

Historic, archived document

Do not assume content reflects current scientific knowledge, policies, or practices.

P-W's FALL BULBS and PLANTS

2.83 PORTER-WALTON CO. Salt Lake City, Utah

"TULIP TIME"
AT OUR CENTERVILLE
DISPLAY GARDENS

Hundreds of the leading new creations in tulips and other spring flowering bulbs are tested here each season, so that we are able to make an intelligent selection of the really worth while varieties for the benefit of our Customers.

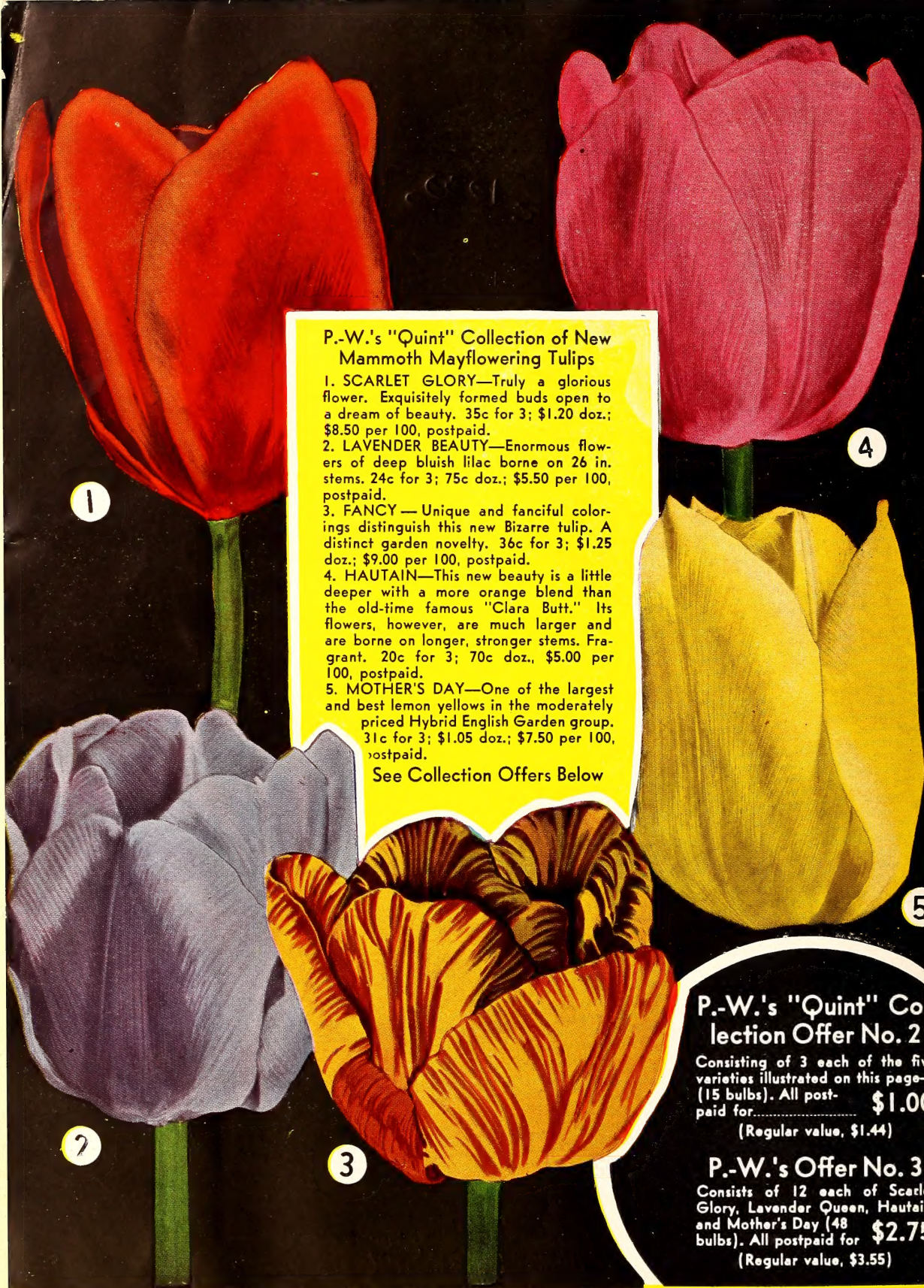


New Hybrid Tulip "WORLD'S FAIR" — This new Mayflowering variety was one of the most outstanding of the hundreds we tested this year in the above Display Gardens. Its mammoth flowers are borne on tall 28 in. stems, presenting a perfectly gorgeous display. You will want these magnificent flowers in your garden next spring. 3 for 75c; dozen for \$2.50; 25 for \$4.00, postpaid.

P.-W.'s "Quint" Collection of New Mammoth Mayflowering Tulips

1. SCARLET GLORY—Truly a glorious flower. Exquisitely formed buds open to a dream of beauty. 35c for 3; \$1.20 doz.; \$8.50 per 100, postpaid.
2. LAVENDER BEAUTY—Enormous flowers of deep bluish lilac borne on 26 in. stems. 24c for 3; 75c doz.; \$5.50 per 100, postpaid.
3. FANCY—Unique and fanciful colorings distinguish this new Bizarre tulip. A distinct garden novelty. 36c for 3; \$1.25 doz.; \$9.00 per 100, postpaid.
4. HAUTAIN—This new beauty is a little deeper with a more orange blend than the old-time famous "Clara Butt." Its flowers, however, are much larger and are borne on longer, stronger stems. Fragrant. 20c for 3; 70c doz., \$5.00 per 100, postpaid.
5. MOTHER'S DAY—One of the largest and best lemon yellows in the moderately priced Hybrid English Garden group. 31c for 3; \$1.05 doz.; \$7.50 per 100, postpaid.

See Collection Offers Below



P.-W.'s "Quint" Collection Offer No. 2

Consists of 3 each of the five varieties illustrated on this page—(15 bulbs). All postpaid for..... **\$1.00**
(Regular value, \$1.44)

P.-W.'s Offer No. 3

Consists of 12 each of Scarlet Glory, Lavender Queen, Hautain, and Mother's Day (48 bulbs). All postpaid for **\$2.75**
(Regular value, \$3.55)

You are as near to us as your Post Office or Express Station. All Delivery Charges are prepaid by us unless otherwise specified.

This service makes us your next door neighbor.

ORDER SHEET PORTER-WALTON CO.

Salt Lake City, Utah

(Do Not Write In Above Space)

Date _____ 193_____

Order No. _____

AMOUNT ENCLOSED

Name _____
(Use Name of Head of Family. Very plain.)

P. O. Order \$_____

Street No. _____ } R.F.D. _____

Exp. Order _____

Post Office _____ } Box _____

Draft _____

State _____ County _____

Cash _____

Ship to _____ State _____

Name of Express or Freight Office

How shall we ship? Indicate by X	
MAIL _____	_____
EXPRESS _____	_____
FREIGHT _____	_____

Stamps _____

Name of Railway _____

Do Not Write Below

Is there a freight agent at your shipping point?

Insurance No. _____

IF NOT PLEASE REMIT TO COVER CHARGES.

Filled by _____

<p style="text-align: center; font-size: small;">Warranty and Responsibility for Crop</p> <p style="font-size: x-small;">What is stated in Catalog regarding this is always a condition of the sale of anything in the Seed and Nursery line.</p>	<p style="font-size: x-small;">When shall we ship? (In the absence of specification, if not reasonable to ship at once, we will use our best judgment as to proper time in your locality.)</p>
---	--

Checked by _____

Shipped _____

B-L No. _____

✓	QUANTITY	SEEDS, BULBS, SHRUBS, TREES AND SUNDRIES	PRICE	AMOUNT
Goods wanted C.O.D. must have at least 25 per cent of the amount accompany order.		If by mail remit Postage on all items not postpaid	Amount for Postage	
			Total Amount Sent	

Suggestions About Ordering

This Order Sheet is for your convenience in sending in orders. Extras will be gladly furnished on request. **Money should always accompany order.** On small amounts we accept postage stamps the same as cash. **Goods wanted C.O.D. must have at least 25 per cent** of the amount accompanying the order. **Patrons signing orders** are requested to use prefix, Mr., Mrs. or Miss. Married ladies please invariably use husband's initials.

Parcel Post Information

Most of the items in this catalog are prepaid, however, on those quoted f.o.b. Salt Lake City the following postal information will be helpful.

Zone	First lb.	Each lb. Additional	Zone	First lb.	Each lb. Additional
1st—Within 50 miles	8c	1.1c	5th—Within 600 to 1,000 miles	11c	5.3c
2nd—Within 50 to 150 miles	8c	1.1c	6th—Within 1,000 to 1,400 miles	12c	7c
3rd—Within 150 to 300 miles	9c	2c	7th—Within 1,400 to 1,800 miles	14c	9c
4th—Within 300 to 600 miles	10c	3.5c	8th—All over 1,800 miles	15c	11c

The Maximum Weight allowable in local and to the First, Second and Third zones is 70 pounds, and to all other zones is 50 pounds. The size of the parcel must not exceed 100 inches for combined length and girth.

USE
LETTER
POSTAGE
HERE

PORTER-WALTON COMPANY

SEED AND NURSERY SPECIALISTS

42 West 1st South Street

SALT LAKE CITY, UTAH

FOLD ON THIS LINE

IMPORTANT

**➔ Before Sealing Be Sure
Your Name and Address are written
plainly on the other side of this blank.**

PROMPT SERVICE
Whether a Packet or a Car Load

FROM _____

“One Good Turn Deserves Another”

The following persons, I think, will likely purchase Planting Materials and would appreciate your Catalog:

NAMES	ADDRESSES

We will include some extra Seeds or Bulbs for above Courtesy.

Please indicate below by X the **free information leaflets** desired:

- | | | | |
|-------------------------|----------------------|---------------------------|------------------|
| Bulb Planting, Fall () | Hardy Lillies () | Planting Nursery | Peonies () |
| Fertilizers () | Lawn Making () | Stock () | Rock Gardens () |
| Flower Seed, Annual () | Mushroom Culture () | Perennial Flower Seed () | Roses () |
| | | | Landscaping () |

Gorgeous New Giant TULIPS

Critically selected as being exceptionally superior among the hundreds of New Holland Creations that were tested at our Centerville Display Gardens last year. All of this collection bloom at the same time, the latter part of May. Plant 6 inches apart each way and 5 to 6 inches deep for best results.

Numerals immediately following variety name is average height in inches. The abbreviations: "B"—Breeder; "CG"—Cottage or English Garden; "ID"—Ideal Darwin; "D"—Darwin; "LF"—Lily Flowered; "NH"—New Hybrids.

★★★**Barbara Pratt** 28 "NH". New and rare. Rich cochineal carmine, edged lilac rose; yellow antlers. Petals are slightly reflexed. A prize tulip for any garden. (See cut.) 3 for 40c; doz., \$1.40; 100, \$10.00.

★★★**Dr. Euwe** 24 "NH". A perfectly glorious soft, clear yellow. Excellent form and substance. 3 for 25c; doz., 85c; 100, \$6.00.

★★★**Goldfinch** 29 "B". Large flower of luminous yellows and browns with glints of bronzy gold. Delightfully sweet scented. 3 for 20c; doz., 65c; 100, \$4.50.

★★★**G. W. Leake** 28 "CG". An incomparable stately flower of a charming brilliant vermilion scarlet which blends with most other colors. The flower petals turning downward disclose a lovely paler base. 3 for 35c; doz., \$1.25; 100, \$8.75.

★★★**Henri Correvon** 26 "NH". A superb flower of great substance and compelling beauty and brilliance. Color is a glowing cerise rose. 3 for 60c; doz., \$2.20; 100, \$15.50.

★★★**Kriemhelde** 28 "ID". This grand, chaste, delicate, creamy-white flower received more praise and favorable comment than any other of the hundreds of novel varieties in our "Display Garden" last spring. It was the first in bloom and remained in flower until the last. Its graceful large oval-shaped flowers are borne on tall, erect stems. The finest white in Tulipdom today. 3 for 35c; doz., \$1.25; 100, \$9.00.

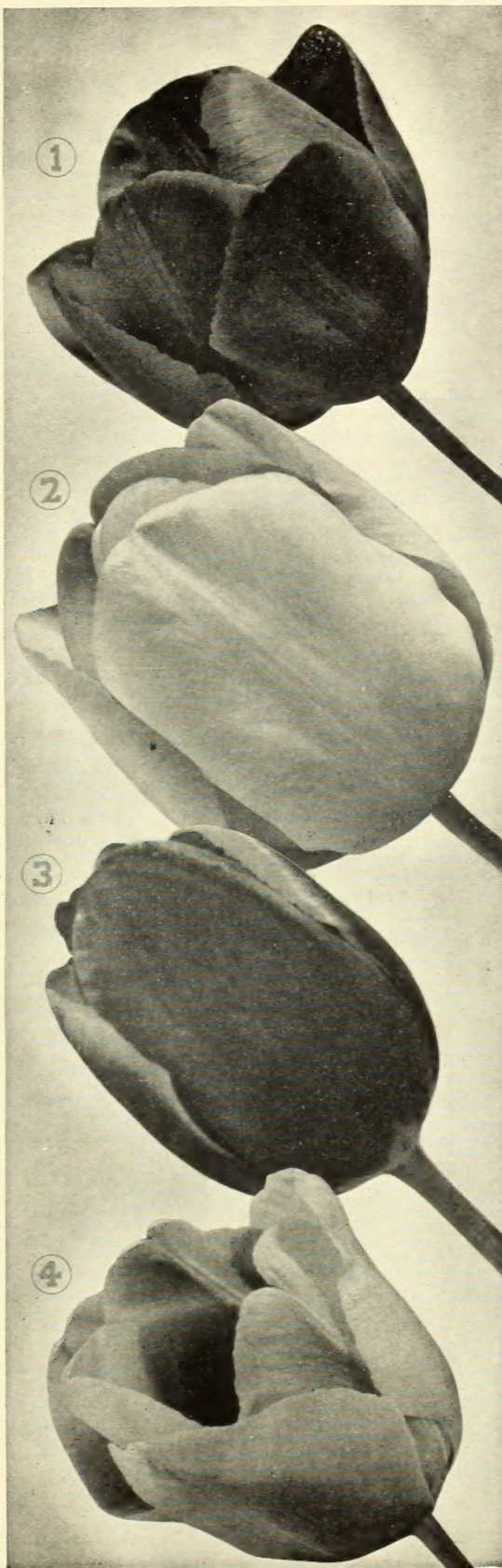
★★★**Marcellina** 26 "LF". When we announce this unique variety is distinctly an enlarged and glorified form of the well-known lily flowered "Siren," you will appreciate it is a real beauty. Its clear, carmine, rose-pink color never fades while the bloom lasts. The petals are gracefully reflexed. 3 for 25c; doz., 85c; 100, \$6.00.

★★★**Mesdag** 29 "D". A super Darwin variety from every angle. Large, stately flowers borne on tall, erect stems; the broad, firm petals are delightfully colored with harmonious hues of solid rose-pink overlaid and tinted at edges with powdery silver. Delightfully charming. 3 for 25c; doz., 85c; 100, \$6.00.

★★**Queen of Hearts** 25 "D". Large, cup-shaped flowers borne on stately stems. In color perhaps the purest deep pink now in cultivation. We have no hesitancy in recommending it. 3 for 25c; doz., 85c; 100, \$6.00.

★★★**Refulgence** 30 "NH". Without question the largest and finest flower in its color, a perfectly gorgeous orange-scarlet, possessing every feature and quality that make for superiority, and in all respects highly recommended. 3 for 65c; doz., \$2.25; 100, \$15.50.

★★★**Scotch Lassie** 26 "ID". In our Centerville Test Garden this variety was pronounced by all odds the finest pure, deep lavender in the entire list. Flowers are large, petals slightly reflexing, which add to its grace and beauty. Most desirable in any garden. 3 for 35c; doz., \$1.20; 100, \$8.50.



1. Scotch Lassie 3. Barbara Pratt
2. Kriemhelde 4. Dr. Euwe

Offer No. 4—Consists of 3 bulbs each of the above 11 varieties. 33 bulbs. Regular value \$3.90. Postpaid..... **\$3.00**

Offer No. 5—Consists of 3 bulbs each of Barbara Pratt, Dr. Euwe, Refulgence, and Kriemhelde (12 bulbs. Reg. val. \$1.65). Postpaid..... **\$1.25**

Offer No. 6—Consists of 12 each of the 4 varieties listed in Collection No 5. (48 bulbs. Regular value \$5.75). Postpaid..... **\$4.50**

P.-W.'s Mammoth May

Include the OLD FAVORITES

These Tulips are marvelous for the Herbaceous Border, massed in clumps along the edge of shrubbery, or as cut-flowers for vases.

Listed under this class are all the very desirable varieties of the so-called **Ideal-Darwin, Darwin, Breeder, New Hybrids, Lily Flowered** and **English or Cottage Garden**. There is really no sense to the past practice of separating these tulips into different groups as the bloom periods, height and habits of growth of all are within the same range and they are all really derived from the same source. So under whatever name you have been buying in the past you will find your favorite in this list.



Ambrosia



Alaska



Picotée

Abel-Kader 27 "B". Deep bronze, paler edged. 3 for 20c; doz., 70c; 100, \$5.00.

★★★**Advance 24 "NH"**. New giant hybrid, producing large, blazing red flowers with purplish border. Simply dwarfs all other varieties and is perhaps the longest lasting variety of all tulips. 3 for 52c; doz., \$1.75; 100, \$12.50.

Afterglow 26 "D". Deep rosy orange with salmon tinted edge. 3 for 18c; doz., 65c; 100, \$4.50.

★★**Alaska 28 "LF"**. Pure golden yellow, slightly reflexed, long petals. 3 for 18c; doz., 65c; 100, \$4.50.

★**Ambrosia 22 "CG"**. Very large, inside salmon orange, outside shaded lilac-rose. 3 for 20c; doz., 70c; 100, \$5.00.

★★**Anton Mauve 26 "D"**. Enormous flowers, deep bluish lilac. 3 for 21c; doz., 75c; 100, \$5.50.

★★★**Aviator Hawkes 29 "NH"**. Large, deep rose pink, silvery edged. Charming. 3 for 27c; doz., 90c; 100, \$6.50.

★**Avis Kennicott 25 "CG"**. Rich, deep shade of yellow, with a striking black base and anthers. 3 for 18c; doz., 65c; 100, \$4.50.

★**Baron De La Tonnaye 26 "D"**. Vivid pink, tall, strong stems. 3 for 18c; doz., 60c; 100, \$4.25.

★**Bartigon 28 "D"**. Fiery red; good forcer. 3 for 18c; doz., 60c; 100, \$4.25.

★★**The Bishop 29 "D"**. Large, deep violet with blue base and white halo. Considered the finest in its color. 3 for 33c; doz., \$1.10; 100, \$8.00.

★**Blue Aimable 25 "D"**. A beautiful, rich, lavender blue. 3 for 18c; doz., 65c; 100, \$4.50.

★★**City of Haarlem 27 "D"**. Intense, dark scarlet, with dark bloom. 3 for 24c; doz., 85c; 100, \$6.00.

★**Clara Butt 22 "D"**. An exquisite shade of soft, salmon pink, shaded rose. 3 for 18c; doz., 60c; 100, \$4.25.

Copernicus 27 "B". Dark, coppery bronze, shaded old rose. 3 for 21c; doz., 75c; 100, \$5.50.

★★★**Dido 30 "NH"**. A perfect flower, excellent in color and form, poised firmly at the top of its straight stem. Color is deep, rich pink with yellow stripes. Magnificent, fragrant. 3 for 18c; doz., 65c; 100, \$4.50.

P.-W.'s LILY FLOWERED TULIP COLLECTION NO. 8

Consists of 12 bulbs each of Alaska, yellow; Marcellina, Carmine; Picotée, white, pink edged. 36 bulbs (Reg. value \$2.10), postpaid. **\$1.50**

P.-W.'s Elite Collection

of 8 foremost Mammoth Flowering Tulips—
The Aristocrats of Tulipdom

Dillenburg
Orange red, bronze edge

Eclipse
Mammoth blood red

Indian Chief
Reddish mahogany

Mesdag
Rose pink

Mothersday
Lemon yellow

Queen of Hearts
Deep pink

Sarazen
Salmon

Scotch Lassie
Pure lavender

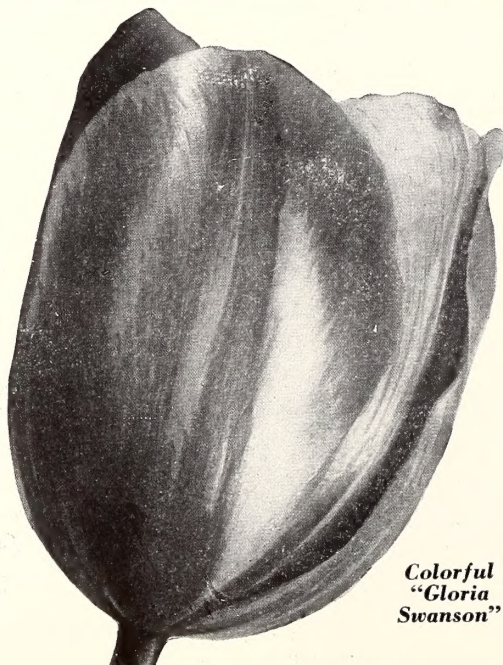
Zwanenburg
Pure white

OFFER No. 9

3 each of above (in all 24 bulbs) postpaid (reg. val. \$2.36) **\$1.75**

OFFER No. 10

6 ea. of above (48 bulbs), postpaid (reg. value \$4.03)..... **\$3.25**



Colorful
"Gloria Swanson"

FLOWERING TULIPS

and the DESIRABLE NEW

You "can't go wrong" on any of them—every variety is worth while; but just to indicate—preferences expressed by technical experts we employ the star (★):

★An outstanding variety. ★★Very outstanding. ★★★Exceptionally superior.

Numerals immediately following variety name is height in inches. The abbreviations: "B"—Breeder; "CG"—Cottage or English Garden; "ID"—Ideal Darwin; "D"—Darwin; "LF"—Lily Flowered; "NH"—New Hybrids.

Plant 6 inches apart, 4 to 5 inches deep in heavy and 6 inches in light soils. For convenience in figuring allow 4 bulbs for each square foot to be planted.

★★★Dillenburg 28 "B". Glorious salmon-orange red, edged bronze, shaded rose. Unusual. 3 for 20c; doz., 70c; 100, \$5.00.

★★★Eclipse 30 "D". New, deep rich glowing blood-red. Huge flower of fine form on a very tall, strong stem. A truly magnificent creation. 3 for 43c; doz., \$1.50; 100, \$10.50.

★★Farncombe Sanders 25 "D". Vivid cerise-scarlet with white base; large. One of the best. 3 for 18c; doz., 60c; 100, \$4.25.

★★Faust 30 "D". A very large, deep violet purple. 3 for 20c; doz., 70c; 100, \$5.25.

★Gesnerianna Major 24 "CG". Dazzling crimson scarlet with violet center. 3 for 20c; doz., 70c; 100, \$5.00.

★★★Gloria Swanson 32 "ID". Enormous crimson-red flower with bluish base. Excellent. 3 for 31c; doz., \$1.05; 100, \$7.50.

★Golden Fleece 28 "D". Large, golden-yellow, tipped bronze; inside orange. 3 for 20c; doz., 70c; 100, \$5.00.

★Grenadier 21 "CG". Beautiful orange, large flower. 3 for 18c; doz., 60c; 100, \$4.25.

★★Hautain 30 "NH". A magnificent large flower, in color a vivid rose. (See illustration front cover). 3 for 20c; doz., 70c; 100, \$5.00.

★★★Indian Chief 34 "B". Very artistic, long shape with slightly recurved petals. Reddish mahogany flushed purple. 3 for 37c; doz., \$1.25; 100, \$9.00.

Inglescome 20 "CG". Golden yellow.

low. 3 for 18c; doz., 60c; 100, \$4.25.

★★Jeanne Desor 28 "CG". Combination of orange, yellow and scarlet. Large, graceful flower. 3 for 23c; doz., 80c; 100, \$5.75.

★Jno. Ruskin 18 "CG". Apricot rose, yellow edge. 3 for 19c; doz., 65c; 100, \$4.75.

★★Kathleen Parlow 30 "NH". Tall, attractive, graceful flower. Shell pink, edged silvery rose, inside lighter. Very charming. 3 for 47c; doz., \$1.60; 100, \$11.50.

★King George V 26 "CG". Brilliant, rosy scarlet; extra large flower. One of the finest. 3 for 24c; doz., 85c; 100, \$6.00.

King Harold 25 "D". Deep oxblood-red. 3 for 18c; doz., 60c; 100, \$4.25.

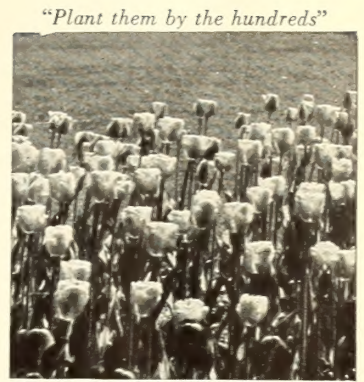
★★Lavender Queen 26 "D". Very large, charming flower of clear, bluish lavender. (See front cover). 3 for 21c; doz., 75c; 100, \$5.50.

★★Leda 25 "NH". Salmon pink with lighter edges. Unique coloring. 3 for 20c; doz., 70c; 100, \$5.00.

★★Louis XIV 30 "B". Enormous flower, rich, deep purple, heavily flushed with golden bronze. 3 for 20c; doz., 70c; 100, \$5.00.

★★Lucifer 28 "B". Mammoth flower of brilliant terra cotta orange. 3 for 25c; doz., 85c; 100, \$6.25.

★★★Marjorie Bowen 26 "NH". The supply of bulbs on this exquisite novelty is very limited. It is a most beautiful, deep, carmine pink with slightly reflexed petals, very graceful in form. Without question the finest in its color. 3 for 28c; doz., 95c; 100, \$6.75.

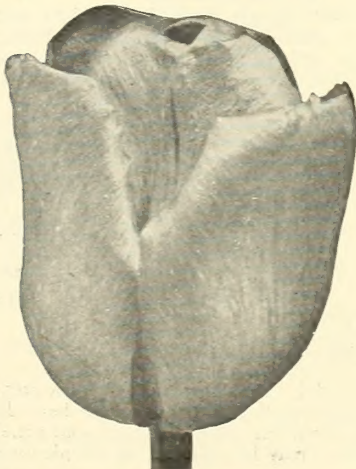


Groups of Mammoth Flowering Tulips



"Giant Flowered Orient"

P.-W.'s BULBS are positively the "Pick o' the Crop." Satisfaction absolutely guaranteed. YOU TAKE NO CHANCES YOUR SUCCESS IS ASSURED



"Louis XIV"

The gorgeous deep purple, edged bronze

P.-W.'s Rainbow Collection of Mammoth Flowered-Tulips

These 5 Charming Varieties—

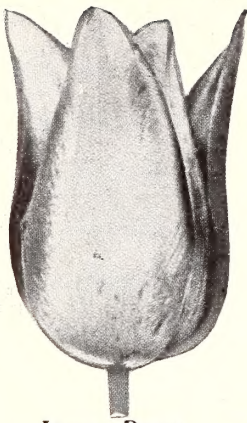
- City of Haarlem
Deep scarlet
- Blue Aimable
Rich lavender blue
- Dido
Pink striped yellow
- Mrs. Moon
Rich yellow
- Orient
Salmon carmine

OFFER No. 11
6 each of above five varieties (30 bulbs), postpaid (reg. value \$2.00)..... \$1.50

OFFER No. 12
12 each of above five varieties (60 bulbs), postpaid (reg. value \$3.50)..... \$2.75

P.-W.'s Mammoth Flowering Tulips

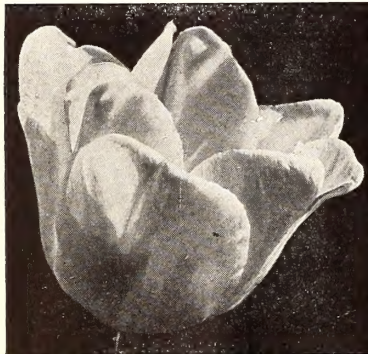
(CONTINUED)



Jeanne Desor



Kathleen Parlow



Zwanenburg



Rembrandt

Cutting Garden Tulip Collection

These four showy old-time varieties are not only grand in the garden, but are excellent for cut flowers—Clara Butt (pink), Farncombe Sanders (scarlet), Inglescombe (yellow), and Rev. H. Ewbank (lavender).

OFFER NO. 14—100 bulbs (25 of each, value \$4.25) for.....\$4.00
OFFER NO. 15—200 bulbs (50 of each, value \$8.50) for.....\$7.75

- ★★Melicette 34 "D". Best pure lavender. 3 for 21c; doz., 75c; 100, \$5.50.
- ★Moonlight 25 "CG". The best pale yellow. Flower is very long and of fine oval shape. 3 for 20c; doz., 70c; 100, \$5.00.
- ★★Mothersday 28 "CG". In our estimation the best large lemon yellow in the moderately priced class. (See front cover.) 3 for 31c; doz., \$1.05; 100, \$7.50.
- ★★Mrs. Beecher Stowe 28 "B". The finest clear blue. A grand novelty. 3 for 27c; doz., 90c; 100, \$6.50.
- ★★Mrs. Moon 25 "CG". Large, golden yellow, petals reflexed, sweet scented. 3 for 20c; doz., 70c; 100, \$5.00.
- ★★★Orient 26 "NH". Mammoth, long, pointed flowers, remarkably blended in a gorgeous color combination of salmon, bright rosy carmine and reddish orange. 3 for 20c; doz., 70c; 100, \$5.00.
- ★Panorama (Fairy) 26 "B". Deep, orange-red shaded mahogany; very fine. 3 for 19c; doz., 65c; 100, \$4.75.
- ★Peking 28 "D". Pure, golden yellow. Large flower on strong stems. A long-looked-for deep yellow Darwin. 3 for 20c; doz., 70c; 100, \$5.00.
- ★★Picotee 20 "LF" (Maiden's Blush). White margined, rose-pink. 3 for 18c; doz., 60c; 100, \$4.25.
- ★★Pink Pearl 27 "B". Lilac rose, inside rosy cream. Petals gracefully curled. 3 for 21c; doz., 75c; 100, \$5.50.
- ★★President Taft 26 "D". Best dark scarlet-red. Extra large. 3 for 27c; doz., 90c; 100, \$6.50.
- ★★Pride of Haarlem 26 "D". Crimson carmine. Still the leader. 3 for 18c; doz., 60c; 100, \$4.25.
- Prince of the Netherlands 31 "D". A giant flowered sort of deep cerise-rose edged pink. 3 for 23c; doz., 80c; 100, \$5.75.
- Prince of Wales 28 "B". Very bright crimson with scarlet flush; bright blue base. 3 for 20c; doz., 70c; 100, \$5.00.
- ★Princess Elizabeth 26 "D". Perfectly formed; large, rich, deep pink. 3 for 18c; doz., 60c; 100, \$4.25.
- ★Professor Rauwenhoff 28 "D". Bright cherry red, shaded salmon. 3 for 18c; doz., 60c; 100, \$4.25.
- Rev. H. Ewbank 20 "D". Silvery lavender shading towards the center, bluish heliotrope. 3 for 18c; doz., 60c; 100, \$4.25.
- ★Rosabella 27 "NH". White edge, large flowers on stout stems, when opening resembles a rose bud. 3 for 20c; doz., 70c; 100, \$5.00.
- ★★Sarazen 26 "D". Most attractively formed salmon rose. Flowers are large, beautifully shaped and of a unique color combination. 3 for 20c; doz., 70c; 100, \$5.25.
- ★★★Scarlet Glory 25 "CG". Truly a glorious flower. Very long, exquisitely formed buds which open into a dream of scarlet beauty. (See front cover.) 3 for 35c; doz., \$1.20; 100, \$8.50.
- Scarletta 20 "CG". Fiery scarlet, large brilliant flower. 3 for 21c; doz., 75c; 100, \$5.50.
- ★Velvet King 31 "B". Dark purple, white base; immense flower. 3 for 31c; doz., \$1.05; 100, \$7.50.
- ★★Vesta 28 "CG". Long stemmed, purest white, black filaments. 3 for 20c; doz., 70c; 100, \$5.00.
- ★Victoire d' Oliveira 26 "D". Showy rich red. 3 for 18c; doz., 60c; 100, \$4.25.
- ★★Yellow Giant 29 "D". Pure, deep golden yellow. The long-sought pure yellow. Truly a glorious flower. 3 for 19c; doz., 65c; 100, \$4.75.
- ★★Yolande 28 "D". Exquisite soft salmon pink. Identical in coloring with Clara Butt, but stem is longer and flower finer in every way. 3 for 23c; doz., 80c; 100, \$5.75.
- ★★Zwanenburg 28 "D". The only pure white Darwin Tulip. Large splendid flower on strong, tall stem. 3 for 23c; doz., 80c; 100, \$5.75.
- Good Mixed. 3 for 16c; doz., 55c; 100, \$4.00.
- P.-W.'s Best Mixed English Garden Tulips. 3 for 18c; doz., 60c; 100, \$4.25.

P.-W.'s Superb Prize Mixture Giant Tulips

The wonderful interest in these splendid Tulips has brought out a great many varieties too numerous for listing, except those considered the best. In addition to some of the varieties listed above, our mixture contains an equal proportion of many others. Brilliant effects may be obtained by the planting of this mixture of choice named sorts.

65c per doz.; per 100.....\$4.50

MAMMOTH TULIPS

P.-W.'s Bargain Collection of May Flowering Tulips

Superior Than Grade Usually Offered by Chain and Department Stores

By special arrangement with our Growers we offer these "Bargain Size Tulips." They are smaller than our regular "top size" quality bulbs, which we handle exclusively except in this collection. This "bargain" grade of bulbs are all of flowering size, true to name; with proper care will give a good account of themselves and are well worth the low price at which they are sold. We stock this grade only in the following varieties. In ordering specify "Bargain Size Bulbs."

Afterglow—rosy or orange salmon.

Blue Aimable—rich lavender blue.

Dido—salmon rose.

Farncombe Sanders—scarlet.

King Harold—deep red.

Inglescombe—large yellow.

Pride of Haarlem—carmine.

Princess Elizabeth—deep pink.

Victoire d' Oliveira—rich red.

Rev. Ewbank—lavender.

Bargain size bulbs of any of above 10 varieties, 45c doz.; \$3.00 per 100.

P.-W.'s THRIFT COLLECTION NO. 17

10 each bargain size bulbs of the above 10 varieties, (100 bulbs). Postpaid, \$3.00.

P.-W.'s THRIFT COLLECTION NO. 18

5 bulbs each of above 10 varieties (50 bulbs), bargain size. Postpaid, \$1.60.

BARGAIN SIZE SPECIAL

A mixture of many varieties packed especially in Holland in lots of 35 bulbs. Per lot, postpaid, \$1.00.

Rock Garden TULIPS

Australis (Clestana)—6. Yellow-shaded brown, sweet scented. 3 for 24c; doz., 85c; 100, \$6.00.

Clusiana—8. White flushed rose, claret base. 3 for 19c; doz., 65c; 100, \$4.75.

Eichleri—11. Immense crimson-scarlet flowers with glistening black center marked with gold. 3 for 18c; doz., 60c; 100, \$4.25.

Florentina Odorata—16. Deliciously fragrant, butter-yellow blossoms. Often two to a stem, with bronze exteriors, carried on slender arching stems. 3 for 21c; doz., 75c; 100, \$5.50.

Kaufmanniana—6. Palest primrose with carmine-red on the outside. Flowers 4 weeks ahead of any other Tulip. 3 for 29c; doz., \$1.00; 100, \$7.00.

Gorgeous Parrot TULIPS

Parrot Tulips are of the May-flowering class and have immense, attractive flowers of singular and picturesque forms and brilliant and varied colors. Plant in light, sandy soil, three inches deep, five to six inches apart, sunny location. Allow five bulbs for each square foot to be placed.

★**Fantasy** 23. A glorious Parrot Tulip with straight, strong stems. Enormous flower of a soft salmon-pink with delicate, pale green blotch in center of petal. 3 for 20c; doz., 70c; 100, \$5.25. (See cut).

Amiral de Constantinople. Large, red flowers, tipped with orange.

Lutea Major. Large, bright yellow, with crimson and green stripes.

Cafe Brune (Coffee Color). A very striking combination of brown and yellow shades.

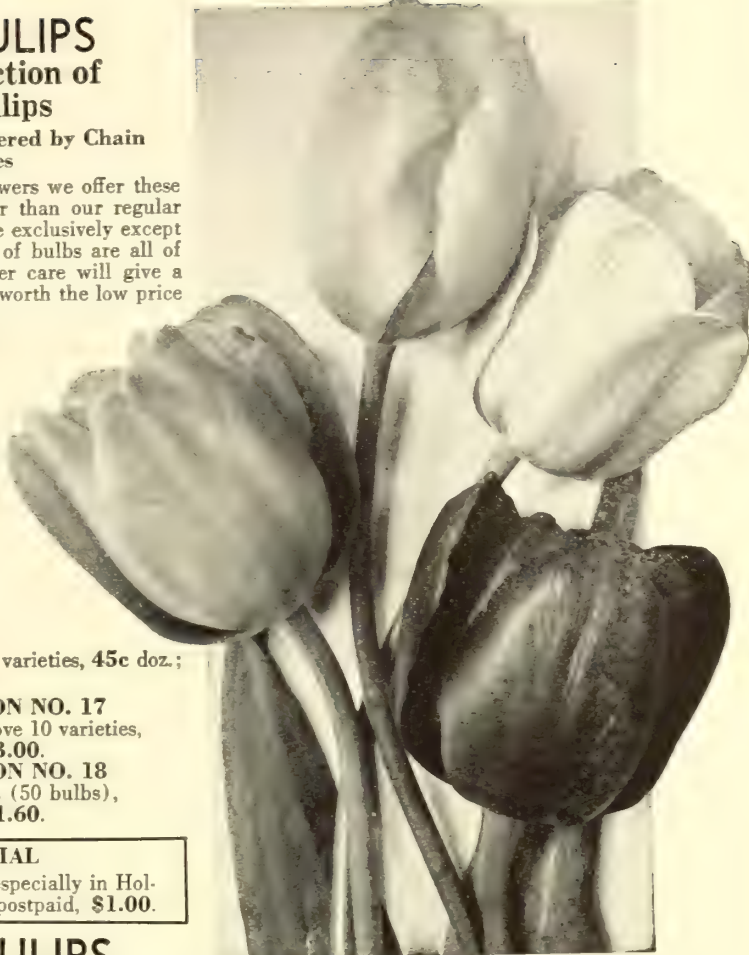
Markgraaf van Baden. True. Orange, striped scarlet; extra fine.

Price—Any of above (except Fantasy), 3 for 18c; doz., 65c; 100, \$4.50.

Parrot Tulip Superfine, Mixed. A mixture of many outstanding self colors and combinations. 3 for 18c; doz., 60c; 100, \$4.25.

COLLECTION OF PARROT TULIPS OFFER NO. 20

Consisting of 6 bulbs each of the above five varieties. (30 in all.) Regular value \$1.84. Postpaid \$1.50



Types of Giant Flowered Tulips

Rembrandt Tulips

This class of "Giant Tulips" is distinguished by the delicate tints and hues with flames or stripes of distinctive coloring; usually are of the darker shades, forming very striking combinations. All varieties and colors—3 for 21c; doz., 75c; 100, \$5.50.

ROCK GARDEN TULIP COLLECTION

No. 19—6 bulbs each of above five varieties. (36 bulbs in all. Value \$1.98) \$1.50



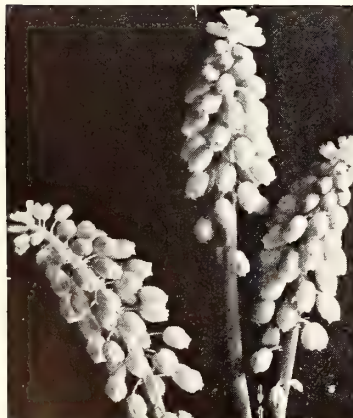
New Parrot Tulip Fantasy



Keizerskroon



Peach Blossom (Dbl. Early)



*Muscari
Imp. Heavenly Blue*

BRILLIANT SINGLE EARLY TULIPS

Blooms during April. Coloring is varied, mostly of very brilliant and gay shades. Effective planted in solid beds of one to several different colors. Allow 5 bulbs to the square foot.

- Belle Alliance.** Brilliant scarlet, yellow base. Doz., 70c; 100, \$5.00.
Chryselora. Pure golden yellow. Doz., 60c; 100, \$4.25.
Cramoise Brilliant. Sparkling red, very large. Doz., 60c; 100, \$4.25.
General De Wet. Deep orange, shaded golden yellow base. Doz., 70c; 100, \$5.25.
Keizerskroon. Crimson scarlet with broad yellow margin. Doz., 75c; 100, \$5.50.
Lady Boreal (White Joost Van Vondel). Finest white. Doz., 70c; 100, \$5.25.
Prosperine. Silky rich satiny carmine-rose. Doz., 70c; 100, \$5.00.
Rose Luisant. Fine deep rose. Doz., 70c; 100, \$5.25.
Van der Neer. Deep violet. Doz., 70c; 100, \$5.00.
All Colors Mixed. Good mixture of named varieties. Doz., 55c; 100, \$4.00.

SHOWY DOUBLE EARLY TULIPS

Same culture and bloom period as Single Early Tulips. (See above.)

- Azalea.** Beautiful deep rose flushed salmon. Very fine. Doz., 70c; 100, \$5.00.
Boule de Neige. Pure white; large, peony-like flower. Doz., 85c; 100, \$6.00.
Golden Murillo (Mr. Van der Hoef). Rich golden yellow. Doz., 70c; 100, \$5.00.
Peach Blossom. Very deep pink. Doz., 70c; 100, \$5.00.
Mu-Rillo. Rose and white. Large, double, good forcer. Doz., 65c; 100, \$4.75.
Vuurbaak. Brilliant scarlet, very large flower. Doz., 85c; 100, \$6.00.
All Colors Double Mixed. Good Holland Mixture. Doz., 65c; 100, \$4.75.

Collections of Double Tulips

Contain Azalea, Golden Murillo, Peach Blossom and Vuurbaak

- No. 22**—6 bulbs each of above (24 bulbs, value \$1.48).....\$1.25
No. 23—12 bulbs each of above (48 bulbs, value \$2.96)..... 2.25
No. 24—25 bulbs each of above (100 bulbs, value \$5.25)..... 4.25

CROCUS

Among the earliest to blossom in spring is this beautiful little flower, lifting its head almost before the snow has disappeared. Blooming at a time when the ground is destitute of foliage and flower, it is a welcome visitor. The Crocus succeeds in pots and glasses, for which purpose the named varieties should be selected. They present the best appearance, however, when grown in masses for which quantities should be used of at least 100 to 500. All bulbs we supply in named varieties are mammoth size. Prices include postage. Doz. 100

King of Blues —Dark purple blue.....	\$.30	\$2.25
Mont Blanc —Best white30	2.25
Mammoth Yellow —Golden yellow35	2.50
Scipio —Variegated and striped30	2.25
Choice Mixed Crocus —All colors.....	.25	1.75

AUTUMN-FLOWERING CROCUS

(Plant in September)

Excellent for planting in rock gardens, grass plats and shrubby borders. **Speciosus**—Lively violet-blue, veined with orange red anthers, light yellow throat. Very fine. Doz., 40c; 100, \$2.75.

Zonatus—Rosy-lilac; yellow center and orange zone. Most satisfactory. Doz., 55c; 100, \$3.75.

OFFER NO. 25

25 each Crocus, King of Blues, Mont Blanc, Mam. Yellow (75 small. Reg. value \$1.79.)
 Postpaid.....\$1.50

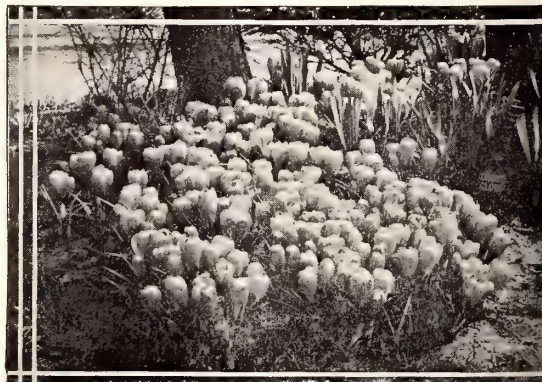
MUSCARI

(Grape Hyacinths)

One of the prettiest of early spring flowering bulbs, grows about 6 inches high. Attractive floral spik-ets.

Improved Heavenly Blue

—Color clear light blue; very showy. Doz., 30c; 100, \$2.00; 1000, \$17.50.



Crocus, Mammoth Yellow

THE FRAGRANT HYACINTH

THE "BIG TEN" RAINBOW COLLECTION

Garden Culture. Bulbs may be planted from the end of September until very severe weather sets in. The beds should be raised a few inches above the surrounding ground, to prevent lodgments of water, which cause bulbs to rot. Bulbs should be set 6 to 8 inches apart and 6 to 8 inches deep. If the soil is dry at planting time it should be watered and kept moist while the weather permits.

EXHIBITION HYACINTHS

(Flowers in April)

Giant First-Size Bulbs, Specially Selected for Forcing in the House, Exhibition at Flower Shows or Planting in the Garden

Gertrude. Magnificent compact trusses, closely set with rich carmine-rose bells. A favorite variety for outdoor bedding. Easily forced, for winter blooming.

Grand Maitre. A glorious spike of large bells closely set on a long and strong stem, in color a rich deep porcelain blue.

King of the Blues. This outclasses all other deep blue varieties on account of its purity and richness of color. The flower-spikes are long and fully set with large bells.

Lady Derby. Clear, rich rose blooms forming a solid and strong spike of color. A magnificent, free-blooming variety.

La Victoire. One of the earliest of all Hyacinths. The flowers are brilliant scarlet. When grown indoors they have a tendency to be lighter.

L'Innocence. Magnificent white bells of extra large size gracefully arranged into a fine, sturdy truss on a substantial and long stem. This makes a beautiful display.

Roi des Belges. Very large compact spike. Brilliant, deep red.

Queen of Blues. Soft, light blue; very long and perfect truss, with large bells; easily forced.

Sir William Mansfield. Large, beautiful purplish mauve.

Yellow Hammer. A good deep shade of creamy-yellow, easily forced and forms compact, long, showy flower-spikes.

Price—Any of the above 18c each; 3 for 50c; doz., \$1.75; 100, \$12.00.

COLLECTION OF EXHIBITION HYACINTHS

These collections contain the following 5 varieties: Gertrude, King of the Blues, Sir William Mansfield, La Victoire, and L'Innocence.

No. 27—Two bulbs each (10 bulbs, value \$1.80).....	\$1.50
No. 28—Three bulbs each (15 bulbs, value \$2.50).....	2.15
No. 29—Six bulbs each (30 bulbs, value \$5.00).....	3.85

CHIONODOXAS

(Glory of the Snow)

Luciliae. Pure white center gradually merging into the blue, the color becoming more intense towards the tips of the petals. Beautiful bedding flowers; also good for pots. Doz., 30c; 100, \$2.00.

Sardensis. Charming rich gentian-blue. Doz., 30c; 100, \$2.00.

FRITILLARIAS

Crown Imperial. Each, 35c; doz., \$3.50; 100, \$25.00, postpaid.

Meleagris. Singular, dwarf, spring-flowering plants, bearing large, pendent bell-shaped flowers of various colors, in yellow, white, black, purple, striped and splashed and checkered in the most curious way. Attractive in large groups in the garden border or wild garden in a dry situation. Mixed colors. Doz., 45c; 100, \$3.00.

SNOWDROP

Single. Selected bulbs. Doz., 40c; 100, \$3.00.

Double. Selected bulbs. Doz., 65c; 100, \$4.50.

SCILLAS (Squills)

Sibirica, Blue. Invaluable for indoor decoration and is perfectly hardy outside, largely grown in the open border in conjunction with Snowdrops. Doz., 40c; 100, \$3.00.

Campanulata, Blue. (English Blue Bells). Blooms in May. Doz., 40c; 100, \$2.75.

Campanulata, Rosea. Very pretty pink flowers. Each, 5c; doz., 40c; 100, \$2.75.

WINTER ACONITE

(*Eranthis Hyemalis*)

The Winter Aconite is the very "firstling" of the year covering the ground with gilt spangles in the bleakest days of February or March in colder states. Any soil or situation will suit this flower, and it should be planted in large patches within view from the windows. Doz., 35c; 100, \$2.50.

Hyacinths in Pots. Get rich, light soil or Bulb Fibre. If soil, provide drainage. Break off any offsets which appear at the base of the bulbs, and, in potting, place each bulb so that its top shall be half an inch below the surface of the soil, and about an inch below the rim of the pot.

P.-W.'s Superb Bedding Hyacinths

(Named Sorts)

These bulbs are splendid forcing. Pot culture and outdoor beds. They are smaller bulbs than the "exhibition" size listed above but we offer precisely the same varieties, the only difference being the flower spikes may be slightly smaller. They may be used for formal garden planting with every assurance that when they are in bloom the design will not be ruined by having flowers of unequal height differences in blooming time, weak stems or color clashes sometimes experienced in bedding mixtures.

Price—12c each; 3 for 30c; doz., 90c; 25, \$1.75; 100, \$6.75, postpaid.



Exhibition Hyacinth

P.-W.'s LOVELY DAFFODILS

SELECTED BULBS FROM WORLD SPECIALISTS



Olympia

Collections of Four Large Daffodils

These collections contain the following large-flowering varieties described on these two pages:

Olympia, Spring Glory, Sir Watkins and Poetaz Elvira. All selected bulbs.

No. 32 —Three bulbs each.....	\$.75
(12 bulbs, value 96c)	
No. 33 —Six bulbs each.....	1.35
(24 bulbs, value \$1.68)	
No. 34 —Twelve bulbs each.....	2.60
(48 bulbs, value \$3.35)	
No. 35 —25 bulbs each.....	5.00
(100 bulbs, value \$6.00)	

Trumpet Daffodils, Mixed Many of our friends have requested us to furnish them with a mixture of Narcissi which could be used for mass planting in the garden, the woodland, or the meadow. Our mixture contains all hardy varieties suited for this purpose. The plants will multiply from year to year and give the natural effect so much desired. Doz., **75c**; 100, **\$5.50**; 1000, **\$50.00**.

Double Daffodils

DOUBLE VAN SION. Too well known to need description; grand old double yellow Daffodil.
Selected Bulbs, 3 for 24c; doz., 85c; 100, \$6.00.
Sulphur Phoenix (Incomparabilis). Large, double creamy-white with deeper center, very chaste and beautiful.
Selected Bulbs, 3 for 24c; doz., 85c; 100, \$6.00.

Twink The most popular Double Daffodil. Semi-double in type, with alternating petals of primrose and clear orange, each whorl of petals symmetrically centered over the other. It has none of the confused appearance common to older inferior doubles of this class. Flowers very early in the garden and is particularly suited for forcing. Outstanding exhibition variety. 3 for **54c**; doz., **\$1.85**; 100, **\$13.00**.

Both Holland and Northwestern Grown Bulbs are now available, and there are no hardier bulbous plants with more merit than the Narcissus or Daffodil. They grow well in almost any climate or condition, sun or shade, moist or dry, although they have a preference for good deep soil, and a partly shaded position.

They are equally desirable for pot culture for winter flowering. The top of the bulbs should be planted four inches below the surface and 6 to 12 inches apart.

NOTE: In describing Narcissus reference is made to the "perianth" and the "trumpet." The latter is the long center, funnel-shaped tube, and the perianth is the outer row of petals or wings.

Large Trumpet Daffodils

EMPEROR. Yellow trumpet, perianth deep primrose.
Selected Bulbs, 3 for 21c; doz., 75c; 100, \$5.50.

KING ALFRED. This wonderfully beautiful Daffodil is considered the largest and finest deep golden yellow trumpet variety. A tall, strong grower, with magnificent frilled trumpet and large perianth, all of a uniform rich golden-yellow of splendid heavy texture—lasting well.

Selected Bulbs, 3 for 31c; doz., \$1.05; 100, \$7.50.

Mother Bulbs, 3 for 41c; doz., \$1.40; 100, \$10.00.

MRS. ERNEST H. KRELAGE. White King Alfred. This is rated as one of the finest pure white trumpet daffodils. Flower is even toned of pure white throughout. Free flowering and of outstanding vigor. 3 for **35c**; doz., **\$1.20**; 100, **\$8.50**.

OLYMPIA. A much improved and enlarged Emperor, very free-flowering and exceptionally hardy. This giant trumpet is priced so low that it can be ranked as a leading commercial cut flower variety.

Selected Bulbs, 3 for 27c; doz., 90c; 100, \$6.50.

Mother Bulbs, 3 for 39c; doz., \$1.35; 100, \$9.50.

SPRING GLORY. Clear white perianth with long petals of splendid form, long trumpet of deep yellow, well reflexing at brim. Vigorous grower and one of the best Daffodils for pot culture.

Selected Bulbs, 3 for 24c; doz., 85c; 100, \$6.00.

Mother Bulbs, 3 for 33c; doz., \$1.10; 100, \$8.00.

VAN WAVEREN'S GIANT. Largest in cultivation; perianth primrose, trumpet bright yellow.

Selected Bulbs, 3 for 35c; doz., \$1.20; 100, \$8.50.

ROBERT SYDENHAM. (See color plate, page 14.)



Double Van Sion Daffodil



Bonfire
Narcissus



Cheerfulness

For a Thrill Plant These Three Glorious Narcissus

BONFIRE. A most impressive flower. Long ivory colored petals overlapping surrounding glowing orange scarlet cup of great beauty. A decided freshness like that of newly formed cream characterizes the petals while the deep color of the cup dazzles the eye. Long stemmed; very free flowering. 3 for 25c; dozen 85c; 100 \$6.00.

CHEERFULNESS: This is a new double white Poetas hybrid. Three to four flowers on a single stem. While the general effect of the coloring is white, there is a suggestion of ivory and yellow tints at the base of the petals which give character to the entire flower. It stands out as the most charming introduction in this class in recent years. Wonderful show variety. (See above color cut.) 3 for 25c; dozen 85c; 100 \$6.00.

ORANGE GLOW. "Exceptionally superior" is the usual comment for this variety. Possesses a clear golden yellow perianth of large dimensions. Delightfully frilled crown of great depth and width stained a deep orange with a reddish fringe. This magnificent flower measures 4 1/2 to 5 inches across under good cultural treatment. (See color cut.) 30c each; 3 for 80c; dozen \$3.00; 100 \$21.00.



New
Orange
Glow

Collection No. 37

Consists of three bulbs each of Bonfire, Cheerfulness, and Orange Glow. 9 bulbs in all. (Regular Value, \$1.30.) Postpaid. All for.....

\$1.00

Collection No. 38

Consisting of 12 each of the above three varieties. 36 bulbs in all. (Regular value, \$4.70.) Postpaid.....

\$3.75

NARCISSUS FOR NATURALIZING

Plant them by the hundreds. Medium and short trumpet varieties mixed. All the first class bulbs especially recommended for naturalizing or large plantings. Contains all types and colors. 50c doz.; \$3.75 per 100; \$35.00 per 1000.

P-W's Bargain Collections of "Tried and True" Flowers
"That Bloom in the Spring"

Bargain Offer No. 41
"All Spring Bloom" Collection consisting of
25 Crocus Yellow No. 4 March
25 Grape Hyacinth No. 7 April
25 Bulb Iris No. 2 May
All of above 75 bulbs
(Regular Value \$2.05). Postpaid..... **\$1.50**

Offer No. 42

Consists of the following flowers
—all shown on this page:

- 3 Emperor Narcissus No. 1
- 6 Iris, Poggenbeeck No. 2
- 3 Tulips, Picotee No. 3
- 25 Crocus, Assorted No. 4
- 8 Farncomb Sanders No. 5
- 6 Giant Jonquils No. 6
- 12 Grape Hyacinths No. 7
- 6 Poets Narcissus No. 8
- 6 Mrs. Moon Tulips No. 9

75 bulbs

(Regular Value \$2.83)
Postpaid. All for..... **\$2.00**

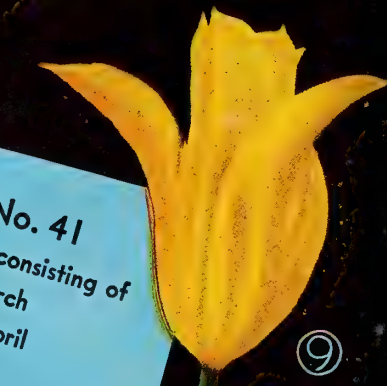
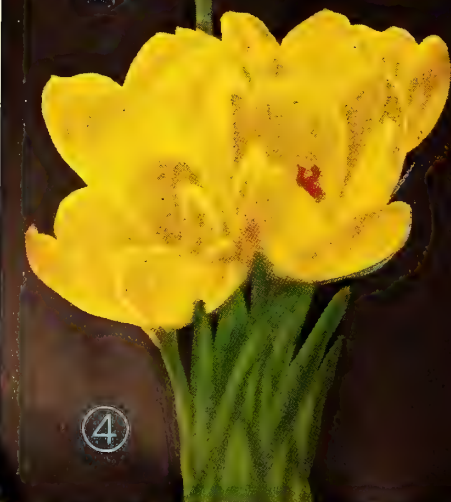
Offer No. 43

"Cutting Garden" of graceful
Tulips that bloom in May.

- 25 Picotee Tulips No. 3
- 25 Farncomb Saunders No. 5
- 25 Mrs. Moon Tulips No. 9

75 Top Size Bulbs

(Regular Value \$3.38)
Postpaid. All for..... **\$2.75**



1. Royal Lily

(Lilium Regale)

One of the most beautiful and hardy lilies in cultivation. A vigorous grower, bearing as many as 18 to 20 flowers in a season. Grows 4-6 feet high. Blooms in June and July. Selected, 6-7 in. bulbs, 15c each; 3 for 40c; \$1.50 doz. postpaid.

2. Sir Watkin

Narcissus

A giant . . . Sometimes called "The Big Welshman." The biggest value in the narcissus family. Selected No. 1 bulbs 9c each; 90c per dozen. (See page 15.)

3. King of Blues

Hyacinth

A typical spike grown from our exhibition bulbs. Easy to grow indoors or out. Also available in other varieties. Price, 20c each; 6 for \$1.00; 25 for \$3.75.

See pages 9 to 16 for detailed information.



Hardy Lily Collection No. 45

Consists of 8 large size lilies:

- 3 Royal Lilies
 - 2 Philippinense
 - Formosanum
 - 3 Tiger Lily
- All Postpaid for
\$1.00

(Ready in October. Reg. Value \$1.40)
(See page 16 for description)



2

"MEMORIAL DAY"

Peony Collection No. 46

In early or late seasons some of these varieties will be in bloom Memorial Day.

- 1 OFFICINALIS RUBRA—Extra early red.
- 1 FESTIVA MAXIMA—Early white.
- 1 EDULIS SUPERBA—Early pink.
- 1 RICHARD CARVEL—Early red.
- 1 MONS. JULES ELIE—Early lilac pink.

All of above, 5 large roots in all. (Regular value, \$2.75.) Prepaid **\$2.00** for only.

BEST THREE

Peony Collection No. 47

Unquestionably here are the three finest in their color group known to cultivation in the peony world today.

- SOLANGE—Cream tinged amber.
- WALTER FAXON—Best pink.
- PHILIPPE RIVOIRE—Deep velvet red.

(Regular value, \$4.16) Postpaid **\$3.50**

(Below)

SUPERB RED PEONY

Karl Rosenfield

Price, 45c each; \$4.50 doz., postpaid. (See page 17.)



3





Above: Short Trumpet
Narcissus Cassandra



Medium
Trumpet
Narcissus
Lucinius



Above: Large Trumpet
Daffodil Robert Sydenham

**P.-W.'s Prize Winning Trio
DAFFODILS - NARCISSUS**
Glory of the Spring Flowers

CASSANDRA. This is the outstanding flower in its class. The perianth is an immaculate white with an orange cup fringed red. Flowers are borne on strong stems. It is not only the best in its class for the florists as a cut flower, but it is a splendid garden variety. (See above color cut.) 3 for 20c; dozen, 70c; 100, \$5.00.

LUCINIUS. This is a striking flower among the newer ones in this class. It has a solid well rounded perianth of sulphur yellow and a large deep cup, chrome yellow edged deep orange shading to red. Flowers are of unusually good form and excellent substance. Delightful in a garden group. 3 for 30c; dozen, \$1.00; 100, \$7.00. (See above color cut.)

ROBERT SYDENHAM. A superb outstanding heavily frilled trumpet of beautiful golden yellow, glittering as a sprinkle of gold dust backed by a symmetrical soft sulphur yellow perianth. The entire flower suggests rugged proportionate beauty such as the Greeks loved to express in their masterful sculpture. Belongs in every collection for Flower Shows, where it is a consistent winner. (See color cut.) 3 for 35c; dozen, \$1.25; 100, \$9.00.

"Springtime" Collection Offer No. 49

Consists of 6 bulbs, each of the three grand varieties illustrated on this page. 18 bulbs in all.
(Reg. Value \$1.70). Postpaid..... **\$1.25**

"Springtime" Collection Offer No. 50

Consisting of 18 each of above three. 54 bulbs in all.
(Reg. Value \$4.43). Postpaid..... **\$3.50**

LANDSCAPE PLANS AND ADVICE

This service is cheerfully rendered to all our customers desiring it. A commercial Landscape Architect, with wide, practical experience, is in charge and the same careful attention will be given the smallest home grounds as is accorded to the largest estates. A post card signifying your interest will put you in immediate touch with this invaluable service.



Lucifer (Med. Trumpet)

Poet's Narcissus

This class of Narcissus, instead of having a trumpet or crown, has a small wide-mouthed cup. Very hardy, used in large numbers for naturalizing, their simplicity of form and delightful fragrance making them highly prized.

Cassandra (see page 14, also color plate). 3 for 20c; doz., 70c; 100, \$5.00.

Poeticus Ornatus. More symmetrical than the old *Recurvas* (Pheasants-eye) and blooms earlier; flowers large, pure white, cup margined orange-gold and as fragrant as the type. 3 for 20c; doz., 70c; 100, \$5.00.

Poeticus, Horace. Quite the best and largest of the new Poet's varieties. The white perianth is of large size, cup canary-yellow, rimmed bright red. Height 17 inches. 3 for 20c; doz., 70c; 100, \$5.00.

Poetaz Hybrid Narcissus

The flowers in this class are somewhat similar to the Poet's Narcissus. They are really the result of hybridizing the *Poeticus* and the *Polyanthus* Narcissus, possessing the good qualities of both parents. The plants grow very vigorously and bear generally from three to five flowers on a stem and are deliciously fragrant.

Cheerfulness. Wonderful new double Poetaz. (See color plate, page 11.) 3 for 24c; doz., 85c; 100, \$6.00.

Elvira 25. A large pure white with yellow cup; strong grower and free flowering; fragrance resembles that of gardenia. 3 for 24c; doz., 85c; 100, \$6.00.

Helios. The flowers are arranged in clusters on fine long stems. They are a pure golden yellow color. Blooms early and freely. Excellent for forcing in the house and, being very hardy, valuable for planting in the open. Planted in clumps among perennials or shrubbery, a very fine display can be created. 3 for 29c; doz., \$1.00; 100, \$7.00.

Laurens Koster. Pure white perianth, orange-yellow cup. 8c each; 3 for 27c; doz., 90c; 100, \$6.50.

Collection No. 53

Consists of 6 each, *Poets Ornatus*, *Barrii Conspicuus*, *Croesus*, and *Helios*. (24 bulbs; value \$1.86.)

Postpaid **\$1.50**



Poetaz Elvira



Rock Garden "Angel's Tears"

Medium Trumpet Narcissus

These types, which include the *Barrii*, *Incomparabilis* and *Leedsii* are a cross between the large trumpet varieties and the *Poeticus*. They are gorgeous when planted outdoors in masses; may also be grown indoors and are excellent for cut flowers.

Barrii Conspicuus. Large, broad pale yellow perianth, deep yellow cup with bright scarlet edge. A very free flowering variety of the true *Barrii* type. 3 for 20c; doz., 70c; 100, \$5.00.

Bonfire. Novelty (see color plate, page 13). 3 for 29c; doz., \$1.00; 100, \$7.00.

Croesus. Truly magnificent. Flower has a pale primrose perianth with thick overlapping petals, widely expanded crown and heavily suffused and stained deep orange red. 3 for 24c; doz., 85c; 100, \$6.00.

Lucifer. A showy and striking variety; perianth pure white, crown or trumpet brilliant orange-scarlet, making an effective contrast. 3 for 21c; doz., 75c; 100, \$5.50.

Lucinius. Novelty (see color plate, page 14.) 3 for 29c; doz., \$1.00; 100, \$7.00.

Mrs. Langtry. Pure white, twin-flowered; a gem for forcing and cutting. 3 for 20c; doz., 70c; 100, \$5.00.

Sir Watkin. "Giant Chalice Flower," or "Big Welshman." A gigantic flower, the largest in this section; perianth sulphur-yellow, cup slightly deeper in color and tinged with orange; fine for pot culture; in fact, does well everywhere. 3 for 21c; doz., 75c; 100, \$5.50.

Will Scarlet. Creamy white perianth with large running fiery orange-red cup. Very distinctive novelty. 3 for 24c; doz., 85c; 100, \$6.00.

White Lady. White perianth, soft canary-yellow cup; of fine form. 3 for 20c; doz., 70c; 100, \$5.00.

Jonquils

Very popular as cut flowers and can be successfully grown by everyone. Culture same as *Narcissus*.

Giant Jonquils (Capernelle Rugulosus). An improved rich golden-yellow, very fragrant; from 3 to 6 flowers are borne on stalks about 18 inches high. 3 for 21c; doz., 75c; 100, \$5.50.

Narcissus for Rock Garden

Triandrus Albus (Angel's Tears). A most graceful variety, requiring shade and well drained soil. It grows about 6 inches in height, and its narrow creamy-white perianth segments recurve upward from the drooping cup. (See cut below.) Two or more flowers are clustered on one stem. 3 for 29c; doz., \$1.00; 100, \$7.00.

Bulb Bowls

We carry a large assortment of Bulb Bowls, embracing most every desirable size, type, design and color. Prices range from 25c to \$1.00 each, postpaid.

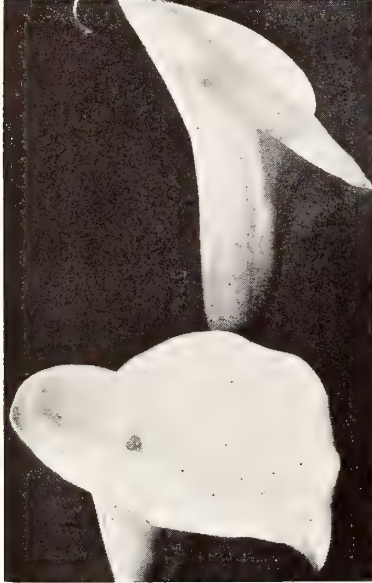
Prepared Bulb Fibre

Lb., 20c; 5 lbs., 90c, postpaid. Not prepaid, 10 lbs., \$1.25; 100 lbs., \$10.00.

See next page for Indoor Bulbs



Speciosum Lily



*White Calla
Purity Freesias*



Giant White Narcissus

P.-W.'s HARDY GARDEN LILIES

Auratum (Golden-banded Japan Lily). Large, graceful, fragrant flowers composed of six petals, delicate ivory-white thickly studded with chocolate-crimson spots and striped through the center a golden-yellow. 3 to 5 feet. July, September. Plant bulbs 8 to 10 inches deep. Mammoth bulbs. 3 for 85c; doz., \$2.75; 100, \$20.00.

Henryii. This is really a yellow Speciosum, growing 8 to 10 ft. high. It likes to root among low shrubs, sending the stems up into the sunlight. Flowers are a bright apricot yellow. Blooms in July and August. Plant 9 inches deep. Large bulbs, 3 for 58c; doz., \$2.00.

Philippinense Formosanum. A most beautiful large white trumpet shaped lily. Flowers suffused on exterior with reddish brown. Delightfully fragrant. Blooms in September. Plant 8 inches deep. 3 for 52c; doz., \$1.75; 100, \$12.50.

Madonna Lily. Pure snow-white and very fragrant, borne on long stems. Produces a beautiful array of flowers in May or early June. Cover bulbs not to exceed 3 inches when planted. Extra large Jumbo bulbs. 3 for \$1.00; doz., \$3.50; 100, \$25.00. (Ready from August until ground freezes.) First size bulbs, 3 for 60c; doz., \$2.10; 100, \$15.00.

Royal (Regale). One of the most beautiful yet introduced. 3 to 5 feet high, blooms in July; hardy and flourishes under varied conditions. Delicately scented flowers, produced freely, are ivory-white, shaded pink, tinged with canary-yellow. Plant 6 inches deep. Large flowering bulbs (6-7), 3 for 37c; doz., \$1.25; 100, \$9.00. Extra large bulbs (8-9), 3 for 58c; doz., \$2.00; 100, \$14.00. (Ready October.)

Speciosum Magnificum. Better than Rubrum. The form is white, flushed pink, and heavily spotted and banded with carmine. The stem is about 4 feet high and has fresh, green lance-shaped leaves. Late August and early September bloomer. Plant the bulbs 9 to 12 inches deep. First size bulbs, 3 for 85c; doz., \$2.75; 100, \$20.00.

Superbum. Can be planted in garden or meadow. Often grows over 8 feet high and produces 20 to 30 orange-red flowers in July. Plant bulbs 5 inches deep in moist peaty soil for best results. 3 for 58c; doz., \$2.00.

Tiger Lily. The flowers are orange, spotted purple, opening in August and September on 2-4 foot stems. Plant bulbs 9 inches deep. 3 for 52c; doz., \$1.75; 100, \$12.00.

Tenuifolium. Especially adapted for the rock garden. A small, slender lily growing 12 to 18 inches high, with bright scarlet flowers and recurved petals. Bloom in June. Plant 4 inches deep. 3 for 44c; doz., \$1.50; 100, \$10.50.

Umbellatum Erectum. Hardy everywhere. Flowers in umbels three to five of rich orange shade, flushed red, spotted black. Grows 2-3 feet high and blooms in June-July; plant rather close together, about five inches deep. 3 for 60c; doz., \$2.10; 100, \$15.00.

BULBS FOR INDOORS

Calla Lilies (Pot Culture)

Yellow Calla. Ready in October. Rich golden yellow almost identical with the white except for color. Mammoth bulbs, 3 for 70c; doz., \$2.50.

White Calla. The well known beautiful white Calla. Strong flowering roots, 3 for 70c; doz., \$2.50.

Freesias

Purity. Lasting fragrant white flowers borne in clusters. When potted, do not place in dark room like most other bulbs, but put directly in the light. Will bloom by Christmas and flower in succession until June. Large bulbs, 3 for 12c; doz., 45c; 100, \$3.00.

Rainbow Mixed Colors. Large, fragrant mixture of beautiful shades. 3 for 16c; doz., 55c; 100, \$4.00.

Oxalis

White, lavender, and yellow. 3 for 15c; doz., 50c; 100, \$3.50.

Giant White Narcissus (Paper White)

Flowers pure snow-white, desirable for their beauty and fragrance, forces admirably. Will bloom as early as December and flowers freely in dense clusters. Splendid for growing in water with pebbles and moss. Jumbo bulbs, 3 for 18c; doz., 65c; 100, \$4.50.

Soleil d'Or or Golden Sun

Large clusters of rich yellow flowers with a deep orange-red cup. 3 for 29c; doz., \$1.00; 100, \$7.00.

Chinese Sacred Lily

Usually grown in bowls of water. Put enough gravel or shells around the bulbs to keep from falling over. Fill bowl with water and set in dark closet for a few days until the roots start freely, then bring to the light in an ordinary living room. Starting at intervals, will give a succession of bloom during the winter. Large bulbs, 3 for 29c; doz., \$1.00; 100, \$7.00.

BEAUTIFUL PEONY—QUEEN OF THE GARDEN

All f.o.b. Salt Lake City. If by mail add 8c per plant; 50c per dozen extra for packing and postage.

Probably no perennial is more universally acclaimed and loved, and we know of none that justifies such popularity more than the Peony.

Peonies are best planted from the latter part of Sept. until the ground freezes in the Mountain States.

An important point to observe in the planting of Peonies is not to plant too deep. The roots should be placed so that the crowns are covered with 2 or 3 inches of soil. Too deep planting is a frequent cause of shy flowering. Proper distance apart is from 3½ to 4 ft.

NOTE: Figures following varieties indicate the rating given them by the American Peony Society. The highest rating a peony can receive is 10. There is no variety yet with such a rating; 9 is excellent, 8 is very good, 7 is good.

Albert Crousse—3.6. Bomb type. Late. Shell pink. Center slightly flecked crimson. Large, compact, vigorous. 50c each; \$5.00 per doz.

Baroness Schroeder 9.0. Rose type; late. White with flesh shading. One of the finest Peonies. Its immense flowers of great substance with high chalice-shaped center are freely produced, lasting a long time. Very fragrant. 50c each; \$5.00 per doz.

Duchess de Nemours—8.1. Guard petals white, center lemon-yellow, cup-shaped; at first it develops into a large bloom, gradually fading to white; fragrant; strong grower and free bloomer. Extra good commercial variety. 40c each; \$4.00 per doz.

Edulis Superba—7.6. This is the famous Decoration Day Peony. Color a beautiful bright, clear pink, with silvery reflex. 40c each; \$4.00 per doz.

Felix Crousse—3.4. Large, ball-shaped bloom; very brilliant red. One of the finest self-colored varieties. 40c each; \$4.00 per doz.

Festiva Maxima—9.3. Magnificent white. Very early. 35c each; \$3.50 per doz.

Grover Cleveland—8.2. Rose type. Late. Dark crimson. Very large and full. Tall. One of the best red varieties. 50c each; \$5.00 per doz.

Karl Rosenfield—3.8. Large, globular, compact, semi-rose type; Dark crimson. Midseason. Very fine. 45c each; \$4.50 per doz.

LeCygne—9.9. (The Swan). "One of the three finest peonies," says Mrs. Harding. The curving petals of this magnificent flower are arranged like the feathers on a swan's wing. "Symmetrical, globular, of great size, fragrant, free-blooming, and milk-white." Has the highest rating of any Peony. Early midseason. Each, \$2.00.

Marie Jacquin—3.3. Midseason. Semi-rose type. Known as the "Water-Lily Peony." Very interesting on account of its variable forms. Color is a most delicate flesh tint that gives way to lilac white. Semi-double; blooms in profusion. 50c each; \$5.00 per doz.

Martha Bullock—9.1. Immense flowers of bright old-rose-pink that are often 9 to 12 inches in diameter. Very tall, fragrant; late. \$1.00 each.

Mme. Jules Dessert—9.4. White, shaded with buff and salmon tints, large flower. Med. height, strong grower. Midseason. A superior variety. 75c ea.; \$7.50 per doz.

Mons. Jules Elie—9.2. Immense globular, very full flowers. Color glossy lilac-pink, shading to deeper rose at base, the entire flower overlaid with a sheen of silvery hue. 50c each; \$5.00 per doz.

Mons. Martin Cahuzac—3.8. Dark, purple-garnet with black reflex. Perhaps the darkest colored peony in existence. Much sought after by fanciers. \$1.00 each; \$10.00 per doz.

Officinalis Rubra. Extra early, large globular, brilliant crimson. The very popular old time "Piney" first of all in peonies to bloom in spring. 50c each; \$5.00 per doz.



A Clump of Mons. Jules Elie

Philippe Rivoire—9.2. Considered the leading new bright rich crimson. Comes into bloom late midseason. A wonderful show flower and absolutely void of stamens; pleasing fragrance. The highest rated red peony. \$2.00 each; \$20.00 per doz.

Philomele—7.7. Striking flower. Guards bright violet rose. Center deep golden yellow, changing to amber-cream with small crown of bright rose, edged crimson. Midseason Anemone type. An unusual sort. 35c each; \$3.50 per doz.

Richard Carvel—3.8. Bright crimson, large, bomb type; tall, profuse bloomer. Very fragrant. A magnificent early peony. 75c each; \$7.50 per doz.

Rubra Superba—7.2. Magnificent rich brilliant crimson. Very large, full, and double. Highly fragrant. One of the best late red peonies. 40c each; \$4.00 per doz.

Sarah Bernhardt—9.0. Late mid-season. One of the strongest growing varieties, flowers of remarkable size, full and double, of unusual perfection of form. Color a beautiful mauve-rose with silver tips. 75c each; \$7.50 per doz.

Solange—9.7. A truly marvelous variety. Its flower is high built, compact, and composed of large, thick petals which closely overlap. The color is deep cream, tinged with amber throughout, with a touch of soft, salmon-pink glowing from the center. Late. \$1.00 each.

Therese—9.8. Violet-rose, changing to lilac-white; mid-season. Considered the most nearly perfect peony in cultivation. \$1.00 each; \$10.00 per doz.

Walter Faxon—9.3. A new semi-rose type midseason variety. Is the most vivid of all pink peonies. Flowers are medium size of attractive form and delightfully fragrant. It tops all as a show peony. \$1.00 each; \$10.00 per doz.

Fern Leaved Peony

Tenuifolium. A very interesting, early flowering, red variety. Its delicate fringed fern-like foliage always attracts attention. It blooms very early before the popular Chinese varieties. Stock limited. \$1.50 each.

New Japanese Varieties

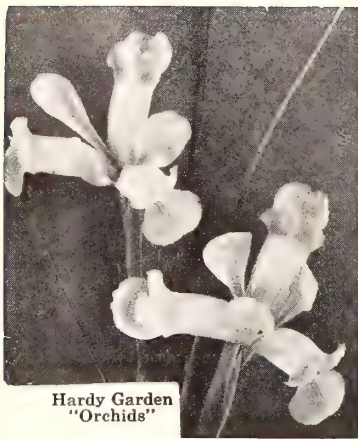
Kameno Kerogama—3.1. Very large deep carmine flowers of uniform color. Clear even tone, fine form and immense in size. Huge center of saffron yellow petaloids. Fine grower and free bloomer. 75c each.

Mikado—3.6. Japanese; dark, brilliant crimson petals, center cushion of golden yellow petaloids, crimson edged; long, wiry stems; an exquisite flower. 75c each.

Unnamed Double Peonies

Strong 3-5 eye divisions of good varieties which we have in surplus. We furnish these in separate colors.

Red, White and Pink. Each, 25c; \$2.50 per doz. If by mail add 5c ea.; 50c per doz. extra for pkg. and postage.



Hardy Garden
"Orchids"

Dutch Bulbous Iris



Flag Iris

Dwarf Flag Iris

(Pumila Hybrids)

Most attractive for Rock Gardens. Very showy. Early flowering. Height 8-10 inches. Separate colors — Violet-blue, White and Yellow. 15c each; \$1.50 per doz.; \$11.00 per 100.

Siberian Iris

(Sibirica)

Orientalis. Rich, violet-blue; very free and one of the best. June, 2 to 2½ feet.

Geo. Wallace (Azure blue). "F" marked white. Very attractive.

Snow Queen. Great merit; flowers snowy white.

Price—20c each; \$2.00 per dozen.

Bleeding Hearts

(Dicentra)

Spectabilis. Its long racemes of graceful heart-shaped pink flowers are always attractive. Is perfectly at home in any part of the hardy border and especially valuable for planting in the shade. Strong roots, 45c each; 3 for \$1.20; \$4.50 per doz. If by mail add 10c each; 20c for 3; 50c per doz. extra for postage.

Lily of the Valley

(Convallaria Majalis)

A wonderful ground cover for shady places.

American Pips (for outside planting only). Extra strong. Pips, 25 for 90c; 100 for \$3.00; 250 for \$7.50, postpaid.

Un-named Iris Separate to Color

Orange, white, yellow, blue, lavender, pink, purple and mixed. 10c each; \$1.00 per doz.; \$7.50 per 100. If by mail add 5c each; 25c per dozen extra.

DUTCH IRIS (Bulbous)

We are listing below what we believe to be the best distinct colors. They are excellent for growing, both under glass and in the garden also. When planted outdoors they should be covered with a mulch and the bulbs planted in a well-drained border, about 5 inches deep.

Celestial—Uniform purplish lavender.
Imperator—Brilliant deep blue with a bright golden yellow blotch on each of the standards. Particularly fine; strong growing.
Indian Chief—Violet standards; bronzy yellow falls.
Poggenbeek. Brilliant dark blue with yellow markings.

Rembrandt. A beautiful purplish blue with orange markings on the falls.
Therese Schwartze. Charming corn flower, blue, orange markings.
White Excelsior. Incomparably the largest and finest pure white.
Yellow Queen. Both the standards and falls are bright golden yellow. Early and most desirable.

Any of the above varieties, 3 for 18c; 65c doz.; \$4.50 per 100, postpaid.

Collections of Dutch Iris

Made up of Celestial, Imperator, Therese S, White Excelsior and Yellow Queen.
No. 64—3 bulbs each of these 5 varieties (15 bulbs, reg. val. 90c), postpaid...\$.75
No. 65—5 bulbs each of these 5 varieties (25 bulbs, reg. val. \$1.50), postpd..... 1.25
No. 66—12 bulbs each of these 5 varieties (60 bulbs, reg. val. \$3.23), postpd..... 2.70

FLAG IRIS (Germanica)

Avoid planting too deep, barely covering the rhizomes (creeping root stems) being sufficient. They are great drouth resisters. "S" refers to standards. "F" to falls. Numerals indicate height in inches.

P.-W.'s Popular Iris Collection

Out of the many we have selected 25 varieties listed below as outstanding in the low-priced field of present-day varieties. Make your own choice of any of this collection at 15c each; \$1.50 per dozen; \$10.00 per 100. If by mail add 5c each; 10c for 3; 25c for 12, extra for postage.

Ambassador—S. bronze; F. maroon, 40".
Avatar—S. heliotrope; F. pansy violet.
Ballerine—S. violet; F. deeper, 54".
Bruno—S. bronze; F. red purple, 36".
Citronella—gold and maroon; fine, 33".
Crusader—S. blue; F. dark blue, 36".
Dolly Madison—A large blend, extra, 36".
Dream—Light pink; very popular, 40".
Eldorado—Bronze tones.
Fairy—White and soft blue.
Florentina Alba—Early White.
Iris King—S. yellow; F. maroon.

Lorely—S. yellow; F. marine blue.
Nibelungen—S. yellow; F. violet purple.
Opera—Good; dark red purple.
Queen of May—Lilac pink; early.
Rajput—Bright violet self.
Rhea—S. lobelia violet; F. pansy violet.
Seminole—S. red tones.
Shekinah—Pale lemon yellow; 36".
Sherwin Wright—Golden yellow.
Susan Bliss—Fine lilac pink.
Teneabrae—S. violet; F. violet; purple, 36".
Titan—S. violet blue; F. purple, 38".

P.-W.'s Iris Aristocrats

If by mail add extra 5c each; 10c for 3; 25c for 12, for postage.

Avalon—48". Enormous flower of great beauty, color satiny, lustrous pink lavender, perfect in form and of great substance. Well branched and tall. 20c each.

Cameliard—48". A large well proportioned flower; color amber yellow overlaid wine purple on the blade of the flaring falls to within half an inch of the orange beard where it breaks into veins on a yellow ground. 25c each.

Coppersmith—Very distinct, large flowered and tall. S. crimson purple; F. Indian lake shading to dahlia carmine, producing a wonderfully rich copper red velvet in the sun. Flower of heavy substance, fine, flaring form and exceptional finish. 42". 25c each.

Dauntless—40". Awarded the biggest honor a variety can receive, the Dykes Memorial Medal. The coloring in both the standards and falls is a rich velvety red. It will be some time before this variety is surpassed. 50c each.

El Capitan—28". A magnificent, most popular iris. Huge flowers of a soft lavender blue. Early. 35c each.

Freida Mohr—42". A gigantic pink-toned Iris of perfect form and brilliant coloring; fragrant. 25c each.

King Tut—30". One of the brightest of all. General garden effect bright glowing red. Standards cocoa-brown; falls Hessian brown. Every lover of a red Iris should have this one. 25c each.

Los Angeles—Immense white flowers of beautiful form and great substance, the standards faintly edged blue; outstanding. 35c each.

Midgard—36". A wonderful blending of pink and yellow. General effect, a rich shade of pink. Large flowers, perfectly formed. 25c each.

Mrs. Valerie West—40". Very large, rich deep crimson-brown; standard large, lavender shot with bronze. Strong stem. Well branched. 35c each.

Peerless—A magnificent flower, brilliant coloring giving the effect of a rich glowing light mahogany red. The standards are very erectly held with no tendency to "flop." 3½ inches long and 3 inches wide, light reddish violet in color. 30c each.

Rayo De Sol—A clear, tall, well branched yellow self. 35c each.

Rosado—42". S. F. A most beautiful clear soft pink. Plant tall and strong growing. A very beautiful flower of unusual size, very vigorous and free flowering. 25c each.

Tuscany Gold—General effect deep orange-buff. Standards sulphine-yellow, tinged purple; falls blue toned. Heavy orange beard. 25c each.

William Mohr—29". This is probably the most remarkable hybrid ever raised. Mr. Mohr considered it his finest achievement. It has been named in his memory. The ground color is pale lilac, standards flushed darker, the whole flower beautifully veined Manganese violet. Form is perfect; stems strong and rigid. The rhizomes and foliage are small, the flowers immense. Should be hilled slightly above general ground level for surface drainage. 35c each.

P.-W.'s Collection of Six Iris Aristocrats No. 67

One each of Dauntless, Freida Mohr, Midgard, Peerless, Rayo De Sol and Wm. Mohr (six in all, regular price delivered, \$2.25).
All postpaid for..... **\$1.75**

P.-W.'s HARDY PERENNIAL PLANTS AND SEEDS

Seeds are postpaid. If plants are sent by mail add 5c each; 30c per dozen for postage. The dozen rates are ten times the each prices quoted below.

	Seeds per pkt.	Plants each		Seeds per pkt.	Plants each
Achillea, Ptarmica, The Pearl. All summer. Pure white	.15	\$.15	★Hollyhock, Double. 6-8 ft. Aug.-Sept. 7 colors	\$.10	\$.15
Agrostemma, Coronaria Mixed. 1-2 ft. June-Sept. Mixed	.10	.15	Lathyrus Latifolius. 6 ft. All summer. Mixed colors	.10	.15
Anemone, Pulsatilla. 1 ft. April. Large single. Reddish-purple	.20	.15	Liatris, Pysnostachya. 5 ft. July-Aug. Rosy purple	.10	.15
Anemone, Sylvæstris. 1-1½ ft. April, May. White	.15	.15	★Linum, Perenne. 1½ ft. All summer, large blue flowers	.10	.15
Anchusa, Italica, Dropmore. 5 ft. June-July. Gentian blue	.15	.15	Lupinus, Polyphyllus. 3 ft. May-June. Clear blue	.10	.15
Boltonia, Latisquama. 4-5 ft. July-Oct. Pink	.15	.15	Lupinus, Russell. 2½-3 ft. June-Sept. Mixed	.25	.25
Betonica, Grandiflora. 1 ft. Red purple	.15	.15	Lychnis, Campion, Chalcedonica. 2-3 ft. June-July. Orange	.10	.15
Campanula, Glomerata Superba. 20 in. June-July. Dark violet	.15	.15	Lychnis, Viscaria. 16 in. Deep rose	.15	.15
Campanula, Persicifolia Coerulea. 30 in. June-July. Double blue	.25	.15	Lythrum, Roseum. 40 in. Rose-pink	.15	.15
Canterbury Bells, Calycanthema. 2 ft. June-Aug. 3 colors: Blue, pink, white	.10	.15	Oenothera, Frazeri. 12 in. Deep yellow	.15	.15
★Canterbury Bells, Campanula Medium. 2 ft. Double and single	.10	.15	Ornamental Grass, Festuca Glauca. 1 ft. Blue-green	.40	.40
Canterbury Bells, Campanula Pyramidalis. 5-6 ft. Mixed	.10	.15	Erianthus Ravennae (Pampas Grass). 10 ft.	.50	.50
★Carnation, Double Mixed. Blooms all summer. Large double	.15	.15	Eulalia Japonica. 6-7 ft. Silver gray plumes	.40	.40
Centaurea, Dealbata. 2 ft. July-Sept. Rose-pink	.15	.15	Eulalia Gracillima Univittata. 6-7 ft. Narrow green foliage; plumed	.40	.40
Centaurea, Montana Blue. 2 ft. June-Sept. Beautiful blue	.10	.15	Papaver, Nudicaule. Yellow, orange or white	.10	.15
Cerastium, Tomentosum. 4 in. All summer. White	.15	.15	Papaver, Oriental Red. 3 ft. Gorgeous colors	.10	.15
Cheiranthus, Allioni. 1 ft. Dazzling fiery orange	.10	.15	Papaver, Oriental New Hybrids. 3 ft. Mixed colors. May-June	.10	.15
Chelone, Barbata Torrey. 2-4 ft. Summer and fall. Scarlet	.10	.15	Pentstemon, Large Flower. Newest Hybrids. Good assortment	.15	.15
Chrysanthemum, Mawii. 1 ft. Rich pink	.35	.15	★Platycodon, Grandiflorum. 1-2 ft. Deep blue flowers	.10	.15
Columbine, Dobbie's Imperial Hybrids. Brilliant tones	.15	.15	Polemonium, Coeruleum. 2 ft. Beautiful sky-blue	.10	.15
★Columbine, P.-W.'s Long-Spurred Hybrids. Choice mix	.15	.15	★Pyrethrum, Roseum Single. Choice selected strain	.25	.15
★Columbine, Double Flowering. All colors mixed	.10	.15	Physalis, Franchetti. 1½ ft. Yellow, dark center	.10	.15
★Coreopsis, Lanceolata Grandiflora. 2 ft. Orange-yellow	.10	.15	Physostegia, Virginiana. 3 ft. June-Sept. Delicate pink	.10	.15
Delphinium, New Pacific Hybrids. Blue shades, Mammoth Spikes	.50	.30	Rudebeckia, Hirta fl. pl. 5-7 ft. July-Oct. Yellow	.25	.15
Pastel shades, Mammoth Spikes	.50	.30	Salvia, Pitcheri. 4 ft. Aug.-Sept. Blue. Fine	.10	.15
White giants, Mammoth Spikes	.75	.30	Scabiosa, Fischerii. 2½ ft. Blue-purple	.15	.15
★Delphinium, Wrexham Hybrids. Huge spikes. 6 ft.	.25	.25	★Shasta Daisy, Alaska. 2 ft. All summer. Large white	.10	.15
Digitalis, Grandiflora. 2-3 ft. June-July. Yellow and brown	.15	.15	Sidaleca, Rose Queen. 2-3 ft. June-July. Bright rose	.10	.15
Doronicum, Caucasicum. 2 ft. Yellow. Spring	.15	.15	★Statice, Latifolia. 2 ft. Dense deep blue	.10	.15
★Digitalis, Gloxiniaeflora, Mixed. 3-5 ft. June-July	.10	.15	Stokesia, Cyanea. 18 in. July-Oct. Rich blue	.10	.15
Euphorbia, Myrsinitis. 3 in. June-July. Large yellow	.15	.15	Sweet William, Sgl. Gt. Flr. Red and pink. Good mixture	.10	.15
★Gaillardia, Grandiflora Mixed. 18-24 in. June all season	.10	.15	Sweet William, Dbl. Gt. Flr. Wide color asst.	.15	.15
Geranium, Sanguineum. 18 in. Entire season. Crimson	.15	.15	Thalictrum, Diptercarpum. 4-5 ft. Aug.-Sept. Rosy-purple	.25	.15
Geum, Atrococcineum fl. pl. 15-18 in. May-July. Scarlet	.15	.15	Tritoma, Grandis (Pfizer). 3 ft. Aug.-Sept. Orange-scarlet	.15	.20
Gypsophilia, Paniculata. 2-3 ft. July-Aug. White lace-like	.10	.15	★Valerana, Coccinea. 2 ft. June-Oct. Showy old rose	.10	.15
Helenium, Riverton Gem. 2-4 ft. Aug-Oct. Crimson and old gold	.15	.15	Verbascum, Phoeniceum Hyb. 2 ft. Mixed	.15	.15
Helianthus, Sunflower. 5-6 ft. July. Yellow	.15	.15	Veronica, Longifolia Subsessilis. 2-3 ft. July-Sept. Deep blue	.15	.15
Hemerocallis (Yellow Day Lily). 3 ft. June-July	.15	.15	Yucca, Filamentosa. 5-6 ft. June-July. Creamy-white	.10	.25
Hesperis. 30 in. May-June. Red, white	.10	.15			
Heuchera, Brizoides. 30 in. May-June. Flesh-pink	.15	.15			
Heuchera, Sanguinea. 2 ft. July-Aug. Crimson-scarlet	.25	.15			
Hibiscus, Mallow Marvels. 3-5 ft. Aug-Sept. Mixed	.10	.15			

Star Perennial Plant Collection Offer No. 71

Consists of 1 plant each of the above 15 varieties marked with a star (★).
(Regular value \$2.60).
All prepaid for

\$2.00

Star Perennial Seed Collection Offer No. 72

Consists of 1 pkt. each of the above 15 varieties marked with a star (★).
(Regular value \$1.70).
All prepaid for

\$1.25

ROCK GARDEN SEEDS AND PLANTS

Seeds are postpaid at prices listed. If plants are to be mailed add 5c each; 30c per dozen for packing and postage.

	Seeds per pkt.	Plants each		Seeds per pkt.	Plants each
Achillea , Tomentosa. 6-8 in. July-Sept. Bright yellow	.10	.15	Potentilla , Aurea. 6 in. Yellow	.20	.15
Alpine Aster , Dwarf, Alpinus. 6-10 in. May-June	.25	.15	Primula , Veris. 6 in. Early spring. Pale yellow	.20	.15
Alyssum , Argenteum. 1 ft. All summer. Dwarf yellow	.10	.15	Saponaria , Ocymoides. 9 in. All summer. Bright rose	.10	.15
Alyssum , Saxatile Compactum. 1 ft. June Golden	.10	.15	Sedum , Acre. 3 in. May-June. Yellow	.25	.30
Arabis , Alpina. 6 in. Pure white flowers	.10	.15	Sedum , Brilliant. 12 in. June-July, Scarlet	.25	.30
Arabis , Alpina Rosea. 12 in. May. Pink	.35	.15	Sedum , Stolonifera. 6 in. July-August. Pur- plish-pink, flat	.25	.30
Aubrietia , Bougainvillei. 6 in. Early spring. Dark blue	.25	.15	Silene , Schafta. 4-6 in. July-Oct. Bright pink flowers		.15
Aubrietia , Leichtlinii. 4-6 in. Rosy lilac	.25	.15	Thymus , Serpyllum Coccineum. 2 in. June- July. Dark red	.25	.15
Calamintha , Alpina. 6 in. June. Small blue flowers	.25	.15	Tunica , Saxifraga. All summer. Light pink flowers	.10	.15
Campanula , Rotundifolia. 6-12 in. June- July. Blue	.15	.15	Veronica , Rupestris. 3-4 in. Cloud of bright blue	.15	.15
Canterbury Bells , Carpatica. 8 in. June Oct. White or blue	.15	.15	Veronica , Rupestris Nana. 1 in. April-May. Deep blue	.15	.15
Canterbury Bells , Garganica. June. Starry light blue	.25	.15	Vinca , Mionr. 4 in. June. Lg. blue flowers		.15
Dianthus , Caesius. 1 ft., May-June. Rose- pink	.25	.15	Viola , Jersey Gem. Single. Extra large, deep blue	.10	.15
Dianthus , Graniticus. 4 in. May-June. Crimson		.15			
Dianthus , Deltoides. 8 in. Delicate pink, feathery	.25	.15			
Dianthus , Plumaris. Low-growing single or double	.10	.15			
Feverfew , Little Gem. 18-24 in. June-Oct. Double white	.10	.15			
Gypsophila , Repens. Dwarf white Baby's Breath	.15	.15			
Helianthemum , Mutabile. 8-12 in. July- Aug. Mixed	.10	.15			
Iberis , Gibraltarica. 6-10 in. Early sum- mer. Pinkish-white	.10	.15			
Iberis , Sempervirens. 6-10 in. Early sum- mer. White	.15	.15			
Linaria , Dalmatica. 3-4 ft. June-Sept. Bright yellow	.10	.15			
Nepeta , Mussini. May-Sept. Lavender-blue flowers	.25	.15			

Hardy Rock Garden Perennial Plant Offer No. 74

Consists of 1 plant each of the following:

Alyssum Saxatile	Sedum Brilliant
Aubrietia Bougainvillei	Silene
Dianthus Deltoides	Tunica
Linaria Dalmatica	Veronica Rupestris Nana

8 plants in all (regular prepaid value \$1.60), prepaid for only **\$1.25**

Rock Garden Perennial Seed Offer No. 75

1 pkt. each of the 8 varieties listed under Offer No. 74 (regular value \$1.35). All postpaid for **\$1.00**

N. B.—Where the each price is 15c the dozen rate is \$1.50, the hundred rate is \$11.00. If by mail add 5c per plant; 30c per doz. plants extra for packing and postage.

Hardy Phlox Collections

Consisting of these splendid varieties—**B. Comte**, **Count Zeppelin**, **Commander**, **Rynstrom**, and **Leo Schlageter**.

No. 76—1 each of above 5 varieties (5 in all, reg. value \$1.75), postpaid... **\$1.40**

No. 77—3 each of above 5 varieties (15 in all, reg. value \$5.25), postpaid... **\$3.95**

HARDY PHLOX

Phlox are a garden in themselves, succeed in almost any soil and position and flower freely for many years.

B. Comte. Rich French purple.
Beacon. Bright cherry red.
Caroline Vandenburg. Magnificent large true lavender blue.
Commander. New bright crim. dark eye.
Count Zeppelin. Pure white with vermilion eye.
Ethel Pritchard. A French mauve. Very delightful.
Mrs. Jenkins. Pure white.
Rynstrom. Deep rose-pink.
Thor. Lovely shade deep salmon pink.
Price—Any of above good root divisions: Each 25c; doz., \$2.50.

blue lending a charming effect upon the color of the flower. Very hardy. Price—each, 45c; 3 for \$1.10; doz., \$3.30.

LEO SCHLAGETER

A beautiful new brilliant scarlet. Flowers seem to grow with fire. Full rich heads produced on vigorous plants 3 to 4 ft. high. Considered best red Phlox in cultivation. Ea., 45c; 3 for \$1.20; doz., \$3.70.

DWARF ALPINE PHLOX For Rock Gardens

Sublata (Moss or Mountain Pinks). Early spring flowering type; pretty moss-like evergreen foliage. We supply three colors—White, Pink & Purple. \$2.00 doz.

NEW COLUMBIA PHLOX
U. S. Patent Plant No. 118. Lovely soft salmon pink with eye of very light

HARDY ORNAMENTAL TREES

(FOR FALL PLANTING SEE CATALOG No. 38 FOR DESCRIPTIONS)

All Prices are F.O.B. Salt Lake City

Ailanthus (Tree of Heaven). 6-8 ft., \$1.50.
Ash, American, White, 5-6 ft., \$1.00; 6-8 ft., \$1.25.
Green Lanceolata, 6-8 ft., \$1.50; 8-10 ft., \$1.75.
Birch, Cutleaf Weeping, 5-6 ft., \$2.50; 6-8 ft., \$2.75; 8-10, \$3.00.
Boxelder, 6-8 ft., 90c; 8-10 ft., \$1.10.
Catalpa, Speciosa, 6-8 ft., \$1.25; 8-10 ft., \$1.75.
Cherries, Flowering, Double Pink, 3-4 ft., \$1.25.
Japanese Weeping, 5 ft. standards, \$3.25.
Chestnut, Horse, 6-8 ft., \$3.00.
Crabs, Flowering, Double Bechtel's, 2-3 ft., \$1.00; 3-4 ft., \$1.50.
Atrosanguinea, 4-5 ft., \$1.75.
Floribundi, 3-4 ft., \$1.50.
Scheideckeri, 4-5 ft., \$1.75.

Elm, American White, 6-8 ft., \$1.25; 8-10 ft., \$1.75; 10-12 ft., \$2.25.
Chinese or Siberian, 4-6 ft., 50c; 6-8 ft., \$1.00; 8-10 ft., \$1.25; 10-12 ft., \$1.75; 12-14 ft., \$2.00.
Cork, 6-8 ft., \$2.50.
English, 6-8 ft., \$2.50; 8-10 ft., \$3.00.
Moline, 6-8 ft., \$2.00; 8-10 ft., \$2.50.
Hawthorne, Paul's Scarlet, 5-6 ft., \$2.00.
Laburnum, Golden Chain, 5-6 ft., \$1.75.
Locust, Black, 6-8 ft., \$1.00; 8-10 ft., \$1.50.
Honey, 6-8 ft., \$1.25; 8-10 ft., \$1.50.
Globe, 2 year head, \$2.50.
Locust, Orchid Flowering, 7-8 ft., \$2.00.

HARDY ORNAMENTAL TREES—Continued

Maple, Norway, 6-8 ft., \$1.75; 8-10 ft., \$2.00.
Schwedleri, 6-8 ft., \$2.25; 8-10 ft., \$2.75.
Silver, 6-8 ft., \$1.25; 8-10 ft., \$1.75.
Mulberry, Russian, 5-6 ft., \$1.00; 6-8 ft., \$1.50.
Peach, Flowering, White, Pink, or Red, 2-3 ft., 50c; 4-5 ft., \$1.00.
Plums, Flowering, Bliiriana, 4-5 ft., \$1.00.
Newport, 4-5 ft., \$1.00.
Pissardi, 4-5 ft., 90c.
Triloba, 4-5 ft., \$1.00.
Poplar, Bolleana, 6-8 ft., 75c; 8-10 ft., \$1.00.
Canadian (for Alkaline and dry situations) 5-6 ft., 45c; 6-8 ft., 55c; 8-10 ft., 75c.
Carolina, 6-8 ft., 50c; 8-10 ft., 60c; 10-12 ft., 75c; 12-14 ft., \$1.00.

Poplar, Lombardy, 6-8 ft., 50c; 8-10 ft., 75c.
Olive, Russian, 3-4 ft., 65c; 5-6 ft., \$1.00; 6-8 ft., \$1.25; 8-10 ft., \$1.50.
Sophora, Japonica, 4-5 ft., \$2.00.
Tulip Tree, 3-4 ft., \$1.50; 6-7 ft., \$2.75.
Walnut, Black, 4-5 ft., \$1.00; 8-9 ft., \$2.00.
Willow, Babylonian Weeping, 6-8 ft., \$1.00; 8-10 ft., \$1.50; 10-12 ft., \$2.00.
Niobe Weeping, 6-8 ft., \$1.00; 8-10 ft., \$1.50.
Matsudana, 5-6 ft., \$1.00; 6-8 ft., \$1.25.
Pussy, 3-4 ft., 35c; 5-6 ft., 50c; 6-8 ft., 75c.
Golden, 6-8 ft., 50c.
Black, 6-8 ft., 60c; 8-10 ft., 85c.

HARDY SHRUBS

(FOR FALL PLANTING SEE CATALOG NO. 38 FOR DESCRIPTIONS)

All Prices are F.O.B. Salt Lake City

Almond, Pink or White, Double Flowering, 2-3 ft., 75c; 18-24 in., 50c.
Amorpha, Fruticosa, 3-4 ft., 75c; 2-3 ft., 50c.
Aralia, Spinosa, 2-3 ft., 75c; 18-24 in., 50c.
Barberry, Japanese, 15-18 in., 30c; 18-24 in., 40c.
Red Leaf, 15-18 in., 50c; 18-24 in., 75c.
Purple, 15-18 in., 40c; 18-24 in., 50c; 3-4 ft., \$1.00.
Buddleia, Ile de France, 2 yr., 60c.
Alternifolia, 2 yr., 75c.
Caragana, Arborescens, 18-24 in., 25c; 2-3 ft., 35c.
Cornus, Red Dogwood, 2-3 ft., 45c; 3-4 ft., 60c.
Golden Twig, 2-3 ft., 45c.
Cotoneaster, Acutifolia, 18-24 in., 50c; 2-3 ft., 75c.
Cydonia, Japonica, 18-24 in., 35c; 2-3 ft., 50c.
Deutzia, Crenata, 18-24 in., 35c; 2-3 ft., 50c.
Magnifica, 2-3 ft., 50c.
Elder, American, 2-3 ft., 45c; 3-4 ft., 60c.
Cutleaf American, 2-3 ft., 45c; 3-4 ft., 60c.
Eunonymus, Alatus Compacta, 18-24 in., 75c.
Atropurpurea, 2-3 ft., 60c.
European, 2-3 ft., 60c.
Forsythia, Fortunei, 18-24 in., 30c; 2-3 ft., 45c; 3-4 ft., 60c.
Honeysuckle—
Morrowi, 2-3 ft., 50c; 3-4 ft., 75c.
Pink Tartarian, 2-3 ft., 50c; 3-4 ft., 60c.
Red Tartarian, 2-3 ft., 50c; 3-4 ft., 60c; 4-5 ft., 75c.
White Tartarian, 2-3 ft., 50c; 3-4 ft., 60c.
Standishi, 18-24 in., \$1.00.
Alberti, 18-24 in., \$1.00; 2-3 ft., \$1.25.
Thibetica, 18-24 in., \$1.25.
Kerria, Japonica, 18-24 in., 50c.
Kolkwitzia, Amabilis, 18-24 in., 60c; 2-3 ft., 85c.
Lepedeza, Formosa, 2-3 ft., 50c.
Lilac, French, in following named varieties at \$1.25 each, size 2-3 ft.; \$1.00 each, size 18-24 in.
Charles X., S. Reddish Purple.
Pres. Grevy, D. Blue
Rubra de Marley, D. Red
Chas. Jolley, D. Purple
Wm. Robison, D. Pink
Michael Buchner, D. Lavender
Marie LeGrave, S. White
Lilac, Chinese, Rotho, 18-24 in., 50c; 2-3 ft., 75c.
Common White or Purple, 18-24 in., 35c; 2-3 ft., 50c.
Persian Purple, 2-3 ft., 60c.
Philadelphus coronarius, 2-3 ft., 45c; 3-4 ft., 60c.
Mont. Blanc, 2-3 ft., 50c; 3-4 ft., 75c.
Golden Leaf, 2-3 ft., 60c.
Grandiflorus, 2-3 ft., 45c; 3-4 ft., 60c.
Lemoine, 2-3 ft., 45c.
Virginalis, 18-24 in., 50c; 2-3 ft., 65c.
Photina, Villosa, 18-24 in., 60c; 2-3 ft., 75c.
Glabra, 5-6 ft., B. & B., \$1.50.
Physocarpus opulifolius, 2-3 ft., 45c; 3-4 ft., 60c.
Opulifolius nana, 18-24 in., 45c.
Potentilla, Fruticosa, 18-24 in., 60c.
Privet, English, 18-24 in., 10 for \$1.50; 50 for \$5.00; 100 for \$9.50; 2-3 ft. size, 10 for \$2.50; 50 for \$6.50; 100 for \$12.00.

Privet, Lodense, 12-15 in., 40c.
Regale, 12-15 in., 30c; 2-3 ft., 45c.
Rhodotypos, kerrioides, 2-3 ft., 60c; 18-24 in., 45c.
Rhus, Canadensis, 18-24 in., 50c.
Typhina Lacinata, 2-3 ft., 50c; 3-4 ft., 65c.
Typhina Staghorn, 2-3 ft., 45c; 3-4 ft., 60c; 4-5 ft., 75c.
Ribes, Odoratum (Golden Currant), 3-4 ft., 75c.
Sorbaria, Aitchisoni, 18-24 in., 50c; 2-3 ft., 75c.
Spiraea, Arguta, Billardi, Douglasi, Froebeli, Korean, Prunifolia, Thunbergi. Any of above, 18-24 in., 35c; 2-3 ft., 50c; 3-4 ft., 65c.
Van Houtte, 18-24 in., 30c; 2-3 ft., 40c; 3-4 ft., 50c; 4-5 ft., 65c; large clumps, \$1.25.
Symphoricarpos chenaulti, 18-24 in., 35c; 2-3 ft., 50c.
Racemosus, 18-24 in., 30c; 2-3 ft., 40c; 3-4 ft., 50c.
Vulgaris, 18-24 in., 30c; 2-3 ft., 40c; 3-4 ft., 50c.
Tamarix, Gallica Indica, 2-3 ft., 45c; 3-4 ft., 60c.
Hispidia, 2-3 ft., 45c; 3-4 ft., 60c; 4-5 ft., 75c.
Viburnum, Carlesi, 18-24 in., \$1.75 B. & B.
Dentatum, 15-18 in., 35c; 18-24 in., 50c.
Opulus, 2-3 ft., 75c; 3-4 ft., \$1.00.
Opulus Sterilis, 18-24 in., 50c; 2-3 ft., 75c.
Weigela, Eva Rathke, 2-3 ft., 60c.
Rosea, 18-24 in., 45c; 2-3 ft., 60c.
Vitex, Macrophylla, 2-3 ft., 75c.
Rosa Rugosa and Hybrids, 2 yr., 50c each.
Rubra, Belle Poitvine, Palustris
Hanska, Setigera, Rubrifolia

Hybrid Tea Garden Roses

In containers fully developed for planting now. Average shipping weight, each 15 lbs. Prices are f.o.b. Salt Lake City, Utah.

Crimson, Red and Scarlet
American Beauty, 75c
Hadley, 75c
Margaret McGredy, 75c
Mary Hart, \$1.25
Radiant Beauty, \$1.25
Red Radiance, 75c
Saturina, \$1.25
Syracuse, 75c
Copper and Salmon
Autumn, \$1.00
Condessa De Sastago, \$1.00
Mme. Ed. Herriott, 75c
Mrs. Sam McGredy, \$1.00
Talisman, 75c
Orange and Yellow
Joanna Hill, 75c
Lady Margaret Stewart, 85c
McGredy's Sunset, \$1.75
Mrs. E. P. Thom, 85c
Mrs. P. S. Dupont, 85c
Ronsard, \$1.75
Signora, \$1.50
Souer Therese, \$1.00
Pink Shades
Dame Edith Helen, 75c
Editor McFarland, 75c
Eternal Youth, \$1.75
J. Otto Thilow, 75c
Miss Rowena Thom, 75c
Mrs. A. R. Barraclough, 75c
Mrs. Francis King, cream, \$1.25
Polyanna and Floribunda
Anne Poulsen, \$1.00
Carillon, \$1.10
Chatillon, 55c
Elsie Poulsen, 75c
Golden Salmon, 75c
Ideal, 55c
Kirsten Poulsen, 75c
Climbers
Doubloons, \$1.75
Primrose, 75c
Roses in dormant roots furnished in Spring only. See catalog No. 38.

HARDY EVERGREENS

Junipers
Chinese Pyramidalis Blue, 18-24 in., \$3.50; 24-36 in., \$4.25; 3-4 ft., \$5.50; 4-5 ft., \$8.00; 5-6 ft., \$10.00; 6-7 ft., \$12.50.
Horizontalis, Depressa Plumosa (blue), 15-18 in., \$3.00.
Irish, 15-18 in., \$2.00; 18-24 in., \$3.75; 24-30 in., \$4.50.
Pfitzer, 12-15 in., \$2.25; 15-18 in., \$2.90; 18-24 in., \$3.50; 24-30 in., \$4.50; 30-36 in., \$5.50; 36-48 in., \$7.00.
Keetleri, 3-4 ft., \$6.00; 5-6 ft., \$10.00; 6-7 ft., \$12.00.
Sabina, 18-24 in., \$4.00.
Sabina Tamariscifolia, 15-18 in., \$3.50; 18-24 in., \$4.25.
Scopulorum, 18-24 in., \$3.50; 30-36 in., \$5.00; 3-4 ft., \$6.00; 4-4½ ft., \$7.00; 4½-5 ft., \$8.00; 5-5½ ft., \$9.00; 5½-6 ft., \$10.00; 6-6½ ft., \$11.00; 6½-7 ft., \$12.00; 8-9 ft., \$15.00.
Virginiana Cannarti, 15-18 in., \$2.25; 4-5 ft., \$8.00; 5-6 ft., \$10.00.
Pine (Pinus), Austrian, 18-24 in., \$3.50; 3-4 ft., \$6.00.
Mugho, 12-15 in., \$2.25; 15-18 in., \$3.25; 18-24 in., \$4.25.
Spruce (Picea), Black Hills, 2½-3 ft., \$5.50; 3-3½ ft., \$6.50; 3½-4 ft., \$8.00; 4-5 ft., \$10.00; 5-6 ft., \$12.00.
Colorado Blue Spruce, 10-12 in., \$1.75; 12-15 in., \$2.50; 1½-2 ft., \$5.00; 2-2½ ft., \$6.50; 2½-3 ft., \$7.50; 3½-4 ft., \$10.00; 4-5 ft., \$12.00.

Spruce (Picea)—Continued
Koster's Blue, 12-15 in., \$5.00; 18-24 in., \$6.50; 2-2½ ft., \$9.00; 3-3½ ft., \$14.00; 4-5 ft., \$18.00; 5-6 ft., \$22.00.
Norway, 18-24 in., \$3.00; 2½-3 ft., \$4.00.
Thuja (Arbor-Vitae)
Beverlyensis Type, Elegentissima, 18-24 in., \$2.75; 24-30 in., \$3.50; 30-36 in., \$4.00; 3-4 ft., \$4.50; 4-5 ft., \$5.75; 5-6 ft., \$6.75.
Meldensis, 24-30 in., \$3.75; 30-36 in., \$4.50.
Orientalis Aurea Nana, 10-12 in., \$1.50; 15-18 in., \$2.25; 18-24 in., \$3.00; 24-30 in., \$3.75; 30-36 in., \$5.00.
Orientalis Bakers, 18-24 in., \$3.00; 2½-3 ft., \$4.50; 3-4 ft., \$5.50; 4-5 ft., \$6.50; 5-6 ft., \$8.00.
Pyramidalis Occidentalis, 18-24 in., \$3.00; 24-30 in., \$3.50; 30-36 in., \$4.50; 3-4 ft., \$6.00; 4-5 ft., \$7.75; 5-6 ft., \$9.50; 6-7 ft., \$11.00.
BROAD LEAFED EVERGREENS
Mahonia, Aquifolia, 15-18 in., \$1.50.
Illicifolia, 2-3 ft., \$3.00.
Pyraecantha Lalandi (Reddish Orange Berry), 12-15 in., 75c; 15-18 in., \$1.25; 18-24 in., \$1.95; 24-30 in., \$2.50; 30-36 in., \$2.90; 3-4 ft., \$3.90.

FRUIT TREES

At our Nurseries we have a particularly fine lot of strong, healthy trees. This stock has been selected and critically grown to meet the requirements of orchardists planting for eastern or local markets. We believe, also, those of our patrons who are planting a small orchard for home use will find sufficient variety to amply fill every want in the fruit line. Detailed planting and cultural directions, free with each order. Ask for them. Our trees are very carefully graded to size and height but in determination of grade the Caliper usually governs.

Ordinary seasons we are able to deliver fruit and ornamental trees the latter part of October. In sections where ground freezes up early, we advise spring delivery. Prices quoted are f.o.b. Salt Lake City.

It is not necessary to buy 10 or 40 of a single variety to secure the respective quantity rates; 10 or more assorted fruit trees may be priced at the ten rates applying on the particular varieties selected, and 40 or more may be priced at the 40 or more price schedules. On all orders below ten, the each prices apply.

APPLES—Summer Varieties—Red Astrachan, Maiden's Blush, Red lute, Sweet Bough, Yellow Transparent, Early Crimson Beauty.

Autumn Varieties—Gravestine, Twenty-Ounce Pipin, Wealthy.

Winter Varieties—Arkansas Black, Bellefleur, Cortlandt, Delicious, Gano, Grimes, Golden Pipin, Jonathan, Rome Beauty, N. W. Greening, Stayman's, Winesap, Winter Banana, Pearmain, McIntosh Red, Golden Russet.

Crab Apples—Siberian Red.

APRICOTS—Varieties—Moorpork, Chinese, Jones, Colorado.

CHERRIES—Varieties—Bing, Black Tartarian, Lambert, Reine Hortense, May Duke, Montmorency, Napoleon, Richmond, Windsor.

PEACHES—Varieties—Alexander, Crawford, J. H. Hale, Elberta, Heath Cling, Carman, Red Bird, Orange Cling,

Mayflower, Dal's Cling, Golden Jubilee, June Elberta, Rochester, Sunbeam, South Haven, Tuscan Cling.

PEARS—Varieties—Bartlett, Beurre d'Anjou, Keiffer, Parish Favorite, Winter Nellis.

PLUMS—Varieties—Burbank, Bradshaw, Duarte, Satsuma, Damson, Green Gage, Santa Rosa, Peach, Opata, Sapa, Hauska.

PRUNES—Varieties—French and Italian.

The prices on all fruit trees listed on this page are as follows f.o.b. Salt Lake City:

	Height	Inches Caliper	Each	10-40	40-100
Home Orchard	4 ft. up	9/16-11/16	75c	50c	
Coml. Orchard	3 ft. up	7/16-9/16	60c	45c	Write
Mail Size	2 ft. up	5/16-7/16	50c	40c	for
Extra Spec. Size	5 ft. up		1.00	75c	Prices

N.B.—In localities where there is poor drainage, also where winter temperatures reach zero and below, we do not recommend Fall planting of Apricots, Sweet Cherries and Peaches.

Small Fruits and Berries

Stock is not available for Fall Planting. See Spring Catalog for complete line.

HARDY ORNAMENTAL VINES

Ampelopsis, Boston Ivy, 1 gal. cans, 75c; 4 in. pots, 50c.

Englemanni, 2 yr. No. 1, 35c.

Bignonia Radicans, 2 yr. No. 1, 50c.

Clematis, Jackmani, 4 in. pots, 75c.

Mad. Ed Andre, 4 in. pots, 75c.

Clematis, Paniculata, 1 gal. can, 60c.

English Ivy, 3-inch pots, 25c; 4-inch pots, 40c.

Honeysuckle, Heckrotti, 2 yr., 75c.

Hall's Japanese, 40c.

Scarlet Trumpet, 1 yr., 35c; 2 yr., 50c.

Polygonum Auberti, gal. can, 75c; 2 yr., 60c.

Wisteria, Chinese Sinensis blue, 2 yr., 85c.

Chinese Sinensis White, 2 yr., 85c.

Multijuga, 1 yr., 75c; 2 yr., \$1.00.

P.-W.'s Special Bargain Fruit Collection No. 81

12 VIGOROUS FRUIT TREES, HOME ORCHARD SIZE

A well selected fruit assortment containing 1 each of the twelve varieties—all of which should be on every home place that has room for them. Your selection from above varieties of 4 Apples, 3 Pears, 3 Plums, 1 Prune and 1 Pie Cherry—specially priced while they last.

Delivered to your railway station for..... \$5.00

Bargain Fruit Collection No. 82

Your selection from above 4 Apples, 3 Pears, 3 Plums, 1 Prune, 1 Pie Cherry. Mail order size trees, 12 in all, prepaid..... \$3.75

FARM SEEDS FOR FALL PLANTING

Of highest germination and purity. PRICES FLUCTUATE. Please write for quantity prices.

Astragalus Rubyi. Sensational new legume for reclaiming alkaline soils. Sow 7 lbs. per acre. 95c per lb. postpaid. Not prepaid, lb., 90c; 10 lbs., \$8.50.

Crested Wheat Grass. It was brought in from Siberia. For range, pasture and hay it is most highly recommended. Lb., 35c, postpaid. Not prepaid, 10 lbs., \$2.50; 100 lbs., market price.

Bormus Inermis. Sow 20 to 30 lbs. per acre. Lb., 30c, postpaid. Not prepaid, 10 lbs., \$2.25; 100 lbs., market price.

Red Top. Sow 25 lbs. per acre. Lb., 35c, postpaid. Not prepaid, lb., 30c; 100 lbs., market price.

Orchard Grass. Sow from 20 to 25 lbs. per acre. Lb., 35c, postpaid. Not prepaid, 10 lbs., \$2.50.

English or Perennial Rye Grass. 30 lbs. per acre. Lb., 30c, postpaid. Not prepaid, 10 lbs., \$2.25; 100 lbs., market price.

Meadow Fescue. Sow in spring or fall at the rate of 30 lbs. to the acre. Lb., 35c, postpaid. Not prepaid, 10 lbs., \$2.50; 100 lbs., market price.

Tall Meadow Oat Grass. Sown alone, use 30 lbs. to the acre, either spring or fall. Lb., 45c, postpaid. Not prepaid, 10 lbs., \$3.50; 100 lbs., market price.

Red or Creeping Fescue. Lb., 70c; 3 lbs., \$1.95, postpaid. Not prepaid, lb., 60c; 10 lbs., \$5.75.

Slender or Western Wheat Grass. For dry land with-out equal. Sow 15 lbs. per acre. Lb., 35c, postpaid. Not prepaid, 10 lbs., \$2.50.

Timothy. 12 lbs. to the acre. Lb., 20c, postpaid. Not prepaid, 10 lbs., \$1.25.

Reed's Canary Grass. Recommended for planting in parks and along banks of streams or ponds. Lb., 50c, postpaid. Not prepaid, 10 lbs., \$4.50.

Western Alkali Grass. Produces in alkaline soils where all others fail. Seeding can be done any time from Sep-

tember 1 until spring. Sow 2 lbs., per acre. Lb., 95c; 3 lbs., \$2.75, postpaid. Not prepaid, lb., 85c; 10 lbs., \$8.00.

Clovers

Alfalfa Hardy Desert. Lb., 35c, postpaid. Not prepaid, 10 lbs., \$3.00; 100 lbs., market price.

Alfalfa Seed Grimm (Certified). Lb., 40c, postpaid. Not prepaid, 10 lbs., \$3.50; 100 lbs., market price.

Alsike Clover (Swedish Hybrid). Sow at the rate of six or eight lbs. per acre. Sown in mixtures, five or six lbs. per acre is sufficient. Lb., 40c, postpaid. Not prepaid, 10 lbs., \$5.50; 100 lbs., market price.

Medium Red Clover (Trifolium Pratense). Sow either in the spring or fall at the rate of fifteen lbs. to the acre. Lb., 40c, postpaid. Not prepaid, 10 lbs., \$3.00; 100 lbs., market price.

Strawberry Clover. For reclaiming wet saline soils. Much better for pasture than White Dutch. Sow 4 lbs., per acre. Lb., \$2.25, postpaid. Not prepaid, 10 lbs., \$20.00.

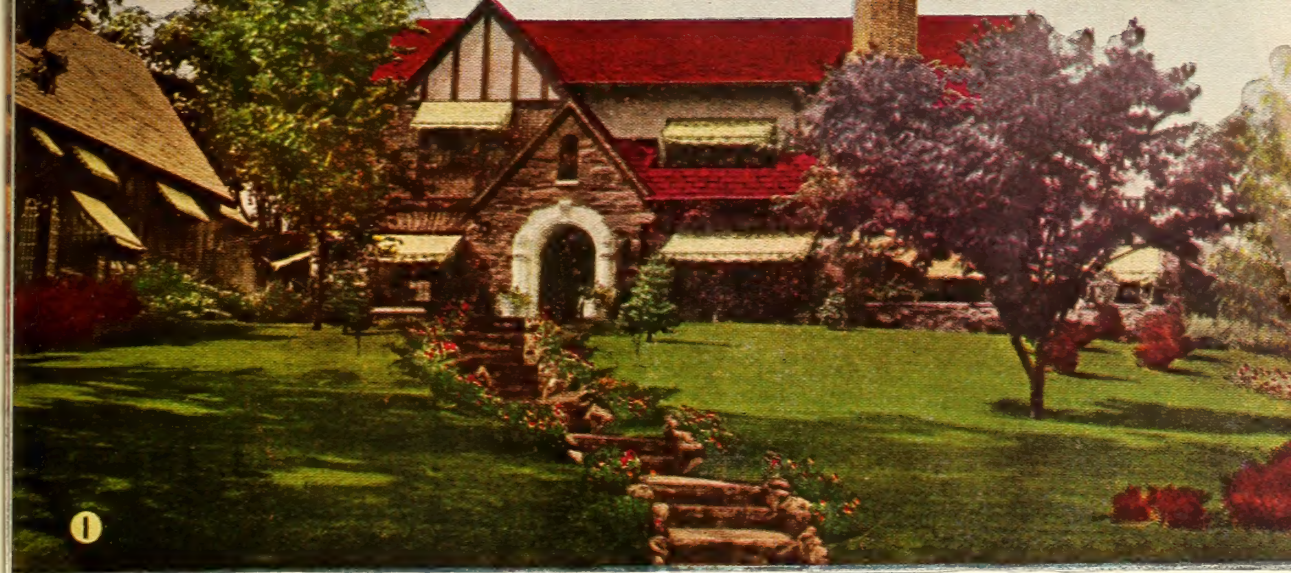
Sweet Clover or Bokhara (Melilotus Alba) White Blossom. Sow at the rate of 10 to 15 lbs. per acre. Cover the seed very lightly. Lb., 25c, postpaid. Not prepaid, 10 lbs., \$1.75; 100 lbs., market price.

Yellow Blossom (Melilotus Officinalis). Lb., 25c, postpaid. Not prepaid, 10 lbs., \$1.75; 100 lbs., market price.

Mixture No. 1 (For Meadows and Pastures). Sow 25 lbs. per acre. Lb., 35c, postpaid. Not prepaid, 10 lbs., \$2.75; 100 lbs., market price.

Dry Land Rye

A drouth-resisting strain of Fall Rye strictly dry land grown; produces forage and grain where others fail. Sow 20 to 30 lbs. per acre. 10 lbs., 85c, postpaid. Not prepaid, 100 lbs., \$1.65. Write for quantity prices.



For a Beautiful Lawn Sow P.-W.'s Velvet Green Lawn Seed.

P.-W.'s LAWN SEED (For Fall Sowing)

Lawns Made in the Fall have many advantages over those made during the Spring months, as the conditions are ideal for quick germination of seed, and the plants will make deeper roots and more healthy growth. Use Vigoro, the ideal fertilizer. Ask for FREE leaflet on how to make a lawn.

Kentucky Blue Grass. The main stay for lawn making. Our stock is extra fancy. Lb., 45c; 3 lbs., \$1.25, postpaid. Not postpaid, lb., 40c; 10 lbs., \$3.75.

P.-W.'s Creeping Bent. Especially recommended for Lawn and Golf Courses for the reason that it makes an exceptionally fine turf that smothers out dandelions and other weeds. Sow in Fall or Spring 3 to 4 lbs. to 1,000 square feet. 1 lb., \$1.20; 3 lbs., \$3.30, postpaid. Not prepaid, lb., \$1.10; 10 lbs., \$10.00.

P.-W.'s Velvet Green Lawn Mixture. Produces a beautiful permanent lawn in four to six weeks. Sow at rate of one lb. to 200 square feet. 1 lb., 50c; 3 lbs., \$1.40, postpaid. Not prepaid, lb., 45c; 10 lbs., \$4.00.

P.-W.'s Shady Nook Lawn Mixture. Prepared especially for shady places where it is difficult to

get turf established. Lb., 65c, postpaid. Not prepaid, lb., 55c; 10 lbs., \$5.00.

White Clover. First class re-cleaned seed. Specially selected for lawn use. Lb., 75c; 3 lbs., \$2.10, postpaid. Not prepaid, lb., 70c; 10 lbs., \$6.75.

P.-W.'s Special Bent Mixture A Lawn Without Weeds

This splendid mixture is made up of grasses that will make a closely woven tough turf, choking out weeds and producing a beautiful green sward. We especially recommend this to situations where trouble is had with Dandelions and other objectionable weeds.

Lb., 75c; 10 lbs., \$7.00, prepaid. Not prepaid, lb., 70c; 10 lbs., \$6.50.

HARDY ANNUAL FLOWER SEEDS (For Fall Sowing)

Fall sowing of hardy annuals is very rightly becoming more popular every year as practically all hardy annuals will produce stronger, sturdier plants with earlier bloom by this method. Even when it is desirable to sow in the spring, experienced gardeners also sow in the fall because they then have a longer bloom period. The ideal time for planting in the Mountain States and areas of similar climatic conditions, is the latter part of November or early December, just before the ground freezes. If the ground is properly prepared in the fall, sowing can be made during winter thaws.

Alyssum, Little Gem. Pkt., 10c; ¼ oz., 25c.

Antirrhinum (Snapdragons), P.-W.'s Special Mixture. Pkt., 15c; ¼ oz., 25c.

Calendula, Orange King. Pkt., 10c; ¼ oz., 25c.

Calliopsis, P.-W.'s Special Mix. Pkt., 10c; ¼ oz., 25c.

Candytuft, Gt. Hyacinth-Flowered White. Pkt., 10c; ¼ oz., 25c.

Centaurea, Cyanus (Bachelor's Button), P.-W.'s Special Mix. Pkt., 10c; ¼ oz., 20c.

Chrysanthemum, P.-W.'s Special Double and Single Mixed. Pkt., 10c; ¼ oz., 25c.

Clarkia, P.-W.'s Special Mixture. Pkt., 10c; ¼ oz., 25c.

Cosmos, Early Flowering Mammoth Mixed. Pkt., 10c; ¼ oz., 20c.

Cynoglossum, Amabile. (Chinese Forget-Me-Not), 18-24 in. Pkt., 10c; ¼ oz., 20c.

Dianthus, P.-W.'s Special Double and Single Mixtures. Each Pkt., 10c; ¼ oz., 30c.

Eschscholtzia, P.-W.'s Spec. Mixture. Pkt., 10c; ½ oz., 25c.

Erysimum (Fairy Wall Flower), Orange flowers. 2 ft. Pkt., 10c.

Euphorbia, Variegata (Snow on the Mountain). Pkt., 10c; ¼ oz., 25c.

Gypsophila, Elegans Grandiflora White (Angel's Breath). Pkt., 10c; ½ oz., 20c.

Hunnemannia, Fumariaefolia (Bush Eschscholtzia). Pkt., 10c; ¼ oz., 25c.

Larkspur, P.-W.'s Special Giant Mixture. Pkt., 15c; ¼ oz., 25c.

Linum (Blue Flax). Pkt., 10c.

Lupinus, Tall annual mixed. Pkt., 10c.

Mignonette, Mixed. Pkt., 10c; ¼ oz., 20c.

Nicotiana, Affinis (Sweet-scented Tobacco Plant). Pkt., 10c; ¼ oz., 25c.

Nigella, Miss Jekyll (Love-in-the-Mist). Pkt., 10c; ¼ oz., 15c.

Petunia, P.-W.'s Single Bedding Mixed Colors. Pkt., 10c; ½ oz., 25c.

Pansies, P.-W.'s International Mixture. Mammoth flowers, gorgeous colors. Pkt., 25c; 1/16 oz., 60c.

Poppy, P.-W.'s Special Shirley Mixed. Pkt., 10c; ¼ oz., 25c.

Scabiosa, P.-W.'s Special Mixed. Pkt., 10c; ¼ oz., 25c.

Silene, Armeria Mixed. 1½ ft. Pkt., 10c.

Sweet Peas, P.-W.'s Special Mixture. Early flowering. Spencer varieties. Pkt., 10c; oz., 35c.

Viola Cornuta, P.-W.'s Improved Scotch Pansies, Mixed. Pkt., 10c; ¼ oz., 35c.

Collection Offer No. 83

Consists of 1 pkt. each of following charming annuals:

Centaurea, Cyanus,	Dianthus, P.-W.'s Dbl. Mxd.
P.-W.'s Mixed	Larkspur, P.-W.'s
Calliopsis, P.-W.'s Sp. Mxd.	Giant Mixed
Cynoglossum, Amabile	Snapdragon, P.-W.'s
	Giant Early Mixed

6 pkts. in all (Regular value, 70c) **50c**
All postpaid for.....

Big 4

GROUP OF MAMMOTH TULIPS

Last Word in Giant May-flowering Hybrids

Big 4 Offer No. 87

3 bulbs each of the four
marvelous Tulips shown on
this page.

1. Eclipse 3. Aviator Hawkes
2. Dillenburg 4. Alaska

12 bulbs in all (regular value \$1.14,
see pages 4-6) postpaid

75c



①



②



③



④

Big 4 Offer No. 88

one dozen bulbs each of
the 4 varieties on this
page, 48 bulbs in all (reg-
ular value \$3.75) postpaid

\$2.75

You take no Chances. For More
than 34 Years of Fair Dealing and
the Largest Source of Supply in the
Mountain States Backs Every Or-
der from us.

**SAFE DELIVERY AND
SATISFACTORY RESULTS
GUARANTEED**

Porter-Walton Co.
Centerville, Utah

Return Postage Guaranteed

Sec. 562 P. L. & R.
U. S. POSTAGE

PAID

Centerville, Utah
Permit No. 1

H. P. GOULD
PRINCIPAL HORTICULTURIST
U. S. DEPT OF AGRIC.
WASHINGTON, D. C.

SEP 22 1933