

THE QUARRIER  
1949 QUARRIER



Mary Ann Bernhardt

Janice Fraley

Jean Lynch

Ethel Rose Kepley

Kenneth Troutman

Lillian Johnson

Joan Lillie Roscoe

Betty Rose Thomas

Lillie Mae Penley

Nell

Wallace Smith

Joan Mahaffey

Mildred Baity

Delma

Charles Bame

Christine Starves Paul

Hendert Klutz

Betty

Colleen Dennis

Dwight Fraley

Nancy Housman

Bobby Ray Shaver

Wade W. Fisher Junior

John

Billy Addie

ROWAN PUBLIC LIBRARY  
FELLSBURY, N. C.

Gladys Couch  
David Couch

Margaret Barger

Joe Klutzy  
~~Joe Klutzy~~

Blanca Holstonsen

Charles Reberlin

League

Jason Brown

Philip Ray Holstonsen

Madeline Fink

J.C. Williams

Thomas Rose Humphreys

Donald Richardson

Biederstein

Bobby Barringer

Ray L. Tucker

James P. ...

Paul ...

Gene ...

John Kesler

Decker

Lorraine  
Kerby

James M. ...  
Gene ...

Mary Rose  
Allen

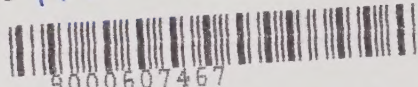
Richard ...

HR BOOKS  
NC ROW.24 QUA

c.1 y.1949

Quarrier.

c.1 1949 Quarrier.



9000607467

# THE QUARRIER

Nineteen Hundred Forty-Nine

Published by

## THE SENIOR CLASS

GRANITE QUARRY HIGH SCHOOL

GRANITE QUARRY, N. C.

Editor

JEAN RANEY

Business Manager

RICHARD MELCHOR

**ROWAN PUBLIC LIBRARY**  
**SALISBURY, N. C.**

# PRESENTING "FORTY NINERS"

"THERE'S A GOAL IN THEM THAR HALLS"

As our forefathers traveled west to the fabulous gold-rush of 1849, we the "forty-niners" of this century have been constantly traveling for twelve years a similar trail that leads to this, our graduation.

Like our predecessors, hardships have hindered our progress—causing some of our clan to fall by the rugged trail. But with the aid of capable leaders, we crossed the barriers, forded the streams, and settled a land quite strange to us. Our experiences, although new and often trying, were both enjoyable and exciting.

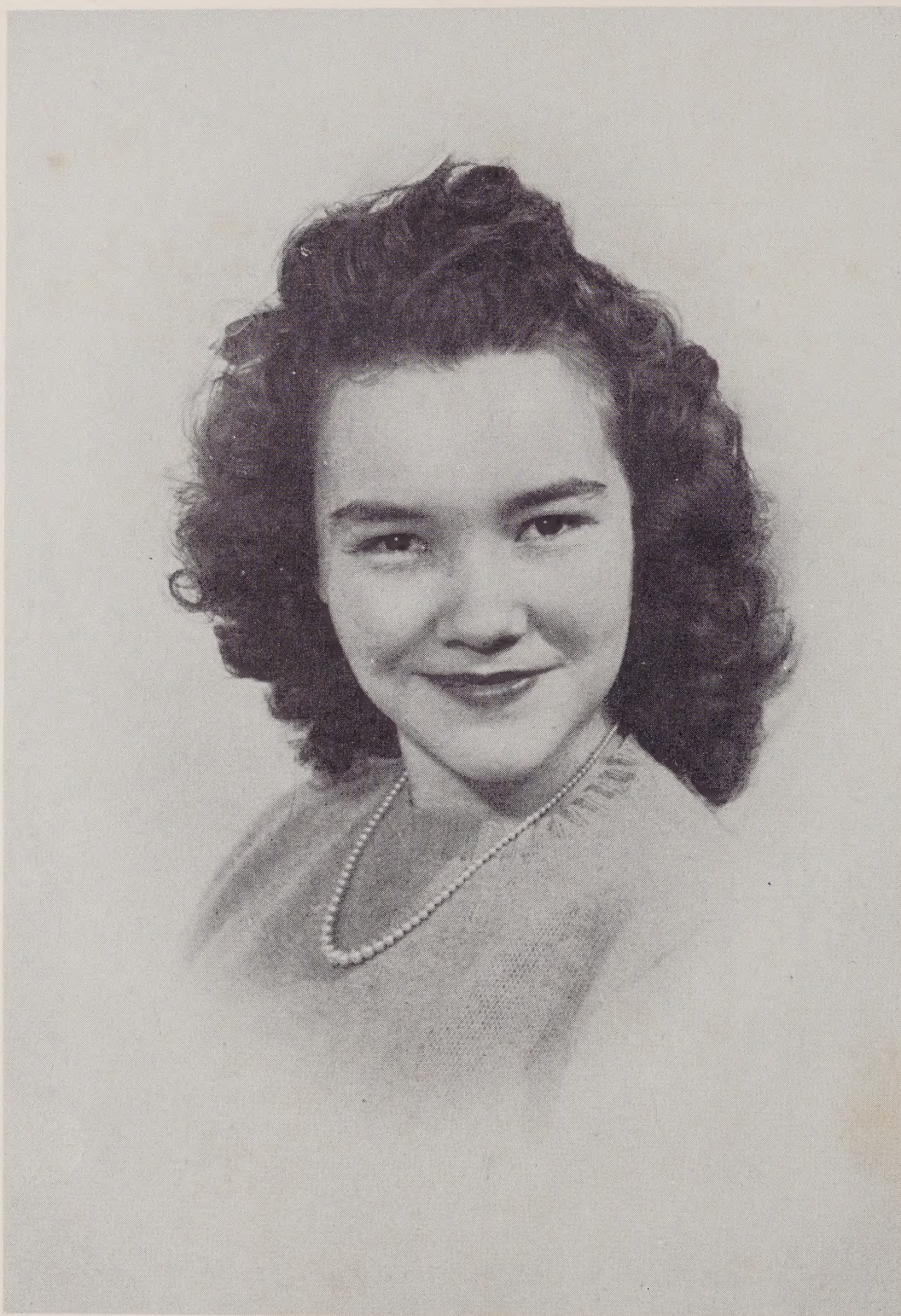
With our homesteads erected, our work completed, and the day of graduation here, we have reached our goal, as the "forty-niners" had reached their gold.



## FOREWORD

We, the Senior Class of 1949, store within the pages of this edition of the "Quarrier" the countless treasures of everlasting memories of our beloved and cherished activities at dear old Granite Quarry from our first year, to this, our last one. Future references to these pages will recall days of joy and days of hardships. The priceless memories that we here record, will always remind us all of Granite Quarry High School.

# DEDICATION



MISS BETTY JEAN FRICK

This issue of the "Quarrier" is dedicated by the Seniors of Granite Quarry High School to Miss Betty Jean Frick who would be a member of the graduating class if she had not met with an unfortunate accident in 1945. Her cheerful smile shines through the darkness to everyone.





PRINCIPAL  
E. C. STATON

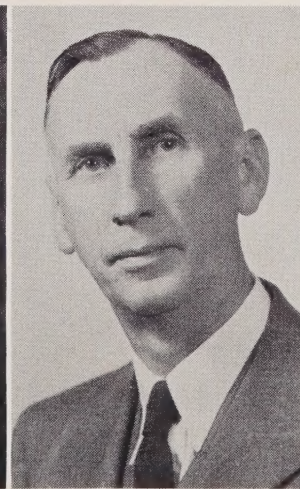
### SCHOOL BOARD



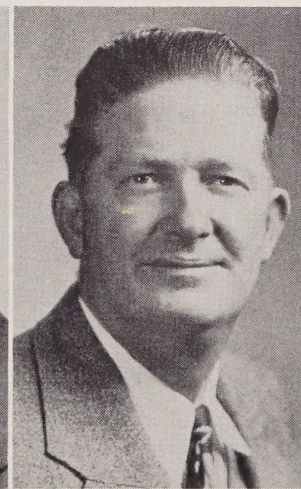
MR. W. R. TREXLER  
Chairman



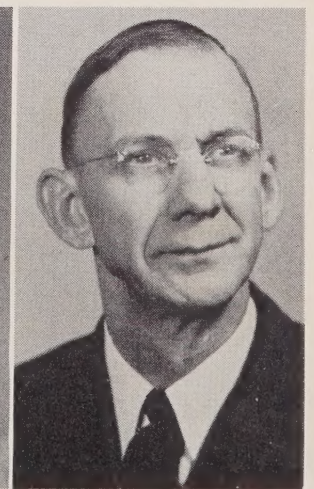
MR. LEON BARGER



MR. A. H. PEELER



MR. HUGH ROBERTSON



MR. ERNEST LYERLY

# FACULTY



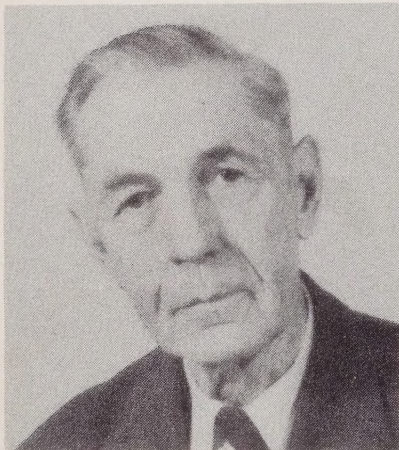
MRS. J. L. SOWER, A.B.  
Salisbury, N. C.  
English, Chemistry  
Carthage College



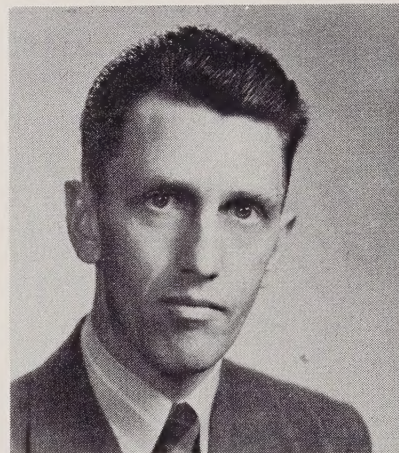
MRS. W. E. McCOMBS, A.B.  
Faith, N. C.  
Commercial Subjects  
Catawba College



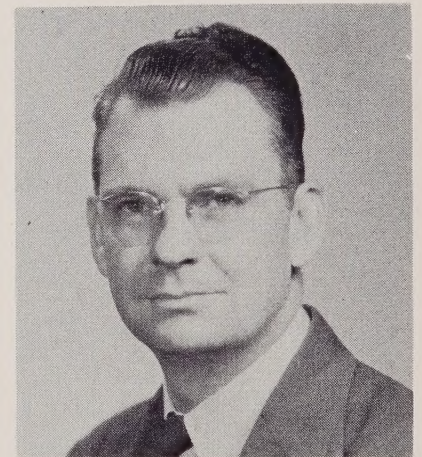
MRS. J. J. CROWELL, A.B.  
Granite Quarry, N. C.  
English  
Greensboro Woman's College



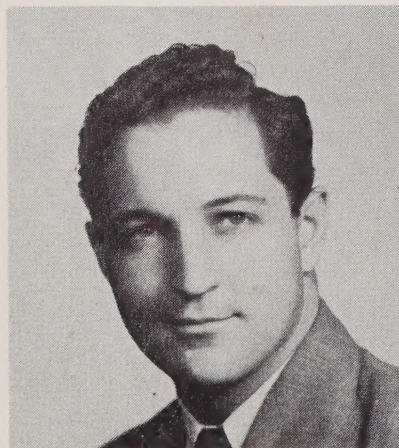
MR. W. F. McCANLESS, Ph.B., M.A.  
Greensboro, N. C.  
English, Math  
University of North Carolina



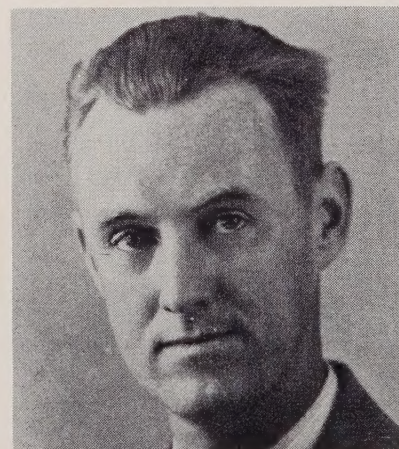
MR. W. L. RHYNE  
A.B., M.A., B.S. in L.S.  
Salisbury, N. C.  
Social Science, French, Library  
University of North Carolina



MR. J. W. HUNEYCUTT, B.S.  
Rockwell, N. C.  
Social Studies, Biology  
Appalachian State Teachers College



MR. DANIEL LANE, B.S.  
Salisbury, N. C.  
Civics, Health, Physical Education  
Wake Forest College



MR. J. G. JONES, B.S.  
Granite Quarry, N. C.  
Agriculture  
Clemson College



MRS. J. R. FELTS, JR., B.S.  
Salisbury, N. C.  
Home Economics  
Catawba College

# FACULTY



MRS. W. J. RITCHIE, B.S.  
Granite Quarry, N. C.  
Eighth Grade  
Catawba College



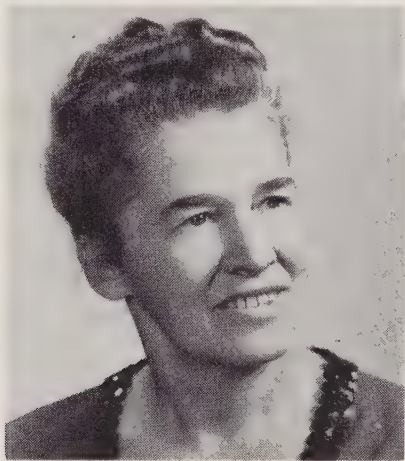
MRS. R. C. SAFRIT, A.B.  
Salisbury, N. C.  
Eighth Grade  
Greensboro Woman's College



MRS. W. C. TAYLOR  
Salisbury, N. C.  
Seventh Grade  
Catawba College



MRS. J. L. KIRK, A.B.  
Salisbury, N. C.  
Sixth and Seventh Grades  
Greensboro Woman's College



MRS. A. S. HUDSON, A.B.  
Salisbury, N. C.  
Sixth Grade  
Catawba College



MRS. L. W. BROWN, A.B.  
Granite Quarry, N. C.  
Fifth and Sixth Grades  
Catawba College



MRS. J. H. WILHELM, A.B.  
Salisbury, N. C.  
Fifth Grade  
Catawba College



MRS. L. R. CAUBLE, B.S.  
Granite Quarry, N. C.  
Fourth Grade  
Appalachian State Teachers College

# FACULTY



MRS. W. R. ROBERTS, B.S.  
Salisbury, N. C.  
Third Grade  
Catawba College



MRS. P. G. KINNEY, A.B.  
Granite Quarry, N. C.  
Third Grade  
Elon College



MISS MARY MELTON, A.B.  
Granite Quarry, N. C.  
Second Grade  
Davenport College



MRS. G. C. WILLIAMS, A.B.  
Granite Quarry, N. C.  
Second Grade  
Catawba College

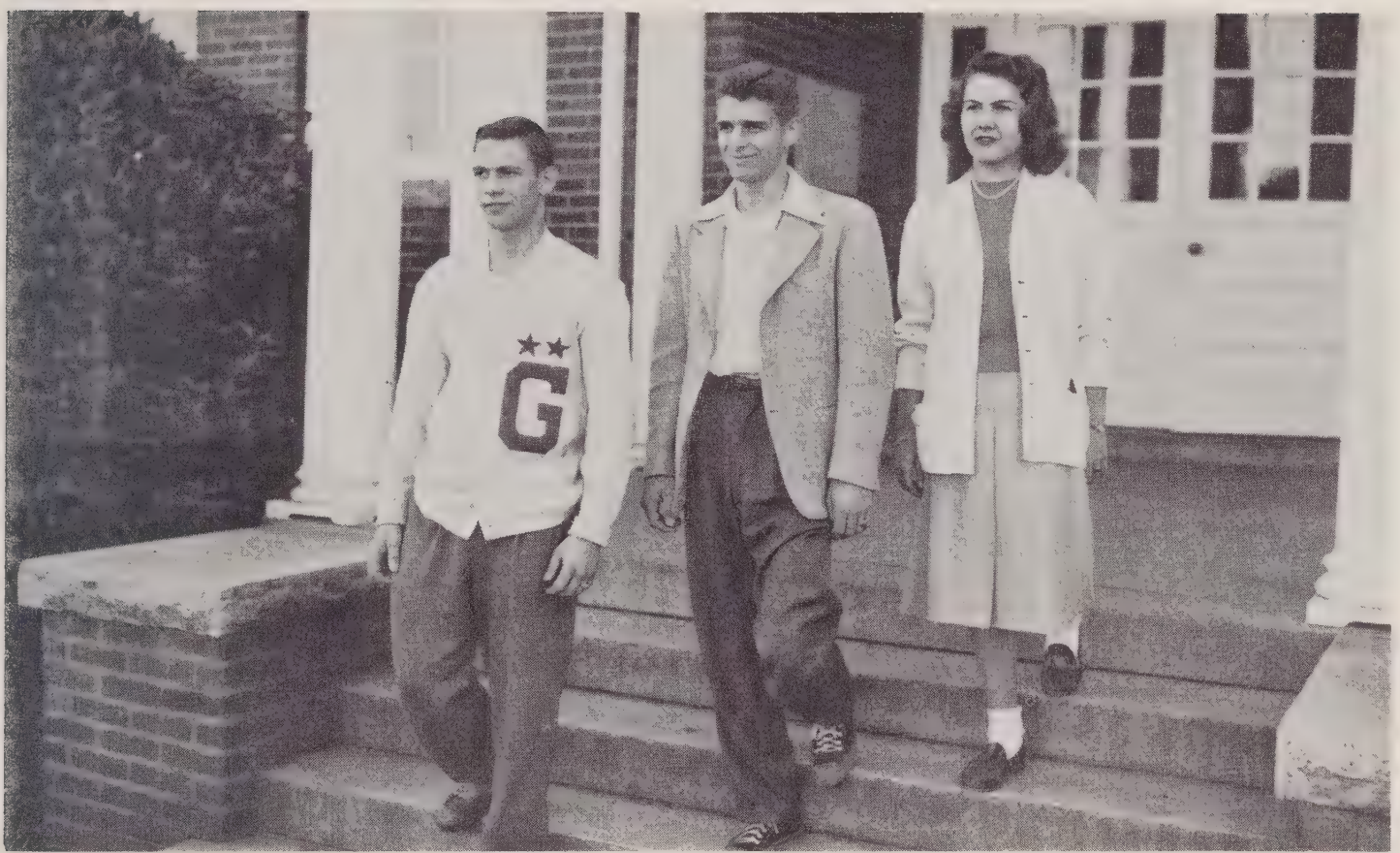
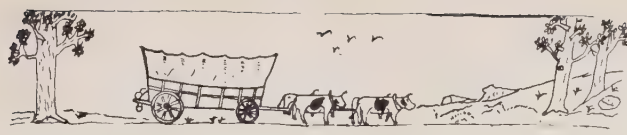


MRS. J. M. HOLSHOUSER, B.S.  
Salisbury, N. C.  
First Grade  
Catawba College



MRS. W. L. RHYNE, A.B.  
Salisbury, N. C.  
First Grade  
Catawba College





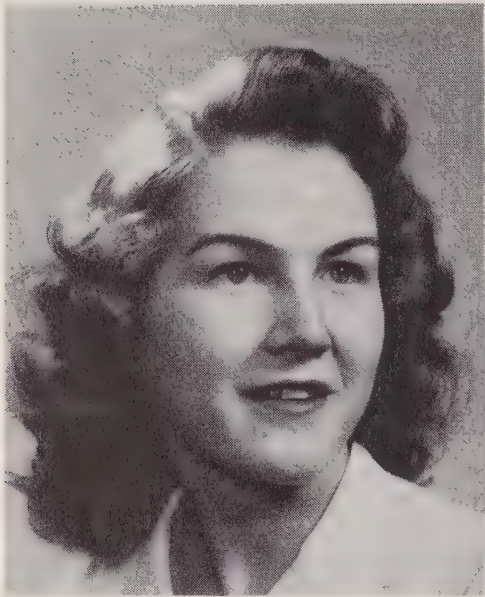
# SENIORS

## CLASS OF 1949

Philip Holshouser..... President  
Wade Fisher..... Vice-President  
Kitty Allen..... Secretary and Treasurer



# SENIORS



KITTY KNIGHT ALLEN

"True and sincere, loyal and kind."  
Glee Club 1; Activity Club 4; Cheerleader 3; Halloween Queen 3; Secretary-Treasurer of Class 4.



PATTY SUE ANDREW

"She acts with dignity, small tributes to a fine girl."  
Fun Club 3; Variety Club 3. Activity Club 4; Music Student 1, 2, 3, 4; "Most Likely to Succeed" 4.



MILDRED LOUISE BAITY

"A full, rich nature, free to trust."  
F. H. A. Club 2; Glee Club 3, 4.



CHARLES REID BAME

"My own thoughts are my companions."  
F. F. A. Club 1, 2, 3, 4; Speech Club 3; Basketball Team 3; Baseball Team 3, 4; F. F. A. Reporter 3.



MARGARET RHEA BARGER

"Success is marked by a continuance of effort."  
F. H. A. Club 2, 3; Sports Club 3; Glee Club 3, 4; Beta Club 3, 4; Junior Marshal 3; Class Day Officer 3; "Most Original" 4.

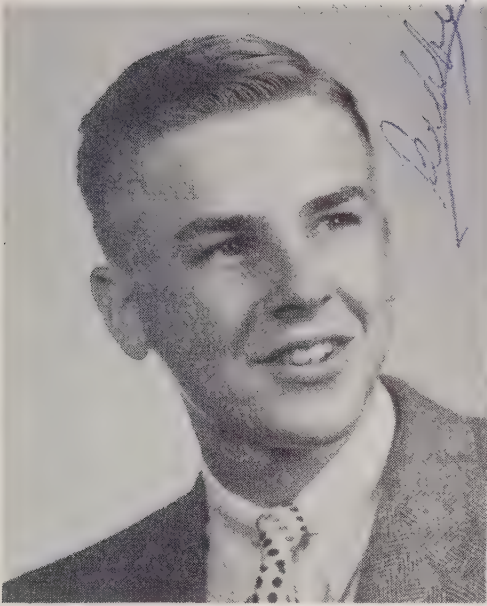


BESSIE JENNIE MALINDA BARRINGER

"Good temper, like a sunny day, sheds brightness over everything."  
Junior Play Cast 3; Variety Club 3; Fun Club 3; Glee Club 4; Reporter of "Granite Chips" 4; Commercial Club 4; Manager of Girls' Basketball Team 4.

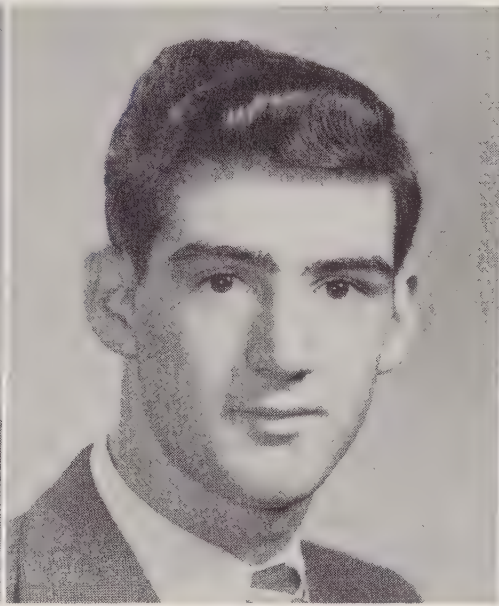


# SENIORS



ROBERT DRYE BARRINGER

"A gentleman and always willing to oblige."  
 Glee Club 3; F. F. A. Club 1, 2, 3, 4; Sports Club 3; Art Editor of "Quarrier" 3, 4; Bus Driver 3, 4; Art Editor of "Granite Chips" 4; Commercial Club 4; "Best Personality" 4.



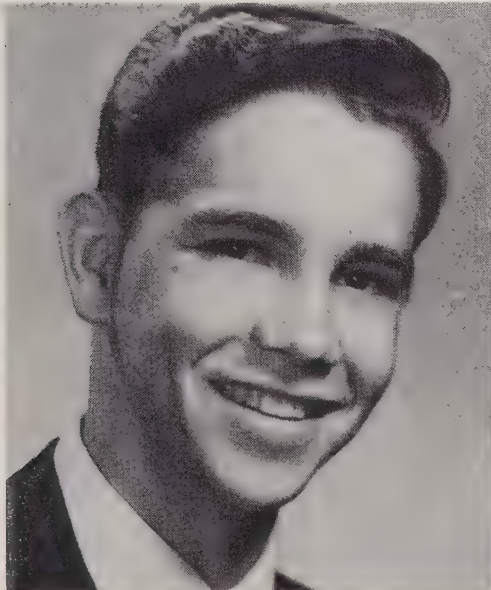
VOIGHT MONROE BASINGER

"A gentleman he is of artless grace, Gentle of voice and fair of face."  
 Baseball Team 1, 2, 3, 4; F. F. A. Club 1, 2, 3, 4; Sports Club 3; Basketball Team 3, 4; Fireman 3, 4; Secretary-Treasurer of Class 3; "Best Looking" 4.



MARY SUE BERNHARDT

"She's loyal to her word, to her work, to her friends."  
 Glee Club 1, 4; Music Student 1, 2, 3; Speech Club 3; Variety Club 3; "Most Dependable" 4.



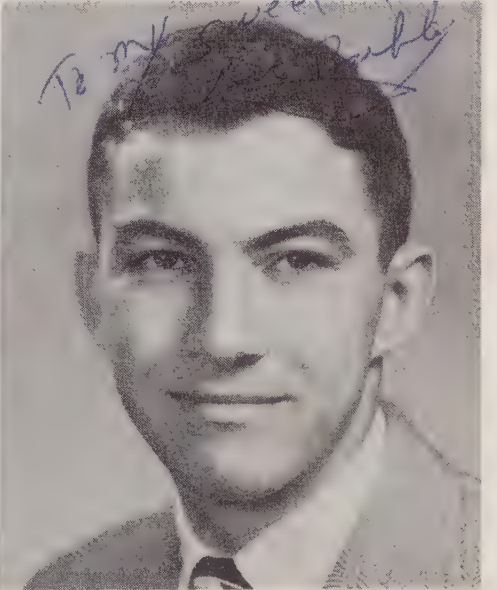
JASON SOLOMON BROWN

"Don't take life too seriously, you'll never get out of it alive anyway."  
 R. O. T. C. 1, 2; F. F. A. 4; Cheerleader 4.



DELMA ROSE CORL

"A jolly unselfish personality is really the greatest gift of all."  
 Glee Club 3, 4; F. H. A. Club 3.

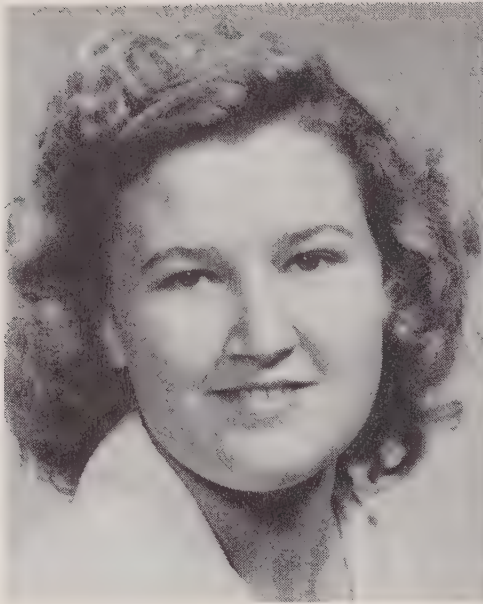


BOBBY LEE CRUSE

"Bobby is a friendly sort, a loyal friend and a good sport."  
 F. F. A. 1, 2, 3, 4; Junior Play Cast 3; Basketball Team 3, 4; Baseball Team 3, 4; Fireman 4; Student Council 4; Business Manager of "Granite Chips" 4; "Best Sport."

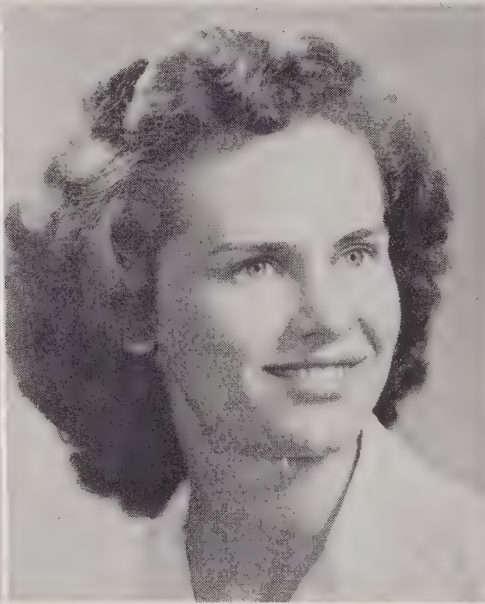


# SENIORS



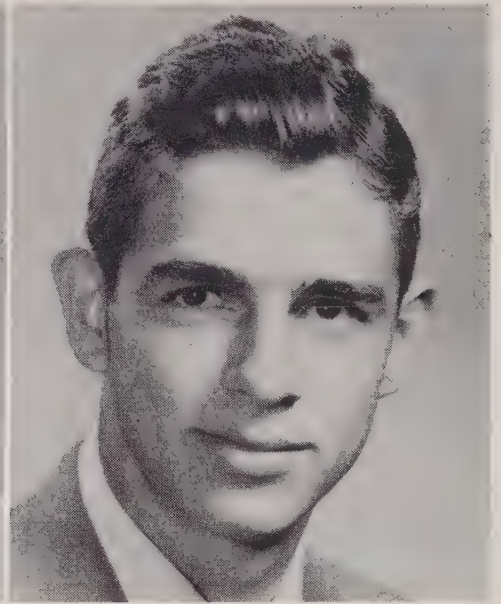
VEARAL COLEEN DENNIS

"The only way to have a friend is to be one."  
F. H. A. Club 3; Glee Club 3, 4.



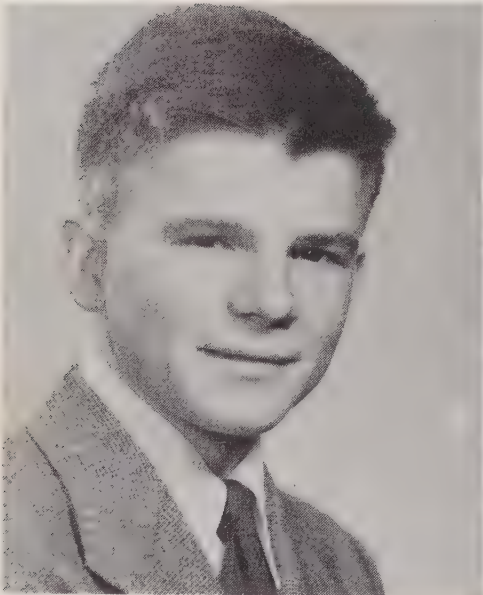
GAY MADELINE FINK

"This is a girl who's hard to beat, Nice and jolly and always sweet."  
May Day Attendant 1; Music Student 1, 2, 3, 4; Vice-President of Class 2; Secretary of Class 3; Cheerleader 3; Vice-President of Student Council 3; Circulation Manager of "Granite Chips" 3, 4; Glee Club 1, 4; Basketball Team 4; "Best Personality" 4.



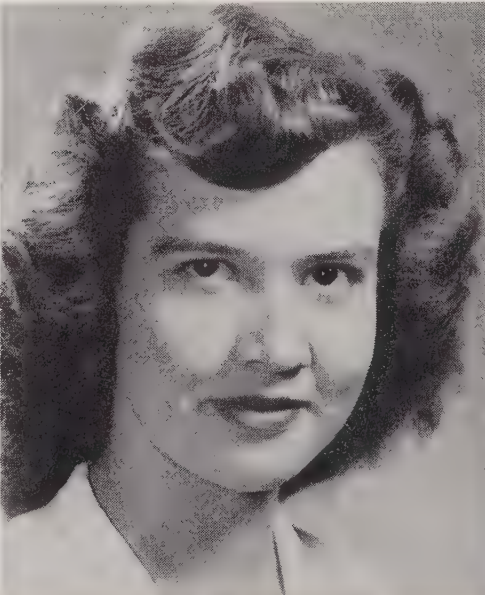
WADE W. FISHER

"Healthy, happy, the best of sports You seldom see him out of sorts."  
Basketball Team 3, 4; Baseball Team 3, 4; Junior Play Cast 3; F. H. A. Club for Boys 3; Sports Club 3; D. of D. F. V. Club 4; Bus Driver 4; Vice-President of Class 4; "Most Dependable."



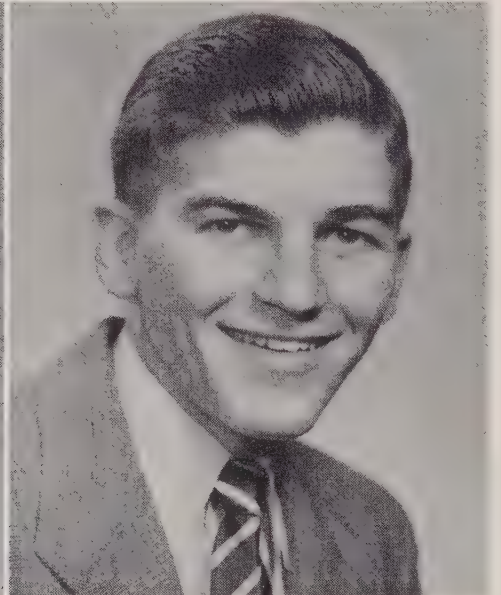
DWIGHT BARGER FRALEY

"For a man is by nothing so well betrayed as his manners."  
F. F. A. Club 1, 2, 3, 4; Sports Club 3; F. F. A. Sentinel 3; F. F. A. Treasurer 4; Manager of Boys' Basketball Team 4; Bus Driver 4; "Class Baby" 4.



JANIE ELIZABETH FRALEY

"She does with cheerful will, What others talk of while their hands are still."  
Student Council 2; Glee Club 1, 4; Fun Club 3; Sports Club 3; Junior Marshal 3; Beta Club 3, 4; Commercial Club 4; Literary Editor of "Quarrier" 4; "Most Intelligent" 4.



WALLACE CLAUDE GAITHER

"A good disposition is to be valued more than goods."  
Basketball Team 1, 2, 3, 4; Baseball Team 1, 2, 3, 4; Boys' F. H. A. Club 3; Good Sports Club 3; Glee Club 1, 4; Fireman 4; Commercial Club 4; Sports Editor of "Granite Chips" 4; "Most Athletic" 4.



PHILIP RAY HOLSHOUSER

"From all his worthy qualities, 'twould be a task to pick his best."

F. F. A. Club 1, 2, 3, 4; Basketball Team 1, 2, 3, 4; Baseball Team 1, 2, 3, 4; Sports Club 3; Assistant Editor of "Granite Chips" 3; Assistant Business Manager of "Quarrier" 3; Junior Play Cast 3; Vice-President of F. F. A. 3; Fire Chief 4; President of Student Council 4; "Best-all-around" 4.

REBECCA EARDINE HOLSHOUSER

"Thy modesty is a candle to thy merit."  
F. H. A. Club 2, 3; Sports Club 3; Glee Club 4; "Best Looking" 4.

THYRA ROSE HONEYCUTT

"The girl who wins is the girl who works, The girl who toils while the next one shirks."

Beta Club 3, 4; Speech Club 3; Junior Marshal 3; Junior Play Cast 3; Assistant Editor of "Quarrier" 3; Copy Editor of "Granite Chips" 4; Class Day Officer 4; "Best Dressed" 4.



LILLIAN ODESSIA HUFFMAN

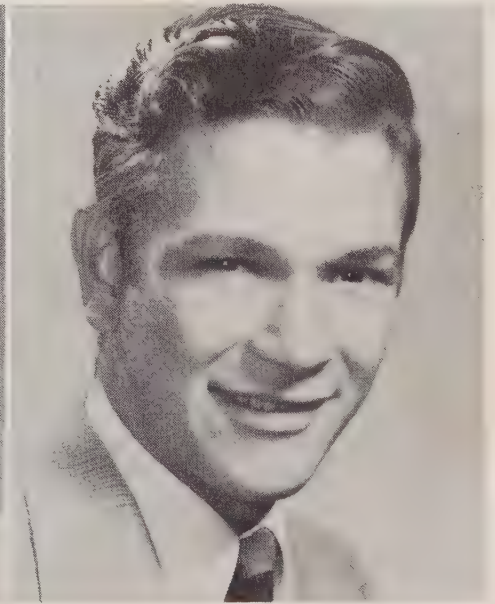
"Genius wins sometimes; hard work always."

F. H. A. Club 2, 3; Vice-President of F. H. A. Club 3; Sports Club 3; Beta Club 3, 4; D. of D. F. V. Club 4.



ETHEL ROSE KEPLEY

"Music is a gift of the gods,  
And I have been well blessed."  
F. H. A. Club 3; Glee Club 1, 3, 4.



JOHN THOMAS KESLER

"Happiness is cheaper than worry,  
So why pay the higher price?"  
F. F. A. Club 1, 2, 3, 4; Speech Club 3; Vice-President of F. F. A. Club 4; Glee Club 4.

HERBERT CLIFFORD KLUTZ

"Take it easy, have your fun,  
And let the old world flicker on."

Basketball Team 2, 3, 4; Baseball Team  
2, 3, 4; Fireman 2; Good Sports Club 3;  
F. F. A. Club 1, 2, 3, 4; Junior Play Cast  
3; "Cutest" 4.

MILES JOE KLUTZ

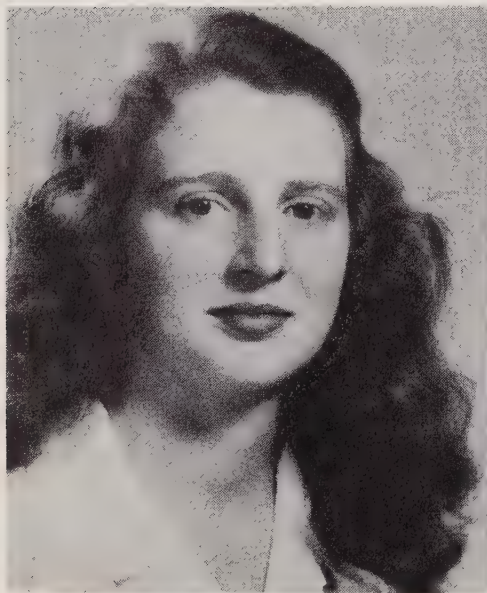
"For even though vanquished he could  
argue still."

Basketball Team 1, 2, 3, 4; Baseball  
Team 1, 2, 3, 4; Student Council 2; Boys'  
F. H. A. Club 3; Good Sports Club 3;  
"Most Influential" 4.

LOIS LORAIN KLUTZ

"She is young and very fair,  
With bright eyes and light hair."

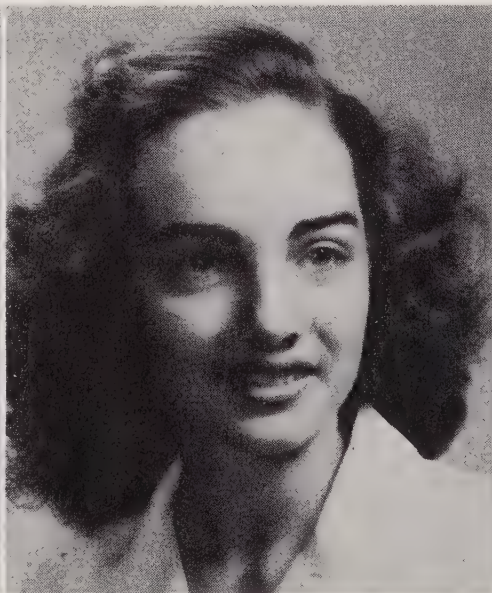
Halloween Queen 1, 4; Glee Club 3, 4;  
Junior Play Cast 3; Music Student 1, 2, 3;  
"Most Influential" 4.



JEAN CAROL LYERLY

"The reward of a thing well done, is to  
have done it."

F. H. A. Club 2, 3; Treasurer of F. H. A.  
Club 3; Beta Club 3, 4; Junior Marshal 3;  
Sports Club 3; D. of D. F. V. Club 4; "Most  
Studious" 4.



JOAN LEE MAHAFFEY

"Of manners mild, of affections gentle."

Glee Club 1, 2; Play Makers Club 3;  
Librarian 3; Reading Room 3; D. of D. F.  
V. Club 4.



MONA JUNE MCKENZIE

"Every virtue is more fair when it ap-  
pears on a beautiful face."

Glee Club 1; Basketball Team 2, 3, 4;  
Halloween Queen 3; Fun Club 3; Junior  
Play Cast 3; Variety Club 3; May Day  
Attendant 1; Softball Team 3; Treasurer of  
Commercial Club 4; "Most Athletic" 4.



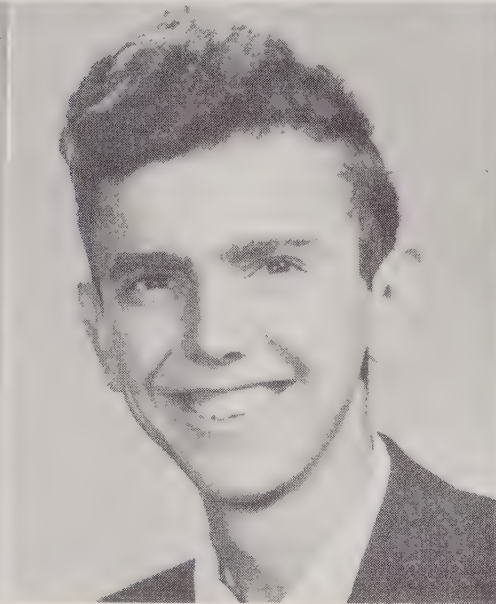
# SENIORS



RICHARD PERRY MELCHOR

"Zealous yet modest; sincere and kind; patient of toil."

Student Council 2, 3; Fireman 2, 3; Beta Club 3, 4; Sports Club 3; Junior Marshal 3; Business Manager of "Quarrier" 4; "Friendliest" 4.



BILLY EDWARD ODDIE

"Men of few words are often the best men."

F. F. A. Club 1, 2, 3, 4; Speech Club 3; Fireman 3; Glee Club 4.



BETTY ANN PEELER

"By the work, one knows the workman."

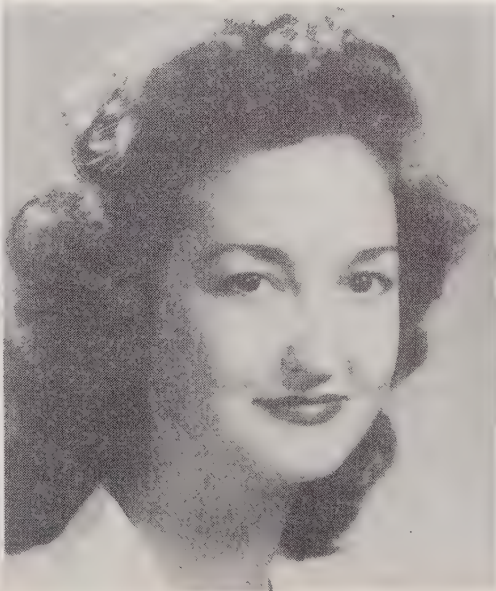
Student Council 2; F. H. A. Club 3; Glee Club 3; President of Commercial Club 4; Editor of "Granite Chips" 4; Class Poet 4; "Most Popular" 4.



MARY ROSE PEELER

"Let them call it mischief; When it is past and prospered 'twill be virtue:"

Glee Club 1, 4; Basketball Team 4; Softball Team 3, 4; Variety Club 3; F. H. A. Club 3.



LILLIE MAE PENLEY

"A smile for all, a greeting glad, A friendly jolly way she had."

Glee Club 1, 2, 3, 4; Queen of Halloween; "Best Sport" 4.



DORIS JEAN RANEY

"Dignity, good character, and a cheerful disposition, happily combined."

Glee Club 1, 4; Junior Marshal 3; F. H. A. Club 3; Beta Club 3, 4; Basketball Team 3, 4; Softball Team 3, 4; President of Variety Club 3; Secretary of Student Council 4; Reporter of Senior Class 4; Sports Editor of "Granite Chips" 4; Vice-President of Commercial Club 4; Editor of "Quarrier" 4; "Best-all-around" 4.

To my sweet  
Richard

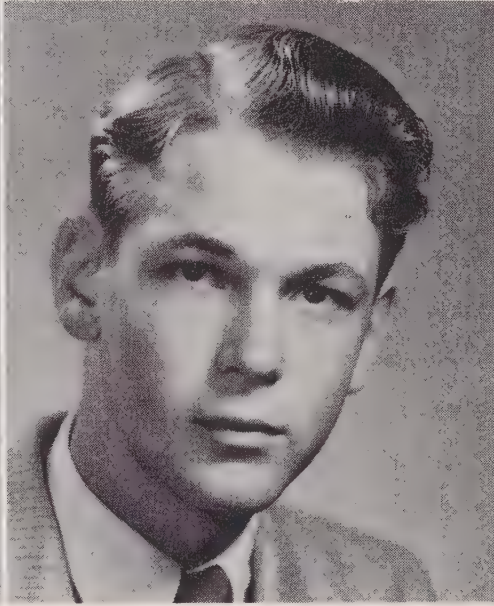


# SENIORS



CHARLES LEWIS RIBELIN

"A studious boy goes far into the world of knowledge."  
Student Council 1; Fireman 2; Sports Club 3; Junior Marshal 3; Baseball Team 3, 4; Basketball Team 3; Beta Club 3, 4; Co-Manager of Basketball Team 4; D. of D. F. V. Club 4.



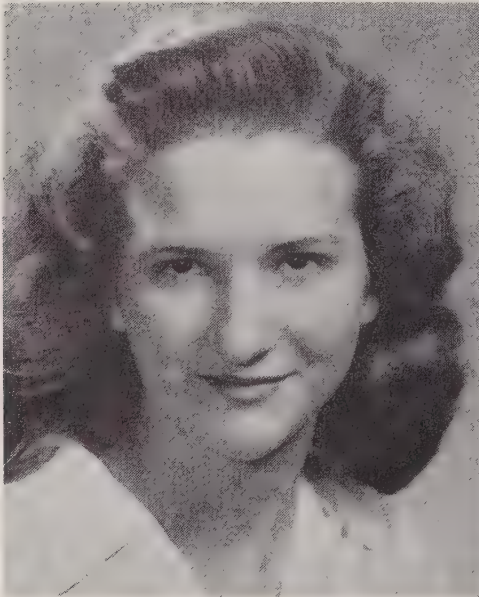
WILLIAM DONALD RICHARDSON

"Those who are commended by all must be great men."  
F. F. A. Club 1, 2, 3, 4; Treasurer of Class 2; President of Class 3; Sports Club 3; Treasurer of F. F. A. Club 3; Beta Club 3, 4; President of Beta Club 4; President of F. F. A. Club 4; Class Day Officer 4; Glee Club 4; "Most Popular" 4.



LILLIE JANE ROSCOE

"High character is the real foundation of all worthwhile success."  
F. H. A. Club 1, 2; Marriage Club 3; Glee Club 1, 2, 3, 4.



NANCY JEAN ROUSSEAU

"A quiet and gentle heart had she."  
F. H. A. Club 3; Variety Club 3; Student Council 3; "Class Baby" 4.



BOBBY RAY SHAVER

"Small in stature, but often wise in judgment."  
Glee Club 1, 2; Student Council 3; Sports Club 3; F. H. A. Club for Boys 3; Baseball Manager 3; Beta Club 3, 4; Advertising Manager of "Quarrier" 4; Commercial Club 4; "Most Studious" 4.



MARTHA CHRISTINE STARNES

"One thing is forever good, and that one thing is success."  
F. H. A. Club President 3; Reporter of Glee Club 4; Junior Play Cast 3; Music Student 3, 4; Variety Club 3.



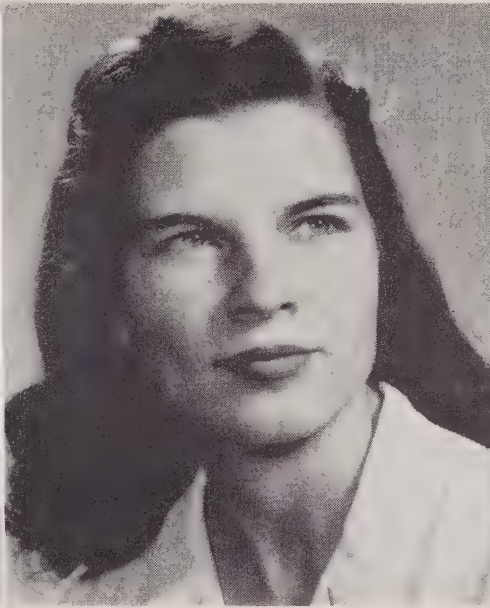
# SENIORS



NELLIE ELIZABETH TEAGUE

"Her pleasant manner and smile will long be remembered."

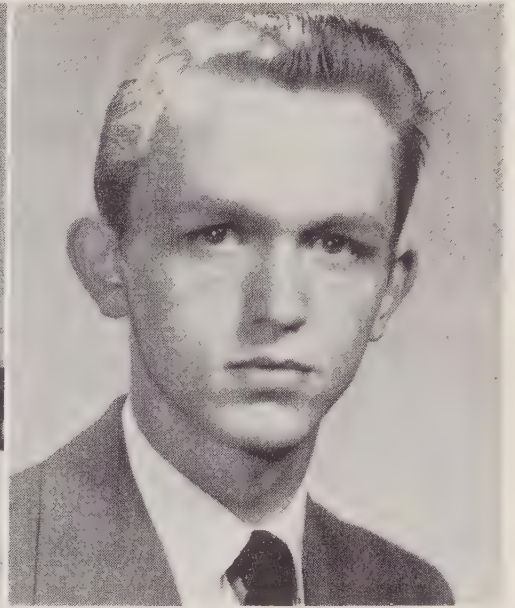
Music Student 2, 3; Glee Club 1, 2, 3, 4.



BETTY ROSE THOMAS

"She's the sweet and quiet kind, whose nature never varies."

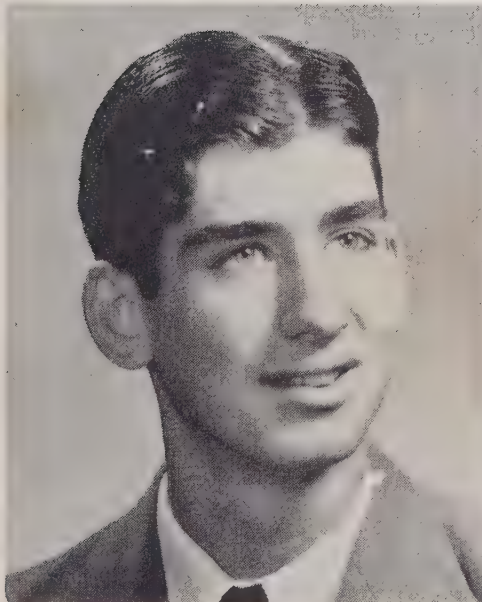
Secretary of Class 1; Glee Club 1, 3, 4; Music Student 1, 2, 3, 4; Author of Class Song 4; "Friendliest" 4.



JOHN WILLIAM TREXLER

"Every man is a volume if you but know how to read him."

Halloween King 2; Good Sports Club 3; F. H. A. Club for Boys 3.



ROY LEON TREXLER

"I exist as I am, that is enough."

Glee Club 1, 2, 3, 4; Basketball Manager 3; Baseball Team 3, 4.



ERVIN KENNETH TROUTMAN

"A jolly-good sport wherever he goes."

F. F. A. Club 3; Glee Club 1, 4; Fun Club 3; Vice-President of Variety Club 3.



JASPER COLUMBUS WILLIAMS, JUNIOR

"Pleasure fills our youthful hearts, Why study if it interferes?"

F. F. A. Club 1, 2, 3, 4; Baseball Team 2, 3, 4; Speech Club 3; Bus Driver 3, 4; "Most Original" 4.



## MASCOTS



DELORES MARCELL WILLIAMS

"Who can foretell for what high cause  
This darling of the gods was born?"



GEORGE BARRINGER

"Where did you get your eyes so blue?  
Out of the sky as I came through."

### CLASS MOTTO

"Knowledge comes, but wisdom lingers."

### CLASS COLORS

Green and White

### CLASS FLOWER

White Rose



## SENIOR CLASS HISTORY

Dear Diary,

The time finally arrived for our entrance into the higher halls of learning. With the aid of Miss Annie Lee Cress and Miss Rachael Crowell, we sixty-two Freshmen soon grew accustomed to the tasks and surroundings of our new undertaking. Gradually various classmates began to participate in school activities, such as the May Day Program. Madeline Fink, June McKenzie, Voight Basinger, and Philip Holshouser represented our class in this event. . . .

Having accomplished the work and duties assigned us Freshmen, we found ourselves thinking about the second step toward learning when our names became "Sophomores." For this account we shall again turn to our diary for the school year of 1946-1947.

Dear Diary,

We quickly overcame all inferior feelings of being awkward and "green" in order to make marked progress in our work. Under the leadership of Mrs. Russell Felts and again Miss Annie Lee Cress, we carried out our requirements effectively and efficiently. The following received the distinction of being elected class officers: Philip Holshouser, President; Bobby Lee Cruse, Vice-President; Madeline Fink, Secretary; and Donald Richardson, Treasurer.

Half our goal had been attained and we could now see the top rung of the ladder that would be reached in two years. From our diary it is noted that our Junior year, 1947-1948, was an all-important one.

Dear Diary,

This was a year we shall always remember; one filled with outstanding happenings and events. First of all, the Junior Class production of "Bound to Marry" was a tremendous success due primarily to the untiring efforts of Miss Rachael Crowell and Mrs. Nancy Bostian. When we honored the Seniors at the annual Junior-Senior banquet, the same degree of perfection was again noted. Miss Pearle Klutz assisted us in carrying out our "April Fool" theme on this occasion. It was our pleasure to be the first class at Granite Quarry to stage the banquet at the Yadkin Hotel. We were also the first to order class rings while members of the Junior Class. The notable success of the basketball team during this school year was due in part to the hard fighting ball players who were members of our class: Joe Klutz, Wallace Gaither, and Philip Holshouser. The following officers served faithfully: Donald Richardson, President; Madeline Fink, Vice-President; and Voight Basinger, Secretary and Treasurer. . . .

With anticipation, we classmates looked to the final year, the remaining days of studying and roaming in these halls. These were red-letter days that we would remember all too well. Let us read an excerpt from the diary for a clearer picture of our activities and a few of our sentiments.

Dear Diary,

Yes, we had anticipated a great deal of happiness to be wrapped into the last days of school; days when we actually realized that our goal had been accomplished and that we had ended one era of our lives. It seemed that all forty-eight of us became a little more serious as we took on extra-curricular activities. The first team in basketball was made up solely of Senior boys; it was a team about whom the whole school could boast. Several class members displayed outstanding dramatic ability in the Senior play which was presented in the spring. Mrs. J. L. Sowers, our class advisor, directed this successful play in the same unflinching manner in which she led us through other undertakings. It was then our turn to be honor guests at a most enjoyable Junior-Senior banquet. The class officers who directed the selection of mascots and invitations were: Philip Holshouser, President; Wade Fisher, Vice-President; and Kitty Allen, Secretary and Treasurer. . . .

Now that our high school days are ended, the realization is before us that this is truly a new beginning. Let us sum up our sentiments by saying,

"Calmly we look behind us, on joys and sorrows past,  
We know that all is mercy now, and shall be well at last,  
Calmly we look before us,—we fear no future ill,  
Enough for safety and for peace, if Thou art with us still."



# SENIOR CLASS PROPHECY

In the year 1849, during the fabulous gold rush, a famous document was recorded. But this document was cast aside and forgotten by the fortune hunters of that day, who at that time knew nothing of the paper's real value.

As I rambled through the files and records of the days of the 49'ers I discovered this priceless piece of parchment, and to my amazement I found the future plans of the Senior Class of 1949 as foretold by an unknown prophet 100 years ago.

It was surprising to learn that each member of our class who had been together through our high school experience is now scattered throughout the nation.

Joe Klutz is now coaching a fine basketball team at U. N. C.

Wally Gaither, who always enjoyed skating, is the owner of "The Rink" in Chicago.

J. C. Williams, who was forever interested in sports, is playing for "Dem Bums."

Bobby Ray Shaver has worked his way up as a paper boy. He now holds the position of Editor of the Salisbury Post.

Herbert Klutz, an engineer for Southern Railway, has a regular run from Salisbury to Spencer. Jean Ramey is just patiently waiting for the age of women conductors.

Bobby Barringer is head mechanic for General Motors. Anyone would know his able assistant, Dwight Fraley.

Jason Brown, who was always handy with a cue stick, now owns one of the world's largest billiard parlors.

Voight Basinger is in the process of organizing his own professional baseball team. June McKenzie is at home keeping the fire burning.

Bobby Lee Cruse is a Captain on the High Seas in Uncle Sam's Navy. One of his fine crew is First Mate, Kenneth Troutman.

It looks as though housewives are plentiful. The class of 1949 put Mildred Baity, Betty Rose Thomas, and Lillie Roscoe in this position.

Also enjoying a swell home life are Lillie Mae Penley and Patty Sue Andrew.

Much success has come to Bill Trexler. He is now the sole owner of Trexler Brothers Clothing Store.

The nation has no need to worry about its food problems with such capable agriculturists as Charles Bame and Billy Oddie.

Donald Richardson and Bessie Barringer are working in the religious field. Donald is a minister and Bessie is a missionary in China.

Wade Fisher and Philip Holshouser are now co-owners of Holshouser-Fisher Super Market, a profitable business, which has put them well up on the ladder of success.

Roy Trexler, an employee for Goodman Lumber Company, has solved our building problems.

The business men of today have no trouble finding a capable secretary. Lillian Huffman, Rebecca Holshouser, Margaret Barger, Jean Lyerly, and Coleen Denis all have jobs sitting on the BOSS' knee taking a letter.

No wonder there is such a demand for new styles. Delma Corl and Joan Mahaffey are creating simply wonderful fashions.

The kiddies today have some swell teachers. Look who they are: Thyra Rose Honeycutt, Christine Starnes, and Kitty Allen.

Richard Melchor is working hard trying to rid the country of crime. He is a secret agent for the F. B. I. One of his fellow workers is one of his classmates, John Kesler.

Mary Rose Peeler is making sure that the nursing profession is kept on its high standard. She is head nurse at Duke Hospital in Durham. She has a fine staff with Mary Sue Bernhardt at the top.

Also in the nursing profession are Nancy Rousseau and Nellie Teague who hold positions at the Johns Hopkins Hospital.

What would the newspapers and magazines of the country do without people to gather the news? Betty Peeler is doing her best as a journalist to make it possible for everyone to read the news as it happens.

Charles Ribelin always enjoyed the science and chemistry classes at G. Q. H. S. He is now a research chemist for the Du Pont Chemical Corporation.

Madeline Fink and Loraine Klutz have taken to the song "Go West" and are now residing in sunny California. They often return to North Carolina to see how the old home town is making out.

Janie Fraley, who received her training working hard on "The Quarrier," now holds a fine position in the literary field.

It is encouraging to see that every member of my class is now making such a success in life.

RICHARD MELCHOR, Prophet





# STATISTICS OF THE FORTY-NINERS

On October 20, 1948, I was elected to this office of statistician, but it was not until in December that I understood fully the responsibility which was mine in compiling accurate information which would be suitable for the outstanding class of '49.

After much work I finally succeeded in collecting the following bewildering facts:

This notable class consists of forty-eight members and  $56\frac{1}{4}\%$  of them are human beings. We are not sure about the other  $43\frac{3}{4}\%$  since they are boys.

We are a large class when it comes to height since our average height is 5 feet,  $6\frac{3}{4}$  inches. Bobby Barringer elevated this a bit by the tip of his head touching the 74 inch mark.

When all of us jumped up on the scales we found our weight to be 6456 pounds. Applying a little arithmetic I soon found that the average weight would be  $134\frac{1}{2}$  pounds. Joan's 96 pounds and Charles Bame's 185 pounds made this incident possible.

Shoes are being worn small by this class since the average shoe size is  $7\frac{1}{2}$ . This number was slightly offset by Bill Trexler's number 11's.

Our hair appears to be of all forms and colors. Brown hair rules the hair kingdom with a  $66\frac{2}{3}\%$  majority. Next in line for the throne are the blondes with  $20\frac{5}{6}\%$ . The other  $12\frac{1}{2}\%$  is made up of auburn, red, and black hair.

Each of us has two eyes which are good for seeing.  $41\frac{2}{3}\%$  have brown eyes, 25% have blue,  $8\frac{1}{3}\%$  gray, and  $8\frac{1}{3}\%$  green while the remaining  $16\frac{2}{3}\%$  are a mixture. As yet nobody has any black eyes or sore eyes (from studying).

The leading radio program is "The Beulah Show" with the "Lux Radio Program" running a close second. Quite a few seemed to be interested in the educational program, "It Pays To Be Ignorant."

We are all devoted to at least one subject.  $18\frac{3}{4}\%$  prefer sociology for their favorite subject,  $16\frac{2}{3}\%$  typing,  $16\frac{2}{3}\%$  geometry,  $12\frac{1}{2}\%$  English,  $12\frac{1}{2}\%$  agriculture,  $8\frac{1}{3}\%$  bookkeeping, and  $4\frac{1}{6}\%$  chemistry. Study hall seems to be the favorite of  $2\frac{1}{2}\%$ .

The teachers seem to take pleasure in refinishing some of our plots. Nevertheless we still highly esteem Mrs. Sowers and Mrs. McCombs.

You need not be surprised to hear us singing our favorite songs, "My Happiness" and "Love Somebody." We can not as yet sing as well as Vaughn Monroe and Bing Crosby but with our musical talent we may be able to outsing them in the near future.

For entertainment give us movies, music, or "a date." Do not furnish us with "a date" that is eatable either. "Fuzzy" says that loafing entertains him a great deal.

These dignified seniors prefer basketball as their favorite sport. It is no wonder that basketball is best liked for practically the entire team is taken from our class. Some said their sport was hunting but they did not say for what.

Everyone is in a clamor because we are going to see June Allyson and Peter Lawford (substitutes) play the leading roles in "A Date With Judy" at the Salisbury Drive-In. If that is not enough to satisfy our intentions we're going to see "Tap Root" at the Capitol.

A favorite pastime of ours is joy-riding. The Chevrolet is the preferred car while the Oldsmobile, Pontiac, and Buick are fighting for second place in the line-up. Mary Sue says she likes any kind, just so it will run.

Most of us like to read the "Life" magazine or the "Reader's Digest." Others read the comics or some other exciting magazine. Those who know enough already, do not read anything.

Our appetites vary so the favorite dishes are many. The leading food, however, is ice cream with fried chicken running a close second. Wade says that he would rather have pinto beans.

Blue and green are our favorite colors. We could not think of a way of combining them since we are "green" when a test is given and "blue" when we get our results.

Our pet-peeve is conceited people. Several others were mentioned which range from long classes to reckless drivers.

Let something go wrong and you will hear our pet saying, "My goodness!"

If everything is carried out according to our ambitions, the world will be greatly blessed. Some lucky students will be able to say that they have been well taught (we will not say what) by some of these knowledge seekers from Granite Quarry High School. Secretaries, ministers, and housewives are also on the list. Some will be satisfied just to graduate from high school.

Hobbies seem to cover a large field of activities from driving a bus to collecting all kinds of things. We are for anything—just so it is interesting.

The above figures and facts, gathered from the forty-niners, are true, to the best of my knowledge, and are presented with the hope that they will encourage others to see things as they should be rather than as they are.

With these last words, I, the statistician of the class of 1949, do solemnly affix my signature.

MARGARET BARGER

# LAST WILL AND TESTAMENT

We, the members of the Granite Quarry High School Class of '49, being of sound mind and body, and having accumulated the necessary requirements for graduation, do hereby declare this our Last Will and Testament.

ARTICLE I. To our parents for supplying the means for our high school education, we leave our deep, undying gratitude and love.

ARTICLE II. To Mr. Staton we leave our utmost appreciation for the kindness and understanding shown us in our high school years. Also to the other members of the faculty, we leave our sincere thanks for their guidance and sympathy.

ARTICLE III. To the Junior Class we leave our place in chapel and our ability to have fun in school.

ARTICLE IV. As individuals, we will these, our personal belongings, to the Rising Seniors:

Roy Trexler wills his love for the opposite sex to Gerald Adams, Clyde Brown, Billy Canup, and Donald Bruce.

J. C. Williams bequeaths his originality and love of fun and jokes to Bill Witty.

Dwight (Fuzzy) Fraley leaves Bus No. 73 because those last few pieces just would not come apart.

Jean Lyerly wills her studiousness to Pansy Hopkins.

Lillian Huffman leaves her conversational ability to be contested among her close rivals, Eunice Silliman, Donna Trexler, Sybil Bernhardt, and Jean Trexler.

Betty Peeler wills her leadership and literary talent to Marian Misenheimer.

Janie Fraley leaves . . . as soon as she can get away with that coveted diploma.

Jason Brown wills his contempt for studying to Verne McCombs.

Mary Rose Peeler bequeaths her love of fun to Lottie Ritchie and Margaret Walton.

Kenneth Troutman leaves high school life to become a successful business man.

Lillie Roscoe bequeaths her sparkling eyes to Sherry Gantt.

June McKenzie wills her sports ability to Sylvia Peacock, Frances Miller, and Gaynelle Fulk.

Nellie Teague leaves with few (if any) regrets.

Bessie Barringer wills her gaiety to Shirley Peeler.

Philip Holshouser bequeaths his outstanding leadership to any Junior who is willing to work hard and long.

Loraine Klutz wills her unquenchable love for skating to Pat Bringle.

Billy Oddie bequeaths his dark, wavy hair to Howard Basinger.

Madeline Fink wills her personality and ready smile to Frances Beck.

Rebecca Holshouser and Voight Basinger leave their titles of "Best Looking" to the two Juniors whom Mother Nature has smiled upon.

Bobby Lee Cruse wills his motorbike to whoever has enough mechanical ability to take care of it.

Nancy Rousseau wills her quiet, gentle nature to Nancy Cain, Rebecca Rash, Betty Sue Roseman, and Mary Lee Earnhardt.

Betty Rose Thomas bequeaths her friendliness to Roana Agner.

Wade Fisher wills his care-free ways to James Troutman.

Jean Raney bequeaths her position as Editor-in-Chief of the annual to some unfortunate sucker.

Ethel Rose Kepley wills her love of singing to Sara Jo Lingle.

Margaret Barger bequeaths her originality to Jean Broadway.

To any Junior who possesses such desirable qualities Bobby Barringer bequeaths his title of "Best Personality."

Mary Sue Bernhardt wills her dependability to Mary Ellen Jarrett and James Julian.

Charles Bame leaves his football physique to Bill Julian.

Patty Sue Andrew wills her title of "Most Likely to Succeed" to Rebecca Peeler.

John (Bill) Trexler leaves his title of "Best Dressed" to whoever gets a job at Trexler Bros.

Lillie Mae Penley wills her red hair to Hilda Eller, Jean Peeler, and Charlene Lefler.

John Kesler leaves Bus No. 47 to Joe Kesler.

To Nathlyn Fesperman and Betty Lou Whirlow, Joan Mahaffey bequeaths her qualities of cuteness.

Wallace Gaither wills his habit of being late for class to anyone willing to take a chance.

Kitty Allen bequeaths her mature ways to Joyce Thomas and Grace Bost.

Joe Klutz leaves his love of sports to Herman Ritchie and Gregory Harrison.

Thyra Rose Honeycutt bequeaths her "Best Dressed" and ladylike qualities to her neighbor, Annita Elium.

Donald Richardson leaves the presidency of the Beta Club and F. F. A. Chapter to anyone with an insufficient amount of work and worry.

Delma Corl wills her blonde hair to Jerrell (Polly) Fisher and Margaret Yost.

Richard Melchor wills his cheer-leading ability and friendliness to Howard Crossett.

Coleen Dennis wills her quietness to Peggy Nell Brown and Mary Lentz.

Charles Ribelin bequeaths his "A's" to Paul Webb and Eston Doyle.

Mildred Baity would like either to will her shortness to Patsy Miller or to share some of Patsy's height.

Bobby Ray Shaver leaves Ray Edward Cauble his lack of height.

Herbert Klutz leaves because . . . well, what would school be without Jean.

And I, being of sound mind and body, do hereby affix my signature to this, the Last Will and Testament of the Class of 1949.

Witnesses:  
HENRY LIETELLER, PETE KUNOOZUMFOOZUM

DONALD RICHARDSON,  
Testator



## CLASS SONG

When we go out to reach our final goal in life  
We'll think of all the fun we had at Granite High.  
These memories, we treasure, will stay within our hearts,  
They'll guide us and lead us  
Whenever we depart from here.  
We'll think of loved ones who've been helpful to us all  
The many problems that were solved within these halls.  
This graduating class of forty-nine will say,  
"Farewell to all they leave behind today."

BETTY ROSE THOMAS

## CLASS POEM

We have struggled hard, but here we are  
On this all-important day,  
To say goodbye to friends and teachers  
From whom we are going away.

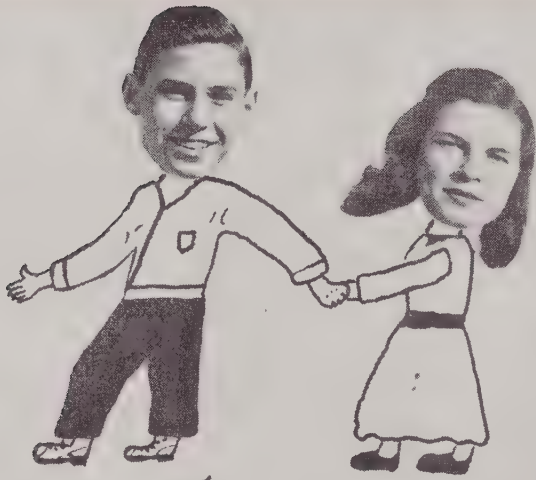
And in our deeds, we hope we will prove  
That their efforts were not in vain  
As they taught us to be honest and true  
And our highest goals attain.

We have gathered dear memories here  
In these four years behind us,  
That down through the years will make the ties  
Which will together bind us.

BETTY PEELER



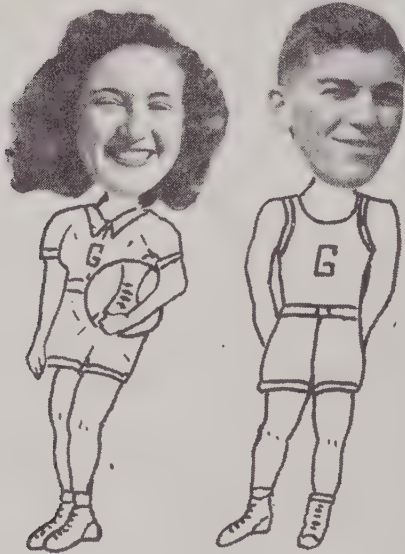
# SENIOR SUPERLATIVES



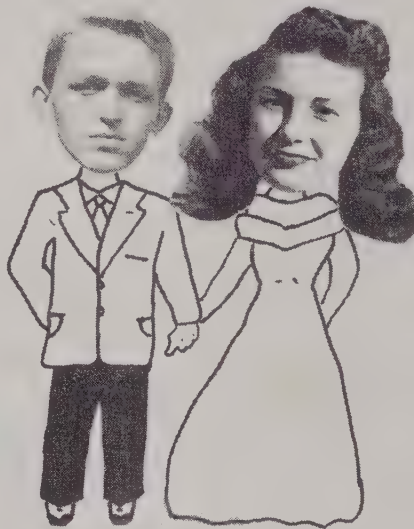
FRIENDLIEST  
RICHARD MELCHOR, BETTY R. THOMAS



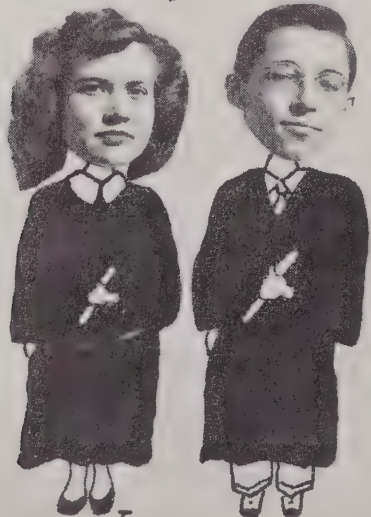
CLASS BABIES  
NANCY ROUSSEAU, DWIGHT FRALEY



MOST ATHLETIC  
JUNE MCKENZIE, WALLACE GAITHER



BEST DRESSED  
BILL TREXLER, THYRA ROSE HONEYCUTT



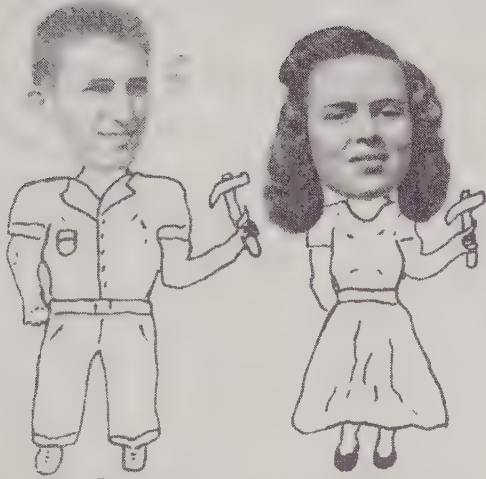
MOST INTELLIGENT  
JANIE FRALEY, CHARLES RIBELIN



CUTEST  
HERBERT KLUTTZ, JOAN MAHAFFEY



# SENIOR SUPERLATIVES



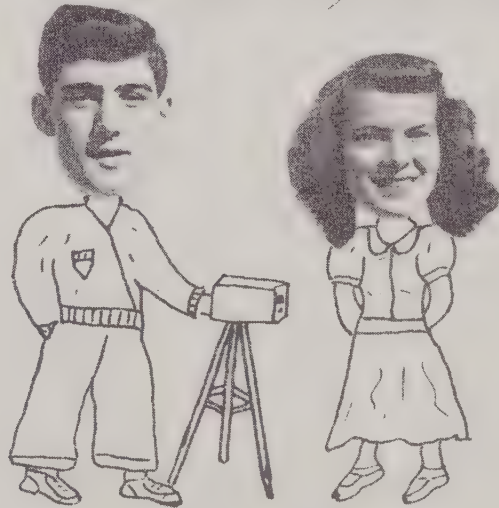
**MOST INFLUENTIAL**  
JOE KLUTTZ  
LORRAINE KLUTTZ



**BEST ALL AROUND**  
JEAN RANEY  
PHILIP RAY HOLSHOUSER



**MOST STUDIOUS**  
JEAN LYERLY  
BOBBY RAY SHAVER



**BEST LOOKING**  
VOIGHT BASINGER  
REBECCA HOLSHOUSER



**BEST SPORTS**  
LILLIE MAE PENLEY  
BOBBY LEE CAUSE



# SENIOR SUPERLATIVES



*MOST POPULAR*

*DONALD RICHARDSON  
BETTY PEELER*

*MOST DEPENDABLE*

*WADE FISHER  
MARY SUE BERNHARDT*



*BEST PERSONALITY*

*BOBBY BARRINGER  
MADELINE FINK*



*MOST LIKELY TO SUCCEED*

*JOHN KESLER  
PATTY SUE ANDREW*



*MOST ORIGINAL*

*MARGARET BARGER  
J. C. WILLIAMS*



## 1949 GRADUATES

MASCOTS: George Barringer, Delores Williams

First row: Margaret Barger, Nancy Rousseau, Delma Corl, Mary Rose Peeler, Joan Mahaffey, Mildred Baity, Jean Lyerly, Betty Peeler.

Second row: Betty Rose Thomas, Madeline Fink, Patty Sue Andrew, Rebecca Holshouser, Bobby Ray Shaver, Coleen Dennis, Mary Sue Bernhardt, Lillie Roscoe.

Third row: Kitty Allen, Loraine Klutz, Nellie Teague, Ethel Rose Kepley, Lillian Huffman, J. C. Williams, Christine Starnes, June McKenzie.

Fourth row: Joe Klutz, Dwight Fraley, Jean Raney, Thyra Rose Honeycutt, Bessie Barringer, Lillie Mae Penley, Janie Fraley.

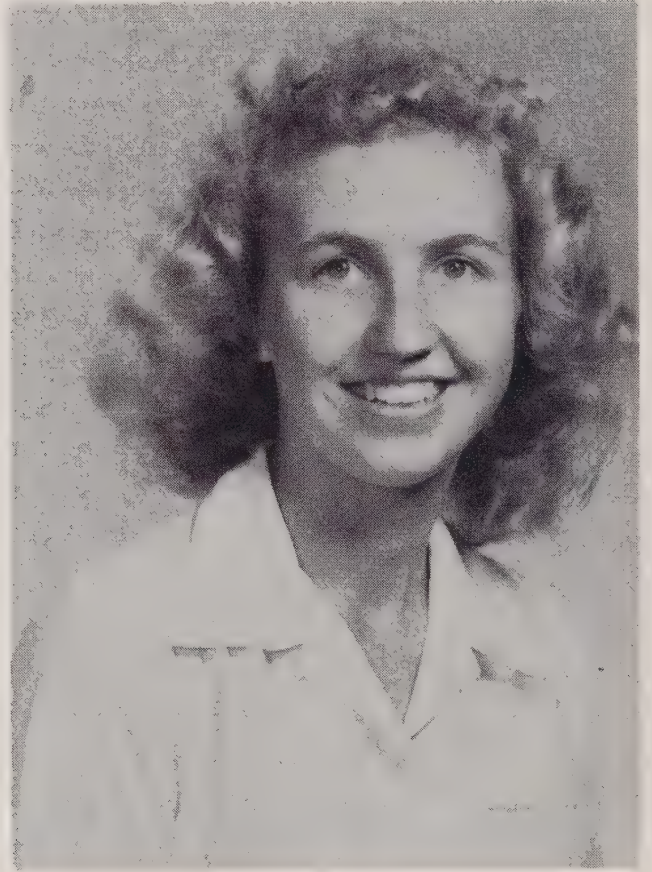
Fifth row: Wallace Gaither, Richard Melchor, Bill Trexler, Kenneth Troutman, Herbert Klutz, Jason Brown, Jr.

Sixth row: Philip Holshouser, Wade Fisher, Bobby Lee Cruse, John Kesler, Billy Oddie, Charles Bame.

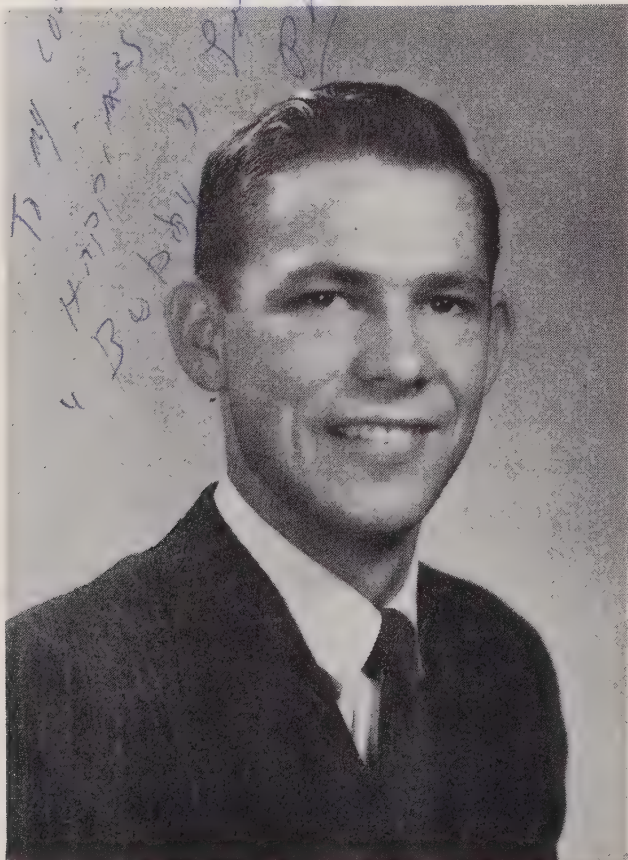
Seventh row: Charles Ribelin, Roy Trexler, Voight Basinger, Bobby Barringer, Donald Richardson.



## SENIOR FAVORITES



JEAN RANEY



PHILIP HOLSHOUSER



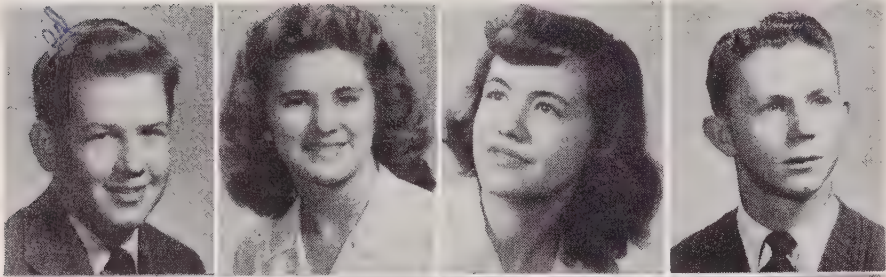


## JUNIOR CLASS OFFICERS

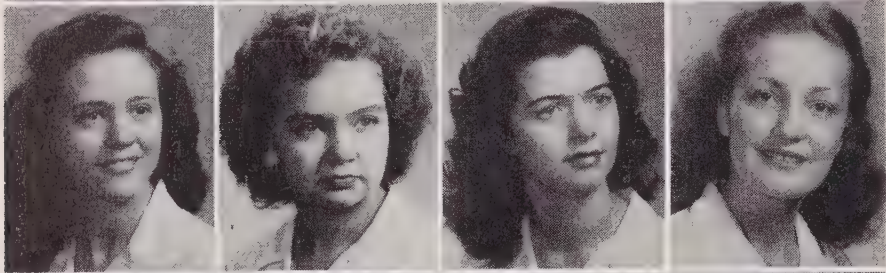
Jerrell Ann Fisher.....Secretary  
Annita Elium.....Vice-President  
Helen Brown.....Treasurer  
Marian Misenheimer.....President



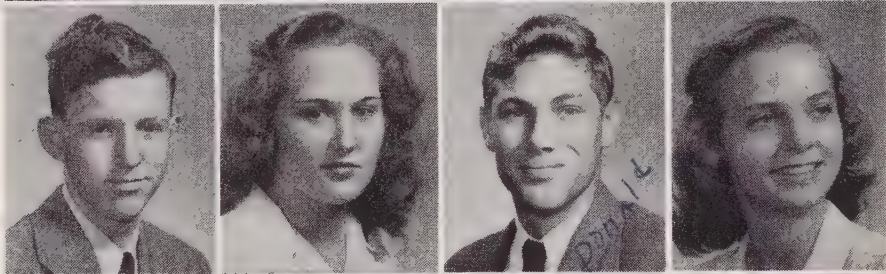
# JUNIORS



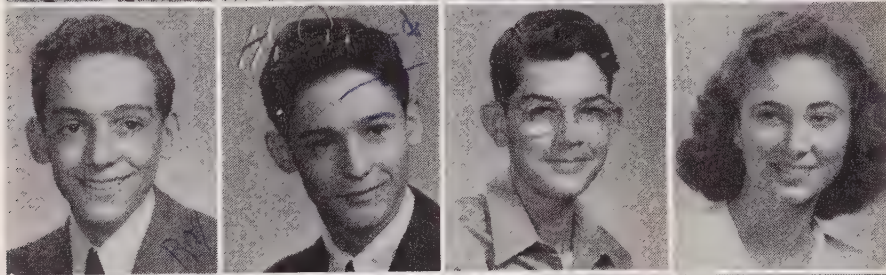
Gerald Adams  
Roana Agner  
Sybil Barnhardt  
Howard Basinger



Frances Beck  
Grace Bost  
Patricia Bringle  
Jean Broadway



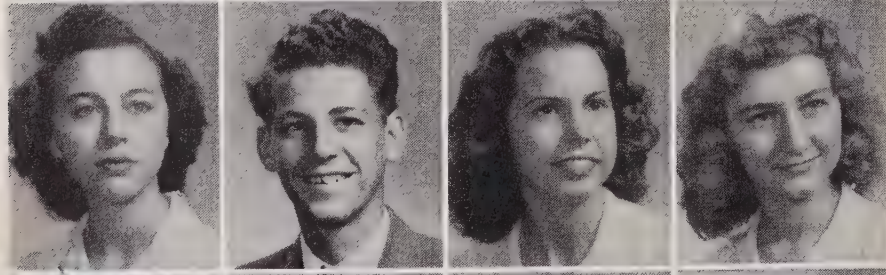
Clyde Brown  
Helen Brown  
Donald Bruce  
Nancy Cain



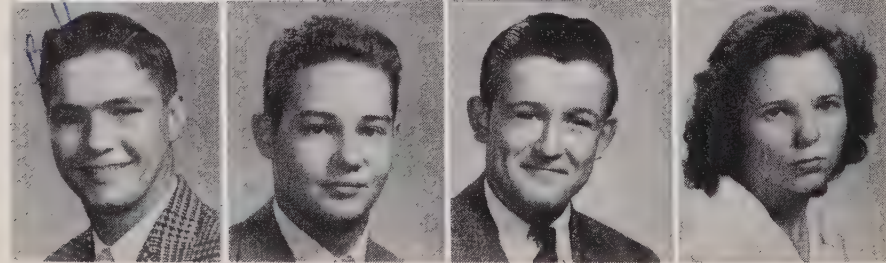
Ray Cauble  
Howard Crossett  
Eston Doyle  
Annita Elium



Hilda Eller  
Jerrell Ann Fisher  
Nathlyn Fesperman  
Gaynelle Fulk



Sherry Gantt  
Gregory Harrison  
Betty Holshouser  
Mary Ellen Jarrett

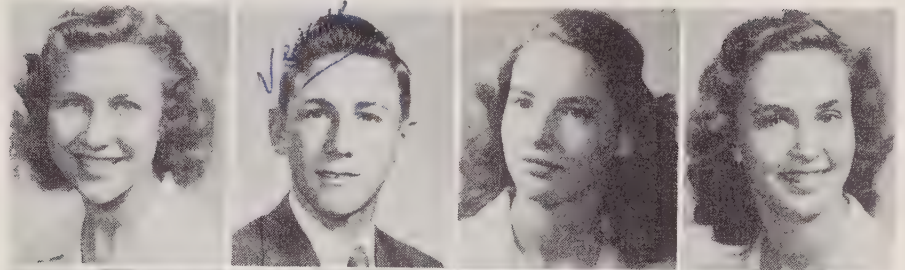


Bill Julian  
James Julian  
Joe Kesler  
Mary Louise Lentz

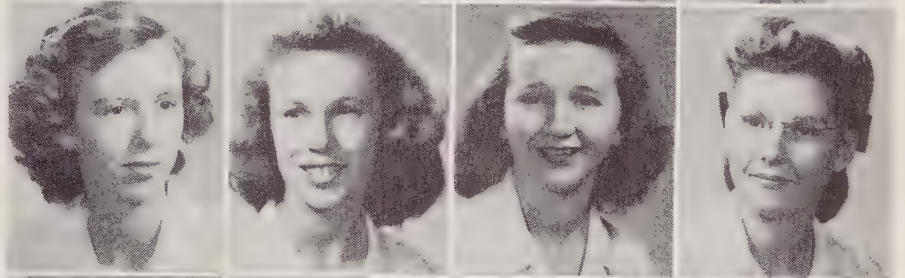


# JUNIORS

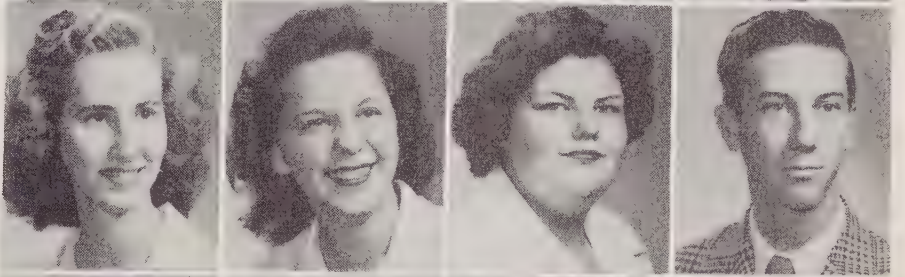
Sara Jo Lingle  
 Verne McCombs  
 Charline Lefler Miller  
 Frances Miller



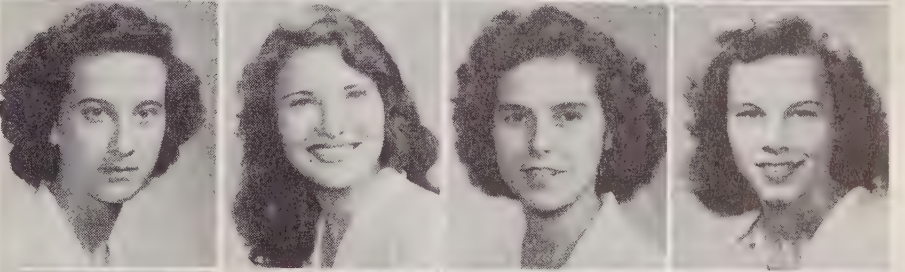
Patsy Miller  
 Marian Misenheimer  
 Sylvia Peacock  
 Jean Peeler



Rebecca Peeler  
 Shirley Peeler  
 Rebecca Rash  
 Herman Ritchie



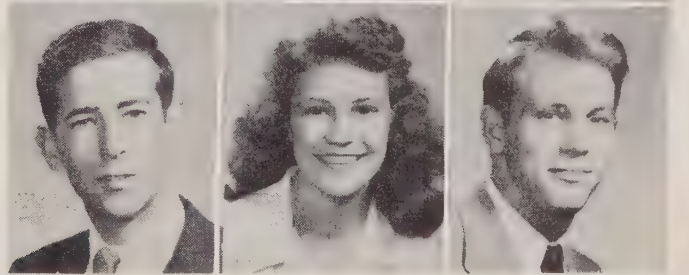
Lottie Ritchie  
 Betty Sue Roseman  
 Eunice Silliman  
 Joyce Thomas



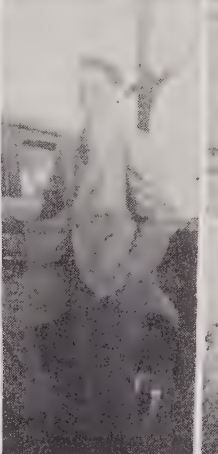
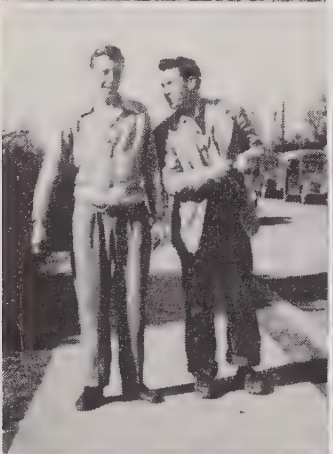
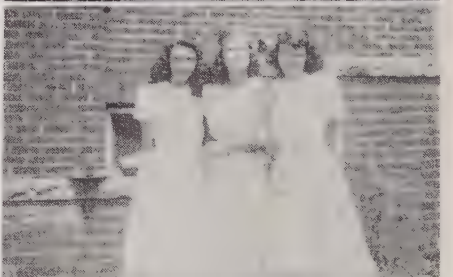
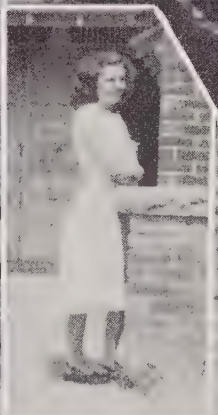
Donna Trexler  
 Jean Trexler  
 James Troutman  
 Margaret Walton

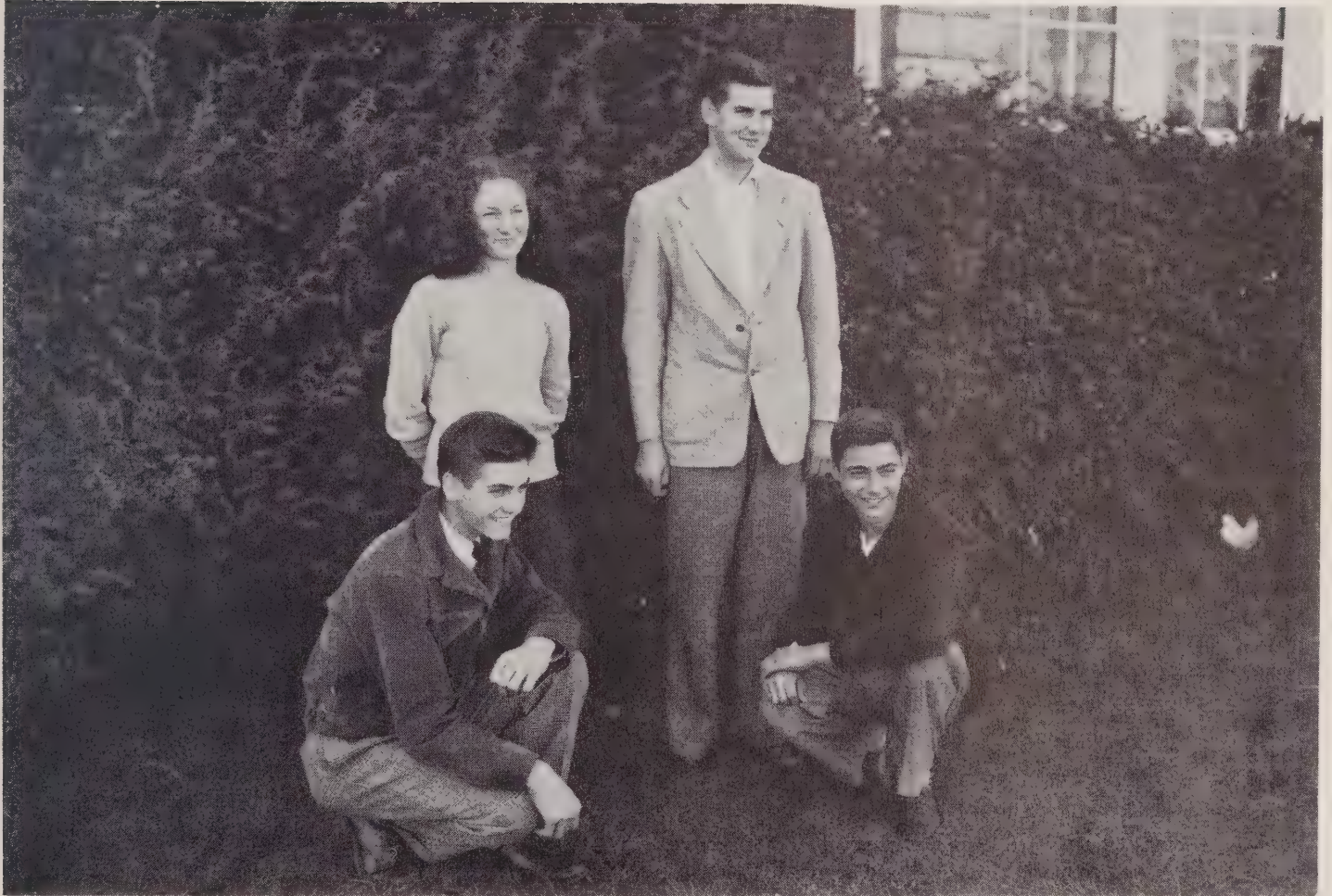


Paul Webb  
 Betty Whirlow  
 Bill Whitty



Students Whose Class Picture Do Not Appear In Annual  
 Peggy Brown, Billy Canup, Mary Lee Earnhardt, Pansy Hopkins,  
 Margaret Yost.





## SOPHOMORE CLASS OFFICERS

Robert Bruce.....	Treasurer
Carolyn Richardson.....	Secretary
Max Sifford.....	President
Kenneth Fisher.....	Vice-President



# SOPHOMORES



Front row, left to right: Mary Brown, Betty Sue Klutz, Joan Earnhardt, Nona Bruce, Peggy Cruse, Carolyn Cauble, Janet Fisher, Mary Lee White.

Second row: Alvanell Julian, Dorothy Kirkman, Ruby Hinson, Libby Helms, Doris Earnhardt, Marie Bringle, Lucille Goodman, Edith Klutz, Ellen Barger.

Third row: Kenneth Fisher, Jimmie Hartley, Junius Fraley, Earl Livengood, Ben Fink.

Fourth row: Glenn Cauble, Ted Holshouser, Nelson Barringer, C. L. Eagle, Roy Brown, Bobby Clawson.

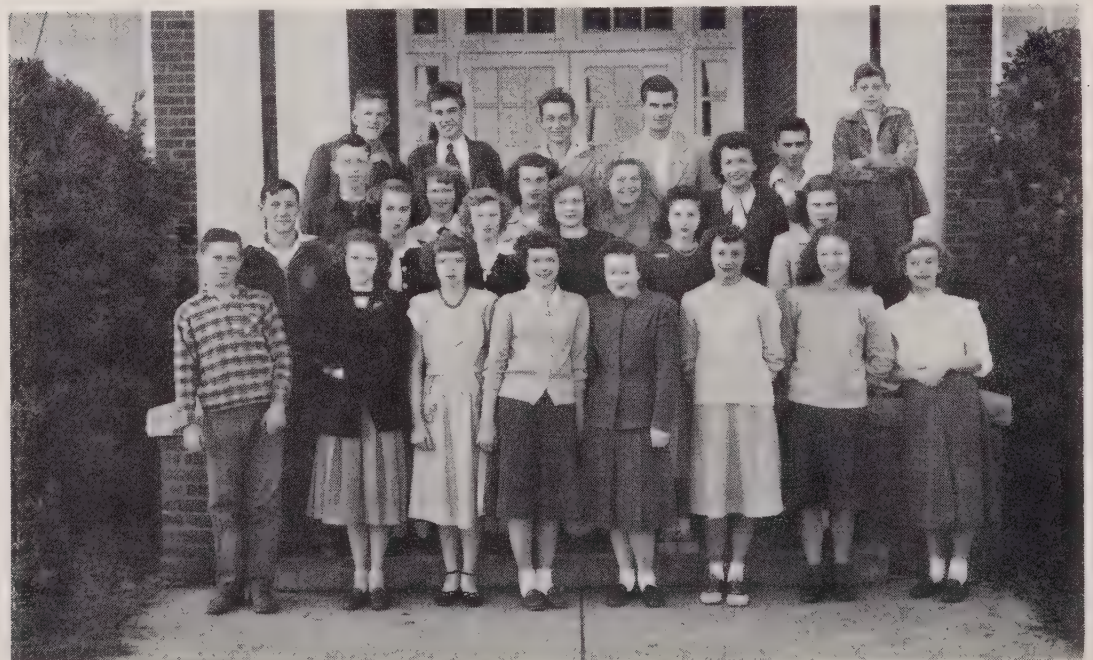
Fifth row: William Fisher, Clifford Bernhardt, Wilbert Lyerly, W. L. Rhyne, Advisor.

First row, left to right: Robert Lee Snider, Evelyn Ribelin, Phyllis Sifford, Betty Oddie, Ethel Snider, Jean Peeler, Carolyn Richardson, Barbara Shirley.

Second row: Albert Ray Kepley, Edith Peeler, Winifred Peeler, Ruby Snider, Claudine Miller, Jeanette Peeler.

Third row: Joe Stirewalt, Betty Jo Teague, Norma Jean Peeler, Kitty Robertson, Virginia Roscoe, Paul McCall, Jimmy Peeler

Fourth row: Ralph Sifford, Robert Bruce, Billy Starnes, Max Sifford, Mrs. McCombs, Advisor.





## FRESHMAN CLASS OFFICERS

John Bame.....Vice-President  
Buddy Barger..... President  
Lydia Jean Kepley..... Secretary-Treasurer



# FRESHMEN



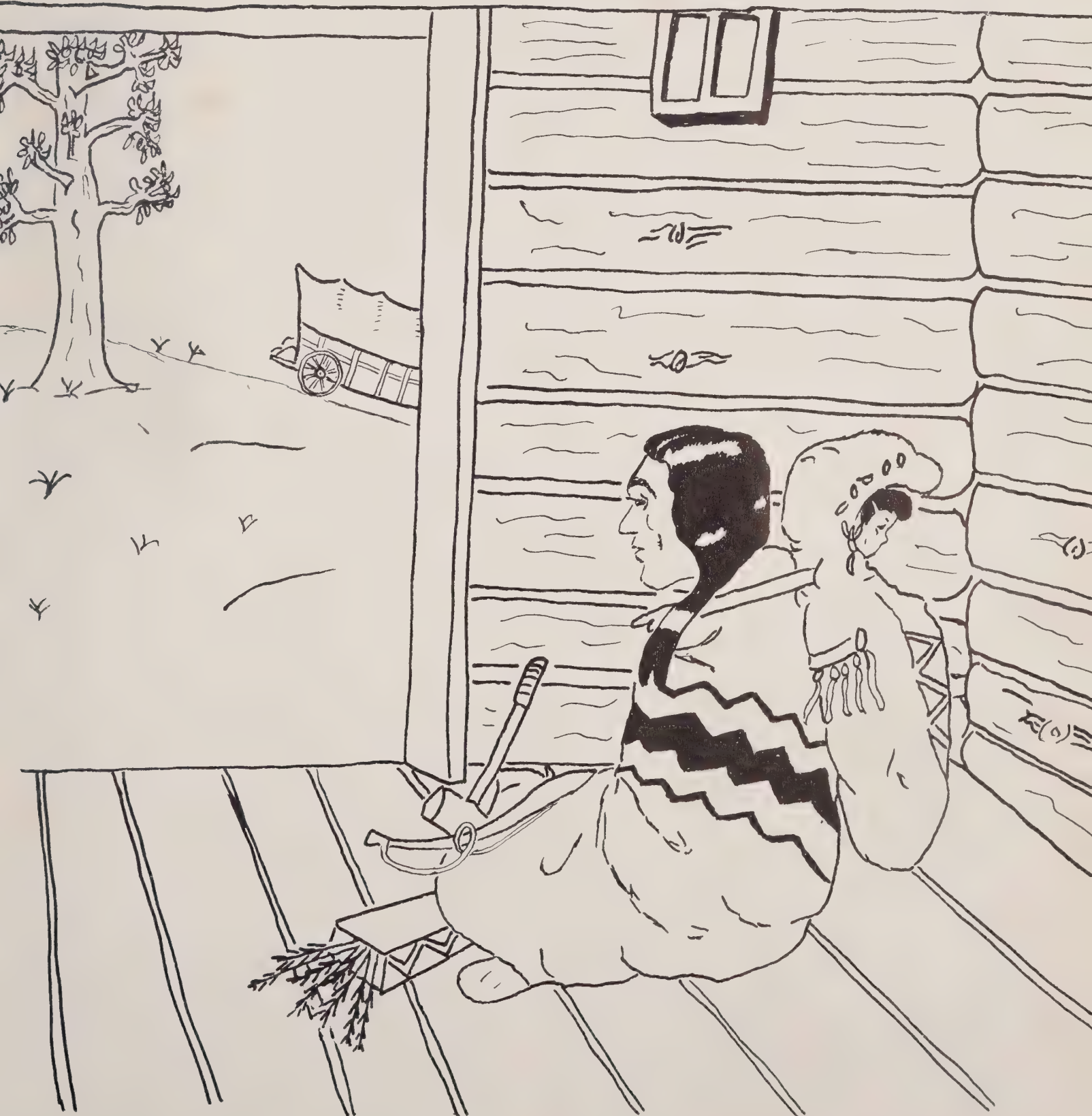
Front row, left to right: Janis Mahaffey, Sue Eller, Ruth Holshouser, Jane Hall, Delcie Earnhardt, Mona Hess, Nettie Jo Hilliard, Mildred Combs, Walter Goodman Mr. Lane Advi,sor. Second row: Pansy Graham Reather Dennis, Peggy Broadway. Third row: Madge Holshouser, Bonnie Ervin, Doris Cauble, Evelyn Agner, Patsy Jones, Peggy Gibson, Tommy Honbarrier. Fourth row: Joanne Boger, Vivian Eagle, Gazelle Hopkins, Ruby Basinger, Mildred Curlee. Fifth row: Bertie Earnhardt, Claude Eagle, James Cline, James Earnhardt, Sylvia Fink. Sixth row: Robert Blackwelder, Charles Beck, Deedie Fisher, Augustus Holshouser, David Couch, John Bame, John Alexander, Lewis Jacobs, Derek Elium, Dennis Barger, Philip Kesler.

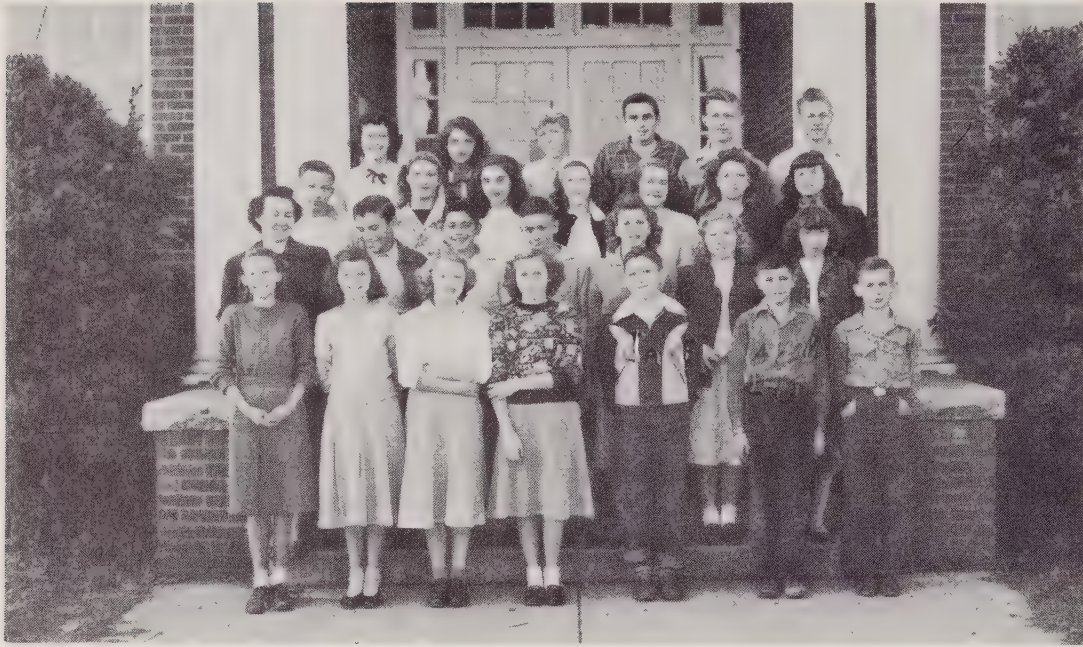
Front row, left to right: Fred Joyner, Billy Ray Stiller, Sylvia Lee Shaw, Sara Jo Miller, Norma Kluttz, Naomi Younce, Nell Rousseau, Virginia Snider, Ruby Lesley, Annie Marie Roseman, Mr. Huneycutt, Advisor. Second row: Jack Smith, Evelyn Myers, Genevieve Lohr, Margaret Jacobs, Hazel Troutman, Jean Kepley, Donald Smith. Third row: J. F. Brooks, Angie Kimmer, Jean Sifford. Fourth row: Tommy Yount, Eloise Peeler, Loretta Kluttz, Lucille Yates, Frank Staton. Fifth row: Hoy Peeler, Jr., Kay Margaret McCombs, Peggy Nell Miller, Patsy Rogers, Betty Suttle. Sixth row: Tony Miller, Jerry Misenheimer, Larry Lyerly, Donald Deal, Buddy Kluttz. Seventh row: John Walser, Bill Ritchie.





# UND ER CLASSEMEN





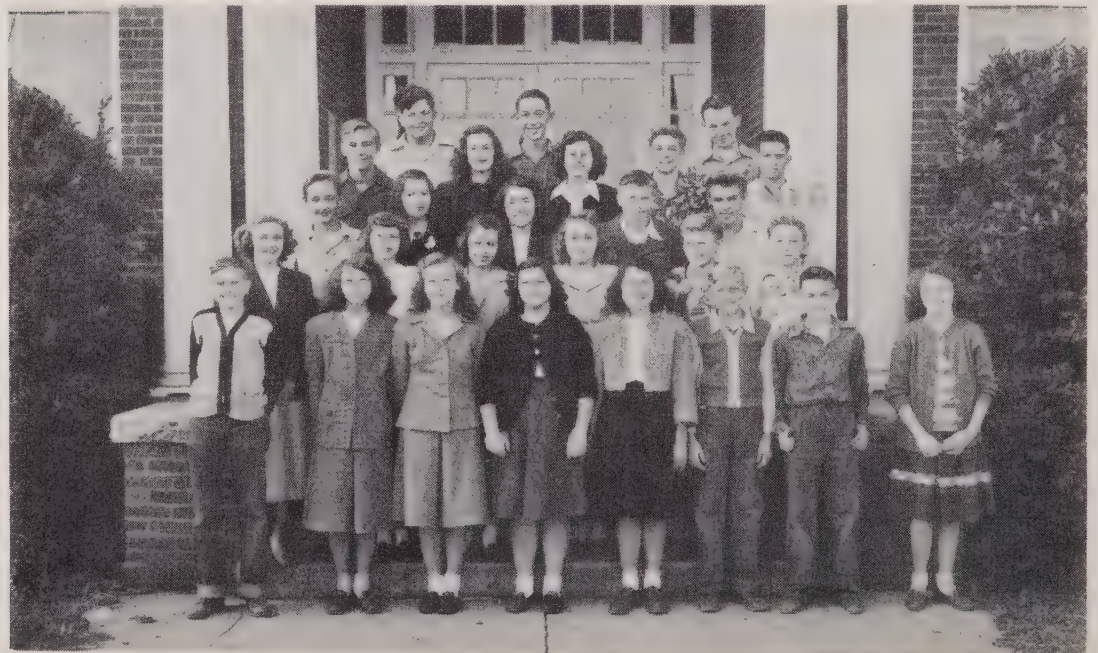
MRS. SAFRIT'S  
EIGHTH GRADE

Front row, left to right: Martha Ann Lefler, Libby Foy, Winifred White, Mary Lee Bailey, Jake Shaver, Arnold Crook, Lester Snider. Second row: Mrs. Robert Safrit, Harold Baity, Arnold Lesley, Gerald Stout, Jeanette Brown, Jessie Shipwash, Rachel Overcash. Third row: David Peeler, Betty Jean Miller, Janet Wagoner, Elizabeth Moore, Mazie Stokes, Vera Mae Heilig, Barbara Crowe. Fourth row: Doris Roseman, Betty Jean Barrier, Donald Eudy, Carl Foy, Charles Merritt, Charlie Wells.

Absent when picture was taken: Ben Surratt.

Front row, left to right: Bennie Williams, Viola Robinson, Nancy Eagle, Faye Trexler, Betsey Capel, Carl Buff, Grady Hinceman, Jean Miller. Second row: Mrs. Ritchie, Margaret Cauble, Catherine Baity, Ruby Goodman, Bobby Newsome, Julius Holshouser. Third row: A. C. Wagoner, Jr., Eleanor Ribelin, Carleen Lyerly, John Cauble, Junior Edwards. Fourth row: Bobby Beck, Nancy Honeycutt, Margaret Whirlow, John Henry Barringer, Ned Agner. Fifth row: Nolan Montieth, Joe Lyerly, Jimmy Thompson.

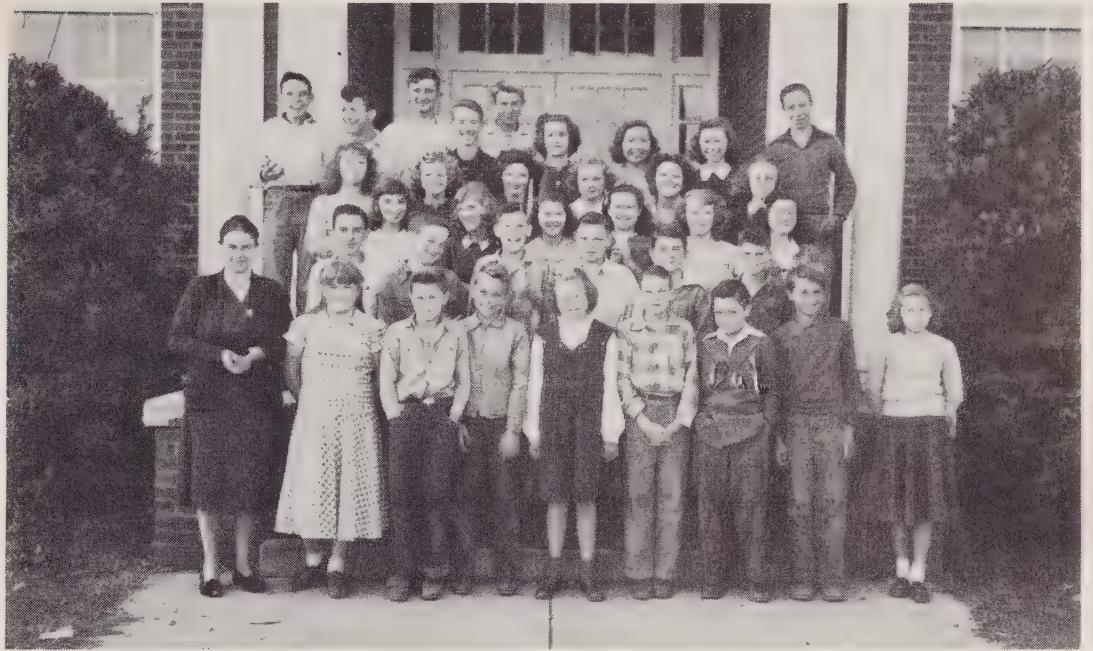
Absent when picture was taken: Sally Livengood.



MRS. RITCHIE'S  
EIGHTH GRADE



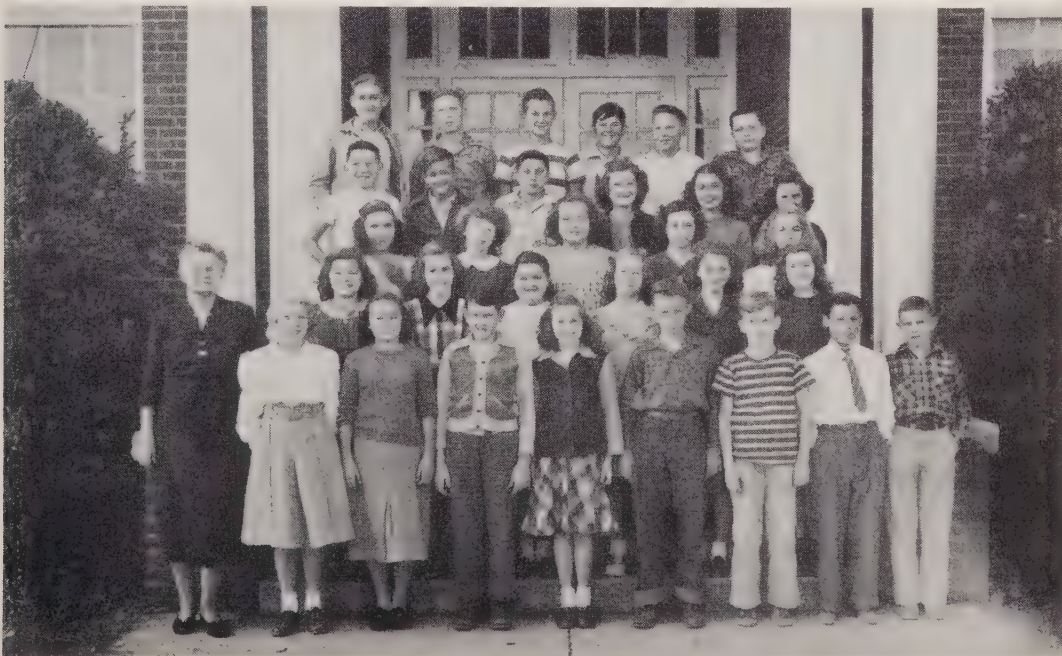
MRS. TAYLOR'S  
SEVENTH GRADE



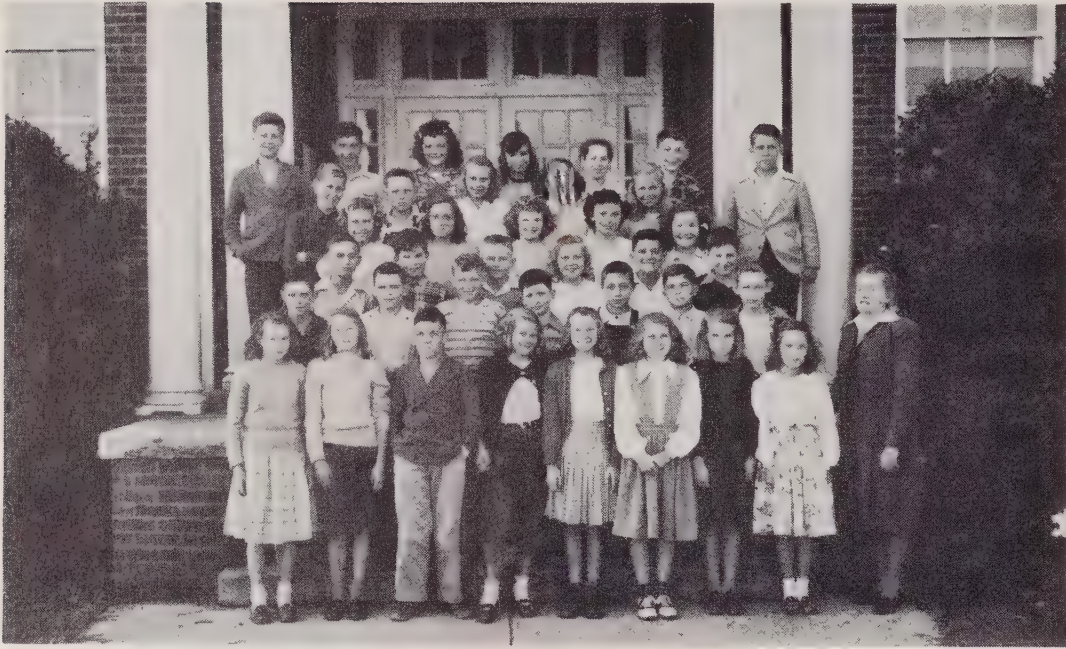
Front row, left to right: Mrs. Taylor, Annie Smith, Sonny Fisher, Jack Rary, Nancy Lee Eller, Billy Clawson, Pat Peeler, William Hataway, Edna Kimmer. Second row: Bobby Lee Earnhardt, J. A. Fowler, Bobby Lyerly, Billy Peeler, Larry Byrd, Gary Teague. Third row: Janet Lefler, Ronnie Spry, Betty Jo Miller, Sarah Cauble, Gladys Little, Arlene Combs. Fourth row: Shirley Kepley, Velma Trexler, Peggy Montieth, Kay Thomas, Betty Lou Lingle, Sylvia Rickman. Fifth row: John Thomas Lentz, Edward Lee Alexander, James Trexler, W. A. Lefler, James Lemly, Pauline Walton, Shirley Trexler, Thelma Branch, Earl Earnhardt.

Absent when picture was taken: Jean Newsome, Nancy Allen, Harold Lee Peacock, Melvin Pruett, Bobby E. Earnhardt.

Front row, left to right: Mrs. Kirk, Ruth Cauble, Jane Wiley, Jerry Doyle, Letty Foy, Larry Parrish, Clive Mahaffey, Richard Baity, R. V. Robinson. Second row: Peggy Harrison, Barbara Peeler, Anne Melton, Helen Smith, Margaret Trexler, Lillian Gaither. Third row: Margaret Shulenberger, Nancy Jo Baxley, Jo Anne Eagle, Flossie Poole, Lynda Andrew. Fourth row: Ralph Keller, Philip Eller, Bobby Teague, Virginia Lineberry, Evelyn Lesley, Violet Smith. Fifth row: William Earnhardt, Ray Barger, Billy Cain, Frank Norris, Hayden Poole, Jimmy Ketner.



MRS. KIRK'S  
SIXTH AND  
SEVENTH GRADES



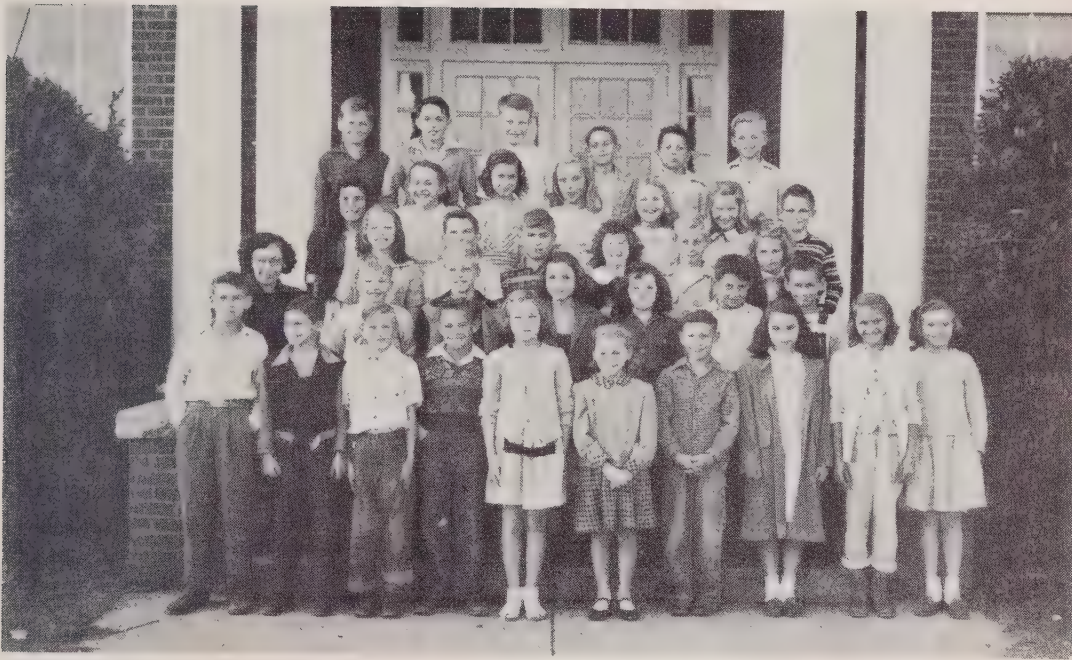
MRS. HUDSON'S  
SIXTH GRADE

Front row, left to right: Ethel Livengood, Shirley Kimmer, John Stout, Barbara Miller, Gladys Overcash, Peggy Fisher, Alma Yost, Phyllis Brown, Mrs. Elmina Hudson. Second row: Richard Holshouser, Philip Eller, Jimmy Kluttz, Gary Bringle, Melvin Goodman, F. C. Combs, Edwin Peeler. Third row: Jack Brown, Luther Starnes, James Helms, Sylvia Holshouser, Mickey Capel, Webster Griffeth. Fourth row: Shelby Myers, Mildred Hinson, Phyllis Covington, Louise Roseman, Dorothy Little. Fifth row: Johnny Miller James Poole, Etta Hartman, Gladys Couch, Betty Edwards, Frank Merritt. Sixth row: George Smith, Bobby Honbarrier, Nancy Lyerly, Patsy Cooke, Barbara Norris, Bob Bringle.

Front row left to right: Shelbia Jean Lemly, Peggy Sue Bogle, Kermene Colson, Betty Ann Foster, Barbara Sue Coley, Luther Floyd, Paul Fisher, Hilton Max Lingle. Second row: Mrs. L. W. Brown, Tommy Thompson, Jerry Kesler, Jimmy Wise, James Dutch, David Houston, Betty Jean Shaw. Third row: Elaine Fisher, Ray Brown, Wayne Bame, Jerry Cline, Harvey Hartman Mackie Overcash. Fourth row: Sonny Bringle, Roy Pethel, Shirley Hartman, Carolyn Barringer, Carrie Sue Peeler. Fifth row: Catherine Wells, Essie Holshouser, Billy Crowe.

MRS. BROWN'S  
FIFTH AND  
SIXTH GRADES





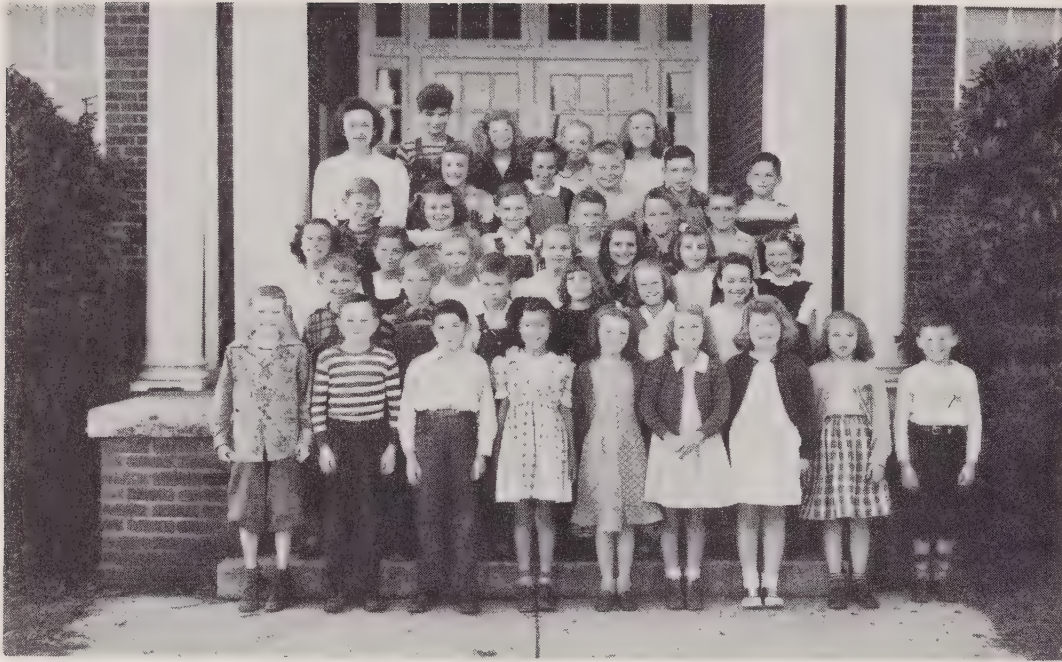
MRS. WILHELM'S  
FIFTH GRADE

Front row, left to right: Ralph Smith, J. C. Earnhardt, Paul Livengood, Kelly Dutch, Sue Clawson, Barbara Edwards, Glenn Eagle, Wilma Mahaffey, Martha Teague, Wilma Cauble. Second row: Mrs. Wilhelm, Frank Gaddy, Jack Whirlow, Martha Jane Austin, Camille Brown, David Fisher, John Kesler. Third row: Barbara Brewer, Donald Curlee, Alvin Smith, Christine Horah, Victor Earnhardt, Shirley Poole. Fourth row: Lillie Mae Shulenberg, Eunice Foster, Virginia Athey, Peggy Rary, LaVerne Dennis, Betty Jean Hodgson, Jerry Goodman. Fifth row: Wayne Trexler, Boyd Linder, Truett Smith, Craig Eagle, James Kinney, Bill Agner.

Front row, left to right: Nancy Kesler, Nancy Beaver, Jimmy Eller, Marie File, Eugene Cauble, Wayne Miller, Ruby Oddie, Jewel Rary. Second row: Mrs. Peeler, Annie Mae Hartman, Bernard Holshouser, Shirley Lesley, Jerry Livengood, Sandra Eudy, Richard Cashwell. Third row: Sue Fisher, Tommy Byrd, Hugh Lambirth, Richard Roscoe, Sonny Ribelin, Jimmy Webb. Fourth row: Ray Wyrick, Winsten Mahaffey, Frances Barger, Jerry Honbarrier, Ruth Isenhour, Virgil Bernhardt. Fifth row: Billy Ray Honbarrier, Faye Smith.

MRS. PEELER'S  
FOURTH AND  
FIFTH GRADES





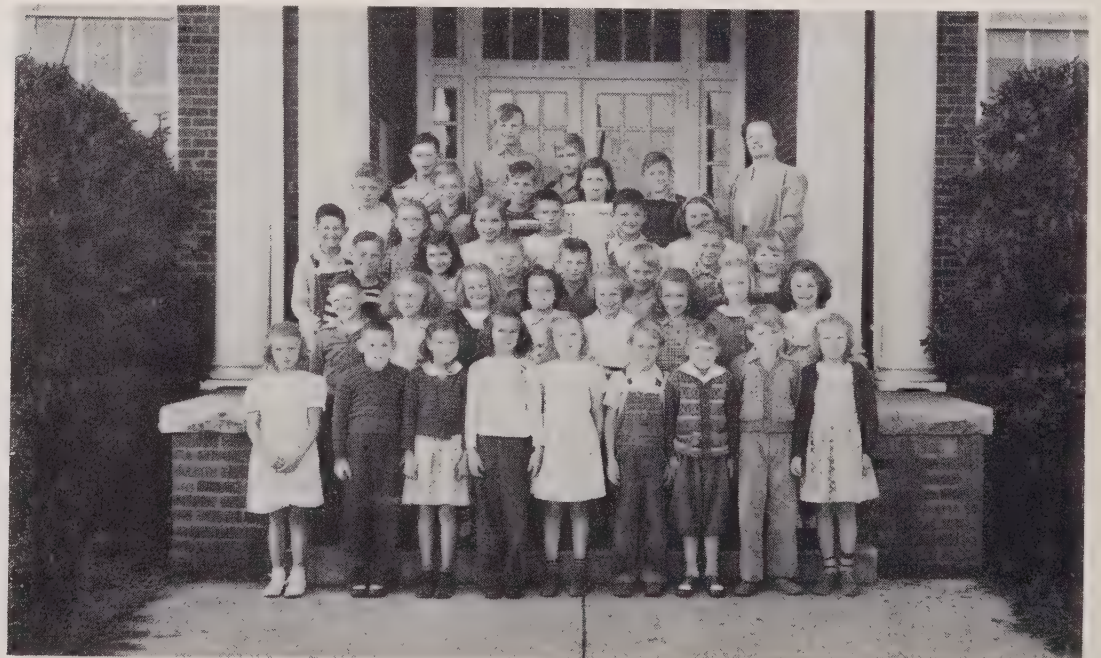
MRS. CAUBLE'S  
FOURTH GRADE

Front row, left to right: Jerry Peeler, Larry Thomas, Howard Honbarrier, Bonnie June Lingle, Magalene Davis, Joyce Honbarrier, Rose Smith, Joyce Austin, Edgar Bailey. Second row: Lynn Russell Trexler, Jack Cecil, Shirley Eller, Mary Elizabeth Overcash, Alma Brown. Third row: Betty Lou Shue, Amelia Bame, Richard Livengood, Marilyn Helms, Frances Foye, Evelyn Floyd, Ruby Lee Stiller. Fourth row: Jackie Brown, Faye Trexler, J. E. Cauble, Tommy Jones, Nelson Page, Jerry Klutz. Fifth row: Mrs. L. Ray Cauble, Phyllis Peeler, Jean Lyerly, Donald Leazer, Raven Earhardt, Jimmy Lyerly. Sixth row: Frank Houston, Marion Eudy, Roberta Goodman, Jean Bringle.

Absent when picture was taken: Shirley Earnhardt, Charles Baker, David Trexler.

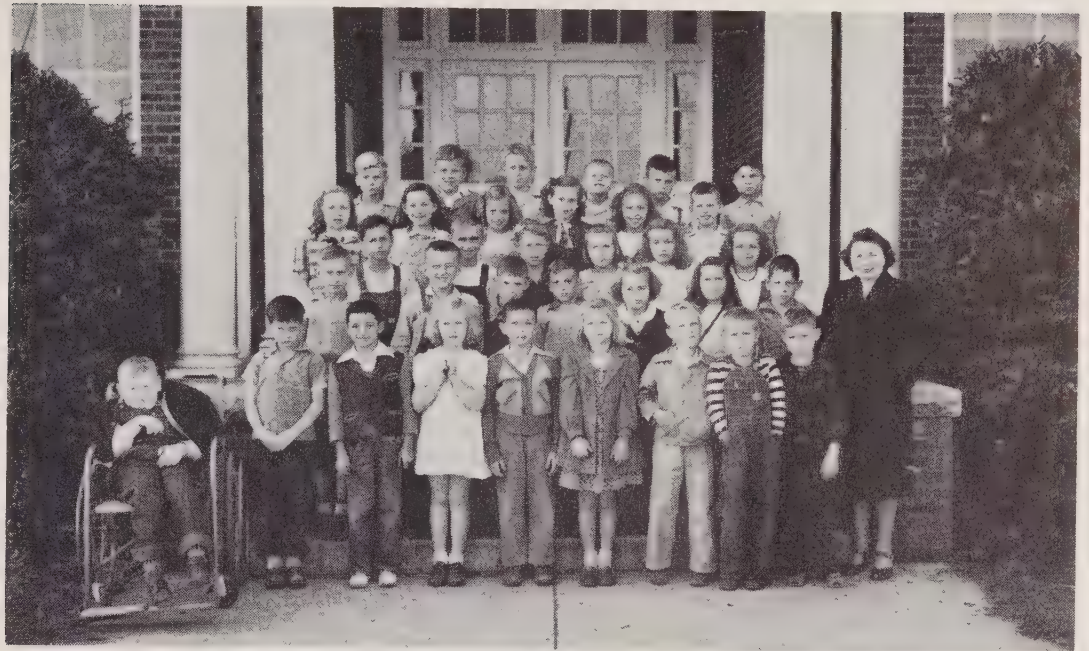
Front row, left to right: Jane Hill, Jimmy Beaver, Shirley Rabon, Jeanette Myers, Jeanette Oddie, Gene Wagner, Ronnie McCulloh, Orrin Mahaffey, Margaret Earnhardt. Second row: Charles Hartley, Frances McClaren, Greta Hinceman, Mary Jo Klutz, Jane Wyrick, Annie Marie Hudson, Ellen Harris Wilson, Margalene Cartner. Third row: Edward Lentz, Pauline Athey, Sonny Brewer, James Whirlow, Nelson Durham, Jerry Roseman, Billy Smith. Fourth row: Jimmy Hill, Judy Kepley, Nancy Brewer, Sammy Miller, Ronald Barger, Elaine Klutz. Fifth row: Dickie Sellers, James Peeler, Tony Myers, Mary Elizabeth Abernathy, Jack Ponds, Mrs. Kinney. Sixth row: Tommy Myers, Frankie Earnhardt, Freddie Whirlow.

MRS. KINNEY'S  
THIRD GRADE



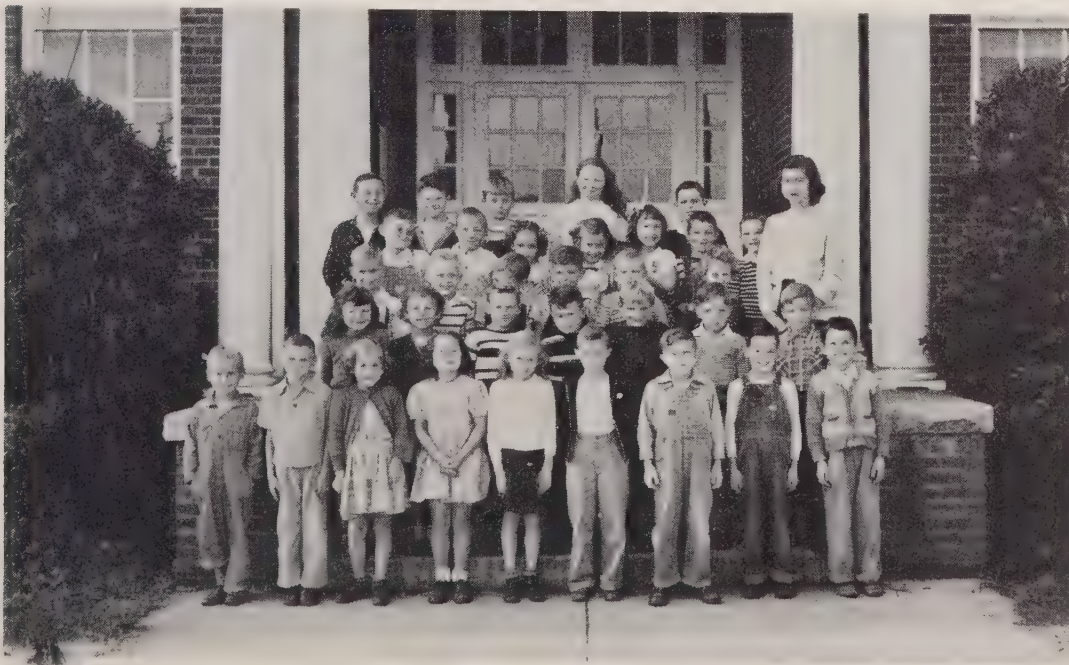


MRS. ROBERT'S  
THIRD GRADE

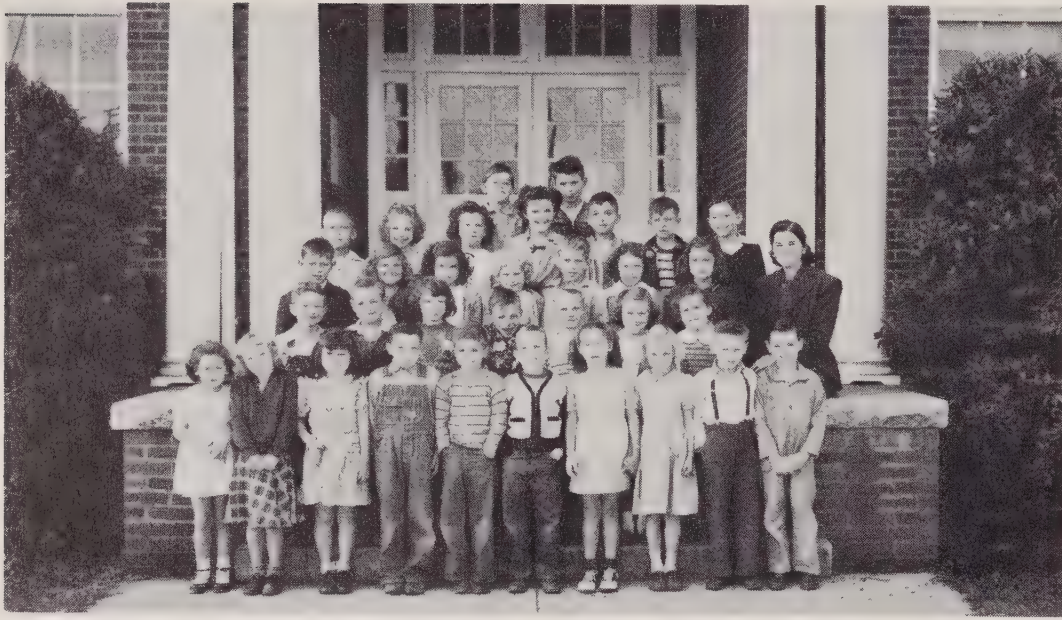


Front row, left to right: Arnold Walton, Jr., Roddy Bringle, Terry Bogle, Judy Eller, George Kinney, Kay Stokes, Ray Blume, Marshall Snider, Curtis Ribelin, Mrs. Roberts. Second row: Richard Hodgson, Ralph Trexler, Robert Shulenberger, Rodney Fulk, Wanda Robinson, Betty Lou Earnhardt, Kirby Allen. Third row: Leon Trexler, Stephen Kesler, Jerry Eller, Sandra Holshouser, Sandra Kepley, Nancy Lomax. Fourth row: Sara Simpson, Frances Phillips, Sandra File, Dona Ann Cross, Yvonne Earnhardt, Bobby Poole. Fifth row: Jim Fisher, Jerry Eagle, W. A. Cline, III, Frederick Trexler, Ronald Smith, Roy Benson.

Front row, left to right: Bobby Edwards, Larry Hill, Barbara Snider, Barbara Webb, Elizabeth File, Larry Stiller, Roy Land, Paul Brown, Dickie Foy. Second row: Carolyn Wise, Deanna Rary, Larry McKenzie, Philip Walton, George Denham, Franklin Ribelin, Wesley Crowe. Third row: Howard Brown, Ronald Sills, Junior Overcash, Bobby Gene Mills, Joe Vaughan, Carolyn Klutz, Mrs. Williams. Fourth row: James Pinion, Clyde Goodman, Sue Kesler, Sondra Henderson, Shirley Austin, Roy Hopkins, Larry McBride. Fifth row: Jerrel Kesler, Kenneth Miller, Freddie Denham, Geraldine McDaniel, Carrol Cooke.



MRS. WILLIAM'S  
SECOND GRADE



MISS MELTON'S  
SECOND GRADE

Front row, left to right: Marlene Earnhardt, Judy Davis, Peggy Shipwash, Cletus Livengood, James Floyd, Vernon Eller, Helen Brewer, Rebecca Livengood, Gene Isenhour, Bobby Lee Kluttz. Second row: Lloyd Miller, James Clawson, Judy Heilig, Craven Brewer, Fred Pence, Judith Jones, Sue Cabell Williams, Miss Melton. Third row: James McIntyre, Sandra Trexler, Lois Whirlow, Betty Corriher, Roy Brown, Carol Honbarrier, Jean Roseman. Fourth row: Johnny Earnhardt, Babara Bernhardt, Margaret Hill, Joyce Roseman, Calvin Mille, Paul Athey, Harold Cooke. Fifth row: Francis Harris, Roy Kesler.

Absent when picture was taken: Dixie McNeely, Joann Pepper, Lloyd Baker.

Front row, left to right: Edna Denham, Shirley Goodman, Charles Barringer, Brenda Goodman, Betty Lou Honbarrier, Linda Bringle, Kay Ellum, Linda Snider, James Rabon, Teddy Beaver, Brenda Sue Baxley, Linda Eagle. Second row: James Trexler, Jackie Williams, Donald Bullins, John Angell, Dennis Sellers, Edward Isenhour, Shirley Von Cannon, Tex Lyerly, Mrs. Rhyne. Third row: Billy Covington, Nancy Livengood, Gilbert Bernhardt, Beth Young, Ann Boger, Mary Catherine Brewer, Gail Cauble. Fourth row: Ann Miller, Nancy Dry, Thomas Houston, Judy Holshouser, Margaret Ann Bostian, Luther Goodman, Treva Morgan.

Absent when picture was taken: Billy Goodman, Walter Pepper, Russell Pruett, Ruth Edwards, Doris Pepper.

MRS. RHYNE'S  
FIRST GRADE





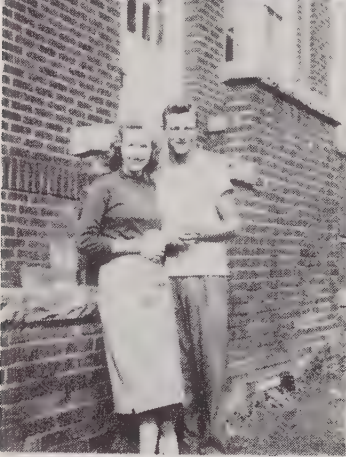
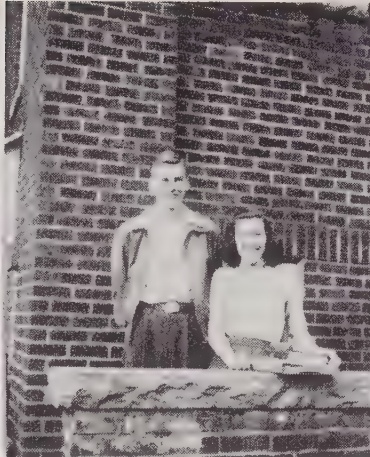


MRS. HOLSHOUSER'S  
FIRST GRADE



Front row, left to right: Harold Snider, Albert Rabon, Nancy Basinger, Ralph Walton, James Huston, John Luther Horton, Nancy Livengood, Robert Peeler, Eugene Norris, Barbara Branch, Wayne Rogers. Second row: Shirley McIntyre, Nancy Louise Spry, John Raymond Klutz, Roy Trexler, Marvin Kimmer, Faye Wagoner, Evelene Oddie, Richard Wyrick. Third row: Carolyn Trexler, Mary Frances Hill, Brenda Ruth Erwin, Barbara Ann Lentz, George Little, John Wayne Foy, Barbara Faye Goodman, Carol Kesler, Mrs. Holshouser. Fourth row: Dianne Rary, Carol Shinn, Kathleen Oddie, Barbara Elaine Naylor, Betty Lou Shulenberger, Donald Smith, Johnny File. Fifth row: Terry Cartner, Vernon Overcash.





## INSEPARABLES

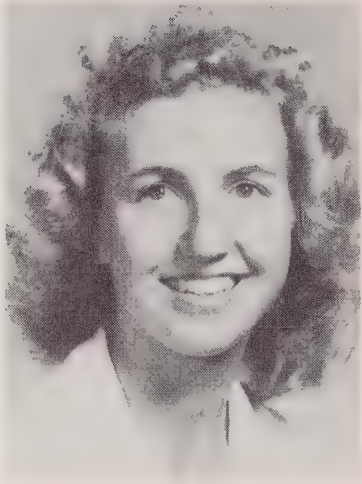
Eunice and Quincy . . . Bobby and Pat . . .  
 Alvanell and Jake . . . Charles and Kitty  
 . . . Jean and Herbert . . . June and Voight  
 . . . Betty and Bill . . . Doris and Bill . . . Bill  
 and Betty Rose . . . Philip and Sylvia . . . Bill  
 and Joyce . . . Nathlyn and Wally . . .

# A I T V T I E I

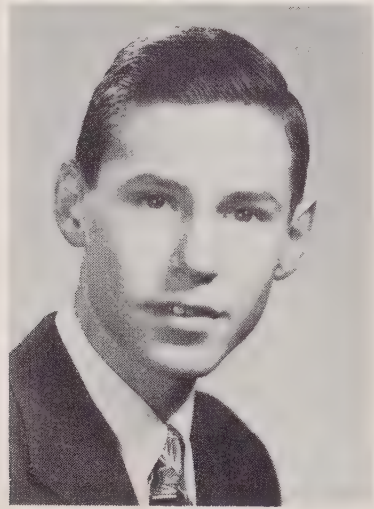




## QUARRIER STAFF



Editor-in-Chief  
JEAN RANEY



Business Manager  
RICHARD MELCHOR



Seated, left to right: Nancy Cain, Assistant Business Manager; Richard Melchor, Business Manager; Jean Raney, Editor-in-Chief; Mary Ellen Jarrett, Assistant Editor.

Standing: Helen Brown, Assistant Literary Editor; June McKenzie, Sports Editor; Janie Fraley, Literary Editor; Bobby Barringer, Art Editor; Bobby Ray Shaver, Advertisement Manager; Mrs. McCombs, Advisor.

Absent when picture was taken: Bill Oddie, Production Manager.

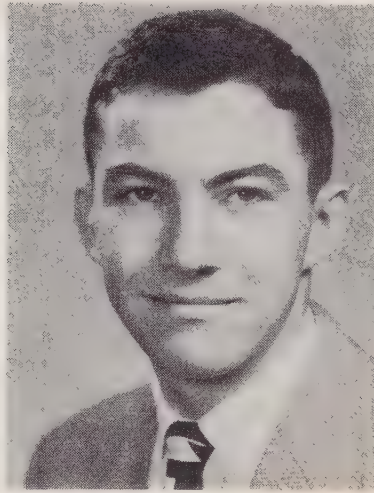


# GRANITE CHIPS STAFF

Editor-in-Chief  
BETTY PEELER



Business Manager  
BOBBY LEE CRUSE

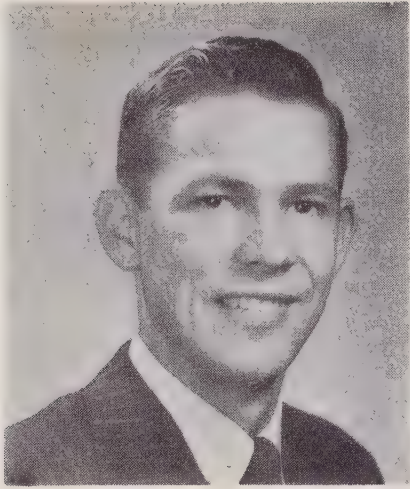


Seated, left to right: Mary Ellen Jarrett, Assistant Business Manager; Bobby Lee Cruse, Business Manager; Betty Peeler, Editor-in-Chief; Eunice Silliman, Assistant Editor-in-Chief.

Standing: Wally Gaither, Boys' Sports Editor; Bessie Barringer, Reporter; Thyra Rose Honeycutt, Copy Editor; Madeline Fink, Circulation Manager; Bill Julian, Assistant Circulation Manager; Jean Raney, Girls' Sports Editor; Bobby Barringer, Art Editor.



# STUDENT COUNCIL



President  
PHILIP HOLSHOUSER

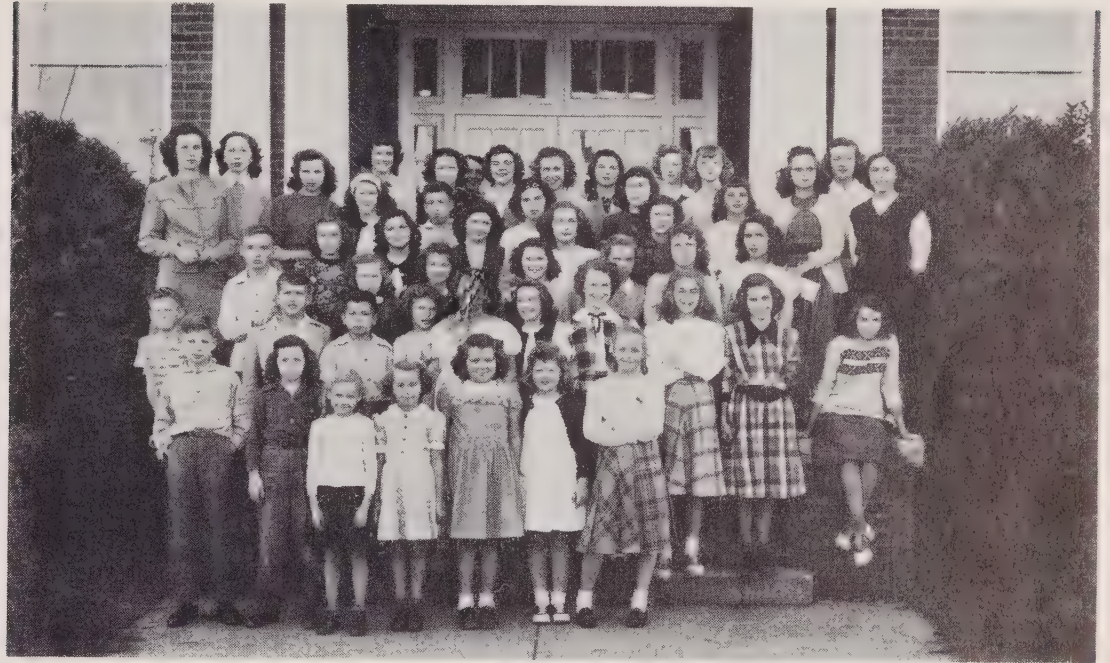
Front row, left to right: Frances Beck, Virginia Roscoe, Jean Raney, Secretary; Philip Holshouser, President; Howard Crossett, Vice-President; Pansy Hopkins, June McKenzie.

Second row: Kay Margaret McCombs, Jerry Misenheimer, Junior Brown, Paul Webb, Robert Bruce, Bobby Lee Cruse, Clifford Barnhardt, Augustus Holshouser, Alvanel Julian, Joanne Boger, Mr. Jones, Advisor.





MUSIC  
STUDENTS



Front row, left to right: Sonny Ribelin, Camille Brown, Elizabeth File, Wanda Robinson, Fay Trexler, Rose Smith, Roberta Goodman. Second row: Jimmy Kluttz, Frank Merritt, James Kinney, Phyllis Covington, Gladys Couch, Elaine Fisher, Carolyn Barringer, Lynda Lee Andrew, Barbara Peeler, Norma Kluttz. Third row: Tommy Thompson, Mary Lee Bailey, Betty Jean Shaw, Faye Trexler, Margaret Trexler, Peggy Montieth, Betty Jo Miller, Mazie Stokes, Kay Thomas, Madge Holshouser, Shirley Kepley, Joan Earnhardt. Fourth row: Madeline Fink, Lillian Huffman, Joyce Thomas, Elizabeth Moore, Doris Roseman, John Peeler, Evelyn Ribelin, Hoy Peeler, Kay Margaret McCombs, Eunice Silliman, Sara Jo Lingle, Betty Rose Thomas, Loretta Kluttz, Winifred Peeler, Patsy Jones, Margaret Cauble, Nell Rcusseau, Joanne Boger, Ruth Holshouser, Mr. Ralph Bostian, Teacher.

Front row, left to right: Nathlyn Fesperman, Roana Agner, Hazel Troutman, Claudine Miller, Joanne Boger, Jean Trexler. Second row: Roy Trexler, Charles Ribelin, W. L. Rhyne (Advisor).  
Absent when picture was taken: Bessie Barringer.



LIBRARIANS



F. H. A.

First row, left to right: Mary Lee White, Vice-President; Carolyn Richardson, Secretary; Carolyn Cauble, Treasurer; Nathlyn Fesperman, President; Evelyn Ribelin, Historian; Sara Jo Lingle, Song Leader; Betty Sue Kluttz, Pianist. Second row: Shirley Peeler, Jean Peeler, Mary Brown, Dorothy Kirkman, Alvanell Julian, Roana Agner, Phyllis Sifford, Janet Fisher, Barbara Shirley. Third row: Winifred Peeler, Doris Earnhardt, Joanne Earnhardt, Ellen Barger, Ruby Snider, Ruby Hinson, Kitty Robertson, Edith Peeler, Becky Peeler, Mrs. Felts, Advisor.

Front row left to right: Glenn Cauble, Herbert Kluttz, Joe Stirewalt, Paul Webb, Jason Brown, Junius Fraley, Bobby Clawson, Claude Eagle. Second row: Howard Basinger, J. C. Williams, Albert Kepley, Dwight Fraley, Treasurer; Donald Bruce, John Bame, John Alexander, David Couch. Third row: Roy Brown, Bill Starnes, James Julian, Philip Kesler, Bill Oddie, Howard Crossett, Robert Bruce, Philip Holsouser, Donald Deal. Fourth row: Donald Smith, Hoy Peeler, Buddy Kluttz, James Earnhardt, Deedie Fisher, Walter Goodman, Jack Smith, Frank Staton, Billy Ray Stiller. Fifth row: Bill Whitty, Bobby Baringer, Secretary; Max Sifford, Donald Richardson, President; Bobby Lee Cruse, Ted Holshouser, Ralph Sifford, Charles Bame, Bill Fisher, John Kesler, Vice-President; Voight Basinger.

Absent when picture was taken: Verne McCombs, Bill Julian, Herman Ritchie, Joe Kesler, Reporter; Ray Cauble, Jerry Misenheimer, Clarence Pickler, Mr. Jones, Advisor.

F. F. A.  
CHAPTER





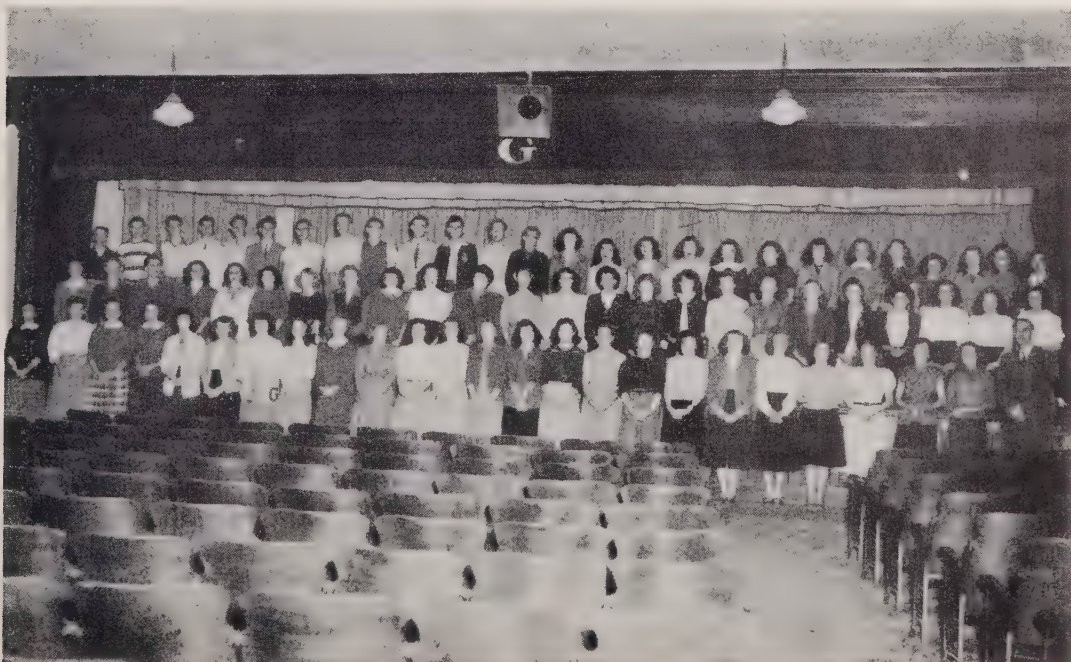


## BETA CLUB



Front row, left to right: Jean Raney, Roana Agner, Thyra Rose Honeycutt; Jean Lyerly, Lillian Huffman, Margaret Barger. Second row: Mary Ellen Jarrett, Jean Trexler, Helen Brown, Rebecca Peeler, Nathlyn Fesperman, Eunice Silliman, Janie Fraley. Third row: Mrs. McCombs, Advisor; Ray Edward Cauble, Paul Webb, Charles Ribelin. Officers, standing at right: Bobby Ray Shaver, Treasurer; Annita Elium, Secretary; Richard Melchor, Vice-President; Donald Richardson, President.

Front row, left to right: Loraine Kluttz, Jean Peeler, Sherry Gantt, Gaynelle Fulk, Mary Sue Bernhardt, Mary Rose Peeler, Peggy Cruse, Betty Sue Roseman, Marian Misenheimer, Delma Corl, Mildred Baity, Rebecca Holshouser, Margaret Barger, Patricia Bringle, Claudine Miller, Grace Bost, Nona Bruce, Hazel Troutman, Genevieve Lehr, Naomi Yountz, Doris Cauble, Peggy Broadway, Peggy Gibson, Lydia Jean Kepley, Mr. McCanless, Advisor. Second row: Kay Margaret McCombs, Buddy Barger, Ben Fink, Anne Roseman, Frances Miller, Jane Hall, Evelyn Agner, Coleen Dennis, Margaret Walton, Jean Broadway, Rebecca Rash, Lillie Mae Penley, Jean Peeler, Virginia Roscoe, Reather Dennis, Libby Helms, Mildred Curlee, Evelyn Myers, Margaret Emma Yost, Mary Lee Earnhardt, Vivian Eagle, Margaret Jacobs, Hilda Eller, Madge Holshouser. Third row: Hoy Peeler, Jimmy Cline, Derek Elium, Roy Trexler, Bill Starnes, Gregory Harrison, Philip Holshouser, Bobby Barringer, Bobby Lee Cruse, Donald Richardson, Bill Oddie, Bill Whitty, Jerry Misenheimer, Lucille Goodman, Marie Bringle, Donna Sue Trexler, Jeanette Peeler, Patsy Rogers, Edith Kluttz, Peggy Miller, Betty Suttle, Charline Lefler Miller, Mona Hess, Betty Rose Thomas, Madeline Fink, Janice Mahaffey, Mrs. Sowers, Advisor.



## GLEE CLUB



FIREMAN

Front row, left to right: Wally Gaither, John Bame, Bill Whitty, Bobby Lee Cruse, Philip Holshouser, Fire Chief; Voight Basinger, Bill Julian, Assistant Fire Chief; C. L. Eagle. Second row: Bill Ritchie, Howard Crossett, Max Sifford.

Front row, left to right: Bobby Barringer, Wade Fisher, Philip Holshouser, Dwight Fraley, Bobby Lee Cruse, J. C. Williams. Second row: Bill Julian, Ted Holshouser, Max Sifford, John Kesler, Charles Bame, Billy Oddie.



BUS DRIVERS



## COMMERCIAL CLUB



Front row, left to right: Betty Peeler, President; Bobby Ray Shaver, Richard Melchor, Eunice Silliman. Second row: Janie Fraley, Jean Raney, Vice-President; Nancy Cain, Mary Ellen Jarrett. Third row: Thyra Rose Honeycutt, Reporter; Wallace Gaither, June McKenzie, Treasurer. Fourth row: Mrs. McCombs, Advisor; Helen Brown, Bessie Barringer, Secretary.

Absent when picture was taken: Bobby Barringer.

Front row, left to right: Angie Kimmer, Loretta Kluttz, Sarah Jo Miller, Ruth Holshouser, Gazelle Hopkins, Norma Kluttz. Second row: Joanne Boger, Patsy Jones, Betty Holshouser, Mrs. Bryte Kluttz Crowell, Sponsor. Third row: Pansy Graham, Ruby Lesley, Mary Lentz. Fourth row: Lillian Huffman, Gerald Adams, Clyde Brown, Paul McCall, Pansy Hopkins. Fifth row: Jean Lyerly, Joyce Thomas, Frances Beck, Charles Ribelin, Wade Fisher. Sixth row: Nancy Rousseau, Joan Mahaffey, Lewis Jacobs, Bill Trexler, Fred Joyner.

Absent when picture was taken: Joe Kluttz, Ruby Basinger, Betty Sue Kluttz, Nathlyn Fesperman, Peggy Cruse, Dwight Fraley, Albert Ray Kepley, Sue Eller.



## THE DRAMATICS OF D. F. V. CLUB



WONDER  
CLUB

Front row, left to right: Benny Frick, Dulcie Earnhardt, Bonnie Ervin, Sue Eller, Mildred Combs. Second row: Bertie Earnhardt, Earl Livengood, Sybil Barnhardt, Robert Blackwelder, J. F. Brooks, Jimmie Hartley, W. L. Rhyne, Advisor. Third row: Sylvia Fink, Annita Elium, Jerrell Fisher, Wilbert Lyerly, Kenneth Fisher, Clifford Barnhardt, Nelson Barringer.

Front row, left to right: Eloise Peeler, Nell Rousseau, Virginia Snider, Treasurer; Sylvia Shaw, Reporter; Patty Sue Andrew, Jean Sifford, Sylvia Peacock, President. Second row: Augustus Holshouser, Tommy Honbarrier, Larry Lyerly, Patsy Miller, Lucille Yates, Betty Lou Whirlow, Vice-President; Lottie Ritchie, Secretary; Jean Trexler. Third row: Mr. Huneycutt, Mr. Lane, Advisors; John Walser, Scot Moore, Bill Ritchie, Tony Miller, John Peeler, Tommy Yount, Robert Snider, Jimmy Peeler.

Absent when picture was taken: Ted Holshouser, Joe Stirewalt, Bill Fisher, Roy Brown, Ralph Sifford, Bobby Clawson.

ACTIVITY  
CLUB





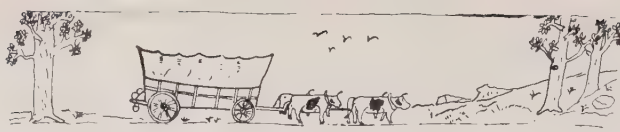
# BOY'S BASEBALL TEAM



DANIEL LANE

Front row, left to right: Roy Trexler, Gregory Harrison, Bill Julian, Philip Holshouser, Ted Holshouser, Howard Crossett, J. C. Williams, Herbert Klutz. Second row: Ray Cauble, Clifford Barnhardt, Wally Gaither, Voight Basinger, Charles Ribelin. Third row: Herman Ritchie, Joe Klutz, Wade Fisher, James Troutman, Bobby Gene Barnhardt, Coach Lane.

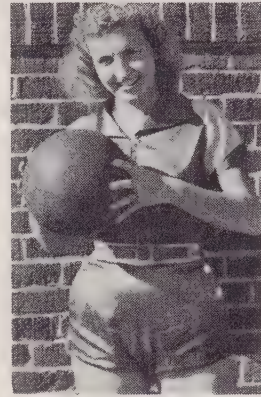




# GIRL'S BASKETBALL TEAM



JUNE MCKENZIE  
Center Forward



JEAN RANEY  
Forward



SYLVIA PEACOCK  
Forward



MADELINE FINK  
Guard



FRANCES MILLER  
Guard



JEAN TREXLER  
Guard



Front row, left to right: Jean Raney, June McKenzie, Captain; Frances Beck.  
Second row: Mary Rose Peeler, Peggy Cruse, Betty Gheen, Jean Broadway,  
Coach Lane. Third row: Sylvia Peacock, Madeline Fink, Jean Trexler, Gaynelle  
Fulk, Frances Miller.

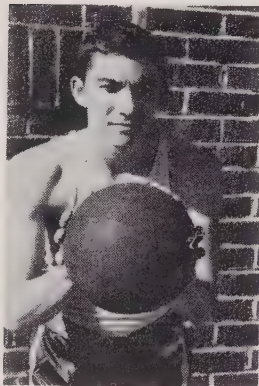
Absent when picture was taken: Polly Fisher.



# BOY'S BASKETBALL TEAM



VOIGHT BASINGER  
Center



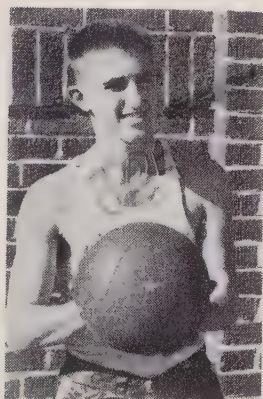
BOBBY LEE CRUSE  
Co-Captain



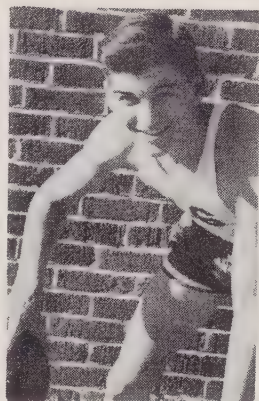
DANIEL LANE  
Coach



PHILIP HOLSHOUSER  
Co-Captain



JOE KLUTTZ  
Forward



WALLACE GAITHER  
Forward



Front row, left to right: Voight Basinger, Bobby Lee Cruse, Co-Captain. Second row: Philip Holshouser, Co-Captain; Wade Fisher, Joe Kluttz, Wally Gaither, Coach Lane. Third row: Charles Ribelin, Manager; Verne McCombs, Bobby Ray Shaver, Bobby Gene Barnhardt, Herbert Kluttz, Junior Brown.

Absent when picture was taken: James Troutman.



## HALLOWEEN KINGS AND QUEENS

Left to right: Fredrick Trexler, Prince; Bill Whitty, King; Loraine Kluttz, Queen; Margaret Whirlow, Princess.




*Compliments*  
*of*  
**Farmers and Merchants**  
**Bank**

GRANITE QUARRY, N. C.

Member of Federal Deposit Insurance Corporation

**NOTHING'S TOO HARD** when we try hard enough — and what better place to try than right here in our own Piedmont Carolinas? Wonderful resources, mild climate, some of the best people in the world, opportunity envied the world over a lot of work waiting to be done and a government that leaves you free to choose and work as you will. Putting economical power at your command is our part in helping you to build a satisfying and rewarding life.

A cartoon character with a smiling face, wearing a suit and tie, stands on a power line tower. He is holding a small object in his right hand and gesturing with his left. The tower is part of a series of power lines stretching into the distance. Below the character, the words "POWER TO Serve" are written in a stylized font. A small copyright symbol and the letters "R.N." are visible near the character's feet.

**DUKE POWER COMPANY**  
*Serving the Piedmont Carolinas.*

*Lovely to look at . . .*

*. . . Lovelier to wear*

THE NEW

# SPORTSWEAR FASHIONS

*from*



Salisbury

*Compliments of*

**CAROLINA MAID PRODUCTS, INC.**

*Manufacturers of*

WOMEN'S DRESSES — HOUSE COATS — BLOUSES

WOMEN'S FELT HOUSE SLIPPERS

ROYAL SLEEPER

GRANITE QUARRY, N. C.

# Taylor Mattress Company

MANUFACTURERS AND JOBBERS

Mattresses and Cotton Batting

Phone 6

SALISBURY, NORTH CAROLINA

Whether "Investin Rest"

You're partly educated when you use "Taylor Mattresses"

or our

Venetian Blinds

Also Prompt Repair Service

CHARLES HEILIG

Owners

JAMES HEILIG

## ANN MANUFACTURING COMPANY INCORPORATED

*Ann - Co.*

PRODUCTS

GRANITE QUARRY, NORTH CAROLINA

PHONE 841

Manufacturers of

**SPORTS WEAR**

**TEE SHIRTS — POLO SHIRTS — SWEAT SHIRTS**

# BARGER-LINGLE COMPANY

GE and Philco Appliances

Sherwin Williams Paints

Deming Water Systems

Complete Bathroom Outfits Installed

PHONE 241

FAITH, N. C.

*Compliments*

*of*

# McCombs Company

Fresh Meats, Groceries, Country Produce,

Feeds, Fertilizer, and Hardware

PHONE 231

FAITH, NORTH CAROLINA



**H. L. LYERLY & SONS**  
DRY GOODS, NOTIONS AND FURNITURE  
FRESH MEATS — STAPLE GROCERIES

Phone 271

GRANITE QUARRY, NORTH CAROLINA

PHOTOGRAPHS BY

*Torrence Studio*

118½ North Main Street

Phone 2825

SALISBURY, NORTH CAROLINA

WATCHES

DIAMONDS

JEWELRY

*Norman's Watch Shop*

293 South Main Street

Salisbury, N. C.

Phone 660

1847 ROGERS SILVERPLATE

ALVIN STERLING

**F. & W. SPORTING GOODS COMPANY**

COMPLETE LINE OF SPORTING GOODS  
AND SPORTS WEAR

207 North Main Street

Phone 818

**SALISBURY, NORTH CAROLINA**

*Compliments of*

**W. F. BRINKLEY & SON**

GENERAL CONTRACTORS

GRANITE QUARRY

NORTH CAROLINA

L. P. SHEPHERD

MRS. L. P. SHEPHERD

**SHEPHERD'S GROCERY**

GROCERIES — MEATS — PRODUCE

Phone 3657-J

110 NORTH GREEN STREET

SALISBURY, N. C.

*Compliments  
of*

**BELK-HARRY COMPANY**

SALISBURY

NORTH CAROLINA

# *Newsom Jewelers*

FINE JEWELRY  
AT CONSERVATIVE PRICES

104 South Main Street

Phone 185

*Compliments of*

## ROWAN TELEPHONE

## COMPANY

*Compliments of*

## PEELER BROTHERS

FAITH-GRANITE QUARRY

NORTH CAROLINA

### **Salisbury Floor Covering Shop**

**SALISBURY, N. C.**

Inlaid Linoleum — Yard Good Linoleum

Wall Covering — Rugs — Rubber Tile

Asphalt Tile

110 West Bank St.

Telephone 542

### **GEO. W. FISHER'S GARAGE**

Steam Cleaning

Wheel Balancing

Phone 52

**GRANITE QUARRY**

Compliments of

**CHEERWINE  
BOTTLING COMPANY**

**SALISBURY, N. C.**

*Congratulations  
Class of '49*

**THE GLASS SHOP**

Jackson Park

Phone 427-1

**KANNAPOLIS, N. C.**

Compliments of

**GEM GAS COMPANY**

**GRANITE QUARRY, N. C.**

Compliments of

**BROWN SUPPLY  
COMPANY**

**GRANITE QUARRY, N. C.**

Compliments of

**STANBACK COMPANY,  
Ltd.**

Manufacturers of  
STANBACK HEADACHE POWDER

Compliments of

**PET DAIRY PRODUCTS**

**SALISBURY, N. C.**

MONUMENTS      MAUSOLEUMS

**Salisbury Marble & Granite  
Company, Inc.**

*"Builders of Memorials That  
"Last Till Everlasting"*

1305 S. Main St.

Telephone 359

**SALISBURY, N. C.**

**GOODMAN  
LUMBER COMPANY**

Quality Millwork

*Everything for the Builder*

Phone 305-306-405

**SALISBURY, N. C.**



*Compliments of*

**RUSTIN  
FURNITURE CO.**

**SALISBURY, N. C.**

*Compliments of*

**SALISBURY**  
*Evening and Sunday*  
**POST**

**J. W. HUDSON  
& SONS**

**FRESH MEATS AND GROCERIES**

Phone 201

**GRANITE QUARRY, N. C.**

John Deere  
Quality Farm Equipment  
SALES — PARTS — SERVICE

**DUNGAN FARM  
EQUIPMENT COMPANY**

P. O. Box 618

Phone 801

**SALISBURY, N. C.**

*Compliments of*

**DRY SHOE STORE**

**SALISBURY, N. C.**

Compliments of

**PURCELL'S  
DRUG STORE**

111 W. Innes

101 N. Main

**SALISBURY, N. C.**

FLOWERS FOR ALL OCCASIONS

*The Flower Shop*

*Salisbury's Leading Florists*

125 West Innes Street—Phone 381; Night 2358-W  
SALISBURY, N. C.

Compliments of

**NORMAN INGLE**  
*Jeweler*

**SALISBURY,**

**N. C.**

**ROCKWELL  
FURNITURE COMPANY**

COMPLETE HOME FURNISHINGS

Phone 761

**ROCKWELL, N. C.**

*Compliments*

*of*

**NEHI BEVERAGE CO.**

**SALISBURY, N. C.**

*Compliments of*

**BAMBY BAKERY**

**SALISBURY, N. C.**

**Salisbury Cut-Rate  
Furniture Company**

L. C. KLUTTZ — H. S. MELTON  
Owners

127 East Innes Street

**SALISBURY, N. C.**

Compliments of

**HARRISON'S  
FOOD MARKET**

123 East Innes Street

**SALISBURY, N. C.**

Compliments of

**FISHER-THOMPSON  
HARDWARE CO.**

**SALISBURY, N. C.**

*Compliments of*

**RICKMAN  
MFG. COMPANY**

**SALISBURY, N. C.**

**CITY ELECTRIC  
COMPANY**

ELECTRICAL CONTRACTORS

*Appliances — Repairing — Fixtures*

117 E. Fisher St.

Telephone 293

**SALISBURY, N. C.**

Compliments of  
**WHITE PACKING COMPANY**  
Pork and Beef Packers  
SALISBURY, NORTH CAROLINA

**Arnold's**  
*"Your Guide to Better Fashions"*

**K. W. ARTHUR**  
Roofing and Sheet Metal Contractor  
Barrett Twenty Year Bonded Roofing  
Lennox Winter Air Condition and  
Sheet Metal Works  
1315 S. Main St. Phone 976

**Salisbury Tractor Co., Inc.**  
Ford Tractor  
Dearborn Farm Equipment  
214 East Innes Street  
SALISBURY, N. C.

**FOIL MOTOR COMPANY**  
CHRYSLER — PLYMOUTH  
Sales and Service  
211 E. Innes St. Telephone 1852  
SALISBURY, N. C.

Compliments of  
**HAYNES MOTOR CO.**  
SALISBURY, N. C.

**EDWIN EARLE**  
STATIONERY  
Office Equipment and Supplies  
SALISBURY, N. C.

Compliments of  
**S. H. KRESS & CO.**  
SALISBURY, N. C.

**T. & H. GROCERY**  
GAS & OIL  
Near Drive-In Theater  
FAITH ROAD

Compliments of  
**SPENCER GROCERY**  
SPENCER, N. C.

**Ketchie's Barber Shop**  
The Best Place to Go  
SALISBURY, N. C.

Compliments of  
**KIRK'S TAXI**  
PHONE 77  
Salisbury, North Carolina

**Simpson-Peacock Company**  
WHOLESALE GROCERS  
SALISBURY, N. C.

Compliments of  
**S. & W. FARM SUPPLY**  
SALISBURY, N. C.

**Southern Implement Co., Inc.**  
Allis-Chalmers Farm Machinery  
Box 514 Phone 196  
SALISBURY, NORTH CAROLINA

**FAITH BEAUTY SHOP**  
Phone 511 Faith, N. C.  
MRS. MURRAY PEELER, JR.

**W. A. BROWN & SON**

Complete Line of  
Commercial Refrigeration  
Meat and Beverage Coolers  
Florist Boxes  
SALISBURY, N. C.

**L & S**  
FURNITURE

Compliments of  
**Cauble Bros. Contractors**  
GRANITE QUARRY, N. C.

**THE TEEN SHOP**

Phone 2841  
SALISBURY, N. C.

Compliments of  
**SALISBURY THEATRES**  
STATE VICTORY  
CAPITOL  
SALISBURY, N. C.

**Hedrick Auto Co., Inc.**

120-122 North Church Street  
Telephone 14-15  
SALISBURY, N. C.

Compliments of  
**Gil Walker's Service Sta.**  
Salisbury, North Carolina

Compliments of

**R. M. ANDREW**  
GRANITE QUARRY, N. C.

JIMMIE BLACKWELDER'S

**BARBECUE**

West Innes Salisbury, N. C.

**WALLACE MOTOR CO.**

LINCOLN — MERCURY  
Sales and Service  
Tel. 3919 Salisbury, N. C.

Compliments of  
**Raney-Miller Motor Co.**  
SALISBURY, N. C.

Compliments of

**Granite Quarry Furn. Co.**  
GRANITE QUARRY, N. C.

Compliments of  
**Salisbury Barber Shop**  
SALISBURY, N. C.

**FAITH CLEANERS**

*"For Smart Appearance"*

PHONE 481

Compliments of  
**McLELLANS STORE**

*Never Knowingly Undersold*

Charles Reblin

Joe Klutzy

Edna Holstowen

Margaret Berger

League

Jason Brown

Philip Ray Holstowen

Madeline Fink

J.C. Williams

Donald Richardson

Henry Rose

Billie Rose

Biederstein

Bobby Barringer

Ray L. Tucker

John Kesler

Decker

Mary Rose

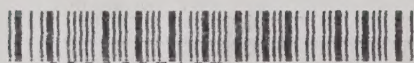
Allen

Richard Tucker

James M. Young

Loraine Keith

HEADQUARTERS



9000607467

