



266c1

1749

1-21

Library of the Museum

OF

COMPARATIVE ZOÖLOGY,

AT HARVARD COLLEGE, CAMBRIDGE, MASS.

Founded by private subscription, in 1861.

Deposited by ALEX. AGASSIZ.

No. 7527

Oct 8, 1887 - May 23, 1888.

New Series, No. CIX (Vol. XXVIII, Part 1).

Price 10s.

AUGUST, 1887.

7527
Oct. 8. 1887

1449
1-21

THE

QUARTERLY JOURNAL

OF

MICROSCOPICAL SCIENCE.

EDITED BY

E. RAY LANKESTER, M.A., LL.D., F.R.S.,

Fellow of Exeter College, Oxford, and Jodrell Professor of Zoology in University College, London;

WITH THE CO-OPERATION OF

W. T. THISELTON DYER, M.A., C.M.G., F.R.S.,

Director of the Royal Gardens, Kew,

E. KLEIN, M.D., F.R.S.,

Joint-Lecturer on General Anatomy and Physiology in the Medical School of St. Bartholomew's Hospital, London.

H. N. MOSELEY, M.A., LL.D., F.R.S.,

Linacre Professor of Human and Comparative Anatomy in the University of Oxford,

AND

ADAM SEDGWICK, M.A., F.R.S.,

Fellow and Assistant-Lecturer of Trinity College, Cambridge.

WITH LITHOGRAPHIC PLATES AND ENGRAVINGS ON WOOD



LONDON:

J. & A. CHURCHILL, 11, NEW BURLINGTON STREET.

MDCCCLXXXVII.

LIBRARY

1887
CAMBRIDGE, MASS.

CONTENTS OF No. CIX.—New Series.

MEMOIRS:

	PAGE
The Anatomy of the Madreporaria: III. By G. HERBERT FOWLER, B.A.Oxon., Ph.D., Berkeley Fellow of the Owens College, Manchester. (With Plates I and II)	1
On the Anatomy of Mussa and Euphyllia, and on the Morphology of the Madreporarian Skeleton. By G. C. BOURNE, B.A., F.L.S., Assistant to the Linacre Professor in the University of Oxford. (With Plates III and IV)	21
On the Intra-ovarian Egg of some Osseous Fishes. By ROBERT SCHARFF, Ph.D., B.Sc. (With Plate V)	53
Observations on the Structure and Distribution of Striped and Unstriped Muscle in the Animal Kingdom, and a Theory of Muscular Contraction. By C. F. MARSHALL, M.Sc., Platt Physiological Scholar in the Owens College, Manchester. (With Plate VI)	75
On the Fate of the Muscle-Plate, and the Development of the Spinal Nerves and Limb Plexuses in Birds and Mammals. By A. M. PATERSON, M.D., Senior Demonstrator of Anatomy, and Lecturer in Dental Anatomy and Physiology, in the Owens College, Manchester. (With Plates VII and VIII)	109
Note on the Ciliated Pit of Ascidians and its Relation to the Nerve-ganglion and so-called Hypophysial Gland; and an Account of the Anatomy of <i>Cynthia rustica</i> (?). By LILIAN SHELDON, Bathurst Student, Newnham College, Cambridge. (With Plates IX and X)	131
The Tongue and Gustatory Organs of <i>Mephitis mephitica</i> . By FREDERICK TUCKERMAN, M.D.Harv., Amherst, Mass., U.S.A. (With Plate XI)	149
On the Quadrate in the Mammalia. By Dr. G. BAUR, of New Haven, Conn.	169
On the Hæmoglobin Crystals of Rodent's Blood. By W. D. HALLIBURTON, M.D., B.Sc., Assistant Professor of Physiology, University College, London	181
An Easy Method of obtaining Methæmoglobin Crystals for Microscopic Examination. By W. D. HALLIBURTON, M.D., B.Sc., Assistant Professor of Physiology, University College, London	201

YRABUJ

2243.56018643

2

New Series, No. CX (Vol. XXVIII, Part 2).

Price 10s.

NOVEMBER, 1887.

7527
Dec. 16. 1887.

THE

QUARTERLY JOURNAL

OF

MICROSCOPICAL SCIENCE.

EDITED BY

E. RAY LANKESTER, M.A., LL.D., F.R.S.,

Fellow of Exeter College, Oxford, and Jodrell Professor of Zoology in University College, London;

WITH THE CO-OPERATION OF

W. T. THISELTON DYER, M.A., C.M.G., F.R.S.,

Director of the Royal Gardens, Kew,

E. KLEIN, M.D., F.R.S.,

Joint-Lecturer on General Anatomy and Physiology in the Medical School of St. Bartholomew's Hospital, London.

H. N. MOSELEY, M.A., LL.D., F.R.S.,

Linaers Professor of Human and Comparative Anatomy in the University of Oxford,

AND

ADAM SEDGWICK, M.A., F.R.S.,

Fellow and Assistant-Lecturer of Trinity College, Cambridge.

WITH LITHOGRAPHIC PLATES AND ENGRAVINGS ON WOOD.



LONDON:

J. & A. CHURCHILL, 11, NEW BURLINGTON STREET.

MDCCCLXXXVII.

CONTENTS OF No. CX.—New Series.

MEMOIRS:

	PAGE
On the Development of <i>Peripatus Novæ-Zelandiæ</i> . By LILIAN SHELDON, Bathurst Student, Newnham College. (With Plates XII, XIII, XIV, XV, and XVI)	205
On Some Points in the Anatomy of Polychæta. By J. T. CUNNINGHAM, B.A., F.R.S.E., Fellow of University College, Oxford. (With Plates XVII, XVIII and XIX)	239
On <i>Temnocephala</i> , an Aberrant Monogenetic Trematode. By WILLIAM A. HASWELL, M.A., B.Sc., Lecturer on Zoology and Comparative Anatomy, Sydney University. (With Plates XX, XXI, and XXII)	279
Notes on Echinoderm Morphology, No. XI. On the Development of the Apical Plates in <i>Amphiura squamata</i> . By P. HERBERT CARPENTER, D.Sc., F.R.S., F.L.S., Assistant Master at Eton College	303

3 265.4
New Series, No. CXI (Vol. XXVIII, Part 3).

Price 10s.

FEBRUARY, 1888.

7527
Mar. 26. 1888.

THE

QUARTERLY JOURNAL

OF

MICROSCOPICAL SCIENCE.

EDITED BY

E. RAY LANKESTER, M.A., LL.D., F.R.S.,

*Fellow of Exeter College, Oxford, and Jodrell Professor of Zoology in University College,
London;*

WITH THE CO-OPERATION OF

W. T. THISELTON DYER, M.A., C.M.G., F.R.S.,

Director of the Royal Gardens, Kew,

E. KLEIN, M.D., F.R.S.,

*Joint-Lecturer on General Anatomy and Physiology in the Medical School of St. Bartholomew's Hospital,
London.*

H. N. MOSELEY, M.A., LL.D., F.R.S.,

Linacre Professor of Human and Comparative Anatomy in the University of Oxford,

AND

ADAM SEDGWICK, M.A., F.R.S.,

Fellow and Assistant-Lecturer of Trinity College, Cambridge.

WITH LITHOGRAPHIC PLATES AND ENGRAVINGS ON WOOD.



LONDON:

J. & A. CHURCHILL, 11, NEW BURLINGTON STREET.

MDCCCLXXXVII.

CONTENTS OF No. CXI.—New Series.

MEMOIRS:

	PAGE
The Photospheria of <i>Nyctiphanes Norvegica</i> , G. O. Sars. By RUPERT VALLENTIN and J. T. CUNNINGHAM, B.A., Fellow of University College, Oxford. (With Plate XXIII)	319
On the Early Stages of the Development of a South American Species of <i>Peripatus</i> . By W. L. SCLATER, B.A., F.Z.S. (With Plate XXIV)	343
On the Anatomy of <i>Allurus tetraedrus</i> (Eisen). By FRANK E. BEDDARD, M.A., Prosector to the Zoological Society, and Lecturer on Biology at Guy's Hospital. (With Plate XXV)	365
The Development of the Cape Species of <i>Peripatus</i> . Part IV. The Changes from Stage G to Birth. By ADAM SEDGWICK, M.A., F.R.S., Fellow of Trinity College, Cambridge. (With Plates XXVI, XXVII, XXVIII, and XXIX)	373
On the Occurrence of Numerous Nephridia in the same Segment in Certain Earthworms, and on the Relationship between the Excretory System in the Annelida, and the Platyhelminths. By FRANK E. BEDDARD, M.A., Prosector to the Zoological Society of London, and Lecturer on Biology at Guy's Hospital. (With Plates XXX and XXXI)	397
The Anatomy of the Madreporaria, IV. By G. HERBERT FOWLER, B.A., PH.D., Assistant to the Jodrell Professor of Zoology in University College, London. (With Plates XXXII and XXXIII)	413

New Series, No. CXII (Vol. XXVIII, Part 4).

Price 10s.

7527
May 23. 1888.

APRIL, 1888.

THE
QUARTERLY JOURNAL
OF
MICROSCOPICAL SCIENCE.

EDITED BY

E. RAY LANKESTER, M.A., LL.D., F.R.S.,
*Fellow of Exeter College, Oxford, and Jodrell Professor of Zoology in University College,
London;*

WITH THE CO-OPERATION OF

W. T. THISELTON DYER, M.A., C.M.G., F.R.S.,
Director of the Royal Gardens, Kew,

E. KLEIN, M.D., F.R.S.,
*Joint-Lecturer on General Anatomy and Physiology in the Medical School of St. Bartholomew's Hospital,
London.*

H. N. MOSELEY, M.A., LL.D., F.R.S.,
Linacre Professor of Human and Comparative Anatomy in the University of Oxford,

AND

ADAM SEDGWICK, M.A., F.R.S.,
Fellow and Assistant-Lecturer of Trinity College, Cambridge.

WITH LITHOGRAPHIC PLATES AND ENGRAVINGS ON WOOD.



LONDON:

J. & A. CHURCHILL, 11, NEW BURLINGTON STREET.

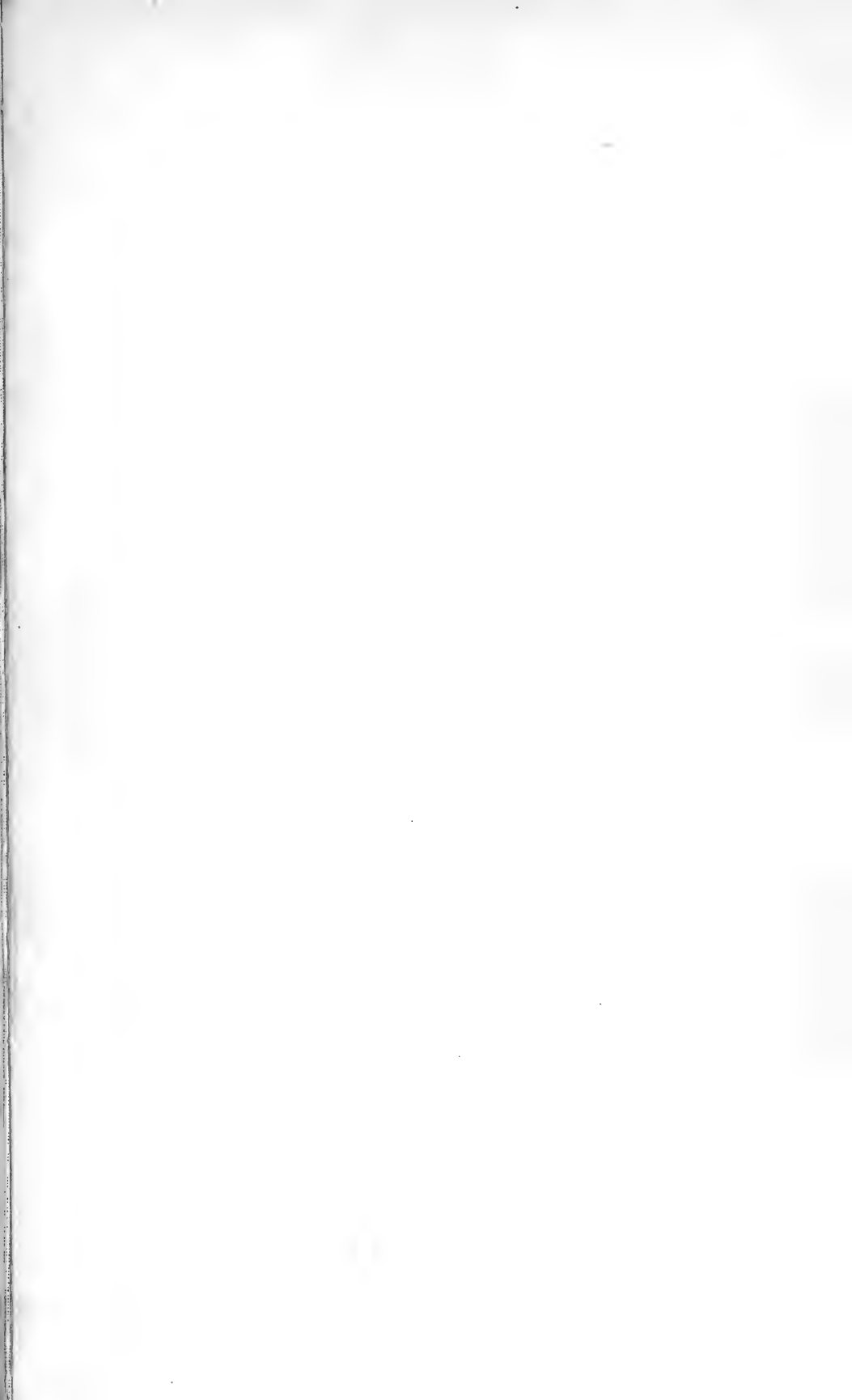
MDCCLXXXVIII.

CONTENTS OF No. CXII.—New Series.

MEMOIRS:

	PAGE
A Monograph on the Species and Distribution of the Genus <i>Peripatus</i> (Guilding). By ADAM SEDGWICK, M.A., F.R.S., Fellow of Trinity College, Cambridge. (With Plates XXXIV, XXXV, XXXVI, XXXVII, XXXVIII, XXXIX and XL)	431
Notes on the Anatomy of <i>Peripatus capensis</i> and <i>Peripatus Novæ-zealandiæ</i> . By LILIAN SHELDON, Bathurst Student, Newnham College, Cambridge	495
On the Construction and Purpose of the so-called Labyrinthine Apparatus of the Labyrinthic Fishes. By Doctor NICHOLAS ZOGRAFF, of Moscow. (With Plate XLI)	501
Studies on the Comparative Anatomy of Sponges. I. On the Genera <i>Ridleia</i> , n. gen., and <i>Quasillina</i> , Norman. By ARTHUR DENDY, M.Sc., F.L.S., Demonstrator and Assistant Lecturer in Biology in the University of Melbourne. (With Plate XLII)	513
Kleinenberg on the Development of <i>Lopadorhynchus</i> . By G. C. BOURNE, B.A., F.L.S., Fellow of New College, Oxford, and Assistant to the Linacre Professor in the University	531

TITLE, CONTENTS and INDEX.



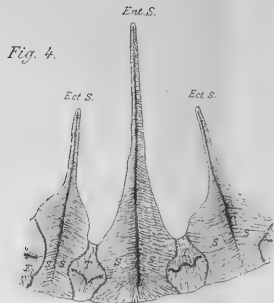
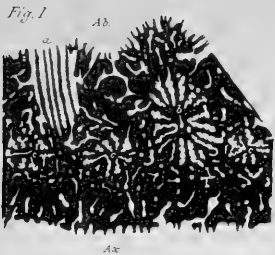


Fig. 3.

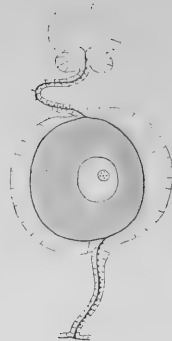


Fig. 5.

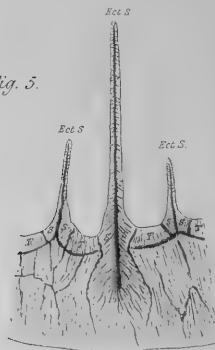


Fig. 2.

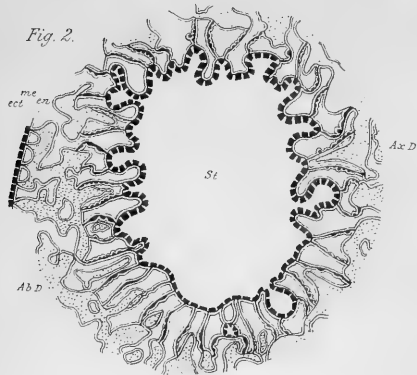


Fig. 6.

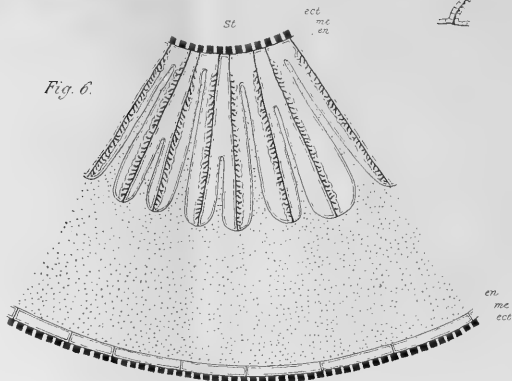


Fig. 7.

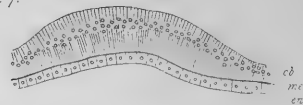


Fig. 8.

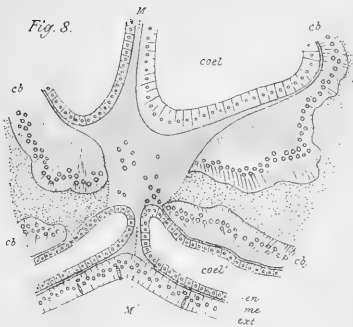


Fig. 9.

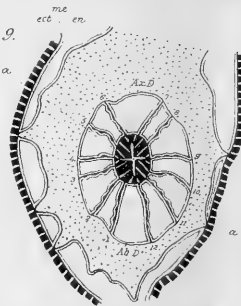


Fig. 11.

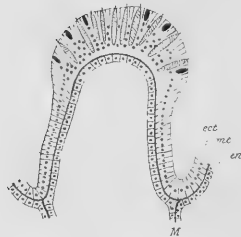


Fig. 10.

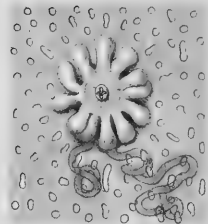


Fig. 12.

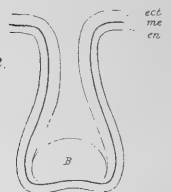




Fig. 13.

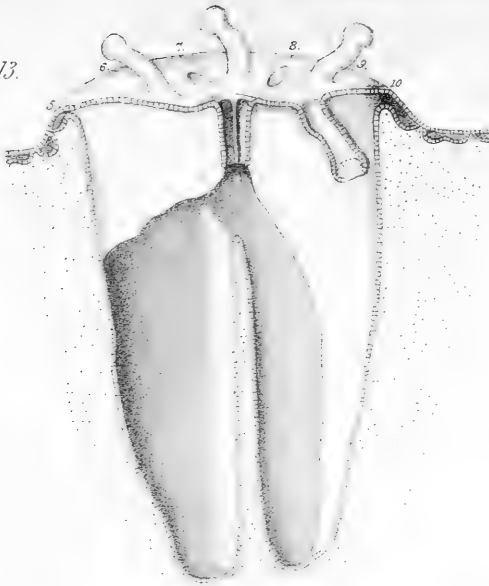


Fig. 14.



Fig. 15.

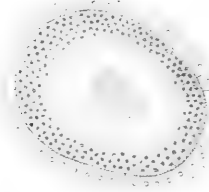


Fig. 16.

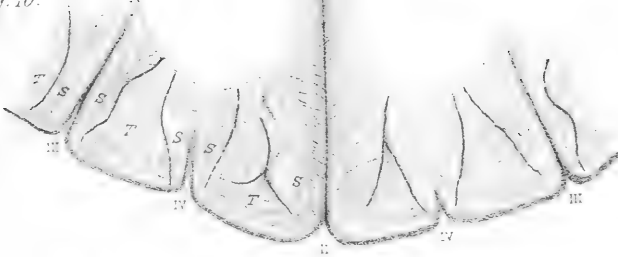


Fig. 17.

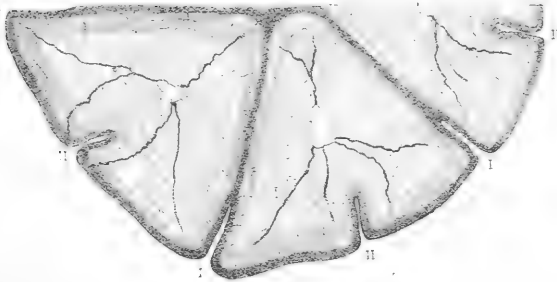






Fig. 1.

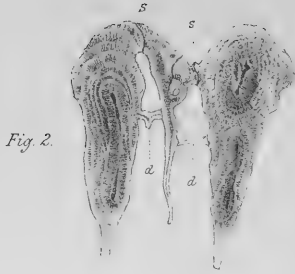


Fig. 2.

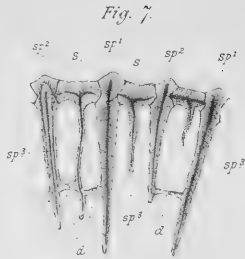


Fig. 7.

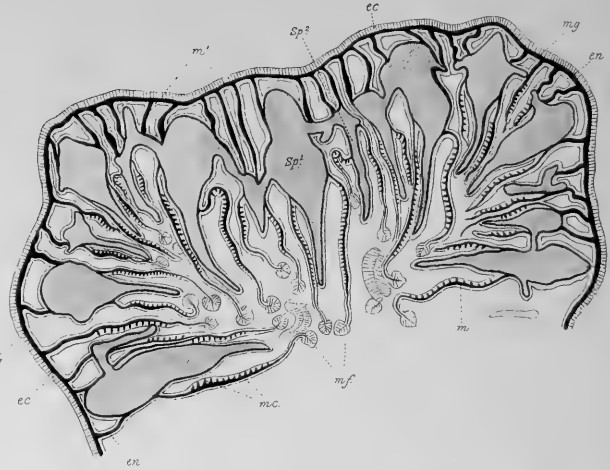


Fig. 5.

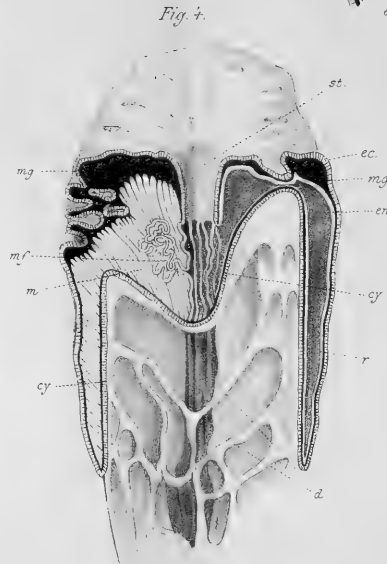


Fig. 4.

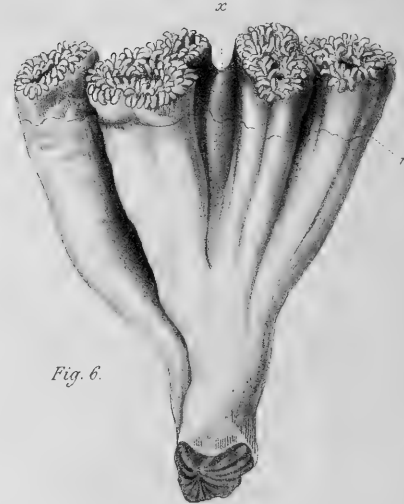


Fig. 6.

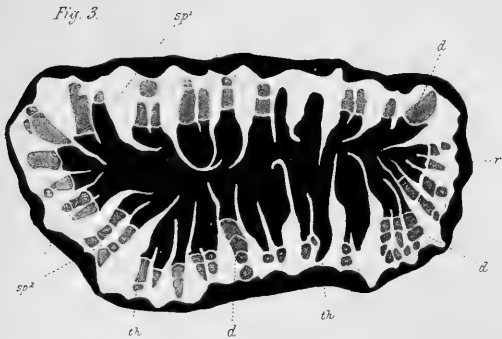


Fig. 3.

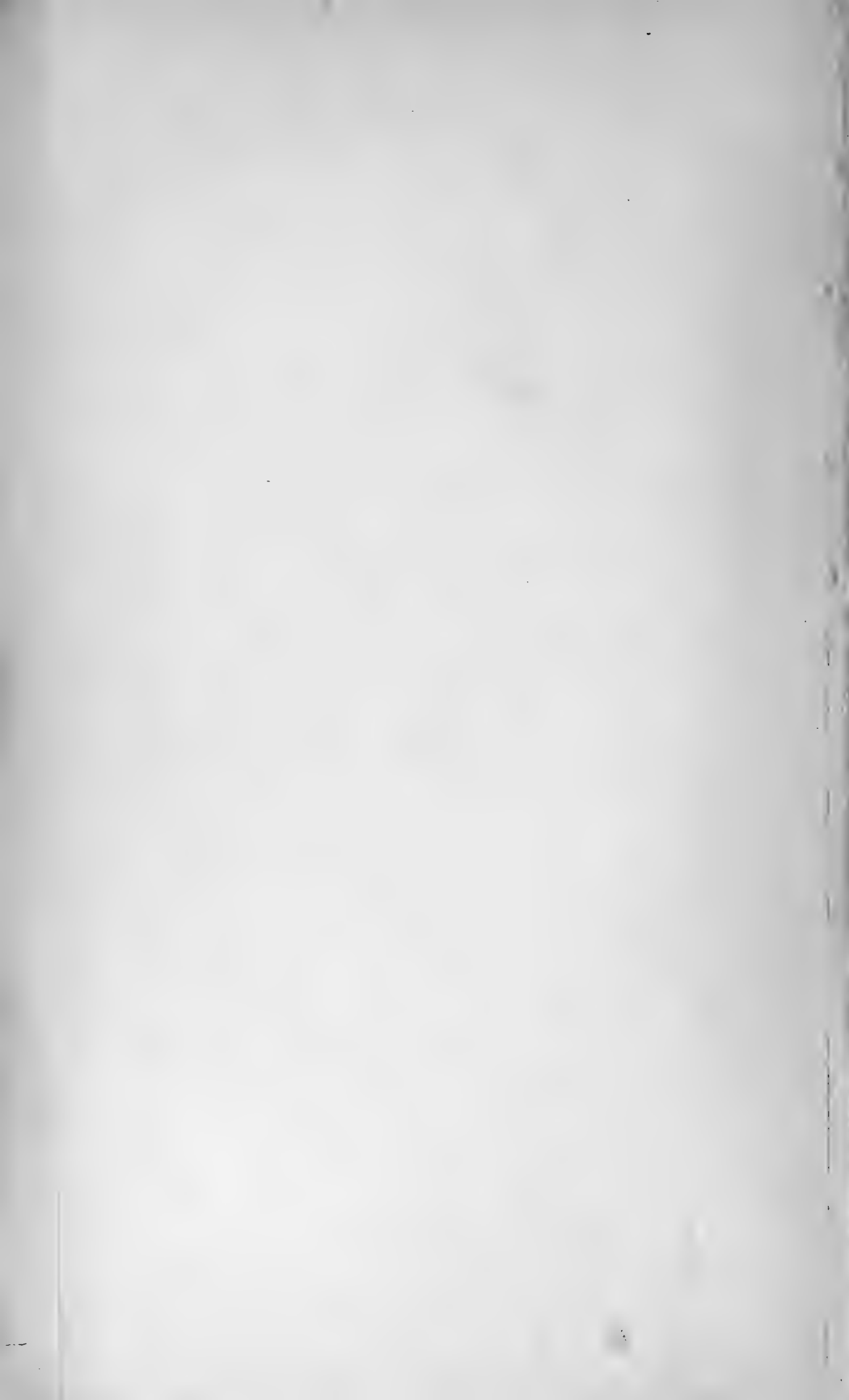


Fig. 8.

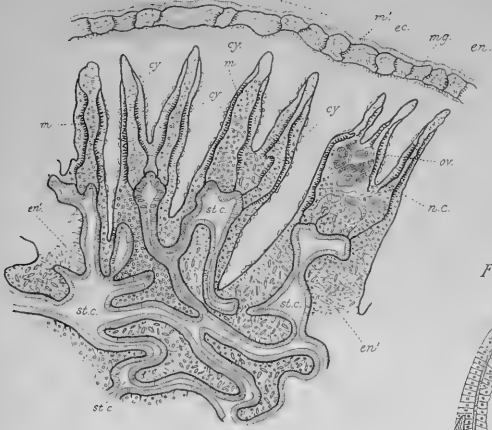


Fig. 9.

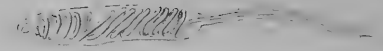


Fig. 10.



Fig. 11.

Fig. 12.



Fig. 13.

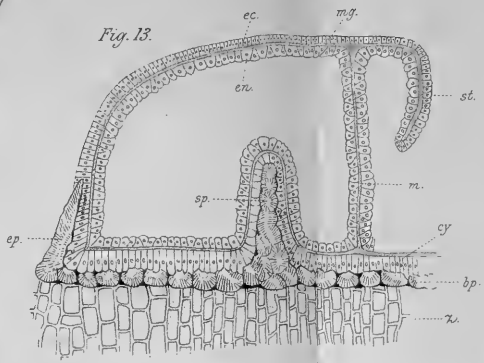


Fig. 17.



Fig. 14.

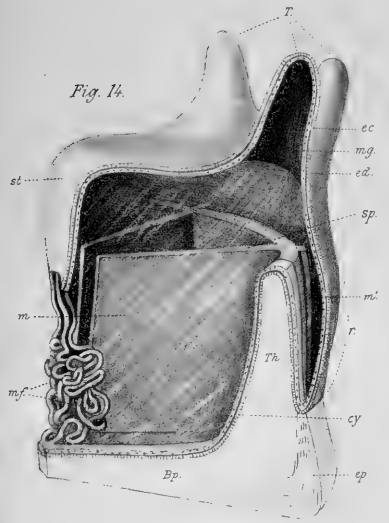


Fig. 15.

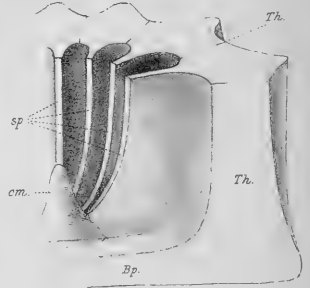


Fig. 16.

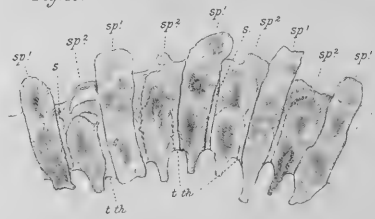




Fig. 1



Fig. 2



Fig. 3



Fig. 4



Fig. 5



Fig. 6

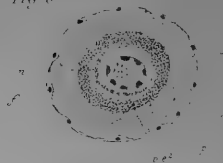


Fig. 7

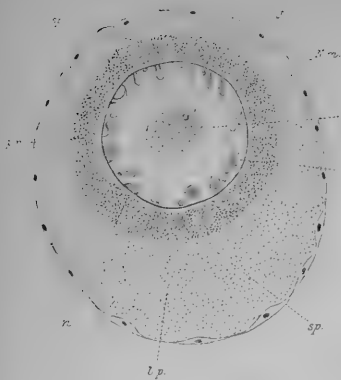


Fig. 9

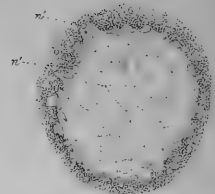


Fig. 12

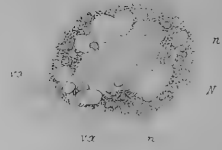


Fig. 8

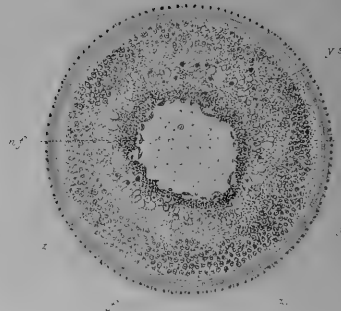


Fig. 15

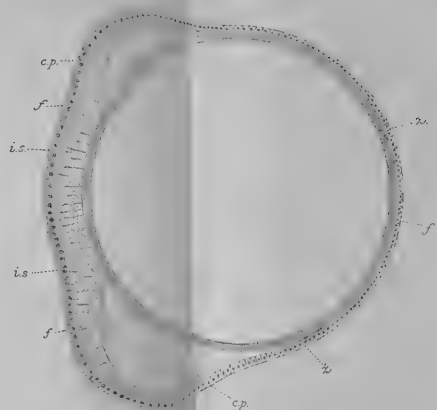


Fig. 10



Fig. 11



Fig. 13

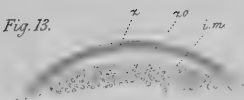


Fig. 14

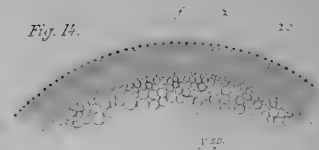


Fig. 16



Fig. 17



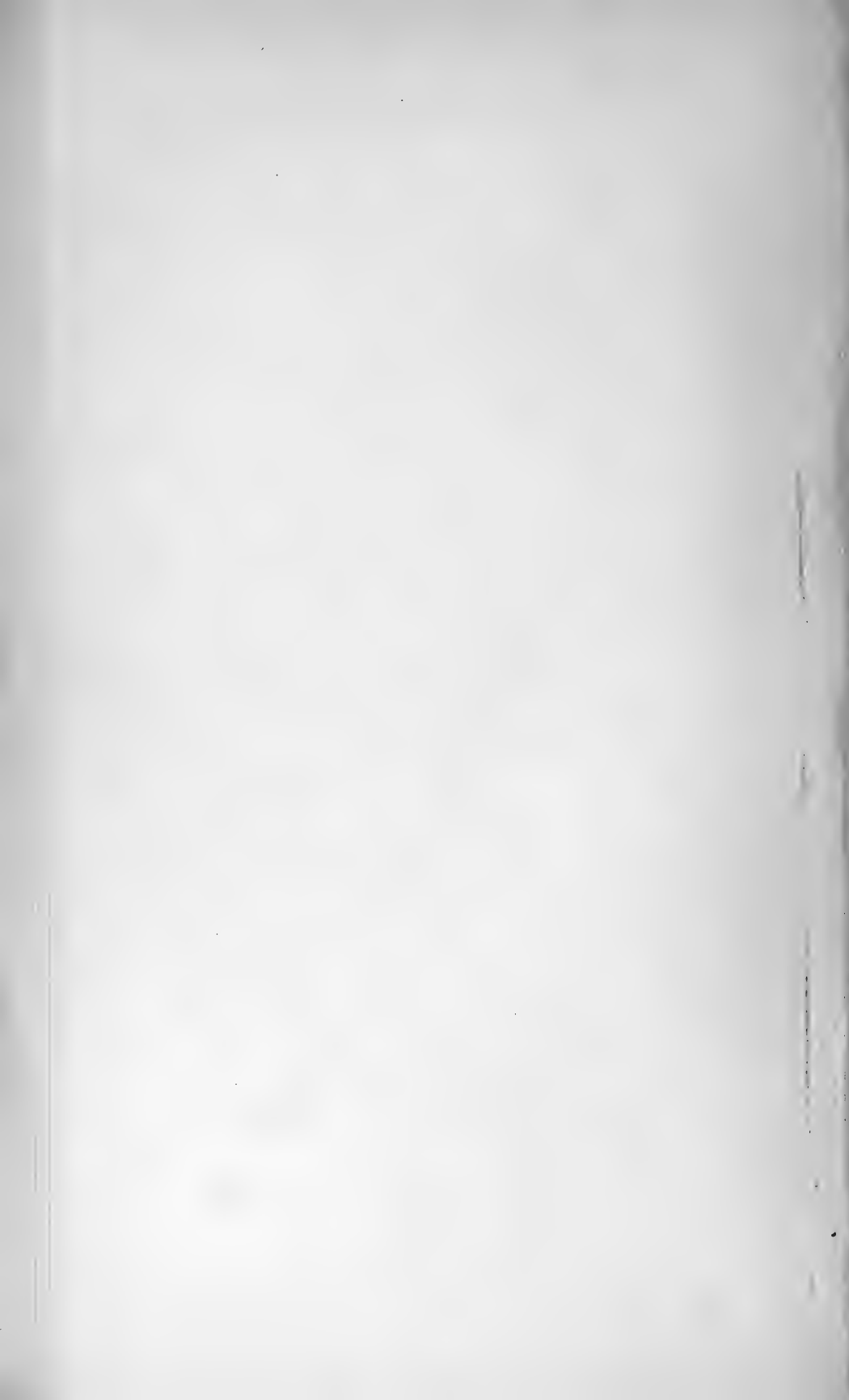


Fig. 1



Fig. 2 x 1100



Fig. 3 x 100



Fig. 4 x 1100

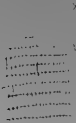


Fig. 5

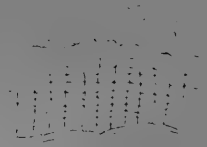


Fig. 6 x 500

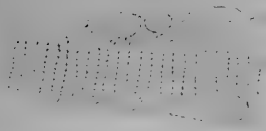


Fig. 8 x 1100



Fig. 9 x 300

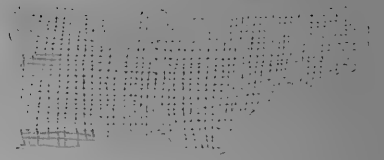


Fig. 7 x 1100

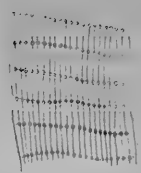


Fig. 10 x 1100



Fig. 11 x 1100

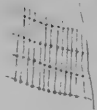


Fig. 16

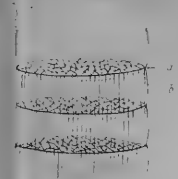


Fig. 17a x 250



Fig. 12 x 1100

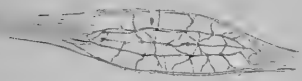


Fig. 13 x 1100

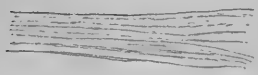


Fig. 14c x 1100



Fig. 14b x 1100



Fig. 15

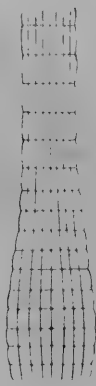


Fig. 17

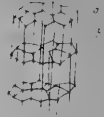


Fig. 18



Fig. 19

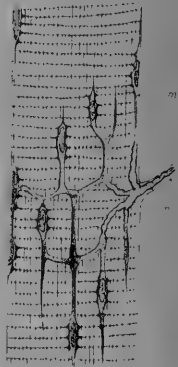






Fig. 1.

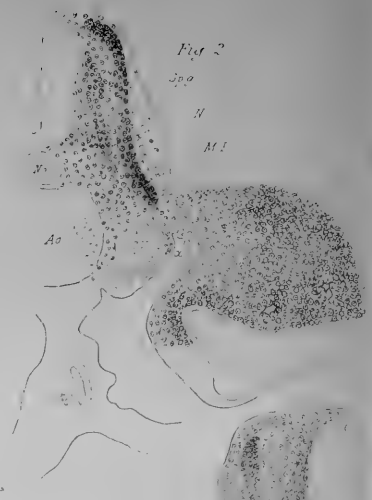


Fig. 2.

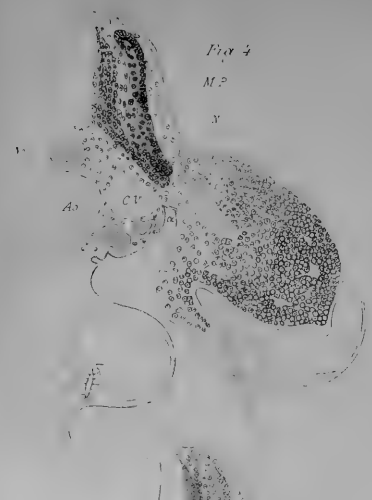


Fig. 4.

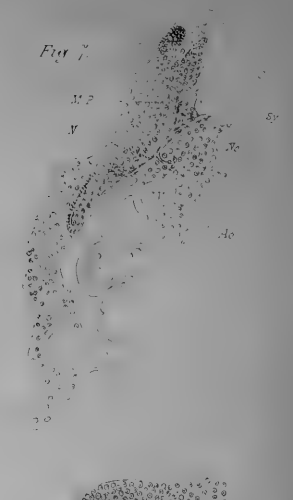


Fig. 7.

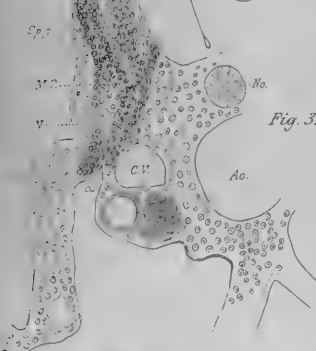


Fig. 3.



Fig. 5.



Fig. 6.

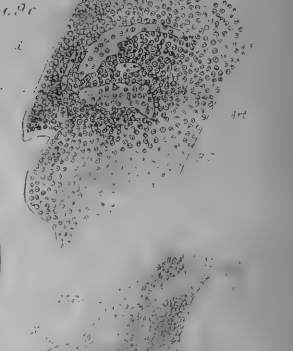


Fig. 9c.

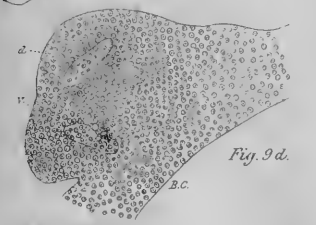


Fig. 9d.



Fig. 9b.

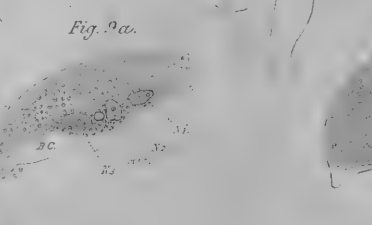
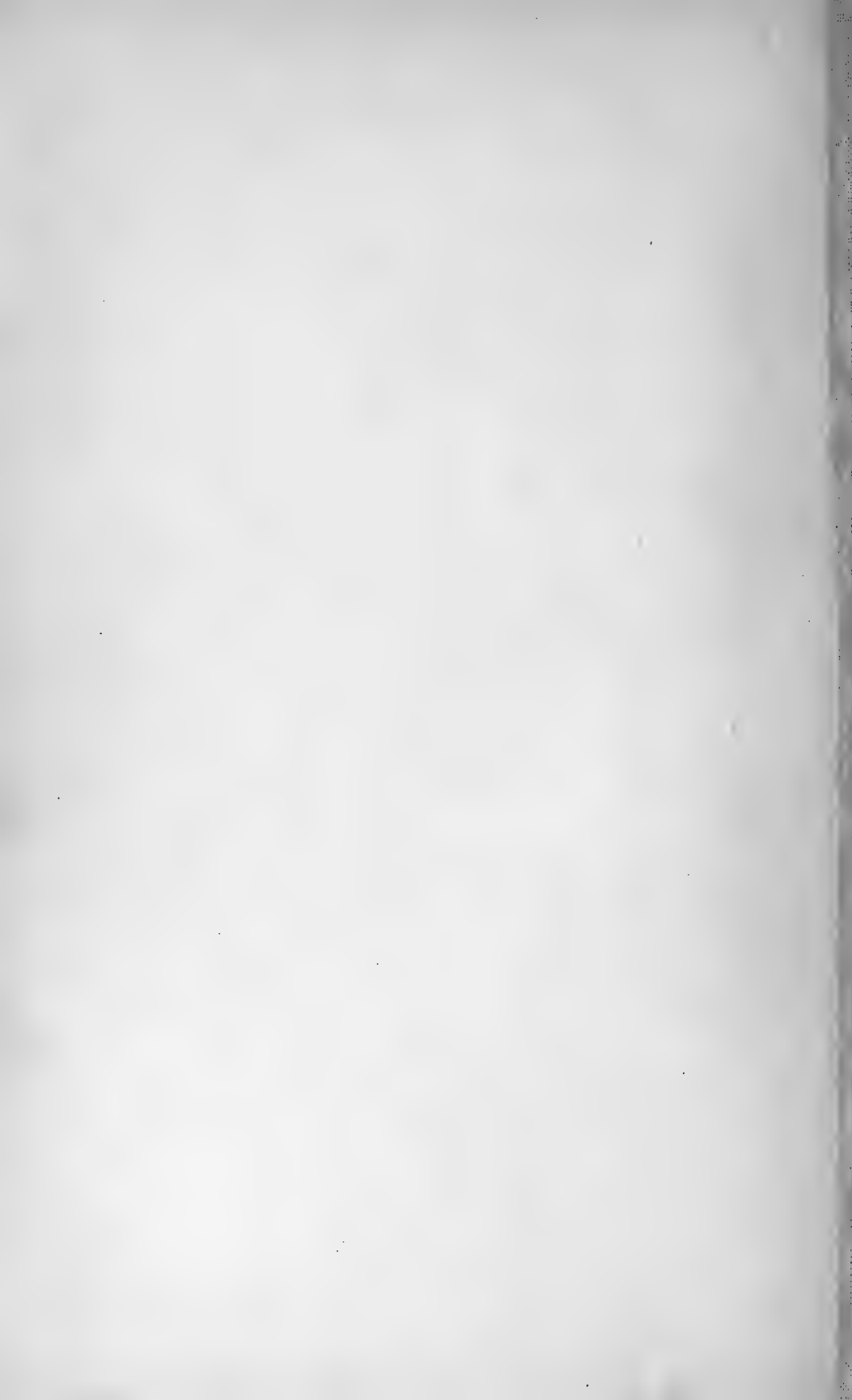


Fig. 9a.



Fig. 9.



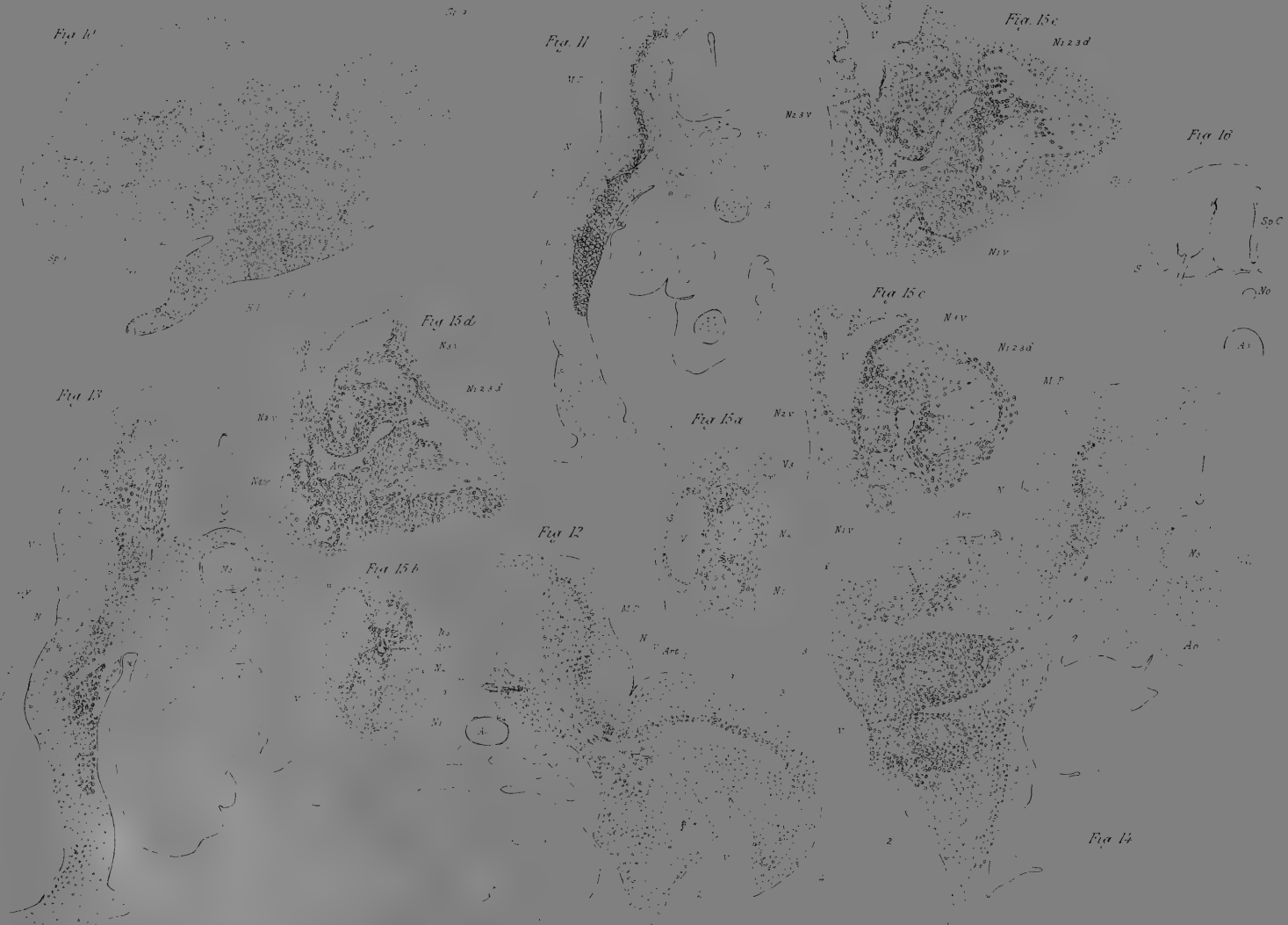




Fig 1

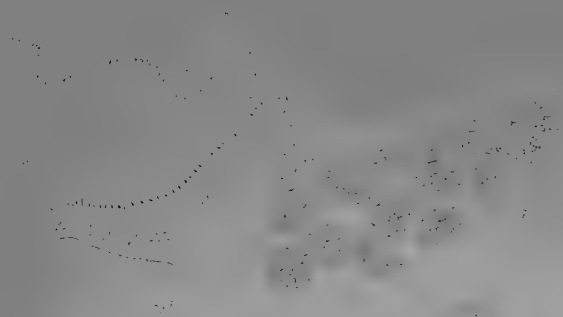


Fig 2



Fig 3

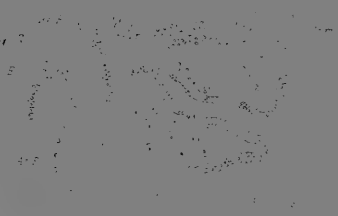


Fig 4

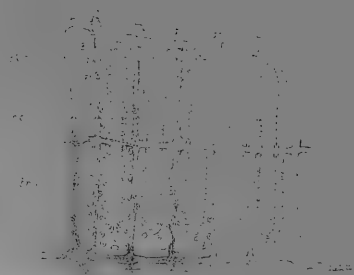


Fig 5



Fig 6

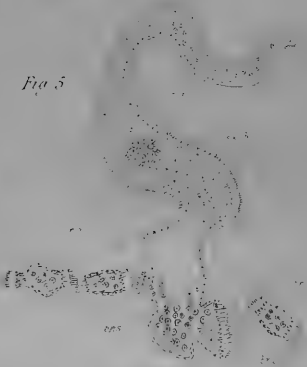


Fig 7

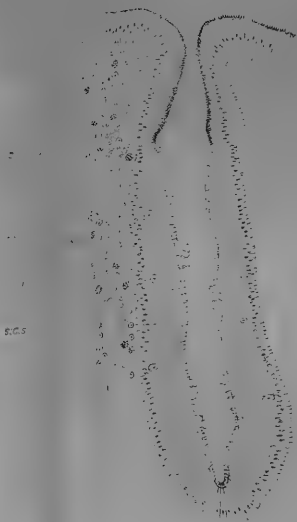


Fig 8

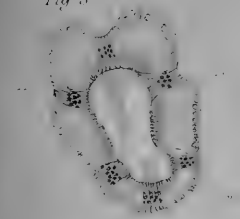


Fig 9

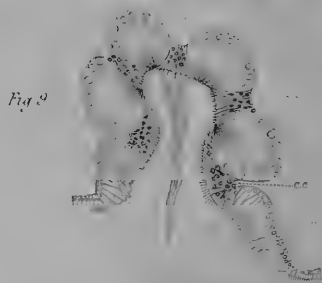
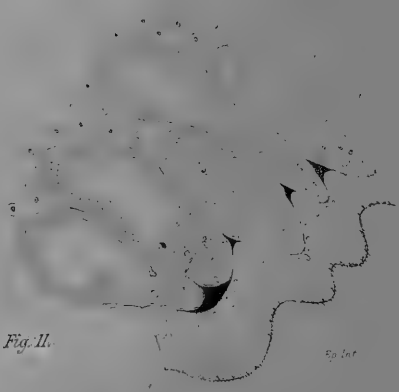


Fig 10



Fig. II.



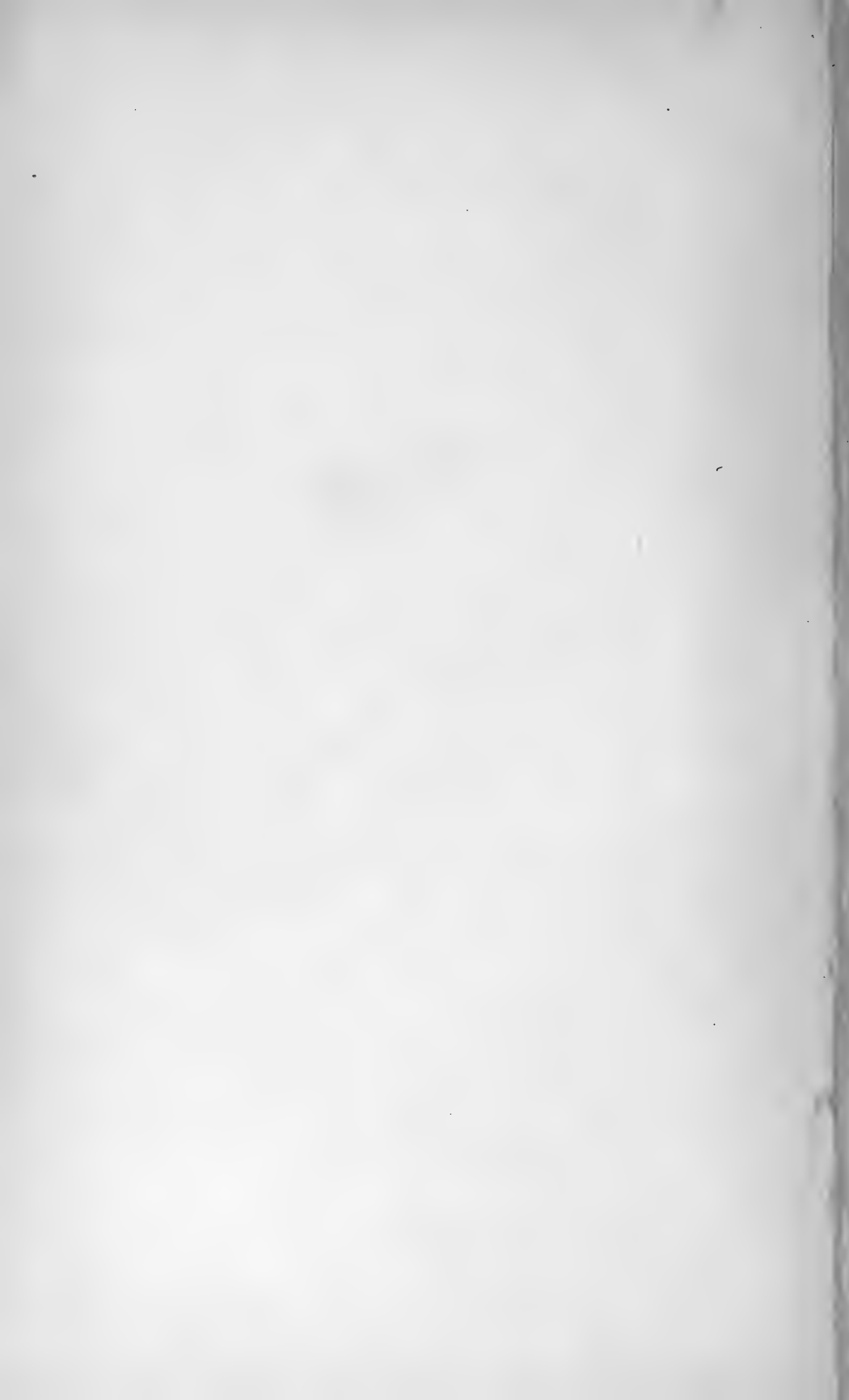


Fig. 12.

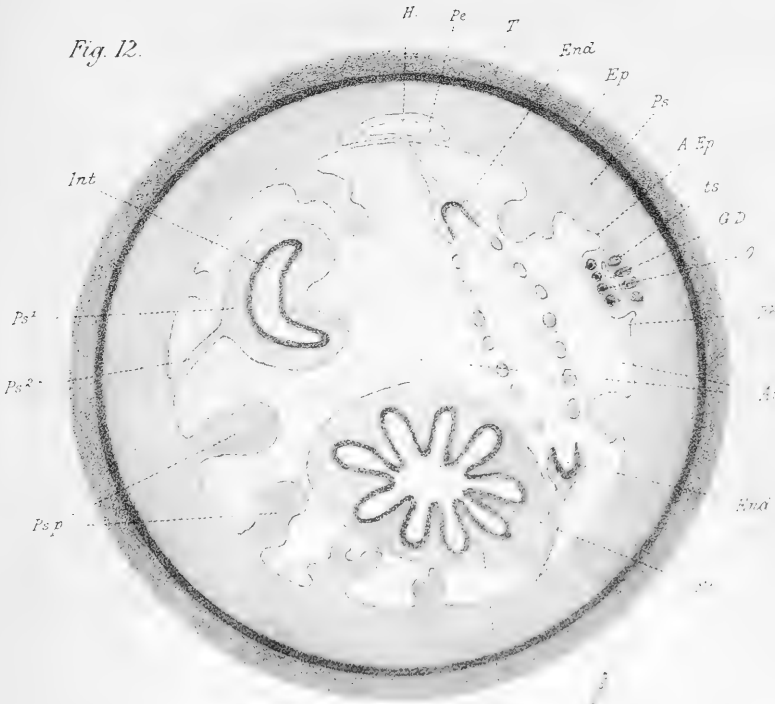


Fig. 13.

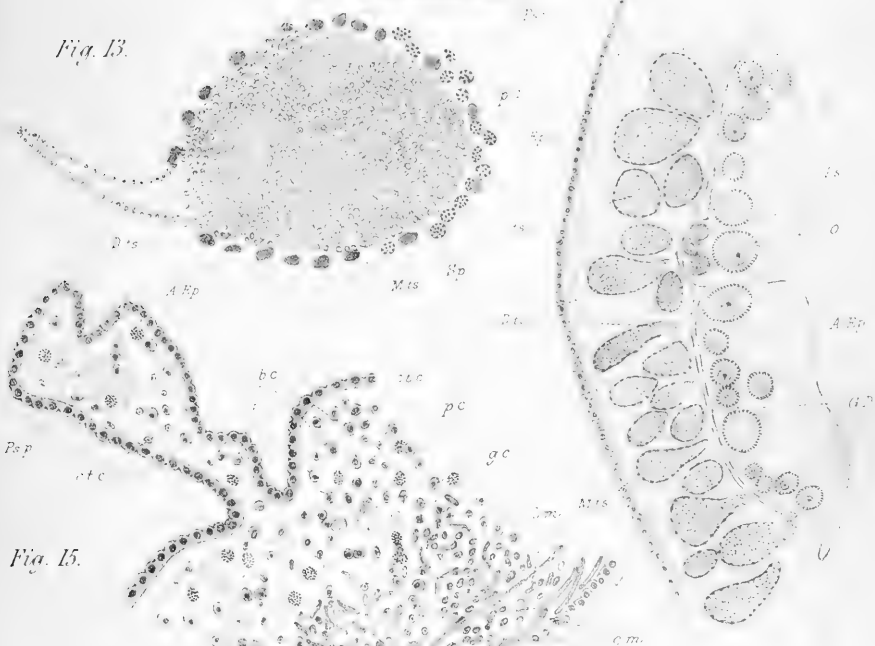


Fig. 15.



Fig. 14.





Fig. 1.

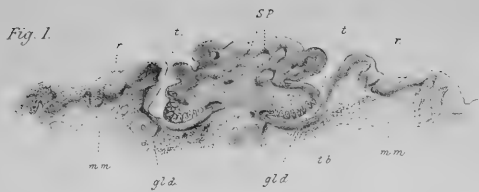


Fig. 2.



Fig. 3.

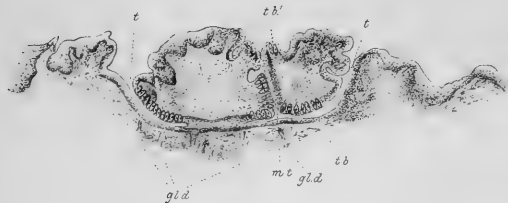


Fig. 4.



Fig. 5.

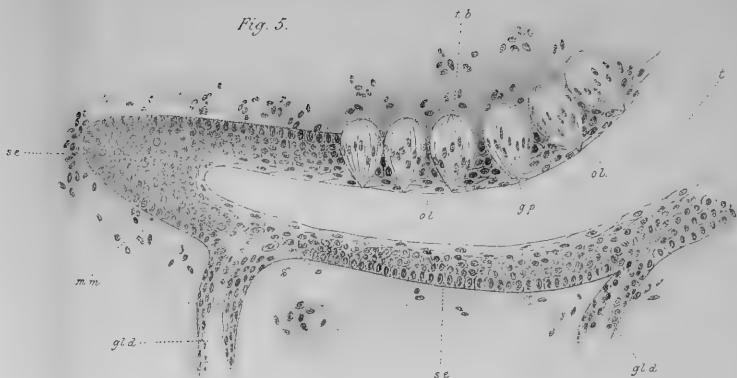


Fig. 6.



Fig. 7.

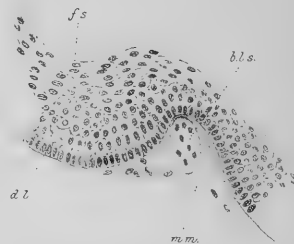




Fig. 1

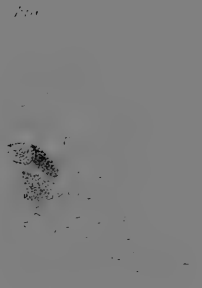


Fig. 2

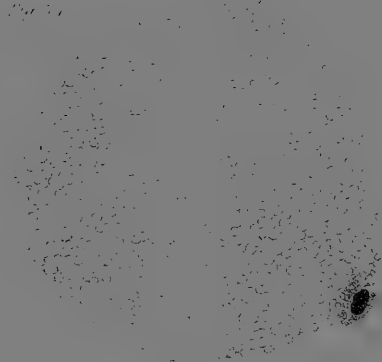


Fig. 3a

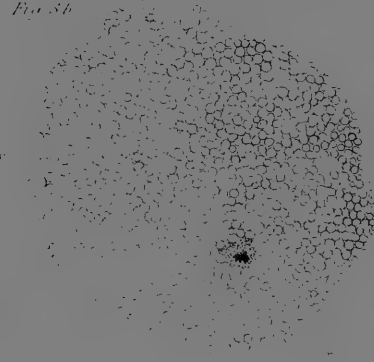


Fig. 3b

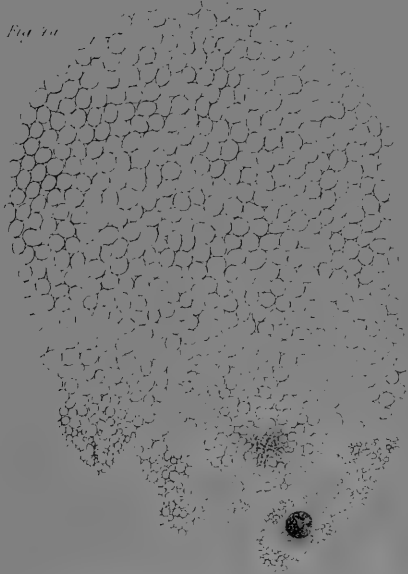


Fig. 4a

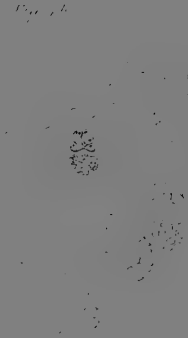


Fig. 4b

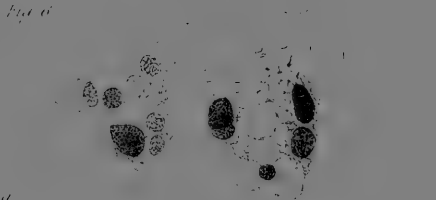


Fig. 5

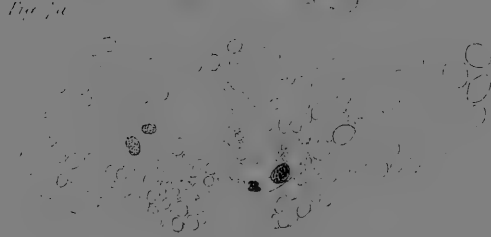


Fig. 6a

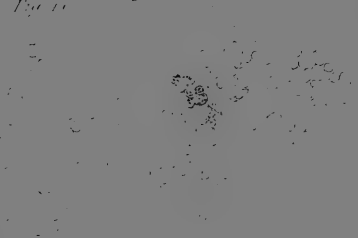


Fig. 6b

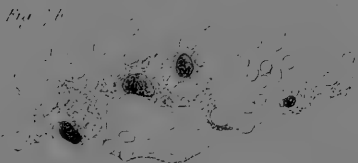


Fig. 7

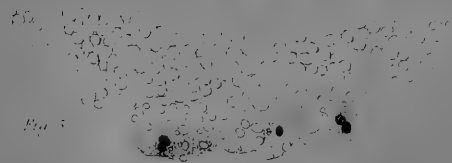


Fig. 8

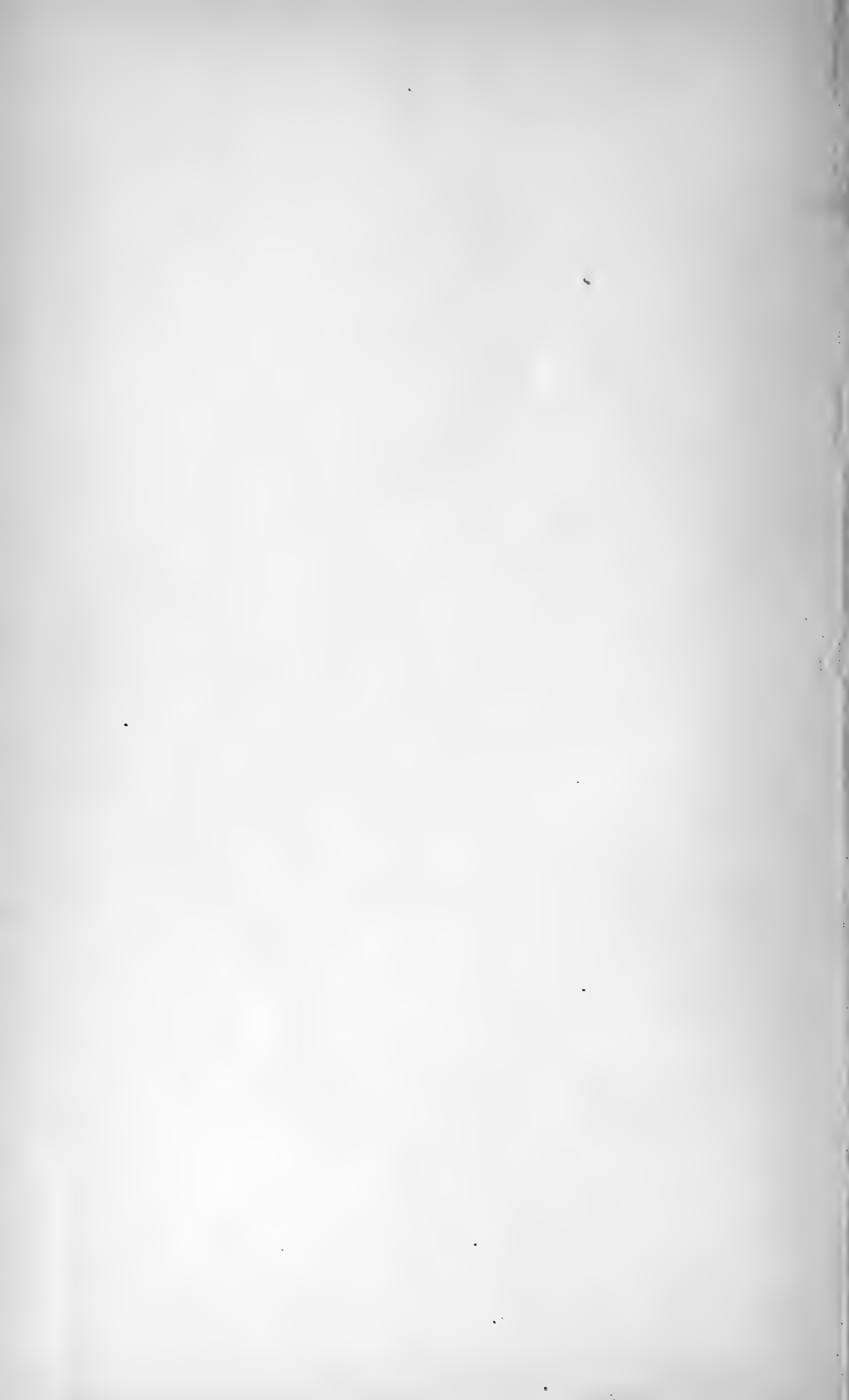


Fig. 8



Fig. 9

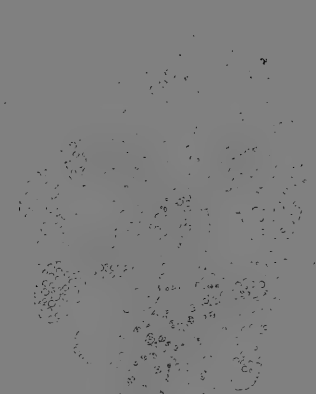


Fig. 10



Fig. 11

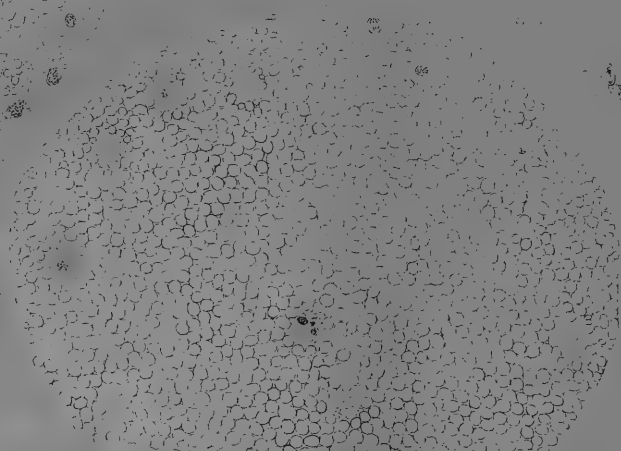


Fig. 12

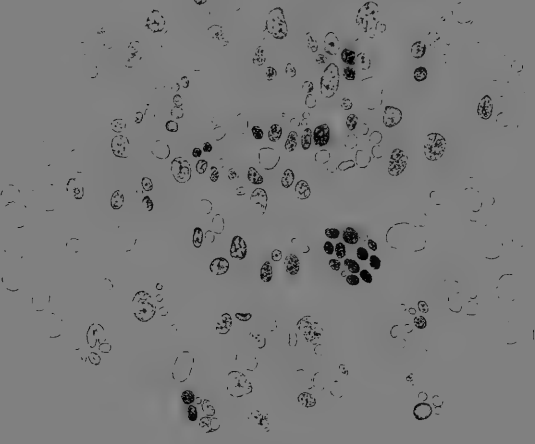


Fig. 13

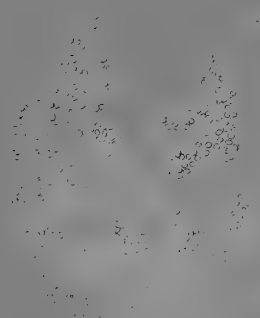


Fig. 14

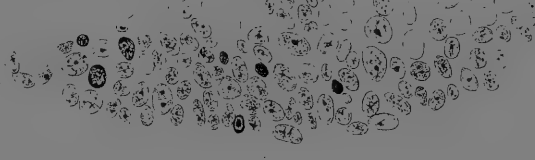
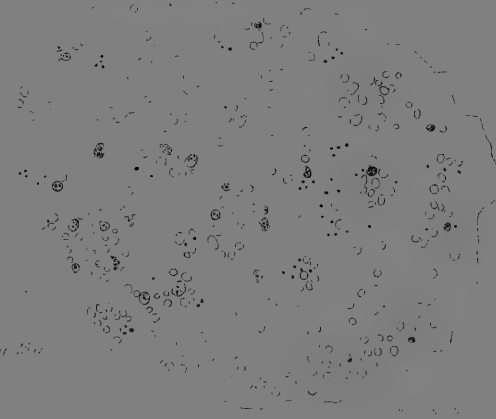


Fig. 15



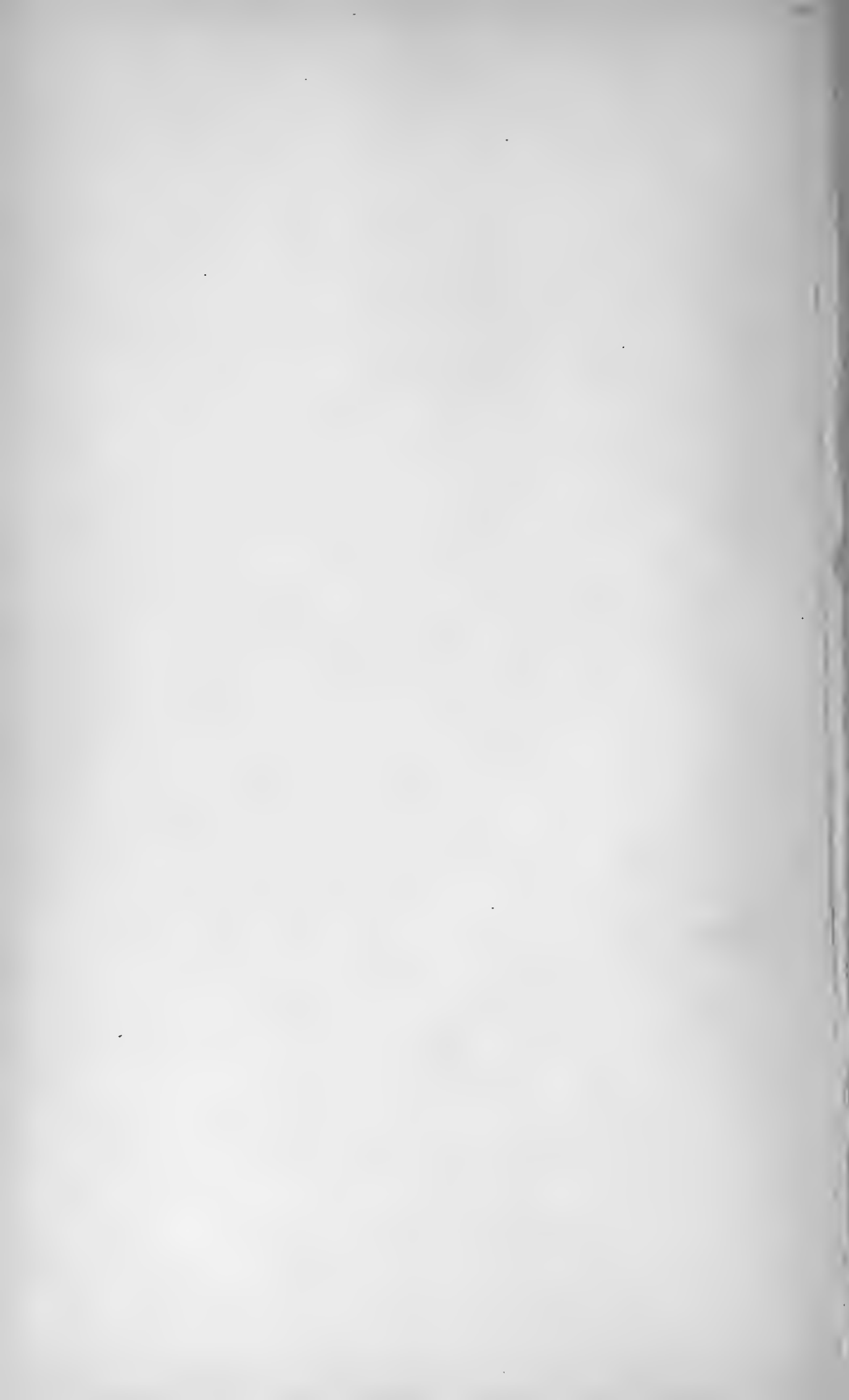


Fig. 15 b

Fig. 15 c

Fig. 16

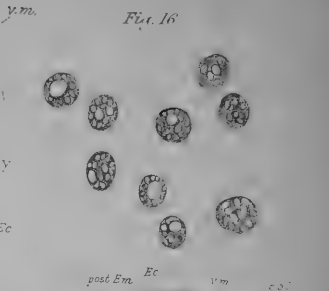
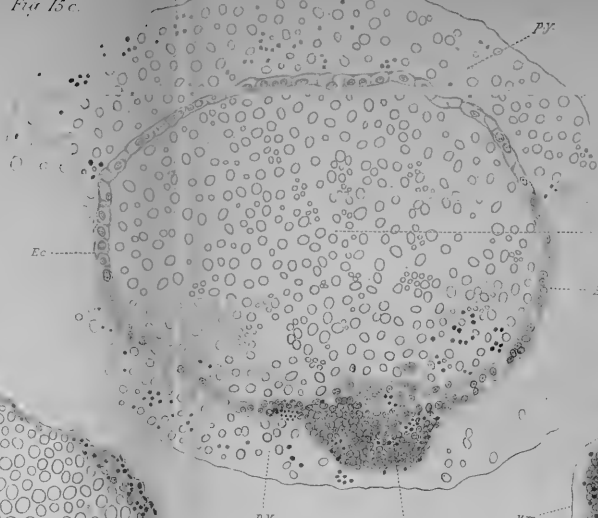
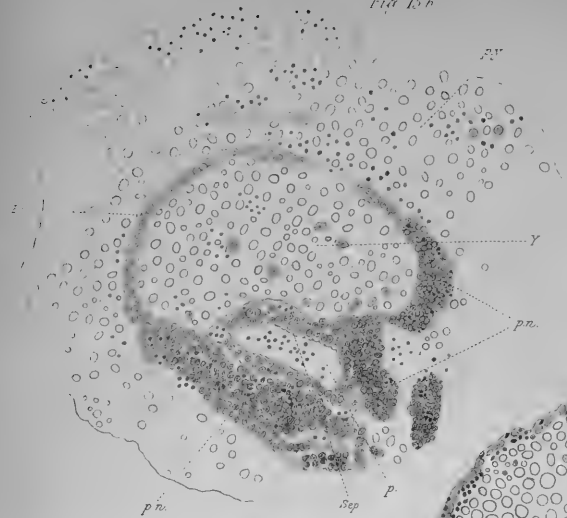


Fig. 17 b

Fig. 17 a

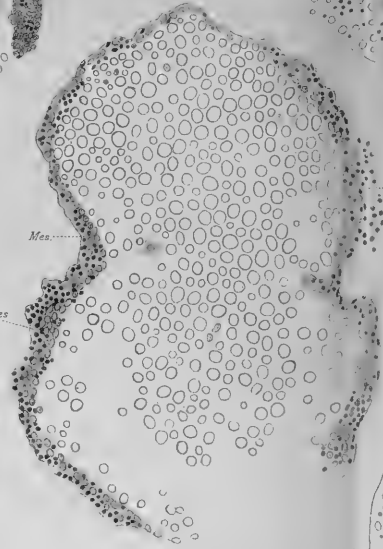
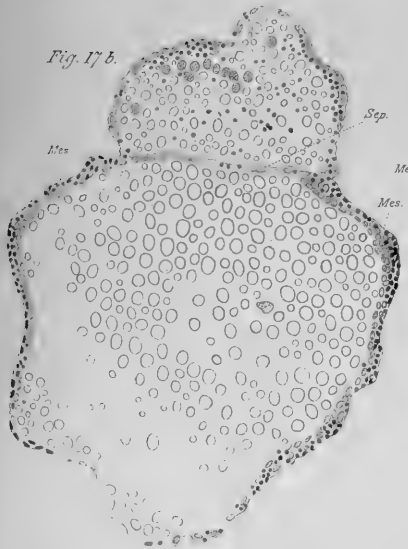


Fig. 17 c

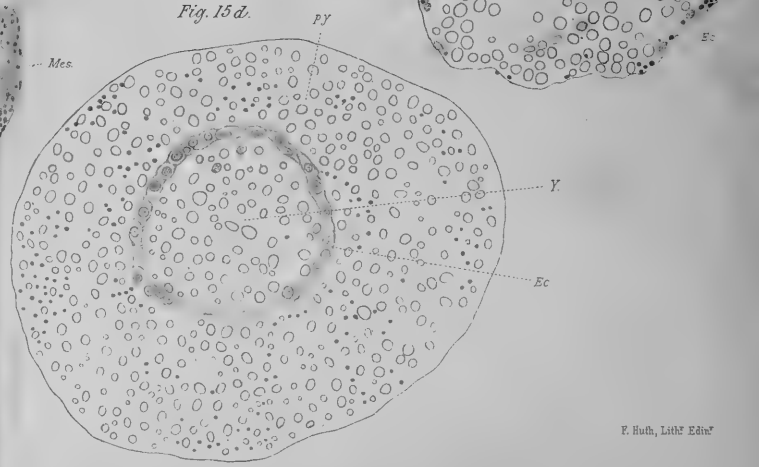


Fig. 15 d

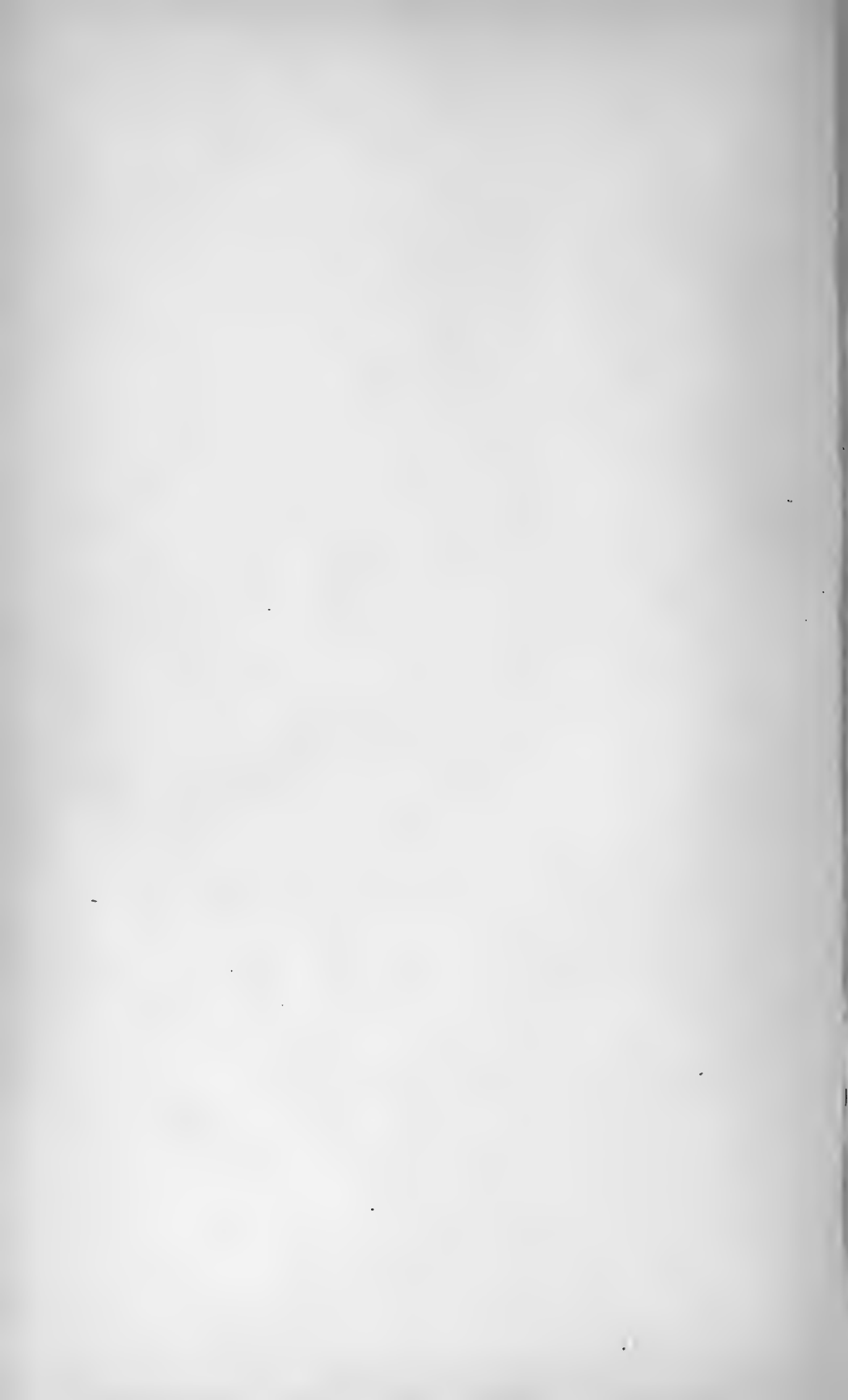


Fig. 18a

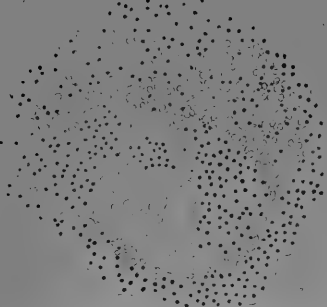


Fig. 18b

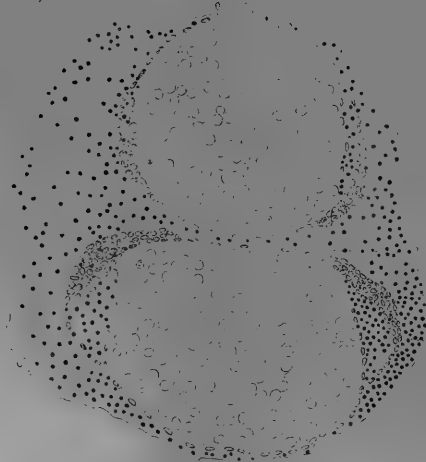


Fig. 18c

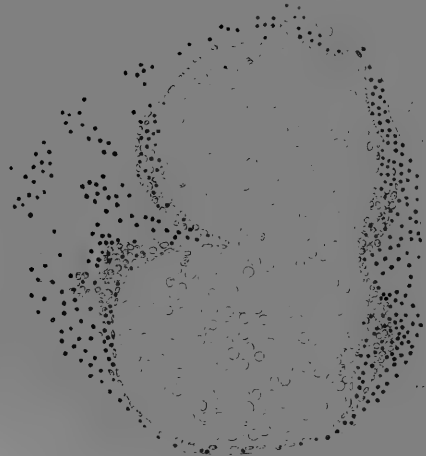


Fig. 19a

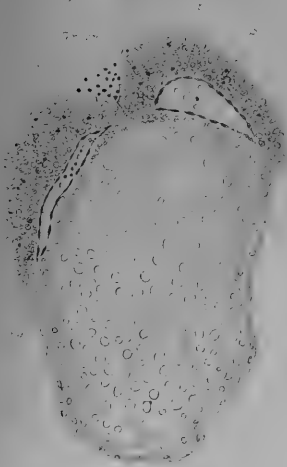


Fig. 19b

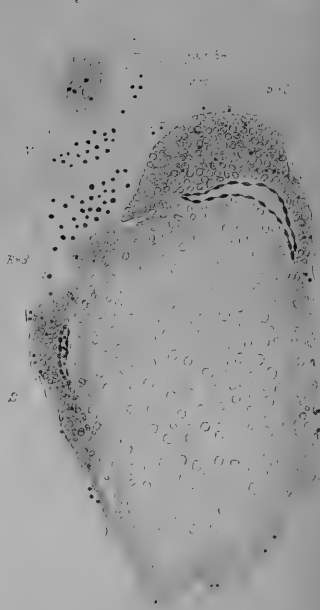


Fig. 19c

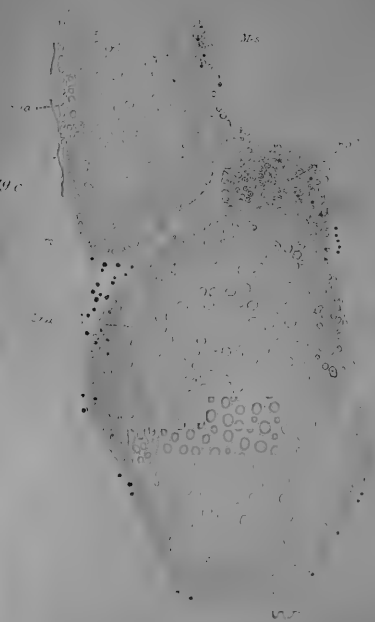


Fig. 19d

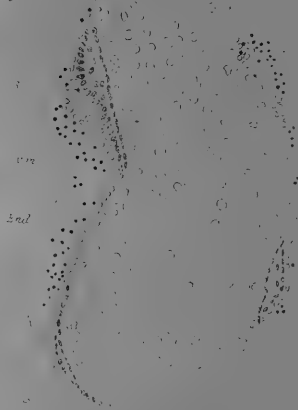




Fig. 20

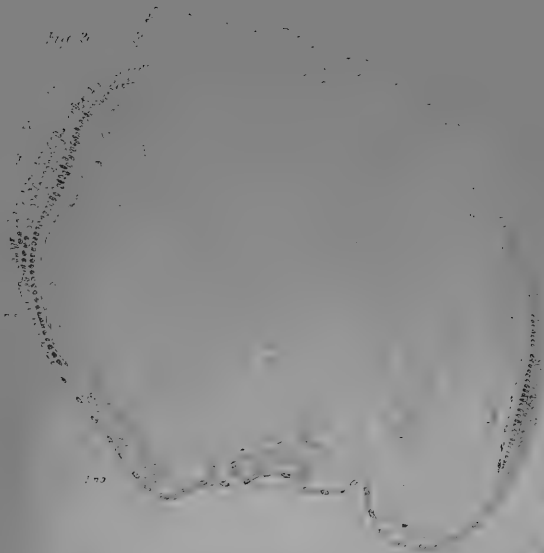


Fig. 21a

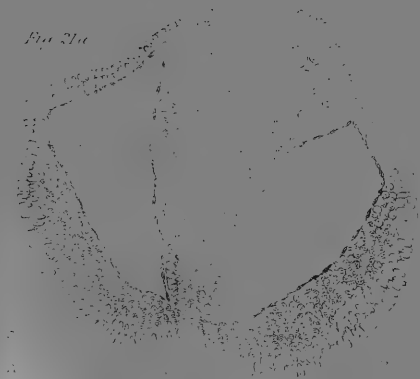


Fig. 23

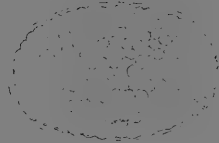


Fig. 24

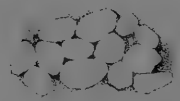


Fig. 22



Fig. 21b

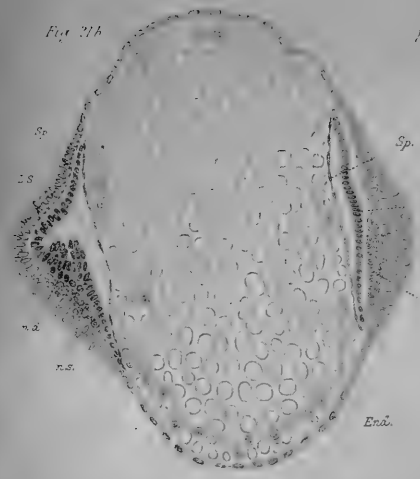


Fig. 21c

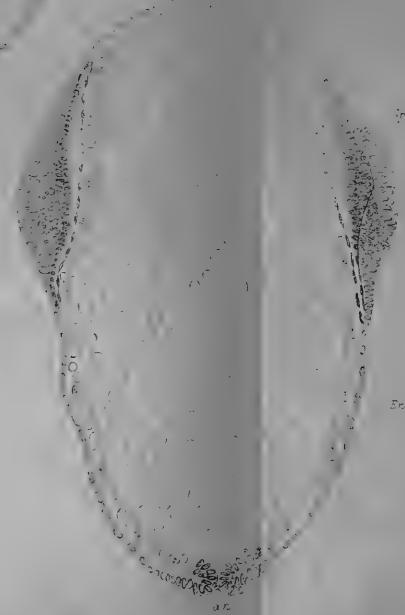


Fig. 26

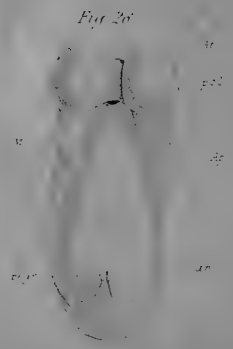
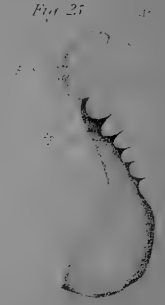


Fig. 25



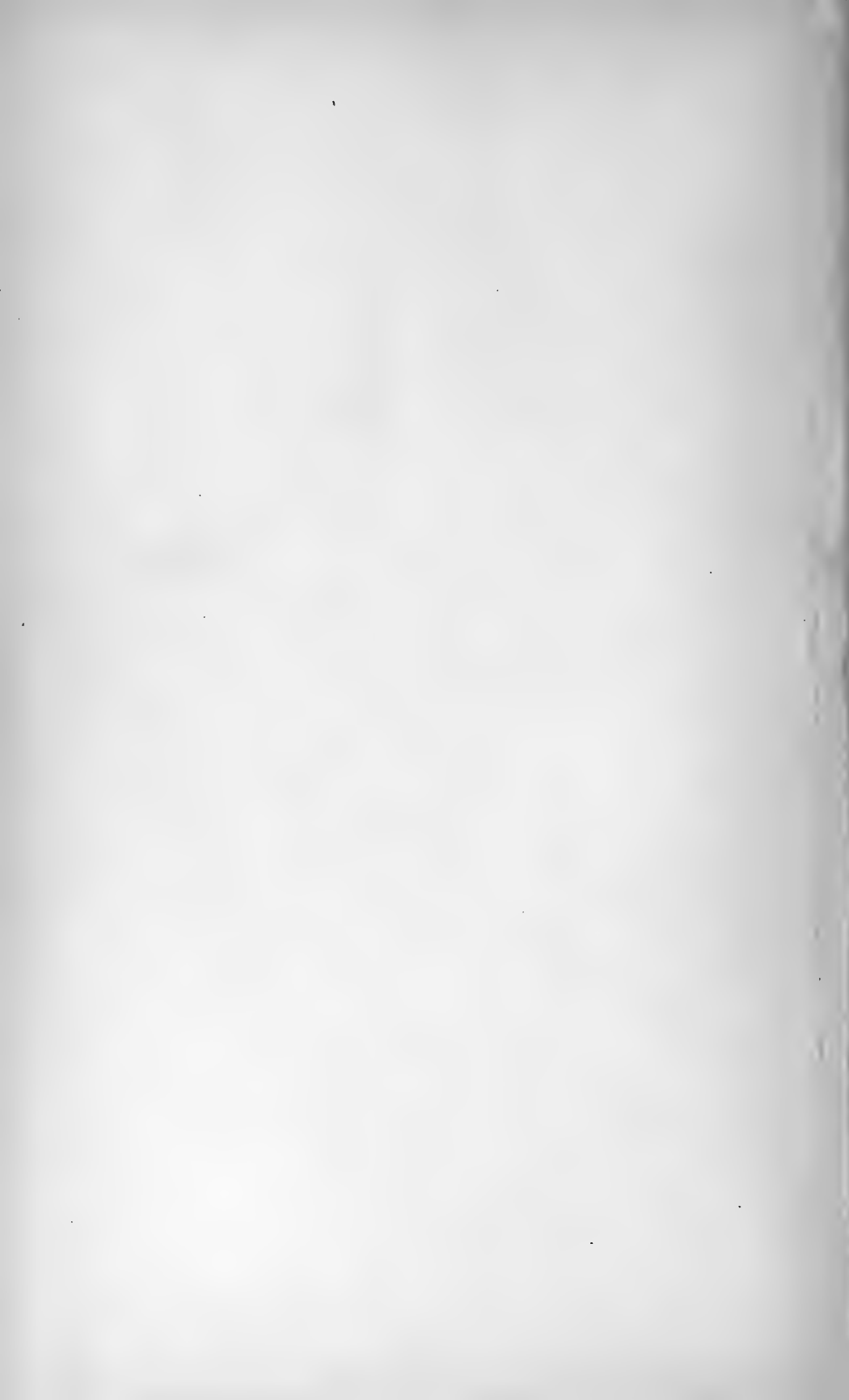




Fig. 1.

Fig. 3.

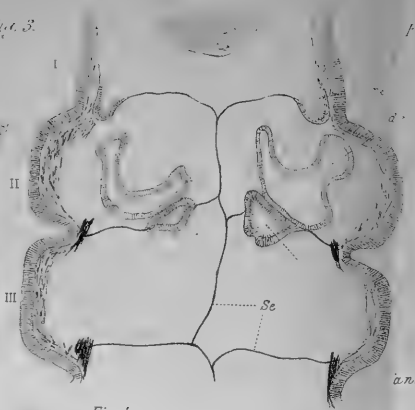


Fig. 5.



Fig. 7.



Fig. 4.



Fig. 9.

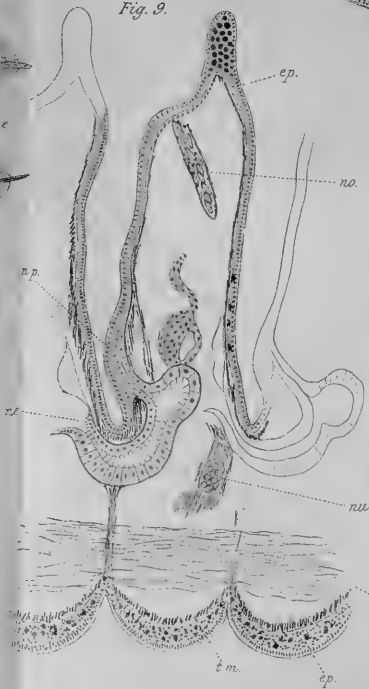


Fig. 8.



Fig. 2.

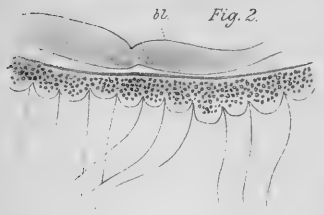
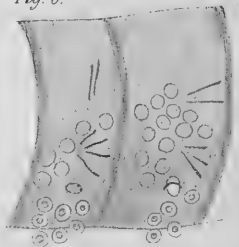


Fig. 6.





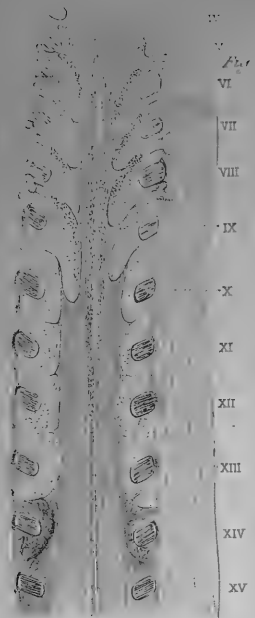


Fig. 10

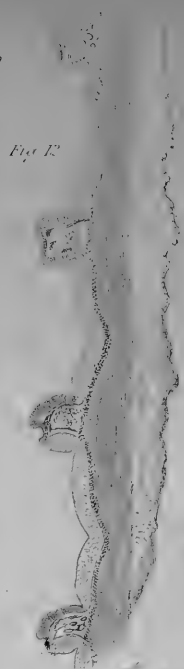


Fig. 11

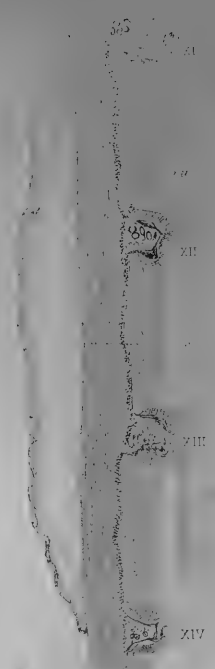


Fig. 12



Fig. 13

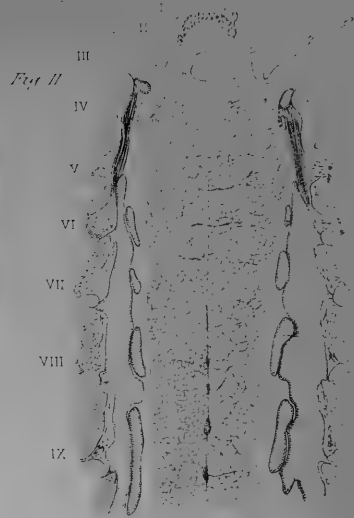


Fig. 14

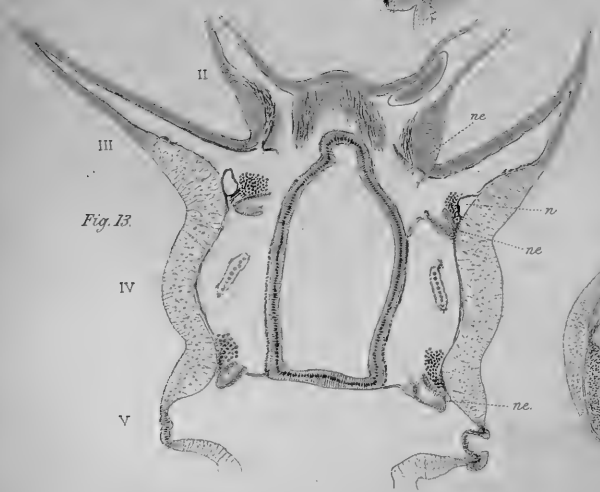
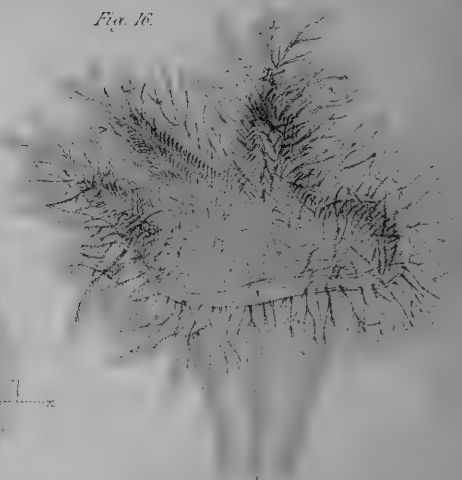


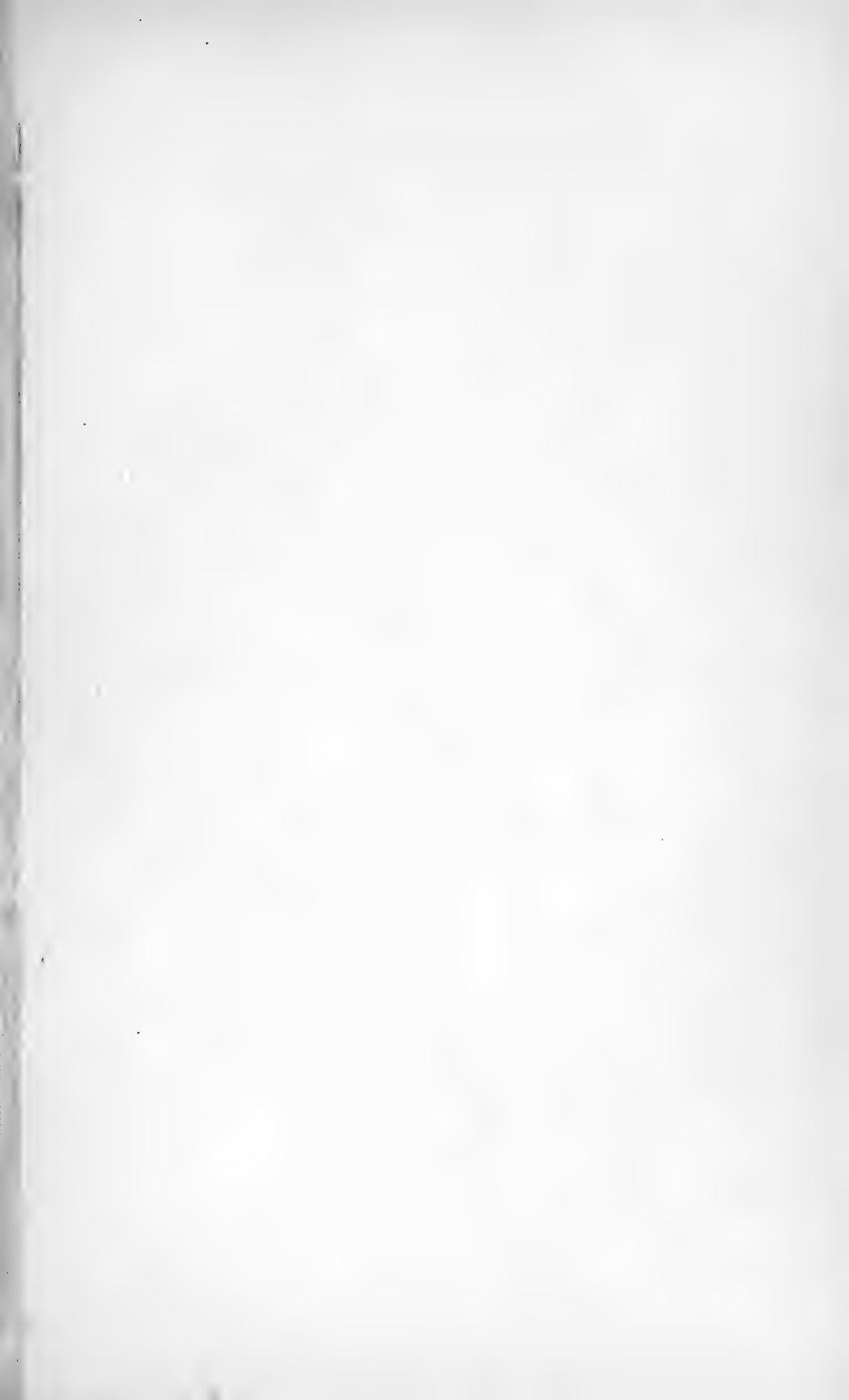
Fig. 15

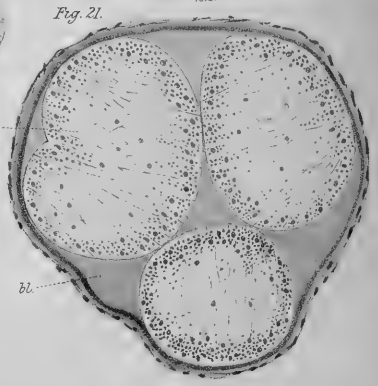
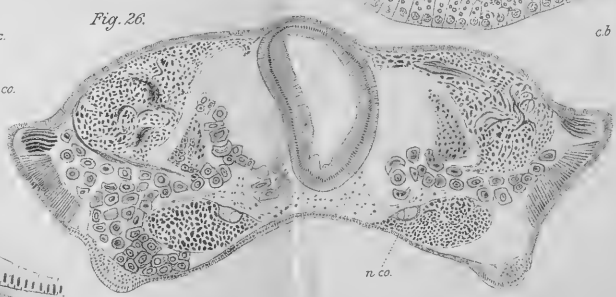
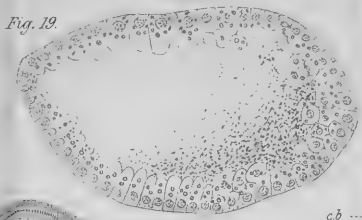
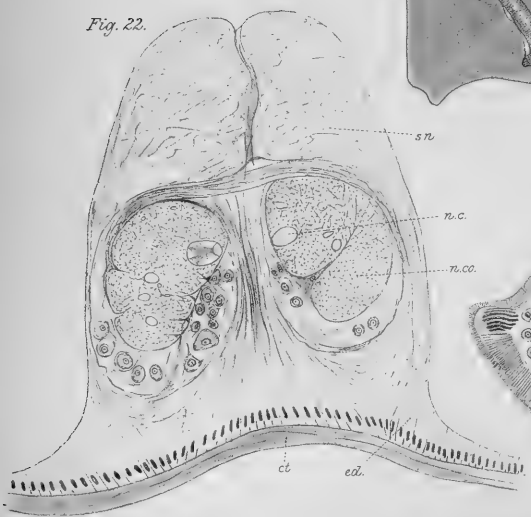
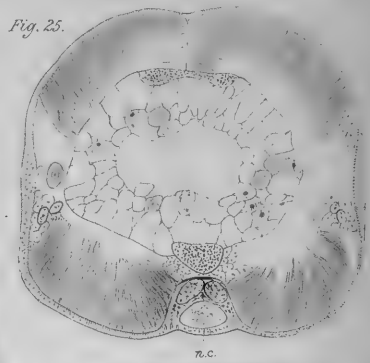
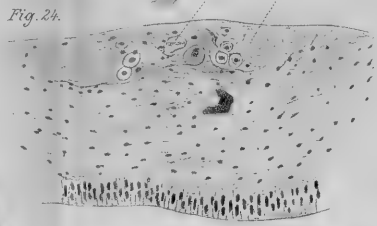
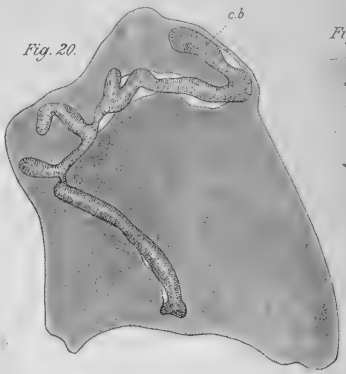
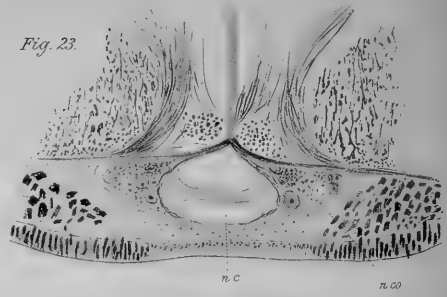
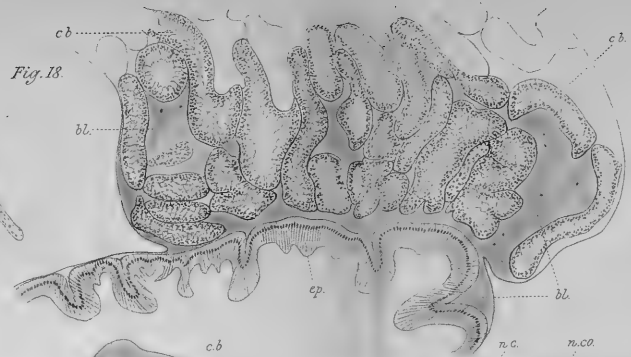
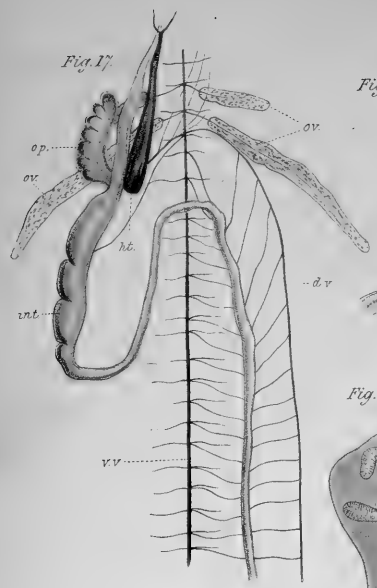


Fig. 16









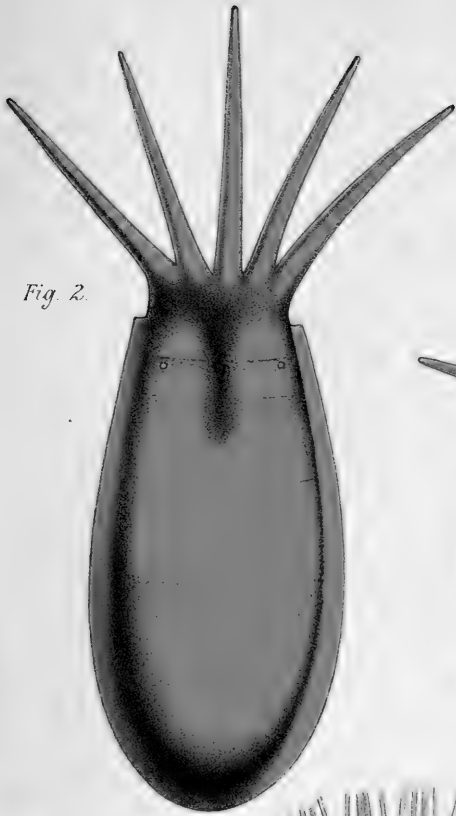


Fig. 2.



Fig. 1.

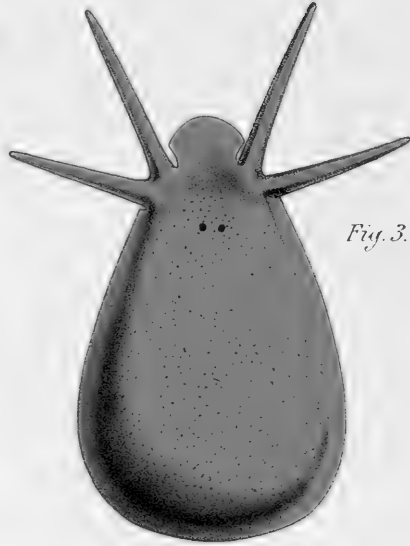


Fig. 3.



Fig. 4.

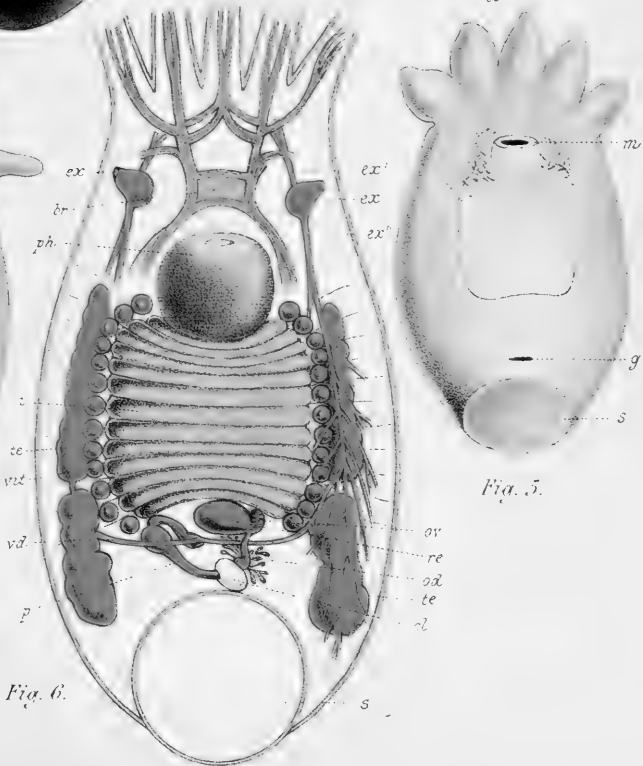


Fig. 5.



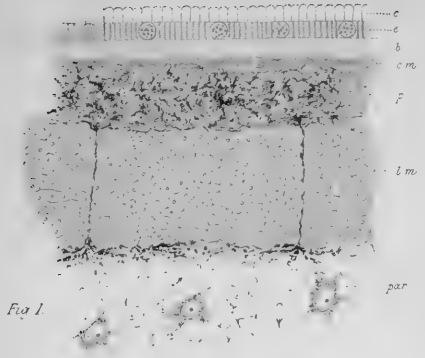


Fig. 1

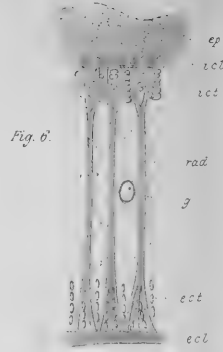


Fig. 6.



Fig. 10.



Fig. 11

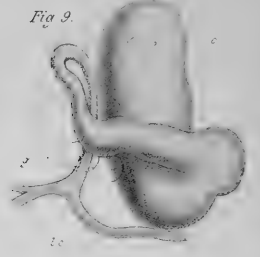


Fig. 9.

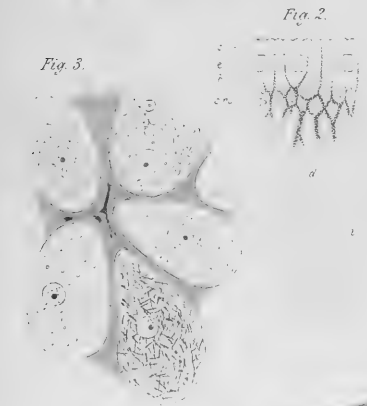


Fig. 3.

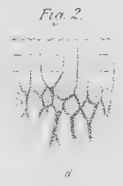


Fig. 2.

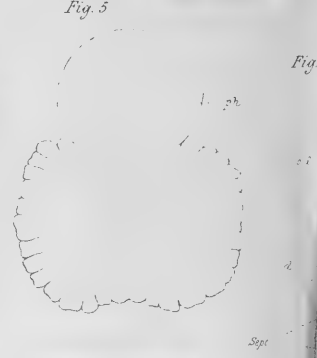


Fig. 5.

Fig. 8.



Fig. 7.

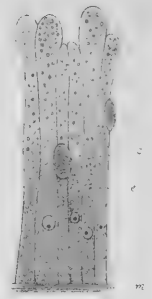


Fig. 12

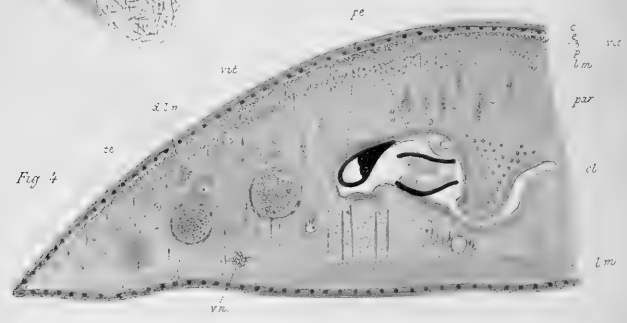
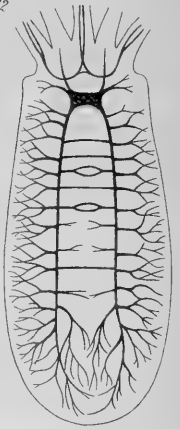


Fig. 4

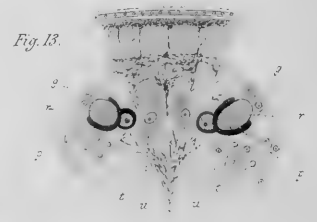
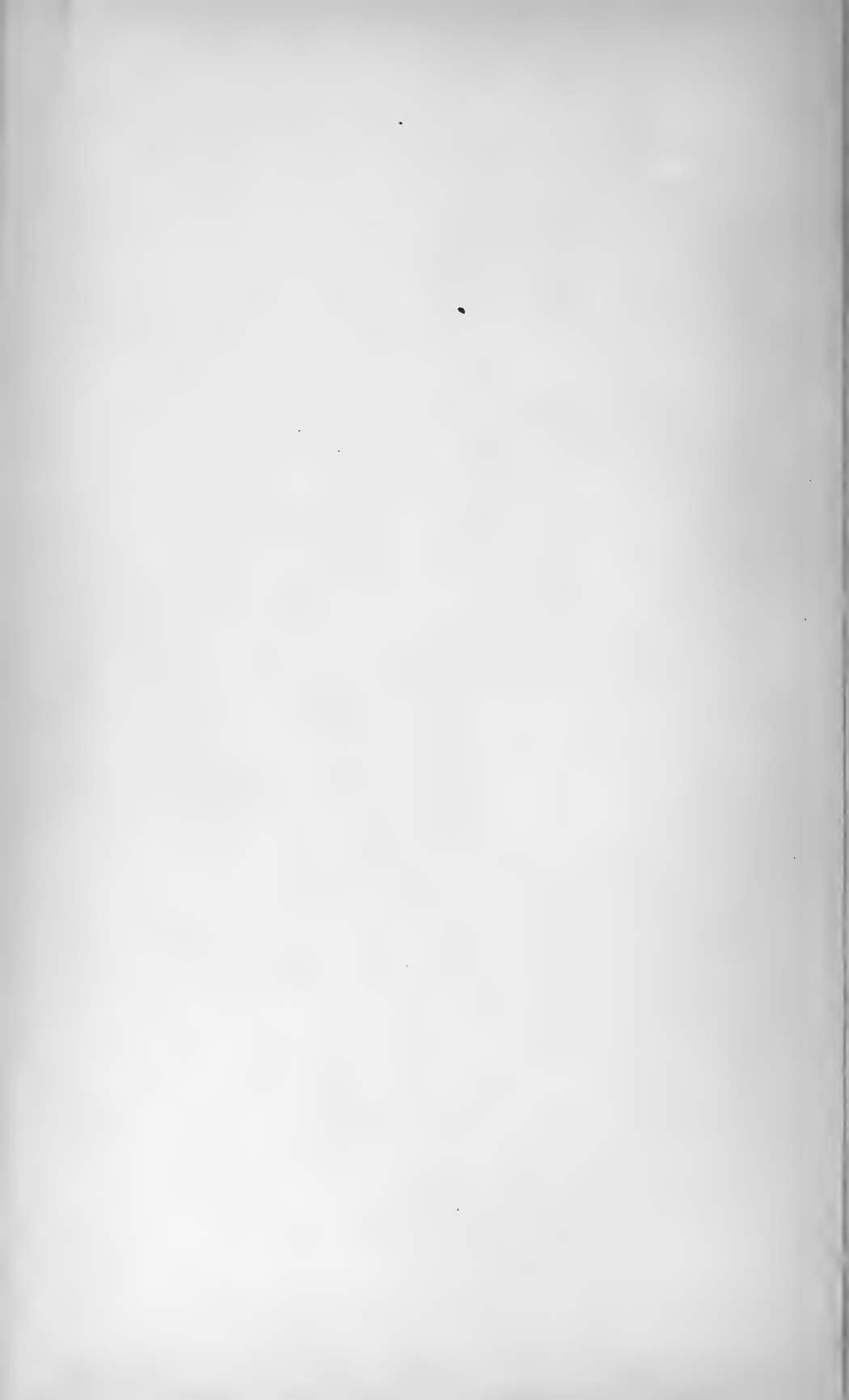


Fig. 13.



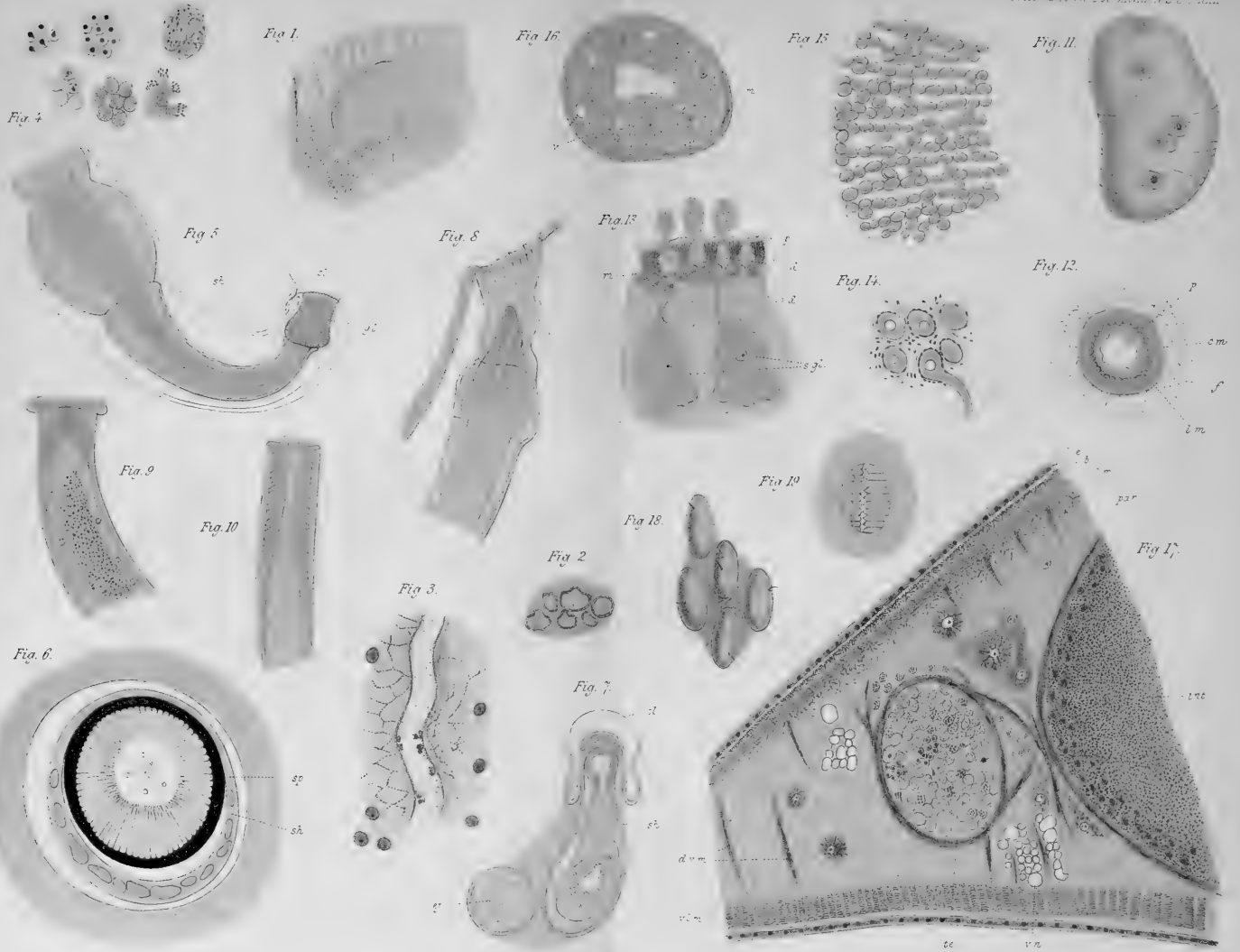


Fig. 6.

Fig. 4.

Fig. 5.

Fig. 9.

Fig. 10.

Fig. 1.

Fig. 3.

Fig. 8.

Fig. 2.

Fig. 7.

Fig. 16.

Fig. 18.

Fig. 13.

Fig. 15.

Fig. 19.

Fig. 11.

Fig. 12.

Fig. 14.

Fig. 17.

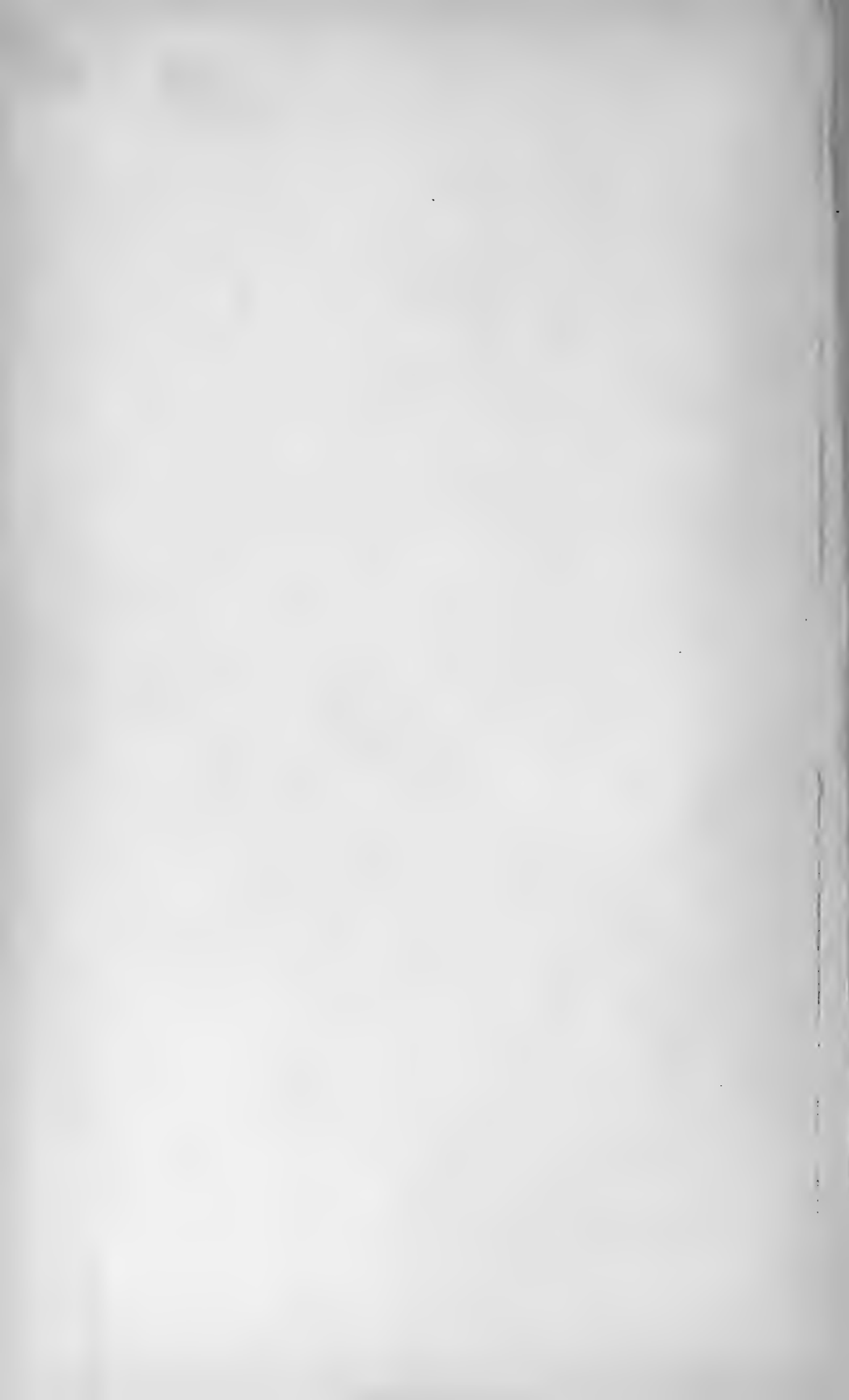




Fig. 1

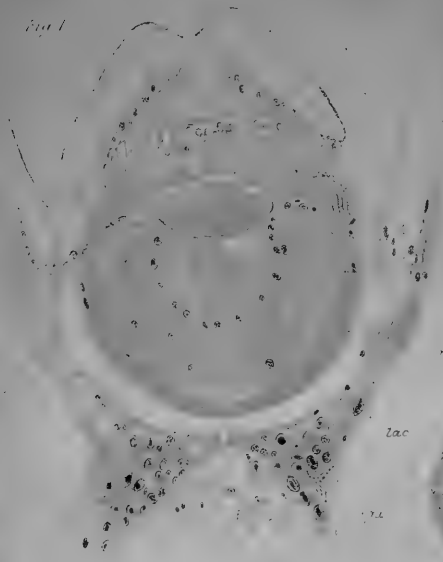


Fig. 4

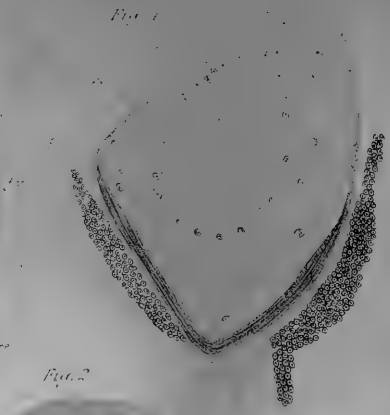
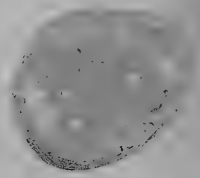


Fig. 3



Fig. 2



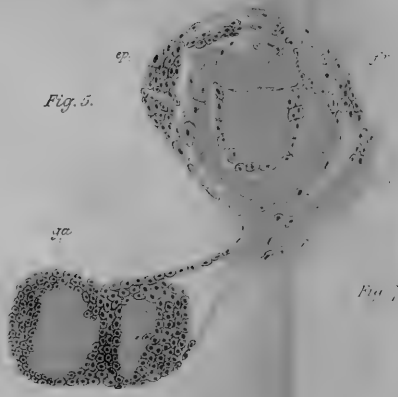
lac

ca

Fig. 6

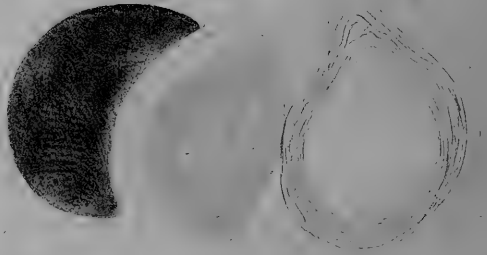


Fig. 5



ca

Fig. 7



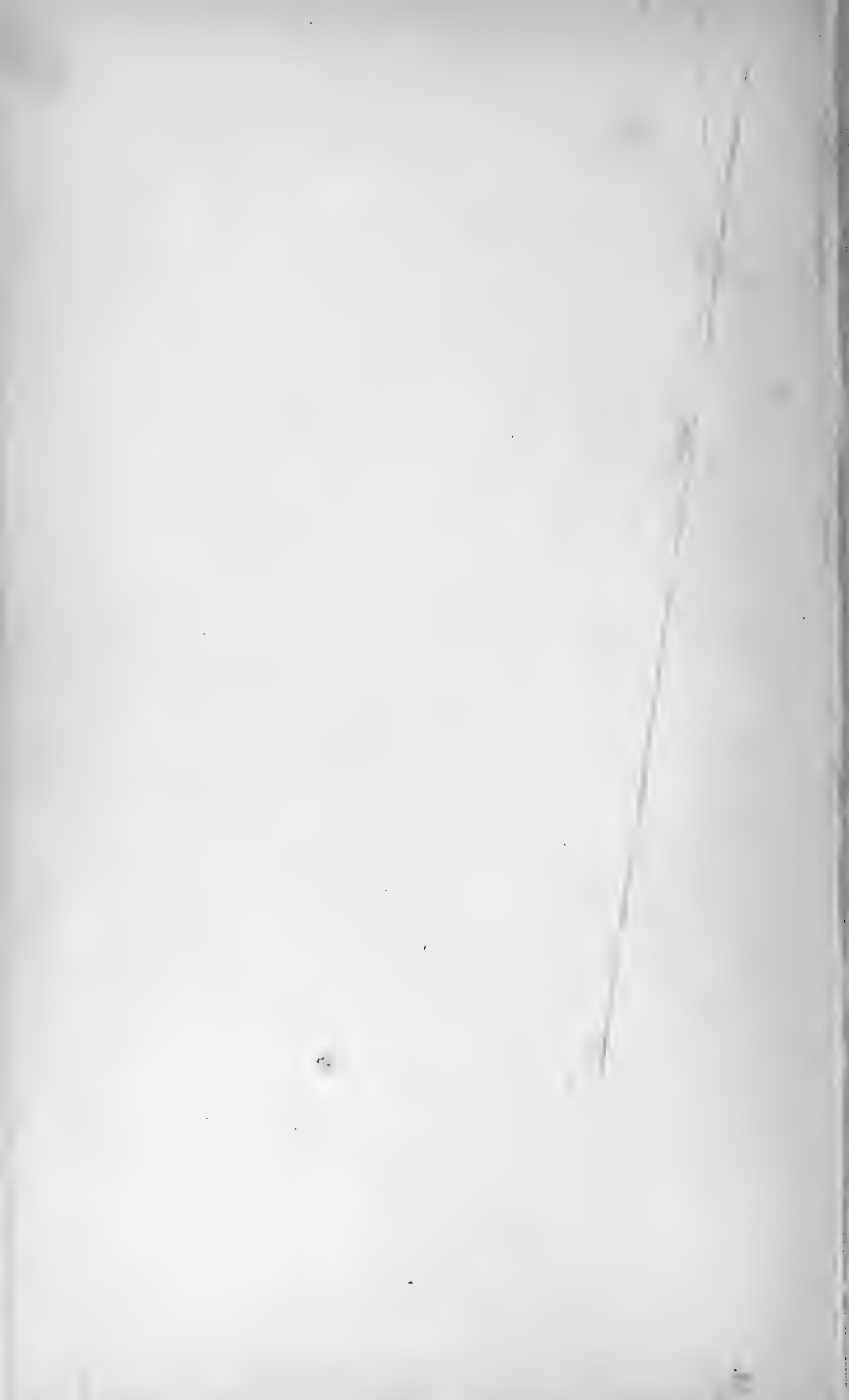






Fig. 1.

Fig. 2.

Fig. 3.

Fig. 4.

Fig. 7.

Fig. 6.

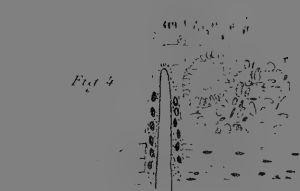
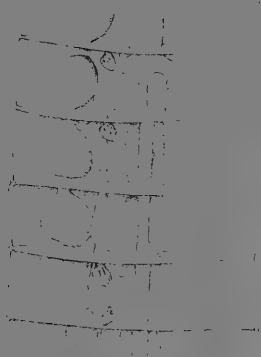


Fig. 5.

Fig. 11.

Fig. 10.

Fig. 3a.

Fig. 8.

Fig. 9.

Fig. 12.

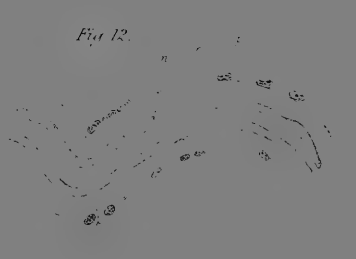
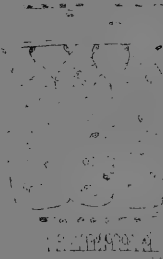
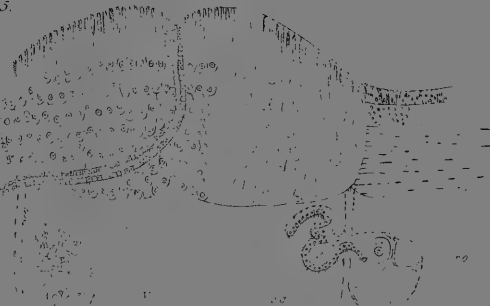
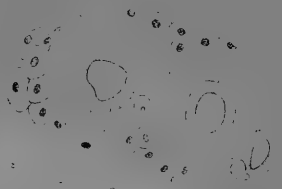




Fig. 2

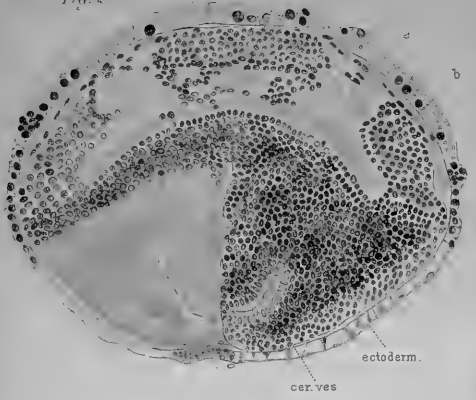


Fig. 1

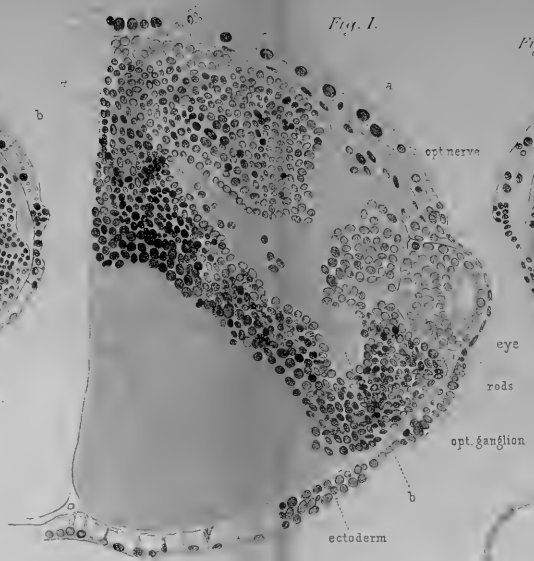


Fig. 3



Fig. 4

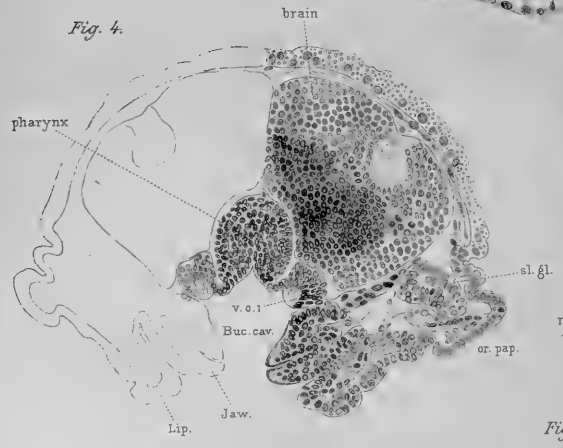


Fig. 5





Fig. 8.



Fig. 9.



Fig. 12.

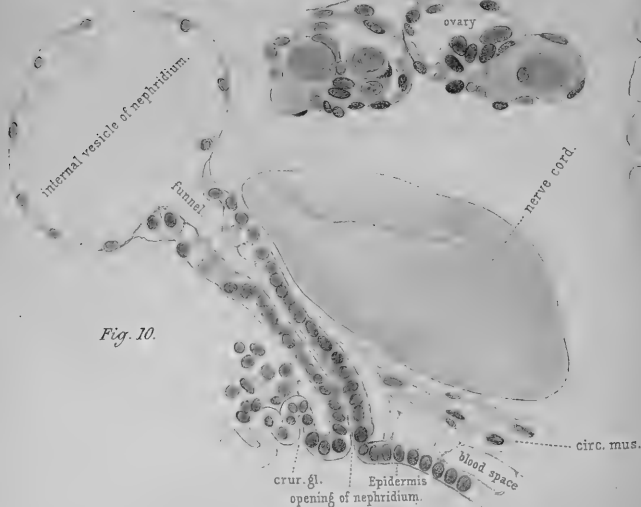


Fig. 10.



Fig. 11.



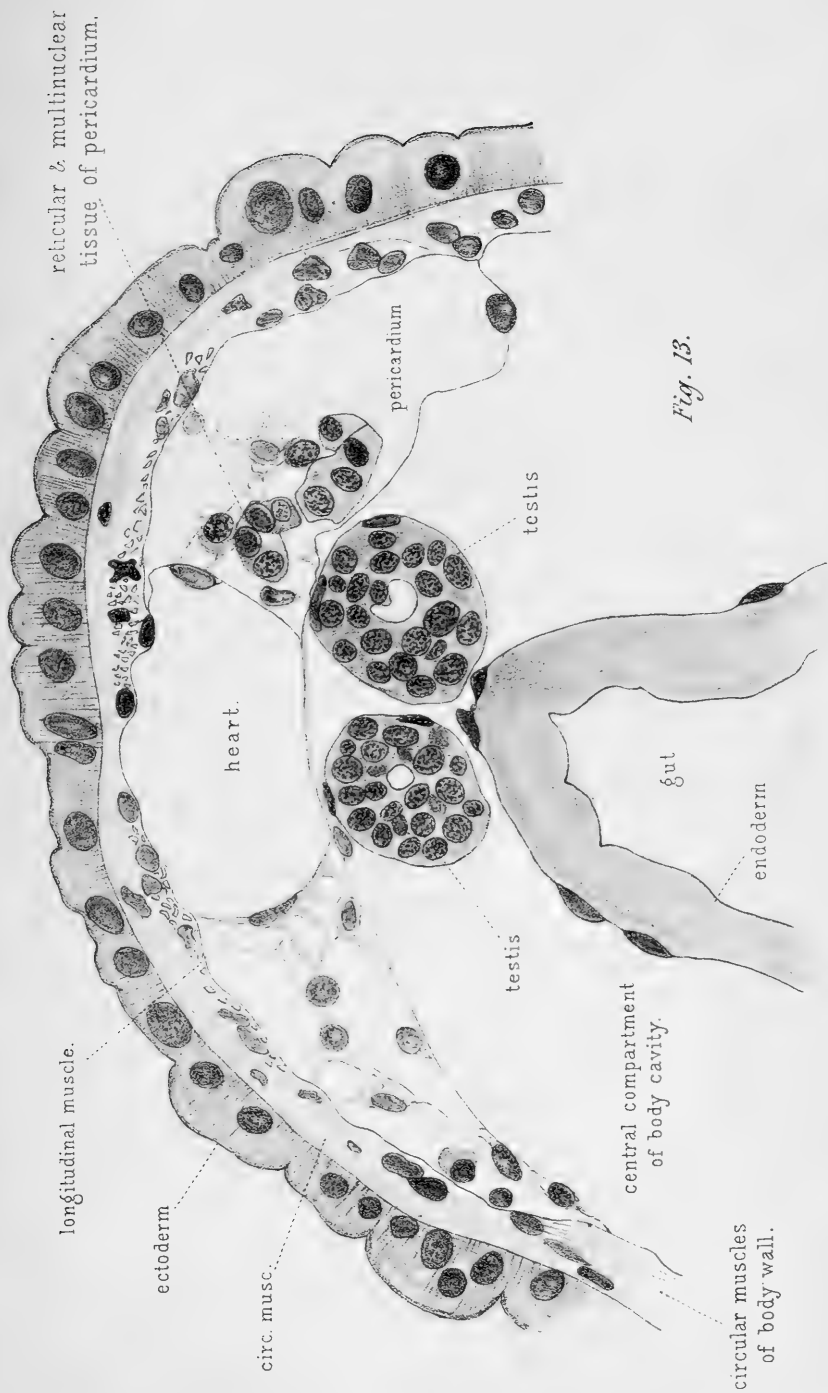


Fig. 13.

reticular & multinuclear
tissue of pericardium.

longitudinal muscle.

ectoderm

circ. musc.

heart.

pericardium

testis

testis

central compartment
of body cavity.

gut

endoderm

circular muscles
of body wall.

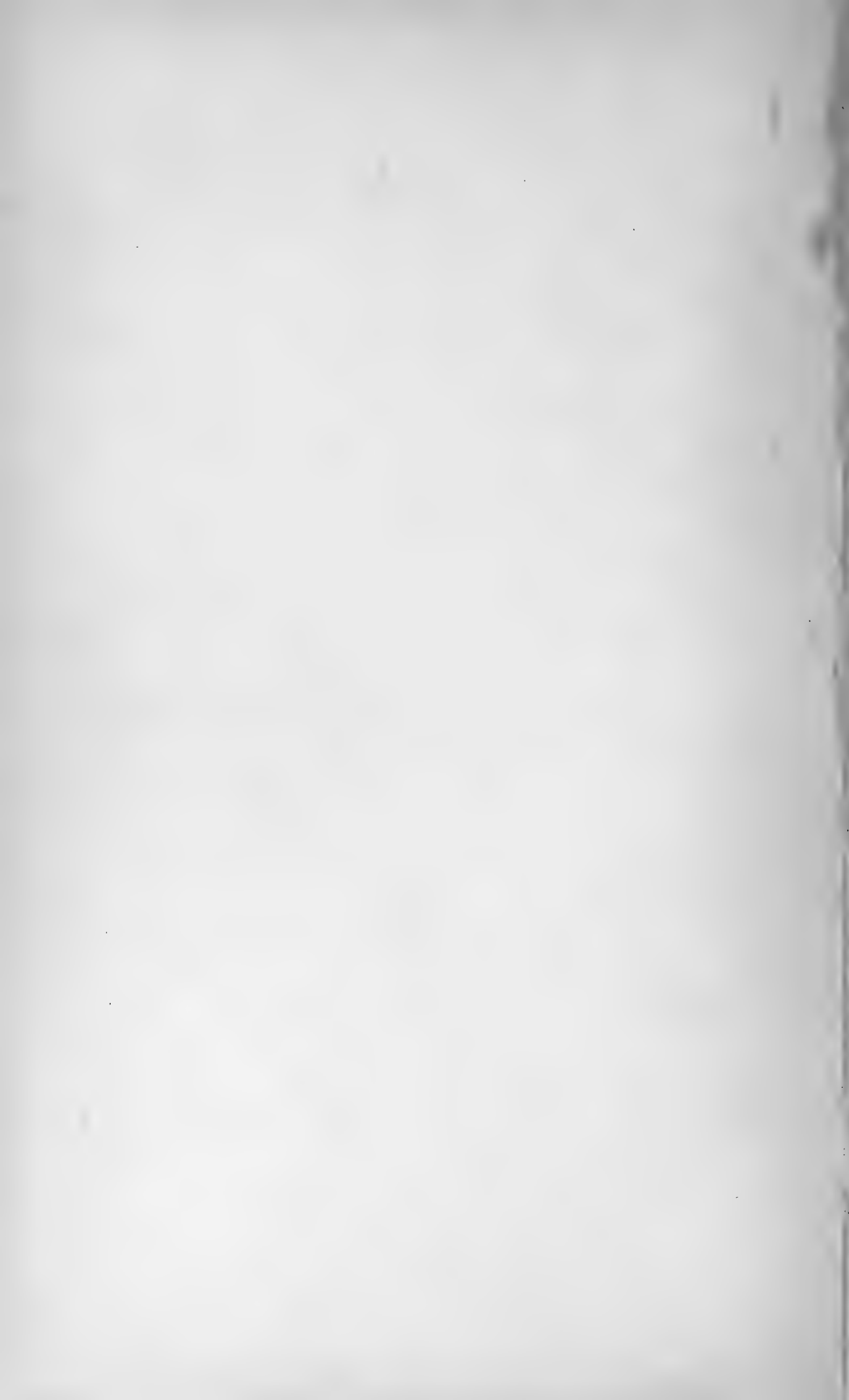


Fig. 14.

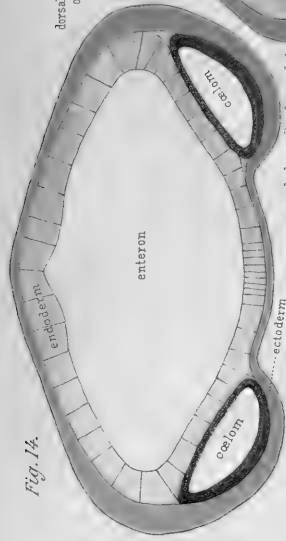


Fig. 16.

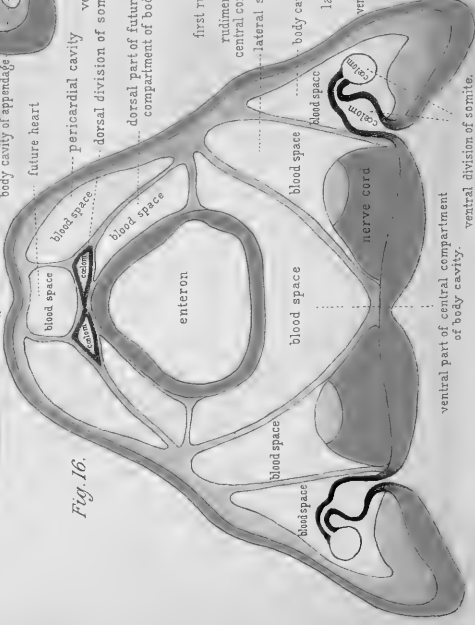


Fig. 14a.

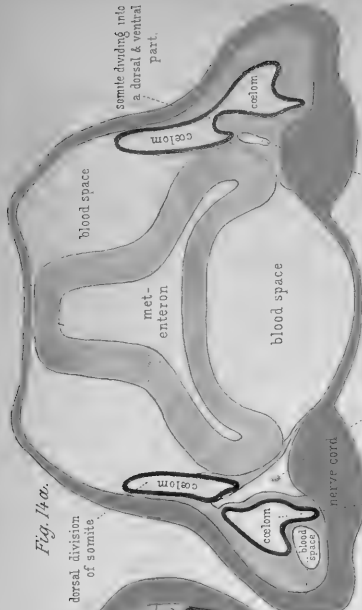


Fig. 15.

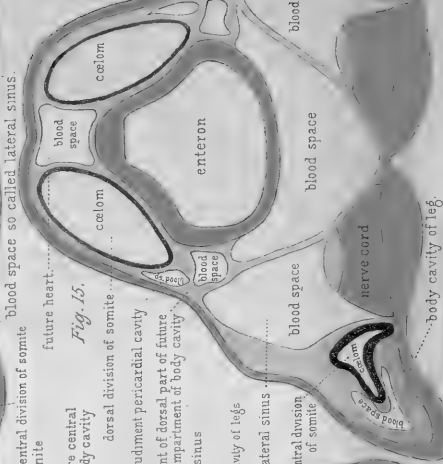


Fig. 17.





Fig. 1.

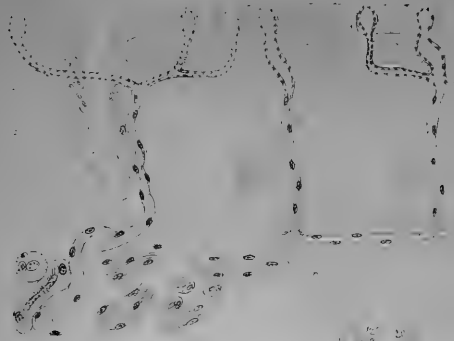


Fig. 2.



Fig. 4.



Fig. 10.



Fig. 5.



Fig. 5.

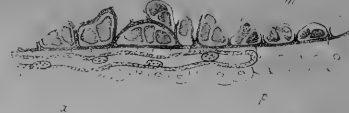


Fig. 8.



Fig. 6.

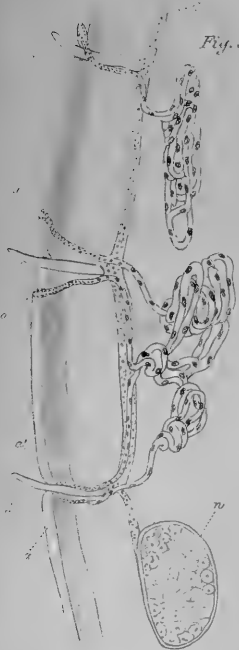


Fig. 11.

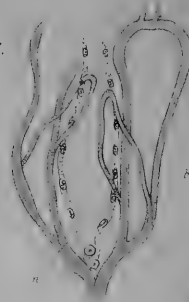


Fig. 7.

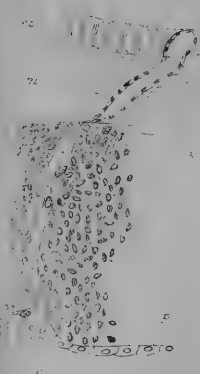
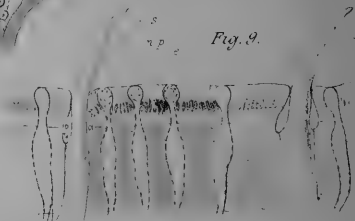


Fig. 9.





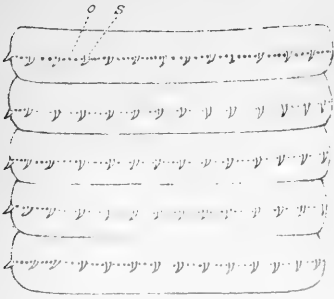


Fig. 12.

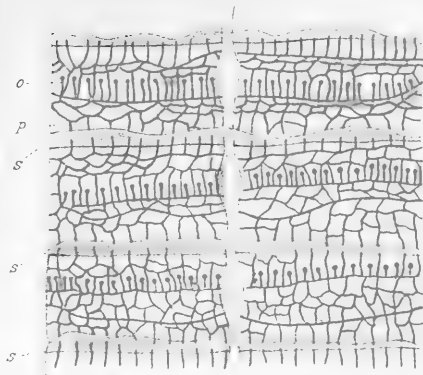


Fig. 13.

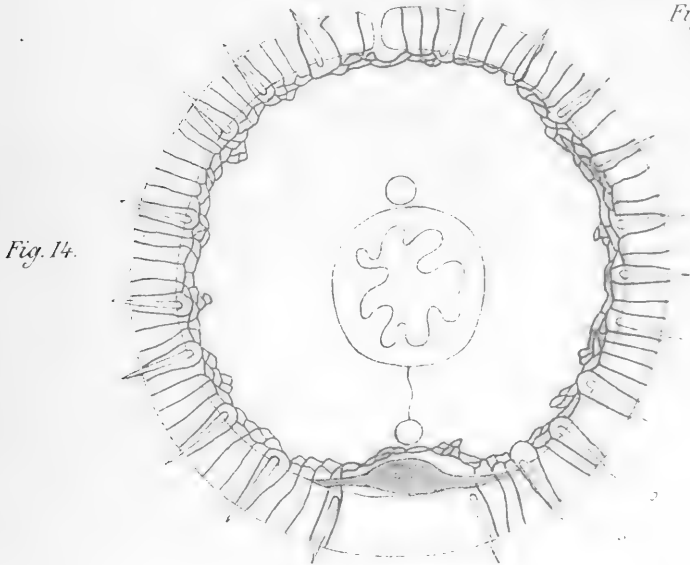


Fig. 14.

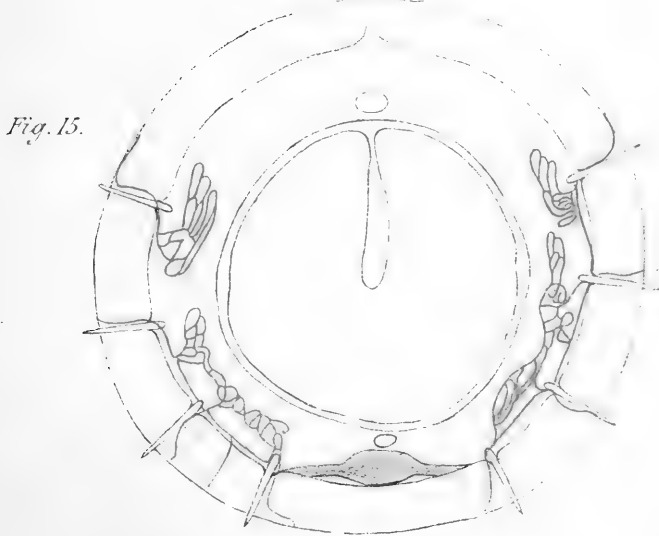


Fig. 15.



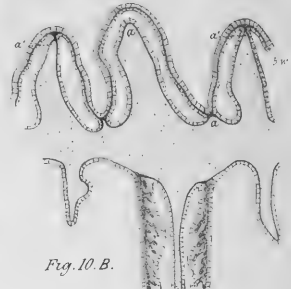
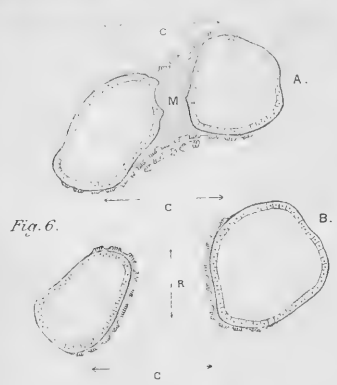
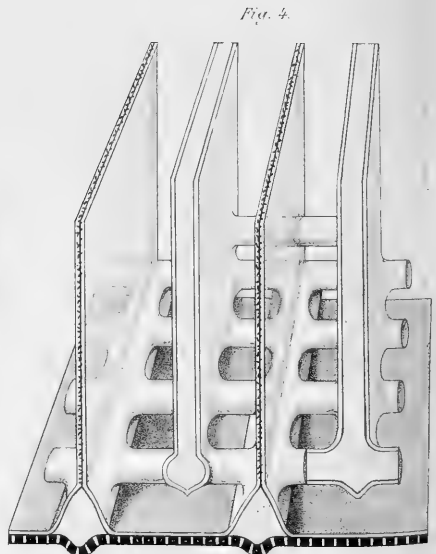
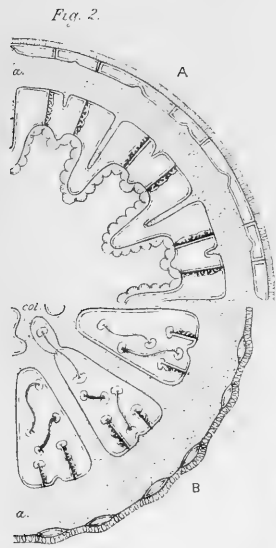
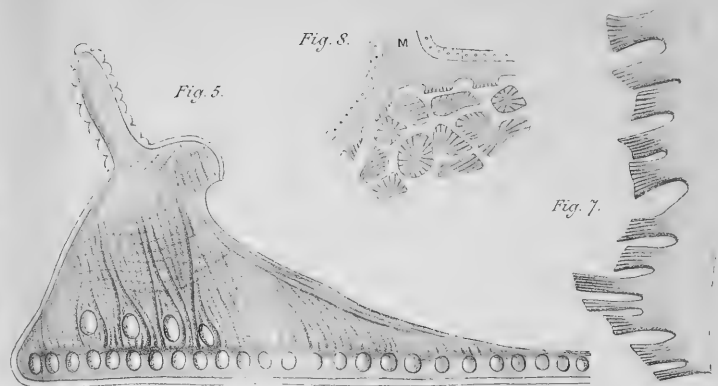
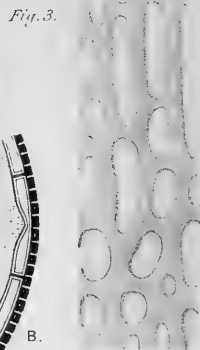
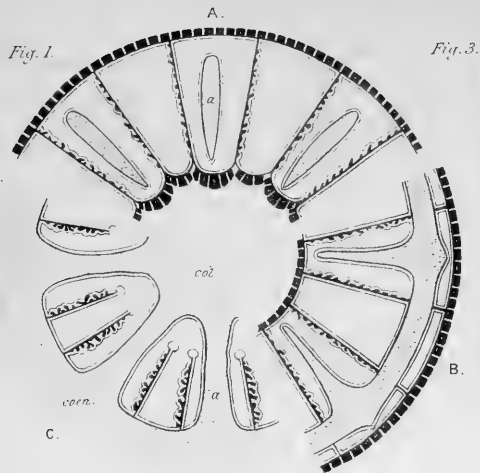


Fig. 11.

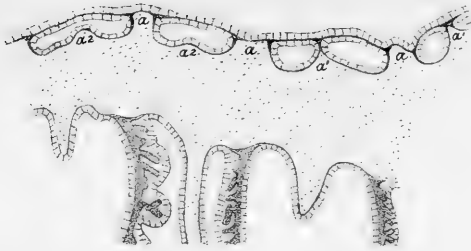


Fig. 15.

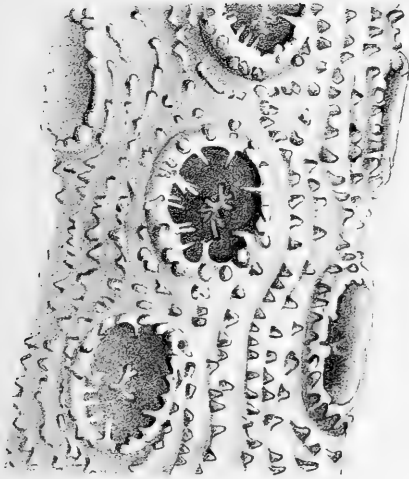


Fig. 14.



Fig. 13.

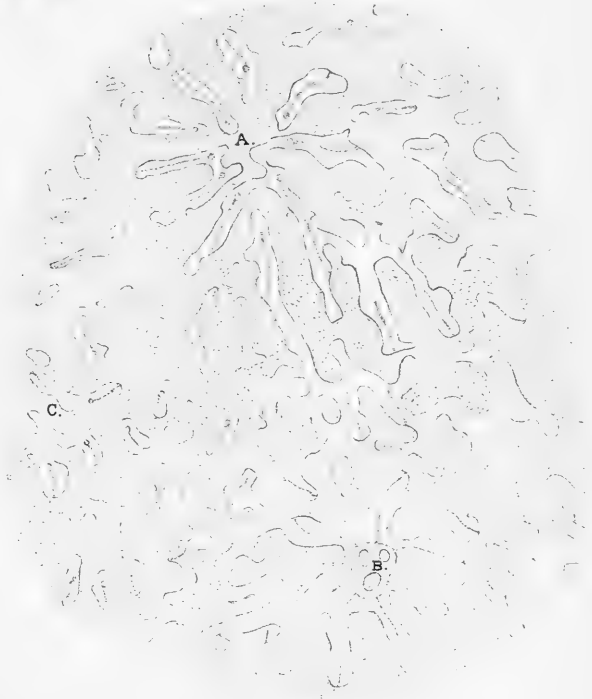


Fig. 12.





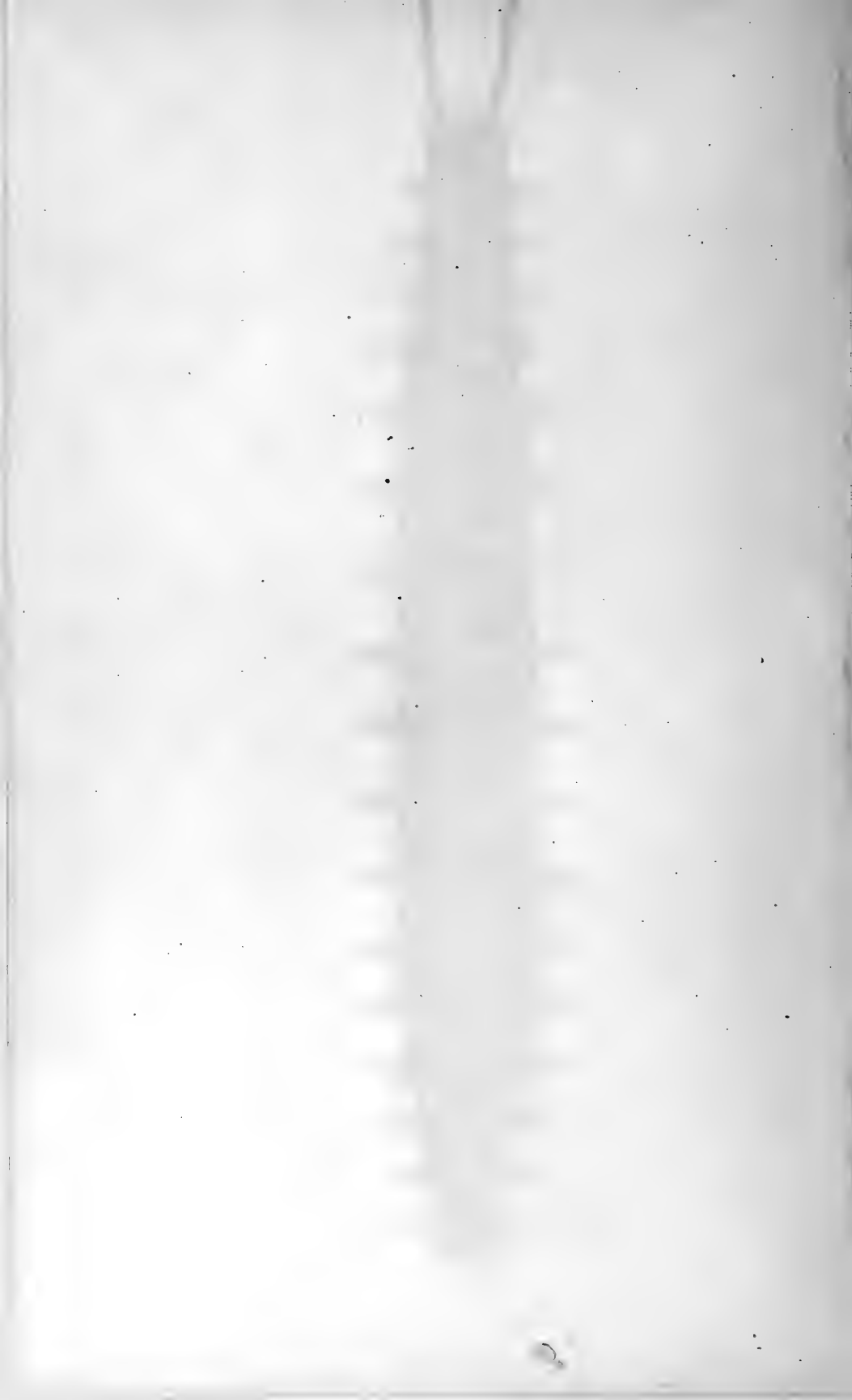
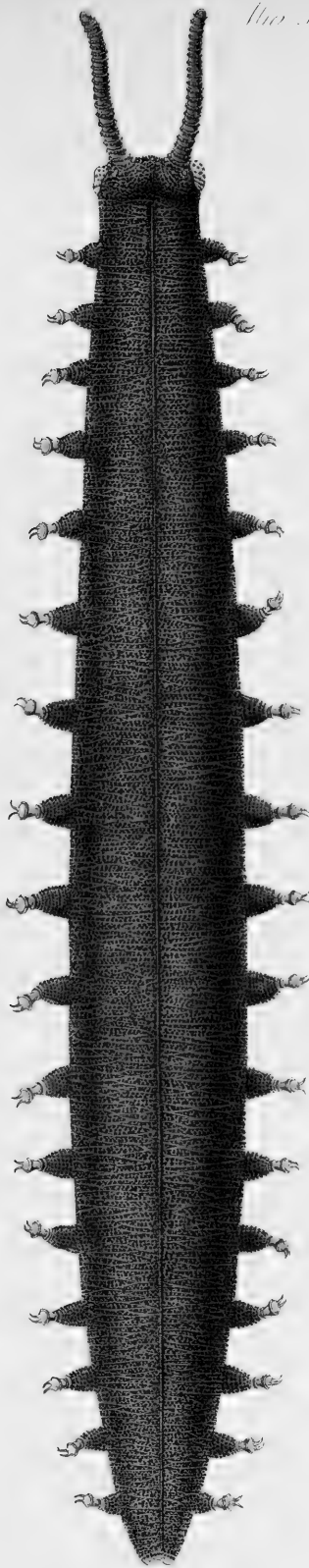
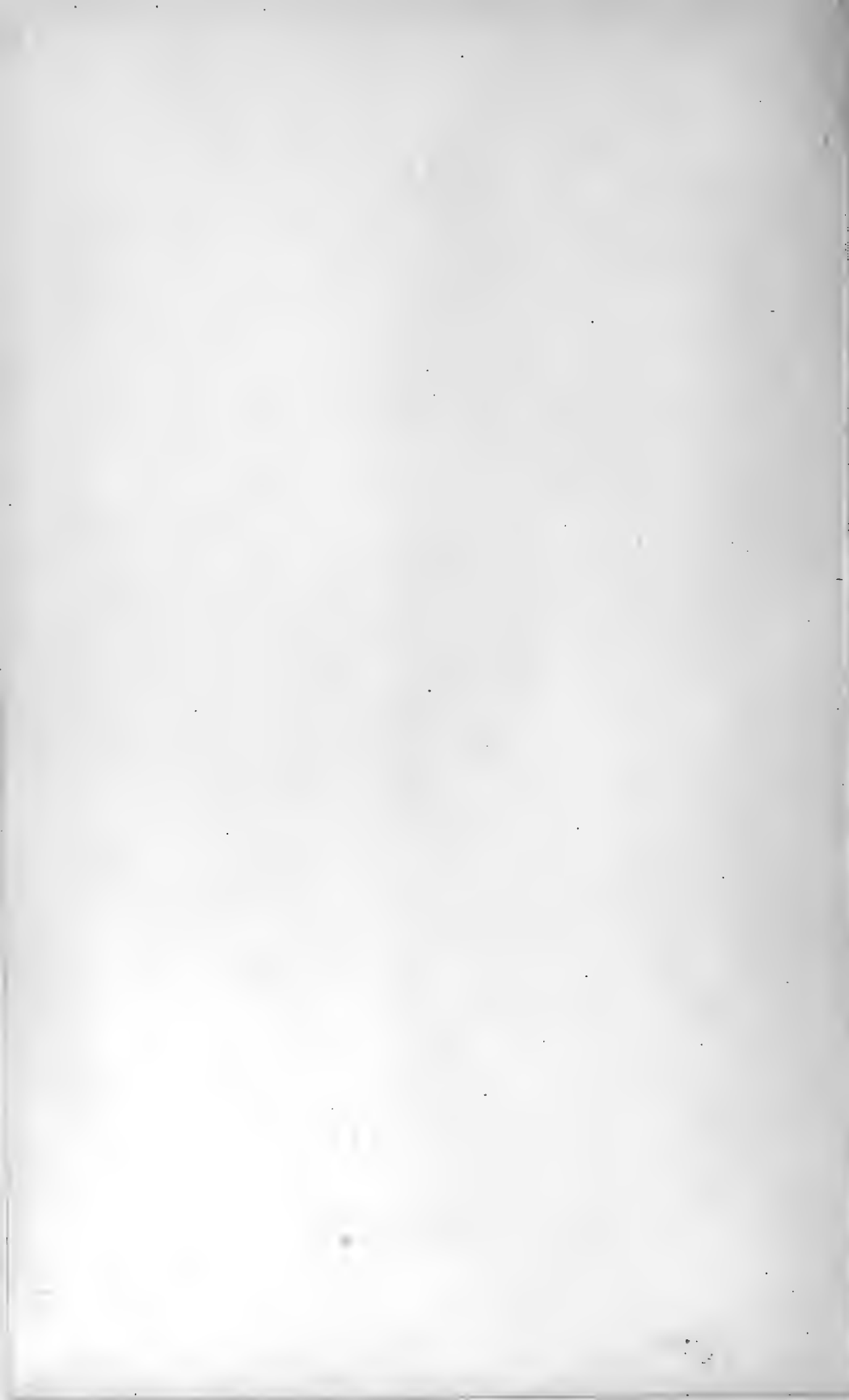
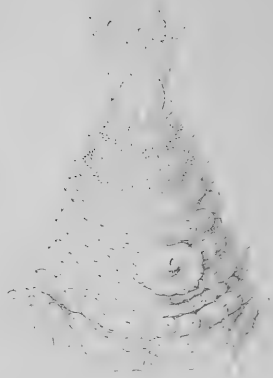
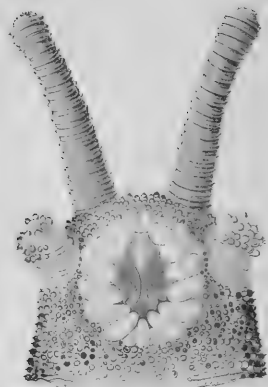


Fig. 1.



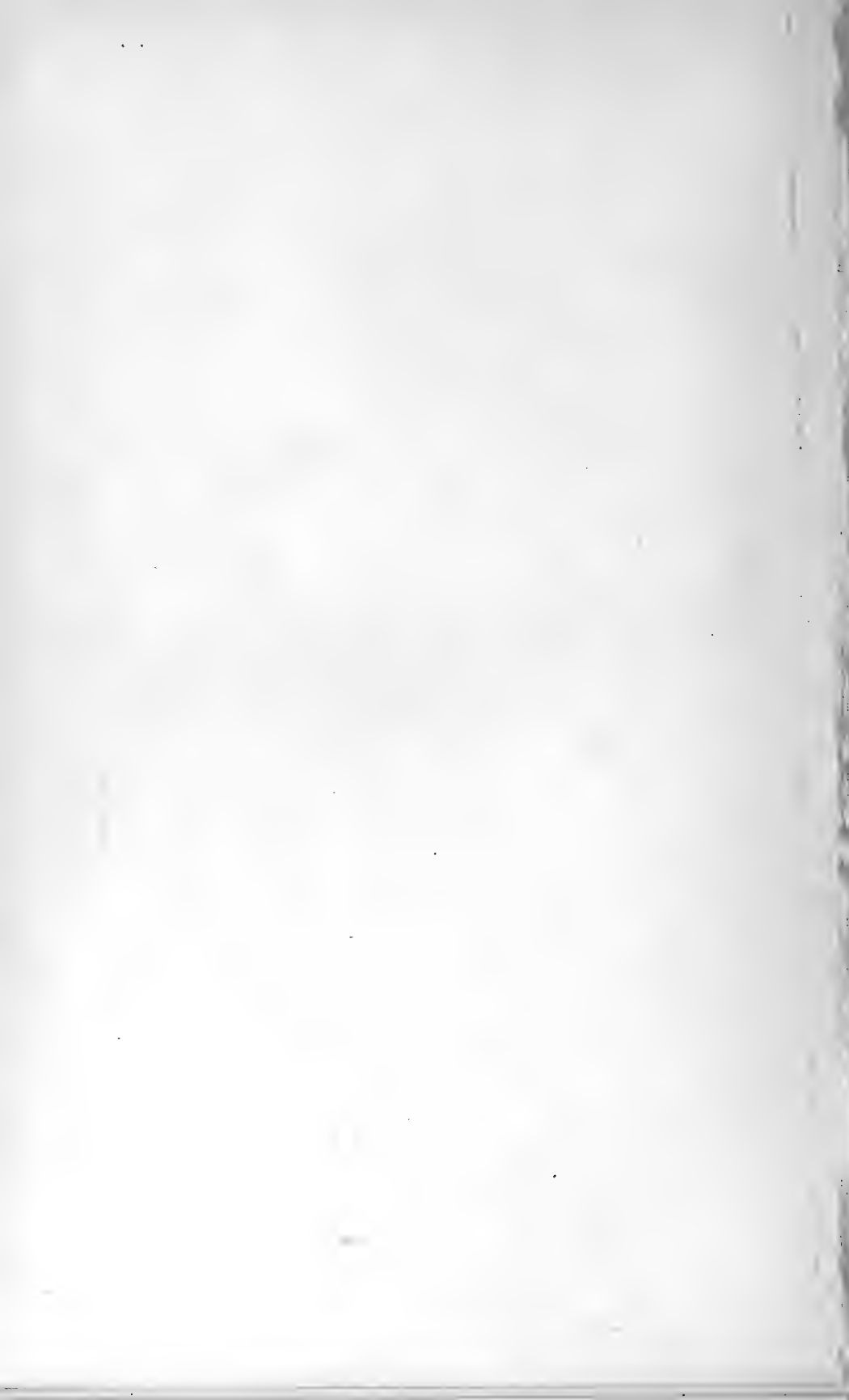


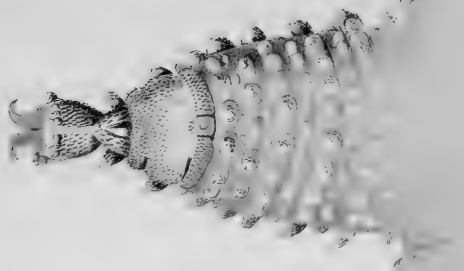




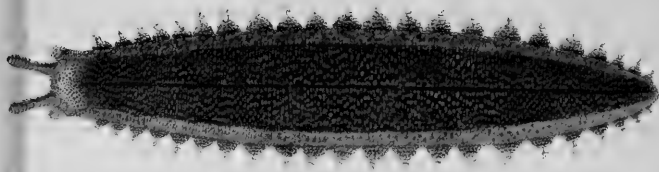
Leaf of *P. papetensis* (P. 1107)

Leaf of *P. papetensis* (P. 1107)



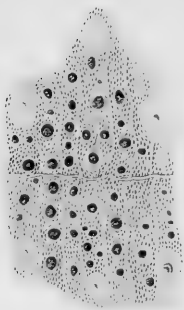
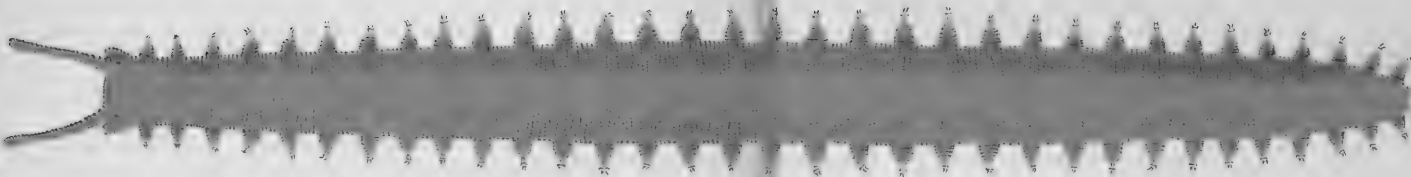


4th leg of *P. Balfouri*.

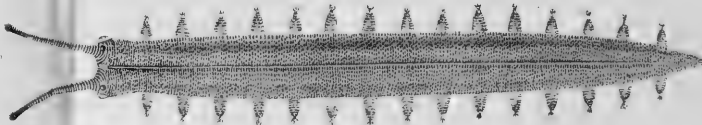


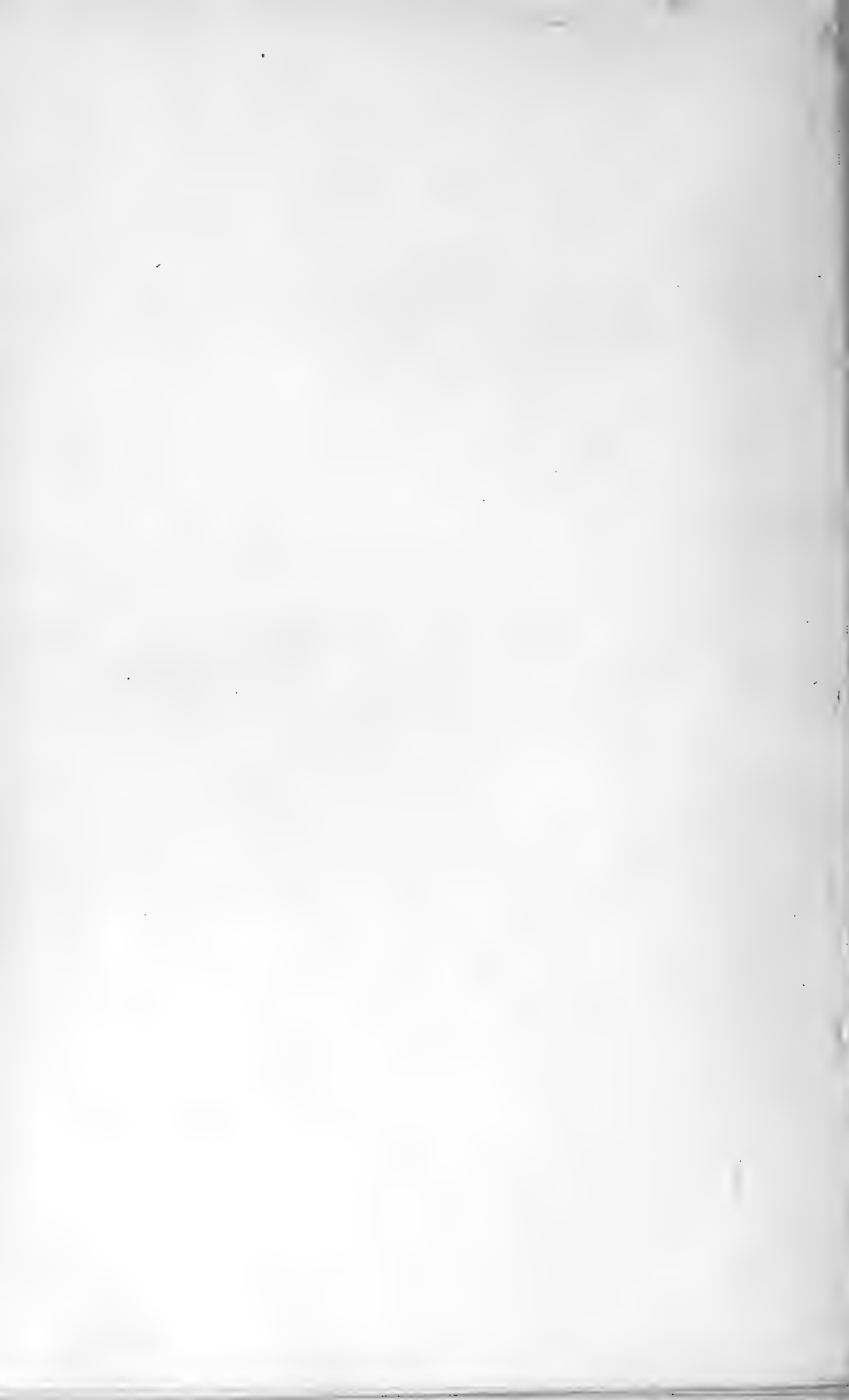
P. Novae Zeelandiae x4.

Fig 7.



4th leg of *P. Edwardsii*.





6th left foot of *P. Novae Zeslandiae* Anterior view



Fig. 14



Fig. 15

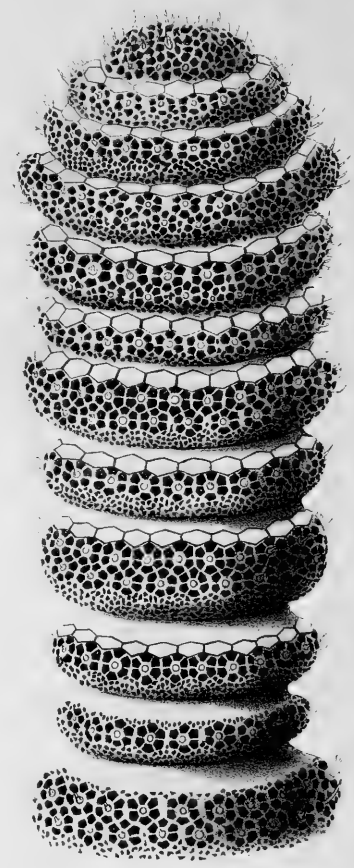
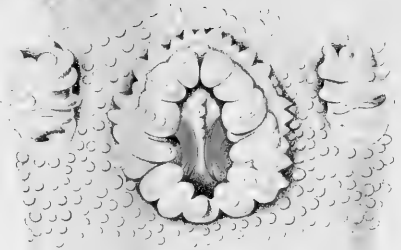
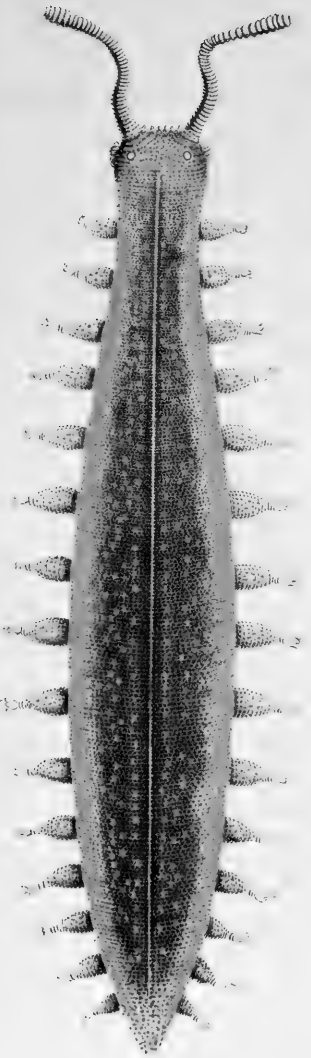
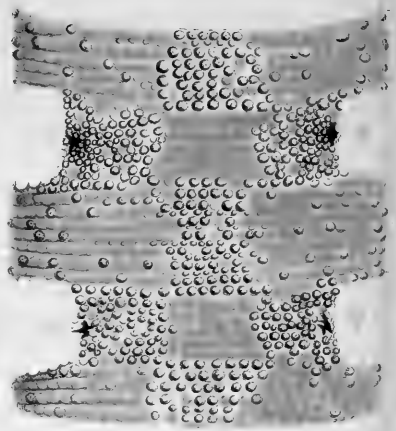


Fig. 17





17.



P. Novae Zeelandiae Dorsal view x 32.

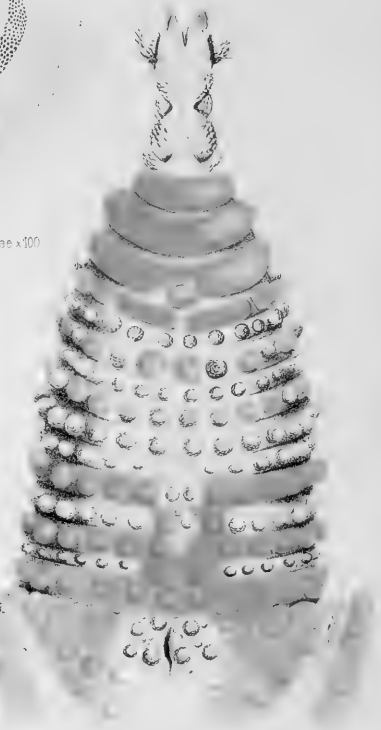
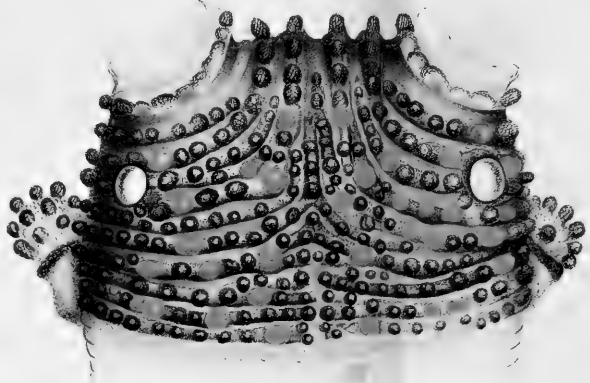
Fig 18



P. Novae Zeelandiae x 100
Fig 19



Fig 20, A



Ant. of P. Novae Zeelandiae

Fig 21

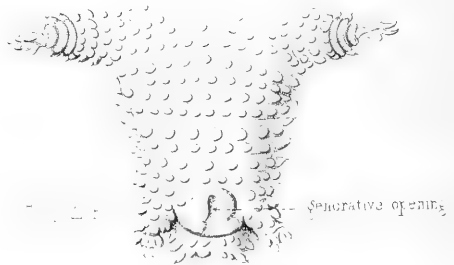




P. Edwardsi Ventral view of a posterior leg



Ventral view of hind end of P. Novae-Zelandiae.



Ventral view of hind end of P. Balfouri.

Outer blade of jaw of *P. Edwardsi*.

Inner blade of jaw of *P. Edwardsi*.

Inner blade of jaw of *P. Capensis*.

Outer blade of jaw of *P. Capensis*.



Skin of leg *P. Trinitatis* (Gaffren)



Skin of *P. Novae-Zelandiae*

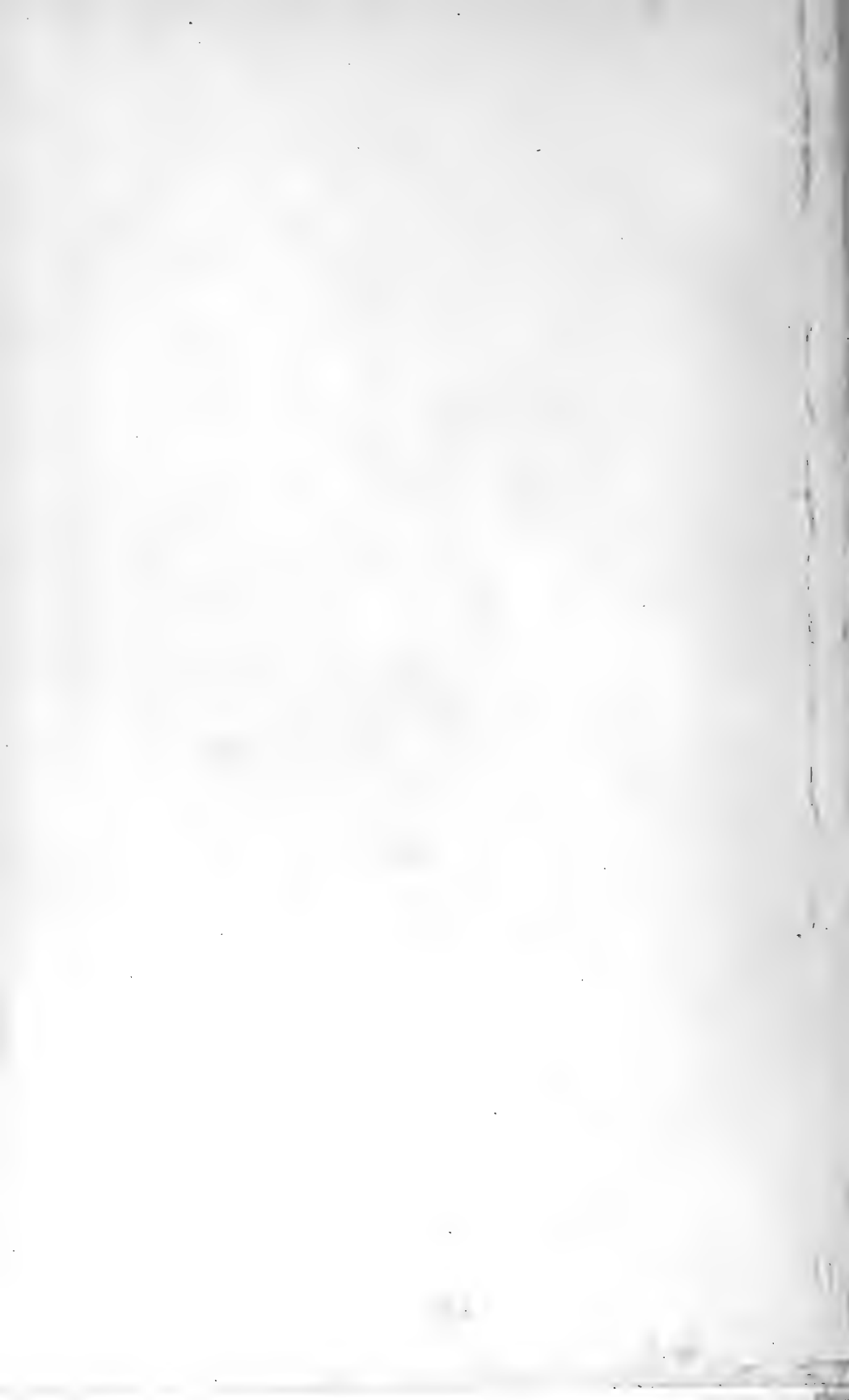


Fig. 1.

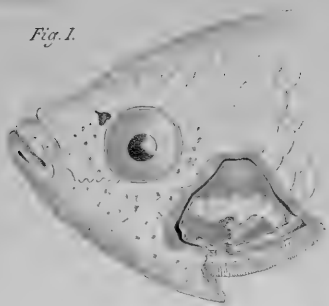


Fig. 2.

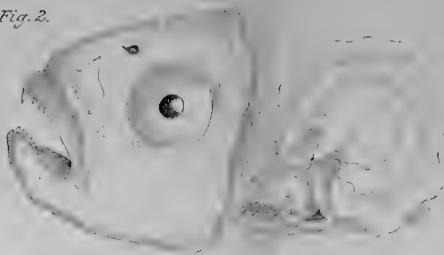


Fig. 3.



Fig. 5.



Fig. 6.



Fig. 4.



Fig. 7.



Fig. 8.



Fig. 13.



Fig. 9.

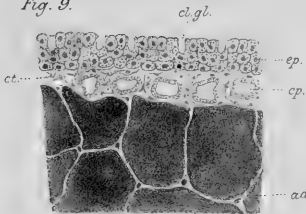


Fig. 10.



Fig. 11.



Fig. 12.

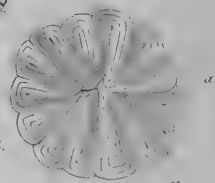




Fig 4
x 100



Fig 5
x 100

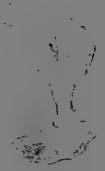


Fig 16
x 100

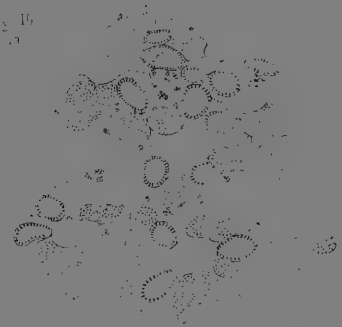


Fig 17
x 100

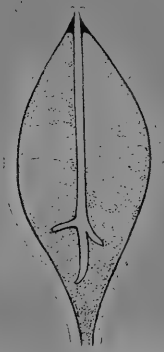


Fig 18
x 100



Fig 19
x 100

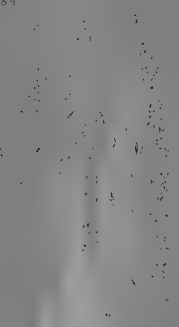


Fig 20
x 100

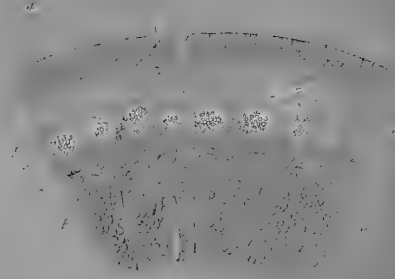


Fig 21
x 500



ERNST MAYR LIBRARY



3 2044 110 319 712

