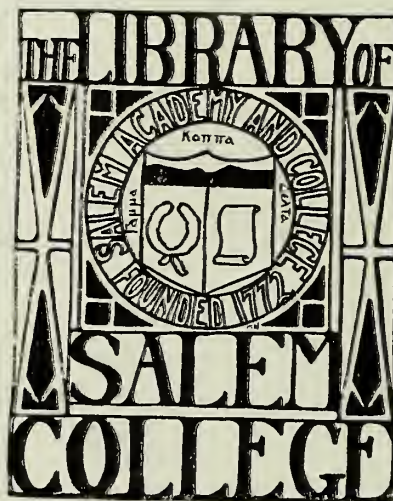


QUILL PEN  
1 9 3 5

Cl. 376.63 Bk. Sa 320

1935



Accession No. 16863





Ex Libris







# THE QUILL PEN

*of*

1935



PUBLISHED BY

THE STUDENTS

*of*

SALEM ACADEMY

WINSTON-SALEM, NORTH CAROLINA



## Dedication

Cognizant of the enrichment of life that is ours  
through the achievements of inventive and  
creative genius, we, the members of  
the staff of the 1935 Quill Pen, ded-  
icate this volume of our book to  
the spirit of progress as em-  
bodied in the last line of  
Tennyson's *Ulysses*,

"To strive, to seek, to find, and not to yield"





# THE SCHOOL



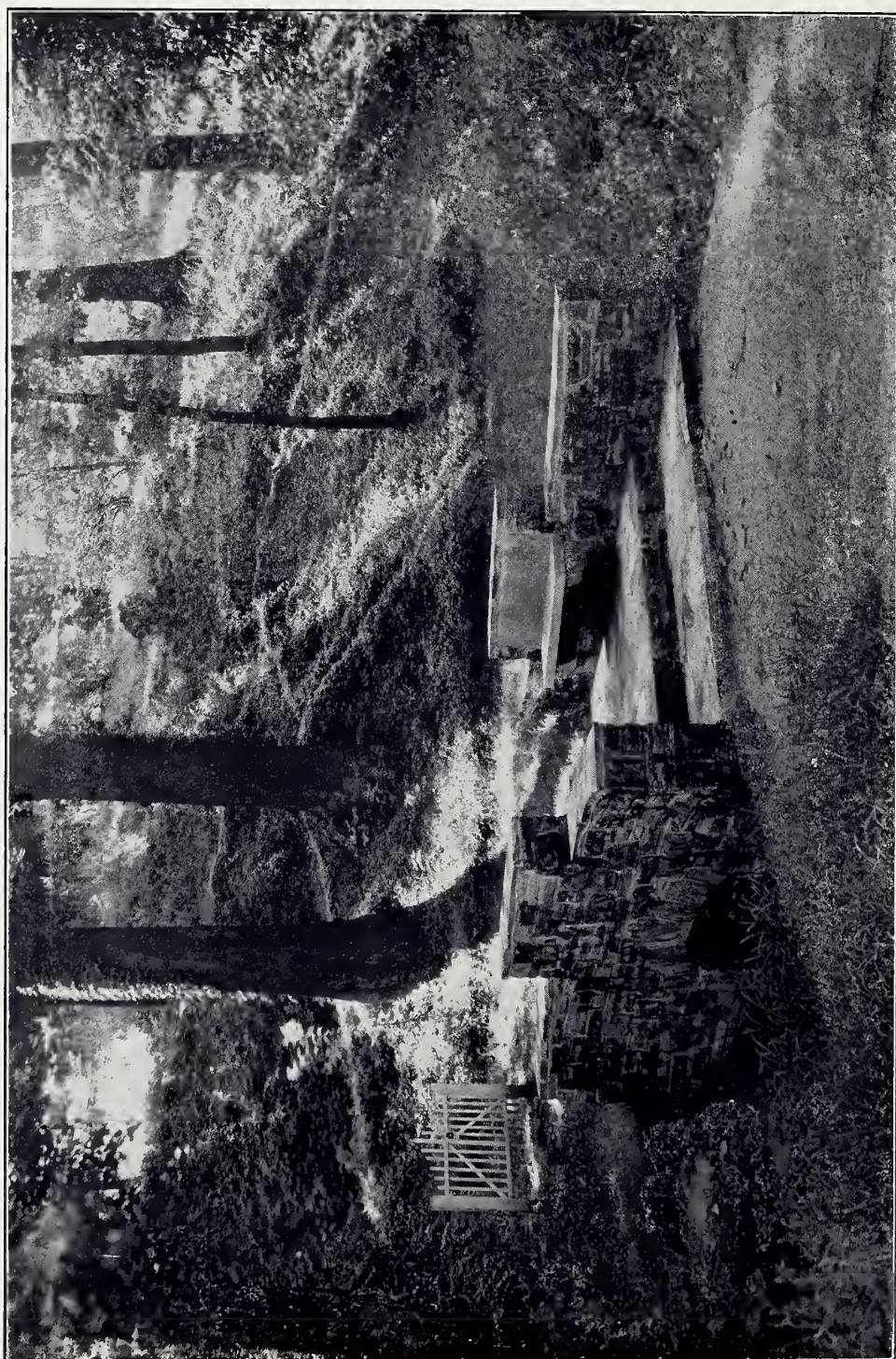


Digitized by the Internet Archive  
in 2013

<http://archive.org/details/quillpen19351935sale>













## FACULTY OF SALEM ACADEMY

HOWARD E.  
RONDTHALER  
PRESIDENT  
Ph. B., LL. D.  
*University of N. C.*  
B. D., M. A., D. D.  
*Moravian Theological  
Seminary*  
BIBLE

MARY A. WEAVER  
PRINCIPAL  
B. A.  
*Randolph-Macon  
Woman's College*  
MATHEMATICS

CHARLOTTA JACKSON  
*Columbia University*  
PRINCIPAL IN RESIDENCE  
PHYSICAL EDUCATION

ELIZABETH ZACHARY  
B. A.  
*Salem College*  
PRINCIPAL IN RESIDENCE  
PHYSICAL EDUCATION

DOROTHY H. KNOX  
B. A.  
*Radcliffe College*  
M. A.  
*Middlebury College*  
FRENCH AND SPANISH  
CHORAL SINGING

VIRGINIA WILSON  
B. S.  
*Woman's College of  
University of North  
Carolina*  
HOME ECONOMICS

HAZEL D. WHEELER  
B. S.  
*Boston University*  
*Vesper George School  
of Art*  
ART

LACRA SUMNER  
B. A.  
*Woman's College of  
University of North  
Carolina*  
M. A.  
*Smith College*  
ENGLISH

ANNE IRVIN  
FAULKNER  
B. A.  
*Wellesley College*  
M. A.  
*Cornell University*  
HISTORY

M. CARRINGTON  
SHIELDS  
B. A.  
*Randolph-Macon  
Woman's College*  
SCIENCE  
MATHEMATICS  
PHYSICAL EDUCATION

MARY ELIZABETH  
BROWN  
B. A.  
*Randolph-Macon  
Woman's College*  
LATIN  
ENGLISH



# CLASSES









MISS VIRGINIA WILSON

*Class Sponsor*

Vivacity . . humorous repartee . . . Vogue  
 . . . knitting needles . . . Emily Post . . .  
 summer excursions.

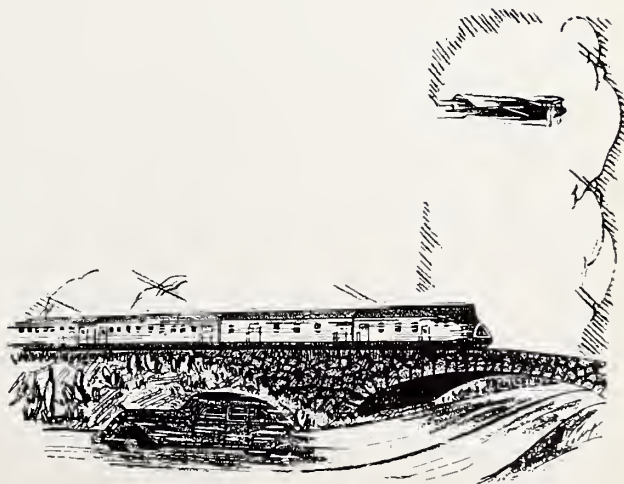


MARY LOUISE McLENDON

GREENSBORO, NORTH CAROLINA

*President*

Soft, curly hair . . . sweaters and skirts  
 . . . pastel shades . . . riptides . . . school  
 spirit.





LADY KATE ALLEN  
JEFFERSON CITY, TENNESSEE

Cinderella slippers . . . elves . . . Tennessee chatter . . . friendly grins.

MARGARET HANNAH CRITCHER  
ROXBORO, NORTH CAROLINA

Musical heights . . . diaries . . . bandannas . . . rivals . . . wisecracks.

ELIZABETH HILL BAHINSON  
WINSTON-SALEM, NORTH CAROLINA

*Vice-President*

The highest rung of the ladder . . . shining roadsters . . . football games . . . fluffy evening dresses.

HELEN GILMER DICKSON  
LARCHMONT, NEW YORK

Country clubs . . . Robin Hood . . . Fred Astarian feet . . . charge accounts . . . skyscrapers.





RUTH LOWNSBOROUGH GREENE

ASHEVILLE, NORTH CAROLINA

The Psalm of David . . . letters . . . "The Very Thought of You" . . . "Pinafore" . . . Pi Delta Phi.

MARY RUFFIN (PATSY) HILL

NEW YORK, NEW YORK

Impertinence . . . surprises . . . yellow sweaters . . . New York . . . Olympic stars . . . Best-all-round.

MARY ELIZABETH GRIER

CHARLOTTE, NORTH CAROLINA

Black curls . . . Make-up . . . dancing . . . friendliness . . . "Moonlight and Roses".

JANE IRVING

WASHINGTON, D. C.

Black velvet and tea roses . . . dark eyes . . . a bubbling wit . . . the staccato of typewriters . . . "Sonny" days.







GEORGINA JONES  
SWEETWATER, TENNESSEE

Giggles . . . exciting stories . . . college  
dances . . . L'heure Bleue perfume . . .  
"Stardust".

JOSEPHINE LITZ  
CHARLESTON, WEST VIRGINIA

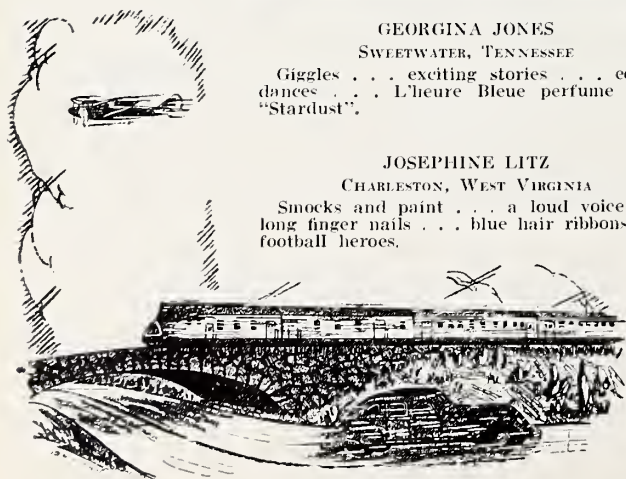
Smocks and paint . . . a loud voice . . .  
long finger nails . . . blue hair ribbons . . .  
football heroes.

ETHEL MARGARET LITZ  
TAZEWELL, VIRGINIA

"Snooks" . . . Tea-talk . . . broad grins  
. . . perseverance . . . soccer fields.

HELEN MURDOCK MCARTHUR  
WINSTON-SALEM, NORTH CAROLINA

Palettes and brushes . . . anklets . . .  
Punch and Judy . . . day dreams . . . sweet  
and lovely . . . madonna.







ELLEN NORFLEET MOORE  
WINSTON-SALEM, NORTH CAROLINA  
Rosy apples . . . big brown eyes . . .  
lockets . . . old shoes . . . blazing camp fires  
. . . memories.

KATE OWEN PRATT  
WINSTON-SALEM, NORTH CAROLINA  
Permanent waves . . . hockey sticks . . .  
knitting needles . . . new clothes . . . danc-  
ing feet.

MARY LAURA PERRYMAN  
WINSTON-SALEM, NORTH CAROLINA  
A deep chair and an exciting book . . .  
hospitals and doctors . . . theater ushers . . .  
French correspondents . . . an actor's masque.

DOROTHY ROBERTS  
NORTHAMPTON, MASSACHUSETTS  
A literary circle . . . colliers . . . deep  
forests . . . old books . . . Irish eyes.





JEAN GRAY SCOTT  
GRAHAM, NORTH CAROLINA  
*Treasurer*

Temperamental hair . . . a slow, easy  
drawl . . . bridle paths . . . books . . .  
"dramatis personae".

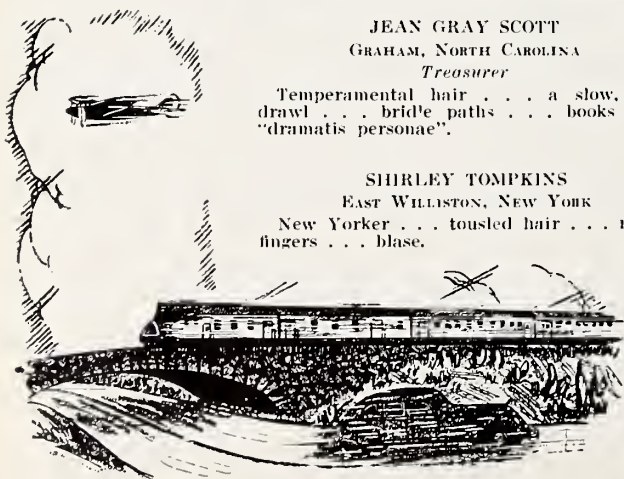
SHIRLEY TOMPKINS  
EAST WILLISTON, NEW YORK  
New Yorker . . . tousled hair . . . ringed  
fingers . . . blase.

EDITH ESTES STOKELY  
NEWPORT, TENNESSEE

Honor Roll . . . Newport accent . . . rela-  
tives . . . tennis racquets . . . reducing ex-  
ercises.

LAURA ELIZABETH TROTMAN  
WINSTON-SALEM, NORTH CAROLINA  
*Secretary*

Stage doors and footlights . . . blank verse  
. . . storms . . . blue buses . . . personality.





ANNA MARGUERITE WILLINGHAM

WINSTON-SALEM, NORTH CAROLINA

Surf boards and sand dunes . . . old songs  
 . . . puns . . . fickleness . . . sophisticated  
 lady.

DOROTHY LEWIS WYATT

WINSTON-SALEM, NORTH CAROLINA

School girl complexion . . . radios . . .  
 baby smiles . . . chewing gum . . . an orange  
 sunset in the clouds.

OLIVIA WOMBLE

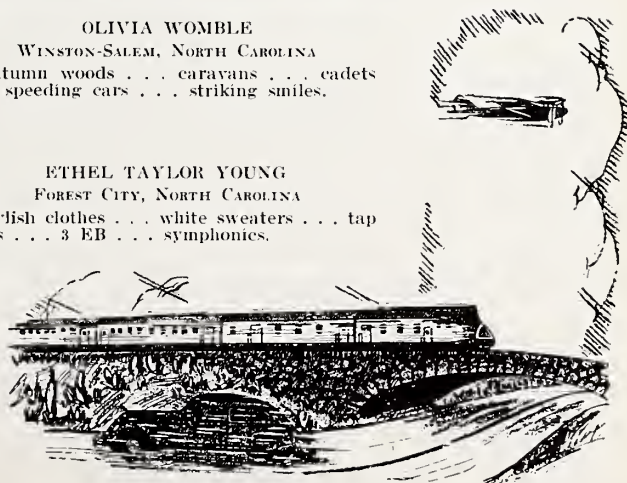
WINSTON-SALEM, NORTH CAROLINA

Autumn woods . . . caravans . . . cadets  
 . . . speeding cars . . . striking smiles.

ETHEL TAYLOR YOUNG

FOREST CITY, NORTH CAROLINA

Stylish clothes . . . white sweaters . . . tap  
 shoes . . . 3 EB . . . symphonics.







MARY CHARLOTTE YOUNT

NEWTON, NORTH CAROLINA

Twisted curls . . . chewing gum . . . magazines . . . fingernail polish . . . drug stores.

LUCY GRAY SMITHER

WINSTON-SALEM, NORTH CAROLINA

*Postgraduate*

Maroon roadsters . . . football games . . . plaid scarfs . . . Glen Gray . . . "Tinker Bell".

FLORENCE CARR PEARSALL

WRIGHTSVILLE SOUND, NORTH CAROLINA

*Postgraduate*

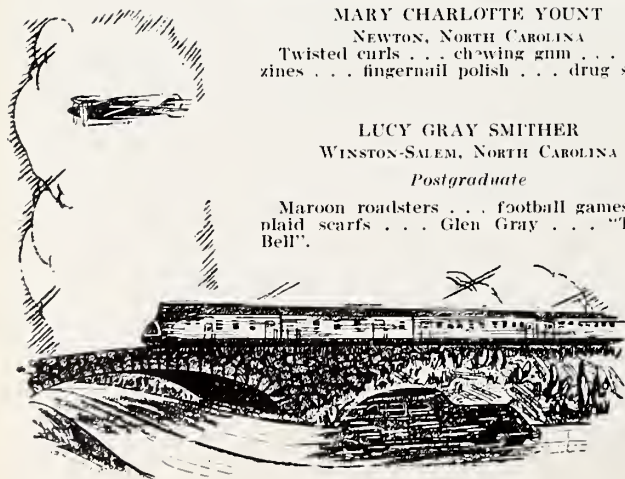
Perfume . . . braids . . . peals of laughter . . . house parties . . . worry . . . Lumina . . . "Red and Black".

CATHERINE JOHNSON\*

WINSTON-SALEM, NORTH CAROLINA

*Postgraduate*

Footlights . . . old music . . . shaggy dogs . . . candy pulls . . . Lawrence Tibbett.  
\*No picture.







## CLASS HISTORY

ONE September morning nine little girls rolled up to the front door of Salem Academy. These little girls were as fresh and as new as the one-year old building which they entered. In the beginning these novices were somewhat awed and slightly subdued by their lowly position; but they soon overcame this meek feeling and organized the class with Florence Sweeny, President; Josephine Litz, Vice-President; Elizabeth Trotman, Secretary and Treasurer; and Miss Margaret Murray, Class Sponsor.

By selling food once a week all through the year, and with the aid of Miss Murray we were able in the spring to entertain the Juniors at a garden party given at the home of Marguerite Willingham.

We began our Sophomore year with very different feelings from those that the nine little girls had experienced the year before. Our indomitable spirit was stronger than ever, and we elected to guide us through the year: Elizabeth Trotman, President; Josephine Litz, Vice-President; Helen McArthur, Secretary and Treasurer; and Miss Georgia Watson, Class Sponsor.

Several times during the year, we assumed the role of mannequins by sponsoring fashion shows. In the spring, we found ourselves in dire financial straits; but our generous President, Elizabeth Trotman, came to our relief and entertained the Seniors at a delightful luncheon at Sedgfield Inn near Greensboro. Anxious to follow her example, we decided to donate our meager funds toward enlarging the library and adding a few bricks to the new entrance gates of Salem Academy.

As we entered our Junior year, we discovered that our number had almost doubled since we first came to Salem. Ruth Greene, Elizabeth Trotman, and Jean Gray Scott were duly elected class officers; and Miss Virginia Wilson was appointed Class Sponsor. A few select members of our group were initiated into Pi Delta Phi, the Dramatic Club for upper classmen; and all of these fortunate girls have since demonstrated their histrionic ability. In addition, one of our members, Betty Bahnson, was President of the Edison Club, an organization composed of the students of the Science Department.

All through the year we labored faithfully to raise money for the traditional Junior-Senior Banquet, which, through the unfailing solicitude and able assistance of Miss Wilson, was a complete success.

At last, the year to which we had looked forward arrived—we were Seniors. As we scanned the faces of our dignified class, we found that six of us—Betty Bahnson, Josephine Litz, Helen McArthur, Shirley Tompkins, Elizabeth Trotman, and Marguerite Willingham—had remained faithful to Salem for four years. For the last time we elected our class officers: Mary Louise McLendon, President; Betty Bahnson, Vice-President; Elizabeth Trotman, Secretary; Jean Gray Scott, Treasurer; and Miss Virginia Wilson, Class Sponsor.

The first three months passed by all too quickly; and before we realized they were gone, it was time to begin our Christmas shopping. Our class sponsored a bazaar, and for one afternoon and night, we all became proficient saleswomen. Our merchandise was supplied by all the leading stores of the city, and the event proved very profitable to the class treasury.

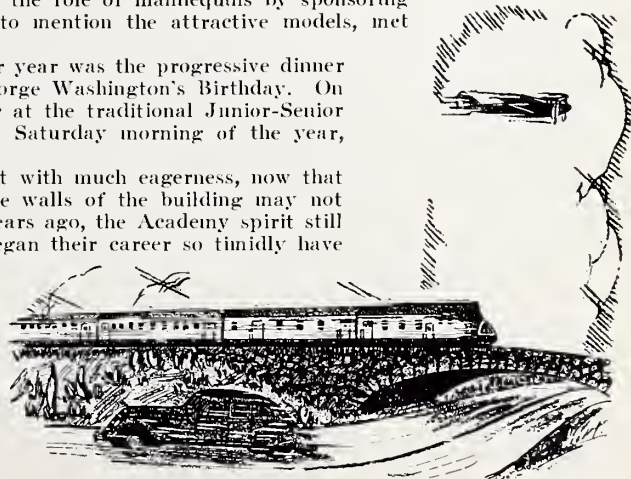
The exciting thought of getting our class rings next intrigued us. But great was our disappointment when they failed to arrive before our departure for the Christmas holidays. Soon after we arrived at home, however, each of us received a small package containing the treasure which had caused us so many days of anxiety.

On the eighth of March we once more undertook the role of mannequins by sponsoring a fashion show. The attractive spring clothes, not to mention the attractive models, met with the high approval of the audience.

One of the most delightful occasions of our Senior year was the progressive dinner party given for us by Dr. and Mrs. Roundthaler on George Washington's Birthday. On the seventeenth of May, we were the guests of honor at the traditional Junior-Senior banquet. We ourselves became hostesses on the last Saturday morning of the year, when we entertained the faculty at breakfast.

Although we have anticipated May the thirty-first with much eagerness, now that it is here, we regret to see it pass. Even though the walls of the building may not be so spotless and the paint so fresh as it was four years ago, the Academy spirit still shines as brightly as ever; and the little girls who began their career so timidly have learned to love and honor their Alma Mater. Today our hearts are filled with sadness at the thought of leaving her, and our only consolation is that ours is the heritage of Salem.

—MARGUERITE WILLINGHAM, *Historian*.





## CLASS PROPHECY

**T**HE magnificent passenger plane dipped and swooped through the blackening clouds, frequently rocking angrily when opposed by the gathering elements. It was my first long trip by air, and I was thoroughly enjoying the luxury of the leather seats and the view of heavy clouds from the window when quite suddenly my peace of mind was disturbed by the alarmed shouts of passengers and pilot. The operators were struggling madly with the engine and shouting warnings at the gaping occupants of the falling plane.

Before I had time to realize what had happened, the steward had fastened me into a parachute and kicked me out of the door. I clutched the brass ring tightly and waited for the horrible contraption to open its snowy silkness. It seemed that it would never open. "Well", thought I, "Young lady, your end is near. At least it will always be said that you died with your boots on. Oh! What a horrible thought! Try to change your trend of thought. What about your Salem school friends—wonder what ever happened to them!"

I had dropped another fifty feet before I saw the familiar faces appear in the misty moisture. Margaret Hannah Critcher, of all people—and playing duets with Paderewski at that—no, she and the eminent pianist were accompanying the renowned opera star whose stage name is Ruth Greene, but whose *tall* husband was waiting behind scenes to attach a "Mrs." back to her name.

Who was that? Mary Louise McLendon—almost an old maid because she still can't decide who is "head man." I assure you, however, that all of the old bachelors step lively when "Bunky" comes around.

I just got a glimpse of Shirley Tompkins, now a night club hostess, talking to Jane Irving and her new army officer husband, who were seeing New York while on leave. Jane was whispering secretly to Shirley that one of the lieutenants in the regiment was pursuing Olivia Womble with matrimonial intent. "Lib," as I remembered, always did go in for uniforms and brass buttons.

Florence Pearsall, it seems, is a connoisseur of perfumes in the same Parisian beauty salon where Jody Litz is head manicurist. Amid the thunder, I gathered that these strange images were trying to tell me that Patsy Hill, the cinema star, had just been in, dragging her third husband behind her. Jody also told me that Jean Gray Scott was in Paris for a few days on her way to Rome, where she plans to do intensive research work in Latin.

Just then a scene flashed before my eyes! It looked like Greenwich Village—it was Greenwich Village—and in the middle sat Lizzie Trotman writing blank verse for BALLYHOO. She told me that Marguerite Willingham was "holding down" the job of writing Burns' and Allen's script. I expressed a desire to see "Peter" but was repulsed by the reply that she had stepped across the street to visit Helen McArthur and her cartoonist husband.

Just at that moment, Helen Gilmer Dickson's smiling countenance appeared in the picture. She resembled a contortionist at first glance; but after a few moments I realized that she was instructing a class of obese society ladies on how to get rid of that "middle-age-spread." Lady Kate Allen was touching her toes on the very front row. She confided to me in a sad little voice that she never expected to have a "school girl figure" again, because she just couldn't leave off "nice, white ice-cream."

I had dropped two hundred more feet before I saw Ethel Young dancing at the Essex House to Glen Gray's tunes. Lucy Gray Smither was seated at one of the tables with her husband and her four boys. Poor Lucy Gray seemed to be having a difficult time preventing her sons from throwing olives at the performer.

Catherine Johnson and Dorothy Roberts are professors of sociology at one of the leading universities. Both were anxious to inform me that Georgina Jones was down for the May Frolics with her "stag lines" just as good and numerous as ever.

I glanced at the nearing ground. It wouldn't be long! "Well, I might as well finish out my class," I surmised. What about Edith Stokely—wonder what she is up to? I glanced about the clouds until I found her canning tomatoes and "Boston baked beans." I was trying to remember other names when I caught sight of a sign bearing the following inscription, "Moore and Pratt Antique Shop—Old Shoes and Jewelry, Specialties." I began to wonder what had happened to Kate's friend, Betty Bahnson. Then I saw her sitting on the side lines of a football game. No wonder she was looking on the game with such interest—her husband was the coach. Betty told me that she had two little girls who were at that time attending a kindergarten under the excellent guidance and supervision of Mary Grier.

Next, Charlotte Yount flashed across the sky. She is now operating a beauty salon, permanent waves being her specialty—put in by hand. She told me that "Snooks" Litz is the proud proprietor of a baby shop, where she can play with baby clothes to her heart's content. She had recently seen, she continued, Mary Laura Perryman playing in Broadway's biggest seasonal hit. I remembered that Mary was always one of the most dramatically talented personages in school.

At this period only a few feet from the ground, the annoying old parachute opened. Why didn't it go on and give me time to finish seeing my friends? Just as my feet touched terra firma, I caught a glimpse of Dorothy Wyatt administering aid to adoring patients in a large city hospital.

I was safe at last after what certainly shouldn't ever be thought of as an unpleasant experience, but a most enjoyable reunion with my Salem Academy Class.

—JEAN GRAY SCOTT, *Prophet*.





## LAST WILL AND TESTAMENT

WE, the Senior Class of 1935, do bequeath the objects most dear to our persons to those who follow in our footsteps, while we pass into the regions beyond. Being stable both in mind and body, we do leave the following articles:

To the Freshmen, Sophomores, and Juniors, we give our hope and expectations that they will pass many more days here and, will, in the course of time, be "standing at the portal."

Mary Louise McLendon wills to Jane Norvell her gift of making frequent announcements with the greatest of ease.

Shirley Tompkins endows Ora Holt Long with her capacity for gossip.

To Margaret Welfare, Ruth Greene leaves her voice, as well as her affectionate nature.

Georgina Jones leaves her "Nunns" to the next.

Betty Bahnson wills her cherubie qualities and tiny feet to Flossie Lee Harry.

To Sarah Hurlburt, Jean Gray Scott wills her slow and easy drawl, in the hope that Miss Knox will appreciate it.

Ethel Litz leaves her intriguing brogue to Rose Willingham.

To Betsy Moss, Dorothy Roberts leaves her aptitude for wrestling with chemistry problems.

To Anne Adams, Helen Dickson wills her profound argumentative ability.

To Caroline Gray, Edith Stokely leaves her quiet ways, as well as a new copy of "The Swiss Family Robinson," so that she may familiarize herself with the contents thereof.

Ethel Young bequeaths her power in history class and her love for yellow tulips to Dorothy Everett.

Margaret Hannah Critcher bequeaths to Edith Madden her ability to concentrate.

The Senior Class donates their largest blackboard to Betty Lee Bell and Jane Hill, in order that they may continue their feud, unmolested, and at the same time leave our walls comparatively devoid of script.

We will to Miss Faulkner a term of fair Tuesdays for horseback rides.

To Miss Wilson, we leave a new supply of ingenuity, so that she may devise novel ways of raising money for the next Senior Class.

To Miss Jackson, we bequeath the services of a twenty-four hour chauffeur.

To Miss Weaver, we leave a share in the faculty tables of the dining room, and a perpetually blooming flower garden to supply flowers for inspiration to her math students.

To the other faculty members, we bequeath the memory of our hurt feelings and many examination boners.

Our deepest love and admiration are left to Dr. and Mrs. Rondthaler, who have endeared themselves to the Class of 1935.

To our Alma Mater, we leave our undying love and appreciation for the happy days spent "in free and joyous progress."

—SIGNED: CLASS OF 1935

Witnesses:

Carnell  
Campus squirrels  
Miss Jackson's Dodge

PATSY HILL, *Testator*.





## CLASS POEMS

My treasure chest stands in the corner  
 Full of golden hours and precious gifts.  
 Each evening in the silence of the dusk  
 I'll open wide this chest and count  
 My treasures as a miser counts his gold.  
 Among those silver coins of memory  
 I shall find a crystal-yellow topaz  
 Reflecting the color of an emerald lying near—  
 Both, jewels of everlasting friendships;  
 A garnet for constancy, and beryl  
 For all the happy hours lived;  
 A rainbow-colored diamond, true symbol for a  
     school of peace;  
 A dark-green bloodstone spotted with red,  
 Stone of courage and wisdom and unfailing love;  
 And then the chest is empty save for one—  
 A flawless pearl, perfect in its ivory shape,  
 Store of all honor and tradition—gem of purity:  
 Seven jewels given me by Salem.

—HELEN McARTHUR.

.....

Stately with your terraced lawns,  
 And lofty view of varied dawns;  
 Living apace with modern cast;  
 Embraced by echoes from the past;  
 Marked in each line with strength and grace,  
 And meeting problems face to face;  
 Cherish your culture through the years  
 And keep the name refinement rears!  
 Dear may you be to every heart,  
 Enriched as each one does his part.  
 May we, in turn, retain, we pray,  
 Your noble spirit day by day.

—DOROTHY ROBERTS.





## JUNIOR CLASS

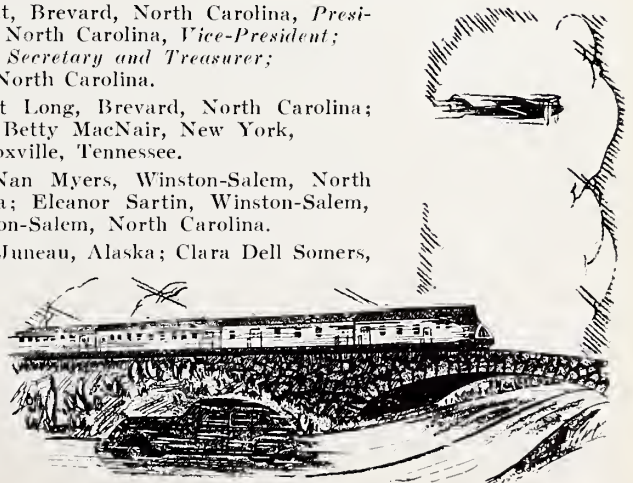
Miss Anne I. Faulkner, *Sponsor*; Dorothy Everett, Brevard, North Carolina, *President*; Mary Elizabeth Walston, Winston-Salem, North Carolina, *Vice-President*; Katherine Read, McMinnville, Tennessee, *Secretary and Treasurer*; Dorothy Carlough, Charlotte, North Carolina.

Sarah Hurlburt, Roxbury, Connecticut; Ora Holt Long, Brevard, North Carolina; Sarah McCanless, South Boston, Virginia; Betty MacNair, New York, New York; \*Edith Madden, Knoxville, Tennessee.

Elizabeth Moss, Washington, North Carolina; \*Nan Myers, Winston-Salem, North Carolina; Jane Norvell, Salisbury, North Carolina; Eleanor Sartin, Winston-Salem, North Carolina; Elizabeth Sartin, Winston-Salem, North Carolina.

Jane Sherman, Evanston, Illinois; Louise Skinner, Juneau, Alaska; Clara Dell Somers, Hamptonville, North Carolina; Nancy Taylor, Harrellsville, North Carolina; Margaret Welfare, Winston-Salem, North Carolina.

\*Academically irregular.





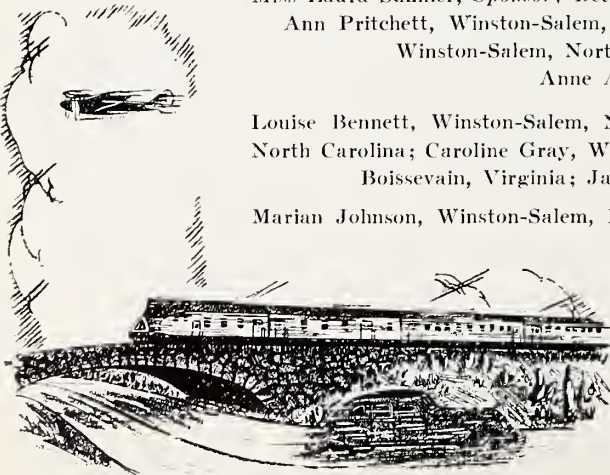


## SOPHOMORE CLASS

Miss Laura Sumner, *Sponsor*; Betsy Hill, Winston-Salem, North Carolina, *President*;  
Ann Pritchett, Winston-Salem, North Carolina, *Vice-President*; Harriet Valk,  
Winston-Salem, North Carolina, *Secretary and Treasurer*;  
Anne Adams, Macon, Georgia.

Louise Bennett, Winston-Salem, North Carolina; Eleanor Sue Cox, Winston-Salem,  
North Carolina; Caroline Gray, Winston-Salem, North Carolina; Florence Lee Harry,  
Boishevain, Virginia; Jane Hill, Winston-Salem, North Carolina.

Marian Johnson, Winston-Salem, North Carolina; Mary Mendenhall, Winston-Salem,  
North Carolina; Nita Montague, Winston-Salem, North Carolina; Johnsie Moore, Winston-  
Salem, North Carolina; Louise Moore, Winston-Salem, North Carolina.







## SOPHOMORE CLASS

Rebecca Nifong, Winston-Salem, North Carolina; Betsy O'Brien, Winston-Salem, North Carolina; Nancy O'Neal, Winston-Salem, North Carolina; Mary Ann Paschal, Winston-Salem, North Carolina; Marjorie Peterson, Winston-Salem, North Carolina.

Jacqueline Ray, Oxford, North Carolina; Joan Reife, Long Island, New York; Elizabeth Roberts, Winston-Salem, North Carolina; Helen Sams, Winston-Salem, North Carolina; Emily Smither, Winston-Salem, North Carolina.

Ruth Templeman, Winston-Salem, North Carolina; Jane Tucker, Winston-Salem, North Carolina; Anna Bitting Whitaker, Winston-Salem, North Carolina; Rose Willingham, Macon, Georgia.





## FRESHMAN CLASS

Miss Mary E. Brown, *Sponsor*; Nancy Teague, Winston-Salem, North Carolina, *President*; Sylvia Shaw, Knoxville, Tennessee, *Vice-President*; Margaret Vardell, Winston-Salem, North Carolina, *Secretary and Treasurer*.

Betty Lee Bell, Winston-Salem, North Carolina; Mary Spotswood Coan, Winston-Salem, North Carolina; Sarah Froeber, Winston-Salem, North Carolina.

Polly Guerrant, Callaway, Virginia; Berylla Hanes, Winston-Salem, North Carolina;  
 \*Alda Madden, Winston-Salem, North Carolina; Mildred Parks, Asheboro, North Carolina.

\*No picture.







SENIORS AND MARSHALS





# ATHLETICS









## HEADS OF SPORTS

*Golds* ..... MARGUERITE WILLINGHAM  
*Purples* ..... PATSY HILL  
*Speedball* ..... BETTY MACNAIR  
*Baseball* ..... JANE IRVING  
*Swimming* ..... EDITH MADDEN  
*Basketball* ..... MARY ELIZABETH WALSTON

*Soccer* ..... ETHEL LITZ  
*Minor Sports* ..... MARY ELIZABETH WALSTON  
*Tennis* ..... EDITH STOKELY  
*Hockey* ..... MARY LOUISE McLENDON  
*Riding* ..... JEAN GRAY SCOTT  
*Archery* ..... HELEN GILMER DICKSON





SWIMMING



TENNIS





## SPEEDBALL

### PURPLES

*MACNAIR	*WILLINGHAM, R.	LONG	HARRY
*McLENDON	*DICKSON	EVERETT	*McCANLESS
GRIER	WHITAKER	O'NEAL	SARTIN, ELEANOR
FROEBER	HANES	VALK	MADDEN, A.
TEMPLEMAN	*SAMS	GRAY	TOMPKINS

### GOLDS

GUERBANT	*BAHNSON	*ADAMS
TEAGUE	STOKELY	SARTIN, ELIZ.
*IRVING	GREENE	SKINNER
*SMITH, E.	*ROBERTS, D.	HURLBURN
PASCHAL	*JOHNSON, M.	SCOTT
RAY	WELFARE	



## SOCCER

### GOLDS

*First Team*  
 \*IRVING  
 \*PRATT  
 SMITH, E.  
 WALSTON  
 \*WILLINGHAM, M.  
 \*ALLEN  
 GUERRANT

\*BAHNSON  
 \*JONES  
 TEAGUE  
 SHERMAN  
 STOKELY  
 HURLBURN  
 MOORE, J.  
 JOHNSON, M.

*Second Team*  
 GREENE  
 HILL, B.  
 PASCHAL  
 PEARSALL  
 HANES  
 WELFARE  
 O'BRIEN  
 WOMBLE

*First Team*  
 COX  
 \*McLENDON  
 \*MACNAIR  
 \*HILL, P.  
 SAMS  
 \*CRITCHER  
 WHITAKER  
 McCANLESS

### PURPLES

READ  
 PETERSON  
 \*LITZ, E.  
 TEMPLEMAN  
 WILLINGHAM, R.  
 \*FROEBER  
*Second Team*  
 EVERETT

VALK  
 MOORE, E.  
 MYERS  
 TAYLOR  
 GRIER  
 O'NEAL  
 MADDEN, E.  
 GRAY  
 COAN

\*Indicates varsity.





## BASKETBALL

### PURPLES

\*TAYLOR  
READ  
MOORE, E.  
LITZ, E.

CRITCHER  
\*HILL, P.  
McCANLESS

### GOLDS

\*WOMBLE  
\*STOKELY  
\*WALSTON  
PEARSALL  
\*WILLINGHAM, M.

\*PRATT  
WYATT  
HURLBURN  
SHERMAN  
MOORE, J.

\*Indicates varsity.



## RIDING



HOCKEY



BASEBALL





*Familiar Quotations  
by A Daystudent*



"Hey, check me in, too!"



"Hurry up with the 'phone —  
I've gotta use it before the  
bell rings."



"How can we get out of  
exercise today?"



"Lend me a dime so  
I can get some ice  
cream, too."

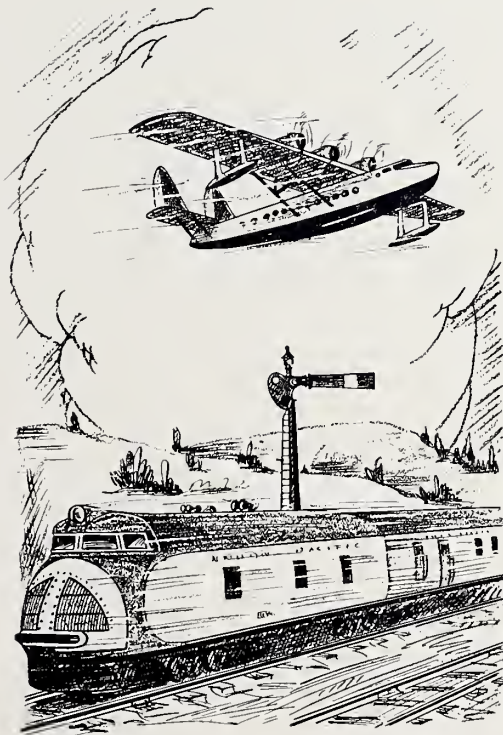








# ORGANIZATIONS









### QUILL PEN STAFF

Betty Bahnson, *Editor-in-Chief*; Jean Gray Scott, *Advertising Manager*; Shirley Tompkins, *Business Manager*; Georgina Jones, *Photographic Editor*.

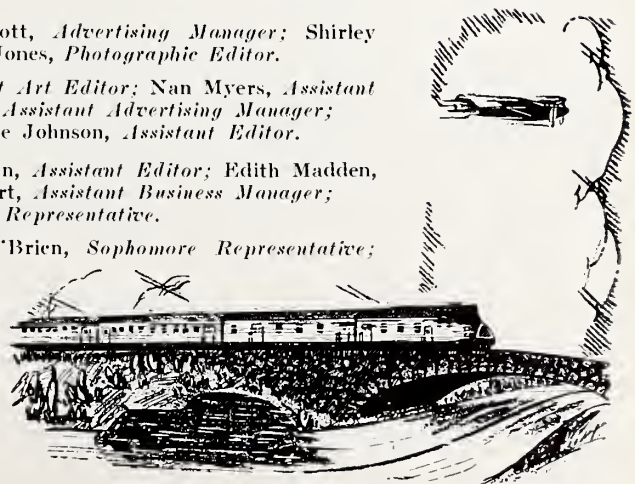
Jody Litz, *Art Editor*; Helen McArthur, *Assistant Art Editor*; Nan Myers, *Assistant Advertising Manager*; Helen Gilmer Dickson, *Assistant Advertising Manager*; Olivia Womble, *Athletic Editor*; \*Catherine Johnson, *Assistant Editor*.

†Dorothy Roberts, *Assistant Editor*; Jane Sherman, *Assistant Editor*; Edith Madden, *Assistant Photographic Editor*; Sarah Hurlburt, *Assistant Business Manager*; Margaret Willingham, *Senior Representative*.

Betty McNair, *Junior Representative*; Betsy O'Brien, *Sophomore Representative*; Sylvia Shaw, *Freshman Representative*; Miss Laura Sumner, *Faculty Adviser*.

\*No picture.

†Entered too late for picture.





## STUDENT REPRESENTATIVES

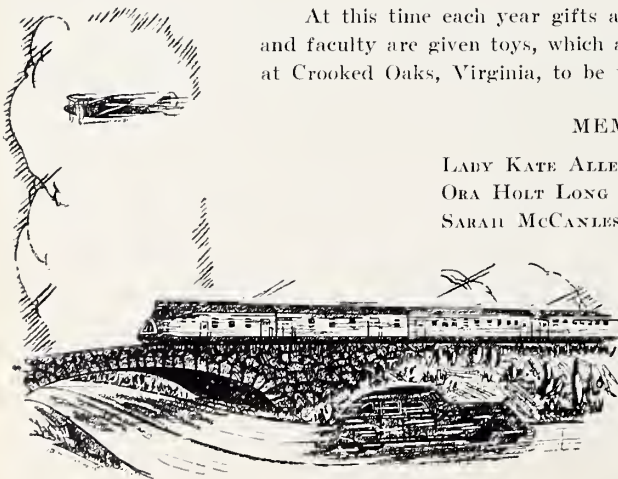
Festive and seasonal, the Christmas dinner and party are among the most enjoyable occasions of the year. The party, sponsored by the student representatives, centers around the putz, or representation of the nativity scene. In appreciative manner, Dr. Rondthaler recounts to us the chief characteristics of the putz, which is a traditional part of the Moravian Christmas celebration. To our 1934 party Pi Delta Phi contributed by presenting two plays, a Christmas Morality Play and "A Christmas Guest" by Constance D'Arcy Mackay.

At this time each year gifts are distributed to our servants; and to the students and faculty are given toys, which are later collected and sent to the Moravian Mission at Crooked Oaks, Virginia, to be used as Christmas gifts to needy children.

### MEMBERS FOR 1934-35

LADY KATE ALLEN  
ORA HOLT LONG  
SARAH MCCANLESS

EDITH MADDEN  
ELIZABETH ROBERTS  
SHIRLEY TOMPKINS







Group



Detail (Correggio's Holy Night)  
CHRISTMAS PAGEANT



## PI DELTA PHI

*"We are the friends of poets and drama."*

Founded March 27, 1930

ELIZABETH TROTMAN ..... *President*  
 JEAN GRAY SCOTT ..... *Secretary and Treasurer*

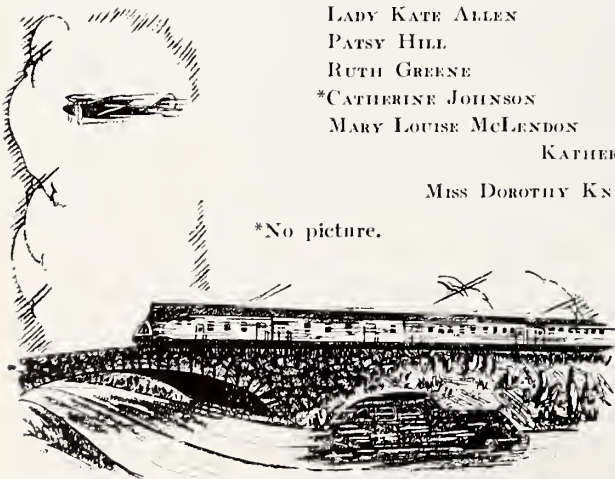
LADY KATE ALLEN  
 PATSY HILL  
 RUTH GREENE  
 \*CATHERINE JOHNSON  
 MARY LOUISE McLENDON

ELLEN MOORE  
 MARY LAURA PERRYMAN  
 ETHEL YOUNG  
 DOROTHY EVERETT  
 BETTY McNAIR

KATHERINE READ

MISS DOROTHY KNOX, *Faculty Adviser*

\*No picture.







## HARLEQUIN CLUB

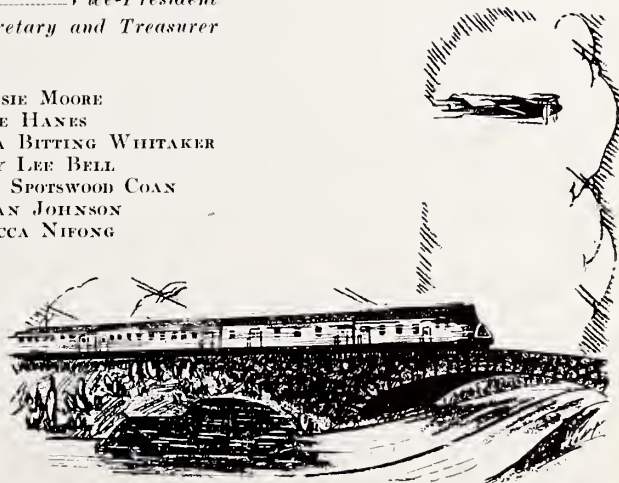
The Harlequin Club, the junior dramatic organization of Salem Academy, is composed of sophomores and freshmen interested in acting. Each year the group presents two plays, one in the fall and one in the spring, for the entertainment of the students and their friends. Miss Anne Faulkner is the faculty adviser.

### OFFICERS FOR 1934-35

JANE HILL.....*President*  
 JACQUELINE RAY.....*Vice-President*  
 ELEANOR SUE COX.....*Secretary and Treasurer*

### MEMBERS

ANN PRITCHETT	JOHNSIE MOORE
FLORENCE LEE HARRY	BILLIE HANES
CAROLINE GRAY	ANNA BITTING WHITAKER
MARGARET VARDELL	BETTY LEE BELL
JANE HILL	MARY SPOTSWOOD COAN
BETSY HILL	MARIAN JOHNSON
LOUISE BENNETT	REBECCA NIFONG
LOUISE MOORE	







### SCRIBBLERS' CLUB

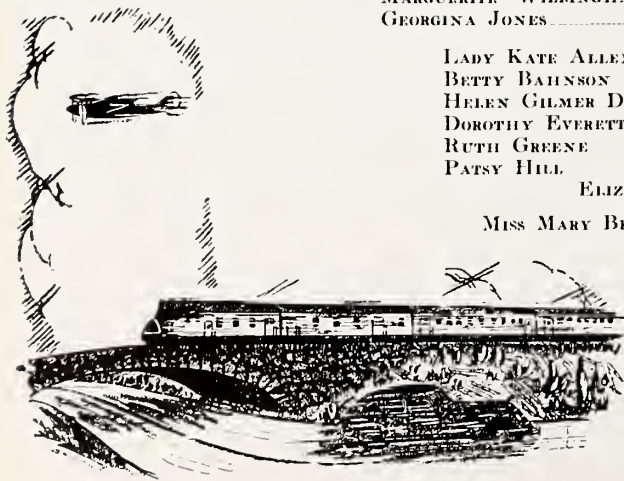
JEAN GRAY SCOTT .....	<i>President</i>
MARGUERITE WILLINGHAM .....	<i>Vice-President</i>
GEORGINA JONES .....	<i>Secretary and Treasurer</i>

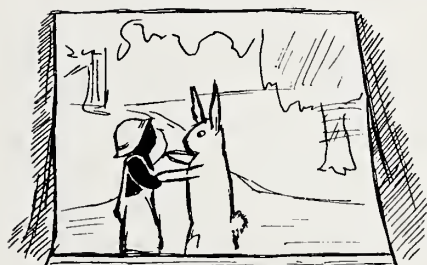
LADY KATE ALLEN  
 BETTY BAHNSON  
 HELEN GILMER DICKSON  
 DOROTHY EVERETT  
 RUTH GREENE  
 PATSY HILL

HELEN McARTHUR  
 KATE PRATT  
 KATHERINE READ  
 DOROTHY ROBERTS  
 JANE SHERMAN  
 EDITH STOKELY

ELIZABETH TROTMAN

Miss MARY BROWN, *Faculty Adviser*

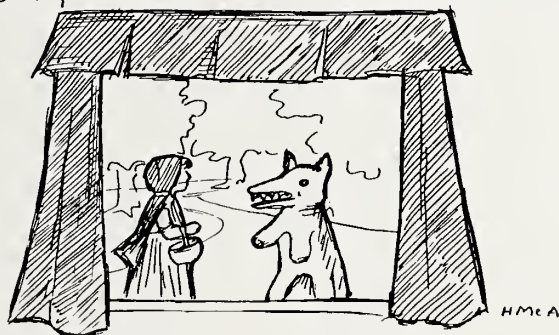




"Tar Baby"



"Epaminondas"



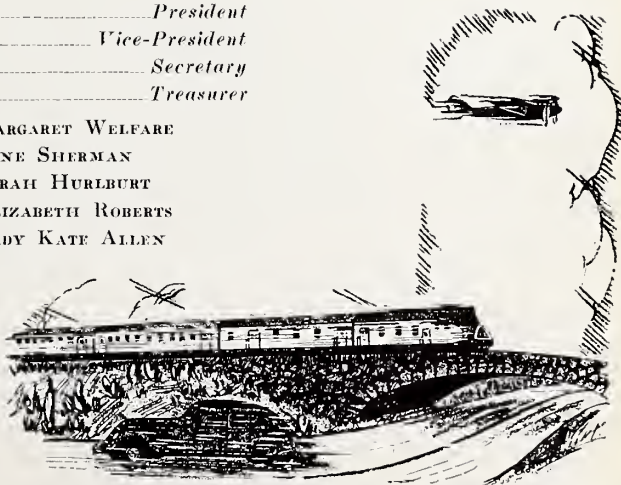
"Little Red Ridinghood"

## THE PUPPET CLUB

The Puppet Club, which is one of the new organizations in Salem Academy this year, is supervised by Miss Virginia Wilson. In the early fall a miniature stage was built and furnished with scenery and draw curtains. Then, as the different plays were presented, various members of the Club made the necessary puppets. The most important presentations this year, LITTLE RED RIDING HOOD, EPAMINONDAS, and the dramatization of several poems, were given at dinners for parents of the day students, at student parties, and at club meetings in town. The Club is a creative organization and one formed for girls interested in dramatics, handicraft, and playwriting.

### MEMBERS

HELEN McARTHUR .....	President
ELIZABETH TROTMAN .....	Vice-President
PATSY HILL .....	Secretary
MARGARET HANNAH CRITCHER .....	Treasurer
ROSE WILLINGHAM	MARGARET WELFARE
JACQUELINE RAY	JANE SHERMAN
FLORENCE LEE HARRY	SARAH HURLBURT
POLLY GUERRANT	ELIZABETH ROBERTS
RUTH GREENE	LADY KATE ALLEN







MUSIC CLUB



LATIN CLUB

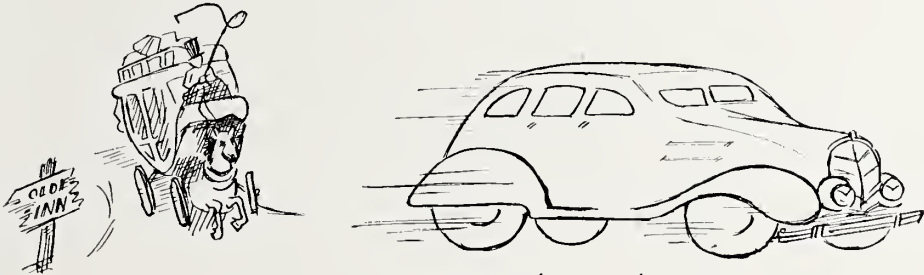




*Though we may change*



*from bustles to slender lines*



*and from coaches to stream lines*



*our heart lines remain  
the same!*



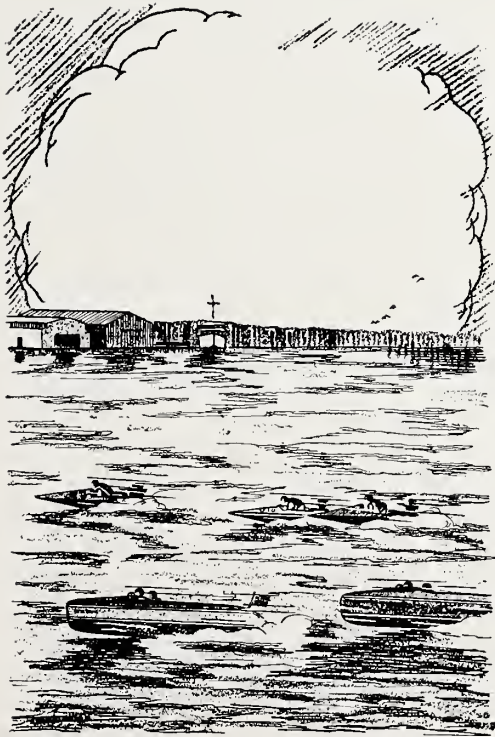
### ·HORIZONTAL·

- 1 Third letter in alphabet.
- 2 A price fixed as to ratio.
- 6 Keys differing in pitch.
- 7 Part of verb to be.
- 9 Abbr. of a Southern State.
- 11 From (Latin).
- 13 Moravian School for girls, Salem—
- 14 To exist
- 15 A preposition.
- 16 Open side of fireplace on which food may be cooked.
- 19 Part of verb to be.
- 20 A preposition
- 21 The principal of Salem Academy.
- 22 A period of time.
- 24 To allow.
- 26 An ancient city of the Bible
- 27 To wander, stray.
- 28 A conjunction

### ·VERTICAL·

- 2 President of Salem Academy and College.
- 3 Indefinite article.
- 4 A group of players
- 5 Winglike.
- 8 The school of which this man is president.
- 10 Division of a play.
- 12 A preposition.
- 14 Bachelor of Arts degree (abbr.).
- 15 Single in number.
- 17 Above.
- 18 Deceive.
- 21 Person entrusted to the care of a guardian.
- 23 Move swiftly.
- 25 Negative.

# HONORS









ELIZABETH HILL BAHNSEN  
*First Honor Student*



EDITH ESTES STOKELY  
*Second Honor Student*



## HONOR ROLL

---

### CLASS OF 1935

LADY KATE ALLEN 2*	KATE PRATT 4
BETTY BAINSON 5	†DOROTHY ROBERTS 2
HELEN GILMER DICKSON 4	JEAN GRAY SCOTT 4
JANE IRVING 3	LUCY G. SMITHER 1
CATHERINE JOHNSON 4	EDITH STOKELY 5
GEORGINA JONES 2	DOROTHY WYATT 1
HELEN McARTHUR 5	ETHEL YOUNG 1
MARY LOUISE McLENDON 5	MARY CHARLOTTE YOUNT 4

---

### CLASS OF 1936

ORA HOLT LONG 2	ELIZABETH SARTIN 1
SARAH McCANLESS 2	JANE SHERMAN 2

---

### CLASS OF 1937

†ANNE ADAMS 2	MARIAN JOHNSON 2	†JANE TUCKER 1
CAROLINE GRAY 5	ANN PRITCHETT 5	ANNA BITTING WHITAKER 5

---

### CLASS OF 1938

SARAH FROEBER 2	BERYLLA HANES 1
-----------------	-----------------

---

## HONOR COUNCIL

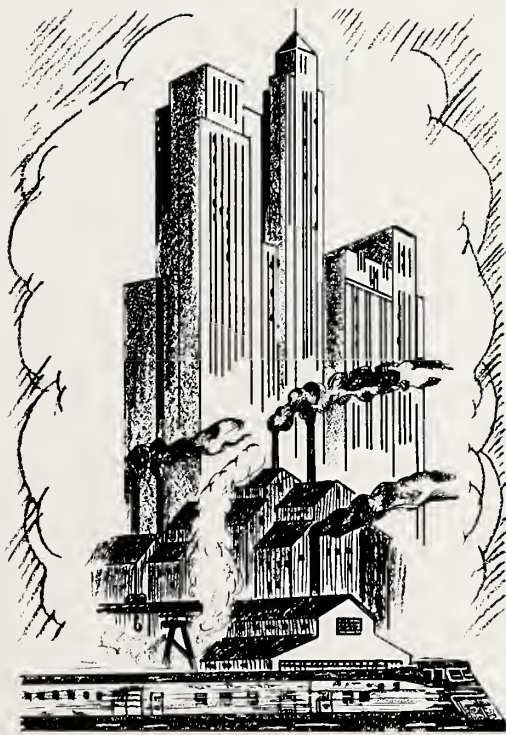
MARY LOUISE McLENDON	ANNA BITTING WHITAKER
JANE IRVING	MARGARET VARDELL
ORA HOLT LONG	

\*Numeral indicates the number of times student has made Honor Roll.

†Enrolled only second semester.



# ADVERTISEMENTS





**COHEN'S**  
**SMART WOMEN'S**  
**WEAR**

*Serving you is a pleasure*

**Bobbitt's Drug Stores**

*Appreciate  
Your Business*

**TEAGUE'S**

*Women's Smart Apparel*  
Everything for the School Girl  
Winston-Salem, N. C.  
319 W. Fourth

**Brown-Rogers-Dixson**

**HARDWARE AND  
SPORTING GOODS**

**"The Best Place To Get It"**

*We Patronize*

**Welfare's Drug Store**

*"Of Course"*

Careful and Courteous Drivers  
DIAL 7121

**BLUE BIRD CAB, Inc.**  
**DAY AND NIGHT SERVICE**  
**BAGGAGE TRANSFER**

Stands: Robt. E. Lee—Bus Station  
R. R. Passenger Station  
WINSTON-SALEM, N. C.

*Everything Electrical*

**CHINA, GLASS, LAMP SHADES**  
**Gift Novelties**

**Electric Service Shop**

114 West Fourth Street  
Winston-Salem, N. C.

**C. C. Disher Chevrolet Co.**

210 North Marshall Street  
Service Telephone 7782  
Sales Telephone 7801

**SERVICE AWAITS YOU**  
at the

**Junior League Beauty Parlor**

Mezzanine  
Robert E. Lee Hotel  
Telephone 8620

*STYLE*  
*Without Extravagance*

**KAUFMAN'S**

Women's Wearing Apparel  
Fourth at Cherry

**BUSKIN**

A NEW LEATHER FOR  
COLLEGE SHOES

**HINE'S**

**Rankin's**  
**ICE CREAM**

*"The Best Ice Cream  
In Town"*



## SOSNIK'S

West Fourth at Spruce

Always on the Honor Roll with  
Young Salemites . . .

OUR SMART FASHIONS  
IN JUNIOR SIZES

They're the real things for young  
things who know what's right!

We keep you  
*Young and Beautiful*

SOSNIK'S  
BEAUTY SALON

Highly Specialized Service by Opera-  
tors skilled in every line of beauty  
culture . . . this means satisfaction.

SOSNIK'S

West Fourth at Spruce

SALEM GIRLS

*Are Always Welcome*

*at the*

**Anchor Company, Inc.**

*"Winston-Salem's*

*Shopping Center"*

**O'Hanlon's Drug Store**

Is known all over North  
Carolina where any one  
thinks of a drug store.

Cor. W. 4th and Liberty Sts.

**Pilot Insurance Agency**

Inc.

GENERAL INSURANCE

Corner Fourth and Spruce Streets

Phone 6123

**Southern Dairies**

ICE CREAM

*The Standard of Comparison*

A Complete Dairy Service

Throughout the City

*Fine Social Stationery*

H. T. HEARN ENGRAVING CO.

Winston-Salem, N. C.

NEW AND MODERN

**CAROLINA  
DRUG STORE**

West 4th and Spruce

DIAL 4131

(Opposite Carolina Theatre)

**D. G. Craven Company**

MISSES AND JUNIOR  
DRESSES

Winston-Salem, N. C.

*Compliments  
of*

**THE IDEAL**

Winston-Salem's Predominating and  
Finest Department Store

*You're Always Welcome  
Here*

*Compliments  
of*

**ROBERT E. LEE  
HOTEL**

Winston-Salem  
North Carolina

**MONTALDO'S**

Campus Clothes That Combine

Smartness With Quality

*Modestly Priced*

**FRATERNITY, COLLEGE  
and CLASS JEWELRY**

Commencement Announcements,  
Invitations, Diplomas

*Jeweler to the  
Senior Class of Salem Academy*

**L. G. Balfour Company**

Manufacturing Jewelers and Stationers

Attleboro, Mass.

*A QUALITY STORE*

*For Men and Boys*

*for nearly a*

*Quarter of a Century*

**Frank A. Stith Co.**

**FUN FOR SALE**



Take a tip from thousands of students—there's twice the fun, at half the cost, vacationing by Greyhound. Write for full information on trips to any part of America.

**ATLANTIC  
GREYHOUND  
Lines**

TRAVEL BUREAU, CHARLESTON, WEST VIRGINIA

COATS DRESSES  
MILLINERY

*"Where Salem Girls Buy  
Their Clothes"*

**DARLING SHOP**

*Darling Dresses Always*

420 N. Liberty Street  
Winston-Salem, North Carolina

# SALEM PLATES

BY  
WEDGWOOD



*Eight Views of*  
**SALEM ACADEMY  
AND COLLEGE**

*In Your Choice of  
Five Colors*

Blue, Sepia, Green, Pink,  
Mulberry.

Made by Wedgwood  
in England.

Dinner Service Size 10½ in.

**Salem Book Store**  
Salem College

**DAVIS, Inc.**  
QUALITY MERCHANDISE

Reasonably Priced

*Salem Girls Are Always  
Welcome*

Make our store *your* store

**William McCall**  
Importers of Art Linens  
Filet-Italian Cut Work

503 W. Fourth Street  
Winston-Salem, N. C.  
Phone 2-1831

**Gooch's Drug Store**

*We Appreciate Your  
Business*

**Arden Farm**

Clemmons,  
North Carolina

*High Grade Dairy and  
Poultry Products*

Helping millions to  
**END COLDS**  
**SOONER** **VICKS**  
VAPORUB



# C. R. WILLIAMS RADIO CO.

PHILCO Radio For the Home and Automobile

Norge Electric Refrigerator

Laco Oil Burner

Liberty at First Street

Phone 6942

COAL

COAL

## J. R. THOMAS

ICE and COAL

CALL 7158

ICE

ICE

*BEST WISHES*

FROM

P. H. Hanes Knitting  
Company

Manufacturers of



UNDERWEAR

For Men and Boys

*For Every Season*

**SELECTO**  
"The **HAM** delicious"



*Beautiful CARS*

*For*

*Beautiful GIRLS*



**BUICK**

*and*

**PONTIAC**



*Distributed*

*by*

*Forsyth Motors, Inc.*

133 North Main St.

WINSTON-SALEM, N. C.

PHONE 4166

After the consumption of 30  
K. W. hours, which is less  
than the average family's  
requirements for lighting  
alone,

## A SINGLE PENNY WILL

Make 37 pieces of golden brown toast.

Keep a 25-watt light burning from  
dusk till daylight (12½ hrs.)

Bring in more than six half-hour pro-  
grams on average radio.

Fan you for six hours.

Keep food fresh and make ice cubes  
five hours.

Operate electric iron for half an hour.

Vacuum clean eight room-size rugs  
(two hours, five minutes).

Operate food mixer five hours.

Wash all dishes for a full week (22½  
meals).

Wash 3¾ tubs full of clothes.

Give over six hours relief from pain  
with a heating pad.

## Duke Power Co.

Formerly Southern Public  
Utilities Co.

Phone 7151

# Camels

WAKE UP  
YOUR  
ENERGY!



Smokers everywhere are turning to Camels for their delightful "energizing effect." You'll enjoy them, too! And remember—the finer, MORE EXPENSIVE TOBACCOS—Turkish and Domestic—used in the manufacture of Camels never get on your nerves . . . never tire your taste.



**COSTLIER TOBACCOS**



In the Language of  
Underwear

**Mayo**  
Made from Mayo Yarn

Means . . .

Comfort, Durability,  
and Economy

We are now making beautiful MAYO Athletic Shirts, as well as light, medium, and heavy weight underwear, in every desired size.

See Your MAYO Dealer today and outfit  
yourself for spring and summer.



We also make a cheaper trimmed line of winter underwear of the following brands:

**MELOTEX and PIEDMONT**

Our MAYFAIR brand is used on Children's Waist Suits only.

Well established Washington Mills Sheeting brands are:

STARS AND STRIPES—LL—4 Yds.  
MANHATTAN—LL—4.70 Yds.  
SUNFLOWER—LL—6.15 Yds.  
PALMER—LL—5.50 Yds.  
AVALON—LL—5 Yds.



MADE BY

**WASHINGTON MILLS COMPANY**

OFFICES:

WINSTON-SALEM, NORTH CAROLINA

MILLS:

MAYODAN, NORTH CAROLINA AND FRIES, VIRGINIA

93 WORTH STREET, NEW YORK

Salem College    Salem Academy  
for                      for  
Women                Girls

Founded 1772



HERITAGE of the PAST

STANDARDS of the PRESENT

ENDOWMENT of the FUTURE



*Quarter Million Dollars in New Buildings*



M E M B E R S

SOUTHERN ASSOCIATION OF COLLEGES AND PREPARATORY SCHOOLS

Memories of youth  
fade and are gone,  
but  
never changing photographs  
of Today  
become  
Tomorrow's Treasures.

**BEN V. MATTHEWS**

317 West Fourth Street

Winston-Salem . . . North Carolina



The 1935 Quill Pen is  
A Winston-Salem Product—



Penry-Aitchison Printing Company

*A Complete Printing Service*

Winston-Salem, North Carolina

# PIEDMONT ENGRAVING COMPANY

HALFTONES

ZINC ETCHINGS

ELECTROTYPES

COMMERCIAL ART

PHOTO-ETCHING

WINSTON-SALEM, N. C.



1 9 3 5

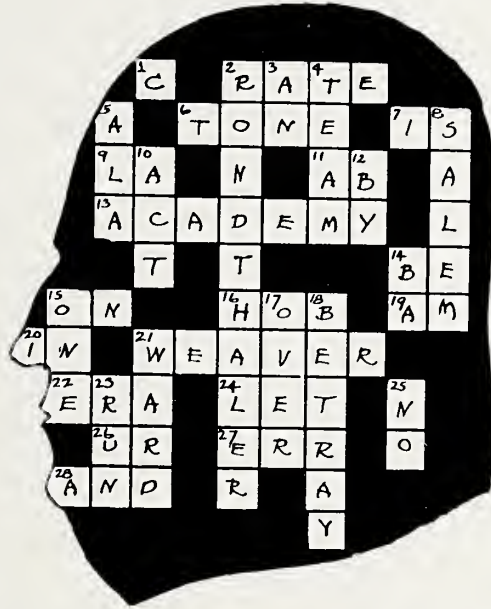
TO THE STAFF  
AND STUDENTS

It has been a genuine pleasure to work with you in the production of this the 1935 edition of your school yearbook.

It is our sincere hope that you have found Piedmont Plates and Piedmont service entirely satisfactory in every way and that your annual will be a constant source of pleasure and happy memories for the rest of your lives.

Very truly yours,  
*M. Prongay*  
M. Prongay, of  
PIEDMONT ENGRAVING CO.

MP/k



## ALMA MATER

School of ages, still aspiring  
 School of fame:  
 Mothers, daughters seek to honor thy  
     great name;  
 Salem, may we true and loyal ever be;  
 Salem may you hear our singing—  
 Love we're bringing all to thee.

School of ages, thy great spirit  
 Gives us power  
 To make free and joyous progress hour by hour.  
 Honor, splendor, love, and glory thine shall be;  
 Through our lives will shine thy blessing—  
 Alma Mater, hail to thee!











SALEM ACADEMY & COLLEGE



0 2960 0218515 9

