



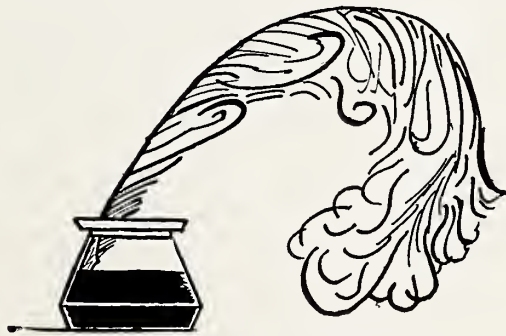




Digitized by the Internet Archive
in 2013

<http://archive.org/details/quillpen19491949sale>

The Quill Pen



Published by the Students of
S A L E M A C A D E M Y
Winston-Salem, North Carolina
1949



*A*ll the world's a stage,

And all the men and women merely players.
They have their exits and their entrances,
And one man in his time plays many parts.

From *As You Like It*

By William Shakespeare



38801

To Dr. and Mrs. Rondthaler

By dedicating to you the 1949 Quill Pen, we, the staff, wish to acknowledge the inspiration you have never ceased to be, the kindness you have always shown to us, the traditions you have taught us to love, and the beauty you have added to our lives.



DR. AND MRS. HOWARD E. RONDTHALER

Administration



HOWARD E. RONDTHALER
President

Ph. D., L.L.D., University of North Carolina
B.D., M.A., D.D., Moravian Theological Sem-
inary



MARY A. WEAVER

Principal

A.B., Randolph-Macon Woman's College
M.A., Columbia University; University of
Wisconsin; Harvard University

Faculty

VIOLET R. LEE
Secretary

ROSAMOND LYNCH
French-Spanish
B.A., Vassar College
Middlebury College
University of Pennsylvania

JEAN MISH
Science-Home Economics
B.S., Madison College

ELSIE NUNN
Mathematics
B.A., Woman's College of the
University of North Carolina
M.A., University of North Carolina

STELLA PRICE
Bible
B.A., Lenoir-Rhyne College
Duke University
Union Theological Seminary

LAURA SUMNER
English
B.A., Woman's College of the
University of North Carolina
M.A., Smith College
Harvard University
University of North Carolina

HAZEL D. WHEELER
Art
B.S., Boston University
Vesper George School of Art
Chicago Institute of Art
Harvard University

VIOLA WOOLFOLK
Dean of Residence
Mathematics
B.A., Mount Holyoke College
M.A., Columbia University





Faculty

EMMIE J. ANSLEY

Chaperone

Diploma, Edward McGehee College

Tulane University

University of Tennessee

LAURA BLAND

Latin

B.A., Salem College

M.A., University of North Carolina



HELEN BROWN

Dramatics-English

Temple University

B.A., Albright College

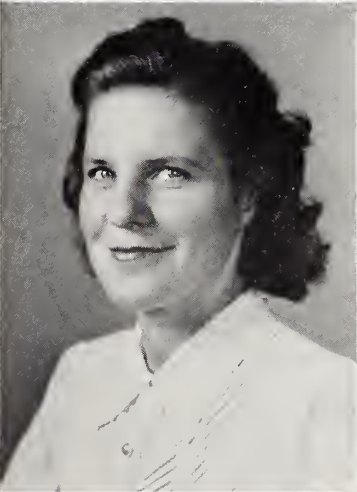
University of North Carolina

SARA LEE GARRETT

History

B.A., Louisiana Polytechnic Institute

M.A., University of Arizona



DOROTHY GUETH

Physical Education

B.S.P.E., Woman's College of the

University of North Carolina

KATHERINE HARWOOD

Dietitian

B.S., New York Institute of Dietetics

MARY McCOY HODGES

Assistant Dean

Montreat College



LUCIA R. KARNES

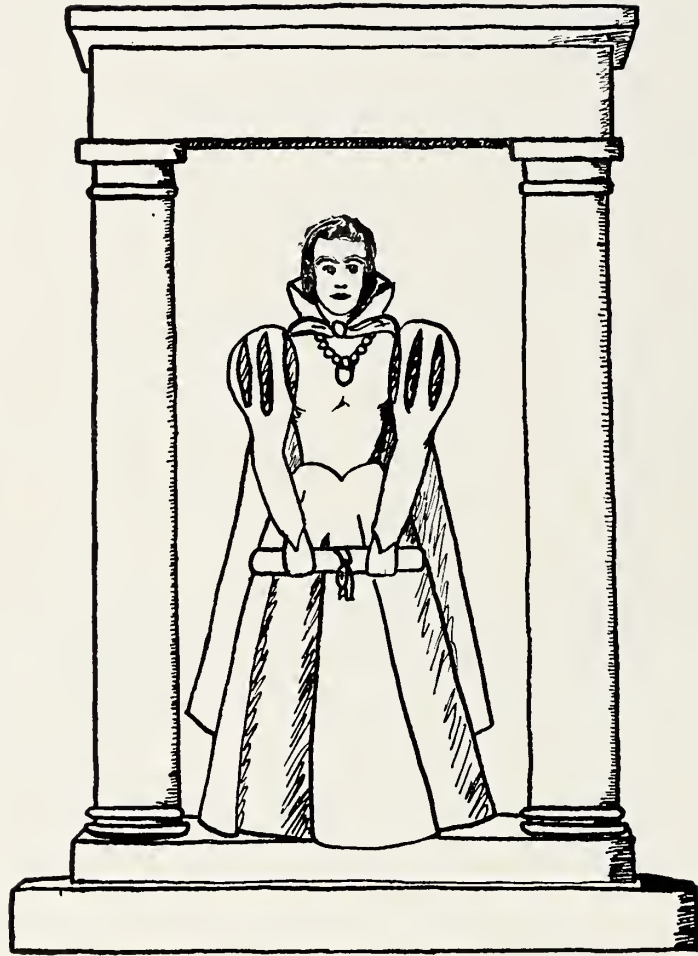
Librarian

B.S., Georgia State College for Women

M.A., Emory University

Emory University Law School

Senior Class



All's Well That Ends Well



KELLEY, LONGCRIER, MOORE, HEDRICK

Senior Class Officers

<i>President</i>	MARY ALICE LONGCRIER
<i>Vice-President</i>	MARY JO KELLEY
<i>Secretary</i>	MARILYN MOORE
<i>Treasurer</i>	THERESA HEDRICK
<i>Sponsor</i>	MISS LAURA SUMNER



Seniors

EMILY BLUM

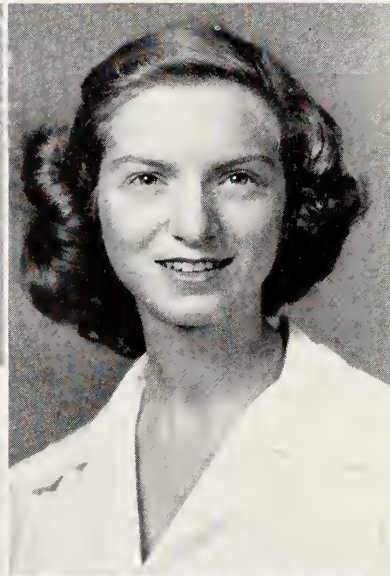
2728 Forest Drive, Winston-Salem, N. C.
mad weekends at Duke . . . telephone
calls . . . letters . . . golf? . . .

President of Freshman Class; Academic
Marshal, 1; Head of Tour Committee, 2, 3;
Varsity Speedball, 3; Dance Committee, 4;
Quill Pen Staff, 2, 3, 4; Glee Club, 1, 3, 4;
Dramatic Club, 1, 2, 3, 4; French Club, 3.

LAVONE BURTON (Vonnie)

1711 Honaker Avenue, Princeton, W. Va.
daydreaming . . . quick comebacks . . .
auburn hair . . . singing . . .

Glee Club, 3, 4; Duck Inn Staff, 3, 4; Dramatic
Club, 3, 4; Spiritual Steering Wheel, 3, 4;
President of S. S. W., 4; Operetta, 3, 4; French
Club, 3; Double Sextet, 3, 4.



SALLY COUCH

Chapel Hill, N. C.

anything gray . . . yackety yack . . .
football and open house . . . Y.P.S.L.

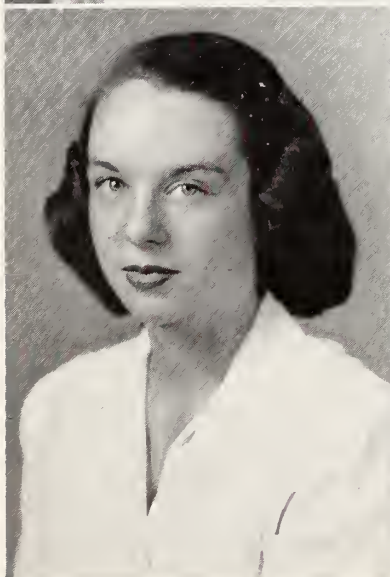
Glee Club, 2, 3, 4; Student Representative,
2, 3; Vice-President of Glee Club, 4; Spiritual
Steering Wheel, 4; Speedball Varsity, 2; Hockey
Varsity, 3; Dance Committee, 4; Dramatic
Club, 2, 3, 4; Scribblers' Club, 4; French Club 3;
Operetta, 4; Double Sextet, 3, 4; Academic Mar-
shal, 2; Citizenship Honor, 3.

ELEANOR DUNBAR

Damascus, Virginia

symphonies . . . whistling through the halls
. . . paint brushes . . . enjoys life . . .

Dramatic Club, 1, 2, 3, 4; Honor Council,
2, 3; Chaperone Fund, 3, 4; Operetta, 4; Part
in Play, 4; Spiritual Steering Wheel, 4; French
Club, 3; Quill Pen Staff, 4; Double Sextet, 4.



ELEANOR ROSE FIELD

32 Buena Vista Road, Biltmore, N. C.

G. B. . . "that's cheatin" . . . nail
polish . . . Pawley's Island . . .

Dramatic Club, 3; Glee Club, 3, 4; Senior
Counselor, 4; Honor Council, 4; Chairman of
Red Cross, 3; Spiritual Steering Wheel, 3;
Finance Committee-Alumnae Association, 4;
Secretary of Student Council, 4; French Club, 4.

SUE FIELDS

Amherstdale, West Virginia

posture . . . sophisticated lady . . .
convertibles . . . St. Patrick's Day . . .

Post War Council, 1; Soccer Varsity, 1, 2, 3, 4;
Speedball Varsity, 1, 2, 3, 4; Spiritual Steering
Wheel, 4; Head of Golds, 4; Dramatic Club, 1;
Glee Club, 1, 2, 3, 4; Vice-President of Sopho-
more Class; Secretary of Scribblers' Club, 3;
Scribblers' Club, 3, 4; Dance Committee, 4.

Seniors

ANN FRANKLIN

1141 Linganore Place, Charlotte, N. C.

"I have a question" . . . a Charlotte house party . . . Little Ann . . . socialized medicine

Dramatic Club, 2, 3; Glee Club, 4; Soccer Varsity, 3; Speedball Varsity, 2, 3; Quill Pen Staff, 3; French Club, 3; Lecture Committee, 4.

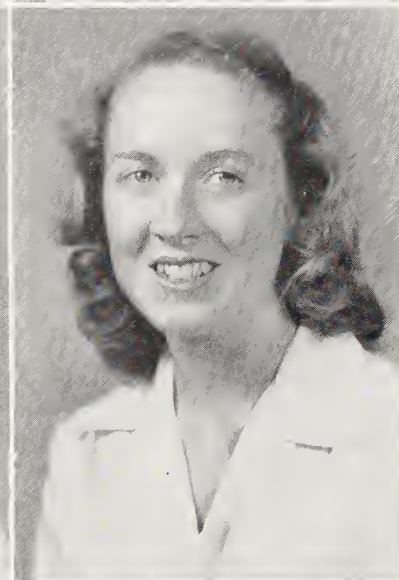
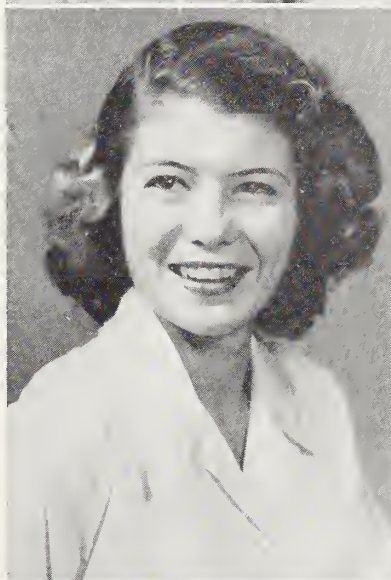


PAT GROOME

203 Edgedale Drive, High Point, N. C.

Door signs . . . "says here" . . . animals . . . French

Dramatic Club, 3, 4; Duck Inn Staff, 3; Glee Club, 3, 4; French Club, 3; Assistant Editor of Quill Pen, 4; Volleyball Varsity, 3; Operetta, 4; Double Sextet, 4.



GWEN HAMER

205 Maehill Park, Lenoir, N. C.

football heroes . . . plays . . . typewriter keys . . . writing . . .

Spiritual Steering Wheel, 3; Dramatic Club, 3, 4; Vice-President of Dramatic Club, 4; Scribblers' Club, 3, 4; Editor of Quill Pencil, 3; Secretary of Junior Class, 3; Glee Club, 3, 4; Double Sextet, 3, 4; French Club, 3; Lead in Plays, 3.

THERESA HEDRICK

318 E. College Avenue, Lenoir, N. C.

strawberry blond . . . Darlington . . . "What, him?" . . . "So In Love"

Golf Varsity, 3; Spiritual Steering Wheel, 4; Treasurer of Senior Class, 4; Glee Club, 3, 4; Double Sextet, 4; Dramatic Club, 3, 4; French Club, 3, 4.



MARY JANE HUTCHENS

Greenwood Drive, High Point, N. C.

clothes plus . . . sweet and quiet . . . slow easy draw! . . . willing way . . .

Glee Club, 3, 4; Dramatic Club, 3, 4; Quill Pen Staff, 4; Duck Inn Staff, 4; French Club, 3.

PAT KAVANAGH

Long Ridge, Route No. 1, Lenoir City, Tenn.

"I'll slip you a clue" . . . knittin' needles . . . Tennessee chatter . . . attractive eyes . . .

Glee Club, 3, 4; Red Cross Committee, 3; Student Council, 4; Dramatic Club, 3, 4; Scribblers' Club, 4; French Club, 3.

Seniors

MARY JO KELLEY

912 Overbrook Avenue, Winston-Salem, N. C.

warm smiles . . . the best things in
life are Ferree . . .

Glee Club, 2, 3; Chairman of Program Committee, 3; Quill Pen Staff, 2, 3; Honor Council, 3, 4; Vice-President of Class, 3, 4; Student Council, 4; Citizenship Honor, 3; Chairman of Community Service Committee, 4; Golf Varsity, 3; Dramatic Club, 2.

MARY ALICE LONGCRIER (Alice)

Saxapahaw, North Carolina

"Land" . . . bent hair . . . Saxapahaw
tales . . . musical heights . . .

Dramatic Club, 4; Treasurer of Class, 2, 3; President of Senior Class; Hockey Varsity, 4; Glee Club Accompanist, 2, 3; Glee Club, 1, 2, 3, 4.

MADELINE MABRY

Apt. 19-14, College Village, Winston-Salem, N. C.

Kaiser-Frazier woman . . . "boocoo of"
. . . big grins . . . Gawgian'
drawl . . .

Quill Pen Staff, 4; Dramatic Club, 4.

MARION MACHESNEY

110 Macon Avenue, Asheville, N. C.

Chatter, chatter . . . on a slow boat to
Japan . . . "How's yours?" . . .
Tigress . . .

Glee Club, 3, 4; Duck Inn Staff, 3; Head of Social Committee, 4; Dramatic Club, 3, 4.

MARILYN McDONALD

Box 296, Logan, West Virginia

horses . . . bouncing curls . . . sports
. . . turtles . . .

Athletic Board, 2, 3, 4; Hockey Varsity, 1, 2, 4; Soccer Varsity, 3; Basketball Varsity, 2, 3, 4; Softball Varsity, 2; Golf Varsity, 3; Head of Service Committee, 3.

MARGARET McINTOSH (Bobbie)

Welch Road, R. F. D., Huntington Valley, Pa.

exercising . . . "hey wait I'm coming"
. . . peroxide . . . eating . . .

Dramatic Club, 2, 3, 4; Treasurer of Dramatic Club, 2; President of Dramatic Club, 4; Lead in play, 2, 4; Executive Board For Dramatic Club, 2, 3, 4; Quill Pen Staff, 3; Scribblers' Club, 2, 3, 4; Vice-President of Scribblers' Club, 3, 4; Soccer Varsity, 4.



Seniors

ANNE MILLER

East Main Street, Lincolnton, N. C.
 "ho! ho! let's have a party" . . .
 fashion follower . . . flighty . . .
 particular . . .

Dramatic Club, 3, 4; Student Council, 3;
 French Club, 3.

MARILYN MOORE

1121 Wateree Street, Kingsport, Tenn.
 music . . . V. P. I. . . . laughter . . .
 lots of fun . . .

President of Glee Club, 4; Secretary of Senior
 Class; Secretary of Dramatic Club, 4; Spiritual
 Steering Wheel, 4; Part in play, 4; Glee Club
 Accompanist, 4.



MARTHA NORTON

Gaffney, South Carolina
 "Listen, --" . . . newlook . . . mod-
 eling . . . "Su-Su, I'm so fat" . . .

French Club, 3; Dramatic Club, 3, 4; Duck
 Inn Staff, 4; Dance Committee, 4; Assistant
 Editor of Quill Pen, 3; Editor of Quill Pen, 4.

MARY ELLA O'DAY

2404 Forest Drive, Winston-Salem, N. C.
 Irish eyes are smiling . . . "Hey, sin-
 cere friend" . . . Ford Station Wagon
 . . . Woodberry . . .

Dramatic Club, 3; French Club, 3; Quill
 Pen Staff, 3, 4; Glee Club, 3.



BETTIE MARIE SCHIFFMAN

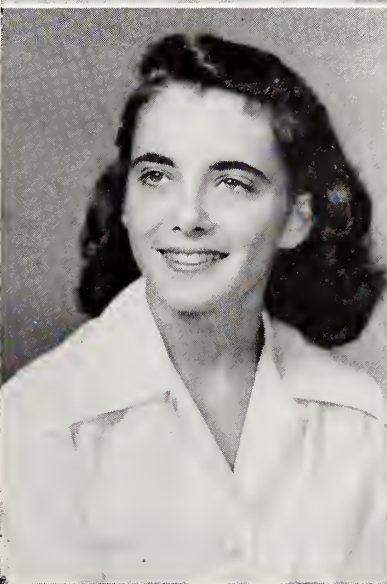
620 Woodland Drive, Greensboro, N. C.
 dances . . . excitement . . . senti-
 mental songs . . . long distance tele-
 phone calls . . .

French Club, 3; Dramatic Club, 1, 2, 3; Chair-
 man of Dance Committee, 3, 4; Lead in play, 3;
 Executive Board of Dramatic Club, 4.

REBECCA SCHOLL

739 Providence Road, Charlotte, N. C.
 honor roll and honors . . . understand-
 ing . . . dependable . . . silly moods
 . . .

Honor Council, 2, 3, 4; Chairman of Honor
 Council, 4; Student Council, 3, 4; Scribblers'
 Club, 2, 3, 4; Treasurer of Scribblers' Club, 2;
 Dramatic Club, 4; Lead in Play, 4; Glee Club,
 2, 3, 4; Head of Duck Inn, 4; Secretary of French
 Club, 3; Citizenship Honor, 2, 3; Academic
 Marshal, 2, 3.



Seniors

CAROLINE SILER (Cherry)

Lyons Bend Road, Knoxville, Tenn.

always laughing . . . school spirit . . .
friendliness . . . Knoxville chatter . . .

Athletic Council, 4; Head of Red Cross Committee, 4; Vice-President of Spiritual Steering Wheel, 4; Spiritual Steering Wheel, 3, 4; Glee Club, 3, 4; Dramatic Club, 2, 3, 4; Duck Inn Staff, 4; Softball Varsity, 3; Hockey Varsity, 4.

MARY LIB SMITH

8 White Oak Road, Biltmore Forest, N. C.

soap operas . . . Davidson dances . . .
Star Dust . . . morning walks . . .

Glee Club, 2, 3, 4; Dramatic Club, 2, 3, 4; Dance Committee, 3, 4; Quill Pen Staff, 2, 3; Head of Purples, 4; Secretary of Dramatic Club, 4; Golf Varsity, 3; Hockey Varsity, 2, 3, 4; Basketball Varsity, 3; French Club, 3; Athletic Council, 3, 4.

FAY SYLVESTER

Richlands, N. C.

deep dimples . . . fickle . . . "got a
Speck in my eye" . . . black shiny hair

Dramatic Club, 3, 4; Glee Club, 2, 3, 4; Duck Inn Staff, 2; Dance Committee, 4; Christmas Play, 3; Soccer Varsity, 2, 4.

LUCY WRIGHT

Hartsville, Tennessee

Davidson . . . slow easy drawl . . .
always laughing . . . witty . . .

Dramatic Club, 2, 3, 4; Glee Club, 3, 4; French Club, 3; Scribblers' Club, 3, 4; Chairman of Good Will Committee, 3; Quill Pen Staff, 1; President of Junior Class; President of Student Council, 4.

PAMELA WRIGHT

Bunker Hill, Cranbury, N. J.

"an Italian in England" - bang! bang!
. . . a "rosy" future . . . Classical
music . . . far away places . . .

Secretary of Sophomore Class; Soccer Varsity, 2, 3, 4; Softball Varsity, 2, 3; Basketball Varsity, 3; Quill Pen Staff, 3, 4; French Club, 3; Spiritual Steering Wheel, 3.

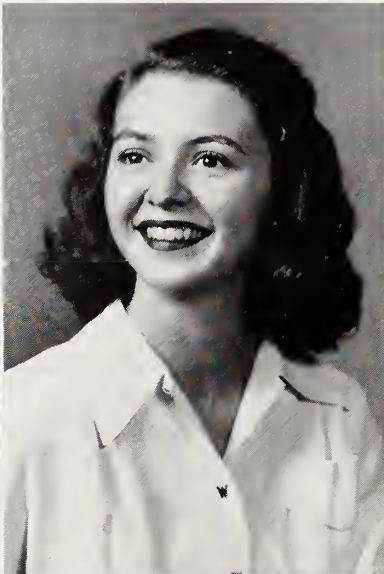
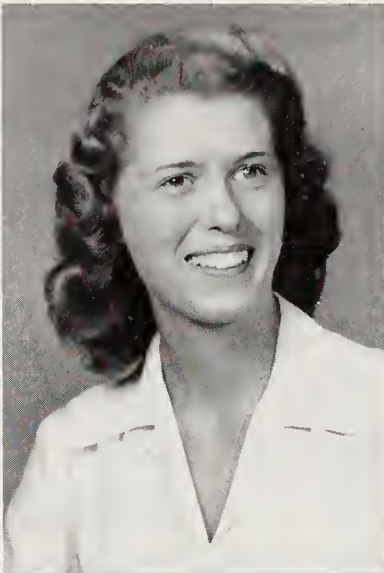
ROSEMARY STANFIEL

Special Student

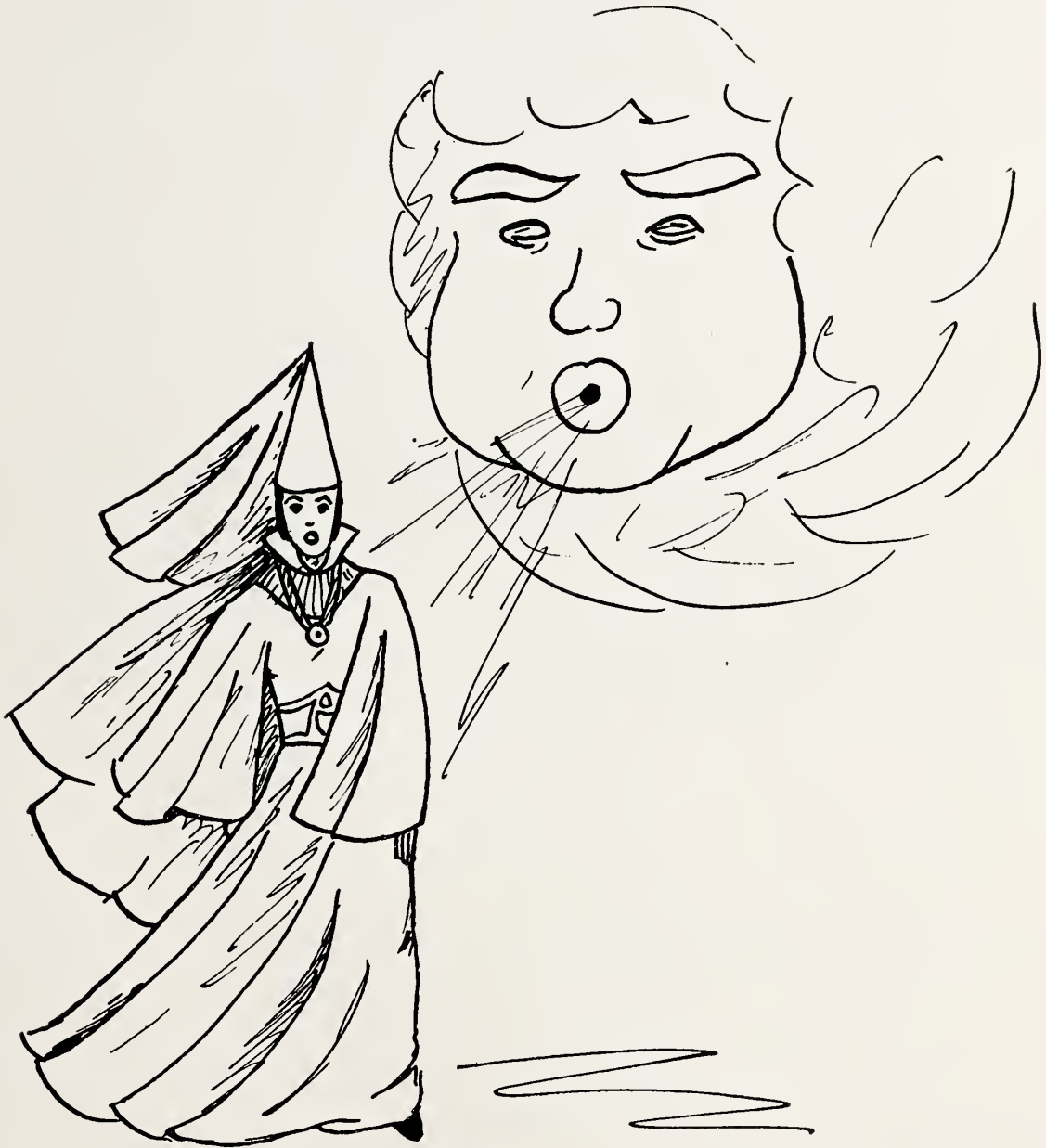
1514 Reynolds Road, Winston-Salem, N. C.

piggy-piggy . . . those weekends . . .
boys! . . . chartered planes . . .

Dramatic Club, 4; Quill Pen Staff, 4.



Junior Class



The Tempest



COVINGTON, BORDERS, ALLISON, GREER

Junior Class Officers

<i>President</i>	BETTIE ALLISON
<i>Vice-President</i>	JEAN BORDERS
<i>Secretary</i>	ANNE COVINGTON
<i>Treasurer</i>	TEENA GREER
<i>Sponsor</i>	MISS DOROTHY GUETH

Juniors

BETTIE ALLISON
318 Davie Ave., Statesville, N. C.

CLARA ASHE
Westmoreland Heights, Knoxville, Tenn.

SHIRLEY AUSTIN
Box 636, Kannapolis, N. C.

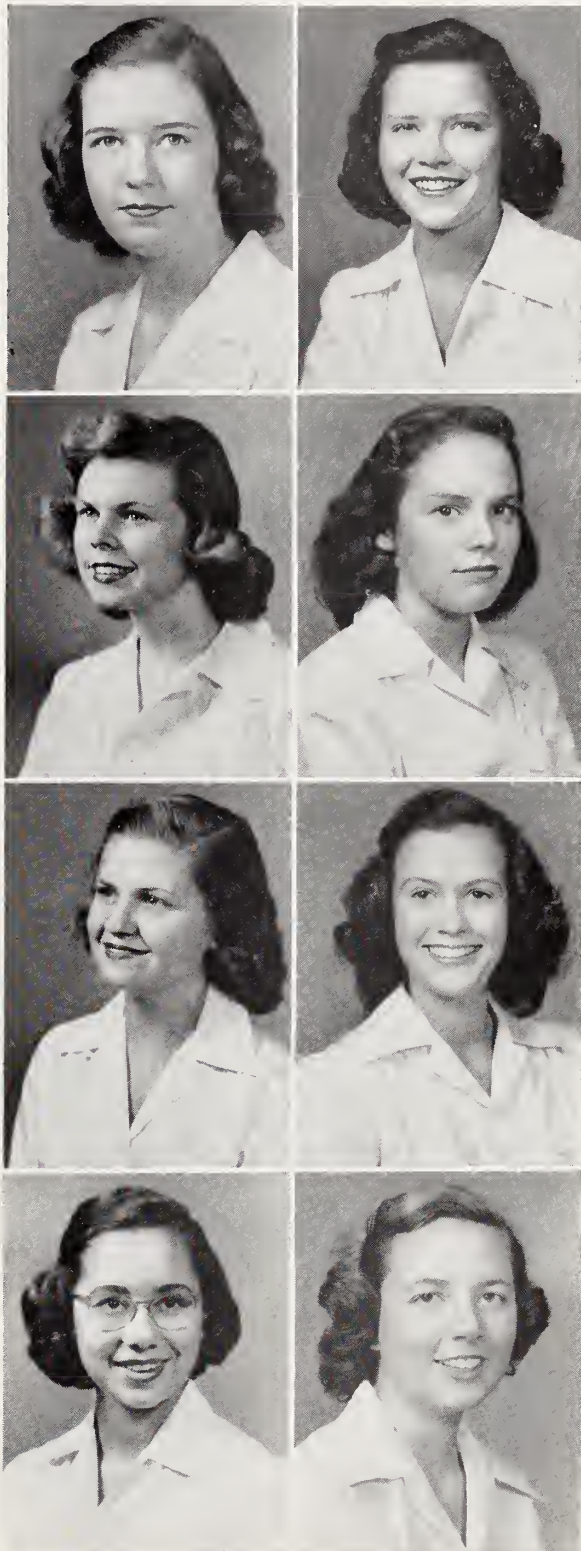
JEAN BORDERS
201 W. Bessemer Ave., Greensboro, N. C.

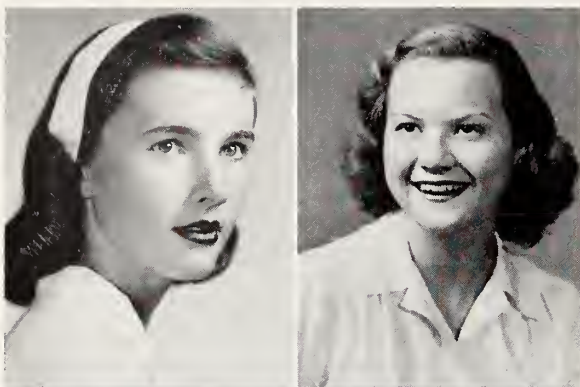
MARY KATHRYN BURTON
1224 Langhorne Road, Lynchburg, Va.

MARGARET CHEATHAM
Oxford Road, Henderson, N. C.

ANNE COVINGTON
119 Mason Croft Drive, Sumter, S. C.

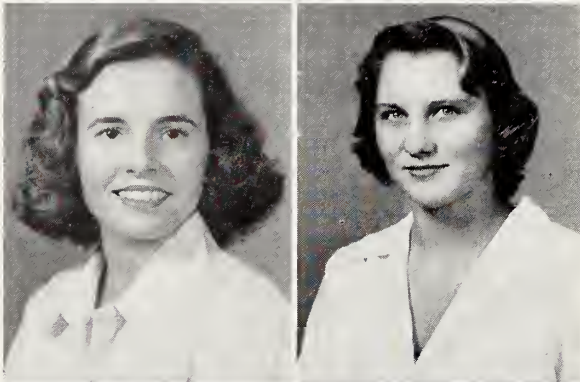
COLIN DOUGHERTY
Jomandowa Lane, Forest Heights,
Knoxville, Tenn.





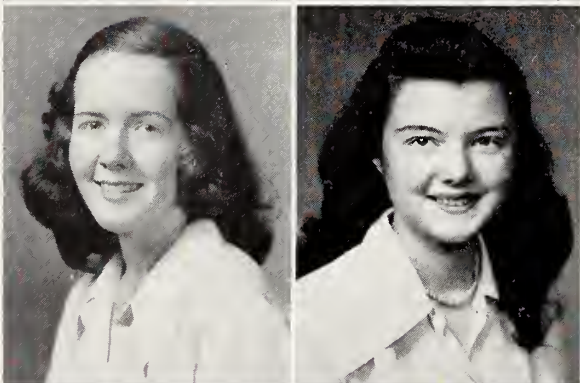
Juniors

JOAN GIRARD
2000 Westview Drive, Winston-Salem, N. C.



AURELIA GRAY
128 N. Cherry St., Winston-Salem, N. C.

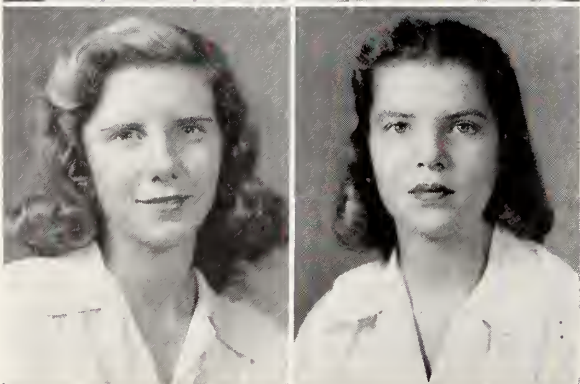
MELISSA GREEN
75 North Hampton St., Kershaw, S. C.



TEENA GREER
Loudon, Tenn.

JULIA GRIER
R. F. D. 5, Charlotte, N. C.

GENNIFER JOHNSON
Apartado 3644, Bogota, Colombia, S. A.

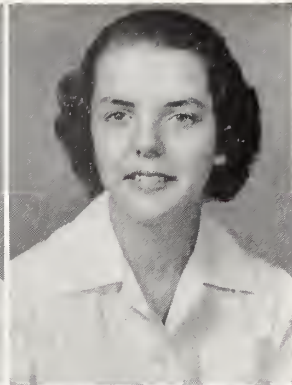
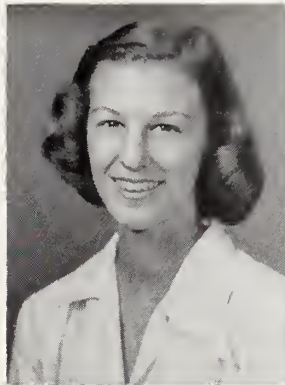


CAROLE KEITH
1603 Carlisle Road, Greensboro, N. C.

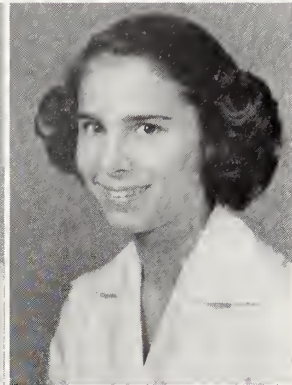
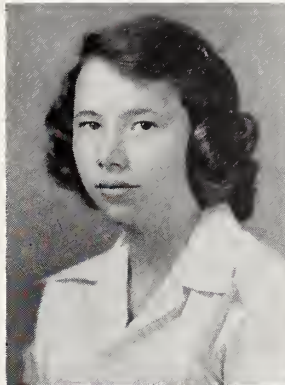
JULIA KESTER
2614 Country Club Road, Winston-Salem, N. C.

Juniors

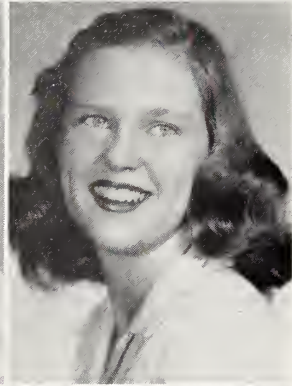
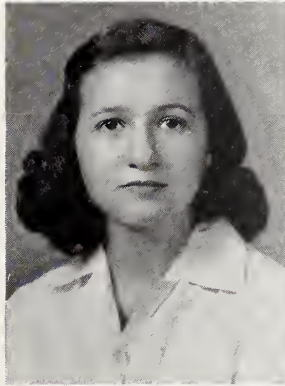
ELEANOR MYERS
Kings Mountain, N. C.



CONNIE NEAL
1918 Pinewood Circle, Charlotte, N. C.

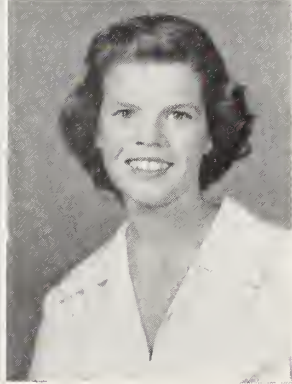
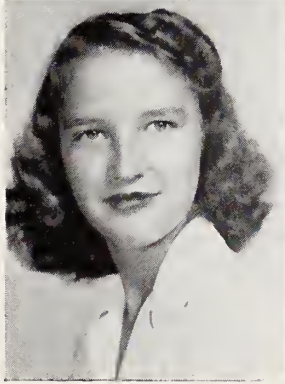


EMILY NEIL
Route 14, Knoxville, Tenn.



MARGARET PADGETTE
329 Tenney Circle, Chapel Hill, N. C.

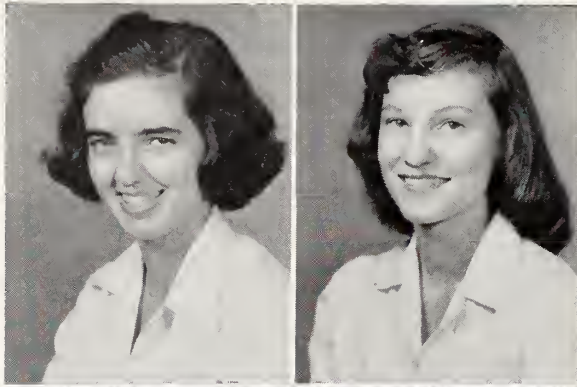
SARAH GERTRUDE PAGE
317 E. Coast Drive, Atlantic Beach, Fla.



MARGARET RANDOLPH
Westview Drive, Winston-Salem, N. C.

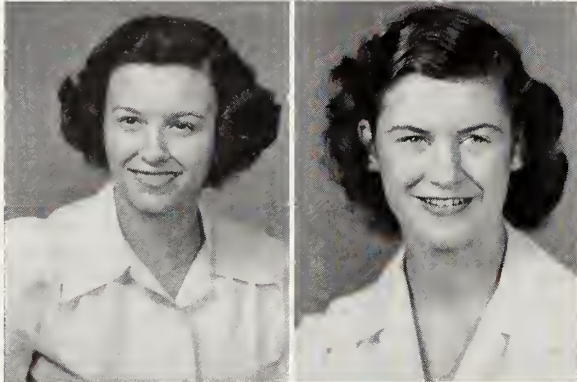
MARY REYNOLDS
221 Club Park Road, Winston-Salem, N. C.

MARY ELLEN RODDY
Westmoreland Heights, Knoxville, Tenn.



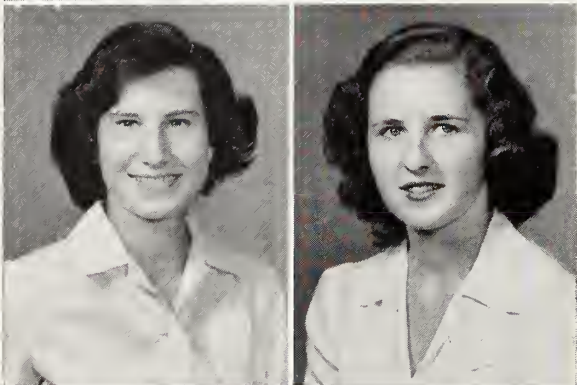
Juniors

NORA JANE RUMPH
37 Haynsworth St., Sumter, S. C.



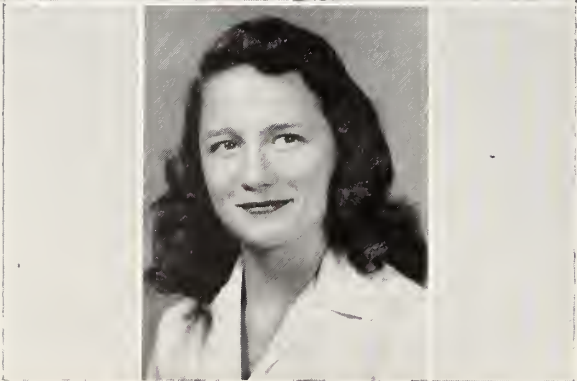
DOROTHY SAUNDERS
Robbins, N. C.

SUSAN SCOTT
3606 Plymouth Place, Lynchburg, Va.



NANCY SIBLEY
5 Douglass Heights, Union, S. C.

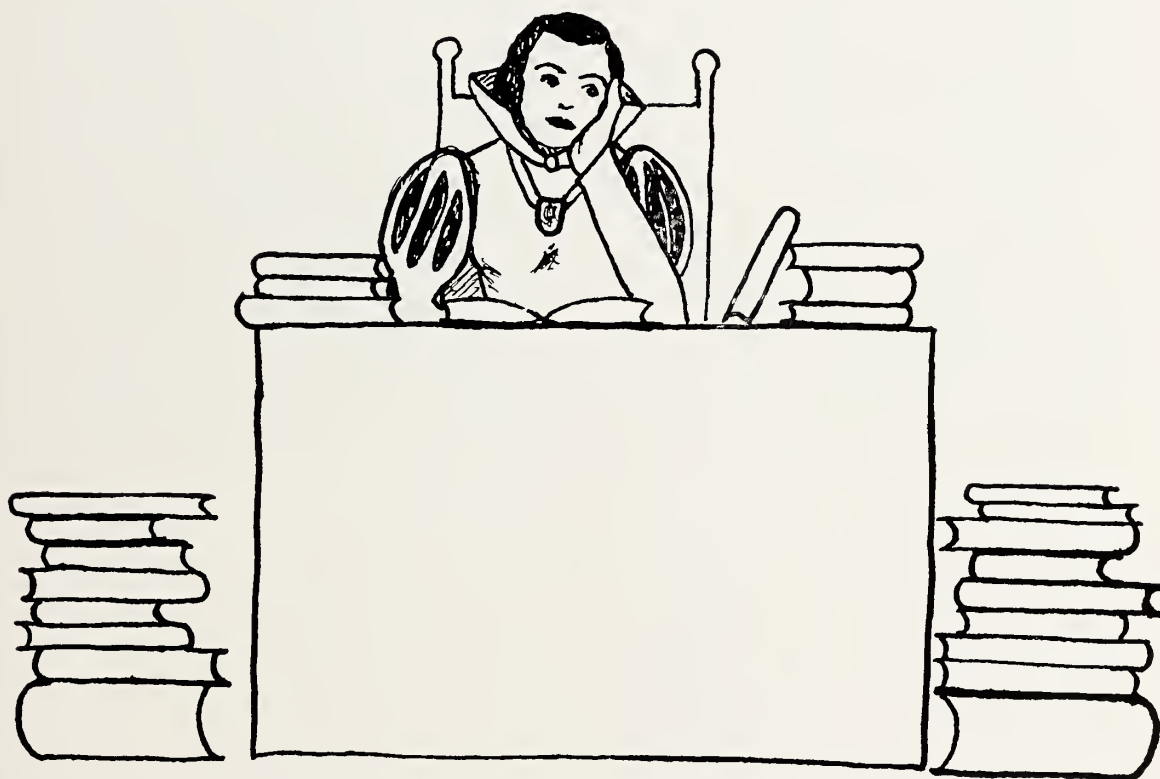
MARJORIE SPIGEL
2318 Yellow Mountain Rd., Roanoke 14, Va.



NANCY TUCKER
3506 Luther Street, Winston-Salem, N. C.

CAROLINE VAN ZANDT
656 13th Avenue, Huntington, W. Va.

Sophomore Class



Love's Labour Lost



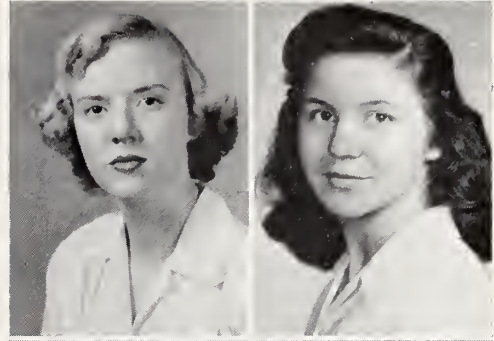
HINES, SWAN, PLUMMER

Sophomore Class Officers

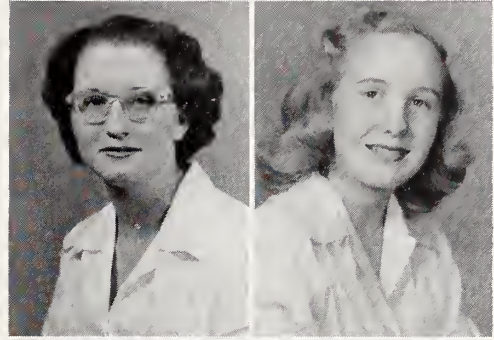
<i>President</i>	MARION HINES
<i>Vice-President</i>	MARY SATTERFIELD
<i>Secretary</i>	CAMDEN SWAN
<i>Treasurer</i>	MARY FRANCES PLUMMER
<i>Sponsor</i>	MISS LEE GARRETT

Sophomores

CAROLYN ARWOOD
617 16th Street, Knoxville, Tenn.

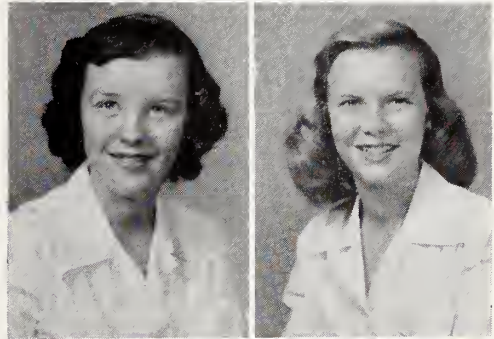


MARY BAMBALIS
920 Lynwood Ave., Winston-Salem, N. C.



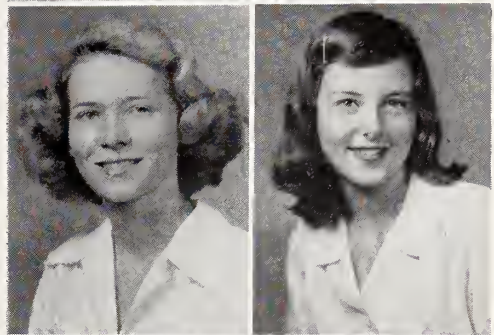
ROXANN BASSETT
Bassett, Virginia

ELIZABETH CHRISTIAN
1545 Langhorne Road, Lynchburg, Va.



ANNE CURRIE
Carthage, N. C.

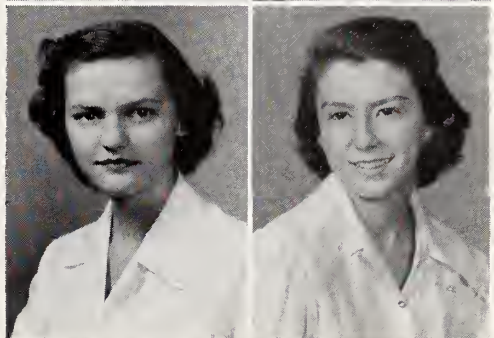
SARAH DEW
South Hayne Street, Monroe, N. C.



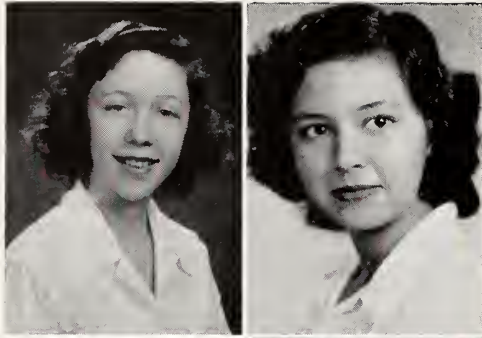
SARAH GRIFFITH
301 Cherokee Blvd., Knoxville, Tenn.

MARTHA HARDY
Hartsville, Tenn.

MARION HINES
407 Magnolia Drive, Monroe, N. C.

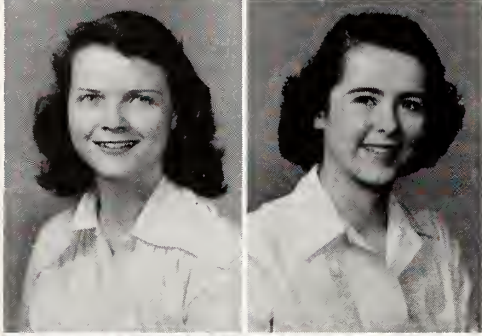


PEGGY KING
1349 Linville Street, Kingsport, Tenn.



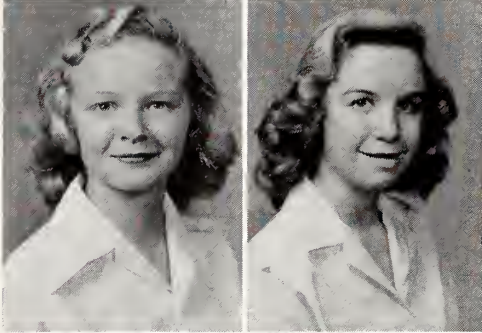
Sophomores

JULIA McCRARY
3625 Iskagna Drive, Knoxville, Tenn.



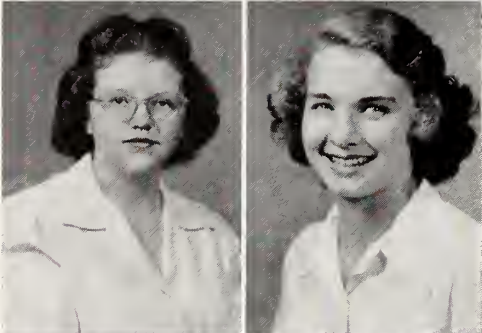
KATHERINE MILESTONE
215 Westview Drive, Winston-Salem, N. C.

ADELINE NEAL
Marion, N. C.



MARY FRANCIS PLUMMER
Brevard, N. C.

MARY SATTERFIELD
508 Jefferson Ave., Goldsboro, N. C.



CAMDEN SWAN
12 Hillvale Circle, Knoxville, Tenn.

JO ANN TATUM
Box 26, Elizabethtown, N. C.



ELIZABETH TUCKER
125 East Hillvale, Knoxville, Tenn.

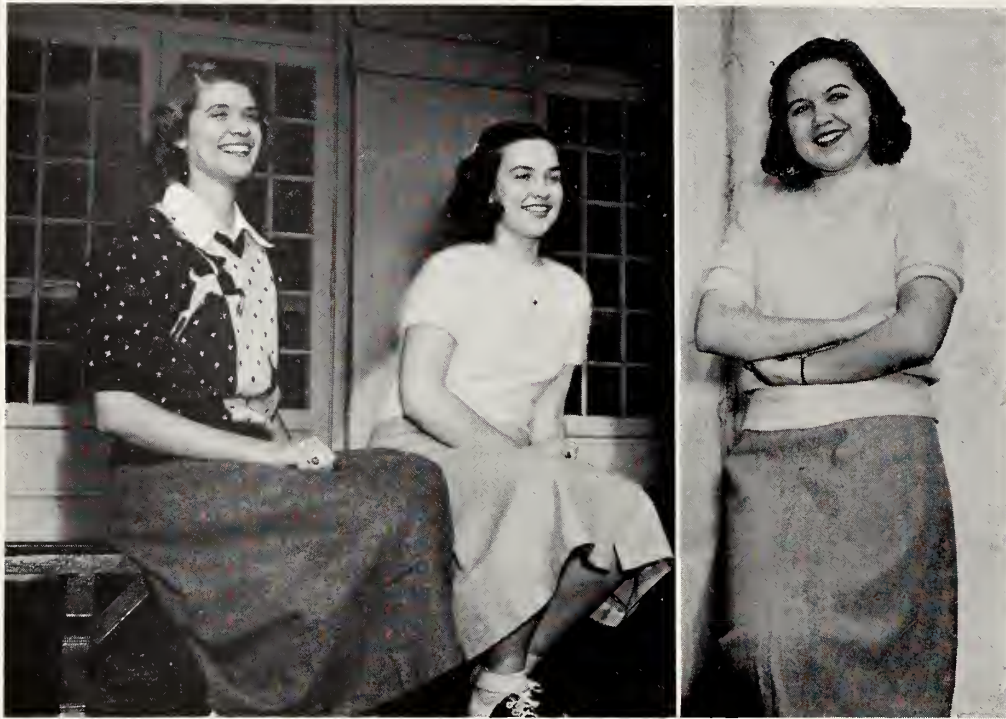
SUSAN WALLACE
Marine Barracks 8th. 1 Sts., S. E.,
Washington, D. C.

JANE GRAY WILLIAMS
Box 64, Chester, S. C.

The Freshman Class



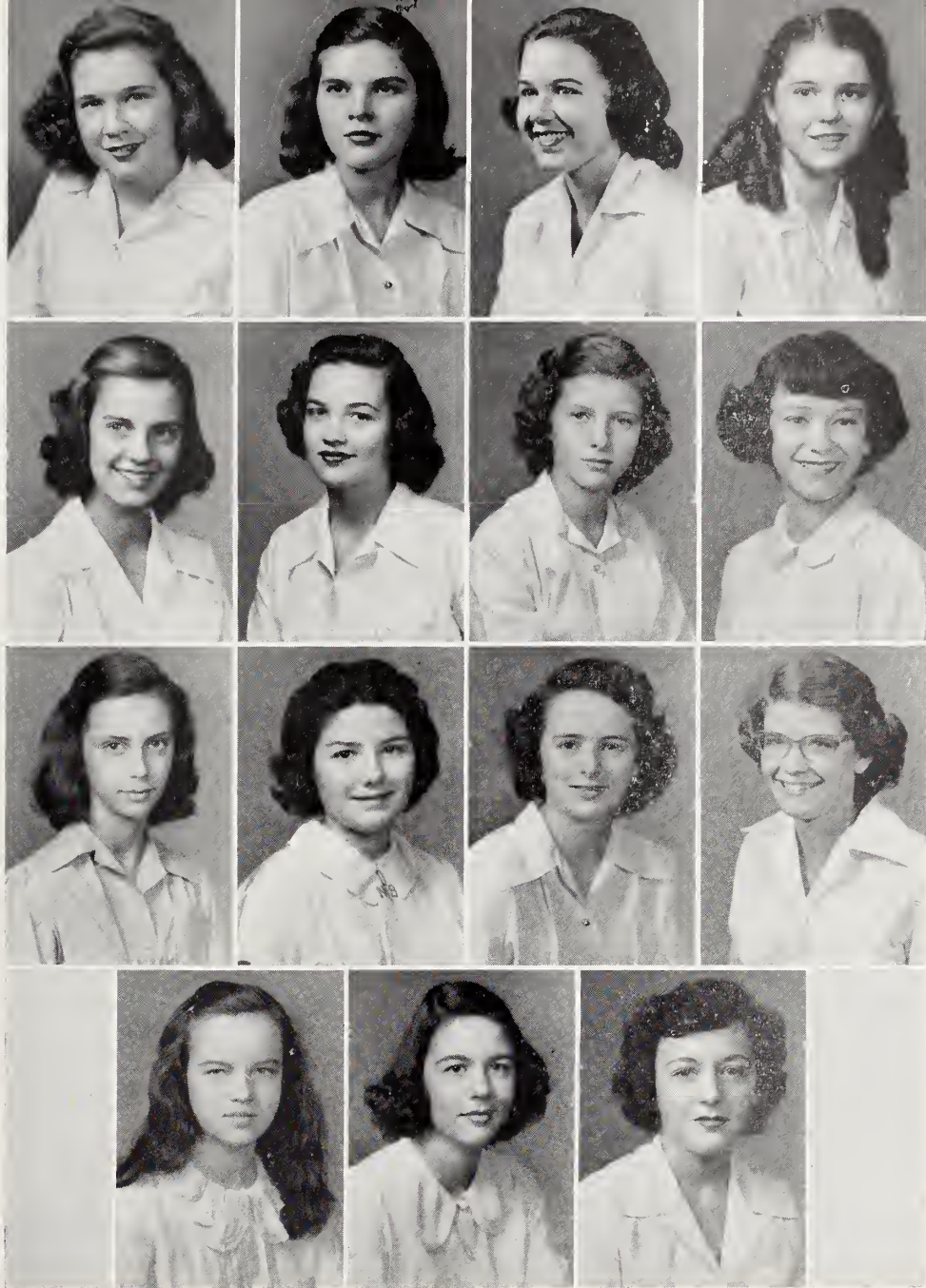
The Comedy of Errors



SNIPES, GOLD, COOPER

Freshman Class Officers

<i>President</i>	MISHEW COOPER
<i>Vice-President</i>	LEON GOLD
<i>Secretary and Treasurer</i>	JANE SNIPES
<i>Sponsor</i>	MISS ELSIE NUNN



Freshmen

- | | |
|---|--|
| ANNE BRANSFORD
209 Leftwich St., Greensboro, N. C. | JANE LINCOLN
126 Pembroke St., Boston, Mass. |
| GEORGANNE COBLE
Lexington, N. C. | ISABEL MASTERTON
Box 428, Hillsboro, N. C. |
| MISHEW COOPER
240 Charles Street, Henderson, N. C. | BEE PACE
Route No. 1, Concord, Tenn. |
| ANNA COX
506 Summit Street, Winston-Salem, N. C. | LOIS PLUMMER
Brevard, N. C. |
| ANNE EMERY
3606 Iskagna Drive, Knoxville, Tenn. | JANE SNIPES
3466 Alta Vista Way, Knoxville, Tenn. |
| LEON GOLD
1723 13th Ave., Hickory, N. C. | JANE LADD WEBB
324 Forest Hills Blvd., Knoxville, Tenn. |
| ELIZABETH HORNE
Apt. 172 Creole Pet Corp., Maracaibo, Ven., S.A. | MARY WHARTON
P. O. Box 2504, Winston-Salem, N. C. |
| SALLY WHITNER
205 Oakland Ave., Rock Hill, S. C. | |



LUCY WRIGHT



MARTHA NORTON

HONOR GRADUATES

ACADEMIC HONOR ROLL

(These students have attained the Academic Honor Roll at least once during the 1948-49 session)

Clara Ashe
Roxann Bassett
Jean Borders
Lavone Burton
Mary Kathryn Burton
Elizabeth Christian
Georganne Coble
Mishew Cooper
Anne Covington
Colin Dougherty
Eleanor Dunbar
Eleanor Field
Joan Girard
Leon Gold
Aurelia Gray
Melissa Green
Kathleen Greer
Pat Groome

Mary Alice Longcrier
Julia McCrary
Margaret McIntosh
Anne Miller
Marilyn Moore
Connie Neal
Emily Neil
Martha Norton
Sarah Gertrude Page
Mary Frances Plummer
Mary Ellen Roddy
Nora Jane Rumph
Rebecca Scholl
Mary Elizabeth Smith
Jo Ann Tatum
Mary Wharton
Lucy Wright
Pamela Wright

Class History

My name is Old Mother Salem. For 177 years I have watched many girls come and go through the portals of the Academy. Now as I put on my lace bonnet to go to the graduation of the Class of 1949, I think back over their activities during their four years here.

I saw them electing their class officers for their first year in boarding school. With the help of Miss Rebecca Shriver, their faculty adviser, the eleven little girls chose Emily Blum, President; Jean McRae, Vice-President; and Emily Boyd, Secretary and Treasurer. The Freshman Carnival was their main project. The students, who were asked to come dressed in tacky clothes, pitched pennies, went through the horror house, and posed for their silhouettes. The money earned went for a subscription to **Seventeen** for the library and to the World Student Service Fund.

The next year new girls entered the class and made it number eighteen. After electing Jean McRae, President; Sue Fields, Vice-President; Pamela Wright, Secretary; and Mary Alice Longcrier, Treasurer, they launched into projects to earn money for the Sophomore Tea Dance. Miss Krone, their sponsor, helped them plan early in the year a "Come As You Are" Party and later a Spaghetti Supper, which was given in the surroundings of a Spanish Night Club. Also they sold cake on the halls over the weekends and gave a modern version of *Romeo and Juliet* that they had written. Finally the day of the Tea Dance arrived. I watched them as they decorated the Social Room as an old-fashioned garden and wondered, as they, whether the boys had received the invitations, who would win the Beauty Queen Contest they were sponsoring, and how an orchestra would sound in the Social Room. Of course the dance was a great success. At the end of the year they gave several albums of religious records to the library.

In the Fall of 1947 twenty-nine Juniors met with Miss Dorothy Gueth as faculty adviser to elect class officers. Lucy Wright was their President and the other officers were Mary Jo Kelley, Vice-President; Gwen Hamer, Secretary; and Mary Alice Longcrier, Treasurer. Immediately they planned ways and means for raising money for the Junior-Senior Prom.

They sold tip-ons, Christmas cards, cake on the halls, and food at the athletic games. They had a bridge party and a fashion show sponsored by Sosnik's. On April 24, the Seniors and the Juniors, tired but happy, danced until almost midnight in the gym, which was decorated in keeping with the theme "Moonlight and Roses." With their remaining money they placed full-length mirrors on each hall and contributed to the World Student Service Fund.

In September 1948 I stood in my accustomed place and listened to the forty-niners singing the traditional hymn "Standing at the Portal." Under the guidance of Mary Alice Longcrier, President; Mary Jo Kelley, Vice-President; Marilyn Moore, Secretary; and Theresa Hedrick, Treasurer, they began the year to which they had been looking forward since their arrival at Salem. The cutting of the birthday cake at the first banquet, Senior Day, and the arrival of their class rings in November increased their feeling of importance. Christmas time brought the Christmas bazaar, their main project. All the Seniors used their sales ability to make it a big success. After the Christmas holidays the class acted as hostess at a tea for the Salem College Freshmen. One Saturday night in March they presented Mr. Clark Billings, a magician. The high spot for the Seniors this year, as every year, was the Junior-Senior, when they promenaded down the gym to receive their favors at their last Salem dance.

Oh, my goodness, I have been reminiscing for so long that I am afraid I shall be late for commencement. But since I am just a spirit I can be there in a second—in fact, here I am now. I see Miss Laura Sumner, the patient and understanding Senior Class sponsor, lining up the Seniors on the loggia and trying to keep them calm and quiet as they start in to the strains of "Pomp and Circumstance." There is Dr. Rondthaler sitting on the stage for the last time as President. How Salem will miss him! As I watch them go through the graduation exercises, I realize that another group of girls is leaving Salem, taking with them loving memories of friends, faculty, and of their Alma Mater.

BETTIE MARIE SCHIFFMAN
MARY ALICE LONGCRIER

Last Will and Testament

State of North Carolina

County of Forsyth

City of Winston-Salem

Salem Academy

To Whom It May Concern:

We, the Class of 1949, being supposedly of sound mind and body and realizing the uncertainty of this life, do hereby publish and declare this to be our last will and testament.

ARTICLE I

To the faculty we leave our love and appreciation in return for the inspiration and guidance they have given us through our four years at Salem.

ARTICLE II

To the incoming Senior Class we leave our dignity and privileges.

ARTICLE III

To the Sophomore Class we leave our ability to keep our privileges in time of great temptation.

ARTICLE IV

In the hope of saving them steps, we leave to the Freshmen the long-talked-about escalator to the third floor.

ARTICLE V

Emily Blum turns over the 2 C. S. phone to Carolyn Arwood in hope that she will get as many calls as Emily received.

Vonnie Burton leaves her pep and vitality to Betty Tucker, who probably doesn't want to give up her calm nature.

Sally Couch leaves memories of gay week ends at U. N. C. to go to Duke - the traitor!

Eleanor Dunbar leaves her strong attachment to her corner room on 1 E. B. to whoever else likes a "double exposure."

Eleanor Rose Field leaves E. B. forever (she hopes) to anybody who can live up to it. How about it, Dottie Saunders?

Sue Fields wills her perfect posture to future athletes.

Ann Franklin leaves her questions for next year's history teacher - heaven help her!

Pat Groome leaves her contagious laugh to Elizabeth Horne.

Gwen Hamer leaves her coy expressions and wicked eyes to Melissa.

Theresa Hedrick leaves her Buick convertible to - oh, no! she's changed her mind.

Mary Jane Hutchens leaves all her mail to Margaret Cheatham because Margaret never gets any.

Pat Kavanagh leaves her Irish wit to Colin Dougherty.

Mary Jo Kelley wills her short, curly hair to Martha Hardy.

Mary Alice Longcrier leaves Saxapahaw to anyone who has the kindness to say she has heard of it.

Marion Machesney regretfully leaves her fond memories of Salem to board a "Slowboat to China," Tokyo - bound.

Marilyn McDonald bequeaths her knack for keeping up with her turtles to Jane Lincoln.

Bobbie McIntosh leaves her strong attraction to the dining room to Carole Keith.

Madeline Mabry bequeaths her naturalness and good nature to "Itsie," who doesn't need them at all.

Anne Miller wills her up-to-date wardrobe to Sarah Dew, who probably couldn't use it.

Marilyn Moore leaves her giggles and unusual talent in music to Connie Neal.

Martha Norton leaves her Georgia-South Carolina accent to Miss Woolfolk.

Mary Ella O'Day bequeaths her love for public speaking to Jean Borders.

Bettie Marie Schiffman leaves Winston-Salem to go to Greensboro.

Becca Scholl wills her ability to make honor roll with little effort to Mary Frances.

Cherry Siler wills her rare trips on the Carolina "creeper" to the Knoxville girls.

Mary Lib Smith bequeaths her many jaunts to Davidson to whoever gets invited - lucky girl!

Rosemary Stanfiel leaves her dimples to anybody who loves them as much as we do.

Fay Sylvester leaves her man troubles to Bee Pace, who'd be a nervous wreck if she got into the predicaments Fay gets into.

Lucy Wright is finally getting rid of her ears. She's leaving them to Peggy King.

Peter Wright bequeaths a deck of cards to 2 C. S., but keeps the "Ace of hearts".

ARTICLE VI

We hereunto set our signatures and affix the seal on this the thirty-first day of May, one thousand nine hundred and forty-nine.

(Signed) THE CLASS OF 1949

MARY A. WEAVER, *Principal*

LAURA SUMNER, *Sponsor*

Witnesses

SALLY COUCH

CHERRY SILER

Testators

Prophecy

It's the summer of 1959, and we – Eleanor Rose and Bobbie – arrived a few days ago to get the hotel ready. Mr. Schiffman has rented the Ocean Forest Hotel for us; you see, we're having a Salem House party at the beach and the first complete class reunion in ten years. The first to arrive yesterday were Lucy Wright and her family – Lucy says their father confidently expects the boys to become Betas too! She still insists she's going to have those ears attended to, but she hasn't had time in the past few years. Bettie Marie Schiffman has taken a few days off from managing her father's business – Bettie's now a career woman, since she couldn't decide between those two suitors. However, Martha Norton has profited by Bettie's indecision, and won her "one and only." She has just arrived, bubbling over and loaded with the latest beach clothes. Eleanor Rose says Emily Blum has written that she'll be forced to arrive late because of her husband's usual golf schedule. Vonnie Burton came this morning, pursued by several suitors, insisting, however, that marriage and the Met don't mix. Vonnie has just explained that Gwen will be here Monday, since she's planning to stop off at Winston to attend the Methodist Church as usual. Could it be Dr. Depp? ?? We were fascinated by the copies of Patricia Kavanagh's latest mystery, "The Coffee Fiend," which Lavone brought with her. Eleanor Dunbar appeared yesterday with her paints and easel; she's now painting sets for the Barter Theater and couldn't pass up all this ocean scenery! The famous designer, Anne Miller, joined us today and confided that instead of designing she'd really rather be teaching at Davidson. Anne tells us that Marilyn Moore and her husband are very happy, even though they're both following different careers – he is basketball coach at VPI, and Marilyn is a concert pianist. Marion Machesney writes that since overseas telephone calls are rather expensive, the Army recently had a new recruit who was shipped to Japan and joined her.

Today we drove to Charleston to hear the famous political orator, Ann Page Franklin, speak on "The Evils of Socialized Medicine." Believe it or not, at the end of her speech she asked for questions! We hated to miss those hilarious comedienne, Alice Longrier and Cherry Siler, who just dropped in, and being on tour had only time to leave their calling cards. Alice brought us some delicious candy, which her mother had made with her new "jet mixer." Dr. Augusta (Pat) Groome, who has just graduated from veterinarian school, has been roaming the beaches hunting for diseased animal life to practice on. We are all pretty stiff from the posture-improving exercises Sue Fields has been making us do on the beach each morning. It seems that she's sponsoring National Posture Contests! Peter Wright, who has returned from England, has wired us some roses, and says

she's coming and plans to bring lots of classical records. Sally Couch, who came early, has just recovered from the writer's cramp brought on by writing all the invitations for the house party. After our reunion is over, we're invited to drop in at one of her famous open houses, if we go through Chapel Hill. We're rather tired today since Mary Jane kept us up all night talking. She's taken several elocution courses and now that she's started she can't seem to stop! We've just received a long, long letter from Becca Scholl – writing from the courthouse as usual. Of course we'd all heard of her wonderful luck in winning "Stop the Music," but she has some more news for us – that she's planning to set up a Girls' Town with her winnings!

Marilyn McDonald, on vacation from Salem, brought wonderful news with her – now that she is Physical Ed. teacher, the faculty have to take morning walks! After gloating a while over this, all of us, including Fay Sylvester, our chaperone, (we picked her since she's had so much experience at the beach!) went out to dinner at the Oasis. There we met Mary Jo Kelley, surrounded as usual by a tribe of men. She tells us that Rosemary Stanfiel is unmarried, since she's still running from one college dance to another. She can't make up her mind. Madeline Mabry, who's staying at Pawley's Island with her family, was going to meet us at the Oasis tonight, but her sunburn was so bad she couldn't make it! We hear she's almost completed her Georgian mansion.

Now it's the next day; we're all down on the beach talking to Mary Ella O'Day. She's still working on her book, *A Philosopher Looks at Life*, and day after day she plans to sit on the beach writing and staring off over the water. Bobbie has been combing the beach looking for good physiques; her taste hasn't changed a bit! Eleanor Rose has broken bad news to us: she feels she must return soon to Chapel Hill, since she's worried about her "boys", as she affectionately calls the fraternity brothers to whom she is house mother. Oh! Theresa Hedrick has just arrived in her Buick convertible with piles of stationery. Unfortunately, she had to leave her husband and the children at home, but she'll probably spend most of her time writing them! She still has her knack for letter writing. Meanwhile we'll make good use of her car to meet Mary Lib Smith. Married life has really brought a change in Lib – she is flying from her home in Houston. She is the last one to arrive; we wish the whole class could be here with President Longrier holding meetings with Parliamentary order! Maybe we'll all be here in 1969!!! Good luck to everyone till then.

ELEANOR ROSE FIELD
BOBBIE McINTOSH

Class Poem

TILL SPRING

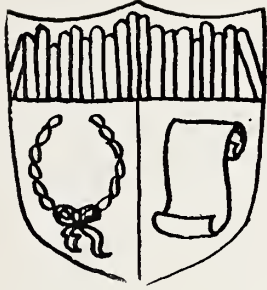
I have watched the airy ballet of the leaves,
Given on summer's last breezes, sad and gay,
With tiny dancers soon to exchange their garbs of green
For other hues . . .
Till spring.
I have felt autumn's subtle kiss upon my cheek . . .
Shy and cool as hidden mountain streams,
And beheld her discarded palette of smeared colors
Resting against
Azure skies.

I have counted the darting, dashing specks of snow
Swirling past my window to the silent, waiting earth,
And left footprints in the whiteness of the dale and on the hill beyond,
And known a love . . .
Brilliant, cold.
I have walked in the silver greyness of rain
Falling silently and ceaselessly through the cold, bare trees,
Whose black boughs toss in despair on the bitter winter wind,
And whisper prayers
For spring.

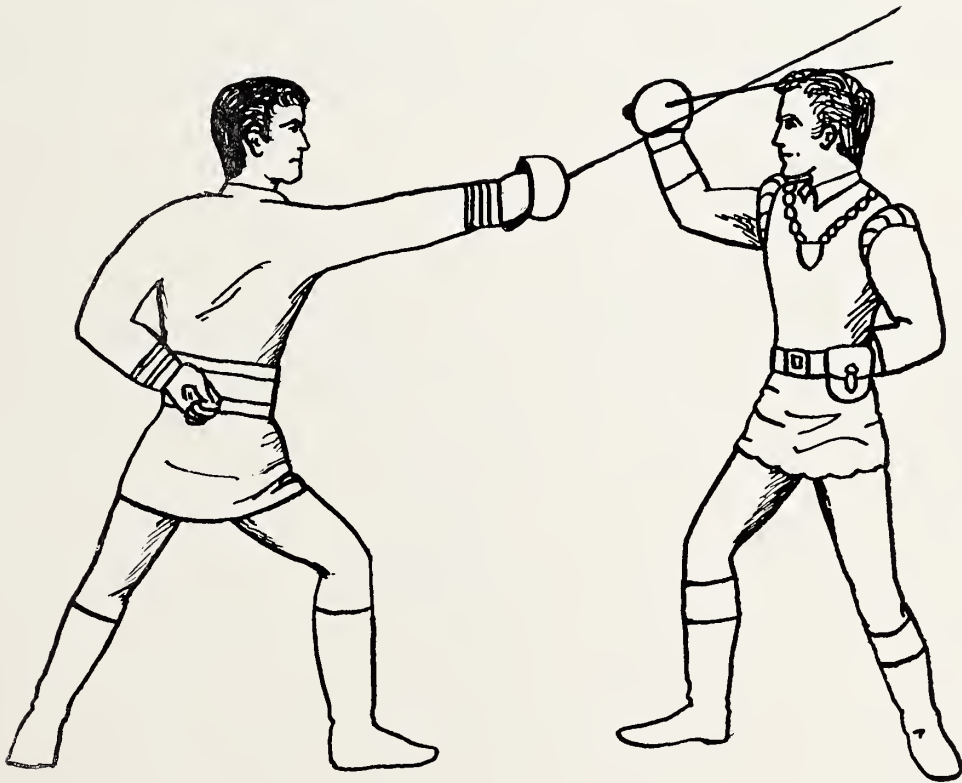
I have walked in the pink dust of a lingering sunset
Behind the ruddy walls and gleaming spires upon the hill,
And seen the tranquil night push day from the heavens . . .
And the new moon rise
In the dusk.
I have wandered through a pale green woodland
Down winding paths beside a brook where sunbeams play,
And heard the sylvan pipes joyously heralding serene spring,
And dreamed dreams
Of yesterdays.

I have stood and gazed from the valley below
To the sun-crest tower crowning the wooded hill,
And seen priceless gains, bitter tears, smiles of friends,
And caught unveiled
Glimpses of truth.

GWEN HAMER



Activities



As You Like It

Organizations



Student Council

President LUCY WRIGHT
Secretary ELEANOR ROSE FIELD
Sponsors . . . MISS MARY HODGES AND MISS VIOLA WOOLFOLK
Members: M. K. Burton, Scholl, Rumph, Kelley, Gold,
 Page, Kavanagh, Plummer



Spiritual Steering Wheel

President LAVONE BURTON
Vice-President CAROLINE SILER
Spiritual Life SALLY COUCH
Vespers ELEANOR DUNBAR
Community Service ANNE COVINGTON
Music MARILYN MOORE
Sponsor MRS. STELLA PRICE
 Spiritual Steering Wheel Hall Representatives:
 Melissa Green Dorothy Saunders
 Sue Fields Theresa Hedrick
 Mary Satterfield Jo Ann Tatum



Honor Council

President..... REBECCA SCHOLL
Members: Eleanor Field, Rebecca Scholl, Mary K. Burton,
 Nora Jane Rumph, Elizabeth Christian, Georganne Coble,
 Mary Jo Kelley, Lucy Wright



Committee Chairmen

Program Committee..... JOAN GIRARD
Community Service Committee..... MARY JO KELLEY
Jr. Red Cross Committee..... CAROLINE SILER
Good Will Committee..... ELIZABETH CHRISTIAN
Service Committee..... DOROTHY SAUNDERS
Social Committee..... MARION MACHESNEY
W. S. S. F...... CLARA ASHE
Standards Committee..... MELISSA GREEN

Officers of the Dramatic Club



President.....BOBBIE MCINTOSH
Vice-President.....GWEN HAMER
Secretary.....MARILYN MOORE
Treasurer.....MARY ELIZABETH SMITH
Sponsor.....MISS HELEN BROWN



Glee Club

President.....MARILYN MOORE
Vice-President.....SALLY COUCH
Secretary and Treasurer.....SUSAN WALLACE
Sponsor.....MISS JUNE SAMPSON

Arwood, C.; Ashe, C.; Austin, S.; Bambalis, M.; Bassett, R.; Blum, E.; Borders, J.; Bransford, A.; Burton, L.; Burton, M. K.; Cheatham, M.; Christian, E.; Coble, G.; Cooper, M.; Covington, A.; Cox, A.; Currie, A.; Dougherty, C.; Field, E.; Fields, S.; Franklin, A.; Girard, J.; Gold, L.; Gray, A.; Green, M.; Grier, J.; Griffith, S.; Groone, P.; Hamer, G.; Hardy, M.; Hedrick, T.; Hines, M.; Hutchens, M.; Kavanagh, P.; Keith, C.; Kester, J.; King, P.; Lincoln, J.; Longrier, M.; Machesney, M.; Masterton, I.; Milestone, K.; Myers, E.; Neal, A.; Neal, C.; Neil, E.; Pace, B.; Page, S.; Plummer, L.; Plummer, M.; Randolph, M.; Reynolds, M.; Roddy, M.; Rumph, N.; Satterfield, M.; Saunders, D.; Scholl, R.; Sibley, N.; Siler, C.; Smith, M.; Snipes, J.; Spigel, M.; Swan, C.; Sylvester, F.; Tucker, N.; Van Zandt, C.; Webb, J.; Williams, J.; Wright, L.



Duck Inn Committee

Head REBECCA SCHOLL
 Members: Lavone Burton, Julia Grier, Martha Hardy, Carole Keith, Mary Jane Hutchens, Judy McCrary, Martha Norton, Sis Roddy, Susan Scott, Caroline Siler, Susan Wallace.



Scribblers' Club

President ANNE COVINGTON
 Vice-President BOBBIE MCINTOSH
 Secretary SUSAN SCOTT
 Editor CAROLINE VAN ZANDT
 Members: Bettie Allison, Sally Couch, Sue Fields, Melissa Green, Gwen Hamer, Elizabeth Horne, Pat Kavanagh, Connie Neal, Margaret Randolph, Mary Satterfield, Nancy Sibley, Rebecca Scholl, Susan Wallace, Lucy Wright, Martha Hardy.
 Sponsors MISS HAZEL WHEELER, MISS LAURA SUMNER



The Dance Committee

Chairman . . . BETTIE MARIE SCHIFFMAN

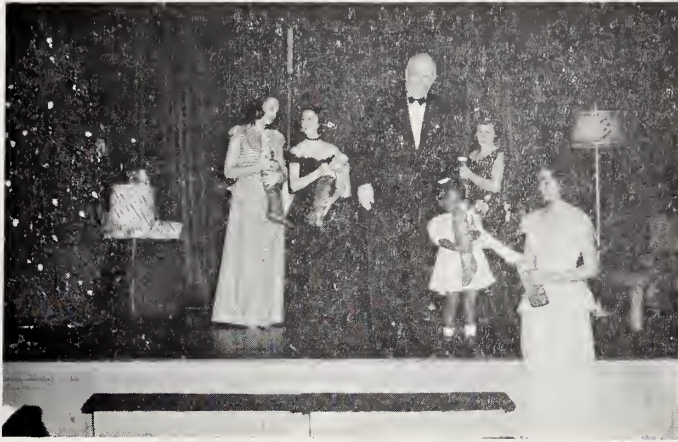
Faue Franklin
 Mary Lib Smith
 Bettie Allison
 Sally Couch
 Joan Girard
 Sue Fields
 Fay Sylvester
 Emily Blum
 Martha Norton
 Aurelia Gray

Quill Pen Staff



Editor MARTHA NORTON
Assistant Editors PAT GROOME
 MARY ELLEN RODDY
 ELEANOR DUNBAR
 MARGARET PADGETTE
Art Editor NANCY SIBLEY
Assistant Art Editor CAROLINE VAN ZANDT
Sports Editor MARY JANE HUTCHENS
Assistant Sports Editor SUSAN SCOTT
Organizations Editor EMILY BLUM
Assistant Organizations Editor ELEANOR MYERS
Photographic Editor PAMELA WRIGHT
Assistant Photographic Editor SHIRLEY AUSTIN
Business Manager AURELIA GRAY
Assistant Business Manager MADELINE MABRY
Advertising Editor MARY ELLA O'DAY, JOAN GIRARD, MARY REYNOLDS, MARGARET RANDOLPH, JULIA
 KESTER, ROSEMARY STANFIEL
Assistant Advertising Editors
Sponsor MISS HELEN BROWN

Christmas at Salem



*The
Christmas
Party*



The Christmas Pageant

*Dr. Rondihaler
Reads the
Christmas Carol*





Athletics

Heads of Teams

Sue Fields, Head of Golds

Mary Lib Smith, Head of Purples



Heads of Sports

- Soccer.....Teena Greer
- Hockey.....Marilyn McDonald
- Speedball..Mary Kathryn Burton
- Basketball....Dorothy Saunders
- Softball.....Roxann Bassett
- Volleyball.....Jean Borders
- Tennis.....Mary Satterfield
- Riding.....Betty Tucker
- Individual Sports
Mary Ellen Roddy



Hockey Varsity

Mary Elizabeth Smith
Carole Keith
Joan Girard
Caroline Siler
Clara Ashe
Mary Alice Longcrier
Jean Borders
Elizabeth Christian
Marilyn McDonald
Betty Tucker



Soccer Varsity

Sue Fields
Dorothy Saunders
Kathleen Greer
Pamela Wright
Mary Kathryn Burton
Ann Bransford
Fay Sylvester
Margaret McIntosh
Melissa Green
Susan Wallace



Gold Team



Purple Team



Valentine Dance



"The Maker of Dreams"

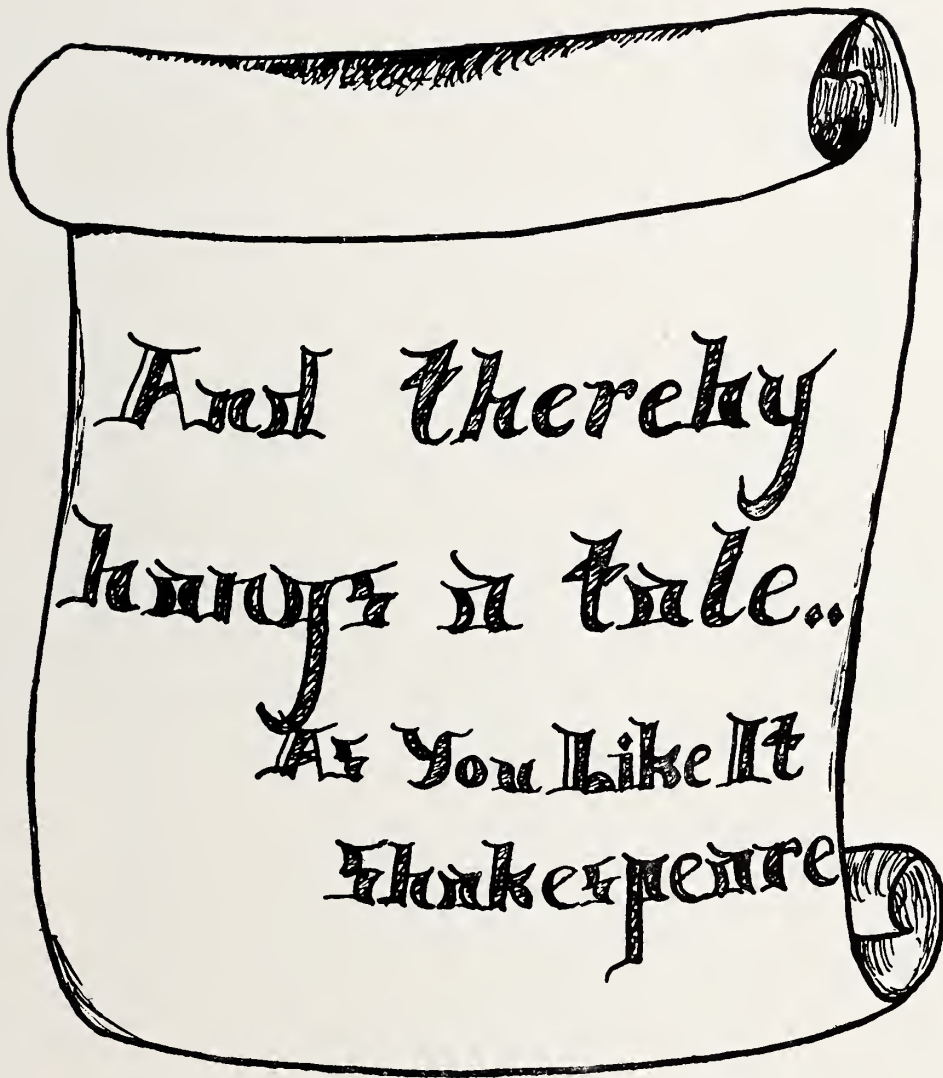
SNAPSHOTS







Seniors and Marshals



And thereby
hangs a tale..
As You like It
Shakespeare

Gwen Hamer wears silk and sheer wool in the shape of a jacket dress.

From our Young Towner's collection.

Snead
& Craven



TAXI

Dial 8141 Dial

"A Thinking Fellow Calls a Yellow"

YELLOW CABS

91 Burke Street

W. T. VOGLER and SON

**Jewelers and
Silversmiths**

Winston-Salem, N. C.

COMPLIMENTS

of

FORSYTH MOTORS, Inc.

BUICK

Insurance Department

**WACHOVIA BANK
& TRUST CO.**

Winston-Salem, N. C.

COMPLIMENTS

of

**WINSTON-SALEM
HUDSON CO., Inc.**

1033 South Main St.

"This Time It's HUDSON"

BEST WISHES FROM

P. H. HANES KNITTING CO.

Winston-Salem, N. C.

Manufacturers of



UNDERWEAR - SPORTSWEAR - CHILDREN'S SLEEPERS

Congratulations - -

TO THE FINE GROUPS OF
GIRLS WHO HAVE HELPED
KEEP SALEM ACADEMY
SUCH AN OUTSTANDING
SCHOOL.



General Offices - - - - - Kingsport, Tennessee



Posed by
Lucy Wright
Class of '49



*Dream dress
of white net with
a cascade of
pink roses
on a green velvet sash*

From our collection of the finest young fashions on our Second Floor

Winston-Salem

MONTALDO'S

North Carolina



THE IDEAL

West 4th St.

Winston-Salem, N. C.

One of North Carolina's
Leading Department
Stores

Richmond Roanoke Winston-Salem

The S. GALESKI OPTICAL CO.

209 West Fourth St.

Winston-Salem, N. C.

TEAGUE'S

West Fourth St.

Women's Clothing

Lady Be Lovely Beauty Salon

"A Beauty Aid for Every Need"

144 Reynolds Bldg.

Phone 2-0355

EVENTUALLY - Why Not now !

HINES - SHOES - West Fourth Street

HIATT'S, Incorporated

Dodge Cars—Plymouth Cars—Dodge Job-Rated Trucks

210 N. Marshall St.,

P.O. Box 994

Phone 6135

Winston-Salem, N. C.

COMPLIMENTS OF
SOUTHERN DAIRIES CO.

For the latest in records, go to
MILES RECORD SHOP

If they haven't got the one you
want, they'll get it

**THE HOME LAUNDRY
AND
DRY CLEANING CO.**



1422 S. Main St.

Phone 2-4212 - 5512

SUMMIT STREET PHARMACY, Inc.

Overlooking Hanes Park
Winston-Salem, N. C.

A Registered Pharmacist always in charge
Your Prescription Our First Consideration

FRANK A. STITH CO.

West 4th Street
Winston-Salem, N. C.

**ELECTRIC
SERVICE
COMPANY**

Gift Giving Is Age Old

ARDEN SALEM STORE, Inc.

UNUSUAL and ATTRACTIVE GIFTS
FOR ALL OCCASIONS

614 S. Main St.
Opposite Salem Square

Compliments of

Jacard's
nissen bldg.

COMPLIMENTS

of

**KESTER MACHINERY
COMPANY**

VOGLER SERVICE

Funeral Directors
AMBULANCE

Dependable for More than
90 Years
DIAL 6101

COMPLIMENTS

of

BENNETT-LEWALLEN COMPANY

147 N. Main St.

CAMELS

for MILDNESS and

FLAVOR



In appraising values there are none greater than the privilege of serving you as we build for health and happiness in an ever growing community.

Dial
2-2645

Dial
2-3592

Dewey's

"The Fine Art Baker"

114 W. 4th St. and City Market
Winston-Salem, N. C.

**CARDINAL GIFT SHOP
and
KNITTING NOOK**

408 N. Cherry Street
Phone 2-3011

PILOT LIFE INSURANCE CO.

306 First National Bank Bldg.
Phone 2-2321

TOMMY BLUM SHELL SERVICE

5th and Marshall St.
Phone 2-1452

Kelly Tires

Parking

COMPLIMENTS

of

BRODT-SEPAK MUSIC CO.

620 W. Fourth St.

Winston-Salem, N. C.

COMPLIMENTS

of

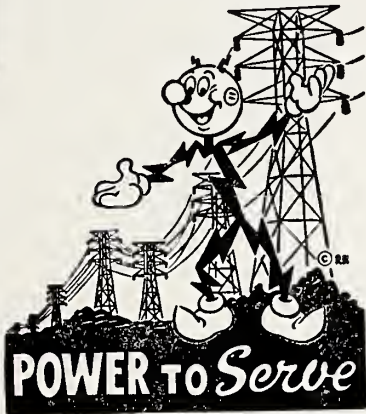
HANES

DYE AND

FINISHING

COMPANY

NOTHING'S TOO HARD when we try hard



enough — and what better place to try than right here in our own Piedmont Carolinas? Wonderful resources, mild climate, some of the best people in the world, opportunity envied the world over, a lot of work waiting to be done, and a government that leaves you free to choose and work as you will. Putting economical power at your command is our part in helping you to build a satisfying and rewarding life.

DUKE POWER COMPANY
Serving the Piedmont Carolinas

EFIRD'S DEPT. STORE

"Quality Merchandise
at Popular Prices"

COMPLIMENTS
of
RAYLASS CHAIN STORE
4th St. opposite the
Court House

COMPLIMENTS
of
SCHAEFER JEWELRY

COMPLIMENTS
of
**KRISPY KREME
DOUGHNUT CO.**

E. W. O'HANLON, Inc.
DRUGS
Fourth and Liberty Streets

H. T. HEARN ENGRAVING CO.
Since 1930
229 North Liberty St. Phone 2-1303
Winston-Salem, N. C.

COMPLIMENTS
of
MOTHER and DAUGHTER STORE
Winston-Salem,
N. C.

“Fine Equipment For Your Pleasure”

**BOCOCK-STROUD
COMPANY**

“Come in and Browse”

COMPLIMENTS
of
CLEO'S BEAUTY SALON
420 West 4th Street
Miss Cleo Bateman—proprietor

COMPLIMENTS
of
SARTIN'S

An Important Sign of the Times

SALEM COLLEGE

Winston-Salem, NORTH CAROLINA

Offers a Liberal Arts blueprint for world citizenship . . . realizing that the universal need today is that of greater understanding among men and nations, Salem College endeavors by its curriculum to inspire and prepare future citizens to seek the necessary goal.

DEGREES OFFERED IN
LIBERAL ARTS . . . SCIENCES . . . MUSIC

The Salem Book Store

SALEM COLLEGE

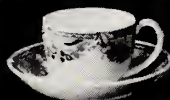
WINSTON-SALEM, N. C.



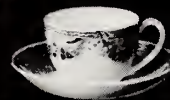
Salem Staffordshire



SALEM STAFFORDSHIRE CHINA—We have recently purchased the entire stock of Staffordshire China formerly sold by the Arden Farm Store. For that unusual gift we suggest this china in any of the seven pieces. Choice of three colors, all pieces in stock for immediate shipment.



Salem Wedgwood



SALEM WEDGEWOOD CHINA—For sixteen years Wedgwood China has been selected by thousands for their own use and as gifts. We shall continue to stock both the Wedgwood and Staffordshire China. Although some Wedgwood scenes are not available at present, shipments from England are expected in a few months. Write for prices and illustrated circular.

**A
Better
Coverage**

**NEWS — SPORTS — FEATURES
SOCIAL EVENTS — COMICS**

with

**WINSTON-SALEM TWIN CITY
JOURNAL and SENTINEL**
(Morning) (Sunday) (Evening)

**OGBURN INSURANCE
AGENCY**

654 W. 4th St. Telephone 2-0166

Winston-Salem 3, N. C.

**FIRE-AUTOMOBILE-CASUALTY
INSURANCE**

**ROMINGER
FURNITURE COMPANY**

Winston-Salem
N. C.

**COMPLIMENTS
of a
FRIEND**

Arcade FASHION SHOP

Where Smart Winston-Salemites Shop

*

Fourth and Trade St.
Phone 5185

HIGH GRADE PIANOS

"Since 1902"

JESSE G. BOWEN MUSIC CO.

217 W. 5th St.

Phone 7923

In Winston-Salem it's

THE ANCHOR COMPANY

"Shopping Center"

Fourth at Trade

Dial 4-3611

SOSNIK'S



JONES-DALTON

*Miss Margaret Randolph wearing a candy stripe formal
from our third floor collection.*

DAVIS-MILLER MOTORS, Inc.

1029 N. Liberty St.

Phone 3-5541

Winston-Salem

MELFORD T. MANN

Optician

325-A

Reynolds Building

**MAYO
UNDERWEAR**

For

MEN and BOYS

Also Polo Shirts for Ladies and Misses

Washington Mills Co.

Mayodan and Winston-Salem

BROWN-COLTRANE MOTOR CO., Inc.
NASH SALES and SERVICE

GENERAL REPAIRING and BODY and PAINT WORK

840 N. Liberty St.

Winston-Salem, N. C.

Telephone 3-7841

HAVERTY FURNITURE CO.

COMPLIMENTS
of
FORSYTH POULTRY CO.
310 West 7th Street

WAIR-WAIR-FM

CLAY The Printer
The House that
Quality and Price Built

SALADS
SANDWICHES
SODAS

MORRIS SERVICE

403 West Fourth

C. R. WILLIAMS and SON

Distributors of

PHILCO

You Get More for Your Money
at
SPEAR'S
Your Jeweler

410 North Main St.

COMPLIMENTS
of
SILVER'S STORE

LAMBERTI
Your Hair Dresser

Robt. E. Lee Hotel
Phone 8620

Ideal Dept. Store
Phone 5161

BIG BEAR SUPER MARKET

601 N. Cherry St.
Winston-Salem, N. C.

COHEN'S

West 4th St.
Winston-Salem, N. C.

BELK-STEVENSON CO.
Dept. Store
The Home of Better Values

COMPLIMENTS
of
S. H. KRESS & CO.

YOUTH CENTER
Fourth St.

Compliments
of
Pepsi Cola Bottling Co.
of
Winston-Salem, Inc.

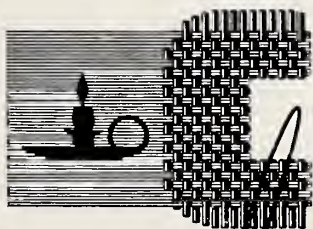
For Fine Linens
visit
WM. McCALL LINEN SHOP
408 N. Spruce St.

GUILD HOUSE
4th and Spruce
Winston-Salem, N. C.

COMPLIMENTS
of
CAROLINA THEATRE

In Winston-Salem
Trade at
MORRISETT'S

Chatham
makes good
blankets!



CHATHAM

Blankets _____

Chatham Manufacturing Co., Elkin, N. C.

Woodrow Wilson
Photographer

COMPLIMENTS

of

Central Carolina
Motors

Cadillac

Oldsmobile

FRANK L. BLUM & CO.
GENERAL CONTRACTORS

860 West 4½ Street

SUN PRINTING COMPANY
PRINTING and PUBLISHING
304-306 S. Main St.

Steinway and Knabe Pianos
BLAND PIANO COMPANY
220 North Main Street
"Home of Standard Makes"

STANDARD BUILDING and LOAN
ASSOCIATION
LOANS SAVINGS
236 N. Main St Phone 3-1069

Winston Printing Co.

Printers - Lithographers - Binders

Phones 6146 - 6147

Patterson Ave.

Stabler Pontiac Company

On the Threshold of Life....

In this shining hour of commencement, when the great gates of life's adventure swing wide to beckon the young graduate, COBLE extends heartiest well wishes for a career filled with health, happiness and prosperity.

You who embark on the magnificent journey carry with you the dreams, hopes and inspiring visions that have always lured the courageous and guided them through a life, complete in every fulfillment.

It is the hope of COBLE - a grand name in health—that each graduate of Salem will live the rich and abundant life of sweet contentment.





SALEM ACADEMY & COLLEGE



0 2960 0218529 0



