

EASTERN APPROACH TO SALEM ACADEMY



Digitized by the Internet Archive
in 2013

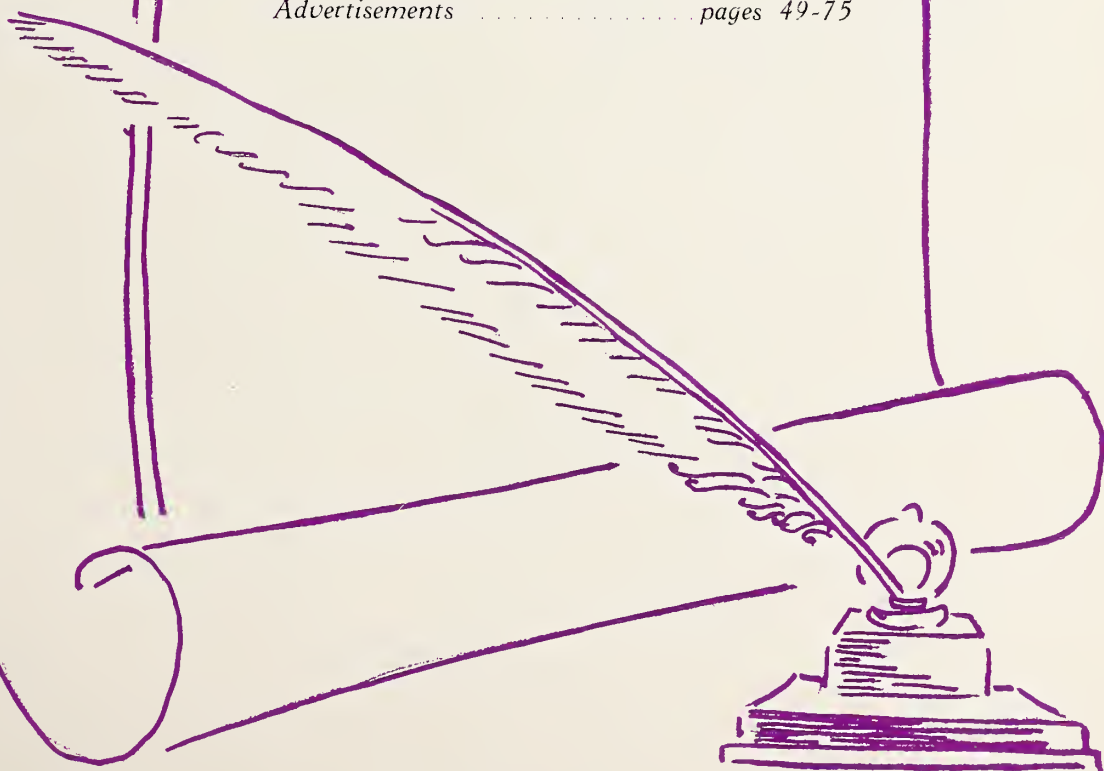
<http://archive.org/details/quillpen19511951sale>

1951 QUILL PEN



Table of Contents

<i>Administration and Faculty</i>	<i>pages 6- 8</i>
<i>Classes</i>	<i>pages 9-28</i>
<i>Features</i>	<i>pages 29-32</i>
<i>Sports</i>	<i>pages 33-38</i>
<i>Organizations & Activities</i>	<i>pages 39-48</i>
<i>Advertisements</i>	<i>pages 49-75</i>





THEME . . .



As we reach graduation,
each of us has completed the
circle of the year
Symbolized by the golden band
of our Senior ring, these Salem
days will live endlessly in our
memories.

6-4-51
10/0
now
10/0
10/0



12643
3



IN DEDICATION . . .

To a teacher who takes no nonsense . . . to a friend who is full of it . . . to a sponsor who has circled this important year with the Seniors, giving impartially of her time to ancient history and to the history made by the 1951 Senior Bazaar . . . to the faculty member about whom it has been said, "A Salemite hasn't lived until she has taken one of those 'list-trace-explain-discuss' history courses" . . .

To you, Miss Garrett, we dedicate this, the 1951 QUILL PEN.



MISS LEE GARRETT



DALE H. GRAMLEY



MARY A. WEAVER



A
D
M
I
N
I
S
T
R
A
T
I
O
N



FLORENCE M. BROWN



CHERIE McDOUGALL

• • • THEY GUIDE US • • •

DALE H. GRAMLEY, *President*
B.A., Litt.D. Albright; M.S. Columbia

MARY A. WEAVER, *Principal*
B.A. Randolph-Macon Woman's College; M.A. Columbia University; University of Wisconsin; Harvard University

FLORENCE M. BROWN, *Dean*
B.S. University of New Hampshire; M.ScO. Curry College; University of Michigan; Columbia University

CHERIE McDOUGALL, *Assistant Dean*
B.S. Ohio State University; M.A. University of North Carolina

• • • THEY TEACH US • • •

MARY BENSON, *Physical Education*
B.S. Woman's College of the University of North Carolina

VIRGINIA S. BLACKWELL, *English*
B.A. Randolph-Macon Woman's College; M.A. University of Virginia

LAURA BLAND, *Latin*
B.A. Salem College; M.A., Ph.D. University of North Carolina; Diploma, American Academy
in Rome; Vergilian School of Naples and Cumae

SARA LEE GARRETT, *History*
B.A. Louisiana Polytechnic Institute; M.A. University of Arizona

MAY FLEWELLEN McMILLAN, *English-Dramatics*
B.A. Wesleyan College; M.A. Columbia University; Mercer University

JEAN MISH, *Science-Home Economics*
B.S. Madison College

ELAINE NEWSOME, *French-Spanish*
B.A. Emory and Henry College; M.A. University of Virginia; University of North Carolina;
La Escuela Interamericana de Verano

ELSIE NUNN, *Mathematics*
B.A. Woman's College of the University of North Carolina; M.A. University of North Carolina

BENSON



BLACKWELL



BLAND



GARRETT



F
A
C
U
L
T
Y



McMILLAN



MISH

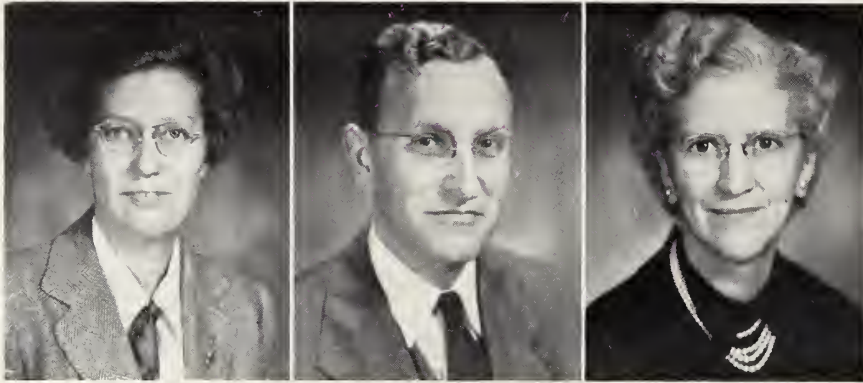


NEWSOME



NUNN

FACULTY



SAMSON

SAWYER

WHEELER

JUNE L. SAMSON, *Glee Club*

B.A. Pembroke and Brown University; M.A. Smith College; Juilliard School of Music; Pennsylvania University

EDWIN A. SAWYER, *Bible*

B.S. Lehigh University; B.D. Moravian Theological Seminary

HAZEL D. WHEELER, *Art-Registrar-Alumnae Secretary*

B.S. Boston University; Vesper George School of Art; Chicago Institute of Art; Harvard University

• • • THEY LOOK AFTER US • • •

Our Safety, Our Records, Our Health, Our Comfort



ANSLEY

LEE

LYTCH

WHITE

EMMIE J. ANSLEY, *Chaperon*

Diploma, Edward McGehee College; Tulane University; University of Tennessee

VIOLET R. LEE, *Secretary*

SARAH BUCHANAN LYTCH, *Dietitian*

Peace Jr. College

MARGARIE S. WHITE, *House Director*

B.A. Salem College

CLASSES





CHRISTIAN, BUGG, CURLEE
HENDRIX

SENIORS

CLASS OFFICERS

Martha Curlee *President*
Elizabeth Christian *Vice-President*
Betty Bugg *Secretary*
Nancy Hendrix *Treasurer*

Miss Lee Garrett
Class Sponsor

DIXEY ANNE ANDREWS

49 Rodgers Road
U. S. Naval Academy
Annapolis, Maryland

"Poop Poop! . . ." "Me Too!" Middies . . . Such pictures
over the door . . . M. U. . . . Sweater girl . . . Catch that
Hare!!

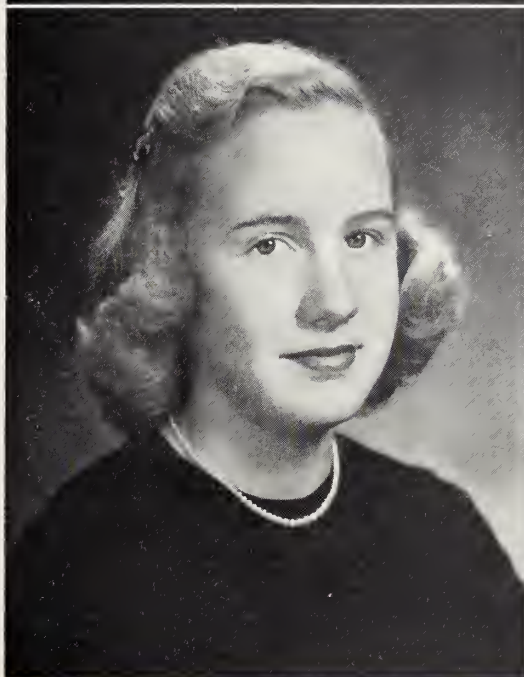
Glee Club 3, 4; Secretary-Treasurer of Glee Club 4; Accom-
panist of Glee Club 4; Lead in Play 3, 4; Junior Class Secre-
tary; Social Committee Chairman 3, 4; Hockey Varsity 3, 4;
Dramatic Club 3, 4; Dance Committee 4; Head of Hockey 4.

MARY BAMBALIS

920 Lynwood Avenue
Winston-Salem, N. C.

"Cheaper by the dozen" . . . E. C. T. C. . . . Or is it? . . .
friend indeed . . . Bambi . . . "Ain't she sweet?"
Glee Club 1, 2, 3; Soccer Varsity 3; Red Cross Representa-
tive 2.





ROXANN BASSETT

Bassett, Virginia

"Now, youall, now stop!" . . . Phil Rizzuto and the Yankees
 . . . Torchy . . . Sam Shovel . . . Virginia . . .
 Glee Club 1, 2, 3, 4; Dramatic Club 1, 2, 3, 4; Lead in Play
 3, 4; Speedball Varsity 1, 2, 3; Soccer Varsity 3, 4; Softball
 Varsity 1, 2, 3; Head of Speedball 2; Head of Golds 4; Head
 of Soccer 3; Honor Council 2.

ELIZABETH CHRISTIAN

1511 Langhorne Road
 Lynchburg, Virginia

"Legs" . . . U. Va. . . Duke . . . Duchess . . . Lovable . . .
 the Charleston . . . Blondie.
 Glee Club 1, 2, 3, 4; Dramatic Club 1, 2, 3, 4; Secretary-
 Treasurer of Freshman Class; Vice-President of Senior Class;
 Secretary of Student Council 4; Chairman, Good Will Com-
 mittee 2; Student Council 1, 4; Hockey Varsity 2, 4; Volley-
 ball Varsity 3; Academic Marshal 1, 2, 3; Senior Counselor
 4; Assistant Editor, QUILL PEN 3; Honor Council 2, 3, 4;
 President of Honor Council 4; Citizenship Honor 3; Angel in
 Christmas Pageant 1, 2; Head of Volleyball 4.

BETTY BUGG

607 Forest Hills Drive
 Wilmington, N. C.

B. T. C. T. . . . eyes . . . "Boodle-Bugg" . . . letters . . .
 . . . hands . . .
 Glee Club 4; Secretary of Senior Class.

MARTHA CURLEE

Erwin Heights
 Thomasville, N. C.

D. U. . . . "the young thing" . . . Marion . . . Junaluska . . .
 kelly green satin men's tie . . . hip exercises . . . auburn hair
 . . . "Curlee"
 Glee Club 3, 4; Accompanist 3, 4; President of Glee Club 3;
 Vice-President of Glee Club 4; Dramatic Club 3, 4; Lead in
 Play 3; Floor Committee 4; Vice-President of Junior Class;
 President of Senior Class; Honor Council 4.

ANNE CURRIE

Crescent View
Carthage, N. C.

"Roomy" . . . Uke . . . Diet . . . Queens . . . Yessir . . . Girls
English Solitaire . . . "Yessir, That's My Baby . . ."
Glee Club 2, 3, 4; Vice-President of Glee Club 3; President
of Glee Club 4; Double Sextette 2, 3, 4; Volleyball Varsity
2; Soccer Varsity 3, 4; Head of Hiking 3, 4; S. S. W. Rep-
resentative 4; Lead in Operetta 2, 3.

CORNELIA DOWD

3141 Sharon Road
Charlotte, N. C.

Oh, Brother! . . . "bubbles" . . . "No Other Love" . . . yes,
low windbreaker . . . skinny . . . good looks . . . What a
walk!
Glee Club 4; Chairman, Good Will Committee 4; Food Com-
mittee 4.

SARA DEW

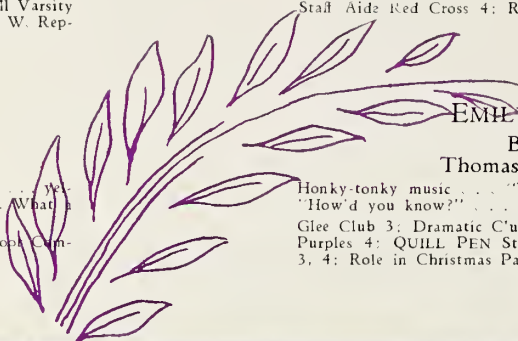
Confederate Avenue
Salisbury, N. C.

"What is it, Mumbles?" . . . Peasants! . . . those baby blue
eyes . . . "That's a good-looking mother."
Glee Club 2; President of S. S. W. 4; QUILL PEN Staff 3;
Staff Aide Red Cross 4; Role in Christmas Pageant 4.

EMILEY FINCH

Box 1
Thomasville, N. C.

Honky-tonky music . . . "Whu-u-t?" . . . those eyes . . .
"How'd you know?" . . . loud pajamas . . . Junaluska.
Glee Club 3; Dramatic Club 3; Soccer Varsity 4; Head of
Purples 4; QUILL PEN Staff 3; Red Cross Representative
3, 4; Role in Christmas Pageant 4.





FELICIA GOLD

Peachtree Road
Shelby, N. C.

"Cat" . . . U. N. C. . . . "square" . . . Gardner-Webb . . .
"hard" . . . Ocean Drive . . . "No Joke!"
Glee Club 3, 4; Basketball Varsity 3; Dance Committee 4;
Floor Committee 3; Red Cross Representative 4.

SARAH GRIFFITH

569 Cherokee Blvd.
Knoxville, Tennessee

Dimples . . . U. T. . . . Kappa Sigs . . . "Dreams" . . .
Knoxville High . . . Cheewie . . . "45" and Lucky "7."
Glee Club 1, 2, 3, 4; Chairman, Good Will Committee 3;
Dramatic Club 1, 2, 3, 4; Student Council 4; Dance Com-
mittee 1, 2, 4; Softball Varsity 2; Head of Tennis 4; Lead
in Play 1, 2, 3; Academic Marshal 3; Hockey Varsity 1, 4.

EMILY HALL

Box 266
Belmont, N. C.

Sonny . . . brown eyes . . . always ready . . . prunes . . .
"Did I get any?"
S. S. W. Representative 4; Secretary of S. S. W. 4.

MARTHA HARDY

Hartsville, Tennessee

"Party, Party" . . . Billy-Boy . . . "hershey" . . . U. T.
Prompt? . . . Those Eyes . . . "Roomie" . . . "To-
gether."
Glee Club 1, 2, 3, 4; Dramatic Club 1, 2, 3, 4; Lead in
Play 4; Basketball Varsity 3; Volleyball Varsity 3; Soccer
Varsity 4; Head of Soccer 4; Head of Volleyball 3; Scrib-
bler's Club 2, 3, 4; Treasurer of Scribbler's Club 3; Pres-
ident of Scribbler's Club 4.

MARLENE HEDRICK

Box 619
Lenoir, N. C.

Oak Ridge . . . Carolina . . . Davidson . . . 9472 . . .
Pretty Teeth . . . Lights . . . Lenoir Bearcats . . . 8:00
. . . one sweet gal.

Glee Club 3, 4; Double Sextette 3; Basketball Varsity 3;
Student Council 3; Secretary of Glee Club 3; Lead in Op-
eretta 3; Dramatic Club 3; Staff Aide for Red Cross 3.

NANCY HENDRIX

144 Pinecrest Road
Durham, N. C.

"Those Big Blue Eyes" . . . "Cy" . . . Woodberry or Duke?
. . . Finds good in everyone . . . "orange blossom."

Glee Club 3, 4; Dramatic Club 3; Double Sextette 4; Red
Cross Representative 4; Treasurer of Senior Class, S. S. W.
Representative 3; Floor Committee 4; QUILL PEN Staff 3.

KATHLEEN KAVANAGH

Longridge
Lenoir City, Tennessee

J. D. T. . . . U. T. . . . Pat . . . You're kidding . . .
that radio tower . . . photogenic . . . those beautiful eyes
. . . Katsy.

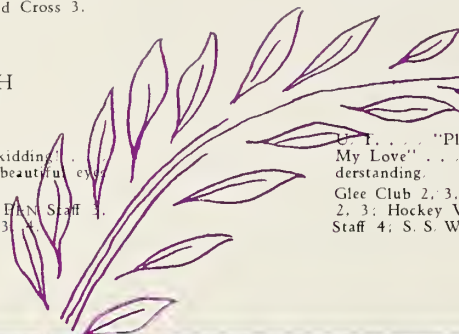
Glee Club 3, 4; Dramatic Club 3, 4; QUILL PEN Staff 3,
4; Editor of QUILL PEN 4; Scribbler's Club 3, 4.

PEG KING

1349 Linville Street
Kingsport, Tennessee

O. I. . . . "Plexy" . . . "Should I write him?" . . . "Be
My Love" . . . station wagons . . . Blind Dates! . . . un-
derstanding.

Glee Club 2, 3, 4; Dramatic Club 2, 3, 4; Softball Varsity
2, 3; Hockey Varsity 4; Dance Committee 4; QUILL PEN
Staff 4; S. S. W. Representative 4.





CAROLINE KNEEBURG

Milford Hills
Salisbury, N. C.

Always willing . . . letters 'n more letters . . . Salisbury . . .
brainy . . . "Eek, another pound!"
Glee Club 4; Hockey Varsity 4; Staff Aide for Red Cross 4.

JUDY MCCRARY

3625 Iskagna Drive
Knoxville, Tennessee

Frank . . . Florida . . . The Hill . . . "that Nippy" . . .
Tennessee . . .
Glee Club 4; Dramatic Club 2, 3, 4; Treasurer of Drama-
tic Club 4; Student Council 3, 4; Volleyball Varsity 2, 3;
Dance Committee 4; QUILL PEN Staff 4; S. S. W. Repre-
sentative 3.

KATHERINE MILESTONE

Route No. 1
Clemmons, N. C.

"I'm in Love with a Wonderful Guy" . . . "Monkeys is the
craziest people!"
Glee Club 2; Dramatic Club 1, 2, 3, 4; QUILL PEN Staff
3, 4; Dance Committee 4.

MARY NELSON

Lees-McRae College
Banner Elk, N. C.

Paul . . . Lees-McRae . . . Sweet . . . Natural . . . Phi
Gam . . . knitting . . . "Crazy Knocker" . . . Ollie Owl.
Dramatic Club 3, 4; Soccer Varsity 4; Volleyball Varsity
3; Chairman of Devotions, S. S. W. 3, 4; Scribbler's Club
3, 4; Honor Council 3; QUILL PEN Staff 4; President of
Scribbler's Club 3; Staff Aide for Red Cross 4.

MARY FRANCES PLUMMER

567 East Main Street
Brevard, N. C.

Roy . . . Chevrolets . . . "My Foolish Heart" . . . "It's a
rite nice nite with a brite lite" . . . "Winkie."

Glee Club 1, 2, 3, 4; Dramatic Club 1, 2, 3, 4; Treasurer
of Sophomore Class; Student Council 2, 3, 4; Soccer Vars-
ity 4; Floor Committee 3; QUILL PEN Staff 3, 4; Citizen-
ship Honor 1, 2; Chairman, Social Committee 3, 4; Red
Cross Representative 1.

MARY REYNOLDS

221 Club Park Road
Winston-Salem, N. C.

Men, men, and more men! . . . Model girl . . . "I've found
my woman!"

Glee Club 1, 2, 3, 4; Dance Committee 3, 4; QUILL PEN
Staff 1, 2, 3; Dramatic Club 1, 2, 3, 4; Scribbler's Club
4; Treasurer of Scribbler's Club 4.

JOHN RAGSDALE*

Exchange Plantation
Georgetown, S. C.

Clothes . . . "Grand!" . . . Cha-a-lie . . . coffee . . . Wil-
son . . . "Let's have a party!" . . . Carolina . . . U. Va.

Floor Committee 3; Christmas Pageant 3.

*Insufficient credits to graduate.

KATE SANDERS RUDY

609 Kentucky Avenue
Paducah, Kentucky

"Is he cute?" . . . Oak Ridge . . . "Don't sit on my bed!"
. . . "I'm flying" . . . harp . . . Little One . . . Yale.

Glee Club 3, 4; Double Sextette 3, 4; Student Council 3;
Scribbler's Club 3, 4; Lead in Operetta 3; Dramatic Club
3, 4; Secretary of Scribbler's Club 3, 4; Staff Aide for Red
Cross 4.





JAN SAXON
Churchill Road
Charlotte, N. C.

Always singing . . . that Ipana smile . . . Transylvania . . .
witty remarks . . . "Monkey's Paw" . . . Miami.
Glee Club 4; Double Sextette 4; Lead in Play 4.

JO ANN TATUM
Box 26
Elizabethtown, N. C.

"Wahoo! Wah!" . . . Duke . . . Broadway . . . "Girls, the
world looks bad." . . . "I'm Just Wild About Harry."
Dramatic Club 2, 3, 4; Treasurer of Junior Class; Lead in
Play 3; S. S. W. 2, 3, 4; President of Dramatic Club 4.

ELEANOR THORNHILL
113 Oakwood Place
Lynchburg, Virginia

Jose . . . Yuus-s-s-s . . . green Buicks . . . Virginia accent
"Someday" . . . "I'm so excited I could just 'squish'
a grape!"
Glee Club 3, 4; Dramatic Club 3; S. S. W. Representative 4.

BETTY TUCKER
125 East Hillvale
Knoxville, Tennessee

Al and Tuck . . . Sigma Chi . . . Sam . . . the mountains
Seymour . . . The beach . . . Booker . . . Bozo . . .
that tan.
Dramatic Club 2, 3; Student Council 3, 4; Chairman, Com-
munity and World Service 4; Senior Counselor 4; Academic
Marshal 2, 3; Hockey Varsity 2, 4; Basketball Varsity 2;
Golf Varsity 3; Citizenship Honor 2; S. S. W. 3; Head of
Riding 2, 3, 4.

HELEN CAROLE WATKINS

Prestwood Drive
Hartsville, S. C.

"I'm just the laziest gal in town!" . . . Southern Belle . . .
"Where's my future?" . . . "Mo" than you know."
Glee Club 3; Dramatic Club 3.

MARY LOU WATSON

1411 West Nash Street
Wilson, N. C.

Hair . . . Carolina . . . "Sho!" . . . "My Destiny" . . .
Duke . . . Uke . . . Myrtle Beach . . . eyes . . . clothes.
Glee Club 3, 4; Dramatic Club 3, 4; Floor Committee 4;
QUILL PEN Staff 3, 4; Red Cross Representative 4.

JANE GRAY WILLIAMS

17-c-I Bailey Court
Anderson, S. C.

Le Nez . . . Sure-e-e-e . . . "Oh, my hair!" . . . Animals
galore . . . blue jeans and man's shirt . . . sweet as pie . . .
Glee Club 1, 2, 3, 4; Softball Varsity 1, 3; Head of Service
Committee 3, 4; Soccer Varsity 3, 4; Speedball Varsity
3; Dance Committee 3, 4; Dramatic Club 1, 2, 3, 4; Secretary of Dramatic Club 4.

LYNN WILLIAMS

Rural Route No. 2, Box 203
Mundelein, Illinois

"Tweds" . . . "There goes the train!" . . . knee socks . . .
Chunky . . . Monty . . . "Really Voguie" . . . argyles.
Glee Club 3, 4; Double Sextette 4; Dramatic Club 3, 4;
Junior Class President; President of Student Body 4; Leads
in Plays 3, 4; Academic Marshal 3; Scribbler's Club 3, 4;
President of Student Council 4; Hockey Varsity 4; Executive
Board, Dramatic Club 3, 4.





1. Waitin' for the picnic chow.
2. Digging for exams.
3. Better get that letter written.
4. News from the switchboard.
5. "I'm going on a diet tomorrow!"
6. "Si, si, señoritas."
7. "Let it snow—"
8. Clean-up committee for dance.

9. Arthur Godfrey has nothing on us.
10. Two dear ole roomies.
11. Caroling before breakfast and Christmas vacation.
12. "Standing at the portals."
13. Seniors get revenge on faculty.
14. "That's at least 300 calories!"
15. Nothing like that morning recess.

Circle of Our Senior Year

The Class of '51 started the circle of their Senior year with the traditional opening hymn at Salem Academy, "Standing at the Portals." For us the words seemed especially true, for we hadn't as yet quite realized that we were flesh and blood Seniors. That realization came, along with official recognition of our status, at the Birthday Banquet on September 15, when the cake was cut with the knife used only at this yearly occasion.

The next outstanding point on our Senior circle was Senior Day—that day when Seniors and faculty make a noble effort to change places (you can see why it lasts only a day!) that day looked forward to from the time when we were underclassmen, not quite certain that we should take seriously the power of the new Senior faculty—but afraid not to! What fun when others stood in our presence—and stood and stood and stood. Remember Roxann as Miss Wheeler and Curlee as Miss Weaver in the chapel skit? Remember the faculty room, our headquarters, which, although temporary, we made completely our own for twenty-four hours—and don't believe we didn't use it right up until the last minute? I'm afraid we robbed it of any remaining decorum when we dressed there for court that night—those black robes and white faces with dark shadows!

October made one last effort, and contributed another highpoint on our Senior circle. As we dived into our nut-cups at the Hallowe'en Banquet, we discovered with mad shrieks—nuts? In a nut-cup? Ridiculous! Our Senior rings!

Christmas came bringing the usual cheer, and a Salem usual, the Senior Bazaar. We rushed from place to place getting merchandise which we sold the afternoon of December 1. What fun it was acting as clerks—and I do mean acting—during all the adding, subtracting, multiplying, and dividing we did, we took time to be thankful for all our math courses, and to realize that they might possibly be of some real use. One day was enough, though—no wonder we sang so heartily the morning we left for Christmas vacation, when we caroled through the underclassmen halls at six-thirty A.M.!

The first semester came to an end; grades went to the colleges of our choice. No sooner had we gotten used to our position as Seniors and begun to take it rather matter-of-factly, than we were reminded of the fact that in not too many more months we would be freshmen again. That was far enough away not to be too alarming, but the announce-

ment of Honor Graduates and the election of Academic Marshals brought graduation very close.

With this in mind, the Seniors gave their parts in the operetta and the Spring three-act play something extra, knowing this would be their last participation in these events, and wanting to give their very, veriest best.

The long-awaited week-end finally arrived—the week-end of April 14th. The tea-dance given by the Sophomores in honor of the Seniors wrote Saturday afternoon in capital letters. Remember when the Beauty Queen was announced! But the high-light of the week-end was that night—the Junior-Senior Prom. The Juniors had been working secretly all year on the dance; the Seniors had tried to find out the theme, but for all our listening at keyholes, and such, all we got were certain dark hints of a barn-dance. Were we surprised that night when we finally discovered the real theme "Stardust," and delighted and thrilled when we were presented to the tune of "A Pretty Girl Is Like A Melody." That was one wonderful time we will never forget! Remember how we worked the year before to give it—what a job!

Our years at Salem were drawing to a close—the circle of our Senior year was nearly finished—our scrapbook was almost full of memories. The last week of hard studying was over; exams ended with many a sigh. Our names had been entered in the Senior Scrapbook at the Quill Pen Banquet. Remember getting in our hands those precious possessions, our Senior annuals, and trying to sing "Auld Lang Syne," while tears moistened our faces?

Tuesday, June 5, 1951, arrived at last—that contradictory day, happy yet sad; a day of hellos and farewells; the Alpha and Omega of our Senior circle. First was the closing chapel and then came the Recognition Program. At 5:00 o'clock the Seniors standing on the stone steps and the underclassmen dancing in front of them made a woodland scene in the dell—a scene always to stay in the minds of the Seniors—a scene which climaxed the times that the Seniors and underclassmen were together.

It was time to complete the circle of our Senior year. To the notes of "Pomp and Circumstance" we approached the stage, where the Senior Class of '51 was together for the last time. Speeches were made and diplomas were received by the Seniors; the march from "Aida" was heard; the Seniors walked out, taking with them memories and joys that would live with them forever.

JUNIORS



CLASS OFFICERS

JANE SNIPES

President

3357 Kenilworth Drive
Knoxville, Tennessee

MARY LOUISE CORNWELL

Vice-President

501 West Union Street
Morganton, N. C.

ANN ALTVATER

Secretary

771 York Street
Denver 6, Colorado

JANICE DECKER

Treasurer

18 Garden Place
Brooklyn 2, N. Y.

Class Sponsor

MISS MARY BENSON

MARY ANDERSON BOOE

King, N. C.

NELL BRADY

2124 Cowper Drive
Raleigh, N. C.

BETTY BUXTON

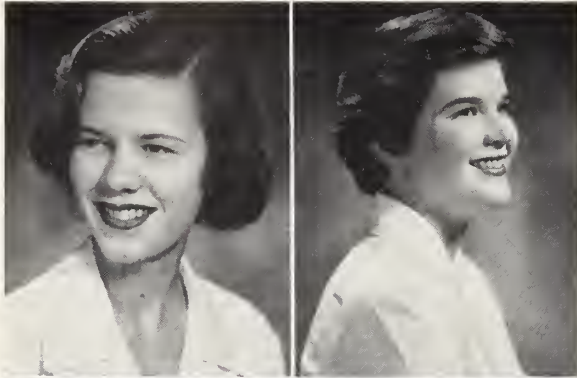
26 Frank Clarke Street
Sumter, S. C.

LINDA CARPENTER

625 South 9th Street
Wytheville, Virginia

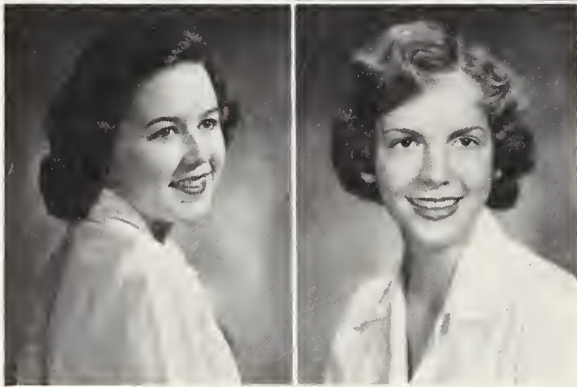


JUNIORS



MARTHA CLINE
1327 17th Street
Hickory, N. C.

GEORGANNE COBLE
Country Club Drive
Lexington, N. C.



MISHEW COOPER
240 Charles Street
Henderson, N. C.

CICELY DARR
1067 East Kent Road
Winston-Salem, N. C.

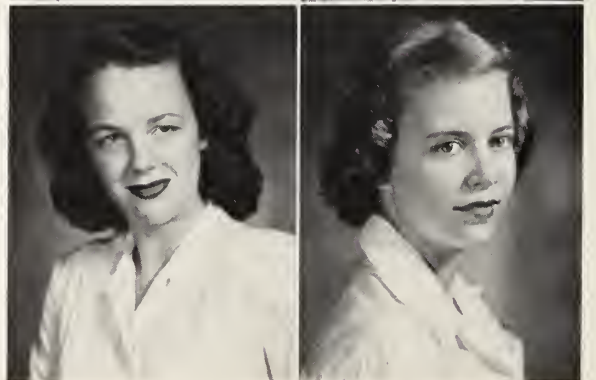
ANN EMERY
3606 Iskagna Drive
Knoxville, Tennessee

SUSAN FREEMAN
Randleman, N. C.

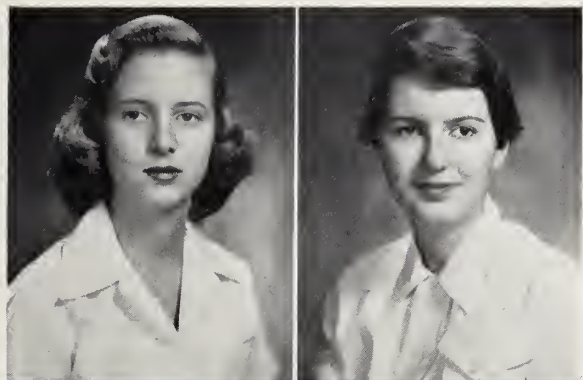


ELIZABETH GAINES
Box 903
Winter Haven, Florida

SUE GILL
Knox Lane
Wheeling, West Virginia



JUNIORS

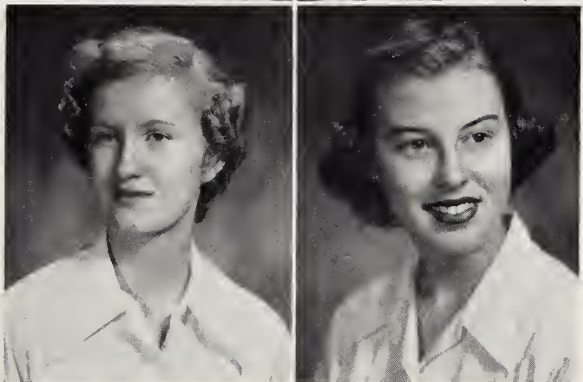


ELIZABETH HORNE

Creole Petroleum Corporation
Apartado No. 172, Maracaibo
Venezuela, South America

DAWN HELENE LANTZIUS

28 Manetta Road
Asheville, N. C.



CORRINE MICK

4616 Noyrs Avenue
Charleston, West Virginia

MIRIAM MORRIS

67 Louise Avenue
Concord, N. C.

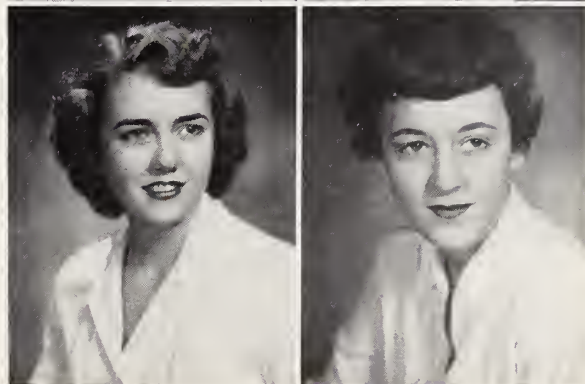
LOIS PLUMMER
567 East Main Street
Brevard, N. C.

BETTY SHUFORD
10 White Oak Road
Asheville, N. C.



LOU TOWNSEND
Wyoming, Delaware

SALLY WHITNER
205 Oakland Avenue
Rock Hill, S. C.



SOPHOMORES



CLASS OFFICERS

SALLY HAZEN

President

1809 Virginia Road
Winston-Salem, N. C.

JANE MOORE

Vice-President

1133 Queens Road
Charlotte, N. C.

REEZIE POOL

Secretary

2604 Warwick Road
Winston-Salem, N. C.

BETTY JANE MAY

Treasurer

1801 W. Market Street
Greensboro, N. C.

Class Sponsor

MRS. VIRGINIA BLACKWELL

TOPS ANDERSON

Mar-Beth-Top Farm
Fletcher, N. C.

CAROLINE BLACKWELDER

323 South Mulberry Street
Lenoir, N. C.

PATRICIA COLE

Box 68
Yanceyville, N. C.

ELIZABETH COFFEE

418 N. Spain Street
Darlington, S. C.



SOPHOMORES

DORSEY COSBY
1724 Brandon Road
Charlotte, N. C.

ANNE CRENSHAW
15 Circle Drive
Belmont, N. C.



DAISY DOUGHTON
401 Fairway
Anniston, Alabama

LANE HARVEY
1201 N. College Street
Kinston, N. C.



ELIZABETH HEEKIN
2001 Greenbrier Road
Winston-Salem, N. C.

ANNE JORDAN
Cedar Falls, N. C.



CHARLOTTE LAWSON
Armstrong Circle
Gastonia, N. C.

LESLIE MCCANLESS
1939 Sterling Road
Charlotte, N. C.



SOPHOMORES



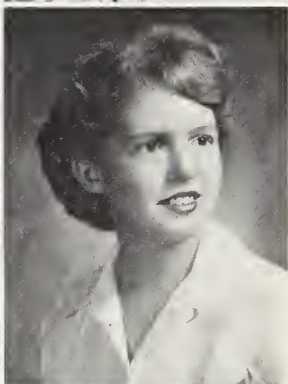
JOANNE MUSGRAVE
Pikeville, N. C.



JOAN SANDRA NIVLING
90 Dorchester Road
Rochester, N. Y.



WILLIE NEAL REYNOLDS
221 Club Park Road
Winston-Salem, N. C.



MARY SHAW
227 Hempstead Place
Charlotte, N. C.



MERI-DELL SOSNIK
911 Hyde Avenue
Winston-Salem, N. C.

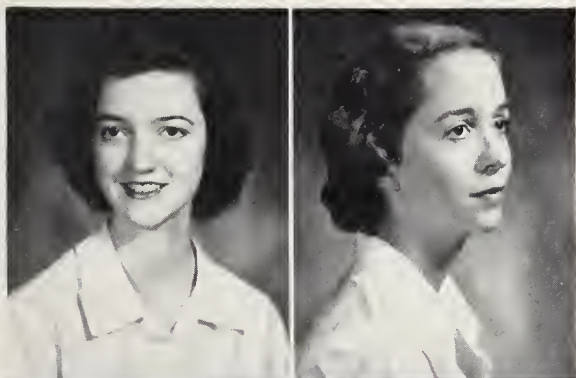


SUZANNE WALKER
1065 West 4th Street
Winston-Salem, N. C.



MARY SAUNDERS WILLIAMSON
302 Sunset Drive
Greensboro, N. C.

FRESHMEN



CLASS OFFICERS

ANN WEAVER

President

24 Browntown Road

Biltmore Forest

Biltmore, N. C.

MARJORIE ANN SMITH

Vice-President

Draper, N. C.



GERALDINE FULLER

Secretary

Box 2266

Hickory, N. C.

JANICE AUSMUS

Treasurer

300 Fifth Street

Jellico, Tennessee

Class Sponsor

MISS ELSIE NUNN

LOUISE CANNON

65 North Union Street
Concord, N. C.

ALICE ELLER

227 Roslyn Road
Winston-Salem, N. C.

ELIN ENDSLEY

Sweetwater, Tennessee

MARTHA HAZLEWOOD GEE

Box 314
Kenbridge, Virginia



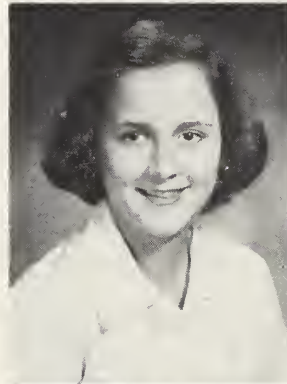
FRESHMEN

MARY CARROLL GRIFFIN

1414 Dodson Drive
Atlanta, Georgia

NATALIE HINE

1800 West Academy Street
Winston-Salem, N. C.

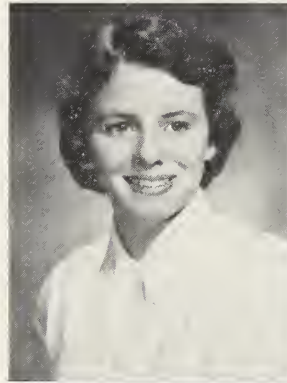


BARBARA LISK

1610 Queens Road
Charlotte, N. C.

MARY LOVE PRESSLY

Ingleside
Statesville, N. C.



LINDA LOUISE REED

Apartado Aereo 263
Barranquilla
Colombia, South America

CAROL SHERRILL

Cornelius, N. C.



MARIE WATSON

Watson Drive
Wilson, N. C.



FEATURES





PRESIDENT OF STUDENT GOVERNMENT

LYNN WILLIAMS

Student Government, based on the honor system, is the foundation of all life at Salem; therefore a personal honor code is expected of each student so that she is singularly responsible for the observance of rules. Girls may request changes and new rules through the Student Council, thus making student government really function. The president of the Student Government is automatically president of the Student Council and ex-officio member of the Honor Council. Added to these duties, she presides at all Student Government meetings and confers with the deans on student matters.



HONOR GRADUATES

ELIZABETH CHRISTIAN

MARY FRANCES PLUMMER

Each year at Salem Academy the two students ranking highest academically in the senior class are named "Honor Graduates." These two students are chosen by the faculty at the end of the first semester of the senior year. Honorable mentions are accorded students next in rank. The Honor Graduates are speakers at the graduation exercises, and their names are placed on the academic plaque in the Social Room.



ACADEMIC MARSHALS

Left to right: Reezie Pool, Sally Hazen, standing; Mary Carroll Griffin, Mishew Cooper, Sue Gill, Elizabeth Horne, Jane Snipes, seated.

Academic Marshals, elected by the Senior Class, serve at the Senior-Faculty Breakfast and usher at graduation. They include four representatives from the Junior Class, two from the Sophomore Class, and one from the Freshman Class. The president of the Junior Class serves as chief marshal.

The qualifications for Academic Marshals include both academic and personal attributes.

SPORTS





HEADS OF TEAMS

ROXANN BASSETT
Head of Golds

EMILY FINCH
Head of Purples

Excitement runs high on the first Saturday evening of each school year. This is the evening for the drawing of the names of all new students for the Purple and Gold teams. The old students assemble on the steps of the gymnasium, sitting in their respective teams, while the head of each team, elected by the student body at the end of the previous year, draw alternately from a box containing the names of all new Salem-ites. As the names of the new students are announced, they take their places on the steps amid the cheers of their new teammates. When all have been assigned to either the Purple or Gold team, a tug of war is held, with each team striving to win this first battle of the year.

This is just the beginning of the struggle, however. The two teams are the basis of all

intramural activities at Salem Academy and compete throughout the year in games held at the end of each sport season. The team winning each game is awarded five points, and on Recognition Day, a loving cup is presented to the team with the largest number of points for the year.

Throughout the year here at Salem seven major sports are offered: in the fall, hockey and soccer; in the winter, speedball and basketball; and when Spring fever overcomes us, softball and volleyball. Golf, designated for Juniors and Seniors only, is also played in the Spring. Other than these seven sports, there are several tournaments—tennis, doubles and singles, badminton, and pingpong.

Like any other organization, the Athletic Association has a governing body or council. This council is composed of the heads of the two teams; the managers of the seven sports; a manager each of tennis, riding, and individual

sports; and the athletic instructor. The work of this council is to encourage fair play on the field and to sponsor the tournaments the posture campaign, and morning walks.

In order to recognize achievement in sports, points are given for the different activities in which a girl participates. Three hundred and fifty points, the number necessary to be eligible for an award, looks mighty big at the beginning of the year, but as time passes and teams are chosen, tournaments played, varsities announced, and weeks of getting up five minutes early for morning walks go by, dreams of letters for the Freshmen, emblems for the Sophomores, Junior plaques, and the much sought after Senior loving cups, become a reality. These awards are presented on Recognition Day by the heads of the Purple and Gold teams.



PURPLE-GOLD DRAWING
 Heads of teams draw names of new students for their teams.



BASKETBALL

Left to right: Lane Harvey, Peg King, Martha Cline, Joanne Musgrave, Head of Basketball; Marlene Hedrick, Nancy Hendrix.

Basketball seems to be the favorite sport during the winter months. The season begins promptly after the return from Christmas vacation and continues through the first two weeks of March. At the end of the season, a game is played between the Purples and Golds, the winner receiving points toward the cup. A game is also played against the Salem College Freshmen.



HIKING

Left to right: Mary Shaw, Felicia Gold, and Anne Currie, Head of Hiking.

Hiking is one of the most popular sports in the fall of the year. For her first two hikes a Salemite receives thirty points toward her athletic letter, and for every additional hike she gets ten points. Spring weather renews the invitation to hikers for early Saturday excursions, ending with breakfast in the dell, or journeys to Reynolds Park for skating.



HOCKEY

Foreground, left to right: Dawn Lantzius, Elizabeth Christian, Dixey Andrews, Head of Hockey; Sarah Griffith. Background: Mary Saunders Williamson, Janice Decker.

Stick work and shin guards are common words in a Salemite's vocabulary when hockey time arrives. Then, on the lower field, gym classes face one another with little white balls and club-footed sticks—first awkwardly and then with skill as knowledge of the game progresses. Finally, November arrives, and with it the day of the big Purple-Gold Game, the climax of the hockey season.

SOCCER

Left to right: Mary Bambalis, Sue Gill, Martha Hardy, Head of Soccer; Barbara Lisk, Betty Jane May.

Soccer is not hard for a person having educated toes and feet, for in this game it's the feet, not the hands, that propel the ball. "Play your position," "hands!", "kick that goal," shouted from the side lines, keep the forwards, half-backs, and full-backs on the run. And it is really a fast game when, cheered by the members of their team, the Purples and Golds charge down the field for a last goal in the final game of the fall season.



INDIVIDUAL SPORTS

Players, left to right: Betty Shuford, Jane Snipes, Head of Individual Sports. On-lookers: Pat Cole, Anne Jordan.

Individual sports at Salem include swimming, golf, ping pong, badminton, and tennis. Tournaments are held in all of these except swimming and golf, with the winners receiving points for their team and for their letter. In the Spring upperclassmen may take golf, and from this group a varsity golf team is chosen. In all of these sports individual achievement is emphasized.



VOLLEYBALL

Reading by row from left to right: Peggy King, Dawn Lantzius, Lois Plummer, Marlene Hedrick, Nancy Hendrix, Elizabeth Christian, Head of Volleyball; Mary Nelson, Anne Crenshaw, Jane Moore, Sara Dew, Sandra Nivling, Martha Cline, and Joanne Musgrave.

A high net dividing two courts, sixteen girls batting by hand the swiftly moving volley ball, and the gym becomes enlivened on rainy days. Sunny days, however, bring this sport outdoors.





SOFTBALL

Left to right: Dawn Lantzius, Mary Saunders Williamson, Elizabeth Horne, Head of Softball.

After Spring vacation when warm weather is here to stay, the softball enthusiasts can be seen warming up for practice on the lower field. Members of both teams intend being fully prepared for that Purple and Gold game held a short time before final exams. The most hilarious game of the season, however, occurs when the faculty don blue jeans and caps to match their batting average with the Juniors.



SPEEDBALL

Left to right: Jane Gray Williams, Head of Speedball; Cissie Darr, Louise Cannon, and Ann Altvater.

Kick it like a football, dribble it like a soccer ball, or pass it like a basketball. Put two eleven member teams on the field, and you have that crazy, fast game known as "speedball." We play it here at Salem during the dull winter months.



RIDING

Left to right: Emily Finch, Betty Tucker, Head of Riding.

Each Tuesday and Friday afternoon, girls, dressed for horseback riding, may be seen piling into the station wagon with Sedgefield Stables as their destination. There for an hour or two they are instructed in the skills of this sport and enjoy riding in the ring or on the trails. Though this sport is optional at Salem, fifty points may be earned toward a letter if a student goes for ten horseback rides during one semester.

ORGANIZATIONS AND ACTIVITIES





Left to right: seated in front on floor: Joanne Musgrave, Elizabeth Christian; second row: Liz Horne, Lynn Williams, Miss Brown, Betty Heekin, Makie Griffin, Miss McDougall; back row: Betty Tucker, Sarah Griffith, Mary Frances Plummer. Not pictured: Judy McCrary.

STUDENT COUNCIL

The Student Council is the group which acts for the entire student body. Composing the council are the hall representatives, a day student representative, and the head of student government, with the deans acting as advisers. Once a week they have meetings to discuss new ideas, problems, and rules. On alternate Wednesdays after dinner they have student body meetings during which all the business discussion of the council is put before the students. On the other Wednesdays, hall representatives relate business to their own halls.

All year the Student Council is responsible for these six committees which it sponsors: the Service Committee, the Standards Committee, the Good Will Committee, the Program Committee, the Social Committee, and the Community and World Service Committee. Every girl in school serves on one of these.

The Student Council plays an active part in social activities too. On the first Friday night of a new school year they sponsor the annual Birthday Banquet, which is brought to its close by the traditional cutting of the birthday cake by the new senior class. At Christmas time they give the Christmas Banquet, which is followed by a party for the servants' children. Presents and goodies are given to the children, who, in turn, recite or sing for the student body. This party is always very gay and quickly puts everyone in the holiday mood.

On the Sunday night before graduation, the Student Council gives an impressive candle-light and campfire service in the dell. With the lighting of the candles, the newly elected council members begin their work for the coming year.

HONOR COUNCIL

Because honor at Salem is the foundation of all phases of life, it becomes a growing and vital part of all Salemites. To us "Honor is that which is right, just, and true; it is everywhere at Salem," and it is only through the personal integrity of each girl that our honor system is upheld.

We have an Honor Council to uphold the standards of honor that we want for the school and the individual. Its purpose is not to punish girls for the violation of rules, but to help girls understand our principles. Each girl takes the responsibility of obeying the rules and reporting herself if she breaks them. Since the Student Council handles questions that might arise in the dormitories, the Honor Council deals only with academic matters.

Although we feel that a sense of honor is equally important in athletics, dormitory activities, and the classroom, the Honor Council handles only such things as dishonest work on tests or misbehavior in study hall.

The Council, composed of three Seniors, the president of the Student Body being an ex-officio member, two Juniors, one Sophomore, one Freshman, and a day student representative, are "on call" for meetings at any time. Usually the meetings, such as the one pictured below, are held at night after quietness has settled over the dormitory. The sponsor gives the Council the benefit of her advice.

Seated in front, left to right: Mary Saunders Williamson; Elizabeth Christian, President of Honor Council; Marie Watson, Reezie Pool; back row: Lynn Williams; Martha Curlee, Ann Altvater, Mishew Cooper.





Left to right: Betty Buxton, Betty Shuford, Eleanor Thornhill, Caroline Blackwelder, Jo Ann Tatum, Anne Currie, Ann Crenshaw, Misbew Cooper, Vice-President; Emily Hall, Secretary-Treasurer; Miss Newsome, Sponsor, Sara Dew, President; Mary Nelson.

SPIRITUAL STEERING WHEEL

The purpose of the Spiritual Steering Wheel here at Salem is to promote religious activities in everyday school life. Its duties are especially concerned with nightly hall devotions and Sunday vesper programs.

During the week, girls take turns in having a ten minute devotional program on their halls after light bell. With everyone dressed in pajamas, the program is carried on in an informal manner. Last year we began having devotions for the entire school on Friday night in the Social Room. With its air of a "fire-side chat," this proved to be most successful.

Between Christmas holidays and mid-term exams, we have Religious Emphasis Week, which lasts from Sunday night through Wednesday. This year we were fortunate in having the Reverend Kenneth Goodson from the First Methodist Church of High Point, North Carolina. He talked to us at chapel, held group discussions, and was available during the day for personal conferences. These worship services and conferences proved to be of great help and inspiration to all of us.

In the Spring of the year it is our custom to have a group of small children from the Children's Home spend an afternoon with us. Salemites volunteer to help entertain the children, keeping them busy with games and refreshments. Academy girls seem to enjoy it as much as the children.

Our main aim is to promote a spirit of friendliness among all girls and to make everyone feel at home here at Salem. We try to bring a wholesome Christian atmosphere to the entire Academy community. It is our hope that each girl will leave Salem a better person and a truer Christian.

DRAMATIC CLUB

The Dramatic Club was reorganized at the beginning of the year to establish certain requirements for membership. To become a member of the club, a person must earn ten points, either by serving on a committee or by taking part in the plays. There is also a requirement that a member must earn four points per semester in order to remain in the club.

Before Christmas we gave three one act plays, *THE MONKEY'S PAW*, by Louis Parker from a story by W. W. Jacobs; *THE PURPLE DOORKNOB*, by Walter Eaton; and *THE HAPPY JOURNEY*, by Thornton Wilder. Mr. Wilder's play was given as a theater-in-the-round production. Four chairs composed the scenery and properties, and the members of audience were seated facing a center circle, which served as a stage. In March we gave the three act play, *ASK FOR ME TOMORROW*. Later in the Spring, we joined the Glee Club in presenting the Gilbert and Sullivan operetta, *H. M. S. PINAFORE*.

A special privilege allowed members of the Dramatic Club with a college recommendation average is attending the Winston-Salem Little Theater plays and those brought to the city by the Barter Theater. At the Reynolds Auditorium, where these plays are presented, we gather in gay groups between acts to discuss staging, costuming, and acting with "professional" aplomb.

Our club gives Salemites many opportunities for creative work—either on stage, back stage, or on committees. With our newly acquired set of scenery and the fund we have started for lighting equipment, we have achieved much as an organization. We take the greatest pride, however, in the quality of the plays we have produced.

Actors in *HAPPY JOURNEY*: seated: first row: Roxann Bassett, Martha Hardy; second row: Jane Moore, Marjorie Smith; standing: Lynn Williams; Members: left to right: first row: Betty Tucker, Martha Curlee, Mishew Cooper, Sally Hazen, Betty Heekin, Mary Nelson, Liz Christian, Kate Rudy, Kathleen Kavanagh, Betty Shuford, Vice-President: Jane Gray Williams, Secretary; Jo Ann Tatum, President; Miss McMillan, Sponsor; second row: Charlotte Lawson, Mary Frances Plummer, Reezie Pool. Not pictured: Judy McCrary, Treasurer.





Seated at piano: Dixey Andrews, Secretary and Treasurer; Martha Curlee, Vice-President; *standing:* Ann Currie, President of the Glee Club; *seated on floor:* Betty Buxton, Ann Altwater, Joanne Musgrave, Ann Weaver, Betty Heekin; *seated to the right:* Double Sextette; *first row:* Cissie Darr, Anderson Booe, Kate Rudy, Sue Gill, Nancy Hendrix; *second row:* Jan Saxon, Lynn Williams, Sally Hazen, Betty Shuford, Jane Snipes, Liz Horne; *seated on stage:* *first row:* Natalie Hine, Gerrie Fuller, Barbara Lisk, Makie Griffin, Tops Anderson, Leslie McCannless, Louise Cannon, Anne Jordan, Charlotte Lawson, Sally Whitner; *second row:* Dawn Lantzius, Mary Shaw, Reezie Pool, Lois Plummer, Liz Christian, Suzanne Walker, Meri-Dell Sosnik, Betty Jane May, Cornelia Dowd, Martha Cline, Mishew Cooper, Janice Decker, Jane Gray Williams, Peg King, Dorsey Cosby, Marie Watson, Martha Gee, Caroline Blackwelder, Mimi Morris; *third row:* Betty Bugg, Anne Crenshaw, Sara Griffith, Mary Frances Plummer, Carolyn Kneeburg, Mary Lou Watson, Felicia Gold, Mary Saunders Williamson, Marlene Hedrick, Martha Hardy, Kathleen Kavanagh, Eleanor Thornhill, Mary Louise Cornwell, Sandra Nivling, Susan Freeman, Roxann Bassett. *Not pictured:* Judy McCrary.

GLEE CLUB

The fact that nearly everyone likes to sing was shown at the beginning of the year when seventy-five girls joined Salem Academy's largest and most popular organization, the Glee Club. This club, led by Miss June Samson, never disappoints the girls in opportunities to sing, for there are many occasions besides the regular meetings on Tuesdays and Fridays.

Within the Glee Club is the Double Sextet, chosen from many who try out for the coveted memberships. This group has two extra meetings a week to learn songs for singing at Vespers, in chapel, and on programs with the rest of the Glee Club.

The Glee Club's first project this year was the annual Christmas pageant put on with the help of the Dramatic Club. The girls, dressed in black and white, carried lighted candles, which were placed on the edge of the stage to twinkle during the program. They sang Christmas music as appropriate scenes appeared in a big, gold frame on stage. As another enjoyable Yuletide tradition, the Glee Club also sang at the Salem Home.

The biggest and most exciting program, the annual Gilbert and Sullivan operetta, was given in the Spring with the help of the Dramatic Club. This year the girls were "salty" sailors in a favorite—H. M. S. PINAFORE.

To many, the last performance of the year, and to many the last forever, was the performance given by the Glee Club the night before graduation at the Senior Recital.

SCRIBBLERS' CLUB

The Scribblers' Club of Salem Academy gives girls who like to write or draw a chance to improve their writing by practice and by comparing their work to that of others.

Each month the club issues a paper, the *Quill Pencil*, which contains drawings, poetry, and short stories contributed by the members. There are bi-monthly meetings to discuss business of the club, to read poems, plays, or stories, and to hear outside speakers. The picture below illustrates a typical meeting of the Scribblers' Club. Here the girls are putting their paper together after which they will distribute it to the rest of the student body.

This year the work of the Scribblers' Club has consisted of revising the club's constitution and publishing the monthly paper. Senior members write the Class Day program, which is given in the May Dell on the afternoon of graduation day. This is a poem acted out in pantomime by the underclassmen. At this time the last *Quill Pencil*, containing the Class Day program, write-ups on graduation activities and the Honor Graduates, and the usual stories and poems, is issued.

During vacation *Pencil Shavings*, the summer edition of the *Quill Pencil*, is sent to old and new girls, giving the old girls news of their friend's summer activities and the new girls a feeling of belonging. This issue completes the activities of the Scribblers' Club for the year. The club is sponsored by Miss Hazel Wheeler.

Front row, seated: left to right: Martha Hardy, President; Mary Reynolds, Treasurer; Ann Altvater, Editor; Mary Nelson, Program Chairman; standing: left to right: Kate Rudy, Secretary; Charlotte Lawson, Vice-President; Lynn Williams, Kathleen Kavanagh, Sally Hazen, Lane Harvey, Dorsey Cosby, Daisy Doughton, Linda Reed.





Left to right: standing: Kathleen Kavanagh, Editor; seated in foreground: Ann Altvater, Assistant Editor; Sue Gill, Assistant Editor; Mary Frances Plummer, Business Manager; Cissie Darr, Assistant Business Manager; first row: Mary Nelson, Art Editor; Dawn Lantzius, Assistant Art Editor; Peg King, Photographic Editor; Mishew Cooper, Assistant Photographic Editor; Miss McMillan, Advisor; second row: Assistant Advertising Managers: Suzanne Walker, Reezie Pool, Sally Hazen, Betty Heekin, Mary Lou Watson, Mary Louise Cornwell, Liz Horne, Meri-dell Sosnik. Not pictured: Katherine Milestone, Advertising Manager; Judy McCrary, Assistant Advertising Manager.

QUILL PEN STAFF

The majority of Salem Academy students do not see our annual, the QUILL PEN, until the Senior Farewell Banquet, which is given by the QUILL PEN staff late in May. At this time the dedication is read, the annuals are presented, first to the Seniors and then to the underclassmen, and another QUILL PEN makes its debut before a waiting world of Salemites.

Members of the QUILL PEN staff are chosen by invitation in November, and with the aid of their faculty sponsor, start grooming and molding the character of the annual to get the best possible results before the February printing deadline.

The Editorial Staff chooses the theme (which is always kept secret until the annuals are presented), then decides the layout and all the pictures which are to be taken, always keeping in mind the theme and concentrating on carrying it out in each phase of the yearbook.

The Business Staff takes care of finances, keeps a file of advertisements, bills and receipts, and handles much of the detailed paperwork of the combined staffs of the QUILL PEN. The Advertising Staff, after dashing madly back and forth between school and local stores, and sending many, many letters to many, many out-of-town business concerns, finally secure the advertisements necessary for the publication.

The QUILL PEN contains an actual account of the activities of the year, just as the Senior ring symbolizes the memories.



Seated in front: Martha Cline; back row: Jane Gray Williams, Dixey Andrews, Cissie Darr, Cornelia Dowd. Not pictured: Georganne Coble.

COMMITTEE CHAIRMEN

The students, pictured to the left, head the committees sponsored by the Student Council. These committees keep the everyday activities of Salem rolling along. The Service Committee is in charge of the switchboard; it sees that the kitchenette is kept clean; and it sees that the classrooms are kept straight. The Social Committee sponsors teas, banquets, and week-end programs. The Good Will Committee visits the sick and is in charge of the publicity around the campus. The Program Committee arranges the chapel programs. The Community and World Service Committee works with the Red Cross and World Students Service Fund. Every girl in school serves on one of these committees.

Dancing with their dates, members of the committee are: *left to right: Poochie Milestone, Mary Reynolds, Dixey Andrews, Sarah Griffith. Not pictured: Mishew Cooper, Judy McCrary, Jo Ann Tatum.*

DANCE COMMITTEE

Conceiving and carrying out a theme, making orchestra arrangements, ordering refreshments, and sending out invitations keep the members of this committee busy in planning three of the school dances every year. Their efforts become worthwhile, however, at the sight of the gym changed into a ballroom—complete with music, dancers, and atmosphere.





1. May West McMillan vamps (?) Hop A. Long Benson in Faculty Stunt.
2. Mail (or should we say "male") call.
3. Sophomore Stork Club features Hadacol.
4. We came here for education!
5. Servants' children pose at Christmas party.
6. Animals and dolls for luck at exams.
7. Charleston addicts.

8. Mid-winter babes celebrate birthdays.
9. Atomic "isodopes" release faculty's frozen energy.
10. What a floor show!
11. Glee Club's candlelight procession.
12. Seniors try their salesmanship.
13. Hanging the Moravian Star.
14. Scene from Christmas Pageant.

Betty Heekin, trim and cool in a pure linen two-piecer from our summer collection



Snead
incorporated



"Reezie" Poole,
class of 1953,
in white lace
and net.

From our collection of gowns
for occasions you will
always remember.

MONTALDO'S

SALEM COLLEGE

is proud of

SALEM ACADEMY

*for . . . its consistent progress
 . . . its academic standing
 . . . the achievements of its graduates*

Because of this pride and a natural affection for our "Mother" institution, Salem College welcomes Salem Academy graduates into the student body. We hope you will feel just as much at home on our West Campus as you do on your East Campus, whether you are Senior or Freshman.

FOR INTERESTING SALEM COLLEGE VIEW BOOK
AND CATALOGUE, WRITE OR TELEPHONE THE
OFFICE OF PUBLIC RELATIONS



**Thomasville Chair Company
Finch Furniture Company**

Main Office

401 E. MAIN ST.

PHONE 431

THOMASVILLE, NORTH CAROLINA

Best Wishes

from

SOSNIK - THALHIMERS

Compliments
of
SAXON'S, Inc.

McPHAIL'S

COLE
Chevrolet Company

CHEVROLET — OLDSMOBILE

Yanceyville, N. C.

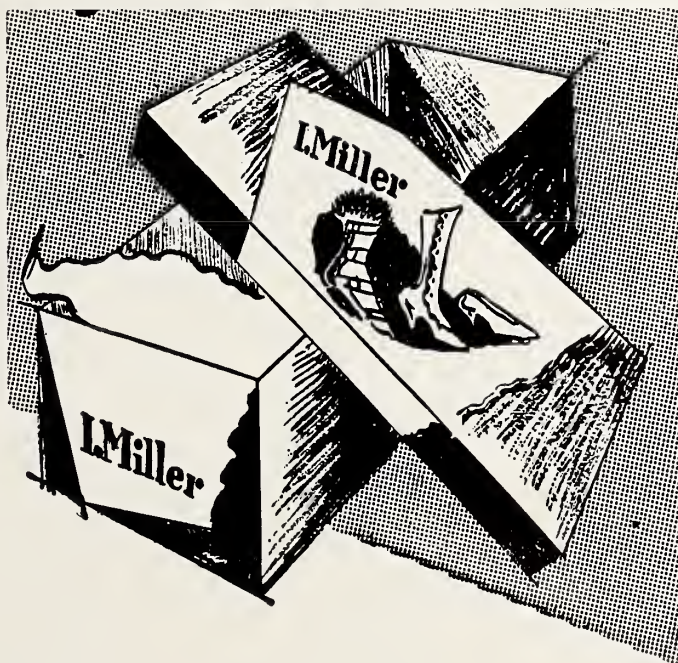
WAIR

WAIR-FM

◆
*Compliments
of*

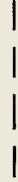
DOBY'S
BAKERY

COMPLIMENTS
OF
GUILD HOUSE





BEST WISHES



L. Roberts



COMPLIMENTS OF

BASSETT

FURNITURE INDUSTRIES



Salem Staffordshire

SALEM STAFFORDSHIRE CHINA—We have recently purchased the entire stock of Staffordshire China formerly sold by the Arden Farm Store. For that unusual gift we suggest this china in any of the seven pieces. Choice of three colors, all pieces in stock for immediate shipment.



Salem Wedgewood

SALEM WEDGEWOOD CHINA—For sixteen years Wedgewood China has been selected by thousands for their own use and as gifts. We shall continue to stock both the Wedgewood and Staffordshire China. Although some Wedgewood scenes are not available at present, shipments from England are expected in a few months. Write for prices and illustrated circular.



TEAGUE'S

Women's Smart Apparel

Winstan-Salem, N. C.

Compliments of
**Mother and Daughter
 Store**

Winstan-Solem, N. C.

Salads

Sandwiches

Sodas

Morris Service

403 West Fourth Street

In Winston-Solem

Trade at

MORRISETTS

Steinway and Knabe Pianos
Bland Piano Company

220 North Main Street

"Home of Standard Makes"

Compliments
 of
 A FRIEND

Compliments of
Walker's Florist

115 N. Paplar St. Phone 3-3621

"Flowers For All Occasions"

Belk-Stevens Co.
The Home of Better Values



Compliments
of

Plummer's
A decorative banner with a wavy, ribbon-like border, containing the text "BREVARD, N. C." in a bold, sans-serif font.
BREVARD, N. C.



**QUALITY
FIRST**



Compliments of

SOUTHERN COAL & COKE COMPANY

INCORPORATED

Domestic Steam and Gas Coals

HI - LO
DIXIE GEM
SOUTHERN STAR
KENTUCKY ACE
GOLDEN GLOW
REGAL

KNOXVILLE 1, TENN.



*nature
gave you
seamless
legs* *Hanes*
*gives you
seamless
nylons*



**"Your Prescriptions For Our
First Consideration"**

**Summit Street Pharmacy
Inc.**

Opposite Hanes Park

**C. R. Williams
and Son**



Distributors of

PHILCO

HIGH GRADE PIANOS
"Since 1902"



**Jesse G. Bowen
MUSIC COMPANY**

217 W. 5th St. Phone 7923

**W. T. VOGLER
& Son**

Jewelers
and
Silversmiths



Winston-Salem, N. C.



Best Wishes

from

GEM YARN MILLS



Best Wishes

MOTOR SALES COMPANY



KINGSPORT, TENNESSEE

TAXI

DIAL — **8141** — DIAL

"A Thinking Fellow Calls a Yellow"

YELLOW CABS

91 Burke Street

◆

WE EXTEND OUR BEST WISHES FOR
THE FUTURE TO THE
STUDENTS AND FACULTY
OF
SALEM ACADEMY

◆



"Now, joining the North & South"



Compliments of

Raylass Chain Store

4th St. Opposite the Court House

Vogler Service

Funeral Directors

AMBULANCE

**Dependable Service
for Over Ninety Years**

DIAL 6101

**Southern Dairies
SEALTEST MILK**



Winston-Salem, N. C.

FRANK A. STITH

West 4th Street

Winston-Salem, N. C.

**Standard
Building and Loan
Association**

LOANS

236 N. Main St.

SAVINGS

Phone 3-1069

REAL ESTATE

INSURANCE

Shepherd Realty Company

E. M. Shepherd, Pres.

Pattan Building

Dial 2-5128

HENDERSON COTTON MILLS

HARRIET COTTON MILLS



Manufacturers of

FINE KNITTING &

WEAVING YARNS



Offices Located:

Utica, New York

Philadelphia, Pennsylvania

Chattanooga, Tennessee

Burlington, North Carolina

Chicago, Illinois

Providence, Rhode Island

HENDERSON, NORTH CAROLINA

COMPLIMENTS

OF

**SALEM
KNIT SHOP**



Compliments

of

**QUALITY
OIL
COMPANY**

Compliments of

KESTER
Machinery Company

"Fine Equipment For Your Pleasure"

**BOCOCK - STROUD
Company**

"Come In and Browse"

**BELCHER'S
INCORPORATED**

Smart - Collegiate
Footwear

306 W. Fourth St.

Nissen Bldg.

Compliments

of

Bennett-Lewallen Company

147 North Main Street

Compliments of

Carolina Drug Store

Fourth and Spruce Streets

Dial 2-4131

H. C. Newsame, Manager

CAMELS

for **MILDNESS** *and*
FLAVOR





Melford T. Mann

Optician

325-A Reynolds Building

OGBURN
Insurance Agency

654 West 4th Street

Telephone 2-0166

Winston-Salem 3, N. C.



— FIRE —
AUTOMOBILE — CASUALTY
INSURANCE

COMPLIMENTS

OF

FORSYTH MOTORS
Incorporated



BUICK

WM. LAMBERTI

Hairdresser

Rabt. E. Lee Hotel Ideal Dept. Store

Phone 8620

Phone 5161

Compliments

of

S. H. KRESS & CO.

THE IDEAL

West 4th Street
Winston-Salem, N. C.

One of North Carolina's Leading
Department Stores

Dewey's

Your Chance to Win the Academy Award

The First Ten Girls to Visit Dewey's After the
Publication of this Annual will Receive
One Dozen Princess Cookies FREE

Compliments of
Huntley's Furniture Store

Liberty at Fourth Streets
Winston-Salem, N. C.

Richmond - Roonoke - Winston-Salem

The S. Galeski Optical Co.

209 West Fourth Street
Winston-Salem, N. C.

HIATTS, Inc.

Dodge Cors — Plymouth Cors
Dodge Job-Rated Trucks
210 N. Morsholl St. Phone 6135
Winston-Salem, N. C.

COHEN'S

West 4th Street
Winston-Salem, N. C.

Compliments of

CAROLINA THEATRE



Winston-Salem, N. C.

CLAY — The Printer

The House that
Quolity and Price Built



Compliments

of

**Lentz Transfer &
Storage Co.**

Chinaware — Houseware
Sporting Goods

Photographics

Compliments of

Brown Rogers Dixon Co.
"The Best Place to Get It"

Compliments of

Brodt-Separk Music Co.

620 West Fourth Street

Winston-Salem, N. C.

EVENTUALLY — Why Not Now!

HINES

— SHOES — West Fourth Street

Electric Service Co.

Fixtures — Wiring

Supplies

"Gifts For All Occasions"

China and Glassware

Dial 2-3743 116 W. 4th St.

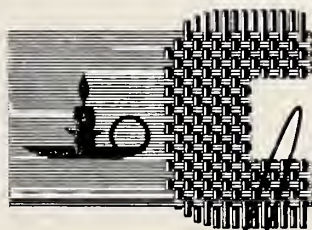
Winston-Salem, N. C.

Arcade
FASHION SHOP

Fourth and Trade Streets

Phone 5185

Chatham
makes good
blankets!



CHATHAM
Blankets

Chatham Manufacturing Co., Elkin, N. C.

Compliments

of

**CORNWELL
DRUG STORE**



MORGANTON, N. C.

COMPLIMENTS

OF

**CENTRAL
CAROLINA
MOTORS**

Cadillac

Oldsmobile

Phone 2-4171

FRANK L. BLUM & CO.

GENERAL CONTRACTORS



860 WEST 4½ STREET

Compliments

of

J. R. THOMAS

ICE

AND

COAL

COMPANY



WOODROW WILSON

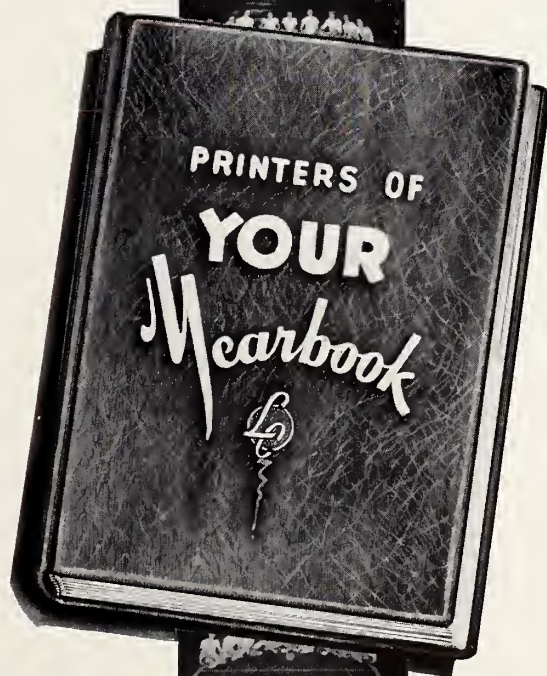


Photographer



**CHARLOTTE
ENGRAVING
COMPANY**

Engravers and Designers of College Yearbooks
CHARLOTTE, N. C.



LASSITER CORPORATION

CHARLOTTE, NORTH CAROLINA

School Publications

*Continuous Quality
Continuous Price*



BOTTLED UNDER AUTHORITY OF THE COCA-COLA COMPANY BY

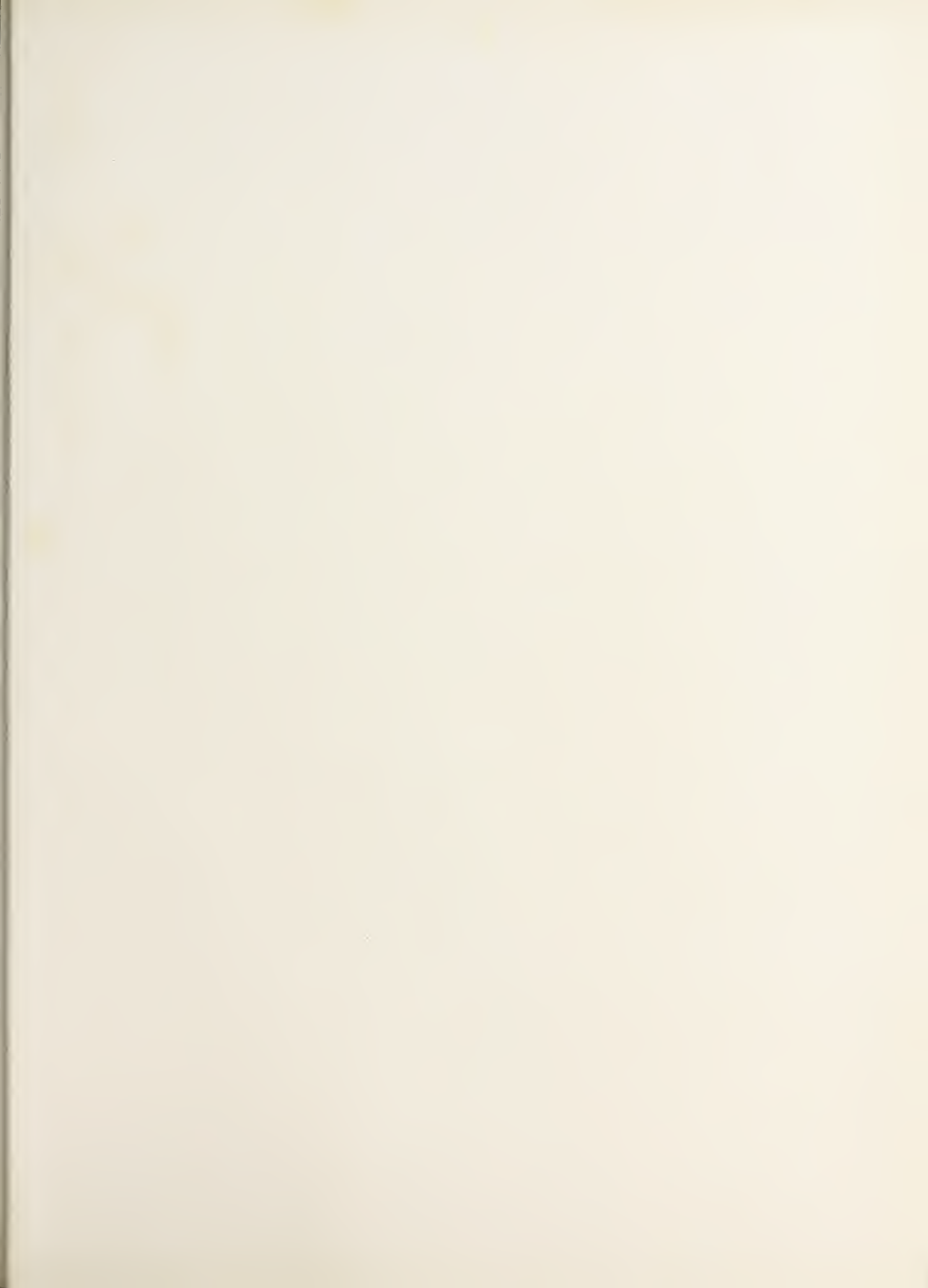
WINSTON-SALEM BOTTLING CO.

Winston-Salem, N. C.

AUTOGRAPHS

AUTOGRAPHS

AUTOGRAPHS







REAR VIEW OF SALEM ACADEMY AS SEEN FROM COLLEGE HILL

SALEM ACADEMY & COLLEGE



0 2960 0218531 6

THE UNIVERSITY OF CHICAGO
LIBRARY
540 EAST 57TH STREET
CHICAGO, ILL. 60637