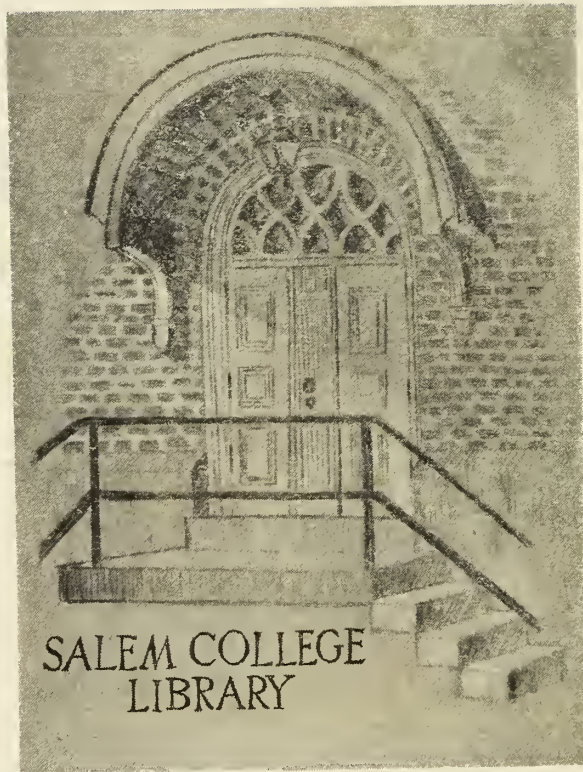
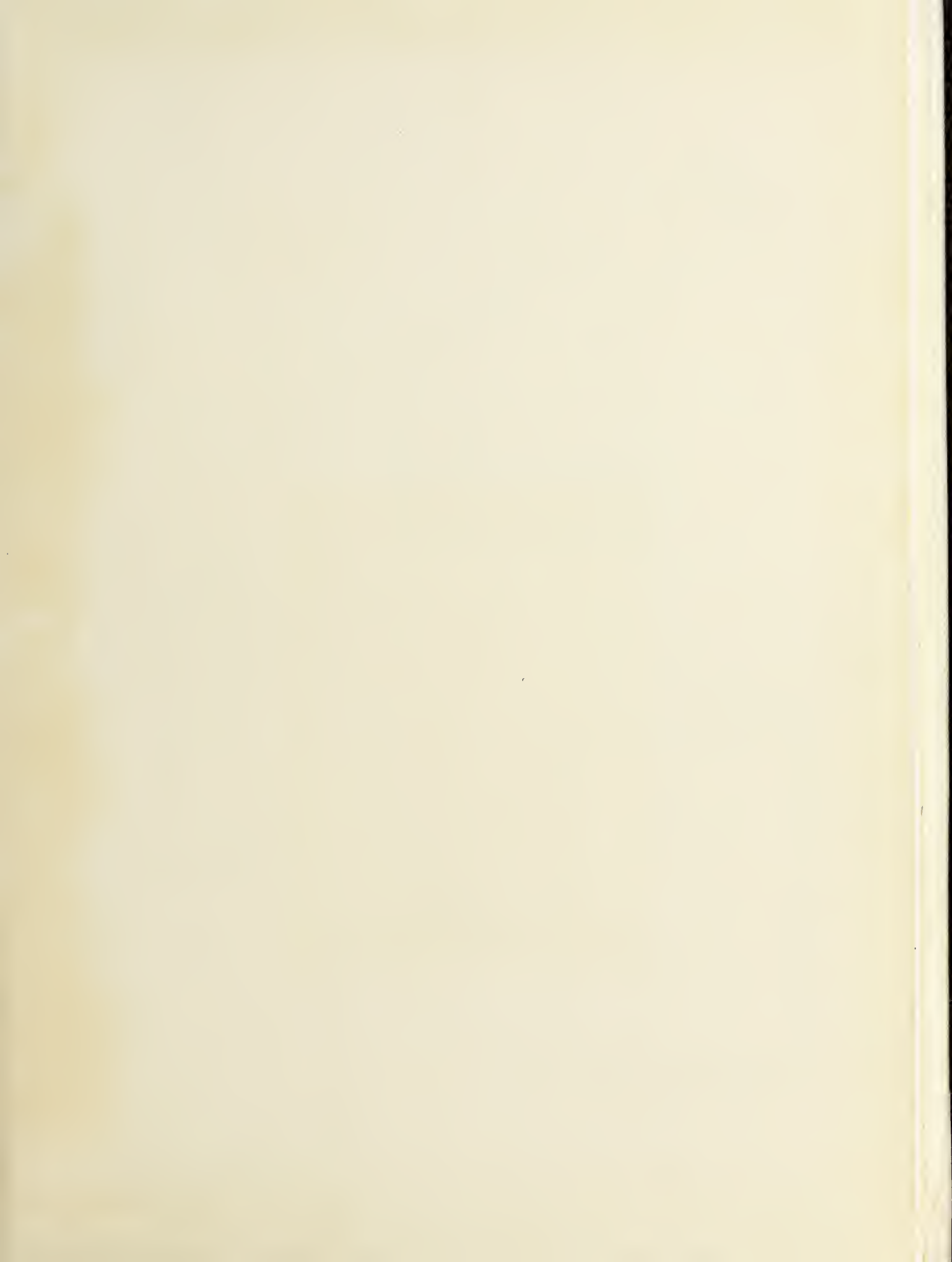



Quill Pen

1956







Digitized by the Internet Archive
in 2013

<http://archive.org/details/quillpen19561956sale>

Quill Pen

1956

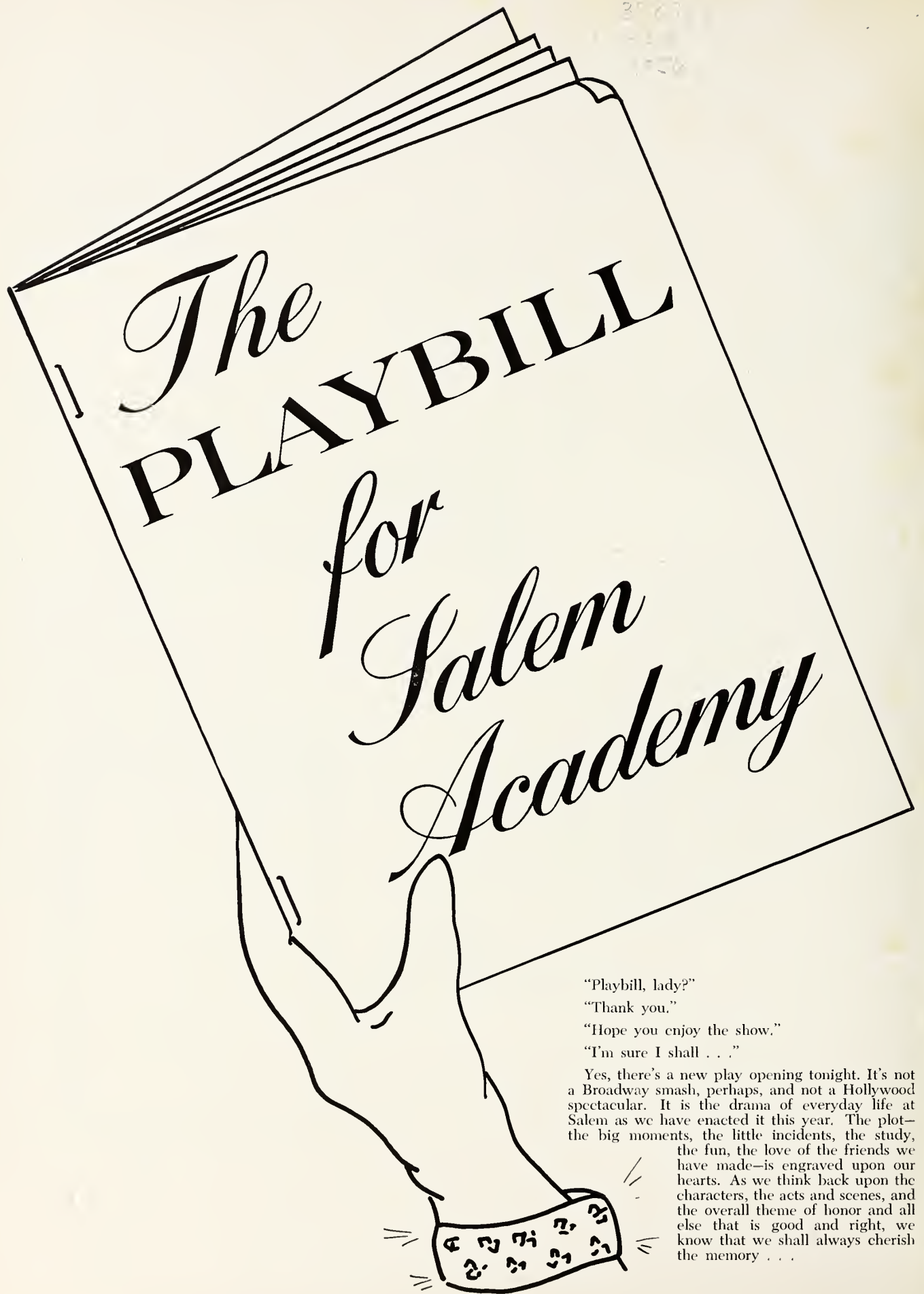
NOV
PLAYING

MUSIC
AND
DANCE

SALEM
ACADEMY



WINSTON-SALEM
NORTH CAROLINA



The
PLAYBILL
for
Salem
Academy

"Playbill, lady?"
"Thank you."
"Hope you enjoy the show."
"I'm sure I shall . . ."

Yes, there's a new play opening tonight. It's not a Broadway smash, perhaps, and not a Hollywood spectacular. It is the drama of everyday life at Salem as we have enacted it this year. The plot—the big moments, the little incidents, the study, the fun, the love of the friends we have made—is engraved upon our hearts. As we think back upon the characters, the acts and scenes, and the overall theme of honor and all else that is good and right, we know that we shall always cherish the memory . . .



ACT I
...page 38

ACT II
...page 48

ACT III
...page 56

Presenting . . .

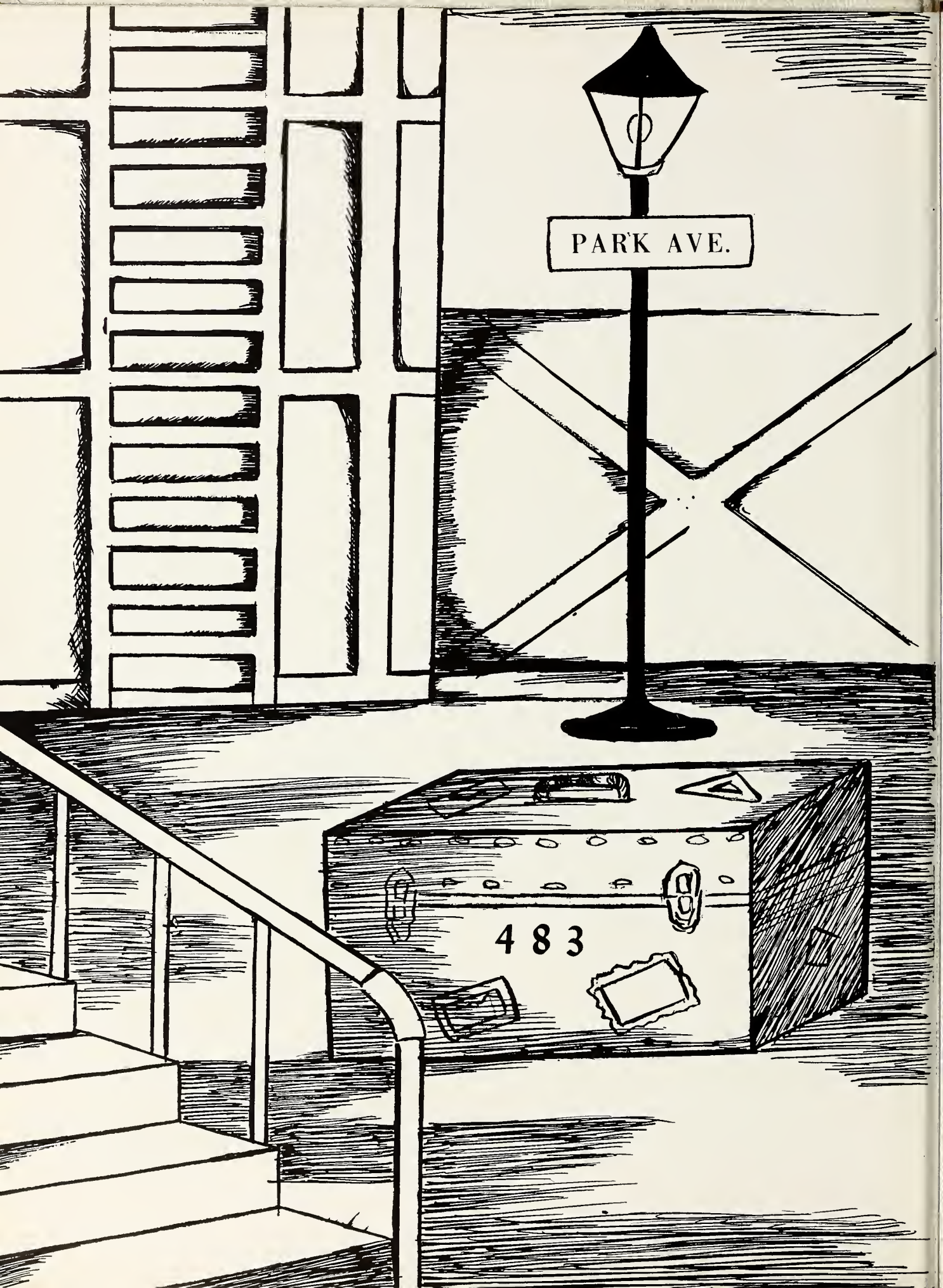
A new star on the horizon? No, a very familiar character at Salem. In fact, no introduction is really needed. We all know her; we all love her; for, indeed, she is one of us. She laughs with us; she shares our blue moments. Above all, she is always wonderful to us.

She does not back a class; she does not hold an administrative office. She works behind the scenes of activity at Salem, always present and always ready to help when needed.

We see her arranging flowers for the hall; we see her on hostess duty at the big desk in Miss Weaver's office; we see her with knitting in her hands; we see her checking off names at the taxi stand. She is our chaperon, yes, but above and beyond her official duty, she is our friend. To you, Mrs. Ansley, we dedicate with love this, our 1956 QUILL PEN.

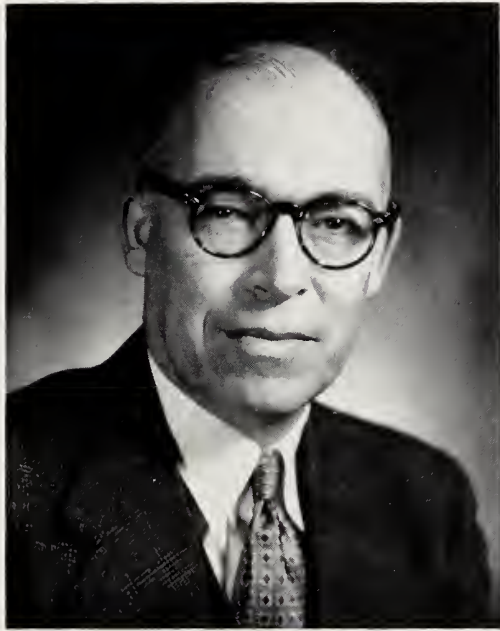


12-13-56
CP 4 +
enue 270-7



PARK AVE.

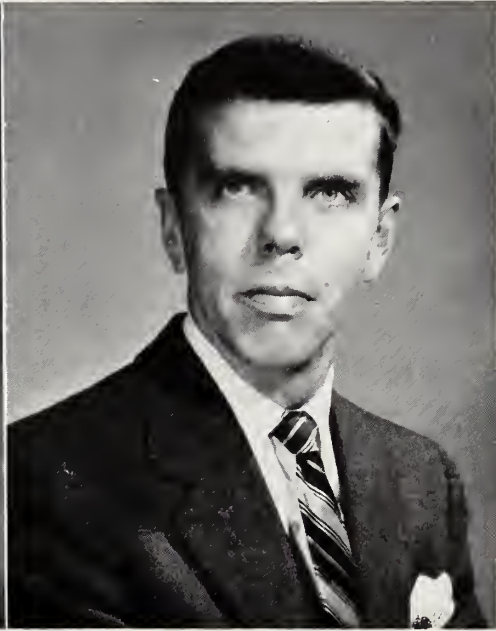
483



DALE H. GRAMLEY
President

B.A. and Litt.D., Albright; M.S., Columbia University; LL.D., Moravian College.

Producer



DONALD E. BRITT
Administrative Assistant

703 Jersey Avenue, Winston-Salem, N. C.
A.B., University of North Carolina.

Co-producer

Director

MARY A. WEAVER
Principal

B.A., Randolph-Macon Woman's College; M.A., Columbia University; University of Wisconsin; Harvard University.

Assistant Directors

ELVA BARDIN
Dean

Oak Grove, La.
B.A., Louisiana State University; Louisiana Polytechnic Institute.

MARY MCCOY HODGES
Assistant Dean

122 Ridge Avenue, Salisbury, N. C.
Montreat College.



TECHNICAL ADVISORS

MRS. HENRY D. BLACKWELL
English

154 Norfolk Avenue, Lynchburg, Virginia

B.A., Randolph Macon Woman's College; M.A., University of Virginia.

RUTH RAWLINS
History

New Bern, N. C.

A.B., Woman's College of the University of North Carolina; University of North Carolina.

ELSIE NUNN
Mathematics

Whiteville, N. C.

A.B., Woman's College of the University of North Carolina; M.A., University of North Carolina.

EVELYN F. VANDIVER
French, Spanish

2246 Cumberland Avenue, Charlotte, N. C.

A.B., Duke University; M.A., University of North Carolina.



MRS. MELBA S. AVENT
Science

2401 Rosewood Avenue, Winston-Salem, N. C.

B.S., Flora MacDonald College; Woman's College of the University of North Carolina.

NANCY HOWLAND FISK
Latin, French

482 Brook Street, Framingham, Mass.

A.B., Wellesley College; Middlebury College French School; University of Grenoble, Grenoble, France; Bay Path Institute.

JULANNE LYNN
English, Dramatics

Chester, S. C.

B.A., Winthrop College; M.A., Duke University.

MRS. ROBERT N. WHITE
Home Economics

826 Overbrook Avenue, Winston-Salem, N. C.

B.S., Winthrop College.



TECHNICAL ADVISORS



CAROLYN BRYSON
Franklin, N. C.

B.S., Woman's College of the University of North Carolina.

HAZEL D. WHEELER
Art, Registrar, Alumnae Secretary
10 Prospect Street, Walpole, Mass.

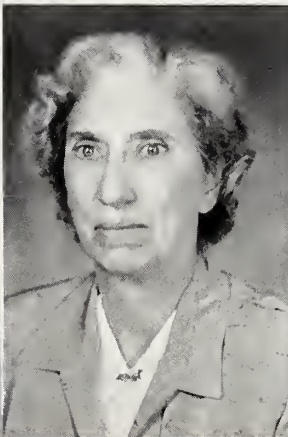
B.S., Boston University; Chicago Art Institute; Harvard University.

PAUL W. PETERSON
Glee Club

345 Pennsylvania Avenue, Winston-Salem, N. C.
A.B., Eastman School of Music; M.A., Northwestern University;
Juilliard School of Music; Christiansen Choir School.

EDWIN A. SAWYER
Bible

909 Church Street, Winston-Salem, N. C.
B.S., Lehigh University; B.D., Moravian Theological Seminary.



EMMIE J. ANSLEY
Chaperon, Hostess

3171 Habersham Road, N.W., Atlanta, Georgia
Edward McGehee College; Tulane University; University of Tennessee.

MINNA ROBERTSON
Hendersonville, N. C.

A.B., College for Women, Columbia, S. C.; M.A., University of South Carolina; Columbia University; University of Miami.

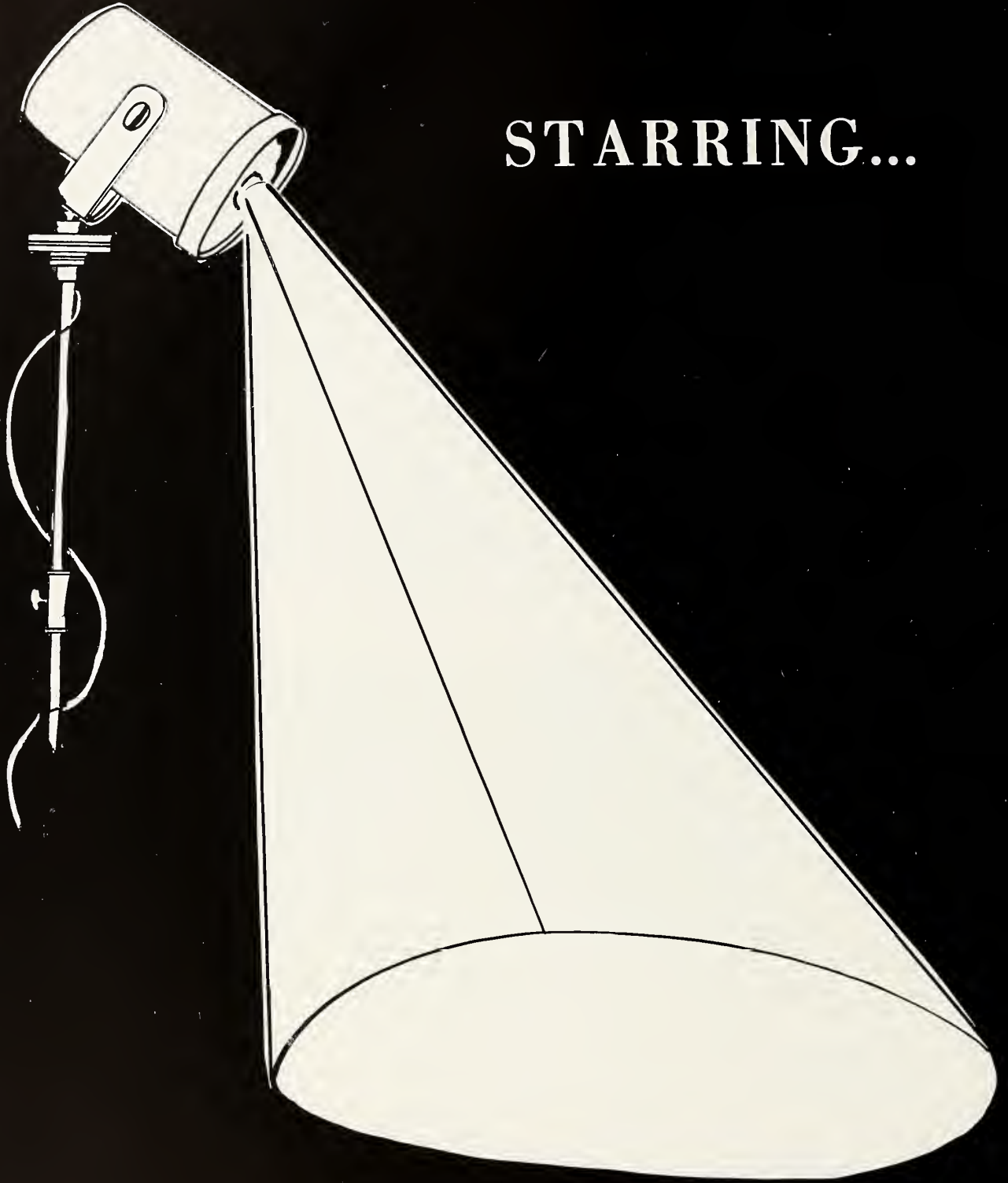
VIOLET R. LEE
Secretary

1321 Sharon Street, Winston-Salem, N. C.

MRS. GRACE MORRIS GALE
Dietitian

1101 West End Blvd., Winston-Salem, N. C.

STARRING...



SENIOR CLASS



SENIOR CLASS OFFICERS—Barbara Ivey, Secretary; Lucy Meade, Vice-President; Janie Deane, Treasurer; Annie Gray Calhoun, President.

The Seniors begin their busy year early in the fall with the traditional "Senior Day". This day they rule as queens for a day and enjoy all the rights and privileges granted to them as residing faculty.

The big event of the year is the Senior Bazaar, given at Christmas time to raise money for a remembrance gift. This gift is presented to the school by the Seniors at the end of school.

Near the end of the year the Seniors and Miss Nunn, our sponsor, combine our forces and entertain the faculty at the Senior-Faculty Breakfast.

The final project of the Seniors is the writing and directing of the awaited Class Day, which is presented on Graduation Day. All of this brings to a close a never-to-be-forgotten year.

ANNIE GRAY NASH CALHOUN

421 Hawthorne Road

Elkin, N. C.

Madam President . . . Crip . . . "But WHY?" . . .
 "Gotta write Wes" . . . Emory . . . The athletic
 type . . . Pet peeve—Georgia Peaches . . . Is it
 KA, Kappa Sig., or Sigma Alpha Epsilon . . . "See
 ya around the campus" . . . "My little fat brother"
 . . . 3CS . . . The dance floor is the best place
 for_____??

Sec. of Program Committee 3; Dramatics Club 2,3,4;
 Sec. of Dramatics Club 3; Scribbler's Club 2,3;
 Glee Club 2,3,4; A.A. Council 4; Quill Pen Staff 4;
 President of Class 4.



T H E S E N I O R C L A S S

JULIA COX

"Judy"

Wallburg, N. C.

"Sneevets" . . . "Oh, well it takes all kinds" . . . "I'll never get it done before the recital!" . . . "Telephonya!" . . . "Pusionally, I prefer Chopin!" . . . "Thank - - ss" . . . "Egg Omelet!" . . . "Oh, Panic!" . . . "You cats."

Vice-President Glee Club 4; Day-Student Representative 2; Glee Club 1,2,3,4; Double Sextet 2,3,4; Scribblers Club 3.

JEANNE-MARIE BRIGHT

Route 1, Box 104

Matthews, N. C.

Post Graduate.



JANIE DEANE

3735 Kingston Pike

Knoxville, Tennessee

Deane-bean . . . "Hi honey" . . . Randy . . . "Let's play bridge" . . . "I'm hungry" . . . Pawleys . . . "Can I have another glass of milk?" . . . "Beer makes me burp" . . . "Remind me to take my vitamins" . . . wim, wigor, and vitality . . . Janie-bug.

Chairman of Standards Committee 4; Glee Club 2,3,4; Cheerleader 2,3,4; President of Class 3; Scribblers Club 2,3,4; Honor Council 3; Treasurer of Class 4; A.A. Council 4.

LILA DEBOW

"Button"

Oakland Heights

Statesville, N. C.

James Jackson, Jr. and Sr. . . . Bedroom scenes . . . Oh, scrounge . . . Olympic speedball champion . . . Diamond Lila . . . Tuna fish . . . Buz . . . Shining light of Blowing Rock's Social Scene.

President of Scribblers Club 4; Secretary of Class 2; Academic Marshal 3; Annual Staff 4; Glee Club 1,2; Athletic Council 3; Dance Committee 4; Secretary of Social Committee 3.

SANDRA EDGERTON
"Egghead"

600 E. Walnut St. Goldsboro, N. C.
 "ow 'bout it" . . . Morehead . . . U.N.C. . . . Alpha Tau
 Phi . . . "Somebody help me gain weight!" . . . "Cat" . . .
 Crazy man crazy . . . "Let's bop" . . . 4F . . . Kenny Poo Poo
 . . . "What if it isn't this weekend?" . . . Round #2—Martin
 vs. Edgerton.



MARY HANNAH FINCH
"Feench"

225 W. Colonial Drive Thomasville, N. C.
 "Wow, I'm lucky—Georgia Tech and Parker!!! . . . You know,
 I don't exactly catch on . . . Hey, K.K. . . . T'was the night
 before Xmas Vacation!! . . . A geiger?? . . . Lefty . . . Dale!!
 Glee Club 3,4; Double Sextet 3,4; President of Glee Club 4;
 Secretary of S.S.W. 4; Quill Pen Staff 4; Head of Vespers 4.



ELLEN VALWORTH FOSCUE
"Fosce"

1307 Woodland Drive High Point, N. C.
 Phi Delta Theta . . . Davidson . . . It's reactionary!!! . . .
 BELLS!! . . . I want a drink of water . . . Duck ponds . . .
 chaperones . . . Oh—to be slim, suave, and sophisticated!!!
 . . . the toothpaste tube is squeezed in the middle . . . long
 walks at night.
 A.A. Council 3,4; Quill Pen Staff 3; Scribbler's Club 3,4; Glee
 Club 3,4; Double Sextet 4; Red Cross Council 3; S.S.W.
 Council 3; Dramatics Club 4; Student Council 4; Citizenship
 Honor 3.



MARY JO FUTRELL
 Pine Level, N. C.

Wake Forest . . . "But there are 596 people in Pine Level
 now!! . . . "Isn't that big W.F. football player just beautiful?"
 . . . Homecoming date . . . K. vs K. . . . Smithfield . . .
 "Just been eating sandwiches all alone with the best looking
 tuxedo."
 Student Council 4; S.S.W. 2,3; Honor Council 3,4; Citizenship
 Honor 2,3; A.A. Council 3.

T H E S E N I O R C L A S S

MARY JANE GOODYKOONTZ
 "Goody"
 Bishop, Va.

Beautiful Brown Eyes . . . Texas . . . "More fun" . . . I like mens" . . . and then there's the absent-minded professor . . . (good, fresh, stimulating apple cider) . . . "I need a whiff from the bottle" . . . Chopin, Carmen Jones, and the Cha Cha Cha!!!

Class President 2; Commencement Marshal 2; Chairman of Social Committee 3; Glee Club 3,4; Dramatics Club 4; Student Council 4; Scribbler's Club 2,4.



MARGARET ALICE HARRY
 "Peggy"

Box N Grover, N. C.
 "Big A.C." . . . Duke . . . It's all in your mind . . . "Hurry" . . . It scared me to pieces . . . I'm in the mood for love.

Quill Pen Staff 3; Secretary of Goodwill Committee 4; S.S.W. Council 4; Red Cross Council 4; Glee Club 3,4.



NOEL HOLLINGSWORTH
 High Point, N. C.

1028 Rockford Road
 That pretty little gal from High Point . . . Johnny . . . Kappa Sigma . . . "Fats" . . . "good as everything" . . . O.D. . . . the beach . . . Wofford . . . "just listen to this" . . . "he makes me furious."

Glee Club 3,4; Dance Committee 3,4; Chairman of Dance Committee 4; Quill Pen Staff 3,4; Secretary of Dramatic Club 4.



BARBARA IVEY
 "Felix"

359 Second St. Pl. N.W. Hickory, N. C.
 "Walter", Ya' or Carl??" . . . White Rain bottle . . . Party Girl?? . . . "I wanna be evil" . . . I'm all shook up . . . Mail Box.

Class Treasurer 2; Glee Club 2,3,4; Class Secretary 4; S.S.W. Council 4.

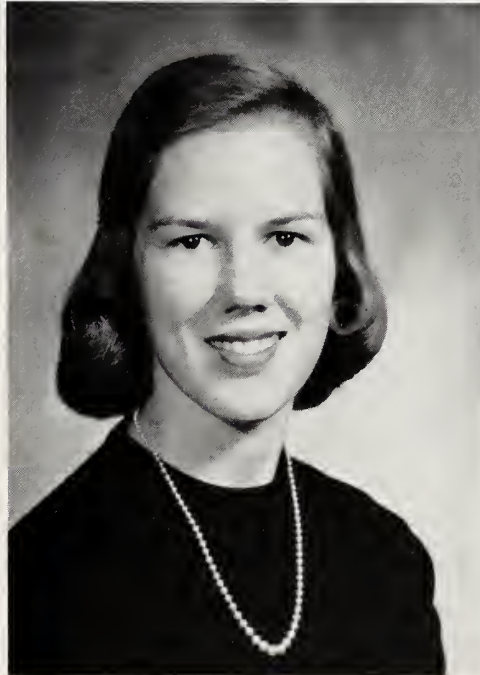
CAROL JENKINS

1935 Cherokee Blvd. Knoxville, Tenn.
 Oh peaches . . . New York! . . . C'est la vie . . . Arlene Dahl
 Perfect balance . . . That's just fabulous . . . Dahling!! . . .
 Someday when I'm rich and famous . . . Me and my French
 no-Count!
 S.S.W. Council 2,3; Vice-President of S.S.W. 3; Assistant
 Editor of Annual 3; Vice-President of Junior Class 3; President
 of Dramatic Club 3; Scribbler's Club 2,4; Glee Club 1,2;
 Dramatic Club 3,4; Editor of Annual 4; Commencement
 Marshal 3; Honor Graduate 4.



ANNE KEARNS

907 Rockford Rd. High Point, N. C.
 Dear Cornell . . . One in a million . . . Glass doors tell . . .
 Cornell made a touchdown . . . Broken promise, WOW!?!
 . . . I'm burning up . . . P.P. . . . Diet starts tomorrow
 . . . Tops! . . . 4-F . . . Claude who? . . . Y'all . . . John Wayne.
 Secretary of Junior Class 3; Assistant Editor of Quill Pen 3;
 Dance Committee 3; Academic Marshal 3; Student Council 4;
 Honor Council 4; President of Student Body 4; Athletic
 Council 3.



LUCY HAYWARD MEADE
 "Lu"

313 Maple Ave. Danville, Ky.
 You right! . . . Jim . . . Sigma Chi . . . Big McConkey . . .
 Cactus juice . . . Centre . . . Partridge Hill . . . Weiner roast
 . . . Diet tomorrow! . . . Fraternity pin.
 Honor Council 1; Secretary of Class 1; Student Council 2;
 Dramatic Club 3,4; Quill Pen Staff 4; Vice-President of
 Class 4; Dance Committee 4; Glee Club 1,2; President of
 Dramatic Club 4.



MARGARET MOORE
 Newport, Tenn.

Thumbs down!! . . . Are you a turtle? . . . Rings on her toes
 . . . Scratch my back . . . Who stole my liquid lead pencil?
 . . . Itty Bitty Girl . . . Let's all go to Vanderbilt . . . I'm
 just so tired . . . Carolina maybe? . . . 4-7 . . . no trump
 . . . Clarkie.
 Glee Club 3; A.A. Council 4; Dramatic Club 4; Honor
 Graduate 4.

T H E S E N I O R C L A S S

T H E S E N I O R C L A S S

PATRICIA ANN MURRAY
"Pat"

533 Parkway High Point, N. C.
Air Force . . . I'm sorry . . . Duke . . . Tubby . . . Cheer-
leaders!! . . . That cute fairy boy . . . Whee!
Glee Club 2,3,4; Double Sextet 3,4; Quill Pen Staff 3,4;
Secretary of Program Committee 4.



MARY ELIZABETH O'HARA
"Mary Liz"

208 Fifth St. Jellico, Tenn.
Y'all, wait a minute . . . Pingpong(?) at midnight! . . . Do
bandboys get gold footballs? . . . 30 miles, that's all . . .
Tales of the back seat . . . The Belle in Black . . . Honorary
4-F . . . Let's have a party! Where's my sword?
Glee Club 1,3,4; Chairman of Community World Service Com-
mittee 3; Secretary of Community World Service Committee 4;
Quill Pen Staff 4; Double Sextet 4; A.A. Council 3,4; Dance
Committee 4; Head of Purple Team 4.



WALLACE JOAN POOLE
"Bucky"

"Rockledge" Rt. 2 Johnson City, Tenn.
Just barf! . . . I'm sooo in love . . . KA . . . Davidson! . . .
Bob . . . Mona Lisa . . . Bearded one . . . 7 months ago tonight
. . . Big Bra . . . Mushigoni mumsat! . . . Poolebaum . . .
Because you're so nice.
Scribbler's Club 2,3,4; Assistant Editor of Quill Pencil 4;
Dramatic Club 4; Glee Club 2,3,4; Dance Committee 4.



PATRICIA ANNE PORTER
"Pat"

Box 5 Hillsville, Va.
V.P.I. . . . "Moonlight and Roses" . . . I'd better hear from
Hillsville today! . . . Washington, D. C. . . . This week I'll
diet or maybe next . . . Galax . . . Prsss . . . No. 97 & 87
. . . R.O.T.C.
Chairman of Service Committee 3; Secretary of Standards
Committee 4; Quill Pen Staff 4; Glee Club 1,2; S.S.W.
Council 4.

JANE RICHARDS
Heath Springs, S. C.

"Jezebel" . . . Tech-Clemson . . . "Woof-Woof" . . . Martain Kane . . . Happy . . . weon't . . . prima donna . . . "Watch out for that cow" . . . The other woman.

President of Honor Council 4; Student Council 3,4; Honor Council 2,4; Glee Club 1,2; Scribbler's Club 2; Athletic Council 1,2,3; Class President 1; Dramatic Club 3,4; Secretary of Standards Committee 2.



MYRTLE LOU SCALES
"Lou"

200 Fayetteville Rd. Rockingham, N. C.
Carolina? No, unless I get a letter . . . Chi Phi . . . beauty and personality . . . P.P. . . What a room, what a night! . . . 4F . . . Mail, Male, Mail . . . I'm freezing to death . . . Cat with the kiss . . . Mt. "Bootsie" . . . Bridge, anyone?
Dance Committee 4; Heal of Golds 4; Glee Club 3,4; Double Sextet 3,4; Cheerleader 3; Quill Pen Staff 3,4.



NAN SELLERS
Danville, Ky.

Mac . . . U.K. . . . C.C. . . . Sailing! . . . Soulful brown eyes . . . Bourbon candy . . . Southern drawl . . . Let's go see Adelaide.

Vice-President of Sophomore Class 2; Double Sextet 2; Glee Club 2,4; Chairman of Community and World Service Committee 4; Quill Pen Staff 3,4.



ANNE WALSTON

Route 2 Walstonburg, N. C.
Butterball . . . Oh, do you know somebody from La? . . . Anyway though . . . Don't mind me, I just live here . . . Mounds . . . That's beside the point . . . Lover Boy . . . Carolina.
S.S.W. Council 4; Glee Club 4; Community and World Service Committee 4.



T H E S E N I O R C L A S S

Senior Class History

September 9, 1955—"Are you a Senior?" We tried so hard to be dignified, but after the first few days realized this was futile. We started right in planning for Senior Day. We reigned like queens and loved it. Teaching classes, ordering underclassmen around, residing in the Faculty Room, and eating—eating—eating all that wonderful food are the things we'll remember about that date. Since then we've continued along the regular mad-dash, high-pitched, rushing, whirling routine of the Senior Year—Christmas with the bazaar, Senior Vespers, and caroling on the halls; choosing our marshals and accompanist; planning Class Day; and above all, dreaming of that all-glorious night of May 29,—Graduation!! When we receive our diploma we will have reached the climax of our Salem years. We will forget many of the details of school life as the years pass, but certain memories will always stay with us. Above all, we know that a bit of ourselves we have left behind as have the many others who have passed through the Stately Portals in years gone by and years to come; and that a great deal of Salem we have taken with us—the ideals of Salem will prove to be the standard for our living far into the future.



SENIORS AND THEIR MARSHALS



CO-STARRING...

JUNIOR CLASS

"The Duck Inn is open", are familiar words heard around campus each day. Each Junior has done her share of the work in keeping the Duck Inn throughout the year.

Other projects, such as selling coffee, doughnuts, and pastries; selling Christmas cards, giving the Auction and Spring Fashion Show, all go towards their one big project—Junior-Senior.

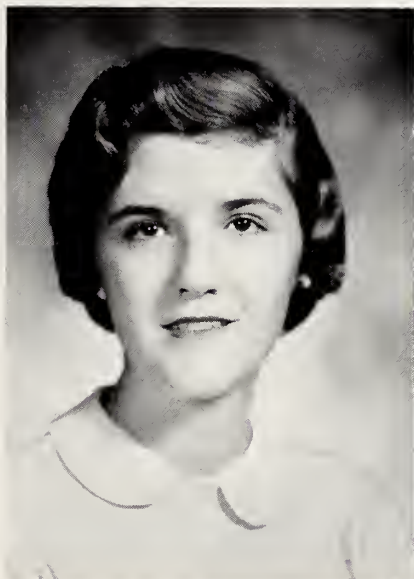
To Miss Bryson, our sponsor, we owe so much credit for making our Junior year one that we will always remember and our Junior-Senior unforgettable.



JUNIOR CLASS OFFICERS—Sue Buchanan, Secretary; Donna Griffith, President; Clarkie Pennington, Treasurer; Pat Powell, Vice-President.

MARIA ARNOLD
329 Cherokee Place
Charlotte 7, N. C.

SUE BUCHANAN
270 Forest Hill Drive
Asheville, N. C.





CAROLINE CANNON
324 Winn Street
Sumter, S. C.



BETTY CARMICHAEL
123 Westview Drive
Winston-Salem, N. C.



CYNTHIA CATE
1852 Terrace Avenue
Knoxville, Tennessee



NANCY COULTER
265 Golf View Road
Ardmore, Pennsylvania



DODDIE ELKS
Box 16
Grimesland, N. C.



MARTHA ELY
119 Scenic Drive
Knoxville, Tennessee



CATHERINE EWING
Box 326
Candor, N. C.

JUNIOR



ANITA FREEZE
Box 545
Randleman, N. C.



ALIX FRINCKE
941 Temple Avenue
Knoxville 16, Tennessee



DONNA GRIFFITH
569 Cherokee Blvd.
Knoxville, Tennessee

TERRY HILL
4220 Towanda Trail
Knoxville, Tennessee

NANCY HOLLINGSWORTH
1028 Rockford Road
High Point, N. C.



JOAN McCLAIN
1442 B. Agawela Avenue
Knoxville, Tennessee

ELIZABETH NISBET
Charlotte, N. C.



CLASS



NANCY PATTON
1118 Forest Hills Boulevard
Durham, N. C.



NANCY JEAN PENN
1009 E. Nokomis Circle
Knoxville, Tennessee



NANCY LEE PENN
The Boxwoods
Madison, N. C.



CLARKIE PENNINGTON
600 E. 19th Street
Jasper, Alabama



ADAIR PHIFER
505 West Union Street
Morganton, N. C.



SALLY ANN PIERCE
2112 Roswell Avenue
Charlotte 7, N. C.



PAT POWELL
Caixa Postal 6482
Sao Paulo, Brasil, S.A.

JUNIOR



CAROL RICE
351 N. College Street
Harrodsburg, Kentucky



RUTH ROBBINS
Blowing Rock, N. C.



ANNE DOUG SCOTT
2236 Rivermont Avenue
Lynchburg, Virginia

DEE SMITH
516 Parkway
High Point, N. C.



PAT SPENCER
Box 2404
Hickory, N. C.



BEBE WHITAKER
3200 Robin Hood Road
Winston-Salem, N. C.



MARY WILEY
Walnut Road
Salem, Virginia



CLASS



SOPHOMORE CLASS OFFICERS—Rosie Roth, Vice-President; Ann Marshall, Secretary; Suzanne Porter, President; Lele Follin, Treasurer.

SOPHOMORE CLASS

Who knows what hidden talent may be found among us Salemites. Many of these talents may be discovered when the Sophomores present their Talent Show. This project is the main way the Sophomores earn "those beautiful green bills!"

"Hallelujah!" is the familiar cry of the Juniors as they return from Spring Vacation, for this means that the Sophomores begin the task of keeping the Duck Inn.

To begin the Junior-Senior weekend the Sophomores give their annual Tea Dance. This dance is given in honor of the graduating class. The long-awaited affair of crowning the Senior Beauty Queen takes place at this time.

Without the help of our sponsor, Miss Rawlins, none of these things could have been undertaken and successfully completed.

MARY JANE ALTVATER
771 York Street
Denver 6, Colo.

CAROLYN BOND
20 Erskine Lane
Aiken, S. C.

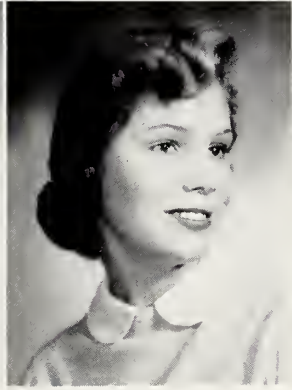
ESTHER BOOE
52 Edgemont Road
Asheville, N. C.





LINDA BROYHILL
Box 794
Lenoir, N. C.

SANDRA BULLARD
603 Colonial Drive
Wilmington, N. C.



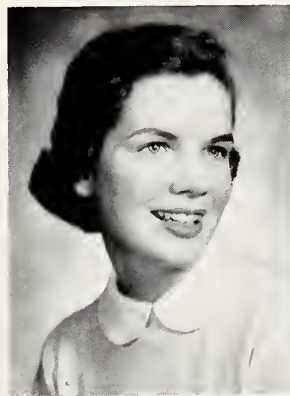
MARY COCHRAN
P. O. Box 225
Fernandina Beach, Fla.

MARGARET COOPER
623 Woodland Drive
Greensboro, N. C.

SOPHOMORES

BETTY COPELAND
1200 West Road
Kinston, N. C.

FRANKIE DAVIS
1222 Arnette Ave.
Durham, N. C.



BRENDA FLYNT
Rural Hall, N. C.

LELE FOLLIN
307 Wentworth Drive
Greensboro, N. C.





BEULAH GATEWOOD
2516 Buena Vista Road
Winston-Salem, N. C.

HELEN RHEA
GOODYKOONTZ
Bishop, Va.



SUSAN HARDWICK
374 Walnut Road
Salem, Va.

CECILE HARRISON
Durham, N. C.
1108 Virginia Ave.

SOPHOMORES

GAY HUDSON
Grimesland, N. C.

ANNE MARSHALL
341 Arbor Road
Winston-Salem, N. C.



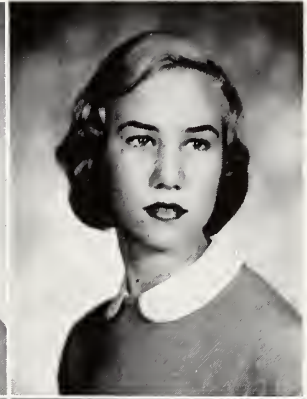
MARTHA MOORE
2149 Cherokee Blvd.
Knoxville, Tenn.

NONA PORTER
1924 W. 1st Street
Winston-Salem, N. C.



SUZANNE PORTER
P. O. Box 5
Hillsville, Va.

JEANIE ROGERS
2916 Kingston Pike
Knoxville, Tenn.

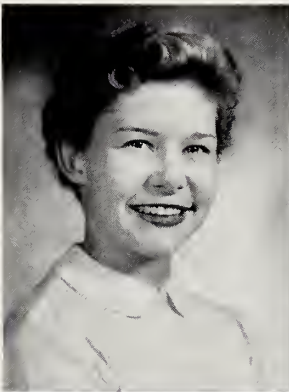


ROSA ROTH
137 Terrace Avenue
Elkin, N. C.

LUCRETIA SIEWERS
2620 Warwick Road
Winston-Salem, N. C.

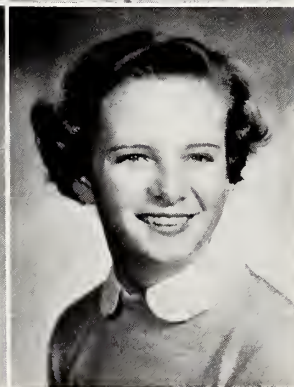
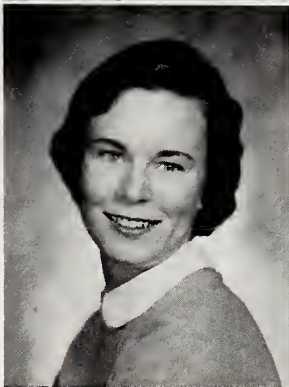


SOPHOMORES



JONI THOMPSON
3721 Gunston Road
Alexandria, Va.

SALLIE THOMPSON
Wendell, N. C.



ANNA TRANSOU
310 Wentworth Drive
Greensboro, N. C.

ANDREA TYREE
1240 NE 103rd Street
Miami, Fla.



FRESHMEN CLASS

A long-awaited event in the lives of Salem's Freshmen is the Freshman Carnival, which was given shortly before Christmas. Of course the carnival is not only enjoyed by the girls who have worked so hard on it, but the entire Student Body.

The raising and lowering of the flag is a weekly duty of our energetic Freshmen.

Under the capable guidance of Mrs. Blackwell this year's Freshman class will succeed in any of their undertakings.

FRESHMAN CLASS OFFICERS—Cathy Byrd, Vice-President; Valarie McLanahan, Treasurer; Barbara Blackwelder, President; Frances Watkins, Secretary.

BARBARA BLACKWELDER
323 S. Mulberry Street
Lenoir, N. C.

CATHERINE BYRD
Linden, N. C.

VALERIE McLANAHAN
195 Lake Forest Drive
Elberton, Ga.



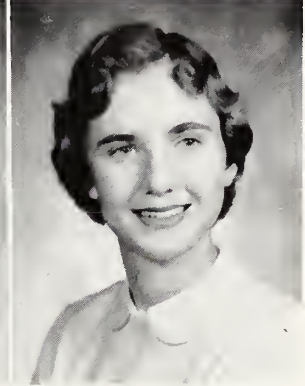
LUCIE NICELY
Weigarber Rd., Rt. 15
Knoxville, Tenn.

NANCY NICHOLS
214 Chamberlain Blvd.
Knoxville, Tenn.



MARY MARGARET PARKER
Windsor, N. C.

ELEANOR RAMSEY
Emerywood Estates
High Point, N. C.



FRESHMEN



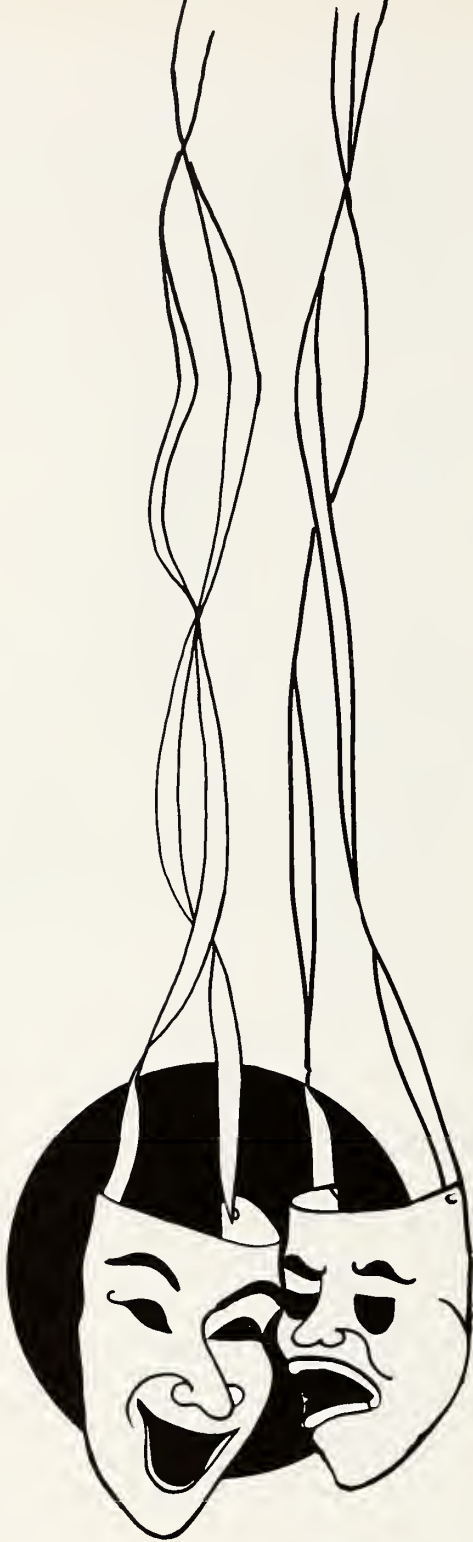
CAROL ROBERT
"Middlecourt"
Hampden-Sydney, Va.

COOKIE TEER
4019 Roxboro Road
Durham, N. C.



FRANCES WATKINS
2048 Laurel Street
Tallahassee, Fla.

BRANCHIE WATSON
1301 Watson Drive
Wilson, N. C.



Featuring...



PRESIDENT OF THE STUDENT BODY

"To rule, or not to rule, that is the question," says Ann Kearns, as she stands before the student body on Wednesday nights.



PRESIDENT OF THE HONOR COUNCIL

"The honorable way is the only way," says Jane Richards, who is president of our Honor Council.



HONOR GRADUATES

Salem's highest academic honor was won this year by Carol Jenkins and Margaret Moore, both from Tennessee. This honor represents many long hours of study and hard work on the part of these girls.

Citizenship Honor

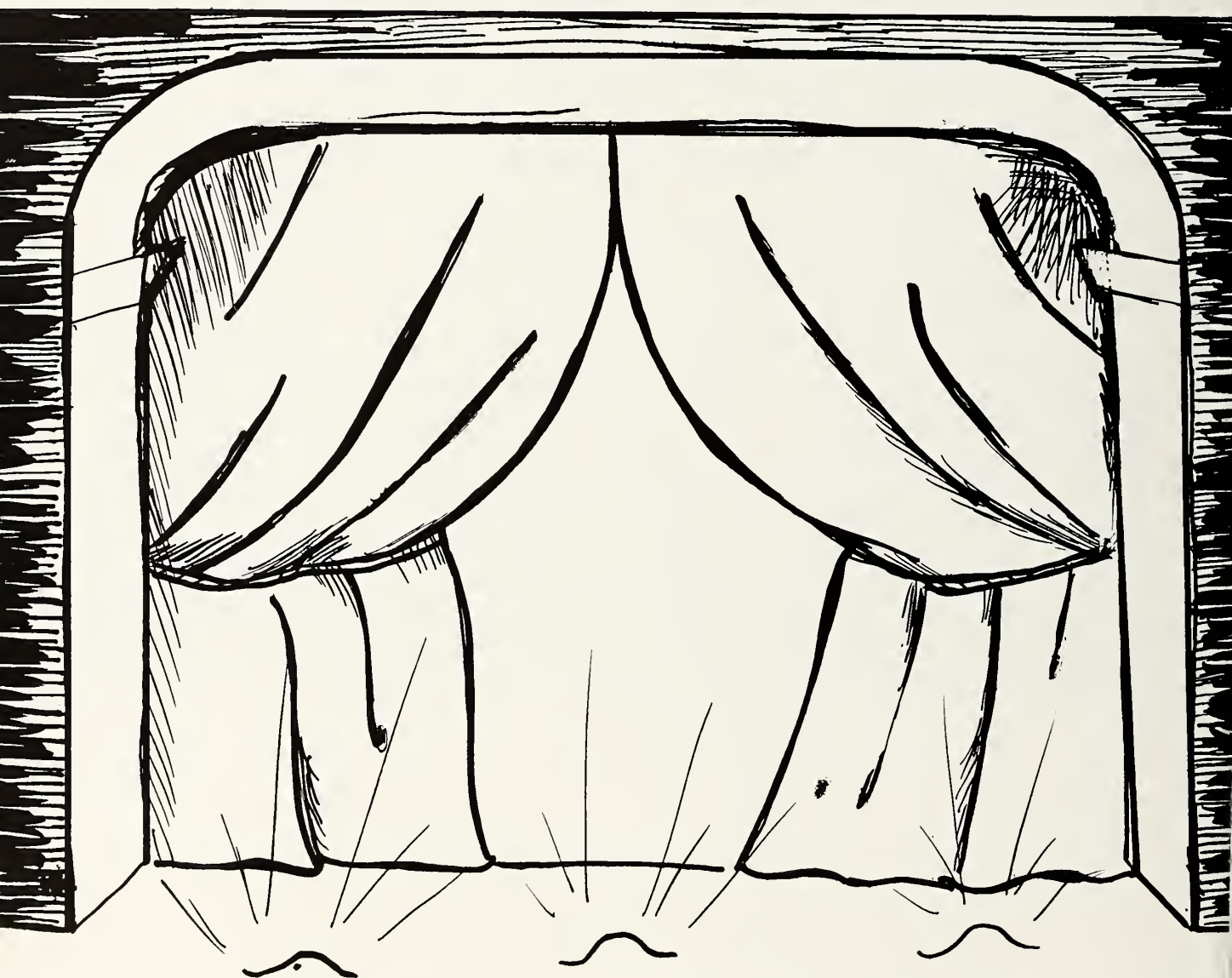
One of Salem's most beloved traditions is that of Citizenship Honor. Although this is not an academic honor, the girls must have qualities which academic honors don't require. She must be thoughtful and considerate, have a pleasant smile on her face and a cheerful word for her homesick little sister and her bewildered roommate. Often times this is a very tough assignment, especially when it continues for an entire school year. However, the girl who is a true Salem citizen finds this a very easy assignment.



ACADEMIC MARSHALS

Academic Marshal is an honor which is cherished by each underclassman. They are elected by the Senior class to serve at Commencement. They are: Donna Griffith, chief marshal; Dee Smith, Elizabeth Nisbet, and Clarkie Pennington, Juniors; Rosy Roth and Betty Copeland, Sophomores; Eleanor Ramsay, Freshman.

ACT I





STUDENT COUNCIL

Salem's government is in the capable hands of a representative group from the dormitories consisting of a president, president of Honor Council, one representative from each of the six halls, two Senior Counselors, and a day student representative.

Every girl at Salem respects the self-government system and willingly upholds the rules and regulations of the Student Council. Once each week a meeting is held to discuss dormitory life. New rules are made as the occasion arises and old rules discarded. The Student

Council is always for the betterment of dormitory life.

The representatives elected by the girls are always ready to help others and set an example of a good Salem citizen.

During the year the Student Council is the leader in many activities, such as the opening banquet of the year, the Christmas banquet and servants' party, and the impressive Spirit Fire service held at the end of the year at which newly elected Student Council members receive their offices for the ensuing year.

Seated, on floor: Joan McClain, Mary Jo Futrell, Ellen Foscue, Sandra Bullard. *Seated, second row:* Miss Hodges, Ann Kearns, Miss Bardin. *Standing:* Mary Jane Goodykoontz, Elizabeth Nisbet, Bebe Whitaker, Jane Richards, Eleanor Ramsey, Sandra Edgerton.



ONE



The Honor Council is composed of Jane Richards, President; Mary Jo Futrell, Senior Class Representative; Adair Phifer and Mary Wiley, Junior Class Representatives; Rosy Roth, Sonhomore Class Representative; and Branchie Watson, Freshman Class Representative.

The success of our student government depends on the honor council. The honor system is esteemed by all the girls at Salem and serving on the council is truly an honor. The Honor Council consists of two seniors, two juniors, one sophomore, one freshman, one day student representative, and the president of the Student Government.

Each Salem girl is responsible to the honor

system and is expected to live according to the rules of the Honor Council. The Honor Council handles only matters relating to honesty in academic matters. Its purpose is not to punish girls, but rather to help them find the principle behind each rule. Each girl is on her personal honor to herself and to the school to maintain the honor system, one of Salem's most cherished traditions.

HONOR COUNCIL

QUILL PEN STAFF

A book composed of pictures and explanatory articles to bring back the old memories of school at Salem—this is the purpose of the QUILL PEN Staff. In an attempt to publish and produce such a book, the editorial staff, headed by Editor-in-Chief Carol Jenkins, and the business staff, led by its manager, Pat Murray, spend long hours of planning and work. While the editorial staff is busy choosing the theme, planning the dummy, arrang-

ing for photography, and writing the copy, the business staff is out soliciting ads from Winston-Salem business firms, parents of Salemites, and out-of-town prospects in order to meet the all-important budget.

Even though the member of the QUILL PEN Staff spends a lot of time and work, she gains self-satisfaction when the annual is dedicated and presented to the faculty and student body at the Farewell Banquet in the spring.

Production of Salem's yearbook is handled by Carol Jenkins, Editor-in-Chief; Pat Powell and Anita Freeze, Assistant Editors; Pat Murray, Business Manager; and Bebe Whitaker, Ad Manager.



TWO



Lila DeBow, Editor-in-Chief, goes over some copy for the next issue. Bucky Poole is Assitant Editor and Joan McClain, Art Editor.

A trip into another world, tales of adventure and daring emotions expressed in words—these are some of the things the Scribbler's Club have in their creative writing. This club, sponsored by Miss Lynn, publishes two papers at different times throughout the year: *The Quill Pencil*, devoted entirely to creative

writing, and *Pencil Shavings*, which reports interesting happenings at Salem. Also, during the summer *Pencil Shavings* is sent out to welcome the new students and give news of old students and their vacations.

The members meet once a month to discuss their papers, exchange ideas, and drink coffee.

SCRIBBLER'S CLUB

DRAMATIC CLUB

Lights! Action! The stars of the future are acting in an array of costumes and make-up to gain a name at Salem and a membership in the Dramatic Club. Not only are there actresses, but behind the scenes, the make-up crew and property managers are striving to make the play a certain hit at Salem. They, also, are granted membership in the Dramatic Club when they have attained ten points.

Miss Lynn is the sponsor of the Dramatic

Club and due to her, three brilliant one-act plays were presented with gusto—"Mannikan and Minnikan," "The Happy Journey," and "Overtones." The Dramatic and Glee Clubs collaborated and planned a beautiful Christmas program. Now a three-act play, "Letters of Lucerne," is being laboriously worked on to be given in the spring. Later, a performance of songs from hit Broadway productions will be presented by the Dramatic Club and Glee Club.

Lucy Meade, President, directs a large scale production. Other officers of the organization are Pat Spencer, Vice-President; Noel Hollingsworth, Secretary; Mary Elizabeth O'Hara, Treasurer.



THREE



Officers of this organization are Mary Hannah Finch, President; Judy Cox, Vice-President; Mary Jane Goodykoontz, Treasurer.

The first day that we all walked into the social room and had a song fest with Mr. Peterson directing, we knew that we would enjoy working with him all year and making the halls of Salem ring with music. Outstanding talent is not required to be in the Glee Club, only the desire to sing.

Throughout the year the Glee Club gives many performances. This year we have sung

at the Moravian Church, various other Christmas services, and on TV. Beautiful Christmas music was sung by the Glee Club at the Academy Christmas program; everyone's face looked quite angelic over the lighted candles. The Glee Club is now preparing their spring performance. This year instead of an operetta we are going to give a festival of songs from Broadway shows.

GLEE CLUB

SCENE FOUR AND

Spiritual Steering Wheel

Another aspect of Salem life which is most enjoyable is the religious aspect. This aspect is taken care of by the Spiritual Steering Wheel. The S.S.W. plans the nightly devotions on the halls, and asks a faculty member to have devotions in the Social Room on Friday night. After Christmas when everyone has the "exam blues," the S.S.W. sponsors Re-

ligious Emphasis Week. For this short week we have a prominent speaker, who always gives us an inspiring message.

The projects mentioned are only a small part of the work done by the S.S.W. They are always around to help anyone with a problem of any kind.

First row: Ann Walston, Nona Porter, Linda Broyhill. *Second row:* Sally Ann Pierce, Anita Freeze, Mary Cochran, Alix Frincke. *Third row:* Peggy Harry, Mary Hannah Finch, Barbara Ivey, Pat Porter, Sue Buchanan. *Standing:* Margaret Moore, President of S.S.W.



SCENE FIVE

DANCE COMMITTEE

Committees make up a very vital part of our life at Salem. One of the smallest, but a most important one is the Dance Committee. This Committee is responsible for the planning and decorating of every dance except Junior-Senior. It requires quite a bit of originality at times to think up clever themes and hard work to decorate effectively. But the good times which the girls have at the dances compensate for the hard work.



Seated, first row: Lou Scales, Ann Doug Scott, Nancy Hollingsworth. *Seated, second row:* Cathy Ewing, Mary Liz O'Hara, Sandra Edgerton, Sue Buchanan. *Standing:* Bucky Poole, Noel Hollingsworth, Lucy Meade, Lila DeBow.

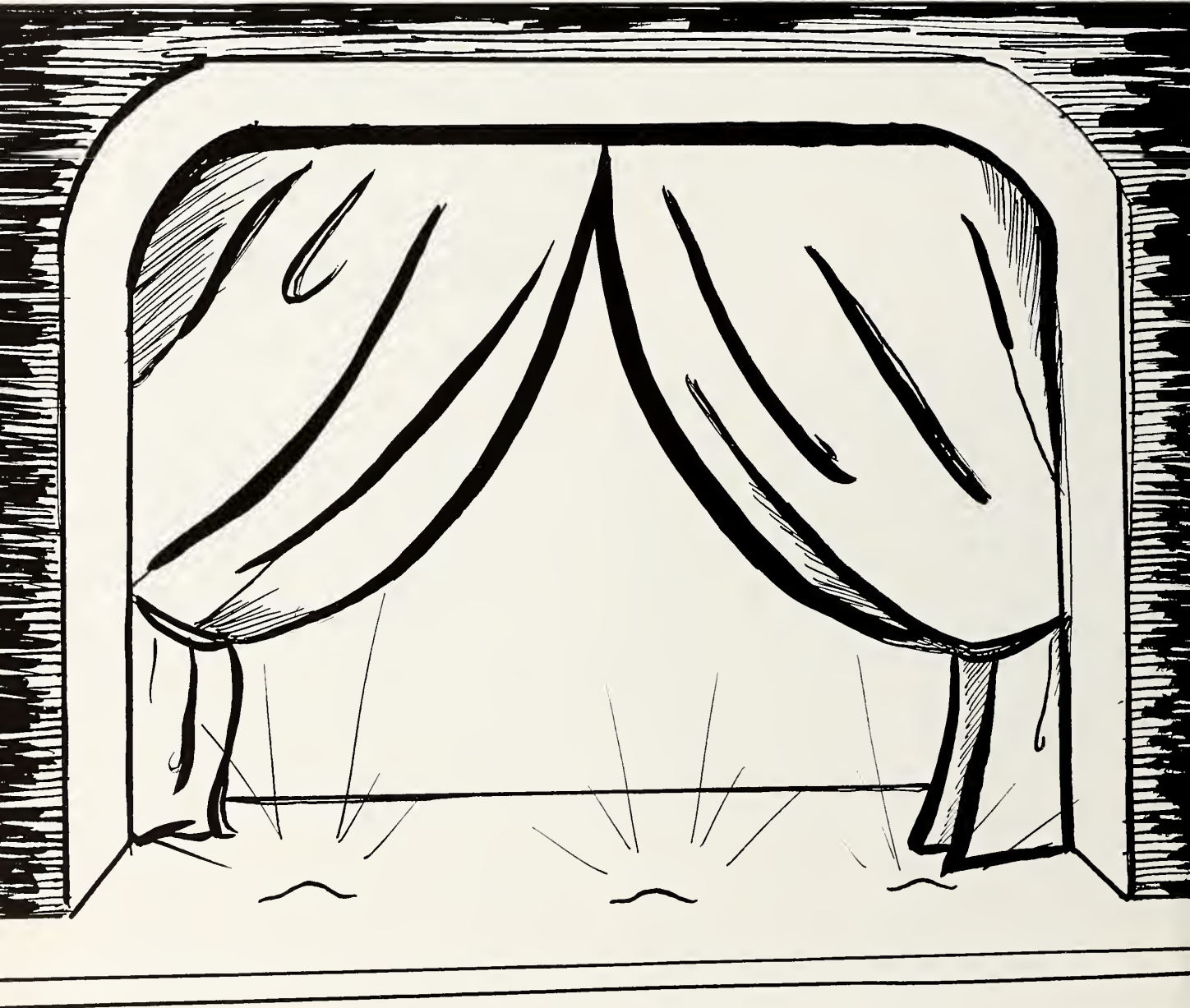


COMMITTEE CHAIRMEN: Janie Deane, Anita Freeze, Nan Sellers, Adair Phifer, Andrea Tyree, and Bettie Carmichael.

At the beginning of the year at Salem, each girl is given her choice of the committee that she would like to be on for the year. There are seven committees, each of which has its own specific duties—The Service Committee, The Social Committee, The Good Will Committee, The Program Committee, The World Service Committee, and The Standards Committee.

COMMITTEE CHAIRMEN

ACT II





ATHLETICS

Each and every Salemite belongs to a team, either Purple or Gold. On the first Saturday of the school year the heads of the respective teams, this year Lou Scales being head of the Golds and Mary Elizabeth O'Hara being head of the Purples, draw the names of the new members of the student body so as to decide which team each girl will belong to. Following this drawing a tug-of-war takes place which supposedly predicts the winning team of the year.

From this day on, the competition between the two teams is keen. Each girl works to

earn points for her team, hoping it will receive the loving cup on recognition day.

Girls also work throughout the year trying to earn a total of 350 points for different individual awards. These points are earned by entering individual tournaments, taking morning walks, going to extra gym classes, and by making the team or varsity of a certain sport. The first year this total is reached a girl receives a letter; the second year, an emblem; the third year, a plaque; the fourth year, a much sought-after loving cup.

Team Heads are Lou Scales, Head of Golds, and Mary Liz O'Hara, Head of Purples.



ONE



First row: Lou Scales, Mary Liz O'Hara, Ellen Foscue, Helen Rhea Goodykoontz. *Second row:* Margaret Moore, Lila DeBow, Annie Gray Calhoun, Janie Deane, Andrea Tyree. *Third row:* Martha Ely, Rosie Roth. *Fourth row:* Elizabeth Nisbet, Nancy Penn, Suzanne Porter.

The athletic council is the governing body for all athletic activities at Salem. It is composed of the heads of the Purples and Golds, Mary Liz O'Hara and Lou Scales, with the 14 girls that are heads of the major and individual sports. The athletic instructor, Miss Bryson, sponsors the athletic council and its activities.

In the fall and spring, morning walks are sponsored by this body, and throughout the year various games and tournaments are held.

In these activities fine sportsmanship is shown and team spirit runs high.

Among the highlights of the school year are the Athletic Banquets given at the end of each Sports season. However, the top moment is Recognition Day. The awards for the year are given then by the heads of the Purple and Gold teams, and the coveted cup is awarded to the team which has won the most points during the year.

ATHLETIC COUNCIL

SCENE TWO

VOLLEYBALL



It's the final point; who will win? Cathy Byrd, Terry Hill, Alix Frincke, Pat Spencer, Eleanor Ramsay, and Mary Cochran are all on their toes as the ball goes over the net.



TENNIS

Sally Ann Pierce and Dee Smith congratulate each other on a well-played game.



ARCHERY

The Musketeers, sporting bows and arrows instead of swords, are Noel Hollingsworth, Sandra Edgerton and Ann Walston.

SCENE THREE

SOCCKER

Guard her closely, Janie; Sue is trying again. Sue Buchanan gets ready to kick a goal to Suzanne Porter. Guarding her is Janie Deane. Other players are Lucy Meade, Mary Hannah Finch, and Jeanne-Marie Bright.



HOCKEY

May the best team win! Those receiving bruises, sore ankles, and kicked shins are Martha Ely, Mary Jo Futrell, Barbara Blackwelder, Rosie Roth, Ann Kearns, and Clarkie Pennington.



MODERN DANCING

It sure is modern, but can you call it dancing? Ruth Robbins, Cathy Ewing, Mary Wiley, Judy Cox, Brenda Flynt and Mary Jane Altvater listen to the beat of the tom-tom.



SCENE FOUR

SPEEDBALL

“Get that ball from Sue Buchanan” is Jane Richards’ cry to her teammate, Janie Deane. Cookie Teer, Lucy Nicely, Mary Hannah Finch, and Nancy Patton wait for their chance to get in on the action.



BASKETBALL

“Block Andrea Tyree’s shot” is the cry of Margaret Moore to Ellen Foscue. Margaret Cooper, Donna Griffith, and Mary Liz O’Hara wait to get the rebound if Andrea misses.



BADMINTON

Sandra Bullard and Anna Transou team up against Martha Moore and Cecil Harrison in a close game.



SCENE FIVE

SOFTBALL

With Doddie Elks pitching and Valerie McLanahan catching, Lele Follin gets ready to hit a homer. Branchie Watson, Marie Arnold, and Nancy Nichols watch from the sidelines.



GOLF

Elizabeth Nisbet demonstrates the correct way to "swing that club" while Annie Gray Calhoun, Pat Powell, and Peggy Harry watch.

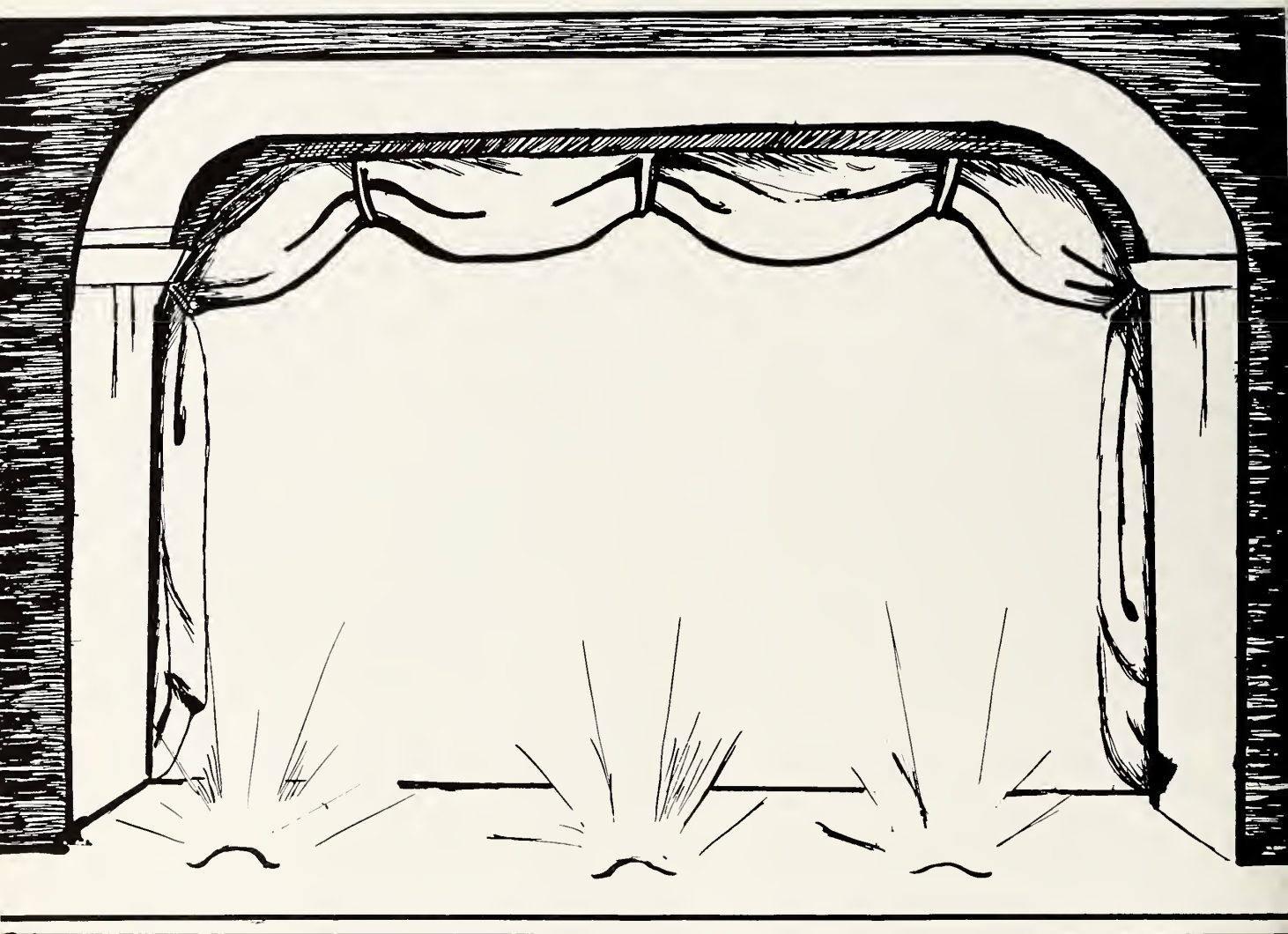


INDIVIDUAL SPORTS

Anita Freeze and Carol Rice team up against Susan Hardwick and Helen Rhea Goodykoontz while Nan Sellers officiates.



ACT III





SENIOR BEAUTY QUEENS

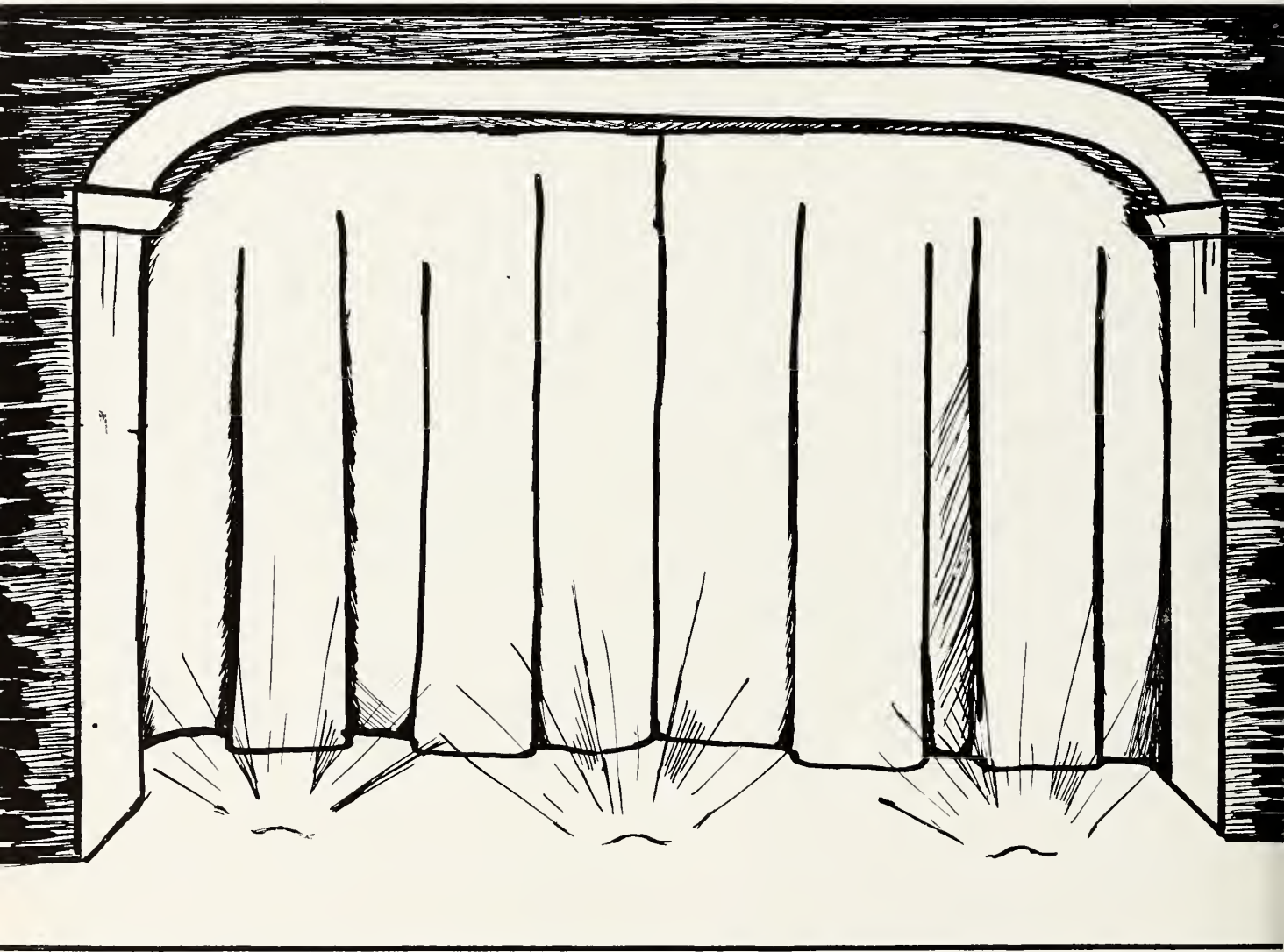
These three girls received the most votes for the Senior Queen this year; in the final elections one will be chosen. She will be presented at the Sophomore Tea Dance.

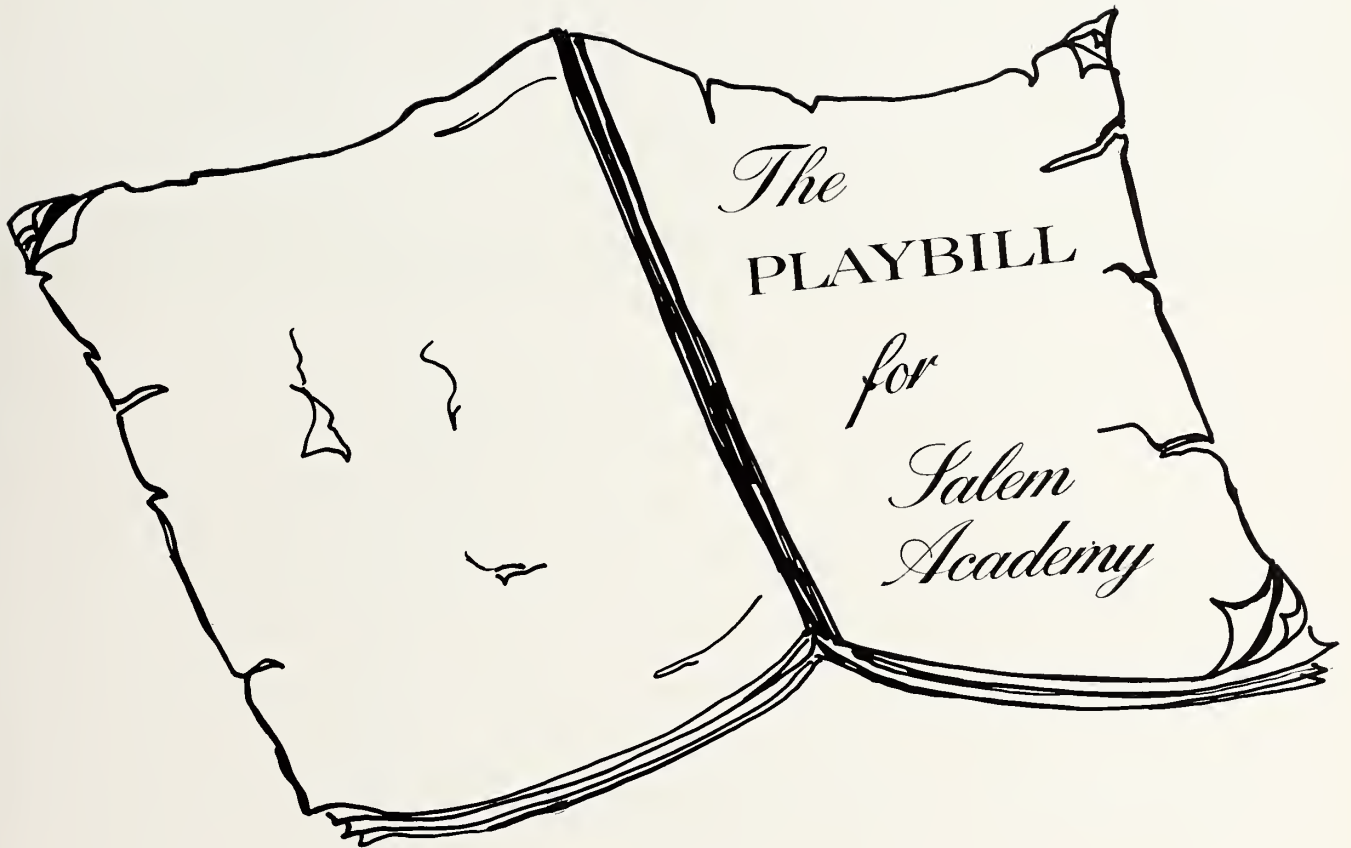






FINIS





PATRONS

of this production have been . . .

SALEM CHINA

WEDGEWOOD

STAFFORDSHIRE



Plates, cups and saucers, cereal dishes, bread and butter plates, tiles, and pitchers. Write for circular for prices and colors.

THE SALEM BOOKSTORE

9 EAST ACADEMY ST.

WINSTON-SALEM, N. C.

Compliments of

R. T. BROYHILL

LENOIR, NORTH CAROLINA

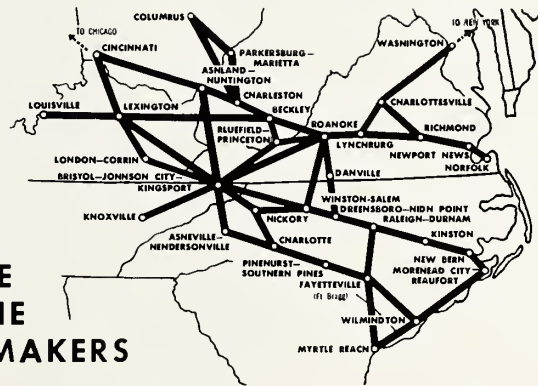
Best Wishes



to the high-flying
Class of '56



ROUTE
OF THE
PACEMAKERS



PIEDMONT *Airlines*

CALL 5-0511 For Reservations, Information

OLD PRINT EXCHANGE

Phone 7618

Compliments of

A FRIEND

Compliments of

A FRIEND

Compliments of

Mr. and Mrs. Paul E. Nichols



nature
gave you
seamless
legs *Itane*
gives you
seamless
nylons

Compliments of

Nello L. Teer Company

CONTRACTORS

...

DURHAM, NORTH CAROLINA



**WINSTON-SALEM
BOTTLING CO.**

Winston-Salem, N. C.

ARCADE

Ladies' Ready-to-Wear
and Accessories



Compliments of

FRANK L. BLUM CONSTRUCTION CO.



860 W. 4th St.

WINSTON-SALEM, NORTH CAROLINA

Congratulations
to the
Graduating Class

from

**THE BO TY FLORIST
& GARDENS**

Phone 5-0641
Westview Drive
WINSTON-SALEM, N. C.

Compliments of

A FRIEND

Compliments of

A FRIEND

**CARMICHAEL
PRINTING
CO.**



118 West Third Street
WINSTON-SALEM, N. C.

Compliments of

A FRIEND

Best Wishes from

THE P. H. HANES KNITTING COMPANY

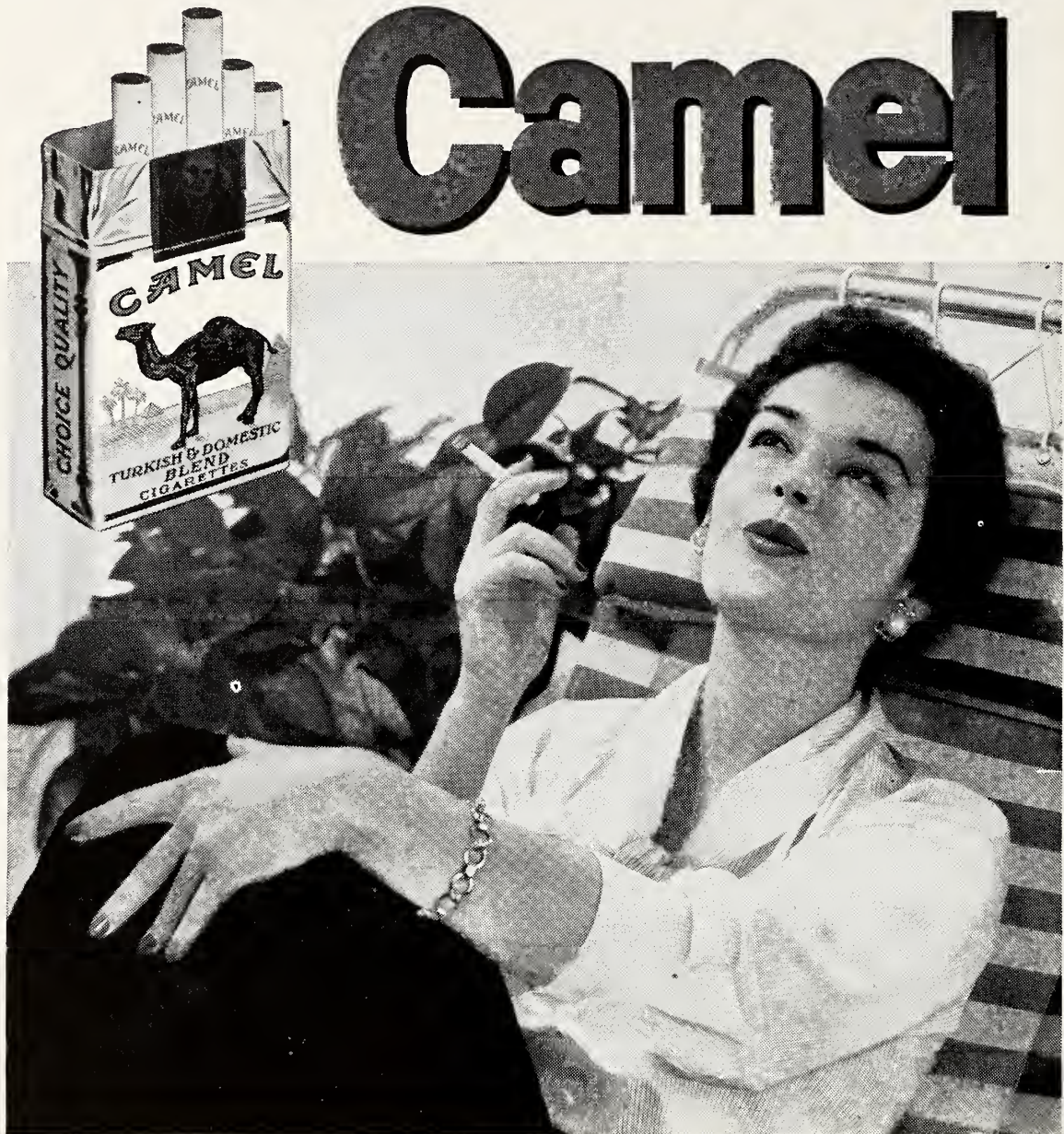
makers of



Sportswear – Underwear – Sleepwear

For more pure pleasure...have a

Camel



R. J. Reynolds Tobacco Co., Winston-Salem, N. C.

**No other cigarette is so
rich-tasting, yet so mild!**

*Start now! Make your own
30-day Camel Mildness Test!*

Smoke only Camels for 30 days. You'll agree: no other cigarette has ever equalled Camel's richer blend of mild, costly tobaccos. You'll see why *Camels agree with more people than any other brand!*

Compliments

of

L. ROBERTS

Compliments of

Emily Finch Lambeth—1951

Mary Hannah Finch—1956

Compliments of

BOCOCK-STROUD COMPANY

BELCHERS, Incorporated

SMART COLLEGIATE FOOTWEAR

306 W. Fourth St.

Nissen Building

BLACKWELDER
PROPERTIES, INC.

...

LENOIR, NORTH CAROLINA



Mary Hannah Finch, class of 1956, in harmonious shades of peacock and aqua taffeta fashioned with a butterfly bow over a voluminous skirt. From our collection for gala occasions

MONTALDO'S
WINSTON-SALEM, N. C.

Compliments of
COX PHARMACY
Complete Drug Service

PHONE 3-3627

College Village
WINSTON-SALEM, N. C.

Compliments of

A FRIEND

Office
Phone 3-2174

Residence
Phone 6002

ELDRIDGE OPTICAL COMPANY

J. W. Eldridge

304 W. 4th St.

Winston-Salem, N. C.

McPHAIL'S

McCALL'S ART
LINEN SHOP

Compliments of

A FRIEND

Compliments of

A FRIEND

Compliments of

A FRIEND

Congratulations

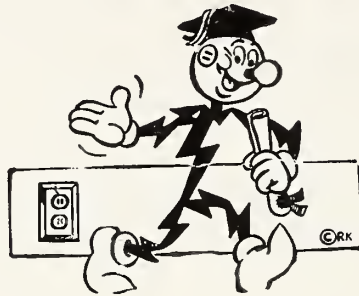
**CHEROKEE AMUSEMENTS
INC.**

W. H. Parrott

...

LAFOLLETTE, TENNESSEE

POWER TO THE CLASS OF '56



We're proud of you... proud, too, of the chance to serve a new generation of young Piedmont citizens.

Our best to you as you move forward, in a free and responsible community... where your own will and effort are the measure of achievement.

DUKE POWER COMPANY
Serving the Piedmont Carolinas

OGBURN INSURANCE AGENCY

109 Reynolds Building
Telephone 2-0166
WINSTON-SALEM, N. C.

●

FIRE
AUTOMOBILE CASUALTY
INSURANCE

Compliments of

**MR. AND MRS.
DAVID L. HARRY**

●

GROVER, N. C.

Every year . . .

Every day . . .

The

SUNDAY

JOURNAL and SENTINEL

MORNING

EVENING

Serve

Winston-Salem

and

Northwest North Carolina

PIEDMONT PUBLISHING CO.

North Marshall St.

WINSTON-SALEM, N. C.



A cordial welcome awaits you always at Thalhimers where you will find fashion supremacy and quality. In every area one great store stands out above all others.

. . . in North Carolina it's

Thalhimers

Compliments

of

L. A. REYNOLDS CO.



WINSTON-SALEM, N. C.

Compliments of

A FRIEND



Golden Anniversary Chair

comfort cushioning with Firestone FOAMEX®



THIS special anniversary chair demonstrates the quality Globe has achieved through specialization on living room furniture for a half-century. Globe has been a leader in the development of the furniture industry in North Carolina.

Comfortable Living Room Furniture



by **globe**

HIGH POINT, NORTH CAROLINA

FINE LIVING ROOM FURNITURE FOR FIFTY YEARS

Best Wishes

MEMBER



THE *Best* IN
LAUNDRY SERVICE

Compliments

of

HOTEL

ROBERT E. LEE

Compliments of

A FRIEND

Compliments of

A FRIEND

SALEM COLLEGE

is proud of

SALEM ACADEMY

for . . . its consistent progress
 . . . its academic standing
 . . . the achievements of its graduates

Because of this pride and a natural affection for our "Mother" institution, Salem College welcomes Salem Academy graduates into the student body. We hope that you will feel just as much at home on our West Campus, as you do on your East Campus, whether you are Senior or Freshman.

For interesting Salem College View Book and Catalog, write or telephone:

THE OFFICE OF PUBLIC RELATIONS

Compliments

SOUTHERN COAL AND COKE COMPANY

• • •

KNOXVILLE, TENNESSEE

Compliments
**REPUBLIC
GRANITE CO., INC.**

ELBERTON, GA.

WELFARE'S DRUG STORE

Serving Salem Academy and
College Girls 43 Years

Welcome at Welfare's

Telephone 2-6104 - 2-6105

Near Salem College

**TWIN-CITY
DRY CLEANING CO.**

612 West Fourth Street
WINSTON-SALEM, N. C.

1865

1956

W. T. VOGLER & SON

Jewelers and Silversmiths

WINSTON-SALEM, N. C.

**L. M. WILLIAMS
GROCERY CO.**

1214 Reynolda Road
Phone 3-4181

CASH AND CARRY

Self Service
Everything for the Table

Compliments of
SEPAK MUSIC COMPANY

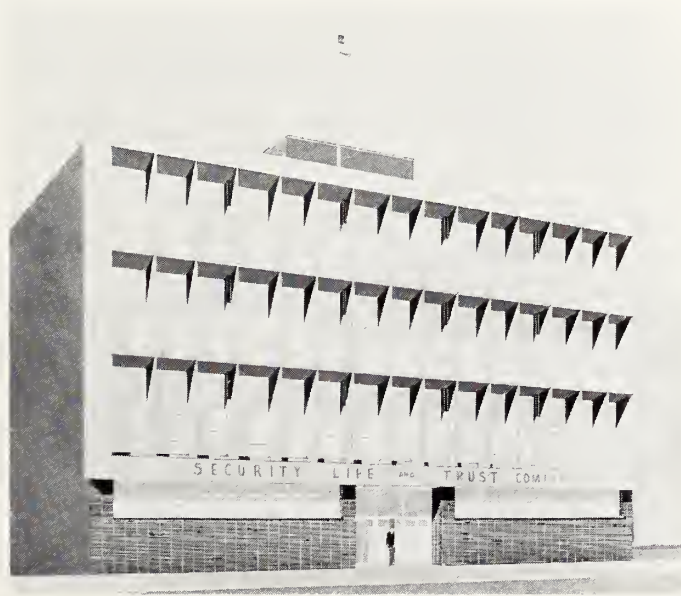
620 West Fourth St.
WINSTON-SALEM, N. C.

Compliments of

A FRIEND

**THE GORRELL-SIEWERS AGENCY
SALUTES SALEM ACADEMY**

SECURITY LIFE, like SALEM, has a reputation of
service to the community and to the South.



Security Life and Trust Company

Home Office

WINSTON-SALEM, NORTH CAROLINA

Insurance in Force
Over \$686,000,000

Assets
Over \$53,000,000

FACE THE FUTURE WITH SECURITY

Compliments of

**ROMINGER
FURNITURE
COMPANY**

Complete Home Furnishers

In Winston-Salem for 56 Years

423 North Liberty Street
Phone 4-7411

**PILOT
INSURANCE AGENCY**

General Insurance

407 Reynolds Building
Phone 6123
WINSTON-SALEM, N. C.

SUMMIT STREET PHARMACY

Overlooking Hanes Park
West End Boulevard

Your Prescription Our First Consideration

DIAL 2-1144
For Complete Drug Service

**SELLERS
ENGINEERING
COMPANY**

DANVILLE, KY.

Compliments of

A FRIEND

Compliments of

ZINZENDORF LAUNDRY

• • •

1000 N. Main Street

Compliments

of

DOBY'S BAKERY

Compliments of

**STABLER
PONTIAC
COMPANY**

Compliments of

STOKELY-VAN CAMP
INCORPORATED

...

SYMBOLS
OF
SAFETY
AND
SERVICE
TO THE
PUBLIC



General Offices
Winston-Salem, N. C.

"WE PULL FOR INDUSTRY"

Compliments of

**AMMONS
ESSO
SERVICENTER**



1200 Reynolda Road
WINSTON-SALEM, N. C.

Compliments of



Compliments of

An
APPRECIATIVE DADDY

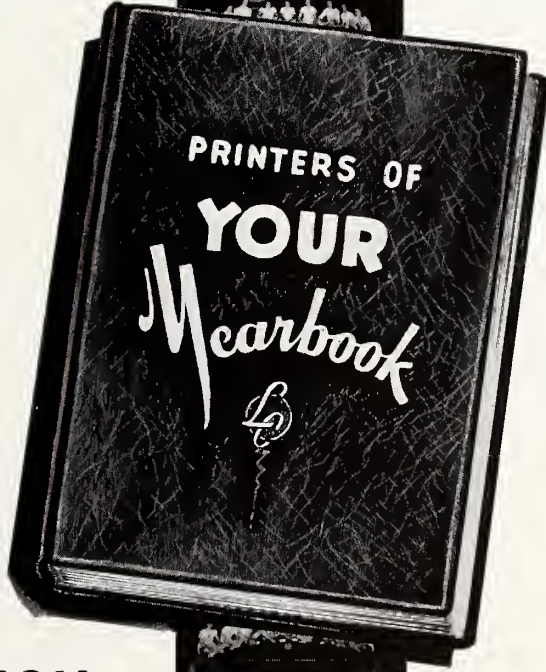
To Your
Excellent School

Compliments of

MR. AND MRS. E. G. SCOTT



LYNCHBURG, VA.



LASSITER CORPORATION
CHARLOTTE, NORTH CAROLINA
School Publications

AUTOGRAPHS



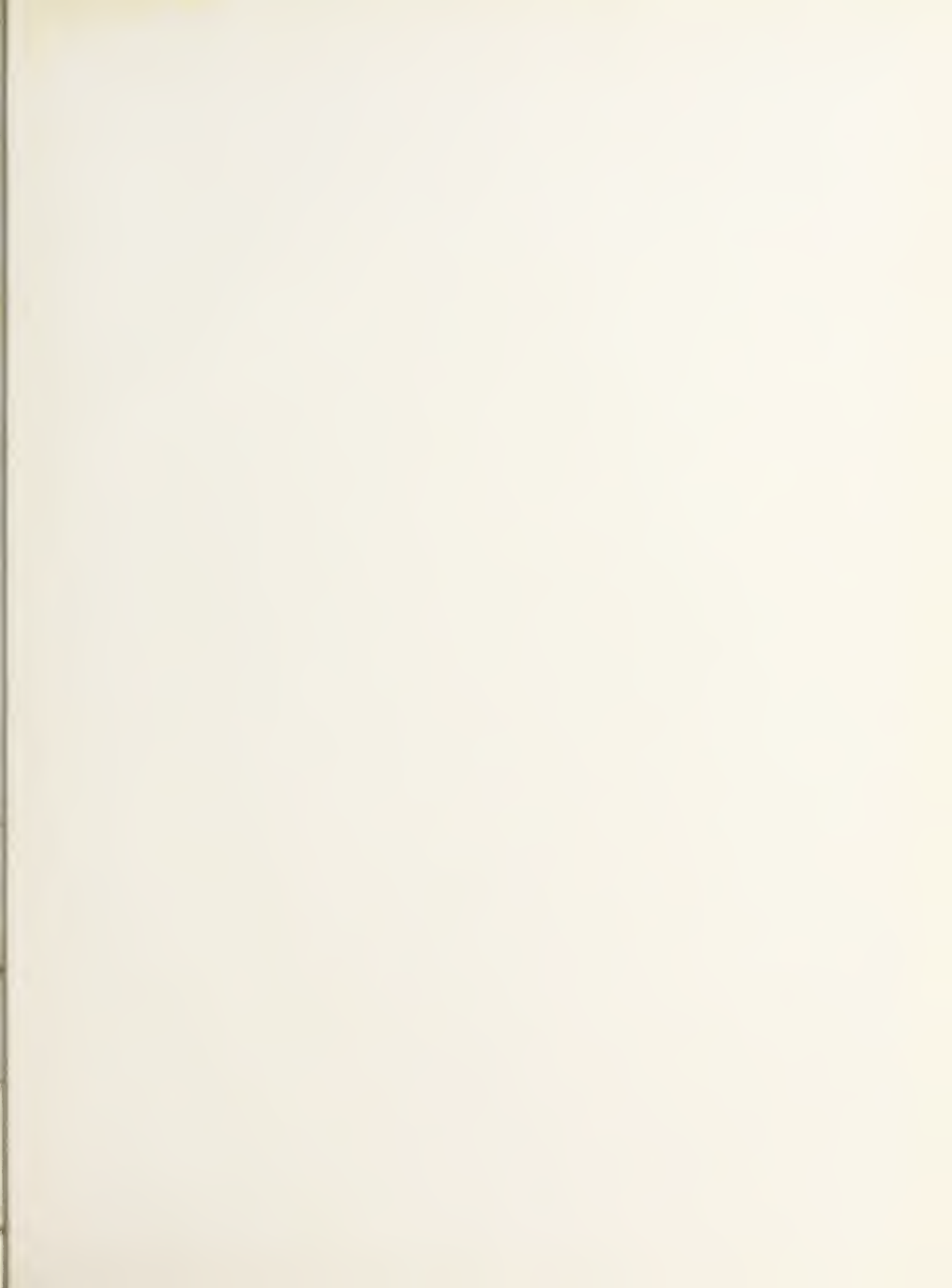
**CHARLOTTE
ENGRAVING
COMPANY**

Engravers and Designers of College Yearbooks

CHARLOTTE, N. C.



AUTOGRAPHS







SALEM ACADEMY & COLLEGE



0 2960 0218536 5

411
LABSIFER CORPORATION
1000
1000
1000