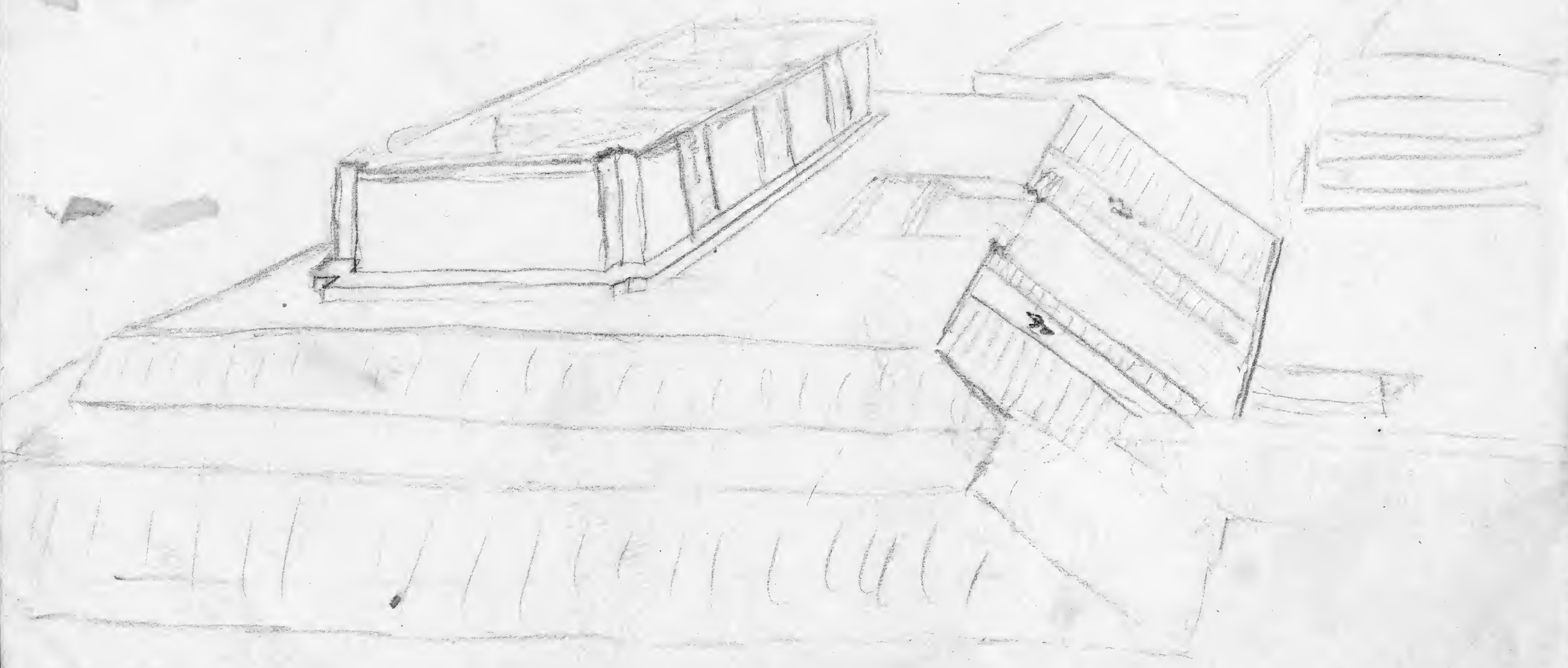


Quirigua Temple I







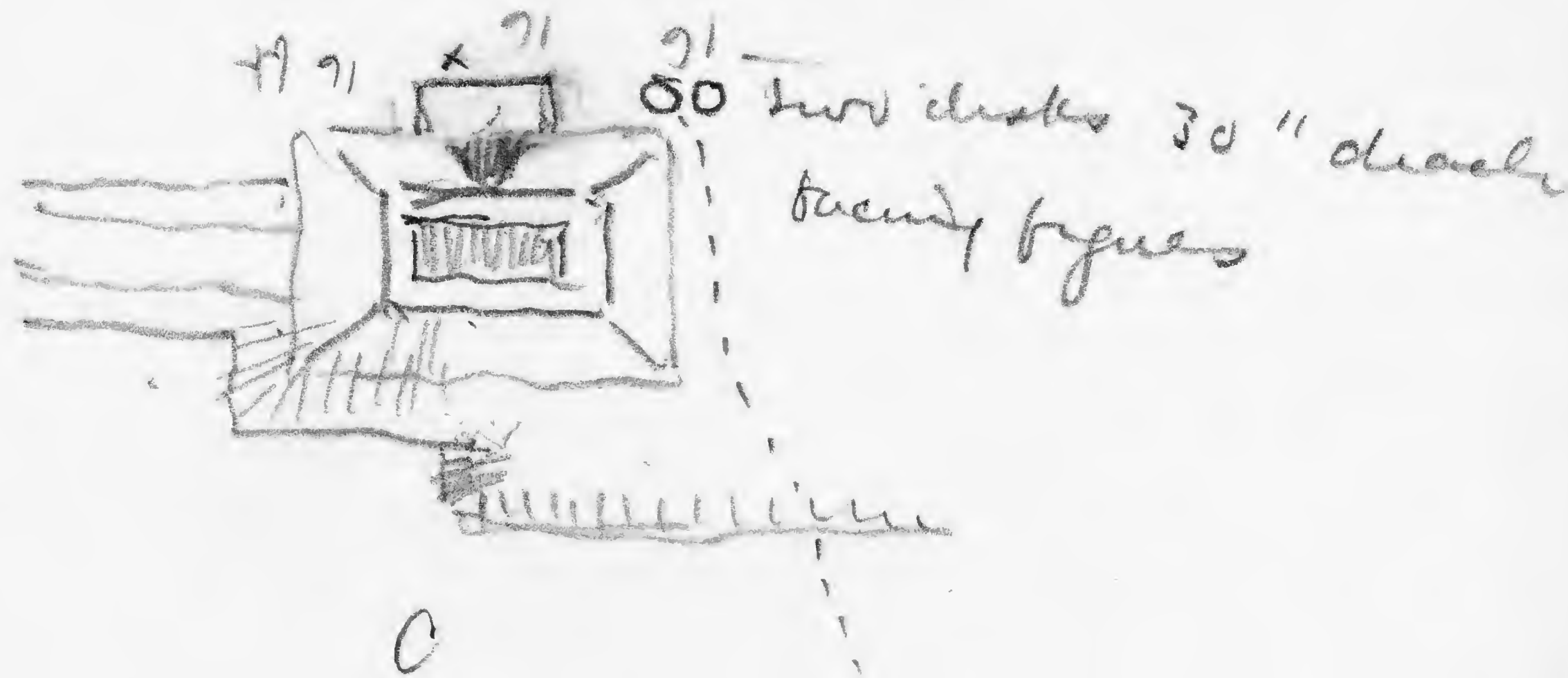
Quirigua

West

Ceremonial Court



16 long  
Part of a wall



Small building on East side  
of Ceremonial court,

Room rough stone little dressed  
stone 12 wide 20 long  
walls 3 or 4 ft high  
outer wall small stone partly  
well dressed  
Height 10 ft

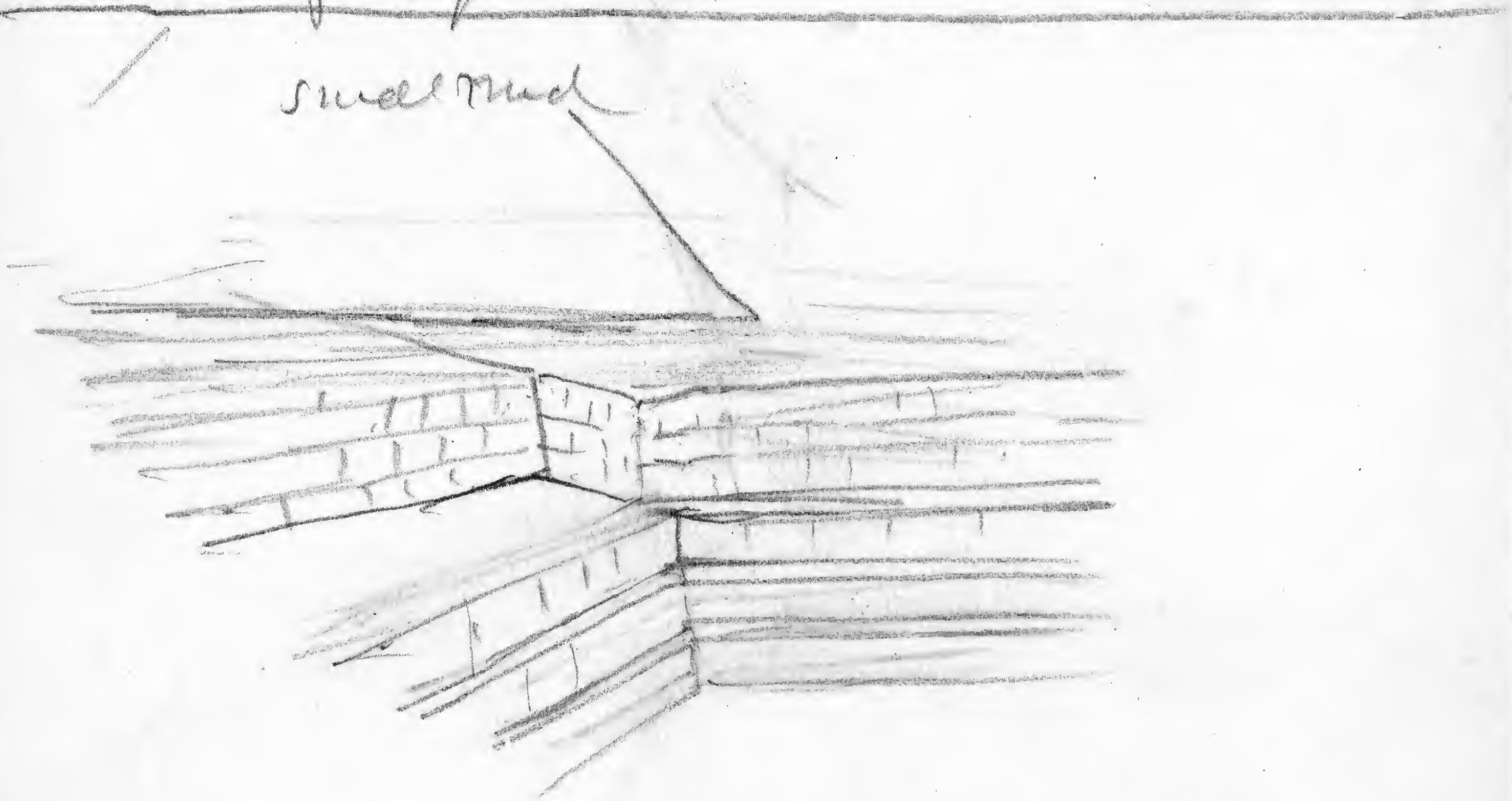
Amoyue

Amoyue

D. MAP. Rounded, and stone surface  
 much levelled down. no building visible  
 Steps of heavy stones <sup>10 or 12 step, 16 or 18 wide</sup> spread at base  
 platform not well pronounced here but  
 platform next E well defined, <sup>6 wide</sup> not  
 as 2<sup>nd</sup> platform <sup>vallies</sup> vertical face stone  
 1<sup>st</sup> platform slightly <sup>6 ft high</sup> - <sup>vallies</sup> 20° or more

5 or 6 ft high

small mud

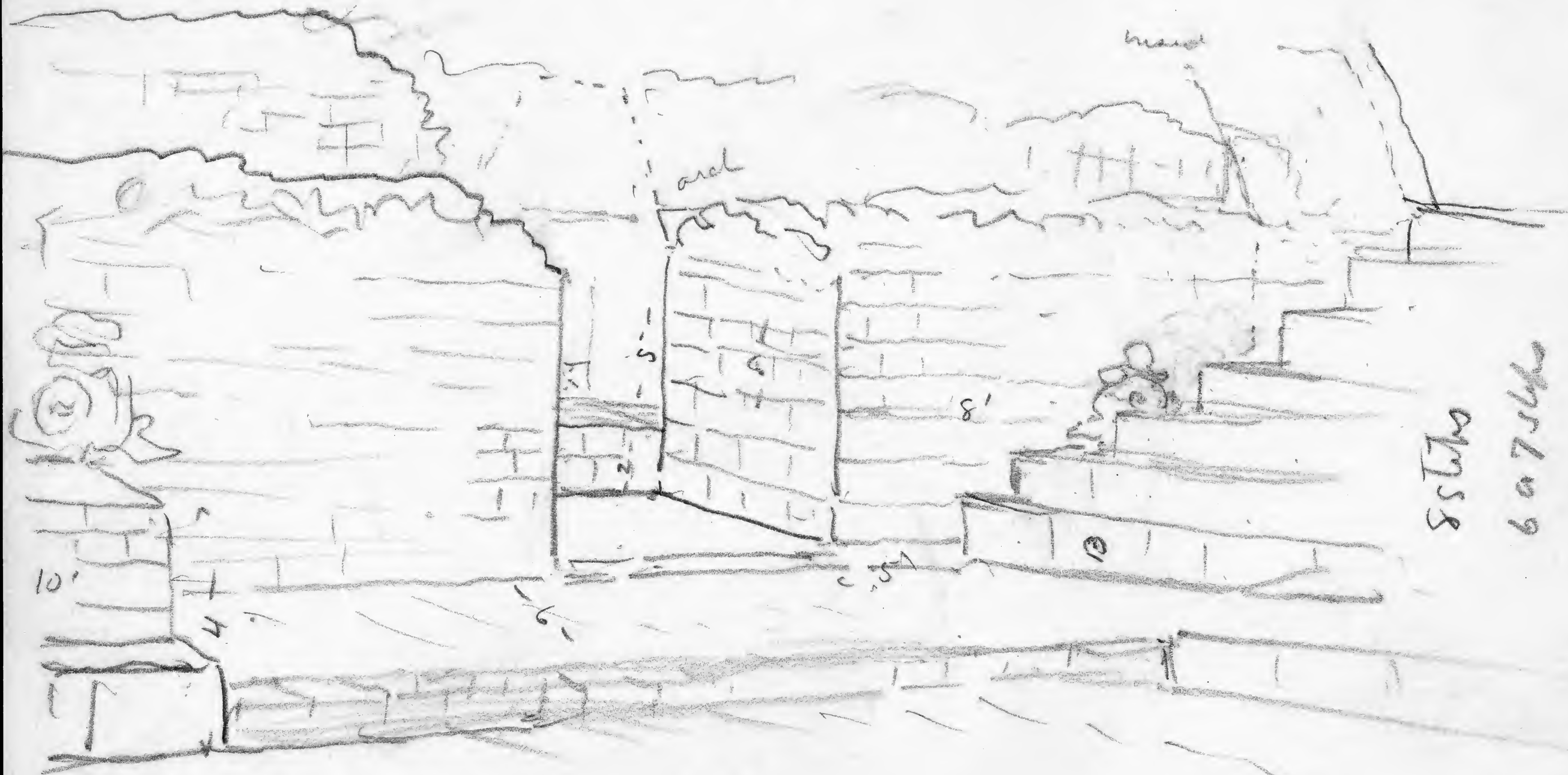


North west corner of the Temple Court



Quirigua

This building is about 30 x 40 outside



S 26

This side temple - about 26 long to steps of court

S.W. corner temple court

Temple of the mural medallions

Queyque

Temple of the mural medallions, looking west





# CEREMONIAL COURT

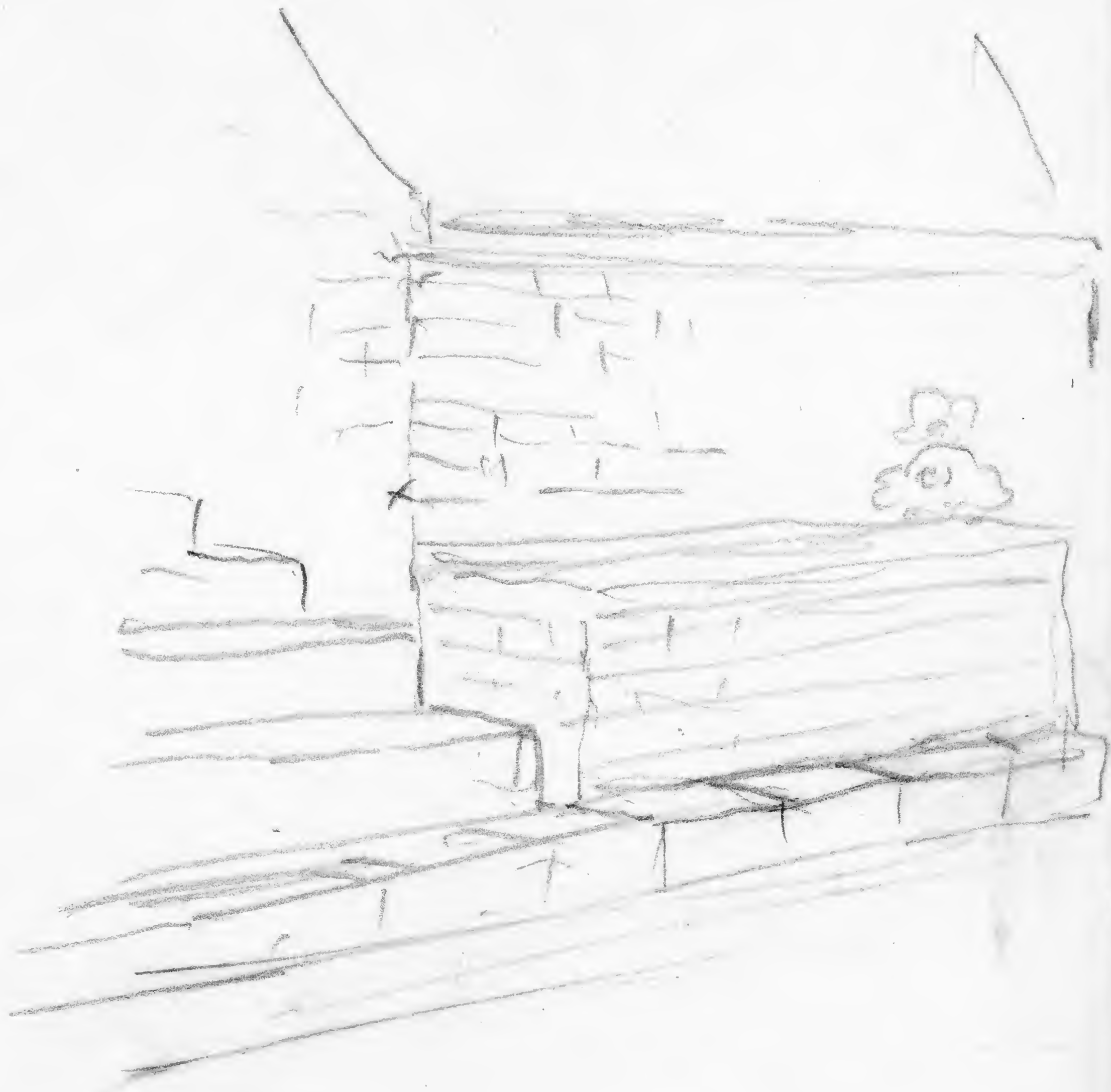
Temple

Ceremonial Court

25 ft high or more

The surrounding walls, east & south are stepped with large cut stone. In the S.E. corner they are disarrayed & measure a foot to 20 inches in width & thickness <sup>are open</sup> & 3 feet or more in length. On the east side of the court are two animals of small size & are dark. The low passage at the South west <sup>low terrace</sup> is a <sup>^</sup> near a hundred feet in width.

Quirigua



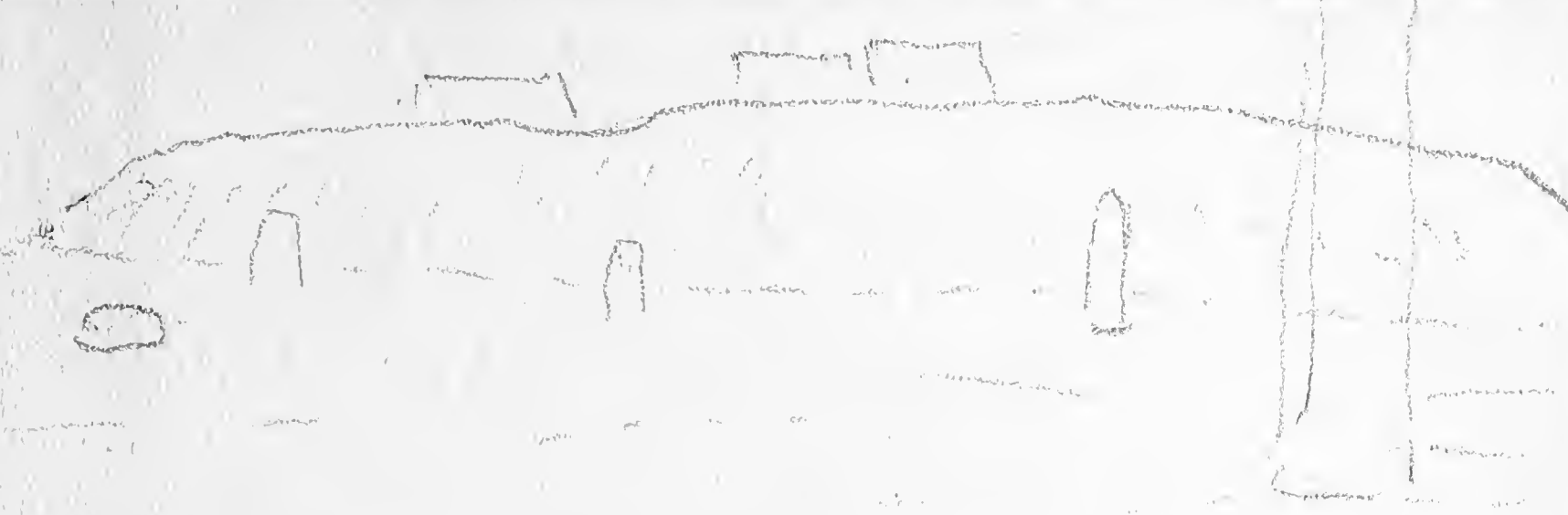
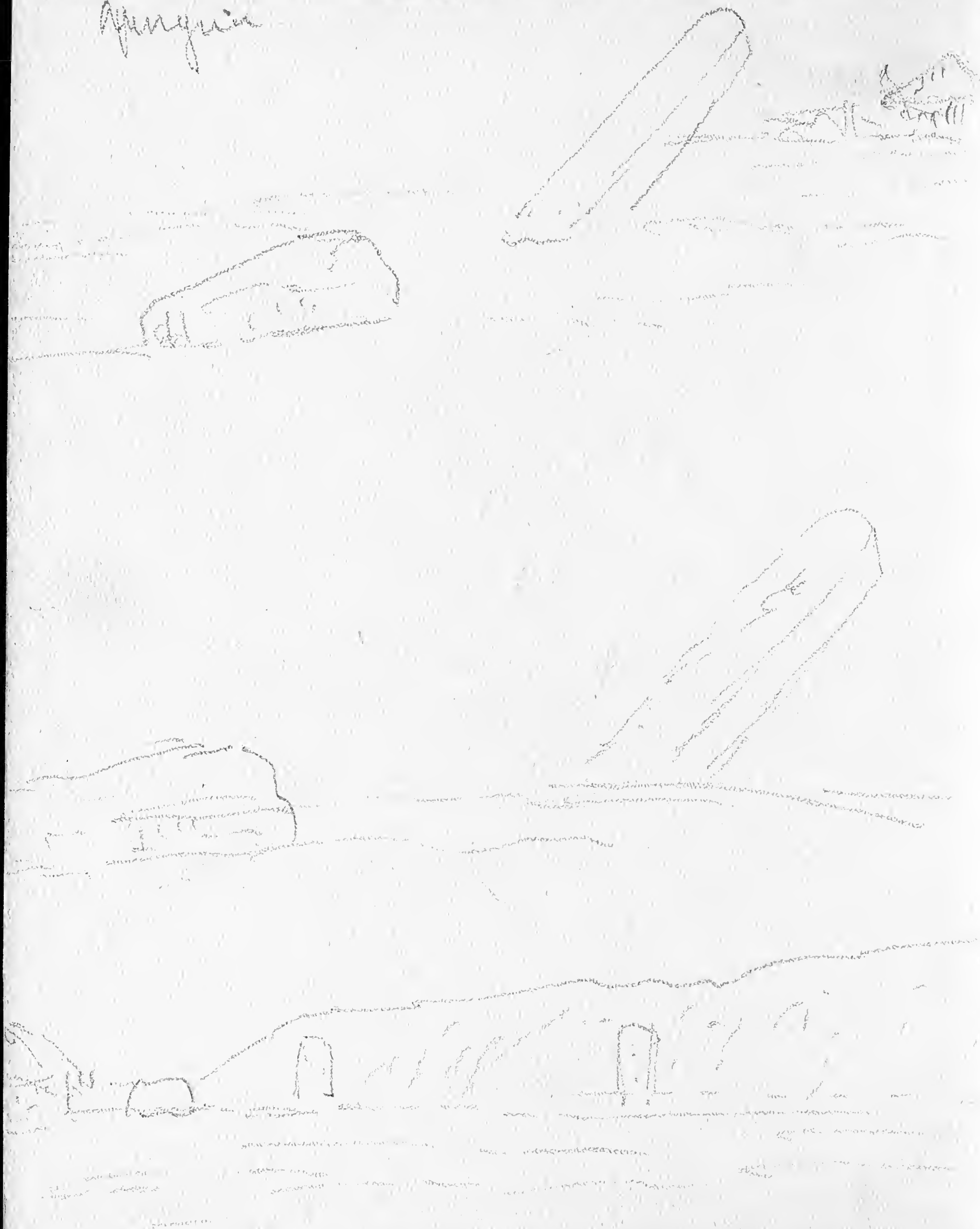
Temple of the mural medallion

N.W. Corner

X



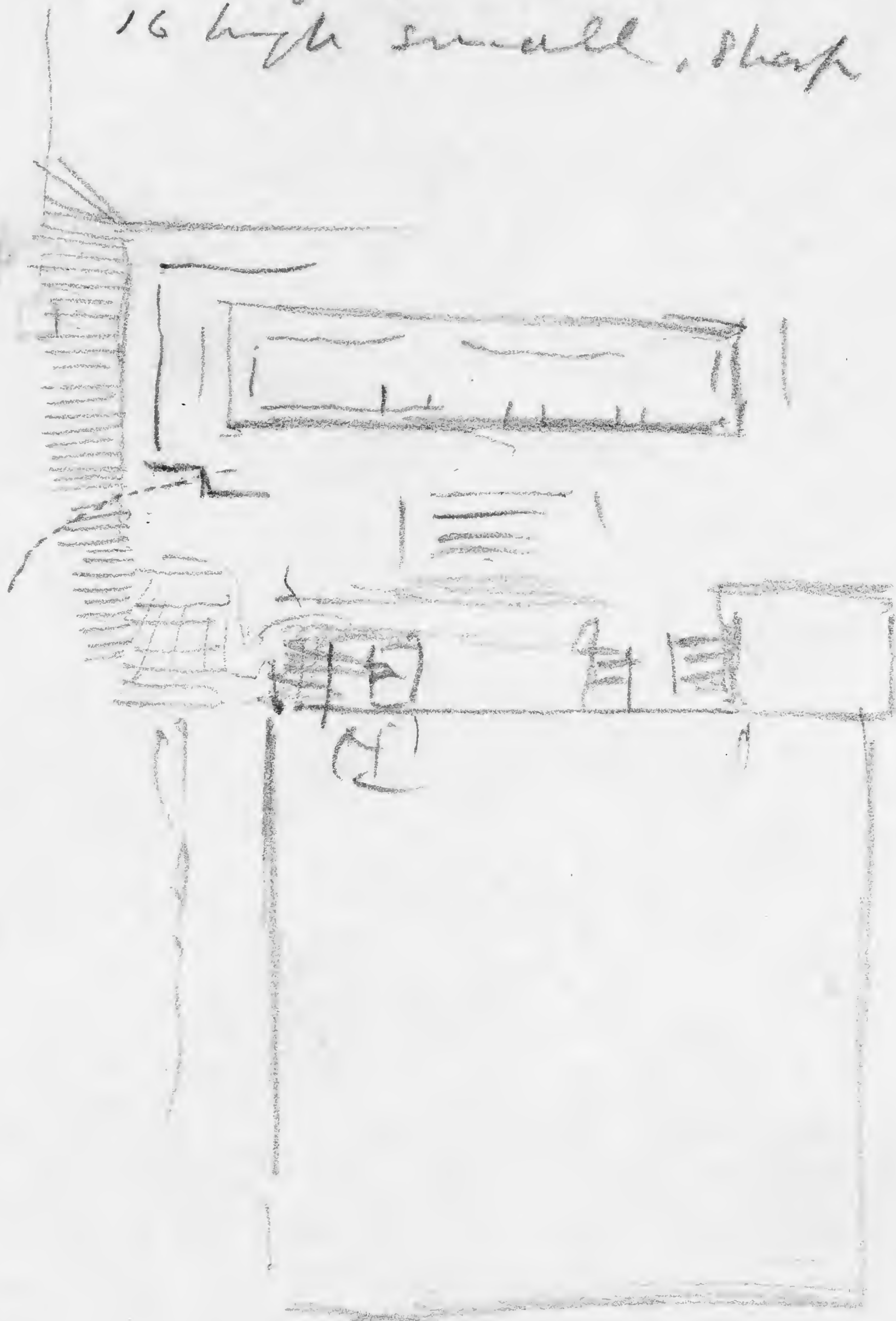
Quincy



Murgua

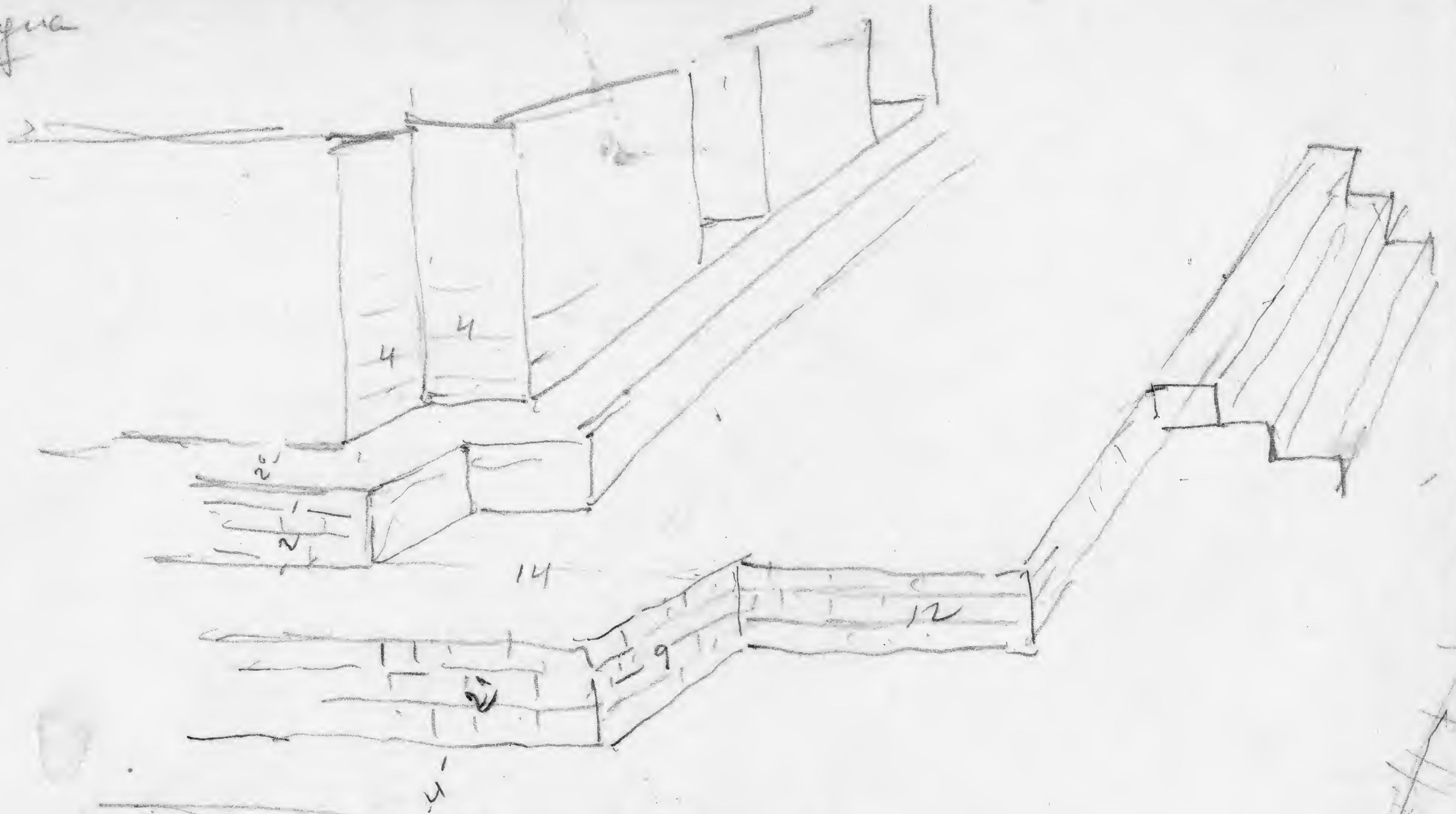
40 or 50 ft from the main mound  
16 high small, sharp

Dump



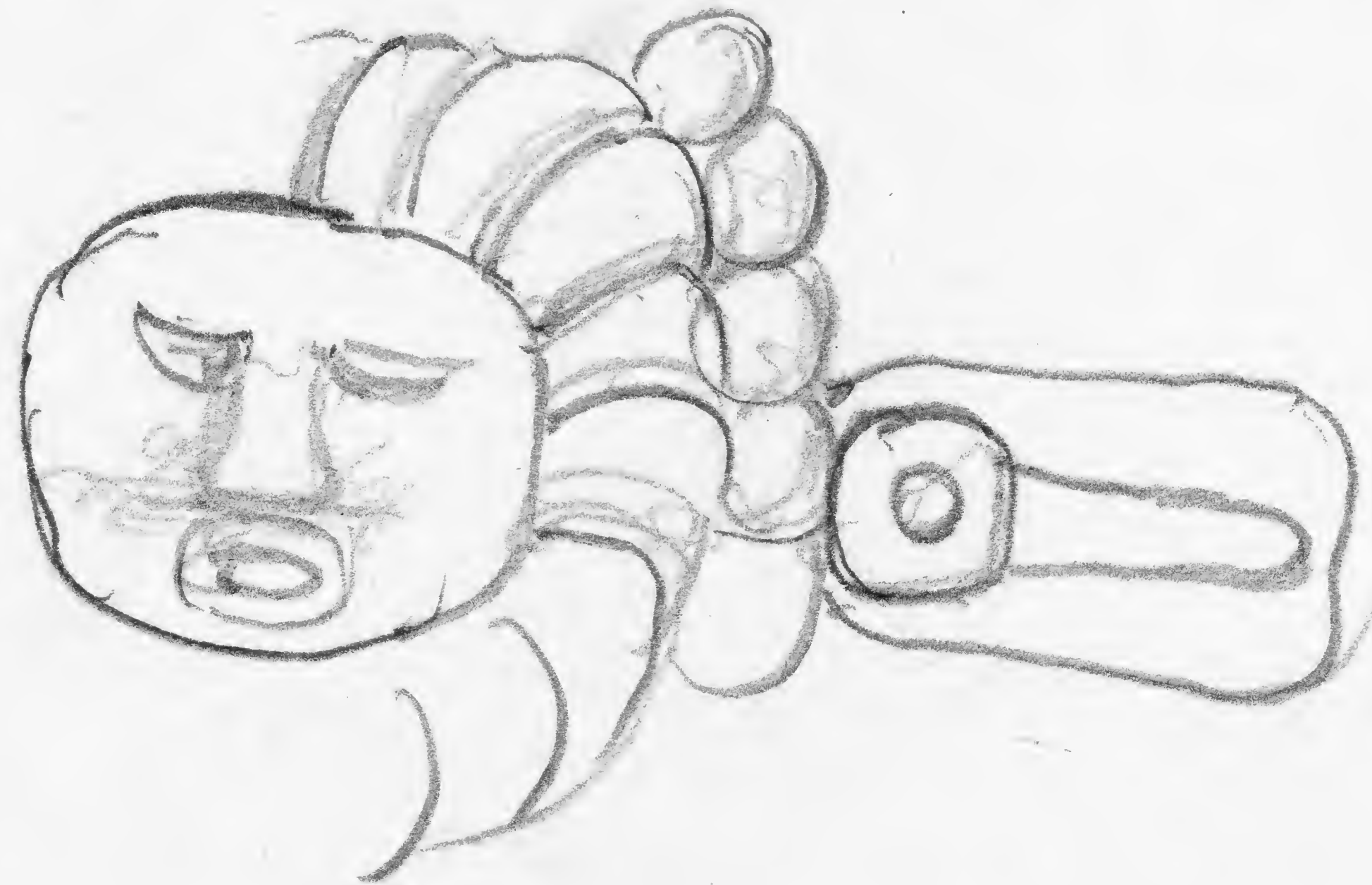


Quergua



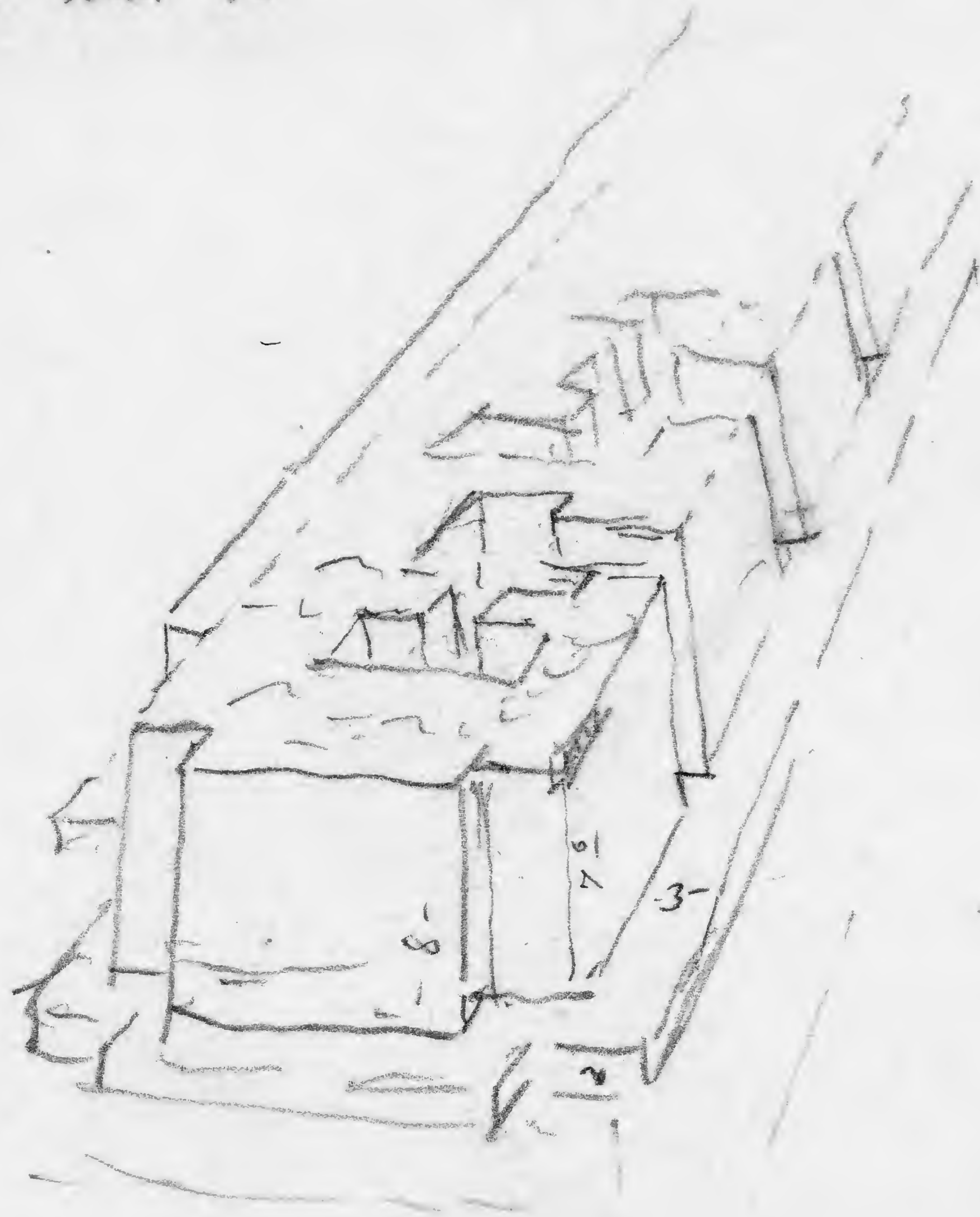
Frühling

-20-





Quercus no 15

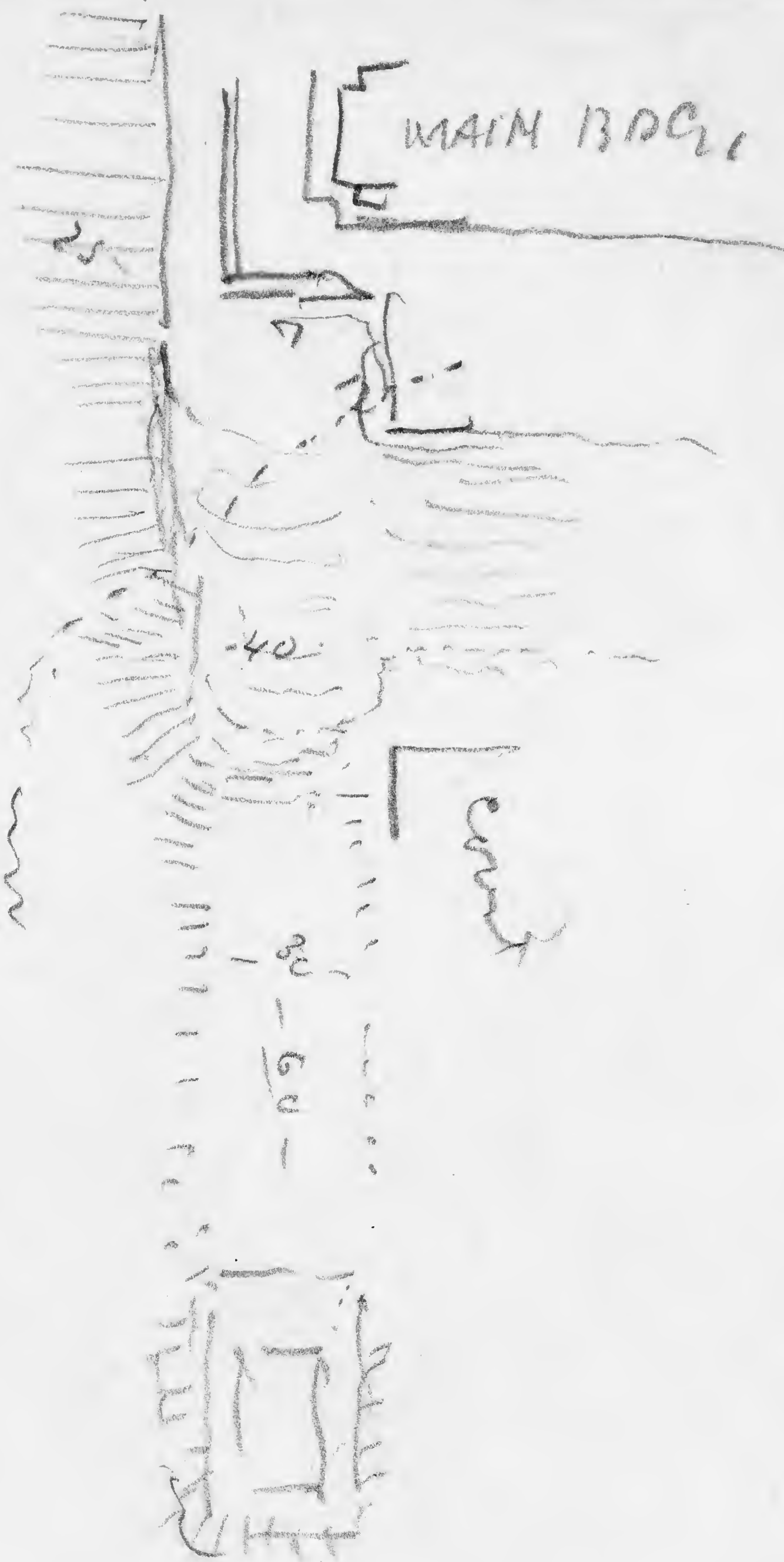


2.5

7.5 to corner

Corner 12"

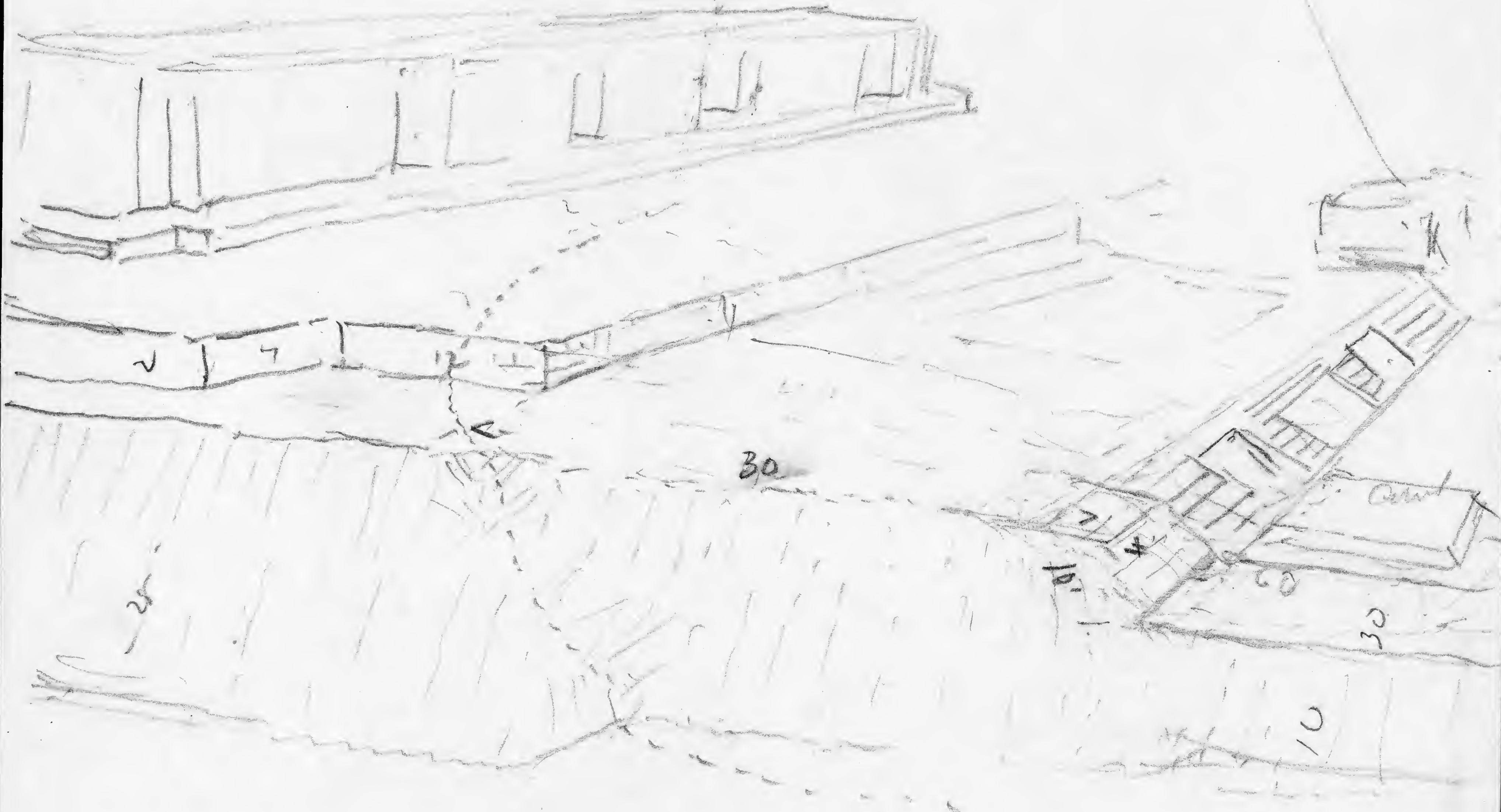
Quirigua Nov 18





Amryna

MAIN BDC.



+ steps

Gualanala

Celts, mostly polished dark  
green stone (chloromelane)

many <sup>small</sup> just like hemules



This size up to

6 or 7 in length

many rather thick with  
blades square in section

Hardly to be distinguished from  
knives save by squareness

+ flat facedness

Edges <sup>usually</sup> all round

Same as of W. 9. type

usually broader at edge





Quaternary

n.g.

Typical platy laminae  
wavy and slightly undulating  
planes

part quartzite

Some platulas

2 to 3 1/2 inches in dia.

Graduated

29

Obrien  
Dept. of Health

Fat cells

Same procedure as jade!



7

Heat little until cells  
begin to burst



Guatemala

24

Many cell shaped idols  
2 say + green stone  
rather much



old female

1 1/2 to 2 inches long

rather much pink



-10-

29.

Graduated

Digging weight



3 to 6 1/2 in

many heavy



Perfectly  
finished  
Kenchere



+ 1 1/2 to 4 thick

Rounded or beamed  
holes



Same good douglas

knobs & ridges

1 hole



Rough to smooth  
push

By for Club heads  
no true holes

R 7-

Graduated

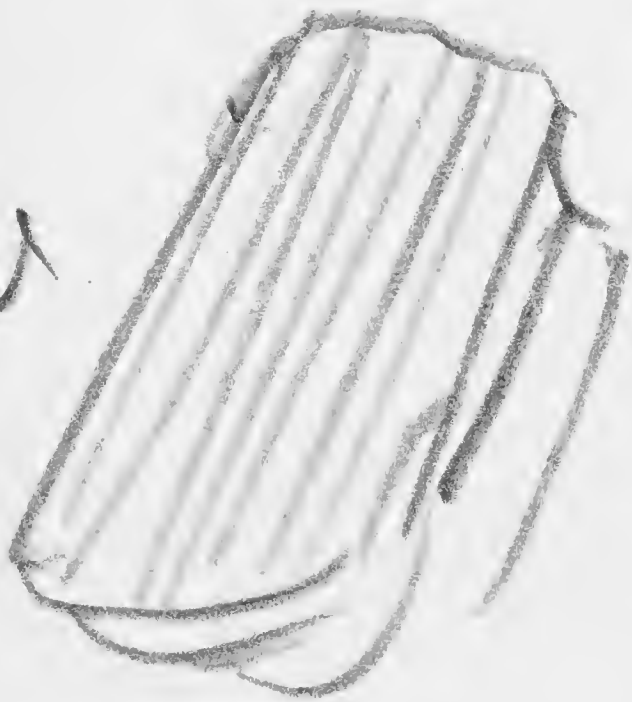
3



Paper beaters

usual round  
beaters

4

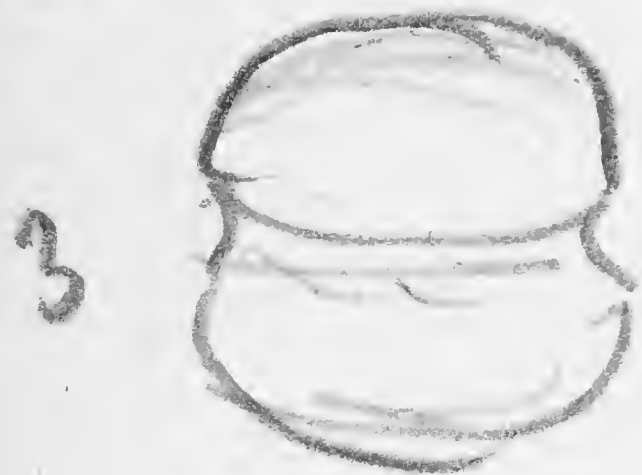


all handgrooves



fractured

29,



Hemms 3<sub>2</sub> club heads

4 of them

2 1/2

Proth grove  
Smooth faces  
well finished

11

Quirigua 2 steps  
1 step Temple I

probably rubble slope

