

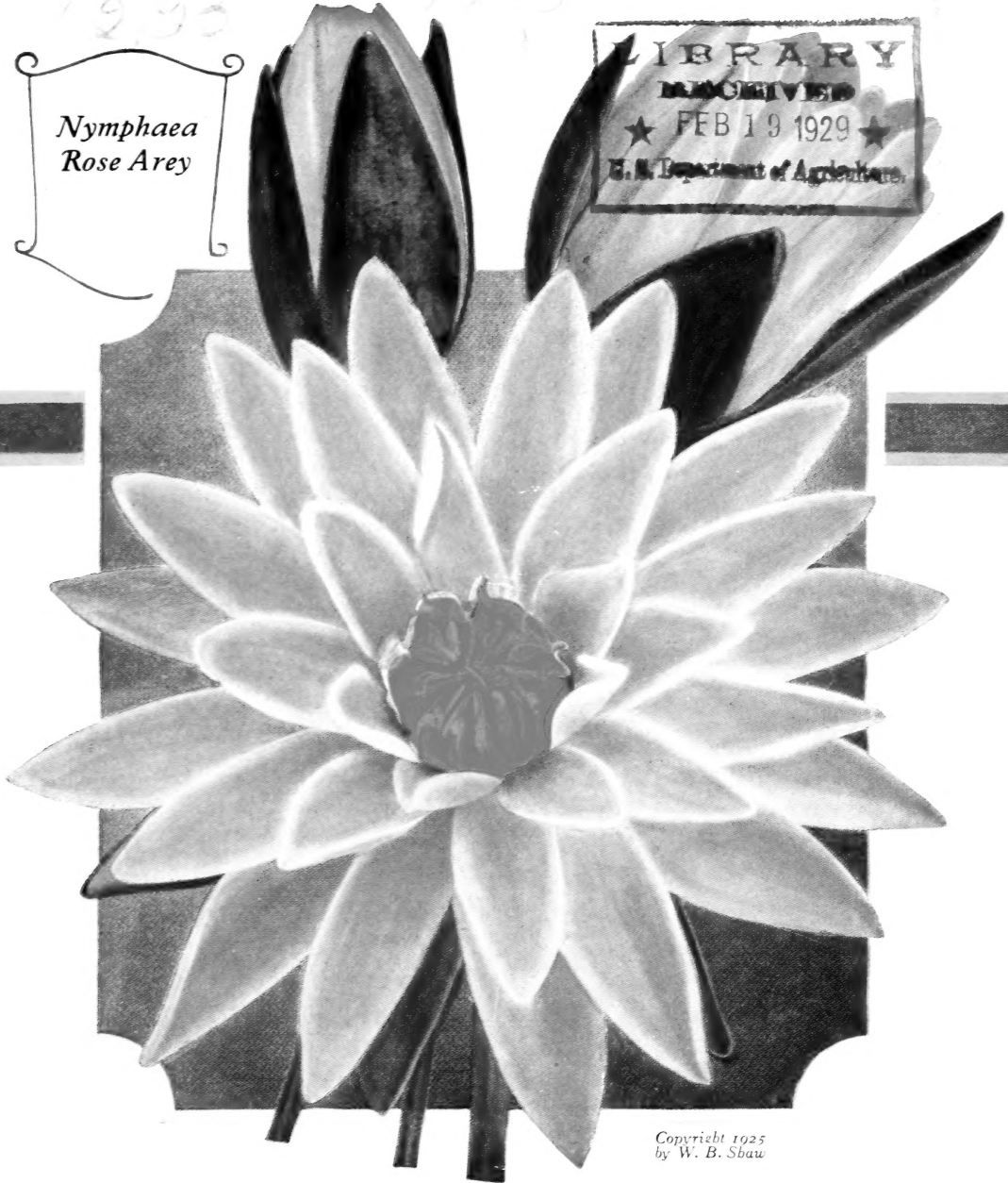
Historic, archived document

Do not assume content reflects current scientific knowledge, policies, or practices.



1930
Nymphaea
Rose Arey

LIBRARY
RECEIVED
★ FEB 19 1929 ★
U. S. Department of Agriculture.



Copyright 1925
by W. B. Shaw

Rare Water Lilies

W. B. SHAW
KENILWORTH, WASHINGTON, D. C.



Customers Please Notice

Prices

are net. All plants shipped at the purchaser's expense and risk. No charge for packing.

Shipping

All plants are packed with utmost care, and leave our hands in first class condition. We will NOT be responsible for results, as failures may be due to improper handling or unusual climatic conditions.

Parcel Post

All plants are sent special handling parcel post, unless shipment by express is requested. We do not prepay charges and a sufficient amount should be sent to cover. Any excess will be returned.

Order Early

and avoid the late spring rush. Hardy lilies may be shipped any time from the first of May to the end of August, but tender lilies not before June.

Inquiries

will be cheerfully answered, and as soon as we are able to do so.



1929 Catalogue of
Rare Water Lilies



RAISED AND FOR SALE BY

W. B. SHAW

KENILWORTH, D. C.

Water Lilies for A Garden

There are no flowers that are easier to grow than water lilies, and none that equals them in range of color and delicacy of perfume.

To grow water lilies successfully in a garden, there are three requisites—quiet water, open sunshine, and rich soil.

If one wishes to add to a garden the charm of water lilies, the simplest method is the introduction of a cement pool. If a carefully selected site be chosen, and the pool built to conform to the rest of the garden, one is sure to be charmed with results. The rectangular pool is the least expensive, but one with a natural outline is more artistic. In either case the pool should be at least two feet deep with sides slightly slanting outward at the top so that the formation of ice will not crack the cement. Always avoid the use of a coping (unless the garden be formal), allowing the grass to come directly to the edge of the water.

The simplest way to plant in a concrete pool is to provide boxes about two feet square by one foot deep, with rich soil. Cow manure is the best fertilizer, but commercial fertilizers can be used. Place one water lily root in each box, covering up to the crown of the plant. Then cover with an inch of sand or gravel to prevent discoloration of the water, and also to prevent the fish digging around the roots.

Hardy lilies will blossom in about six weeks from the time of planting, and will bloom from May until September. The water should be from nine to twelve inches over the crown of the plants. If tender water lilies be planted they will come to you with the ball of earth in which they have been started. They need only to be placed in the soil, just as you would report any plant, remembering that the richer the soil, the finer the flowers.

If it be desired to beautify a natural pond, one must place the roots in the soil at the bottom, being sure that they do not float up, placing stones on them if necessary to insure their permanence. If protected from water fowl or other depredators until established, they will then take care of themselves.

If one be lucky enough to have a slow running stream on his estate, nothing could be lovelier than water lilies naturalized in such a spot. Always remember to plant in the sunshine.

When winter comes, the water may be allowed to remain in the pool, if the formation of ice would not be greater than ten inches as in and around Washington, D. C., or the water may be drained off and the boxes or tubs covered with leaves, or boughs and litter to prevent the frost from reaching the roots.

In case one wishes to drain the pool and remove the boxes of lilies into a cellar, be careful that they do not become entirely dry.

In the case of tender lilies, the plants should be treated as annuals and be replaced each year, as the cost is not great and few people have the proper facilities for starting tender water lilies.

The use of marginal plants and sub-aquatics, adds much to the grace of a water garden. Arrow-head, pickerel weed with pure white and bright blue blooms, respectively, are good, while the yellow water poppy and dainty forget-me-not, the parrot's feather and water hyacinth, all have a particular charm of their own.

In any pool, large or small, a few fish are a necessary addition to eradicate the larvae of the mosquito.



Water Lily Pools

How to Make Them

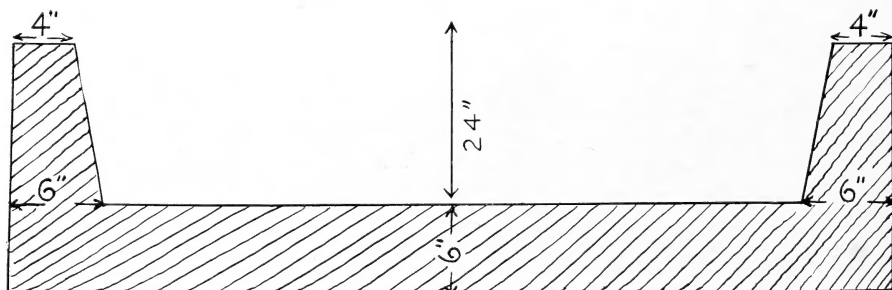
In building a cement pool, the first thing to think about is location. Put your pool in the sunshine; shady spots are attractive, but your lilies will not bloom. They need at least partial sun.

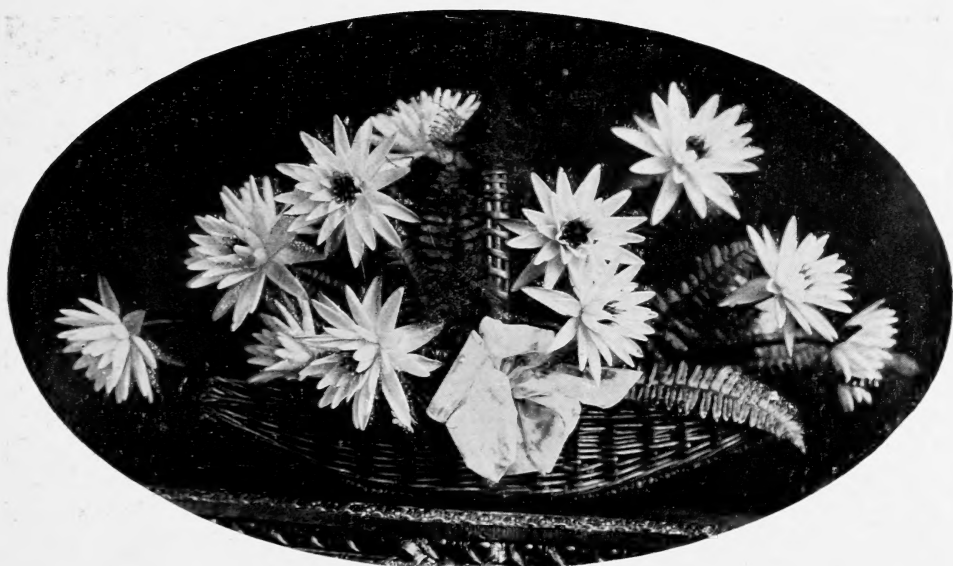
Next comes the size. Make your pool as large as you have room for, for if you put in a small pool, you will surely wish it larger by the time your water lilies come into bloom.

Decide then upon your location and size, and excavate to the depth of 2 feet, 6 inches, and tamp the soil until firm and level. Fill in the bottom to a depth of 6 inches with water-proofed cement mixture, using one part Portland Cement, 2 parts sand, 3 parts stone. Next, place a form made of 1-inch rough lumber, so that the wall will be 6 inches wide at the bottom and 4 inches wide at the top, using the inside of the excavation as the outside of the wall. (See sketch at bottom of this page.)

Pour into the form thus made, a rather wet mixture of the concrete as described and puddle well. If the pool is more than 6 feet long, some form of reinforcement (chicken wire is good) should be used, this being placed before the cement is poured, and extending from the bottom up into the sides to bind them together and prevent cracks. A smaller pool will not need reinforcement. The wet concrete should be wet down for several days, and it is best not to plant for about ten days.

A drain is an added convenience and if wished should be placed in position before pouring cement. If a drain is not used then the water may be siphoned off when cleaning the pool.





NYMPHAEA ROSE AREY.

New and Rare Hardy Nymphaeas

- Nymphaea Rose Arey.** A new lily of a brilliant coral pink color throughout. Flowers 5 to 6 inches across, standing well out of the water. The petals are narrow and numerous, and curiously incurved, making it a very distinctive blossom. The stem is brown, the stamens golden yellow. It is a most prolific bloomer, flowering from May 15 to September 1. See front cover...Price, Each \$3.00
- N. Attraction.** A true attraction. Flowers 6 to 7 inches across, of a deep garnet suffused with rose. Stamens dark orange red, tipped with brilliant golden yellow. Stem brown. Sepals green without, but white within, lightly touched with garnet. A very free and continuous bloomer and very desirable. See back cover...Price, 7.50
- N. Escarboucle.** The most striking water lily in our collection. The color is a brilliant crimson carmine, with orange-yellow center. The plant is a strong grower with a long blooming season. AttractivePrice, 10.00
- N. Mrs. Richmond.** The largest and most beautiful of our hardy water lilies. The blossom is perfect in form, with exquisite waxen petals of a delicate shade of violet rose. This water lily has the longest blooming season of any of the hardy plants.Price, 25.00

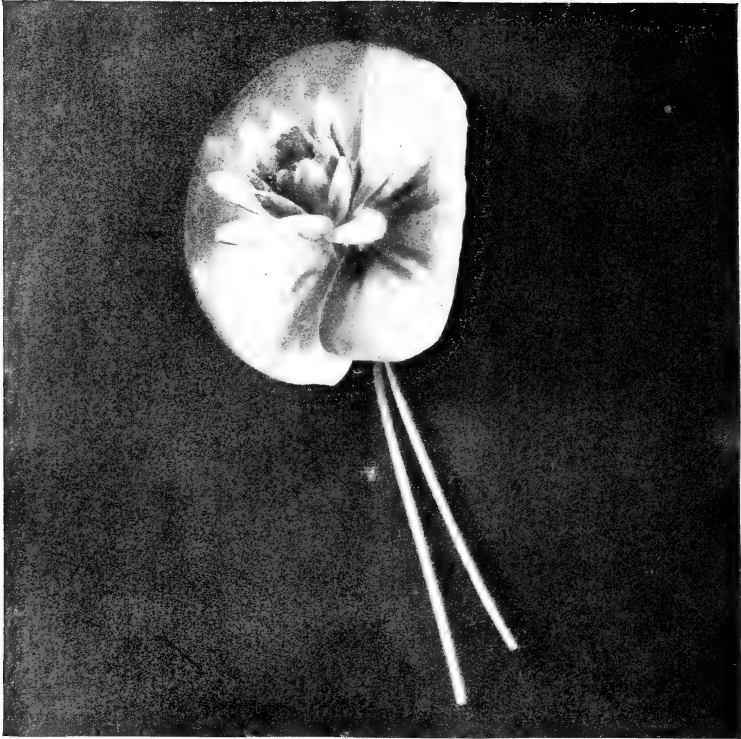


Hardy Water Lilies

- | | Each |
|---|----------------------|
| Nymphaea William Falconer. The most brilliant dark red hardy lily in cultivation. Flowers 5 to 6 inches across, of an intense bright garnet color | Price, \$5.00 |
| N. Gloriosa. A superb variety with flowers 4 to 6 inches across, of a deep carmine rose color. A free, continuous bloomer and a very desirable variety | Price, 5.00 |
| N. Arethusa. A free-flowering variety with large blooms of a brilliant crimson pink color. Desirable | Price, 5.00 |
| N. Robinsoni. Large floating flowers of a dark orange-red color. A free bloomer and should be in every collection | Price, 3.00 |
| N. Paul Hariot. A splendid variety with flowers of large size, canary yellow in color, shading into rich apricot as the flower grows older. An extremely desirable variety | Price, 4.00 |

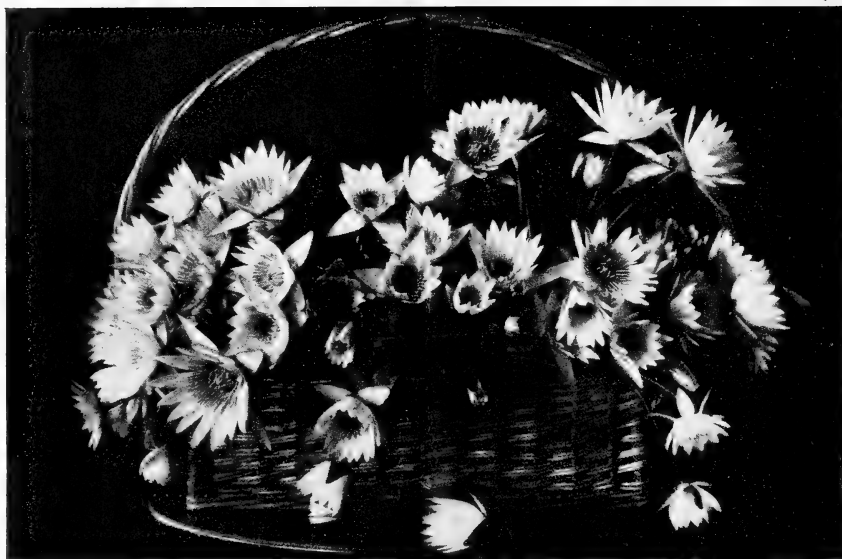
- Nymphaea Loose.** A beautiful large white lily, 5 to 7 inches across with a peculiarly delightful fragrance. Particularly desirable, as it is a free and continuous bloomer, the flowers opening earlier in the day than any other lily. One of the best whites.....Price, **\$1.50** Each
- N. Marliacea Chromatella.** A free and vigorous grower with flowers 4 to 6 inches across, of bright canary yellow. One of the bestPrice, **2.00**
- N. Marliacea rosea.** Flowers 4 or 5 inches across, of a deep rose color. One of the best for cut flowers.....Price, **2.50**





- | | | |
|--|----------------|---------------|
| N. James Brydon. An unusual flower of rosy crimson color, beautifully cup-shaped and of free-blooming habit. The foliage is strikingly handsome. A magnificent variety..... | Each
Price, | \$3.00 |
| N. Marliacea albida. Flowers white, large and quite fragrant. A strong grower and a continuous bloomer..... | Price, | 2.00 |
| N. odorata. This is the fragrant pond lily of the Northern States. Flowers white, 3 to 5 inches across, with yellow stamens... | Price, | .25 |
| N. odorata gigantea. The native lily of the South Eastern States. Vigorous grower with flowers measuring from 5 to 7 inches across. Pure white | Price, | .75 |
| N. odorata Eugenia DeLand. Flowers 5 to 6 inches in diameter, star-shaped with many petals of a deep rosy pink color. Very fragrant. A vigorous grower and a desirable variety..... | Price, | 1.50 |
| N. odorata W. B. Shaw. Flowers large, of a rich rose pink color and very fragrant. A strong grower and continuous bloomer. | Price, | 1.25 |

Nymphaea odorata Luciana. An exquisite variety. Flowers 4 to 5 inches across; pure rose pink, with delightful fragrance...	Each Price,	\$1.00
N. odorata rosea. The Cape Cod pond lily. Flowers 4 or 5 inches across; color a beautiful rose pink, very fragrant.....	Price,	1.00
N. Mary Exquisita. A sweet-scented variety with flowers 5 to 6 inches across, of a beautiful pink color. A free and continuous bloomer and quite desirable	Price,	1.00
N. Helen Fowler. A seedling with fragrant flowers 3 to 5 inches across, of a very deep pink color. A strong grower and a continuous bloomer. A desirable variety.....	Price,	1.00
N. tuberosa rosea. Flowers of an exquisite shade of pink, 4 or 5 inches across, standing well out of the water. Desirable..	Price,	1.00
N. tuberosa Richardsoni. Flowers white, 6 to 8 inches across, forming with its numerous petals a perfect globe when fully open. The most beautiful white lily. Fragrant.....	Price,	1.50
N. tuberosa maxima. Flowers medium size, cup-shaped, pure white with strong fragrance	Price,	.50
N. alba (English). The well-known white lily from Europe. Flowers 4 to 5 inches across. A free bloomer and strong grower...	Price,	.50
N. Mexicana. Flowers 3 or 4 inches across, bright yellow. A rather shy bloomer in this climate.....	Price,	1.00
N. Gladstoniana. Flowers dazzling white, 6 to 8 inches across, petals concave and broad. A free and continuous bloomer and one of the finest white lilies in cultivation.....	Price,	2.00
N. Pink Opal. A new flower with exceptional form and coloring, very deep pink, with an attractive rounded bud. Lasts longer after being cut than any other lily.....	Price,	2.00
N. Evangeline. A new Kenilworth production of much merit, similar in growth and habit to Eugenia De Land, but a freer bloomer. The blossoms are an exquisite pearly flesh color. We have had this plant in our garden for several years, and consider it eminently satisfactory	Price,	1.00
N. Dawn. A dazzling white lily with sepals tinted pink. The flower is large with the exquisite fragrance of the wild odorata of the North. A very strong grower, consequently not suitable for tub culture	Price,	1.00
N. Sioux. One of our most desirable yellow-tinted flowers. The blossoms are large, of a beautiful clear yellow, shading red as the blossom grows older. The foliage is particularly fine, being beautifully blotched with brown	Price,	3.00



Tender Day-Blooming Water Lilies

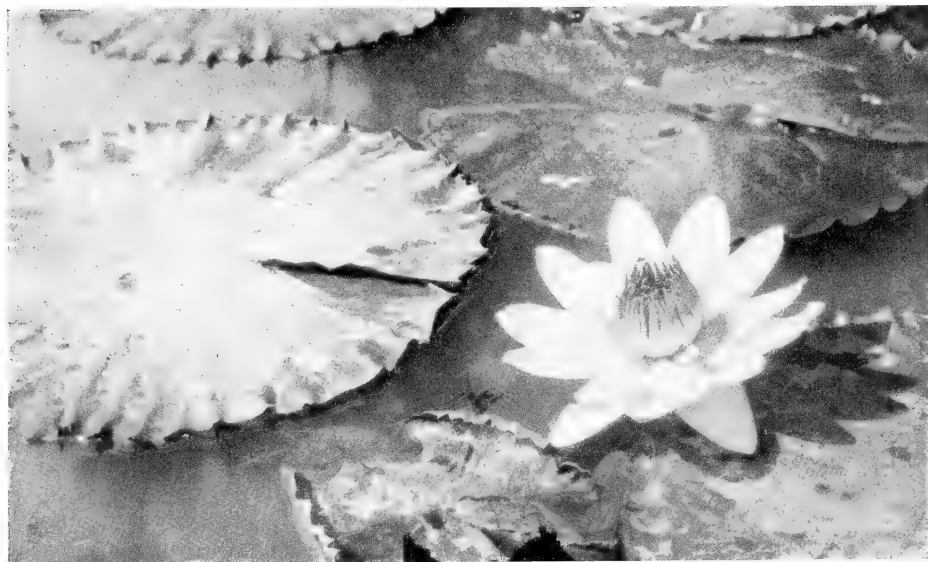
- Nymphaea. Mrs. Edward Whitaker.** The largest of the day-blooming tropicals. The color is a lovely lavender blue. It is a distinct and charming variety.....Price, **\$3.00**
- N. Zanzibariensis azurea.** Similar to the above, but with the flowers open wider, and are of a lighter blue color.....Price, **2.00**
- N. Zanzibariensis rosea.** Flowers rose, of various shades, otherwise like the abovePrice, **2.00**
- N. Izetta Jewel.** A new hybrid of Gracilis, with rich blue flowers, retaining all the grace of its parent. The most floriferous of all the bluesPrice, **2.00**
- N. Pennsylvania.** A vigorous variety with very large, rich blue flowers. A free bloomer and a very desirable plant.....Price, **2.50**
- N. Pulcherrima.** A beautiful variety with light blue flowers 8 to 10 inches across; yellow stamens. A free and continuous bloomer and very desirablePrice, **2.00**

- Nymphaea coerulea. (Syn. Stellata.)** Flowers 4 to 6 inches across, pale blue, star-shaped and fragrant. A free bloomer and easily raisedPrice. **Each \$1.50**
- N. Panama-Pacific.** A new variety with flowers of a distinctly new shade. Reddish purple with yellow stamens. A perfect beauty. Price, **3.00**
- N. August Koch.** An attractive, free-flowering plant with large blossoms of a beautiful rosy lilac shade. One of the best of the newer introductionsPrice, **2.50**

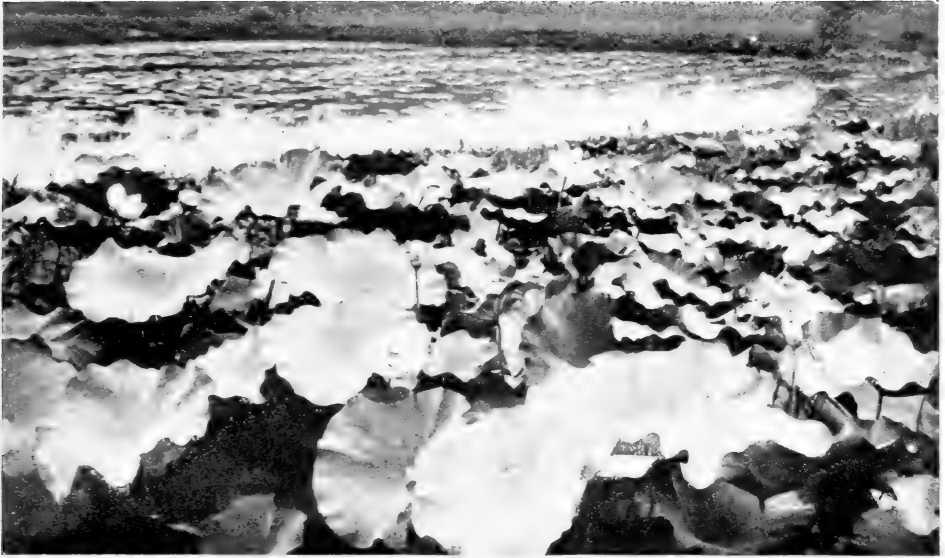


Tender Night-Blooming Water Lilies

	Each
Nymphaea Devoniensis. Flowers 8 to 10 inches across, of a bright rosy red color, borne on stout stems well above the water. The plant blooms very freely and is one of the most desirable varieties	Price, \$1.50
N. rubra rosea. One of the best red night bloomers in cultivation. Flowers 8 to 10 inches across, rosy carmine; petals broad at base, but pointed	Price, 1.50
N. O'Marana. Flowers of the largest size; petals of a reddish pink with nearly white stripes up the center. A vigorous grower and a free-flowering variety	Price, 1.50
N. Bisseti. Flowers 8 to 10 inches across, of a beautiful rose-pink color; petals broad and slightly concave, forming a cup-shaped bloom. Free in flower	Price, 2.00
N. dentata magnifica. Flowers 8 to 12 inches in diameter, creamy white, with very wide petals slightly concave, giving the bloom a cup-shaped appearance. Stamens pure yellow	Price, 2.50
N. Kewensis. One of our most attractive night lilies. Flowers exquisite shade of pink, borne in profusion	Price, 1.50



NYMPHAEAE BISSETI.



NELUMBIUMS.

Nelumbiums

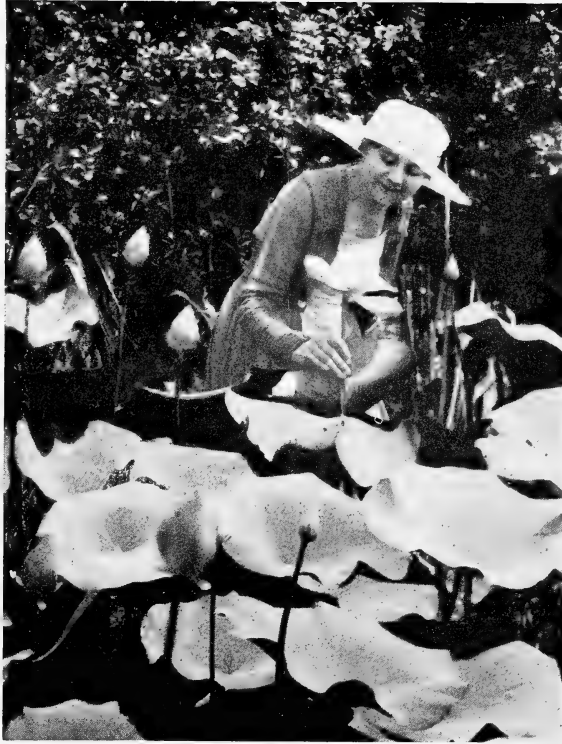
This class of plants is among the most worthy of cultivation, being about the most decorative, as well as the most interesting plant to the Aquatic grower. The foliage itself, being of a peculiar bluish green, covered with a light bloom like a peach, lends enchantment to any garden, aquatic or otherwise. The flowers are very large, exquisitely tinted, and with a delicate, yet oriental perfume.

Nelumbium speciosum (Egyptian Lotus). The easiest of all Lotus Each
to grow. The flowers are large, of a deep rose color, shading to
cream at base of petals.

Dormant tubersPrice, **\$2.00**

Nel. Shiroman. This is considered by many the most beautiful variety
of Lotus. The flowers are large, pure white, and very double,
with a splendid perfume.

Dormant tubersPrice, **5.00**



Nelumbium Pekinensis rubrum. This is the best dark-colored variety. Each
 The flowers are very large, of a rosy carmine color. The foliage is large and handsome. Very free flowering.

Dormant tubersPrice, **\$3.00**

Nel. Pekinensis rubrum plenum. Identical with the preceding, but with flowers very double, making it an extremely showy plant.

Dormant tubersPrice, **5.00**

Nel. luteum (American Lotus). A superb variety, with yellow flowers. Indigenous to the Western and Southern States.

Dormant tubersPrice, **2.00**

Since collections of plants seem somehow to appeal these days as an easy way to order, we have decided to arrange a few collections of water lilies.

These collections have been well considered, and in every case the blending of colors has been thought out, so that there will be striking contrasts, yet harmonious combinations.

Collections of Hardy Varieties

Collection A—W. B. Shaw (shell pink)	\$1.25
Helen Fowler (deep pink)	1.00
Albida (best white)	2.00
	<hr/>
	\$4.25
	Special Collection Price \$3.00
Collection B—Marliacea rosea (rose color)	\$2.50
Marliacea Chromatella (canary yellow).....	2.00
Marliacea Albida (white)	2.00
	<hr/>
	\$6.50
	Special Collection Price \$5.00
Collection C—Gladstoniana (large white)	\$2.00
Pink Opal (deep pink)	2.00
Gloriosa (carmine rose)	5.00
	<hr/>
	\$9.00
	Special Collection Price \$7.00
Collection D—Attraction (carmine)	\$7.50
Gladstoniana (white)	2.00
Marliacea rosea (rose)	2.50
Marliacea Chromatella (canary yellow).....	2.00
	<hr/>
	\$14.00
	Special Collection Price \$10.00

Collection E—Attraction (carmine)	\$7.50
Wm. Falconer (rich garnet)	5.00
Albida (White)	2.00
Marliacea rosea (rose)	2.50
Pink Opal (deep pink)	2.00
W. B. Shaw (shell pink)	1.25
Egyptian Lotus (pink)	2.00

\$22.25

Special Collection Price \$18.00

Collection of Hardy and Tender Varieties

Pink Opal (deep pink)	\$2.00
Albida (white)	2.00
Chromatella (canary yellow)	2.00
Rubra rosea (ruby night bloomer; tender).....	1.50
Robinsoni (orange red)	3.00

\$10.50

Special Collection Price \$8.00

Pennsylvania (lovely blue; tender)	\$2.50
Chromatella (canary yellow)	2.00
Pink Opal (deep pink)	2.00

\$6.50

Special Collection Price \$5.00

With these collections can be combined any of the sub-aquatics listed on page 17, all of which should be planted in shallow water—plant in pots or boxes and raise to the surface so that only the roots are submerged—Many charming effects can be secured by the use of these lovely shallow water plants which combine so gracefully with the water lily.

Aquatics for Marginal and Shallow Water Planting

Sagittaria Latifolia (Arrow-head). Graceful sub-aquatic, with arrow shaped leaves and snow white blossom. Grows 1 to 2 feet high	Each Price,	\$.25
Typha Latifolia (Cat-tail). Suitable for any pool not too small. Roots should be confined.	Price,	.25
Limncharis Humboldtii (Water Poppy). Floating oval leaves and bright yellow blooms make these attractive, though they are tender and can only be handled outdoors in warm weather.	Price,	.25
Myriophyllum proserpina coides (Parrot's Feather). Graceful feathery green branches of this plant add to a straight cold looking margin	Per Bunch, Price,	.25
Eichornia crassipes major (Water Hyacinth). This is a floating plant with glossy green leaves and trusses of the most lovely orchid-like flowers of light lavender. Most desirable.	Price,	.25
Zizania Aquatica (Wild Rice). Ornamental grass, easily grown in shallow water. Graceful and desirable.	Price,	.25
Myosotis palustris (Water Forget-me-not). Most attractive of our sub-aquatic plants for a border. Perfectly hardy and with myriads of tiny light blue flowers exactly like our garden forget-me-not	Per Bunch, Price,	.25
Saururus cernuus (Lizard's Tail). Small plant about 1 foot high, growing directly in the water with white flowers in long recurved spike	Price,	.25
Pontederia Cordata (Pickerel Weed). A graceful plant with glossy green leaves and spikes of bright blue flowers. Grows directly in the water	Price,	.25

Any of the above aquatics are a marked addition to the water garden, giving height and grace to an otherwise necessarily flat arrangement.



L. HELEN FOWLER,
PROPRIETOR W. B. SHAW AQUATIC GARDEN

Irises

Of all the flowers that we grow in our gardens, the iris seems to lend itself most gracefully as a companion to our water lilies. So I am listing a few of the better iris that I have for sale, hoping that every one who tries them, will have the same thrill that I have experienced in growing mine. The shipping season for all of these iris is from June 15th to September 1st, as we do not handle them during the blooming period.

GERMAN IRIS

	Each
I. Archeveque , purple violet	Price, \$.35
I. Arnols , rosy bronze	Price, .25
I. Albert Victor , blue lavender	Price, .25
I. Eldorado , purple and gold	Price, .35
I. Florentina alba , one of the best whites.	Price, .20
I. Fairy , white, tinted pale blue, fragrant.	Price, .35
I. Flavescens , soft yellow	Price, .20
I. Golden Bounet , orange, marked brown	Price, .20
I. Isolene , old rose and copper, fine	Price, .35
I. Kharput , violet purple	Price, .25
I. Kochii , claret purple	Price, .35
I. Lohengrin , rich lilac	Price, .35
I. Mme. Neubronner , rich orange yellow	Price, .25
I. Mme. Cherau , white frilled with lavender.	Price, .25
I. Neglecta , lavender and purple	Price, .25
I. Niebelungen , fawn and violet purple	Price, .35
I. Princess Victoria Louise , yellow and plum	Price, .50
I. Purple King , full purple	Price, .25
I. Rubella , crimson purple	Price, .25
I. Rose Unique , violet rose	Price, .50
I. Rhein nixe , white, with falls of raspberry purple.	Price, .35
I. Wyomissing , creamy white and soft rose	Price, .35
I. Arlington , Standards—rosy lavender, Falls—reddish violet. Large and beautiful	Price, 3.00
I. Ballerine , Standards—light-blue violet, Falls—a deeper shade. An exquisite flower	Price, 2.00
I. Cecile Minturn , Uniform soft shade of cattleya rose. Very desirable	Price, 1.25
I. Lent A. Williamson , Standards—bright lobelia blue, with fawn shadings. Falls—rich velvety purple. Beautiful and distinctive	Price, 1.25

MISCELLANEOUS IRIS

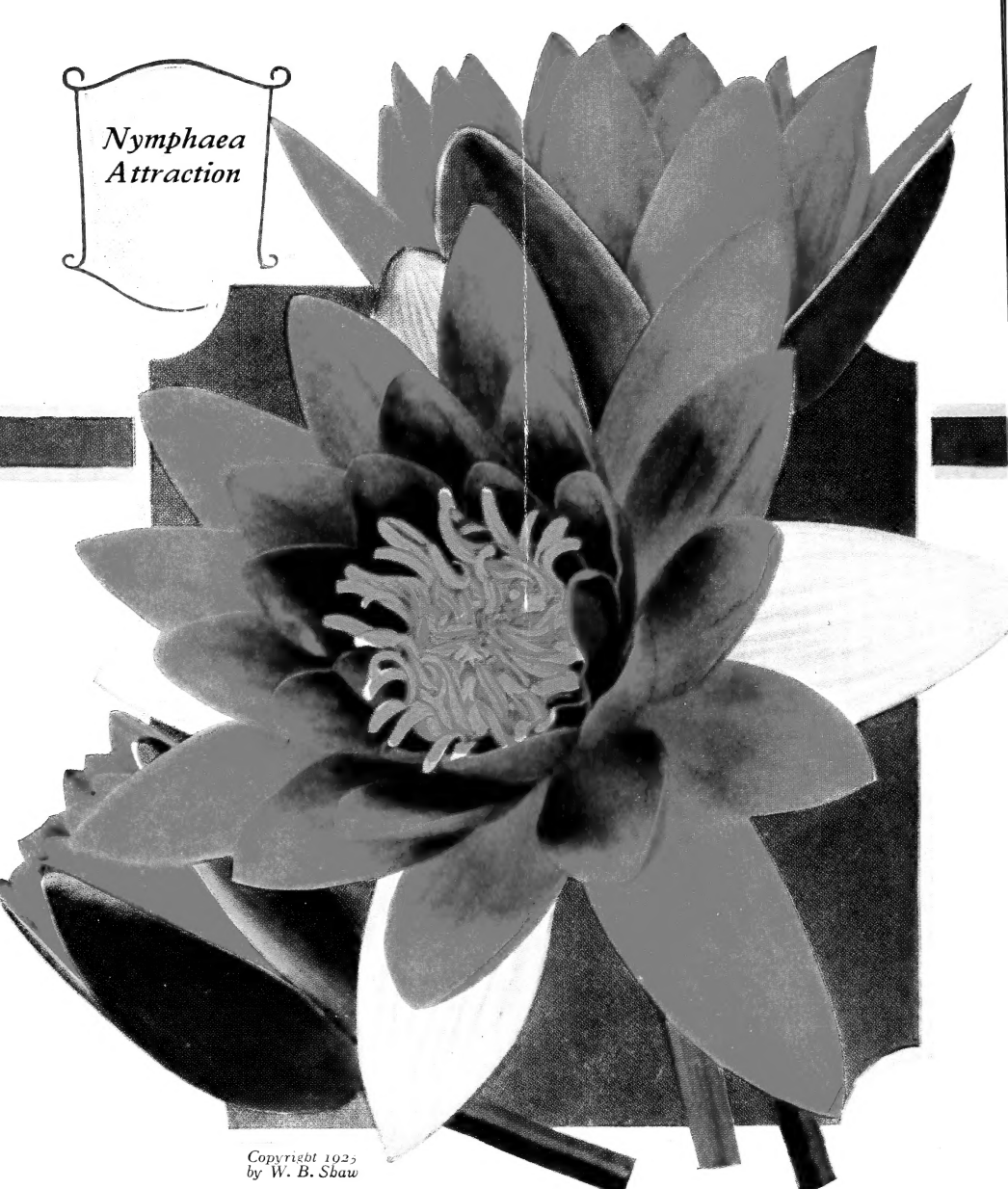
I. versicolor , lavender blue, suitable for damp places.	Price, .25
I. pseudacorus , common yellow water flag.	Price, .25
I. Orientalis , rich violet blue, very early.	Price, .25
I. pumila , royal purple, and dwarf	Price, .25



ONE OF THE BEAUTIFUL SPOTS IN THE SHAW WATER GARDENS,
KENILWORTH, D. C.



FRONS OF BYRON S. ADAMS
WASHINGTON, D. C.



*Nymphaea
Attraction*

Copyright 1925
by W. B. Shaw

Rare Water Lilies

W. B. SHAW

KENILWORTH, WASHINGTON, D. C.