

Historic, archived document

Do not assume content reflects current scientific knowledge, policies, or practices.

62,39

LITTON
REGISTERED
1892
Culture.

1892



RAWSON'S

AUTUMN

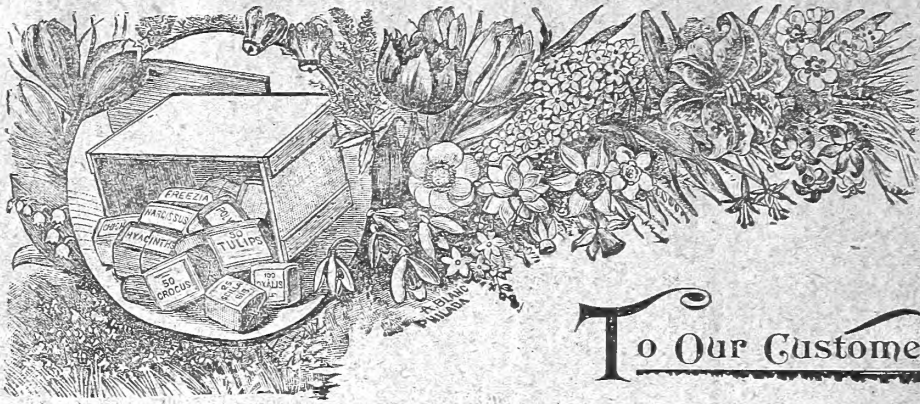
Catalogue
OF

BULBS

AND
SMALL FRUITS

W.W. RAWSON & Co.
34 So. MARKET ST. BOSTON





To Our Customers.

The Quality of our bulbs are of the best, having spared neither time nor expense in selecting them from the best growers in Holland, and our prices are as low as first quality bulbs can be sold.

Shipments can be made in September with nearly all the bulbs, except a few sorts that are not sufficiently matured, and cannot be shipped until November. Among the late sorts, we mention the following, viz.: Iris Kämpferi, Lily of the Valley, Lilies. When orders for these are included with orders for earlier sorts, it is our custom to forward such as are ready, and make a separate shipment of the later sorts. Should our customers prefer to have us make but one shipment, we will hold all, and send when later bulbs are received.

Please order early, as you can then get the varieties desired, and better bulbs, being perfectly sound, while if left until late, there is always a tendency towards reduced vitality, when not so good results are obtained.

The bulbs should be placed in the ground as early as possible after October 1st, to obtain the best results. However, they may be planted as late as they can be got into the ground.

Postage Prepaid on bulbs to all parts of the United States at single and dozen prices quoted, except when noted.

Charges on all parcels by express to be paid by the purchaser, unless by special agreement.

Remittances can be made in current Bank Bills, Post-Office Orders, Registered Letters, or by draft on New York or Boston. Post-Office Orders are preferable to all others, as there is no possibility of loss; but when these cannot be obtained, Registered Letters are surest to reach their destination. *We will guarantee the safe arrival* of all packages when orders are accompanied with a draft on New York, Registered Letter, or Post-Office Order.

In giving orders please state explicitly by what conveyance they are to be forwarded. When no particular route is designated, we forward according to the best of our judgment.

SPECIAL NOTICE TO CORRESPONDENTS.

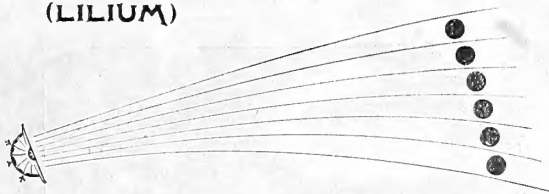
PLEASE be particular and give your NAME, POST-OFFICE ADDRESS, COUNTY AND STATE IN FULL, *distinctly written*. We are frequently in receipt of orders deficient in some one of these important requisites, and very frequently from prominent men of business, who not only forget to sign their names, but omit their place of residence, often causing a delay of weeks in the execution of their orders, greatly to their inconvenience, as well as our own.

If any article received is not perfectly satisfactory, immediate notice must be given, as complaints cannot afterwards be entertained.

Should you not require this Catalogue, kindly place it in the hands of a friend who cultivates flowers.

THE LILY.

(LILIUM)



Lilium Auratum.

On this gorgeous, beautiful, and easily cultivated class of plants, we have paid particular attention, and would invite special notice to our very complete and select collection. No class of plants capable of being cultivated out-of-doors, possesses so many charms; rich and varied in color, stately and handsome in habit, profuse in variety, and of delicious fragrance, they stand prominently out from all other hardy plants, and no herbaceous border, however select, should be without a few of its best sorts. With a well-selected collection, *Liliums* may be had in bloom from June to October.

CULTURE OUT-OF-DOORS.

They should be planted in the fall, from October 1st as long as the soil can be worked; and in spring, as soon as the frost is out of the ground, until the 1st of May; the earlier the better. In the Southern States, where the frost does not interfere, they can be planted from October to March. Plant in good, loamy soil, enriched with very rotten stable manure. Plant about four inches deep, and during the winter it is advisable to cover the surface of the bed, with a thin layer of manure, which will not only afford a slight protection to the bulbs, but will materially enrich the soil. In spring, the manure may be removed, or dug in between the rows.

The bulbs should not be disturbed oftener than once in three years, as established patches bloom much more profusely, than if taken up and divided annually. The flowers will continue to bloom much longer if shaded from the noon-day sun.

CULTURE IN POTS.

In November and December the bulbs should be procured, and at once potted, using good mellow soil, of about equal parts of fibry loam and peat, or decayed leaves may be used instead of peat, where this cannot easily be obtained. The soil should be nicely broken up, and well intermixed with about one-sixth its weight of any sharp, clean sand. In potting, the soil should be made *close* by being *firmly*

pressed together. The pots should then be placed in a cold frame or pit, under the stage of a green-house, or a sitting-room where there is no fire; or, indeed, any other cold situation not exposed to wet, will answer perfectly for the winter months. No water should be given at this season, nor until the bulbs have fairly started into growth.

The number of bulbs to be put into one pot must depend upon the taste and the convenience of the cultivator. From four to six good bulbs, in an eleven-inch pot, produce a display of bloom almost unequalled. Single bulbs will, however, flower well, in even six-inch pots.

GENERAL LIST OF LILIES.

EMBRACING ALL THE MOST DESIRABLE VARIETIES.

All *Liliums* marked * require 5 cents each additional for postage if sent by mail; all others sent free at prices named.

Following the description of each, we have indicated the height and time of flowering. None of the varieties will be ready for shipment until the last of October, except *L. Harrisii* and *Candidum*, which are ready in September.

***Lilium Auratum** (Golden-Banded Queen of Lilies).— This magnificent variety has become one of the standard favorites of the flower-garden, and is considered by many the finest of all Lilies. The immense blooms, measuring nearly a foot in width when fully expanded, are produced in great profusion, and are deliciously fragrant. 25 cents each; \$2.50 per dozen. (2 to 5 feet.) June to October.

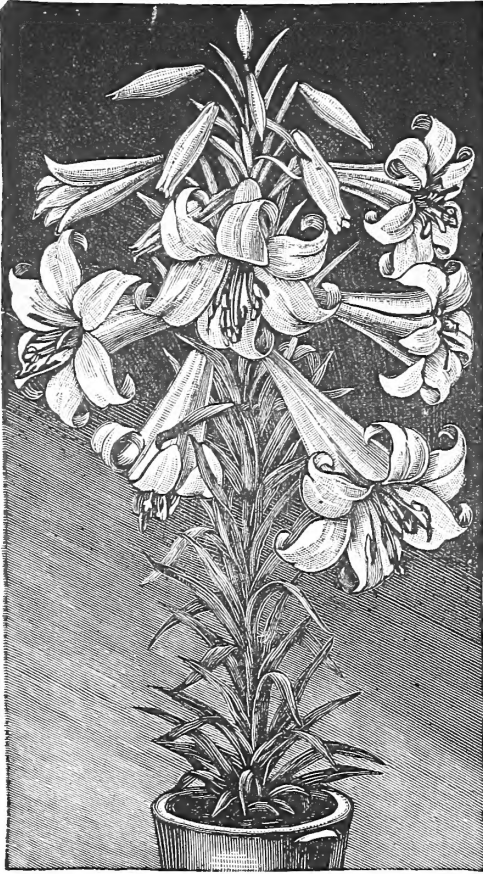
***Batemannia**.— A Japanese Lily, growing from 3 to 4 feet in height, and having richly colored, unspotted flowers, of a bright apricot tint; most desirable. 25 cents each; \$2.00 per dozen. (3 to 4 feet.) July.

Canadense.— Our bell-shaped, native Lily; drooping yellow and red flowers. 15 cents each; \$1.25 per dozen. (3 feet.) July.

— **rubrum**.— Vigorous grower; flower rich dark red. 15 cents each; \$1.25 per dozen. (3 feet.) July.

***Candidum**.— The well-known hardy Easter Lily; snow-white, fragrant blossoms; one of the best varieties for forcing, or for garden culture, and an established favorite. 10 cents each; \$1.00 per dozen. (3 to 4 feet.) June.

Chalcedonicum— Intensely scarlet recurved blossoms, resembling a Turk's cap. 30 cents each. \$3.00 per doz. (3 feet.) June.



Lilium Harrisii.

Concolor.—Graceful foliage, supporting dazzling crimson star-shaped flowers, upright, and somewhat similar to *Pulchellum*, but still very distinct. 20 cents each; \$1.50 per dozen. (1 foot.) July.

Elegans (Thunbergianum).—These are all early, flowering in June. They range from 4 inches high to 4 feet, with the most varied collection of colors; the flowers are always upright and cup-shaped, although the forms are innumerable, giving beautiful effects planted in clumps or lines. Mixed, 15 cents each; \$1.50 per dozen. (1 to 2 feet.) June.

***Excelsum (Isabellinum)**—The stately form, beauty of color, and delightful fragrance of this variety, have made it a great favorite wherever known. It grows from 5 to 6 feet high, and produces from 6 to 12 nodding Lilies, of a delicate light-buff color. 50 cents each; \$5.00 per dozen. (4 to 6 feet.) June and July.

Leichtlinii.—A beautiful Japanese species, of neat and elegant habit; the flowers are pure canary-yellow, with crimson spots; a real acquisition. 50 cents each. (3 to 5 feet.) August.

Lilium pulchellum.—A fitting companion to *Tenuifolium*, blooming at the same time. The upright flowers spread their petals at nearly right angles, so that, when in full bloom, a bed of them presents a solid mass of rich, bright-crimson flowers. The shape is most remarkable. The bulbs are as vigorous and hardy as a Tiger Lily. 30 cents each. \$3.00 per dozen. (1 to 2 feet.) June and July.

Lilium Harrisii.—In general appearance, and more especially in the shape of its flowers, this Lily resembles the old, well-known *L. longiflorum*, upon which it is a decided and marked improvement in every way. The flowers are large, trumpet shaped, pure waxy-white, symmetrically formed, as beautiful and chaste as anything can be imagined, lasting from ten days to two weeks. The ends of the petals are recurved, giving it a very graceful appearance. Its fragrance is delightful. It is perfectly hardy, and is one of the finest plants for the garden border, shrubberies, and cemetery decoration. Price, 1st size, 25 cents each, \$2.50 per dozen; 2d size, 15 cents each, \$1.50 per dozen.

***Lilium lancifolium**, known also as **Speciosum**.—Are probably, as a whole, the most desirable section of Lilies; the varieties are distinct, graceful, beautiful, and free bloomers. They always grow and flower, and require no special treatment. (2 to 4 feet.) August.

***Lilium lancifolium album præcox.**—Color pure white, with a slight rose tint on the ends of the petals; form perfect; petals more reflexed than in the other varieties of the species; the fringe in the centre of the flower is very long and fine, giving it an exquisite appearance; it is perfectly hardy. 35 cents each.

***—album.**—Pure white, and very fragrant. 30 cents each; \$3.00 per dozen.

***—monstrum album.**—An interesting and distinct variety, with a broad, flat stem; pure-white flowers; very floriferous. 20 cents each; \$2.00 per dozen.

***—roseum.**—White, spotted with rose. 20 cents each; \$2.00 per dozen.

***—rubrum.**—Rose spotted with crimson. 20 cents each; \$2.00 per dozen.

***—punctatum.**—White, spotted and suffused with light rose. 40 cents each; \$4.00 per dozen.

Longiflorum.—The well-known, beautiful, snow-white fragrant Lily; fine for forcing, and handsome in the garden. 20 cents each; \$2.00 per dozen. (1½ to 2 feet.) June and July.

Lilium Tenuifolium.—One of the most charming of all Lilies; no words can adequately describe the elegant appearance of the flower and foliage. The wax-like petals are beautifully reflexed; the dazzling vermilion flowers, suspended fairy-like on graceful stems above and among the glossy, narrow foliage, are simply exquisite. They are so bright that they attract attention at a great distance, and, blooming in early spring, enliven the surroundings when flowers are scarce. The bulbs are perfectly hardy, and grow very easily. Plant them in loose, sandy soil; avoid a place where water stands during the winter. 25 cents each; \$2.50 per dozen. (1 to 2 feet.) June and July.

Martagon (Turk's Cap).—Various colors, mixed. 15 cents each; \$1.25 per dozen. (2 feet.) June and July.

Superbum.—The best of our native varieties; when grown in rich soil, will frequently reach a height of six feet, and will produce upwards of thirty flowers of a yellowish-red color. July. 15 cents each; \$1.50 per dozen.

***Tigrinum, fl. pl. (Double Tiger Lily).**—This is a plant of stately habit, growing from four to six feet high; foliage dark green, very long, bearing an immense number of double, bright orange-red flowers, spotted with black. 20 cents each; \$2.00 per dozen. (3 to 5 feet.) August.

***Tigrinum (Tiger Lily).**—Orange-salmon spotted black. 15 cents each; \$1.50 per dozen. (3 to 5 feet.)

HYACINTHS.

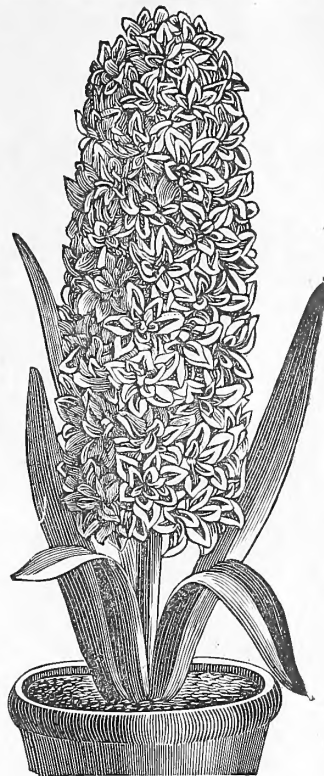
THESE are well-known favorites, easily grown, fragrant, and adapted to cultivation in pots and glasses in the house or in beds, edgings, or in the open air. They grow freely in almost any medium capable of retaining moisture, and will generally produce as fine spikes of bloom when grown in sand, moss, or water, as when planted in the richest compost.

TIME OF PLANTING.

Select such as show a disposition to start, for the first planting, say about the middle of September. Successive plantings may be made fortnightly until the first of January. The first plantings will then be in bloom about Christmas, and the last in May. They may be forced to flower at Christmas; but the more slowly the flowers are developed the finer in the end they will be.

CULTIVATION IN BEDS.

The Hyacinth will grow well in any good garden soil; but a light, rich soil will suit it best, and it should be effectually drained. It is advisable to plant early, and to plant deep. If a rich effect is required, the bulbs should be six inches apart, but a good effect may be produced by planting nine inches apart. The time of blooming may be, to some extent, influenced by the time and manner of planting; but no strict rules can be given to suit particular cases. Late planting and deep planting both tend to defer the time of blooming; but there will not be a great difference in any case, and, as a rule, the late bloom is to be preferred, because less liable to injury from frost. The shallowest planting should ensure a depth of three inches of earth above the crown of the bulb; but, generally speaking, they will flower better, and a few days later, if covered with full six inches of earth over the crowns when planted. There is no protection so effectual as dry leaves or straw.



Double Hyacinth.

CHOICE NAMED DOUBLE HYACINTHS.

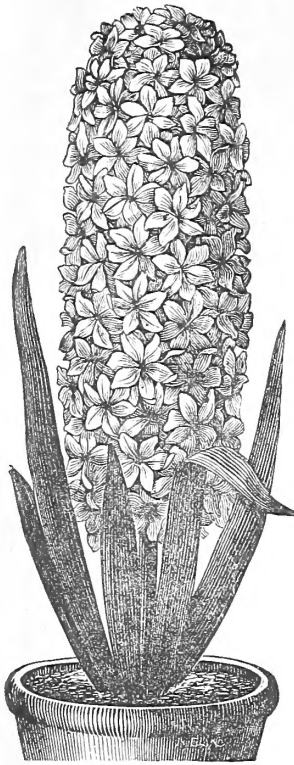
If desired by mail, add 15 cts. per dozen for postage.

| RED (of various shades). | | Each. | WHITE (of various shades). | | Each. |
|---|--|--------|--|--|--------|
| Acteur, rose, shaded with deep pink, very double, | | \$0.10 | *A la Mode, pink eye, fine truss, | | \$0.15 |
| Alida Catharina, deep rose, handsome truss, | | 20 | *Anna Maria, blush, neat bells, with violet centre, | | 15 |
| Bouquet Royal, delicate rose, pink eye, very double, handsome truss, | | 15 | Grand Monarque de France, white shaded, very fine truss, long, graceful bells, | | 20 |
| *Bouquet Tendre, deep red, finely proportioned truss, | | 15 | Grand Vainquier, pure white, large bells, good truss, | | 25 |
| *Comtesse de la Coste, delicate rose, purple eye, very double, | | 20 | *Grootvorstin, extra fine large spike, pure white, | | 15 |
| Cœur fidele, red, with dark centre, | | 15 | La Tour d'Auvergne, pure white, large spike, | | 20 |
| Czar Nicholas, pure rose, bells and spike large, | | 15 | La Virginite, blush white, good spike, | | 15 |
| General Ziethen, light red, dark stripe, | | 15 | La Vestale, pure white, dwarf habit, | | 15 |
| Grootvorst, delicate blush, very double, truss large, compact, and beautiful, | | 15 | Lord Castlereagh, fine white, purple eye, | | 20 |
| *Le Grand Conquerant, bright rose, dark centre, extra fine truss, | | 20 | *Miss Kittie, pure white, purple eye, good truss, | | 20 |
| Lord Wellington, delicate light rose, very double, truss large compact, and handsome, | | 20 | Ne plus ultra, purple eye, large bells, | | 15 |
| *Maria Louisa, fine red, good, full truss, | | 15 | Passe Virgo, fine, purple eye, | | 15 |
| Princess Royal, dark red, purple eye, | | 15 | *Prince of Waterloo, pure white, large bells, | | 20 |
| *Prince of Orange, bright pink, striped carmine, | | 20 | Prince William Frederick, large bells, fine truss, | | 15 |
| Queen Victoria, fine salmon rose, | | 15 | *Pyrene, pure white tipped with bright green, | | 15 |
| Sans Souci, very deep crimson, | | 20 | *Triumph Blandina, waxy, rosy, white, long, | | 25 |
| YELLOW (of various shades). | | | BLUE (of various shades). | | |
| *Bouquet d'Orange, reddish yellow, short truss, | | 25 | *Blokberg, beautiful, clear porcelain, large bells, | | 15 |
| Cresus, pink eye, very double, small, neat truss, | | 20 | Bride of Lammermoor, fine lilac, | | 15 |
| Goethe, cream colored, very double, fine truss, | | 15 | Envoye, porcelain, blue, fine form, | | 15 |
| Heroine, fine yellow, green tips, | | 25 | Garrick, deep lilac blue, long spike, | | 15 |
| Jaune Supreme, fine deep yellow, | | 25 | *General Antink, dark porcelain, shaded lilac, | | 15 |
| La Favorite, delicate lemon yellow, good form, | | 25 | *Grand Sultan, delicate blue, good truss, early, | | 15 |
| L'Or Vegetal, fine yellow, good form, | | 20 | Madame Marmont, fine marbled light blue, | | 20 |
| Ophir, fine straw color, large double bells, | | 20 | Mignon de Dryfhout, bright porcelain, compact, | | 20 |
| | | | *Othello, brilliant silky violet black, distinct and fine, | | 20 |
| | | | *Passetout, clear porcelain, moderate spike, pretty, | | 25 |
| | | | Pasquin, delicate porcelain, violet eye, good spike, | | 20 |
| | | | *Prince of Saxe Weimar, rich purplish blue, | | 15 |
| | | | Van Speyk, light lilac blue, extra large flowers, | | 25 |

Price, per dozen, \$1.75; selected from varieties of red, white, and blue. Selected from yellow, \$2.25 per dozen.

CHOICE NAMED SINGLE HYACINTH.

If desired by mail add 15 cts. per dozen for postage.



Single Hyacinth.

RED (of various shades).

| | Each. |
|--|--------|
| Amy, bright scarlet, long, compact truss, | \$0 10 |
| Acteur, blush, with pink stripe, long tube, large bells, | 15 |
| Diebitsch Sabalkansky, brilliant carmine, | 15 |
| Fabiola, delicate pink, carmine striped, | 20 |
| Jenny Deans, extra dark single crimson, very fine, | 25 |
| Jenny Lind, fine red, good truss, | 15 |
| L'Amie du Cœur, dark red, moderate truss, | 15 |
| Macaulay, striped carmine, extra fine, | 15 |
| Madame Hodson, delicate pink, striped deep red, | 15 |
| Mars, fine deep red, green tips, | 20 |
| Norma, delicate satin pink, very large bell, | 15 |
| Princess Charlotte, beautiful pearl, very rare, | 15 |
| Princess Clothilde, bright carmine red, single truss, | 20 |
| Solfaterre, orange scarlet, light centre, very distinct, | 20 |
| Sultan's Favorite, blush shaded, deep pink, | 15 |
| Von Schiller, salmon pink, crimson stripes, | 25 |

WHITE (of various shades).

| | |
|--|----|
| Alba Maxima, pure white, splendid truss, | 20 |
| Alba Superbissima, pure white, fine spike, | 20 |
| Grand Vainqueur, pure white, large truss, | 20 |
| Grande Blanche Imperiale, blush white, | 20 |
| Grande Vedette, pure white, large bells, | 15 |
| Grandeur a Merveille, beautiful blush, fine truss, | 20 |
| Hannah Moore, pure white, fine, | 20 |
| Madame van der Hoop, pure white, large bells, | 15 |
| Mammoth, creamy white, extra large bell, | 20 |
| Mont Blanc, pure white, large bells, magnificent, | 25 |
| Prince de Galitzin, fine white, compact truss, | 20 |
| Rousseau, shaded, large bells, | 15 |
| States General, pure white, violet centre, fine truss, | 20 |
| Triumph Blandina, rosy white, long, fine truss, | 20 |
| Virgo, pure white, good form, | 15 |
| Voltaire, white shaded rose, large bells, fine truss, | 15 |

BLUE (of various shades).

| | Each. |
|--|--------|
| Argus, fine blue, with pure white eye, | \$0.15 |
| Baron von Tuyl, deep blue, truss large, | 15 |
| Bleu Mourant, fine deep blue, close truss, | 15 |
| Charles Dickens, porcelain, splendid truss, | 15 |
| Emicus, indigo blue, fine, | 15 |
| Feruck Khan, very dark purple, fine truss, | 20 |
| General Havelock, blackish purple, extra fine spike, | 25 |
| Grand Lilac, beautiful silvery lilac, | 15 |
| Keizer Ferdinand, porcelain, shaded violet, | 15 |
| King of the Blues, rich blue, magnificent spike and bells, the finest of all blue Hyacinths, | 20 |
| L'Amie du Cœur, violet blue, good truss, | 15 |
| Mimosa, dark purple, beautiful, | 15 |
| Pieneman, dark porcelain blue, immense bells, | 20 |
| Prince Albert, dark purple, large compact truss, | 20 |
| Uncle Tom, violet black, fine, | 15 |
| William the First, fine glowing purple, | 15 |

Bulbs selected from varieties of red, white, and blue, \$1.75 per dozen.

YELLOW (of various shades).

| | Each. |
|--|-------|
| Adonia, lemon yellow, good form, | 15 |
| Alida Jacobea, rich canary yellow, | 20 |
| Heroine, primrose, large, compact truss, | 20 |
| Ida, pure yellow, extra fine, | 30 |
| King of Holland, orange, very distinct, | 20 |
| La Grande Jaune, buff, good spike, | 25 |
| La Pluie d'Or, pale yellow, moderate, compact truss, | 15 |
| Orange Vlag, orange yellow, | 15 |

VIOLET, MAUVE, LILAC, AND PURPLE.

| | |
|---|----|
| Arnold Prinsen, extra fine, purple shaded, | 40 |
| Charles Dickens, rich violet striped, extra fine bells, | 30 |
| Dandy, clear violet, fine truss, | 20 |
| Hayden, distinct mauve, very fine bells, | 30 |
| Honneur d'Overveen, rich violet, fine spike, | 30 |
| L'Unique, violet purple, shaded, quite distinct, | 20 |

Bulbs selected from varieties of yellow, violet, and mauve, \$2.40 per dozen.

MIXED HYACINTHS FOR THE GARDEN IN SEPARATE COLORS.

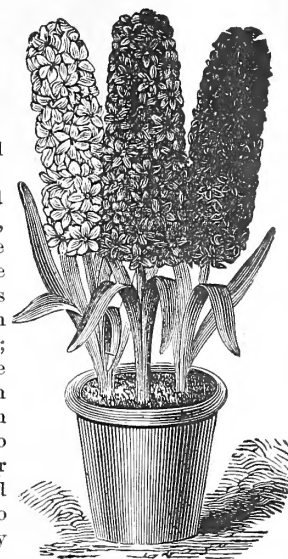
Where an effective display alone is the object, the following will answer every purpose. They are smaller bulbs selected from the named varieties, so that each color embraces many shades; blue, for instance, dark and purple; red—rose, blush, etc.; white—colored eyes, shaded, etc.

If desired by mail add 15 cents per dozen for postage.

| | SINGLE. | | | DOUBLE. | | | |
|----------------------------------|---------|----------|---------|----------------------------------|----------|---------|--------|
| | Each. | Per doz. | Per 100 | Each. | Per doz. | Per 100 | |
| Red and Rose, mixed, all shades, | \$0.08 | \$0.60 | \$4.00 | Red and Rose, mixed, all shades, | \$0.08 | \$0.60 | \$4.00 |
| Blue, " " " | .08 | .60 | 4.00 | Blue, " " " | .08 | .60 | 4.00 |
| White, " " " | .08 | .60 | 4.50 | White, " " " | .08 | .60 | 4.50 |
| Yellow, " " " | .08 | .60 | 4.00 | Yellow, " " " | .08 | .75 | 6.50 |
| All Colors, " " " | .08 | .60 | 4.00 | All Colors, " " " | .08 | .60 | 4.00 |

Our Superb Collection of
HYACINTHS
 For

POT CULTURE



WE advise the use of small pots where Hyacinths are grown in pits and frames for decorative purposes, because they can be conveniently placed in ornamental stands, or packed close together in baskets of moss, when required for the embellishment of the drawing-room. A rich, light soil is indispensable, and it should consist of at least one-half of good rotten manure, and the remainder turfy loam, with a liberal allowance of sharp sand. The mixture should be in a moderately moist condition when ready for use. Fill the pots quite full of soil, and then press the bulb down into it, and press the soil down around the bulb to finish the operation. If potted loosely they will not thrive; if potted too firmly, they will rise up as soon as they begin to grow, and be one-sided. They should be nearly covered with soil, except when grown in small pots, and then they must be only half covered, in order to afford them the largest possible amount of root-room. When potted, water sufficiently to settle the soil, and place in a dark, cool location, or cover with three or four inches of coal ashes or sand that the moisture may be retained and heat and frost excluded. They can remain thus until they are well rooted and begin to show signs of growth, when they can be brought out into the light. As they begin to grow, water occasionally with weak liquid manure, until the flowers begin to expand, and then pure soft water should be used instead.

DOUBLE.

| | <i>Each.</i> |
|---|--------------|
| Bouquet Royal , delicate rose, pink eye, very double, | \$0 15 |
| Grootvorst , delicate blush, very double, truss large, | 15 |
| La Virginite , blush white, good spike, | 15 |
| Ne Plus Ultra , purple eye, large bells, | 15 |
| Boloksberg , beautiful, clear porcelain, large bells, | 15 |
| Garrick , deep lilac blue, long spike, | 20 |
| Ophir , fine straw color, large double bells, | 20 |

SINGLE.

| | <i>Each.</i> |
|---|--------------|
| Amy , bright scarlet, long compact truss, | \$0 10 |
| Fabiola , delicate pink, carmine striped, | 20 |
| Grande Blanche Imperiale , blush white, large bells, | 20 |
| Grand Lilac , beautiful silvery lilac, | 15 |
| Alida Jacobea , rich canary yellow, | 20 |
| L'Unique , violet purple, shaded quite distinct, | 20 |
| Chas. Dickens , porcelain, splendid truss, | 15 |

The entire collection for \$2.00 by express, or \$2.25 by mail.



Our Superb Water Collection for

GROWING IN GLASSES

It is of little consequence whether rain, river, or spring water be employed in this mode of culture; but it should be clean. Fill the glasses so that the bulbs will nearly, but not quite, touch the water, and place them at once in a dark, cool place, that they may be encouraged to send their roots down into the water before they begin to expand their leaves. When the roots are growing freely, bring them from the dark to the light, in order that their leaves and flowers may be developed in a healthy manner without being attenuated. Provide supports in good time; let them have as much light as possible, with an equable temperature. The water in the glasses should occasionally be changed, and they should, at all times, be kept nearly full, so that the bulb will nearly, not quite, touch the water.

DOUBLE.

| | <i>Each.</i> |
|---|--------------|
| Bouquet Tendre , deep red, | \$0 15 |
| Lord Wellington , delicate light rose, | 20 |
| Anna Maria , blush, with violet centre, | 15 |
| Grootvorstin , extra fine large spike, pure white, | 15 |
| Miss Kitty , pure white, purple eye, | 20 |
| Othello , brilliant, silky, violet black, | 20 |
| Maria Louisa , fine red, good full truss, | 15 |

SINGLE.

| | <i>Each.</i> |
|---|--------------|
| L'Amie du Cœur , dark red, | \$0 15 |
| Hannah Moore , pure white, | 20 |
| Voltaire , white, shaded rose, | 15 |
| Bleu Mourant , fine deep blue, | 15 |
| Mimosa , dark purple, | 15 |
| La Pluie d'Or , pale yellow, | 25 |
| Dandy , clear violet, | 20 |

The entire collection for \$2.00 by express, or \$2.25 by mail.



Roman Hyacinth.

FEATHERED HYACINTHS.

The spike is from 9 to 12 inches high, and in place of being formed of bells as others are, it is a feathery plume, and is very useful for cutting.

Monstrosus, blue; **Plumosus**, purple blue. Each, 5 cents; 40 cents per dozen.

GRAPE HYACINTH.

The flowering spike is about six inches high, with little round bells so arranged as to resemble a bunch of grapes. This very handsome variety should form a place in every one's garden, being admirably adapted for permanent beds and edgings, and partially shaded locations. They are perfectly hardy, and are self-producing, thus a bed once set out will care for itself. They are very pretty when grown in pots for winter flowering.

Blue, each, 5 cents; 30 cents per dozen; \$1.25 per 100.
White, each, 10 cents; \$1.00 per dozen.

ROMAN HYACINTHS.

This beautiful and very valuable variety, if planted early in September, and gently forced, will bloom in November, or their flowering may be retarded until Christmas, by keeping them in a cool place. By successive plantings they may be had in bloom until March, being thus very useful for florists. The flowers, which are smaller than the ordinary Hyacinth, are produced in great profusion, each bulb throwing up three or four spikes of delicately scented, **clear white blossoms**. For a good effect, from three to five bulbs should be planted in a medium sized pot. 5 cents each; 50 cents per dozen; \$3.00 per 100. If by mail add 10 cents per dozen for postage.

Single Rose and Blue Roman, — two to three weeks later than the white variety, — 5 cents each; 50 cents per dozen; \$3.00 per 100. If by mail add 10 cents per dozen for postage.

MUSK HYACINTHS.

A small Hyacinth of bluish color, having a very pleasant musk odor.

| | Each. | Per doz. |
|--|--------|----------|
| Moscatus major , blue and yellow, | \$0.25 | \$2.50 |
| Moscatus minor , " " | .15 | 1.25 |
| Racemosus , blue, | .05 | .40 |



HYACINTHUS CANDICANS.

(Summer Flowering White Giant Hyacinth.)

This is a magnificent Yucca-like hardy plant, producing in July and August a flower-stem from three to four feet high, surmounted by a grand spike of numerous pendant, bell-shape, snow-white flowers. If planted about nine inches deep, it will remain uninjured by the severest winter. Since its introduction, this plant has gained a well-deserved popularity, and should find a place in every collection. 10 cents each; by mail, 12 cents each; \$1.00 per dozen.

TROPÆOLUM.

Splendid, slender, rapid-growing, graceful plants, for wire globes and trellis-work. *T. Tricolorum* and *T. Jaratti* are beautiful greenhouse ornaments, while *T. Pentaphyllum* succeeds out of doors, in light soil, in warm, sheltered situations.

When planted in pots, use a light, rich soil, with plenty of drainage; just cover the tubers, and when started keep up a vigorous growth; a ten or twelve inch pot will be required for one bulb.

| | |
|--|--------|
| Jaratti , scarlet, yellow, and black, each, | \$0.25 |
| Pentaphyllum , scarlet and green, each, | .30 |
| Tricolorum , scarlet, yellow, and black, | .25 |

FRITILLIARIAS.

Miniature Crown Imperials, with singularly marbled flowers, succeed in any common garden soil.

Fritillarias, fine mixed, 5 cents each; 40 cents per dozen.



Hyacinthus Candicans.

TULIPS.

For the ornamentation of the conservatory and sitting-room during the winter and spring months, the Tulip stands unrivalled, both as regards its rich and diversified colors, easy culture, and accommodating habits. Like the Hyacinth, it will thrive in almost any soil or situation, and under almost any circumstances, so that its claim to universal cultivation is equal to the Hyacinth, Polyanthus, Narcissus, and Crocus.

EARLY DWARF DUC VAN THOL TULIP.

The pretty little Dwarf Tulips of this section are, perhaps, the most generally known, their early blooming, exceedingly gay colors, and low, compact growth (four inches) has secured for them a place which no other bulbous root can occupy; they grow in sand, moss, or water, and may be cultivated in the smallest size pots; but are most effective when planted from three to twelve in pots varying from four to eight inches, also in boxes in the sitting-room, or in the conservatory borders; indeed, their accommodating habit is such, they may be grown anywhere, if planted early in September and forced, as recommended for Hyacinths; they may be had in bloom early in December.

For very early beds out of doors, we strongly recommend this section. They are extremely beautiful, and blend admirably; the scarlet is almost too brilliant for the eye, the rose has a satiny appearance, while the yellow and white are pure; so that a bed with scarlet in the centre, yellow next, then rose, then variegated, the last three or more deep, would produce an exceedingly pretty effect.

- Single Red, bordered with yellow,
- Double Red, very double, red and yellow,
- Carmine, lively carmine,
- Gold Striped, new and beautiful,

- Rose, satiny rose,
- Scarlet, brilliant scarlet,
- Vermilion, very brilliant,
- White, clear white, fine,
- Yellow, bright yellow,

Price, 5 cents each; 40 cents per dozen.



Duc Van Thol.

EARLY SINGLE TULIPS.

For beauty of form and brilliancy of color, these Early Single and Double Tulips cast all other spring flowers into the shade. Nothing can equal, much less excel, their gorgeous appearance in Beds, Lines, Ribbons, or Groups in the spring garden, to which they impart as gay and rich an appearance as the finest of summer bedding plants. In form they are the most perfect of all florist's flowers, whilst their wealth of colors and the purity and variety of their markings furnish abundant evidence of their extreme beauty and effectiveness in any and every position in which they may be placed. In these there are the finest shades of purple, crimson, scarlet, pink, yellow, and purest whites. Of striped flowers, there are purple, violet, crimson, rose, puce, cerise, and yellow stripes on snow-white grounds, and crimson, scarlet, maroon, and red flakes and feathers on rich gold grounds. As they succeed with every one, we recommend them with the greatest confidence. In addition to using them for bedding purposes, they should be largely grown in herbaceous grounds, in shrubbery borders, etc., etc., in which a few clumps introduced at intervals have a most magical effect. In balcony boxes, jardinettes, conservatory baskets, etc., they will give great pleasure and satisfaction. In pots, also, with from three to twelve bulbs in each, they make fine specimens for the Greenhouse or Conservatory, and force equally well with Hyacinths, and require similar treatment.



Early Single.

under the surface. The same soil, etc., as for Hyacinths will suit them well. They should be protected during severe weather by branches of evergreen, or covering of straw or leaves about three inches thick. The prices at which they are offered place them within the reach of all lovers of spring flowers. All the varieties of Single Tulips force readily.

| | Each. | Per doz. | | Each. | Per doz. |
|--|--------|----------|--|--------|----------|
| Artus, scarlet, | \$0.05 | \$0.30 | Couleur Ponceau, rich cerise, | \$0.05 | \$0.30 |
| Belle Alliance, rich crimson, with golden yellow bottom, fine, | 05 | 40 | Duc d'Orange, orange and yellow, | 05 | 40 |
| Bizard aimable, orange yellow and red, | 05 | 50 | Duchesse de Parma, bronze crimson, bordered with orange, | 05 | 40 |
| Bizard Pronkert, yellow and red, | 05 | 35 | Grootmeester van Maltha, white striped and feathered with scarlet, | 05 | 40 |
| Bride of Haarlem, white, richly bordered with crimson, | 08 | 75 | Joost Van Vondle, bright rose, white stripes, large, | 05 | 50 |
| Canary Bird, rich yellow, fine cup, | 05 | 50 | Joost Van Vondle, pure white, fine, | 25 | 2 50 |
| Chrysolora, pure yellow, | 05 | 50 | Keizer Kroon, crimson scarlet, broadly edged with bright yellow, | 05 | 50 |
| Claremont, rose striped, flushed violet rose, | 05 | 50 | Lac Van Rhein, violet crimson, white edged, | 05 | 50 |
| Cottage Maid, dark rose and white, | 05 | 60 | L'Immaculee, pure white, | 05 | 50 |
| Couleur Cardinal, brilliant crimson, tinged with yellow, | 05 | 50 | | | |

EARLY SINGLE TULIP.—Continued.

| | Each. | Per doz. | | Each. | Per doz. |
|--|--------|----------|---|---------|----------|
| Pottebakker, bright canary yellow | \$0.05 | \$0.50 | Wapen Van Leyden, white, bordered with rose, fine | \$0.05 | \$0.40 |
| Pottebakker (white), pure white, bold flower | 05 | 50 | Yellow Prince, good yellow, dwarf | 05 | 40 |
| Pottebakker (red), yellow and red striped | 05 | 50 | Wouwerman, rich purple, very large, extra fine | 05 | 40 |
| Pottebakker (scarlet) | 05 | 50 | | | |
| Rembrandt, rich glowing crimson | 05 | 50 | | | |
| Rose gris-de-lin, delicate rose and white | 05 | 50 | | | |
| Roi Pepin, red and white striped | 08 | 75 | Finest assorted varieties, with names | \$0.40 | \$3.00 |
| Rosa Mundi, white, deeply edged rose | 05 | 35 | Extra Fine Mixed | .30 | 2.50 |
| Vermilion Brilliant, dazzling vermilion, scarlet, splendid | 05 | 50 | Fine Mixed | .25 | 1.50 |
| | | | | per 100 | per 1000 |

PARROT TULIPS.

The Parrot Tulip has a singularly picturesque appearance, the flowers are large and the colors brilliant, so that when planted in flower borders, they produce a striking effect. (See cut outside cover.)

| | Each. | Per doz. | | Each. | Per doz. |
|---|--------|----------|--|-----------------|----------|
| Constantinople, red, streaked with orange | \$0.05 | \$0.30 | Markgraaf, yellow and orange | \$0.08 | \$0.50 |
| Belle Jaune, large yellow, striped with red | 05 | 30 | Perfecta, yellow, scarlet feathered, green | 05 | 30 |
| Cafe brun, yellow, green, and mottled | 05 | 30 | Various colors, mixed, extra fine, "fine," | per 100, \$2.50 | 30 |
| Monstre Rouge, large, crimson | 05 | 50 | | per 100, 1.75 | 25 |

EARLY DOUBLE TULIPS.

These succeed well in pots and are very attractive; but, with the exception of a few, we prefer seeing them in the flower garden, where their brilliant colors and massive flowers look truly grand. They are robust growers, and furnish admirable beds, whilst from their double flowering habit the season of bloom is much prolonged, the flowers being more persistent. Culture out of doors, just what we have recommended for the Hyacinth, except that the roots should be planted six or eight inches from each other, but the Duc Van Thol four inches.

All the varieties in this section are effective in the open ground, therefore we have not divided them as in other cases.

* Indicates those best suited for pot culture.

| | Each. | Per doz. | | Each. | Per doz. |
|--|--------|----------|---|--------|----------|
| Belle Alliance, white, feathered with crimson | \$0.05 | \$0.30 | *Murillo, beautiful rosy white | \$0.05 | \$0.50 |
| *Couronne des Roses, deep cerise | 05 | 50 | Paeony Gold, golden yellow, striped with dark red, fine | 05 | 40 |
| *Duke Van Thol, yellow and red, dwarf very early | 05 | 30 | Paeony Red, very deep red, with yellow stripe | 05 | 40 |
| *Duke of York, bronze, crimson, margin silvery white | 05 | 30 | *Prince of Wales, brilliant scarlet, purple tinge, very handsome | 08 | 75 |
| *Extremite d'Or, crimson scarlet, edged yellow | 05 | 50 | *Regina Rubrorum, crimson red, striped with yellow | 08 | 75 |
| *Gloria Solis, scarlet, deeply edged with bright yellow | 05 | 30 | Rex Rubrorum, bright crimson, scarlet | 05 | 40 |
| *Imperator Rubrorum, rich crimson scarlet | 05 | 50 | Rosine, fine rose | 05 | 50 |
| *La Candeur, pure white, fine form | 05 | 40 | *Tournesol, scarlet, margined yellow | 05 | 50 |
| *Mariage de ma Fille, pure white striped cerise | 08 | 75 | Tournesol, yellow, yellow flushed with reddish orange, new and fine | 05 | 50 |
| Finest assorted varieties, with names, per dozen, 40 cents; per 100, \$3.00. | | | *Yellow Rose, fine yellow, scented | 05 | 40 |
| Fine mixed varieties, per dozen, 25 cents; per 100, \$1.50. | | | | | |

LATE FLOWERING SINGLE TULIPS.

In some locations these are known as the "May-flowering Tulip," and closely follow the season of the early single sorts. They are largely cultivated on account of their individual beauty, being possessed of great variation of form and colors, the latter being rich and distinct. A few of these ought to be in every collection, as their stately form never fails to attract attention.

| | Each. | Per doz. | | Each. | Per doz. |
|---|--------|----------|---|--------|----------|
| Bizzares, ground color yellow, feathered with crimson, maroon, etc. | \$0.05 | \$0.30 | Bybloemens, Violet, have also white grounds, but the markings are violet, blue, purple, and black | \$0.05 | \$0.30 |
| Bybloemens, Rose, white grounds, with beautiful markings of crimson, pink, and scarlet | 05 | 30 | Gesneriana, rich crimson scarlet, dark centre | 05 | 30 |
| Either of the above varieties, separate, per dozen, 30 cents; per 100, \$2.00. All of the above in fine mixture, per 100, \$2.00. | | | | | |

JONQUILS.

PRETTY flowers — desirable for their early flowering, and greatly prized on account of their fragrance. Culture same as the Polyanthus Narcissus, except that a four or five inch pot will be large enough for three roots, while a six or seven inch pot will grow five or six roots.

| | Each. | Per doz. | | Each. | Per doz. |
|-----------------------|--------|----------|--------------------|--------|----------|
| Large Double | \$0.05 | \$0.50 | Single Campernelli | \$0.05 | \$0.30 |
| Single, sweet-scented | 05 | 30 | | | |

If by mail add 5 cents per dozen for postage.

NARCISSUS.

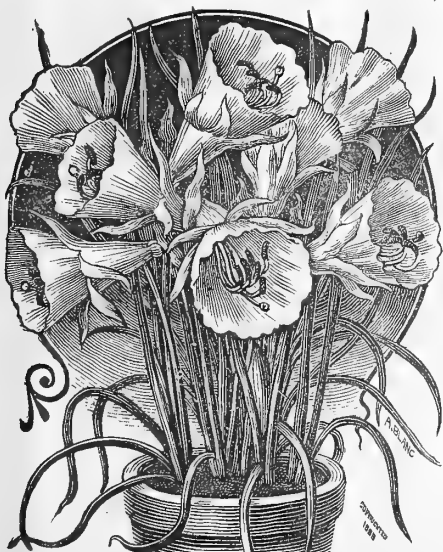
POLYANTHUS NARCISSUS.

A SPLENDID flower for winter and spring decoration, whether for the ornamentation of the conservatory, sitting-room, or flower garden. In importance it ranks next to the Hyacinth, so that however limited the collection of plants may be, if there is not in it a fair proportion of this delightfully fragrant flower, it will be deficient of a most essential ornament. Its perfume is that of the Jonquil, and its flower resembles the well-known Polyanthus, hence its name, Polyanthus-like-Narcissus.

Culture is the same as the Hyacinth.

| | Each. | Per doz. |
|--|--------|----------|
| Bazelman Major , white, yellow cup, very fine, . . . | \$0.30 | \$3.00 |
| Bazelman Minor , white, yellow cup, smaller than preceding . . . | 10 | 1.00 |
| Gloriosa , white, orange cup, very large . . . | 08 | 75 |
| Grand Monarque , white, yellow cup, large . . . | 10 | 1.00 |
| Grand Primo , white, citron cup, large . . . | 10 | 1.00 |
| Grand Soleil d'Or , fine yellow, orange cup, very handsome . . . | 8 | 75 |
| Paper White , pure white, for forcing . . . | 05 | 30 |
| Paper White , new, large flowering, early and fine for forcing, . . . | 05 | 50 |
| Queen of the Netherlands , white, deep yellow cup. . . | 15 | 1.50 |
| Roman , double, white and yellow, very fragrant, fine for forcing . . . | 05 | 50 |
| States General , lemon yellow, orange cup, . . . | 08 | 75 |

Fine mixture from above sorts, 8 cents each; 75 cents per dozen.



Bulbocodium (Hoop Petticoat).

GARDEN NARCISSUS.

(DAFFODILS.)

UNDER this head are some remarkably showy, sweet-scented, spring-flowering favorites, which are especially deserving of notice, on account of their easy culture, early flowering, and generally effective appearance. They thrive in any soil, and are exceedingly attractive when planted in masses or long continuous lines, either in mixed borders or along carriage drives. *Narcissus albo pleno odorato* and *Narcissus Poeticus* are cultivated largely around London for Covent Garden, where the cut flowers meet with a ready sale on account of their beauty and fragrance.

SINGLE VARIETIES.

| | Each. | Per Doz. |
|---|--------|----------|
| Biflorus (<i>medio luteus</i>), white, yellow cup . . . | \$0.05 | \$0.30 |
| Bulbocodium (<i>Hoop Petticoat</i>), fine for pot culture . . . | 08 | 75 |
| Maximus (<i>Trumpet</i>), deep golden yellow . . . | 15 | 1.75 |
| — major . . . | 05 | 50 |
| Moschatus (<i>Sulphur Trumpet</i>) . . . | 20 | 2.00 |
| Poeticus (<i>Pheasant's Eye</i>), pure white, the cup beautifully edged with red, fragrant . . . | 03 | 25 |
| Poeticus Ornatus , much larger and earlier than the common <i>Poeticus</i> . . . | 05 | 50 |
| Fine mixed varieties . . . | | 75 |



Narcissus Incomparable.

CHINESE NARCISSUS (SACRED LILY OF CHINA).

This variety of Narcissus is easily grown and blooms freely, bearing a very sweet scented flower of silvery white, with golden yellow cups.

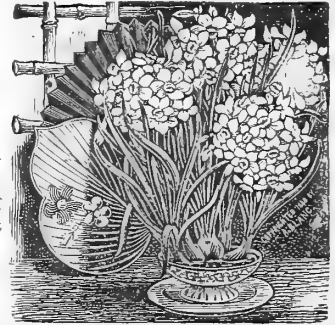
Use shallow dishes about three inches deep, into which put about one inch of gravel. Set the bulbs on this, and fill in with small stones, to keep them upright and keep the dish full of water. It is not necessary to put the bulbs in the dark, but if kept shaded until the leaves begin to grow, better results may be obtained. Although they will succeed in any ordinary room, it is necessary for them to be kept away from gas, as it causes the flowers to blast.

Price, 20 cents each; \$2.00 per dozen.

GARDEN NARCISSUS — Continued.

DOUBLE VARIETIES.

| | Each. | Per doz. |
|---|--------|----------|
| Albo pleno odorato , pure white, double, very fragrant | \$0.05 | \$0.30 |
| Incomparable , yellow and orange | 05 | 40 |
| Orange Phoenix , orange and buff | 05 | 50 |
| Sulphur Crown , very double, silvery white and sulphur | 10 | 1.00 |
| Van Sion (Double Yellow Daffodil), a well-known and established favorite | .05 | 50 |
| Fine mixed varieties | | 75 |



Chinese Narcissus.

ANEMONES.

THIS highly ornamental class of easily cultivated hardy plants is becoming better known and more popular each succeeding year, and should occupy a conspicuous place in every garden. They are well adapted for either pot or border culture, and, among early flowering plants, are unsurpassed for variety and richness of color. They succeed well in any moist, well-drained, fertile soil, and are usually set about two inches deep in rows or groups six inches apart. Plant in October or November, or as soon as the ground can be worked in the spring, and during winter protect with straw or leaves.

For pot culture, use a rich, porous compost, and secure good drainage; four good roots are enough for a five-inch pot; set the pots in a cold frame or other cool situation until the roots are started, after which they may be moved at pleasure to wherever intended to bloom.

DOUBLE ANEMONES.

| | Each. | Per doz. | | Each. | Per doz. |
|---|--------|----------|--|--------|----------|
| Ceres , pure white | \$0.05 | \$0.50 | Queen Adelaide , purplish lilac | \$0.08 | \$0.75 |
| Duchesse of Lotharingen , rose | 05 | 50 | Scarlet Superb , dazzling scarlet | 08 | 75 |
| Harold , purple blue | 05 | 50 | Victoria Regina , deep red velvet | 08 | 75 |
| Josephine , scarlet | 05 | 50 | Extra fine mixed varieties | | 25 |
| Lord Nelson , violet blue | 05 | 50 | | | |

MISCELLANEOUS ANEMONES.

| | Each. | Per doz. | | Each. | Per doz. |
|--|--------|----------|---|--------|----------|
| Anemone fulgens (Scarlet Wind-flower), flowers large, of the richest vermilion or scarlet; in bloom from March till May | \$0.05 | \$0.50 | Anemone Double French , splendid varieties mixed | \$0.15 | \$1.50 |
| Single French , splendid varieties mixed | 05 | 50 | — Stellata (Star Anemone), fine mixed | 10 | 75 |

ORNOITHOGALUM ARABICUM.

A Splendid Winter Flowering Bulb. Sure to Bloom.

THIS magnificent Winter-blooming bulb from Arabia gives great satisfaction. The bulbs are large and solid, somewhat resembling Hyacinths; the leaves are long, narrow, and graceful; flower stalks are thrown up to a height of eighteen or twenty inches, and produce immense clusters of pearly-white flowers, each having a jet black centre. This distinct character, together with the durability of flowers, makes this grand novelty the best Winter bloomer now offered. Bulbs can be planted in four-inch pots, and given the same culture as Hyacinths. If planted in open ground, they should be given slight protection. Price of bulbs sure to bloom, 10 cents each; \$1.00 per dozen.

CROCUS.

THIS, as is well known, is one of our earliest spring flowers; and producing, as all the varieties do, dense masses of rich colored blossoms, and is beyond question the most effective of its season, and can hardly be too liberally planted in every garden. The more thickly they are planted, the greater is the effect produced — say in clumps, six, twelve, or more bulbs, or in beds of one hundred to five hundred bulbs either in separate colors or mixed. We strongly recommend the finer varieties for in-door decoration, for which purpose they are exceedingly useful, blooming as they do at a season when flowers are scarcely to be had, except by those who can afford expensive erections for their culture. With ordinary care, the Crocus will bloom freely in any sitting-room window.



Crocus.

CULTURE OF THE CROCUS IN FLOWER BORDERS OR BEDS.

Plant in the open ground in October, November, or as early in December as circumstances will permit, preferring deep, light, rich, sandy soil; but the Crocus will thrive in any ordinary soil or situation. In planting, the bulbs should be covered from two to three inches with fine mould, and not more than two inches apart. For edging borders and beds the Crocus is always exceedingly useful; and where planted in lines along the margin of walls, or in clumps of three, six, twelve or more bulbs each, and allowed to remain in the ground for several years, the effect of the immense masses of flowers which they produce is all that can be desired. A very effective display in a flower-garden in March may be produced by each bed having a broad edging of Crocus, the colors being nicely arranged and contrasted. This may be secured without interfering with either the spring or summer occupants; for the bulbs may be planted close in the outside of the bed, where they will scarcely be in the way, either in digging or planting. A splendid effect may be produced by scattering the bulbs broadcast upon lawns and planting under the turf, wherever they fall. In this way the lawn will be gay with their showy blossoms, as soon as the snow is off in the spring. Unless the bulbs become too numerous, and the leaves spread over more space than it may be desirable to have covered with them, they should not be disturbed, as they bloom more profusely when well established. Care must be exercised to protect the bulbs from mice, as they are exceedingly partial to them, especially in winter.

CULTURE OF THE CROCUS IN POTS, VASES, BASKETS, ETC.

For blooming in-doors, either in pots or any of the various contrivances which are used instead of pots, strong bulbs of the seeding varieties should be selected, planting them in succession, commencing as early in autumn as they can be procured. For pot culture use good rich sandy soil, and secure perfect drainage, a liberal supply of water being necessary during the blooming season; therefore, any defect in the drainage would cause the soil to become sodden. Planted in china bowls, saucers, etc., filled with moss or sand, drainage is unnecessary; but on no account should the moss or sand ever be allowed to get dry. Treatment same as recommended for Hyacinths in sand or moss.

DUTCH CROCUS.

| | Per doz. | Per 100 | | Per doz. | Per 100 |
|-----------------------------------|----------|---------|---------------------------------------|----------|---------|
| Blue, mixed | \$0.10 | \$0.50 | Cloth of Gold, small flower, golden | | |
| Striped, mixed | 10 | 50 | yellow, with brown stripe | \$0.10 | \$0.60 |
| White, mixed | 10 | 50 | Cloth of Silver, pure white | 10 | 60 |
| Large Yellow, very fine | 15 | 75 | All Colors, mixed | 10 | 50 |

CHOICE NAMED VARIETIES DUTCH CROCUS.

| | Per doz. | Per 100 | | Per doz. | Per 100 |
|--|----------|---------|---|----------|---------|
| Albion, large striped | \$0.20 | \$1.00 | Miss Nightingale, light striped | \$0.20 | \$1.00 |
| Bride of Abydos, splendid white | 20 | 1.00 | Mont Blanc, magnificent, large white | 20 | 1.00 |
| Bride of Lammermoor, splendid striped | 20 | 1.00 | Prince Albert, purple lilac, very large | 20 | 1.00 |
| Calypso, creamy white, purple tube | 20 | 1.00 | Pomona, fine white | 20 | 1.00 |
| Caroline Chisholm, splendid white | 20 | 1.00 | Queen Victoria, the purest white | 20 | 1.00 |
| David Rizzio, deep purple, large | 20 | 1.00 | Sir Walter Scott, beautifully pencilled, | | |
| La Majestueuse, violet striped, very large | 20 | 1.00 | lilac, very large | 20 | 1.00 |

Our own selection of the above, 20 cents per dozen; \$1.00 per 100. If by mail, add 20 cents per 100 for postage.



Crocus Versicolor.

CROCUS VERSICOLOR.

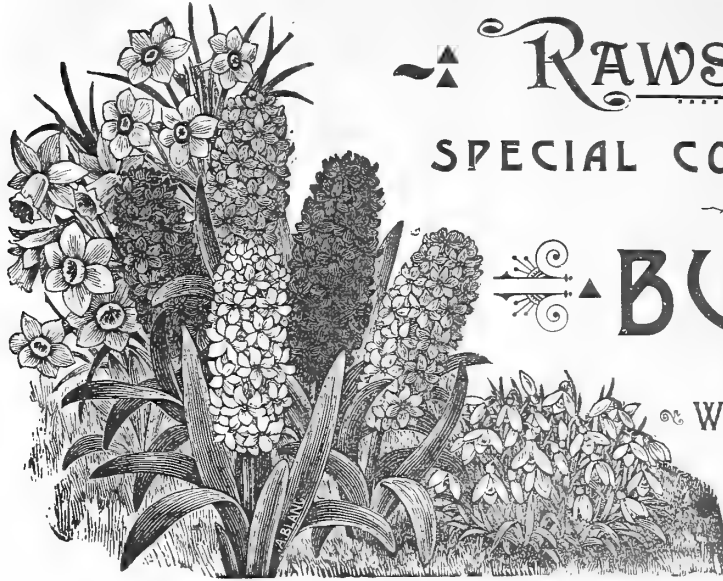
New seedlings in extra fine and very distinct varieties. 15 cents per dozen; 75 cents per 100.

CROCUS SATIVUS.

Violet, with purple feathers and orange styles; has a delicious perfume. This variety produces the saffron of commerce. 20 cents per dozen; \$1.25 per 100.

TRITELEIA UNIFLORA.

THIS is a perfectly hardy little gem, doing equally well in pots or planted in the flower border; it will grow in any soil, and produces an abundance of lily-shaped, violet tinted white flowers, which emit a fine Primrose perfume. The flowers are of good substance, and remain in bloom a long time. Five or six bulbs grown in a six-inch pot make quite a picture when in flower. Price, 5 cents each; 40 cents per dozen.



RAWSON'S

SPECIAL COLLECTIONS

OF

BULBS

FOR THE

WINDOW GARDEN.

PRICE,

\$1.00 EACH.

WE have arranged the following collections, which we offer at a large reduction from regular rates, in order to induce many who have never grown bulbs to give them a trial. There are thousands of people who devote much time and attention to the cultivation of flowers in the house during the winter months, who would be surprised to know how much pleasure might be derived from even a small number of bulbs.

The special low rates at which these collections are offered will admit of our making no changes, and customers are referred to other pages of the catalogue for such sorts as they do not find here.

Price, \$1.00, each by mail, free of postage to any part of the United States or Canada.

Collection No. 1. Three Roman Hyacinths; three Hyacinths, assorted; three Narcissuses, assorted; one Easter Lily; one Amaryllis purpurea.

Collection No. 2. Six Roman Hyacinths; six Hyacinths, assorted; one Vallota purpurea.

Collection No. 3. Three Roman Hyacinths; four Tulips, assorted; four Freesia Refracta Alba; one Cyclamen; one Easter Lily; one Amaryllis Equestris.

Collection No. 4. One Roman Hyacinth; one Hyacinth; two Narcissuses; two Sparaxis; two Anemones; three Freesia Refracta Alba; two Oxalis; two Ranunculus; one Cyclamen; one Easter Lily; one Amaryllis Atamasco.

Collection No. 5. Twelve Tulips, assorted; six Polyanthus Narcissuses, assorted; five Ornithogalum Arabicum.

Collection No. 6. Four Hyacinths, assorted; six Tulips, assorted; two Narcissuses; twelve Crocus, assorted; three Freesia Refracta Alba; one Cyclamen.

Collection No. 7. Three Sparaxis; three Chionodoxas; three Ixias; three Anemones; three Jonquils; three Oxalis; three Scillas; two Ornithogalum Arabicum; three Snowdrops; two Tritonia.

Collection No. 8. Three Haycinths, assorted; three Chionodoxa; three Freesia Refracta Alba; three Ornithogalum Arabicum; three Snowdrops; three Tritonia; one Chinese Sacred Lily.

Collection No. 9. Three Roman Hyacinths; three Tulips, assorted; three Sparaxis; three Ixias; three Freesia Refracta Alba; three Oxalis; three Ornithogalum Arabicum; one Chinese Sacred Lily.

We call special attention to our Freesias. There are few bulbs offered in this list that are more satisfactory for cultivation in the house than these. See outside cover. Our illustration represents the full size of the flower.

AMARYLLIS.

A BEAUTIFUL class of plants, with large, drooping, bell-shaped, lily-like flowers, varying in color from the richest crimson to pure white, striped with crimson or scarlet. They are of the easiest possible culture, and few flowers give a better return in the shape of lasting and showy bloom for the limited amount of labor involved in their cultivation. With a very small stock of bulbs they can be had in flower at almost any season of the year by starting them in succession. A compost consisting of equal parts of good turfy loam, leaf-mould, well-decayed manure, and sharp sand answers best. From the time they are started, water should be given very carefully, and not in too great quantities. When the foliage begins to decay, water should be gradually withheld until it has quite died down, when the bulbs may be stored away (in the pots), in any dry, cool place, safe from frost, until their flowering season comes again. The evergreen varieties, which do not die down, should be kept in a growing state, and shifted into larger pots as they require it.

Frequent disturbance of the roots is to be particularly avoided in the cultivation of Amaryllis, and, therefore, it is desirable to allow them to remain in the same pots two or three years, or if they are shifted on, it should be done in such a way that the roots remain undisturbed. Top dressing and liquid manure will help them when they have been some time in the same pots.



Amaryllis Vittata.

*If by mail, 5 cents each extra for postage for those marked.**

| | | | | |
|---|------|--------|----------|--------|
| Amaryllis (Zephyranthes) atamasco , pink and white, variable, showy for border | Each | \$0.05 | Per doz. | \$0.50 |
| — Formosissima (Jacobean Lily) , velvety crimson, a desirable border plant | | 20 | | 2.00 |
| * Bella Donna (Bella Donna Lily) , white, flushed with rosy purple | | 40 | | 4.00 |
| * Johnsonii , deep red and white | | 75 | | |
| * longiflora alba , white | | 35 | | |
| * — — — rosea , rose | | 35 | | |
| — Equestris . A beautiful free-flowering variety, bright scarlet with white at base of the petals | | 35 | | |
| — (Zephyranthes) Treatea , a miniature variety, with pure white flowers | | 10 | | 75 |
| * Vittata .—These magnificent varieties produce a free supply of flowers of the most striking tints, and are justly esteemed the most beautiful of the Amaryllis family. We offer red or white ground hybrids, all beautifully striped and flaked | | | | 75 |
| * Vallota Purpurea .—This plant is closely allied to and was at one time recognized as a member of the Amaryllis family. It is evergreen and one of the most beautiful and desirable plants grown, producing large, crimson-scarlet, lily-like flowers in heads of five or six blooms each, which remain a long time in perfection. Large bulbs, if kept growing, will flower several times during the year. As easily cultivated as the Calla Lily. Price, 50 cents each; \$4.50 per dozen. | | | | |

ARUM.

THE Arums are remarkable and handsome plants, with fine foliage and curious inflorescence, more or less enclosed in a hooded spathe, which is generally richly colored and marked. They are hardy, and easily grown in any soil.

| | | |
|---|------|--------|
| A. Dracunculus (Dragon Flower) , palm-like leaves, and a velvety, purplish-brown spathe. By mail, 30 cents, | Each | \$0.25 |
| A. Italicum , flowers yellow; distinct and beautiful; foliage lanceolate, glossy dark green, veined and spotted with white | | 20 |
| A. Orientalis , dark foliage, spotted flower | | 45 |

CALLA AETHIOPICA.

THE well-known Calla Lily is one of the best plants for parlor culture. Its growth is stately, the flower showy, exceedingly fragrant, and freely produced. A commendable feature is that it effectually resists all the injurious effects which gas and furnace heat generally inflict on our floral pots. The requisites for successful culture are rich soil, plenty of water and pot-room. 30 cents to 50 cents each.

CALLA VARIEGATA.

(Richardia Alba Maculata.)

A DISTINCT variety, with spotted leaves narrower and not so long as the common Calla; the flowers are creamy-white, with purple blotch in centre; the plants grow only in the summer, and can be stored in dry sand during the winter. 35 cents each.



Arum Dracunculus.

CROWN IMPERIALS.

WE might say much in praise of this old-fashioned spring-blooming plant, with its cluster of pendant, bell-shaped flowers surmounted with a tuft of green leaves, but it is so well known, having been cultivated nearly three centuries, and may be met with almost everywhere; we may, however, just notice that it is, perhaps, the most useful spring plant we have for relieving the monotony of the flower borders, and imparting a lively appearance to shrubberies. They grow freely in any common, well-drained soil.

| | | | |
|--|--------------|---|--------------|
| | <i>Each.</i> | | <i>Each.</i> |
| Flore luteo , single yellow | \$0.30 | Rubro Simplex , single red | \$0.20 |
| " " peno , double yellow | 65 | Mixed colors, \$1.00 per doz. | 10 |
| Rubro pleno , double red | 40 | If by mail, add 3 cents each for postage. | |



Crown Imperial.

cover the bulb; merely press it into the soil, and give a slight watering. Keep them shaded, and water sparingly until they start growing, then treat as other house plants.

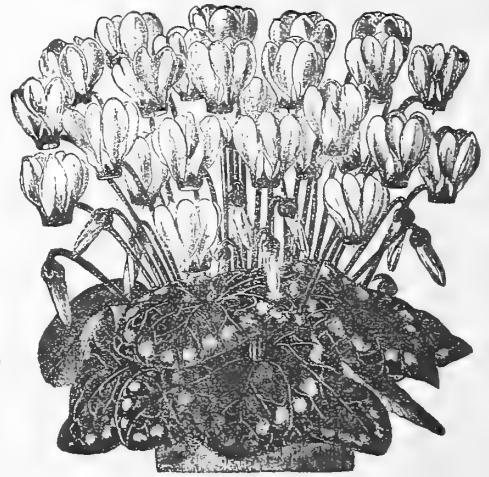
- | | | |
|---|--------------|-----------------|
| C. Cozm. —Blotched crimson and rosy purple, very early | <i>Each.</i> | <i>Per doz.</i> |
| C. Europaeum album. —White, fragrant | \$0.25 | \$2.50 |
| C. Europaeum rubrum. —Lovely pale rose pink. The foliage of these two foregoing varieties is entirely covered with the richest silvery tracings imparting to them, even when not in flower, a very beautiful appearance. | 25 | 2.50 |
| C. Persicum Giganteum. —Foliage slightly silvery, flowers ranging in color from white to rich rosy-crimson and fragrant | 20 | 2.00 |
| | 25 | 2.50 |

MONTBRETIA CROCOSMIAEFLORA.

A SPLENDID novelty; very hardy; bright orange-red flowers, which continue for a long time in bloom. 15 cents each; \$1.50 per dozen.

CYCLAMEN.

AMONG the many floral pets that enliven our homes throughout the winter and early spring, none are more charming than the Cyclamen. Its neatness of foliage and flower, its brilliant and varied colors, and its duration of bloom, render it desirable for parlor culture. Plant during September and October in a mixture of turfy loam, leaf mould, and sand, in equal parts. Do not water. Keep them shaded, and water sparingly until they start growing, then treat as other house plants.

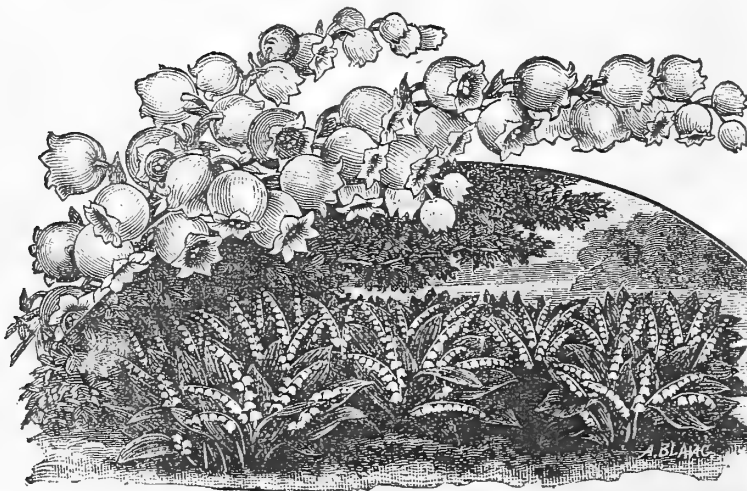


Cyclamen.

LILY OF THE VALLEY.

Convallaria Majalis. (Ready about the first of November.)

A WELL-KNOWN charming late spring-flowering plant, producing racemes of white flowers, which effuse a pleasing and delicious odor, and render it a universal favorite. Being of dwarf habit, with a profusion of deep-green foliage, and flourishing well in shady places, where few other plants will succeed, it is sought after by all who love beautiful flowers. It grows well in pots, and in mid-winter its beautiful racemes of snowy flowers are ever welcome. For pot culture the selected "flowering pips" are the best to use, and moisture is indispensable. To encourage the development of flower and foliage simultaneously, some growers invert a flower-pot over the crowns until some progress in growth has been made, after which the plants are removed to a less shady situation. During the whole period of growth abundance of water must be given. Flowering Pips, selected, per dozen, 25 cents; per 100, \$1.50; by mail, \$1.75; Strong Clumps, for planting in open ground, 30 cents each; by mail, 40 cents each; \$3.00 per dozen; by mail, \$4.00 per dozen.



Lily of the Valley.

FREESIA.

FOR graceful beauty and exquisite fragrance, this important introduction rivals many an old-time favorite as a plant for parlor culture, for which it is particularly adapted, while the ready facility with which it can be forced insures to florists and others an abundance of cut-flowers just at the time they are most valuable. Our illustration (see back cover) gives a faithful representation of the flowers which are borne on a slender, branching scape somewhat spreading, the strongest bulbs throwing a flower-stem about twenty inches in height. The perfume is delicious,—differing from the majority of strongly perfumed flowers in that it is never objectionable. The culture is simple. The bulbs should be potted from August to November in any good soil of a sandy texture; water sufficient should be given to soak through, after which but sparingly until beginning to grow rapidly; then water freely and place in a sunny, temperate position, either in the house or conservatory.

Refracta alba, clear white, with yellow blotch on lower petal. Price, 5 cents each; 40 cents per dozen.

Leichtlini, pale yellow, with deep yellow blotch. Price, 5 cents each; 60 cents per dozen.

CHIONODOXA LUCILIAE. ("GLORY OF THE SNOW.")

A VALUABLE hardy early-flowering bulb, recently introduced from Asia Minor, producing spikes of lovely azure-blue flowers, with pure white centres. Those who know *Scilla Siberica* will need no further description of this beautiful plant when we say the flowers and spikes are more than twice the size of that little gem. It is as easily cultivated as *Scilla*, to which family it is closely allied. Price, 5 cents each; 50 cents per dozen. See back cover.

SCILLA.

THIS very beautiful genus of plants is one that should be grown by every lover of early spring bulbs, and the species enumerated below, and which are the most distinct and beautiful sorts, will be found deserving of extended cultivation. They are all quite hardy and adapted of cultivation in the open ground, and they are also very suitable for growing in pots. The flowers are borne in spikes of from six to twelve blooms each, the individual, bell-like blossoms being gracefully pendant, with the exception of Peruviana, which produces large, erect trusses.

| | Each. | Per doz. | | Each. | Per doz. |
|--|-------|----------|---|-------|----------|
| Scilla Hyacinthoides , blue | \$.08 | \$0.75 | Scilla Campanulata , blue bell-shaped blossom | \$.05 | \$0.50 |
| Scilla Siberica (Amœna) , bright blue, erect spike | .05 | 30 | | | |



Scilla Hyacinthoides.

GLADIOLUS. (HALF HARDY.)

THE following comprises the best varieties for fall planting. They are all good growers, and very desirable, requiring a slight protection in winter.

Byzantinus.—Crimson purple. 5 cents each; 40 cents per dozen.

The Bride.—(*Colvilli alba*).—A most beautiful pure white variety, an excellent forcing quality. 5 cents each; 50 cents per dozen.

Saundersoni.—This is the handsomest and most interesting species we have. Rich orange scarlet; the texture of the petals has a remarkably soft appearance, glistening and sparkling like crystal. 50 cents each.

Purpurea Auratus.—Bearing on a slender, bending stem eight to twelve nodding flowers, somewhat bell-shaped in form; yellow, with broad purple stripes on the inner side of the lower divisions. 5 cents each; 50 cents per dozen.

Dracocephalus.—A most curious bronzy-yellow flower. 25 cents each.

IXIAS, SPARAXIS, AND TRITONIAS.

THE above are amongst the most graceful and beautiful of half-hardy bulbs, and, though differing from each other in habit of growth, are closely allied, and require the same cultural treatment. The flowers resemble a miniature *Gladiolus*, and when expanded in the sunshine the rich, varied, and beautiful colors present a picture of gorgeous beauty. This, with their compact dwarf growth, renders them perfect gems for pot culture. For this purpose the most suitable soil is equal portions of turfy loam, leaf mould, and sand. Have the pots well drained, and plant the bulbs firmly about an inch deep; set in a cool place and water sparingly until considerable growth is made, after which they may be removed to where intended to bloom.

| | Each. | Per doz. | | Each. | Per doz. | | Each. | Per doz. |
|-----------------------------|-------|----------|--------------------------------|-------|----------|--------------------------------|-------|----------|
| Ixias , finest mixed | \$.05 | \$0.35 | Sparaxis , finest mixed | \$.05 | \$0.35 | Tritonia , finest mixed | \$.05 | \$0.35 |
| | | | | | | | | |

PÆONIES.

THESE have become indispensable to every garden. They are all hardy, and admirably adapted to the climate of our most northern States; growing well in almost all situations. Price, 35 cents each; \$3.50 per dozen. If by mail add 5 cents each for postage.

Tenuifolium, fl. pl.—A very desirable plant, and quite distinct; has very beautiful, fern-like foliage, and flowers the color and shape of *Jacqueminot Rose*, more double, and one-third larger. 50 cents each; by mail, 55 cents each.



Snowdrops.

SNOWDROPS.

THERE is nothing more beautiful than the little drooping blossoms of this modest flower. It gets along with almost any ordinary treatment, but by planting them here and there on the lawn a beautiful effect is secured, when their graceful, snowy bells appear nestling in the grass in the early days of opening spring. They may also be grown in baskets or pots, for which purpose the double variety is the best.

| | | | |
|---|--------|--------|--------|
| | Each. | doz. | 100 |
| Double flowering, extra large roots | \$0.05 | \$0.25 | \$2.00 |
| Single " " " " | 03 | 15 | 1.25 |

THE GIANT SNOWDROP (GALANTHES ELWESII).

This is the largest and earliest of all the Snowdrops; flowers almost three times the size of the ordinary variety. It is very desirable for forcing, and slightly fragrant. 5 cents each; 50 cents per dozen.

MADEIRA VINE.

A RAPID and useful climber for the window garden during winter and spring. Flowers white, and very fragrant. 10 cents each; 75 cents per dozen.

RANUNCULUS.

THESE are among the most strikingly attractive spring flowers we know of, and can be successfully grown if subjected to the same treatment as recommended for Anemones; but, being less hardy, increased care is requisite to protect them during winter.

DOUBLE PERSIAN RANUNCULUS.

| | Each. | Per doz. | | Each. | Per doz. |
|--|--------|----------|--|--------|----------|
| Bella Donna, white, spotted purple | \$0.05 | \$0.30 | Mont Blanc, pure white | \$0.08 | \$0.60 |
| Commodore Napier, primrose, tipped purple | 05 | 30 | Ceil Noir, glossy black, splendid | 05 | 50 |
| Count Orloff, sulphur yellow with rose spots | 05 | 30 | Reine de Hollande, black | 05 | 50 |
| Fireball, bright red | 05 | 30 | Rose de Hollande, carmine, extra Extra fine mixture from preceding varieties | | 40 |

DOUBLE TURBAN OR TURKISH RANUNCULUS.

| | Each. | Per doz. | | Each. | Per doz. |
|--------------------------------------|--------|----------|---|--------|----------|
| Carmine Turban | \$0.05 | \$0.30 | Scraphique, bright yellow | \$0.05 | \$0.30 |
| Grandiflora, crimson | 05 | 30 | Souci Dore, spotted | 05 | 30 |
| Hercules, white | 06 | 50 | Turban d'Or, scarlet with gold | 05 | 30 |
| Mervilleuse, orange yellow | 05 | 30 | Extra fine mixture from preceding varieties | | 30 |
| Romano Scarlet, scarlet | 05 | 30 | | | |

NEW GIANT FRENCH RANUNCULUS.

A splendid new, vigorous-growing and free-flowering class, comprising the richest colors, and preferred by many to the Persian varieties; flowers single or semi-double. Extra fine mixed, 5 cents each; 50 cents per dozen.

IRIS.

AMONG the many forms of floral beauty which adorn the flower borders in June, the Iris has claims which entitle it to a more than ordinarily prominent position; the flowers are large and handsome, the colors extremely rich and varied; the height of the plant is from eighteen to twenty-four inches, while its cultivation is unusually simple, succeeding in any ordinary garden soil; when planted in clumps of three or more, and allowed to remain undisturbed, they improve in beauty each successive year.

| | Each. | Per doz. | | Each. | Per doz. |
|---|--------|----------|--|--------|----------|
| English.—Finest mixed, without names, | \$0.05 | \$0.50 | Spanish.—Finest mixed without names, | \$0.05 | \$0.50 |
| Pavonia.—Pure white, petals blotched with bright blue. For pot culture three bulbs should be planted in a five-inch pot | 05 | 50 | Susiana Mourning Bride.—Blush tinted, netted with dark lines, a remarkable looking and exceedingly handsome flower, succeeds admirably in pots | 15 | 1.50 |
| Persica.—White, blue, purple, and yellow, forces well | 10 | 1.00 | | | |

IRIS KEMPFERI (Ready about the 1st of November).

Amongst thoroughly hardy plants of later introduction the fine varieties of this species are unsurpassed. Let the weather be ever so severe they are not in the least affected. The prevailing colors are from deepest black-purple through various shades of blue, to the purest white. The individual flowers are of great size and heavy texture, flowering from the middle of June to the end of July. In all colors, 20 cents each; \$2.00 per dozen. If by mail, 25 cents each.

IRIS GERMANICA.

Very showy border plant and hardy, 20 cents each; \$2.00 per dozen. If by mail, 25 cents each.

Oxalis.

A GENUS of very pretty, neat-growing plants, elegant in foliage and bloom, the latter being produced in great profusion and embracing a wide range of colors. They are the best bulbs we know of for growing in pots for window decoration, their dwarf and spreading habit rendering them specially desirable. They are of the easiest possible culture; may be planted at any time, and if good rich soil is used, will do well without a great deal of attention.

| | Each. | Per Doz. |
|--|--------|----------|
| O. Bowiei, bright crimson, large and fine | \$0.05 | \$0.25 |
| O. flava, yellow, beautiful | . 05 | 25 |
| O. lactiflora, beautiful white | . 05 | 25 |
| O. Cernua, double yellow | . 05 | 25 |
| O. versicolor, white, with margin of vermilion | . 05 | 25 |
| Fine mixture from many varieties | . 05 | 20 |



Oxalis.



Arum Sanctum (Black Calla).

ARUM SANCTUM;

(THE NEW BLACK CALLA.)

AMONG recent Bulb introductions we doubt if there has in several years been anything brought out which is so eminently desirable as this. It is a bulb which has come to stay, and finds its way rapidly into every collection of winter flowers. We say *winter* flowers, as it is strictly a winter bloomer and will bloom no other time. Its flowers are enormous, fully a foot in length; color, clear coal black, so intense that it really shows a brilliancy, and as may well be imagined it is a flower of the most striking oddity and beauty. A person who possesses a bulb of this Calla has indeed a treasure, which will be the envy of an entire neighborhood. The bulbs are large and should be potted in the fall, and when growth commences set in a window. After blooming the foliage will die down and the bulb should be kept dry for planting again in the fall. In addition to its great beauty and oddity it has a fine fruity fragrance. It is a native of the Holy Land and was introduced into Italy two years ago. Our bulbs came in one of the first importations from the Holy Land this season. Price of large flowering bulbs, 60 cents each.

COLCHICUM AGRIPPINA VARIEGATUM.

A PRETTY checkered autumn large-flowering crocus. Rose color, marked with purple violet checks. This is a native of the Islands of the Grecian Archipelago, and is also found in Asia Minor. The rarest and most beautiful of all the autumn flowering crocus, and most desirable on account of its season of bloom. 25 cents each, \$2.50 per dozen.



Colchicum Agrippina.

ALLIUMS

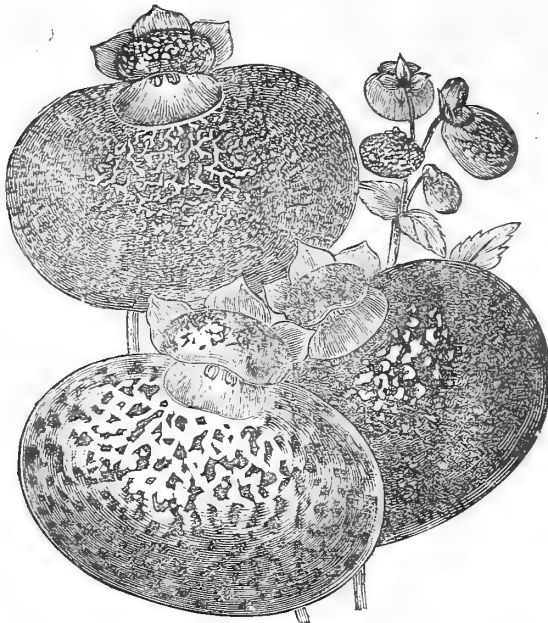
ARE grown extensively for their ornamental qualities, being hardy, showy, and blooming for a considerable length of time.

Allium Neapolitanum is amongst the earliest and grandest of winter bloomers. Its flower stems are 20 inches high, supporting a large cluster of delicate white starry flowers; sure to bloom splendidly in any window. 5 cents each, 50 cents per dozen.

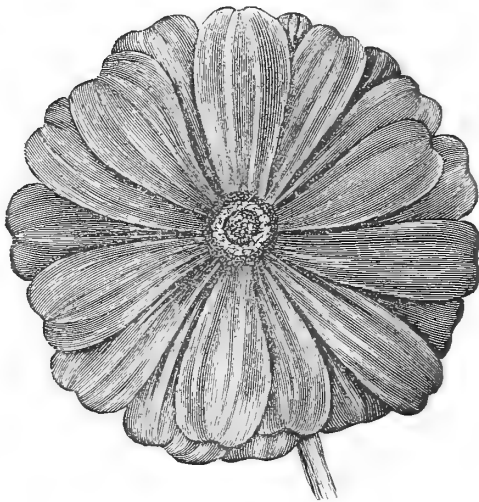
— **Moly** (Golden Allium).— Perfectly hardy, growing one foot high and covered with large clusters of golden flowers. Most desirable for the garden. 5 cents each, 50 cents per dozen.



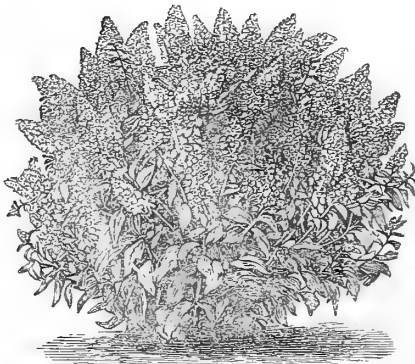
Allium Neapolitanum.



Calceolaria



Cineraria.



Mignonette.



Double Daisy.

Choice Flower Seeds

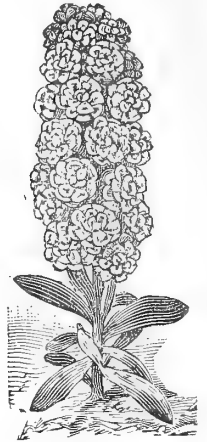
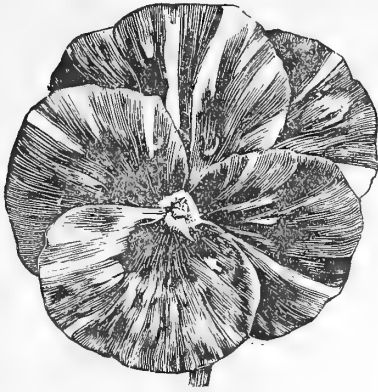
For Fall Sowing.

Of easy Cultivation in Parlor, Greenhouse and Garden.

Particular attention is invited to the following list, the seeds being of a quality that cannot be surpassed. They have been selected from the stocks of several of the most successful cultivators and exhibitors in this country and Europe, and we can confidently recommend them to growers requiring specially good strains for either commercial or competing purposes.

Per Pkt.

| | |
|--|--------|
| Aricula. —The finest prize sorts, saved from choice English hybrids | \$0.25 |
| Begonia, tuberous rooted. —These splendid varieties produce branching, and, at the same time, tufted plants, from twelve to eighteen inches high, covered the whole summer with bright, elegant flowers. They are also well adapted for pot culture. Flowering bulbs, 30c.; seeds | 25 |
| Calceolaria. —Extra select, beautifully spotted, extra large flowers—the finest in cultivation | 50 |
| Carnation. —“New Shakespearean.”—A perpetual flowering variety. We are confident that, for size of flowers, brilliancy of colors, and constancy of bloom this strain cannot be equalled | 50 |
| Centaurea candidissima (ragusina). —Splendid silvery-leaved plant for beds, vases and pots | 10 |
| —Gymnocarpa. —Valuable for its silvery foliage | 10 |
| Cineraria. —Extra choice, from all the new varieties | 50 |
| —New double-flowering. —A desirable acquisition; rich and beautiful colors | 50 |
| Cyclamen Persicum giganteum. —This superb variety is a new and greatly improved type, having very broad, mottled leaves, and stout flower-stalks, throwing the flowers well above the foliage | 50 |
| Daisy, double white. —Constant and perfectly double, valuable for florists | 10 |
| —Choice Mixed. —Saved from splendid double flowers | 05 |
| Forget-me-not. —Fine mixed | 10 |
| Gloxinia. —Selected, from prize flowers, of both the drooping and erect varieties | 50 |
| Hollyhocks. —Very double, saved from an unrivalled collection of Boston prize varieties; if sown in August or September will flower freely next year | 25 |
| Lobelia Paxtoniana. —Pure white with, pale blue belt; splendid for hanging baskets | 05 |
| —Erinus. —Deep blue | 05 |
| —Alba. —Pure white | 05 |
| Mignonette Machet —New and fine | 10 |
| —Hybrid Spiral. —The two best varieties for pot culture | 10 |



Pansies.

Stocks.

Choice Flower Seeds

For Fall Sowing.

PANSY (Heart's-Ease, Viola Tricolor).

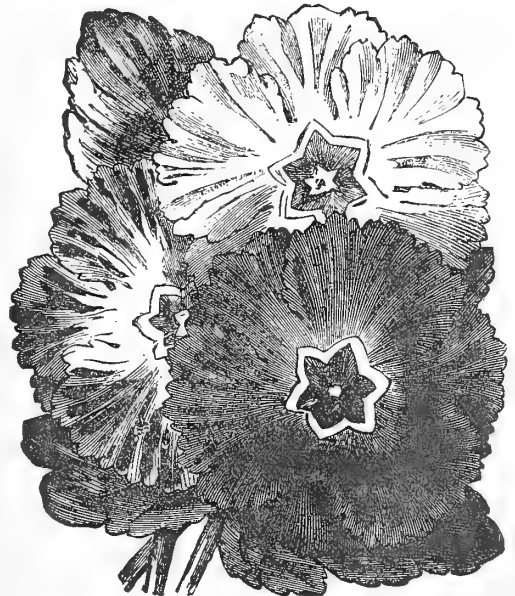
This lovely flower, a favorite with every one, is too well known to need any description. Nothing can be more effective, whether grown in beds, ribbons, groups, or interspersed among other plants in the border. It is also admirably adapted for pot-culture, for the decoration of the conservatory, during the winter and spring months. The following collection embraces the finest varieties offered:

Per Pkt.

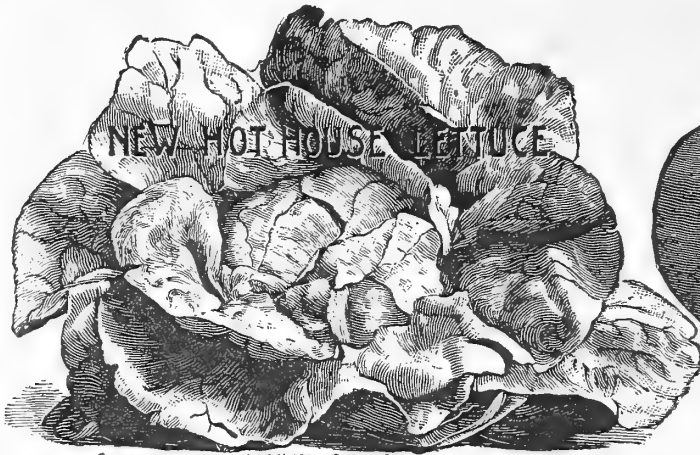
- Pansy, **Bliss's Perfection**.—For variety of markings, beauty of form, large size, good substance, and splendid satiny texture, cannot be excelled . . . \$0.50
- Trimardeau**.—A new variety of French origin; plants vigorous and of compact habit, the flowers of which are larger than any other variety . . . 25
- Emperor William**.—Brilliant blue, well-defined purple eye; splendid . . . 10
- Faust, or King of the Blacks**.—Densest black pansy known . . . 10
- Golden yellow**.—Beautiful . . . 10
- Odieur, or Five Spotted**.—A distinctly blotched variety of great beauty, which has been greatly improved of late by careful selection . . . 25
- Bugnot**.—A new French variety of the Odier type, with very large and beautifully colored flowers; very attractive . . . 50
- Snow Queen**.—A charming, delicate, satiny white, slightly tinged with yellow toward the centre; splendid bouquet variety . . . 10
- Choice mixed**.—Containing many varieties . . . 25
- Good mixed**.—Fine for bedding . . . 10
- Collection of 12**.—Best variety . . . 75
- Petunia, Rawson's New Hybrid**.—The best in cultivation . . . 50
- Primula sinensis fimbriata** (Chinese Primrose fringed).—Various colors mixed, extra . . . 25
- Primula sinensis fimbriata filicifolia** (new fern-leaved varieties), various colors mixed . . . 25
- Primula sinensis fimbriata flore pleno** (new double varieties).—Various colors mixed . . . 50
- Smilax**.—One of the best decorative climbing plants . . . 10
- Stocks—Snowflake**.—White variety, which for winter cutting cannot be excelled; much prized by Boston Florists . . . 15
- Brompton**.—Superior for pot culture, scarlet, white, and purple mixed . . . 10
- Giant Perfection**.—New large flowering, mixed . . . 15
- French Winter or Coardeau**.—A beautiful variety for pot culture, mixed colors . . . 15
- Sweet William, auricula-flowered**.—A variety of great merit, far surpassing anything before offered . . . 10
- Verbenas, extra fine, mixed** . . . 10
- Wallflower**.—Extra fine double German . . . 10



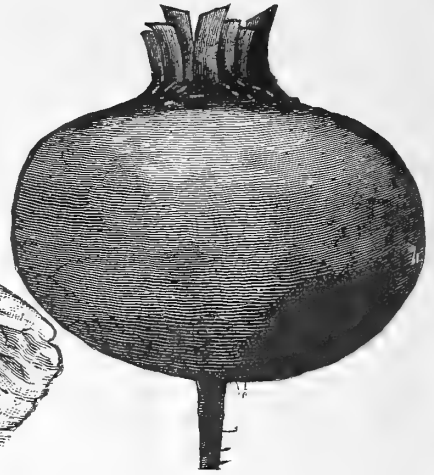
Sweet William.



Primula.



COPYRIGHTED BY W. W. RAWSON & CO 1892



Crosby's Improved Egyptian.



Rawson's Volunteer.



Cauliflower.

Beets. — Crosby's Improved Egyptian. — This variety well known by some of our Arlington gardeners, is the result of repeated and careful selection for a series of years by the late Mr. Josiah Crosby, of Arlington, Mass., from his stock of the original Egyptian Beet. By his method he succeeded not only in producing a variety that was better in form, being *thicker* and smoother, or even in growth, but better in quality than the older sort. It is also equally early. Per pkt., 5c.; oz., 10c.; 1-4 lb., 30c.; lb., \$1.00.

— Eclipse. Per pkt., 5c.; oz., 10c.; 1-4 lb., 25c.; lb., 60c.
 — Arlington Favorite. Per pkt., 5c.; oz., 10c.; 1-4 lb., 25c.; lb., 60c.

Cabbage. — Rawson's Volunteer. — A new and very early summer cabbage. Tested in our trial grounds it was ready for marketing fully eight to ten days earlier than any other variety. It strongly resembles the Early Etampes; the leaves grow compactly together, so that it can be planted very close. Per pkt., 10c.; oz., 30c.; 1-4 lb., \$1.00.

— Jersey Wakefield (True). Per pkt., 5c.; oz., 30c.; 1-4 lb., \$1.00; lb., \$3.00.

— Extra Early, Etampes, a new and very superior variety. Per pkt., 5c.; oz., 20c.; 1-4 lb., 75c.; lb., \$2.50.

— Early York. Per pkt., 5c.; oz., 20c.; 1-4 lb., 50c.; lb., \$2.00.

— Winnigstadt. Per pkt., 5c.; oz., 20c.; 1-4 lb., 50c.; lb., \$2.00.

— Early Flat Dutch (True). Per pkt., 5c.; oz., 20c.; 1-4 lb., 50c.; lb., \$2.00.

— Rawson's Extra Early Summer, Arlington seed. Per pkt., 10c.; oz., 30c.; 1-4 lb., \$1.00; lb., \$4.00.

— Improved Brunswick. Per pkt., 5c.; oz., 30c.; 1-4 lb., \$1.00; lb., \$3.00.

— Premium Flat Dutch. Extra select. Per pkt., 5c.; oz., 20c.; 1-4 lb., 50c.; lb., \$2.00.

Cauliflower. — Sea Foam. Extra early. Per pkt., 25c.; oz., \$3.50; 1-4 lb., \$12.00.

— Earliest Paris. Per pkt., 10c.; oz., 75c.

— Extra Early Dwarf Erfurt. Per pkt., 25c.; oz., \$3.50; 1-4 lb., \$12.00.

— Early Snowball. Per pkt., 25c.; oz., \$3.50; 1-4 lb., \$12.00.

— Algiers. Per pkt., 10c.; oz., 75c.; 1-4 lb., \$2.50.

Kale. — Dwarf-Curled German Greens, or "Sprouts." Per pkt., 5c.; oz., 10c.; 1-4 lb., 75c.; lb., \$1.00.

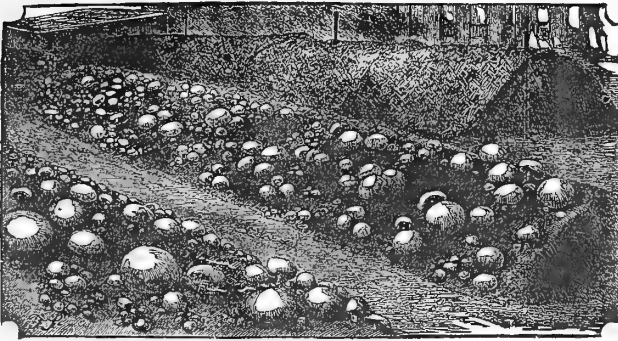
— Green-Curled Scotch. Per pkt., 5c.; oz., 10c.; 1-4 lb., 75c.; lb., \$1.00.

Lettuce. — Curled Simpson. Per pkt., 5c.; oz., 10c.; 1-4 lb., 40c.; lb., \$1.50.

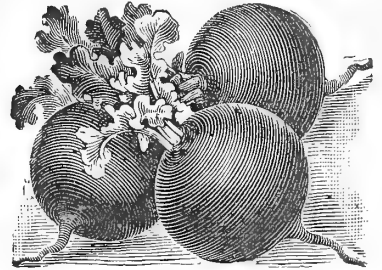
— Rawson's New Hot-House. — This new Lettuce is especially adapted for growing in greenhouses and hot-beds. It is the *largest lettuce grown*, being nearly double the size of the famous Boston Market or White Seed Tennis-Ball Lettuce. It is also a *sure header*, and not liable to *rot in the heart*, making it a most valuable sort for market gardeners. This is not the Hittinger Lettuce. All of the seed has been grown under glass, from carefully selected heads, by Mr. Rawson. Per pkt., 20c.; oz., 50c.; 1-4 lb., \$2.00; lb., \$6.00.

— Boston Market, or White Seeded Tennis Ball. — This variety is grown extensively by market gardeners, under glass, for winter use; very compact head, and of the best quality; Arlington grown seed. Per pkt., 5c.; oz., 30c.; 1-4 lb., 75c.; lb., \$3.00.

— Brown Dutch. Per pkt., 5c.; oz., 15c.; 1-4 lb., 40c.; lb., \$1.50.



Mushroom Bed.



Scarlet Globe Radish.

- Mushroom, Spawn English - (Bricks) per lb. . . \$0.15
- “ “ French.—Two lb. boxes . . . 1.00
- “ “ “ Three lb. “ . . . 1.40
- “ “ “ Four lb. “ . . . 1.75

Melons.—Arlington Green Nutmeg.—Handsome fruit, roughly netted all over, flesh thick, green, melting and very sweet. Per pkt., 5c.; oz., 10c.; 1-4 lb., 30c.

Champion Market.—These melons are almost a perfect globe in shape and densely netted. The flesh is thick, light-green in color, and of rich, sweet flavor. Per pkt., 5c.; oz., 10c.; 1-4 lb., 30c.

Montreal Green Nutmeg.—Nearly round, flattened at the ends; deep regular ribs; skin densely netted; flesh thick, and of delicious flavor. Per pkt., 5c.; oz., 10c.; 1-4 lb., 30c.; lb., \$1.00.

New Early Hackensack (Cantaloupe).—Highly recommended for market gardeners to whom earliness and quality are essentials. Per pkt., 5c.; oz., 10c.; 1-4 lb., 30c.; lb., \$1.50.

White Japan.—Early, medium size; flesh thick and very sweet. Per pkt., 5c.; oz., 10c.; 1-4 lb., 30c.; lb., \$1.00.

Onion, Egyptian, or Perennial Tree.—A true novelty in the Onion family, being entirely hardy. These should be planted in the fall, and onions can be obtained in the spring earlier than with any other kind. It is used extensively by market-gardeners in this vicinity, for early onions. Price per quart, 25c.; per peck, \$1.25; per bushel, \$4.00.

Parsley, Arlington Extra Curled.—Dwarf and tender; leaves crimped beautifully and curled; used principally as a garnish for the table. Per pkt., 5c.; oz., 10c.; 1-4 lb., 25c.; lb., \$1.00.

Market Gardeners.—Per pkt., 5c.; oz., 10c.; 1-4 lb., 30c.; lb., \$1.25.

Radish, Scarlet Globe.—It is of globular shape, of a brilliant red color and has a very short top. In flavor it is all that can be desired, and the flesh is tender and crisp. *The best for forcing.* Per pkt., 5c.; oz., 10c.; 1-4 lb., 25c.; lb., 75c.

Deep Blood-Red Turnip.—A new sort, entirely distinct from all other varieties hitherto grown. It is a very deep, rich color, quite constant, of fine flavor. Per pkt., 5c.; oz., 10c.; 1-4 lb., 25c.; lb., 75c.

Scarlet Turnip, White Tipped.—A very early variety, excellent for market, and fine for forcing. Per pkt., 5c.; oz., 10c.; 1-4 lb., 25c.; lb., 75c.

Wood's Early Frame.—Similar to Long Scarlet, but does not grow quite as long; of more brilliant color; excellent for forcing. Per pkt., 5c.; oz., 10c.; 1-4 lb., 25c.; lb., 75c.

French Breakfast.—Arlington grown seed; a very popular, quick-growing variety; a good forcing variety. It is of oval form; color scarlet, tipped with white. Per pkt., 5c.; oz., 10c.; 1-4 lb., 25c.; lb., 60c.

American Long Scarlet.—Arlington grown seed; this is the standard variety grown for private gardens and for market. The true variety has a very bright-red root, with one of fine quality, with small top. Per pkt., 5c.; oz., 10c., 1-4 lb., 25c.; lb., 75c.

Black Spanish, Winter.—Per pkt., 5c.; oz., 10c.; 1-4 lb., 25c.; lb., 60c.

Spinach.—Arlington Pointed Leaf; a hardy, large-growing variety; used quite extensively by our Arlington gardeners for Fall sowing. Per pkt., 5 cts.; oz., 10 cts.; 1-4 lb., 20 cts.; lb., 50.

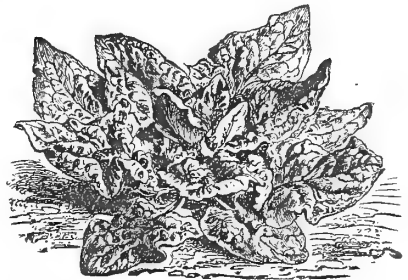
Prickly.—Per pkt. 5c.; oz., 10c.; 1-4 lb. 15c.; lb., 35 cts.

Large Round-Leaved Viroflay.—Per pkt., 5c.; oz., 10c.; 1-4 lb., 15c.; lb., 35c.

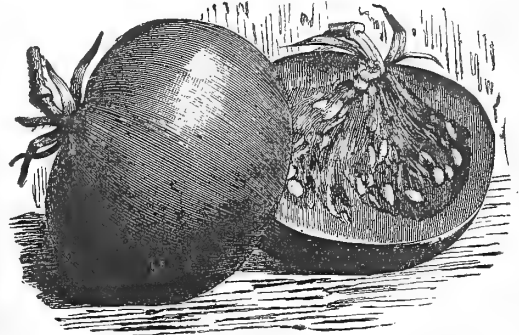
New Savoy Leaved.—An extra fine variety, much esteemed. Per pkt., 5c.; oz., 10c.; 1-4 lb., 15c.; lb., 35c.

Rawson's Round, Thick-leaved; the popular market variety, good either for Fall or Spring sowing. Per pkt., 5c.; oz., 10c.; 1-4 lb., 15c.; lb., 25c.

Tomato, Lorillard.—Especially recommended for forcing. Per pkt., 10c.; oz., 25c.; 1-4 lb., 75c.



Spinach.

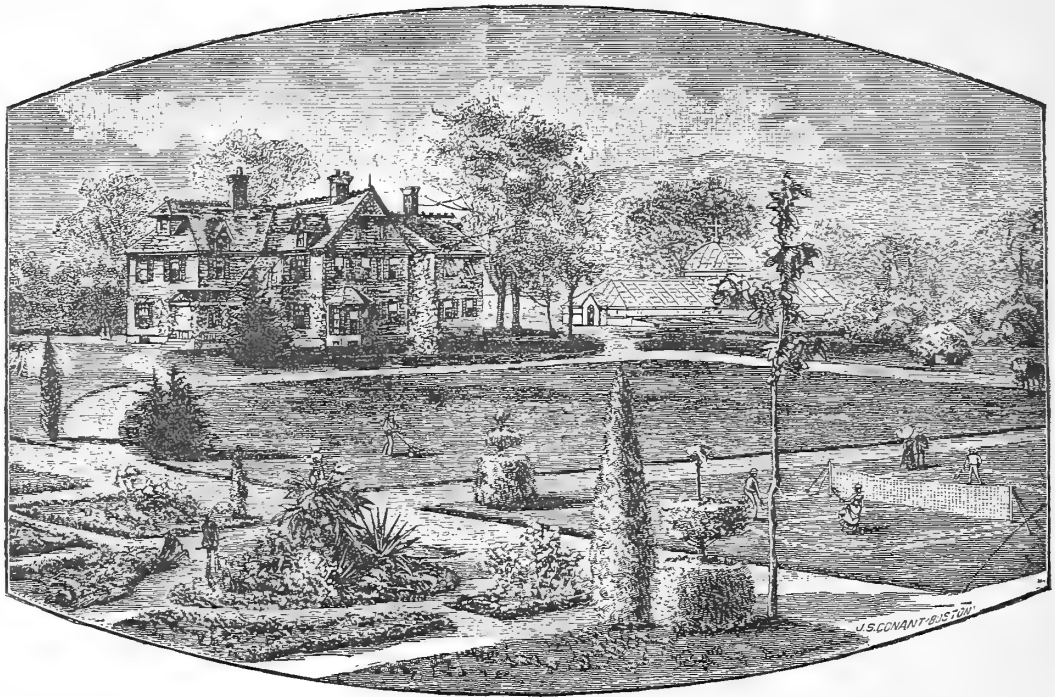


Lorillard Tomatoes.



Egyptian, or Perennial Onions.

A Suburban Residence, showing a well-kept Lawn, Flower Garden and Conservatory.



Rawson's Velvet Lawn Grass Mixture.

Our increased sales each year of Rawson's *Velvet Lawn Grass* mixture show that it is all we claim it to be, and that is, "the best mixture of grasses for lawns that can be obtained." It is composed of dwarf and close growing grasses which properly managed produce a fine, velvety lawn and permanent sod. Sow 4 bushels per acre. Per qt., 20 cts.; 4 qts., 65 cts.; peck, \$1.00; bush., \$4.00; 5 bush., and upwards, \$3.50.

BOWKER'S LAWN DRESSING.

This dressing has been in use for several years, and we have the most satisfactory reports from our customers who have tried it.

It should be sown broadcast when the grass is dry, from 5 to 10 pounds to every 1,000 square feet, during the spring months, and once during the summer after the grass has been mowed. It is a fine, dry powder, and can be very easily sown from the hand without any inconvenience. It produces a luxuriant growth of dark-green grass, introduces no weeds, and leaves no filth, as is the case with barnyard or stable manure.

PRICES.—100-lb. bag, for plat 100x100 feet, \$3.00; 50-lb. bag, for plat 50x100 feet, \$1.75; 25-lb. bag, for plat 50x50 feet, \$1.00; 10-lb. bag, for plat 10x100 feet, 50 cts.

CLOVERS.

Alsike Clover (*Trifolium hybridum*).—Perennial; flowers in June and July. It is deservedly in repute as one of the best perennial clovers, and is well adapted to this country. (60 lbs. to the bushel.) 12 lbs. will sow one acre; per lb., 25 cts.

Crimson, or Italian Clover (*Trifolium incarnatum*).—Spikes or heads oblong, and of a beautiful crimson color when in flower; annual; height, 18 inches to 2 feet; flowers in June or July. It forms a valuable green food for cattle early in the season, and, if cut when in full bloom, yields an abundant crop. 20 lbs. will sow one acre. Per lb., 30 cts.

Red Clover (*Trifolium pratense*).—The common or medium red clover, so generally cultivated in this country. (60 lbs. to the bushel.) Market price.

White Clover (*Trifolium repens*).—This variety is more valuable than any other for permanent pasture, and is also used in lawn mixtures. (60 lbs. to the bushel.) Per lb., 30 cts.

Lucerne Clover, Alfalfa (*Medicago sativa*).—Perennial; height about 3 feet; flowers in June and July. The soils which appear most congenial to it are those of a light sandy nature. If proper care is taken of the young plants they will yield a considerable crop the second year; but it is at least the third season after sowing before they arrive at full maturity. 25 lbs. to an acre. (60 lbs. to the bushel.) Per lb., 30 cts.

Select Grass Seeds for the Farm and Lawn.

- Creeping Bent, or Marsh Bent Grass** (*Agrostis stolonifera*).— Excellent for lawn. Sow two or three bushels per acre. (15 lbs. to the bush.) Per lb. 25 cts.; bush., \$3.00.
- Crested Dog's Tail, or Gold Grass** (*Cynosurus cristatus*).— Excellent for lawn and permanent pasture. About one bushel sown to the acre. (28 lbs. to the bush.) Per lb., 40 cts.; bush., \$7.50.
- Darnel-Leaved, or Rye Fescue** (*Festuca loliacea*).— Especially adapted to marshy soils. About three or four bushels sown to the acre. (12 lbs. to the bush.) Per lb., 25 cts.; bush., \$3.00.
- Hard Fescue** (*Festuca duriuscula*).— Excellent for pasture, as it retains its verdure during long continued drought. (12 lbs. to the bush.) Two to three bushels will sow an acre. Per lb., 25 cts.; bush., \$2.50.
- Italian Rye Grass** (*Lolium Italicum*).— Three bushels to the acre. (118 lbs. to the bush.) Per bush., \$1.75.
- Johnson Grass** (*Sorghum halepense*).— A strong grower. (25 lbs. to the bush.) One bushel will sow an acre. Per lb., 25 cts.; bush., \$4.00.
- Kentucky Blue Grass** (*Poa pratensis*).— This should be used in all permanent mixtures especially in lawns. (14 lbs. to the bush.) Three bushels will sow an acre. Extra clean. Per bush., \$3.50.
- Meadow Foxtail** (*Alopecurus pratensis*).— Three to four bushels sown to the acre. (7 lbs. to the bush.) Per lb., 40 cts.; bush., \$2.50.
- Meadow Fescue** (*Festuca pratensis*).— It is especially adapted for permanent pastures. (15 lbs. to the bush.) Three bushels will sow an acre. Per lb. 25 cts.; bush., \$3.50.
- Meadow Soft Grass** (*Holcus lanatus*).— Is adapted to most any soil, also grows well under trees. (7 lbs. to the bush.) Three bushels will sow an acre. Per lb., 20 cts.; bush., \$1.25.
- Orchard Grass** (*Dactylis glomerata*).— Three bushels will sow an acre. (14 lbs. to the bush.) Per lb., 20 cts.; bush., \$2.25.
- Perennial Rye Grass** (*Lolium perenne*).— Three bushels will sow an acre. (14 lbs. to the bush.) Per bush., \$1.75.
- Red or Creeping Fescue** (*Festuca rubra*).— Is especially valuable on account of its suitability for loose, light, and dry soil. (12 lbs. to the bush.) Two bushels will sow an acre. Per lb., 25 cts.; bush., \$3.00.
- Rhode Island Bent** (*Agrostis canina*).— Two to three bushels will sow an acre. (10 lbs. to the bush.) Per lb., 25 cts.; bush., \$2.75.
- Rough-Stalked Meadow Grass** (*Poa trivivis*).— Is especially adapted for pasture and irrigated meadow. (14 lbs. to the bush.) Two bushels will sow an acre. Per lb., 35 cts.
- Red-Top Grass** (*Agrostis vulgaris*).— Two to three bushels will sow an acre. Bush. of ten lbs., 80 cts. Fancy cleaned, per lb., 15 cts.
- Sheep Fescue** (*Festuca ovina*).— Two bushels will sow an acre. (12 lbs. to bush.) Per lb., 25 cts.; bush., \$2.50.
- Sweet-Scented Vernal Grass** (*Anthoxanthum Odoratum*).— Three bushels will sow one acre. (110 lbs. to the bush.) Per lb., 25 cts. True Perennial, per lb., 75 cts.
- Tall Fescue** (*Festuca elatior*).— This is excellent for permanent pasture mixture. (15 lbs. to the bush.) Two and a half bushels will sow one acre. Per lb., 35 cts.; bush., \$4.50.
- Tall Meadow Oat Grass** (*Avena elatior*).— Is early and very productive. (12 lbs. to the bush.) Four bushels will sow an acre. Per lb., 30 cts.; bush., \$2.50.
- Timothy, or Herd's Grass** (*Phleum pratense*).— We keep only the best grade. (45 lbs. to the bush.) One half-bushel will sow an acre. Per bush., \$2.00. Price subject to change without notice.
- Various-Leaved Fescue** (*Festuca heterophylla*).— Per lb., 30 cts.; bush., \$3.00.
- Wood Meadow Grass** (*Poa nemoralis*).— It is especially valuable for lawns and grounds somewhat shaded. (14 lb. to the bush.) Two bushels will sow an acre. Per lb., 40 cts.; per bush., \$5.00.
- Yellow Oat Grass** (*Avena flavescens*).— (About 8 lbs. to the bush.) Per lb., 75 cts.; bush., \$5.00.

THE STOCKBRIDGE LETTUCE MANURE.

We have been experimenting for some time with a fertilizer which would be effective, in producing healthy plants, free from mildew or rot, and which would head up compactly.

The reports received show that the separate chemicals were more or less effective; but that the Special Lettuce Manure was by far the best, giving a rapid and vigorous growth, free from mildew and rot, and causing the Lettuce to head up in a most satisfactory manner.

We offer this Stockbridge Special Lettuce Manure, firmly believing that it will give entire satisfaction. We have put it up in small parcels, in order that the lettuce-growers may try it in a small way before buying it in large quantities. Apply at the rate of one pound to thirty square feet.

We have used this Lettuce Manure with satisfactory results, and recommend it to market gardeners.

| | Price. | | Price. |
|--------------------------------------|---------|--------------------------------|--------|
| Per Ton, in 200 pound bags | \$42.50 | Per Bag of 50 pounds | 1.50 |
| Per Bag of 100 pounds | 2.50 | Per Bag of 25 pounds | 1.00 |

GOLDMAN'S ATOMIZER AND SPRINKLER



Practical and Useful.

AN exceedingly useful little invention for sprinkling house plants, clothes, etc., throwing a very fine, mist-like spray. Easily and rapidly filled and controlled by pressure. Price by mail to any address in the United States for 40 cents.

BOWKER'S AMMONIATED FOOD FOR FLOWERS.

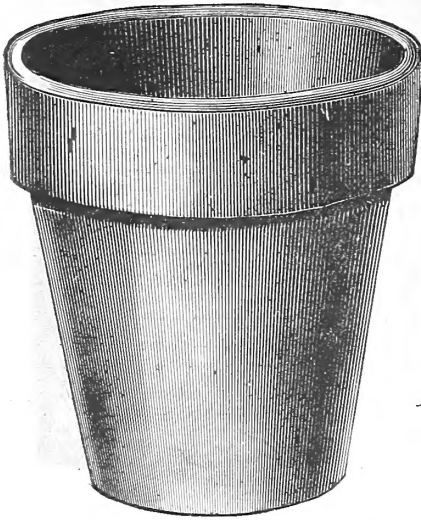
A Fertilizer Largely Soluble in Water, Free from Odor, and Clean to Handle.

It is made expressly for flowers grown in the house or garden. It contains the same plant food as stable dressing, and produces the same results, without giving off in the room that offensive and unhealthy odor which arises from the application of stable manure. It produces a healthy, luxuriant growth, and induces early and generous flowering, and cannot in any way harm the plants if applied according to directions, which are very simple, and accompany each package. Per box, 15 and 30 cts.; if by mail, 20 and 45 cts.



STANDARD FLOWER-POTS.

ADOPTED by the Society of American Florists. Well made, perfect in shape, with an improvement in drainage, having a convex bottom, or, we should say, with the rim or body of the pot projecting below the bottom, thus leaving a space between the bottom and the table it is placed upon. Breakage is not one half as great as in other pots, the deep rim protecting them from any ordinary hard usage.



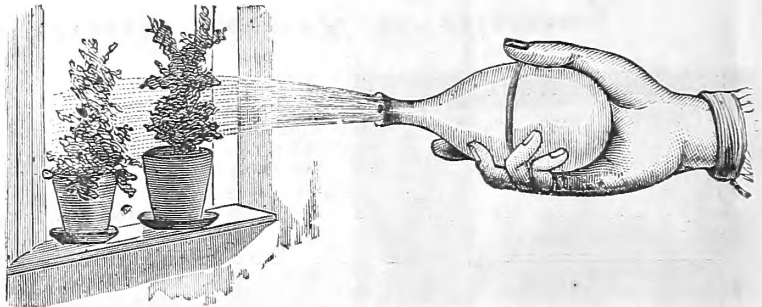
| Sizes. | POTS. | | SAUCERS. | |
|------------------------------|----------|----------|----------|----------|
| | Per doz. | Per 100. | Per doz. | Per 100. |
| 2½ in high and width inside, | \$0.12 | \$0.85 | | |
| 3 " " " " " " | 18 | 1.20 | | |
| 4 " " " " " " | 24 | 1.75 | \$0.20 | \$1.50 |
| 5 " " " " " " | 42 | 3.00 | 30 | 2.00 |
| 6 " " " " " " | 60 | 4.25 | 40 | 2.50 |
| 7 " " " " " " | 84 | 6.75 | 48 | 3.25 |
| 8 " " " " " " | 1.20 | 8.50 | 54 | 3.75 |
| 9 " " " " " " | 1.44 | 11.50 | 60 | 4.25 |
| 10 " " " " " " | 1.75 | 13.50 | 72 | 5.00 |
| 11 " " " " " " | 3.00 | 17.50 | 96 | 5.50 |
| 12 " " " " " " | 4.80 | 30.00 | 1.20 | 8.00 |

SEED AND BULB PANS.

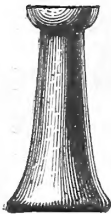
| Diameter | 6 in. | 8 in. | 10 in. | 12 in. |
|---------------------|-------|-------|--------|--------|
| Round Pattern, each | 07 | 12 | 15 | 20 |
| " " dozen | 72 | 96 | 1.56 | 2.16 |

ELASTIC PLANT SPRINKLER.

MADE of rubber with a flat bottom. The cap is nickel-plated and fitted with a rubber valve which permits it to fill rapidly. An excellent sprinkler for house plants, carpets, floors, clothes, etc. In two sizes: No. 1, \$1.00; by mail, \$1.25; No. 2, 50 cents; by mail, 60 cents.



HYACINTH GLASSES.



No. 1.

No. 1.—Belgian, in three colors,—blue, green, and purple. 15 cents each; \$1.50 per dozen.

No. 2.—Tye's pattern, in three colors,—blue, green, and purple. 20 cents each; \$2.00 per dozen.



No. 2.

PATENT PROTECTING CLOTH FOR HOT-BEDS.

This material is being largely used in the place of glass for the protection and forwarding of plants in early spring. The material used in its preparation renders it very tough and durable; prevents it from shrinking, and causes it also to be partially water proof. It is an excellent substitute for glass, and being light and easily and safely shipped, can be sent to sections of the country where it would be quite impossible to send sash. It is furnished in pieces containing about forty yards, one yard wide. Prices, medium grade, per yard, 10 cents; by the piece, 8½ cents per yard.

SASH FOR HOT-BEDS.

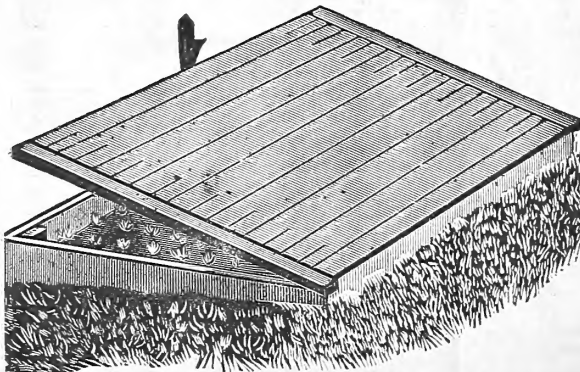
Best quality, 1¼ inch, 3x6 ft., unglazed, \$1.10; glazed, double thick, \$2.40; 1½ inch, 3x6 ft., unglazed, \$1.00; glazed, double thick, \$2.25.

HOT-BED MATS.

These are made in the best manner, of good straw, and full size and weight—6x6 ft. Each, \$1.50. Prices in large lots on application.

TOBACCO STEMS.

For fumigating plants infested with green fly, etc. Dampen before lighting. Price per barrel, \$1.00; case, \$2.06 to \$5.00.

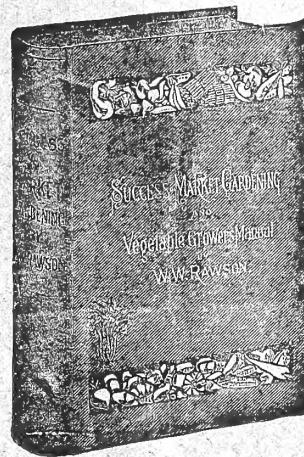


SUCCESS IN MARKET GARDENING,

A NEW

VEGETABLE GROWERS' MANUAL.

By W. W. RAWSON.

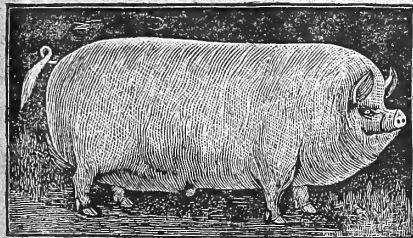


THE Boston Market has long been celebrated for the superior quality of its vegetables, as well as for their beautiful appearance, and the inquiry is often made how these results are accomplished.

An experience of thirty years as a practical market gardener at Arlington (only five miles from Boston), and in daily communication with the Boston market, has given me an opportunity to become thoroughly acquainted with every department of the business connected with growing and marketing the stock, added to this the keen competition among the Arlington market gardeners, who, stimulated by the liberal premiums offered by the Massachusetts Horticultural Society for the best display of vegetables, both at their weekly and annual exhibitions, spare no pains nor expense to secure the best seed, and adopt the most approved methods of cultivation. The success which has attended my efforts, both as a grower and exhibitor (having taken more premiums than any others), which has been so favorably reported by the press, has elicited many letters of inquiry from all parts of the country to learn how these results have been accomplished. So much time is required to answer these various questions, I have thought it advisable to give a statement of my experience in the form of a book, which will not only answer the ordinary inquiries usually made, but give plain and simple instructions for growing all kinds of vegetables, both for the market and kitchen garden, so that any one desirous of commencing the business may have the benefit of my experience.

PRICE, \$1.00.

MEDIUM YORKSHIRE PIGS.



HAVING been a breeder of swine for the past thirty years, — and having tried nearly all the different breeds that have been so highly recommended during that time, I am fully convinced that the Medium Yorkshire are by far the most profitable for keeping. The cut annexed will give a fair idea of their appearance. They have small heads, large shoulders, of fine form, very quiet, and easily kept; take on fat quickly; will average, when dressed, at twelve months, 350 lbs.; in fifteen months, 450 lbs.

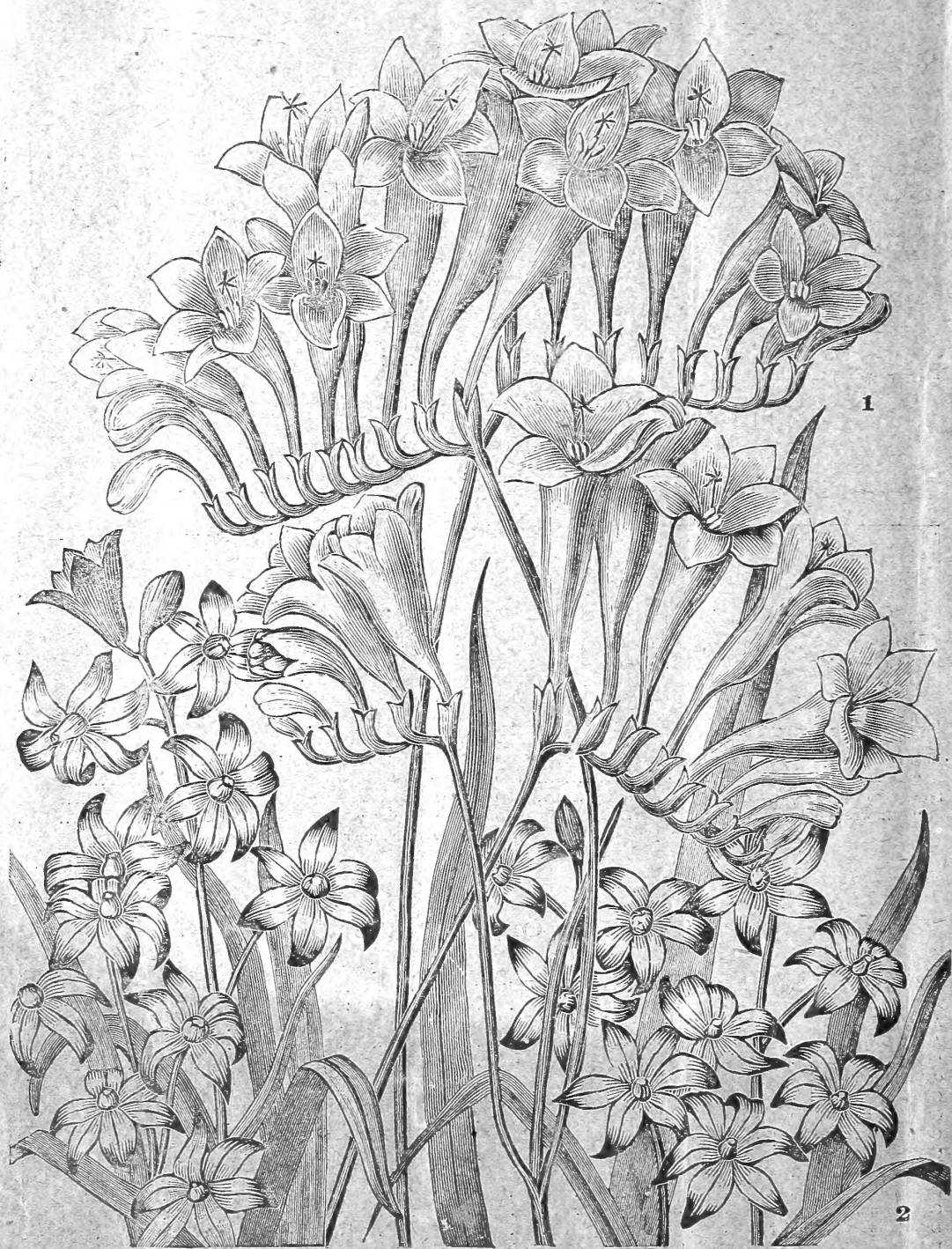
They will be carefully boxed for safe transportation (with extra feed when necessary), and delivered to the express in Boston, upon the receipt of the prices quoted.

| | | | |
|------------------------------|--------|---------------------------------------|-------|
| Boars, 6 to 7 weeks old..... | \$5.00 | Barrows, 6 to 7 weeks old..... | 4.00 |
| “ 12 weeks old..... | 8.00 | “ 12 weeks old..... | 5.00 |
| Sows, 6 to 7 weeks old..... | 3.00 | Barrow and Sow, 6 to 7 weeks old..... | 7.10 |
| “ 12 weeks old..... | 5.00 | “ “ “ 12 weeks old..... | 10.00 |

Special prices will be given where a large number are required.

TABLE OF CONTENTS.

| | Page. | | Page. | | Page. |
|-------------------------|-------|-----------------------|-------|--------------------------------|-------|
| Alliums | 17 | Grass Seed Mixtures | 22 | Onion, Egyptian | 21 |
| Anemones | 10 | Hot-bed Mats | 24 | Ornithogalum Arabicum | 10 |
| Arum | 13-17 | Hyacinths, Culture of | 3 | Oxalis | 17 |
| Amaryllis | 13 | Hyacinths, Double | 3 | Pæonies | 15 |
| Bulb Collections | 12 | Hyacinths, Roman | 6 | Plant Food | 23 |
| Calla Lily | 13-17 | Hyacinths, Single | 4 | Patent Protecting Cloth | 24 |
| Clovers | 22 | Hyacinth Glasses | 24 | Ranunculus | 16 |
| Chionodoxa Lucilia | 15 | Hyacinths, Musk | 6 | Scilla | 15 |
| Collections, Hyacinths | 5 | Hyacinths, Feathered | 6 | Seeds, Flowers for Fall and | |
| Colchicum | 17 | Hyacinths, Grape | 6 | Winter Sowing | 18-19 |
| Crocus | 11 | Hyacinthus Candicans | 6 | Seeds, Vegetables for Fall and | |
| Crown Imperials | 14 | Iris | 16 | Winter Sowing | 20-21 |
| Cyclamen | 14 | Ixias | 15 | Snowdrops | 16 |
| Elastic Plant Sprinkler | 24 | Jonquils | 8 | Special Collections | 12 |
| Fertilizers | 22-23 | Lily, Culture of | 1 | Sparaxis | 15 |
| Flower Pots | 24 | Lilies, Japan, etc. | 1-2 | Sash for Hot-beds | 24 |
| Flower Seeds | 18-19 | Lily of the Valley | 14 | Triteleia Uniflora | 11 |
| Freesia | 15 | Madeira Vine | 16 | Tritonias | 15 |
| Fritillarias | 3 | Montbretia | 14 | Tropæolum | 6 |
| Gladiolus, Hardy, etc. | 15 | Narcissus, Garden | 9-10 | Tulips | 7-8 |
| Goldman's Atomizer | 23 | Narcissus, Polyanthus | 9 | Tobacco Stems | 24 |
| Grass Seeds | 22-23 | Narcissus, Chinese | 10 | Vegetable Seeds | 20-21 |



1. FREESIA.

2. CHIONODOXA LUCILIAE.

See Page 15.