

## Historic, archived document

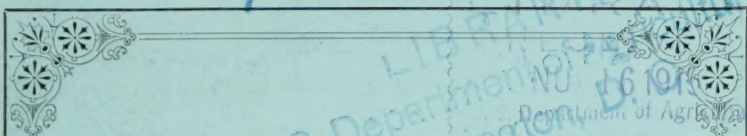
Do not assume content reflects current scientific knowledge, policies, or practices.



62.39

1885

LIBRARY OF THE  
U. S. Department of Agriculture  
Washington, D. C. 10116



# RAWSON'S

CATALOGUE OF



# AUTUMN BULBS.

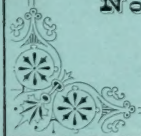


**W. W. RAWSON & CO.,**

SEEDSMEN,

No. 34 South Market Street,

**BOSTON.**



HENRY H. CLARK & CO., PRINTERS, 77 KILBY STREET.

# PRICE-LIST

OF

## Flower-Pots and Saucers,

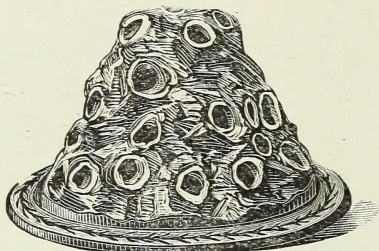
### HYACINTH GLASSES, ETC.

#### FLOWER-POTS AND SAUCERS.

	EACH	DOZ.	HUN.
3 inch. — Pot and Saucer . . . . .	\$0.04	\$0.45	\$3.00
4 inch. — “ “ “ . . . . .	.05	.55	4.00
5 inch. — “ “ “ . . . . .	.07	.80	6.00
6 inch. — “ “ “ . . . . .	.10	1.10	8.00
7 inch. — “ “ “ . . . . .	.12	1.30	10.00
8 inch. — “ “ “ . . . . .	.15	1.70	12.50
9 inch. — “ “ “ . . . . .	.20	2.25	16.00
10 inch. — “ “ “ . . . . .	.25	2.80	20.00

Price

75 cents.

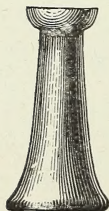


CROCUS POT.

#### HYACINTH POTS.

	EACH.	DOZ.	HUN.
3½ inch in diameter; 6½ inches deep . . . . .	\$0.07	\$0.75	\$5.00
5 inch “ “ 7 “ “ . . . . .	.09	1.00	7.00

#### HYACINTH GLASSES.



No. 1.

No. 1.—**Belgian**, in three colors,—blue, green, and purple.

20 cents each; \$2.25 per dozen.

No. 2.—**American-Shaped Belgian**, in three colors,—blue green, and purple.

25 cents each; \$2.75 per dozen.



No. 2.

## ❖ To Purchasers. ❖

---

SEPTEMBER, 1885.

**A**S customary at this season, we present herewith our general Price-List of Autumn Bulbs, Seasonable Seeds, etc. We ask for it your kind attention, and hope that on looking it through you will notice many varieties of Bulbs you need, find our prices satisfactory, and be pleased to favor us with your orders.

Our Bulbs will be found to be true to name, and of strongest capacity. While we aim to supply at the lowest market rates, we have imported for our customers the most expensive grades, believing the strongest and finest Bulbs will well repay any trifling additional cost over the ordinary grades; especially is this true of Bulbs for forcing.

**Our Terms are Net Cash.** All bills on which short credits are allowed are due on the first of the month succeeding the date of purchase. Bills on which longer time is desired must be provided for by special agreement.

**Orders.** All orders from known correspondents (cash or accepted credit) will at all times receive our careful and prompt attention. Orders from *unknown* correspondents will receive equal attention, *if accompanied by a remittance for the amount of the order, or satisfactory references.*

## TO PURCHASERS.

---

**Remittances.** Remittances may be made by Post-Office Money-Order, Bank Draft, Registered Letter, or, for amounts less than two dollars, in Bank-Bills, at our risk. For fractional parts of a dollar, postage-stamps may be sent.

**Bulbs by Mail.** We send Bulbs by mail, *post-paid*, to all parts of the United States at the mail price especially noted.

**Address, etc.** Persons ordering Bulbs by mail are requested to be particular to write their OWN NAME, and also the names of their TOWN, POST-OFFICE, COUNTY, and STATE, plainly, and NOT TO OMIT EITHER, as serious delays are occasioned by such omissions. If Bulbs ordered are not received within a reasonable time thereafter, notice should be sent us, so that the delay may be accounted for and remedied at once.

W. W. RAWSON & CO.,

34 South Market Street,

Boston, Mass.

# HYACINTHS.



HYACINTH.

**T**HE Hyacinth is a universal favorite, both for Winter blooming in the house, either in earth or water, and for Spring decoration in the garden. Our list comprises bulbs of all colors, both single and double.

## NAMED HYACINTHS.

Finest selected bulbs. Especially adapted for growing in earth or water, or for forcing. By mail, at prices quoted.

RAWSON'S AUTUMN BULBS.

SINGLE RED (*shades*).

	EACH.
<b>Amy</b> , very fine bright scarlet . . . . .	\$0.20
<b>Charles Dickens</b> , very fine pink, large truss . . . . .	.35
<b>Gigantea</b> , pink, very large broad truss . . . . .	.25
<b>Josephine</b> , scarlet, good truss . . . . .	.30
<b>L'Ami du Cœur</b> , red, very fine . . . . .	.20
<b>Lord Macaulay</b> , fine red, large truss . . . . .	.30
<b>Madame Hodson</b> , red, with carmine stripe . . . . .	.20
<b>Norma</b> , finest pink early, very large bulb . . . . .	.20
<b>Robert Steiger</b> , fine large scarlet, a favorite . . . . .	.20
<b>Solfatare</b> , dark red . . . . .	.30
<b>Von Schiller</b> , handsome red . . . . .	.30

SINGLE WHITE (*shades*).

<b>Alba Maxima</b> , pure white . . . . .	\$0.25
<b>Grand Vainqueur</b> , pure white, large truss . . . . .	.20
<b>La Candeur</b> , good white, early . . . . .	.20
<b>La Grandesse</b> , finest white . . . . .	.30
<b>Mont Blanc</b> , fine pure white . . . . .	.25
<b>Queen Victoria</b> , a good white . . . . .	.25
<b>Voltaire</b> , white, shaded rose . . . . .	.20

SINGLE BLUE (*shades*).

<b>Argus</b> , blue with white eye . . . . .	\$0.20
<b>Charles Dickens</b> , light blue, extra large truss . . . . .	.15
<b>Grand Lilas</b> , light blue . . . . .	.25
<b>Leonidas</b> , light blue, fine . . . . .	.20
<b>Marie</b> , dark blue, large bulb . . . . .	.20
<b>Mimosa</b> , dark blue, good truss . . . . .	.20
<b>Orondatus</b> , light blue . . . . .	.25

SINGLE YELLOW (*shades*).

<b>Anna Caroline</b> , pure yellow, extra fine . . . . .	\$0.25
<b>Grand Vainqueur</b> , clear yellow . . . . .	.20
<b>Herman</b> , orange, very large bulb . . . . .	.20
<b>Ida</b> , elegant pure yellow, superb . . . . .	.25



RAWSON'S AUTUMN BULBS.

---

SINGLE VIOLET (*shades*).

	EACH.
<b>Charles Dickens</b> , good violet, light colored . . . . .	\$0.30
<b>Haydn</b> , dark lilac purple, splendid . . . . .	.25
<b>Jeschko</b> , fine lilac purple, large bulb . . . . .	.30
<b>L'unique</b> , violet, good truss . . . . .	.25

DOUBLE RED (*shades*).

<b>Bouquet Tendre</b> , dark red, very early . . . . .	\$0.20
<b>Czar Nicolas</b> , pink, very large bulb . . . . .	.15
<b>Lord Wellington</b> , finest pink . . . . .	.25
<b>Noble par Merite</b> , very fine rose, early . . . . .	.20
<b>Regina Victoria</b> , rose, compact flower . . . . .	.20

DOUBLE WHITE (*shades*).

<b>Anna Maria</b> , blush white . . . . .	\$0.20
<b>Bouquet Royal</b> , pure white . . . . .	.20
<b>La Tour d'Auvergne</b> , pure white, early . . . . .	.20
<b>Non Plus Ultra</b> , pure white, fine for forcing . . . . .	.25

DOUBLE BLUE (*shades*).

<b>Bloksberg</b> , finest light blue, large truss . . . . .	\$0.20
<b>Bride of Lammermoor</b> , dark blue, late . . . . .	.20
<b>Garrick</b> , azure blue, very large truss . . . . .	.20
<b>Prince of Saxony Weimar</b> , dark blue, semi-double . . . . .	.20

DOUBLE YELLOW (*shades*).

<b>Bouquet d'Orange</b> , orange, very dwarf . . . . .	\$0.20
<b>Goethe</b> , sulphur yellow, finest . . . . .	.25
<b>Jaune Suprême</b> , pure yellow . . . . .	.25

RAWSON'S AUTUMN BULBS.

---

**HYACINTHS.**

In distinct colors for massing, bedding, ribbon gardening, etc.; also in mixtures, for beds or borders and general out-door culture. By mail, 25 cents per dozen extra.

	EACH.	DOZ.	HUND.
<b>Single Dark Red</b> . . . . .	\$0.10	\$1.00	\$6.00
“ <b>Rose</b> . . . . .	.10	1.00	6.00
“ <b>Pure White</b> . . . . .	.10	1.00	7.00
“ <b>Blush White</b> . . . . .	.10	1.00	6.50
“ <b>Dark Blue</b> . . . . .	.10	.75	5.00
“ <b>Light Blue</b> . . . . .	.10	.75	5.00
“ <b>Yellow</b> . . . . .	.10	1.00	6.00
“ <b>All Colors, Mixed</b> . . . . .	.10	1.00	6.00
<b>Double Dark Red</b> . . . . .	.10	1.00	7.00
“ <b>Rose</b> . . . . .	.10	1.00	7.00
“ <b>Blush White</b> . . . . .	.10	1.00	8.00
“ <b>White</b> . . . . .	.10	1.00	7.00
“ <b>Dark Blue</b> . . . . .	.10	.75	5.00
“ <b>Light Blue</b> . . . . .	.10	.75	5.00
“ <b>Yellow</b> . . . . .	.15	1.50	8.50
“ <b>All Colors, Mixed</b> . . . . .	.10	1.00	6.00

**ROMAN HYACINTHS.**

Extensively used for forcing and house-culture, flowering from three to four weeks earlier than the Holland Hyacinth. Flowers pure white, each bulb producing several spikes. 75 cents per dozen. By mail, 25 cents per dozen, extra.

# TULIPS.

By mail, 15 cents per dozen extra.



TULIP.

THE ease with which this beautiful flower can be grown, and its great beauty, make it very desirable both for house and garden. They will thrive in any good garden soil. The Early Single Tulips are best adapted for forcing in the house. The Duc Van Tholl Tulips are all adapted for forcing, and may be had in bloom by Christmas. They are the earliest of all Tulips.

## EARLY SINGLE TULIPS.

	EACH.	DOZEN.
<b>Artus</b> , brilliant scarlet . . . . .	\$0.03	\$0.30
<b>Belle Lisette</b> , white flaked, rose . . . . .	.05	.50
<b>Belle Alliance</b> , good scarlet . . . . .	.05	.50
<b>Bride of Haarlem</b> , silver, bright cherry, feathered with white . . . . .	.08	.80
<b>Bride of Haarlem</b> , gold, bright red feathered with yellow . . . . .	.15	1.50
<b>Brutus</b> , bright red and yellow . . . . .	.05	.50
<b>Canary Bird</b> , clear yellow . . . . .	.05	.50
<b>Chryselora</b> , golden yellow, extra . . . . .	.05	.50
<b>Cottage Maid</b> , rose with white border . . . . .	.06	.60
<b>De Keizer</b> , scarlet . . . . .	.06	.60
<b>Donna Maria</b> , red and white . . . . .	.06	.60

## RAWSON'S AUTUMN BULBS.

	EACH.	DOZEN.
<b>Duchesse de Parma</b> , orange yellow, fine . . . . .	\$0.05	\$0.50
<b>Epaminondas</b> , crimson and violet . . . . .	.06	.60
<b>Globe du Rigaut</b> , dark violet and white . . . . .	.05	.50
<b>Mollière</b> , purple lilac . . . . .	.05	.50
<b>Pottebaker</b> , brown and yellow . . . . .	.05	.50
<b>Pottebaker</b> , yellow, splendid . . . . .	.06	.60
<b>Pottebaker</b> , white, finest of all white tulips . . . . .	.06	.60
<b>Pottebaker</b> , scarlet, very fine . . . . .	.06	.60
<b>Purple Crown</b> , purple red . . . . .	.03	.30
<b>Queen Victoria</b> , white, rose shaded . . . . .	.05	.50
<b>Rose Mundi</b> , bright rose, extra . . . . .	.05	.50
<b>Royal Standard, silver</b> , white feathered with cherry crimson . . . . .	.06	.60
<b>Royal Standard, golden</b> , bronze red, feathered with golden yellow . . . . .	.06	.60
<b>Vermillion Brilliant</b> , glossy bright vermillion . . . . .	.05	.50
<b>Vesuvius</b> , red, fine . . . . .	.04	.40
<b>Wouwerman</b> , violet, very fine . . . . .	.05	.50
<b>Yellow Prince</b> , yellow, very fragrant . . . . .	.05	.50

### EARLY DUC VAN THOLL TULIPS.

This class is early, dwarf and very fine for forcing.

	EACH.	DOZEN.
<b>Red</b> . . . . .	\$0.05	\$0.50
<b>Scarlet</b> . . . . .	.05	.50
<b>White</b> . . . . .	.15	1.50
<b>Crimson</b> . . . . .	.05	.50

### EARLY DOUBLE TULIPS.

	EACH.	DOZEN.
<b>Agnes</b> , scarlet, dwarf . . . . .	\$0.06	\$0.60
<b>Blanc Bordé Pourpre</b> , violet and white . . . . .	.04	.40
<b>Couronne des Roses</b> , finest rose . . . . .	.06	.60
<b>Duke of York</b> , red and white . . . . .	.03	.30
<b>Gloria Solus</b> , brown and yellow . . . . .	.04	.40
<b>Imperator Rubrorum</b> , brightest scarlet . . . . .	.05	.50
<b>La Candeur</b> , pure white . . . . .	.04	.40

## RAWSON'S AUTUMN BULBS.

	EACH.	DOZEN.
<b>Lady Grandisson</b> , dwarf scarlet . . . . .	\$0.06	\$0.60
<b>Le Blazon</b> , very fine rose pink . . . . .	.05	.50
<b>Murillo</b> , nearly white, very fine . . . . .	.06	.60
<b>Purple Crown</b> , bronze-red . . . . .	.03	.30
<b>Rex Rubrorum</b> , brilliant scarlet . . . . .	.04	.40
<b>Rose Blanche</b> , pure white, extra . . . . .	.08	.80
<b>Titian</b> , brown and yellow, fine . . . . .	.06	.60
<b>Tournesoll</b> , bright red and yellow . . . . .	.05	.50
<b>Tournesoll</b> , yellow, very fine for forcing . . . . .	.08	.80
<b>Turban Violet</b> , violet, very fine . . . . .	.10	1.00

### PARROT TULIPS (*for the open ground only*).

The flowers are very large, and the colors exceedingly brilliant. They are unequalled for groups in mixed borders, or conspicuous places in front of shrubs.

	EACH.	DOZEN.
<b>Admiral Constantinople</b> , red . . . . .	\$0.04	\$0.40
<b>Aurantiacum</b> , orange . . . . .	.10	1.00
<b>Perfecta</b> , yellow and scarlet . . . . .	.04	.40
<b>Rubra Major</b> , scarlet . . . . .	.10	1.00
<b>All Colors, Mixed</b> . . . . .	.04	.40

### LATE SINGLE TULIPS.

This class flowers soon after the early varieties. They are for the open ground only.

	EACH.	DOZEN.
<b>Bizarres</b> , finest mixed with yellow grounds . . . . .	\$0.04	\$0.40
<b>Bybloemens</b> , finest mixed with white grounds . . . . .	.04	.40
<b>Roses</b> , finest mixed, with white grounds . . . . .	.04	.40

### MIXED TULIPS.

	DOZEN.	HUN.
<b>Early Single Tulips</b> . . . . .	\$0.25	\$2.00
<b>Early Double Tulips</b> . . . . .	.25	2.00
<b>Parrot</b> . . . . .	.25	2.00
<b>Late Flowering</b> . . . . .	.40	4.00

# CROCUS.

By mail, 10 cents per dozen extra.



CROCUS.

**T**HE Crocus is of the easiest culture, and will grow in almost any soil or situation; blossoming as they do almost before the snow is gone, at a time when there are no flowers, they are especially welcome. Planted early in pots, pans, or dishes in the house, they will flower about Christmas-time.

## BLUE.

	DOZEN.	HUN.
<b>Albion Purple</b> , large dark purple, early	}	\$0.15 \$1.00
<b>Baron Brunow</b> , bright purple, free blooming		
<b>Lilaceus</b> , light blue, extra		
<b>Non Plus Ultra</b> , purple with white top		
<b>Prince Albert</b> , brilliant purple		
<b>Sir John Franklin</b> , dark blue		
<b>Vulcain</b> , very dark blue		

## WHITE.

<b>Caroline Chisholm</b> , finest white	}	.15 1.00
<b>Mont Blanc</b> , good white		

## STRIPED AND VARIEGATED.

<b>Albion</b> , dark, violet striped	}	.15 1.00
<b>Madame Mina</b> , light blue striped		
<b>Sir Walter Scott</b> , white striped with purple		

YELLOW, ETC.

	DOZEN.	HUN.
<b>Yellow</b> , first size, deepest yellow . . . . .	\$0.15	\$1.00
<b>Yellow</b> , second " " " . . . . .	.10	.65
<b>Cloth of Gold</b> , golden yellow brown stripe . . . . .	.10	.75
<b>Cloth of Silver</b> , light blue striped . . . . .	.15	1.00

MIXED CROCUSES.

	DOZEN.	HUN.
<b>Blue</b> , all shades in splendid mixture	} \$0.10	\$0.60
<b>White</b> " " " " "		
<b>Striped</b> " " " " "		
<b>All Colors</b> " " " " "		

**NARCISSESS.**

By mail, 3 cents each, 30 cents per dozen extra.



NARCISSESS.

**T**HE Narcissus is a very fine class of early-blooming flowers, including the well-known Daffodil and Jonquil. The Polyanthus Narcissus are all adapted for forcing; while the Double and Single varieties are very fine for bedding in the garden. A rich soil, made porous with plenty of sand and well-rotted manure, is best adapted to their culture.

## RAWSON'S AUTUMN BULBS.

### POLYANTHUS NARCISSUS.

	EACH.	
<b>Bouquet Sans Pareille</b> , pure white . . . . .	\$0.15	
<b>Paper White</b> , pure white, used extensively for forcing . . . . .	.10	
<b>Gloriosa</b> , pure white, with orange cup . . . . .	.10	
<b>Grand Monarque</b> , large, pure white with citron cup, very desirable . . . . .	.15	
<b>Grand Soleil d'Or</b> , yellow and orange . . . . .	.10	
<b>Newton</b> , finest yellow . . . . .	.15	

### DOUBLE NARCISSUS (*Daffodil*).

	EACH.	DOZEN.
<b>Albus Plenus Odoratus</b> , pure white, sweet scented . . . . .	\$0.05	\$0.50
<b>Incomparable</b> , butter and eggs, very fine yellow and orange . . . . .	.05	.50
<b>Sulphur Phoenix</b> (sulphur crown), is pure white when forced . . . . .	.15	1.50
<b>Van Sion</b> , golden yellow, extra fine . . . . .	.05	.50

### SINGLE NARCISSUS.

	EACH.	DOZEN.
<b>Bicolor Horsfiedi</b> , large, white and yellow . . . . .	\$0.35	\$3.50
<b>Bulbocodium</b> , golden yellow, dwarf . . . . .	.15	1.50
<b>Poeticus</b> , white, scented . . . . .	.05	.50
<b>Trumpet Major</b> , dark, golden yellow, very fine for forcing . . . . .	.10	1.00

### JONQUILS.

By mail, 10 cents per dozen extra.

The Double and Single Jonquils, with their rushlike leaves, fine golden-yellow flowers, and agreeable scent, are very popular for house-culture.

	EACH.	DOZEN.
<b>Double</b> , sweet scented . . . . .	\$0.08	\$0.75
<b>Single</b> , sweet scented . . . . .	.04	.40
<b>Campernelle</b> , large, fragrant . . . . .	.04	.40



# ANEMONES.

By mail, 10 cents per dozen extra.

**S**HOWY flowering plants, hardy, and well adapted for garden or house culture.

## NAMED VARIETIES.

	EACH.	DOZEN.
<b>Blue Aimable</b> , dark blue . . . . .	\$0.05	\$0.50
<b>Duchesse de Lorraine</b> , rose-red . . . . .	.05	.50
<b>Hamlet</b> , lilac, large . . . . .	.06	.60
<b>King of the Scarlet</b> , large scarlet . . . . .	.06	.60
<b>Leverier</b> , large, scarlet . . . . .	.05	.50
<b>Ornament de la Nature</b> , dark blue and violet . . . . .	.06	.60

## MIXED.

	EACH.	DOZEN.
<b>Double Mixed</b> . . . . .	\$0.03	\$0.30
<b>Single Mixed</b> . . . . .	.03	.30

# RANUNCULUS.

By mail, 5 cents per dozen extra.

**F**REE-blooming, large flowers of all colors. They succeed well in any good garden soil. The Turban varieties do best for indoors, and are very showy; keep them in a cool, moist atmosphere.

<b>Double French</b> . . . . .	} \$0.25
<b>Double Persian</b> . . . . .	
<b>Double Turban</b> . . . . .	



RANUNCULUS.

## SNOWDROPS.

By mail, 6 cents per dozen extra.

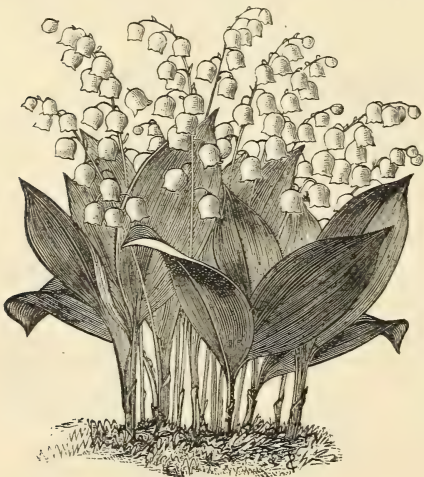
**P**LANT in clumps two inches deep. They are perfectly hardy.

	DOZEN.	HUN.
Double . . . . .	\$0.25	\$2.00
Single . . . . .	.15	1.50

## LILY OF THE VALLEY.

By mail, 5 cents per dozen extra.

**P**ROBABLY no plant is so well known, and such a universal favorite, as the Lily of the Valley. They



do well in the garden, and may be put under the shade of trees; but wherever placed the roots should not be disturbed for several years, as frequent moving prevents their blooming. They grow well in pots, and are much used for forcing.

LILY OF THE VALLEY.

	DOZEN.	HUN.
<b>Flowering Pips</b> (Ready for delivery in November),	\$0.40	\$2.75

# LILIUMS.

By mail, 3 cents each, 30 cents per dozen extra.

**L**ILIES delight in light rich soil, such as is afforded by a mixture of loam and well-rotted manure, and should be planted in the dryest spot possible, where water is not liable to stand in Winter. A good mulching of leaves or coarse manure will prove highly beneficial, in preventing them from being thrown out by the frost. July and August is the usual season of blooming. They may be planted either in Spring or Fall; but Fall planting is considered best.



LILIUM AURATUM.

EACH. DOZEN.

<b>Auratum</b> (Golden Japan Lily). White, with rich chocolate spots, and golden band through centre of each petal . . . . .	\$0.40	\$4.00
<b>Brownii</b> , with magnificent large foliage, flowers large, white inside, purple outside, and stamens of chocolate . . . . .	1.50	15.00
<b>Canadense</b> , pendulous flowers; yellow, spotted brown and petals tipped red . . . . .	.15	1.50
<b>Candidum</b> , fragrant, pure white, fine for forcing . . . . .	.10	1.00
<b>Harrisii</b> (the Bermuda Easter Lily). This new variety is very free-blooming, often flowering two or more times in succession without rest; trumpet-shaped, pure white, and very fragrant, large flowers. It can be forced into bloom early in Winter . . . . .	.25	2.50

RAWSON'S AUTUMN BULBS.

	DOZEN.	HUN.
<b>Lancifolium Album</b> , splendid white . . . . .	\$ 0.25	\$ 2.50
<b>Lancifolium Rubrum</b> , white, spotted with crimson; superb . . . . .	.25	2.50
<b>Longiflorum</b> , pure white, trumpet-shaped flowers, petals recurved, very fragrant and free flowering; a most valuable Lily for Winter flowering . . . . .	.25	2.50
<b>Tigrinum</b> (Tiger Lily). Orange salmon, spotted with black . . . . .	.15	1.50

*MISCELLANEOUS BULBS.*

By mail, at prices quoted.

THE following list is a selection of the most beautiful of the bulbous plants not enumerated in the body of our list. Although some of them are not so well known, they are all very beautiful, and worthy of extended cultivation.

	EACH.	DOZEN.
<b>AMARYLLIS, Belladonna Major</b> , white flushed with rosy purple . . . . .	\$ 0.50	\$ 5.00
<b>CROWN IMPERIALS, Aurora</b> , orange red . . . . .	.25	
“ “ <b>Sulphurine</b> , beautiful orange . . . . .	.40	
<b>CYCLAMEN PERSICUM</b> , various colors . . . . .	.30	3.00
<b>IRIS, English</b> , bulbous mixed . . . . .	.04	.40
“ <b>Spanish</b> , bulbous mixed . . . . .	.15	
<b>IXIAS</b> , mixed varieties . . . . .	.25	
<b>MADEIRA VINE</b> . . . . .	.10	.75
<b>OXALIS</b> , finest named varieties . . . . .	.05	.50
<b>SCILLA SIBERICA</b> , brilliant sky blue . . . . .	.25	
<b>SPARAXIS</b> , fine mixed, all colors . . . . .	.30	
<b>TUBEROSE, Double Dwarf, Pearl</b> . . . . .	.10	1.00
“ <b>Large Flowering</b> . . . . .	.08	.80
<b>TIGRIDIA, Pavonia grandiflora</b> . . . . .	.10	1.00
“ <b>Conchiflora</b> . . . . .	.10	1.00



# FRUIT CULTURE

*AND THE LAYING OUT AND MANAGE-  
MENT OF A COUNTRY HOME*

BY W. C. STRONG

EX-PRESIDENT OF THE MASSACHUSETTS HORTICULTURAL SOCIETY,  
AND VICE-PRESIDENT OF THE AMERICAN  
POMOLOGICAL SOCIETY

ILLUSTRATED

*“Forward, graffe, set, plant, and nourish up trees in every corner of your grounds: the labor is small, the cost is nothing, the commoditie is great, yourselves shall have plenty, the poor shall have somewhat to relieve their necessitie, and God shall reward your good mindes and diligence.”*

HOUGHTON, MIFFLIN & CO., PUBLISHERS

FOR SALE BY

W. W. RAWSON & CO.

34 SOUTH MARKET STREET  
BOSTON, MASS.

# FRUIT CULTURE,

AND THE LAYING OUT AND MANAGEMENT OF A COUNTRY HOME. By W. C. STRONG, Ex-President of the Massachusetts Horticultural Society, and Vice-President of the American Pomological Society. Illustrated. In one volume, 16mo, \$1.00.

## CONTENTS.

- I. Rural Homes. — Choice of Locality. — Treatment. — A Good Lawn. — The Approach.
- II. Fruits. — Location of the Fruit Garden. — Success in Fruit Culture. — Profit in Fruit Culture.
- III. How to Procure Trees. — Quality. — How to Plant. — Time to Plant. — Preparing the Land. — Fertilizers. — Cutting Back. — Distances for Planting.
- IV. Care of the Fruit Garden. — Irrigation. — Application of Fertilizers. — Thinning the Fruit. — Labels.
- V. The Apple. — Insects Injurious to the Apple.
- VI. The Pear. — Dwarf Pears. — Situation and Soil. — Pruning. — Ripening the Fruit. — Insects Injurious to the Pear. — Diseases.
- VII. The Peach. — Injurious Insects and Diseases of the Peach. — Nectarines.
- VIII. The Plum. — Insects and Diseases of the Plum. — Apricots.
- IX. The Cherry. — Insects Injurious to the Cherry.
- X. The Quince. — Insects Injurious to the Quince.
- XI. The Grape. — Grape Houses. — Varieties. — Insects Injurious to the Grape. — Mildew.
- XII. The Currant. — Insects Attacking the Currant. — The Gooseberry.
- XIII. The Raspberry. — The Blackberry.
- XIV. The Strawberry.
- XV. The Mulberry. — The Fig. — Rhubarb. — Asparagus.
- XVI. Propagating Fruit Trees. — From the Seed. — By Division. — By Cuttings. — By Layers. — By Budding. — By Grafting.

## NOTICES OF THE PRESS.

---

In his treatise on "Fruit Culture," Mr. Strong gives evidence of that thorough grasp of the subject which he has gained from thirty years' experience as an orchardist. His book is a simple, clear, well condensed manual of practical information on the fundamental principles involved in the successful cultivation of each species of fruits. The happy suggestions on the laying out and management of a country home, the special attention given to the habits of the insects injurious to fruits, and the numerous woodcuts illustrating the salient features of the text are, in themselves, more than sufficient to recommend this little guide to all interested in horticulture or in fruit-tree culture. — *Boston Advertiser*.

Numerous works have appeared from time to time on fruit culture and kindred topics. One would think there was no room for more. But in no branch of intelligence has there been so much advance as in horticulture. Every year solves new problems insoluble before, and with new ideas new books follow. It is in just this line—in the endeavor to elucidate fundamental principles—that Mr. Strong believes he finds an unoccupied field, and this book is the result. In the peculiar field it is destined to fill it will be found very useful. — *Gardeners' Monthly and Horticulturist* (Philadelphia).

A most inspiring little book, and one that fairly makes the mouth water, the subjects treated are so suggestive of flavor and fineness. Country readers, or even those owning small plots in town, will be possessed, after reading Mr. Strong's chapters, with a desire to turn horticulturist or orchardist as soon as possible. Small fruits are not neglected amid the details of planting and training peaches, cherries, plums, grapes, and quinces, apples, pears, etc., in chapters that glow with color. Practical rules and shrewd observations are condensed within the pages which treat of soils, injurious insects, and "blights," and the general discouragements as well as the rewards of "Fruit Culture." — *Philadelphia Ledger*.

This book is full of valuable suggestions on the culture of fruit; and a careful perusal might save the amateur gardener many mistakes, which in point of time, emphatically, cannot be afforded if he wishes to sit beneath his own vine, and eat the fruit of his own labor. A well-chosen list of pears is given, which will, without waste, supply a continual rich dessert for six months of the year. . . . We cordially recommend the book to those who are interested in horticulture. — *Portland Press*.

An excellent manual for the beginner in the cultivation of the larger and the smaller fruits. It is conservative in its notices of novelties, and necessarily brief in its details, but covers the whole ground in an elementary way. . . . It is reliable advice, based upon thirty years' experience. — *Christian Register* (Boston).

The opening chapter, on "Rural Homes," gives really practical and wise advice about locality and the treatment of the spot selected, with clear directions for constructing a good lawn. . . . The remaining fifteen chapters are all devoted strictly to the culture of fruit. . . . Though Mr. Strong writes from the standpoint of a Northern man, there is very little in his book that will not be found applicable to fruit culture in the South as well as the North. — *Charleston News and Courier*.

A valuable little handbook. . . . The author has shown excellent judgment in giving the particular information which small-fruit raisers most desire to know. Descriptions are given of the best kinds of garden fruits, with advice as to soil, transplanting, culture, and general treatment, with suggestions as to the treatment of fruit diseases, and the destruction of insects. — *Boston Transcript*.

It has the weight of authority. It is a compact work, sensible and perfectly intelligible; scientific, yet not too technical; and adapted well to meet the practical wants of the public. There are helpful illustrations, and we have no hesitation in commending the book. — *The Congregationalist* (Boston).

People who own small patches with what the Anglomaniac calls boxes upon them, and who indulge in expensive experiments in the direction of home production, need just such a book as this to keep them from wasting their substance in riotous sampling of nature. — *The Art Age* (New York).

A compact little volume, into which Mr. Strong has compressed the knowledge gained by thirty years of experience. . . . The book is clear, condensed, and convenient in arrangement, and is particularly well adapted to the needs of amateur fruit-raisers. — *Boston Journal*.

Those of our readers interested in fruit culture will find much profit in this book. The directions are specific enough to be understood by beginners and wise enough to be of profit to experienced fruit-growers. — *Home and Farm* (Louisville).

The work will be found a valuable one. — *Boston Traveller*.

---

\*.\* For sale, or sent by mail, post-paid, on receipt of price (\$1.00) by

HOUGHTON, MIFFLIN & CO., PUBLISHERS

FOR SALE BY

W. W. RAWSON & CO.

34 SOUTH MARKET STREET

BOSTON, MASS.



# Seasonable Seeds.

BY MAIL, ADD 16 CENTS PER POUND.

## CUCUMBER.

	PKT.	OZ.	LB.
Rawson's White Spine. An improved variety of White Spine. Very true and early. The best variety for market-gardeners; used for forcing under glass - - - - -	\$ 0.10	\$ 0.40	\$ 4.00

## LETTUCE.

White-Seeded Tennisball. This variety is grown extensively by market-gardeners, under glass, for Winter use; very compact head, and of the best quality; Arlington-grown seed - - - - -	.10	.50	5.00
---	-----	-----	------

## MUSHROOM SPAWN.

English Spawn (in bricks), per pound - - - - -			.15
French Spawn, two-pound boxes, each - - - - -			1.00
"    "    three-pound boxes, each - - - - -			1.50
"    "    four-pound boxes, each - - - - -			2.00
"    "    in bulk, per pound - - - - -			.35

## RADISH.

Arlington Long Scarlet. The standard Long variety of the Boston market; early, and of fine flavor - - - - -	.05	.15	1.25
Arlington French Breakfast. An early variety of the finest quality. Roundish-oblong shape, with white tip - - - - -	.05	.15	1.25

## GRASS SEEDS FOR LAWNS.

Experience has proved that, for various soils and locations, a mixture of grasses is attended with the best results. Our Extra Mixture is composed of the finest and thickest-growing sorts, those best adapted for forming a close and permanent sod.

	QT.	BUSH.
Lawn Grass, extra mixture - - - - -	\$ 0.20	\$ 4.00

## INSECT EXTERMINATORS.

	BOX.	LB.
Whale-Oil Soap (extra best quality), in one-pound bars - - - - -		\$ 0.15
"    "    "    "    "    "    in five-pound boxes - - - - -		.60
"    "    "    "    "    "    in ten-pound boxes - - - - -		1.00
"    "    "    Chemical Concentrated, in bars - - - - -		.15
Tobacco Soap (for washing animals or plants) - - - - -		.40
	BUSH.	BBL.
Tobacco Dust (for extermination of insects) - - - - -		\$ 0.10
Tobacco Stems (for fumigating) - - - - -	\$ 0.50	\$ 1.25
	LB.	EACH.
Archangel Mats (for vegetable and plant ties) - - - - -		\$ 0.75
Roffea (for tying) - - - - -		.50
Soft Twine (for tying) - - - - -		.40

