

Historic, archived document

Do not assume content reflects current scientific knowledge, policies, or practices.

62,37

RAYNER BROS.

DEPENDABLE
PROFIT PRODUCING PLANTS

SALISBURY

MARYLAND

FAIRFAX
PROMISING
EARLY
SHIPPER

DORSET
UNEXCELLED
IN QUALITY
IN FLAVOR





Premier

The Finest And Most Profitable
Early Strawberry

Kindly Accept Our Sincere Thanks

We thank you all for the great number of orders we received in the season of 1933, which was a real blue ribbon year for us. Our business actually increased 50% over any previous year since the founding of our firm. There must be, and there is a reason.

To make a long story short and as we do not believe in a fellow "blowing his own horn," we refer you to the unsolicited letters sent us by satisfied customers, who were so well pleased with our plants they took the time to write and tell us about it. There are quite a number of these letters scattered throughout this book and we have many, many hundred in our files. We are justly proud of every one of these letters and to us they mean the full realization of our aim "Every Customer a Satisfied Customer."

At this time there is a tendency of price increase in almost every commodity but as most farm produce has been rather slow in making this increase, we are holding our plant prices at about the same low level as last year, we believe this policy will aid farmers greatly to make a "flying start" now that better times are here.

The cultural directions given herein have been thoroughly tested and are dependable, variety descriptions are as we have found them, whether new or old, we also give the weak as well as the strong points. All other information is accurate and dependable, for we would rather have your confidence than your business should it be necessary to forfeit either one.

In requesting your orders we wish to call your attention to our Guarantee: 100% Satisfaction or Your Money Back. This is your assurance of prompt service, strong, dependable plants, and above all, a "Square Deal" when you order from Rayner Bros.

Again thanking you all and with best wishes for a happy and prosperous 1934, we are

Yours very truly,

RAYNER BROTHERS.

PROFIT PRODUCING PLANTS

To come true to this, plants must first be strong and vigorous, true to name and healthy. The cost of production will be the same whether you have a fine unbroken bed or only half a stand of mixed sorts yet the yield should be double or even thruple that of the poor, mixed field and the fruit in most cases is much better and will return several cents more per quart.

Then there is the cost of the plants, although this is a small item when compared to the total cost of producing strawberries it is still important. The best plants are always cheapest regardless of price, while poor, weak, mixed plants would be expensive as a gift for the labor, the use of the land and the fertilizer used would just be wasted.

Our plants are just as good as we know how to grow them and we have had many years experience at this one job. We will give you every good plant we can for your money, and when we say good, we mean as good as can be grown. Our prices are very reasonable when you consider the quality of the plants we send out and we are behind them with our guarantee of 100% Satisfaction or Your Money Back.



An Actual Photograph of Our Plants

Will Strawberries Pay You?

We believe so. It would be needless for us to say you would make \$500.00 or \$1,000.00 per acre and would be misrepresenting the true facts. We do, however, believe there are fairly large profits for the grower who handles his strawberries well and markets them to the best advantage. Although you may receive little or no profit, this is also true of any crop you can grow, and strawberries have been one of the best, if not the best, paying crop for many years and we can see no reason why they should not continue so.

Profits of from \$300.00 to \$500.00 per acre are not uncommon and sometimes much more, but to realize the higher figure conditions must be very favorable and a grower must have an excellent market. We have always found a grower who has an acreage he can handle to good advantage, does much better than one who has more than he can care for properly. Four or five acres or less are usually found in the high profit class, although there are exceptions to all rules.

On pages 6 and 7 there are some common sense suggestions for growing strawberries which most growers would work out for themselves in time. By following these suggestions the novice has the same advantage as the experienced grower. We have no "Rayner's Way," no "Secrets" or "Key." Strawberries are just like any other crop. The essentials are good plants, (we have these), good soil, proper fertilization, careful planting, hoeing and cultivating.

Marketing is very important in relation to your profit, and should receive careful consideration. If you are close to a well traveled highway, a roadside stand offers an opportunity to market your berries at fancy prices. An advertisement in your local newspaper, a few attractive signs along the highway, or if you have a local broadcasting station, an announcement every day or a fifteen minute program once or twice a week will bring customers to your door and you can soon work up a trade that will come back each year. Careful grading, honest selling and putting the berries up in a neat, attractive package makes selling easier and customers will tell their friends and neighbors. This is the very best advertisement, and we attribute our success to the generous cooperation of our customers.

Well Pleased With Plants

Dear Sirs: John's Island, S. C., Feb. 28, 1933.
The strawberry plants have just arrived. Thanks for the extra ones. Every one of the plants looks fine. Am well pleased with them and will order some more plants between now and May.

Yours truly, Julius Boyer.

Full Count In Every Bunch

Dear Sirs: Blue Spring Run, Va., April 29, 1933.
I received the strawberry plants Monday, April 24th, in good condition. They were well grown, thrifty plants and a full count in every bunch. They look now as if they are all going to grow.

Thank you very much. Yours, A. G. Lockhart.



This is one of the fields we will dig in filling our orders this season.

«Plants That Please»

Above is an actual photograph (taken in October 1933) of one of our fields, from which plants will be dug for your orders this spring. These are fine, well grown plants, strong, vigorous, healthy and true to name, and would please the most exacting grower. They are the best buy regardless of price, while plants from a less vigorous field, possibly of mixed varieties, would not be cheap at any price. Our plants are true to name and we take every precaution to keep them so.

However, plants from a field equally vigorous to these would be of equal value, as they stand in the field, provided, of course they were true to name. It would be very foolish for us to claim our plants, in themselves, were better than those of all others, just because we grew them.

The plants of greatest value to you are those that give best results. We are going to tell you why we honestly believe Rayner Brothers' plants will be of greatest value to you, regardless of the price you pay.

First: They are obviously superior to plants less vigorous and healthy than those pictured above. In all field pictures the most vital part of a plant is not shown, namely, the root system. Our plants are grown in the lighter type of soil and have a wonderful development of long, fibrous roots, proper fertilization is also important in developing this root system. Plants grown on heavy clay soil are usually short rooted, but even if a heavy root system were developed they could not be removed from the soil without breaking off many of the fibrous roots. If you have ever tried to dig plants from hard clay soil you know just what we mean.

Second: For plants to please in the fullest meaning of the phrase the following rules must be followed.

- (a) Strong, vigorous, healthy, well rooted plants, true to name, and kept so by careful handling.
- (b) Thoroughly cleaned and evenly bunched, roots straightened. This makes setting easier, quicker and better.
- (c) Plants must be kept moist while digging and handling. Dried out plants are of little value.
- (d) In every field there are always some late runner plants which are not fully developed, these must be discarded. There must be full count of selected plants.
- (e) Careful packing is also important as plants can lose much of their value in transit. Our plants are packed in light ventilated crates, small quantities wrapped in waterproof paper, roots in layers of damp sphagnum moss, tops to the outside of the crate or package, packed just tight enough to prevent shaking around and drying out.

Third: Any one of these things omitted or carelessly done would detract from the true value of the plants and the assurance they will be properly maintained to the utmost degree is your guarantee of receiving "Plants That Please" when you order from Rayner Bros. Our plants are dependable; those who have tried them know this to be a fact. To those who have not, a trial order will prove our statement and be to our mutual benefit.

To maintain the high quality of our plant and to build up a strong thriving business, has always been, and always will be our aim. We believe by the true statement of facts, by honest description of varieties and by giving a "Square Deal" to every one this end can best be attained.

The use you make of the enclosed order sheet and envelope will prove whether we are right. Why not send it in today? Shipment will be made when you desire.

Should You Dig Plants From Your Fruiting Bed?

When you ask yourself this question, although you are saving the actual outlay of cash necessary to buy your plants, we ask you in fairness to yourself and to your best interests to consider:

- (1) The profit you would receive from these plants during the two or three years you could fruit them.
- (2) The expense of digging plants, often with inexperienced help, from hard or sticky soil.
- (3) The convenience of having plants right at hand ready to set the first "open spell" in the spring, and as you no doubt know, "Early Planting Pays."
- (4) Plants thoroughly cleaned and evenly bunched with roots straightened. Which means quicker and better planting.
- (5) The invigorating effect of a change of climate. This is usually much greater than you would expect.
- (6) Having plants that were grown for that purpose, long rooted for drought resistance and to withstand mechanical disturbances to the greatest possible degree, grown by men who have had long experience in growing strawberries both for plants and fruit.

PRICE LIST ON PAGE 23. ORDER SHEET AND ENVELOPE ENCLOSED.

These Growers Like Our Plants

As Fine A Bed As Grows Out Of Doors

Dear Sirs: Lacona, N. Y., June 6, 1933.
I received the Premier, Blakemore and Mastodon plants on May 10th and I set them out at once. Today I have as fine a bed as grows out of doors. I can highly recommend your plants to anyone. Yours for more berry plants next year.
Very respectfully, E. J. Robarge.

Plants Looking Fine

Gentlemen: Latanes, Va., July 25, 1933.
The strawberry plants bought of you are looking fine and putting out a nice lot of runners. I am well pleased with them and if I need any plants in the future will give you firm the order.
Yours truly, G. Coates.

Good Count

Dear Sirs: Millstone, W. Va., May 1, 1933.
I received your plants a day or two ago and have just finished setting them out. They are all living and looking fine. I sent for 1,000 and received 1116. I can recommend you to other people. Thanks for extras,
Yours, Herbert Elliott.

Wants More Plants

Dear Sirs: Cheshire, Ohio, April 10, 1933.
I received my plants and they were in fine shape and I am well pleased with them. Please send me 500 Dr. Burrill and 500 Blakemore. If you cannot send both varieties, send 1,000 Dr. Burrill. Am enclosing check herewith.
Yours truly, David Matthews.

Last Year's Plants Look Very Good

Gentlemen: Lafayette, R. I., April 24, 1933.
I received my plants O. K. Thanks for fine plants, liberal count and prompt service. Those I bought of you last year look very good.
Yours truly, Irving Thomas.

16,000 Plants Very Satisfactory

Dear Sirs: Coudersport, Pa., Feb. 1, 1933.
Please quote me price on 8,000 Joyce and 8,000 Mastodon, also price on 4,000 Joyce, 4,000 Chesapeake and 8,000 Mastodon. The 16,000 plants I bought of you last year were very satisfactory. I am putting in the same acreage this year.
Yours, O. B. Geer,

Suggestions On Culture

SELECTING AND PREPARING LAND. Strawberries can be grown in almost any soil and climate, in light sandy types or heavy clay, as far south as Florida and as far north as Alaska, but will produce much better crops if planted in a well drained soil, but soil that will retain a great deal of moisture, for it is well to remember that one of the most essential requirements of strawberries is plenty of moisture at fruiting time.

We advise planting after some truck crop that has been well manured and cultivated for the soil will be more fertile and there will be less weed seed, or after some legume, if possible. We do not advise planting in old sod unless necessary as this type of land is likely to be infested with white grubs which will cut off the young plants soon after they are set in the spring, but if you have no other land available, plow it in the fall and harrow during the winter and early spring as often as you can, in this way most of the grubs will be killed out.

After selecting a desirable field it should be plowed and thoroughly harrowed as early as possible in the spring. If stable manure is to be used we advise spreading it broadcast on the land just after it has been plowed, then the land either with or without manure should be disced thoroughly and harrowed to level it up so that a firm, even bed is obtained.

TIME TO PLANT. Strawberries should be planted in the EARLY spring as that is the natural, most satisfactory and successful time. Just as soon as the weather permits getting the land ready. In the Northern States April, in the Middle States March and the early part of April, in the Southern States from November till April 1st.

EARLY PLANTING PAYS BIG. The plants start quicker, grow better and make better beds than plants that are set late, and remember, it costs no more to plant early than late, be sure to have your order in early so that your plants will be right at hand when your ground is ready.

CARE OF PLANTS. If you are not ready to set the plants when they arrive, unpack, separating each variety, open the bunches, dampen the roots up to the crown but do not wet the leaves, they should be healed in a V shaped trench and if shaded from the sun they will keep in first class condition for several weeks if necessary.

PLANTING. Plants should be protected from the wind and sun when planting. It will help if roots of the plants can be dipped in water and allowed to "plump up" for sometime before setting, perhaps over night. At any rate have them thoroughly moistened when planting.

Where commercial fertilizer is to be used, rows should be run out three to four inches deep and the fertilizer drilled into these rows and thoroughly worked in, then the soil should be thrown back and leveled off.

Where a large acreage is planted a horse drawn transplanter is often used, however this requires skill and experience if the crowns of the plants are to be left at the proper level with the roots extending straight into the ground and not at a slant with the roots oftentimes near the surface. A trowel, dibble or spade are the most popular tools for setting plants, they are set down the prepared row with the roots out fan shape and the crown level with the surface of the ground. It is also important to see that the ground is pressed firmly around the plant and that enough soil is filled in near the crown so that the top of the roots will not be exposed.

If you do not use fertilizer under the plants, the rows can be laid off with a marker and the plants set down the marked row.

HOEING AND CULTIVATING. Begin cultivating and hoeing soon after the plants are set. When first hoeing be sure to uncover the bud of all plants that have been planted too deep. If this is not done these plants will never amount to anything.

Cultivate and hoe enough to keep the ground from crusting and keep the weeds down, but do not cultivate deep enough to disturb the roots.

We, and most of our customers use the matted row system and we find this the most profitable method. The first runner plants should be encouraged to take root, this will help the mother plant to produce a large number of runner plants.

When hoeing be sure to see that the plants do not become too thickly crowded in the bed. There is not much trouble this way except with varieties that are heavy plant makers. Where the rows are 3½ feet apart we recommend a bed from 15 to 20 inches across, for getting a heavy crop of berries, but if the rows are four feet a wider bed will be O. K.

DISTANCE TO PLANT. Matted Row. For this system the rows should be from 3½ to four feet apart with the plants set from 15 to 24 inches in the row, according to the varieties set. Heavy bedding varieties such as Senator Dunlap, Premier, Dr. Burrill and others should be set farther apart than varieties like Chesapeake, Lupton and other varieties that make very large plants but not so many of them.

Hill System. If you decide to use this system rows should be 30 inches apart one way and 15 inches the other with the plants set in the check. All runners should be kept cut off. Under this system the berries will be much larger than if grown in the matted row, but labor costs prohibit this system unless space is very limited.

FERTILIZATION. If you have barnyard manure broadcast after plowing and disced in, this is a fine way to improve your land and insure you a fine berry patch with lots of fancy fruit, but commercial fertilizer can be used with very satisfactory results. We find 400 pounds of dissolved bone and 100 pounds of acid phosphate per acre used in the drill about a week before the plants are set or along side the plants after setting and thoroughly hoed or cultivated in will give excellent results. Where it is applied broadcast 1,000 pounds of the mixture per acre has proven very satisfactory, but be sure to harrow it in thoroughly before setting the plants. Do not use over 500 pounds in the drill, for too heavy an application of any commercial fertilizer will be very injurious to the plants.

Another application of about 800 pounds per acre as a top dressing late in the summer when the plantbed is almost made or early in the spring before plant growth starts, of a mixture containing 4 per cent to 7 per cent nitrogen and from 5 per cent to ten per cent phosphoric acid, with little potash.

We believe late summer is the best time for if applied then you will have stronger and more vigorous plants as it takes strong plants to produce large fancy berries. All fertilizer should be brushed off the leaves.

MATING VARIETIES. There are two sexes of strawberry plants—male and female—listed in this book as perfect and imperfect, (in our price list perfect flowering varieties are followed by “Per” and imperfect by “Imp”). The perfect flowering sorts will produce as well by themselves as with the imperfect varieties, but the imperfect will produce very poorly, if at all, without the perfect varieties. They should be planted four rows of the imperfect flowering varieties and two rows of the perfect flowering varieties, of the same season, and so on across the field, or they may be planted in the same row using one-fourth perfect and three-fourths imperfect.

REMOVING BLOSSOMS AND MULCHING. All strawberry plants begin to bloom soon after being set in the spring and if the fruit is allowed to ripen the plants will be greatly weakened, therefore all blossoms should be removed. This is very important for it may mean success or failure. On everbearing varieties the blossoms should be removed twice before the berries are allowed to ripen, other than this the everbearers are given the same treatment as the standard varieties.

Mulching is a wonderful way to protect the plants from freezing and thawing of the soil in winter, to preserve moisture during a dry fruiting season and to keep the berries from being spattered with dirt during a rain.

Use straw, coarse manure or similar material, apply in the fall and in the spring when growth starts rake off the beds into the center of the row; there it also serves the purpose of retarding the growth of weeds.

Will Send Future Orders

Dear Sirs: Palmyra, N. Y., April 22, 1933.
Received the 500 Senator Dunlap plants in fine shape. They certainly were well rooted plants. Will give you my order again when in need of stock. Thanks for extra plants.
Yours truly, Clarence Skeel.

More Mastodon

Gentlemen: Saugerties, N. Y., April 25, 1933.
Received my plants in fine condition. Enclosed please find money order for which please send me another 1,000 Mastodon everbearers.
Yours very truly, Claude Finger.

Appreciates Service

Dear Sirs: Stroudsburg, Pa., May 13, 1933.
Received plants by parcel post and they were fine. I certainly appreciate what you have done for me and will recommend you to anyone I know. Thanking you again for your extra trouble and assuring you my order next spring, I am
Sincerely yours, Geo. G. Spring.

More Than Satisfied

Gentlemen: Masseua Center, N. Y., May 13, 1933.
Must write you to say your strawberry plants arrived in excellent condition. They are wonderful plants and I am more than satisfied. Your prices are very reasonable. Thanks for the splendid plants.
Yours truly, Mrs. Thos. W. Rickard.

Extra Plants and Prompt Service

Dear Sirs: Port Royal, Pa., May 6, 1933.
I received the plants this morning in excellent condition and wish to thank you for the extra plants and your prompt service. Yours truly, Wm. Moyer.

Very Well Satisfied, Orders Again

Dear Sirs: Westfield, Pa., April 25, 1933.
I am afraid I am sending in my order a little late. We ordered plants of you three years ago, 500 each of the same varieties I am ordering now. I am resetting them this year. We were well satisfied with the plants we ordered of you before and wish the loveliest berries I ever saw.
Yours truly, Mrs. Belle Brown.

Early Varieties of Strawberries

Fairfax Was originated by the United States Department of Agriculture and was introduced last season. We have not fruited this variety but visited the Government Field Station near Washington, last spring, during their fruiting season, as we wished to see for ourselves just what they really were before offering them to our customers. We found them to be even better than we had expected and we feel sure Fairfax will be a leader in the very near future.

Its parentage is uncertain but believed to be a cross of Royal Sovereign and Premier (Howard 17) seedling No. 613. Has been tested by the government and others for several years in different localities and has always stood out from the rest, especially in quality which is equalled by no other variety with the possible exception of Dorsett. To appreciate this it must be eaten as it is impossible to describe this flavor. Fairfax is believed to have obtained this exceptional quality from the old English variety, Royal Sovereign, which was said to be a berry "Fit for a King."

The first point that caught our attention, in both Fairfax and Dorsett, was their dark green, healthy foliage, which is essential for a profitable variety, showing less leaf spot than even Premier.

Fairfax produces more runners than Premier, but is however, a moderate runner producer and does not need thinning, except possibly, in very rich soil, but will make enough runner plants to give a very good fruiting bed in most any soil.

The flower stalks are strong and upstanding, holding the fruit up off the ground even to the late ripening berries. The blossoms are large and are among the most abundant pollen producers, thus guaranteeing a good set of berries under most trying weather conditions. Although they start blooming before Premier they seem to be as frost resisting, for they have never as yet (since 1926) shown any frost damage. The berries ripen with Premier and have a very long fruiting season, producing as large berries at the end as at the beginning of the season, thus producing a larger percentage of good berries than can be expected from the older varieties. This is another important advantage, as you are assured top prices for the entire crop.

Fairfax berries are very firm, as firm or firmer than any commercial berry grown in the East with a much tougher skin than Premier and will stand shipment to distant markets, arriving in the best of condition. When berries are picked at the proper time they are very attractive, bright red, have a light green cap and prominent yellow seed, turning dark red as they become over-ripe, but still retaining their firmness and flavor.

Generally the shape remains very regular throughout the whole season and is one of the most uniform in this respect of any variety. In size they average very large, quite a lot larger than Premier or Blakemore, being fully as large as Chesapeake and seem to resemble this variety.

We have received quite a number of inquiries for this variety and as our supply is somewhat limited, we urge you to order early and we will reserve them for you, thus avoiding disappointment. See front cover for illustration.

RED GOLD. Introduced by the Gardner Nursery Co., of Iowa, and highly recommended by them. Ripens early, fair producer of medium to large berries having a somewhat oval shape. Its fine quality is its greatest recommendation. Red Gold is a free plant maker, foliage disease resistant. Makes an excellent fruiting bed. We would advise those of you who desire real quality to give them a trial.

HOWARD 17. Believed by Horticulturists to be the same as Premier. Was introduced by a Mr. Howard a few years after Premier and from our own experience we have found them to be the same in every way. For full description see Premier description.

MISSIONARY. An old dependable variety, largely grown in Florida and other southern states. Will do well in almost any type of soil and does especially well in the lighter types. Is a favorite with the juice men. Will probably be replaced by Blakemore in the near future.

Dorsett Originated from a cross of Royal Sovereign and Premier (Howard 17) made in 1923 by the United States Department of Agriculture and selected by them as a promising berry in 1925 when the best were selected from this cross.

In 1930 it appeared very promising when tested in New Jersey where its vigor, productiveness and dessert quality were outstanding. In 1932 trials were made in different points in Maryland and Delaware as well as well as New Jersey indicating it was worthy of introduction as a variety for home garden as well as for local and distant markets.

Dorsett has a slightly different foliage than Fairfax but is equally vigorous and healthy, the leaves are somewhat darker in color and maintain their healthy condition throughout the entire fruiting season. Dorsett is a vigorous growing variety, under normal conditions producing many runners and making a heavy matted row which may become too dense if growing in rich soil and may need thinning to obtain best results. The leaves have not been seriously injured by leaf spot and it is considered as resistant as Premier.

The flower stalks are as strong as Fairfax and will hold the fruit well off the ground, have an abundance of bloom and they have proven more productive than even Fairfax. The quality is unsurpassed, there has been some dispute as to whether Fairfax or Dorsett excel, but we can safely say they are both very good, and are away ahead of the old commercial varieties.

It begins ripening with Premier but a much larger early crop is produced, although this variety is very young, no frost damage has yet been noted. Has a longer fruiting season than Premier and the berries are much larger, fully as large as Fairfax but they run down slightly in size, toward the end of the season. The fruit is usually conic in shape, presenting a very uniform appearance, is light red, fully as light as Premier or Blakemore, this is a big factor when shipping to wholesale markets where buyers often consider dark berries as over-ripe.

Dorsett berries are firmer than Premier but not quite as firm as Fairfax or Blakemore, are firm enough to ship moderate distances, such as can be safely done with Premier, and arrive in fine condition, and with their other outstanding qualities we feel they will undoubtedly become one of the most popular early berries.

We urge you to plant some Dorsett this year, as we are sure their excellent quality will give you many satisfied customers, for when they taste these berries their demand will become doubly strong. The vigor and productiveness of this variety assures you a good fruiting bed and a heavy crop under almost any conditions.

Our supply of plants is somewhat limited so order early and we will reserve your plants and ship when wanted. See front cover for illustration.

Southland Introduced by the United States Department of Agriculture as a home garden berry for the South. We have not fruited this variety but saw them fruiting at the Government Field Station and have had some very good reports of it from reliable sources. Southland is said to be the best early berry for the South, for local market or home garden. The fruit ripens earlier than most any other variety. The scientists who developed this variety believe the crown bud crop which produce the extra early berries would be injured by frost in the North, but if could be protected this would prove a profitable berry in the North for those who have a local market for fancy berries that will ripen several days ahead of Premier.

Southland is a good plant maker which assures a fine fruiting bed and the foliage is healthy and vigorous, maintaining its vigor throughout the fruiting season, a very heavy producer of large fancy berries and have an extremely long fruiting season. The quality of the fruit is very good. We feel they are the best extra early home garden or local market berry yet introduced. Those of you who are raising berries for your home use, have a roadside stand or local market and desire a real fancy early berry, we recommend Southland. Try them this year, we are sure you will be pleased with the results.

PREMIER

Premier This variety is so widely planted there is little need of describing it. For the past ten years Premier has been, and for that matter, still is, the most popular early berry grown, and has no doubt returned the most profit to growers of any berry yet introduced. We expect however, the new Fairfax will some day take its place, but until such time Premier is still leader.

Premier is a good plant maker in all types of soil, where some other varieties fail, Premier will make an abundant fruiting bed. The plants are strong and healthy and immensely productive, fruit ripens early and bears through a very long season, producing more quarts per acre than any other standard variety, this is very important as it cuts your production cost per quart, leaving a larger margin of profit.

The fruit is large and attractive, of uniform shape, a glossy, rich red extending clear through the berry, has a bright green cap which stays green to the end of the season and adds much to the beauty of the fruit. The berries have a delicious flavor and are of high quality, are unsurpassed as an early berry for the home garden, roadside or local market and yet they are firm enough to stand shipment to distant markets and arrive in good condition.

Premier has never failed to make a crop of berries since introduced as due to their hardiness and persistent blooming they are practically frost proof, and in sections where early berries could not be grown because of late frosts, Premier is now grown with great success.

If, by chance, you have never tried Premier, plant some this year for if you are making money with some other early variety we are sure you will make more with Premier.

Old Customers, Old Growers And A Bumper Crop

Satisfied Customer Ordering Again

Dear Sirs: Biglerville, Pa., April 29, 1933.

We are just one of your old satisfied customers ordering again after our old strawberry patch has done its share. We are a little late but feel confident your plants will grow.

Respectfully, E. E. Wishard.

Always Good, Well Rooted Plants

Gentlemen: French Creek, Va., April 5, 1933.

I have bought plants of you for the past four years and have always received good plants, well rooted and good count.

I am Yours truly, H. B. Darnall.

The Same Fine Plants and Generous Count

Gentlemen: Norton, Mass., March 2, 1933.

This order means to me that I shall get the same fine plants and generous count I have always got from you for which I am thankful. I am a strawberry booster and I like to notice how your business has grown. The Aberdeen plants you sent me last year grew wonderfully.

Sincerely yours, Alden F. Keyes.

Plants Arrive In Finest Condition

Dear Sirs: Avondale, Pa., April 4, 1933.

The plants I ordered arrived and I want to say, I have been buying plants for 25 years. Your plants were in the finest condition of any I have ever seen.

Truly, S. M. Collins.

Has Grown Berries Since 1857

Sirs: Ossining, N. Y., May 2, 1933.

The strawberry plants arrived and are just fine. I have grown strawberries more or less since 1857. When I was 10 years old, my father procured six Agriculturist strawberry plants as a premium with a subscription to a weekly paper.

Yours for success. H. A. Cornell.

Over 4,000 Quarts from 3,000 Plants

Dear Sirs: Germantown, N. Y.

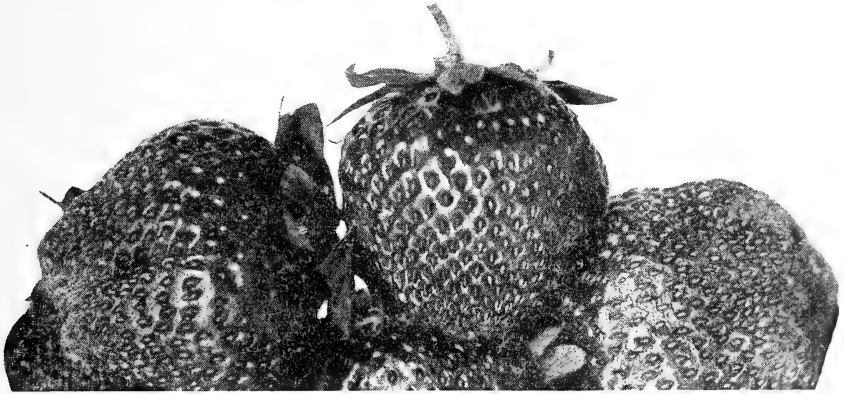
Two years ago I purchased from you 3,000 strawberry plants. They picked 140 bushels (4480 quarts). They did so well I am placing my order for 6,000 Premier and 3,500 Lupton plants. I trust I am not too late in placing my order. Will you kindly send them between the 1st and 6th of May.

Yours very truly, Clyde Lechtueban.

Blakemore A great new early variety originated by Prof. Beatty of the U. S. Department of Agriculture, Washington, D. C., and introduced by the Department in 1930. It has been thoroughly tested in most of the strawberry producing sections of the United States and seems to readily adapt itself to conditions existing where planted.

A cross between Premier and Missionary, resembling the Missionary very much in plant growth, being a free plant-maker of medium sized plants; a very heavy producer of bright red berries, ripening two or three days ahead of Missionary or Premier, which show the unusual ability to hang on the vine from one to three days after it is apparently ripe, without any waste. Size medium large, round to conical in shape, red to the center, without any green tips. Its outstanding characteristics are its uniformity of ripening, firmness and ability to stand shipment to distant markets and arrive fresh and bright. We advise our customers to give this variety a thorough trial as we believe it will prove a real money-maker.

COOPER. A very vigorous variety. The berries are large, even larger than Premier, very bright red and of excellent quality. A beautiful berry and fine for local or nearby market but too soft to ship to distant markets.



Bellmar is one of the new ones and we like it very much.

Bellmar Introduced by the U. S. Department of Agriculture and developed by them, like Blakemore from a cross of Premier and Missionary in 1922, but was not introduced until 1931. Recommended for trial in comparison with Premier wherever it is adapted for general market.

Bellmar is a much more vigorous plant maker than Premier and thus will make a better fruiting bed in poor soils and in good soil may need thinning to get best results; blossoms are perfect; a heavy producer, but not quite as heavy as Premier although the appearance and size are somewhat better; ranks high in dessert quality, being less acid than Missionary. The fruit is very firm and will stand shipping well. Commands top prices on any market. Fruit is large, bright red similar to Premier and have a large green calyx and a bright gloss which has caused it to be selected as the most handsome berry among hundreds. We advise you to give this variety a fair trial this season as they certainly look to be a leader for the near future.

LINDBERG. Originated by a Mr. Scott along the Chesapeake Bay in Virginia, and were so highly spoken of we obtained a few plants for our trial ground. We found they were all that could be desired in an early berry of extra large size.

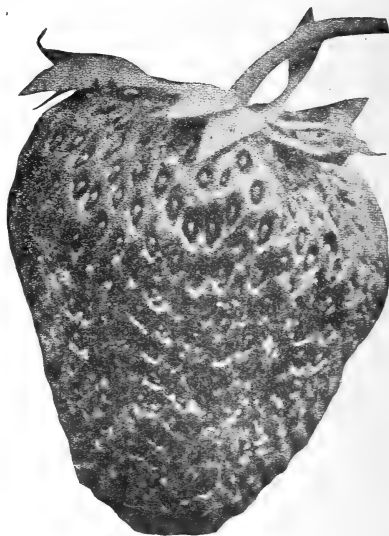
Lindberg produces strong, large, disease resisting plants, showing no sign of rust or other ailments common with many varieties of strawberries, producing enough plants for a nice fruiting bed, but should be set about 15 or 18 inches apart in the row and they seem to have the ability to produce this amount of plants in any type of soil as we have tried them in both light and heavy soil and the bed in both cases was the same. Fruit ripens almost with Premier and is very much larger, even larger than Cooper, is very firm, medium dark red clear through, of irregular conical shape, good quality and excellent flavor, but runs down at the end of the season.

Midseason Varieties

Aberdeen. We find this to be a mighty fine variety, and is very popular in eastern Pennsylvania and New Jersey and will probably be widely planted when its merits are better known. Makes a rank growth of strong healthy plants, is very productive, equal to and said by some growers superior to Premier.

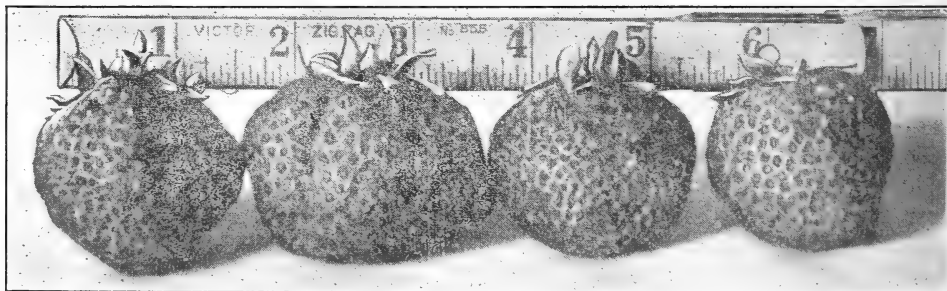
Fruit is medium to large, of conical shape, an attractive dark red, and of very good quality. We cannot recommend this variety for distant shipment in refrigerator cars, but for markets within 300 miles it is a berry hard to equal and is very profitable because of its hardiness, ability to fruit under most trying conditions, its unsurpassed productiveness and quality of fruit. Fruiting period extends from two to three weeks. We have a good supply of exceptionally strong plants of Aberdeen to offer this season and would like to have our customers try them in comparison with Premier and Big Joe.

The berries begin ripening in early midseason and although we do not believe they will ever excel Premier to an appreciable extent, we do feel that it may have a special value as a midseason variety where Big Joe is not at the best. Where Big Joe is sometimes affected by late frosts and unfavorable soil conditions we are of the opinion Aberdeen will prove more successful.



ABERDEEN

Try this for your roadside market



Fugeima is a new variety from Japan. You should try it.

Fugeima We fruited this variety in our trial ground last season and were deeply impressed by their strong, vigorous growth, productiveness, quality and flavor. But their outstanding characteristic is the enormous size of the fruit. The grower from whom we procured our plants claimed he had grown them of such size that 8 berries would fill a quart basket. With us they did not quite attain this size, but they did range from 12 to 15 berries per well filled quart.

This variety came from Japan and on account of their large size were named for the largest mountain there. Notice their size in comparison with a rule.

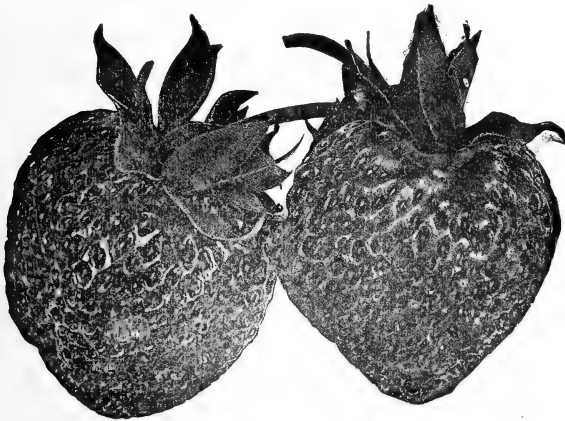
Try a few of these plants this year and if you are not pleased with the results we will gladly refund the purchase price. Our supply of plants is very limited and as we wish to have as many growers try them as possible, we can only furnish 100 plants to a customer. Notice the size above as compared to a rule. Four berries over 7 inches.

BIG JOE-A REAL BERRY

Big Joe (Joe Johnson). This is no doubt the most profitable midseason variety, and to have a berry patch that will produce the most, the fanciest, and the best flavored berries, and this means the most possible profit from your labor and investment, we recommend without hesitation Premier for early, Big Joe for midseason and Chesapeake for late. This will give you the finest berries throughout a very long season.

Big Joe does well on all types of soil, but like most all berries does best on fertile soil with proper care, begins fruiting just as the early varieties start to run down therefore you will always get a premium of a dollar or more per crate for them.

They make a very vigorous plant growth, are very productive of large, bright red berries that have a large green cap therefore these berries are always very attractive and whether you retail your berries, sell at the farm or ship to distant markets you should include Big Joe in your plantings and we are sure you will be delighted with the results.



Big Joe

SENATOR DUNLAP. A very good variety for the beginner for the plants are very hardy and can be depended upon to make a good bed under any conditions, in fact they are the most freely bedding variety we have. When properly thinned it is hard to find a berry that will produce a larger crop of marketable fruit than Dunlap. Fruit is bright red clear through, fair in quality and of medium size. The greatest advantage of Dunlap is its ability to make a good growth and produce heavily under almost any conditions. This variety still finds favor with a large number of experienced berrygrowers.

BEAUTY. One of the newer varieties that is all its name implies. The plants are strong and healthy and entirely capable of producing and maturing large crops of fancy berries, that hold up well during the entire fruiting season. A large, juicy, sparkling red berry of the most delicious flavor, that seems to be firm enough for shipment to distant markets. We believe every grower should give this variety a trial, as it may show up better than the varieties that you have been using either for distant market or for home use.

DR. BURRILL. You will find this exactly like Senator Dunlap. For description see Senator Dunlap.

In Fine Condition

Dear Sirs: Staunton, Va., April 28, 1933.
We received the strawberry plants on the 24th they were in fine condition. Thanks for your prompt service and also for extras.
Yours truly, Miss Annie Caves.

GIBSON. This is another old standard variety that has proven itself many times over. Has a very vigorous growth and makes a fine fruiting bed, produces heavily of bright red berries with a fancy green cap. Does not ship well but are fine for local market or home use and are fine for preserving and canning.

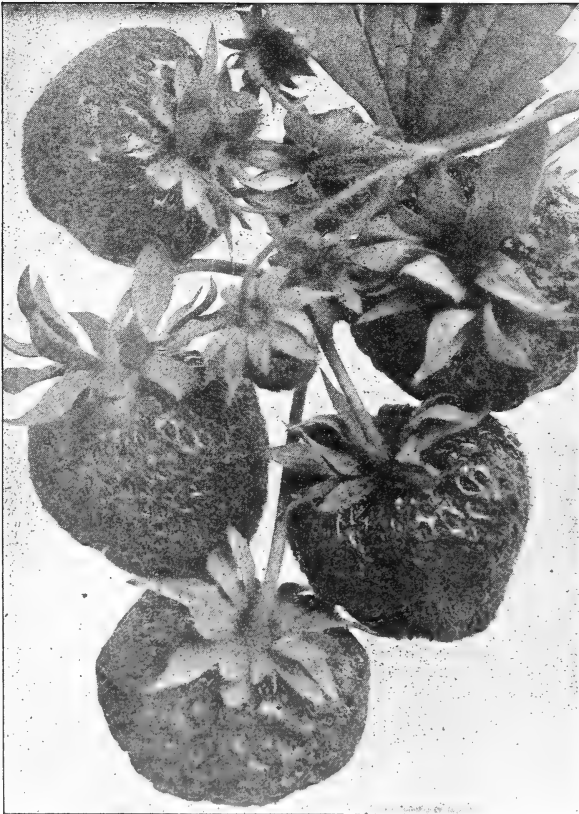
\$1.00 WORTH OF PLANTS FREE—SEE BACK OF ORDER SHEET

Joyce Is The Finest Berry He Ever Handled

Dear Sirs: April 17, 1933.
Please ship with my order of March 31st, 5,100 Mastodon, 300 Premier and 1,200 of a late variety which you think suited for this locality. Enclosed is check for \$31.65 to cover the cost of same. I wish a real late berry which will do well where the Joyce and Premier do well. Your Joyce is the finest berry I have ever handled. Is a heavy producer of fancy fruit and such a splendid shipper. Yours,
O. B. Geer, Coudersport, Pa.

JOYCE

Joyce—The Faultless Berry (Per). This is a new variety originated by Mr. Bassett of Salisbury, Md. We obtained a few plants from him and have fruited them in our trial grounds for the past five seasons where they made a remarkable showing. Compared with Big Joe as follows: better plant maker, cleaner, healthier foliage, fruit brighter red, more frost resistant, more productive, fruit much larger, fruiting season from five to ten days longer. Quality and firmness the same.



JOYCE—We urge you to try this new berry

Three years ago we sold several thousand of these plants to our old customers and in every locality where they were planted they gave excellent results. We visited some of these fields last fruiting season to see for ourselves the quality, productiveness and plant growth made in these sections. We found it had been an outstanding success in every locality. All of these growers want more plants this season. They said it was the best midseason berry they had ever grown; the berries were so large, had such a wonderful color and flavor their customers bought them in preference to any other variety.

Joyce is a very thrifty grower, producing a fine fruiting bed of strong, vigorous plants; fruits a few days before Big Joe, has an exceptionally long fruiting season; fruit is very large and holds up well to the end of the season. Bright red and of excellent quality, firm; will stand shipment to distant markets and arrive in excellent condition. For home use or roadside market they are unexcelled.

We ask you all to give Joyce a trial this year and we are sure they will prove your leading June berry.

Always remember that we are at your service and will be glad to hear from you and will give you any and every possible assistance.

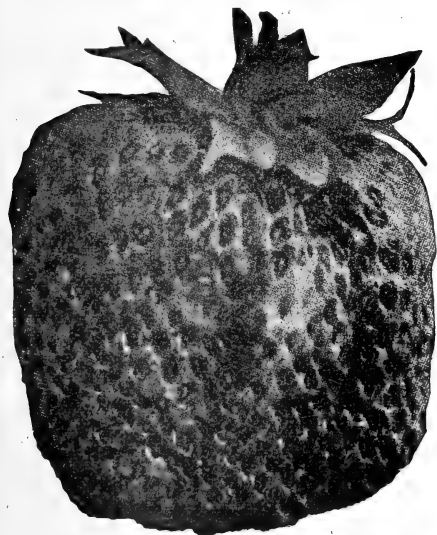
Late Varieties of Strawberries

AROMA. A wonderful late variety extensively planted in all sections of the country; makes a vigorous plant growth; produces large crops of beautiful, almost perfect shape berries, light red with a green cap that are sure to bring good prices in your market whether you sell locally or ship to distant markets for the fruit is very firm and will reach the market in perfect condition. They are the most popular late berry grown in the South and many of our old customers have found Aroma one their best money-makers.

Sirs: Alum Bank, Pa., May 2, 1933.

This is my first order to you. I loaned my catalog to Mr. Nicodemus, and he sent you an order for 2,000 Premier and is very much pleased. I saw his plants and they look fine. Please rush my plants as I am late. Wishing you much success, I am
Your customer, Clarence S. Mickle.

LUPTON. A mighty good late shipping berry, very large, in fact as large as Chesapeake and just as attractive but only fair in quality but always brings top prices in city markets. Lupton is a mighty heavy bedder and therefore a fine variety to grow in land where it is impossible to get a satisfactory bed of Chesapeake. They are very firm and excellent shippers but we do not recommend them for home garden.



WM. BELT—The standard of excellence.

large and of fine quality, fruit bright red with a large green cap, therefore very handsome, and will stand shipment to distant markets in perfect condition for they are the firmest berries on the market. They are good plant makers and you should have no trouble in getting a good fruiting bed.

Very Much Pleased

Dear Sirs: Lexington, Va., April 1, 1933.
I received my order promptly and am very much pleased with the plants. Have set them out already.
Thank you so much. Respectfully yours,
L. A. Goodbar.

BIG LATE. The plant growth of this variety is very vigorous, produces handsome uniform berries, bright red with yellow seeds and a medium size green cap which makes them very attractive. The blossoms are imperfect, will mate well with Big Joe and Aroma.

They are very heavy producers, almost equal to Premier, are firm and good shippers therefore we believe this will be a profitable berry to raise.

BRANDYWINE. A late variety that has been grown for many years and has found many friends. A good plant maker and a heavy producer of fine quality, dark red berries that are very firm and will stand shipment to distant markets without damage, are also fine for the home garden and local market.

WM. BELT. This is one of the best flavored berries grown and is the standard of excellence of quality. The berries are somewhat irregular in shape but are fairly large, bright glossy red with a green cap and are therefore handsome. Wm. Belt is desired for the home garden, local market and for the grower who takes pride in the quality of the berries he ships. The consumer is always willing to pay good prices for them. Be sure to try a few of them in your patch this year.

PARSONS' BEAUTY. This is a fine old variety for the home garden or local market. The plants make a vigorous growth, are easy to bed and are very productive through a long fruiting season, of dark red, fine flavored, medium size berries. The housewife will find them unexcelled for canning and very easy to cap.

GANDY. This is one of the old varieties that ranks as a leader among extra late shipping berries. It does best in low, springy land as it needs plenty of moisture through fruiting season. Gandy is not a heavy producer but all the berries are very

Best Rooted Plants

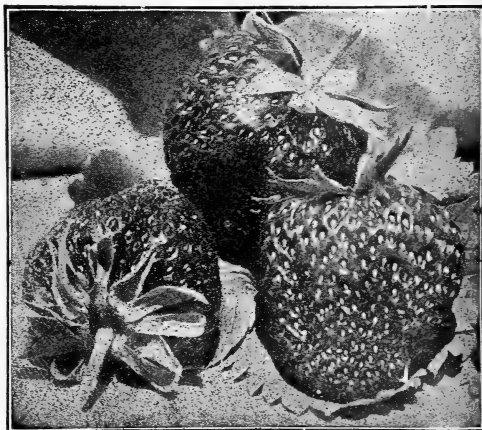
Dear Sirs: Crafton, Pa., May 1, 1933.
The strawberry plants arrived in good shape and am well pleased with them. The best rooted plants I have seen in many years. Thank you.
Yours truly,
John Schmidt.

CHESAPEAKE

The Aristocrat of Strawberries

Big Berries, Big Crops, Big Prices

This is the finest dessert berry of the late varieties and will keep better and sell at higher prices than any other late berry grown. The fruit is very large and handsome and will stay so until the end of the fruiting season. The berries are a rich, glossy red with bright yellow seed, have a large green cap and are very uniform; have the most delicious flavor of any berry we have ever tasted; very firm and will ship better than any other large late berry we have ever grown.



Chesapeake must have good, well manured land and good care, for it is sometimes difficult to get sufficient plants for a good fruiting bed. This variety produces extra large, healthy plants. This is necessary for heavy production of such extra large berries. The plants can never be cheap compared with free growing varieties but the results are well worth a little more and they are sure to return an extra profit. They are heavy producers of large berries that are all large—not a few large berries and a lot of small ones—all of the same enormous size and they hold their size throughout the season.

They are very seldom frosted for they blossom very late and we believe they are the best and most profitable late berry to grow for commercial or home use. Being a very fancy berry, large, delicious and handsome they will always sell at top prices.

To our customers who have not grown Chesapeake, we advise they give them a trial in a rich piece of moist, well drained ground, for they will not do well in all types of soil, giving them the best of attention and we are certain you will be well paid for your extra trouble.

WASHINGTON (Per). A new late variety introduced recently in Michigan, called the Honey Sweet Strawberry by its introducer and highly recommended by them. We have found it to be a good plant maker, fairly productive of medium sized, dark red berries of somewhat irregular shape, but we believe it like Wm. Belt, better suited to the climatic conditions further north. Of little value in this section.

PEARL. Blooms late and escapes late frosts. The plants are strong, vigorous growers in almost all types of soil, and are very productive of large, firm, attractive berries somewhat resembling Chesapeake. Very late. Valuable where it is important to extend the season of fancy berries. We have a good supply of strong, vigorous plants.

FREE \$1.00 WORTH OF PLANTS. SEE BACK OF ORDER SHEET FOR FULL PARTICULARS.

You'll Like Our Plants Too

Will Send Order Next Year

Dear Sirs: Mechanics Falls, Me., June 11, 1933.
I wish to take this opportunity to tell you how well satisfied I am with my strawberry plants thus far. They arrived in very good condition and are doing very nicely now. I might say that I ordered plants from one other concern at the same time I ordered from you. They also arrived at about the same time. Those plants have not proved very satisfactory. This simply means that my order next year will be for you.

Yours truly, William E. Ricker.

Fair Dealing

Gentlemen: Smyrna, N. Y., May 13, 1933.
Many thanks for the way you have dealt with me. Should I need anything in your line I will always remember you.

Yours, L. S. Enos.

Thanks For Liberal Count

Sirs: Bethel, Pa., April 27, 1933.
I received the strawberry plants and they were certainly nice. The way they look now every one is growing. Thanks for the liberal count.

Sincerely yours, Aaron H. Reber.

They Were Wonderful

Dear Sirs: Clairon, Pa., May 8, 1933.
Just a line to tell you I received the plants in fine condition. They were sure wonderful. Have them planted and every one is growing and in bloom. Thanks for extras.

Yours truly, S. N. Mills.

Was Well Satisfied

Dear Sirs: Hudson, N. Y., Jan. 10, 1933.
Last year I sent with a friend for some strawberry plants and was well satisfied. Will you please send me a catalog this year as soon as you receive this.

Yours truly, Fred Wright.

Would Recommend Us

Gentlemen: Hennicker, N. H., July 7, 1933.
Please pardon me for not acknowledging receipt of the second lot of Chesapeake plants you sent me. They were nice plants and are doing fine. I must say that I consider you a very honest company to deal with and would recommend you to anyone wishing to deal with an honest company. Thanking you for the last shipment and fair dealings. I remain

Yours truly, J. Herbert Conner.

Our Plants Did Fine

Dear Sirs: Bearsville, N. Y., Jan. 30, 1933.
Please send me your catalog of strawberry plants. I had some of your plant through Mr. Simpson of Lake Hill and they did fine. Thanking you in advance, I remain

Yours truly, Lewis Harder.

Ordering For His Neighbors

Gentlemen: Arcola, Va., March 30, 1933.
Please find enclosed order for plants. This is for my neighbors. Received the 3,000 plants the 27th all O. K. Were fine plants.

Respectfully, Rice Snapp.



Above are field scenes taken in October 1933 at our plant farms. These plants will be dug to fill your 1934 orders.

Upper left is a 15 acre field containing Fairfax, Dorsett, Premier, Aberdeen, Wm. Belt. Upper right is a 7 acre field of Premier. Lower left is a view of a field of Joyce with their name sake, "and she really likes these berries." Lower right is a block of well bedded Chesapeake.

These views give evidence of the vitality of our plants and of the results you may expect from them. For when quality plants like these are planted you are assured of a perfect stand and a bumper crop.

Everbearing Varieties of Strawberries

FOR PLEASURE AND PROFIT

There should always be some of these varieties planted in the home garden. Think of it! Plenty of delicious fresh strawberries right from your own garden and you can have strawberry shortcake or ice cream and all the other strawberry desserts all through the summer and fall. This is easily possible, no special methods are needed. Get good plants and follow a few simple directions (see pages 6 and 7) and you will be surprised and delighted with the results. A few everbearing plants should be grown wherever there is an available space for a garden, and it does not take much, a few rows beside your driveway or a little corner in your back yard will be fine.

We have many customers who have grown everbearing strawberries in a commercial way for years and they have made quite a success of it. The things essential to success in a commercial way is good springy land that will hold moisture well throughout the summer, keeping the plants well hoed and cultivated, and having a good market.

Successful growers have told us they find a ready market at fancy prices at hotels, local groceries, and they have always been ready sellers at roadside stands. They are a good advertisement as many cars will stop when they see the berries and quite often buy other fruit and vegetables also.

Since the introduction of Mastodon many of our growers have received large profits by shipping to the wholesale markets as the commission houses always have a ready market for these large fancy berries. If conditions are favorable everbearers are a good investment as a quick money crop, for you can set the plants in March or April and harvest the berries during the summer and fall.

Be sure to include some everbearers in your order for if you plant a few rows along with your standard varieties they may pay, or more than pay the expenses on your whole patch. In this way you can have a larger acreage with a smaller outlay of cash.

Mastodon has done away with a lot of the risk in raising everbearers, for if conditions are bad or should you be unable to find a good market for the summer and fall berries, they have proven to be an excellent spring fruiting variety, ripening with Big Joe, are fully as attractive and will produce as many quarts per acre in their Spring crop alone.

We have found that everbearers will do best in the hill system, for summer and fall fruiting. Set plants 15 inches apart in the rows with rows 2 to 2½ feet apart, and keep all or nearly all the runners cut off, for the big strong individual plant always makes more and larger berries than the plant that produces a lot of runner plants for the efforts of the plant are then concentrated on fruit production. But when a large spring crop is desired we find the matted row best. Keep the blossoms picked off until July, this will allow the plants to make an abundant plant growth and if desired a fair fruiting bed will then be started. This is the only difference in caring for everbearing varieties or the standard varieties. We also recommend that you plant early. It pays.

Fine Healthy Plants

Dear Sirs: Unionport, Ohio, April 17, 1933.
Plants arrived O. K. and they were fine healthy plants. I thank you for the promptness in shipping my order.
Respectfully, J. O. Curry.

Many Thanks

Dear Sirs: Attica, Ohio, April 22, 1933.
I received the plants yesterday all O. K. Many thanks.
Yours very truly, Mrs. Joseph Nagel.

Fine Healthy Plants

Dear Sirs: Cambridge, Ohio, May 1, 1933.
I received the 1,000 Premier strawberry plants April 24th. They were in fine condition. I set them out the same evening and to give them a good start had a nice rain that night. They are all living and they sure were fine, healthy looking plants.
Very truly yours, Paul Gibson.

Plants In No. 1 Condition

Dear Sirs: Ruffsdale, Pa., April 17, 1933.
Received plants in No. 1 condition just when the ground was ready to plant them. Thanks for extra plants.
Yours respectfully, Charles Tarr.

Plants In Fine Order

Dear Sirs: Red Bank, N. J., April 29, 1933.
Received my plants in fine order and wish to thank you for your good service.
Very truly yours, Edward Loeser.

Better Plants For Less Money

Dear Sirs: Rebeck, Pa., May 9, 1933.
May I state that I am more than pleased with my plants. They reached me in excellent condition and there were very few that did not grow. They were equal to or better than any plants we received from other firms in former years that sold at a considerably higher price. Yours truly, Harry D. Moyer.

MASTODON

Mastodon The one everbearer that has been a money-maker for all growers. It stands out ahead of the other everbearers as Dorsett and Fairfax do the spring varieties.

Many of our customers have been raising Mastodon commercially for several years and we know of several growers who have made \$400.00 per acre and more the same year the plants were set. To make this, however, one must have rich, moist soil and a good market. Although you may not reach this figure we are sure Mastodon will show you a nice profit the same year the plants are set and will also produce a very heavy crop of fancy berries the following spring that will be equal to, or better, than many of the standard varieties.

The berries are much larger than those of the other everbearing varieties, bright red, with a large green cap which adds much to their appearance; firm enough to ship to distant markets and arrive in good condition and with their large size and attractiveness will bring top prices always.

Mastodon is a strong, vigorous grower and in most soils will make an abundant plant growth which shade the berries in the hot summer months and protects them in the fall from early frosts. They are very productive, often producing a quart of berries from a single plant during the summer and fall. This is possible only with favorable weather, rich soil and strong, healthy plants, but you are sure of a paying crop under almost any condition.

Mastodon begins fruiting 90 days after the plants are set and keep right on till hard freezing weather in the fall, fruit again with the standard varieties the next spring and after a layoff of 2 or 3 weeks start fruiting again and with careful attention will produce for another season or possibly longer. We sold many hundred thousand of these plants last year and have a fine supply for the coming season.

CHAMPION. This everbearer was introduced in 1917 by a Mr. Lubke of Michigan and has been extensively planted, and so far we have heard nothing but praise for them. It also has a very good record but not as good as Mastodon. 5,632 quarts have been produced from one acre in 223 days from the time the plants were set. The fruit is not firm enough for distant markets but it is of excellent flavor and fine for home garden and local market. Champion is a good bedder in most soils.

PROGRESSIVE. Same description as for Champion.

LUCKY STRIKE (Everbearing). Becoming very popular with some growers for home use and local market proving superior to Champion or Progressive. We do not think it equal to Mastodon. A persistent yielder of medium to large berries of very good quality and appearance; makes plants freely and is a vigorous grower. Try a few plants in your garden this year.

BERRI-SUPREME (Everbearing). A new everbearer originating in Utah, and possibly a money-maker for the originator. In our test plot they were not as good plant makers as Mastodon, nor as productive. Fruit as large and of somewhat better flavor and appearance than Mastodon or Champion. We do not recommend them.

Every Plant Growing

Gentlemen: Tamaqua, Pa., April 23, 1933.

We received the strawberry plants in fine condition and so far every one is growing. Thanks for the extra plants.

I remain as your customer, Joel J. Osenbach.

Mastodon Very Satisfactory

Gentlemen: Flanders, N. J., April 25, 1933.

The Mastodon plants I received from you arrived a week ago in very good condition. They are now planted and proving very satisfactory.

Thanking you, I remain, Alfred Gruenert.

Good Friends And How They Help Our Business Grow

Sirs: Fredericksburg, Pa., April 8, 1933.
This is my first year to plant strawberries. I was at one of my neighbors and they had just got one of your catalogs and said I could send from it. Then when I saw the card from Mr. Rank I knew all about your strawberries for I helped pick berries at his place. I never saw any before or after like his. So I am anxious to have some of your plants too. Kindly send me 1,000 Premier and 400 Chesapeake, as per order enclosed.

Yours very truly, Mrs. Calvin Dommoyor.



Hr. Heffelfinger And His Plants

Dear Sirs: Northampton, Pa., October 9, 1933.
Enclosed you will find some photos taken in my new eight acre strawberry field, set out this spring. These are Joyce the "Faultless berry" which I believe will soon become the leading midseason berry and will be in greater demand than any other variety. The berries are a light red color and look as fresh the third day after they are picked as on the first, not like many other varieties that turn dark a few hours after picking. They are also fine plant makers; my rows are now 36 to 40 inches wide and will be about 48 inches wide by the time cold weather sets in. These rows are 60 inches apart and plants were set 32 inches apart in the row. If it was not that I have to have a few early berries I would plant nothing but Joyce as there is always a good demand for them right here at my place and they will always sell at a premium. The second a buyer sets his eyes on them they are sold. I have even had buyers come to blows, each one wanted them and I did not have enough for both. Wishing you and your new berry great success, I am,
Yours very truly, G. John L. Heffelfinger.

Sirs: Hillsville, Va., June 2, 1933.
On the recommendation of Mr. F. E. DeHaven I am writing you concerning strawberry plants. last year he purchased 1,000 Premier plants from you and this spring he is picking a splendid crop. He set his plants earlier than this last year. If you think it is not too late to set them now, please send me 800 Premier and 200 of a good variety of everbearer.
Very truly yours, J. E. Gardner.

Dear Sirs: Geneva, N. Y., May 21, 1933.
The plants arrived yesterday and are planted. We feel more than satisfied as we did not expect you to do this. We do thank you and I will do my best to get others to deal with you. Many around here send away for plants. Again thanking you, I am,
Yours truly, C. L. Smith.

Dear Sirs: Schenectady, N. Y., March 20, 1933.
Will you please send me your catalog of strawberry plants. I am interested in everbearing plants. Mr. Armstrong of Church Road used your plants and the berries were of excellent quality. Trusting you will rush catalog as I want to get started this spring.
Yours truly, George D. Richards.

Gentlemen: South Amboy, N. J., May 2, 1933.
Received the strawberry plants you shipped to me April 20th, arrived the next day in very good condition and had them planted the following day. Thanks for your prompt attention to my order. If you will please mail a catalog to Mr. Jonowsky, South River, I think you can sell him some plants as I was talking to him yesterday and he told me he was in the market for some plants.
Yours very truly, F. H. Lear.

Dear Sirs: Bournansville, Pa., May 3, 1933.
Mr. Brendle received plants from you in fine condition and told me about your plants and prices. I would like to have 3,000 Premier and 3,000 Chesapeake. Please find check enclosed.
Yours truly, Charles Lane.

Dear Sirs: Fredericksburg, Pa., May 8, 1933.
Just a few lines to let you know we received your catalog sometime ago. You sent it at the request of Mr. Rank, our neighbor. We were not quite ready to plant so we loaned it to our neighbor, Mrs. Dommoyor who has sent you an order. Next we sent you our order and on May 1st loaned the catalog to another neighbor, Mr. Boeshore, who has also sent you an order. This is just to show how it helps when you have satisfied customers. I am sure we will all be pleased with the berries next year. Our plants look real nice.
Yours truly, Mrs. David Shirk.

Gentlemen: Kerr's Creek, Va., March 29, 1933.
Received strawberry plants Saturday. Were all that I could expect, extra in every way. Your services are speedy for which I wish to thank you.
Yours truly, Isaac G. Wilhelm.

Dear Sirs: New Ringgold, Pa., Jan. 30, 1933.
Please send me a copy of your catalog as soon as possible. My brother got his strawberry plants from you last year and they were all nice, healthy plants and priced very reasonable. So I thought I would like to get your book and prices, too, this year.
Yours truly, Albert Lechleitner.



Mr. Geer and His Mastodon

Dear Sirs: Coudersport, Pa., October 3, 1933.
Enclosed are two photos, one of a patch of 4,000 Joyce with oats drilled near the row for mulch and the other of a patch of 3,600 Mastodon everbearing. You may use these pictures in any manner you wish, also use my name for reference to other growers if you care to. I have 100 per cent stand except for a very small loss from grubs. My Mastodon have paid for the better than 16,000 plants that I bought from you, fertilizer, oats for mulching and part of the labor on same and I am still selling 40 to 60 quarts two and three times a week at 25c a quart for graded berries.

Yours respectfully, O. B. Geer.
P. S. The Joyce are harder than Premier. O.B.G.



A Home Garden Patch And Some For Market Too
Our Plants Will Please You. Try Them.

Home Garden

Every one should have a berry garden. With a little effort, one may have delicious, fresh berries right from the vines, daily through a long season (and by planting some everbearers) they can have them all summer and fall. Order 200 to 500 plants today; this many if given proper care will produce all the berries you can use fresh, have plenty to preserve and probably you will have several quarts to sell to your neighbors, who will always be more than glad to get them.

The roadside stand gives a wonderful advantage to sell berries at good prices and there is always a good demand for them. See back cover page for Garden Specials.

ASPARAGUS

Splendid for home garden or market. The plants are very easy to grow and a bed when once established will thrive for many years. As a field crop, Asparagus is very profitable, and there is most always a good demand for it at good prices. Any good garden soil will give excellent crops, but it should be manured freely.

MARY WASHINGTON. This is generally recognized by the leading growers as being the best variety of Asparagus grown. It starts earlier, produces more and larger stalks of extra quality than any other variety. It is highly rust resistant and has proven by test to be best both for home garden or commercial plantings. The true strain. Price list on page 23.

RASPBERRIES

Raspberries will succeed in any good soil suitable for garden vegetables, and amply repay good culture. Ground bone is a good fertilizer. Plant in rows 4 feet apart and plants 3 feet apart in the rows. Cut out old wood as it dies after the fruit ripens.

CHIEF. An outstanding new early red raspberry. Ripens 10 to 12 days earlier than Latham. Berries are dark red, good size, extra firm and hold up a long time after picking. Plants are strong and stocky, immune to mildew and highly resistant to all diseases. Withstands hot, dry weather better than most varieties. A good shipper.
75c for 10, \$3.50 for 100, \$25.00 per 1000. Special prices on large lots.

CUMBERLAND. Berries are large, borne in clusters several to a branch. The reliable blackcap. Flavor is rich and sweet. Probably the very best black raspberry.
75c for 10, \$3.50 for 100, \$20.00 per 1000. Special prices on large lots.

LATHAM. Claimed by many to be the best red raspberry. Berries are large, dark red, of uniform size. Will stay on canes several days after fully ripe. Bushes are vigorous growers, perfectly hardy in all parts of the country. Begins bearing the first year. If you have not grown this try it this year.
75c for 10, \$3.50 for 100, \$25.00 per 1000. Special prices on large lots.

ST. REGIS. Leading growers agree that this is the best, the most profitable and most dependable everbearing red raspberry. Good quality and a good grower. Fruit begins to ripen midseason and continues through fall.
75c for 10, \$3.00 for 100, \$20.00 per 1000. Special prices on large lots.

Instructions To Customers

TIME TO ORDER. As soon as convenient after receiving this catalog, for late in the season we may be out of some varieties, but if you order early you will get just what you want, without any trouble or delay. Plants will be reserved and shipped when the proper planting time comes. Be sure to **PLANT AS EARLY** as possible for this may mean success or failure.

TIME OF SHIPMENT. From October 15th to May 10th. Shipping through the winter to Southern States. Spring is the best time to set strawberry plants in the Middle and Northern States. The earlier your plants are shipped and planted the better they are for they will stand digging, shipping and planting much better early than after the growth has started. May tenth ends our shipping season. We will however fill a limited number of orders shortly after that date, and with a late season the plants will go through in good condition, but we do not advise planting this late in the season and will fill orders only at the purchaser's risk after this date. We will use every precaution in our power to put the plants through in good condition.

PAYMENT. Money Order, Registered Letter, Bank Draft or Personal Check in full payment with order or one-fourth cash with order and balance before date of shipment. We will book orders and wait a reasonable length of time for remittance.

REFERENCES. The Salisbury National Bank, Salisbury, Md., and the Farmers and Merchants Bank, Salisbury, Md.

TRUE TO NAME. We use every precaution to have our plants true to name, and if any should prove otherwise we will replace it, but in no case will we be responsible for any sum greater than that paid for the plants.

YOU ARE TAKING NO RISK. We send just what you order or refund your money, unless you tell us to substitute your order with the nearest to it we have, should we be out of the varieties you order.

GUARANTEE. 100% satisfaction or your money back. Claims, if any, must be made promptly on receipt of goods. We cannot be responsible for conditions over which we have no control.

ALWAYS REMEMBER. We are at your service and will always be glad to hear from you and will give you any and every possible assistance.

OUR PLANTS ARE FRESH DUG FOR YOUR ORDER. From new beds that have not borne fruit, tied in bundles of 25 and packed in light ventilated crates with plenty of damp moss so they will carry safely. We make no extra charge for crates and packing.

SHIPMENT. On all orders of 500 plants or more after the third zone the rate is cheaper by express than by parcels post, and as the Postoffice Department demand a minimum charge of 17c for C. O. D. collection and money order fee it is cheaper for our customers to remit the amount of postage with order if plants are to be shipped by parcel post. Parcel post charges can be figured by the following table.

PARCEL POST RATES

	Zones 1-2	Zone 3	Zone 4	Zone 5	Zone 6	Zone 7	Zone 8
100 Plants	\$.012	\$.015	\$.021	\$.027	\$.033	\$.041	\$.048
200 Plants	.16	.23	.35	.49	.61	.77	.92
300 Plants	.21	.31	.49	.70	.89	1.13	1.36
400 Plants	.25	.39	.63	.91	1.17	1.49	1.80
500 Plants	.29	.47	.77	1.12	1.45	1.85	2.24
600 Plants	.34	.55	.91	1.33	1.73	2.21	2.68
700 Plants	.38	.63	1.05	1.55	2.01	2.57	3.12
800 Plants	.43	.71	1.19	1.76	2.29	2.93	3.56
900 Plants	.47	.79	1.33	1.97	2.57	3.29	4.00
1000 Plants	.51	.87	1.47	2.18	2.85	3.65	4.44

Price List of

Shipping Season
October 15th to May 10th



Quality Plants

All Prices Quoted Below
Are F. O. B. Salisbury, Md.

EVERY CUSTOMER A SATISFIED CUSTOMER

	25	50	100	200	300	400	1000	5000
Early Varieties								
BLAKEMORE (per)	\$.20	\$.35	\$.60	\$.90	\$1.10	\$1.30	\$2.50	\$11.25
DORSETT (per)	.50	.80	1.50	2.25	3.00	3.50	8.00	35.00
FAIRFAX (per)	.50	.80	1.50	2.25	3.00	3.50	8.00	35.00
Howard 17 (per)	.25	.40	.70	1.00	1.20	1.45	3.00	13.75
Lindberg (per)	.25	.40	.70	1.00	1.20	1.45	3.50	16.25
Missionary (per)	.20	.35	.60	.90	1.10	1.30	2.50	11.25
PREMIER (per)	.25	.40	.70	1.00	1.20	1.45	3.00	13.75
Red Gold (per)	.30	.50	.80	1.10	1.40	1.80	4.50	
SOUTHLAND (per)	.40	.60	1.00	1.60	2.15	2.60	6.00	27.50
Medium Early Varieties								
ABERDEEN (per)	.25	.40	.70	1.00	1.20	1.40	3.25	15.00
Bellmar (per)	.25	.40	.70	1.00	1.20	1.40	3.25	15.00
Cooper (per)	.25	.40	.70	1.00	1.20	1.40	3.25	15.00
Dr. Burrell (per)	.20	.35	.60	.90	1.10	1.30	2.50	11.25
Sen. Dunlap (per)	.20	.35	.60	.90	1.10	1.30	2.50	11.25
Midseason Varieties								
Beauty (per)	.25	.40	.70	1.00	1.20	1.45	3.50	16.25
BIG JOE (per)	.25	.40	.70	1.00	1.20	1.40	3.25	15.00
Fugeima (per)	1.00	1.50	2.50					
JOYCE (per)	.30	.50	.80	1.10	1.40	1.80	4.50	20.00
Late Varieties								
Aroma (per)	.25	.40	.70	1.00	1.20	1.40	3.25	15.00
Big Late (imp)	.25	.40	.70	1.00	1.20	1.40	3.25	15.00
Brandywine (per)	.25	.40	.70	1.00	1.20	1.40	3.25	15.00
CHESAPEAKE (per)	.25	.40	.70	1.00	1.20	1.45	3.50	16.25
Gibson (per)	.25	.40	.70	1.00	1.20	1.40	3.25	15.00
LUPTON (per)	.25	.40	.70	1.00	1.20	1.40	3.25	15.00
Parsons' Beauty (per)	.25	.40	.70	1.00	1.20	1.40	3.25	15.00
WM. BELT (per)	.25	.40	.70	1.00	1.20	1.40	3.25	15.00
Very Late Varieties								
Gandy (per)	.25	.40	.70	1.00	1.20	1.45	3.00	13.75
Pearl (per)	.25	.40	.70	1.00	1.20	1.45	3.50	16.25
Washington (per)	.30	.50	.80	1.10	1.40	1.80	4.50	21.25
Everbearing Varieties								
Berri-Supreme (per)	.60	.90	1.60	2.50				
Champion (per)	.30	.50	.80	1.10	1.40	1.80	4.50	21.25
Lucky Strike (per)	.40	.60	1.00	1.60	2.15	2.60	6.00	27.50
MASTODON (per)	.40	.60	1.00	1.60	2.15	2.60	6.00	27.50
Progressive (per)	.30	.50	.80	1.10	1.40	1.80	4.50	21.25
ASPARAGUS ROOTS								
Mary Washington 1 yr. No. 1	.40	.60	1.00	1.60	2.15	2.50	5.50	25.00
Mary Washington 2 yr. No. 1	.50	.80	1.50	2.25	3.00	3.50	8.00	35.00

500 Plants at the thousand rate.

Special Notice. Two or more varieties cannot be added together to get a lower rate.

If you wish your plants shipped Parcel Post Prepaid be sure to include same with your remittance as per Parcel Post table on opposite page.

PLANT EARLY. IT PAYS.

\$1 Worth of Plants Free

See back of Order Sheet for Particulars.

UNIVERSITY OF MARYLAND

COLLEGE PARK, MARYLAND

November 13, 1933.

STATE HORTICULTURAL DEPARTMENT

Certificate of Inspection

Diploma of Number 47

State to Certify That on the 13th day of September, 1933, we examined the

Nursery Stock of their Salisbury Wisconsin

growing in their greenhouse at Salisbury Wisconsin

State of Maryland, in accordance with the laws of Maryland, 1911 Chapter 265, Section 54, and that said nursery and greenhouse are properly licensed and in conformity with the laws of the State of Maryland, Chapter 265, Section 54, and that said nursery and greenhouse are properly licensed and in conformity with the laws of the State of Maryland, Chapter 265, Section 54, and that said nursery stock is in conformity with the laws of Maryland, Chapter 265, Section 54, and that said nursery stock is in conformity with the laws of Maryland, Chapter 265, Section 54, and that said nursery stock is in conformity with the laws of Maryland, Chapter 265, Section 54.

G. A. Langford, Chief Inspector

C. E. Tamm, State Horticulturist

Garden Specials

SPECIAL No. 1

25 Premier, early	\$0.25
25 Joyce, midseason	.30
25 Wm. Belt, late	.25
25 Mastodon, everbearing	.45
	<u>\$1.25</u>

Special Price \$1.00 Postpaid

SPECIAL No. 2

100 Blakemore, early	\$0.70
100 Big Joe, midseason	.70
100 Chesapeake, late	.70
100 Lucky Strike, everbearing	1.30
	<u>\$3.40</u>

Special Price \$3.00 Postpaid

SPECIAL No. 3

The New Variety Special

100 Southland, early	\$1.00
100 Fairfax, early	1.50
100 Dorsett, early	1.50
100 Joyce, midseason	.80
100 Fugeima, midseason	2.50
	<u>\$7.30</u>

Special Price \$7.00 Postpaid

SPECIAL No. 4

50 Premier, early	\$0.40
50 Aberdeen, midseason	.40
50 Brandywine, late	.40
50 Champion, everbearing	.50
	<u>\$1.70</u>

Special Price \$1.50 Postpaid

SPECIAL No. 5

100 Fairfax, early	\$1.50
100 Joyce, midseason	.80
100 Chesapeake, late	.75
100 Mastodon, everbearing	1.20
	<u>\$4.25</u>

Special Price \$4.00 Postpaid

SPECIAL No. 6

50 Premier, early	\$0.40
50 Joyce, midseason	.45
50 Wm. Belt, late	.40
50 Chesapeake, late	.40
50 Champion, everbearing	.50
	<u>\$2.15</u>

Special Price \$2.00 Postpaid

Commercial Specials

Transportation Charges To Be Paid By Purchaser

SPECIAL No. 7

1,000 Blakemore, early	\$2.50
1,000 Joyce, midseason	4.50
1,000 Big Joe, midseason	3.25
1,000 Wm. Belt, late	3.25
1,000 Chesapeake, late	3.50
	<u>\$17.00</u>

Special Price \$16.00

SPECIAL No. 9

The Acre Special

2,000 Premier, early	\$6.00
2,000 Joyce, midseason	9.00
2,000 Aberdeen, midseason	6.50
2,000 Chesapeake, late	7.00
	<u>\$28.50</u>

Special Price \$27.00

SPECIAL No. 8

500 Premier, early	\$1.50
500 Big Joe, midseason	1.65
500 Chesapeake, late	1.75
500 Mastodon, everbearing	3.00
	<u>\$7.90</u>

Special Price \$7.25

SPECIAL No. 10

5,000 Premier, early	\$13.75
5,000 Joyce, midseason	20.00
5,000 Chesapeake, late	16.25
	<u>\$49.00</u>

Special Price \$46.00

The above with	
5,000 Mastodon, everbearing	27.50
	<u>\$76.50</u>

Special Price \$70.00

RAYNER BROS., SALISBURY, MD.