

## Historic, archived document

Do not assume content reflects current scientific knowledge, policies, or practices.



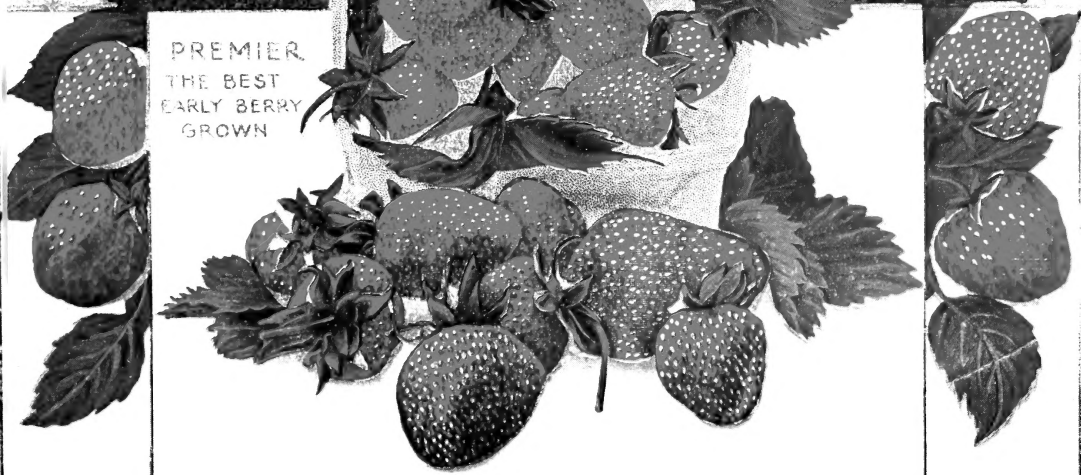
6237  
**RAYNER BROS.**  
SALISBURY, MD.

**STRAWBERRY PLANTS  
AND OTHER SMALL FRUIT PLANTS  
TREES, SHRUBS, ETC.**

LIBRARY  
RECEIVED  
★ FEB 7 1933 ★  
U. S. Department of Agriculture



PREMIER  
THE BEST  
EARLY BERRY  
GROWN





The Finest And Most Profitable  
Early Strawberry

We Thank You For Your  
Co-operation

We send you this catalog with our best wishes for a Happy and Prosperous Year. We are mighty proud to say our business has grown far beyond our fondest expectations. We realize this has only been possible by the co-operation of our many satisfied customers and the great success they have had with RAYNER'S Quality plants.

To those of you who desire High Quality plants and with whom we have not as yet had the pleasure of dealing, we ask you to place your order with us this season, so you may see for yourself that you may pay far more for plants, but you can never get better, regardless of price. This is not just sales talk for we back our plants with the **Strongest and Fairest Guarantee** that can be made. We guarantee 100% satisfaction or your money back.

We take great pleasure in entering in this catalog a few of the unsolicited testimonials sent us by satisfied customers. You can imagine how these letters encourage us to improve our service every year.

You will find all information and variety descriptions in this book accurate and dependable. We do not boost a variety, no matter how large our stock, unless we are sure it will give good results, for we want your orders, not only this year, but we want you to keep ordering from us year after year and we know that to hold your confidence our catalog statements as well as our plants must be dependable.

In closing we wish to extend our sincere thanks to the many thousands of customers who have so generously placed their orders with us, and made this business possible. We trust we may have the pleasure of serving you during the coming season, which we are sure will be to our mutual benefit because **Rayner's Plants Live, Grow, Produce Heavily and Pay Well.**

Sincerely yours,  
RAYNER BROTHERS.



## An Actual Photograph Of Our Plants

Your profits come from plants that Grow, and vigorous plants like these are your Guarantee of Success with berries. They have given us many thousand satisfied customers. Below there are a few of the many letters we received from them. You will also find others scattered through this catalog.



Gentlemen:

Takoma Park, Md., May 7, 1932.

I duly received the Big Joe plants yesterday. Must say they are certainly fine quality plants. I have a perfect stand and they are all growing nicely.

Very truly yours, Lloyd W. Biddle.

Kind Sirs:

Thurmont, Md., May 18, 1932.

Received plants O. K. I believe I will have a 100% stand as I have not found one dead plant yet (one week after planting).

Yours truly, Harry S. Simmers.

Dear Sirs:

Newburgh, N. Y., May 21, 1932.

I received my strawberry plants the 12th and planted them the same day. They are certainly wonderful plants and doing fine. Expect to plant two acres of your plants next spring.

Yours very truly, J. O. Turenne.

### Every Plant Strong and Healthy.

Milburn, N. J., May 7, 1932.

Gentlemen:

The plants arrived last evening and were set out immediately and look as though made to order. We had a nice, cool shower this morning. Every plant looks strong and healthy. They certainly are wonderful plants and hope we have success with the berries.

Thanking you I remain,

Paul H. Waese.

### Rayner's Plants Are Better

Freedens, Pa., March 1, 1932.

Dear Sirs:

I received your new catalog of strawberry plants. I have received plants from you for two seasons and found them to be just what you say they are and then a little better. Good strong stock and true to name. Can you furnish me 2500 Premier or 2000 Premier and 500 Big Joe to be shipped April 10th to 15th?

Yours very truly,

Ira W. Barron.

### Couldn't Be More Satisfied

Elizabeth, Pa., April 29, 1932.

Gentlemen:

Thank you for the strawberry plants. I couldn't be more satisfied.

Very truly yours, John Stracelsky.

### Rayner's Plants Came Through Fine.

Williamsport, Pa., May 30, 1932.

Dear Sirs:

I wish to thank you for the prompt attention you gave my late order. Plants came through just fine.

Yours truly, Ralph Pinkney.

### A Booster For Rayner's Plants

Como Cottage, Pa., May 9, 1932.

Gentlemen:

I wish to thank you for your prompt delivery and advice and if I can promote or help you in this part of the country I shall gladly do so.

Sincerely,

Mrs. Etta Gray.

### Rayner's Plants Always Good.

Alderson, W. Va., April 26, 1932.

Gentlemen:

I am sending you a small order for plants. Whatever you send me will be all right, if you have to substitute. Your plants are always good.

Respectfully,

Wayland Stevens.

### Quality Plants—Prompt Shipment

North Eastham, Mass., April 5, 1932.

Friends:

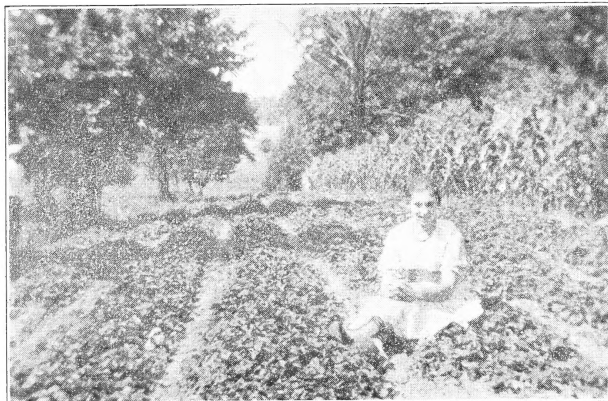
Berry plants received in fine condition. Quality very good. Thanks for prompt shipment.

Respectfully and truly yours,  
H. P. Lombard.

## Strawberries Pay Every Year

In all our years in the plant business we have never as yet found a customer who has not made a profit with Strawberries, and some have made as high as \$1,200 on one acre. This, however, does not happen very often. Only by having an exceptionally favorable season, good fertile soil, strong, vigorous plants and an excellent market can this be realized. Under average conditions one should not expect more than \$300 to \$500 per acre. This is much more than can be realized from most other crops.

Only a small amount of money is needed to start. Returns come in earlier than from any other fruit crop and with little additional expense a second crop almost equal to the first can be had. A nice income can be had from a small patch and experience, though desirable, is not necessary.



A Home Garden Patch And Some For Market Too.

## Home Garden

Every one should have a berry garden. With a little effort, one may have delicious, fresh berries right from the vines, daily, through a long season (and by planting some everbearers) they can have them all summer and fall. Order 200 to 500 plants today; this many if given proper care will produce all the berries you can use fresh, have plenty to preserve and probably you will have several quarts to sell to your neighbors, who will always be more than glad to get them.

The roadside stand gives a wonderful advantage to sell berries at good prices and there is always a good demand for them. See page 23 for Garden Specials.

### RAYNER'S JOYCE THE WONDER BERRY.

Gentlemen:

Northampton, Pa., July 15, 1932.

I wish to tell you of the success I have had with the new Strawberry, Joyce, which I received from you last year. These plants made a very strong growth, the beds were 24 to 30 inches wide by the middle of October, were clean and thrifty, showing no sign of rust.

We began picking June 24th and July 15th there were still a few berries on the vines. From the 1,000 plants we set we picked 2467 quarts; we counted the berries in several baskets and they ranged from 20 to 27 berries to the quart. We had several heavy rains during the picking season but the berries showed no bad effects and the color and flavor of the berries were simply wonderful. We have several varieties but all our customers wanted the Joyce.

I shall place my order for seven or eight thousand Joyce plants early next spring for they are the very best midseason berry I have ever grown or seen.

Wishing you and your New Berry great success, I am

Very truly yours,

John G. Heffelfinger.

Dear Sirs:

Washington, R. I., May 4, 1932.

Plants arrived in very good condition and they are all alive and looking fine. Thanking you for your prompt delivery and for extra plants.

Yours truly

Leona Wilcox.

# PREMIER---The Great Early Variety

The Most Popular Early Standard Berry.

(See first cover and page 2 for illustration).

All the good things that can be said about a strawberry can be said about Premier. No strawberry yet introduced has brought the returns to growers that Premier has, and it still stands unchallenged as a **real money maker**. With the possible exception of Blakemore it stands alone for adaptability to any type of soil or climate, producing enormous yields under most adverse conditions.

Premier makes an abundant plant growth for a good fruiting bed, of strong, healthy plants, which are very productive, fruit ripens early and bears through a long season. No variety produces more quarts of fancy berries per acre; this is very important with present low prices which makes it necessary to keep production costs down as low as possible. Fruit is very large and attractive, a bright red with a green cap which stays green to the end of the season and adds much to the beauty of the fruit. It is almost frost-proof and has never failed to make a crop in this section since first introduced, holds up well even during a very unfavorable season and in extremely wet weather if kept picked closely will come through on the profit side of your ledger. A firm berry that will stand shipment to distant markets in good condition and yet of such exceptional fine quality that it is unsurpassed as an early berry for home garden or local market.

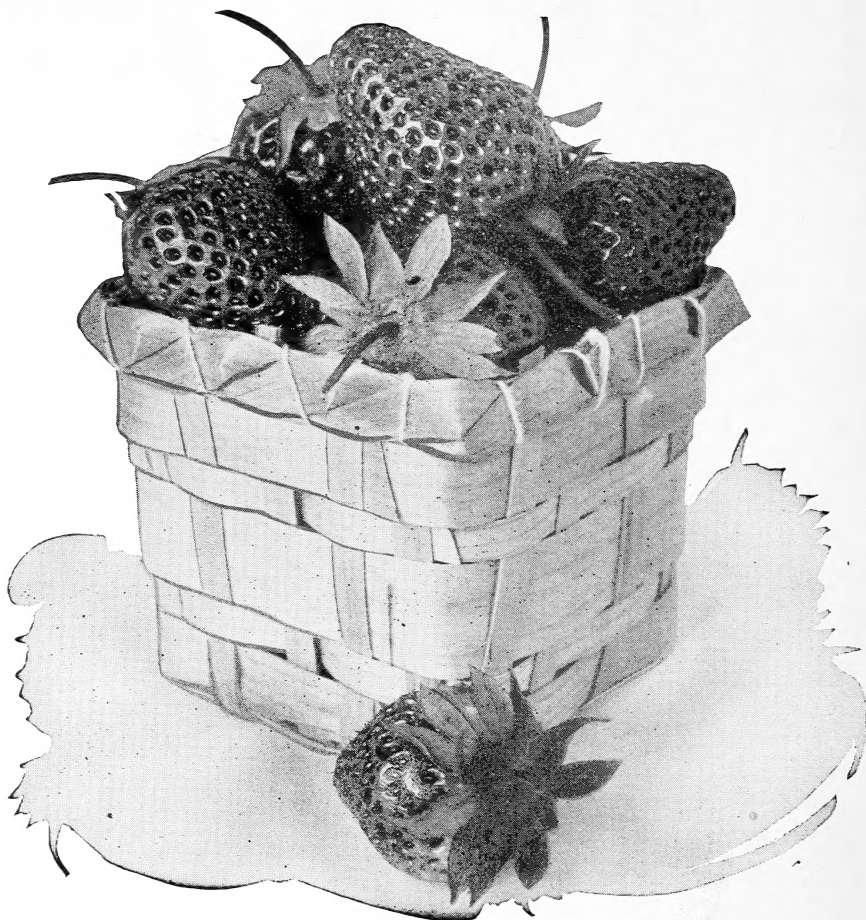
To insure your next year's income plant a patch, an acre or five acres of Rayner Brothers' Premier for you are sure to get results whether your planting be large or small.



This field of Rayner's Super Premier plants is awaiting your orders.

**HOWARD No. 17.** Believed by horticulturists to be the same as Premier. Was introduced by a Mr. Howard a few years after Premier and from our own experience we have found these varieties to be one and the same variety. For full description see Premier.

**MISSIONARY.** An old dependable variety, largely grown in Florida and other southern states. Will do well in almost any type of soil and does especially well in the lighter types. Is a favorite with the juice men. Will probably be replaced by Blakemore in the near future.



A Basket of Fancy Blakemore

**Blakemore** A great new early variety originated by Prof. Beatty of the U. S. Department of Agriculture, Washington, D. C., and introduced by the Department in 1930. It has been thoroughly tested in most of the strawberry producing sections of the United States and seems to readily adapt itself to conditions existing where planted.

A cross between Premier and Missionary, resembling the Missionary very much in plant growth, being a free plant-maker of medium sized plants; a very heavy producer of bright red berries, ripening two or three days ahead of Missionary or Premier, which show the unusual ability to hang on the vine from one to three days after it is apparently ripe, without any waste. Size medium large, round to conical in shape, red to the center, without any green tips. Its outstanding characteristics are its uniformity of ripening, firmness and ability to stand shipment to distant markets and arrive fresh and bright. Our plants have been State inspected and found to be free from all injurious diseases. We advise our customers to give this variety a thorough trial as we believe it will prove a real money-maker.

**RED GOLD.** Introduced by the Gardner Nursery Co., of Iowa, and highly recommended by them. Ripens early, fair producer of medium to large berries having a somewhat oval shape. Its fine quality is its greatest recommendation. Red Gold is a free plant maker, foliage disease resistant. Makes an excellent fruiting bed. We would advise those of you who desire real quality to give them a trial.

**LINDBERG.** Originated by a Mr. Scott along the Chesapeake Bay in Virginia, and were so highly spoken of we obtained a few plants for our trial ground. We found they were all that could be desired in an early berry of extra large size.

Lindberg produces strong, large, disease resisting plants, showing no sign of rust or other ailments common with many varieties of strawberries, producing enough plants for a nice fruiting bed, but should be set about 15 or 18 inches apart in the row and they seem to have the ability to produce this amount of plants in any type of soil as we have tried them in both light and heavy soil and the bed in both cases was the same. Fruit ripens almost with Premier and is very much larger, even larger than Cooper, is very firm, medium dark red clear through, of irregular conical shape, of highest quality and excellent flavor. In our estimation Lindberg is a real winner either for commercial market, home garden or local sale, and we believe one of the greatest early varieties yet introduced.

**Big Joe (Joe Johnson).** This is no doubt the most profitable midseason variety, and to have a berry patch that will produce the most, the fanciest, and the best flavored berries, and this means the most possible profit from your labor and investment, we recommend without hesitation Premier for early, Big Joe for midseason and Chesapeake for late. This will give you the finest berries throughout a very long season.

Big Joe does well on all types of soil, but like most all berries does best on fertile soil with proper care, begins fruiting just as the early varieties start to run down therefore you will always get a premium of a dollar or more per crate for them.

They make a very vigorous plant growth, are very productive of large, bright red berries that have a large green cap therefore these berries are always very attractive and whether you retail your berries, sell at the farm or ship to distant markets you should include Big Joe in your plantings and we are sure you will be delighted with the results.



Big Joe

**SENATOR DUNLAP.** A very good variety for the beginner for the plants are very hardy and can be depended upon to make a good bed under any conditions, in fact they are the most freely bedding variety we have. When properly thinned it is hard to find a berry that will produce a larger crop of marketable fruit than Dunlap. Fruit is bright red clear through, fair in quality and of medium size. The greatest advantage of Dunlap is its ability to make a good growth and produce heavily under almost any conditions. This variety still finds favor with a large number of experienced berrygrowers.

**BEAUTY.** One of the newer varieties that is all its name implies. The plants are strong and healthy and entirely capable of producing and maturing large crops of fancy berries, that hold up well during the entire fruiting season. A large, juicy, sparkling red berry of the most delicious flavor, that seems to be firm enough for shipment to distant markets. We believe every grower should give this variety a trial, as it may show up better than the varieties that you have been using either for distant market or for home use.

**DR. BURRILL.** You will find this exactly like Senator Dunlap. For description see Senator Dunlap.

**COOPER.** This variety was introduced by the A. R. Weston Co., who praised it very highly and from our own experience it is very satisfactory. Cooper is a very vigorous variety, making a moderate number of large, healthy plants, although in some fertile soils will stand thinning for best results. This variety is very large even larger than Premier, a very bright red and of excellent quality. A beautiful berry, fine for local or nearby market. A variety that cannot be surpassed for the grower who has a local market for large berries.



**Joyce**—The Faultless Berry (Per). This is a new variety originated by Mr. Bassett of Salisbury, Md. We obtained a few plants from him and have fruited them in our trial grounds for the past three seasons where they made a remarkable showing. Compared with Big Joe as follows: better plant maker, cleaner, healthier foliage, fruit brighter red, more frost resistant, more productive, fruit much larger, fruiting season from five to ten days longer. Quality and firmness the same.



JOYCE—We urge you to try this new berry

Two years ago we sold several thousand of these plants to our old customers and in every locality where they were planted they gave excellent results. We visited some of these fields last fruiting season to see for ourselves the quality, productiveness and plant growth made in these sections. We found it had been an outstanding success in every locality. All of these growers want more plants this season. They said it was the best midseason berry they had ever grown; the berries were so large, had such a wonderful color and flavor their customers bought them in preference to any other variety.

Joyce is a very thrifty grower, producing a fine fruiting bed of strong, vigorous plants; fruits a few days before Big Joe, has an exceptionally long fruiting season; fruit is very large and holds up well to the end of the season. Bright red and of excellent quality, firm; will stand shipment to distant markets and arrive in excellent condition. For home use or roadside market they are unexcelled.

We ask you all to give Joyce a trial this year and we are sure they will prove your leading June berry. Order early as our supply of these plants is limited.

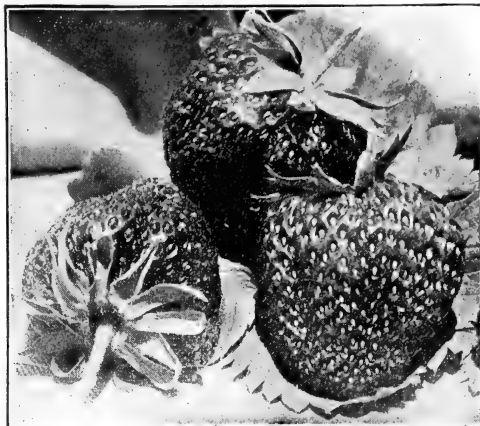
**Bellmar** Introduced by the U. S. Department of Agriculture and developed by them, like Blakemore from a cross of Premier and Missionary in 1922 but was not introduced until last season. Recommended for trial in comparison with Premier wherever it is adapted for general market.

Bellmar is a much more vigorous plant maker than Premier and thus will make a better fruiting bed in poor soils and in good soil may need thinning to get best results; blossoms are perfect; a heavy producer, but not quite as heavy as Premier although the appearance and size are somewhat better; ranks high in dessert quality, being less acid than Missionary. The fruit is very firm and will stand shipping well. Commands top prices on any market. Fruit is large, bright red similar to Premier and have a large green calyx and a bright gloss which has caused it to be selected as the most handsome berry among hundreds. We advise you to give this variety a fair trial this season as they certainly look to be a leader for the near future.

# Chesapeake

## The Aristocrat of Strawberries

This is the finest dessert berry of the late varieties and will keep better and sell at higher prices than any other late berry grown. The fruit is very large and handsome and will stay so until the end of the fruiting season. The berries are a rich, glossy red with bright yellow seed, have a large green cap and are very uniform; have the most delicious flavor of any berry we have ever tasted; very firm and will ship better than any other large late berry we have ever grown.



### CHESAPEAKE

Big Berries—Big Crops—Big Prices

Chesapeake must have good, well manured land and good care, for it is sometimes difficult to get sufficient plants for a good fruiting bed. This variety produces extra large, healthy plants. This is necessary for heavy production of such extra large berries. The plants can never be cheap compared with free growing varieties but the results are well worth a little more and they are sure to return an extra profit. They are heavy producers of large berries that are all large—not a few large berries and a lot of small ones—all of the same enormous size and they hold their size throughout the season.

They are very seldom frosted for they blossom very late and we believe they are the best and most profitable late berry to grow for commercial or home use. Being a very fancy berry, large, delicious and handsome they will always sell at top prices.

**GIBSON.** This is another old standard variety that has proven itself many times over. Has a very vigorous growth and makes a fine fruiting bed. produces heavily of bright red berries with a fancy green cap. Does not ship well but are fine for local market or home use and are fine for preserving and canning.

**BRANDYWINE.** A late variety that has been grown for many years and has found many friends. A good plant maker and a heavy producer of fine quality, dark red berries that are very firm and will stand shipment to distant markets without damage, are also fine for the home garden and local market.

## BERRIES PAY BEST.

Dear Friends:

Lexington, Va., June 3, 1932.

We received the plants all O. K. Shipped on Saturday and arrived here Monday at 11.30 A. M., in first class shape and they are doing fine; I think every single plant is living. Have worked them three times and removed the blossoms twice, but somehow we missed a few on the Premier and today we picked a quart and a half of the finest berries I have ever seen. I was never so surprised in all my life; many of the berries measured over one and one-half inches in length. Most of the plants have runners on them a foot long.

I certainly wish I had set out a patch of berries last year. I can get at least 50c a gallon for all I could raise this year and that is mighty good according to everything else here; eggs are 8c to 9c a dozen, butter 8c to 9c a pound, veal calves 3c a pound and no market even at these prices.

Thanking you all for your kindness, I am

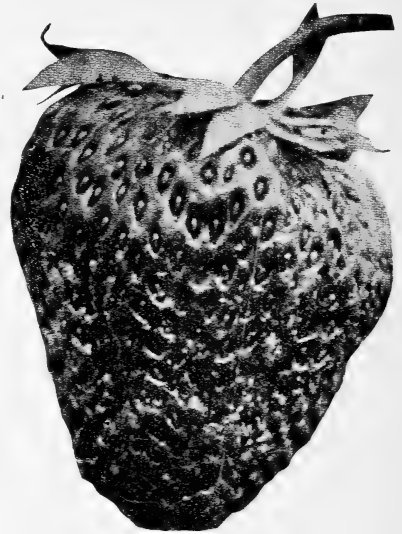
Your friend, J. W. Goodbar.

P. S. These are the first Premier I have ever raised and I have certainly been missing it by not raising them as they seem well adapted to our soil and climate. Never saw finer berries than we gathered yesterday. J. W. G.

**\$1.00 WORTH OF PLANTS FREE—SEE BACK OF ORDER SHEET**

**Aberdeen.** We find this to be a mighty fine variety, becoming very popular in eastern Pennsylvania and New Jersey and will probably be widely planted when its merits are better known. Makes a rank growth of strong healthy plants, so many in fact that unless planted 24 inches apart, in good soil, thinning will be necessary to produce best results. Aberdeen is very productive, equal to, and said by some growers superior to Premier.

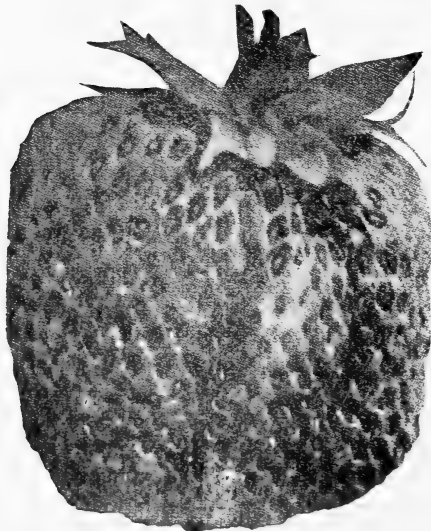
Fruit is medium to large, of conical shape, an attractive dark red, and of very good quality. We cannot recommend this variety for distant shipment in refrigerator cars, but for markets within 300 miles it is a berry hard to equal and is very profitable because of its hardiness, ability to fruit under most trying conditions, its unsurpassed productiveness and quality of fruit. Fruiting period extends from two to three weeks. We have a good supply of exceptionally strong plants of Aberdeen to offer this season and would like to have our customers try them in comparison with Premier and Big Joe.



ABERDEEN

Try this for your roadside market

**LUPTON.** A mighty good late shipping berry, very large, in fact as large as Chesapeake and just as attractive but only fair in quality but always brings top prices in city markets. Lupton is a mighty heavy bedder and therefore a fine variety to grow in land where it is impossible to get a satisfactory bed of Chesapeake. They are very firm and excellent shippers but we do not recommend them for home garden.



**WM. BELT.** This is one of the best flavored berries grown and is the standard of excellence of quality. The berries are somewhat irregular in shape but are fairly large, bright glossy red with a green cap and are therefore handsome. Wm. Belt is desired for the home garden, local market and for the grower who takes pride in the quality of the berries he ships. The consumer is always willing to pay good prices for them. Be sure to try a few of them in your patch this year.

**PARSONS' BEAUTY.** This is a fine old variety for the home garden or local market. The plants make a vigorous growth, are easy to bed and are very productive through a long fruiting season, of dark red, fine flavored, medium size berries. The housewife will find them unexcelled for canning and very easy to cap.

**GANDY.** This is one of the old varieties that ranks as a leader among extra late shipping berries. It does best in low, springy land as it needs plenty of moisture through fruiting season. Gandy is not a heavy producer but all the berries are very

WM. BELT—The standard of excellence.

large and of fine quality, fruit bright red with a large green cap, therefore very handsome, and will stand shipment to distant markets in perfect condition for they are the firmest berries on the market. They are good plant makers and you should have no trouble in getting a good fruiting bed.



**WASHINGTON (Per).** A new late variety introduced recently in Michigan, called the Honey Sweet Strawberry by its introducer and highly recommended by them. We have found it to be a good plant maker, fairly productive of medium sized, dark red berries of somewhat irregular shape. but we believe it like Wm. Belt, better suited to the climatic conditions further north. Give them a trial.

**AROMA.** A wonderful alet variety extensively planted in all sections of the country; makes a vigorous plant growth; produces large crops of beautiful, almost perfect shape berries, light red with a green cap that are sure to bring good prices in your market whether you sell locally or ship to distant markets for the fruit is very firm and will reach the market in perfect condition. They are the most popular late berry grown in the South and many of our old customers have found Aroma one their best money-makers.

#### Fine Plants

Nicholson, Pa., May 14, 1932.

Gentlemen:

The several thousand plants ordered from you arrived in fine shape. They are a fine lot of plants. I have used your plants for many years and I feel you should have no trouble in selling such wonderful plants as you send out.

Yours truly, John Sweitzer.

#### Proud of Rayner's Big Joe

Forest, Va., March 2, 1932.

Gentlemen:

Just a line to advise you that the Big Joes arrived O. K. They are fine plants and I am proud of them. Thanking you very much and wishing you a large business, I am

Yours truly,

J. J. Seibert.

**BIG LATE.** The plant growth of this variety is very vigorous, produces handsome uniform berries, bright red with yellow seeds and a medium size green cap which makes them very attractive. The blossoms are imperfect, will mate well with Big Joe and Aroma.

They are very heavy producers, almost equal to Premier, are firm and good shippers therefore we believe this will be a profitable berry to raise.

#### Will Tell Friends About Rayner's Mastodon

Frankfort, Ky., May 20, 1932.

Dear Sirs:

Received the 1000 Mastodon Strawberry plants some time ago. Have had very dry weather since I set them out but scarcely any of them have died. I just wish that I could afford to put out a few more thousand. If I ever do, I shall get them from you and I will tell all my friends about you. With best regards, I am

Very respectfully yours,

John A. Pierce.

#### Mastodon Arrive In Fine Shape

Colebrook, N. H., May 24, 1932.

Dear Sirs:

The Mastodon plants I ordered from you arrived in fine shape. Thanks for the extra ones. Shall place all my future orders with you.

Yours truly,

Mrs. Edith M. Hook.

## The A B C In Buying Plants

We believe it pays to buy your plants, not only because selling plants is our business but if you are considering setting plants from your fruiting beds think of

- (a) The money you would receive from these plants during the two or three years that you could fruit them.
- (b) The trouble and expense of digging and cleaning the plants with inexperienced help, from heavy and sticky soil, they can not be planted as quickly or as well as the thoroughly cleaned and evenly bunched plants we can furnish you, and they are sure not to give as good results, also the invigorating effects that come from a change of soil and climate will almost always give a very marked gain.
- (c) You can have them right at hand as soon as spring opens, which gives you the beneficial effects of early planting; and early planting is the surest road to success in growing strawberries.
- (d) The advantage of having plants grown in light soil, fed and cultivated to give them a vigorous root system that will stand drought, bred to produce the heaviest possible yield. All this is done under our personal supervision, from the time our plants are set until packed and shipped to you.

**DON'T YOU THINK OUR PLANTS COST LESS?**



A MID-SUMMER TREAT

## Everbearing Strawberries

There should always be some of these varieties planted in the home garden, for they will start fruiting 90 days after the plants are set and produce all through the summer and fall till there is a heavy frost. Any family that enjoys delicious strawberries (and we believe everyone does) should not be without at least one of the everbearing varieties. Just to think, you can have delicious strawberry shortcake and all the other strawberry desserts all through the summer and fall, with very little expense, for if given the proper care each plant will often produce a quart or more of delicious berries during their long fruiting season. Many of our customers have told us they have had plenty for their own use and then sold enough to pay their expenses with a neat profit besides from just a small patch in their garden.

Since Mastodon has been introduced there are large profits for the grower who plants a large acreage. Picking begins 90 days after the plants are set and you will have a nice income all through the summer and fall for there is a great demand and highest prices are paid for these berries. Be sure to include some in your order, for if you plant a few rows in with your standard varieties they may pay, or more than pay the expenses on your whole patch. In this way you can have a larger acreage with a smaller outlay of cash.

The essentials in successfully producing the Everbearers are the same as for growing standard varieties; good fertile soil that will retain moisture should be used and be sure to get strong, healthy, true-to-name plants; keep the blossoms off till the middle of June and the plant will make a vigorous growth and a fair bed and you will have plenty of berries on through the summer and fall. One of the most important points is to be sure and plant early.

### Extra Plants Greatly Appreciated

Forest, Va., April 7, 1932.

Gentlemen:

My plants arrived the 2nd and I planted them on the 4th. I am well pleased with them all. Wish to thank you for the extra Big Joe. They are greatly appreciated. Again thanking you, I am,

Yours very truly, J. J. Siebert.

### Thanks For Extra Plants

Kirkwood, N. Y., May 20, 1932.

Gentlemen:

Am writing to say I received the strawberry plants. They were O. K. and am very pleased with them. Thanks for the extra plants. Yours truly,

J. G. Peaslee.



A Field of Rayner's Genuine Mastodon.

## MASTODON--The World's Best Everbearer

We hope you will plant some of our heavy yielding strain of guaranteed true to name Mastodon. We grew the largest crop of berries from this strain of Mastodon we have ever had the pleasure to pick and the demand was so great we were unable to supply our trade with these large improved berries.

Mastodon is a strong, vigorous grower, producing big, juicy sparkling red berries of the most delicious flavor, with a bright green cap and are firm enough to carry hundreds of miles in perfect condition and command top prices in any market. Mastodon begins fruiting 90 days after the plants are set and keep right on till hard freezing weather in the fall, fruit again with the standard varieties the next spring and after a layoff of 2 or 3 weeks start fruiting again and with careful attention will produce for another season or possibly longer. We have selected our plants for the past six years and now we feel we have the best Mastodon plants that can be found. We sold hundreds of thousands of these plants last year and have a fine supply for the coming season.

### Mastodon Is A Real Everbearer

Dear Sirs:

Newburg, N. Y., April 5, 1931.

You might be somewhat interested in our last year's experience. We ordered 5,000 Mastodon from you in April, which arrived in due time in the very finest condition of any plants I have ever had shipped to me in all my 19 years experience with strawberries. All my neighbors told me I had made a mistake in buying Mastodon as they were no good. The weather was most unfavorable nearly all summer, a terrible drought and one very bad hail storm when hail fell that was literally as big as hen eggs. We were also bothered to get enough help to keep the plants properly weeded.

But in spite of all these handicaps we did harvest a bumper crop of splendid berries. We even picked with gloves on as it was very cold before they froze up for good; the last picking was November 10th and there had been several freezes before that, but Mastodon stands the cold the best of any berries I ever raised.

And, best of all, the very people who said Mastodon was no good bought them eagerly and said they were the finest berries they had ever eaten.

Very respectfully,

L. Scribner.

**CHAMPION.** This everbearer was introduced in 1917 by a Mr. Lubke of Michigan and has been extensively planted, and so far we have heard nothing but praise for them. It also has a very good record but not as good as Mastodon. 5,632 quarts have been produced from one acre in 223 days from the time the plants were set. The fruit is not firm enough for distant markets but it is of excellent flavor and fine for home garden and local market. Champion is a good bedder in most soils.

**PROGRESSIVE.** Same description as for Champion.

**LUCKY STRIKE** (Everbearing). Becoming very popular with some growers for home use and local market proving superior to Champion or Progressive. We do not think it equal to Mastodon. A persistent yielder of medium to large berries of very good quality and appearance; makes plants freely and is a vigorous grower. Try a few plants in your garden this year.

**BERRI-SUPREME** (Everbearing). A new everbearer originated in Utah, and a money-maker for the originator. In our test plot they were not as good plant makers as Mastodon but were as productive. Fruit as large and of somewhat better flavor and appearance than Mastodon or Champion. Further tests may prove their merit.

## Suggestions on Culture

**SELECTING AND PREPARING LAND.** Strawberries can be grown in almost any soil and climate, in light sandy types or heavy clay, as far south as Florida and as far north as Alaska, but will produce much better crops if planted in a well drained soil, but soil that will retain a great deal of moisture, for it is well to remember that one of the most essential requirements of strawberries is plenty of moisture at fruiting time.

We advise planting after some truck crop that has been well manured and cultivated for the soil will be more fertile and there will be less weed seed, or after some legume, if possible. We do not advise planting in old sod unless necessary as this type of land is likely to be infested with white grubs which will cut off the young plants soon after they are set in the spring, but if you have no other land available, plow it in the fall and harrow during the winter and early spring as often as you can, in this way most of the grubs will be killed out.

After selecting a desirable field it should be plowed and thoroughly harrowed as early as possible in the spring. If stable manure is to be used we advise spreading it broadcast on the land just after it has been plowed, then the land either with or without manure should be disced thoroughly and harrowed to level it up so that a firm, even bed is obtained.

**TIME TO PLANT.** Strawberries should be planted in the EARLY spring as that is the natural, most satisfactory and successful time. Just as soon as the weather permits getting the land ready. In the Northern States April, in the Middle States March and the early part of April, in the Southern States from November till April 1st.

**EARLY PLANTING PAYS BIG.** The plants start quicker, grow better and make better beds than plants that are set late, and remember that it costs no more to plant early than late so be sure to have your order in early so that your plants will be right at hand when your ground is ready.

**CARE OF PLANTS.** If you are not ready to set the plants when they arrive, unpack, separating each variety, open the bunches, dampen the roots up to the crown but do not wet the leaves, they should be healed in a V shaped trench and if shaded from the sun they will keep in first class condition for several weeks if necessary.

**PLANTING.** Plants should be protected from the wind and sun when planting. Do not water the plants when setting for this is very injurious to the strawberry plant.

Where commercial fertilizer is to be used, rows should be run out three to four inches deep and the fertilizer drilled into these rows and thoroughly worked in, then the soil should be thrown back and leveled off.

Where a large acreage is planted a horse drawn transplanter is often used, however this requires skill and experience if the crowns of the plants are to be left at the proper level with the roots extending straight into the ground and not at a slant with the roots oftentimes near the surface. A trowel, dibble or spade are the most important tools for setting plants, they are set down the prepared row with the roots out fan shape

and the crown level with the surface of the ground. It is also important to see that the ground is pressed firmly around the plant and that enough soil is filled in near the crown so that the top of the roots will not be exposed.

If you do not use fertilizer under the plants, the rows can be laid off with a marker and the plants set down the marked row.

**HOEING AND CULTIVATING.** Begin cultivating and hoeing soon after the plants are set. When first hoeing be sure to uncover the bud of all plants that have been planted too deep. If this is not done these plants will never amount to anything.

Cultivate and hoe enough to keep the ground from crusting and keep the weeds down, but do not cultivate deep enough to disturb the roots.

We, and most of our customers use the matted row system and we find this the most profitable method. The first runner plants should be encouraged to take root, this will help the mother plant to produce a large number of runner plants.

When hoeing be sure to see that the plants do not become too thickly crowded in the bed. There is not much trouble this way except with varieties that are heavy plant makers. Where the rows are  $3\frac{1}{2}$  feet apart we recommend a bed from 15 to 20 inches across, for getting a heavy crop of berries, but if the rows are four feet a wider bed will be O. K.

**DISTANCE TO PLANT. Matted Row.** For this system the rows should be from  $3\frac{1}{2}$  to four feet apart with the plants set from 15 to 24 inches in the row, according to the varieties set. Heavy bedding varieties such as Senator Dunlap, Premier, Dr. Burrill and others should be set farther apart than varieties like Chesapeake, Lupton and other varieties that make very large plants but not so many of them.

**Hill System.** If you decide to use this system rows should be 30 inches apart one way and 15 inches the other with the plants set in the check. All runners should be kept cut off. Under this system the berries will be much larger than if grown in the matted row, but labor costs prohibit this system unless space is very limited.

**FERTILIZATION.** If you have barnyard manure broadcast after plowing and disced in, this is a fine way to improve your land and insure you a fine berry patch with lots of fancy fruit, but commercial fertilizer can be used with very satisfactory results. We find 400 pounds of dissolved bone and 100 pounds of acid phosphate per acre used in the drill about a week before the plants are set or along side the plants after setting and thoroughly hoed or cultivated in will give excellent results. Where it is applied broadcast 1,000 pounds of the mixture per acre has proven very satisfactory, but be sure to harrow it in thoroughly before setting the plants. Do not use over 500 pounds in the drill for too heavy an application of any commercial fertilizer will be very injurious to the plants.

Another application of about 800 pounds per acre as a top dressing late in the summer when the plantbed is almost made or early in the spring before plant growth starts, of a mixture containing 4 per cent to 7 per cent nitrogen and from 5 per cent to 10 per cent phosphoric acid, with little or no potash.

We believe late summer is the best time for if applied then you will have stronger and more vigorous plants as it takes strong plants to produce large fancy berries. All fertilizer should be brushed off the leaves.

**MATING VARIETIES.** There are two sexes of strawberry plants—male and female—listed in this book as perfect and imperfect, (in our price list perfect flowering varieties are followed by “Per” and imperfect by “Imp”). The perfect flowering sorts will produce as well by themselves as with the imperfect varieties, but the imperfect will produce very poorly, if at all, without the perfect varieties. They should be planted four rows of the imperfect flowering varieties and two rows of the perfect flowering varieties, of the same season, and so on across the field, or they may be planted in the same row using one-fourth perfect and three-fourths imperfect.

**REMOVING BLOSSOMS AND MULCHING.** All strawberry plants begin to bloom soon after being set in the spring and if the fruit is allowed to ripen the plants will be greatly weakened, therefore all blossoms should be removed. This is very important for it may mean success or failure. On everbearing varieties the blossoms should be removed twice before the berries are allowed to ripen, other than this the everbearers are given the same treatment as the standard varieties.

Mulching is a wonderful way to protect the plants from freezing and thawing of the soil in winter, to preserve moisture during a dry fruiting season and to keep the berries from being spattered with dirt during a rain.

Use straw, coarse manure or similar material, apply in the fall and in the spring when growth starts rak off the beds into the center of the row; there it also serves the purpose of retarding the growth of weeds.

# Instructions to Customers

**TIME TO ORDER.** As soon as convenient after receiving this catalog, for late in the season we may be out of some varieties, but if you order early you will get just what you want, without any trouble or delay. Plants will be reserved and shipped when the proper planting time comes. Be sure to **PLANT AS EARLY** as possible for this may mean success or failure.

**TIME OF SHIPMENT.** From October 20th to May 1st. Shipping through the winter to Southern States. Spring is the best time to set strawberry plants in the Middle and Northern States. The earlier your plants are shipped and planted the better they are for they will stand digging, shipping and planting much better early than after the growth has started. May first ends our shipping season. We will however fill a limited number of orders shortly after that date, and with a late season the plants will go through in good condition, but we do not advise planting this late in the season and will fill orders only at the purchaser's risk after this date. We will use every precaution in our power to put the plants through in good condition.

**PAYMENT.** Money Order, Registered Letter, Bank Draft or Personal Check in full payment with order or one-fourth cash with order and balance before date of shipment. We will book orders and wait a reasonable length of time for remittance.

**REFERENCES.** The Salisbury National Bank, Salisbury, Md., and the Farmers and Merchants Bank, Salisbury, Md.

**TRUE TO NAME.** We use every precaution to have our plants true to name, and if any should prove otherwise we will replace it, but in no case will we be responsible for any sum greater than that paid for the plants.

**YOU ARE TAKING NO RISK.** We send just what you order or refund your money, unless you tell us to substitute your order with the nearest to it we have, should we be out of the varieties you order.

**GUARANTEE.** 100% satisfaction or your money back.

**ALWAYS REMEMBER.** We are at your service and will always be glad to hear from you and will give you any and every possible assistance.

**OUR PLANTS ARE FRESH DUG TO YOUR ORDER.** From new beds that have not borne fruit, tied in bundles of 25 and packed in light ventilated crates with plenty of damp moss so they will carry safely. We make no extra charge for crates and packing.

**SHIPMENT.** On all orders of 500 plants or more after the third zone the rate is cheaper by express than by parcels post, and as the Postoffice Department demand a minimum charge of 17c for C. O. D. collection and money order fee it is cheaper for our customers to remit the amount of postage with order if plants are to be shipped by parcel post. Parcel post charges can be figured by the following table.

## PARCEL POST RATES

	Zones 1-2	Zone 3	Zone 4	Zone 5	Zone 6	Zone 7	Zone 8
100 Plants .....	\$0.12	\$0.15	\$0.21	\$0.27	\$0.33	\$0.41	\$0.48
200 Plants .....	.16	.23	.35	.49	.61	.77	.92
300 Plants .....	.21	.31	.49	.70	.89	1.13	1.36
400 Plants .....	.25	.39	.63	.91	1.17	1.49	1.80
500 Plants .....	.29	.47	.77	1.12	1.45	1.85	2.24
600 Plants .....	.34	.55	.91	1.33	1.73	2.21	2.68
700 Plants .....	.38	.63	1.05	1.55	2.01	2.57	3.12
800 Plants .....	.43	.71	1.19	1.76	2.29	2.93	3.56
900 Plants .....	.47	.79	1.33	1.97	2.57	3.29	4.00
1000 Plants .....	.51	.87	1.47	2.18	2.85	3.65	4.44

# Price List of Rayner's Quality Strawberry Plants

## EVERY CUSTOMER A SATISFIED CUSTOMER

Early Varieties	25	50	100	200	300	400	1000	5000
BLAKEMORE (Per)	\$0.20	\$0.35	\$0.60	\$0.90	\$1.10	\$1.30	\$2.50	\$11.25
Howard 17 (Per)	.25	.40	.70	1.00	1.20	1.45	3.00	13.75
Lindberg (Per)	.25	.40	.70	1.00	1.20	1.45	3.50	16.25
Missionary (Per)	.20	.35	.60	.90	1.10	1.30	2.75	12.50
PREMIER (Per)	.25	.40	.70	1.00	1.20	1.45	3.00	13.75
Red Gold (Per)	.30	.50	.80	1.10	1.40	1.80	4.50	

Midseason Varieties	25	50	100	200	300	400	1000	5000
Aberdeen (Per)	.25	.40	.70	1.00	1.20	1.45	3.25	15.00
Bellmar (Per)	.30	.50	.80	1.10	1.40	1.80	4.50	21.25
Beauty (Per)	.25	.40	.70	1.00	1.20	1.45	3.50	16.25
BIG JOE (Per)	.25	.40	.70	1.00	1.20	1.45	3.25	15.00
Dr. Burrill (Per)	.20	.35	.60	.90	1.10	1.30	2.50	11.25
JOYCE (Per)	.25	.40	.70	1.10	1.30	1.60	4.00	18.00
Senator Dunlap (Per)	.20	.35	.60	.90	1.10	1.30	2.50	11.25
Cooper (Per)	.25	.40	.70	1.00	1.20	1.45	3.25	15.00

Late Varieties	25	50	100	200	300	400	1000	5000
Aroma (Per)	.25	.40	.70	1.00	1.20	1.45	3.25	15.00
Big Late (Imp)	.25	.40	.70	1.00	1.20	1.45	3.25	15.00
Brandywine (Per)	.25	.40	.70	1.00	1.20	1.45	3.25	15.00
CHESAPEAKE (Per)	.25	.40	.70	1.00	1.20	1.45	3.50	16.25
Gandy (Per)	.25	.40	.70	1.00	1.20	1.45	3.00	13.75
Gibson (Per)	.25	.40	.70	1.00	1.20	1.45	3.25	15.00
Lupton (Per)	.25	.40	.70	1.00	1.20	1.45	3.25	15.00
Parsons' Beauty (Per)	.25	.40	.70	1.00	1.20	1.45	3.25	15.00
Washington (Per)	.30	.50	.80	1.10	1.40	1.80	4.50	21.25
WM. BELT (Per)	.25	.40	.70	1.00	1.20	1.45	3.25	15.00

Everbearing Varieties	25	50	100	200	300	400	1000	5000
Berri-Supreme	1.00	1.85	3.50	5.50	7.50	9.00		
Champion	.30	.50	.80	1.10	1.40	1.80	4.50	21.25
Lucky Strike	.50	.80	1.30	2.50	3.30	4.10	8.00	
MASTODON	.45	.75	1.20	1.80	2.40	2.90	5.50	25.00
Progressive	.30	.50	.80	1.10	1.40	1.80	4.50	21.25

500 plants at the 1,000 rate. The above prices are F. O. B. Salisbury, Maryland.  
Two or more varieties cannot be added together to get a lower rate.

## STRAWBERRY GARDEN SPECIALS

### GARDEN SPECIAL No. 1.

25 Premier, early	\$0.25
25 Joyce, midseason	.25
25 Wm. Belt, late	.25
25 Mastodon, everbearing	.45

\$1.20

SPECIAL PRICE \$1.00, Postpaid

### GARDEN SPECIAL No. 2.

100 Blakemore, early	\$0.70
100 Big Joe, midseason	.70
100 Chesapeake, late	.70
100 Lucky Strike, everbearing	1.30

\$3.40

SPECIAL PRICE \$3.00, Postpaid

### GARDEN SPECIAL No. 3.

50 Premier, early	\$0.40
50 Aberdeen, midseason	.40
50 Brandywine, late	.40
50 Champion, everbearing	.50

\$1.70

SPECIAL PRICE \$1.50, Postpaid

### NEW VARIETY SPECIAL

50 Red Gold, early	\$0.50
50 Bellmar, midseason	.50
50 Washington, late	.50
50 Berri-Supreme, everbearing	1.85

\$3.35

SPECIAL PRICE \$3.00, Postpaid



## PEACH TREES

Everybody delights in the flavor of a fine, juicy Peach. They succeed best on high dry and well-drained soil. They are borne on wood of the previous season's growth, and it is essential that they be pruned some every season. Keep your trees in good shape and you will be repaid with good fruit. It takes but a short time for them to come into bearing. Only the very best varieties are listed below.

### PRICES OF RAYNER'S PEACH TREES

4 to 5 feet—1 to 9 @30c each, 9 to 49 @ 25c each, 50 or more @ 17c each.

**BELLE OF GEORGIA.** White, freestone, large size, and most attractive in color and shape, with a light red cheek; flesh white, firm and delicious; extra fine flavor.

**CARMAN.** A very hardy peach, ripening about the middle of July; skin pale yellow with blush on sunny side; flesh white, tender, sweet and melting.

**EARLY ELBERTA.** Ripens about a week to ten days earlier than Elberta; yellow, freestone, large, similar to Elberta but a trifle better flavor. Excellent home orchard peach.

**ELBERTA.** Midseason. A valuable large peach of good quality; fruit yellow with red cheek; juicy and highly flavored, flesh yellow, freestone. The leading market variety.

**GOLDEN JUBILEE.** A new variety originated by the New Jersey Experimental Station, of the Elberta type, ripening with Carmen and Belle of Georgia. Freestone.

**HILEY.** Ripens about a week before Belle of Georgia. A large creamy white peach with a rich blush on the sunny side. Freestone.

**GREENSBORO.** White, freestone, large, handsome, a rich yellowish white with crimson cheek, exceedingly tender and of fine quality.

**J. H. HALE.** One of the best sorts for garden or market. Fruit very large, round and of excellent quality, skin yellow finely colored, flesh yellow, sweet and melting. Ripens just before Elberta. A very good peach.

**RED BIRD CLING.** White, extra large with a bright red blush. The first peach of large size to ripen. Brings extra high prices in all the leading markets.

**SOUTH HAVEN.** Yellow, freestone, large, roundish, uniform size, deep yellow with a red cheek, delicious flavor, consistent heavy bearer. Ripens about fifteen days ahead of Elberta. A very promising new variety.

**WHITE HEATH CLING.** Ripens about September 15th. Fruit large, roundish; flesh white, exceedingly juicy. A favorite for canning purposes.



## APPLE TREES

The Apple is easily the first in importance of all fruits, the growing of which is one of the big industries of the country. It will thrive on any well-drained soil. Its period of ripening extends over a longer period than any other fruit, and by careful selection of varieties, a constant succession can be obtained.

For Family use no fruit is more indispensable or as healthy as the Apple. No one who has a place to plant should hesitate to plant an orchard, or at least a few trees for family use. You will find the best varieties listed and described below.

### PRICES OF RAYNER'S APPLE TREES

4 to 5 feet—1 to 9 @ 40c each, 10 to 49 @ 35c each, 50 or more @ 25c each.

**BALDWIN.** Large, round, bright red, rich and juicy, crisp; good late keeper. Quick grower; yields big crops. Winter.

**CORTLAND.** A promising new variety. Beautiful red, large and a good keeper. Fine flavor. Winter.

**DELICIOUS.** Brilliant dark red, flesh fine grained, juicy crisp and melting, flavor sweet, with a slight acid taste, with a delightful aroma; highest quality. Winter.

**DUCHESS.** Medium size, red striped, flesh white, juicy and good flavor; early. A heavy bearer and dependable cropper.

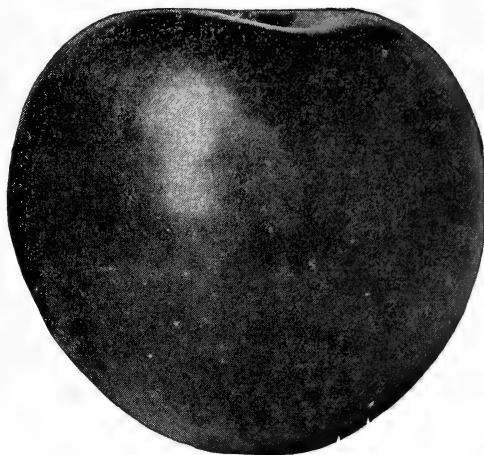
**GRIMES GOLDEN.** Medium size, golden yellow, tender, rich, aromatic, sub-acid, delicious, possibly the best flavored apple known, and a good keeper. Autumn.

**MAMMOTH BLACK TWIG (Paragon).**—Extra large in size; skin smooth, yellowish, covered with deep red, the general effect being dark red; flesh tender, tinged with yellow, crisp, sub-acid, aromatic, fine flavor, of excellent quality in every way. Winter.

**ROME BEAUTY.** Large, round; mottled and striped in different shades of red; flavor and quality of the best. Always in good demand and brings high prices. Keeps in good condition until May and June. Winter.

**STAYMAN WINESAP.** A dark, rich red, with rather indistinct striping. Flesh yellow, plenty of juice; firm, tender, rich, sub-acid, aromatic, quality of the best. A splendid late keeper, but mellows for use in the fall. Quick grower; bears young. Winter.

**WEALTHY.** Medium to large size, round; almost solid red; flesh white, tender, crisp, juicy, fine grained, good flavor. Autumn.



Eat Apples For Health's Sake

**WILLIAMS EARLY RED.** Medium to large in size, bright rich red; flesh is crisp, tender, juicy and sub-acid. Early.

**YELLOW TRANSPARENT.** Medium to large; cream and yellow, tender, juicy, sub-acid, fragrant, good flavor. Early.

**YORK IMPERIAL.** Medium to large size, round, irregular, greenish yellow overlaid with bright red; flesh tender, firm, crisp and high flavor; wonderful keeper; can be kept in cold storage until June. Winter.

## PEAR TREES

Fine flavor, reliability, profit, long life of trees and general goodness make Pears a staple fruit. They are good to have in a home-orchard, on a lawn, or about a farm. They do not take up much space—a few trees can be put in odd places about the farm.

### PRICES OF RAYNER'S PEAR TREES

4 to 5 feet—1 to 9 @ 40c each, 10 to 49 @ 35c each, 50 or more @ 25c each.

**BARTLETT.** A large, yellow pear; fine sweet flavor. Very popular. September 1st.

**DUCHESS.** One of the largest and best. Greenish yellow with russet spots.

**KIEFFER.** Well known canning pear. Hardy, prolific, fruit large and yellow with touches of carmine. A regular bearer.

**SECKEL.** A small variety but of excellent quality. Very productive.

**YOU CAN PAY MORE BUT YOU CANNOT BUY BETTER ANYWHERE**

## CHERRY TREES

The Cherry is hardy and will thrive in almost any soil, provided it is well drained. Fruit-growers are realizing that it is one of the most profitable crops they can grow as it begins bearing young and the fruit nearly always sells for good prices.

### PRICES OF RAYNER'S CHERRY TREES

4 to 5 feet—1 to 9 @ 40c each, 10 to 49 @ 35c each, 50 or more @ 25c each.

**BLACK TARTARIAN.** Very large, juicy, rich flavor, sweet, purplish black. Heavy bearer and most profitable sweet cherry.

**DYEHOUSE.** Ripens 10 days earlier than Early Richmond; medium size, sour, good keeper, fine quality, heavy bearer. Popular for pies and canning.

**EARLY RICHMOND.** Early summer. Very sour, medium size, bright red. Unsurpassed for cooking. Yields heavy crops. Most hardy of all cherries, sure cropper, productive.

**MONTMORENCY.** Midseason, sour, large, red, slightly acid, flesh tender and of unusually good quality. Good shipper.

## PLUM TREES

Plums are so easily grown, thrive so well with little care and even in spite of neglect, and respond so liberally to good care that they should find a place in every home orchard. They succeed in almost any soil, and are often planted in the chicken yard and out-of-the-way- corners when other space is not available. Plant 18 to 20 feet apart.

### PRICES OF RAYNER'S PLUM TREES

4 to 5 feet—1 to 9 @ 40c each, 10 to 49 @ 35c each, 50 or more @ 25c each.

**ABUNDANCE.** Fruit very large, showy, flesh light yellow, exceedingly juicy, tender and sweet. A good market variety.

**SHROPSHIRE DAMSON.** Medium size fruit, produced in thick clusters or groups. Very productive of dark purple fruit.

## ASPARAGUS

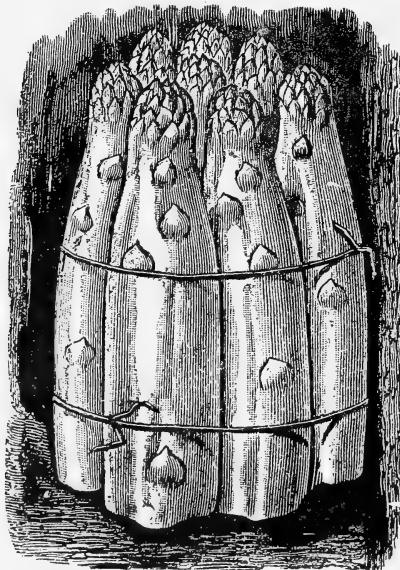
Splendid for home garden or market. The plants are very easy to grow and a bed when once established will thrive for many years. As a field crop, Asparagus is very profitable, and there is most always a good demand for it at good prices. Any good garden soil will give excellent crops, but it should be manured freely.

### Prices 2 year No. 1 Strong Plants

25 for 50c, 100 for \$1.50, 1000 for \$7.50

**PALMETTO.** Earlier than most other varieties. Stalks vary from light to dark green, are very large and of exceptionally good quality. The standard commercial variety.

**MARY WASHINGTON.** This is generally recognized by the leading growers as being the best variety of asparagus grown. It starts earlier, produces more and larger stalks of extra quality than any other variety. It is highly rust resistant and has proven by test to be best both for the home garden or commercial plantings. The true strain.



## QUINCE TREES

One of the finest fruits grown for jellies, preserves and canning. They are easily grown and need very little attention.

### PRICES OF QUINCE TREES

4 to 5 ft.—1 to 9 @ 60c each, 10 or more @ 50c each.

**CHAMPION.** Tree strong grower; produces a good crop every year. Fruit large and of good quality. Cooks as tender as an apple. October.

**ORANGE.** Good size and heavy bearer. Flesh orange yellow.

## GRAPES

The Grape is one of the most important of the small fruits, not only commercially in various sections, but also for the home garden. There is no fruit more easily grown and it takes little room in the home garden, for the garden fences can be transformed into trellises, and not only answer their purpose as an enclosure, but will make them more beautiful when covered with the vines.

**CAC9.** A comparatively new grape that is of the very best flavor. Strong grower and bears abundantly. Large in size and have a wine red over amber color. Ripens just before Concord. Excellent for home use.

40c each, \$3.50 for 10, \$25.00 per 100

**CONCORD.** The most popular grape. It adapts itself to varying conditions. Large compact bunches of dark purplish black berries covered with a rich bloom, skin is tender, but firm enough to carry to distant markets. Vigorous grower, hardy and very productive.

25c each, \$1.50 for 10, \$12.50 per 100

**MOORE'S EARLY.** Dark purple; bunches medium size, berries large. Flavor and quality good. Ten days earlier than Concord.

20c each, \$1.50 for 10, \$12.50 per 100

**NIAGARA.** The best of the light colored grapes. Bunches medium size, berries large. Ripens earlier than Concord; flavor good.

2c each, \$1.50 for 10, \$12.50 per 100

**CHAMPAGNE.** A sterling variety of great merit. Color a coppery red, berries very large; strong grower and bears immense crops of the most delicious grapes, hence the name Champagne. Stock limited this year.

40c each, \$3.50 for 10, \$25.00 per 100



The Old Reliable Concord Grape.

## RASPBERRIES

Raspberries will succeed in any good soil suitable for garden vegetables, and amply repay good culture. Ground bone is a good fertilizer. Plant in rows 4 feet apart and plants 3 feet apart in the rows. Cut out old wood as it dies after the fruit ripens.

**CHIEF.** An outstanding new early red raspberry. Ripens 10 to 12 days earlier than Latham. Berries are dark red, good size, extra firm and hold up a long time after picking. Plants are strong and stocky, immune to mildew and highly resistant to all diseases. Withstands hot, dry weather better than other varieties. A good shipper.

\$1.00 for 10, \$6.00 for 100, \$50.00 per 1000

**CUMBERLAND.** Berries are large, borne in clusters, several to a branch. The reliable blackcap. Flavor is rich and sweet. Probably the very best black raspberry. Prolific.

75c for 10, \$3.00 for 100, \$20.00 per 1000

**LATHAM.** Claimed to be the very best red raspberry. Berries are large, dark red, of uniform size. Will stay on canes several days after fully ripe. Bushes are vigorous growers, perfectly hardy in all parts of the country; begins bearing the first year.

75c for 10, \$3.50 for 100, \$25.00 per 1000

**ST. REGIS.** Leading growers agree that St. Regis is the most profitable and dependable red raspberry. Fruit ripens midseason and continues through fall. Good quality.

75c for 10, \$3.00 for 100, \$20.00 per 1000

## BLACKBERRIES

Blackberries are among the best known and most valued of our berries. No fruit is more wholesome. They should be planted in rows five or six feet apart and three or four feet apart in the row. Keep the ground clean and well fertilized.

**ELDORADO.** Berries are large, jet black and of a richly sweet flavor. Quality is excellent. Produces a heavy crop regularly. Ideal both for home use and market. The leading commercial blackberry.

75c for 10, \$3.50 for 100, \$25.00 per 1000

**BLOWERS.** Large size, jet black, good shipper. Very hardy and productive.

75c for 10, \$3.50 for 100, \$25.00 per 1000

**LUCRETIA.** Ripens about ten days before ordinary blackberries. Large, good looking, productive. Bring top-notch prices.

60c for 10, \$2.50 for 100, \$17.50 per 1000



Compact Oriental  
Arborvitae

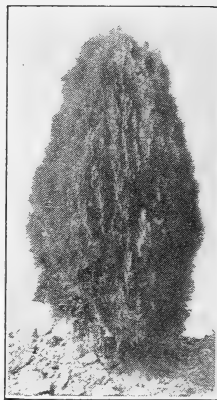
## Evergreens



A small investment in these beautiful evergreens will not only make the home a beautiful place in which to live but will also increase the value of your home or farm many times the cost of the planting. Our plants are all kept well trimmed, thus giving them that dense foliage; shipped with a ball of earth and burlapped and guaranteed to grow. Priced in reach of all.

### Planting Instructions

As soon as you receive your order from the shipper soak the ball in a tub of water, but do not remove the burlap; plant about one



Berckman's Golden  
Arborvitae

to two inches deeper than when in the nursery. Soak the ground well once a week during the first summer. For fertilizer use any good well rotted barnyard manure, or a fertilizer like you use in your vegetable garden.

**American Arborvitae** (*Thuja occidentalis*). Very hardy and easily transplanted makes rapid growth requiring very little attention. Color bright green. One of the most extensively planted evergreens. 18 to 24 inch 75c.

**Berckman's Golden Arborvitae** (*Biota Aurea Nana*). Beautiful conical form, very dense and compact dwarf type with golden foliage. 12 to 15 inch \$1.00 each.

**George Peabody Arborvitae** (*Thuja occidentalis lutea*). Pyramidal shape with beautiful golden yellow foliage which it retains well throughout the year. 12 to 15 inch 75c each.

**Globe Arborvitae** (*Thuja globosa*). A very handsome variety, making a perfect globe when well grown. Color light green. 12 to 15 inch 75c each.

**Pyramidal Arborvitae** (*Thuja pyramidalis*). A dense dark green columnar form, hardy and very beautiful. Tall and slender, requiring very little space. 18 to 24 inch \$1.00 each.

**Oritntal Pyramidal Arborvitae** (*Biota orientalis pyramidalis*). One of the tallest and hardiest varieties, foliage bright green. Very attractive. 24 to 30 inch \$1.00; 30 to 36 inch \$1.50.

**Oriental Compact Arborvitae** (*Biota Compacta*). Dense trees with bright green foliage of pyramidal form. Very neat and attractive. 24 to 30 inch \$1.00 each; 30 to 36 inch \$1.50 each.

**Tom Thumb Arborvitae**. Of low, broad pyramidal form; dwarf type, very compact, foliage light green. 12 to 18 inch 75c each.

**Abelia Grandiflora**. A broad leaved evergreen with dark green glossy foliage. Flowers from July till frost, flowers are small, pale pink. A charming addition to any planting. 24 to 36 inch \$1.00 each.

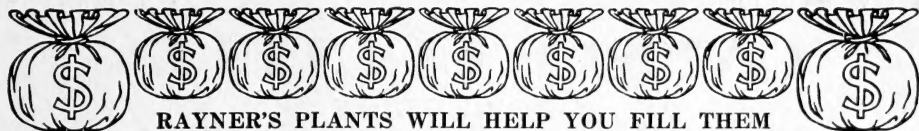
**Azalea Antioena**. A dwarf growing evergreen bush with slender branches and semi-double flowers of bright rosy purple produced in such great numbers that they literally cover the plant in June. 10 to 12 inches \$1.00 each.

**Azalea Hinodegiri**. Of broad spreading habit; flowers brilliant scarlet; foliage rounded and deep green. Probably the most popular evergreen grown. 10 to 12 inches \$1.00 each.

**Azalea Macrantha**. This is one of the late varieties having large double type salmon red flowers. A good grower. 10 to 12 inch \$1.25 each.

**Boxwood Sempervirens**. Very compact; does well in poor soil or shady places. Can be trimmed to any form. Excellent for individual specimens on lawns or in tubs. 12 to 18 inch 60c each.

**Boxwood Suffruticosa** (Old English Box). Retains its dwarf size. For planting along walks or similar places. 6 to 8 inches 25c each; \$2.00 for 10.



## Read What Our Customers Say About Our Plants and Service

### HE LIKES OUR SERVICE AND OUR ETHICS

Gentlemen:

Oakdale, Pa., April 27, 1931.

I was agreeably surprised to receive your letter dated April 23rd, enclosing check to cover cost of having plants delivered from wrong shipping point. This procedure was so much different than I have experienced in dealing with numerous other firms who advertise the ethics and integrity of their business policy, that I have to tell you about it. I like to figuratively shake the hand of a square shooter when I meet one, even by mail, there are so many pretenders.

I had the ground ready to plant when the plants should have arrived and planted them as soon as I received them. I looked the patch over thoroughly yesterday and could not find a single plant that had failed to grow, in spite of the 48 hours they lay in the express office. Most people in the business could afford to pay you for a few lessons in packing plants.

Respectfully yours,

L. W. Shout.

### HERE'S ANOTHER SATISFIED CUSTOMER

Dear Sirs:

Hudson, N. Y., January 10, 1933.

Last year I sent with a friend for some strawberry plants and they were wonderful. Am well satisfied with them. Will you please send me a catalog this year as soon as you receive them as I wish to place my order early.

Yours truly,

Fred Wright.

### FOUND PLANTS SATISFACTORY AND ORDERS MORE

Gentlemen:

Sugar Loaf, N. Y., May 15, 1932.

I am sending orders for 1000 Premier strawberry plants. Will you kindly send them as soon as you can? Some time ago I ordered some everbearing strawberry plants from you and they were certainly a nice lot of well rooted, healthy plants. Am sure the Premier plants will be equally as good.

Yours very truly,

Ray C. Lane.

### ORDERS AFTER SEEING OUR PLANTS

Gentlemen:

Waynesboro, Pa., May 14, 1932.

Please ship me 500 Big Joe, 500 Premier and 250 Senator Dunlap strawberry plants. Saw a patch of your plants and they were such strong vigorous plants that I decided to send you my order. Please rush as I am a little late,

Yours truly,

S. J. Pfontz.

---

## Rayner Brothers - - Salisbury, Maryland

H. J. W. RAYNER

S. H. RAYNER

# RAYNER BROTHERS

## GROWERS OF

# CHOICE STRAWBERRY PLANTS

And Other Small Fruit Plants, Trees, Etc.

Salisbury, Md., January 10, 1933.

Dear customer:

After looking through this catalog you will no doubt wonder how we can deliver high quality, heavy producing plants at such reasonable prices, so we are taking this opportunity to talk it over with you. We produce our plants on our own land, not having them grown by farmers in the neighborhood, many of them careless and indifferent, as many nurseries do. In this way we save the profit that must necessarily be paid the farmers and avoid the inefficient methods often employed. This big saving is passed directly to you.

By growing all our plants it is possible to give them our personal supervision from the time the plants are dug, set, fertilized, blossoms removed, hoed, cultivated, till dug for your order and we make sure each operation is at the right time and is handled in the most efficient manner. The plants must be strong and healthy, from producing stock (this is your assurance of heavy yields), must be planted carefully and correctly, on soil best suited for each variety, the correct plant food applied at the proper times, all blossoms removed (we often go over them three or four times to make sure) so that none of the plants will be weakened; our plants are kept thoroughly hoed, not a weed is permitted to grow; we are always sure the plants are thoroughly cultivated at the proper time to keep the soil moist and the plants strong and thrifty.

In digging plants for your order the same care is given as when we are digging for ourselves. The plants are carefully dug and thoroughly cleaned, all weak or undeveloped plants discarded, evenly bunched and tied with raffia, this makes planting easier and saves much time, the plants are then packed in light ventilated crates with plenty of damp sphagnum moss and will arrive anywhere in the United States as fresh and bright as when dug. This is how we give you Prompt Service, High Quality, Heavy Producing, Selected Plants at Very Reasonable Prices. The best is always cheapest whether the price be high or low.

On the back of this letter and throughout our catalog there are a few of the many unsolicited letters we received from our customers about the high quality of our plants, our prompt, courteous service and the success they have had with them. Read them all; they are from honest, thrifty, successful people like yourself, who like to get one hundred cents in value for every dollar they spend and have found our plants and service to meet their requirements. We are sure we can please you too.

Send us your order for PLANTS THAT PLEASE at PRICES THAT SAVE.

With best regards, we are

Very truly yours,  
RAYNER BROTHERS.



**Indian Cedar (*Cedrus deodora*).** Graceful drooping branches of feathery blue green foliage giving a stately appearance. Not hardy north of the Mason and Dixon Line. 18 to 24 inch \$1.00 each.

**Blue Lawson Cypress (*Cupressus Lawsoniana*).** An erect grower, broad at base, having delicate, feathery bluish green foliage. 15 to 18 inch 75c each.

**Italian Cypress.** A very slender columnar form, fine dark green foliage. 30 to 36 inch \$1.50 each; 36 to 42 inch \$2.00 each.

**Euonymus Pearledge.** A broad leaf evergreen with outer edge of leaves a pearl color with dark green center. This makes an unusual and attractive bush. Can be trimmed to any desired shape. 12 to 18 inch 75c each.

**Irish Juniper.** Forms slender, dense columns of silvery green. One or more of these trees should be in every planting. 24 to 30 inch \$1.00 each; 30 to 36 inch \$1.25 each.

**Pfitzer Juniper.** The gray green sweeping branchlets of this low spreading variety make it valuable in any mixed planting. 18 to 24 inch spread \$1.00 each.

**Andorra Juniper (Plume Juniper).** A low growing type with beautiful blue green foliage. 18 to 24 inch spread \$1.00 each.

**Spiny Greek Juniper (*Juniperus excelsa stricta*).** An attractive dwarf pyramidal type with very compact bluish green foliage. Makes uniform growth in almost any soil. 12 to 15 inch \$1.00.

**Nandina Domestica.** Broad leaf evergreen having reddish green leaves and stem, umbrella form with white berries. Beautiful for specimen planting. 24 to 30 inch 75c each.

**Retinospora Plumosa.** Grows rapidly. Beautiful deep green plume-like foliage. 12 to 18 inch 75c each.

**Golden Plume Retinospora.** Beautiful light green plume-like foliage tipped with yellow. 12 to 18 inch \$1.00 each; 18 to 24 inch \$1.50 each.

**Retinospora Squarrosa Veitchi.** A beautiful compact type, foliage a bluish green above and silvery on the underside giving the tree a silvery green appearance. 12 to 18 inch 75c each.

**Retinospora Picifera.** An upright type, very open, foliage is light green, very feathery and graceful. 12 to 18 inch \$1.00 each.

**Retinospora Lutescens.** A dwarf type of low conical form, very compact. Foliage a deep green with yellowish tips. 12 to 15 inch \$1.00 each.

**Colorado Blue Spruce.** Foliage blue and sage, usually has a symmetrically shaped narrow pointed or rounding top. A hardy and quick grower. 12 to 15 inch 75c each.

**Norway Spruce.** Very hardy. Makes a very attractive, compact growth and is extensively planted. 12 to 18 inch 50c each.

## SPECIAL OFFER

### FOR A HOME PLANTING

Your Choice of any 6 Evergreens for only \$5.00; any 12 Evergreens for \$9.00.



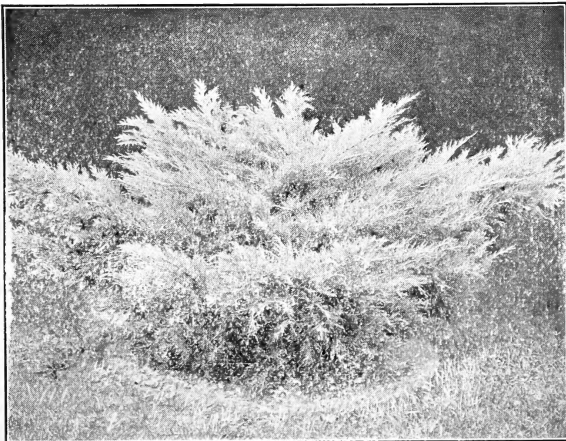
Jordan, N. Y., May 14, 1932.

Dear Sirs:

Received the strawberry plants in fine condition. Very much pleased with them.

Yours very truly,

George H. Vickers.



The Beautiful Pfitzer's Juniper



A Very Effective Door Entrance Planting

# What Our Customers Tell Us.

Dear Sirs:

The berry plants received today and must say they were far beyond my expectations, and I am certainly well pleased with them.

Yours truly,

Mrs. Lucille Jentzen.

Gentlemen:

The plants arrived and were just fine and am well pleased with them. Will always use your plants.

Franklin, Ind., May 6, 1932.

Frank Rumennap.

**Rayner Bros. Really Back Their Guarantee**

Fort Fairfield, Me., June 7, 1932.

Gentlemen:

I wish to express to you my appreciation of your remarkable courtesy in replacing the strawberry plants. I shall be glad to recommend you to any of my friends who might be interested in nursery goods. Thanking you sincerely, I am

Very truly yours, Alma G. Slipp.

**Living Good—Bedding Heavily**

Merchantville, N. J., May 30, 1932.

Dear Sirs:

Received my order of plants in April, in wonderful condition. Living good and bedding the heaviest I have ever seen plants in this length of time. Thanks for the extra Champion, about 35 instead of 25. They are bedding fine too.

Yours truly, Wm. E. Gullett.

**Fine Plants—Prompt Service**

Stitlersville, Pa., May 16, 1932.

Gentlemen:

Received your strawberry plants in fine condition and we are very much pleased with them and feel sure they will all grow. Thanks for your prompt service.

Yours respectfully, Eugene L. Miller.

**Perfect Stand of Chesapeake**

Thomaston, Me., February 9, 1932.

Dear Sirs:

Just received your 1932 Catalog of Strawberry Plants and that reminds me that I neglected to write you last summer (kept forgetting it) about the wonderful plants you furnished me last spring. These were 1500 Chesapeake and I believe less than a dozen plants died out of the 1500. My rows were 4 feet apart and the runners were meeting before fall. No one need hesitate in sending their order to Rayner Bros. Yours very truly,

Otis A. Robinson.

**Good Plants—Good Roots—Liberad Count**

Lafayette, R. I., May 10, 1932.

Gentlemen:

I received the plants in good condition, and am well pleased with them. Thanks for the good plants, good roots and liberal count. Yours sincerely,

Irving Thomas.

Hackettstown, N. J., April 19, 1932.

**Rayner's Plants O. K.**

Petersburg, Va., April 18, 1932.

Dear Sirs:

Strawberry plants arrived O. K. They are fine. Thanks for extras.

Yours truly, Mrs. G. B. Aldridge.

**Tells Neighbors About Rayner's Plants**

Memphis, N. Y., May 16, 1932.

Dear Sirs:

I received my strawberry plants yesterday in fine shape. Thanks for the prompt shipment, also for the extra plants. First time I ever received any extra plants. Would like to have sent for more but money is rather scarce here this year. My neighbor, Mrs. McCollum was sending for plants and I told her about my lovely plants and gave her the catalog you sent me and I think you will get an order from her. Again thanking you, I am

Very truly yours, Mrs. L. K. Loomis.

**I Call This Service**

Williamson, Pa., May 22, 1932.

Dear Sirs:

I received the strawberry plants you shipped me O. K. in good growing condition and they are fine. You made shipment April 25th, plants arrived on the 26th and I had them home and planted on the 27th. I call this service. Thanks for extra plants.

Your friend and customer, Jos. Deibert.

**Plants Nice—All Green**

Fort Plain, N. Y., May 12, 1932.

Gentlemen:

We wish to thank you for the extra plants you sent us. The plants are very nice, all green and full of life. All our future orders for berry plants will be sent to you. Your friend, Andy Bereo.

**Every Plant Grows—Greatly Satisfied**

Tamaqua, Pa., April 21, 1932.

Dear Sirs:

We received the strawberry plants in first class condition; every plant is growing and am greatly pleased with them. Thanks for the extra plants you added.

Yours truly, Joel J. Osenback.