

Historic, archived document

Do not assume content reflects current scientific knowledge, policies, or practices.

2.31*

1949

RAYNER'S

SALISBURY, MARYLAND.

1949
BERRY
BOOK

CATSKILL

PREMIER

Again in 1948



Berries Leading Profit Makers

Strawberries did it again! Growers throughout the Country report their 1948 Strawberry harvest the biggest source of cash profit. Many who also had blueberries, raspberries, blackberries or grapes reported top market prices.

The reason is simply this — there is still a shortage of berry plantings and the supply of fruit is not meeting the demand. This has been true since the wartime years when fruit growers turned to other crops to supply the need overseas.

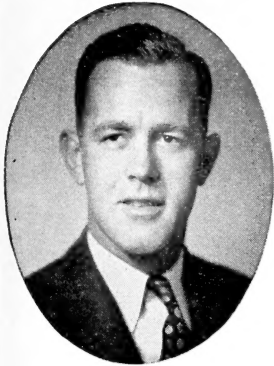
The continued expansion of the frozen food industry as well as a greatly increased use of fresh fruit is keeping berries on the wanted list.

Whether you are a large farmer, roadside marketer or a home gardener you will find the berry fruits will pay you more for your investment than anything you plant.



When You Plant Berries You Are Planting For Profit

Twenty-Third Year



"BOB"
S. H. RAYNER

**CUSTOMER SATISFACTION
CONTINUES TO BE
OUR FIRST CONSIDERATION**



"JACK"
H. J. W. RAYNER

To Our Friends and Customers:

This is our twenty-third annual Catalog. Since our first mailing in 1927 to a small list of berry growers within a few hundred miles of Salisbury, our list of satisfied customers has grown to include all of the 48 States and neighboring countries.

Many of these customers have come to us through recommendations of friends or relatives, often in some distant town, who had spread the word that Rayner Brothers gave real satisfaction. And we have found once we ship plants to a new community we soon begin receiving orders from acquaintances of this satisfied grower.

We ask that you accept this Catalog as a personal message from us for we have tried to tell you about our plants just as if you were visiting at our nursery.

Our nursery is a great source of pride to us for we have grown with it. It has been our ambition that none better be produced anywhere and we believe we have succeeded. Our Catalog honestly describes these plants and you may order from us secure in the knowledge that we guarantee you complete satisfaction. That is our policy—nothing secret, no magic words. It has brought us a constant-growing list of friends who have found Customer Satisfaction is the First Consideration at Rayner Brothers.

We would sincerely appreciate the privilege of supplying your planting needs in 1949.

Gratefully yours,

Jack & Bob Rayner

Strawberry Success Is Assured

32 - VARIETIES - 32

When You Choose From This Great Selection

Let BOB RAYNER

**TELL YOU HOW
TO PICK THE RIGHT
VARIETIES FOR YOUR NEEDS
FROM ONE OF THE
LARGEST SELECTIONS OF
APPROVED VARIETIES
IN THE UNITED STATES**



Perhaps too little has been said in praise of the untiring efforts of the United States Department of Agriculture and State Experiment Stations in their quest for improved fruit varieties. Year after year this process goes on to determine the fruiting qualities, growth habits and adaptability of countless varieties. This information is carefully indexed and varieties that fail to meet exacting specifications are discarded and only the most promising are made available.

We have cooperated with this experimental work and have assisted in introducing many of today's best known varieties. And we have made constant observation of the performance of these varieties under varying climatic conditions.

We offer 32 Strawberry Varieties today because we know from experience that some varieties do much better in a given area than others. Our wide selection enables you to choose just the varieties that growers in your area have been most successful with.

The guide on the following page enables you to determine the best varieties within a few minutes. Select the right varieties in our top quality plants and you are assured of planting and fruiting success.

Rayner Brothers Have All of the Best Varieties. See Next Page

RAYNER BROTHERS ARE RELIABLE

WHERE THEY DO BEST

Variety Preferences by States and Areas

Based on climatic adaptability and record of performance under weather conditions expected during a normal year in areas defined.



UNDERScore YOUR STATE WITH PEN OR PENCIL

Alabama—B-I-K-SU-E	Louisiana (south)—K-SU-E-I	Ohio (south)—B-SU-A-P-C-H-S
Arizona—I-K	(north)—B-K-SU-E	D-FP-L-J-T-Q-AB
Arkansas—B-SU-A-F-M-O-J-T	Maine—F-SD-P-C-S-RS-W-MA	(north)—F-P-C-CH-MA-SR-N
California—B-I-K-E	G-SR-AM-R-AB-N-Q	S-T-W-R-AM-D
Colorado—A-SD-P-F-M-T-MA	Maryland—B-SU-F-CH-H-D-FP	Oklahoma—B-A-F
Connecticut—F-P-C-CH-H-S	L-J-T-P-C-RS-R-MA-SR	Oregon—F-MA-G-SR-S-T-RS
AM-AB-FP-T-RS-W-MA-G	Q-AB	W-P-C
SR-N-R	Massachusetts—F-P-C-H-S-J-T	Pennsylvania—F-P-C-CH-MA
Delaware—B-F-P-C-CH-H-S-R	RS-W-AB-Q-MA-G-SR-R-AM	G-SR-W-N-H-S-D-FP-T-RS
FP-L-J-T-M	Michigan—F-SD-P-C-S-RS	R-AM-Q-AB
Dist. Columbia (See Maryland)	W-N-MA-SR-R-AM	Rhode Island—F-P-C-CH-MA-G
Florida—I-E	Minnesota—SD-P-C-MA-G-SR-W	SR-RS-N-S-D-RS-W-R
Georgia (south)—B-I-E	Mississippi—B-I-K-SU-E	South Carolina—B-I-K-SU-E
(north)—K-SU-F-B-A-M-T	Missouri—A-F-P-C-CH-MA-H	South Dakota—SD-P-C-MA-G
Idaho—P-W-MA-G-SR-C-SD	D-FP-L-J-T-S	SR-W
Illinois (south)—H-S-D-FP-L-J	Montana—SD-P-C-W-MA	Tennessee—B-SU-A-H-FP-L-J
T-B-SU-A-F-SD-CH-R	Nebraska—SD-P-C-MA-G-SR	Texas—B-I-K-E
(north)—P-C-S-J-RS-AM-W	S-RS-W-N	Utah—P-C-CH-MA-G-SR-W
MA-SR	Nevada—P-C-CH	Vermont—SD-P-C-MA-G-SR-T
Indiana—H-S-D-F-J-T-RS-W	New Hampshire—SD-P-C-MA-G	N-S-W-R-AM
AM-S-F-SD-P-C-CH-MA-G-R	SR-N-S-AM-R-AB-Q	Virginia—B-SU-F-P-C-CH-H-D
Iowa—B-A-SD-CH-H-R-P-C-S	New Jersey—B-F-P-C-CH-Q-H	J-T
AM-AB-D-FP-J-T-RS-W-R	S-FP-L-J-T-R-AB	(coastal)—B-SU-F-H-L-J-T
SR-G-MA-	New Mexico—I-K-SD	Washington—H-S-D-T-G-MA-SR
Kansas—B-A-F-SD-P-C-H-S-FP	New York—F-P-C-CH-MA-G-SR	West Virginia—H-S-FP-J-T-B
J-T-MA-G-SR-M-D	N-S-T-RS-W-AM-R-Q-AB	F-P-C-CH-R-AM
Kentucky—B-S-F-P-C-H-D	North Carolina—B-I-K-SU-F-O-T	Wisconsin—W-SD-P-C-MA
FP-J-T-M-A	(western)—P-C-H-S-J-T	Wyoming—W-SD-P-C-MA
	North Dakota—F-P-C-MA-G	
	SR-W-AM-R	

NOW UNDERScore VARIETIES FROM THE KEY LETTERS BEHIND YOUR STATE STRAWBERRIES — Page Number After Each Variety

AB—Aberdeen 18	H—Midland 10	Q—Pathfinder 18
A—Aroma 19	I—Missionary 19	R—Robinson 16
AM—Ambrosia 17	J—Big Joe 17	(or Scarlet Beauty)
B—Blakemore 6	K—Klondike 19	RS—Red Star 15
BM—Brune's Marvel 21	L—Lupton 18	S—Sparkle 11
C—Catskill 12	M—Maytime 10	SD—Sen. Dunlap 18
CH—Chesapeake 17	MA—Mastodon 20	SR—Streamliner 21
D—Dorsett 13	N—Fairland 13	ST—Starbright 18
E—Klonmore 19	O—Massey 6	SU—Suwanee 19
F—Fairfax 7	P—Premier 9	T—Temple 8
FP—Fairpeake 14	(or Howard 17)	W—Wayzata 21
G—Gem 21		

RASPBERRIES—All States north of Virginia, Tennessee and Missouri. Pages 28 and 29.

BLACKBERRIES All States except North Central and Desert States. Page 30.

BOYSENBERRIES All States except North Central.

BLUEBERRIES—All States with 30 days or more of freezing winter temperatures. Pages 23 to 27.

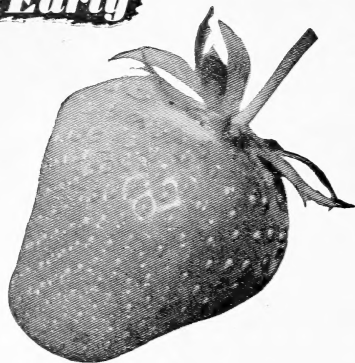
GRAPES—All States east of Nevada except deep South. Page 31.

See Pages Indicated For Full Descriptive Information

Early

BLAKEMORE

● FAVORITE EARLY VARIETY OF GROWERS FROM GEORGIA TO SOUTHERN PENNSYLVANIA, AND WEST TO OKLAHOMA AND MISSOURI.



**RAYNER'S
YELLOW'S FREE STRAIN**

Abundant Growth — Under practically all conditions and soils, BLAKEMORE will make abundant growth free from leaf troubles. Need thinning on very rich soils to produce larger berries.

Uniform Size—Very uniform, medium size berries hold up well all season.

Produces Freely—Free bedding habit makes good fruiting row. Dependable year after year.

Long Distance Shipper — One of the firmest varieties. Good skin with light red color that does not darken when overripe. Their fine arrival condition means customer satisfaction and repeat orders.

Fine Field Keepers—Fruit may hang on vines two or three days after normal ripening without loss in color and firmness. Minimizes loss from weather delays or picking labor shortages.

Excellent For Freezing and Canning—Medium sub-acid, firm flesh of fine texture, red color.

\$11.50 per 1000; \$2.30 per 100: Full Price List on page 43.

**BLAKEMORE
IS EXCELLENT
FOR FREEZING
AND
PRESERVING**

MASSEY

**OUTSTANDING MIDSEASON
WITH BLAKEMORE GROWERS**

Berry growers in the Carolinas, Virginia and Maryland are particularly enthusiastic over MASSEY because it fills the bill for a variety to extend the fruiting season after Blakemore begins to taper off. It has all the qualities a berry needs, large size, mouth watering beauty and a flavor that never disappoints. We heartily recommend MASSEY in areas where Blakemore is grown successfully.

Thrifty Grower—Makes a good fruiting row of large vigorous plants resistant to spot and scorch.

Uniform Berries—Large flowers carry abundant pollen, assuring well-developed berries of large to very large size.

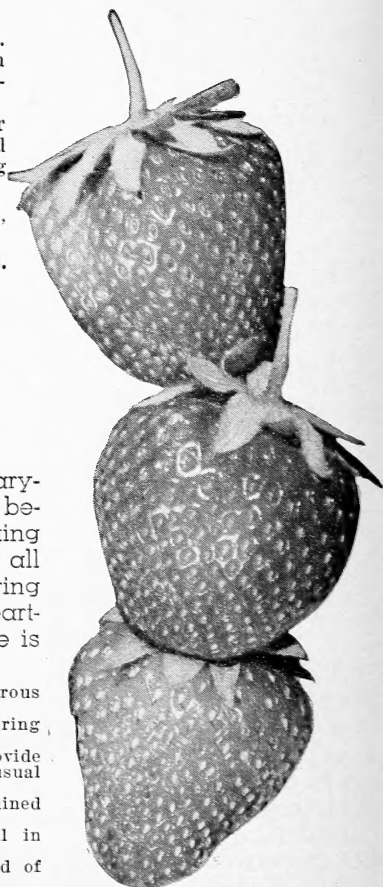
Glossy Bright Red—Vivid green cap and small yellow seed provide fitting contrast to the high, glossy red making a berry of unusual beauty.

Delicious Flavor—Fine dessert quality and flavor fully retained several days after picking.

Excellent Shipper—Firm berries hold up exceptionally well in shipment.

Good Producer—Large size of berries account for high yield of NUMBER ONE fruit.

\$12.00 per 1000; \$2.40 per 100. Price List and Ordering Information on Pages 41 and 43.



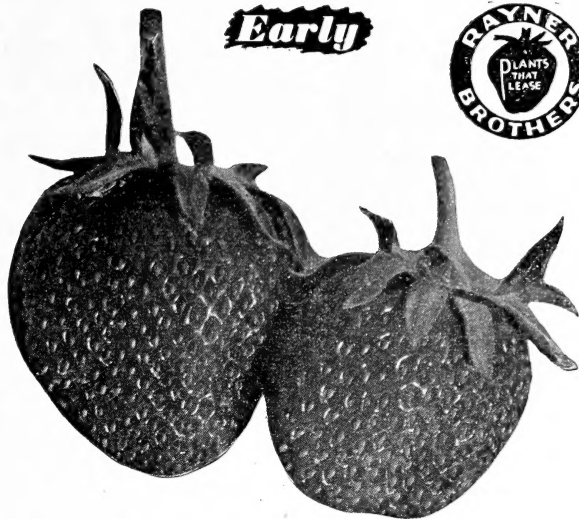
RAYNER BROTHERS ARE RELIABLE

FAIRFAX

Early



●
Flavor Favorite
 over
Half the Nation
 ●



First Choice With Home and Market Gardeners
Because of Marvelous Flavored, Beautiful Large Fruit

FAIRFAX is considered the best of all home garden berries because it has all of the qualities you would want for your own table—superb flavor of highest dessert quality—exceptional firmness and a long fruiting season. These same qualities make FAIRFAX a leader with commercial growers, particularly the roadside market and local trade grower who wants a berry with beauty and mouth-watering aroma—a berry that looks good, smells good and tastes GOOD.

FAIRFAX has an unusually wide growing range that makes it most popular with growers throughout the North and a profitable variety as far south as North Carolina. Growers throughout Premier growing areas report excellent results with FAIRFAX and some of the most enthusiastic reports come from the New England States. Grown from the Atlantic to the Pacific.

Flavorful, firm fruit that will bring the customers back for more is the reward of the grower who includes FAIRFAX in his plantings.

Very Large Size—FAIRFAX size holds up well through exceptionally long fruiting season.

Sturdy Growth—Large plants with beautiful dark green foliage free from leaf spot and scorch.

Firm Shippers—Firm, even-textured body gives FAIRFAX excellent shipping qualities.

Very Sweet—A berry that requires little or no sugar. Good eating just as it is. Rich, full-bodied flavor and aroma that holds even when berries are over-ripe.

High Yield—Considered the best early yielder by many growers. Clean fruit is supported well off the ground by strong, upstanding stems.

Rich Color—Medium light red berries tend to darken in advanced ripening stage. However, high gloss and beauty remain to identify this unusually good berry.

Frost Resistant—Popularity of FAIRFAX is growing in New England States because it is proving to be a good cropper under unusual weather conditions.

Fairfax Prices

25 for	1.05
50 for	1.75
100 for	2.80
200 for	4.90
250 for	5.60
300 for	6.30
400 for	7.55
500 for	8.75
750 for	11.55
1000 for	14.50
In 5000 lots	13.50

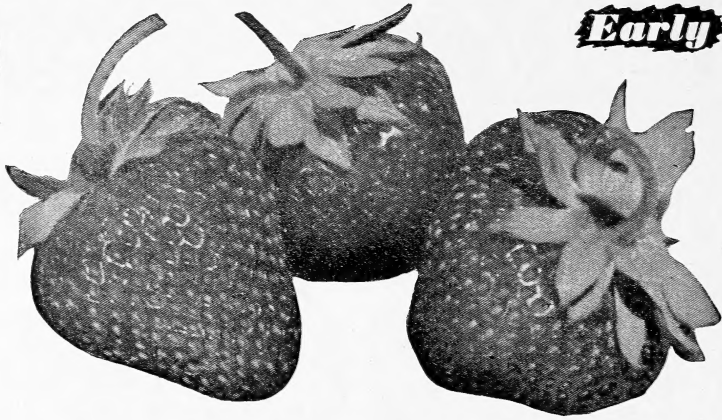
Complete Price List
 and Ordering Information
 on Pages 41 & 43.

● Try the Fairfax Flavor Garden on Page 10. Includes Fairfax, Temple, Sparkle and Fairpeake. All of these are Fairfax crosses and are tops in flavor and vigor. Your opportunity to enjoy real dessert berries the entire season.

YOU CAN RELY ON RAYNER BROTHERS



Early



TEMPLE

GROWERS PROCLAIM IT BEST VARIETY INTRODUCED IN TWENTY YEARS

FIRM BEAUTY

● Produce buyers prefer Temple over most varieties as it looks good and is as good as it looks.

GOOD PRODUCER

● Growers from North Carolina to Maine report excellent production.

EXCELLENT FLAVOR

● The best flavor qualities of its flavor-famous parents, Aberdeen and Fairfax.

LONG FRUITING

● As many as 12 pickings over a period of 25 days.

Temple Prices	
25 for	\$ 1.00
50 for	1.65
100 for	2.60
200 for	4.55
250 for	5.20
300 for	5.85
400 for	7.00
500 for	8.15
750 for	10.75
1009 for	13.00
In 5000 lots.....	12.00
Complete Price List and Ordering Information on Pages 41 & 43.	

TEMPLE has become a sales leader in less time than any variety we ever introduced. After observing its unusual vigor and growth we offered TEMPLE in trial lots of 100 plants in 1945 and many growers planted on our recommendations. In 1946 there was an unusual demand for TEMPLE which has increased tremendously the past two years.

TEMPLE was originally introduced as a variety entirely resistant to root diseases, but the vigor that made this resistance possible has also made TEMPLE a winner under most unusual growing conditions.

TEMPLE has what you want in a strawberry—it has a glossy, healthy red beauty—it sizes up well and the fruit is firm and of excellent flavor—it is a good producer over a long fruiting season. Excellent frost resistance. Enthusiastic reports from growers throughout the northeast show TEMPLE is well adapted in Premier, Catskill growing areas.

Wide Soil Range—Does well in moist, poorly drained soil and is also successful in higher, upland soils.

Space Wide In Row—Free bedding habit of TEMPLE suggests spacing wide in row, a minimum of 18 inches and up to 30 inches. Planting too close may cause such dense beds that berry size, yield and quality may be affected.

Use Fertilizer Sparingly—The best practice is an early fall fertilizing with little or no fertilizing in the spring. Heavy spring applications may cause too dense foliage growth.

100 QUARTS FROM 50 TEMPLE PLANTS

Stauben County, N. Y.; April 25, 1948

For trial I ordered 50 Temple (in 1946) and I never before have seen plants grow like they have. And in spite of the fact we had a hard freeze that froze all of the first blossoms, we picked 100 quarts of as nice berries as I have ever seen from that 50 Temple plants.

Archie Lloyd

RAYNERS STRAWBERRY PLANTS HARDY IN COLDEST CLIMATES

BIG
YIELDS
BERRIES
PROFITS

Rayner's
Surecrop

Early



**Most Widely
 Planted Strawberry**

PREMIER
(or Howard 17)

PREMIER is the outstanding early berry over a wide area because it has never been known to make a crop failure since introduction 32 years ago. The vigorous, frostproof PREMIER strain has sired many of the best known commercial varieties including Fairfax, Catskill, Dorsett, Midland and Blakemore.

No early variety has been as universally accepted because of its hardiness, high production, long fruiting season and all round dependability. PREMIER was originated by A. B. Howard Sons and is often sold as HOWARD 17 in the New England States.

RAYNER'S success has been built around our famous strain of PREMIER and the many varieties it has sired. When you purchase RAYNER'S Surecrop PREMIER you are sure of a sure-cropper at its best.

ORDER EARLY!

Vigorous Growth—Makes good fruiting bed in all types of soil and no variety has healthier foliage.

Large Berries—Fruit runs large to very large at first pickings. Because PREMIER sets so much fruit, berries will run down in size toward end of season.

Satisfactory Shipper—Berries firm enough for truck shipment but will not stand long refrigeration as will some varieties.

Good Quality—Bright red fruit ripens evenly without green tips and healthy green caps set off natural glossiness to make PREMIER a most attractive market berry.

Great Producer—Year after year, under all conditions, PREMIER is a leader in production of good marketable berries.

Frost Resistant—PREMIER sets so many blooms under tough, heavy foliage that frost cannot damage all blooms, and has never failed to make a crop.

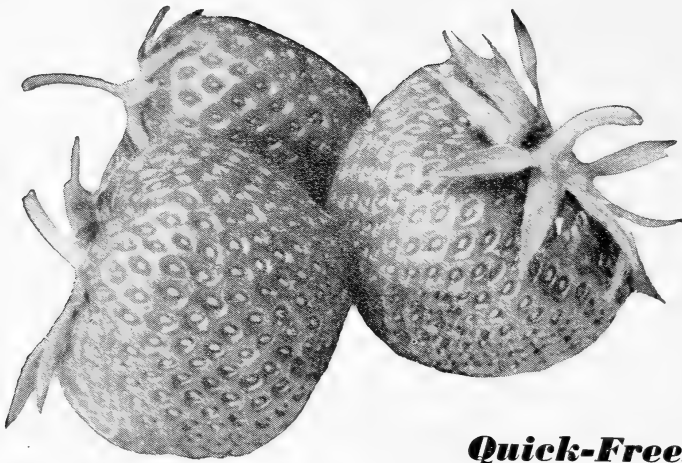
Premier Prices

25 for	\$ 1.00
50 for	1.70
100 for	2.70
200 for	4.75
250 for	5.40
300 for	6.10
400 for	7.30
500 for	8.45
750 for	11.15
1000 for	13.50
In 5000 lots	12.50

Complete Price List
 and Ordering Informa-
 tion on pages 41 & 43.

**Rayner Brothers Success Has Been Built Around Our
 Famous Premier Strain**

RAYNER BROTHERS ARE RELIABLE



Early



MIDLAND

Quick-Freezing Variety of Excellent Flavor

A PREMIER - REDHEART CROSS OF FIRM FREEZING AND SHIPPING QUALITY.

Here is a variety productive of very large berries of deep, glossy red color that runs all through the berry. Fruit is mildly sub-acid and of very good to excellent dessert quality. These qualities make MIDLAND a good freezing variety that makes an attractive package of highly-flavored fruit embodying much of that fresh-off-the-vine goodness.

Vigorous Plants—Plants have large, healthy leaves resistant to leaf spot and scorch, but do not set a heavy fruiting bed.

Very Large Berries—Fruit clusters set a large number of uniform berries much larger than Dorsett and twice as large as Blakemore.

Excellent Dessert Quality—Deep red berries are rich and juicy. Flavor is much better than Premier and above most varieties.

Highly Productive—This U.S.D.A. cross has shown high production as far south as Virginia and westward to Missouri and Iowa and northward to Connecticut and Michigan.

Good Shipper—Seeds are even with surface and sometimes slightly raised, giving added protection to a very glossy, firm skin. Ranks high in shipping quality and therefore brings more in berry markets than most popular varieties.

MIDLAND PRICES—100 plants \$3.00; 1000 plants \$15.50. Complete Price List on page 43

Flavor-Famous Garden

Want the best in flavor—strawberries that will be the talk of your neighborhood? This offering gives you superb flavored strawberries over the entire season.

25 FAIRFAX	125
25 TEMPLE	Plants
25 SPARKLE	
25 FAIRPEAKE	\$ 3.95
25 REDSTAR	

Complete Garden
 2 Gardens - 250 plants - - \$6.49
 4 Gardens - 500 plants - - \$9.95
MARKET GARDENER'S SPECIAL
 No. 5 - 200 of each variety
 1000 plants - \$16.95

MAYTIME

EARLIEST FRUITING VARIETY

MAYTIME is VERY EARLY and is ready for picking from four to eight days earlier than Premier, Dorsett and other early varieties. The berries ripen quickly, usually giving two biggest pickings at premium prices before other berries are in market. Free grower, resistant to leaf spot and scorch. Glossy bright red, large to medium berries of fine, juicy dessert quality. Good shipper.

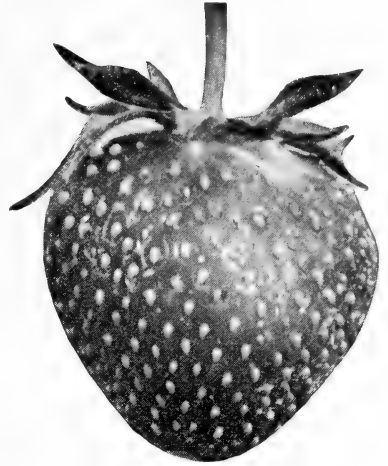
MAYTIME has been successful as far north as Massachusetts, but should be planted with caution in areas where late frosts are a problem.

MAYTIME PRICES: 100 plants \$2.00; 1000 plants \$10.00. Complete price list on page 43.

YOU CAN RELY ON RAYNER BROTHERS

An Excellent Freezing Variety

SPARKLE



A Brilliant Late Midseason

**A Truly Outstanding
All Purpose Strawberry**

SPARKLE is of the same parentage as Temple, and is showing the same remarkable characteristics as a midseason that Temple offers as an early.

SPARKLE seems to have absorbed much of the better qualities of its Fairfax parent as it resembles Fairfax in appearance and firmness and the color is a solid red so glossy that it has the appearance of being waxed. However, it does not tend to darken on holding and the deep red color runs solidly through the meaty flesh which marks it as one of the very best varieties for quick freezing.

SPARKLE was originally introduced in New Jersey, but its high production, excellent flavor and good freezing qualities were found to be just as good in areas north and south. Today it is widely planted throughout the Middle and North Atlantic States and is particularly favored in New York State.

SPARKLE should not be looked upon as just a good freezing berry. These same qualities make it an excellent all around berry - a good shipper - a good local market berry - a good home garden berry.

**SUPERIOR
FREEZING
VARIETY**

UNUSUALLY VIGOROUS—Medium to large plants make an abundance of runners. Sets a great number of flowers per cluster and practically all develop into fruit of marketable size.

EXCELLENT RESISTANCE—Not bothered with leaf spot and scorch and is resistant to root diseases.

Sparkle Prices

25 for	\$ 1.05
50 for	1.75
100 for	2.80
200 for	4.90
250 for	5.60
300 for	6.30
400 for	7.55
500 for	8.75
750 for	11.55
1000 for	14.50
In 5000 lots	13.50

Complete Price List
and Ordering Information
on Pages 41 & 43.

Market Gardeners Special No. 5

200 SPARKLE	200 REDSTAR	1000
200 FAIRFAX	200 TEMPLE	Plants
200 FAIRPEAKE		

Build Repeat Customers With
These Varieties - Tops in Flavor!

\$16.95

Varieties offered in the Market Gardener's Special are also offered to the Home Gardener in our Flavor Famous Garden on page 10.

YOU CAN RELY ON RAYNER BROTHERS

The Largest Strawberries

Mid-Season



CATSKILL



Largest Fruiting and Most Widely Planted Midseason Strawberry

CATSKILL is another Premier cross that has absorbed the best qualities of its parent. Premier growers consider CATSKILL the ideal variety for continuing a profitable fruiting season because it comes into fruit just as Premier is picking off.

CATSKILL combines amazing size and excellent flavor into a firm strawberry of rich, dainty dessert quality. This eye appeal, flavor and firmness attracts top market prices against other midseasons.

Catskill Prices

25 for.....	\$ 1.00
50 for.....	1.70
100 for.....	2.70
200 for.....	4.75
250 for.....	5.40
300 for.....	6.10
400 for.....	7.30
500 for.....	8.45
750 for.....	11.15
1000 for.....	13.50
In 5000 lots.....	12.50

Complete Price List
and Ordering Informa-
tion on pages 43 & 44.

CATSKILL is a favorite with roadside fruit stands and local market growers because the enormous strawberries come as a welcome change just as earlier sorts have begun to dwindle in production and size.

CATSKILL normally makes runners freely on healthy foliage but under unusual growing conditions it may not set a full fruiting row. Even then it is a most outstanding strawberry and the large size berries often make the total harvest volume greater than Premier.

CATSKILL MEASURED 6 INCHES

Middlesex County, Mass., March 10, 1948

We were so delighted with the Catskill strawberries we had last summer. It will probably be no surprise to you that we picked some luscious berries that measured six inches in circumference.

Mrs. W. D. Bancroft

RAYNER'S PLANTS ARE HARDY IN COLDEST CLIMATES

NEW

FAIRLAND

HEAVY PRODUCER

HARDY, RED

STELE RESISTANT

Early Midseason
U. S. D. A. 3205



(Illustration from U. S. D. A. Photograph)

We were privileged to introduce FAIRLAND to berry growers last Spring and inasmuch as these plantings will not fruit until this year we cannot give you a report on their success. However, test plantings still show this variety particularly good from Pennsylvania to Maine and it continues to outproduce other varieties in New England tests.

FAIRLAND is of the same parentage as Temple and Sparkle and has the same vigor of growth and has good red stele resistance. It is frost resistant and the bright red berries size up well with good dessert quality and aroma.

We heartily recommend this variety if you are in Premier growing area.

FAIRLAND PRICES: Per 100 \$2.80 - 1000 plants \$14.00 Price List on page 43.

DORSETT

Popular With Premier Growers

This variety has been planted for 25 years by growers in Premier growing sections. Foliage is quite similar to Premier and fruit is more attractive, of better flavor and usually a bit firmer than Premier. However, it is not as productive as Premier for many growers due to the fact that it will often bed up too much. It is most productive when the runners formed late in the season are picked off.

DORSETT'S beauty, flavor and high production for many growers is well worth the additional care it may require.

Price List on page 43.

YOU CAN RELY ON RAYNER BROTHERS

No. 1---Northern Garden

Most widely planted varieties throughout the northern half of this country.

- 25 FAIRFAX
- 25 PREMIER
- 25 CATSKILL
- 25 REDSTAR

Will Plant
Six
25 ft. rows

100 plants
(Worth \$4.30)

\$2.95

2 GARDENS
200 plants

\$4.95

4 GARDENS
400 plants

\$8.49



Late



New

**UNFORGETTABLE
FLAVOR**

FAIRPEAKE

FAIRPEAKE has won the enthusiastic acceptance of flavor-conscious growers seeking a late berry to match the dessert quality of the earlier fruiting Fairfax. FAIRPEAKE has a double advantage of fine flavor inherited from its parents, Chesapeake and Fairfax. Flavor is considered by many strawberry authorities to be the best of any variety, and FAIRPEAKE has all the essential qualities of a good commercial strawberry — beauty — good size — firmness — and good production.

THE TRUCK GARDENER'S DREAM

Truck gardeners, roadside marketers and other growers who have a select list of customers should add FAIRPEAKE to their plantings. Quality and flavor will merit premium prices until the very last picking.

FAIRPEAKE is recommended throughout the Central and Northern States as far south as Maryland.

Fairpeake Prices

25 for	\$ 1.10
50 for	1.80
100 for	2.90
250 for	5.10
250 for	5.80
500 for	6.50
500 for	7.80
500 for	9.10
750 for	12.10
1000 for	14.50
In 5000 lots	13.50

Complete Price List
and Ordering Informa-
tion on Pages 41 & 43.

Vigorous Plants—Resistant to leaf spot and scorch, plants make a good number of runners comparable with Fairfax. Prefers the same moist soil as other late varieties.

Rich Red Berries—Beautiful, medium to large berries, rich red skin and dark green cap.

Flavor Can't Be Beat—Very sweet with best dessert quality, even better than its Fairfax and Chesapeake parents. High aroma.

Good Cropper—Production compares well with other late varieties. Follows Catskill and Sparkle to provide an unusually long and profitable berry harvest.

Excellent Marketer—Firm-textured berries enable FAIRPEAKE to arrive at market looking its best.

YOU CAN RELY ON RAYNER BROTHERS

GET

THIS BIG FARM MAGAZINE

NOW!

Owners, renters, operators and managers of farm land, their families, and merchants who do business with farm people should read this big, live, magazine. FARM JOURNAL and FARMER'S WIFE, the world's largest farm magazine, is now read by more than 2,700,000 families. Each issue has departments for men, women, boys and girls. Clean and wholesome, no liquor advertisements. The low subscription prices shown below make it a real bargain for folks who have farm interests.



SEE
OTHER
SIDE

Farm Journal and Farmer's Wife

Published by The Farm Journal
Publishing Co.

50¢ for ONE YEAR

THE
BARGAIN OFFER

FIVE YEARS

\$2.00

\$1 for TWO YEARS

(Add 50¢ postage)

Mark the Offer Side Best Send Money Order USA

Name
Please Print

R. F. D. Box or Street

Put route number above for prompt service

P. O.

Acres: Own Rent

If you are already a subscriber put X here
Your present subscription will be extended

Send money order or check payable to Farm Journal Publishing Co., 1000 Locust Street, Philadelphia, Pa. with remittance our risk. Canada and other Countries outside U. S. 75¢ per year.

ORDER YOUR FAVORITE MAGAZINES

at lowest publishers' prices. Save time, trouble and expense and be assured of safe, fast service. Each magazine may be sent to a different name, if you like.

Save \$1.00 or more by ordering for 2 years, or better still order for 3 years and save twice as much.

For the Whole Family

	1 year	2 years	3 years
Farm Journal & Farmer's Wife	<input type="checkbox"/> \$.50	<input type="checkbox"/> \$4.00	<input type="checkbox"/> \$2.00
American Home	<input type="checkbox"/> 2.50	<input type="checkbox"/> 5.00	<input type="checkbox"/> 5.00
American Magazine	<input type="checkbox"/> 3.00	<input type="checkbox"/> 6.00	<input type="checkbox"/> 7.00
Collier's	<input type="checkbox"/> 4.00	<input type="checkbox"/> 5.50	<input type="checkbox"/> 8.00
Cosmopolitan	<input type="checkbox"/> 3.50	<input type="checkbox"/> 5.50	<input type="checkbox"/> 7.50
Country Gentleman	<input type="checkbox"/> 3.00	<input type="checkbox"/> 5.00	<input type="checkbox"/> 2.00
Flower Grower	<input type="checkbox"/> 6.00	<input type="checkbox"/> 11.00	<input type="checkbox"/> 15.00
Life	<input type="checkbox"/> 3.50	<input type="checkbox"/> 6.00	<input type="checkbox"/> 6.00
Look	<input type="checkbox"/> 1.80	<input type="checkbox"/> 3.00	<input type="checkbox"/> 3.00
Photoplay	<input type="checkbox"/> 3.00	<input type="checkbox"/> 5.00	<input type="checkbox"/> 5.00
Reader's Digest	<input type="checkbox"/> 2.50	<input type="checkbox"/> 4.00	<input type="checkbox"/> 6.00
Redbook	<input type="checkbox"/> 6.00	<input type="checkbox"/> 10.00	<input type="checkbox"/> 14.00
Saturday Evening Post	<input type="checkbox"/> 6.50	<input type="checkbox"/> 12.00	<input type="checkbox"/> 17.00
Time	<input type="checkbox"/> 2.00	<input type="checkbox"/> 3.00	<input type="checkbox"/> 4.00
Pathfinder (News Magazine)	<input type="checkbox"/>	<input type="checkbox"/>	<input type="checkbox"/>

For Womenfolks

Good Housekeeping	<input type="checkbox"/> 3.50	<input type="checkbox"/> 5.50	<input type="checkbox"/> 7.50
Ladies' Home Journal	<input type="checkbox"/> 3.00	<input type="checkbox"/> 5.00	<input type="checkbox"/> 7.00
McCall's	<input type="checkbox"/> 2.50	<input type="checkbox"/> 4.00	<input type="checkbox"/> 6.00
Parents	<input type="checkbox"/> 2.50	<input type="checkbox"/> 3.75	<input type="checkbox"/> 4.50
Today's Woman	<input type="checkbox"/> 3.00	<input type="checkbox"/> 5.00	<input type="checkbox"/> 7.00
True Romance	<input type="checkbox"/> 1.80	<input type="checkbox"/> 3.00	<input type="checkbox"/> 5.00
True Story	<input type="checkbox"/> 2.20	<input type="checkbox"/> 3.50	<input type="checkbox"/> 6.00
Woman's Home Companion	<input type="checkbox"/> 2.50	<input type="checkbox"/> 4.00	<input type="checkbox"/> 6.00

For Menfolks

American Fruit Grower	<input type="checkbox"/> .50	<input type="checkbox"/>	<input type="checkbox"/> 1.00
American Poultry Journal	<input type="checkbox"/> .50	<input type="checkbox"/>	<input type="checkbox"/> 2.00
Outdoors	<input type="checkbox"/> 2.00	<input type="checkbox"/>	<input type="checkbox"/> 4.00
Popular Mechanics	<input type="checkbox"/> 3.50	<input type="checkbox"/>	<input type="checkbox"/> 8.00

For Youngfolks

American Girl (Girl Scouts)	<input type="checkbox"/> 2.00	<input type="checkbox"/> 3.00	<input type="checkbox"/> 4.00
Child Life (Up to 10 yrs.)	<input type="checkbox"/> 3.00	<input type="checkbox"/> 5.00	<input type="checkbox"/> 6.00
Jack & Jill (Up to 10 yrs.)	<input type="checkbox"/> 2.50	<input type="checkbox"/> 4.00	<input type="checkbox"/> 6.00
Open Road for Boys	<input type="checkbox"/> 2.00	<input type="checkbox"/> 3.00	<input type="checkbox"/> 4.00

—MAIL TODAY WITH REMITTANCE DIRECT TO:—

**FARM JOURNAL Subscription Service Dept.
P. O. Box 958, Philadelphia 5, Pa.**

Enclosed find \$..... Send publications marked "X."

Name First Name Middle Initial Last Name
Please Print: First Name Middle Initial Last Name

R.F.D. Box or Street
if you live on a R.F.D. put route number above for prompt service.

P.O. State
Note: No orders accepted for addresses outside United States.

New

Late

RED STAR



VERY LATE FRUITING OF EXCEPTIONAL BEAUTY AND DESSERT QUALITY FROM MARYLAND TO MAINE, WEST TO MISSOURI.

REDSTAR fills a definite need for an extra late variety of very high quality. A cross of Fairfax and Chesapeake it has acquired the large size and excellent flavor of its parents but is much more vigorous in formation of fruiting row than Chesapeake. Ripens latest of all regular varieties to give the berry grower an exceptionally long fruiting season. Beauty, flavor and firmness make it equally ideal for the commercial grower, truck gardener or home use.

**Latest Contribution
To A Longer
More Profitable
Strawberry Season**

Redstar Prices

25 for	\$ 1.10
50 for	1.89
100 for	2.90
200 for	5.10
250 for	5.80
300 for	6.50
400 for	7.80
500 for	9.10
750 for	12.10
1000 for	14.50
In 5000 lots	13.50

Complete Price List
and Ordering Information
on Pages 41 & 43.

Vigorous Grower—Healthy plants, spot and scorch resistant, always develops a good fruiting row. When planted in moist soils (as all late varieties should be) REDSTAR is a heavy producer.

Very Large Berries—Hold size well to end of season. Generally cone shaped, sometimes varying and furrowed.

Bright, Glossy Red—Light bright red berry, with light green cap and protruding yellow seeds makes an unusually attractive package.

Rich Flavor—Quite tart until fully ripe. Dessert quality compares with the best.

Excellent Shipper—Very firm berry with extra protection of raised seeds. Well suited to handling and shipping.

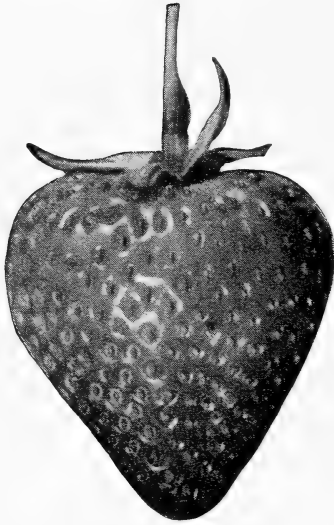
Good Canner—Firm flesh retains shape perfectly in preserving and canning. Good home garden variety.

Scarlet Beauty

(Or ROBINSON)



Mid-Season



**NO STRAWBERRY
EVER MORE
TRULY NAMED**

Few varieties have ever received the acclaim that has greeted SCARLET BEAUTY since it originated in Michigan several years ago. Reports indicate that it has outsold all other strawberries in the midseason ripening range in Michigan and it is now being grown throughout the Premier growing states.

SCARLET BEAUTY is truly described by its name. Berries are the most uniformly large of any variety that we offer and the cardinal red color is solid all the way through. Firm skin makes it an excellent shipping berry that will withstand plenty of handling. This firmness means freezing and canning quality, too.

ROBINSON (or SCARLET BEAUTY) is highly productive over a long fruiting season that begins soon after Premier. Large thick fruiting stems with heavy foliage that makes a wide fruiting row. Seems adaptable to a wider range of soils than most varieties and has shown up better in light, sandy dry land soils.

SCARLET BEAUTY is certainly well worth a trial in Premier growing areas. We know you will enjoy its unusual beauty. We believe you will be pleased with the tangy, rich sweet flavor that has made it so popular with northern growers.

SCARLET BEAUTY Prices: 100 plants - \$2.80; 1000 plants - \$14.00. Complete Price List on Page 43.

CUSTOMER SATISFACTION Will Always Come FIRST at Rayner Brothers

THANK YOU, MR. WHEELER—

Briarcliff Manor, N. Y., June 15, 1948

Your generous replacement of Premier Strawberries for my Dorsett dead uns was entirely unexpected and appreciated beyond mere thanks. If all business were conducted along such Christian lines, this old world would not be in the selfish, greedy, dog-eat-dog mess it is, and I want to not only congratulate but warmly applaud your fine ethical example.

Sincerely, D. E. Wheeler

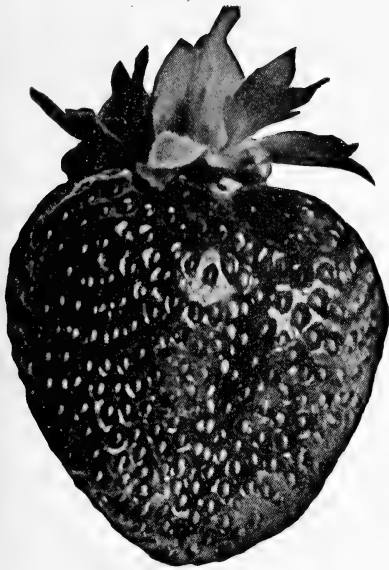
THANK YOU, MR. CONGER—

Genoa, N. Y., Dec. 3, 1948

If only all of us would conduct our affairs as you do how soon the strife, contention and needless suffering in the world would cease. May you have continued prosperity is our wish.

Sincerely, Alson J. Conger

We treasure such kind expressions. It is our sincere aim to give you complete satisfaction at all times. We recognize that "it is human to err" and we cannot always be right. But you will find Rayner Brothers always willing to make it right. You can't go wrong when you deal with Rayner Brothers.



BIG JOE

**A TWENTY YEAR FAVORITE MIDSEASON
FROM VIRGINIA NORTHWARD**

Until the introduction of Catskill, BIG JOE was the best and most popular midseason variety. And it is still the first choice of many growers because of good success they have enjoyed year after year. BIG JOE ripens just as earlier varieties have finished fruiting and ripens a major portion of crop in three big pickings, usually when large, attractive berries are at a premium. Try Rayner's BIG JOE and you will have BIG JOE at its best.

Abundant Growth—Strong, vigorous plants with unusually healthy foliage in abundance. Fruit stalks strong and upstanding.

Large, Light Red Berries—Fine, full-bodied, tangy flavored berries run large to very large and with sufficient moisture berries size up well to last of crop.

Good Shipper—Berries hold up well and are firm enough for long distance shipping.

Heavy Producer—Under normal conditions, production is very heavy.

BIG JOE Prices: 100 plants, \$2.60; 1000 plants, \$13.00. Complete Price List on page 43.

CHESAPEAKE

EXCELLENT FOR IRRIGATION

CHESAPEAKE is an old favorite late strawberry fancied by many growers. It is now enjoying new popularity with users of irrigation. Very large berries of fine delicious flavor and good shipping quality. Blooms late to escape frost damage. Complete Price List on Page 43.

AMBROSIA

VERY LATE STRAWBERRY

AMBROSIA'S firm, large berries are proving increasingly popular with growers seeking a good late berry. Fruit of good flavor in north but slightly tart in Maryland and New Jersey. As with all late varieties should be set in soil that does not dry out too much. Good frost resistance. Complete Price List on Page 43.

Enjoy
Strawberries
Four
Months
of the
Year

All Season Gardens

June bearing varieties and Everbearing for Strawberries throughout the growing season.

Garden No. 3

25 TEMPLE, 25 BIG JOE, 25 REDSTAR
75 MASTODON EVERBEARING

150 Plants - \$6.90 Value

\$5.49

Garden No. 4

50 TEMPLE, 50 BIG JOE, 50 REDSTAR,
100 MASTODON

250 Plants - \$10.30 Value

\$8.49

Top Money-Makers of the South



Rayner's Klondike, Klonmore Are Proving Their Superior Fruiting Strain in the Carolinas, Louisiana, Texas, California and other Southern States.

KLONDIKE

Rayner's Improved Strain
An Excellent Freezer

Rayner's KLONDIKE offers planters of this variety a new opportunity to really renew their plantings with KLONDIKE of disease free origin, unusually clean and healthy foliage and smooth uniform, bright red berries. It is the KLONDIKE strain that will make you money and you'll agree that a planting of Rayner's KLONDIKE was the best investment you ever made.

KLONDIKE is an unusually good variety for freezing because of its deep red color and firm flesh. Order early! There's a constantly increasing demand for Rayner's Improved Strain.

MISSIONARY

FIRST IN FLORIDA

An old dependable shipping variety that is grown almost exclusively in Florida because it requires a very minimum dormant season and is so firm that it carries in excellent condition to distant markets. Does well in all types of soil, especially lighter types. Medium size fruit is rather tart, dark red and very attractive. A heavy producer. We are privileged to supply many of Florida's largest growers with our superior strain MISSIONARY plants.

QUANTITY PRICES

If you are interested in buying large quantities write us for prompt quotations.

KLONMORE

A Leaf Spot Resistant Variety
for the Deep South

KLONMORE is a Klondike-Blakemore cross of exceptional vigor and high resistance where leaf spot has been a problem. Medium size berries are light, bright red with yellow seeds and real beauty. Good dessert quality and firm enough for shipment.

KLONMORE is preferred in Louisiana and southward because of leaf spot resistance. Rayner's KLONMORE has what it takes to really put you in the berry business.

Many Southern Growers Tell Us
They Had Despaired of Getting
Really Good Klondike, Klonmore
and Missionary Until They Tried
Rayner Brothers.

We Have The Best. One Order
Will Convince You!

PRICES

All Varieties on This Page
\$10.00 per 1000 Plants

In 5000 Lots - \$9.00 per 1000

Full Price List on Page 43.

RAYNER BROTHERS ARE RELIABLE

Favorites of Many Growers

ABERDEEN

Red-stem immune variety productive of large light red fruit of good quality and flavor. Highly productive and very profitable for berry growers serving nearby markets. Recommended from New Jersey northward.

100 plants \$2.40; 1000 plants \$12.00.

PATHFINDER

Very similar to Aberdeen, but a more consistent heavy producer, particularly under drought conditions. Immune to root diseases, leaf spot and scorch. Good appearance, quality and flavor. Ideal for market gardening in Aberdeen sections.

100 plants \$2.40; 1000 plants \$12.00.

AROMA

Popular late shipping berry for South and South Central States. Fairly vigorous plants with large berries, bright, attractive and very firm. Entire crop sizes up well for profitable long distance shipping. A real money maker for many growers.

100 plants \$2.00; 1000 plants \$10.00.

DUNLAP

An old favorite home garden and canning variety in many sections of Northern and Central States. DUNLAP'S greatest advantage is good growth and production under almost any condition. Very free bedding and productive of medium, dark red fruit for table purposes.

100 plants \$2.40; 1000 plants \$12.50.

SUWANEE

The South's Newest Table Treat

This variety is rapidly gaining favor in Southern gardens because of the exceptionally delicious flavored berries produced on healthy, vigorous free-growing plants. SUWANEE fills a real need from Maryland southward. Supply is still a bit limited on this new variety, so we suggest you place your order early so plants may be reserved until you are ready to set them.

100 plants \$2.40; 1000 plants \$12.00.

STARBRIGHT

STARBRIGHT is a Chesapeake - Fairfax cross that is preferred by many growers in the belt from Virginia to New Jersey and westward to Kansas and Iowa. Large berries are of unsurpassed dessert quality and are firm, very good shippers. Big plants are free from leaf spot and scorch.

100 plants \$2.40; 1000 plants \$12.00.

LUPTON

Excellent late shipping variety in areas where Chesapeake is grown. Preferred by many who have had trouble getting a good bed of Chesapeake. Firm berries ship well, and are very similar in appearance to Chesapeake.

100 plants \$2.40; 1000 plants \$12.00.

**SELECT
YOUR OWN
GARDEN**

(Number 10 Offer)

200 Plants for \$3.69

PICK ANY 4 VARIETIES FROM THIS LIST

Aberdeen, Ambrosia, Aroma, Blakemore, Dorsett, Maytime, Chesapeake, Pathfinder, Big Joe, Lupton, Suwanee, Sen. Dunlap, Starbright, Klondike, Klonmore, Missionary, Massey.

**RAYNER'S Varieties
Meet Every Need**



- Varieties that bear firm berries especially adapted to long-distance shipping—
- Varieties with large, attractive berries of best flavor and quality especially suited for local market and home use—
- Varieties especially adapted to canning and freezing with firmness and sub-acid flavor essential to preserving and canning.

YOU CAN RELY ON RAYNER BROTHERS

STRAWBERRIES . .

A tempting treat most anytime, strawberries have an extra special appeal when picked from your own garden out of season. We have enjoyed strawberries until Thanksgiving Day year after year, as everbearing varieties fruit until hard freezing weather. For the truck gardener, fresh, local strawberries—out of season—always demand high prices, and food stores are glad to get them. Commercial growers in Northern sections report handsome profits from Everbearing Strawberry fields.

MASTODON GROWN OVER WIDER AREA THAN ANY OTHER VARIETY

**Everbearing
Leader
for
15 Years**



**Hardy
Productive
Everbearing**

**MASTODON
Illustrated in
pint basket**

This is the fifteenth year of leadership in everbearing varieties for MASTODON. Many everbearing varieties have been introduced, but none have ever equalled MASTODON'S record for productiveness and vigor over a wide range of growing conditions.

MASTODON has unusually good foliage for protection of fruit from hot sun during summer and fall. Berries average up with Big Joe on spring crop and are a bit smaller in summer and fall. Flavor in spring and fall compares favorably with many regular varieties. Spring and fall production outranks any everbearing in our experience. Plants develop a number of crowns and produce an unusual amount of runners.

MASTODON has a very wide growing range and is worthy of trial in all States where there is sufficient rainfall to develop the fruit. **MASTODON Prices: 100 plants - \$5.00;**

1000 plants - \$25.00. Complete Price List on Page 43.

90 to 120 DAYS AFTER PLANTING

Two Pages of the Best Everbearing Varieties

STREAMLINER

Sensational New Everbearer

STREAMLINER has received more publicity than any everbearing strawberry introduced in recent years. We have observed its performance the past two years under varied weather conditions over a wide area.

STREAMLINER has been called "THE BEST", "PERFECT", and many other high compliments. We prefer to be a bit cautious and state in our opinion it is giving excellent results in everbearing areas. Fruit is large, bright red. Flavor is very good and berries quite firm in the spring and fall. Production is good, with excellent spring crop.

STREAMLINER does not seem to bed as well as Mastodon and Gem, but sets more fruit per plant.

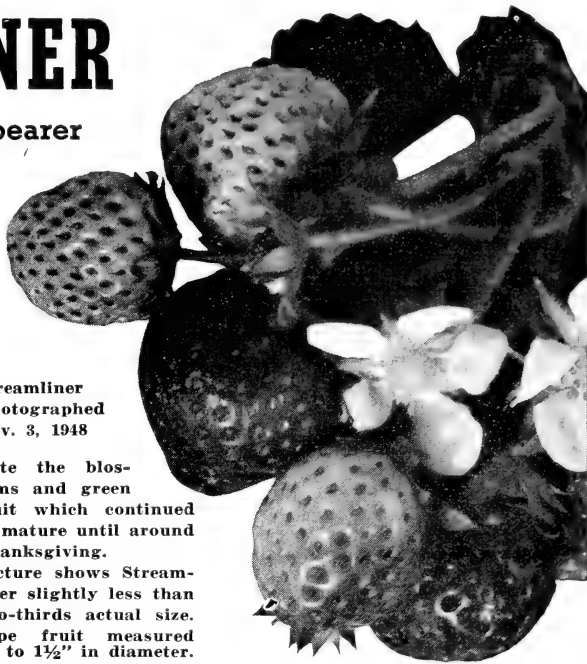
Streamliner: 100 plants \$6.00; 1000 plants \$30.00.

Complete Price List on page 43

Streamliner
Photographed
Nov. 3, 1948

Note the blossoms and green fruit which continued to mature until around Thanksgiving.

Picture shows Streamliner slightly less than two-thirds actual size. Ripe fruit measured up to 1½" in diameter.



G E M

Old Reliable Everbearing Makes a Good Plant Bed With Heavy Production

GEM shares the popularity spotlight with Mastodon in many areas because it sets a really worthwhile fall crop if not allowed to bed too thick. It is adapted to a wider range of soils than most everbearers and is often successful where others fail. Fruit sizes up well, although not as large as Mastodon, but flavor is superior under adverse weather conditions.

GEM is an amazing plant maker and can be depended upon to set runner plants that become hardy, vigorous specimens and producers of fruit in an unusually short time. Thinning of abundant runner plants will enable setting a tremendous crop.

GEM Prices: 100 plants \$5.00; 1000 plants \$25.00. Complete Price List on page 43.

WAYZATA

Best Flavored of All

WAYZATA is the luxury everbearer grown by gardeners seeking the best in flavor. Requires little space because plants grow from crowns and set very few runners. Delightful red, large berries are truly something delicious. WAYZATA, also called Rockhill, is best from Pennsylvania, northward.

WAYZATA Prices: 100 \$7.50; 1000 \$37.50.

COMPLETE PRICE LIST ON PAGE 43

BRUNE'S MARVEL

Flavor of The Wild

An unusually sweet, non-acid berry with flavor as near the wild strawberry as any we have ever tasted. Plants make a stand under most adverse weather conditions. Free bedding habit necessitates thinning for best fruit production. Fruit small to medium, requires practically no sugar.

Prices: 100 plants, \$3.30; 1000 plants, \$16.50

What Everyone Should Know About Everbearing Strawberries

When a Strawberry variety is listed as an Everbearing, this indicates that more than one crop per season may be expected. All Everbearing varieties make a Spring fruiting as do regular Strawberry varieties. But, in addition, Everbearing varieties will bloom again after recovering from the strain of the Spring fruiting and will produce fruit beginning in August and continuing until the first freeze.

We are anxious that our customers understand several important characteristics of Everbearing Strawberry varieties:

1. While the Spring fruiting of Everbearing varieties compares favorably in volume with regular Strawberry varieties, the Fall fruiting does not usually produce a considerable volume of fruit at one time. The fruiting is often spread over a period of as much as 90 days. For this reason we sincerely recommend that at least 100 Everbearing plants be set for average family use. (This is not an attempt to sell you more Everbearing plants than you need, but we know from experience it is folly to suggest planting Everbearers in dozen lots or minor quantities because there would not be enough fruit at one time for table use. We offer Everbearing in quantities as small as 25 plants to enable you to plant a variety selection.)
2. Everbearing Strawberry plants are usually a disappointment when planted in hot climates where hot, sultry days and comparably warm nights are the general rule over a major part of the summer. Strawberries are essentially a cool weather fruit (most regular varieties are June bearing). Therefore, in sections south of Maryland the early Fall fruiting of Everbearers is not usually satisfactory. Everbearers are best adapted to States north of Virginia or in altitudes and areas where summer nights are generally cool.
3. Everbearing Strawberry plants should be set in soil with plenty of humus (soil that holds moisture) so that the drain of blossoming and fruiting in early Fall, when dry weather is often prevalent, will not prove too severe on the plants.
4. Everbearing Strawberry plants should not be allowed to fruit until well established. The usual practice is to keep all blossoms picked off until around July 1, or until growth is well advanced.

Everbearers can be a world of fun. If you live in a climate adapted to them you will be pleased with their delightful novelty. Fresh strawberries from your own garden in October are truly a breath of Springtime. We repeat—if you live in an area suited to Everbearing, plant them—if in doubt, make a trial planting before investing too heavily.

Special **EVERBEARING** Gardens

No. 6 - Everbearing Garden

25 GEM	\$3.95
25 MASTODON	
25 BRUNES MARVEL	
150 PLANT GARDEN	\$6.49
300 PLANT GARDENS	\$9.98

Please Order Gardens by Number.

No. 7 - All Varieties Offer

25 GEM	\$7.95
25 MASTODON	
25 STREAMLINER	
25 BRUNES MARVEL	
25 WAYZATA	
2 GARDENS - 250 Plants	\$11.25
4 GARDENS - 500 Plants	\$15.95

Rayner's FAMOUS BLUEBERRIES

Big Yields . . Big Profits



..... A Crop of Proven Value on Acid Soils, Cutover Woods Lots, Swamp Lands and Similar Moisture Retaining Soils Where Little Success Has Been Obtained from other Crops.

The highbush blueberry is native to swamps and moist soils where adequate drainage is available to prevent surface flooding. The cultivated blueberry has the same soil requirements. However, it has been hybridized for disease and frost resistance until today it is one of the most easily maintained fruits. Makes the usual big crop in years when frost kills out the wild. Requires minimum cultivation and attention. A great crop for that piece of soil too acid for other things or similar soils not now under cultivation.

Adaptable Commercially as far South as the Elberta Peach and as far North as Michigan and the New England States. Grown by Gardeners in All States Having 30 Days or More of Freezing Winter Temperatures.

YOU CAN RELY ON RAYNER BROTHERS

Year Round Beauty for Lawn and Garden Taste-filling Delight for Your Table

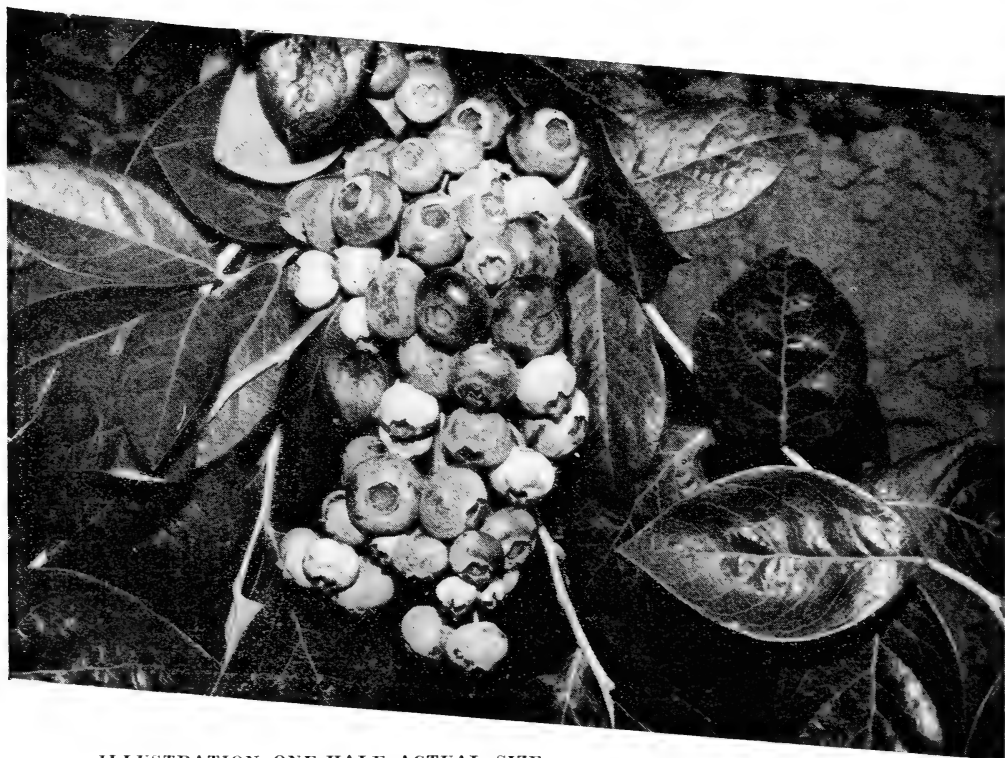


ILLUSTRATION ONE-HALF ACTUAL SIZE

Blueberries have an unusual taste appeal that never fails to awaken the appetite and the distinctive flavor welcomes frequent appearance on any menu. Big, plump fruit often as big as grapes with a delicate blue beauty to add to their appeal.

You can enjoy this superlative fruit and you can enjoy the beauty of the blueberry bush all year round. There is no "off season" for the blueberry bush. The bright, glossy new foliage of spring is enhanced by clusters of pink buds that turn to pinkish white flower bells. After fruiting the glossy green foliage retains its beauty and with autumn it turns an attractive red. In winter the dark red and brown bark continues to blend with the best landscaping plan.

Rayner's Leading Giant

BLUEBERRIES

A Full Selection of Superior Hybrids. Your Choice of All The Best Known Varieties

(Order at least two varieties to insure proper pollination)

CABOT (Early, Low Bush). Lowest of all cultivated varieties, bush seldom exceeds four feet in height. An early variety with a long fruiting season. Best in Northern States.

JUNE (Early, Fast Ripening). Liked because it fruits early and ripens entire crop quickly. Medium high bush with medium size fruit. Popular from North Carolina to Maine.

CONCORD (Early Midseason.) Medium berries ripens about 2 weeks after Cabot. Tall, vigorous, attractive bush. Sets a tremendous crop of firm fruit with good flavor.

STANLEY (Early Midseason). Tall, vigorous bush with large, thick shiny leaves. Good producer of large berries, considered best flavored of all varieties.

RANCOCAS (Midseason Beauty). Upright bush often exceeds six feet at maturity. A favorite for lawn and garden plantings because of unusual beauty. Good producer of fine flavored fruit.

PIONEER (Midseason). A popular, high producer in States north of New Jersey. Fruit is of medium size, dark blue and of excellent dessert quality.

JERSEY (Ideal Late Variety). Large, light-blue berries of best shipping quality. Vigorous, fine bush with excellent growth characteristics. Erect, productive, beautiful foliage.

SCAMMELL (Late Variety). A specialty with us, bush is most productive of medium, firm fruit of good flavor. Ships well and is popular for its hardiness from North Carolina northward.

RUBEL (Widely Planted Late). Bush is upright, very vigorous, hardy and productive. Medium fruit, light blue, very firm. Well liked because of its productiveness, firmness and desirable growth characteristics.

BURLINGTON (Latest Of All). Medium size berries on vigorous, upright bush. Good blue color, firm, aromatic, good dessert quality. Promising for its lateness, color and excellent shipping quality.

NEW LOW PRICES

F.O.B. Salisbury, Maryland

Varieties may be combined to take advantage of quantity prices.

	Single Each	3 to 9 Each	210 to 28 Each	30 to 99 Each	100 or more Each
1 yr. (916 in.).....	\$.50	\$.40	\$.35	\$.30	\$.25
2 yr. (6-9 in. liner).....	.70	.60	.55	.45	.40
2 yr. 9-12 in.).....	1.00	.90	.80	.70	.60
3 yr. (12-18 in.) 2 or more branches.....	1.45	1.25	1.05	.90	.80
4 yr. (18-24 in.) 3 or more branches.....	2.20	1.85	1.60	1.35	1.20

Write us for prompt quotations on large quantities.

Prices and Descriptions of some recently introduced varieties will be found on the following page. Parcel Post rates on page 41.



Complete Planting and Growing Directions, Including Soil Preparation on Page 39

RAYNER BROTHERS ARE RELIABLE

Latest Introductions

Newest Varieties Offered in Limited Quantities

DIXI Largest Fruit

Produces largest fruit of all varieties on a vigorous bush. Promising for large size, firmness and productiveness. Fine blue color and high aroma add to attractiveness. Late season, slightly before Jersey.

WEYMOUTH Earliest of All

Dark blue, medium berries lack dessert quality, but should prove very popular commercially because of earliness and quick ripening of entire crop for early market prices.

ATLANTIC Next to Dixi in Size

Very vigorous bush, very productive. Large berries of good color, firm, with slight aroma, good dessert quality. A late variety promising for large size, fine color, and for productiveness.

PEMBERTON Most Vigorous

Bush considered most vigorous of all varieties. Very productive of large berries, firm with slight aroma and good dessert quality. Liked because of its vigorous bush and large size of berry. Midseason.

PRICES OF VARIETIES ON THIS PAGE

	Each	Lots of 3-9 Each	Lots of 10-30 Each	Lots of 30-99 Each	Lots of 100
1 yr., 3-6".....	\$.65	\$.55	\$.45	\$.40	\$.35
2 yr., 6-9" liner.....	.95	.80	.70	.60	.55
2 yr., 9-12".....	1.25	1.15	1.05	.90	.75
3 yr., 12-18", 2 or more branches.....	1.90	1.65	1.35	1.15	1.00
4 yr., 18-24", 3 or more branches.....	2.75	2.35	2.10	1.75	1.50

USE THIS GUIDE IN MAKING SELECTIONS

FOR SIZE OF FRUIT—DIXI, ATLANTIC, PEMBERTON, SCAMMELL, JERSEY

FOR DESSERT QUALITY—STANLEY, PIONEER, ATLANTIC, CONCORD, BURLINGTON, RANCOCAS, RUBEL, JERSEY

FOR FREEZING QUALITY—JERSEY, BURLINGTON, RANCOCAS, ATLANTIC, RUBEL, SCAMMELL.

YIELDS—Blossoms should be pinched from blueberry plants that have been newly planted to prevent fruiting in order to conserve strength. Plants will begin fruiting the following year and production will increase as the plants mature.

No.5 - New Variety Garden

- 1 Weymouth—3 yr.—12-18"—Early
- 1 Dixi—3 yr.—12-18"—Midseason
- 2 Atlantic—3 yr.—12-18"—Midseason
- 2 Pemberton—3 yr.—12-18"—Late

6 Bearing Age Plants 12-18" **\$8.98**

12 PLANTS - - - **\$14.98**



Wild Blueberries and Cultivated Blueberries are compared in size in this actual unretouched photograph.



You Can Know the Joy of Owning a Gorgeous Blueberry Planting

Here's real beauty that lasts all year 'round. Rich, glossy green leaves with the waxed appearance of the gardenia.

Wood varies from pale green to gray in the growing season with a bit of red on the new growth. In the dormant season the wood assumes the red glow of the barberry.

SPECIAL BLUEBERRY GARDEN OFFERS

No. 1 - Bearing Age Garden

- 2 Concord—3 yr.—Midseason 18-24"
- 2 Rancocas—3 yr.—Early 18-24"
- 2 Jersey—3 yr.—Late 18-24"

6 Bearing Age Plants 18-24"
(Catalog Price \$11.10)

SPECIAL

\$8.98

No. 2 - Flavor Garden

- 2 Rancocas—2 yr.—9-12"
- 3 Rubel—2 yr.—9-12"
- 2 Jersey—2 yr.—9-12"

6 Plants (Catalog Price \$6.30)

SPECIAL

\$4.98

12 plants (4 of each variety) **\$9.98**

No. 3 - Rooted Cutting Garden

- 6 Rancocas—1 yr.—3-6"
- 6 Cabot—1 yr.—3-6"
- 6 Jersey—1 yr.—3-6"

18 Plants
(Catalog Price \$6.30)

SPECIAL

\$4.98

No. 4 - Bargain Garden

- 4 Rancocas—3 yr.—12-18"
- 4 Rubel—3 yr.—12-18"
- 4 Concord—3 yr.—12-18"

12 Bearing Age Plants
(Catalog Price \$12.60)

SPECIAL

\$9.98

You will never believe just how incredibly wonderful it is to behold a blueberry bush in fruit, to pick and eat these marvelous berries until you experience it yourself.

And this rich experience can be enjoyed from your own lawn or garden.

Blueberry bushes can be pruned and adapted to any landscaping plan.

Full instructions with every order. Add beauty to your home and grow fruit that will be the sensation of your neighborhood!



RASPBERRIES

Rayner's
DEPENDABLE

FOR BIGGER CROPS

**Best Known Varieties
Hardy and Productive**

Raspberries are an ideal crop for the fruit grower who lives near a good market. The fact that raspberries do not ship as well as other fruits is a real advantage to the fruit grower who can supply fresh, ripe berries of superior quality and flavor to his own local trade.

Your own plantings of raspberries will bring that dainty, fresh off the vine quality right to your table. Raspberries at their best, with all their firm ripe juiciness are raspberries from your own plants.

LATHAM Most Popular and Widely Planted Red Raspberry

LATHAM is the most widely grown of the red varieties because of its vigor, productivity and ability to thrive over a wide range of conditions and its resistance to diseases. Particularly popular in colder sections because of extreme hardiness and ability to withstand very low temperatures. LATHAM produces a good crop of large, firm, beautiful rich red berries. Often produces more than 5,000 quarts per acre.

NEWBURGH Best Red Variety for Planting Near Black Varieties

NEWBURGH is very popular in New York, Pennsylvania and New England because of large size and unusual firmness of berries. Its freedom from mosaic makes NEWBURGH unusually good for growing with black raspberries. Very hardy in cold States and highly productive of large, very firm, mild flavored fruit. Grows low with long laterals and does best on trellis. Shorter canes than most varieties, but should be cut back in spring to prevent setting too much fruit.

INDIAN SUMMER Acknowledged the Best Red Everbearer

Not just our opinion but it is generally agreed that INDIAN SUMMER is the really outstanding Everbearing Red Raspberry. Fruit is of high quality, large and of medium red color with a good flavor. Season is long, starting a day or two later than regular varieties. The fall crop commences early and continues until hard frost with heaviest production about twenty days after first fall planting. Tremendous June crop. Vigorous, upright, hardy, healthy and productive.

EASY TO GROW

Soil should be given the same thorough preparation for a raspberry plantation as for corn or similar crops. For home gardens the chicken yard is frequently a desirable place for a raspberry patch. Poultry keep down weeds and enrich the soil, and do not often injure the berries.

PURPLE and BLACK RASPBERRIES

S O D U S THE BEST PURPLE RASPBERRY UNUSUALLY LARGE FRUIT

Tall, vigorous plants of excellent hardiness and drought resistance with best production record of the purple raspberries entitles SODUS to recognition as the best. Fruit is unusually large, purple, firm and a bit tart. An excellent variety for canning and preserves. Growth habit like black raspberries. Considered hardiest, most drought resistant of the purple varieties.

Cumberland Favorite Black

No other Black Raspberry has been as widely planted as CUMBERLAND and it is still the choice of many home and commercial growers because it has stood the test of time. No other Black Raspberry has been grown as extensively as CUMBERLAND. A very dependable heavy cropper of large fruit, firm, sweet, fine quality and attractive jet-black color. This highly productive midseason ripens most of crop in about two weeks.

Morrison Best New Black

This new black variety originated in northern Ohio and is proving popular throughout raspberry growing areas. Very large, jet-black fruit is of fine flavor and considered less seedy than other sorts. Plants are strong, highly productive and have excellent disease resistance. MORRISON is quickly gaining the reputation of being the best Black Raspberry of the late fruiting varieties, and is being widely planted in the northern half of the Country.



Price List Rayner's Certified Raspberry Plants

	6	12	25	50	100	250	500	1,000
Latham, 1 Yr., No. 1.....	\$1.80	\$2.60	\$4.10	\$7.10	\$12.35	\$26.80	\$43.10	\$75.00
Newburgh, 1 Yr., No. 1.....	1.80	2.60	4.10	7.10	12.35	26.80	43.10	75.00
Indian Summer, 1 Yr., No. 1.....	1.80	2.60	4.10	7.10	12.35	26.80	43.10	75.00
Cumberland, 1 Yr., No. 1.....	1.45	2.10	3.30	5.70	9.90	21.40	34.50	60.00
Morrison, 1 Yr., No. 1.....	1.45	2.10	3.30	5.70	9.90	21.40	34.50	60.00
Sodus, 1 Yr., No. 1.....	1.60	2.35	3.70	6.40	11.25	24.10	38.80	67.50

Success With Raspberries

A good crop of berries may be expected from plants the year after they are set and a full crop the second year after planting. It is highly important that only the best grade of nursery stock be used and Rayner Brothers have exercised extreme care in selecting plants of the very highest quality propagated in one of the best Raspberry growing sections in the Country.

PLANTING—Plants should be set in the early spring in the eastern part of the United States, due to usually higher prevalence of natural moisture in the soil. **FULL CULTURE DIRECTIONS** will be sent with your order.

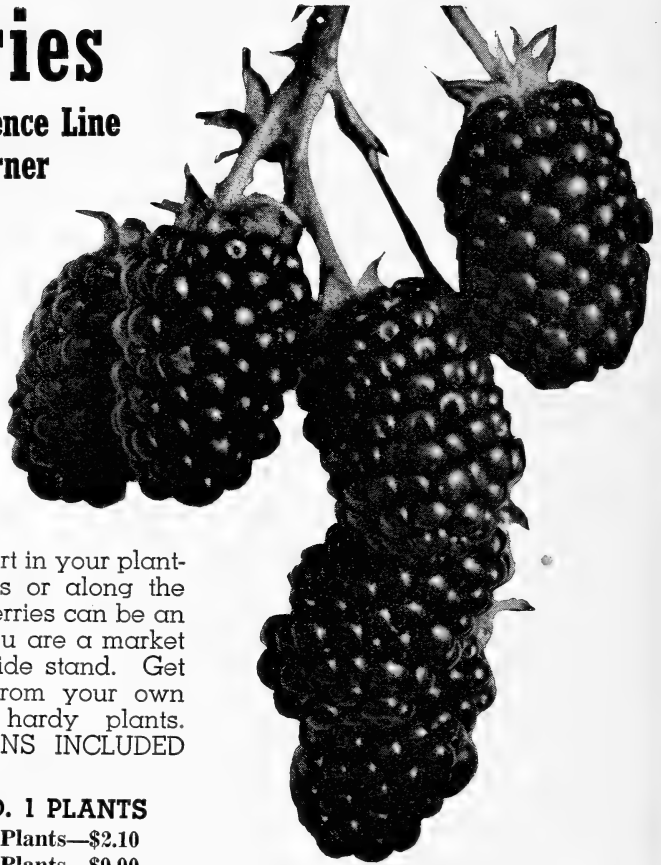
YOU CAN DEPEND ON RAYNERS FOR DEPENDABLE PLANTS

Blackberries

**Plant Them Along the Fence Line
or in That Extra Corner**

Blackberries ripen in July to fill an important part in keeping a continuous supply of garden fresh fruit on the table. Eaten just as they are with cream, the rich juicy flavor of the cultivated blackberry is a delectable dish, and in a pie or as blackberry dumplings they are superb.

Blackberries can have a part in your plantings — along drain trenches or along the back of the lot. And blackberries can be an important fruit crop, too, if you are a market gardener or operate a roadside stand. Get ready for a bumper crop from your own plantings. Set RAYNER'S hardy plants. FULL GROWING DIRECTIONS INCLUDED WITH YOUR ORDER.



BLACKBERRY PRICES NO. 1 PLANTS

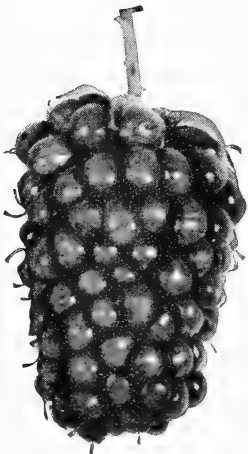
6 Plants—\$1.45	12 Plants—\$2.10
25 Plants—\$3.30	100 Plants—\$9.90

Boysenberries

Highest Quality Thornless

The boysenberry is a hybrid fruit produced by crossing the blackberry, loganberry and raspberry. The result has brought a berry of tremendous size — often more than two inches long — and of such unusually delicious flavor that description is indeed difficult. If you like blackberries you will just love these giant, wine-colored beauties.

An unusually large yielder, berries hold up well for local market. Practically seedless, juicy, delicious — be sure to include some Boysenberries in your fruit garden.



Bearing Age Plant Prices

6 Plants—\$2.95	12 Plants—\$4.75
25 Plants—\$8.00	100 Plants—\$25.00

1 Yr. No. 1 Boysenberry Plant Prices

6 Plants—\$2.05	12 Plants—\$2.95
25 Plants—\$4.65	100 Plants—\$14.05

"ALL-AROUND-THE-FARM" Group

All three for only \$1

FARM JOURNAL and FARMER'S WIFE..... 1 year
 AMERICAN FRUIT GROWER..... 1 year
 AMERICAN POULTRY JOURNAL..... 1 year

SELECTIVE CLUB #1

Four Magazines for only \$5.90
 (value up to \$11.50)

PATHFINDER (News Magazine)..... 1 year
 and any 3 of the following popular magazines
 FLOWER GROWER..... 1 yr. TRUE STORY .. 1 yr.
 POPULAR MECHANICS.. 1 yr. CHILD LIFE... 1 yr.
 OPEN ROAD FOR BOYS... 1 yr. PHOTOPLAY .. 1 yr.
 AMERICAN GIRL..... 1 yr. PARENTS..... 1 yr.
 Mark X for the 3 you choose in addition to PATHFINDER.

SELECTIVE CLUB #2

Save Up to 40% over Regular Prices

Choose any three magazines \$3.00 (value to \$5.40)
 Choose any four magazines \$4.00 (value to \$6.90)
 Choose any five magazines \$5.00 (value to \$8.40)

FARM JOURNAL & FARMER'S WIFE 3 yrs.
 AMERICAN FRUIT GROWER..... 3 yrs.
 AMERICAN POULTRY JOURNAL..... 3 yrs.
 BREEDER'S GAZETTE..... 18 mos.
 PHOTOPLAY..... 1 yr.
 TRUE ROMANCE..... 1 yr.
 OPEN ROAD FOR BOYS..... 9 mos.
 AMERICAN GIRL (Girl Scouts)..... 9 mos.
 OUTDOORS..... 9 mos.
 PATHFINDER..... 9 mos.
 CHRISTIAN HERALD..... 6 mos.
 FLOWER GROWER..... 6 mos.
 PARENTS..... 6 mos.

—MAIL TODAY WITH REMITTANCE DIRECT TO:—

FARM JOURNAL Subscription Service Dept.
 P. O. Box 958, Philadelphia 5, Pa.

Enclosed find \$..... Send magazines marked "X."

Name First Name Middle Initial Last Name
 Please Print:

R.F.D. Box or Street.....
 if you live on a R.F.D. put route number above for prompt service.

P.O. State.....
 Note: No orders accepted for addresses outside United States.

Recommended by

RAYNER BROTHERS

SEND

For your copies of this exciting poultry magazine

TODAY

HUNDREDS OF EASY
PROFIT MAKING IDEAS

★

FREE—

BEAUTIFUL 4 COLOR
POULTRY PICTURES
IN WINTER ISSUES
SUITABLE FOR FRAMING

★

FREE ANSWERS TO
YOUR POULTRY PROBLEMS

★

ADVANCE NEWS FROM
THE LARGEST POULTRY
EXPERIMENTAL FARMS

★

HUGE WOMAN'S AND
HOMEMAKING SECTION

★

LARGE GARDEN AND
ORCHARD DEPT.

★

LATEST NEWS ON
TRACTORS AND FARM
MACHINERY

★

COMICS • CARTOONS

You will get hundreds of easy to read illustrated pages
chuck full of simple, clever, money-making ideas
for both men and women. Features that make enjoyable
and profitable reading for the whole family.

TAKE ADVANTAGE OF THIS BARGAIN OFFER TODAY

AMERICAN POULTRY JOURNAL

P. O. Box 958

Philadelphia 5, Pa.

ONE YEAR 50c or FIVE YEARS \$2

BIG COPIES

BARGAIN OFFER

Mark your choice — Send money at our risk

Name

R. F. D. Box or Street

P. O. State

READ AND ENJOYED BY 500,000 FAMILIES WHO
RAISE THEIR POULTRY THE AMERICAN WAY

Mail this coupon NOW



GRAPE VINES

Delicious! Productive! Dependable!

Grapes have been one of the most important fruit crops since Biblical times because they are high in food value and essential minerals as well as outstanding in taste appeal. A few vines will produce a great deal of fresh fruit that is ideal as a fresh dessert and for jam, jellies and juice. A vineyard is an investment in a permanent fruit crop that will bear fruit for your table and as a source of income for a lifetime. Grapes are easy to grow and do not take a lot of space. RAYNER'S grapevines are from fine, sturdy selections.

CONCORD—The Best Blue

CONCORD originated in Massachusetts more than 100 years ago and is still today the most widely grown of American varieties because it is hardy in many varying climatic conditions. The berries are very dark with an abundant blue bloom. CONCORD is of good dessert quality with a high aroma and firm juiciness that makes it a favorite for the table and juice, jam and jelly. These qualities also make it one of the outstanding commercial varieties.

CACO—The Best Red

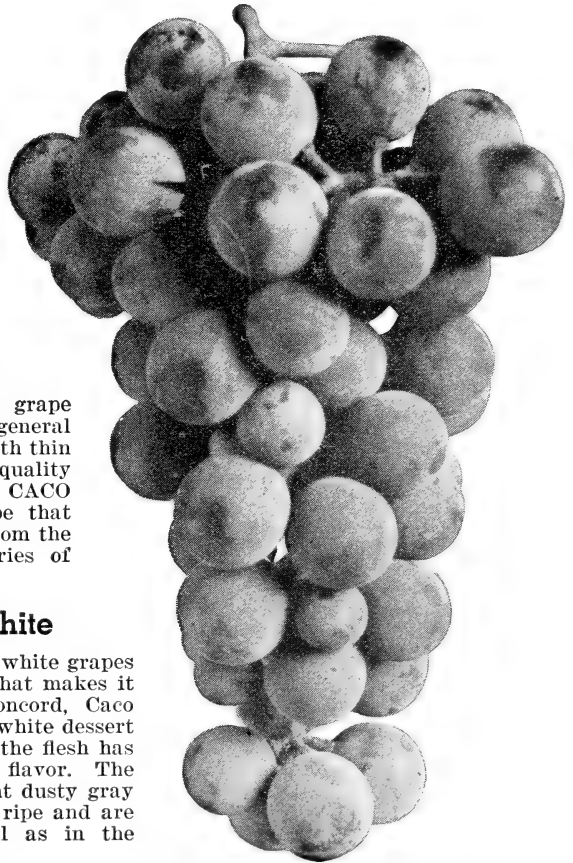
CACO is recognized as the best red grape variety because of its extreme vigor and general hardiness. The berries are a light red with thin skin and tender juiciness. The dessert quality is as good as the high aroma suggests. CACO is an excellent home and market grape that does well in the same area as Concord, from the middle South to the Northern boundaries of this Country.

NIAGARA—The Best White

We consider NIAGARA the best of the white grapes because it has the vigor and hardiness that makes it a popular producer throughout the Concord, Caco area and it meets the demand for a good white dessert grape. The skin is thin and tender and the flesh has a juicy sweetness and a strong winey flavor. The berries are of an amber color with a light dusty gray bloom. Grapes hold up well when fully ripe and are therefore popular commercially as well as in the home.

PRICES—2 Yr. No. 1 Vines

Each 55c; 3 vines \$1.50; 10 vines \$4.05;
25 vines \$8.45; 50 vines \$14.05; 100 vines \$22.50



This illustration is considerably smaller than the actual size of the grapes. Photograph was reduced about one-third.

GRAPES are adapted to all types of soils that are well drained and of average fertility. They do well in practically all climates and thrive in sunny locations or a reasonable amount of shade. Full planting, pruning and culture directions are included with your order. Grapes should be planted as early as other fruits: Order now!

FOR REAL ENJOYMENT—PLANT ALL THREE

Tender, Fresh ASPARAGUS

from Your Own Plantings
Year After Year

MARY WASHINGTON Most Popular of All. This heavy yielding strain, developed by the U. S. Dept. of Agriculture, is the favorite of commercial growers because it has met the need for a highly productive, rust-resistant variety. **MARY WASHINGTON** is very early, a strong grower, and produces shoots of the finest quality that run more uniform in size, shape and color than any of the older selections. Asparagus has healthy green color, rich flavor and juicy tenderness.

NEW PARADISE Preferred for Early Production. A new variety that has created sensational reports from asparagus growers because in many instances it produces a normal crop one year earlier than other varieties. **NEW PARADISE** is a sport discovered in a Mary Washington field. Seems to have all of the qualities of Mary Washington including vigorous growth, large stalks and exceptional rust resistance. Present records indicate it will begin volume production sooner and is therefore favored by most home gardeners.

Asparagus is one of the first vegetables to make appearance in the Spring and its succulent, green stalks are a welcome change to the table. Because of its earliness, asparagus can be depended upon to realize a profit and there is an ever increasing demand for canning and freezing. Asparagus is easy to grow and a bed once established will continue to produce heavy crops for 10 to 15 years. 50 to 150 plants are adequate for the family garden. The most important step is to get plants of good quality. Our soil is ideal for developing asparagus roots and you may be assured of extra heavy crowns and strong roots when you buy from Rayner Brothers.



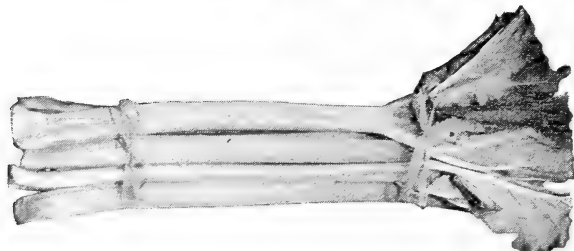
ASPARAGUS PRICES

Big two year roots will produce stalks large enough for cutting the second year and a big crop each year thereafter.

	25	50	100	250	500	1000
2 year No. 1 Roots.....	\$1.85	\$3.10	\$5.00	\$10.00	\$15.60	\$25.00
1 year No. 1 Roots.....	1.15	1.90	3.00	6.00	9.40	15.00
Jumbo Super Size Roots.....	3.35	5.60	9.00	18.00	28.10	45.00

MacDonald
Red

RHUBARB



RHUBARB is a very popular perennial where winters are sufficiently cold to freeze ground 3 to 4 inches. A few plants well tended make an excellent supply of sauce and pies.

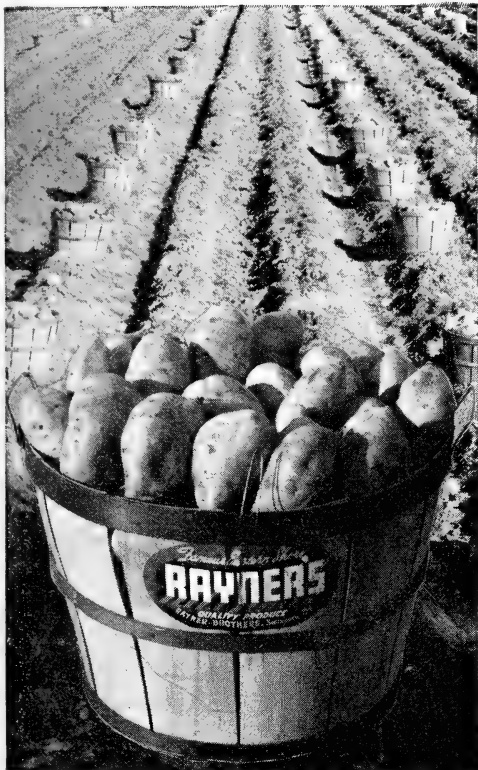
We offer only the MacDonald Red variety because of its marked superiority. Matures earlier, sweeter, and one planting lasts a lifetime.

PRICES'

75c each - 3 for \$2.00 - 10 for \$6.00

YOU CAN RELY ON RAYNER BROTHERS

Maryland Golden SWEET POTATO PLANTS



This variety was developed here and has become the most popular Sweet Potato shipped from this great growing area.

The skin and flesh is of golden color and the quality is excellent for boiling, candied sweets, frying, baking and made into pies or potato bread.

Matures very early, affording the northern gardener the opportunity to harvest a sweet potato crop before cold weather. Satisfactory for storage until mid-winter. A small planting will supply your family requirements.

Sweet Potato Plants
Ready for Shipment May 25th
Order Now!

Prices:
50 plants \$1.00; 100 plants \$1.50;
250 plants \$3.50; 500 plants \$6.00;
1000 plants \$10.00

We have found our baskets fill the needs of truck farmers and gardeners who do not have a regular supplier in their area and who recognize that good containers mean higher prices for their fruit.

In offering baskets it is not our intent to compete with regular supply houses. Our sole interest is to render a service to our customers who have experienced difficulty in buying baskets locally. Good baskets are still scarce, so please order early.

HIGH-QUALITY PRE-DRIED AMERICAN BASKETS

Quarts

100 - \$1.60 500 carton - \$7.50

Pints

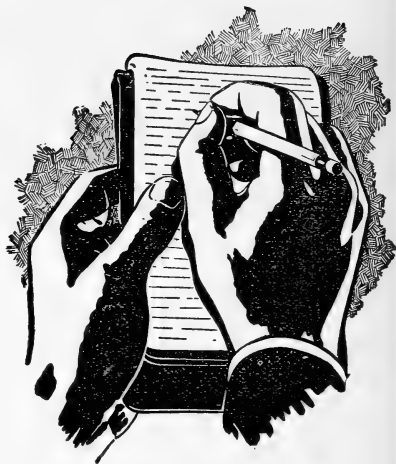
100 - \$1.60 500 carton - \$7.25



(Prices F. O. B. Salisbury, Md. See postage chart for Parcel Post charges. 500 Basket cartons will be shipped Freight or Express Collect because of Postal limitations governing size of package. Where only Parcel Post service is available cartons may be shipped in 2 packages. Early large orders may be shipped by Freight for cheapest transportation.)

YOU CAN RELY ON RAYNER BROTHERS

Our Customers Write To Us...



It is indeed gratifying to receive so many nice letters from our customers. We are quoting a few of them on these pages.

BLUEBERRIES FINE

Bucks County, Penna., Oct. 1, 1948

The blueberry bushes we got from you in the Spring have grown beautifully.

Mrs. Roger Mason

MUCH PLEASED, ENLARGING PLANTINGS

Suffolk County, N. Y., Aug. 26, 1948

I am very much pleased with the ones I received in Spring and am enlarging my strawberry patch to take care of 2,000 more plants.

Mrs. Robert Allgaier

500 QUARTS FROM 400 PLANTS

Dauphin County, Pa., April 6, 1948

The four hundred berry plants which I purchased from you in 1946 bore a splendid crop last year. I harvested over 500 quarts of berries.

Harry C. Gipe

UNSURPASSED PLANTS

Westmoreland County, Pa., April 6, 1948

Rayner plants are unsurpassed. They're tops.

Roy E. Dillinger

SAYS NICEST PLANTS EVER BOUGHT

Perry County, Pa., April 13, 1948

I will recommend your plants and good service to every one I know who grows strawberries.

Floyd O. Crum

BLACK RASPBERRIES BEST EVER SEEN

Wyoming County, N. Y., May 10, 1948

I thank you for your prompt and efficient service. I don't think I have ever seen as strong healthy roots on plants as these have.

Mrs. Clark Safford

LIKES OUR SERVICE

Wayne County, Ohio, May 14, 1948

I fully appreciate your diligent service in the past. Your courtesy to the customers you have is certainly a fine recommendation.

David A. Redding

RED RASPBERRIES SWELL

Hamilton County, Indiana, May 12, 1948

The red raspberry plants you shipped me a few weeks ago were swell, all plants lived and am well pleased with them.

Jett Hinshaw

BELIEVES EVERY PLANT WILL LIVE

Washington County, Va.

I received the 400 berry plants in fine shape and just when I wanted them. And they look like every plant will live.

Paul A. Singleton

EVERYONE ADMIRES LARGE BERRIES

Tioga County, N. Y., June 14, 1948

I'm just awfully proud of my Rayner Strawberries. And, everyone who has been here have never seen any larger and nicer berry.

Mrs. Roy Ingham

MOST SATISFACTORY PRODUCTION

Nassau County, N. Y., June 20, 1948

Just a note to let you know how very pleased I am with your strawberries. This is their first productive year and they are most satisfactory.

Miss Jean Doughty

3,000 PLANTS DOING FINE

Washington County, Md., September 1, 1948

My 3,000 plants I got from you sure look nice. I will want that many more in the spring of '49.

Mr. L. C. Fritz

DOING WELL IN NEW HAMPSHIRE

Grafton County, N. H., June 7, 1948

The strawberries we bought from you recently came in good condition and are doing well in the garden now.

W. T. Chan

MASSACHUSETTS GROWER WELL PLEASED

Worcester County, Mass., April 20, 1948

They arrived in excellent condition. All were fine healthy plants. I am very much pleased with them.

Fred Walodse

WEST VIRGINIA SHIPMENTS FINE

Grant County, W. Va., April 20, 1948

I received both shipments of strawberry plants in good condition. I am well pleased with them.

S. M. Havlin

99 PERCENT LIVABILITY

Pickaway County, Ohio, June 4, 1948

The berry plants I received from you last spring were fine, only 4 out of 300 did not grow.

Wilbur E. Brinker

COMPLETE GARDEN PLANNED FOR YOU



One sure way to beat high food costs and set an even better table is to grow your own fruits and vegetables. Much better too, because you will have the benefit of that freshly picked flavor with all the natural taste and vitamins, too. A few dollars invested now will return to you dozens of times as you gather the bountiful harvests from your garden. These selections give you everything you need. And you can have them all - or any part - at real rock-bottom prices.

STRAWBERRIES - Enough to plant 300 ft. of row
 200 Plants 50 Early 50 Midseason - Worth \$8.20
 50 Late 50 Everbearing

BLUEBERRIES - Selected varieties for a long season
 9 plants 2 Year Size - - Worth \$8.10
 Will bear next summer

RASPBERRIES - 6 Red - 6 Black - 6 Everbearing
 18 plants Newburgh, Indian Summer - Worth \$5.05
 and Morrison

GRAPES - 2 Red - 2 Blue - 2 White
 6 vines Niagara, Concord - - Worth \$3.00
 and Caco

BLACKBERRIES - 6 Sturdy Plants - Worth \$1.45

ASPARAGUS and RHUBARB - Worth \$5.10
 50 2 yr. Roots - 3 McDonald Red

\$30.90 VALUE FOR ONLY **\$19.98**

- "B" GARDEN without Strawberries - \$15.98
- "C" GARDEN without Blueberries - - \$15.98
- "D" GARDEN without Raspberries - - \$16.98
- "E" GARDEN without Grapes - - - \$17.98
- "F" GARDEN without Asparagus - Rhubarb - \$16.98
- "G" GARDEN without Blackberries - - \$18.98

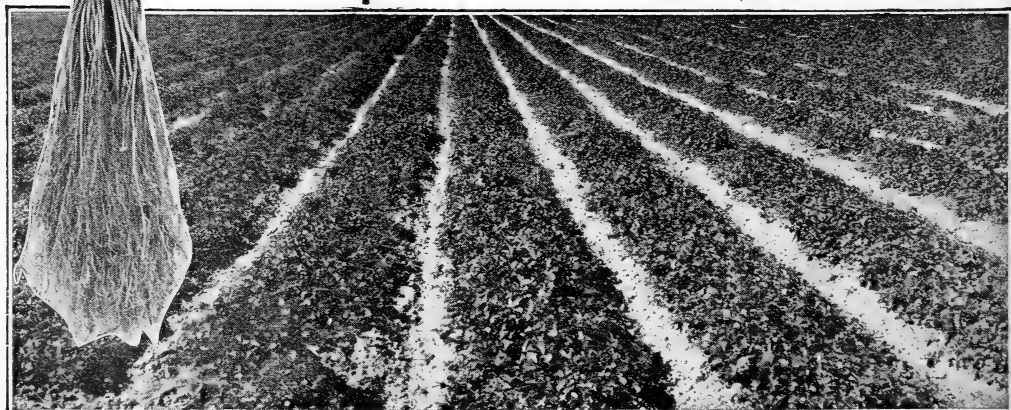
To order Complete Garden merely write "Complete Garden" on order sheet.
 Please order other Gardens by letter listed with each.

YOU CAN RELY ON RAYNER BROTHERS



Our Pledge to You . . .

- 1 Plants purchased from these pages will be True-to-Name.
- 2 Your plants will be selections from the Very Best parent stock.
- 3 You will receive a Full count of plants with good healthy crowns and fully developed root systems.
- 4 Your Plants will be carefully dug and packed to reach you in perfect growing condition.
- 5 You will receive complete information for the utmost Growing Success.
- 6 All illustrations in this catalog are actual Photographs, Nothing has been done to mislead and we have carefully avoided overstatement.



You must be satisfied.
Any plants not entirely
satisfactory will be
replaced or your
purchase price refunded.

**Our Guarantee
to You**

References:

American
Association
of Nurseriesmen
Washington, D. C.

Your Own State
Experimental Station
or County Agent

Farmers & Merchants
Bank

County Trust Co.
Salisbury, Md.

Dun & Bradstreet
New York

Pointers on Planting



We would not be content to merely ship you an order of plants and display no further interest in the success of your plantings. We want these plants to grow well and produce abundant crops that will make you always glad you relied on Rayners for the best in plants. We are outlining on these pages the important phases of plant culture. You will also receive full planting information with your order and you are always welcome to write for additional information or advice.

Growing Strawberries

Strawberries are one of the easiest fruits to grow. Good plants set at the proper season in good soil will respond with ordinary care and cultivation. There is nothing complicated about growing strawberries, and by following these easy instructions the beginner can assure good results.

Soil Requirements—Strawberries can be produced in abundance on any good garden soil or land that has produced satisfactory crops of garden or regular field crops. Land that has had thorough cultivation is best but if vacant lot, garden space or field that has been unattended has a rank growth of weeds and grass this an indication that the soil is fertile enough to grow excellent crops of strawberries.

Preparing The Land—The land should be plowed or dug as early in the spring as possible and worked until a level plant bed is formed. An application of horse, cow, hog or sheep manure at the rate of 1 bushel for every 50 square feet is good if applied before plowing or worked well into the soil. However, if previous crops have been well fertilized, good results may be expected without further fertilizing. (See paragraph on Fertilizer and Manure). When planning to set additional ground in strawberries it is well to consider plowing under a late summer crop of such green manure as peas, beans and other grasses or cover crops, or even natural weed growth. Plowing under while green will cause cover crops to rot much faster and also help destroy weed seeds. Early fall sowing of cover crops for discing under as early as possible in spring is also a good practice.

Planting Methods—If plants are to be set in rows, mark off rows $3\frac{1}{2}$ to 4 feet apart from center to center so that rows will be about 2 feet wide when bedded and ample alleys will be left for cultivation. For the small garden and hand cultivation spacing may be narrower if desired. Plants should be set about 18 inches apart. In setting plants the most important points are to have the roots straight down with the soil packed firmly along entire root length and crown even with the surface. Proper depth is very important, but is easily established by following the illustration in these directions. If roots are too long (some varieties are much longer rooted than others) the roots may be clipped to a length of 4 or 5 inches without damage to the plants.

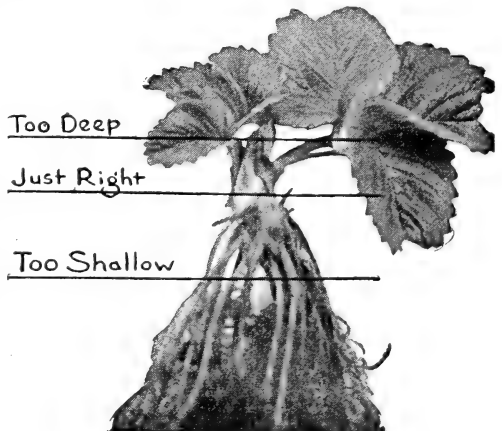
Readying The Plants For Setting—Plants from RAYNERS will come to you thoroughly cleaned with roots straightened and ready to set into the ground. Before setting, the roots should be covered with water so that they may soak up all moisture possible to hold them in good condition until the feeder roots begin their job. Before and during planting, keep plants protected from sun and wind and keep them thoroughly moist. IF PLANTS CANNOT BE SET SOON AFTER ARRIVAL they should be removed from the crate, the package material moistened, and then be re-packed loosely. Stored in a cool, damp place they will keep in good condition three or four days. IF PLANTS MUST BE KEPT LONGER, they should be placed in cold storage around 32 degrees or if this is not convenient they should be heeled in. This is done by digging a V-shaped trench four or five inches deep. Spread plants thinly so soil contacts all roots and pack soil firmly up even with crowns of plants (note illustration). Water thoroughly and keep shaded if weather turns warm.

If weather turns colder a light covering of straw or other mulch will protect plants until ready for setting.

Cultivation—Frequent cultivation will keep the ground from becoming crusted and will greatly retard weed growth. Plants should be hoed soon after set and any plants too deep or too shallow should be attended to. Be sure crowns are not covered as this will smother the plant and cause it to die. If roots are exposed there is danger of drying out. (See illustration). Hoe and cultivate shallow to avoid disturbing the roots. After plant bed is formed plants should not be allowed to become too dense. About 7 plants per square foot is considered ample and extra plants may be cut out with the hoe. A well spaced row provides more and better fruit.

Removing Blossoms—Flower stems usually appear on strawberry plants soon after they are set in the field and as the production of fruit on newly set plants is a severe drain on their vitality, the flower stems should be removed as blossoms appear. This will materially help the number of new runner plants and give them a much better fruiting bed. WITH EVERBEARING PLANTS the blossoms should be removed until the plants are well established. This will usually require about sixty to ninety days.

Time To Plant—Early spring, just as early as the ground can be worked, is the best time to set strawberry plants. Light frosts that do not heave the ground will not injure the newly set plants. PLANT EARLY while plants are fully dormant and the weather is most favorable to good growth. Early planting is the most important single factor in successful strawberry culture. April in the North; to May 15 in the far North; March and April in the Middle States; November to April in the South.



RAYNER BROTHERS ARE RELIABLE

How Plants Are Held Perfectly Dormant By Controlled Storage

Strawberry plants dug in winter and stored at controlled temperatures often show better results than freshly dug plants. The United States Department of Agriculture has conducted extensive experiments on our farms on proper storage temperatures and practices. These experiments proved that plants dug while still fully dormant (before April 10) and stored at the correct temperature would be more vigorous than freshly dug plants, especially when set later than April 15th.

For our own plantings we are now using controlled storage plants that are dug during the winter. These plants can be kept dormant as long as desired. When weather has held up planting until late spring plants held dormant by controlled storage have given us as good results as fresh dug plants set in March.

We know from our experience that plants set in late April or May will do much better if dug while fully dormant and properly stored, instead of freshly dug plants that have begun to make spring growth. If you have a commercial storage plant near you that provides storage at 32 degrees, we recommend you order your plants early and store them so you can have them whenever desired. We recommend storage plants without reservations.

Fertilizer and Manure—Barnyard manure may be applied in fall, winter or very early spring at the rate of about 10 tons or more per acre. It may be applied after plowing on light soils and then disced in, or before plowing on heavy soils. If strawberries are grown on land following crops that have been fertilized, it is not usually necessary to apply any manure or fertilizer. If plants are making a strong, vigorous growth and have dark-green foliage throughout the summer this indicates the supply is adequate and no additional supply is needed.

Complete commercial fertilizers (approximately 5-10-5 or 5-10-10 mixture) give good results and are used by many commercial growers. To aid plants in getting a vigorous start fertilizer may be applied broadcast and thoroughly worked in the soil a week ahead of setting plants, or may be applied as a top dressing at the first cultivation after plants are set. Apply evenly and brush off any that may be on the leaves. Six pounds per 100 feet of row or 700 pounds per acre is ample.

Chicken manure mixed two parts to one part 16% superphosphate makes a satisfactory material. Chicken manure should be applied evenly while foliage is dry. Barnyard manure includes horse, cow, hog and sheep manure, to be used as indicated in first paragraph. **WHERE FALL FERTILIZING IS INDICATED** on moderately fertile soils where growth of plants is not very vigorous, 5 to 7 pounds of fertilizer per 100 feet of row or 600 to 800 pounds per acre will give good results when applied in late August or September.

Spraying and Dusting—Strawberries are seldom subject to any serious damage from disease or insects. Healthy plants of varieties immune or resistant to disease are your best assurance. Should your plants develop insect trouble, write and describe the condition and we will be glad to advise you. It is also a good bet to call on your County Agent because of his familiarity with local problems. If you do not know him, we will supply his name and address.

Summer and Early Fall Planting Not Advisable—Strawberry plants should not be dug and shipped during the growing season. Satisfactory results can be obtained only from dormant plants dug and shipped in November. In the interest of our customers we do not ship plants during July, August, September and October.

USE RAYNERS SPECIAL CUSTOMER SERVICE

In addition to planting instructions included with each order, special bulletins are available on pruning, plant care after fruiting, spraying, trellising and other subjects.

THIS INFORMATION IS ALWAYS AVAILABLE TO OUR CUSTOMERS.

Mating Varieties—All the varieties we offer are perfect flowering and will produce a full crop when planted alone. Varieties will not mix.

Winter Mulching—Mulching is a good practice because it guards against winter injury to roots and crowns and prevents plants from heaving out of the ground by alternate freezing and thawing. Ordinarily as soon as temperatures of 25 degrees or lower have occurred, mulch should be applied to cover beds at least 2 inches deep. Straw, marsh hay, pine needles and similar materials are satisfactory. Where growth is not too vigorous, strawy stable manure is recommended. As soon as growth starts in Spring the surplus mulch should be raked into the alleys. A light covering may be left for the plants to grow through. Mulching helps keep down weeds, keeps berries clean and conserves moisture, and for that reason is often practiced where winter injury is not a hazard.

Plants Required Per Acre

Plants required per acre at various planting distances:

Rows	Distance in Row	Plants per Acre
3½ feet apart	15 inches	10,000
3½ feet apart	18 inches	8,925
3½ feet apart	24 inches	6,225
3½ feet apart	30 inches	5,000
4 feet apart	15 inches	8,750
4 feet apart	18 inches	7,300
4 feet apart	24 inches	5,425
4 feet apart	30 inches	4,375

3 POINTS TO REMEMBER

FIRST—Plant **EARLY** in the Spring, just as soon as weather conditions permit preparing the soil. Plants set while fully dormant start far better and moisture supply and temperatures are most favorable in the Spring.

SECOND—Renew a part of your plantings each year. A planting is usually considered good for two or three years fruiting, with proper cultivation and favorable weather. However, the first year's fruiting is the best and in successive years the plants tend to blossom earlier and are more susceptible to frost damage and the size of fruit begins to run down. By renewing a part of your plantings each year you are assured of a more constant supply of finest quality berries.

THIRD—Set good plants. Quality and vitality of plants will largely influence growth and production. RAYNER'S vigorous, healthy plants assure high yields and best returns.

YOU CAN RELY ON RAYNER BROTHERS

Growing Blueberries



Adaptability—Cultivated blueberries are being successfully grown from North Carolina to the Northern boundaries of the Country. The best indication that blueberries may succeed on a soil is that they or some related plants, such as huckleberries, azaleas, or laurel, are found growing there naturally. We do not feel any exact limit of adaptability has been established and would suggest trial plantings anywhere except in the deep South or where the soil is alkaline or very dry.

Soils—**VERY IMPORTANT**—Natural blueberry soils have a p.h. value from 3.8 to 5.5 with best growth occurring between p.h. 4.1 to p.h. 5. These soils have an abundance of humus and a fairly constant high water table. Such soils must have a good surface drainage, as flooding during the growing season may cause serious injury. Planting on this type of soil is usually done on wide ridges, six to seven inches high. **DO NOT PLANT BLUEBERRIES IN RICH GARDEN SOIL THAT HAS HAD THE BENEFIT OF LIME, STABLE MANURE OR OTHER SOIL SWEETENERS.** If you set blueberry plants in your garden or lawn the best method is to dig a large hole where each plant is to be set and fill with woods leaf mold (the decayed leaf and straw matter found in woodland). If this material is not readily available mix your soil with generous proportions of peat, sawdust (preferably rotting hardwood sawdust), or similar humus materials. **UNDER NO CIRCUMSTANCES** should lime or stable manure be permitted to come into contact with the area in which plants are set. It should be borne in mind that the productiveness of a blueberry planting depends largely on the moisture supplied in the upper soil.

Mulching—On all but natural blueberry soil, a permanent mulch should be applied as soon as the plants are set. Such materials as straw, sawdust, salt hay, sudan grass, pine needles or leaves should be spread around the plants about six inches deep. Further applications should be made each year in sufficient quantities to maintain the mulch. With individual plants mulch should be applied over an area six to eight feet square.

Pruning—Usually very little pruning is necessary until the end of the third season, when regular annual pruning should ordinarily begin. Pruning directions are included with your order.

Fertilizer—The application of commercial fertilizer has given a very marked increase in the yield and size of fruit. Applications of $\frac{1}{4}$ to $\frac{3}{4}$ lb. per bush have been very successful. We are using a standard 5-10-5 fertilizer with very good results. Application should be made in a wide band spread evenly around the plant about 10 inches from the plant. Where sawdust mulch is used, 2 oz. sul-

phate ammonia per bush should be added the second and third years to supply necessary nitrogen. Also note paragraph 2 on bottom of this page. **NO FERTILIZER SHOULD BE APPLIED THE FIRST YEAR PLANT IS SET.**

Pollination—It is generally conceded that many or all of the cultivated blueberries tend to be self-sterile. Therefore, two or more varieties should be planted to insure good pollination.

Planting—For commercial planting, plants are set every four feet in rows eight to ten feet apart as many varieties of blueberries reach a height of six to seven feet and a width of five to six feet. Plants should be set slightly deeper than they grew in the nursery, with the roots well spread out. When planting, we place a thin layer of pulverized peat and sand, which has been soaked and mixed half and half, below and above the roots. We feel this makes an ideal rooting medium, and will keep the plant well supplied with moisture until it becomes established. Before planting, **one-half to two-thirds of the top growth should be pruned off.** For the home planting plants may be set in whatever manner is convenient, giving them about thirty-two square feet of space to each plant.

Yields—On good blueberry soil, yields of 6 to 8 pints per plant may be expected from mature plants and with medium pruning plants may produce 12 to 20 pints. However, most varieties will tend to overbear and after the third year it is the practice of commercial growers to prune the plants to keep up the size of the berries and encourage vigorous new growth for the next year's crop. Individual bushes will produce some fruit after being planted 1 year. A good rule of thumb is to estimate 1 pint per year of age of well established bushes; for example, 6 pints from a 6 year bush, etc. Present records indicate that blueberry plantings, with proper care, will be profitably productive for fifty to seventy-five years, and possibly longer.

Profits—Since the introduction of these large, cultivated blueberries their excellent flavor and unusual size have kept them in the price bracket of a novelty and prices have ranged very high with 75c per pint often realized. The market continues to increase as more fruit becomes available and many areas are just beginning to enjoy the introduction of hybrid blueberries. It is safe to state the market has merely been scratched, and because of their solid meatiness, good keeping qualities and absolute minimum of waste (no caps to remove) customers feel justified in paying premium prices above other berries. All of these reasons establish the blueberry as a dependable profit maker.

POINTS TO REMEMBER ABOUT BLUEBERRIES

1. Plant at least two varieties to provide for cross pollination. Cultivated blueberries are considered self-sterile.
2. Blueberries should not be planted on soils limed in recent years unless actual tests show soils are still acid enough for blueberries. For less acid soils, decaying leaves or acid peat, rotting straw, sawdust, etc., may be mixed into soil to make conditions suitable. This is important if you are planting in your garden or on your lawn. Aluminum sulphate at rate of 5 lbs. per 100 sq. ft. and up to 10 lbs. on heavy loams is excellent for garden plantings.
3. Do not permit lime or stable manure to come into contact with immediate area in which plants are set. See directions on Soils and Fertilizers on this page.

RAYNER BROTHERS ARE RELIABLE

GROWING RASPBERRIES

Select any well drained soil, preferably sandy loam or light clay or soil that will produce such crops as corn or potatoes. It is advisable to spread the land with manure before planting. Early spring planting is most satisfactory. For hill system the usual distance to plant is 5 ft. by 5 ft. If the hedge system is desired, plant 3 ft. apart in rows which are 5 to 7 feet apart. Before planting, the tops should be cut back to 6 inches or less, and plants should be set 2 to 3 inches deeper than they grew in the nursery (soil mark is very plain). Cultivate frequently enough to retain moisture and kill weeds, but be sure not to cultivate over 2 to 3 inches deep next to plants.

After the fruiting season remove all fruiting canes, cutting them close to the ground and burning them. This will help prevent disease and greatly aid new growth. Do not allow over 8 canes to grow to the plant. Remove all weak canes and suckers so as to throw all the strength into the young bearing canes. Topping canes in the early spring will strengthen the canes and aid in picking. Raspberries respond readily to fertile soil, and sufficient fertilizer or manure should be used to keep the soil in good fertile condition. A mulch of straw, hay, leaves, etc., helps retain moisture and takes the place of cultivation.

GROWING GRAPES

Plant in a well drained location six to eight feet apart. If set in rows the rows should be about 8 feet apart. Before setting, vines should be pruned back so that only a few inches of stalk remain with two or three buds. Roots may also be trimmed to an 8 to 10 inch length. Be sure to dig holes large enough to spread roots well and set slightly deeper than roots grew in nursery (this is indicated by a definite soil mark).

Stable manure is an excellent fertilizer. Nitrate of Soda at rate of 4 to 8 ozs. per bush is also widely used.

Grapes may be trained along a garden fence or

a regular arbor may be constructed to suit the desired arrangement in the garden. A simple method is to follow the practice of the commercial growers and settle posts from which three wires are strung with the lower wire supporting the vines as they grow from the main trunk and the middle and top wires to support the vine growth. This simple arrangement makes easy pruning as all that is necessary is to prune back to the main trunk branches along the lower wire in February or March before signs of new growth. FULL PRUNING AND GENERAL CULTURAL DIRECTIONS WILL BE SENT WITH YOUR ORDER.

GROWING ASPARAGUS

Asparagus grows best on light, loamy soil but is successful on practically any good garden soil. Before planting the soil should be worked well and furrows run out 6 to 10 inches deep, four to five feet apart. Roots should be set 12 to 18 inches apart down the furrows with roots well spread out. The crowns are covered firmly with three inches of soil when set and when cultivating the soil is gradually worked into the remaining furrow over a period of about 60 days or until level. Do not

fill furrow too fast to prevent smothering.

Cultivation should be thorough and at intervals frequent enough to keep down weeds, and conserve moisture. Shoots may be cut for two or three weeks the year following planting and thereafter as long as desirable and then let tops grow. Right after cutting season the field should be given a heavy application of stable manure or commercial fertilizer high in nitrogen, at the rate of 10 to 25 pounds per 100 feet of row.

GROWING RHUBARB

Plants should be spaced from 3 to 4 feet apart and the crowns set 4 inches below the surface so they will be covered with 2 to 3 inches of soil. Firm soil about the roots with the feet. Apply

liberal quantities of manure or fertilizer on land before planting. Shallow cultivation often enough to control weeds is all that is required. Mulching is an easy method of weed control.

GROWING BLACKBERRIES, BOYSENBERRIES

Culture is very similar to Raspberries. Cut back the plants when set, leaving 3 inches and not more than 6 inches of cane. Set plants same distance as Raspberries. Dig holes large enough to spread roots well and just deep enough to leave the crown or new growth about one inch under the soil. Pack soil firm, but not too hard, over the

bud so it can start growth without interference. Water well if ground is dry. Bush fruits do not need plant food the first year after planting. Well rotted stable manure makes a good mulch in late fall before the ground freezes. FULL PRUNING, MULCHING AND OTHER INFORMATION INCLUDED WITH YOUR ORDER.

GROWING SWEET POTATOES

Sweet potatoes are most productive and the tubers are better formed when grown on sandy or light soils. Plants may be set as soon as all danger of frost is past. Set on wide ridges 32 to 36 inches apart with the plants 12 to 18 inches apart in the ridge. On very light sandy soil the plants may be set level and ridges formed through cultivation, but on average soils it is best to form the ridges before planting.

Plants should be kept moist and protected from sun and wind until set. Watering as the plants

are set is a good practice. Cultivate until the vines practically cover the ground or tubers begin to form. Topdress with complete fertilizer, high in potash, a week to 10 days after planting at the rate of 4 to 6 pounds per 100 feet of row.

When digging, if the potatoes are to be stored for later use, care should be taken to avoid bruising and scarring. Lining the containers with paper is a good practice. Store in a dry, warm place where the temperature will not fall below 50 degrees.

Rayner Grown Plants Guaranteed Hardy in Coldest Climates

Here on Maryland's famous peninsula between the Chesapeake Bay and the Atlantic Ocean, freezing weather does not usually occur until late November and often as late as Christmas time. Our plants show root growth longer than more northerly grown plants. However, during the winter months there is plenty of freezing weather that gives our plants the extra hardness that fits them for transplanting in the coldest climates. That's why RAYNER'S plants are so popular in Pennsylvania, New York, the New England States and other cold weather sections.

HOW to FIGURE PARCEL POST RATES

All you do is note the number listed back of your State on this page. Locate this number on Parcel Post chart below and amount of postage will appear on line listing quantity of plants ordered. Include this amount with your order. If you prefer shipment, by Express do not send money for shipping charges and delivery man will collect at your door. If you do not indicate method of shipment or include charges we will ship best way, charges collect.

YOUR ZONE NUMBER IS LISTED WITH YOUR STATE

Alabama 5	Indiana 4	Montana 7	North Dakota 7	Texas 6
Arizona 8	Iowa 5	Nebraska 6	Ohio 4	Utah 6
Arkansas 5	Kansas 6	Nevada 8	Oklahoma 6	Vermont 4
California 8	Kentucky 4	New Hampshire 4	Oregon 8	Virginia 3
Colorado 7	Louisiana 5	New Jersey 2	Pennsylvania 3	(east of Staunton,
Connecticut 3	Maine 4	(north of New	(Counties south	Danville 1 & 2)
Delaware 1 & 2	Maryland 1 & 2	Brunswick 3)	and east of	Washington 8
Dt. Columbia 2	Massachusetts 4	New Mexico 7	Harrisburg 2)	West Virginia 3
Florida 5	Michigan 4	New York 3	Rhode Island 4	(Charleston and
Georgia 4	Minnesota 5	(north of	South Carolina 4	south and west 4)
Idaho 8	Mississippi 5	Albany 4)	South Dakota 6	Wisconsin 5
Illinois 5	Missouri 5	North Carolina 3	Tennessee 5	Wyoming 7

PARCEL POST RATES BY ZONE NUMBERS

STRAWBERRIES, SWEET POTATO PLANTS, ASPARAGUS ROOTS

Quantity of Plants	Zones 1 & 2	3	4	5	6	7	8
25 Plants	\$.15	\$.16	\$.19	\$.21	\$.24	\$.27	\$.30
50 Plants	.17	.19	.23	.27	.31	.36	.41
100 Plants	.21	.25	.32	.39	.46	.55	.64
200 Plants	.27	.34	.46	.57	.69	.84	.99
300 Plants	.31	.40	.55	.69	.84	1.03	1.22
400 Plants	.47	.63	.89	1.13	1.42	1.77	2.12
500 Plants	.57	.77	1.10	1.41	1.78	2.23	2.68
750 Plants	.73	.99	1.44	1.85	2.36	2.97	3.58
1000 Plants	.87	1.19	1.74	2.23	2.87	3.76	4.57

GRAPE VINES, RASPBERRIES, BLACKBERRIES, BLUEBERRIES

Quantity	Zones 1 & 2	3	4	5	6	7	8
3 to 6 Plants	\$.21	\$.25	\$.32	\$.39	\$.46	\$.55	\$.64
7 to 12 Plants	.25	.31	.41	.51	.61	.74	.87
13 to 20 Plants	.29	.37	.50	.63	.76	.93	1.10
21 to 30 Plants	.33	.43	.59	.75	.91	1.12	1.33

Postage rates on Blueberries figured on 2 year plants. Postage on 1 year Blueberry Plants one-half of above rates. Postage on 3 year Blueberry Plants double the above rates.

BERRY BASKETS

Quantity	Zones 1&2	3	4
100 Pints	\$.25	\$.31	\$.41
100 Quarts	.29	.37	.50
200 Pints	.41	.54	.76
200 Quarts	.51	.68	.97
300 Pints	.59	.80	1.14
300 Quarts	.71	.96	1.40

DUE TO POSTAL REGULATIONS governing size of package, not more than 300 baskets may be shipped in one package. On larger orders to be shipped Parcel Post please figure postage on each 300 unit. Standard cartons of 500 may be shipped by Express or Freight.

INDEX

	Page Numbers
ASPARAGUS	32
BASKETS	33
BLACKBERRIES	30
BLUEBERRIES	23 to 27
BOYSENBERRIES	30
GRAPES	31
RASPBERRIES	28-29
RHUBARB	33
STRAWBERRIES	6 to 21
SWEET POTATOES	33
Complete Strawberry Price List on Page 43	

HOME GARDENS



Be Sure to Include Some of These Bargains With Your Order.
Top Quality Selections Sure to Please

STRAWBERRY GARDENS

- | | |
|---|----------------|
| No. 1. NORTHERN GARDEN—100 plants of choice varieties described on Page 13. | \$2.95 |
| No. 2. FLAVOR FAVORITE GARDEN—125 plants of best flavored described on Page 10. | \$3.95 |
| No. 3. ALL SEASON GARDEN—75 of regular varieties and 75 everbearing for a full season of strawberry enjoyment described on Page 17. 150 Plants - \$6.90 Value. | \$5.49 |
| No. 5. MARKET GARDENER'S SPECIAL contains 1000 plants of choice, most flavorful varieties offering your customers the very best. Described on Page 11. | \$16.95 |
| No. 6. EVERBEARING GARDEN offers 3 varieties of everbearing strawberries. See page 22 for full description. 75 Plant Garden. | \$3.95 |
| No. 7. ALL VARIETIES OF EVERBEARING. This garden enables you to try them all at a bargain price. 25 plants of all 5 varieties. 125 Plant Garden described on page 22. | \$7.95 |

BLUEBERRY GARDENS

- | | |
|---|---------------|
| No. 1. BEARING AGE GARDEN contains 6 choice 18-24" plants described on page 27. A \$11.10 value for | \$8.98 |
| No. 2. FLAVOR GARDEN contains 6 plants in 9-12" size described on page 27. A \$6.30 value for | \$4.98 |
| No. 3. ROOTED CUTTING GARDEN contains 18 plants for the gardener who would like a blueberry garden at rock bottom cost. Described on page 27. | \$4.98 |
| No. 4. BARGAIN GARDEN features 12 choice 3 year plants at a new low price. See page 27 for description. | \$9.98 |
| No. 5. NEW VARIETIES GARDEN offers an excellent selection at a new low price. 6 plants in 12-18" size described on page 26. | \$8.98 |

RASPBERRY GARDENS

- | | |
|---|---------------|
| No. 5. RED AND BLACK VARIETIES - 18 PLANTS
6 Newburgh (red), 6 Morrison (black), 6 Indian Summer (red) | \$3.69 |
| No. 6. PURPLE AND BLACK VARIETIES - 18 PLANTS
6 Sodus (purple), 6 Morrison (black), 6 Cumberland (black) | \$2.95 |
| No. 7. RED RASPBERRY GARDEN - 36 PLANTS
12 Latham - 12 Newburgh - 12 Indian Summer (Everbearing) | \$4.95 |

Plant Strawberries in Spring - Plant Blueberries, Raspberries in Spring or Late Fall.

Strawberry Price List

Rayner's High Quality at New Low Prices

(Prices on Blueberries, Raspberries, Grapes and other Plants on Descriptive Pages)

	25	50	100	200	300	500	750	1000	5000
	Plants	Plants	Plants	Plants	Plants	Plants	Plants	Plants	lots per 1000
Early Varieties									
BLAKEMORE90	\$1.50	\$2.40	\$4.20	\$5.40	\$7.50	\$9.90	\$11.50	\$10.50
DORSETT	1.05	1.75	2.80	4.90	6.30	8.75	11.55	14.00	13.00
FAIRFAX	1.05	1.75	2.80	4.90	6.30	8.75	11.55	14.50	13.50
KLONDIKE75	1.25	2.00	3.50	4.50	6.25	8.25	10.00	9.00
KLONMORE75	1.25	2.00	3.50	4.50	6.25	8.25	10.00	9.00
MAXTIME75	1.25	2.00	3.50	4.50	6.25	8.25	10.00	9.00
MIDLAND	1.15	1.90	3.00	5.25	6.75	9.40	12.40	15.50	14.50
MISSIONARY75	1.25	2.00	3.50	4.50	6.25	8.25	10.00	9.00
PREMIER	1.00	1.70	2.70	4.75	6.10	8.45	11.15	13.50	12.50
HOWARD 17	1.00	1.70	2.70	4.75	6.10	8.45	11.15	13.50	12.50
TEMPLE	1.00	1.65	2.60	4.55	5.85	8.15	10.75	13.00	12.00
Midseason Varieties									
ABERDEEN90	1.50	2.40	4.20	5.40	7.50	9.90	12.00	11.00
BIG JOE	1.00	1.65	2.60	4.55	5.85	8.15	10.75	13.00	12.00
CATSKILL	1.00	1.70	2.70	4.75	6.10	8.45	11.15	13.50	12.50
FAIRLAND	1.05	1.75	2.80	4.90	6.30	8.75	11.55	14.00	13.00
MASSEY90	1.50	2.40	4.20	5.40	7.50	9.90	12.00	11.00
PATHFINDER90	1.50	2.40	4.20	5.40	7.50	9.90	12.00	11.00
ROBINSON	1.05	1.75	2.80	4.90	6.30	8.75	11.55	14.00	13.00
SCARLET BEAUTY ..	1.05	1.75	2.80	4.90	6.30	8.75	11.55	14.00	13.00
SEN. DUNLAP90	1.50	2.40	4.20	5.40	7.50	9.90	12.50	11.50
SPARKLE	1.05	1.75	2.80	4.90	6.30	8.75	11.55	14.50	13.50
STARBRIGHT90	1.50	2.40	4.20	5.40	7.50	9.90	12.00	11.00
SUWANEE90	1.50	2.40	4.20	5.40	7.50	9.90	12.00	11.00
Late Varieties									
AMBROSIA90	1.50	2.40	4.20	5.40	7.50	9.90	12.00	11.00
AROMA75	1.25	2.00	3.50	4.50	6.25	8.25	10.00	9.00
CHEESAPEAKE	1.15	1.90	3.00	5.25	6.75	9.40	12.40	15.50	14.50
FAIRPEAKE	1.10	1.80	2.90	5.10	6.50	9.10	12.10	14.50	13.50
LUPTON90	1.50	2.40	4.20	5.40	7.50	9.90	12.00	11.00
REDSTAR	1.10	1.80	2.90	5.10	6.50	9.10	12.10	14.50	13.50
Everbearing Varieties									
BRUNES MARVEL	1.25	2.10	3.30	5.80	7.45	10.35	13.65	16.50	15.50
GEM	1.90	3.15	5.00	8.75	11.25	15.65	20.65	25.00	24.00
MASTODON	1.90	3.15	5.00	8.75	11.25	15.65	20.65	25.00	24.00
STREAMLINER	2.25	3.75	6.00	10.50	13.50	18.75	24.75	30.00	29.00
WAYZATA	2.80	4.70	7.50	13.15	16.90	23.45	30.95	37.50	36.50


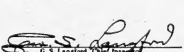
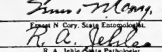
Quantity Discounts

2000 Plants of a variety—Deduct 20c from 1000 rate quoted above.
 3000 Plants of a variety—Deduct 40c from 1000 rate quoted above.
 4000 Plants of a variety—Deduct 70c from 1000 rate quoted above.
 5000 Plants—\$1.00 less than 1000 rate. See 5000 rate in right column.

TERMS — One-fourth with order; balance before shipment.

OUR PLANTS ARE CERTIFIED

A COPY OF OUR STATE CERTIFICATE ACCOMPANIES EVERY SHIPMENT

UNIVERSITY OF MARYLAND	
COLLEGE PARK, MARYLAND	DATE <u>July 22, 1948</u>
 STATE HORTICULTURAL DEPARTMENT Certificate of Inspection	
Duplicate Number <u>47</u>	
This is to certify, That on the <u>22nd</u> day of <u>July</u> , 1948, we, the undersigned, having seen of <u>Rayner Straw</u>	
located at <u>Salisbury</u> County of <u>Wicomico</u>	
State of Maryland, in accordance with the laws of Maryland, 1881, Chapter 283, Section 18, that said specimen and produce are superior to the standard as set by the Department of Inspection, from the San Jose Scale, Peach Yellow, Pear Slight and other dangerous diseases, and are free from insects.	
This Certificate is valid until <u>September 30</u> , 1949, unless sooner revoked and does not include nursery stock not grown within this State, unless such stock is previously covered by Certificate and accepted by the State Entomologist and State Pathologist.	
 J. M. C. Langford State Entomologist	 R. A. Schuler State Pathologist

FREE!

\$1.00 Worth of Strawberry Plants

See Back of Order Sheet For Particulars

WE WILL BE GLAD TO QUOTE DELIVERED PRICES

All Varieties F.O.B. Salisbury, Maryland. See Page 41 for Parcel Post Rates.

RAYNER BROTHERS, SALISBURY, MD

Rayner's
CULTIVATED
BLUEBERRIES

A REAL
MONEY MAKER

