

Historic, archived document

Do not assume content reflects current scientific knowledge, policies, or practices.

STRAWBERRIES — BLUEBERRIES
FRUIT TREES — GRAPES
ASPARAGUS — ORNAMENTALS

Rayner's 1969 **BERRY BOOK**

National Agricultural Library
RECEIVED

JAN 8 1969

U.S. Department of Agriculture



SMALL GARDEN

- 25 FAIRFAX Early
- 25 SURECROP Mid-Season
- 25 ROBINSON Mid-Season
- 25 SPARKLE Late

00 Top Quality Virus-Free Plants

SPECIAL \$8.95

Plus Postage

**Plant Rayner's Garden Specials
For Money-Saving Values**

RAYNER BROTHERS, INC.
SALISBURY, MD. 21801

All Season Garden

- 25 REDGLOW Early
- 25 SURECROP Mid-Season
- 25 ARMORE Late
- 25 JERSEYBELLE Very Late
- 25 Superfection Evb.

125 Top Quality Virus-Free Plants

SPECIAL \$11.95

Plus Postage

MEDIUM GARDEN

50 REDGLOW Early

50 CATSKILL Mid-Season

50 POCAHONTAS
Mid-Season

50 ARMORE Late

200 Top Quality
Virus-Free Plants

SPECIAL **\$12.95**

Plus Postage



✓ OZARK BEAUTY EVERBEARER

Ozark Beauty has been a real sensation wherever it has been grown but we have delayed offering it until a sufficient supply of virus-free plants was available. Now you can start with the best stock of one of the best everbearers of all times.

Ozark Beauty is well named since its berries are truly beautiful, with a bright sparkling color and fine green cap. The size is large throughout its picking season from June until frost and its flavor is unusually sweet and delicious.

25 PLANTS \$4.00; 100 PLANTS \$9.00; 1000

Production is extra heavy for an everbearer, with official yields as high as 12,000 quarts per acre. In our opinion one of the most important features is its good plant production and vigor which make Ozark Beauty a very dependable everbearer and much easier to grow than most strawberries of this type. Although it originated in the south, Ozark Beauty is very hardy since it has been tested for several years in areas where the winter temperature reaches 20° below zero or colder. See page 16 for further description of Ozark Beauty.

FOR \$40.00. Complete Price List Page 17.

✓ SURECROP

THE MOST DEPENDABLE
STRAWBERRY

LARGE GARDEN

100 FAIRFAX Early

100 SURECROP Mid-Season

100 POCAHONTAS
Mid-Season

100 JERSEYBELLE
Very Late

400 Top Quality
Virus-Free Plants

SPECIAL **\$19.95**

Plus Postage



In addition to its big yield of excellent berries this amazing variety from the U. S. Dept. of Agriculture has triple resistance to the red stele disease; resistance to Verticillium wilt; resistance to leaf diseases; and drought resistance. These features, combined with its unusual vigor and hardiness, make Surecrop the easiest of all strawberries to grow and the most dependable variety. No wonder it is a "surecropper" for thousands of

25 PLANTS \$2.70; 100 PLANTS \$6.20; 1000 FOR \$27.00. Complete Price List Page 17.

commercial growers and home gardeners throughout most of the eastern half of the United States.

If you want a strawberry that is truly outstanding for profit or pleasure you will certainly want Rayners' registered virus-free stock of Surecrop with its abundant production of large, firm, delicious berries.

See page 9 for further details.

TWO NEW VARIETIES

ALL PLANTS VIRUS-FREE

Redchief

a new joint introduction by U.S.D.A. and Maryland Agricultural Experiment Station, is a must for trial by the home gardener as well as the commercial grower. Its praiseworthy characteristics also make it ideal for "pick your own" plantings.

SWEET FLAVOR

Redchief's sweet flavor, uniform deep red color and firm glossy surface make it a high quality dessert berry. It makes good jam, and its high quality is also maintained when frozen.

Producing runners freely, it has performed well in the matted-row system. Its fruit size is from large to medium, and it ripens midseason—about 2 or 3 days after Surecrop. Redchief is resistant to five strains of red stele; thus, it is recommended for areas where this may be a problem and Surecrop has not been productive.



Redchief was tested over a wide area as selection Md.-U.S. 3068. Its performance was best from Maryland north to Massachusetts and west to Illinois. We strongly recommend it in this area for all strawberry growers who want to be first with this wonderful new variety. Due to the high demand, we must limit 500 plants to each customer.

25 PLANTS \$3.50; 50 for \$5.25; 100 for \$7.90; 500 for \$22.75
Complete Prices on Page 17

Raritan

was introduced in 1968 by the New Jersey Agricultural Experiment Station. This variety has performed very well in New Jersey and has gained wide acceptance by the commercial growers who have tested it. We strongly recommend it for New Jersey and feel that it is certainly worth a trial in the neighboring states.

**LIMITED SUPPLY
ORDER EARLY**

In addition to having large glossy red fruit with an attractive cap, Raritan is firm and ships very well. Because of its beauty and excellent shipping qualities, Raritan will soon be the favorite early midseason to midseason variety in New Jersey. The fruit has an excellent eating quality and is recommended for fresh market and table use but not for freezing. Plants run freely and produce a good bed in the matted-row system. Raritan is not red stele resistant. Do not plant where this disease is known to exist.

Because of its limited supply, we must limit 500 plants to each customer. The demand for this excellent variety is expected to be heavy, so order early to insure getting your plants.

25 PLANTS \$3.50; 50 for \$5.25; 100 for \$7.90; 500 for \$22.75
Prices do not include postage. See page 18.

BUY RAYNER'S PLANTS AND YOU BUY THE BEST

Growing Strawberries

Strawberries are one of the easiest crops to grow. Good plants set at the proper season in good soil will thrive with ordinary care and cultivation. There is nothing complicated about growing strawberries, and by following these easy instructions the beginner can be sure of good results. Rayner's registered virus-free stock is further assurance of success.

Where strawberries can be grown: In every state of the Union strawberries are grown at least to some extent. They are quite hardy and will give good results in any reasonably fertile soil that has good moisture. Like other fruit, strawberries require almost full sunlight for good fruit production.

Soil: A good soil for strawberries is one that is slightly acid, in good condition, and reasonably free of weed seed. Newly plowed pasture or sod may give poor results, but recently cleared woodland is excellent. All good garden soils will produce strawberries successfully.

Fertilizer: Important requirements for strawberries are high organic matter and high fertility. Before planting, plow down well-rotted barnyard manure, which is one of the best materials for good strawberry growth. If this is not available, other organic material is helpful. If you wish to use a commercial fertilizer, plow down 500 pounds to the acre of a complete fertilizer (8-8-8 or 10-10-10). This is equal to about 1¼ pounds per 100 sq. ft. If the soil contains a good supply of manure and is in a very high state of fertility, this is not necessary.

Use of a good soluble fertilizer at time of planting is recommended. It will not burn the plants and can safely be used at any time during the growing season.

In poor soils an application of cottonseed meal or a complete commercial fertilizer may be necessary 4 to 6 weeks after planting.

Strawberries have a high requirement for nitrogen, but it must be applied at the proper time or else very adverse effects may result. Fruit buds, which determine the spring crop, are developed in the plant during August and September. Therefore, this is the most important time to apply fertilizer. Most successful growers apply about 500 lbs. per acre of a 10-6-4, 8-8-8, or similar fertilizer at this time. This is equal to about 1 lb. per 80 sq. ft. of strawberry bed. The fertilizer should be spread directly on the plants when dry and then brushed off the leaves. If applied when the leaves are wet, injury may result.

An excellent organic plant food for strawberries and nearly all other plants is cottonseed meal. It is obtained entirely from ground cottonseed and is thus entirely organic in nature. Usually it contains about 6% nitrogen, 3% phosphoric acid, and 2% potash plus other important elements. Thus, cottonseed meal is a perfect plant food for those who follow the highly commendable practices of organic gardening. It is usually used at the rate of 4 lbs. per 25 ft. of strawberry row and will cause no injury or damage to the plants.

In general, it is best not to apply fertilizer during the spring on fruiting beds. This can cause excess plant growth, reduced fruit production, and poorer quality. We believe this is one of the most

common causes of poor strawberry yields and recommend that fruiting beds should not be fertilized in the spring.

When to plant: Early spring is usually the best time to plant strawberries. In northern states it is best to wait until May or even June when the soil is in good condition. Frost or snow will not harm newly planted strawberries. *With Rayner's dormant plants, there is a definite trend to summer planting where irrigation is available. This gives a less crowded plant bed which yields unusually heavy crops of very large berries.* In cold climates we do not recommend planting after mid-July. Fall plantings are sometimes successful but are often damaged or completely destroyed by winter injury.

How to plant: It is important not to set the plant too deep or too shallow—see photo below. Do not clip the roots but spread them out full length and press soil around the plant so that the roots are firmly anchored in the soil. About a pint of water or soluble fertilizer solution should be poured around each plant when it is put in the hole. A good planting distance is 2 ft. apart in the row with 4 ft. between rows. Slightly narrow fruiting beds will usually have better yields and higher quality than beds that are unusually thick. There are usually two extra plants per bunch, so set the extras at a row end and use if replacements are needed.

Plants Required Per Acre

Plants required per acre at various planting distances:

Rows	Distance in Row	Plants per Acre
3½ ft. apart	18 in.	8,325
3½ ft. apart	24 in.	6,225
3½ ft. apart	30 in.	5,000
4 ft. apart	15 in.	8,750
4 ft. apart	18 in.	7,300
4 ft. apart	24 in.	5,425
4 ft. apart	30 in.	4,375

Too Deep

Just Right

Too Shallow



STRAWBERRY CULTURE

(Continued from page 4)

Care of the plants: A few weeks after the strawberries are planted they will produce blossoms. For the regular matted-row system it is best to remove these blooms since the plants will make better growth. Hoeing and cultivation are necessary practices for weed control, but much benefit can be obtained by use of a good weed-killer. We recommend that you consult your state agricultural authorities for recommendations. We have used geese in our fields for grass control; about three per acre will do a good job on young grass.

In northern states it is important to mulch strawberries for prevention of winter injury. Straw, hay, or marsh grass are the best materials. It should be applied in the fall when the temperature first reaches 20°F and used so as to cover the plants to a depth of 3 to 4 in. About three to six tons

of hay or straw per acre is needed. As soon as new strawberry leaves begin to grow in the spring, the mulch should be removed so that only about an inch remains. The rest should be kept between the beds where it will help keep the berries clean and free of rot. Even in the South many berries are mulched to help keep them free of dirt and decay.

Control of diseases and insects: Two soil diseases: red stele and verticillium wilt, sometimes damage strawberries. Below is a list of resistant varieties. In our No. 17 issue of "Better Berries" we have a chart showing control of diseases and insects. And in our No. 21 issue there is a full summary of strawberry culture. Write to Rayner Bros. Inc., Box 1617, Salisbury, Maryland 21801.

For further details concerning strawberries contact your county agricultural agent or write to your state agricultural extension service.

WHERE TO FIND THE FINEST NURSERY STOCK

STRAWBERRY PLANTS.....	Pages	1-17	DWARF FRUIT TREES.....	Pages	24-25
ASPARGUS ROOTS.....	Page	19	NUT TREES.....	Page	26
RHUBARB and HORSE-RADISH.....	Page	19	GRAPES and TERRACE.....	Page	27
RASPBERRY PLANTS.....	Pages	20-21	SHRUBS and DOGWOOD.....	Page	28
BLACKBERRY PLANTS.....	Page	23	EVERGREEN SEEDLINGS.....	Page	29
GRAPE VINES.....	Page	27	BLUEBERRIES.....	Pages	30-34
FRUIT TREES—STANDARD SIZE.....	Pages	22-23	RED DOGWOOD and MAPLE.....	Page	35

How to Choose the Best Strawberry Varieties

Your choice of strawberry varieties depends, to a large extent, on the purpose for which they are to be grown. Some varieties are especially good for fresh eating, while others are quite tart, but good for long-distance shipping. Some are superior for freezing, and others are extra good for preserves. Some varieties will give fine results in nearly any soil, while others require very good growing conditions. Some varieties are resistant to diseases while others are susceptible. Below is a list of general strawberry characteristics when grown under normal conditions. It must be remembered that excess fertility and other conditions can greatly alter strawberry qualities. Thus, we strongly recommend that you try several of the most desirable varieties and decide which ones are best for your particular location. Complete descriptions of all our strawberry varieties are given in this catalog.

CHARACTERISTICS OF SOME STRAWBERRY VARIETIES

Best for Flavor and General Home Use: Redglow, Fairfax, Armore, Pocahontas, Suwannee, Sparkle, Midway, Sunrise, Redstar, Fletcher, Redchief.

Best for Large Size: Armore, Robinson, Jerseybelle, Catskill, Empire, Pocahontas, Vesper.

Best for High Yields: Catskill, Pocahontas, Surecrop, Earlidawn, Midway, Sunrise.

Best for Firmness: Blakemore, Pocahontas, Surecrop, Tennessee Beauty, Earlibelle, Fulton, Raritan, Redchief.

Best for Freezing: Midland, Pocahontas, Redglow, Sparkle, Surecrop, Earlidawn, Midway, Blakemore, Earlibelle, Fletcher, Redchief.

Best for Preserves and Jams: Blakemore, Suwannee, Pocahontas, Tennessee Beauty, Earlibelle, Redchief.

Best for Earliness: Earlidawn, Midland, Premier, Redglow, Sunrise, Earlibelle.

Best for Lateness: Armore, Sparkle, Jerseybelle, Tennessee Beauty, Redstar, Vesper.

Best for Vigor and Growth in Poor or Dry Land: Surecrop, Robinson, Premier, Blakemore, Sen. Dunlap, Sunrise.

Best for Resistance to Red Stele: Surecrop, Redglow, Sparkle, Midway, Sunrise, Redchief.

Best for Resistance to Verticillium Wilt: Catskill, Surecrop, Premier, Robinson, Empire, Sunrise.

Best for Resistance to Leaf Troubles: Fairfax, Premier, Midland, Surecrop, Catskill, Empire, Redstar, Tennessee Beauty.

Best for Very Cold Climates: Sen. Dunlap, Robinson, Catskill, Sparkle, Premier, Midway, Fulton, Fletcher, Redcoat.

Best for Frost Resistance: Earlidawn, Premier.

Best for Southern States: Albritton, Pocahontas, Blakemore, Surecrop, Tennessee Beauty, Earlibelle.

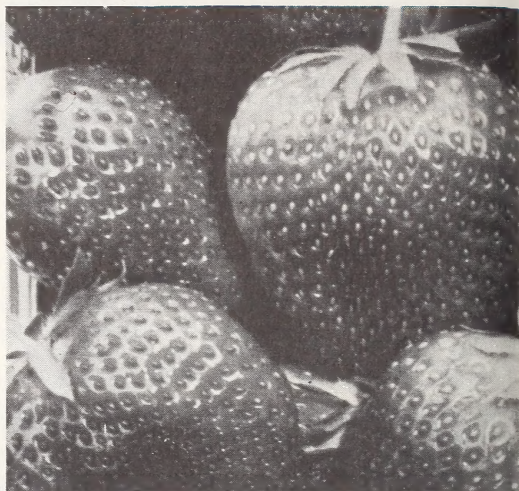
Best for Florida: Florida 90.

**EXCELLENT QUALITY AND BEAUTY—
VERY EARLY—VIRUS-FREE**

Throughout the northeastern and central states, this is one of the finest of all strawberries for flavor, quality, and appearance. The berries are very large and have a beautiful deep red color. The flesh is firm and has a fine solid red texture that rates Midland as one of the best of all for freezing. Berries ripen very early and bring top prices, so this is a fine variety for either small or large-scale commercial use. On Long Island virus-free Midland has proven to be an outstanding variety for the high-quality New York market.

We strongly recommend Midland for home gardens and local sales where its excellent quality and fine appearance make it a real favorite. The plants are vigorous and resistant to leaf troubles and do not make too many runners as is the case with some varieties. Give Midland good growing conditions and you will be rewarded with a fine strawberry in all respects. Rayner's registered virus-free stock of Midland will bring the best out of this excellent variety.

25 Plants \$2.90; 50 for \$4.45; 100 for \$6.60; 1,000 for \$29.00. Complete Prices Page 17.
Our prices do not include Postage. See order sheet for postage and handling charge.



✓ *Midland*

May 14, 1968

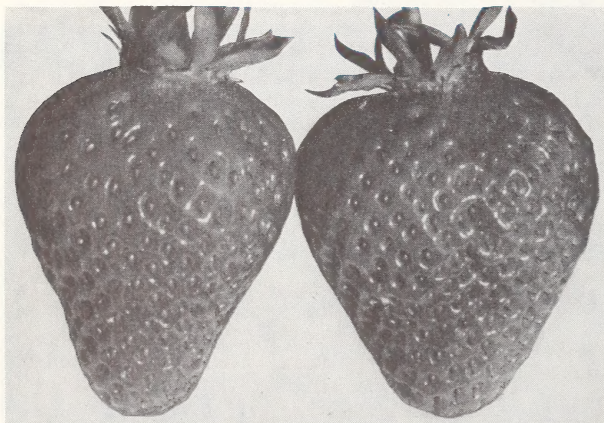
It is less than two weeks since I planted the strawberries, following your simple instructions, and the results are unbelievable. I have plants at least 5 or 6 inches high and they improve daily. I was quite surprised at the quality of the plants you sent me free for four names.

Not one single plant failed to grow, including the extra ones in each bundle. I shall recommend your plants to all my friends. The plants are a picture to see. MR. VINCENT E. BALLIRANO, Johnstown, R. I.

**VIRUS
FREE**

Earlidawn

**BEST EARLY VARIETY FOR
COMMERCIAL PRODUCTION**

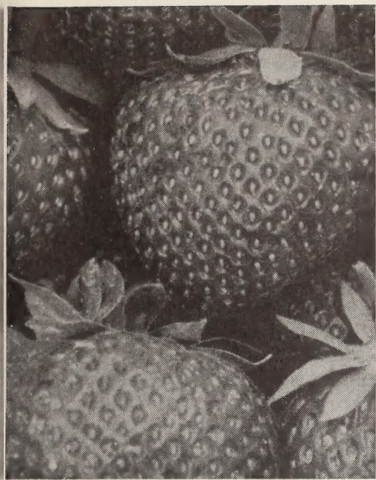


Since its introduction in 1956 by the United States Dept. of Agriculture, Earlidawn has been of steadily increasing importance as an early commercial strawberry. It ripens before all other strawberries and produces tremendous crops that lead the customers right to your door for those early profits. Berries of Earlidawn are light red in color and have a fairly firm, light red flesh. The flavor is tart and when used for preserves and freezing this variety gives fine results.

Plants of Earlidawn often do not make quite as many runners as some varieties but in any reasonably good soil it will usually make a fine fruiting bed. Like other strawberries suscep-

tible to Verticillium wilt this variety should not be planted in soil where tomatoes or potatoes have recently been grown. Despite its earliness, Earlidawn has unusual frost resistance and thus is a very dependable producer. It ripens rapidly and produces lots of big berries that make the rows shine with the unmatched beauty of red, ripe strawberries. Rayners virus-free stock will result in the best success with Earlidawn.

25 Plants \$2.90; 50 for \$4.45; 100 for \$6.60; 1,000 for \$29.00. Complete Prices Page 17.



VIRUS
FREE

Redglow

OUTSTANDING FOR FLAVOR AND BEAUTY

REDGLOW is our nomination for the best combination of beauty, flavor, and quality in a strawberry. It is so delicious that you and your customers will know you have found the variety that has all that can be desired in this respect. In addition, this fine early variety has resistance to the red stele disease and sufficient hardiness to withstand northern winters. For home gardens Redglow is a favorite because of its beauty and flavor, and for local sales these same fine features result in "repeat customers." Berry size is large and the outside color is a bright, light red while the inside color is also bright red. It grows well in nearly any reasonably fertile soil and with Rayner's virus-free stock you will obtain the full value.

25 Plants \$2.80; 50 for \$4.35; 100 for \$6.45; 1,000 for \$28.00.

Earlibelle

EARLY COMMERCIAL VARIETY FOR SOUTHERN AREA. VIRUS-FREE

Earlibelle resulted from the cooperative breeding program of the United States Department of Agriculture and the North Carolina Agricultural Experiment Station. Apparently it will take the place of Dixieland in some areas because its berries are unusually firm and thus excellent for a southern shipping variety. It ripens early and produces fine crops of beautiful, bright, tart berries that "hold their size." Earlibelle is a very vigorous variety and makes lots of plants even in sandy soil or dry weather. Dr. M. M. Parker, of the Virginia Truck Experiment Station, found this variety to be extremely productive, early in ripening, and to produce large, firm berries even when fruiting beds were crowded with plants. We recommend Earlibelle from eastern Maryland into Georgia and other southern areas.

25 Plants for \$2.70; 50 for \$4.15; 100 for \$6.20; 1,000 for \$27.00. Complete Prices Page 17.

OUTSTANDING
AROMA

Sunrise

VIRUS-FREE

AMAZINGLY PRODUCTIVE DISEASE RESISTANT

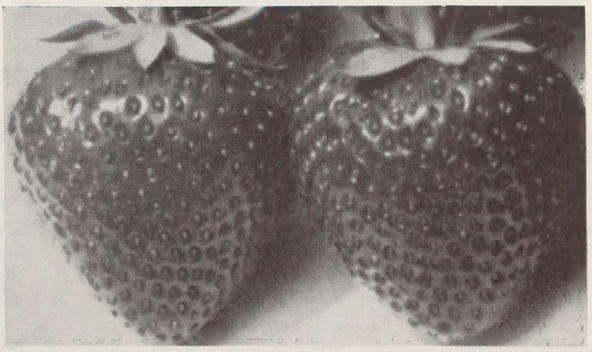
For several years this variety was tested as Md.-U. S. 2601 in many areas of the U. S. A. It was very promising with its high yields of large, firm, very bright, attractive berries that held their fine color long after picking.

Sunrise has proven to be a real winner in the area from New Jersey to Missouri. Its wonderful aroma has made it a favorite with the home gardener and the commercial grower. It has multiple resistance to red stele fungus and is resistant to Verticillium wilt.

Sunrise ripens early—about 2 days after Earlidawn—and produces heavy yields of very attractive berries with a fine cap and pink flesh color. The flavor is good for fresh use and preserves but when frozen the color is a bit light for top quality.

Plants of Sunrise are vigorous and resistant to leaf scorch and powdery mildew but susceptible to leaf spot. This variety is also very drought resistant and may make an excess of runners, which should be removed for maximum yields. We recommend Sunrise as a very promising early, commercial variety especially in soils where red stele and Verticillium wilt occur.

25 Plants \$3.10; 50 for \$4.65; 100 for \$6.95; 1,000 for \$31.00. Complete Prices Page 17. Prices do not include postage. See Page 18 and order sheet for postage and handling charge



BUY RAYNER'S PLANTS AND YOU BUY THE BEST



✓ *Premier*

U. S. D. A.
Virus-Free
Strain

THE OLD FAVORITE EARLY BERRY

Premier is such a well-known variety that despite the fact it is surpassed by several other varieties it is still very popular in many areas. It originated in Massachusetts and was introduced in 1918 as Howard-17. Later it was renamed Premier and became one of the most widely grown of all strawberries. It ripens early and is quite frost hardy in cold climates, so that it has long had the reputation of being a very dependable producer of big crops of strawberries. Premier will grow well in most types of soil but is not resistant to the red stele disease. It ripens early, producing attractive light red berries in abundance. In most of the northern states it is generally considered a very dependable variety for home use and local sales. Our planting stock is of the U.S.D.A. strain, which is exceptionally vigorous and a free runner producer. Premier is very resistant to Verticillium wilt.

25 Plants \$2.60; 50 for \$3.95; 100 for \$5.90; 1,000 for \$26.00.

IMPROVED
VIRUS-FREE

✓ *Suwannee*

EXCELLENT
FLAVOR

At last we have Virus-Free Suwannee to offer our customers this year. Suwannee is noted for its quality fruit and is the favorite home-garden variety. It has a wonderful flavor and makes good preserves and jam. The large berries are rather long in shape. The light red fruit is fairly firm but will not stand long-distance shipping. Ideal for any garden. Plant some in yours this year. You will be delighted.

25 Plants \$2.70; 50 for \$4.15; 100 for \$6.20; 1,000 for \$27.00.

**NO MATTER HOW
MUCH YOU PAY**

You will never buy berries as good as the fresh harvests of your own locality. With "shipped-in" berries the quality and flavor cannot match the vine-ripened perfection right out of the patch. That's why more and more folks grow their own. Grow more! Save more! Have more!

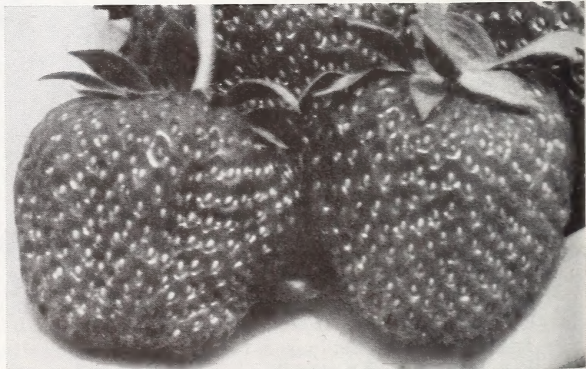
VIRUS
FREE

✓ *Fairfax*

THAT WONDERFUL
STRAWBERRY

THE OUTSTANDING VARIETY FOR DELICIOUS FLAVOR

We recommend Fairfax for those who want strawberries with a truly delicious flavor. Since its introduction in 1928 by the U. S. Department of Agriculture, this variety has been a flavor favorite. Many commercial growers have customers who pay a premium price for this delicious berry, and many home gardeners always include it in their planting. Berries of Fairfax become a very deep red color when at their flavor peak, but for freezing the berries of medium red color give better results. Its fruit is medium to large in size, and production is good. Plants of our virus-free Fairfax are quite vigorous and winter hardy throughout the northeastern states. We believe that the sensational flavor of Fairfax makes it one of the very best varieties for home gardens from north to south. Rayner's virus-free plants will give best results.



25 Plants \$2.80; 50 for \$4.35; 100 for \$6.45; 1,000 for \$28.00. Complete Prices Page 17.

Our prices do not include Postage. See order sheet for postal and handling charges.

VIRUS
FREE

Surecrop

SEE COLOR PHOTO
INSIDE FRONT COVER

DISEASE RESISTANT, DROUGHT RESISTANT, UNUSUALLY VIGOROUS

Year after year Surecrop continues to be the most popular variety we have to offer. Because of its vigor and dependable crops of delicious fruit, Surecrop is highly in demand by both the home gardener and the commercial grower. In a test of seven locations, it averaged 1.37 quarts per plant set. One of the locations reported 13,600 quarts per acre. Its fruit was rated large in size, firm in texture, and of good freezing quality. Similar reports are obtained from so many customers in so many locations that we can unhesitatingly recommend Surecrop as a truly remarkable strawberry for both home garden and commercial production.

Surecrop has such vigor that it will often grow in poor or dry land where other strawberries fail. Also it has multiple resistance to the red stele disease as well as resistance to Verticillium wilt and other troubles. Because of its vigorous growth it is most important to prevent the fruiting bed from becoming too heavily matted and to avoid any spring application of fertilizer.

This excellent midseason variety has beautiful, firm fruit, with nice flavor and quality. Try Surecrop or one of the finest strawberries you have ever seen. Further information on inside cover.

25 Plants \$2.70; 50 for \$4.15; 100 for \$6.20; 1,000 for \$27.00. Complete Prices Page 17.

April 5, 1968

Please find enclosed my check for 500 Surecrop strawberries. We are highly pleased with your plants. We harvested our first crop last year and picked 700 qts. off 750 plants and had such large berries we couldn't begin to supply our customers.

We have seventeen hundred plants to bear this year and they will be gone as fast as we can pick them.

MR. VICTOR SANDERS, Lincoln, Ill.

VIRUS
FREE

Pocahontas

EXTRA BIG YIELDS OF HIGH QUALITY BERRIES. EXCELLENT FOR BOTH COMMERCIAL AND HOME PLANTINGS.

Pocahontas was introduced in 1954 by the U. S. Dept. of Agriculture and the Virginia Truck Experiment Station and soon became one of the leading varieties for both commercial and home garden production. Such popularity is fully deserved since Pocahontas produces extra big yields of very large, bright, high quality berries that hold their fine appearance long after picking. Thus Pocahontas is a favorite with commercial producers where these features are so important. The excellent quality and large size of Pocahontas, together with fine plant vigor, also make it one of the best for home gardens. It ripens in midseason and yields amazing crops of beautiful berries that "hold their size" during its long harvest period. The berries have a fine bright skin with yellow seeds and a good clear red flesh color. Therefore Pocahontas is fine for freezing and preserves. From New York to Georgia and westward to Texas this variety is still one of the very best and we recommend it highly to all who want big crops of large, fancy berries.



25 Plants \$2.70; 50 for \$4.15; 100 for \$6.20; 1,000 for \$27.00. Complete Prices Page 17. Our prices do not include Postage. See page 18 and order sheet for postage and handling charge.

BUY RAYNER'S PLANTS AND YOU BUY THE BEST

VIRUS
FREE

✓ Empire

EXCELLENT FOR COMMERCIAL
AND HOME USE IN THE NORTH

Empire is another of the fine fruit developments of the New York State Experiment Station. Thus, it is well suited to the northern states where it is a fine midseason companion of Catskill. Yields are good, and it has sufficient frost and winter hardiness to be a very dependable producer. Empire is an especially attractive berry since it has a very glossy, medium red color and a fine green cap. The berry shape is somewhat elongate and irregular. Berry size is large, and this size holds up well for the entire picking season. The flesh color of Empire is somewhat pale, and it is a bit soft, but the flavor is very good. Its large size, fine appearance and good flavor rate Empire as a real profit maker in northern states. We definitely believe you will like this excellent variety.

Plants of Empire are very vigorous, winter hardy and resistant to Verticillium wilt. Runner plants are developed freely and result in a good fruiting row. In all the New England area, we believe you will have excellent results with Rayner's virus-free Empire which produces such extra-big berries.



25 Plants \$2.60; 100 for \$3.95; 1,000 for \$26.00. Order Early. Complete Prices Page 17.

June 26, 1968

I am writing in appreciation of the quality of your very excellent Sunrise strawberry plants I ordered and promptly received from you. They are far superior to any other I have ever received by mail. They are planted and thriving, not even having wilted down. Thank you for your quality.

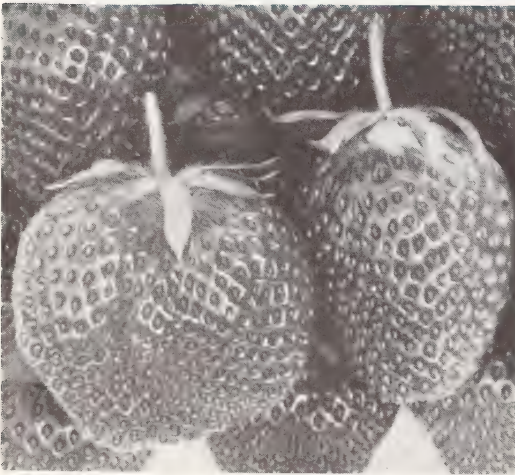
—MRS. ELIZABETH H. JOHNSON, Leavittsburg, Ohio

TREMENDOUS
YIELDS OF
LARGE BERRIES

✓ Midway

VIRUS-FREE
U. S. D. A. Hybrid

**GET YOUR SHARE OF BIG PROFITS FROM THIS NEW
COMMERCIAL LEADER. EXCELLENT FLAVOR, FINE FOR FREEZING,
RED STELE RESISTANT**



Because of its tremendous production of delicious, firm, attractive berries, Midway has had a popularity explosion that causes the demand for plants to far exceed the supply. Be sure to place your order early. Within a few years this wonderful berry has become the king for both commercial production and home plantings. In Michigan, Ohio, Virginia, West Virginia, Maryland, New Jersey, Pennsylvania, and many other states it has become a sensational favorite. If you want to grow one of the best of all strawberries, be sure to get Rayner's registered virus-free stock of Midway. It has now proved to be one of the heaviest yielding of all strawberries and one of the best ever for big profits.

It ripens in early midseason, producing large, bright berries with extra fancy caps and bright yellow seeds. Berries of Midway have a nice uniform shape and hold their large size and firm appearance for the long harvest season. The berries have a firm flesh and firm skin, which permits long distance shipment and results in a nice-looking berry a day or two after they have been picked. Midway is a delicious berry for fresh use and excellent for freezing and preserves. It has resistance to red stele and is a very good plant maker if conditions are at all favorable. Be sure to try this superior variety.

25 Plants \$2.80; 50 for \$4.35; 100 for \$6.45; 1,000 for \$28.00. Complete Prices Page 17.

UNUSUALLY
VIGOROUS

✓
Robinson

VIRUS
FREE

Extra Large Berries

Robinson (also known as Kardinal King and Scarlet Beauty) has several outstanding good features that far outweigh its less desirable qualities. It is one of the most vigorous plant makers and will often give good results in poor or sandy soils where other varieties fail. Even under drought conditions it will usually produce good crops. Another fine quality is its very large berry size. Fruits of Robinson are very big, and with their light red color they bring good prices. Its ripening period begins soon after Premier, but it is generally considered a midseason variety. The plants are small but the fruiting beds are very wide and vigorous—in fact, best results are obtained if late-formed runners are removed. Robinson is resistant to Verticillium wilt and virus diseases and is very winter hardy.

In cool climates the quality and firmness of Robinson is good enough to satisfy most customers. However, in warm areas it may not be suitable. Because of its vigor and large berry size Robinson remains a favorite of many home gardeners and commercial growers in the northeast.



50 for \$3.95; 100 for \$5.90; 1,000 for \$26.00.

Prices in this catalog do not include Postage.

August 20, 1968

The strawberry plants I purchased from you produced for the first time this spring. I had berries on my Robinson which weighed 1 1/4 oz. each. They were solid all the way through and delicious. The Surecrop and Sparkle were very productive.

—MR. I. C. ADAMS, Chaumont, N. Y.

✓
Catskill

BIG YIELDS OF BIG BERRIES
OUTSTANDING NORTHERN VARIETY
VIRUS-FREE—WINTER HARDY



This famous berry has long been the leading variety in most of the northeastern United States. It is especially hardy and consistently produces unusually big crops. Berries of Catskill are large, bright in color, and of excellent flavor. They ripen in midseason and are a favorite for local sales and home gardens. Catskill is generally not firm enough for long distance shipment but is excellent for "pick them yourself" plantings. Plants of Catskill are very vigorous and resistant to leaf troubles and Verticillium wilt. This variety was introduced by the New York Agricultural Experiment Station in 1933 and still remains a favorite with thousands of growers who praise its bumper crops of big delicious berries. Through Penna. and northward into Canada, Catskill gives fine results in nearly any soil that is reasonably fertile and moist. Rayner's virus-free true-to-name stock assures you of the best possible results with Catskill.

25 Plants \$2.70; 50 for \$4.15; 100 for \$6.20; 1,000 for \$27.00. Complete Prices Page 17.

BUY RAYNER'S PLANTS AND YOU BUY THE BEST



✓ Sparkle

FAVORITE LATE VARIETY FOR FRESH USE AND FREEZING—VIRUS-FREE

For many years Sparkle has been the most important late strawberry in much of the north-east. It was introduced by the New Jersey Agricultural Experiment Station in 1931 and soon became very popular because of its many outstanding qualities. Sparkle is a very dependable producer of fine crops of glossy, sparkling berries. They are of medium size, have a nice cap, and yellow seeds. Berries of Sparkle have very good flavor and quality and are rated very good for freezing and for preserves. Sparkle generally ripens just after the midseason varieties and is a very important commercial variety north of Maryland. It is very winter hardy, giving good results even in parts of Canada. It is a good

plant maker in most types of soil. As an extra feature Sparkle is resistant to red stele and leaf troubles. Plants of Sparkle are naturally quite vigorous, but with Rayner's virus-free stock they have that extra vitality that really makes this a great favorite for both commercial growers and home gardeners. In Michigan there is a variety known as Paymaster that is generally considered to be the same as Sparkle.

25 Plants \$2.70; 50 for \$4.15; 100 for \$6.20; 1,000 for \$27.00. Complete Prices Page 17.

**VIRUS-FREE
BIG PROFITS**

✓ Jerseybelle

HUGE, BEAUTIFUL BERRIES—LATE—VERY PRODUCTIVE

If you want big strawberries you want Jerseybelle.

This popular berry was introduced by the New Jersey Agricultural Experiment Station and soon became very popular because of its huge, bright, beautiful berries which bring the highest prices. They are therefore excellent for roadside stands, auction markets, and similar sales where your customers will pay more for fancy berries. And if you want a berry you can truly be proud of then you will find the answer in Jerseybelle since a quart of these berries is truly a sight to behold.

Berries of Jerseybelle have consistently been about the largest of any variety we have ever seen, and they have a beautiful glossy color that gives a waxed appearance. The cap is large and the seeds are bright yellow, resulting in a berry of unusual beauty. The flesh is not nearly as juicy as in some varieties, thus Jerseybelle will hold its appearance quite well. The flavor is not as good as for some berries but is satisfactory. The ripening season is quite late, about a week after Sparkle, which greatly helps to prolong the picking season.

Jerseybelle may show some leaf troubles but generally this is not a serious problem. In northern soils it is best not to plant Jerseybelle in land recently grown to tomatoes, potatoes, or other strawberries. But if you are looking for that extra big berry that will make real profits, you will make a planting of Rayner's registered, virus-free Jerseybelle.

25 Plants \$2.90; 50 for \$4.45; 100 for \$6.60; 1,000 for \$29.00.

See order sheet for postage and handling charge.



Redstar

**VIRUS
FREE**

LARGE EXTRA-LATE

The big feature of Redstar is its unusual lateness. It ripens a week or more after the normal late varieties. Thus, Redstar is very popular with both home gardeners and commercial producers who want to extend the berry season as long as possible. Another advantage of this lateness is that Redstar rarely is hurt by frost and thus is a dependable producer throughout most of the Eastern states.

Redstar does best in fertile soil where it will make a nice bed of unusually large plants. The fruit is large, attractive, and has a very big cap that makes Redstar a beautiful berry. Flavor and quality are good, and it makes a nice frozen product.

Rayner's registered stock of virus-free Redstar has resulted in a great increase in popularity of this fine variety. It still requires good growing conditions for best results, but now Redstar is much more dependable.

25 Plants \$2.90; 50 for \$4.45; 100 for \$6.60; 1,000 for \$29.00. Complete Prices Page 17. See Page 18 and order sheet for postage and handling charge.



Armore

**EXTRA LARGE BERRIES
LATE—EXTRA FINE FLAVOR
VIRUS-FREE**

For many years ARMORE has been a favorite variety with home gardeners and local market growers. This variety is well suited throughout the area from Missouri to New England. Although rated as a late variety it ripens several days ahead of such extra-late varieties as Redstar and Vesper. Armore is a good plant maker and grows well in most soils.

Its foliage is subject to leaf troubles but this does not seem to interfere with heavy yields of large, delicious berries which have a good red color inside and out. For big yields of a large, late, sweet berry be sure to try Rayner's virus-free stock of Armore.

25 Plants \$2.60; 50 for \$3.95; 100 for \$5.90; 1,000 for \$26.00. Complete Prices Page 17.

**EXTRA LARGE
VERY LATE**

Vesper

**VIRUS
FREE**

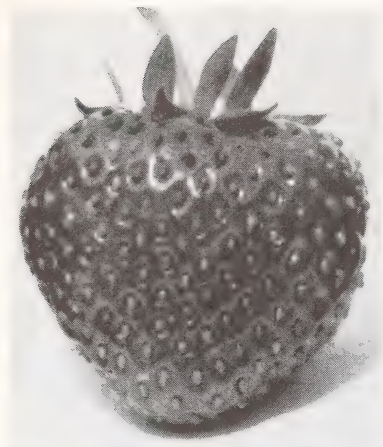


Vesper, which was tested as New Jersey selection No. 157, provides strawberry growers with the biggest and one of the latest of all strawberries. This variety is truly amazing because of its huge berries, which are as large as any variety we know. It is much like Jerseybelle in most respects, which it now displaces as champion for berry size. For lateness it is about as late as Redstar, which is generally considered to be the latest of all June bearing strawberries. Foliage of Vesper is generally vigorous but like Jerseybelle is a bit more susceptible to leaf troubles than some varieties. But with proper growing conditions Vesper can be one of the most remarkable strawberries you have ever seen.

The unusually late ripening of this variety is additional reason why it can be a real profit maker, since you will still have fine berries after other strawberries are gone. Be sure to try at least a few of this amazing new variety that will show you and your friends just how big a strawberry can be.

25 Plants \$3.00; 50 for \$4.55; 100 for \$6.75; 1,000 for \$30.00. Complete Prices Page 17.

BUY RAYNER'S PLANTS AND YOU BUY THE BEST



VIRUS
FREE

Redcoat

From Canadian Department of Agriculture

Because of its heavy production of sweet, firm, attractive berries that are rated good for processing and freezing, Redcoat has become the most popular variety in Canada and is gaining favor in the U. S. This fine variety was introduced by the Canadian Department of Agriculture and, of course, is very winter hardy. Redcoat ripens in midseason and appears to be well worth trial in most moderate to cold climates. Rayner's virus-free stock will give best results.

25 Plants \$3.10; 100 for \$6.95; 1,000 for \$31.00.

A FIRM VARIETY FOR
COLD CLIMATES

Fulton

VIRUS
FREE

FULTON was introduced by the New York Experiment Station to provide a good, firm strawberry suited to cold climates. As most northern berries are rather soft, the firmness of this beautiful, productive, midseason variety, is quite important to commercial growers who want a variety that will bring top prices at local markets. Plants of Fulton are vigorous and resistant to leaf troubles.

25 Plants \$2.80; 50 for \$4.35; 100 for \$6.45; 1,000 for \$28.00.

VIRUS
FREE

Senator Dunlap

THE OLD-FASHIONED VARIETY WITH WILD STRAWBERRY FLAVOR

Dunlap was named in Illinois in 1890 and has withstood the test of time better than any standard variety. It was a favorite long ago because of its wonderful flavor and excellent quality for fresh use and preserves. Today Senator Dunlap still has these same excellent features and has also proven to be fine for freezing. The plants are extremely winter hardy and will grow in our coldest states. Try Rayner's registered stock of virus-free Dunlap.

25 Plants for \$2.50; 50 for \$3.75; 100 for \$5.60; 1,000 for \$25.00. Complete Prices Page 17.

VIRUS
FREE

Fletcher

WINTER HARDY
HIGH QUALITY

FLETCHER was released by the New York Agricultural Experiment Station in 1959 as a result of the outstanding breeding program of Dr. George L. Slate. For several years this variety has been tested in New York and other states and has proven to be a very promising berry for both home use and commercial production. It is a cross of Midland with Suwannee, both of which have excellent quality, and as a result Fletcher has a wonderful flavor that should appeal to all who appreciate good strawberry flavor. Berries of Fletcher are reasonably large, bright in color, excellent for freezing, and sufficiently firm for commercial marketing. The plants are vigorous, tall, and very productive. Fletcher is a fairly late variety—ripening about 3 days after Sparkle. It is very winter hardy and well adapted to northeastern conditions.



25 Plants \$2.80; 50 for \$4.35; 100 for \$6.45; 1,000 for \$28.00. Complete Prices Page 17.

**VIRUS
FREE**

Albritton

**CAROLINA
FAVORITE**

ALBRITTON is a leading commercial and home garden variety in the coastal region of North Carolina and will give good results southward into Georgia and northward into Virginia. In this area it produces berries that are unusually attractive and of fine quality but unfortunately Albritton does not give good results in colder climates. Rayner's virus-free stock of Albritton is especially vigorous and productive.

25 Plants \$2.50; 50 for \$3.75; 1,000 for \$25.00. See order sheet for postal charges.

**VIRUS
FREE**

Florida 90

**BEST FOR
FLORIDA**

Because of the lack of cold weather in Florida there is not sufficient winter dormancy for fruit development in most varieties of strawberry. The plants will grow but production of fruit is poor or absent. For many years Missionary was the only variety that would produce good crops under Florida conditions, but in recent years it has been largely replaced by Florida 90, a berry developed in Florida for Florida conditions. This is the berry that is grown so extensively for shipment to the North. Its berries are large and elongate and have a rich red color and wonderful flavor. Not satisfactory north of Georgia.

25 Plants \$2.40; 50 for \$3.65; 100 for \$5.40; 1,000 for \$24.00. Complete Prices Page 17.

**VIRUS
FREE**

Blakemore

**DROUGHT
RESISTANT**

THE BEST FOR PRESERVES AND JAMS—WONDERFUL FOR FREEZING

Because of its fine qualities when processed or frozen BLAKEMORE once was the most widely planted commercial strawberry. Its sparkling, light-red, firm berries still produce the finest, most attractive preserves you have ever seen. When frozen the berries hold their shape well and have fine color. For a special attraction freeze some whole, with caps attached. Plants of Blakemore are especially vigorous and will grow well in nearly any soil. This early variety is especially suited to moderate climates but should do well in all but the coldest states. If you like strawberry preserves be sure to try Blakemore.

25 Plants for \$2.40; 50 for \$3.65; 100 for \$5.40; 1,000 for \$24.00.

Tennessee Beauty

**VIRUS
FREE**

LATE COMMERCIAL VARIETY FOR SOUTH-CENTRAL STATES

Tennessee Beauty is recommended as a commercial variety in south-central and eastern states, where its firmness is a definite advantage. Many growers tell us that it is their best producer.

The berries are of medium size and have a bright, rich red color. The flavor is good, and the slight tartness results in fine quality. For freezing and preserving Tennessee Beauty rates high since it produces a fine bright product. One feature of this variety that is desirable for processing is the ease with which the cap comes off. With its many fine features such as good quality, firmness, beauty, and high production, Tennessee Beauty is definitely a good variety for both commercial and home plantings.

Although we do not recommend large-scale planting of Tennessee Beauty in the northern states, it is considered a good commercial variety in some sections.



25 Plants \$2.60; 50 for \$3.95; 100 for \$5.90; 1,000 for \$26.00. Complete Prices Page 17.

BUY RAYNER'S PLANTS AND YOU BUY THE BEST

EVERBEARING STRAWBERRIES

PICK DELICIOUS STRAWBERRIES SPRING, SUMMER AND FALL

THE
FAVORITE

Ozark Beauty

VIRUS
FREE

VERY PRODUCTIVE AND HARDY See Inside Front Cover for Further Details

We wish we could show you the many letters of praise we have received concerning the outstanding performance of our virus-free stock of Ozark Beauty. Below is just one of the many favorable comments on Ozark Beauty. For an everbearer, it has an unusually good flavor which is most rewarding in the fall. Plants of Ozark Beauty are very vigorous and will give good results in almost any reasonably fertile soil where they grow rapidly and produce lots of runners. For best results the first crop of blossoms should be removed from newly set plants but in late summer a fine crop of big, delicious berries will be produced. Then, the next spring you will be amazed at the heavy production of very large, attractive, delicious fruit and another great crop in the fall.

25 Plants \$4.00; 50 for \$6.00; 100 for \$9.00; 1,000 for \$40.00.

February 6, 1968

Your plants are always excellent but the Ozark Beauty plants out-did themselves. I hope they produce as well this spring.

BARBARA FRAUENHOLZ, Pittsburgh, Pa.



VIRUS
FREE

Superfection

PRODUCTIVE
HARDY

Superfection is our most dependable everbearer. It is a vigorous grower and readily produces good fruiting rows. This variety is also known as Gem and Brilliant.

The berries can be very large and quite attractive. The color is a good light red, and the flavor ranges from mild to tart. Superfection is not as good as the June-bearing varieties, but it will give you a fair amount of nice berries in June and July and another crop in the early fall that will continue until freezing weather. Fine for home gardens.

25 Plants \$3.80; 50 for \$5.70; 100 for \$8.60; 1,000 for \$38.00.

Rayner's High Quality Strawberry Plants

These prices supersede all other prices of Rayner Bros. Prices do not include shipping charges. Several varieties cannot be combined to obtain a lower price. Full planting instructions are sent with each order. We do not sell less than 25 of a variety.

**BETTER BERRIES
BUILT OUR BUSINESS**

1969 PRICE LIST

**SATISFACTION OR
YOUR MONEY BACK**

	25 Plants	50 Plants	75 Plants	100 Plants	250 Plants	500 Plants	750 Plants	1000 Plants	5000 Plants
Early Varieties									
BLAKEMORE V.F.	\$2.40	\$3.65	\$4.55	\$5.40	\$10.50	\$15.60	\$20.70	\$24.00	\$117.50
EARLIBELLE V.F.	2.70	4.15	5.10	6.20	11.85	17.55	23.30	27.00	132.50
EARLIDAWN V.F.	2.90	4.45	5.50	6.60	12.75	18.90	25.05	29.00	142.50
FAIRFAX V.F.	2.80	4.35	5.35	6.45	12.25	18.20	24.15	28.00	137.50
FLORIDA 90 V.F.	2.40	3.65	4.55	5.40	10.50	15.60	20.70	24.00	117.50
MIDLAND V.F.	2.90	4.45	5.50	6.60	12.75	18.90	25.05	29.00	142.50
PREMIER V.F.	2.60	3.95	4.90	5.90	11.40	16.90	22.45	26.00	127.50
REDGLOW V.F.	2.80	4.35	5.35	6.45	12.25	18.20	24.15	28.00	137.50
SUNRISE V.F.	3.10	4.65	5.75	6.95	13.60	20.20	26.80	31.00	152.50
SUWANNEE V.F.	2.70	4.15	5.10	6.20	11.85	17.55	23.30	27.00	132.50
Midseason Varieties									
CATSKILL V.F.	2.70	4.15	5.10	6.20	11.85	17.55	23.30	27.00	132.50
EMPIRE V.F.	2.60	3.95	4.90	5.90	11.40	16.90	22.45	26.00	127.50
FULTON V.F.	2.80	4.35	5.35	6.45	12.25	18.20	24.15	28.00	137.50
MIDWAY V.F.	2.80	4.35	5.35	6.45	12.25	18.20	24.15	28.00	137.50
POCAHONTAS V.F.	2.70	4.15	5.10	6.20	11.85	17.55	23.30	27.00	132.50
RARITAN V.F.	3.50	5.25	6.55	7.90	15.30	22.75	—	—	—
REDCHIEF V.F.	3.50	5.25	6.55	7.90	15.30	22.75	—	—	—
REDCOAT V.F.	3.10	4.65	5.75	6.95	13.60	20.20	26.80	31.00	152.50
ROBINSON V.F.	2.60	3.95	4.90	5.90	11.40	16.90	22.45	26.00	127.50
SEN. DUNLAP V.F.	2.50	3.75	4.70	5.60	10.95	16.25	21.55	25.00	122.50
SURECROP V.F.	2.70	4.15	5.10	6.20	11.85	17.55	23.30	27.00	132.50
Late Varieties									
ALBRITTON V.F.	2.50	3.75	4.70	5.60	10.95	16.25	21.55	25.00	122.50
ARMORE V.F.	2.60	3.95	4.90	5.90	11.40	16.90	22.45	26.00	127.50
FLETCHER V.F.	2.80	4.35	5.35	6.45	12.25	18.20	24.15	28.00	137.50
JERSEYBELLE V.F.	2.90	4.45	5.50	6.60	12.75	18.90	25.05	29.00	142.50
REDSTAR V.F.	2.90	4.45	5.50	6.60	12.75	18.90	25.05	29.00	142.50
SPARKLE V.F.	2.70	4.15	5.10	6.20	11.85	17.55	23.30	27.00	132.50
TENN. BEAUTY V.F.	2.60	3.95	4.90	5.90	11.40	16.90	22.45	26.00	127.50
VESPER V.F.	3.00	4.55	5.60	6.75	13.15	19.50	25.90	30.00	147.50
Everbearing Varieties									
OZARK BEAUTY V.F.	4.00	6.00	7.60	9.00	17.50	26.00	34.50	40.00	—
SUPERFECTION V.F.	3.80	5.70	7.20	8.60	16.60	24.70	32.80	38.00	—

V.F. "Plants referred to as "virus-free" in this catalog have been field grown by us from virus-free foundation stock furnished by the U. S. Department of Agriculture Bureau of Plant Industry, Soils and Agricultural Engineering, Beltsville, Maryland, and State Horticultural Department, University of Maryland. Our field-grown stock has been dusted with parathion to control aphids which transmit the virus diseases. It has also been grown at considerable distance from any other strawberry plants. Since viruses do not produce clear-cut symptoms in most strawberry varieties, but simply weaken and devalue the plants, no guarantee can be made that these plants are 100 percent free of viruses. Because of the measures that we have used to protect these plants from virus infection, we believe them to be substantially virus-free."

None of the Prices in this Catalog Include Postage. Please See Order Sheet and page 18 for Postal Charges and other Shipping Information.

THE UNIVERSITY OF MARYLAND
AND
STATE BOARD OF AGRICULTURE
COLLEGE PARK, MARYLAND DATE August 23, 1968

STATE HORTICULTURAL DEPARTMENT
Certificate of Inspection
Duplicate of Number _____ of
Block No. TIC _____

This is to Certify, That the nursery stock of Rayner Brothers, Inc.,
located at _____ Salisbury - Wicomico County
State of Maryland, has been officially examined in accordance with the laws of Maryland, 1898, Chapter 209,
Section 36, and that said nursery and premises were found to be apparently free from dangerously serious
(a) pest and plant diseases.

This Certificate is valid only if the nursery stock has been grown within the state, unless such stock is previously
covered by a Certificate of Inspection issued by the State Horticultural and State Plant Pathology
Laboratories, provided that certificate is valid upon _____ (September 23) 1969

A. O. Weaver State Plant Pathologist
Geo. S. Langford State Horticulturist

**A Copy Of Our Nursery
Certificate Is Sent With Each
Shipment.**

All of our plants are
guaranteed. See page 18
for details.

All plants are graded to
meet Nursery Association
standards.

BUY RAYNER'S PLANTS AND YOU BUY THE BEST

To Our Customers and Friends



Jack Rayner
President

We are very happy to welcome you as a reader of Rayner's Berry Book. In it you will find the best possible planting stock of strawberries, blueberries, raspberries, fruit trees, and other plants. Also there is complete, up-to-date information on the proper methods of growing these crops. We believe you will find our Berry Book to be both helpful and interesting.

Of much importance to you is the reliable Rayner guarantee of satisfaction which assures you of good plants or your money will be fully and promptly refunded.



Curtis Massey
General Manager

"We guarantee you will receive top quality stock. If for any reason you are not pleased with our plants, write us within 30 days and we will replace the plants or refund the complete purchase price. After the 30 day period and within one year of the date the plants were purchased, we will replace at one-half price any plants that are not satisfactory. This guarantee covers full purchase price and does not imply any further responsibility or liability." This guarantee applies to all of our nursery plants that are planted during the spring season and to strawberries planted by July 15.

Also of vital importance to you is the Rayner policy of honest, efficient dealings with our customers. We fully realize that satisfied customers are the backbone of our business, and we will make every reasonable effort to provide you with top-quality plants and service.

We hope you will read the information in this catalog concerning methods of planting strawberries, blueberries, and other nursery stock. We have tried to provide the best possible directions because we certainly want you to be successful. Also planting instructions are sent with each order. Give our plants satisfactory growing conditions and they will reward you many times over with abundant crops of top-quality fruit.

Yours for continued success with Rayner's plants.

H. JACK W. RAYNER, President

INSTRUCTIONS TO PURCHASERS

With each strawberry variety description you will find our 1969 prices and on page 17 we have a complete list of all varieties in any quantity. These prices supersede any previous prices.

We can ship your plants by Parcel Post, United Parcel Service, Air Freight or Express, Greyhound Bus, or R. E. A. Express. We commend UPS or Parcel Post for small orders.

PARCEL POST. Add 10% of the total order for postage and handling for orders of \$6.00 or more. For orders less than \$6.00, add 60c. For orders west of the Mississippi the charge is 15% of the cost of plants with a minimum of 80c.

UPS. United Parcel Service is a private parcel delivery service. Generally delivery is faster by UPS than by Parcel Post. Packages are delivered by a uniformed driver who must obtain a signature. If your address is RFD or box, please indicate name of road or street. There is a postage and handling charge of 10% of the order with a minimum of 60c. This service can be used only in the following states: Ala., Conn., Del., D. C., Fla., Ga., Ind., Ky., Md., Me., Mass., N. H., N. J., N. Y., N. C., Ohio, Pa. (except Phila. area), R. I., S. C., Tenn., Va., Vt., and W. Va.

AIR FREIGHT. On all large orders this is the fastest way to ship plants and has been very satisfactory for many customers. It does cost more than Parcel Post or Express but gives very fast service. Shipping charges are paid when plants are received.

GREYHOUND BUS. We have shipped a lot of plants by bus, and if you are convenient to a bus station, this is a very good way. Be sure to send your phone number so that you can be called when your plants arrive. The charges can be paid when plants are received.

R. E. A. EXPRESS. Shipment can be made by Express. However, many Express offices have been closed, so be sure to give us your nearest Express office if different from your post office. When shipment is made by Express, charges can be paid when the plants arrive. No small orders will be sent by Express.



Member: AMERICAN ASSN. OF NURSERYMEN
Member: MARYLAND ASSN. OF NURSERYMEN
MAILORDER ASSN. OF NURSERYMEN, INC.

Business References:

MARYLAND NATIONAL BANK, Salisbury, Md. DUN and BRADSTREET





FROM _____

PLACE
STAMP
HERE

Rayner Bros., Inc.

SALISBURY,

MARYLAND 21801

www.rayner.com

TEAR OUT ENVELOPE ALONG THIS PERFORATION AND ENVELOPE UNDER OTHER SIDE.

TO AVOID DELAY PLEASE BE CERTAIN THAT ORDER BLANK IS CLEARLY AND COMPLETELY FILLED OUT AND THAT PAYMENT, INCLUDING POSTAGE, IS ENCLOSED.

WE THANK YOU VERY MUCH FOR THIS ORDER AND WILL DO OUR BEST TO PROVIDE COMPLETE SATISFACTION.



MEMBER: AMERICAN ASSOC. OF NURSERYMEN

MEMBER: MARYLAND ASSOC. OF NURSERYMEN

MEMBER: NATIONAL MAIL ORDER NURSERYMEN'S ASSOC.



BUY RAYNER'S PLANTS AND YOU BUY THE BEST

RAYNER'S 1969 ORDER SHEET

Salisbury, Maryland 21801

AFG

DATE

CUSTOMER:
PLEASE INDICATE
AMOUNT ENCLOSED
 CHECK.....
 MONEY ORDER.....
 CASH.....
 VOUCHER.....

NAME
 (Please Print or Write Plainly, Giving Full Address)

STREET.....

BOX..... R.F.D.....

City State ZIP CODE NO.....

SHIP BY—(CHECK ONE)
 UPS REA EXPRESS STATION.....
 If Express Station is different from Post Office
 PARCEL POST SHIP PLANTS ON OR ABOUT
 OTHER (SPECIFY) (Date)

If no date is stated we will ship at a time our experience indicates is good for your area

HOW MANY	NAMES OF VARIETIES ORDERED	PRICE	
		Dollars	Cents

NONE OF THE PRICES IN THIS CATALOG INCLUDE POSTAGE
 FOR ORDERS OVER \$6.00 ADD 10% OF ORDER
 FOR ORDERS UNDER \$6.00 ADD .60¢
 See Page 18 for additional information
 See Page 18 for shipments West of Mississippi.



Amount for Plants			
Amount for Postage and Handling			
Total Amount Sent			

IMPORTANT NOTICE! If varieties ordered are not available, we will substitute plants of equal or greater value. Check here if you do not want us to substitute.

See other side for additional order space and free bonus offer
BUY RAYNER'S PLANTS AND YOU BUY THE BEST

TEAR OUT ENVELOPE ALONG THIS PERFORATION AND ENCLOSE ORDER SHEET

SPACE BELOW IS FOR ADDITIONAL ITEMS OR REMARKS

HOW MANY	NAMES OF VARIETIES ORDERED	PRICE	
		Dollars	Cents

IF YOUR ORDER AMOUNTS TO \$5.00 OR MORE, SEND FOUR NAMES FOR BONUS OFFER OF 25 FREE STRAWBERRY PLANTS!

Send us the names and addresses of four persons who grow berries or who have a garden and may be interested in receiving our catalog. We will send you 25 strawberry plants FREE. We must reserve right to choose variety of plants, but are sure you will be well pleased. Bonus plants will not be sent for less than four names or if order amounts to less than \$5.00 and can only be shipped with this order.

List Names and Addresses Here. Please Print or Write Legibly.

Please be sure to include Street Address or R.F.D. and Zip Code Number.

1. _____

2. _____

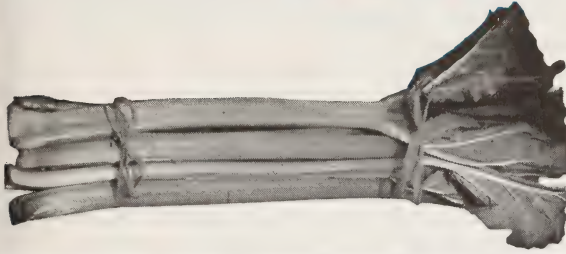
3. _____

4. _____

BUY RAYNER'S PLANTS AND YOU BUY THE BEST

**MacDonald
RED**

Rhubarb



RHUBARB is a very popular perennial where winters are sufficiently cold to freeze ground 3 to 4 in. A few plants well tended make an excellent supply for sauce and pies.

We offer the MacDonald Red variety because of its marked superiority. Matures earlier, sweeter, and one planting lasts a lifetime. Plant in spring, 3 to 4 ft. apart. Rhubarb culture is given in Bulletin No. 18.

**Prices for Large, Vigorous Divisions
\$1.10 each; 3 for \$3.00; 10 for \$8.75.**

VICTORIA RHUBARB

For those who want vigorous, seedling rhubarb roots we recommend the well-known Victoria variety. These whole roots will soon become established and produce lots of long, tender, pink stalks that are excellent for home use. Gives best results in cool climates and in fertile, deep soil with a uniform supply of moisture. Prices of Victoria Rhubarb:

Strong 1-yr. whole roots, 1 to 1½ in. diameter: 5 for \$1.65; 10 for \$2.75.

HORSERADISH

This is the old-fashioned Maliner Kren variety that is very vigorous and develops such large firm roots. Grows best in moist, cool soils of reasonable fertility. If you like horseradish, you will surely want to try this excellent variety. A few roots will soon develop into a fine bed that will last for years.

Vigorous whole roots about 6 to 8 in. long: 5 for \$1.60; 10 for \$2.75.

TENDER, FRESH

Asparagus

**From Your Own Plantings
Year After Year**

The best eastern variety for home and commercial planting is the disease-resistant MARY WASHINGTON. We sell only the famous Robert's strain, which is the best asparagus money can buy. It produces shoots of finest quality, more uniform in size, shape and color than others.

50 to 100 roots supply an average family. 250 roots will take care of canning and freezing needs, too.

A planting of Rayner's asparagus will yield loads of fine food for many years. Plant early in the spring in fertile soil to which about 5 lbs. of 10-6-4 fertilizer per 100 sq. ft. has been added. Spread the roots in a trench about 6 in. deep and 8 in. wide. Place plants about 16 in. apart and cover crowns with about 2 in. of soil. As plants begin to make new growth, gradually fill the trench.

Write for Rayner's Bulletin No. 18 giving full details of Asparagus culture.



ASPARAGUS PRICES—ORDER EARLY FOR SPRING PLANTING

	6 plants	12	25	50	100	250	500	1000
1-yr. #1 Roots	\$0.95	\$1.75	\$3.25	\$4.95	\$ 7.25	\$14.25	\$21.10	\$32.50
2-yr. #1 Roots	1.65	2.75	5.00	7.60	12.95	21.70	31.10	49.00
3-Yr. Jumbo Roots	2.15	3.75	6.60	9.90	14.85	28.35	47.85	82.50

Big 3-Yr. Roots will produce some stalks large enough for cutting the second year. These prices do not include postage. See page 18 and order sheet for postage and handling charge.

BUY RAYNER'S PLANTS AND YOU BUY THE BEST

CERTIFIED RASPBERRY PLANTS



This is the dependable certified stock which has been state inspected for freedom from insects and diseases and which has been proven dependable by many years of profitable production by thousands of commercial growers and home gardeners.

BLACK RASPBERRIES

✓ **LOGAN** is a fine early black raspberry, ripening about a week before Cumberland and producing fine crops of beautiful, high quality berries. Very hardy and vigorous.

✓ **BRISTOL** is a fine midseason black raspberry with large, round, firm berries of very good quality. It is very vigorous, winter hardy, and produces big crops.

✓ **CUMBERLAND** ripens in midseason and gives big yields of beautiful black raspberries of unsurpassed flavor and quality. Its plants are vigorous, hardy and adapted to various soils.

RED RASPBERRIES

✓ **LATHAM** is the standard red raspberry for most of the eastern states. Its plants are hardy, producing big crops of large, high-quality fruit, fine for fresh use, freezing, or preserves. Latham is fine for home gardens and excellent for commercial plantings, for its berries hold up well for shipment. It is hardy in our coldest climates and very late in ripening.

✓ **TAYLOR** usually ripens considerably earlier than Latham and because of its very large, delicious berries is rapidly increasing in popularity. It is very hardy and has heavy yields of firm berries which are excellent for freezing. Taylor is recommended both for home plantings and commercial use.

✓ **SEPTEMBER EVERBEARING RED RASPBERRY** is from the New York Experiment Station. It is truly an outstanding variety, producing a wonderful crop of high-quality, early berries during the regular summer season and other fine crop that begins to ripen early in the fall. September is a real winner for home use where its firm berries, which are free from crumbling, are especially nice for freezing.

Prices of certified 1-Yr. #1 plants of Latham, Taylor, September, Bristol, Cumberland and Logan. These prices do not include postage (see order sheet).

5	10	25	50	100	250	500	750	1000
plants	plants	plants	plants	plants	plants	plants	plants	plants
\$1.90	\$3.40	\$6.60	\$12.20	\$22.50	\$51.60	\$93.75	\$129.40	\$150.00

ASK FOR RAYNER'S BULLETIN 14 FOR ADDITIONAL INFORMATION

GROWING RASPBERRIES

Raspberries give best results in areas where the summers are not usually hot or dry. Therefore they are not generally grown south of Tennessee and Missouri. A good, fertile soil that retains moisture but is still not poorly drained gives best results. Raspberries should be planted in early spring for best results. If possible a high amount of well rotted manure should be mixed into the soil before planting. Also a regular spring application of about 450 pounds per acre of 10-10-10 fertilizer is important. This is equivalent to about 6 ounces per plant. In small plantings the rows are usually 6 feet apart with 4 feet between plants. Raspberries are

generally planted in early spring and will produce a crop about 15 months after planting. The canes are tied to wires or to posts, depending upon the planting system. After the first fruiting season the fruiting canes of regular red and black raspberries are pruned out—leaving the new canes which will bear fruit the next season. In the case of ever-bearing raspberries the canes which produced the fall crop should not be pruned out but only slightly cut back in the spring. For best results with raspberries a recommended spray program for control of diseases and insects is necessary.

VIRUS-FREE RASPBERRY PLANTS

As a result of research by the United States Department of Agriculture and the University of Maryland a program for production of substantially virus-free raspberry plants has been developed. We were the first nursery to offer this stock to the public and this year an increased supply is available. These plants have been propagated from virus-free foundation stock and maintained substantially virus-free by a special program of isolation, spraying, and inspection. To obtain the full benefit of this virus-free vigor these plants should be separated from other brambles by at least 200 ft. and a recommended program for control of aphids should be followed.



Because of the many extra procedures necessary to produce this special stock, their cost is more than for regular certified plants but we believe that the resulting increase in vigor, production, and quality will far outweigh the difference in price.

VIRUS-FREE RED RASPBERRIES

LATHAM is the most widely grown red raspberry since it is a very dependable producer in such cold climates as Minnesota and North Dakota as well as the southern raspberry area. This variety yields big crops of large, firm berries with a delicious flavor. It ripens very late and thus provides berries long after the regular season. Latham has long been a standard commercial and home variety.

NEWBURGH is an excellent early-midseason red raspberry that is excellent for commercial production because it produces fine crops of very large, very firm attractive berries of good quality. It has vigorous, hardy plants of medium height and is less subject to mosaic infection than most red varieties. It is important to cut back the canes at spring pruning in order to allow proper fruit development.

TAYLOR is a late red raspberry that produces big crops of the most beautiful raspberries you have ever seen. Its berries are very large and long in shape and are especially attractive. They are firm in texture and have fine quality. The plants are so sturdy that they usually do not need support.

VIRUS-FREE BLACK RASPBERRIES

PLUM FARMER is an early black raspberry from Ohio that has long been a favorite because of its vigor, drought resistance and fine crops of large, bright, firm berries. The crop ripens rapidly and uniformly so that it can all be harvested in two or three pickings. One of the hardiest black raspberries.

BRISTOL is an excellent midseason black raspberry that is very popular for home or commercial use. Big crops of very large, round, firm berries that have a fine sweet flavor and excellent quality. Plants are vigorous, with good winter hardiness and are adapted to a wide range of growing conditions.

PRICES FOR SUBSTANTIALLY VIRUS-FREE 1-yr. #1 plants of LATHAM, NEWBURGH, TAYLOR, PLUM FARMER, AND BRISTOL RASPBERRY PLANTS. AVAILABLE IN SPRING ONLY.

5 plants	10 plants	25 plants	50 plants	100 plants	500 plants	Send for Rayner's Bulletin No. 14
\$3.15	\$5.65	\$10.95	\$20.31	\$37.50	\$156.25	

May 6, 1968

I want to tell you how nice my raspberry canes look. They looked so good I hated to cut them but I did and planted them.

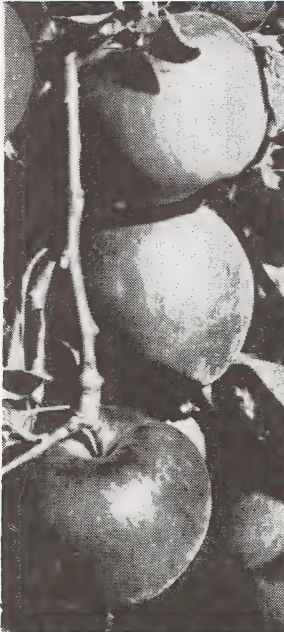
E. SCARBOROUGH, Lowell, Mass.

June 5, 1968

We have been customers of Rayner Brothers since 1949 and I thought it was high time to write and tell you how much we like doing business with you. Your thoughtfulness and cooperation has not gone unrewarded because over the years we have recommended your company to all of our neighbors and they too have been satisfied with your service.

MRS. LOUIS POLLACK, Rockville, Md.

BUY RAYNER'S PLANTS AND YOU BUY THE BEST



For best results with most fruit trees plant at least two varieties for pollination.

APPLE TREES

WINESAP, IMPROVED STRAIN. Beautiful deep red color. Vigorous, hardy, productive, early bearing. Rich flavor. Crisp, tender apples of long-keeping quality.

GRIMES GOLDEN. A vigorous producer of excellent fall apples. Big, golden yellow, tender, crisp apple of fancy dessert quality.

GOLDEN DELICIOUS. Heavy yielding, early bearing. Bright golden yellow, crisp, juicy apples. National favorite.

RED McINTOSH. A leading commercial variety. Fancy red apples with white, tender flesh of high quality and aroma. Tree very hardy and vigorous.

RED DELICIOUS. Large apples of rich red color and excellent flavor and aroma. Uniform fruit. Tree very hardy. Great favorite with home gardeners as well as orchardists.

APPLE TREE PRICES

	Each	3 to 9 trees Each
2-Yr., 3 to 4 ft.	\$3.00	\$2.75

PEACH TREES

GOLDEN JUBILEE. An unusually hardy tree unequaled for production of early yellow freestone peaches of exceptional quality. One of the most dependable for home gardens.

HALE HAVEN. A deep crimson freestone peach. Flesh is golden yellow, firm and of unusually good flavor. Strong, thrifty. Midseason. One of the best for processing.

BELLE OF GEORGIA. Considered the best of white-fleshed peaches. Large size, freestone. Delicious flavor. Midseason.

ELBERTA. This variety is most widely planted because it is adaptable to a wide range of soils and climates. Most popular market peach. Beautifully colored, firm, juicy, yellow flesh. Ripens late.

PEACH TREE PRICES

	Each	3 to 9 trees Each
2-Yr., 3 to 4 ft.	\$3.00	\$2.75



All of our trees are shipped "full length" but if notified we will prune them to proper planting length.

Write for Rayner's Bulletin 16 on fruit tree culture

NEW! HARDY APRICOTS FROM MINNESOTA

Imagine apricots so hardy they thrive in the cold climate of Minnesota. These two new varieties were released by the Minnesota Agricultural Experiment Station in 1961 and have proven their ability to produce fine crops of delicious, beautiful apricots in an area with winter temperatures down to 30° below zero. **MOONGOLD** and **SUNGOLD** produce trees about 10 to 12 ft. tall and are ideal for home gardens.

Sturdy, branched trees (2-3 ft.) \$3.95 each; 2 for \$7.50. Plus postage—see order sheet.

MONTMORENCY SOUR CHERRY

For commercial plantings as well as home use Montmorency is by far the leading variety of sour cherry. The fruit are large, firm, and have a beautiful bright red color. Fruit first ripens in early July and can be kept on the tree about a month. This variety is self-fertile. Rayner's stock of Montmorency is of the excellent virus-free strain that is exceptionally vigorous and productive.

	Each	3 to 9 trees Each
2-Yr., 3 to 4 ft.	\$3.25	\$3.00

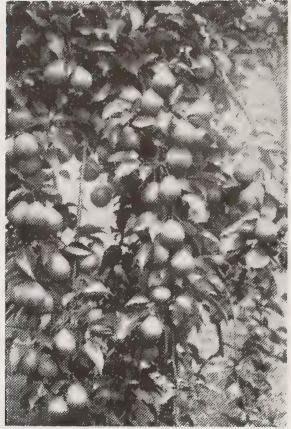
PEAR TREES

BARTLETT. Old favorite pear considered best for home garden and market throughout the northern half of country. Large, golden yellow pears have a reddish blush. Flavor excellent. Vigorous, highly productive.

SECKEL. A pear of excellent flavor, fruiting in September and October. Fruit medium-sized with a deep brown, reddish cheek when fully ripe. Vigorous, disease resistant.

MAGNESS. Big new blight resistant pear from U. S. Dept. of Agriculture. Fine flavor, high quality, winter hardy. Requires another pear for pollination.

MOONGLOW. Another U.S.D.A. blight resistant variety. Large, delicious pears ripen two weeks before Bartlett. Good pollinator and very hardy.



PEAR TREE PRICES

2-Yr., 3 to 4 ft. **Each \$3.00**

3 to 9 trees
Each \$2.75

New! THORNLESS BLACKBERRIES

Now you can pick delicious blackberries at home without getting scratched and stuck with thorns. Pick your own blackberries in a short-sleeved shirt. These two new introductions are very productive. Ideal for "pick your own" operations and for the home garden. Our limited supply will not last through the season. Order early.

SMOOTHSTEM. Originated from seed of U. S. 1482 (Merton Thornless and U. S. 1411). The seedling selected in 1958 by Dr. D. H. Scott and Dr. D. P. Ink, at Beltsville, has been evaluated in fruiting plots at several locations. It ripens about August 1 at Beltsville. The fruit is large, firm, blunt conic, jet-black when fully ripe, has a delicious flavor. Canes are thornless, very productive and hardy in central New Jersey, central Ohio and southward. Be sure to try some in your garden this year.

THORNFREE. Originated by a cross made in 1956 of U. S. 1410 and U. S. 1414, was selected by Dr. D. H. Scott and Dr. D. P. Ink. It ripens about 3 weeks later than Eldorado, and a week earlier than Smoothstem. The fruit is medium large, firm, blunt conic, glossy black and has a good tart flavor. Canes are thornless, not quite as vigorous as Smoothstem, but very productive in fertile soils. It has been hardy in Oregon, New Jersey, Ohio, Illinois and southward. This is another good blackberry that you should try.

Vigorous #1 Plants: 5 for \$3.15; 10 for \$5.65; 25 for \$10.95; 50 for \$20.31; 100 for \$37.50

New! RANGER BLACKBERRY

This excellent new blackberry was developed by Dr. I. C. Haut of the University of Maryland. Plants of Ranger are quite vigorous and very productive with large, bright blackberries that are truly delicious when allowed to ripen fully. We recommend it throughout the blackberry area.

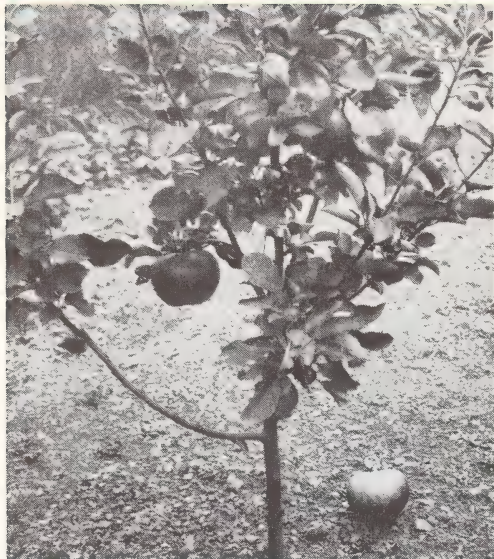


DARROW BLACKBERRY

Another fine introduction of the New York Experiment Station. During recent years Darrow has proven to be a dependable producer of big crops, of large, firm, high quality blackberries. Very vigorous and winter hardy.

PRICES FOR RANGER AND DARROW 1-YR., #1 PLANTS					
5 plants	10 plants	25 plants	50 plants	100 plants	500 plants
\$2.75	\$4.95	\$9.65	\$17.90	\$33.00	\$137.50

RAYNER'S DWARF FRUIT TREES



ORNAMENTAL—PRODUCTIVE SAVE VALUABLE GARDEN SPACE

**Trees Are Small, Yet Fruit Is Of Regular
Size And Quality**

No longer just a special feature of exclusive gardens, dwarf fruit trees are now available to all, and at reasonable prices. These wonderful space-saving trees are produced by budding or grafting regular varieties on special dwarfing rootstocks. Apples are usually dwarfed by use of the Malling root systems, and Quince rootstocks produce dwarf pears. Peaches are budded to special dwarfing root systems. Even though the trees remain much smaller, the fruit is of full size and quality. One outstanding feature of dwarf trees is that they begin to bear fruit when only three or four years old. Just the thing for home gardens where space is so valuable. Write for Rayner's Bulletin No. 16 on Culture of Dwarf Trees.

Dwarf Apple Trees

Sturdy trees on the fully dwarfing Malling IX rootstock. Trees grow to about 8 ft. tall.

McINTOSH. Especially suited to Northeast. Big, attractive, red apples with crisp, white flesh. Tender and juicy. Very winter hardy.

WINESAP. Long-time favorite red apple with sweet, juicy flesh. Very vigorous and winter hardy.

GOLDEN DELICIOUS. The queen of apples for beauty and flavor. Big golden apples of superior quality and unsurpassed flavor.

RED DELICIOUS. The national favorite. Large, bright red apples of outstanding beauty and flavor. Very vigorous and productive.

**Prices of 2-yr. dwarf apples 3 ft. up, \$3.50 each; 3 trees for \$9.75.
These prices do not include postage.**

Dwarf Peach Trees

One of the most attractive ornamental trees in the spring when it is loaded with beautiful pink blossoms. Then in the summer you will harvest an abundance of delicious, full-size fruit. These trees usually reach 8 to 10 ft. at maturity and begin to bear in two to three years. See page 22 for variety descriptions.

GOLDEN JUBILEE (Early)

HALE HAVEN (Midseason)

BELLE OF GEORGIA (Midseason)

ELBERTA (Late)

3 to 4 ft. trees, \$3.95 each; 3 for \$10.75.

Our prices do not include Postage. See page 18 and order sheet for postage and handling charge.

Dwarf Cherry Trees

EXCELLENT FOR FRESH USE AND ALL TYPES OF PROCESSING

NORTH STAR is a naturally dwarf hybrid reaching 6 to 8 ft. Very hardy and easy to grow. Fruit is of good size, dark red when ripe and has tart, juicy flesh with a small stone. Very productive. A fine tree for home gardens and small orchards.

METEOR is more upright than North Star but a definite dwarf. Fruit is tart in flavor, clear red in color and large size. Trees are strong and vigorous, hardy, and disease resistant. For best production, plant two varieties to insure proper pollination.

Well-rooted trees, 2 to 3 ft. tall. \$3.25 each; 2 trees (one of each variety) \$5.95.

Dwarf Pear Trees

Grafted to dependable Quince dwarfing stock. Trees grow to about 12 ft. Plant two or more varieties for pollination.

CLAPP'S FAVORITE. A large yellow, early pear of exceptionally fine flavor and quality. Trees are very hardy and productive.

SECKEL. Delicious, small pears. Vigorous and blight resistant. An excellent variety.

BARTLETT. Top quality, very productive. For areas where fire blight is not severe.

DEVOE. (Plant Pat. No. 728.) Large, elongate fruit with crisp white sweet flesh and good keeping quality. Trees upright and vigorous.

Prices of Dwarf Pear Trees:

3 ft. up, \$4.25 each; 3 trees for \$12.00

Plus Postage. See page 18 and back of order sheet for postage and handling charge.



Dwarf Plums

These dwarf trees require very little room and may be planted 15 feet apart. Plum trees have a double value, with beautiful blossoms in the spring and juicy ripe fruit in the very early fall.

STANLEY. An excellent, very popular prune-plum for both home and commercial planting. Trees are vigorous and self fertile producing tremendous crops of large, purple plums with a golden flesh that is unexcelled for flavor when fully ripe. Ripens in early September in the New England area.

FELLENBERG. This old favorite variety is also known as German prune or Italian prune. It is self-fruitful and very hardy, producing big crops of large, purple, freestone plums with a firm, sweet, delicious flesh. Excellent for fresh use, market sales, and processing. Ripens in September.

GREEN GAGE. This is truly a high quality plum that every home owner should have in his fruit planting. Its fruit is round with a greenish yellow skin and flesh. The flavor of this juicy, sweet plum is delightful. The tree is hardy and the fruit ripens in September.

BLUE DAMSON. This is a medium round, dark purple, freestone Damson plum. It is tart, wonderful for making preserves and canning. It produces large yields and ripens in September.

Prices of well-rooted Dwarf Plum Trees: 2 yr., 2 to 3-ft. size, \$4.00 each; four trees (1 of each variety) \$14.95, plus postage.



Fruit Bowl Special

- 2 DWARF APPLE TREES—Your choice of 2 varieties from preceding page.
- 2 DWARF PEACH TREES—Your choice of 2 varieties from preceding page.
- 2 DWARF PEAR TREES—Your choice of 2 varieties from top of page.
- 2 DWARF PLUM TREES—Your choice of 2 varieties listed above.
- 2 DWARF CHERRY TREES—one of each variety.

Total of 10 Dwarf Fruit Trees.

Regular Price \$37.90. Special Fruit Bowl Price \$32.00, plus postage.

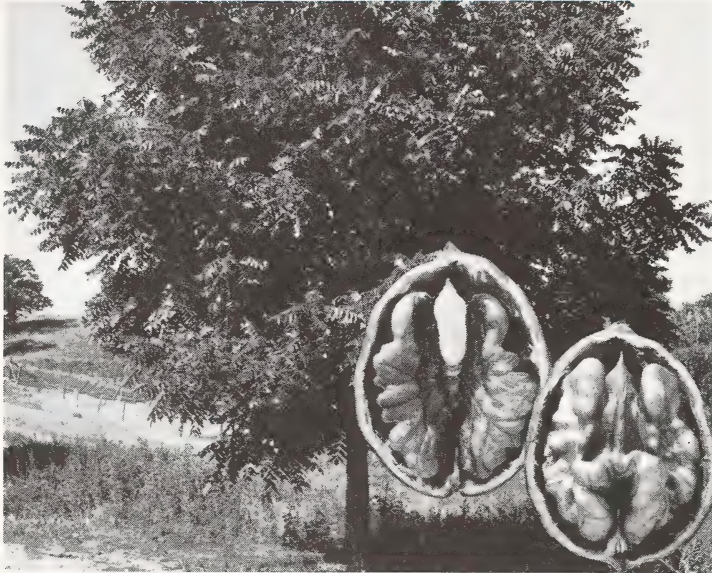
EXCELLENT
FOR SHADE

Nut Trees

HIGHLY
PRODUCTIVE

ENGLISH WALNUTS

FAMOUS
CARPATHIAN
STRAIN



Hardy to 40° below zero

This is the exceptionally hardy Persian or English walnut that has become so popular in most of the northern states. Mature trees are said to be hardy to 40° below zero and still produce big crops of large, thin-shelled, meaty nuts.

These vigorous seedling trees are very dependable for consistent yields as far north as Minnesota. For good crops it is best to have two or more trees for proper pollination. Vigorous, well-rooted, seedling trees.

2 to 3-ft. size, \$3.95 each;
3 for \$10.75, plus postage.

FAST GROWING, EARLY PRODUCING

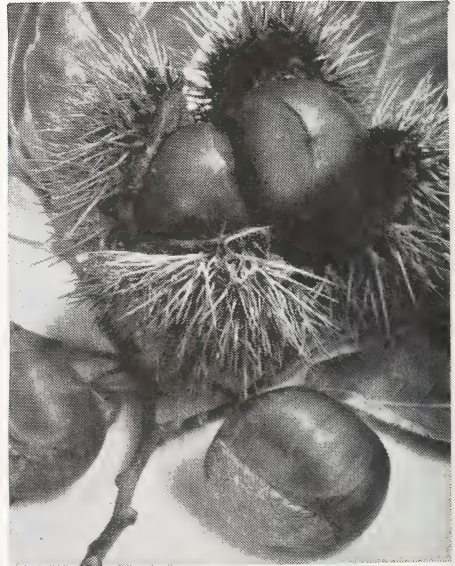
Chinese Chestnut

HARDY, BLIGHT RESISTANT

Here is the most popular of all nut trees. In a short time it becomes one of the most beautiful trees on your place, and you will look forward to each fall harvest of delicious nuts that are very much like American chestnuts.

Chinese chestnuts are highly resistant to the blight disease, very hardy, and will produce excellent crops of large nuts when only a few years old. The trees are vigorous and have a spreading shape that makes them fine for shade as well as for their crop. Plant two or more trees for cross-pollination. These are vigorous seedlings selected from highly productive trees that will begin to bear in 2 or 3 years. Hardy to about 20° below zero.

PRICES FOR Sturdy, Well-rooted, Branched Trees
3 to 4 ft., \$2.25 each, or \$2.00 each in quantities
of 10 or more.



Chinese Chestnut Approximately 2/3 Natural Size

Write for Bulletin No. 18 on Nut Tree Culture

Prices in this Catalog do not include postage. See order sheet for postage and handling charge.

Grapes

THE OUTSTANDING EASTERN VARIETIES

✓ CONCORD—The Best Blue

This is the variety with the true grape flavor that has been the favorite for over 100 years. Unsurpassed for home gardens and commercial production. Ripens late.

✓ NIAGARA—The Best White

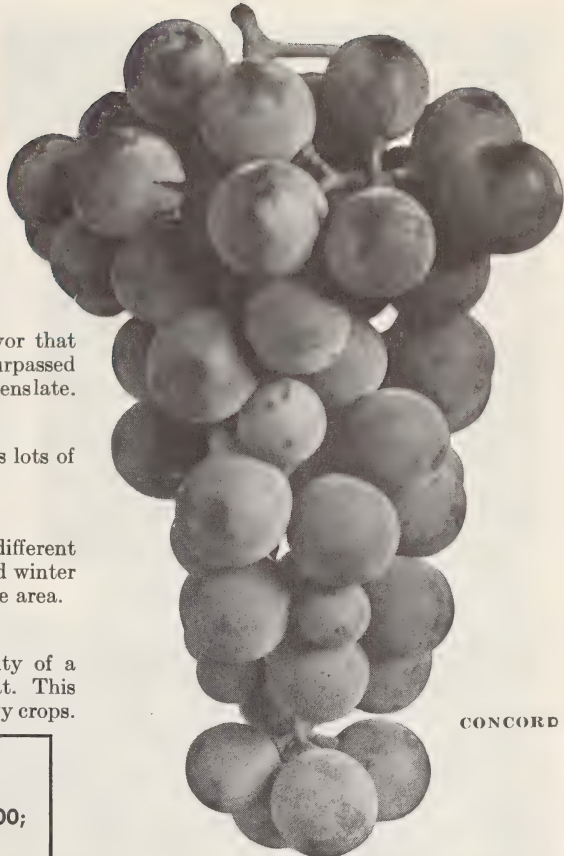
A fine midseason white variety that produces lots of beautiful clusters of large, excellent grapes.

✓ CACO—The Best Red

When fully ripe CACO has a deliciously different flavor that makes it very popular. Its vigor and winter hardiness make it well adapted to eastern grape area.

✓ FREDONIA—The Best Black

For a real flavor treat the wonderful quality of a vine-ripened FREDONIA grape is hard to beat. This excellent early black variety produces extra heavy crops.



CONCORD

Illustration about two-thirds actual size

PRICES OF CONCORD, NIAGARA CACO, FREDONIA

2-Yr. #1 Plants, Extra Large

\$1.10 each; 3 for \$3.00; 10 for \$9.00;

25 for \$19.35, plus postage—
see order sheet.

✓ New! INTERLAKEN SEEDLESS WHITE GRAPE FOR COLD CLIMATES

This excellent introduction of the New York Agricultural Experiment Station provides eastern growers with the first high-quality, seedless, white grape. Clusters are large and the good-size, pale golden fruit have a rich, sweet flavor. Interlaken ripens about a month before Concord. Its vines are vigorous and hardy to about 20° below zero.

2-Yr. #1 plants; \$1.65 each; 3 for \$4.75.

Rayner's Bulletin #14 includes details of grape culture.

BERRY TERRACE

50 feet of row in a 6-foot space

IDEAL FOR SMALL YARDS

The Terrace is made of aluminum that holds its beauty for years. It will accommodate 50 Everbearing strawberry plants. The ease of watering and fertilizing enables much more production of fruit than would normally be realized. The beauty of foliage and blossoms and the harvest of berries from spring to frost will provide a constant delight.

You may prefer to grow one or two of the excellent June-bearing varieties in your pyramid. Do not remove the blossoms but cut off the runners and you will have excellent berries 60 days or less after planting.



NEW MODEL PYRAMID \$8.98

Consists of three attractive corrugated aluminum bands with a base diameter of 6 feet. Complete with sprinkler system ready for attachment to your garden hose.

ACCESSORIES FOR PYRAMID

Cover (plastic) makes small greenhouse	\$5.15
Support Strips (for cover)	\$3.70
Net (for bird protection)	\$6.70

BUY RAYNER'S PLANTS AND YOU BUY THE BEST

RAYNER'S
QUALITY

TREES AND SHRUBS

YOU CAN REALLY SAVE WITH YOUNG TREES AND BE SURE OF GOOD RESULTS



Protects Your Property with an Impenetrable Thorny Barrier. Excellent Bird and Game Cover.

Multiflora Rose

The primary use for Multiflora rose is to provide a protective barrier around fields and property lines of farms, estates, and other rural areas. After a few years this vigorous, thorny rose will make an almost impenetrable barrier that is a true living fence. It lasts a lifetime and needs no repairs. It will fence in farm animals and keep out trespassers. Very popular for conservation use to prevent land erosion. Multiflora rose grows well in nearly any soil type and is suitable for all but the most northern areas. Produces small white blossoms followed by clusters of red berries.

PRICE LIST: Vigorous, well-rooted plants

25 plants \$4.25	100 plants \$13.50
50 plants 7.50	500 plants 39.00

See Page 18 and Order Sheet for Postal Charge

WINTER
HARDY

AZALEAS

RAYNER'S SELECTION OF FINE
VARIETIES PROVEN ESPECIALLY HARDY

HINOCRIMSON. Brilliant red blossoms; hardy compact plant. Excellent foliage.

STEWARTSTONIAN. A fine orange-red Gable hybrid. Vigorous upright growth.

DELAWARE VALLEY WHITE. Large white flowers, fairly tall and spreading.

CAROL. Gable hybrid, with pink, double blooms; low, compact growth habit.

Field-grown, 3 yr. plants, 8 to 12 in. tall, \$1.50 each; 3 for \$4.25.

For Good Results with Azaleas Follow Blueberry Culture and Plant in Shade.

Cherokee Princess White Dogwood

A beautiful companion to the Cherokee Chief red dogwood described inside the back cover. This fine tree produces large, pure white flowers in great abundance. Trees are very vigorous, early blooming, and have an excellent branching habit. Hardy in most of the New England area. **Sturdy well-rooted trees 24 to 30 in. tall, \$3.85 each.**

Privet Hedge

Amur River Privet is completely winter hardy in the coldest states. Plants grow rapidly to make a fine hedge or windbreak. Leaves are small, dark green and very attractive. Plant one foot apart. **Vigorous, well-rooted plants 12 to 18 inches tall with 2 or more stems, 10 for \$4.00; 25 for \$8.95; 50 for \$17.00; 100 for \$33.00.**

Weeping Willow

For graceful beauty the weeping willow is outstanding. In most of the New England states, west to the Mississippi, and in the South it is a favorite for planting near river and stream banks, but also gives good results in dry land. This is the old-fashioned strain of willow that is so easy to grow and is very hardy.

3 to 4-ft. trees, \$1.50 each; 3 for \$3.95. See order sheet for postal charge.

Japanese Yews (Taxus)

The Yews are in greatest demand because they do equally well in shade or sun. Leaves are broader than other evergreens, are not prickly, and have a flat, glossy deep green hue that remains all year around. Yews stand hard clipping and are of dense habit. Do well in ordinary soil and prefer plenty of humus. 8 to 10 in. size. **See page 18 and order sheet for postal charge.**

\$1.10 each; 3 for \$3.00

Upright Yew—Use at entrances, corners and for drive entrances.

Spreader Yew—Use under windows, around low porches or low foundations.

Be sure to specify Upright or Spreading.

Excellent for All Types of
Landscape and Hedge
Plantings. Very Hardy.



Upright Yew



Spreader Yew

Write for Rayner's Bulletin No. 20 which includes culture of ornamentals and Multiflora Rose.

Evergreen Seedlings

Rayner's pines and spruces are excellent for Christmas tree plantings. Seedlings that cost only a few pennies now will soon be worth dollars. Make poor land or hillsides produce a real profit. Ideal for erosion control, windbreaks, and hedges. For ornamental use plant in a nursery bed and soon you will have ideal specimen trees for your own use and for sale.

SCOTCH PINE

This is one of the best trees for Christmas plantings since it grows very fast and will reach saleable size in five years. Grows well in dry or moist soil and makes a nicely shaped tree with very little shearing. Excellent for ornamental use.

AUSTRIAN PINE

Will grow well in nearly any soil from sand to clay and will tolerate industrial smoke and fumes that kill other pines. Needles are dark green and quite stiff. Develops into nice bushy saleable tree in about seven years.

DOUGLAS FIR

This has long been a favorite tree for Christmas plantings since it has a naturally compact type of growth. With relatively little shearing it will produce high-grade trees. Needles of Douglas fir are short and have a blue-green color. Our trees are of the special San Isabel, Colorado, strain.

WHITE PINE

One of the most beautiful of all trees with soft, slender needles having a fine light green color. White pines grow well in nearly any soil type and will give good results in poorly drained land where most other pines will not grow. For Christmas trees shearing is necessary.

CANADIAN HEMLOCK

For graceful beauty the hemlock cannot be excelled. It produces short, dark green needles which give its long drooping boughs an almost feathery appearance. Canadian hemlock can be easily pruned to



NORWAY SPRUCE

Norway spruce has long been a favorite specimen tree in northern gardens where its stately beauty cannot be excelled. Prefers moist soils rather than dry land and will make a nice tree in about eight years.

COLORADO BLUE SPRUCE

A truly magnificent tree with an outstandingly different blue-green color. In contrast with other evergreens this blue spruce is most unusual and thus is highly prized for its ornamental value. Gives good results in moist, fertile soil and requires relatively little shearing.

Prices of top-quality, 3-yr. Rooted Seedlings (Available March 1 to May 30):

Fully Guaranteed • See page 18.	10 Plants	25 Plants	50 Plants	100 Plants	250 Plants	500 Plants	1000 Plants
AUSTRIAN PINE . . . (10 to 18 in.)	\$1.60	\$3.10	\$5.65	\$10.50	\$24.15	\$43.75	\$73.50
SCOTCH PINE (10 to 18 in.)	1.60	3.10	5.65	10.50	24.15	43.75	73.50
WHITE PINE (8 to 10 in.)	2.05	3.95	7.35	13.50	30.95	56.25	94.50
DOUGLAS FIR (8 to 12 in.)	2.10	4.05	7.50	13.80	31.65	57.50	96.50
COLO. BLUE SPRUCE (9 to 14 in.)	2.25	4.40	8.15	15.00	34.40	62.50	105.00
NORWAY SPRUCE . . (9 to 14 in.)	1.75	3.40	6.35	11.70	26.80	48.75	82.00
CANADIAN HEMLOCK (10 to 18 in.)	3.00	5.80	10.75	19.80	45.40	82.50	139.00

These prices do not include postage. See page 18 and order sheet for postage and handling charge.

Write for Rayner's Bulletin No. 19 Giving Complete Culture Information for Evergreens.

BUY RAYNER'S PLANTS AND YOU BUY THE BEST

Growing Blueberries

These instructions apply to Rayner's hardy, top-quality plants. Be sure to prune about half of top from large bushes before planting.

WHERE BLUEBERRIES CAN BE GROWN:

The varieties of blueberries we offer will grow well from North Carolina to Maine and westward to Michigan and Missouri. They also grow well in parts of California, Oregon, and Washington. For best fruit production blueberries require full sunlight. The best time to plant is early spring. Frost or snow will not harm newly planted blueberries.

SOIL ACIDITY: One of the most important factors in successful blueberry culture is to use acid soil—a pH range of 4.0 to 5.5 is considered best. Many soils naturally have this much acidity, but in many areas where blueberries could otherwise grow well the soil is not sufficiently acid. For small-scale plantings this difficulty can be readily overcome. One of the best methods is to dig a hole about 18 in. deep and about the same in width. Mix half of this soil with well-rotted leaf mold or peat and then mix in 3 oz. ammonium sulfate fertilizer plus $\frac{1}{4}$ lb. of cottonseed meal. Replace this mixture in the hole and set the plant properly, and you have overcome the main problem in growing blueberries.

DRAINAGE: Cultivated blueberries require a uniform supply of moisture but they will not tolerate poorly drained or soggy soil. Avoid heavy clay soil for large plantings.

HOW TO PLANT: If the roots have become dry in shipment, they should be placed in water for about an hour. Best results are obtained if about half of the top growth is pruned from the plant. This allows the plant to become established faster and better. It will rapidly make an abundance of new, sturdy growth. After the holes have been dug and the soil prepared as previously described, the plant should be set so that the upper roots are covered by about an inch of soil. It is very important not to set blueberries too deep in the ground, for they may make poor growth or die. It is helpful to water the newly set plant with a soluble fertilizer, using about one quart of solution per plant. Next the soil should be firmly packed around the roots and a mound of soil made around the edge of the hole so that the plant can be properly watered during dry weather. Rooted cuttings should be grown for two or three years in a bed containing lots of sawdust plus cottonseed meal and acid fertilizer. They can be transplanted as desired.

In commercial plantings blueberries are usually set 4 ft. apart in the row with 8 to 10 ft. between rows. However, in home gardens they may be arranged in any manner and can be pruned to nearly any desired shape. Blueberries are especially suitable for hedge plantings and other ornamental uses.

MULCHING: It is very helpful if a heavy mulch can be maintained around the plants. Any natural organic matter is satisfactory. Sawdust—new or old, oak or pine—also gives excellent results and we strongly recommend its use. However, when sawdust is used as a mulch, it is necessary to add extra nitrogen to the soil. For each ton of sawdust approximately 24 lbs. of actual nitrogen is needed. This can be obtained from 115 lbs. of ammonium sulfate or 72 lbs. of ammonium nitrate. This corresponds to 13 ounces of ammonium sulfate per bushel of sawdust or 8 oz. of ammonium nitrate per bushel. Any other type of fertilizing material could be used if the proper amount of nitrogen is provided.

FERTILIZING: We definitely recommend that blueberries should receive regular fertilizer applications. Use an acid-type, complete fertilizer early in the spring at the rate of about $\frac{1}{4}$ lb. per each small plant or $\frac{1}{2}$ lb. for large plants. Another application in early summer is usually helpful. Do not apply fertilizer in late summer or fall, since it may make plants tender and thus subject to winter injury. Cottonseed meal, $\frac{1}{4}$ lb. for young plants and $\frac{1}{2}$ lb. for old plants, is a complete organic fertilizer that is ideal for blueberries and most other plants. Ammonium sulfate, 2 oz. per small plant and $\frac{1}{4}$ lb. per large plant, is an excellent commercial fertilizer. About 250 lbs. per acre is recommended for large plantings. Half should be applied in March or April and the rest during May or June.

PRUNING: When first planted, about half of the upper branches should be removed. Then during each dormant season further pruning is required. Since blueberries usually make too much top growth, some of this must be thinned out or the fruit will be small. Normally it is best to prune out slender twigs, leaving the heavier stronger growth. Low branches should be removed as well as any weak or dead wood. Write for Rayner's Bulletins 3 and 18 on blueberry pruning.

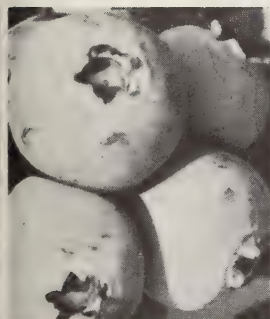
YELLOW FOLIAGE: Blueberries are especially free of disease and insect troubles and thus do not generally require any spraying or dusting. The most common trouble is a yellow color of the leaves (chlorosis). This yellowing can be corrected in two ways—one is by making the soil more acid by addition of vinegar or sulphur, and the other is to add iron directly to the plant and to the soil. Yellow leaves will often become a healthy green color within a few days, after iron is added. We recommend iron chelate for this purpose. About 1 level tablespoonful in a gallon of water can be applied to the leaves and soil and will be of much help in improving foliage.

CROSS-POLLINATION: Since cultivated blueberries are partly self-sterile it is best to plant at least two varieties for cross-pollination. Any combination of varieties is usually satisfactory.

Rayner's FAMOUS BLUEBERRIES



HERE ARE THOSE AMAZING EXTRA LARGE HYBRIDS



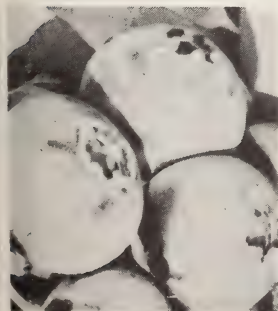
BERKELEY

**MILD
SWEET**

BERKELEY

**MOST
BEAUTIFUL**

This is our selection for the best of all home garden blueberries. It ripens in midseason, producing large, loose clusters of the biggest, most beautiful blueberries you have ever seen. Unlike some varieties, the flavor is good almost as soon as the berry turns blue. Plants of Berkeley are very vigorous and have an excellent semi-spreading shape and usually a heavy main stem. The leaves are very large and very attractive in summer and fall. For all but the most northern states, we strongly recommend Berkeley as an outstanding blueberry.



BLUECROP

**HEAVY
PRODUCER**

BLUECROP

**WINTER
HARDY**

This excellent midseason variety is another of the outstanding introductions of the U. S. Department of Agriculture. Within just a few years Bluecrop has rapidly gained an outstanding reputation as one of the best of all blueberries for commercial production. It is very winter and frost hardy and can be grown in most of the northern states. Berries are large and maintain their size through the long picking season. Yields are very heavy and quality is good. The plants are fairly upright and have a tendency to develop several stems from the ground.

During winters that are unusually severe, causing direct cold injury to blueberries in some areas, also when a late frost occurs which may severely reduce the crop on some varieties, Bluecrop proved its real value by coming through with a large crop of excellent berries. This is undoubtedly one of the finest of all blueberries.

BUY RAYNER'S PLANTS AND YOU BUY THE BEST



BLUERAY

GROWERS' FAVORITE

BLUERAY

EXTRA VIGOROUS

This early variety includes as parents such fine old varieties as Jersey, Pioneer, Stanley, and June and is closely related to Bluecrop. It was released in 1955 by the U. S. D. A. and the New Jersey Agricultural Experiment Station. Since then it has gained rapid acceptance as a commercial berry because of its unusual vigor and tremendous yields of large berries. Blueray has good winter hardiness, giving fine results in Michigan and the New England states.

August 9, 1968

I have 11 blueberry bushes which are about 15 years old. I don't think they have ever missed a year producing and still are.

GROVER CARTER, Rock Hall, Md.

New!

COLLINS

WONDERFUL FLAVOR



COLLINS

In 1959 this variety was released by the U.S.D.A. and the New Jersey Experiment Station. It is a cross between Stanley and Weymouth and ripens midway between Earliblue and Bluecrop. Berries are large, firm, light blue in color, and have a mild sweet flavor. Collins appears to have excellent prospects as a home garden berry because of its fine flavor, excellent quality, and dependable production. Plants are reasonably hardy and should give good results in most of the New England and central states.

April 1, 1968

A note of appreciation for the quality of your stock that I have received from you over the past several years. Two years ago I picked 250 quarts of blueberries from 20 of your plants and I consistently pick between 500 and 600 quarts of strawberries from 200 of your plants.

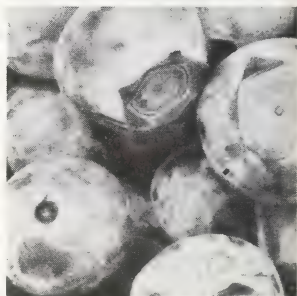
JOHN J. DAVIS, Putnam, Conn.

EXTRA LATE

COVILLE

BIG BERRIES

This very late-ripening variety greatly prolongs the blueberry season. Under our conditions we begin to pick Earliblue about June 10 and Coville in early July. Berries are large and very attractive and continue to ripen for several weeks. Good flavor does not usually develop in Coville until after the berries have fully ripened, but allow them to remain for a week after turning blue and the quality can be very good.



COVILLE

June 14, 1968

I want to let you know that all the plants and bushes we bought from you this year are growing beautifully. We are most proud of our patch of forty Rayner blueberry bushes. Twenty-eight are 14 years old and very productive bushes.

Mrs. ALFRED FOX, Linglestown, Pa.

VERY EARLY

EARLIBLUE

FINE QUALITY

This excellent commercial berry is about as early as Weymouth and has many fine commercial features. The berries are large and ripen uniformly in big, tight clusters. The picking scar is good and berries are resistant to cracking. Of special interest to home gardeners is the mild sweet flavor of Earliblue. Plants are vigorous and have fine upright growth. This variety has good cold resistance and has proven to be a fine berry for both commercial and home use.



EARLIBLUE

**VERY
HARDY**

HERBERT

**BIG
AND LATE**

Herbert is very different in appearance from most blueberries since its fruit has a shiny black luster and a flattened shape. These extra large berries ripen late in the season in loose clusters and have very good quality. Bushes are vigorous and produce heavy crops. Of much importance is the winter hardiness which permits Herbert to be grown in most of the northern states. It is a good variety for home gardeners since it combines winter hardiness, large berry size, good production, and fine quality. Ripens about a week before Coville.

June 7, 1968

I would like to say how pleased I was in the outstanding way in which your Company handles itself. In this era it's hard to find someone to purchase something from and receive the personal attention I received. So I would like to thank you for Rayner Bulletins you sent and the postcard for letting me know you received my order.

The old saying goes: Your customer is your best salesman I hope I can do my part because you certainly have done your part.

HARRY LONG, Claymont, Del.

**BEAUTIFUL
CLUSTERS**

IVANHOE

**UNUSUAL
FLAVOR**

Ivanhoe is outstanding because of its unusually beautiful berry clusters which look much like bunches of blue grapes. Another feature is the wonderful fruity flavor. However, this flavor does not develop until the berries are fully ripe, which is about a week after they first turn blue. The berries are very large and have a dark blue color. Plants of Ivanhoe grow very rapidly and have a fine appearance. And for flavor we believe that a ripe Ivanhoe is one of the best of all blueberries.

**BUY YOUR PLANTS DIRECTLY FROM THE GROWER
AND GET THE BEST FOR LESS**

See page 30 for Complete
Planting Information

PRICE LIST

Prices Do Not Include Postage.

See order sheet for postage and handling charge.

THESE PRICES ARE FOR BERKELEY, BLUECROP, BLUERAY, COLLINS, COVILLE, EARLIBLUE, HERBERT, AND IVANHOE

Healthy True-To-Name Plants	One	3 to 9	10 to 29	30 to 100
	Plant	Plants	Plants	Plants
1-yr. 3 to 9 in. rooted cuttings.....	\$0.85	\$0.75	\$0.65	\$0.55
2-yr. 9 to 12 in. field transplants (branched)	1.75	1.65	1.55	1.35
3-yr. 12 to 18 in. field transplants (well branched) ..	2.15	1.95	1.80	1.60
3-yr. 18 to 24 in. field transplants (well branched) ..	3.25	3.05	2.95	2.50

WRITE FOR PROMPT QUOTATIONS ON LARGER QUANTITIES OF PLANTS
(Varieties may be combined to take advantage of quantity prices)

Extra-Large Plants of Hybrid Blueberries 4 to 5-yr., 24 to 36 in.

We have a limited supply of big, 4 to 5-year plants of BERKELEY, BLUERAY, EARLIBLUE, IVANHOE, and COVILLE. They have already produced at least two nice crops of berries and are loaded with fruit buds for the next crop. But for good results with these large plants remove about half of the total top growth and allow only a small crop to develop. This will allow the root system to become well established and give best results in succeeding years. You will be amazed at the big, delicious berries these hybrid varieties will yield.

PRICES: \$3.95 each; 3 for \$10.95, plus postage. Be sure to follow instructions on page 30.

**NO MATTER HOW
MUCH YOU PAY**

You will never buy berries as good as the fresh harvests of your own locality. With "shipped-in" berries the quality and flavor cannot match the vine-ripened perfection right out of the patch. That's why more and more folks grow their own. Grow more! Save more! Have more!

BUY RAYNER'S PLANTS AND YOU BUY THE BEST

**RAYNER'S
FAMOUS**

Blueberries

FRESH, FULL RIPE BLUEBERRIES ARE A FLAVOR SENSATION—WONDERFUL FOR PROFIT AS WELL AS ORNAMENTAL BEAUTY. BUY YOUR PLANTS DIRECTLY FROM THE PRODUCER AND GET BETTER PLANTS AT LOWER PRICES. THESE ARE THOSE WONDERFUL IMPROVED VARIETIES THAT HAVE BEEN PROVEN SO SUCCESSFUL BY MANY YEARS OF PLANTING IN HOME GARDENS AND FOR COMMERCIAL USE. RAYNER BROS. OFFER THE MOST COMPLETE SELECTION OF THE BEST VARIETIES. FULL PLANTING INFORMATION ON PAGE 30. Other Varieties, pages 31 to 33.

WEYMOUTH Very Early, Large Size

Weymouth is a fine money maker since it is the earliest blueberry to ripen and brings highest prices. It is excellent for home gardens and a leading commercial variety. Berries are large, dark blue, and have a mild, sweet flavor. Plants of Weymouth are low-growing and very hardy.

RANCOCAS Early and Vigorous

Rancocas is an especially dependable variety since it has such vigor and winter-hardiness that it will grow in an unusually wide range of climates and soils. Its berries are sweet in flavor and form tight, attractive clusters; they are firm and fine for preserves, and freezing.

STANLEY Midseason Fine Quality

Stanley is one of our favorite varieties because it makes tall, vigorous plants that produce heavy crops of especially beautiful clusters of berries. The flavor and quality is excellent and thus Stanley is one of the best for eating "off the bush" as well as for processing.

CONCORD Midseason, Very Hardy

Concord is a nice home garden blueberry because of its combination of vigorous, hardy plant growth and beautiful, high quality fruit. The berries are of medium size, have a deep blue color, and are good for freezing. Concord is a dependable producer of big crops.

PEMBERTON Midseason Vigorous

Pemberton is a very good variety for home gardens since it is quite vigorous, and a dependable producer of fine crops of very attractive berries. These dark blue, high quality berries are quite firm and have very good flavor for fresh use or preserves and freezing.

JERSEY Late and Sweet

Jersey is one of the leading commercial varieties since it produces unusually big crops of beautiful, high quality, delicious berries. Its plants are very vigorous and hardy. For home gardens Jersey is an excellent late variety and for profit it is an established leader.

RUBEL Wild Flavor, Late

Rubel is a selection from a wild, productive highbush blueberry. It has that wonderful flavor of wild huckleberries and is therefore a favorite for home gardens. Plants of Rubel are vigorous and very winter hardy. Berries of Rubel are medium in size and have good quality.

DIXI Very Late and Very Large

Dixi has the largest berries of any of the older varieties. The berry quality is good and the texture is firm. Plants are vigorous and have an open spreading shape. Dixi is a very heavy producer and ripens late.

See page 30 for Complete Planting Information

PRICE LIST

These Prices Do Not Include Postage. See order sheet for handling charge.

BUY DIRECT FROM THE GROWER AND GET THE BEST FOR LESS

These prices are for Concord, Dixi, Jersey, Pemberton, Rancocas, Rubel, Stanley, and Weymouth. See pages 31 to 33 for other varieties and prices.

Healthy, True-to-Name Plants

Plant Two Varieties for Pollination.

	One Plant	3 to 9 Plants Each	10 to 29 Plants Each	30 to 99 Plants Each	100 or more Plants Each
1 yr. 3 to 9 in. rooted cuttings.....	\$0.50	\$0.40	\$0.35	\$0.30	\$0.25
2 yr. 9 to 12 in. branched	1.45	1.35	1.20	1.10	1.00
3 yr. 12 to 18 in. well branched	1.95	1.85	1.70	1.60	1.40
3 to 4 yr. 18 to 24 in. well branched	2.45	2.30	2.10	2.00	1.80

Varieties may be combined to take advantage of quantity prices.

JUMBO Size Blueberry Plants—5 yr. 24 to 36-in. Plants

We have a limited supply of extra large plants that have already fruited for two years in the nursery and will bear lots of fruit this coming season.

The varieties available in this 24 to 36 in. size are: Rancocas, Jersey, Dixi, Concord, Pemberton, and Stanley. These are really beautiful plants and are certain to bear a crop. For a big crop in a short time, try these Jumbo plants. For good results follow carefully instructions on page 30.

\$2.95 each; 3 for \$7.95; 10 for \$24.00. SEE SPECIAL OFFERS, BACK COVER

Cherokee Chief

RED DOGWOOD

U. S. Plant Patent No. 1710

EACH TREE CARRIES THIS
PATENT TAG



At last there is a truly red Dogwood—not a pink; but a fine, deep red that is amazingly different. The wonderful new Cherokee Chief originates from a bud sport and is propagated by grafting on to a sturdy rootstock. Even the new foliage is a red color, and in the fall the leaves are scarlet. In late summer there is an abundance of fine red berries that add to the beauty of this excellent ornamental tree. Cherokee Chief is very vigorous and makes a fine tree with uniform branching.

It will grow in full sun but prefers some shade for best results. Hardy to about 10° below zero.

Sturdy, well rooted trees,
24-30 in. tall, \$4.95



CHEROKEE CHIEF

SEE PAGE 28 FOR THE NEW

CHEROKEE PRINCESS WHITE DOGWOOD

Crimson King Maple

Plant Patent
No. 735

The Crimson King variety of Norway maple has long been famous for its deep scarlet foliage which is so different from other trees. It has such beauty and excellent growth habit that it was granted a plant patent. The leaves vary in color from deep scarlet to purplish-red depending on growing conditions. This fine color holds throughout the season.

To improve shipping difficulties we are offering only the 3-4 ft. size which will get off to a flying start and soon develop into magnificent trees. This type of tree is especially dependable.

Your lawn will take on a new look of distinction when you plant your Crimson King Maple. We know you will always cherish one of these beautiful trees.

Vigorous, well-rooted, grafted trees,
3-4 ft. size \$4.95. Fully guaranteed.
Prices in this catalog DO NOT include postage.



BUY RAYNER'S PLANTS AND YOU BUY THE BEST

RAYNER'S FAMOUS BLUEBERRIES



Economy Garden

- 2 CONCORD
- 2 STANLEY
- 2 JERSEY

6 Top Quality
Plants, 2 yr. 9-12"
SPECIAL **\$6.50**

Quality Garden

- 3 RANCOCCAS
- 3 STANLEY
- 3 BURLINGTON

9 Top Quality
Plants, 3 yr. 12-18"
SPECIAL **\$13.95**

Hybrid Garden

- 2 EARLBLUE
- 2 BLUERAY
- 2 BERKELEY

6 Top Quality
Plants, 3 yr. 12-18"
SPECIAL **\$9.95**

Jumbo Garden

- 2 RANCOCCAS
- 2 STANLEY
- 2 JERSEY

6 Top Quality
Plants, 4 yr. 24-36"
SPECIAL **\$13.90**



**Order Rayner's
Garden Specials for
Money-Saving Values**

RAYNER BROTHERS, INC.
SALISBURY, MD. 21801

BULK RATE
U. S. POSTAGE
PAID
SALISBURY, MD.
Permit No. 46

US1-171 EGB
ASDA NATN AGRICUL LIB
CORRENT SERIAL RECORD
WASHINGTON D C 20250

Buy Rayner's Plants and You Buy the Best

**THIS BERRY BOOK IS YOUR GUIDE TO SUCCESSFUL FRUIT PRODUCTION
PROVEN BY THOUSANDS OF SATISFIED CUSTOMERS FROM MAINE TO FLORIDA**