

Historic, archived document

Do not assume content reflects current scientific knowledge, policies, or practices.

RAYNER'S

1974

Berry Book

RAYNER BROS., INC. • SALISBURY, MD. 21801

Index

62

FR



RAYNER'S

Garden Specials

Money-Saving Values For You

SMALL GARDEN

(4 rows 50 ft. long)

25 FAIRFAX
25 SURECROP
25 POCAHONTAS
25 SPARKLE

100 PLANTS

SPECIAL \$10.95

Plus Postage

MEDIUM GARDEN

(4 rows 100 ft. long)

50 REDGLOW
50 CATSKILL
50 SURECROP
50 ARMORE

200 PLANTS

SPECIAL \$15.35

Plus Postage

LARGE GARDEN

(8 rows 100 ft. long)

100 SUNRISE
100 SURECROP
100 POCAHONTAS
100 JERSEYBELLE

400 PLANTS

SPECIAL \$23.65

Plus Postage

SURECROP

**THE MOST DEPENDABLE
STRAWBERRY**



In addition to its big yield of excellent berries this amazing variety from the U.S. Dept. of Agriculture has triple resistance to the red stele disease; resistance to Verticillium wilt; resistance to leaf diseases; and drought resistance. These features, combined with its unusual vigor and hardiness, make Surecrop the easiest of all strawberries to grow and the most dependable variety. No wonder it is a "surecropper" for thousands of commercial growers

and home gardeners throughout most of the eastern half of the United States.

If you want a strawberry that is truly outstanding for profit or pleasure you will certainly want Rayner's registered virus-free stock of Surecrop with its abundant production of large, firm, delicious berries.

See page 9 for further details and page 17 for complete prices.

25 PLANTS \$3.35; 100 PLANTS \$7.50; 1,000 FOR \$33.50

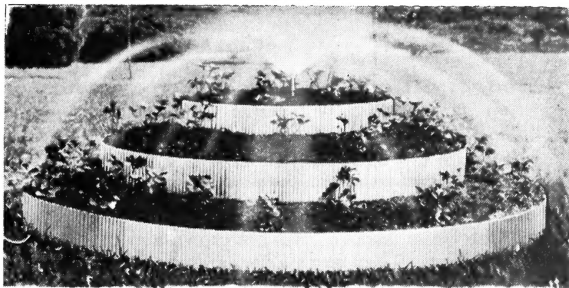
BERRY TERRACE

50 feet of row in a 6-foot space

IDEAL FOR SMALL YARDS

The Terrace is made of aluminum that holds its beauty for years. It will accommodate 50 strawberry plants. The ease of watering and fertilizing enables much more production of fruit than would normally be realized. The beauty of foliage and blossoms and the harvest of berries from spring to frost will provide a constant delight.

You may prefer to grow one or two of the excellent June-bearing varieties in your pyramid. Do not remove the blossoms but cut off the runners and you will have excellent berries 60 days or less after planting.



NEW MODEL PYRAMID \$9.95

Consists of three attractive corrugated aluminum bands with a base diameter of 6 feet. Complete with sprinkler system ready for attachment to your garden hose.

ACCESSORIES FOR PYRAMID

Cover (plastic) makes small greenhouse	\$5.95
Support Strips (for cover)	\$4.10
Net (for bird protection)	\$6.95

TABLE OF CONTENTS

	Page		Page
STRAWBERRY PLANTS.....	1-17	DWARF FRUIT TREES.....	24-25
ASPARAGUS ROOTS.....	19	NUT TREES.....	26
RHUBARB AND HORSERADISH	19	GRAPE VINES.....	27
RASPBERRY PLANTS.....	20-21	TREES AND SHRUBS.....	28
FRUIT TREES—STANDARD SIZE.....	22-23	EVERGREENS SEEDLINGS.....	29
BLACKBERRY PLANTS.....	23	BLUEBERRIES.....	30-34

How to Choose the Best Strawberry Varieties

Your choice of strawberry varieties depends, to a large extent, on the purpose for which they are to be grown. Some varieties are especially good for fresh eating, while others are quite tart, but good for long-distance shipping. Some are superior for freezing, and others are extra good for preserves. Some varieties will give fine results in nearly any soil, while others require very good growing conditions. Some varieties are resistant to diseases while others are susceptible. Below is a list of general strawberry characteristics when grown under normal conditions. It must be remembered that excess fertility and other conditions can greatly alter strawberry qualities. Thus, we strongly recommend that you try several of the most desirable varieties and decide which ones are best for your particular location. Complete descriptions of all our strawberry varieties are given in this catalog.

CHARACTERISTICS OF SOME STRAWBERRY VARIETIES

Best for Flavor and General Home Use:

Redglow, Fairfax, Armore, Pocahontas, Suwannee, Sparkle, Midway, Sunrise, Redstar, Fletcher, Redchief, Surecrop, Guardian.

Best for Large Size: Armore, Robinson, Jerseybelle, Catskill, Empire, Pocahontas, Vesper, Guardian.

Best for High Yields: Catskill, Pocahontas, Surecrop, Earlidawn, Midway, Sunrise.

Best for Firmness: Guardian, Pocahontas, Surecrop, Tennessee Beauty, Earlibelle, Raritan, Redchief.

Best for Freezing: Midland, Pocahontas, Redglow, Sparkle, Surecrop, Earlidawn, Midway, Fletcher, Redchief.

Best for Preserves and Jams: Blakemore, Suwannee, Pocahontas, Tennessee Beauty, Earlibelle, Redchief, Guardian.

Best for Vigor and Growth in Poor or Dry

Land: Surecrop, Robinson, Premier, Blakemore, Sunrise.

Best for Resistance to Red Stele: Surecrop, Redglow, Sparkle, Midway, Sunrise, Guardian, Redchief.

Best for Resistance to Verticillium Wilt: Catskill, Surecrop, Premier, Robinson, Empire, Sunrise, Guardian.

Best for Resistance to Leaf Troubles: Fairfax, Premier, Midland, Surecrop, Catskill, Empire, Redstar, Tennessee Beauty, Guardian.

Best for Very Cold Climates: Robinson, Catskill, Sparkle, Premier, Midway, Fletcher.

Best for Southern States: Albritton, Pocahontas, Blakemore, Surecrop, Tennessee Beauty, Earlibelle.

Growing Strawberries

Strawberries are one of the easiest crops to grow. Good plants set out at the proper season in good soil will thrive with ordinary care and cultivation. There is nothing complicated about growing strawberries, and by following these easy instructions the beginner can be sure of good results. Rayner's registered virus-free stock is further assurance of success.

Where strawberries can be grown: In every state of the Union strawberries are grown at least to some extent. They are quite hardy and will give good results in any reasonably fertile soil that has good moisture. Like other fruit, strawberries require almost full sunlight for good fruit production.

Soil: A good soil for strawberries is one that is slightly acid, in good condition, and reasonably free of weed seed. Newly plowed pasture or sod may give poor results, but recently cleared woodland is excellent. All good garden soils will produce strawberries successfully.

Fertilizer: Important requirements for strawberries are high organic matter and high fertility. Before planting, plow down well-rotted barnyard manure, which is one of the best materials for good strawberry growth. If this is not available, other organic material is helpful. If you wish to use a commercial fertilizer, plow down 500 pounds to the acre of a complete fertilizer (8-8-8 or 10-10-10). This is equal to about 1¼ pounds per 100 sq. ft. If the soil contains a good supply of manure and is in a very high state of fertility, this is not necessary.

Use of a good soluble fertilizer at time of planting is recommended. It will not burn the plants and can safely be used at any time during the growing season.

In poor soils an application of cottonseed meal or a complete commercial fertilizer may be necessary 4 to 6 weeks after planting.

Strawberries have a high requirement for nitrogen, but it must be applied at the proper time or else very adverse effects may result. Fruit buds, which determine the spring crop, are developed in the plant during August and September. Therefore, this is the most important time to apply fertilizer. Most successful growers apply about 500 lbs. per acre of a 10-6-4, 8-8-8, or similar fertilizer at this time. This is equal to about 1 lb. per 80 sq. ft. of strawberry bed. The fertilizer should be spread directly on the plants when dry and then brushed off the leaves. If applied when the leaves are wet, injury may result.

An excellent organic plant food for strawberries and nearly all other plants is cottonseed meal. It is obtained entirely from ground cottonseed and is thus entirely organic in nature. Usually it contains about 6% nitrogen, 3% phosphoric acid, and 2% potash plus other important elements. Thus, cottonseed meal is a perfect plant food for those who follow the highly commendable practices of organic gardening. It is usually used at the rate of 4 lbs. per 25 ft. of strawberry row and will cause no injury or damage to the plants.

In general, it is best not to apply fertilizer during the spring on fruiting beds. This can cause excess plant growth, reduced fruit production, and

poorer quality. We believe this is one of the most common causes of poor strawberry yields and recommend that fruiting beds should not be fertilized in the spring.

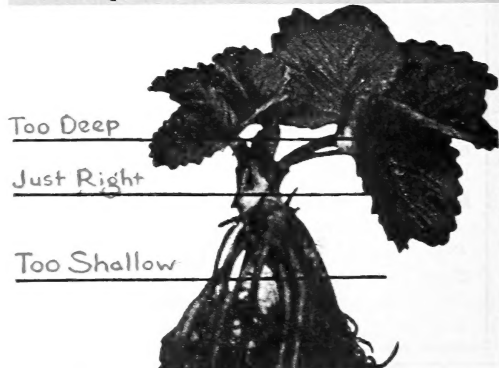
When to plant: Early spring is usually the best time to plant strawberries. In northern states it is best to wait until May or even June when the soil is in good condition. Frost or snow will not harm newly planted strawberries. *With Rayner's dormant plants, there is a definite trend to summer planting where irrigation is available. This gives a less crowded plant bed which yields unusually heavy crops of very large berries.* In cold climates we do not recommend planting after mid-July. Fall plantings are sometimes successful but are often damaged or completely destroyed by winter injury.

How to plant: It is important not to set the plant too deep or too shallow—see photo below. Do not clip the roots but spread them out full length and press soil around the plant so that the roots are firmly anchored in the soil. About a pint of water or soluble fertilizer solution should be poured around each plant when it is put in the hole. A good planting distance is 2 ft. apart in the row, with 4 ft. between rows. Slightly narrow fruiting beds will usually have better yields and higher quality than beds that are unusually thick. There are usually two extra plants per bunch, so set the extras at a row end and use if replacements are needed.

Plants Required Per Acre

Plants required per acre at various planting distances:

Rows	Distance in Row	Plants per Acre
3½ ft. apart	18 in.	8,325
3½ ft. apart	24 in.	6,225
3½ ft. apart	30 in.	5,000
4 ft. apart	15 in.	8,750
4 ft. apart	18 in.	7,300
4 ft. apart	24 in.	5,425
4 ft. apart	30 in.	4,375



STRAWBERRY CULTURE

(Continued from page 4)

Care of the plants: A few weeks after the strawberries are planted they will produce blossoms. For the regular matted-row system it is best to remove these blooms since the plants will make better growth. Hoeing and cultivation are necessary practices for weed control, but much benefit can be obtained by use of a good weed-killer. We recommend that you consult your state agricultural authorities for recommendations. We have used geese in our fields for grass control; about three per acre will do a good job on young grass.

In northern states it is important to mulch strawberries for prevention of winter injury. Straw, hay, or marsh grass are the best materials. It should be applied in the fall when the temperature first reaches 20°F and used so as to cover the plants to a depth of 3 to 4 in. About three to six tons

of hay or straw per acre is needed. As soon as new strawberry leaves begin to grow in the spring, the mulch should be removed so that only about an inch remains. The rest should be kept between the beds where it will help keep the berries clean and free of rot. Even in the South many berries are mulched to help keep them free of dirt and decay.

Control of diseases and insects: Two soil diseases: red stele and verticillium wilt, sometimes damage strawberries. Below is a list of resistant varieties. In our No. 17 issue of "Better Berries" we have a chart showing control of diseases and insects. And in our No. 21 issue there is a full summary of strawberry culture. Write to Rayner Bros. Inc., Box 1617, Salisbury, Maryland 21801.

For further details concerning strawberries contact your county agricultural agent or write to your state agricultural extension service.

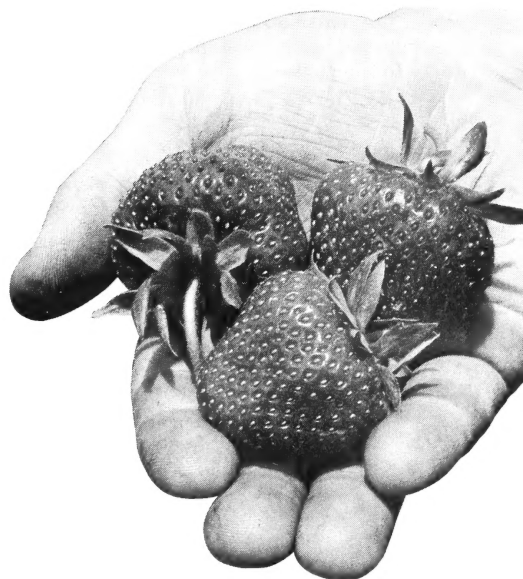
The Best Thing That's Happened to Strawberries—Since Jam Guardian

RESISTANT TO RED STELE AND VERTICILLIUM WILT

As sure as strawberry jam is good to eat, GUARDIAN is the best new variety to come along for many years. This attractive midseason variety has a delightful flavor that you won't forget. You can preserve or freeze GUARDIAN and enjoy its wonderful flavor all year long. It has already become a favorite with all who have picked it. The huge, firm berries have a glossy shine that makes it very attractive for home gardeners as well as "pick it yourselves." GUARDIAN holds its uniform light red color throughout the picking season and because of its firmness it ships well.

Since it is highly resistant to red stele, Verticillium wilt, powdery mildew, and leaf scorch, GUARDIAN is very appropriately named. Red stele and Verticillium wilt are two of the most troublesome diseases in strawberry plantings. Little can be done except to plant resistant varieties. GUARDIAN is a high quality berry that is resistant to five races of red stele as well as Verticillium wilt.

We strongly recommend that you plant GUARDIAN. No strawberry planting would be complete without this wonderful new variety.



25 Plants \$3.75; 50 for \$5.60; 100 for \$8.50; 1,000 for \$37.50. Complete Prices Page 17.

April 16, 1973

The plants are great as usual. Thanks a lot for a good company such as yours.

A. P. THOMPSON, Front Royal, Va.

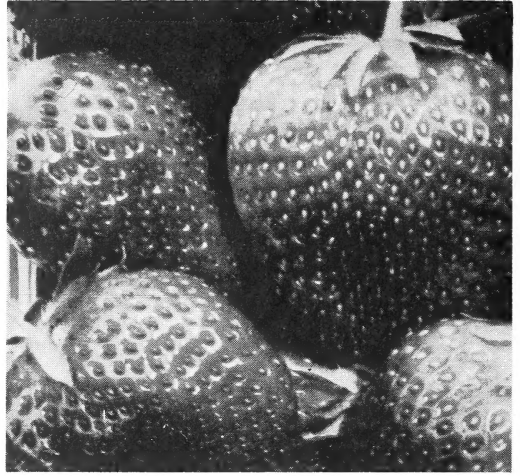
BETTER BERRIES BUILT OUR BUSINESS

Midland

**VERY EARLY.
EXCELLENT QUALITY AND BEAUTY**

Throughout the northeastern and central states, this is one of the finest of all strawberries for flavor, quality, and appearance. The berries are very large and have a beautiful deep red color. The flesh is firm and has a fine solid red texture that rates Midland as one of the best of all for freezing. Berries ripen very early and bring top prices, so this is a fine variety for either small or large-scale commercial use. On Long Island virus-free Midland has proven to be an outstanding variety for the high-quality New York market.

We strongly recommend Midland for home gardens and local sales where its excellent quality and fine appearance make it a real favorite. The plants are vigorous and resistant to leaf troubles and do not make too many runners as is the case with some varieties. Give Midland good growing conditions and you will be rewarded with a fine strawberry in all respects. Rayner's registered virus-free stock of Midland will bring the best out of this excellent variety.



25 Plants \$3.60; 50 for \$5.40; 100 for \$8.10; 1,000 for \$36.00. Complete Prices Page 17.
Our prices do not include Postage. See order sheet for postage and handling charge.

Premier

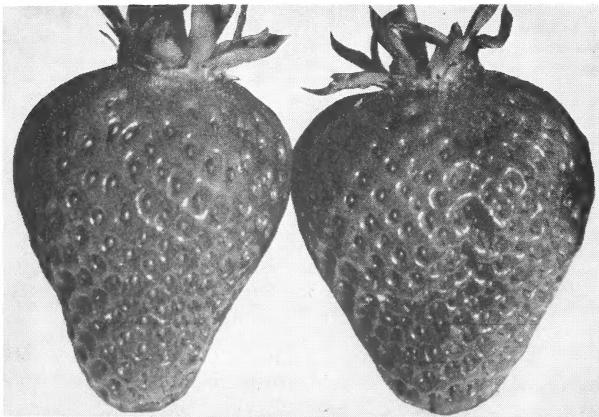
THE OLD FAVORITE EARLY BERRY

Premier was introduced in 1918 as Howard 17. Later it was renamed Premier and became one of the most widely grown of all strawberries. Even though it has been surpassed by many new varieties, Premier has remained a favorite because it ripens early and is frost hardy even in cold climates. It produces light red berries in abundance, and in most of the northern states it is considered a very dependable variety for home use or local sales.

25 Plants \$3.45; 50 for \$5.15; 100 for \$7.80; 250 for \$15.10; 1,000 for \$34.50

Earlidawn

**ONE OF THE BETTER
EARLY VARIETIES
FOR COMMERCIAL PRODUCTION**



Earlidawn ripens before all other strawberries and produces tremendous crops that lead the customers right to your door for those early profits. Berries of Earlidawn are light red in color and have a fairly firm, light red flesh. The flavor is tart and when used for preserves and freezing this variety gives fine results.

Earlidawn does not make runners freely but in reasonably good soil it will make a good fruiting bed. Susceptible to Verticillium wilt, it should not be planted where tomatoes or potatoes have recently been grown. Despite its earliness Earlidawn has unusual frost resistance. It ripens rapidly and produces lots of big berries

that make the rows shine with the unmatched beauty of red, ripe strawberries.

25 Plants \$3.60; 50 for \$5.40; 100 for \$8.10; 1,000 for \$36.00; Complete Prices Page 17.



Redglow

OUTSTANDING FOR FLAVOR AND BEAUTY

REDGLOW is our nomination for the best combination of beauty, flavor, and quality in a strawberry. It is so delicious that you and your customers will know you have found the variety that has all that can be desired in this respect. In addition, this fine early variety has resistance to the red stele disease and sufficient hardiness to withstand northern winters. For home gardens Redglow is a favorite because of its beauty and flavor, and for local sales these same fine features result in "repeat customers." Berry size is large and the outside color is a bright, light red while the inside color is also bright red. It grows well in nearly any reasonably fertile soil and with Rayner's virus-free stock you will obtain the full value.

25 Plants \$3.50; 50 for \$5.25; 100 for \$7.90; 1,000 for \$35.00

Earlibelle

EARLY VARIETY FOR SOUTHERN AREA

Earlibelle resulted from the cooperative breeding program of the United States Department of Agriculture and the North Carolina Agricultural Experiment Station. It has taken the place of Dixieland in some areas because its berries are unusually firm and thus excellent for a southern shipping variety. It ripens early and produces fine crops of beautiful, bright, tart berries that "hold their size." Earlibelle is a very vigorous variety and makes lots of plants even in sandy soil or dry weather. Dr. M. M. Parker, of the Virginia Truck Experiment Station, found this variety to be extremely productive, early in ripening, and to produce large, firm berries even when fruiting beds were crowded with plants. We recommend Earlibelle from eastern Maryland into Georgia and other southern areas.

25 Plants \$3.40; 50 for \$5.10; 100 for \$7.65; 1,000 for \$34.00. Complete Prices Page 17.

Sunrise

OUTSTANDING AROMA AND FLAVOR

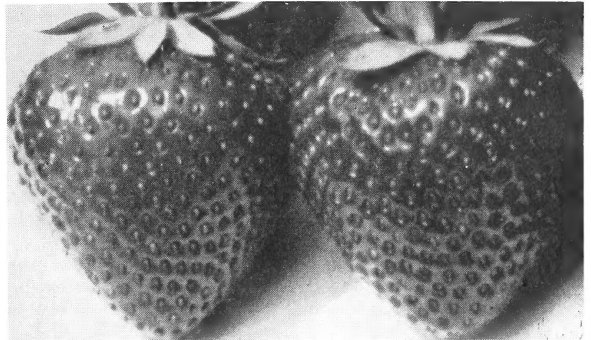
AMAZINGLY PRODUCTIVE DISEASE RESISTANT

Sunrise has proven to be a real winner in the area from Norfolk, Va., to Philadelphia, Pa., and west to Missouri. Sunrise consistently produces high yields of large, firm, very bright, attractive berries that hold their color long after picking. Its wonderful aroma and delicious flavor have made it a favorite with the home gardener and commercial grower alike.

It has multiple resistance to red stele fungus and is resistant to Verticillium wilt. Sunrise ripens early—about 2 days after Earlidawn—and produces heavy yields of very attractive berries with a fine cap and pink flesh color. The flavor is good for fresh use and preserves but when frozen the color is a bit light for top quality.

Plants of Sunrise are vigorous and resistant to leaf scorch and powdery mildew but susceptible to leaf spot. This variety is also very drought resistant and may make an excess of runners, which should be removed for maximum yields. We recommend Sunrise as a very good early commercial variety especially in soils where red stele and Verticillium wilt occur.

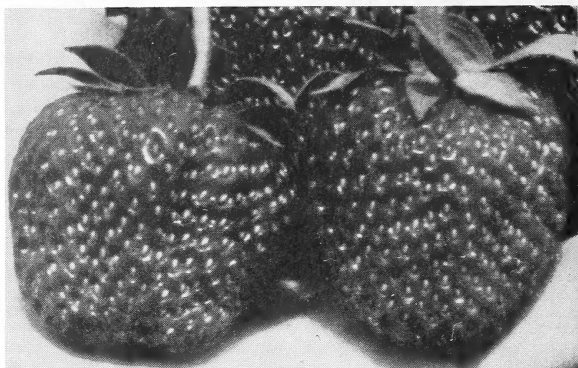
25 Plants \$3.55; 50 for \$5.30; 100 for \$8.00; 1,000 for \$35.50. Complete Prices Page 17.



Fairfax

THE OUTSTANDING VARIETY FOR DELICIOUS FLAVOR

We recommend Fairfax for those who want strawberries with a truly delicious flavor. Since its introduction in 1928 by the U. S. Department of Agriculture, this variety has been a flavor favorite. Many commercial growers have customers who pay a premium price for this delicious berry, and many home gardeners always include it in their planting. Berries of Fairfax become a very deep red color when at their flavor peak, but for freezing the berries of medium red color give better results. Its fruit is medium to large in size, and production is good. Plants of our virus-free Fairfax are quite vigorous and winter hardy throughout the northeastern states. We believe that the sensational flavor of Fairfax makes it one of the very best varieties for home gardens from north to south. Rayner's virus-free plants will give best results.



25 Plants \$3.60; 50 for \$5.40; 100 for \$8.10; 1,000 for \$36.00. Complete Prices Page 17.

Suwannee

HIGH QUALITY

EXCELLENT FLAVOR

Suwannee is considered by many experts to be the best flavored of all strawberry varieties. Besides having such a good flavor, it also makes good preserves and jam which can be enjoyed long after the picking season is over. The large light red fruit is rather long in shape, fairly firm, but will not stand long distance shipping. If you want outstanding flavor, you want Suwannee. Plant Suwannee in your garden this year. You will be delighted.

25 Plants \$3.30; 50 for \$4.95; 100 for \$7.35; 250 for \$14.45; 1,000 for \$33.00

Robinson

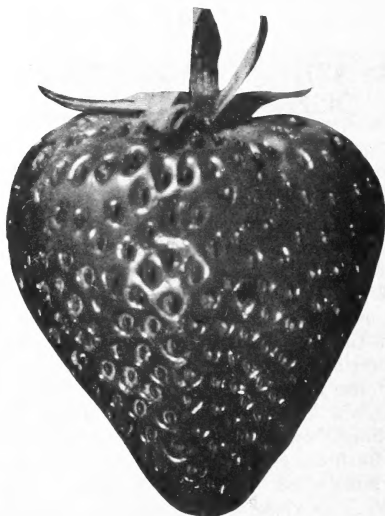
Extra Large Berries

Robinson (also known as Kardinal King and Scarlet Beauty) has several outstanding good features that far outweigh its less desirable qualities. It is one of the most vigorous plant makers and will often give good results in poor soils where others fail. Fruits of Robinson are very big, and with their light red color they bring good prices. It ripens early mid-season. The plants are small but the fruiting beds are very wide and vigorous. Robinson is resistant to Verticillium wilt and is very winter hardy.

In cool climates the quality and firmness of Robinson is good enough to satisfy most customers. However, in warm areas it may not be suitable. Because of its vigor and large berry size, Robinson remains a favorite of many home gardeners and commercial growers in the northeast.

25 Plants \$3.35; 50 for \$5.00; 100 for \$7.50; 1,000 for \$33.50

Prices do not include postage



Surecrop

COLOR PHOTO
INSIDE COVER

DISEASE RESISTANT, DROUGHT RESISTANT, UNUSUALLY VIGOROUS

Year after year Surecrop continues to be the most popular variety we have to offer. Because of its vigor and dependable crops of delicious fruit, Surecrop is highly in demand by both the home gardener and the commercial grower. In a test of seven locations, it averaged 1.37 quarts per plant set. One of the locations reported 13,600 quarts per acre. Its fruit was rated large in size, firm in texture, and of good freezing quality. Similar reports are obtained from so many customers in so many locations that we can unhesitatingly recommend Surecrop as a truly remarkable strawberry for both home garden and commercial production.

Surecrop has such vigor that it will often grow in poor or dry land where other strawberries fail. Also it has multiple resistance to the red stele disease as well as resistance to Verticillium wilt and other troubles. Because of its vigorous growth it is most important to prevent the fruiting bed from becoming too heavily matted and to avoid any spring application of fertilizer.

This excellent midseason variety has beautiful, firm fruit, with nice flavor and quality. Try Surecrop for one of the finest strawberries you have ever seen. Further information on inside front cover.

25 Plants \$3.35; 50 for \$5.00; 100 for \$7.50; 1,000 for \$33.50. Complete Prices Page 17.

Florida 90

BEST FOR
FLORIDA

Because of the lack of cold weather in Florida there is not sufficient winter dormancy for fruit development in most varieties of strawberry. Florida 90 was developed in Florida for Florida conditions. This is the berry that is grown so extensively for shipment to the North. Its berries are large and elongate and have a rich red color and wonderful flavor. Not satisfactory north of Georgia.

25 Plants \$3.40; 50 for \$5.10; 100 for \$7.65; 1,000 for \$34.00. Complete Prices Page 17.

Pocahontas

EXTRA BIG YIELDS OF HIGH QUALITY BERRIES

Pocahontas was introduced in 1954 by the U. S. Dept. of Agriculture and the Virginia Truck Experiment Station and soon became one of the leading varieties for both commercial and home garden production. Such popularity is fully deserved since Pocahontas produces extra big yields of very large, bright, high quality berries that hold their fine appearance long after picking. Thus Pocahontas is a favorite with commercial producers where these features are so important. The excellent quality and large size of Pocahontas, together with fine plant vigor, also make it one of the best for home gardens. It ripens in midseason and yields amazing crops of beautiful berries that "hold their size" during its long harvest period. The berries have a fine bright skin with yellow seeds and a good clear red flesh color. Therefore Pocahontas is fine for freezing and preserves. From New York to Georgia and westward to Texas this variety is still one of the very best and we recommend it highly to all who want big crops of large, fancy berries.

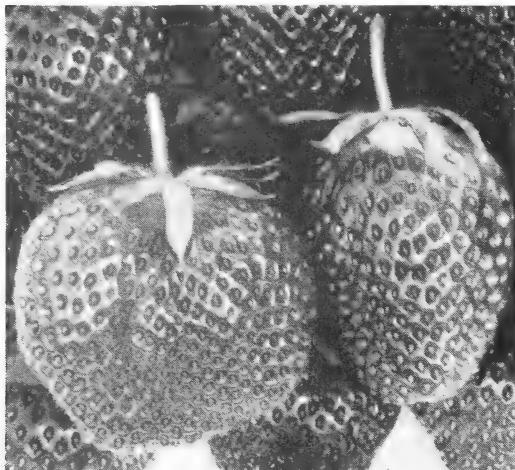


25 Plants \$3.40; 50 for \$5.10; 100 for \$7.65; 1,000 for \$34.00. Complete Prices Page 17.
Our prices do not include Postage. See page 18 and order sheet for postage and handling charge.

ON FRUITING BEDS APPLY FERTILIZER IN EARLY AUTUMN

Midway

GET YOUR SHARE OF BIG PROFITS FROM THIS NEW COMMERCIAL LEADER. EXCELLENT FLAVOR, FINE FOR FREEZING, RED STELE RESISTANT



Because of its tremendous production of delicious, firm, attractive berries, Midway has had a popularity explosion that causes the demand for plants to far exceed the supply. Be sure to place your order early. Within a few years this wonderful berry has become the king for both commercial production and home plantings. In Michigan, Ohio, Virginia, West Virginia, Maryland, New Jersey, Pennsylvania, and many other states it has become a sensational favorite. If you want to grow one of the best of all strawberries, be sure to get Rayner's registered virus-free stock of Midway. It has now proved to be one of the heaviest yielding of all strawberries and one of the best ever for big profits.

It ripens in early midseason, producing large, bright berries with extra fancy caps and bright yellow seeds. Berries of Midway have a nice uniform shape and hold their large size and fine

appearance for the long harvest season. The berries have a firm flesh and firm skin, which permits long-distance shipment and results in a nice-looking berry a day or two after they have been picked. Midway is a delicious berry for fresh use and excellent for freezing and preserves. It has resistance to red stele and is a very good plant maker if conditions are at all favorable. Be sure to try this superior variety.

25 Plants \$3.50; 50 for \$5.25; 100 for \$7.90; 1,000 for \$35.00. Complete Prices Page 17.

January 5, 1973

I want to tell you how pleased I was with the thousand Midway I ordered last year. They were marvelous.

S. CARVER, Bland, Va.

Raritan

LARGE GLOSSY FRUIT—A REAL PROFIT MAKER

Since its introduction in 1968, Raritan is fast becoming one of the favorite early midseason varieties. If you live in the area from the east coast of Virginia to Long Island, Maryland, Ohio or Pennsylvania, you can grow Raritan with excellent results.

In addition to having large glossy red fruit with an attractive cap, Raritan is firm and ships well. The fruit has very good flavor and is recommended for fresh market and table use but not for freezing. Because of its beauty and excellent shipping qualities, Raritan has become the favorite variety in New Jersey.

Plants run freely and produce a good bed in the matted row system. Raritan is not resistant to red stele or Verticillium wilt; therefore, we recommend avoiding land where these diseases are known to exist.

The demand for this new variety is expected to be heavy, so order early to insure getting your plants.

25 Plants \$3.70; 50 for \$5.55; 100 for \$8.30; 1,000 for \$37.00

Prices do not include postage. See page 18.

February 12, 1973

I could get these plants closer to home but have always received superior plants from you.

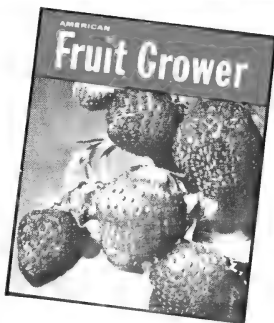
J. P. ALEXANDER, Sheffield, Ala.

GROW MORE WONDERFUL CROPS

of **FRUITS • NUTS • BERRIES**
GET IN ON THIS SPECIAL OFFER!

AMERICAN FRUIT GROWER makes
it easy for you to . . .

- Select the best varieties, know how to prune, plant, and pack.
- Market at a profit, make money with fruit.
- Plant trees that flourish earlier, bear more wonderful crops.
- Get the advice of experts, learn how leading growers do it.



Recommended by
Rayner
Brothers Inc.

USE ORDER FORM ON OTHER SIDE

YES, COUNT ME IN...

Enter my subscription at the special half-price offer checked below. I enclose payment.

12 months only \$2.00 — or better yet

24 months only \$4.00
(Foreign \$8.00 a year)

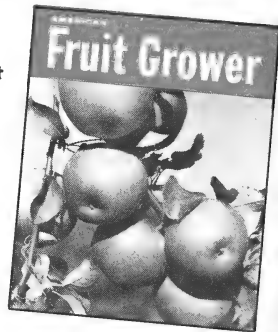
Name _____

Street or RFD _____

Post Office _____ State _____ Zip _____

Fruit Grown _____ Acreage _____

Do you presently receive AFG? Yes No



The Only National Magazine for Fruit, Nut, and Berry Growers

Mail check, money order, or cash to: American Fruit Grower, Willoughby, Ohio 44094

THE ORGANIC METHOD

It's not the easiest way to garden. It's just the best.

It takes a few brains to put Nature to work for you. Instead of against you.

Like outsmarting pests and insects. Without poisoning them. Along with the "good bugs". And maybe even yourself.

And it takes a little extra effort to make your own natural fertilizer. Instead of wasting money on inferior chemicals.

But isn't it worth it to be able to raise the biggest, tastiest poison-free fruits and vegetables? The very earliest crops? And the hardiest,

healthiest plants that you and your neighbors have ever seen?

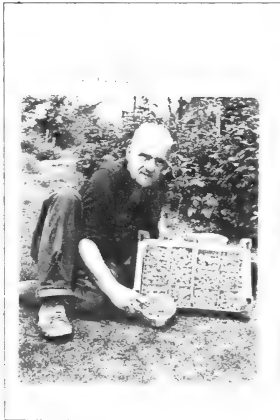
That's what the *organic* method of gardening is all about.

And while it's not the easiest way to garden, it can't be too hard either. Because we're helping nearly one million men, women and children to Nature's plentiful rewards right now.

We're ORGANIC GARDENING magazine. And if you'd like to see how we can help in your garden *without spending a cent . . .* here's all you have to do:

**Mail the attached card to inspect
our latest issue FREE and prove it to yourself.**

All the garden help you'll ever need.



- Early, hardy, delicious fruit and vegetables.
- Beautiful lawns, trees, shrubbery and flowers.
- "Can't miss" gardening techniques for beginners or veterans.
- Old-fashioned recipes and cooking hints.
- Tips on canning, storage, preservation.
- Building plans and ideas.
- Garden Calendar.
- Euell Gibbons and wild foods.
- Cashing in on your organic crops.
- Advice on homesteading, natural living and much more!

Mail the card and see what we mean. There's no cost, risk or obligation.

Catskill

BIG YIELDS OF BIG BERRIES—OUTSTANDING FLAVOR



This famous berry has long been the leading variety in most of the northeastern United States. It is especially hardy and consistently produces unusually big crops. Berries of Catskill are large, bright in color, and of excellent flavor. They ripen in midseason and are a favorite for local sales and home gardens. Catskill is generally not firm enough for long distance shipment but is excellent for "pick them yourself" plantings. Plants of Catskill are very vigorous and resistant to leaf troubles and Verticillium wilt. This variety was introduced by the New York Agricultural Experiment Station in 1933 and still remains a favorite with thousands of growers who praise its bumper crops of big delicious berries. Through Penna. and northward into Canada, Catskill gives fine results in nearly any soil that is reasonably fertile and moist. Rayner's virus-free true-to-name stock assures you of the best possible results with Catskill.

25 Plants \$3.40; 50 for \$5.10; 100 for \$7.65; 1,000 for \$34.00. Complete Prices Page 17.

Empire

FOR NEW ENGLAND STATES

VERY LARGE

Empire is another of the fine fruit developments of the New York State Experiment Station. Thus, it is well suited to the northern states where it is a fine midseason companion of Catskill. Yields are good, and it has sufficient frost and winter hardiness to be a very dependable producer. Empire is an especially attractive berry since it has a very glossy, medium red color and a fine green cap. The berry shape is somewhat elongate and irregular. Berry size is large, and this size holds up well for the entire picking season. The flesh color of Empire is somewhat pale, and it is a bit soft, but the flavor is very good. Its large size, fine appearance and good flavor rate Empire as a real profit maker in northern states. We definitely believe you will like this excellent variety.

Plants of Empire are very vigorous, winter hardy and resistant to Verticillium wilt. Runner plants are developed freely and result in a good fruiting row. In all the New England area, we believe you will have excellent results with Rayner's virus-free Empire which produces such extra-big berries.

25 Plants \$3.40; 100 for \$7.65; 1,000 for \$34.00



Albritton

SOUTHERN FAVORITE

ALBRITTON is a leading commercial and home garden variety in the coastal region of North Carolina and will give good results southward into Georgia and northward into Virginia. In this area it produces berries that are unusually attractive and of fine quality but unfortunately Albritton does not give good results in colder climates. Rayner's virus-free stock of Albritton is especially vigorous and productive.

25 Plants \$3.30; 50 for \$4.95; 1,000 for \$33.00. See order sheet for postal charges.

A MULCH WILL KEEP THE BERRIES CLEAN

Redchief

**NEW RED STELE RESISTANT
HIGH QUALITY MIDSEASON VARIETY**



REDCHIEF, introduced in 1968 by USDA and Maryland Agricultural Experiment Station, is a new midseason variety that is suitable for the home gardener as well as the commercial grower. It is ideal for "pick your own" plantings. Redchief's sweet flavor, uniform red color, and firm glossy surface make it a high quality dessert berry. It makes good jam, and its high quality is also maintained when frozen. Being a firm berry it ships very well and holds up during the picking season.

REDCHIEF is resistant to five strains of red stele, leaf scorch, mildew, and moderately resistant to Verticillium wilt. The plants have medium vigor, make a good matted row, and produce above average yields. Redchief has performed very well from Maryland north to Massachusetts and west to Illinois. There are nothing but good reports from commercial growers in Michigan. With Rayner's virus-free plants, you will be more than pleased with this wonderful new variety.

25 Plants \$3.70; 50 for \$5.55; 100 for \$8.30; 500 for \$24.05; 1,000 for \$37.00

April 4, 1973

The Marlate I ordered in 1971 were the best plants I have ever received from any nursery. Last year the plants were loaded with berries.

W. F. SPENCER, Radford, Va.

Marlate

EXTRA LATE — EXTRA LARGE

Marlate is a new extra late, high quality variety that extends picking well past the regular season. The plants are vigorous and it appears to be resistant to leaf diseases. The berries are large, bright, firm, and very attractive. Marlate holds its size throughout the harvest season, and the fruit stems snap freely making them easy to pick.

This variety has been tested thoroughly in Maryland, Pennsylvania and neighboring states and certainly, appears worthy of trial for those who want an extra late variety that ripens after Jerseybelle but before Redstar. Supply is limited for this variety.

25 Plants \$3.75; 50 for \$5.60; 100 for \$8.50; 1,000 for \$37.50. Prices do not include postage.

Sparkle

FAVORITE LATE VARIETY FOR FRESH USE AND FREEZING

For many years Sparkle has been the most important late strawberry in much of the north-east. It was introduced by the New Jersey Agricultural Experiment Station in 1931 and soon became very popular because of its many outstanding qualities. Sparkle is a very dependable producer of fine crops of glossy, sparkling berries. They are of medium size, have a nice cap, and yellow seeds. Berries of Sparkle have very good flavor and quality and are rated very good for freezing and for preserves. Sparkle generally ripens just after the midseason varieties and is a very important commercial variety north of Maryland. It is very winter hardy, giving good results even in parts of Canada. It is a good plant maker in most types of soil. As an extra feature Sparkle is resistant to red stele and leaf troubles.

Plants of Sparkle are naturally quite vigorous, but with Rayner's virus-free stock they have that extra vitality that really makes this a great favorite for both commercial growers and home gardeners. In Michigan there is a variety known as Paymaster that is generally considered to be the same as Sparkle.

25 Plants \$3.40; 50 for \$5.10; 100 for \$7.65; 1,000 for \$34.00. Complete Prices Page 17.



Jerseybelle

HUGE, BEAUTIFUL BERRIES—LATE—VERY PRODUCTIVE

If you want big strawberries you want Jerseybelle.

This popular berry was introduced by the New Jersey Agricultural Experiment Station and soon became very popular because of its huge, bright, beautiful berries which bring the highest prices. They are therefore excellent for roadside stands, auction markets, and similar sales where your customers will pay more for fancy berries. And if you want a berry you can truly be proud of then you will find the answer in Jerseybelle since a quart of these berries is truly a sight to behold.

Berries of Jerseybelle have consistently been about the largest of any variety we have ever seen, and they have a beautiful glossy color that gives a waxed appearance. The cap is large and the seeds are bright yellow, resulting in a berry of unusual beauty. The flesh is not nearly as juicy as in some varieties, thus Jerseybelle will hold its appearance quite well. The flavor is not as good as for some berries but is satisfactory. The ripening season is quite late, about a week after Sparkle, which greatly helps to prolong the picking season.

Jerseybelle may show some leaf troubles but generally this is not a serious problem. In northern soils, it is best not to plant Jerseybelle in land recently grown to tomatoes, potatoes, or other strawberries. But if you are looking for that extra big berry that will make real profits, you will make a planting of Rayner's registered, virus-free Jerseybelle.

25 Plants \$3.60; 50 for \$5.40; 100 for \$8.10; 1,000 for \$36.00

See order sheet for postage and handling charge

YOU CAN'T BEAT THAT FRESH FROM THE GARDEN FLAVOR



Redstar

LARGE EXTRA-LATE

The big feature of Redstar is its unusual lateness. It ripens a week or more after the normal late varieties. Thus, Redstar is very popular with both home gardeners and commercial producers who want to extend the berry season as long as possible. Another advantage of this lateness is that Redstar rarely is hurt by frost and thus is a dependable producer throughout most of the Eastern states.

Redstar does best in fertile soil where it will make a nice bed of unusually large plants. The fruit is large, attractive, and has a very big cap that makes Redstar a beautiful berry. Flavor and quality are good, and it makes a nice frozen product.

Rayner's registered stock of virus-free Redstar has resulted in a great increase in popularity of this fine variety. It still requires good growing conditions for best results, but now Redstar is much more dependable.

**25 Plants \$3.70; 50 for \$5.55; 100 for \$8.30;
1,000 for \$37.00. Complete Prices Page 17.**



Armore

LARGE BERRIES—LATE—FINE FLAVOR

For many years ARMORE has been a favorite variety with home gardeners and local market growers. This variety is well suited throughout the area from Missouri to New England. Although rated as a late variety it ripens several days ahead of such extra-late varieties as Redstar and Vesper. Armore is a good plant maker and grows well in most soils.

Its foliage is subject to leaf troubles but this does not seem to interfere with heavy yields of large, delicious berries which have a good red color inside and out. For big yields of a large, late, sweet berry be sure to try Rayner's virus-free stock of Armore.

25 Plants \$3.35; 50 for \$5.00; 100 for \$7.50; 1,000 for \$33.50. Complete Prices Page 17.

Vesper

HUGE BERRIES—VERY LATE



Vesper, which was tested as New Jersey selection No. 157, provides strawberry growers with the biggest and one of the latest of all strawberries. This variety is truly amazing because of its huge berries, which are as large as any variety we know. It is much like Jerseybelle in most respects, which it now displaces as champion for berry size. For lateness it is about as late as Redstar, which is generally considered to be the latest of all June bearing strawberries. Foliage of Vesper is generally vigorous but like Jerseybelle is a bit more susceptible to leaf troubles than some varieties. But with proper growing conditions Vesper can be one of the most remarkable strawberries you have ever seen.

The unusually late ripening of this variety is additional reason why it can be a real profit maker, since you will still have fine berries after other strawberries are gone. Be sure to try at least a few of this amazing new variety that will show you and your friends just how big a strawberry can be.

25 Plants \$3.60; 50 for \$5.40; 100 for \$8.10; 1,000 for \$36.00. Plus Postage.

Fletcher

**WINTER HARDY
HIGH QUALITY**

FLETCHER was released by the New York Agricultural Experiment Station in 1959 as a result of the outstanding breeding program of Dr. George L. Slate. For several years this variety has been tested in New York and other states and has proven to be a very promising berry for both home use and commercial production. It is a cross of Midland with Suwannee, both of which have excellent quality, and as a result Fletcher has a wonderful flavor that should appeal to all who appreciate good strawberry flavor. Berries of Fletcher are reasonably large, bright in color, excellent for freezing, and sufficiently firm for commercial marketing. The plants are vigorous, tall, and very productive. Fletcher is a fairly late variety—ripening about 3 days after Sparkle. It is very winter hardy and well adapted to northeastern conditions.



25 Plants \$3.50; 50 for \$5.25; 100 for \$7.90; 1,000 for \$35.00. Complete Prices Page 17.

Blakemore

THE BEST FOR PRESERVES AND JAMS—WONDERFUL FOR FREEZING

Because of its fine qualities when processed or frozen BLAKEMORE once was the most widely planted commercial strawberry. Its sparkling, light-red, firm berries still produce the finest, most attractive preserves you have ever seen. When frozen the berries hold their shape well and have fine color. For a special attraction freeze some whole, with caps attached. Plants of Blakemore are especially vigorous and will grow well in nearly any soil. This early variety is especially suited to moderate climates but should do well in all but the coldest states. If you like strawberry preserves be sure to try Blakemore.

25 Plants \$3.30; 50 for \$4.95; 100 for \$7.35; 1,000 for \$33.00

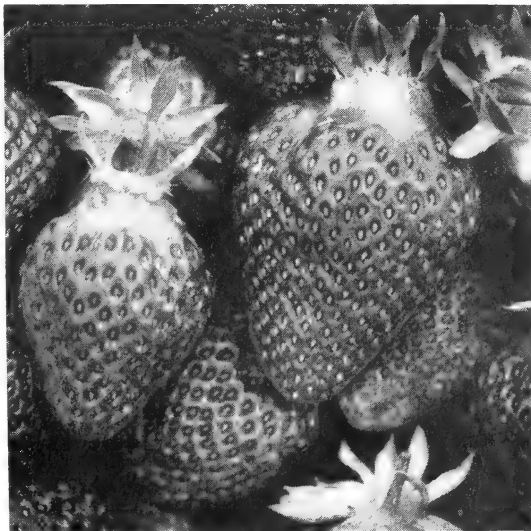
Tennessee Beauty

**LATE COMMERCIAL VARIETY
FOR SOUTH-CENTRAL STATES**

Tennessee Beauty is recommended as a commercial variety in south-central and eastern states, where its firmness is a definite advantage. Many growers tell us that it is their best producer.

The berries are of medium size and have a bright, rich red color. The flavor is good, and the slight tartness results in fine quality. For freezing and preserving Tennessee Beauty rates high since it produces a fine bright product. One feature of this variety that is desirable for processing is the ease with which the cap comes off. With its many fine features such as good quality, firmness, beauty, and high production, Tennessee Beauty is definitely a good variety for both commercial and home plantings.

Although we do not recommend large-scale planting of Tennessee Beauty in the northern states, it is considered a good commercial variety in some sections.



25 Plants \$3.35; 50 for \$5.00; 100 for \$7.50; 1,000 for \$33.50. Complete Prices Page 17.

ALL OUR STRAWBERRY PLANTS ARE VIRUS-FREE

Everbearing Strawberries

Everbearing strawberries are varieties that, unlike other strawberries, produce fruit continuously from early spring until late fall. Everbearers are more difficult to grow; however, you will be rewarded many times by the delicious fresh flavor of "out of season" berries picked during the summer and fall. For those of you who want berries long after the season is over, we recommend that you include everbearers in your strawberry patch.

We offer two varieties for your selection. Ozark Beauty and Superfection have proven to be the best everbearing varieties. Both varieties are producers of fine fruit. For good results we recommend removing the first set of blossoms, then allow the plants to fruit from then on.

The supply of everbearing plants is very short this year; therefore, we must limit each order to 25 plants. Order soon, since we expect to sell out early. We hope next year to have a better supply of these plants.



PRICES FOR OZARK BEAUTY and SUPERFECTION

25 Plants \$5.25

Prices do not include postage

Satisfied Customers Are Our Best References

March 6, 1973

Thank you for the excellent service last year and also for the Bulletins you sent me

L. OAKES, Accokeek, Md.

April 30, 1973

When the plants arrived I was astonished to see how lovely they were. I had no idea such lovely plants grew on this side of the Garden of Eden.

D. I. BRADNEY, Timewell, Ill.

January 27, 1973

We planted 200 strawberry plants in 1971 and picked 578 qts. last year.

J. S. YODER, Sugarcreek, Ohio

March 19, 1973

I was very pleased with the plants I received from you these past few years. They all grew well and gave terrific crops of delicious berries.

R. M. FISHEL, Bainbridge, Pa.



1974 PRICE LIST

VIRUS-FREE

Strawberry Plants

These prices supersede all other prices of Rayner Bros. Prices do not include shipping charges. Several varieties cannot be combined to obtain a lower price. Full planting instructions are sent with each order. We do not sell less than 25 of a variety.

25 50 75 100 250 500 750 1000 5000
Plants Plants Plants Plants Plants Plants Plants Plants Plants

EARLY										
BLAKEMORE	V.F.	\$3.30	\$4.95	\$6.10	\$7.35	\$14.45	\$21.45	\$28.45	\$33.00	\$162.50
EARLIBELLE	V.F.	3.40	5.10	6.35	7.65	14.90	22.10	29.35	34.00	167.50
EARLIDAWN	V.F.	3.60	5.40	6.75	8.10	15.75	23.40	31.05	36.00	177.50
FAIRFAX	V.F.	3.60	5.40	6.75	8.10	15.75	23.40	31.05	36.00	177.50
FLORIDA 90	V.F.	3.40	5.10	6.35	7.65	14.90	22.10	29.35	34.00	167.50
MIDLAND	V.F.	3.60	5.40	6.75	8.10	15.75	23.40	31.05	36.00	177.50
PREMIER	V.F.	3.45	5.15	6.45	7.80	15.10	22.40	29.75	34.50	170.00
REDGLOW	V.F.	3.50	5.25	6.55	7.90	15.30	22.75	30.15	35.00	172.50
SUNRISE	V.F.	3.55	5.30	6.65	8.00	15.50	23.10	30.60	35.50	175.00
SUWANNEE	V.F.	3.30	4.95	6.10	7.35	14.45	21.45	28.45	33.00	162.50

MIDSEASON										
CATSKILL	V.F.	3.40	5.10	6.35	7.65	14.90	22.10	29.35	34.00	167.50
EMPIRE	V.F.	3.40	5.10	6.35	7.65	14.90	22.10	29.35	34.00	167.50
GUARDIAN	V.F.	3.75	5.60	7.10	8.50	16.40	24.45	32.35	37.50	185.00
MIDWAY	V.F.	3.50	5.25	6.55	7.90	15.30	22.75	30.15	35.00	172.50
POCAHONTAS	V.F.	3.40	5.10	6.35	7.65	14.90	22.10	29.35	34.00	167.50
RARITAN	V.F.	3.70	5.55	6.90	8.30	16.15	24.05	31.90	37.00	182.50
REDCHIEF	V.F.	3.70	5.55	6.90	8.30	16.15	24.05	31.90	37.00	182.50
ROBINSON	V.F.	3.35	5.00	6.20	7.50	14.65	21.75	28.90	33.50	165.00
SURECROP	V.F.	3.35	5.00	6.20	7.50	14.65	21.75	28.90	33.50	165.00

LATE										
ALBRITTON	V.F.	3.30	4.95	6.10	7.35	14.45	21.45	28.45	33.00	162.50
ARMORE	V.F.	3.35	5.00	6.20	7.50	14.65	21.75	28.90	33.50	165.00
FLETCHER	V.F.	3.50	5.25	6.55	7.90	15.30	22.75	30.15	35.00	172.50
JERSEYBELLE	V.F.	3.60	5.40	6.75	8.10	15.75	23.40	31.05	36.00	177.50
MARLATE	V.F.	3.75	5.60	7.10	8.50	16.40	24.45	32.35	37.50	185.00
REDSTAR	V.F.	3.70	5.55	6.90	8.30	16.15	24.05	31.90	37.00	182.50
SPARKLE	V.F.	3.40	5.10	6.35	7.65	14.90	22.10	29.35	34.00	167.50
TENN. BEAUTY	V.F.	3.35	5.00	6.20	7.50	14.65	21.75	28.90	33.50	165.00
VESPER	V.F.	3.60	5.40	6.75	8.10	15.75	23.40	31.05	36.00	177.50

EVERBEARING										
OZARK BEAUTY	V.F.	5.25
SUPERFECTION	V.F.	5.25

V.F. "Plants referred to as "virus-free" in this catalog have been field grown by us from virus-free foundation stock furnished by the U. S. Department of Agriculture Bureau of Plant Industry, Soils and Agricultural Engineering, Beltsville, Maryland, and State Horticultural Department, University of Maryland. Our field-grown stock has been dusted with parathion to control aphids which transmit the virus diseases. It has also been grown at considerable distance from any other strawberry plants. Since viruses do not produce clear-cut symptoms in most strawberry varieties, but simply weaken and devitalize the plants, no guarantee can be made that these plants are 100 percent free of viruses. Because of the measures that we have used to protect these plants from virus infection, we believe them to be substantially virus-free."

WRITE FOR QUOTATIONS ON LARGER QUANTITIES

To Our Customers and Friends



Jack Rayner
President

You, our customers and friends, made last year the biggest in the 48-year history of Rayner Bros. Again this year we will have a good supply of strawberry plants and other nursery stock to ship to you. You should order early to get the varieties of your choice, because, again this year, we expect the demand to be great from both home gardener and commercial grower.

All our strawberry plants are certified and virus free. In our nursery rigid controls are needed to produce plants free of virus, nematode and red stele. It is worth the extra effort, because tests indicate that certified virus-free plants yield over 100% more fruit than other plants.

You will find this Berry Book to be more than just a nursery catalog.

Besides the detailed descriptions of different varieties, it contains helpful growing instructions especially of strawberries and blueberries. Planting instructions are sent with your order and special Better Berry bulletins are available upon request.

We are always happy to answer any questions not answered in this Berry Book, planting instructions, or special bulletins. Please feel free to write. We want you to be successful with all the plants you purchase from us.



Curtis Massey
General Manager

H. JACK W. RAYNER, President

"We guarantee you will receive top quality stock. If for any reason you are not pleased with our plants, write us within 60 days and we will replace the plants or refund the complete purchase price. After the 60 day period and within one year of the date the plants were purchased, we will replace at one-half price any plants that are not satisfactory. This guarantee covers full purchase price and does not imply any further responsibility or liability." This guarantee applies to all of our nursery plants that are planted during the spring season and to strawberries planted by July 15.

INSTRUCTIONS TO PURCHASERS

Place your order early so it can be shipped at the time you specify. If you wish to wait until it is time to plant before sending your order, please allow 10 days for us to ship your order.

We can ship by Parcel Post, UPS, Air Freight or Bus. Please check the appropriate block on the order sheet.

SMALL ORDERS—5,000 strawberry plants or less.

PARCEL POST—Add 10% of the total order for postage and handling for orders of \$7.00 or more. For orders less than \$7.00, add 70c. For orders west of the Mississippi, the charge is 15% of the cost of plants with a minimum of \$1.00.

UPS—United Parcel Service is a private delivery service. Generally, delivery is faster by UPS than by Parcel Post. **If your address is RFD or P. O. Box, please indicate name of road or street.** There is a postage and handling charge of 10% of the order with a minimum charge of 70c. We can ship only 100 pounds (about 3,500 plants) to you each day by UPS. If your order weighs more than 100 pounds, we will split your shipment over a couple of days. West of the Mississippi add 15% with minimum of \$1.00.

LARGE ORDERS—over 5,000 plants or 50 fruit trees

We recommend picking up large orders at our packing house: Monday through Friday, 7:00 A.M. to 5:30 P.M. or Saturday, 7:00 A.M. to 12:00 Noon. If plants are to be shipped by Air Freight or Bus, indicate closest airport or bus station.

AIR FREIGHT—This is the fastest way to ship plants. It does cost more, but gives very fast service. Check with your airport for rates. Allow 25 pounds per 1,000 strawberry plants. Pay shipping charges when order arrives.

BUS—If you are close to a bus station, this is a good way to have your order shipped. Be sure to send your phone number so you can be called when your plants arrive. Pay shipping charges when plants are received.



Member: AMERICAN ASSN. OF NURSERYMEN
Member: MARYLAND ASSN. OF NURSERYMEN
MAILORDER ASSN. OF NURSERYMEN, INC.

Business References:

MARYLAND NATIONAL BANK, Salisbury, Md. DUN and BRADSTREET





FROM _____

PLACE
STAMP
HERE

Rayner Bros., Inc.

SALISBURY,

MARYLAND 21801

TO AVOID DELAY PLEASE BE CERTAIN THAT ORDER BLANK IS CLEARLY AND COMPLETELY FILLED OUT AND THAT PAYMENT, INCLUDING POSTAGE, IS ENCLOSED

WE THANK YOU VERY MUCH FOR THIS ORDER AND WILL DO OUR BEST TO PROVIDE COMPLETE SATISFACTION.



MEMBER: AMERICAN ASSOC. OF NURSERYMEN
MEMBER: MARYLAND ASSOC. OF NURSERYMEN
MEMBER: NATIONAL MAIL ORDER NURSERYMEN'S ASSOC.



BUY RAYNER'S PLANTS AND YOU BUY THE BEST

RAYNER'S 1974 ORDER SHEET

Salisbury, Maryland 21801

DATE

NAME

(Please Print or Write Plainly, Giving Full Address)

STREET

BOX R.F.D.

CUSTOMER:
PLEASE INDICATE
AMOUNT ENCLOSED

CHECK

MONEY ORDER

CASH

VOUCHER

ZIP CODE NO.

City State

SHIP BY—(CHECK ONE)

AIR MAIL
 REGISTERED MAIL
 PARCEL POST
 OTHER (SPECIFY)
 DATE TO SHIP PLANTS (ON OR ABOUT) (Date)

no date is stated we will ship at a time our experience indicates is good for your area

HOW MANY	NAMES OF VARIETIES ORDERED	PRICE	
		Dollars	Cents

NONE OF THE PRICES IN THIS CATALOG INCLUDE POSTAGE FOR ORDERS OVER \$ 7.00 ADD 10% OF ORDER FOR ORDERS UNDER \$ 7.00 ADD 70¢ See Page 18 for additional information See Page 18 for shipments West of Mississippi.	➔	Amount for Plants		
	Amount for Postage and Handling			
	Total Amount Sent			

IMPORTANT NOTICE! If varieties ordered are not available, we will substitute plants of equal or greater value. Check here if you do not want us to substitute.

See other side for additional order space and free bonus offer

BUY RAYNER'S PLANTS AND YOU BUY THE BEST

SPACE BELOW IS FOR ADDITIONAL ITEMS OR REMARKS

HOW MANY	NAMES OF VARIETIES ORDERED	PRICE	
		Dollars	Cents

IF YOUR ORDER AMOUNTS TO \$5.00 OR MORE, SEND FOUR NAMES FOR
BONUS OFFER OF 25 FREE STRAWBERRY PLANTS!

Send us the names and addresses of four persons who grow berries or who have a garden and may be interested in receiving our catalog. We will send you 25 strawberry plants FREE. We must reserve right to choose variety of plants, but are sure you will be well pleased. Bonus plants will not be sent for less than four names or if order amounts to less than \$5.00 and can only be shipped with this order.

List Names and Addresses Here. Please Print or Write Legibly.
 Please be sure to include Street Address or R.F.D. and Zip Code Number.

1. _____

2. _____

3. _____

4. _____

BUY RAYNER'S PLANTS AND YOU BUY THE BEST

**MacDonald
RED**

Rhubarb



RHUBARB is a very popular perennial where winters are sufficiently cold to freeze ground 3 to 4 in. A few plants well tended make an excellent supply for sauce and pies.

We offer the MacDonald Red variety because of its marked superiority. Matures earlier, sweeter, and one planting lasts a lifetime. Plant in spring, 3 to 4 ft. apart. Rhubarb culture is given in Bulletin No. 18.

Prices for Large, Vigorous Divisions
\$1.25 each; 3 for \$3.50; 10 for \$9.95.

VICTORIA RHUBARB

For those who want vigorous, seedling rhubarb roots we recommend the well-known Victoria variety. These whole roots will soon become established and produce lots of long, tender, pink stalks that are excellent for home use. Gives best results in cool climates and in fertile, deep soil with a uniform supply of moisture. Prices of Victoria Rhubarb:

Strong 1-yr. whole roots, 1 to 1½ in. diameter: 5 for \$2.60; 10 for \$5.00.

HORSERADISH

This is the old-fashioned Maliner Kren variety that is very vigorous and develops such large firm roots. Grows best in moist, cool soils of reasonable fertility. If you like horseradish, you will surely want to try this excellent variety. A few roots will soon develop into a fine bed that will last for years.

Vigorous whole roots about 6 to 8 in. long: 5 for \$1.60; 10 for \$2.75.

TENDER, FRESH

Asparagus

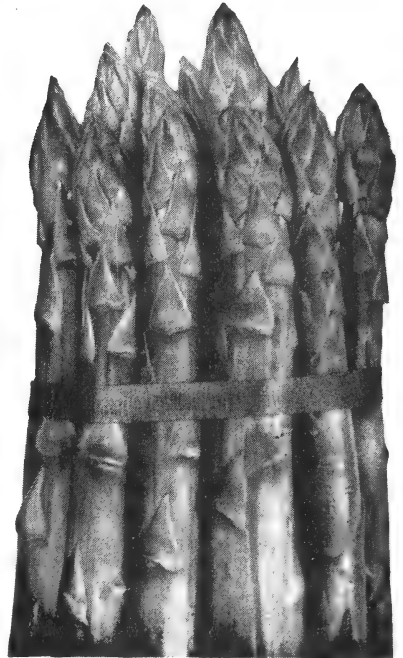
**From Your Own Plantings
Year After Year**

The best eastern variety for home and commercial planting is the disease-resistant MARY WASHINGTON. We sell only the famous Robert's strain, which is the best asparagus money can buy. It produces shoots of finest quality, more uniform in size, shape and color than others.

50 to 100 roots supply an average family. 250 roots will take care of canning and freezing needs, too.

A planting of Rayner's asparagus will yield loads of fine food for many years. Plant early in the spring in fertile soil to which about 5 lbs. of 10-6-4 fertilizer per 100 sq. ft. has been added. Spread the roots in a trench about 6 in. deep and 8 in. wide. Place plants about 16 in. apart and cover crowns with about 2 in. of soil. As plants begin to make new growth, gradually fill the trench.

Write for Rayner's Bulletin No. 18 giving full details of Asparagus culture.



ASPARAGUS PRICES—ORDER EARLY FOR SPRING PLANTING

	12 Plants	25	50	100	250	500	1000
1 yr. #1 Roots	\$1.95	\$3.60	\$5.45	\$8.00	\$15.70	\$23.20	\$36.00
2 yr. #1 Roots	3.00	5.50	8.35	14.25	23.85	34.20	54.00
3-yr. #1 Roots	4.10	7.25	10.90	16.35	31.20	52.65	90.00

Big 3-Yr. Roots will produce some stalks large enough for cutting the second year. These prices do not include postage. See page 18 and order sheet for postage and handling charge.

BUY RAYNER'S PLANTS AND YOU BUY THE BEST

RASPBERRIES

CERTIFIED RASPBERRY PLANTS

This is the dependable certified stock which has been state inspected for freedom from insects and diseases and which has been proven dependable by many years of profitable production by thousands of commercial growers and home gardeners.



BLACK RASPBERRIES

LOGAN is a fine early black raspberry, ripening about a week before Cumberland and producing fine crops of beautiful, high quality berries. Very hardy and vigorous.

BRISTOL is a fine midseason black raspberry with large, round, firm berries of very good quality. It is very vigorous, winter hardy, and produces big crops.

CUMBERLAND ripens in midseason and gives big yields of beautiful black raspberries of unsurpassed flavor and quality. Its plants are vigorous, hardy and adapted to various soils.

RED RASPBERRIES

LATHAM is the standard red raspberry for most of the eastern states. Its plants are hardy, producing big crops of large, high-quality fruit, fine for fresh use, freezing, or preserves. Latham is fine for home gardens and excellent for commercial plantings, for its berries hold up well for shipment. It is hardy in our coldest climates and very late in ripening.

SEPTEMBER EVERBEARING RED RASPBERRY is from the New York Experiment Station. It is truly an outstanding variety, producing a wonderful crop of high-quality, early berries during the regular summer season and other fine crop that begins to ripen early in the fall. September is a real winner for home use where its firm berries, which are free from crumbling, are especially nice for freezing.

Prices for Certified Red and Black Raspberry Plants

5 plants	10 plants	25 plants	50 plants	100 plants	250 plants	500 plants	750 plants	1000 plants
\$2.25	\$4.05	\$8.95	\$15.65	\$26.75	\$61.35	\$111.55	\$147.70	\$179.50

Prices do not include postage

GROWING RASPBERRIES

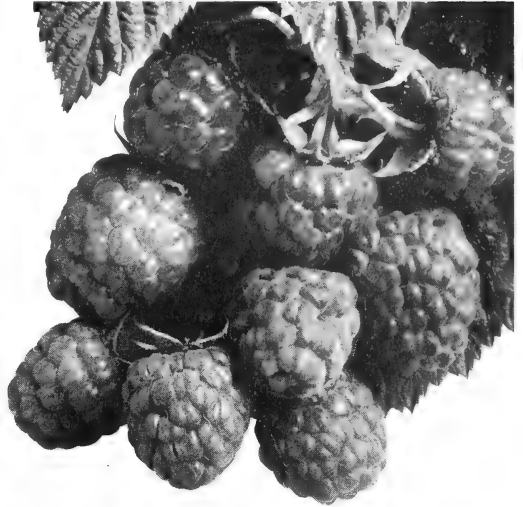
Raspberries give best results in areas where the summers are not usually hot or dry. Therefore they are not generally grown south of Tennessee and Missouri. A good, fertile soil that retains moisture but is still not poorly drained gives best results. Raspberries should be planted in early spring for best results. If possible a high amount of well rotted manure should be mixed into the soil before planting. Also a regular spring application of about 450 pounds per acre of 10-10-10 fertilizer is important. This is equivalent to about 6 ounces per plant. In small plantings the rows are usually 6 feet apart with 4 feet between

plants. Raspberries are generally planted in early spring and will produce a crop about 15 months after planting. The canes are tied to wires or to posts, depending upon the planting system. After the first fruiting season the fruiting canes of regular red and black raspberries are pruned out—leaving the new canes which will bear fruit the next season. In the case of everbearing raspberries the canes which produced the fall crop should not be pruned out but only slightly cut back in the spring. For best results with raspberries a recommended spray program for control of diseases and insects is necessary.

Virus-Free Raspberry Plants

FOR BETTER BERRIES

As a result of research by the USDA it was found that raspberry plants were infected by viruses, some of which are hard to detect. Test results also indicated that **YIELDS CAN BE DOUBLED BY PLANTING VIRUS-FREE PLANTS**. In keeping with the policy to offer the best plants available, Rayner Bros. was the first nursery to offer virus-free plants to the public. These plants have been propagated from virus-free foundation stock and maintained substantially virus-free by following a special program of isolation, spraying and inspection. To obtain full benefit from virus-free plants, they should be planted at least 200 feet from other brambles, and a program for control of aphids should be followed. An increase in vigor, production, and quality will far outweigh any additional cost for virus-free plants.



VIRUS-FREE RED RASPBERRIES

LATHAM is the most widely grown red raspberry since it is a very dependable producer in such cold climates as Minnesota and North Dakota as well as the southern raspberry area. This variety yields big crops of large, firm berries with a delicious flavor. It ripens very late and thus provides berries long after the regular season. Latham has long been a standard commercial and home variety.

NEWBURGH is an excellent early-midseason red raspberry that is excellent for commercial production because it produces fine crops of very large, very firm attractive berries of good quality. It has vigorous, hardy plants of medium height and is less subject to mosaic infection than most red varieties. It is important to cut back the canes at spring pruning in order to allow proper fruit development.

VIRUS-FREE BLACK RASPBERRIES

PLUM FARMER is an early black raspberry from Ohio that has long been a favorite because of its vigor, drought resistance and fine crops of large, bright, firm berries. The crop ripens rapidly and uniformly so that it can all be harvested in two or three pickings. One of the hardiest black raspberries.

BRISTOL is an excellent midseason black raspberry that is very popular for home or commercial use. Big crops of very large, round, firm berries that have a fine sweet flavor and excellent quality. Plants are vigorous, with good winter hardiness and are adapted to a wide range of growing conditions.

ASK FOR RAYNER'S BULLETIN 14 FOR ADDITIONAL INFORMATION

Prices for Substantially Virus-Free Red and Black Raspberry Plants

5 plants	10 plants	25 plants	50 plants	100 plants	500 plants
\$3.65	\$6.55	\$12.55	\$23.40	\$42.25	\$180.00

RAYNER'S
Dependable

Fruit Trees

PLANT NOW FOR YEARS OF FRUIT
FROM YOUR OWN TREES

Apple Trees

WINESAP, IMPROVED STRAIN. Beautiful deep red color. Vigorous, hardy, productive, early bearing. Rich flavor. Crisp, tender apples of long-keeping quality.

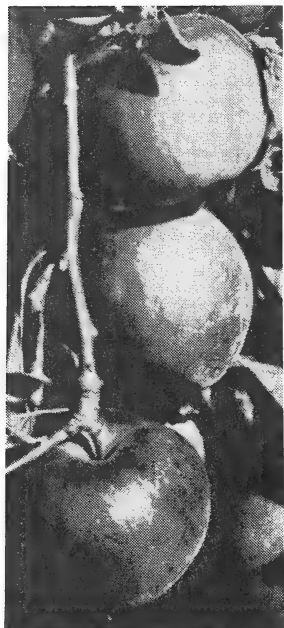
GOLDEN DELICIOUS. Heavy yielding, early bearing. Bright golden yellow, crisp, juicy apples. National favorite.

RED McINTOSH. A leading commercial variety. Fancy red apples with white, tender flesh of high quality and aroma. Tree very hardy and vigorous.

RED DELICIOUS. Large apples of rich red color and excellent flavor and aroma. Uniform fruit. Tree very hardy. Great favorite with home gardeners as well as orchardists.

APPLE TREE PRICES

	Each	3 trees for
2-Yr., 3 to 4 ft.....	\$3.50	\$10.00



Peach Trees

GOLDEN JUBILEE. An unusually hardy tree unequalled for production of early yellow freestone peaches of exceptional quality. One of the most dependable for home gardens.

HALE HAVEN. A deep crimson freestone peach. Flesh is golden yellow, firm and of unusually good flavor. Strong, thrifty. Midseason. One of the best for processing.

BELLE OF GEORGIA. Considered the best of white-fleshed peaches. Large size, freestone. Delicious flavor. Midseason.

ELBERTA. This variety is most widely planted because it is adaptable to a wide range of soils and climates. Most popular market peach. Beautifully colored, firm, juicy, yellow flesh. Ripens late.

PEACH TREE PRICES

	Each	3 trees for
2-Yr., 3 to 4 ft.....	\$3.50	\$10.00



All of our trees are shipped "full length" but if notified we will prune them to proper planting length.

Write for Rayner's Bulletin 16 on fruit tree culture

NEW! HARDY APRICOTS FROM MINNESOTA

Imagine apricots so hardy they thrive in the cold climate of Minnesota. These two new varieties were released by the Minnesota Agricultural Experiment Station in 1961 and have proven their ability to produce fine crops of delicious, beautiful apricots in an area with winter temperatures down to 30° below zero. **MOONGOLD** and **SUNGOLD** produce trees about 10 to 12 ft. tall and are ideal for home gardens.

Sturdy, branched trees (3-4 ft.) \$4.95 each; 2 for \$9.00. Plus postage—see order sheet.

Montmorency Sour Cherry

For commercial plantings as well as home use Montmorency is by far the leading variety of sour cherry. The fruit are large, firm, and have a beautiful bright red color. Fruit first ripens in early July and can be kept on the tree about a month. This variety is self-fertile. Rayner's stock of Montmorency is of the excellent virus-free strain that is exceptionally vigorous and productive.

	Each	3 trees for
2-Yr., 3 to 4 Ft.....	\$4.00	\$11.50

Pear Trees

BARTLETT. Old favorite pear considered best for home garden and market throughout the northern half of country. Large, golden yellow pears have a reddish blush. Flavor excellent. Vigorous, highly productive.

CLAPP'S FAVORITE. A large yellow, early pear of exceptionally fine flavor and quality. Trees are very hardy and productive.



PEAR TREE PRICES

	Each	3 trees for
2-Yr., 3 to 4 Ft.....	\$3.50	\$10.00

THORNLESS BLACKBERRIES

Now you can pick delicious blackberries at home without getting scratched and stuck with thorns. Pick your own blackberries in a short-sleeved shirt. These two new introductions are very productive. Ideal for "pick your own" operations and for the home garden. Our limited supply will not last through the season. Order early.

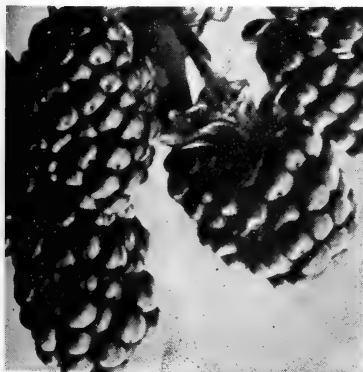
SMOOTHSTEM. Originated from seed of U. S. 1482 (Merton Thornless and U. S. 1411). The seedling selected in 1958 by Dr. D. H. Scott and Dr. D. P. Ink, at Beltsville, has been evaluated in fruiting plots at several locations. It ripens about August 1 at Beltsville. The fruit is large, firm, blunt conic, jet-black when fully ripe, has a delicious flavor. Canes are thornless, very productive and hardy in central New Jersey, central Ohio and southward. Be sure to try some in your garden this year.

THORNFREE. Originated by a cross made in 1956 of U. S. 1410 and U. S. 1414, was selected by Dr. D. H. Scott and Dr. D. P. Ink. It ripens about 3 weeks later than Eldorado, and a week earlier than Smoothstem. The fruit is medium large, firm, blunt conic, glossy black and has a good tart flavor. Canes are thornless, not quite as vigorous as Smoothstem, but very productive in fertile soils. It has been hardy in Oregon, New Jersey, Ohio, Illinois and southward. This is another good blackberry that you should try.

Vigorous #1 Plants: 5 for \$3.60; 10 for \$6.45; 25 for \$12.30; 50 for \$23.00; 100 for \$44.45

New! Ranger Blackberry

This excellent new blackberry was developed by Dr. I. C. Haut of the University of Maryland. Plants of Ranger are quite vigorous and very productive with large, bright blackberries that are truly delicious when allowed to ripen fully. We recommend it throughout the blackberry area.



Darrow Blackberry

Another fine introduction of the New York Experiment Station. During recent years Darrow has proven to be a dependable producer of big crops, of large, firm, high quality blackberries. Very vigorous and winter hardy.

PRICES FOR RANGER AND DARROW 1-YR., #1 PLANTS

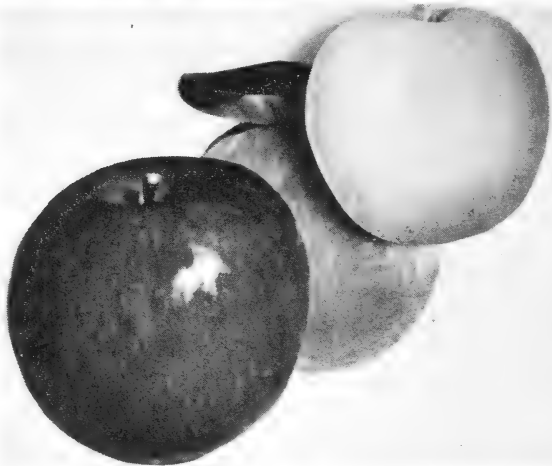
5	10	25	50	100	500
plants	plants	plants	plants	plants	plants
\$2.85	\$5.10	\$9.95	\$18.45	\$34.00	\$140.00

RAYNER'S DWARF FRUIT TREES

ORNAMENTAL—PRODUCTIVE SAVE GARDEN SPACE

Trees Are Small, Yet Fruit Is Of Regular Size And Quality

No longer just a special feature of exclusive gardens, dwarf fruit trees are now available to all, and at reasonable prices. These wonderful space-saving trees are produced by budding or grafting regular varieties on special dwarfing rootstocks. Apples are usually dwarfed by use of the Malling root systems, and Quince rootstocks produce dwarf pears. Peaches are budded to special dwarfing root systems. Even though the trees remain much smaller, the fruit is of full size and quality. One outstanding feature of dwarf trees is that they begin to bear fruit when only three or four years old. Just the thing for home gardens where space is so valuable. Write for Rayner's Bulletin No. 16 on Culture of Dwarf Trees.



Dwarf Apple

McINTOSH. Especially suited to Northeast. Big, attractive, red apples with crisp, white flesh. Tender and juicy. Very winter hardy.

WINESAP. Long-time favorite red apple with sweet, juicy flesh. Very vigorous and winter hardy.

GOLDEN DELICIOUS. The queen of apples for beauty and flavor. Big golden apples of superior quality and unsurpassed flavor.

RED DELICIOUS. The national favorite. Large, bright red apples of outstanding beauty and flavor. Very vigorous and productive.

Prices of 2-yr. dwarf apples, 3 ft. up, \$4.00 each; 3 trees for \$11.25

Dwarf Peach

GOLDEN JUBILEE (early). Yellow freestone, exceptional quality, hardy.

HALE HAVEN (midseason). Yellow freestone, firm good for processing.

BELLE OF GEORGIA (midseason). Large, white freestone, delicious flavor.

ELBERTA (late). Beautifully colored, firm, juicy, yellow flesh.

Prices of 2-yr. dwarf peaches, 3 ft. up, \$4.50 each; 3 trees for \$12.75

Dwarf Cherry

EXCELLENT FOR FRESH USE AND ALL TYPES OF PROCESSING

NORTH STAR is a naturally dwarf hybrid reaching 6 to 8 ft. Very hardy and easy to grow. Fruit is of good size, dark red when ripe and has tart, juicy flesh with a small stone. Very productive. A fine tree for home gardens and small orchards. North Star is self fruitful and also is a good pollinator for other varieties.

Well-rooted trees, 2 to 3 ft. tall. \$4.50 each; 2 trees \$7.95

Dwarf Pear

Grafted to dependable Quince dwarfing stock. Trees grow to about 12 ft. Plant two or more varieties for pollination.

CLAPP'S FAVORITE. A large yellow, early pear of exceptionally fine flavor and quality. Trees are very hardy and productive.

SECKEL. Delicious, small pears. Vigorous and blight resistant. An excellent variety.

BARTLETT. Top quality, very productive. For areas where fire blight is not severe.

Prices of Dwarf Pear Trees:

3 ft. up, \$4.75 each; 3 trees for \$13.25

Plus Postage. See page 18 and back of order sheet for postage and handling charge.



Regular Plum

Plum trees require very little room and can be planted 20 feet apart. Our plum trees are grafted on myrobalan root stock to insure good, strong trees for many years to come. With beautiful blossoms in the spring and juicy, ripe fruit in the very early fall, plum trees have a double value. Plant some this year.

STANLEY. An excellent, very popular prune-plum for both home and commercial planting. Trees are vigorous and self fertile producing tremendous crops of large, purple plums with a golden flesh that is unexcelled for flavor when fully ripe. Ripens in early September in the New England area.

FELLENBERG. This old favorite variety is also known as German prune or Italian prune. It is self-fruitful and very hardy, producing big crops of large, purple, freestone plums with a firm, sweet, delicious flesh. Excellent for fresh use, market sales, and processing. Ripens in September.

GREEN GAGE. This is truly a high quality plum that every home owner should have in his fruit planting. Its fruit is round with a greenish yellow skin and flesh. The flavor of this juicy, sweet plum is delightful. The tree is hardy and the fruit ripens in September.

BLUE DAMSON. This is a medium round, dark purple, freestone Damson plum. It is tart, wonderful for making preserves and canning. It produces large yields and ripens in September.

Prices of well-rooted Plum Trees: 2 yr., 3 to 5-ft. size, \$4.75 each;
four trees (1 of each variety) \$17.95, plus postage.



Fruit Bowl Special

- 2 DWARF APPLE TREES—Your choice of 2 varieties from preceding page.
- 2 DWARF PEACH TREES—Your choice of 2 varieties from preceding page.
- 2 DWARF PEAR TREES—Your choice of 2 varieties from top of page.
- 2 PLUM TREES—Your choice of 2 varieties listed above.
- 2 DWARF CHERRY TREES.

Total of 10 Fruit Trees.

Regular Price \$43.95. Special Fruit Bowl Price \$38.95, plus postage.

EXCELLENT
FOR SHADE

Nut Trees

HIGHLY
PRODUCTIVE

ENGLISH WALNUTS

FAMOUS
CARPATHIAN
STRAIN



Hardy to 40° below zero

This is the exceptionally hardy Persian or English walnut that has become so popular in most of the northern states. Mature trees are said to be hardy to 40° below zero and still produce big crops of large, thin-shelled, meaty nuts.

These vigorous seedling trees are very dependable for consistent yields as far north as Minnesota. For good crops it is best to have two or more trees for proper pollination. Vigorous, well-rooted, seedling trees.

**2 to 3-ft. size, \$5.95 each;
3 for \$15.45, plus post-
age.**

FAST GROWING, EARLY PRODUCING

Chinese Chestnut

HARDY, BLIGHT RESISTANT

Here is the most popular of all nut trees. In a short time it becomes one of the most beautiful trees on your place, and you will look forward to each fall harvest of delicious nuts that are very much like American chestnuts.

Chinese chestnuts are highly resistant to the blight disease, very hardy, and will produce excellent crops of large nuts when only a few years old. The trees are vigorous and have a spreading shape that makes them fine for shade as well as for their crop. Plant two or more trees for cross-pollination. These are vigorous seedlings selected from highly productive trees that will begin to bear in 2 or 3 years. Hardy to about 20° below zero.

**PRICES FOR Sturdy, Well-rooted, Branched
Trees 3 to 4 ft., \$2.50 each; 10 for \$22.00.**



Chinese Chestnut Approximately 2/3 Natural Size

Write for Bulletin No. 18 on Nut Tree Culture

Prices in this Catalog do not include postage. See order sheet for postage and handling charge.

Inspect ORGANIC GARDENING FREE!

Please send me the latest issue of ORGANIC GARDENING *at your risk* and enter a *Trial 12-Month Subscription* beginning with that issue. If I like what I see, I agree to pay the special introductory price of \$3.85. Otherwise, I may cancel and owe nothing.

MAIL
THIS CARD
WITHOUT
RISK OR
OBLIGATION

- I'M CONVINCED! My payment is enclosed for faster processing.
- I'D LIKE TO DOUBLE MY SAVINGS by ordering 24 months for just \$7.70. Since regular price is \$12.25, I save \$4.55. Same guarantee and cancellation privileges as above.

41394

NAME _____
ADDRESS _____
CITY _____
STATE _____ ZIP _____

**FULL
MONEY-BACK
GUARANTEE**

Receive a full refund if you're not satisfied anytime during your subscription.

O-1410

**FIRST CLASS
PERMIT NO. 16
EMMAUS, PA.**

BUSINESS REPLY MAIL

No Postage Stamp Necessary if Mailed in the United States

POSTAGE WILL BE PAID BY

**ORGANIC GARDENING
AND FARMING®
EMMAUS, PENNA.
18099**

AMERICAN VEGETABLE GROWER

Tells you how to make money growing vegetables and potatoes

The best authorities in the country on vegetable growing will tell you how to get increased production and greater profits. Your own state specialists are frequent contributors to our editorial pages. Get the help and guidance of experts by subscribing to the national vegetable magazine at this SPECIAL HALF-PRICE OFFER.

AMERICAN VEGETABLE GROWER Willoughby, Ohio
Please enter my subscription at the special introductory rate checked below. I enclose payment at your risk.

12 Months — \$2.00 24 Months — \$4.00

(Foreign \$8.00 a year)

Name _____

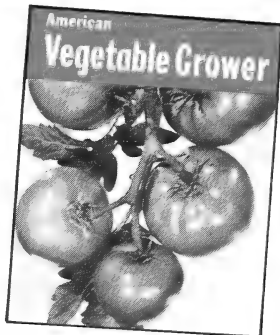
Street or RFD _____

Post Office _____ State _____ Zip _____

Vegetables Grown _____

acreage _____

Do you presently receive AVG? Yes No



Mail check, money order, or cash to: American Fruit Grower, Willoughby, Ohio 44094.

A \$8⁰⁰ VALUE FOR \$4⁰⁰

**12 months AMERICAN FRUIT GROWER
12 months AMERICAN VEGETABLE GROWER**

BOTH ONLY \$4⁰⁰

(Either can be bought separately at same money-saving rates — see other pages of this folder. Offer good in U.S. only.)

Yes, send me BOTH MAGAZINES

Name _____

Street or RFD _____

Post Office _____ State _____ Zip _____

Crops Grown _____ Acreage _____

Are you presently receiving AFG? Yes No AVG? Yes No

**Recommended
Rayner
Brothers Inc.**

Mail check, money order or cash to: AMERICAN FRUIT GROWER, Willoughby, Ohio 44094

Grapes

EASY TO GROW THEY LAST FOR YEARS

Grapes can easily be grown in any well-drained soil that will produce garden crops. They may be trained along a garden fence, or a regular arbor may be constructed to add to the beauty and landscaping of your yard and garden. Many good varieties have been developed. We have selected the outstanding Eastern varieties of each color grape. Select the color grape you want, or you may want to take advantage of the special and order one of each variety.

CONCORD—The Best Blue

This is the variety with the true grape flavor that has been the favorite for over 100 years. Unsurpassed for home gardens and commercial production. Ripens late.

NIAGARA—The Best White

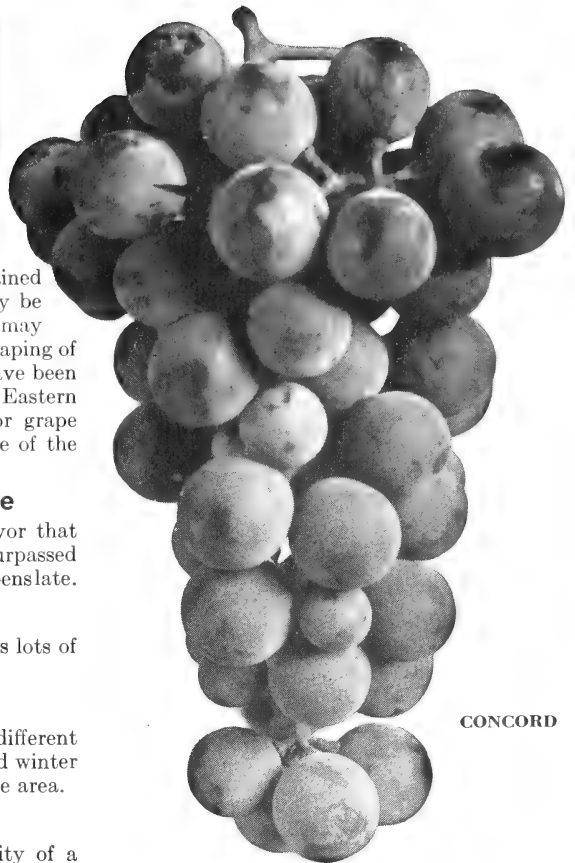
A fine midseason white variety that produces lots of beautiful clusters of large, excellent grapes.

CACO—The Best Red

When fully ripe CACO has a deliciously different flavor that makes it very popular. Its vigor and winter hardiness make it well adapted to eastern grape area.

FREDONIA—The Best Black

For a real flavor treat the wonderful quality of a vine-ripened FREDONIA grape is hard to beat. This excellent early black variety produces extra heavy crops.



CONCORD

Illustration about two-thirds actual size

PRICES FOR CONCORD, NIAGARA, CACO AND FREDONIA 2-YR. #1 PLANTS

\$1.30 each; 3 for \$3.55; 10 for \$10.95; 25 for \$23.50 Plus postage

Write for Bulletin No. 14 on Grape Culture

Interlaken SEEDLESS GRAPE

This excellent introduction of the New York Experiment Station provides the eastern grape grower with a high-quality, seedless variety. Clusters are of good size and well filled with rich, golden fruit. The flesh is meaty and crisp and the flavor is very sweet. Interlaken seedless ripens about a month before Concord. The vines are vigorous and hardy to about 20° below zero.

2-Yr. #1 plants: \$2.25 each; 3 for \$6.00

GRAPE ARBOR SPECIAL

Start a grape arbor or plant along a fence, but don't pass up this money-saving special.

One each of all varieties.

- | | |
|--------------|----------|
| 1 CONCORD | Blue |
| 1 NIAGARA | White |
| 1 CACO | Red |
| 1 FREDONIA | Black |
| 1 INTERLAKEN | Seedless |

5 Plants for \$6.00

BEAUTIFUL TREES AND SHRUBS

CLEAN AIR, PREVENT EROSION, PROTECT WILDLIFE



Protects Your Property with an Impenetrable Thorny Barrier. Excellent Bird and Game Cover.

Multiflora Rose

The primary use for Multiflora rose is to provide a protective barrier around fields and property lines of farms, estates, and other rural areas. After a few years this vigorous, thorny rose will make an almost impenetrable barrier that is a true living fence. It lasts a lifetime and needs no repairs. It will fence in farm animals and keep out trespassers. Very popular for conservation use to prevent land erosion. Multiflora rose grows well in nearly any soil type and is suitable for all but the most northern areas. Produces small white blossoms followed by clusters of red berries.

PRICE LIST: Vigorous, well-rooted plants
25 plants \$4.25 100 plants \$13.50
50 plants 7.50 500 plants 39.00
See Page 18 and Order Sheet for Postal Charge

Winter Hardy AZALEAS

RAYNER'S SELECTION OF FINE VARIETIES PROVEN ESPECIALLY HARDY

RED—HINODEGIRI has brilliant red blossoms. Excellent foliage.

PINK—CORAL BELLE with its dainty pink blooms has long been a favorite.

PURPLE—HERBERT. Beautiful large purple flowers. Very hardy.

WHITE—SNOW. Beautiful large white flowers. A must for contrast.

3-yr. plants, \$2.00 each; 3 for \$5.25.

For Good Results with Azaleas Follow Blueberry Culture and Plant in Shade.

Weeping Willow

For graceful beauty the weeping willow is outstanding. In most of the New England states, west to the Mississippi, and in the South it is a favorite for planting near river and stream banks, but also gives good results in dry land. This is the old-fashioned strain of willow that is so easy to grow and is very hardy.

3 to 4-ft. trees, \$2.50 each; 3 for \$6.75. See order sheet for postal charge.

Cherokee Princess White Dogwood

A beautiful companion to the Cherokee Chief red dogwood described inside the back cover. This fine tree produces large, pure white flowers in great abundance. Trees are very vigorous, early blooming, and have an excellent branching habit. Hardy in most of the New England area.

Sturdy well-rooted trees 24 to 30 in. tall, \$4.75 each.

BUY RAYNER'S PLANTS AND YOU BUY THE BEST

Evergreen Seedlings

Christmas Trees Windbreaks Landscape

Rayner's pines and spruces are excellent for Christmas tree plantings. Seedlings that cost only a few pennies now will soon be worth dollars. Make poor land or hillsides produce a real profit. Ideal for erosion control, windbreaks, and hedges. For ornamental use plant in a nursery bed and soon you will have ideal specimen trees for your own use and for sale.

SCOTCH PINE

This is one of the best trees for Christmas plantings since it grows very fast and will reach saleable size in five years. Grows well in dry or moist soil and makes a nicely shaped tree with very little shearing. Excellent for ornamental use.

AUSTRIAN PINE

Will grow well in nearly any soil from sand to clay and will tolerate industrial smoke and fumes that kill other pines. Needles are dark green and quite stiff. Develops into nice bushy saleable tree in about seven years.

DOUGLAS FIR

This has long been a favorite tree for Christmas plantings since it has a naturally compact type of growth. With relatively little shearing it will produce high-grade trees. Needles of Douglas fir are short and have a blue-green color. Our trees are of the special San Isabel, Colorado, strain.

CANADIAN HEMLOCK

For graceful beauty the hemlock cannot be excelled. It produces short, dark green needles which give its long drooping boughs an almost feathery appearance. Canadian hemlock can be easily pruned to form a fine hedge, an excellent background or sheared specimen trees. Hemlocks are very easy to grow and do well in sun or shade.



NORWAY SPRUCE

Norway spruce has long been a favorite specimen tree in northern gardens where its stately beauty cannot be excelled. Prefers moist soils rather than dry land and will make a nice tree in about eight years.

COLORADO BLUE SPRUCE

A truly magnificent tree with an outstandingly different blue-green color. In contrast with other evergreens this blue spruce is most unusual and thus is highly prized for its ornamental value. Gives good results in moist, fertile soil and requires relatively little shearing.

Prices of top-quality, 3-yr. Seedlings, 6 to 10 in. (Available March 1 to May 30). Fully Guaranteed. See page 18.

	10 Plants	25 Plants	50 Plants	100 Plants	250 Plants	500 Plants	1000 Plants
AUSTRIAN PINE	\$1.75	\$3.40	\$6.35	\$11.70	\$26.80	\$48.75	\$82.00
SCOTCH PINE	1.75	3.40	6.35	11.70	26.80	48.75	82.00
DOUGLAS FIR	2.25	4.40	8.15	15.00	34.40	63.25	106.00
COLO. BLUE SPRUCE	2.40	4.85	9.00	16.50	37.85	68.75	115.00
NORWAY SPRUCE	1.90	3.75	7.00	12.90	29.50	53.65	90.00
CANADIAN HEMLOCK	3.30	6.40	11.85	21.75	49.95	90.75	150.00

These prices do not include postage. See page 18 and order sheet for postage and handling charge.

Write for Rayner's Bulletin No. 19 Giving Complete Culture Information for Evergreens.

CHRISTMAS TREE PLANTINGS ARE GOOD INVESTMENTS

Growing Blueberries

These instructions apply to Rayner's hardy, top-quality plants. Be sure to prune about half of top from large bushes before planting.

WHERE BLUEBERRIES CAN BE GROWN:

The varieties of blueberries we offer will grow well from North Carolina to Maine and westward to Michigan and Missouri. They also grow well in parts of California, Oregon, and Washington. For best fruit production blueberries require full sunlight. The best time to plant is early spring. Frost or snow will not harm newly planted blueberries.

SOIL ACIDITY: One of the most important factors in successful blueberry culture is to use acid soil—a pH range of 4.0 to 5.5 is considered best. Many soils naturally have this much acidity, but in many areas where blueberries could otherwise grow well the soil is not sufficiently acid. For small-scale plantings this difficulty can be readily overcome. One of the best methods is to dig a hole about 18 in. deep and about the same in width. Mix half of this soil with well-rotted leaf mold or peat and then mix in 3 oz. ammonium sulfate fertilizer plus $\frac{1}{4}$ lb. of cottonseed meal. Replace this mixture in the hole and set the plant properly, and you have overcome the main problem in growing blueberries.

DRAINAGE: Cultivated blueberries require a uniform supply of moisture but they will not tolerate poorly drained or soggy soil. Avoid heavy clay soil for large plantings.

HOW TO PLANT: If the roots have become dry in shipment, they should be placed in water for about an hour. Best results are obtained if about half of the top growth is pruned from the plant. This allows the plant to become established faster and better. It will rapidly make an abundance of new, sturdy growth. After the holes have been dug and the soil prepared as previously described, the plant should be set so that the upper roots are covered by about an inch of soil. It is very important not to set blueberries too deep in the ground, for they may make poor growth or die. It is helpful to water the newly set plant with a soluble fertilizer, using about one quart of solution per plant. Next the soil should be firmly packed around the roots and a mound of soil made around the edge of the hole so that the plant can be properly watered during dry weather. Rooted cuttings should be grown for two or three years in a bed containing lots of sawdust plus cottonseed meal and acid fertilizer. They can be transplanted as desired.

In commercial plantings blueberries are usually set 4 ft. apart in the row with 8 to 10 ft. between rows. However, in home gardens they may be arranged in any manner and can be pruned to nearly any desired shape. Blueberries are especially suitable for hedge plantings and other ornamental uses.

MULCHING: It is very helpful if a heavy mulch can be maintained around the plants. Any natural organic matter is satisfactory. Sawdust—new or old, oak or pine—also gives excellent results and we strongly recommend its use. However, when sawdust is used as a mulch, it is necessary to add extra nitrogen to the soil. For each ton of sawdust approximately 24 lbs. of actual nitrogen is needed. This can be obtained from 115 lbs. of ammonium sulfate or 72 lbs. of ammonium nitrate. This corresponds to 13 ounces of ammonium sulfate per bushel of sawdust or 8 oz. of ammonium nitrate per bushel. Any other type of fertilizing material could be used if the proper amount of nitrogen is provided.

FERTILIZING: We definitely recommend that blueberries should receive regular fertilizer applications. Use an acid-type, complete fertilizer early in the spring at the rate of about $\frac{1}{4}$ lb. per each small plant or $\frac{1}{2}$ lb. for large plants. Another application in early summer is usually helpful. Do not apply fertilizer in late summer or fall, since it may make plants tender and thus subject to winter injury. Cottonseed meal, $\frac{1}{4}$ lb. for young plants and $\frac{1}{2}$ lb. for old plants, is a complete organic fertilizer that is ideal for blueberries and most other plants. Ammonium sulfate, 2 oz. per small plant and $\frac{1}{4}$ lb. per large plant, is an excellent commercial fertilizer. About 250 lbs. per acre is recommended for large plantings. Half should be applied in March or April and the rest during May or June.

PRUNING: When first planted, about half of the upper branches should be removed. Then during each dormant season further pruning is required. Since blueberries usually make too much top growth, some of this must be thinned out or the fruit will be small. Normally it is best to prune out slender twigs, leaving the heavier stronger growth. Low branches should be removed as well as any weak or dead wood. Write for Rayner's Bulletins 3 and 18 on blueberry pruning.

YELLOW FOLIAGE: Blueberries are especially free of disease and insect troubles and thus do not generally require any spraying or dusting. The most common trouble is a yellow color of the leaves (chlorosis). This yellowing can be corrected in two ways—one is by making the soil more acid by addition of vinegar or sulphur, and the other is to add iron directly to the plant and to the soil. Yellow leaves will often become a healthy green color within a few days, after iron is added. We recommend iron chelate for this purpose. About 1 level tablespoonful in a gallon of water can be applied to the leaves and soil and will be of much help in improving foliage.

CROSS-POLLINATION: Since cultivated blueberries are partly self-sterile it is best to plant at least two varieties for cross-pollination. Any combination of varieties is usually satisfactory.

Rayner's HYBRID BLUEBERRIES



HERE ARE THOSE AMAZING EXTRA LARGE HYBRIDS

EARLY

Varieties are listed in the order they ripen

**VERY
EARLY**

Earliblue

**FINE
QUALITY**

This excellent commercial berry is about as early as Weymouth and has many fine commercial features. The berries are large and ripen uniformly in big, tight clusters. The picking scar is good and berries are resistant to cracking. Of special interest to home gardeners is the mild sweet flavor of Earliblue. Plants are vigorous and have fine upright growth. This variety has good cold resistance and has proven to be a fine berry for both commercial and home use.

January 10, 1973

About 10 years ago I purchased four blueberry plants from you. They have borne heavily every year since. You certainly have a quality product.

G. J. HERMISTON, Milton, Mass.

**BEAUTIFUL
CLUSTERS**

Ivanhoe

**UNUSUAL
FLAVOR**

Ivanhoe is outstanding because of its unusually beautiful berry clusters which look much like bunches of blue grapes. Another feature is the wonderful fruity flavor. However, this flavor does not develop until the berries are fully ripe, which is about a week after they first turn blue. The berries are very large and have a dark blue color. Plants of Ivanhoe grow very rapidly and have a fine appearance. And for flavor we believe that a ripe Ivanhoe is one of the best of all blueberries.

BEEES ARE VERY HELPFUL IN POLLINATION



EARLIBLUE



IVANHOE

Blueray

EXTRA VIGOROUS—WINTER HARDY

This early variety includes as parents such fine old varieties as Jersey, Pioneer, Stanley, and June and is closely related to Bluecrop. It was released in 1955 by the U. S. D. A. and the New Jersey Agricultural Experiment Station. Since then it has gained rapid acceptance as a commercial berry because of its unusual vigor and tremendous yields of large berries. Blueray has good winter hardiness, giving fine results in Michigan and the New England states.



BLUERAY

February 18, 1973

The blueberries I ordered last year are doing very well, and I have reordered the same Hybrid Group this year.

M. M. MOYER, North Wales, Pa.

MIDSEASON

Bluecrop

WINTER HARDY—HEAVY PRODUCER

This excellent midseason variety is another of the outstanding introductions of the U. S. Department of Agriculture. Within just a few years Bluecrop has rapidly gained an outstanding reputation as one of the best of all blueberries for commercial production. It is very winter and frost hardy and can be grown in most of the northern states. Berries are large and maintain their size through the long picking season. Yields are very heavy and quality is good. The plants are fairly upright and have a tendency to develop several stems from the ground.

During winters that are unusually severe, causing direct cold injury to blueberries in some areas, also when a late frost occurs which may severely reduce the crop on some varieties, Bluecrop proved its real value by coming through with a large crop of excellent berries. This is undoubtedly one of the finest of all blueberries.



BLUECROP

Berkeley

MILD SWEET MOST BEAUTIFUL

This is our selection for the best of all blueberry varieties—for the home garden and commercial planting. It ripens in midseason, producing large loose clusters of the biggest, most beautiful blueberries you have ever seen. Unlike some varieties, the flavor is good almost as soon as it turns blue. Our local customers call for Berkeley when we are picking. They want the best. They want Berkeley. We have one customer who drives over 150 miles to our field to get Berkeley blueberries.

Plants of Berkeley are very vigorous and have an excellent semi-spreading shape and usually a heavy main stem. The leaves are very large and very attractive in summer and fall. For all but the most northern states, we strongly recommend Berkeley as an outstanding blueberry.



BERKELEY

Herbert

SWEET VERY HARDY



HERBERT

Herbert is very different in appearance from most blueberries since its fruit has a shiny black luster and a flattened shape. These extra large berries ripen late in the season in loose clusters and have very good quality. Bushes are vigorous and produce heavy crops. Of much importance is the winter hardiness which permits Herbert to be grown in most of the northern states. It is a good variety for home gardeners since it combines winter hardiness, large berry size, good production, and fine quality. Ripens about a week before Coville.

June 26, 1973

We have two plantings of your blueberries—Three plants set in 1963 and 3 plants in 1969. They are lovely healthy bushes and produce beautifully.

S. D. ELLIS, Huntsville, Ala.

Coville

GOOD FOR FREEZING AND JELLY

This very late-ripening variety greatly prolongs the blueberry season. Under our conditions we begin to pick Earliblue about June 10 and Coville in early July. Berries are large and very attractive and continue to ripen for several weeks. Good flavor does not usually develop in Coville until after the berries have fully ripened, but allow them to remain for a week after turning blue and the quality can be very good.



COVILLE

See page 30 for Complete Planting Information

PRICE LIST

Prices Do Not Include Postage.

See order sheet for postage and handling charge.

THESE PRICES ARE FOR BERKELEY, BLUECROP, BLUERAY, COVILLE, EARLIBLUE, HERBERT, AND IVANHOE

Healthy True-To-Name Plants	One Plant	3 to 9	10 to 29	30 to 100
		Plants Each	Plants Each	Plants Each
1-yr. 3 to 9 in. rooted cuttings.....	\$0.90	\$0.80	\$0.70	\$0.60
2-yr. 9 to 12 in. field transplants (branched).....	1.85	1.75	1.65	1.45
3-yr. 12 to 18 in. field transplants (well branched)..	2.30	2.10	1.95	1.75
3-yr. 18 to 24 in. field transplants (well branched)..	3.40	3.20	3.10	2.65

WRITE FOR PROMPT QUOTATIONS ON LARGER QUANTITIES OF PLANTS
(Varieties may be combined to take advantage of quantity prices)

BUY YOUR PLANTS DIRECTLY FROM THE GROWER AND GET THE BEST FOR LESS

To encourage more people to start growing blueberries, we offer this special on rooted cuttings of the hardy varieties. Plant them about one foot apart in a bed with a mixture of peat moss or sawdust. Be the envy of the neighborhood with your own blueberry nursery on only 15 sq. ft. of land. After two years move the plants to their permanent locations. Save money and have fun growing your own plants.

BLUEBERRY STARTER SPECIAL

- 5 BLUERAY 3-9"
- 5 BLUECROP 3-9"
- 5 HERBERT 3-9"

15 Plants for **\$9.50**

Blueberries

THE OLD FAVORITE VARIETIES



A section of our 100-acre fruiting field

EARLY

WEYMOUTH is the earliest blueberry to ripen. It is excellent for home gardens and a leading commercial variety. Berries are large, dark blue, and have a mild sweet flavor. Plants of Weymouth are low growing and very hardy.

RANCOCAS is a very dependable variety. Because of its vigor and winter hardiness, it can be grown in a wide range of climates and soils. The firm sweet berries are good for preserves and freezing.

MIDSEASON

STANLEY has a tall vigorous bush with beautiful tight clusters of berries. The flavor of Stanley is excellent and thus it is one of the best for "eating off the bush."

LATE

JERSEY is the best of all the "Old Favorite Varieties." It is very vigorous and hardy and produces large crops of beautiful berries. It was used as a parent for many of the "New Hybrid Varieties."

PRICE LIST FOR THE OLD FAVORITE VARIETIES

Prices Do Not Include Postage.

Healthy, True-to-Name Plants Plant Two Varieties for Pollination.	Prices Do Not Include Postage.			
	One Plant	3 to 9 Plants Each	10 to 29 Plants Each	30 to 99 Plants Each
1 yr. 3 to 9 in. rooted cuttings.....	\$0.70	\$0.60	\$0.55	\$0.50
2 yr. 9 to 12 in. branched.....	1.65	1.55	1.40	1.30
3 yr. 12 to 18 in. well branched.....	2.10	2.00	1.85	1.75
3 to 4 yr. 18 to 24 in. well branched.....	3.00	2.80	2.60	2.50

Varieties may be combined to take advantage of quantity prices.

Cherokee Chief

RED DOGWOOD

U. S. Plant Patent No. 1710

EACH TREE CARRIES THIS
PATENT TAG



At last there is a truly red Dogwood—not a pink; but a fine, deep red that is amazingly different. The wonderful new Cherokee Chief originates from a bud sport and is propagated by grafting on to a sturdy rootstock. Even the new foliage is a red color, and in the fall the leaves are scarlet. In late summer there is an abundance of fine red berries that add to the beauty of this excellent ornamental tree. Cherokee Chief is very vigorous and makes a fine tree with uniform branching.

It will grow in full sun but prefers some shade for best results. Hardy to about 10° below zero.

Sturdy, well rooted trees,
24-30 in. tall, \$6.00

CHEROKEE CHIEF



SEE PAGE 28 FOR THE NEW
CHEROKEE PRINCESS WHITE DOGWOOD

Crimson King Maple

Plant Patent
No. 735

The Crimson King variety of Norway maple has long been famous for its deep scarlet foliage which is so different from other trees. It has such beauty and excellent growth habit that it was granted a plant patent. The leaves vary in color from deep scarlet to purplish-red depending on growing conditions. This fine color holds throughout the season.

To improve shipping difficulties we are offering only the 3-4 ft. size which will get off to a flying start and soon develop into magnificent trees. This type of tree is especially dependable.

Your lawn will take on a new look of distinction when you plant your Crimson King Maple. We know you will always cherish one of these beautiful trees.

Vigorous, well-rooted, grafted trees,
3-4 ft. size \$5.50. Fully guaranteed.
Prices in this catalog DO NOT include postage.



BUY RAYNER'S PLANTS AND YOU BUY THE BEST

RAYNER'S FAMOUS BLUEBERRIES

HYBRID

- 2 EARLBLUE
- 2 BLUERAY
- 2 BERKELEY
- 6 Blueberry Plants
- 3 yr. 12-18 in.
- SPECIAL \$10.95**

QUALITY

- 2 BLUECROP
- 2 BERKELEY
- 2 COVILLE
- 6 Blueberry Plants
- 2 yr. 9-12 in.
- SPECIAL \$8.75**

BIG BLUE

- 2 BLUERAY
- 2 BLUECROP
- 2 HERBERT
- 6 Blueberry Plants
- 4 yr. 18-24 in.
- SPECIAL \$16.45**

OLD FAVORITE

- 1 RANGOCAS
- 1 STANLEY
- 1 JERSEY
- 3 Blueberry Plants
- 4 yr. 18-24 in.
- SPECIAL \$7.50**

Order Rayner's
Garden Specials for
Money-Saving Values

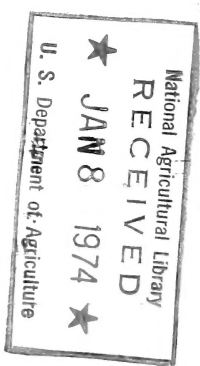


RAYNER BROS., INC.
SALISBURY, MD. 21801
ADDRESS CORRECTION REQUESTED

BULK RATE
U. S. POSTAGE
PAID
SALISBURY, MD.
Permit No. 46

Mr. W. H. Longenecker
11311 Cedar St.
Beltsville, Md. 20705

AFG-73
2



Buy Rayner's Plants and You Buy the Best
THIS BERRY BOOK IS YOUR GUIDE TO SUCCESSFUL FRUIT
PRODUCTION PROVEN BY THOUSANDS OF SATISFIED
CUSTOMERS FROM MAINE TO FLORIDA