

## Historic, archived document

Do not assume content reflects current scientific knowledge, policies, or practices.



STRAWBERRIES-BLUEBERRIES  
FRUIT TREES—GRAPES—ASPARAGUS—ORNAMENTALS

FR

# RAYNER'S 1964 BERRY BOOK

National Agricultural Library  
**RECEIVED**  
★ JAN 8 1964 ★  
U. S. Department of Agriculture

## SMALL GARDEN

- 25 FAIRFAX Early
- 25 CATSKILL Mid-Season
- 25 ROBINSON Mid-Season
- 25 SPARKLE Late

100 Top Quality  
Virus Free Plants  
Special \$5.95  
Plus Postage

## MEDIUM GARDEN

- 50 PREMIER Early
- 50 CATSKILL Mid-Season
- 50 POCAHONTAS Mid-Season
- 50 ARMORE Late

200 Top Quality  
Virus Free Plants  
Special \$9.65  
Plus Postage

## LARGE GARDEN

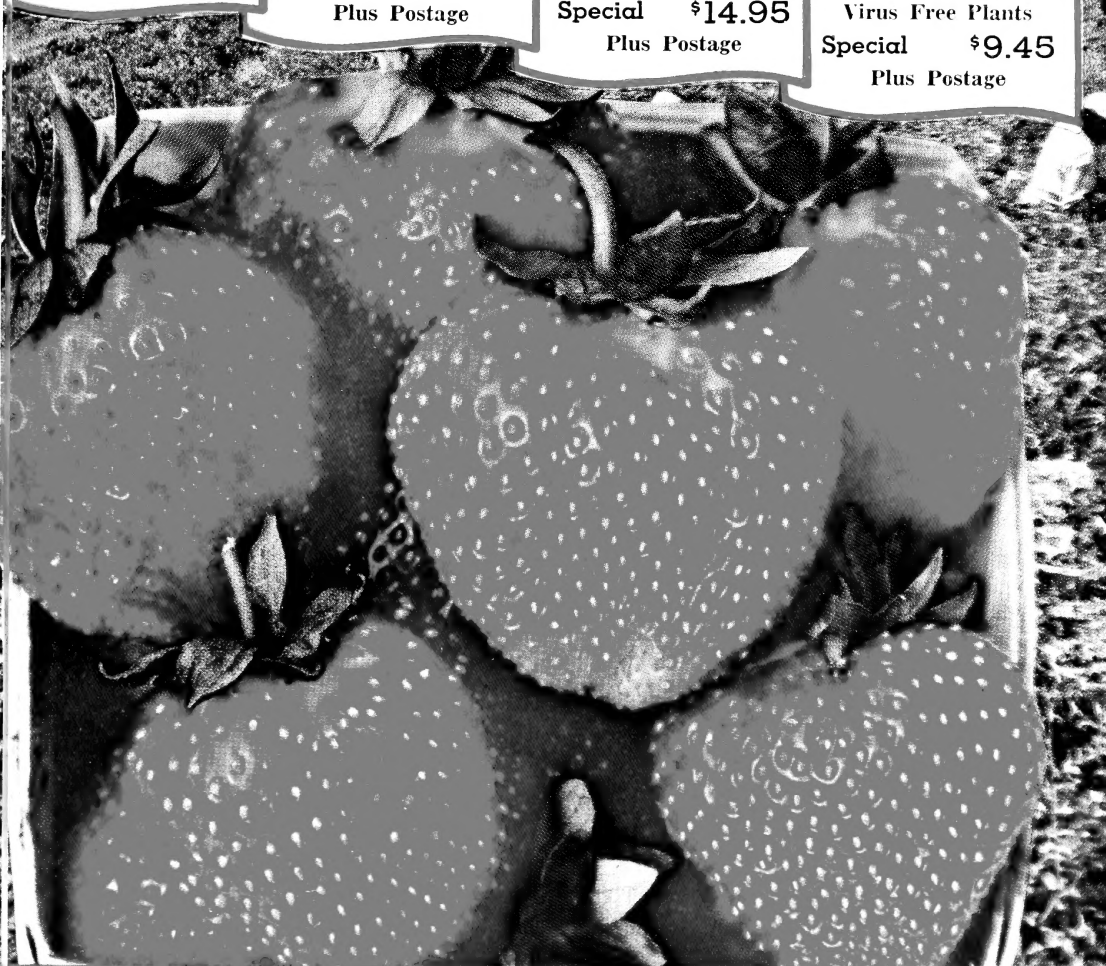
- 100 FAIRFAX Early
- 100 SURECROP Mid-Season
- 100 CATSKILL Mid-Season
- 100 JERSEYBELLE Late

400 Top Quality  
Virus Free Plants  
Special \$14.95  
Plus Postage

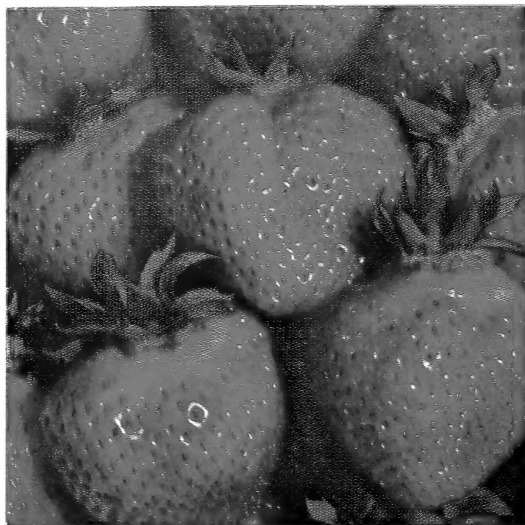
## All Season Garden

- 25 REDGLOW Early
- 25 SURECROP Mid-Season
- 25 SPARKLE Late
- 25 ARMORE Late
- 25 Superfection Evb.

125 Top Quality  
Virus Free Plants  
Special \$9.45  
Plus Postage



RAYNER BROTHERS INC. SALISBURY, MD.



# SURECROP

THE MOST DEPENDABLE STRAWBERRY

Virus-Free, Disease Resistant,  
Drought Resistant, Highly Productive

Surecrop was developed by the U. S. Dept. of Agriculture especially for resistance to the red stele disease. It has such high resistance to this trouble that it will produce perfect crops where most varieties would be complete failures. In addition, Surecrop is resistant to Verticillium wilt, leaf spot, and leaf scorch. Then, as an extra bonus, Surecrop is one of the most drought resistant of all strawberries. Under almost any soil condition Surecrop's unexcelled vigor will produce an abundant crop of wonderful fruit. Thus, you can understand why we call it the most dependable of all strawberries.

Surecrop ripens in midseason and has large, bright-red berries with a nice cap and bright seeds. The berries are very uniform and have a fine appearance. The flavor is good for fresh use and preserves; likewise, Surecrop is good for freezing. The flesh is quite firm; thus, Surecrop will hold up well for shipping and keep its fine appearance for several days. Therefore, this is an excellent commercial variety as well as a fine berry for home gardens.

Surecrop has rapidly become one of the leading strawberry varieties in the eastern United States. Its consistently high yields, amazing vigor, and excellent berry characteristics make this one of the best of all for commercial profits and for dependable home garden production. If you want a strawberry that is very easy to grow, and one that you can show with pride, you definitely want Surecrop.

Because of its great vigor, Surecrop may produce too many plants, so for best results be sure to keep the bed fairly narrow with several inches between each plant.

25 PLANTS \$1.95; 100 PLANTS \$4.40; 1000 FOR \$19.50. Complete Price List Page 20.  
Prices in this catalog DO NOT include postage. See page 21 for Postal Rates.

IN RECENT TRIALS AT THE OHIO EXPERIMENT STATION SURECROP YIELDED AT THE RATE OF 7,696 QTS. PER ACRE AND IN 14 DIFFERENT LOCATIONS IN WEST VIRGINIA THE OFFICIAL PRODUCTION OF SURECROP AVERAGED 8,200 QUARTS PER ACRE.



## Crimson King Maple

(Patent No. 735)

Crimson King Maple, a great improvement over any red maple yet introduced, is truly the king of all maples. Its deep crimson foliage, that holds its color all through the summer, adds an exhilarating contrast to the green of other trees. It becomes more attractive each year, and is a fast growing tree which reaches a height of about 50 ft. at maturity. Hardy to about 20° below zero.

Your lawn will take on a new look of distinction when you plant your Crimson King Maple. We know you will always cherish one of these beautiful trees.

PRICE: 4-5 FT. TREES—EACH \$4.75  
Plus Postage

Complete Shipping Information and Postal Rates are given on page 21.

BUY RAYNER'S PLANTS AND YOU  
BUY THE BEST.

# To Our Customers and Other Friends



**Jack Rayner**  
President

We are very happy to welcome you as a reader of Rayner's Berry Book. In it you will find the best possible planting stock of strawberries, blueberries, raspberries, fruit trees, and other plants. Also, there is complete, up-to-date information on the proper methods of growing these crops. We believe you will find our Berry Book to be both helpful and interesting.

Of much importance to you is the reliable Rayner guarantee of satisfaction which assures you of good plants or your money will be fully and promptly refunded.



**P. C. Massey**  
General Manager

**"We guarantee you will receive top quality stock. If for any reason you are not pleased with our plants, write us within 30 days and we will replace the plants or refund the complete purchase price. After the 30 day period and within one year of the date the plants were purchased, we will replace at one-half price any plants that are not satisfactory. This guarantee covers full purchase price and does not imply any further responsibility or liability." This guarantee applies to all of our nursery plants that are planted during the spring season and to strawberries planted by July 1st.**

Also of vital importance to you is the Rayner policy of honest, efficient dealings with our customers. We fully realize that satisfied customers are the backbone of our business and we will make every reasonable effort to provide you with top-quality plants and service.

We hope you will read the information in this catalog concerning methods of planting strawberries, blueberries and other nursery stock. We have tried to provide the best possible directions because we certainly want you to be successful. Also planting instructions are sent with each order. Give our plants satisfactory growing conditions and they will reward you many times over with abundant crops of top quality fruit.

Yours for continued success with Rayner's plants.

H. JACK W. RAYNER, President

## Where to Find the Finest Nursery Stock

STRAWBERRY PLANTS .....	Pages 1-20	NUT TREES .....	Pages 30-31
RASPBERRY PLANTS .....	Pages 22-23	WILLOW TREES .....	Page 32
BLACKBERRY PLANTS .....	Page 23	MAGNOLIA .....	Page 32
GRAPE VINES .....	Page 24	RHODODENDRON .....	Page 32
ASPARAGUS .....	Page 25	HOLLY and AZALEA .....	Page 32
RHUBARB and HORSE-RADISH .....	Page 25	MULTIFLORA ROSE .....	Page 32
APPLE TREES .....	Page 26	YEWS .....	Page 32
PEACH TREES .....	Page 26	PINES .....	Page 33
PEAR TREES .....	Page 27	SPRUCE and FIR .....	Page 33
PLUMS, PRUNES, and DAMSONS .....	Page 28	CANADIAN HEMLOCK .....	Page 33
DWARF FRUIT TREES .....	Pages 28-29	BLUEBERRIES .....	Pages 34-40
CHERRY TREES and PERSIMMON .....	Page 29	CHEROKEE CHIEF DOGWOOD .....	Page 39

## How to Order From This Catalog

As you read about the various varieties you will find the price given with each item. There is a special Strawberry Price List on page 20. Fill out the order sheet plainly and completely, being sure to give full address. From page 21 estimate the postage and add it to the cost of plants. If too much postage is sent it will be refunded at time of shipment. Enclosed is an order envelope which does not require postage. Send your order early so we can reserve your plants for shipment at the proper time. We strongly recommend the special handling service for prompt delivery of mail orders of any type of perishable material. See page 21 for details.

Member: AMERICAN ASSOC. OF NURSERYMEN

Member: MARYLAND ASSOC. OF NURSERYMEN

Business References:

MARYLAND NATIONAL BANK, Salisbury, Md.

UNION TRUST CO., Salisbury, Md.

DUN and BRADSTREET

**BUY RAYNER'S PLANTS AND YOU BUY THE BEST**



# How to Choose the Best Strawberry Varieties

Your choice of strawberry varieties depends, to a large extent, on the purpose for which they are to be grown. Some varieties are especially good for fresh eating while others are quite tart, but good for long-distance shipping. Some are superior for freezing, and others are extra good for preserves. Some varieties will give fine results in nearly any soil, while others require very good growing conditions. Some varieties are resistant to diseases while others are susceptible. Below is a list of general strawberry characteristics when grown under normal conditions. It must be remembered that excess fertility and other conditions can greatly alter strawberry qualities. Thus, we strongly recommend that you try several of the most desirable varieties and decide which ones are best for your particular location. Complete descriptions of all our strawberry varieties are given in this catalog.

## CHARACTERISTICS OF SOME STRAWBERRY VARIETIES

- BEST FOR FLAVOR AND GENERAL HOME USE:** Redglow, Fairfax, Armore, Pocahontas, Midland, Sparkle.
- BEST FOR LARGE SIZE:** Armore, Robinson, Jerseybelle, Catskill, Empire, Pocahontas, Vesper.
- BEST FOR HIGH YIELDS:** Catskill, Pocahontas, Surecrop, Earlidawn, Midway.
- BEST FOR FIRMNESS:** Dixieland, Blakemore, Pocahontas, Surecrop, Tennessee Beauty, Midway.
- BEST FOR FREEZING:** Midland, Pocahontas, Dixieland, Redglow, Sparkle, Surecrop.
- BEST FOR PRESERVES AND JAMS:** Blakemore, Pocahontas, Tennessee Beauty.
- BEST FOR EARLINESS:** Earlidawn, Midland, Premier, Redglow.
- BEST FOR LATENESS:** Armore, Sparkle, Jerseybelle, Tenn. Beauty, Redstar, Vesper.
- BEST FOR VIGOR AND GROWTH IN POOR OR DRY LAND:** Surecrop, Robinson, Premier, Blakemore, Sen. Dunlap.
- BEST FOR RESISTANCE TO RED STELE:** Surecrop, Redglow, Sparkle, Midway, Vermillion.
- BEST FOR RESISTANCE TO VERTICILLIUM WILT:** Vermillion, Catskill, Surecrop, Premier, Robinson.
- BEST FOR RESISTANCE TO LEAF TROUBLES:** Fairfax, Premier, Midland, Surecrop, Catskill, Empire, Redstar, Tennessee Beauty.
- BEST FOR VERY COLD CLIMATES:** Sen. Dunlap, Cyclone, Catskill, Sparkle, Premier.
- BEST FOR FROST RESISTANCE:** Earlidawn, Premier.
- BEST FOR SOUTHERN STATES:** Albritton, Pocahontas, Dixieland, Blakemore, Surecrop, Tennessee Beauty.
- BEST FOR FLORIDA:** Florida 90.

For best success with strawberries we hope you will read the culture information given on pages 18-19. Naturally we want our customers to have fine results with our plants and therefore, we try to keep you informed of the very best methods for growing strawberries and other plants we sell. Each spring we send a copy of our bulletin "Better Berries" to our customers and in it you will find detailed information on fertilizing, pruning, mulching, pest control, and similar important points for success with various crops. The 20th annual issue of "Better Berries" will be sent this spring and back copies of all issues are available. If you do not have these valuable bulletins, you may obtain the entire set by sending 20c, to cover handling and postage, to Rayner Bros., Inc., Salisbury, Maryland.

December 10, 1962

Lincoln, Illinois

In 1961 we bought some strawberry plants from you and this year we obtained some from another nursery, but there was no comparison in the plants. The ones purchased from Rayners produced the most and the best berries we ever had.

Harold Hoelscher

June 1, 1963

Clarington, Ohio

I am well pleased with your company because of the very prompt and efficient service and because you back up your guarantee.

Mrs. P. D. Forni

June 5, 1963

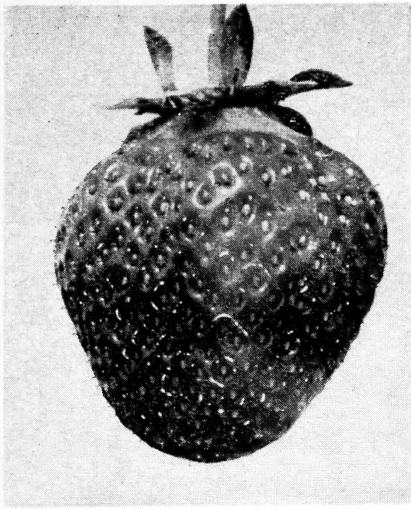
Perkasie, Penna.

We wish to compliment you on your method of shipping plants—they are all received in such good condition.

Mrs. F. R. Feist

**NO MATTER HOW  
MUCH YOU PAY**

You will never buy berries as good as the fresh harvests of your own locality. With "shipped-in" berries the quality and flavor cannot match the vine-ripened perfection right out of the patch. That's why more and more folks grow their own. Grow more! Save more! Have more!



# EARLIDAWN

**NEW LEADER FOR EARLY PROFITS. TREMENDOUSLY PRODUCTIVE - VIRUS FREE**

Earlidawn has really made a hit with berry growers who want those big early profits. It ripens several days before other varieties and leads the customers right to you. Berries of Earlidawn are large, moderately firm, and very attractive. The flesh has a nice bright red color and makes a fine frozen product. Earlidawn ripens uniformly, without white tips, and the whole row shines with that unmatched color of big ripe strawberries. Production is good and the crop ripens uniformly with 50% being harvested in the first week.

Despite the fact that Earlidawn is the earliest of all strawberries, it has good frost resistance and will produce a full crop where other varieties are badly injured. In poor soils, Earlidawn is not as vigorous as some varieties, but give it good growing conditions

and you will be amazed at its wonderful production of big, beautiful, early berries. For best results it should not be grown in land that has recently been cropped to tomatoes, and other strawberries. Throughout the northeastern and central states Earlidawn has proven that it is a real profit maker and with Rayner's registered, virus-free plants, you have extra assurance of success. Order early to reserve your plants, since this variety usually "sells out."

25 Plants \$2.10; 50 for \$3.15; 100 for \$4.70; 1,000 for \$21.00. Complete Prices Page 20.

# PREMIER

**U. S. D. A.  
Virus-Free  
Strain**

## THE OLD FAVORITE EARLY BERRY

For over forty years Premier has been the standard early strawberry for northern states. It has long been recognized as one of the most dependable varieties since it has frost resistance and will grow under nearly any soil conditions. The foliage is vigorous and makes an abundance of sturdy plants which produce heavy yields.

Berries of Premier have an attractive light red color and are of medium size. The flavor is generally good and in northern states is better than in warm areas. Premier is not as firm in texture as some other varieties but is generally satisfactory for fresh market sales and home use. In areas, where winter-hardiness is important, Premier is a good choice since it has established a fine record of performance in cold climates. Recently it has been shown that Premier has resistance to Verticillium Wilt. This trouble occurs in some northern soils, especially where tomatoes and potatoes have been grown.

25 Plants for \$1.90; 50 for \$2.85; 100 for \$4.30; 1,000 for \$19.00



**VIRUS  
FREE**

# DIXIELAND

**VERY  
FIRM**

At present all known sources of Dixieland are affected with a trouble known as "Yellows". Until "Yellows-free" plants of this fine commercial variety are available we will not be able to guarantee Dixieland. But it is still being widely grown because of its very firm, big berries which make Dixieland such an excellent "shipping" variety.

Prices: 100 Plants for \$4.50; 1,000 for \$20.00. Complete Prices on Page 20.

**BUY RAYNER'S PLANTS AND YOU BUY THE BEST**

**VIRUS  
FREE**

# FAIRFAX

**THAT WONDERFUL  
STRAWBERRY**

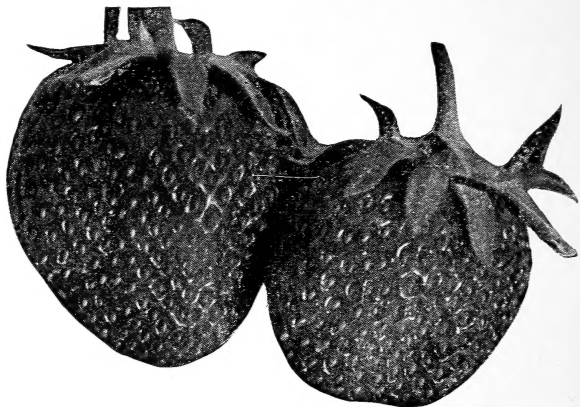
**THE OUTSTANDING VARIETY FOR DELICIOUS FLAVOR**

Fairfax was introduced in 1928 by the United States Department of Agriculture and immediately became very popular because of its excellent flavor and quality. In this respect it is still the leader of all strawberries and therefore, the favorite variety for home gardens and local sales where flavor is appreciated. You will find in Fairfax the true strawberry flavor that is so important to all who enjoy fresh strawberries. Its berries are large and have a deep red color when fully ripe. The flesh is likewise a dark red color.

With the new vigor of Rayner's registered virus-free plants, Fairfax is a very dependable variety giving fine production for home gardens and for commercial production where "repeat" business is important. Your customers will continue to come back for more of this delicious berry.

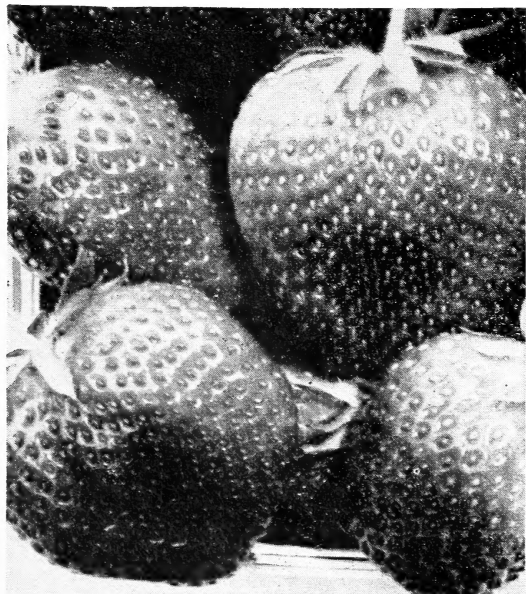
Fairfax is quite winter-hardy and is well adapted to the northern states as well as to the middle-Atlantic and Central area. It grows well in nearly any type of soil but like most strawberries gives best results in fertile land having a good supply of moisture. The berry color of Fairfax becomes quite dark when fully ripe but this is the time for best flavor. These fully-ripe berries are not as satisfactory for freezing as those that are picked while the color is not so deep. Order early so that you will be sure to get this fine variety.

**25 Plants \$2.00; 100 for \$4.50; 1,000 for \$20.00. Complete Prices Page 20**



# MIDLAND

**VIRUS - FREE. OUTSTANDING  
EARLY VARIETY. Top Quality**



Throughout the northeastern and central states, this is one of the finest of all strawberries for flavor, quality, and appearance. The berries are very large and have a beautiful deep red color. The flesh is firm and has a fine solid-red texture that rates Midland as one of the best of all for freezing. Berries ripen very early and bring top prices so this is a fine variety for either small or large scale commercial use. On Long Island virus-free Midland has proven to be an outstanding variety for the high-quality New York market.

We strongly recommend Midland for home gardens and local sales where its excellent quality and fine appearance make it a real favorite. The plants are vigorous and resistant to leaf troubles and do not make too many runners as is the case with some varieties. Give Midland good growing conditions and you will be rewarded with a fine strawberry in all respects. Rayner's registered virus-free stock of Midland will bring the best out of this excellent variety.

**25 Plants \$2.10; 50 for \$3.15; 100 for \$4.70;  
1,000 for \$21.00. Postal Rates Page 21.**

**BUY RAYNER'S PLANTS AND YOU BUY THE BEST**



**VIRUS  
FREE**

# REDGLOW

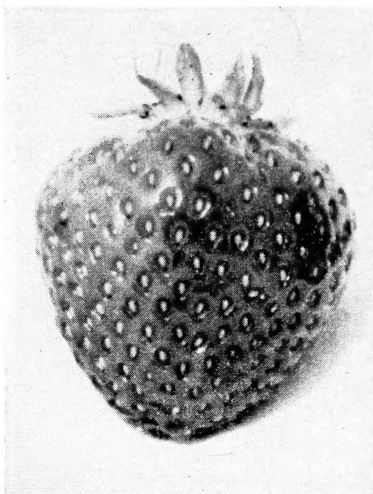
**UNUSUALLY  
FINE  
FLAVOR**

## EXCELLENT FOR FREEZING

We are firmly convinced that for real strawberry flavor and quality Redglow is outstanding. If allowed to remain on the plant a few days after it first turns red the fresh flavor is truly delicious and cannot be excelled by any other strawberry. In addition to such fine flavor Redglow is also one of the most beautiful varieties. The berries are medium to large in size and have a fine bright red color that really shines. The flesh is firm and has a fine color which results in an excellent frozen product. It grows well in most soils but is best in rich, moist land. It has red stele resistance so if this soil disease is a problem just plant Redglow and enjoy the finest strawberries you have ever known.

For the home garden we believe that Redglow is ideal and recommend it highly from North to South. For roadside stands and other local sales it is a sure profit-maker for, once your customers have become familiar with its fine flavor and quality they will be sure to return. Redglow ripens early with big crops of the most beautiful, delicious berries you have ever seen. The foliage is vigorous and runner production is good.

25 Plants \$2.10; 50 for \$3.15; 100 for \$4.70; 1,000 for \$21.00. Complete Prices Page 20.



**Virus - Free**

# BLAKEMORE

## THE BEST FOR PRESERVES, JAMS, AND JELLIES

For many years the excellent processing qualities of Blakemore have made it one of the most important of all strawberry varieties. Its berries are very firm and have an outstanding bright red color. Blakemore is a bit tart for most fresh use but when sugar is added there is an excellent flavor. These features make Blakemore an outstanding favorite with all who want to make the best jams, jellies, and preserves. The bright sparkling product will prove that Blakemore well deserves its fine reputation in this respect. For freezing it is likewise excellent since the berries are unusually firm and hold their shape and color very well. When frozen fresh, with the caps still on, Blakemore makes a beautiful delicious treat for winter days. This is a very vigorous early variety and will give good results in all but the coldest states. Rayner's stock of Blakemore is virus-free and Yellow-free.

25 Plants \$1.50; 50 for \$2.25; 1,000 for \$15.00. See Page 20 for Complete Price List.

**VIRUS FREE**

# FLORIDA 90

**BEST FOR FLORIDA**

Because of the lack of cold weather in Florida there is not sufficient winter-dormancy for fruit development in most varieties of strawberry. The plants will grow but production of fruit is poor or absent. For many years Missionary was the only variety that would produce good crops under Florida conditions, but in recent years it has been largely replaced by Florida 90, a berry developed in Florida for Florida conditions. This is the berry that is grown so extensively for shipment to the north. Its berries are large and elongate and have a rich red color and nice flavor. The plants are relatively small but very vigorous, making excellent growth on a wide variety of soils. Recently Florida 90 has been found to give fine results in parts of Georgia, where it has excellent commercial possibilities. For the home gardener in Florida, there is no better strawberry than this fine berry which is tailor-made for your climate. Unfortunately this variety is not adapted to northern climates.

25 Plants \$1.40; 100 for \$3.15; 1,000 for \$14.00. Complete Prices Page 20. Postage P. 21.

May 16, 1963

I have grown the finest strawberries ever in this area from your plants.

Lafeer, Michigan

Leslie Ritchie

**BUY RAYNER'S PLANTS AND YOU BUY THE BEST**

VIRUS  
FREE

# POCAHONTAS

EXTRA BIG YIELDS OF HIGH QUALITY BERRIES. EXCELLENT



FOR BOTH COMMERCIAL  
AND HOME PLANTINGS.

The features which make Pocahontas so outstanding are its tremendous yield, of large, high-quality berries, and exceptional plant vigor. Pocahontas was released by the U. S. Dept. of Agriculture in 1954 and has rapidly become the leading commercial variety in many areas. Likewise, it is one of the very best strawberries for home gardens. In official tests in many states Pocahontas has consistently ranked near the top for production. Of special significance are the many enthusiastic reports from berry growers who find Pocahontas to be the best strawberry they have ever known. From Texas to Georgia and northward to New York and Iowa this is a variety that is setting new records for production and profits. In many areas Pocahontas is an important commercial variety since its firm, large berries can be shipped

long distances to market and still maintain their attractive appearance. It is also a real profit maker for local sales.

Pocahontas ripens in mid-season and produces large berries that "hold their size" for the entire season. They have a bright red, firm skin and a fine red flesh. The flavor is excellent if the berries are allowed to ripen fully before picking. If picked too soon, Pocahontas is rather tart and in the northern states this tartness seems to be more evident than in warmer areas. For preserves and freezing Pocahontas is excellent.

25 Plants for \$2.00; 50 for \$3.00; 100 for \$4.50; 1,000 for \$20.00. Complete Prices Page 20.

Our prices do not include Postage. See Page 21 for Postal Rates.

April 19, 1963

I like Rayner's plants better than any I ever got from anyone else. In 1960 I got 1,000 of your Surecrop and 1,000 Pocahontas. From them I picked the best crop I ever saw or heard of. Your advice on growing strawberries has been of great help.

Robson, W. Va.

Hayes S. Taylor

May 15, 1963

In 1961 we planted 280 of your Pocahontas and last season picked well over 600 quarts of large, delicious berries.

Weston, W. Va.

William C. Casto

October 13, 1962

The Pocahontas from Rayners has been a very fine berry with us — outyielding everything else.

San Anselmo, California

James Gulick

## SENATOR DUNLAP VIRUS FREE

THE OLD-FASHIONED VARIETY WITH WILD-STRAWBERRY FLAVOR

Dunlap was named in Illinois in 1890 and has withstood the test of time better than any standard variety. It was a favorite long ago because of its wonderful flavor and excellent quality for fresh use and preserves. Today Senator Dunlap still has these same excellent features and has also proven to be fine for freezing. The plants are extremely winter hardy and will grow in our coldest states. Thus, it is well liked in Minnesota, Wisconsin, North Dakota, South Dakota, and other states having severe winter weather. Dunlap will also grow well in poor soils and in heavy clay soils and is very drought resistant. Berries of Senator Dunlap are of medium size and have a rich red color inside and out. For berries that will bring back memories of that delicious wild strawberry flavor try Rayner's registered stock of virus-free Dunlap. Place your order early to be sure of obtaining the desired varieties.

25 Plants \$1.55; 50 for \$2.35; 100 for \$3.50; 1,000 for \$15.50. Complete Prices Page 20.

**TREMENDOUS  
YIELDS OF  
LARGE BERRIES**

# MIDWAY

**VIRUS FREE**  
New U. S. D. A. Hybrid

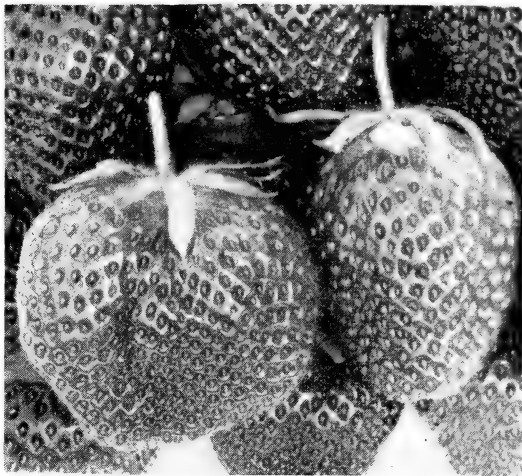
Within just two years this wonderful new variety, from the U. S. Department of Agriculture has become established as one of the best of all strawberries. In New Jersey it gave such outstanding yields of big, high quality berries that even the most experienced growers were very favorably impressed.

Recent official trials with growers in W. Va. showed Midway to be No. 1 in yield with an average of 8,280 quarts per acre. In one location it produced at the rate of 20,800 quarts. At the Ohio Agricultural Experiment Station Midway was rated outstanding and produced at the rate of 10,237 quarts per acre.

In Maryland and Michigan, it was one of the heaviest producers and brought top prices at the auction markets.

Midway ripens in early midseason and produces large, bright berries, with a fine cap, and yellow seeds. The berries have a good uniform shape and hold their large size and fine appearance for the full picking season. Berries of this variety have a firm flesh and firm skin which permits long distance shipment and results in a fine looking berry a day or two after they have been picked.

Midway is a cross of Dixieland x Temple and has the same type of red stele resistance that helped to make the Temple such a reliable variety. Likewise, it has a lot of that fine Temple flavor. We feel certain that if you will give Midway a chance it will reward you with outstanding yields of wonderful, large, strawberries. Order early since there will be a shortage of Midway.



**25 Plants \$2.10; 50 for \$3.15; 100 for \$4.70; 1,000 for \$21.00. Complete Prices Page 20.**

**Our prices do not include Postage. See Page 21 for Postal Rates.**

July 20, 1963

In May of 1962 I set 300 Rayner's Midway. All plants grew — they were the finest I ever saw. Despite a severe winter and a heavy frost on May 27, Midway produced an excellent crop of the finest berries we have ever fruited.

Indianapolis, Indiana

Geo. W. Kern

**VIRUS  
FREE**

# SURECROP

**SEE INSIDE  
FRONT COVER**

The amazing variety that is so vigorous it will grow almost anywhere in nearly any soil. Everyone can have success with this outstanding variety. See inside front cover for color picture and full details. We believe this is the finest strawberry variety ever developed.

April 20, 1963

I was exceptionally well pleased with the growth of Surecrop, and the high yield and quality of the berries.

Clarksburg, W. Va.

Fay D. Benson

April 29, 1963

The Surecrop plants, received about 5 weeks ago, are all blooming now. I didn't lose a single plant. Since I have never grown fruit before you can imagine that I am well pleased. I especially appreciate the detailed instructions that came with the plants.

Forest Park, Georgia

Betty McKeeman

April 11, 1963

Your Surecrop plants produced double the amount I harvested from an early variety I purchased locally.

Fairchild, Wisconsin

Dale Susdorf, Sr.

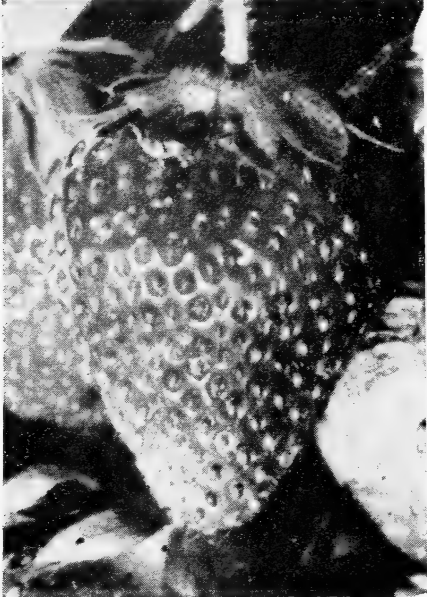
**BUY RAYNER'S PLANTS AND YOU BUY THE BEST**

**UNUSUALLY  
VIGOROUS**

# **ROBINSON**

**VIRUS  
FREE**

## **Extra Large Berries**



Robinson (also known as Kardinal King and Scarlet Beauty) has several outstanding good features that far out-weigh its less desirable qualities. It is one of the most vigorous plant makers and will often give good results in poor or sandy soils where other varieties fail. Even under drought conditions it will usually produce good crops. Another fine quality is its very large berry size. Fruit of Robinson are very big and with their light red color, they bring good prices. Its ripening period begins soon after Premier, but it is generally considered a midseason variety. In Michigan Robinson is the leading commercial variety. The plants are small but the fruiting beds are very wide and vigorous — in fact best results are obtained if late-formed runners are removed.

In cool climates the quality and firmness of Robinson is good enough to satisfy most customers. However, in warm areas it may not be suitable. Because of its vigor and large berry size Robinson remains a favorite of many home gardeners and commercial growers in the northeast. Rayner's registered virus-free stock of Robinson will bring the best out of this variety. For big berries try Robinson.

**100 Plants for \$4.30; 1,000 for \$19.00.  
Complete Price List Page 20.**

April 1, 1963

Two years ago we purchased 100 of Rayner's Robinson and last year picked 175 quarts of big, delicious berries. We highly recommend your plants.

Davison, Michigan  
175 quarts of big,

James Adkins

**VIRUS  
FREE**

# **EMPIRE**

**EXCELLENT FOR COMMERCIAL  
AND HOME USE IN THE NORTH.**

Empire is another of the fine fruit developments of the New York State Experiment Station. Thus, it is well suited to the northern states where it is a fine mid-season companion of Catskill. Yields are good and it has sufficient frost and winter hardiness to be a very dependable producer. Empire is an especially attractive berry since it has a very glossy, medium red color and a fine green cap. The berry shape is somewhat elongate and irregular. Berry size is large and this size holds up well for the entire picking season. The flesh color of Empire is somewhat pale, and it is a bit soft, but the flavor is very good. Its large size, fine appearance and good flavor rate Empire as a real profit maker in northern states. We definitely believe you will like this excellent variety.

Plants of Empire are very vigorous and are hardy in cold climates. Runner plants are developed freely and result in a good fruiting row. In all the New England area, we believe you will have excellent results with Rayner's virus-free Empire. It is very good for any fresh market sales but is not rated too highly for processing.



**Empire Prices: 100 for \$4.40; 1,000 for \$19.50. Order Early. Complete Prices Page 20.**

March 4, 1963

From the 2,000 plants I obtained last year from Rayners, I only lost two plants.

Mohnton, Penna.  
Charles Kissinger

# CATSKILL

**BIG YIELDS OF BIG BERRIES  
OUTSTANDING NORTHERN VARIETY  
VIRUS FREE. WINTER HARDY**



The outstanding feature of Catskill is its consistently high yields throughout the northern states. Under most growing conditions, its virus-free vigor and extreme winter hardiness always result in fine production. Thus, it is well liked by the amateur who wants a strawberry that is easy to grow and it is a favorite for commercial planting where this dependability is so important. In addition to such fine plant vigor and high yields Catskill has excellent berries of large size. The flavor is good and they have a nice bright red color. Berries of Catskill are not as firm as some varieties and for best results should be handled promptly. But for many years this has been the leading midseason variety throughout most of the northeast so it must be good. Catskill was developed in 1933, at the New York Experiment Station and has consistently been one of the best of all strawberries. It is noted for its tall, light green foliage which is so resistant to leaf troubles. Likewise, Catskill is highly resistant to Verticillium Wilt, which is of importance in some northern soils. Recent tests in West Virginia showed an average yield under grower's conditions of 6,850 quarts per acre.

For good results with strawberries in cool climates be sure to try some of Rayner's registered virus-free Catskill. Order early and we will reserve your plants.

**25 Plants \$1.95; 50 for \$2.95; 100 for \$4.40; 1,000 for \$19.50. Complete Prices Page 20.**

**Prices in this Catalog do not include postage. See page 21 for Postal Rates.**

August 22, 1962

Castine, Maine

Enclosed are photos of the excellent beds of Catskill and Sparkle from Rayner's plants. The severe winter last year killed other plants, but the plants from Rayner's showed very little injury. I picked over 2 quarts per plant set which is over \$1.00 worth of berries for each plant purchased from you.

Merton Hatch

March 12, 1963

Scot Run, Penna.

Last April I purchased 50 each of your Catskill and Sparkle. I kept the excess runners removed and picked 575 quarts from 106 plants.

George W. Naring

**VIRUS  
FREE**

# VERMILION

**GOOD  
FLAVOR**

**RESISTANT TO RED STELE AND VERTICILLUM WILT**

In 1950 Vermilion was introduced by the University of Illinois as a red stele resistant variety for commercial production in the north-central states. It is also being grown both as a commercial and home garden berry in much of the northeast. Vermilion has high disease resistance that makes it a very dependable variety. In addition to the red stele disease it is also resistant to Verticillium wilt and leaf spot. Thus, this variety will give excellent results in a wide range of soils and growing conditions. Of much importance is the high quality of the fruit which makes Vermilion a favorite for old-fashioned strawberry flavor. It produces fine crops of medium sized, bright berries of good firmness. The fruit are solid and have a fine red flesh color which makes this variety very good for freezing and preserves.

**100 Plants \$4.15; 1,000 for \$18.50. Complete Prices Page 20. Planting Instructions P. P. 18-19.**

April 19, 1963

Mineral Wells, W. Va.

Last year we picked 1,400 quarts from a planting of 450 of your plants. There were 150 Sparkle, and 100 each of Surecrop, Pochontas, and Midway.

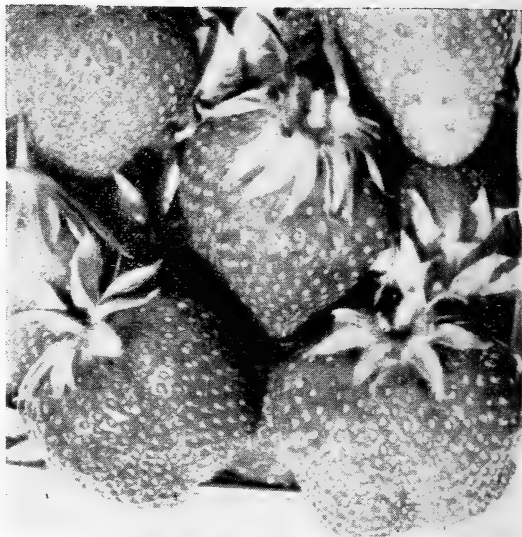
Boyd Brown

**BUY RAYNER'S PLANTS AND YOU BUY THE BEST**

# SPARKLE

**FAVORITE LATE VARIETY FOR FRESH USE AND FREEZING — VIRUS FREE**

Sparkle has red stele resistance combined with virus-free plant vigor and thus will give fine results in nearly all soil types. Sparkle is very winter hardy giving dependable production throughout the New England area. Berries of this variety are well named for they have such a fine bright color that they seem to sparkle. The seeds are bright yellow and with its nice cap Sparkle is a beautiful berry. U.S.D.A. Farmers Bulletin #1043 states the following about Sparkle "Berries usually medium-sized, sometimes small, short blunt conic to oblate, medium firm, glossy, rich medium red, mildly subacid, of very good dessert quality, medium late. Leaves medium sized, and resistant to leaf spot and leaf scorch; plants making runners very freely."



For many years Sparkle has been a favorite late variety because of its excellent yields of delicious berries that bring good prices. It is a pleasure to grow this fine berry because it is so good to eat and your customers always come back for more. For freezing Sparkle is one of the very best and for jams and preserves, it is also excellent.

In Michigan, it is the leading red stele resistant variety, and is commonly known as Paymaster. For best results with this fine variety use Rayner's registered virus-free plants. Reserve your plants by placing your order early.

**25 Plants \$1.95; 50 for \$2.95; 100 for \$4.40; 1,000 for \$19.50. Complete Prices Page 20.**

May 29, 1963

Pineville, Kentucky

Thanks for sending the most beautiful strawberry plants. Despite unfavorable weather we have had fine berries to freeze, as well as to eat and plenty more in the vines to ripen. The grape vines are growing beautifully and will bear this year.

Mrs. Jennie W. Young

**VIRUS  
FREE**

# ALBRITTON

**MOST PERFECT  
OF ALL BERRIES**

## CAROLINA FAVORITE



This excellent variety originated as a result of a cooperative breeding program between the U. S. Dept. of Agriculture and the North Carolina Agricultural Experiment Station. Albritton is unquestionably one of the most perfect of all strawberries. It is very large, has a beautiful glossy color with bright seeds, and a large attractive cap. The fruit are so uniform in shape that they look as if they were all carefully graded. Flavor and quality are excellent and the flesh is firm enough to be a good shipping berry. It is considered a late variety.

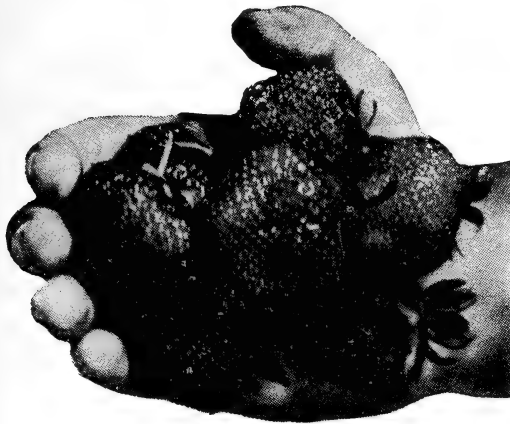
Unfortunately it is very restricted as to the area where it will produce consistently good yields. In the coastal area of North Carolina it is usually excellent but in areas of Virginia, Maryland, and New Jersey it is not always a dependable variety. Rayner's stock of virus-free Albritton is a favorite with commercial growers.

**100 Plants \$3.55; 1,000 for \$16.00**

**Complete Prices Page 20. Postal Rates Page 21.**

**EXTRA LARGE BERRIES**  
**LATE — EXTRA FINE FLAVOR**

**VIRUS-FREE**



# ARMORE

During the past few years Armore has gained greatly in popularity in the north-eastern states. Armore could almost be considered a late-season Catskill. Its berries are very large and have a nice bright color that makes them very attractive. The flesh color is light red and the quality is excellent. It is good for freezing.

Armore has really found a place with berry growers who sell direct to the customers because it is very large, late-ripening, and has a fine sweet flavor. These features bring repeat sales and good profits. Armore is well suited to the south central and middle-Atlantic states and is also well liked in the northern area. It is quite vigorous but its foliage is not as resistant to leaf troubles as some varieties.

25 Plants \$1.85; 100 for \$4.15; 1,000 for \$18.50. Complete Price List Page 20.

April 29, 1963

Dayton, Tenn.

About a year ago I sent for a series of Rayner's "Better Berries Bulletins". I have not found anything so packed full of helpful, down-to-earth information on the culture of small fruits, etc. as these bulletins.

R. L. Hallock

February 19, 1963

Algoma, Wisconsin

Several years ago I received 25 plants each of Robinson, Redglow, and Pochontas from you. These were the best plants I ever received and gave the finest berries I have raised in all my life.

Gilbert Demeuse

# TENN. BEAUTY

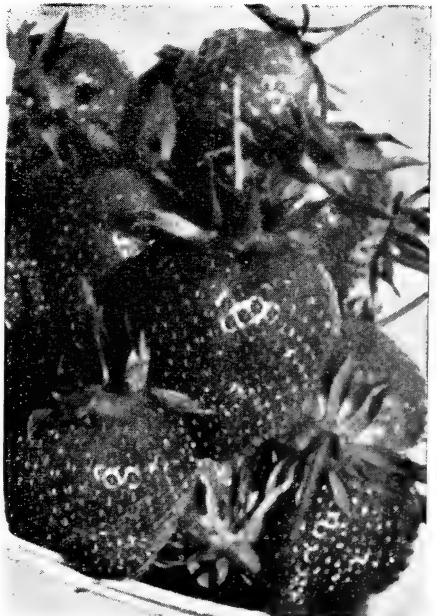
**VIRUS  
FREE**

**BIG YIELDS - FIRM - LATE**

Tennessee Beauty is recommended as a commercial variety in south central and eastern states, where its firmness is a definite advantage. Many growers tell us that it is their best producer. Plants are vigorous and make lots of runners.

The berries are of medium size and have a bright, deep red color. The flavor is good, and the slight tartness results in fine quality. For freezing and preserving Tennessee Beauty rates high since it produces a fine bright red product. One feature of this variety that is desirable for processing is the ease with which the cap comes off. In fact ripe berries often lose their cap when they are picked. With its many fine features such as good quality, firmness, beauty, and high production, Tennessee Beauty is definitely a good variety both for commercial and home plantings.

Although we do not recommend large scale planting of Tennessee Beauty in the northern states, it is considered a good commercial variety in some sections. Rayner's virus-free stock of this fine variety is extra vigorous and will get your plants off to a flying start that will result in excellent fruiting rows and high yield. Tenn. Beauty usually is very vigorous, producing thickly matted fruiting beds. For best yield and quality some type of runner control should be practiced. 25 Plants \$1.90; 50 for \$2.85; 100 for \$4.30; 1,000 for \$19.00. Plus Postage. See page 21.



**BUY RAYNER'S PLANTS AND YOU BUY THE BEST**

**VIRUS - FREE  
BIG PROFITS**

# JERSEYBELLE

**HUGE, BEAUTIFUL BERRIES, LATE - VERY PRODUCTIVE**

If you want big strawberries, then you want Jerseybelle. For several years these exceptionally large, beautiful berries have been a sensation in the Hammonton, New Jersey area where they are grown for the New York market. Jerseybelle has consistently brought higher prices than any other variety and has rapidly become the leading berry in that area. Recently virus-free stock of Jerseybelle became available and it has resulted in a tremendous improvement in this variety. Now Jerseybelle has excellent plant vigor and will give fine results in most soils.

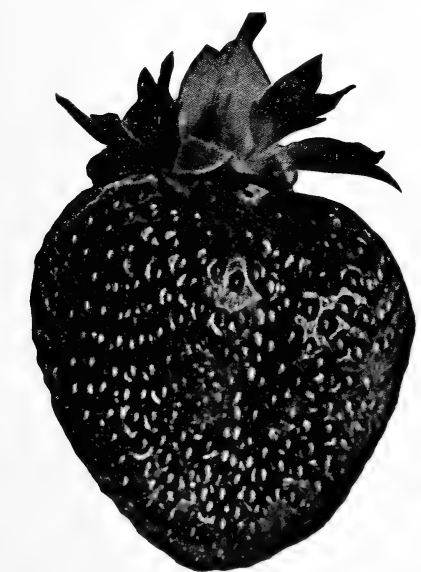
Berries of Jerseybelle have consistently been the largest of any variety we have ever seen and they have a beautiful glossy color that gives a waxed appearance. The cap is large and the seeds are bright yellow, resulting in a berry of unusual beauty. The flesh is not nearly as juicy as in some varieties thus, Jerseybelle will hold its appearance quite well. The flavor is not as good as for some berries but is satisfactory. The ripening season is quite late, about a week after Sparkle, which greatly helps to prolong the picking season.

Jerseybelle may show some leaf troubles but generally this is not a serious problem. In northern soils, it is best not to plant Jerseybelle in land recently grown to tomatoes, potatoes, or other strawberries. But if you are looking for that extra big berry that will make real profits, you will make a planting of Rayner's registered, virus-free Jerseybelle.

**25 Plants \$2.10; 50 for \$3.15; 100 for \$4.70; 1,000 for \$21.00. Complete Prices on Page 20.**



May 19, 1963  
I lost only one strawberry plant out of 3,300 received from you this spring. They are the best I have ever had.  
Lincoln, Illinois  
Harold Hoelscher



# REDSTAR VIRUS FREE

The big feature of Redstar is its unusual lateness. It ripens a week or more after the normal late varieties. Thus, Redstar is very popular with both home gardeners and commercial producers who want to extend the berry season as long as possible. Another advantage of this lateness is that Redstar rarely is hurt by frost and thus is a dependable producer.

Redstar does best in fertile soil where it will make a nice bed of unusually large plants. The fruit is large, attractive, and has a very big cap that makes Redstar a beautiful berry. Flavor and quality are good and it makes a nice frozen product.

Rayner's registered stock of virus-free Redstar has resulted in a great increase in popularity of this fine variety. It still requires good growing conditions for best results, but now Redstar is much more dependable. In any of the northern areas where a very late strawberry is desired we believe that Redstar will be very satisfactory.

**25 Plants \$2.10; 50 for \$3.15; 100 for \$4.70; 1,000 for \$21.00. Complete Prices Page 20. Prices in this catalog do not include Postage. See page 21.**



**EXTRA LARGE**  
**VERY LATE**

# VESPER

**VIRUS**  
**FREE**



Vesper, which was tested as New Jersey selection No. 157, provides strawberry growers with the biggest and one of the latest of all strawberries. This variety is truly amazing because of its huge berries which are larger than any other variety we know. It is much like Jerseybelle in most respects, which it now displaces as champion for berry size. For lateness it is about as late as Redstar which is generally considered to be the latest of all June-bearing strawberries. Foliage of Vesper is generally vigorous but like Jerseybelle is a bit more susceptible to leaf troubles than some varieties. But with proper growing conditions Vesper can be one of the most remarkable strawberries you have ever seen.

The unusually late ripening of this variety is additional reason why it can be a real profit-maker since you will still have fine berries after other strawberries are gone. Be sure to try at least a few of this amazing new variety that will show you and your friends just how big a strawberry can be.

25 Plants \$2.50; 50 for \$3.75; 100 for \$5.60; 1,000 for \$25.00. Complete Prices Page 20.

Our prices do not include Postage. See Page 21 for Postal Rates.

March 4, 1963 Terre Haute, Indiana  
Three years ago I ordered strawberries from Rayner Brothers and never lost a plant. The next spring we had the most wonderful berries and the same amount the next year.  
Burlin Burdette

April 17, 1963 Woodbine, Iowa  
Just wanted to let you know that the 500 strawberry plants were in fine condition upon arrival. I will certainly recommend Rayner Brothers' plants.  
G. C. Zortman

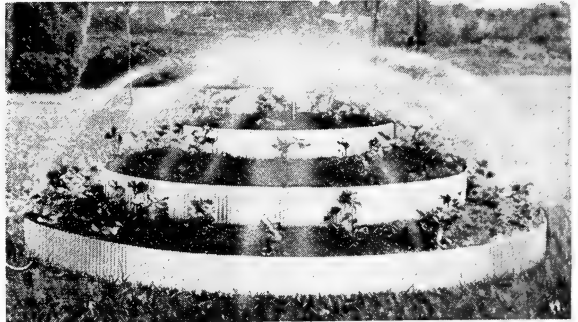
## BERRY TERRACE

*50 feet of Row in a  
6 foot space*

**IDEAL FOR SMALL YARDS**

The Terrace is made of aluminum to hold its beauty for years. It will accommodate 50 Everbearing strawberry plants. The ease of watering and fertilizing enables much more production of fruit than would normally be realized. The beauty of foliage and blossoms and the harvest of berries from spring to frost will provide a constant delight.

You may prefer to grow one or two of the excellent June-bearing varieties in your pyramid. Do not remove the blossoms but cut off the runners and you will have excellent berries 60 days or less after planting. Pocahontas, Catskill, Redglow, or Fairfax should give excellent results in a terrace. The second season they would be at their best, producing almost 1 quart of fine berries per plant.



### NEW MODEL PYRAMID

Consists of 3 attractive corrugated aluminum bands with a base diameter of 6 feet. Complete with sprinkler system ready for attachment to your garden hose.

**BERRY TERRACE \$7.95** Shipping  
**COMPLETE** Weight, 7 lbs.

#### ACCESSORIES FOR PYRAMID

Cover (Plastic) makes small Green House .. \$4.95  
Support Strips (for cover) ..... \$3.30  
Net (for bird protection) ..... \$6.35

**BUY RAYNER'S PLANTS AND YOU BUY THE BEST**

**New**

# FRONTENAC

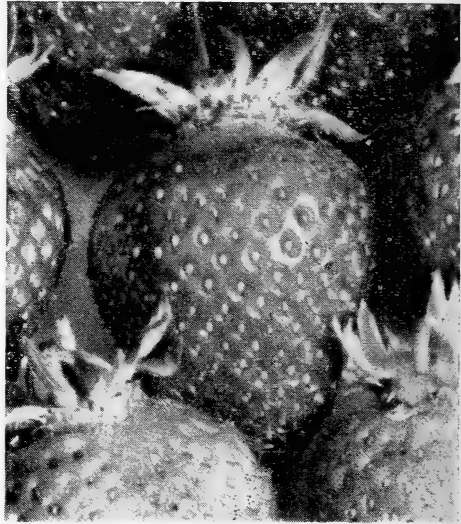
**VIRUS  
FREE**

## From N. Y. Experiment Station

Frontenac is a fine, late-ripening variety for northern areas. It ripens a few days after Sparkle and is larger in size. Its berries are medium red, and very attractive. The flesh is fairly firm and the skin is tough enough to make this a good market berry in cooler climates. For both fresh use and freezing Frontenac is excellent.

This variety was developed at the New York Experiment Station from a cross between Fairfax and Dresden and it has a lot of that fine Fairfax quality. The plants are very winter hardy, vigorous, productive, and quite free from leaf troubles. Runner production is adequate if good growing conditions are provided. Frontenac has produced as high as 18,000 quarts per acre. It is recommended for trial both for home garden use and commercial planting since it has big yields of large firm berries with good freezing quality.

Prices: 25 Plants \$2.50; 50 for \$3.75; 100 for \$5.60. See page 21 for Postal Rates.



**New**

# CYCLONE

**VIRUS  
FREE**

Cyclone is a result of the strawberry breeding program at Iowa State University. It is especially adapted to very cold climates where a large high-quality berry is desired. In Iowa it is an early variety with big, brilliant red, juicy berries. Dessert quality is excellent and it is fine for freezing. It is generally not firm enough for shipment and thus is recommended for home gardens and local sales. Plants are vigorous and produce a good stand of well-spaced runners. In trial plantings in Iowa Cyclone has produced 11,000 qts. per acre. It has been fully winter hardy under severe mid-western conditions and is recommended for trial in comparable climates. Prices: 25 Plants \$2.50; 50 for \$3.75; 100 for \$5.60 Plus Postage.

**New**

# FULTON

**VIRUS  
FREE**

## From N. Y. Experiment Station

Fulton is another fine variety resulting from the excellent breeding program of the New York Agricultural Experiment Station. It was introduced in 1959 and has subsequently proven to be adapted to most of the northeastern and central states. This variety was introduced primarily for use as a northern commercial variety since the berries are firmer than most varieties generally adapted to northern conditions. The flesh is firm and the skin is fairly tough so that the berries have good handling and keeping quality. Fulton ripens about midseason and has good yields of bright, attractive berries. The flavor is good and freezing quality is also very good. Plants are vigorous, productive, and resistant to leaf troubles. In 1963 we saw this variety in official trial plantings in Maryland and Ohio and believe that its firmness and other good qualities rate it very promising for commercial planting in cooler climates.

Prices: 25 Plants \$2.50; 50 for \$3.75; 100 for \$5.60.



# EVERBEARING STRAWBERRIES

PICK DELICIOUS STRAWBERRIES SPRING, SUMMER AND FALL

## SUPERFECTION

### VIRUS-FREE

Superfection is our most dependable everbearer. It is a vigorous grower and readily produces good fruiting rows. This variety is also known as Gem and Brilliant.

The berries can be very large and quite attractive. The color is a good light red and the flavor ranges from mild to tart. Superfection is not as good as the June bearing varieties, but it will give you a fair amount of nice berries in June and July and another crop in the early fall that will continue until freezing weather. Fine for home gardens.



25 Plants \$3.20; 100 for \$7.15.

Prices in this Catalog do not include Postage. See Page 21 for Postal Rates.

March 20, 1963

I had 25 plants of Gem last year and they were delicious. Very well pleased with them.

Bricktown, New Jersey  
Mrs. Victor Nielsen

## GEM

### VIRUS FREE

Gem is so much like Superfection that we consider it to be the same variety. But call it what you want, it is still the most dependable everbearer for the northeast. Prices are shown on page 20.



## STREAMLINER

### VIRUS FREE EVERBEARER FINE FLAVOR, GOOD YIELDS, LARGE SIZE

In many areas of the central and mid-southern states, Streamliner is the outstanding everbearer. It has very vigorous, beautiful foliage and produces an abundance of runner-plants under most growing conditions. Berries of Streamliner are of good size and have a fine appearance and a good flavor. A good crop is produced in the spring but best production is in the fall when you can really appreciate this fine variety. For fresh use and freezing, it is quite good and thus Streamliner is rapidly increasing in popularity not only in the South but in northern states as well. This excellent everbearer is certainly worth a trial if you want a fall-bearing strawberry.

25 Plants \$3.40; 50 for \$5.10; 100 for \$7.65. Complete Price List Page 20.

BUY RAYNER'S PLANTS AND YOU BUY THE BEST

# Growing Strawberries

Strawberries are one of the easiest crops to grow. Good plants set at the proper season in good soil will respond with ordinary care and cultivation. There is nothing complicated about growing strawberries, and by following these easy instructions the beginner can be sure of good results. Rayner's registered virus-free stock is further assurance of success.

**Where strawberries can be grown:** In every state of the union strawberries are grown at least to some extent. They are quite hardy and will give good results in any reasonably fertile soil that has good moisture. Like other fruit, strawberries will not produce a good crop in a shady location.

**Soil and fertilizer:** A good soil for strawberries is one that is slightly acid, in good condition, and reasonably free of weed seed. Newly plowed pasture land or sod often gives poor results but recently cleared woodland is excellent. If good soil is properly prepared it can be successfully replanted to strawberries a year after an old planting was plowed up. Important requirements for strawberries are high organic matter and high fertility. Well rotted barnyard manure is one of the best materials for good strawberry growth but other organic matter is very helpful. Well rotted poultry manure can be used but may cause plant injury and also increases the weed problem. Many growers plow under about 500 lbs. of complete fertilizer 2 or 3 weeks before planting but if the soil contains a good supply of manure this is not necessary.

Use of a good soluble fertilizer at time of planting is recommended. Soluble fertilizer will not burn the plants and can be safely used at any time during the growing season.

Strawberries have a high requirement for nitrogen but it must be applied at the proper time or else very adverse affects may result. Fruit buds, which determine the spring crop, are developed in the plant during August and September. Therefore, this is the most important time to apply fertilizer. Most successful growers apply about 500 lbs. per acre of a 10-6-4, 8-8-8, or similar fertilizer at this time. This is equal to about 1 lb. per 80 sq. ft. of strawberry bed. The fertilizer should be spread directly on the plants when dry and then brushed off the leaves. If applied when the leaves are wet considerable damage can occur.

An excellent organic plant food for strawberries and nearly all other plants is cottonseed meal. It is obtained entirely from ground cottonseed and is thus entirely organic in nature. Usually it contains about 6% nitrogen, 3% phosphoric acid, and 2% potash plus other important elements. Thus, cottonseed meal is a perfect plant food for those who follow the highly commendable practices of organic gardening. It is usually used at the rate of 4 lbs. per 25 ft. of strawberry row and will cause no injury or damage to the plants. It should be applied once in early spring and again in midsummer.

In general, it is best not to apply fertilizer during the spring on fruiting beds. This can cause excess plant growth, reduced fruit production and poorer quality. We believe this

is one of the most common causes of poor strawberry yields and recommend that fruiting beds should not be fertilized in the spring.

**When to plant:** Early spring is usually the best time to plant strawberries but in northern states it is best to wait until May or even June when the soil is in good condition. Frost or snow will not harm newly planted strawberries. With Rayner's dormant plants, there is a definite trend to summer planting with growers who have irrigation. This gives a less crowded plant bed which yields unusually heavy crops of very large berries. In cold climates we do not recommend planting after mid July. Fall plantings are sometimes successful but are often damaged or completely destroyed by winter injury.

**How to plant:** It is important not to set the plant too deep or too shallow—see photo below. Do not clip the roots but spread them out full length and press dirt around the plant so that the roots are firmly anchored in the soil. For best results we recommend use of a soluble fertilizer as a transplanting solution. About a pint of solution should be poured around each plant when it is put in the hole. A good planting distance is 2 ft. apart in the row with 4 ft. between rows. Slightly narrow fruiting beds will usually have better yields and higher quality than beds that are unusually thick.

## Plants Required Per Acre

Plants required per acre at various planting distances:

Rows	Distance in Row	Plants per Acre
3½ feet apart	18 inches	8,325
3½ feet apart	24 inches	6,225
3½ feet apart	30 inches	5,000
4 feet apart	15 inches	8,750
4 feet apart	18 inches	7,300
4 feet apart	24 inches	5,425
4 feet apart	30 inches	4,375



## STRAWBERRY CULTURE

(Continued from page 18)

**Care of the plants:** A few weeks after the strawberries are planted they will produce blossoms. For the regular matted-row system it is best to remove these blooms since the plants will make better growth. Hoeing and cultivation are necessary practices for weed control but much benefit can be obtained by use of a good weed-killer. We recommend Sesone. Consult your state agricultural authorities for recommendations. We use geese in our fields for weed control; about three per acre will do a good job on young grass.

In northern states it is important to mulch strawberries for prevention of winter injury. Straw, hay or marsh grass are the best materials. It should be applied in the fall when the temperature first reaches 20°F and used so as to cover the plants to a depth of three to four inches. About three to six tons of hay or

straw per acre is needed. As soon as new strawberry leaves begin to grow in the spring the mulch should be removed so that only about an inch remains. The rest should be kept between the beds where it will help keep the berries clean and free of rot. Even in the south many berries are mulched to help keep them free of dirt and decay.

**Control of Diseases and Insects:** Two soil diseases, red stele and Verticillium wilt sometimes damage strawberries. On page 4 there is a list of resistant varieties. In our No. 17 issue of "Better Berries" we have a chart showing control of diseases and insects. Your county agent can also give recommendations.

For further information concerning strawberry production write to your state agricultural experiment station. For 20c we will send a complete set of "Better Berries" which gives more details concerning culture of berry crops, fruits, and other crops. Send to Rayner Bros., Inc., Salisbury, Md.

## RAYNER'S PROVEN PLANTING SYSTEM GIVES YOU DELICIOUS RIPE STRAWBERRIES WITHIN 60 DAYS AFTER PLANTING

The usual and most reliable method of growing strawberries is to remove the blossoms that are produced the same season the plants are set. For large plantings this is the best method since it gives better stands of plants if growing conditions are unfavorable.

But with the new virus-free vigor of Rayner's registered strawberry plants it is now possible to leave the blossoms on the newly set plants and to harvest big delicious berries within 6 to 8 weeks after planting. We recommend this method only for those who are willing to take the small amount of extra care that is necessary. But if you will follow the method described below we feel certain that you will be rewarded with a fine yield of beautiful berries within 60 days after planting and that you will be truly amazed at the yield and size of berries the second season.

1. Select a piece of well drained soil that receives full sunlight. During the fall or early spring, make a heavy application of organic matter. Well rotted stable manure is preferred but chicken manure is also good. Compost, sawdust, and peat are also satisfactory but if they are used some type of fertilizer would be helpful. For each bushel use 8 oz. of Ammonium nitrate or 1 lb. 5-10-5 or similar fertilizer. This material should be mixed thoroughly into the soil at least 2 weeks before planting. Plant as early as possible in the spring and no later than June 15. This method is not recommended for strawberries set after this date.

2. Set the plants about 18 inches apart in the row and have 3 ft. between rows. Make a hole for each plant so that the roots can be fully extended and spread outward slightly. Pour about 1 pint of soluble fertilizer around each plant and press the soil firmly around it so that the roots are fully covered but no soil is on the bud.

3. Each week during the growing season strawberries require about 2 inches of water.

If this is not received by rainfall, it should be applied.

4. About 25-30 days after planting the plants will produce blossoms. Do not remove these blossoms since in another 25-30 days they will develop into delicious ripe strawberries.

5. Runner plants will develop from the original plants during the summer and fall. Allow each plant to form no more than 6 runners and keep the rest removed. This will involve some extra work but is well worth the effort. This results in a spaced fruiting bed for the next season that will give tremendous yields of unusually large berries. If the regular type of matted fruiting bed is preferred there is no need for runner control but yield and size are generally less in matted rows than in spaced rows.

6. In mid-August spread a complete fertilizer such as 10-6-4 directly on the plants when they are dry. Use about 1 lb. per 40 ft. of row and brush it off the leaves to prevent burning. A foliar fertilizer or any type of well rotted manure could also be used.

8. During the winter a mulch of about 2 inches of straw should be placed over the plants when the temperature first reaches 20°F. This should be lightly raked to the row middles in early spring where it will help to keep the berries clean. If frost threatens the blossoms it can be spread on the plants and removed after the danger of frost has passed.

9. Nearly any variety of strawberry can be used for this method but the plants should have the virus-free vigor provided by Rayner's registered stock.

In northern states it is best to plant varieties resistant to Verticillium wilt in land where tomatoes, potatoes, have recently been grown. Some excellent resistant varieties are Surecrop, Catskill, Vermilion, Premier, and Robinson.

**BUY RAYNER'S PLANTS AND YOU BUY THE BEST**

## Rayner's High Quality Strawberry Plants

These prices supercede all other prices of Rayner Bros. They include packing costs but do not include shipping charges. Several varieties cannot be combined to obtain a lower price. Please determine approximate postage from next page and include with order. Full planting instructions are sent with each order. We do not sell less than 25 of a variety.

### ALL VARIETIES REGISTERED VIRUS-FREE

	25	50	75	100	250	500	750	1000	5000
Early Varieties	Plants	Plants	Plants	Plants	Plants	Plants	Plants	Plants	Plants
BLAKEMORE (V.F.)	\$1.50	\$2.25	\$2.85	\$3.40	\$6.55	\$9.75	\$12.95	\$15.00	\$72.50
CYCLONE (V.F.)	2.50	3.75	4.70	5.60					
DIXIELAND (V.F.)	2.00	3.00	3.80	4.50	8.75	13.00	17.25	20.00	97.50
EARLIDAWN (V.F.)	2.10	3.15	3.95	4.70	9.20	13.65	18.10	21.00	102.50
FAIRFAX (V.F.)	2.00	3.00	3.80	4.50	8.75	13.00	17.25	20.00	97.50
FLORIDA 90 (V.F.)	1.40	2.10	2.65	3.15	6.10	9.10	12.05	14.00	67.50
MIDLAND (V.F.)	2.10	3.15	3.95	4.70	9.20	13.65	18.10	21.00	102.50
PREMIER (V.F.)	1.90	2.85	3.60	4.30	8.30	12.35	16.40	19.00	92.50
REDGLOW (V.F.)	2.10	3.15	3.95	4.70	9.20	13.65	18.10	21.00	102.50
Midseason Varieties									
CATSKILL (V.F.)	1.95	2.95	3.65	4.40	8.45	12.65	16.80	19.50	95.00
EMPIRE (V.F.)	1.95	2.95	3.65	4.40	8.45	12.65	16.80	19.50	95.00
FULTON (V.F.)	2.50	3.75	4.70	5.60					
MIDWAY (V.F.)	2.10	3.15	3.95	4.70	9.20	13.65	18.10	21.00	102.50
POCAHONTAS (V.F.)	2.00	3.00	3.80	4.50	8.75	13.00	17.25	20.00	97.50
ROBINSON (V.F.)	1.90	2.85	3.60	4.30	8.30	12.35	16.40	19.00	92.50
SEN. DUNLAP (V.F.)	1.55	2.35	2.95	3.50	6.80	10.10	13.35	15.50	75.00
SURECROP (V.F.)	1.95	2.95	3.65	4.40	8.45	12.65	16.80	19.50	95.00
VERMILION (V.F.)	1.85	2.80	3.50	4.15	8.10	12.00	15.95	18.50	90.00
Late Varieties									
ALBRITTON (V.F.)	1.60	2.40	3.00	3.55	7.00	10.40	13.80	16.00	77.50
ARMORE (V.F.)	1.85	2.80	3.50	4.15	8.10	12.00	15.95	18.50	90.00
FRONTENAC (V.F.)	2.50	3.75	4.70	5.60					
JERSEYBELLE (V.F.)	2.10	3.15	3.95	4.70	9.20	13.65	18.10	21.00	102.50
REDSTAR (V.F.)	2.10	3.15	3.95	4.70	9.20	13.65	18.10	21.00	102.50
SPARKLE (V.F.)	1.95	2.95	3.65	4.40	8.45	12.65	16.80	19.50	95.00
TENN. BEAUTY (V.F.)	1.90	2.85	3.60	4.30	8.30	12.35	16.40	19.00	92.50
VESPER (V.F.)	2.50	3.75	4.70	5.60	10.95	16.25	21.50	25.00	122.50
Everbearing Varieties									
GEM (V.F.)	3.20	4.80	6.00	7.15	14.00	20.80	27.60	32.00	—
STREAMLINER (V.F.)	3.40	5.10	6.35	7.65	14.85	—	—	—	—
SUPERFECTION (VF)	3.20	4.80	6.00	7.15	14.00	20.80	27.60	32.00	—

V.F. "Plants referred to as "virus-free" in this catalog have been field grown by us from virus-free foundation stock furnished by the U. S. Department of Agriculture Bureau of Plant Industry, Soils and Agricultural Engineering, Beltsville, Maryland, and State Horticultural Department, University of Maryland. Our field-grown stock has been dusted with parathion to control aphids which transmit the virus diseases. It has also been grown at considerable distance from any other strawberry plants. Since viruses do not produce clear-cut symptoms in most strawberry varieties, but simply weaken and deitalize the plants, no guarantee can be made that these plants are 100 percent free of viruses. Because of the measures that we have used to protect these plants from virus infection, we believe them to be substantially virus-free."

All Prices F.O.B.  
Salisbury, Maryland

Please See  
Parcel Post Rates On  
Next Page.

We Will Be Glad To Quote  
Delivered Prices.



A Copy of Our Nursery  
Certificate Is Sent With  
Each Shipment.

All of our plants are  
guaranteed — See page 3  
for details.

All plants are graded to  
meet Nursery Association  
standards.



RAYNER BROTHERS NURSERY--SPECIALISTS IN PRODUCTION OF VIRUS-FREE STRAWBERRY PLANTS, QUALITY BLUEBERRY PLANTS, AND OTHER HIGH QUALITY NURSERY STOCK.



FROM \_\_\_\_\_  
\_\_\_\_\_  
\_\_\_\_\_

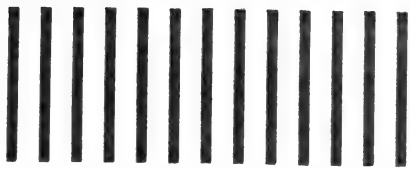
FIRST CLASS  
PERMIT NO. 167  
SALISBURY, MD.

BUSINESS REPLY MAIL  
NO POSTAGE STAMP NECESSARY IF MAILED IN THE UNITED STATES

-POSTAGE WILL BE PAID BY-

*Rayner Bros., Inc.*

SALISBURY,  
MARYLAND 21801



TEAR OUT ENVELOPE ALONG THIS PERFORATION AND ENCLOSE ORDER SHEET

TO AVOID DELAY PLEASE BE CERTAIN THAT ORDER BLANK IS CLEARLY AND COMPLETELY FILLED OUT AND THAT PAYMENT, INCLUDING POSTAGE, IS ENCLOSED.

WE THANK YOU VERY MUCH FOR THIS ORDER AND WILL DO OUR BEST TO PROVIDE COMPLETE SATISFACTION.

BUY RAYNER'S PLANTS AND YOU BUY THE BEST





**SPACE BELOW IS FOR ADDITIONAL ITEMS OR REMARKS**

HOW MANY	NAMES OF VARIETIES ORDERED	PRICE	
		Dollars	Cents

**IF YOUR ORDER AMOUNTS TO \$5.00 OR MORE, SEND FOUR NAMES FOR BONUS OFFER OF 25 FREE STRAWBERRY PLANTS!**

Send us the names and addresses of four persons who grow berries or who have a garden and may be interested in receiving information on berry growing. We will include 25 strawberry plants FREE. We must reserve right to choose variety of plants, but are sure you will be well pleased. Bonus plants will not be sent for less than four names and can only be shipped with this order.

**WRITE NAMES HERE FOR BONUS PLANT OFFER**

List Names and Addresses Here. Please Print or Write Legibly.

Please be sure to include Street Address or R.F.D. Number. Also note whether Mr., Mrs., or Miss.

1. \_\_\_\_\_
2. \_\_\_\_\_
3. \_\_\_\_\_
4. \_\_\_\_\_

**INSTRUCTIONS TO PURCHASERS**

**TIME TO ORDER**—As soon as convenient after receiving this catalogue. Late in the season we may be out of some varieties, but if you order early, plants will be reserved until you are ready for them. Be sure to PLANT EARLY!

**TIME OF SHIPMENT**—From November 1st to May 15th. All orders filled after May 15th will be at purchaser's risk. We recommend special handling for most rapid postal service. See parcel post rates for further details.

**PAYMENT**—Money Order or Personal Check with order, or if desired 1/4 payment and balance before date of shipment.

**REFERENCES**—Union Trust Co., Maryland National Bank, Salisbury, Md., Dun & Bradstreet, your own State Experiment Station or County Agent.

**GUARANTEE**—100% satisfaction or your money back. Claims if any, must be made within 30 days after receipt of goods. After 30 days and within 1 year we will replace at 1/2 the original purchase price. We cannot be responsible for conditions over which we have no control. At no time will we be responsible for any sum greater than that paid for the stock.

**TRUE-TO-NAME**—We use every precaution to have our plants true-to-name. Should any prove otherwise we will replace them or refund the purchase price.

**SHIPMENT**—Express is generally cheaper on 2000 plants or more beyond the third zone and on all large orders.

**PARCEL POST**—On all orders under 2000 Parcel Post is generally cheaper. Be sure to send enough postage to save C.O.D. charges for balance. Any excess postage will be returned.

**BUY RAYNER'S PLANTS AND YOU BUY THE BEST**

# HOW to FIGURE PARCEL POST RATES

Your Parcel Post ZONE is listed below with your State. Locate this ZONE number in the Parcel Post Rate Chart below and include postage for total weight of your shipment. Please note weight of each type of plant is listed. Please include this amount with your order. It will save you the C.O.D. collection charge made by the Postoffice on Parcel Post Collect shipments. On orders of 2,000 strawberry plants beyond the 3rd zone, and on all orders of more than 3,000 plants express is cheaper. Do not send money for express shipping costs as it will be collected on delivery. If you do not indicate how to ship we will use best way, charges collect. After May 15 all postal orders of plants will be sent by "Special Handling" in order to prevent any delay during warm weather. We recommend this service on all orders sent by mail. We do not ship overseas.

## YOUR ZONE NUMBER IS LISTED WITH YOUR STATE

Alabama 5	Indiana 4	Montana 7	North Dakota 7	Texas 6
Arizona 8	Iowa 5	Nebraska 4	Ohio 4	Utah 6
Arkansas 5	Kansas 6	Nevada 8	Oklahoma 6	Vermont 4
California 8	Kentucky 4	New Hampshire 4	Oregon 8	Virginia 3
Colorado 7	Louisiana 5	New Jersey 2	Pennsylvania 3	(east of
Connecticut 3	Maine 4	(north of New	(Counties south	Richmond 2)
Delaware 1 & 2	Maryland 1 & 2	Brunswick 3)	and east of	Washington 8
Dt. Columbia 2	Massachusetts 4	New Mexico 7	Harrisburg 2)	West Virginia 3
Florida 5	Michigan 4	New York 3	Rhode Island 3	(Charleston and
Georgia 4	Minnesota 5	(north of	South Carolina 4	south and west 4)
Idaho 8	Mississippi 5	Albany 4)	South Dakota 6	Wisconsin 5
Illinois 5	Missouri 5	North Carolina 3	Tennessee 5	Wyoming 7

## WEIGHT TABLE

(Includes packing material & container)

STRAWBERRIES		BLACKBERRIES	
Quantity of Plants	Weight in lbs.	Quantity	Weight
25 Plants	1 lb.	6 Plants	2 lbs.
50 Plants	2 lbs.	12 Plants	4 lbs.
100 Plants	3 lbs.	25 Plants	8 lbs.
200 Plants	6 lbs.	50 Plants	12 lbs.
300 Plants	10 lbs.	100 Plants	18 lbs.
400 Plants	14 lbs.	250 Plants	40 lbs.
500 Plants	18 lbs.		
750 Plants	20 lbs.		
1000 Plants	25 lbs.		

RASPBERRIES		GRAPES, RHUBARB	
Quantity	Weight	Quantity	Weight
6 Plants	2 lbs.	3 Vines or	
12 Plants	4 lbs.	Roots	4 lbs.
25 Plants	8 lbs.	each additional	
50 Plants	12 lbs.	add	12 ounces

## ASPARAGUS

Wt. Per 25 Plants	3 Vines or	Weight
1 Year ... 1 Pound	Roots	4 lbs.
2 Years ... 3 Pounds	each additional	
3 Years ... 5 Pounds	add	12 ounces

## BLUEBERRIES

Quantity	Weight
6 Plants 1 yr., 3-9" .....	2 lbs.
each additional plant add .....	2 ounces
6 Plants 2 yr., 9-12" .....	4 lbs.
each additional plant add .....	3 ounces
6 Plants 3 yr., 12-18" .....	10 lbs.
each additional plant add .....	1 lb.
6 Plants 3 yr., 18-24" .....	12 lbs.
each additional plant add .....	1½ lbs.
6 Plants - Jumbo Size .....	15 lbs.
each additional plant add .....	2 lbs.

## SHRUBS AND TREES

Not over 2 ft. tall, each .....	1 lb.
2 ft. to 4 ft. tall, each .....	2 lbs.

**EVERGREEN SEEDLINGS** — 5 lbs. per 100 plants and 45 lbs. per 1,000.

**MULTIFLORA ROSE** — 15 lbs. per 100 plants.

\* Due to variation in plants these are approximate weights only. If you send too much for postage we will promptly refund any over payment. If not enough is sent we will request it.

## PLEASE INCLUDE POSTAGE WITH ORDER

If you send too much we will rebate at time of shipment. **FOR SPECIAL HANDLING** please add 25c on orders up to 2 lbs.; 35c up to 10 lbs., and 50c if over 10 lbs. Mark on order, "Ship Special Handling." This is a service of the United States Post Office Department.

## PARCEL POST RATES

Pounds	Zones 1 & 2	Zone 3	Zone 4	Zone 5	Zone 6	Zone 7	Zone 8
2	\$.33	\$.35	\$.39	\$.45	\$.51	\$.58	\$.64
3	.38	.41	.47	.55	.61	.74	.83
4	.43	.47	.55	.65	.77	.90	1.02
5	.48	.53	.63	.75	.90	1.06	1.21
6	.53	.59	.70	.85	1.03	1.22	1.40
7	.58	.65	.77	.95	1.16	1.38	1.59
8	.63	.71	.84	1.05	1.29	1.54	1.78
9	.68	.77	.91	1.15	1.42	1.70	1.97
10	.73	.83	.98	1.23	1.55	1.86	2.16
11	.77	.89	1.05	1.35	1.67	2.02	2.34
12	.81	.95	1.12	1.45	1.79	2.18	2.52
13	.85	1.01	1.19	1.55	1.91	2.34	2.70
14	.89	1.07	1.26	1.65	2.03	2.50	2.88
15	.93	1.13	1.33	1.75	2.15	2.66	3.06
16	.97	1.18	1.40	1.85	2.27	2.81	3.24
17	1.01	1.23	1.47	1.95	2.39	2.96	3.42
18	1.05	1.28	1.54	2.05	2.51	3.11	3.60
19	1.09	1.33	1.61	2.15	2.63	3.26	3.78
20	1.14	1.38	1.68	2.25	2.75	3.41	3.96
21	1.17	1.43	1.75	2.34	2.87	3.56	4.14
22	1.21	1.48	1.82	2.43	2.99	3.71	4.32
23	1.25	1.53	1.89	2.52	3.11	3.86	4.50
24	1.29	1.58	1.96	2.61	3.23	4.01	4.68
25	1.33	1.63	2.03	2.70	3.35	4.16	4.86
30	1.53	1.88	2.38	3.15	3.95	4.91	5.76
35	1.73	2.13	2.73	3.60	4.50	5.61	6.61
40	1.93	2.38	3.08	4.05	5.05	6.31	7.46
45	2.13	2.63	3.43	4.50	5.60	7.01	8.26
50	2.33	2.88	3.78	4.95	6.15	7.71	9.06
55	2.53	3.13	4.08	5.35	6.70	8.36	9.86
60	2.73	3.38	4.38	5.75	7.25	9.01	10.66
65	2.93	3.63	4.68	6.15	7.80	9.66	11.46
70	3.13	3.88	4.98	6.55	8.35	10.31	12.26

We will notify you by first class mail the day your order is shipped. Be on the alert for your plants so there will be no delay in receiving them. Rayner's plants are guaranteed to arrive in good condition.

# RED RASPBERRIES



## ✓ **SEPTEMBER** **NEW RED EVERBEARING**

The September raspberry variety was developed by the New York State Experiment Station and is an outstanding contribution to the berry industry. It is an everbearing type of red raspberry that produces a large crop in June and yet another fine crop in September. This fall crop is considerably earlier than that of other everbearing raspberries so September is especially desirable. The berries are unusually large and have a delicious flavor. You will surely want some of this wonderful variety in your garden.

See Prices on Next Page.

See Page 21 for Postal Rates.

**DELICIOUS  
FLAVOR**

# LATHAM

**MOST WIDELY  
GROWN RED**

Latham is the standard red raspberry for most of the eastern United States. Its plants are strong and hardy and produce bumper crops of large, firm, delicious fruit. It grows well in many soil types and has high resistance to diseases. Berries are of very high quality — good for fresh market, for freezing, or preserving. Latham is an excellent commercial variety because it produces big crops of berries that can be carried long distances to market. If you want red Raspberries you want Latham. See next page for prices.

**EXTRA LARGE  
RED RASPBERRY**

# TAYLOR

**FINE FLAVOR, GOOD  
PRODUCTION, HARDY**

Taylor is an excellent early red raspberry, ripening a few days before Latham. Its berries are very large and have an elongate shape. The berries have a fine color, good texture, and excellent flavor. For freezing Taylor is outstanding. Plants are tall, vigorous, and productive and usually so sturdy that they can be grown without support if properly pruned. In New York and other northern states Taylor shows good winter hardiness and has such superior fruit that it is one of the best of all raspberries. See next page for prices.

## **GROWING RASPBERRIES**

Raspberries give best results in areas where the summers are not unusually hot or dry. Therefore they are not generally grown south of Tennessee and Missouri. A good, fertile soil that retains moisture but is still not poorly drained gives best results. Raspberries should be planted in early spring for best results. If possible a high amount of well rotted manure should be mixed into the soil before planting. Also a regular spring application of about 450 pounds per acre of 10-10-10 fertilizer is important. This is equivalent to about 6 ounces per plant. In small plantings the rows are usually 6 feet apart

with 4 feet between plants. Raspberries are generally planted in early spring and will produce a crop about 15 months after planting. The canes are tied to wires or to posts, depending upon the planting system. After the first fruiting season the fruiting canes of regular red and black raspberries are pruned out — leaving the new canes which will bear fruit the next season. In the case of everbearing raspberries the canes which produced the fall crop should not be pruned out but only slightly cut back in the spring. For best results with raspberries a recommended spray program for control of disease and insects is necessary. More details in Bulletin 14.



# BLACK RASPBERRIES

DEPENDABLE CERTIFIED STOCK

✓ **BRISTOL** is an excellent early black raspberry that produces big crops of delicious, high quality berries. Very hardy and vigorous. It is the best commercial variety in Ohio and other states.

✓ **CUMBERLAND** is the most widely grown black raspberry. It ripens in mid-season with fine crops of delicious, firm berries. A long time favorite.

✓ **LOGAN.** This new strain of Logan is gaining rapidly because of its early harvest, big yields, and good quality. Very hardy and vigorous.

✓ **MORRISON** has unusually large berries. It ripens late and has good flavor and quality. Plants are very hardy and productive.

Prices of certified 1 yr. #1 plants of September, Latham, Taylor, Bristol, Cumberland, Logan and Morrison. These prices do not include postage — See page 21.

3 plants	6	12	25	50	100	200	300	400	500	750	1000
\$1.35	\$2.15	\$3.15	\$4.95	\$9.25	\$16.95	\$29.95	\$38.75	\$47.95	\$55.75	\$74.75	\$98.00

## New! BLACK BEAUTY EVERBEARING BLACK RASPBERRY

For years we have been searching for an everbearing black raspberry and finally have the pleasure of offering the outstanding Black Beauty variety. Its berries are big, bright, and delicious. A fine crop is produced in early summer and if new canes are not cut back will ripen another big crop before frost. Black Beauty is wonderful for home gardens.

Price of sturdy #1 plants of Black Beauty

3 for \$1.95; 6 for \$3.40; 12 for \$5.95; 25 for \$9.75; 50 for \$17.95; 100 for \$33.00

## Blackberries

### New! DARROW

Unquestionably the finest of all blackberries. This new introduction of the N. Y. Experiment Station has very heavy production of delicious, large, firm berries that are about 1 inch long and 3/4 inch wide. Plants are very vigorous and especially winter hardy. Darrow has proven to be outstanding for dependable early production.

3 1-Yr. No. 1 Plants \$2.25; 6 Plants \$4.25; 12 for \$6.30; 25 for \$9.95; 50 for \$17.25; 100 for \$31.90. Prices do not include postage - See P. 21.



**HEDRICK** A very productive, late blackberry with much vigor and good winter hardiness. Berries are large, firm, sweet, and very attractive.

1 yr. #1 plants: 3 for \$1.95; 6 for \$3.30; 12 for \$5.25; 25 for \$8.25 plus postage.

**THORNLESS BOYSENBERRY** A delicious berry combining the flavor of raspberries and blackberries. Completely thornless. Not hardy in northern states. 1 yr. #1 plants: 3 for \$1.35;

6 for \$2.15; 10 for \$2.75; 25 for \$4.95; 50 for \$9.25.

BUY RAYNER'S PLANTS AND YOU BUY THE BEST

# Grapes

## THE OUTSTANDING EASTERN VARIETIES

### CONCORD—The Best Blue

This is the variety with true grape flavor that has been a favorite for over 100 years. From New England through Missouri this is the leading variety for home garden or commercial planting. Concord has vigorous, productive vines and ripens late in the season.

### CACO—The Best Red

A mid-season, red grape of large size and good quality. Excellent for home gardens throughout the Concord area. Vines of Caco are very hardy and vigorous.

### NIAGARA—The Best White

This excellent variety produces beautiful white to amber grapes with a juicy, sweet quality. Niagara is a vigorous, hardy variety ripening in mid-season. Excellent for home gardens.

### FREDONIA—The Best Black

Fredonia is one of the most delicious of all grapes. Its big, black fruit is produced in large, beautiful clusters. Fredonia ripens about two weeks earlier than Concord and is generally more productive and vigorous.

### New! INTERLAKEN SEEDLESS GRAPE

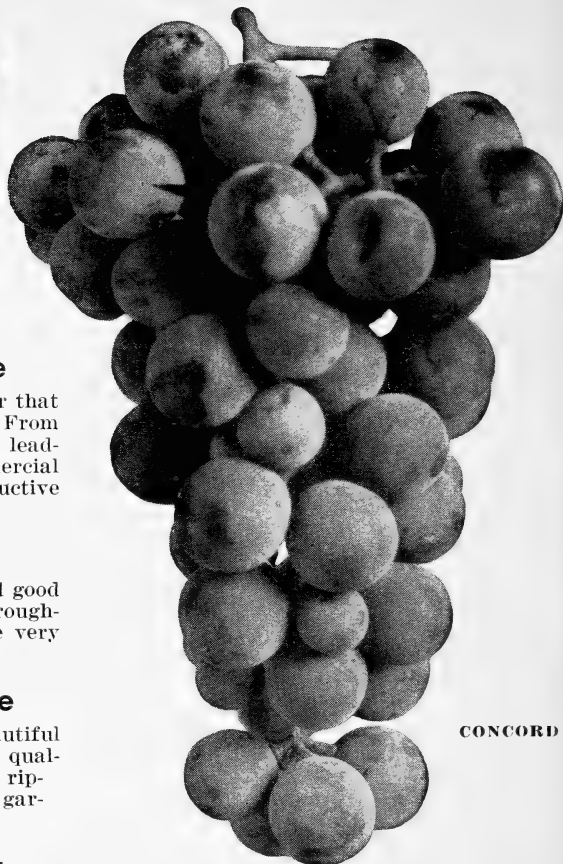
This excellent introduction of the New York Experiment Station provides the eastern grape grower with a high quality, seedless variety. Clusters are of good size and well filled with rich, golden fruit. The flesh is meaty and crisp and the flavor is very sweet. Interlaken seedless ripens about a month before Concord. The vines are vigorous and hardy to about 20 degrees below zero.

2 Yr. #1 Plants: \$1.50 each; 3 for \$4.25

### PRICES CONCORD, NIAGARA, CACO, FREDONIA

2 Yr. #1 Plants, Extra Large

85 cents each; 3 for \$2.25; 10 for \$6.30;  
25 for \$13.10. Plus Postage. See page 21.



CONCORD

Illustration about two-thirds actual size

## GRAPES ARE EASY TO GROW AND LAST FOR YEARS

Grape vines may be planted in early Spring or in the Fall in November and December. Grapes should be set in a well-drained soil that would produce garden crops.

Vines are usually planted 8 to 10 feet apart in the home garden and where a vineyard is planned the rows should be 10 feet apart with vines 4 to 5 feet apart in the row. Grapes may be trained along a garden fence or a regular arbor may be constructed to suit the desired arrangement in the garden.

A simple method of support is followed by commercial growers. Wires are strung from posts with top wire 5 feet above the ground and the lower wire 2½ feet above the ground.

Pruning is one of the most important factors in obtaining marvelous grape harvests. Our Better Berries Bulletin No. 3 completely outlines most popular pruning methods; other information is given in Bulletin No. 14.

COMPLETE PLANTING INSTRUCTIONS also will be sent with your order.

Tender, Fresh

# ASPARAGUS

From Your Own Plantings  
Year After Year

The best eastern variety for home and commercial planting is the disease resistant MARY WASHINGTON. We sell only the famous Robert's strain which is the best asparagus money can buy. It produces shoots of finest quality, more uniform in size, shape and color than others.

50 to 100 roots supply an average family. 200 roots will take care of canning, freezing needs, too.

A planting of Rayner's asparagus will yield loads of fine food for many years. Plant early in the spring in fertile soil to which about 5 pounds of 10-6-4 fertilizer per 100 square feet has been added. Spread the roots in a trench about 6 inches deep and 8 inches wide. Place plants about 16 inches apart and cover crowns with about 2 inches of soil. As plants begin to make new growth gradually fill the trench.



Write for Rayner's Bulletin No. 18 giving full details of Asparagus culture.

## ASPARAGUS PRICES — ORDER EARLY FOR SPRING PLANTING

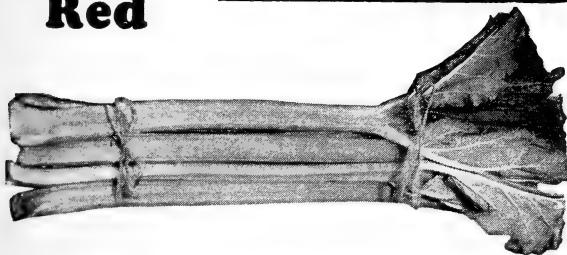
	6 plants	12	25	50	100	250	500	1000
3 yr. Jumbo Roots ..	\$1.75	\$2.75	\$4.50	\$7.50	\$12.00	\$24.00	\$42.50	\$75.00
2 yr. No. 1 Roots ....	1.00	1.80	2.69	4.35	7.00	14.00	26.85	45.00
1 yr. No. 1 Roots .....	.60	1.00	1.70	2.80	4.50	9.00	16.95	27.50

Big 3 Yr. Roots will produce stalks large enough for cutting the second year.

These prices do not include Postage. See page 21 for Postal Rates.

MacDonald  
Red

## RHUBARB



### VICTORIA RHUBARB

For those who want vigorous, seedling rhubarb roots we recommend the well known Victoria variety. These whole roots will soon become established and produce lots of long, tender, pink stalks that are excellent for home use. Gives best results in cool climates and in fertile, deep soil with a uniform supply of moisture.

Strong 1 yr. whole roots, 1 to 1½ inch diameter: 5 for \$1.50; 10 for \$2.50. Shipping weight 1 lb. per 5 roots.

RHUBARB is a very popular perennial where winters are sufficiently cold to freeze ground 3 to 4 inches. A few plants well tended make an excellent supply for sauce and pies.

We offer the MacDonald Red variety because of its marked superiority. Matures earlier, sweeter, and one planting lasts a lifetime. Plant in Spring, 3 to 4 feet apart. Rhubarb culture is given in Bulletin No. 18.

Prices for Large, Vigorous Divisions  
\$1.00 each; 3 for \$2.70; 10 for \$8.00

### HORSE - RADISH

This is the old fashioned Maliner Kren variety that is very vigorous and develops such large firm roots. Grows best in moist, cool soils of reasonably fertility. If you like horse-radish you will surely want to try this excellent variety. A few roots will soon develop into a fine bed that will last for years.

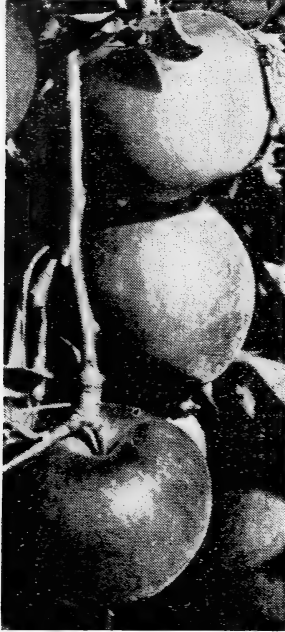
Vigorous whole roots about 6 to 8 inches long: 5 for \$1.50; 10 for \$2.50. Shipping weight 1 lb. for 5 roots.

BUY RAYNER'S PLANTS AND YOU BUY THE BEST

# FRUIT TREES

For best results with most fruit trees plant at least two varieties for pollination.

## APPLE TREES



✓ **WINESAP-IMPROVED STRAIN.** Beautiful deep red color. Vigorous, hardy, productive, early bearing. Rich flavor. Crisp, tender apples of long-keeping quality.

✓ **GRIMES GOLDEN.** A vigorous producer of excellent Fall apples. Big golden yellow, tender, crisp apple of fancy dessert quality.

✓ **GOLDEN DELICIOUS.** Heavy yielding, early bearing. Bright golden yellow, crisp, juicy apples. National favorite.

✓ **RED McINTOSH.** A leading commercial variety. Fancy red apples with white, tender flesh of high quality and aroma. Tree very hardy and vigorous.

✓ **RED DELICIOUS.** Large apples of rich red color and excellent flavor and aroma. Uniform fruit. Tree very hardy. Great favorite with home gardeners as well as orchardists.

## PEACH TREES

✓ **GOLDEN JUBILEE.** An unusually hardy tree unequalled for production of early yellow, freestone peaches of exceptional quality. One of the most dependable for home gardens.

✓ **HALE HAVEN.** A deep crimson freestone peach. Flesh is golden-yellow, firm and of unusually good flavor. Strong, thrifty. Mid-season. One of the best for processing.

✓ **BELLE OF GEORGIA.** Considered the best of white-fleshed peaches. Large size, freestone. Delicious flavor. Mid-season.

✓ **ELBERTA.** This variety is most widely planted because it is adaptable to a wide range of soils and climates. Most popular market peach. Beautifully colored, firm, juicy. Late.



PRICES OF ABOVE APPLE AND PEACH TREES	
PARCEL POST SIZE	EXPRESS SHIPMENT SIZE
\$1.75 each	\$2.50 each
3 to 4 ft. 10 to 49 trees \$1.50 ea.	5 to 6 ft. 10 to 49 trees \$1.95 ea.
50 trees or more \$1.00 ea.	50 trees or more \$1.45 ea.
These prices do not include shipment. See page 21 for Postal Rates.	

All of our trees are shipped "full length" but if notified we will prune them to proper planting length (see below). One or two Express size trees can be pruned to meet Parcel Post mailing regulations. More than two Express size trees must be sent by Railway Express. See page 3 for details of our Guarantee.

### HOW TO PLANT AND GROW RAYNER'S HARDY FRUIT TREES

Below the Mason-Dixon line fall is generally considered the best time to plant fruit trees but in northern states there is too much danger of winter injury so spring planting is recommended. We do not guarantee nursery stock planted in the fall in northern states.

A hole should be dug that is slightly deeper and wider than the root system. Place fertile top soil in the bottom of the hole so that the upper roots will be about two inches below the surface. Next add more soil to fill in the hole packing it firmly around the roots and adding water. Be sure to eliminate air pockets around the roots. Plant at least two varieties of most fruit for proper pollination.

Apples, cherries, and pears should be pruned to a main stem with 2 or 3 side branches while peaches should be cut back to a single stem about 2 ft. tall. Maintain a heavy mulch of sawdust or other organic matter around each tree and wrap the lower stem with fine-mesh wire if there is danger of rabbit injury. In early spring apply manure or complete fertilizer such as 10-6-4 or 8-8-8. Use ½ lb. on young trees and 3 to 4 lbs. on older trees. Write for Rayner's No. 16 bulletin describing culture of fruit trees. Obtain spraying information from your State Agriculture Extension Service or County Agent.



# 2 New Pear Varieties

Developed by United States Department of Agriculture

## New! MOONGLOW

HIGH RESISTANCE TO FIRE BLIGHT

Because of the serious fire blight disease pears cannot be grown commercially in most of the Eastern U. S. As a result of an extensive breeding and testing program the U. S. Dept. of Agriculture has developed Moonglow and Magness, both of which appear to have sufficient blight resistance to enable them to be grown throughout the eastern pear area. Moonglow is a large, high quality pear that ripens about 2 weeks before Bartlett. It is good for fresh use as well as processing and storage. Moonglow is a good pollen producer and will set fruit when pollinated by nearly any other pear. Trees are vigorous and upright.



MOONGLOW

(Courtesy U.S. Dept. Agriculture)

Seckel, Kieffer, Dawn, and most other pears.

## New! MAGNESS

EXTREMELY BLIGHT RESISTANT

Magness has very high blight resistance and is very vigorous with a spreading shape. It produces big crops of medium size pears with a soft, sweet flesh that is almost free of grit cells. It ripens about a week after Bartlett and can be held in cold storage up to 3 months with fine quality. Magness does not produce good pollen so cannot pollinate other pears. It will set good fruit with pollen from Moonglow, Seckel, Kieffer, Dawn, and most other pears. Developed by U. S. Department of Agriculture.

## New! COLLETTE EVERBEARING PEAR

Plant Pat. # 1401

This exciting everbearing pear is so different that it has been granted a plant patent (Plt. Pat. 1401). It blooms in the spring but instead of stopping as other pears Collette continues to produce blooms most of the summer. This results in lots of big, golden pears ripening over an unusually long season. This pear is very winter hardy, easy to grow, and very productive. Trees reach about 15 ft. at maturity. Collette is not blight resistant and is recommended for cool climates where the Bartlett pear can be grown.

PRICES FOR MOONGLOW, MAGNESS, AND COLLETTE PEARS

Sturdy Grafted Trees, 3-4 ft. Size, \$2.95 each; 3 for \$7.95. Plus Postage. See P. 21 for Rates.



## Standard Pear Varieties

**BARTLETT.** Old favorite pear considered best for home garden and market throughout the northern half of country. Large, golden yellow pears have a reddish blush. Flavor excellent. Vigorous, highly productive.

**KEIFFER.** A long time favorite in Eastern states because of its high resistance to blight. A vigorous, tall-growing tree, producing loads of huge yellow pears each season. Extremely winter hardy. Fruit is firm and good for preserves.

**SECKEL.** A pear of excellent flavor, fruiting in September and October. Fruit medium-sized with a deep brown, reddish cheek when fully ripe. Vigorous, resistant to fire blight.

PRICES FOR BARTLETT, KEIFFER and SECKEL PEARS

Sturdy, Grafted Trees (2 yr. 3-4 ft.) Each \$2.10; 3 for \$5.95.

BUY RAYNER'S PLANTS AND YOU BUY THE BEST

# DWARF FRUIT TREES

ORNAMENTAL - PRODUCTIVE. SAVE VALUABLE GARDEN SPACE

Trees Are Small Yet Fruit Is Of Regular Size And Quality

No longer just a special feature of exclusive gardens, dwarf fruit trees are now available to all, and at reasonable prices. These wonderful space saving trees are produced by budding or grafting regular varieties on special dwarfing rootstocks. Apples are usually dwarfed by use of the Malling IX root system and Quince rootstocks produce dwarf pears. Peaches are budded to special dwarfing root systems. Even though the trees remain much smaller the fruit is of full size and quality. One outstanding feature of dwarf trees is that they begin to bear fruit when only 3 or 4 years old. Just the thing for home gardens where space is so valuable. Write for Rayner's Bulletin No. 16 on Culture of Dwarf Trees.

## Dwarf Apple Trees

Sturdy trees on the fully-dwarfing Malling IX rootstock. Trees grow to about 8 feet tall.

**McINTOSH**—Especially suited to northeast. Big, attractive, red apples with crisp, white, flesh. Tender and juicy.

**WINESAP**—Long-time favorite red apple with sweet, juicy flesh. Very vigorous and winter hardy.

**GOLDEN DELICIOUS**—The queen of apples for beauty and flavor. Big golden apples of superior quality.

**RED DELICIOUS**—The national favorite. Large, bright red apples of outstanding beauty and flavor. Very vigorous and productive.

Prices of 2 yr. branched dwarf apples  
3 feet up, \$2.95 each

3 trees for \$7.50      10 trees for \$23.50

These prices do not include postage.



## Special!! 5 on 1 Dwarf Apple Tree

For a spectacular home garden treasure plant this outstanding example of horticultural skill. Five different varieties of apple grafted to the same dwarf tree. Will ripen at different times providing a wonderful attraction and lots of delicious fruit. Varieties are McIntosh, Cortland, Red Rome, Double Red Delicious and Yellow Transparent. Easy to grow and sure to be a real source of pleasure for many years. These trees are scarce so order early to be sure you get this amazing 5 on 1 dwarf tree.

Sturdy 3 yr. trees 4-5 ft. \$4.95 plus postage. See Postal Rates on Page 21.

## Dwarf Cherry Trees

EXCELLENT FOR FRESH USE AND ALL TYPES OF PROCESSING

**NORTH STAR** is a naturally dwarf hybrid reaching 6 to 8 ft. Very hardy and easy to grow. Fruit is of good size, dark red when ripe and has tart, juicy flesh with a small stone. Very productive. A fine tree for home gardens and small orchards.

**METEOR** is more upright than North Star but a definite dwarf. Fruit is tart in flavor, clear red in color and large size. Trees are strong and vigorous, hardy, and disease resistant. For best production plant 2 varieties to insure proper pollination.

Well rooted trees 2-3 ft. tall: each \$2.45; two trees (one of each variety) \$4.40 plus postage.

## Dwarf Pear Trees

Grafted to dependable quince dwarfing stock. Trees grow to about 12 ft. Plant 2 or more varieties for pollination.

**BARTLETT.** Top-quality, very productive. For areas where fire blight is not severe.

**CLAPP'S FAVORITE.** Hardy and vigorous producer of large, sweet pears. Good pollinator for other varieties. Not blight resistant.

**KEIFFER.** The big, old fashioned, late pear of the east. Blight resistant and very vigorous. Fine for preserves.

**SECKEL.** Delicious, small pears. Vigorous and blight resistant. An excellent variety.

### Prices of Dwarf Pear Trees:

3 feet up, \$2.95 each

3 trees for \$7.50      10 trees for \$23.50

Plus Postage. See Page 21 for Rates.



## Dwarf Peach Trees

One of the most attractive ornamental trees in the spring when it is loaded with beautiful pink blossoms. Then in the summer you will harvest an abundance of delicious, full-size fruit. These trees usually reach 8 to 10 ft. at maturity and begin to bear in 2-3 years. See page 26 for variety descriptions.

**GOLDEN JUBILEE** (Early)

**HALE HAVEN** (Mid-Season)

**BELLE OF GEORGIA** (Mid-Season)

**ELBERTA** (Late)

3-4 ft. branched trees, \$3.15 each; 3 for \$8.85 plus postage. See Page 21 for Postal Rates.

## Montmorency SOUR CHERRY

For commercial plantings as well as home use Montmorency is by far the leading variety of sour cherry. The fruit are large, firm, and have a beautiful bright red color. Fruit first ripens in early July and can be kept on the tree about a month. This variety is self-fertile.

Rayner's stock of Montmorency is of the excellent virus-free strain.

Well rooted 2 yr. trees, 3-4 ft. tall are \$1.95 each; five or more \$1.65 each.

## PLUMS, PRUNES, AND DAMSONS

**METHLEY PLUM** Delicious deep red plums with orange-red flesh. Very vigorous and productive.

**STANLEY PRUNE** Large blue prune-plums with golden flesh. Truly delicious when fully ripe. Vigorous and hardy.

**SHIRO PLUM** A large, golden plum of unsurpassed beauty and quality. One of the finest in all respects.

**SHROPSHIRE DAMSON** The old fashioned damson so famous for delicious preserves. Also excellent for fresh use.

Price is \$2.45 each or 3 for \$6.50. 3-4 ft., 2 yr. trees. Plant 2 or more varieties for pollination.

## GRAFTED Japanese Persimmon

From southern Pennsylvania southward these beautiful trees with amazingly large delicious fruit are wonderful for the home garden. Vigorous and early bearing, **Eureka** is an especially productive variety with big orange fruit having a new delicious flavor when ripe. Deep green, glossy leaves have fine ornamental value. **Tanenashi** produces large yellow to red fruit which are excellent when fully ripe.

Plant both varieties for best pollination. 3-4 ft. trees \$2.95 each; two for \$5.50. Plus Postage.

July 8, 1963

I am very well pleased with the Montmorency Cherry trees purchased from Rayners this spring. They have a few cherries already. I would highly recommend your stock to anyone.

Beach City, Ohio

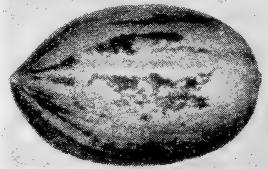
Mrs. Levi J. Keim

## We Finally Have A Supply of Good Hardy Pecans!

For many years we have been trying to obtain enough of these trees to list them in our catalog. Difficulties of grafting have prevented this but now we have a limited supply. So order early if you want these hard-to-get northern-type pecans. These trees will produce dependable crops at least to the 40th latitude (approximately from Philadelphia, Pa. to Springfield, Ill.). The trees are hardy, much further north than this and rapidly develop into beautiful ornamental and shade specimens. Plant at least 2 varieties for cross-pollination. Write for Rayner's Bulletin No. 18 which includes culture of nut trees.

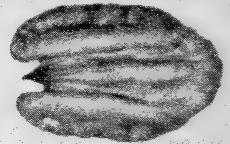
### MAJOR Northern Type Pecan

With respect to climate there are two main groups of pecans. The northern type will mature a crop within 175 to 225 days, of growing temperature while the Southern pecans require up to 300 days. Major is one of the best of the northern type and will produce excellent crops as far north as any pecan. Thus it is one of the most dependable of all pecans for those who want to grow this fine crop near the northern range for pecans. Nuts of Major are of medium size and have excellent flavor and quality. The shell is thin and kernels are plump. Trees of Major are very hardy and vigorous and begin to bear within 4 to 5 years. It is a good pollinator for other varieties.



### BUSSERON Northern Type Pecan

This is another of the northern type pecans and will produce excellent crops in many areas where pecans have never been considered to be reliable. Nuts of Busseron are of medium size and have a fine rich flavor and good cracking quality. It is an early-ripening type and a good pollinating variety for other pecans. Busseron originated in Illinois about 1908 and has made a good reputation as a fine pecan for extension of the northern limit of this wonderful crop.



### GILES Northern Type Pecan

Giles is one of the heaviest producing of the northern pecans with one report of 125 lbs. of nuts from an 18 year old tree. It originated in Kansas and is generally considered to be a very dependable producer with good tree vigor. Nuts of Giles are of average size, and easy to crack and have excellent flavor. Trees begin to bear in 3 to 5 years and rapidly attain a beautiful shape that has much ornamental and shade value.

#### Prices of Major, Giles and Busseron Pecans:

**STURDY GRAFTED TREES:** .....2-3 ft. size \$4.95 each; 3 for \$14.10  
**STURDY GRAFTED TREES:** .....3-4 ft. size \$5.95 each; 3 for \$16.95

These Prices Do Not Include Postage. See Page 21 for Postal Rates.

## GRAFTED STUART PECAN

Stuart is one of the excellent southern-type pecans that will consistently yield big crops of very high quality nuts. The trees are fast growing and are excellent for shade even in northern states, but nut production is irregular north of the Mason-Dixon line. Plant two or more trees for cross-pollination. These are vigorous grafted trees that are sure to give good results. Like all Rayner's other plants they are fully guaranteed. 2-3 ft. size, \$3.85 each.

### BUTTERNUT

Cornell University Bulletin No. 701 lists this as the hardiest of northern nuts. It is fast growing and makes a nice shade tree with loads of elongate nuts having a fine mild flavor.

2-3 ft. Seedling Trees ..... \$1.95 each

### HEARTNUT

Another hardy nut tree for cold climates. This is a type of Japanese Walnut with smooth, good quality nuts of very nice flavor. Excellent for shade.

2-3 ft. Seedling Trees ..... \$2.55 each

EXCELLENT  
FOR SHADE

# NUT TREES

DELICIOUS  
FLAVOR

FAST GROWING; EARLY-PRODUCING

## Chinese Chestnut

HARDY BLIGHT RESISTANT

Here is the most popular of all nut trees. In a short time it becomes one of the most beautiful trees on your place and you will look forward to each fall harvest of delicious nuts.

Chinese Chestnuts are highly resistant to the blight disease, very hardy, and will produce excellent crops of large nuts, when only a few years old. The trees are vigorous and have a spreading shape that makes them fine for shade as well as for their crop. Plant 2 or more trees for cross-pollination. These are vigorous seedlings selected from highly productive trees. Be sure to include postage with order.

### Parcel Post Size

2 to 3 ft. \$1.60 each

10 to 49 trees: \$1.40 each

50 or more: \$1.25 each

### Express Shipment

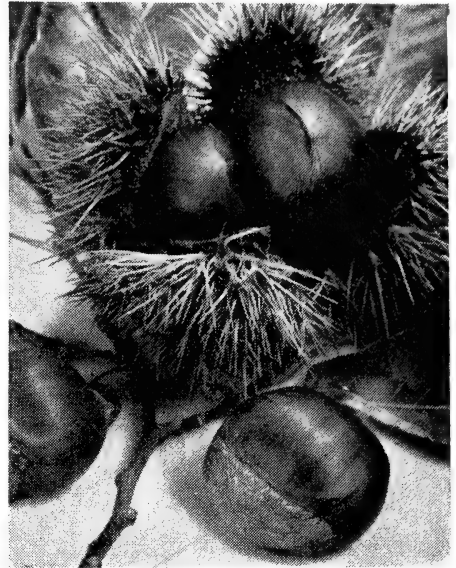
Sizes

4 to 5 ft. \$2.95 each

10 to 49 trees: \$2.75 each

50 or more: \$2.60 each

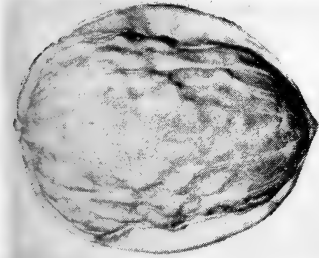
Write for Bulletin No. 18 on Nut Tree Culture.



## CARPATHIAN ENGLISH WALNUT

Mature Trees Are Hardy to 40 Below Zero

This is the exceptionally hardy Persian or English walnut that has become so popular in most of the northern states. Mature trees are said to be hardy to 40° below zero and still produce big crops of large, thin-shelled, meaty nuts. The trees are very vigorous and have a nice spreading shape which is ideal for shade and ornamental beauty.



CARPATHIAN WALNUT

These vigorous seedling trees are very dependable for consistent yields as far North as Minnesota. For good crops it is best to have two or more trees for proper pollination. Vigorous, well rooted, seedling trees.

2-3 ft. size, \$3.25 each;

3 for \$9.00 plus postage

## THOMAS BLACK WALNUT

These sturdy grafted trees are the best black walnuts available. Very vigorous, giving good yields of large meaty nuts into central New York. Grows best in deep, well drained soil. Use another black walnut for cross-pollination.

2-3 ft. size: \$3.85 each; 3 for \$9.90 plus postage

## HALL'S HARDY ALMOND

These favorite nut trees are closely related to peaches and require about the same climate. They also produce a similar type of tree with beautiful pink blossoms and will begin to bear in 3 to 4 years. Plant 2 or more for cross-pollination.

Sturdy 3-4 ft. trees: \$2.75 each; 3 for \$7.50

See postal rates page 21.

## American Filbert (Hazel Nut)

A small, attractive nut tree commonly known as HAZEL NUT. A good dependable type commonly planted in northeastern states. Use two or more varieties for cross-pollination.

2-3 ft. trees, \$1.95 each

## Barcelona Filbert

Because of its high yields of large nuts Barcelona is an important commercial filbert in Oregon and Washington. It is also a fine variety for the northeastern area.

2-3 ft. trees, \$2.95 each

## Du Chilly Filbert

Du Chilly is another popular filbert with dependable production of large nuts. It appears to be a good pollinating variety for other filberts.

2-3 ft. trees, \$2.95 each

WE SPECIALIZE IN YOUNG TREES OF VARIETIES THAT WILL GIVE EXTRA FAST GROWTH. YOU CAN REALLY SAVE WITH YOUNG TREES AND BE SURE OF GOOD RESULTS. THESE TREES WILL SOON DEVELOP INTO BEAUTIFUL SPECIMENS.

**Japanese Yews (Taxus)** Yews are among the finest of all evergreens for landscape planting. Their deep green foliage adds charm and value to any home. Easily kept to any shape by regular shearing; grows well in sun or shade; and in any well-drained soil. Plant upright type at corners and other locations where height is desired and spreaders under windows or other locations where a plant of broad, low shape is required. Be sure to specify upright or spreader when ordering.

Prices of sturdy well rooted plants: 2 yr. 10-12 inch; \$1.00 each; 3 for \$2.75.  
Prices in this catalog do not include postage. See page 21 for postal rates.

**Potted American Holly Plants** Only the female holly trees produce the well-known bright red berries but male trees are needed for pollination. These hollies were raised from cuttings from male or female trees so the sex is known. Sold only in the combination of 2 female and 1 male. Approximately 12-15 inches tall. 3 **HOLLY PLANTS** from pots, \$3.95.

**Magnolia Grandiflora** This is the beautiful magnolia that produces fragrant white blossoms up to 6 or 8 inches wide. Can be grown as far north as parts of New York state but is at its best in the south. Prefers moist, fertile, acid soil and may reach a height of 50 feet. 12-18" size: \$1.95 each; 3 for \$5.00.

**Rhododendrons** These magnificent evergreens are among the finest of flowering shrubs. Rhododendrons give best results in shady locations where the soil is acid and there is a good supply of moisture. Soil preparation is the same as described in this catalog for blueberries. This is a hybrid seedling so we cannot specify as to color but they are generally shades of pink. Hardy in all but the coldest states. 10-12" plants, \$1.65 each; 3 for \$4.25. See page 21 for postal rates.

**Weeping Willow** For graceful beauty the weeping willow is outstanding. In most of the New England states, west to the Mississippi, and in the south it is a favorite for plantings near river and stream banks, but also gives good results in dry land. This is the old-fashioned strain of willow that is so easy to grow and is very hardy. 3-4 ft. trees \$1.25; 3 for \$3.00; 5-6 ft. trees \$2.25; 3 for \$5.50. Plus Postage.

WINTER HARDY **AZALEAS** RAYNER'S SELECTION OF FINE VARIETIES PROVEN ESPECIALLY HARDY

- HINOCRIMSON** — Brilliant red blossoms, hardy compact plant. Excellent foliage.
- STEWARTSTONIAN** — A fine orange-red Gable hybrid. Vigorous upright growth.
- DELAWARE VALLEY WHITE** — Large white flowers, fairly tall and spreading.
- CAROL** — Gable hybrid, with pink, double blooms; low, compact growth habit.
- OLD FAITHFUL** — Beautiful light orchid flowers; vigorous upright growth.

Field Grown, 3 yr. plants, 8-12 inches tall: \$1.50 each; 3 for \$4.25 — Plus Postage.  
For Good Results With Azaleas Follow Blueberry Culture and Plant in Shade.



Protects Your Property With An Impenetrable Thorny Barrier. Excellent Bird and Game Cover.

## MULTIFLORA ROSE

The primary use for multiflora rose is to provide a protective barrier around fields and property lines of farms, estates, and other rural areas. After a few years this vigorous, thorny rose will make an almost impenetrable barrier that is a true living fence. It lasts a lifetime and needs no repairs. It will fence in farm animals and keep out trespassers. Very popular for conservation use to prevent land erosion and is an excellent game cover. Multiflora rose grows well in nearly any soil type and is suitable for all but the most northern areas. Produces loads of small white blossoms followed by clusters of small red berries.

**PRICE LIST: Vigorous 12-18" Plants**  
25 plants \$2.25                      100 plants \$ 7.50  
50 plants 4.15                        500 plants 30.00

See page 21 for Postal Rates

# Evergreen Seedlings

Rayner's pines and spruces are excellent for Christmas tree plantings — seedlings that cost only a few pennies now will soon be worth dollars. Make poor land of hillsides produce a real profit. Ideal for erosion control, wind-breaks, and hedges. For ornamental use plant in a nursery bed and soon you will have ideal specimen trees for your own use and for sale.

## SCOTCH PINE

This is one of the best trees for Christmas plantings since it grows very fast and will reach saleable size in 5 years. Grows well in dry or moist soil and makes a nicely shaped tree with very little shearing. Our special French strain Scotch Pine have a very nice blue-green color which holds well in coldest weather. Excellent for ornamental use.

## AUSTRIAN PINE

Another popular tree for Christmas plantings or ornamental use. Will grow well in nearly any soil from sand to clay and will tolerate industrial smoke and fumes that kill other pines. Needles are dark green and quite stiff. Develops into nice bushy saleable tree in about 7 years.

## DOUGLAS FIR

This has long been a favorite tree for Christmas plantings since it has a naturally compact type of growth. With relatively little shearing it will produce high-grade trees. Needles of Douglas fir are short and have a blue-green color. Best results are obtained in soils that are not too heavy or poorly drained. Our trees are of the special San Isabel, Colorado, strain that is the best of all Douglas Fir.

## CANADIAN HEMLOCK

For graceful beauty the hemlock cannot be excelled. It produces short, dark-green needles which gives its long drooping boughs an almost feathery appearance. Only on large parks and estates should it be allowed to develop into its full magnificent size. But in restricted areas Canadian Hemlock can be easily pruned to form a fine hedge, an excellent background or sheared specimen trees. Hemlocks are very easy to grow and do well in sun or shade.

Prices of top quality 3 yr. Rooted Seedlings. Available Oct. 15 to Nov. 15 and March 15 to May 15. Write for prices on larger quantities. Get the best for less at Rayner's.

Fully Guaranteed - See page 3.	10 plants	25	50	100	250	500	1000
AUSTRIAN PINE ..... (8-18 in.)	\$1.30	\$2.60	\$4.50	\$8.00	\$16.00	\$25.00	\$40.00
SCOTCH PINE ..... (8-18 in.)	1.30	2.60	4.50	8.00	16.00	25.00	40.00
WHITE PINE ..... (4- 8 in.)	2.00	4.00	7.00	11.00	21.00	33.00	55.00
DOUGLAS FIR ..... (8-10 in.)	2.50	5.00	8.00	12.00	22.00	35.00	60.00
COLO. BLUE SPRUCE .. (8-10 in.)	2.50	5.00	8.00	12.00	22.00	35.00	60.00
NORWAY SPRUCE ..... (8-14 in.)	2.00	4.00	7.00	11.00	21.00	33.00	55.00
CANADIAN HEMPOCK (12-18 in.)	3.00	6.00	9.50	16.00	27.00	55.00	80.00

Write for Rayner's Bulletin #19 Giving Complete Culture Information for Evergreens.

These prices do not include Postage. See page 21 for Postal Rates.

**BUY RAYNER'S PLANTS AND YOU BUY THE BEST**

## WHITE PINE

One of the most beautiful of all trees with soft, slender needles having a fine light-green color. White pines grow well in nearly any soil type and will give good results in poorly-drained land where most other pines will not grow. For Christmas trees, shearing is necessary but in 6 years an excellent compact tree can be produced.

## NORWAY SPRUCE

Norway Spruce has long been a favorite specimen tree in northern gardens where its stately beauty cannot be excelled. But as a Christmas tree it is also outstanding since with reasonable shearing it will produce fine compact trees with a nice pyramidal shape. Prefers moist soils rather than dry land and will make a nice tree in about 8 years.

## COLORADO BLUE SPRUCE

A truly magnificent tree with an outstandingly different blue-green color. In contrast with other evergreens this blue spruce is most unusual and thus is highly prized for its ornamental value. This beautiful color likewise makes it a very desirable tree for Christmas use, bringing top prices. Gives good results in moist, fertile soil and requires relatively little shearing.

# Rayner's FAMOUS BLUEBERRIES



Giant Berries Big as Nickels, Picked from our 100 Acre Fruiting Field

## HERE ARE THOSE AMAZING EXTRA LARGE HYBRIDS



**BERKELEY**

MILD  
SWEET

**BERKELEY** MOST  
BEAUTIFUL

This is our selection for the best of all home garden blueberries. It ripens in mid season producing large, loose clusters of the biggest, most beautiful blueberries you have ever seen. Unlike some varieties, the flavor is good almost as soon as the berry turns blue. Plants of Berkeley are very vigorous and have an excellent semi-spreading shape and usually a heavy main stem. The leaves are very large and very attractive in summer and fall. For all but the most northern states, we strongly recommend Berkeley as an outstanding blueberry.



**BLUECROP**

HEAVY  
PRODUCER

**BLUECROP** WINTER  
HARDY

This excellent midseason variety is another of the outstanding introductions of the U. S. Department of Agriculture. Within just a few years Bluecrop has rapidly gained an outstanding reputation as one of the best of all blueberries for commercial production. It is very winter and frost hardy and can be grown in most of the northern states. Berries are large and maintain their size through the long picking season. Yields are very heavy and quality is good. The plants are fairly upright and have a tendency to develop several stems from the ground.

This past winter was unusually severe, causing direct cold injury to blueberries in some areas. In addition there were several frosts in late May which severely reduced the crop of some varieties. But Bluecrop proved its real value by coming through with a tremendous crop of excellent berries. This is undoubtedly one of the finest of all blueberries.



**GROWERS  
FAVORITE**

# BLUERAY

**EXTRA  
VIGOROUS**

This early variety includes as parents such fine old varieties as Jersey, Pioneer, Stanley, and June and is closely related to Bluecrop. It was released in 1955 by the U. S. D. A. and the New Jersey Agriculture Experiment Station. Since then it has gained rapid acceptance as a commercial berry because of its unusual vigor and tremendous yields of large berries. Blueray has good winter hardiness giving fine results in Michigan and the New England states.

January 9, 1963

Kalmath, California

I bought 9 blueberry plants from you and they are doing exceptionally well.

Gaylord Masterson



**BLUERAY**

## **New!** COLLINS **WONDERFUL FLAVOR**

In 1959 this variety was released by the U. S. D. A. and the N. J. Experiment station. It is a cross between Stanley and Weymouth and ripens midway between Earliblue and Bluecrop. Berries are large, firm, light blue in color, and have a mild sweet flavor. Collins appears to have excellent prospects as a home garden berry because of its fine flavor, excellent quality, and dependable production. Plants are reasonably hardy and should give good results in most of the New England and central states.

December 4, 1963

Maywood, New Jersey

I have been buying Rayner's blueberry plants for several years and plant them in a big cage to keep out birds. I have 23 young bushes and picked 40 pints last season.

Adolph L. Kohule



**COLLINS**

**EXTRA  
LATE**

## COVILLE

**BIG  
BERRIES**

This very late ripening variety greatly prolongs the blueberry season. Under our conditions we begin to pick Earliblue about June 10 and Coville in early July. Berries are large and very attractive and continue to ripen for several weeks. Good flavor does not usually develop in Coville until after the berries have fully ripened but allow them to remain for a week after turning blue and the quality can be very good.

February 3, 1963

North Wales, Penna.

Last spring I ordered rooted cuttings of your blueberries and now they are from 16 to 22 inches tall. I am amazed!!

Lawrence R. Buck



**COVILLE**

**VERY  
EARLY**

## EARLIBLUE **FINE QUALITY**

This excellent commercial berry is about as early as Weymouth and has many fine commercial features. The berries are large and ripen uniformly in big, tight clusters. The picking scar is good and berries are resistant to cracking. Of special interest to home gardeners is the mild sweet flavor of Earliblue. Plants are vigorous and have a fine upright growth. This variety has good cold resistance and has proven to be a fine berry both for commercial and home use.



**EARLIBLUE**

**BUY RAYNER'S PLANTS AND YOU BUY THE BEST**



**HERBERT**



**IVANHOE**

**VERY  
HARDY**

**HERBERT**

**BIG AND  
LATE**

Herbert is very different in appearance from most blueberries since its fruit has a shiny black luster and a flattened shape. These extra large berries ripen late in the season in loose clusters and have very good quality. Bushes are vigorous and produce heavy crops. Of much importance is the winter hardiness which permits Herbert to be grown in most of the northern states. It is a good variety for home gardeners since it combines winter hardiness, large berry size, good production, and fine quality.

January 27, 1963

The seven blueberry plants I bought from you are all doing well and bearing well.

Noank, Conn.

Mrs. Mary Danforth

**BEAUTIFUL  
CLUSTERS**

**IVANHOE**

**UNUSUAL  
FLAVOR**

Ivanhoe is outstanding because of its unusually beautiful berry cluster which look much like bunches of blue grapes. Another feature is the wonderful fruity flavor. However, this flavor does not develop until the berries are fully ripe which is about a week after they first turn blue. The berries are very large and have a dark blue color. Plants of Ivanhoe grow very rapidly and have a fine appearance.

Each season we grow Ivanhoe we like it better and this is especially true of the 1963 crop. Despite a bad winter and severe spring frosts Ivanhoe shows no injury and has a big crop of the most beautiful berries. And for flavor we believe that a ripe Ivanhoe is about the best of all blueberries.

**BUY YOUR PLANTS DIRECTLY FROM THE GROWER AND GET THE BEST FOR LESS**

See Page 37 For Complete  
Planting Information

**PRICE LIST**

Prices Do Not Include Postage.  
See Page 21

**THESE PRICES ARE FOR BERKELEY, BLUECROP, BLUERAY, COLLINS, COVILLE, EARLIBLUE, HERBERT, AND IVANHOE.**

Healthy True-To-Name Plants	Single	3 to 9	10 to 29	30 to 100
	Each	Each	Each	Each
1 yr. 3-9" rotted cuttings .....	\$ .75	\$ .70	\$ .60	\$ .50
2 yr. 9-12" field transplants (branched) .....	1.60	1.50	1.40	1.25
3 yr. 12-18" field transplants (well branched)	1.95	1.75	1.65	1.40
3 yr. 18-24" field transplants (well branched)	2.95	2.75	2.65	2.25

**WRITE FOR PROMPT QUOTATIONS ON LARGER QUANTITIES**

**Varieties May Be Combined To Take Advantage Of Quantity Prices**

May 15, 1963

Castill, N. Y.

I have bought plants from your company and always received them in the best shape and they have grown almost 100%. I recommend you very highly.

Fred J. Shaffner

November 5, 1962

Paradise, California

Your business transactions on even small orders are excellent and I have every reason to believe your products are the same.

Robert W. Robar

**NO MATTER HOW  
MUCH YOU PAY**

You will never buy berries as good as the fresh harvests of your own locality. With "shipped-in" berries the quality and flavor cannot match the vine-ripened perfection right out of the patch. That's why more and more folks grow their own. Grow more! Save more! Have more!

# Growing Blueberries

These instructions apply to Rayner's hardy, top quality plants. Be sure to prune about  $\frac{1}{2}$  of top from large bushes before planting.

## WHERE BLUEBERRIES CAN BE GROWN:

The varieties of blueberries we offer will grow well from North Carolina to Maine and westward to Michigan and Missouri. They also grow well in parts of California, Oregon and Washington. For best fruit production blueberries require full sunlight. The best time to plant is early spring. Frost or snow will not harm newly planted blueberries.

**SOIL ACIDITY:** One of the most important factors in successful blueberry culture is to use acid soil—a pH range of 4.0 to 5.5 is considered best. Many soils naturally have this much acidity but in many areas where blueberries could otherwise grow well the soil is not sufficiently acid. For small scale plantings this difficulty can be readily overcome. One of the best methods is to dig a hole about 18 inches deep and about the same in width. Mix half of this soil with well rotted leaf mold or peat and then mix in 3 oz. ammonium sulfate fertilizer plus  $\frac{1}{4}$  lb. of cottonseed meal. Replace this mixture in the hole and set the plant properly and you have overcome the main problem in growing blueberries.

**DRAINAGE:** Cultivated blueberries require a uniform supply of moisture but they will not tolerate poorly drained or soggy soil. Avoid heavy clay soil for large plantings.

**HOW TO PLANT:** If the roots have become dry in shipment they should be placed in water for about an hour. Best results are obtained if about half of the top growth is pruned from the plant. This allows the plant to become established faster and better. It will rapidly make an abundance of new, sturdy growth. After the holes have been dug and the soil prepared as previously described the plant should be set so that the upper roots are covered by about an inch of soil. It is very important not to set blueberries too deep in the ground for, they may make poor growth or die. It is helpful to water the newly set plant with a soluble fertilizer — using about one quart of solution per plant. Next the soil should be firmly packed around the roots and a mound of soil made around the edge of the hole so that the plant can be properly watered during dry weather. Rooted cuttings should be grown for 2 or 3 years in a bed containing lots of sawdust plus cottonseed meal and acid fertilizer. They can be transplanted as desired.

In commercial plantings blueberries are usually set 4 feet apart in the row with 8 to 10 feet between rows. However, in home gardens they may be arranged in any manner and can be pruned to nearly any desired shape. Blueberries are especially suitable for hedge plantings and other ornamental uses.

**MULCHING:** It is very helpful if a heavy mulch can be maintained around the plants. Any natural organic matter is satisfactory.

Sawdust; new or old, oak or pine, also gives excellent results. Sawdust is very desirable for mulching blueberries and we strongly recommend its use. However, when sawdust is used as a mulch it is necessary to add extra nitrogen to the soil. For each ton of sawdust approximately 24 pounds of actual nitrogen is needed. This can be obtained from 115 pounds of ammonium sulfate or 72 pounds of ammonium nitrate. This corresponds to 13 ounces of ammonium sulfate per bushel of sawdust or 8 ounces of ammonium nitrate per bushel. Any other type of fertilizing material could be used if the proper amount of nitrogen is provided.

**FERTILIZING:** We definitely recommend that blueberries should receive regular fertilizer applications. Use an acid-type, complete fertilizer early in the spring at the rate of about  $\frac{1}{4}$  pound per each small plant or  $\frac{1}{2}$  pound for large plants. Another application in early summer is usually helpful. Do not apply fertilizer in late summer or fall since it may make plants tender and thus subject to winter injury. Cottonseed meal,  $\frac{1}{4}$  lb. for young plants and  $\frac{1}{2}$  lb. for old plants, is a complete organic fertilizer that is ideal for blueberries and most other plants. Ammonium sulfate, 2 oz. per small plant and  $\frac{1}{4}$  lb. per large plant, is an excellent commercial fertilizer. About 250 lbs. per acre is recommended for large plantings. Half should be applied in March or April and the rest during May or June.

**PRUNING:** When first planted about half of the upper branches should be removed. Then during each dormant season further pruning is required. Since blueberries usually make too much top growth some of this must be thinned out or the fruit will be small. Normally it is best to prune out slender twigs, leaving the heavier stronger growth. Low branches should be removed as well as any weak or dead wood. Write for Rayner's Bulletins 3 and 18 on blueberry pruning.

**YELLOW FOLIAGE:** Blueberries are especially free of disease and insect troubles and thus do not generally require any spraying or dusting. The most common trouble is a yellow color of the leaves (Chlorosis). This yellowing can be corrected in two ways—one is by making the soil more acid by addition of vinegar or sulphur and the other is to add iron directly to the plant and to the soil. Yellow leaves will often become a healthy, green color within a few days after iron is added. We recommend Iron Chelate for this purpose. About 1 level tablespoonful in a gallon of water can be applied to the leaves and soil and will be of much help in improving foliage.

**CROSS POLLINATION:** Since cultivated blueberries are partly self-sterile it is best to plant at least two varieties for cross-pollination. Any combination of varieties is usually satisfactory.

# Rayner's Famous Blueberries

**FRESH, FULL RIPE BLUEBERRIES ARE A FLAVOR SENSATION—WONDERFUL FOR PROFIT AS WELL AS ORNAMENTAL BEAUTY. BUY YOUR PLANTS DIRECTLY FROM THE PRODUCER AND GET BETTER PLANTS AT LOWER PRICES. THESE ARE THOSE WONDERFUL IMPROVED VARIETIES THAT HAVE BEEN PROVEN SO SUCCESSFUL BY MANY YEARS OF PLANTING IN HOME GARDENS AND FOR COMMERCIAL USE. RAYNER BROS. OFFER THE MOST COMPLETE SELECTION OF THE BEST VARIETIES. FULL PLANTING INFORMATION ON PAGE 37. Other Varieties, pages 34-36.**

## ✓ BURLINGTON Very Late

Burlington remains a favorite with commercial growers because of its firmness, good picking scar, fine keeping quality, and exceptional winter hardiness. Plants are vigorous and have a fine upright-spreading shape.

## ✓ DIXI Very Late and Very Large

Dixi has the largest berries of any of the older varieties. The berry quality is good and texture is firm. Plants are vigorous and have an open spreading shape. Dixi is a very heavy producer and ripens late.

## ✓ JERSEY Late and Sweet

Jersey is one of the most important commercial varieties because of its dependable production of big crops, of beautiful, fine-flavored fruit. The plants are vigorous and erect.

## ✓ PEMBERTON Mid-Season

Pemberton is a very good variety for home gardens since it is unusually vigorous, very productive, and has a nice appearance. Berries are dark blue, of medium size, and firm.

They have a very good flavor and are excellent for processing.

✓ **CONCORD** A good variety for home gardens because the berries are of fine quality. Berries are a deep blue color, fairly firm, and have a mild, good flavor, and good size. The plants are tall and upright and are very hardy. Concord ripens in mid-season.

See Page 37 For Complete Planting Information

## PRICE LIST

These Prices Do Not Include Postage. See Page 21.

**BUY DIRECT FROM THE GROWER AND GET THE BEST FOR LESS**

These prices are for Burlington, Concord, Dixi, Jersey, Pemberton, Rancocas, Rubel, Stanley and Weymouth. See page 36 for other varieties and prices.

### Healthy, True-to-Name Plants

Plant 2 Varieties for Pollination.	Single	3 to 9	10 to 29	30 to 99	100 or more
	Each	Each	Each	Each	Each
1 yr. 3-9" rooted cuttings.....	\$ .45	\$ .35	\$ .30	\$ .25	\$ .20
2 yr. 9-12" branched .....	1.30	1.20	1.00	.90	.80
3 yr. 12-18" well branched.....	1.75	1.65	1.50	1.40	1.20
3-4 yr. 18-24" well branched .....	2.25	2.10	1.90	1.80	1.60

Varieties may be combined to take advantage of quantity prices.

### JUMBO Size Blueberry Plants 5 yr. 24" to 36" Plants

We have a limited supply of extra large plants that have already fruited for two years in the nursery and will bear lots of fruit this coming season.

The varieties available in this 24-36" size are: **Rancocas, Rubel, Jersey, Dixi, Concord and Stanley.** These are really beautiful plants and are certain to bear a crop. For a big crop in a short time, try these Jumbo plants.

**\$2.85 each; 3 for \$7.95; 10 for \$23.00. SEE SPECIAL OFFERS — Page 40**



# *Cherokee Chief*

RED DOGWOOD

U. S. Plant Patent No. 1710

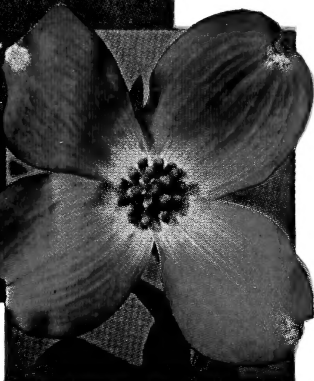
EACH TREE CARRIES THIS  
PATENT TAG



At last there is a truly red Dogwood—not a pink; but a fine, deep red that is amazingly different. The wonderful new Cherokee Chief originates from a bud sport and is propagated by grafting on to a sturdy rootstock. Even the new foliage is a red color, and in the fall the leaves are scarlet. In late summer there is an abundance of fine red berries that add to the beauty of this excellent ornamental tree. Cherokee Chief is very vigorous and makes a fine tree with uniform branching.

It will grow in full sun but prefers some shade for best results. Hardy to about 10° below zero.

Sturdy, well rooted trees,  
24-30 in. tall, \$3.95 plus postage



**CHEROKEE CHIEF**

March 31, 1963

I have ordered from several nurseries but have never seen trees packed so carefully and so good and strong. Your service is superb.

Portsmouth, Virginia

Tony Slapikas

## *New!* Robin Hood HEDGE ROSE

**THE PERFECT COMBINATION OF BEAUTY AND PROPERTY PROTECTION**

There has long been a need for a hedge rose suitable for restricted locations. The multi-flora rose listed in this catalog is fine for large fields but grows too freely for use in small yards. Now the beautiful Robin Hood rose can be planted about 18 to 24 inches apart and will soon make an almost impenetrable barrier covered with brilliant bright pink flowers all summer and fall. The foliage is a glossy, deep green that is resistant to black spot and other troubles. Within 3 to 4 years these plants should reach a height of 3 ft. or more and can easily be kept pruned for a perfect hedge. Very hardy and easy to grow.

Prices for sturdy 1 yr. rooted cuttings, about 12-15 inches

5 for .....	\$ 4.45
10 for .....	8.25
25 for .....	19.50
50 for .....	36.00

Plus Postage — page 21





**RAYNER'S**  
**CULTIVATED**  
**BLUEBERRIES**  
**A REAL**  
**MONEY MAKER**

***Order Rayner's Garden Specials for Money-Saving Values***

<b>Economy Garden</b>	<b>Quality Garden</b>	<b>Hybrid Garden</b>	<b>Jumbo Garden</b>
2 CONCORD 2 STANLEY 2 JERSEY	3 RANCOCAS 3 STANLEY 3 BURLINGTON	2 EARLIBLUE 2 BLU'ERAY 2 COVILLE	2 RANCOCAS 2 CONCORD 2 JERSEY
6 Top Quality Plants, 2 yr. 9-12"	9 Top Quality Plants, 3 yr. 12-18"	6 Top Quality Plants, 3 yr. 12-18"	6 Top Quality Plants, 4 yr. 24-36"
<b>SPECIAL \$5.85</b> Plus Postage	<b>SPECIAL \$10.95</b> Plus Postage	<b>SPECIAL \$8.95</b> Plus Postage	<b>SPECIAL \$12.95</b> Plus Postage

