

Historic, archived document

Do not assume content reflects current scientific knowledge, policies, or practices.

62.67

LIBRARY RECEIVED
Price-List, 1892
JUN 5 1892
U.S. Department of Agriculture
LIBRARY RECEIVED
MAY 16 1918

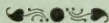
REID'S

Selected and Tested

Best Stock.

Best Sorts.

SEEDS



E. W. REID, Bridgeport, Ohio.

IMPORTANT TO BUYERS.

When Ordering, do not forget to sign with order plainly, and give your full address, no difference how often you write us.

How to Send Money.—Any amount less than \$1 can be sent in two-cent postage stamps; for sums over this amount send post-office or express money order, bank draft, or registered letter. *Do not remit by private checks unless adding 25c. to make collection.*

Postpaid by Mail.—We pay the postage on all seeds as follows: Packets, ounce, 1/4-pound, pound, pint and quart. When over this amount is wanted, add 8 cents per pound, if to be sent by mail; otherwise we will send by express or freight.

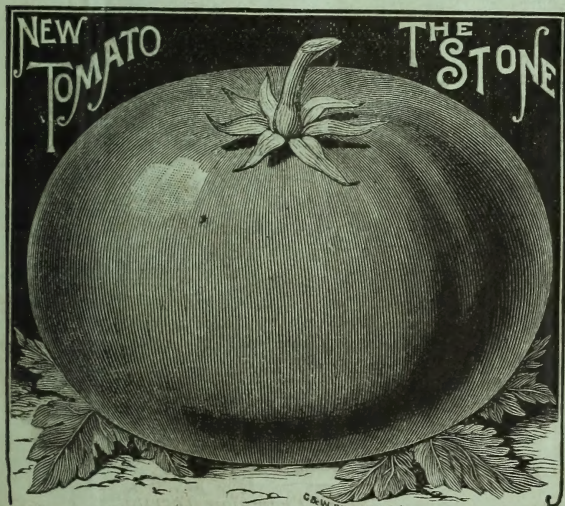
THE STONE—THE NEW TOMATO.

The New "Stone" Tomato ripens for main crop; is very large, and of bright scarlet color; very smooth, with occasionally a specimen very slightly octagon-shaped, ripening evenly to the stem without a crack; exceedingly solid and firm-fleshed (as its name indicates); is an excellent shipper; quality the very best; fine for canning; a good keeper; without hard core; not subject to rot; its appearance on market remarkably attractive;

a heavy variety, its vines and foliage rank and robust, heavily loaded with uniform specimens of fruit.

For five years this tomato has been subjected to the most careful testing, and we have found it to possess several superior qualities and distinct characteristics. We believe it to be the coming tomato for market-gardeners and canners.

ABOVE ALL, NOT SUBJECT TO ROT.—Prof. J. L. Budd, of Iowa State Agricultural College, says: "The tomato-seed was planted in my private garden, and the fruit compared with many sorts at the Experiment Plantations. It was large enough, smooth, firm-fleshed, and above all, not subject to rot. I did not see a rotten specimen, although it was a bad year for rot." 10 cts. per pkt., two pkts., 15 cts.; 30 cts. per oz.



C. & W. ENG. CO. PHILA.

LIVINGSTON'S GOLD-COIN SWEET-CORN.

Remarkably distinct and handsome in appearance, in these respects exciting the admiration, not only of gardeners, but of professional seed-growers, and is without doubt the most valuable variety ever introduced. Its enormous productiveness is enough to place it in advance of any sort now grown; it almost always yields two and frequently three mammoth ears to the stalk. 10 cts. per pkt., 25 cts. per oz., 85 cts. per $\frac{1}{4}$ -lb., \$3 per lb.

**THE NEW GRAGG WATER-MELON.**

From the northern part of Texas and is justly famous in its native home; but how it originated is unknown. Some three or four years since, a customer in that state sent us a few seeds for trial. Unfortunately the correspondence has been mislaid, and hence we are unable to give credit. We have had it tested in the north, south and west, and not a single unfavorable report. 10 cts. per pkt., 20 cts. per oz., 85 cts. per $\frac{1}{4}$ -lb., \$3 per lb.

IMPROVED CHARTIER RADISH.

This is an early summer variety. In color a deep pink or crimson above, and gradually blends into a pure waxy white to its roots, making it very attractive in appearance. In quality it is unsurpassed, being very tender and remaining so for a longer period than most other summer radishes after attaining its growth. It is especially adapted for market-gardeners. 5 cts. per pkt., 10 cts. per oz., 20 cts. per $\frac{1}{4}$ -lb., 65 cts. per lb.

DWARF CHAMPION TOMATO.

One of the most distinct and valuable tomatoes of recent introduction; dwarf and compact growth, growing stiff and upright, with thick-jointed stems, and foliage unlike any other. In form, color and size, the tomatoes resemble the Acme—very smooth and symmetrical in shape, ripening close around the stem. It matures the fruit ready to market as early as July 1. It is very productive, many stalks having the fruit crowded closely together on the branches for the length of fifteen inches. 5 cts. per pkt., 30 cts. per oz., 90 cts. per $\frac{1}{4}$ -lb., \$3 per lb.

LIVINGSTON'S NEW BEAUTY TOMATO.

The color is quite distinct from any other sort, being a very glossy crimson, with a slight tinge of purple; the color alone will bring it into favor. It grows in clusters of four or five large fruits, retaining its large size late in the season. This is an essential point in its favor, as many other good sorts decrease in size at least one-half before the season is over. It ripens with the Acme and Perfection, is entirely free from ribbed and elongated fruit, being perfect in shape. During the past four seasons of growth, under varied circumstances and on different classes of soil, it showed no signs of rotting. This is partly on account of its firmness, besides its having a thick skin and few seeds. 10 cts. per pkt., 20 cts. per $\frac{1}{2}$ -oz., 35 cts. per oz., \$1 per $\frac{1}{4}$ -lb., \$3 per lb.

SENECA FALLS, ILL.

Plants came up all right, I am well pleased with them.

M. B. MORLAN.

ATLANTA, ILL.

My order (No. 3302) arrived in good condition and gave the best of satisfaction. Thanks to you.

J. S. DONDY.

LIVERPOOL, PA.

Shipment of stock received, everything as ordered. Please receive our thanks for same.

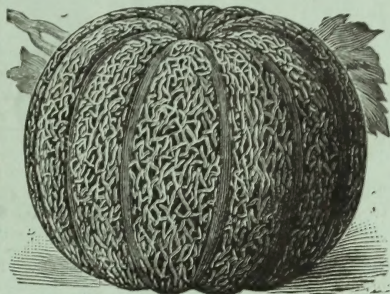
A. F. UNCAPHER.



Dwarf Champion Tomato.

NEW EARLY HACKENSACK MELON.

By careful selection and improvement, carried on for some years, this strain has been so developed that it produces melons with all the good qualities of the well-known Hackensack melon, but at least ten days earlier. The melons weigh from six to ten pounds each, are of a nutmeg shape, heavily netted, and have light green flesh of delicious flavor. This is the third year that we have sold this Extra-Early Hackensack melon, and have not had a complaint. We grew it largely for seed last season, and had opportunities to observe its earliness, manner of growth, etc. 5 cts. per pkt., 10 cts. per oz., 25 cts. per ¼-lb., 90 cts. per lb.



New Early Hackensack Melon.

HENDERSON'S EARLY SNOWBALL CAULIFLOWER.

Everything considered, this is certainly the best type of cauliflower in the market. The experience of years shows it to be unexcelled by any variety for earliness. If planted March 1, large-sized heads will be produced early in June, about one week earlier than other varieties, and scarcely a single head will fail to form. The outer leaves are short, so that the plants may be set from eighteen to twenty inches apart, thus allowing the planting of from twelve to fourteen thousand heads per acre. Its compact habit of growth renders it a peculiarly profitable variety to force under glass, and it does equally well, also, for late planting. 15 cts. per pkt., \$1 per ¼-oz., 3\$ per lb.



Henderson's Early Snowball Cauliflower.

kinds. The flour made from it is equal in quality to that of any other buckwheat. Is enormously productive. On account of its earliness it can be grown farther north than any other. 10 cts. per pkt., 25 cts. per lb.; by express or freight, 15 cts. per qt., 60 cts. per pk., \$1.75 per bus.

NEW JAPANESE BUCKWHEAT.

The Japanese buckwheat is entirely distinct from all other varieties; the kernels are at least double the size of those of any other variety, and of a shape peculiar and distinct from all others. The color of the kernel is also distinct, being a rich, dark shade of brown. The straw is heavier and branches more. It does not need to be sown as thickly as the other



FLEMING, N. Y.

The remainder of order No. 3255 received in good condition, for which accept my thanks.
R. E. PAUL.

OAKLAND, N. Y.

Plants (No. 3023) arrived in good condition. Thanks for promptness and extras.
LUTHER R. THOMPSON.

SUMMERFIELD, KANSAS.

The plants by mail came all right and are the finest I ever saw sent by mail. I am well pleased with your manner of dealing.
A. C. CORNISH.

WEST MIDDLETON, IND.

The plants arrived in good condition; they are the best-rooted plants I ever saw.
JACOB GARRISON.

REID'S GENERAL TESTED SEED-LIST.

ASPARAGUS.

	Pkt.	Oz.	¼-lb.	lb.
The Palmetto	\$0 15	\$0 30	\$1 00	\$3 00
Conover's Colossal	5	10	25	75

BEANS, BUSH.

	Pkt.	Pt.	Qt.	Pk.
Early Round Pod Valentine	\$0 05	\$0 25	\$0 45	\$1 25
Imp. Early Round Pod Valentine	5	25	45	1 25
Early Long Yellow Six Weeks	5	25	45	1 25
Early Mohawk	5	25	45	1 25
New Golden Wax	5	30	50	1 75
Henderson Dwarf Lima	10	40	75	

BEANS, POLE.

	Pkt.	Pt.	Qt.	Pk.
Large White Lima	\$0 05	\$0 30	\$0 55	\$2 00
Ford Mammoth Lima	10	35	60	3 00
Red Giant Wax	10	35	65	2 50
White Crease-Back	10	30	50	2 00

BEETS.

	Pkt.	Oz.	¼-lb.	lb.
Eclipse	\$0 05	\$0 10	\$0 20	\$0 75
Egyptian	5	10	20	65
Early Blood Turnip	5	10	20	65
Dewing's Improved Blood Turnip	5	10	20	65
Bastian's Early Blood	5	10	20	65

BEETS, Mangel-Wurzel.

	Oz.	¼-lb.	lb.
Red Globe	\$0 05	\$0 15	\$0 50
Yellow Globe	5	15	50
Golden Tankard	5	15	50
Giant Long Red	5	15	50

CAULIFLOWER.

	Pkt.	Oz.	¼-lb.
Henderson Early Snowball	\$0 15	\$3 00	
Extra-Early Dwarf Erfurt	20	2 50	
Half - Early Paris	20	75	\$2 50
Large Late Algiers	15	1 00	3 50

CABBAGE.

	Pkt.	Oz.	¼-lb.	lb.
Select Early Jersey Wakefield	\$0 10	\$0 25	\$0 80	\$3 00
Henderson Early Summer	5	20	60	2 00
Premium Late Flat Dutch	5	20	60	2 00
Shortstem Drumhead	5	25	75	2 50
Marblehead Mam	5	25	75	2 50
Burpee's Sure-head	5	25	75	2 50
Large Late Flat Dutch	5	15	50	1 50
Puget Sound Cabbage	5	20	60	2 00
Large Blood-Red Dutch	5	15	50	1 75

CELERY.

	Pkt.	Oz.	¼-lb.	lb.
Henderson White Plume	\$0 10	\$0 30	\$1 00	\$3 50
Henderson Half Dwarf	5	20	60	2 00
Dwarf Golden-Heart	5	20	60	2 00
Boston Market	5	25	75	2 50
New Rose	5	25	75	2 50
Crawford's Half Dwarf	5	20	60	2 00

CARROTS.

	Pkt.	Oz.	¼-lb.	lb.
Danvers	\$0 05	\$0 10	\$0 25	\$0 90
Oxheart	5	10	30	1 00
Improved Long Orange	5	10	25	75
Half Long Scarlet Carentan	5	10	25	90

CORN.

	Pkt.	Pt.	Qt.	Pk.	Bu.
New Gold Coin	\$0 20	\$0 30	\$0 45	\$1 50	\$5 00
Early Adams	5	20	35	1 00	3 50
Cory's Early	5	20	35	1 25	4 00
Early Minnesota	5	20	35	1 00	3 50
Liv. Evergreen	5	20	35	1 25	4 00
Stowell's Evergreen	5	20	35	1 00	3 25
Shaker's Early	5	20	35	1 00	3 20
Late Mammoth	5	20	35	1 00	3 20

CUCUMBERS.

	Pkt.	Oz.	¼-lb.	lb.
Early Frame	\$0 05	\$0 10	\$0 25	\$0 75
Boston Pickling	5	10	25	75
Improved Long Green	5	10	25	85
Green Prolific	5	10	25	75
White Spine	5	10	25	75
Nichol's Medium Green	5	10	25	75

EGG-PLANT.

	Pkt.	Oz.	¼-lb.	lb.
Black Pekin	\$0 10	\$0 40	\$1 25	\$4 50
New York Improved	10	40	1 40	5 00
Livingston Mammoth Purple	10	50	1 50	5 50

GOURDS.

	Pkt.	Oz.
Dipper	10	25
Nest-Egg	5	

LETTUCE.

	Pkt.	Oz.	¼-lb.	lb.
Boston Market	\$0 05	\$0 15	\$0 50	\$1 50
Hanson	5	15	50	1 50
Silver-Ball Lettuce	5	15	50	1 50
Henderson New York	5	15	50	1 50
Livingston Golden-Head	5	15	50	1 50
Defiance Summer	5	15	50	1 50

MUSKMELONS.

	Pkt.	Oz.	¼-lb.	lb.
Champion Market Melon	\$0 05	\$0 10	\$0 30	\$1 00
Baltimore Nutmeg	5	10	30	1 00
Perfection	5	10	25	85
Montreal Market	5	10	25	90
Emerald Gem	5	10	25	80
Hackensack Extra-Early	5	10	25	90

WATERMELONS.

	Pkt.	Oz.	¼-lb.	lb.
The New Gragg (see Novelties)	\$0 10	\$0 25	\$0 85	\$3 00
Pride of Georgia	5	10	25	75
Mammoth Iron-Clad	5	10	25	75
Black Spanish	5	10	25	75
Boss	5	10	25	75
True Ice-Cream	5	10	25	75
Florida Favorite	5	10	25	75
The Volga	5	10	25	75

ONIONS.

	Pkt.	Oz.	¼-lb.	lb.
Early Red Globe	\$0 05	\$0 25	\$0 75	\$2 50
Large Red Wethersfield	5	20	60	2 00
Yellow Danvers Flat	5	15	50	1 75
Yellow Danvers Globe	5	20	60	2 00
White Globe	5	25	75	2 50
White Portugal Silver-Skin	5	20	65	2 25

PARSNIPS.

	Pkt.	Oz.	¼-lb.	lb.
Large Sugar	\$0 05	\$0 10	\$0 20	\$0 65
Long White Dutch	5	10	20	65

PEPPERS.

	Pkt.	Oz.	¼-lb.	lb.
Large Bell	\$0 05	\$0 25	\$0 75	
Long Red	5	25	75	
Golden Dawn	5	25	75	
Cayenne	5	30	1 00	
Mammoth Ruby King	10	30	1 00	

PEARS.

	Pkt.	Pt.	Qt.	Pk.	Bu.
Livingston's First in Market	\$0 05	\$0 30	\$0 55	\$1 25	\$4 75
Bliss' American Wonder	5	30	55	1 75	6 75
New Alaska	5	30	55	1 50	5 00
Tom Thumb Dwarf	5	30	55	1 50	5 00
Telephone	10	35	55	2 25	8 50
Marrowfat, Large White	5	25	40	1 00	3 00

RADISHES.

	Pkt.	Oz.	¼-lb.	lb.
Improved New Chartier	\$0 05	\$0 10	\$0 20	\$0 65
Rosy Gem (Turnip)	5	10	25	75
White Strasburg	5	10	20	60
Early Long Scarlet Short Top	5	10	20	60
Long Black Spanish	5	10	25	75
Rose China Winter	5	10	25	75

SQUASH.

	Pkt.	Oz.	¼-lb.	lb.
Hubbard	\$0 05	\$0 10	\$0 20	\$0 70
Boston Marrow	5	10	20	70
Mammoth Chili	10	15	40	1 50
Essex Hybrid	5	10	20	70
Pineapple or White Turban	5	10	20	70
Marblehead	5	10	20	70
Cushaw, Liv. Improved	5	10	30	1 00
Winter Crookneck	5	10	20	70

SPINACH.

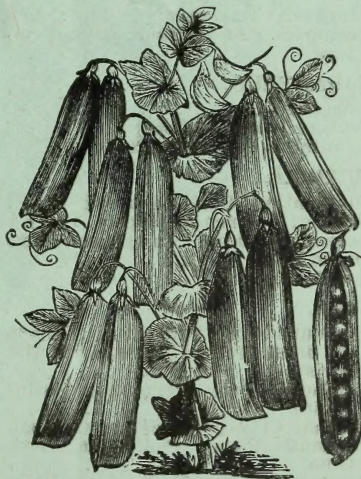
	Oz.	¼-lb.	lb.
Round-Leaf Summer	\$0 05	\$0 15	\$0 50
Savoy-Leaved	5	15	50
Long Standing	5	15	50

TOMATOES.

	Pkt.	Oz.	¼-lb.	lb.
Livingston's Acme	\$0 05	\$0 25	\$0 75	\$2 50
Livingston's New Beauty	10	35	1 00	3 00
Perfection	5	25	75	2 75
Paragon	5	25	75	2 75
Livingston's Favorite	5	25	75	2 75
Mikado	5	25	75	2 75
Plum-Shaped Yellow	5	25		
New Wonderful Peach	10	40		
Dwarf Champion	5	25		

TURNIPS.

	Pkt.	Oz.	¼-lb.	lb.
Red Purple-Top	\$0 05	\$0 10	\$0 20	\$0 65
Large White Globe	5	10	20	65
Extra-Early Milan	5	10	25	90
Extra-Early Flat Dutch	5	10	20	60



Telephone Pea.

SPECIAL NOTICE.—We pay postage on all seeds as follows: Packet, ounce, ¼-lb., pound, pint and quart. Send list of wants, and if we can quote you a special rate we will do so.

GENERAL LIST OF FLOWER-SEEDS.



Abutilon.

ABUTILON.	Per pkt.
Fireball. New, large, crimson flowers; very compact plant . . .	\$0 15
AGERATUM.	
Mexicanum. Blue	5
Lasseauxii. Beautiful rose	5
Imperial Dwarf. White	5
ALYSSUM.	
Benthami Compactum. White; very compact, and desirable for pot-culture	5
AMARANTHUS.	
Caudatus	5
Tricolor (Joseph's-Coat)	5
Salicifolius (Fountain-Plant)	5
AQUILEGIA.	
Chrysantha. Golden-spurred	5
Skinneri. Crimson sepals, light green petals and long crimson spurs	5
Single Mixed	5
Double Mixed	5
ASTER.	
Truffaut's Peony Perfection. This is the finest strain of asters for the florists	10
Truffaut's Peony Perfection, Satin-White	10
Truffaut's Peony Perfection, Crimson	10
Truffaut's Peony Perfection, Dark Blue	10
Truffaut's Peony Perfection, Violet with White	10
Truffaut's Peony Perfection, Rose with White	10
Truffaut's Peony Perfection, White with Carmine	10

ASTER, continued.	Per pkt.
Victoria. A fine class	\$0 10
" Pure white	15
Comet. Pure white novelty; twisted like a choice chrysanthemum	10
Crown. Showy flowers; very double	10

BALSAM.	
Double White. Good strain	10
King. Brilliant scarlet	10
Peach-blossom (Maiden's-Blush)	10
Camellia, Double-flowered	10
Double Mixed	5

BEGONIA. The Tuberous-rooted Begonias are used largely for bedding, and are finer for that purpose than geraniums.	
	Per pkt.
Single Mixed	\$0 15
Double Mixed	25

CALENDULA.	
Prince of Orange. Fine	5
Ranunculoides. Orange	5

CANDYTUFT.	
Empress. Large trusses of pure white flowers; splendid	5
Crimson	5
Tom Thumb. White, compact; best for pots and edgings	5

CARNATION.	
Finest Double German Mixed	25
Grenadin. Double, dwarf; scarlet	25
Marguerite. (Novelty.) Produces fine flowers	10



Truffaut's Peony-flowered Aster.



Cosmos.

CINERARIA. Per pkt.
 Large-flowering English Mixed . . . \$0 25
 " " Dwarf Mixed . . . 25

COSMOS. This is a fine autumn-bloom-
 ing flower. Per pkt.
 Large-Flowering. Mixed . . . \$0 10
 Pearl. New white . . . 15

CYCLAMEN.
 Pure white. Perpetual-blooming;
 large-flowering; fragrant . . . 25

CYPRESS-VINE.
 Scarlet . . . 5
 White . . . 5
 Ivy-leaved. Scarlet flowers . . . 5

DAHLIA.
 Large Double-flowering Mixed . . . 10
 Single varieties, Mixed . . . 10

DAISY.
 Double Mixed . . . 15
 Longfellow. Double red . . . 15
 Snowball. New white . . . 15

DIANTHUS.
 Heddewigii. Mixed . . . 5
 Imperialis. Double-fringed, mixed . . . 5
 Laciniatus. Double-fringed, mixed . . . 5

GERANIUM.
 Zonale. Choice mixed . . . 15
 Apple-scented. True . . . 15

GLOXINIA.
 Fine Mixed . . . 25

HOLLYHOCK.
 Extra-Double, mixed . . . 10
 Pink . . . 10
 White . . . 10
 Yellow . . . 10

HELIOTROPE Per pkt.
 \$0 10

IMPATIENS SULTANI. Beautiful
 rose-colored flowers, borne in the
 greatest profusion 15

IPOMŒA.
 Grandiflora. White-seeded moon-
 flower 15
 Bona-Nox (Evening-Glory) 10
 Coccinea (Star Ipomœa) 10

MIGNONETTE.
 Golden-Queen 5
 Parsons White 5
 Machet. Dwarf variety, with large
 spikes of fragrant, reddish flowers . . . 10
 Giant White Spiral. Fine 5

NASTURTIUM. (Dwarf or Tom
 Thumb.)
 Scarlet 5
 Yellow 5
 Crimson. Dark velvet 5
 Pearl. Pure white 5

PANSY.
 King of the Bronzes 10
 " " Blotched 10
 " " Striped 10
 " " Blacks 10
 " " Pure Whites 10
 " " Golden Yellows 10
 Giant Trimardeau. Mixed 10
 Bugnot Large-strained. Fancy . . . 10
 Choice English Mixed 10

POPPY.
 Choice Double Mixed 5
 Double Carnation-flowered. Mixed . . . 5
 Double Snowdrift. Pure white . . . 10



Zonale Geranium.

PETUNIA.

Single varieties:	Per pkt.
Fine Mixed	\$0 05
Striped and Blotched. A choice strain	10
Large-flowering single varieties:	
Grandiflora Venosa. Beautifully veined	25
Yellow-Throated	35
Large-flowering double varieties:	
Dwarf Double Lilliput	25
Extra-Double Fringed. Choicest	25

PHLOX DRUMMONDII.

Mixed. Good quality	10
Grandiflora, Large-flowering. Mixed	10
" Splendida. Vivid crimson, white eye	10
" Coccinea. Rich scarlet	10
" Alba Rubra. Pure white	10

PORTULACA.

Finest Single Mixed	5
" Double Mixed. Large-flowering	15

PRIMULA.

Sinensis Fimbriata	25
Fimbriata Flore Pleno	25

PYRETHRUM.

Aureum (Golden-Feather)	5
Roseum	10

SMILAX

.	10
-----------	----

STOCKS.

Large-flowering Blood-Red	10
" Crimson	10
Dwarf Snowflake	15

SWEET-PEAS.

Butterfly. White and blue	5
Scarlet invincible	5
White	5
Striped	5
Adonis. Carmine-rose	5

SWEET-WILLIAM.

Single Mixed	\$0 05
Double Mixed	5

VERBENA.

New Mammoth. True	20
Pure White	15
Scarlet	10
Choice Mixed	15
Fine Mixed	5

VIOLET.

Sweet-scented White	10
" Blue	10

WALLFLOWER.

Double Mixed	10
Single Mixed	5



Sweet Peas.

SUMMER-FLOWERING BULBS.**GLADIOLUS. In mixture.**

	Each.	Per doz.
All colors, mixed	\$0 05	\$0 35
White and Light varieties	5	50
Red and Scarlet	5	35
Yellow	8	75
Pink	5	50
Variegated	5	50

TUBEROSES.

Tall Double	7	66
Dwarf Pearl	7	60
Variegated	15	1 25

Address all orders to

E. W. REID, Bridgeport, Ohio.

We use only the cream of journals for advertising, hence we wish the best trade.
We sell you stock true to name and of the best grade.