

11 12 13 14

COLLEGE

TEACHERS

STATE

RHODODENDRON

APPLY

A

Digitized by the Internet Archive  
in 2009 with funding from  
University of North Carolina at Chapel Hill







A. S. T. C.



R H O D O D E N D R O N



"A treat

T H E 1 9

*red mementos of our trip through time”*

**Published by Students of  
Appalachian State Teachers College  
Boone, North Carolina**

**EVELYN WASHBURN, Editor  
ROBERT DOWNS, Business Manager**

**4 R H O D O D E N D R O N**

# C O N T E N T S

## BOOK I—THE COLLEGE

ADMINISTRATION

CLASSES

## BOOK II—ACTIVITIES

ORGANIZATIONS

ATHLETICS

## BOOK III—FEATURES



# F O R E W O R D

This is your book—a book of memories that is perhaps more revealing for the things it omits than for those it includes. However, we hope that as you turn its pages, a snapshot, a word, an impression will convey to you in some intangible way a glad reminder of your college days at Appalachian.





# D E D I C A T I O N

To one who stands constantly ready  
to aid those who call upon him; to one  
whose understanding of the students  
and whose genuineness and humility have  
made him beloved by the student body  
and faculty alike; to JAMES T. THOMPSON,  
our true friend, we the staff proudly  
dedicate this 1954 RHODODENDRON.

**B O O K O N E**

*the College* .....







*Administration Building*



*Faculty Apartments*



*Science Building*



*Administration*

# A D M I N I S T R A T I O N

B. B. DOUGHERTY  
B.S., Ph.B., D.Lit., D.Ed.  
*President*



J. D. RANKIN  
A.B., A.M., S.T.D.  
*Dean of College*

LEO K. PRITCHETT  
A.M., M.Ed.  
*Dean of Men*

HELEN BURCH  
A.B., M.A.  
*Dean of Women*

# DEPARTMENT HEADS

CATHERINE SMITH, B.S., M.A.  
*Art*

RAY DERRICK, B.S., M.S.  
*Biology*

JAMES T. THOMPSON, A.B., M.B.A.  
*Business Education*

ARLIE RAYMOND SMITH, A.B., A.M.  
*Chemistry*

CHAPPELL WILSON, B.A., M.A., Ed. D.  
*Education*

LUCY ELLEN BROCK, B.S., A.B., M.S.  
*Home Economics*

GRAYDON P. EGGERS, A.B., A.M., Ph.D.  
*Languages*

ILA MAE TAYLOR, A.B., B.S. in L. S.  
*Library Science*



# FACULTY

J. T. C. WRIGHT, A.B., A.M., Ph.D.  
*Mathematics*

GORDON A. NASH, A.B., M.A.  
*Music*

MAX R. RAINES, B.A., M.S., Ph.D.  
*Personnel and Guidance*

FREDERICK KIRCHNER  
B.S., M.S., Ph.D.  
*Physical Education*

STARR N. STACY, B.S., M.A.  
*Physics*

WILLY F. SMITH, A.B., M.A., Ph.D.  
*Psychology*

D. J. WHITENER, A.B., M.A., Ph.D.  
*Social Studies*

BERNARD DOUGHERTY, B.S.  
*Business Manager*





# FACULTY



- MARION BAILEY ADAMS, B.S., M.S.  
*Home Economics*
- DICK M. ALLEN  
A.B., M.A., B.S. in L.S.  
*Librarian*
- ROSCOE J. ALLEN, B.S., M.S.  
*Typing*
- JOHN G. BARDEN, A.B., A.M., Ph.D.  
*Education*
- ROBERT WILLIAM BROOMH, B.S., M.A.  
*Physical Education*
- GOLDEN H. BUCKLAND, B.S., M.A.  
*Mathematics*
- IRVIN WATSON CARPENTER, JR.  
B.S., M.S., Ph.D.  
*Biology*
- ELIZABETH CRADDOCK CASALI  
B.S., M.A., Ph.D.  
*English*
- GAIL CLAY, B.S., M.A.  
*Physical Education*
- PAUL CLUM, A.B., M.A.  
*Director Off Campus Student Teachers*
- WALTON S. COLL, B.A., M.A.  
*Music*
- FRANCIS COOK, B.A., M.A.  
*English*
- LEON COULTER, B.S., M.A.  
*Biology*
- WARREN G. CUTTS, JR.  
A.B., M.S., Ph.D.  
*Education*
- MILDRED A. DAWSON  
B.A., M.A., Ed.D.  
*Education*
- EDWIN S. DOUGHERTY, B.S., M.A.  
*Social Studies*
- HERMAN R. EGGERS, A.B., M.A.  
*Registrar*
- AUDREY EICHELBERGER, B.A., M.A.  
*English*
- NELLIE HOPE ELLISON, B.S., M.S.  
*Business Education*
- NICHOLAS ERNESTON  
B.M.E., M.M., M.F.  
*Music*
- LEONARD EURY  
A.B., B.S. in L.S., M.S. in L.S.  
*Librarian*
- PETER W. FVRETT, B.S., M.A., Ph.D.  
*Education*
- JOHN BOWEN HAMILTON  
B.S., M.A., Ph.D.  
*English*
- WINNETTE LANGFORD HARGROVE  
B.M., M.A.  
*Music*
- WALTER G. HAWKINSON, B.S.  
*Mathematics*
- CLEONE H. HODGES, A.B., M.S.  
*Health and Physical Education*
- ALLIE A. HODGINS, B.S., B.S. in L.S.  
*Reference Librarian*
- DAVID HODGINS, B.A., M.A.  
*English*
- FRANCIS L. HOOVER, B.S., M.A.  
*Physical Education*
- LILLIAN R. HORN, A.B.  
*Chemistry*
- BEN H. HORTON, B.S., M.A.  
*Supervisor Off Campus Student Teachers*
- JOHN T. HOWELL, B.S., M.A., M.Ed.  
*Principal of Elementary School*
- VANCE C. HOWELL, B.A., M.A.  
*Social Studies*
- MARY ALICE HUIF, A.B., A.B. in L.S.  
*Library Catalogner*
- WORTH R. JONES, A.B., M.A.  
*Psychology*
- JOHN MITCHELL JUSTICE, A.B., A.M.  
*Social Studies*
- DOROTHY E. KEMP, B.S., M.A.  
*Music*

# FACULTY

JOY MILLER KIRCHNER, B.S., M.A.  
*Health and Physical Education*

JOHN KIRK, B.S., M.A.

*Physical Education*

IDA BELLE LEDBETTER, A.B., M.A.  
*Biology*

VIRGINIA WARY LINNEY, B.M., M.M.  
*Music*

ROBERT EUGENE LOTT, A.B., A.M.  
*Spanish*

J. R. MELTON, B.A., M.A., Ph.D.  
*Education*

WILLIAM HENRY MORGAN,  
B.S., M.A., Ph.D.  
*English*

EMMA H. MOORE  
*Librarian Emeritus*

PRESTON MULL, B.S., M.A.  
*Physical Education*

LEE J. REYNOLDS, B.S., M.A., Ed.D.  
*Education*

MADGE M. RHYNE, B.S., M.S.  
*Home Economics*

LEROY ROGERS, B.S., M.A.  
*Acting Assistant High School Principal*

JAMES W. ROOKER, B.M., M.M.  
*Music*

W. HOYT SAFRIT, B.S., M.A.  
*Music*

GEORGE L. SAWYER, B.S., M.A.  
*Social Studies*

JOHN R. SHAFFER, B.S., M.A., Ed.D.  
*Acting High School Principal*

LORIS SHIPMAN, B.S., A.B., M.A.  
*English*

JEAN ANN SMITH, B.S.  
*Home Economics*

WILLIAM G. SPENCER, B.M., M.A.  
*Music*

GRACE STORM, B.A., M.A.  
*Education*

ROGER E. THOMAS, B.S., M.Ed.  
*Physical Education*

VERA C. TUNNELL  
*Librarian Periodicals*

INA WOESTEMERFER VAN NOPPEN  
B.S., M.A., Ed.D.

*Social Studies*

JOHN J. VAN NOPPEN  
A.B., M.A., Ed.D.

*English*

ARNOLD F. VAN PELT, JR.  
B.A., M.S., Ph.D.

*Biology*

R. W. WATKINS, A.B., M.A.  
*Physical Education*

VIVIAN WOOD WELBORN, B.S., M.S.  
*Dietitian*

CRATIS D. WILLIAMS, A.B., M.A.  
*English*

ELIZABETH RUCKER WILLIAMS, B.S.  
*Art*

MYRTLE B. WILSON, B.S., M.A.  
*Education*

JOHN H. WORKMAN, A.B., M.A., Ph.D.  
*Economics*

J. C. YODER, B.S., M.A., Ph.D.  
*Social Studies*

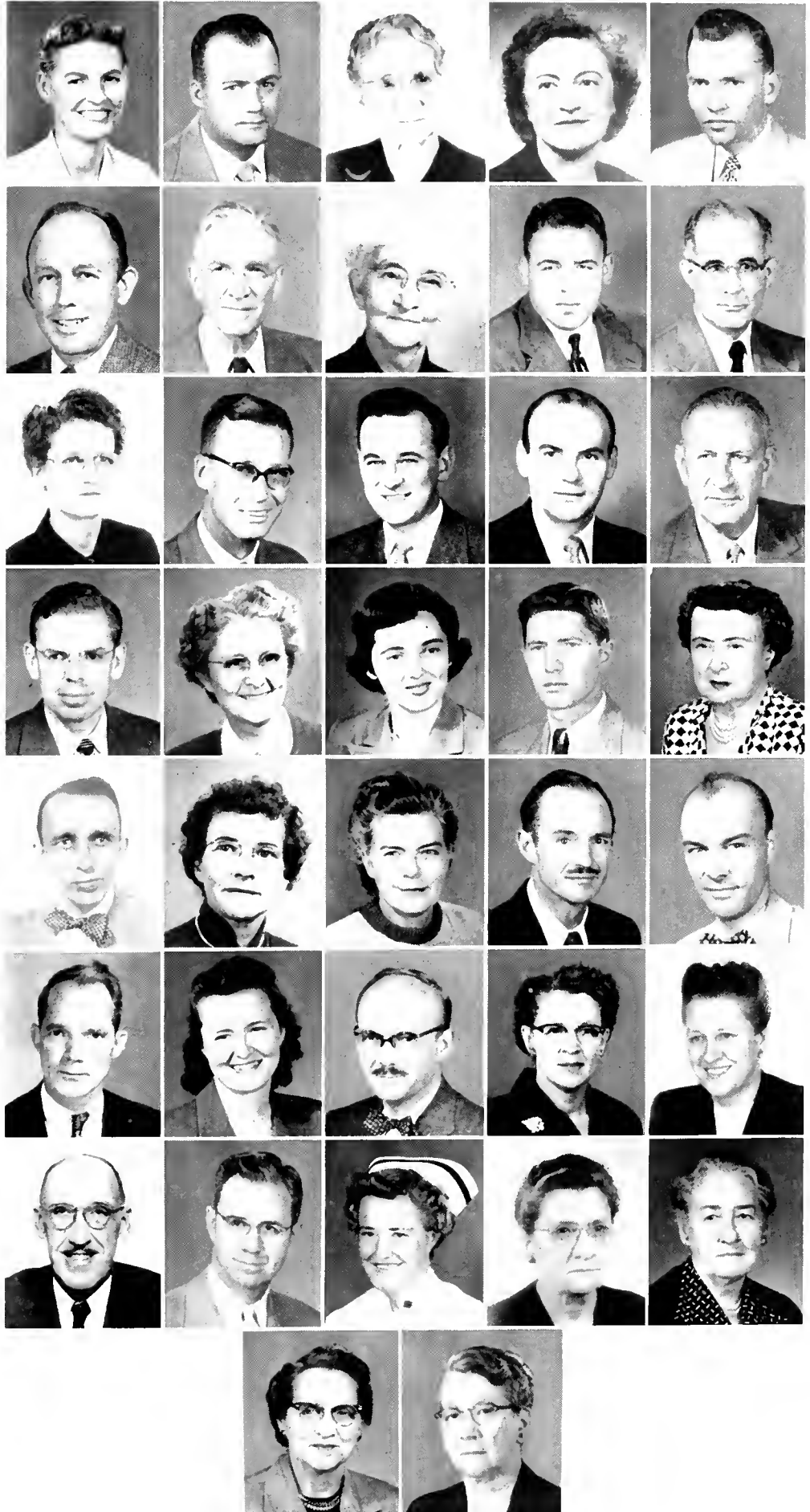
MARY S. SHOOK  
*Registered Nurse*

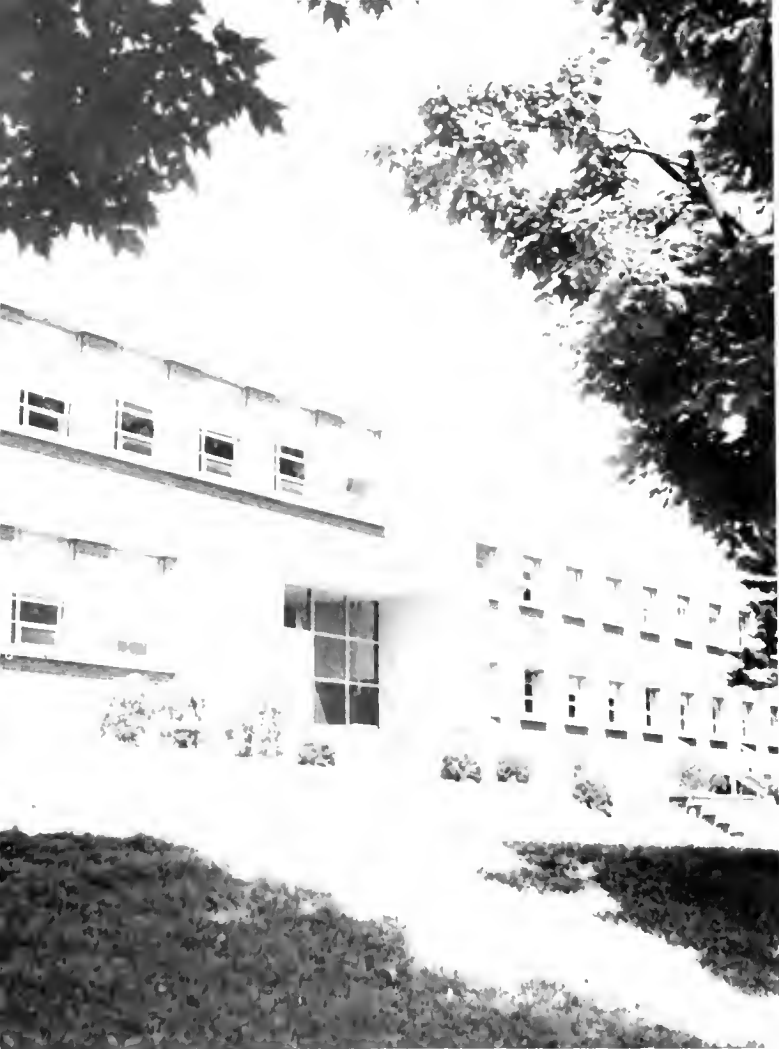
MRS. J. E. BASKIN  
*Dauph-Blau Dormitory Hostess*

MRS. J. W. MASSEY  
*White Hall Hostess*

MRS. ANNIE S. MAJETTE  
*Lovill Hall Hostess*

MRS. LILLIE B. HARDIN  
*East Hall Hostess*





*... its building*



*Cathedral*



*... building*



*... building*





# Classes

# GRADUATE STUDENTS



JOHN WESLEY ALEXANDER      Concord

ALBERT LEE BRADLEY      Forest City

JO ANNE GRAYBEAL      Creston



JANE STUART HOWELL      Greensboro

HENRY GRADY LANE, JR.      Bainbridge, Ga.

VAN ROBERSON LAYSON      Eatonton, Ga.



CARL A. LITAKER      Statesville

MARY JANE MATTHEWS      Galax, Va.

RICHARD LEON MIZE      Statesville



CORRY OWSLEY      Boone

MARVIN ATLAS PICKARD      Durham

ZEB V. SHOOK      Boone



GENE WILSON      Boone



OFFICERS

*Left to right:*

ROBERT CLENDENIN

BETTY ANN ROBINSON

BOB HUFFMAN

REBECCA HOOVER (Not Pictured)

*Vice-President*

*Secretary*

*President*

*Treasurer*

*Seniors*

**GERALD CLARK ADAMS** Salisbury  
 Physical Education and Social Studies ... Football 1, 2, 3;  
 Men's "V" Club 2, 3, 4; Resident Manager Justice Hall 3, 4;  
 Varsouviana 2, 3, 4; Physical Education Club 1, 2, 3, 4;  
 Treasurer 3.

**JANE ALEXANDER** Huntersville  
 Primary Education ... Y.W.C.A.; Pep Club; Future Teachers  
 of America.

**MARY RUTH AYERS** Boone  
 Grammar Grade Education

**BOBBY JOE BAKER** Rocky Mount  
 Physical Education and Mathematics ... Football; Men's "V"  
 Club; Treasurer, Physical Education Club; Senior Superlative.

**DAPHNE DARE BALDWIN** Lansing  
 Grammar Grade Education ... A.C.E.I. 1, 2, 3, 4; Second Vice  
 President 3; President 4; Westminster Fellowship 1, 2, 3, 4;  
 Council 3, 4; Y.W.C.A. 3, 4; Resident Assistant 3; Chi Lambda  
 Chi 4.



**DOBIS JANET BARE** Jefferson  
 Primary Education ... Y.W.C.A.; Pep Club.

**WILLIAM WILLY BLACKBURN** Boone  
 Science and Mathematics ... Men's "V" Club 3, 4; Varsity  
 Basketball 3, 4; J. V. Basketball 1, 2; J. V. Cheerleader 2; Varsity  
 Cheerleader 3, 4; Forensic Club 1, 2, 3, 4; Pi Kappa Delta 2, 3,  
 4; Vice President 4; Varsouviana 2, 3; B.S.U. 1, 2, 3, 4;  
 Y.M.C.A. 3.

**SAMUEL RALPH BEAKI** Candor  
 Physical Education and Social Studies

**COY BOLICK** Boone  
 Grammar Grade Education and Social Studies ... Baseball 2.

**MILDRED I. BOLICK** Boone  
 Primary Education ... W.A.A. 4.



MORRIS LEE BRANCH Hickory

Physical Education and Mathematics ... Modern Dance; Varsouviana; Physical Education Club; Men's "A" Club, President 4; Varsity Football 4, Co-Captain 4; *Who's Who Among Students in American Universities and Colleges* 4.

BOBBIE GLENN BRIDGES Caroleen

Primary Education ... Brevard Junior College 1, 2; Y.W.C.A. 4; Future Teachers of America 4.

BOYCE EDMOND BRIDGES Ellenboro

Physical Education and Social Studies ... Gardner-Webb Junior College 1; Physical Education Club 2, 3, 4; B.S.U. 2, 3, 4; Y.M.C.A. 2, 3, 4.

BARBARA CAROL BROOKS North Wilkesboro

Physical Education and Social Studies ... W.A.A. 1, 2, 3, 4; Y.W.C.A. 1, 2; Pep Club 1; Physical Education Club 1, 2, 3, 4.

CATHERINE BROWN Huntersville

Primary Education ... Pep Club 1; Y.W.C.A. 2, 3; Future Teachers of America 4.

SENIORS



CUANSEL T. BROWN Winston-Salem

English and Physical Education ... Science Club 1; Pep Club 3; Student Council 4; *Appalachian Sports* Editor 2, 3, 4; RHODODENDRON Sports Editor 3, 4; Physical Education Club 1, 2, 3; Varsouviana 4; Y.M.C.A. 1, 2; Junior Marshal 3; *Who's Who Among Students in American Universities and Colleges* 4.

BRUCE J. BUCHANAN Minneapolis

Science and Physical Education

JANE BULLOCK Albemarle

English and Physical Education ... I.B.C. 2, 3, 4; Vice-President 3; B.S.U. 1, 2, 3, 4; Secretary 2; B.T.U. Representative 4; RHODODENDRON Staff 4; Physical Education Club 2, 3, 4; May court 1, Herald 2, 3; Vernician Society 2, 3, 4; Pep Club 1, 2; W.A.A. 4; Y.W.C.A. 1, 2, 3, 4.

JEAN BULLOCK Albemarle

English and Physical Education ... Y.W.C.A. 1, 2, 3, 4; Secretary 3; I.B.C. 2, 3, 4; Secretary 3; Pep Club 1, 2; B.S.U. 1, 2, 3, 4; Secretary 3; S.S. Representative 4; RHODODENDRON Staff 4; W.A.A. 4; May Court 1, Herald 2, 3; Vernician Society 2, 3, 4.

ERNESTINE CLAIRE CALLOWAY Southern Pines

Grammar Grade Education ... A.C.E.I. 1, 2, 3, 4; Y.W.C.A. 1, 2, 3, 4; Officer 4; Westminster Fellowship 1, 2, 3, 4; Council 3; President 4; Resident Assistant 3; Chi Lambda Chi 4.

THE

# SENIORS

**DAPHNE CAMPBELL** China Grove  
 Business Education ... Playcrafters 1, 2, 3, 4; Editor *Playbill*;  
 Business Club 2, 3, 4; Secretary 4; Chi Lambda Chi 4; Secretary  
 4; Band 2; Varsouvianna 2, 3; Dauphin President 4; Kappa  
 Delta Phi Staff 3, 4; Assistant Business Manager 3.

**BOBBIE MAE CARNES** Monroe  
 Business Education ... Wingate Junior College 1, 2; Business  
 Club 3, 4; Y.W.C.A. 3, 4; Varsouvianna 4; Future Teachers of  
 America 4.

**ALMA MAE CARPENTER** Shelby  
 Grammar Grade Education ... Gardner-Webb Junior College  
 1, 2; Y.W.A. 4.

**BARBARA MYERS CARPENTER** Mount Holly  
 Primary Education

**HAROLD TOWNES CARTER** Winston-Salem  
 Social Studies and English ... Intramurals.



**IRIS LOVE CHAMPION** Blacksburg, S. C.  
 Grammar Grade Education ... Y.W.C.A. 3, 4.

**HELEN GAYNELLE CHANDLER** Albemarle  
 Music ... Mars Hill Junior College 1, 2; White Hall President  
 3, 4; Music Education Club 3, 4; College Choir 3, 4; House  
 Council 3, 4.

**MITCHELL G. CLARK, JR.** Marion  
 Physical Education and Social Studies ... High Point College  
 1; Physical Education Club 4.

**ROBERT A. CLENDENIN** Greensboro  
 Physical Education and Social Studies ... *Who's Who Among  
 Students in American Universities and Colleges* 4.

**LEONARD E. CLINE** Gastonia  
 Physical Education and Social Studies ... Gardner-Webb Junior  
 College 1, 2; Dance Band 3, 4.

# THE





PEGGY CLINE Kernersville  
English and Physical Education



JEANNE COBLE Burlington  
Grammar Grade Education ... Warren Wilson Junior College  
1, 2; Christian Teachers Club 4; Future Teachers of America 3,  
4; Librarian 4; Westminster Fellowship 3, 4; A.C.E.I. 4;  
Y.W.C.A. 4.



JERRY CLARKE COBLE Greensboro  
Library Science ... Library Science Club 1, 2, 3, 4.



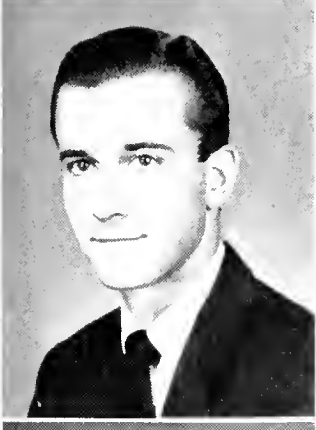
SARA MAE COBLE Burlington  
Grammar Grade Education ... Warren Wilson Junior College  
1, 2; Future Teachers of America 3, 4; Secretary 4; A.C.E.I. 4;  
Y.W.C.A. 4; Westminster Fellowship 3, 4.



MAY FRANCES COCHRANE Charlotte  
Home Economics and Science ... Pep Club 1; Home Economics  
Club 1, 2, 3, 4; Science Club 2, 3, 4; President 3; Westminster  
Fellowship 1, 2, 3, 4.



MADELINE RUTH COFFEY Banner Elk  
Business Education ... Lees-McRae College 1, 2; Majorette 3;  
Business Club 4; Varsouviana 4.



BEN J. CONNELL Concord  
English and Mathematics ... American Youth Foundation  
Scholarship 1; Future Teachers of America 2, 4; B.S.U. 1, 2, 3, 4;  
Officer 2, 3, 4; Y.M.C.A. 2, 3; I.R.C. 2; Forensic Club 1, 2; Male  
Octet 1, 2; Double Octet 2, 3, 4; College Chorus 1, 2, 3, 4;  
President 4; Playcrafters 2, 3, 4; Vice President 3; Chi Lambda  
Chi 4; Orientation Assistant 3.



JOHN PHILLIP COULTER, JR. Catawba  
Science and Mathematics ... Math Club 2, 3, 4; President 4;  
Wesley Fellowship 2, 3, 4; Y.M.C.A. 2, 3; Religious Council 1, 3;  
Future Teachers of America 4; Chief Marshal 3; Chi Lambda  
Chi 4.



TRUMAN A. CRITCHER Blowing Rock  
Physical Education and Social Studies ... Lees-McRae College 1.

RITA FAYE CROWELL Charlotte  
Grammar Grade Education ... Mars Hill Junior College 1, 2;  
Future Teachers of America 3, 4; B.S.U. 3, 4; Y.W.C.A. 4.



BARBARA ANN DAVENPORT Mount Holly  
Grammar Grade Education Gardner Webb Junior College 1, 2.

G. C. DAVIS, JR. Winston Salem  
English and Science Appalachian Staff 2, 3, 4, Sports Editor 3, 4, Pep Club 2, 3, President 3, Vice President Junior Class; Student Council 4, Vice President Student Body 4, Science Club 2, Chi Lambda Chi 3, Senior Superlative; *Who's Who Among Students in American Universities and College* 4.

MARY JEAN DOWSE Davidson  
Business Education Y.W.C.A. 1, 2, Pep Club 1, Business Club 2.

BETTY DIXON Fallston  
Home Economics and Science Home Economics Club 1, 2, 3, 4, Yemican Literary Society 2, 3, 4, Rhododendron Staff 4; Y.W.C.A. 1, 2, 3, 4.

LUCY FLOWERY DIXON Marion  
Library Science Library Science Club 2, 3, 4.



NORMA ARLENE DOUGLAS Piney Creek  
Grammar Grade Education Home Economics Club 1.

LENA DUNCAN Nottingham, Pa.  
Business Education Business Club 2, 3, 4, Y.W.C.A. 2, 3; I.R.C. 3; Future Teachers of America 4, House Council 4.

MARY ANN EDMISTEN Boone  
Science and Physical Education W.A.A. 3, 4, Flying Fish 4, College Chorus 3, 4.

ISABEL ANN EGGERS Boone  
English and Literary Science Band 1, 2, 3, College Chorus 1, 2, 3, B.S.U. Executive Council 2, 3, 4, Appalachian Staff 1, 2, 3, 4, Junior Marshal 3; *Who's Who Among Students in American Universities and Colleges* 4.

LAURA VAN ELLER Lansing  
Home Economics and Science W.C.U.N.C. 1, 2, Home Economics Club 3, 4, Pep Club 3.





JANE GRIGG EURE Lincolnton  
Primary Education ... Y.W.C.A. 3, 4; Lovill House President  
4; Chi Lambda Chi 4; Future Teachers of America 3, 4.

RUSSELL RAY FLINCHUM Danbury  
Science and Social Studies

RACHEL MAE FRANKLIN Spear  
Grammar Grade Education ... Brevard Junior College 1, 2;  
Spanish Club 3; Future Teachers of America 4; *Appalachian*  
Staff 3, 4; Y.W.C.A. 4.

SHIRLEY GOODSON GABRIEL Iron Station  
Physical Education and Mathematics ... Football 1, 2, 3, 4,  
North State Conference 4, Most Outstanding Player 4; N. C. Highest  
Scorer 4; Men's "A" Club 1, 2, 3, 4, Treasurer 3; Co-President of  
Freshman Class; President of Junior Class; President of Student  
Council 4; Westminster Fellowship 3, 4; Varsouvianna 3; Y.M.C.A.  
3; Physical Education Club 2; Chi Lambda Chi 3, 4; Most Popu-  
lar Superlative 3; Senior Superlative; *Who's Who Among Students*  
*in American Universities and Colleges* 3, 4.

JOHN H. GAMBLE Shelby  
Physical Education and Social Studies ... Gardner-Webb Junior  
College 1, 2; Football 3, 4; Men's "A" Club 3, 4.

SENIORS



VIRGINIA LEA GOLSON Danville, Va.  
Primary Education ... Spartanburg Junior College 1, 2; Future  
Teachers of America 3, 4; Christian Teachers Club 4.

CAROL ANN GOODRUM Belmont  
Primary Education ... Y.W.C.A. 1, 2, 3, 4, President 4,  
Westminster Fellowship 1, 2, 3, 4; Varsouvianna 1, 2, 3, 4, Sec-  
retary 3; Junior Marshal 3; A.C.E.L. 3; Future Teachers of America  
4; Cheerleader, Junior Varsity 1, Varsity 2, 3, 4, Chief 4; May  
Court 2; Pep Club 2, 3, 4; Chi Lambda Chi 4; Religious Council  
4; Chorus 2; Christmas Queen 4; *Who's Who Among Students*  
*in American Universities and Colleges* 4.

WADE G. HAMPTON, JR. Winston-Salem  
Business Education ... Mars Hill Junior College 1, 2; Business  
Club 4.

PATRICIA ANN HANKLEY Galax, Va.  
Home Economics and Science ... Home Economics Club 1, 2,  
3, 4, President 4; Cheerleader 2, 3, 4; Homecoming Court 2;  
Christmas Queen 2; May Court 2; Pep Club 1, 2, 3, 4; Var-  
souvianna 4; Orientation Assistant 3; House Council 2, 3;  
W.A.A. 1, 2.

JOANN HARDIN Boone  
English and Mathematics ... Pi Kappa Delta 2, 3, 4, Presi-  
dent 3; Forensic Club 1, 2, 3, 4; *Appalachian* Staff 3, 4.

THE

SENIORS

MICHAEL A. HARRISON Waco  
 Science . . . Gardner Webb Junior College 1, 2; Playcrafters 3, 4; Science Club 3, 4; Y.M.C.A. 3, 4; Wesley Fellowship 3, 4.

NANCY G. HAYNES Yadkinville  
 Grammar Grade Education . . . College Choir 1; Y.W.C.A. 1, 2, 3; Vernian Society 1, 2, 3, 4; Rhythm/Drum Staff 4; Pep Club 3.

ELEANOR RAY HELMS Charlotte  
 Music . . . Orchestra 1, 2, 3, 4; Octet 3, 4; College Chorus 3; Music Education Club 3, 4; B.S.U. 1, 2; Future Teachers of America 4.

WILLA DEAN HERMAN Rhodhiss  
 Grammar Grade . . . Y.W.C.A. 2, 3, 4; Future Teachers of America 3, 4; Pep Club 3, 4; A.C.F.E. 2, 3.

MARTHA ANNE HERRING Blowing Rock  
 Primary Education . . . Future Teachers of America 3, 4; President 4; Varsouviana 1, 2, 3, 4; Vice President 4; Chi Lambda Chi 4; Junior Marshal 3.



CALVIN RAYVON HILLIARD Linwood  
 Grammar Grade Education . . . Y.M.C.A.; Christian Teachers Club; Wesley Fellowship; Religious Council.

BETTY JUNE HOLLANDER Edgemont  
 Grammar Grade Education

BILLY LEE HOLSCLAW Lenoir  
 Grammar Grade Education

CHARLES HOLT Mooresville  
 Business Education . . . Business Club 2, 3, 4.

REBECCA W. HOOVER Lenoir  
 Grammar Grade and Physical Education . . . W.A.A. 1, 2, 3, 4; Women's "A" Club 2, 3, 4; President 4; Y.W.C.A. 1, 2; Student Council 1, 2; Senior Superlative.

THE



JEAN GRAHAM HOPKINS

Beaufort

Science and Social Studies ... Baton Club 1; Band 1, 2, 3, 4; Orchestra 2; *Appalachian* Staff 2, 3; Forensic Club 3, 4; Pi Kappa Delta 2, 4; Debate Team 3, 4; Science Club 3, 4; President 4; I.R.C. 4; Chi Lambda Chi 4; Social Affairs Committee 4.



BRYAN HOICK

Todd

Grammar Grade Education ... I.R.C. 3, 4; *Appalachian* Staff 3.



BOB HUFFMAN

Kannapolis

Grammar Grade Education ... Class President 2, 4; Wrestling 1, 2; Student Council 3; Chi Lambda Chi 4; Canterbury Club 2, President 2.



AGNAS SUE HUNTER

Winston-Salem

Grammar Grade and Physical Education ... W.A.A. 1, 2, 3, 4; Women's "A" Club 2, 3, 4; Flying Fish 1, 2, 3, 4; Modern Dance, Varsouvianna.



KATHRYN GRIFFIN JAMES

Marshville

Business Education ... Wingate Junior College 1, 2; Business Club 3, 4; Y.W.C.A. 3, 4; Future Teachers of America 4.



FRANCES CIVILA JEFFREYS

Creedmoor

Library Science and Grammar Grade Education ... Lees-McRae College 1, 2; Westminster Fellowship 3, 4; Religious Council 4; Y.W.C.A. 3, 4; Library Science Club 3, 4; President 4; A.C.E.I. 3, 4; Vice-President 4; Future Teachers of America 3; Christian Teachers Club 4; Chi Lambda Chi 4.



HONORE E. JENKINS

Polkville

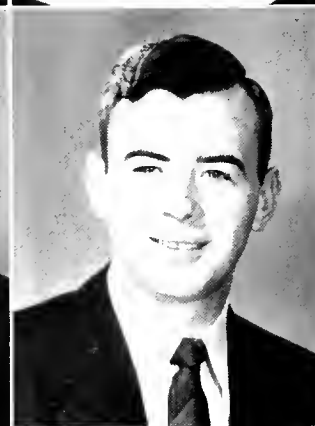
Grammar Grade Education



VIRGINIA JENNINGS

Pores Knob

Library Science ... Y.W.C.A. 3, 4; Library Science Club; I.R.C.



LEONARD L. JOHNSON

Randleman

Library Science and Social Studies ... Library Science Club.

BERT EDWARD JOINES

Trap Hill

Mathematics and Science ... Science Club 1, 2, 3, 4; Y.M.C.A. 2, 3.



MARILYN COLIBAN JONES Sparta  
Grammar Grade Education . . . Western Carolina College 1, 2.

PAULINE JEAN JONES Belmont  
Grammar Grade Education . . . Y.W.C.A. 2.

BILLY ANN KUEHL Lake Lure  
Business Education . . . Business Club 3, 4; W.Y.A. 1, 2, 3; Future Teachers of America 4.

MARY FRANCES KILLBICK Asheville  
Grammar Grade Education . . . Mars Hill Junior College 1, 2; W.Y.A. 3, 4; Appalachian Staff 3, 4; Spanish Club 3; Future Teachers of America 3, 4.

SARAH LUYALEA KIMBALL China Grove  
Primary Education . . . Lutheran Student Association 1, 2; Westminster Fellowship 3, 4; Religious Council 2; Y.W.C.A. 2, 3; A.C.F.E. 1, 2; Band 1, 2; Orchestra 1, 2.



MARVIN CRAIG KING Kannapolis  
Grammar Grade Education and Social Studies . . . Pfeiffer Junior College 1, 2; Y.M.C.A. 3, 4; Future Teachers of America 1, A.C.F.E. 3.

BUDDY C. A. KUEHL Concord  
Physical Education and Social Studies . . . Baseball 1, 2, 3, 4; Basketball Manager 3, 4; Men's "A" Club; Y.M.C.A.; Physical Education Club; Intramurals; Soccer 2, 3; Football 2, 3; Track.

BONNIE MALONE Hickory  
Primary Education . . . Tenor Blyne 1, 2; American Society 3, 4; Pep Club 3, 4; Max Court 3; Appalachian Staff; Business Assistant.

A. C. FARRINORI Winston Salem  
Mathematics and Physical Education . . . Who's Who Among Students in American Universities and Colleges 4.

JOHN H. EASLEY Walnut Cove  
Grammar Grade Education . . . BSU 1, 2, 3, 4; Executive Council 3, 4; Religious Council 3.



SARA FAYE LASSITER Troy  
 Business Education ... Playcrafters 1, 2, 3, 4; Secretary 4;  
 Alpha Psi Omega 4; Business Club 2, 3, 4; House Council 3.

PEGGY LAUGHLIN Marion  
 Primary Education ... Brevard Junior College 1, 2; Y.W.C.A.  
 4; Lovill Vice-President 4; Chi Lambda Chi 4; House Council 4.

ARCH LEE Polkville  
 Science and Physical Education ... Physical Education Club  
 2, 3, 4; Westminster Fellowship 4; Y.M.C.A. 2.

EDWARD D. LEE Polkville  
 Physical Education and Mathematics ... J. V. Basketball 1;  
 Physical Education Club 2, 3, 4.

JEAN LINEBACK Winston-Salem  
 Primary Education ... Y.W.C.A. 1, 2, 3, 4; A.C.E.I. 1, 2, 3,  
 4; Vernician Society 2, 3, 4; House Council 3.

SENIORS



GEORGE LITTMAN Elkin  
 Grammar Grade Education ... Georgia Tech 1; College Chorus  
 2; Double Octet 2; Study Adviser 4.

BEVERLY ANN LONON Marion  
 Grammar Grade Education ... W.C.U.N.C. 1; W.A.A.  
 2, 3, 4; Women's "A" Club 4; Pep Club 4; Y.W.C.A. 4.

BARBARA ANN LOWDER New London  
 Physical Education and Mathematics ... Physical Education  
 Club 2, 3, 4; Y.W.C.A. 2; Women's "A" Club 4; Chi Lambda  
 Chi 4; Appalachian Staff 2, 3, 4; W.A.A. 2, 3, 4, President 4;  
 Social Affairs Committee 4; Senior Superlative.

EUZEL MCGINNIS Chesnee, S. C.  
 Home Economics and Science ... Spartanburg Junior College  
 1; Home Economics Club 2, 3, 4.

SUE WITHERS McMILLAN Lenoir  
 English and Social Studies ... W.C.U.N.C. 1; Playcrafters 2,  
 3, 4; Appalachian Staff 2, 3; J.V. Cheerleader 3; Pep Club 2, 3;  
 Varsouviana 4.

THE

SENIORS

JIMMIE EDWIN MARTIN Gastonia  
 Physical Education and Social Studies ... Football 1, 2, 3, 4;  
 Men's "A" Club 2, 3, 4; Varsouvianna 2, 3, 4; Modern Dance 3,  
 4; Physical Education Club 2, 3.

ARLENE MAST Boone  
 Library Science ... Band Majorette 1, 2, 3, 4; College Chorus  
 1, 2; Baton Club 1; Varsouvianna 3, 4; Library Science Club 4;  
 B.S.U. 1.

CAROLYN MAST Valle Crucis  
 English and Business Education ... Business Club 1, 2, 3, 4;  
 Playcrafters.

JOHN HORTON MILLER Laurel Springs  
 Grammar Grade Education

SARA ELIZABETH MILLER Boonville  
 Grammar Grade Education ... Appalachian Staff 2, 3, 4, Cir-  
 culation Manager 4; Playcrafters 1, 2; Wesley Fellowship 1, 2, 3, 4;  
 W.A.A. 3, 4; Future Teachers of American 3; Varsouvianna 4.



RAYMOND PAUL MILLER Apple Grove  
 Mathematics and Science ... Math Club 1, 2, 3, 4.

JAMES MARK MOFFETT Charlotte  
 English and Social Studies ... Spanish Club 3; Appalachian  
 Staff 3, 4; I.R.C. 3, 4; President 4; Chi Lambda Chi 4; Social  
 Affairs Committee 4; Science Club 3, 4; Who's Who Among  
 Students in American Universities and Colleges 4.

GLADYS REBECCA MOORE Pilot Mountain  
 Business Education ... Business Club 1, 2, 3; House Council  
 2; Y.W.C.A. 1, 2, 3; Treasurer 3.

WILLIAM HORACE MORGAN Laurinburg  
 Mathematics and Physical Education ... Physical Education  
 Club 1, 2, 3; Math Club 2; Y.M.C.A., Vice-President 3; Pep Club,  
 Vice-President 3; Student Council 1, 2, 3, 4; Freshman Class  
 President; Wrestling 2; Treasurer of Student Council 3; Campus  
 Superlative, Most Valuable; Junior Marshal 3; Who's Who Among  
 Students in American Universities and College 3, 4.

ANN MOSES Goldston  
 Primary Education ... Vernician Society 2, 3, 4; House Council  
 3; Rhododendron Staff 4; Appalachian Staff 3, 4; Pep Club 3, 4.

THE





MARY ALICE MOSES Pittsboro  
Primary Education ... A.C.E.I. 1, 2, 3, 4.

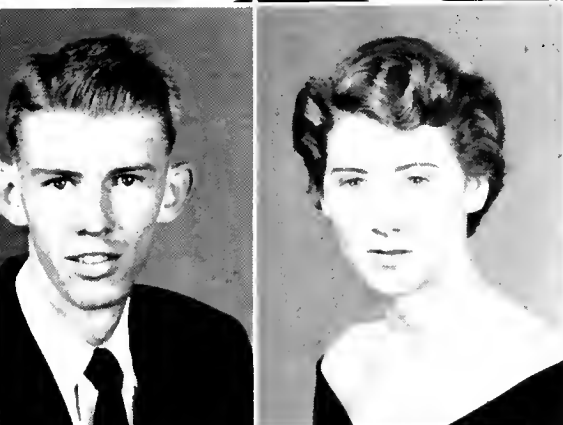
BARBARA ANNA NANCE Cornelius  
Primary Education ... Future Teachers of America 4; Y.W.C.A. 1, 2, 3, 4; Pep Club 3, 4; A.C.E.I. 1, 2; House Council 4.

PEGGY BENNETTE NEEL Cherryville  
Home Economics and Science ... Spanish Club 1; Home Economics Club 1, 2, 3; W.A.A. 2; Varsouvianna 2.

CLARA CHRISTINE NEILL Bald Creek  
Primary Education ... Future Teachers of America 4; Pep Club 3, 4; Wesley Fellowship 1, 2, 3, 4.



MARTIN EUGENE NICHOLS East Bend  
Mathematics and Science ... Gardner-Webb Junior College 1, 2; B.S.U. Executive Council 4; Science Club 4.



NEVA ANN NORRIS Boone  
Grammar Grade Education ... College Chorus 1, 2; Playcrafters 1, 2, 3; Band 1.

LAWRENCE LEE OLDAKER Norfolk, Va.  
Physical Education and Social Studies ... Norfolk Division, College of William and Mary 1; Wrestling 2; Men's "A" Club 2, 3, 4; Physical Education Club 2, 3, 4; Varsouvianna 2, 3, 4; Appalachian Staff 3, 4; Assistant Intramural Director 3.



JACK B. PENNELL Lenoir  
Physical Education and Science ... Football 1, 2, 3, 4; Men's "A" Club 2, 3, 4.

JOE B. PERRY Banner Elk  
Grammar Grade Education ... Lees-McRae College 1, 2; Y.M.C.A. 3, 4; Future Teachers of America 3, 4; Pep Club 3, 4.

VIOLET MYRTLE PHILLIPS Greenville, S. C.  
Primary Education ... Lynchburg College 1, 2, 3.

**IRA JANE PLOFF** Concord  
 Business Education Pfeiffer Junior College 1, 2; Band 3;  
 4; Future Teachers of America 4; Business Club 4.

**JOHN NICHOLAS PYCHY** Jonesville  
 Mathematics and Physical Education Basketball 1, 2, 3,  
 4; Men's "A" Club 1, 2, 3, 4; Physical Education Club 2, 3, 4;  
 President 3; *Who's Who Among Students in American Universities  
 and Colleges* 4.

**FRANCIS M. RAINE** Elizabethton, Tenn.  
 Business Education

**CATHERINE RAY** Mars Hill  
 Music Mars Hill Junior College 1, 2; Dorm Vice President  
 3, 4; Music Education Club 3, 4; College Chorus 3, 4; House  
 Council 3, 4.

**FLEWELLYN RAY** Burnsville  
 Home Economics and Science Greensboro College 1; Home  
 Economics Club 3, 4; Playcrafters 2, 3; *Appalachian* Staff 2, 3;  
 Pep Club 2, 3.



**RUTH YANCEY RAY** Newland  
 Grammar Grade Education Florida State University 1, 2.

**BESSY REA** Matthews  
 Home Economics and Science Home Economics Club 1, 2,  
 3, 4; Vice President 4; Westminster Fellowship 1, 2, 3, 4; Secre-  
 tary 4; Religious Council 3, 4; Dorm Counselor 3; Christmas Queen  
 3; Treasurer of Junior Class.

**THOMAS RICHARDSON** Boone  
 Science and Social Studies

**SADIE ROBBINS** Harris  
 Grammar Grade Education Pep Club 3, 4; *American So-  
 cety* 2, 3, 4.

**RODNEY WILLIAM ROBBIS** Asheville  
 Business Education University of Maryland 1, 2; Business  
 Club 3, 4.





REBEKAH LEE ROBERTSON Winston-Salem  
Physical Education and Spanish ... Flying Fish 1, 2, 3, 4; Physical Education Club 3, 4; Varsouviana 3, 4; Modern Dance Club 3, 4; Spanish Club 3, 4; W.A.A. 2, 3.

BETTY ANN ROBINSON Hickory  
English and Spanish ... Lenoir Rhyne College 1, 2; Appalachian Staff 3, 4; Pep Club 3, 4; Homecoming Court 3; May Day Court 3; Spanish Club 3, 4; Class Secretary 4.

PEGGY SHANNON ROGERS Hendersonville  
Grammar Grade Education ... George Peabody College 1, 2; College Chorus 3, 4; Future Teachers of America 4; Y.W.C.A. 1, 2, 3, 4.

MARY LOUISE ROSS Spruce Pine  
Grammar Grade Education ... Y.W.A.; Pep Club; B.S.U.

EDGAR B. ROUTH Franklinville  
Mathematics and Physical Education ... Physical Education Club 1, 2, 3; J.V. Basketball 2, 3; Y.M.C.A. 2, 3; Westminster Fellowship 3, 4; RHODODENDRON Staff 4.

SENIORS



RUTH SCOTT Lewisville  
Business Education ... Vernian Society 3, 4; Business Club 1, 2, 3, 4; Varsouviana 3.

BILL E. SHOAF Winston-Salem  
Mathematics and Physical Education ... Physical Education Club; Math Club; Intramurals.

CLAUDE RAY SHRUM Newton  
Business Education ... Business Club 1, 2, 3, 4, President 4; Men's "A" Club 2, 3, 4; Y.M.C.A. 1, 2, 3, 4, President 3; Wrestling 1, 2; Football 1; Student Council 3; Secretary 3; Chi Lambda Chi 3, 4, President 4; Religious Council 3; Class Vice-President 3; Who's Who Among Students in American Universities and Colleges 3.

MARGARET SMITH SILVER Micaville  
Grammar Grade Education ... Pep Club 1, 2, 3, 4, Secretary 3, 4; House Council 2, 3, 4, President 4; RHODODENDRON Staff 3, 4; Vernian Society 3, 4; Wesley Fellowship 1, 2; Chi Lambda Chi 4.

MARY JANE SISK Bessemer City  
Primary Education ... Gardner Webb Junior College 1, 2; Future Teachers of America 3; B.S.U. 3, 4.

THE

# SENIORS

**HAROLD S. SONGER** Sherwood  
 English and Social Studies ... Debating; Pi Kappa Delta 2; Senior Superlative; *Who's Who Among Students in American Universities and Colleges* 4.

**SAMUEL CALHOUN SNIPES** Forest City  
 Business Education ... Mars Hill Junior College 1, 2; Business Club 3, 4.

**MARY ANN STAMEY** Polkville  
 Primary Education ... Y.W.C.A. 1; Pep Club 1; A.C.E.I. 3; Future Teachers of America 4.

**MYZELLE ROSA STANLEY** Elkin  
 Grammar Grade Education ... B.S.U. 1, 2, 3, 4, Greater Council 2, 4; A.C.E.I. 2, 4; Future Teachers of America 3, 4; Publicity Chairman 4; Y.W.C.A. 2; House Council 1, 2, Secretary 2; Student Tutor 4; Y.W.A. Secretary 4.

**MARTHA EMILY STEVENS** Asheville  
 English and Social Studies ... Orchestra 2, 3, 4; *Appalachian* Staff 2, News Editor 3, Business Manager 4; Chi Lambda Chi 4, Social Affairs Committee 4; *Who's Who Among Students in American Universities and Colleges* 4.



**PATSY RUTH STUBBS** Shelby  
 Grammar Grade Education ... Mars Hill Junior College 1, 2; Playcrafters 3, 4; A.C.E.I. 3, 4; Treasurer 4; B.S.U. Executive Council 4; Y.W.C.A. 4; Future Teachers of America 4.

**WILLIAM EUGENE SWEETZ** Kings Mountain  
 Grammar Grade Education ... Playcrafters 1, 2, 3, 4, Vice-President 2, President 3; Alpha Psi Omega 4; Chi Lambda Chi 3; Wesley Fellowship 1, 2, 3, 4, Editor "Challenge" 2, Co Editor 3; Council 3; Y.M.C.A. 2, 3, 4.

**LOIS F. SWICEGOOD** Woodleaf  
 Primary Education ... Y.W.C.A. 1, 2, 3, 4; Science Club 1; Westminster Fellowship 1, 2, 3, 4.

**NANCY ANN TATUM** China Grove  
 Grammar Grade Education ... College Choir 1, 2, 3, 4; Y.W.C.A. 1, 2; Pep Club 1, 2, 3, 4.

**RALPH S. THOMPSON** Boone  
 Grammar Grade Education

# THE



**JERRY CLYDE TRAMMELL** Shelby  
Physical Education and Social Studies ... Gardner Webb Junior College 1, 2; Basketball 3, 4; Men's "A" Club 3, 4; Physical Education Club 3, 4; President 4; Varsouviana 4; *Appalachian* Staff 4.

**RAY SPENCER TRIPLETT** Wilkesboro  
Physical Education and Social Studies ... Football 1, 2, 3, 4; Baseball 1; Men's "A" Club 1, 2, 3, 4; Chaplain 1, 2, 3; Marshal in Summers of 1952, 1953; Physical Education Club 1, 2, 3, 4.

**VERA BERNICE TROUTMAN** Barium Springs  
Grammar Grade Education ... Mitchell Junior College 1, 2; Y.W.C.A. 3, 4; Lutheran Students' Association 3, 4; Religious Council 3, 4; Future Teachers of America 4; Christian Teachers Club 3, 4.

**ROBERT MINIS WAKEFIELD** Deland, Fla.  
Science and Social Studies

**O. D. WALLACE, JR.** Carthage  
Physical Education and Social Studies ... Basketball 1, 2, 3, 4; Men's "A" Club 2, 3, 4; Physical Education Club 1, 2, 3.



**ALBERT C. WALSH** Purlear  
Business Education and Social Studies ... Spanish Club 1; Business Club 2, 3, 4.

**EVELYN WASHBURN** Shelby  
Grammar Grade Education ... Vernician Society 2, 3, 4; Secretary 3; Y.W.C.A. 2; Future Teachers of America 2, 3; Business Club 4; RHODODENDRON Staff 3, 4; Editor 4; *Who's Who Among Students in American Universities and Colleges* 4.

**ROY THOMAS WATERS** Morganton  
Physical Education and Science ... University of North Carolina 1, 2; RHODODENDRON Staff 4; *Appalachian* Staff 3, 4; Physical Education Club 3, 4; Christian Teachers Club 4.

**ELIZABETH JEAN WEAST** Mount Ulla  
Grammar Grade Education ... Westminster Fellowship 1, 2, 3, 4; Christian Teachers Club 4; Y.W.C.A. 3, 4; Library Science Club 2; *Appalachian* Staff 3; President of Religious Council 4.



**PAUL E. WELBORN** North Wilkesboro  
Social Studies and Physical Education ... Football 1, 2, 3, 4; Physical Education Club 2, 3, 4; Varsouviana 3, 4.

# THE SENIORS

MARIAN MILLER WHITNER Raleigh  
Home Economics and Science Home Economics Club 3, 4.

CHARLES WAYNE WHITESIDES Gaffney, S. C.  
Physical Education and Social Studies ... Football 1, 3, 4, 5; Physical Education Club 2, 3, 4; Men's "A" Club 2, 3, 4; Sergeant at Arms 4.

ALICE ANNE WILDE Asheville  
English and Grammar Grade Education ... Chi Lambda Chi 3, 4; Appalachian Staff 1, 2, 3, 4; News Editor 2; Associate Editor 3; Editor 4; I.R.C. 2, 3, 4; Vice President 4; Future Teachers of America 3, 4; Secretary-Treasurer 3; Orientation Assistant 3; *Who's Who Among Students in American Universities and Colleges* 4.

JACQUELINE A. WILLIAMS Monroe  
Physical Education and Social Studies ... Wingate Junior College 1, 2; W.V.A. 3, 4; Varsouviana 4; Physical Education Club 3, 4.

EVA JOAN WOOD Winston Salem  
Grammar Grade Education ... High Point College 1, 2; Appalachian Staff 3, 4; Vernician Society 3, 4; Varsouviana 4; Vice President Dauphin 4; Pep Club 3.

JOHN FRANKLIN WOODRUFF Laurel Springs  
Science and Social Studies ... Pfeiffer Junior College 1, 2; Y.M.C.A. 3, 4; Science Club 4.

RICHARD LEE ZUBER Hickory  
Mathematics and Social Studies ... Math Club Secretary-Treasurer 2; I.R.C. 2, 3, 4; President 3; Forensic Club 3, 4; Pi Kappa Delta 3, 4; Reporter 4; Orientation Assistant 3; Y.M.C.A. 2, 3; Secretary-Treasurer 3; Student Council 3, 4; Chi Lambda Chi 3; Class Vice President 1; *Who's Who Among Students in American Universities and Colleges* 3, 4.





OFFICERS

*Left to right:*

BOBBY SNEAD

MARY HUDSON

JEAN McNEIL

HAROLD LAKEY

*President*

*Treasurer*

*Secretary*

*Vice-President*

*Juniors*



JOANNE BRANNON ALDRIDGE .....Boone  
 RACHEL MARIE ANDERSON .....Wilkesboro  
 REBECCA ANNELEE AUSTIN .....Montoc  
 DOROTHY MAE BARBER .....Charlotte  
 RICHARD THOMAS BARKER .....Mooresville

DAVID FRANKLIN BARNHARDT .....Oakboro  
 DAVID WOOD BARRETT .....Amherst, Va.  
 CAROLYN BAUCOM .....Concord  
 HAROLD BENNETT .....North Wilkesboro  
 ANNE BIGHAM .....Morgantown

EDWARD LEE BLACK .....Lenoir  
 EDITH ADLAIDE BLAIR .....Jonesboro  
 JEANETTE BLANTON .....Shelby  
 JOAN FRANCES BLEVINS .....North Wilkesboro  
 MARY MILLER BLEVINS .....Crumpler

NANCY ANN BOGER .....Mocksville  
 JEAN ALICE BOILER .....Pelzer, S. C.  
 CLEO ELIZABETH BOUICK .....Boone  
 LAURA JEWELL BORDERS .....Shelby  
 ELIZABETH ANN BRAWLEY .....Mooresville

GEORGE W. BRAWLEY, JR. ....Mooresville  
 HELEN BRAZIL .....Mars Hill  
 BOBBY STANLEY BRIDGES .....Rutherfordton  
 GEORGE DONALD BRIGHI .....High Point  
 BILL L. BROWN .....Mooresville



# J U N I O R S

GLADYS NELL BROWN .....Belmont  
 MARY JEANNE BROWN .....Alexander  
 WAYNE DAVID BURRIS .....Oakboro  
 DOROTHY LOUISE BYERS .....Forest City  
 BILLY BRYAN CANSLER .....Troutman

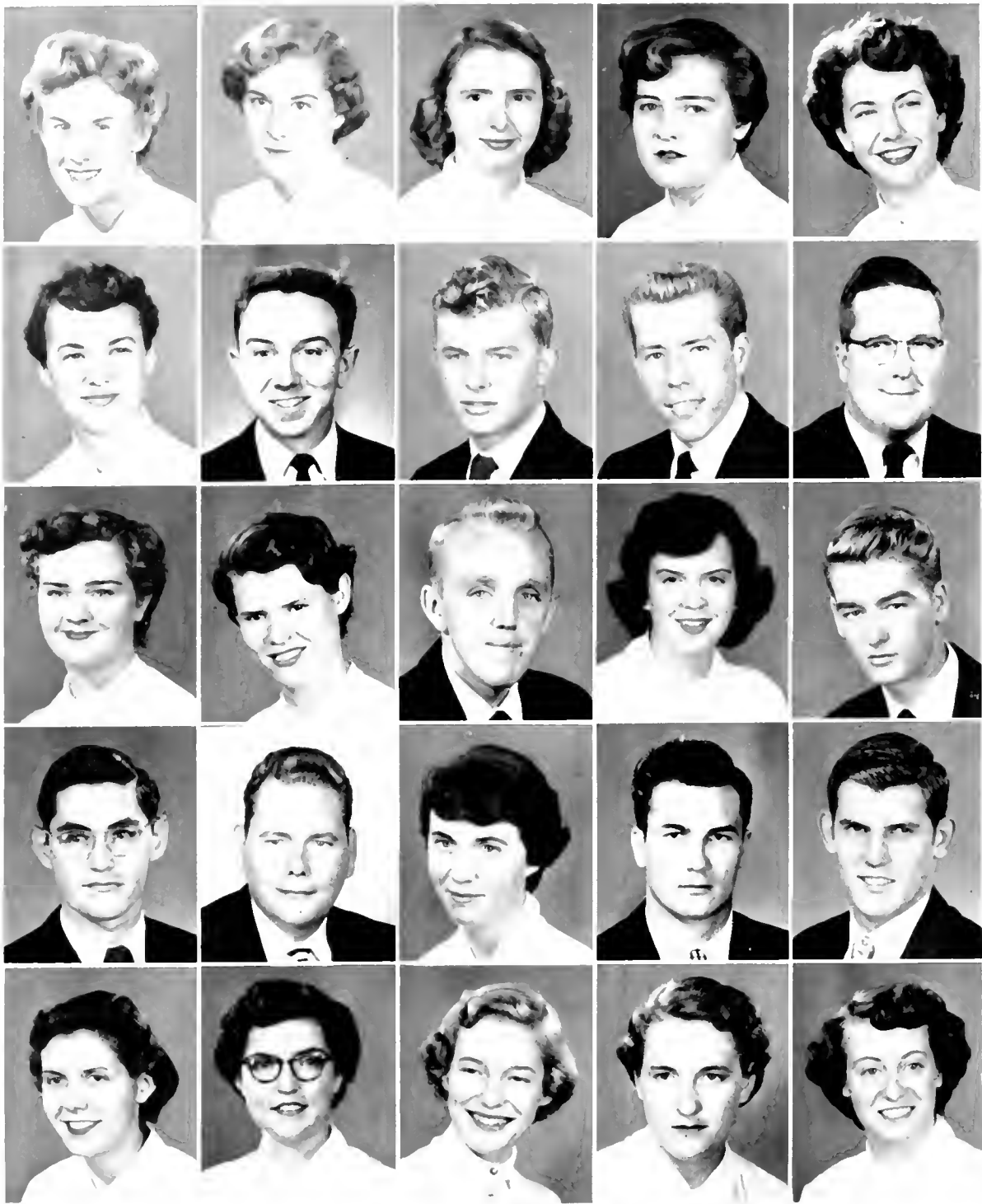
ROSA LEE CANTRELL .....Walnut  
 BURMAH KELLY CARPENTER .....Mount Holly  
 MARTHA KATE CASHION .....Cornelius  
 GEORGIA M. CHEEK .....Deep Gap  
 CLARA REBECCA CHURCH .....Granite Falls

MARY SHAW CLEMENT .....Salisbury  
 HELEN JEAN COFFEY .....Banner Elk  
 SARAH COOK COLLINS .....Boone  
 CAROL B. CORBETT .....Spring Hope  
 LENORE GREENE CRITCHER .....Blowing Rock

NANCY JACQUELINE DICKERSON ....Winston Salem  
 JULIA E. DUBOSE .....Arden  
 HOPE L. DYSON .....Taylorsville  
 RODDY P. EAVES .....Charlotte  
 JOE ALLEN EDMINSTEN .....Boone

MARTELLA ELIZABETH EDWARDS .....Marshville  
 JOAN ELLER .....Landis  
 PAUL DAVIS ELLER .....Statesville  
 ALLEN RALPH ELLINGTON .....Belmont  
 ELIZABETH ANN ELLIOTT .....Polkville





FRANCES JUNE EVANS ..... Statesville  
 LAVENE FALLS ..... King Mountain  
 DOROTHY FEARRINGTON ..... Pfafftown  
 SYBIL CONSTANCE FLEMSTER ..... Union Grove  
 BETTY LOU FINCH ..... Ruby, S. C.

PATRICIA ANN FINGER ..... Maiden  
 ROBERT LEE FLEMING ..... Yadkinville  
 WILLIAM CHARLES FLETCHER ..... Elkin  
 JOHN ROBERT FOSTER ..... North Wilkesboro  
 EVERETTE B. FOX, JR. .... Boone

NORMA SMITH GABRIEL ..... North Wilkesboro  
 LYDIA FAYE GLOUCE ..... Micaville  
 CHARLES FATHER GRABER ..... China Grove  
 BETTY LEE GRAGG ..... Newland  
 DANSH LEE GRAY ..... Kannapolis

GEORGE P. GRILL ..... Valdese  
 JIM H. GRISSOM ..... State Road  
 JO ANNE GROSS ..... Harmony  
 CHARLES T. HALES ..... Warsaw  
 SAMUEL SCOTT HANDBRICK ..... Shelby

JOAN HARRISON ..... Cherryville  
 ORA LEE HELMS ..... Monroe  
 HELEN JURETTA HEMPHILL ..... Rutherfordton  
 MARY LUCILLE HEMPHILL ..... Nebo  
 FRANCIS JOSEPHINE HENDRIX ..... Hays



# J U N I O R S

CARL HENRY .....Conover  
 ANNE E. HENSON .....Sherwood  
 DON W. HIATT .....Mount Airy  
 BUSTER M. HICKS .....Newland  
 MARY ELIZABETH HIGGINS .....Hays

BARBARA ANNE HINE .....Winston Salem  
 BETTY FAYE HINES .....Rutherfordton  
 BETTY JEAN HOLLAR .....Yadkinville  
 SARAH NELL HOOTS .....Union Grove  
 JACOB G. HORD .....Kings Mountain

LORETTA M. HOWE .....Burlington  
 MARY J. HUDSON .....Greensboro  
 BETSY JUNE HUGHES .....Boone  
 INA RUTH HURLEY .....Jefferson  
 ELIZA MAE JARVIS .....Mars Hill

JOHN BROADUS JOHNSON, JR. ....Belmont  
 MARY ANN JOHNSON .....Greensboro  
 MARY ELLEN JOHNSON .....Hays  
 FRANKLIN M. JONES .....Reidsville  
 JACKIE JONES .....Winston-Salem

SHIRLEY NEAL JONIS .....Belmont  
 SARAH EMILY KEATON .....Anderson, S. C.  
 PEGGY COLE KELLER .....Asheville  
 HAROLD DEAN LAKEY .....Boonville  
 JOYCE LAMB .....Asheville





HELEN KATHRINE LANGLEY .....Laurinburg  
 MARY ANN LANZ .....Lincolnton  
 NANCY JEAN LATHAM .....Mocksville  
 PHYLLIS RAY LATHMORE .....Ellenboro  
 JACK LEONARD LAWING .....Lincolnton

REGINALD LAVON LAY .....Belmont  
 TESS LEDBETTER .....Hendersonville  
 CLARENCE HENRY LEE, JR. ....Reidsville  
 DONALD R. LINBERGER .....Gastonia  
 BETTY ROSE LITTLE .....Denver

MARY MAGDALENE LITTLE .....Stanfield  
 PEGGY SUE LITTLE .....Monroe  
 KATHRYN ANN LOUI .....North Wilkesboro  
 HOPE LOWMAN .....Hickory  
 MARIHA A. McAULEY .....Statesville

JAMES KIRK McBLE ..... Spruce Pine  
 MALCOLM WORTH McDONALD .....Carthage  
 BETTY MARI McGLE .....Lenoir  
 ISA JEAN McNILL .....Purlear  
 ANNIE BAI MARTIN .....Lenoir

BEN MAST .....Sugar Grove  
 MARGORIE ANN MAST .....Sherwood  
 RUBY FAYE MAST .....Rominger  
 JANET MATTHEWS .....Boonville  
 DORIS TORNA MEDLIN .....Monroe

# J U N I O R S

THELMA ELAINE MEDLIN .....Monroe  
 DELMAS VERNEL MENDENHALL .....Lewisville  
 CAROL M. MILKS .....Wadesboro  
 DENT MILLER .....Statesville  
 MYRTLE IRIS MILLER .....Mount Airy

KATHRYN ANNE MILLSAPS .....Hiddenite  
 LOUISE JANETTE MITCHELL .....Zionsville  
 ESTHER MOORE .....Lenoir  
 METTA ELIZABETH MOORE .....Hoffman  
 JOHN W. MORETZ .....Boone

REBECCA MOXLEY .....Laurel Springs  
 DAVID COLON NIFONG .....Morganton  
 BETTY ANN NOLAND .....Waynesville  
 COILA ANN OLLIS .....Morganton  
 MAGNOLIA OXENDINE .....Pembroke

JAMES R. PACE .....Saluda  
 WILLIAM E. PAGE .....Belmont  
 JANICE REBECCA PARKER .....Hayesville  
 NELDA YVONNE PERRY .....Morganton  
 POLLY ANNA PLUMMER .....Cleveland

LEL C. POE .....Elk Park  
 ALENE QUEEN .....Shelby  
 GWYNN WILLIAM RAMSEY .....Drexel  
 MARIE REAVIS .....Yadkinville  
 JERRY GLENN REID .....Granite Falls





GEORGE LOU REINS ..... North Wilkesboro  
 DORIS KAY RHYNE ..... Spruce Pine  
 MARGIE JEAN RHYNE ..... Gastonia  
 BILLIE SUE RICHARDSON ..... Bessemer City  
 DUANE ROBINSON ..... Charlotte

MARGARET JANE ROBINSON ..... Hickory  
 PHYLLIS ROSEMAN ..... China Grove  
 ELLEN GRACE ROUTH ..... Robbins  
 BETTY JOY SHELLEM ..... Denver  
 FRED L. SHOAF ..... Cooleemee

ELEANOR EAVE SHULL ..... Drexel  
 NIRA O. SLEDGE ..... Burlington  
 INA SMITH ..... Lowgap  
 JAMES WILLIAM SMITH ..... King  
 JOANNE CORNELIA SMITH ..... Forest City

EDELL LOUISE SMOOT ..... Hays  
 JACQUELINE SNYDER ..... Winston Salem  
 MINYONNE SOJOURNER ..... Drexel  
 FORTHE LAWRENCE STOUT ..... Vilas  
 BILLY JOANNE SUDDELTH ..... Enoir

PATRICIA IRENE SUMROW ..... Charlotte  
 ALICE ELIZABETH SWANN ..... Jeard  
 BELVA LEE TAYLOR ..... Mt. Pleasant, S. C.  
 COY E. TEMPLE ..... Lexington  
 HILDA THOMPSON ..... Mooresville

# J U N I O R S

BRUCE J. TRAMMELL ..... Shelby  
 NED R. TRIVETTE ..... Reese  
 CAROLYN FRANCES TURNER ..... Greensboro  
 JANICE H. UPCHURCH ..... Knightdale  
 SUE VANCE ..... Boone

SUSIE JEANETTE VANNOY ..... Millers Creek  
 MARIE VAUGHT ..... Winston-Salem  
 ROSETTA MAE WALSH ..... Purlear  
 ALICE ELIZABETH WALKER ..... Morganton  
 ANNE CARROLL WALKER ..... Morganton

NANCY LOU WALKER ..... Hillsboro  
 HAZEL VIRGINIA WALL ..... Spindale  
 WILLIAM R. WARLICK ..... Lincolnton  
 BETTY ANN WARREN ..... Roxboro  
 NANCY AMELIA WATERS ..... Forest City

MARTHA ANN WATKINS ..... Cliffside  
 LORA JACQUELINE WEATHERS ..... Lattimore  
 HARRY LEE WELCH ..... Winston-Salem  
 DORIS JEAN WELLS ..... Hamptonville  
 ROBERT B. WESTBROOK ..... Rock Hill, S. C.

BEN KNOX WHITE ..... Salisbury  
 MARY JANE WHITE ..... Concord  
 AUDREY LEIGH WHITTINGTON ..... Purlear  
 BETTY SUE WILLIAMS ..... Matthews  
 MILDRED GENELA WILLIAMS ..... Hudson





# J U N I O R S

GAYNELLI B. WILSON ..... Boone  
MAUDE WILSON ..... Reese  
SANDRA LEE WILSON ..... Asheville  
HAROLD DONALD WOOD ..... High Point  
GRETA JANE WOOLLEN ..... Jonesville

ANN OLETA WRIGHT ..... Greenville  
FRANCIS ELIZABETH YOUNG ..... Grassy Creek





OFFICERS

*Left to right:*

JOHNNY MATTHEWS

ELIZABETH EARGLE

PETE LOVETT

ERNESTINE ROSS

*President*

*Vice-President*

*Treasurer*

*Secretary*

*Sophy*





# SOPHOMORES

KATHLEEN ABEE  
 WAYNE H. ABERNETHY  
 NANCY ANNE ALEXANDER  
 BEN ALLEN

Vale  
 Hildebran  
 Harrisburg  
 Shelby

SUZANNE ARWOOD  
 LARRY AUTEN  
 PEGGY JO BADGETT  
 LUCY BETTY BARKER

Kings Mountain  
 Belmont  
 Dobson  
 Roaring River

BOBBIE JEAN BARR  
 WILLIAM HARDING BENSON  
 JUANITA BEROTH  
 NINA LEE BOSWELL

King  
 Mocksville  
 Winston-Salem  
 Graham

NANCY LOUISE BOWEN  
 BETTY JUNE BOYD  
 MARGARET EDITH BRACY  
 FERNE BRANDON

Pinnacle  
 Kings Mountain  
 Ahsokie  
 Lexington

PAUL T. BROOKSHIRE  
 BETTY JANE BROWN  
 ALFRED BUMGARNER  
 PEGGY ROSE BUMGARNER

Boone  
 Red Springs  
 Shelby  
 Millers Creek

FRANCES VIRGINIA BURCH  
 EMILY JO BURGESS  
 NANCY CATHERINE CALDWELL  
 HATTIE FAYE CALTON

Bat Cave  
 Rocky Mount  
 Charlotte  
 Bostic

MELVIN CARPENTER  
 JEAN CARTER  
 ELIZABETH ANN CHAMBERS  
 GOLDA CHAPMAN

Three Mile  
 Gaffney, S. C.  
 Winston-Salem  
 Hildebran

HELA LOUISE CHURCH  
 MARY LUCILLE CHURCH  
 BILLY CLARK  
 JOHN H. CLONTZ

Millers Creek  
 Lenoir  
 Millers Creek  
 Lenoir

# SOPHOMORES

JEANNA MAE COFFEY  
EDWARD RANDOLPH COLLINS  
PEGGY CONRAD  
MARGARET ANN COZART

Hudson  
Rockingham  
Winston-Salem  
Mocksville

JAMES MARSHALL CRAIG  
MARTHA JANETTE CRUMP  
ROBERT EUGENE CULBRETH  
R. E. CUMMINGS

Charlotte  
Lenoir  
Ellenboro  
Winston-Salem

WILLARD DANCY  
BARBARA ANN DAVIS  
EUGENIA RUTH DAVIS  
JOE LLOYD DAVIS, JR.

Wilkesboro  
Winston-Salem  
Biltmore  
Hartsville, S. C.

DON ALLEN DEATON  
MARJORIE DELLINGER  
DORIS JEAN DIXON  
MARLENE DOCKERY

Morganton  
Crossnore  
Ramseur  
Wilkesboro

SARA LIND DOWLING  
DOROTHY MAE EADES  
ELIZARETH ANN EARGLE  
BEULAH G. EDWARDS

Boone  
Catawba  
Salisbury  
Sparta

DORIS D. EDWARDS  
JEANNETTE LOUISE EDWARDS  
NORMA JEAN EDWARDS  
CHRIS ELLIOTT

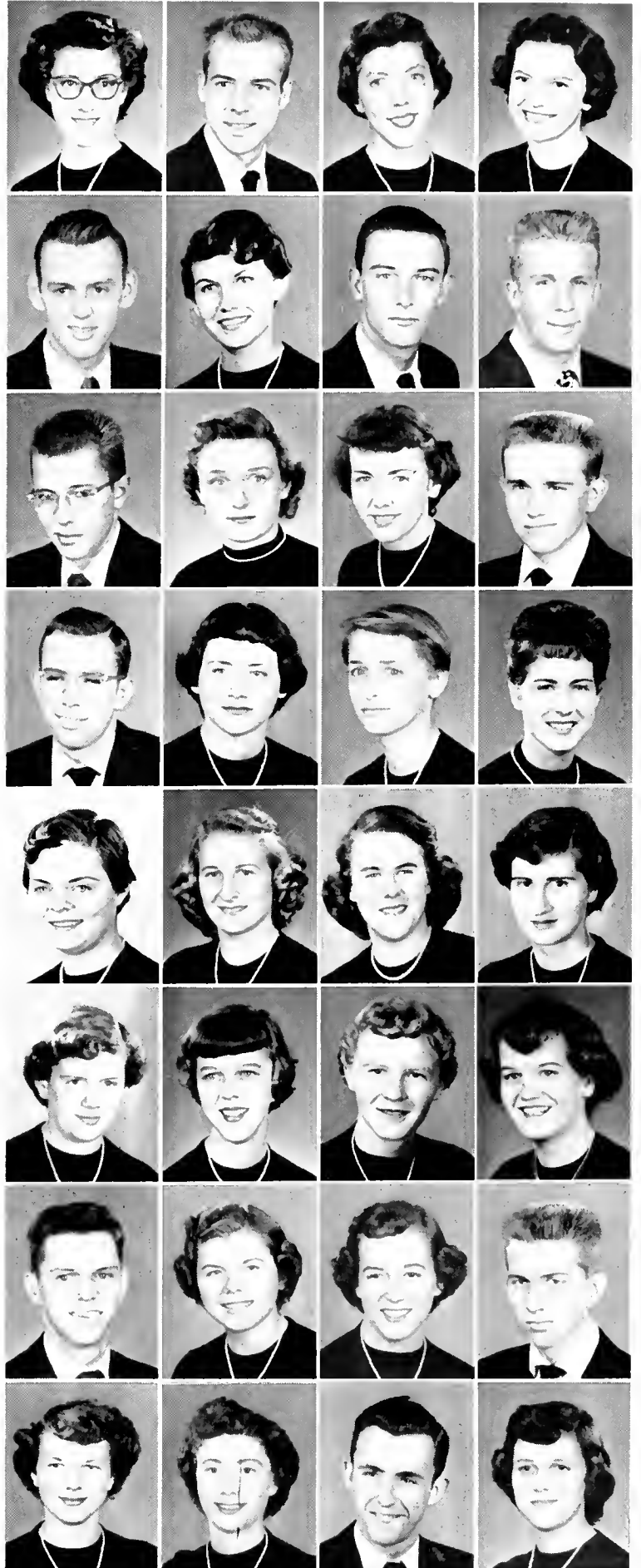
Cliffside  
Winston-Salem  
Sparta  
Murphy

EDDIE E. EPLEY  
WILMA CAROLINE EVERHART  
ELIZABETH JANE EWING  
BILL MAX FERREE

Morganton  
Winston-Salem  
Belmont  
Badin

ANNIE VIRGINIA FLIPPIN  
MARY ELIZABETH FOSTER  
THOMAS GLENN FOSTER  
ZETTA LOU FREEMAN

Francisco  
Ronda  
Mocksville  
Elkin





# SOPHOMORES

PATRICIA ANN GABRIEL North Wilkesboro  
 HENRY B. GAITHER Boone  
 MARGUERITE CHASE GAMBLE Asheville  
 WILLIE CAROLYN GENTRY Elkin

ABBY JUNE GIBSON Gibson  
 ROBERT THOMAS GOFORTH Kings Mountain  
 MARGARET JANE GOODMAN Union  
 GERALD GLENN GREENE Boone

KENNETH R. GREENE Concord  
 BOBBIE GREER Vilas  
 TEENAN PRESLEY HALTHCOCK Robbins  
 LYDIA HALL Yadkinville

EDITH MAE HAMPTON Sparta  
 CHARLES WILLIAM HANCOCK Shelby  
 JOSEPH EUGENE HARDISTER Badin  
 EMOGENE HARMON Sherwood

JUANITA HARRELL Bakersville  
 JANE HARRISON Denton  
 BETTY MAXINE HARTMAN Walnut Cove  
 SARAH PAULINE HAYES Kings Mountain

MARGARET MAGLORIA HEDRICK Denton  
 LOUISE HEFNER Statesville  
 IDA SUE HENDRIX Mocksville  
 CARL HENNESSEY Morganton

MELBA DARE HINSHAW Graham  
 FRANCIS LOUISE HINSON Landis  
 BOBBY JEAN HOLLAND Statesville  
 PEGGY ANN HOLLAND Marshall

REYNOLDS HOLLIFIELD Spruce Pine  
 BESSIE W. HOLLINGSWORTH Boone  
 MADGE HOUSHOUSEL Faith  
 FREDIA ANN HOOVER Boone

# SOPHOMORES

HENRY HAYES HOOVER Boone  
 JANET SUE HOUCK West Jefferson  
 ALVERTA EUNICE HOUSTON Harrisburg  
 NANCY LUCILE HOUSTON Troutman

CAROL HOWELL Todd  
 EDWARD LEON HOWELL Todd  
 GWEN HUNTLEY Lenoir  
 JULIAN LILES HUNTLEY Starr

ANNA YVONNE HYATT Lexington  
 I. D. INGRAM Bakersville  
 CATHERINE JACKSON Dobson  
 JOAN JARETT Marion

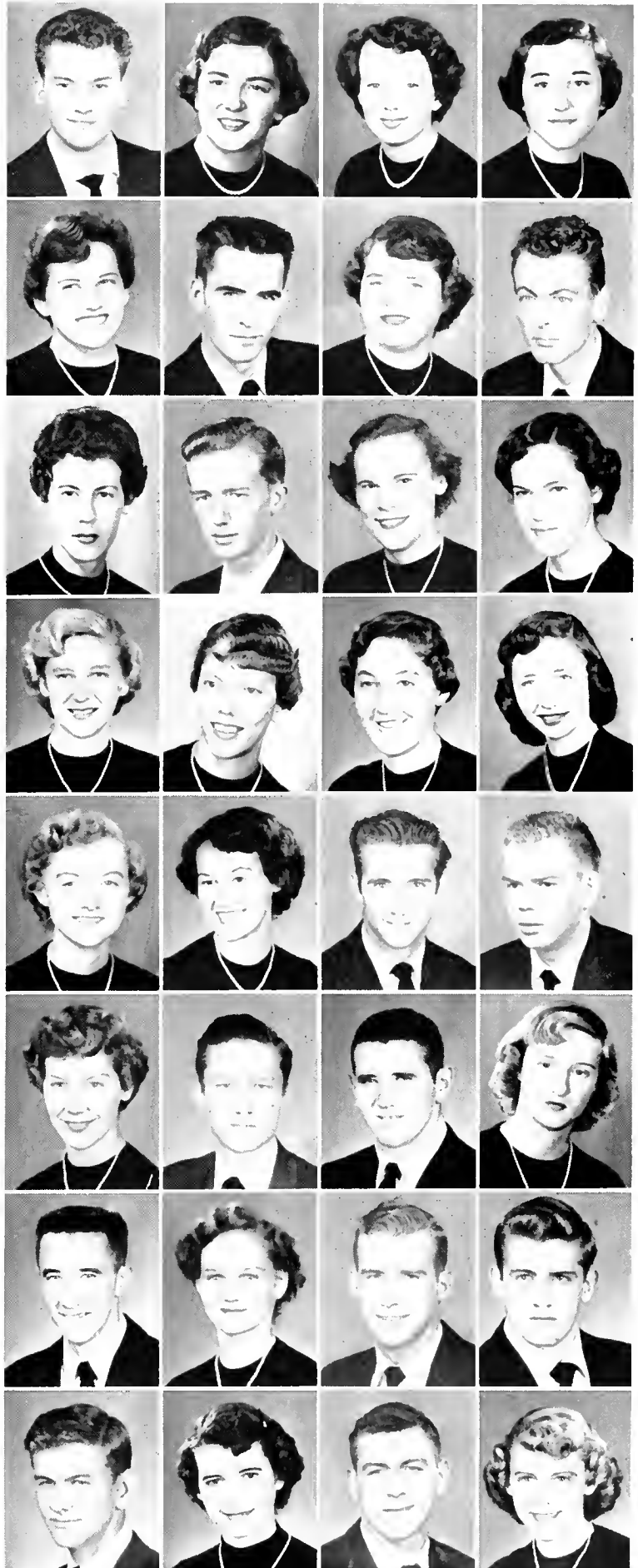
PEGGY LORENE JARVIS Wilkesboro  
 MARY EVELYN JENNINGS Banner Elk  
 ELEANOR DARE JOHNSON Burlington  
 JO ANNE JOHNSON Walnut Cove

PATRICIA ANN JONES Granite Quarry  
 EDITH SUE JORDON Mooresville  
 BOBBY LINDLEY KANOV Thomasville  
 FULTON SWANN KING Kannapolis

MARY KATHILEEN KING Littlestown, Pa.  
 EARL MEACHAM KIPKA Mooresville  
 JIMMIE RAY KISER Shelby  
 BARBARA ANN LACKEY Hiddenite

BILLY CHARLES LANDRETH Sparta  
 VIRGINIA ELIZABETH LASLEY Walnut Cove  
 WILLIAM MAX LAWSON Mount Airy  
 HOWARD PATTON LEDBETTER Marion

WILLIAM F. LEE Polkville  
 RUBY JEAN LEWIS Creston  
 GEORGE BELK LINKER Charlotte  
 PEGGY LEE LONG Matthews





# SOPHOMORES

JOHN MAURICE LOVETTE                      Millers Creek  
 RICHARD LAURENCE LOWDER              Star  
 MARY MARSHALENE McCANTS            Concord  
 BETTY GRAY McCASKIEL                  Bethune, S. C.

RUSSELL THOMAS McDONALD              Forest City  
 RUTH ELIZABETH McFADYEN              Fayetteville  
 DORIS ANNE McNEILL                      West Jefferson  
 JOY L. MADRON                              Vilas

LARRY DEAN MANN                          Spruce Pine  
 BETTY VIRGINIA MARSTON                  Old Fort  
 FRANCES MARTIN                            Statesville  
 JO ANN MATHIS                              Ronda

JOHNNY C. MATTHEWS                      Galax, Va.  
 PEGGY JANE MITCHELL                      North Wilkesboro  
 OLIVE MORETZ                              Boone  
 JOANNE LANDIS MORRIS                      Marion

RAY DALE MORRIS                            Lenoir  
 FRANCES ANNA MORRISON                  Jonesville  
 CLYDE ELLIOTT MORROW                    Mooresville  
 BOBBY LEE MYERS                            Hays

SARAH LUCILLE NANNEY                      Spindale  
 BETTY M. NICHOLS                            Monroe  
 WILLIAM JERRY NICHOLS                      Catawba  
 FRANKIE ELOISE NORMAN                    East Bend

HAROLD EDWARD NORRIS                      Mabel  
 MARTHA JANE ODOM                           Hickory  
 JAMES BRUCE OLLIS                           Ingalls  
 INES OROZCO                                  Columbia, S. A.

FRANKLIN DELANO OWENS                      Francisco  
 SHARON D. OWINGS                           Kannapolis  
 CHARLES EUGENE PAINTER                   Kings Mountain  
 CAROLYN JEANETTE PARRER                   Shallotte



# SOPHOMORES

PEGGY JO ANN PARKER Taylorsville  
 NORMA LAURA PATTON Burnsville  
 LOIS FAYE PAYNE Elkin  
 NELDA ELAINE PETERSON Burnsville

BOBBY ELLIOTT PHILLIPS Whiteville  
 BOBBY LEE POTEAT North Wilkesboro  
 BETTY JEAN PRESNELL Burnsville  
 BETTY SUE PRESSON Kannapolis

BARBARA ANN PROCTOR Boger City  
 MARY GAY REDDING Ronda  
 JEANETTE DEAN REID Mooresville  
 JACQUELINE RICHARDSON Lilesville

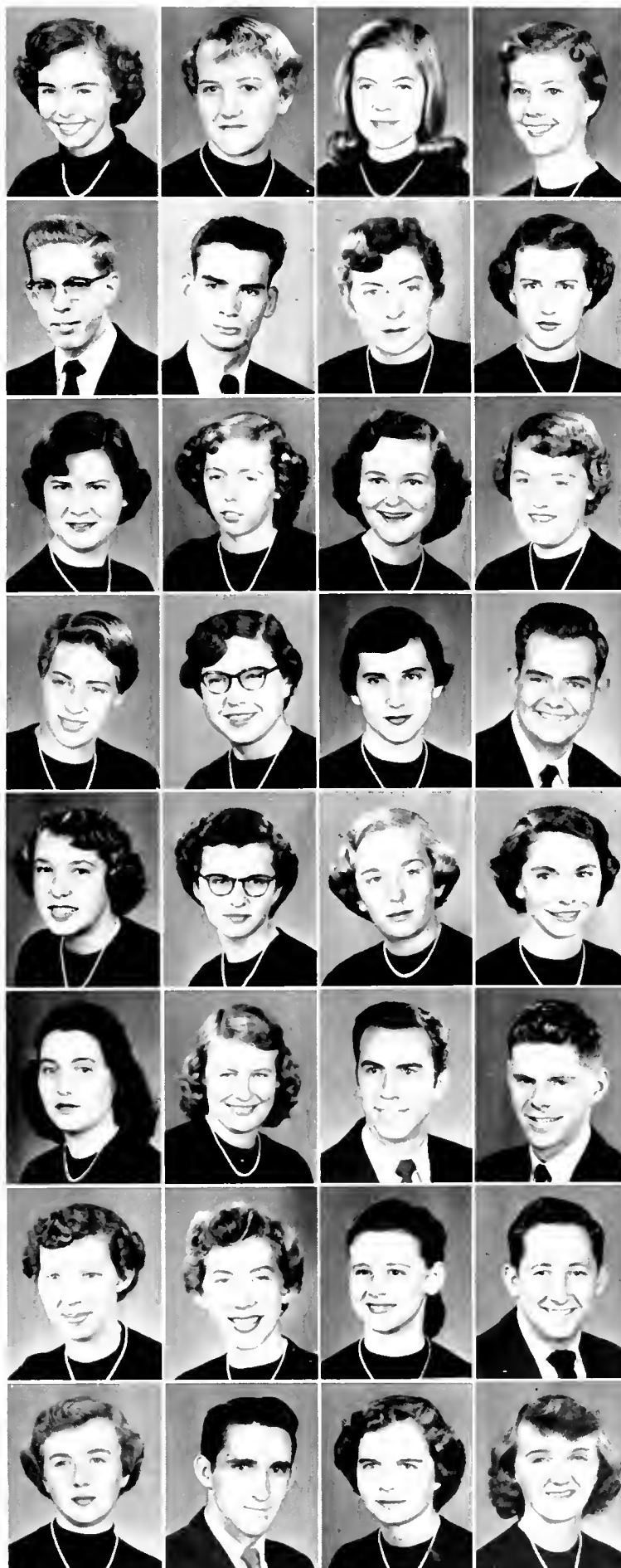
BETTY JEAN ROBERSON Jonesville  
 JULIA ANN ROSS Charlotte  
 PEGGY ERNESTINE ROSS Spruce Pine  
 EDWARD BARRY RUTH High Point

PAULINE SAPP Lansing  
 SARAH LOU SCHUYLER Lowgap  
 FRANCES ANN SELVEY Forest City  
 DOROTHY GREY SHARPE Burlington

MARY JUNE SHEETS Laurel Springs  
 EMMA JEAN SHIELDS Murphy  
 BOB SIGMON Catawba  
 WILLIAM COLEMAN SIGMON Lumberport, W. Va.

ELIZABETH LUCILLE SISK Bessemer City  
 HELEN FRANCES SISK Bessemer City  
 NANCY LEE SNIDER Eagle Springs  
 BILLY RAY SOFLEY Mocksville

SHIRLEY MAE SPANGLER Rutherfordton  
 DWIGHT COLEMAN SPEECE Statesville  
 JO NELL STARNES Monroe  
 PATSY ALLEN STARNES Chesnee, S. C.







# SOPHOMORES

PAUL RICHARD STEWART Spruce Pine  
 RICHARD EDWARD SWAIN Walkertown  
 WINONA ELIZABETH SWAIN Lexington  
 JANICE RAY SWIFT Reese

IRMA IRIS TANNER Elk Park  
 ROLAND ELLIS TATE Grover  
 DILLARD CLAYTON TAYLOR Mount Airy  
 JEAN TEMPLETON Boone

GWEN MOORE THOMPSON Lenoir  
 CLEO TOTTEN Yanceyville  
 DOROTHY REBECCA TRAVIS Granite Falls  
 ESPY T. TROUTMAN Statesville

TEDDY DEAN VADEN Francisco  
 JO ANNE R. VANNOY West Jefferson  
 DORIS EUGENIA WALL Spindale  
 MARY SUE WALSH Sherwood

MARIETTA ESTELLE WARD Mount Holly  
 BETTY JOAN WATERS Lincolnton  
 SHIRLEY GAY WATERS Ellenboro  
 AVERY THOMAS WATKINS Winston-Salem

ROYCE JEROLINE WATTS Kannapolis  
 LOIS ANN WEAST Mount Ulla  
 NANCY JANE WEATHERS Lattimore  
 MAE WEAVER Grassy Creek

CAMILA WELBORN Mountain Park  
 MARGARET CAROL WESTBROOK Albemarle  
 WALTER EUGENE WHELCHEL Gaffney, S. C.  
 BETTY CAROL WILSON Huntersville

CAROLE DOLORES WILSON Kannapolis  
 JOHN L. WOOD Mount Airy  
 JAMES MONROE YELTON, JR. Bakersville  
 RUTH YELTON Bostic



OFFICERS

*Left to right:*  
BUDDY MILLER  
CLARA STOTT  
ED LAKEY  
GRADY LEWIS

Treasurer  
Secretary  
Vice-President  
President

*FROSH*

# FRESHMEN



David Wayne Abernathy .....Catawba  
Richard Paul Absber .....McGrady  
Doris Glynn Adams .....Laurinburg  
Eve Sue Adams .....Mountain City, Tenn.  
Myra Jean Adkins .....Mooreville



Grover D. Alexander .....Cherryville  
Margaret Lucinda Alexander .....Gastonia  
Betty Louise Allison .....Caroleen  
Nancy Jane Allison .....Huntersville  
Alice Willodene Allred .....Mount Airy



Peggy Joyce Almond .....Concord  
Hilda Anzola .....Columbia, S. A.  
Emily A. Atwood .....Winston Salem  
Johnnie Robert Austin .....Hudson  
Jackie McKay Avant .....Walterboro, S. C.



Ida Edna Bailey .....Bakersville  
Preston Gwyn Baker, Jr. ....Drexel  
Wanda Wadine Bandy .....Newton  
Mary Roberta Barefoot .....Dunn  
Robert Franklin Barker .....Big Stone Gap, Va.



Carolyn Barnette .....Union Grove  
Joyce Alene Barnette .....Ellenboro  
Irvin Sherwood Batchelor .....Greensboro  
Betty Lynn Baynard .....Forest City  
Ruth Jacqueline Beck .....Pilot Mountain



Jimmy Shelton Bellamy .....Shalotte  
Margaret Bellamy .....Greensboro  
Kitty Joan Bennett .....Glen Alpine  
Laura Patricia Billings .....Hays  
Meredith Joyce Biser .....Kings Mountain



John Thomas Bingham .....Sugar Grove  
Karen Bishop .....Millers Creek  
Sherley Blackburn .....Mountain Park  
Frances N. Blanton .....Spindale  
Alice Y. Bodenheimer .....Boone



Jimmy T. Bowman .....Winston Salem  
Earl A. Bright .....Marion  
Frank Joseph Brown .....Blowing Rock  
Jack D. Brown .....Robbins  
Joy Temple Brown .....Boone



Libby Lee Brown .....Mount Airy  
John D. Broyhill .....Blowing Rock  
Betty Louise Buie .....Denton  
Bettie Ann Burch .....Graham  
Emogene Caliban .....Bakersville

# FRESHMEN

Mary Kay Callahan .....Laurinburg  
 Frances Elizabeth Capel .....Salisbury  
 Jo Anne Carlton .....Kannapolis  
 Margaret Ann Carpenter .....Marion  
 Rosemary Carpenter .....Faith

Otis Ward Carroll .....Raleigh  
 Carol Joyce Carter .....Gastonia  
 Joseph B. Carter .....Shalotte  
 Julius George Carter .....Raleigh  
 T. D. Carter .....Roaring River

Carlton Eugene Cates .....Burlington  
 John L. Cave .....Boonville  
 William Richard Caviness .....Ramseur  
 Ruth Irene Cherry .....Gastonia  
 Martha Long Christopher .....Newton

Sarah Marie Clayton .....Albemarle  
 Jim Curtis Cline .....Boone  
 James Albert Collins .....Francisco  
 Martha Louise Colvard .....Boone  
 Sarah Ellen Conrad .....Lexington

Joe Reid Cook .....Lenoir  
 Joe William Cook .....Kannapolis  
 Betty Jane Cooke .....Hiddenite  
 Joanne Cooke .....Shulls Mills  
 Barbara Alice Cooper .....Marion

Jackie Lou Correll .....Winston-Salem  
 Charles R. Crabtree .....Charlotte  
 Nancy Jane Craven .....Asheboro  
 Alayne Craver .....Yadkinville  
 Sara Crawford .....Statesville

Charles C. Crisp .....Crossnore  
 Carolyn Eugenia Crowe.....Newton  
 Thomas D'Armi, Jr. ....Federalburg, Md.  
 Millie Carolyn Davis .....Mooresboro  
 Myron Whitener Deal .....Hickory

Jack David Dellinger .....Bakersville  
 Billy Jackson Denton .....Morganton  
 Mary Louise Dobbins .....Charlotte  
 Margaret Sparks Dobson .....Nebo  
 Edward Therman Doler ....Pepperell, Ala.

Frances Camilla Douglas .....Statesville  
 Wilmer Dove .....Lake View, S. C.  
 Carl Draughon .....Boonville  
 Mary Frances Duckworth .....Morganton  
 Mary Lizzie Dunn .....Laurinburg



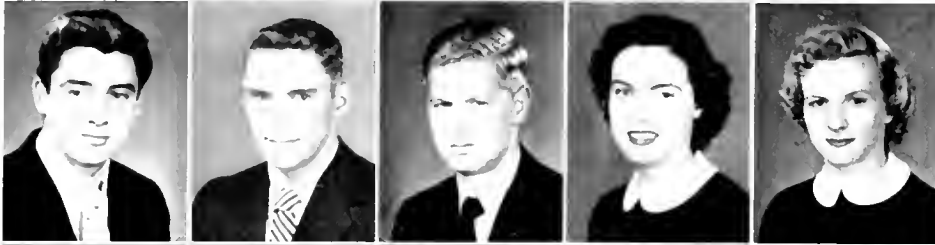
# FRESHMEN



Gladys Hill Fastridge ..... Mountain City, Tenn.  
 John Paul Edmisten ..... Boone  
 Flore Elizabeth Edmondson ..... Grayson  
 Betsy Jo Edwards ..... West Jefferson  
 Daniel Robert Edwards ..... Whitehead



Elizabeth Bonham Eggers ..... Boone  
 Aubrey Flam ..... Nile, Mich.  
 Joann Rebecca Eller ..... Purlear  
 Joe Vance Eller ..... Cramerton  
 Thomas Franklin Eller ..... Purlear



Donald Charles Elliott ..... Marion  
 Guy Eugene Ervin ..... Catawba  
 William J. Feimster ..... Union Grove  
 Betty Ellen Fletcher ..... State Road  
 Christine Foster ..... Millers Creek



Francis Donald Foster ..... Dunbar, Va.  
 Jo Ann Foster ..... Gastonia  
 Mary Lou Fox ..... Burnsville  
 Barbara Ann Francis ..... Shelby  
 James Ray Freeman ..... Jonesville



Jerry Max Frye ..... Concord  
 William Alfred Gaddis ..... Gastonia  
 William Anderson Gardner ..... Shelby  
 Nancy Elizabeth Garrison ..... Charlotte  
 Joseph Lemuel Garwood ..... North Wilkesboro



Conrad Maxwell George ..... Francisco  
 Winthrop Henry Germaine ..... Mooresville  
 Meriel Ailene Gibbs ..... Old Fort  
 Rex Lee Gilley ..... Pilot Mountain  
 Bonnie Inez Godfrey ..... Marion



Elizabeth Jane Goforth ..... Kings Mountain  
 William Clarence Goings ..... Mount Airy  
 June Crowth Good ..... Mount Airy  
 Bobby Dean Gore ..... Vilas  
 Doris Ann Gore ..... Tabor City



Louise Caroline Graham ..... Luckerdale  
 Audrey Ruth Grass ..... Kannapolis  
 Barbara Ann Greene ..... Spencer  
 Bobby Hamp Greene ..... Deep Gap  
 Thomas Taylor Greene ..... Blowing Rock



Sherrill Eugene Greer ..... Newland  
 William Arthur Groce, Jr. .... Wilkesboro  
 Peggy Lee Gross ..... Boone  
 George Harold Gunter ..... Gastonia  
 Carrie Mae Gwyn ..... Mount Airy



# FRESHMEN

Cassie Louise Gwyn .....Mount Airy  
 Betty Jean Haley .....Kannapolis  
 Elizabeth Anne Hallyburton .....Drexel  
 Ella Ruth Hampton .....Piney Creek  
 Kenneth Miller Hansel .....McAdenville

Helen Edna Hardin .....Boone  
 Jacqueline L. Hardy ..Fort Lauderdale, Fla.  
 Benny Leonard Harris .....Granite Falls  
 Carolyn Elliott Harris .....Moorestboro  
 Hazel Marie Harris .....Mill Springs

Tommie Elwood Harris .....Thomasville  
 William Eugene Harris .....Roxboro  
 Carolyn Gray Hart .....Clemmons  
 Jackie Curtis Hart .....Hickory  
 Flora Cecilia Hartsell .....Concord

Joe Calvin Hathcock .....Stanfield  
 Bobby Miller Hauser .....Yadk'ville  
 Dewey Dale Hawkins .....Ferguson  
 Billy Gray Hawks .....Mount Airy  
 Theodore Calvin Hayes ..North Wilkesboro

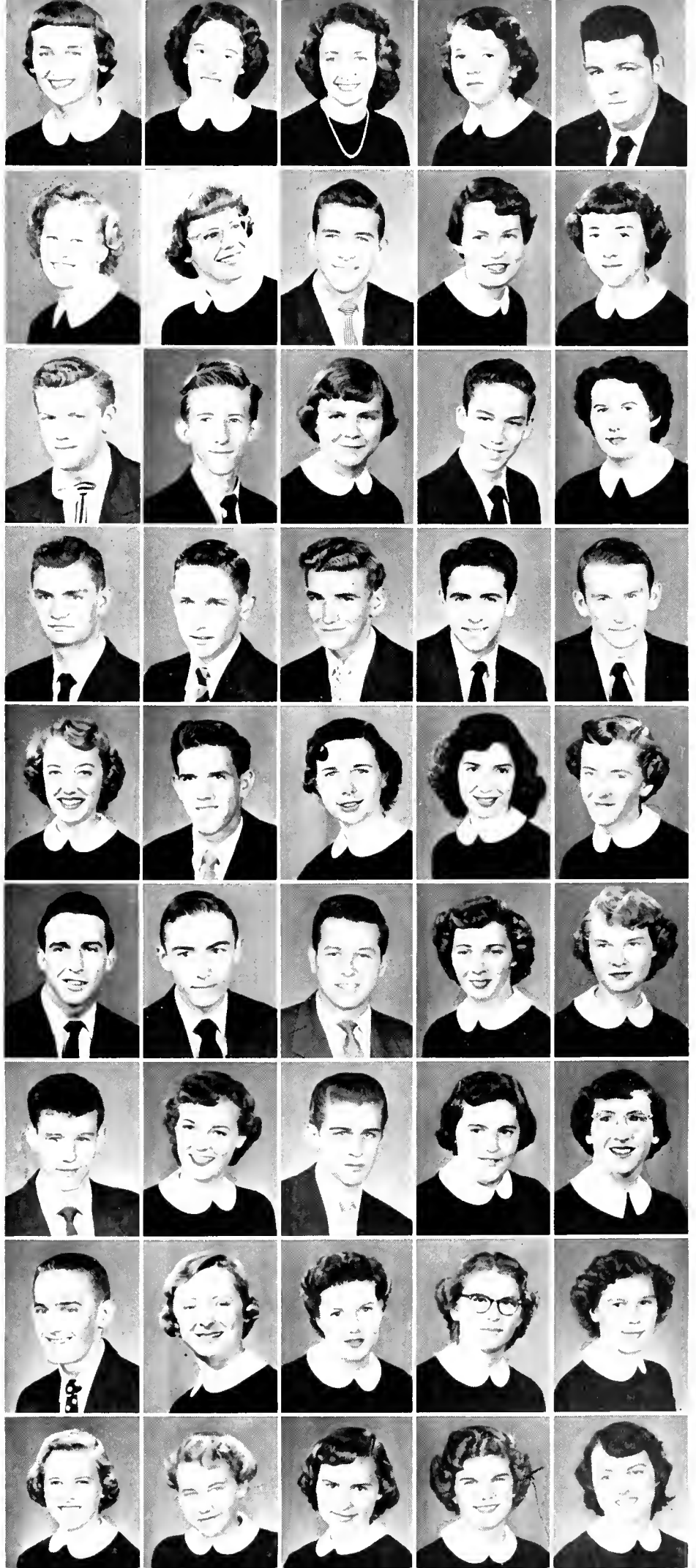
Carolyn Anne Haynes .....Lewisville  
 James Robert Heavner .....Vale  
 Mary Alice Heavner .....Lincolnton  
 Faye O. Hege .....Lexington  
 Mary Roberta Hensley .....Burnsville

Garry Roland Herman .....Rhodhiss  
 Philip Gordon Hester .....Roxboro  
 Jerry Randolph Hill .....Shelby  
 Patsy Jane Hill .....Avondale  
 Gretchen Ann Hine .....Lumber Bridge

Jimmy Edward Hinson .....Concord  
 Theda Clarine Holder .....Blowing Rock  
 Max Grey Holland .....Gastonia  
 Cora Anne Hollingsworth .....High Point  
 Peggy Joyce Honeycutt .....Kannapolis

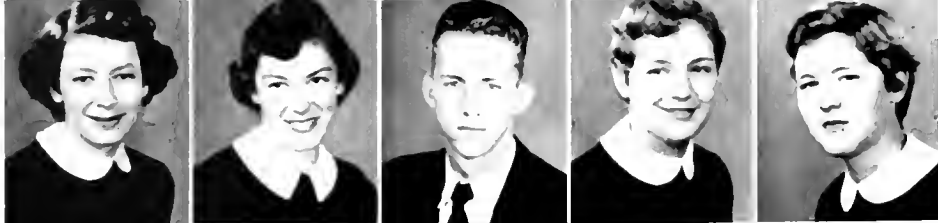
William Eugene Honeycutt .....Concord  
 Margaret M. Hopkins .....Beaufort  
 Patricia Lee Hoover .....Charlotte  
 Julia Ellen Hough .....Lilesville  
 Wanda Lee Houser .....Vale

Barbara Jean Hughes .....Concord  
 Norma Jean Hull .....Morganton  
 Margaret Huneycutt .....Monroe  
 Betty Lee Hunt .....Polkville  
 Dorothy Jean Hunter .....Bessemer City

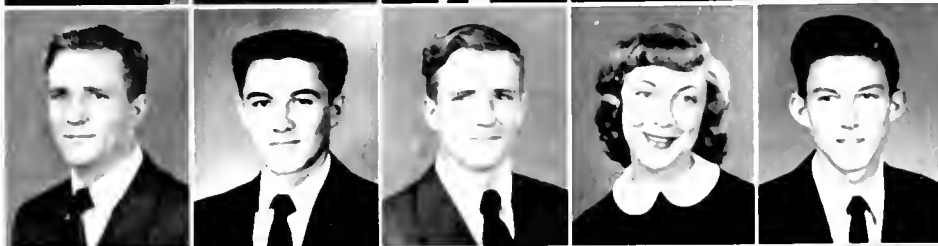




# FRESHMEN



Ruth Hyder .....Rutherfordton  
 Mary Elizabeth Hyder .....Yanceyville  
 James McDowell Idol .....Deep Gap  
 Betty Lou James .....Mocksville  
 Leity Sue James .....Mocksville



Cox Dean Isaacs .....Vilas  
 Jack Brinkley Isaacs .....Flk Park  
 Roy Gene Isaacs .....Vilas  
 Iris M. Jackson .....Winston Salem  
 Bobby Carl James .....Gastonia



Glenda Laye James .....Graham  
 Bobby Greene Johnson .....Mount Airy  
 Jim Johnson .....Boone  
 Billye Norma Jones .....Scottville  
 Carol Elizabeth Jones .....Fuka



Joseph Victor Jones .....Thomasville  
 Mary Sue Jones .....Lansing  
 Pauline Jones .....Lansing  
 Curlee Joyce .....Sandy Ridge  
 Joyce Maxine Joyner .....Kernersville



Joyce Keller .....Asheville  
 Carol Sue Kennedy .....Piney Creek  
 Gypsy Lee Kennerly .....Kannapolis  
 Jennie Irene Kerr .....Kannapolis  
 Ira Raymond Kincaid, Jr. ....Bessemer City



Margaret Kincaid .....Morganton  
 Joe Claude Kirby .....Rhodhiss  
 Betty Kivett .....Asheboro  
 Ellen Kate Koonce .....Raeford  
 Mozelle Kuykendall .....Hendersonville



Richard Boyd Lackey, Jr. ....Bessemer City  
 Garcia Long Lail .....Newton  
 Edward Ray Lakey .....Boonville  
 David Floyd Landis .....Lexington  
 Burl McKinley Lankford .....North Wilkesboro



Wallace James Lankford .....Fryon  
 Mary J. Lanning .....Boone  
 Polly Ann Lasley .....Belew Creek  
 Duck Bedmond Lavender .....Boone  
 Harold Dean Lawing .....Marion



Earl James Leatherwood .....Belmont  
 Grady Lewis .....Troutman  
 Shirley Fingerfelt .....Boone  
 Nam Lathan Linker .....Mount Holly  
 Patty Ann Long .....Yadkinville

# FRESHMEN

Manuel Lorenzo .....Boone  
 William Howard Love .....Vilas  
 Sue Carolyn Lutz .....Newton  
 Nancy Lyerly .....Rockwell  
 John Angus McAulay .....Rockingham



Colie Lee McCarty .....Charlotte  
 Hilda Essie McCollum .....Mount Gilead  
 Douglas Lee McCraw .....Marion  
 Gene Odell McGarr .....Statesville  
 Kenneth C. McGee .....Statesville



Patricia Ellen McGuire .....Boone  
 Nancy Lee McKinney .....Sanford  
 Neil W. McKinney .....Spruce Pine  
 Dorothy Gail McLain .....Statesville  
 REX McNIEL .....Purlear



George Washington Marion, Jr. ....Dobson  
 Bobbie Jean Marshall .....Charlotte  
 Doris Elizabeth Martin .....Troutman  
 Willis Carlton Martin .....Francisco  
 Sylvia Gray Massey .....Winston Salem



Doris Greene Mathis .....Ronda  
 Margaret Mathis .....Ronda  
 Joanne Harris Matthews .....Lenoir  
 Patrick Worth Matthews .....Winston Salem  
 Jo Anne Merrill .....Statesville



Leon Arrowood Miller .....Shelby  
 Nancy Lee Mills .....Concord  
 Richard Bryan Minish .....Elkin  
 Sybil Louise Minish .....Marion  
 Betty Jane Mitchell .....Sparta



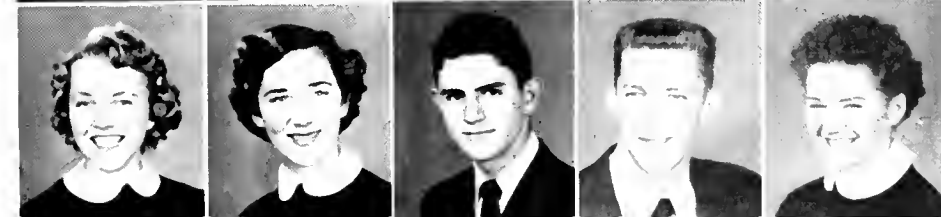
Charles Calvin Moore .....Hoffman  
 Mary Jane Moore .....Stanley  
 Roxie Elinor Moorhead .....Shelby  
 Robert Gordon Morris .....Marion  
 Bill M. Morrison .....Charlotte



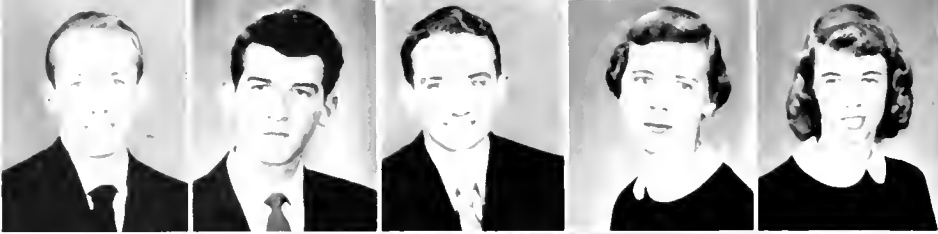
Maud Marie Morrison .....Morganton  
 Robert Melvin Morrison .....Statesville  
 Valorie Florence Mosher .....Charlotte  
 Ann H. Murray .....Broadway  
 Frances Othelia Nichols .....Wilkesboro



Francine Nolen .....Crouse  
 Betty Sue Norris .....Boone  
 Norman Sidney Norton .....Stony Point  
 Ray Edward Osborne .....Boone  
 Barbara Ann Pendleton .....Charlotte



# FRESHMEN



Don Milton Pendleton .....Vale  
 Charlie Fisher Peninger .....Gastonia  
 Joseph Charles Perkins .....Bakersville  
 Evelyn Goldie Peters .....Mount Airy  
 Patti Sue Petrea .....Kannapolis



Patsanna Phillips .....Ingalls  
 Betty Frances Poindexter .....Cana  
 Clarence R. Poindexter .....Winston Salem  
 Edwina Fern Pope .....Stony Point  
 Ruby Jean Potts .....Advance



Johnnie David Ragsdale, Jr. ....Winston Salem  
 Norval J. Ramey, Jr. ....Warrenton, Va.  
 Carolyn Sue Ramsey .....Gaffney, S. C.  
 Erma Lee Ramsey .....Bee Log  
 James Earl Rector .....Conover



John Emory Reece .....Boonville  
 Joan Rhyne .....Lincolnton  
 Mary Frances Rich .....Charlotte  
 Billie Ann Roberts .....Shelby  
 Ethel Robinson .....Hickory



Janet Gaynor Rogers .....Hendersonville  
 Juell Lee Rogers .....Greensboro  
 Catherine Claudette Sanford ....Laurinburg  
 Wayne Henry Seckler .....China Grove  
 Ramona Ruth Seibert .....Cannelton, Ind.



Shirley Mona Sharpe .....Kannapolis  
 Barbara Ellen Shaw .....Liberty  
 Mary Ethel Shearin .....Bed Oak  
 Jo Ann Shoup .....Charlotte  
 Tyre Abraham Sidden ....North Wilkesboro



Larry Simmons .....Lake View, S. C.  
 Billy Hayes Simpson .....Boonville  
 Carol Lee Sloan .....Winston Salem  
 Hal Lee Smith .....Drexel  
 Paul Jarvis Smith .....Granite Falls



Vivian Christine Smith .....Monroe  
 Wanda Smith .....Moravian Falls  
 Billy Dean Smitherman .....Yadkinville  
 Betty Jane Sneed .....Mount Gilead  
 Carroll Clifton Snuggs .....Concord



Ralph Lewis Snyder .....Millers Creek  
 Edith Geraldine Staley .....Lenoir  
 Nancy Marie Stilwell .....Thomasville  
 Clara Lou Stott .....Bailey  
 Charles Eugene Summers ....North Wilkesboro

# FRESHMEN

Joseph Gayden Swann, Jr. .... Old Fort  
 Bobby James Tate ..... Gastonia  
 Betty Jean Taylor ..... Beech Creek  
 Catherine Agnes Taylor ..... Hamlet  
 Charles Gordon Taylor ..... Boone



Frances D. Taylor ..... Charlotte  
 Gerald C. Taylor ..... Forest City  
 James Howell Taylor ..... Todd  
 Ruby Lee Taylor ..... Union Mills  
 Clara Mae Teague ..... Boone



Nancy Lou Teague ..... Winston-Salem  
 Peggy Joyce Teague ..... Boone  
 Faynitia Teaster ..... Minneapolis  
 J. C. Tester ..... Boone  
 Joe E. Thomas ..... Kannapolis



Obie Scott Thomas, Jr. .... Salisbury  
 Irma June Thompson ..... Wadeville  
 Vernon David Thompson .... Mount Gilead  
 Joyce Ann Thornton ..... Gastonia  
 Linda Z. Townsend ..... Valle Crucis



Ernie Creston Triplett ..... Banner Elk  
 Bobbie Joy Trivette ..... Beech Creek  
 Mattie Gaye Wagoner ..... State Road  
 Doris Faye Walsh ..... Ferguson  
 Margaret Ann Warlick ..... Lawndale



William J. Waters ..... Lincolnton  
 John Malcolm Watlington .... Yanceyville  
 Lena Faye Watts ..... Morganton  
 Ferne Rebecca Waycaster ..... Asheville  
 Grace Elizabeth Weeks ..... Clinton  
 Joann Elizabeth Wellborn .... Stony Fork



Elizabeth White ..... Cornelius  
 Rachel Joanne White ..... Hiddenite  
 Ancil Dean Williams ..... Boone  
 Betsy Ray Williams ..... Charlotte  
 Wade Franklin Wilmoth ..... Dobson  
 Betty Jo Wilson ..... Trade, Tenn.



Richard Truett Wilson ..... Marion  
 Joseph Charles Winkler ..... Boone  
 Harold Witherspoon ..... Hickory  
 Mary Jocelyn Wittner ..... Asheboro  
 Tony Dalton Woods ..... Lenoir  
 Nancy Gale Wooten ..... Charlotte



Thomas Yancey Wooten ..... East Bend  
 Doris Anne Yarbrough ..... Gastonia  
 Jerry T. Young ..... Marion  
 James B. Yount ..... Vale  
 James Danny Yount ..... Granite Falls  
 Johnny A. Yount ..... Columbia, Tenn.





**B O O K T W O**

*Activities...*







*Classroom*



*Recreation*



*Activity*



*Organizations*

# STUDENT GOVERNMENT



SHIRLEY GABRIEL  
*President*

G. C. DAVIS, JR.  
DON LINEBERGER  
CHANCEL BROWN

*Vice-President*  
*Secretary*  
*Treasurer*



# R E P R E S E N T A T I V E S



A. C. LARRIMORE  
*Senior Representative*

BILL MORGAN  
*Senior Representative*

RICHARD ZUBER  
*Senior Representative*

BILL BROWN  
*Junior Representative*

JOAN ELLER  
*Junior Representative*

MARTHA WATKINS  
*Junior Representative*

JANE HARRISON  
*Sophomore Representative*

RUSSELL McDONALD  
*Sophomore Representative*

GRADY LEWIS  
*Freshman Representative*

CLARA STOTT  
*Freshman Representative*



EDITORIAL STAFF

ALICE SWANN	<i>Managing Editor</i>
ESTHER MOORE	<i>Feature Editor</i>
MARY HUDSON	<i>Activity Editor</i>
CHANCEL BROWN	<i>Sports Editor</i>
NANCY LAFHAM	<i>Sports Editor</i>
BEN MAST	<i>Art Editor</i>
PAT FINGER	<i>Art Editor</i>
JEAN MCNIEL	<i>Picture Editor</i>
RODDEY EAVES	<i>Faculty Editor</i>
MARGARET SILVER	<i>Snapshot Editor</i>
GEORGE GRILL	<i>Typist</i>
ED ROUTH	<i>Assistant Sports Editor</i>

EVELYN WASHBURN  
*Editor*

THE 1954

*Rhododendron*



INA SMITH  
*Associate Editor*



DON LINEBERGER  
*Assistant Business Manager*

BUSINESS STAFF

BUSTER HICKS	<i>Advertising Manager</i>
BOBBY SNEAD	<i>Advertising Staff</i>
NED TRIVETTE	<i>Advertising Staff</i>
ROY WATERS	<i>Advertising Staff</i>
BETTY NOLAND	<i>Circulation Manager</i>
ANN LANTZ	<i>Circulation Staff</i>
MINYONNE SOJOURNER	<i>Circulation Staff</i>
MARY HIGGINS	<i>Circulation Staff</i>
JANE HARRISON	<i>Circulation Staff</i>
MARY LITTLE	<i>Typist</i>
GLADYS MOORE	<i>Typist</i>

ROBERT DOWNS  
*Business Manager*



### BUSINESS STAFF

*Seated:* Bobby Snead, Ann Lantz, Mary Higgins. *Standing:* Jane Harrison, Ned Trivette, Marv Little, Betty Noland, Gladys Moore, Roddey Eaves, Minvyonne Sojourner, Buster Hicks.



### STAFF EDITORS

*Left to right:* Roddey Eaves, Chancel Brown, Margaret Silver, Ben Mast, Nancy Latham, Esther Moore, Pat Finger, Jean McNeil, Mary Hudson, Alice Swann.



### CLASS EDITORS

*Seated:* Catherine Taylor, Doris Adams, Nira Sledge, Gladys Brown. *Standing:* Martha Cashion, Betty Dixon, Nancy Haynes, Camilla Welborn, Jean Shields, Roy Waters, George Grill, Ann Moses.



### EDITORIAL STAFF

*Seated:* Betty McGee. *Standing:* Jean Bullock, Sharon Owens, Chris Elliott, Rachel Anderson, Phyllis Roseman, Estelle Ward, Nancy Snyder, Grace Routh, Frieda Williamson, Jane Bullock.





EDITORIAL STAFF

HOPE DYSON *Associate Editor*

JANE HARRISON *News Editor*

RUSSELL McDONALD *Assistant Sports Editor*

ALICE WILDE  
*Editor*



THE  
*Appalachian*

G. C. DAVIS, CHANCEL BROWN  
*Sports Editors*

BUSINESS STAFF

JAMES SMITH *Assistant Business Manager*

BONNIE LAMONE *Business Assistant*

ANN MOSES *Business Assistant*

CAROLYN BAUCOM *Business Assistant*

LIB MILLER *Circulation Manager*

ANN LANZ *Circulation Assistant*

BETTY NOLAND *Circulation Assistant*

MARTHA STEVENS  
*Business Manager*



EDITORIAL STAFF

*Seated:* Wilma Everhart, Rachel Franklin, Mary Frances Kilpatrick, Alice Wilde, Frieda Williamson. *Standing, First row:* JoAnn Johnson, Margaret Bellamy, Mary Little, Jo Ann Hardin, Hope Dyson, Mary McCants, Betty Brown, Kathryn Millsaps. *Standing, Second row:* Eunice Houston, Betty Snead, Jane Harrison, Wanda Houser, Helen Hardin, Christine Elliott, Elizabeth Elliott, Ellen Koonce, Margaret Hedrick, James Moffett, Belva Taylor.



SPORTS STAFF

*Left to right:* Roy Waters, Barbara Lowder, Chancel Brown, Russell McDonald, G. C. Davis.



CIRCULATION STAFF

*First row:* Ann Lantz, Frances Martin, Pat Finger, Elizabeth Miller, Joan Wood, Betty Noland, Minyonne Sojourner. *Second row:* George Grill, Barbara Proctor, Sue Presson, Iris Jackson.



BUSINESS STAFF

*Left to right:* Ann Moses, Carolyn Baucom, Martha Stevens, James Smith, Bonnie LaFone.



# WESLEY FELLOWSHIP

*First row:* Kenneth McGee, Scott Thomas, Abby June Gibson, Pat Matthews, Eugenia Davis, Nancy Latham, Janet Rogers, Ben White. *Second row:* Rev. Joseph Shackford, Mary Elizabeth Hyder, Betty Snead, Joyce Thornton, Betty Halev, Doris Ann Gore, Jimmy Bellamy, Margaret Bellamy, Deon Standland, Milton Barden. *Third row:* Marvin Culbreth, Dot Byers, Joan Har

relson, Mike Harrelson, Edith Blair, Bonnie Godfrev, Betsy Edwards, Elizabeth Elliott, Jane Goforth, Bobby Snead. *Fourth row:* John Howard, Philip Hester, Dickie Lavender, Fran Nolen, Mozelle Kuykendall, Mary Kay Callahan, Valorie Mosher, Pat-sanna Phillips, Bob Barker, Susie Dobbins, Don Lineberger.

## OFFICERS

BOBBY SNEAD ..... *President*  
 DON LINEBERGER .... *First Vice Pres.*  
 JOAN HARRELSON ... *Second Vice Pres.*  
 DOT BYERS ..... *Secretary*  
 BOB FLEMING ..... *Treasurer*



## OFFICERS

IRNESTINE CALLOWAY .... *President*  
 MARTHA CASHION .... *Vice-President*  
 BETSY REA ..... *Secretary*  
 BOBBY PHILLIPS ..... *Treasurer*  
 MRS. A. B. SMITH ..... *Adviser*  
 F. FORD KING, JR. .... *Adviser*



# WESTMINSTER FELLOWSHIP

*First row:* Jean Carter, John Watlington, Ellen Koonce, Carol Kennedy, Gretchen Hine, Anne Hollingsworth, Tilla Ruth Hampton, Sue Hendrix. *Second row:* Lois West, Janice Houston, Betty Jane Brown, Marie Vaught, Frank Widenhouse, Mary McCants, Betsy Rea, Buster Hicks, Wesley Alexander, Betty Jo Henderson, Mrs. J. K. Parker, Jr., Rev. J. K. Parker, Jr., Jean West, Martha Cashion, Dave Barrett, Nancy Everly, Betty Buie, Raymond Miller, Daphne Baldwin, Mary Blevins, Frances Jeffreys. *Third row:* Julia Ross, June Boyd, Sara Coble, Libby

White, Nancy Allison, Jennie Kerr, Doris Yarbrough, Mary E. Martin, Katherine Millsaps, Evelyn Washburn, Ernestine Calloway, Carolyn Crowe, George Grill, Bobby Phillips, Barbara Pittillo, Metta Moore, Sue Presson, Magnolia Oxending, Sandra Wilson, Becky Moxley. *Fourth row:* Louise Bowen, Margie Huneycutt, Jane Harrison, Marjorie Dellinger, Sara Crawford, Jim Craig, Jean Hunter, Jean Coble, Bob Sigmom, Peggy Long, Walter Giles, Edward Lee, Mrs. A. B. Smith, F. Ford King, Jr., Mellicent Huneycutt.



#### OFFICERS

PEGGY KELLER .....*President*  
 JOYCE KELLER .....*Vice-President*  
 ETHEL ROBINSON .....*Secretary*  
 CHARLES TAYLOR .....*Treasurer*  
 MISS MADGE RHYNE .....*Sponsor*

## LUTHERAN STUDENT ASSOCIATION

*First row:* Louise Mitchell, Peggy Keller, Charles Taylor, Buck Hall, Joyce Keller. *Second row:* Bernice Troutman, Charles Lyons, Ethel Robinson, Juel Rogers,

Margaret Goodman. *Third row:* Ernest Lyons, Jerry Troutman, Harris Greene, Mr. Walton Cole, Marv Alva White, Miss Madge Rhyne.

## B. S. U. EXECUTIVE COUNCIL

*Seated:* Jean Bullock, Ina Smith, Jo Anne Johnson, Loretta Howe, Jo Anne Smith, Nelda Peterson, Jane Bullock. *Second row:* Louise Church, Dot Barber, Ora Lee Helms, Isabel Eggers, Camilla Welborn, Betty McGee, Phyllis Lattimore, Patsy Stubbs, Dot Travis, Marv

Little. *Third row:* Martin Nichols, John Laslev, Coy Temple, Richard Barker, Ben Connell, Bill Soflev, John Davis. *Not Pictured:* Bill Benson, Joe Davis, Louise Graham, Wade Wilmoth, Frances Sisk.



#### OFFICERS

BETTY MCGEE .....*President*  
 DOT BARRER .....*Vice-President*  
 BEN CONNELL .....*Vice-President*  
 PATSY STUBBS .....*Vice-President*  
 CAMILLA WELBORN .....*Secretary*  
 MARY LITTLE .....*Secretary*  
 JOHN DAVIS .....*Sponsor*

### OFFICERS

RAY SHRUM ..... President  
 ALICE WILDE ..... Vice President  
 DAPHNE CAMPBELL ..... Secretary  
 PEGGY KELLER ..... Assistant Secretary  
 MR. WORTH JONES ..... Sponsor



## CHI LAMBDA CHI

*First row:* Daphne Baldwin, Doris Medlin, Peggy Laughlin, Jean Weast, Ina Smith, Jean Hopkins.  
*Second row:* Loretta Howe, Harold Bennett, Joanne Aldridge, Buster Hicks, Betty McGee, Ernestine Calloway, Gwen Thompson.  
*Third row:* Peggy Keller, Russell McDonald, Marie Vaught, Don Lineberger, Alice Wilde, Richard Barker, Evelyn Washburn, James Craig, Rebecca Austin, Swann King, Mr. Worth Jones, Martha Stevens, Eleanor Helms. *Not Pictured:* Gerald

Adams, Daphne Campbell, Gaynelle Chandler, Bunk Carpenter, Ben Connell, John Coulter, Robert Downs, Jane Eure, Carol Goodrum, Patty Hanklev, Martha Herring, Rebecca Hoover, Sue Hunter, Bob Huffman, Frances Jeffreys, A. C. Larrimore, Barbara Lowder, Jim Marks, James Molfett, Ray Shrum, Margaret Silver, Bobby Snead, Barry Ruth, Alice Swann, Rachel Teague, Gene Wilson, Patsy McGuire, Johnny Matthews, Grady Lewis.

## HOUSE MATRONS AND PRESIDENTS

### HOUSE PRESIDENTS

JIM MARRS ..... Justice Hall  
 PAISY STUBBS ..... Dauph Blau  
 PEGGY LAUGHLIN ..... Lovill Hall  
 DORIS MEDLIN ..... East Hall  
 ORA LEE HELMS ..... White Hall

### RESIDENT MANAGER

MORRIS BRANCH ..... Newland Hall

### HOUSE MATRONS

MRS. LILLIE BASKIN ..... Dauph Blau  
 MRS. I. B. MAITTE ..... Lovill Hall  
 MRS. JESSIE B. STEPHENS ..... Assistant  
 MRS. LILLIE B. HARDIN ..... East Hall  
 MRS. I. W. MASSEY ..... White Hall





# ASSOCIATION FOR CHILDHOOD EDUCATION

*Seated:* Nelda Peterson, Patsy Stubbs, Mary Blevins, Mrs. Joe Crawford, Daphne Baldwin, Dorothy Barber, Edith Hampton, Frances Jeffreys. *Second row:* Doris Yarbrough, Joyce Ann Thornton, Jean Wall, Jo Nell Starnes, Shirley Sharpe, Jennie Kerr, Jean Coble, Betsy Williams, Eloise Edmondson, Camilla Welborn, Mary Frances Martin, Erma Lee Ramsey. *Third row:* Polly Moses, Patty Billings, Sana Coble, Libby White, Betsy

Edwards, Edith Smoot, Jean Lewis, Doris Edwards, Ernestine Calloway, Flora Hartsell. *Fourth row:* Julia Hough, Ethel Robinson, Nancy Garrison, Margaret Warlick, Louise Bowen, Lucy Barker, Mary Dunn, Jean Hunter, Jean West. *Not pictured:* Ruth Beck, Norma Douglas, Jo Anne Johnson, Peggy Holland, Bernice Troutman.



## OFFICERS

DAPHNE BALDWIN ..... *President*  
 DOT BARBER .... *First Vice-President*  
 EDITH HAMPTON .. *Second Vice-Pres.*  
 FRANCIS JEFFREYS .. *Third Vice-Pres.*  
 MARY BLEVINS ..... *Secretary*  
 PATSY STUBBS ..... *Treasurer*  
 NELDA PETERSON ..... *Reporter*  
 PEGGY HOLLAND ..... *Publications*  
 JO JOHNSON .... *Publicity Chairman*  
 MRS. JOI CRAWFORD ..... *Sponsor*



## OFFICERS

MARTHA HERRING ..... *President*  
 RICHARD BARKER ..... *Vice-President*  
 SARAH COBLE ..... *Secretary*  
 RITA CROWELL ..... *Treasurer*  
 DR. JOHN G. BARDEN ..... *Sponsor*

# FUTURE TEACHERS OF AMERICA

*First row:* Dr. John Barden, Rachel Franklin, Dean Herman, Martha Herring, Bobby Bridges, Richard Barker. *Second row:* Janice Upchurch, Peggy Laughlin, Betty Sue Williams, Bobbie Bridges, Bernice Troutman, Gladys Moore, Sue Presson. *Third row:* Ben Connell, Peggy Rogers, Patsy Stubbs, Nancy Snyder, Ann Lantz, Minvonne Sojourner, Betty Noland, Christine Neill, Jean Well. *Fourth row:* Jean Coble, Peggy Little, Betty Finch, Mary Blevins, Joanne Smith, Lenna Duncan, Elizabeth Elliott,

Kathryn Griffin, Bobbie Carnes, Rita Crowell, Myzelle Stanley, Billie Sue Richardson, Sara Coble, Camilla Welborn, Jacqueline Snyder, Richard Swam. *Not pictured:* John Coulter, Carol Goodrum, Eleanor Helms, Mary Higgins, Betty Keller, Peggy Keller, Mary Frances Kilpatrick, Ruby Mast, Barbara Nance, Joe Perry, Mildred Williams, Evelyn Falls, Carol Wilson, Betsy Rea, Lave George, Lea Golson, Alice Wilde, Doris Rhyne.





SPONSORS

BARBARA STEPHENSON  
*Not Pictured*  
 MARY S. SHOOK



# Y. W. C. A.

CABINET MEMBERS

CAROL GOODRUM  
 INA SMITH  
 BETTY JANE BROWN  
 GLADYS MOORE  
 SANDRA WILSON  
 JEANNA COFFEY  
 REBECCA MOXIEY  
 JEAN BULLOCK  
 JANE BULLOCK  
 BETTY JEAN ROBERSON  
 ERNESTINE CALLOWAY  
 BETTY MCGEE  
 MARY CHURCH  
 BECKY AUSTIN  
 BOBBIE GREER

*President*  
*Vice-President*  
*Secretary*  
*Treasurer*  
*Religious Council Representative*  
*Religious Council Representative*  
*Prayer Group Chairman*  
*Social Vice-President*  
*Social Service Chairman*  
*Publicity Director*  
*Membership Chairman*  
*Chapel Program Chairman*  
*Reporter*  
*Pianist*  
*Chorister*

*First row:* Louise Graham, Betsy Edwards, Edith Smoot, Betty McGee, Mary Ellen Johnson, Irene Cherry, Lucinda Alexander, Doris Yarbrough, Bonnie Godfrey. *Second row:* Patsanna Phillips, Valorie Mosher, Bernice Troutman, Carol Jones, Mary Little, Gladys Moore, Doris A. Gore, Elnor Morehead, Dot Travis, Joyce Humeycutt, Nancy Allison, Doris Martin. *Third row:* Jeanna Coffey, Ernestine Calloway, Margaret Goodman, Mary Frances Rich, Jo Anne Merrill, Carol Carter, Jo Ann Foster, Susie Dobbins, Julia Ross, Betty J. Roberson, Jean Bullock, Ina Smith, Jane Bullock, Betty Hollar, Abby J. Gibson, Gail McClain, Frances Taylor, Sarah Coble, Sue Jones.



# THE RELIGIOUS COUNCIL

*First row:* Jean Weast, Phyllis Lattimore, Jeanna Coffey, Peggy Keller, Margaret Goodman, Sandra Wilson, Betty McGee, Eugenia Davis. *Second row:* Frances Jeffreys, Ernestine Calloway, Bernice Trout-

man, Nelda Peterson. *Not Pictured:* David Barrett, Julia DuBose, Carol Goodrum, Juanita Harrell, Bobby Phillips, Bobby Sneed, Danny Gray, Swann King.



## OFFICERS

JEAN WEAST .....President  
 PHYLLIS LATTIMORE ..Vice-President  
 NELDA PETERSON .....Secretary  
 EUGENIA DAVIS .....Treasurer  
 JOHN DAVIS .....Sponsor  
 MARVIN CULBRETH .....Sponsor



## OFFICERS

JIM CRAIG .....Chairman  
 MARGIE HUNEYUTT .....Recorder

# CHRISTIAN TEACHERS CLUB

*First row:* Jim Craig, Margie Huneycutt, Bob Phillips, Margaret Goodman, Roy Waters, Barbara Green, Betty Brown, Frances Jeffreys, Nancy Jane Allison, Libby White, Carol Jones. *Second row:* Nancy Laverly, Joyce Keller, Betty McGee, Dot Barber, Lois Weast, Bernice Troutman, Mary Blevins, Jean Coble, Sara Coble, Ann Henson, Patsy Starnes, Wesley Alex-

ander, Ernestine Calloway, Gene Harris, Lucinda Alexander. *Third row:* Elaine Medlin, Joyce Thornton, Doris Yarbrough, Ema Ramsey, Julia Ross, Vivian Smith, Martha Kate Cashion, Jean Weast, Daphne Baldwin, Eibel Robinson, Gene Cherry, Carol Carter, Joan Foster.

# PHYSICAL EDUCATION CLUB

## OFFICERS

J. C. TRAMMELL

*President*

CAROLYN BAUCOM

*Vice-President*

JULIA ROSS

*Secretary*

HILDA THOMPSON

*Treasurer*

DR. G. I. KIRCHNER

*Sponsor*

*First row:* Barbara Fowler, Jim Ollis, Nancy Latham, Betty Jean Roberson, Marie Reavis, Connie Feinster, Mary Church, Eleanor Shull, Elizabeth Eargle, Sue Hendrix, Carolyn Baucum, Swann King, Bill Hutchinson. *Second row:* Laylene Falls, Hilda Thompson, Jackie Correll, Sylvia Massey, Lucille Nanney, Edith Sue Jordan, Iris Tanner, Molly Hopkins, Letty James, Mary Barefoot, Doris Dixon, Bob Westbrook, Reynolds Hollifield, Guy Ervin. *Third row:* Jerry Staley, R. E. Cummings, Marjorie Mist, Colon Nilong, Sarah Conrad, Lloyd Simpson, Jean Bullock, Jane Bullock, Gay Waters, Neil McKinney, Joan Eller, Julia Ross, Bill Ferree, Ed Lakey, Paul Sisk. *Fourth row:* Lawrence Oldaker, Bob Jones,

Al Homesley, Roy Waters, J. C. Trammell, Fred Shoaf, Harold Lakey, Arch Lee, Worth McDonald, Wallace Langford, Tony Wood, Fruett Wilson, Edward Lee, Joy Whitner. *Not pictured:* Richard Absher, Don Alexander, Ann Bigham, Boyce Bridges, Wayne Burris, Bill Crawford, Joy Madron, Bill Morgan, Ken Murray, Jack Bamey, Barbara Pendleton, Wanda Smith, Jean Templeton, Bruce Trammell, John Woodruff, Jo Anne Merrill, Carl Hennessee, Al Bumgarner, Larry Mann, George Linker, Sue Hunter, Charles Painter, Thomas Foster, Lavon Laye, Troy Neal, Sara Winecoff, Mary Kay Callahan, Carolyn Crowe, Buddy Kluttz.





# THE BUSINESS CLUB

## OFFICERS

RAY SHRUM

*President*

BUSTER HICKS

*Vice-President*

DAPHNE CAMPBELL

*Secretary*

MAX BRANNON

*Treasurer*

*First row:* Buster Hicks, Magnolia Oxendine, Bobbie Carnes, June Boyd, Marjorie Dellinger. *Second row:* Kathleen Abee, Sue Presson, Kathryn Millsaps, Betty Cooke, Ann Haynes, Mary Lou Fox. *Third row:* George Grill, Scott Thomas, Don Lineberger, Allen Ellington, Rex McNeil, Curlee Joyce. *Fourth row:* Karen Bishop, Nancy Houston, Rodney Roberts, Norma Hull, Christine Foster, Betty Snead, Dot Byers, Mary Sue Jones, Doris Martin, Iris Jackson, Janet Sue Houck, Wade Hampton, Dick Minish, Don Deaton, Theda Holder, Carol Kennedy, Billye Jones, Nancy Stilwell, Frances Taylor, Gladys Moore, Mary Little. *Not pictured:* Wayne Abernathy, Alice Allred, Jerry Allred, Libby Brawley, Daphne Campbell, Carlton Cates, Madeline Coffey, Lenna Duncan, Thomas Edmisten, Beulah Edwards,

Wilma Everhart, Virginia Flippin, Don Foster, Barbara Francis, Henry Germaine, Walter Giles, Clarence Goings, Bobbie Greer, Hazel Harris, Polly Hayes, Alice Heavner, Sam Hefner, William Honeycutt, Hayes Hoover, Barbara Hughes, Coy Isaacs, Roy Isaacs, Bill Jones, J. V. Jones, Betty Keller, Mozelle Kuykendall, William Lane, Faye Lassiter, Henry Lee, Patty Long, Maurice Lovette, Martha McAuley, Mary McCants, Lib McFadyen, Jean McNeil, Bobbie Marshall, Carolyn Mast, Buddy Miller, Nancy Mills, Frankie Morrison, Bob Myers, Frances Nichols, Ira Jane Plott, Joan Rhyne, Ray Shrum, Sam Snipes, Bill Sofley, Coleman Speece, Cleo Totten, Ned Trivette, Albert Walsh, Evelyn Washburn, Betty Wilson, John Wood.

# HOME ECONOMICS CLUB

## OFFICERS

PATY HANKLEY .....President      ESTHER MOORE .....Secretary-Treasurer  
 ANNIE RAE MARTIN .....Vice-President      RICK CRUMP .....Reporter  
 JOAN WATERS .....Reporter

First row: Julia DuBose, Betsy Rea, Iris Miller, Lydia Hall. Second row: Ruth Hyder, Ruby Taylor, Laura Eller, Elaine Medlin, Audrey Glass, Mary Jane Sheets, Phyllis Lattimore, Nancy Allison, Jo Anne Carlton, Rick Crump, Gretchen Hine. Third row: Margaret Huneveutt, Ina Smith, Annie Rae Martin, Janice Swift, Miss Jean Smith, Rachel Teague, Jo Anne Mathis, May Frances Cochran, Mary G. Bedding, Joan Waters, Eleanor Johnson, Cora Ann Hollingsworth, Ruby Mast. Fourth row: Sarah Crawford, Miss Marion Adams, Martha Kate Cashion, Betty Dixon, Maxine Hartman, Margaret Cozart, Hlowellyn Ray, Jeroline Watts, Betty Laslev, Carol Westbrook, Sara Hoots, Juanita Harrell, Jean Carter. Fifth row: Janice Parker, Miss Lucy Brock, Esther Moore, Nra Sledge, Peggy Neel, Joyce Lamb, Jean Wells, Jean Rhyne, Luzell McGinnis. Not pictured: Jeanette Reid, Patty Hankley, Barbara Davis, Pat Finger, Ida Bailey, Libby Lee Brown, Frances Douglas, Elizabeth Jane Goforth, Ella Ruth Hampton, Carolyn Harris, Mary Hensley, Betty Lou James, Garcia Long Lail, Sue Carolyn Lutz, Doris Mathis, Maud Morrison, Ruby Lee Taylor, Nancy Wooten.



First row: Ila Mae Taylor, Olive Moretz, Frances Jeffreys, Peggy Keller, Eunice Query. Second row: Tess Ledbetter, Jackie Snyder, Mary Ellen Johnson, Jeanna Coffey, Gwen Thompson, Betty Jane Brown, Betty Faye Hines, Betty Marston, Jo Anne Welborn, Jerry Coble. Third row: Leonard Lee Johnson, Carol Jones, Isabel Eggers, Sandra Wilson, Arlene Mast, Louise Mitchell, Jane Howell, Joan Jarrett, Betty McGee. Not Pictured: Robert Hoffman, Virginia Jennings, Frances Young, Linda Townsend, Corky Owsley, Belva Calloway.



# LIBRARY SCIENCE CLUB

## OFFICERS

FRANCES JEFFREYS .....President      PEGGY KELLER .....Secretary-Treasurer  
 OLIVE MORETZ .....Vice-President      MISS EUNICE QUERY .....Sponsor





#### OFFICERS

JOHN COULTER .....*President*  
 PHYLLIS ROSEMAN ....*Vice-President*  
 MARGARET GOODMAN .....*Sec.-Treas.*  
 DOT TRAVIS .....*Program Chairman*  
 DR. J. T. C. WRIGHT .....*Sponsor*

## MATH CLUB

*First row:* Nancy Waters, Mary Ellen Johnson, Margaret Goodman, Hope Lowman, Dot Travis, Barbara Green. *Standing:* Phyllis Roseman, Nancy Snider, John Coulter, Mary Ethel Shearin, Doris Ann Gore,

Betty Haley, Kenneth McGee. *Not Pictured:* Raymond Miller, Mary Elizabeth Hyler, Melvin Carpenter, Joe Davis, Larry Mann, Reynolds Hollifield, Franklin Jones.

## SCIENCE CLUB

*First row:* Chris Elliot, Metta Moore, Jean Hopkins, Edith Blair, Mary June Sheets, Maxine Hartman, Doris Ann Gore. *Second row:* Leon Coulter, Donald Foster, Hope Dyson, Carol Westbrook, Dorothy Travis, Margaret Hedrick, Freida Williamson. *Third*

*row:* Mike Harrelson, Martin Nichols, Franklin Jones, Julian Huntley, Lee Poe, Bill Lawing, Dr. Irwin Carpenter, Dr. Arnold Van Pelt. *Not Pictured:* Charles Hancock, May Francis Cochrane, David Barnhardt, James Ziglar, James Moffett, Betty Haley.



#### OFFICERS

JEAN HOPKINS .....*President*  
 METTA MOORE .....*Vice-President*  
 EDITH BLAIR ....*Secretary-Treasurer*  
 DR. A. F. VAN PELT .....*Sponsor*





OFFICERS

JOANNE ALDRIDGE .....President  
 WILLIAM BLACKBURN .....Vice President  
 HOPE DYSON .....Sec. Treas.  
 RICHARD ZUBER .....Reporter  
 DR. D. J. WHITNER .....Sponsor  
 LEO K. PRITCHETT .....Debate Coach  
 and Director of Forensics

PI KAPPA DELTA

MEMBERS

JEAN HOPKINS	JAMES CRAIG
JIM MARKS	MARTHA KATE CASHION
ALICE SWANN	SARA LIND DOWLING
JOHN HOWARD	DAN YOUNT
MARY JANE WHITE	BELVA TAYLOR
JO ANN HARDIN	JULIA HOUGH

FORENSIC CLUB

Standing: Jim Marks. First row: Leo K. Pritchett, Jo Ann Hardin, Bill Blackburn, Hopy Dyson, John Howard. Second row: Jeanna Coffey, Richard Zuber, Joanne Aldridge, Jean Hopkins, Mary Jane White. Not Pictured: Janet Sue Houck, Alice Swann, Belva Taylor, Dan Yount, Sara Lind Dowling, Jeanette Reid, Martha Kate Cashion, Julia Hough, James Craig.

OFFICERS

JAMES MARKS .....President  
 HOPE DYSON .....Vice President  
 ALICE SWANN .....Secretary  
 LEO K. PRITCHETT .....Sponsor



# VERNICIAN SOCIETY

## OFFICERS

RACHEL TEAGUE ..... *President*  
 JOAN ELLER ..... *Vice-President*  
 MARY HUDSON ..... *Secretary-Treasurer*

ALICE SWANN ..... *Program Chairman*  
 JOANNE SUDRETH ..... *Chaplain*  
 MRS. MAX RAINES ..... *Sponsor*



*First row:* Jeroline Watts, Jeanna Coffey, Joan Waters, Inez Orozco, Marie Reavis, Iris Miller, Bonnie LaFone, Jeanette Reid, Nelda Peterson. *Second row:* Esther Moore, Martha Kate Cashion, Joan Suddreth, Alice Swann, Mary Hudson, Rachel Teague, Joan Eller, Annie Rae Martin, Pat Finger, Martha McAuley, Ann Lantz. *Third row:* Grace Routh, Carolyn Dauss, Martha Watkins, Kathleen Abee, Julia Ross, Jean Bullock, Jane Bullock, Norma Gabriel, Dot Sharp. *Fourth row:* Jean Lineback, Betty Noland, Phyllis Roseman, Evelyn Washburn, Jane Harrison, Marjorie Mast, Barbara Davis, Jane Robinson, Janet Matthews, Ann Lott, Sara Hoots. *Not pictured:* Beckv Austin, Ann Bigham, Jean Boiter, Margaret Cozart, Rick Cramp, Betty Dixon, Fayleen Falls, Nancy Haynes, Louise Hefner, Eleanor Johnson, Joyce Lamb, Elizabeth McFadven, Ann Moses, Sadie Robbins, Margaret Silver, Betty Warren, Joan Wood, Hilda Anzola, Marie Vaught, Bobbie Brooks.



## J. V. CHEERLEADERS

*Left to right:* Betsy Hughes, Katy King, Julia Ross, Bill Honeycutt, Rachel Anderson, Wilma Everhart, Katherine Langley, Nelda Peterson, Faylene Falls.

# PLAYCRAFTERS



## EXECUTIVE BOARD

*Left to right: Janet Sue Houck, Custodian; Harold Bennett, President; Richard Barker, Historian; Faye Lassiter, Secretary; Audrey Eichelberger, Sponsor; Charles Hancock, Vice-President; Daphne Campbell, Editor "Playbill"; Ed Collins, Custodian.*



# CRAFTSMEN AND MASTER CRAFTSMEN

*First row:* Daphne Campbell, Charles Hancock, Audrey Eichelberger, Faye Lassiter, Harold Bennett, Janet Houck. *Second row:* Alene Queen, Richard Barker, Jacqueline Snyder, Nancy Dickerson, Jeanna Coffey, Neva Norris, Patsy Stubbs, Sue McMillan. *Third row:* Michael Harrelson, Ed Collins, Carl Henry, Larry Auten, Coy Temple.



## APPRENTICES

*Seated:* Dorothy Travis, Bob Meyers, Myra Adkins, Betty Norris, Belva Taylor, Loretta Howe. *Standing:* Katherine Langley, Betty Haley, Susie Dobbins, Patsy McGuire, Wade Wilmoth, Jane Goforth, Valorie Mosher, Jim McGee, Joyce Honeycutt, Elizabeth Elliott, Mary Little, Jerry Young, Otis Carroll, Charles Hales, Jane Robinson, Scamp McMillan, Lottie Stout.

# COLLEGE CHORUS

## OFFICERS

BEN CONNELL  
BECKY AUSTIN  
ALENE QUEEN

*President*  
*Vice-President*  
*Secretary-Treasurer*

BOB GILLEY  
GAYNELLE WILSON  
BECKY MOXLEY

*Reporter*  
*Librarian*  
*Librarian*

### *First Sopranos*

MYRA ADKINS  
SARA LIND DOWLING  
BETH EGGERS  
JUNE GOOD  
ELIZABETH HALLYBURTON  
ALENE QUEEN  
CAROL SLOAN  
NANCY TATUM  
MARIE VAUGHT  
GAYNELLE WILSON  
SYLVIA MASSEY

### *Second Sopranos*

SUZANNE ARROWOOD  
GAYNELLE CHANDLER  
BECKY MOXLEY  
JUEL ROGERS  
JACKIE WEATHERS  
BETSY WILLIAMS

### *First Altos*

BECKY AUSTIN  
CAROLYN BAUCOM  
NANCY DICKERSON  
ZETTA FREEMAN  
GLORIA GATTIS  
CAROLYN GREEN  
FRANCES SISK  
FRANCES WOOD  
ANNE HAYNES

### *Second Altos*

CATHERINE RAY  
ELEANOR HELMS  
MARY ALVA WHITE  
NEVA NORRIS  
BETTY SUE NORRIS  
EVELYN PETERS  
PEGGY ROGERS

### *First Bass*

PAT MATTHEWS  
JOHN MCAULAY  
MARVIN PICKARD  
FRANK WIDENHOUSE  
GENE MCGARR

### *Second Bass*

BEN CONNELL  
BOB GILLEY  
DAVID LANDIS  
DICK LAVENDER  
MR. GORDON NASH  
BARRY RUTH

### *Tenors*

JERRY HILL  
BILL HONEYCUTT  
LAVON LAYE  
GENE WILSON  
JOHN IDOL  
CHARLIE CRABTREE







MR. NICHOLAS ERNESTON, *Conductor*

*Violins*

ELEANOR HELMS  
 MARTHA STEVENS  
 CYNTHIA STILES  
 BETTY SUE NORRIS  
 JOYCE ANN THORNTON  
 PAT MATTHEWS  
 ETHEL ROBINSON  
 CAROL SLOAN  
 BETTY SWAIN  
 JO ANNE HARDIN  
 J. M. CULLERS  
 REBECCA MOXLEY  
 ZETTA FREEMAN  
 JUNE GOOD  
 SUZANNE ARROWOOD  
 EVA ADAMS  
 GLADYS EASTRIDGE

*Violas*

JERRY HILL  
 MRS. MARVIN PICKARD

CARMEN GUY  
 BETTY CALLOWAY

*Cellos*

BETH EGGERS  
 MYRA ADKINS  
 MARVIN PICKARD

*String Bass*

BARRY RUTH  
 GENE MCGARR

*Clarinets*

PAT SUMBROW  
 CAROL MILKS

*Flutes*

GLORIA GATTIS  
 JACKIE WEATHERS

*Oboe*

MARY HUDSON

*Bassoon*

WILLIAM SPENCER

*French Horns*

DOROTHY KEMP  
 PAUL SIMPSON  
 DON WOOD  
 JOY BROWN

*Trumpets*

DICKIE HUNT  
 FRANK WIDENHOUSE  
 GERALD TAYLOR

*Trombone*

JOHN CLONTZ

*Percussion*

ED CULLERS

*Tympani*

GORDON NASH

# SYMPHONY ORCHESTRA



# MARCHING BAND

## OFFICERS

BARRY RUTH

*President*

PAT SUMROW

*Vice-President*

MARY HUDSON

*Secretary-Treasurer*

MR. WILLIAM SPENCER

*Director*



*First row:* George Grill, Cleo Bolick, Grace Weeks, Mr. Nicholas Erneston, Mary Hudson, Tyre Sidden, Ed Culler, Juell Rogers, Jeanette Reid, Arlene Mast, Lenore Critcher. *Second row:* Mr. William Spencer, Suzanne Arrowood, Jean Hopkins, Betty Calloway, Eva Adams, Betty Swain, Jackie Weathers, Betty Sue Norris, Wanda Smith, Myra Adkins, Martha Christopher, Freida Hoover,

June Goode, Ed Collins. *Third row:* Jean Templeton, Elizabeth Eargle, Gladys Eastridge, Joe Davis, Gerald Taylor, Buddy Miller, Frank Widenhouse, Pat Sumrow, John McAulay, Joy Brown, Ira Jane Platt. *Fourth row:* Ann Selvy, Don Wood, Hayes Hoover, Gene McGarr, Jerry Smith, Calvin Hayes, Danny Yount, Barry Ruth, Frances Blanton, Fern Waycaster, Joyce Cowells.



### OFFICERS

GENE WILSON .....*President*  
 BARRY RUTH .....*Vice-President*  
 FRAN SISK .....*Secretary*  
 GAY WILSON .....*Treasurer*  
 REBECCA MOXLEY .....*Reporter*  
 FREIDA HOOVER ..*Program Chairman*  
 MR. GORDON NASH ..*Faculty Adviser*

## MUSIC EDUCATORS CLUB

*First row:* Gene Wilson, Barry Ruth, Fran Sisk, Gay Wilson, Rebecca Moxley, Freida Hoover, Mr. Gordon Nash. *Second row:* Betty Sue Norris, Frances Wood, Rebecca Austin, Jackie Weathers, Frank Widenhouse, Eleanor Helms, Carol Sloan, Myra Adkins, June Good, Eva Adams. *Third row:* Zetta Freeman, Pat Sumrow, Alene Queen, Don Wood, Jerry Hill, Beth Eggers, Juell Rogers, Gladys Eastridge, Pat Matthews, John

McAulay. *Fourth row:* Marvin Pickard, Gene McGarr, Gerald Taylor, David Landis, Don Knowland, Mr. W. S. Cole, Mrs. Winnie Hargrove, Gloria Gattis, Mr. J. W. Rooker, Bob Gilley. *Not Pictured:* Mrs. Dorothy E. Kemp, Mr. N. G. Erneston, Mrs. Virginia W. Linney, Mr. Hoyt Safrit, Mr. W. M. Spencer, Suzanne Arrowood, Gaynelle Chandler, Bob Goforth, Joanne Graybeal, Catherine Ray, Mary Alva White.

## DOUBLE OCTET

*First row:* Jackie Snyder, Gloria Gattis, Jerry Hill, Bill Honeycutt, James Rucker, Jack Isaacs, Marie Vaught, Beth Eggers. *Second row:* Eleanor Helms, Jean Boiter, Pat Matthews, Ed Collins, Bob Gilley, Gene Wilson, Gaynelle Wilson, Becky Austin.



MR. HOYT SAFRIT .....*Conductor*  
 FRAN SISK .....*Pianist*

OFFICERS

- BURMAH CARPENTER . . . . .President
- MARtha HERRING . . . . .Vice President
- KATY KING . . . . .Secretary Treasurer
- LAWRENCE OLDAKER . . . . .Publicity Chairman
- Mrs. JOY KIRCHNER . . . . .Co-Sponsor
- MISS JANIE MATTHEWS . . . . .Co-Sponsor



# VARSOUVIANNA CLUB

*First row:* Mary Clement, Morris Branch, Nancy Dickerson, Gene Ross, Faylene Falls, Benny Mast, Katy King, Burmah Carpenter. *Second row:* Juanita Beroth, Ray Morris, Joy Madron, Ned Trivette, Mary Sue Walsh, Joe Garwood, Hilda Thompson, Troy Neal. *Third row:* Julia Ross, Bill Sollev, Betsy Capel, Ed Doler, Annie Rae Martin, Howard Ledbetter, Marth Christopher, Junior Groce. *Members Not Pictured:* Marjorie Mast, Colon Nitong, Martha Herring, Joan Eller, Al Bumgarner, Jerry Young, Carol Goodrum.

# MODERN DANCE

*First row:* Joe Edmisten, Burmah Carpenter. *Second row:* Troy Neal, Janie Matthews, Katy King, Clarence Casey. *Third row:* Morris Branch, Hilda Thompson, Julia Ross, Faylene Falls, Edward Lee. *Members Not Pictured:* Lucille Nanney, Mary Church.

OFFICERS

- JOE EDMISTEN . . . . .President
- KATY KING . . . . .Vice President
- FAYLENE FALLS . . . . .Secretary Treasurer
- Mrs. JOY KIRCHNER . . . . .Co-Sponsor
- MISS JANIE MATTHEWS . . . . .Co-Sponsor





*Athletics*



JOANNE ALDRIDGE



BOB GOFORTH



CAROL GOODRUM



MARIE VAUGHT



BILL BLACKBURN



CHIEF CHEERLEADER



BOB SIGMON



PATTY HANKLEY



BOB PHILLIPS

JANET HOUCK



# Varsity

# Cheerleaders



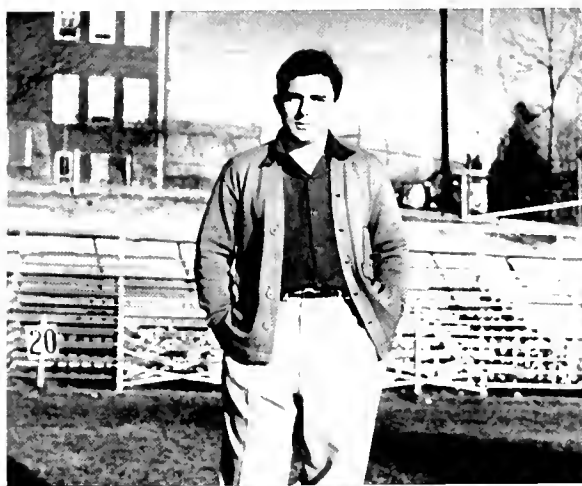


## COACHES

John Kirk, Bob Broome, E. C. Duggins,  
Francis Hoover, Preston Mull.

## MANAGERS

Jack Parks, Bunk Carpenter, Jake Hord,  
Carl Draughon, Wilmar Dove.







# SENIORS

MORRIS BRANCH

BOB CLENDEN

BOBBY JOE BAKER

SHIRLEY GABRIEL

JACK PENNELL

JIM MARTIN

MACK HAYNES

PAUL WELBORN

JOHN GAMBLE

RAY TRIPLETT



# JUNIORS

DON HALL  
BOB JONES

HAROLD LAKEY  
COLON NIFONG

BEN QUINN  
JOE EDMISTEN

NED PENNELL  
JIM MARKS



# S O P H O M O R E S

MAC SMITH

JIM KISER

JIM OLLIS

BUCK HALL

JOHNNY MATTHEWS

RAY MORRIS  
R. E. CUMMINGS

AL BUNGARNER  
GENE WELCHER





# FRESHMEN

ORB ELAM  
JOE GARWOOD  
JUNIOR GROCE  
JOE ELLER

MELVIN MORRISON  
ED DOLER  
ED LAKEY  
CHARLES TAYLOR

GEORGE GUNTER  
W. J. WATERS  
BILL SMITHERMAN  
LARRY SIMMONS

LARRY DAVIS  
FRANKLIN ELLER  
T. D. CARTER  
KENNETH HANSEI

# BASKETBALL 1953-'54

FRANCIS HOOVER  
BOB BROOM  
*Coaches*



*First row: O. D. Wallace, Captain; Al Harmon, Tommy McNeill, Howard Ledbetter. Second row: Bill Blackburn, Tom D'Armi, Tee Haithcock, Martin Banner, Myron Deal, Bill Lee, Bill Ferree. Third row: Harry Welch, Jake Trammell, Bob Sebastian, Dave Abernathy, Bill Brown, Tom Wooten, Bob Campbell.*

APPALACHIAN 66—MILLIGAN 81



O. D. WALLACE  
*Captain*

JAKE TRAMMELL



BOB CAMPBELL



DAVE ABERNATHY

MARTIN BANNER



BILL BROWN







APPALACHIAN 62—EAST TENNESSEE 66



TEE HATHCOCK  
BILL BLACKBURN



HARRY WELCH  
BILL CRAWFORD



MYRON DEAL



BOB SEBASTIAN  
TOM WOOFEN

APPALACHIAN 81—ELON 74



HOWARD LEDBETTER

TOM D'ARMI



BILL FERRE

TOM McNEILL



AL HARMON

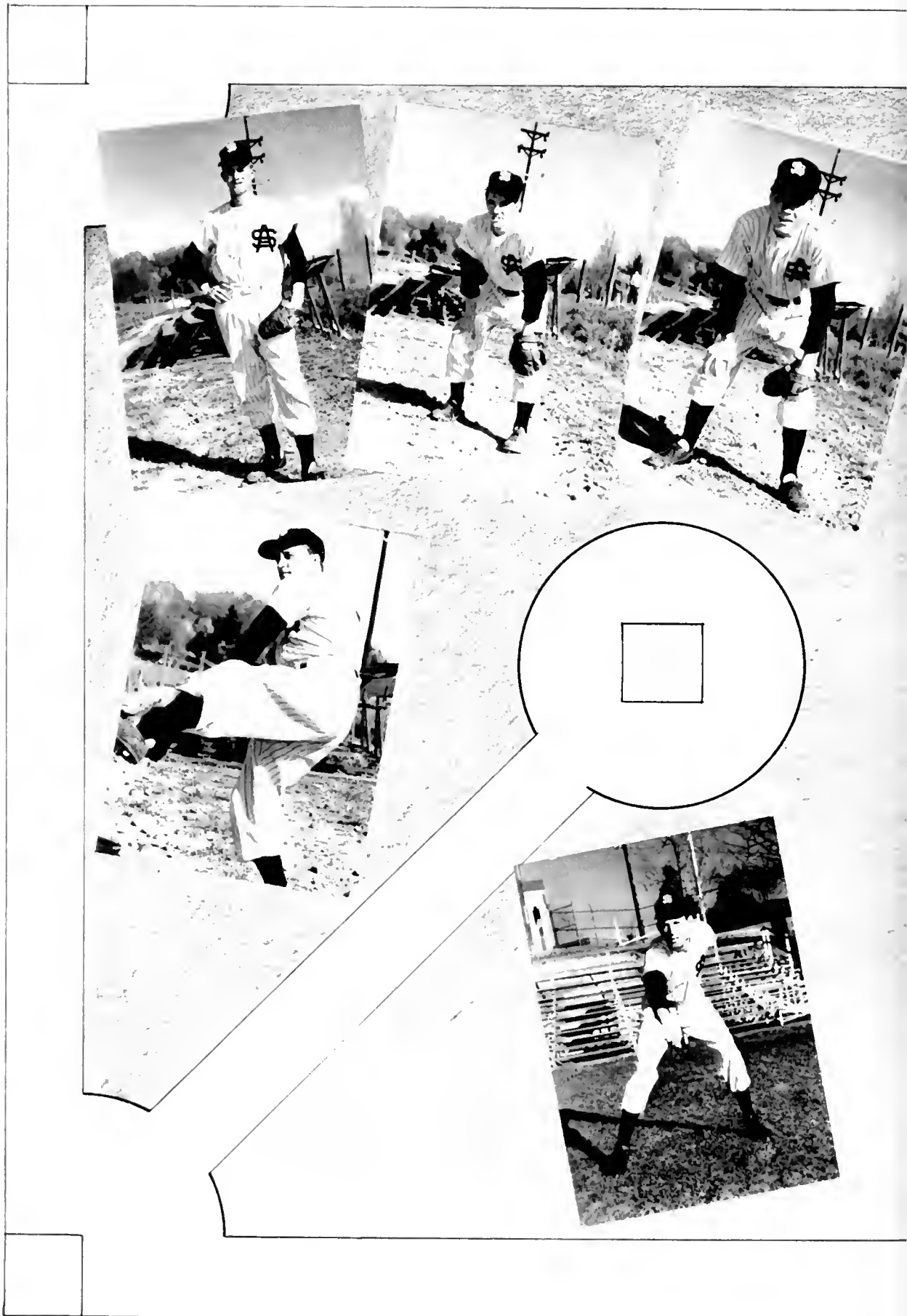


BILL LEE

JAKE HORD  
*Manager*

DENT MILLER  
*Manager*





# BASEBALL

*Left to right:*

TROY BRIDGES

BUDDY KLUTTZ

DON HIATT

FRED ASHFORD

FRED SHOAF

DENT MILLER

RICHARD LAPISH

FRANK WILSON

BILL HUTCHINSON

R. A. DOWNS

COACH BOB BROOME

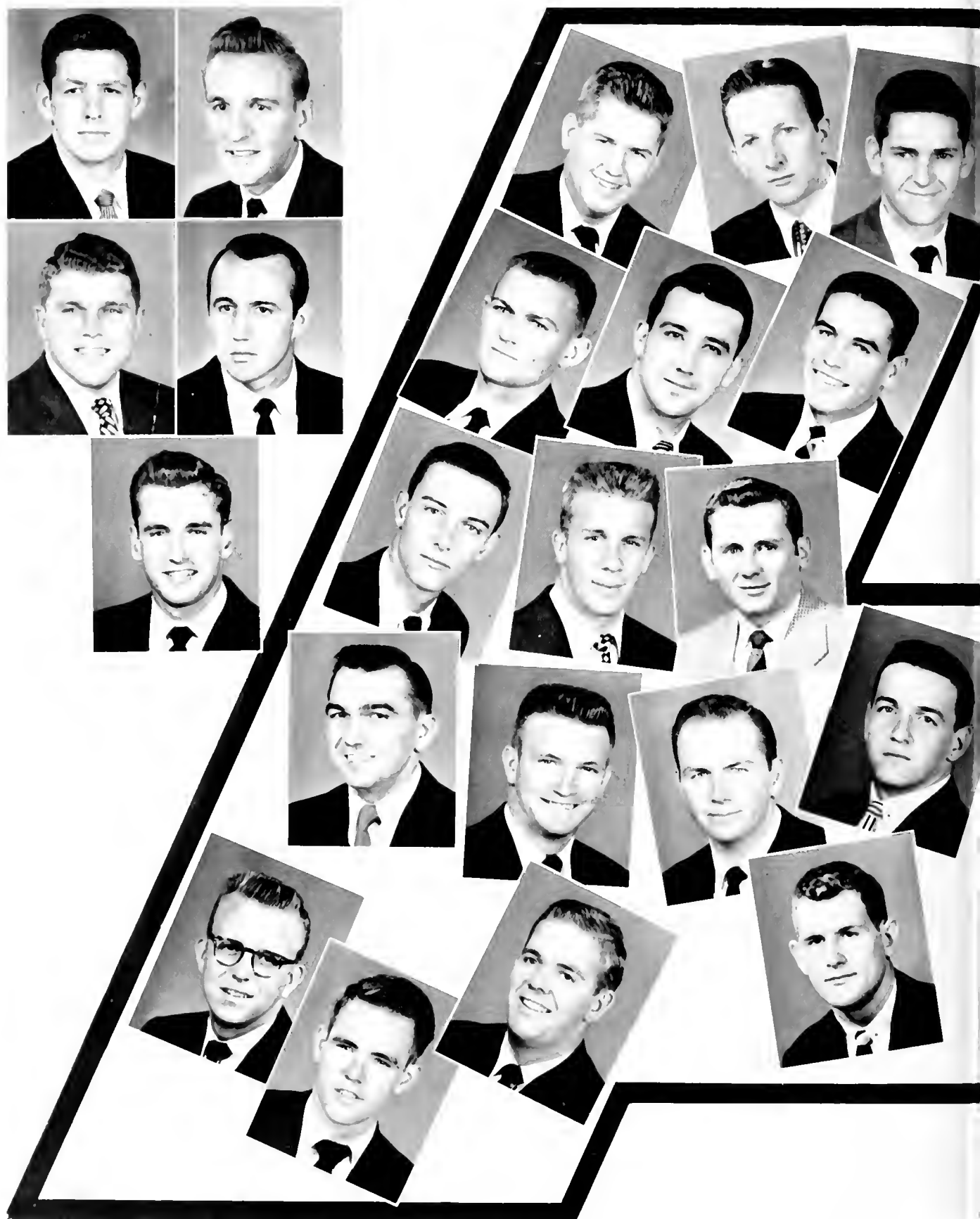
HAROLD LAKEY

DON LINEBERGER, *Manager*



# MEN'S

MORRIS BRANCH .....President  
 JOHN PALCHA .....Vice-President  
 GEORGE HOLMES (Not Pictured) .....Secretary



GERALD ADAMS  
 BILL BLACKBURN  
 BILL BROWN  
 BILL CASSLER  
 BURMAH CARPENTER

BOB CLENDENIN  
 BOB CULBRETH  
 R. E. CUMMINGS  
 R. A. DOWNS  
 ORBI FLAM  
 SHIRLEY GABRIEL

JOHN GAMBLE  
 JOE GARWOOD  
 T. J. MAN HALTHCOCK  
 DON HAFT  
 IAKI HORD  
 BOB JONES

JACKIE JONES  
 JIM KISER  
 BUDDY KLUTTZ  
 RICHARD LAPISH  
 JIM MARTIN



# A" CLUB

BOBBY JO BAKER ..... *Treasurer*  
 HAROLD LAKEY ..... *Sergeant-at-Arms*  
 DON LINBERGER ..... *Chaplain*



DENT MILLER  
 COLON NIFONG  
 LAWRENCE OLDAKER  
 JIM OLLIS  
 JACK PENNELL

NED PENNELL  
 BEN QUINN  
 FRED SHOAF  
 RAY SHRUM  
 J. C. TRAMMELL

RAY TRIPPLETT  
 O. D. WALLACE  
 PAUL WELBORN  
 HARRY WELCH  
 WAYNE WHITESIDES  
 ROBERT WHITLOCK

*Not Pictured:*  
 BUCK HALL  
 DONALD HAYNES  
 JACK PARK  
 DAVE PIERCE  
 MACK SMITH



# W. A. A. CHAMPIONS

BARBARA FOWDER  
*Table Tennis Singles Champion*

BARBARA FOWDER, IRIS FASSER  
*Table Tennis Doubles Champions*

BARBARA FOWDER, JANE MATTHEWS  
*Tennis Doubles Champions*

MISS GAIL CLAY  
*Women's Athletic Director*

BARBARA FOWDER  
*Tennis Singles Champion*

ANN BIGHAM  
*Badminton Singles Champion*

LEO BAUCOM  
*Archery Champion*

ANN BIGHAM, DOBIS DIXON  
*Badminton Doubles Champions*

## Women's "A" Club

### OFFICERS

REBECCA HOOVER ..... *President*  
 SUE HUNTER ..... *Vice President*

*Left to right:* Janie Matthews, Sue Hunter, Nancy Latham, Barbara Lowder, Marjorie Mast, Rebecca Hoover, Joan Eller.



## The Flying Fish

### OFFICERS

SUE HUNTER ..... *President*  
 REBEKAH ROBERTSON ..... *Vice President*  
 MARJORIE MAST ..... *Secretary*  
 JOAN ELLER ..... *Treasurer*  
 NANCY LATHAM ..... *Publicity Chairman*

*Left to right:* Metta Moore, Joan Eller, Julia DuBose, Janie Matthews, Rebekah Robertson, Nancy Latham, Sue Hunter, Lucille Nannex, Marjorie Mast, Jean Butler, Joy Whitner, Joy Madron, *Not Pictured:* Evelyn Peters, Joyce Lamb.



## Women's Athletic Association

### OFFICERS

*Left to right:*  
 BARBARA LOWDER ..... *President*  
 IRIS TANNER ..... *Secretary*  
 LUCILLE NANNY ..... *Vice President*  
 MARJORIE MAST ..... *Interannual Manager*  
 ELIZABETH FARGUE ..... *Treasurer*  
 NANCY LATHAM ..... *Interannual Manager*



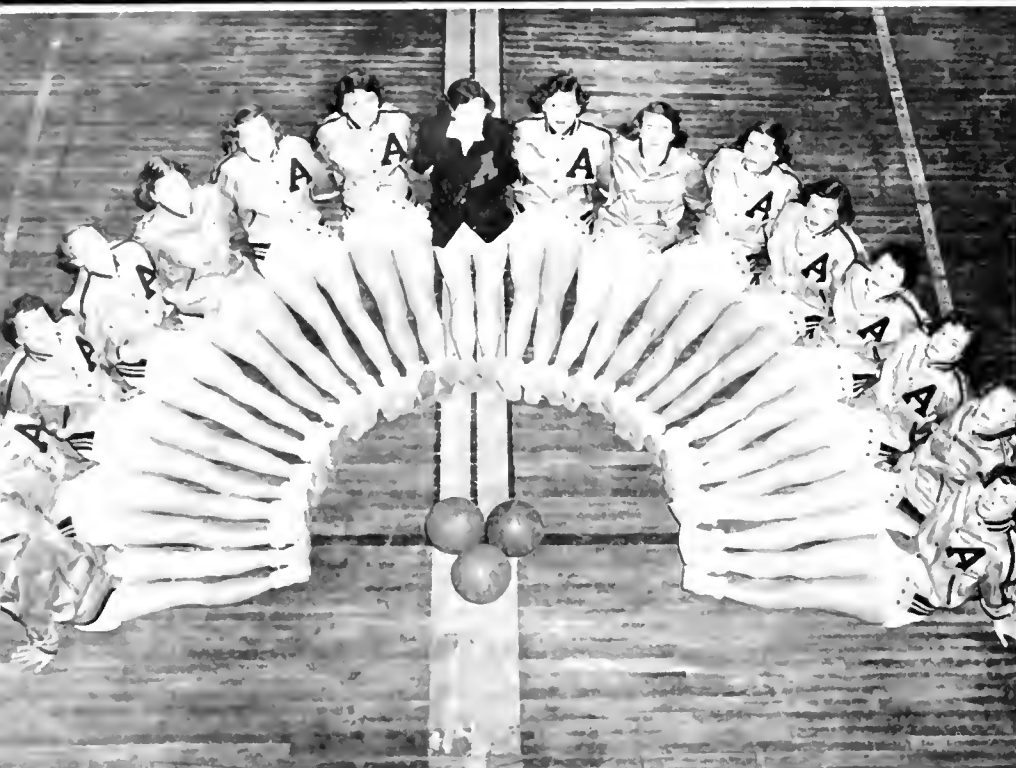


# MAJOR INTRAM

## VOLLEYBALL

JEAN TEMPLETON, *Captain*

*Left to right:* Jane Bullock, Laylene Falls, Jamie Matthews, Rebecca Hoover, Sue Hendrix, Jackie Williams, Jean Templeton, Mary Kay Callahan, Mildred Bolick.



## BASKETBALL

*Left to right:* Nell Shull, Jackie Correll, Ann Bigham, Doris Dixon, Margaret Warlick, Patsanna Phillips, Lucille Nanney, Mary Church, Wanda Hauser, Lib Eargle, Winona Swain, Marjorie Mast, Barbara Lowder, Becky Robertson, Nancy Walker, Nancy Latham.



# NON-MAJOR INTRAM

## VOLLEYBALL

JO ANNE VANNOY, *Captain*

*Left to right, first row:* Lydia Hall, JoAnne Vannoy, Jane Ewing. *Second row:* Margaret Cozart, Maude Wilson, Doris Dixon, Coach; Georgia Check, Jean Lewis.

# IL CHAMPIONS

## SOCCER

TED BAUCOM, *Captain*

*Left to right, first row:* Doris Dixon, Sue Hunter, Ted Baucom, Margaret Warlick. *Second row:* Lib Eargle, Jackie Correll, Jean Templeton, Wanda Hauser.



## SOFTBALL

SYLVIA MASSEY, *Captain*

*Left to right:* Sylvia Massey, Ted Baucom, Wanda Hauser, Nancy Latham, Sue Hunter, Joy Whitner, Joy Madron.



# URAL CHAMPIONS

## BASKETBALL

NANCY HAYNES, *Captain*

*Kneeling:* Joan Eller, Coach. *Standing:* Pat Finger, Maude Wilson, Georgia Check, Metta Moore, Magnolia Oxendine, Edith Blair, JoAnne Vannoy.





**B O O K T H R E E**

*Features . . .*





The Queen of May . .

*Rebecca Hoover*  
Queen



*Carol Goodrum*  
Maid of Honor

**.. And Her Attendants**

... and



BONNIE MALONE  
*Senior Attendant*



BETTY ANN ROBINSON  
*Senior Attendant*



BETSY REX  
*Senior Attendant*



NANCY DICKERSON  
*Junior Attendant*



VICI SWANN  
*Junior Attendant*



*court—*



ISUZ OROZCO  
*Sophomore Attendant*

MARTHA WATKINS  
*Junior Attendant*



NANCY SHAWELL  
*Freshman Attendant*

PEGGY LONG  
*Sophomore Attendant*



ROSEMARY CARPENTER  
*Freshman Attendant*



*Homecoming*  
COURT

*Martha Watkins*  
HOMECOMING QUEEN



*Left to right: MARJORIE MAST, PEGGY JARVIS, MARTHA WATKINS, MARTHA CHRISTOPHER, ALICE SWANN, ROSEMARY CARPENTER.*

*Christmas*  
COURT



*Carol Goodrum*  
CHRISTMAS QUEEN



*Left to right: JACQUELINE SNYDER, JEAN McNIEL, CAROL GOODRUM, JEAN BOITER, BETTY ANNE ROBINSON.*

Miss Appalachian  
PATTY HASKLEY



Mr. Appalachian  
DON LINEBERGER



Most Valuable  
SHIRLEY GABRIEL



Most Popular  
JAKE TRAMMIELL



*Most Attractive*  
REBECCA HOOVER

*Most Handsome*  
BOBBY JOE BAKER

*Most Athletic Boy*  
SHIRLEY GABRIEL

*Most Athletic Girl*  
BARBARA LOWDER

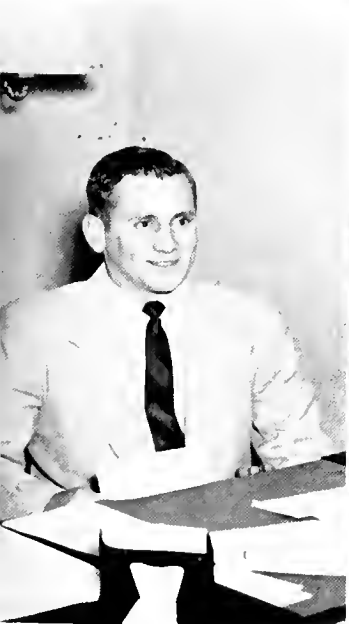
# SENIOR SUPERLATIVES

*Friendliest*  
ROBERT DOWNS

*Most Versatile*  
G. C. DAVIS

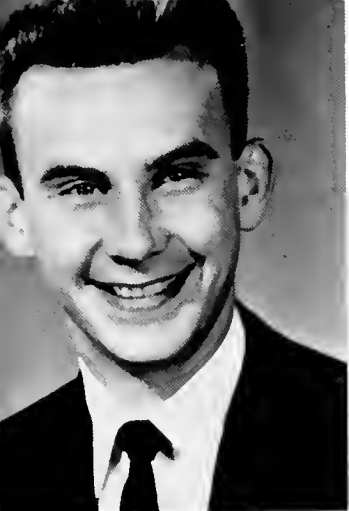
*Most Intellectual*  
HAROLD SONGER

*Most Likely To Succeed*  
JOHN PYECHA

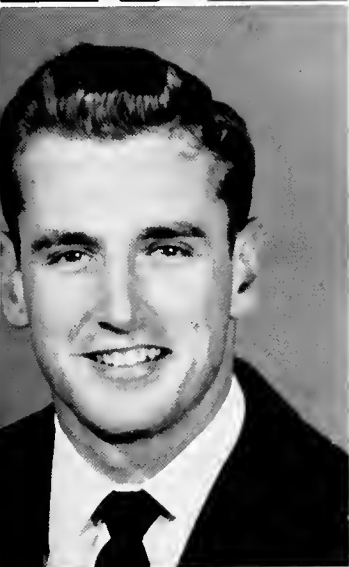




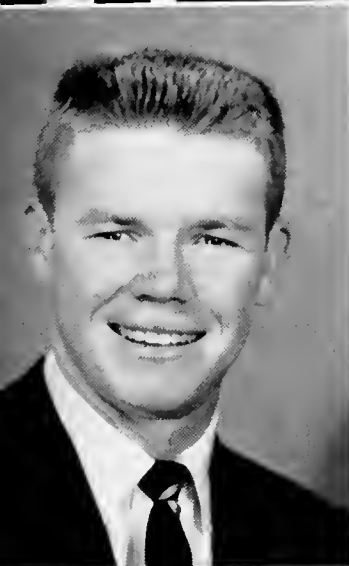




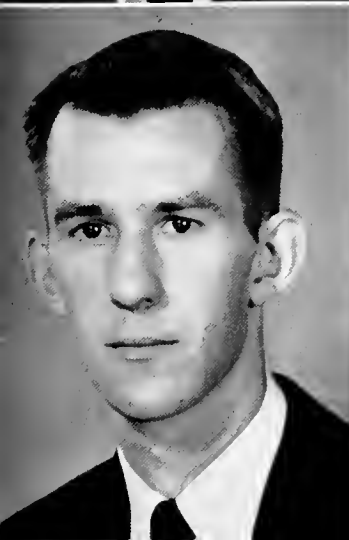
JOANNE ALDRIDGE  
 MORRIS BRANCH  
 CHANCEL BROWN  
 BOB CLENDENIN  
 G. C. DAVIS



ISABEL EGGERS  
 SHIRLEY GABRIEL  
 CAROL GOODRUM  
 A. C. LARRIMORE  
 DON LINEBERGER



MARY JANE MATTHEWS  
 JAMES MOFFETT  
 BILL MORGAN  
 JOHN PYECHA  
 BOBBY SNEAD



HAROLD SONGER  
 MARTHA STEVENS  
 EVELYN WASHBURN  
 ALICE WILDE  
 RICHARD ZUBER

WHO'S WHO AMONG STUDENTS IN AMERICAN  
 UNIVERSITIES AND COLLEGES



*Mrs. D. P. Washburn*

EVELYN WASHBURN, *Editor*

## THE RHODOD



*Walter Giles*

EVELYN WASHBURN, *Editor*

*Mrs. Nellie Downs*

ROBERT DOWNS, *Business Manager*



DRON STAFF



*Miss Elizabeth Downs*

ROBERT DOWNS, *Business Manager*

*Mr. Simpson O. Wilde*

*ALICE WILDE, Editor of Appalachian*



*Mrs. J. R. Stephens*

*MARTHA STEPHENS, Business Manager of Appalachian*



*Betty Gabriel*

SHIRLEY GABRIEL, *President of Student Body*



*Mr. Lee Huffman*

BOB HUFFMAN, *President Senior Class*



*Mrs. Jesse Snead*

BOB SNEAD, *President Junior Class*



*Mrs. J. J. Matthews*

JOHNNY MATTHEWS, *President Sophomore Class*



*Mr. William Mitchell Lewis*

GRADY LEWIS, *President Freshman Class*



*Mr. F. C. Weast*

JEAN WEAST, *President Religious Council*



# Yosef shows



- 1. Calija
- 2. Oh! A Huntin' We Will Go
- 3. Ain't Life Grand?
- 4. I Wanna Be Evil

- 5. The Last Mile
- 6. I Didn't Know The Gun Was Loaded
- 7. Easter Parade
- 8. And Baby Makes Three



now we live informally-



9. If I Were King  
 10. Home Sweet Home  
 11. I'm Sitting On Top of The World  
 12. I Wanna Be Loved By You

13. Carry Me Back to Ole' Virginia  
 14. Mr. Touchdown U.S.A.  
 15. Cement Mixer, Putty, Putty  
 16. Darktown Strutters Ball



# at Appalachia



- 1. What It Was Was Football
- 2. Sleepy Time Gals
- 3. We Three
- 4. Three Little Words
- 5. Let's Have A Party!

- 6. I'm Waiting Just For You
- 7. Hail, Hail, The Gangs All Here
- 8. I Got Plenty O' Nuttin'
- 9. Whiskey, Women + Men, and Loaded Dice



*M*



10. Show Me The Way To Go Home  
11. Don't Fence Me In  
12. Aw, Come On, John!  
13. Totem Pole

14. Down By The Riverside  
15. Winter Wonderland  
16. Put Some Money In the Pot, Boy!  
17. Darktown Poker Club









# APPALACHIAN STATE TEACHERS COLLEGE

Boone, North Carolina



DEVOTED EXCLUSIVELY TO  
IMPROVING INSTRUCTIONAL  
SERVICE IN NORTH CAROLINA  
AND THE SOUTH



Graduate and Undergraduate Work  
Regular and Summer Terms

Compliments of

**GENERAL SHALE PRODUCTS  
CORPORATION**

JOHNSON CITY, TENNESSEE

# Hughes Equipment Company

School, Church, and Institutional Furnishings



HIGH POINT, NORTH CAROLINA

**ELECTRICITY SERVES YOU**

Time-Saving and Penny-Wise

**NEW RIVER LIGHT AND POWER COMPANY**

Safe For Your Savings Since 1921

**WATAUGA BUILDING & LOAN ASSOCIATION**

"Assets Over \$2,000,000"

CURRENT DIVIDENDS 3%

We Believe The American Home Safeguards The American Liberty


**REACH  
FOR**

**WALDENSIAN BAKERIES, INC.**  
BAKERS OF  
*Sunbeam Bread and Cake*

**WALDENSIAN BAKERIES, INC.**

VALDESE, N. C.

# ELECTRIC SUPPLY CO.

ASHEVILLE,  NORTH CAROLINA

**DISTRIBUTORS**

**LIGHTING SUPPLIES**

**ELECTRICAL EQUIPMENT**

# THE NORTHWESTERN BANK

BOONE, NORTH CAROLINA

The only complete financial institution in Watauga County offering a complete financial service. Every banking service in consistent with sound banking.

**CAPITAL \$500,000.00**

**SURPLUS \$2,000,000.00**

Meet Your

FRIENDS

At

**BILL'S**



SANDWICHES  
FOUNTAIN SERVICE

# APPALACHIAN THEATRE



"Everybody Likes Boone, N. C."

## WATAUGA DEMOCRAT

"Established 1888"

R. C. Rivers, Owner

BOONE, N. C.

Home-Owned and Home-Operated

**HILLSIDE DAIRY PRODUCTS, Inc.**

PHONE 194

BOONE, N. C.



Always Planning To Serve  
More People Better



**THE BURKE OIL COMPANY, INC.**

VALDESE, N. C.

COME BACK THIS SUMMER  
TO SEE



Presented by

The Southern Appalachian Historical Asso., Inc.

BOONE, N. C.

**Central Electric Supply Company**

Wholesale Distributors  
of  
**ELECTRICAL SUPPLIES  
AND APPARATUS**

29 North Center Street  
P. O. Box 2348  
HICKORY, NORTH CAROLINA

Meet Your Friends At

**CAROLINA  
PHARMACY**



Phone 47

BOONE, N. C.



# SCHRAFFT'S

*"The Nation's Leading Candies"*

ON SALE AT GOOD

STORES EVERYWHERE

\$1.00 - \$2.00 Lb.

Morgan Bros., Inc.

*Wholesale Distributors*

67 Broadway, Asheville, N. C.



Compliments of

## **North Wilkesboro Candy Company**

NORTH WILKESBORO, NORTH CAROLINA

"The Friendly Folks From a Friendly Town"  
Who Supply

**Havatampa Cigars**

**Schrafft's Chocolates**

**Cigarettes and Tobaccos**

**Candies, Gum, and Sundries**

Compliments of

## **Geitner Feed & Seed Company, Inc.**

Phone 7106

13 Main, N. E.

Box 686

HICKORY, NORTH CAROLINA

SANDWICHES

SHORT ORDERS

Meet Your Friends At

**SHORTY'S**

"The Students' Nightly Retreat"

North Wilkesboro Highway

Boone, North Carolina

**BELK'S DEPARTMENT STORE**

BOONE, N. C.



"The Home of Better Values"

**NEWTON'S DEPARTMENT STORE**

Complete Line of

**MEN'S AND LADIES' READY-TO-WEAR**

At Popular Prices

BOONE, N. C.

**GOODNIGHT BROTHERS**

"Packers and Shippers of Watauga Produce"

**FERTILIZERS—SEEDS**

PHONE 135

**EUSTIS LANCASTER ASSOCIATES**

JOHN SEVIER HOTEL BLDG.

ANDREW JOHNSON HOTEL BLDG

ENGINEERS AND DISTRIBUTORS



DIRECT MANUFACTURERS AGENTS

JOHNSON CITY PHONE 3200

KNOXVILLE DIAL 4-4623

**CAUDILL'S, Inc.**

THE SHOP FOR LADIES AND MEN

123 East King Street

BOONE, NORTH CAROLINA

Compliments of

**FARMERS HARDWARE CO., INC.**

**"Everything in Hardware and Associate Lines"**

BOONE, NORTH CAROLINA

**TRAILWAY LAUNDRY and CLEANERS, Inc.**

**"The Best In Laundry and Cleaning"**

Pick-up and Delivery Service

Phone 79

BOONE, N. C.

**REINS-STURDIVANT OF BOONE, INC.**

Funeral Directors and Licensed Embalmers  
BOONE, NORTH CAROLINA

**Reins-Sturdivant Mutual Burial Association, Inc.**

North Wilkesboro, Boone, West Jefferson, Sparta, N. C.

**ANDREW'S CHEVROLET, INC.**

BOONE, N. C.

Office Phone P-26

Shop Phone 27

MECHANICAL REPAIRS TO ANY MAKE CAR

Bare Frame Machine

Radiator Repair

Body Repairs and Painting

REFRESHES

WITHOUT

FILLING



**Pepsi-Cola Bottling Company**

SPRUCE PINE, NORTH CAROLINA

Compliments of

**A. F. HUDSON REAL ESTATE**

2412 Spring Garden Street

GREENSBORO, N. C.

Compliments of

**WriteRight**

"Manufacturers of Fine Paper  
And College Supplies"

**THE CHILDREN'S SHOP**

Complete Outfitters for  
INFANTS TO PRE-TEENS

BOONE, N. C.

**B. W. STALLINGS**

"Your College Jeweler"



BOONE, N. C.

**BOONE DRUG COMPANY**

**REXALL**

"The Professional Store"

Three Registered Pharmacists

W. R. Richardson O. K. Richardson G. K. Moose

Phone 17

Listen WATA 12:15

**DANIEL BOONE HOTEL**

Elevation 3333

Boone, N. C.

**DINING ROOM SERVICE**

J. B. McCoy, Mgr.

C. A. Price, Resident Manager

Compliments of

**HICKORY PACKING COMPANY**

HICKORY, N. C.

**PORK AND BEEF PACKERS**

"Unexcelled For Daily Freshness"

Phone 246-M



**BOONE TRAIL MOTEL**

Mr. and Mrs. Jake Moretz, Owners and Operators

**NEW - BRICK - HEATED - PRIVATE BATHS  
BEAUTYREST BEDS**

One Half Mile From "Horn In The West"

820 East Main St.

Boone, N. C.

**Boone Tire and Bargain Store**

Furniture

Frigidaire Appliances

BOONE, N. C.

Phone 152

Compliments of

**The North State Canning Co.**

"Makers of Watauga Chopped Kraut"

BOONE, N. C.



Compliments of

**CITY BARBER SHOP**

**"It Pays To Look Well"**

BOONE, N. C.

Boone's Favorite

**HUNT'S DEPARTMENT STORE**

Compliments of

**Champion Knitwear Company, Inc.**

A.S.T.C. Processed

**SPORTSWEAR**

ROCHESTER 4, NEW YORK

Harold J. Schefter, Representative

Compliments of

**VANCE RECAPPING CO.**

BOONE, N. C.



**"We Handle Lee Tires"**

RHODODENDRON PHOTOGRAPHY

BY

**Palmer's Studio**

BOONE, N. C.



**"Boone's Leading Photographic Center"**

# *Working* **TOGETHER...**



**W**orking together is the theme of the OBSERVER PRINTING HOUSE publications department. We cannot do our best work without your assistance—you cannot expect to get the best results from your efforts without willing assistance and coöperation from your printer.



ARTISTS AND CRAFTSMEN WORK  
TOGETHER IN CREATING IMPRESSIVE  
AND LASTING RECORDS OF YOUR  
YEARS IN SCHOOL—

