

SCRAPBOOK EDITION

THE ROCKET

1 9 5 1

A. J. Smith with Eugene Goodman

Ollie Foy (Good Luck)

I have enjoyed being in your class very much. You must do like the most of our lessons. You abundant money system

Look on the back page of the log you will find that we all sleep you

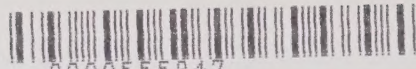
Dear Mr. Smith
I am glad to hear
from you and
hope you are
well. I am
well and hope
you are the same.

Dear Mr. Smith
I am glad to hear
from you and
hope you are
well. I am
well and hope
you are the same.

Robert Carl
wishes good
luck to you
and your wife

C. W.
M. H.

c.1 1951 Rocket.



9000555847

Donated by
Goodwill Industries

ROCKWELL HIGH SCHOOL



THE SENIOR CLASS

of

ROCKWELL HIGH SCHOOL

Presents

THEIR SCRAPBOOK OF MEMORIES

1951

LOWAN PUBLIC LIBRARY
SALISBURY, N. C.



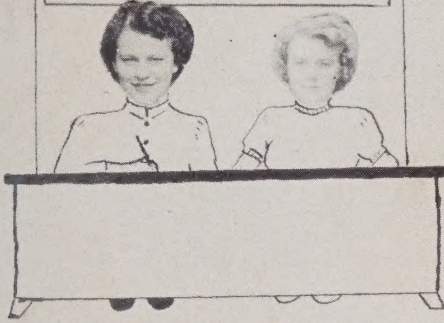
Dedication

We, the Seniors of 1951, wish to show our appreciation to these two wonderful leaders, who have helped us as we go through high school with their tireless efforts and never-failing inspiration. We dedicate "The Rocket" to. . . .

Mrs. Gordon Hunt
Mrs. J. G. Puckett



Editor - "Becky" Cooke
 Associate Editor -
 Norma Jean Miller



Boy! I'm glad
 this thing
 is over!



Faculty
 Advisors.

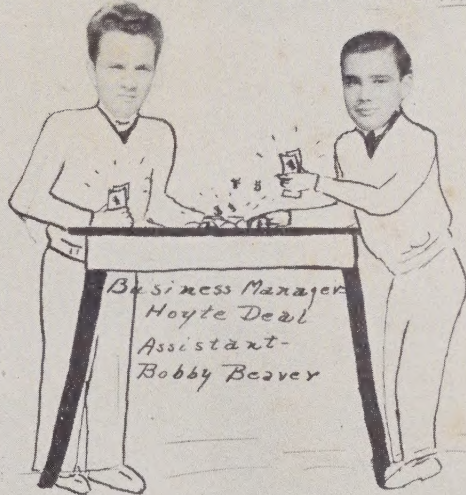
Mrs. Rink

Mrs. Hunt



Girls Sports
 Editor -
 Jerry Miller

Assistant -
 Evelyn Cooke

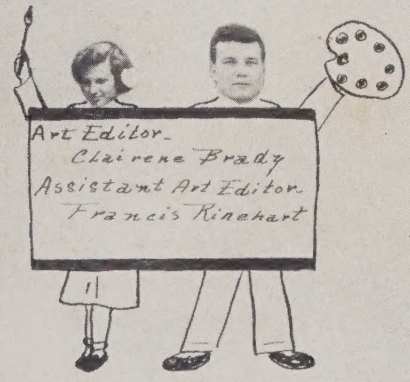


Business Manager
 Hoyte Deal
 Assistant -
 Bobby Beaver



Boys Sports Editor -
 John Robert Eavhardt

Assistant -
 Rex Holshouser



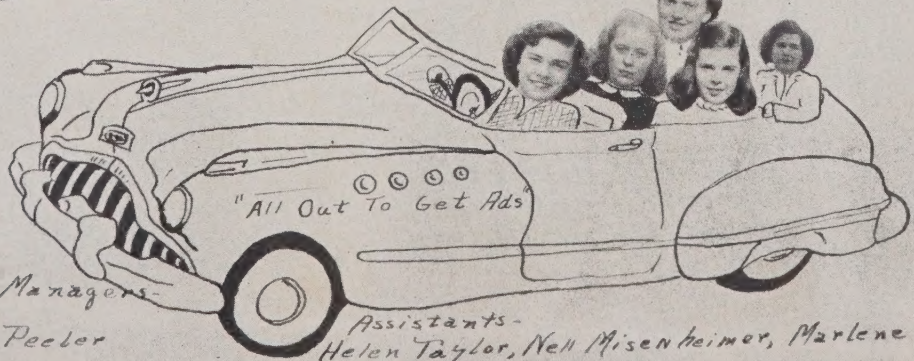
Art Editor -
 Clairene Brady
 Assistant Art Editor -
 Francis Kinehart



Photographer
 Tom Packer



Typists -
 Sue Ritchie - Jackie Beaver - Frances
 Kinehardt

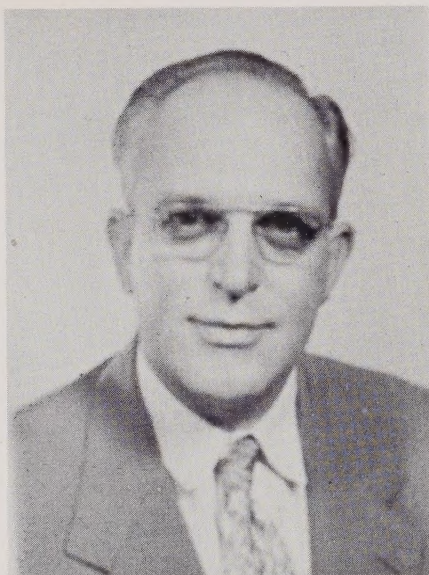


"All Out To Get Ads"

Advertising Managers -
 Mary Louise Peeler

Assistants -
 Helen Taylor, Nell Misenheimer, Marlene Boot,
 Delah Mae Brady

Administration



MR. J. W. PUCKETT
Principal

Board of Education



Mr. C. W. Stiller, Mr. Murray Penninger, Mr. C. A. Bost, Dr. L. C. Holshouser. Absent when picture was made, Mr. Ralph Shaver.



Puckett



Cauble



Rink



Hunt



Mr. Puckett



McCloskey



Bost

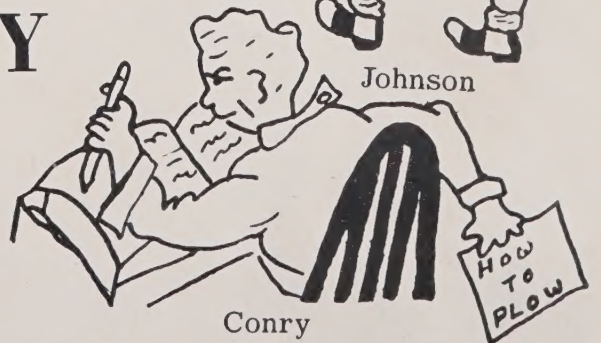


Johnson

THE FACULTY

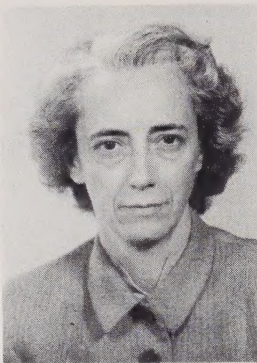


Coach



Conry

High School Faculty

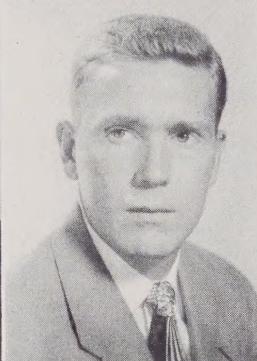
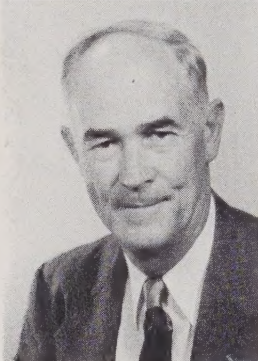


Mrs. Lewis Bost

English
Queen's College, A. B.
Rockwell, N. C.

Mrs. C. J. Cauble

Home Economics
Catawba College, B. S.
Granite Quarry, N. C.



Mr. J. M. Conry

Agriculture
George Peabody College, B. S.
Rockwell, N. C.

Mr. Cecil Gilkerson

Physical Education
Catawba College, A. B.
Rockwell, N. C.



Mrs. Gordon Hunt

Commercial
Catawba College, B. S.
Salisbury, N. C.

Mrs. Wayne D. Johnson

Math.
Catawba College, A. B.
Rockwell, N. C.



Mrs. Virgil Lyerly

Music
Woman's College, U. N. C.
Rockwell, N. C.

Mr. James McCloskey

Science
Drexel Institute of Technology
Catawba College, A. B.
Salisbury, N. C.



Mrs. J. G. Puckett

Library, English
Woman's College U. N. C., A. B.
Rockwell, N. C.

Mrs. John Rink

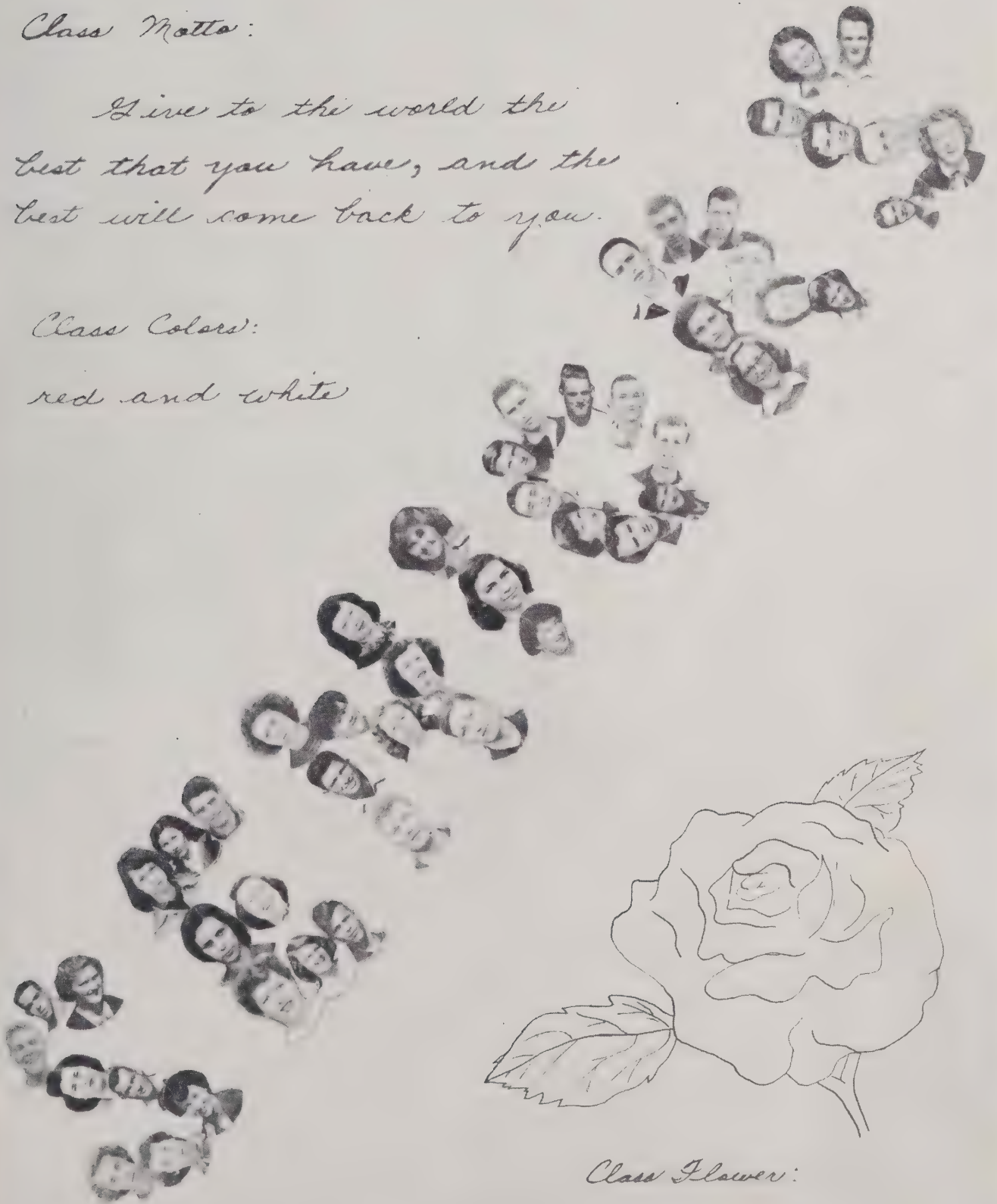
Social Studies
Catawba College, A. B.
Salisbury, N. C.

Class Motto:

*Give to the world the
best that you have, and the
best will come back to you.*

Class Colors:

red and white



Class Flower:

Red Rose

Senior Class Officers



EDNA HOFFNER
Treasurer

HOYT DEAL
President

NORMA ANN STILLER
Secretary

MARY LOOKABILL
Vice-President



MRS. GORDON HUNT
Sponsor

MASCOTS



MRS. J. G. PUCKETT
Sponsor



STEVIE SHUPING



BONNIE GAY MEISMER

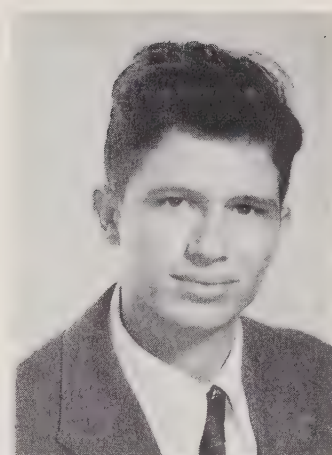
Seniors



Dolores Sue Agner

"Precious things come in small packages."

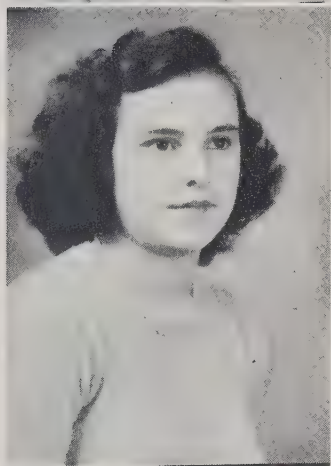
Library Club 2; Talent Show 2, 3, 4; Junior Play; Junior-Senior Waitress 2.



James Agner

"Speech is great, but silence is greater."

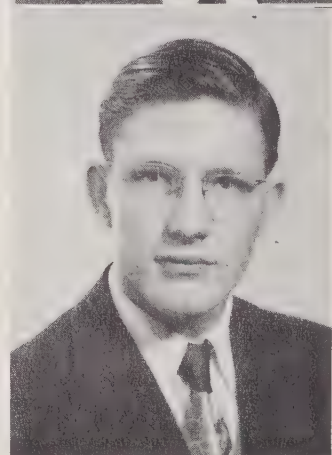
F. F. A. 1, 2, 3, 4; Entered Seed Contest 3; Shop Club 1.



Betty Anthony

"Sweetness and kindness go well together."

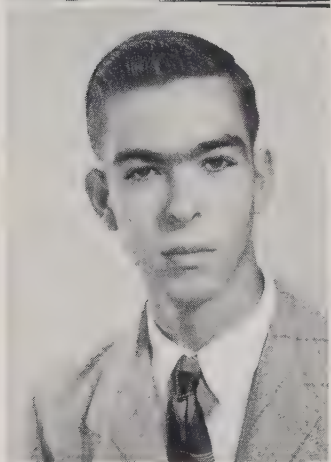
Berea High School 1, 2, 3; Member of F. H. A. 1, 2, 3, 4; Basketball 2, 3; Junior Play; F. H. A. Waitress 1.



John Henry Barringer

"He lives to build, not boast."

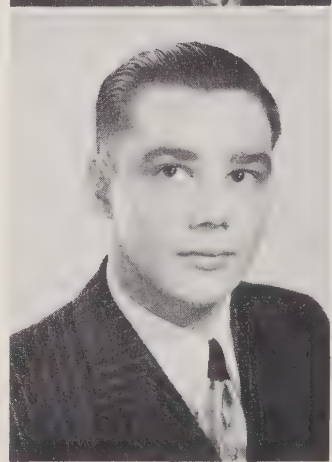
F. F. A. 1, 2, 3, 4; Shop Club 1; Junior Play; Bus Driver 4; Substitute Bus Driver 3.



Fred Basinger

"Life hath no blessing like a prudent friend."

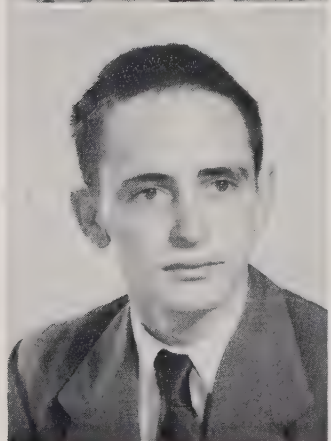
F. F. A. 1, 2, 3, 4; Bus Driver 4; Beef Judging 2, 3.



Bob Beaver

"Be glad of life because it gives you a chance to love, work and play."

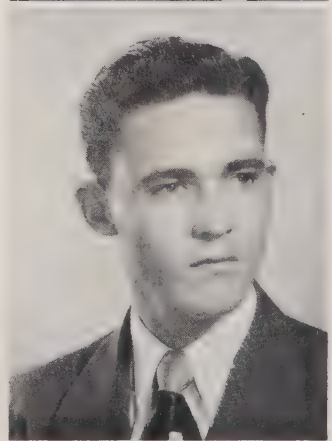
Glee Club 1, 2, 3, 4; Football Team 3, 4; Co-Captain 4; Monogram Club 3, 4; Hi-Light Staff 3, 4; Annual Staff 4; Beta Club 4; French Club 3.



Jack Beaver

"Even though you're tiny, you get around."

Cheerleader 1, 2; F. F. A. Club; Beta Club 3, 4; Glee Club 1, 2.

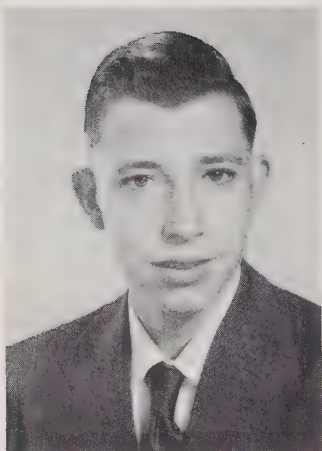


Harold Blackwelder

"I am, as I am, and so will I be."

Football 3, 4; Baseball 3, 4; Basketball 3, 4; Monogram Club 2, 3, 4; Cheerleader 2; F. F. A. 4; Athletic Club.

Seniors



Dale Boger

"Men of few words are the best men."

F. F. A. 1, 2, 3, 4; Bus Driver 3, 4.

Edith Bost

"Thy modesty is as a candle to thy merit."

Library Club 2; Music Student 3; Usher in the Music Recital 3; Glee Club 4.

Lucille Bost

"A kinder friend threads not the earth."

Library Club 2; Junior Play; Music Student 1.

Clairene Brady

"She has a style all her own."

Glee Club 2; Junior Play; Basketball 3, 4; Talent Show 4; Monogram Club 4; Hi-Light Staff 3, 4; Annual Staff, Art Editor 3, 4; Office Worker 4; Dancing Club 1; Junior-Senior Banquet Waitress 3; Candidate for Halloween Queen 4.

Delah Brady

"Noble deeds that are concealed are most esteemed."

Library Club 2; Halloween Queen 3; Annual Staff 4; Hi-Lights 4.

Ruth Darline Cline

"She is quiet, and modest, and tells her secrets to few."

F. H. A. 2, 3, 4; Library Club 2, 3, 4; Store Worker 3; Lunchroom Worker 1, 2, 3, 4; 4-H; Club 3, 4.

Evelyn Cook

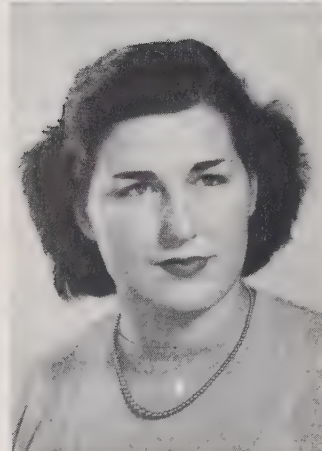
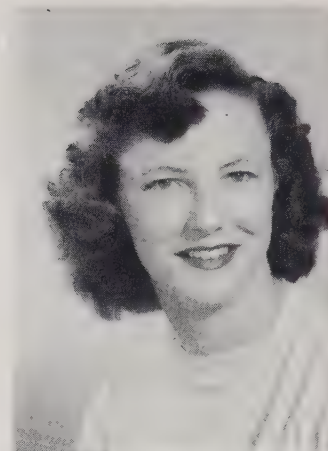
"In friendship I was early taught to believe."

Cape May High School 1, 2, 3; Glee Club 1, 2, 3; Cheerleader 1; Handicraft Club 1; Science Club 2; Color Guard 2, 3; Junior Deb 2, 3; Talent Show 4; Hi-Light Staff 4; Annual Staff 4; Junior Marshall (Chief)

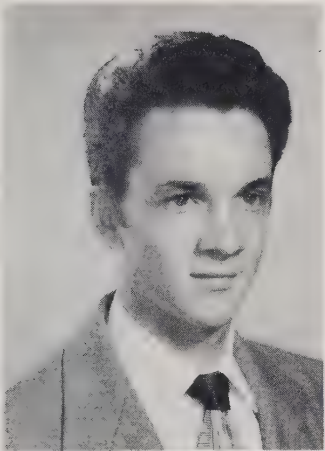
"Becky" Cooke

"How modest, kindly all-accomplished, wise, with sublime oppression of herself."

Glee Club 1, 2, 3, 4; F. H. A. 2; Beta Club 3, 4; Basketball 1, 2, 3; Beta Club Skit 3; Junior Play; Editor of High-Light and Annual 4; Monogram Club 2, 3, 4; Secretary and Treasure 3; French Club 3; Talent Show 3, 4; Class Officer 2, 3; Music Student 1, 2, 4; Beta Club Officer 4; Dancing Club 1, 2.



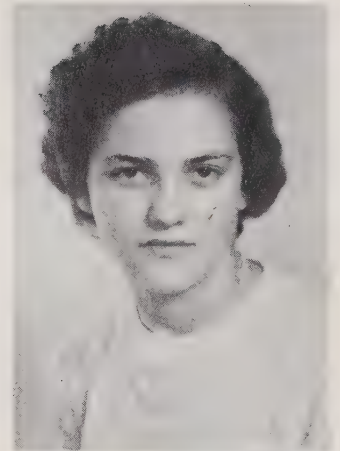
Seniors



Hoyt Deal

"He's nice to work with. He's witty to talk with and pleasant to think upon."

Glee Club 1, 2, 3, 4; Class Officer 1, 2, 3, 4; Beta Club 3, 4; Beta Club Officer 3; Junior Play; Annual Staff 3, 4; Sports Editor 3; Business Manager 4; Junior Marshall; Beta Club Skit 3; Talent Show 2.



Annie Mae Eagle

"Anything worth having is worth working for."

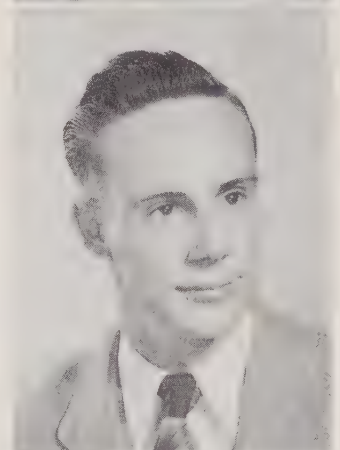
Beta Club 4; Junior Usher 3; Lunchroom Worker 1, 2, 3, 4; 4-H Club 2; Treasurer of Library Club 2.



Elva Rae Eller

"Leave silence to the saints. I am but human."

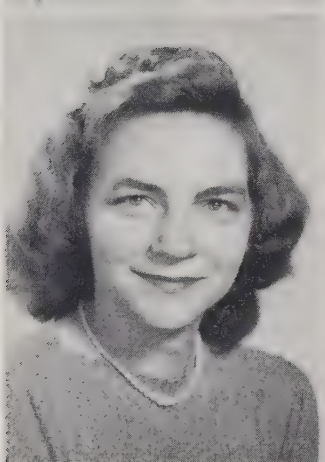
Glee Club 1, 2, 4; Basketball Team 3; Library Club 3; F. H. A. 2, 3; Junior-Senior Waitress 2; Office Worker 4.



John Robert Earnhardt

"A little nonsense now and then is pleasant."

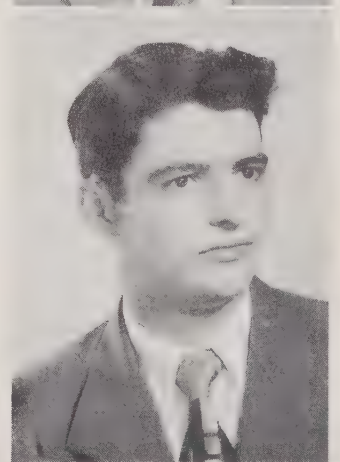
Glee Club 1, 2, 3, 4; Beta Club 3, 4; Junior Play; French Club 3; Hi-Light Staff 3; Annual Staff and Hi-Light Staff 4.



Lucille File

"I am the master of my fate."

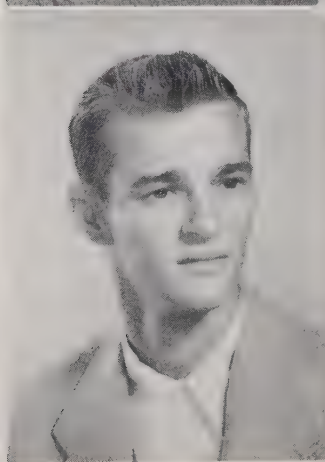
Library Club 2, 3, 4; President 2, 4; Senior 4-H Club 3, 4; F. H. A. Club 2, 3, 4; President 4; Class Officer 1; French Club 3; Beta Club 3, 4; Junior Play; Junior Marshall; Junior-Senior Banquet Waitress 2; Talent Show 2; Cafeteria Worker 1, 2, 3; Class Poet 4; Hi-Light Staff 4; Glee Club 4; Poem accepted by National Poetry Association 3; County F. H. A. Contest 3; Basketball 3.



Jimmy Gallimore

"Wit and humor belong to genius alone."

Glee Club 1; Football 2, 3, 4; Baseball 1; Basketball 2, 3; Captain 3; Monogram Club 3, 4; Class Officer 1.



John Gordy

"Life is a goblet to be drained, but a measure to be filled."

Baseball 1, 2, 3, 4; Basketball 2, 3, 4; Football 3, 4; Junior Play; F. F. A. 4; Glee Club 1, 2, 3; Monogram 1, 2, 3, 4; Candidate for King 4; Dancing 3; F. F. A. Chapter Officer 4.



Frances Hall

"Her eyes smiled with her lips."

Candidate for Halloween Queen 1; Music Student 1, 2; Junior Play 3; Beta Club 4.

Seniors



Ada Lucille Hoffner

"Sober, quiet pensive and demure; one of those friends of whom you're always sure."

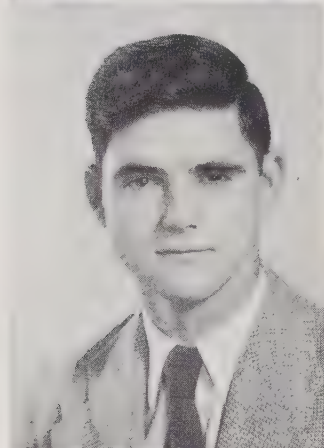
Library Club 2, 3, 4; Glee Club 1, 2, 3, 4; F. H. A. 3; 4-H Club 4; Talent Show 3; Office worker 1; Junior Usher 3; Lunch Room Worker 1, 2, 3, 4; Junior-Senior Waitress 2.



Edna Hoffner

"True and sincere loyal and kind."

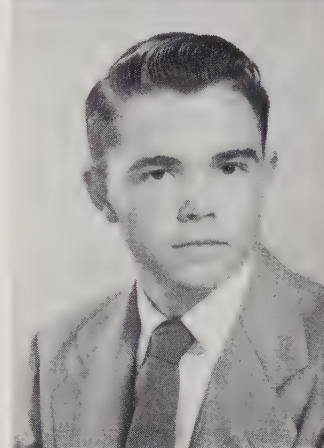
Glee Club 3, 4; Library Club 2, 3, 4; President 3; Beta Club 3, 4; F. H. A. Club 3; Secretary 3; Junior-Senior Waitress 2; Junior Usher 3; Class Officer 1, 3, 4.



Craig Holshouser

"Our deeds determine us."

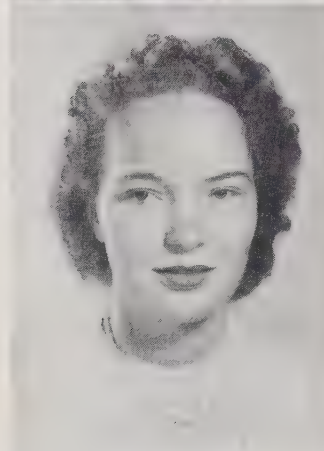
F. F. A. 1, 2, 4; Baseball 1, 2, 3; Bus Driver 2, 3; Monogram Club 1, 2, 3, 4; Athletic Club 1, 2; Shop Club 2; Dancing Club 3.



Rex Holshouser

"The time to be happy is today."

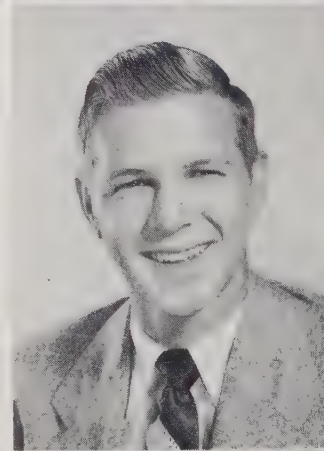
Glee Club 3, 4; Beta Club 4; Class President 2; Candidate for King 3; Hi-Light Staff 4; Annual Staff 4; Beta Club Officer; Vice-President 4.



Henrietta Honeycutt

"A golden silence is a true friend."

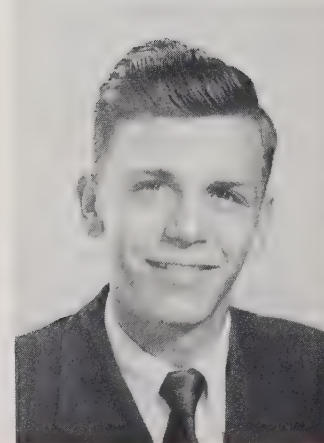
Library Club 2.



Kenneth Honeycutt

"He plays the game well, but most outstanding are his ideals of clean sportsmanship."

F. F. A. 4; F. F. A. Officer 4; Baseball 1, 2, 3, 4; Football 3, 4; Basketball 2, 3, 4; Monogram Club 1, 2, 3, 4; President of Monogram Club 4.



Norman Kesler

"He has mischief even in his eyes."

Glee Club 1, 2; F. F. A. 2, 3, 4; Baseball 3, 4; Cheerleader 2; Bus Driver 3, 4; Monogram Club 1, 2, 3, 4; Store Worker 3; F. F. A. Officer 4.



Patsy Onieda Ketchie

"As large as life and twice as natural."

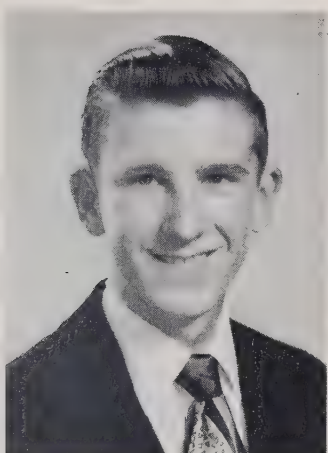
Library Club 2, 3, 4; 4-H Club 1, 2, 3, 4; F. H. A. 4; Store Worker 3; Office Worker 2.

Seniors

Jim Lefler

"I shall not look upon his like again."

Glee Club 3, 4; Junior Play; Beta Club 3, 4.



Mary Elizabeth Lookabill

"As full of spirit as the month of May."

Glee Club 3, 4; Library Club 2, 3, 4; 4-H Club 2, 4; Class Officer 4; Talent Show 3; F. H. A. 3; Usher for Junior Play 3; Lunchroom Worker 1, 2, 3, 4; Junior-Senior Waitress 2.



Jerrie Miller

"The energy that she possesses is used in doing what is right."

Glee Club 1, 2, 4; Junior Play; Basketball 2, 3, 4; Talent Show 4; Beta Club 3, 4; Monogram Club 2, 3, 4; Annual Staff 4; Hi-Light Staff 4; Office Worker 4; Junior-Senior Waitress 2; Music Student 1, 2, 3, 4; Youth Center Officer 3; Statistician of Annual 4; Class Officer 1; F. H. A. 3; Home Ec. Club 3; Dancing Club 2; Library Club 3.



Norma Jean Miller

"She gives you the magnificent spectacle of human in its highest form."

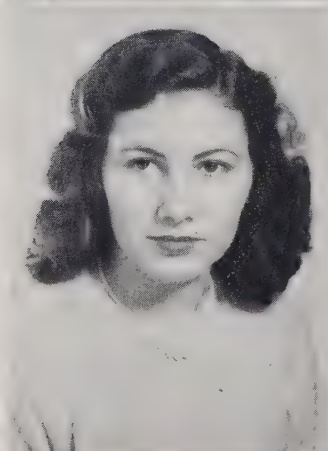
Glee Club 1, 2, 3, 4; F. H. A. 2; Cheerleader 2; Secretary of Beta Club 3, 4; Junior Play; Monogram Club 2, 3, 4; Secretary and Treasurer 4; Assistant Editor of Annual 4; Talent Show 4; Dancing Club 1, 2; Hi-Light Staff 4.



Betty Jean Hoffner

"A quiet and gentle nature has she."

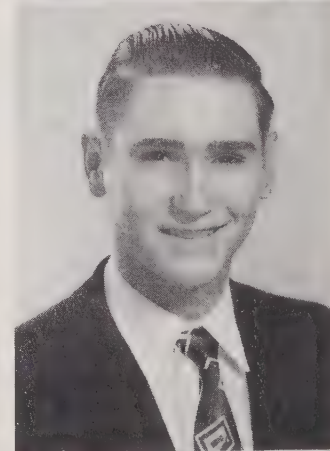
Library Club 2, 3; Beta Club 3, 4; Office Worker 3, 4; Secretary of Library Club 3; Junior Usher 3; Cafeteria Worker 1, 2, 3, 4.



Donald Morgan

"Stubborn labor conquers everything."

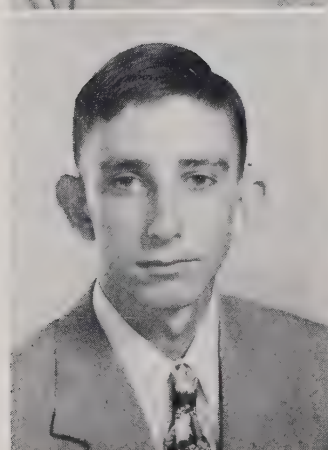
F. F. A. 1, 2, 3, 4; Shop Club 1; Bus Driver 3, 4; Junior Play; Glee Club 4; Live Stock Judge 2.



Kenneth Morgan

"I like your silence. It shows the more of your wonder."

F. F. A. 1, 2, 3, 4.



Margaret Louise Morgan

"Her modest manner and graceful air show her wise and good."

Library Club 2, 4; 4-H Club 4; F. H. A. 4; Store Worker 3; Junior-Senior Waitress 2; Lunchroom Worker 1, 2, 4.



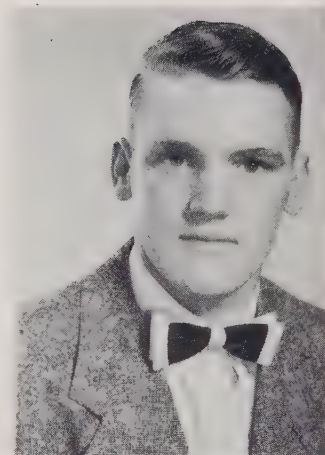
Seniors



Margaret Ruth Owens

"From well to better, daily self surpassed."

Library Club 2, 3; 4-H Club 1; Lunchroom Worker 1, 2, 3, 4; Junior Usher 3; Junior-Senior Waitress 2.



Melvin Lee Roy Owens

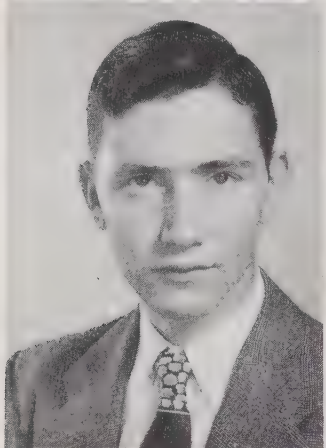
"Why be serious. Let's be happy."

F. F. A. 1, 2, 3, 4; Athletic Club 1; Junior Play; Store Worker 1, 2, 3, 4; Bus Driver 2, 3, 4.

Derwood Puckett

"Curiosity has its reward."

F. F. A. 1, 2, 3, 4; Store Worker 2, 3, 4; Glee Club 1, 2, 4.



Mary Louise Peeler

"Those move easiest who learn to dance."

Glee Club 1, 2, 3, 4; Music Student 1, 2, 3, 4; Beta Club 3, 4; Beta Skit 3, 4; Office Worker 4; Junior Play; High School Play 1; Basketball 1, 2, 3, 4; Monogram Club 2, 3, 4; Scholarship Medal 2, 3; Annual Staff 3, 4; Hi-Light Staff 3, 4; F. H. A. 2; Junior Marshall 3.



Frances Rinehardt

"Tender blushes shown neath her dark hair and skin."

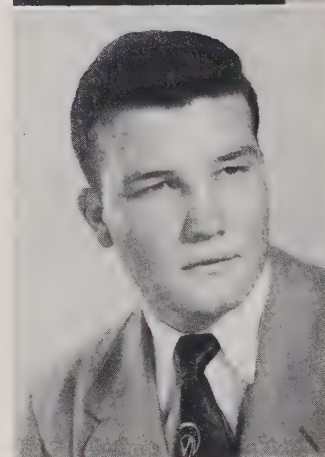
Basketball 1, 2, 3; Glee Club 1, 2, 3, 4; Beta Club 3, 4; Music 1, 2, 3, 4; Junior Play; Marshall 3; French Club 3; Monogram Club 2, 3, 4; Talent Show 4; F. H. A. 1; Office Worker 4; Annual Staff 4; Hi-Light Staff 4; Scoop Staff 1, 2; Scholarship Medal 3; Beta Club Skit 3, 4; Glee Club Treasurer 3; Monogram Club Advertising Committee 3.



Francis Rinehart

"Though you were dying he would make you laugh."

Cheerleader 1; Glee Club 1, 2; Monogram Club 1, 2, 3, 4; Basketball 2, 3, 4; Football 3, 4; Co-Captain of Football Team 4; Dancing 1, 2, 3; Bus Driver 3, 4; F. F. A. Officer 3, 4; Candidate For King 2; Annual Staff 4.



Albert Shepherd

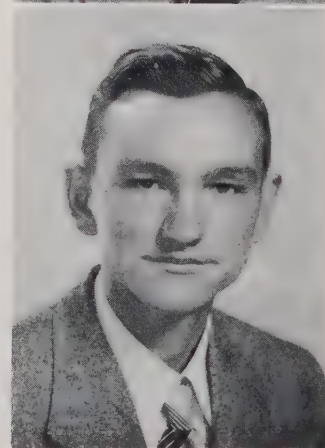
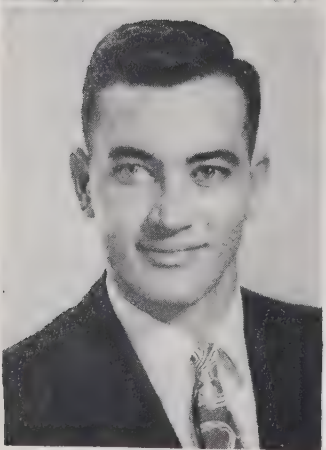
"All-round good sport."

F. F. A. 1, 2, 3, 4; Athletic Club; Football 3; Entered a Parliamentary Procedure Contest in F. F. A. 3; Bus Driver 2, 3, 4; School Store 4; Junior Play; F. F. A. Officer 1, 2, 3; Skit in Junior Senior.

Robert Shepherd

"It is a wise heart that makes a still tongue."

Beta Club 4; Bus Driver 4; F. F. A. 1, 2, 3, 4; Delegate to State F. F. A. Convention 4; Delegate to Federation F. F. A. Convention 4; Entered Crop Contest 3; Entered Dairy Judging 3.



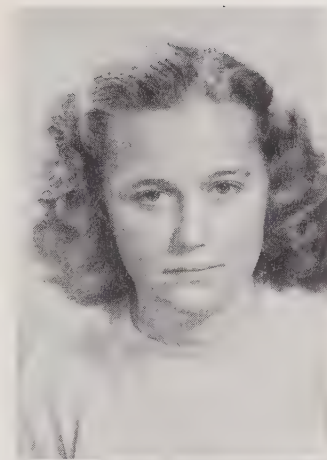
Seniors



Norma Stiller

"Constant activity makes success."

Glee Club 1; F. H. A. 2; Beta Club 3, 4; Cheerleader 3, 4; Monogram Club 4; Junior Play; French Club 3; Library Club 2; Scoop Staff 3. Talent Show 4; Junior Senior Waitress 3; Class Officer 4; Marshall 3.



Helen Taylor

"Of all lights you carry in your face, joy shines farthest out in school."

Library Club 2; Beta Club 3, 4; Junior Play Historian 4; Annual Staff 4; Hi-Light Staff 4.



Betty Lou Troutman

"Of manners gentle, of affections mild."

F. H. A. 2; Library Club 2, 3, 4; 4-H Club 4; Store Worker 3; Lunchroom 1, 4; Junior-Senior Waitress 2.



Hazel Waller

"Much wisdom often goes with few words."

F. H. A. 1, 2; Library Club 1, 2, 3; Junior Play



First Row: Mascots, Stevie Shuping, Bonnie Mesimer. Second Row: Rex Holshouser, Frances Hall, Frances Rinehardt, Norma Ann Stiller, Hazel Waller, Mary Louise Peeler, Jerrie Neale Miller, Ada Hoffner, Evelyn Cook, Delores Agner, Betty Anthony, Helen Taylor, Jean Miller. Third Row: "Becky" Cooke, Derwood Puckett, Jack Beaver, Annie Mae Eagle, Elva Ray Eller, Clairene Brady, Darleen Cline, Betty Troutman, Mary Lookabill, Patsy Ketchie, Edna Hoffner, Lucille File. Fourth Row: Harold Blackwelder, Kenneth Morgan, Dale Boger, Hoyt Deal, John Robert Earnhardt, Margaret Owens, Edith Bost, Lucille Bost, Margaret Morgan, Henrietta Honeycutt, Betty Jean Hoffner, Craig Holshouser. Fifth Row: John Gordy, Jimmy Gallimore, Jimmy Lefler, Francis Rinehart, Kenneth Honeycutt, Norman Kesler, Robert Shepherd, Fred Bassinger, Albert Shepherd, Donald Morgan, Melvin Owens, John Henry Barringer, James Agner.

Last Will And Testament

We, the Senior Class of 1951, having completed our sad preparations for leaving, and hoping that we remain of sound mind and are destined to graduate, do hereby make this our Last Will and Testament, as follows, to wit:

ARTICLE 1- Since we have more talents than we could possible use during our high school days, we leave the following talents to the underclassmen with the hope that they will be able to use them:

Lucille File wills her ability in never running out of anything to say to Sue Ritchie.
Dolores Agner wills her dancing skill to Ann File.
Kenneth Morgan wills his love (what love?) for English Class to James Agner.
"Becky" Cooke wills "Editor-In-Chief" of the annual to anyone who likes to do a lot of work.
Betty Jean Hoffner and Craig Holshouser will their courting days in school to Johnsie Holshouser.
Darline Cline wills her typewriter to Ruth Trexler or Ann File.
Frances Rinehardt wills her dark skin and brown eyes to Martha Holshouser.
John Gordy wills his spot on the mound to Junior Holshouser and Milburn Leonard.
Evelyn Cook wills her big mouth to Nell Misenheimer.
Elva Rae Eller wills her nickname "Ever Ready" to Gladys Trexler.
Robert Shepherd wills his bus No. 54 to anyone that can stand the noise and overlook the women drivers.
Albert Shepherd and Donald Morgan will their partnership to James Lee Bost and Jim File.
James Agner wills his seat in Science Class to anyone that can fill it.
Melvin Owens wills the ice cream store to some honest person.
Dale Boger and Fred Basinger will their ability to skip class to anyone that can get away with it.
Betty Troutman wills her Science Book to anyone, who thinks he can pass it.
Frances Hall wills her long eye lashes to Bobby Fesperman.
Annie Mae Eagle wills her Beta Ability to her sister, Janie Eagle.
Margaret Morgan wills her willingness to work in the lunchroom to Louise Burr.
Henrietta Honeycutt wills her Chemistry Book to Minnie Rattz.
Patsy Ketchie wills her A's (what A's?) to Georgie Ketchie if she can use them.
John Robert Earnhardt wills his name and address to anyone who cares to look him up.
Bobby Beaver wills his football uniform to Gregory Taylor (if he thinks he can fill it).
Hoyt Deal wills his night gown, he wore in "Take Your Medicine, "to anyone who has legs too ugly to show.
Jimmy Lefler wills his shoe size 9 1/2 to Jackie Beaver's 10's.
Lucille Bost wills her ability to have a good time to Lillie Mae Guinn.
Edith Bost wills her long red shoes to Betty Goodnight.
Norma Ann Stiller wills her big mouth, and pet name "Dopey" to Sue Odell who she is sure can fill it.
Francis Rinehart wills his ability to outshine everyone else, to Jackie Beaver.
"Butterbean" and Norman Kesler will their willingness to keep the boys up in cigarettes after they leave to any rich student.
Hazel Waller wills her Chemistry Book to anyone who has no more sense than to take Chemistry.
Margaret Owens wills her good times in High School to Mary Eller.
John Henry Barringer wills his "amen" corner in English Class to Jimmy File.
Clairene Brady and Jerry Miller will their everlasting friendship and fun to Jackie Beaver and Annie Lea Lyerly.
Rex Holshouser wills his love for blondes to anyone who can hold down their temper.
Mary Louise Peeler wills her love for music to Marlene Bost.
Helen Taylor wills her ability to get into Beta Club to Violet Eudy.
Edna Hoffner wills her superlative "Most Personality", to her sister, Johnnie Hoffner.
Harold Blackwelder wills all his girl friends to Jimmy Poole (except one).
Jack Beaver leaves his little size to Gladys Trexler.
Delah Mae Brady wills her car to Violet Mae Eudy.
Norma Jean Miller wills her blond hair and fair skin to Ann Cruse.
Derwood Puckett wills his love for cameras to Tommy Puckett.
Jimmy Gallimore wills his D's to Junior Holshouser.

ARTICLE 2- To the Juniors, we leave the front row seats in assembly, top lockers and our dear text-books, (if they think they can make passing grades by using them).

ARTICLE 3- To the Sophomores, we leave luck because we feel they will need it during their Junior and Senior years.

ARTICLE 4- To the Freshmen, we leave a quiet study hall so they can study (particularly first period!)

ARTICLE 5- To Mr. Puckett, we leave; isn't that enough?

ARTICLE 6- To the Faculty, we leave all text-books, (willingly) and our "Thank You's" for their help in the past years.

ARTICLE 7- To Mrs. Puckett and Mrs. Hunt, our Senior Advisors, we leave the memories of the year 1950-1951.

ARTICLE 8- To the Beta Club, we leave our sorrow at having to give up our skits and our trips to Beta Club Conventions. Our appreciation goes to Mrs. Johnson and Mr. McCloskey.

ARTICLE 9- To Mrs. Rink and the Annual Staff, we leave all our hard work. Thank you, Mrs Rink for your help.

ARTICLE 10- To "Stevie", our janitor, we leave a building in need of sweeping, after our graduation.

ARTICLE 11- To the Cafeteria Workers, we leave 52 less mouths to be fed.

We do hereby revoke all former wills and, with witness thereof, make this the last will and testament of the Senior Class, this twenty-third day of May, nineteen hundred and fifty-one.

Mary Louise Peeler
Testator

Class History

In August of '47 we, the Freshman Class of Rockwell, enrolled eighty-two frightened boys and girls. We were really afraid of the upper classmen, --not to mention the principal and faculty members.

The first few days we just wandered around, not knowing what to do. We soon settled down to do some real work. (I wonder how much work we actually did--especially at school!)

The following year we came back to school as Sophomores. Some of our fellow students have dropped out, but this did not discourage the others. Some people think school is a burden, but the days we spend in school are our happiest days.

No outstanding event marked our Sophomore year, except that a few of the girls looked forward to being waitresses at the Junior-Senior banquet.

In the fall of '49, we came back to school and entered as a group of "JOLLY JUNIORS"! One of the most important happenings of our Junior year was the Junior-Senior banquet. Planning for this event was a job, and one that kept us busy for days. Our work was not in vain, for I think I can honestly say that this banquet was one of the best that Rockwell High had had for a number of years.

Another great event that we must include was the Junior Play, "Take Your Medicine", which was directed by Mrs. Bost and Mrs. Johnson. We were very happy that our play was a great success.

When we returned to Rockwell High, in the fall of '50 we were glad to know that only a few of our classmates had dropped out. With the addition of several new students, we reached 52, the highest enrollment in Rockwell High.

The class, under the leadership of Mrs. Hunt and Mrs. Puckett, elected the following officers: President, Hoyt Deal; Vice-President, Mary Lookabill; Secretary, Norma Stiller; Treasurer, Edna Hoffner.

Our class is well known in the field of sports with such stars as, Becky Cook, Mary Louise Peeler, Jimmie Gallimore, Bob Beaver and "Butterbean", a three letter man.

We are looking forward to the Junior-Senior banquet, one of the high spots of every Senior life. Along with the fun will be the thrill of evening dresses, corsages, and our special "date", of course all the plans for the banquet are still a deep, dark secret, but we know that what ever they are, the banquet will be wonderful.

As we look back over the past four years, we see, like pages in a scrapbook many happy memories. We are grateful to all of those who have shared in making these days both happy and profitable. In the coming years we hope that each member of the class may build up even happier remembrances for his or her scrapbook of life.

Historian
Helen Taylor

Class Poem

Our school days are almost over,
Our graduation is drawing nigh,
Though learning, we'll always cherish
Fond memories of dear Rockwell High.

Many times we grew discouraged,
The way became rough and hard,
Through difficulties we kept on going
And now we reap our reward.

We wish to thank each one of you
who helped us over the way.
Thanks for kindnesses you gave,
They mean more than we can say.

Yes, we're the seniors of Fifty-one,
Fifty-two members in our class.
We hope to use throughout our life
The ideals we've learned in the past.

Superlatives



MOST PERSONALITY
Adna Hoffner
Bobby Beaver



MOST INTELLECTUAL
Norma Ann Stiller
Robert Shepherd



MOST TALENTED
Clairene Brady
Francis Rinehardt



MOST POPULAR
Norma Jean Miller
Rex Holshouser



BEST ALL-ROUND
Becky Cook
Hoyt Deal



BEST LOOKING
Jerrie Neale Miller
Jimmie Gallimore



BEST DRESSED
Frances Rinehardt
John Gordy



MOST ATHLETIC
Mary Louise Peeler
Kenneth Honeycutt



MOST ORIGINAL
Frances Hall
John Robert Earnhardt

Supelatives



LADY AND GENTLEMAN
Mary Lookabill
Derwood Puckett



CUTEST
Evelyn Cook
Dale Boger



FRIENDLIEST
Elva Rae Eller
Jack Beaver



MOST BASHFUL
Hazel Waller
Jimmy Lefler



**SENIOR CLASS
MOST BEHAVED
IN STUDY HALL**



WITTIEST
Lucile File
Norman Kesler



FLIRTIEST
Dolores Agner
Melvin Owens



TRIED AND TRUE
Craig Holshouser
Betty Jean Hoffner

Class Statistics

In future years when we look back into our Scrapbook of memories we will look at each other and say, "My, haven't things changed!"

Age-17
Weight-134
Height-5' 7"
Color of Hair-Brown
Color of Eyes-Brown
Shoe Size-8-except for Dolores' 3.
Head size-6 3/4
Actor-John Wayne
Actress-Esther Williams
Comedian-Bob Hope
Comedienne-Joan Davis
Movie-"Look For The Silver Lining"
Cartoon-Tom and Jerry
Walt Disney Character-Donald Duck
Theater-Drive In
Comic Strip-Blondie and Dagwood
Commerical-Hadacol
Orchestra Leader-Guy Lombardo
Radio Program-Beulah
Newspaper-Salisbury Post, also known as the Stob.
Tune-Goodnight Irene
Gum-Juicy Fruit
Candy Bar-Mounds
Dessert-Ice Cream
Midnight Snack-Hamburger and Drink
Sandwich-Bacon Lettuce and Tomato
Automobile-Ford
Shampoo-Drene
Shaving Lotion-Avon
Soap-Lux
Perfume-Evening In Paris
Nail Polish-Pink Lightning
Lipstick-Pink Lightning (the boys like any kind.)
Novel-Lord Johnny
Magazine-Girl's Seventeen, Boy's Boy's Life
Athlete-Joe Dimaggio--Butterbean, a close second.
Hobby-Reading--Melvin O. likes hunting, For what?
Pastime-Sleeping and Eating although some boy's like being with girls (Eh! John Robert)
Hangout-Theatre
College-Catawba (says "Ene")
School Outfit-Girls -----Boy's
Skirts and Sweaters Corduroy and Gaberdine
And Windbreakers. Shirt and Windbreakers--White Shoes
Saying-"Gotta Have It"

This is an average of the things we like, say, and do. But we hope this doesn't classify us as just "average" people.

Jerrie Neale Miller



Underclassmen

Junior Class Officers



BOBBY FESPERMAN
President

MINNIE RATTZ
Vice-President

HAYDEN EARNHARDT
Treasurer

RUTH HOOKS
Secretary



MRS. WAYNE JOHNSON
Sponsor



MRS. LEWIS BOST
Sponsor

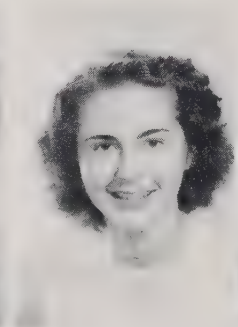
JUNIOR MARSHALLS



GENEVA FILE, Chief



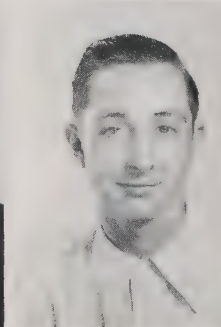
JACKIE BEAVER



GERTRUDE FRICK



MILBURN LEONARD

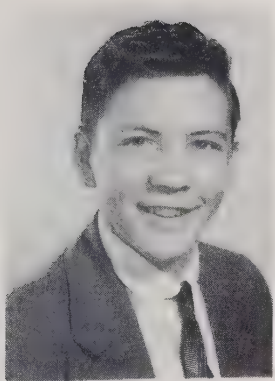


MARVIN MISENHEIMER

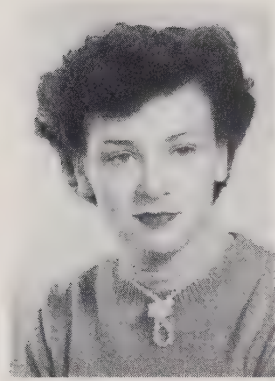


SUE RITCHIE

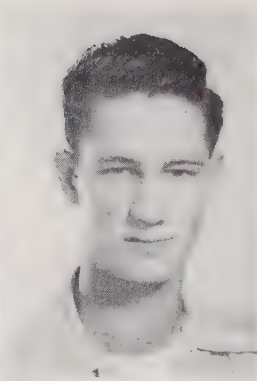
Junior Class



JAMES ALEXANDER



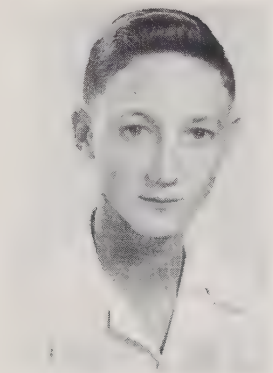
JACKIE BEAVER



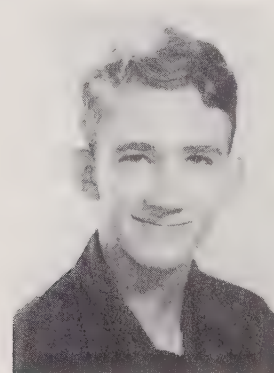
JAMES LEE BOST



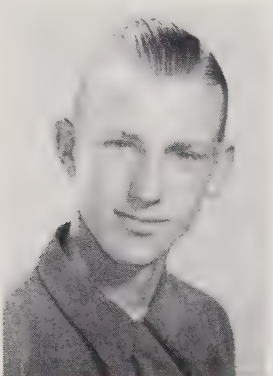
JOHN BOST



LESTER BROWN



MIKE CONRY



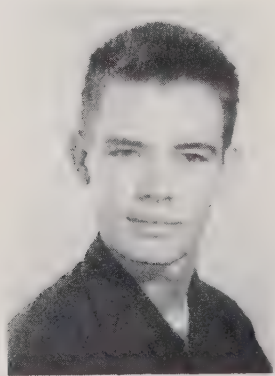
LARRY CORL



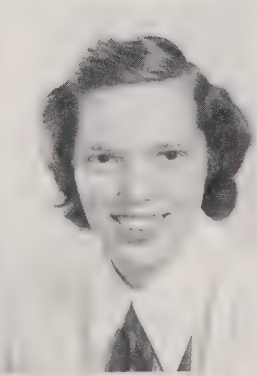
DEWEY CULP



BESSIE LEA DOBY



HAYDEN EARNHARDT



MARY ELLER

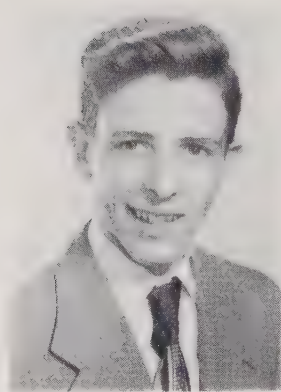


MARY EUART

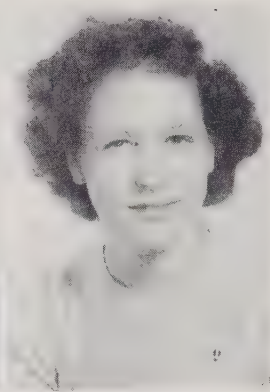
Junior Class



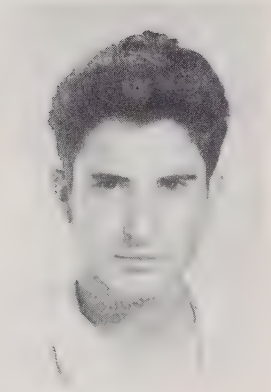
PEGGY FEATHERSTONE



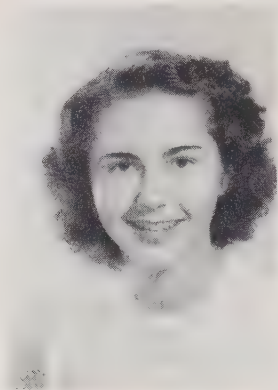
BOBBY FESPERMAN



GENEVA FILE



JIM FILE



GERTRUDE FRICK



C. D. GOODMAN



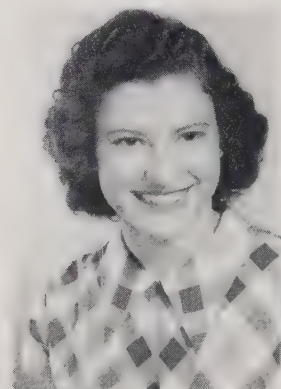
RUTH GOODMAN



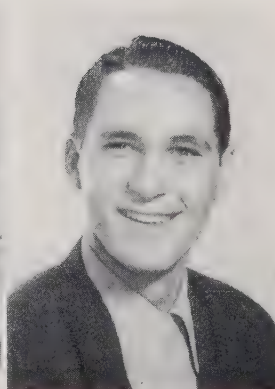
LILLIE MAE GUINN



NORMA JEAN HILL



MARGARET HINSON

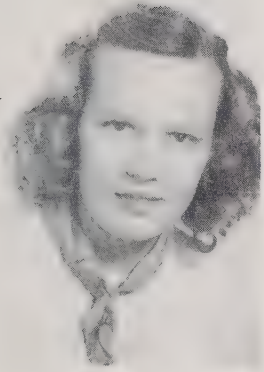


JUNIOR HOLSHOUSER



MARTHA HOLSHOUSER

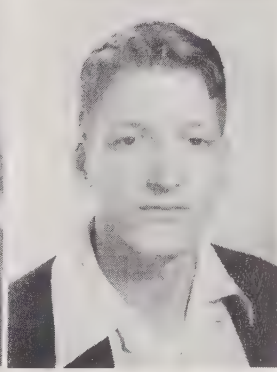
Junior Class



RUTH HOOKS



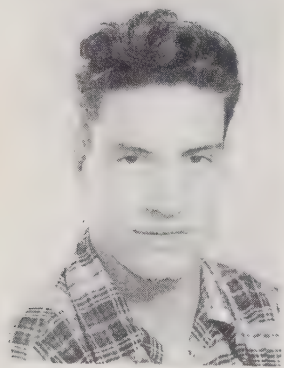
PEGGY KLUTTZ



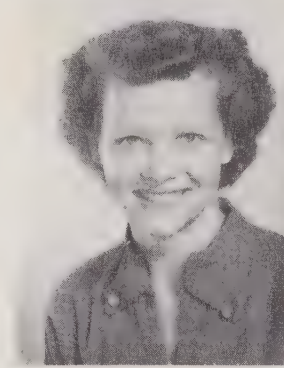
MILBURN LEONARD



ANNIE LEA LYERLY



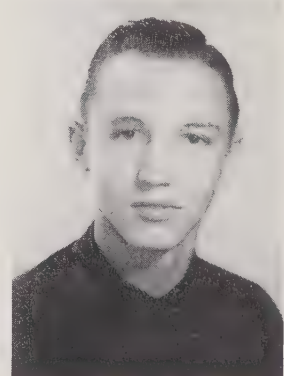
LUTHER MATTHEWS



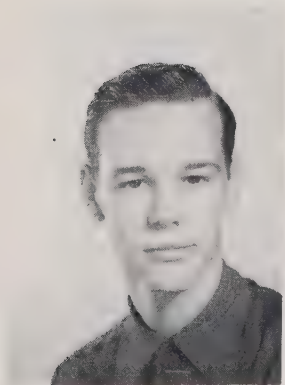
PRISCILLA McGUIRE



MARVIN MISENHEIMER



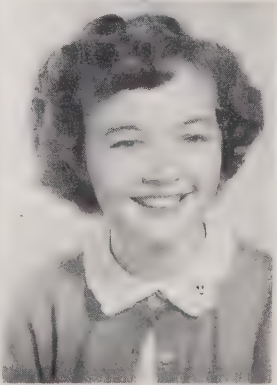
JIMMY POOLE



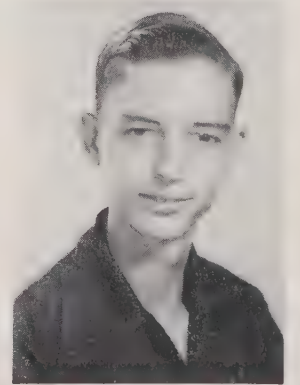
TOM PUCKETT



MINNIE RATTZ



SUE RITCHIE



KENNETH SHAVER

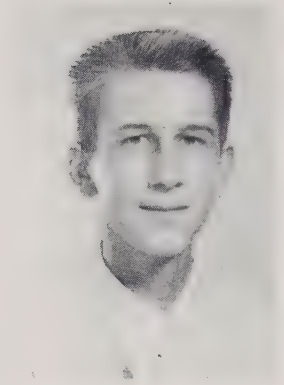
Junior Class



MARGARET SHUE



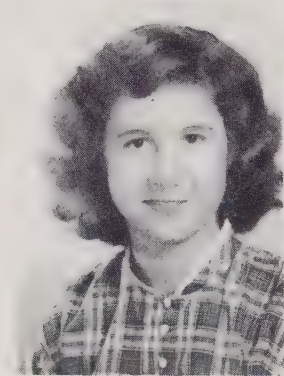
JIMMIE RUTH SHUPING



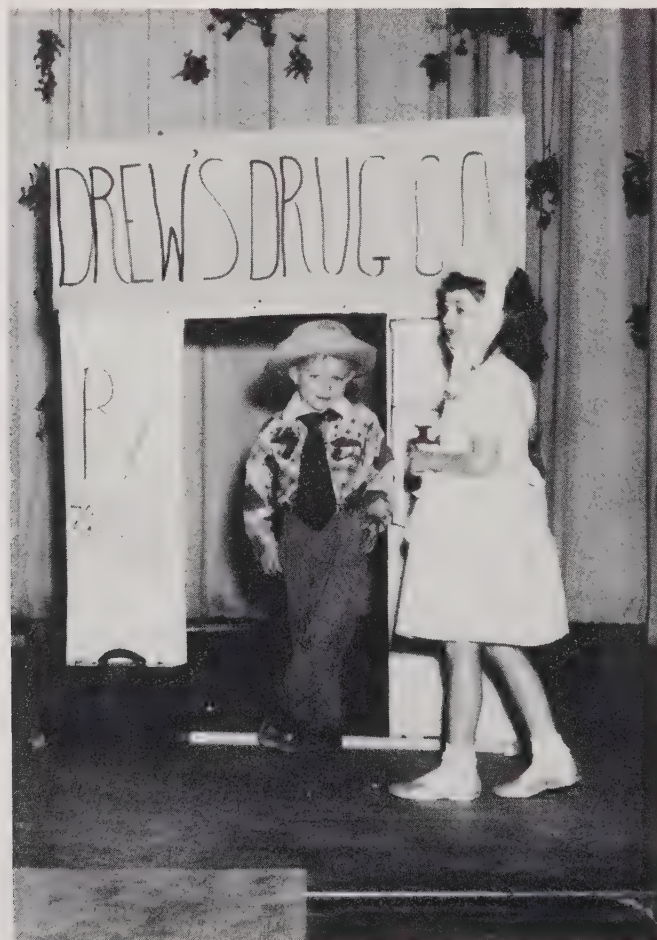
GREGORY TAYLOR



GLADYS TREXLER



ANNIE BELL WARD



TALENT SHOW 1950
John Drew
Judy Fatata

Sophomore Class Officers



JANIE EAGLE
President

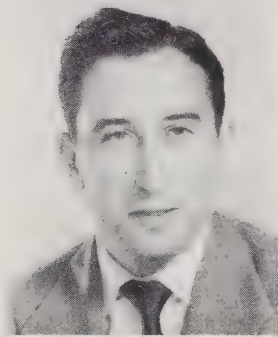
CATHERINE FISHER
Vice-President

FRANK HAMPTON
Secretary

RACHEL TREXLER
Treasurer



MRS. C. J. M. CAUBLE
Sophomore Class Sponsor



MR. JAMES McCLOSKEY
Sophomore Class Sponsor



MR. CECIL GILKERSON
Freshman Class Sponsor



MRS. JOHN RINK
Freshman Class Sponsor

Freshman Class Officers

GEORGE POOLE
Treasurer

LILLIE RUTH HONEYCUTT
Secretary

BOBBY HALL
Vice-President

LARRY VANHOY
President



Sophomores



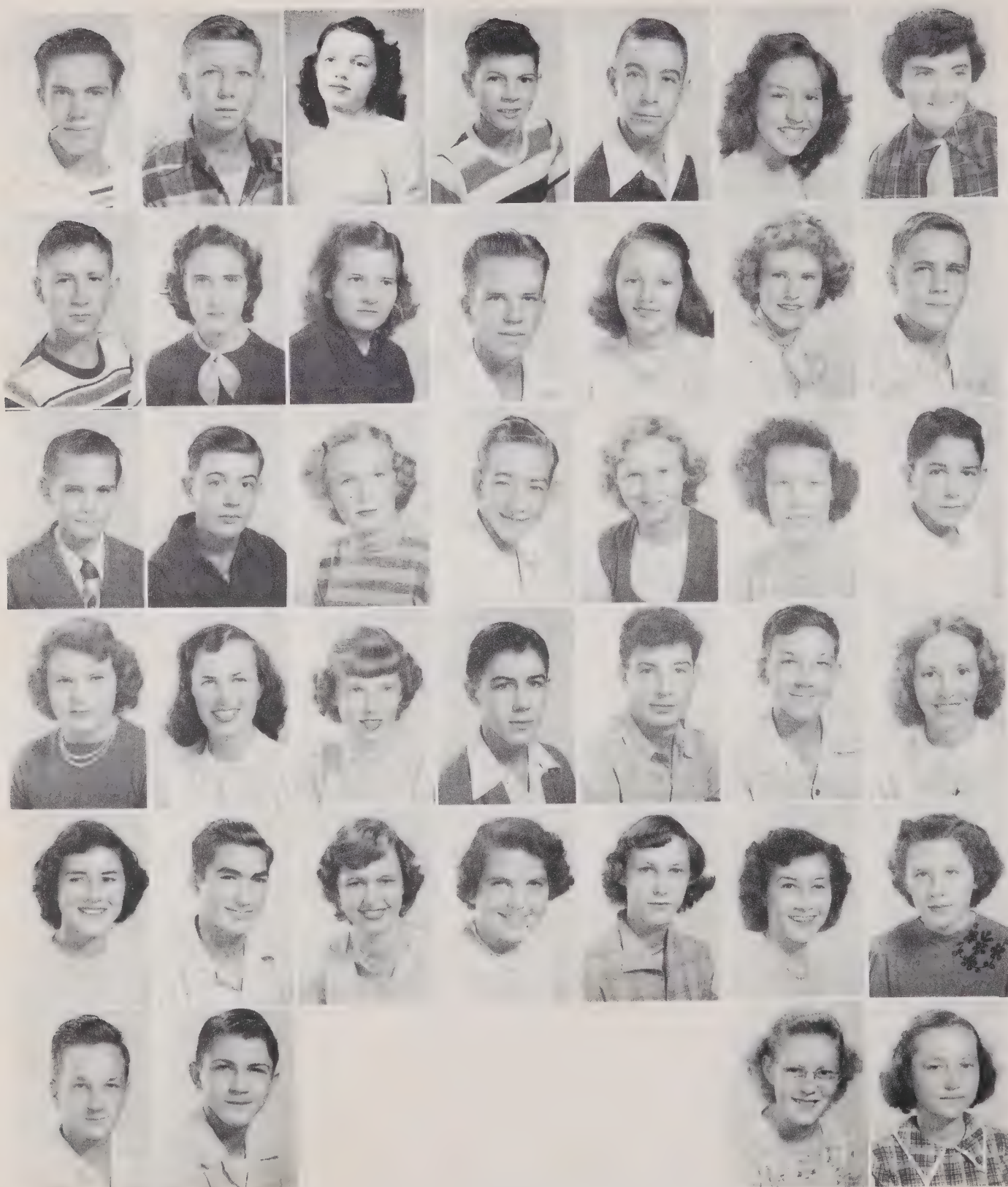
Ben Agner, Floyd Beck, Marlene Bost, Janet Brady, Louise Burr, Edith Broadway, Elmer Cline, Hubert Cox, Annie Earnhardt, Bill Earnhardt, Gene Eagle, Janie Eagle, Catherine Fisher, Betty Goodnight, Carolyn Gordy, Franklin Hampton, Jimmy Harrison, Elaine Heglar, Kenneth Hoffman, Doris Hoffner, Donald Hoffner, Harvey Holshouser, Jimmy Kesler, Georgie Ketchie, Robert Lowery, Sylvia Lowman, Nancy Lyerly.

Sophomores



Jean McGuire, Inez Medley, Donald Mesimer, Nell Misenheimer, Jean Montgomery, Thomas Moose, Herman Morgan, Wayne Morgan, William Morgan, Ruth Morgan, Sue Odell, Mary Owens, Mildred Rattz, Mary Roseman, Bobby Russel, Mary Lee Russel, Betty Safrit, Roy Shepard, Ruby Shipton, Peggy Shue, Sue Shuping, Eugene Sides, Lillian Taylor, Carolyn Trexler, Rachel Trexler, Ray Wilhelm, Barbara Yelton.

Freshmen



Jimmy Agner, Lee Agner, Shirley Anthony, Clyde Arey, Lee Basinger, Rosa Bell Biggerstaff, Jean Boger, Wayne Bost, Jeanette Burluson, Nell Corl, James Correll, Joan Cox, Ann Cruse, Alfons Dadzitis, Claude Earnhart, Johnny Efird, Violet Eudy, George Fesperman, Ann File, Naomi File, Jerry Fry, Lavada Gallo-way, Louise Goodman, Shirley Green, Bobby Hall, Freddy Hall, James Haynes, Johnie Hoffner, Barbara Holshouser, Bobby Holshouser, Johnsie Holshouser, Dolores Honeycutt, Lillie Ruth Honeycutt, Mary Hor-ton, Shirley Jacobs, Willie Gray Johnson, Billy Kluttz, Beatrice Lambert, Carrie Lefler.

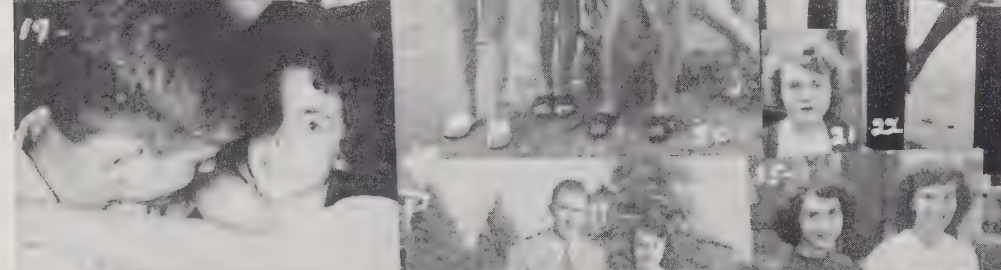
Freshmen



Nancy Lefler, Norman Leonard, Virginia Ludwick, Mary McGuire, Bebe Mesimer, Calvin Miller, Terry Miller, Joan Morgan, Jimmy Morris, Lawson Odell, Yorke Peeler Jr, Loimes Peterson, Ruby Pickler, Ruth Pickler, George Poole, Hazeline Poole, James Puckett, James Puckett, Frankie Rattz, Dorothy Russell, John Ray Shaver, Ralph Sheppard, Kenneth Shoe, Howard Shuping, Dewey Sides, Glenn Sides, Thomas Small, Mary Stiller, Mary Stoner, Amy Swink, Louise Trexler, Ruth Trexler, Lillian Troutman, Lloyd Troutman, Larry Vanhoy, Leroy Wagner, Mary Ann Walters, Douglas Watts.



1. Pre-Toni Days.
2. Our Twins.
3. Where are your sun glasses?
4. Sisterly Love.
5. What, no backbone?
6. Cupid's Couple.
7. You can't Play Basketball there
8. Bloomer Girl.
9. Where are your curls?
10. Is the sun worrying you?
11. Farm Hand.
12. We wear shoes in North Carolina.
13. Where are we going, all dressed up?
14. Where are your wooden shoes?
15. Shame on you; you're a big girl now.
16. Meet me in the moonlight.
17. What's up your sleeve?
18. Colgate Smile.
19. Oh, we're surprised at you!
20. Nothing but legs.
21. What's wrong?
22. Glamour Girl.
23. Ain't we cute?
24. What about it?
25. Great Pals.
26. This is what it used to be.
27. Gee! I love you!
28. Three of a kind.
29. Oo-la-la.
30. Crew-cut.
31. Meanie.
32. Five Stooges.
33. Say "cheese".
34. Take me for a ride.



ELEMENTARY SCHOOL



Second Grade



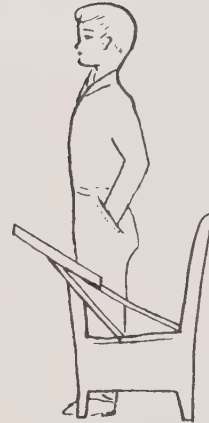
Fifth Grade



Third Grade



First Day



Sixth Grade

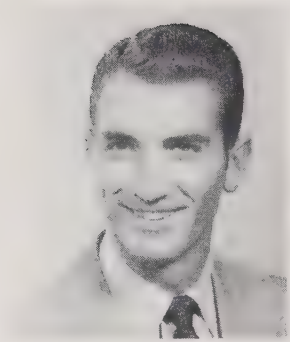


Fourth Grade

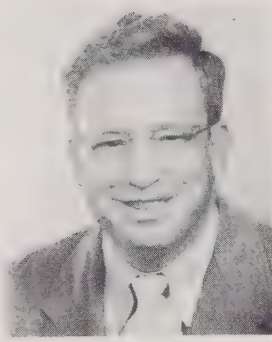


Seventh Grade

Elementary Faculty



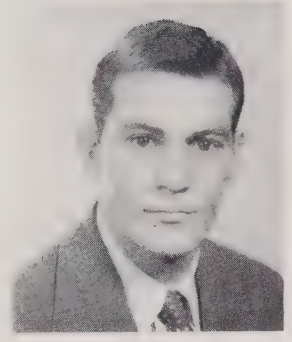
Mr. Sam Erwin
Eighth Grade
Catawba College, A. B.
Salisbury, N. C.



Mr. Warren Kesler
Eighth Grade
Catawba College, A. B.
Salisbury, N. C.



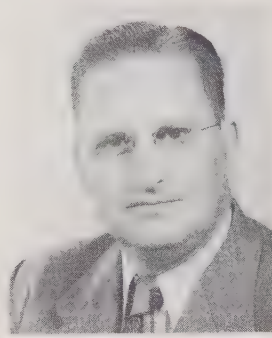
Mr. Herman Leonard
Seventh Grade
Lenior Rhyne College
A. B.



Mr. Jack Walters
Seventh Grade
Catawba College, B. S.
Salisbury, N. C.



Mrs. Carrie Currie
Sixth Grade
Catawba College, A. B.
Rockwell, N. C.



Mr. O. T. Smith
Sixth Grade
Catawba College, B. A.
Salisbury, N. C.



Mrs. Ruth Beaver
Fifth Grade
Lenior Rhyne College A. B.
Teachers College, B. S.



Mrs. Cline Isenhour
Fifth Grade
Catawba College, B. S.



Miss Martha Peeler
Fourth Grade
Appalachian State
Teachers College, B. S.



Mrs. Inez Sloan
Fourth Grade
Catawba College, A. B.



Mrs. J. W. Huneycutt
Third Grade
Appalachian State
Teachers College, B. S.



Mrs. Mary Sowers
Third Grade
Catawba College, A. B.



Mrs. Harold Eagle
Second Grade
Catawba College, A. B.
Salisbury, N. C.



Mrs. Lovanna Verble
Second Grade
Catawba E. C. T. C.
A. B.



Mrs. Frank Hodge
First Grade
Catawba College, A. B.



Mrs. Mable Isenhour
First Grade
Appalachian State
Teachers College, B. S.

Eighth Grade

Mr. Sam Erwin



First Row: Libby Bost, Allen Galloway, Lewis Featherstone, Barbara Foxx, Margaret Klutz, Betty Pickler, Dottie Brown, Isabel Barrier. *Second Row:* George Lyerly, Joyce Grass, Janice Vanhoy, Mildred Lambert, Betty Jean West, Anita Small. *Third Row:* Clyde Walker, Sarah Klutz, Frances Eddleman, Mary Virginia Holsouser, Roy Pethel, Shirley Honeycutt. *Fourth Row:* Andrew Brown, Guy Puckett, Colleen Haynes, Carol Wiles, Helen Honeycutt, Oscar Bost, Mr. Erwin.

Absent when picture was taken: Peggy Sue Ritchie.



Eighth Grade

Mr. Warren Kesler

First Row: Annie Sue Johnson, Geneva Hooks, Genevie Haynes, Shirley Fesperman, Norma Beaver, Douglas White. *Second Row:* Rebecca Lentz, Lillion Fesperman, Sarah Shue, Betty Ruth Thompson, Faye Ritchie, Calvin Euart. *Third Row:* Margaret Hoffner, Kay Shuping, Mary Ella Lambert, Nancy Holshouser, Kathleen Earnhardt, Rebecca Bost, Judy Vanhoy. *Fourth Row:* Hugh Fowler, Bobby Hopkins, Thurman Perry, Bill Brown, William Barringer. *Fifth Row:* Mr. Kesler, Ray File, Miron Wilhelm, Jimmie Poole.



Seventh Grade

Mr. Herman Leonard

First Row: Benny Drew, Helen Corl, Kay Stoner, Willie Mae Hoffner, Thomas Trexler, John Honeycutt, Kenneth Isenhour, Allen Cozart, Thomas Yelton. *Second Row:* Bobby Boyd, Jimmie Varnadore, Jimmie Pickler, Gladys Artz, Roy Shaver, Jerry Morgan. *Third Row:* Sondra Odell, Lawrence Drew, Joe Miller, Bobby Ray Lyerly, Elizabeth Arnette, Maxine Moose. *Fourth Row:* Jean Shuping, John Corl, Delmar Rowland, Bobby Bost, James Gallimore, Ned Stoner, Bobby Joe Beaver. *Fifth Row:* Betty Jean Efird, Vickie Moose, Mr. Leonard.

Seventh Grade

Mr. Jack Walters



Fifth Row: Josephine Earnhardt, Mary Frances Trexler, Rebecca Measimer, Jackie Rattz, Ruth Dadzites, Annie Mae Boger, Shirley Morris. *Second Row:* Jimmie Harwood, Robert Hopkins, Larry Whitt, Alan Lyerly, Larry Brown, Merlin Horton, Ray Pickler, Eugene Weant. *Third Row:* Samuel Rothrock, Phillip Simpson, John Kluttz, Cleo Jones, Margaret Shinn, Virginia Ates, Alice Hooks. *Fourth Row:* Jackie Doby, Richard Heffner, Barbara Long, Larry Barger, Harold Beaver. *Fifth Row:* George Fisher, Richard Brady, Fred Benfield, Carl Dixon, Janice Haynes, Harry Johnson, Mr. Walters.

Sixth Grade

Mrs. Carrie Currie



First Row: Larry Fesperman, Wayne Reeks, Joan Heilig, Martha Brown, Gerald Walker, Bobby Burris, Janice Small. *Second Row:* Bobby Martin, Wayne Trexler, Paul Honeycutt, Eugene Ritchie, Frank King, Boyce Hart-sell, Joan Honeycutt. *Third Row:* Betty Lou Jacobs, Lloyd Grass, Janet Benfield, Eugene Gordon, Bobby Shuping, Edward Keller, Larry Frick, Ann Brown. *Fourth Row:* Sparks Honeycutt, Donald Wilhelm, Christine Morgan, Ray Barringer, G.L. Barringer, Vernon Page. *Fifth Row:* Billy Medley, Jerry Miller, Harold Corl, Herman Shinn, Gary Gene Drye, Clyde Kesler. *Sixth Row:* Mrs. Currie, Roy Rowland, Lucille Barringer, Lucille Hipp, Pearle Stoner.

Absent when picture was taken: Sue Powlas



Sixth Grade

Mr. O. T. Smith

First Row: George Hall, Gary Earnhardt, Daniel Tweed, Gerald Wilcox, James Harvey Kluttz, Eugene Goodman. *Second Row:* Robert Corl, Jerry Wayne Drew, Burrous McQuire, C.W. Cooper, Darnell Collins, Jack Galloway, Donald Tweed. *Third Row:* Edwin Huggins, Gail Leonard, Betty Lou Trexler, Minnie Sue Moss, Carol Rummage, Norma Jean Brady, Marie Wilcox. *Fourth Row:* Brooks Puckett, Norman Brown, Bryan Conry, Lloyd Kluttz, Mozelle Heffner, Carol Earnhardt. *Fifth Row:* Bill Holshouser, Helen Lyerly, Midgie Huneycutt, Joann Morgan, Wayne Poole, Ollie Foxx. *Sixth Row:* Jay Arnette, B. K. Holshouser, Cecil Medley, Eugene Abernathy, Mr. Smith.



Fifth Grade

Mrs. W. A. Beaver

First Row: Herby Vanhoy, Jerry Lee Sides, Betty Harwood, Barbara Connell, Shirley Lyerly, Mary Ellen Corl, Betty Sue Overcash, Homer Lee Safrit. *Second Row:* Bobby Jo Petrea, Wayne Smith, Sue Earnhardt, Betty Jane Miller, Rachel Earnhardt, Carolyn Holshouser, Mary Katherine Rowland. *Third Row:* David Sides, Robbie Honeycutt, Wayne Moose, Andrejs Peterson, Carolyn Boger, Ellen Ludwick. *Fourth Row:* Mildred Shinn, Jack Trexler, Charles Taylor, Billy Shaver, Rose Wagoner, Joyce Benfield, Margaret Kesler. *Fifth Row:* Tim Culp, Peggy Haynes, Wayne Brown, Ronald Morgan, Gretine Peterson, Nancy Brewer. *Sixth Row:* Mrs. Ruth Beaver, Raymond Ludwick, Bobby Dry, Howard Hill, Richard Powlas.



Fifth Grade

Mrs. Cline Isenhour

First Row: Jackie Walker, Helen Featherstone, Carolyn Arey, Barbara Trexler, Carolyn Morgan, Becky Varnadore, Karen Bostian, Bobby Rinehardt, Jimmy Beaver, Harold Yost. *Second Row:* Raymond Shue, Marvin Brown, John Klutz, Norman Beck, Floyd Sides, Clyde Overcash, Betty Jo Miller, Peggy Drew. *Third Row:* Joe Moss, Harold Rinehardt, Joe Trexler, Frances Rile, Norma Jean Correll, Sue Holshouser. *Fourth Row:* Floyd Goodman, Gary Beaver, Renda Treece, Norma Jean Barringer, Wayne Eddleman, Van Hankins. *Fifth Row:* William Dixon, Nina Arnette, Marvin Rowland, Marie Rowland, Clara Mae Shaver, Audrey Brown, Carol Bass.

Absent when picture was taken: Viola Brown

Fourth Grade

Miss Peeler



First Row: Betty Petrea, Linda Whitt, Tommy Drew, Gaynell Galloway, Phyllis Grass, Louise Winecoff, Joyce Ann West, Sybil Penninger. *Second Row:* Clyde Featherstone, Betty Brown, Patsy Holshouser, Bruce Johnson, Mickey Holshouser, Wayne Goodman, Bobby Morgan. *Third Row:* Craven Brewer, Shirley Shuping, Peggy Kluttz, Leslie Kesler, Tony Lyerly, Sandra Beaver, Bobby Heilig. *Fourth Row:* Gailya Fowler, Betty Holshouser, James Lyerly, Rachel Bost, James Jones, Tony Cranford, Brenda Heglar, Marie Casper.

Absent when picture was taken: Roy Burkett, Wayne Cross, Loy Morgan.



Fourth Grade

Mrs. Inez Sloan

First Row: Billy Ridenhour, Jean Martin, Mary Ida Hodge, Patricia Wagoner, Myrtle Trexler, Tommy Lefler, Billy Joe Johnson, Robert Efird, Mary Nell Boger. *Second Row:* Clara Leigh Goodman, Kay Holshouser, Carolyn Cauble, Mae Perry, Kay Perry, Betty Sue Swinson. *Third Row:* Larry Carter, Gene Culp, Jimmie Ritchie, Joe Freeze, Ann Carole Helderman, Anne Brown, Ralph Stoner. *Fourth Row:* Thomas Moose, Larry Carter, Jerry Kluttz, Charlie Earnhardt, Irene Benfield, Wanda Hefner, Jimmie Bost.

Absent when picture was taken: Jerry Burkett, Clifford Boger.



Third Grade

Mrs. J. W. Honeycutt

First Row: Peggy Leonard, Carolyn Taylor, Bonnie Holshouser, Marjorie Trexler, Edith Galloway, Jimmie Stoner, Phyllis Poteat, Diana Kennedy. *Second Row:* Thomas Shue, Mary Shue, Patsy Bost, Katie Puckett, Daisy Kluttz, Alex Trexler, Ernest Shepherd. *Third Row:* Billy Hull, Joyce Rummage, Dorothy Overcash, Donald Miller, Donelle Benfield, Brenda Bass, Yorke Beaver, Mrs. Huneycutt. *Fourth Row:* Brenda Cooper, Don Kluttz, Margaret Overcash, Jerry Page, Judy Eller, Melvin Dixon. *Fifth Row:* Wayne Rummage, Kyle Poteat, Thomas Corelle, Jerry Kluttz, Donald Corl, Bobby Varnadore.

Absent when picture was taken: William Watts, Shelva Haynes

Third Grade

Mrs. Mary Sowers



First Row: Guy McGuire, Johnny Morgan, Wayne Taylor, Brenda Small, Brenda Holshouser, Brenda Leazer, Becky Heilig, Hazeline Featherstone, Joann Moss. *Second Row:* Jimmy Brady, Judy Misenheimer, Ronnie Mooney, John Culp, Billy Varnadore, Jerry Wiles. *Third Row:* Robert Drew, Jimmy Bost, Abbie Hohn, Betty Bost, Colleen Pickler, Nancy Safrit. *Fourth Row:* Guy Jones, Bruce Sapp, Bobby King, Marlene Waller, Nancy Walker, Susie Ludwic. *Fifth Row:* Ray Sechler, Pearl Barringer, Sylvia Holshouser. *Sixth Row:* Myrtle Cranford, Ronald Horton, Beulah Rowland, Melva Corl, Shirley Casper.

Absent when picture was taken: Mark K. Brewer, Thurman Efird.

Second Grade

Mrs. Harold Eagle



First Row: James Neil Beaver, Judy Fatata, Don Huffman, Barbara Holshouser, Eleanor Poole, Jay Johnson, Patricia Cooper. *Second Row:* Brantly Park, Joe Gallimore, Patsy Trexler, Willie Page, Donald McIntyre, Terry Braswell, Dale Basinger. *Third Row:* Jimmie Benfield, Shelva Müller, E. J. Efid, Dorothy Hall, Jerry Corl, Bobby Moss, Wayne Fesperman. *Fourth Row:* Lawrence Misenheimer, Sue Linker, Mary Frances Honeycutt, Peggy Hampton, Kay Correll, Melvia Hall, Martha Clark. *Fifth Row:* Vicki Morgan, Tony Misenheimer, Mrs. Eagle.



Second Grade

Mrs. Lovanna Verble

First Row: James File, Darrell Galloway, Nancy Roseman, Carolyn Brown, Loena Holshouser, Clifford Klutz, Betty Power, John Drew. *Second Row:* Coy Wiles, Cecil Deal, Doris Hall, Patricia Huneycutt, Gary Hall, Carolyn Morgan, Valeria Carter, Barbara Walker. *Third Row:* Brenda Earnhardt, Dorothy Carlton, Junior Morgan, Robie Swink, Martin Luther Trexler, Ronnie Hohn, Jerry King. *Fourth Row:* Kenneth Bostian, Larry Brown, Brenda Lyerly, Ronnie Crisco, Peggy Cozart, Lester Shuping, Nell Goodman. *Fifth Row:* Chester Moose, Mrs. Verble, Anderson Haynes.

Absent when picture was taken: Nancy Shue.



First Grade

Mrs. Frank Hodge

First Row: Becky Lyerly, Brenda Kay Barringer, Howard Merritt Crowe, Carolyn Harwood, Nelson Shepherd, Michael Rinehardt, Brenda Kay Penninger, Marlene Swinson, Kay Francis Petrea. *Second Row:* Walter Casper, Evelyn Dunaway, Eugene Trexler, Barbara Drye, Carol Ann Miller, Max Varnadore, Betty Rummage, Lolly Mae Taylor, Vance Eller, Leslie Holshouser. *Third Row:* Monty Simpson, Thomas Powlas, Ruth Brown, Doris Casper, Terry Kesler, Dottie Morgan, Mary Shinn, Gary Rummage, Ruby Sue Kesler. *Fourth Row:* Gary Kluttz, Bobby Rowland, Richard Eagle, Novella Scott, Monnie Sechler, Brenda Kay Fisher, Mary Ann Misenheimer, Barbara Sue Hill. *Fifth Row:* Betty Eudy, Junie Rowland, Mrs. Hodge.



First Grade

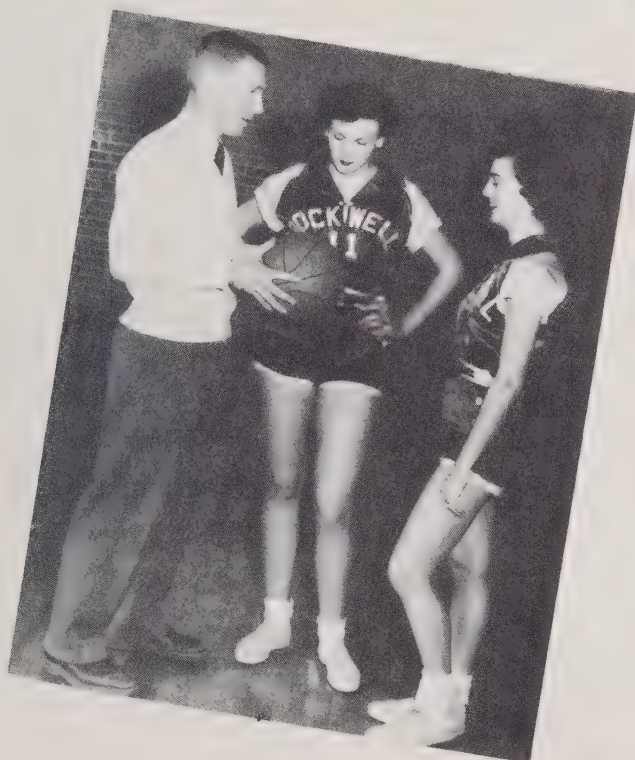
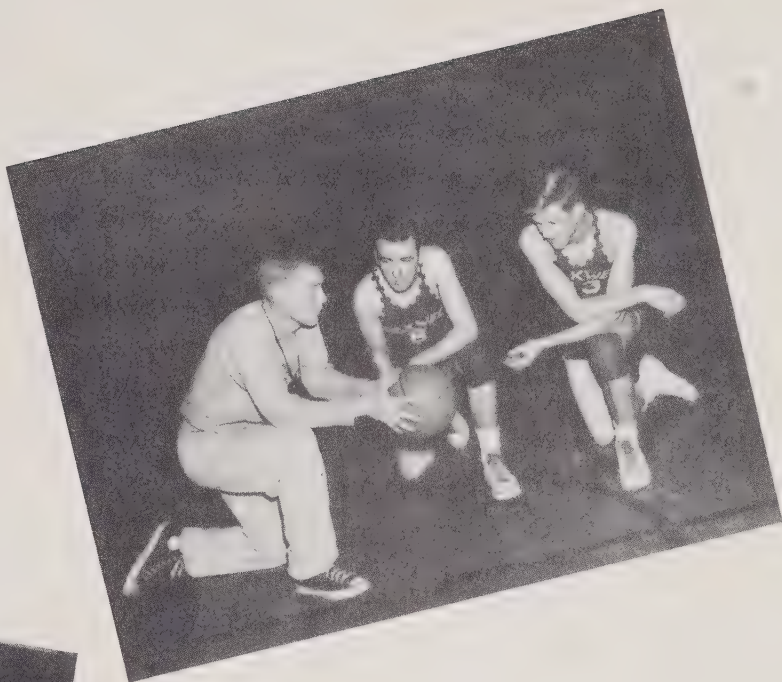
Mrs. Mable Isenhour

First Row: Sandra Trexler, Judy Huffman, Victor Roseman, Cheryl Morales, Tommy Rinehardt, Carol Cori, Jackie Steele, Billy Trexler, Joan Martin. *Second Row:* John Earnhardt, Judy Earnhardt, Sandra Selle, Ruby K. Eudy, Janice Baker, Ray Huggins, Bobby Safrin, Sandra Shue, John Remeta, David Poteat. *Third Row:* Joel Vanhoy, Gene Hill, Frederick Drew, Adam Swink, Marion Rothrock, Maurice Bost, Dean Kluttz, Clifford Kesler, Charles Hill. *Fourth Row:* Edith Swinson, Phyllis Trexler, William Ludwig, Lorraine Fisher, Terry Beaver, Elaine Fisher, Wayne Medley, Randy Stiller.

Absent when picture was taken: Margarete Watts, Maggie Moss.

SPORTS

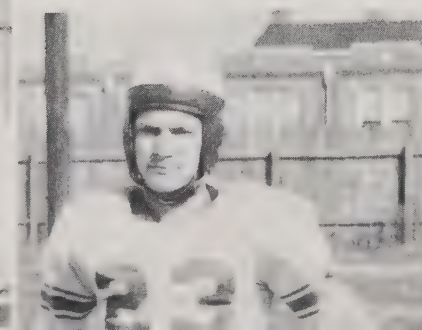
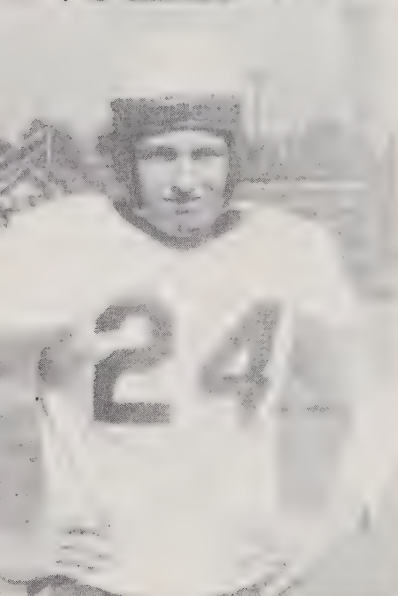
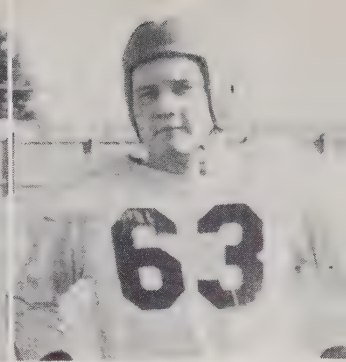
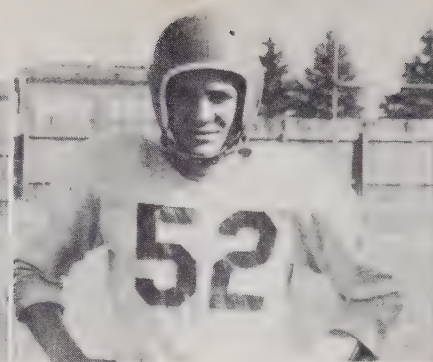
BASKETBALL CO-CAPTAINS - BOYS
Coach Gilkerson, Franklin Hampton
Kenneth Honeycutt



BASKETBALL CO-CAPTAINS - GIRLS
Coach Gilkerson, Jackie Beaver
Mary Louise Peeler

FOOTBALL CO-CAPTAINS
Bobby Beaver, Coach Gilkerson
Francis Rhinehart

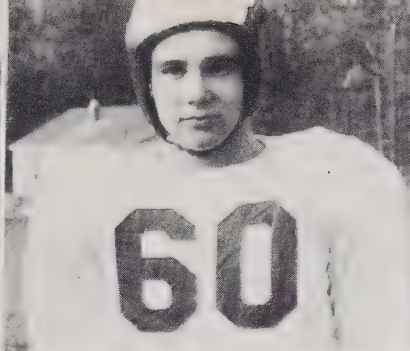




Football Roster-1950

NAME	NO:	POS:	WT:
Harold Blackwelder	48	LE	150
Francis Rinehardt	63	LG	176
Luther Matthews	39	LT	170
Hayden Earnhardt	19	C	135
Bobby Beaver	60	RG	160
Glenn Sides	62	RT	170
John Gordy	18	RE	160
Bobby Fesperman	38	WB	150
Kenneth Honeycutt	28	BB	150
Jimmy Gallimore	24	TB	165
Junior Holshouser	53	FB	160
Bobby Mooney	44	LE	150
Wayne Morgan	66	BT	250
Bill Earnhardt	39	LG	150
Ray Wilhelm	65	RT	165
Mike Conry	40	RE	140
Junior Poole	30	BB	140
Frank Hampton	49	TB	164
Jimmy Poole	43	RG	150
Bobby Holshouser	31	TB	135





Rockwell's first year of eleven man football provided a number of outstanding players. Junior Holshouser netted about 400 yards rushing from the fullback position. Jim Gallimore, a tailback, ran an average of 233 yards and kicked 39 1/2 yards per try. Kenneth Honeycutt ran from blocking back and altered with Holshouser at fullback and also caught many passes to run for a considerable gain of yardage. Fesperman and Hampton alternating at wingback also made some good plays which meant extra yardage. Some of the lines men who were outstanding were Bob Beaver, Luther Mathews, Glenn Sides, and Francis Rinehart.

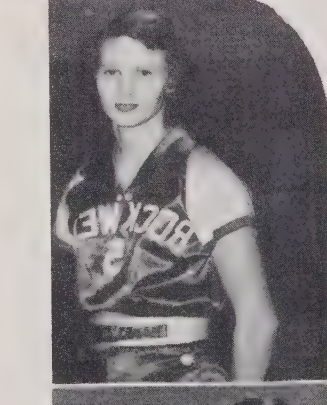
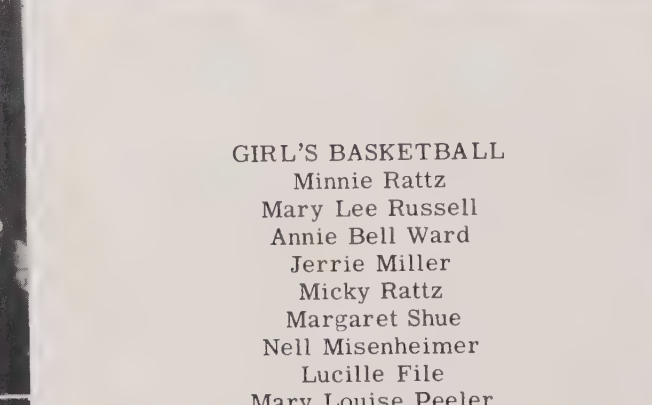
The following men were chosen for the All Tri-County team. Junior Holshouser, star fullback, was chosen as fullback on the All Tri-County first team. Francis Rinehart, left guard, was chosen as guard on the second team and honorable mention went to Bob Fesperman, wingback; Bob Beaver, guard; and Jim Gallimore, tailback.

Also assisting Coach Gilkerson with the management of the football team were Mr. Sam Erwin, Mr. Warren Kesler, and Mr. McCloskey.

SCHEDULE

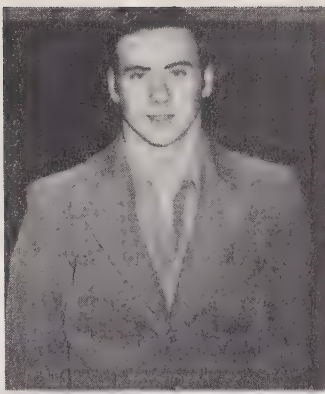
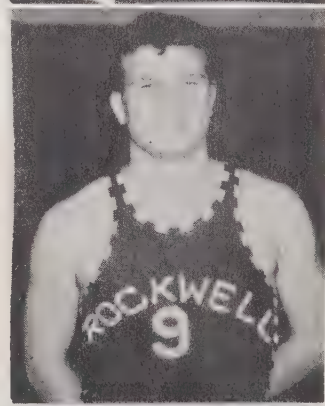
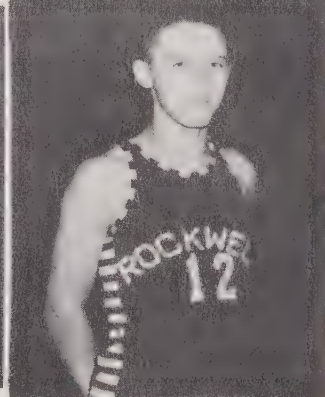
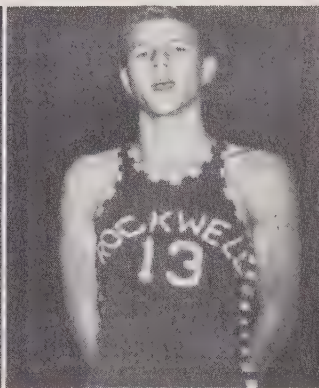
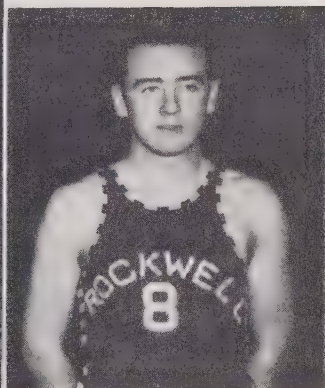
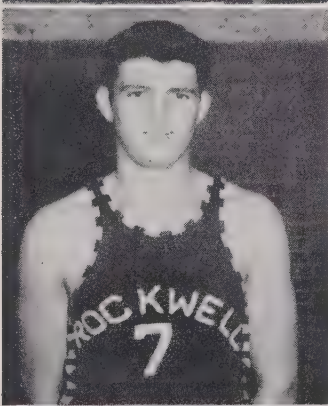
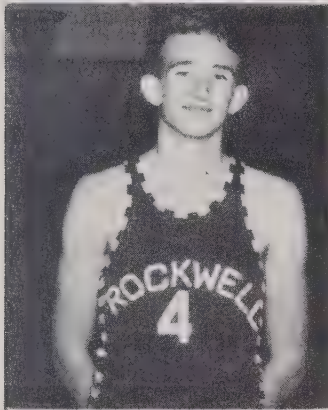
Cooleemee	19	Rockwell	0
Mt. Pleasant	6	Rockwell	7
Mills Home	12	Rockwell	13
China Grove	27	Rockwell	0
Landis	25	Rockwell	0
Winecoff	19	Rockwell	12
Cleveland	7	Rockwell	12
East High Charlotte	13	Rockwell	7





GIRL'S BASKETBALL

- Minnie Rattz
- Mary Lee Russell
- Annie Bell Ward
- Jerrie Miller
- Micky Rattz
- Margaret Shue
- Nell Misenheimer
- Lucille File
- Mary Louise Peeler
- Jackie Beaver
- Lillie Ruth Honeycutt
- Frankie Rattz
- Clairene Brade
- Lavada Galloway
- Peggy Kluttz
- Mary Frances Stiller



BASKETBALL SCHEDULE

First Half	Date
Landis at Rockwell.....	Jan. 5
Cleveland at Rockwell.....	Jan. 9
Rockwell at Granite.....	Jan. 12
Mt. Ulla at Rockwell.....	Jan. 16
East Spencer at Rockwell...	Jan. 19
Rockwell at China Grove...	Jan. 23
Woodleaf at Rockwell.....	Jan. 26

Second Half	Date
Rockwell at Landis.....	Jan. 31
Cleveland at Rockwell.....	Feb. 2
Granite at Rockwell.....	Feb. 6
Rockwell at Mt. Ulla.....	Feb. 9
Rockwell at East Spencer...	Feb. 13
China Grove at Rockwell...	Feb. 16
Rockwell at Woodleaf.....	Feb. 20

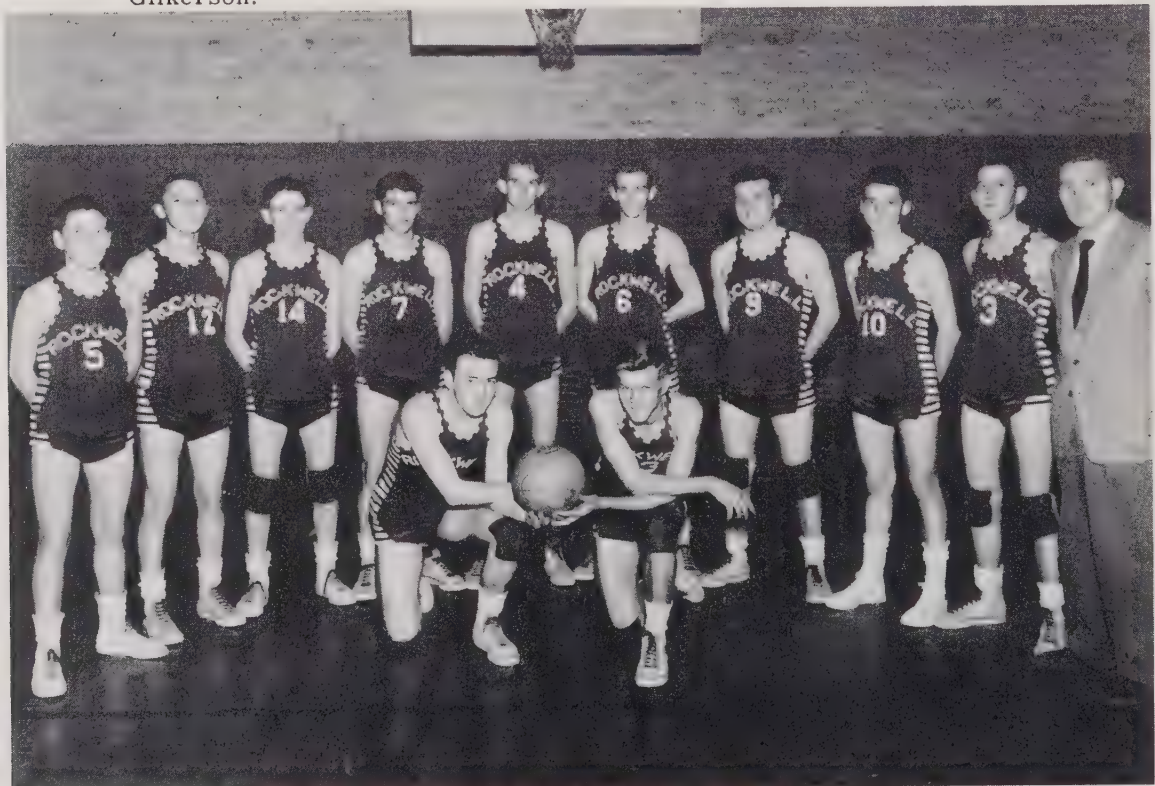
BOY'S BASKETBALL

- James Alexander
- Mike Conry
- Bobby Fesperman
- Jimmy Gallimore
- John Gordy
- Frank Hampton
- Kenneth Honeycutt
- Glenn Sides
- Buzz Peeler
- Jimmy Poole
- Francis Rinehardt
- George Taylor

Basketball



KNEELING: The Co-Captains; Jackie Beaver, Mary Louise Peeler.
STANDING: Peggy Klutz, Mary Stiller, Lucille File, Mary Lee Russel, Jerrie Miller, Clairene Brady, Nell Misenheimer, Lillie Ruth Honeycutt, Annie Bell Ward, Margaret Shue, Minnie Rattz, Frankie Rattz, Coach Gilkerson.



KNEELING: The Co-Captains; Frank Hampton, Kenneth Honeycutt,
STANDING: James Alexander, Jimmy Poole, Bobby Fesperman, Jimmy Gallimore, Mike Conry, John Gordy, Francis Rhinehart, Buzz Peeler, Gregory Taylor, Coach Gilkerson.

Baseball



STANDING: Mike Conry-Manager, Jack Mooney, Hayden Earnhardt, John Gordy, Junior Holshouser, Harold Blackwelder, Milburn Leonard, Norman Kesler, Coach Gilkerson. KNEELING: Harold Earnhardt, Jimmy Poole, Kenneth Kepley, Franklin Hampton, Bill Earnhardt, Wayne Sapp, Harvey Holshouser.

JOHN GORDY ACE-PITCHER



Last year, 20 boys under the direction of Coach Gilkerson wound up the season with Rockwell in third place in the county conference. Rockwell won 9 games and lost only 5 in the county. In addition, the team traveled to Virginia and defeated 3 strong Virginian clubs. They took New Market 7 to 6, Harrisonburg, 19 to 0, and Stanton 10 to 5.

The 1951 team will feel the loss of Jack Mooney, Harold Earnhardt, and Kenneth Kepley. However, there will be eleven lettermen returning. Some new boys who will add strength to this year's ball club are Yorke Peeler, Freddie Hall, Bill Brown, Glenn Sides, and Bobby Holshouser.

Cheer Leaders



Barbara Holshouser, Hazeline Poole, Norma Ann Stiller, Chief, Ann File, Sue Odell.

Monogram Club



First Row: Coach Gilkerson, Ruby Shipton, Junior Holshouser, Jackie Beaver, Vice President, Kenneth Honeycutt, President, Jean Miller, Secretary and Treasurer, Milburn Leonard, Mike Conry. *Second Row:* Minnie Rattz, Becky Cook, Mary Louise Peeler, Jerrie Miller, Clairene Brady, Francis Rinehardt, Wayne Morgan, Luther Matthews, Bobby Ray Holshouser. *Third Row:* Hayden Earnhardt, Marvin Misenheimer, Frances Rinehardt, Jimmy Gallimore, Nell Misenheimer, Bobby Beaver, John Gordy, George Poole. *Fourth Row:* Harold Blackwelder, Bill Earnhardt, Bobby Mooney, Hubert Cox, Ray Wilhelm.

The Petty Girls



Glee Club



Music Students



Beta Club



FIRST ROW: Hoyte Deal, Jack Beaver, Rex Holshouser, Vice President; Jean Miller, Secretary; Becky Cooke, President; Bob Beaver, Treasurer; SECOND ROW: Tom Puckett, Martha Holshouser, Jerrie Miller, Mary Louise Peeler, Frances Hall, Jimmy Lefler, THIRD ROW: Margaret Shue, Annie Mae Eagle, Helen Taylor, Sue Ritchie, Frances Rinehardt, Norma Ann Stiller. FOURTH ROW: Annie Lea Lyerly, Jackie Beaver, Edna Hoffner, Lucille File, Betty Jean Hoffner, Ruth Goodman, Gertrude Frick, Geneva File. FIFTH ROW: Milburn Leonard, Mike Conry, Marvin Misenheimer, Mrs. J. W. Johnson, Ruth Hooks. SIXTH ROW: Mr. James McCloskey, John Robert Earnhardt, Robert Shepherd.

Beta Club Initiation





F.H.A.

Officers Gladys Trexler, Sue Ritchie, Nell Misenheimer, Katherine Fisher, Lucille File, Ruth Hooks. *First Row:* Mildred Rattz, Martha Holshouser, Georgie Ketchie, Ruby Jean Shipton, Louise Goodman, Jean McQuire, Anne Belle Ward, Peggy Kluttz, Mary Louise Pickler, Norma Jean Hill, Mary Eller. *Second Row:* Darlene Cline, Bebe Mesimer, Mary Euart, Lillian Taylor, Rosabelle Biggerstaff, Violet Ray Miller, Lillie Ruth Honeycutt, Margaret Morgan, Patsy Ketchie, Geneva File, Mary K. Stoner, Elaine Hegler, Barbara Yelton. *Third Row:* Janie Eagle, Sylvia Lowman, Mary Roseman, Carrie Elizabeth Lefler, Frankie Rattz, Mary Horton, Pricilla McQuire, Lavada Galloway, Mary Louise McQuire, Nell Corl, Mary K. Owens, Rachel Trexler, Ruth Morgan, Betty Goodnight, Doris Hoffner.

F.F.A.



First Row: Bill Earnhardt, James Alexander, Marvin Misenheimer, Francis Rinehardt, Norman Kesler, Franklin Hampton, Harvey Holshouser, Mr. Conry. *Second Row:* Gene Eagle, Donald Hoffner, Ben Agner, Robert Lowery, Derwood Puckett, Robert Shepherd. *Third Row:* Junior Holshouser, Kenneth Hoffman, Jimmy Kesler, Elmer Lee Cline, Roy Shepherd. *Fourth Row:* Hayden Earnhardt, Kenneth Honeycutt, James Agner, Ray Wilhelm. *Fifth Row:* Harold Blackwelder, John Gordy, John Bost, Bobby Mooney. *Sixth Row:* Jim Poole, John Eller, Lester Brown, Kenneth Shue, Eugene Goodman. *Seventh Row:* Luther Matthews, C. D. Goodman, James Correll, Herman Morgan, Alfons Dadzitis. *Eighth Row:* Dewey Sides, James Troutman, Ralph Shepherd, Jimmie Agner, Lee Bassinger, Loimons Peterson, Donald Measimer. *Ninth Row:* Craig Holshouser, Ervin Casper, Howard Shuping, Clyde Arey, Kenneth Morgan, Eugene Sides, Kenneth Shaver, Bill Morgan, Claude Earnhardt. *Tenth Row:* Jimmie Pucket, Kenneth Shaver, James Haynes, Jimmy Goodman, Johnny Efird, Willie Johnson. *Eleventh Row:* James Bost, Wayne Bost, Fred Bassinger, Dale Boger, Donald Morgan, John Henry Barringer.



P. T. A. OFFICERS:
 President, Mrs. Thomas Moose; Secretary, Mrs. Murray Penning; Vice President, Mrs. J. W. Puckett, Treasurer; Mr. R. W. Brown.



CAFETERIA WORKERS:
 Mrs. Spencer Bost, Mrs. George Parks, Mrs. Jim Trexler, Manager; Mrs. J. A. Miller.



OFFICE WORKERS:
 Frances Rinehardt, Mary Louise Peeler, Mr. Puckett, Ruby Jean Shipton, Marlene Bost, Frances Hall, Sue Ritchie.



BUS DRIVERS:
 James Lee Bost, Hayden Earnhardt, Gregory Taylor, Bessie Lee Doby, Gene Eagle, Robert Shepherd. **SECOND ROW:** Dale Boger, Francis Rhinehart, Norman Kesler, Donald Morgan. **THIRD ROW:** Albert Shepherd, Jim File, John Henry Barringer.

JANITOR:
 Steve Williams



Senior 4-H



Junior 4-H



Library Club



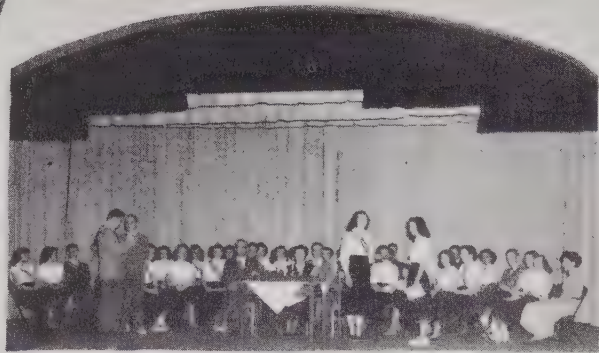
Mary Eller, Minnie Rattz, Norma Jean Hill, Dewey Culp, Priscilla McQuire, Peggy Featherstone, Mary Lewis McQuire, Lavada Galloway, Mary Euart, Johnnie Hoffner, Jeanette Burleson, Ann Cruse, Carrie Mae Lefler, Bebe Mesimer, Amy Swink, Frances Stiller, Margaret Morgan, Edna Hoffner, Lillie Ruth Honeycutt, Nell Corl, Ada Hoffner, Betty Troutman, Barbara Yelton, Patsy Ketchie, Rosa Belle Biggerstaff, Mrs. Puckett, Lee Bassinger, James Puckett, Lucille File, Darline Cline, Nell Misenheimer.

Junior Play Cast



Sue Ritchie, Hayden Earnhardt, Luther Matthews, Margaret Shue, Mike Conry, Ruth Hooks, James Alexander, Bobby Fesperman, Marvin Misenheimer, Annie Lea Lyerly, Lester Brown, Martha Holshouser, Jackie Beaver, Larry Corl, Gladys Trexler, Milburn Leonard.

Senior Memories





POWLES FUNERAL HOME

CONGRATULATIONS AND BEST WISHES

TO THE CLASS OF 1951

MAY THE FUTURE BRING YOU

HEALTH, HAPPINESS AND SUCCESS

“RESPONSIVE AND RESPONSIBLE SERVICE”

Phone 282

Rockwell

North Carolina

BRADY
AND
EARNHARDT

WE BUY POPLAR LUMBER
AND
STANDING TIMBER

Phone 102

Gold Hill

North Carolina

Compliments of

HEIST McCAIN HOSIERY MILL

EXCLUSIVE HOSIERY

Rockwell

North Carolina

ROCKWELL RADIO & ELECTRIC CO.

HOUSEHOLD APPLIANCES - ELECTRICAL CONTRACTING

Motor Repairing

Telephones: 151 - 152 - 921 - 925

ROCKWELL

FURNITURE COMPANY

Complete Home Furnishings

East Main Street

Phone 761

Rockwell North Carolina

CITY MOTOR CO., INC.



SALES

SERVICE

Phone 231

Rockwell North Carolina

HOLSHOUSER

HARDWARE

Dealers in

General Hardware

Phone 711

Rockwell North Carolina

TEXACO SERVICE CENTER

Distributers of

B. F. GOODRICH

Tires and Batteries

Complete Auto Service

ESSO SERVICE STATION

Distributers

DUNLOP TIRES AND BATTERY

Mull and Ridenhour

Compliments of

ROCKWELL DRUG CO.

Rockwell North Carolina

ROCKWELL MILLING CO., INC.

Manufacturers of
Flour, Meal, and Feeds
Distributor for
Poultry and Dairy Feeds

Phone 311

Rockwell North Carolina

BEAVER'S GROCERY

Groceries and Meats

Gas and Oil

Phone 451

Highway 52

Route 2

Rockwell North Carolina

Compliments of

ROCKWELL CIVITAN CLUB

BUILDERS
OF
GOOD CITIZENSHIP

Rockwell North Carolina

THELMA'S BEAUTY SHOP

Phone 411

Bank Building

Rockwell North Carolina

SIDES JEWELRY SHOP

Watches

Diamonds

Jewelry

Bank Bldg. Rockwell

ROCKWELL DRY CLEANERS

Cleaning and Pressing

Phone 591

Rockwell North Carolina

J. W. DAVIS GROCERIES

Groceries - Fresh Meats

Dry Goods

Rockwell North Carolina

BEAVER BROS. ESSO STATION

Washing-----Greasing
Auto Repairing
Body and Fender Work
Painting
Welding
Phone 221

Rockwell North Carolina

MOOSE & SON

Meats and Groceries

Rockwell North Carolina

SERVICE OIL COMPANY

Service Stations:
Gold Hill-Kannapolis-Rockwell

C. L. Helderman Owner
Main Office Phone 305-301

Gold Hill North Carolina

SIMPSON'S SELF SERVICE

Meats and Groceries

Fresh Vegetables

Frozen Foods

Phone 901

Compliments of

HOLSHOUSER GROCERY

Route 2

Rockwell North Carolina

POP'S PLACE

MISENHEIMER

SERVICE STATION

Misenheimer North Carolina

C. C. SHUPING STORE

Texaco Gas & Oil

Groceries and Sandwiches

DEAL'S

MARKET & GROCERY

Phone Faith 205

-Quality Groceries-

-Grade "A" Meats-

-Good Gulf Gas and Oil-

Highway 152

2 Miles West of Rockwell

TREXLER BROS., INC.

Salisbury's Store
for Men

121-123 South Main Street

Salisbury North Carolina

THE GOLD SHOP

Wearing Apparel
It's Smart To Be Thrifty

Lenior

Thomasville

Concord

North Carolina

Salisbury

Newton

Hickory

Compliments of

PALACE BARBER SHOP

114 E. Innes St.

Salisbury North Carolina

FAMILY CLEANERS

Cash and Carry
Pick-up and Delivery

122 East Innes St.

Phone 243

Salisbury

North Carolina

MORMAN INGLE

Class Rings

Watches, Diamonds Rings,

Clocks

We Repair All Class Rings

Salisbury North Carolina



BANKETT

Tires & Battery Co.
Willard Batteries
DUNLOP & GENERAL

-Tires-

Recapping

Phone 102

Salisbury North Carolina

W. L. FILE

Groceries

Gas and Oil

Fertilize and Feeds

Phone 4013J1

Bringle Ferry Road

Salisbury North Carolina

Compliments of

BINGHAM LUMBER CO.

Phone 942 - Rockwell

Route 1

Gold Hill North Carolina

HONEYCUTT'S GROCERY

GENERAL MERCHANDISE

Earl Honeycutt, Prop.

Phone 931 and 935

Gold Hill

North Carolina

PHEIFFER JUNIOR COLLEGE

A Methodist College that will prepare you for Senior College or for business.

Expenses can be as low as \$300 for a boarding student. \$215 for a day student.

Misenheimer North Carolina

Compliments of

VETERANS GRILL

Phone 26

Gold Hill

North Carolina

RUSSELL & SONS

Groceries & Drinks
Wholesale and Retail
Gas and Oil

Gold Hill

North Carolina

AUTOGRAPHS

"Torchie" Cudgel Cook
 Betty Jean Hoffner
 Helen Mae Brady
 Mary Louise Belle
 "Francis Reinhart"
 "Norman Keeler"
 "Butterbean"
 Henrietta Honeycutt
 Kenneth Morgan
 Melvin Lee Roy
 Lucille Fife
 Edith Best
 Harold Blackburn
 Craig Holschouer
 Edna Hoffner
 Robert Shepherd
 Jimmy Leifer
 Margaret Owens
 "P.E." Louis Miller
 "Buryready" Edna Eller
 Helen Taylor
 Mary Leekabill
 Ada Hoffner
 Jean Miller
 Betty J. Jantman
 Annie Mae Eagle
 Frances Rinhardt
 Daline Cline
 Jimmy Ballmore
 Frances Rinhardt
 Norma Stillie
 Best
 Dale Owen
 Hazel Moller
 Margaret Morgan
 John Henry Barkingler
 John Robert Campbell
 Derwood Perbette
 John Robert Campbell

James Owen

Frances Best

Robert Owen

Mr. Smith
the best
of hope the best
of wish all through
life and the best of health

Danall Collins

Recil Medley

KOWAN PUBLIC LIBRARY
SALISBURY, N. C.

d. C. W. Love M

Mr Smith
you are the best
teacher I have ever
had. You have taught me
a lot. Best of luck
Carol Earnhardt

I hope for
you just
as much as I
do. I hope
you will
keep up
the good
work you
are doing
in the
school.
I love
you and
I hope
you will
keep up
the good
work you
are doing
in the
school.

you are a
Very good
teacher

had.
Burrows. M

Mr. Smith
I think you
have been a good
teacher and a good pal.
Bill Halchouer

Jerry Brewer

Mr. St. Smith
I thank you are
a very good teacher
and you have helped me
a lot

H. Halchouer

Bill Halchouer
I hope
you will
keep up
the good
work you
are doing
in the
school.

Wayne Poole
Gary Eamhardt
Brooks Ruckett

Cecil Cooper. good
leeds.

Electrical

Mr. Smith like you
Most people don't but for
me I hope you teach
a room next year but not
mine because we may
have to work harder

Danny Tweed

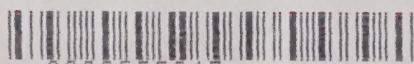
Mr. Smith
I hope you
teach a room
next year but
not mine because
we may have
to work harder

You would grade
the seventh year
Worm
Brady
B + C
B + D

Danny Tweed

Carl Eugene Goodman
Very good budding
man

HEADQUARTERS



9000555847

