



**ROCKET**

0

9

5

5



*O. J. Smith*



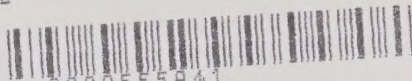
Digitized by the Internet Archive  
in 2021 with funding from  
North Carolina Digital Heritage Center

<https://archive.org/details/rocket195500rock>

KOWAN PUBLIC LIBRARY  
SALISBURY, N. C.

Donated by  
Goodwill Industries

c.2 1955 Rocket.



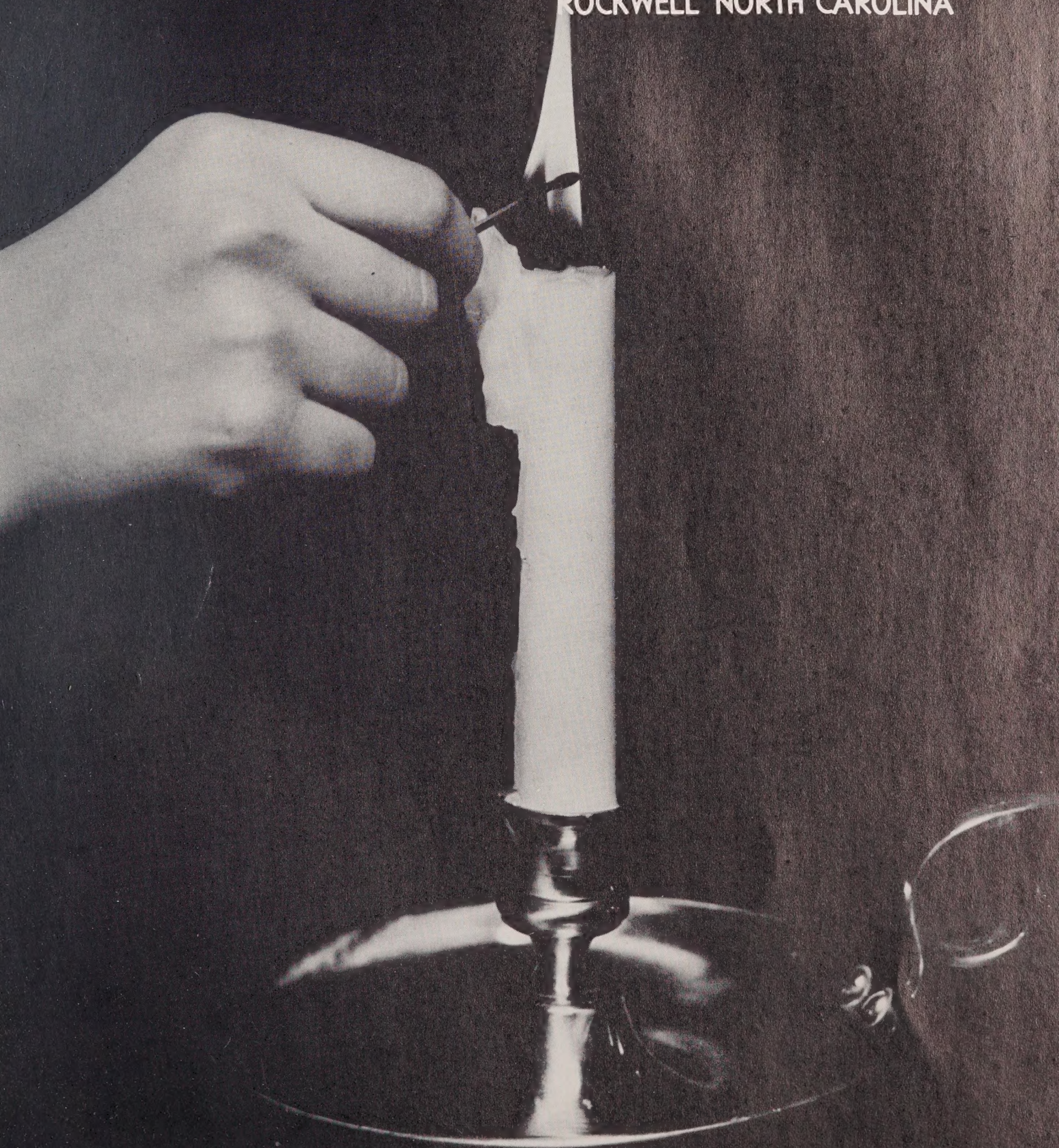
9000555841

WYOMING PUBLIC LIBRARY  
SALISBURY, N. C.

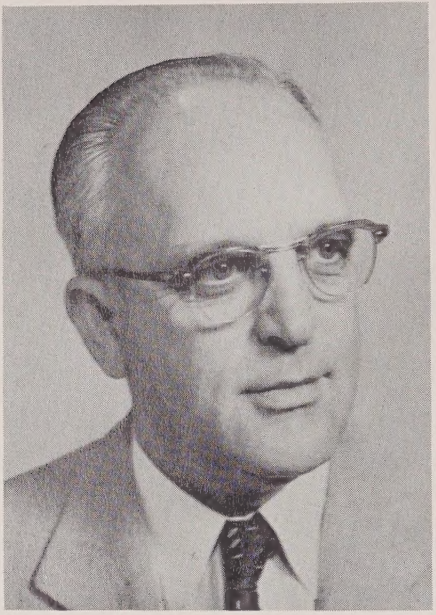


# THE ROCKET

ROCKWELL NORTH CAROLINA







## *Principal*

MR. J. W. PUCKETT

## *School Board*

Mr. Ed Beaver, Mr. Charles Helderman  
Mr. Roy Dellinger, Mr. Thomas Moose





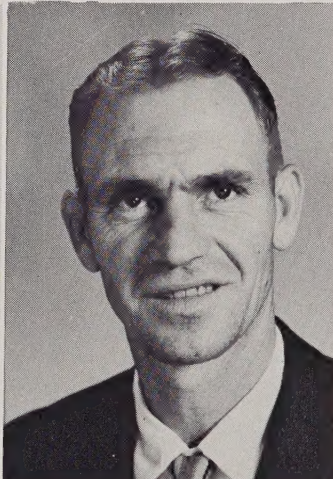
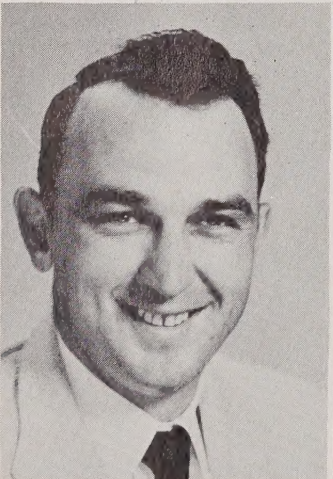
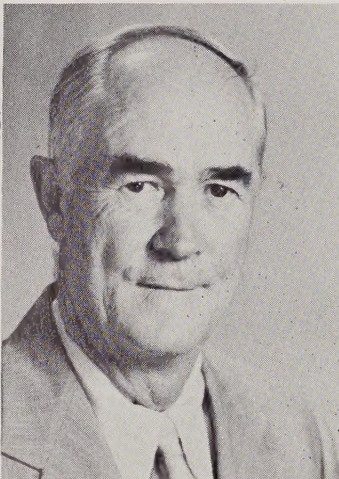
## *Dedication*



We, the seniors of 1955, do proudly dedicate the 1955 "Rocket" to Miss Ruth Wagner, in sincere appreciation of the time, effort, and interest she has given our school. She will be a true friend in our hearts throughout the years.



*High School  
Faculty*



Mrs. Jesse Ballew  
 Mrs. Lewis Bost  
 Mrs. Vivian Boyd  
 Mrs. Rebecca Broughton  
 Mr. J. M. Conry  
 Mrs. Martha Johnson  
 Mrs. Jane Laughridge  
 Mr. Bill Poole  
 Mr. William Proctor  
 Mrs. J. G. Puckett  
 Mr. Carl Rudisill  
 Mrs. Laura Sides  
 Miss Ruth Wagner





# SENIORS



*Mascots*

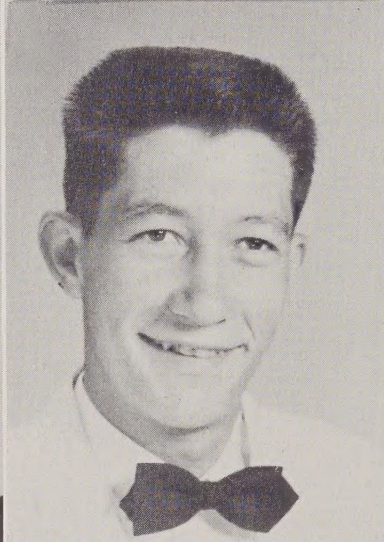
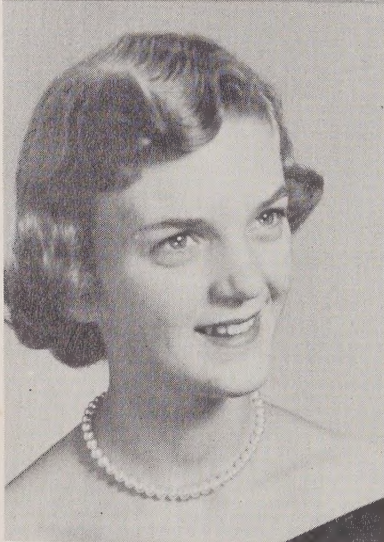
BONNIE HONEYCUTT   MICHAEL MISENHEIMER





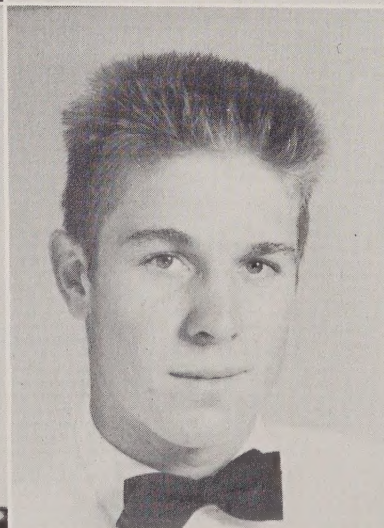
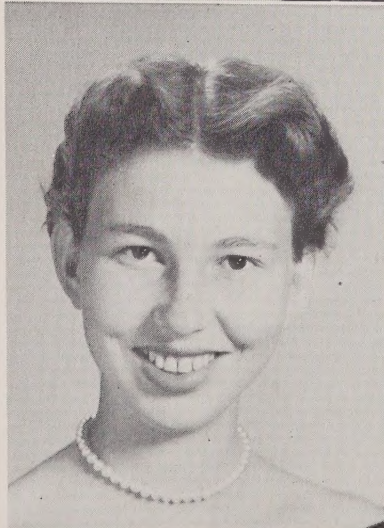
ISABEL BARRIER  
 "She is loyal to her word, to her  
 work, and to her friends."  
 Bible Club 2; French Club.

NORMA BEAVER  
 "As she thinketh in her heart  
 so is she."  
 F. H. A. 2, 3, 4, Officer 4; Junior  
 Play; Glee Club 1, 2, 3, 4; 4-H Club  
 1, 2, 3; Beta Club 3, 4; Bible Club  
 2, 3; Annual Staff 2, 3, 4; Hi-Light  
 Staff 3, 4; Junior Marshal; Majorette  
 2, 3, 4.



ELIZABETH BOST  
 "A mighty spirit fills that  
 little frame."  
 F. H. A. 1, 2, 3, 4; Officer 4; Glee  
 Club 1, 2, 3, 4; Beta Club 3, 4; An-  
 nual Staff 3, 4; French Club 3, 4;  
 Halloween Queen 3; Homecoming At-  
 tendant 3; Basketball Team 1, 2; Hi-  
 Light Staff 2, 3, 4; Superlative, Best  
 Looking; Office Worker 4; Majorette  
 4; Talent Show 1; Junior Play, Beta  
 Club Play 3.

OSCAR BOST  
 "Let's laugh, be jolly and enjoy  
 life, for tomorrow. . . who knows."  
 F. F. A. 4; 4-H Club 4; Bus Driver  
 1; Superlative, Most Likely to Suc-  
 ceed; Junior Play.



REBECCA BOST  
 "Three cheers for a swell gal. . .  
 of energy plus."  
 Junior Play; Glee Club 2, 3, 4; Beta  
 Club 3, 4; Music 1, 2; 4-H Club 1, 2,  
 3; F. H. A. 2, 3, 4, Officer 3, 4; Bas-  
 ketball 1; Cheerleader 3, 4, Chief 4;  
 Annual Staff 2, 3, 4; Bible Club 2, 3,  
 Officer 3; Candidate for 4-H Queen.

ANDREW BROWN  
 "I like something that is fast  
 moving with a good take-off."  
 Bus Driver 3, 4; 4-H Club 1, 2, 3, 4,  
 Officer 2; F. F. A. 1, 2, 3, 4, Offi-  
 cer 2, 3; Monogram Club 1, 2, 3;  
 Football 1, 2, 3, 4; Class Officer 1.



Top Row, Left to Right:

DOTTIE BROWN

"Smooth runs the water  
where the brook is deep."

Glee Club 1, 2, 3, 4, Officer 3; Library Club 3,  
4, Officer 3; Music 1, 2, 4; 4-H Club 1, 2, 3, 4,  
Officer 1, 2; Bible Club 3; Cheerleader 3, 4;  
Usher in Junior Play; Homecoming Attendant 2;  
Hi-Light Staff 4; Bus Driver 3, 4.

BARBARA CULP

"True, sincere, loyal and kind."

Store Worker 3; 4-H Club 1, 2; Glee Club 1.

FRANCES EDDLEMAN

"The time to be happy is today."

4-H Club 1, 2, 3; F. H. A. 1, 2; Bible Club 3;  
Library Club 1, 4; Hi-Light Staff 1; Office Work-  
er 1; Cafeteria Worker 1; Junior Play.

Second Row, Left to Right:

TERRY MICHAEL CAPEL

"Not a worry, not a care;  
my joy I like to share."

Transfer from Granite Quarry High School 1, 2,  
3; Football 4; Superlative, Neatest.

CALVIN EUART

"Those of real goodness are never forgotten."  
F. F. A. 1, 2, 3, 4; 4-H 1, 2, 3, 4.

SHIRLEY FESPERMAN

"Cute, and full of life,

she has a personality all her own."

Class Officer 1, 3, 4; Glee Club 1, 2, 3, 4; F. H.  
A. 2, 3, 4, Officer 3; Bible Club 2, 3, Officer 3;  
Beta Club 3, 4; Junior Play; Store Worker 4; 4-H  
Club 1, 2, 3; Junior Marshal; Cheerleader 4;  
Annual Staff 2, 3, 4; Superlative, Most Persona-  
lity; Beta Club Play 3.





Top Row, Left to Right:

JANET FILE

"Cheerful looks make every dish a feast."

F. H. A. 1, 2; 4-H Club 1, 2; Bible Club 2, 3; French Club 3; Store Worker 3; Junior Marshal; Usher in Junior Play 3; Beta Club 3, 4; Bus Driver 4.

CATHERINE FREEMAN

"The only way to know what is going on is to start it."

Glee Club 1, 2, 3, 4; Beta Club 3, 4; F. H. A. 1, 2, 3, 4; Music Student 1, 2; Library Club 1, 2, 3; Officer 2, 3; Halloween Queen 4, Candidate 1, 4; Homecoming Attendant 4; 4-H Club 1, 2, 3, 4; Officer 2, 3; Bus Driver 3, 4; Talent Show 1, 2; Junior Play; Hi-Light Staff 1, 2, 3, 4.

COLLEEN HAYNES

"Such is she,  
you can't help liking her company."

Library Club 1, 2, 3, 4, Officer 2, 3; 4-H Club 1, 2, 3; Bible Club 3; Hi-Light Staff 1, 2, 3, 4; French Club 3, 4; Junior Play Usher; Beta Club 3, 4.

Second Row, Left to Right:

RAY FILE

"As large as life, and twice as natural."

F. F. A. 1, 2, 3, 4; 4-H 1, 2; Football 3, 4.

JEANNE FRICK

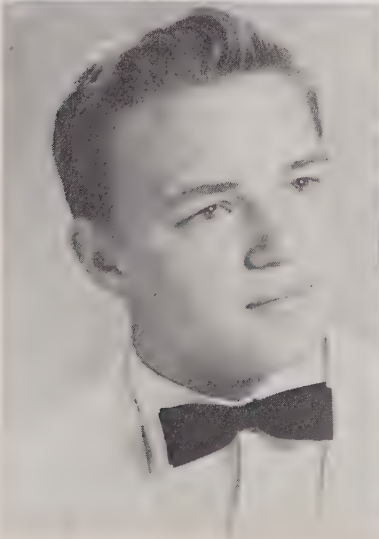
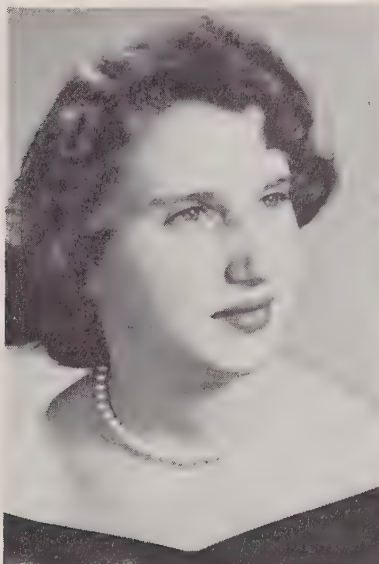
"Always strive to do one's best and success you will find."

Bible Club 2, 3; 4-H Club 1; French Club 1; Junior Play; Office Worker 3; Beta Club 3, 4; Cafeteria Worker 1, 2, 3, 4; Scholarship Medal 1, 2, 3; Chief Junior Marshal; Library Club 4; Superlative, Most Likely to Succeed.

MARY VIRGINIA HOLSHOUSER

"A style all her own, she is great."

Beta Club 3, 4; Basketball 1, 2, 3, 4; Junior Play 3; Monogram 2, 3, 4; F. H. A. 1, 2, 3, 4, Officer 3, 4; Office Worker 4; Glee Club 1, 2, 3, 4; Annual Staff 3, 4; Editor 4; Hi-Light Staff 2, 3, 4; French Club 3, 4, Officer 3, 4; Band 2, 3, 4; Halloween Queen Candidate; Talent Show 1; 4-H Club 1, 2.





**NANCY HOLSHOUSER**

"Constant activity maketh her a true example of school spirit."

Glee Club 1, 2, 3, 4; F. H. A. 1, 2, 3, 4, Officer 3; Beta Club 3, 4, Officer 4; French Club 3, 4; Junior Play 3; Hi-Light Staff, Editor 4; Majorette 2, 3; Drum Majorette 4; Annual Staff 3, 4; Basketball 1, 2, 3, 4, Co-Capt. 3; Most Outstanding Player 3; Bible Club 2, 3; Monogram 2, 3, 4; Superlative, Most Athletic.

**HELEN HONEYCUTT**

"All around good sport."

F. H. A. 1, 2, 3; Beta Club 3, 4, Officer 4; Class Officer 1, 2; Monogram 2, 3, 4; Basketball 1, 2, 3, 4; Superlative, Most Popular; Junior Play; Office Worker 4; Hi-Light Staff 1, 2, 3, 4; 4-H Club 1, 2, 3, Officer 3; Store Worker.

**BOBBY HOPKINS**

"Joking and kidding around is a favorite pastime."

F. F. A. 1, 2, 3, 4; Talent Show 2; Monogram Club 3, 4; Football 3, 4; 4-H Club 1, 2, 3, 4.

**SARAH KLUTTZ**

"Silence is my treasure, though constant activity, I like."

French Club 3, 4, Officer 4; Bible Club 2; F. H. A. 1, 2, 3, 4, Officer 3; 4-H Club 2, 3, 4, Officer 4; Junior Play; Majorette 2, 3, 4; Beta Club 4; Superlative, Neatest; Homecoming Queen 4.

**GENEVIEVE KINLAW**

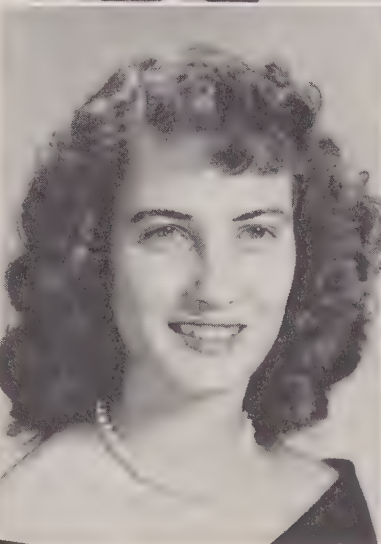
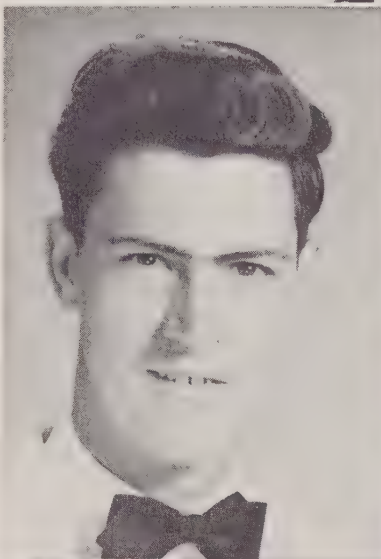
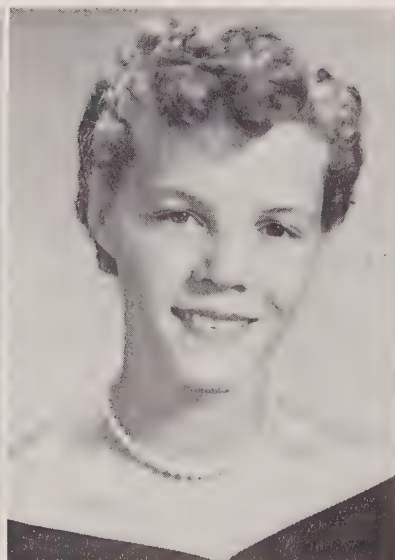
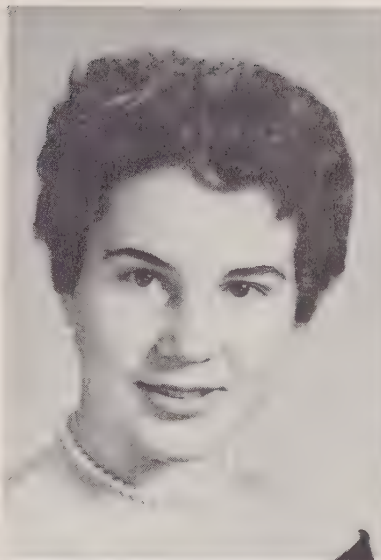
"A quiet and gentle nature has she."

Piano Student 1; Glee Club 1; F. H. A. 1, 2; 4-H Club 1, 2, 3, 4.

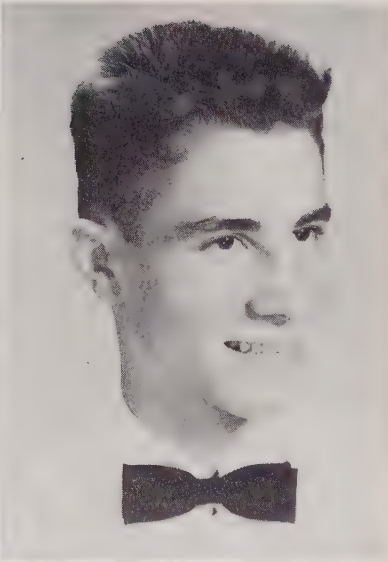
**REBECCA LENTZ**

"She maketh glad the hearts of many with her singing."

F. H. A. 1, 2, Officer 2; Bible Club 2, 3; Library 1, 2, 3, 4, Officer 2; Glee Club 1, 2, 3, 4; Hi-Light Staff 1; Junior Play; Talent Show 1; Piano Student 1, 2.

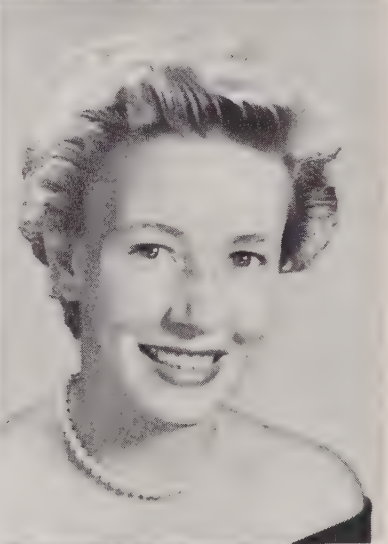
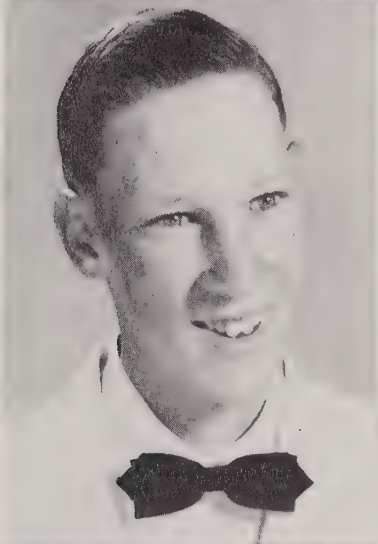






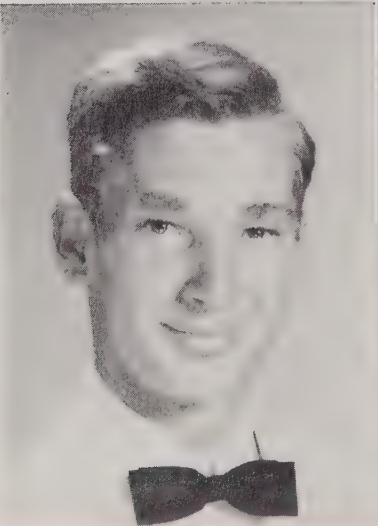
**FRANCES LOOKABILL**  
 "Blessed is the memory of her who strived to make life more pleasant for all."  
 F. H. A. 1, 2; Glee Club 1, 2, 3, 4; Class Officer 1, 4; 4-H Club 1, 2, 3; Officer 1; Annual Staff 4; Hi-Light Staff 4; Junior Marshal; Beta Club 3, 4; Bible Club 2, 3; Office Worker 4; Superlative, Best All Around; Store Manager.

**GERNAL LOWMAN**  
 "Not too serious, not too gay, but a jolly good fellow in every way."  
 Bible Club 2, 3; F. F. A. 1, 2; Bus Driver 3, 4; Monogram 3, 4; 4-H Club 1, 2; Hi-Light 4; Library Club 3, 4; Baseball 3, 4; Cafeteria Worker 4; Junior Play; Superlative, Most Personality.



**GEORGE LYERLY**  
 "Work fascinates me as long as I can watch someone else do it."  
 F. F. A. 1, 2, 3, 4, Officer 1; 4-H 1, 2, 3, 4; Bus Driver 4; Bible Club 3.

**PAULINE MORGAN**  
 "She has mischief even in her eyes."  
 Hi-Light Staff 4; Store Worker 2; Talent Show 2; 4-H Club 1, 2, 3; Junior Play Usher; Library Club 3; F. H. A. Club 1.



**ROLAND MORGAN**  
 "Let's stop joking and be serious just once."  
 F. F. A. 1, 2, 3, 4; 4-H Club 1, 2, 3, 4.

**EDNA OWENS**  
 "High character is the real foundation of all worthwhile success."  
 F. H. A. 1, 2; Bible Club 2, 3; 4-H Club 1, 2, 3; Junior Marshal; Annual Staff 4; Hi-Light Staff 4; Office Worker 4; Class Officer 3, 4; Beta Club 3, 4; Glee Club 1, 2, 3, 4; Store Worker 3.



Top Row, Left to Right:

ROY PETHEL

"If I couldn't be constantly on the go,  
I would be bored."

F. F. A. 1, 2, 3, 4; 4-H 1, 2, 3.

GUY PUCKETT

"Be glad of life because it gives you a chance  
to love, work and play."

Glee Club 1, 2, 3, 4; Library Club 3, 4, Officer  
3; 4-H Club 1, 2, 3, 4; Class Officer 2, 3; Bible  
Club 2, 3; Cheerleader 1, 2; Junior Play; Beta  
Club 4; F. F. A. 1, 2; Health King of N. C. in  
4-H; Halloween King Candidate 3; Bus Driver  
3, 4; Superlative, Most Popular.

PEGGY RITCHIE

"A moving television and radio,  
she is never quiet."

F. H. A. 1, 2; 4-H Club 1, 2, 3; French Club 3;  
Bible Club 2; Usher in Junior Play 3; Library  
Club 3.

Second Row, Left to Right:

BETTY PICKLER

"Kindness and goodness go well together."  
4-H 1, 2, 3; Library Club 1, 2, 3; Glee Club 1.

FAYE RITCHIE

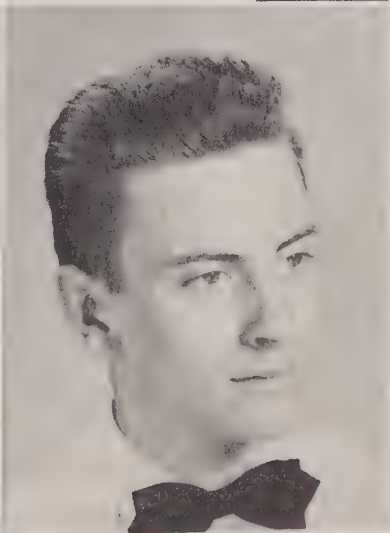
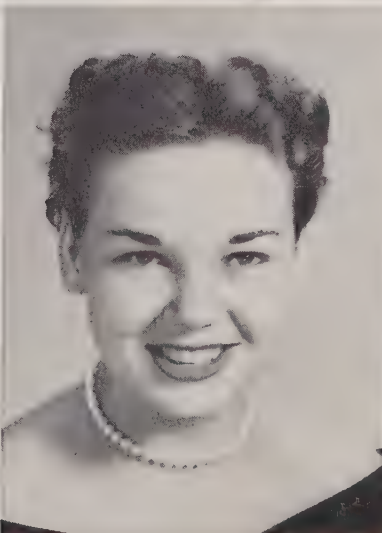
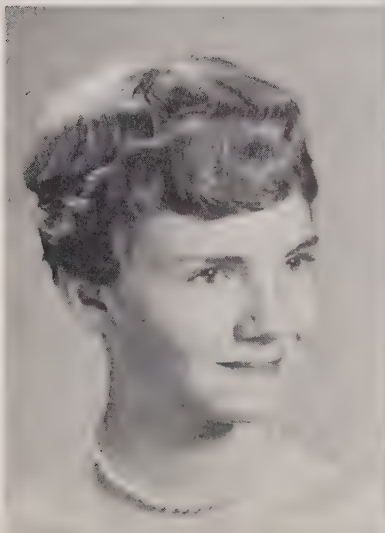
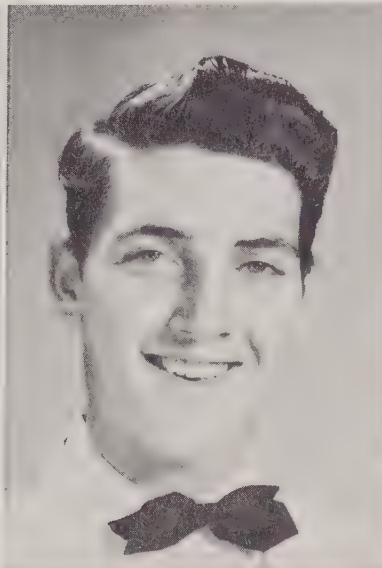
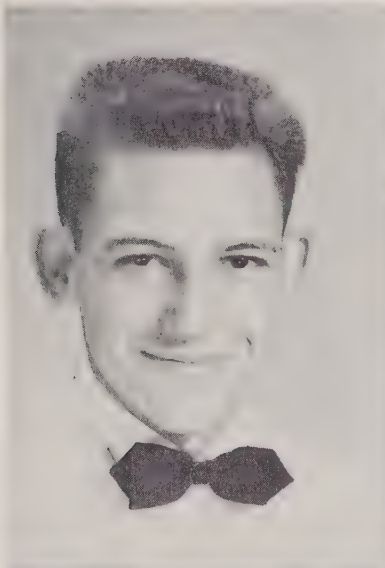
"Why be serious, let's be happy."

F. H. A. 1, 2, 3, 4, Officer 3, 4; Beta Club 3, 4;  
Piano Student 1, 2, Band 2, 3, 4; Basketball 3, 4;  
4-H Club 3, 4; Monogram Club 3, 4; Hi-Light  
Staff 3; Junior Play; Library Club 1.

FRED SETZER

"I am, as I am, and so will I be."

F. F. A. 1, 2, 3, Officer 2, 3; Judging Team 2, 3;  
Glee Club 1, 2, 3, 4; 4-H 1, 2; Bible Club 2, 3;  
Class Officer 3; Baseball 3, 4; Football 2, 3;  
Monogram Club 3, 4; Bus Driver 3, 4; Junior  
Play; Talent Show 2; Beta Club 4; Superlative,  
Most Intellectual.





Top Row, Left to Right:

SARAH SHUE

"I like friends

and I strive to be so to everyone."

French Club 3; Bible Club 2; F. H. A. 1, 2, 3, 4; Library Club 3; 4-H Club 1, 2, 3; Junior Play Usher.

ANITA SMALL

"Speech is great, but silence is greater."

F. H. A. 1, 2; 4-H Club 1, 2, 3.

JANICE VANHOY

"Of all the lights you carry in your face, joy shines farthest."

Beta Club 3, 4, Officer 3, 4; Library Club 2; F. H. A. 2, 3, 4, Officer 3, 4; Basketball 1, 2, 3; Monogram Club 1, 2, 3, 4; Office Worker 3, 4; Annual Staff 3, 4, Associate Editor 4; Hi-Light Staff 2, 3, 4; Bus Driver 3, 4; Talent Show 1; 4-H Club 1, 2, 3, 4, Officer 2, 3, 4; Majorette 3, 4, Chief 4; Junior Play; Cafeteria Worker 2.

Second Row, Left to Right:

KAYE SHUPING

"She reminds you of a flame... forever glowing."

F. H. A. 1, 2, 3; 4-H Club 1, 2, 3; Store Worker 3; Library Club 3, 4.

FRANKLIN SURRATT

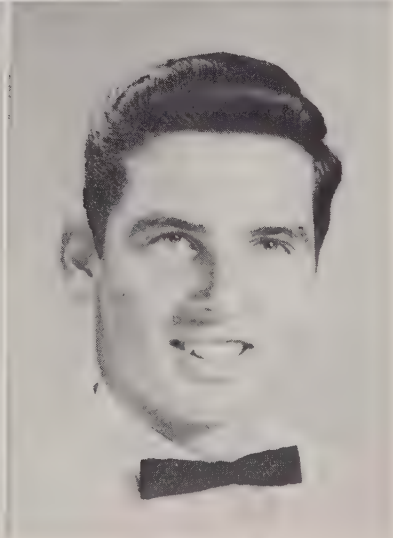
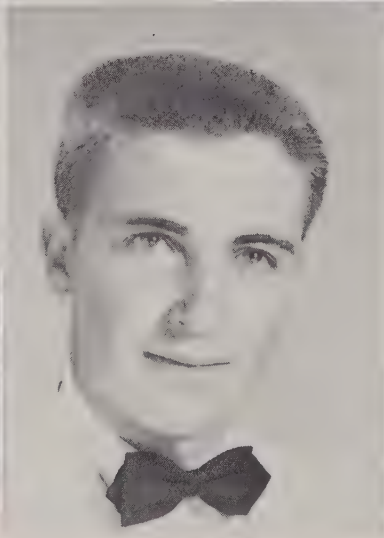
"A jolly unselfish personality is the greatest gift of all."

Beta Club 4; Football 1, 2, 3, 4, Co-Captain 4; Baseball 3, 4; Monogram 3, 4; Glee Club 2, 3, 4; 4-H Club 2, 3, 4; Candidate for Halloween King 1; Annual Staff 4; Talent Show 2; F. F. A. 1, 2, 3, Officer 2, 3; Junior Play; Bible Club 2, 3; Bus Driver 3, 4; Superlative, Best All Around.

KENNETH VANHOY

"He is well rewarded for all his good works and sportsmanship."

Beta Club 4, Officer 4; Monogram Club 2, 3, 4; Annual Staff 4; Glee Club 2, 3, 4; Football 1, 2, 3, 4, Co-Capt. 4; Basketball 1, 2, 3; Talent Show 2; F. F. A. 2; Junior Play; Bible Club 3, 4; Superlative, Most Athletic.





BETTY JEAN WEST

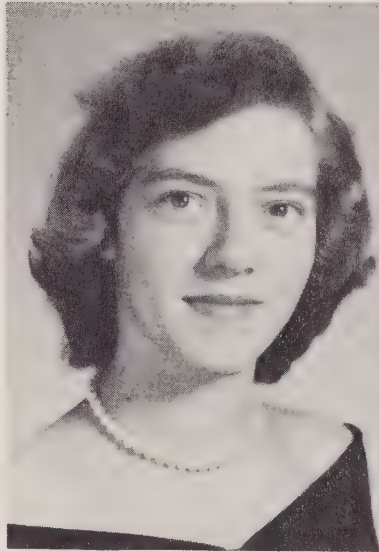
"Bashfulness is an ornament  
to youth."

4-H Club 1, 2, 3, 4; F. H. A. 1, 2;  
Glee Club 1, 2; Bible Club 2, 3; Li-  
brary Club 1, 2, 3, 4.

MIRON WILHELM

"Tell him of Jacob's ladder  
and he will ask the number  
of rounds."

F. F. A. 1, 2, 3, 4, Officer 1, 4; 4-H  
Club 1, 2, 3, 4; Monogram Club 2;  
Basketball 1, 2; Bus Driver 2, 4;  
Superlative, Best Looking.



BETTY JEAN WISE

"A better friend  
treads not the earth."

F. H. A. 1, 2; Bible Club 2, 3; Beta  
Club 3, 4; Store Worker 3; 4-H Club  
1, 2, 3; Usher in Junior Play.

CAROL WILES

"It is not good for one to keep  
silent if a good word is to be  
spoken."

4-H 1, 2, 3; F. H. A. 2, 3; Library  
Club 1, 2, 4.



MARY WISE

"So shines a good deed  
in a naughty world."

Transfer from Lexington High  
School; S. C. Glee Club 1, 2, 3, 4;  
Class Officer 3; Hi-Light Staff 2, 3,  
4; Beta Club 3, 4; Journalism Club  
2; Dramatics Club 3; Superlative,  
Most Intellectual; Class Poet.







## Class History

In the fall of 1952, 78 boys and girls entered high school classified as "green freshmen." We had as our home room teachers, Mrs. John Rink and Mr. Cecil Gilkerson. Naturally we were laughed at, landed up in wrong places and had our teachers thinking we were "just awful." We elected as class officers- Bill Brown, President; Helen Honeycutt, Vice President; Shirley Fesperman, Secretary and Frances Lookabill, Treasurer.

A year later we again entered school, this time as Sophomores with only 61 on roll. Now being a year older, we looked with pity upon the poor freshman. Our sponsors were Mr. Bill Poole and Mr. William Snider. Our class officers were Andrew Brown, President; Guy Puckett, Vice-President; Helen Honeycutt, Secretary; Peggy Jo Lipe, Treasurer.

After what seemed a very short vacation to all of us we again entered high school to be enrolled as Juniors. How happy we were to be looking forward to such a delightful year. A few of our classmates dropped by the wayside, leaving us with only 50 Juniors. Our class sponsors were Mrs. John Rink, Miss Ruth Wagner and Mrs. J. G. Puckett. Our play, "Fraidy Cat," under the direction of Mrs. John Rink, was termed a success.

The following spring of 1954 the Junior-Senior Banquet climaxed many hours of hard work and patience under the guidance of Miss Ruth Wagner. It was held in our new school cafeteria. We attempted to create a Mexican atmosphere.

Six outstanding girls were chosen to be Junior Marshals. They were Jeanne Frick, Frances Lookabill, Edna Owens, Janet File, Shirley Fesperman, and Norma Beaver.

As our Junior year came to a close we looked with envy at the seats in chapel which we would soon occupy and call our own.

Now in the year of 1955 we have come back to the scene for the last year. Several more students dropping by the way reduced our number to 47. Our boys, Frank Surratt, Fred Setzer, Ken Vanhoy, Mickey Capel and Bob Hopkins, can be given a loud cheer for the fine display of sportsmanship they displayed at all our football games this year. We shall expect much from Nancy Holshouser, Mary Va. Holshouser and Helen Honeycutt to carry us to a victorious year in basketball. All of us look forward eagerly to our Senior activities for this coming year. Many of us will start again as college freshman in the fall of 1955.

Our class officers and sponsors who will help make this year a big one are Edna Owens, President; Shirley Fesperman, Vice-President; Frances Lookabill, Secretary; and Helen Honeycutt, Treasurer; Mrs. J. G. Puckett; Miss Ruth Wagner and Mrs. Jesse Ballew.

We wish to thank all of you who have helped make it possible for us to advance so far. May we amount to something, not merely exist in life.

Historian  
Norma Beaver

## Class Poem

Graduation! What does it mean--  
That work is o'er, a battle won?  
Or does it mean that we have seen  
A worthy life begun?

Those tireless hours of study past  
End not life's preparation.  
They made us strong and true at last,  
That we might build a nation.

Lessons read, assignments done,  
Have made our knowledge broader.  
As games and contests, lost and won  
Have molded life and character.

Now we leave these portals in the mist.  
In future hours may the echo ring,  
"In life, not merely to exist,  
But to amount to something."

Mary Wise





## *Senior Class Officers*

Treasurer  
Helen Honeycutt

President  
Edna Owens

Vice President  
Frances Lookabill

Secretary  
Shirley Fesperman



## *Superlatives*



MOST INTELLECTUAL  
Mary Wise  
Fred Setzer

MOST ATHLETIC  
Nancy Holshouser  
Kenneth Vanhoy





## *Superlatives*



BEST ALL AROUND  
Frances Lookabill  
Franklin Surratt

MOST PERSONALITY  
Shirley Fesperman  
Gernal Lowman





# *Superlatives*



**MOST POPULAR**  
Helen Honeycutt  
Guy Puckett



**BEST LOOKING**  
Libby Bost  
Miron Wilhelm



# *Superlatives*



MOST LIKELY TO SUCCEED  
Jeanne Frick  
Oscar Bost

NEATEST  
Sarah Kluttz  
Mickey Capel







*Seniors*



*1955*



# Advisors



CLASS FLOWER  
Red Rose

CLASS COLORS  
Red And White



MRS. PUCKETT



MISS WAGNER



MRS. BALLEW

CLASS MOTTO  
Not merely to exist, but to  
amount to something in life.





*Homecoming Queen*

Sarah Klutz



# *Junior Officers*

President  
Phil Simpson

Vice President  
Bobby Beaver

Secretary  
Betty Lou Brady

Treasurer  
Doris Holshouser





# Juniors

Rachel Agner  
Shirley Agner  
Gladys Artz  
Bobby Beaver

Bobby Bost  
Bobby Boyd  
Betty Lou Brady  
Richard Brady  
Eugene Burr

Janice Carter  
Helen Corl  
John Corl  
Jimmy Cranford  
Benny Drew

Josephine Earnhardt  
Betty Efrid  
Allen Cozart  
Anne Lou Fraley







Yvonne Goodman  
Tommy Hall  
James Harwood  
Janice Haynes

Curtis Hoffner  
Pauline Hoffner  
Willie Hoffner  
Doris Holshouser  
Cleo Jones

Louise Kirk  
George Kluttz  
Alan Lyerly  
Rebecca Mesimer  
Hubert Miller

Betty Morgan  
David Morgan  
Elaine Morgan  
Vickie Moose

*Juniors*



# Juniors

Sondra Odell  
Ray Pickler  
Jackie Rattz  
Samuel Rothrock

Dickie Rudisill  
Betty Lou Shaver  
Shirley Shaver  
Margaret Shinn  
Phil Simpson

Ethel Trexler  
Mary Trexler  
Loretta Troutman  
Jimmy Varnadore  
Jeanette Ward

Eugene Weant  
Larry Whitt  
Shirley Williams  
Tommy Yelton







*Sophomore Officers*

President  
Danny Tweed

Secretary  
Midgie Honeycutt

Vice President  
B.K. Holshouser

Treasurer  
Barbara Pinkston



# Sophomores

Helen Agner  
Joan Agner  
G. L. Barringer  
Robert Barringer

Darnell Collins  
Bryan Conry  
C. W. Cooper  
Derwood Cox

Larry Frick  
Joe Frye  
Marget Goodman  
Eugene Gordon

Delmar Brady  
Elsie Brady  
Martha Brown  
Norman Brown

Lawrence Drew  
Jerry Drew  
Carol Earnhardt  
Thelma Freeman







Joan Heilig  
 Marie Hodge  
 Helen Hoffner  
 Martha Hoffner

Betty Jacobs  
 Frankie King  
 Gail Leonard  
 Helen Lyerly

Colleen Morgan  
 Dewey Lee Morgan  
 Floyd Morgan  
 Joan Morgan

Bill Holshouser  
 Jo Ann Honeycutt  
 Midgie Honeycutt  
 Sparks Honeycutt

Bobby Martin  
 Max Merritt  
 Patricia Mills  
 Alice Morgan

## *Sophomores*

ROCKWELL CAFE



# Sophomores

Sylvia Morgan  
Barbara Pinkston  
Wayne Poole  
Brooks Puckett

Jeannette Trexler  
Nancy Trexler  
Wayne Trexler  
Dannie Tweed

Donnie Tweed  
Betty Wagner  
Brenda Wagner  
Geraldine Whitley

Wayne Reeks  
Carol Rummage  
Bobby Shuping  
Louise Sides

Janice Small  
Wilhelmina Smith  
Annie Lou Trexler  
Betty Lou Trexler







*Freshman Office*

President  
Eggy Hayne  
Vice President

Secretary  
Richard Lewis  
Treasurer  
Carolyn Morgan



# Freshmen

Frances Agner  
 Carolyn Arey  
 James Barringer  
 Norma Jean Barringer

Wayne Brown  
 Billy Cannup  
 Tommy Dellinger  
 Peggy Drew

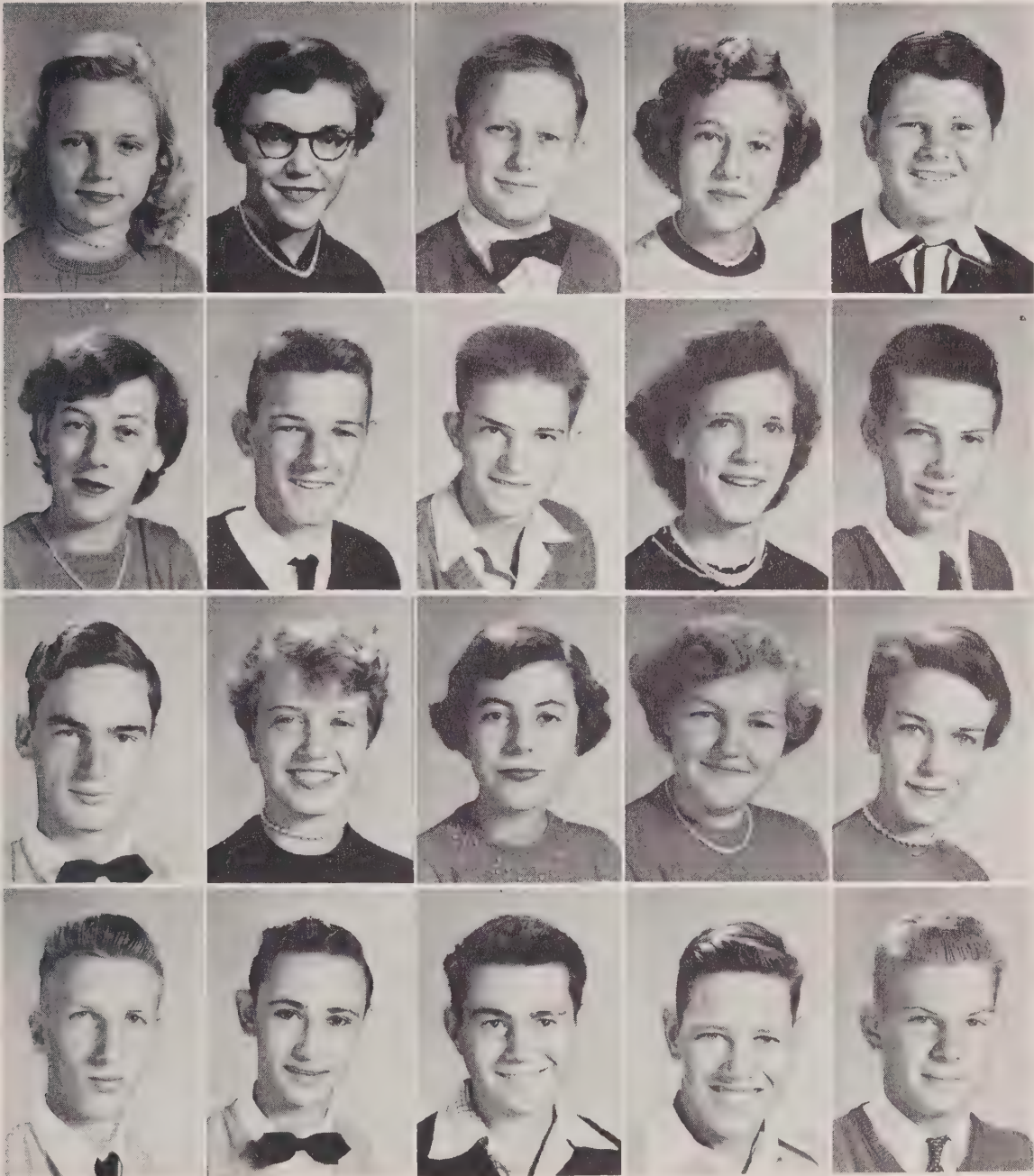
Frances File  
 Larry Fortune  
 Jack Galloway  
 Floyd Goodman

Ruby Basinger  
 Gary Beaver  
 Jimmy Beaver  
 Norman Beck

Mary Ann Doby  
 Rachel Earnhardt  
 Sue Earnhardt  
 Helen Featherstone







Betty Jean Harwood  
 Peggy Haynes  
 John Hill  
 Robert Hill

John Lemly  
 Sammy Lowman  
 Shirley Lyerly  
 Stephen Morefield

Ronald Morgan  
 Bobby Petrea  
 Evelyn Poole  
 Richard Powlas

Carolyn Holshouser  
 Robbie Honeycutt  
 Lena Ketchie  
 Lloyd Kluttz

Betty Miller  
 Christine Morgan  
 Frances Morgan  
 Lloyd Morgan

## *Freshmen*

ROCKWELL ESSO SERVICE STATION



# Freshmen

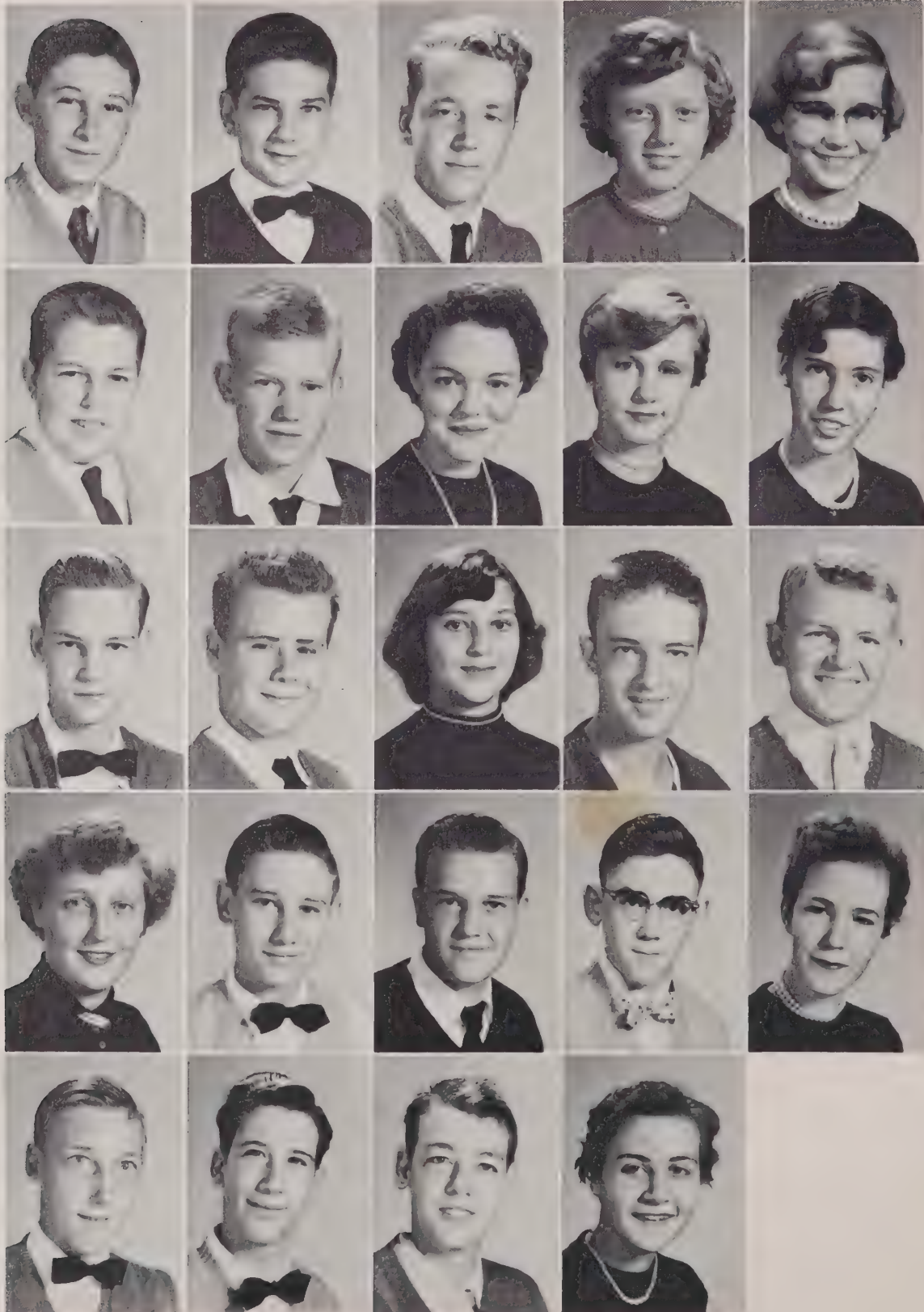
Bobby Rinehardt  
Homer Lee Safrit  
Billy Shaver  
Mary Rose Shaver  
Robert Shaver

C. J. Solomon  
Ruth Starnes  
Jean Strube  
Charles Taylor  
Phillip Thompson

Jackie Walker  
Judy Ward  
John Wise  
Becky Varnadore

Raymond Shue  
Billy Sides  
David Sides  
Floyd Sides  
Jerry Lee Sides

Renda Treece  
Barbara Trexler  
William Yates  
Harold Yost  
Rose Wagoner



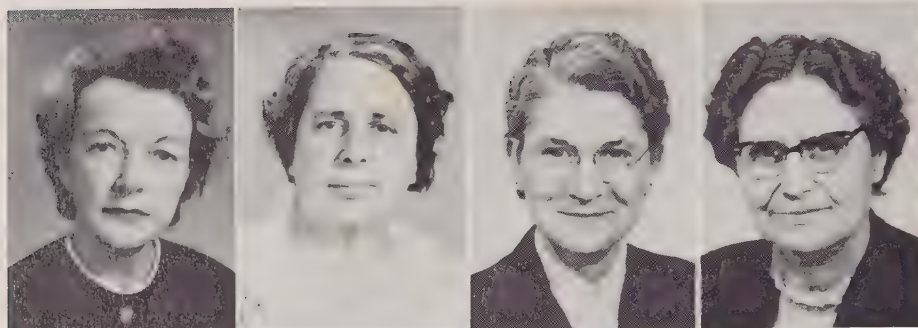


# ELEMENTARY GRADES





## *Elementary Faculty*



Mrs. Elizabeth Barker  
Mrs. Ruth Beaver  
Mrs. J. A. Bolton  
Mrs. Carrie Currie



Mrs. Harold Eagle  
Mrs. Frank Hodge  
Mrs. J. W. Honeycutt  
Mrs. Cline Isenhour



Mr. Warren Kesler  
Mrs. Elizabeth Kindley  
Mr. Herman Leonard  
Mr. Melvin Morgan



Mrs. Jennie Ruth Plyler  
Miss Mary Edna Rouzer  
Mrs. Inez Sloan  
Mr. O. T. Smith



Mrs. Mary Sowers  
Mrs. Louanna Verble  
Mrs. Betty Williams

Absent:  
Mrs. George Uzzell



# Eighth Grade



## MR. KESLER, MR. SMITH'S ROOMS

Irene Benfield, Jimmy Bost, Rachel Bost, Frances Bostian, Karen Bostian, Helen Brewer, Ann Brown, Betty Brown, Marvin Brown, Larry Carter, Carolyn Cauble, Gene Clup, Tommy Drew, Charles Earnhardt, Gary Earnhardt, Robert Eford, Gailya Fowler, Bearford Frayley, Joe Freeze, Clara Goodman, Wayne Goodman, Brenda Heglar, Bobby Heilig, Ann Helderman, Mary Hodge, Betty Holshouser, Kay Holshouser, Mitchel Holshouser, Grady House, Jr., Bruce Johnson, Lee Kirk, Jerry Klutz, Tommy Lefler, Barry Leonard, James Lyerly, Tony Lyerly, Ellen Ludwick, Anis Maners, Jean Martin, Betty Miller, Julia Millis, Thomas Moose, Wayne Moose, Bobby Martin, Jay Morgan, Sybil Penninger, Susie Petrea, Bill Ridenhour, Jimmy Ritchie, Larry Shipton, Barbara Snider, Timothy Thompson, J. W. Trece, Joe Trexler, E. C. Wagoner, Patricia Wagoner, Joyce West, Linda Whitt.

## THELMA'S BEAUTY SHOP



## Seventh Grade



### MR. LEONARD, MR. MORGAN'S ROOMS

Yorke Beaver, Donnell Benefield, Betty Bost, Jimmy Bost, Patsy Bost, Jimmy Brady, Donald Corl, Melvia Corl, Thomas Correll, Myrtle Cranford, Tony Cranford, Wayne Cross, John Clup, Betty Dyson, Bobby Drew, Wayne Eddleman, Judy Eller, Maxine Eller, Nadine Eller, Clyde Featherstone, Hazeline Featherstone, Abby Hahn, Patricia Hartley, Shalva Haynes, Becky Heilig, Jerry Hilliard, Ronald Horton, Brenda Holshouser, Bonnie Holshouser, Sylvia Holshouser, James Jones, Guy Jones, Daisy Kluttz, Jerry Kluttz, Peggy Klutz, Brenda Leazer, Barbara Lentz, Edward Lentz, Peggy Leonard, Judy Misenheimer, Johnny Morgan, Lonnie Morgan, Richard Morgan, Ronnie Mooney, John Nickolson, Colleen Pickler, Katie Puckett, Nancy Safrit, Ray Seckler, Harold Shoaf, Mary Shue, Brenda Small, Linda Snider, Ralph Stoner, Betty Swinson, Carolyn Taylor, Wayne Taylor, Alexander Trexler, Marjorie Trexler, Myrtle Trexler, Marlene Walker, Shirley Von Cannon, Nancy Walker, Thomas Whitaker.



## *Sixth Grade*

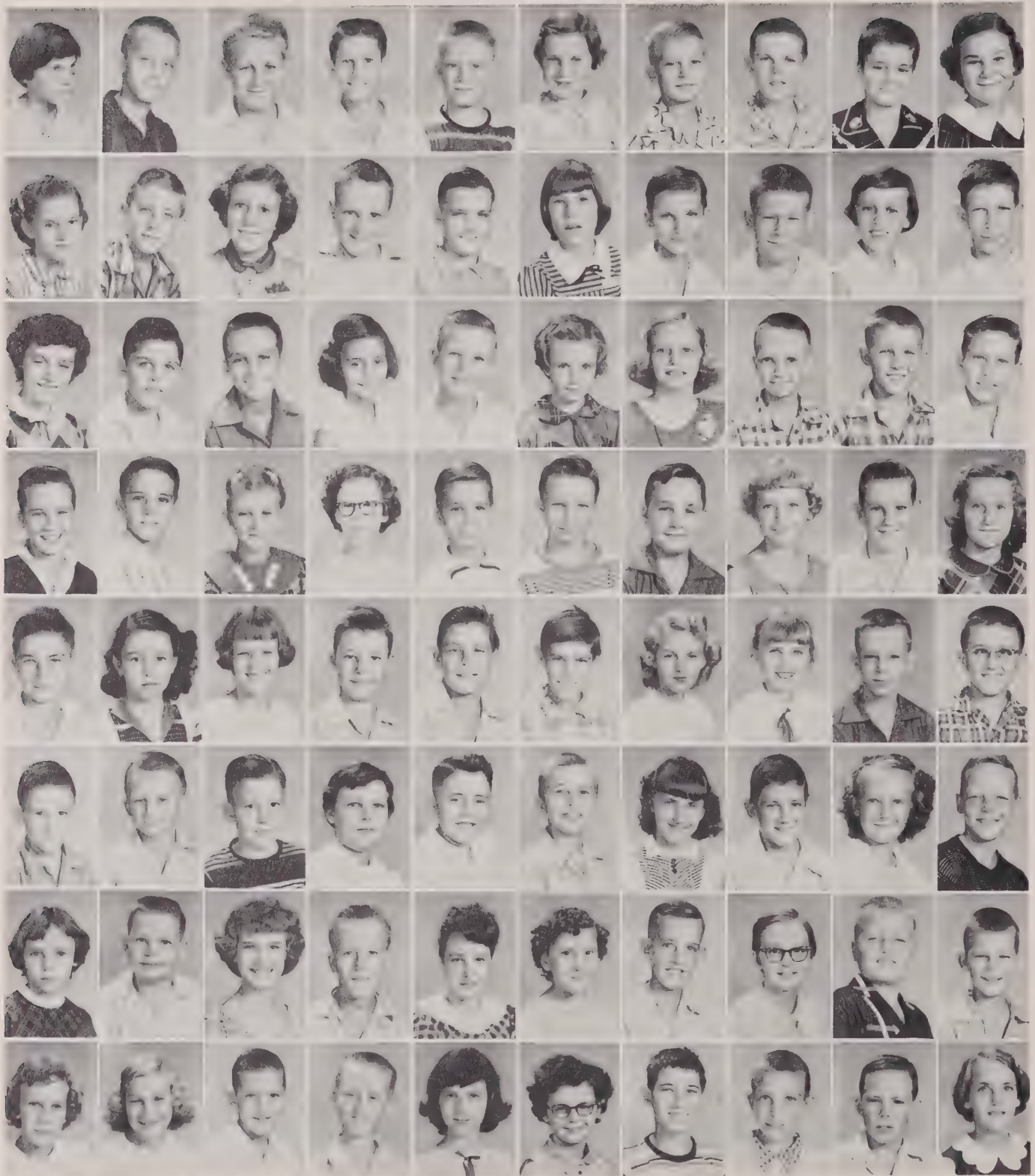


### MRS. WILLIAMS, MRS. CURRIE'S ROOMS

Gayle Arey, Pearl Barringer, Dale Basinger, James Beaver, Jimmy Benfield, Billy Bowden, Helen Boger, Dolly Brewer, Brenda Brooks, Ronald Cauble, Valerie Carter, Jerry Corl, Kay Correll, Peggy Cozart, Johnny Drew, Edward Eagle, Brenda Earnhardt, Virginia Eller, Judy Fatata, Wayne Fesperman, Shirley Frye, Nell Goodman, Ronald Hahn, Doris Hall, Gary Hall, Melva Hall, John Hamby, Barbara Holshouser, Leona Holshouser, Mary Honeycutt, Don Huffman, Patricia Honeycutt, Jay Johnson, Bill Kirk, Don Kluttz, Sue Linker, Tonia Linker, Susie Ludwick, Brenda Lyerly, Walter, Lyman, Shirley McCall, Shelvia Miller, Tony Misenheimer, Lawrence Misenheimer, Carolyn Morgan, Junior Morgan, Vickie Morgan, Larry Owens, Brantley Park, Eleanor Poole, Martha Poole, Gerald Rattz, Linda Robbins, Nancy Roseman, Beulah Rowland, Earnest Shepard, Nancy Shue, Wayne Stokes, Barbara Thompson, Helen Treece, Martin Trexler, Patsy Trexler, Billy Varnadore, Bobby Varnadore, Barbara Walker, Coy Wiles, Jerry Wiles, Bobby Wright.



# Fifth Grade



## MRS. BOLTON, MRS. KINDLEY, MRS. BEAVER'S ROOMS

Brenda Barringer, Terry Beaver, Kenneth Bostian, Maurice Bost, Terry Braswell, Ruth Brown, Howard Crowe, Cecil Deal, Freddie Drew, Barbara Dye, Evelyn Dunaway, Richard Eagle, Judy Earnhardt, E. J. Efird, Vance Eller, Kaye Eudy, James File, Richard Hampton, Carolyn Harwood, Anderson Haynes, Barbara Hill, Charles Hill, Donnie Holshouser, Kay Holshouser, Leslie Holshouser, Judy Huffman, Ruby Kesler, Clifford Kluttz, Dean Kluttz, Gary Kluttz, Keith Leonard, William Ludwick, Becky Lyerly, Jo Ann Martin, Billy McCall, Guy McGuire, Wayne Medley, Carol Miller, John Millis, Mary Misenheimer, Chester Moose, Cheryl Morales, Dottie Morgan, Robert Morgan, Jerry Page, Willie Page, Brenda Penninger, Kay Petrea, Thomas Powlas, Michael Rinehardt, Tommy Rinehardt, Billy Ricer, John Rometta, Marion Rothrock, Gary Rummage, Bobby Safrit, Barbara Sail, Wayne Sail, Novella Scott, Monnie Lechler, Sandra Selle, Nelson Shepherd, Mary Shinn, Thomas Shoaf, Mary Smith, Mary Snider, Monty Simpson, Faye Solomon, Randy Stiller, Robie Swink, Lolly Taylor, Lillie Treece, Kenneth Treece, Eugene Trexler, Phyllis Trexler, Sandra Trexler, Clinton Vanhoy, Joel Vanhoy, Max Varnadore, Joyce Williams.



# Fourth Grade



## MRS. SLOAN, MRS. BEAVER, MRS. UZZELL'S ROOMS

Barbara Beaver, Larry Beaver, Paula Bost, Donald Braswell, Robert Brewer, April Brown, Larry Brown, Sandra Brown, G. D. Cruse, Bobby Dellinger, Robert Dyson, John Earnhardt, Judy Earnhardt, Dolind Easter, Betty Eford, Betty Eudy, Elizabeth Eudy, Jimmy Fatata, Betty Featherstone, Ellison Fesperman, Harold Fesperman, Mary File, Martha Fisher, Jean Fraley, Leighton Frye, Brenda Goodman, Gwynn Goodman, Bobby Hamby, Marcia Helder man, Nina Hodge, Kermit Holshouser, Steven Holshouser, Phyllis Hopkins, David Kluttz, Wayne Kluttz, Ronnie Loflin, Roger Maners, Steven McIntyre, Charles Miller, Gaye Miller, Kaye Miller, Billie Misenheimer, Richard Miller, Tony Misenheimer, Gloria Morgan, Phyllis Morgan, David Morris, Darrell Owens, Shelton Perry, Barbara Ridenhour, Patsy Roseman, Victor Roseman, Junior Rowland, Robert Rowland, Michael Rudisill, Kay Shinn, Larry Small, Carlie Snider, Jimmy Snider, Ruby Southard, Edith Swinson, Marlene Swinson, Lawrence Tarlor, Joseph Thompson, Troy Treece, Theresa Trexler, Diane Vanhoy, Lonnie Vanhoy, Joe Varnadore, Jennie Catherine Verble, Joe Wagoner, Clarence Waller, Billy Whitt, Linda Wilhelm, Juanita Wright, Sylvia Yost.



## Third Grade



### MRS. HONEYCUTT, MRS. SOWER'S ROOMS

Micky Anthony, Barry Barger, Mike Barger, Carol Beaver, Dale Beaver, Mike Bingham, Judy Brewel, Mitchel Brown, Patricia Brown, Linda Corl, Ronnie Dyson, Elaine Eddleman, Alvin Eller, Jerry Hamby, Rebecca Hartley, Gaynelle Haynes, Linda Hill, Ray Hill, David Hipp, Frances House, Judy Kesler, Barbara King, Jerry Lefler, Wayne Lentz, Johnnie Ludwick, Betty Lyman, Phylis is McCall, Rodney McIntyre, Cale Miller, Vonette Miller, Eddie Millis, Peggy Misenheimer, Rebecca Moose, Gary Mull, Delores Nance, Dianne Nash, Sandra Nash, Harry Owens, Harry Parks, Linda Parks, Joan Pickler, Junior Pickler, Calvin Reid, Grenda Robbins, Shirley Rowland, Ronnie Schimpt, Randy Shields, Ruddy Shipton, Norman Shue, Eddie Shuping, Columbus Smith, Ethel Smith, Judy Snider, Rebecca Southard, Judy Steele, Billy Swinson, Alan Taylor, Janet Taylor, C. B. Treece, Donald Troutman, Junior Troutman, Brenda Whitaker, Jackie Wiles.



## Second Grade



### MRS. VERBLE, MRS. EAGLE, MRS. BARKER, MRS. ROUSER'S ROOMS

Jimmy Adams, Sylvia Arey, Gary Barringer, Glenda Beaver, Larry Beaver, Linda Beaver, Bernard Bost, Donald Bost, Larry Bostian, Diana Brady, Tonnie Brooks, Bonnie Brown, Donald Brown, Joyce Brown, Larry Brown, Gary Burleson, Richard Carter, Buddy Lee Carter, Phyllis Chatlos, George Clark, Jr., Jimmy Cornelius, Juanita Correll, Brenda Kay Cranford, Kenneth Culp, Lorene Daniels, Brenda Deal, Nancy Drew, Donald Drye, Glenn Eagle, Robert Easter, Diane Edwards, Donna Edwards, Brenda Eller, Pamela Fesperman, Johnnie Graham, Betty Hallman, Donnie Harwood, Yvonne Haynes, Sylvia Heffner, Stephen Helderman, Becky Hillard, Audrey Hill, Linda Hill, James Hodges, Brenda Hogan, Ann Holshouser, Alton Holshouser, Jeffrey Horton, Marty Jo Johnson, Donald Jones, Paul Kesler, Dole Kirk, Ronald Kirk.



## *Second Grade*



**MRS. VERBLE, MRS. EAGLE, MRS. BARKER, MRS. ROUZER'S ROOMS**

Dennis Kluttz, Hazel Kluttz, Linda Lefler, David Linker, Mary Lowery, Scottie Lyerly, Hughie McLenny, Billy Miller, Gene Miller, Johnny Miller, Kenneth Miller, Lena Miller, Rickie Misheimer, Janice Moose, Glenda Morris, Jackson Myrick, Jr., Barbara Nickolson, Joey Olson, Paul Patterson, Donna Peeler, Shirley Perry, James Pierce, Bobby Powers, Mary Powlas, Brenda Rainey, Jimmy Remeta, Rachel Rowland, Carolyn Russell, Richard Shields, Michael Shinn, Ruby Shinn, Stevie Shuping, Julian Sides, Melinda Sides, Andrea Smith, John Southard, Tony Swink, Sue Treece, Lucretia Trent, Connie Trexler, Donnie Trexler, Jerry Trexler, Larry Trexler, Ronald Trexler, Linda Troutman, Robert Troutman, Willard Fortune, Mona Vanadore, Gerry Vanhoy, Janice Vanhoy, Vickie Vanhoy, Marguerite Verble, Ronald Walker, Linda William, Linda Wright, Danny Yost.



# First Grade



MRS. HODGE, MRS. ISENHOUR, MRS. PLYER'S ROOMS

Bonnie Bean, Elizabeth Beaver, Larry Beaver, Roger Belvins, Bobby Bost, Jimmy Bowers, Hoy Brady, Brenda Brown, Linda Kay Brown, Ted Brown, Sue Carter, Rudolf Chaltos, Larry Correll, Linda Crowe, Steven Cruse, Johnny Cozart, Donny Cozart, Julia Deal, Hoy Lee Dry, Ronald Dyson, Coy Lee Edwards, Nelson Efird, Reid Eller, Minnie Fatata, Linda File, Judy Fisher, Zelia Fisher, Eli Galloway, Linda Galloway, Patricia Gibson, Tommy Hammill, Beverly Hampton, Billy Haymes, Hazel Hill, Brenda Hipp, Dennis Holshouser, Linda Hols-houdrt, Terry Holshouser, Vivian Holshouser, Bonnie Honeycutt, Shirley Hopkins, Michael Kirk, Pamela Kluttz, Terry Kluttz, Betty Knight, Sandra Lyerly, Albert Lyman, Judy McCall, Harry McClund, Ralph Mc-Clung, Gene Medley, Clifford Miller, Michael Misenheimer, Vickie Jo Montgomery, Bobby Moose, Bonnie Morgan, Garrett Morgan, Reggie Rattz, Billie Reid, Charles Reid, Ricky Ridenhour, Phyllis Selle, Floyd Shaver, Ronnie Shuping, Janie Snider, Susan Tarlton, Brenda Thompson, Michael Thompson, Kathryn Treece, James Trexler, Johnny Trexler, Jerry Troutman, Mary Troutman, Gene Vanhoy, Bobby Watson, Larry Wyatt.





## *In Memoriam*

This book is dedicated to Henry Irving Eagle, son of Mr. and Mrs. D. L. Eagle, of the Liberty Community, who was accidentally killed on October 9, 1954.

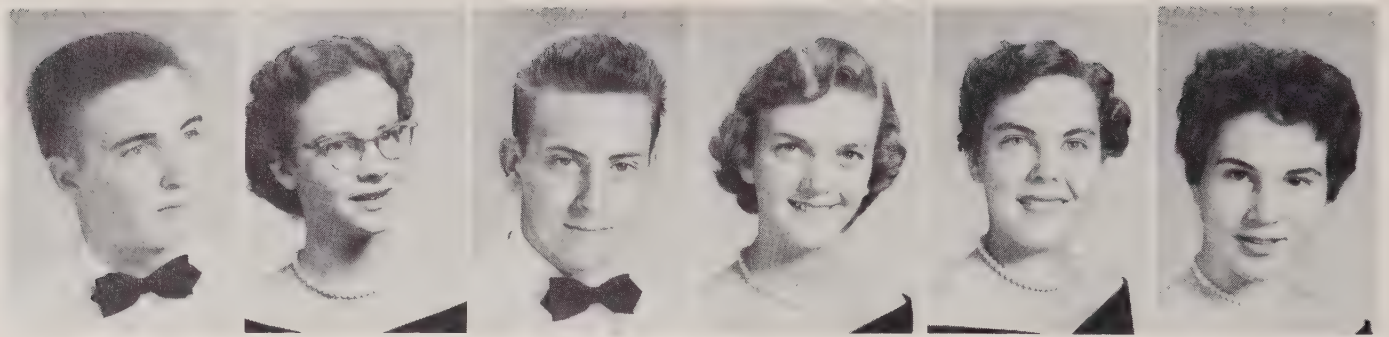
Irving, a happy friendly boy, was a member of the freshman class, coming to Rockwell from Morgan School. He was an outstanding member of his class and community. Although he had not been with us long, his many friends miss Irving, and his memory lingers with them.



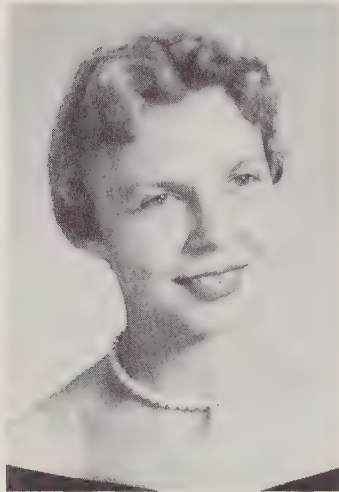
# ACTIVITIES







Franklin Surratt Janice Vanhoy Fred Setzer Libby Bost Norma Beaver Nancy Holshouser



Mary Virginia Holshouser  
Editor



Mrs. Laughridge  
Advisor

## *Annual Staff*







*Hi-Light Staff*

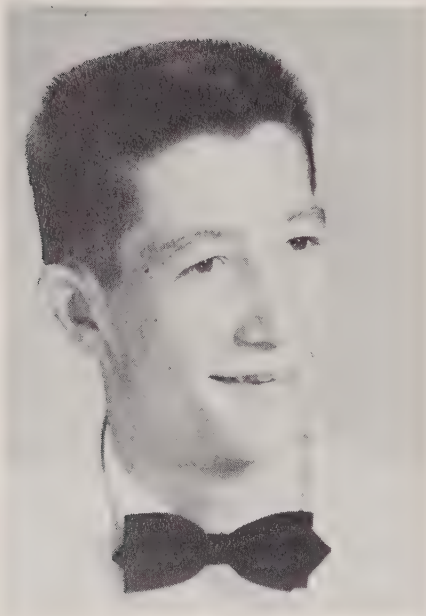


**Nancy Holshouser**  
Editor

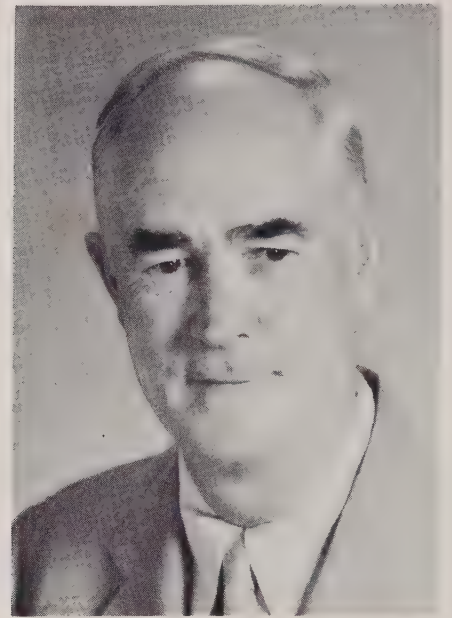
**BANK OF ROCKWELL**



# *Future Farmers Of America*



Oscar Bost  
President



Mr. Conry  
Advisor







*Future Homemakers Of America*



Janice Vanhoy  
President



Miss Wagner  
Advisor

BRADY LUMBER CO.





*Junior  
Marshals*

*Office Workers*





*Library  
Club*



*French  
Club*

Complements of DR. L.C. HOLSHOUSER





*Senior  
4 H Club*



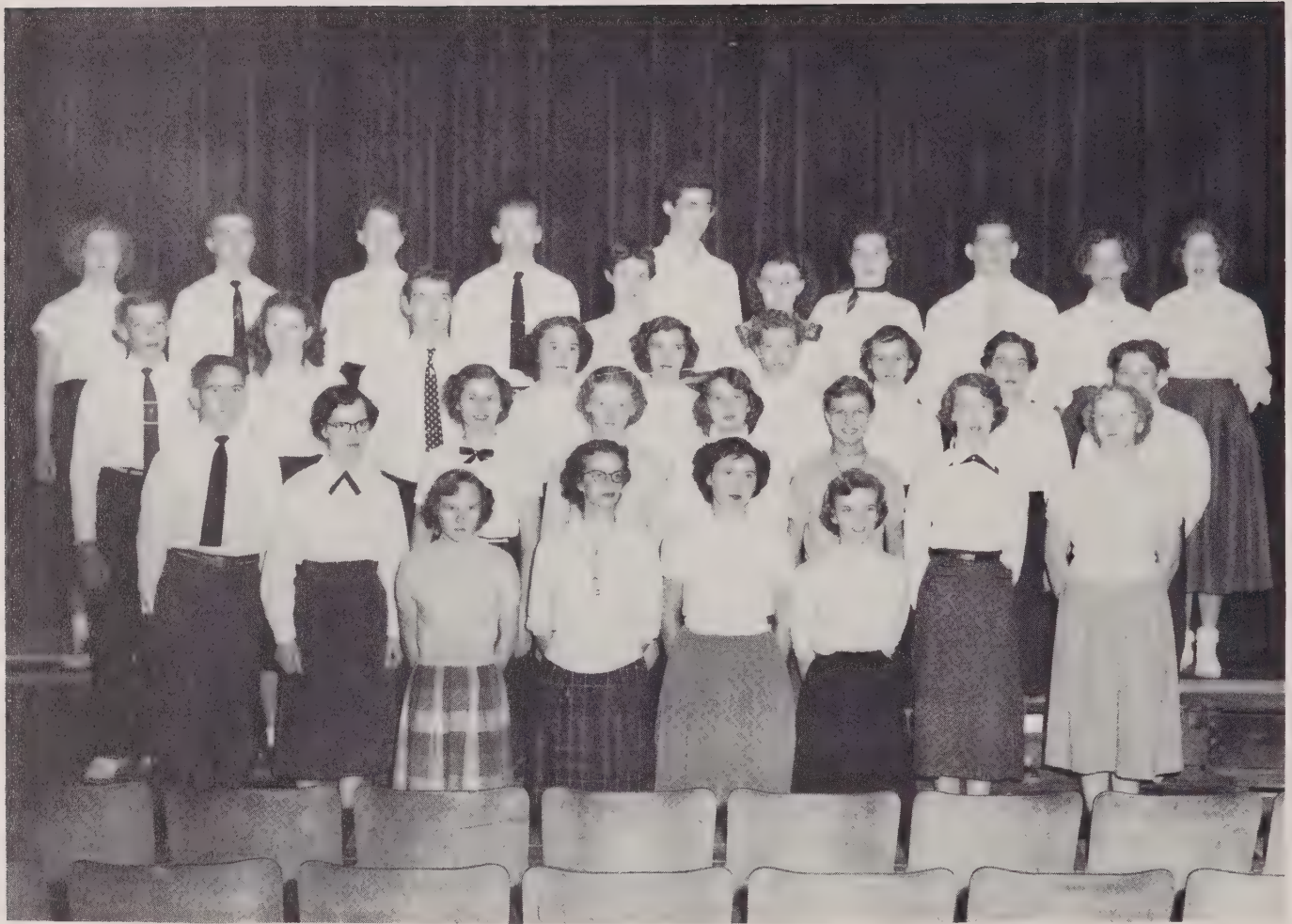
*Junior  
4 H Club*



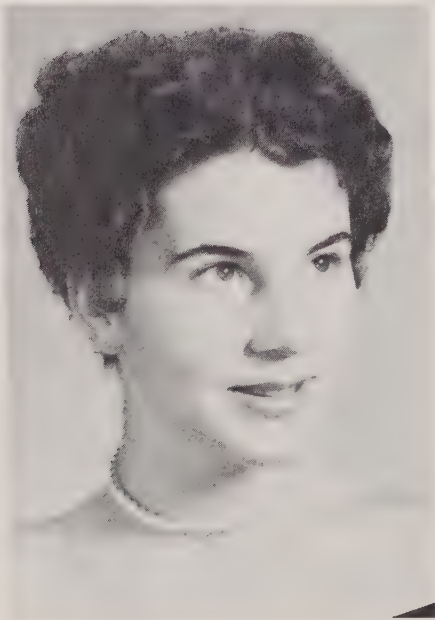








*Beta Club*



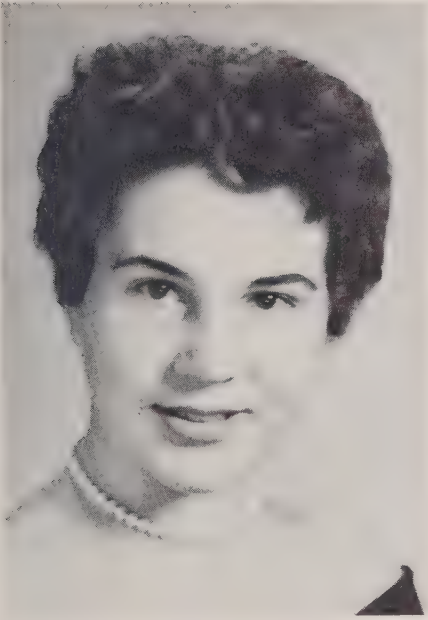
Nancy Holshouser  
President



Mrs. Johnson  
Advisor



# Glee Club



Nancy Holshouser  
President



Mrs. Broughton  
Director



MILLER'S BARBER SHOP





*Senior Band*

K. & L. GROCERY





Judy Fatata



Nancy Holshouser  
Drum Majorette



Janice Vanhoy  
Chief Majorette



Barbara Beaver



Patsy Holshouser



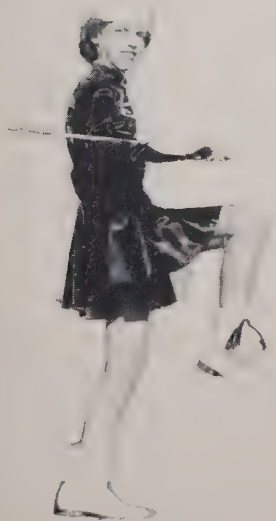
Carol Rummage



Libby Bost



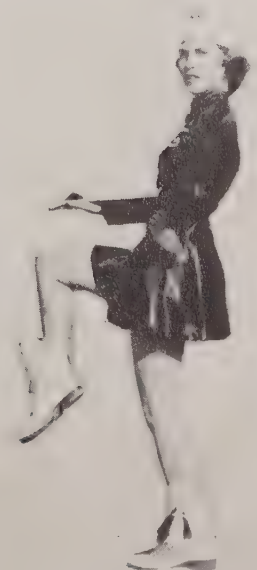
Norma Beaver



Colleen Haynes



Sylvia Yost



Sarah Kluttz



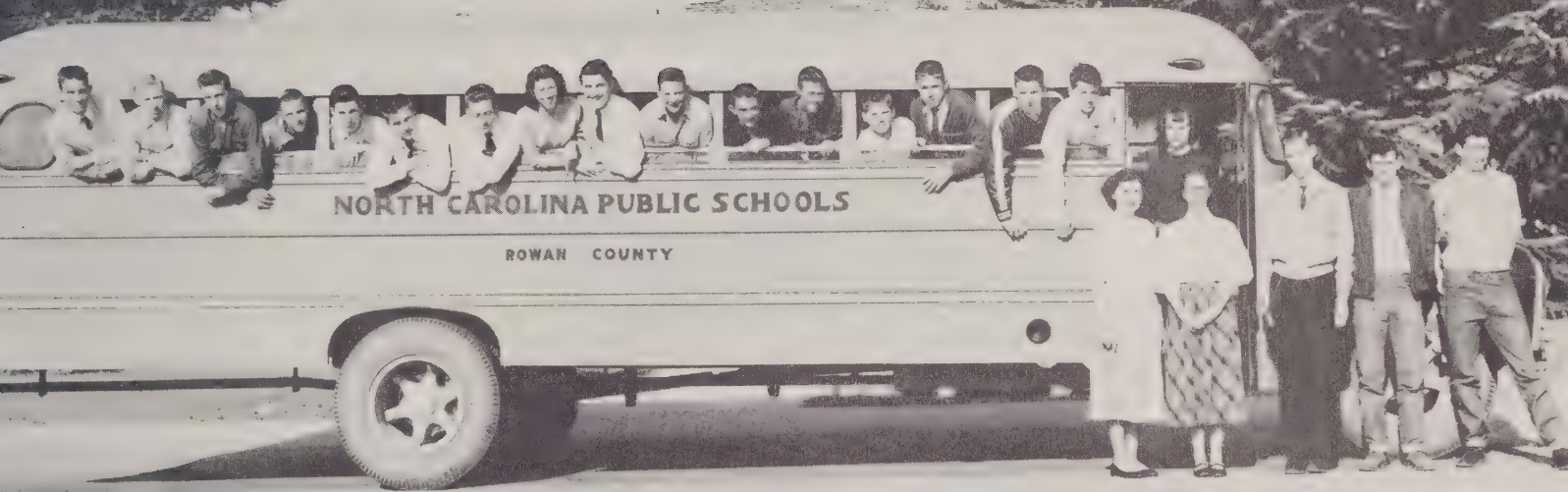


*Junior  
Band*



*Beginner's  
Band*





*Bus Drivers*

*Cafeteria Cooks*



*Janitor*



Stevie

SERVICE OIL & SUPPLY CO.





## *Halloween Royalty*

Catherine Freeman - Runner-Up-Queen, Don Tweed, Colleen Morgan, Nancy Safrit - Princess, James Lyerly - Prince, Johnny Cozart, Patsy Roseman, Oscar Bost - King, Rachel Agner - Queen, Vickie Jo Montgomery, Wayne Medley, Katie Puckett, William Yates, Loretta Holshouser, Dick Rudisill.





## *Farmers Fall Fair*

The Farmers Fall Fair started on September 21 and lasted through September 25. The fair was very successful. We hope that we may have just as nice a fair next year.





*Monogram Club*



SANITARY BARBER SHOP ON SQUARE LEWIS ROTHROCK, JOHN CULP



*Dancing  
Class*



*Music  
Students*







# SPORTS



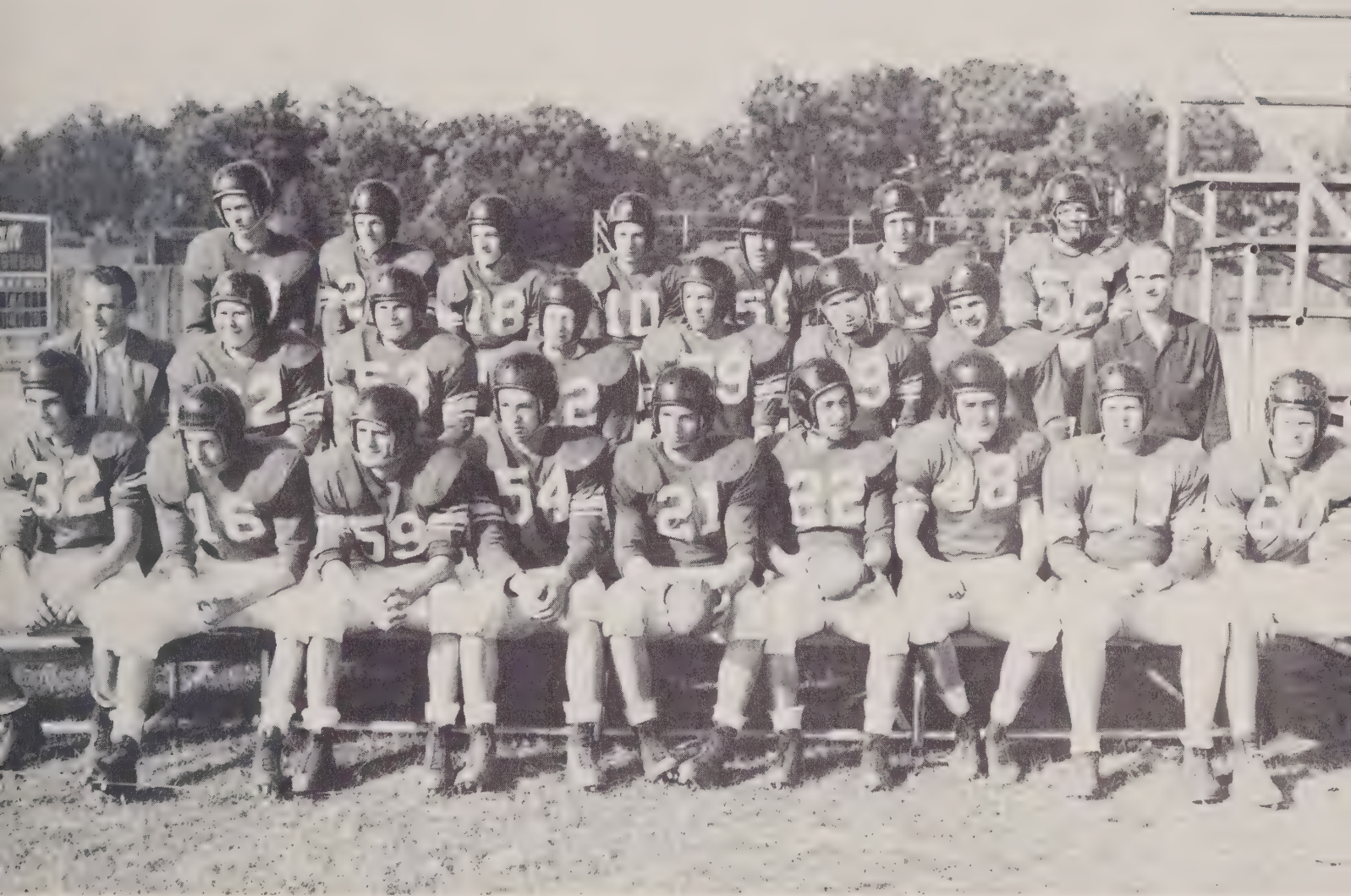




*'54 Football Squad*







## *Football Team*

First Row: Dickie Rudisill, Fred Setzer, Bill Holshouser, William Yates, Kenneth Vanhoy, Franklin Surratt, Bobby Beaver, Ronald Morgan, Richard Powlas. Second Row: Coach Bill Poole, David Sides, Norman Brown, Derwood Cox, C.J. Solomon, G. L. Barringer, Robert Corl, Coach Carl Rudisill. Third Row: Bobby Hopkins, Robbie Honeycutt, Bobby Martin, Allen Cozart, Mickey Capel, Garry Beaver, Ray File.





Fred Setzer



Bobby Beaver



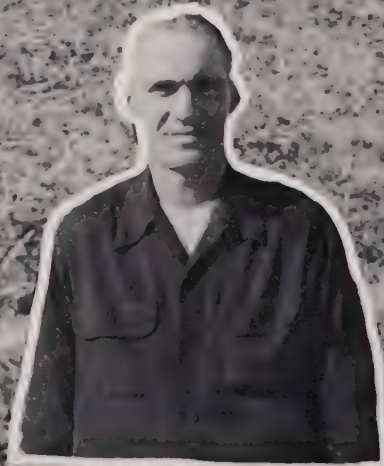
Allen Cozart



Frank Surratt  
Co-Captain



Gary Beaver



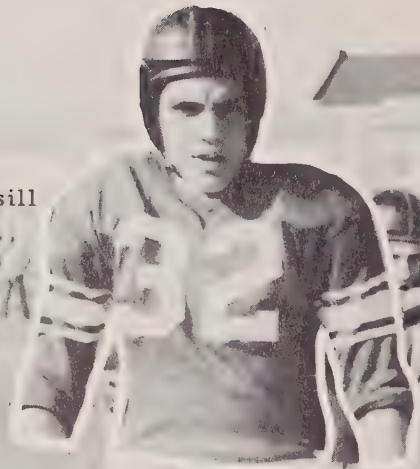
Mr. Rudisill  
Coach



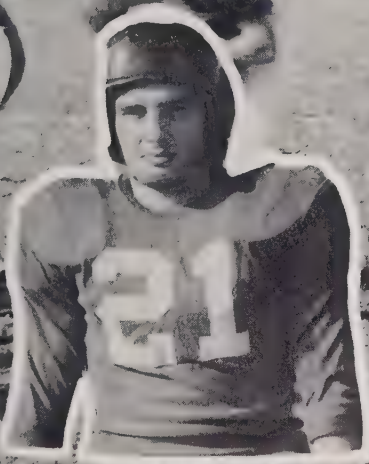




William Yates



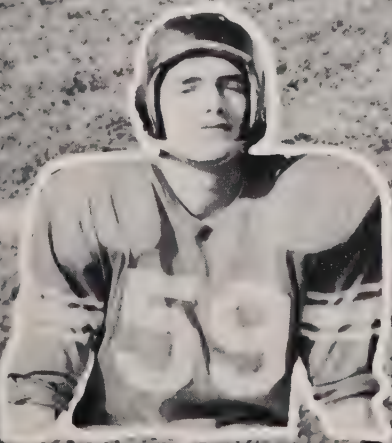
Dick Rudisill



Kenneth Vanhoy  
Co-Captain



Micky Capel



Bill Holshouser



Bob Corl







## *Girls' Basketball*

Thelma Freeman, Sondra Odell, Helen Hoffner, Marie Hodge, Peggy Haynes, Carolyn Morgan, Mary Virginia Holshouser, Nancy Sue Holshouser, Helen Shrell Honeycutt, Norma Barringer, Peggy Drew, Willie Hoffner, Juanita Eagle, Margaret Goodman, Jackie Rattz.





# Boys' Basketball



Wayne Smith, Allen Cozart, Robbie Honeycutt, John Corl, Richard Pow-  
las, Harold Rinehardt, Tommy Dellinger, Joe Frye, G. L. Barringer,  
Bobby Beaver, Dick Rudisill, John Honeycutt, Bill Holshouser.







## *Tri-Captains*

Nancy Holshouser - Helen Honeycutt  
Mary Virginia Holshouser

COACH  
Rudisill

## *Co-Captains*

Bobby Joe Beaver - Dick Rudisill

COACH  
Poole



POOL'S GRILL





## *Baseball*

Curtis Hoffner, Fred Setzer, Bobby Holshouser, Bill Poole - Coach,  
Lee Bassinger, Tommy Hall, Durwood Cox, Bobby Beaver, Joe Frye,  
Joe Miller, Gernal Lowman, Frank Surratt, Max Merrit, G. L. Barringer,  
Robbie Honeycutt - Manager.







*Cheerleaders*

Chief  
Rebecca Bost







Dear Mr. Smith,

March 29, 1955

It is a great pleasure to be the first to write in your annual

it is also - and has been for me, to be in your team this year. I know - and you know that the group of us have been

of all a day - TERRIBLE! I don't know how you can stand it, and as often, for that matter!

I know a couple of times you could have enjoyed me - if you ever returned - as beyond me!

Then there is me - you are even mentioned -

well, I want say. We are still living - I think - (my dear darling Gene - really) though we'll survive - and love happily ever after - a hope -

Very sincerely - I think that you have been a wonderful teacher! Please - don't die when you hear this - but - well - I hope you continue to be so funny as you are now - I mean always be so - energy! That's a nice personality!

Best of luck - Always!

P.S. Mr. Smith, you know I don't really mean all the things I said -

Best of everything -

Alison  
Kathleen  
Ann Parake  
also known  
as  
O.C. or  
O.C. Spagh  
Smush



Dear Mr. Smith

I have enjoyed being in your room this year. I have learned a lot in this room. Thanks for your patience and understanding.

Always,  
Brenda  
Higley

Dear Mr. Smith,

She has been a year that I shall remember with pleasant memories for years to come.

Had fun We've worked hard and we're

I'd liked toward to being in your room ever since I was in the seventh grade.

You've been a wonderful teacher and friend this year and in years past.

Thanks for everything that you've done for me.

Sincerely,

Brenda Higley



I have sincerely enjoyed  
being in your room this  
year. I ~~am~~ am truly thankful  
for all the things you've done  
for me.  
Sincerely,  
Mary Ida

March 29, 1955

Mr. Smith.

I sure have  
enjoyed being  
in your class  
this year of '54 and  
'55. I hope you  
have many years  
of Good Luck.

always and forever  
Shirley Shuping

Dear Mr. Smith:

I have enjoyed being  
in your room this  
year.

Pat W.

It has been  
so much fun  
to be in your  
class this year  
and I hope you  
will have many  
more years of  
good luck.

Dear Mr. Smith,  
I have enjoyed being in  
your room this year and  
hope that my brother gets  
in your room. You are a  
very nice teacher and I en-  
joyed a lot being in your  
class room.

Sincerely yours  
Kay Halakauer  
5<sup>th</sup> Grade



Mr Smith I have  
enjoyed being in  
your room this  
year and a lots of  
Luck. "Tommy"

Roses as Red  
Violets as Blue  
Devils have horns  
and so do you

"James"

John Hodgman

I know you did not  
a lot of luck, I wish you  
me. But seriously I  
know you did not  
a lot of luck, I wish you

Mr. Smith: I  
have really enjoyed  
being in your  
room this year,  
and lots of luck  
to you.

"Bobby"

Mr. Smith,

It has been a  
pleasure to be in your  
room. The going has  
gotten rough, at times,  
and I got a real  
op you as you mad  
me. But seriously I  
know you did not  
a lot of luck, I wish you



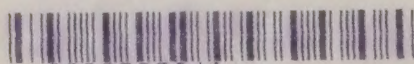
HOWAN PUBLIC LIBRARY  
SALISBURY, N. C.







HEADQUARTERS



9000555841

