

ROCKET



O. J. Smith

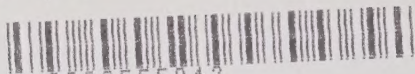


Digitized by the Internet Archive
in 2021 with funding from
North Carolina Digital Heritage Center

KOWAN PUBLIC LIBRARY
SALISBURY, N. C.

Donated by
Goodwill Industries

c.z 1956 Rocket.



9000555842

THE ROCKET

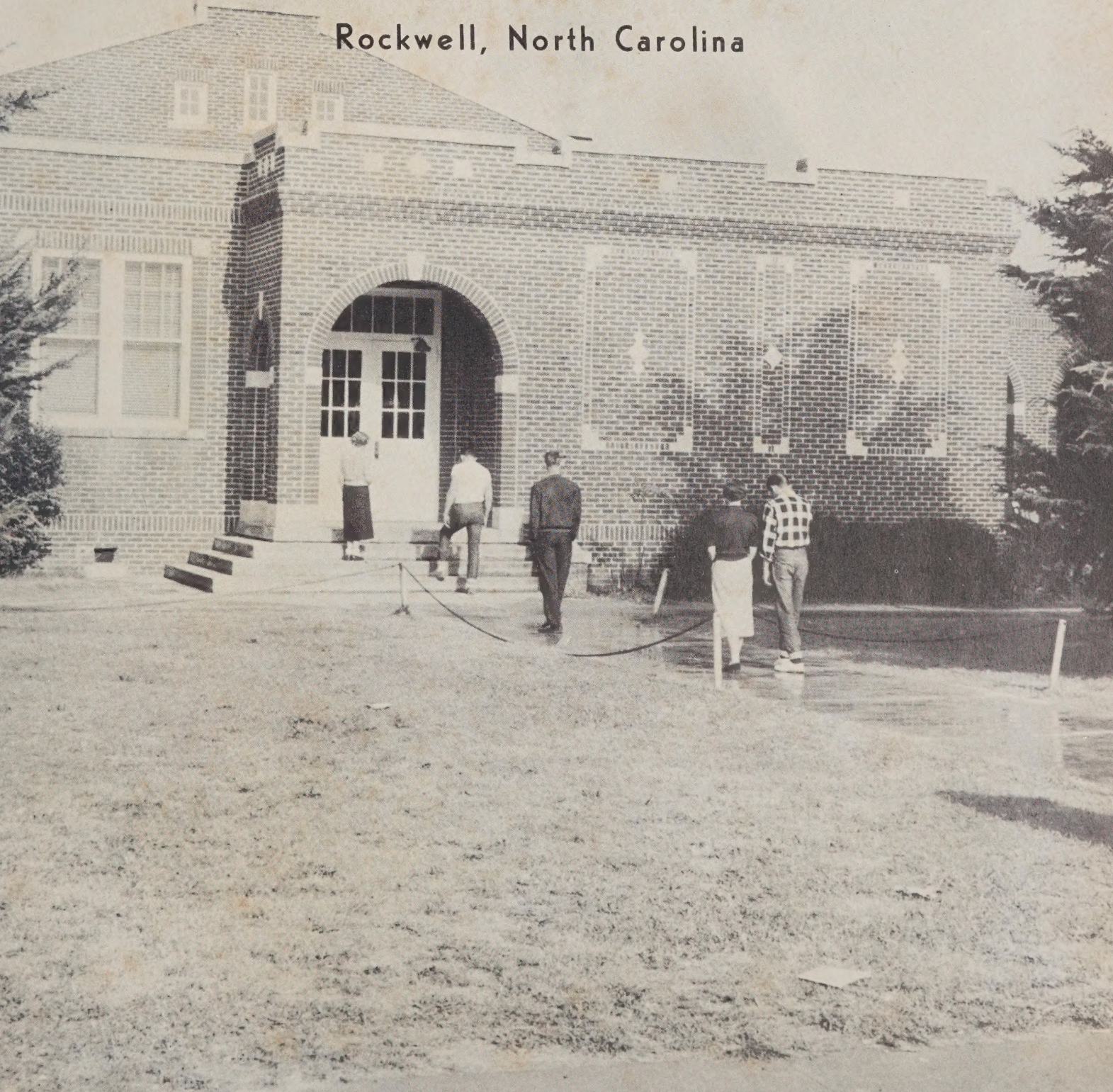
Published By

THE SENIOR CLASS

Of

ROCKWELL HIGH SCHOOL

Rockwell, North Carolina



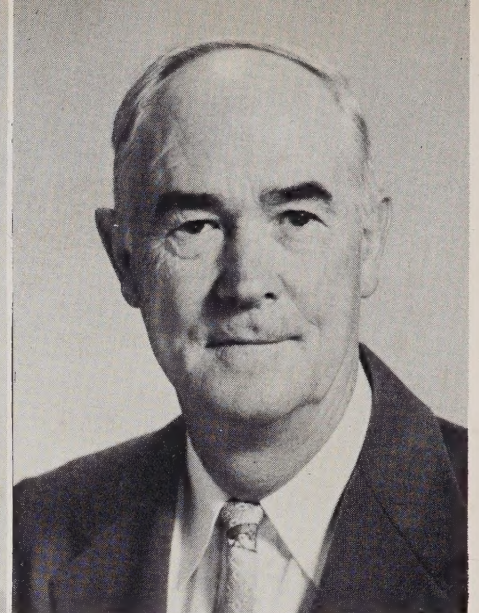
KOWAN PUBLIC LIBRARY
SALISBURY, N. C.



Mrs. Lewis Bost



Mrs. Vivian Boyd



Mr. J. M. Conry

Faculty



OUR PRINCIPAL: Mr. J. W. Puckett

Mrs. Donald Gettle

Mr. Richard Hamilton

Mrs. Martha Johnson

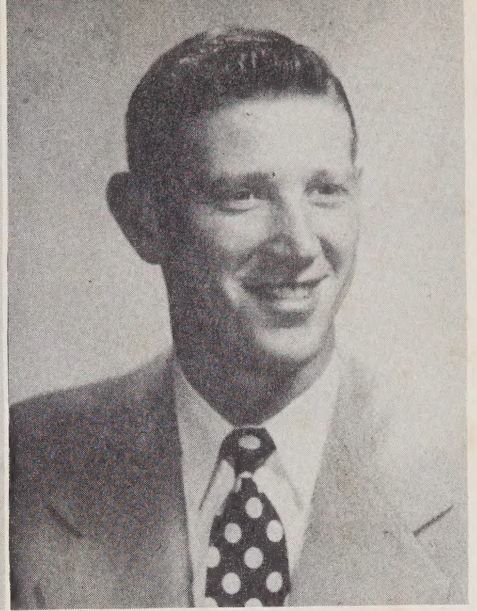




Mr. William Lawson



Mrs. Charles Page



Mr. Jerry Pless



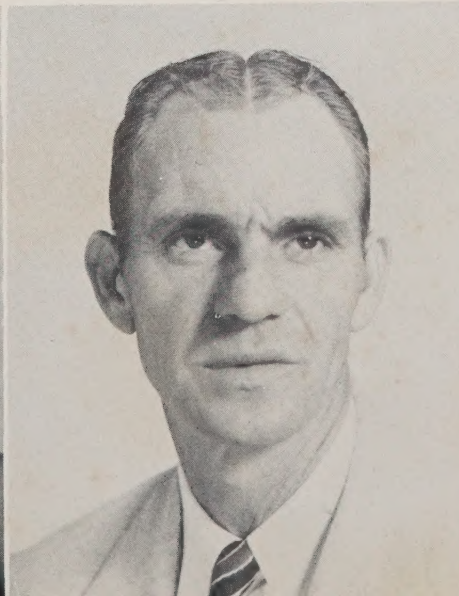
Faculty

SCHOOL BOARD: Roy Dellinger, Thomas Moose,
C. L. Helderman, Edd Beaver.

Mrs. J. G. Puckett

Mr. Carl Rudisill

Miss Ruth Wagner





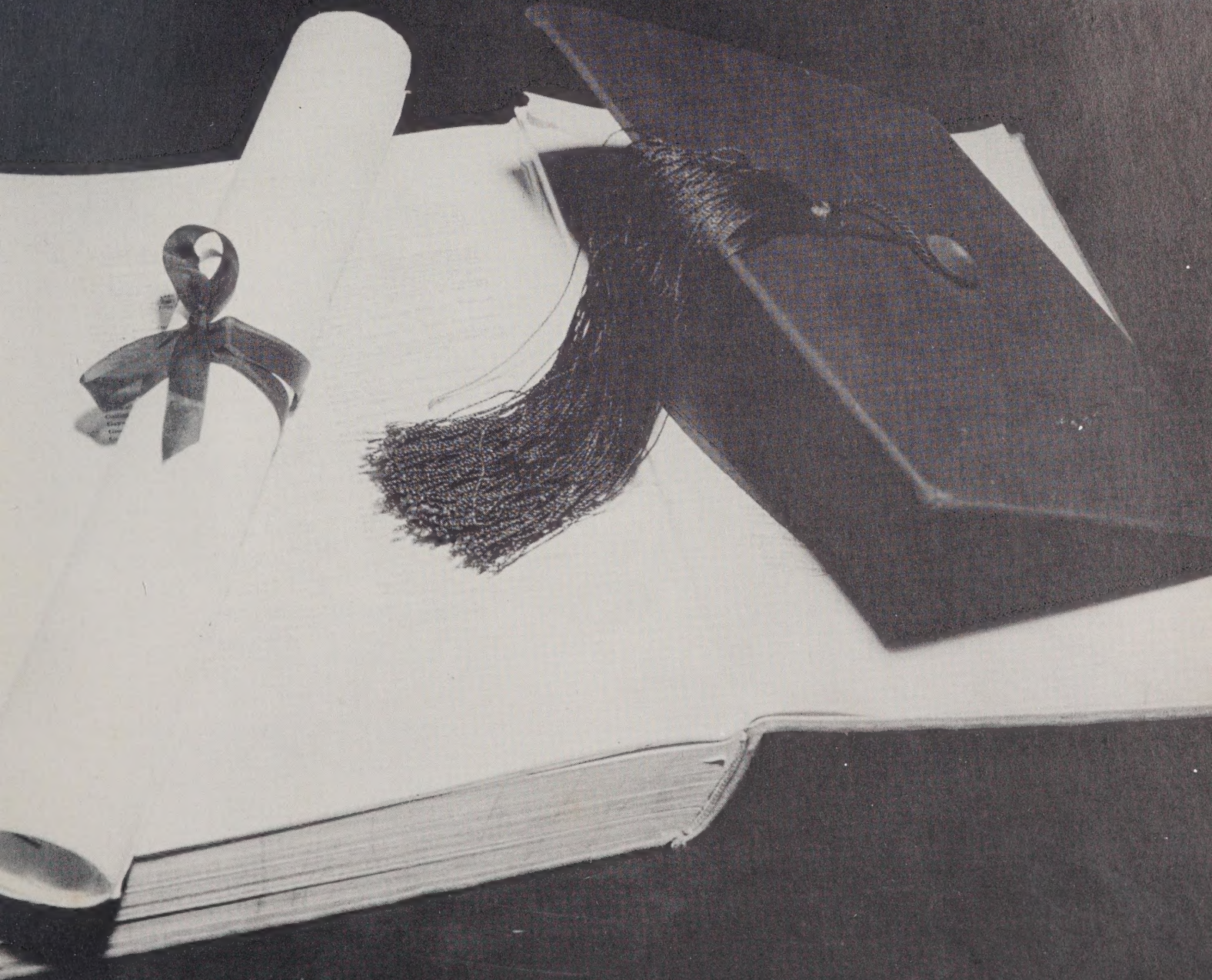
THANKS....

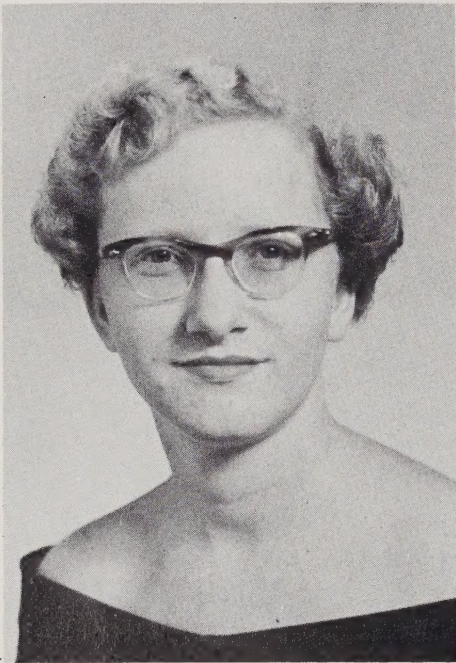
TO MRS. VIVIAN BOYD

We dedicate our 1956 ROCKET
to a teacher who has been an
inspiration to all of us and loyal
to our school. She is always
willing to lend the "helping
hand."



SENIORS





HELEN RACHEL AGNER

"Virtue is herself the best reward."
F.H.A. 1; Office Worker 2; Bible Club 2; Store Worker 3; Junior Marshal 3; Class Statistician 4; Beta Club 3,4; Annual Staff 4; Beta Club Officer 4; Superlative-Most Intellectual.



SHIRLEY JEAN AGNER

"She's loyal to her work, to her word, to her friends."
F.H.A. 1; Bible Club 2; Beta Club 3,4; Junior Marshal 3; Halloween Queen 3; Superlative-Most Personality; Store Worker 3; Annual Staff 4; 4-H 1.

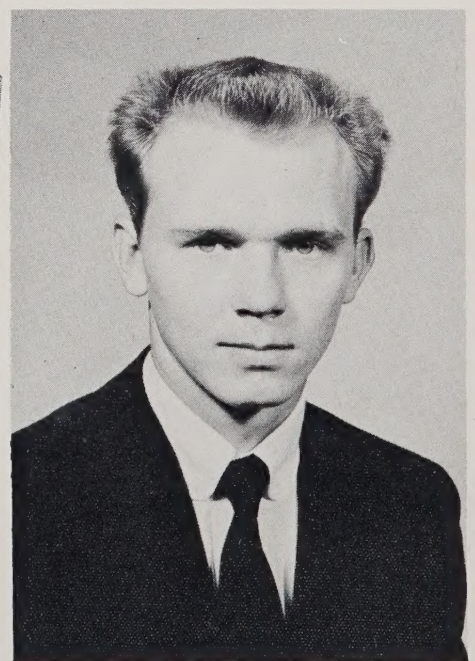


MARY GLADYS ARTZ

"Where there's a will there's a way."
F.H.A. 1; Bible Club 4; Library Club 1; Usher Junior Play.

LARRY WAYNE BARGER

"You stand in your own light."
Football 1,2,3,4; Monogram Club 1,2,3,4; Bible Club 2.





BOBBY JOE BEAVER

"By the work one knows the workman."

Football 1,2,3,4; Basketball 2,3,4; Baseball 1, 2,3,4; Captain Football 4; Captain Basketball 3; Captain Baseball 3; Monogram Club 1,2,3,4; Vice President Monogram Club 2; Secretary Monogram Club 4; Superlative-Most Athletic 4; F.F.A. 1; King Halloween 2; Candidate for King 4; Class Vice President 3; Class President 4; 4-H 1; Junior Play 3.



HAROLD DEAN BEAVER

" 'Tis good to be merry and wise."

Football 1,2,3; Bible Club 2; Monogram Club 1,2,3,4; Glee Club 1,2,3; Junior Play 3; Bus Driver 3,4; F.F.A. 4.

BOBBY GENE BOST

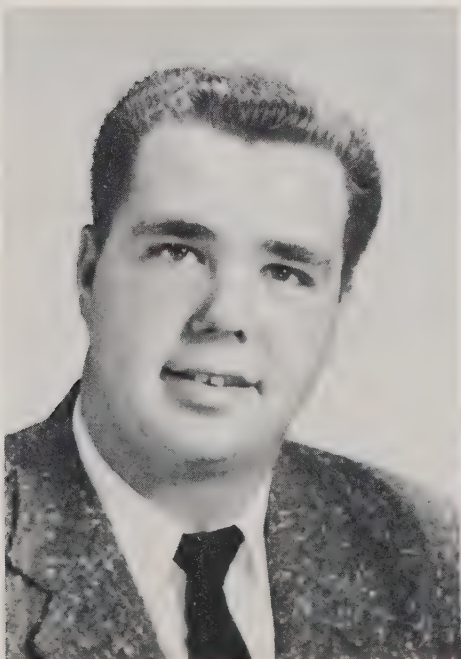
"Be useful where thou livest."

F.F.A. 1,2,3; Bus Driver 2,3; 4-H 1,2,3; Bible Club 1,2; Glee Club 3.

BOBBY BOYD

"Never leave that till tomorrow which you can do today."

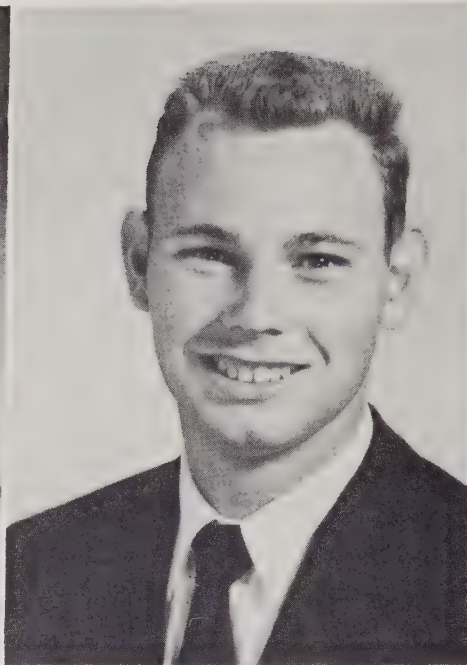
Band 1; F.F.A. 1,2,4; Officer F.F.A. 2; Football 2; 4-H 1,2,3,4; Bible Club 4.





BETTY LOU BRADY

"Humor is harmony of the heart."
Library Club 1, 2, 4; F.H.A. 1, 2; Halloween Queen 1; Class Officer 1,3; Glee Club 2,3; Junior Play 3; Band 2, 3; Annual Staff 3, 4; Hi-Lights Staff 2,3; 4-H Club 1,4; Superlative-Most Popular.



THOMAS EUGENE BURR

"A merry heart maketh a cheerful countenance."
F.F.A. 1,2,3,4; Library Club 1; 4-H Club 1; Junior Play; Bible Club 2; Bus Driver 3,4; Superlative-Wittiest.



RICHARD BRADY

"This is the plan: More work; by work we build the Man."
Football 1; Monogram 1; Annual Staff 4.

JANICE MARIE CARTER

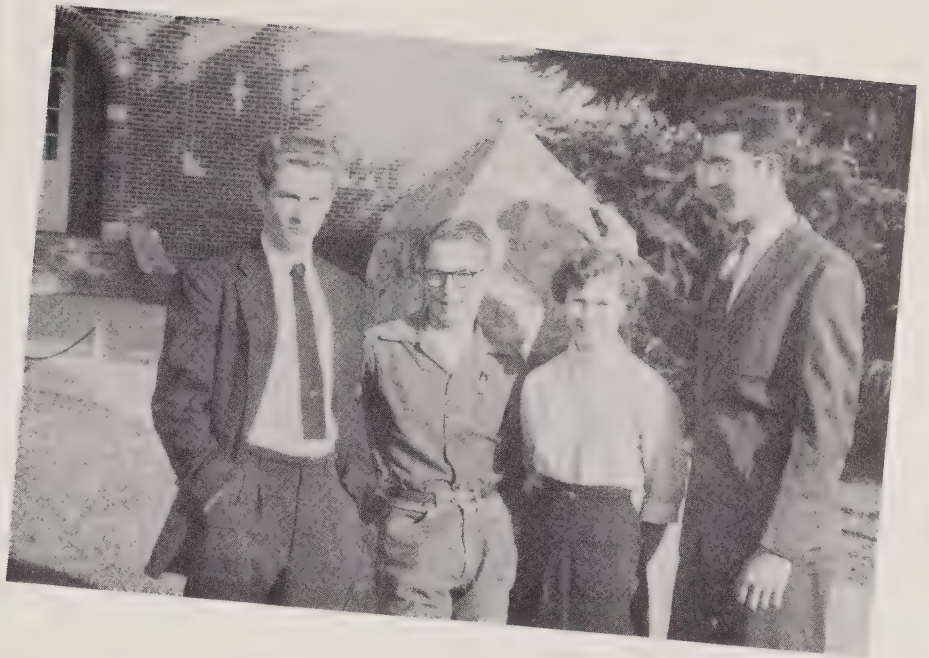
"Time tries the troth in everything."
Transfer from Richfield High; Halloween Queen 1; Glee Club 1; 4-H 1; Rockwell, Office Worker 2; Glee Club 2,3; Junior Play 3; Band 3; Hi-Light 2,3; Annual Staff 4; 4-H Club 4; Library Club 4; Superlative-Wittiest.





MURPHY BRYAN CONRY

"Necessity is the mother of invention."
Beta Club 3; Monogram Club 3; Band 1,2,3;
Band Officer 3; 4-H 1; Junior Play 3; Annual
Staff 3; Hi-Light Staff 1,2; Bible Club 3; En-
tertainment Committee Junior-Senior.



HELEN ELIZABETH CORL

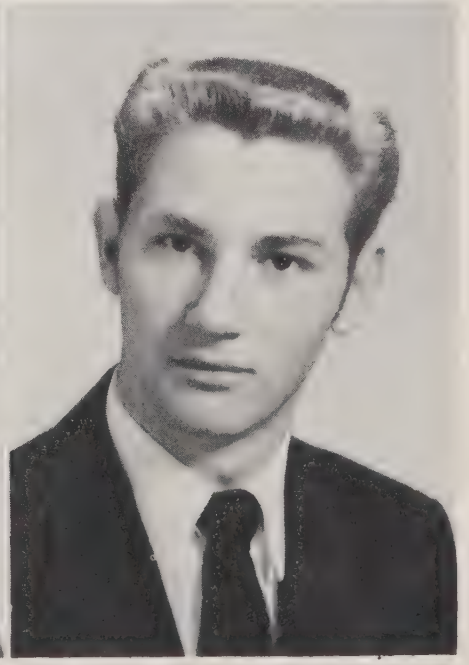
"Even tho you're tiny you get around."
F.H.A. 1,2; Library Club 1,2; Annual Staff 4;
4-H Club 1,2; Usher Junior Play 3; Superla-
tive-Cutest.

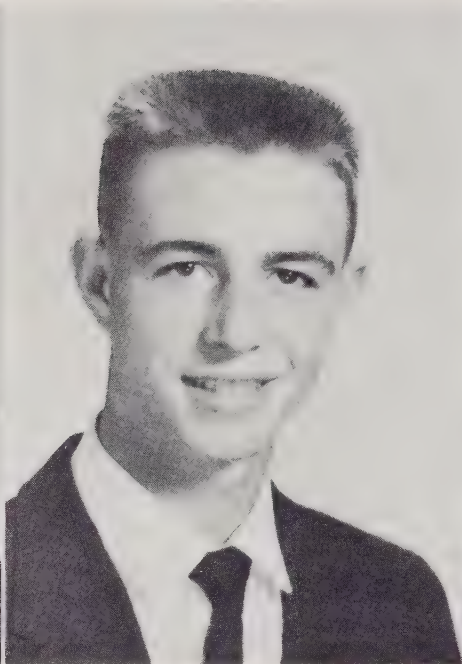
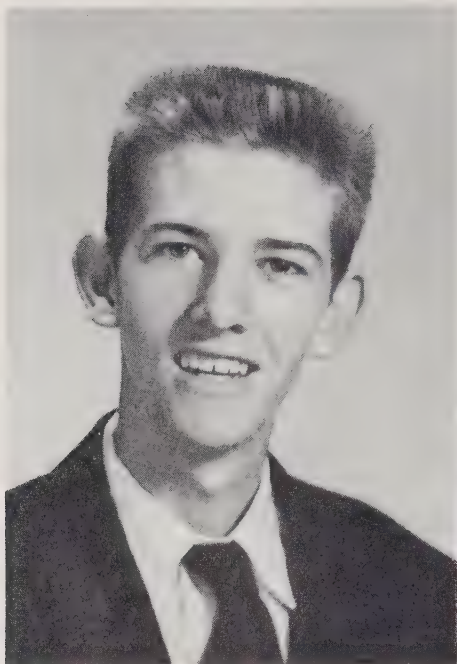
JOHN GRADY CORL, JR.

"By his inspiring light may he fare on."
Scholarship Award 1; Bible Club 2,4; French
Club 2,3; Beta Club 3,4; Library Club 4; Vice
President Library Club 4; Monogram Club 3,
4; Hi-Light Staff 4; Junior Marshal 3; Office
Worker 3; Cafeteria Worker 4; Football Man-
ager 2,3,4; Football 4; Basketball 2,3,4; Su-
perlative-Most Likely to Succeed.

ALLEN L. COZART

"The more the merrier."
Band 2,3; Basketball 2,3,4; Football 3,4; Mon-
ogram Club 3,4; Monogram Club Treasurer 4;
Superlative-Cutest.





JIMMIE DAVID CRANFORD

"A wise son maketh a glad father."

F.F.A. 1; Bible Club 2; Beta Club 3,4; Annual Staff 4; Superlative-Most Intellectual.

BENJAMIN HAROLD DREW

"All good things must come to an end."

Glee Club 1,2; Monogram Club 3,4; Superlative-Best Looking; F.F.A. 1,2,3; Baseball 3,4; Annual Staff 4.

ANNIE LOU FRALEY

"How far that little candle throws its beam."

F.H.A. 1,2; 4-H 1,2; Library Club 1; Cafeteria Worker 3,4; Bus Driver 3,4; Usher Junior Play 3; Office Worker 4; Annual Staff 4; Hi-Lights Staff 4.

EUNICE YVONNE GOODMAN

"Music is a gift of the gods, and she has been well blessed."

Bus Driver 3,4; Bus Driver Award 3; Music Student 1,2,3,4; Glee Club 2, 3, 4; F.H.A. 1; Beta Club 4; Hi-Light Staff 4; French Club 2,3; Annual Staff 4; 4-H Club 1,2,3,4; Library Club 1,3,4; Library Club Officer 4.





THOMAS JEFFERSON HALL

"God made him; therefore, let him pass for a man."

F.F.A. 2,3,4; Baseball 2,4; Library Club 2; Bible Club 2,4; Bus Driver 3; Annual Staff 4.



JIMMIE HARWOOD

"I hate nobody: I am in charity with the world."

F.F.A. 2,3,4; Library Club 2; Bible Club 4.

JANICE MARLENE HAYNES

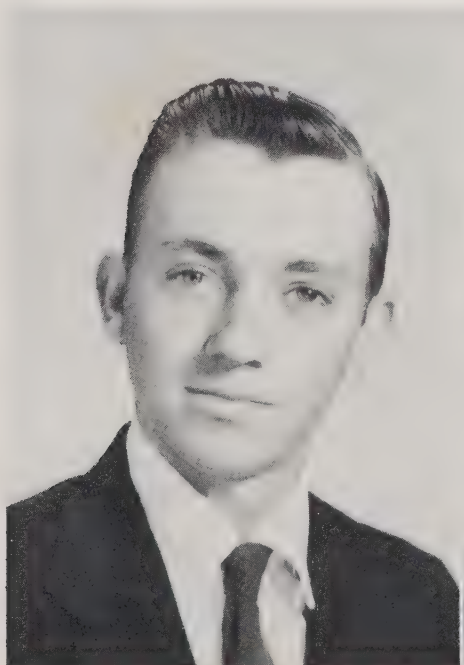
"A friend in need is a friend in deed."

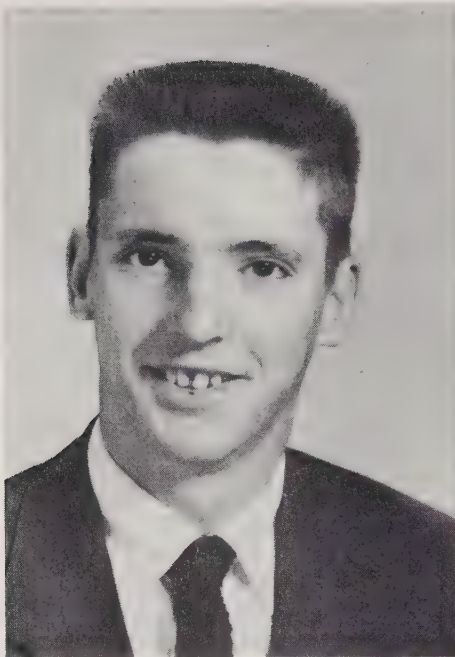
4-H Club 1,2,3,4; F.H.A. 1,2; Beta Club 4; Cheerleader 2,3,4, Chief 4; Glee Club 3; Monogram Club 4; Annual Staff 3,4; Hi-Light Staff 4; Junior Play 3; Library Club 1,2; Officer Library Club 1.

THELMA PAULINE HOFFMAN

"It's what you do with what you've got that counts."

4-H 1,3,4; Library Club 1,2; Bible Club 2; F.H.A. 1; Glee Club 3; Cheerleader 4; Annual Staff 4; Junior Play 3.

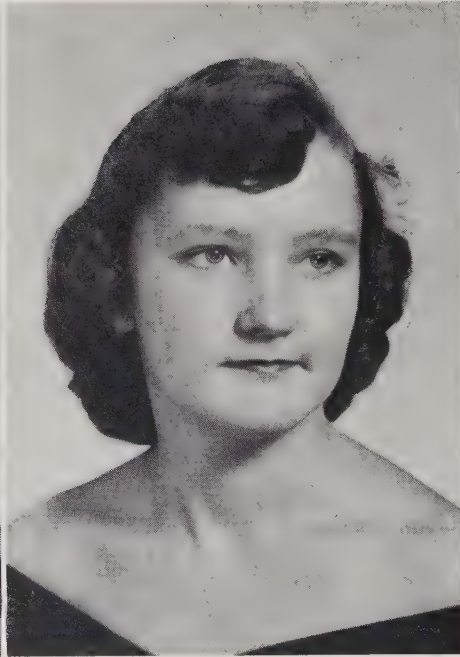




CURTIS MANUEL HOFFNER

"A personality all his own."

Football 1,2,3,4; Baseball 1,2,3,4; Basketball 4; Monogram 2,3,4; F.F.A. 1,2,3,4; 4-H Club 1,2,3,4; Bus Driver 3,4.



DORIS ELIZABETH HOLSHOUSER

"There is no substitute for hard work."

Beta Club 3,4; Bible Club 2; Hi-Light Staff 4; Annual Staff 4; Junior Marshal 3; 4-H Club 1,2,4; Junior Play Usher 3; Class Officer 3,4; Bus Driver 4; Superlative-Best All Around; Music Student 1,3.



WILLIE MAE HOFFNER

"Nothing succeeds like success."

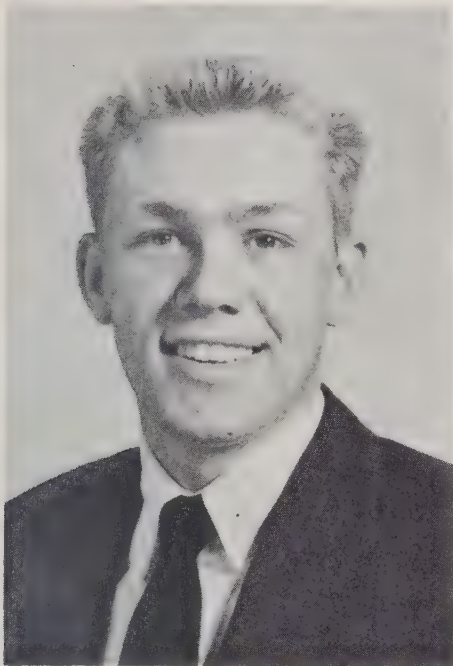
F.H.A. 1,2; Beta Club 3,4; Monogram Club 3,4; Basketball 1,2,3,4; Usher Junior Play 3; 4-H Club 1,2; Typist Editor Annual 4; Office Worker 3; Superlative-Most Likely to Succeed.

JOHN WYATT HONEYCUTT

"Wise, steadfast in the strength of God and truth."

Vice President Freshman Class; Library Club 1; Monogram Club 1,2,3,4, Vice President 4; Bible Club 4, President 4; Annual Staff 4; Hi-Light Staff 2; French Club 2,3; Basketball 1,2,3,4; Football 1,2,3,4; Baseball Manager 1; 4-H Club 2; Superlative-Best All Around.

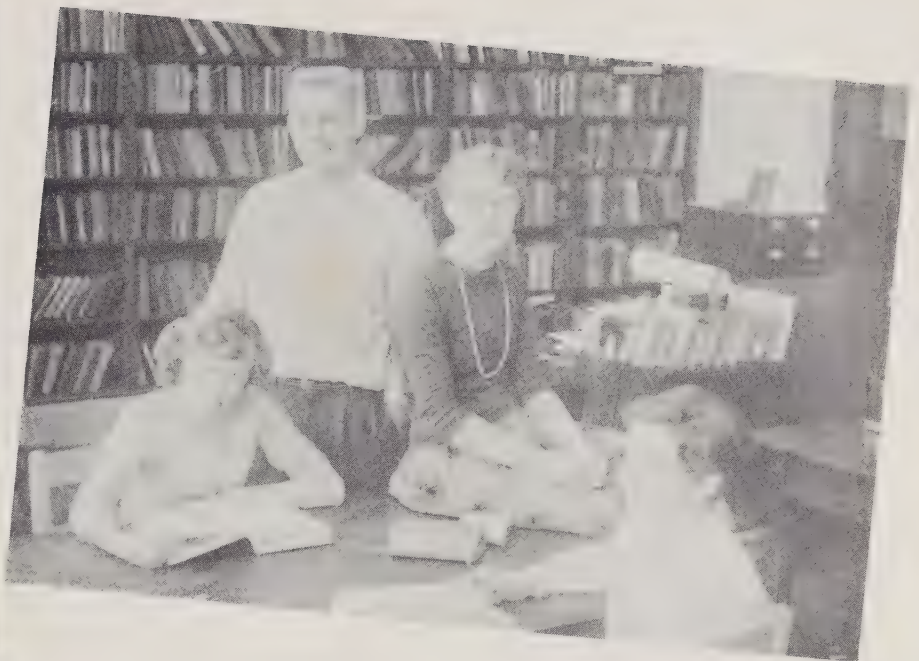




ROBERT FRANKLIN HOPKINS

"While we live, let's live in clover."

Glee Club 1, 2, 3; F.F.A. 2; Bible Club 2, 4; 4-H Club 1,2; Junior Play 3; School Projectionist 3,4.



CLEO REBECCA JONES

"Variety is the spice of life."

F.H.A. 1,2; Library Club 1; Monogram Club 4; Basketball Manager 1; Band 1,2,3; Secretary Band 3; Office Worker 3,4; Cheerleader 4; Junior Play 3; Associate Editor Annual 4; Hi-Light Staff 2,3,4; Editor Hi-Light Staff 4; 4-H Club 1,2; Glee Club 3.

GRACE LOUISE KIRK

"I love my books as drinkers love their wine."

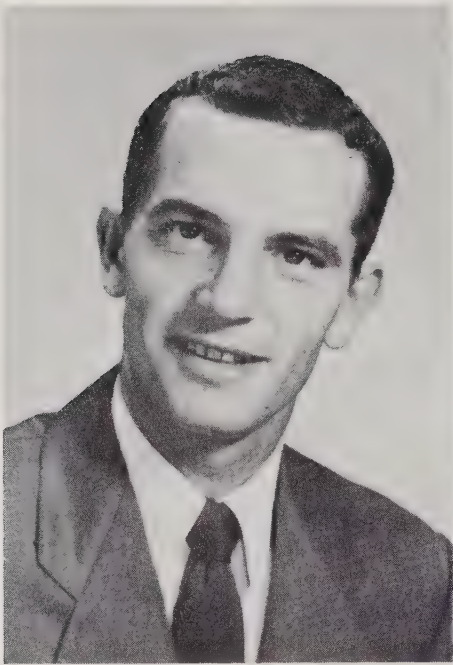
4-H 1,3; Dancing 4; Beta Club 3,4; French Club 2, 3; Library Club 3, 4; F.H.A. 1, 2, 3; Editor-in-Chief Annual 4; Cheerleader 4; Office Worker 4; Junior Play 3; Cafeteria Worker 1,3; Glee Club 2,3; Piano Student 1.

REBECCA ELAINE MEASIMER

"Her heart is in the right place."

4-H Club 1, 2, 3; Library Club 1,2, 3; Music Student 1,2,3,4; Cafeteria 1; Office Worker 4; French Club 2; F. H. A. 1, 2; Junior Play 3; Bus Driver 3,4; Annual Staff 4.





HUBERT MILLER

"The heart of him that hath understanding seeketh knowledge."



VICTORIA ANN MOOSE

"Nothing is impossible to a willing heart."
Beta Club 3,4; Secretary Beta Club 4; F.H.A. 1,2,3,4; President F.H.A. 4; 4-H 1; French Club 2; Glee Club 1,2,3; Band 2,3,4, Officer 4; Piano Student 1,2, Officer 3,4; Library Club 1; Associate Editor of Annual 4; Hi-Light Staff 2,3; Manager of Basketball Team 2; Junior Play 3; Monogram Club 4.

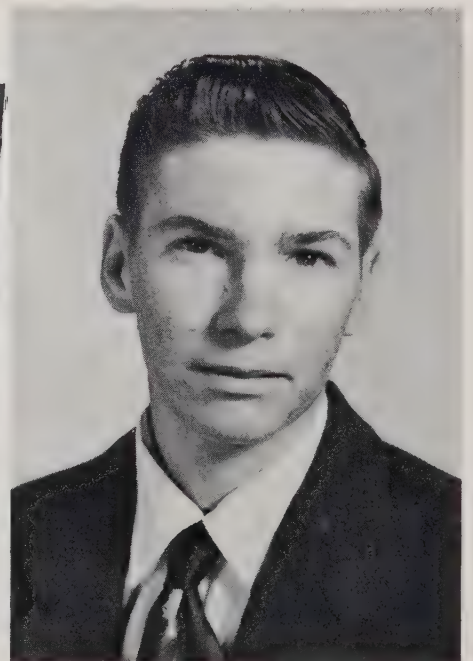


BETTY LOU MORGAN

"Patience and gentleness is power."
4-H Club 1,2,3,4; Bible Club 2; Library Club 3,4, Recording Secretary 4; Annual Staff 4.

DAVID RILEY MORGAN

"The Lord helps those who help themselves."
4-H 1,2; F.F.A. 2,3,4; Cafeteria Worker 1,2, 3,4; Library Club 2,3; Bible Club 2; Baseball 4.





BESSIE ELAINE MORGAN

"In her tongue is the law of kindness."
Glee Club 3; 4-H 1, 3, 4; F. H. A. 1; Library Club 1,2; Bible Club 2; Annual Staff 4; Junior Play 3; Class Reporter 4.



JERRY DALE MORGAN

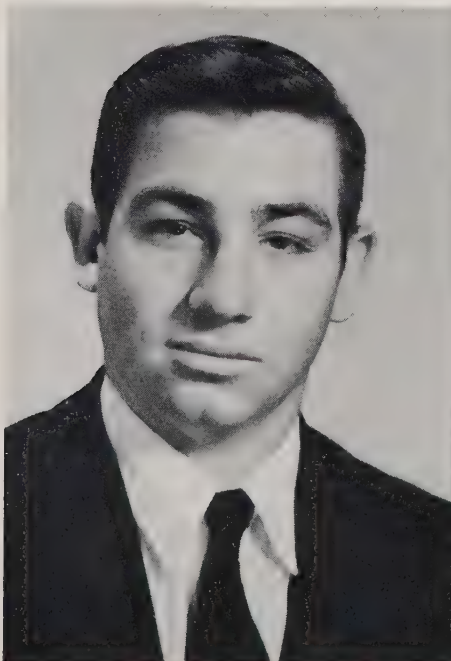
"It is work which gives flavor to life."
F. F. A. 1,2,3,4; 4-H 1,2,3,4; Bible Club 2; Sub. Bus Driver 3,4; Junior-Senior Banquet Decoration Committee; F.F.A. Officer 1,2,3, 4.

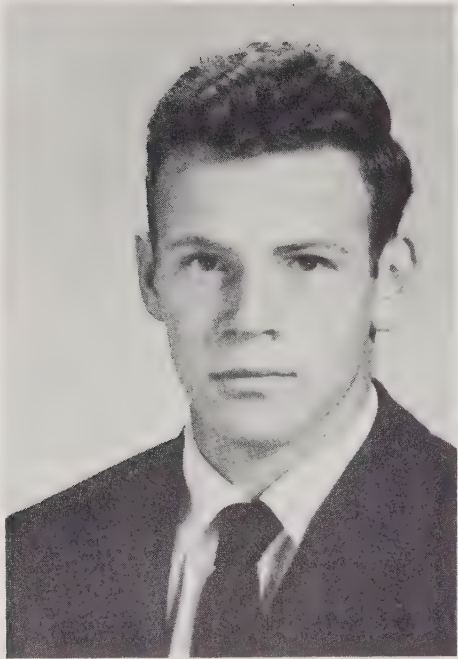
SONDRA LANE ODELL

"She has a style all her own."
Class Officer 1,2; Basketball 1,2,3,4; Library Club 1,2,4; F.H.A. 1,2,3; 4-H 1,2,4; Homecoming Queen Attendant 1,2; Homecoming Queen 4; Halloween Queen Candidate 2; Cheerleader 1; Monogram Club 1,2,3,4; Monogram Club President 4; Library Club Secretary 2; Glee Club 2,3; Junior Play 3; Annual Staff 4; Superlative-Best Looking.

JIMMIE PICKLER

"I'll not budge an inch."
Bible Club 2,4; F.F.A. 4; Reporter F.F.A. 4; Junior Play 3; Glee Club 1.





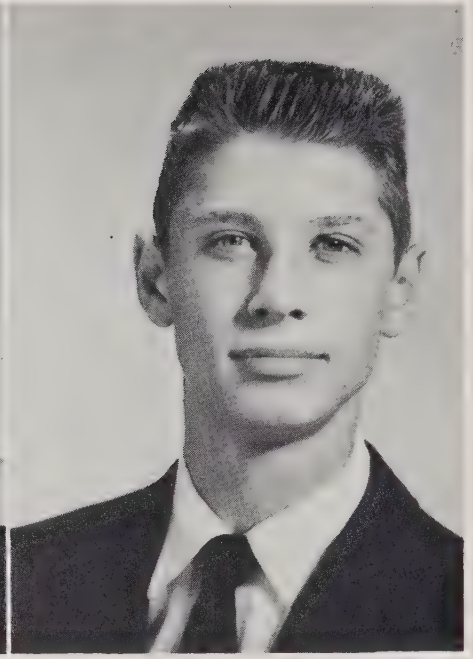
RAY PICKLER

"Dost thou love life? Then do not squander time for that is the stuff life is made of." F. F. A. 1,2,3,4, Officer 2; Library Club 1; 4-H Club 1,2,3,4; Bible Club 4; Bus Driver 3.



JACKIE MAE RATTZ

"All Around Good Sport." Monogram Club 2, 3, 4; Basketball 1, 2, 3, 4; Cafeteria Worker 1; Beta Club 3, 4; Office Worker 3, 4; F. H. A. 1, 2; Superlative-Most Athletic; Bible Club 2.

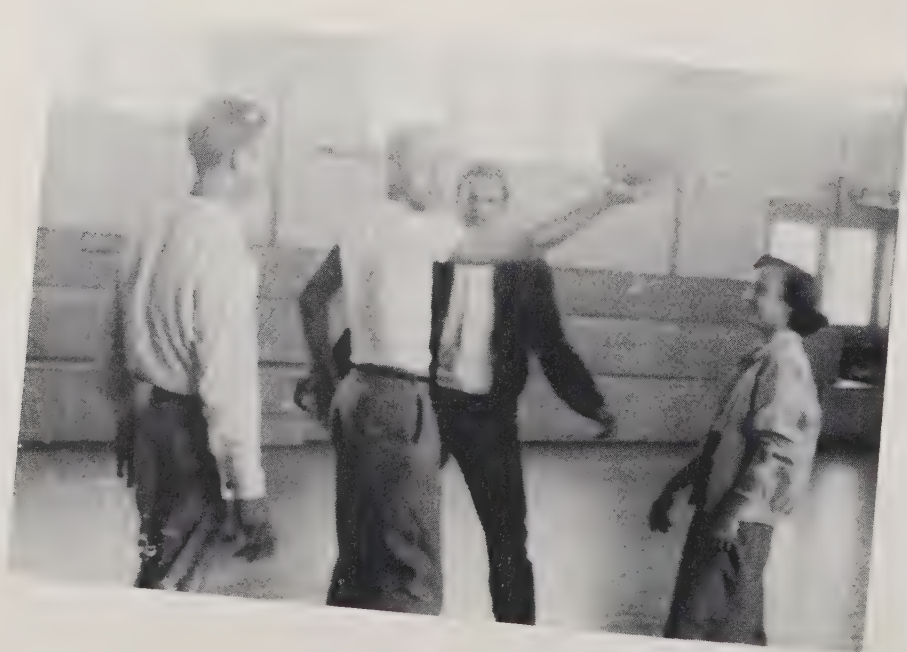


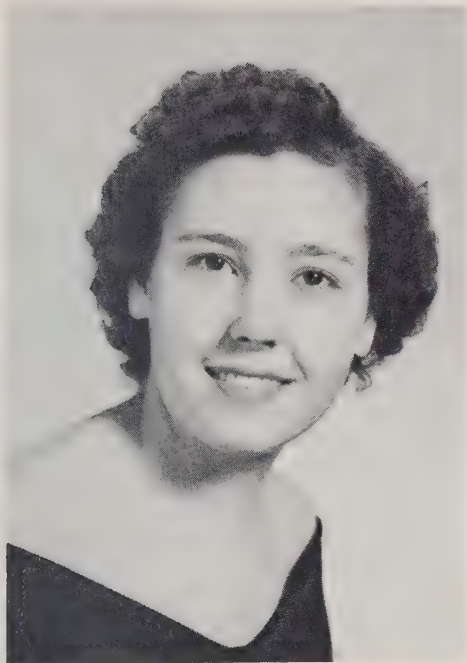
CARL RICHARD RUDISILL

"Let us swear an eternal friendship." 4-H Club 1,2; Monogram Club 2,3,4; Football 3, 4; Annual Staff 3, 4; Basketball 1, 2, 3, 4; Baseball 2,3,4; F.F.A. 2,4; Superlative-Most Popular; Junior Play 3; Candidate for King 3; 4-H Club Officer 1; Vice President of Monogram 3.

SAMUEL ROTHROCK

"The desire of a man is his kindness." F.F.A. Club 1,2,3,4; 4-H Club 1,2,3,4.





BETTY LOU SHAVER

"A good name is rather to be chosen than great riches."

F. H. A. 1, Pianist 1; 4-H Club 1,3,4; Class Officer 2; French Club 2,3; Music 1,3; Library Club 3, 4, Song Leader 3, Treasurer 4; Glee Club 3; Annual Staff 3,4; Class Historian 4; Superlative-Best Dressed; Beta Club 4; Hi-Lights Staff 4.



SHIRLEY YVONNE SHAVER

"Instructed that true knowledge leads to success."

F.H.A. 1; 4-H Club 1,2,3,4; Music Student 1, 3; Office Worker 2, 4; Beta Club 3, 4, Vice President 4; Substitute Bus Driver 3,4; Junior Marshal 3; Annual Staff 4; Feature Editor Hi-Lights Staff 4; Bible Club 4.

MARGARET ANN SHINN

"She has a daily beauty in her life."

F.H.A. 1,2; Library Club 1; 4-H Club 1,2,3; Annual Staff 4; Junior Play 3; Manager Halloween Queen.

JIMMY WALTER SIDES

"The only way to have a friend is to be one."

F.F.A. 1,2,3,4; 4-H Club 1,2; Bible Club 2,3; Decoration Committee Junior-Senior Banquet 3; Bus Driver 3,4.





PHILLIP RAY SIMPSON

"Eat, drink, and be merry, for tomorrow who knows."

Candidate for King 1; Glee Club 1,2; Bible Club 2,4; F.F.A. 4; Class President 3; Junior Play 3; 4-H 2,4.



ETHEL YVONNE TREXLER

"Brevity is the soul of wit."

4-H 1,3,4; Hi-Light Staff 4; Annual Staff 4; Junior Play 3.



MARY TREXLER

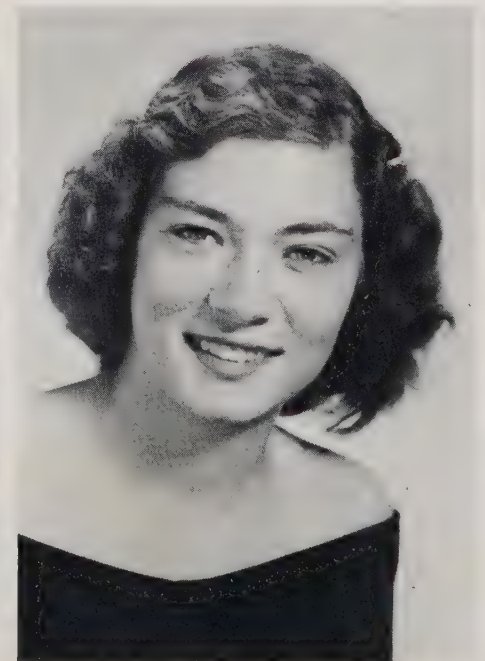
"The hand that hath made you fair hath made you good."

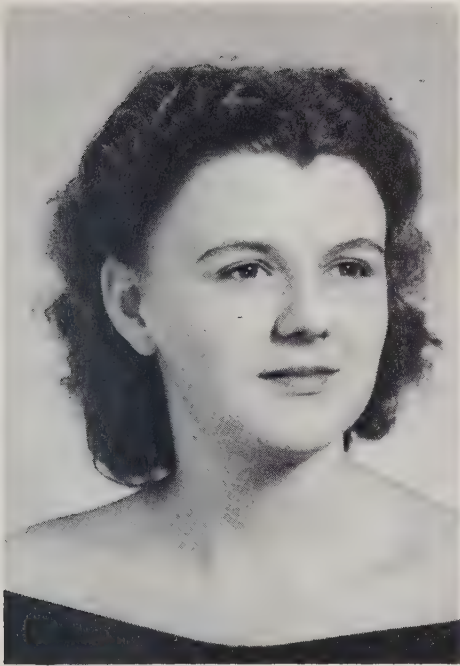
F.H.A. 1; 4-H Club 1,2,3,4; Music Student 1, 3; French Club 2,3; Library Club 2,3,4, Assistant Treasurer 2,3, President Library Club 4; Glee Club 3; Beta Club 4; Annual Staff 4; Hi-Lights Staff 4; Bible Club 4, Secretary 4; Office Worker 4.

MARY FRANCES TREXLER

"They laugh that win."

4-H 1,2,3; Library Club 1,3; Cafeteria Worker 1,4; Annual Staff 4.





HAZEL LORETTA TROUTMAN

"Honest labor bears a lovely face."

F.H.A. 1; Bible Club 2; Beta Club 3,4; Junior Play Usher 3; Class Officer 4; Bus Driver 4; Halloween Queen 4; Homecoming Attendant 4.



JIMMY VARNADORE

"Though I am always in haste, I am never in a hurry."

VIVIAN JEANETTE WARD

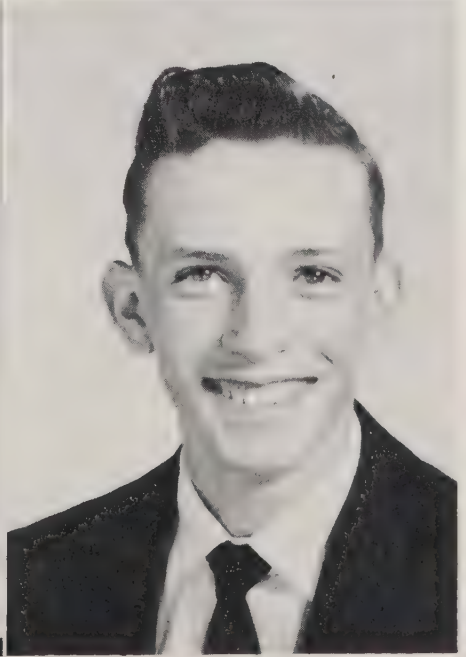
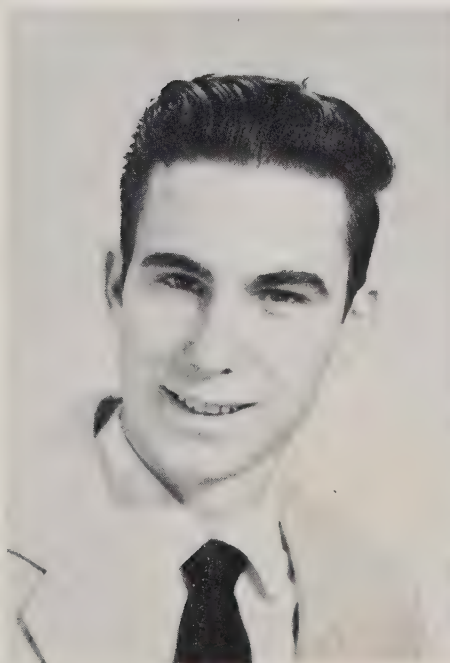
"Whatever is worth doing at all, is worth doing well."

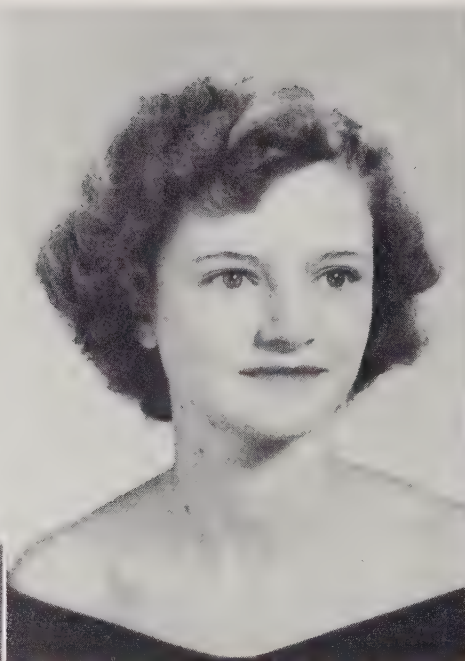
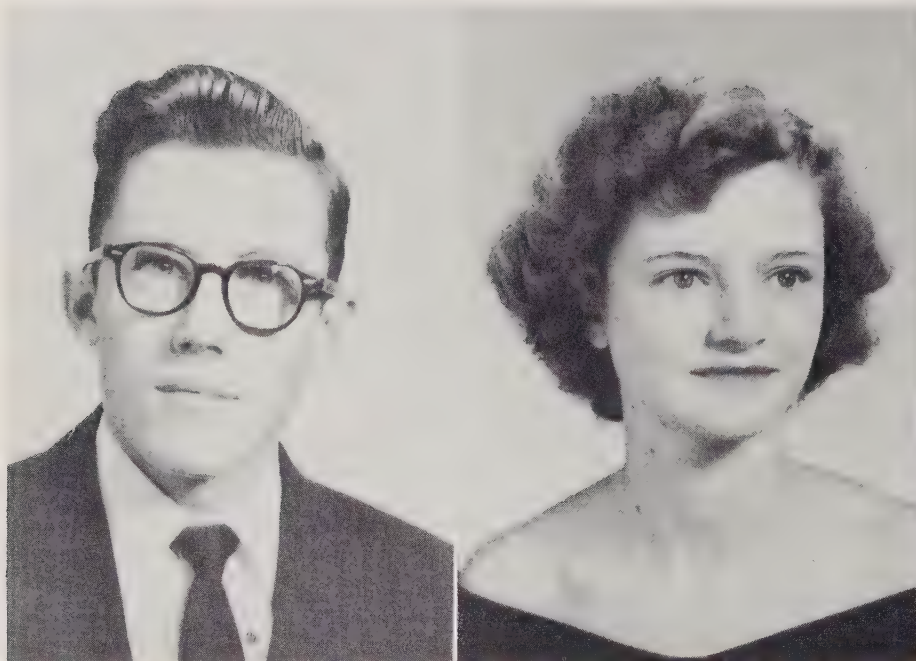
F. H. A. 1, 2; Library Club 1; 4-H Club 1; Cafeteria Worker 1, 3, 4; Office Worker 2; Annual 2; Annual Staff 4; Usher in Junior Play 3.

MARVIN EUGENE WEANT

"Some are born great, some achieve greatness and some have greatness thrust upon them."

Music Student 1; F.F.A. 1,2,4; Beta Club 3,4; President Beta Club 4; Glee Club 3,4; Junior Marshal 3; Chief Junior Marshal 3; Band 3,4; Treasurer Band 4; Junior Play 3; Beta Club Play 3; Scholarship Award 2,3; Business Manager of Annual 4.





LARRY NEWTON WHITT

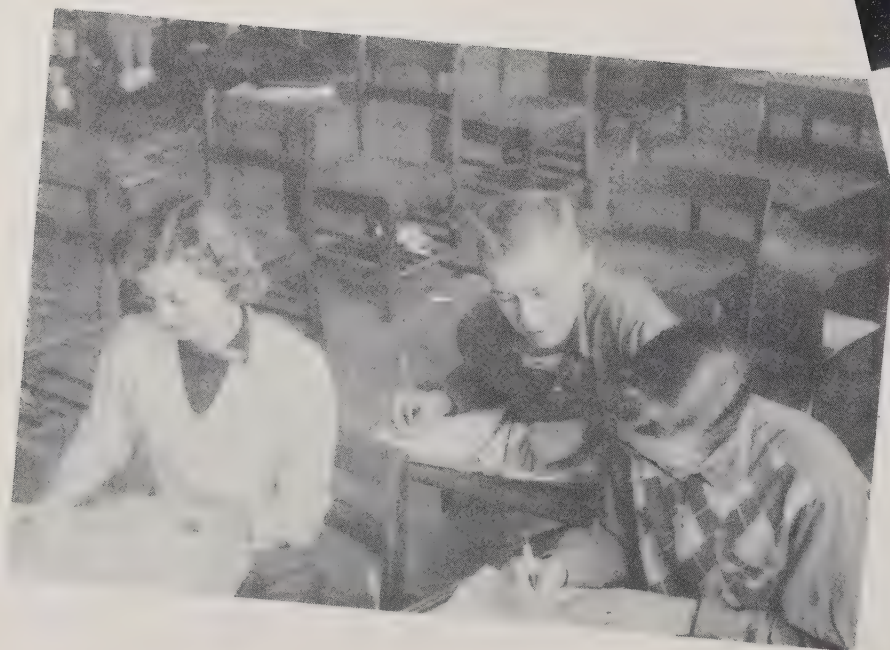
"A good mind possesses a kingdom."
French Club 2, 3; Band 2, 3; Beta Club 3, 4;
Senior Class Vice President.

SHIRLEY WILLIAMS

"Her voice was ever soft, gentle, and low,
an excellent thing."
F.H.A. 1,2; Library Club 2,3,4; Annual Staff
4; 4-H Club 1,2,3,4; Hi-Lights Staff 4; French
Club 2.

TOMMY YELTON

"Whatsoever a man soweth, that shall he also
reap."





Senior Class Officers

President	Bobby Beaver	Secretary	Bretta Troutman
Vice President	Larry Whitt	Treasurer	Chris Holsbouser

Superlatives

MOST POPULAR

Betty Brady
Dick Rudisill



BEST-ALL-AROUND

Doris Holshouser
John Honeycutt

Superlatives



MOST PERSONALITY

Shirley Agner
Harold Beaver



MOST LIKELY TO SUCCEED

Willie Hoffner
John Corl

Superlatives

BEST LOOKING

Sondra Odell
Benny Drew



MOST ATHLETIC

Jackie Rattz
Bobby Beaver

Superlatives



CUTEST

Helen Corl
Allen Cozart

MOST INTELLECTUAL

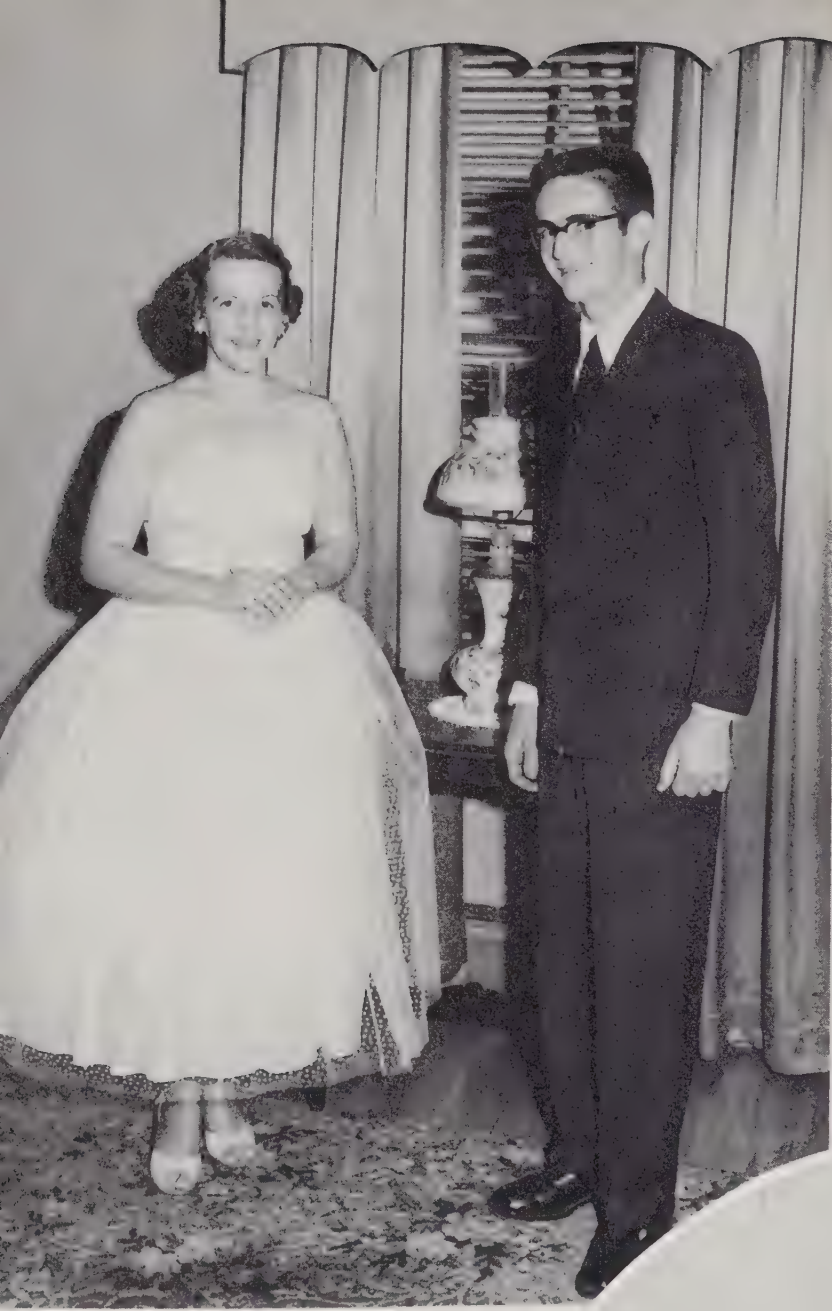
Rachel Agner
Jimmy Cranford



Superlatives

WITTIEST

Jan Carter
Eugene Burr



BEST DRESSED

Betty Lou Shaver
Larry Barger



Senior Sponsors

Mrs. Donald Gettle

Mrs. Charles Page

Mrs. J. G. Puckett



Our Motto

"Not finished, just begun"



Senior Mascots

Tony Brown
Lynda Adams

Class History

In the fall of 1952, we, the Freshman Class of Rockwell High School, enrolled 81 boys and girls. Naturally, we ended up in the wrong classrooms and were called "green freshmen." Our home room teachers were Mrs. Johnson and Mrs. Bost. We elected as our class officers: John Honeycutt, president; Sondra Odell, vice president; Alice Hooks, secretary; and Betty Lou Brady, treasurer. We soon settled down to the regular schedule for a hard year's work.

After having a short vacation, we entered school again, this time as Sophomores. Dropping some along the way decreased the total to 72 boys and girls. Our advisors were Mrs. Daye and Mr. Poole. Our class officers were: Fred Benfield, president; John Honeycutt, vice-president; Betty Lou Shaver, secretary; Sondra Odell, treasurer. To bring the year to a close we all enjoyed a party at Granite Lake.

Another year rolled on, and we entered high school as Juniors, enrolling only 68. Under the sponsorship of Mrs. Sides, Mrs. Bost, and Mr. Conry, happy we were to be looking forward to such a delightful and successful year. We began to work, under the direction of Mrs. Bost, on a play, "Aunt Tillie Goes to Town," which was a success.

We elected as class officers: Phil Simpson, president; Bobby Beaver, vice president; Betty Lou Brady, secretary; and Doris Holshouser, treasurer.

As spring approached, we began to think of the Junior-Senior Banquet. Under the guidance of Mrs. Sides we used the theme "Rockwell Terrace." It was held in the school cafeteria.

As the school year neared the close, seven outstanding members of the class were chosen Junior Marshals. They were Eugene Weant, chief, Rachel Agner, Shirley Agner, Doris Holshouser, Shirley Shaver, John Corl, and Alan Lyerly.

All of us looked with envy at the Senior seats in Chapel as well as the top lockers.

Seniors at last! Several more dropping out reduced our number to 56 boys and girls. Our class has been very active in sports for the past few years. We are looking forward with eagerness to a hard-working and successful year full of Senior activities. Some of us will enter college in the fall of 1956 carrying the title of "green freshmen."

The ones who will help us to make it a successful year are our sponsors: Mrs. Puckett, Mrs. Page, Mrs. Gettle; and our class officers: Bobby Beaver, president; Larry Whitt, vice president; Loretta Troutman, secretary; and Doris Holshouser, treasurer.

Our class colors are blue and white, and the class flowers we chose were blue and white carnations.

Since our days are growing fewer in number, we wish to express our thankfulness and gratitude to all who have made it possible for us to advance so far. May we strive to make of our life a good one.

Historian
Betty Lou Shaver

UNDERCLASSMEN





Class Of '57

CLASS OFFICERS

Max Merritt President
 Dan Tweed Vice President
 Barbara Pinkston Secretary
 Marie Hodge Treasurer

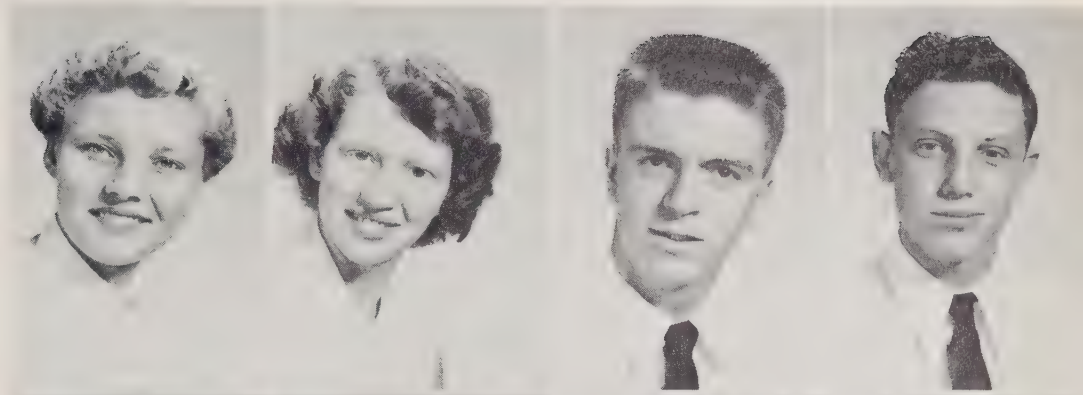


ADVISORS

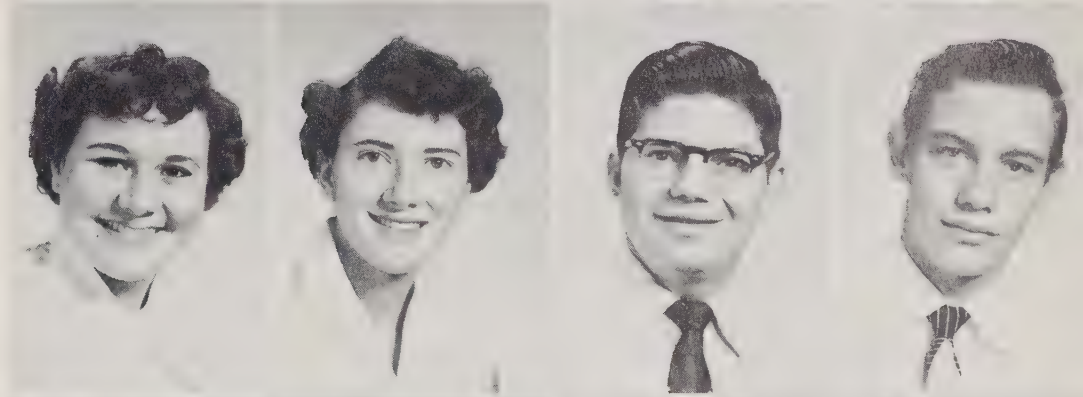
Mrs. Lewis Bost
 Mrs. Martha Johnson
 Miss Ruth Wagner

Class Of '57

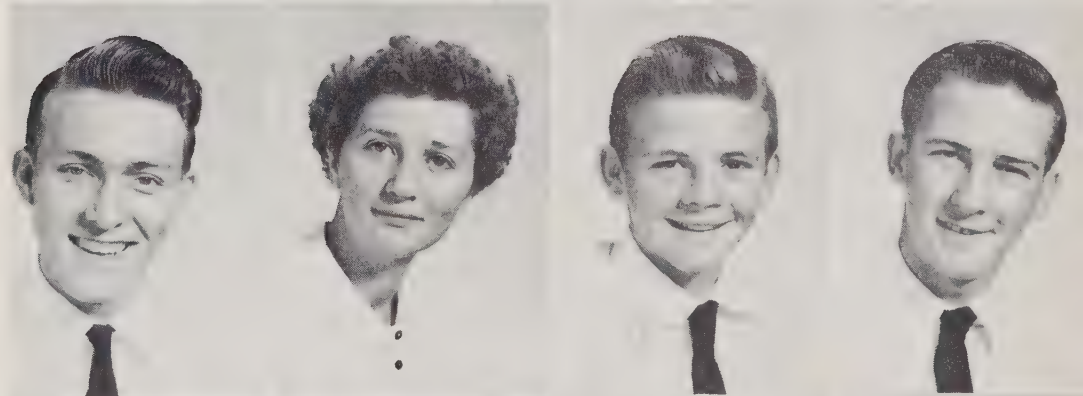
Helen Agner
Joan Agner
G. L. Barringer
Robert Barringer



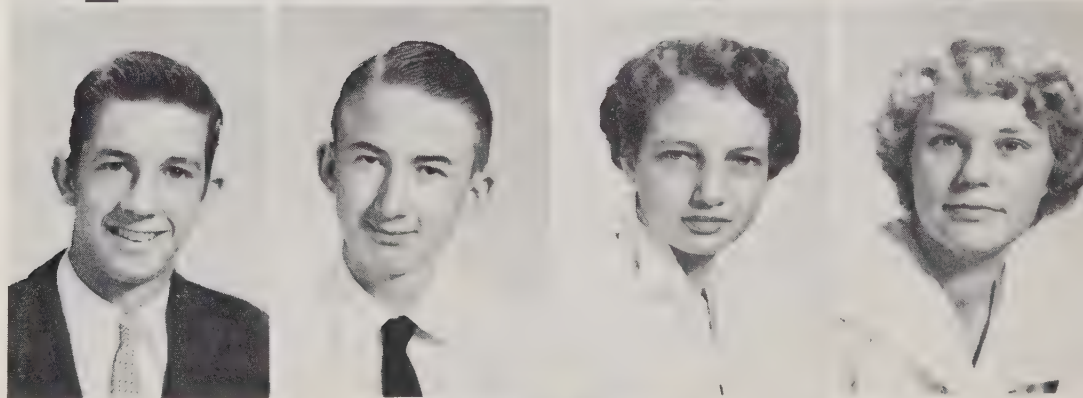
Elsie Brady
Martha Brown
Norman Brown
Darnell Collins



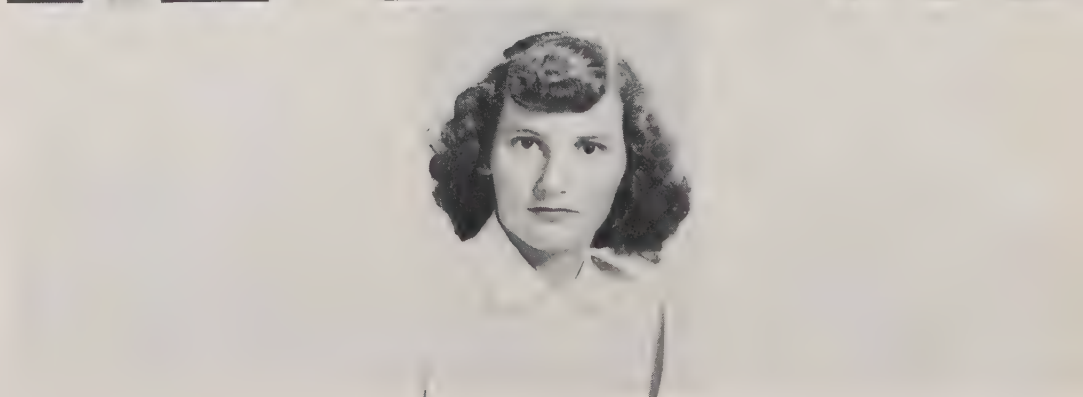
C. W. Cooper
Carol Earnhardt
Larry Fesperman
Larry Frick



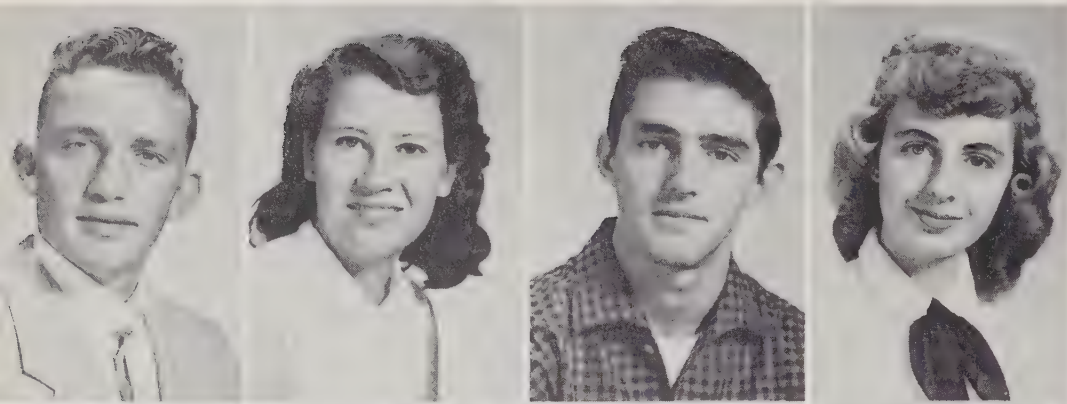
Joe Frye
Eugene Gordon
Joan Heilig
Marie Hodge



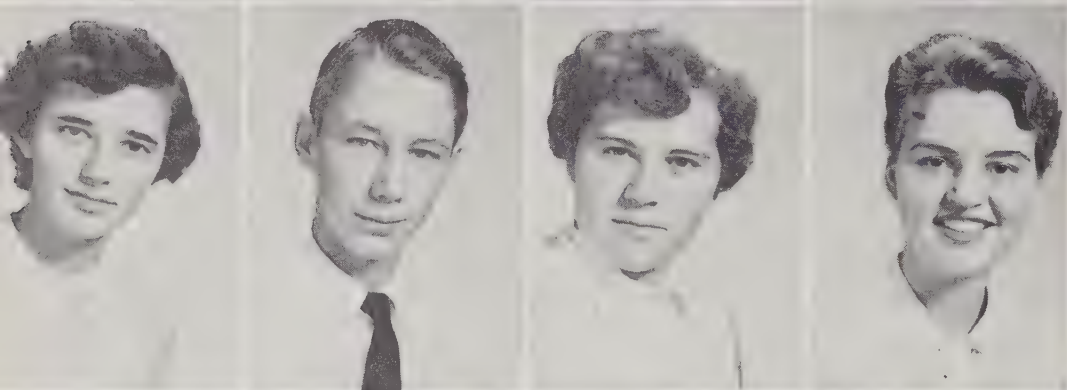
Helen Hoffner



Class Of '57



Jimmy Hoffner
Martha Jo Hoffner
Bill Holshouser
Midgie Honeycutt



Betty Jacobs
Frank King
Gail Leonard
Helen Lyerly



Bobby Martin
Max Merritt
Patricia Mills
Alice Morgan



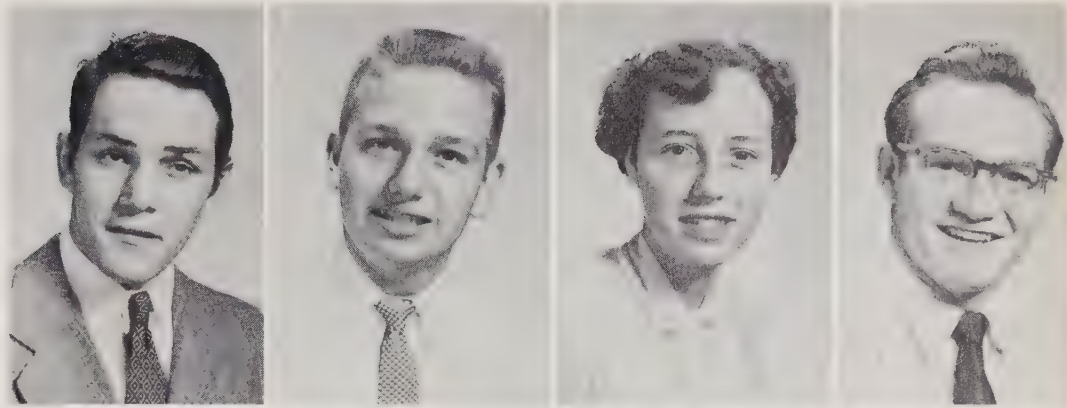
Colleen Morgan
Floyd Morgan
Joan Morgan
Sylvia Morgan



Barbara Pinkston

Class Of '57

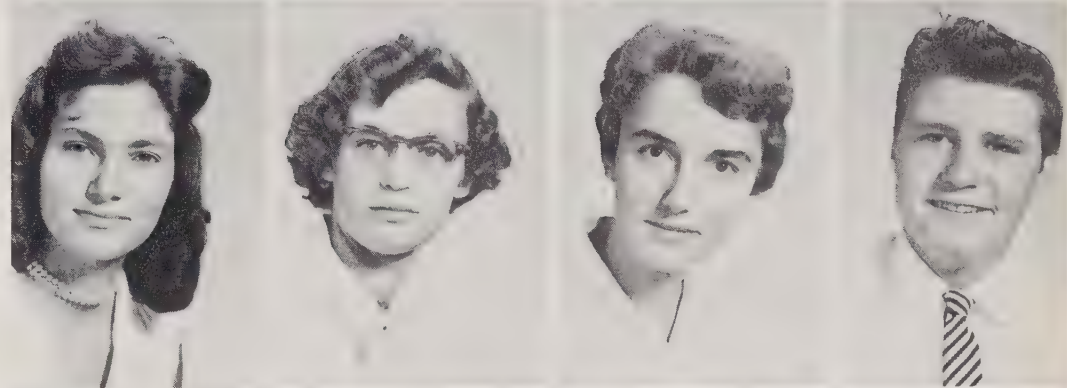
Brooks Puckett
Wayne Reeks
Carol Rummage
Bobby Shuping



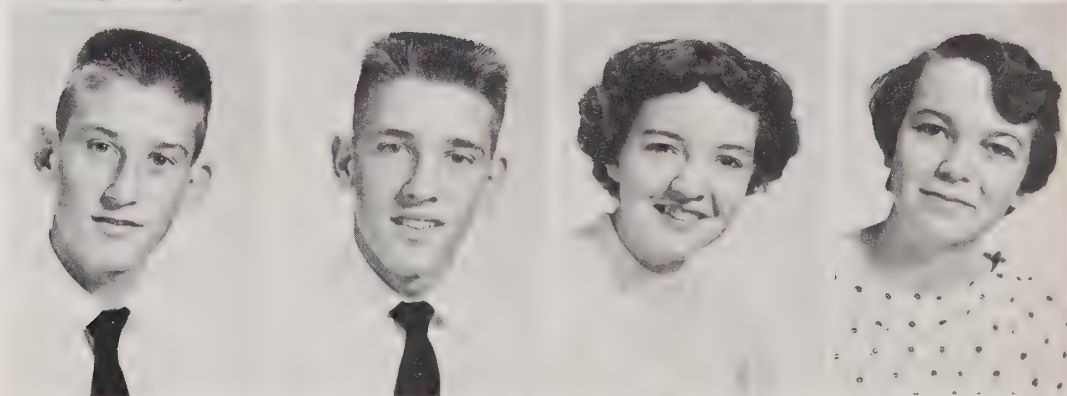
Louise Sides
Janice Small
Wilhelmina Smith
Annie Lou Trexler



Betty Lou Trexler
Jeanette Trexler
Nancy Trexler
Wayne Trexler



Dan Tweed
Don Tweed
Betty Wagoner
Brenda Wagoner



Geraldine Whitley





Class Of '58

CLASS OFFICERS

Tommy Dellinger President
Robbie Honeycutt . . Vice President
Carolyn Morgan Secretary
Gary Beaver Treasurer

ADVISORS

Mrs. Vivian Boyd
Mr. Jerry Pless



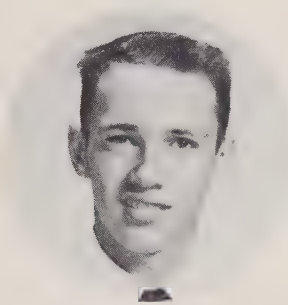
Class Of '58



Frances Agner



Carolyn Arey



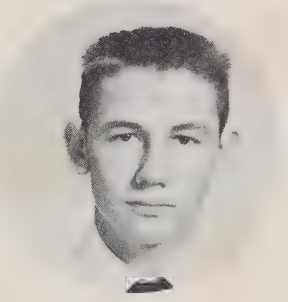
James Barringer



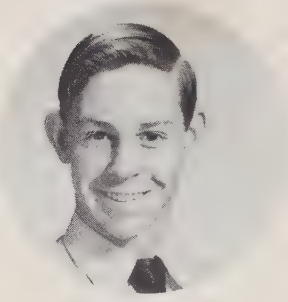
Norma Jean Barringer



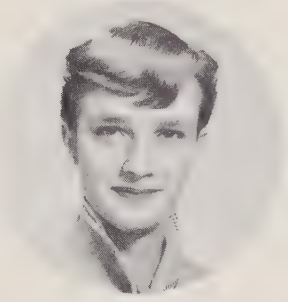
Ruby Basinger



Norman Beck



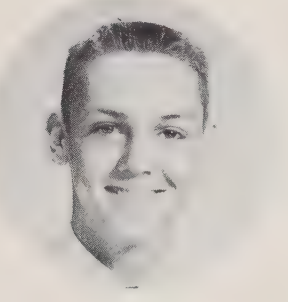
Jimmy Beaver



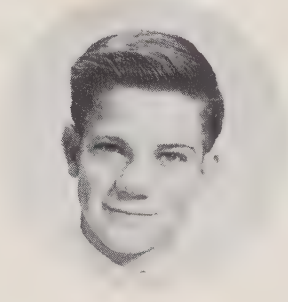
Barbara Connell



Norma Jean Correll



Tommy Dellinger



Jack Galloway



Mary Ann Doby



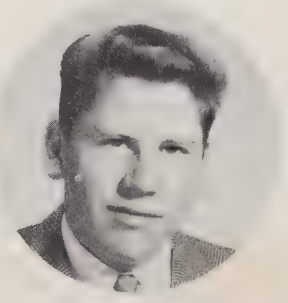
Peggy Drew



Rachel Earnhardt



Sue Earnhardt



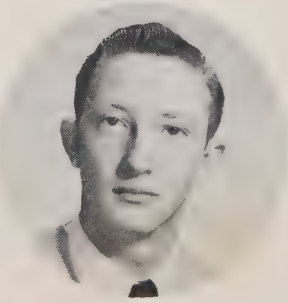
Glenn Elliott



Helen Featherstone



Frances File



Larry Fortune



Betty Harwood

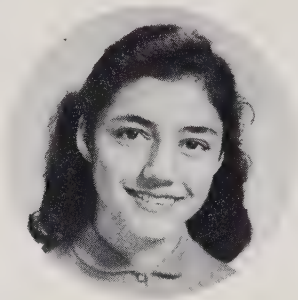
Class Of '58



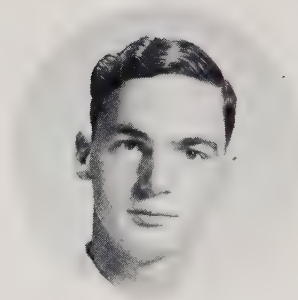
Peggy Haynes



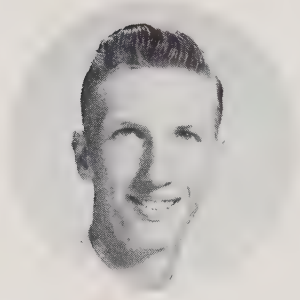
Carolyn Holshouser



Loretta Holshouser



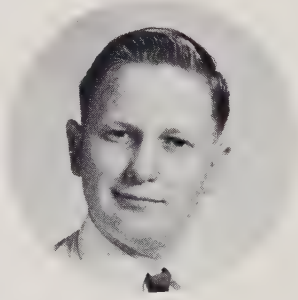
Johnny Hill



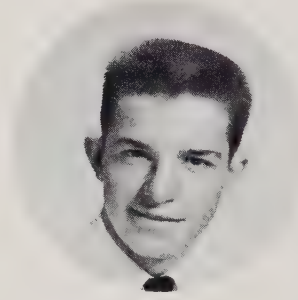
Robert Hill



Lena Ketchie



Johnny Lemley



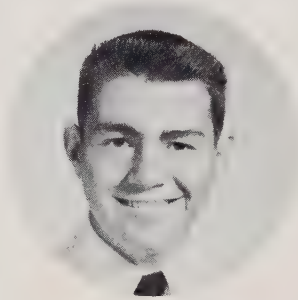
Sammy Lowman



Shirley Lyerly



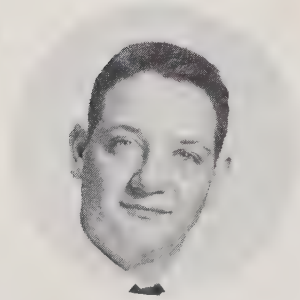
Betty Jane Miller



Steve Morefield



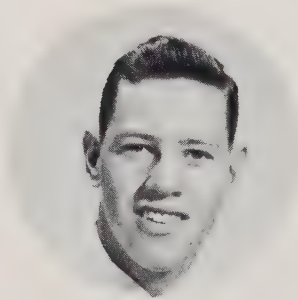
Carolyn Morgan



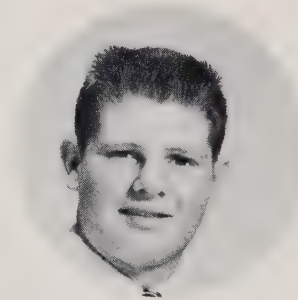
Dewey Lee Morgan



Frances Morgan



Lloyd Morgan



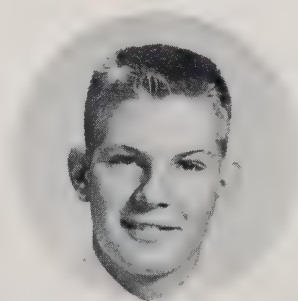
Ronald Morgan



Bobby Joe Petrea



Evelyn Poole

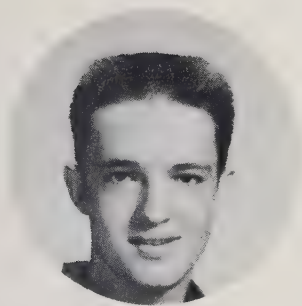


Richard Powlas

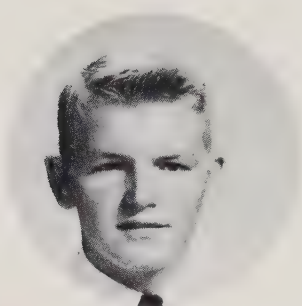


Harold Yost

Class Of '58



William Yates



John Wise



Judy Ward



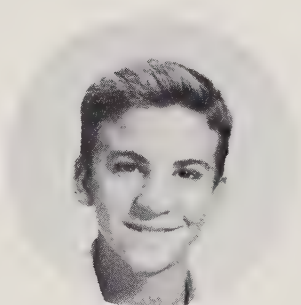
Jackie Walker



Rose Wagoner



Becky Varnadore



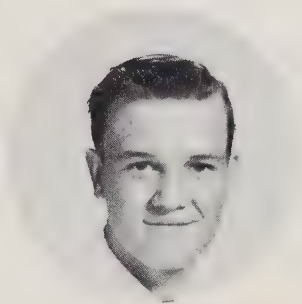
Herby Vanhoy



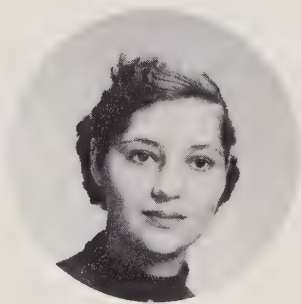
Barbara Trexler



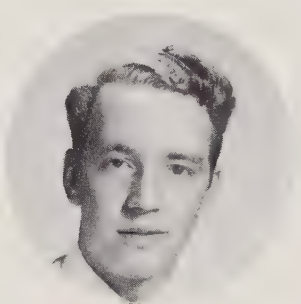
Renda Treece



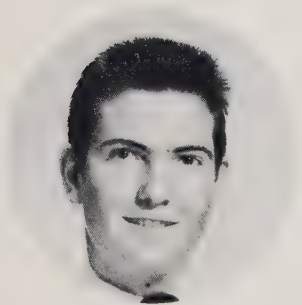
Charles Taylor



Jean Strube



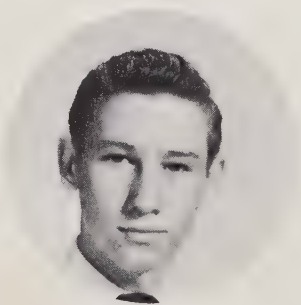
C. J. Soloman



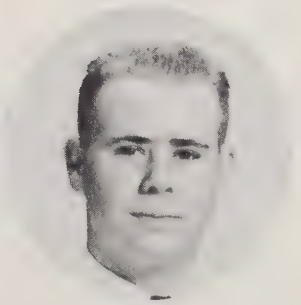
Wayne Smith



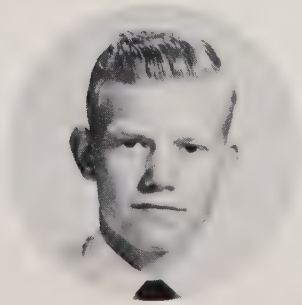
Jerry Lee Sides



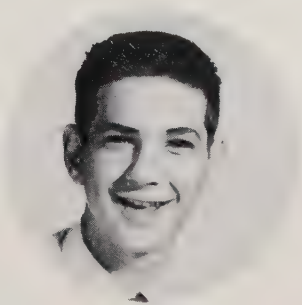
Floyd Sides



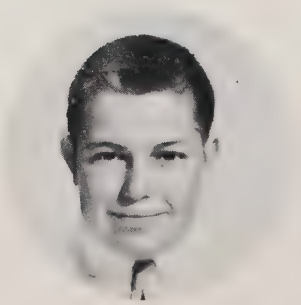
David Sides



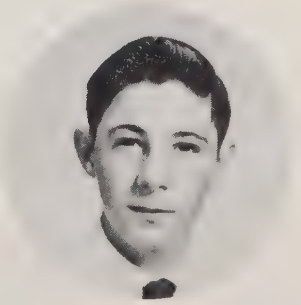
Billy Sides



Raymond Shue



Homer Lee Safrit



Bobby Rhinehardt



Class Of '59

CLASS OFFICERS

Dwight Morgan President
 Marvin Brown Vice President
 Ann Carole Helderman Secretary
 Tony Lyerly Treasurer



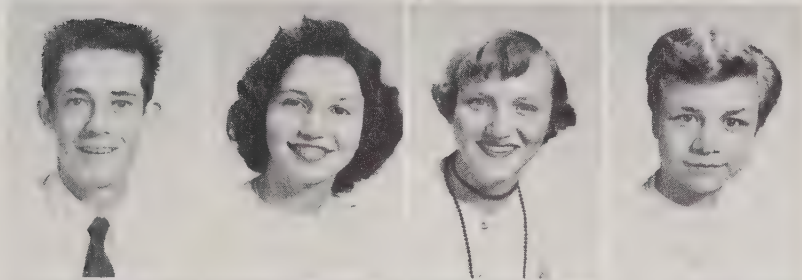
ADVISORS

Mr. J. M. Conry
 Mr. Richard Hamilton
 Mr. Carl Rudisill

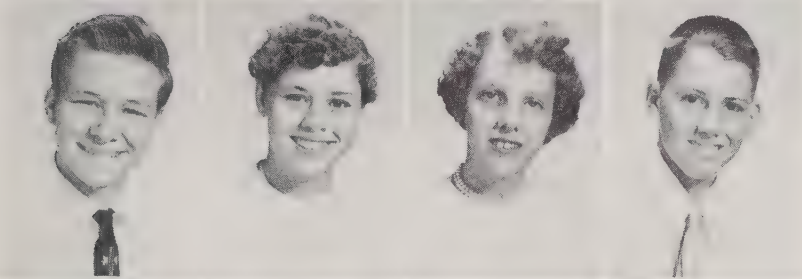
Class Of '59



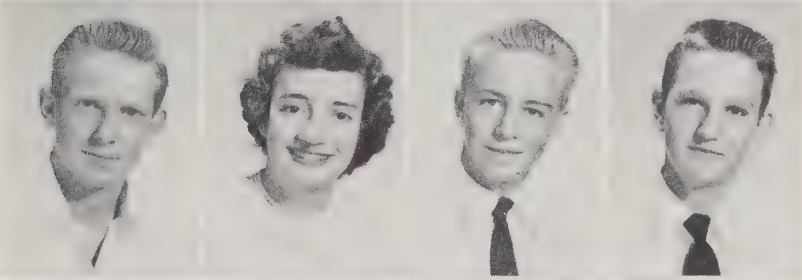
Christine Bame
Clara Barringer
Sandra Beaver
Carolyn Benfield



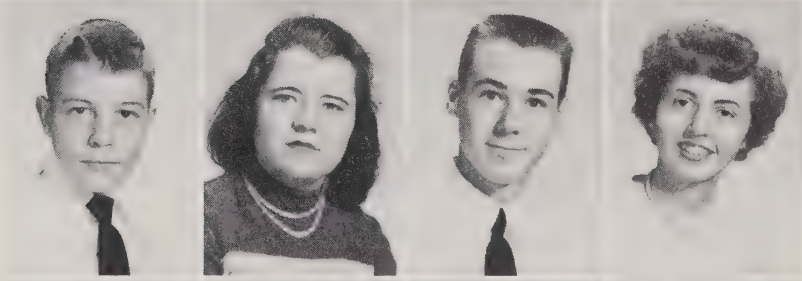
Jimmy Bost
Rachel Bost
Frances Bostian
Karen Bostian



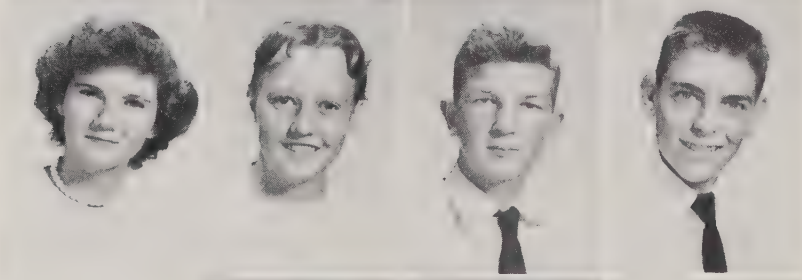
Edward Boulding
Ann Brown
Betty Brown
Marvin Brown, Jr.



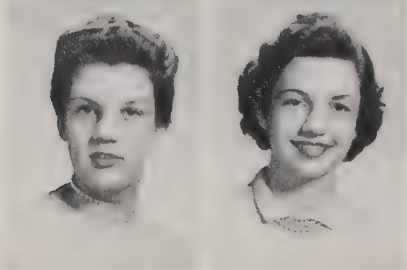
Larry Carter
Carolyn Cauble
Tommy Drew
Charles Earnhardt



Robert Efird
Gailya Fowler
Joe Freeze
Gay Frick



Gaynell Galloway
Clara Leigh Goodman
Robert Goodman
Wayne Goodman



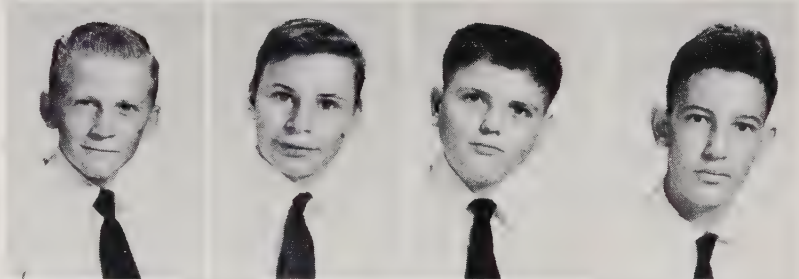
Brenda Hegler
Ann Carol Helderman

Class Of '59

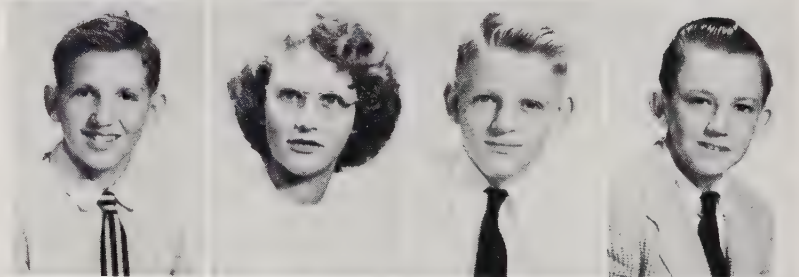
Mary Ida Hodge
Martha Jo Hoffman
Betty Holshouser
Kaye Holshouser



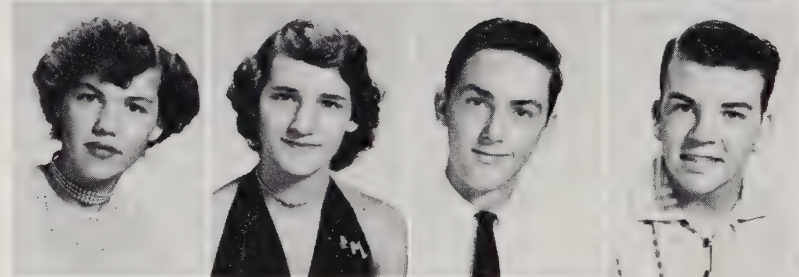
Mickey Holshouser
Grady House
David Huddle
Danny Kesler



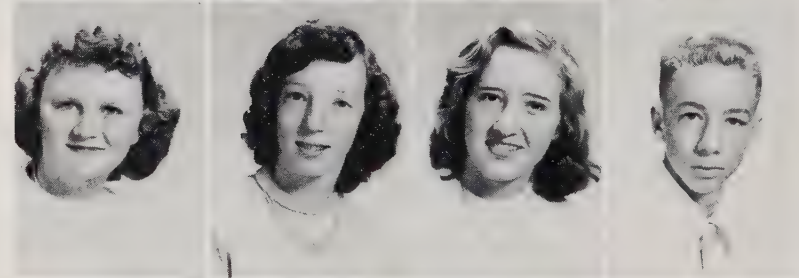
Lee Roy Kirk
Carolyn Kluttz
Jerry Kluttz
Tommy Lefler



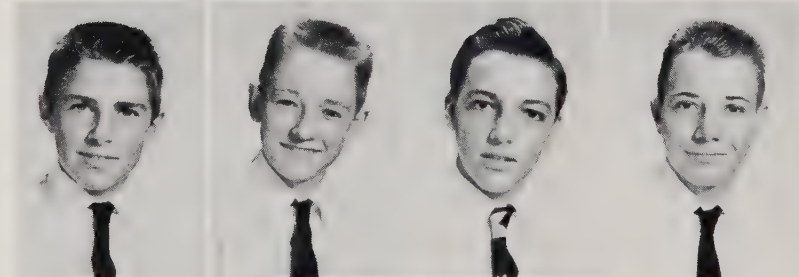
Alice Lewis
Ellen Ludwick
James Lyerly
Tony Lyerly



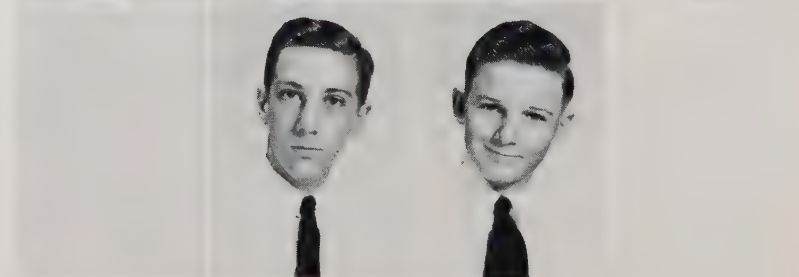
Annis Maners
Jean Martin
Betty Jo Miller
R. L. Mills



Thomas Moose
Bobby Morgan
Bronnie Morgan
Dwight Morgan



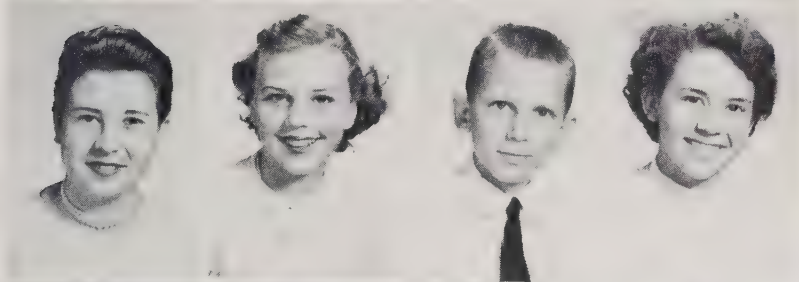
Eugene Morgan
Jerry Morgan



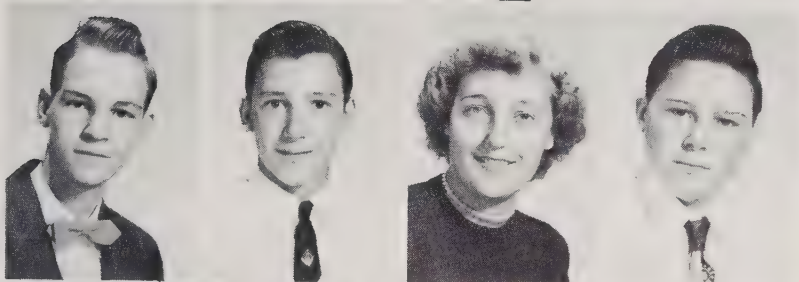
Class Of '59



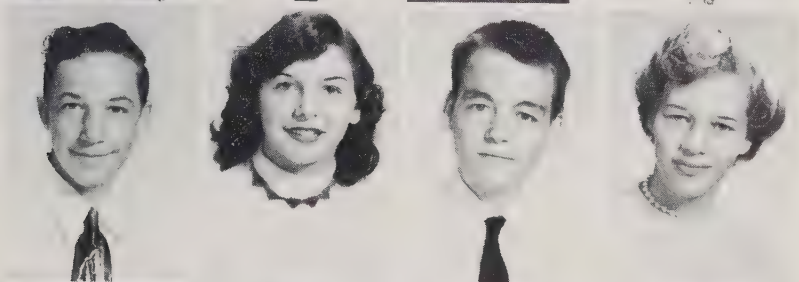
Larry Morgan
Loy Morgan
Gail Owens
Shirley Owens



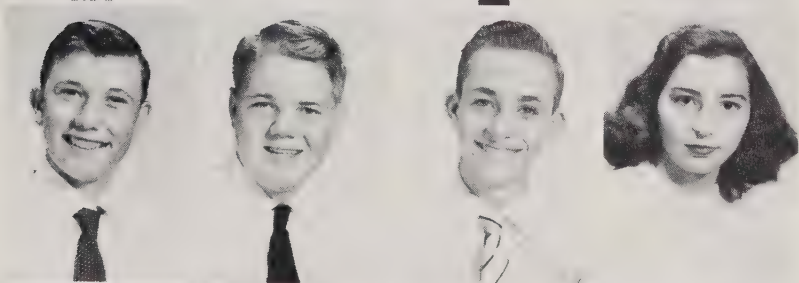
Sybil Penninger
Betty Sue Petrea
Billy Ridenhour
Marshall Setzer



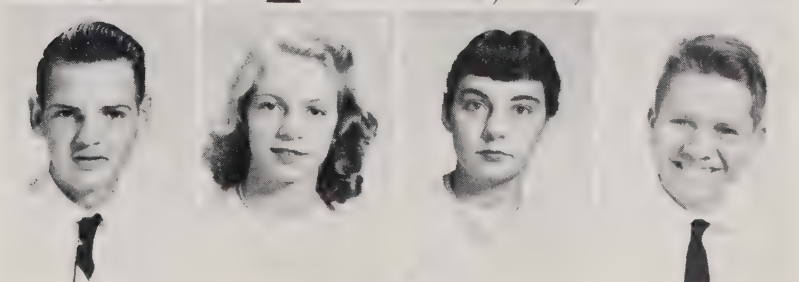
Billy Shaver
James Shaver
Mary Rose Shaver
Larry Shipton



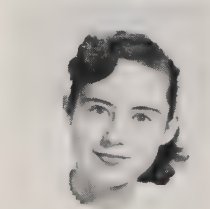
James Sides
Sarah Elizabeth Stoner
Timothy Thompson
Ann Trexler



Johnny Trexler
John N. Trexler
Ray Trexler
Erlene Troutman



Eugene Wagoner
Patricia Wagoner
Joyce West
Lane Whitley



Linda Whitt



1955 Halloween Carnival



1955 Junior Play



ELEMENTARY GRADES

Elementary Faculty



Elizabeth Barker
Ruth Beaver
Mrs. J. A. Bolton
Mrs. Carrie Currie



Mrs. Harold Eagle
Mrs. Ralph Edwards
Ruby Fleming
Mrs. Ruth Hodge



Mrs. Lottie Honeycutt
Mrs. Cline Isenhour
Warren Kesler
Mrs. Elizabeth Kindley



Herman Leonard
Mr. Melvin Morgan
Mary Edna Rouzer
Mrs. Inez Sloan



Mr. O. T. Smith
Mrs. Mary Sowers
Mr. George Uzzell
Mrs. Louanna Verble

Eighth Grade



Yorke Beaver, Betty Bost, James Bost, Patsy Bost, Harold Bostian, Jimmy Brady, Donald Corl, Melva Corl, Thomas Correll, Gene Culp, John B. Culp, Bobby Drew, Betty Jean Dyson, Wayne Eddleman, Charles Eller, Judy Eller, Clyde Featherstone, Hazeline Featherstone, Beauford Fraley, Edith Galloway, Shelva Haynes, Becky Heilig, Jerry Hilliard, Bonnie Holshouser, Brenda Holshouser, Sylvia Holshouser, Ronald Horton, Guy Jones, James Jones, Daisy Kluttz, Jerry Kluttz, Peggy Kluttz, Brenda Leazer, Edward Lentz, Peggy Leonard, Mary Ann Ludwig, Donald Miller, Johnny Morgan, Harold Pethel, Colleen Pickler, Kate Puckett, Ray Sechler, Mary Shue, Brenda Small, Thomas Smith, Ralph Stoner, Betty Sue Swinson, Carolyn Taylor, Wayne Taylor, J. W. Treece, Alexander Trexler, Joe Bennett Trexler, Marjorie Trexler, Myrtle Trexler, Shirley Vancannon, Nancy Walker, Marlene Waller, Thomas Whitaker, Larry Wilson, Claudette Woodie, Farrell Woodie.

Seventh Grade



Gayle Avery, Dale Basinger, James Beaver, Brenda Biggerstaff, Helen Boger, Billy Bowden, Brenda Brooks, Valeria Carter, Ronnie Cauble, Jerry Corl, Kay Correll, Peggy Cozart, Myrtle Cranford, Johnny Drew, Brenda Earnhardt, Juda Fatata, Wayne Fesperman, Shirley Frye, Doris Hall, Gary Hall, Melvia Hall, Barbara Holshouser, Leona Holshouser, Frances Honeycutt, Patricia Honeycutt, Don Huffman, Jay Johnson, Bill Kirk, Donald Kluttz, Barbara Lentz, Sue Linker, Tony Linker, Suzie Ludwick, Brenda Lyerly, Walter Lyman, Lawrence Misenheimer, Ralph Misenheimer, Carolyn Morgan, Junior Morgan, Vickie Morgan, Brantly Park, Clara Payne, Phyllis Pethel, Elenor Poole, Martha Poole, Gerald Rattz, Kay Robbins, Nancy Roseman, Nancy Shue, Barbara Thompson, Helen Treece, Martin Trexler, Patsy Trexler, Bobby Varnadore, Barbara Waller, Coy Wiles, Jerry Wiles, Robert Wright.

Sixth Grade



Brenda K. Barringer, Pearle Barringer, Terry Beaver, James Lee Boger, Maurice Bost, Kenneth Bostian, Jerry Braswell, Ruth Brown, Howard Crawe, Cecil Deal, Freddie Drew, Barbara Drye, Evelyn Dunaway, Judy Earnhardt, Claude Eller, Vance Eller, Kay Eudy, Rachel Farlow, James File, Brenda Fisher, Johnny Foster, Darrell Galloway, Richard Hampton, Carolyn Harwood, Anderson Haynes, Billy Herrin, Barbara Hill, Charles Hill, Donnie Holshouser, Kay Holshouser, Leslie Holshouser, Bobby Honeycutt, Clyde Honeycutt, Judy Huffman, Howard Isley Ruby Kesler, Clifford Kluttz, Dean Kluttz, Gary Kluttz, Becky Lyerly, Bill McCall, Guy Webster McGuire, Jo Ann Martin, Wayne Medley, Carol Miller, Shelva Miller, Mary Ann Misenheimer, Chester Moose, Cheryle Morales, Dottie Morgan, Mary Lou Morgan, Larry Owen, Jerry Page, Bobby Pate, Brenda Penninger, Kay Petrea, Thomas Powlas, Walter Pule, John Remeta, Michael Rinehardt, Tommy Rinehardt, Billy Riner, Marian Rothrock, Beulah Rowland, Gary Rummage, Bobby Safrit, Novella Scott, Monnie Sechlen, Sondra Selle, Ernest Shepherd, Nelson Shepherd, Mary Shinn, Thomas Shoaf, Monty Simpson, Mary Smith, Faye Solomon, Randy Stiller, Lolly Taylor, Glenn Traies, Kenneth Treece, Lillie Treece, Eugene Trexler, Phyllis Trexler, Sondra Trexler, Joel Vanhoy, Joyce Williams, Grady Woodie.

Fifth Grade



Barbara Beaver, Larry Eeaver, Mary Benfeld, Paula Bost, Donald Braswell, April Brown, Sondra Jo Brown, Greydon Cruse, Bobby Dellinger, Robert Dyson, John Ray Earnhardt, Judy Earnhardt, Doland Easter, Betty Sue Efird, E. J. Efird, Betty Eudy, Diane Eudy, Jimmy Fatata, Betty Sue Featherstone, Ellison Fesperman, Mary Frances File, Martha Jean Fisher, Helen Foster, Linda Fox, Jean Fraley, Rusty Frye, Joe Gallimore, Brenda Goodman, Gwyn Goodman, Kay Helderman, Nina Ruth Hodge, Kermit Holshouser, Steven Holshouser, Phyllis Ann Hopkins, David Kluttz, Ronnie Loflin, William Ludwick, Steven McIntyre, Charles Miller, Kay Miller, Richard Miller, Billie Misenheimer, Toney Misenheimer, Phyllis Ann Morgan, Darrell Owen, Willie Page, Georgia Peele, Shelton Perry, Barbara Ridenhour, Patsy Roseman, Victor Roseman, Bobby Rowland, Junior Rowland, Michael Rudisill, Kay Shinn, Larry Small, Jimmy Snider, Robie Swink, Marlene Swinson, Carlie Synder, Larry Taylor, Joseph Thompson, Troy Treece, Butch Trexler, Theresa Trexler, Lonnie Vanhoy, Jenny Catherine Verble, Joe Vornadore, Joe Wagoner, Grover Waller, Linda Wilhelm, Juanita Wright, Dorothy Yates, Sylvia Yost.

Fourth Grade



Markie Anthony, Barry Barger, Michael Barger, Carol Beaver, Dale Beaver, Michael Birigham, Mitchel Brown, Patricia Brown, Linda Corl, Elaine Eddleman, Alvin Eller, Roy Farlow, Harold Fesperman, Gaynell Haynes, Linda Hill, Ray Hill, Martha Honeycutt, Frances House, Douglas Isley, Judy Isley, Dianne Jones, Robert Kearns, Judy Kesler, Barbara King, Wayne Kluttz, Jerry Lefler, Wayne Lentz, Phyllis McCall, Rooney McIntyre, Dale Miller, Gaye Miller, Vonnette Miller, Peggy Misenheimer, Rebecca Moose, Rosie Lee Morgan, Gary Mull, Dolores Nance, Sandra Nash, Harry Owen, Jr., Harry Park, Linda Park, Joan Pickler, Junior Pickler, Brenda Robbins, Shirley Rowland, Ronnie Schimpf, Ruddy Shipton, Norman Shue, Eddie Shuping, Ethel Smith, Judy Steele, Alan Taylor, Janet Taylor, C. B. Treece, Donald Troutman, Brenda Whitaker.

Third Grade



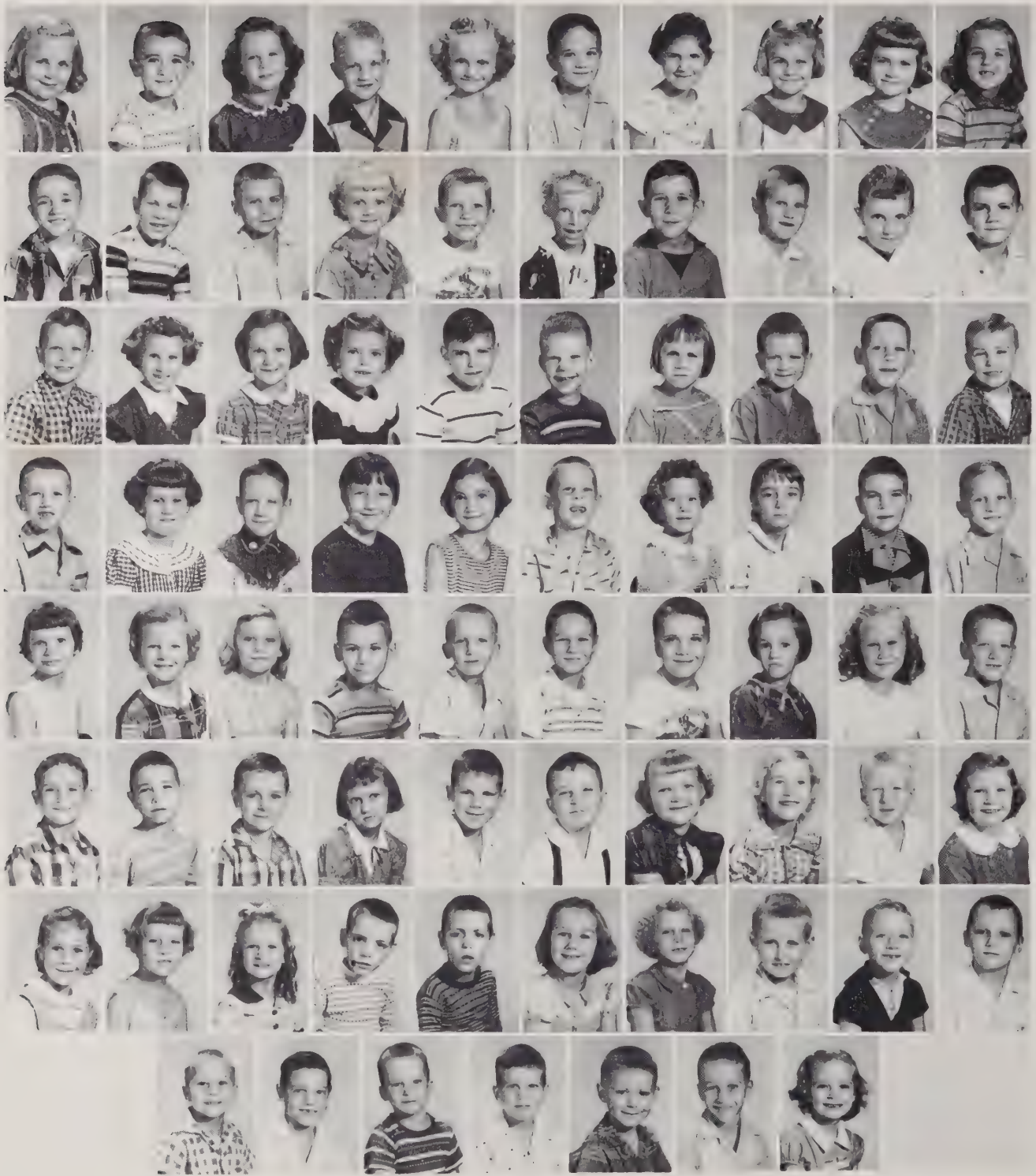
James Adams, Jr., Gary Barringer, Sylvia Barringer, Larry Bean, Glenda Beaver, Johnny Beaver, Linda Beaver, Nancy Biggerstaff, Bernard Bost, Donald Bost, Larry Bostian, Diana Brady, Ronald Brooks, Bonnie Brown, Donald Brown, Joyce Brown, Larry Brown, Gary Burleson, Buddy Lee Catoe, Richard Carter, Phyllis Chatlos, George Clark, James Cornelius, Juanita Correll, Brenda Ray Cranford, Earl Cranford, Kenneth Culp, Brenda Deal, Nancy Drew, Glenn Eagle, Robert Easter, Donna Edwards, Pamela Fesperman, Willard Fortune, Linda Freeze, Johnnie Graham, Betty Jean Hallman, Donnie Harwood, Yvonne Haynes, Stephen Helderman, Audrey Hill, Linda Gail Hill, Shelia Hilliard, James Hodge, Brenda Hogan, Ann Holshouser, John Alton Holshouser, Jeffrey Horton, Faye Isley, Martha Jo Johnson, Donnie Jones, Dale Kirk, Ronald Kirk, Dennis Kluttz, Hazel Kluttz, Linda Gail Lefler, David Linker, Mary Lowerly, Johnny Ludwick, Scottie Lyerly, Billie Lee Miller, Eugene Miller, Lana Miller, Rickie Misenheimer, Jamie Moose, Jackson Myrick, Paul Patterson, Nancy Payne, Donna Peeler, James Pierce, Mary Ann Powlas, Calvin Reid, Jimmy Remeta, Rachel Rowland, Carolyn Russell, Donna Sheets, Michael Shinn, Ruby Shinn, Steven Shuping, Julian Sides, Columbus Smith, Nancy Sue Treece, Lucretia Trent, Connie Trexler, Donnie Trexler, Jerry Trexler, Larry Trexler, Phyllis Trexler, Ronald Trexler, Junior Troutman, Robert Troutman, Janice Vanhoy, Vickie Vanhoy, Mona Varnadore, Marguerite Verble, Ronald Walker, Linda Williams, Alice Woodie, Linda Wright, Danny Yost.

Second Grade



Bonnie Bean, Elizabeth Beaver, Larry Beaver, Guy Biggerstaff, Robert Bost, Michael Bowers, Sonny Bowers, Hoy Brady, Brenda Brown, Linda Brown, Ted Brown, Sue Carter, Rudolf Chatlos, Larry Connell, Donny Cozart, Johnny Cozart, Linda Crowe, Steven Cruse, Julia Deal, Donald Drye, Ronald Dyson, Coy Edwards, Reid Eller, Minnie Fatata, Linda File, Judy Fisher, Zelia Fisher, Eli Galloway, Linda Galloway, Tommy Hammill, Beverly Hampton, Billy Haynes, Brenda Herrin, Hazel Hill, Dennis Holshouser, Linda Holshouser, Terry Holshouser, Vivian Holshouser, Bonnie Honeycutt, Shirley Hopkins, Lonny Isley, Paul Kesler, Michael Kirk, Pamela Kluttz, Terry Kluttz, Sandra Lyerly, Judy McCall, Hugh McClenney, Gene Medley, Clifford Miller, Kenneth Miller, Michael Misenheimer, Vicki Jo Montgomery, Bobby Moose, Bonnie Morgan, Charles Morgan, Sylvia Pate, Jimmy Payne, Barbara Peeler, Charles Reid, Ricky Ridenhour, Phyllis Selle, Floyd Shaver, Sheila Sheets, Ronnie Shuping, Andrea Smith, Tony Swink, Brenda Thompson, James Trexler, Johnny Trexler, Mary Troutman, Ralph Turner, Sonny Wall, Bobby Watson, Larry Wyatt.

First Grade



Shelia Barringer, Dan Beaver, Pamela Beaver, Jerry Boger, Sharon Bost, Tony Brown, Gail Burlson, Gay Cornelius, Judith Cozart, Linda Dennier, Tony Drew, Hoy Lee Dry, David Eagle, Carlin Earnhardt, David Earnhardt, Peggy Earnhardt, Stanton Earnhardt, Lester Efird, Nelson Efird, Max Eller, Bobby Eudy, Wanda Fesperman, Vickie File, Cindy Fowler, Allan Fox, Michael Gable, Wanda Galloway, Michael Goodman, Ray Goodman, David Hamilton, Eddie Hampton, Carol Haynes, Denny Haynes, Sandra Haynes, Jo Ann Holshouser, Glenn Hopkins, Jane Jacobs, Carmen Johnson, Kenneth Johnson, Carl Kesler, Terry Ketner, Judy Kirk, Dianne Kluttz, Orville Kluttz, Dale Linker, John Thomas Linker, Billy Misenheimer, Joyce Morgan, Anne Peeler, Ronnie Pierce, Joe Pittman, Billie Reid, Kenneth Ridenhour, Faye Rinehardt, Larry Robbins, Mitchell Rowland, Linda Shepherd, Lucille Shoaf, Darrell Simpson, Elizabeth Stallings, Marie Stancil, Sharon Steele, Bonnie Stokes, Donald Thompson, Michael Thompson, Betty Trexler, Bonnie Kaye Trexler, John Trexler, Johnny Trexler, Vern Trexler, Jr., Jerry Troutman, Gene Vanhoy, Ronald Vanhoy, Dickie Wiles, Lamar Yelton, Donald Yost, Linda Yost.

A C T I V I T I E S





The Rocket Staff



Sondra Odell
Classes Editor



Betty Lou Brady
Advertising Manager



Bryan Conry
Photographer



John Honeycutt
Co-Sports Editor



John Corl
Co-Sports Editor

BANK OF ROCKWELL
PET ICE CREAM CO.



Vickie Moose
Associate Editor



Eugene Weant
Business Manager



Louise Kirk
Editor-in-Chief



Cleo Jones
Associate Editor.



Mrs. Donald Gettle
Advisor

Preparing "Rocket" For Take Off





Hi Light Staff

Editor-in-Chief Cleo Jones

Office Workers



RACHEL'S BEAUTY SHOP



EARNHARDT LUMBER CO.



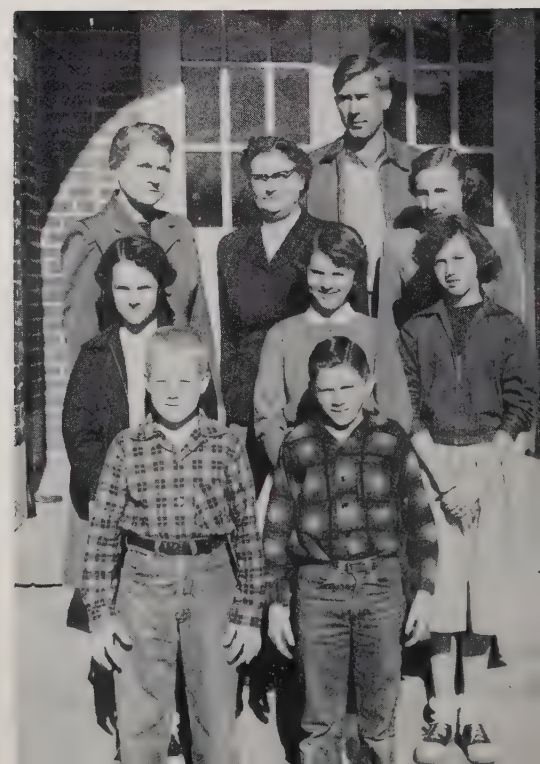
4-H

SENIOR OFFICERS



ROCKWELL CAFE

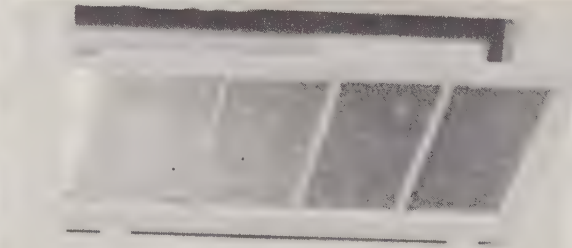
JUNIOR OFFICERS





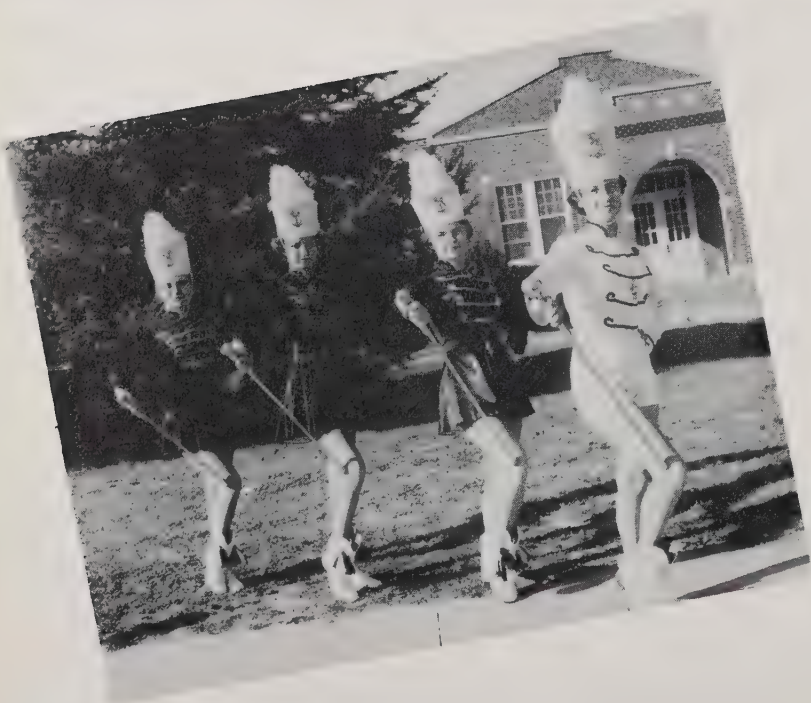
Bible Club

Library Club





Rockwell High



MAJORETTES



School Band

JUNIOR BAND



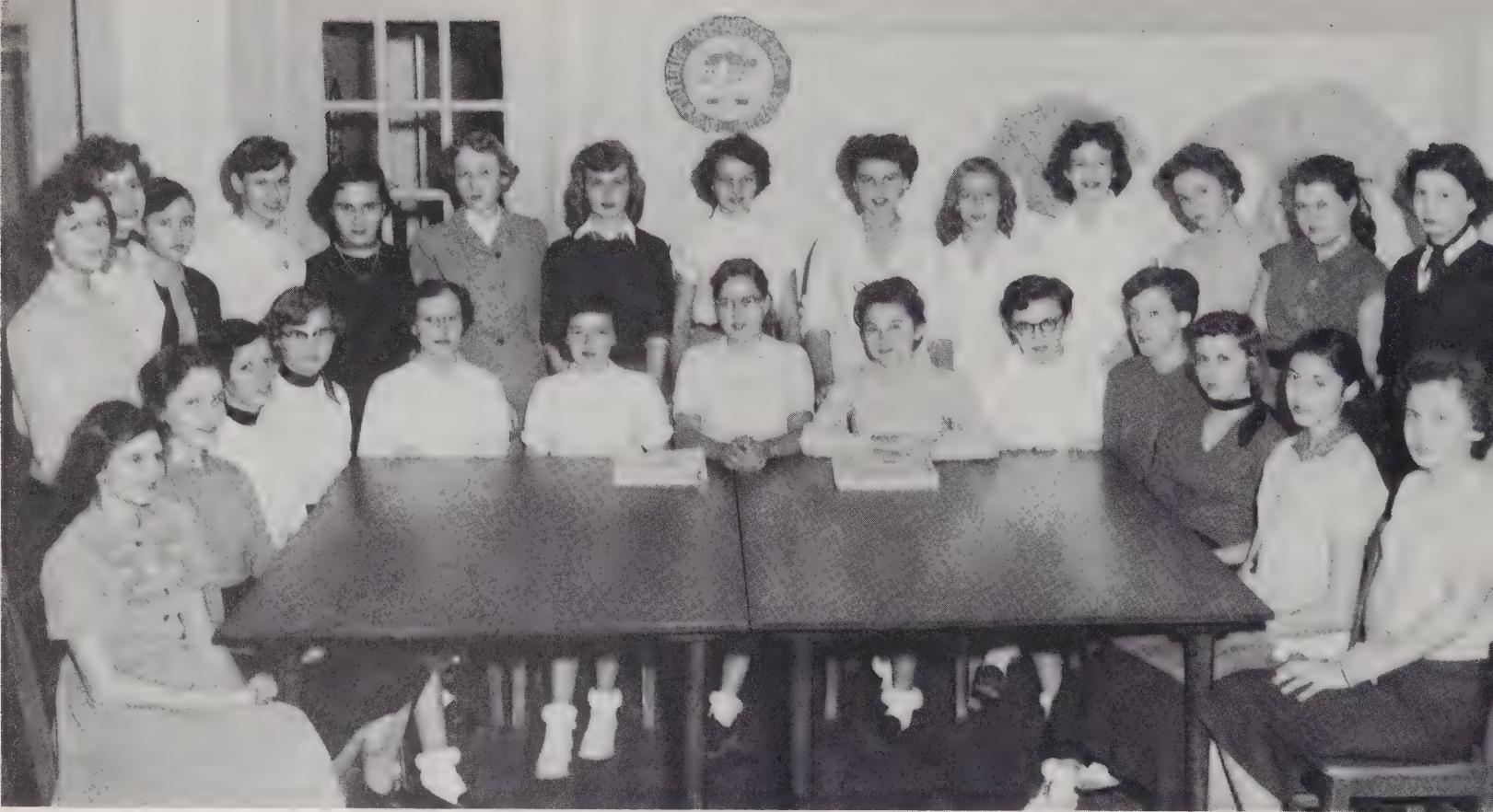
Cheerleaders



Monogram Club



ROCKWELL FLORIST.



Future Homemakers Of America

Future Farmers Of America





French Club

Marshals

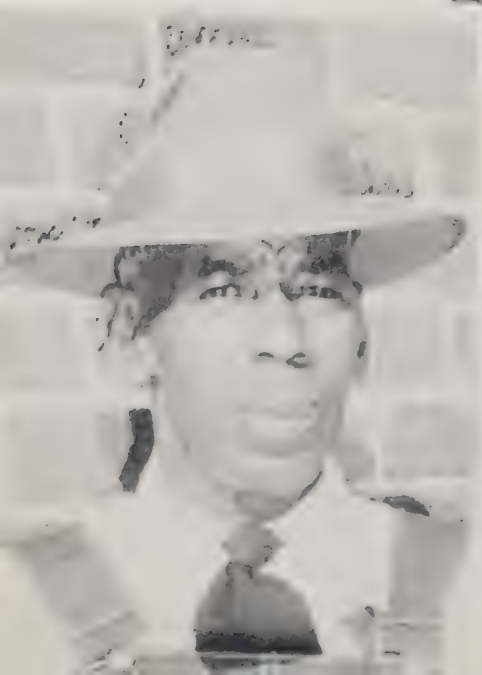




*Dancing
Class*



*Cafeteria
Staff*



STEVIE



*Bus Drivers
Safety Patrol*



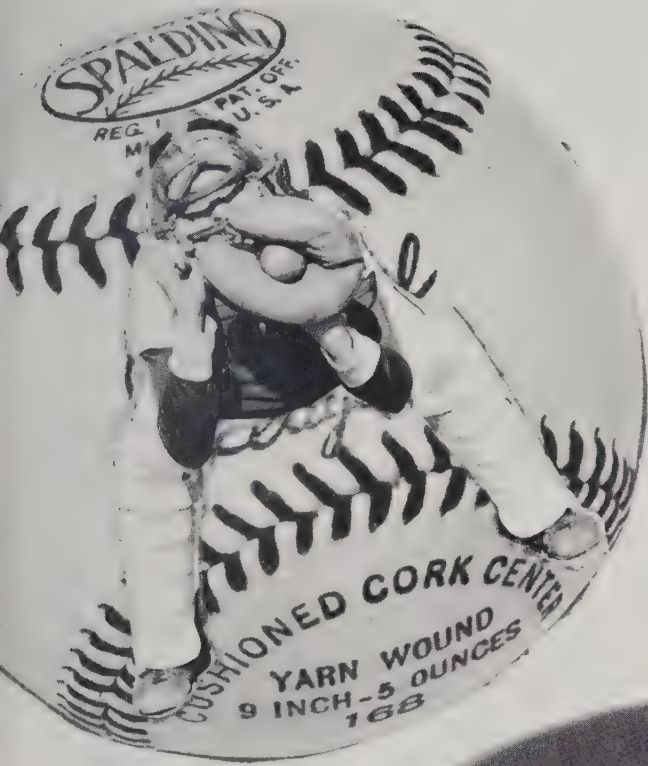


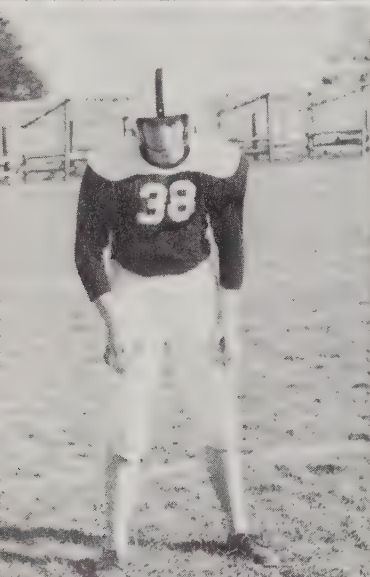
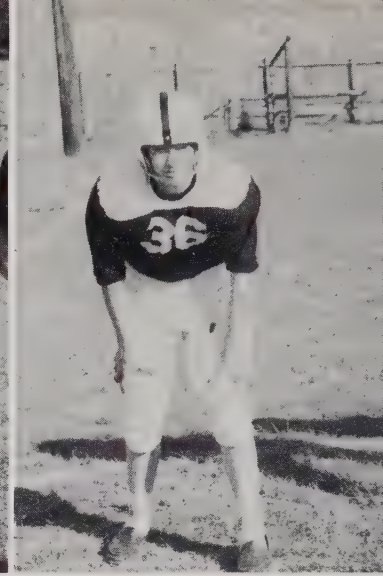
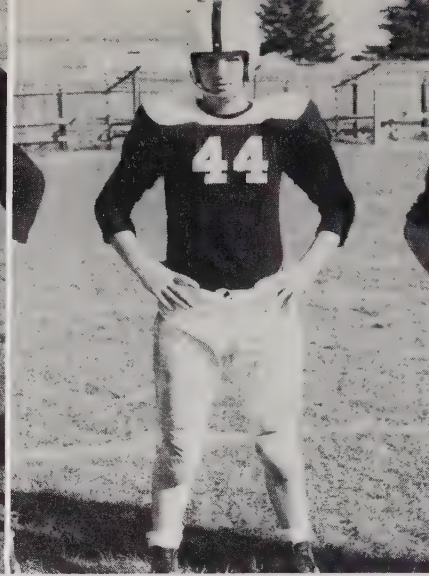
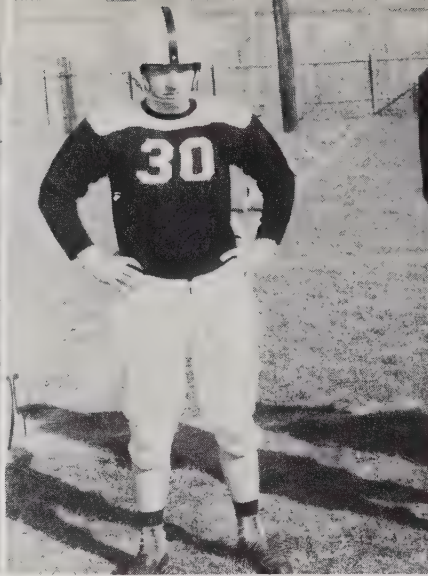
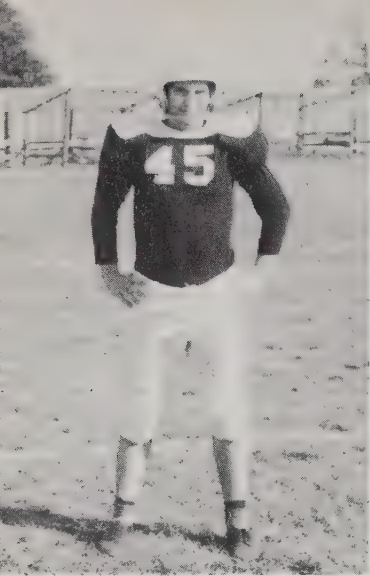
Homecoming

Miss Sondra Lane Odell
Queen

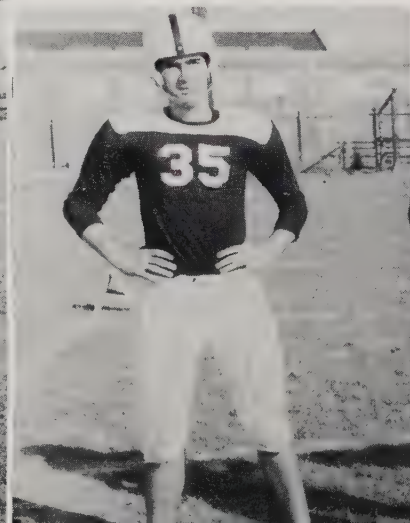


SPORTS





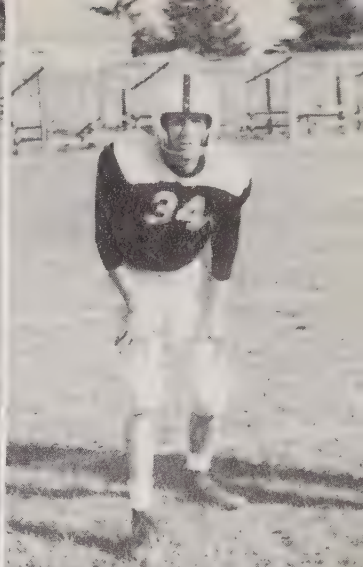
Wayne Smith FB
 Loy Morgan LHB
 William Yates LHB
 Floyd Sides RHB
 Steve Morefield C
 Robbie Honeycutt LE
 Don Tweed RE
 Raymond Shue LT
 Thomas Moose LG
 John Corl RG
 Dan Tweed, Bobby Heilig,
 Managers



FOOT

SCORES

Rockwell	7	China Grove	40
Rockwell	0	Boyden J. V.	0
Rockwell	0	Cooleemee	31
Rockwell	6	Mt. Pleasant	26
Rockwell	27	Mocksville	14
Rockwell	21	Norwood	7
Rockwell	12	Hartsville	25
Rockwell	0	Cleveland	13
Rockwell	12	Granite Quarry	18
Rockwell	45	Badin	0



BALL

Larry Barger RG
 Bobby Beaver FB
 Allen Cozart RHB
 John Honeycutt LHB
 Tommy Dellinger QB
 Dick Rudisill RE
 Curtis Hoffner LE
 Ronald Morgan RT
 Robert Corl LG
 David Sides LT
 Gary Beaver C



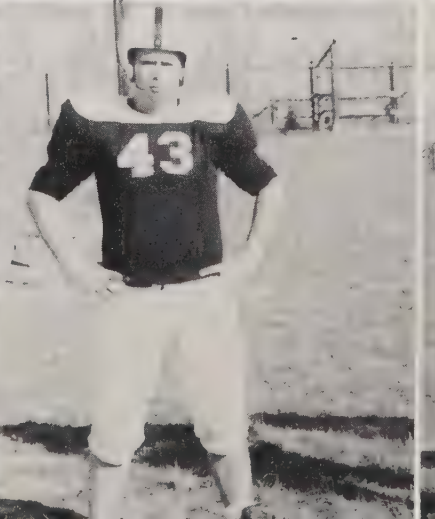
"Not the best, Not the worst"

The record of our team this year wasn't too impressive. We won three, lost six and tied one. We triumphed over Mocksville 27-14, Norwood 21-7 and Badin 45-0. We lost a heart-breaker to Granite Quarry in the last 30 seconds when they went 50 yards for a touchdown. We were leading at the half time by a score of 12-0.

Bobby Beaver was high man in scoring with 53 points; Allen Cozart followed with 30; John Honeycutt and Curtis Hoffner scored 12 each. Wayne Smith and Dickie Rudisill scored 7 and 6 respectively. Tommy Dellinger scored 10 points. We had a total of 130 points for the season. Our opponents managed to score a total of 174.

Our Team next year will be composed mainly of Juniors, of these, eight are letter-men. We will lose 7 members of our squad at graduation.

Our coaches this year were Carl Rudisill and Richard Hamilton. We feel they did a fine job, and we give them our vote of thanks. We also wish to thank our managers, Bobby Heilig and Dan Tweed, for the fine job they did.



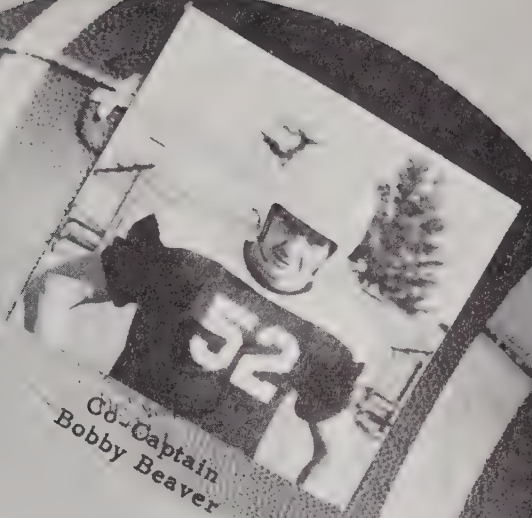


Senior Stars

K. & L. GROCERY



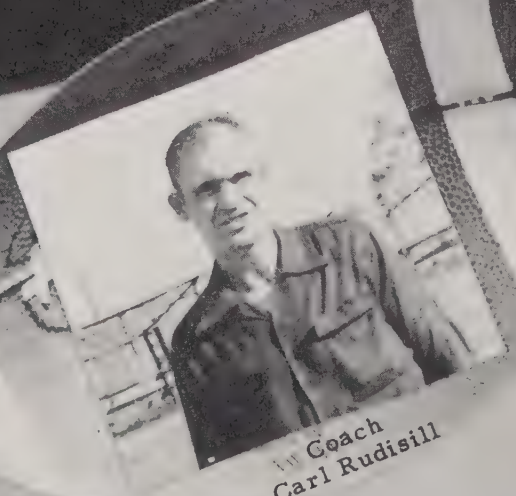
Co-Captain
Larry Barger



Co-Captain
Bobby Beaver



Coach
Richard Hamilton



Coach
Carl Rudisill

Boys' Basketball



G. L. Barringer, Harold Rhinehardt, Richard Powlas, Allen Cozart, Dick Rudisill, Wayne Smith, Tommy Dellinger, John Corl, Homer Lee Siefert, Robbie Honeycutt, "Pap" Sides, Manager, Bob Beaver, Co-Captain, Carl Rudisill, Coach, John Honeycutt, Co-Captain, Rob Corl, Manager.



COACH
Jerry Pless

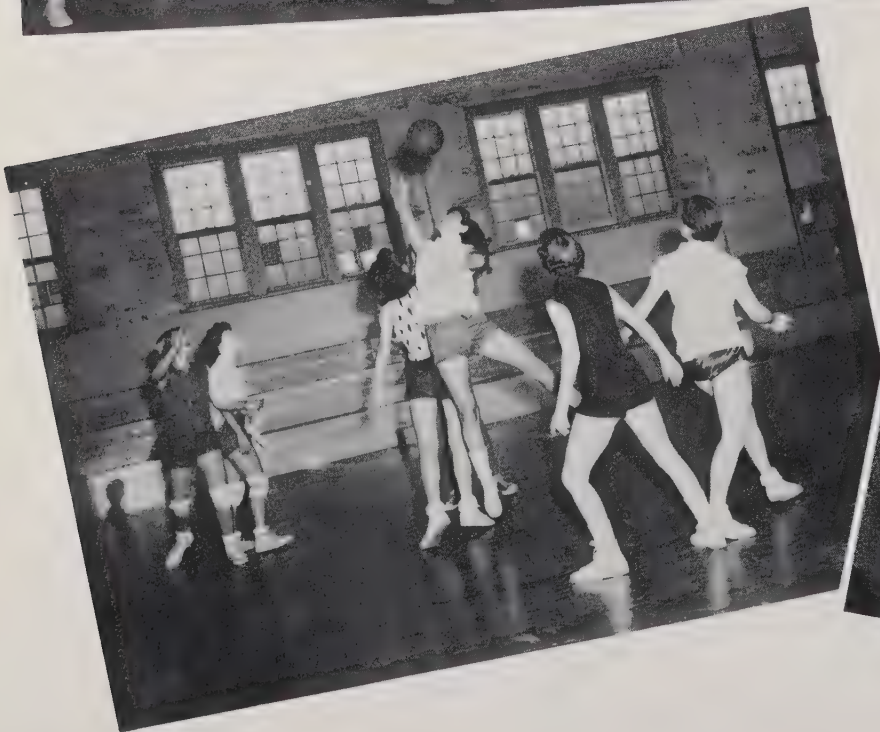
Girls' Basketball

CO-CAPTAINS
Willie Hoffner
Jackie Rattz



MOOSE & SONS
GROCERY

*Our Teams
In Action*



SPALDING

REG. U. S. PAT. OFF.
MADE IN U.S.A.



CUSHIONED CORK CENTER
YARN WOUND
9 INCH - 5 OUNCES
1883

Baseball

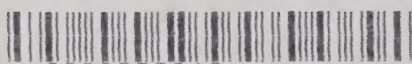


Autographs

Autographs

LOWAN PUBLIC LIBRARY
SALISBURY, N. C.

HEADQUARTERS



9000555842

