



1959

THE ROCKET





Digitized by the Internet Archive  
in 2021 with funding from  
North Carolina Digital Heritage Center

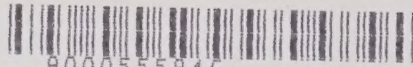
<https://archive.org/details/rocket195900rock>

ROWAN PUBLIC LIBRARY  
SALISBURY, N. C.

Donated by  
Goodwill Industries



c.1 1759 Rocket.



9000555846



# THE ROCKET

Nineteen Hundred And Fifty-Nine

PUBLISHED BY THE STUDENTS OF

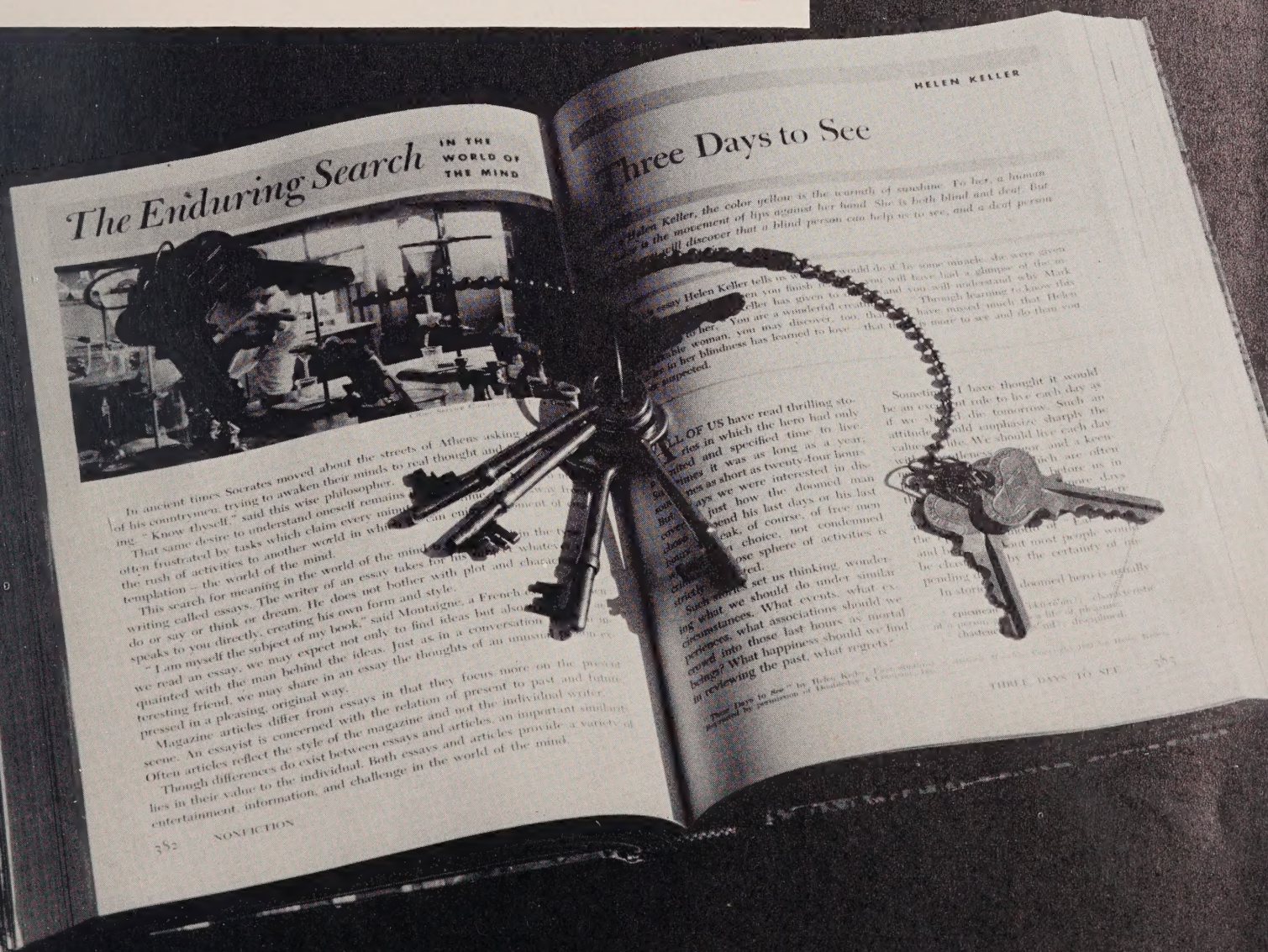
ROCKWELL HIGH SCHOOL

Rockwell, North Carolina

Editor--Sybil Penninger

Associate Editor--Jo Hoffman

ROWAN PUBLIC LIBRARY  
SALISBURY, N. C.



the keys to

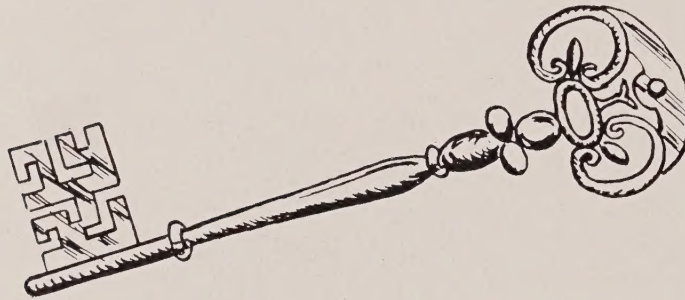
*Unforgettable Memories*



# Foreword

The 1959 edition of the Rocket has been published with one purpose: to capture a year between its covers. Although life at Rockwell High School consists of many things too intangible to portray, there are many events that we would like to recall. In the coming years we may recall these events----joyous and otherwise---by using this book as the key to unforgettable memories.

Students, we give you your 1959 Rocket.



# Contents

DEDICATION  
ADMINISTRATION  
FACULTY  
CLASSES  
ACTIVITIES  
ATHLETICS





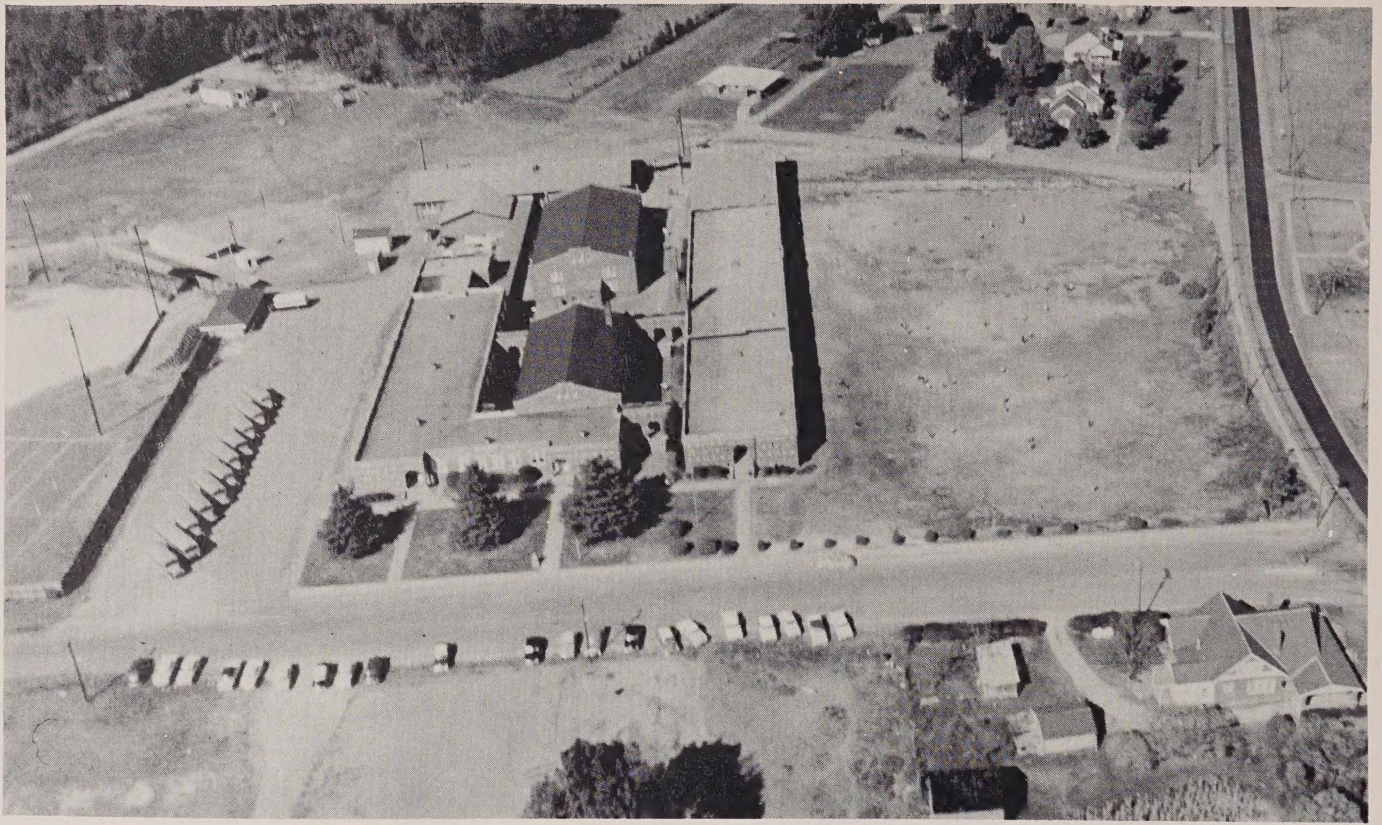
MRS. LEWIS BOST

To Mrs. Lewis Bost, whom we esteem for her integrity, admire for her unfailing energy and sincerity, and honor for her service. Her wisdom and helping hand has brought sunshine into the lives of many.

May this dedication of the 1959 Rocket express in some measure our appreciation for the outstanding service she has rendered to Rockwell High School.

# *Dedication*

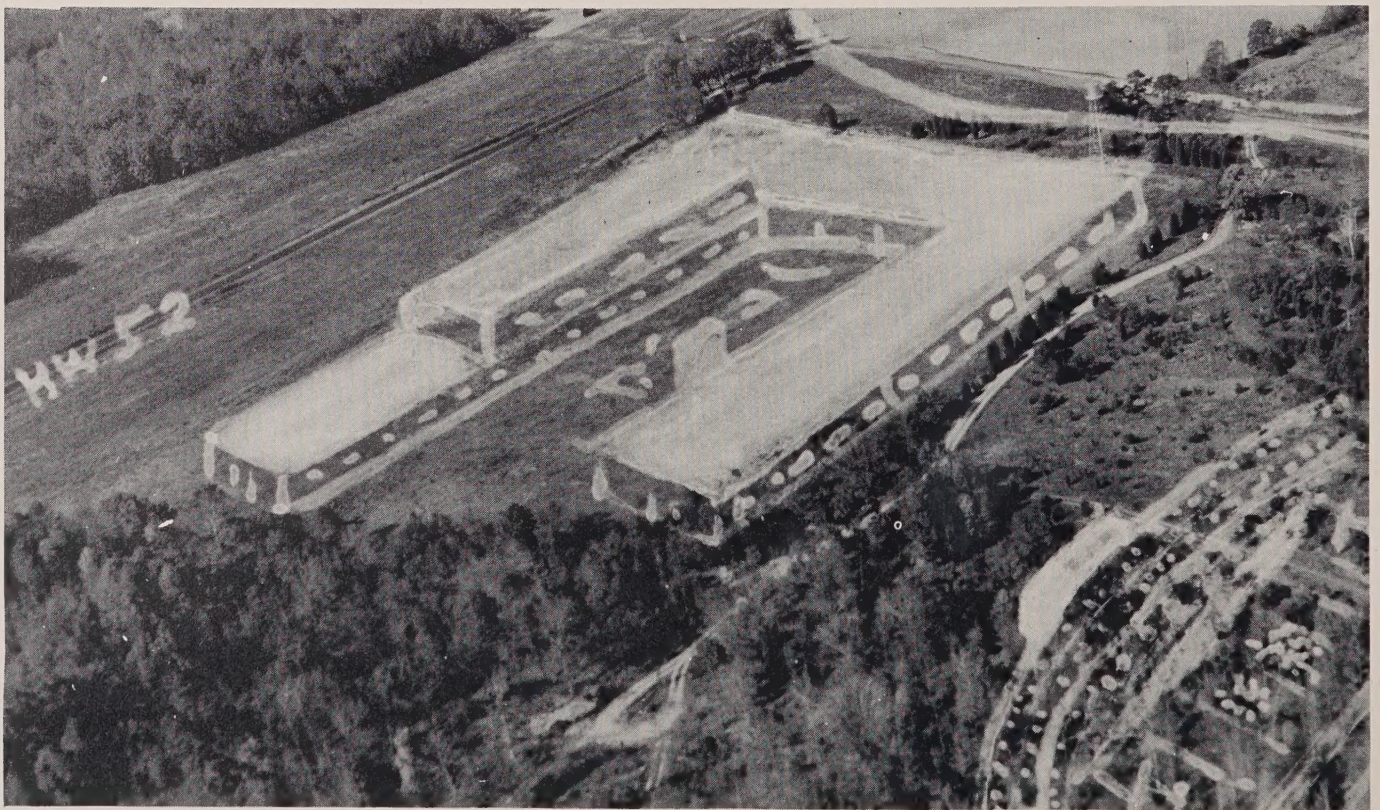




## Rockwell High School

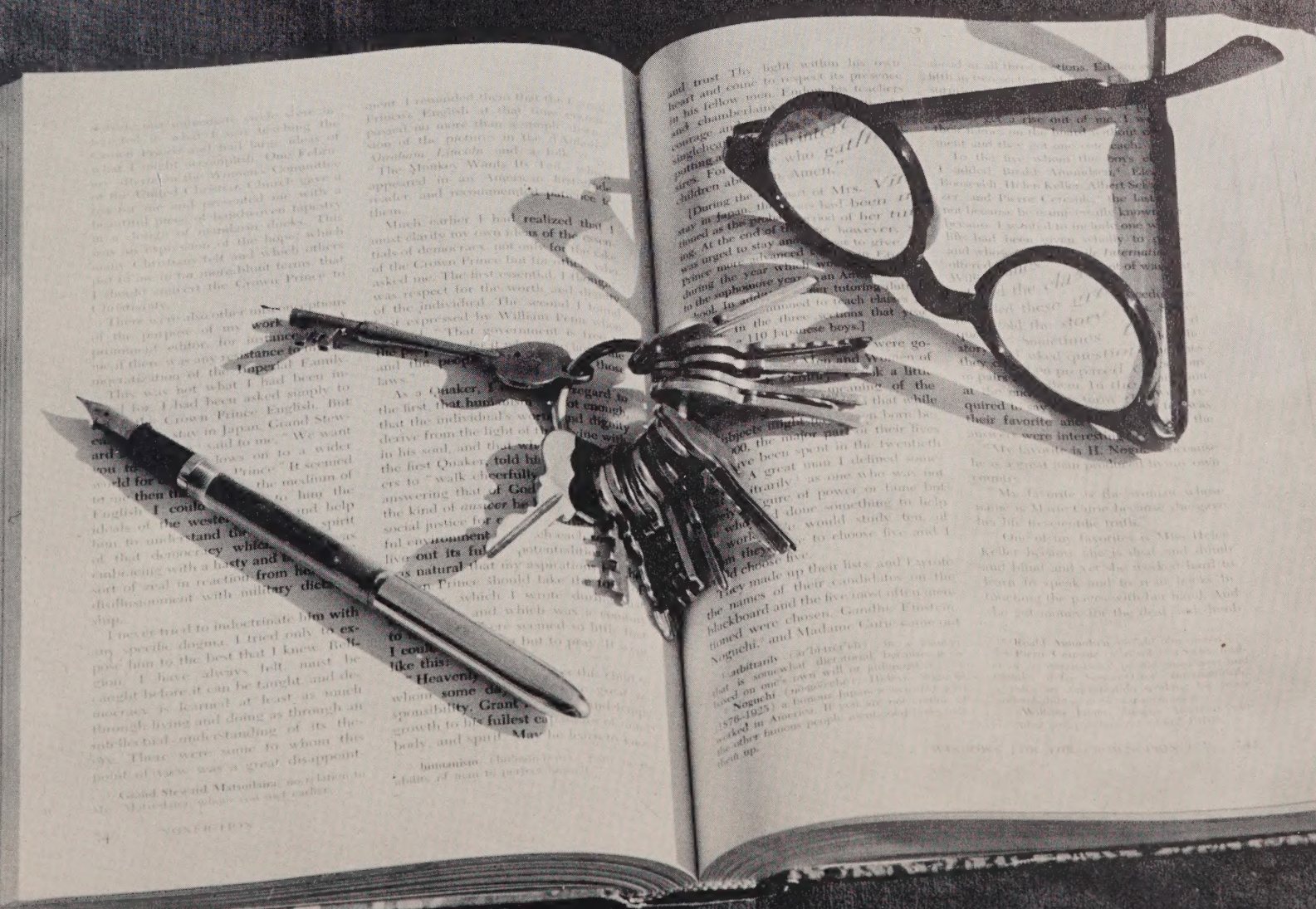
We have been told that there is nothing constant in the world except change. It is time to change to a new era that has been thrust upon us. Jet planes fly faster than sound, radar eyes and ears see and hear around the world. Missiles, not only shoot from continent to continent, but reach out into the vast space beyond our sphere. Hundreds of other mechanisms have become a part of our daily lives and make it mandatory that education keep pace with these stupendous advances. Our new home was conceived in scientific thinking and planning that would have startled school builders of a generation ago. Education must advance, "FOREWARD."

## Our Future Home





# Administration





# Principal

In a few days the key will again turn the lock in the door which will close another year of school.

To the senior class, it will close the door to its high school days. What keys will be used then? Will they open doors to colleges, to industry, to professions, to the establishment of new homes?

Most of all, you will remember the many keys that we have used to open the doors of happiness on many of our high school days. Time will mellow and sweeten these memories until they will become very near and dear to us.

Whatever keys we use for our future, may we always open doors to happiness and abundant and useful living.

J. W. Puckett







SUPERINTENDENT OF ROWAN COUNTY SCHOOLS  
Mr. C. C. Erwin

P. T. A. OFFICERS



Mr. Ben Brown,  
President  
Mrs. C. L. Helderman,  
Vice-President  
Mrs. Ray Yost, Secretary  
Mr. Barnard Bost,  
Treasurer

SCHOOL BOARD



Mr. Roy Dellinger  
Mr. Frank King

Mr. C. L. Helderman  
Mr. Glenn Misenheimer



# Faculty



MRS. PATRICIA I. BARROW  
Science, Math  
Catawba College, A. B.  
Granite Quarry, N.C.

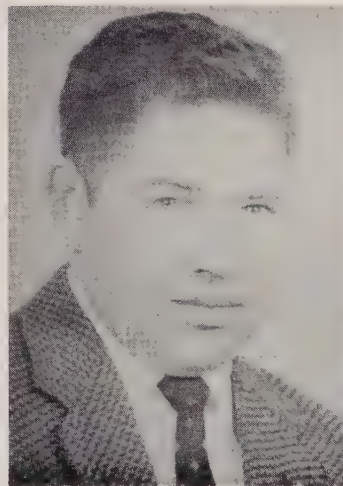


MRS. LEWIS BOST  
English  
Queen's College, A. B.  
Rockwell, N. C.

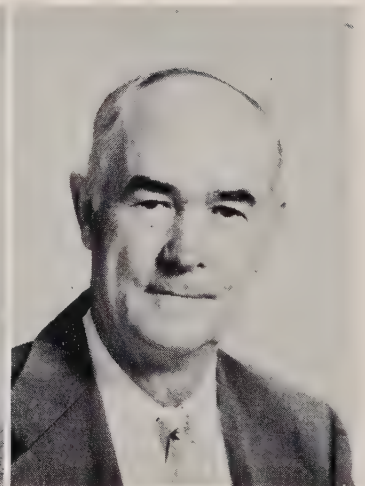


MRS. FRED BOYD  
Commercial, School Secretary  
Woman's College, U. N. C., B. S., S. A.  
Salisbury, N. C.

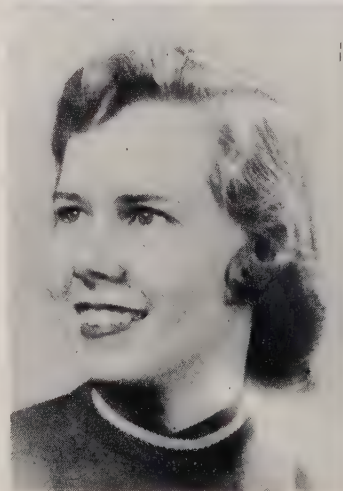
MR. RAY A. BRAWLEY  
Science  
Catawba College, A. B.  
Mooresville, N. C.



MR. J. M. CONRY  
Agriculture  
George Peabody College, B. S.  
Rockwell, N. C.



MISS CAROLINE HAYES  
Home Economics  
Woman's College, U. N. C., B. S.  
Salisbury, N. C.



MRS. CHARLES HONEYCUTT  
Band  
Appalachian State Teachers College, B. S.  
Granite Quarry, N. C.





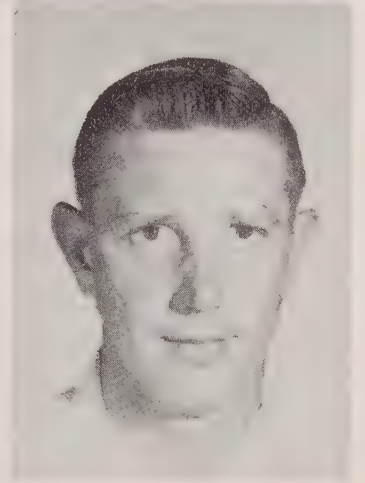
# Faculty

MRS. ROBERT C. LEE  
English, Sociology  
Catawba College, A. B.  
Salisbury, N. C.



MRS. CHARLES PAGE  
Bible  
Southwestern University, A. B., B. R. E.  
Granite Quarry, N. C.

MR. JERRY PLESS  
Social Science, Physical Education  
Lenior Rhyne College, A. B.  
Landis, N. C.

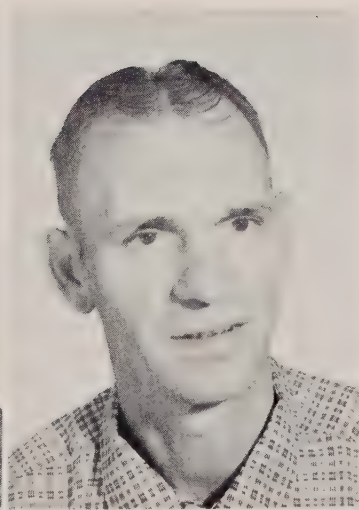


MRS. J. G. PUCKETT  
Library, English, French  
Woman's College, U. N. C., A. B.  
Rockwell, N. C.

MR. CARL RUDISILL  
Social Science, Physical Education  
Appalachian State Teachers College, B. S.  
Rockwell, N. C.

MR. C. D. SIDES  
Mathematics  
High Point College, A. B.  
Concord, N. C.

MISS PEARL SULLIVAN  
Business Education  
Pfeiffer College, B. S.  
Rockwell, N. C.





# Faculty

## "On Guard"



Miss Sullivan--trying to teach her Typing I class the keyboard.

Mrs. Page--reading in preparation for teaching Bible I and II.



Mr. Pless--surrounded by the maps he uses in U. S. History.

Mrs. Bost--preparing to read the autobiographies of her sophomore English class.



Mr. Brawley--contemplating the problems of Physics.



# Seniors





## OFFICERS

President, Tony Lyerly  
Vice-President, Joe Freeze  
Secretary, Jimmy Shaver  
Treasurer, Sybil Penninger



# Seniors

## SPONSORS



Mrs. Patricia I. Barrow



Mrs. Charles Page



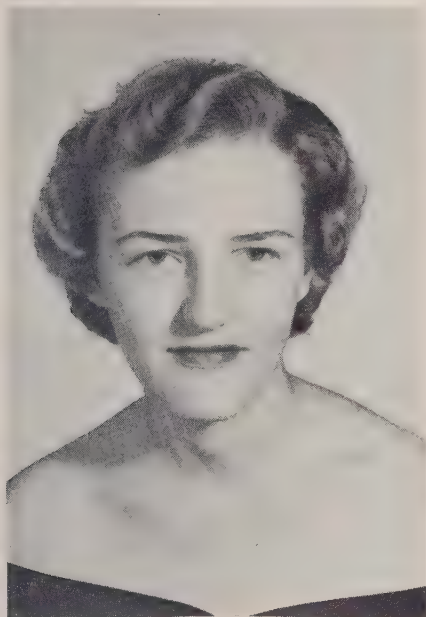
Mrs. Robert C. Lee



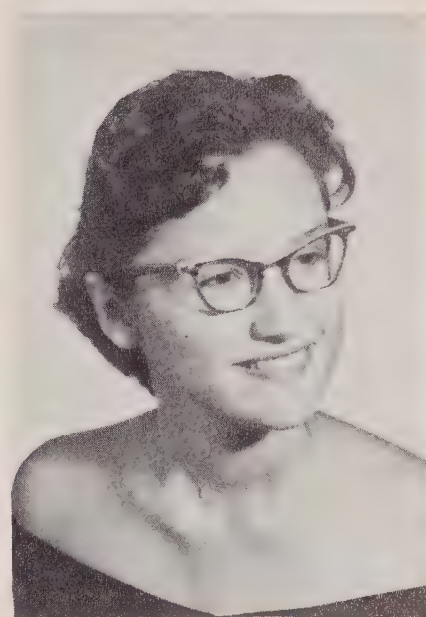
Mrs. J. G. Puckett



# Seniors



ELTHA CHRISTINE BAME  
"She is quiet, and modest, and tells  
her secrets to few."



CLAIRE JANE BARRINGER  
"Those of real goodness are never  
forgotten."



SANDRA LEE BEAVER  
"Honest labor bears a lovely face."



RACHEL CAROLYN BOST  
"Happy-go-lucky; fair and free."



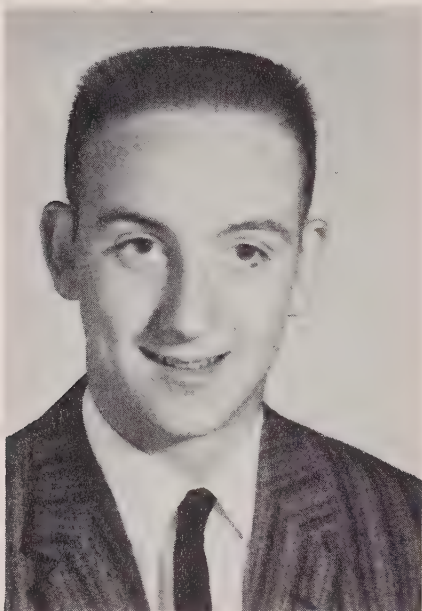
KAREN JOAN BOSTIAN  
"Sweetness and kindness go well to-  
gether."



BETTY CHARLOTTE BROWN  
"Slender are her features, and kind  
her smile."



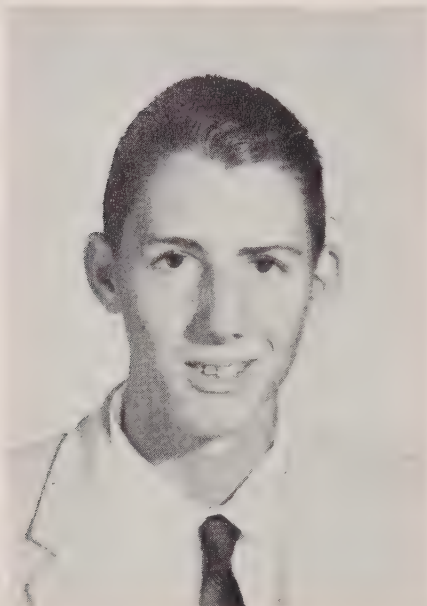
# Seniors



BYRON WALLACE BROWN  
"Tell him of Jacob's ladder and he'll  
ask you the number of rounds."



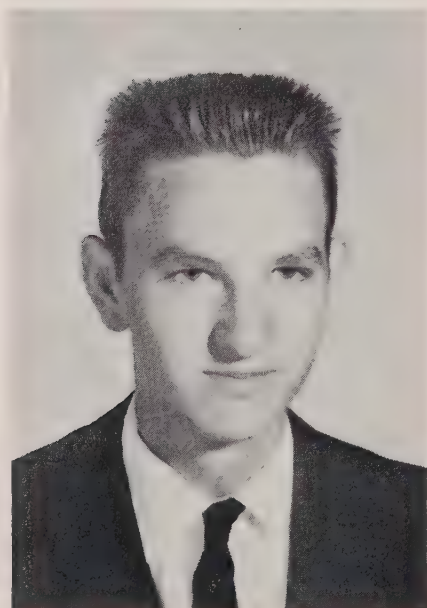
LUCETTA ANN BROWN  
"Manners so kind, yet stately."



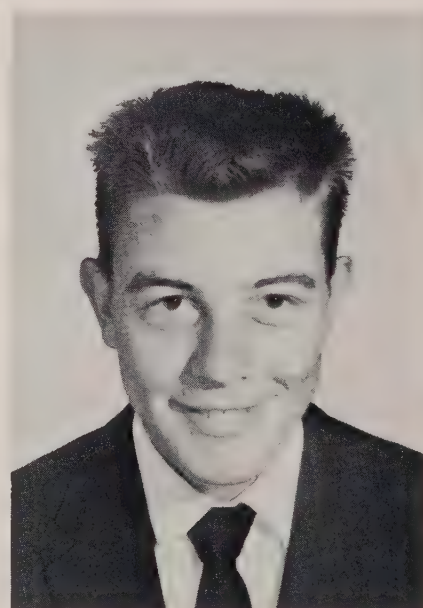
MARVIN FRED BROWN, JR.  
"It is good to live and learn."



KAY CAROLYN CAUBLE  
"Always strive to do one's best and  
success you will find."



CHARLES HARRY EARNHARDT  
"A friendly, jolly way he had."



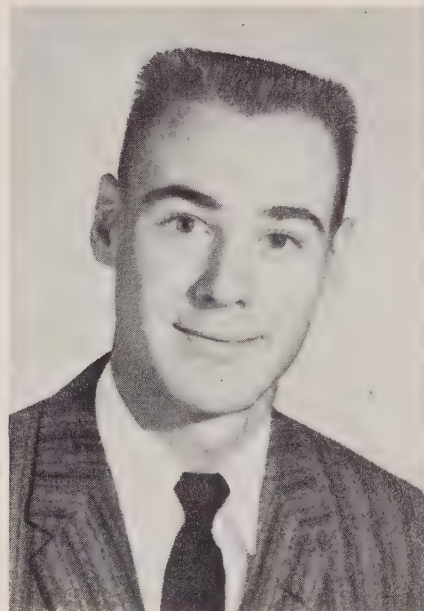
ROBERT LEE EFRID  
"The only way to have a friend is to  
be one."



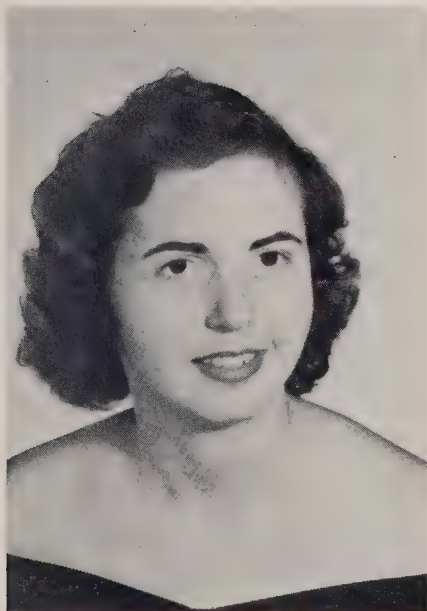
# Seniors



GAILYA ELAINE FOWLER  
"It is better to have a little than nothing."



JOE WAYNE FREEZE  
"Tall and stately in appearance yet gay and full of fun."



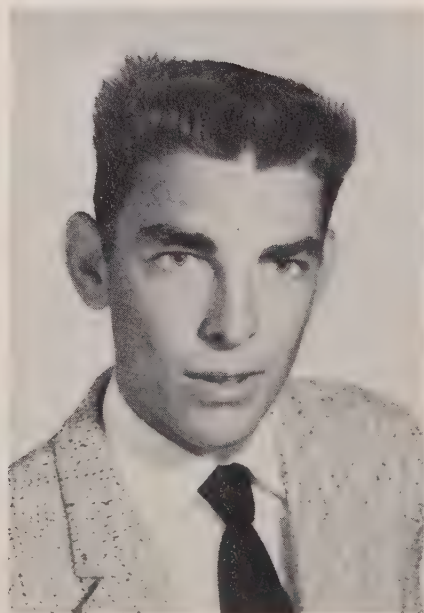
GAY ERLENE FRICK  
"Speech is silver; silence is golden."



LOTTIE GAYNELL GALLOWAY  
"Such is she, you can't help liking her company."



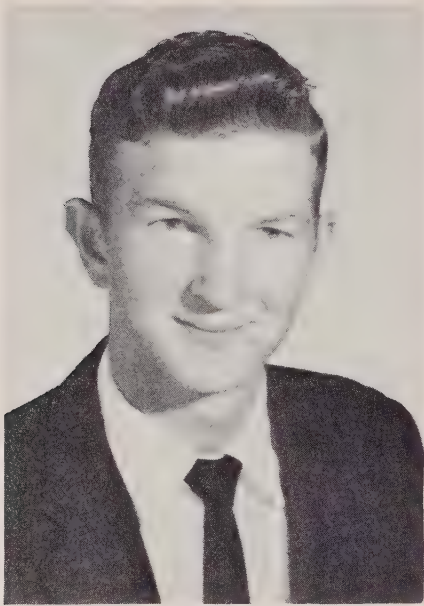
CLARA LEIGH GOODMAN  
"A genius when it comes to sports."



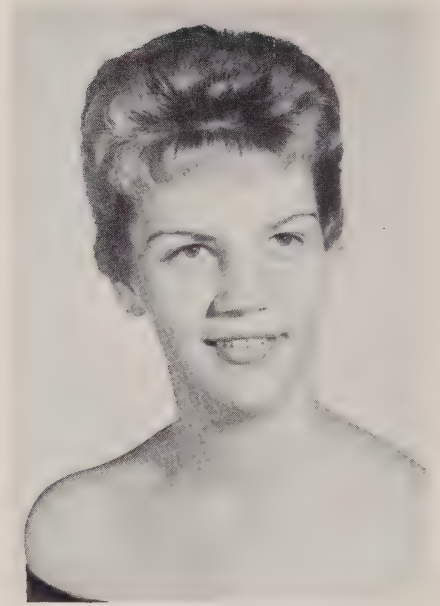
GERALD WAYNE GOODMAN  
"All this and education too."



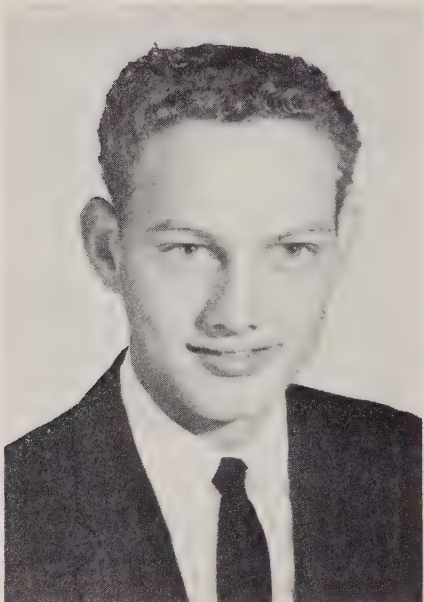
# Seniors



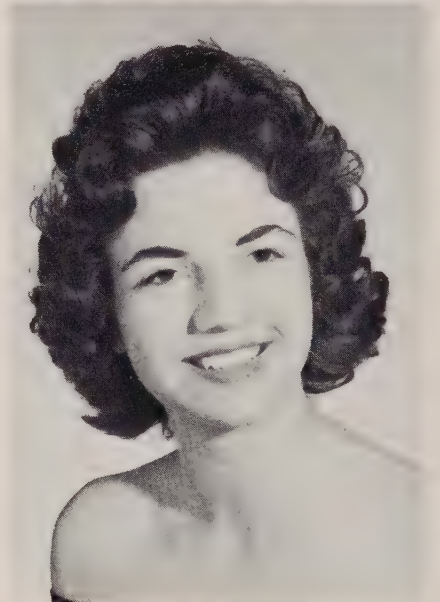
ROBERT LEE GOODMAN  
"Why be serious, let's be happy."



BRENDA KAY HEGLAR  
"Sweet and stately with all the grace of womanhood."



BOBBY GENE HEILIG  
"The more the merrier."



ANN CAROLE HELDERMAN  
"One of those all around persons, so rarely found."



MARY IDA HODGE  
"Music is a gift of the gods, and she has been well-blessed."



JO ELAINE HOFFMAN  
"They are never alone that are accompanied by noble thoughts."



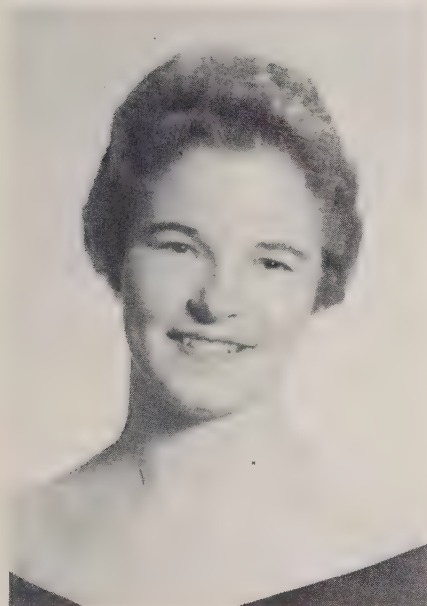
# Seniors



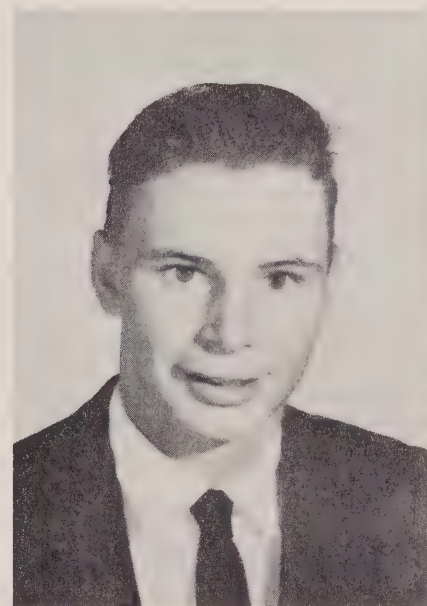
BETTY ANNE HOLSHOUSER  
"The time to be happy is today."



MITCHEL CLAYTON HOLSHOUSER  
"Men of few words are the best men."



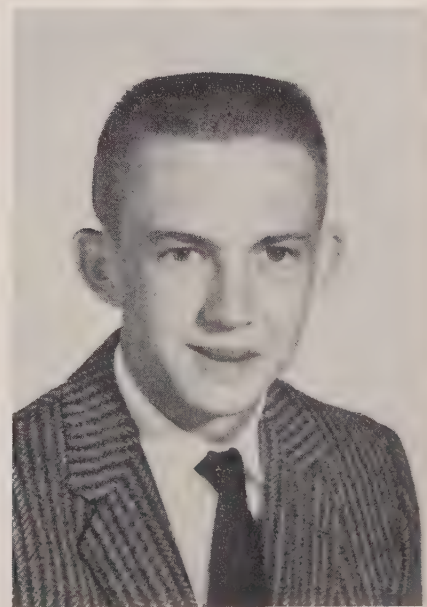
PATSY JO HOLSHOUSER  
"Where there's a will, there's a way."



GRADY EUGENE HOUSE  
"Bashfulness is an ornament to youth."



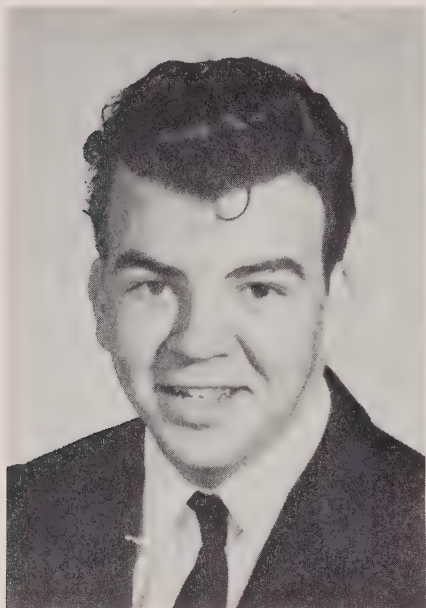
LEE ROY KIRK  
"He is modest, he is shy, but there's mischief in his eyes."



CHARLES THOMAS LEFLER  
"I am what I am and so will I be."



# Seniors



**ANTHONY TERRY LYERLY**  
"He has abundant good nature and a sunny smile."



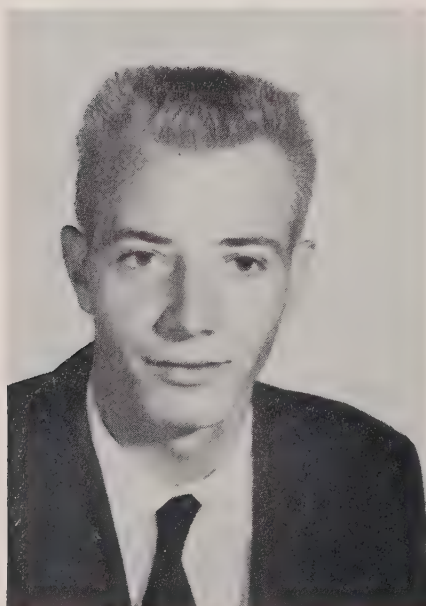
**ANIS VADA MANERS**  
"Of manners gentle; of affections mild."



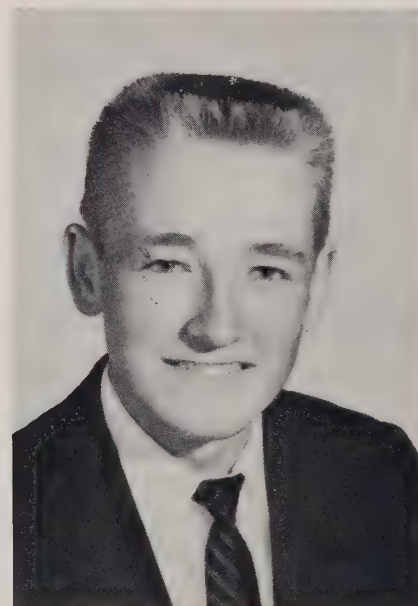
**DORIS JEANETTE MARTIN**  
"Good things come in small packages."



**ROBERT LEE MILLS**  
"He plays the game well, but most outstanding are his ideals of clean sportsmanship."



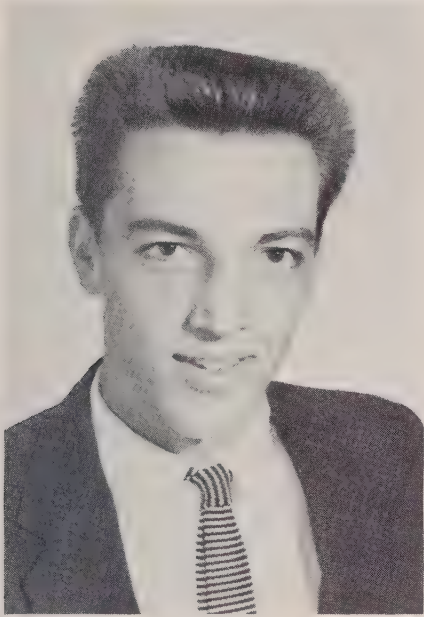
**ARNOLD DWIGHT MORGAN**  
"Though you were dying, he would make you laugh."



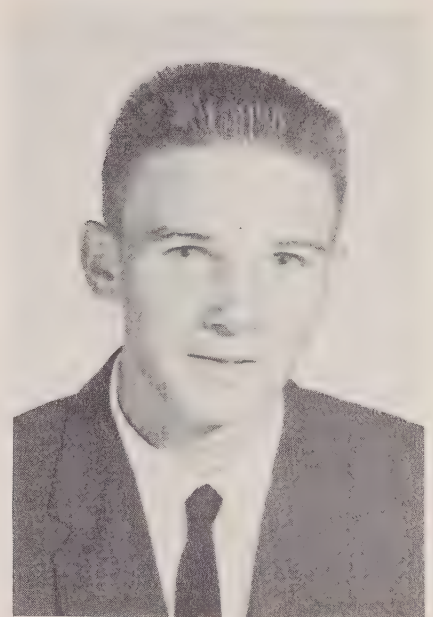
**BOBBY WAYNE MORGAN**  
"Thought is deeper than all speech."



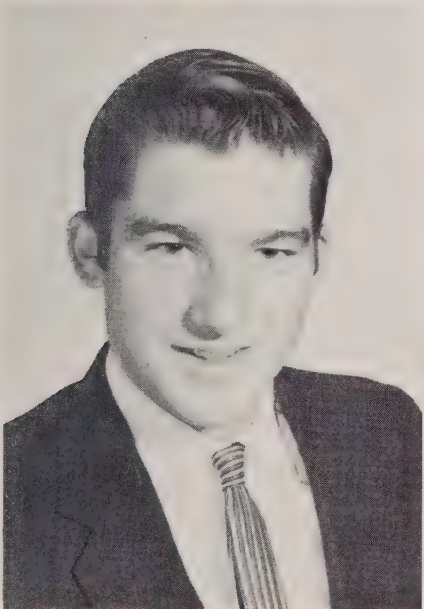
# Seniors



BRONNIE LARRY MORGAN  
"One of those all around boys so rarely found."



JERRY WAYNE MORGAN  
"Foot loose and fancy free."



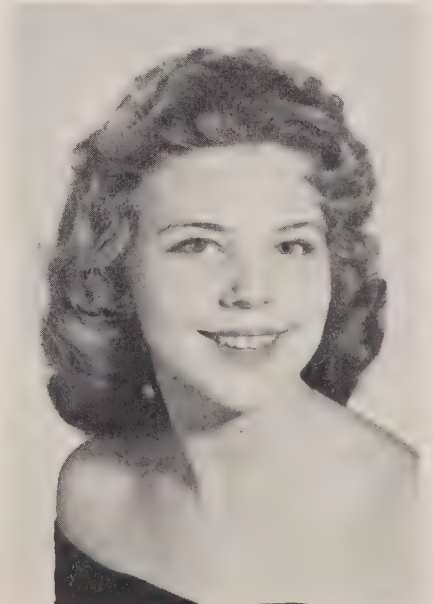
LOY CLINTON MORGAN  
"A merry heart maketh a cheerful countenance."



SHIRLEY ANNE OWENS  
"Life without laughter would be a dreary book."



SYBIL HENDRIX PENNINGER  
"Nothing succeeds like success."



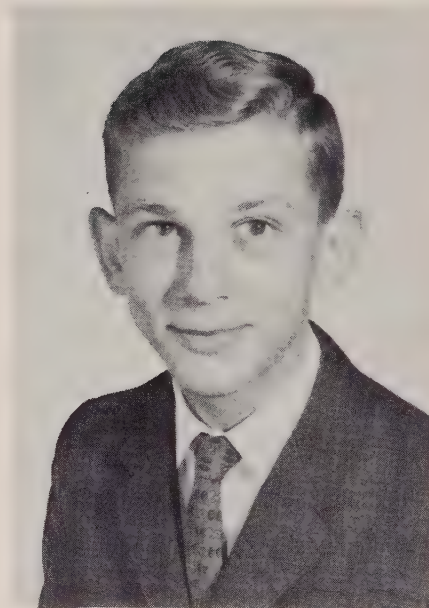
BETTY SUE PETREA  
"A mighty spirit fills that little frame."



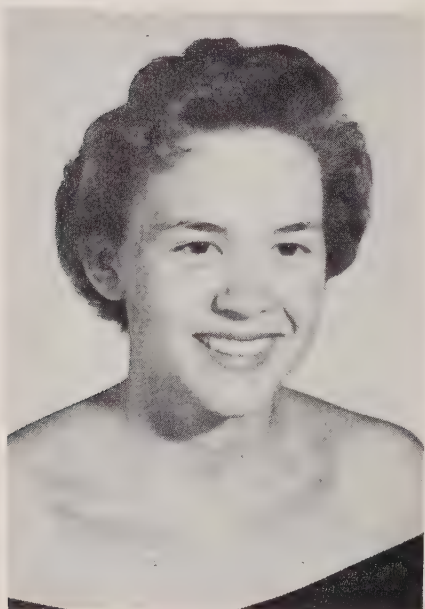
# Seniors



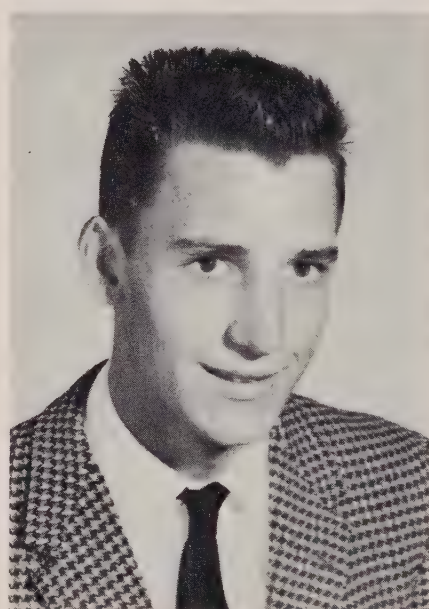
SARA KATE PUCKETT  
"With a personality all her own."



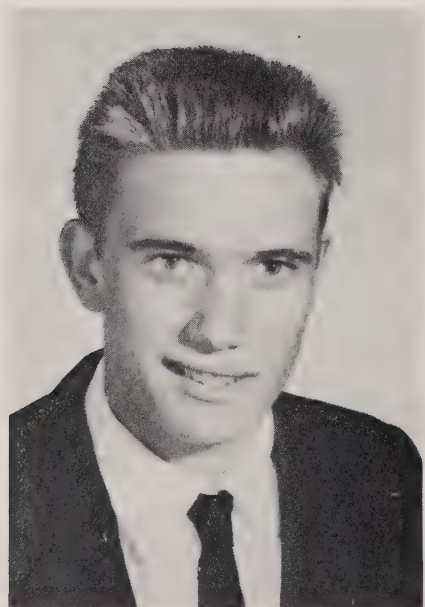
JAMES WILLIAM RIDENOUR  
"I'll get by somehow."



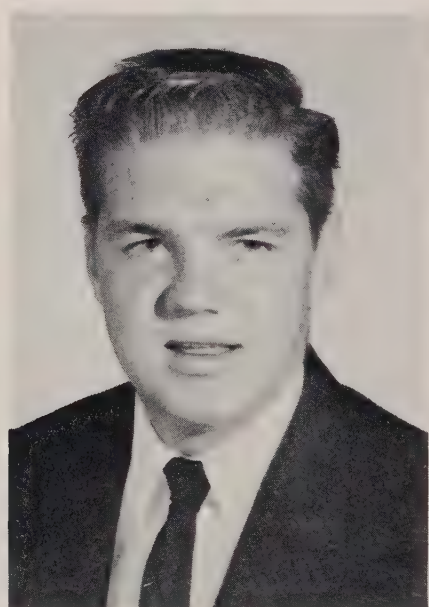
MARSHALL RUTH SETZER  
"In her tongue is the law of kindness."



JIMMY ANDREW SHAVER  
"I'll not budge an inch."



JOHNNY ANDREW TREXLER  
"Not a worry, not a care; my joy I  
like to share."



JOHN NAPOLEON TREXLER  
"Always jolly, never sad; sometimes  
naughty, never bad."



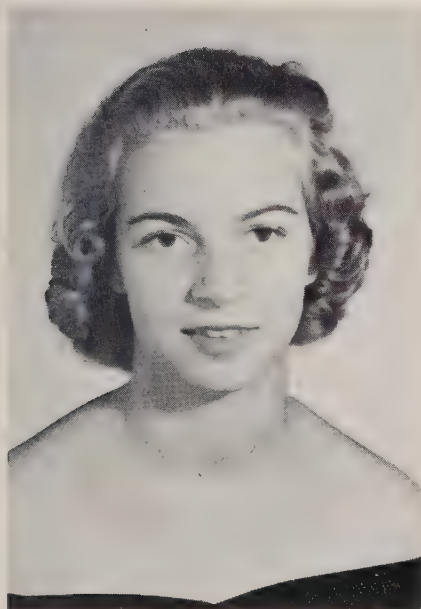
# Seniors



MARGIE ERLENE TROUTMAN  
"Intelligent with a knowledge of how  
to be so."



GRADY EUGENE WAGNER  
"Life is what you make it."



PATRICIA ANNE WAGONER  
"Leave silence to the saints; I am but  
human."



LINDA GAIL WHITT  
"Those dimples and smiles would  
stir the hardest heart."

CLASS COLORS  
Green and White

CLASS FLOWER  
Carnation

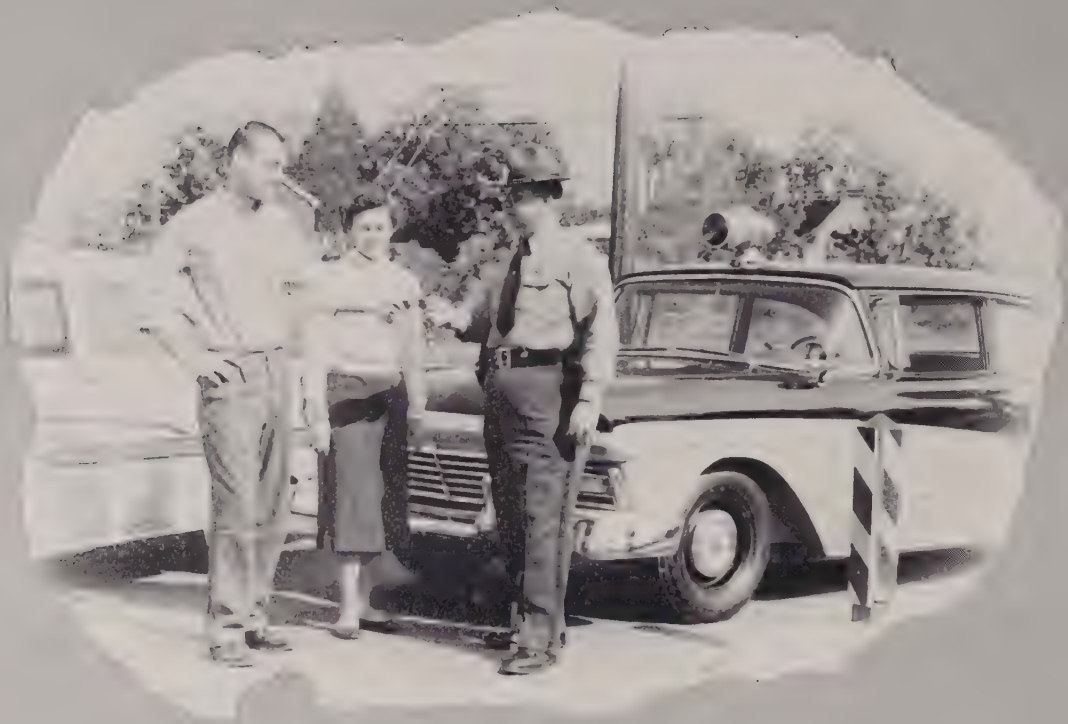
MOTTO  
"Not merely to exist, but to amount  
to something in life."

MASCOTS  
Sonia Shenk  
Eddie Odom





# Superlatives



**BEST ALL AROUND**  
Joe Freeze - Marshall Setzer



**QUIETEST**  
Mickey Holshouser - Betty Brown



**MOST POPULAR**  
Tony Lyerly - Claire Jane Barringer



# Superlatives



**MOST LIKELY TO SUCCEED**  
Jimmy Shaver - Sybil Penninger



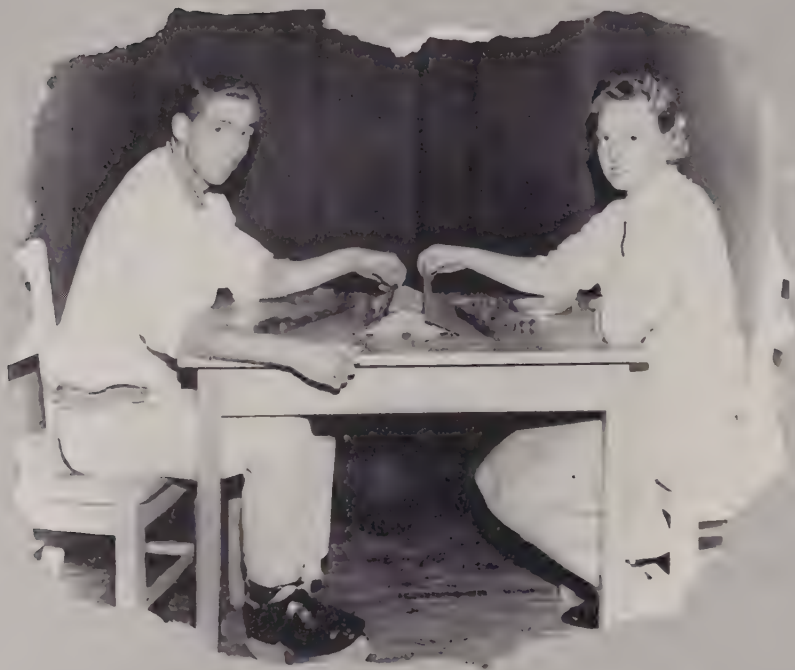
**BEST DRESSED**  
Tommy Lefler - Brenda Heglar



**WITTIEST**  
Dwight Morgan - Shirley Owens



# Superlatives



**MOST ATHLETIC**  
R. L. Mills - Clara Leigh Goodman



**BEST LOOKING**  
Bobby Heilig - Linda Whitt



**MOST TALENTED**  
Bobby Morgan - Mary Ida Hodge



# Senior Activities

ELTHA CHRISTINE BAME: Beta Club-3,4; Waitress at Junior-Senior Banquet-2; 4-H Club-1,2; Junior Talent Show-3; Office Worker-3; Cafeteria Worker-2.

CLAIRE JANE BARRINGER: Glee Club-2,3,4; Co-Ed Hi-Y Club-3,4; Assistant Treasurer-4; Monogram Club-3,4; 4-H Club-3,4; Junior Talent Show-2,3; FTA-4; Class officer Secretary-3; Halloween Queen-2; Annual Staff-3,4; Business Manager-4; Hi-Light Staff-3,4; Editor-in-Chief-4; Band-1,2,3,4; Junior Marshal-3; Superlative-Most Popular-4; Homecoming Attendant-2; Bible Club-4; President-4; Beta Club-4; Office Worker-4; Runner-up Homecoming Queen-4.

SANDRA LEE BEAVER: Beta Club-4; Co-Ed Hi-Y Club-3,4; Historian and Reporter-3; FHA-1,2,3,4; Reporter-3; President-4; Annual Staff-4; Business Manager-4; Hi-Light Staff-3,4; Assistant Business Manager-3; Clubs Editor-4; Glee Club-2,3,4; 4-H Club-1,2,3,4; FTA-4; Monogram Club-2,3,4; Bible Club-2; Library Club-2; Band-1; Basketball Manager-1; Waitress Junior-Senior Banquet-2; Talent Show-2,3; Pep Club-3; President-3.

RACHEL CAROLYN BOST: FHA-1,2,3,4; Glee Club-2,3,4; Music Student-2,3; Annual Staff-3; Hi-Light-4; Talent Show-3; Usher-3; Halloween Queen-3; Attendant Homecoming-3,4; French Club-3; Secretary-3; Library Club-3; 4-H Club-1,2,3,4; FTA-4; President-4; Pep Club-3.

KAREN JOAN BOSTIAN: Glee Club-4; Bible Club-4; Pep Club-3.

BETTY CHARLOTTE BROWN: Band-1,2; Glee Club-3,4; 4-H Club-1,2,3,4; FHA-3,4; French Club-3,4; Library-4; Junior Talent Show-3; FTA-4; Monogram Club-1,2,3; Pep Club-3.

BYRON WALLACE BROWN: Football-3,4; Basketball-4; Junior Talent Show-3; Monogram Club-4; Glee Club-3,4; Annual Staff-4; Candidate for Homecoming King-4; Transferred from Tubman Junior High: Junior Classical League-2; Junior Fire Marshal-1,2; Guidance Officer-2; Library Worker-2; Lost and Found Worker-2.

LUCETTA ANN BROWN: FHA-1,2,3,4; 4-H-1,2,3,4; Glee Club-2,3,4; Library Club-4; Bus Driver-3,4; Talent Show-2,3; Bible Club-4.

MARVIN FRED BROWN, JR.: Class Officer-Vice President-1; Library Club-3; Talent Show-3; FFA-1,2,3,4; Glee Club-2,3,4; 4-H-1,2,3,4; Annual Staff-4.

KAY CAROLYN CAUBLE: 4-H-1,2,3,4; FHA-1,2,3,4; Glee Club-2,3,4; Hi-Light Staff-3,4; Typist-3; Annual staff-3,4; Typist-4; Music Student-1,2,3; French Club-3,4; Library Club-1,2,3,4; Reporter-3; Beta Club-3,4; Junior Talent Show-3; Bible Club-2; FTA-4; Pep Club-3.

CHARLES HARRY EARNHARDT: Band-1,2,3,4; Cheerleader-2,3,4; Assistant Chief-3; Chief-4; Junior Talent Show-3; Bible Club-2,4; Bible Club Play-2; Library Club-4; Glee Club-2; Monogram Club-2,3,4.

ROBERT LEE EFIRD: Bible Club-2; Glee Club-3,4; Talent Show-3; 4-H Club-4.

GAILYA ELAINE FOWLER: Glee Club-2,3,4; 4-H-1,2,3,4; Library Club-1,2,3,4; FHA-1,2,3,4; FTA-4; Bus Driver-3,4; Talent Show-1,2,3; Cafeteria Worker-2; Bible Club-4.

JOE WAYNE FREEZE: Band-1,2; Basketball-1,2,3,4; Baseball-2,3,4; Glee Club-3,4; Beta Club-3,4; President-4; Halloween King-3; Talent Show-3; 4-H-1,2; Superlative-Best all around-4; Bible Club-2; Class Officer-Vice President-4; Junior Marshal-3; Annual Staff-4; Monogram Club-2,3,4; Co-Ed Hi-Y Club-3,4; Vice President-4.

GAY ERLENE FRICK: Bible Club-2; French Club-3,4; Talent Show-3; Usher-3; Cafeteria Worker-1,2,3,4; Beta Club-4.

LOTTIE GAYNELL GALLOWAY: 4-H-1,2,3,4; Library Club 3-4; President-3; Cheerleader-3,4; Glee Club-2,3,4; FHA-2,3,4; Monogram Club-4; Talent Show-3; French Club-3; Bible Club-4; Pep Club-3.

CLARA LEIGH GOODMAN: Basketball-1,2,3,4; Beta Club-3,4; Monogram Club-3,4; Superlative-Most Athletic; Candidate for Halloween Queen-4.

GERALD WAYNE GOODMAN: FFA-1,2,3,4; Talent Show-3; Band-1,2; 4-H 1,2,4.

ROBERT LEE GOODMAN: FFA-1,2,3,4; Judging team-1,2,3; Parliamentary procedure-1,2; 4-H-1,2,3,4; Bus Driver-4; Band-1,2,3,4; Monogram Club-3,4; Talent Show-3.

BRENDA KAY HEGLAR: Glee Club-2,3,4; Junior Talent Show-2,3; Annual Staff-4; Typist-4; Superlative-Best Dressed-4; Pep Club-3; Homecoming Attendant-4.

BOBBY GENE HEILIG: Bible-2; Talent Show-3; Monogram Club-1,2,3,4; Bible Club Play-2; Superlative-Best Looking-4.

ANN CAROLE HELDERMAN: Band-1,2,3,4; President-3, Councilman-4; Most improved-2; FHA-1,2,3,4; Treasurer-2; President-3; Assistant Advisor-4; N.C.'s candidate for National Historian-3; 4-H-1,2,3,4; Reporter-2; SongLeader-3; Assistant Program Chairman-4; French Club-3,4; Reporter-4; Co-Ed Hi-Y Club-3,4; Treasurer-4; Glee Club-2,3,4; Hi-Light-2,3,4; Reporter-2; Assistant Business Manager-3; Business Manager-4; Annual Staff-3,4; Monogram Club-2,3,4; FTA-4; Song Leader-4; Talent Show-1,2,3; Miss Rockwell High-4; Homecoming attendant-1; Halloween Queen candidate-1, Junior Marshall-3; Scholarship Award-1; Music Student-2; Beta Club-3,4; Class Officer-Secretary-1.

MARY IDA HODGE: FHA-1,2,3,4; Reporter-2; Historian-3; Treasurer-4; Band-1,2,3,4; Librarian-2,3; Councilman-4; 4-H-1,2,3,4; Pianist; Monogram Club-2,3,4; Annual Staff-3,4; Hi-Light Staff-3,4; Business Manager-3; Elementary Editor-4; FTA-4; Co-Ed Hi-Y Club-3,4; Secretary-4; Talent Show-1,2,3; Class Officer-Secretary-3; Glee Club-2,3,4; Pianist; French Club-3,4; President-4; Chief Junior Marshall-3; Superlative-Most Talented-4; Scholarship Award-2,3; Beta Club-3,4.

JO ELAINE HOFFMAN: 4-H-1,2; Monogram-3,4; Band-1,2,3,4; Councilman-3; Most improved-3; President-4; French Club-3,4; Treasurer-3; Glee Club-2,3,4; FTA-4; Vice President-4; Bus Driver-4; Bible Club-2; Talent Show-3; Hi-Light Staff-4; Beta Club-3,4; Annual Staff-3,4; Associate Editor-4; Junior Marshall-3; Co-Ed Hi-Y Club-4; Music Student-3.

BETTY ANN HOLSHOUSER: Glee Club-2,3,4; 4-H-1,2,3,4; FHA-4; Usher at Junior Talent Show-3; FTA-4; Pep Club-3.

MITCHELL CLAYTON HOLSHOUSER: Baseball-2,3,4; 4-H-1,2; FFA-1,2,3,4; Monogram Club-2,3,4; Superlative-Quietest-4; Talent Show-3; Band-1.



# Senior Activities

PATSY JO HOLSHOUSER: Beta Club-3,4; Co-Ed Hi-Y Club-3,4; President-3,4; Glee Club-2,3,4; FHA-1,2,3,4; Historian-4; Bible Club-2; FTA Club-4; Secretary-4; Drum Major-ette-1,2,3,4; Band Officer-4; Basketball-1; Junior-Senior Banquet Waitress-2; Talent Show-2,3; Hi-Light Staff-3,4; Feature Editor-4; Business Manager-3; Annual Staff-4; 4-H Club-1,2,3,4.

GRADY EUGENE HOUSE: FFA-1,2,3,4; Bible Club-2,4; Junior Talent Show-3; Library Club-1.

LEE ROY KIRK: 4-H Club-1,2,3; Baseball-2,3,4; Co-Ed Hi-Y Club-4; Hi-Light Staff-3,4; Sports Editor-4; Senior Class Reporter-4; French Club-3,4; Treasurer-4; Bible Club-2; Freshman Basketball-1; Talent Show-3.

CHARLES THOMAS LEFLER: FFA-1,2,3,4; Talent Show-3; Superlative-Best Dressed-4; 4-H Club-1,2.

ANTHONY TERRY LYERLY: Class Officer-Treasurer-1,2; President-3,4; Beta Club-3,4; Bible Club-2; Bible Club Play-2; Talent Show-3; Junior-Senior Banquet Waiter-2; Superlative-Most Popular-4; Monogram Club-3; 4-H Club-1,2; Glee Club-3; Annual Staff-4.

ANIS VADA MANERS: French Club-3; Junior Talent Show-3; Library Club-2,3; Secretary-3; Annual Staff-3; Officer Worker-3,4; 4-H Club-1; Music Student-1,2,3; Beta Club-4.

DORIS JEANETTE MARTIN: Glee Club-2,3,4; Library Club-2,3,4; Bible Club-4; Talent Show-2,3; Usher at Talent Show-3; Beta Club-3,4; Hi-Light Staff-4.

ROBERT LEE MILLS: FFA-1,2,3,4; Officer-3,4; Football-1,2,3,4; Basketball-2,3,4; Baseball-3,4; Monogram Club-3,4; Bus Driver-4; Co-Ed Hi-Y Club-4; Talent Show-2,3; Glee Club-4; Superlative-Most Athletic-4; Hi-Light Staff-4.

ARNOLD DWIGHT MORGAN: FFA-1,2,3,4; Officer-1,2,3,4; Baseball-1,2,3,4; Football-4; Monogram Club-2,3,4; 4-H Club-1; Talent Show-3; Class Officer-President-1,2; Assistant Treasurer-4; Superlative-Wittiest-4; Beta Club-4; Homecoming Candidate for King-4.

BOBBY WAYNE MORGAN: Basketball-1,2,3,4; Baseball-2,3,4; Talent Show-3; Glee Club-3,4; Beta Club-3,4; 4-H Club-1,2; Bible Club-2; Monogram Club-2,3,4; Junior-Senior Banquet-Waiter-2.

BRONNIE LARRY MORGAN: FFA-1,2,3,4; Baseball-2,3,4; Football-4; Talent Show-3; Bus Driver-4; 4-H Club-1,3,4; Glee Club-4; Monogram Club-3,4; Runner-up Homecoming King-4.

JERRY WAYNE MORGAN: FFA-1,2,3,4; 4-H Club-1,4.

LOY CLINTON MORGAN: FFA-1,2; Baseball-2,3,4; Football-1,4; Co-Ed Hi-Y Club-4; Glee Club-4; President-4; Monogram Club-3,4; 4-H Club-1,2,3,4; Hi-Light Staff-4; Homecoming King-4.

SHIRLEY ANNE OWENS: Bible Club-2; 4-H Club-1,2,3,4; Program Chairman-4; Junior-Senior Banquet Waitress-2; Glee Club-2,3,4; Hi-Light Staff-4; Usher at Junior Talent Show-3; Basketball-3; Superlative-Wittiest-4; Candidate for Homecoming Queen-4.

SYBIL HENDRIX PENNINGER: Band-1; Scholarship Medal-1; Bible Club-2,4; Secretary-2; Bible Club Play-2; Monogram Club-2,3,4; Music Student-1,2,3,4; Glee Club-2,3,4; Vice-President-3; Annual Staff-3,4; Editor-in-Chief-4; Class Officer-Treasurer-3,4; Hi-Light Staff-3; Typist-3; French Club-3,4; Beta Club-3,4; Reporter-4; Junior Marshal-3; Junior Talent Show-2,3; Senior Superlative-Most Likely To Succeed; Co-Ed Hi-Y Club-4; Pep Club-3.

BETTYSUE PETREA: Glee Club-2,3,4; 4-H Club-1,2,3,4; Library Club-4; Bible Club-2,4; Junior Talent Show-2,3; Usher-3; Hi-Light Staff-4.

SARA KATE PUCKETT: FHA-1,2,3; Band-1,2,3; Councilman-3; Monogram Club-2,3; Co-Ed Hi-Y Club-3; Annual Staff-2,3; Artist-3; Hi-Light Staff-1,2; Basketball Manager-1; FTA-3; Glee Club-1,2,3; Junior Talent Show-2; Waitress at Junior-Senior Prom-2; Beta Club-3.

JAMES WILLIAM RIDENHOUR: Bible Club-2; Junior Talent Show-3; Bible Club Play-2; Basketball-3,4; Glee Club-2; 4-H Club-1,2; Band-1.

MARSHALL RUTH SETZER: 4-H Club-1,2,3,4; President-4; Glee Club-2,3,4; Treasurer-4; Monogram Club-3,4; Co-Ed Hi-Y Club-4; Bible Club-2; Junior Talent Show-2,3; Beta Club-3,4; Secretary-4; Hi-Light Staff-4; Band-1,2,3,4; Councilman-2; Senior Superlative-Best All Around; Homecoming Queen-4.

JIMMY ANDREW SHAVER: FFA-1; 4-H Club-1; Baseball-1,2,3,4; Class Officer-Vice-President-1,2,3; Secretary-4; Monogram Club-2,3,4; Co-Ed Hi-Y Club-3,4; Vice-President-3; Bus Driver-4; Activity Bus Driver-4; French Club-3,4; Vice-President-4; Bible Club-2; Junior Talent Show-3; Halloween King-2; Beta Club-3,4; Waiter at Junior-Senior Banquet-2; Senior Superlative-Most Likely To Succeed.

JOHNNY ANDREW TREXLER: FFA-1,2,3,4; Baseball-1,2,3,4; Basketball-2,3,4; Monogram Club-2,3,4; Bus Driver-4; Talent Show-3; Halloween King-4.

JOHN NAPOLEON TREXLER: Band-1,2; 4-H Club-1,2,3,4; Glee Club-3,4; Junior Talent Show-2,3; Bus Driver-3; Bible Club-2; Football-3,4; FFA-3,4; Monogram Club-2,3,4.

MARGIE ERLINE TROUTMAN: Bible Club-2; Library Club-2; French Club-3,4; FTA-4; Treasurer-4; 4-H Club-2; Junior Talent-3; Glee Club-3; Beta Club-3,4.

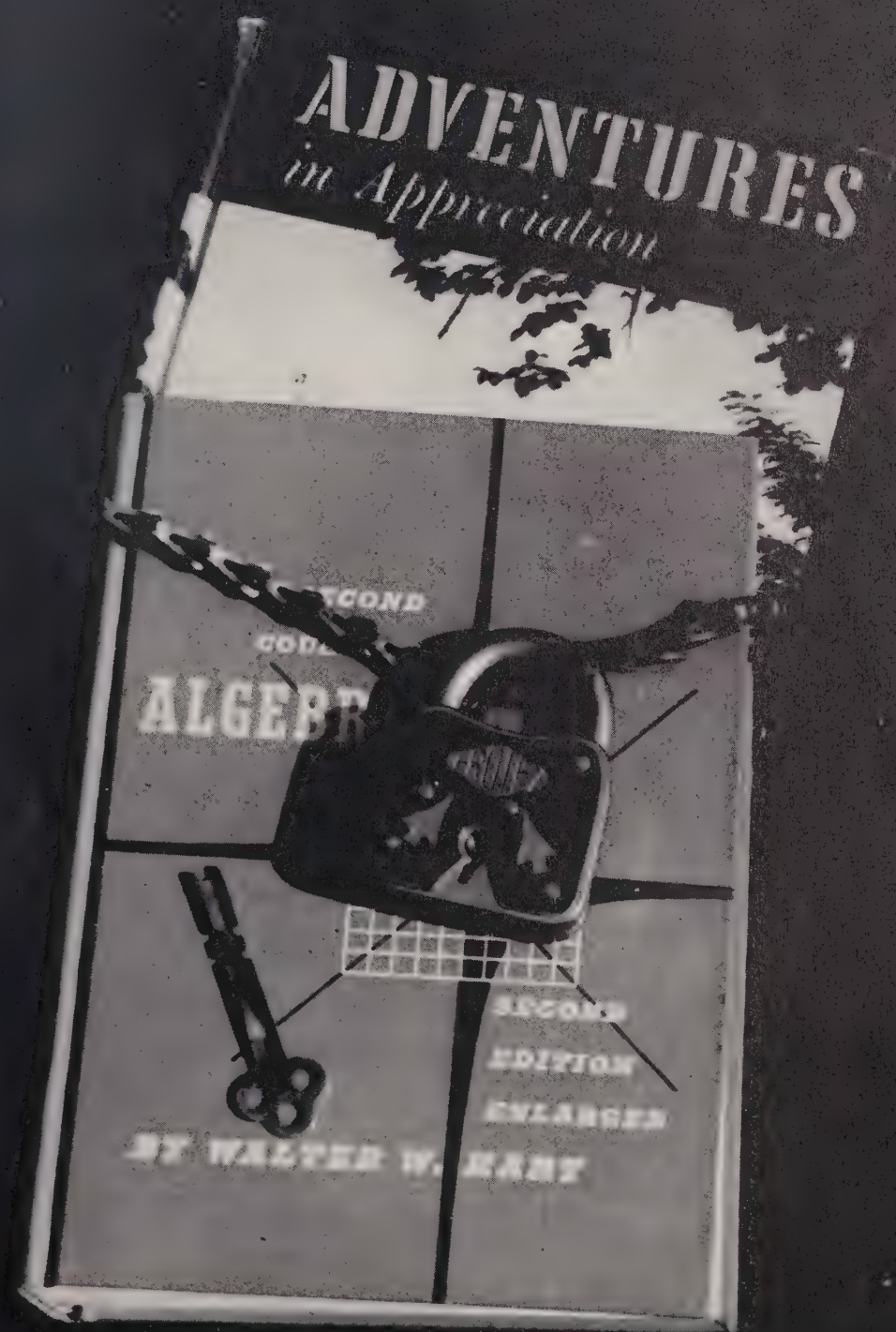
PATRICIA ANNE WAGONER: FHA-1,2,3,4; Vice-President-3; 4-H Club-1,2,3,4; Glee Club-2,3,4; Library Club-1,2,3,4; Junior Talent Show-2,3; Waitress at Junior-Senior Banquet-2; Cheerleader-1,2; FTA-4; Monogram Club-1,2,3,4; Pep Club-3.

GRADY EUGENE WAGONER: FFA-1,2,3,4; Vice-President-2; Junior Talent Show-3; Bible Club-2; Band-1,2; Monogram Club-1,2,3,4; 4-H Club-1,4; Bible Club Play-2.

LINDA GAIL WHITT: 4-H Club-1; FHA-1,2,3,4; Secretary-3; Band-1,2,3,4; Secretary-Treasurer-3,4; Band Council-3,4; Glee Club-2,3,4; Beta Club-3,4; French Club-3,4; President-3; Monogram Club-2,3,4; Hi-Light Staff-3; Annual Staff-3; Co-Ed Hi-Y Club-4; Junior Talent Show-2; Junior Marshal-3; Senior Superlative-Best Looking-4.



# *Underclassmen*





## OFFICERS

President, Jimmy Bost  
 Vice-President, Thomas Correll  
 Secretary, Mavis Goodman  
 Treasurer, Wayne Taylor



## Juniors

### SPONSORS



Mrs. Lewis Bost



Miss Caroline Hayes



Miss Pearl Sullivan

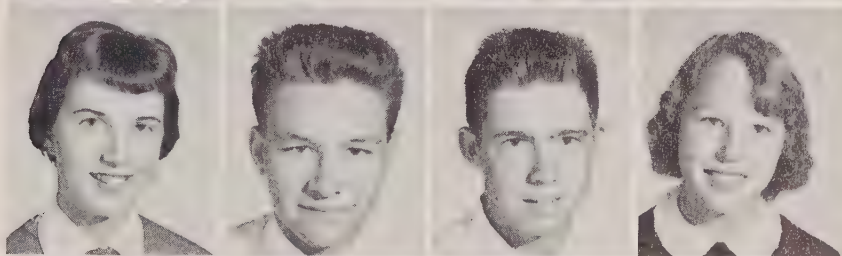


# Juniors

Jane Agner  
York Beaver  
Betty Bost  
Jimmy Bost



Patsy Bost  
Edward Boulding  
Jimmy Brady  
Corrie Burris



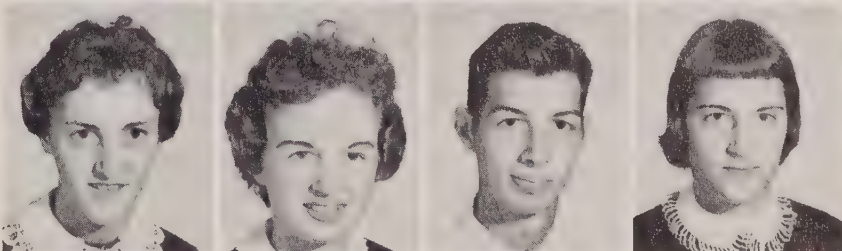
Thomas Correll  
Carolyn Cranford  
Joan Crook  
Tommy Drew



Margaret Drye  
Barbara Jean Eagle  
Judy Eller  
Brenda Ervin



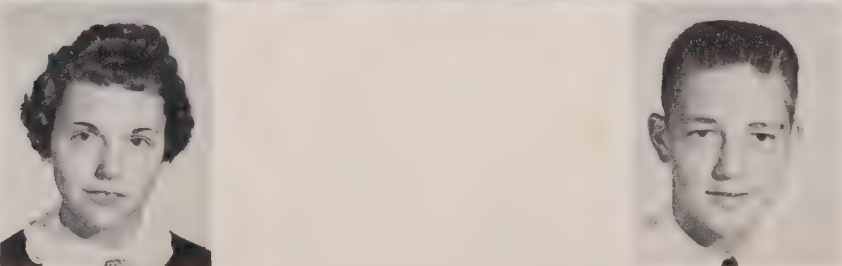
Hazeline Featherstone  
Mavis Goodman  
Dwight Hall  
Shelva Haynes



Becky Heilig  
Jean Hill  
Margaret Hill  
Bonnie Holshouser



Brenda Holshouser  
Ronald Horton



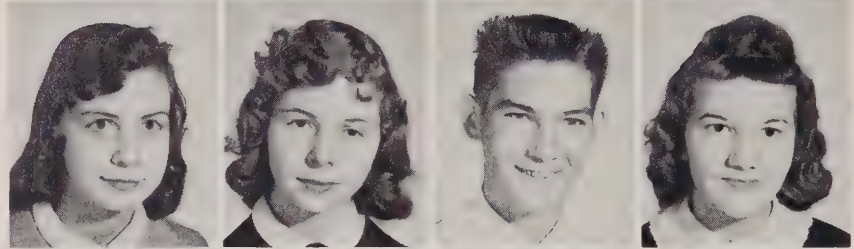


# Juniors

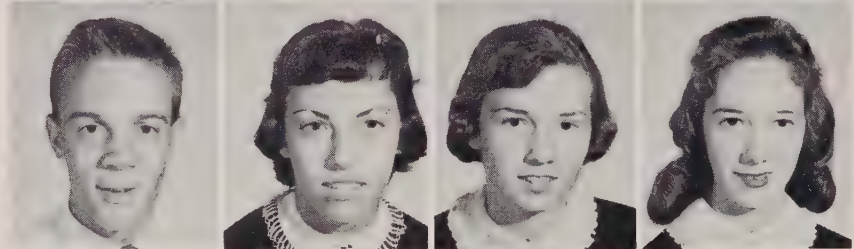
Guy Jones  
Peggy Kluttz  
Brenda Leazer  
Peggy Leonard



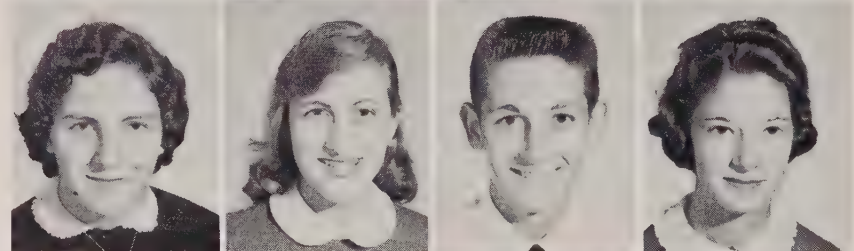
Mary Ann Ludwig  
Judy Misenheimer  
Larry Morgan  
Betty Roseman



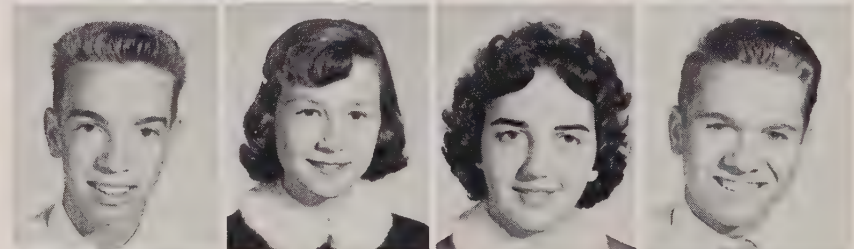
Wayne Rummage  
Mary Shue  
Dorothy Sides  
Brenda Small



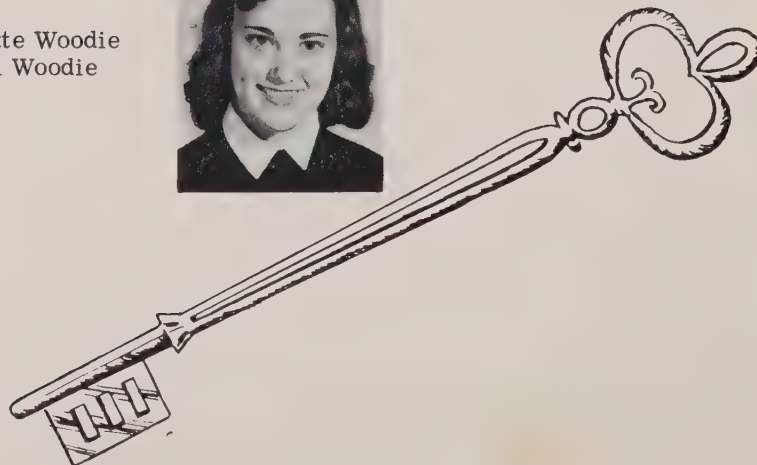
Janice Stoner  
Carolyn Taylor  
Wayne Taylor  
Margie Trexler



Larry Veach  
Shirley Voncannon  
Marlene Waller  
Lane Whitley

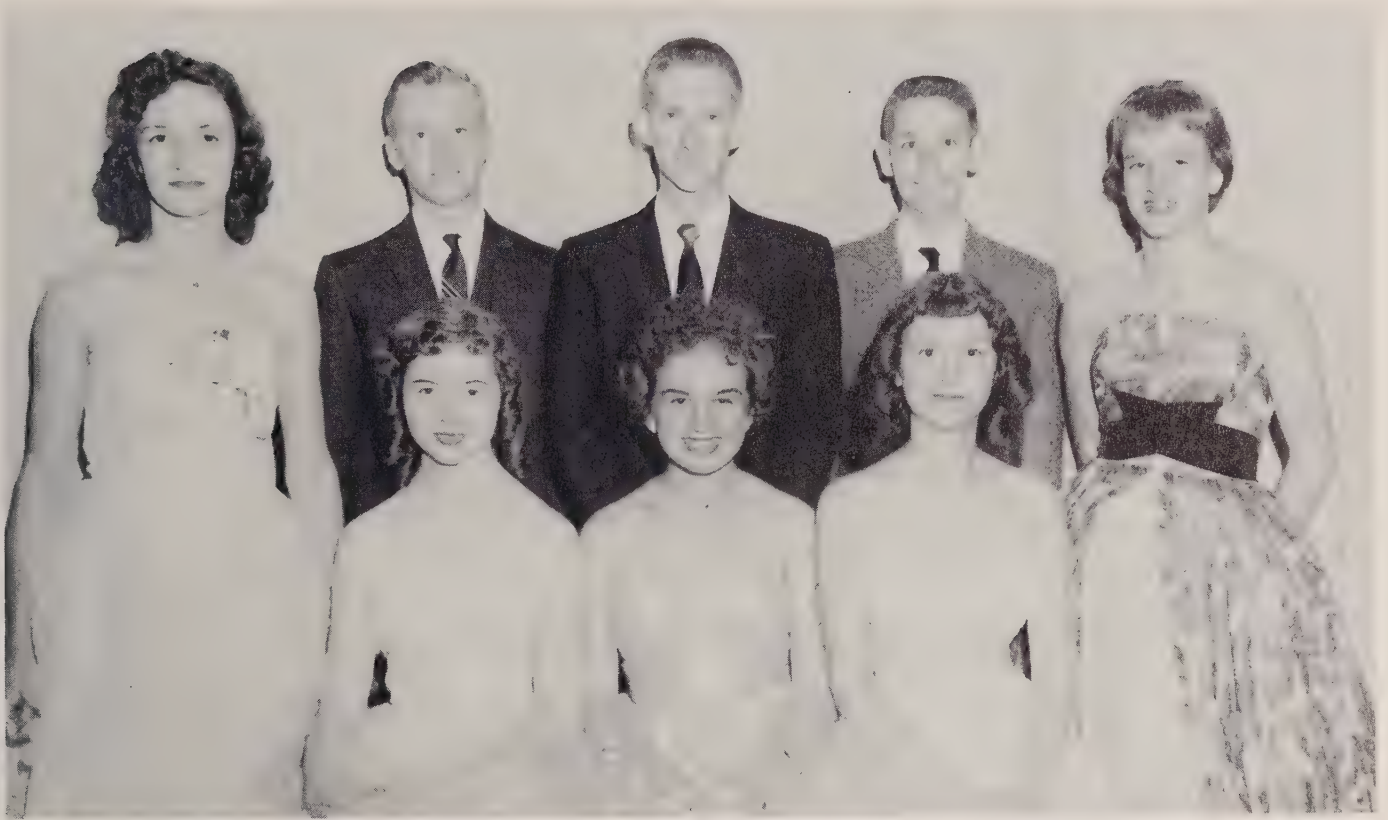


Claudette Woodie  
Farrell Woodie





# Junior Marshals



Seated: Judy Misenheimer, Mavis Goodman, Margaret Drye. Standing: Carolyn Cranford, Tom Goodman, Jim Bost, Chief, Wayne Taylor, Katy Puckett.

These Juniors are trying an experiment in Chem Lab.



These Junior girls are learning to be economical by sewing.



#### OFFICERS

President, Dale Basinger  
Vice-President, Peggy Cozart  
Secretary, John Wyatt  
Treasurer, Martha Poole



## Sophomores

#### SPONSORS



Mrs. Fred Boyd



Mr. C. D. Sides

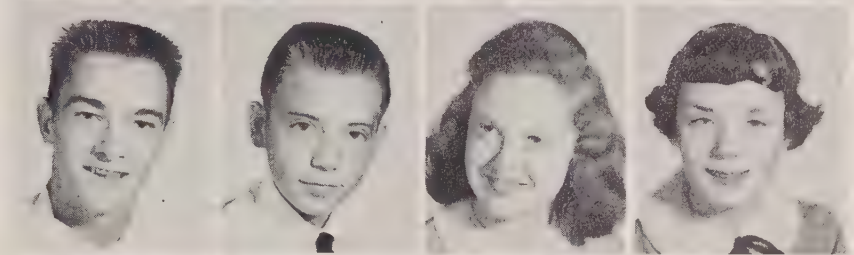


# Sophomores

Jerry Agner  
Gayle Arey  
Leon Barringer  
Dale Basinger



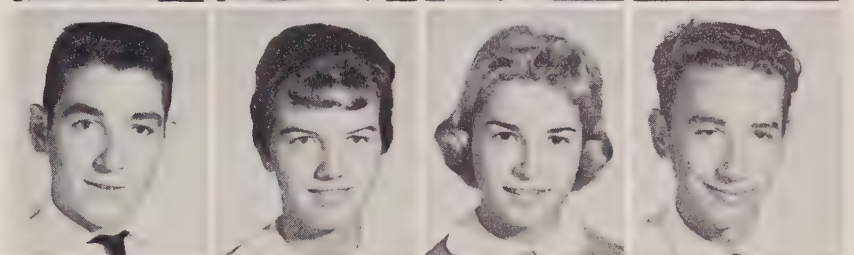
Jim Basinger  
James Neil Beaver  
Brenda Biggerstaff  
Dixie Bonds



Louetta Boulding  
Brenda Brooks  
Jean Burleson  
Joyce Burr



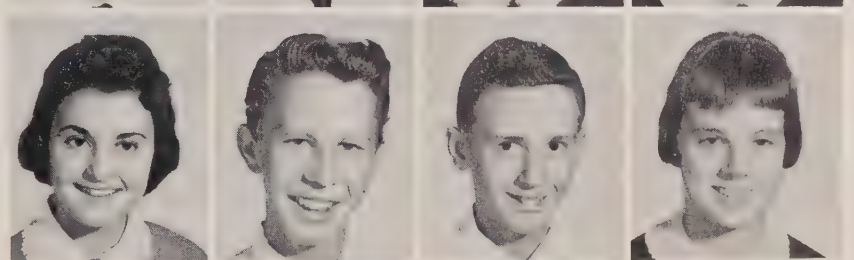
Tommy Burris  
Kay Correll  
Peggy Cozart  
Carl Denniston



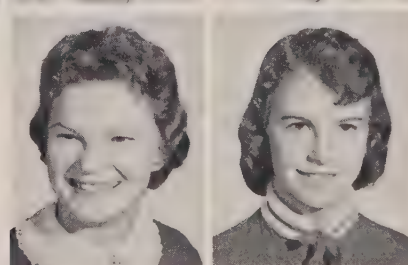
Bobby Drew  
Johnny Drew  
Brenda Earnhardt  
Elaine Eller



Judy Fatata  
Wayne Fesperman  
Everett Frick  
Shirley Frye



Jane Goodman  
Doris Hall



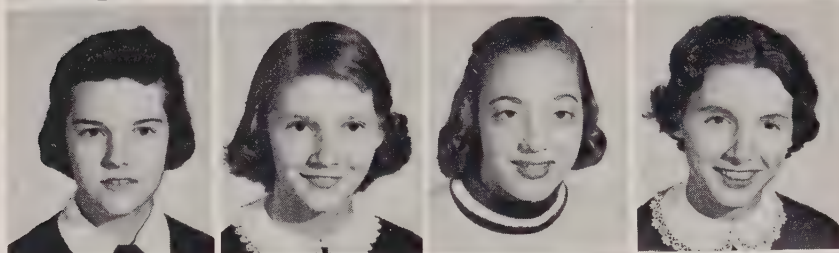


# Sophomores

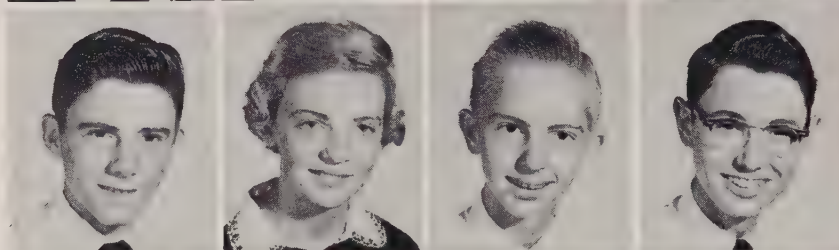
Gary Hall  
Melvia Hall  
Agnes Hill  
Jerry Hillard



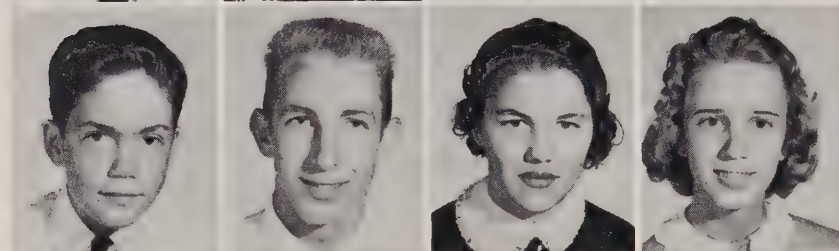
Barbara Holshouser  
Edith Holshouser  
Leona Holshouser  
Sylvia Holshouser



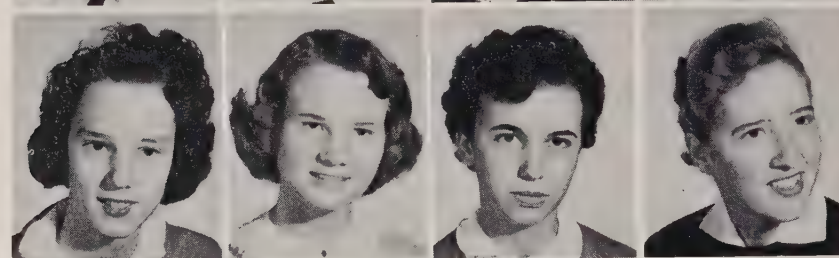
Don Huffman  
Pat Huneycutt  
Jay Johnson  
Bruce Jones



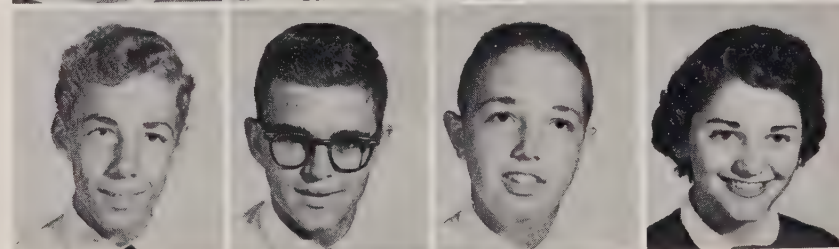
Bill Kirk  
Don Kluttz  
Alice Lewis  
Sue Linker



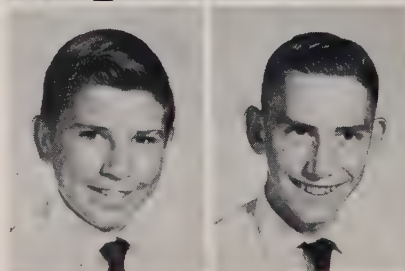
Brenda Lyerly  
Vida Madden  
Shirley McCall  
Betty Miller



Gurney Mills  
Lawrence Misenheimer  
Tony Misenheimer  
Carolyn Morgan



Johnny Morgan  
Junior Morgan



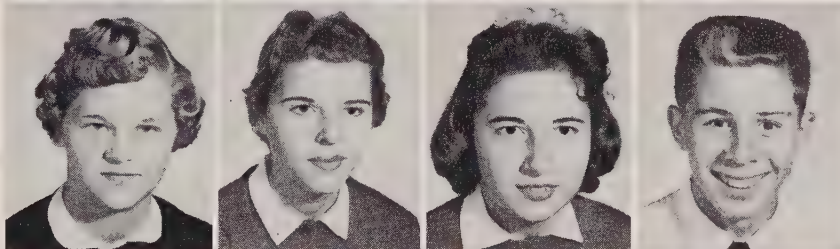


# Sophomores

Nancy Morgan  
Thelma Morgan  
Vickie Morgan  
Brantly Parks



Colleen Pickler  
Eleanor Poole  
Martha Poole  
Gerald Rattz



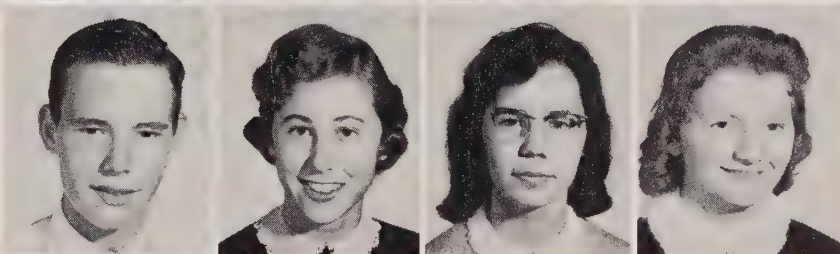
Kay Robbins  
Nancy Roseman  
Joyce Rummage  
Nancy Shue



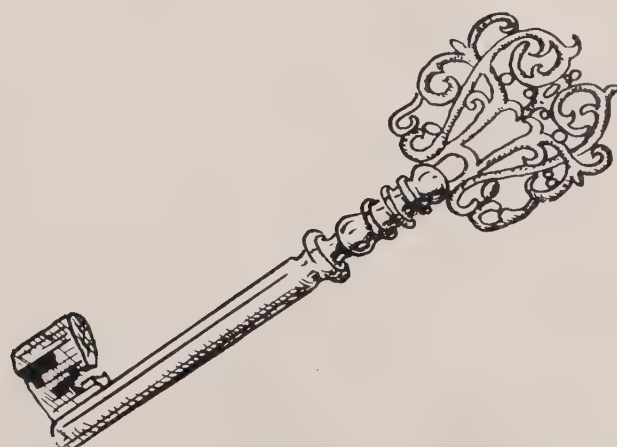
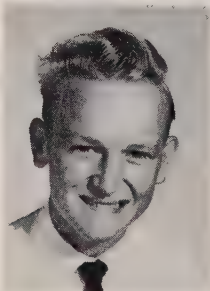
Marie Trexler  
Myrtle Trexler  
Pat Trexler  
Henry Lee Turner



Billy Varnadore  
Barbara Walker  
Frances Ward  
Ann Wise



John Wyatt





#### OFFICERS

President, Buzz Holshouser  
 Vice-President, Judy Huffman  
 Secretary-Treasurer, Judy Earnhardt



## Freshmen

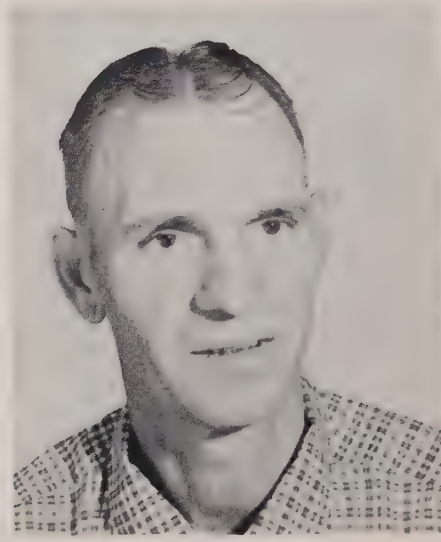
#### SPONSORS



Mr. Ray A. Brawley



Mr. Jerry Pless

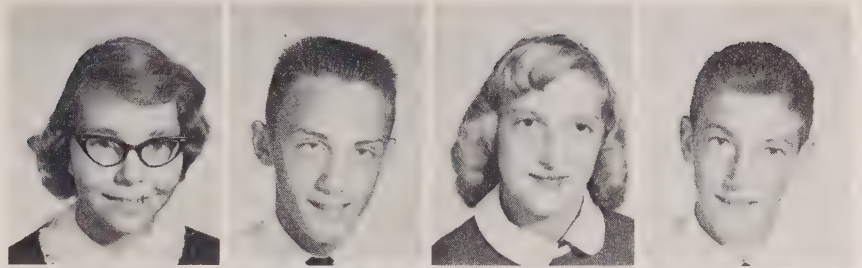


Mr. Carl Rudisill



# Freshmen

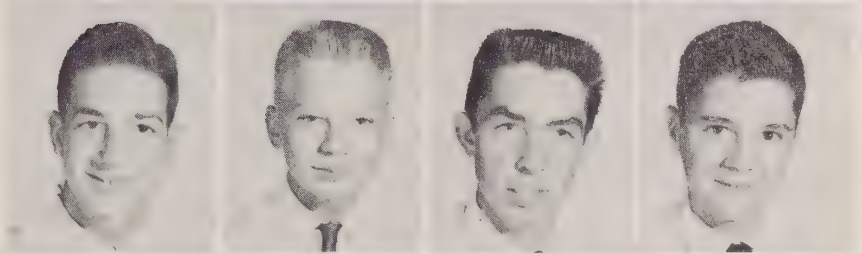
Sharon Basinger  
Terry Beaver  
Helen Boger  
James Boger



Maurice Bost  
Judy Brown  
Ruth Brown  
Howard Burrage



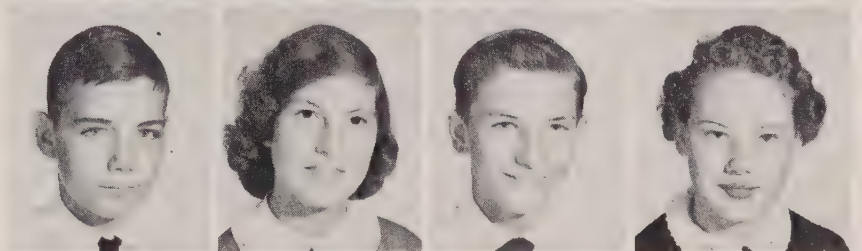
Ronnie Cauble  
Howard Crowe  
John Culp  
Fred Drew



Barbara Drye  
Nancy Drye  
Evelyn Dunaway  
Judy Earnhardt



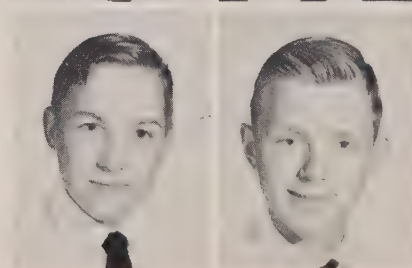
Vance Eller  
Kay Eudy  
James File  
Judy File



Darrell Galloway  
Richard Hampton  
Carolyn Harwood  
Barbara Hill



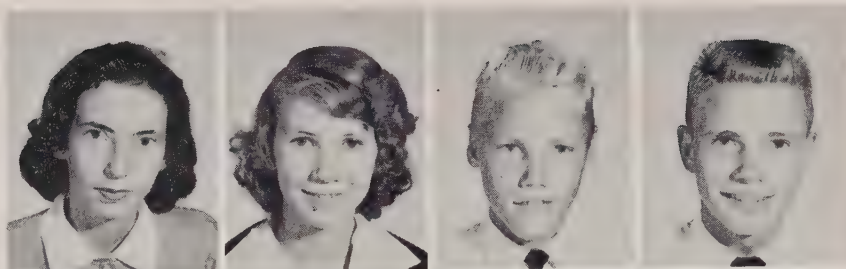
Larry Hill  
Jerry Hill



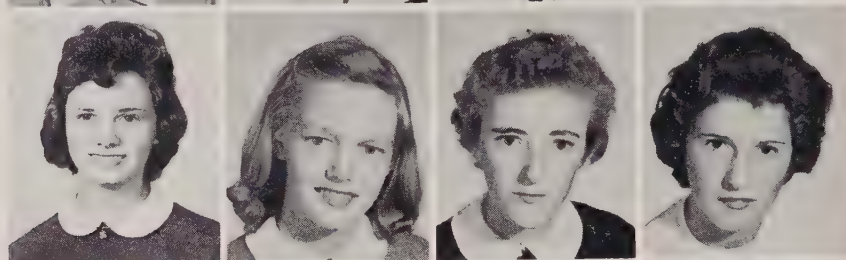


# Freshmen

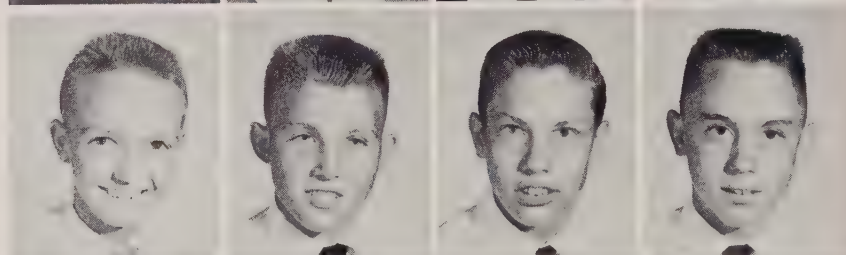
Barbara Jean Hoffner  
Hilda Hoffner  
Eugene Holshouser  
Leslie Holshouser, Jr.



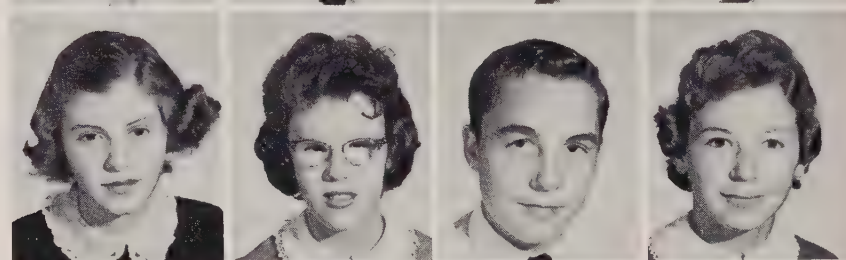
Judy Huffman  
Ruby Kesler  
Marie Ketchie  
Patricia Kirby



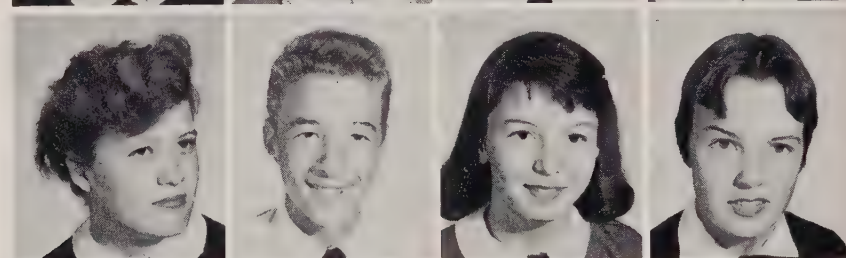
Clifford Kluttz  
Dean Kluttz  
Gary Kluttz  
Wayne Linker



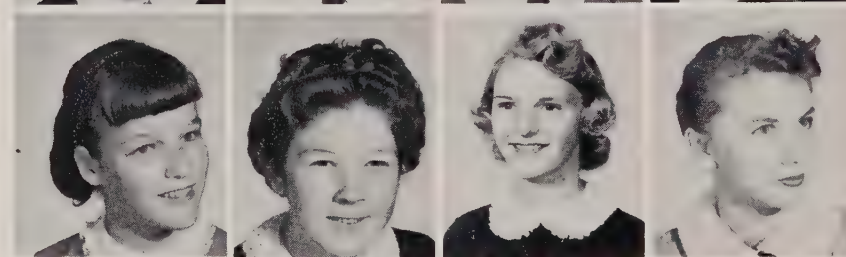
Becky Lyerly  
JoAnn Martin  
Wayne Medley  
Carol Miller



Shelva Miller  
Jerry Mills  
Cheryl Morales  
Betty Ann Morgan



Dottie Morgan  
Shirley Morgan  
Brenda Penninger  
Kay Petrea



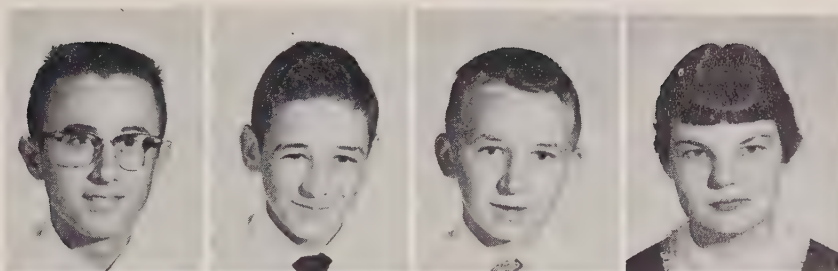
Thomas Powlas  
John Remeta



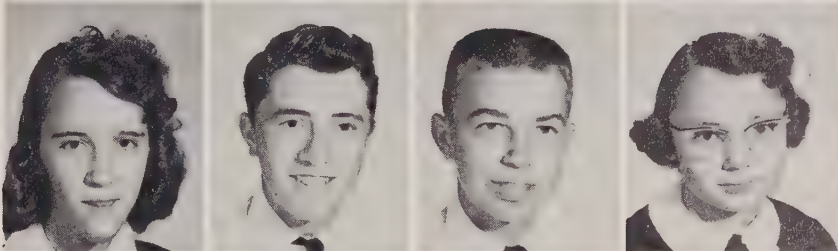


# Freshmen

Michael Rinehardt  
Tommy Rinehardt  
William Riner  
Marion Rothrock



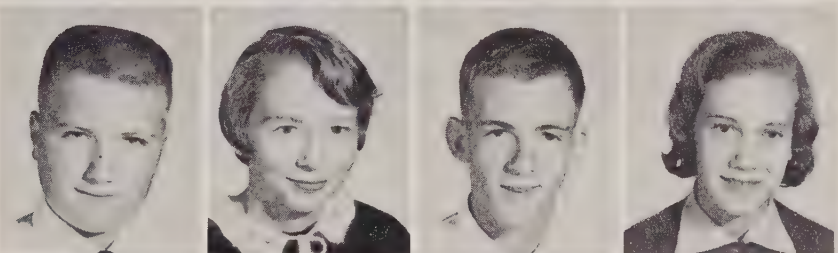
Betty Rummage  
Gary Rummage  
Bobby Safrin  
Sandra Sell



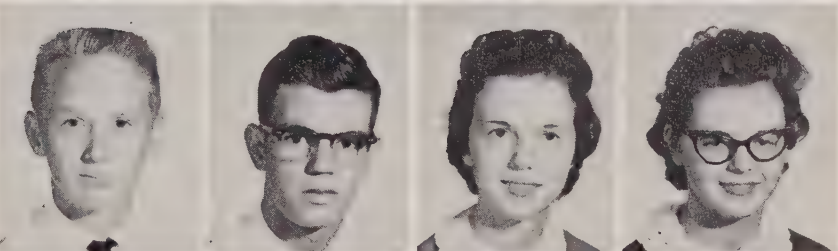
Ernest Shepherd  
Nelson Shepherd  
Mary Shinn  
Monty Simpson



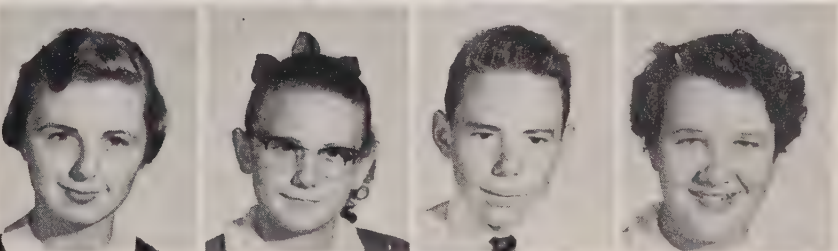
Randy Stiller  
Faye Solomon  
Wayne Stokes  
Lolly Mae Taylor



Harry Trexler  
Martin Luther Trexler  
Phyllis Trexler  
Sandra Trexler



Virginia Trexler  
Judy Troutman  
Jerry Varnadore  
Carlene Whitley



Grady Woodie







Senior Snapshots



# *Elementary Grades*





# Eighth



## TEACHERS

MR. GILBERT DYSON

MR. WARREN KESLER

MR. O. T. SMITH





# Grade



Row 1: June Austin, Brenda Kay Barringer, Pearle L. Barringer, Barbara Beaver, Larry Beaver, Ronald B. Beaver, Paula Jean Bost, Kenneth Bostian, Harry Bowers, Donald Ray Braswell, Terry Braswell, April Brown, Brenda Gail Brown, Sandra J. Brown, Bobby Dellinger.

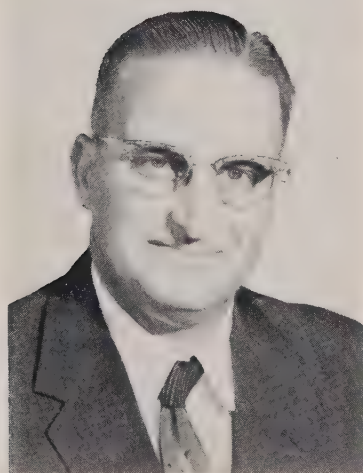
Row 2: Jim Diffenderfer, Richard Eagle, John Ray Earnhardt, Judy Ann Earnhardt, Dolon Easter, Betty Sue Efird, Betty Eudy, Jimmy Fatata, Ellison Fesperman, Brenda Fisher, Martha Jean Fisher, Mary Frances File, Jean Fraley, Russell Frye, Jerry Dwayne Gaines.

Row 3: Brenda Gail Goodman, Anderson Haynes, Jimmy Hayes, Kay Helderman, Charlie Hill, Nina Ruth Hodge, Howard D. Holshouser, Kermit Holshouser, Phyllis Hopkins, Juanita Houston, Howard Isley, Ronnie Kirby, David Kluttz, Barbara Lail, Wayne Lail.

Row 4: Ronnie Loflin, Roger D. Maners, Billy McCall, Billie Treisa Misenheimer, Mary Ann Misenheimer, Tony Misenheimer, Charles Miller, Richard Miller, Mary Lou Morgan, Bobby Pate, Carolyn Reavis, Barbara Ridenhour, Mike Rudisill, Novella Scott, Robert Sexton.

Row 5: Kay Shinn, Cherryanna Shive, Larry Small, Mary Irene Smith, Carlisle Snider, Larry Taylor, James Thompson, Joe Thompson, Troy Lynn Treece, Clarence Gilbert Trexler, Theresa Trexler, Joe Varnadore, Jenny Catherine Verble, Donald Joe Wagoner, Buddy Waller.

Row 6: Brenda Kay Weaver, Linda Wilhelm, Juanita Wright, Dotty Yates, Sylvia Ann Yost.



Boy! Am I hungry?





# Seventh



## TEACHERS

MR. MELVIN MORGAN

MRS. MELVIN MORGAN





# Grade



Row 1: Markie Anthony, Barry Barger, Carol Beaver, Dale Beaver, Mike Bingham, Wayne Britt, Alan Brown, Mitchel Brown, Patricia Brown, Linda Corl, E. J. Efird, Phyllis Eddleman, Alvyn Eller, Diane Eudy, Harold Fesperman.

Row 2: Gwynn Goodman, Gaynell Haynes, Linda Hill, Ray Hill, Eugene Holshouser, Frances House, Douglas Isley, Dianne Jones, Robert Kearns, Judy Kesler, Barbara King, Wayne Kluttz, Jerry Lefler, Wayne Lentz, William Ludwick.

Row 3: Phyllis McCall, Rodney McIntyre, Charles McLaurin, Dale Miller, Kay Miller, Sybbie Miller, Vonnette Miller, Peggy Misenheimer, Frankie Moore, Rebecca Moose, Gary Morgan, Rosie Lee Morgan, Gary Mull, Dolores Nance, Sandra Nash.

Row 4: Darrell Owen, Harry Owen, Harry Park, Linda Park, Joan Picker, Junior Pickler, Tenna Posey, Brenda Robbins, Patsy Roseman, Shirley Rowland, Ruddy Shipton, Olivia Shive, Norman Shue, Eddie Shuping, Ethel Smith.

Row 5: Jimmy Snider, Judy Steele, Alton Stewart, Junior Swink, Marlene Swinson, Alan Taylor, Janet Taylor, Jonathan Trivette, Donald Troutman, Diana Vanhoy, Andy Whisenhunt, Jackie Wiles.

Let's go gang!





# Sixth



## TEACHERS

MRS. RUTH BEAVER

MRS. JESSIE CORL

MRS. CARRIE CURRIE





# Grade



Row 1: Mickey Adair, Jimmy Adams, Sylvia Arey, Linda Barnes, Gary Barringer, Kathy Basinger, Michael Basinger, Larry Bean, Linda Beaver, Bernard Bost, Diane Brady, Johnny Beaver, Ronald Brooks, Bonnie Brown, Donald Brown.

Row 2: Joyce Brown, Larry Brown, Carolyn Burleson, Gary Burleson, Richard Carter, Phyllis Chatlos, Goldie Closton, Jimmy Cornelius, Juanita Correll, Linda Covington, Kenneth Culp, Brenda Deal, Nancy Drew, Glenn Eagle, Robert Easter.

Row 3: Donna Edwards, Pamela Fesperman, Willard Fortune, Linda Freeze, Johnnie Graham, Betty Hallman, James Hammill, Donnie Harwood, Yvonne Haynes, Stephen Helderman, Audrey Hill, Linda Hill, Kim Hilliard, Shelia Hilliard, Brenda Hogan.

Row 4: Alton Holshouser, Ann Holshouser, Marion Holshouser, Jeffrey Horton, Judy Isley, Marty Jo Johnson, Bonnie Jones, Donnie Jones, Dale Kirk, Ronald Kirk, Linda Lefler, Roger Leonard, David Linker, Mary Ann Lowery, Scotty Lyerly.

Row 5: Jerry McLaurin, Brenda Miller, Eugene Miller, Gaye Miller, Lana Miller, Jamie Moose, Brenda Morgan, Jackson Myrick, Paul Patterson, Donna Peeler, James Pierce, Mary Anne Powlas, Brenda Rainey, Lonnie Reavis, Calvin Reid.

Row 6: Jimmy Remeta, Carolyn Russell, Ruby Shinn, Stevie Shuping, Julian Sides, Melinda Sides, Jimmy Thompson, Sue Treece, Lucretia Trent, Connie Trexler, Donnie Trexler, Jerry Trexler, Larry Trexler, Junior Troutman, Linda Troutman.

Row 7: Ronald Walker, Alice Woodie, Linda Wright, Mona Varnadore, Janice Vanhoy, Vicky Vanhoy, Marguerite Verble, Danny Yost.

Back to work.





# Fifth



## TEACHERS

MRS. JOHN BOLTON

MRS. ELIZABETH KINDLEY

MRS. RUTH UZZELL





# Grade



Row 1: Janice Austin, Bonnie Bean, Elizabeth Beaver, Nancy Biggerstaff, Bobby Bost, Larry Bostian, James L. Bowers, Michael Bowers, Hoy Brady, Brenda Brown, Linda Brown, Ted Brown, Buddy Catoe, Ruddy Chatlos, Larry Correll.

Row 2: Donny Cozart, Johnny Cozart, Brenda Cranford, Earl Cranford, Janice Cress, Linda Crowe, Julia Deal, Reid Eller, Minnie Fatata, Linda File, Linda File, Zelia Fisher, Joe Hayes, Billy Haynes, Tommy Hammill.

Row 3: James Hodge, Dennis Holshouser, Linda Holshouser, Terry Holshouser, Vivian Holshouser, Bonnie Honeycutt, Shirley Hopkins, Faye Isley, Paul Kesler, Michael Kirk, Dennis Klutz, Pamela Kluttz, Terry Klutz, Kenneth Linker, Johnny Ludwick.

Row 4: Sandra Lyerly, Marvin Martin, Nancy Martin, Judy McCall, Gene Medley, Carrie Miller, Clifford Miller, Kenneth Miller, Mike Misenheimer, Rickie Misenheimer, Bonnie Morgan, Garrett Morgan, Sylvia Pate, Reggie Rattz, Ricky Ridenhour.

Row 5: Rachel Rowland, Phyllis Sells, Floyd Shaver, Brenda Shuping, Ronald Shuping, Andrea Smith, Robert Stewart, Fred Swink, Brenda Thompson, James Trexler, Johnny Trexler, Robert Troutman, Sonny Wall, Mike Whitley, Larry Wyatt.

Let's take a nap.





# Fourth



## TEACHERS

MRS. RALPH EDWARDS

MRS. INEZ SLOAN

MRS. RUTH UZZELL





# Grade



Row 1: Brenda Adams, Shelia Barringer, Dan Beaver, Pamela Beaver, Betty Blaine, Sharon Bost, Anthony Brown, Gail Burleson, Kay Conner, Gay Cornelius, Judith Cozart, Linda Sue Dennis, Tony Drew, Donald Drye, Hoy Lee Drye.

Row 2: David Eagle, Carlin Earnhardt, Chip Earnhardt, David Earnhardt, Peggy Earnhardt, Nelson Efird, Max Eller, Bobby Eudy, Wanda Fesperman, Vickie File, Cindy Fowler, Pamela Frick, Michael Goble, Ray Goodman, Gayle Hall.

Row 3: Rebecca Hammill, Eddie Hampton, Kenneth Hayes, Carol Haynes, Sandra Haynes, Jo Ann Holshouser, Phyllis Holshouser, Mitchell Hopkins, Vera Houston, Larry Isley, Jane Jacobs, Kenneth Johnson, Terry Ketner, Judy Kirk, Stephen Kirk.

Row 4: Orville Kluttz, Dale Linker, Johnny Linker, Hugh McClenney, David McLaurin, Billy Miller, Billy Misenheimer, Donald Misenheimer, Bobby Ray Moose, Joyce Morgan, Tony Morgan, Barbara Murray, Joey Nance, Ann Peeler, Ronnie Pierce.

Row 5: Charles Reid, Kenneth Ridenhour, Faye Rinehardt, Larry Robbins, Mitchell Rowland, Darrell Simpson, Linda Shepherd, Elizabeth Stallings, Sharon Steele, Bonnie Mae Stokes, Tony Swink, Michael Thompson, Bonnie Trexler, Buddy Trexler, John Trexler.

Row 6: Johnny Trexler, Jerry Thompson, Mary Frances Troutman, Garry Vanhoy, Ronald Vanhoy, Jack Wagoner, Linda Wagoner, Bobby Watson, Lamar Yelton, Donnie Yost.



In step.





# Third



## TEACHERS

MRS. ELIZABETH BARKER

MRS. J. WESLEY HUNEYCUTT

MRS. WOODROW SOWERS





# Grade



Row 1: Barbara Adams, Delores Adams, Lynda Adams, Sandra Armfield, Charles Artz, Terry Beaver, Jerry Boger, Peggy Bost, Tommy Bost, Judy Brown, Alice Burice, Jerry Closton, Gary Earnhardt, Johnny Earnhardt, Lester Efird.

Row 2: Clifford Eudy, Pattie Eudy, Diane Fesperman, Johnny Fisher, Lannie Fowler, Pattie Frick, Gary Goodman, Linda Graham, Johnny Hall, Carol Hammill, Patrica Hampton, Mary Harwood, Larry Haynes, Vickie Hill, Belinda Holshouser.

Row 3: Kay Holshouser, Trudy Holshouser, Vickie Holshouser, Junior Honeycutt, Toby Honeycutt, Glenn Hopkins, Neddie Howard, Billy Huffman, Linda Huffman, Connie Kluttz, Garry Kluttz, Pamela Kluttz, Johnny Lentz, Allen Linker, Linda Lyerly.

Row 4: Tommy Martin, Teresia McClenney, Betty McHone, Donnie Miller, Rita Miller, Ronald Miller, Theresa Miller, Brenda Misenheimer, Henry Misenheimer, Judy Misenheimer, Stephen Misenheimer, Imogene Morgan, June Morgan, Arleen Nance, David Patterson.

Row 5: Nancy Peeler, Joe Pittman, Glenda Poole, Joe Poole, Troy Reavis, Billy Reid, Brenda Ridenhour, Larry Roseman, Jo Ann Sides, Wanda Small, Joyce Smith, Scott Smith, Patrica Thompson, Ann Trexler, Gene Vanhoy.

Row 6: Steven Varnadore, Connie Wagner, Vickie Ward, Johnnie Wensil, Dean Wyatt, Tommy Wyatt, Patrica Yost.

"Hey, buddy -- pitch it over!"





# Second



## TEACHERS

MRS. RALPH BARKER

MRS. HAROLD M. EAGLE

MISS MARY ROUZER





# Grade



Row 1: Kay Artz, Gray Barrier, Michael Barringer, Bonnie Basinger, David Bean, Alan Beaver, Shirley Beaver, Randy Bingham, Sherry Boger, Jimmie Bost, Rhonda Britt, Jackie Brown, Larry Brown, Nancy Burlison, Stanley Carter.

Row 2: Brian Cauble, Peggy Jo Closton, Joe Corl, Amy Drew, Shirley Drye, Robert Earnhardt, Jimmy Efird, Larry Efird, Grady Eller, Nancy Carol Eudy, Michael Fesperman, Brenda Kay Fisher, Kathy Fisher, Steve Goodman, Jimmy Hill.

Row 3: Donald Hipp, Carolyn Holshouser, Rodney Holshouser, Guy Johnson, Jane Jones, Carl Kesler, Alan King, Mary Kluttz, Debra Lyerly, Barbara McCall, Billy Miller, Jackie Miller, Lonnie Miller, Joyce Misenheimer, Linda Misenheimer.

Row 4: Larry Moose, George Morgan, Glenda Morgan, Nancy Carol Myers, Michael Peeler, Jackie Poole, Lonnie Poole, Nancy Powlas, Larrie Lee Reid, Howard Sexton, Garland Shuping, Darrell Sloop, Glenda Smith, James Steele, Christopher Stiller.

Row 5: Donald Thompson, Barbara Trexler, James Trexler, Trudy Troutman, Mary Vanhoy, Ricky Vanhoy, Mitzi Walker, Nancy Kay Washington, Roy Watson, Jan Whitley.



Push me - I'll show you!





# First



## TEACHERS

MRS. RUTH B. HODGE

MRS. CLINE ISENHOUR

MRS. LOUANNA VERBLE





# Grade



Row 1; Richard Adams, Ronnie Adams, Dennis Anthony, Donald Barger, Linda Barger, Deborah Bassinger, Donald Bassinger, Junior Beaver, Jean Bingham, Jeanette Blaine, Beryl Bost, Gary Bostian, Johnny Brown, Kaye Brown, Vicki Brown.

Row 2: Calvin Chatlos, Ruth Correll, Joe Culp, Linda Drye, Glenn Dunaway, Jill Earnhardt, Tony Earnhardt, Monty Edwards, Wayne Eudy, Jerry Fesperman, Dennis Goble, Billy Goodman, Christine Goodman, Bobby Hall, Henry Hampton.

Row 3: Alan Harwood, Gary Wayne Hill, Sandra Hilliard, Rebecca Hinson, Billy Hodges, Michael Holshouser, Terry Holshouser, Elizabeth Honeycutt, Shirley Hopkins, Bobby Horne, Kenneth Huffman, Ronnie Huffman, Michael Jacobs, Gene Jones, Nancy Kesler.

Row 4: Vicki Killian, Henry Linker, Billy Joe Loflin, Shirley Lovvery, Jerry McCall, Martha McClenny, Andrew Miller, Elaine Miller, Linda Miller, Becky Misenheimer, David Misenheimer, Rachel Misenheimer, Donald Moose, Mary Ann Moose, Dale Nance.

Row 5: Susan Norris, Eddie Odom, Patricia Page, Billy Peeler, Gary Lee Pickler, Sharon Poole, Betty Reid, Harry Reid, David Remeta, Barbara Ridenhour, Freddie Ridenhour, Patricia Ridenhour, Gary Russell, Roger Safrit, Spencer Sells.

Row 6: Cathy Sheeks, Sonia Shenk, Kathy Shuping, Joe Sides, Thomas Sinclair, Perry Swinson, Curtis Treece, Bobby Trivette, Freddie Troutman, Judy Troutman, Kenneth Troutman, Roger Troutman, Harold Van Hoy, Sylvia Wagoner, Wayne Wagoner.

Row 7: David Weaver, Tommy Walker, Sidney Wensil, Timmy Woodie, Richard Yates, Patricia Yelton.

Recess--the time for fun.







OPENING HOURS  
SUNDAYS 3 TO 5  
NAZARETH  
ORPHANAGE

Snapshots

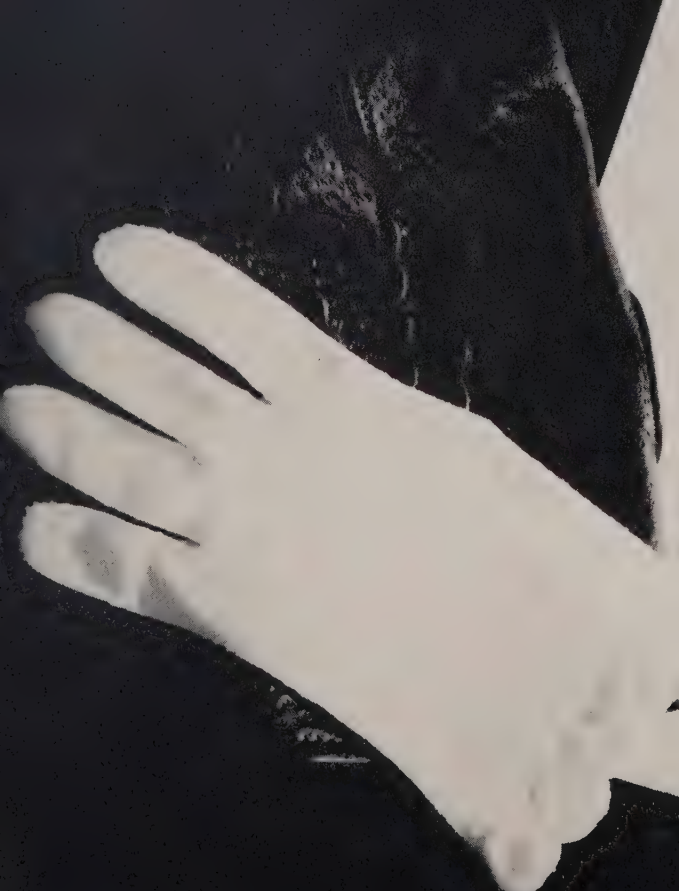


# *Activities*

27th Season

## *the Blue Masque*

CATAWBA COLLEGE  
Salisbury, North Carolina







## *"The Rocket" Staff*



EDITOR  
Sybil Penninger

ADVISOR  
Mrs. Robert C. Lee

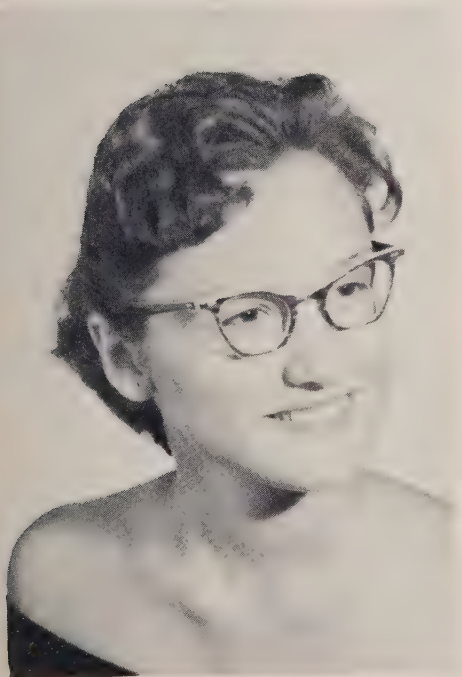


ASSOCIATE EDITOR  
Jo Hoffman





## The "Hi-Lights" Staff



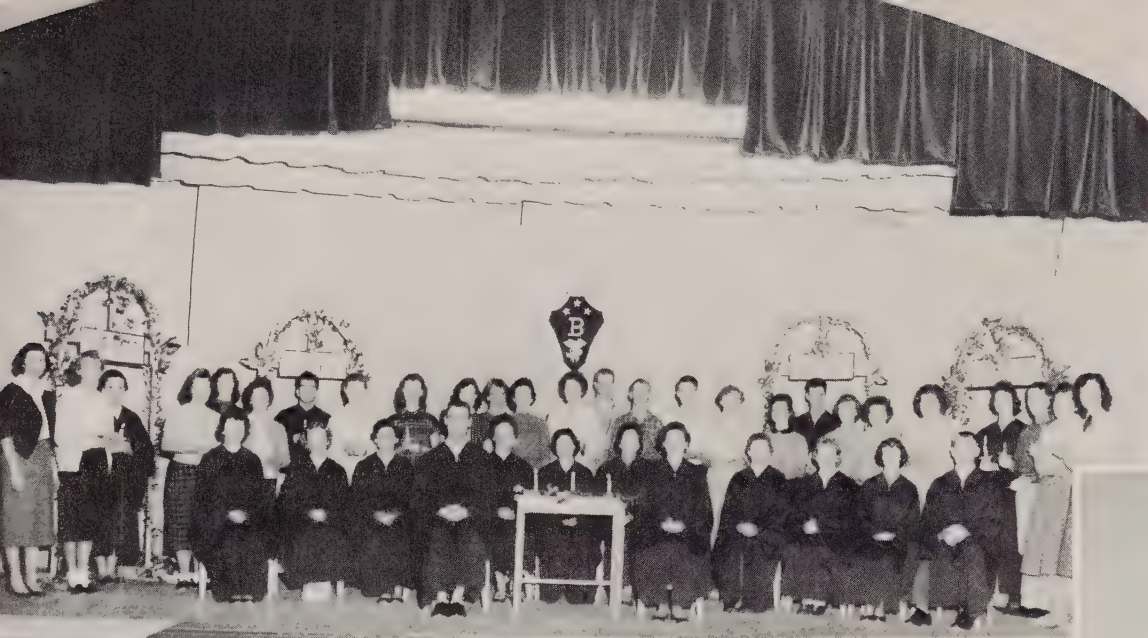
**EDITOR**  
Claire Jane Barringer

**ADVISOR**  
Miss Pearl Sullivan

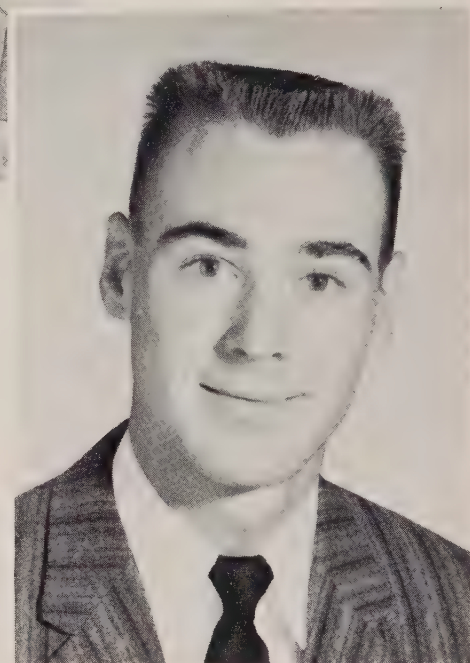


**FEATURE EDITOR**  
Pat Holshouser

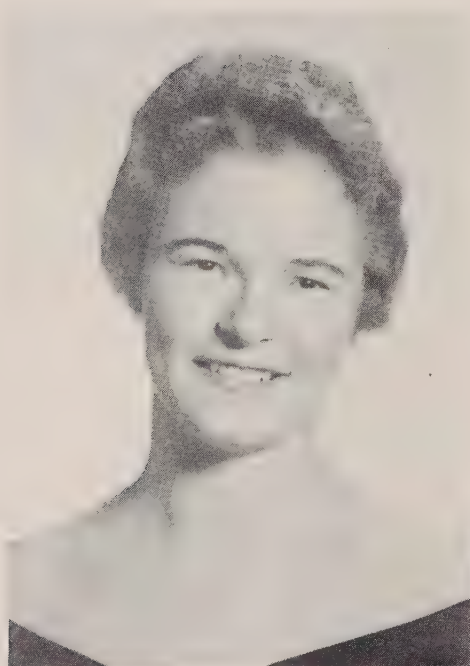




PRESIDENT  
Joe Freeze



## Beta Club

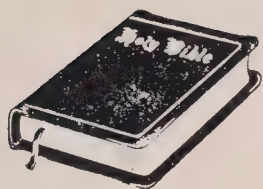


PRESIDENT  
Pat Holshouser

## Co-Ed Hi-Y Club







PRESIDENT  
Claire Jane Barringer



## Bible Club



## French Club



PRESIDENT  
Mary Ida Hodge

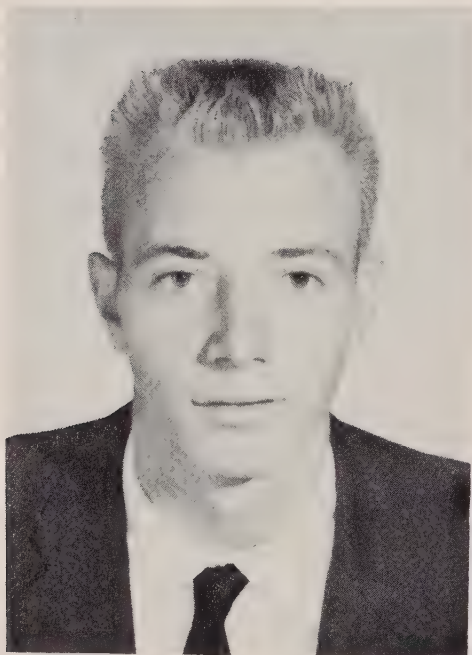






PRESIDENT  
Sandra Beaver

# *Future Homemakers Of America*



PRESIDENT  
Dwight Morgan

# *Future Farmers Of America*



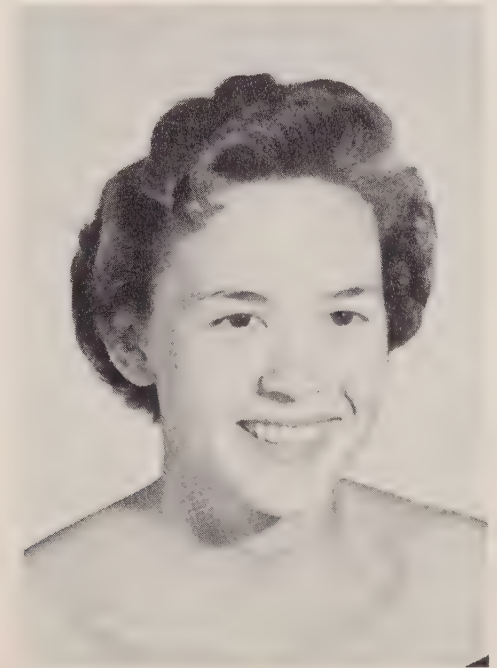




PRESIDENT  
Eleanor Poole



*Library Club*

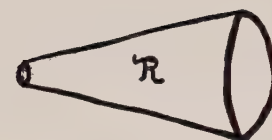


*4-H Club*

PRESIDENT  
Marshall Setzer







CHIEF  
Charles Earnhardt



*Cheerleaders*



PRESIDENT  
R. L. Mills

*Monogram Club*

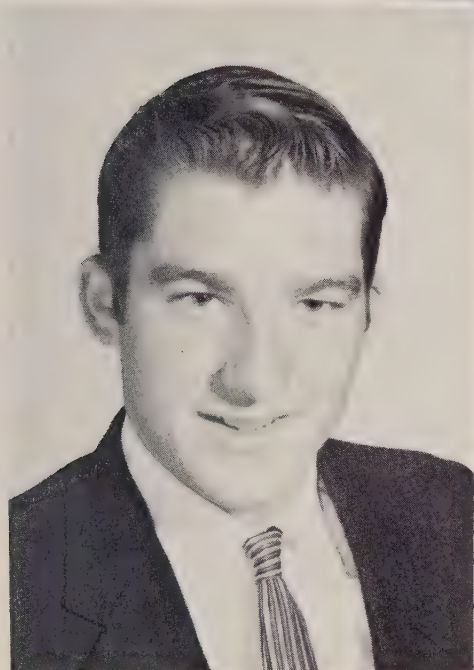


R





PRESIDENT  
Loy Morgan



## The Glee Club

## Music Students



GLEE CLUB DIRECTOR  
MUSIC TEACHER  
Mrs. Merle F. Sollinger







## *Senior Band*

## *Band*



**PRESIDENT**  
Jo Hoffman



**DIRECTOR**  
Mrs. Charles Honeycutt





*Junior Band*



*Beginners Band*

*Majorettes*



Left to right: Carolyn Morgan, Kay Correll, Nancy Shue, Peggy Cozart, Judy Fatata, and Pat Holshouser, Chief.

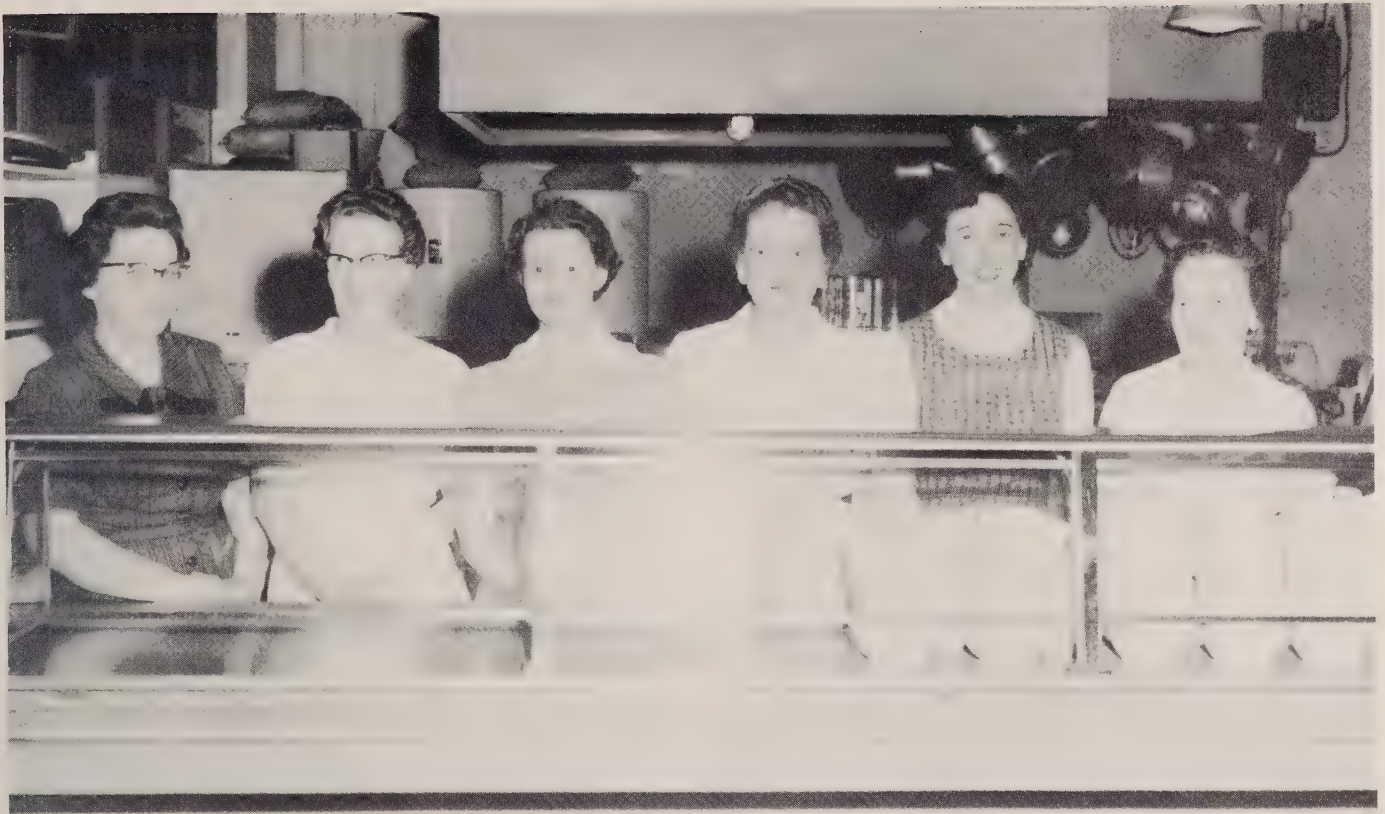




## *Bus Drivers Office Staff*







## *Cafeteria Workers*



JANITOR  
Steve Williams





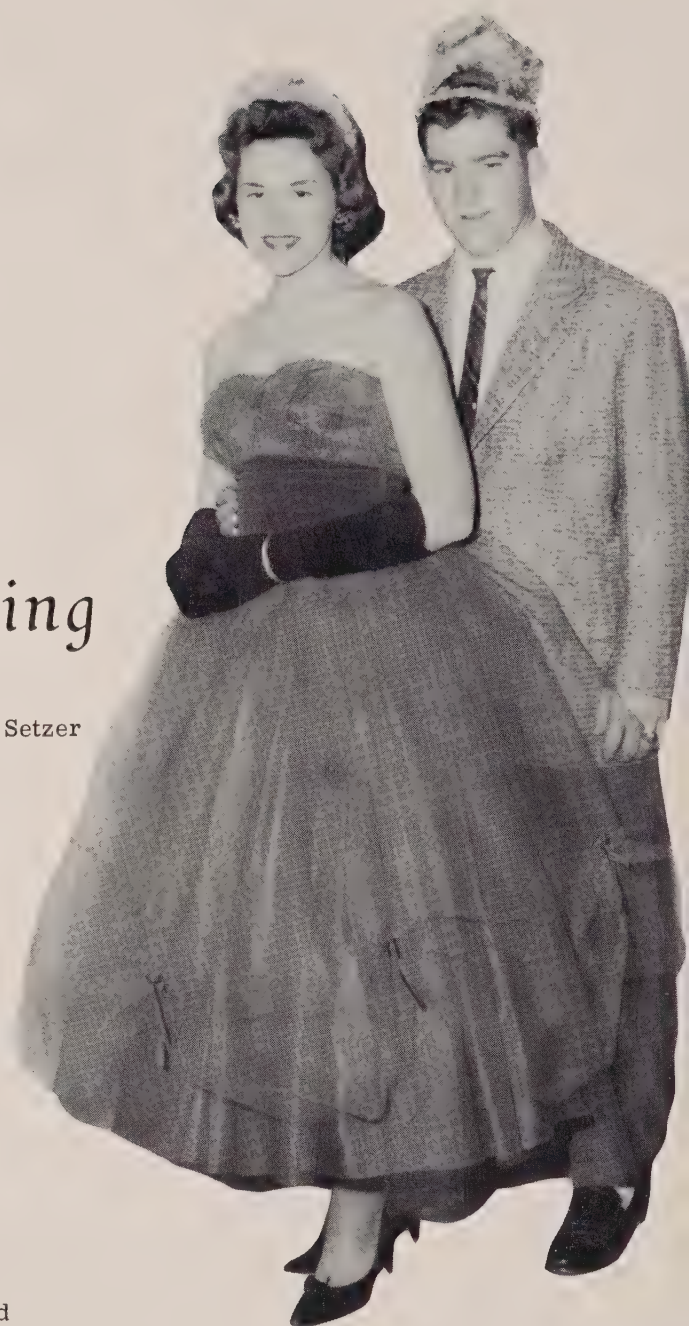
The Homecoming Court in formal pose.



The Royal Couple being crowned  
by the runners-up.

# Homecoming

KING AND QUEEN  
Loy Morgan and Marshall Setzer



Their Majesties and part  
of their court.



Our Royal Couple preparing to leave  
the field in style.







## *Halloween Queen And Court*

Each year the P. T. A. sponsors the Halloween Carnival. After many concessions in the gymnasium and much good food in the cafeteria; the excitement moves into the auditorium for cake walks, raffles, and most exciting of all- the crowning of the Halloween King and Queen and their Court.



## *Honor Attendants*





## Future Teachers' Club

This organization, having been formed during this school year, is the newest in our high school. Its aims are to interest students in the teaching profession and to give them practical experience. Rachel Bost is president and Mrs. J. G. Puckett is faculty adviser.



Latest feminine fashions were modeled by these charming young models.

## Junior Talent Show- 1958

Try your luck at "The Charleston" as did these amusing preformers.





# *Sports*







Front row: Yorke Beaver, Byron Brown, R. L. Mills, Thomas Moose, Donnie Brown. Second row: Tommy Drew, Leon Barringer, John Trexler, Bronnie Morgan, Don Huffman. Third row: Ronald Horton, Ernest Shepherd, Thomas Correll, Guy Jones, Dwight Morgan. Fourth row: Thomas Powlas, Buzz Holshouser, Lawrence Misenheimer, Gene Holshouser, Jerry Mills. Fifth row: Larry Hill, James Beaver-Manager, Carl Rudisill-Coach.

## 1958 Rocket Football





Jerry Hilliard, Loy Morgan, Gurney Mills, Alex Trexler, David Morgan, Gerald Rattz, Ralph Hoffner, Robert Stoner, Jerry Pless-Coach, Johnny Drew-Manager.

# Team



COACHES  
Mr. Jerry Pless  
Mr. Carl Rudisill

CAPTAINS  
Thomas Moose  
R. L. Mills





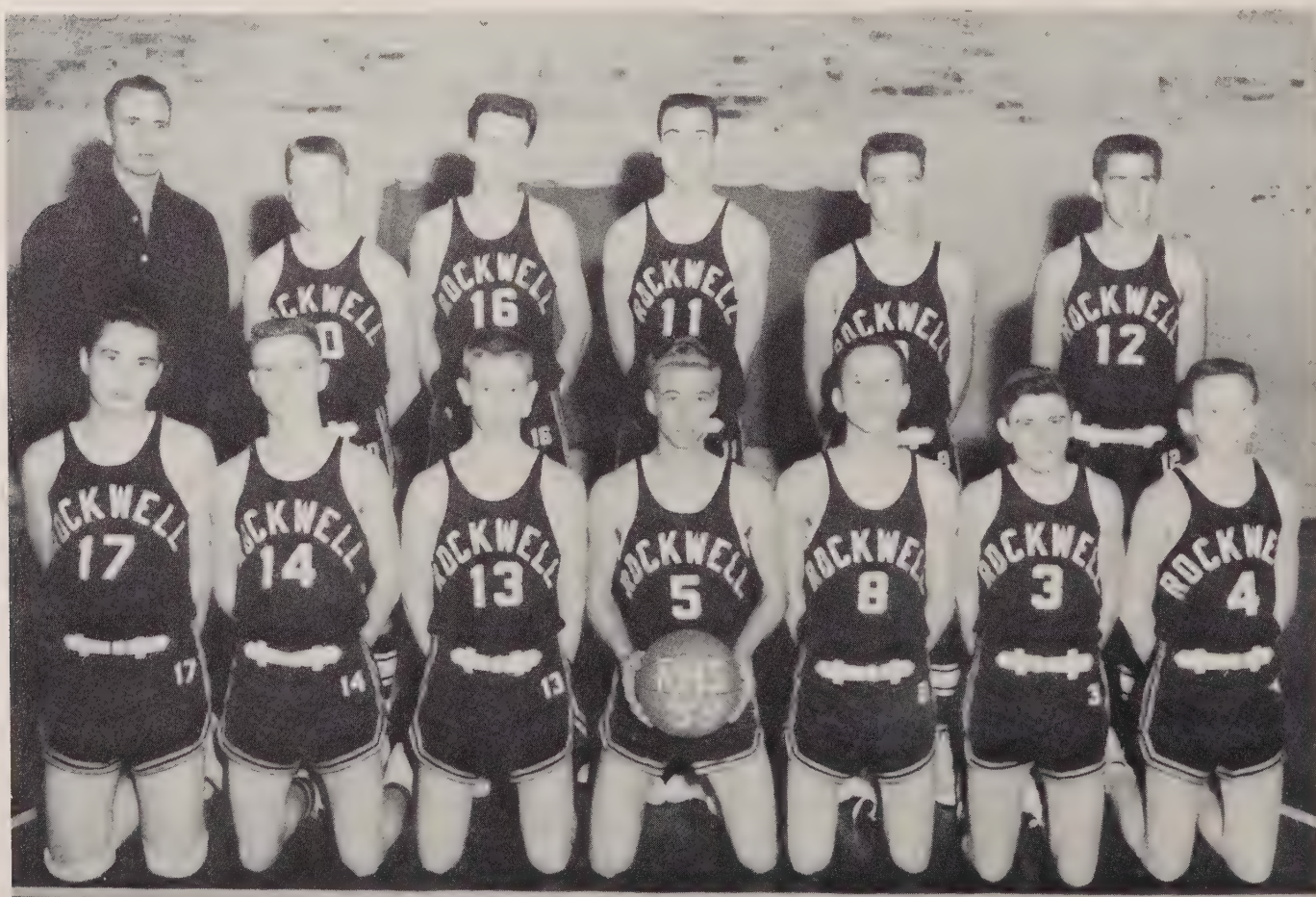
# Boys'



COACH  
Mr. Carl Rudisill

## 1958-1959 TEAM

Front row, left to right: Wayne Medley, Buzz Holshouser, Thomas Powlas, R. L. Mills, Guy Jones, Don Huffman, Dale Basinger. Back row, left to right: Coach Carl Rudisill, Bobby Morgan, Thomas Correll, Joe Freeze, Johnny Trexler, Thomas Moose.



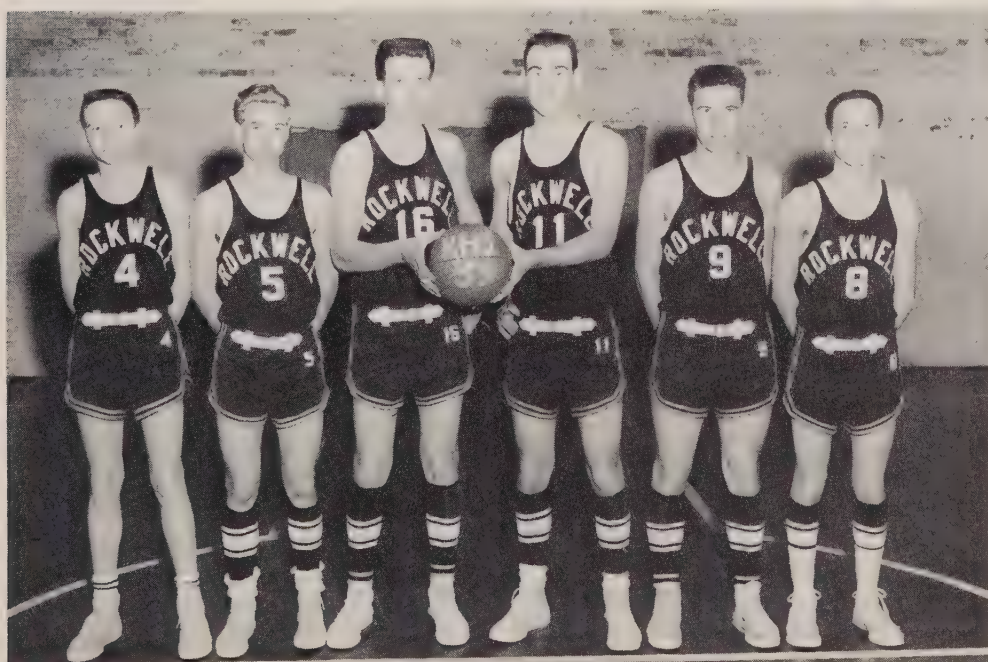


# Basketball

CAPTAINS  
R. L. Mills and Joe Freeze



FIRST TEAM  
Dale Basinger, R. L. Mills, Thomas Correll, Joe Freeze, Johnny Trexler,  
Guy Jones.





# Girls



COACH  
Mr. Jerry Pless

## 1958-1959 TEAM

Kneeling, left to right: Peggy Leonard, Brenda Penninger, Carol Miller, Judy Huffman, Judy Fatata. Standing, left to right: Eleanor Poole, Martha Poole, Edith Holshouser, Peggy Cozart, Marlene Waller, Coach Jerry Pless, Kay Correll, Carol Harwood, Judy Earnhardt, Nancy Drye, Shelva Miller, and Faye Solomon, Manager.





# Basketball

**CAPTAINS**  
Peggy Cozart  
Marlene Waller



**FIRST TEAM**  
Kneeling: Eleanor Poole. Standing:  
Martha Poole, Peggy Cozart, Kay  
Correll, Marlene Waller, Edith Hols-  
houser.

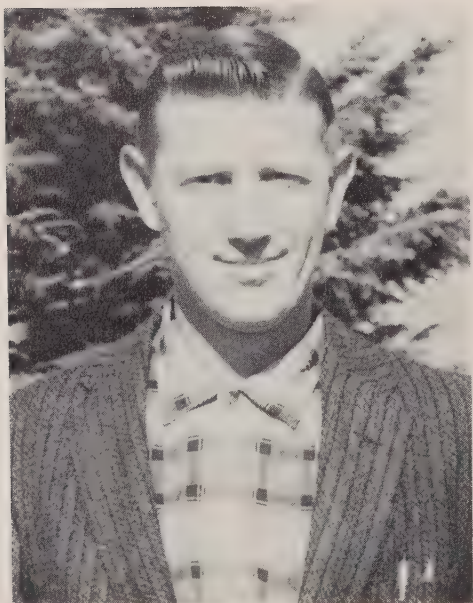




#### 1958 BASEBALL TEAM

First row: Jerry Pless, Coach. Second row: Johnny Trexler, Tommy Dellinger, Harold Rinehardt, Richard Powlas, Bobby Petrea, Dwight Morgan, Jerry Sides, Mickey Holshouser. Third row: Joe Freeze, Lee Roy Kirk, Bobby Rinehardt, Donny Brown, Jimmy Beaver, Don Huffman, Loy Morgan, Bronnie Morgan. Fourth row: R. L. Mills, Dale Basinger, John Hill, Lloyd Morgan, Bobby Morgan, Jimmy Shaver, Wayne Smith, Jimmy Brady, David Sides. Fifth row: Johnny Drew and William Yates, Managers.

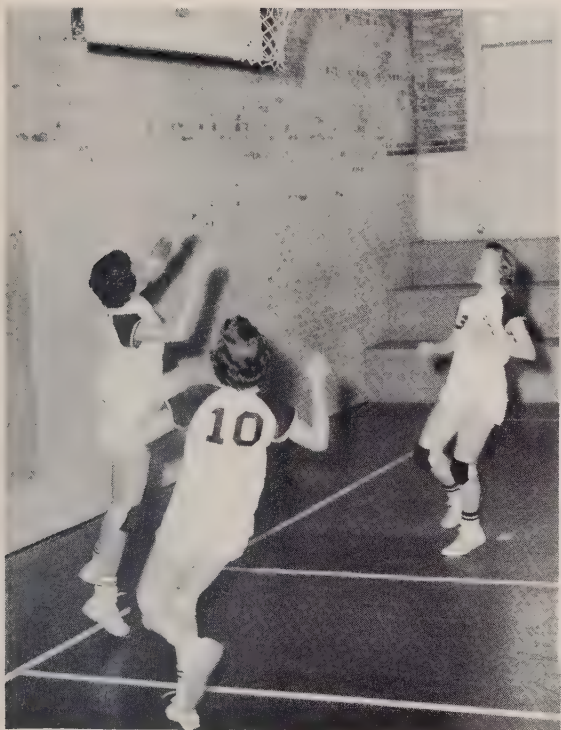
## Baseball



COACH  
Mr. Jerry Pless







# Sports



S  
n  
a  
p  
s  
h  
o  
t  
s





Into The Future



**TO OUR ADVERTISERS:**

**WE WANT TO SAY THAT WE SINCERELY THANK YOU**

**FOR HELPING TO MAKE OUR 1959 YEARBOOK A SUCCESS.**

## **THE ROCKET STAFF**

### **POWLAS FUNERAL HOME**

**"Responsive & Responsible Service"**

**Licensed Morticians:**

**L. Councill Powles**

**Billy V. Overman**

**R. Richard Fisher**

**Dial CRescent 9-9820**

**Rockwell**

**North Carolina**

### **ROCKWELL TIRE & FUEL CO., INC.**

**Wholesale-Retail**

**Recapping-Oil Products-Coal-Seed-Fertilizers**

**Buyers of Seed - Seed Cleaning**

**Phone CRescent 9-9715**

**Box 786**

**Rockwell, N. C.**



## **NORMAN INGLE JEWELERS**

Salisbury, North Carolina

## **ROWAN CO. FARM EQUIPMENT DEALERS ASSOCIATION**

Salisbury Tractor Co. Inc.  
Smith Fowler Equipment Co.  
Southern Implement Co.  
Trexler Tractor & Imp't Co.  
Ryburn Farm & Equipment Co.  
General Farm Equipment Co.

## **SANITARY BARBER SHOP**

Lewis Rothrock-John Culp  
"A Satisfied Customer  
is our first consideration"

Phone CR 9-7095

Rockwell

## **"WINKS"**

Salisbury, North Carolina

## **ATLANTIC OIL SERVICE**

Dial - ME 3-0952

Triple-Refined

Heating Oils

*Compliments of*

## **ROWAN PRINTING CO.**

"Your School Supply Headquarters"

Salisbury, North Carolina

## **HOMER L. MISENHEIMER CO.**

Hardware  
Sundries  
General Merchandise

Phone CR 9-9700  
Rockwell, North Carolina

*Compliments of*

## **GRADY LENTZ ROCKWELL JEWELERS**

Phone CR 9-9705

Rockwell, North Carolina



**GIL WALKER'S SINCLAIR SERVICE**

"Buy Sinclair-drive with care"  
1337 W. Innes St.  
Salisbury, North Carolina

**MARSHALL'S CHARCOAL  
STEAK HOUSE**

Steaks, Chicken, Ham & Seafood  
1609 W. Innes St. Salisbury

**ROCKWELL RADIO & ELECTRIC CO.**

"A Corporation"  
Rockwell, North Carolina  
We Sell "World's Finest  
Electrical Appliances"

**ROCKWELL FURNITURE CO.**

"Quality Furniture At Budget Prices"  
Alice Linker, Decorator  
A. L. Linker, Mgr.

**GOODMAN LUMBER CO.**

Dial ME 3-2421

Compliments of  
**THE COCA-COLA BOTTLING CO.**  
of  
Salisbury  
Salisbury, North Carolina

**BANK OF ROCKWELL**

"See Us For  
Complete Banking Service"

Rockwell, North Carolina

**SIMPSON'S SELF SERVICE**

Salisbury, North Carolina

**STILLER'S**

Rockwell, North Carolina

**ROCKWELL CAFE**

Rockwell, North Carolina

**WAGONER'S FOOD STORE**

Rockwell, North Carolina

Compliments of

**JACK T. BROWN**

**ZIMMERMAN'S DEPT. STORE**

Salisbury, North Carolina

Compliments of

**FISHER-THOMPSON HARDWARE**

Salisbury, North Carolina

**POOLE'S GRILL**

Salisbury, North Carolina

**ROWAN DAIRY**

Salisbury, North Carolina



**JIMMY BLACKWELDER'S BARBECUE**

Salisbury, North Carolina

**PET DAIRY**

Salisbury, North Carolina

**KLUTTZ PIANO CO.**

Granite Quarry, North Carolina

**MILLER'S BARBER SHOP**

Rockwell, North Carolina

**THELMA'S BEAUTY SHOP**

Rockwell, North Carolina

**HOLSHOUSER'S HARDWARE**

Rockwell, North Carolina

**MOOSE AND SON  
MEATS - GROCERIES**

Rockwell, North Carolina

**MULL'S TEXACO SERVICE CENTER**

Rockwell, North Carolina

**B & T FOOD LOCKER**

Rockwell, North Carolina

**ROCKWELL MILLING COMPANY**

Rockwell, North Carolina

**SIDES LUMBER COMPANY**

Rockwell, North Carolina

**ROCKWELL CASKET CO.**

Rockwell, North Carolina

**RIDENHOUR'S TEXACO  
SERVICE CENTER**

Rockwell, North Carolina

**COZART LUMBER & SUPPLY CO.**

Rockwell, North Carolina







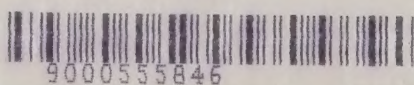
HOWAN PUBLIC LIBRARY  
SALISBURY, N. C.







HEADQUARTERS



9000555846

DELMA