

Historic, archived document

Do not assume content reflects current scientific knowledge, policies, or practices.

62.83



Roses...

LIBRARY RECEIVED
 OCT 13 1953
 U. S. Department of Agriculture

THE BEST OF THE OLD, NEW PATENTED VARIETIES
 for 1953-1954

ROSEMONT NURSERIES
 TYLER, TEXAS



YELLOW BANKSIA

Here is the charming old yellow climber that is so much at home in the South. In fact, it has been cultivated ever since the late eighteenth century. It produces great masses of small, double, yellow bloom very early in the season. The plant is very easy to grow and is extremely long lived all through the South. \$2.00 each; 3 for \$5.00.

Return Postage Guaranteed

Sec. 34.66, P. L. & R.
 U. S. POSTAGE
PAID
 TYLER, TEXAS
 Permit No. 11

U. S. Department of Agric.
 Ralph R. Shaw, Librarian
 Washington 25, D. C.



**SOEUR
THERESE**
\$1.10 each;
3 for \$2.85

ROSEMONT'S SELECT HYBRID TEA ROSE BUSHES

THE DOCTOR
\$1.25 each; 3 for \$3.15

FOR 1953 - 54

"Make Your Own" Collection

AT THE FOLLOWING PRICES (PREPAID IF ORDER AMOUNTS TO \$4.00 OR MORE)
WE DO NOT SHIP OUTSIDE CONTINENTAL U. S. A.

All **\$1.10** Roses are any **3 for \$2.85; \$10.50 per doz.**
All **\$1.25** Roses are any **3 for \$3.15; \$12.50 per doz.**
All **\$1.35** Roses are any **3 for \$3.50; \$13.50 per doz.**

Price, except as noted, best-grade 2-yr. plants, \$1.10 each; any 3 for \$2.85; \$10.50 per doz.; \$85.00 per 100

All Old-Fashioned Tea Roses are \$1.50 each; 3 for \$3.75

Alexander Hill Gray (Yellow Maman Cochet). Old-Fashioned Tea. Large, very fragrant, deep lemon-yellow, becoming deeper as the bloom develops.

Ami Quinard. Buds large; velvety maroon-crimson flowers, with blackish luster. Vigorous grower.

Antoine Rivoire. Creamy white, tinted with light pink. An extra fine Rose with large petals. \$1.25 each; 3 for \$3.15.

Better Times. Bud long pointed; flower high centered, very large, double, bright cerise. \$1.35 each; 3 for \$3.50.

Betty Uprichard. Large, both semi-double and double, and extremely fragrant. Salmon-pink with reverse carmine and copper. Foliage light green, glossy. As easy to grow as Radiance.

Briarcliff. Very large, moderately fragrant, rose-pink at center, passing to a lighter shade on the outer petals. \$1.25 each; 3 for \$3.15.

Caledonia. Flowers white, large, double, high centered, slightly fragrant. \$1.25 each; 3 for \$3.15.

Charles K. Douglas. Bud long pointed; large, double, fragrant flower of flaming scarlet, flushed velvety crimson. Abundant blooms. Very vigorous.

Columbia. Glistening rose-pink. The blooms are full double, large, fragrant. Upright and vigorous. \$1.25 each; 3 for \$3.15.

Comtesse Vandal. Orange-copper bud opens into high-centered, brilliant salmon-pink flower. Excellent for cutting. \$1.35 each; 3 for \$3.50.

Condesa de Sagago. A two-color beauty from Spain—Oriental-red and yellow. Flower large and double. Free bloomer. \$1.25 each; 3 for \$3.15.

Crimson Glory. Best-loved red Rose in the world! Perfectly shaped, deep velvety crimson flowers, very double and fragrant. \$1.50 each; 3 for \$3.75.

Dainty Bess. Soft rose-pink, single flowers with maroon stamens. Excellent bloomer.

Duchesse de Brabant. Old-Fashioned Tea. Soft rosy pink to bright rose. Free blooming. Very hardy.

Edith Nellie Perkins. Orient-red, shaded cerise-orange; inside salmon-pink.

Editor McFarland. Large, fragrant, glowing pink flowers, suffused yellow.

E. G. Hill. Immense; dazzling scarlet, shading to deep pure red. Vigorous. Abundant foliage; free flowering.

Etoile de Hollande. Bright red, almost unfading. \$1.25 each; 3 for \$3.15.

Golden Dawn. Sunflower-yellow, flushed old-rose. \$1.25 each; 3 for \$3.15.

Golden Rapture. Clear golden yellow flowers of fine form, lasting a long time. Old Rose fragrance. \$1.25 each; 3 for \$3.15.

Gruss an Teplitz. Valuable hedge Rose. Extremely vigorous; strong spicy fragrance. Bud small, dark velvety scarlet.

Hinrich Gaede. Bud pointed, nasturtium-red; flower very large, double, high centered, orange-yellow with red glow. Delightful raspberry fragrance. Vigorous. \$1.35 each; 3 for \$3.50.

Joanna Hill. Bud long pointed; flower double (40 to 50 petals), dark yellow. Vigorous.

Kaiserin Auguste Viktoria. For more than half a century this Rose has been a favorite. Bud is cream-white, but the open bloom is snow-white with a tint of lemon at the center. One of the best white Roses.

Lady Hillingdon. Old-Fashioned Tea. Fragrant, deep apricot-yellow blooms. Almost as hardy as a Hybrid Tea.

Luxembourg (Grande Duchesse de Luxembourg). Among the most beautiful and best of the deep yellow or deep orange Roses. Very desirable for the South.

Maman Cochet. Old-Fashioned Tea. Rich coral-pink, shading to rosy crimson. Very large, with thick, shell-like petals.

Maman Cochet, White. Old-Fashioned Tea. Creamy white, flushed rose on edges.

Margaret McGredy. Moderately fragrant, orange-scarlet blooms that do not fade. The flowers are extremely large and full double. Fine, glossy foliage.

Marie van Houtte. Old-Fashioned Tea. Large, very double, high centered, fragrant, deep cream, tinged carmine-pink, with buff-yellow base. Vigorous.

McGredy's Ivory. Bud long pointed; flower very large, double, fragrant, creamy white. \$1.25 each; 3 for \$3.15.

McGredy's Scarlet. Flower large, double, velvety crimson-scarlet; base orange. Tea fragrance. Very vigorous.

Mme. Joseph Perraud. A Rose of unusual charm in both bud and open bloom. The long-pointed, opening buds have delightful glowing yellow sunset shades that change to nasturtium-buff as the fragrant flowers slowly unfold. This is one of the most enchanting Roses we know in the lovely pastel tones. \$1.35 each; 3 for \$3.50.

Mme. Lombard. Old-Fashioned Tea. Large, very double, fragrant, rosy salmon, deepening toward center. Vigorous.

Mrs. Chas. Bell. Shell-pink buds that open into globe-shaped flowers of the same color, with shadings of salmon. A sport of Radiance and like it except in color. Also called Siell-pink Radiance.

Mrs. Dudley Cross. Old-Fashioned Tea. Full, pale chamois-yellow, edged in autumn with rose and carmine. Good grower and bloomer.

Mrs. Pierre S. du Pont. Beautiful fragrant blooms of reddish golden yellow on a low, spreading plant. Unusually free blooming. \$1.25 each; 3 for \$3.15.

Nigger Boy. Long-pointed bud opening into a high-centered, very fragrant, very velvety dark blackish maroon flower with as many as 56 petals. Continuous and profuse bloom. Plant is low growing, with Polyantha tendencies. \$1.35 each; 3 for \$3.50.

Continued on inside of folder



POINSETTIA
\$1.25 each; 3 for \$3.15



PICTURE. \$1.25 each; 3 for \$3.15





SOEUR THERESE
\$1.10 each;
3 for \$2.85



THE DOCTOR
\$1.25 each; 3 for \$3.15

ROSEMONT'S SELECT HYBRID TEA ROSE BUSHES FOR 1953 - 54

"Make Your Own" Collection

AT THE FOLLOWING PRICES (PREPAID IF ORDER AMOUNTS TO \$4.00 OR MORE)
WE DO NOT SHIP OUTSIDE CONTINENTAL U. S. A.

All \$1.10 Roses are any 3 for \$2.85; \$10.50 per doz.
All \$1.25 Roses are any 3 for \$3.15; \$12.50 per doz.
All \$1.35 Roses are any 3 for \$3.50; \$13.50 per doz.

Price, except as noted, best-grade 2-yr. plants, \$1.10 each; any 3 for \$2.85; \$10.50 per doz.; \$85.00 per 100

All Old-Fashioned Tea Roses are \$1.50 each; 3 for \$3.75

- Alexander Hill Gray** (Yellow Maman Cochet). Old-Fashioned Tea. Large, very fragrant, deep lemon-yellow, becoming deeper as the bloom develops.
- Ami Quinard**. Buds large; velvety maroon-crimson flowers, with blackish luster. Vigorous grower.
- Antoine Rivoire**. Creamy white, tinted with light pink. An extra fine Rose with large petals. \$1.25 each; 3 for \$3.15.
- Better Times**. Bud long pointed; flower high centered, very large, double, bright cerise. \$1.35 each; 3 for \$3.50.
- Betty Uprichard**. Large, both semi-double and double, and extremely fragrant. Salmon-pink with reverse carmine and copper. Foliage light green, glossy. As easy to grow as Radiance.
- Briarcliff**. Very large, moderately fragrant, rose-pink at center, passing to a lighter shade on the outer petals. \$1.25 each; 3 for \$3.15.
- Caledonia**. Flowers white, large, double, high centered, slightly fragrant. \$1.25 each; 3 for \$3.15.
- Charles K. Douglas**. Bud long pointed; large, double, fragrant flower of flaming scarlet, flushed velvety crimson. Abundant blooms. Very vigorous.
- Columbia**. Glistening rose-pink. The blooms are full double, large, fragrant. Upright and vigorous. \$1.25 each; 3 for \$3.15.
- Comtesse Vandal**. Orange-copper bud opens into high-centered, brilliant salmon-pink flower. Excellent for cutting. \$1.35 each; 3 for \$3.50.
- Condesa de Saotago**. A two-color beauty from Spain—Oriental-red and yellow. Flower large and double. Free bloomer. \$1.25 each; 3 for \$3.15.
- Crimson Glory**. Best-loved red Rose in the world! Perfectly shaped, deep velvety crimson flowers, very double and fragrant. \$1.50 each; 3 for \$3.75.
- Dainty Bess**. Soft rose-pink, single flowers with maroon stamens. Excellent bloomer.
- Duchesse de Brabant**. Old-Fashioned Tea. Soft rosy pink to bright rose. Free blooming. Very hardy.
- Edith Nellie Perkins**. Orient-red, shaded cerise-orange; inside salmon-pink.
- Editor McFarland**. Large, fragrant, glowing pink flowers, suffused yellow.
- E. G. Hill**. Immense; dazzling scarlet, shading to deep pure red. Vigorous. Abundant foliage; free flowering.
- Etoile de Hollande**. Bright red, almost unfading. \$1.25 each; 3 for \$3.15.
- Golden Dawn**. Sunflower-yellow, flushed old-rose. \$1.25 each; 3 for \$3.15.
- Golden Rapture**. Clear golden yellow flowers of fine form, lasting a long time. Old Rose fragrance. \$1.25 each; 3 for \$3.15.
- Gruss an Teplitz**. Valuable hedge Rose. Extremely vigorous; strong spicy fragrance. Bud small, dark velvety scarlet.
- Hinrich Gaede**. Bud pointed, nasturtium-red; flower very large, double, high centered, orange-yellow with red glow. Delightful raspberry fragrance. Vigorous. \$1.35 each; 3 for \$3.50.
- Joanna Hill**. Bud long pointed; flower double (40 to 50 petals), dark yellow. Vigorous.
- Kaiserin Auguste Viktoria**. For more than half a century this Rose has been a favorite. Bud is cream-white, but the open bloom is snow-white with a tint of lemon at the center. One of the best white Roses.
- Lady Hillingdon**. Old-Fashioned Tea. Fragrant, deep apricot-yellow blooms. Almost as hardy as a Hybrid Tea.
- Luxembourg (Grande Duchesse de Luxembourg)**. Among the most beautiful and best of the deep yellow or deep orange Roses. Very desirable for the South.
- Maman Cochet**. Old-Fashioned Tea. Rich coral-pink, shading to rosy crimson. Very large, with thick, shell-like petals.
- Maman Cochet, White**. Old-Fashioned Tea. Creamy white, flushed rose on edges.
- Margaret McGredy**. Moderately fragrant, orange-scarlet blooms that do not fade. The flowers are extremely large and full double. Fine, glossy foliage.
- Mario van Houtte**. Old-Fashioned Tea. Large, very double, high centered, fragrant, deep cream, tinged carmine-pink, with buff-yellow base. Vigorous.
- McGredy's Ivory**. Bud long pointed; flower very large, double, fragrant, creamy white. \$1.25 each; 3 for \$3.15.
- McGredy's Scarlet**. Flower large, double, velvety crimson-scarlet; base orange. Tea fragrance. Very vigorous.
- Mme. Joseph Perraud**. A Rose of unusual charm in both bud and open bloom. The long-pointed, opening buds have delightful glowing yellow sunset shades that change to nasturtium-buff as the fragrant flowers slowly unfold. This is one of the most enchanting Roses we know in the lovely pastel tones. \$1.35 each; 3 for \$3.50.
- Mrs. Lombard**. Old-Fashioned Tea. Large, very double, fragrant, rosy salmon, deepening toward center. Vigorous.
- Mrs. Chas. Bell**. Shell-pink buds that open into globe-shaped flowers of the same color, with shadings of salmon. A sport of Radiance and like it except in color. Also called Shell-pink Radiance.

- Mrs. Dudley Cross**. Old-Fashioned Tea. Full, pale chamois-yellow, edged in autumn with rose and carmine. Good grower and bloomer.
- Mrs. Pierre S. du Pont**. Beautiful fragrant blooms of reddish golden yellow on a low, spreading plant. Unusually free blooming. \$1.25 each; 3 for \$3.15.
- Nigger Boy**. Long-pointed bud opening into a high-centered, very fragrant, very velvety dark blackish maroon flower with as many as 56 petals. Continuous and profuse bloom. Plant is low growing, with Polyantha tendencies. \$1.35 each; 3 for \$3.50.

Continued on inside of folder



POINSETTIA
\$1.25 each; 3 for \$3.15



PICTURE. \$1.25 each; 3 for \$3.15



ROUGE MALLERIN
\$1.25 each; 3 for \$3.15



DAINTY BESS. \$1.10 each; 3 for \$2.85

Plant Pat. 812..... 1.50
TOTAL..... \$5.00
One each of the above for only **\$4.40**



PEACE. Plant Pat. 591
\$2.50 each; 3 for \$6.60



HELEN TRAUBEL. Plant Pat. 1028
\$2.75 each; 3 for \$7.20



GOLDEN ANNIVERSARY
Plant Pat. 806
\$1.75 each; 3 for \$4.65

LAVENDER PINOCCHIO
Plant Pat. 947
\$2.00 each; 3 for \$5.25



MARY MARGARET McBRIDE
Plant Pat. 537
\$1.75 each; 3 for \$4.65



FORTY-NINER. Plant Pat. 792
\$2.50 each; 3 for \$6.60



CHARLES MALLERIN
Plant Pat. 933
\$2.50 each; 3 for \$6.60



Charles Mallerin. HT. Plant Pat. 933. Deep, rich, velvety blackish red. Very fragrant. Never fades to blue. Vigorous and disease resistant. \$2.50 each; 3 for \$6.00.

Charlotte Armstrong. HT. Plant Pat. 455. Cerise to spectrum-red. Large, beautifully formed, high-centered blooms open from extra long, slender, blood-red buds. Won highest score in fourteen official test gardens of All-America Rose Selections. Outstanding. \$2.25 each; 3 for \$6.00.

Cl. Crimson Glory. CHT. Plant Pat. 736. Sport of Crimson Glory and like it except for its vigorous climbing habit. \$2.50 each; 3 for \$6.60.

Cl. Floradora. C.Flor. Plant Pat. 1054. Sport of Floradora. Vigorous climbing plant with many branches. Foliage glossy green. Blooms scarlet, reverse Nopal red, very double (50 to 55 petals), borne singly. Slightly fragrant. \$2.00 each; 3 for \$5.25.

Cl. Heart's Desire. CHT. Plant Pat. 663. True sport of parent and like it except for vigorous climbing habit. \$2.00 each; 3 for \$5.25.

Cl. Hinrich Gaede. CHT. Plant Pat. 244. Sport of Hinrich Gaede. Large, double, open, high-centered flower, orange-yellow with nasturtium-yellow glow. Glossy, bronzy foliage. Vigorous. \$1.75 each; 3 for \$4.65.

Cl. Peace. CHT. Plant Pat. 932. A strong climbing form of Peace with the same long-stemmed, yellow flowers flushed pink. \$2.50 each; 3 for \$6.60.

Cl. Picture. CHT. Plant Pat. 524. Sport of Picture. Very double, reflexed petals of velvety clear rose-pink. Foliage glossy, dark. Excellent cut flower. Continuous bloomer. \$2.00 each; 3 for \$5.25.

Cl. Summer Snow. C.Flor. Plant Pat. 400. Semi-double, fragrant, snow-white blooms in June and July and in fall. Very vigorous. Seedling of famous old Rambler Tausendschön. \$2.00 each; 3 for \$5.25.

Donald Prior. Flor. Plant Pat. 377. Fragrant, bright scarlet flowers in huge cluster on strong stem. Vigorous, bushy (3 to 4 feet). Profuse, fragrant blooms. \$1.50 each; 3 for \$3.90.

Dream Girl. L.C. Plant Pat. 643. Beautiful large, double flowers with very spicy fragrance, unfolding coral-pink in color. Very vigorous climber. \$2.25 each; 3 for \$6.00.

Eclipse. HT. Plant Pat. 172. Rich golden yellow buds of exquisite form, extremely long pointed. Good bushy plant. \$1.75 each; 3 for \$4.65.

Fashion. Flor. Plant Pat. 789. Clusters of coral-peach flowers like miniature Hybrid Teas. Vigorous, bushy growth. \$2.00 each; 3 for \$5.25.

Forty-niner. HT. Plant Pat. 792. Large, open, double blooms, borne singly. Striking oriental-red, changing to cherry-red; reverse side of petals deep chrome-yellow to straw-yellow, washed with pink. Very vigorous, upright grower; excellent bloomer. \$2.50 each; 3 for \$6.60.

Golden Anniversary. HT. Plant Pat. 806. Sport of Good News. Beautifully formed flowers of a fine deep gold flushed apricot at times. This is one yellow Rose which is truly remarkable in that it is well branched and very vigorous. \$1.75 each; 3 for \$4.65.

Goldilocks. Flor. Plant Pat. 672. Clusters of medium-sized, double, yellow flowers. Vigorous, bushy; strong fragrance. Continuous bloomer. A very satisfactory yellow Floribunda. \$1.50 each; 3 for \$3.90.

Good News. HT. Plant Pat. 426. Very large, globular silvery pink with apricot glow. \$2.00 each; 3 for \$5.25.

Happiness. HT. Plant Pat. 911. Brilliant red! Does not blue. Flowers of fine form and splendid for cutting. Strong, healthy. \$2.50 each; 3 for \$6.60.

Heart's Desire. HT. Plant Pat. 501. Bud long pointed; large, high-centered, fragrant flower of uniform crimson. \$1.75 each; 3 for \$4.65.

Helen Traubel. HT. Plant Pat. 1028. Magnificent buds of light apricot blending into sparkling pink open into large open flowers of fine form. Has pleasing fragrance. Strong and sturdy grower; prolific bloomer. \$2.75 each; 3 for \$7.20.

Katherine T. Marshall. HT. Plant Pat. 607. Bud deep salmon-pink; flower large, deep rose-pink. Long strong stem. \$1.75 each; 3 for \$4.65.

Lavender Pinocchio. Flor. Plant Pat. 947. Produces large clusters of 4-inch blooms in a new, truly lavender color. About 3 feet tall. \$2.00 each; 3 for \$5.25.

Lowell Thomas. HT. Plant Pat. 595. Large, very double, high centered, clear canary-yellow. Strong, compact, upright. \$2.00 each; 3 for \$5.25.

Mary Margaret McBride. HT. Plant Pat. 537. Long-pointed bud; large, double, high-centered, deep salmon-pink flowers. \$1.75 each; 3 for \$4.65.

McGredy's Sunset. HT. Plant Pat. 317. Long-pointed bud opens into fragrant flower. Chrome-yellow at base, shading to bright scarlet; reverse clear buttercup-yellow. \$1.75 each; 3 for \$4.65.

Mirandy. HT. Plant Pat. 632. Large, double, with sweet spicy fragrance; garnet-red. \$2.25 each; 3 for \$6.00.

Mission Bells. HT. Plant Pat. 923. Large, double, high-centered blooms of salmon-pink; moderately fragrant. Healthy. \$2.25 each; 3 for \$6.00.

New Yorker. HT. Plant Pat. 823. A large, sparkling, red, red Rose, delightfully fragrant. A profuse bloomer from early spring until cold weather. Long stems. \$2.00 each; 3 for \$5.25.

Nocturne. HT. Plant Pat. 713. Large, semi-double to double, fragrant, cardinal-red shaded to crimson. \$2.00 each; 3 for \$5.25.

Pan America. HT. Plant Pat. 437. Large, double flower, deep orange-buff inside and reddish orange outside. \$1.75 each; 3 for \$4.65.

Peace. HT. Plant Pat. 591. Large, striking flower of canary-yellow, pale gold, deep yellow, pearl-white, often edged apple-blossom. Rates as the best Rose in America. \$2.50 each; 3 for \$6.60.

Pinocchio. Flor. Plant Pat. 484. Blooms small, salmon flushed gold. \$1.50 each; 3 for \$3.90.

Red Pinocchio. Flor. Plant Pat. 812. A bright red form of the popular Pinocchio. \$1.50 each; 3 for \$3.90.

Rex Anderson. HT. Plant Pat. 335. Delicate ivory-white flowers of enormous size, double and of perfect shape. \$1.75 each; 3 for \$4.65.

Rose of Freedom. HT. Plant Pat. 791. Beautiful currant-red blooms and buds atop stems 28 to 32 inches long make this prize-winner a welcome addition to any garden. Exceedingly fragrant. \$2.00 each; 3 for \$5.25.

Rubaiyat. HT. Plant Pat. 758. Large, double, high-centered, very fragrant, rose-red bloom on a strong stem. \$1.75 each; 3 for \$4.65.

San Fernando. HT. Plant Pat. 785. Large, high-centered, very fragrant, scarlet blooms. An upright plant. \$1.75 each; 3 for \$4.65.

Show Girl. HT. Plant Pat. 646. Large, semi-double, cupped, fragrant, deep pink. \$2.00 each; 3 for \$5.25.

Summer Snow. Flor. Plant Pat. 416. A prolific, pure white Floribunda. \$1.50 each; 3 for \$3.90.

Suzon Lotthe. HT. Plant Pat. 934. Pale to bright pink blend. Wonderfully double blooms, high centered and extremely large. Long-lasting as cut flowers. \$2.50 each; 3 for \$6.60.

Tallyho. HT. Plant Pat. 828. Urn-shaped bud; large, two-toned flower—outside of petals crimson and inside rose-red to pink. Vigorous, bushy, upright. \$2.00 each; 3 for \$5.25.

Texas Centennial. HT. Plant Pat. 162. Medium red, lighter in center. \$1.25 each; 3 for \$3.15.

Vogue. Flor. Plant Pat. 926. Miniature Hybrid-Tea-like flowers of vivid cherry-coral. Blooms in clusters; extremely fragrant. Robust plants 2½ to 3 feet tall make excellent hedges. \$2.00 each; 3 for \$5.25.



© **REX ANDERSON**
Plant Pat. 335. \$1.75 each; 3 for \$4.65



© **HORACE MCFARLAND.** Plant Pat. 730
\$2.00 each; 3 for \$5.25



HEART'S DESIRE. Plant Pat. 501
\$1.75 each; 3 for \$4.65



© **ECLIPSE**
Plant Pat. 172. \$1.75 each; 3 for \$4.65

OFFER No. 1

Again we have the privilege of offering the best ten Roses taken from a list of thirty-six All-America Rose Selections winners by the National Rose Jury.

TOP TEN

PEACE. Plant Pat. 591.....	\$2 50
NOCTURNE. Plant Pat. 713.....	2 00
MIRANDY. Plant Pat. 632.....	2 25
KATHERINE T. MARSHALL. Plant Pat. 607.....	1 75
SAN FERNANDO. Plant Pat. 785.....	1 75
FORTY-NINER. Plant Pat. 792.....	2 50
TALLYHO. Plant Pat. 828.....	2 00
CHARLOTTE ARMSTRONG. Plant Pat. 455.....	2 25
LOWELL THOMAS. Plant Pat. 595.....	2 00
RUBAIYAT. Plant Pat. 758.....	1 75
TOTAL.....	\$20 75

Shipped Prepaid for only **\$18.50**

ROSEMONT NURSERIES
D. L. THOMPSON, Owner TYLER · TEXAS





PEACE, Plant Pat. 591
\$2.50 each; 3 for \$6.60



GOLDEN ANNIVERSARY Plant Pat. 806
\$1.75 each; 3 for \$4.65



MARY MARGARET McBRIDE Plant Pat. 537
\$1.75 each; 3 for \$4.65



GOOD NEWS Plant Pat. 426
\$2.00 each; 3 for \$5.25

OFFER No. 3
Pinocchio, Plant Pat. 484 \$1.50
Lavender Pinocchio, Plant Pat. 947 2.00
Red Pinocchio, Plant Pat. 812 1.50
TOTAL \$5.00
One each of the above for only **\$4.40**

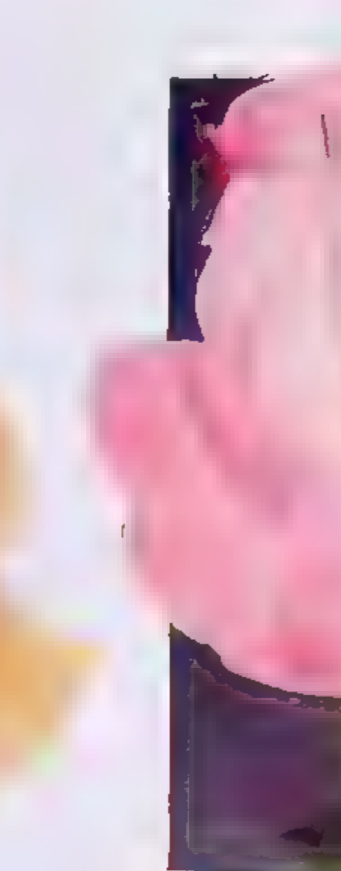
LAVENDER PINOCCHIO Plant Pat. 947
\$2.00 each; 3 for \$5.25



FORTY-NINER, Plant Pat. 792
\$2.50 each; 3 for \$6.60



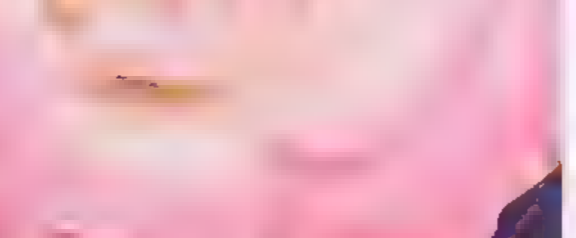
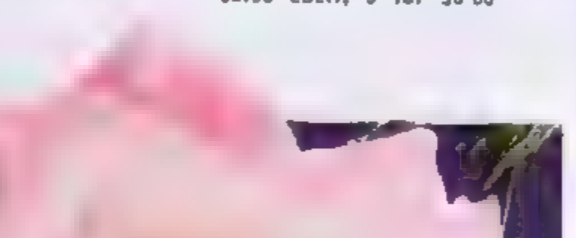
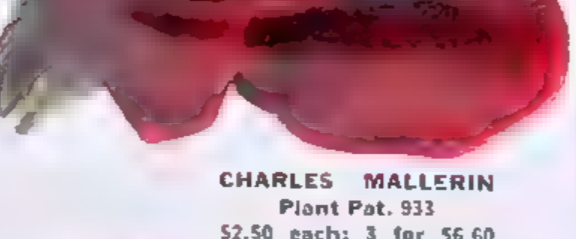
CHARLES MALLERIN Plant Pat. 933
\$2.50 each; 3 for \$6.60



SUZON LOTTHE, Plant Pat. 934, \$2.50 each; 3 for \$6.60



HELEN TRAUBEL, Plant Pat. 1028
\$2.75 each; 3 for \$7.20



APPLAUSE, Plant Pat. 829, \$2.00 each; 3 for \$5.25

ROSEMONT'S Patented Everblooming ROSES

Applause, HT, Plant Pat. 829. Light red and deep pink. Long-petaled bud; flower very double, high centered. Strong, upright grower. Blooms profusely. \$2.00 each; 3 for \$5.25

Capistrano, HT, Plant Pat. 922. Very large, globular, double bloom of bright pink. Very fragrant. Vigorous and upright. \$2.25 each; 3 for \$6.60

Charles Mallerin, HT, Plant Pat. 933. Deep, rich, velvety blackish red. Very fragrant. Never fades to blue. Vigorous and disease resistant. \$2.50 each; 3 for \$6.60

Charlotte Armstrong, HT, Plant Pat. 455. Cerise to specter-red. Large, beautifully formed, high-centered blooms open from extra long, slender, blood-red test gardens of All-America Rose Selections. Outstanding. \$2.25 each; 3 for \$6.60

Cl. Crimson Glory, CHT, Plant Pat. 736. Sport of Crimson Glory and like it except for its vigorous climbing habit. \$2.50 each; 3 for \$6.60

Cl. Floradora, C Flor, Plant Pat. 1054. Sport of Floradora. Vigorous climbing plant with many branches. Foliage glossy, green. Blooms scarlet, reverse royal red, very double (90 to 95 petals), borne singly. Slightly fragrant. \$2.00 each; 3 for \$5.25

Cl. Heart's Desire, CHT, Plant Pat. 643. True sport of parent and like it except for its vigorous climbing habit. \$2.00 each; 3 for \$6.60

Cl. Hinrich Gaede, CHT, Plant Pat. 244. Sport of Hinrich Gaede. Large, double, open, high-centered flower, orange-yellow with nasturtium-yellow glow. Glossy, bronzy foliage. Vigorous. \$1.75 each; 3 for \$4.65

Cl. Peace, CHT, Plant Pat. 932. A strong, climbing form of Peace with the same long stemmed, yellow flowers flushed pink. \$2.50 each; 3 for \$6.60

Cl. Picture, CHT, Plant Pat. 524. Sport of Picture. Very double, reflexed petals of velvety clear rose-pink. Foliage glossy, dark. Excellent cut flower. Continuous bloomer. \$2.00 each; 3 for \$5.25

Cl. Summer Snow, C Flor, Plant Pat. 481. Semi-double, fragrant, snow-white blooms in June and July and in fall. Very vigorous. Seeding of famous old number 17 and 18. \$2.00 each; 3 for \$5.25

Donald Prior, Flor, Plant Pat. 377. Fragrant, bright scarlet flowers in huge clusters. Strong, bushy. Vigorous, bushy. \$1.50 each; 3 for \$4.65

Dream Girl, C, Plant Pat. 643. Beautiful large, double flowers with very spicy fragrance, unfolding coral-pink in color. Very vigorous climber. \$2.25 each; 3 for \$6.60

Eclipse, HT, Plant Pat. 172. Rich red to yellow buds of exquisite form, extremely long pointed. Good bushy plant. \$1.75 each; 3 for \$4.65

Fashion, Flor, Plant Pat. 789. Clusters of semi-petalled flowers like miniature Hybrid Tea. Vigorous, bushy. \$2.00 each; 3 for \$5.25

Forty-niner, HT, Plant Pat. 792. Large open double blooms, borne singly. Striking coral-red, changing to cherry-red; reverse side of petals deep chrome-yellow to strawyellow, washed with pink. Very vigorous, upright grower, excellent bloomer. \$2.50 each; 3 for \$6.60

Golden Anniversary, HT, Plant Pat. 806. Sport of Good News. Beautifully formed flowers of a fine deep gold flushed apricot at time. This is one yellow Rose which is truly remarkable in that it is well branched and very vigorous. \$1.75 each; 3 for \$4.65

Goldlocks, Flor, Plant Pat. 672. Clusters of medium-sized, double, yellow flowers. Vigorous, bushy; strong fragrance. Continuous bloomer. A very satisfactory yellow Floribunda. \$1.50 each; 3 for \$3.90

Good News, HT, Plant Pat. 426. Very large, globular silvery pink with apricot glow. \$2.00 each; 3 for \$5.25

Happiness, HT, Plant Pat. 911. Brilliant red! Does not blue. Flowers of fine form and splendid for cutting. Strong, healthy. \$2.50 each; 3 for \$6.60

Heart's Desire, HT, Plant Pat. 501. Bud long pointed; large, high-centered, fragrant flower of uniform crimson. \$1.75 each; 3 for \$4.65

Helen Traubel, HT, Plant Pat. 1028. Magnificent buds of light apricot blending into sparkling pink, open into large open flowers of fine form. Has pleasing fragrance. Strong and sturdy grower, prolific bloomer. \$2.75 each; 3 for \$7.20

High Noon, CHT, Plant Pat. 704. A vigorous, upright pillar. Brilliant lemon-yellow, double, loosely cupped blooms in clusters. Strong, bushy. \$2.50 each; 3 for \$6.60

Horace McFarland, HT, Plant Pat. 730. Bud mahogany-red; coppery orange flower, very double (40 to 50 petals) and spicily fragrant. \$2.00 each; 3 for \$5.25

Katherine T. Marshall, HT, Plant Pat. 607. Bud deep salmon-pink; flower large, deep rose-pink. Long strong stem. \$1.75 each; 3 for \$4.65

Lavender Pinocchio, Flor, Plant Pat. 947. Produces large clusters of 4-inch blooms in a true lavender color. About 3 feet tall. \$2.00 each; 3 for \$5.25

Lowell Thomas, HT, Plant Pat. 598. Large, very double, high centered, clear canary-yellow. Strong, compact, upright. \$2.00 each; 3 for \$5.25

Mary Margaret McBride, HT, Plant Pat. 537. Long pointed bud, large, double, and very fragrant. \$1.75 each; 3 for \$4.65

McGredy's Sunset, HT, Plant Pat. 317. Long-pointed bud opens into fragrant flower clear yellow at base, shading to bright scarlet. \$1.75 each; 3 for \$4.65

Mirandy, HT, Plant Pat. 632. Large, double, high-centered blooms of salmon-pink, moderately fragrant. Healthy. \$1.75 each; 3 for \$4.65

Mission Bella, HT, Plant Pat. 923. Large, double, high-centered blooms of salmon-pink, moderately fragrant. Healthy. \$1.75 each; 3 for \$4.65

New Yorker, HT, Plant Pat. 823. A large, sparkling, red, red Rose, delightfully fragrant. A profuse bloomer from early spring until mild weather. Long-stems. \$2.00 each; 3 for \$5.25

Nocturne, HT, Plant Pat. 713. Large, semi-double to double, fragrant, cardinal-red shaded to crimson. \$2.00 each; 3 for \$5.25

Pan America, HT, Plant Pat. 437. Large, double flower, deep orange-rose inside and red-orange outside. \$1.75 each; 3 for \$4.65

Peace, HT, Plant Pat. 591. Large, striking flower of canary-yellow, pale gold, deep yellow, peach-white, often edged with pink. \$2.50 each; 3 for \$6.60

Pinocchio, Flor, Plant Pat. 484. Blooms small salmon flushed gold. \$1.50 each; 3 for \$3.90

Red Pinocchio, Flor, Plant Pat. 812. A bright red form of the popular Pinocchio. \$1.50 each; 3 for \$3.90

Rex Anderson, HT, Plant Pat. 335. Delicate ivory-white flowers of enormous size, double and of perfect shape. \$1.75 each; 3 for \$4.65

Rose of Freedom, HT, Plant Pat. 791. Beautiful currant-red blooms and buds atop stems 28 to 32 inches long make this prizewinner a welcome addition to any garden. Long-lasting fragrant. \$2.00 each; 3 for \$5.25

Rubaiyat, HT, Plant Pat. 758. Large, double, high-centered, very fragrant, rose-red bloom on a strong stem. \$1.75 each; 3 for \$4.65

San Fernando, HT, Plant Pat. 785. Large, double-centered, very fragrant, scarlet blooms. An upright plant. \$1.75 each; 3 for \$4.65

Show Girl, HT, Plant Pat. 646. Large semi-double, cupped, fragrant, deep pink. \$2.00 each; 3 for \$5.25

Summer Snow, HT, Plant Pat. 416. A prolific, pure white Floribunda. \$1.50 each; 3 for \$3.90

Suzon Lotthe, HT, Plant Pat. 934. Pale to bright pink blend. Wonderfully double blooms, high centered and extremely large. Long-lasting as cut flowers. \$2.50 each; 3 for \$6.60

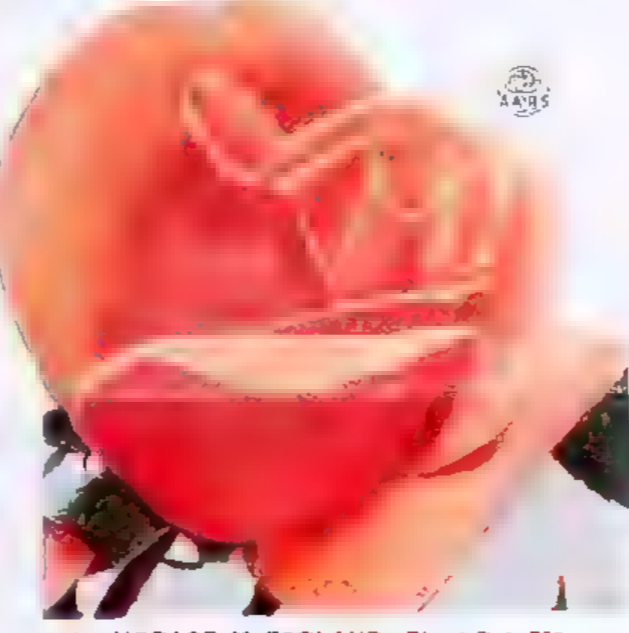
Tallyho, HT, Plant Pat. 828. Urn-shaped bud; large, wax-tinted flower—outside of petals crimson and inside rose-red to pink. Vigorous, bushy, upright. \$2.00 each; 3 for \$5.25

Texas Centennial, HT, Plant Pat. 162. Medium red, better in center. \$1.25 each; 3 for \$3.15

Vogue, Flor, Plant Pat. 926. Miniature Hybrid-Tea-like flowers of vivid cherry-coral. Blooms in clusters; extremely fragrant. Robust plants 2 1/2 to 3 feet tall make excellent hedges. \$2.00 each; 3 for \$5.25



REX ANDERSON Plant Pat. 335, \$1.75 each; 3 for \$4.65



HORACE McFARLAND, Plant Pat. 730
\$2.00 each; 3 for \$5.25



HEART'S DESIRE, Plant Pat. 501
\$1.75 each; 3 for \$4.65



ECLIPSE Plant Pat. 172, \$1.75 each; 3 for \$4.65



FASHION, Plant Pat. 789
\$2.00 each; 3 for \$5.25



SUMMER SNOW, Plant Pat. 416
\$1.50 each; 3 for \$3.90

Gather ye rose buds while ye may
Old time is still a-flying,
And this same flower that smiles today,
Tomorrow may be thine.



GOLDLOCKS, Plant Pat. 672
\$1.50 each; 3 for \$3.90

Floribunda or Hybrid Polyantha Roses

This is not any particular strain of Roses, but rather a new group derived from various sources. These roses are more cold-resistant than Hybrid Teas; the flowers are single to very double, and they last throughout the season. They are most effective planted all over color borders and hedges.

Price, except as noted, best-grade, 2-yr. plants, \$1.10 each; 3 for \$2.85, \$10.50 per doz.

- Baby Chateau** Bud ovoid, crimson, flower double, red shaded garnet. Blooms in clusters. Very vigorous.
- Cecile Brunner** The true Sweetheart Rose. Sprays of rosy pink bud open into shell-pink flowers. \$1.50 each; 3 for \$3.75.
- D. T. Poulsen** Semi-double, bright blood-red. Fragrant.
- Ellen Poulsen** Large, double, bright cherry-pink clusters.
- Elsa Poulsen** Flowers medium size, semi-double, open, very lasting, lightly fragrant, bright rose-pink, borne in clusters on long stems.
- Floradora** One of the most satisfactory of the Floribundas. An eye-catching orange-red. Always in bloom. Height 24 to 30 inches. \$1.50 each; 3 for \$3.75.
- Graus an Aachen** First-pink and salmon-velvet.
- Improved Lafayette** Semi-double, open, slightly fragrant, suffused with crimson. Vigorous; bushy.
- Permanent Wave** Large, semi-double flowers of bright coral-red, borne in clusters. Lobes of petals wavy, producing a very wavy effect. \$1.35 each; 3 for \$3.60.
- Red Ripples** Bud small, globular. Semi-double, oxblood-red to crimson flowers borne in cluster.

Everblooming Polyantha or Baby Roses

The origin of the Polyantha name sometimes applied to them, 'Baby Rose'.

Price, except as noted, best-grade, 2-yr. plants, \$1.10 each; 3 for \$2.85, \$10.50 per doz.



VOGUE, Plant Pat. 926
\$2.00 each; 3 for \$5.25

PERMANENT WAVE
\$1.35 each; 3 for \$3.60

FLORADORA \$1.50 each; 3 for \$3.75

- Chatillon Rose** Semi-double, fragrant, bright pink, blooms in large clusters.
- Gloria Mundi** The prettiest orange-scarlet Baby Rose we know. A delicate, strong, upright grower.
- Golden Salmon** Large, double, bright orange-red flowers. Vigorous.
- Ideal** Velvety crimson trusses of fragrant flowers.
- Katherine Zornes** Large clusters of small white flowers. One of the best white Baby Roses.
- Peach Blossom** Bud orange-red, soft carmine-rose flowers in clusters of 6 to 12. Very free bloomer.
- Perle d'Or** Dainty, light-colored, semi-double flowers, borne in clusters. Strong, upright grower.
- Tip-Top (Baby Doll)** Tyrant-rose at edge of blooms, passing to white and pale yellow.

Banksia, Cherokee, Perpetuals, Rugosa and Miscellaneous Roses

Price, except as noted, best-grade, 2-yr. plants, \$1.50 each; 3 for \$3.75.

- Yellow Banksia** Double yellow flowers. See illustration on front cover.
- Pink Cherokee** Single, silvery pink flowers. Excellent in the South.
- Red Cherokee** Bright carmine-crimson blooms.
- White Cherokee** Fragrant white flowers.
- American Beauty** HP. An old-time Rose that everyone admires because of its perfume. Both buds and flowers are very large, the color deep carmine, shaded to crimson. The perfume is so strong that it is said to produce the finest flowers. \$1.10 each; 3 for \$2.85, \$10.50 per doz.
- Frau Karl Druschki (White American Beauty)** HP. Snow-white, large and full flowers, tinged with light pink, but it soon becomes white. \$1.10 each; 3 for \$2.85, \$10.50 per doz.
- Paul Neyron** HP. Very double, carried on long stems, clear pink, shade of the faded flowers and seed pods are clipped. Half a dozen of these buds will fill an ordinary basket. \$1.10 each; 3 for \$3.10 per doz.
- Grootendorst Supreme** H Rug. Small, deep crimson-red blooms, borne in a mixture cluster. Extremely vigorous, can be pruned any height.
- Rosa Hugonia (Father Hugo Rose, Golden Rose of China)** I August introduction.
- Louis Philippe** I. Large, double, clear pink flowers, borne in deep pyramids.
- Rosa Variegata** Green foliage, white flowers, under the leaves. \$1.25 each; 3 for \$3.15.
- Safrano** Old-Fashioned Tea. Large, semi-double, fragrant, salmon and apricot-yellow.
- Snowflake** Old-Fashioned Tea. Pure white; profuse and continuous bloomer.
- Sour Theresse (Sister Theresse)** A favorite yellow Rose. The plants with quantities of shapely, golden yellow blooms are dependable.
- Stirling** Large, open, semi-double, fragrant, brilliant pink flowers. \$1.25 each; 3 for \$3.15.
- Sunburst** Bud long pointed, double flower of variegated color.
- Tahaman** Rich golden yellow and copper, double, lasting, extremely fragrant.
- The Doctor** Pink. \$1.25 each; 3 for \$3.15.
- White La France (Augustine Guinoisseau)** A sport of La France, very similar to it in variety. White tinted light flesh color. \$1.35 each; 3 for \$3.15.
- White Radiance** A sport of Red Radiance. Very large, double, fragrant white, tinted shell-pink in center. Foliage rich green, soft, glossy.

Rosemont's Select Hybrid Tea Rose Bushes, continued

- Picture** Very old, reflexed petals of velvety clear rose-pink. Free bloomer, red eye, cone. \$1.25 each; 3 for \$3.15.
- Poinsettia** Bud long pointed, flower large, double, open, slightly fragrant, bright unfolding scarlet. Foliage glossy. Vigorous compact. Abundant, continuous blooms. \$1.25 each; 3 for \$3.15.
- President Herbert Hoover** The large, semi-double blooms are a combination of cerise pink, flame, scarlet and yellow, the outside petals become slightly lighter as the flower ages and in the cool days of autumn have splashes of red.
- President Madison** Bud long pointed, at base. Vigorous. \$1.50 each; 3 for \$3.75.
- Radiance** Bud long pointed, deep orange; flower semi-double, golden yellow.
- Red Radiance** Great globes of deep rose-red.
- Roslyn** Bud long pointed, deep orange; flower semi-double, golden yellow.
- Rouge Mallerin** Brilliant red buds, opening to glowing scarlet. \$1.25 each; 3 for \$3.15.
- Safrano** Old-Fashioned Tea. Large, semi-double, fragrant, salmon and apricot-yellow.
- Snowflake** Old-Fashioned Tea. Pure white; profuse and continuous bloomer.
- Sour Theresse (Sister Theresse)** A favorite yellow Rose. The plants with quantities of shapely, golden yellow blooms are dependable.
- Stirling** Large, open, semi-double, fragrant, brilliant pink flowers. \$1.25 each; 3 for \$3.15.
- Sunburst** Bud long pointed, double flower of variegated color.
- Tahaman** Rich golden yellow and copper, double, lasting, extremely fragrant.
- The Doctor** Pink. \$1.25 each; 3 for \$3.15.
- White La France (Augustine Guinoisseau)** A sport of La France, very similar to it in variety. White tinted light flesh color. \$1.35 each; 3 for \$3.15.
- White Radiance** A sport of Red Radiance. Very large, double, fragrant white, tinted shell-pink in center. Foliage rich green, soft, glossy.

OFFER No. 1

Again we have the privilege of offering the best ten Roses taken from a list of thirty-six All-America Rose Selections winners by the National Rose Jury.

TOP TEN	
PEACE, Plant Pat. 591	\$2.50
NOCTURNE, Plant Pat. 713	2.00
MIRANDY, Plant Pat. 632	2.25
KATHERINE T. MARSHALL, Plant Pat. 607	1.75
SAN FERNANDO, Plant Pat. 785	2.50
FORTY-NINER, Plant Pat. 792	2.50
TALLYHO, Plant Pat. 828	2.00
CHARLOTTE ARMSTRONG, Plant Pat. 455	2.25
LOWELL THOMAS, Plant Pat. 598	2.00
RUBAIYAT, Plant Pat. 758	1.75
TOTAL	\$20.75

Shipped Prepaid for only **\$18.50**

ROSEMONT NURSERIES

D. L. THOMPSON, Owner TYLER, TEXAS



APPLAUSE, Plant Pat. 829, \$2.00 each; 3 for \$5.25



**SOEUR
THERESE**
\$1.10 each;
3 for \$2.85

ROSEMONT'S SELECT HYBRID TEA ROSE BUSHES

THE DOCTOR
\$1.25 each; 3 for \$3.15

FOR 1953 - 54

"Make Your Own" Collection

AT THE FOLLOWING PRICES (PREPAID IF ORDER AMOUNTS TO \$4.00 OR MORE)

WE DO NOT SHIP OUTSIDE CONTINENTAL U. S. A.

All **\$1.10** Roses are any **3 for \$2.85; \$10.50 per doz.**

All **\$1.25** Roses are any **3 for \$3.15; \$12.50 per doz.**

All **\$1.35** Roses are any **3 for \$3.50; \$13.50 per doz.**

Price, except as noted, best-grade 2-yr. plants, \$1.10 each; any 3 for \$2.85; \$10.50 per doz.; \$85.00 per 100

All Old-Fashioned Tea Roses are \$1.50 each; 3 for \$3.75

Alexander Hill Gray (Yellow Maman Cochet). Old-Fashioned Tea. Large, very fragrant, deep lemon-yellow, becoming deeper as the bloom develops.

Ami Quinard. Buds large; velvety maroon-crimson flowers, with blackish luster. Vigorous grower.

Antoine Rivoire. Creamy white, tinted with light pink. An extra fine Rose with large petals. \$1.25 each; 3 for \$3.15.

Better Times. Bud long pointed; flower high centered, very large, double, bright cerise. \$1.35 each; 3 for \$3.50.

Betty Uprichard. Large, both semi-double and double, and extremely fragrant. Salmon-pink with reverse carmine and copper. Foliage light green, glossy. As easy to grow as Radiance.

Briarcliff. Very large, moderately fragrant, rose-pink at center, passing to a lighter shade on the outer petals. \$1.25 each; 3 for \$3.15.

Caledonia. Flowers white, large, double, high centered, slightly fragrant. \$1.25 each; 3 for \$3.15.

Charles K. Douglas. Bud long pointed; large, double, fragrant flower of flaming scarlet, flushed velvety crimson. Abundant blooms. Very vigorous.

Columbia. Glistening rose-pink. The blooms are full double, large, fragrant. Upright and vigorous. \$1.25 each; 3 for \$3.15.

Comtesse Vandal. Orange-copper bud opens into high-centered, brilliant salmon-pink flower. Excellent for cutting. \$1.35 each; 3 for \$3.50.

Condesa de Sagato. A two-color beauty from Spain—Oriental-red and yellow. Flower large and double. Free bloomer. \$1.25 each; 3 for \$3.15.

Crimson Glory. Best-loved red Rose in the world! Perfectly shaped, deep velvety crimson flowers, very double and fragrant. \$1.50 each; 3 for \$3.75.

Dainty Bess. Soft rose-pink, single flowers with maroon stamens. Excellent bloomer.

Duchesse de Brabant. Old-Fashioned Tea. Soft rosy pink to bright rose. Free blooming. Very hardy.

Edith Nellie Perkins. Orient-red, shaded cerise-orange; inside salmon-pink.

Editor McFarland. Large, fragrant, glowing pink flowers, suffused yellow.

E. G. Hill. Immense; dazzling scarlet, shading to deep pure red. Vigorous. Abundant foliage; free flowering.

Etoile de Hollande. Bright red, almost unfading. \$1.25 each; 3 for \$3.15.

Golden Dawn. Sunflower-yellow, flushed old-rose. \$1.25 each; 3 for \$3.15.

Golden Rapture. Clear golden yellow flowers of fine form, lasting a long time. Old Rose fragrance. \$1.25 each; 3 for \$3.15.

Gruss an Teplitz. Valuable hedge Rose. Extremely vigorous; strong spicy fragrance. Bud small, dark velvety scarlet.

Hinrich Gaede. Bud pointed, nasturtium-red; flower very large, double, high centered, orange-yellow with red glow. Delightful raspberry fragrance. Vigorous. \$1.35 each; 3 for \$3.50.

Joanna Hill. Bud long pointed; flower double (40 to 50 petals), dark yellow. Vigorous.

Kaiserin Auguste Viktoria. For more than half a century this Rose has been a favorite. Bud is cream-white, but the open bloom is snow-white with a tint of lemon at the center. One of the best white Roses.

Lady Hillingdon. Old-Fashioned Tea. Fragrant, deep apricot-yellow blooms. Almost as hardy as a Hybrid Tea.

Luxembourg (Grande Duchesse de Luxembourg). Among the most beautiful and best of the deep yellow or deep orange Roses. Very desirable for the South.

Maman Cochet. Old-Fashioned Tea. Rich coral-pink, shading to rosy crimson. Very large, with thick, shell-like petals.

Maman Cochet, White. Old-Fashioned Tea. Creamy white, flushed rose on edges.

Margaret McGredy. Moderately fragrant, orange-scarlet blooms that do not fade. The flowers are extremely large and full double. Fine, glossy foliage.

Marie van Houtte. Old-Fashioned Tea. Large, very double, high centered, fragrant, deep cream, tinged carmine-pink, with buff-yellow base. Vigorous.

McGredy's Ivory. Bud long pointed; flower very large, double, fragrant, creamy white. \$1.25 each; 3 for \$3.15.

McGredy's Scarlet. Flower large, double, velvety crimson-scarlet; base orange. Tea fragrance. Very vigorous.

Mme. Joseph Perraud. A Rose of unusual charm in both bud and open bloom. The long-pointed, opening buds have delightful glowing yellow sunset shades that change to nasturtium-buff as the fragrant flowers slowly unfold. This is one of the most enchanting Roses we know in the lovely pastel tones. \$1.35 each; 3 for \$3.50.

Mme. Lombard. Old-Fashioned Tea. Large, very double, fragrant, rosy salmon, deepening toward center. Vigorous.

Mrs. Chas. Bell. Shell-pink buds that open into globe-shaped flowers of the same color, with shadings of salmon. A sport of Radiance and like it except in color. Also called Siell-pink Radiance.

Mrs. Dudley Cross. Old-Fashioned Tea. Full, pale chamois-yellow, edged in autumn with rose and carmine. Good grower and bloomer.

Mrs. Pierre S. du Pont. Beautiful fragrant blooms of reddish golden yellow on a low, spreading plant. Unusually free blooming. \$1.25 each; 3 for \$3.15.

Nigger Boy. Long-pointed bud opening into a high-centered, very fragrant, very velvety dark blackish maroon flower with as many as 56 petals. Continuous and profuse bloom. Plant is low growing, with Polyantha tendencies. \$1.35 each; 3 for \$3.50.

Continued on inside of folder



POINSETTIA
\$1.25 each; 3 for \$3.15



PICTURE. \$1.25 each; 3 for \$3.15



Everblooming CLIMBING ROSES



CONDESA DE SASTAGO
\$1.25 each; 3 for \$3.15

Price, except as noted,
best-grade, 2-yr. plants,
\$1.10 each; 3 for \$2.85;
\$10.50 per doz.

Allen's Golden Climber.
Very glossy green leaves.
Large, full flowers of
deep orange-red. Fine,
free-flowering variety
suitable for growing on
wall, pergola, or as a
pillar. \$1.50 each; 3
for \$3.75.



STERLING
\$1.25 each; 3 for \$3.15



MRS. CHAS. BELL. \$1.10 each; 3 for \$2.85

- Blaze.** Vigorous climber producing a mass of brilliant scarlet in the spring. Often an intermittent bloomer for the remainder of the season. \$1.35 each; 3 for \$3.50.
- Climbing American Beauty.** Climbing form of American Beauty with large, rose-pink flowers.
- Cl. Ami Quinard.** True sport of Ami Quinard; velvety maroon-crimson. Vigorous climbing habit.
- Cl. Briarcliff.** Sport of Briarcliff. Large, fragrant bloom of rose-pink. \$1.25 each; 3 for \$3.15.
- Cl. Cecile Brunner.** Climbing sport of Cecile Brunner. Large clusters of miniature seashell-pink flowers. Good grower. \$1.50 each; 3 for \$3.75.
- Cl. Columbia.** Peachblow-pink. Nearly thornless. \$1.25 each; 3 for \$3.15.
- Cl. Condesa de Sastago.** Oriental-red and yellow. \$1.35 each; 3 for \$3.50.
- Cl. Dainty Bess.** Like its parent Dainty Bess, except in habit of growth.
- Cl. Etoile de Hollande.** Dark, velvety red. \$1.25 each; 3 for \$3.15.
- Cl. Kaiserin Augusta Viktoria.** White. One of our best white climbers.
- Cl. Lady Hillingdon.** Semi-double, fragrant; deep apricot-yellow.
- Cl. Louis Philippe.** Double flowers of deep purplish scarlet-red. \$1.50 each; 3 for \$3.75.
- Cl. Maman Cochet.** Rich coral-pink, shading to rosy crimson. The flowers are very large, with thick shell-like petals. \$1.50 each; 3 for \$3.75.
- Cl. Mrs. Pierre S. du Pont.** Beautiful fragrant blooms of reddish golden yellow.
- Cl. Perle des Jardins.** Large, full, fragrant flowers of golden yellow. Blooms freely; abundant growth. \$1.35 each; 3 for \$3.50.
- Cl. Poinsettia.** Large, double, slightly fragrant blooms of bright unfading scarlet. A strong climber. \$1.50 each; 3 for \$3.75.
- Cl. President Hoover.** Climbing sport of the well-known President Herbert Hoover, and identical in bloom.
- Cl. Radiance.** Sport of Radiance with all its good qualities.
- Cl. Red Radiance.** Sport of Red Radiance with a flower like its parent.
- Cl. Red Talisman.** Climbing sport of hush Red Talisman. Free bloomer.
- Cl. Souer Therese.** Blooms of some high quality as bush. Vigorous climber.
- Cl. Souv. de la Malmaison (Cl. Queen of Beauty and Fragrance).** Introduced in 1893. Very large, double and very fragrant. Creamy flesh with rosy center. \$1.50 each; 3 for \$3.75.
- Cl. Sunburst.** Splendid yellow climber.
- Cl. Talisman.** An excellent bloomer. No other multi-color Rose is as popular as Talisman.
- Marchal Niel.** Bud large, full, pointed; flower large, double, very fragrant. The favorite yellow Rose of the South. \$2.00 each; 3 for \$5.00.
- Mermaid.** Large, single, open, pale sulphur-yellow; amber stamens. Foliage deep varnished green. With us this Rose is evergreen. We consider it one of our best climbers. \$1.50 each; 3 for \$3.75.
- New Dawn (Everblooming Dr. W. Van Fleet).** Double, blush-pink flowers on long stems. Dark, glossy foliage. Climbs to 15 feet. Recurrent bloom. \$1.35 each; 3 for \$3.50.
- Reine Marie Henriette.** Large, double, fragrant, rich brilliant red. \$1.25 each; 3 for \$3.15.
- White Dawn.** Gardenia-like, fragrant, white blooms in clusters. Very vigorous climber with recurrent, abundant blooms. \$1.35 each; 3 for \$3.50.



McGREDY'S IVORY. \$1.25 each; 3 for \$3.15

Hardy Climbers, Ramblers and Pillar Roses

A Climbing Rose is a plant that, if given support, grows higher and higher, starting each year from or near the top of the previous year's growth.

A Rambler, properly speaking, has long, thin, pliable branches which if not supported, take root where they touch the ground and thus "ramble."

A Pillar Rose does not climb or "ramble" for its canes are too stiff. Some are strong and self-supporting; others require a stake or some support.

Price, except as noted, best-grade, 2-yr. plants, \$1.25 each; 3 for \$3.15

American Pillar. Rosy pink or carmine, with white center and yellow stamens. Usually classed as a Rambler but is actually a vigorous climber.

Dr. W. Van Fleet. Large, double flower of cameo-pink to flesh. Very vigorous climber (15 to 20 feet). Profuse bloom in June and July. Blooms on old wood; pruned scantily.

Excelsa (Red Dorothy Perkins). Profuse, double bloom in clusters; Tyrian rose to bright light crimson. Exceedingly vigorous growth—12 to 18 feet.

Gardenia. Creamy white, yellow-centered blooms in small sprays. Very vigorous.

Jacotte. Large, fragrant flower of deep coppery yellow, tinted red. Very vigorous climber; profuse bloom in May and June.

Mme. Gregoire Staechelin (Spanish Beauty). Bud long pointed; flower very large, of distinct form, fragrant. Delicate pink, stained crimson outside, followed by pear-shaped fruit. Long stems. Abundant-blooming climber.

Paul's Scarlet Climber. Semi-double flowers in large clusters; flaming scarlet with a crimson shade. None better. An excellent pillar Rose. \$1.10 each; 3 for \$2.85.

Silver Moon. Large, clear silvery white, semi-double flowers; yellow stamens. Excellent climber.



HINRICH GAEDE. \$1.35 each; 3 for \$3.50

OFFER No. 2

This collection of dependable Roses should be in everyone's garden. They are especially outstanding because all are hardy specimens worthy of the efforts of the amateur Rose grower.

Lucky Ten

E. G. HILL	\$1 10
ROUGE MALLERIN	1 25
PRES. H. HOOVER	1 10
EDITH NELLIE PERKINS	1 10
ROSLYN	1 10
CALEDONIA	1 25
MRS. P. S. DU PONT	1 25
RED RADIANCE	1 10
RADIANCE	1 10
MRS. CHAS. BELL	1 10
TOTAL	\$11 45

Shipped Prepaid for

\$9.90



MRS. PIERRE S. DU PONT. \$1.25 each; 3 for \$3.15





MARGARET McGREDY. \$1.10 each; 3 for \$2.85



CRIMSON GLORY
\$1.50 each; 3 for \$3.75

ROSEMONT'S Favorite Reds

The symbol  indicates Roses that have been winners in the All-America Rose Selections. In competition with other new varieties they have proved their worth by their performance in test gardens across the country. Here they are grown for two years before being rated by the All-America judges. Look for the  sign.



RUBAIYAT. Plant Pat. 758
\$1.75 each; 3 for \$4.65



NEW YORKER.
Plant Pat. 823
\$2.00 each;
3 for \$5.25



ROSE OF FREEDOM
Plant Pat. 791
\$2.00 each; 3 for \$5.25

OFFER No. 4

New Yorker. Plant Pat. 823.....	\$2 00
Rose of Freedom. Plant Pat. 791.....	2 00
Rubaiyat. Plant Pat. 758.....	1 75
TOTAL.....	\$5 75

One each of the above for only. . **\$5.25**

ROSEMONT NURSERIES

D. L. THOMPSON, Owner

P. O. Box 839 TYLER, TEXAS

WE RECOMMEND

that every gardener interested in growing better Roses join the *American Rose Society*, the largest single-flower organization in the country. Here's what you get for your yearly dues of \$4.50:

- A copy of the American Rose Annual
- A subscription to the monthly American Rose Magazine
- Use of the Society's Lending Library
- Guide for Buying Roses
- Guide for Beginners on Growing Roses
- Personal help on Rose problems
- Friendship with other growers

Write the Secretary,
1316 Derry St., Harrisburg, Penna.

ROSEMONT NURSERIES • TYLER, TEXAS

D. L. THOMPSON, Owner • • P. O. BOX 839

Simple Hints for Growing Prize-Winning Roses

We advise fall planting when and where possible. You should be guided by climatic conditions in your section and the experience of successful local gardeners. We usually begin shipping about October 1 and continue until April 1, but find late spring plantings do not survive the first summer as well as earlier plantings.

Any good soil in a sunny location, and away from trees and shrubbery, is right for Roses. The soil should be spaded deep—about 18 inches. Any manure used should be mixed with soil and placed within the first 9 inches at the bottom of the bed. Don't let the roots touch the manure. Fill top of bed with top soil.

Make the holes deep and large enough to receive the roots without bending. Place the plant with roots spread out, and slightly deeper than the plant grew in the nursery. Work soil in around the roots until hole is three-fourths full. Pack well and water thoroughly. When water settles, finish filling hole with loose top soil; this acts as a mulch. If fertilizer is required on the surface, spread it carefully and work into the top soil.

Should watering be required in dry weather, be sure to soak the soil thoroughly. A light sprinkling is almost useless. Good cul-

tivation and loose top soil or a mulch of peat moss are surely as important as watering.

Foliage diseases may be controlled with Tri-ogen or its equivalent. Good sprays may be bought from your local merchant with directions on the containers.

Pruning: Prune Hybrid Tea and Hybrid Perpetual bush Roses by removing misplaced canes and old and diseased wood at the base; shorten remaining canes to desired height. To keep Tea and Polyantha bush Roses in shape, remove dead wood. Prune Hybrid Tea Climbers and Tea Climbers to remove old or diseased wood, and to keep in bounds. Prune Shrub Roses and Climbers which bloom only in the spring by removing old, weakened canes at the base, leaving the new thrifty canes for next year's bloom. (Example, Excelsa and Banksia.) All Rose pruning should be done in the spring when buds begin to swell (about February 15 here) except Climbers and Shrub Roses that bloom only in the spring; these should be pruned in early summer, soon after they have finished blooming.

Abbreviations Used: C. Flor., Climbing Floribunda; CHT., Climbing Hybrid Tea; Flor., Floribunda; HT., Hybrid Tea; LC., Large-flowered Climber.

Rosemont's Liberal Guarantee

We ship only best-grade, 2-yr. plants at prices as reasonable as possible under present costs of production. Rosemont Roses have bloomed profusely one year before being shipped to you; with proper care they will begin blooming early the first summer.

We guarantee to deliver our Roses to you in first-class growing condition, and to furnish them true to label. Should you receive a Rose plant from us in an unsatisfactory condition or which proves to be untrue, we will cheerfully replace it without charge.

WE prepay shipping charges on orders amounting to \$4.00 or more

NOTICE
Complaints not honored unless made within ten days after receipt of shipment