

Historic, archived document

Do not assume content reflects current scientific knowledge, policies, or practices.

62,83

1934

"Southern Beauties"

Economic ...
World OCT 1934

LIBRARY
RECORDED
U. S. Department of Agriculture

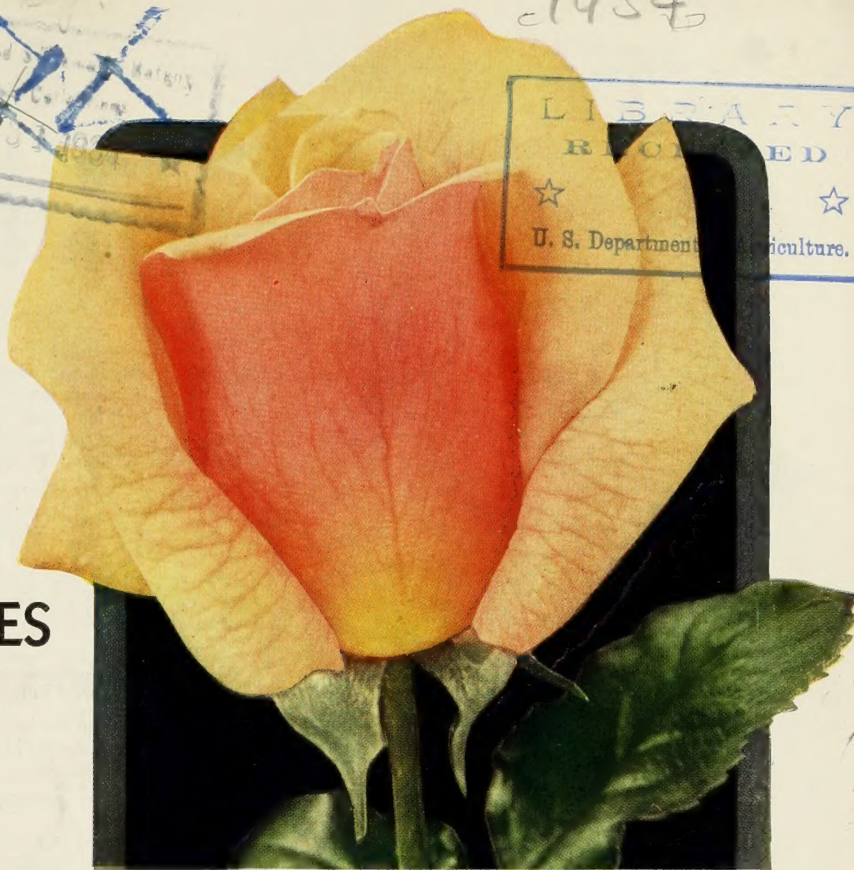
ROSES

from

ROSEMONT NURSERIES

BOX 839

TYLER • TEXAS

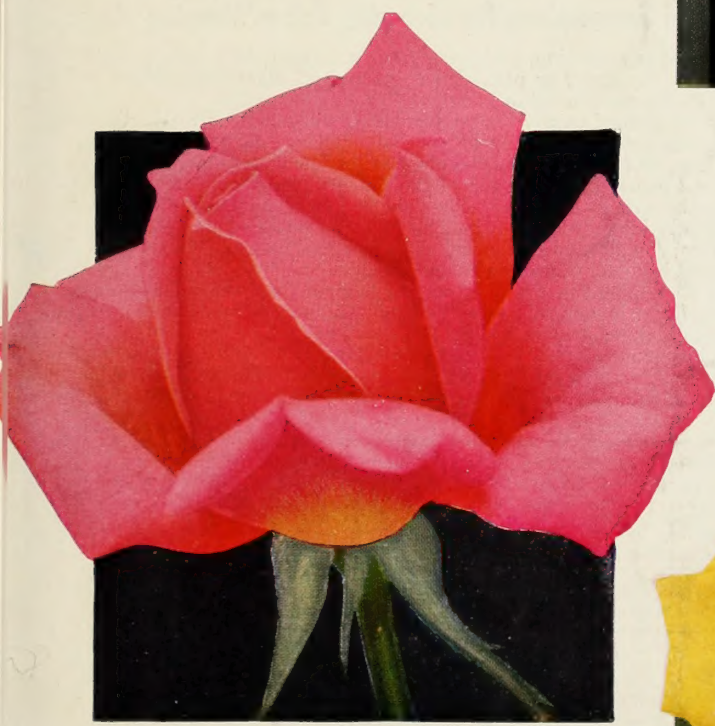


LADY MARGARET STEWART

A queen among the "Queens of the Garden." More is told about this Rose on page 5. 2-yr., heavy plants, 60 cts. each, \$6.00 per doz., prepaid.

REV. F. PAGE-ROBERTS

This gorgeous Hybrid Tea should be in every modern Rose-garden. See page 7. 2-yr., heavy plants, 60 cts. each, \$6.00 per doz., prepaid.



CHARLES P. KILHAM

A lovely Hybrid Tea Rose, in bloom nearly all summer. See full description on page 3. 2-yr., heavy plants, 60 cts. each, \$6.00 per doz., prepaid.

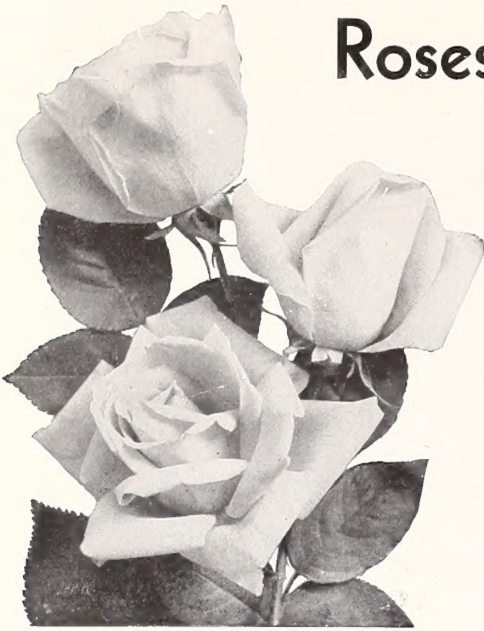


Rosemont Collection of These 3 Roses

Offer No. 1. We will supply one each of the Roses pictured on this page, 2-yr., heavy plants, prepaid . . . **\$1.60**

Offer No. 2. Two plants of each variety, 2-yr., heavy plants, prepaid . . . **\$3.00**

Roses from the Great Rose Region of the Lone Star State



No matter what Rose enthusiasts say about getting results from Roses, the plants are the first thing to consider and study. The plants are both foundation and super-structure of the successful garden. Poor soil can be replaced or fertilized; proper drainage can be supplied; insects and diseases can be controlled. But weak, stunted, store-dried plants are always a disappointment. No amount of cultivating or coddling will make them into strong-growing and free-flowering Rose bushes.

Rosemont provides the foundation for a Rose-garden that will give satisfaction and joy: Better Plants and Better Varieties.

"It matters not what goal you seek,
Its secret here reposes:
You've got to dig from week to week
To get results or ROSES."—*Edgar A. Guest.*

With due respect to Mr. Guest, it is not necessary to burden yourself with such a task. Most gardeners find pleasure and recreation in the garden. Another equally enthusiastic writer speaks thus—

"But these light gardening operations are not labor, they are a delightful amusement to a refined mind, and lead it to reflect on the wonderful infinites of Nature."—*Rivers.*

So there is no reason to be discouraged. Remember, first, Rosemont plants, then your love and care will determine the results.

A Word About Rose Prices

Roses are higher and will be still higher in the spring. The supply of good, two-year, field-grown Roses is short, due to several hard freezes experienced by the growers the past two years. Get your orders in early. Six Roses may be ordered at the dozen rate. An order may be assorted and the dozen rate will apply.

Please note. We do not prepay transportation charges on orders amounting to less than \$1.50. Purchaser must pay such charges. Get your friends and neighbors to club with you and obtain the better rate for large orders.

We guarantee to deliver our Roses to you in a first-class growing condition and that they are true to label. Since we have no control over the forces of nature and the care they will receive, we cannot guarantee them to live.

Rosemont Roses have bloomed profusely one year before being shipped to you; with proper care they will begin blooming early the first summer.

Order now; Roses are scarce and must be higher in the spring.

Here Are Simple Suggestions for Growing Prize-Winning Roses

Any good soil, in a sunny location, and away from trees and shrubbery, is right for Roses. The soil should be spaded or plowed deeply, and all plant-food placed as far down as possible. (See illustration below.)

Rosemont Roses are pruned, ready for setting—they will not need further pruning the first season. If roots should be broken in packing, cut them off before planting.

Make the hole deep, and be sure that the plant is set low enough so that the bud-union will be at least 2 inches below the top of the soil, and the roots spread as shown in the illustrations at bottom of this page. Pack the soil tightly around the roots, but leave the top-soil slightly loose to act as a mulch and to retain moisture. If fertilizer is required on the surface, spread it carefully and work into the top-soil, but avoid having fertilizer or plant-foods in direct contact with the roots.

Should watering be required in dry weather, be sure to soak the soil thoroughly. A light sprinkling is almost useless. Good cultivation and loose top-soil, or a mulch of peat moss, is surely as important as watering.

Mildew and black-spot may be controlled with a mixture of 9 parts dusting sulphur to 1 part arsenate of lead, applied weekly with a dusting-gun or muslin bag.

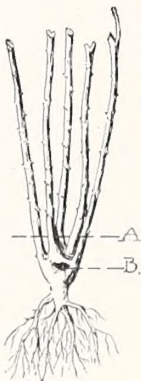
When cutting the blooms, be sure to let two leaves remain on the branch. (See illustration.)

PREPAID PRICES FOR ROSES IN LARGE QUANTITIES

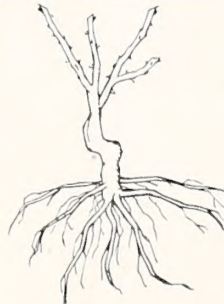
| | | | | |
|---------------|--------------|--------------|--------------|--------------|
| Single Plants | 6 or more | 25 or more | 49 or more | 100 or more |
| 45-ct. Roses | 37 cts. each | 34 cts. each | 33 cts. each | 30 cts. each |
| 60-ct. Roses | 50 cts. each | 47 cts. each | 45 cts. each | 40 cts. each |
| 75-ct. Roses | 63 cts. each | 60 cts. each | 60 cts. each | 60 cts. each |

Patented Roses do not take quantity rates except as noted under each variety.

PLEASE NOTE. An order may be assorted and the above quantity prices will apply.



A. Shows depth to plant.
B. Shows where plant was budded.



Rose plant with top cut back and long roots shortened

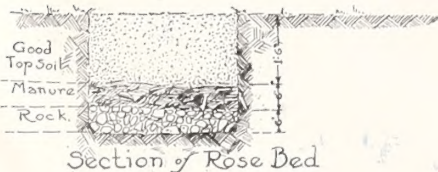


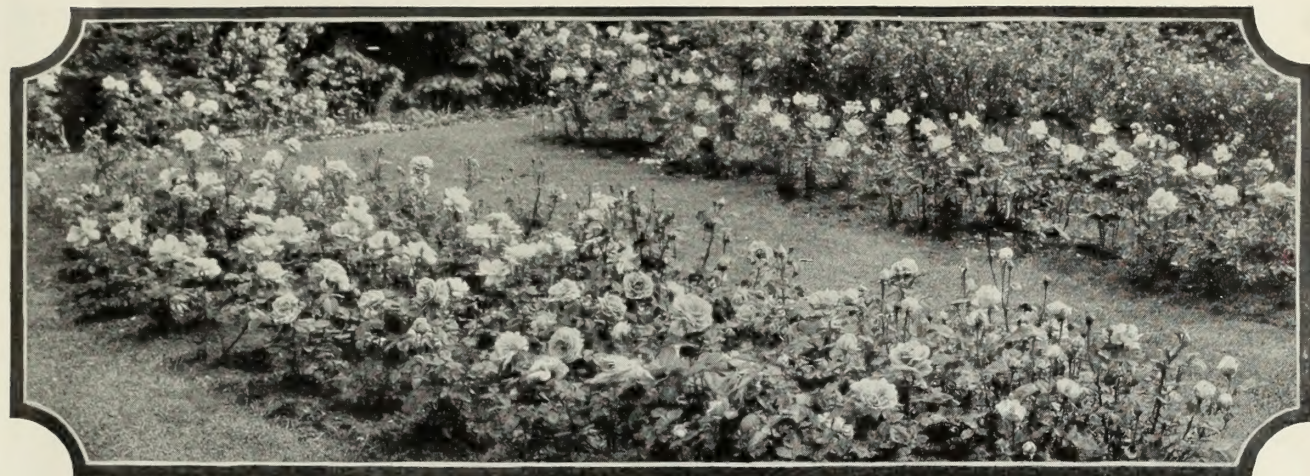
The result of proper planting and pruning



The black line shows where to cut. Let two leaves remain on the bush.

ROSEMONT NURSERIES TYLER · TEXAS





Rosemont's Select List of Everblooming New and Scarce Roses

Every Rose in this list is 2 years old and has bloomed profusely 1 year in the field. We do not attempt to grow every variety of new Rose offered to the public but have

selected the best of those which have been tested and proved worthy. We endeavor to have every **Rosemont** Rose, a Rose worth while, deserving space in your garden.

All New and Scarce Roses, 60 cts. each. \$6.00 per doz., prepaid, except where otherwise stated
TRANSPORTATION CHARGES PREPAID ON ORDERS AMOUNTING TO \$1.50 AND OVER

AMI QUINARD. HT. (1930.) Mme. Meha Sabatier × unnamed seedling (Mrs. Edward Powell × Austrian Copper). Long-pointed, medium-sized bud; flower medium size, semi-double, open, cupped, lasting, fragrant, deep velvety crimson, borne singly and several together on good stem. Dark green, leathery, disease-resistant foliage. Vigorous, upright, bushy grower. 2-yr., heavy plants, 75 cts. each, \$7.50 per doz., prepaid.

CHARLES K. DOUGLAS. HT. Bud large, long-pointed; flower large, full, double, fragrant, flaming scarlet, flushed velvety crimson. Foliage dark green, disease-resistant.

CHARLES P. KILHAM. HT. (1926.) Large, well-shaped flower of brilliant Oriental red-orange, suffused with scarlet, becoming brilliant red with age; faintly tea-scented. Good foliage. Vigorous, upright, bushy grower.

ANGÈLE PERNET. HT. Bénédicte Seguin × unnamed Pernetiana. Bud large, oval; flower very large, globular, double, unusually lasting, extremely fragrant, reddish orange, shaded chrome-yellow, borne singly on long stem. Abundant, bronzy green foliage. Profuse, continuous bloomer.

CUBA. HT. (1926.) Flower large, semi-double, very fragrant, cardinal-red, slightly tinted yellow. Beautiful but fades quickly. We love this Rose for its coloring, and while it could be classed as a single, is very striking and beautiful.

AUTUMN. HT. (1928.) Sensation × Souv. de Claudius Pernet. Bud medium size, ovoid, burnt-orange; flower medium size, double, cupped, lasting, moderately fragrant, burnt-orange, streaked with red, borne singly on medium-length stem. Foliage abundant, leathery, glossy, disease-resistant. Good upright grower; free and continuous bloomer. 2-yr., heavy plants, 75 cts. each, \$7.50 per doz., prepaid.

DAINTY BESS. HT. Ophelia × K. of K. A striking and distinct type. Very large, single, broad-petaled flower, borne several together, rose color with large, flat cluster of stamens.

BETTY UPRICHARD. HT. Good-sized, long-pointed bud; flower large, open, semi-double to double, very lasting, extremely fragrant, delicate salmon-pink, reverse of petals carmine with coppery sheen, borne singly and several together on long stem. Foliage large, light green, leathery, glossy. Growth vigorous; profuse bloomer all summer.

DAME EDITH HELEN. HT. Bloom very large, full, double, high-centered, with recurving petals, lasting, intensely fragrant, pure glowing pink, borne singly on long, strong stem. Foliage medium size, rich green, leathery, disease-resistant. Growth vigorous, upright, bushy; profuse, continuous bloomer all season.

BRIARCLIFF. HT. (1926.) Sport of Columbia. Bud one-third longer than Columbia, very large, long-pointed; flower $4\frac{1}{2}$ inches across when well developed, high-centered, lasting, moderately fragrant, deep rose-pink at center, passing to lighter on outer petals, borne singly on long, strong stem.

DAVID O. DODD. HT. (1926.) Bud medium size, globular; flower large, very double, full, lasting, intensely fragrant, rich crimson, flushed scarlet, borne singly on stem of average length and strength.

DUCHESS OF ATHOLL. HT. (1928.) Bud large, globular, deep bronze; flower large, double, cupped, very lasting, intensely fragrant, vivid orange, flushed old-rose, borne singly on long stem.

CALEDONIA. HT. (1928.) Bud large, long-pointed; flower large, very double, high-centered, extremely lasting, slightly fragrant, white, borne singly on long, strong stem. Foliage large, leathery, dark green, disease-resistant. Free, continuous bloomer. One of the prettiest white Roses. 2-yr., heavy plants, 75 cts. each, \$7.50 per doz., prepaid.

EDITH NELLIE PERKINS. HT. (1928.) Large bud; medium-sized flower, double, open, lasting, moderately fragrant, outside of petals Oriental red shaded cerise-orange, inside salmon-pink flushed orange, borne singly on very good stem. Good, upright, bushy grower.

E. G. HILL. HT. (1929.) Bud very beautiful; flower immense, unusually lasting, dazzling scarlet, shading to a deeper pure red as it develops, but never showing purple, borne on long stem. Foliage abundant, of fine color. Growth vigorous; very free bloomer.



Autumn



Angèle Pernet



Betty Uprichard



Briarcliff

ROSEMONT COLLECTION NO. 2
EIGHTEEN WONDERFUL ROSES
 PICTURED ON THESE PAGES

For full descriptions, see pages indicated

All selected from our New and Scarce Roses. We have grown them, they have bloomed for us, and we commend them to you as Roses that have few equals and no superiors.

- | | |
|---------------------------------|---|
| Autumn. See page 3. | Margaret McGredy. See page 5. |
| Angèle Pernet. See page 3. | Mev. G. A. van Rossem. See page 6. |
| Betty Uprichard. See page 3. | Miss Rowena Thom. See page 6. |
| Briarcliff. See page 3. | Mrs. Erskine Pembroke Thom. See page 6. |
| Caledonia. See page 3. | Mrs. Lovell Swisher. See page 6. |
| Charles K. Douglas. See page 3. | Padre. See page 6. |
| Dame Edith Helen. See page 3. | Patience. See page 6. |
| E. G. Hill. See page 3. | Wilhelm Kordes. See page 7. |
| Golden Dawn. See page 4. | |
| Grace Noll Crowell. See page 4. | |

OFFER NO. 1. We will send One plant each (18 plants) of these Roses, 2-yr., heavy plants, prepaid, for only **\$9.00**

OFFER NO. 2. We will send any Twelve of these Roses (including Autumn OR Caledonia), your selection, prepaid for **\$5.95**

OFFER NO. 3. We will send any Six of these Roses (including Autumn OR Caledonia), your selection, prepaid for **\$3.00**



Golden Dawn



Grace Noll Crowell



Margaret McGredy



Mrs. Lovell Swisher

New and Scarce Roses

ETOILE DE HOLLANDE. HT. This Rose is comparatively new and its worth has been realized more and more as it has been tried out. It is considered by Rose experts to be one of the best red Roses on the market today. Flower moderately double, especially attractive when half blown. Its dark red overlaid with almost black velvet shadings is irresistible. 2-yr., heavy plants, 75 cts. each, \$7.50 per doz., prepaid.

GOLDEN DAWN. HT. (1929.) Elegante × Ethel Somerset. Bud rich sunflower-yellow, flushed old-rose; well-formed, double flower, sweetly fragrant, sunflower-yellow passing to lemon-yellow with age. Vigorous grower; profuse bloomer. One of the best.

GRACE NOLL CROWELL. HT. (1929.) Bud very large, long-pointed; flower extremely large, very double, high-centered, unusually lasting, fragrant, rose-pink slightly shaded cream at base, borne singly on long, strong stem. Soft, light green foliage, disease-resistant. Few thorns. Good grower; profuse bloomer. Should be classed as one of the best pink Roses.

ROSEMONT ROSES

Are shipped into every State in the Union. We guarantee our 2-year-old plants to be true to the label name; to be delivered to you in first-class growing condition. However, as we have no control over the forces of nature, nor over the care that may be given in the garden, we cannot guarantee the plants to live.



Padre

In addition to this Collection of Roses you should be interested in the others shown on the front cover, pages 8 and 9, and the back cover.



Caledonia



Charles K. Douglas



Dame Edith Helen



Mrs. E. P. Thom

New and Scarce Roses

JOANNA HILL. HT. (1928.) Mme. Butterfly × Miss Amelia Gude. Bud extremely large, very long-pointed; flowers large, semi-double, full, unusually lasting, moderately fragrant, darker yellow than Sunburst, borne singly on long, strong stem. Foliage large, dark green, leathery. Few thorns. Growth very vigorous, upright; profuse bloomer. An excellent yellow.

JOHN RUSSELL. HT. Bud large; flower very large, beautifully shaped, extremely double, scentless, rich glowing crimson flushed deeper—almost black. Foliage good all summer; mildew-proof. Free bloomer.

JULIEN POTIN. HT. (1927.) Souv. de Claudius Pernet × unnamed seedling. Bud long-pointed, chrome-citron-yellow; flower large, double, full, cupped, high-centered, pure primrose-yellow, borne on long, strong stem.

LADY MARGARET STEWART. HT. (1926.) This new variety is an aristocrat among Roses. Bud very large, long-pointed, orange, shaded yellow, with cerise markings; bloom extremely large, double to very double, full, high-centered, unusually lasting, intensely fragrant, deep buttercup-yellow, flushed orange and red, borne singly on long, strong stem. Foliage abundant, large, sage-green, leathery, glossy, disease-resistant. Continuous bloomer all season. Has won highest honors among Roses.

LORD CHARLEMONT. HT. Bud medium size, very long-pointed; flower large to very large, double, high-centered, perfectly shaped, lasting, extremely fragrant, deep clear crimson. Free, continuous bloomer.

LUCIE MARIE. HT. (1930.) Very long-pointed bud, deep yellow, splashed red; large, full flower, lasting and sweetly fragrant, buttercup-yellow, washed apricot-orange and shaded cerise. Dark green, leathery foliage.

LULU. HT. Bud very long-pointed, deep orange-red; flower large, single, open, extremely lasting, slightly fragrant, salmon-pink, borne singly and several together on long, strong stem. Bushy, compact grower; free, continuous bloomer all season. Everyone wants a Lulu with their collection.

MARGARET McGREDY. HT. (1927.) Bud very large, long-pointed; flower extremely large, double, lasting, moderately fragrant, orange-scarlet that does not fade, even in the open flower, borne singly and several together on long, strong stem. One of our prettiest and most satisfactory Roses.

MARGARET BELLE HOUSTON. HT. (1929.) Very large, ovoid bud; flower extremely large, unusually double, lasting, fragrant, velvety crimson, borne singly on long, graceful stem. The shape, coloring, and texture of this Rose is unusually beautiful. It is one of the prettiest, if not the prettiest, red Roses we grow. 2-yr., heavy plants, 75 cts. each, \$7.50 per doz., prepaid.



Mevrouw G. A. van Rossem



Miss Rowena Thom



E. G. Hill



Patience

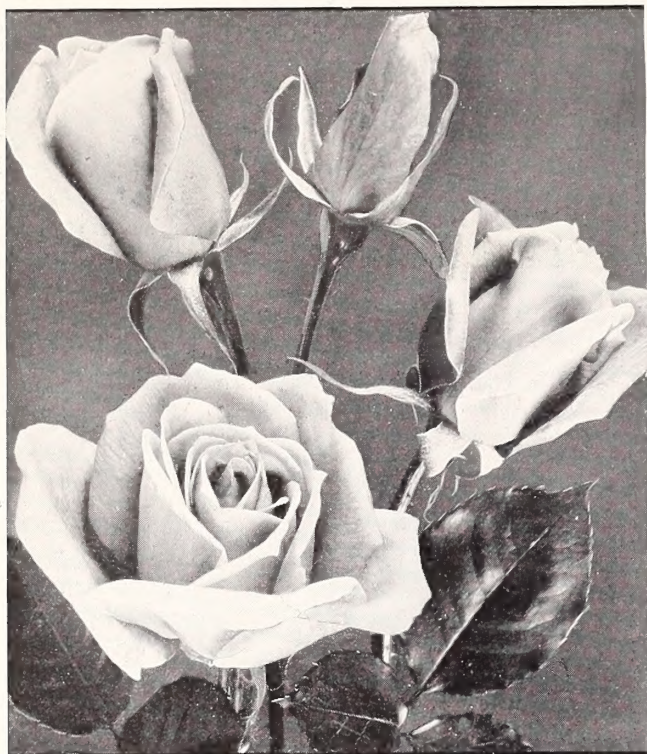


Wilhelm Kordes

ROSEMONT SPECIALS

Your attention is invited to the special offers made on the front and back covers. Three splendid Roses are offered in each group—the front cover collection for \$1.60, back cover collection for \$1.95, and both collections (6 varieties) for \$3.35, prepaid. These are our standard 2-year-old, heavy plants. You can buy no better anywhere at any price.

Rosemont Roses are "born and bred" in the great Rose-producing section of Texas, where soil and climate combine to make first-quality plants.



President Herbert Hoover Roses

New and Scarce Roses

MAY WETTERN. HT. (1928.) Type, Killarney. Bud very large, long-pointed; flower large, double, full, high-centered, unusually lasting, moderately fragrant, rosy pink, borne singly on long, average-strength stem. Profuse, continuous bloomer. Should be classed as one of the best pinks.

MEVROUW G. A. VAN ROSSEM. HT. (1926.) Souv. de Claudius Pernet × Gorgeous. Bud ovoid, opens freely in dull and moist weather; flower large, double, full, very fragrant, borne singly on long stem, heavily flamed and shaded orange and apricot on a dark golden yellow ground, reverse of petals often dark bronze and nearly brown when bloom first opens. Good foliage. Excellent bloomer.

MISS ROWENA THOM. HT. (1927.) Radiance × Los Angeles. Bud very large, long-pointed; flower enormous, opens perfectly, color a blending of fiery rose and rosy mauve, together with old-gold, center rose washed with gold, borne on long, strong stem.

MISS WILLMOTT. HT. Large, well-shaped flower, double, moderately fragrant, uniform soft sulphury cream, with faintest flush of pale pink at the edges. Good grower of bushy, branching habit.

MRS. A. R. BARRACLOUGH. HT. (1926.) Bud very large, long-pointed; flower extremely large, double, high-centered, very lasting, slightly fragrant, bright, soft, sparkling carmine-pink of even shade throughout, shading to yellow at base, becoming brighter with age, and borne on long, strong stem. A profuse, continuous bloomer. Very hardy.

MRS. ERSKINE PEMBROKE THOM. HT. Grange Colombe × Souv. de Claudius Pernet. Bud large, long-pointed; flower large, perfectly formed, very lasting, moderately fragrant, high-centered, fully double, clear deep canary-yellow without a trace of shading, borne singly on long, strong stem. A leading yellow Rose of merit.

MRS. HENRY BOWLES. HT. Large, well-shaped, high-centered flower, extremely lasting, very fragrant, warm shade of pink, flushed salmon, borne on long, strong stem. Upright grower; free, continuous bloomer.

MRS. HENRY MORSE. HT. Very large, long-pointed bud; flower exceptionally large, high-centered, double, moderately fragrant, flesh-cream ground, with sheen of bright rose, shaded vermilion; clear vermilion veining on petals.

MRS. LOVELL SWISHER. HT. (1926.) Unnamed seedling × Souv. de Claudius Pernet. Bud large, beautifully pointed, deep coppery salmon opening to perfectly formed, double, moderately fragrant flower of delicate salmon-pink passing to flesh on the edges. Blooms singly on long stem. Vigorous grower with clean, bronzy foliage.

MRS. PIERRE S. DU PONT. HT. (1929.) Ophelia × unnamed seedling of *R. fetida bicolor* parentage. Medium-sized, long-pointed bud of reddish gold; flower medium size, semi-double, cupped, moderately fragrant, deep golden yellow, becoming slightly lighter with age. Abundant, rich green foliage.

MRS. U. M. ROSE. HT. (1931.) A wonderful new Rose having large blooms of brilliant rose-pink. During cool weather the color deepens and is sometimes almost a red. Good grower. An excellent garden Rose.

OLYMPIAD. HT. (1931.) A handsome new red Rose. Long-pointed bud of flame-scarlet, opening into a high-centered, fragrant blossom of good size with recurving petals, borne singly on long, strong stem. Its unusual shade of red has a strong undertone of orange-yellow, flashing yellow at base of petals. Truly a wonderful Rose. 2-yr., heavy plants, 75 cts. each, \$7.50 per doz., prepaid.

PADRE. HT. Flower shapely, of good substance, medium size, semi-double, fragrant, bright coppery scarlet, flushed with yellow, borne on long, strong stem. Foliage large, rich green, leathery, glossy, and has not mildewed with us. Good grower and abundant bloomer.

PATIENCE. HT. (1927.) Long-pointed, medium-sized bud; flower large, double, high-centered, very lasting, moderately fragrant, scarlet-carmine, passing to deep orange at base, shading to orange-scarlet, borne singly and several together on medium-length stem. Foliage dark green, glossy, leathery. Moderately bushy habit of growth.

PILGRIM. HT. A very large, double, delightfully fragrant, silvery pink Rose. It has a large number of petals and never shows its center. The open flower appears to be flat.

PRESIDENT HERBERT HOOVER. HT. (1930.) Sensation × Souv. de Claudius Pernet. Bud large, long-pointed; flower large, semi-double, full, lasting, moderately fragrant (spicy), medium orange except for the two outside petals which fade to a lighter shade, borne singly on long, strong stem. Foliage leathery, disease-resistant. Growth vigorous, upright; free bloomer. In fall when the days are cool this great new Rose is enhanced by splashes of red on the outer petals—everyone wants Hoover. 2-yr., heavy plants, 45 cts. each, \$4.50 per doz., prepaid.

PRISCILLA. HT. Unnamed seedling × Ophelia. Bud very large, long-pointed; flower extremely large, double, full, cupped, unusually lasting, fragrant, outer petals rose-pink, center petals Tyrian pink, borne singly on long, strong stem. Foliage large, leathery, glossy, disease-resistant. Growth vigorous, upright; abundant bloomer.

Please note that on orders under \$1.50 we do not prepay transportation charges. Make up a neighborhood order and save money.

RAPTURE. HT. (1926.) Sport of Mme. Butterfly. Flower medium size, somewhat deeper pink than Mme. Butterfly, borne singly on long stem. Like parent in habit of growth but stronger.

REV. F. PAGE-ROBERTS. HT. Copper-red buds of great length, opening to golden yellow blooms stained outside with red, fully double and very large, fragrant. Strong, branching plant with healthy foliage. A supremely gorgeous Rose, developing to a surpassing magnificence of size and color.

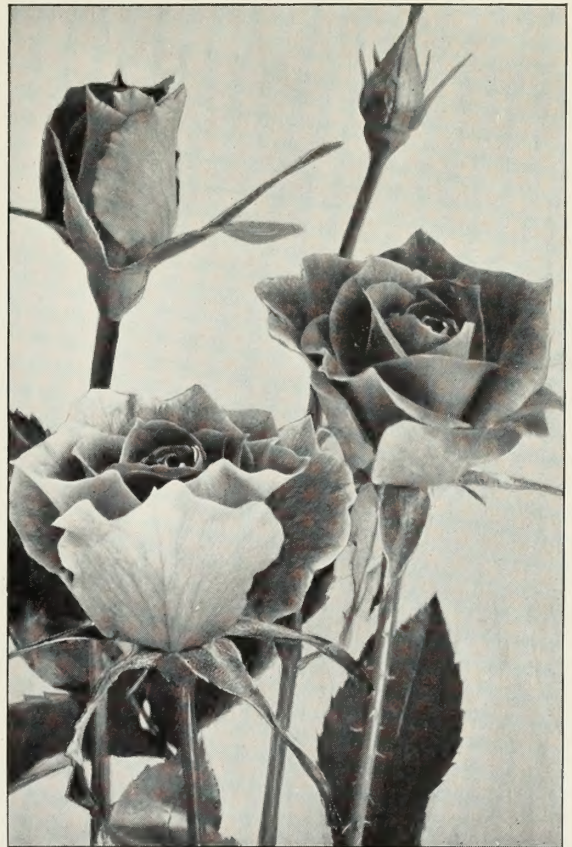
ROSLYN. HT. (1929.) Souv. de Claudius Pernet \times Butterfly. Resembles Souv. de Claudius Pernet in foliage but deeper in color. Medium-sized, long-pointed, deep orange bud; flower large, semi-double, very lasting, slightly fragrant, golden yellow. An excellent yellow Rose.

SOUV. DE CLAUDIUS PERNET. HT. Constance \times unnamed variety. Bud large, long-pointed; flower very large, full, double, extremely lasting, moderately fragrant, pure sunflower-yellow, borne singly on good, long stem. This is one of the most beautiful of yellows. We have not always found it easy to grow. It loves a well-drained, sunny location.

SOUV. DE GEORGES PERNET. HT. Unnamed variety \times Mme. Edouard Herriot. Bud very large, ovoid; flower extremely large, full, globular, Oriental red, shaded with yellow, ends of petals cochineal-carmine, borne on long, strong stem. Foliage dark bronzy green. Growth very vigorous, upright, bushy, branching. A fine Rose.

TALISMAN. HT. (1929.) Ophelia \times Souv. de Claudius Pernet. Bud medium size, long-pointed, richly colored; flower medium size, double, high-centered, very lasting, extremely fragrant, golden yellow and copper, borne singly on long stem. Foliage abundant, large, rich green, leathery, mildews. Growth very vigorous, upright; free bloomer. This new Rose has attracted more attention than any variety introduced in many years. 2-yr., heavy plants, 45 cts. each, \$4.50 per doz., prepaid.

VILLE DE PARIS. HT. (1926.) Souv. de Claudius Pernet \times unnamed Pernetiana seedling. Similar to Souv. de Claudius Pernet. Flower large, double, globular, full, sun-yellow, slightly tinted orange, deeper in center and at base, borne on long stem. Foliage reddish green, glossy.



Talisman Roses

WILHELM KORDES. HT. Gorgeous \times Adolf Koschel. Unique and distinct in coloring—a rich coppery red with yellow suffusion overlaying a golden salmon ground, varying in intensity under different weather conditions. Always beautiful and particularly high-colored early in the season and in the autumn. The buds are long and pointed, opening to double, high-centered, very fragrant flowers. Good grower and free flowering.



SELECTED LIST OF STANDARD EVERB

Every plant has bloomed one year in the field. This group comprises the best of the well-known Roses and a few rather old ones loved by our grandmothers.

2-yr., heavy plants, 45c. each. \$4.50 per doz., prepaid
WE DO NOT PREPAY TRANSPORTATION CHARGES
ON ORDERS UNDER \$1.50

Alexander Hill Gray. T. Pale lemon-yellow, deepening in the center of its perfectly formed, fragrant flowers. Moderate growth and bloom. A good Rose.

American Beauty. HP. An old favorite, well known. Large flowers, each borne on a separate stem, vivid crimson, very fragrant.

Angelus. HT. Columbia × Ophelia seedling. Flower large, full, high-centered, lasting, fragrant, white with slight cream at center, borne singly on good, strong stem. Similar to Kaiserin Auguste Viktoria, but is larger and richer and lasts longer when cut.

Antoine Rivoire. HT. Rich creamy white, delicately tinted with pink—not just a faded pink, but a distinct blending of rich cream and delicate pink—one of the most delicate shades; extra-large petals, full and double. You will like it.

Betty. HT. Large blossoms, full and well shaped, coppery pink overspread with golden yellow; deliciously fragrant.

Bridesmaid. T. Bud beautifully shaped; flower large, full, globular, imbricated, fragrant (tea), clear pink, borne singly on long, strong stem. Vigorous grower; free bloomer. An old-time favorite.

Columbia. HT. Ophelia × Mrs. George Shawyer. Bud large, long-pointed, deep pink; flower extra-large, full, double, very lasting, intensely fragrant, fresh, glistening rose-pink, borne singly on long, strong stem. Foliage medium size, dark green, disease-resistant. Growth very vigorous, upright; profuse, continuous bloomer.

Crusader. HT. Large, double, rich velvety crimson blooms on long stems. Robust; free flowering. One of the best.

Duchess of Wellington. HT. Long-pointed buds; blossoms intense saffron-yellow, flushed crimson, changing to lighter yellow. A leading Rose admired by all who know it.

Duchesse de Brabant. T. Flower large, double, well formed, very lasting, slightly fragrant, soft rosy pink, deepening to bright rose. Growth vigorous, healthy; free bloomer.

Etoile de France. HT. A brilliant shade of clear velvety red-crimson centering to a vivid cerise. Large flowers on long, stiff stems. Bronze-green foliage.

Francis Scott Key. HT. One of the largest reds; easy to cultivate. It is deep red, shading to cerise, and has a profusion of petals opening to a high center. Thrifty grower. Very thorny. Beautiful foliage. Lasts well when cut. One of our favorites.

Rosemont Roses

Are grown on de-eyed understocks; hence they will not sucker nor throw wild shoots from the roots. Our liberal guarantee (see page 2) covers all Rose plants grown and shipped by us, and prices given in this catalogue cover transportation charges to your door. Our quantity discounts are most liberal—why not make a "club order" with your friends and secure the low prices?



Mme. Jenny Gillemot



Laurent Carle



Mrs. A. R. Waddell



Mrs. George Shawyer



Frau Karl Druschki



Angelus



Etoile de France



Luxembourg



Jonkheer J. L. Mock

COMING ROSES



Gen.-Sup. Arnold Janssen



Antoine Rivoire



Mme. Edouard Herriot



Alexander Hill Gray

Rosemont Roses
Have bloomed freely in the fields one year before being shipped to you, thus proving their value to the purchaser. When transplanted to your garden and given proper care the plants should reward you with a great quantity of flowers the first summer. Rose plants are not plentiful this year and your order should be placed as soon as possible.



Mme. Butterfly



Francis Scott Key



Kaiserin Auguste Viktoria

ROSEMONT COLLECTION NO. 3 EIGHTEEN SELECTED ROSES PICTURED ON THESE PAGES

For full descriptions, see pages indicated

For gardeners who have high hopes and a limited purse, we have selected these varieties. While not the latest novelties, they are Roses that you can depend on for flowers and fragrance.

- Angelus. See page 8.
- Antoine Rivoire. See page 8.
- Alexander Hill Gray. See page 8.
- Etoile de France. See page 8.
- Francis Scott Key. See page 8.
- Frau Karl Druschki. See page 9.
- Gen.-Superior Arnold Janssen. See page 9.
- Jonkheer J. L. Mock. See page 10.
- Laurent Carle. See page 10.
- Kaiserin Auguste Viktoria. See page 10.
- Lady Hillingdon. See page 10.
- Luxembourg. See page 10.
- Mme. Butterfly. Page 10.
- Mme. Edouard Herriot. See page 11.
- Mme. Jenny Gillemot. See page 11.
- Mrs. Arthur Robert Waddell. See page 11.
- Mrs. George Shawyer. See page 11.
- Willowmere. See page 11.

OFFER NO. 1. We will send **One plant each** (18 plants) of these Roses, 2-yr., heavy plants, prepaid, for only **\$6.60**

OFFER NO. 2. We will send **any Twelve** of these Roses, your selection, prepaid for. **\$4.40**

OFFER NO. 3. We will send **any Six** of these Roses, your selection, prepaid for. **\$2.25**

Frank W. Dunlop. HT. Mrs. Charles E. Russell × Mrs. George Shawyer. Bud very large, long-pointed; flower extremely large, full, high-centered, very lasting, double, extremely fragrant, deep, bright rose-pink, borne singly on long, strong stem. Foliage leathery, glossy dark green, disease-resistant. Profuse bloomer.

Frau Karl Druschki (White American Beauty). HP. This Rose stands at the top of the Hybrid Perpetual Roses in America. Pure snow-white, long-pointed buds; large, full flowers. The bud sometimes has just a tinge of flesh as it begins to open, but develops into a pure white blossom.

General MacArthur. HT. A dark red Rose of good size, double, lasting, intensely fragrant, borne singly on average-length stem. Disease-resistant foliage. A good Rose.

General-Superior Arnold Janssen. HT. Glowing deep carmine, well filled and perfumed. Finely formed buds on perfect stems. Growth vigorous, compact; continuous bloomer.

Golden Ophelia. HT. Seedling from Ophelia. Bud and bloom medium size, golden yellow in center, paling slightly on outer petals, borne on long, strong stem.



Lady Hillingdon



Willowmere

SELECTED LIST OF STANDARD EVERBLOOMING ROSES

Every plant has bloomed one year in the field. This group comprises the best of the well-known Roses and a few rather old ones loved by our grandmothers.

2-yr., heavy plants, 45c. each. \$4.50 per doz., prepaid
WE DO NOT PREPAY TRANSPORTATION CHARGES ON ORDERS UNDER \$1.50

Alexander Hill Gray. T. Pale lemon-yellow, deepening in the center of its perfectly formed, fragrant flowers. Moderate growth and bloom. A good Rose.

American Beauty. HP. An old favorite, well known. Large flowers, each borne on a separate stem, vivid crimson, very fragrant.

Angelus. HT. Columbia x Ophelia seedling. Flower large, full, high-centered, lasting, fragrant, white with slight cream at center, borne singly on good, strong stem. Similar to Kaiserin Auguste Viktoria, but is larger and richer and lasts longer when cut.

Antoine Rivoire. HT. Rich creamy white, delicately tinted with pink—not just a faded pink, but a distinct blending of rich cream and delicate pink—one of the most delicate shades; extra-large petals, full and double. You will like it.

Betty. HT. Large blossoms, full and well shaped, coppery pink overspread with golden yellow; deliciously fragrant.

Bridesmaid. T. Bud beautifully shaped; flower large, full, globular, imbricated, fragrant (tea), clear pink, borne singly on long, strong stem. Vigorous grower; free bloomer. An old-time favorite.

Columbia. HT. Ophelia x Mrs. George Shawyer. Bud large, long-pointed, deep pink; flower extra-large, full, double, very lasting, intensely fragrant, fresh, glistening rose-pink, borne singly on long, strong stem. Foliage medium size, dark green, disease-resistant. Growth very vigorous, upright; profuse, continuous bloomer.

Crusader. HT. Large, double, rich velvety crimson blooms on long stems. Robust; free flowering. One of the best.

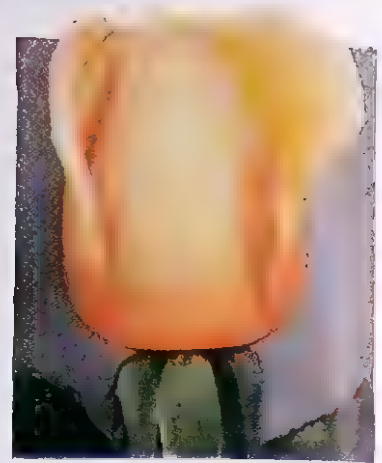
Duchess of Wellington. HT. Long-pointed buds; blossoms intense saffron-yellow, flushed crimson, changing to lighter yellow. A leading Rose admired by all who know it.

Duchesse de Brabant. T. Flower large, double, well formed, very lasting, slightly fragrant, soft rosy pink, deepening to bright rose. Growth vigorous, healthy; free bloomer.

Etoile de France. HT. A brilliant shade of clear velvety red-crimson centering to a vivid cerise. Large flowers on long, stiff stems. Bronze-green foliage.

Francis Scott Key. HT. One of the largest reds; easy to cultivate. It is deep red, shading to cerise, and has a profusion of petals opening to a high center. Thrifty grower. Very thorny. Beautiful foliage. Lasts well when cut. One of our favorites.

Rosemont Roses
Are grown on de-eyed understocks; hence they will not sucker nor throw wild shoots from the roots. Our liberal guarantee (see page 2) covers all Rose plants grown and shipped by us, and prices given in this catalogue cover transportation charges to your door. Our quantity discounts are most liberal—why not make a "club order" with your friends and secure the low prices?



Mme. Jenny Gillemot



Gen.-Sup. Arnold Janssen

Rosemont Roses
Have bloomed freely in the fields one year before being shipped to you, thus proving their value to the purchaser. When transplanted to your garden and given proper care the plants should reward you with a great quantity of flowers the first summer. Rose plants are not plentiful this year and your order should be placed as soon as possible.



Laurent Carle



Mrs. A. R. Waddell



Antoine Rivoire



Mme. Butterfly



Mrs. George Shawyer



Frau Karl Druschki



Mme. Edouard Herriot



Francis Scott Key



Angelus



Etoile de France



Luxembourg



Jonkheer J. L. Mock



Alexander Hill Gray



Kaiserin Auguste Viktoria



Lady Hillingdon



Willowmere

ROSEMONT COLLECTION NO. 3 EIGHTEEN SELECTED ROSES PICTURED ON THESE PAGES

For full descriptions, see pages indicated
For gardeners who have high hopes and a limited purse, we have selected these varieties. While not the latest novelties, they are Roses that you can depend on for flowers and fragrance.

- Angelus. See page 8.
 - Antoine Rivoire. See page 8.
 - Alexander Hill Gray. See page 8.
 - Etoile de France. See page 8.
 - Francis Scott Key. See page 8.
 - Frau Karl Druschki. See page 9.
 - Gen.-Superior Arnold Janssen. See page 9.
 - Jonkheer J. L. Mock. See page 10.
 - Laurent Carle. See page 10.
 - Kaiserin Auguste Viktoria. See page 10.
 - Lady Hillingdon. See page 10.
 - Luxembourg. See page 10.
 - Mme. Butterfly. Page 10.
 - Mme. Edouard Herriot. See page 11.
 - Mme. Jenny Gillemot. See page 11.
 - Mrs. Arthur Robert Waddell. See page 11.
 - Mrs. George Shawyer. See page 11.
 - Willowmere. See page 11.
- OFFER NO. 1.** We will send One plant each (18 plants) of these Roses, 2-yr., heavy plants, prepaid, for only **\$6.60**
- OFFER NO. 2.** We will send any Twelve of these Roses, your selection, prepaid for **\$4.40**
- OFFER NO. 3.** We will send any Six of these Roses, your selection, prepaid for **\$2.25**

Frank W. Dunlop. HT. Mrs. Charles E. Russell x Mrs. George Shawyer. Bud very large, long-pointed; flower extremely large, full, high-centered, very lasting, double, extremely fragrant, deep, bright rose-pink, borne singly on long, strong stem. Foliage leathery, glossy dark green, disease-resistant. Profuse bloomer.

Frau Karl Druschki (White American Beauty). HP. This Rose stands at the top of the Hybrid Perpetual Roses in America. Pure snow-white, long-pointed buds; large, full flowers. The bud sometimes has just a tinge of flesh as it begins to open, but develops into a pure white blossom.

General MacArthur. HT. A dark red Rose of good size, double, lasting, intensely fragrant, borne singly on average-length stem. Disease-resistant foliage. A good Rose.

General-Superior Arnold Janssen. HT. Glowing deep carmine, well filled and perfumed. Finely formed buds on perfect stems. Growth vigorous, compact; continuous bloomer.

Golden Ophelia. HT. Seedling from Ophelia. Bud and bloom medium size, golden yellow in center, paling slightly on outer petals, borne on long, strong stem.



Killarney Queen Rose

Standard Everblooming Roses

- Gruss an Teplitz.** HT. Hardy over a wide range of territory; thrifty grower; incessant bloomer, producing a mass of vivid, dazzling, fiery crimson blooms, sweetly fragrant. Makes a great show and is especially fine in a mass planting. Often used as a medium high hedge.
- Hadley.** HT. Flower very large, well formed, double, full, intensely fragrant, rich crimson with deep velvety crimson shadings, borne singly on nice long stem. Especially admired by all who know it.
- Harison's Yellow.** Spin. One of the best of the old-time favorites. Golden yellow, semi-double blossoms come in great profusion about the middle of May and last for a long time. Blooms only once during a season but is a feast at this time. Prune by removing only weak canes.
- Henry Nevard.** HP. Flower very large, extremely double, full, unusually lasting, intensely fragrant, crimson-scarlet, borne singly on long stem. An excellent Hybrid Perpetual Rose.
- Hoosier Beauty.** HT. Splendid dark rich red blooms with high center and recurving petals; very fragrant. An old favorite.
- Jonkheer J. L. Mock.** HT. Clear pink, under side of petals rosy, almost silver-white. Very double blooms of magnificent size on long, erect canes. Free blooming.
- Kaiserin Auguste Viktoria.** HT. Queen of the white Roses. Pure white with never a tinge of pink. Splendid large, pointed buds, opening to a superb, full, double blossom. A continuous and profuse bloomer.
- Killarney.** HT. Bud large, long-pointed; flower large, double, open, lasting, moderately fragrant, bright sparkling pink, borne singly on medium stem.
- Killarney Brilliant.** HT. Sport of Killarney. Bud medium size, long-pointed; flower medium size, open, double, lasting, strongly tea-perfumed, brilliant pink, almost crimson in bright weather, in dull or cloudy weather pure deep rosy carmine, borne singly on medium-long, strong stems. Many thorns.

Killarney, Double White. HT. Killarney type. Bud large, long-pointed; flower large, very double and lasting, moderately fragrant, snow-white, borne singly on medium-strong stem.

Killarney Queen. HT. Sport of Killarney. Bud large, long-pointed; flower large, semi-double, lasting, moderately fragrant, Tyrian rose, brighter than Killarney.

Killarney, White. Same as Double White Killarney except that flower is not quite so double. An old favorite, well known to all Rose-lovers.

La France. HT. Buds large, long-pointed; flower large, double, full, lasting, very fragrant, silvery pink, reverse bright pink, borne singly on average stem.

Lady Ashtown. HT. One of the best garden Roses, and a fine, long-lasting cut-flower. Blooms of a very pleasing carmine-pink, shading to golden yellow at the base. We especially like this Rose.

Lady Hillingdon. T. A leading yellow. Has a long, slender, pointed bud of clear deep golden yellow and is always an even, intense golden yellow. Very thrifty.

Laurent Carle. HT. Medium-sized bud; flower large, double, full, open, lasting, very fragrant, brilliant velvety carmine. Very desirable.

Los Angeles. HT. Chosen by the American Rose Society as one of the best twelve Roses in America. Los Angeles Rose, which originated in California some years ago, has made a big sensation. Subject to black-spot, but may be protected from this trouble by formula given on page 2. The growth is vigorous and it produces flowers continually on long stems. Color a luminous flame-pink, toned coral, shaded gold at base of petals. Richly fragrant, and has long-pointed buds which open to mammoth blooms.

Louis Philippe. C. Flower of medium size, double, globular, full, deep purplish scarlet-red. Growth moderate, bushy; profuse bloomer.

Luxembourg, Grande Duchesse de. HT. Long-pointed buds on graceful stems; flowers deep orange, much darker than Sunburst. Beautiful foliage. Strong, thrifty grower. One of the best and most beautiful deep yellow Roses we have grown.

Maman Cochet. T. Hardy, vigorous grower. One of the most beautiful pinks. Long-pointed buds; flowers of enormous size, very full, of great depth, rich coral-pink, shaded rosy crimson; broad, thick, shell-like petals. Good bloomer.

Mary, Countess of Ilchester. HT. Unique in its warm crimson-carmine-pink color—a color which will always catch the eye. Flowers of good size, deliciously scented. A free bloomer on long, upright stems.

Matchless. HT. A sport from Premier. Absolutely distinct; a deep rosy cerise color, deepening to pure red in cool weather. Large blossoms on good long stems.

Miss Cynthia Forde. HT. Flower full, large, double, extremely lasting, moderately fragrant, deep brilliant rosy-pink, shading to light rosy pink on back of petals, borne singly on long, strong stem. Foliage disease-resistant. Good grower.

Mlle. Franziska Kruger. T. Bud ovoid; flower large, very double, moderately fragrant, coppery yellow and pink. Growth vigorous, robust; free, continuous bloomer. An old favorite.

Mme. Butterfly. HT. Sport of Ophelia. A harmony of bright pink, suffused with apricot and gold. The tight buds are a lovely shade of Indian red, yellow at the base. Unique in every way.

Mme. Caroline Testout. HT. Brilliant, satiny pink; immense broad petals and extremely large flowers, double and beautiful; very fragrant.

Standard Everblooming Roses

Mme. Edouard Herriot. HT. A great novelty which has won the admiration of all who see it. This is the famous Rose which won the London *Daily Mail* Gold Cup at the International Horticultural Exhibit in London, England, 1912. The buds are coral-red, shaded with yellow at the base; open flower of medium size, semi-double, of a superb coral-red, shaded with yellow and bright rosy scarlet, passing to a shrimp-red. We are offering this Rose at the regular price for the first time.

Mme. Jenny Gillemot. HT. A brilliant saffron-yellow, opening canary, with dark golden shades. Buds long and pointed; blooms large with immense petals. Thorny. Good bloomer. Excellent grower.

Mme. Jules Bouche. HT. Bud medium size, long-pointed; flower medium size, double, full, very lasting, moderately fragrant, white, center shaded primrose or pale blush, borne singly on long, strong stem. A good white Rose.

Mrs. Aaron Ward. HT. Bud medium size, long-pointed; flower double, high-centered, lasting, moderately fragrant, Indian yellow, occasionally splashed with salmon, borne singly on stem of average length and strength.

Mrs. Arthur Robert Waddell. HT. Long-pointed, rosy scarlet bud; flower large, semi-double, open, not very lasting, slightly fragrant, reddish salmon, reverse rosy scarlet, fading lighter, borne singly on very good stem. Large, glossy, bronze-green foliage.

Mrs. B. R. Cant. T. This is the freest blooming Rose we offer; it is especially good in late summer and early fall. The bush is vigorous and free from disease. The pointed buds open into beautiful double flowers of dark red, fading into a most pleasing shade that everyone loves.

Mrs. Charles Bell. HT. A sport from Radiance, and just like it except that the color is a very pleasing, even shade of soft, clear shell-pink.

Mrs. George Shawyer. HT. Brilliant satiny pink; immense, broad petals; extremely large, double flowers, beautiful; very fragrant. A good bloomer even in dry weather.

National Emblem. HT. Bud medium size, ovoid; flower medium size, double, full, high-centered, lasting, moderately fragrant, dark crimson, overlaid velvety crimson, shading to vermilion toward edges, borne singly on long, strong stem.

Ophelia. HT. Bud medium size, long-pointed; flower medium size, double, very lasting, slightly fragrant, salmon-flesh, center shaded light yellow at base of petals. A favorite.

Persian Yellow (*R. fetida Persiana*). A hardy, vigorous grower, covered in early spring with a profusion of small, yellow, semi-double flowers along the entire length of its arching canes. Beautiful in mass at blooming time.

Paul Neyron. HP. Though an old variety, this has the distinction of producing the largest pink Rose in the world, very double and full, on a long, graceful stem. Color a clear pink, shaded to rose. Ranks second among the Hybrid Perpetual Roses, and blooms profusely about three times each season in our section. A half-dozen of these huge pompons make a nice basket.

Perle des Jardins. T. Flowers large, globular, very double, clear, rich yellow, richly perfumed. An old favorite.

Radiance. HT. America's leading Hybrid Tea Rose, judging by the demand. Considered from every point, we think Radiance is our best pink Rose. A strong, thrifty grower, free from disease, and an excellent bloomer. Beautiful pointed buds of a clear, even shade of pink, opening into a tulip-shaped blossom on long, graceful stems.

Red Radiance. HT. A glowing crimson sport of Radiance. Just like the parent except its color. Stands second among the best twelve Roses of its class in America. You will want it with your collection.

Rosa Hugonis (Father Hugo's Rose). Light yellow flowers, $1\frac{1}{2}$ to $2\frac{1}{2}$ inches across, borne profusely along the slender branches, making a striking display very early in the season. This Rose is very effective used as a specimen shrub or background. It grows to a height of 6 to 8 feet, making a very attractive, heavy, drooping clump.

Rose Premier. HT. A clear shade of deep rose-pink; very fragrant. Free grower; stiff, nearly thornless stems with handsome foliage. A beauty.

Sensation. HT. This new red Rose is a thrifty grower with luxuriant, waxy foliage and long, jointed canes, willowy and graceful. Long-pointed buds; large, full blossoms of darkest velvety red with tinges and shadings of almost black. We consider this our most beautiful red Rose introduced in recent years.

Sunburst. HT. Another leading yellow Rose, golden orange at times, varying with stage of development or weather conditions.

Templar. HT. Premier \times Montgomery seedling. A clear, even shade of bright red; medium size; perfect stem. Good foliage. A fine Rose.

White Maman Cochet. T. Sport of Maman Cochet. Creamy white, with edges flushed rose. Profuse bloomer; good grower.

William R. Smith. T. A choice Rose of its shade. Bud medium size, pointed; flower medium size, double, full, very lasting, pale pink at center and in shadows, outer petals creamy flesh tint—a rich blend of cream, pink, and citron.

Willowmere. HT. Color a rich shrimp-pink, shaded yellow in center and toning to carmine-pink toward the edges of the petals. Long coral buds on good stems.



Mme. Jules Bouché



Mrs. Charles Bell



Radiance



Sensation

PATENTED ROSES

In the past, propagators have given to the world plants of inestimable value, the results of their life's labor, and died in poverty because they did not have protection equal to the inventor of a tin monkey. In 1930 the Townsend-Purnell Act, or Plant Patent Law, was passed. Since that time forty-odd Roses have been patented. We offer a few which seem to be especially fine.

Souvenir HT.

(A. N. Pierson, 1930.) U. S. Plant Patent No. 25.

Sport of Talisman, of similar habit of growth, with flower somewhat larger and pure golden yellow. One of the best yellows. 2-yr., heavy plants, \$1.00 each, \$10.00 per doz.



Souvenir

Mary Hart HT.

(G. B. Hart; registered with American Rose Society, 1931.) U. S. Plant Patent No. 8.

Sport of Talisman and very similar except the flower is a maroon-red. Bud long-pointed; flower double, open, lasting, intensely fragrant, on nice long stems with good foliage. A red Talisman. 2-yr., heavy plants, \$1.00 each, \$10.00 per doz.



Mary Hart

Better Times HT.

(Jos. H. Hill Co., 1934.) U. S. Plant Patent No. 23.

Sport of Briarcliff. Large, long-pointed bud; very large flower, double, high-centered, extremely lasting, delicately fragrant, color bright cerise. Vigorous, upright grower, having abundant dark green, leathery foliage. 2-yr., heavy, select plants, \$1.50 each, \$15.00 per doz.

Countess Vandal HT.

(M. Leenders & Co.; intro. in U. S. by Jackson & Perkins Co., 1932.) U. S. Plant Patent No. 38.

(Ophelia × Mrs. Aaron Ward) × Souv. de Claudius Pernet. An outstanding Rose. Very large, long-pointed bud of coppery salmon-pink, suffused orange; flower large, double, high-centered, very lasting, fragrant, brilliant pink with salmon and yellow blend, borne singly on long stem. Large, dark green foliage of leathery texture. 2-yr., heavy plants, \$1.00 each, \$10.00 per doz.

Nigrette HT.

(M. Krause; intro. in U. S. by Conard-Pyle Co., 1934.) U. S. Plant Patent No. 87.

Château de Clos Vougeot × Lord Castlereagh. Bud ovoid; flower double, open, lasting, intensely fragrant, blackish violet-crimson. Bushy; abundant, continuous bloomer. The nearest "Black Rose" grown. 2-yr., heavy plants, \$2.00 each, \$20.00 per doz.



Countess Vandal

Blaze H.C.L.

(Jackson & Perkins Co., 1932.) U. S. Plant Patent No. 10.

Paul's Scarlet Climber × Gruss an Teplitz. Blaze is one of the best of the Patented Roses.

In it we have the outstanding "different red" of Paul's Scarlet combined with the blooming habit of Gruss an Teplitz—an intermittent Paul's Scarlet. Vigorous Climber which may be used as a pillar or shrub Rose. We heartily indorse Blaze. 2-yr., heavy plants, \$1.50 each, \$15.00 per doz.

Order Roses Now

Plants are not abundant, and the prices are likely to be higher in spring



Chatillon Rose



Eblouissant



Gloria Mundi



Lafayette

Rosemont's Select List of Everblooming Polyantha Roses

The Polyantha Roses are bushy, dwarf, low-growing plants, often called Baby Roses, and bear clusters of very dainty little blossoms. These Rose plants make unusually attractive beds and borders.

Cecile Brunner (Sweetheart Rose). Poly. This is rated as the leading dwarf Rose of America. It is exquisite, with sprays of rich, rosy pink, baby buds which open into lovely, perfectly double, miniature flowers of seashell-pink. Intensely fragrant and the idol of all who know it. 2-yr., heavy plants, 60 cts. each, \$6.00 per doz., prepaid.

Chatillon Rose. Poly. This is one of the best dwarf Roses. It blooms profusely during the entire season, bearing trusses of very large, slightly fragrant, bright pink flowers. 2-yr., heavy plants, 45 cts. each, \$4.50 per doz., prepaid.

Eblouissant. Poly. Medium-sized, ovoid bud; flower medium size, very double, globular, extremely lasting, slightly fragrant, dazzling red, borne in good cluster on medium-length stem. Abundant, bronzy green, glossy foliage. 2-yr., heavy plants, 60 cts. each, \$6.00 per doz., prepaid.

Ellen Poulsen. Poly. Bud and flower large, full, double, very lasting, moderately fragrant, bright cherry-pink, borne in cluster on medium-length, strong stem. Foliage of medium size, glossy dark green. Growth vigorous, dwarf; abundant, continuous bloomer. 2-yr., heavy plants, 45 cts. each, \$4.50 per doz., prepaid.

Else Poulsen. Poly. Medium-sized, ovoid bud; medium-sized, semi-double, open flower, very lasting, slightly fragrant, bright rose-pink, borne in cluster on good stem. Foliage glossy, dark green, disease-resistant. 2-yr., heavy plants, 45 cts. each, \$4.50 per doz., prepaid.

Gloria Mundi. Poly. Sport of Superba. Flowers large for the class, fully double, very lasting, orange-scarlet, borne in clusters. Foliage abundant, medium size, light green, glossy. Bushy, upright, vigorous grower for its class. This is the prettiest "Baby Rose" we have grown. It has won many first-class certificates and medals in many flower shows. 2-yr., heavy plants, 60 cts. each, \$6.00 per doz., prepaid.

George Elger. Poly. A superb "Baby Rose" with sufficient Tea blood to make it different. It produces great quantities of lovely little buds of golden yellow, opening into miniature, symmetrical Roses. The plant is so loaded with blooms that it resembles a large bouquet. 2-yr., heavy plants, 45 cts. each, \$4.50 per doz., prepaid.

Golden Salmon. Poly. This is truly a "different" Rose. It bears large trusses of miniature blossoms of a salmon-orange shade that does not fade. Unique. 2-yr., heavy plants, 45 cts. each, \$4.50 per doz., prepaid.

Gross an Aachen. Poly. Bud salmon; flower very large for its class, extremely double, full, lasting, slightly fragrant, orange-salmon at center, passing to white at edges, borne several together on short, strong stem. Very dwarf; free. 2-yr., heavy plants, 60 cts. each, \$6.00 per doz., prepaid.

Ideal. Poly. Sport of Miss Edith Cavell. Dark velvety crimson trusses of small, double, slightly fragrant blooms. Very lasting—makes a dazzling show. 2-yr., heavy plants, 45 cts. each, \$4.50 per doz., prepaid.

Katharina Zeimet. Poly. The white "Baby Rose." Produces pure white, miniature blossoms in abundance, with fragrance similar to hyacinths. Good grower. Attractive. 2-yr., heavy plants, 45 cts. each, \$4.50 per doz., prepaid.

Lafayette (Originally Joseph Guy). Poly. Medium-sized, pointed bud; large flower for its class, semi-double, cupped, lasting, bright cherry-crimson, in immense clusters on strong stems. Large, rich green, glossy foliage. 2-yr., heavy plants, 60 cts. each, \$6.00 per doz., prepaid.

Miss Edith Cavell. Poly. Sport of Orleans Rose. This is our best dark red "Baby Rose." Large trusses of scarlet-crimson blossoms which hold their color well. Foliage leathery, disease-resistant. 2-yr., heavy plants, 45 cts. each, \$4.50 per doz., prepaid.

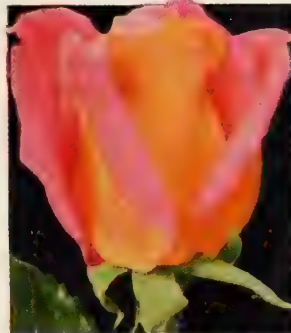
TRANSPORTATION CHARGES ARE NOT PAID ON ORDERS AMOUNTING TO LESS THAN \$1.50



Climbing Red Radiance



Marechal Niel



Climbing President Hoover



Climbing Talisman



Border of Polyantha Roses

Polyantha Roses

- Mme. Anthony Kluis.** Poly. Bud and flower large, semi-double, open, very lasting, unfading salmon-pink with an orange reflection, borne in cluster on average-strength stem. Very vigorous, bushy; abundant bloomer. 2-yr., heavy plants, 45 cts. each, \$4.50 per doz., prepaid.
- Orleans Rose (Red Baby Rambler).** Poly. A showy "Baby Rose" of dwarf, compact habit of growth. This charming variety is a huge bouquet of small, double, red Roses from early spring until killing frost. Planted in a mass or as a hedge, it makes a grand show and is the admiration of all. 2-yr., heavy plants, 45 cts. each, \$4.50 per doz., prepaid.
- Perle d'Or (Yellow Cecile Brunner).** Poly. Bud long-pointed, salmon-orange; flower medium size, very double, open, extremely lasting, intensely fragrant, salmon-pink, borne in clusters on good stem. 2-yr., heavy plants, 45 cts. each, \$4.50 per doz., prepaid.
- Superba.** Poly. Flower very large for the class, double, brilliant crimson, borne in a large, branching cluster. Good grower; very free flowering. A fine Rose. 2-yr., heavy plants, 45 cts. each, \$4.50 per doz., prepaid.
- Tip-Top (Baby Doll).** Poly. A new variety of the "Baby Rose" family. One of the most beautiful and unique of the group. It grows about 18 inches high and is literally covered with exquisite miniature blooms from early spring until freezing weather. The tips of the petals show a vivid crimson, mellowing down into shades of pink, saffron, lavender, gold, and finally at the base of the petals it is deep old-gold. It rivals the rainbow in coloring. 2-yr., heavy plants, 45 cts. each, \$4.50 per doz., prepaid.
- Triomphe Orleanais.** Poly. Flower large for a Polyantha, semi-double, open, very lasting, cherry-red, borne in large clusters on strong stems. Vigorous, bushy grower. 2-yr., heavy plants, 45 cts. each, \$4.50 per doz., prepaid.

Rugosa and Miscellaneous Roses

This group is unusually hardy, enduring subzero weather without protection. The Rugosa and Hybrid Rugosa Roses are rugged growers known as "Shrub Roses." Very attractive in border or bed, and will thrive where more delicate Roses fail.

All Rugosa and Miscellaneous Roses, 45 cts. each, \$4.50 per doz.

- Amelie Gravereaux.** H.Rug. Bud medium size, ovoid; flower large, double, full, cupped, lasting, fragrant, carmine-purple, shaded fuchsia-red, borne several together on long, strong stem. Large, dark green foliage, disease-resistant.
- Anne of Geierstein.** H.Sb. Flowers single, dark crimson, borne so freely that they literally cover the plant. Foliage sweetly scented. Growth vigorous. Bright scarlet seed-pods in autumn. Loved for its old-fashioned sweetness.
- Belle Poitevine.** H.Rug. Bud medium size, long-pointed; flower large, semi-double, open, lasting, rose-pink to magenta-pink, clustered on medium-length stem.
- F. J. Grootendorst.** H.Rug. This rugged, vigorous, bushy Rose makes an excellent hedge 3 to 4 feet high. Flowers are small, double, bright red, borne in clusters all season.
- Hansa.** H.Rug. Flower large, double, full, reddish violet. Vigorous, shrub type. Free bloomer. Large red fruits.
- Pink Grootendorst.** H.Rug. Sport of F. J. Grootendorst; the flower is a clear, even pink with a salmon tone.
- Sarah Van Fleet.** H.Rug. Bud large, ovoid; flower large, semi-double, open, cupped, moderately fragrant, lasting, wild-rose-pink, borne in clusters and singly. Foliage leathery Rugosa type, disease-resistant. Blooms abundantly in June and continues well into autumn.
- Rosa Rugosa Alba.** Large, single, fragrant, white flower. Continuous bloomer. Flower followed by large, conspicuous seed-hips. Foliage rough, dark green, and wrinkled.



Rosa rugosa



Climbing, Rambler, and Pillar Roses

Gardeners are realizing the value of Climbers more and more each year. They are beautiful on trellis, sprawled over a rock wall, or down an embankment. All of the varieties offered here are continuous bloomers, except where stated otherwise.

2-yr., heavy plants, 45 cts. each, \$4.50 per doz., prepaid, except where otherwise noted

TRANSPORTATION CHARGES ARE NOT PREPAID ON ORDERS AMOUNTING TO LESS THAN \$1.50

- American Pillar.** HW. Large, five-petaled, single Rose of rosy pink color, approaching brilliant carmine, with white center and golden yellow stamens. Borne in clusters that completely cover the plant for several weeks in spring. A very vigorous and rank grower. Ornamental after blooming because of its excellent foliage. A most satisfactory Climber.
- Climbing American Beauty.** HW. A beautiful red like the well-known American Beauty bush Rose, with the addition of the climbing habit. A vigorous grower and free bloomer, producing heavily early in the season.
- Cl. Cecile Brunner.** Cl.Poly. A sport of the dwarf variety of this name. Rosy pink on a rich creamy white ground, shaded light salmon. A profuse, continuous bloomer. 2-yr., heavy plants, 60 cts. each, \$6.00 per doz., prepaid.
- Cl. Columbia.** HT. A sport of Columbia and just like the parent except it is a vigorous Climber. The flower is peach-blow-pink, deepening as it opens. A large Rose with long, stiff stems, nearly thornless and free from mildew.
- Cl. Gruss an Teplitz.** Cl.HT. A sport of Gruss an Teplitz. A perfect sheet of crimson—especially fine for a dazzling effect. Read description of parent on page 10.
- Cl. Kaiserin Auguste Viktoria.** Cl.HT. The best white Climber. Pure white, shading at base of petals to a light cream; very fragrant.
- Cl. Killarney.** Cl.HT. Climbing sport of Killarney and like it except for its climbing habit. Read description of parent on page 10.
- Cl. Lady Ashtown.** Cl.HT. Climbing sport of Lady Ashtown. Read description of parent on page 10.
- Cl. Lady Hillingdon.** Cl.T. This Climber is as popular as its parent, the bush variety of same name. Deep yellow with orange shading, good-sized bloom; long-pointed bud. Read description of parent on page 10.
- Cl. Maman Cochet.** Cl.T. A good pink Climber identical with the bush except that it climbs. Read description of bush variety on page 10.
- Cl. Ophelia.** Cl.HT. Brilliant salmon-flesh, shaded with rose on outer edges of petals, with a heart of glowing peach-pink and orange, yellow blendings, all passing finally to lighter shades; very fragrant.
- Cl. President Hoover.** Cl.HT. Vigorous, climbing sport of President Herbert Hoover with same flower. 2-yr., heavy plants, 75 cts. each, \$7.50 per doz., prepaid.
- Cl. Radiance.** Cl.HT. Climbing sport of Radiance. Excellent pink Climber similar to parent. Read description on page 11. 2-yr., heavy plants, 60 cts. each, \$6.00 per doz., prepaid.
- Cl. Red Radiance.** Cl.HT. Vigorous, climbing sport of Red Radiance. Read description of parent on page 11. 2-yr., heavy plants, 60 cts. each, \$6.00 per doz., prepaid.
- Cl. Souv. of Wootton.** Cl.HT. Climbing sport of Souv. of Wootton. Profuse bloomer. A strong, vigorous Climber. Beautiful, well-formed, velvety red blooms.
- Cl. Sunburst.** Cl.HT. Orange-copper, golden orange and golden yellow are its colors at different stages of development—all intense shades. A giant Rose, with long-pointed buds on long stems. Vigorous Climber producing many lovely flowers during the blooming season.
- Cl. Talisman.** Cl.HT. Climbing sport of Talisman. An excellent, vigorous Climber. Flower identical with parent. Read description on page 7. 2-yr., heavy plants, 60 cts. each, \$6.00 per doz., prepaid.
- Cl. White Maman Cochet.** Cl.T. Climbing sport of White Maman Cochet, with identical flower. Read description on page 11.
- Marechal Niel.** Nois. This is an old favorite which still holds its prestige in competition with the many fine new ones. A vigorous Climber. Scarce. 2-yr., heavy plants, 60 cts. each, \$6.00 per doz., prepaid.
- Scorcher.** Cl.HT. Very large, semi-double flower, open, lasting, slightly fragrant, brilliant scarlet-crimson. 2-yr., heavy plants, 60 cts. each, \$6.00 per doz., prepaid.



FROM

ROSEMONT NURSERIES

A. L. THOMPSON, Owner

P. O. BOX 839

TYLER,

TEXAS

Economic and Systematic Botany
Kew Herbarium Collections
37 1934

ETOILE DE HOLLANDE

One of the darkest and richest Hybrid Teas. A gem in the great group of red Roses. See more complete description on page 4. 2-yr., heavy plants, 75 cts. each, \$7.50 per doz., prepaid.

OLYMPIAD

Just imagine this lovely Hybrid Tea in full bloom—it's a gorgeous bouquet of regal beauty. We know you will like it. 2-yr., heavy plants, 75 cts. each, \$7.50 per doz., prepaid.

EDITH NELLIE PERKINS

This favorite Hybrid Tea Rose grows more popular each year. The picture gives a hint of the beauty of the blooms. 2-yr., heavy plants, 60 cts. each, \$6.00 per doz., prepaid.



OLYMPIAD



EDITH NELLIE PERKINS

ROSEMONT NURSERIES

BOX 839
TYLER • TEXAS



ETOILE DE HOLLANDE

Rosemont Prize Collection

Offer No. 1. We will supply one each of the 3 Roses here shown, 2-yr., heavy plants, prepaid **\$1.95**

Offer No. 2. Two plants of each variety, 2-yr., heavy plants, prepaid **\$3.35**

GRAND COMBINATION OFFER

The Roses on front page (in color):

Charles P. Kilham
Lady Margaret Stewart
Rev. F. Page-Roberts

The Roses on this page (in color):

Etoile de Hollande
Olympiad
Edith Nellie Perkins

1 PLANT each of these two groups
—6 Superb Roses—sent anywhere in the U. S., prepaid for **\$3.35**