



*S*andprints
1962

Ann Barkley

RATS

from a
real swell guy!

R.W. Nourse

Ann best
of luck to a
real pest.
Tommy Fuquas

Ann -
my year was
not complete - until
I met you!!
Love ya!
Charlotte
Morris

Ann Barkley -
a swell, sweet,
remembered the beach!
I love always,
Dawn Baker

Ann,
I have enjoyed
having you in
my Biology class
this year.

I can't
wait

You a real sweet girl
I'm a fan, lots of luck
and I'll see you next
year
James B.

Ann - you are a very sweet
girl! Don't ever forget
all those miserable days
in home ec.

Sharon

Good luck
to my girl,
Hope? Love ya
Donnie
Co

to the dearest girl I know
named "Ann" - one of
my favorites
Elizabeth Mann

To a fellow
offshore -
Beth's best
friend

Ann,
We have had our fun
and our sorrow - but I
loved every minute of it.
If you and I weren't such
asses we could really hit
it off! Hope you have much
success.
Love ya,
Sobby Mann

Best of luck
to a sweet & cute
girl, hope you have
every thing you want
in life.

Always
Diana
Doris

Ann,
You are a very
sweet girl and I have
really enjoyed knowing you!
Be good!
Love,
Jackie

Ann,
It has been fun sitting
beside you in the Blue
Club this year. Don't worry
the concert will be good.
Best of luck in the future.
Your friend,
Hope

One of the nicest girls
I know has the name
Ann Barkley" (do you
know her) Nancy B

Nancy,
It certainly
has been fun
in geometry?
really have enjoyed
knowing you this yr.
Hope to see a lot of
you next yr.
Best of luck!
Ann

So a very nice
and sweet girl
of whom I think the
world of. We sure
have had fun in
P.E. and Biology and
I will never ^{forget} the worms
and grasshopper and
of course the frog -
Peggy Bridges

Beware of
Larry Trent!
He is a wild
one. Hope you
come out on top.
Stay as sweet
as you are and
you will go far.

Ronald Clin

So a great alternate,
wish someone would
break a leg, don't you?
see you next year,
Mary J.

I have really
enjoyed being in
Choral with you. Best
of luck.
Carol Matthews

sandprints * 1962

EDITOR: Meredith Crimmins

BUSINESS MANAGER

Donna Budd

ADVISOR: Mary Lee Jackson

*Ann,
cl'ise
knowing
Don't
Choral.
Ann,
really enjoyed
this year.
May you go
live your
Lana
Carol's
life.*

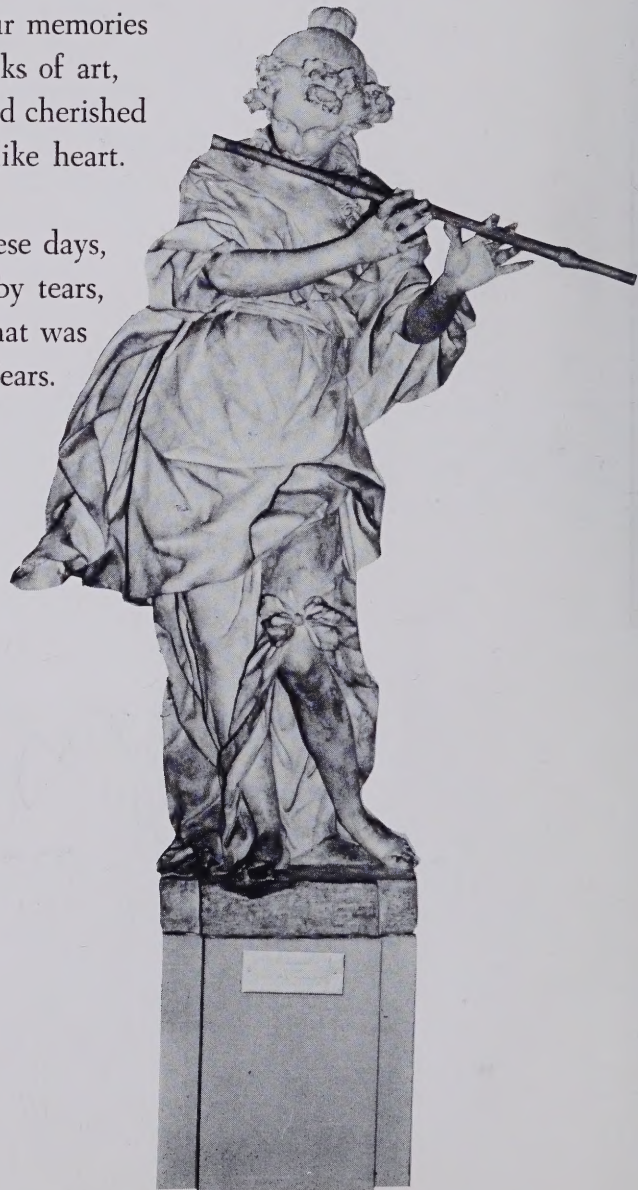
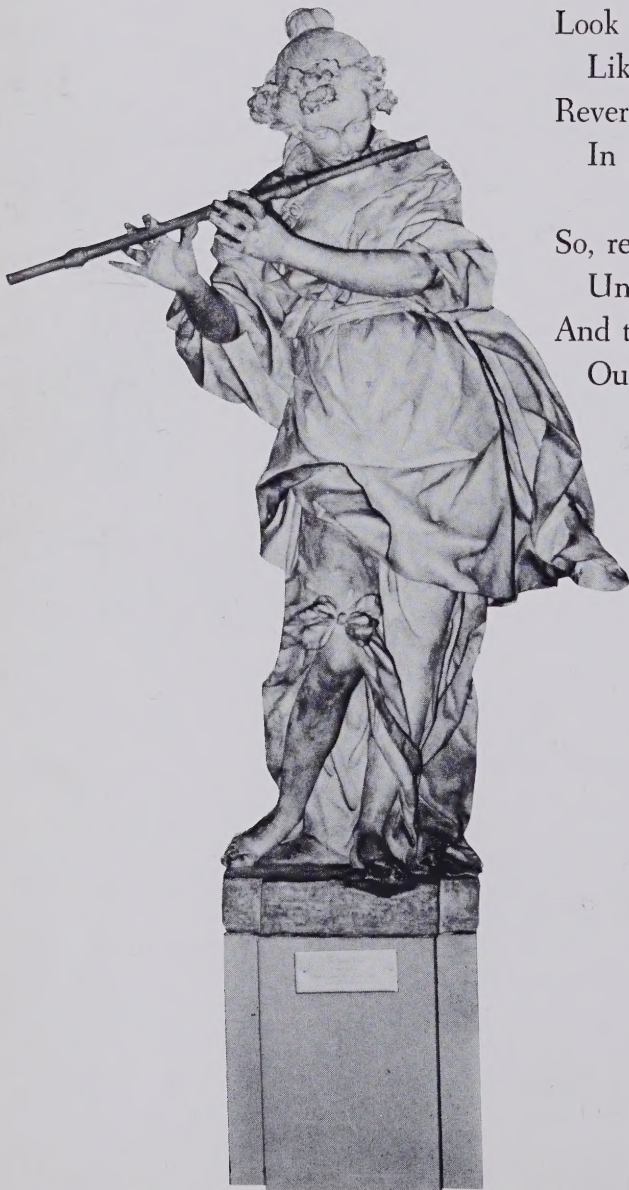
Poem

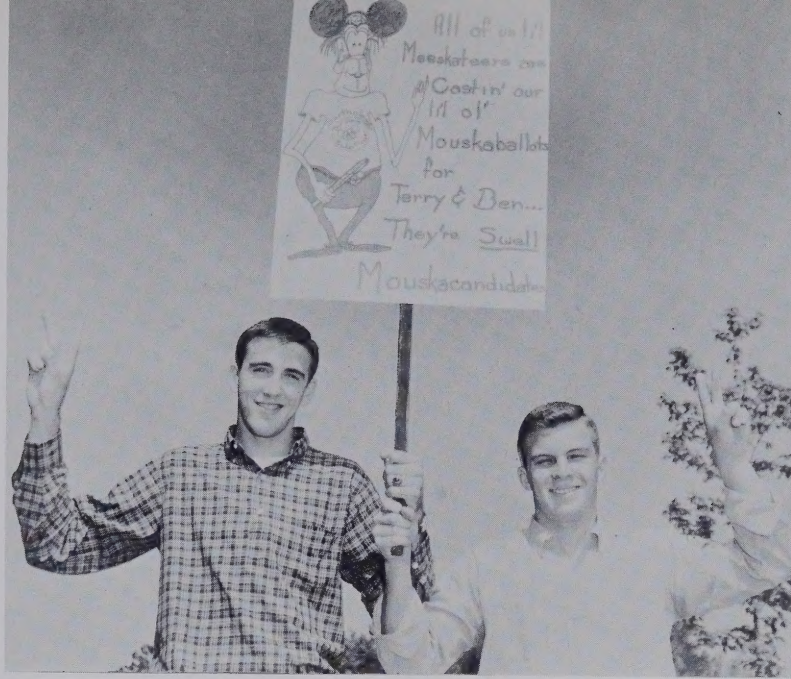
The years are departed
Which once we knew,
The days of laughter,
The skies of clear blue.

Our carefree existence,
Years without strife,
Will soon be replaced
By a wearisome life.

Look back at your memories
Like great works of art,
Revered, they, and cherished
In a museum-like heart.

So, remember these days,
Unblemished by tears,
And the Glory that was
Our Golden Years.





Foreword

Years from now as we look back at these our high school years, we will not remember the little troubles that now seem so great. We will look at these years and we will see them only as years of happiness, carefree years, the gayest, most wonderful years of our lives. Then we will realize that truly these were our GOLDEN YEARS.





Dedication

Because you gave so generously of your time to guide and encourage us, because you so unselfishly gave of your talent for our enjoyment, and most of all because you were a good friend to us all, we, the Senior Class, wish to dedicate this, the 1962 edition of SANDPRINTS to you, MR. EARLE BRAUNHARDT.

Best regards,
J. F. Hockaday

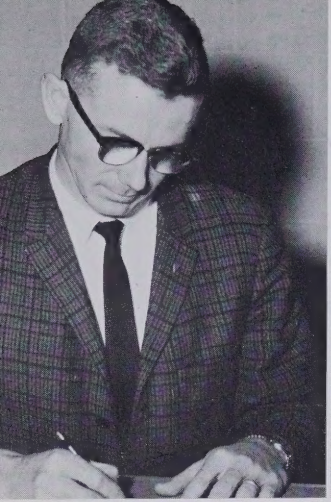


MR. J. F. HOCKADAY
Principal

Administration



MR. M. A. McLEOD
Superintendent



MR. CARY BRADLEY
Diversified Occupations

DR. MARIAN HIERS
English—Psychology

MRS. ISMAY HOOD
English

MRS. ELIZABETH MANN
Secretary

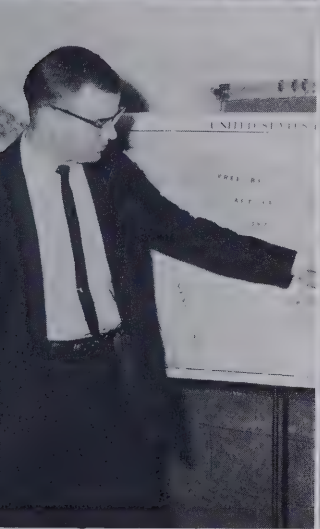
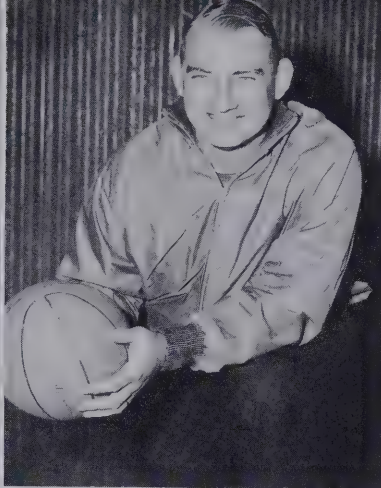
MRS. FREDA KRIMINGER
English

MRS. EDNA E. YARBOROUGH
Choral Music—History

MR. EARLE BRAUNHARDT
Band

MR. WALTER ERRANTON
English

Faculty



John S. Charles

MRS. MARY CARTER
History—Psychology

MR. WILLIAM FARIES
Social Studies

MR. DON PACKARD
Biology—Physical Education

MISS EMILY KIMREY
English—Typing

MRS. VELNER JONES
Biology

MR. JOHN THAELER
Mathematics

MR. CLAUDE HOWARD
Chemistry—Physics

MRS. SUE PHILLIPS
Librarian

Faculty

Faculty

MISS RUTH COTTON
French—Latin

MRS. JULIANNE McCracken
Spanish

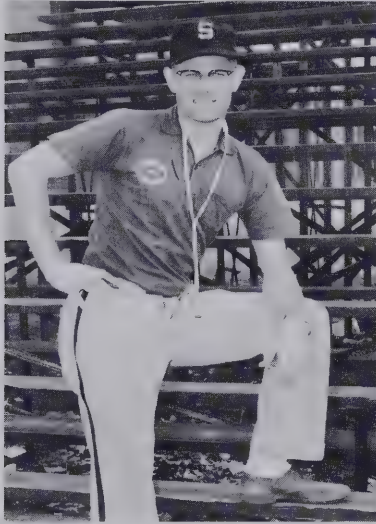
MR. JOHN B. LIPSCOMB
Agriculture

MRS. LYNDA BOWERS
Mathematics—Physical Education

MRS. NANCY GRIFFIN
Guidance Counselor

MR. ALBERT DAVIS
Business Education





MRS. ELLA RAY CHACEY
Business Education

MR. PAUL GAY
*Physical Education—Biology
Mathematics*

MR. VANCE HULBERT
Shop

MRS. BEULAH BYRD WOMBLE
Home Economics

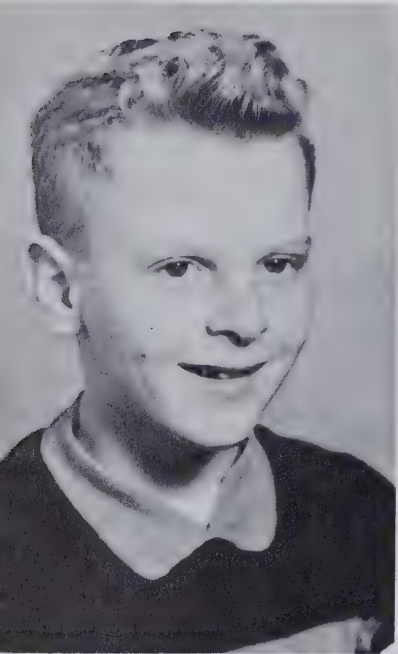
MRS. DOROTHY THORNTON
Mathematics

MR. JOHN PHELPS
*Mechanical Drawing
Shop Mathematics*

Faculty



WITTIEST!!!



Who???

Johnny and Ben



Alycia?? IMPOSSIBLE!!



MOST TALENTED



KITTY



Do you know
Debbie?



Senior Officers

BILL GURLEY, *President*

MIKE BLAKELEY, *Vice-President*

FRANK CHACEY, *Treasurer*

CAROLYN ROSSER, *Secretary*

SENIORS

Working Hard ! ? ?

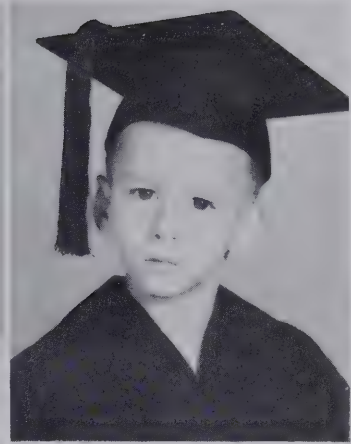


All of us are interested in the many aspects of College Day

Seniors

JANE ROBERTS

JAMES WICKER

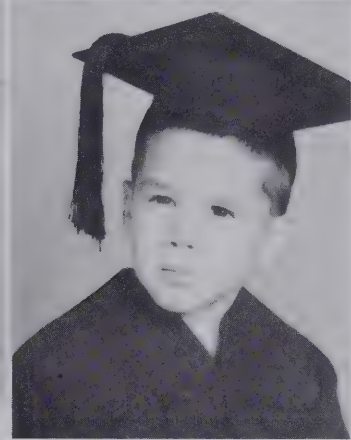


ANN LUCY ARDIS

Kindness is wisdom.

Glee Club 2; F.F.A. 4; Future Secretaries 4; Correspondence Club 4; Teacher Secretary 4.

JOHN WICKER



LOIS FAYE BARBEE

That which befits her is cheerfulness and courage.

Band 2, 3, 4; Lancer 2; Majorette 3, 4; Tri-Hi-Y 2, 4; Monogram Club 4; Superlative.

WILLIAM P. ADAMS

He ranks with the best of them.

Greenwood High school 2, 3; F.F.A. 2.



CAROLYN BLAKELEY

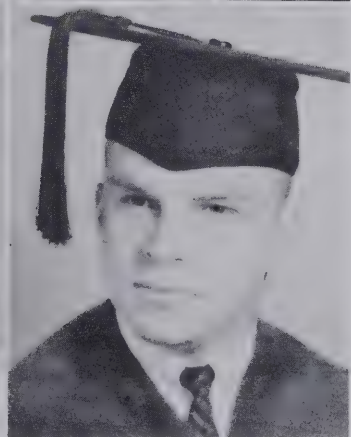
Amiability shines by its own light.

F.H.A. 4; Correspondence Club 4; Teacher Secretary 4.

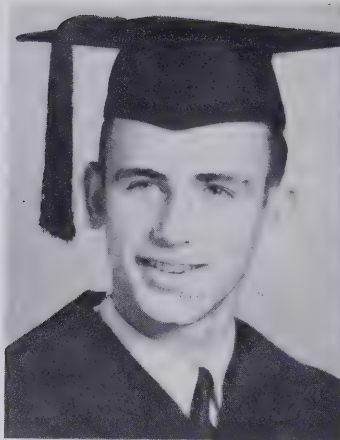
BENJAMIN RUSH AVENT, III

He is capable of imagining all, arranging all, and doing all.

Football 2, 3, 4; Baseball 2, 3, 4; Glee Club 2, 3; Melodians 2; Key Club 2, 3, President 4; Monogram Club 2, 3, 4; Superlative; Junior-Senior Waiter; Boys' State 3; Key Club Delegate 3; All-Conference Football 3; Senior Play.



Seniors



CLYDE BAKER, JR.

The will to do, the soul to dare.

Football Manager 4; Basketball Manager 4; Key Club 4; Monogram Club 4.

MARY DONNA BUDD

Cleverness and versatility predict future achievement.

Tri-Hi-Y 2, 3; Beta Club 3, 4; Panorama Staff 4; SANDPRINTS Staff 3, SANDPRINTS Business Manager 4; Junior-Senior Waitress; Marshal.



ROYCE LEE BAKER

Wonderously active, bright, and great in mind.

F.F.A. 2, 3, 4, Reporter 3, President 4.

REBECCA ANN BURKHEAD

Small in stature but big in heart.

Glee Club 3, 4; Tri-Hi-Y 2, 3, 4; F.H.A. 2; SANDPRINTS Staff 4; Girls' Ensemble 3, 4; Homecoming Queen 4.



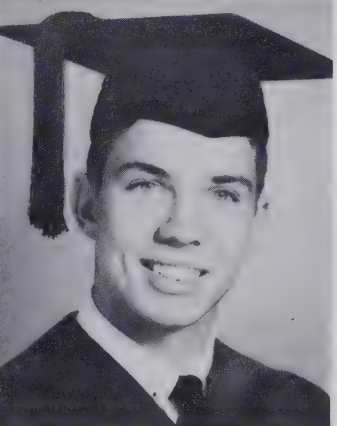
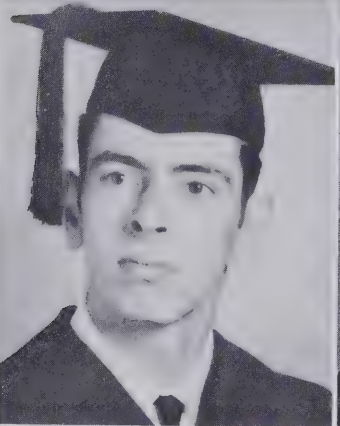
CARL WAYNE BEAL

True success is to labor.

Junior-Senior Waiter.

JO ANN CARTER

Virtue: the strength and beauty of the soul.



GARY SUMMITT BEAL

His joys are as deep as the ocean; his troubles as light as the foam.

F.F.A. 2, 3; Bus Driver 3.

MICHAEL RAND BLAKELEY

As happy a man as any in the world for the whole world seems to smile upon him.

Basketball 3, 4; Key Club 3, 4; Monogram Club 3, 4; Student Council 3, 4; Class Officer 4; Superlative; Junior-Senior Waiter; Senior Play.

1 9 6 2

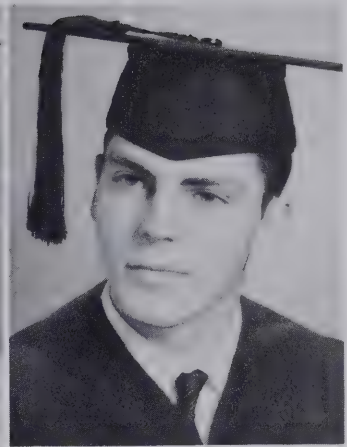
ELIZABETH ANN CLARK

Good Nature is the sign of a large and generous soul.

Future Secretaries 4.

JOHN BONARDI

In silence many virtues lie.



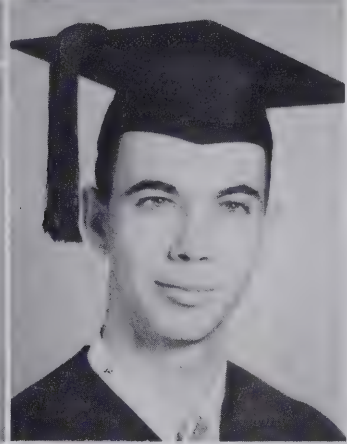
GLORIA EVE CLARK

She has a thousand virtues.

Glee Club 2, 3; Future Secretaries 4; Correspondence Club 4; Teacher Secretary 4.

CHARLES EDSOL BROOKS, JR.

The earnestness of life is the only passport to the satisfaction of life.



BONNIE COX

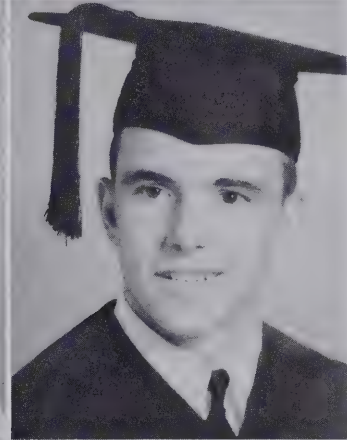
With malice toward none.

Tri-Hi-Y 2, 3, 4, Officer 2, 4; Beta Club 3, 4; Class Officer 2; Library Assistant 4; Library Club 4; Senior Play.

RONNIE BROWN

A true example of goods, pleasing personality; and athletic ability.

Football 2, 3, 4; Baseball 3; Band 2, 3, 4; Key Club 4; Monogram Club 4; Track 2, 3, 4; Superlative.



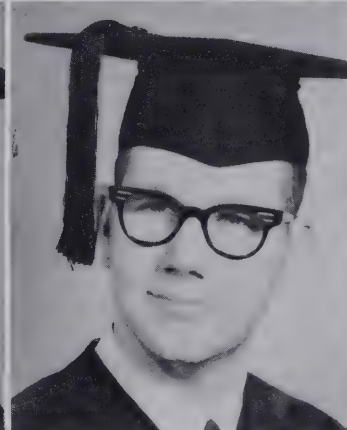
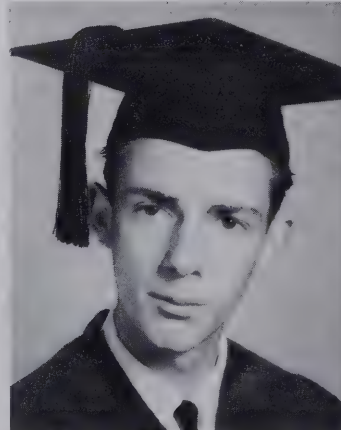
LARRY RAY BYRD

I dare do all that may become a man, who dares do more is none.

ODELL CLEVELAND CAGLE

In quietness and confidence shall be your strength.

Boys' State 3.



Seniors

JERRY DELANO CAMERON

The days that make us happy make us wise.

JUDITH SANDRA COX

What is worth doing is worth doing well.

Correspondence Club 4; Library Assistant 4; Teacher Secretary 4.

JACK WILLIAM CAMPBELL

True as the hurdle to the pole, or as the dial to the sun.

Basketball 2, 3, 4; Baseball 2, 3, 4; Key Club 2, 3, 4; Monogram Club 2, 3, 4; SANDPRINTS Staff 4; Superlative; Boys' State 3; Senior Play.

JUDY LYNN CRAIG

A smile for all, a greeting glad, a friendly, jolly way she had.

Glee Club 3, 4, Secretary 4; Band 2, 3, 4; Junior Music Club 3, 4, Treasurer 4; Tri-Hi-Y 2, 3, 4, Vice-President 3, President 4; Monogram Club 4; Co-Chief Majorette 3; Majorette 4; Lancer 2.

BENNIE MAC CAPPS

Good works are performed by perseverance.

MEREDITH A. CRIMMINS

She's the light of knowledge.

Basketball 2; Band 2, 3, 4, Secretary 4; Tri-Hi-Y 2, 3, 4, Treasurer 3; Beta Club 3, 4; SANDPRINTS Staff 3, SANDPRINTS Editor 4; Superlative; Marshal; Delegate Tri-Hi-Y Council of Carolinas.

ROBERT DON CARSON

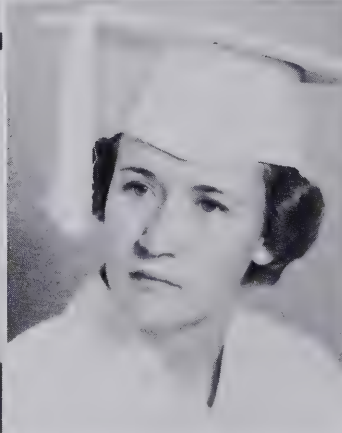
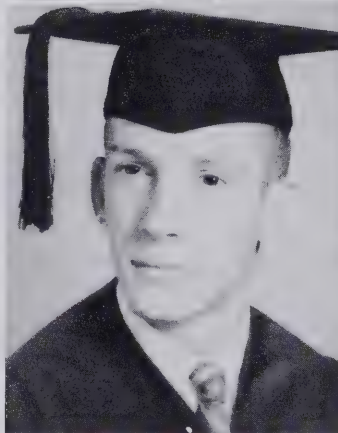
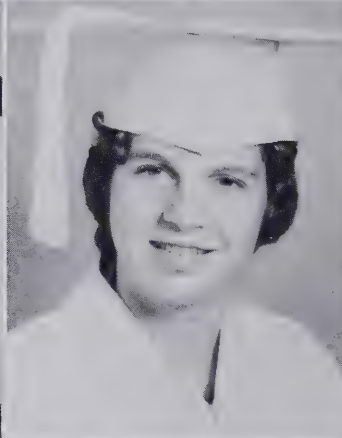
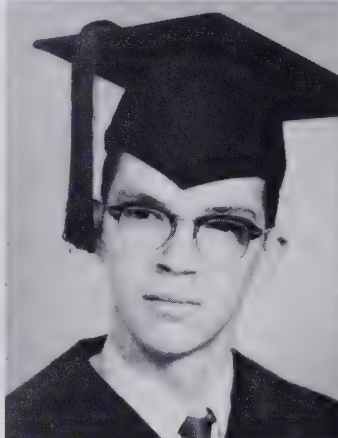
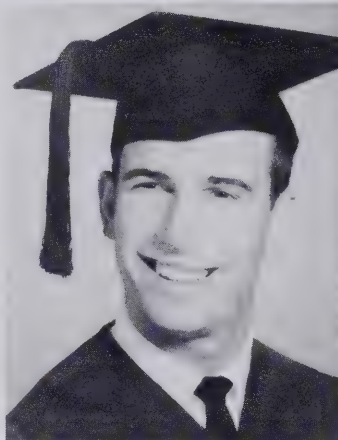
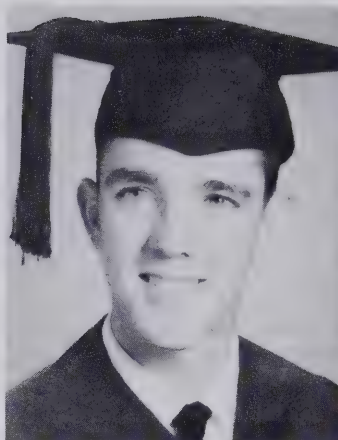
He is a gentleman on whom we build in absolute trust.

Football 2, 3, 4, Honorable Mention All-American 3, All-Conference 3; Basketball 2, 3, 4, M.U.P. Basketball 3, All-Conference 3, All-Tournament State Championship 3; Baseball 2, 3, 4; Key Club 2, 3, 4; Monogram Club 2, 3, 4; Library Assistant 2; Superlative; Student Council 2, 4; Youth-Adult Council 2; Key Club State Delegate 3; Boys' State 3; Senior Play.

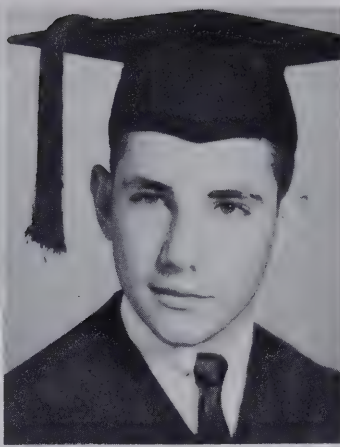
LINDA HELEN CROWSON

There is no one sweet as she.

Library Assistant 4; F.H.A. 4; Future Secretaries 4; Correspondence Club 3, 4, Officer 4; Panorama Staff 4; Spanish Club 4; Library Club 4, Officer 4.



1 9 6 2



BRENDA JOYCE DICKENS

In her heart a melody.

Tri-Hi-Y 2, 3, 4; F.H.A. 4; Spanish Club 4.

EUGENE BRENT CAUSEY

A real man is he whose goodness is part of himself.

Basketball 2; Key Club 3, 4; Beta Club 3, 4; Superlative; Marshal; Junior-Senior Waiter.



MARTHA BOLICK DIXON

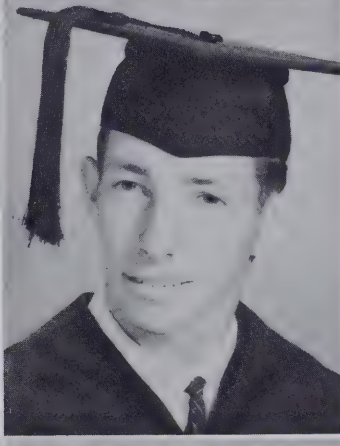
A smile is worth a thousand frowns.

Junior Music Club 3, 4, Officer 4; Tri-Hi-Y 2, 3, 4; Monogram Club 3, 4; Beta Club 3, 4; Panorama Staff 4; Superlative; Chief Marshal; Student Council 2, 4, Officer 4; Class Officer 2, 3; Cheerleader 3, 4; Junior-Senior Waitress; Junior-Senior General Chairman; Senior Play.

FRANKLIN BRADSHER CHACEY

A man in earnest finds means, or, if he can not find—creates them.

Glee Club 3; Band 2, 3, 4; Melodians 2; Beta Club 3, 4, Officer 4; Science Club 2, 3, Office 3; Panorama Staff 4; SANDPRINTS Staff 4; Superlative; Marshal; Junior-Senior Waiter; Class Officer 4; National Science Foundation Program 3.



BETTIE LOU DOWDY

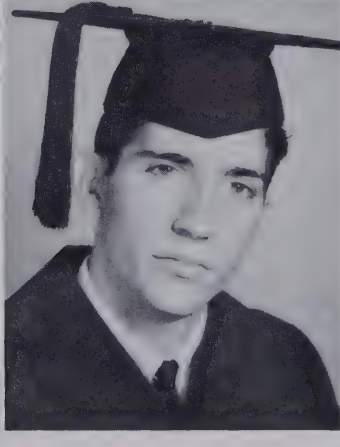
True friendship is heaven's delight.

Glee Club 2, 3; Tri-Hi-Y 2, 3, 4; F.H.A. 4; Correspondence Club 4, Officer 4; Spanish Club 3, 4, Officer 4; Homecoming Court 4.

CHARLES ALEXANDER CHRISTIAN

All men's friend.

Football 2.



DONELDA LAYNE DRAUGHN

A happy nature is a help for every ill.

Glee Club 4; Junior Music Club 3, 4; Tri-Hi-Y 2, 3, 4; F.H.A. 2.

JOHN CHRISTIAN

Wit is play, not work: a nimbleness of the fancy.

Seniors

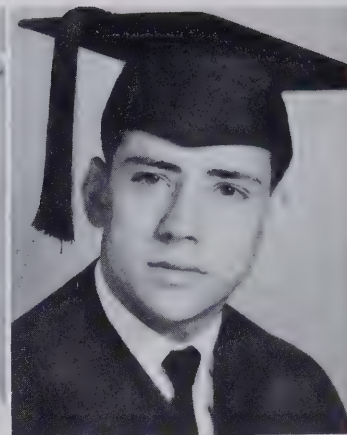
WILLIAM MILLARD DAVID

There's nothing ill that dwells in the mind.

DEBORAH ANN DUKE

She looks the world in the face, with work and smiles she writes her place.

Band 3, 4; Junior Music Club 3, 4; Tri-Hi-Y 2, 3, 4; Monogram Club 4; Beta Club 3, 4; SANDPRINTS Staff 4; Marshal; Junior-Senior Waitress; Lancer 3; Majorette.



HENRY DAVIS

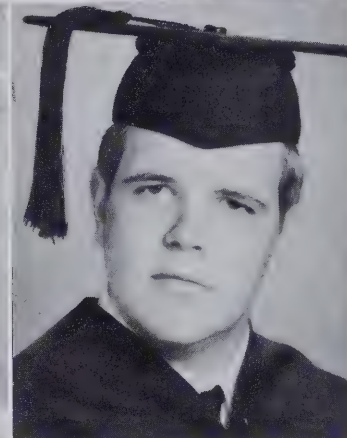
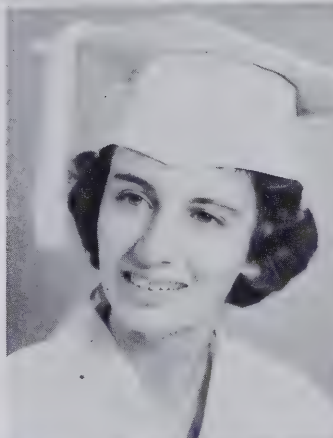
'Tis good to be merry and wise, brim full of mischief, wit and glee.

Civitan Club 4.

KATHRYNE ERWIN

The answer quick and keen, the honest look, the laughter, the love.

Glee Club 3; Junior Music Club 3, 4, Officer 4; Tri-Hi-Y 2, 3, 4; Monogram Club 3, 4, Officer 4; Panorama Staff 4; SANDPRINTS Staff 4; Superlative; Cheerleader 3, 4, Chief 4; Senior Play.



ROYCE DAVIS

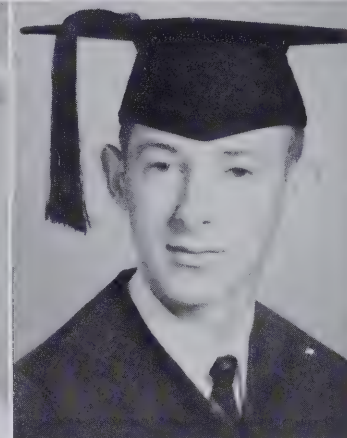
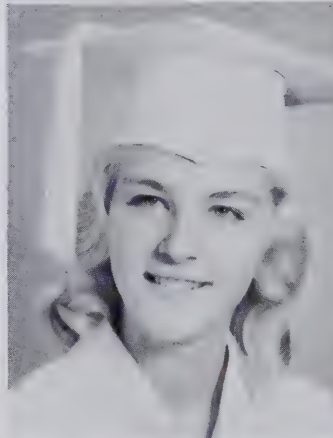
From the crown of his head to the sole of his feet, he is all mirth.

V.I.C. Club 3.

ELLEN FAYE FISH

She has so free, so kind, so blessed a disposition.

Glee Club 2, 3, 4; Tri-Hi-Y 2, 3, 4; F.H.A. 3, 4; Correspondence Club 4; Girls' Ensemble 3, 4.



JOSEPH CARL DAWSON

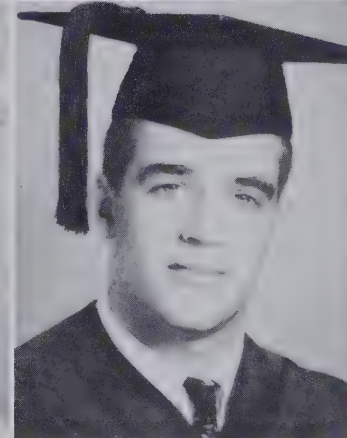
Formed on the good old plan, a true, brave, and honest man.

Football 2, 3, 4; Basketball 3; Baseball 2, 3, 4; Monogram Club 3, 4; Civitan Club 3, 4; Most Outstanding Baseball Player 3.

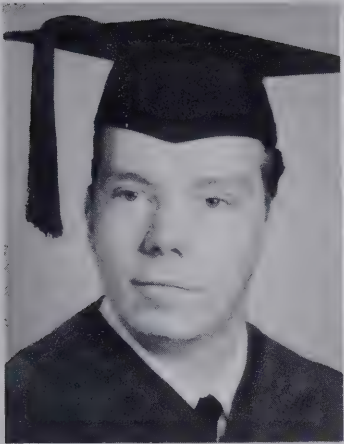
POLLYANNA GILMORE

Her modesty conceals a thousand charms.

Pinè Forest High School 2, 3; Correspondence Club 4.



1 9 6 2

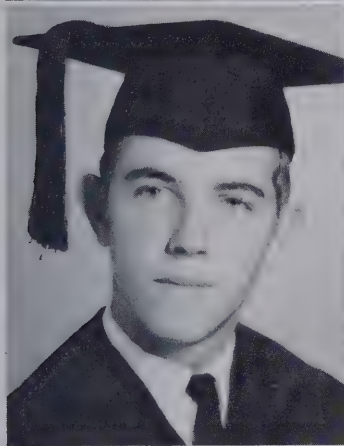


CONNIE GOODWIN

Sympathy is the golden key that unlocks the hearts of others.
Tri-Hi-Y 2, 3, 4; F.H.A. 2; SANDPRINTS Staff 4.

JAMES DEAN

The soul of a man is larger than the sky.

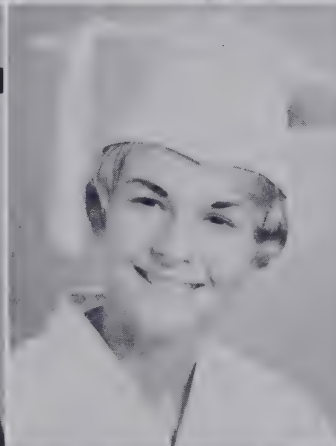
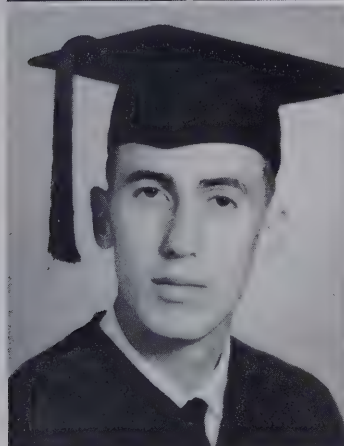


DOROTHY GAYLE GRANTHAM

The true measure of life is not length but honesty.
Glee Club 2; Junior Music Club 3, 4; Tri-Hi-Y 2, 3, 4; Future Teachers 4.

BILLY TILLMAN DOWDY

He is ever quiet and reserved.



CAROLYN HALL

We love her for her comely grave, her golden hair; angelic face.
Glee Club 4; Tri-Hi-Y 2, 3, 4; F.H.A. 4; Future Secretaries 4, Officer 4; Correspondence Club 4; Library Assistant 4; Panorama Staff 4; Spanish Club 3; Homecoming Court 4; Senior Play.

ERNEST PAUL DOWDY, III

He that has patience may compass everything.
Carthage High School 2, 3; Basketball 3; Baseball 3.



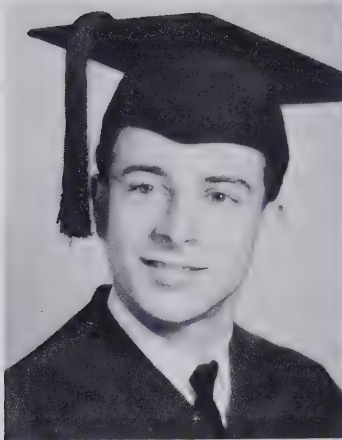
MAVIS AILEEN HARRIS

There's mischief lurking in her pleasant smile.
Tri-Hi-Y 2, 3, 4; F.H.A. 2; SANDPRINTS Staff 4; Superlative.

JAMES DAMION ENNIS

Frame your mind for mirth and merriment.
Football 2, 3, 4; Key Club 3, 4; Monogram Club 3, 4; Student Council 3.

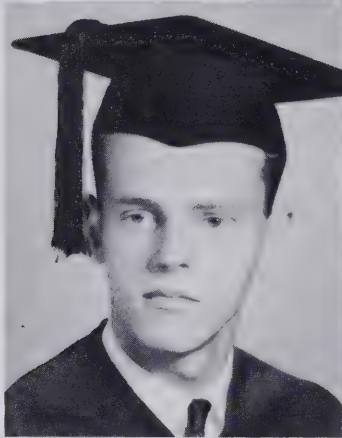
Seniors



JAMES ALTON FALLIN
Silence conceals a wealth of fine thoughts.
F.F.A. 2.



JOAN ALICE HAYES
A charming maid with auburn hair, who always has a smile to spare.
F.H.A. 2; Future Teachers 4; Library Assistant 4; Library Club 4.



RALPH ALFRED FINCH, JR.
Our youth we have but today; we may always find time to grow old.
Henderson High School 2; Football 2; Latin Club 2; Key Club 4.



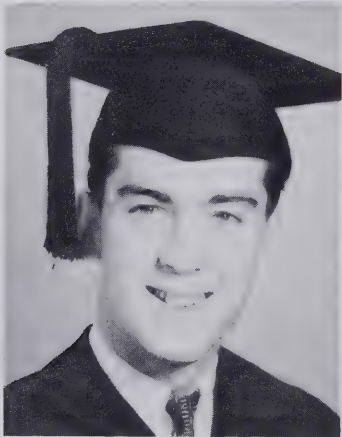
BETTY HUNSUCKER
The hand that follows intellect can achieve.
Tri-Hi-Y 2, 3, 4; Beta Club 3, 4; Science Club 2; Panorama Staff 4; Student Council 2, 3; D.A.R. Citizenship Award 3; Senior Play.



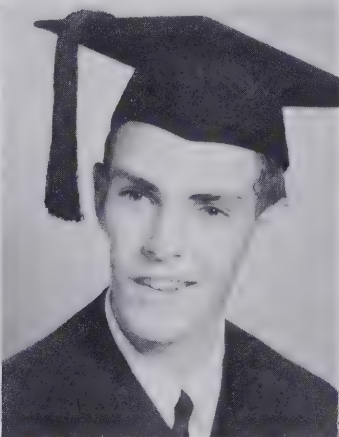
THOBURN HENRY GODWIN, JR.
One man with courage makes a majority.
Rocky Mount High 2; Glee Club 2; Track 2, 3.



MARY GABLE JOHNSON
Not that I love study less, but I love fun more.
Glee Club 2, 3, 4; Tri-Hi-Y 2, 3, 4; F.H.A. 4; Future Teachers 4; Girls' Ensemble 3, 4; Correspondence Club 4; Science Club 3; Spanish Club 3, 4; Senior Play.



LEWIS VICTOR GOODMAN
Opportunity is the best captain of all endeavor.
F.F.A. 2, 3, 4.



ROBERT CHARLES GUNTER
A friend may well be reckoned the masterpiece of nature.

1 9 6 2

CORLIS SUE JOHNSTON

A neat girl with a will to work.

Junior Music Club 3, 4, Officer 4; Tri-Hi-Y 2, 3, 4; Beta Club 3, 4, Officer 4; Science Club 3; SANDPRINTS Staff 4.

WILLIAM HENRY GURLEY, JR.

If you need help from a friend, here's a guy with a hand to lend.

Football 2, 3; Spanish Club 3; Panorama Editor 4; Class Officer 4; Civitan Club 3, 4, Officer 4.

RUBY PAULETTE JOHNSTON

As gentle as the winds that blow, as steadfast as the ground below.

Tri-Hi-Y 2, 3, 4; F.H.A. 2, 4; Future Secretaries 4; Correspondence Club 3, 4; Panorama Staff 4; Senior Play.

JAMES RAY HALL

If thou lovest learning, thou shall be learned.

Beta Club 3, 4; Junior Science Symposium 3.

CAROLYN BEATRICE KELLY

Her placid ways and gentle smile, even the hardest of hearts beguile.

Future Secretaries 4; Spanish Club 4; Correspondence Club Officer 4; Panorama Staff 4; Teachers Secretary 4.

WALTER WADE HARRINGTON

Nothing new, nothing true, and nothing matters.

JOHNNIE DOUGLAS HAYES

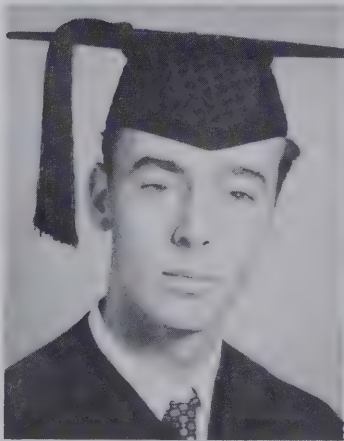
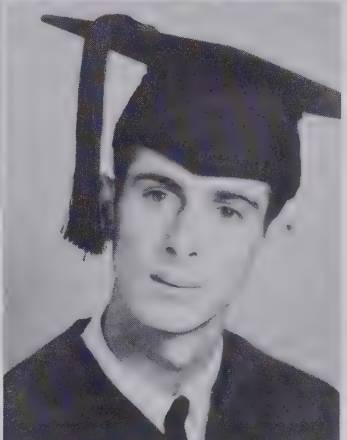
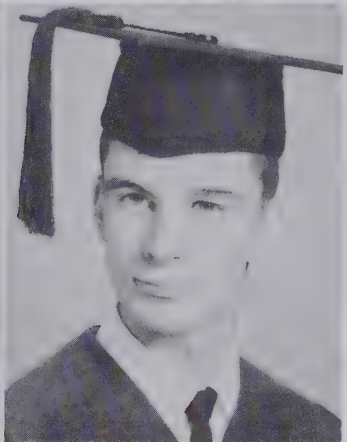
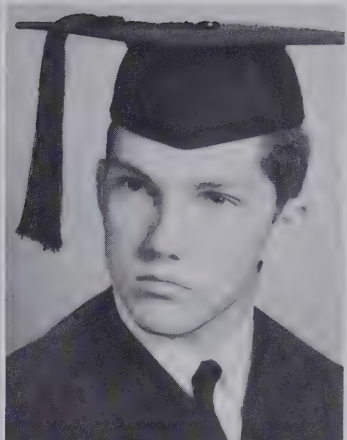
Good nature is the sign of a large and generous soul.

Science Club 2, 3.

EARL ELMON HOLDER

Lots of laughs and tasks well done.

Football 2, 3, 4; Baseball 2, 4; Band 2, 3, 4; Key Club 4; Monogram Club 3, 4.



Seniors

THOMAS CLARK HOWELL

A guy who is fun when fun is due, but when there's work he'll see it through.

Football 2, 3, 4; Key Club 4; Monogram Club 3, 4; Boys' State 3.

LANA JOSEPHINE KIRKMAN

A friend to all she will always be.

Glee Club 4; Tri-Hi-Y 3, 4; F.H.A. 4; Future Secretaries 4; Correspondence Club 4; Library Assistant 4; Library Club 4; Panorama Staff 4; Spanish Club 3; Teachers Secretary 4.

DOUGLAS LEE HUSKETH

A little nonsense now and then is relished by the best of men.

Football 3; Baseball 4; Key Club 4; Library Assistant 2.

SHERRY LYNN LAWSON

Her life is like a singing bird.

Glee Club 3, 4; Junior Music Club 3, 4, Officer 4; Tri-Hi-Y 2, 3, 4, Officer 4; Panorama Staff 4; SANDPRINTS Staff 4; Girls' Ensemble 3, 4.

WILLIE EUGENE INGRAM

Sometimes in him the flashes of genius are seen.
Beta Club 4; Civitan Club 3, 4; Boys' State 3; Senior Play.

ALICE FAYE McFARLAND

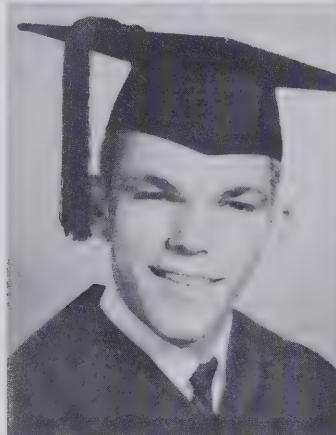
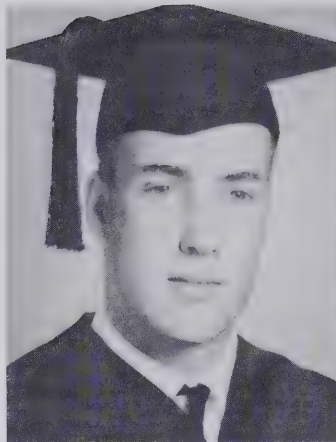
I shall go softly all my years.
F.H.A. 2.

OSCAR KELLER, III

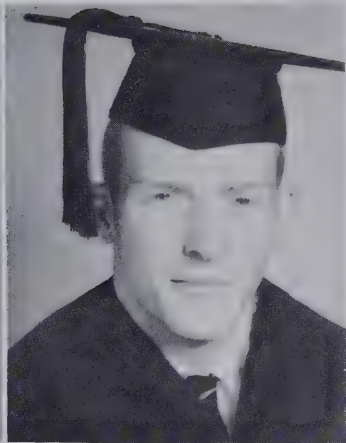
Gentle in manner, strong in performance.
Football 2; Glee Club 4; Monogram Club 2, 3, 4; Track 2, 3, 4.

MARY ELLEN McINNIS

To give my very best to life is my greatest aim.
F.H.A. 2; Tri-Hi-Y 3; Future Secretaries 4; Correspondence Club 4.



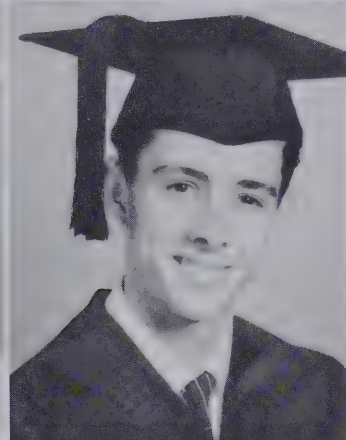
1 9 6 2



SCOTT McIVER

Quietly she goes her way doing her share with little to say.

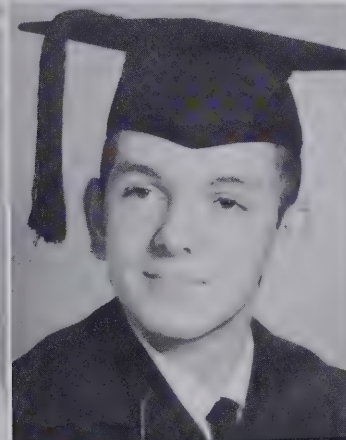
Junior Music Club 4; Tri-Hi-Y 2, 3, 4; Panorama Staff 4; Waitress, Junior-Senior Chairman; Homecoming Court 4; SANDPRINTS Staff 4; Superlative.



JAMES LAWRENCE LEGGE

The man who is prepared has his battle half fought.

Coshocton High, Coshocton, Ohio 2; Class Officer 3, 4.



CONSTANCE FAYE MACE

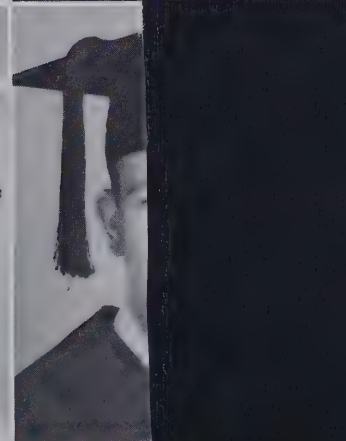
Her voice is like the stars when they sang together.

Glee Club 2, 3, 4; Junior Music Club 3, 4; Tri-Hi-Y 2, 3, 4; Girls' Ensemble 3, 4; Library Assistant 4; Library Club 4.

JOHN BARR LIPSCOMB, JR.

Upright and firm I stand.

Basketball Manager 2, 3; Monogram Club 2, 3, 4; Civitan Club 4.



CAROL LYNN MATTHEWS

Here's to a girl with a heart and smile.

Glee Club 4; Tri-Hi-Y 2, 3; F.H.A. 4; Correspondence Club 4.

NEIL McDONALD

Quiet, yet industrious.

2, 3, 4; Baseball 2, 3, 4; Monogram Club 4; Student Council 4; Senior Play.

LINDA MUREEN MOORE

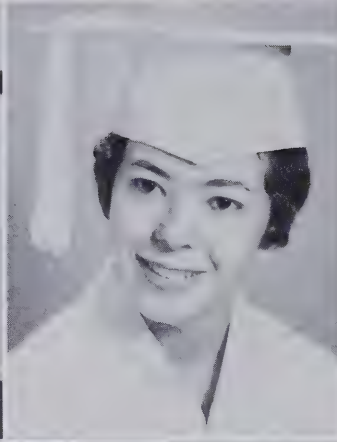
A witty woman is a treasure.

Club 2, 3, 4; Tri-Hi-Y 2, 3, 4.

DANIEL EDWARD McINNIS

h of character, strength of arms.

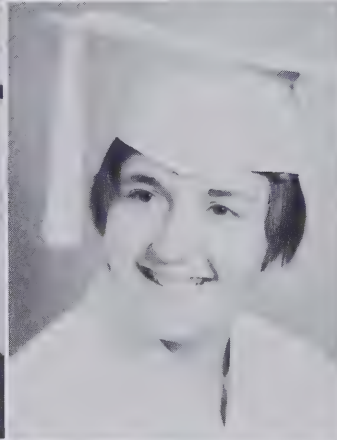
Monogram Club 3, 4; Track 3, 4.



Seniors

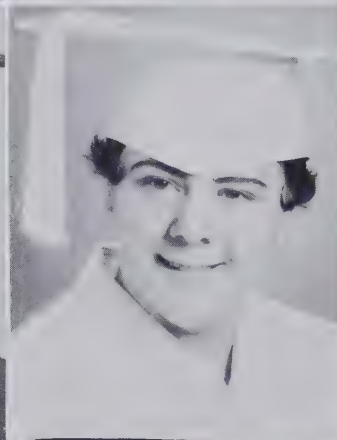
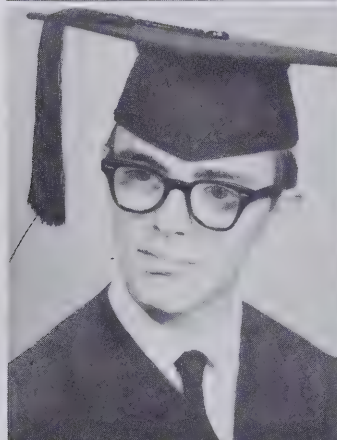
LARRY LEE MADDOX
Honesty is the best policy.

GALA ROSE OLDHAM
Her eye was both merry and kind.
Glee Club 2, 3, 4; Tri-Hi-Y 2, 3, 4; F.H.A. 2, 4; Future Teachers 3, 4; Girls' Ensemble 3, 4; Dramatics Club 3; Correspondence Club 4; Science Club 3; Library Assistant 2; Panorama Staff 4.



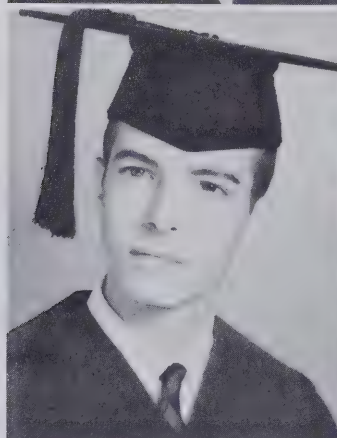
SHELTON GUY MADDOX
Excellent taste, common sense and ability.
F.F.A. 2, 3, 4; Bus Driver 3, 4.

JUDY PATRICIA PALMER
I have no mockings or arguments; I witness and wait.
Glee Club 2, 3; Tri-Hi-Y 2, 3, 4; F.H.A. 2, 4; Future Teachers 4; Dramatics Club 3; Correspondence Club 4; Science Club 2; Library Assistant 2; Panorama Staff 4; Girls' Ensemble 3.



WILLIAM FLETCHER MANN, JR.
To live life full of life is his goal.
Band 2, 3, 4; Science Club 2, 3, 4; Spanish Club 3, 4; Senior Play.

JUDITH ANN PARSONS
She lives her life without a care, forever willing to give and share.
Greenwood High School 2; Glee Club 4; Correspondence Club 4; Bus Driver 3, 4.



ROBERT WILLIAM MANN
He is wise who speaks not much.
Glee Club 2, 4.

ROBERT WILLIAM MATTHEWS
He is possessed with a warm heart and a good nature.
Football 2; Science Club 3, 4, Officer 4; Junior-Senior Waiter.

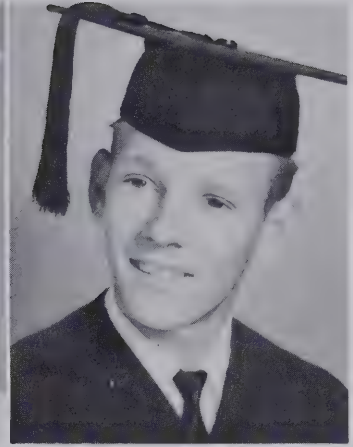
1 9 6 2

SARAH ANN PEACOCK

A modest girl in words and ways.
Lee H. Edwards High School 2.

ROBERT HENRY MOOREFIELD

He may be small but his presence is felt.
Science Club 2, 3.



JEAN PERRY

She looks the world in the face; with work and smiles she writes her place.

Glee Club 3; Tri-Hi-Y 2, 3, 4; Monogram Club 3, 4; Panorama Staff 4; SANDPRINTS Staff 4; Class Officer 3; Girls' State 3; Superlative; Cheerleader 3, 4.

JULIAN ERNEST MORGAN

He likes his fun as we'll all agree; he'll tread Life's way on his personality.

Golf 3, 4; Band 2, 3, 4; Key Club 2, 3, 4; Monogram Club 3, 4; Superlative.



ALICE FAYE PORTER

She has a mild manner and and a kind heart.

THURMAN F. NANCE, JR.

One good turn deserves another.
Science Club 3, 4.



KEITH McCORMICK NELSON

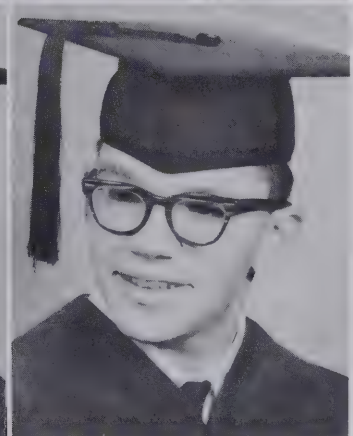
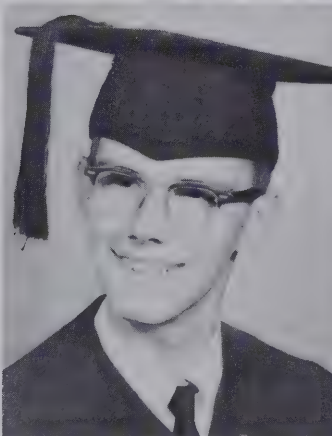
Better be small and shine than tall and cast a shadow.

Football Manager 3; Band 2, 3, 4, Captain 4; Key Club 3, 4.

ROGER WILLIAM NORMAN

Who knows him knows a friend.

Glee Club 2, 3, 4; Melodians 2, 3, 4; F.F.A. 2; Science Club 2, 3, 4; Senior Play.



Seniors

JOHN HARVEY OLDHAM

Always laughing and lots of fun, he gets along with everyone.

F.F.A. 2, 3.

ELIZABETH DIANNE RIDDICK

A perfect woman, nobly planned, to warm, comfort, and command.

Basketball 2, 3, 4; Tri-Hi-Y 2, 3, 4, Delegate Interstate Conference 3; Monogram Club 4; Correspondence Club 4; Science Club 3, 4; Spanish Club 3, 4, Officer 4.

ROBERT CLIFFORD PAYNE

He has a winning way in everything.

Football 3, 4; Baseball 2, 3, 4; Key Club 3, 4; Monogram Club 3, 4, Officer 4; Key Club Convention 3; Boys' State 3; Student Council 4; Senior Play.

CAROLYN ELIZABETH ROSSER

Give the world the best that you have and the best will come back to you.

Glee Club 2, 3, 4; Junior Music Club 3, 4, Officer 4; Tri-Hi-Y 2, 3, 4, Officer 3, Delegate Interstate Convention 3; Beta Club 3, 4; Library Assistant 2; Marshal; Student Council 4; Class Officer 4.

WILLIAM HOWARD PHILLIPS, JR.

His modesty is a candle to his merit.

Key Club 3, 4; Marshal; Student Council 2, 3, 4.

BETTY LOU RUTLEDGE

A blithe heart makes a blooming visage.

Library Assistant 4.

CHARLES M. REEVES, III

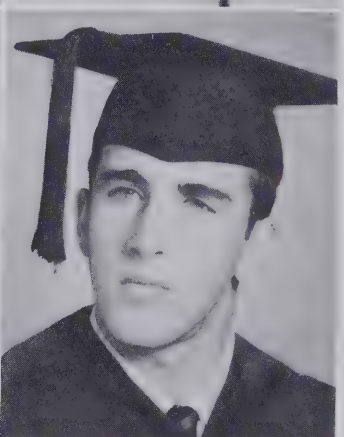
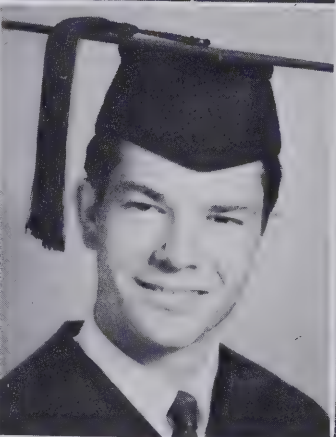
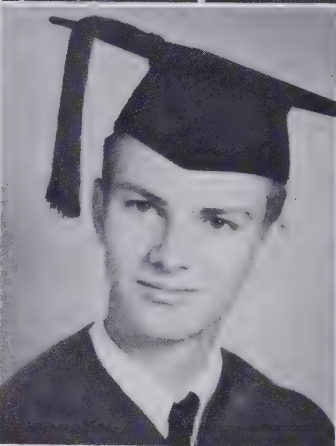
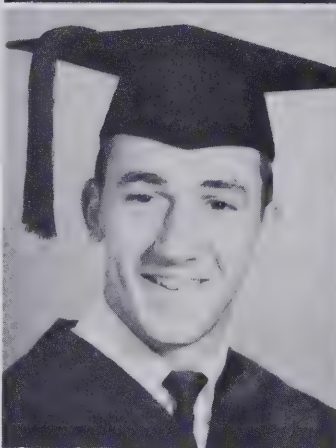
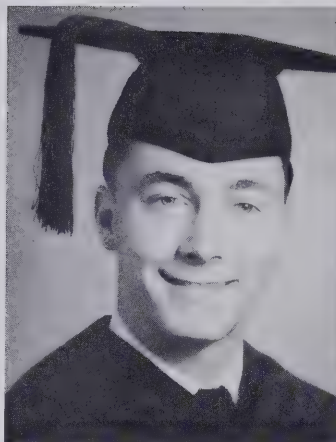
He is a true knight of leadership.

Football 2, 3, 4; Basketball 2, 3, 4; Key Club 2, 3, 4, Officer 4; Monogram Club 3, 4; Delegate to Key Club Convention 3; Beta Club 3, 4; Delegate to Convention 3; SANDPRINTS Staff 4; Superlative; Marshal; Student Council 4, Officer 4; Class Officer 2, 3; Senior Play.

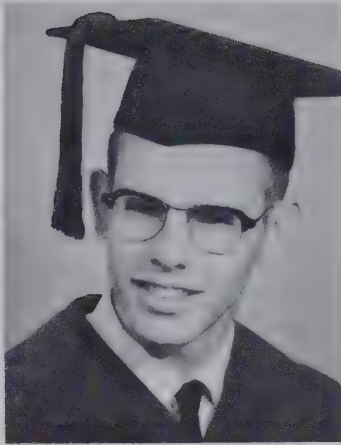
DAVID ROSS ROACH

Men of few words are the best men.

V.I.C. 3.



1 9 6 2

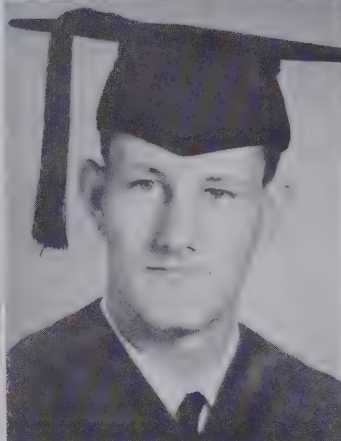


BRENDA JO SMITH

She knows what is good and embraces it.
Tri-Hi-Y 3, 4; F.H.A. 4; Correspondence Club 4.

RICHARD SCOTT

In good humor he always appears.
Basketball 2; Civitan Club 4; Marshal.

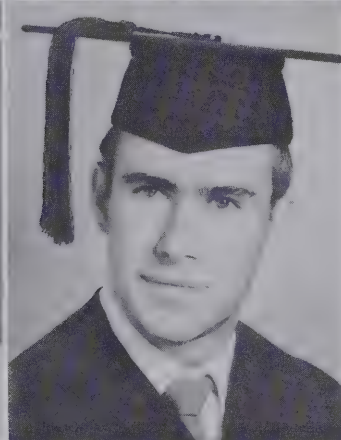


JIMMY FAYE SOLOMON

The way to be happy is to make others so.
Millbrook High School 2, 3, 4; F.H.A. 2, 3;
Decca Club 3.

PHIL ELLIS SENTER

*He always fights to win the game, never thinks
of himself to win the fame.*
Basketball 2, 3, 4; Monogram Club 4; Civitan
Club 4.

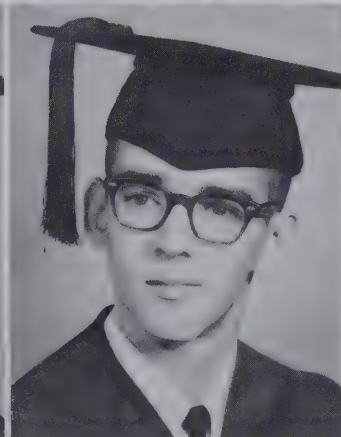
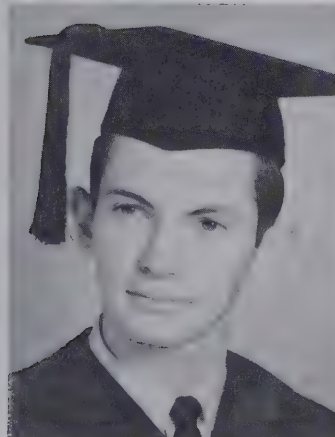


ANNE LYNN SPIVEY

All her thoughts come from the heart.
Glee Club 2; Tri-Hi-Y 2; F.H.A. 4; Correspondence
Club 4.

TOMMIE MARTIN SHIELDS

Delightful to know.



RICHARD IRWING SHOPE

*Now that he's stood the test, he's not better, he's
the best.*
Football 2, 3; Glee Club 3; Band 2, 3, 4; Civitan
Club 3, 4; Senior Play.

EARL RAYMOND SIMMERMAN

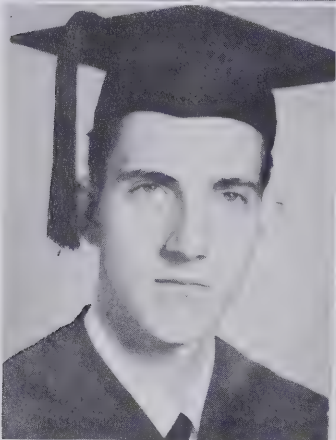
*He's a sport in more ways than one, to top it all
he's a lot of fun.*
Football Manager 3, 4; Monogram Club 3, 4;
Golf 3, 4; Civitan Club 3, 4.

Seniors



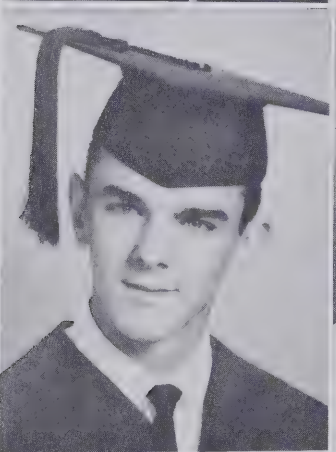
WILLIAM BLAIR SLAUGHTER, JR.
He is true to his word, his work, his friends.
 Bus Driver 3, 4; Library Assistant 3.

JUDY GAY STACK
A warm smile and a sincere manner.
 Future Secretaries 4; Correspondence Club 4;
 Panorama Staff 4; Teacher Secretary 4.



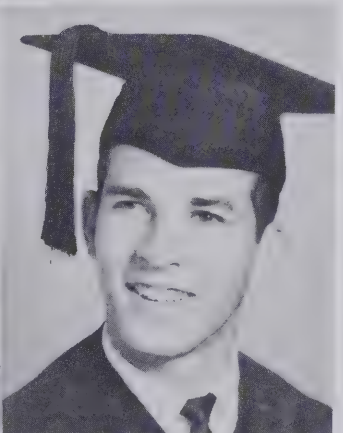
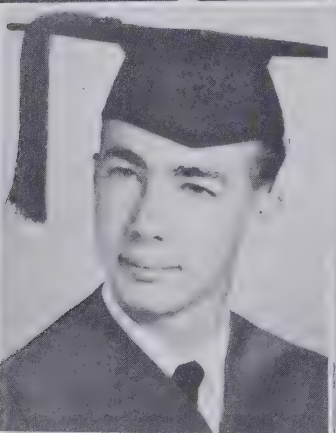
SAMUEL JERRY SLOAN
I came through and I shall return.

RITA CAROL STARR
A finer girl you will never meet.
 F.H.A. 2.



CARL FORD SMITH
Never judge a man by his size.
 Baseball 2; Glee Club 2, 3; Melodians 2, 3; Bus
 Driver 3, 4.

BETTY LEE THOMAS
She strives for the best things in life.
 Future Secretaries 4; Correspondence Club 4.



ROBERT LYNN SMITH
*His good disposition makes him pleasant to
 have around.*
 Football 2; Basketball 3; Baseball 2, 3, 4; Band
 2, 3, 4; Monogram Club 3.

MOSES LAMBE SNIPES
*The happiest person is the person who thinks
 the most interesting thoughts.*
 Basketball 3; Band 2, 3, 4; Key Club 3, 4;
 Monogram Club 3, 4; Golf 3; 4; Student Council 2.

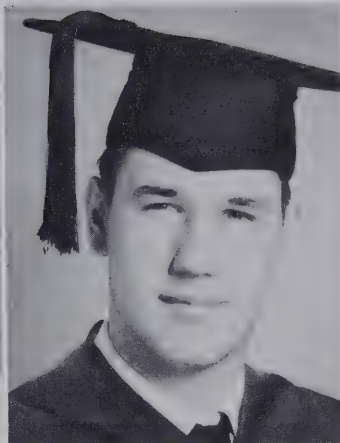
1 9 6 2

CAROLYN SUE THOMAS

She is of a manner so gentle and a heart so kind.
Tri-Hi-Y 3, 4, Officer 4; F.H.A. 2, 4; Correspondence Club 4; Science Club 3; Homecoming Court 4; Senior Play.

LARRY LEGRAND SPIVEY

He greets each day with a smile.



CAROLYN JEANNETTE THOMPSON

She is the sweet, quiet kind whose nature never varies.

WILLIAM ISAAC SPIVEY

He is rich in good works.

Science Club 4; Library Assistant 2, 3; Library Club 4; Civitan Club 2, 3.



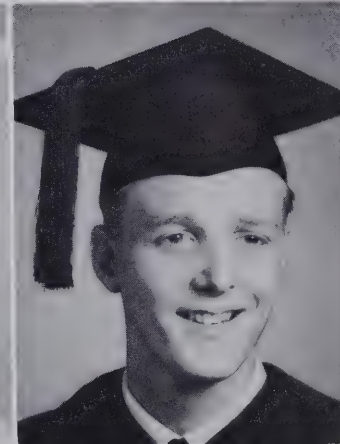
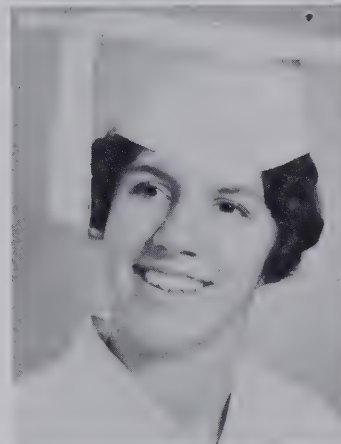
GAIL PATTERSON THORNTON

To speak kindly of others is the greatest charity in the world.

Basketball 2, 3, 4; Glee Club 3, 4; Junior Music Club 3, 4, Officer 4; Tri-Hi-Y 2, 3, 4; Monogram Club 3, 4; F.H.A. 2, 3, 4, Officer 3, 4; Superlative.

ROY GERALD STEPHENS

Ample ability, seriousness . . . just a word.
Glee Club 2, 3, 4, Officer 4; Melodians 2, 3; Civitan Club 4.



JERRY WAYNE STEVENS

The only way to have a friend is to be one.
Football 3, 4; Baseball 2, 3, 4; Band 2, 3, 4; Key Club 4; Monogram Club 3, 4.

JIMMY STONE

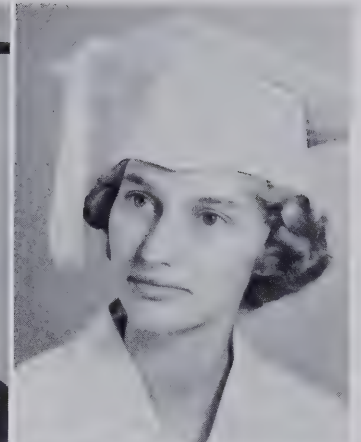
I expect to pass through this world but once.



Seniors

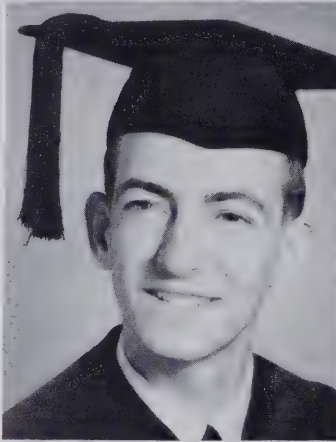
TERRY LEE STRICKLAND
If duty is calling he'll be there.

EDNA UNDERWOOD
Quietness can be valuable.
 Future Secretaries 4, Officer 4; Library Assistant 2, 3, 4; Library Club 4; Panorama Staff 4; SANDPRINTS Staff 4.



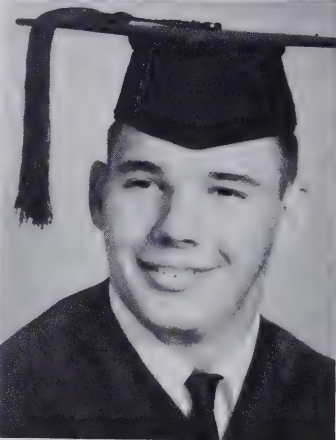
JAMES MICHAEL SWAIN
His ways are ways of pleasantness and his paths are peace.
 Baseball 2; Science Club 4.

ALYCIA DELANEY WATSON
Her secret of happiness is not in doing what she likes, but in liking what she has to do.
 Tri-Hi-Y 2, 3, 4, Delegate Interstate Convention 2, Officer 3, 4; Junior-Senior Prom; SANDPRINTS Staff 4.



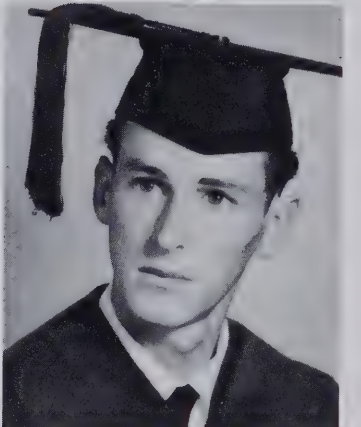
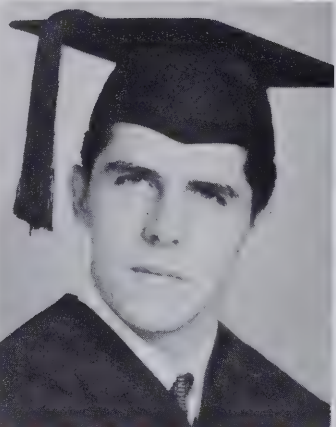
WILLIAM PRYOR TATUM
He is mischievous often, dignified rarely, popular always.
 Football 2, 3, 4; Key Club 3, 4; Monogram Club 3, 4, Officer 4; Delegate Key Club Convention 3; Boys' State 3.

MARJORIE REE WILLIAMS
Sincerity and sweetness are her graces.
 Tri-Hi-Y 2, 3, 4; Correspondence Club 4.

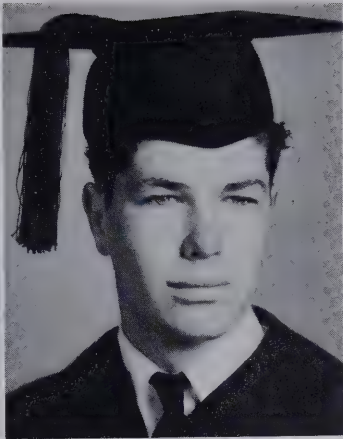


QUINTON KELLY THOMAS
He is endowed with a nature all his own.
 F.F.A. 2.

WAYNE THOMAS
A finer boy you'll never meet
 F.F.A. 2, 3, 4.



1 9 6 2

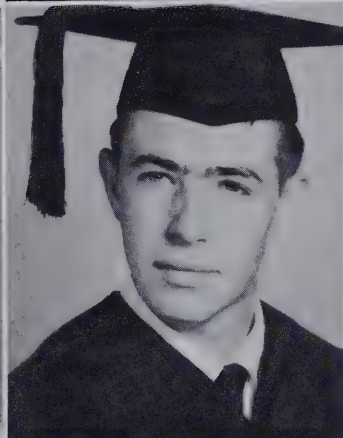


JUDITH WILLIAMSON

She is always laughing and always happy.
Tri-Hi-Y 2, 3, 4; Library Assistant 4; Library Club 4; Homecoming Court 4.

WOODROW LEON THOMAS

Quiet, yet industrious.



ADDIE JANE WILSON

A wonderful disposition combined with wit, popularity and cuteness.
Tri-Hi-Y 2, 3, 4; Beta Club 3, 4; Panorama Staff 4.

LARRY CLAUDE TYSINGER

A nice quiet fellow.
Football 2, 3; Band 2, 3, 4.

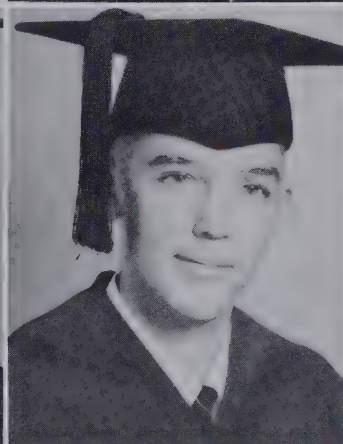
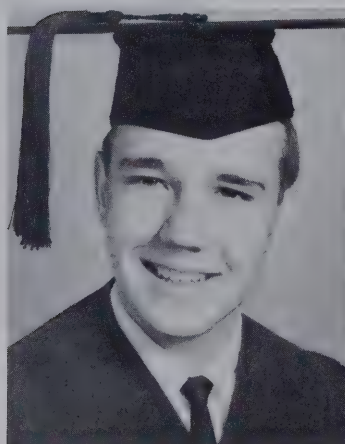


HESTER JEAN WILSON

Her friendly spirit is indeed a virtue.
Glee Club 3; Band 2, 3, 4, Majorette 3, 4; Tri-Hi-Y 2, 3, 4; Monogram Club 4; Superlative.

HOLMES MARSHALL WAGONER, III

A friend to all, enemy to none.
Football 3; Basketball 3, 4; Monogram Club 3, 4; Science Club 2, 4; Golf 3, 4.



JAMES WILLIAM WALKUP

He was born with the gift of ability.
Glee Club 4; Melodians 2, 4; Beta Club 3, 4; Science Club 2; Panorama Staff 4; SANDPRINTS Staff 4; Superlative.

CONLEY HUGH WAY

On any challenge he always tries.
V.I.C. 3, 4.

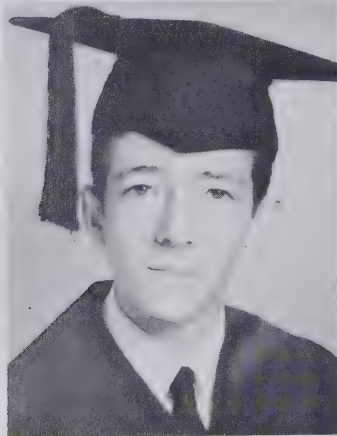
Seniors



ROBERT AMBROSE WICKER
Honest, sincere, dependable and quiet is he.
 Football 4; Key Club 4; Monogram Club 4;
 Student Council 4.



MARY ELIZABETH WINBORNE
Good nature is the beauty of a good mind.
 Tri-Hi-Y 2, 3; Spanish Club 3, 4, Officer 4.



GORDON WILLIAMS
Life is a serious business.



SANDRA KAY WINSTEAD
A lots of wit, lots of fun, everything she does is well done.
 Glee Club 3; Junior Music Club 3, 4; Tri-Hi-Y 2, 3, 4, Officer 3, 4; Monogram Club 3, 4; Delegate to Tri-Hi-Y Convention; Beta Club 3, 4, Officer 4; *Panorama* Staff 4; Marshal; Student Council 2; Class Officer 3; Junior-Senior Waitress; Girls' State 3; Cheerleader 3, 4.



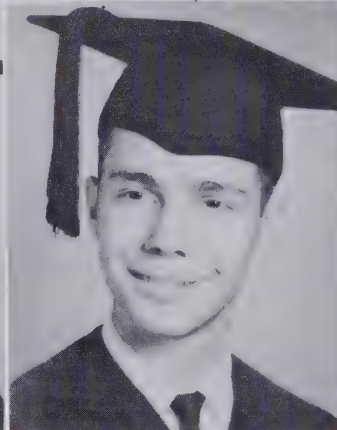
RONALD A. WILLIAMS
A clear conscience is a good pillow.
 Football 2, 3; Band 2, 3; Monogram Club 2, 3; Science Club 2, 3, 4; Biology Award 2; D.A.R. History Award 3; Boys' State 3; District Science Fair 2, 3; Track 2, 3; Senior Play.



PATRICIA LE WOFFORD
Where there's life there's hope.
 Tri-Hi-Y 2; F.H.A. 2; Future Secretaries 4; Correspondence Club 3, 4; Bus Driver 3, 4; Senior Play.



JIMMY SHELTON WILSON
An honest fellow who takes it on the chin.
 Future Secretaries 4; Senior Play.



WILLIAM PAUL WILSON
What I can't see I won't believe.
 Key Club 4; Science Club 4; Track 3, 4; Senior Play.



Junior Officers

JAMES POTTER, *President*

BILL RANNELLS, *Vice-President*

FAYE MATTHEWS *Secretary*

JULIA STRINGFIELD, *Treasurer*

JUNIORS

Juniors?



CLASS RINGS! *Next best to DIPLOMAS*



Juniors

ANNIE MAE ARNOLD
 DANNY ARNOLD
 JOHN ARNOLD
 WESLEY ARNOLD
 BRENDA BAKER
 DORIS BAKER

JAMES BASINSKI
 BILLY BATCHELOR
 CAROLYN BATCHELOR
 FAYE BEAL
 ELAINE BEARD
 GARY BLAKELY

PATSY BLAKELY
 RONALD BOYD
 BRENDA BRACKEN
 VERNA BRANCH
 BECKY BROOKS
 DONALD BULLARD

LARRY BURKE
 LOLA BURNS
 TOMMY BYERLY
 MARY BYRD
 LINDA CAMPBELL
 PATTY CARNES

BARRY CASHION
 GAIL CATO
 J. M. CHESHIRE
 JACK CHRISTIAN
 BETTY CLARK
 JEAN CLEGG

RONALD CLINE
 ROGER COE
 LARRY COLLIER
 JUDY COOK
 GERARD COOPER
 JEAN CRAVEN

Juniors

JERRY CURRIN
 ELAINE DARK
 HOPE DAVIS
 WAYNE DAVIS
 FRED DAY
 BETTY JO DENTON

SANDRA DOWDY
 BILLY DURHAM
 J. C. EDWARDS
 FRED FACKRELL
 JIMMY FIELDS
 WAYNE FITCHETT

COURTNAY FITTS
 CARLANNE FOUSHEE
 LEWIS FOUSHEE
 DONNIE FRYE
 HOWARD FULFORD
 GERALDINE GARNER

DONALD GASTER
 LYNDA GASTER
 BECKY GILLIAM
 JUDY GILLIAM
 JUDY GOODWIN
 JIMMY GRAHAM

MARY ANN GREEN
 HAROLD GRIFFIN
 JERRY GUNTER
 ROBERT GUNTER
 REBECCA HALL
 "TOPPER" HARTNESS

GROVER HENNINGS
 ALICE HERRING
 LOIS HUSSEY
 VERNON JOYE
 JAMES KELLY
 SANDY KENNEDY





Juniors

FLOYD KEY
 NANCY KEY
 JO ANN KIRBY
 J. C. KNIGHT
 CHARLES LARUE
 MARVIN LAWRENCE

JEAN LEMMOND
 JETTY LENTZ
 BETTY BARR LIPSCOMB
 JIMMY LITTLE
 CAROL LOVE
 SHERWOOD LUCAS

MARTHA MCBRYDE
 SHERRI MCCORMICK
 JACKIE MCIVER
 BARBARA McMURRAY
 CECIL MCNEILL
 REBA MCNEILL

LINDA FAYE MADDOX
 RUTH ANN MANN
 NELSON MARSH
 FAYE MATTHEWS
 KAY MERRITT
 BEVERLY MILLER

BETTY MORGAN
 CHARLOTTE MORRIS
 UNA NANCE
 EDDIE NICHOLS
 ANNE NORRIS
 LLOYD NORRIS

BRENDA OLDHAM
 SANDRA OLDHAM
 GEORGE PARKER
 JAMES PASCHAL
 RUSS PATTERSON
 HANNAH PEACOCK

Juniors

RAY PETTUS
ALICE PHILLIPS
PATSY PHILLIPS
TURNER PIGFORD
SARA POE
JAMES POTTER

BOBBY POTTS
DAVID PRIDGEN
ROGER QUILLIN
BILL RANNELLS
NITA REEDY
JERRY RHODES

RAY RHODES
PATSY RIDDLE
MIKE RIDENHOUR
SANDRA RIVES
ALTON ROLLINS
EDDIE ROWLAND

CHARLES RUFFIN
BECKY RUSH
JANE SEYMOUR
VIRGINIA SHANKLE
EDDIE SHIELDS
PATSY SLOAN

ANNIE SMITH
SHEALEY SMITH
REBEKAH SMITH
JILL SNIPES
GINNY LYNN SPIVEY
BILL STEVENS

BOBBY STEVENS
SAMMY STEVENS
DONNIE STEWART
JULIA STRINGFIELD
TIM STROUPE
RICHARD SUCH





Juniors

JACKIE SWOFFORD
 JANE TAYLOR
 LANDA TAYLOR
 CHARLENE THOMAS
 FRED THOMAS

VICTOR THOMAS
 LARRY TRENT
 BETTY TRIPP
 SUE TRUELOVE
 EDDIE WADE

EDDIE WALLACE
 BRUCE WATSON
 MIKE WATSON
 DONNIE WEBSTER
 CAROLYN WICKER

JODY WICKER
 SARAH WICKER
 BRUCE WILLIAMSON
 CHUCK WOOD
 BOB YOW



Sophomore Officers

BILL CHRISTIAN, *President*

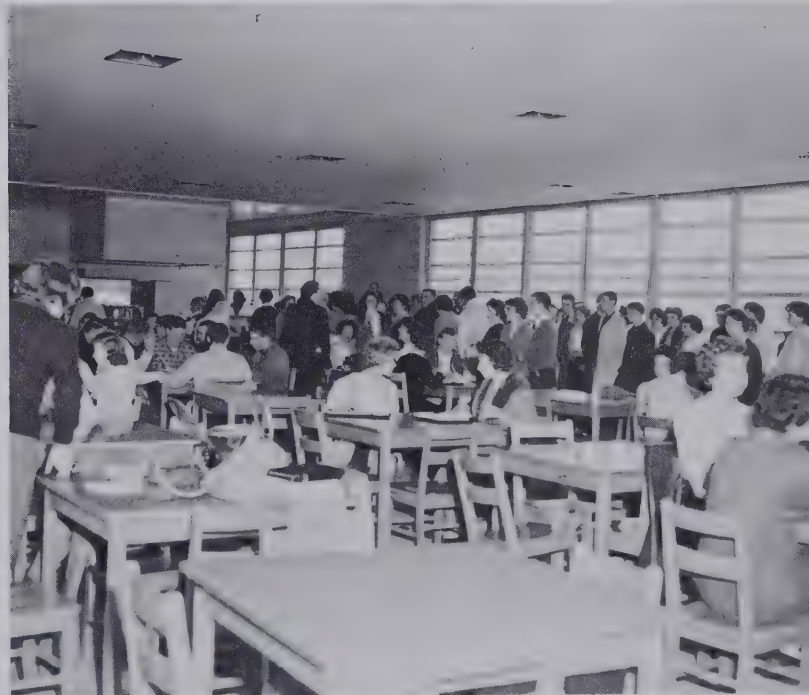
RONNIE ANGEL, *Vice-President*

EMILY CHRISTIAN, *Secretary*

JONES BYRD, *Treasurer*

SOPHOMORES

Peaceful



*Sophomores, you will one day be
SENIORS, too.*

Sophomores



BARRY ADAMS
 JERRY ALLEN
 RONALD ANGEL
 RONALD APPLE
 SUE ASHWORTH
 BILLIE BAKER
 DAWN BAKER
 ANN BARKLEY
 LINDA BATCHELOR
 SUSAN BEAL
 TOMMY BEAL
 SUSAN BERCINI
 CLARA BLACK
 FRANK BLALOCK, JR.
 MARIE BOYD
 NANCY BRADLEY
 PEGGY BRIDGES
 BOBBY BROWN
 DIANE BROWN
 BRUCE BRYANT
 CAROL BRYANT
 DONALD BUCHANAN
 MARTHA BULLOCK
 LARRY BURKETTE
 BETTY BURKHEAD
 JONES BYRD
 SANDRA CAMERON
 LINDA CAMPBELL
 JIMMY CAREY
 DONNIE CARTER
 HAZEL CARTER
 MARY CARTER
 EMILY CHRISTIAN
 PENNY CLARK
 PURVIS CLARK
 ROBIN CLARK
 ALMA GRACE COE
 WALTER COGGIN
 GLADYS COGGINS
 BILLY COLEBROOK
 JERRY COLEY
 JULIA COVINGTON
 DONNIE COX
 RONNIE COX
 MIKE CRISSMAN
 JAMES DALRYMPLE
 SARAH DALRYMPLE
 BOBBY DANIEL
 LARRY DAVIS
 JIMMY DAWSON
 JIMMY DICKENS
 JIMMY DOWDY
 REBECCA EDMONDSON
 CAROLYN ELLIOTT

Sophomores

JOHN FACKRELL
 VICTOR FIELDS
 BOBBY FINCHER
 MARTHA JANE FLETCHER
 JEAN FORE
 CAROLYN FULFORD

TOMMY FUQUAY
 PATSY GAINES
 LINDA GALLEHUGH
 JUDY GARNER
 MARY GAVIN
 VICKY GILMORE

MAXINE GODWIN
 MARTHA GOSNEL
 LAURA GREESON
 GAIL HALL
 SANDRA HALL
 MARY LOU HARPER

JANET HARRINGTON
 JANICE HARRIS
 VAN HARRIS
 CHARLIE HART
 PATRICIA HEARN
 LINDA HELMS

BARRY HICKS
 DIANE HIGHT
 "BEJE" HINSON
 HAZEL HOPKINS
 BOBBY HOWELL
 SANDRA HUTCHENS

MARY WAYNE INGRAM
 BOB JOHANNESSEN
 BARBARA JOHNSON
 "BUSTER" JOHNSON
 NANCY KEITH
 PATSY KELLY

RONNIE KELLY
 TONY KELLY
 JIMMY KEY
 JOYCE KEY
 WALLIE KIMREY
 EVELYN KIRKMAN

BRENDA KNIGHT
 BILLY KOTTAMP
 LUCILE KWIETNIEWSKI
 BOB LARUE
 PRISCILLA LASSEN
 DIANE LITTLE

MARTIN LITTLE
 VIRGINIA LITTLE
 BECKY LUTHER
 "DUSTY" McCLENNY
 TOMMY McDONALD
 BETTY MCFARLAND





Sophomores

C. E. McINNIS
 JIMMY McINNIS
 LOUISE McINNIS
 ELIZABETH McIVER
 PRESTON McKAY
 BRENDA McNEILL

NELL McNEILL
 JIMMY McPHERSON
 DUNCAN McRAE
 BILLY MADDIX
 JERRY MARTIN
 DONNIE MARTINDALE

JOHNNY MASHBURN
 SUSAN MITCHELL
 FAYE MORGAN
 KITTY LOU MULLIS
 JERRY NANCE
 ROSEMARY NEWTON

MARY NORTON
 JUDY O'BRIANT
 BILL OELRICH
 BRENDA OLDHAM
 LINDA OLDHAM
 JANE OLMSTEAD

NANCY OSBORN
 LEWIS PAGE
 KAY PALMER
 BRENDA PAYNE
 "BUDDY" PEARCE
 SANDRA PHILLIPS

CHARLIE PICKARD
 JERRY PORTER
 RALPH PULLIAM
 DAVID REEVES
 SUSAN RESSEQUIE
 GARY ROACH

BILLY ROSSER
 JAMES RUMBOLD
 MARY THOMAS SALMON
 MARTHA SEAGROVES
 BOB SHAW
 RICHARD SHAW

BILLY SIMONSON
 JOSEPH SINGLES
 ERNEST SLOAN
 GLORIA SLOAN
 FRANCES SMITH
 JOYCE ANN SMITH

DIANE SOLIS
 CAROLYN SPARKS
 SANDRA SPENCER
 JOE SPIVEY
 BILLY STEWART
 JIMMY STEWART

Sophomores

BRENDA STONE
 DANNY STONE
 ELIZABETH STONE
 MARY ANN SUCH
 WYNN SUGGS
 JOE TAYLOR

JOYCE TAYLOR
 CINDY TERRELL
 WAYNE TETTERTON
 LARRY THOMAS
 LINDA THOMAS
 PATSY THOMAS

PHILIP THOMAS
 SHIRLEY THOMAS
 ROGER THOMPSON
 LINDA TODD
 ROY TODD
 RANDY TYNDALL

STEVE TYSINGER
 BOBBY ULRICH
 CECIL UNDERWOOD
 GARY VICK
 LAVERNE WADE
 SANDRA WALKER

JEAN WALLACE
 SHARON WARNER
 DARLYNDA WATSON
 LARRY WATTS
 VICKI WEBSTER
 SHARON WEST

JERRY WHITAKER
 DANNY WICKER
 HARVEY WICKER
 BETTY WILLIAMS
 RICHARD WILLIAMSON
 FAYE WILSON

JIMMY WILSON
 JUDY WILSON
 WAYNE WILSON
 CLAY WINDERS
 "BUTCH" WINDHAM
 GARY WINSTEAD

STEVE WOMACK
 PHYLLIS WOMACK
 DORIS WRENN
 GERALD YARBOROUGH
 JOHN YOUNG





features *



Marshals

SHEALEY SMITH

FAYE MATTHEWS

WILLIAM RUFUS HARTNESS, III

VIRGINIA SHANKLE

WILLIAM STEVENS, *Chief*

TURNER PIGFORD

GAIL CATO

JERRY LENTZ

SANDRA OLDHAM

WILLIAM WILLIS

ALICE PHILLIPS

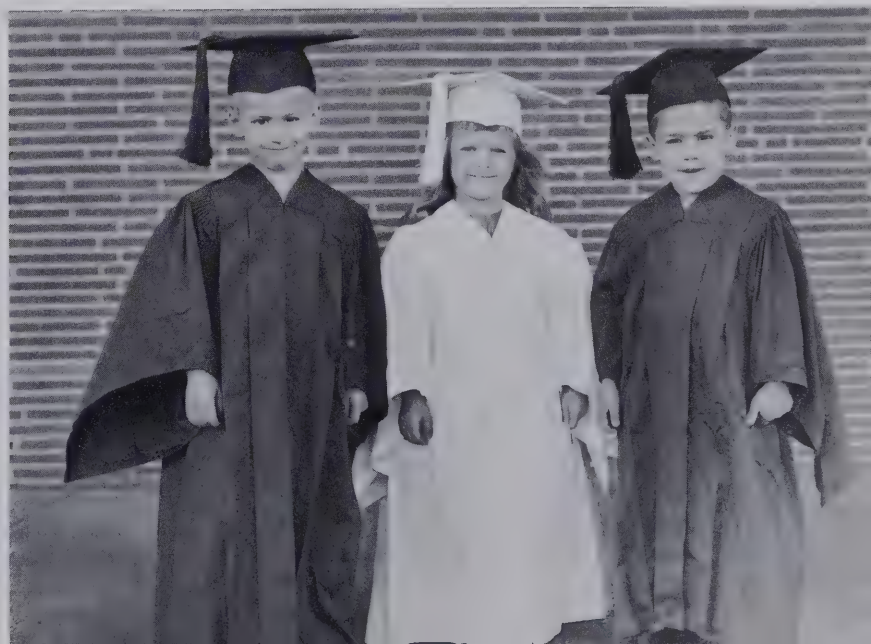
JULIA STRINGFIELD, *Chief*

Mascots

JAMES WICKER

JANE ROBERTS

JOHN WICKER



Student Council



Kneeling: Mike Blakeley, Bill Rannells, Bobby Payne, Jack Campbell, Ben Avent, Bill Stevens, Joe Taylor, Duncan McRae.

Second row: Sandra Dowdy, Mary Gavin, Nancy Bradley, Elaine Beard, Carolyn Rosser, Martha Dixon.

Back row: Mr. J. F. Hockaday, *Principal*; Mr. Walter Erranton, *Advisor*; Richard Such, Terry Reeves, George Parker, Howard Phillips, Bobby Wicker, Neil McDonald, R. D. Carson.



Key Club

Kneeling: Ed Rowland, Jack Campbell, Brent Causey, Mike Blakeley, Bobby Payne, Clyde Baker, Ronnie Brown, Keith Nelson, Jerry Stevens, Rusty Morgan, Douglas Husketh. *Second row:* Charles Ruffin, Danny Wicker, Billy Tatum, Ralph Finch, Billy Wilson, Bill Rannells, Elmon Holder, Moses Snipes, Jack Christian, Ben Avent, Billy Joe Hilliard, David Reeves. *Third row:* Mr. John Thaeler, *Advisor,* George Parker, James Potter, Terry Reeves, Richard Such, Jimmy Ennis, Tommy Howell, Bobby Wicker, R. D. Carson, Harvey Godfrey, Chuck Wood.

Patsy Wofford, Ann Parsons, Patsy Blakeley, Molly Allen, Sandra Oldham, Blair Slaughter, Lloyd Norris, Victor Fields, Donald Bullard, Al Lambeth, James Kelly, Eddie Wallace.

Bus Drivers





**Ella Ray Chacey
Tri-Hi-Y**

First row: Connie Goodwin, Judy Craig, Jean Perry, Debbie Duke, Meredith Crimmins, Mavis Harris, Donelda Draughan, Scott McIver, Lana Kirkman. *Second row:* Corlis Sue Johnston, Sandra Winstead, Faye Fish, Connie Mace, Becky Burkhead, Gaye Oldham, Jean Wilson, Pat Palmer, Carolyn Hall. *Third row:* Sherry Lawson, Carolyn Rosser, Diane Riddick, Mary Johnson, Judy Williamson, Betty Dowdy, Carolyn Thomas, Brenda Dickens, Martha Dixon, Paulette Johnston. *Fourth row:* Miss Emily Kimrey, *Sponsor*; Gayle Grantham, Gail Thornton, Bonnie Cox, Linda Moore, Kitty Erwin, Jane Wilson, Brenda Smith, Alycia Watson, Mrs. Ismay Hood, *Sponsor*.

First row: Elaine Dark, Hope Davis, Kay Merritt, Alice Herring, Charlotte Morris, Una Nance, Doris Baker, Jean Craven, Nancy Key. *Second row:* Julia Stringfield, Carlanne Foushee, Betty Clark, Sandra Dowdy, Julia Gilliam, Jean Lemmond, Becky Gilliam, Betty Tripp, Carolyn Batchelor, Brenda Bracken. *Third row:* Alice Phillips, Betty Lipscomb, Betty Jo Denton, Brenda Oldham, Hannah Peacock, Rebekah Smith, Alma Grace Coe, Judy Godwin, Faye Matthews. *Fourth row:* Mrs. Dorothy Thornton, *Sponsor*; Ruth Ann Mann, Becky Rush, Linda Campbell, Courtney Fitts, Virginia Shankle, Sarah Poe, Jean Clegg, Jane Taylor, Jane Seymore, Jill Snipes, Jackie McIver.

**Jane S. Barringer
Tri-Hi-Y**





First row: Mary Thomas Salmon, Martha Bullock, Diane Little, Marie Boyd, Betty Burkhead, Janice Harris, Joyce Key, Alma Grace Coe, Sandra Cameron, Vicky Gilmore. *Second row:* Susan Resseque, Laura Greeson, Evelyn Kirkman, Darlynda Watson, Susan Beal, Diane Brown, Martha Seagroves, Mary Carter, Maxine Godwin, Sandra Phillips, Kay Palmer, Laverne Wade. *Third row:* Emily Christian, Judy O'Briant, Gloria Sloan, Nancy Bradley, Carolyn Elliott, Elizabeth McIver, Nancy Keith, Janet Harrington, Jane Fletcher, Sandra Spencer, Shirley Thomas, Sharon Warner. *Fourth row:* Mrs. Ella Ray Chacey, *Sponsor;* Penny Clark, Dawn Baker, Doris Wrenn, Priscilla Lassen, Jane Olmstead, Rebecca Edmondson, Patsy Kelly, Mary Lou Harper, Faye Wilson, Mary Wayne Ingram, Kitty Lou Mullis, Linda Gallehugh, Cindy Terrell.

Dorothy-Daniel Tri-Hi-Y

Beta Club

First row: Julia Stringfield, Sandra Winstead, Debbie Duke, "Topper" Hartness, Jerry Lentz, Gail Cato. *Second row:* Faye Matthews, Alice Phillips, Jimmy Walkup, James Hall, Martha Dixon, Brenda Oldham. *Third row:* Corlis Sue Johnston, Donna Budd, Frank Chacey, Brent Causey, Bill Stevens, Meredith Crimmins, Mrs. Mary Carter, *Sponsor.* *Fourth row:* Bonnie Cox, Jane Wilson, Virginia Shankle, Terry Reeves, Eugene Ingram, Betty Hunsucker, Carolyn Rosser.





Future Secretaries

First row, front to back: Carolyn Hall, Paulette Johnston, Linda Crowson, Gloria Clark. *Second row:* Carolyn Kelly, Mary Ellen McInnis, Ann Clark, Betty Thomas, Lina Kirkman. *Third row:* Judy Stack, Edna Underwood, Ann Ardis, Mrs. Ella Ray Chacey, *Sponsor;* Patsy Wofford, Jimmy Wilson.

Correspondence Club

First row: Mollie Allen, Pat Palmer, Linda Crowson, Sandra Oldham, Carolyn Hall, Paulette Johnston, Gaye Oldham, Betty Dowdy. *Second row:* Lana Kirkman, Mary Ellen McInnis, Marjorie Williams, Carol Matthews, Beverly Miller, Judy Stack, Gloria Clark, Carolyn Batchelor, Dianne Riddick, Carolyn Thomas. *Third row:* Landa Taylor, Brenda Baker, Carolyn Kelly, Polly Gilmore, Mary Johnson, Judy Cox, Barbara McMurray, Brenda Smith, Lola Burns, Faye Fish. *Fourth row:* Patsy Blakeley, Ann Ardis, Anne Spivey, Martha McBryde, Patsy Wofford, Geraldine Garner, Ann Parsons, Betty Thomas, Linda Gaster, Mrs. Freda Kriminger, *Advisor.*





Industrial Cooperative Training

Front row: Mr. Cary E. Bradley, *Sponsor*; Carl Smith, Conley Way. *Second row:* David Roach, Roger Quillin, Gordon Williams, Jerry O'Quinn, Nelson Marsh, Woodrow Thomas. *Third row:* Jack Oldham, Kelly Thomas, James Legge, Samuel Sloan, Ray Pettus, Larry Spivey.

First row: Mike Watson, James Kelly, Mickey David, Lloyd Norris, Billy Dowdy, Royce Baker. *Second row:* Harold Douglas, David Stack, Don Maddox, Barry Lambeth, Ray Norris, Jimmy Thomas, Roy Johnson, Odell Lawrence, Harry Angel, Johnny Gales, Ted Cox, Donald Batten, Bernice Dickens, Andy Key, Eugene Gautier, Ronnie Kelly, Jimmy Cook, Connie Deal, Tommy Sloan, David Dickens, Bobby Baker, Linton McNeill, Ronnie Morton. *Standing:* Tommy Shields, Wesley Stack, Donnie Carter, Ronnie Apple, James Dean, James Dalrymple, Al Lambeth, Billy Maddox, Tony Kelly, Eddie Shields, Bill Stevens, Jerry Fields, Bobby Phillips, Carter Rosser, Gary Winstead, Lewis Page, Jimmy Key, Ronnie Kelly, Johnny Sellars, Jerry Whitaker, Larry Davis, Randy Tyndall, Butch Winstead, Bobby Wofford, Ronald Faulk, Bobby Daniels, Mr. J. B. Lipscomb, *Advisor*.

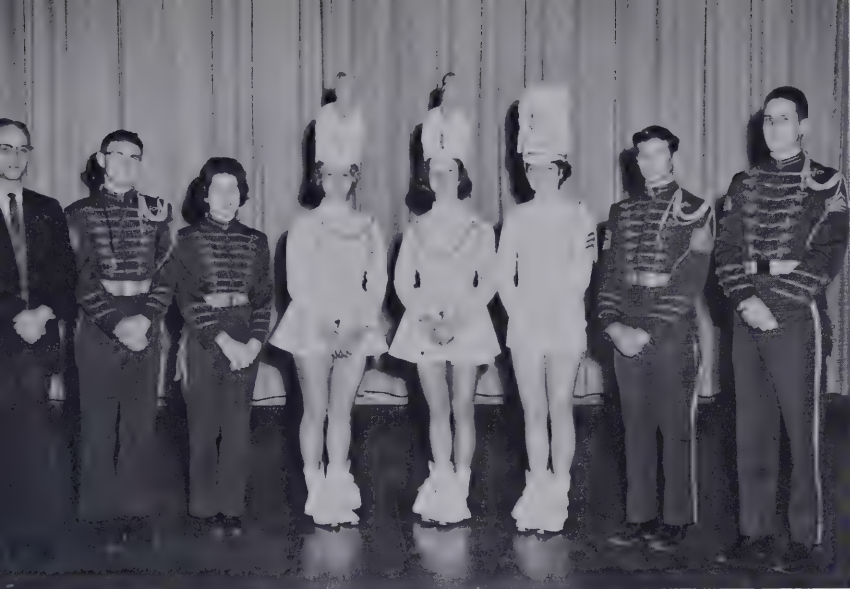
Future Farmers of America



Band



Flutes: Jerry Lentz, Meredith Crimmins, Elsie Rannells, Linda Thornton. *Clarinets:* Duncan McRae, Topper Hartness, Beje Hinson, Bill Oelrich, Gaye Inman, Laura Greeson, Linda Gallehugh, Donna Harris, Karen Bradshaw, Phillip Young, Phillip Thomas, Elaine Wilder, Anne Keith, Janice Nelson, Ricky Lewis. *E \flat Clarinet:* Joe Taylor. *E \flat Alto Clarinet:* Olivia Hurd. *B \flat Bass Clarinet:* Rusty Morgan. *Alto Saxophones:* Gail Cato, Janice Archer, David Reeves, Bob Howard, Herbert McIntyre. *Tenor Saxophone:* Keith Nelson. *Baritone Saxophone:* Frank Chacey. *Trumpets-Cornets:* Barry Cashion, Bobby Yow, Richard Yow, Clay Winders, Tommy Griffin, Tommy McDonald, Bobby McNair, John Erwin, Lynn Poe, Rob Gunter. *French Horns:* Richard Shope, Moses Snipes, Jerry Stevens, Jesse Pearce, Elaine Coggins. *Trombones:* James Potter, James Walkup, Jimmy Perry, Arthur James, George Parker, Lee Fogle. *Baritones:* Mike Ridenhour, Brent Mann, Billy Colebrook. *Basses:* Larry Tysinger, Ronnie Braunhardt, Elmon Holder. *Percussion:* Bob Stevens, Alan Dossenbach, Bobby Smith, Ronnie Brown, Ronnie Boyd, Donnie Stewart, Billy Mann, Jody Wicker, James Haithcock. *Tympani:* Bob Stevens.

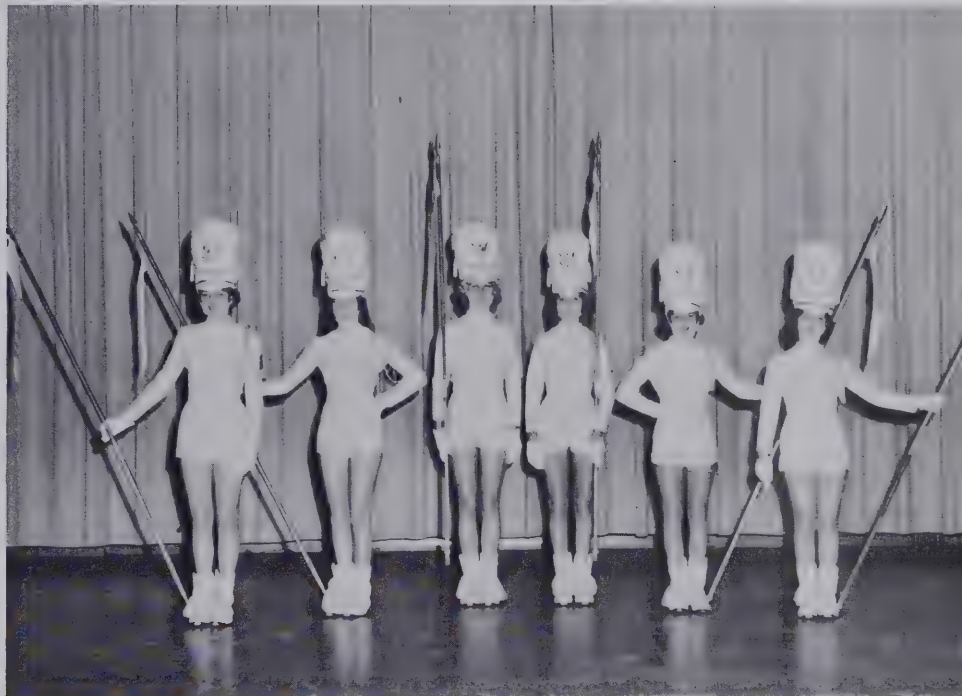


Band Officers

E. R. BRAUNHARDT..... Director
 KEITH NELSON..... Band Captain
 MEREDITH CRIMMINS..... Band Secretary
 LOIS BARBEE..... Co-Chief Majorette
 SARAH WICKER..... Co-Chief Majorette
 JUDY COOK..... Lancer Captain
 BARRY CASHION..... Band Lieutenant
 JAMES POTTER..... Band Sergeant

Lancers

JUDY COOK
 DARLYNDA WATSON
 COURTNEY FITTS
 MARY BYRD
 JANICE HARRIS
 JEAN CRAVEN



Majorettes

JUDY CRAIG
 BEVERLY MILLER
 JEAN LEMMOND
 LOIS BARBEE
 SARAH WICKER
 CHARLENE THOMAS
 DEBBIE DUKE
 JEAN WILSON



Spanish Club

First row: Una Nance, Hope Davis, Betty Dowdy, Dianne Riddick, Carolyn Kelly, Mrs. Julianna McCracken, *Advisor.* *Second row:* Linda Crowson, Alice Herring, Carolyn Thomas, Beverly Miller, Betty Morgan, Charlotte Morris. *Third row:* Betty Lipscomb, Ronald Cline, Sandra Dowdy, Judy Williamson, Linda Campbell, Carolyn Batchelor, Faye Beal. *Fourth row:* Topper Hartness, Billy Mann, James Potter, Wayne Fitchett, Bobby Ulrich, Winn Suggs.

Roll: Jean Clegg, Elaine Dark, Jimmy Dickens, Topper Hartness, Jerry Lentz, Faye Matthews, Betty Morgan, R. W. Norman, Sarah Poe, Dianne Riddick, Billy Rosser, James Rumbold, Ricky Shaw, Jill Snipes, Winn Suggs, Bobby Ulrich, Clay Winders, Bill Wilson, Gary Winstead, Becky Rush, Bruce Williamson, William Willis, Bill Rannells, Dusty McClenny, Thomas Beal, Philip Thomas, Duncan McRae, David Reeves, Jones Byrd, Joe Taylor, Betty Lipscomb, Buster Johnson, Larry Burkette, Emily Christian, Bill Christian, Susan Beal, Dianne Little, Harvey Wicker, Dianne Brown, Rebecca Edmondson, Kitty Mullis, Mike Swain, Billy Mann, Ike Spivey, Nita Reedy, George Parker, Carolyn Elliott, Sherri McCormick, Judy Cook, Gary Vick, Marie Boyd, Chuck Wood, Brenda Bracken, Frank Blalock, James Basinski, Eddie Nichols, Bob Johannessen, Sandra Walker, Jimmy Dawson, Dawn Baker, Ronnie Angel, Shealy Smith.

Science Club





First row: Carol Love, Mary Johnson, Hazel Carter, Joan Hayes, Judy Goodwin, Becky Gilliam, Jane Seymore, Mary Gavin, Nancy Keith, Hannah Peacock, Gayle Grantham. *Second row:* Sherri McCormick, Elizabeth McIver, Pat Palmer, Mary Thomas Salmon, Gloria Sloan, Betty Tripp, Sandra Walker, Doris Wrenn, Becky Rush, Gaye Oldham.

Here I go again
Future Teachers

Junior Civitan

Kneeling: Tinky Boyd, Bill Stevens, Joe Dawson, Jody Wicker, Carl Beal, Henry Davis, Richard Scott, Johnny Lipscomb. *Standing:* Mr. Vance Hulbert, *Advisor:* Jones Byrd, Beje Hinson, Phil Senter, Charles LaRue, Wayne Fitchett, Richard Shope, Gerard Cooper, Jerry Stephens, Earl Simmeron, Eugene Ingram, Barry Cashion, Bill Gurley.



SANDPRINTS

Meredith Crimmins,
Editor;

Donna Budd,
Business Manager;

Frank Chacey,
Subscriptions
Manager;

Scott McIver,
Art Editor;

Judy Cook,
Junior Editor;

Topper Hartness,
Junior Business
Manager and
Student
Photographer;

Alycia Watson,
Advertising
Manager;

Terry Reeves,
Sports Editor;

Edna Underwood,
Typist;

Miss Mary Lee Jackson,
Faculty Advisor.

Sandprints Staff

Panorama Staff

First row: Donna Budd, Alice Phillips, Scott McIver, Jimmy Walkup, Betty Morgan, Virginia Shankle, Hannah Peacock. Second row: Becky Rush, Linda Campbell, Kitty Erwin, Terry Reeves, Jane Taylor, Courtnay Fitts. Third row: Martha Dixon, Topper Hartness, Frank Chacey, Jean Perry, Sherry Lawson, Betty Hunsucker. Fourth row: Rebekah Smith, Mrs. Nancy Griffin, Advisor; Sandra Winstead, Bill Gurley, Ricky Shaw, Bobby Yow, Sandra Oldham, Eugene Ingram, R. D. Carson.





Library Club

Seated: Nancy Key, Linda Crowson, Sandra Dowdy, Lana Kirkman, Joan Hayes, Connie Mace, Linda Gallehugh. *Standing:* Judy Cox, Brenda Baker, Bonnie Cox, Virginia Shankle, William Willis, Ike Spivey, Mrs. Sue Phillips, *Advisor;* Judy Williamson.

Library Assistants

Front: Judy Cox, Connie Mace, Sandra Dowdy, Betty Lou Rutledge, Judy Williamson, Joan Hayes, Nancy Key, Linda Gallehugh, Brenda Baker, Edna Underwood, Linda Crowson. *Back:* Virginia Shankle, Lana Kirkman, Bonnie Cox, Mrs. Sue Phillips, *Librarian.*



Glee Club



First row: Faye Matthews, Elaine Dark, Nancy Keith, Sandra Walker, Hope Davis, Barbara Johnson, Judy Craig, Jackie Swofford, Jody O'Briant, Gloria Sloan, Dianne Little, Ginny Lynn Spivey, Faye Fish, Gaye Oldham, Carolyn Hall, Nell McNeill. *Second row:* Topper Hartness, Donnie Cox, Peggy Bridges, Beverly Miller, Anne Barkley, Betty Jo Denton, Betty Clark, Lana Kirkman, Elizabeth McIver, Doris Wrenn, Dianne Brown, Becky Burkhead, Kay Palmer, Carol Matthews, Sandra Phillips, Randy Morton, Ralph Pulliam. *Third row:* Clay Winders, Bobby Mann, Leslie Davis, Bill Christian, Clara Black, Marie Boyd, Donelda Draughan, Linda Maddox, Jane Seymore, Mary Johnson, Jill Snipes, Hannah Peacock, Carol Love, Linda Moore, Buddy Keller, Barry Adams, Johnny Mashburn. *Fourth row:* Jerry Stevens, R. W. Norman, Gary Vick, Martha Seagroves, Sherry Lawson, Martha McBryde, Mary Gavin, Gail Thornton, Connie Mace, Carolyn Rosser, Rebecca Edmondson, Jackie McIver, Sarah Poe, Ruth Ann Mann, Wade Harrington, Ricky Wagoner, James Potter. *Pianist:* Gail Cato.



Junior Music Club

First row: Carolyn Rosser, Corlis Sue Johnston, Martha Dixon, Sandra Winstead, Gail Thornton. *Second row:* Gayle Grantham, Judy Craig, Connie Mace, Kitty Erwin, Scott McIver, Alice Phillips, Mrs. Edna E. Yarborough, *Advisor.* *Down the stairway:* Gail Cato, Jean Craven, Hannah Peacock, Jane Seymour, Carolyn Batchelor, Faye Matthews, Jill Snipes, Beverly Miller, Ruth Ann Mann, Sherry Lawson, Jackie McIver, Debbie Duke, Linda Campbell, Donelda Draughan.



Monogram Club

First row: Ronnie Brown, Clyde Baker, R. D. Carson, Jean Perry, Bill Hilliard, Buddy Keller, Wayne Fitchett, Rusty Morgan, Bobby Payne, Alice Phillips, Jody Wicker. *Second row:* Ricky Wagoner, Ben Avent, Harvey Godfrey, Neil McDonald, Joe Dawson, Johnny Lipscomb, Ray Rhodes, Jack Campbell, Tommy Howell, Mike Blakeley. *Third row:* Mr. Don Packard, *Advisor;* Jimmy Ennis; Phil Senter, Sandra Winstead, Billy Tatum, Debbie Duke, Richard Such, Terry Reeves, Diane Riddick. *Fourth row:* Elmon Holder, Earl Simerson, Bob Wicker, Sarah Wicker, Jerry Stevens, Jerry Currin, Bill Rannells, Charles Ruffin, Charles LaRue, Jack Christian, Beverly Miller, Gail Thornton. *Fifth row:* Pat Blakeley, Sandra Oldham, Judy Cook, Moses Snipes, Martha McBryde, Martha Dixon, Jackie McIver, Brenda Oldham, Kitty Erwin, Jean Wilson, Charlene Thomas, Jean Craven.

Seated: Gail Thornton, Betty McFarland, Linda Batchelor, Linda Todd, Sandra Hall, Becky Dowd, Mrs. Beulah Byrd Womble, *Advisor;* Brenda Dickens, Gaye Oldham, Mary Johnson, Lana Kirkman, Vicki Webster, Sarah Dalrymple, Carolyn Hall. *Second row:* Sandra Cameron, Becky Burkhead, Sue Ashworth, Pat Palmer, Lois Hussey, Brenda Smith, Ann Ardis, Ann Spivey, Faye Fish, Brenda Stone, Phyllis Womack, Linda Crowson, Connie Mace, Sandra Dowdy, Linda Helms, Maxine Godwin, Alice Herring. *Back row:* Joyce Key, Clara Black, Linda Thomas, Paulette Johnston, Carolyn Thomas, Betty Dowdy.

Future Homemakers

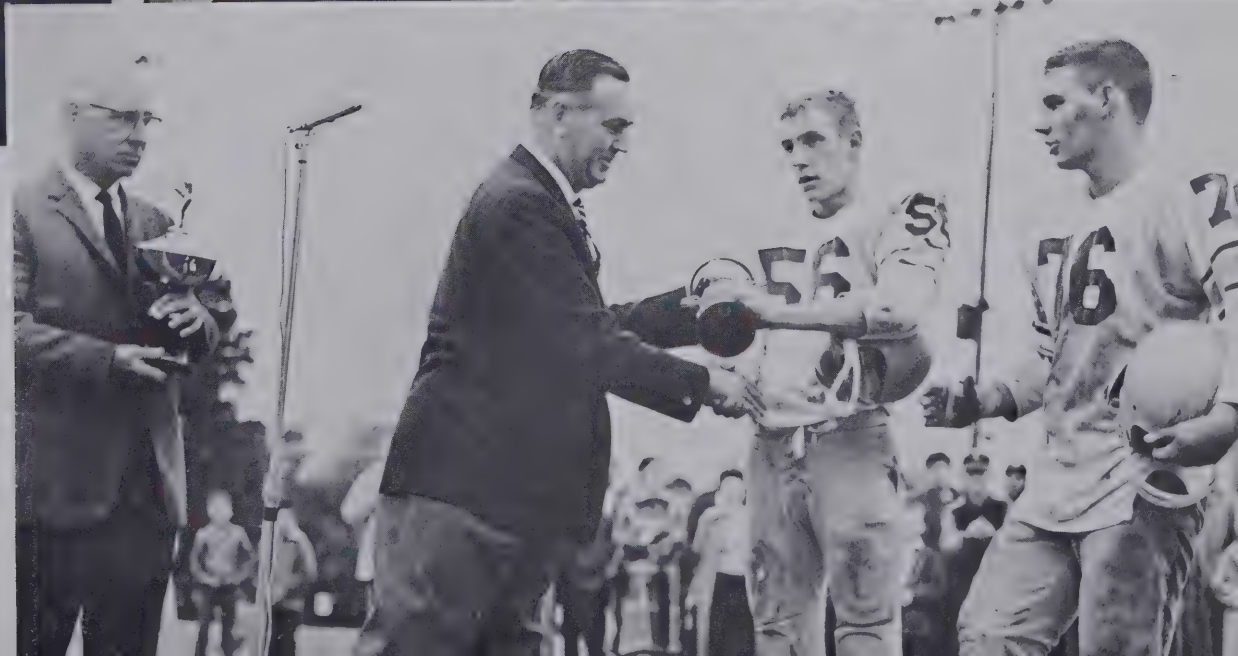




Jr.-Sr. Prom









sports *

Football 1961



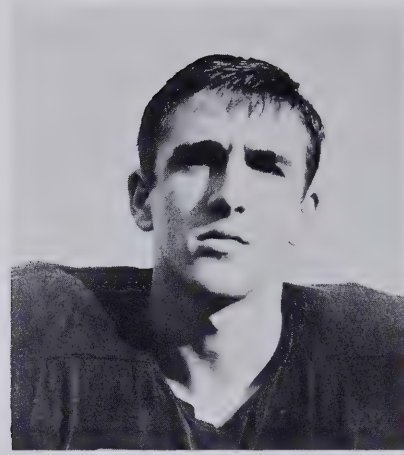
Bottom row: Chuck Wood, Randy Morton, Gerald Yarborough, Gary Vick, Ben Avent, Bobby Payne, Charles LaRue. *Second row:* Larry Thomas, Bill Rannels, Jerry Stevens, Bob LaRue, Jimmy Ennis, Charles Ruffin, Elmon Holder, R. D. Carson, Sam Phillips. *Third row:* Earl Simmerson, *Manager;* Billy Joe Hilliard, Bobby Howell, Jack Christian, Tommy Howell, Billy Tatum, Joe Dawson, Ronnie Brown, Bob Shaw. *Fourth row:* Clyde Baker, Richard Williamson, Bobby Brown, Neil McDonald, Terry Reeves, Richard Such, Harvey Godfrey, Donnie Martindale, Bobby Wicker, Jerry Currin.

Scoreboard

Sanford.....	41	Siler City.....	0
Sanford.....	7	Hamlet.....	0
Sanford.....	7	Raeford.....	7
Sanford.....	20	Laurinburg.....	0
Sanford.....	21	Lumberton.....	0
Sanford.....	18	Rockingham.....	0
Sanford.....	14	South Durham.....	7
Sanford.....	40	Wadesboro.....	6
Sanford.....	6	Goldsboro.....	7
Sanford.....	0	Dunn.....	7



BOBBY PAYNE



TERRY REEVES



COACHES

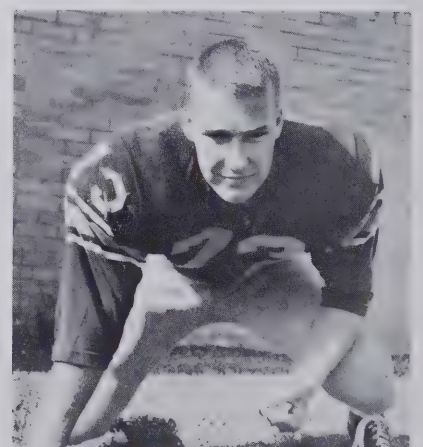
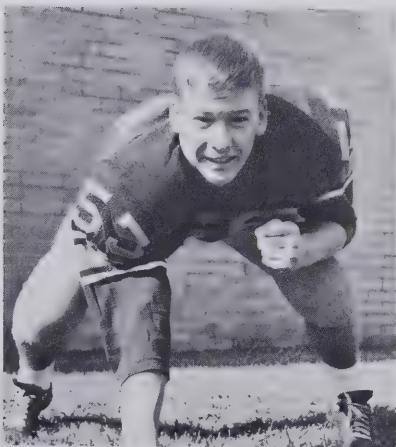
PAUL GAY

DON PACKARD

ELMON HOLDER

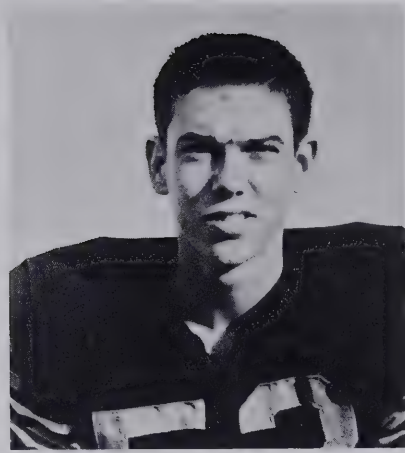
NEIL McDONALD

TOMMY HOWELL





RONNIE BROWN



JERRY STEVENS

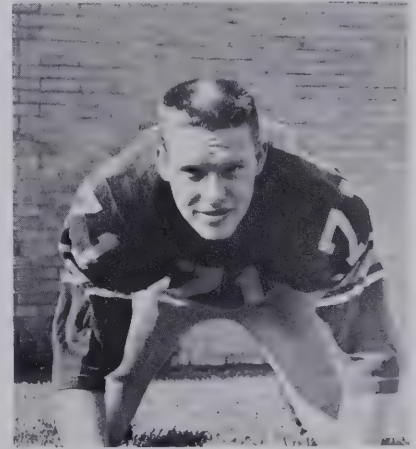
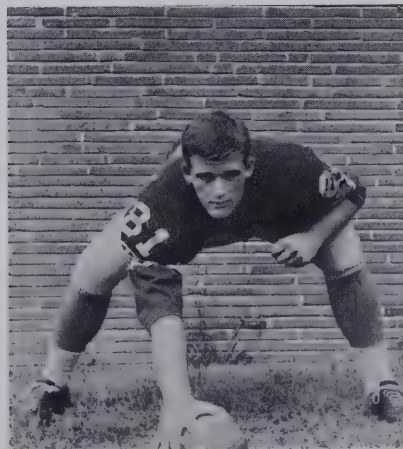
BEN AVENT
COACH GAY
R. D. CARSON
BILLY TATUM



BOBBY WICKER

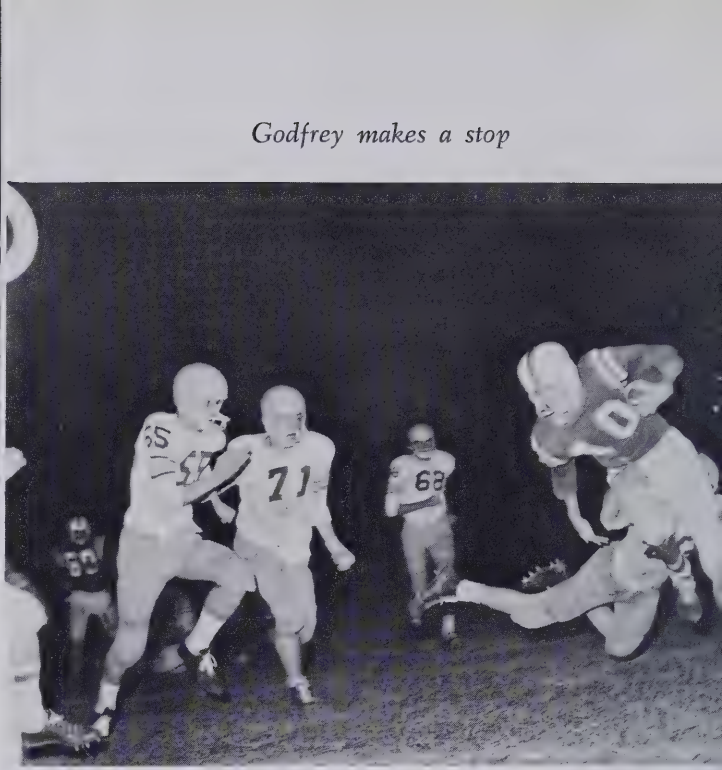
JIMMY ENNIS

JOE DAWSON





Carson on an option to Avent



Godfrey makes a stop



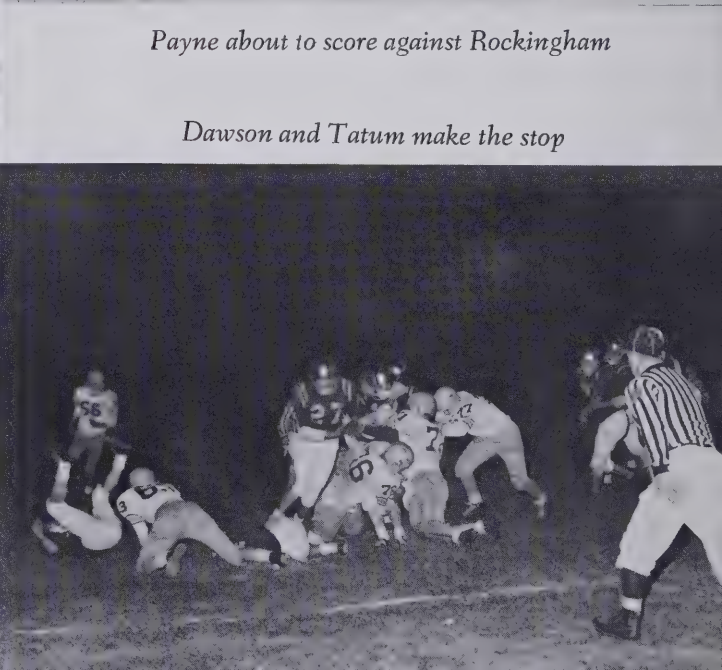
Jackets close in



Payne about to score against Rockingham



Managers: Earl Simmerson and Clyde Baker



Dawson and Tatum make the stop



Tri-captains crown Becky



Bonfire!

Homecoming

Homecoming victory and conference champs



Playoff Games

Sanford 28	Clinton 25
Sanford 13	Greenville 15



Avent goes around



Team Spirit!!!



Wicker scores



Cheerleaders

BRENDA OLDHAM
MARTHA DIXON
JEAN PERRY
KITTY ERWIN, *Chief*
SANDRA WINSTEAD
JACKIE McIVER
ALICE PHILLIPS



We're Number 1!!!



Basketball

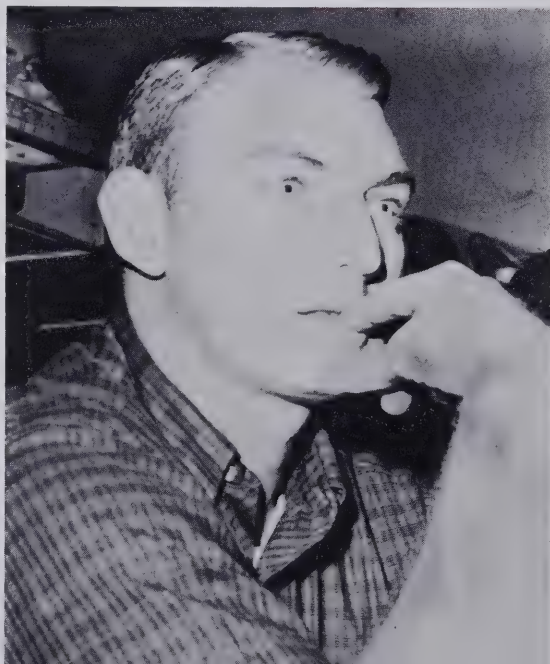


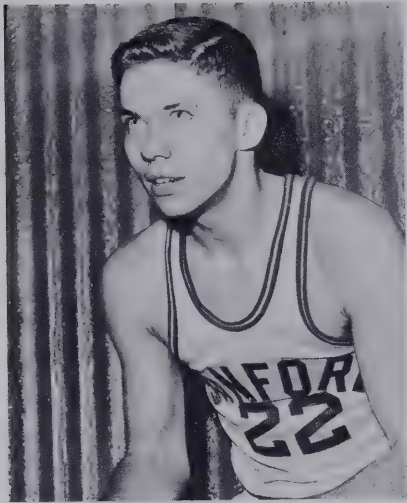
Kneeling, Managers: Clyde Baker, Jody Wicker, Charles Ruffin.
 James Rumbold, Jackie Campbell, Mike Blakeley, R. D. Carson, Donnie Stewart, Robert Brown,
 Richard Such, Phil Senter, Ricky Wagoner, Terry Reeves, Richard Williamson, Harvey Godfrey,
 Charles LaRue, Billy Joe Hilliard, Bob LaRue.

Scoreboard

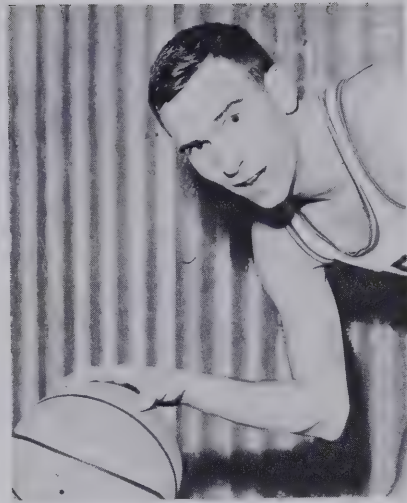
Sanford.....	68	North Durham	56
Sanford.....	56	South Durham	52
Sanford.....	49	Laurinburg	45
Sanford.....	60	Clinton	41
Sanford.....	58	Fayetteville	52
Sanford.....	64	Lumberton	53
Sanford.....	74	Durham	72***
Sanford.....	57	Hamlet	52
Sanford.....	57	Greensboro	47
Sanford.....	70	Wadesboro	31
Sanford.....	54	Rockingham	46
Sanford.....	69	Laurinburg	37
Sanford.....	89	Raeford	52
Sanford.....	67	Fayetteville	58
Sanford.....	58	Hamlet	49
Sanford.....	49	Lumberton	44
Sanford.....	82	Rockingham	44
Sanford.....	70	Wadesboro	54
Sanford.....	54	Raeford	51
Sanford.....	45	Clinton	43

*** Overtime

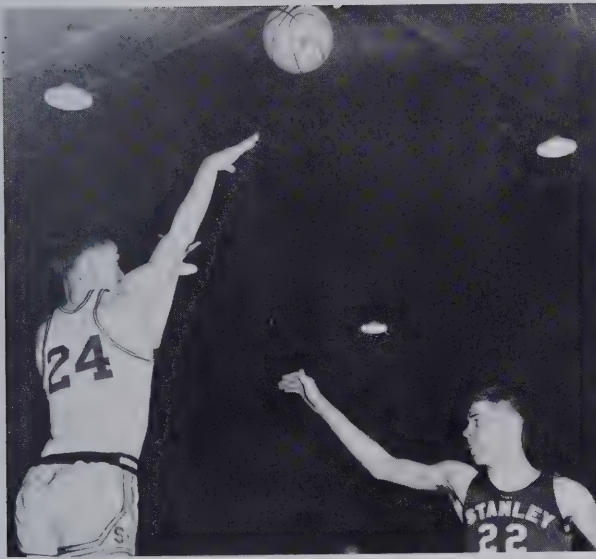




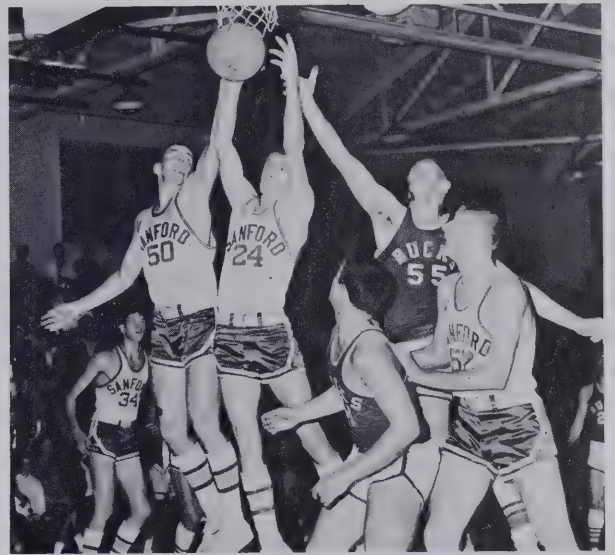
MIKE BLAKELEY
Guard 5' 10"—165



JACKIE CAMPBELL
Guard 5' 9"—145



Carson Fires Away

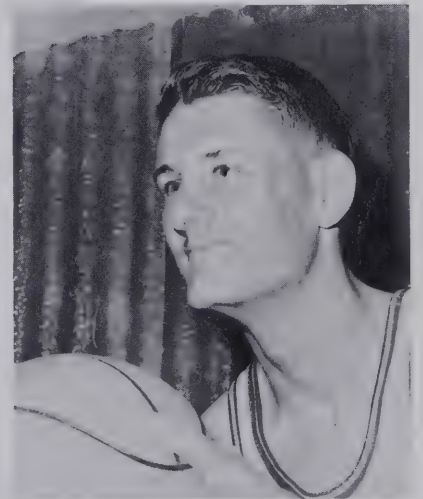
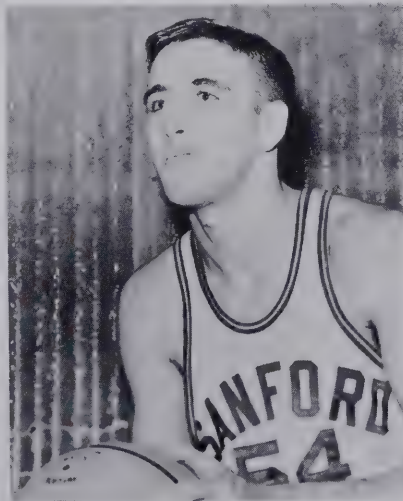
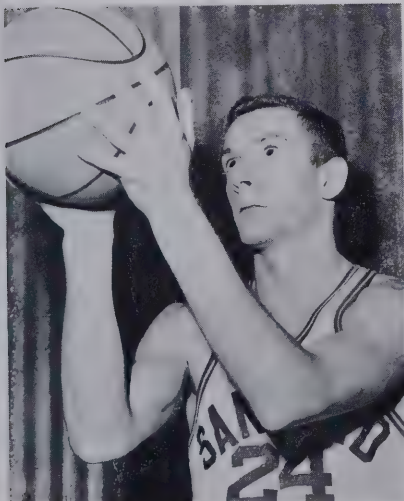


Rebound, Strength

R. D. CARSON
Guard 6' 0"—160

TERRY REEVES
Center 6' 4"—190

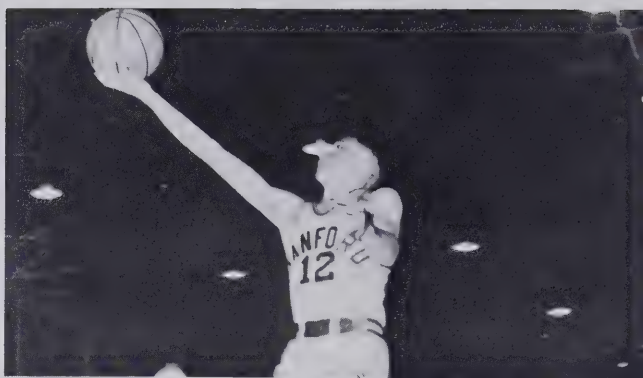
PHIL SENTER
Center 6' 4"—190





They're Off

UNDEFEATED



C'MON SANFORD We're Here Too!



District Tournament

Sanford

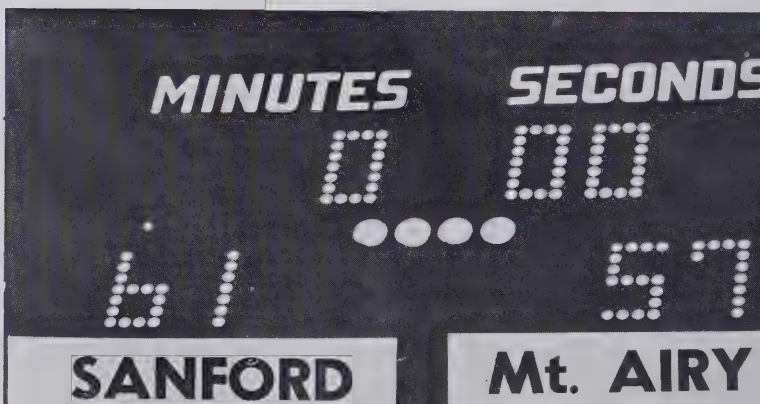
Sanford.....	76	Hamlet	47
Sanford.....	54	Raeford	44

State Tournament

Kinston

Sanford	97	Stanley	59
Sanford.....	55	North Durham	38
Sanford.....	61	Mt. Airy	57

STATE CHAMPS





Kneeling: Ann Ardis, Phyllis Womack, Emily Christian, Coach Mr. Albert Davis, Gail Thornton, Patsy Blakeley, Betty Barr Lipscomb.
Standing: Laura Greeson, Dianne Riddick, Patsy Kelly, Linda Thomas, Nita Reedy.

Girls' Basketball

Scoreboard

Sanford 32	Hamlet 44
Sanford 24	Rockingham 28
Sanford 33	Wadesboro 54
Sanford 40	Raeford 37
Sanford 31	Hamlet 30
Sanford 38	Rockingham 40
Sanford 33	Wadesboro 54
Sanford 36	Raeford 30



Baseball



Scoreboard

Sanford 1	Fayetteville 1
Sanford 7	Hamlet 5
Sanford 8	Fayetteville 5
Sanford 5	Raeford 1
Sanford 8	Laurinburg 7
Sanford 10	Wadesboro 6
Sanford 2	Rockingham 3
Sanford 11	Lumberton 2
Sanford 11	Hamlet 0
Sanford 8	Lumberton 6
Sanford 4	Rockingham 5
Sanford 8	Wadesboro 3
Sanford 8	Raeford 2
Sanford 8	Laurinburg 7
Sanford 4	Hamlet 7



Track

Across the finish line first!!

Other Sports

A Good Team

Golf





superlatives*



Mr. and Miss Central

MISS MARTHA DIXON

MR. CHARLES M. REEVES, III



CUTEST

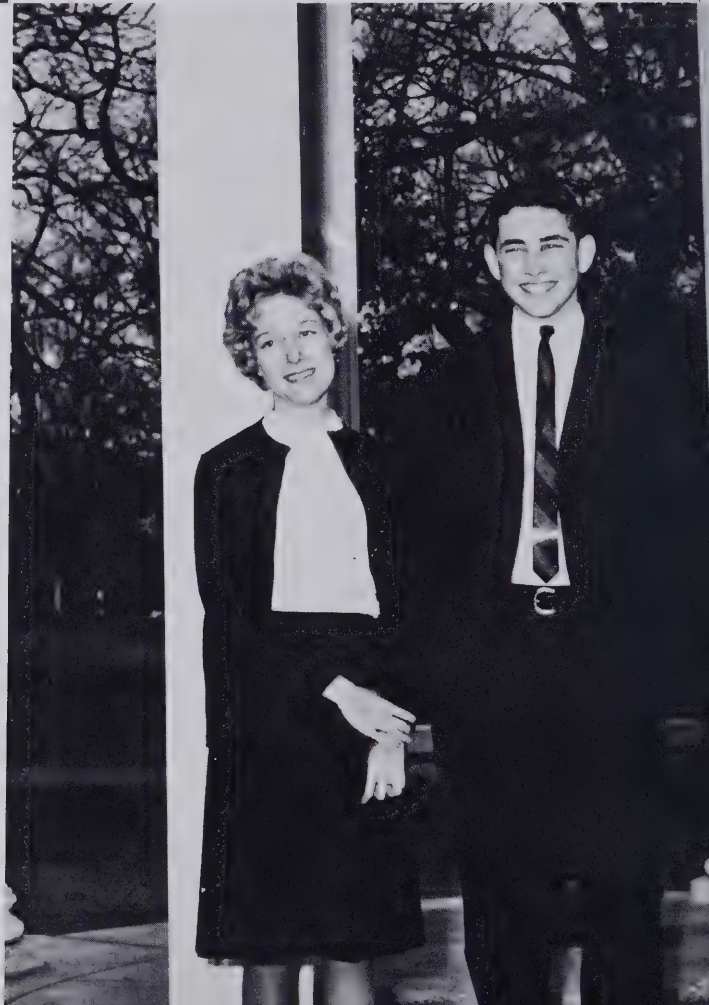
RUSTY MORGAN

SARAH PEACOCK

SCOTT McIVER

BRENT CAUSEY

NEATEST





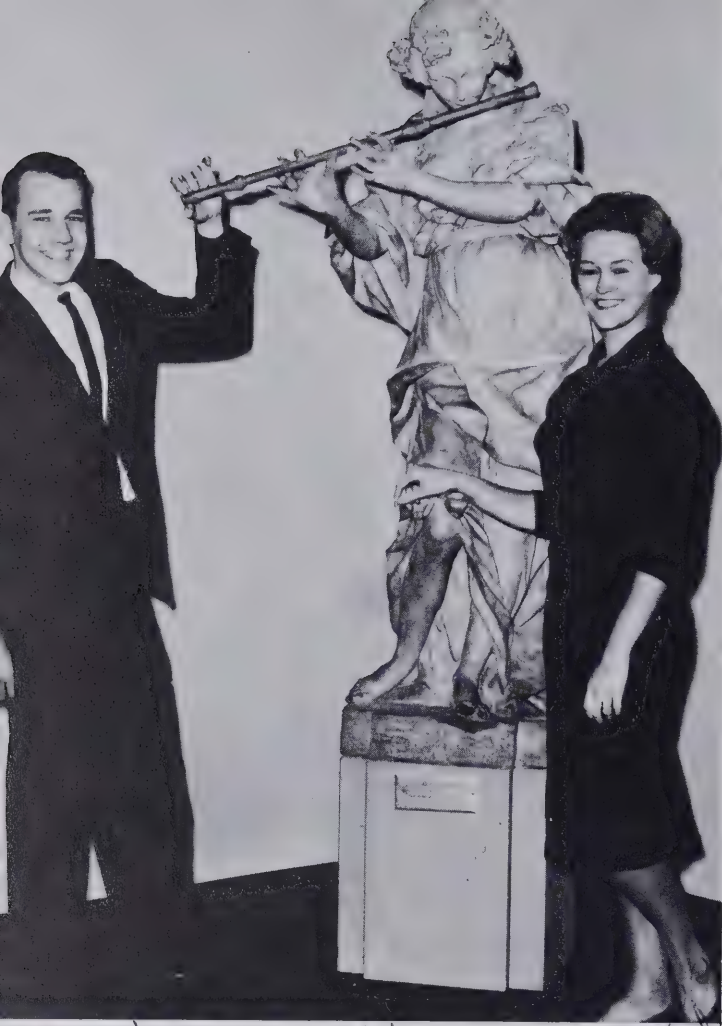
WITTIEST

FRANK CHACEY

MAVIS HARRIS

KITTY ERWIN
RONNIE BROWN
BEST LOOKING





MOST TALENTED

JIMMY WALKUP

LOIS BARBEE

*...nk.
 ...ts to been
 ... fun getting
 ... and with those
 "Choral" memories
 we should have quite
 a past to look back to
 when we want to get to
 say the best always be
 yours. Good luck!
 A friend always*

MOST ATHLETIC

GAIL THORNTON

R. D. CARSON





BEST PERSONALITY

MIKE BLAKELEY

JEAN PERRY

MOST POPULAR

JEAN PERRY

BOB PAYNE





MOST DEPENDABLE

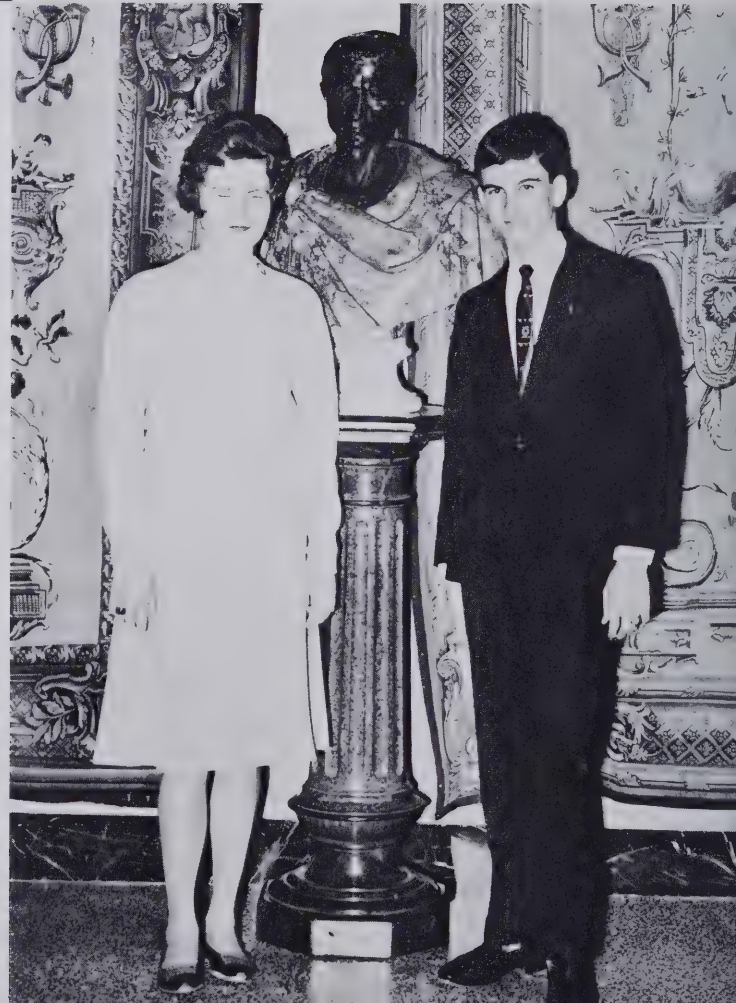
BEN AVENT

MEREDITH CRIMMINGS

**MOST LIKELY TO
SUCCEED**

CAROLYN ROSSER

JAMES HALL

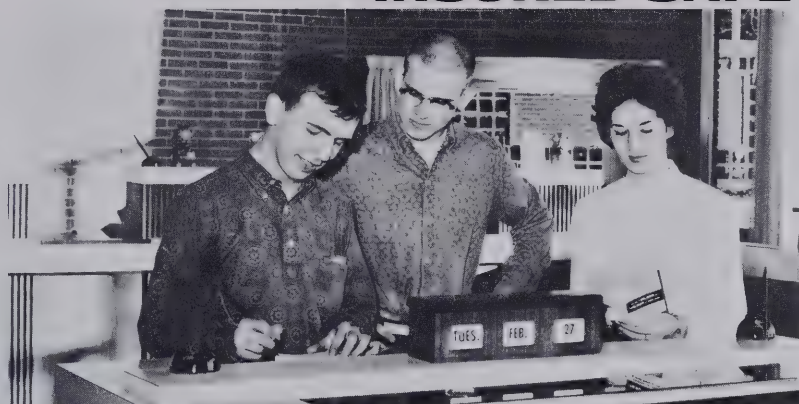


Autographs



sponsors 

INSURED SAFETY



Current dividend rate 4%—payable June 30 and December 30

SAVE BY MAIL . . .

SAVE IN PERSON

Start with any amount from \$1.00 up. All money deposited by the tenth of the month earns dividends from the first.

SANFORD SAVINGS AND LOAN ASSOCIATION

W. J. BRINN, Executive Vice-President

130 N. Steele, Sanford, 104 W. Main, Drive-in Window Service

Assets over \$10,000,000.00

CHIPMAN JEWELERS

BULOVA—LONGINES—ELGIN
KEEPSAKE

The quality of our diamonds will be shown to you with our gemscope in the privacy of our diamond room.

Compliments of

MORTONS

The Place where the teenagers meet

Compliments of

TUCKER'S ESSO SERVICE

Best always to 1962 graduates

Best wishes from

THE *Bootery* SANFORD, N.C.
"Homes You Know - Shoes You Love"

Cor. Carthage & Steele Sts.

Telephone 776-2221

BEST WISHES

H. & H. Auto Parts Company

215 Carthage Street

SANFORD, NORTH CAROLINA

Longley McKenzie Company

Plumbing Heating Supplies
Electrical Supplies

871 Endor Street

SANFORD, NORTH CAROLINA

Phone 775-2221

BEST WISHES

SENIORS

BUCHANAN'S

RADIO TV RECORDS



BEST WISHES

**Sunshine Laundry &
Dry Cleaners**

Dying & Rug Cleaning

Phone 775-4031
SANFORD, N. C.

BANKINGPORT, INC.

GENERAL INSURANCE

W. H. (Bill) Ray, Mgr.

211 S. Steele Street

SANFORD, NORTH CAROLINA

KAMMER, Inc.

SANFORD'S YOUNG
MEN'S SHOP

Steele Street

Compliments of

The Ladies Style Shop

SANFORD, NORTH CAROLINA

**MANN IMPLEMENT
COMPANY**

312 Endor Street

SANFORD, N. C.

G. G. IVEY SAW SERVICE

Band Saws a Specialty
Hammering and Gumming
Round Saws

Pick-Up and Delivery Service

Frances Harris, Jr., Manager

Bragg Street

Phone 775-4263

BEST WISHES, SENIORS

WOMACK LUMBER CO.

Jonesboro Heights

Phone 776-1811

SANFORD, N. C.

CONGRATULATIONS

SANFORD TIRE COMPANY

827 S. Endor Street

SANFORD, N. C.

GOOD LUCK

CHAMBER OF COMMERCE

CAROLINA POOLS, INC.

Builders of Carolina's Finest
Swimming Pools

P. O. Box 315

SANFORD, N. C.

**McCracken Electric and
Plumbing Co.**

Wiring and Plumbing
Carrier Heating and Air Conditioning
Contracting—Repairs

110 S. Moore St.

Phone 776-1131

SANFORD, N. C.

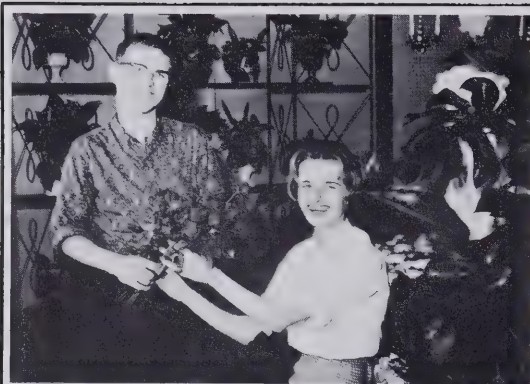
Compliments of

Jonesboro Cleaners & Laundry

WHITE'S 1 HOUR CLEANERS

Operated by Jessie White

SANFORD, N. C.



Frank's
INC.

FLOWERS AND GIFTS

CONGRATULATIONS, SENIORS!

Lawrence Freezer Locker

Wicker Street

SANFORD, NORTH CAROLINA

CONGRATULATIONS

LEE HARDWARE COMPANY

"Everything in Hardware"

131-133 Wicker Street

SANFORD, N. C.

Compliments of

**CENTRAL BANK & TRUST
COMPANY**

F. D. I. C.

Best Wishes, Seniors!

**KENNEDY INSURANCE AND
REALTY AGENCY, INC.**

107 West Main Street

Jonesboro Heights

Sanford, N. C.

CONGRATULATIONS, SENIORS!

HEINS TELEPHONE COMPANY

"Serving Lee County Since 1923"

Exchanges

Sanford—Jonesboro Heights—Broadway—Olivia

SANFORD, N. C.

KIMREY'S SERVICE STATION

G. W. Kimrey, Owner & Operator

Tires—Batteries—Accessories
Washing—Polishing—Lubrication

Service Calls—Phone 776-1512

Corner of Carthage and Endor Streets

CONGRATULATIONS

FROM

SASLOW'S JEWELERS

Compliments of

MACK'S

Sanford's First and Finest

5 & 10

Sanford Furniture Company

Manufacturers of

Fine Permacraft Furniture

Permanent Displays at

American Furniture Mart
Chicago, Ill.

New York Furniture Exchange
New York 16, N. Y.

Dallas Home Furniture Mart
Dallas, Texas

Southern Furniture Exposition Building
High Point, N. C.

Western Merchandise Mart
San Francisco, California

Los Angeles Furniture Mart
Los Angeles, California

**BUDD'S
MASTER TIRE SERVICE**

in front of the courthouse

1507 Lee Avenue

Phone 775-4337

BEST WISHES
AND
GOOD LUCK
SENIORS

COOPER OIL CO.

**First Federal Savings and
Loan Association**

Steele and Wicker

SANFORD, NORTH CAROLINA

W. M. Womble, Exec. Vice-President

●
GOOD LUCK

**LACY OLDHAM
CONSTRUCTION
COMPANY**
●

WINSTEAD'S GROCERY

"Reasonable and Reliable"

Phone 776-2731

BEST WISHES

THOMAS OIL COMPANY

**GRANTHAM PROVISION
COMPANY**

Quality Meats

Phone 775-2732

CONGRATULATIONS, SENIORS!

FLEMING'S

"PENNEY'S" in Sanford

FOUR WAYS TO SHOP

Charge, Layaway, Time Payment, Cash

HOLT SUPPLY CO., INC.

I. H. C. Dealers

Farmall Tractors

McCormick Farm Equipment

International Motor Trucks

SANFORD, N. C.

Compliments of

CENTRAL GULF

N. C. BEAL & SONS

R.F.D. No. 4

SANFORD, N. C.

Private Road and Street Building

Ditching—Basements—Fill Dirt

**ROGERS FUNERAL
HOME**

Ambulance Service

Phone 775-3535

Compliments of

OLIVER'S

Ladies' Ready-to-Wear—Millinery

THE TREASURE CHEST

Gifts for all occasions

221 Carthage Street

Phone 775-3912

SANFORD, NORTH CAROLINA

Compliments of

**Gunn Veneer and Lumber
Company, Inc.**

SANFORD, N. C.

McPHAIL GREENHOUSES

"We grow what we sell"

Flowers for all occasions

Compliments of

W. Koury Company, Inc.

Manufacturers Work and Play Clothes

SANFORD, NORTH CAROLINA

WAGONER'S JEWELERS

Sanford's Oldest and Largest

135 S. Steele Street

Phone 776-2112



Phone 776-1221

Compliments of

ROSE'S 5-10-25c STORES

Wicker Oil Company, Inc.

Jobbers Shell Oil Products

FUEL OIL—GASOLINE—KEROSENE

Prompt Service

J. Shelton Wicker

Box 1021

Sanford, North Carolina

Compliments of

***Stevens Milling
Company***

Phone 258-2561

BROADWAY, NORTH CAROLINA

LEE-MOORE OIL COMPANY

DISTRIBUTOR
AMERICAN OIL PRODUCTS

Phone 775-2344

REX McLEOD

JEWELRY—WATCHES
MUSIC SUPPLIES

101 Wicker Street
SANFORD, N. C.

**THE NATIONAL BANK
OF SANFORD**

A Bank of Friendliness

SANFORD, NORTH CAROLINA

BRANCHES

WOODLAND AVENUE • STEELE STREET

Member Federal Reserve System
Member Federal Deposit Insurance Corporation

RIDDICK PLUMBING CO.

PLUMBING—HEATING
INSTALLATION—REPAIRS

Telephone 775-5631

Jonesboro Heights

SANFORD, N. C.

Sprott Bros. Furniture Co.

The home of quality furniture

114-118 S. Moore Street

SANFORD, N. C.

BEST WISHES

D. F. Harris & Son

Dela Harris, '25

Fletcher Harris, '44

"Insurance—That's Our Business"

110 Carthage St.

Compliments of

LOVE'S GROCERY

Johnson Cotton Company

of

SANFORD

Furniture, Appliances

John Deere Farm Machinery

Phone 775-2338

CARROLL & GIFT

Plumbing and Heating Contractors

801 Wicker Street

Phone 776-1912

State License 547

SANFORD, NORTH CAROLINA

CONGRATULATIONS, SENIORS!

GLENN'S

Headquarters for men's and boys'
clothing for the past ten years

BEST WISHES

CENTRAL ELECTRIC MEMBERSHIP CORP.

Owned by those it serves

SANFORD, NORTH CAROLINA

Compliments of

J. Ray Hunter, Distributor

Gulf Oil Products

1203-A Lee Avenue

SANFORD, NORTH CAROLINA

LEE-MOORE OIL COMPANY

DISTRIBUTOR
AMERICAN OIL PRODUCTS

Phone 775-2344

GOOK LUCK

LARRY'S FINE FOODS

ROY DIXON TIRE CO.

RICHMOND TIRES

Woodland Avenue

Phone 775-3812

SANFORD, N. C.

Compliments of

PIEDMONT WOODYARDS

Bowen Office Equipment Co.

Mac's Typewriter Service

Royal Typewriters

Sales & Service

SANFORD, N. C.

BEST WISHES, SENIORS
FROM

SANFORD CAB COMPANY

**STROUD-HUBBARD
COMPANY**

Sanford's favorite family shoe
store since 1910

SANFORD, NORTH CAROLINA

Hugh Perry

Frank G. Perry

**Perry Brothers Tire
Service, Inc.**

Quality Recapping—Batteries

Dial 775-4225

Box No. 1003

610 Wicker St.

SANFORD, N. C.

Compliments of

**FAIRVIEW
DAIRY BAR**

Compliments of

**HESTER-WILSON
COMPANY**

If It's Printing . . .

COLLINS PRESS

Masonic Building

SANFORD, NORTH CAROLINA

CONGRATULATIONS, SENIORS!

RED AND WHITE FOOD STORES

TODD'S RED & WHITE

802 Wicker Street

Henry Todd

ATKINS' RED & WHITE

646 Oakwood Avenue

Clyde Atkins

Complete Food Store—Free Parking

"Where you always get quality"

SANFORD BRICK & TILE COMPANY

Largest Manufacturers of Brick in the South

COLON, NORTH CAROLINA

Compliments of

**LEE BRICK & TILE
Company, Inc.**

+ +

SANFORD, N. C.

5 Miles North On U. S. 1

JONESBORO'S NEW

LEE DRUG STORE

AIR CONDITIONED

Complete New Prescription Counter

REXALL AGENCY

First in Prescriptions

Jonesboro Heights, Sanford, N. C.

Robert Neal Watson and Fred Ray, Jr.

and Marcus Cameron
Pharmacists

Phone 775-5441



BEST WISHES, SENIORS!

**WILLIAMS-BELK
COMPANY**

“Home of Better Values”

SANFORD, N. C.



Best Wishes from

Jonesboro Drive-In Griddle

Dr. Hunter's Hatchery, Inc.

Baby Chicks, Poultry Feeds & Supplies
Sanford, N. C. Phone 776-2733

BEST WISHES
TO THE SENIORS

**WILKINSON
CADILLAC-OLDSMOBILE**

**BOBBY BURNS
OIL COMPANY
SINCLAIR PRODUCTS**

Box 197

Phone 775-4316

SANFORD, N. C.

Quality Products—Friendly Service

Moulding—Window Units—Doors
Hardwood Flooring

Lee Cabinet & Store Fixture Co.
Incorporated

Bragg Street
SANFORD, N. C.

Phone 775-5131 P. O. Box (J.H.S.) 61

**Sanford Motor
Sales, Inc.**

DE SOTO—PLYMOUTH

Sanford, North Carolina



Compliments of

**SACO-LOWELL GEAR AND
MACHINE DIVISION
Of Saco-Lowell Shops**



LEE DRUG STORE

**"Any Prescription
Any Time"**

SANFORD, N. C.

Joe Lazarus, Proprietor

Phone 775-5511

Free Motor Delivery

Drive-In Prescriptions

Air Conditioned

BORDEN BRICK & TILE



Phone 775-3321

Sanford, N. C.

COMPLIMENTS OF

**Chatham Brick and Tile
Company**

Home of Roman Brick

GULF, NORTH CAROLINA

*Blackwelder
Well Company*

BORING AND DRILLING

2-Way Radio Equipped Trucks

Dial 776-2421

SANFORD, N. C.

Compliments of

**A. J. SCHNEIERSON
& SON, INC.**

CONGRATULATIONS

B & B DRIVE-IN MARKET

SANFORD AUTO SUPPLY, INC.

O. O. Harrill, Proprietor

Wholesale Auto Supplies
Complete Machine Shop

Phone 775-4221

113 North Steele Street
SANFORD, NORTH CAROLINA

●
OUR BEST WISHES

**TRI-COUNTY TRACTOR
COMPANY, INC.**

902 S. Endor Street

SANFORD, N. C.
●

COMPLIMENTS OF

LONG MEADOW FARMS

Compliments of

**LYNN PERRY
PERRY OIL CO.**

Fuel Oil—Kerosene—Gasoline

Phone 775-2514

Ready-Mixed Concrete

Sanford Ice & Coal Company

Phone 775-5441

**Johnson Oil Co. of
Sanford, Inc.**

P. O. Box 2056 Jonesboro Heights
SANFORD, NORTH CAROLINA

SANLEE CHEVROLET CO., INC.



526-528 Wicker Street

SANFORD, N. C.

W. L. JEWELL & SON



GENERAL CONTRACTORS



Perry Arcade

SANFORD, NORTH CAROLINA

DARRELL BYERLY

Photographer

Any type photography you wish

511 Greensboro Avenue

Phone 775-3932

SANFORD, N. C.

Dossenbach's

FINER FURNITURE

Always A Saving

211 Wicker Street Sanford, N. C.

Compliments of •

ROSSER'S MEN SHOP

Jonesboro Heights

We express our sincere appreciation for the time and energy so unselfishly given toward the publication of this edition of SANDPRINTS to:

LESSIE'S

CENTRAL GULF STATION

WILSON'S TV & APPLIANCE

Mavis Harris

Martha Dixon

Jane Wilson

Jean Perry

Connie Goodwin

Kitty Erwin

Corlis Sue Johnston

Debbie Duke

Billy Tatum

BEST WISHES, SENIORS

DARK AND HARRINGTON

Sheet Metal of all Kinds

Telephone 775-4163

Pryor Dark

Jones Harrington

Compliments of

Field's Ice & Coal Company

Phone 775-5624

**STRAWBRIDGE
STUDIOS, INC.**

P. O. Box 2785, West Durham Station
DURHAM, NORTH CAROLINA

Since 1923

SCHOOL PHOTOGRAPHY

Best wishes to a sweet girl who deserves
only the very best.

A friend,
Carolyn Batchelor



OBSERVER PRINTING HOUSE
CHARLOTTE, N. C.

Best of
luck to a very
sweet & cute girl stay
as you are and you will
go far in life.
Stay
Palmer

Dead on
I've known you a long
time, but this year has been
the best. I enjoyed knowing you
very much and I hope next year will be
the same. Best Wishes + good luck always.
Derry Dents

BRIDGE OUT
SLOW TO GO

Wm

Bobby Johansen Jr.

Good
Luck

IN MEMORY
OF THOSE WHO
DIED WAITING
FOR THE 3.35
BELL R.I.P.

1988

Ann, I have enjoyed
you all with a very
sweet girl with loads of
personality. Best wishes for
up pull get the best life you
to office. Best wishes for you!
Carol Ann

To the
Person that
wondered about
Geometry, Bob
Bulak in the future.
Rebecca Edmondson

These days in Bulak Boyd's
class have been a riot - not
to mention stup. ed. It's all
blown by - but then we're at
two more years! I've enjoyed
knowing you this year so much.
Best of luck always. I'll see
it! see you next year.

G.M.M.S.

Ann,
I have enjoyed you at the
ten minute break this year.
May you always stay as nice
as you are, keep your fine
ways and you might succeed
in something.
A friend always,
Jon Wilson

Ann,
you may not know too much
about geometry, but it's been
nice knowing you and being
in your class this year.

Ronnie Angel

Ann, I think you are
a very sweet girl
may success be yours
always. I have enjoyed
being in choral class with
you this year. Got of luck
in the future.
Your friend,
Heraldine.

Ann,
Best of luck
to a very sweet girl.
Don't give too much with
bully.
Carol Love

Ann,
You are one of the
nicest girls I know of
+ best girls I know of
Future I wish in the
Phil
Best of Luck
Rayn Quillin

Ann,
Remember the good
times in the Byers house (ugh!)
Never again, I hope.
See you next year.
Love ya!
Sandra Spencer

Ann:
You're real
cute always
stay that
way! Luck,
Beemore

Good luck to a
very sweet girl. Have
a ball next year.
Franklin
Julie

Ann,
Best of luck
to a very talented
and sweet girl.
Julia Cunningham

Ann,
You're really smart & funny
Have the year, have the year
Don't know how to say it
through at all, at all
But wishes to a great
and love ya
Don't forget
Phil

Ann,
Best of luck
to a very sweet girl.
Don't give too much with
bully.
Carol Love

You Pal,
Babe Walker

Ohm, we have
had many happy
times together - Joe's
hopin', we'll have many
more.
Nancy Keith

Best of luck & a swell gal.
Life's happiness be
yours.
a friend,
Ruth Home Man

Good luck
and all good
wishes and everything
nice and mainly
get a pen that
writes with
less physical
effort.
a friend in need,
Eugene Ingram

Remember P.E.
Ohm, you are a
sweet girl, I'll
always remember that.
Good luck. Mary Carter

Best of luck
to a very sweet
and cut girl. I
hope we live through
the rest of the school
year. don't you. I hope
you have the best of
everything in all your
do. See you this summer
at the beach. ya!
love ya!
Camei
Mace

Best of luck
to a very sweet
girl
"Kella"

To Ann
with about
3/4 my love
(the rest is for my cherry)
Larry
H

Duckie
I remember
the ball's we had
at the track but
I won't kiss your
ass
Love ya
Pooter

As a real sweet girl
whom I think an
awful lot of I
have enjoyed being
in school with you
these years. Luck always.

Ann,
So a very nice
girl who I
hope passes
Geometry.
Purvis

Love,
Betty Clark

Ann,
I've been the good
st's per the good
the year, the
the with having
along enjoyed can then,
I have enjoyed my
I love me in
with me in
to meet you

Ann,
Don't forget your
Geometry homework
Go a swell person in
everything good luck in
all future events
Love ya!
Andy Mull

10 am,

a wonderful smile + sweet personality = one nice girl.

may your future be bright.

Blanca

To a girl
who is very easy
to get along with.
Keep Cool Pearce
Badley

ann,
I wish we had classes
this year together. We would
have had a ball. Have a
roaring summer. Be good!
Jay

So finding better rat rom!
thanks Bill Wilson

To a real
nice(?) girl. Wish
me luck with R.W.
I need it!!! Badley
I do like him - I know
you'll go far I know
Love ya!
Gads
at many

To one my old
neighbors. Your talents
should carry you far.
Lots of Luck
John Byrd

Best wishes to
a good-looking girl.
David
Pridgen

