

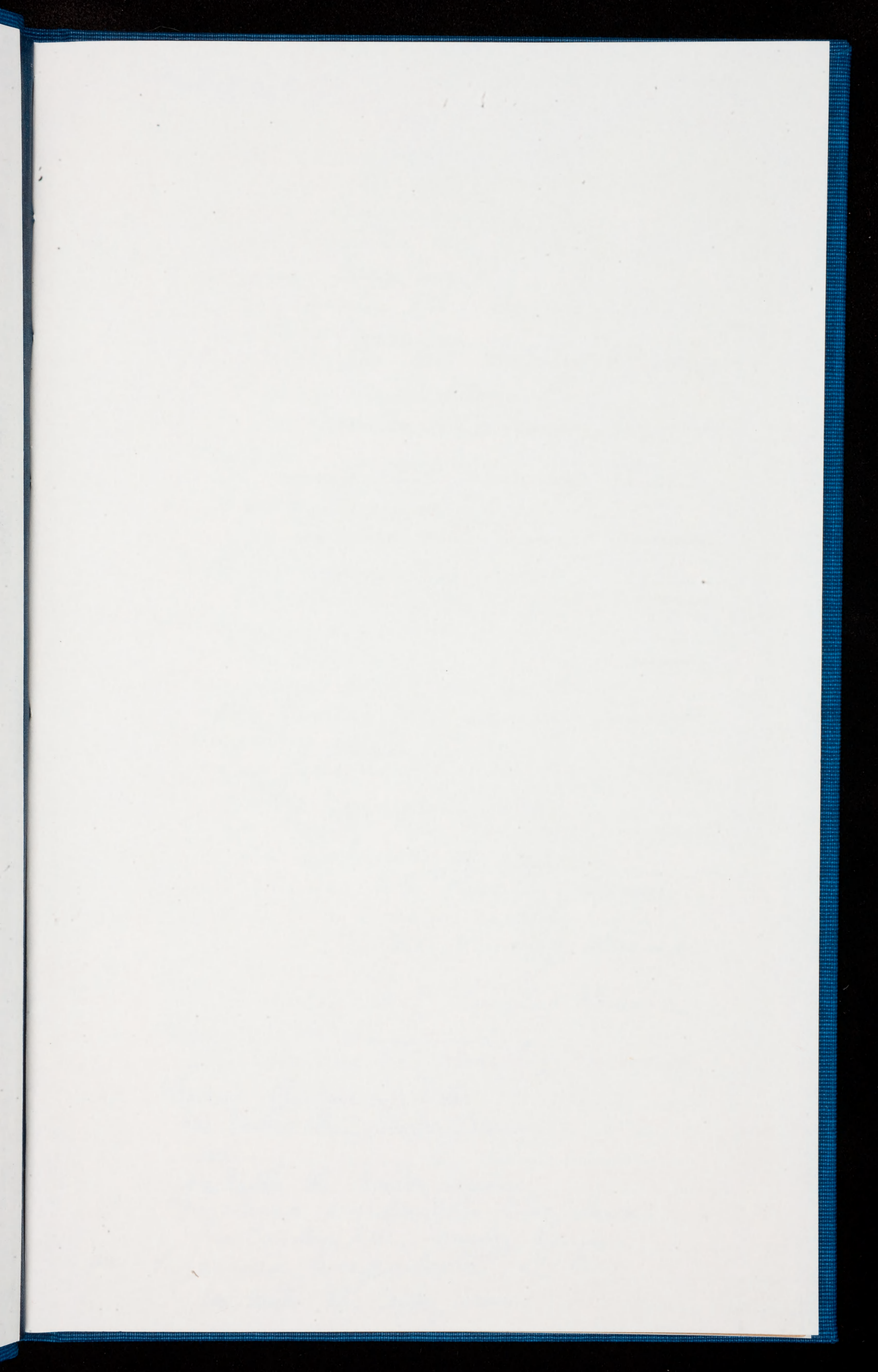
VOL. 53

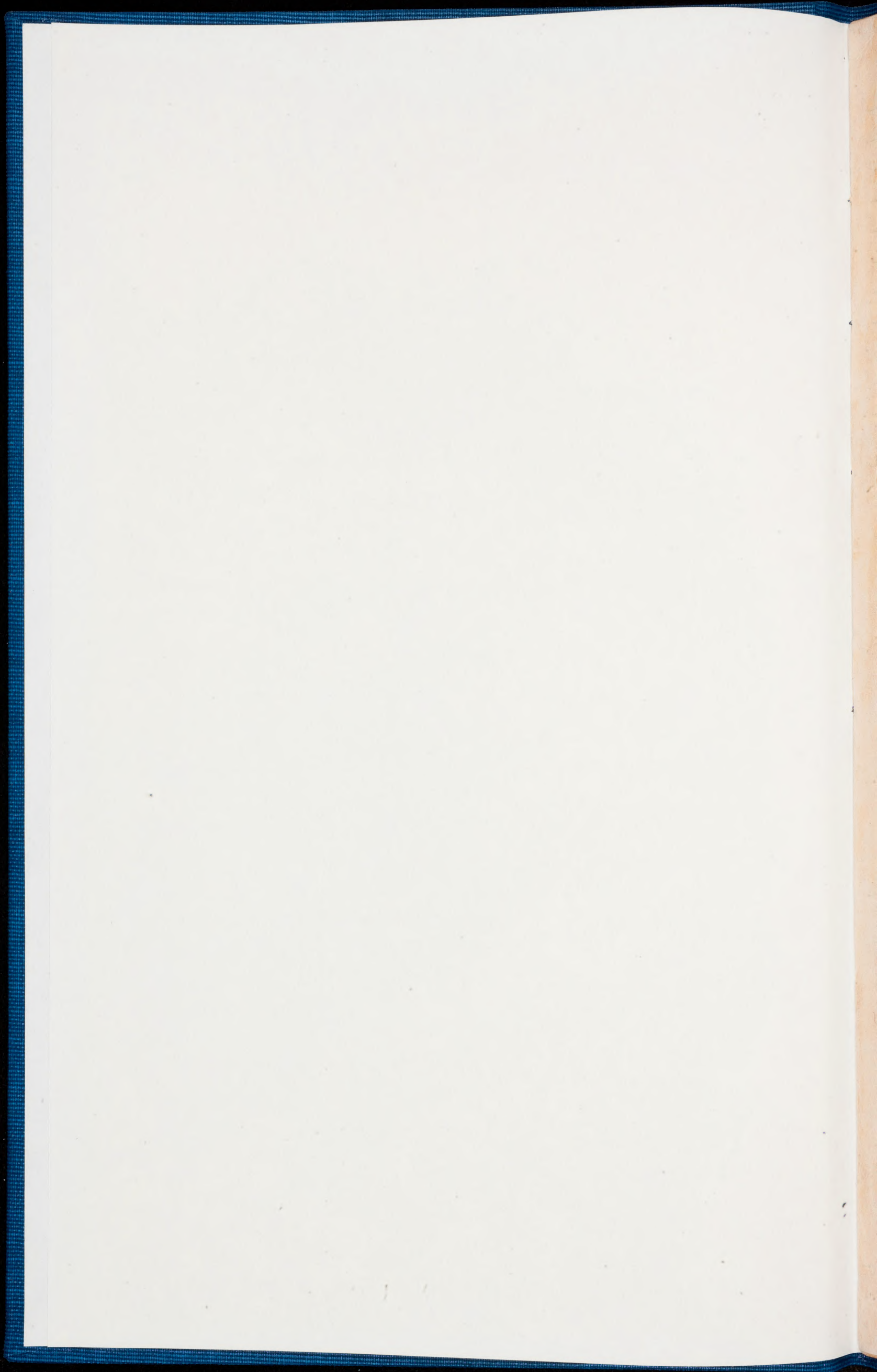
TAYLOR

SANTO DOMINGO

1909







1. *Miconia laevigata* (L.) DC.
Las Cañitas Mt., Sanchez, Samana
2. *Parigium divaricatum* L.
Las Cañitas Mt., Sanchez, Samana
3. *Capsicum baccatum* L.
Las Cañitas Mt., Sanchez, Samana
4. *Adiantum Tenorum* Sw.
Las Cañitas Mt., Sanchez, Samana
5. *Epidendrum cochleatum* L.
Las Cañitas Mt., Sanchez, Samana
6. *Mimypops*?
Las Cañitas Mt., Sanchez, Samana
7. *Antrophyum acaule* (Jacq.) Schott.
Las Cañitas Mt., Sanchez, Samana
8. *Pectanra heracleifolia* (Willd.) Underw.
Las Cañitas Mt., Sanchez, Samana
9. *Marcgravia rectiflora* D. & Pl.
Las Cañitas Mt., Sanchez, Samana
10. *Marcgravia rectiflora* D. & Pl.
Las Cañitas Mt., Sanchez, Samana
11. *Adiantum cristatum* L.
Las Cañitas Mt., Sanchez, Samana
12. *Phymatodes lycopodioides* (L.) Mill.
Las Cañitas Mt., Sanchez, Samana
13. *Geophila terbaeca* (Jacq.) Schum.
Las Cañitas Mt., Sanchez, Samana
14. *Pleurothallis novata* Willd.
Las Cañitas Mt., Sanchez, Samana
15. *Campyloneuron*
Las Cañitas Mt., Sanchez, Samana
16. *Polypodium pectinatum* L.
Las Cañitas Mt., Sanchez, Samana
17. *Peperomia obtusifolia* (L.) Dietr.
Las Cañitas Mt., Sanchez, Samana
18. Lichen.
Las Cañitas Mt., Sanchez, Samana
19. *Renealmia occidentalis* (Sw.) Sweet
Las Cañitas Mt., Sanchez, Samana
20. *Guzmania linguulata* (L.) Mez.
Las Cañitas Mt., Sanchez, Samana

- 20A. *Hyptis scoparia* Poit. Las Cuitas Mt. Panama
- 21 *Piaropus crassipes* (Mart.) Britton
Swamp, Sanchez, Samana
- 22 *Mikania scandens* (L.) Willd.
Swamp, Sanchez, Samana
- 23 *Spongia tiliacea* (Mild.) Chasey
Swamp, Sanchez, Samana
- 24 *Eleocharis guineolata* (L.) R. & C.
Swamp, Sanchez, Samana
- 25 *Limnocharis flava* (L.) Buch.
Swamp, Sanchez, Samana
- 26 *Sagittaria lancifolia* L.
Swamp, Sanchez, Samana
- 27 *Castalia amazonum* (Mart. & Guac) ^{ex Willd.}
Pool in a swamp, Sanchez, Samana
- 28 *Maradendron vaxerucorum* (Pit. & L.) Kuhn & Thell.
Sanchez, Samana
- 29 *Oxypteryx* J.
Swamp, Sanchez, Samana
- 30 *Cyclopetis semigordata* (Sw.) J. Smith.
Cañon, Las Cuitas Mt., Sanchez, Samana
- 31 *Costus cylindricus* Jacq.
Cañon, Las Cuitas Mt., Sanchez, Samana
- 32 *Psychotria uliginosa* J. W.
Cañon, Las Cuitas Mt., Sanchez, Samana
- 33 *Thuidium cymbifolium* var.? (Dz. & Mh.) Bryol. jav.
Cañon, Las Cuitas Mt., Sanchez, Samana
- 34 *Peperomia glabella* (Sw.) A. Dietl.
Cañon, Las Cuitas Mt., Sanchez, Samana
- 35 *Epidendrum rigidum* Jacq.
Cañon, Las Cuitas Mt., Sanchez, Samana
- 36 *Narseucyzella flabelliformis* (Sw.) Cogn.
Cañon, Las Cuitas Mt., Sanchez, Samana
- 37 *Polypodium?* ^{very like plants}
Cañon, Las Cuitas Mt., Sanchez, Samana
- 38 *Passiflora murucija* L.
Cañon, Las Cuitas Mt., Sanchez, Samana
- 39 *Spongia cathartica* Poir.
Cañon, Las Cuitas Mt., Sanchez, Samana
- 40 *Dioscorea pilosiuscula* Benth.
Cañon, Las Cuitas Mt., Sanchez, Samana

- 41 *Goniochloa* ~~*pleurochaeta*~~ ^{*chmoodes*} ~~Lee~~
Cañon, Las Cañitas Mt., Sanchez, Samana.
- 42 *Passiflora rubra* L.
Cañon, Las Cañitas Mt. Sanchez, Samana.
- 43 *Dryopteris* ~~*megaloche*~~ ^{*megalodes*} (Schubert) Urban.
Cañon, Las Cañitas Mt., Sanchez, Samana.
- 44 *Commelina elegans* HBK.
Cañon, Las Cañitas Mt., Sanchez, Samana.
- 45 *Cyclophellis* ~~*semigordata*~~ (Sw.) J. Smully.
Cañon, Las Cañitas Mt., Sanchez, Samana.
- 46 *Coriolum membranaceum*
Cañon, Las Cañitas Mt. Sanchez, Samana.
- 47 *Hyptis verticillata* Jacq.
Cañon, Las Cañitas Mts., Sanchez, Samana.
- 48 *Dicranella* ~~*triacopia*~~ ^{*vequiae*} (Jacq.) Klotz.
Cañon, Las Cañitas Mt., Sanchez, Samana.
- 49 *Parathesis serrulata* (Sw.) Mez.
Cañon, Las Cañitas Mts., Sanchez, Samana.
- 50 *Gonzalagunia* ~~*hirsuta*~~ ^{*spicata*} (Kunze) Mez.
Cañon, Las Cañitas Mt., Sanchez, Samana.
- 51 *Marcgravia rectiflora* Gr. + Pl.
Cañon, Las Cañitas Mt., Sanchez, Samana.
- 52 *Dumortiera hirsuta*
Cañon, Las Cañitas Mt., Sanchez, Samana.
- 53 *Pilea repens* (Sw.) Wedd.
Cañon, Las Cañitas Mt., Sanchez, Samana.
- 54 *Dryopteris domingensis* (Spr.)
Cañon, Las Cañitas Mt., Sanchez, Samana.
- 55 *Adiantum petiolatum* Pers.
Cañon, Las Cañitas Mt., Sanchez, Samana.
- 56 *Trichomanes Kraussii* N + S.
Cañon, Las Cañitas Mt., Sanchez, Samana.
- 57 *Bixa orellana* L.
Cañon, Las Cañitas Mt., Sanchez, Samana.
- 58 *Nucunna altissima* (Jacq.) DC.
Mouth of Yuma River, Sanchez, Samana.
- 59 *Cydista equinoctialis* (L.) Meisn.
Mouth of Yuma River, Sanchez, Samana.
- 60 *Hygrophila brasiliensis* (Spring.) Lindau.
Mouth of Yuma River, Sanchez, Samana.

- 61 *Roystonea regia* (L.) Poelln.
Mouth of Yuma River, Sanchez, Samana.
- 62 *Loucheocarpus domingensis* (Pers.) DC.
Mouth of Yuma River, Sanchez, Samana.
- 63 *Pericaria acuminata* H.B.K.
Mouth of Yuma River, Sanchez, Samana.
- 64 *Ceratophyllum demersum* L.
Mouth of Yuma River, Sanchez, Samana.
- 65 *Dalbergia eucastophyllum* (L.) Yamb.
Mouth of Yuma River, Sanchez, Samana.
- 66 *Echinochloa polystachya* (HBK.) Hitchc.
Mouth of Yuma River, Sanchez, Samana.
- 67 *Cyperus giganteus* Willd.
Mouth of Yuma River, Sanchez, Samana.
- 68 *Paspalum validum* Willd.
Mouth of Yuma River, Sanchez, Samana.
- 69 *Thymonachne amphicarpa* (L.) Rudge
Mouth of Yuma River, Sanchez, Samana.
- 70 *Amalocitricum hexandrum* (Sw.) Kunze
Mouth of Yuma River, Sanchez, Samana.
- 71 *Malsche Peabra* B. Vogel.
Mouth of Yuma River, Sanchez, Samana.
- 72 *Jatropha gossypifolia* L.
Sanchez, Samana.
- 73 *Entada polystachya* DC.
Road to Arenoso, Sanchez, Samana.
- 74 *Palicourea coccinea* DC.
Road to Arenoso, Sanchez, Samana.
- 75 *Clidemia hirta* (L.) D. Don
Road to Arenoso, Sanchez, Samana.
- 76 *Miconia prasina* (Sw.) DC.
Road to Arenoso, Sanchez, Samana.
- 77 *Pitcairnia laurifolium* Jacq.
Road to Arenoso, Sanchez, Samana.
- 78 *Casaria sylvestris* Sw.
Road to Arenoso, Sanchez, Samana.
- 79 *Passiflora suberosa* L.
Road to Arenoso, Sanchez, Samana.
- 80 *Eugenia avaginea* DC.
Road to Arenoso, Sanchez, Samana.

81. *Panicum punctata* (Ell.) Puffl.
Swamp road to Arenoso, Sanchez, Samana.
82. *Paspalum virgatum* L.
Swamp road to Arenoso, Sanchez, Samana.
83. *Fujiera umbellata* Lam.
Swamp road to Arenoso, Sanchez, Samana.
84. *Sporobolus catharticus* Trin
Road to Arenoso, Sanchez, Samana.
85. *Kyllinga juncea* Link.
Swamp road to Arenoso, Sanchez, Samana.
86. *Luzipiza pilosa* HBK
Swamp road to Arenoso, Sanchez, Samana.
87. *Pectis ciliaris* L. *Pectis samayensis* Urb. (in general cover ^{cover} Pectis)
Road to Arenoso, Sanchez, Samana.
88. *Elychavis geniculata* (L.) K. & N.
Swamp road to Arenoso, Sanchez, Samana.
89. *Cyperus serotus* L. C. Rich.
Swamp road to Arenoso, Sanchez, Samana.
90. *Utricularia guadalupensis* (Spreng) Moroy.
Still pond, road to Arenoso, Sanchez, Samana.
91. *Arceuthobium nitida* Jacq.
Road to Arenoso, Sanchez, Samana.
92. *Panicum edulis* Aubl.
Road to Arenoso, Sanchez, Samana.
93. *Sporobolus = Opechulium tuberosa* (L.) Meisn
Climbing on trees, San Lorenzo, Samana Bay.
94. *Stenotaphrum grandifolium* L.
Rocky hillside, San Lorenzo, Samana Bay.
95. *Dorstenia peltata* Spreng.
Rich hillside, San Lorenzo, Samana Bay.
96. *Piperomia scandens* R. & P.
Moist shaded wood, San Lorenzo, Samana Bay.
97. *Calyptranthes Swartzii* (Guss.) Beech. = *C. occidentalis* (Sw.) Mezger
Bank of stream, San Lorenzo, Samana Bay.
98. *Heteranthera reniformis* R. & P.
San Lorenzo, Samana Bay.
99. *Thelypodium lewisii* (Sw.) Schott.
Shaded bank, San Lorenzo, Samana Bay.
100. *Piper marquantium* Jacq.
Shaded woods, San Lorenzo, Samana Bay.

101. *Piper sauranure* Wb. ex.
Parasitic on trees, San Lorenzo, Samana Bay
102. *Pogonatum obtusata* (Jacq.) Britton
Rocky hillside, San Lorenzo, Samana Bay
103. *Hydroperua spicosa* Wb. ex.
Rocky hillside, San Lorenzo, Samana Bay.
104. *Epidermum*
On trees, San Lorenzo, Samana Bay
105. *Tillandsia festucoides* Brongn.
On trees, San Lorenzo, Samana Bay
106. *Peperomia obtusifolia* (L.) A. Dietr.
On trees, San Lorenzo, Samana Bay
107. *Thunax*?
Rocky hillside, San Lorenzo, Samana Bay
108. *Isochilus linearis* (Jacq.) R. Br.
On logs, San Lorenzo, Samana Bay
109. *Pitcairnia pulperia* Oene? [too imperfect, says Key]
Rocky hillside, San Lorenzo, Samana Bay
110. *Leptorchis elata* (Lindl.) Kuntze
On rocky hillside, San Lorenzo, Samana Bay.
111. *Adiantum fragile* Sw.
Rocky hillside, San Lorenzo, Samana Bay.
112. *Gnaphalium media* Jacq.
Rocky hillside, San Lorenzo, Samana Bay.
113. *Rajania hastata* L.
Trailing over trees, San Lorenzo, Samana Bay.
114. *Rhabdadenia biflora* (Jacq.) Muell. Arg.
Trailing over the ground, San Lorenzo, Samana Bay
115. *Platy*
On water, among mangroves, San Lorenzo, Samana Bay.
116. *Encidium velutinum* Lindl.
On trees, Casuelo, Macoris
117. *Auricularia nigrescens*
On log, Casuelo, Macoris.
118. *Coniopsis occidentalis*
On *Spodias lutea* L. Casuelo, Macoris.
119. *Agaricus*
On log, Casuelo, Macoris.
120. *Cordia Sevasacanthus* Jacq.
Fruit, Casuelo, Macoris

121. *Hamelia patens* Jacq.
Along edge of forest, Consuelo, Macoris
122. *Miconia* ~~the name~~ *pori* ~~en~~ *lave* *Nichx*, probably
in mud, Consuelo, Macoris
123. *Coccoloba argentea* (Lodd.) Sargent
In deep woods, Consuelo, Macoris
124. *Coriulus membranaceus*
On dead wood, Consuelo, Macoris
125. *Geophila herbacea* (Jacq.) Schum.
Shaded woods, Consuelo, Macoris
126. *ibid.*
Rich woods, Consuelo, Macoris.
127. *Lentum*
Rich woods, Consuelo, Macoris.
128. *Ficus Eggersii* Martens
Rich woods, Consuelo, Macoris
129. *Galactia striata* (Jacq.) Urban
Rich woods, Consuelo, Macoris
130. *Rousselia humilis* (Sw.) Urban
Rich woods, Consuelo, Macoris
131. *Gloeophyllum striatum*
Rich woods, Consuelo, Macoris
132. *Pyrenopeziza sanguinea*
Rich woods, Consuelo, Macoris
133. *Pistia Stratiotes* L. *s. al.*
In small lagoon, Magua River, Consuelo, Macoris
134. *Dryopteris tetragona* (Sw.) Urban
Moist woods, Consuelo, Macoris.
135. *Piptromia glabella* (Sw.) A. Dietl.
In tree, Consuelo, Macoris
136. *Ichthyanthus nervosus* (Sw.) Doell.
Shaded places, Consuelo, Macoris
137. *Epidendrum rigidum* Jacq.
On tree, Consuelo, Macoris
138. *Nectandra antillana* Meisn.
Monte Coca, Consuelo, Macoris
139. *Anastrophus compressus* (Sw.) Sch.
Monte Coca, Consuelo, Macoris
140. *Pitita domingensis* Jacq.
Monte Coca, Consuelo, Macoris

141. *Theophrasta Jussieu* Lindl.
"Monte Coca", Consuelo, Macoris
142. *Hypoxylon*
Monte Coca, Consuelo, Macoris
143. *Guarea trichiloides* L.
Rich woods, Consuelo, Macoris
144. *Cupania americana* L.
Rich woods, Consuelo, Macoris
145. *Gouania lupuloides* (L.)
Rich woods, Consuelo, Province of Macoris
146. *Trophis racemosa* (L.) Urban
Dense woods, Consuelo, Macoris
147. *Ceanothus laurifolia* (Sw) A. Rich.
Rich woods, Consuelo, Macoris
148. *Lanthoxylum martinicense* (Lam.) DC.
Rich woods, Consuelo, Macoris
149. *Neckera undulata* (P. B.) Hedw. + *N. disticha* Hedw.
On bark of tree, Consuelo, Macoris
150. *Hydrocotyle umbellata* L.
In mud near Magua River, Consuelo, Macoris
151. *Polypodium polypodioides* (L.) Hitchcock.
On trees, Consuelo, Macoris
152.
On small twigs, Consuelo, Macoris.
153. *Agaricus*
Rich woods, Consuelo, Macoris
154. *Auricularia auricula*
Rich woods, Consuelo, Macoris
155. *Pilocratera Tricholoma* (Mont.) P. Henn.
Rich woods, Consuelo, Macoris
156. *Pilocratera Hindsii* (Berh.) P. Henn.
Rich woods, Consuelo, Macoris
157. *Pilocratera Hindsii* (Berh.) P. Henn.
Rich woods, Consuelo, Macoris
158. *Pilocratera Hindsii* (Berh.) P. Henn.
Consuelo, Macoris, Rich woods.
159.
Consuelo, Macoris
160. *Taxithelium planum* (Brid.) Mitt.
On dead log, Consuelo, Macoris.

161. *Asplenium cristatum* Linn.
Rocky hillside, Cousuelo, Macoris
162. *Campyloneuron*
Wet cliff, Cousuelo, Macoris
163. *Rhynchospora Cousuelana* Dul.
On wet Cliff, Cousuelo, Macoris
164. *Olyra latifolia* L.
Trailing over trees Cousuelo, Macoris
165. *Dryopteris domingensis* (Spr.)
Wet cliff, Cousuelo, Macoris
166. *Asplenium pedata* Jacq.
Climbing over trees, Cousuelo, Macoris.
167. *Ischaemum*
On sheath of #123. Cousuelo, Macoris
168. *Chrysophyllum olivaceum* L.
Hillside, Cousuelo, Macoris
169. *Sporobolus catharticus* Poir.
Trailing over the ground Cousuelo, Macoris
170. *Commelina elegans* HBK.
In dry hillside places, Cousuelo, Macoris
171. *Dalmanella concentrica* (Walt.) Ces. & de Not
Cousuelo, Macoris.
172. *Sarcocyptha coccinea* (Jacq.) Cooke?
Cousuelo, Macoris
173. *Ptilocratera Hindii* (Berk) P. Henn.
Cousuelo, Macoris
174. *Cousuelo, Macoris*
Glaziella aurantiaca Berk.
175. *Cousuelo, Macoris*
176. *Thelphosia*
Cousuelo, Macoris
177. *Alga*
Cousuelo, Macoris
178. *Thelphosia*
Cousuelo, Macoris
179. *Tremella*
Cousuelo, Macoris
180. *Elfungia*
On tree trunks, Cousuelo, Macoris.

181. *Bacopa obovata* (Poepp.)
Stagnant pool, Consuelo, Macoris
182. *Cerithia cyclostasa* (Ell.) Cherm.
Stagnant pool, Consuelo, Macoris
183. *Psychotria tenuifolia* Sw.
Moist woods, Consuelo, Macoris
184. *Pilea repens* (Vahl) Wedd.
In moist woods Consuelo, Macoris
185. *Dryopteris tetragona* (Sw.) Urban
Moist woods, Consuelo, Macoris.
186. *Zanthoxylum martinicense* (Lam.) DC
Monte Coca, Consuelo, Macoris
187. *Ficus gagevii* Marking
Rich woods, Consuelo, Macoris
188. *Asplenium serratum* (immature)
On dead log, Consuelo, Macoris
189. *Chrysophyllum argenteum* Jacq.
Rich woods, Consuelo, Macoris
190. *Nectandra oligoneura* Urban
Rich woods, Consuelo, Macoris
191. *Passiflora ualiiformis* A.
Climbing tall trees, Consuelo, Macoris.
192. *Anthurium*
Rich woods, Consuelo, Macoris
193. *Coccoloba pinistis*
On log, Consuelo, Macoris.
194. *Pogonomyces hydroides*
On log, Consuelo, Macoris
195.
Consuelo, Macoris
196.
Consuelo, Macoris
197.
Consuelo, Macoris
198.
Consuelo, Macoris
199.
Consuelo, Macoris
200.
Consuelo, Macoris.

201. *Orchid*, live plants only
Cousuelo, Macoris.
202. *Orchid*, live plants only
Cousuelo, Macoris.
203. *Phyllococcus* live plants only
Cousuelo, Macoris.
204. *Orchid*, live plants only
Cousuelo, Macoris
205. *Living plant*
206. *Yellandria*, live plants only
Cousuelo, Macoris
207. *Yellandria*, live plants only
Cousuelo, Macoris.
208. *Orchid*, live plants only
Cousuelo, Macoris
209. *Orchid* live plants only
Cousuelo, Macoris.
210. *Campyloneuron*
Moist woods, Cousuelo, Macoris
211. *Aechmea*
Cousuelo; Macoris.
212. *Baccharis*, live plants only
Cousuelo, Macoris.
213. *Orchid?* (See living plants)
Moist woods Cousuelo Macoris.
214. *Taherua montana citrifolia* Jacq.
Cousuelo, Macoris
215. *Bradburya Plumieri* (Sw.) Kunze
Climbing on trees Cousuelo, Macoris.
216. *Cyclopettis semicordata* (W.) J. Sm.
Rich moist woods Cousuelo, Macoris.
217. *Cyclopettis semicordata* (W.) J. Sm.
Rich moist woods, Cousuelo, Macoris
218. *Pectaria heracleifolia* (Willd.) Underw.
Rich moist woods, Cousuelo, Macoris
219. *Pterisoides laurifolium* Jacq.
Rocky wooded hillside Cousuelo, Macoris
220. *Asclepias Curassavica* L.
Along river bank, Cousuelo, Macoris

221. *Misauteca triandra* (V.W.) Mez
Along river bank, Consuelo, Macoris.
222. *Lonchocarpus domingensis* (Poe.) DC.
Along river bank, Consuelo, Macoris
223. *Phoradendron quadrangulare* (HBK.) Krug + Urban
Rondelet (Bello) Benth. HBK.
On trees and shrubs, Consuelo, Macoris.
224. *Azorella*
Consuelo, Macoris.
225. *Pseudocryphaea flagellifera* (Brid.) E.G.B.
On trunk of Ficus, Consuelo, Macoris.
226. *Cissua sicyoides* L.
On Ficus, Consuelo, Macoris
227. *Emilia sonchifolia* (L.) DC.
In field, Consuelo, Macoris.
228. *Chamissoa altissima* HBK.
Consuelo, Macoris
229. *Trophis racemosa* (L.) Urban
Consuelo, Macoris
230. *Pilea repens* (V.W.) Wedd.
Consuelo, Macoris
231. *Duropteris parasitica* (L.) Kyatze
Banks of Magua River, Consuelo, Macoris
232. *Eupatorium macrophyllum* L.
Banks of the Magua River, Macoris
233. *Pteris longifolia* L.
Banks of the Magua River, Consuelo, Macoris
234. *Sobelia valericina* Lam.
Banks of Magua river, Consuelo, Macoris
235. *Aplismeneu histellus* (L.) DC.
Banks of Magua River, Consuelo, Macoris
236. *Ischnanthus pallens* (V.W.) Muirv.
Banks of Magua River, Consuelo, Macoris
237. *Adiantum fragile* Sw.
Banks of the Magua River, Consuelo, Macoris
238. *Ischnanthus pallens* (V.W.) Muirv.
Open field, Consuelo, Macoris
239. *Echinochloa colona* (L.) Link
Open field, Consuelo, Macoris
240. *Eleanine indica* (L.) Gaertn.
Open field, Consuelo, Macoris

241. *Spatheisma ^{magnatum} ~~fructuatum~~* (Link.) Nash.
Open field, Consuelo, Macoris
242. *Panicum divaricatum* L.
Open field, Consuelo, Macoris
243. *Ficus microstoma* Martiana
Banks of Macoris River, Macoris
244. *Potamogeton occidentalis* Siebr.
In Macoris River, Consuelo, Macoris.
245. *Ananthacorus angustifolius* (Sw.) Underw. & Maxon.
Along Macoris River, Consuelo, Macoris
246. *Bryopteris diffusa*
Along Macoris River, Consuelo, Macoris.
247. *Syntherisma oligostachyum* (Hbld.) Dcne
Along the Macoris River, Consuelo, Macoris
248. *Gongolagunia ~~hirsuta~~ ^{dispicata}* (Jacq.) Schum.
Along the Macoris River, Consuelo, Macoris
249. *Exothea paniculata* (Juss.) Radlk.
Along the Macoris River, Consuelo, Macoris.
250. *Paullinia ~~hirsuta~~* L.
Along the Macoris River, Consuelo, Macoris
251. *Peperomia ~~glabella~~ ^{macoriseana}* (Sw.) A. Dietl.
Along the Macoris River, Consuelo, Macoris
252. *Leacorea guadalupensis* (Seck.) Britton
Along the Macoris River, Consuelo, Macoris
253. *Orepanocarpus ~~lunatus~~* (L.f.) G. F. W. Meyer.
Along the Macoris River, Consuelo, Macoris
254. *Philibertia clausa* (Jacq.) Vail
Along the Macoris River, Consuelo, Macoris.
255. *Coumbe tenuis* Jacquin, Griseb.
Along the Macoris River, Consuelo, Macoris.
256. *Mikania scandens* (L.) Willd.
Along the Macoris River, Consuelo, Macoris
257. *Sporobolus cathartica* Nees.
Along the Macoris River, Consuelo, Macoris.
258. *Hydromyza stolonifera* G. F. W. Meyer.
In the Macoris River, Consuelo, Macoris
259. *Ficus Eggersii* Martiana
Along the Macoris River, Consuelo, Macoris
260. *Thippocraea volubilis* L.
Along the Macoris River, Consuelo, Macoris.

261. *Citharexylum pauciflorum* L
Along the Macoris River, Consuelo, Macoris
262. *Campyloneuron phyllitidis* (L.) Presl
Along the Macoris River, Consuelo, Macoris.
263. *Centropogon arborescens* (L.) DC. & M.
Along the Macoris River, Consuelo, Macoris.
264. *Malacochaeta* Vogel.
Along Macoris River, Consuelo, Macoris.
265. *Salvia*
In the Macoris River, Consuelo, Macoris
266. *Polygonum portoricense* Nees.
In the Macoris River, Consuelo, Macoris
267. *Epidendrum*
Along the Macoris River, Consuelo, Macoris.
268. *Centropogon cyclostasus* (Ell.) Ch. 185 at 700. 1500 ft.
In the Magua River, Consuelo, Macoris
269. *Ptilotum nudum* (L.) Griseb.
Along Macoris River, Consuelo, Macoris
270. *Pithecolobium portoricense* Urban.
Along Magua River, Consuelo, Macoris
271. *Nectandra Antillana* Meisn.
Magua River, Consuelo, Macoris
272. *Chamissoa altissima* HBK.
Along the Magua River, Consuelo, Prov. of Macoris
273. *Thippocrea volucrialis* L.
Along the Magua River, Consuelo, Macoris.
274. *Eleocharis capitata* (L.) K. Br.
Magua River, Consuelo, Macoris.
275. *Hexagona*
Along Magua River, Consuelo, Macoris
276. *Isotoma longiflora* (L.) Presl.
Along Magua River, Azui, Seibo.
277. *Synopterus*
Wet river bank, Azui, Seibo.
278. *Selaginella albomitens* Spring & -
In wet fern bank, Azui, Seibo.
279. *Nectandra patens* (Sw.) Griseb.
Wet river bank, Azui, Seibo
280. *Dryopteris domingensis* (Spring)
River bank, Azui, Seibo.

281. *Marchantia demissa* D. & D. (Det. Dr. Evans)
On wet clay banks, Azui, Seibo.
282. *Trichostomum*
On wet clay banks, Azui, Seibo.
283. *Carex* ~~sp.~~
River bank, Azui, Seibo.
284. *Guarea trichilioides* L.
Near the Magua River, Azui, Seibo.
285. *Hirtella laudra* W.
Near Magua River, Azui, Seibo.
286. *Pilea tectulosa* (A. Naud.) W. & A.
River bank, Azui, Seibo.
287. *Bacopa obovata* (Poepp.)
Staquant Pool, Azui, Seibo.
288. *Heteranthera*
Azui, Seibo.
289. *Cyperus Swartzii* (Dietr.) Boeckl.
Azui, Seibo.
290. *Turbinia corymbosa* (L.) Raf.
Azui, Seibo.
291. *Inga laurina* Willd.
Deep woods, Azui, Seibo.
292. *Paspalum conjugatum* Berg.
Deep woods, Azui, Seibo.
293. *Trichilia hirta* L.
Azui, Seibo.
294. *Coccoloba racemosa* L.
Edge of field, Azui, Seibo.
295. *Aechmea nivalis* Spreng.
Edge of field, Azui, Seibo.
296. *Chaetochloa inuvialis* (Poir.) Scribn.
Edge of field, Azui, Seibo.
297. *Eleusine indica* (L.) Gaertn.
Edge of field, Azui, Seibo.
298. *Cumulepa*
In water, Azui, Seibo.
299. *Cynchophyllum argenteum* Jacq.
Along river bank, Azui, Seibo.
300. *Piper mansinatum* Jacq.
Along river bank, Azui, Seibo.

301. *Duropteris oligophylla* Maxon
Along river-bank Azuqui, Peicho.
302. *Picramnia pentandra* Sw.
River bank Azuqui, Peicho.
303. *Hypoxis scoparia* Nutt. Escobilla Urban
River bank, Azuqui, Peicho.
304. *Realytha glaberrima* A. Rich.
Wet sandy bank, Azuqui, Peicho.
305. *Cordia sulcata* DC.
River bank, Azuqui, Peicho.
306. *Heliconia bicolor* L.
River bank, Azuqui, Peicho.
307. *Smilax domingensis* Willd.
Rich woods along river, Azuqui, Peicho.
308. *Allypa latifolia* L.
River bank, Azuqui, Peicho.
309. *Stemodia grandifolia* L.
River bank, Azuqui, Peicho.
310. *Eleocharis flaccida* (Spreng) Urban
In pools along river, Azuqui, Peicho.
311. *Stemodia grandifolia* L.
Along river-bank, Azuqui, Peicho.
312. *Ichnanthus pallens* (Sw.) Mezger
Edge of field, Azuqui, Peicho.
313. *Ruellia tuberosa* Moench.
Woods near Aguana river, Consuelo, Macoris.
314. *Hydrocarpos* L.
Climbing over the tallest trees, Consuelo, Macoris.
315. *Agave*
Woods, Consuelo, Macoris.
316. *Hapalopilus gibbus*
Woods, Consuelo, Macoris.
317. *Auricularia auricula*
Woods, Consuelo, Macoris.
318. *Callicostella Berteriana* Hedw.
Epilobium in rich wood, Consuelo, Macoris.
319. *Alphonimia glabella* (Sw.) A. Dietl.
Rich woods, Consuelo, Macoris.
320. *Ficus Eggerii* Wats.
Deciduous woods, Consuelo, Macoris.

321. *Asplenium serratum* L.
On tree trunk, in woods, Consuelo, Macoris.
322. *Pterolepismum ellipticum*
Deep mod. in tree trunk, " "
323. *Asplenium*
In dense woods, Consuelo, Macoris
324. *Lanthonium Elephantiasis* Macf.
Deep woods, Consuelo, Macoris
325. *Asplenium*
Consuelo, Macoris.
326. *Inga laurina* Willd.
Deep woods, Consuelo, Macoris.
327. *Momordia iguanaea* (Jacq.) Rose + Standley
Deep woods, Consuelo, Macoris.
328. *Phoradendron hexastichum* (DC.) Gleason
Deep woods, Consuelo, Macoris
329. *Rachicallis americana* (Jacq.) Hitchc.
Scrub near the coast, La Romana, Seibo.
330. *Eriogonum pubescens* L.
Scrub near the coast, La Romana, Seibo.
331. *Eragrostis littoralis* P.W.
Scrub near the coast, La Romana, Seibo.
332. *Echites agglutinata* Jacq.
Scrub near the coast, La Romana, Seibo.
333. *Colubrina Colubrina* (L.) Willd.
La Romana, Seibo, Scrub near the coast.
334. *Citharexylum punctatum* L.
Scrub near the coast, La Romana, Seibo.
335. *Yarronia slossana* Jacq.
Scrub near the coast, La Romana, Seibo.
336. *Eugenia glabrata* (P.W.) DC.
Scrub near the coast, La Romana, Seibo
337. *Cyperus compressus* L.
In scrub, La Romana, Seibo.
338. *Phoradendron quadrangulare* (H.B.K.) Krug & Burdet
In scrub near the coast, La Romana, Seibo
339. *Eugenia hirtifolia* (P.W.) Willd.
Scrub near the coast, La Romana, Seibo
340. *Eugenia norticola* (P.W.) DC.
Scrub near the coast, La Romana, Seibo

341. *Eugenia showkea* (Kerz.) Krug & W. Beau
Scrub near the coast, La Romana, Seibo
342. *Eupatorium couzoides* Jacq.
Scrub near the coast, La Romana, Seibo
343. *Eugenia axillaris* (Sw.) Willd.
Scrub near the coast, La Romana, Seibo
344. *Passiflora polyphlella* (L.) Radlk.
Scrub near the coast, La Romana, Seibo
345. *Pedicularis angustifolia* Nutt.
In dense scrub, La Romana, Seibo
346. *Bumelia virgata* (Sw.) D. Don.
Scrub near the coast, La Romana, Seibo
347. *Eupatorium canescens* Vahl.
Scrub near the coast, La Romana, Seibo
348. *Paspalum caespitosum* Gleason.
Scrub near the coast, La Romana, Seibo
349. *Pisonia americana* L. Rich. (~~not det.~~)
Scrub near the coast, La Romana, Seibo
350. *Seneciothus nigropila* (L.) W. J. Britt.
In scrub, La Romana, Seibo
351. *Jaquima barbata* (Lam.) Mez.
In scrub near the coast, La Romana, Seibo
352. *Gammia media* Jacq.
In dry rocky scrub, La Romana, Seibo
353. *Guarania tomentosa* Jacq.
Along river bank, La Romana, Seibo
354. *Angelica salicaria* folia Aubl.
Along river bank, La Romana, Seibo
355. *Peperomia glabella* (Sw.) A. Dietr.
Along river bank, La Romana, Seibo
356. *Guaiacum sanctum* L.
River bank, La Romana, Seibo
357. *Acrostichum*
Dry limestone rocks, La Romana, Seibo
358. *Chrysoma crossopetalum* L.
Rocky river bank, La Romana, Seibo
359. *Eriptaalis fruticosa* L.
Rocky river bank, La Romana, Seibo
360. *Peperomia pinguis* Presl.
On trees, La Romana, Seibo

361. *Drepanella mirabiloides* (Lam.) Rudge.
Rocky river bank, La Romana, Seibo.
362. *Peperomia magnifolia* DC.
On trees, La Romana, Seibo.
363. *Bacopa Mouriera* (L.) Wettst.
River bed, La Romana, Seibo.
364. *Synedrella nodiflora* (L.) Gaertn.
River bed, La Romana, Seibo.
365. *Phyllanthus grandifolius* L.
River bank, La Romana, Seibo.
366. *Cladium jamaicense* Cavendish.
River basin, La Romana, Seibo.
367. *Acacia sclerophylla* Juss.
River basin, La Romana, Seibo.
368. *Canella Winterana* (L.) Gaertn.
River basin, La Romana, Seibo.
369. *Pithecolobium unguis-cati* (L.) Benth.
River basin, La Romana, Seibo.
370. *Cassia alata* L.
La Romana, Seibo. Along river banks.
371. *Sophora tomentosa* L.
La Romana, Seibo.
372. *Cyandra lanceolata* (Sw.) Baill.
Rocky point, near the sea, La Romana.
373. *Clusia cartilaginea* Presl.
Rocky places, La Romana, Seibo.
374. *Cyperus purpureus* Sw.
Savannah, Eliza, La Romana, Seibo.
375. *Helicteres reniformis* Bert.
Savannah, Eliza, La Romana, Seibo.
376. *Pithecolobium unguis-cati* (L.) Benth.
Rocky situations, La Romana, Seibo.
377. *Stigmaphyllon lingulatum* (Poir.) Small.
Rocky scrub, La Romana, Seibo.
378. *Clusia cartilaginea* Presl.
Rocky scrub, La Romana, Seibo.
379. *Notolaena cheilanthes microphylla* Sw.
Crevices of rocks, La Romana, Seibo.
380. *Guaicum officinale* L.
Rocky scrub, La Romana, Seibo.

381. *Bignonia unguis* L.
Rocky scrub, La Romana, Seibo.
382. *Eugenia axillaris* (Sw.) Willd.
Rocky scrub, La Romana, Seibo.
383. *Eugenia huxifolia* (Sw.) Willd.
Rocky scrub, La Romana, Seibo.
384. *Coccolobus laurifolia* Jacq.
La Romana, Seibo.
385. *Nectandra coriacea* (Sw.) Griseb.
Rocky scrub, La Romana, Seibo.
386. *Pavonia pinnifera* (Sw.) Cav.
Edge of road, La Romana, Seibo.
387. *Echites adglutinata* Jacq.
Rocky scrub, La Romana, Seibo.
388. *Bidens cynapiifolia portoricensis* (Spreng.) O. E. Schultz
Edge of road, La Romana, Seibo.
389. *Allophyllus eximius* (L.) Sw.
Shaded woods, Higüey, Seibo.
390. *Sporopolus indicus* (L.) K. Br.
Savanna, Higüey, Seibo.
391. *Eliochloa capillata* Kunth (?) ~~tuinensis~~
Savanna, Higüey, Seibo.
392. *Juglans vera* Willd.
Shaded woods, Higüey, Seibo.
393. *Barristera laurifolia* L.
Shaded woods, Higüey, Seibo.
394. *Aeschynomene sensitiva* Sw.
In water, Higüey, Seibo.
395. *Marruba*
In water, Higüey, Seibo.
396. *Acalypha chamaedrifolia* (Pau.) Muell. Arg.
Shaded woods, Higüey, Seibo.
397. *Naucovanus myrtifolia* (L.) Britton
Shaded woods, Higüey, Seibo.
398. *Eugenia acroguinea* DC.
Shaded woods, Higüey, Seibo.
399. *Pseudopitheca flagelliformis* (Pau.) Krug & Holm.
Shaded woods, Higüey, Seibo.
400. *Palud*
Savanna, Higüey, Seibo.

401. *Leonurus sibiricus* L.
Along roadside, Higuay, Seibo
402. *Limnanthemum humboldtianum* (HBK.) Griseb.
In a lake, Higuay, Seibo
403. *Cassia grandis* L.f.
Edge of lake, Higuay, Seibo
404. *Genipa americana* L.
Edge of lake, Higuay, Seibo
405. *Eugenia*
Shaded woods, Higuay, Seibo
406. *Hummeria succulenta* Jacq.
Shaded woods, Higuay, Seibo
407. *Bromelia karatas* L.
Edge of woods, Higuay, Seibo
408. *Byrsonima spicata* (Cav.) D.C.
Shaded woods, Higuay, Seibo
409. *Bacopa obovata* Poir.
Near pool, Higuay, Seibo
410. *Evolvulus nummularius* L.
Savanna, Higuay, Seibo
411. *Erigeron urticifolius* DC.
Savanna, Higuay, Seibo
412. *Nyctotria havigaultalis* Sw.
Edge of savanna, Higuay, Seibo
413. *Polytachya luteola* (Sw.) Hook.
In trees, Higuay, Seibo
414. *Coccolobus diversifolius* Jacq.
Edge of savanna, Higuay, Seibo
415. *Phoradendron racemosum* (Aubl.) Kuntze & Urban
In trees, Higuay, Seibo
416. *Petragastria caribaeana* (Sw.) Kuntze
Edge of savanna, Higuay, Seibo
417. *Duga laurina* (Sw.) Mild.
Edge of savanna, Higuay, Seibo
418. *Cleudroperum marginatus* (Sw.) Steud.
In Exothea, Higuay, Seibo
419. *Jussiaea erecta* L.
Wet places, Higuay, Seibo
420. *Chrysophyllum olivaeforme* L.
In woods, Higuay, Seibo

- + 21. *Picramnia pentandra* Sw
 Edge of woods, Higüey, Seibo
- + 22. *Rauvolfia aculeata* L.
 Edge of savanna, Higüey, Seibo.
- + 23. *Oldenlandia herbacea* (L.) DC.
 In moist places, Higüey, Seibo.
- + 24. *Mitromia triflora* (L.) Kuntze.
 On the Savannah, Higüey, Seibo.
- + 25. *Functostylis diphylla* (Retz.) Vahl.
 Savanna, Higüey, Seibo.
- + 26. *Eleocharis nodulosa* (Roth) R. & S.
 Savanna, Higüey, Seibo.
- + 27. *Clidemia hirta* (L.) B. Don
 Edge of woods, Higüey, Seibo.
- + 28. *Miconia prasina* (Sw.) DC.
 Edge of woods, Higüey, Seibo.
- + 29. *Asclepias curassavica* L.
 In field, Higüey, Seibo.
- + 30. *Cassia ligularis* L.
 Road, Higüey to Gato, Seibo.
- + 31. *Coccolobus diversifolius* Jacq.
 Road, Higüey to Gato, Seibo.
- + 32. *Eugenia glaberrima* West.
 Road, Higüey to Gato, Seibo.
- + 33. *Coccolobus diversifolius* Jacq.
 Road, Higüey to Gato, Seibo.
- + 34. *Eugenia pseudo-pridiarum portoricensis* (DC.)
 Road, Higüey to Gato, Seibo.
- + 35. *Momisia iguanala* (Jacq.) Rose & Standley
 Road, Higüey to Gato, Seibo.
- + 36. *Momisia iguanala* (Jacq.) Rose & Standley
 Road, Higüey to Gato, Seibo.
- + 37. *Phaseolus lathyroides* L.
 Road, Higüey to Gato, Seibo.
- + 38. *Casuarina hirta* Sw.
 Road, Higüey to Gato, Seibo.
- + 39. *Eugenia glabrata* (Sw.) DC.
 Road, Higüey to Gato, Seibo.
- + 40. *Nectandra patens* (Sw.) Griseb.
 Road, Higüey to Gato, Seibo.

441. *Eugenia glabrata* (Sw.) DC.
Road, Higüey to Gato, Seibo
442. *Dendropanax arboreum* (L.) DC. & Pl.
Road, Higüey to Gato, Seibo
443. *Miscanteca triandra* (Sw.) Mez.
Road, Higüey to Gato, Seibo
444. *Colpandra guttillarum* A. E. Schleg.
Road, Higüey to Gato, Seibo
445. *Carrisa lora* L.
Road, Higüey to Gato, Seibo
446. *Guaiacum lupuloides* (L.)
Higüey to Gato, Seibo
447. *Sesamum orientale* L.
Road, Higüey to Gato, Seibo
448. *Sideroxylon foetidissimum* Jacq.
Road, Higüey to Gato, Seibo
449. *Lauropolia nitida* L.
Road, Higüey to Gato, Seibo
450. *Chalcas exotica* (L.) Millsp.
Road, Higüey to Gato, Seibo
451. *Xanthoxalis carniculata* (L.) Pruell.
Road, Higüey to Gato, Seibo
452. *Ficus populoides* Martiana
Road, Higüey to Gato, Seibo
453. *Peperomia obtusifolia* (L.) Dietr.
Road, Gato to La Romana, Seibo
454. *Vitis = Ampelocissus Robinsonii* Planch.
Road Gato to La Romana, Seibo
455. *Chococca alba* (L.) Hitchc.
Road, Gato to La Romana, Seibo
456. *Lea conea guadalupensis* (DuRoi) Britton
Road, Gato to La Romana, Seibo
457. *Sonch. pileatum*
Road, Gato to La Romana, Seibo
458. *Campyloneuron*
Gato to La Romana
- 458A. *radicula brevipes* (DC.)
Gato to La Romana
459. *Sarcophalus dominicensis* (Spreng.) Krug & Urbán
In dense scrub, Bayajibe, Seibo
460. *Ficus hirsutifolia* Muell.
In dense scrub, Bayajibe, Seibo

461. *Passiflora multiflora* L.
In dense scrub, Bayajibe, Seibo
462. *Bauhinia succulenta* Jacq.
In dense scrub, Bayajibe, Seibo
463. *Cyperus tenuis* Sw.
In dense scrub, Bayajibe, Seibo
464. *Erythronium brevipetala* DC.
In dense scrub, Bayajibe, Seibo
465. *Psychotria undata* Jacq. *P. minima Sw.*
In dense scrub, Bayajibe, Seibo
466. *Pteranassa pentandra* Sw.?
In dense scrub, Bayajibe, Seibo
467. *Asplenium ~~puberulum Sw.~~*
In rocks in dense scrub, Bayajibe, Seibo
468. *Plethidium*
In dense scrub, Bayajibe, Seibo
469. *Pilea carpinifolia* Jacq.
In dense scrub, Bayajibe, Seibo
470. *Taxithelium planum* (Brid.) Mitt.
In dense scrub, Bayajibe, Seibo
471. *Peperomia luteo-hacca* L. DC.
In dense scrub, Bayajibe, Seibo
472. *Pseudocryphaea flagellifera* (Brid.) E. G. B.
In dense scrub, Bayajibe, Seibo
473. *Malaxis umbelliflora* Sw.
Dense scrub, Bayajibe, Seibo
474. *Asplenium*
Dense scrub, Bayajibe, Seibo
475. *Asplenium dentatum* L.
Dense scrub, Bayajibe, Seibo
476. *Campyloneurum ~~puberulum Sw.~~* *puberulum (L.) Presl.*
Dense scrub, Bayajibe, Seibo
477. *Ficus mitrochova* Ngole
In dense scrub, Bayajibe, Seibo
478. *Exothea paniculata* (Juss.) Radlk.
In dense scrub, Bayajibe, Seibo
479. *Capparis jamaicensis* Jacq.
In dense scrub, Bayajibe, Seibo
480. *Schaefferia frutescens* Jacq.
In dense scrub, Bayajibe, Seibo

481. *Novadendron quadrangulare* ^{Rauvolfia (Belly) Britton} (H.K.) Kunz & Urban
In trees in scrub Bayajibe, Seibo
482. *Echites adglutinata* Jacq.
Dense scrub Bayajibe, Seibo
483. *Exortumna caribaeum* (Jacq.) Reuth.
Dense scrub Bayajibe, Seibo
484. *Pavia sessiliflora* Willd.
Dense scrub Bayajibe, Seibo
485. *Campyloneurum pattonii lanceolatum* (L.) Presl
Dense scrub Bayajibe, Seibo
486. *Goniothaleium*
Dense scrub Bayajibe, Seibo
487. *Goniothaleium*
Dense scrub Bayajibe, Seibo
488. *Calliandra portoricensis* (Jacq.) Reuth.
In dense scrub Bayajibe, Seibo
489. *Burmannia succulenta* Jacq.
In dense scrub Bayajibe, Seibo
490. *Schaefferia frutescens* Jacq.
In dense scrub Bayajibe, Seibo
491. *Schaefferia frutescens* Jacq.
In dense scrub Bayajibe, Seibo
492. *Gynura latifolia* (W. Urban)
In dense scrub Bayajibe, Seibo
493. *Eugenia axillaris* (Sw.) Willd.
In dense scrub Bayajibe, Seibo
494. *Dillenia tenuifolia* L.
In dense scrub Bayajibe, Seibo
495. *Capparis jamaicensis* Jacq.
In dense scrub Bayajibe, Seibo
496. *Exortumna acuminatum* Urban
In dense scrub Bayajibe, Seibo
497. *Novadendron quadrangulare* ^{Rauvolfia (Belly) Britton} (H.K.) Kunz & Urban
In trees in scrub Bayajibe, Seibo
498. *Chiococca alba* (L.) Hitchc.
In dense scrub Bayajibe, Seibo
499. *Lanthornium fagara* (L.) Sarg.
In dense scrub Bayajibe, Seibo
500. *Calyptanthus pygmaeus* (L.) Sw.
In dense scrub Bayajibe, Seibo

501. *Hylocereus* [Dead] *kapohueensis* (L.) Britton & Rose
In dense scrub, Bayapike, Peiho.
502. *Erjania polyphylla* (L.) Radlk.
Banks of salt lake, Saona Island, Peiho.
503. *Eugenia axillaris* (Sw.) Mild.
Saona Island, Peiho.
504. *Rippia nodiflora* (L.) Michx.
Palina, Saona Island, Peiho.
505. *Cyperus floridanus* Britton
Palina, Saona Island, Peiho.
506. *Phyllanthus*, *Epiphyllanthus* sp.
Banks of salt lake, Saona Island, Peiho.
507. *Capparis jamaicensis* Jacq.
Banks of salt lake, Saona Island, Peiho.
508. *Frederickia glaucoxyta* (Nitz) Urban
Palina, Saona Island, Peiho.
509. *Gynura latifolia* (Vahl) Urban
Banks of salt lake, Saona Island, Peiho.
510. *Krugiodendron ferreum* (Vahl) Urban
Banks of salt lake, Saona Island, Peiho.
511. *Canella Winterana* (L.) Gaertn.
Banks of salt lake, Saona Island, Peiho.
512. *Rhacoma crossopetalum* L.
Banks of salt lake, Saona Island, Peiho.
513. *Pseudophaea argentea* (Pendl.) = *P. viminea* (Mart.) Benth.
Banks of salt lake, Saona Island, Peiho.
514. *Eugenia axillaris* (Sw.) Mild.
Banks of salt lake, Saona Island, Peiho.
515. *Eleocharis capitata* (L.) C. B. Cl.
Palina, Saona Island, Peiho.
516. *Krugiodendron ferreum* (Vahl) Urban
Banks of salt lake, Saona, Peiho.
517. *Siumnegria succulenta* Jacq.
Banks of salt lake, Saona Id., Peiho.
518. *Cyperus tenuis* Sw.
Palina, Saona Island, Peiho.
519. *Bumelia obtusifolia* (Lam.) A.D.C.
Banks of salt lake, Saona Island, Peiho.
520. = *Capparis cynophallophora* Jacq.
Banks of salt lake, Saona Island, Peiho.

521. *Pithecolobium Uruguic-cati* (x.) Benth
Banks of salt lake, Naoua Island, Seibo
522. *Jacquinia Barbacoe* (Loeffl.) Mez.
Banks of salt lake, Saona Island, Seibo
523. *Jacquinia Barbacoe* (Loeffl.) Mez.
Saona Island, Seibo.
524. *Broughtonia domingensis* (Lindl.) Rolfe.
Rocky point, La Romana, Seibo
525. *Pedicularis augustifolia* Vit.
In dense scrub, La Romana, Seibo.
526. *Jacquinia Barbacoe* (Loeffl.) Mez.
La Romana, Seibo.
527. *Jacquinia Barbacoe* (Loeffl.) Mez.
La Romana, Seibo
528. *Cephalocereus* dead stems kept.
La Romana, Seibo.
529. *Cephalocereus* dead stems kept.
La Romana, Seibo.
530. *Hylocereus Eberhardii* Nees & Meyen (Gardner, Bot. (?)
In dense scrub, La Romana, Seibo.
531. *Cephalocereus* (dead stems kept)
La Romana, Seibo.
532. *Mitrasia axillaris* (C.W.) Kuntze
In woods, Consuelo, Macoris.
533. *Pseudocryphaea flagellifera* (Brid.) E. G. B.
In trees, Consuelo, Macoris.
534. *Neckera undulata* (P. B.) Hedw.
In trees, in shady woods, Consuelo, Macoris.
535. *Mitrasia elegans* (Vahl) Nees.
Deep woods, Consuelo, Macoris.
536. *Dendropanax arboreum* (L.) DC. + Pl.
- In deep woods, Consuelo, Macoris.





Conservation work performed 1987-1988. NY
State Conservation/Preservation Discretionary
Grant.

