

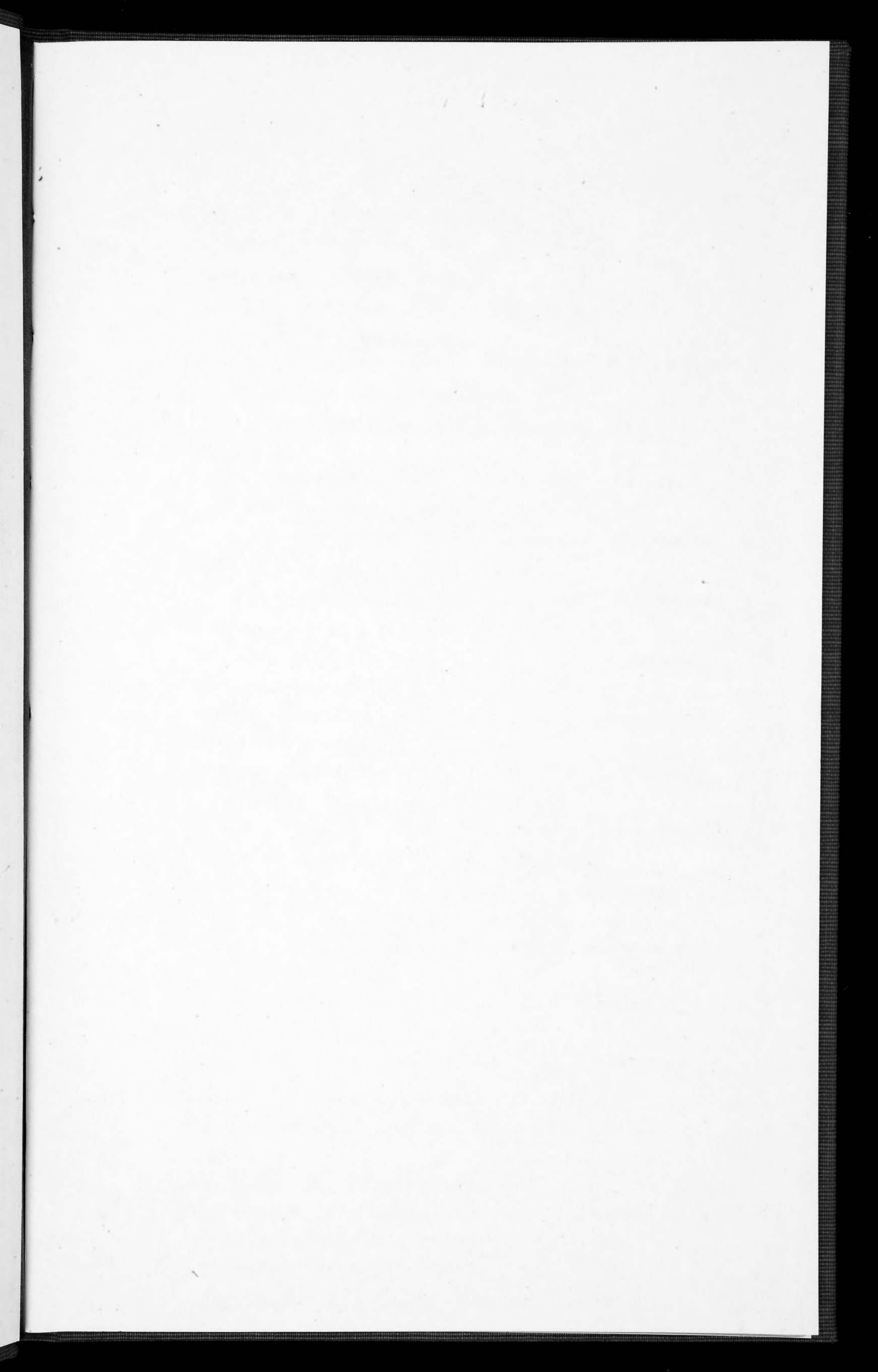
VOL. 53

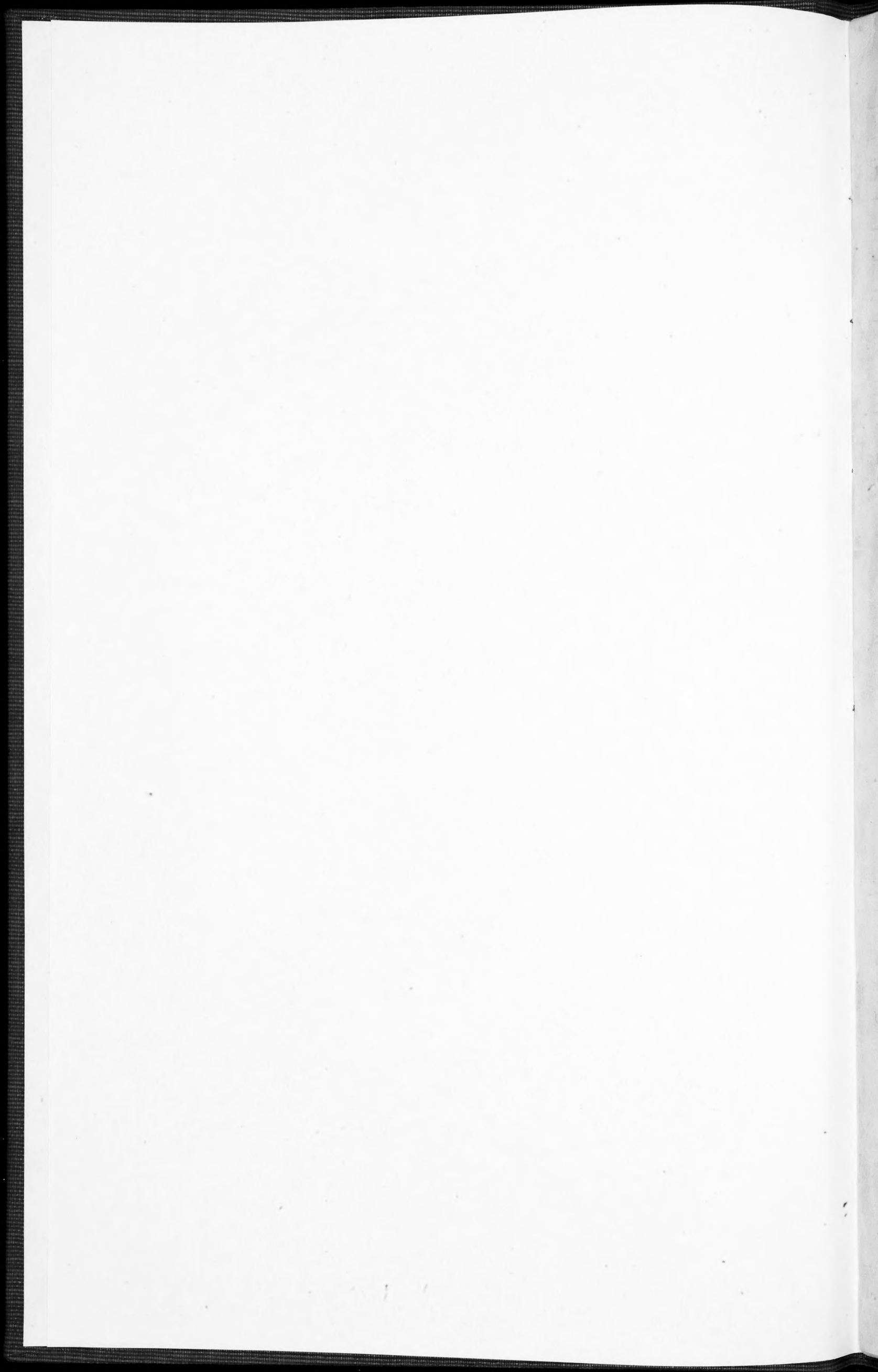
TAYLOR

SANTO DOMINGO

1909







1. *Miconia laevigata* (L.) DC.
Las Cañitas Mt., Sanchez, Samana
2. *Pariguum divaricatum* L.
Las Cañitas Mt., Sanchez, Samana
3. *Capsicum baccatum* L.
Las Cañitas Mt., Sanchez, Samana
4. *Adiantum Tenorum* Sw.
Las Cañitas Mt., Sanchez, Samana
5. *Epidendrum cochleatum* L.
Las Cañitas Mt., Sanchez, Samana
6. *Mimypops*?
Las Cañitas Mt., Sanchez, Samana
7. *Anturium acule* (Jacq.) Schott.
Las Cañitas Mt., Sanchez, Samana
8. *Pectaria heracleifolia* (Willd.) Underw.
Las Cañitas Mt., Sanchez, Samana
9. *Marcgravia rectiflora* Tr. & Pl.
Las Cañitas Mt., Sanchez, Samana
10. *Marcgravia rectiflora* Tr. & Pl.
Las Cañitas Mt., Sanchez, Samana
11. *Adiantum cristatum* L.
Las Cañitas Mt., Sanchez, Samana
12. *Phymatodes lycopodioides* (L.) Millsp.
Las Cañitas Mt., Sanchez, Samana
13. *Geophila terbaeca* (Jacq.) Schum.
Las Cañitas Mt., Sanchez, Samana
14. *Plenopthalis novita* Willd.
Las Cañitas Mt., Sanchez, Samana
15. *Campyloneuron*
Las Cañitas Mt., Sanchez, Samana
16. *Polypodium pectinatum* L.
Las Cañitas Mt., Sanchez, Samana
17. *Peperomia obtusifolia* (L.) Dietr.
Las Cañitas Mt., Sanchez, Samana
18. Lichen.
Las Cañitas Mt., Sanchez, Samana
19. *Renealmia occidentalis* (Sw.) Sweet
Las Cañitas Mt., Sanchez, Samana
20. *Guzmania linguulata* (L.) Mez.
Las Cañitas Mt., Sanchez, Samana

- 20A. *Hyptis scoparia* Poit. Las Cuitas Mt. Panama
- 21 *Piaropus crassipes* (Mart.) Britton
Swamp, Sanchez, Samana
- 22 *Mikania scandens* (L.) Willd.
Swamp, Sanchez, Samana
- 23 *Spongia tiliacea* (Mild.) Chney
Swamp, Sanchez, Samana
- 24 *Eleocharis guineolata* (L.) R. & C.
Swamp, Sanchez, Samana
- 25 *Limnorcharis flava* (L.) Buch.
Swamp, Sanchez, Samana
- 26 *Sagittaria laucifolia* L.
Swamp, Sanchez, Samana
- 27 *Castalia amazonum* (Mart. & Buec) ^{ex Hitchc.}
Pool in a swamp, Sanchez, Samana
- 28 *Phoradendron vaxerucorum* (Pit. & L.) Kuntze & Allen
Sanchez, Samana
- 29 *Oxyopferis* J.
Swamp, Sanchez, Samana
- 30 *Cyclopetis semigordata* (Sw.) J. Smith
Cañon, Las Cuitas Mt., Sanchez, Samana
- 31 *Costus cylindricus* Jacq.
Cañon, Las Cuitas Mt., Sanchez, Samana
- 32 *Psychotria uliginosa* J. W.
Cañon, Las Cuitas Mt., Sanchez, Samana
- 33 *Thuidium cymbifolium* var.? (Dy. & Mh.) Bryol. jav.
Cañon, Las Cuitas Mt., Sanchez, Samana
- 34 *Peperomia glabella* (Sw.) A. Dietl.
Cañon, Las Cuitas Mt., Sanchez, Samana
- 35 *Epidendrum rigidum* Jacq.
Cañon, Las Cuitas Mt., Sanchez, Samana
- 36 *Narsceurezyella flabelliformis* (Sw.) Cogn
Cañon, Las Cuitas Mt., Sanchez, Samana
- 37 *Polypodium?* ^{very like plants}
Cañon, Las Cuitas Mt., Sanchez, Samana
- 38 *Passiflora murucija* L.
Cañon, Las Cuitas Mt., Sanchez, Samana
- 39 *Spongia cathartica* Poir.
Cañon, Las Cuitas Mt., Sanchez, Samana
- 40 *Dioscorea pilosiuscula* Benth.
Cañon, Las Cuitas Mt., Sanchez, Samana

- 41 *Goniochloa* ~~*pleurochaeta*~~ *schmoolesii* ~~Lee~~
Cañon, Las Cañitas Mt., Sanchez, Samana.
- 42 *Passiflora rubra* L.
Cañon, Las Cañitas Mt. Sanchez, Samana.
- 43 *Dryopteris* ~~*megaloche*~~ *megaloche* (Schubert) Urban.
Cañon, Las Cañitas Mt., Sanchez, Samana.
- 44 *Commelinia elegans* HBK.
Cañon, Las Cañitas Mt., Sanchez, Samana.
- 45 *Cyclophellis* ~~*semigordata*~~ *semigordata* (Sw.) J. Smully.
Cañon, Las Cañitas Mt., Sanchez, Samana.
- 46 *Coriolum membranaceum*
Cañon, Las Cañitas Mt. Sanchez, Samana.
- 47 *Hyptis verticillata* Jacq.
Cañon, Las Cañitas Mts., Sanchez, Samana.
- 48 *Dicranella* ~~*triacopia*~~ *triacopia* (Jacq.) Kuhn.
Cañon, Las Cañitas Mt., Sanchez, Samana.
- 49 *Parathesis serrulata* (Sw.) Mez.
Cañon, Las Cañitas Mts., Sanchez, Samana.
- 50 *Gonzalagunia* ~~*hirsuta*~~ *hirsuta* (Jacq.) Schum.
Cañon, Las Cañitas Mt., Sanchez, Samana.
- 51 *Marcgravia rectiflora* Gr. + Pl.
Cañon, Las Cañitas Mt., Sanchez, Samana.
- 52 *Dumortiera hirsuta*
Cañon, Las Cañitas Mt., Sanchez, Samana.
- 53 *Pilea repens* (Sw.) Wedd.
Cañon, Las Cañitas Mt., Sanchez, Samana.
- 54 *Dryopteris domingensis* (Spr.)
Cañon, Las Cañitas Mt., Sanchez, Samana.
- 55 *Adiantum petiolatum* Pers.
Cañon, Las Cañitas Mt., Sanchez, Samana.
- 56 *Buchanania Kraussii* N + S.
Cañon, Las Cañitas Mt., Sanchez, Samana.
- 57 *Bixa orellana* L.
Cañon, Las Cañitas Mt., Sanchez, Samana.
- 58 *Nucunna* ~~*altissima*~~ *altissima* (Jacq.) DC.
Mouth of Yuma River, Sanchez, Samana.
- 59 *Cydista equinoctialis* (L.) Meisn.
Mouth of Yuma River, Sanchez, Samana.
- 60 *Hygrophila brasiliensis* (Spring.) Lindau.
Mouth of Yuma River, Sanchez, Samana.

- 61 *Roystonea regia* (L.) Poak
Mouth of Yuma River, Sanchez, Samana.
- 62 *Loucheocarpus domingensis* (Pur.) DC.
Mouth of Yuma River, Sanchez, Samana.
- 63 *Panicum acuminata* H.B.K.
Mouth of Yuma River, Sanchez, Samana.
- 64 *Ceratophyllum demersum* L.
Mouth of Yuma River, Sanchez, Samana.
- 65 *Dalbergia eucastophyllum* (L.) Yamb.
Mouth of Yuma River, Sanchez, Samana.
- 66 *Echinochloa polystachya* (HBK.) Hitchc.
Mouth of Yuma River, Sanchez, Samana.
- 67 *Cyperus giganteus* Willd.
Mouth of Yuma River, Sanchez, Samana.
- 68 *Panicum validum* Willd.
Mouth of Yuma River, Sanchez, Samana.
- 69 *Thymonachne amphixyloides* (Rudge)
Mouth of Yuma River, Sanchez, Samana.
- 70 *Amalocitron hexandrum* (Sw.) Kunze
Mouth of Yuma River, Sanchez, Samana.
- 71 *Melastoma pesera* B. Vogel.
Mouth of Yuma River, Sanchez, Samana.
- 72 *Jatropha gossypifolia* L.
Sanchez, Samana.
- 73 *Entada polystachya* DC.
Road to Arenoso, Sanchez, Samana.
- 74 *Palicourea coccinea* DC.
Road to Arenoso, Sanchez, Samana.
- 75 *Clidemia hirta* (L.) D. Don
Road to Arenoso, Sanchez, Samana.
- 76 *Miconia prasina* (Sw.) DC.
Road to Arenoso, Sanchez, Samana.
- 77 *Pteris loricata* Jacq.
Road to Arenoso, Sanchez, Samana.
- 78 *Casuarina sylvestris* Sw.
Road to Arenoso, Sanchez, Samana.
- 79 *Passiflora suberosa* L.
Road to Arenoso, Sanchez, Samana.
- 80 *Eugenia avicula* DC.
Road to Arenoso, Sanchez, Samana.

81. *Panicum punctata* (Ell.) Puffl.
Swamp, road to Arenoso, Sanchez, Samana.
82. *Paspalum virgatum* L.
Swamp, road to Arenoso, Sanchez, Samana.
83. *Furcraea umbellata* Lam.
Swamp, road to Arenoso, Sanchez, Samana.
84. *Sporobolus catharticus* Trin.
Road to Arenoso, Sanchez, Samana.
85. *Kyllinga juncea* Link.
Swamp, road to Arenoso, Sanchez, Samana.
86. *Luzipiza pilosa* HBK.
Swamp, road to Arenoso, Sanchez, Samana.
87. *Pectis ciliaris* L. *Pectis samayensis* Urb. (in general cover ^{cover} Pectis)
Road to Arenoso, Sanchez, Samana.
88. *Eleocharis geniculata* (L.) R. & Br.
Swamp, road to Arenoso, Sanchez, Samana.
89. *Cyperus serotus* L. C. Rich.
Swamp, road to Arenoso, Sanchez, Samana.
90. *Utricularia guadalupensis* (Spreng) Moroy.
Still pond, road to Arenoso, Sanchez, Samana.
91. *Arceuthobium nitida* Jacq.
Road to Arenoso, Sanchez, Samana.
92. *Panicum edulis* Aubl.
Road to Arenoso, Sanchez, Samana.
93. *Sporobolus* = *Opereculina tuberosa* (L.) Meisn.
Climbing on trees, San Lorenzo, Samana Bay.
94. *Stenotaphrum grandifolium* L.
Rocky hillside, San Lorenzo, Samana Bay.
95. *Dorstenia peltata* Spreng.
Rich hillside, San Lorenzo, Samana Bay.
96. *Piperomia scandens* R. & P.
Moist shaded wood, San Lorenzo, Samana Bay.
97. *Calyptranthes Swartzii* (Guss.) Beech. = *C. occidentalis* (Sw.) Mez.
Bank of stream, San Lorenzo, Samana Bay.
98. *Heteranthera reniformis* R. & P.
San Lorenzo, Samana Bay.
99. *Thelypodium biserratum* (Sw.) Schott.
Shaded bank, San Lorenzo, Samana Bay.
100. *Piper marginatum* Jacq.
Shaded woods, San Lorenzo, Samana Bay.

101. *Piper sauranure* W. & A.
Parasitic on trees, San Lorenzo, Samana Bay
102. *Populatia obtusata* (Jacq.) Britton
Rocky hillside, San Lorenzo, Samana Bay
103. *Hydroperua spicosa* W. & A.
Rocky hillside, San Lorenzo, Samana Bay
104. *Epidendrum*
On trees, San Lorenzo, Samana Bay
105. *Tillandsia festucoides* Brongn.
On trees, San Lorenzo, Samana Bay
106. *Peperomia obtusifolia* (L.) A. Dietr.
On trees, San Lorenzo, Samana Bay
107. *Thunax*?
Rocky hillside, San Lorenzo, Samana Bay
108. *Isochilus linearis* (Jacq.) R. Br.
On logs, San Lorenzo, Samana Bay
109. *Pitcairnia pulpersi* Oene? [too imperfect, says Key]
Rocky hillside, San Lorenzo, Samana Bay
110. *Leptorchis elata* (Lindl.) Kuntze
On rocky hillside, San Lorenzo, Samana Bay
111. *Adiantum fragile* Sw.
Rocky hillside, San Lorenzo, Samana Bay
112. *Guzmania media* Jacq.
Rocky hillside, San Lorenzo, Samana Bay
113. *Rajania hastata* L.
Trailing over trees, San Lorenzo, Samana Bay
114. *Rhabdadenia biflora* (Jacq.) Muell. Arg.
Trailing over the ground, San Lorenzo, Samana Bay
115. *Pteris*
On water, among mangroves, San Lorenzo, Samana Bay
116. *Encidium velutinum* Lindl.
On trees, Casuelo, Macoris
117. *Auricularia nigrescens*
On log, Casuelo, Macoris
118. *Coniopsis occidentalis*
On *Spodias lutea* L. Casuelo, Macoris
119. *Agaricus*
On log, Casuelo, Macoris
120. *Cordia Sevasacanthus* Jacq.
Fruit, Casuelo, Macoris

121. *Hamelia patens* Jacq.
Along edge of forest, Consuelo, Macoris
122. *Miconia* ~~the same~~, *or Miconia* *lave* Michx., probably
in mud, Consuelo, Macoris
123. *Coccoloba argentea* (Lodd.) Sargent
In deep woods, Consuelo, Macoris
124. *Coriopus membranaceus*
On dead wood, Consuelo, Macoris
125. *Geophila herboacea* (Jacq.) Schum.
Shaded woods, Consuelo, Macoris
126. *Same*
Rich woods, Consuelo, Macoris
127. *Lentum*
Rich woods, Consuelo, Macoris
128. *Ficus Eggerii* Martens
Rich woods, Consuelo, Macoris
129. *Galactia striata* (Jacq.) Urban
Rich woods, Consuelo, Macoris
130. *Rousselia humilis* (Sw.) Urban
Rich woods, Consuelo, Macoris
131. *Gloeophyllum striatum*
Rich woods, Consuelo, Macoris
132. *Pycnoporus sanguineus*
Rich woods, Consuelo, Macoris
133. *Pistia Stratiotes* L.
In small lagoon, Mague River, Consuelo, Macoris
134. *Dryopteris tetragona* (Sw.) Urban
Moist woods, Consuelo, Macoris
135. *Pteris glabella* (Sw.) A. Diet.
In tree, Consuelo, Macoris
136. *Lechwanthus nervosus* (Sw.) Doell.
Shaded places, Consuelo, Macoris
137. *Epidendrum rigidum* Jacq.
On tree, Consuelo, Macoris
138. *Nectandra antillana* Meisn.
Monte Coca, Consuelo, Macoris
139. *Quasipodius compressus* (Sw.) Sch.
Monte Coca, Consuelo, Macoris
140. *Pitita domingensis* Jacq.
Monte Coca, Consuelo, Macoris

141. *Theophrasta Jussieu* Lindl.
"Monte Coca", Consuelo, Macoris
142. *Hypoxylon*
"Monte Coca", Consuelo, Macoris.
143. *Guarea trichiloides* L.
Rich woods, Consuelo, Macoris.
144. *Cupania americana* L.
Rich woods, Consuelo, Macoris
145. *Gouania lupuloides* (L.)
Rich woods, Consuelo, Province of Macoris
146. *Trophis racemosa* (L.) Urban
Dense woods, Consuelo, Macoris
147. *Ceanothus laurifolia* (Sw) A. Rich.
Rich woods, Consuelo, Macoris.
148. *Zanthoxylum martinicense* (Lam.) DC.
Rich woods, Consuelo, Macoris.
149. *Neckera undulata* (P. B.) Hedw. + *N. disticha* Hedw.
On bark of tree, Consuelo, Macoris.
150. *Hydrocotyle umbellata* L.
In mud near Magua River, Consuelo, Macoris
151. *Polypodium polypodioides* (L.) Hitchcock.
On trees, Consuelo, Macoris
152.
On small twigs, Consuelo, Macoris.
153. *Agaricus*
Rich woods, Consuelo, Macoris
154. *Auricularia auricula*
Rich woods, Consuelo, Macoris
155. *Pilocratera Tricholoma* (Mont.) P. Henn.
Rich woods, Consuelo, Macoris
156. *Pilocratera Hindsii* (Berh.) P. Henn.
Rich woods, Consuelo, Macoris
157. *Pilocratera Hindsii* (Berh.) P. Henn.
Rich woods, Consuelo, Macoris
158. *Pilocratera Hindsii* (Berh.) P. Henn.
Consuelo, Macoris, Rich woods.
159.
Consuelo, Macoris
160. *Taxithelium planum* (Brid.) Mitt.
On dead log, Consuelo, Macoris.

161. *Asplenium cristatum* L. var.
Rocky hillside, Cosuelo, Macoris
162. *Campyloneuron*
Wet cliff, Cosuelo, Macoris
163. *Phromia cosuelana* Trel.
On wet cliff, Cosuelo, Macoris
164. *Dryva latifolia* L.
Trailing over trees Cosuelo, Macoris
165. *Dryopteris domingensis* (Spr.)
Wet cliff, Cosuelo, Macoris
166. *Asplenium pedata* Jacq.
Climbing over trees, Cosuelo, Macoris.
167. ~~Lichen~~
168. *Chrysophyllum olivaceum* L.
In sheath of #123. Cosuelo, Macoris
Hillside, Cosuelo, Macoris.
169. *Spongia cathartica* Poir.
Trailing over the ground Cosuelo, Macoris.
170. *Commelina elegans* HBK.
In dry hill place, Cosuelo, Macoris
171. *Dalmania concentrica* (Walt.) Ces. & de Not
Cosuelo, Macoris.
172. *Sarcocyptha coccinea* (Jacq.) Cooke?
Cosuelo, Macoris
173. *Ptilocratera Hindii* (Berk) P. Henn.
Cosuelo, Macoris.
174. *Cosuelo, Macoris*
Glaziella aurantiaca Berk.
175. ~~Lichen~~
Cosuelo, Macoris
176. ~~Thelidhousia~~
Cosuelo, Macoris
177. ~~Lichen~~
Cosuelo, Macoris
178. ~~Thelidhousia~~
Cosuelo, Macoris
179. *Tremella*
Cosuelo, Macoris
180. *Elvingia*
On tree trunks, Cosuelo, Macoris.

181. *Bacopa obovata* (Poepp.)
Stagnant pool, Consuelo, Macoris
182. *Cerithia cyclostasa* (Ell.) Chav.
Stagnant pool, Consuelo, Macoris
183. *Psychotria tenuifolia* Sw.
Moist woods, Consuelo, Macoris
184. *Pilea repens* (Sw.) Wedd.
In moist woods Consuelo, Macoris
185. *Dryopteris tetragona* (Sw.) Urban
Moist woods, Consuelo, Macoris.
186. *Zanthoxylum martinicense* (Lam.) DC
Monte Coca, Consuelo, Macoris
187. *Ficus gagevii* Marking
Rich woods, Consuelo, Macoris
188. *Asplenium serratum* (immature)
On dead log, Consuelo, Macoris
189. *Chrysophyllum argenteum* Jacq.
Rich woods, Consuelo, Macoris
190. *Nectandra oligoneura* Urban
Rich woods, Consuelo, Macoris
191. *Passiflora ualiiformis*
Climbing tall trees, Consuelo, Macoris.
192. *Anthurium*
Rich woods, Consuelo, Macoris
193. *Coccoloba pinistis*
On log, Consuelo, Macoris.
194. *Pogonomyces hydroides*
On log, Consuelo, Macoris
195.
Consuelo, Macoris
196.
Consuelo, Macoris
197.
Consuelo, Macoris
198.
Consuelo, Macoris
199.
Consuelo, Macoris
200.
Consuelo, Macoris.

201.

Cousuelo, Macoris.

202.

Cousuelo, Macoris.

203.

~~Leptocarpus~~ ^{Phlo} ~~leucocarpus~~ ^{leucocarpus} in moist woods.

Cousuelo, Macoris.

204.

Cousuelo, Macoris.

Cousuelo, Macoris.

205.

206.

Cousuelo, Macoris.

Cousuelo, Macoris.

207.

Cousuelo, Macoris.

Cousuelo, Macoris.

208.

Cousuelo, Macoris.

Cousuelo, Macoris.

209.

Cousuelo, Macoris.

Cousuelo, Macoris.

210.

Campyloneurum

Moist woods, Cousuelo, Macoris

211.

Aechmea

Cousuelo; Macoris.

212.

Cousuelo, Macoris.

Cousuelo, Macoris.

213.

Moist woods Cousuelo Macoris.

214.

Taherua montana citrifolia Jacq.

Cousuelo, Macoris

215.

Bradburya Plumieri (Sw.) Kuntze

Climber on trees Cousuelo, Macoris.

216.

Cyclopettis semicordata (W.) J. Sm.

Rich moist woods Cousuelo, Macoris.

217.

Cyclopettis semicordata (W.) J. Sm.

Rich moist woods, Cousuelo, Macoris

218.

Pectaria heracleifolia (Willd.) Wedg.

Rich moist woods, Cousuelo, Macoris

219.

Pterisoides lamifolium Jacq.

Rocky wooded hillside Cousuelo, Macoris

220.

Asclepias Curassavica L.

Along river bank, Cousuelo, Macoris

221. *Misauteca triandra* (Vw.) Mez
Along river bank, Consuelo, Macoris.
222. *Lonchocarpus domingensis* (Poe.) DC.
Along river bank, Consuelo, Macoris.
223. *Phoradendron quadrangulare* (HBK.) Krug + Urban
Rondelet (Bello) Benth. HBK. Krug + Urban
On trees and shrubs, Consuelo, Macoris.
224. *Azorella*
Consuelo, Macoris.
225. *Pseudocryphaea flagellifera* (Brid.) E. G. B.
On trunk of Ficus, Consuelo, Macoris.
226. *Cissua sicyoides* L.
On Ficus, Consuelo, Macoris.
227. *Emilia sonchifolia* (L.) DC.
In field, Consuelo, Macoris.
228. *Chamissoa altissima* HBK.
Consuelo, Macoris.
229. *Trophis racemosa* (L.) Urban
Consuelo, Macoris.
230. *Pilea nepeus* (Vw.) Wedd.
Consuelo, Macoris.
231. *Duropteris parasitica* (L.) Kyatze
Bank of Magua River, Consuelo, Macoris.
232. *Eupatorium macrophyllum* L.
Banks of the Magua River, Macoris.
233. *Pteris longifolia* L.
Banks of the Magua River, Consuelo, Macoris.
234. *Sobelia valericina* Lam.
Banks of Magua river, Consuelo, Macoris.
235. *Aphis medicis histellus* (L.) K. & C.
Banks of Magua River, Consuelo, Macoris.
236. *Achyrocline fallens* (Vw.) Muirv.
Banks of Magua River, Consuelo, Macoris.
237. *Adiantum fragile* Sw.
Banks of the Magua River, Consuelo, Macoris.
238. *Achyrocline fallens* (Vw.) Muirv.
Open field, Consuelo, Macoris.
239. *Echinochloa colona* (L.) Link.
Open field, Consuelo, Macoris.
240. *Eleanine indica* (L.) Gaertn.
Open field, Consuelo, Macoris.

241. *Spurthevisma ^{magnatum} ~~fructuatum~~* (Link.) Nash.
Open field, Consuelo, Macoris
242. *Panicum divaricatum* L.
Open field, Consuelo, Macoris
243. *Ficus microstoma* Martiana
Banks of Magua River, Macoris
244. *Potamogeton occidentalis* Siebr.
In Macoris River, Consuelo, Macoris.
245. *Ananthacorus angustifolius* (Sw.) Underw. & Maxon.
Along Macoris River, Consuelo, Macoris
246. *Bryopteris diffusa*
Along Macoris River, Consuelo, Macoris.
247. *Synedrella oligostachya* (Willd.) Dc.
Along the Macoris River, Consuelo, Macoris
248. *Gonolobus ~~hirsuta~~ ^{dispicata}* (Lam.) Gray Schum.
Along the Macoris River, Consuelo, Macoris
249. *Exothea paniculata* (Juss.) Radlk.
Along the Macoris River, Consuelo, Macoris.
250. *Paulinia ~~hirsuta~~* L.
Along the Macoris River, Consuelo, Macoris
251. *Peperomia ~~glabella~~ ^{macorissana}* (Sw.) A. Dietl.
Along the Macoris River, Consuelo, Macoris
252. *Leconia guadalupensis* (Seck.) Britton
Along the Macoris River, Consuelo, Macoris
253. *Oreopanax ~~pus~~ ^{lucratum}* (L.f.) G. F. W. Meyer.
Along the Macoris River, Consuelo, Macoris
254. *Philibertia clausa* (Jacq.) Vail.
Along the Macoris River, Consuelo, Macoris.
255. *Coumbe ~~turne~~ ^{lacquirii}* Griseb.
Along the Macoris River, Consuelo, Macoris.
256. *Mikania scandens* (L.) Willd.
Along the Macoris River, Consuelo, Macoris
257. *Sporaea cathartica* Moq.
Along the Macoris River, Consuelo, Macoris.
258. *Hydromyza stolonifera* G. F. W. Meyer?
In the Macoris River, Consuelo, Macoris
259. *Ficus Eggersii* Martiana
Along the Macoris River, Consuelo, Macoris
260. *Thippocatea volubilis* L.
Along the Macoris River, Consuelo, Macoris.

261. *Citharexylum pauciflorum* L
Along the Macoris River, Consuelo, Macoris
262. *Campyloneuron phyllitidis* (L.) Presl
Along the Macoris River, Consuelo, Macoris.
263. *Centropogon arborescens* (L.) DC. & Pl.
Along the Macoris River, Consuelo, Macoris.
264. *Malacochaeta* Vogel.
Along Macoris River, Consuelo, Macoris.
265. *Salvia*
In the Macoris River, Consuelo, Macoris
266. *Polygonum portoricense* Nees.
In the Macoris River, Consuelo, Macoris
267. *Epideum*
Along the Macoris River, Consuelo, Macoris.
268. *Centropogon cyclostasus* (Ell.) Chav. 1851 at Consuelo, Macoris
In the Macoris River, Consuelo, Macoris
269. *Psittacium nudum* (L.) Griseb.
Along Macoris River, Consuelo, Macoris
270. *Pithecolobium portoricense* Urban.
Along Macoris River, Consuelo, Macoris
271. *Nectandra Antillana* Meisn.
Macoris River, Consuelo, Macoris
272. *Chamissoa altissima* HBK.
Along the Macoris River, Consuelo, Prov. of Macoris
273. *Thippocrea volubilis* L.
Along the Macoris River, Consuelo, Macoris.
274. *Eleocharis capitata* (L.) K. Br.
Macoris River, Consuelo, Macoris.
275. *Hexagona*
Along Macoris River, Consuelo, Macoris
276. *Isotoma longiflora* (L.) Presl.
Along Macoris River, Azui, Seibo.
277. *Synopterus*
Wet river bank, Azui, Seibo.
278. *Selaginella albomitris* Spring & -
In wet fern bank, Azui, Seibo.
279. *Nectandra patens* (Sw.) Griseb.
Wet river bank, Azui, Seibo
280. *Synopterus domingensis* (Spring)
River bank, Azui, Seibo.

281. *Marchantia demissa* D. & D. (Det. Dr. Evans)
On wet clay banks, Azui, Seibo.
282. *Trichostomum*
In wet clay banks, Azui, Seibo.
283. *Catearia* ~~myliuoides~~
River bank, Azui, Seibo.
284. *Guarea trichilioides* L.
Near the Magua River, Azui, Seibo.
285. *Hirtella laudra* W.
Near Magua River, Azui, Seibo.
286. *Pilea tectulosa* (Poepp.) Urban.
River bank, Azui, Seibo.
287. *Bacopa obovata* (Poepp.)
Staquant Pool, Azui, Seibo.
288. *Heteranthera*
Azui, Seibo.
289. *Cyperus Swartzii* (Dietr.) Boeckl.
Azui, Seibo.
290. *Turbinia corymbosa* (L.) Raf.
Azui, Seibo.
291. *Inga laurina* Willd.
Deep woods, Azui, Seibo.
292. *Paspalum conjugatum* Berg.
Deep woods, Azui, Seibo.
293. *Trichilia hirta* L.
Azui, Seibo.
294. *Coffea racinyma-folius* L.
Edge of field, Azui, Seibo.
295. *Aechmea nivalis* Poepp.
Edge of field, Azui, Seibo.
296. *Chaetochloa inuvialis* (Poir.) Scribn.
Edge of field, Azui, Seibo.
297. *Eleusine indica* (L.) Gaertn.
Edge of field, Azui, Seibo.
298. *Cumulepa*
In water, Azui, Seibo.
299. *Chromolaena argenteum* Jacq.
Along river bank, Azui, Seibo.
300. *Piper nigrum* L.
Along river bank, Azui, Seibo.

301. *Duropteris oligophylla* Maxon
Along river-bank Azuqui, Peicho.
302. *Picramnia pentandra* Sw.
River bank Azuqui, Peicho.
303. *Hypoxis scoparia* Nutt. Escobilla Urban
River bank, Azuqui, Peicho.
304. *Realytha glaberrima* A. Rich.
Moist shady bank, Azuqui, Peicho.
305. *Cordia sulcata* DC.
River bank, Azuqui, Peicho.
306. *Heliconia bicolor* L.
River bank, Azuqui, Peicho.
307. *Smilax domingensis* Willd.
Rich woods along river, Azuqui, Peicho.
308. *Allypa latifolia* L.
River bank, Azuqui, Peicho.
309. *Stemodia grandifolia* L.
River bank, Azuqui, Peicho.
310. *Eleocharis flaccida* (Spring) Urban
In pools along river, Azuqui, Peicho.
311. *Stemodia grandifolia* L.
Along river-bank, Azuqui, Peicho.
312. *Ichnanthus pallens* (Sw.) Mezger.
Edge of field, Azuqui, Peicho.
313. *Ruellia tuberosa* Moench.
Woods near Aguana river, Consuelo, Macoris.
314. *Hydrocarpos* sp. ~~nov.~~
Climbing over the tallest trees, Consuelo, Macoris.
315. *Agave*
Woods, Consuelo, Macoris.
316. *Hapalopilus gibbus*
Woods, Consuelo, Macoris.
317. *Auricularia auricula*
Woods, Consuelo, Macoris.
318. *Callicostella Berteriana* Hedw.
Epilobium in rich wood, Consuelo, Macoris.
319. *Alphonimia glabella* (Sw.) A. Dietl.
Rich woods, Consuelo, Macoris.
320. *Ficus Eggerii* Wats.
Deciduous woods, Consuelo, Macoris.

321. *Asplenium serratum* L.
On tree trunk, in woods, Consuelo, Macoris.
322. *Polypodium thibetum*
Deep mod. in tree trunk, " "
323. *Asplenium*
In dense woods, Consuelo, Macoris
324. *Lanthea plantaginifolia* Macf.
Deep woods, Consuelo, Macoris
325. *Asplenium*
Consuelo, Macoris.
326. *Inga laurina* Willd.
Deep woods, Consuelo, Macoris.
327. *Momordia ignaviana* (Jacq.) Rose + Standley
Deep woods, Consuelo, Macoris.
328. *Phoradendron hexastichum* (DC.) Gleason
Deep woods, Consuelo, Macoris
329. *Rachicallis americana* (Jacq.) Hitchc.
Scrub near the coast, La Romana, Seibo.
330. *Eriogonum pubescens* L.
Scrub near the coast, La Romana, Seibo.
331. *Eragrostis littoralis* Sw.
Scrub near the coast, La Romana, Seibo.
332. *Echites agglutinata* Jacq.
Scrub near the coast, La Romana, Seibo.
333. *Colubrina Colubrina* (L.) Willd.
La Romana, Seibo, Scrub near the coast.
334. *Citharexylum pubescens* L.
Scrub near the coast, La Romana, Seibo.
335. *Yarronia siliosa* Jacq.
Scrub near the coast, La Romana, Seibo.
336. *Eugenia glabrata* (Sw.) DC.
Scrub near the coast, La Romana, Seibo
337. *Cyperus compressus* L.
In scrub, La Romana, Seibo
338. *Phoradendron quadrangulare* (H. B.K.) Krug & Burdet
In scrub near the coast, La Romana, Seibo
339. *Eugenia hirtifolia* (Sw.) Willd.
Scrub near the coast, La Romana, Seibo
340. *Eugenia norticola* (Sw.) DC.
Scrub near the coast, La Romana, Seibo

341. *Eugenia showkea* (Kenz) Krug & W. Beau
Scrub near the coast, La Romana, Seibo
342. *Eupatorium couzoides* Jacq.
Scrub near the coast, La Romana, Seibo
343. *Eugenia axillaris* (Sw.) Willd.
Scrub near the coast, La Romana, Seibo
344. *Passiflora polyphlella* (L.) Radlk.
Scrub near the coast, La Romana, Seibo
345. *Pedicularis angustifolia* Nutt
In dense scrub, La Romana, Seibo
346. *Bumelia virgata* (Sw.) D. Don
Scrub near the coast, La Romana, Seibo
347. *Eupatorium canescens* Vahl.
Scrub near the coast, La Romana, Seibo
348. *Paspalum caespitosum* Gleason
Scrub near the coast, La Romana, Seibo
349. *Pitheca aurea* A. Rich. (~~not det.~~)
Scrub near the coast, La Romana, Seibo
350. *Seneciothus nigropha* (L.) W. J. Britt
In scrub, La Romana, Seibo
351. *Jacquinia barbata* (L.) Mez
In scrub near the coast, La Romana, Seibo
352. *Gamnia media* Jacq.
In dry rocky scrub, La Romana, Seibo
353. *Guarania tomentosa* Jacq.
Along river bank, La Romana, Seibo
354. *Angelica salicaria* J. F. Smith
Along river bank, La Romana, Seibo
355. *Peperomia glabella* (Sw.) A. Dietr.
Along river bank, La Romana, Seibo
356. *Guaiacum sanctum* L.
River bank, La Romana, Seibo
357. *Acrostichum*
Dry limestone rocks, La Romana, Seibo
358. *Chrysoma crossopetalum*
Rocky river bank, La Romana, Seibo
359. *Eriophora fruticosa* L.
Rocky river bank, La Romana, Seibo
360. *Peperomia pinguis* Presl.
On trees, La Romana, Seibo

361. *Drepanella mirabiloides* (Lam.) Burdage.
Rocky river bank, La Romana, Seibo.
362. *Peperomia magnifolia* DC.
On trees, La Romana, Seibo.
363. *Bacopa Mourouera* (L.) Wettst.
River bed, La Romana, Seibo.
364. *Synedrella nodiflora* (L.) Gaertn.
River bed, La Romana, Seibo.
365. *Phyllanthus grandifolius* L.
River bank, La Romana, Seibo.
366. *Cladium jamaicense* Cavendish.
River basin, La Romana, Seibo.
367. *Acacia sclerophylla* Juss.
River basin, La Romana, Seibo.
368. *Canella Winterana* (L.) Gaertn.
River basin, La Romana, Seibo.
369. *Pithecolobium Unguis-cati* (L.) Benth.
River basin, La Romana, Seibo.
370. *Cassia alata* L.
La Romana, Seibo. Along river banks.
371. *Sophora guentheri* P.
La Romana, Seibo.
372. *Cyandra lanceolata* (Sw.) Baill.
Rocky point, near the sea, La Romana.
373. *Clusia cartilaginea* Presl.
Rocky places, La Romana, Seibo.
374. *Cyperus purpureus* Sw.
Savannah plain, La Romana, Seibo.
375. *Helicteres reniformis* Bert.
Savannah plain, La Romana, Seibo.
376. *Pithecolobium Unguis-cati* (L.) Benth.
Rocky situations, La Romana, Seibo.
377. *Stigmaphyllon lingulatum* (Poir.) Small.
Rocky scrub, La Romana, Seibo.
378. *Clusia cartilaginea* Presl.
Rocky scrub, La Romana, Seibo.
379. *Notolaena cheilanthes microphylla* Sw.
Crevices of rocks, La Romana, Seibo.
380. *Guaicum officinale* L.
Rocky scrub, La Romana, Seibo.

381. *Bignonia unguis* L.
Rocky scrub, La Romana, Seibo.
382. *Eugenia axillaris* (Sw.) Willd.
Rocky scrub, La Romana, Seibo.
383. *Eugenia huxifolia* (Sw.) Willd.
Rocky scrub, La Romana, Seibo.
384. *Coccolobus laurifolia* Jacq.
La Romana, Seibo.
385. *Nectandra caviarica* (Sw.) Griseb.
Rocky scrub, La Romana, Seibo.
386. *Pavonia pinnifera* (L.) Cav.
Edge of road, La Romana, Seibo.
387. *Echites adglutinata* Jacq.
Rocky scrub, La Romana, Seibo.
388. *Bidens cynapiifolia portoricensis* (Spreng.) O. E. Schulz.
Edge of road, La Romana, Seibo.
389. *Allophyllus eximius* (L.) Sw.
Shaded woods, Higüey, Seibo.
390. *Sporopolus indicus* (L.) R. Br.
Savanna, Higüey, Seibo.
391. *Eliochloa capillata* Kunth (?) ~~tuinensis~~
Savanna, Higüey, Seibo.
392. *Juglans vera* Willd.
Shaded woods, Higüey, Seibo.
393. *Barristera laurifolia* L.
Shaded woods, Higüey, Seibo.
394. *Aeschynomene sensitiva* Sw.
In water, Higüey, Seibo.
395. *Marruba*
In water, Higüey, Seibo.
396. *Acalypha chamaedrifolia* (Pau.) Muell. Arg.
Shaded woods, Higüey, Seibo.
397. *Laurocarpus myrtifolia* (L.) Britton
Shaded woods, Higüey, Seibo.
398. *Eugenia acroguinea* DC.
Shaded woods, Higüey, Seibo.
399. *Pseudopitheca flagelliformis* (Pau.) Krug & Holm.
Shaded woods, Higüey, Seibo.
400. *Pahia*
Savanna, Higüey, Seibo.

401. *Leonurus sibiricus* L.
Along roadside, Higuay, Seibo
402. *Limnanthes muricata* Humboldt & Bonpland (H.K.) Griseb.
In a lake, Higuay, Seibo
403. *Cassia grandis* L.f.
Edge of lake, Higuay, Seibo
404. *Genipa americana* L.
Edge of lake, Higuay, Seibo
405. *Eugenia*
Shaded woods, Higuay, Seibo
406. *Hummeria succulenta* Jacq.
Shaded woods, Higuay, Seibo
407. *Bromelia karatas* L.
Edge of woods, Higuay, Seibo
408. *Byrsonima spicata* (Cav.) D.C.
Shaded woods, Higuay, Seibo
409. *Bacopa obrata* Poir.
Near pool, Higuay, Seibo
410. *Evolvulus nummularius* L.
Savanna, Higuay, Seibo
411. *Erigeron urticifolius* DC.
Savanna, Higuay, Seibo
412. *Nyctotria haviguata* Sw.
Edge of savanna, Higuay, Seibo
413. *Polytachya luteola* (Sw.) Hook.
In trees, Higuay, Seibo
414. *Coccolobus diversifolius* Jacq.
Edge of savanna, Higuay, Seibo
415. *Phoradendron racemosum* (Aubl.) Kuntze & Urban
In trees, Higuay, Seibo
416. *Petragastria caribaeana* (Sw.) Kuntze
Edge of savanna, Higuay, Seibo
417. *Drya laurina* (Sw.) Mild.
Edge of savanna, Higuay, Seibo
418. *Cleudroperum marginatum* (Sw.) Steud.
In Exothea, Higuay, Seibo
419. *Jussiaea erecta* L.
Wet places, Higuay, Seibo
420. *Chrysophyllum olivaceum* L.
In woods, Higuay, Seibo

- + 21. *Picramnia pentandra* Sw.
 Edge of woods, Higüey, Seibo
- + 22. *Rauvolfia aculeata* L.
 Edge of savanna, Higüey, Seibo.
- + 23. *Oldenlandia herbacea* (L.) Kt.
 In moist places, Higüey, Seibo.
- + 24. *Mitromia triflora* (L.) Kuntze.
 On the Savannah, Higüey, Seibo.
- + 25. *Funckia stylis diphylla* (Retz.) Vahl.
 Savanna, Higüey, Seibo.
- + 26. *Eleocharis nodulosa* (Roth) R. & S.
 Savanna, Higüey, Seibo.
- + 27. *Clidemia hirta* (L.) B. Don.
 Edge of woods, Higüey, Seibo.
- + 28. *Miconia prasina* (Sw.) DC.
 Edge of woods, Higüey, Seibo.
- + 29. *Asclepias curassavica* L.
 In field, Higüey, Seibo.
- + 30. *Cassia leptostachya* L.
 Road, Higüey to Gato, Seibo.
- + 31. *Coccolobus diversifolius* Jacq.
 Road, Higüey to Gato, Seibo.
- + 32. *Eugenia glaberrima* West.
 Road, Higüey to Gato, Seibo.
- + 33. *Coccolobus diversifolius* Jacq.
 Road, Higüey to Gato, Seibo.
- + 34. *Eugenia pseudo-pridiarum portoricensis* (DC.)
 Road, Higüey to Gato, Seibo.
- + 35. *Momisia iguanala* (Jacq.) Rose & Standley
 Road, Higüey to Gato, Seibo.
- + 36. *Momisia iguanala* (Jacq.) Rose & Standley
 Road, Higüey to Gato, Seibo.
- + 37. *Phaseolus lathyroides* L.
 Road, Higüey to Gato, Seibo.
- + 38. *Casuarina hirta* Sw.
 Road, Higüey to Gato, Seibo.
- + 39. *Eugenia glabrata* (Sw.) DC.
 Road, Higüey to Gato, Seibo.
- + 40. *Nectandra patens* (Sw.) Griseb.
 Road, Higüey to Gato, Seibo.

441. *Eugenia glabrata* (Sw.) DC.
Road, Higüey to Gato, Seibo
442. *Dendropanax arboreum* (L.) DC. & Pl.
Road, Higüey to Gato, Seibo
443. *Miscanteca triandra* (Sw.) Mez.
Road, Higüey to Gato, Seibo
444. *Polypodium guillanum* A. E. Schubl.
Road, Higüey to Gato, Seibo
445. *Carrisa lora* L.
Road, Higüey to Gato, Seibo
446. *Guaiacum leucoides* (L.)
Higüey to Gato, Seibo
447. *Sesamum orientale* L.
Road, Higüey to Gato, Seibo
448. *Sideroxylon foetidissimum* Jacq.
Road, Higüey to Gato, Seibo
449. *Lauropolia nitida* L.
Road, Higüey to Gato, Seibo
450. *Chalcas exotica* (L.) Millsp.
Road, Higüey to Gato, Seibo
451. *Xanthoxalis carniculata* (L.) Small.
Road, Higüey to Gato, Seibo
452. *Ficus populoides* Martiana
Road, Higüey to Gato, Seibo
453. *Peperomia obtusifolia* (L.) Dietr.
Road, Gato to La Romana, Seibo
454. *Urtica = Ampelocissus Robinsonii* Planch.
Road Gato to La Romana, Seibo
455. *Chococia alba* (L.) Hitchc.
Road, Gato to La Romana, Seibo
456. *Caeconea guadalupensis* (Duck.) Britton
Road, Gato to La Romana, Seibo
457. *Sonch. pileatum*
Road, Gato to La Romana, Seibo
458. *Campyloneuron*
Gato to La Romana
- 458A. *radicula brevipes* (DC.)
Gato to La Romana
459. *Sarcophalus dominicensis* (Spreng.) Krug & Urbani
In dense scrub, Bayajibe, Seibo
460. *Ficus hirsutifolia* Muell.
In dense scrub, Bayajibe, Seibo

461. *Passiflora multiflora* L.
In dense scrub, Bayajibe, Seibo
462. *Bauhinia succulenta* Jacq.
In dense scrub, Bayajibe, Seibo
463. *Cyperus tenuis* Sw.
In dense scrub, Bayajibe, Seibo
464. *Erythroxylon brevipes* DC.
In dense scrub, Bayajibe, Seibo
465. *Psychotria undata* Jacq.
In dense scrub, Bayajibe, Seibo
466. *Pteranema pentandra* Sw.?
In dense scrub, Bayajibe, Seibo
467. *Asplenium*
In rocks in dense scrub, Bayajibe, Seibo
468. *Plethidium*
In dense scrub, Bayajibe, Seibo
469. *Pida carpinifolia* Jacq.
In dense scrub, Bayajibe, Seibo
470. *Taxithelium planum* (Brid.) Mitt.
In dense scrub, Bayajibe, Seibo
471. *Peperomia luteo-hacca* L. DC.
In dense scrub, Bayajibe, Seibo
472. *Pseudocryphaea flagellifera* (Brid.) E. G. B.
In dense scrub, Bayajibe, Seibo
473. *Malaxis umbelliflora* Sw.
Dense scrub, Bayajibe, Seibo
474. *Asplenium*
Dense scrub, Bayajibe, Seibo
475. *Asplenium dentatum* L.
Dense scrub, Bayajibe, Seibo
476. *Campyloneurum* *phyllitidis* (L.) Presl.
Dense scrub, Bayajibe, Seibo
477. *Ficus mitrochova* Ngole
In dense scrub, Bayajibe, Seibo
478. *Exothea paniculata* (Juss.) Radlk.
In dense scrub, Bayajibe, Seibo
479. *Capparis jamaicensis* Jacq.
In dense scrub, Bayajibe, Seibo
480. *Schaefferia frutescens* Jacq.
In dense scrub, Bayajibe, Seibo

481. *Novadendron quadrangulare* ^{Rauvolfia (Belly) Bullon} (H.K.) Kunz & Urban
In trees in scrub Bayajibe, Seibo
482. *Echites adglutinata* Jacq.
Dense scrub Bayajibe, Seibo.
483. *Exortumna caribaeum* (Jacq.) Rostk.
Dense scrub Bayajibe, Seibo.
484. *Pavia sessiliflora* Willd.
Dense scrub Bayajibe, Seibo.
485. *Campyloneurum pattonii lanceolatum* (L.) Presl
Dense scrub Bayajibe, Seibo.
486. *Goniothekium*
Dense scrub Bayajibe, Seibo.
487. *Goniothekium*
Dense scrub Bayajibe, Seibo.
488. *Calliandra portoricensis* (Jacq.) Benth.
In dense scrub Bayajibe, Seibo.
489. *Burmannia succulenta* Jacq.
In dense scrub Bayajibe, Seibo.
490. *Schaefferia frutescens* Jacq.
In dense scrub Bayajibe, Seibo.
491. *Schaefferia frutescens* Jacq.
In dense scrub Bayajibe, Seibo.
492. *Gynura latifolia* (W. Urban)
In dense scrub Bayajibe, Seibo.
493. *Eugenia axillaris* (Sw.) Willd.
In dense scrub Bayajibe, Seibo.
494. *Tillandsia tenuifolia* L.
In dense scrub Bayajibe, Seibo.
495. *Capparis jamaicensis* Jacq.
In dense scrub Bayajibe, Seibo.
496. *Exortumna acuminatum* Urban
In dense scrub Bayajibe, Seibo.
497. *Novadendron quadrangulare* ^{Rauvolfia (Belly) Bullon} (H.K.) Kunz & Urban
In trees in scrub Bayajibe, Seibo.
498. *Chiococca alba* (L.) Hitchc.
In dense scrub Bayajibe, Seibo.
499. *Lanthonium fragaria* (L.) Berg.
In dense scrub Bayajibe, Seibo.
500. *Calyptanthus pygmaeus* (L.) Sw.
In dense scrub Bayajibe, Seibo.

501. *Hylocereus* [Dead] *capitatus* (L.) *Sw.*
In dense scrub *Nayajibe*, *Seibo*.
502. *Persea polyphylla* (L.) *Radlk.*
Banks of salt lake, *Saona Island*, *Seibo*.
503. *Eugenia axillaris* (Sw.) *Meld.*
Saona Island, *Seibo*.
504. *Rippia nodiflora* (L.) *Michx.*
Palina, *Saona Island*, *Seibo*.
505. *Cyperus floridanus* *Britton*
Palina, *Saona Island*, *Seibo*.
506. *Phyllanthus*, *Epiphyllanthus* sp.
Banks of salt lake, *Saona Island*, *Seibo*.
507. *Capparis jamaicensis* *Jacq.*
Banks of salt lake, *Saona Island*, *Seibo*.
508. *Frederickia glaucoxyta* (Ktze) *Urban*
Palina, *Saona Island*, *Seibo*.
509. *Gynura latifolia* (Vahl) *Urban*
Banks of salt lake, *Saona Island*, *Seibo*.
510. *Krugiodendron ferrugineum* (Vahl) *Urban*
Banks of salt lake, *Saona Island*, *Seibo*.
511. *Canella Winterana* (L.) *Gaertn.*
Banks of salt lake, *Saona Island*, *Seibo*.
512. *Rhacoma Crossopetalum* L.
Banks of salt lake, *Saona Island*, *Seibo*.
513. *Pseudophaea argentea* *Pendl.* = *P. viminea* (Mart.) *Bucc.*
Banks of salt lake, *Saona Island*, *Seibo*.
514. *Eugenia axillaris* (Sw.) *Meld.*
Banks of salt lake, *Saona Island*, *Seibo*.
515. *Eleocharis capitata* (L.) *L. B.*
Palina, *Saona Island*, *Seibo*.
516. *Krugiodendron ferrugineum* (Vahl) *Urban*
Banks of salt lake, *Saona*, *Seibo*.
517. *Suaeda succulenta* *Jacq.*
Banks of salt lake, *Saona Id.*, *Seibo*.
518. *Cyperus tenuis* *Sw.*
Palina, *Saona Island*, *Seibo*.
519. *Bumelia obtusifolia* (Lam.) *DC.*
Banks of salt lake, *Saona Island*, *Seibo*.
520. = *Capparis cynophallophora* *Jacq.*
Banks of salt lake, *Saona Island*, *Seibo*.

521. *Pithecolobium Uruguic-catig* (L.) Benth
Banks of salt lake, Saona Island, Seibo.
522. *Jacquinia Barbacov* (Loeffl.) Mez.
Banks of salt lake, Saona Island, Seibo.
523. *Jacquinia Barbacov* (Loeffl.) Mez.
Saona Island, Seibo.
524. *Broughtonia domingensis* (Lindl.) Rolfe.
Rocky point, La Romana, Seibo.
525. *Pedilanthus augustifolius* Vit.
In dense scrub, La Romana, Seibo.
526. *Pedilanthus augustifolius* Vit.
La Romana, Seibo.
527. *Pedilanthus augustifolius* Vit.
La Romana, Seibo.
528. *Cephalocereus* dead stems kept.
La Romana, Seibo.
529. *Cephalocereus* dead stems kept.
La Romana, Seibo.
530. *Hylocereus* [dead] *Neophytolobium* (Wright) A. N. S. (?)
In dense scrub, La Romana, Seibo.
531. *Cephalocereus* (dead stems kept)
La Romana, Seibo.
532. *Mitrasia axillaris* (C.W.) Kuntze
In woods, Consuelo, Macoris.
533. *Pseudocryphaea flagellifera* (Brid.) E. G. B.
In trees, Consuelo, Macoris.
534. *Neckera undulata* (P. B.) Hedw.
In trees, in shady woods, Consuelo, Macoris.
535. *Muehlenbergia elegans* (Vahl) Nees.
Deep woods, Consuelo, Macoris.
536. *Dendropanax arboreum* (L.) DC. + Pl.
In deep woods, Consuelo, Macoris.





Conservation work performed 1987-1988. NY
State Conservation/Preservation Discretionary
Grant.

