

590
F452
no. 1-13

THE WHITE-TAILED DEER

UNIVERSITY

NO. 1

JUN 1 1922



FIELD MUSEUM OF NATURAL HISTORY

CHICAGO

1922

**THE UNIVERSITY
OF ILLINOIS**

LIBRARY
590
F45t
no.1-13









Sculptures by Herbert Haseltine
of
Champion Domestic Animals
of Great Britain

PRESENTED TO FIELD MUSEUM
BY TRUSTEE MARSHALL FIELD



ZOOLOGY
LEAFLET 13

FIELD MUSEUM OF NATURAL HISTORY
CHICAGO
1934

The Zoological Leaflets of Field Museum are devoted to brief, non-technical accounts of the history, classification, distribution and life habits of animals, with especial reference to subjects shown in the Museum's exhibits.

LIST OF ZOOLOGICAL LEAFLETS ISSUED TO DATE

1. The White-tailed Deer	\$.10
2. Chicago Winter Birds10
3. The American Alligator10
4. The Periodical Cicada10
5. The Alligator Gar10
6. The Wild Turkey10
7. The Man-Eating Lions of Tsavo50
8. Mammals of the Chicago Area20
9. Pike, Pickerel and Muskalonge50
10. The Truth about Snake Stories15
11. The Frogs and Toads of the Chicago Area25
12. The Salamanders of the Chicago Area25
13. Sculptures of Champion Domestic Animals of Great Britain25

STEPHEN C. SIMMS, DIRECTOR

FIELD MUSEUM OF NATURAL HISTORY
CHICAGO, U. S. A.

CONTENTS

	PAGE
Introduction	3
1. Shire Stallion: Field Marshal V	8
2. Shire Stallion: Harboro' Nulli Secundus	10
3. Suffolk Punch Stallion: Sudbourne Premier	12
4. Percheron Stallion: Rhum	14
5. Percheron Mare: Messaline (and Foal)	16
6. Composite Type: The Thoroughbred Horse	18
7. Thoroughbred Horse: Polymelus	20
8. The Chaser: Sergeant Murphy	22
9. Polo Pony: Perfection	24
10. Aberdeen-Angus Bull: Black Knight of Auchterarder	26
11. Shorthorn Bull: Bridgebank Paymaster	28
12. Hereford Bull: Twyford Fairy Boy	30
13. Dairy Shorthorn Cow: Lily Charter 2nd	32
14. Lincoln Ram: Conqueror (1921)	34
15. Lincoln Ram: Challenger (1922)	36
16. Southdown Ewe: Sandringham Ewe No. 10 of 1921	38
17. Middle White Boar: Wharfedale Deliverance	40
18. Middle White Sow: Wharfedale Royal Lady	42
19. Berkshire Boar: Highfield Royal Pygmalion	44

SCULPTURES OF
CHAMPION DOMESTIC ANIMALS
OF GREAT BRITAIN

INTRODUCTION

The series of sculptures of British prize domestic animals, on permanent exhibition in Hall 12 at Field Museum of Natural History, provides an excellent representation not only of the particular champions which were used as models, but also of types illustrating well the physical characteristics of various outstanding breeds of live stock.

The models, some carved in stones of various hues and textures chosen especially for their suitability to reproduce the colors and characteristics of the different animals, and some, where appropriate, cast in bronze, are the work of the noted sculptor, Mr. Herbert Haseltine. The Museum's acquisition of them is due to the generosity of Mr. Marshall Field, Trustee of the institution.

Work on the series was begun by the sculptor in the summer of 1921, at which time the Champion Shire Stallion, FIELD MARSHAL V, from the stables of King George V, was modeled. The original models of other animals were made between 1922 and 1924, in various parts of England, Ireland, and Scotland, and the collection was augmented and perfected in succeeding years. In 1925 the series was exhibited in Paris and in London.

Great Britain as a nation has long encouraged the breeding of fine horses and stock of all kinds, and in

consequence her champions are indeed worthy of having their glory perpetuated in stone by an artist whose special gifts in this field have won him wide acclaim. In similar fashion it was the custom of the ancient Greeks to erect monuments not only to their gods and their human heroes, but to noble steeds which won chariot races.

The animals represented in the sculptures exhibited in Field Museum, and pictured in this leaflet, are actual winners whose mettle has been proved in stock shows and on race courses. To model them the sculptor made studies of them in their various moods and postures, visiting their stables, their stalls, and their pens. The sculptures are one-quarter life size.

The bulls represented include the breeds known as the Aberdeen-Angus, the Shorthorn, and the Hereford. The Aberdeen-Angus is a Scottish breed, black-coated, and without horns. It is typified by a strong bony frame of moderate dimensions carrying a heavy mass of flesh. The champion represented in this series is a bull known as **BLACK KNIGHT OF AUCHTERARDER**.

The Shorthorns, another Scottish breed, are represented by a magnificent specimen, **BRIDGEBANK PAYMASTER**, prize winner both in England and Scotland for three successive years, whose victory is still remembered by officials of the show ring. The sculpture of this animal has been executed appropriately in red marble.

Chosen as characteristic of the Herefords was a bull named **TWYFORD FAIRY BOY**. This is an animal with a dark red coat in contrast to which are a white head, legs, and tail. Its hair is almost as curly as that of a sheep.

Two Lincoln rams and a Southdown were selected to represent the sheep. The Lincoln breed is celebrated for the luxuriance and high quality of its wool. The Southdown is highly esteemed for its delicious meat—so highly, in fact, that the breeders say that the meat of the Lincoln variety is fit only to furnish candles to light the banquet at which Southdown mutton is served

The collection includes models of three extraordinary swine—two of the Middle White breed and a Berkshire. The Middle Whites are carved in pink marble. They are descendants of a Chinese breed which was imported into Yorkshire in the eighteenth century, and they are still characterized by the squat turned-up nose and stiff ears of their remote ancestors. The Berkshires are one of the best known and commonest varieties of pigs, and are raised in great numbers in the United States as well as Great Britain.

The deviations from nature achieved by the breeders, represented in these bovine and porcine models by such refinements as the pig's vast shiny bolster and the sheep's huge woollen blanket, have been modeled by the artist so as to reproduce faithfully their actual shapes, with a classic treatment of their outlines in the manner of the ancient sculptors of Egypt, China, and Greece.

Among the sculptures of horses are representations of both the finest types of powerful heavily built draft horses and the fleet-footed light-framed sleek performers of the race course and the polo field. The characteristics of the strong patient draft horse are at once recognized in the Shires with their feet flounced with hair, and in the Suffolk Punch, whose qualities recall days when horses bore knights with heavy coat-of-mail, and caparison. Rivals to these are the three French Percherons, imported into England since the war. The individual traits of each member of this group are displayed—the sire arches his neck and turns away as if to neigh, while the dam stretches tenderly towards the foal, which clings closely to her flank. In sharp contrast to the draft horses appears the silhouette of the thoroughbred, SERGEANT MURPHY, holding its head victoriously. This horse, winner of the Grand National at fourteen years of age, is a splendid specimen of steeplechaser. Another champion of the track is POLYMELUS, winner of many races on the flat, and, in 1916, 1920, and 1921, at the head of the list of winning

sires. Polymelus' posterity includes horses which have won a total of more than a million dollars (£220,000). This champion of the track and sire of champions was modeled by the artist a few months before its death. Decrepit as the horse was at that time, its fine proportions, depth of shoulder, and length of rein are still discernible in the sculpture.

The type of heavy-weight polo pony is represented by PERFECTION. This horse was bred in Ireland, but its forebears are unknown. Stocky and strong on the legs, Perfection is an admirable specimen of the ponies, which are as keen at the game as the players who ride them.

In an appreciation of the artist's work by the late Georges Bénédict of the Académie Française are found the following words which well express what has been accomplished in this series of sculptures:

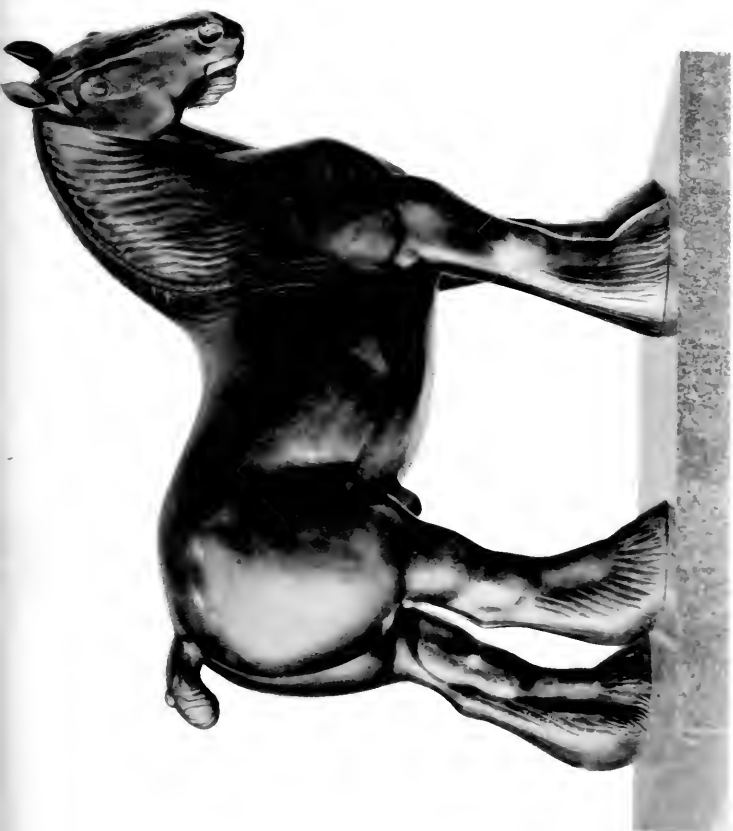
"In the course of his close study of these wonderful examples of British breeding, Haseltine has been brought into contact with all those interested in their welfare, from owners to stud-grooms and herdsman, and has been able to draw upon the knowledge accumulated by them from day to day to supplement his own powers of observation. His chief merit lies in his having realized that the pursuit of their utilitarian ideal of the best furnishes the artist with the essentials for his own pursuit of the beautiful. To give to the line the simplest expression, to reconstruct nature's handiwork in accordance with man's directions, to feel in it and to give to it its due proportion and to endow it with the technical detail which every aspect demands, can alone satisfy the true artist and constitute a true work of art."

1. SHIRE STALLION: FIELD MARSHAL V.

Foaled 1917. Sire: CHAMPION'S CLANSMAN. Dam: EARLY PRIMROSE. Bred by and the property of His Majesty King George V, Sandringham stud.

First and Champion at the Show of the Shire Horse Society, 1920 and 1921.

Chiseled bronze plated with gold, mounted on porphyry base.



2. SHIRE STALLION: HARBORO' NULLI SECUNDUS.

Foaled 1914. Sire: BABINGLEY NULLI SECUNDUS. Dam: TATTON FRIEZE by TATTON FRIAR. Bred by W. T. Hayr, and the property of Mrs. Stanton, Snelston Hall, Derbyshire, England.

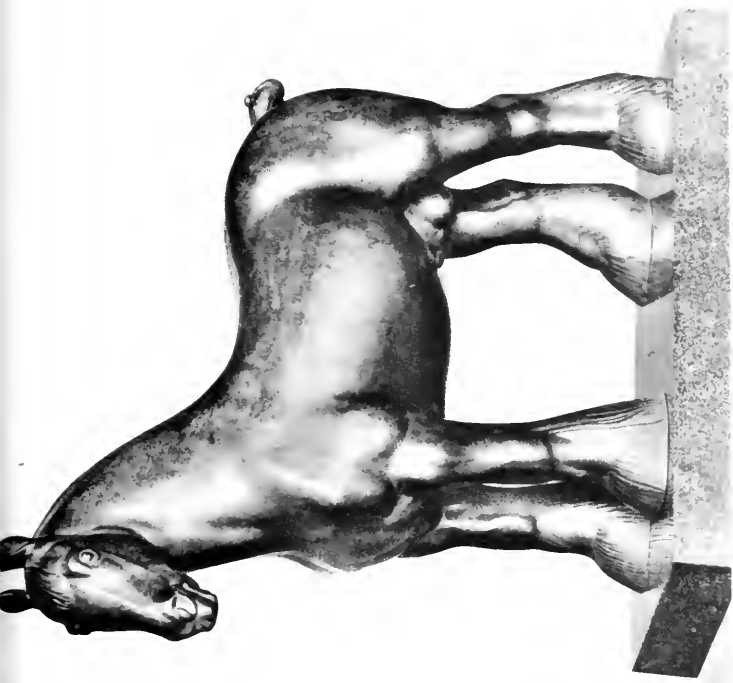
First and Reserve Junior Champion at the Show of the Shire Horse Society, 1917.

First and Reserve Champion at the Show of the Shire Horse Society, 1918.

First and Champion at the Show of the Shire Horse Society, 1922 and 1923.

First and Champion at the Show of the Royal Lancashire Society, 1923.

Chiseled bronze plated with gold, mounted on porphyry base.



3. SUFFOLK PUNCH STALLION: SUDBOURNE PREMIER.

Foaled 1919. Sire: SUDBOURNE BEAU BROCADE. Dam: SUDBOURNE MOONLIGHT.
Bred by the late Lord Manton, and the property since July 11, 1923, of Percy C. Vestey, Easton Park, Wickham Market, England.

First and Champion at the Show of the Royal Agricultural Society of England, 1921 and 1922.

First and Champion at the Suffolk Show, 1922 and 1924.

First and Champion at the Woodbridge Show, 1923.

First at the Derby Show, 1923.

First and Champion and Victory Challenge Cup, Woodbridge, 1924.

First at the Ipswich Spring Show, 1924.

First at the Norwich Spring Show, 1924.

First Suffolk Stallion, 1924.

First at the Essex Show, 1924.

First at the Norfolk Show, 1924.

Bronze plated with gold and ornamented with lapis lazuli, ivory, and onyx.



4. PERCHERON STALLION: RHUM.

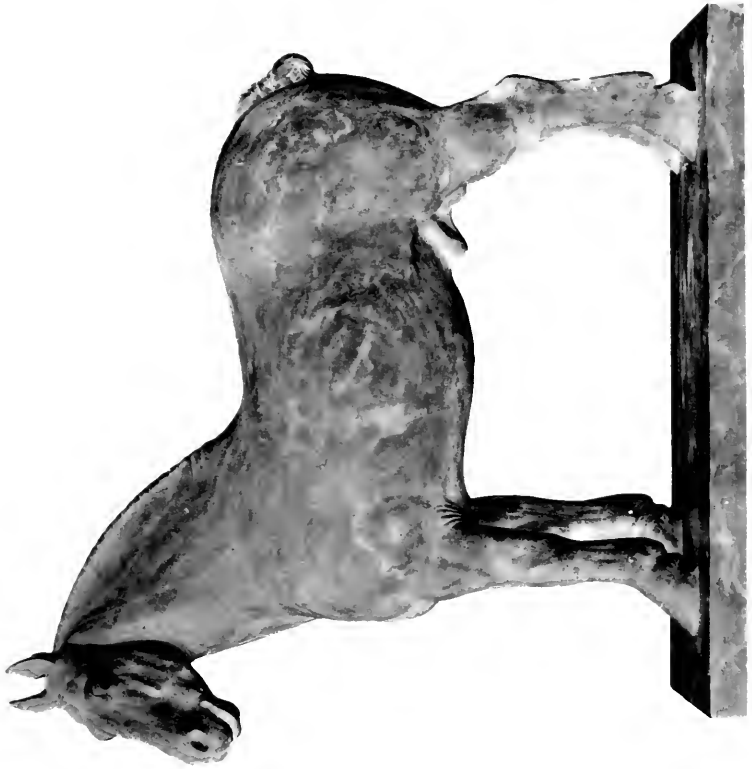
Foaled 1917. Sire: LAGOR. Dam: MAZURKA. Bred by M. Chopin, La Bigottière, Bellème, Mortagne, France, and the property of Mrs. Robert Emmet, the Greyling Stud, Moreton Morrell, Warwickshire, England.

First at Mortagne, 1919.

First and Champion at the Show of the Royal Agricultural Society of England, 1921, 1922, and 1923.

First and Champion, Norwich Stallion Show, 1922 and 1923.

Bardiglio marble.



5. **PERCHERON MARE: MESSALINE (AND FOAL).**

Foaled 1912. Sire: DOUVREUR-EX-COUVREUR. Dam: PAQUERETTE. Bred in France, and the property of Mrs. Robert Emmet, the Greyling Stud, Moreton Morrell, Warwickshire, England.

First, La Mortagne Show, 1917, 1918, and 1919.

First at the Show of the Royal Counties Agricultural Society, 1920.

First and Group Prize at the Show of the Norfolk Agricultural Society, 1920.

First at the Show of the Royal Agricultural Society of England, 1920.

First, Moreton-in-the-Marsh, 1920.

First and Champion at the Show of the Royal Agricultural Society of England, 1921 and 1922.

Bardiglio marble.



6. COMPOSITE TYPE: THE THOROUGHBRED HORSE.

Bronze.



7. THOROUGHBRED HORSE: POLYMELUS.

Foaled 1902. Died March, 1925. Sire: CYLENE. Dam: MAID MARION. Bred by the Marquis of Crewe, and the property of S. B. Joel. Champion sire for five years. His progeny won over £220,000. Among them were:

BLACK JESTER, winner of the St. Leger and City and Suburban.

POMMERN, winner of the Two Thousand, Derby, and St. Leger.

FINELLA, winner of the Oaks and Derby.

CORCYRA, winner of the Middle Park Plate and Newmarket Stakes and second in the Two Thousand Guineas.

BENEVENTE, winner of the Middle Park Plate.

MAIDEN ERLEGH, winner of the City and Suburban and second in the St. Leger.

POLKERRIS, winner of the Coronation Stakes.

ARCHAIC, winner of the Atlantic Stakes and second in the Derby.

DOMINION, winner of several races and second in the St. Leger.

SILVERN, winner of the Greenham Stakes and second in the St. Leger.

POLYGNOTUS, winner of the Greenham Stakes.

HUMORIST, winner of the Derby.

CINNA, winner of the One Thousand Guineas and Coronation Stakes and second in the Oaks.

POLUMFTIS, winner of the Column Produce Stakes.

POMME-DE-TERRE, winner of the Manchester Cup.

GOLDEN GUINEA, winner of the Richmond Stakes.

Prizes won by POLYMELUS: the Richmond Stakes, Goodwood; the Rous Memorial Stakes, Newmarket; the Criterion Stakes, Newmarket; the Fifty-second Triennial Stakes, Ascot; the Durham Produce Stakes, Stockton; the Duke of York Stakes, York; the Gatwick Stakes. Since being purchased by S. B. Joel, has won the Duke of York Stakes, Kempton Park; the Champion Stakes, Newmarket; the Cambridgeshire Stakes, Newmarket; the Princess of Wales Stakes, Newmarket.

Bronze.



8. THE CHASER: SERGEANT MURPHY.

Foaled 1910. Chestnut gelding. Sire: GENERAL SYMONS. Dam: ROSE GRAFT by ASCETIC by ROSE STOCK by PRESTON PANS by ROSELEAF by FRIGHT. Bred by G. L. Walker, Athboy, County Meath, Ireland, and the property of S. Sanford.

Winner of the Grand National, 1923.

Bronze.

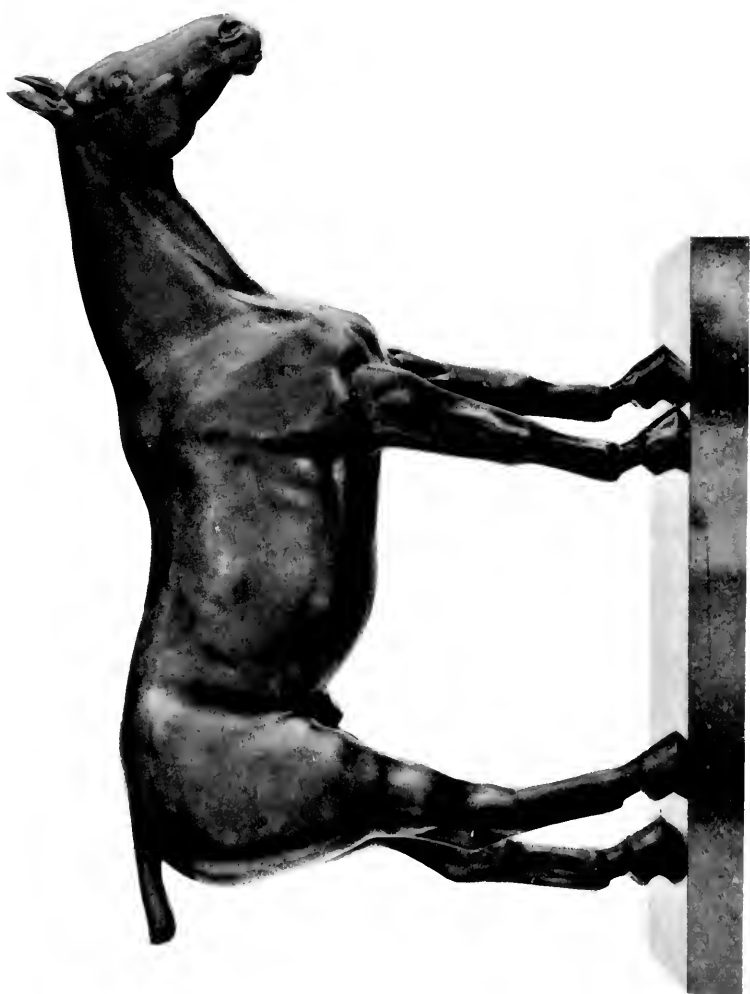


9. POLO PONY: PERFECTION.

Foaled 1915. Pedigree unknown. The property of Major J. F. Harrison, King's Walden Bury, Hitchin, England.

Champion Heavy-weight Polo Pony at Hurlingham and Ranelagh, 1922, 1923, and 1925. First at Olympia, 1923 (only time shown).

Chiseled bronze.



10. ABERDEEN-ANGUS BULL: BLACK KNIGHT OF AUCHTERARDER.

Calved April 26, 1919. Sire: EVMAR. Dam: BLACKBIRD V OF BRAEVAIL. Bred by A. T. Reid, and the property of Sir Leonard Brassey, M.P., Apethorpe Hall, Peterborough, England.

Champion at the Show of the Royal Agricultural Society of England, 1921, 1922, and 1923.
Champion at the Show of the Highland and Agricultural Society of Scotland, 1921 and 1922.

Black Belgian marble.



11. SHORTHORN BULL: BRIDGEBANK PAYMASTER.

Calved January 28, 1919. Sire: GAINFORD RINGLEADER. Dam: PRINCESS CHRISTINA.
Bred by and the property of Albert James Marshall, Bridgebank, Stranraer, Scotland.

First and Champion at the Show of the Royal Agricultural Society of England, 1921, 1922, and 1923.
First and Champion at the Show of the Highland and Agricultural Society of Scotland, 1921, 1922, and 1923.

Red Acajou marble.



12. HEREFORD BULL: TWYFORD FAIRY BOY.

Calved January 16, 1920. Sire: BOUNDS INVESTMENT. Dam: FAIRY GIRL III. Bred by and the property of Charles H. Tinsley, Twyford, Pembroke, England.

First and Champion in 1922 at the Shows of the Royal Agricultural Society of England, the Bath and West Society, the Shropshire and West Midland Society, and the Three Counties Society.

Bronze partially plated with gold.



13. DAIRY SHORTHORN COW: LILY CHARTER 2ND.

Calved March 28, 1916. Sire: THORNECROFT RICHARD. Dam: LILY CHARTER. Bred by Frank Bird, Mill Lane, Neston, Birkenhead, England. Purchased as a calf two months old by the Duke of Westminster, Eaton Hall, Cheshire, and by Lawrence Hignett, Hook End, Checkendon, Reading, September 3, 1923.

First and Female Champion and in groups which won 100 guineas (\$511) and 50 guineas (\$255.50).

Silver Challenge Cups at the Show of the Royal Agricultural Society of England, 1923 (only time exhibited).

Chiseled bronze partially plated with gold.



14. LINCOLN RAM: CONQUEROR (1921).

Sire: PATTERN SQUIRE. Bred by C. W. Tindall, and the property of C. W. Tindall and Major W. H. Rawnsley, at Thornton House, Horncastle, England.

First and Champion at the Show of the Royal Agricultural Society of England, 1921.

First at Lincoln Show and Sale, 1921.

First and Champion at the Yorkshire Show, 1922.

Burgundy limestone.



15. LINCOLN RAM: CHALLENGER (1922).

Sire: DOWSBY PRIDE. Bred by C. W. Tindall, and the property of C. W. Tindall and Major W. H. Rawnsley, at Thornton House, Horncastle, England.

First Two-shear and Champion at the Show of the Royal Agricultural Society of England, 1922.

First at the Lincolnshire Show, 1922.

Second and Reserve Champion at the Yorkshire Show, 1922.

Burgundy limestone.

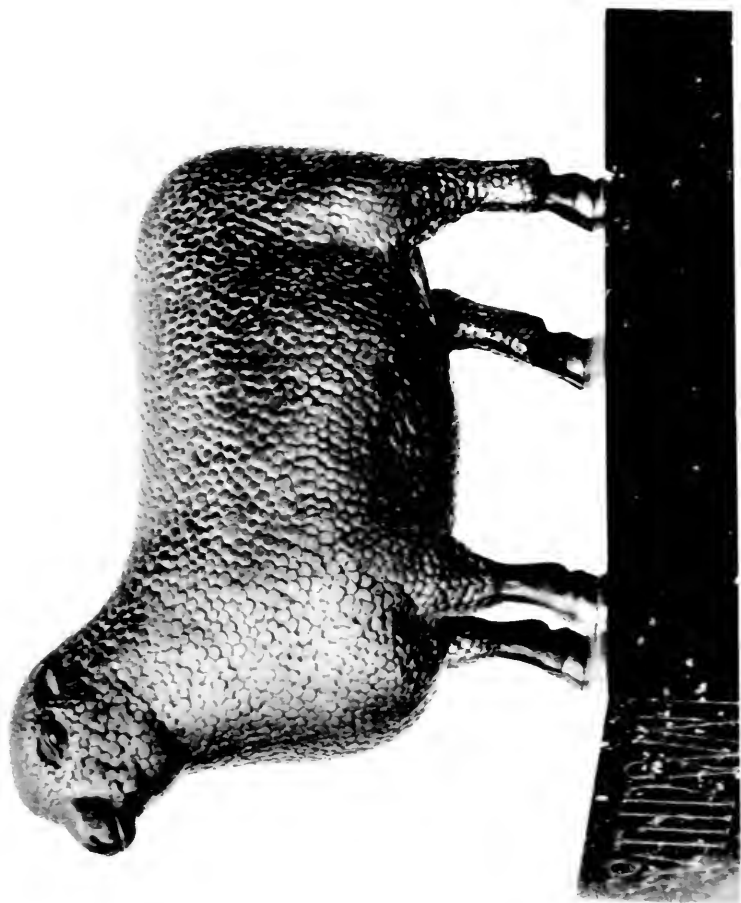


16. SOUTHDOWN EWE: SANDRINGHAM EWE NO. 10 OF 1921.

Sire: GOODWOOD 68 OF 1919. Dam: SANDRINGHAM 24 OF 1919. Bred by and the property of His Majesty King George V, Sandringham flock.

One of the Champion Pen of Ewes at the Show of the Royal Agricultural Society of England, 1922.

Bronze plated with gold.



17. MIDDLE WHITE BOAR: WHARFEDALE DELIVERANCE.

Bred by and the property of Leopold C. Paget, Middlethorpe Hall, York, England.

First at the Royal Lancashire Show, 1920.

First and Reserve Champion at the Show of the Royal Agricultural Society of England, 1921.

First and Champion at the Royal Lancashire Show, 1921.

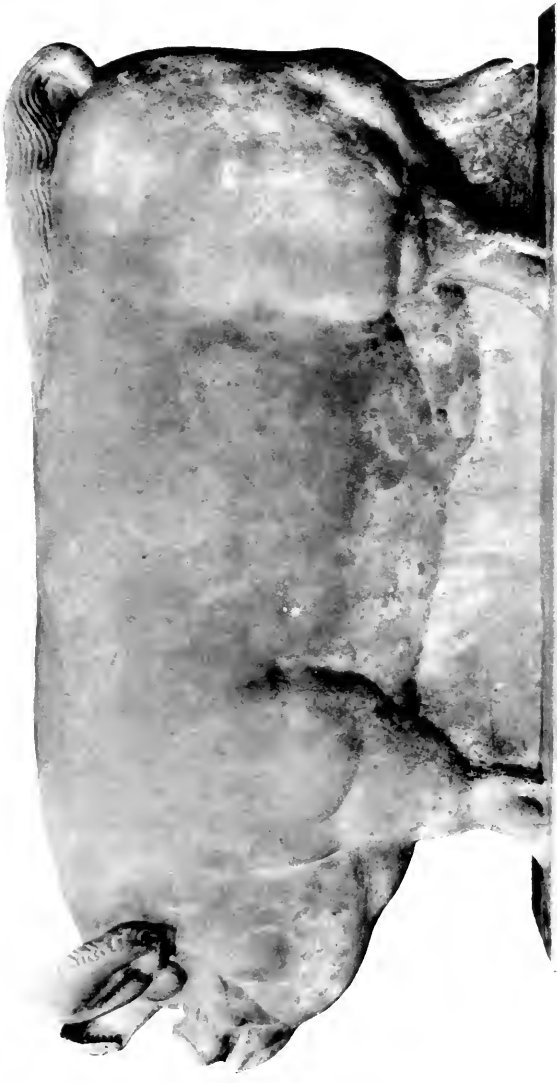
First and Champion Boar at the Show of the Royal Agricultural Society of England, 1922 and 1923.

First and Reserve Championship (being beaten by his own daughter, WHARFEDALE RADIANCE) at the Yorkshire Show, 1922.

Reserve Champion of his breed at the Show of the Royal Agricultural Society of England, 1922 and 1923 (being beaten by his daughters, WHARFEDALE RADIANCE and WHARFEDALE ROYAL LADY, respectively).

First and Champion at the Yorkshire Show, 1923.

Rose St. Georges marble.



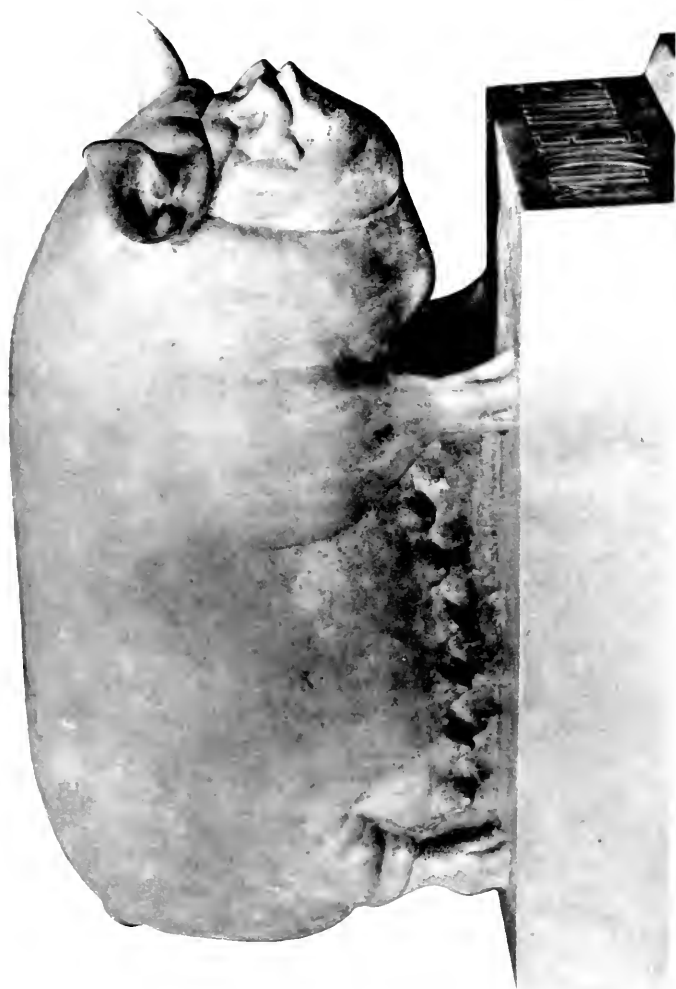
18. MIDDLE WHITE SOW: WHARFEDALE ROYAL LADY.

Bred by and the property of Leopold C. Paget, Middlethorpe Hall, York, England.

First and Breed Champion at the Show of the Royal Agricultural Society of England, 1921 and 1923

First and Champion at the Yorkshire Show, 1923.

Rose St. Georges marble.



19. BERKSHIRE BOAR: HIGHFIELD ROYAL PYGMALION.

Sire: PYGMALION. Dam: EATON PRINCESS ROYAL THIRD. Bred and exhibited by Frank Townend, Highfield, Moor Allerton, Leeds, England, and the property since January, 1923, of the Duke of Westminster.

First and Breed Champion at the Show of the Royal Agricultural Society of England, 1922.

First and Champion at the Yorkshire Show, 1922.

Chiseled bronze partially plated with gold.

UNIVERSITY OF ILLINOIS













UNIVERSITY OF ILLINOIS URBANA



3 0112 037878243