

Historic, archived document

Do not assume content reflects current scientific knowledge, policies, or practices.

02
62.09



1894=5

Sunset Seed ^A_N^D Plant Co.

(SHERWOOD HALL NURSERY CO.)

SEEDS and GENERAL • NURSERY • STOCK

WHOLESALE AND RETAIL

AWARDS

Numerous First Premiums from the California State Floral Society, San Francisco.

First Premium for Best Display of Garden Seeds, California State Board of Agriculture, Sacramento, 1893.

First Award, Gold Medal for Sweet Peas, distinct varieties, growing at World's Columbian Exposition, Chicago, 1893.

First Award, Gold Medal, Garden, Field and Flower Seeds and Horticultural Requisites, California Midwinter International Exposition, San Francisco, 1894.

First Award, Gold Medal, Sweet Pea Seeds, superior quality and largest variety, California Midwinter International Exposition, San Francisco, 1894.

First Award, Gold Medal, Sweet Pea Blossoms, California Midwinter International Exposition, San Francisco, 1894.

First Award, Gold Medal, Ornamental and Decorative Plants, California Midwinter International Exposition, San Francisco, 1894.

The above were in all cases the Highest Awards in the Several Departments in which we entered for competition.

427=429 Sansome Street
San Francisco

SEED FARM AND NURSERIES
MENLO PARK, CAL.

Bulb



Culture

AND LIST OF

Bulbs,



Plants,

Seeds, Etc.

FOR

FALL PLANTING

Hyacinth Glasses



PATENT

Hyacinths grown in glasses of water are charming ornaments for parlor windows, and the ease and success in flowering bulbs in this way adds greatly to the popularity of not only Hyacinths, but Polyanthus, Narcissus, Amaryllis Formosissima and other bulbs, which can be grown in the same manner. We offer both the plain cheap glasses, and the more expensive and handsomely decorated ones; with care they last for years, and can be used for cut flower vases when desired.

Patent Hyacinth Glass. This is in two parts, the inner contains the bulbs and roots, and can be removed without injuring them, to refill with water. Each, 35c.; \$3.50 per dozen.

Tye's Shape Hyacinth Glass. An improved shape—not so easily tipped over—they come in various plain colors. 15c. each; \$1.50 per dozen.

Tall or Belgium Hyacinth Glass. This is a favorite style. In shape it is similar to the Patent, but plain glass in various colors. 15c. each; \$1.50 per dozen.



TYE'S SHAPE

Seeds for Present Sowing

All Seeds in this List are 5c. per packet, and will be Delivered Free by Mail on Receipt of Price

Flower Seeds

Alyssum Sweet, white.
Antirrhinum, mixed.
Aquilegia, mixed.
Asters, all sorts mixed.
Balloon Vine.
Balsams Camellia, flowered, mixed.
Calendula "Meteor," yellow stri'd.
Candytuft, mixed.
Canterbury Bells, mixed.
Carnation, fine mixed.
Chrysanthemum, choice mix d.
Clarkia, mixed.
Cobea Scandens.
Convolvulus Major.
" Minor.
Cosmos, mixed.
Cypress Vine, mixed.
Dahlia, double, mixed.

Dahlia, single, mixed.
Eschscholtzia, mixed.
Everlasting Flowers, mixed.
Forget-me-not, blue.
Foxglove, mixed.
Four O'clock, mixed.
Gaillardia, mixed.
Godetia, mixed.
Golden Feather, (Pyrethrum).
Gourds, all sorts mixed.
Heliotrope, fine mixed.
Hollyhock, choice, mixed.
Marigold, African, lemon.
" French, striped.
Mignonette, sweet.
Nasturtium, tall, mixed.
" dwarf, mixed.
Ornamental Grasses, mixed.

Pansy, fine mixed.
Passion Flower, scarlet.
Petunia, mixed.
Phlox Drummondii, mixed.
Pink, choice, mixed.
Poppy, mixed.
Portulaca, mixed.
Scabiosa, dwarf, double, mixed.
Sensitive Plant.
Stocks, mixed.
Sweet Peas—(see page 12).
Sweet William, mixed.
Verbena, choice, mixed.
Violet, saved from our own unrivaled collection.
Virginia Stock.
Wallflower, mixed.
Zinnia, dwarf, mixed.

Vegetable Seeds

Beets and Mangel Wurzel. 10c. per oz.; 40c. per lb.
Early Blood Turnip.
Long Smooth Blood.
Swiss Chard.
Cabbage. 20c. per oz.; \$1.50 per lb.
Early York.
All Seasons.
Premium Flat Dutch.
Drumhead Savoy.
Carrot. 10c. per oz.; 60c. per lb.
Danvers Half Long.
Improved Long Orange.
Cauliflower. Early Snowball, \$1.25 per oz.
Large Algiers, 40c. per oz.
Half Early Paris, 50c. per oz.; \$8.00 per lb.

Lettuce. 20c. per oz.; \$1 per lb.
California Cream Butter.
Curled Simpson.
Improved Hanson.
Paris White Cos (Romaine)
Onions. 20c. per oz.; \$2.00 per lb.
Spanish King.
White Globe.
Yellow Danvers.
Parsley. 10c. per oz.; 75c. per lb.
Champion Moss Curled.
Peas. 10c. per lb.; \$8 per 100 lbs.
Burpee's Quality.
American Wonder.
Advancer.
Champion of England.
Yorkshire Hero.

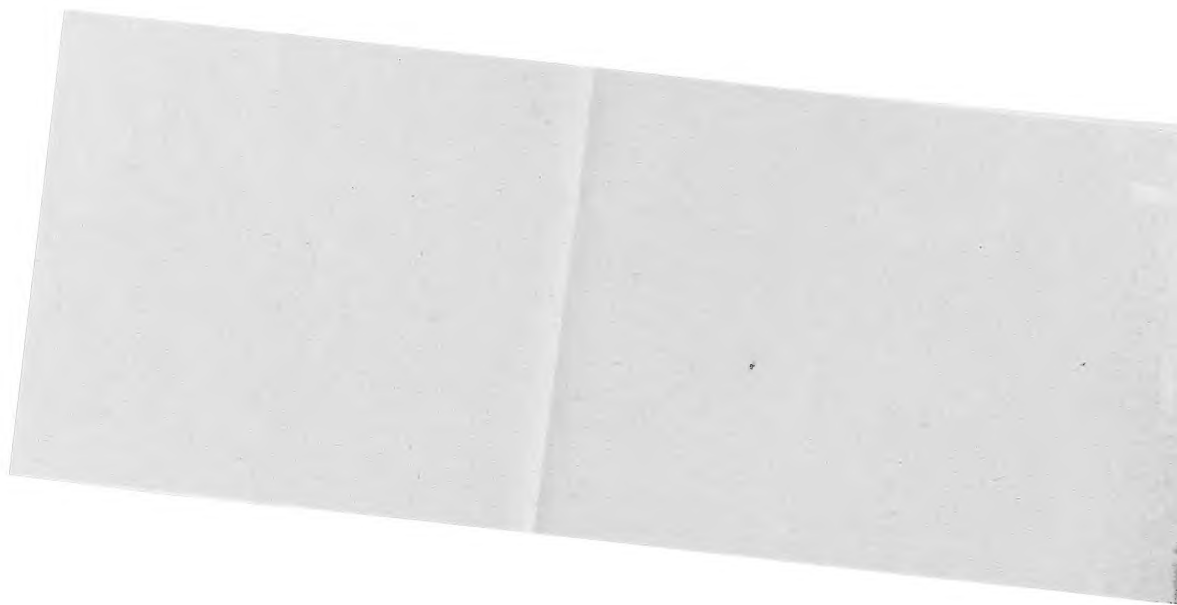
Radish. 10c. per oz.; 60c. per lb.
Early Scarlet Turnip.
Long Scarlet.
Spinach. 10c. per oz.; 30c. per lb.
Long Standing.
Prickly.
Tomato. 20c. per oz.; \$2 per lb.
Acme.
Dwarf Champion.
Ignotum.
Long Keeper.
Perfection.
Trophy.
Turnip. 10c. per oz.; 50c. per lb.
Extra Early Milan.
Golden Ball.
White Egg.
White Strap Leaf.
Improved American Rutabaga.

TO THE TRADE ONLY

WE shall appreciate orders from accompanying Catalogue, and will allow a discount of twenty per cent. and even more in some cases, where our stock warrants it. Special quotations furnished where very large quantities are wanted.

SUNSET SEED AND PLANT CO.

San Francisco, Calif.



Choice Named Hyacinths

FOR CULTURE IN POTS, GLASSES OR THE GARDEN

CULTURE. For growing in pots. Plant from September to December, using a light loam mixed with leaf mould and well decomposed manure. Cover the bulbs so that the tops will just show, and after watering well, place in a cool, dark place out of doors, where they should remain until the pots are full of roots and the tops have sprouted about an inch, which will be in about six or eight weeks. They may then be removed indoors to a sunny situation and plentifully supplied with water at the roots.

For growing in glasses. Allow the water to just touch the base of the bulbs, and place them in a dark closet or cellar where the temperature is about 50°. Expose gradually to light and sun when the glasses are well filled with roots. Change the water as it becomes impure, drawing the roots entirely from the glass, and rinsing in clean water. Be particular to always keep the water to a level with the base of each bulb.

For growing in the garden. Bulbs may be planted any time from September to December. They require a light, rich soil and the crown of the bulb should be three to five inches below the surface; set six inches apart. Where the ground becomes frozen cover with straw or leaves to the depth of about three inches, removing the covering early in spring.

If ordered by mail please add fifteen cents per dozen for postage.



SINGLE HYACINTH

Single Hyacinths

	EACH
Alba Maxima. Pure white, fine.....	\$0 20
Amy. Vivid crimson scarlet.....	10
Baron Von Thuill. Deep blue, large compact truss of bloom. Fine for early forcing.....	10
Charles Dickens. Porcelain shaded lilac.....	10
Czar Peter. Beautiful clear blue.....	20
Cosmos. Fine pink, large truss.....	10
Fabiola. Deep scarlet, striped.....	20
Gigantea. Delicate blush, very large spike.....	15
Grand Vainqueur. Pure white.....	15
Grandvedette. Purest white, large bells, very fine for cutting; one of the earliest pure white for forcing.....	10
Hermann. Orange yellow.....	15
King of the Blues. Deep blue, extra fine.....	20
La Citronniere. Fine golden yellow.....	15
La Grandesse. Finest pure white, grand compact spike of bloom and very large bells.....	15
Madam Hodson. Pink, carmine striped.....	15
Madam Vanderhoop. Purest white.....	15
Marie. Purple, striped with indigo.....	15
Maria Theresa. Rose striped.....	10
Mont Blanc. Pure white.....	20
Nimrod. Light blue.....	15
Norma. Delicate pink, beautiful.....	15
Rhinoceros. Pale orange.....	20
Robert Steiger. Fine crimson.....	15
Uncle Tom. Dark blue.....	10
Vesta. Pure white.....	15
William II. Purple black.....	15

One bulb each of above 26 Single Hyacinths for \$3.50

Fine Mixed Single Hyacinths, all colors, 60c. per dozen; \$4.00 per hundred.

Double Hyacinths

	EACH		EACH
Anna Maria. Waxy pink, violet eye.....	\$0 10	La Tour D'Auvergne. Waxy white.....	15
Blanchard Pure white.....	15	La Virgite. Delicate blush white.....	15
Blokesberg. Azure blue, striped.....	15	Lord Wellington. Dark porcelain.....	20
Bouquet Tendre. Rosy crimson.....	15	Milton. Dark crimson, shaded red.....	40
Czar Nicholas. Clear, delicate rose.....	15	Minerva. Orange red, fine truss.....	30
Garrick. Deep blue, large truss.....	15	Noble Par Merite. Light pink, striped.....	15
Goethe. Clear, bright yellow.....	20	Othello. Violet black.....	15
Grand Vainqueur. Pure white, extra.....	20	Panorama. Marble pink.....	20
Grootvorst. Peach-blossom pink.....	10	Prince of Waterloo. Pure white, rosy eye..	20
Jaune Supreme. Pure yellow.....	20	Regina Victoria. Very dark rose.....	15
La Deese. Pure white, yellow eye.....	20	Rembrandt. Light blue.....	15

One bulb each of above 22 Double Hyacinths for \$3.25.

Fine Mixed Double Hyacinths, all colors, 60c. per dozen; \$4.00 per hundred.

Unnamed Hyacinths in Separate Colors

	PER DOZ. Post Paid	PER 100 By Express		PER DOZ. Post Paid	PER 100 By Express
Double Red and Rose.....	\$0 75	\$4 00	Single Red and Rose.....	\$0 75	\$4 00
“ Blue, all shades	60	4 00	“ Blue, all shades	60	4 00
“ White	75	5 00	“ White	75	5 00
“ Yellow, all shades	80	6 00	“ Yellow	90	6 00

Early White Roman Hyacinths

This beautiful and very valuable variety, if planted in September and gently forced, will bloom in November, or flowering may be retarded till Christmas by keeping in a cool place. The flowers which are smaller than those of the ordinary Hyacinth are produced in great profusion, each bulb throwing up three or four spikes of delicately scented, clear white blossoms; highly recommended for parlor decoration.

Extra large bulbs, 10 cents each; 60 cents per dozen; \$3.50 per hundred.

Tulips

This class of bulbs are of easy culture, flowering freely in almost any location, producing as fine flowers in the city garden as in more favored places. Double and single tulips, mixed and planted together, maintain a more extended display than if planted separately, their continued beauty and great diversity of shade and color never failing to please. Cultural treatment similar to Hyacinths, except that the bulbs being smaller, must not be planted quite so deep.

If ordered by mail please add five cents per dozen for postage.



A GROUP OF TULIPS

Double Tulips

	EACH	PER DOZ.
Blue Flag. Violet blue.....	\$0 05	\$0 50
Duc Van Thol. Bright red	05	40
Gloria Solis. Crimson edged yellow..	05	50
Imperator Rubrorum. Beautiful crimson.....	05	50
La Candeur. Pure white	05	50
Murillo. Beautiful rosy white.....	05	50
Purple Crown. Deep purple	05	50
Rex Rubrorum. Brilliant scarlet....	05	50
Rose Blanche. Purest white.....	05	50
Tournesoll. Scarlet edged yellow....	05	50
Yellow Rose. Golden yellow	05	50

One bulb each of the above eleven distinct Double Tulips for 40c.

Splendid Mixed Varieties of all colors, per doz. 25c., per hundred, \$1.50.

Single Tulips

	EACH	PER DOZ.
Artus. Bright scarlet	\$0 05	\$0 40
Canary Bird. Golden yellow	05	50
Duc Van Thol. Mixed colors	05	50
Keizerkroon. Crimson and yellow....	05	50
Pottebaker. Scarlet { distinct }....	05	50
“ White { and }	05	50
“ Yellow { beautiful }	05	50
Standard Silver. Scarlet feathered white	05	50
Vermillion Brilliant. Very dazzling.	10	1 00
Yellow Prince. Rich pure yellow....	05	50

One bulb each of above ten distinct Single Tulips for 40c.

Splendid Mixed Varieties of all colors, per doz. 25c., per hundred, \$1.50.

Parrot Tulips


These are of singularly picturesque appearance, and exceedingly showy on account of their curiously lacinated petals and richly varied shades of beautiful colors in the same flower.

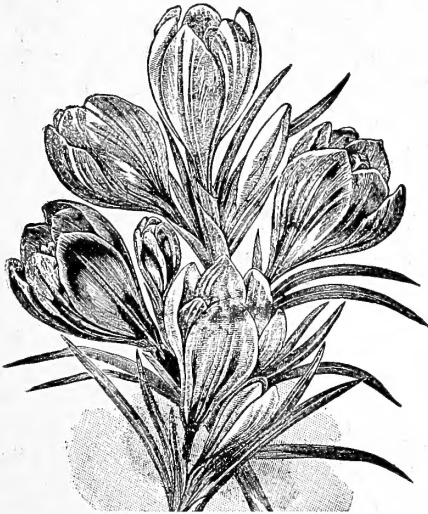
Splendid Mixture, from many named sorts, per doz., 25c., per hundred, \$2.00.

Crocuses

This is one of our earliest Spring flowers and on account of its varied colored blossoms, is remarkably effective. The more thickly crocuses are planted the finer is the effect produced—say in clumps of six, twelve or more bulbs, or in beds of one hundred to five hundred bulbs, either in separate colors or mixed. With ordinary care they will bloom freely in any sitting-room window.

CULTURE. Plant the bulbs two inches deep and two or three inches apart. When grown in pots plant thickly and treat as in the cultivation of the hyacinth.

 If ordered by mail please add fifteen cents per hundred for postage.



CROCUSES

	PER DOZ.	PER 100
Albion. Largest dark purple.....	\$0 20	\$1 00
Baron Brunnow. Bright purple	25	1 25
Cloth of Gold. Yellow, striped brown....	15	75
Cloth of Silver. White, striped lilac.....	15	75
King of the Blues.	25	1 25
Mont Blanc. Pure white.....	20	1 00
Non Plus Ultra. Blue, tipped white.....	25	1 25
Sir Walter Scott. Variegated white and lilac.....	20	1 00
Blue. All shades mixed.....	20	1 00
Striped. “ “	20	1 00
White. “ “	20	1 00
Yellow. “ “	20	1 00

Extra Fine Mixed Crocuses of all colors, selected strong bulbs, per dozen, 15c.; per hundred, 75c.; per thousand, \$6.00.

Amaryllis

The bright colors and handsome form of the Amaryllis make it very effective both for greenhouse and parlor decoration, while its cultivation is so simple that it can be grown by anyone. The soil most suitable is a good loam, with one-fourth part of leaf mould and a proportion of sand; water moderately until the plants show indications of flowering. Frequent disturbance of the roots should be avoided.

	EACH		EACH
Aulica Platypetela. Scarlet, tipped green..	\$1 50	Johnsonii. Crimson, striped with white.....	75
Belladonna. Dark rose and white.....	25	Longiflora Alba. Fine white.....	40
Belladonna Major. Extra large form of preceding	50	Lutea. Beautiful golden yellow.....	15
Formosissima. Rich crimson.....	20	Purpurea. (Vallota)	30

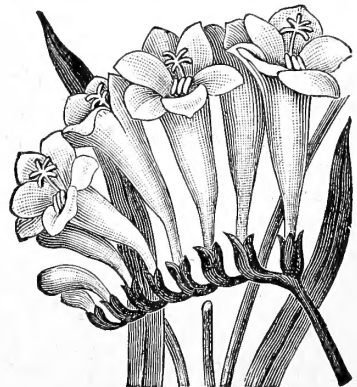
One bulb each of the above eight magnificent sorts will be sent for \$3.50.

Freesias

These are much prized on account of their graceful form and delightful fragrance. They are of the easiest possible culture and a pot of five or six bulbs will be sufficient to perfume a large room. As cut flowers they are extremely valuable; the unexpanded blooms opening in water fill the air with the most delicate perfume and last for many days.

	PER DOZ.	PER 100
Refracta Alba. Pure white.....	\$0 25	\$1 50
Leichtlini Major. Creamy white.....	40	2 00


Freesias are easily raised from seed and will flower in six months from time of sowing. Per packet of 100 seeds, 10 cents.



FREESIA

Narcissus or Daffodils


This is an old favorite especially deserving of notice on account of its easy culture, early flowering and generally effective appearance. Narcissus thrive in any soil and are highly esteemed for their profusion and duration of bloom.

 If ordered by mail please add fifteen cents per dozen for postage

Double		Single	
	EACH	PER DOZ.	
Alba Plena Odorata. Pure white, very fragrant.....	\$0 05	\$0 50	Henry Irving. Golden yellow
Incomparable. Canary and orange.	5	50	Maximus. Golden yellow trumpet and perianth.....
Silver Phoenix. Pure white.....	20	2 00	Poeticus (Pheasant Eye). Pure white, red crown, very sweet scented
Van Sion. Yellow.....	5	50	Sir Watkin. Large yellow cup, rich sulphur perianth
Mixed Double, from a large collection of choice sorts, 50c per dozen; \$3.00 per hundred.			Mixed Single, from a large collection of choice sorts, 50c per dozen; \$3.00 per hundred.

Polyanthus Narcissus and Jonquils

These all flower very early; the flowers are exceedingly fragrant and the Polyanthus may be grown either in glasses or pots. If planted in open borders, protect well by a covering of litter.

 If ordered by mail please add fifteen cents per dozen for postage

Polyanthus Narcissus		Sweet Scented Jonquils	
	EACH	PER DOZ.	
Dubius (Paper White). Pure white, early	\$0 05	\$0 50	These are both double and single and are admir- ably adapted for growing in pots and are much prized for their graceful sweet scented flowers either in or out of doors.
Gloriosa. White with orange cup.	10	75	
Grand Soleil D'Or. Yellow, orange cup	10	75	
Double Roman. Pure white with orange nectary, very fragrant...	10	1 00	
Fine Mixed, many varieties	10	75	
			Campernelle. Single, yellow.....
			Giant Double. Yellow, fragrant...
			Single Sweet Scented. Yellow....

Chinese Sacred Lily

(Joss-Flower, or Flower-of-the-Gods)

A variety of the Polyanthus, or bunch-flowered Narcissus. Grown chiefly in water with pebbles for support. The flowers are very fragrant and pretty; pure white, with a yellow center. Flowers in six weeks after planting.

Extra large imported bulbs, 10c. each; \$1.00 per dozen. Postage 5c. each

Eucharis Amazonica

A perfect gem for pot culture; bears large, waxy, snow-white, star-shaped blossoms of great beauty and deliciously fragrant. It is easily grown.

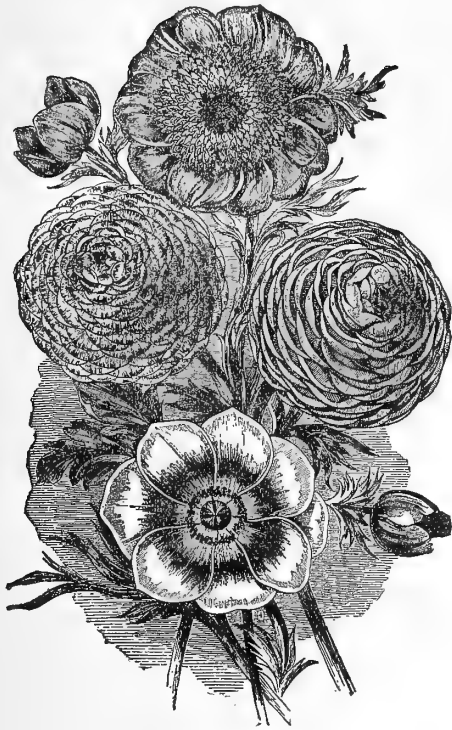
Large flowering bulbs, 35c. each; small, 20c. each

Anemones and Ranunculus

The **Anemone** is unsurpassed among spring flowers for brilliancy of color and profusion and duration of blooming. It is of neat, compact growth, with elegantly lacinated foliage and produces in great abundance flowers of the most vivid hues, which have a splendid effect in beds or masses, while for bouquets or table decoration they are invaluable. Any good soil, moderately well drained will answer; plant two to three inches deep and four to six inches apart.

	EACH	DOZ.
Anemones. Double scarlet.....	\$0 05	\$0 50
“ “ blue	05	50
“ Mixed colors	05	50
Fulgens. Single, brilliant scarlet, very effective	05	50
Japonica Alba. Pure white, very desirable.	10	1 00
Single. All colors mixed.....	05	40
“ Scarlet	05	30
“ Pure white (The Bride).....	05	40
Palmata. Yellow	05	50

Ranunculus. An exceedingly beautiful class of plants embracing the richest and most diversified shades of color. The Turban varieties are of hardier constitution and stronger growth than the Persian, and are very effective when planted in large groups or beds.



ANEMONES AND RANUNCULUS

	EACH	PER DOZ.		EACH	PER DOZ.
Turban. Grootvorst. Carmine....	\$0 05	\$0 35	French. Double mixed.....	\$0 05	\$0 30
“ Heracles. White	10	1 00	Persian. “ “	05	30
“ Merveilleuse. Yellow....	05	40	Turban. Mixed	05	30
“ Romano. Bright scarlet..	05	40			

If ordered by mail, please add 25c. per hundred for postage.

Tigridias

The Tigridia or “Mexican Shell Flower,” as it is often called, is remarkable for the brilliancy of its gold and scarlet coloring. Its culture is similar to that of the Gladiolus, and for summer flowering in the garden, the bulbs should be planted out in the spring. It is one of the easiest plants in the world to cultivate and is sure to flower abundantly in any warm situation.

	EACH	PER DOZ.		EACH	PER DOZ.
Canariensis. Pale yellow, spotted....	\$0 05	\$ 50	Grandiflora Alba. Pearly white, marked at the base with reddish brown spots on a yellowish ground, much admired	10	75
Conchiflora. Orange yellow, spotted.	05	50	Pavonia. Red with yellow spots	05	50
Lilacea. Very beautiful rosy carmine flowers, variegated with white....	10	75			

Scilla Siberica

The Siberian Squill has flowers of a lovely ultramarine blue color, borne in graceful spikes, produced in great profusion. In the house it blooms early like the Roman Hyacinths and forms a beautiful contrast with them. In the open ground they are quite hardy and are specially fine planted in small beds or with Snowdrops. 5 cents each; 30 cents per dozen.

Cyclamen



CYCLAMEN PERSICUM

Among the many charming plants which grace the greenhouse and sitting-room window during the Spring and Winter months, few, if any, are so interestingly pretty and accommodating as the Cyclamen; its neat, chaste, graceful, little, elegant flowers, varying from snow-white to crimson, secure for it universal admiration, while the simplicity of its culture brings it within the reach of even those who can command no better accommodation than a sitting-room window. For indoor decoration these plants are indispensable.

Those we offer are the Giant-flowered varieties, and for clear and beautiful colors, massive substance and fine form of flowers are unrivaled. The pretty variegated foliage and bright flowers, together with the long blooming season, render it a favorite wherever known. Plant in light rich soil and water sparingly until it begins vigorous growth.

Strong flowering bulbs, 20 cents each; \$2.00 per dozen.

Seed saved from our Superb Collection, per packet of 20 seeds, 25 cents.

Tuberous Begonias

It is next to impossible to describe in words the marvelous beauty of these magnificent flowering plants which, with less labor and attention than other bulbs demand, give wonderfully beautiful results. As pot plants they have no equal, but in the garden they are not always a success unless planted in partial shade and protected from winds and storms. All the varieties are gorgeous and bear flowers of an almost incredible size, and for range and delicacy of color far eclipse any other class of plant. They are most at home in a light, loamy soil, and, as already mentioned, require a somewhat shaded location.

Single White

Single Yellow

Single Scarlet

Single Pink

Single Dark Crimson

Single Orange

Price of above, 20c. each; \$2.00 per dozen; \$15.00 per hundred

Single Mixed, all colors, a magnificent strain, 15c. each; \$1.50 per dozen; \$10.00 per hundred.

Double Mixed, all colors, a magnificent strain of finest large-flowered double sorts. They are perfectly magnificent. 30c. each; \$3.00 per dozen.

Gloxinia Bulbs

Like the Tuberous Begonia, bulbs of this handsome and showy plant are in great demand by Florists. They are of the easiest culture, and by careful treatment may be had in bloom at almost any season of the year in our favorable climate. The colors are very numerous, each hue pure and distinct, while many are spotted in a very attractive manner.

Choice Varieties, mixed colors, 20c. each; \$2.00 per dozen

Tropæolum Tricolorum

This is a tuberous-rooted winter-blooming Nasturtium for pot culture, which is one of the most charming window vines one can possess during winter. Pot the bulbs in good soil and treat like other winter bulbs. They are somewhat slow to start, but will after a while throw up little needle-like shoots, which should be supported on strings or trellises. After a short time they will develop beautiful tiny foliage, which will soon be followed by hundreds of brilliant flowers, scarlet, tipped with black and yellow—which keep perfect a long time. 30 cents each.

Lilies

Every one loves the Lily—and well they may, for it stands unrivaled amongst hardy plants, for variety of color and beauty of form. Lilies are of easy culture, and as the bulbs we offer are all home grown, firm and fresh from the ground—not dried up and worthless as is often the case with imported bulbs—there is hardly a chance of failure. Plant from four to eight inches deep according to the size of the bulb. They should remain undisturbed for years, as frequent removals injure the roots.



LILIAM HARRISI



LILIAM TIGRINUM

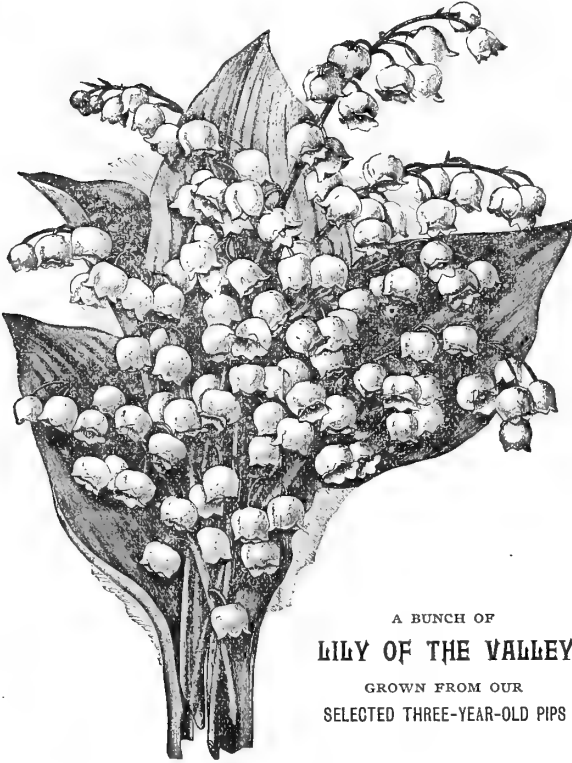
	EACH		EACH
Auratum (Golden-banded lily of Japan). Pure white, studded with rich chocolate crimson spots, and a bright golden band through the center of each petal.....	\$0 20	Hanski. Flowers outside bright yellow marked with white; inside spotted with purple	\$0 75
Auratum Macranthum. A very large flowered variety of the preceding.....	45	Harrisii (Bermuda Easter lily). Resembles <i>L. longiflorum</i>	15
Auratum Wittei. Pure white with raised spots of satiny white; broad yellow stripe through each petal; immense flowers....	1 00	Humboldtii. Reddish orange, spotted with purple..	15
Batemannia. Flowers of a bright apricot color	25	Krameri. Large, rose-colored flowers; fragrant	25
Brownii. Larger flowers, white inside, purple outside; distinct and striking.....	75	Leichtlinii. Flowers bright yellow, spotted with purple.....	40
Candidum (St. Joseph's lily). The well-known white lily of the gardens	10	Longiflorum. Pure white, trumpet-shaped flowers.....	20
Chalcedonicum. Scarlet recurved blossoms.	30	Medeoloides. Vermillion with purple spots..	50
Cordifolium Giganteum. Flowers white, yellow and purple; leaves heart-shaped..	25	Pardalinum. Bright scarlet shading to yellow, spotted with maroon.....	15
Coridion. Clear yellow; star-shaped flowers; exceedingly showy.....	20	Parvum. Orange yellow, spotted with purple.	15
Elegans Alice Wilson. A new variety with upright yellow flowers.....	75	Parryii. Lemon yellow, spotted with brown.	30
Elegans Atrosanguineum. Rich blood crimson	50	Speciosum Album. Pure white handsome flowers.....	30
Elegans Flore Semiplena. Magnificent flower; bright crimson, striped with pink; semi-double	75	Speciosum Roseum. White shading to rose, spotted red	25
Elegans Incomparable. Large, rich, blood-red flowers, spotted and splashed with lemon yellow.....	1 00	Speciosum Rubrum. Darker than the preceding	20
		Testaceum. Delicate apricot.....	30
		Tigrinum (Tiger Lily). Orange red spotted with black.....	10
		Tigrinum Flore Pleno. Double form of the preceding	15
		Washingtonianum. Changing from pure white to purple. Very fragrant.....	25

☞ If ordered by mail please add fifteen cents per dozen for postage

Twelve Lillies of any one of above varieties will be sent at price of Ten.

Lily of the Valley

(*Convallaria majalis*)



A BUNCH OF
LILY OF THE VALLEY
GROWN FROM OUR
SELECTED THREE-YEAR-OLD PIPS

This is one of the most charming of spring flowering plants, bearing slender stems set with tiny bells, which diffuse a delicious odor. The growth is close, dwarf and compact, and the plant is hardy and permanent. It is also a most popular plant for forcing. They generally flower in three or four weeks after planting.

These pretty flowers grow in shady places where few other flowers succeed; they bloom freely out-of-doors, and may be had from New Year on, when forced, beginning with a temperature of 45° and increasing very gradually to 65°. If the pots have a little bottom heat during the winter months, they will do better. Select a half dozen of strong, firm pips, with roots attached, for a six-inch pot, and use rich sandy loam. After flowering, they may be planted in the flower border.

Flowering pips, per hundred, \$2.00; each, 5c.; per dozen, 30c.

Strong clumps for planting in the open ground, each, 50c.; per dozen, \$5.00.

Callas

Dwarf Calla "Little Gem." This variety is a true miniature of the old Calla, and when in flower, a perfect specimen plant but eight inches high, with full developed foliage. We know of no plant which will be so surely and universally recognized as unique. A well-grown plant cannot fail to attract the admiration of every flower lover. Price, 20c. each; \$2.00 per dozen, post paid.

Calla Lily (*Richardia Ethiopica*). One of the best known plants and of easy management. 10c. each; \$1.00 per dozen.

Spotted Calla (*Richardia Alba Maculata*). The leaves of this variety are deep green, with numerous white spots, which gives the plant a very ornamental appearance. The flowers are pure white, with a black center. They grow freely, either indoors or out. 15c. each; \$1.50 per dozen.

Black Calla (*Arum Sanctum*). This interesting variety resembles in habit and foliage the White Calla, with flowers of a rich clear coal black color and a most striking oddity. It is a recent introduction and is rapidly finding its way into every collection. Large flowering bulbs 50c. each.



BLACK CALLA

Oxalis

A very pleasing class of small bulbs, producing vast quantities of brilliant flowers during the autumn and winter months; they are especially desirable for planting in hanging baskets and window boxes in which they make a splendid display. They are of easy culture requiring only good soil and plenty of light, under which conditions they succeed well.

	EACH	DOZ.		EACH	DOZ.
Alba. White.....	\$0 05	\$0 35	Versicolor. Red, violet and white...	05	40
Cernua Lutea. Best known, single yellow, profuse bloomer.....	05	35	Bowei. Rosy red with yellowish base.	05	40
Double Yellow. A beautiful variety.	10	75	Deppei. Deep reddish purple violet; a strong grower and good blossomer.	05	40
Hirta Rosea. Pink.....	05	60	Oxalis. Mixed, many varieties.....	03	20



SPARAXIS

Sparaxis

A beautiful class of bulbs, allied to the Ixias and requiring the same treatment, producing spikes of most exquisite flowers.

It would be difficult to conceive colors more diversified and magnificent than abound in this family. They will not do out doors in cold climates but are invaluable for greenhouse or parlor culture.

All colors mixed, per dozen, 30c.; per hundred, \$2.00.

Ixias

The Ixia is a slender graceful growing plant with long, loose spikes of bloom, resembling a miniature Gladiolus. The colors are rich, varied and beautiful, the center always differing in color from the other parts of the flower, so that the blossoms expanding in the sun's rays present a picture of gorgeous beauty. Very desirable for pot culture, but requiring protection where frosts are severe.

All varieties in splendid mixture, per dozen, 30c.;
per hundred, \$2.00.

Snowdrops

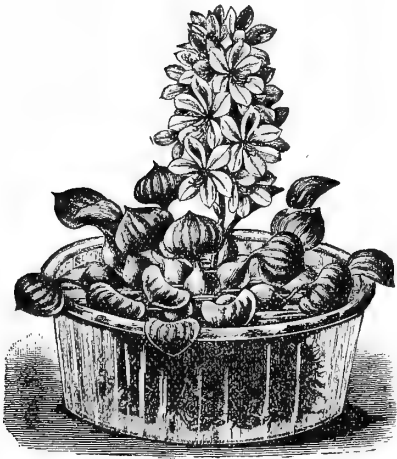
A well-known beautiful, early, white flower, loved by all. There is no trouble in growing this modest little plant; merely set them about two inches deep, and one inch apart, in clumps or rows. Double, 30c. per dozen; \$2.00 per hundred. Single, 25c. per dozen; \$1.75 per hundred.

Pæonies

Well-known, showy, border plants, of many brilliant colors; some of the varieties being deliciously fragrant.

	EACH	PER DOZ.		EACH	DOZ.
Herbaceous Varieties. Mixed.....	\$0 30	\$ 3 00	Tree or Japanese. Mixed.....	1 25	12 00

Water Hyacinth



THE WATER HYACINTH.

This beautiful plant differs from any other water plant in foliage, and produces orchid-like flowers about two and a half inches in diameter; color, delicate lilac, shaded with rose, with an orange spot on the upper petal. It can be grown in the open air in summer and in the window in winter. The plants will thrive in any vessel of water placed in the sun. The most beautiful effect is produced by using a glass vessel of some sort, with shells and white sand so arranged in the bottom as to conceal a small amount of soil. The plant is easily grown, so attractive and different from other plants, that it is sure to greatly interest every one. **15 cents each; \$1.50 per dozen.**

Nymphaea Odorata Gigantea

(Water Lily)

A gigantic form of the white pond Lily. Flowers pure white, with a golden center three times as large as the common pond Lily, and more cup-shaped. The flowers also possess a distinct and charming fragrance. It is perfectly hardy, and a grand plant for tubs, pools, streams or ponds. **20 cents each; \$2.00 per dozen.**

Brodiaëas

Highly ornamental Californian bulbs, producing erect and slender leafless stalks from one to two feet high, upon which are borne clusters of strikingly beautiful lily-like flowers. Few bulbous plants are more reliable bloomers than Brodiaëas or more readily adapt themselves to any soil or situation.

	EACH.	DOZ.		EACH.	DOZ.
Brodiaëa Coccinea (Floral Firecracker). Crimson red, lip vivid green.....	\$0 05	\$0 25	Brodiaëa Volubis (Twining Hyacinth). Delicate rose-pink flowers.....	\$0 10	\$1 00
Brodiaëa Grandiflora. Dwarf habit, purple waxy flowers, very showy....	05	25	Brodiaëa Lactea. Flowers are milky white.....	05	25

Calochortus

(Mariposa or Butterfly Tulips)

An extremely beautiful class of plants, natives of California. They have erect cup-like flowers of large size and of varied and brilliant colors, borne on stiff slender stalks eight to twenty inches high, with from six to twenty flowers on a stalk. For pot culture they are superb, and in a light rich deep soil are easily cultivated out of doors. They thrive in cold climates when given slight protection during winter.

Splendid mixture of many varieties, 25 cents per dozen: \$1.50 per hundred.

Montbretia

Magnificent decorative plants, producing long branching spikes of Gladioli-like blooms, two to three feet high, in the most delicate and richest shades of yellow, orange and scarlet.

5 cents each; 50 cents per dozen.

Dielytra or Bleeding Heart

The most elegant of all forced plants for conservatory and room decoration, also to cut for furnishing vases. The graceful pendant branches are loaded with beautiful red heart-shaped flowers, and furnished with the most delicate rich green foliage. In shrubberies or herbaceous borders, few plants in summer are so attractive.

Strong roots, 20 cents each; \$2.00 per dozen.

Iris

(Fleur de Lis)

The Iris is the "Orchid" of the flower garden. The blossoms of the Flag Iris are the most rich and varied in color of hardy plants, and should be extensively planted in flower and shrubbery borders, and naturalized in wild gardens. As a cut flower these Irises are invaluable, competing in richness and variety of color with the choicest and the most beautiful Orchids; useful as cut flowers as they last a long time in the water.

	EACH	DOZ.		EACH	DOZ.
English. All colors mixed.....	\$0 05	\$0 50	Japanese (<i>Kaempferi</i>). Beautiful in form and color.....	20	2 00
German. Of exquisite colors, beautiful and fragrant.....	10	75			

Miscellaneous Bulbs and Roots

	EACH	DOZ.
Bessera Elegans (Coral Drops). Bright coral scarlet, with white cups and dark blue anthers.....	\$0 05	\$0 50
Caladium Esculentum (Elephant's Ears).....	20	2 00
" Fancy Leaved. Beautifully marked foliage.....	50	
Cyclobothra Flava (Yellow Shell Flower). Golden yellow cup with fine black dots.....	10	75
Dahlia. Splendid assortment of double varieties.....	15	1 50
Doryanthes Excelsa (Giant Torch Lily of Australia). A beautiful and distinct plant with long Dracena like foliage, throwing up a lofty spike of bright scarlet flowers like an immense fiery torch, the stem of which is often twelve to fifteen feet high. Extra strong flowering bulbs.....		75
Gladiolus Covillei Alba (The Bride). Pure white flowers freely borne on long stems and can easily be forced into bloom.....	05	50
Hoteia Japonica (Spiraea). Beautiful feathery white flowers.....	15	1 00
Hyacinthus Candicans. A very striking and beautiful plant. It is a strong grower and quite hardy; shoots upward a stem three or four feet high, which bears quantities of drooping, ivory-white, bell-shaped flowers of delicate fragrance.....	10	1 00
Milla Biflora. A Mexican bulb, producing pure white waxy flowers, over two inches in diameter; a splendid plant for cultivation in the dwelling house, being easily forced into bloom.....	05	50
Montbretia. Magnificent decorative plants, producing long branching spikes of Gladioli-like blooms, two or three feet high, in the most delicate and richest shades of yellow, orange and scarlet.....	05	50
Ornithogalum Arabicum (Star of Bethlehem). Showy, striking; distinct species, white flowers, aromatic odor, fine for Easter decorations. Large, solid bulbs of easy cultivation.....	10	1 00
Spiraea Japonica. (See <i>Hoteia Japonica</i>).....		
Tritoma Uvaria Grandiflora (Red-Hot-Poker-Plant). Striking and attractive plant, throwing up stalks three to five feet high, bearing large solid spikes of brilliant orange-scarlet colored flowers of great size and brilliancy.....	25	2 50
Tropæolum Tricolorum Jarrattii. Fine greenhouse climber.....	20	2 00
Tuberoses (Dwarf Pearl). This delightfully fragrant pure white wax-like flower is too well known to require further description, its purity of color and rich perfume have gained it esteem. Our bulbs are Eastern grown, ready for delivery in November.....	05	50
Zephyranthes. Gems of rare beauty, producing freely either in pots or the open ground, pretty lily-like flowers of the style of Amaryllis. Many varieties mixed.....	05	40

Sweet Peas

Sweet Peas attain in California a perfection almost unheard of in other parts of the country; the size, color and texture of the flowers and the vigor of growth being truly remarkable. In addition, the vitality of our California seed is from 30 to 60 per cent. higher than that of the best English. These, with other advantages, first induced us to become Sweet Pea specialists. The acreage has been increased until we now rank among the largest growers of Sweet Pea Seed in the world.

Plant the seed in good garden soil from October to April at intervals for succession. Do not allow them to suffer for water, and give some slight support. Cut the flower spikes freely, as the maturing of seeds greatly shortens the blooming season.

The latest novelties and all the standard varieties worth growing will be found in the following list.

- Alba Magnifica.** Pure white, pkt., 5 cts; oz., 20 cts.
- Apple Blossom.** Pink and blush, pkt., 5 cts; oz., 15 cts.
- Blanche Ferry.** Pink and white, pkt., 5 cts; oz., 15 cts.
- Boreatton.** Crimson purple, very dark, pkt., 5 cts; oz., 15 cts.
- Butterfly.** Pale grey with distinct porcelain edge, pkt., 5 cts; oz., 15 cts.
- Captain of the Blues.** Bright purple and pale blue, pkt., 5 cts; oz., 15 cts.
- Captain Clark or Tricolor.** White, shading to pink, edged with indigo, pkt., 5 cts; oz., 15 cts.
- Cardinal.** Crimson scarlet, pkt., 5 cts; oz., 15 cts.
- Countess of Radnor.** Lavender, pkt., 5 cts; oz., 15 cts.
- Delight.** White, crested with crimson, pkt., 5 cts; oz., 15 cts.
- Dorothy Tenant.** Dark mauve, pkt., 10 cts; oz., 25 cts.
- Duchess of Edinburgh.** Scarlet, flushed with crimson, pkt., 5 cts; oz., 15 cts.
- Empress of India.** Rosy pink standards, white wings, pkt., 10 cts; oz., 25 cts.
- Emily Henderson (Novelty).** White, pkt., 10 cts; oz., 25 cts.
- Fairy Queen.** White, flushed and feathered with pink, pkt., 5 cts; oz., 15 cts.
- Her Majesty.** Beautiful rosy pink, pkt., 10 cts; oz., 25 cts.
- Ignea.** Fiery crimson scarlet, slightly flushed with purple, pkt., 10 cts; oz., 25 cts.
- Isa Eckford.** Creamy white and rosy pink, pkt., 5 cts; oz., 15 cts.
- Lemon Queen.** Blush and lemon, pkt., 5 cts; oz., 20 cts.
- Miss Hunt.** Carmine salmon and soft pink, pkt., 10 cts; oz., 25 cts.
- Monarch.** Bronze, crimson and blue, pkt., 5 cts; oz., 15 cts.
- Mrs. Eckford.** White, delicately shaded with primrose, pkt., 10 cts; oz., 25 cts.
- Mrs. Gladstone.** Delicate soft pink with rosy blush wings, pkt., 5 cts; oz., 15 cts.
- Mrs. Sankey.** The purest white, the most perfect form, the largest size, a profuse bloomer, pkt., 5 cts; oz., 15 cts.
- Nellie Jaynes.** White and light pink, pkt., 5 cts; oz., 15 cts.
- Orange Prince.** Orange pink, flushed with scarlet, pkt., 10 cts; oz., 25 cts.
- Painted Lady.** Rosy crimson and blush white, pkt., 5 cts; oz., 15 cts.
- Primrose.** Pale primrose yellow, novel and distinct, pkt., 10 cts; oz., 25 cts.
- Princess Louise.** Rosy pink standards, wings deep lilac, pkt., 5 cts; oz., 15 cts.
- Princess Victoria.** Cherry, mauve and pink, pkt., 10 cts; oz., 25 cts.
- Princess of Wales.** White, striped with lavender and mauve, pkt., 5 cts; oz., 10 cts.
- Purple Prince.** Maroon, shaded with purple, wings blue, pkt., 5 cts; oz., 20 cts.
- Queen of England.** White, of large size, pkt., 10 cts; oz., 25 cts.
- Red and White Striped.** Pkt., 5 cts; oz., 15 cts.
- Senator.** Chocolate and creamy white, pkt., 5 cts; oz., 15 cts.
- Splendor.** Coppery crimson, suffused with rosy pink, pkt., 5 cts; oz., 15 cts.
- The Queen.** Bright pink, shaded with heliotrope, pkt., 5 cts; oz., 15 cts.
- Vesuvius.** Carmine rose, shading to velvety violet, pkt., 5 cts; oz., 15 cts.
- Waverly.** Pale blue and rosy claret, pkt., 10 cts; oz., 25 cts.
- New large flowered.** Mixed, pkt., 5 cts; oz., 10 cts.

We will forward free by mail one packet each of the above thirty-nine choice and distinct varieties of Sweet Peas for Two Dollars.

A Botanical Curiosity

The Resurrection Plant or Bird's Nest Moss. In a dry state this plant resembles a ball of apparently dry and lifeless moss, which upon immersing the roots in cold rain water, or placed in a wine glass filled with water, will in a few hours be transformed into a beautiful green moss fern. The experiment can be repeated many times.

Price by Mail postage prepaid, 10 cents each; \$1.00 per dozen

Mushroom Spawn

Culture—Mushrooms may be grown in cellars, under benches of greenhouses or in sheds, wherever a uniform temperature of 50 degrees can be maintained. The beds should be made according to the time the Mushrooms are wanted, and it requires about two months for them to begin bearing. Secure fresh horse dung, free from straw and litter, and mix in an equal bulk of loam from an old pasture with it. Keep this under cover, taking care to turn it every day to prevent heating, until the pile is large enough to make a bed of the required size. Three or four feet wide, eight inches deep, and any length desired, are the proper proportions for a bed; but these may be varied. Prepare the mixture of loam and manure, making the bed in layers, and pounding down each with the back of the spade. Leave this to heat through for a few days, and as soon as the heat subsides to 90 degrees, make holes in the bed about a foot apart each way, into which put pieces of the spawn two to three inches in diameter; fill up the holes with the compost, and at the expiration of a week or ten days the spawn will have thoroughly diffused itself through the bed. Spread a layer of fresh soil over the heap to the depth of two inches, and cover with three or four inches of hay, straw or litter. Examine the bed often to see that it does not get dry. Take special care, however, when water is given that it be at a temperature of about 100 degrees.

Fuller instructions on the management of this crop will be found in "Mushroom Culture," by W. Robinson, which will be sent free by mail for fifty cents. Our spawn can be thoroughly depended on and being specially manufactured for us is fresh and reliable at all times.

English Spawn. In bricks weighing 1½ lb. each	\$ 0.20	\$18.00
French Spawn. In 3-lb boxes, per box, \$1.50; In bulk.....		50

Garden Roots

<p>Artichoke. Green Globe, 2 year old roots; each, 15 cts; doz., \$1.50.</p> <p>Asparagus. Conover's Colossal, 2 year old roots; per 1000, \$10; per 100, \$2.</p> <p>Palmetto (new), 2 year old roots, per 100, \$2.25.</p>	<p>Hop Roots. Per doz., 50 cts.</p> <p>Horse Radish. Per doz., 50 cts.</p> <p>Rhubarb. Myatt's Linnaeus, each, 25 cts; doz., \$1.50; per hundred, \$12.</p> <p>Lorenzo, each, 50 cts; doz., \$3.00.</p>
--	--

Fertilizers

We supply only high grade reliable fertilizers, goods that we know to be as represented; and, quality considered, prices are unusually low.

	Per 100 lbs.	Per ton
Ground Bone	\$2 50	\$35 00
Pure Guano Flour. —Guaranteed to contain 48 to 50 per cent bone phosphate (the same as pure bone-meal) and 1½ per cent. ammonia.....	2 25	30 00
Plain Superphosphate —Or dissolved guano (guano treated with sulphuric acid) containing about 16 per cent. available phosphoric acid and 1 per cent. ammonia.....	2 50	40 00

Lawn Fertilizer.—Unless thoroughly decomposed, stable-manure is not desirable, because of the number of weed-seeds contained in it. Our **LAWN FERTILIZER** possesses the requisite properties to induce a rapid, luxuriant growth, and should be sown broadcast at the rate of 1,500 pounds per acre. A 10-pound package is sufficient for 300 square feet.

Price per ton, \$45.00; per 10-lb package, 75 cents.

Bowker's Flower Food

Is an odorless, chemical preparation, containing the same fertilizing elements as stable manure, in a perfectly clean and soluble form. It is not a stimulant, but a perfect **food** for the plants, in a concentrated, easily assimilable form. It produces healthy foliage, abundant, rich and bright-colored blossoms, and prolongs the period of blossoming; and a pinch added to a vase of cut flowers will preserve their beauty and fragrance for at least forty-eight hours longer than if none were used. Full directions for using are in each package.

Package by mail, Postpaid, 50 cents.

Miscellaneous Horticultural Requisites

	EACH.
Atomizers. (Woodason's Bellows). Convenient for the application of liquid insecticides.....	\$2 00
Bellows. Woodason's Powder for Hellebore, Tobacco Dust, etc.....	\$1, \$2, and 3 00
Garden Lines. Finest braided; 100 feet length.....	75
Garden Pencils. Indelible black.....	15
Grafting Wax. In $\frac{1}{4}$, $\frac{1}{2}$ and pound packages.....	per lb. 50 cts.
Knives, Budding. Best English makes; ivory handles.....	\$1 to 2 00
Knives, Pruning. Best English makes.....	75 cents to 1 50
Labels. Plant and tree.—Wooden Painted—	
Price {	
Per hundred.....	4 $\frac{1}{2}$ -inch \$0 30 5-inch \$0 35 6-inch \$0 40 8-inch \$0 60 3 $\frac{1}{2}$ -inch tree \$0 25
Per thousand.....	1 25 1 40 1 50 5 00 1 15
Mole Traps. Olmsted's improved.....	1 75
Moss. For florist's use, packing, etc.....	in 100 lb. bales, \$8; per lb. 10 cents
Plant Sticks. Painted green—	
Price {	
Per dozen.....	3 feet \$0 75 4 feet \$1 00 5 feet \$1 25 6 feet \$1 50
Per hundred.....	6 00 7 00 9 00 10 00
Pruner. "THE LEVIN." The strongest hand shear extant. It is made of the finest steel, and though only 7 ounces in weight, it is so strong that it can cut through half an inch of dry oak.....	1 25
Raffia. For tying plants; superior to twine.....	per lb., 25 cents; 5 lbs. for \$1 00
Sprinklers. Rubber. For sprinkling cut flowers, seedlings, clothes, etc.....	1 25
Syringes. Brass; of superior manufacture, highly finished.....	\$2 00 to 6 00
Thermometers. SELF-REGISTERING. Registers both heat and cold, indicating exactly how hot or how cold it has been since last notation. It is easily reset by a horseshoe magnet, which accompanies each instrument.....	2 50
PORCELAIN SCALE. 8 inches long; numbers and letters hand-painted.....	1 00
ORDINARY JAPANED TIN CASE	30
Trowels. Solid shank; cast-steel, very strong.....	50
Watering Pots. French Model. Galvanized iron.....	6 qts., \$1 50; 8 qts. \$2 00
Weeders. Excelsior.....	15

Insecticides

Grape Dust. A non-poisonous compound powder for the remedy of mildew and rot on grapes, gooseberries, roses, flowers or plants. It is economical, clean and effective and used by many of the largest commercial florists.

Per 5 lb. package, 50 cents.

Slug Shot. A cheap, popular and effective insecticide, easily applied and not injurious or dangerous to animals.

5-lb. package, 50 cts.

Fir Tree Oil. The best insecticide for indoor use on all plants; is also a valuable remedy for animal parasites and insects.

Per pint \$1.00



Stott's Fir Tree Oil Soap

This new and wonderful compound is a most useful article to have about the house. By its use you can keep your *plants* free from all insects. You can keep your *dogs* free from fleas and their skin healthy, coat glossy, and destroy all offensive odors about them. You can keep your *poultry* free from lice. You can keep the skin of your horse healthy and make him shine. One ounce makes one gallon.

$\frac{1}{2}$ pound tins 25 cents each. By mail 35 cents.

Whale Oil Soap. Excellent wash for trees and plants to prevent insects from lodging in the bark, and for smearing on the trunks of trees to prevent worms from crawling up.

Per 1-lb. tins, 20 cts.; in bulk, in quantities of 10 lbs. or over, 10 cents per pound.



Nursery Department

A brief mention under this heading of our standing and progress in the General Plant World at this time will not be out of place. We have added quite a number of excellent New Roses, deciduous Shade Trees, Shrubs, etc., etc., to our already large collection, so that we are on a footing with other extensive establishments.

Following will be found prices of some leading varieties. It is yet too early to make out a general list. This, however, will be issued early in the month of January, 1895.

Roses

The attention of growers and lovers of Flowers is drawn to the fact that our Stock in this line is large and varied, and whilst we already grow all the best old varieties, we are continually adding to our list, such new sorts as are full of merit and command a ready sale.

They can be had from the open ground and pot-grown. The latter can be planted at almost any season, and those from the open ground any time after November 1st. We also have a number in Standard or Tree form.

Palms

The praises of this favorite decorative plant have already been well sung, but we may say that our stock of such plants is still very fine and we have to offer the perfectly hardy as well as the tender house variety.

Fruit Trees

This is the department that needs the closest attention at the present time. Intending planters would do well to write for prices and full particulars of our stock, previous to purchasing elsewhere, as we are prepared to meet their wants in every particular.

A full list of varieties and prices will be included in our General Catalogue.

The following is a list and prices of Shrubs, Trees, Palms, etc., which we have to offer now, grown in pots, and ready for immediate shipment:

Evergreen Trees and Shrubs

	Each.	Per 10.		Each.	Per 10.
Acacia Lopantha. 4-in. pots, 1½ to 2 ft.	15	1 00	Genista Eldorada. 5-inch pots.	35c to	50
Araucaria Excelsa. 4-inch pots, 12 to 15 inches.	1	00	Grevillea Robusta. 4-in. pots, 3 to 4 ft.	50	4 00
Araucaria Bidwellii. 4-in. pots, 18 in.	1	50	Laurustinus. 3-in. pots (per 100, \$10 00)		
Aucuba Japonica. 4 and 5-in. pots, 12 to 18 inches.	50	cts. to 75	12 inch.	20	1 50
Aucuba Viridis Latifolia. 4-in. pots, 1 foot.	50		Magnolia Grandiflora. 5-inch pots, 3 to 4 feet.	1	00
Azalea. Grafted sorts. 6-in. pots, \$1 00 to 1 50	1	50	Murraya Odorata. 3-inch pots.	50	
Berberis Darwinii. 4 " "	50	4 00	(New choice flowering shrub from South America.)		
Box Dwarf. For edging, per 100, \$4 00			Oleander. Assorted colors. 5-in. pots, 3 to 4 feet.	25	2 00
Cazurina Stricta. 6 in. pots, 3 to 4 ft.	50	4 00	Peppers. 5-inch pots, 4 to 5 feet.	35	3 00
Cypress-Italian. Transp. in boxes, per 100.		\$5 00	Pine — Monterey. Transp. in boxes, per 100.		\$5 00
Diosma Alba. 3-inch pots.	25	2 00	Pittosporum Tobira Variegata. 4-in. pots, 15 to 18 inches.	50	4 00
Eucalyptus Globulus. (Blue Gum.) Transp. in boxes, 12 to 18 inches, per 100.		\$3 00	Pittosporum Tobira. 5-in. pots, 2 to 3 feet.	50	4 00
Euonymus Radicans Variegata. 4-in. pots, 1 foot.	25	2 00	Rhododendron. Grafted Sorts. 2 to 3 feet.	\$2 00	to 2 50

Greenhouse and Decorative Plants

	Each.	Per 10.		Each.	Per 10.
Achalypha. 4-inch pots	50		Dracena. Assorted.	1 00	to 2 50
Adiantum Cuneatum. (Maiden Hair Fern.) 5-inch pots	75	6 00	Hoya Carnosa. (Wax Plant) 4-inch pots	25	2 00
Adiantum Cuneatum. 4-inch pots	50	4 00	Isolepis Gracilis. 4-inch pots	15	1 00
“ Farleyense. 4 to 10-inch pots	75c to	1 00	Japanese Fern Hanging Baskets.	50	
Adiantum Williamsii. 6-inch pots	75		Maranta Zebrina. 4 and 5-in. pots, 50c to 1 00		
Agapanthus Umbellatus. 5-inch. pots, 50c to	75		Musa Ensete. (Abyssinian Banana.) 8-in. pots, 3 to 5 feet	75c to	1 50
Artillery Plant. 2-inch pots	15	1 00	Pandanus Utilis. (Screw Pine.) 6-in. pots, 18 to 24 inches.	1	00
Aspidistra Lurida. 4-inch pots. 35c to	50		Pandanus Veitchii. 6-inch pots, 18 to 24 inches.	1	50
“ Variegata. 4-inch pots	50c to	75	Poinsettia Pulcherrima. 5-inch pots	75	
Asplenium Bulbiferum. 4 & 5-in. pots,	35		Pteris Cretica. 3-inch pots	15	1 00
Begonias. Assorted	25c to	50	“ Tremula. 4 and 5-inch pots	35	
Clerodendron Balfourii. 8-inch pots,	1	00	Rodhea Japonica Alba Marginata. 4 and 5-inch pots.	25c to	50
Cyperus Alternifolius (Umbrella Plant) fine plants, 5-inch pots	50	4 00	Sanchezia Nobilis. 6-inch pots.	50	

Palms, Dracænas, Yuccas, Etc.

	Each.	Per 10.
Areca Lutescens. 5-in. pots, 18 inches..	1	00
Curculego Recurvata. 5-in. pots, 18 to 24 inches.....	75	
Chamærops Excelsa. (Japan Fan Palm.) 8-inch pots, 12 to 18 inches.	50	4 00
Chamærops Humilis. 12-in. pots, 2 ft.,	4	00
Cocos Plumosa. 5-in. pots, 15 to 18 in.,	1	00
Corypha Australis. 5 in. pots, 15 to 18 inches.....	50	4 00
Kentia Fosteriana. 5 in. pots, 20 to 24 inches.....	1	00
Latania Borbonica. 6-in. pots, 15 to 18 inches.....	75	
Phœnix Canariensis. 12-in. pots, 2 to 3 feet.....	2	50
Phœnix Canariensis. 5-in. pots, 15 to 18 inches.....	50	4 00
Phœnix Dactylifera. 12-in. pots, 2 to 3 feet.....	2	50
Phœnix Reclinata. 12-in. pots, 2 feet,	2	50
“ “ 5-in. pots, 15 to 18 inches.....	50	4 00

	Each.	Per 10.
Phœnix Tenuis. 12-in. pots, 2 to 3 feet,	2	50
“ “ 6-in pots, 15 to 18 in.,	50	4 00
Pritchardia Filifera. (Cala. Fan Palm.) 12-inch pots, 2 to 3 feet.....	1	00
Raphis Flabelliformis.	\$1	00 to 5 00
Sabal Blackburiyana. 4-in. pots, 12 to 18 inches.....	50	
Seaforthia Elegans. (Illawarra Palm.) 8-inch pots, 3 feet.....	2	50
Seaforthia Elegans. 8-in. pots, 2 feet.	2	00
“ “ 6-in. pots, 20 to 24 inches.....	1	50
Seaforthia Elegans. 5-in. pots, 12 to 18 inches.....	1	00
Washingtonia Robusta. Boxed. 2 to 3 ft.	2	00
Dracæna Australis. 12-in. pots, 3 to 4 feet.....	1	50
Yucca Variegata. 6 to 12 inches. 25c to	50	
“ Baccata. 4-inch pots.....	25	
“ Whippleyii. 4-inch pots.....	25	
Agave. American, variegated. 6-in pots,	50	
“ “ plain. 6-in. pots...	50	

Climbing Plants

	Each.	Per 10.
Ampelopsis Veitchii. (Japan Ivy.) 4-inch pots.....	0	10 1 00
Asparagus Plumosus. 5-inch pots....	75	
“ Tenuissimus. 5 inch pots..	50	
Ivy. English. 4-inch pots.....	25	2 00
“ Variegated. 4-inch pots.....	25	2 00
Jasmine. Common white. 4-in pots..	25	2 00

	Each.	Per 10.
Jasmine. Catalonian. 4-inch pots....	35	
Mandevillea Sauvolens. (Chili Jasmine.) 4-inch pots.....	25	2 00
Roses. (See list below.)		
Smilax. 2-inch pots... (per 100, \$5 00)	10	75
Solanum Jasminoides Grandiflora. 3-inch pots.....	25	2 00

Miscellaneous Plants

	Each.	Per 10.
Abutilon. Assorted. 4-inch pots....	25	2 00
Carnations. Assorted. 4-inch pots....	25	2 00
Chrysanthemums. 4, 5 and 6-inch pots. According to variety.....	25c	to 50
Currant. White flowering. 4 in. pots..	25	
Erythrina Crista Galli. (Coral Plant.) 6-inch pots.....	50	4 00
Fuschias. Assorted. 4 and 5-in. pots..	25	2 00
Habrothamnus Elegans. 4-in. pots...	25	2 00

	Each.	Per 10.
Heliotrope. 4-in. pots.....	25	2 00
Hollyhock. Assorted.....	25	2 00
Hydrangea Hortensis. 5 and 6-inch pots, 2 to 3 feet.....	50	4 00
Hydrangea Paniculata Grandiflora. 5 and 6-inch pots, 2 to 3 feet.....	50	4 00
Pelargoniums. Assorted. 4 in. pots..	25	2 00
Primula. Chinese. 4-inch pots.....	20	1 50
Violets. Assorted..... (per 100, \$4 00)	10	1 00

Roses

	EACH.	PER DOZ.	PER 100
Field Grown	\$0	25	\$20 00
Standards or Tree	1	00	
Roses in Pots. 3 inch.....	15	1 50	

We have also to offer fine specimens, either single or in pairs, of the following plants. Prices on application:

Areca Baueri	Cycas Revoluta	Macrozamia
Aralia Sieboldii	Cycas Cercinallis	Musas
Araucaria B'dwelli	Cocens Plumosa	Pandanus Utilis
Araucaria Excelsa	Corypha Australis	Phœnix Can. riensis
Beaucarnea	Da-ylirion Gracilis	Raphis Flabelliformis
Birds' Nest Fern	Dracæna Braziliensis	Seaforthia Elegans
Blechnum Braziliensis	Erythea Edulis	Tree Ferns
Crotons	Kentia Fosteriana	Yucca Variegated
	Latania Borbonica	

Our 1895 Catalogue, issued January 1, will contain particulars of all requisites needed for the Garden. Please write for a copy.

Bird Seeds, Poultry Food, Etc.

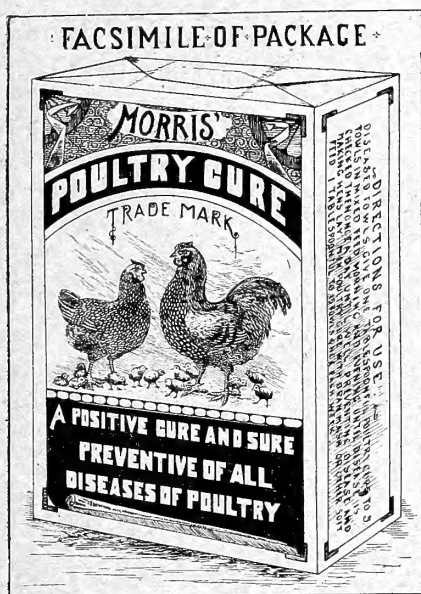
LB.

100 LBS.

Bird Seed, Our Celebrated Mixture. —Without doubt the cleanest and best mixture in the market, and the safest to use for pet birds, in lb. boxes, 10 cts. each; in bulk.....	\$7	00
Bird Sand. —Recleaned.....per box, 10 cts.		
Bone Meal. —For chickens.....	2	00
Canary. —Best Sicily, recleaned.....	\$0 10	7 00
Hemp	10	7 00
Millet	10	7 00
Oyster Shells. —Ground.....		2 00
Rape	10	7 00
Sunflower. —For Parrots.....	15	12 00

Morris Poultry Cure

A Sure Preventive and Positive Cure for all Diseases of Poultry.



Warranted to be a sure cure for Diphtheria, Sore Eyes, Swelled Head, Roup, or Cholera Scaly Legs, or any kindred diseases of Chickens, Turkeys, Guinea Fowls, Ducks or Geese, Ostriches, Mocking Birds, Canary Birds, etc., etc., when given according to directions.

The remarkable success of the Morris Poultry Cure has caused a host of bogus nostrums, called Poultry Powder, Poultry Tonic, etc., etc., to be placed on the market. Beware of such. Insist on having the genuine Morris Poultry Cure, and take no other.

Price 25 cts., 50 cts. and \$1.00 per package.

Manhattan Egg Food

It assists fowls in laying eggs when most desired and when eggs are high. The return in eggs will more than pay for the cost of the Manhattan, aside from the promotion of the health of the fowls. For moulting fowls and young chickens, nothing can compare with this as a tonic. In forming bone, muscle and shell it is infallible. It acts as a relish, promotes perfect digestion, thereby causing a rapid-growth of the fowl.

Price—1-lb. box, 25 cents; 2-lb. box, 40 cents.

Selected Grass and Clover Seeds

The grass and clover seeds offered by us are all of the best grades, and have been specially re-cleaned to meet the demands of our critical trade. Prices for large quantities will be quoted on application. This is more satisfactory than quoting here, as prices are subject to frequent changes with market fluctuations.

IF ORDERED BY MAIL, ADD 8 CENTS PER POUND POSTAGE.

Grass Seed.

Menlo Park Lawn Grass. We devote great care to the preparation of this article, and by careful tests have proved its superiority over all other mixtures. It is composed of the very choicest selected fancy cleaned grasses, entirely free from seeds of weeds, and we can with confidence recommend it to those who wish their lawns to present an evergreen, carpet-like appearance. Price per pound, 30 cents. For the convenience of those who require only a small quantity of seed, **MENLO PARK LAWN GRASS** is put up in boxes containing sufficient for 300 square feet. We forward these boxes, free by mail, at 25 cents each.

	Per lb.
Kentucky Blue Grass, Fancy Clean (<i>Poa Pratensis</i>). This is the best pasture grass for our climate and soil, and produces the most nourishing food for cattle; although it yields herbage early, it requires several years to become well established as a pasture grass.....	\$ 0 25
Orchard Grass (<i>Daactylis glomerata</i>). The most valuable and widely known of all pasture grasses, coming earlier in the spring and remaining longer than any other; it is well adapted for sowing under trees, and valuable either for grazing or for hay.....	25
Red-Top (<i>Agrostis vulgaris</i>). A valuable permanent grass for meadows or lawns, growing in almost any soil, moist or dry, and standing heat well.....	12
Red-Top, Absolutely Clean. Cannot be surpassed in quality.....	20
Rye Grass, Perennial. Enters largely into the composition of many of the richest pastures, and is one of the most nutritious of the permanent grasses.....	15
Rye Grass, Italian (<i>Lolium Italicum</i>). Similar to the preceding, but of more rapid growth, which is its chief merit.....	15
Timothy (<i>Phleum pratense</i>). Well-known and extensively grown; very productive, and thrives on almost any soil, and on a moist clay will produce a larger crop than any other grass.....	10

Clover Seed.

Alfalfa or Lucerne (<i>Medicago sativa</i>). Succeeds well in almost any location, and lasts for a number of years; it grows two or three feet high, and the roots extend deeply into the soil, which enables it to resist the severest drought; it produces heavy crops of nutritious foliage, which may be cut three or four times a year, the best time being just when commencing to bloom.....	15
Alsike (<i>Trifolium hybridum</i>). Thrives well on rich, moist soils, and yields an enormous bulk of forage much preferred by cattle; may be cut several times a season, and as an addition to mixtures for permanent pastures has no superior.....	30
Japan Clover (<i>Lespedeza striata</i>). A branching perennial, growing about twelve inches high, and in warm latitudes will do well in any soil, even during extreme drought; more nutritious than Red Clover, and makes excellent hay.....	40
Medium Red (<i>Trifolium pratense</i>). A well-known standard; excellent for pasturage or hay, and should be in all grass mixtures. If sown alone, ten pounds per acre is required.....	15
White Dutch (<i>Trifolium repens</i>). A spreading perennial; valuable for pastures and lawns; it accommodates itself to a variety of soils, but prefers moist ground; is excellent food for bees.....	30