

## Historic, archived document

Do not assume content reflects current scientific knowledge, policies, or practices.



62.41

LIBRARY  
RECEIVED  
★  
★  
U. S. Department of Agriculture

1917  
**SEEDS  
IN BULK**

WHOLESALE TRADE LIST  
FOR MERCHANTS ONLY



OFFERED BY  
**D. M. Ferry & Co.**  
Seedsman  
DETROIT - MICHIGAN

# SPECIAL NOTICE

**W**E HANDLE absolutely nothing that we do not believe to be the best obtainable. Our unequalled advantages for the production of the best seeds enable us to offer them to our customers at the lowest prices for which well grown and selected seeds true to name can be furnished.

Cheap goods in our line should be resolutely shunned by all dealers who want to supply seeds that will satisfy and make money for the planters and gardeners who trust them with their orders. Our seeds have behind them a history of constant success during the past sixty-one years and we continue to affirm—

*The best is always the cheapest;  
Reliable seeds cannot be afforded at half price.*

☞ These prices are made in anticipation of probable results of crops, therefore, we are not bound by them for any definite time or quantity and they are subject to change without notice.

The prices are for delivery f. o. b. cars, Detroit, Mich., and do not include the cost of containers. When seamless cotton grain bags, boxes, or barrels are necessary for safe transportation, such packages are charged at value and are not returnable.

Not less than 25 lbs. of Grass, Clover, Miscellaneous Farm Seeds or Bird Seeds at 100 lb. rate. On other seeds pound prices apply to quantities of  $\frac{1}{4}$  lb. or more, hundred pound prices to 10 lbs. or more.

The varieties in each class (for example, Wax Podded Beans) are usually arranged in their order of earliness.

**TERMS** NET CASH, June 1st, 1917, without regard to date of purchase, or a discount of one per cent. per month for the unexpired time when paid before maturity. Field Peas, all Grass and Clover Seeds, Miscellaneous Farm Seeds and Bird Seeds, net cash 10 days, without any discount whatever. Cash or satisfactory references should accompany orders from unknown correspondents.

We give no warranty, express or implied, as to description, purity, productiveness, or any other matter of any seeds we send out, and we will not be in any way responsible for the crop. If the purchaser does not accept the goods on these terms they are at once to be returned.

**D. M. FERRY & CO.**

DETROIT, MICH., January 25, 1917.

☞ In telegraphing, please use our CODE on page 49. Our telegraph cipher words should be used in *Telegrams only—not in Orders by Mail.*

# EQUIVALENT BUSHEL QUOTATIONS

For the convenience of those of our customers who have not yet become accustomed to using the Cental System in connection with prices of Beans, Corn and Peas, we subjoin a table which will enable one at a glance to find the equivalent price per bushel of any given price per hundred pounds.

Weights of measured bushels always vary somewhat. Corn ranges from 40 to 50 lbs. per bu.; we have made our table for the average, i. e., 45 lbs. Wrinkled Peas and Field Corn weigh 56 lbs. per bu., Beans and Smooth Peas, 60 lbs. per bu.

Per 100 lbs.	Per 45 lb. bush.	Per 56 lb. bush.	Per 60 lb. bush.	Per 100 lbs.	Per 45 lb. bush.	Per 56 lb. bush.	Per 60 lb. bush.	Per 100 lbs.	Per 45 lb. bush.	Per 56 lb. bush.	Per 60 lb. bush.	Per 100 lbs.	Per 45 lb. bush.	Per 56 lb. bush.	Per 60 lb. bush.
\$ 1.00	\$ .45	\$ .56	\$ .60	\$15.00	\$6.75	\$8.40	\$9.00	\$29.00	\$13.05	\$16.24	\$17.40	\$43.00	\$19.35	\$24.08	\$25.80
1.25	.56	.70	.75	15.25	6.86	8.54	9.15	29.25	13.16	16.38	17.55	43.25	19.46	24.22	25.95
1.50	.68	.84	.90	15.50	6.98	8.68	9.30	29.50	13.28	16.52	17.70	43.50	19.58	24.36	26.10
1.75	.79	.98	1.05	15.75	7.09	8.82	9.45	29.75	13.39	16.66	17.85	43.75	19.69	24.50	26.25
2.00	.90	1.12	1.20	16.00	7.20	8.96	9.60	30.00	13.50	16.80	18.00	44.00	19.80	24.64	26.40
2.25	1.01	1.26	1.35	16.25	7.31	9.10	9.75	30.25	13.61	16.94	18.15	44.25	19.91	24.78	26.55
2.50	1.13	1.40	1.50	16.50	7.43	9.24	9.90	30.50	13.73	17.08	18.30	44.50	20.03	24.92	26.70
2.75	1.24	1.54	1.65	16.75	7.54	9.38	10.05	30.75	13.84	17.22	18.45	44.75	20.14	25.06	26.85
3.00	1.35	1.68	1.80	17.00	7.65	9.52	10.20	31.00	13.95	17.36	18.60	45.00	20.25	25.20	27.00
3.25	1.46	1.82	1.95	17.25	7.76	9.66	10.35	31.25	14.06	17.50	18.75	45.25	20.36	25.34	27.15
3.50	1.58	1.96	2.10	17.50	7.88	9.80	10.50	31.50	14.18	17.64	18.90	45.50	20.48	25.48	27.30
3.75	1.69	2.10	2.25	17.75	7.99	9.94	10.65	31.75	14.29	17.78	19.05	45.75	20.59	25.62	27.45
4.00	1.80	2.24	2.40	18.00	8.10	10.08	10.80	32.00	14.40	17.92	19.20	46.00	20.70	25.76	27.60
4.25	1.91	2.38	2.55	18.25	8.21	10.22	10.95	32.25	14.51	18.06	19.35	46.25	20.81	25.90	27.75
4.50	2.03	2.52	2.70	18.50	8.33	10.36	11.10	32.50	14.63	18.20	19.50	46.50	20.93	26.04	27.90
4.75	2.14	2.66	2.85	18.75	8.44	10.50	11.25	32.75	14.74	18.34	19.65	46.75	21.04	26.18	28.05
5.00	2.25	2.80	3.00	19.00	8.55	10.64	11.40	33.00	14.85	18.48	19.80	47.00	21.15	26.32	28.20
5.25	2.36	2.94	3.15	19.25	8.66	10.78	11.55	33.25	14.96	18.62	19.95	47.25	21.26	26.46	28.35
5.50	2.48	3.08	3.30	19.50	8.78	10.92	11.70	33.50	15.08	18.76	20.10	47.50	21.38	26.60	28.50
5.75	2.59	3.22	3.45	19.75	8.89	11.06	11.85	33.75	15.19	18.90	20.25	47.75	21.49	26.74	28.65
6.00	2.70	3.36	3.60	20.00	9.00	11.20	12.00	34.00	15.30	19.04	20.40	48.00	21.60	26.88	28.80
6.25	2.81	3.50	3.75	20.25	9.11	11.34	12.15	34.25	15.41	19.18	20.55	48.25	21.71	27.02	28.95
6.50	2.93	3.64	3.90	20.50	9.23	11.48	12.30	34.50	15.53	19.32	20.70	48.50	21.83	27.16	29.10
6.75	3.04	3.78	4.05	20.75	9.34	11.62	12.45	34.75	15.64	19.46	20.85	48.75	21.94	27.30	29.25
7.00	3.15	3.92	4.20	21.00	9.45	11.76	12.60	35.00	15.75	19.60	21.00	49.00	22.05	27.44	29.40
7.25	3.26	4.06	4.35	21.25	9.56	11.90	12.75	35.25	15.86	19.74	21.15	49.25	22.16	27.58	29.55
7.50	3.38	4.20	4.50	21.50	9.68	12.04	12.90	35.50	15.98	19.88	21.30	49.50	22.28	27.72	29.70
7.75	3.49	4.34	4.65	21.75	9.79	12.18	13.05	35.75	16.09	20.02	21.45	49.75	22.39	27.86	29.85
8.00	3.60	4.48	4.80	22.00	9.90	12.32	13.20	36.00	16.20	20.16	21.60	50.00	22.50	28.00	30.00
8.25	3.71	4.62	4.95	22.25	10.01	12.46	13.35	36.25	16.31	20.30	21.75	50.25	22.61	28.14	30.15
8.50	3.83	4.76	5.10	22.50	10.13	12.60	13.50	36.50	16.43	20.44	21.90	50.50	22.73	28.28	30.30
8.75	3.94	4.90	5.25	22.75	10.24	12.74	13.65	36.75	16.54	20.58	22.05	50.75	22.84	28.42	30.45
9.00	4.05	5.04	5.40	23.00	10.35	12.88	13.80	37.00	16.65	20.72	22.20	51.00	22.95	28.56	30.60
9.25	4.16	5.18	5.55	23.25	10.46	13.02	13.95	37.25	16.76	20.86	22.35	51.25	23.06	28.70	30.75
9.50	4.28	5.32	5.70	23.50	10.58	13.16	14.10	37.50	16.88	21.00	22.50	51.50	23.18	28.84	30.90
9.75	4.39	5.46	5.85	23.75	10.69	13.30	14.25	37.75	16.99	21.14	22.65	51.75	23.29	28.98	31.05
10.00	4.50	5.60	6.00	24.00	10.80	13.44	14.40	38.00	17.10	21.28	22.80	52.00	23.40	29.12	31.20
10.25	4.61	5.74	6.15	24.25	10.91	13.58	14.55	38.25	17.21	21.42	22.95	52.25	23.51	29.26	31.35
10.50	4.73	5.88	6.30	24.50	11.03	13.72	14.70	38.50	17.33	21.56	23.10	52.50	23.63	29.40	31.50
10.75	4.84	6.02	6.45	24.75	11.14	13.86	14.85	38.75	17.44	21.70	23.25	52.75	23.74	29.54	31.65
11.00	4.95	6.16	6.60	25.00	11.25	14.00	15.00	39.00	17.55	21.84	23.40	53.00	23.85	29.68	31.80
11.25	5.06	6.30	6.75	25.25	11.36	14.14	15.15	39.25	17.66	21.98	23.55	53.25	23.96	29.82	31.95
11.50	5.18	6.44	6.90	25.50	11.48	14.28	15.30	39.50	17.78	22.12	23.70	53.50	24.08	29.96	32.10
11.75	5.29	6.58	7.05	25.75	11.59	14.42	15.45	39.75	17.89	22.26	23.85	53.75	24.19	30.10	32.25
12.00	5.40	6.72	7.20	26.00	11.70	14.56	15.60	40.00	18.00	22.40	24.00	54.00	24.30	30.24	32.40
12.25	5.51	6.86	7.35	26.25	11.81	14.70	15.75	40.25	18.11	22.54	24.15	54.25	24.41	30.38	32.55
12.50	5.63	7.00	7.50	26.50	11.93	14.84	15.90	40.50	18.23	22.68	24.30	54.50	24.53	30.52	32.70
12.75	5.74	7.14	7.65	26.75	12.04	14.98	16.05	40.75	18.34	22.82	24.45	54.75	24.64	30.66	32.85
13.00	5.85	7.28	7.80	27.00	12.15	15.12	16.20	41.00	18.45	22.96	24.60	55.00	24.75	30.80	33.00
13.25	5.96	7.42	7.95	27.25	12.26	15.26	16.35	41.25	18.56	23.10	24.75	55.25	24.86	30.94	33.15
13.50	6.08	7.56	8.10	27.50	12.38	15.40	16.50	41.50	18.68	23.24	24.90	55.50	24.98	31.08	33.30
13.75	6.19	7.70	8.25	27.75	12.49	15.54	16.65	41.75	18.79	23.38	25.05	55.75	25.09	31.22	33.45
14.00	6.30	7.84	8.40	28.00	12.60	15.68	16.80	42.00	18.90	23.52	25.20	56.00	25.20	31.36	33.60
14.25	6.41	7.98	8.55	28.25	12.71	15.82	16.95	42.25	19.01	23.66	25.35	56.25	25.31	31.50	33.75
14.50	6.53	8.12	8.70	28.50	12.83	15.96	17.10	42.50	19.13	23.80	25.50	56.50	25.43	31.64	33.90
14.75	6.64	8.26	8.85	28.75	12.94	16.10	17.25	42.75	19.24	23.94	25.65	56.75	25.54	31.78	34.05

# STANDARD SEEDS IN BULK

## ARTICHOKE

Green Globe..... Tel. Cipher Per Lb. **Accomac** sold out

## ASPARAGUS

**Columbian Mammoth White**..... **Adair**..... \$0 35  
**Conover's Colossal**..... **Aitkin**..... 25  
**Palmetto**..... **Alameda**..... 25

## ASPARAGUS ROOTS

**Columbian Mammoth White**..... Per 1000 **Addison**..... \$4 75  
**Conover's Colossal**..... **Alamance**..... 4 50  
**Palmetto**..... **Albemarle**..... 4 50



MICHIGAN WHITE WAX

## BEANS—Dwarf or Bush

Not less than 10 lbs. at 100 lb. rate.

### WAX PODED SORTS

#### Challenge Dwarf

**Black Wax.** The earliest wax podded bean. We consider it the best first early wax sort. Tel. Cipher Per Lb. Per 100 Lbs.  
**Albany**..... \$0 30 \$22 50

#### D. M. Ferry & Co's

**Golden Wax**..... **Alcorn**..... 30 22 50

#### Michigan White

**Wax.** (See cut) **Alger**..... 30 25 00

#### Grenell Rust Proof

**Wax**..... **Alleghany**.. 30 22 50

**Refugee Wax**..... **Amador**..... sold out

#### Keeney's Rustless

**Golden Wax**... **Alpena**... 30 22 50

#### D. M. Ferry & Co's

**Detroit Wax**..... **Amherst**.. 25 20 00

#### Prolific German

**Wax, Black Seeded**..... **Anderson** 30 22 50

#### Pencil Pod Wax

(very short crop). **Andrews**..... crop failed

#### Currie's Rust Proof

**Wax**..... **Anoka**.... 30 25 00

#### Dwarf Unrivald

**Wax**..... **Anson**.... 25 20 00

#### Wardwell's Kidney

**Wax**..... **Antelope**.. 30 25 00

#### Round Pod Kidney

**Wax**..... **Apache**.... sold out

**Davis Wax**... **Aransas**.. 30 22 50

#### Scarlet Flageolet

**Wax**..... **Archer**... 30 25 00

#### Violet Flageolet Wax

or Perfection Wax **Arenac**... 30 25 00

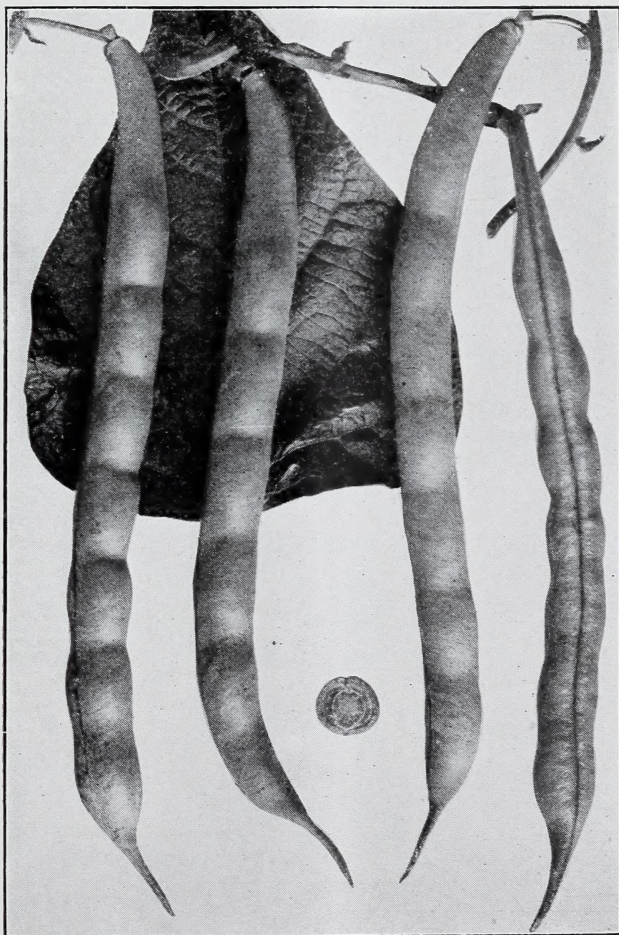
**Hodson Wax**..... **Ashe**..... sold out

**Crystal White Wax**..... **Ashley**.... 30 25 00

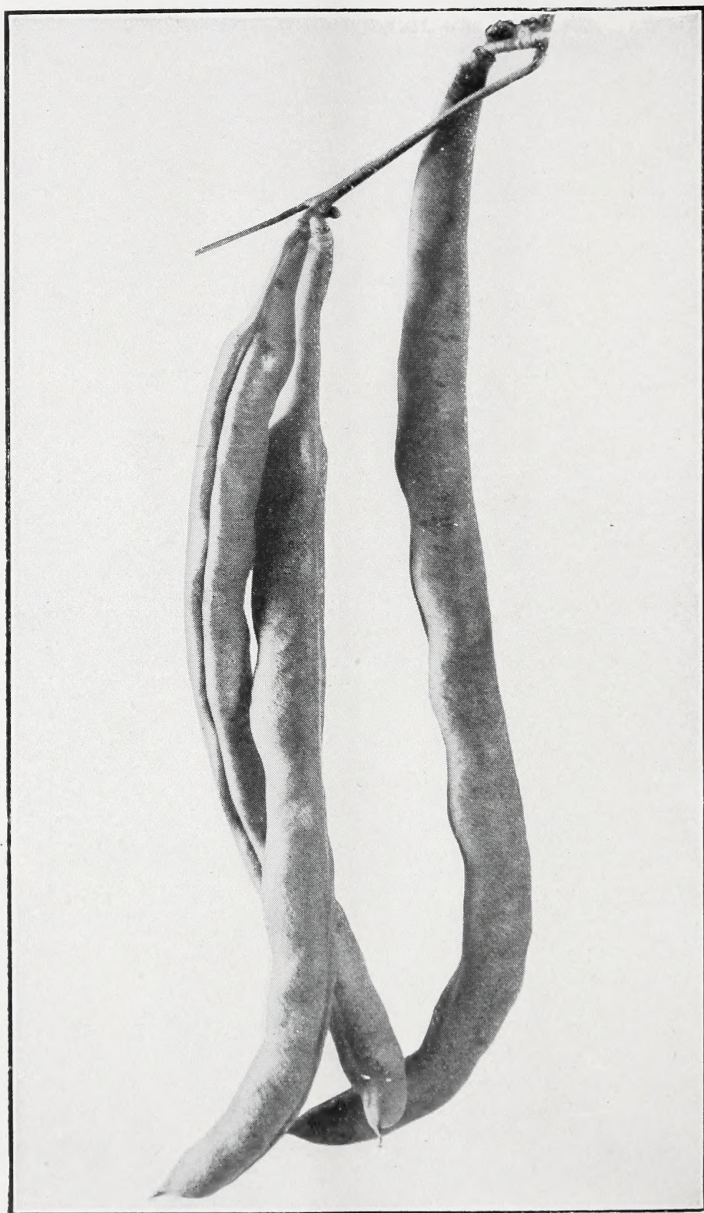
**BEANS—Dwarf or Bush—Continued**

## GREEN PODDED SORTS

	Tel. Cipher	Per Lb.	Per 100 Lbs.
<b>Extra Early Refugee</b> .....	<b>Atascosa</b>	\$0 20	\$15 00
<b>Round Yellow Six Weeks, Improved Round Pod</b> .....	<b>Athens</b> ...	20	15 00
<b>Early Yellow Kidney Six Weeks</b> .....	<b>Atoka</b> ...	20	14 00
<b>Bountiful</b> .....	<b>Attala</b> ...	20	16 50
<b>Extra Early Round Pod Red Valentine</b> .....	<b>Auglaize</b> .	20	15 00



GIANT STRINGLESS GREEN POD



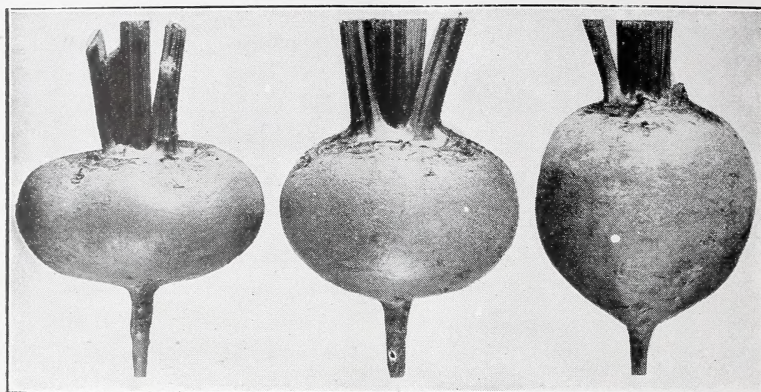
KENTUCKY WONDER



**BEANS—Dwarf or Bush—Continued**

Not less than 10 lbs. at 100 lb. rate.

	GREEN PODDED SORTS	Tel. Cipher	Per Lb.	Per 100 Lbs.
Black Valentine .....		<b>Autauga..</b>	\$0 20	\$16 00
Early Mohawk.....		<b>Audrain..</b>	20	14 00
Stringless Green Pod .....		<b>Bailey...</b>	25	20 00
Giant Stringless Green Pod ( <i>See cut, page 3</i> ) .....		<b>Baldwin..</b>	25	20 00
Tennessee Green Pod. Pods very long, flat, irregular in shape, bright, rather dark green and of fine quality ..		<b>Bamberg.</b>	20	16 00
Dwarf Horticultural.....		<b>Banks....</b>		sold out
Refugee or Thousand to One. Remarkably productive. Stands handling well and is a very popular variety with canners.....		<b>Barber...</b>	20	16 00
Early Marrow Pea or Dwarf White Navy .....		<b>Barnes...</b>		crop failed
Large White Marrow or Mountain .....		<b>Barton...</b>	15	13 00
Vineless Marrow.....		<b>Barron...</b>	15	13 00
Royal Dwarf Kidney.....		<b>Bastrop..</b>		crop failed
DWARF LIMAS				
Bush Lima or Dwarf Sieva ( <i>Henderson's</i> ) .....		<b>Bath....</b>	20	14 00
Burpee's Improved Bush Lima .....		<b>Bayfield..</b>	20	14 00
Dwarf Large White Lima ( <i>Burpee's</i> ).....		<b>Baylor...</b>	20	13 00
Fordhook Bush Lima.....		<b>Beadle...</b>	20	14 00
<b>Pole or Running</b>				
White Creaseback.....		<b>Becker...</b>	15	13 00
Kentucky Wonder. (Old Homestead) Very productive and of the best quality for snaps. ( <i>See cut</i> ).....		<b>Bedford..</b>	20	14 00
St. Louis Perfection White. Early, very productive, white seeded; unsurpassed in its class.....		<b>Beckham.</b>	20	15 00
Red Speckled Cut Short or Corn Hill.....		<b>Belknap..</b>	20	14 00
Scotia or Striped Creaseback. Especially suitable for growing on corn for snaps .....		<b>Bell....</b>	20	14 00
Baldwin Wonder Wax.....		<b>Benning.</b>	30	25 00
Dutch Case Knife .....		<b>Belmont..</b>	15	12 00
Kentucky Wonder Wax. Similar to Kentucky Wonder, but pods are attractive light yellow.....		<b>Beltrami.</b>	20	15 00
Early Golden Cluster Wax.....		<b>Benson..</b>	25	20 00
Harlequin (horticultural).....		<b>Bergen...</b>	20	15 00
London Horticultural or Speckled Cranberry .....		<b>Benzie...</b>	20	14 00
Lazy Wife ( <i>very short crop</i> ).....		<b>Bexar...</b>		sold out
POLE LIMAS				
Seibert's Early Lima.....		<b>Bighorn..</b>	15	12 00
Small White Lima, Carolina or Sieva .....		<b>Billings..</b>	15	12 00
Ideal Pole Lima.....		<b>Bladen...</b>	15	12 00
King of the Garden Lima.....		<b>Blair....</b>	15	12 00
Carpinteria Pole Lima. Very large beans w. greenish tint, and very best quality .....		<b>Blanco...</b>	15	13 00
Large White Lima.....		<b>Bland...</b>	15	12 00



EXTRA EARLY EGYPTIAN, CROSBY'S EGYPTIAN AND DETROIT DARK RED

**BEET**

	Tel. Cipher	Per Lb.
<b>Extra Early Egyptian Blood Turnip. (See cut)</b> .....	<b>Boise</b> .....	\$0 60
<b>Crosby's Egyptian. (See cut)</b> .....	<b>Bond</b> .....	71 90
<b>Detroit Dark Red. (See cut)</b> .....	<b>Boone</b> .....	1 00
<b>Early Eclipse</b> .....	<b>Boreman</b> .....	65
<b>Edmand's Early Blood Turnip</b> .....	<b>Bossier</b> .....	60
<b>Early Blood Turnip, improved</b> .....	<b>Bourbon</b> .....	60
<b>Bastian's Early Blood Turnip</b> .....	<b>Bowman</b> .....	50
<b>Dewing's Blood Turnip</b> .....	<b>Boxelder</b> .....	50
<b>Early Turnip Bassano</b> .....	<b>Boyle</b> .....	50
<b>D. M. Ferry &amp; Co's Half Long Blood</b> .....	<b>Bradford</b> .....	90
<b>Long Dark Blood</b> .....	<b>Branch</b> .....	50
<b>Swiss Chard. Sometimes called Sea Kale Beet or Spinach Beet</b> ..	<b>Brazoria</b> ..	75

**SUGAR BEET**

	Tel. Cipher	Per Lb.	Per 100 Lbs.
<b>Jaensch's Victrix, For Sugar Making</b> .....	<b>Bremer</b> .....	\$0 40	\$35 00
<b>Vilmorin's Improved, " " "</b> .....	<b>Brewster</b> .....	40	35 00
<b>Klein Wanzleben, " " "</b> .....	<b>Bristol</b> .....	40	35 00

**Giant Feeding Sugar Beet or Half Sugar Mangel**

<b>For Stock Feeding</b> .....	<b>Brooks</b> ....	35	30 00
--------------------------------	--------------------	----	-------

**MANGEL WURZEL**

<b>Long Red</b> .....	<b>Bullitt</b> .....	35	30 00
<b>D. M. Ferry &amp; Co's Imp'd Mammoth Long Red</b> .....	<b>Buncombe</b> .....	35	30 00
<b>Yellow Leviathan</b> .....	<b>Burke</b> .....	35	30 00
<b>Golden Tankard</b> .....	<b>Burnett</b> ....	40	35 00

**BROCCOLI**

		Per Lb.
<b>Early Large White French</b> .....	<b>Butts</b> .....	\$2 50

**BRUSSELS SPROUTS**

<b>Improved Half Dwarf</b> .....	<b>Cabell</b> .....	1 00
----------------------------------	---------------------	------



EARLY JERSEY WAKEFIELD

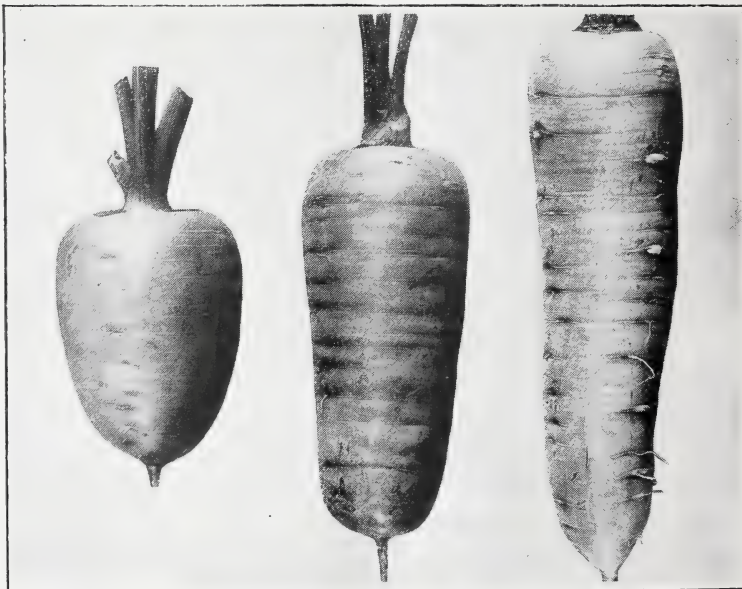
## CABBAGE

For many years Cabbage Seed has been a leading specialty with us. Our cabbage seeds are all grown from approved stock seeds which are largely of our own development on our Oakview Stock Seed Farm and are all grown under our personal inspection and supervision. There is none more reliable, none that can be more implicitly depended upon to give planters uniformly satisfactory results.

	Tel. Cipher	Per Lb.
FIRST EARLY SORTS		
<b>Early Jersey Wakefield.</b> ( <i>See cut</i> ) The earliest and surest heading of first early cabbages.....	<b>Caddo</b> .....	\$1 75
<b>Copenhagen Market.</b> The earliest large round-headed cabbage. Our strain produces the characteristic large, round heads that for their solidity and excellent quality make this variety so valuable. ....	<b>Callahan</b> .....	3 00
<b>Charleston or Large Wakefield.</b> .....	<b>Calhoun</b> .....	1 75
<b>Early Spring</b> .....	<b>Callaway</b> .....	1 75
SECOND EARLY AND INTERMEDIATE SORTS		
<b>Early Dwarf Flat Dutch.</b> .....	<b>Camden</b> .....	1 50
<b>Henderson's Early Summer.</b> .....	<b>Calvert</b> .....	1 75
<b>Glory of Enkhuizen</b> .....	<b>Cambria</b> .....	1 75
<b>All Head Early</b> .....	<b>Camp</b> .....	2 50
<b>Early Winnigstadt.</b> .....	<b>Cannon</b> .....	1 75
<b>Fottler's Early Drumhead</b> or Brunswick Short Stem .....	<b>Carroll</b> .....	1 25
<b>Succession.</b> .....	<b>Carter</b> .....	2 00
<b>All Seasons.</b> .....	<b>Carbon</b> .....	2 00
LATE OR AUTUMN AND WINTER SORTS		
<b>The Warren</b> or Improved Stone Mason .....	<b>Carver</b> .....	1 75
<b>Volga</b> .....	<b>Cascade</b> .....	1 50
<b>Surehead</b> .....	<b>Casey</b> .....	1 50

**CABBAGE—Continued**

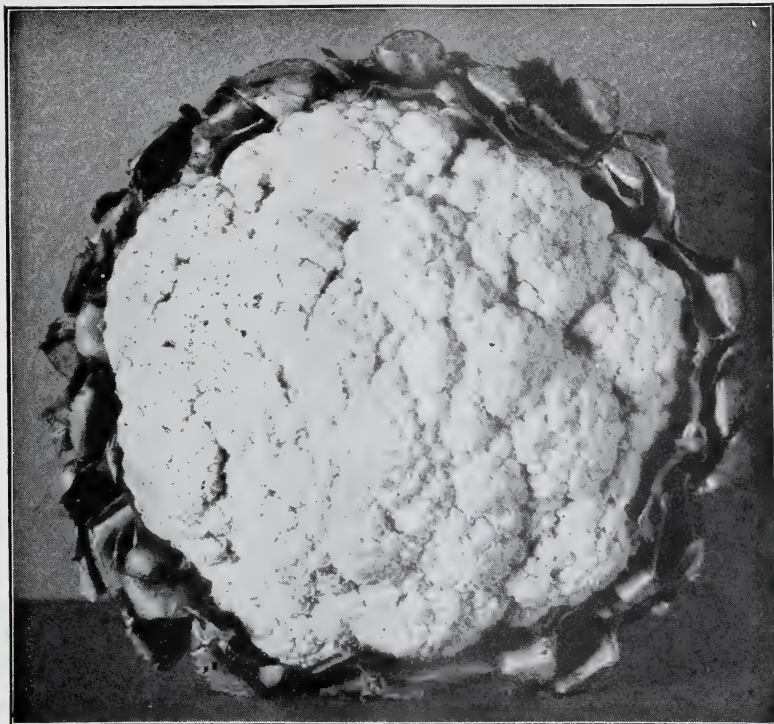
LATE OR AUTUMN AND WINTER SORTS		Tel. Cipher	Per Lb.
D. M. Ferry & Co's Premium Late Flat Dutch. ....		<b>Catoosa</b> .....	\$1 50
D. M. Ferry & Co's Premium Late Drumhead .....		<b>Chambers</b> .....	1 50
Hollander or Danish Ball Head. Our own strain and growth.....		<b>Chatham</b> .....	sold out
Hollander or Danish Ball Head. Choice Danish seed.....		<b>Chaves</b> .....	1 75
<b>Mammoth Rock Red</b> .....		<b>Cheatham</b> crop failed	
<b>Large Red Drumhead</b> .....		<b>Chehalis</b> .....	2 50
<b>Savoy, Early Dwarf Ulm</b> .....		<b>Chenango</b> .....	1 50
<b>Savoy, Improved American</b> .....		<b>Cherry</b> .....	1 50
<b>CHINESE IMPROVED or PE-TSAL.</b> Also called Celery			
Cabbage. Grows like Cos Lettuce.....		<b>Cheshire</b> ..	2 50



GUERANDE, CHANTENAY AND DANVERS

**CARROT**

	Tel. Cipher	Per Lb.
Earliest Short Horn, <i>for forcing</i> .....	<b>Chester</b> .....	\$1 50
<b>Early Scarlet Horn</b> .....	<b>Chicot</b> .....	1 25
Early Half Long Scarlet Carentan, <i>coreless</i> .....	<b>Chippewa</b> ..	1 50
Half Long Scarlet Nantes, Stump-Rooted .....	<b>Choctaw</b> ..	1 50
<b>Chantenay.</b> ( <i>See cut</i> ).....	<b>Chowan</b> .....	1 25
<b>Guerande or Ox Heart.</b> ( <i>See cut</i> ).....	<b>Clare</b> .....	1 00
<b>Danvers.</b> Our strain is unsurpassed. ( <i>See cut</i> ).....	<b>Clark</b> .....	1 25
<b>Improved Long Orange</b> .....	<b>Clatsop</b> ..	1 00
D. M. Ferry & Co's Improved Short White. ....	<b>Clayton</b> .....	50



EARLY SNOWBALL

## CAULIFLOWER

Our stocks of Cauliflower are all of the finest quality and are produced by the most experienced growers in Europe, in such localities as are best suited to their proper development and the greatest care is taken to save seed from perfectly developed plants only.

Tel. Cipher Per Oz. Per Lb.

<b>Early Snowball.</b> This is unquestionably the earliest maturing strain of the true short leaved Snowball type. The heads are of medium to large size, round and solid, with compact, very white curd of the very best quality. ( <i>See cut</i> ).....	<b>Clermont..</b>	\$1 50	\$20 00
<b>Extra Early Dwarf Erfurt.</b> A remarkably sure heading early cauliflower. It is nearly as early as Snowball. The heads when ready for market are of medium to large size, curd white, exceptionally deep and of finest quality.....	<b>Clinton....</b>	1 25	18 00
<b>Early Favorite.</b> A large, exceptionally sure heading and easily grown, second early variety.....	<b>Coal .....</b>	50	5 00
<b>Large Algiers.....</b>	<b>Coconino .</b>	40	4 50
<b>Veitch's Autumn Giant .....</b>	<b>Coffee.....</b>	30	3 50



GOLDEN YELLOW SELF BLANCHING

**CELERY**

	Tel. Cipher	
<b>Golden Yellow Self Blanching.</b> (See cut) Oz. \$1 00.	<b>Coke</b> .....	Per Lb. \$12 00
<b>White Plume.</b> Finest strain.....	<b>Coleman</b> .....	1 75
<b>Columbia.</b> One of the earliest maturing varieties. Introduced by us in 1906. In rich nutty flavor our strain is unsurpassed.....	<b>Colleton</b> .....	5 00
<b>Dwarf White Solid or Large Ribbed Kalamazoo.</b> .....	<b>Collin</b> .....	1 50
<b>Giant Pascal</b> .....	<b>Comanche</b> .....	1 25
<b>Winter Reliance.</b> A very desirable late keeping variety	<b>Conejos</b> .....	2 50
<b>French's Success</b> .....	<b>Converse</b> .....	2 50
Soup or Cutting.....	<b>Cooper</b> .....	50
Celery Seed (for flavoring).....	<b>Coosa</b> .....	20
<b>CELERIAC, Large Smooth Prague</b> .....	<b>Cortland</b> .....	2 00

	<b>CHERVIL</b>	Tel. Cipher	Per Lb.
Curl'd.....	Oz. \$0.10	<b>Costilla..</b>	\$0 75
	<b>CHICORY</b>		
Large Rooted or Coffee.....		<b>Coweta..</b>	1 00
	<b>CHIVES</b>		Per Oz.
Allium Schcenoprasum.....		<b>Cowlitz..</b>	\$0 50
	<b>COLLARDS</b>		Per Lb.
Georgia, Southern or Creole.....		<b>Crane....</b>	\$0 40

**CORN**

(SHELLED)

CAUTION—Sweet Corn in bulk, even after being thoroughly cured, will often gather moisture and spoil, particularly if it has been exposed to a low temperature. To prevent this it should be taken out of the bags as soon as received and spread in a dry place.

Not less than 10 lbs. at 100 lb. rate.

Sweet Corn crops this year were either very short or total failures. Our supplies are meager and consequently the prices we quote are not only high but also are for moderate quantities only.

SWEET OR TABLE VARIETIES

	Tel. Cipher	Per Lb.	100 Lbs.
<b>Mammoth White Cory..</b>	<b>Crawford.</b>	\$0 20	\$15 00
<b>Crosby's Early .....</b>	<b>Cross .....</b>	30	25 00
<b>Golden Bantam.</b> Not our own growth. Purchased after harvest .....	<b>Culpeper.</b>	30	25 00
<b>Early Minnesota .....</b>	<b>Curry.....</b>	20	15 00
<b>Kendel's Early Giant.....</b>	<b>Cuyahoga .....</b>	20	15 00
<b>Early Sweet or Sugar.....</b>	<b>Dakota...</b>	20	14 00
<b>Black Mexican.....</b>	<b>Darke .....</b>	20	16 00
<b>Ferry's Early Evergreen.....</b>	<b>Davidson .....</b>	30	25 00
<b>Avon Evergreen.....</b>	<b>Dauphin .....</b>	30	25 00
<b>Country Gentleman.....</b>	<b>Davis.....</b>	35	27 50
<b>Stowell's Evergreen.....</b>	<b>Dawes .....</b>	30	25 00
<b>Mammoth .....</b>	<b>Day.....</b>	25	20 00

FIELD VARIETIES

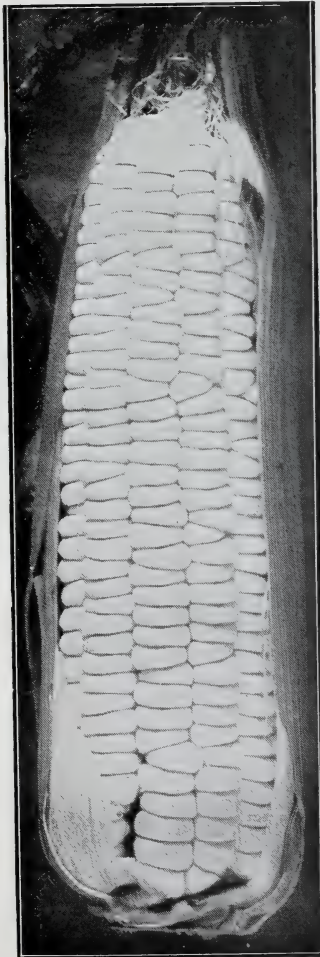
<b>Extra Early Adams.....</b>	<b>Decatur..</b>	10	6 00
<b>Early Adams or Burlington.....</b>	<b>Dekalb...</b>	10	6 00
<b>Early Red Blazed .....</b>	<b>Denton...</b>	05	3 50
<b>Early Golden Dent or Pride of the North.....</b>	<b>Denver...</b>	05	3 50

POP CORN

<b>Black Beauty (on the cob).....</b>	<b>Desha....</b>		7 00
“ “ (shelled).....		10	
<b>White Rice (on the cob).....</b>	<b>Deuel....</b>		6 00
“ “ (shelled).....		10	

**CORN SALAD or Feticus**

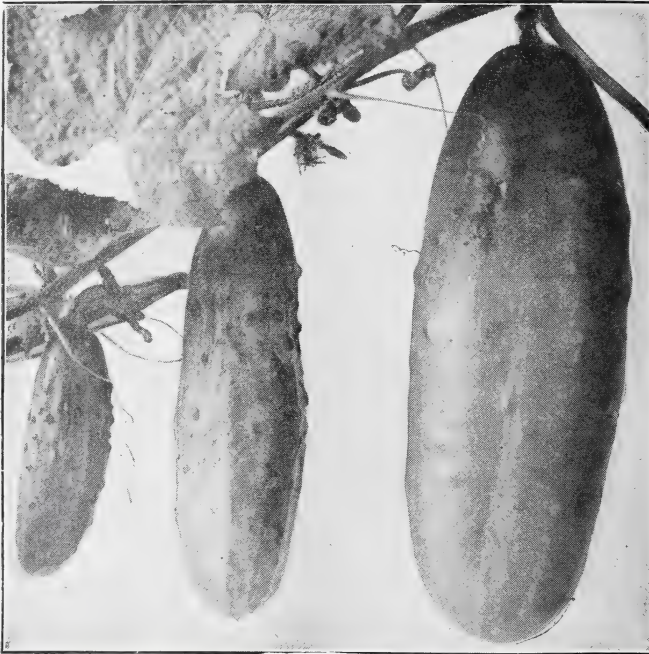
<b>Large Seeded, Large Leaved, extra cleaned.....</b>	<b>Dewitt.....</b>		Per Lb. \$0 35
---	--------------------	--	----------------



MAMMOTH WHITE CORN

**CRESS**

Curled or Pepper Grass.....	Tel. Cipher <b>Dickey</b> .....	Per Lb. <b>\$0 25</b>
True Water.....	<b>Dodge</b> .....	<b>3 00</b>



BOSTON PICKLING

**CUCUMBER**

Early Cluster .....	Tel. Cipher <b>Doniphan</b> ..	Per Lb. <b>\$0 45</b>
Early Short Green or Early Frame.....	<b>Dooly</b> .....	45
<b>Snow's Pickling</b> .....	<b>Drew</b> .....	50
<b>Chicago or Westerfield Pickling</b> .....	<b>Dubois</b> .....	50
Boston Pickling. ( <i>See cut</i> ).....	<b>Dukes</b> .....	45
Jersey Pickling .....	<b>Dunklin</b> .....	45
<b>Early White Spine</b> .....	<b>Dupage</b> .....	45
Arlington .....	<b>Durham</b> .....	45
<b>Klondike</b> . ( <i>See cut, page 13</i> ).....	<b>Dutchess</b> .....	50
<b>Extra Long or Evergreen White Spine</b> .....	<b>Duval</b> .....	55
<b>Improved Long Green</b> . We believe the stock we offer has no equal. ( <i>See cut, page 13</i> ) .....	<b>Eddy</b> .....	70
Small Gherkin ( <i>for pickles</i> ).....	<b>Edmonson</b> .....	1 00

**DANDELION**

Cultivated or French Common.....	<b>Edwards</b> .....	3 00
Improved Thick Leaved.....	<b>Eldorado</b> .....	4 00

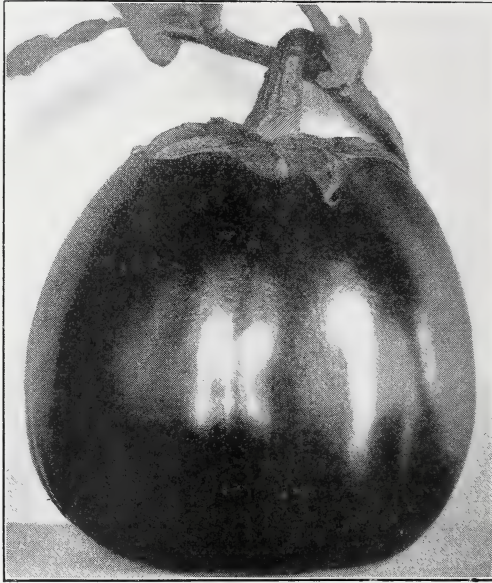




K ONDIKE



IMPROVED LONG GREEN



EGG PLANT, D. M. FERRY & Co's IMPROVED LARGE PURPLE

### EGG PLANT

	Tel. Cipher	Per Lb.
Early Long Purple.....	<b>Elkhart</b> .....	\$4 00
Black Pekin.....	<b>Elliott</b> .....	4 00
<b>Black Beauty</b> .....	<b>Ellis</b> .....	5 00
Large New York Purple.....	<b>Elmore</b> .....	4 50
<b>D. M. Ferry &amp; Co's Improved Large Purple, spineless</b> .....	<b>Emanuel</b> ..	4 50

### ENDIVE

<b>Large Green Curled</b> .....	<b>Emmet</b> .....	85
Moss Curled.....	<b>Erath</b> .....	75
Ever White Curled.....	<b>Estill</b> .....	75
Broad Leaved Batavian or Escarolle.....	<b>Falls</b> .....	75

### FENNEL

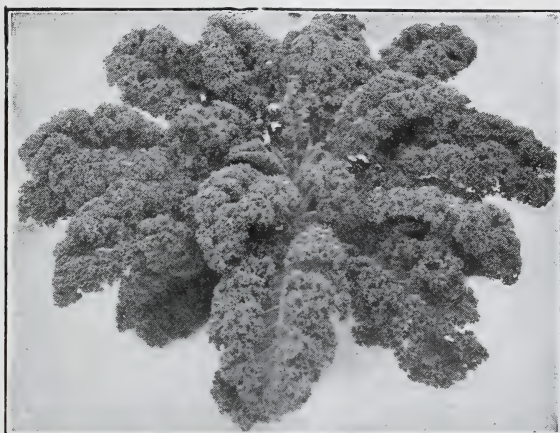
Florence.....	<b>Schuyler</b> ...	60
---------------	---------------------	----

### GARLIC

Bulbs.....	<b>Faulkner</b> ...	30
------------	---------------------	----

### HORSE RADISH

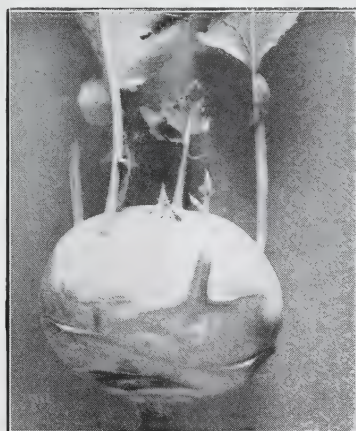
		Per 100
Small Roots.....	<b>Fayette</b> .....	\$0 50



DWARF CURLED SCOTCH KALE

## KALE or Borecole

	Tel. Cipher	Per Lb.
Tall Green Curled Scotch..	<b>Fergus</b> .....	\$0 60
<b>Dwarf Curled Scotch</b> or German Greens. ....	<b>Finney</b> .....	50
German Dwarf Purple.....	<b>Fluvanna</b> ....	75
<b>Siberian</b> or Sprouts ..	<b>Fleming</b> ....	40



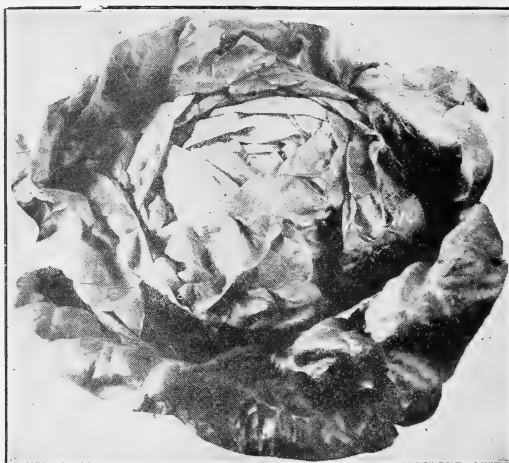
KOHL RABI, EARLY WHITE VIENNA

## KOHL RABI

	Tel. Cipher	Per Lb.
<b>Early White Vienna</b> , <i>extra for forcing</i> .....	<b>Forest</b> .....	\$1 25
Early Purple Vienna, <i>very early</i> .....	<b>Foster</b> .....	1 25
Large Green.....	<b>Franklin</b> ....	75

## LEEK

	Tel. Cipher	Per Lb.
London Flag.....	<b>Fremont</b> .....	\$0 75
<b>Large American Flag</b> .....	<b>Frio</b> .....	75
Large Rouen.....	<b>Furnas</b> .....	75
<b>Monstrous Carentan</b> .....	<b>Gallatin</b> .....	75



MAY KING

## LETTUCE

## CABBAGE OR HEADING VARIETIES

	Tel. Cipher	Per Lb.
<b>May King, w. s. (See cut)</b> .....	<b>Garfield</b> .....	\$0 65
Early Tennis Ball, <i>b. s.</i> .....	<b>Garvin</b> .....	60
<b>Salamander, b. s.</b> .....	<b>Gaston</b> .....	60
Hubbard's Market, <i>w. s.</i> .....	<b>Genesee</b> .....	50
<b>Mammoth Black Seeded Butter</b> .....	<b>Gentry</b> .....	60
Deacon, <i>w. s.</i> .....	<b>Gila</b> .....	50
<b>Unrivald Summer, w. s.</b> .....	<b>Giles</b> .....	75
<b>Big Boston, w. s.</b> .....	<b>Gilliam</b> .....	65
California Cream Butter or Royal Summer Cabbage, <i>brown seed.</i>	<b>Gilpin</b> .....	50
Jersey Winter, <i>w. s.</i> .....	<b>Glascokk</b> .....	55
Brown Dutch, <i>b. s. (very hardy)</i> .....	<b>Gogebic</b> .....	55
Los Angeles, <i>w. s.</i> .....	<b>Goliad</b> .....	75
Hanson, <i>w. s.</i> .....	<b>Gordon</b> .....	55

## CURLD OR LOOSE LEAVED VARIETIES

<b>Grand Rapids, b. s.</b> .....	<b>Gove</b> .....	65
Detroit Market Gardeners' Forcing, <i>w. s.</i> .....	<b>Grafton</b> .....	75
Simpson's Early Curled, <i>w. s.</i> .....	<b>Grainger</b> .....	55
<b>Ferry's Early Prize Head, w. s.</b> .....	<b>Grant</b> .....	55
<b>Black Seeded Simpson</b> .....	<b>Graves</b> .....	60
<b>Early White Self-Folding Cos, w. s. (Romaine)</b> .....	<b>Gregg</b> .....	75



ADMIRAL TOGO

## MUSK MELON

### GREEN FLESHED VARIETIES

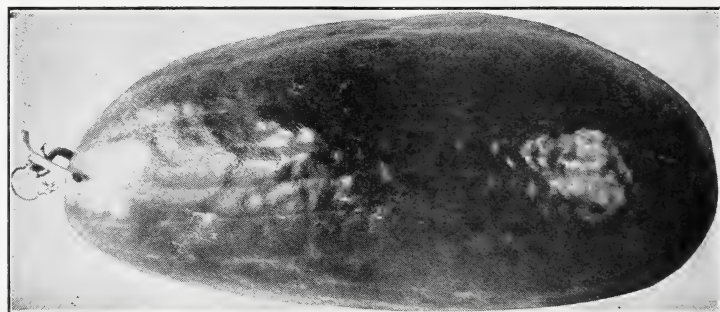
	Tel. Cipher	Per Lb.
Extra Early Citron .....	<b>Griggs</b> .....	\$0 45
Jenny Lind .....	<b>Grundy</b> .....	45
Extra Early Hackensack .....	<b>Gunnison</b> ..	50
Netted Gem or Rocky Ford .....	<b>Gwinnett</b> ...	45
Baltimore or Acme .....	<b>Hamblen</b> ...	45
Champion Market.....	<b>Hand</b> .....	50
Hackensack or Turk's Cap.....	<b>Hansford</b> ...	55
Bay View.....	<b>Hardin</b> .....	45

### ORANGE FLESHED VARIETIES

<b>Emerald Gem.</b> For home use and near markets it leads all other kinds on account of its sweetness and convenient size.	<b>Harford</b> .....	60
<b>Tip Top</b> .....	<b>Harnett</b> .....	55
<b>Surprise</b> .....	<b>Harper</b> .....	50
<b>Extra Early Osage.</b> Fully a week earlier than Osage, a little smaller, more nearly round and with more netting.....	<b>Hart</b> .....	55
<b>Petoskey or Paul Rose</b> .....	<b>Hartley</b> .....	50
<b>Admiral Togo</b> or Orange Fleshed Rocky Ford. Unexcelled in flavor. We consider this the best small shipping melon yet introduced. ( <i>See cut</i> ) .....	<b>Haskell</b> ...	55
<b>Hoodoo.</b> A splendid orange fleshed variety of medium size. By many considered the finest shipping melon.....	<b>Hays</b> .....	50
<b>Defender.</b> Originated and introduced by us in 1901. We believe it identical with Burrell's Gem.....	<b>Heard</b> .....	55
<b>Osage</b> or Miller's Cream. Our stock is unsurpassed.....	<b>Hennepin</b> ..	60
<b>CASSABA MELON, Golden Beauty</b> .....	<b>Hertford</b> ..	1 00

## WATER MELON

	Tel. Cipher	Per Lb.
Harris' Earliest .....	Hidalgo	\$0 40
D. M. Ferry & Co's Peerless (Ice Cream).....	Hocking	35
Round Light Icing .....	Holt	35
Long Light Icing .....	Hooker	35
Dark Icing.....	Horry	35
Monte Cristo or Kleckley's Sweets. ( <i>See cut</i> ).....	Houston	50
Florida Favorite .....	Howell	35
Alabama Sweet.....	Hughes	35
Tom Watson.....	Humacao	45
Ferry's Iceberg .....	Humboldt	25
Kolb's Gem.....	Huron	25
Chilian .....	Ida	50
Sweet Heart.....	Idaho	35
Gypsy or Georgia Rattlesnake.....	Ingham	35
Triumph .....	Ionia	25
Citron ( <i>for preserving</i> ).....	Iredell	50



MONTE CRISTO OR KLECKLEY'S SWEETS

## MUSHROOM SPAWN

	Tel. Cipher	Per Brick
Pure Culture. Per 100 bricks (each about 1¼ lbs.) \$15.00 .....	Iroquois	\$0 20

## MUSTARD

		Per Lb.
White English.....	Isabella	\$0 30
Southern Giant Curled.....	Island	35
Large Smooth Leaved .....	Isanti	35

## NASTURTIUM

Tall Mixed Garden. ( <i>See other Nasturtiums, page 40</i> ).....	Itasca	45
---	--------	----

## OKRA or Gumbo

White Velvet.....	Jackson	20
Perkins' Mammoth Long Pod.....	Jasper	20
Dwarf White.....	Jenkins	20

## ONION

Our onion seeds are grown from the choicest selected bulbs raised from pedigree seed of the choicest selected types. You may find onion seed offered for less than ours. You cannot find any of better quality, no matter how high the prices asked.

	Tel. Cipher	Per Lb.
Extra Early Red .....	<b>Johnston</b> ...	\$1 50
<b>Large Red Wethersfield</b> .....	<b>Juneau</b> .....	1 25
<b>Southport Red Globe</b> .....	<b>Kalawao</b> .....	1 50
Large Yellow Dutch or Strasburg.....	<b>Kanabec</b> .....	1 25
Yellow Danvers.....	<b>Kane</b> .....	1 25
Yellow Globe Danvers. ( <i>See cut</i> ).....	<b>Karnes</b> .....	1 40
<b>Michigan Yellow Globe</b> .....	<b>Kauai</b> .....	1 60
Southport Yellow Globe.....	<b>Keith</b> .....	1 60
<b>Mammoth Yellow Spanish or Prizetaker</b> .....	<b>Kennebec</b> .....	1 50
White Portugal ( <i>American Silverskin</i> ).....	<b>Kenton</b> .....	2 50
<b>White Globe</b> .....	<b>Kern</b> .....	3 00

### IMPORTED VARIETIES

<b>Extra Early Barletta</b> .....	<b>Keokuk</b> .....	3 00
<b>Queen, very early</b> .....	<b>Kershaw</b> .....	3 00
Early Neapolitan Marzajola.....	<b>Keweenaw</b> .....	2 50
Giant White Italian Tripoli.....	<b>Kingman</b> .....	2 50
Mammoth Silver King.....	<b>Kiowa</b> .....	2 50



YELLOW GLOBE DANVERS

## PARSLEY

	Tel. Cipher	Per Lb.
Plain .....	<b>Kittitas</b> .....	\$0 35
<b>Champion Moss Curled</b> .....	<b>Klamath</b> .....	35
Hamburg or Rooted.....	<b>Knox</b> .....	45

## PARSNIP

Long White Dutch or Sugar.....	<b>Kossuth</b> .....	25
<b>Hollow Crown</b> or Guernsey.....	<b>Laclede</b> .....	25



THOMAS LAXTON



## PEAS

Not less than 10 lbs. at 100 lb. rate.  
Wrinkled varieties marked thus\*.

### FIRST EARLY AND EARLY SORTS

	Tel. Cipher	Per Lb.	Per 100 Lbs.
Ferry's First and Best.....	Lagrange..	\$0 15	\$10 00
Earliest of All or Alaska.....	Lamar.....	20	15 00
*Thomas Laxton. ( <i>See cut, page 20</i> ).....	Lamoille..	15	11 00
*Gradus.....	Lancaster..	15	12 00
*American Wonder.....	Langlade..	15	10 00
*Nott's Excelsior.....	Laporte...	15	10 00
*Laxtonian.....	Larne.....	20	18 00
*Premium Gem (Improved Little Gem).....	Lasalle...	15	10 00
*Little Marvel.....	Latimer...	15	12 00

### SECOND EARLY SORTS

*McLean's Advancer.....	Latah.....	15	11 00
*Yorkshire Hero.....	Laurel.....	15	9 00
*Bliss' Everbearing.....	Lavaca.....	15	9 00
*The Admiral.....	Lebanon...	15	8 00
*Duke of Albany.....	Leflore...	15	11 00
*Telephone.....	Lemhi.....	15	11 00
*Alderman.....	Leslie.....	15	11 00

### LATER SORTS

*Improved Stratagem.....	Letcher...	15	12 00
*Dwarf Champion.....	Liberty...	15	10 00
Pride of the Market.....	Lincoln...	15	10 00
*Horsford's Market Garden.....	Lipscomb..	15	11 00
Melting Sugar ( <i>edible pods</i> ).....	Logan.....	15	12 00
*Champion of England.....	Lorain.....	15	10 00
Large White Marrowfat ( <i>hand-picked</i> ).....	Louisa.....	15	10 00
Large White Marrowfat.....	Love.....		sold out
Large Blackeye Marrowfat ( <i>hand-picked</i> ).....	Lowndes...	15	9 00
Large Blackeye Marrowfat.....	Lucas.....	15	8 50

### FIELD SORTS

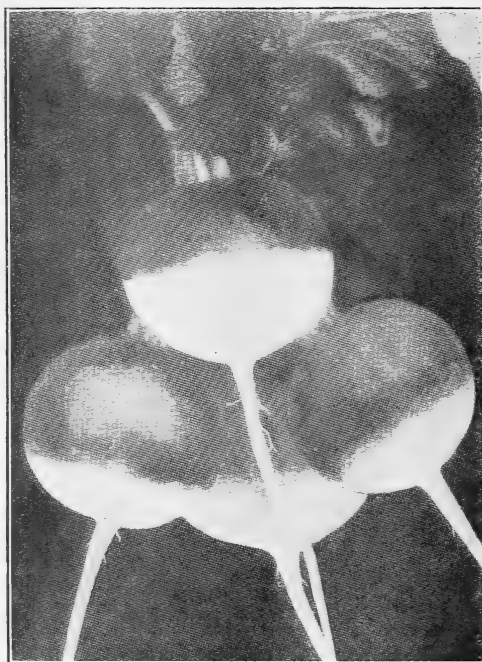
Common White.....	Lumpkin... }	market
No. 1 White.....	Luzerne... }	price

## PEPPER

		Per Lb.
Red Cherry.....	Lyman.....	\$2 25
Red Chili.....	Lyon.....	2 25
Long Red Cayenne.....	McCook.....	2 25
Large Bell or Bull Nose.....	McKean.....	2 50
Ruby King.....	McKinley...	3 00
Pimiento.....	McLeod.....	crop failed
Giant Crimson.....	McLennan...	4 00
Large Sweet Spanish.....	McMinn.....	2 50

## PUMPKIN

		Per Lb.	Per 100 Lbs.
Pie.....	McNairy...\$0	40	\$35 00
Sugar or New England Pie.....	Macomb...	40	35 00
Large Yellow.....	Macoupin...		sold out
Green Striped Cushaw.....	Madera...	75	
Sweet Cheese or Kentucky Field.....	Madison...	35	30 00



EARLY SCARLET TURNIP, WHITE TIPPED

## RADISH

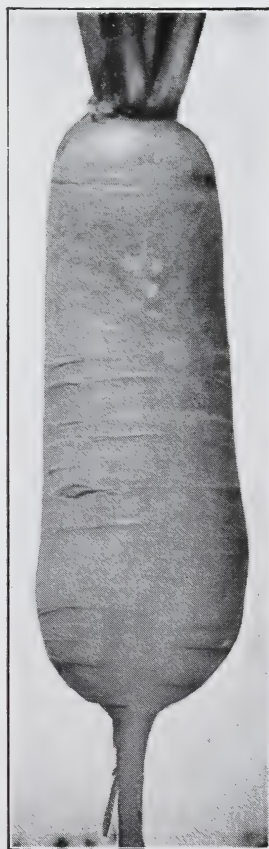
	Tel. Cipher	Per Lb.
<b>Non Plus Ultra</b> or Early Deep Scarlet Turnip, Forcing	<b>Malheur</b>	\$0 35
<b>Prussian Globe</b>	<b>Mahaska</b>	35
<b>Early Scarlet Globe</b>	<b>Manistee</b>	40
Early Scarlet Turnip, White Tipped, Forcing	<b>Marengo</b>	35
Early Deep Scarlet, Olive Shaped, Short Leaf	<b>Maries</b>	35
Early White Turnip	<b>Martin</b>	40
Early Scarlet Turnip	<b>Marion</b>	30
<b>Early Scarlet Turnip, White Tipped.</b> ( <i>See cut</i> )	<b>Marlboro</b>	40
<b>French Breakfast</b>	<b>Massac</b>	35
<b>Crimson Giant Turnip</b>	<b>Maul</b>	40
Half Long Deep Scarlet	<b>Maverick</b>	40
Long Brightest Scarlet, White Tipped	<b>Mayes</b>	35
<b>Early Long Scarlet, Short Top, Improved</b>	<b>Meagher</b>	30
Wood's Early Frame	<b>Medina</b>	30
Cincinnati Market	<b>Meigs</b>	35
<b>Improved Chartier or Shepherd</b>	<b>Menfee</b>	35
<b>Early Golden Yellow Oval</b>	<b>Mercer</b>	40
<b>Icicle</b>	<b>Meyer</b>	35
Long White Vienna or Lady Finger	<b>Mesa</b>	35
Golden Globe	<b>Mills</b>	crop failed
<b>Large White Summer Turnip</b>	<b>Miner</b>	35
<b>White Strasburg</b>	<b>Millard</b>	35
<b>Early White Giant Stuttgart</b>	<b>Midland</b>	35

## RADISH—Continued

WINTER VARIETIES		Tel. Cipher	Per Lb.
<b>Scarlet China.</b> ( <i>See cut</i> )	.....	<b>Mitchell</b> .....	\$0 35
<b>Celestial.</b> Roots long, cylindrical with beautiful white skin and flesh; quality excellent. ( <i>See cut</i> )	.....	<b>Modoc</b> .....	40
California Mammoth White China	.....	<b>Mono</b> .....	40
Round Black Spanish	.....	<b>Monroe</b> .....	40
<b>Half Long Black Winter.</b> Roots half long, grayish black; flesh white, crisp, pungent and well flavored.	.....	<b>Montcalm</b> ..	40
Long Black Spanish	.....	<b>Montour</b> ....	40



CELESTIAL



SCARLET CHINA

**RHUBARB**

	Tel. Cipher	Per Lb.
Rhubarb or Pie Plant.....	<b>Moore</b> .....	\$0 60
“ “ “ “ roots.....per doz., \$1.00.....	<b>Morgan</b>	

**SALSIFY or Vegetable Oyster**

Mammoth Sandwich Island.....	<b>Morton</b> .....	1 50
------------------------------	---------------------	------

**SORREL**

Large Leaved French....	<b>Moultrie</b> ...	1 25
-------------------------	---------------------	------



VICTORIA

**SPINACH**

	Tel. Cipher	Per Lb.	Per 100 Lbs.
<b>Savoy Leaved</b> or Bloomsdale ( <i>very small crop</i> )....	<b>Murray</b> ....		sold out
Broad Flanders.....	<b>Nance</b> ...	\$0 60	\$50 00
Improved Thick Leaved ( <i>Monstrous Viroflay</i> ).....	<b>Natrona</b> ...	60	50 00
<b>Early Giant Thick Leaved</b> ( <i>very short crop</i> ).....	<b>Nash</b> .....		sold out
<b>Victoria.</b> ( <i>See cut</i> ).....	<b>Navarro</b> ...	70	60 00
<b>Long Season</b> .....	<b>Nelson</b> ...	70	60 00
Long Standing.....	<b>Nemaha</b> ..	60	50 00
<b>Long Standing Prickly</b> .....	<b>Neshoba</b> ..		sold out
New Zealand ( <i>Tetragonia</i> ).....	<b>Newberry</b> ..	50	

## SQUASH

SUMMER SORTS		Tel. Cipher	Per Lb.
Long Island White Bush.....		<b>Noble</b> .....	\$0 65
Early White Bush Scallop.....		<b>Nicholas</b> ...	60
<b>Mammoth White Bush Scallop</b> .....		<b>Newton</b> ...	65
Early Yellow Bush Scallop.....		<b>Nolan</b> .....	65
<b>Mammoth Summer Crookneck</b> .....		<b>Nowata</b> ...	75
Summer Crookneck.....		<b>Nuckolls</b> ...	70
Italian Vegetable Marrow ( <i>Cocozezza di Napoli</i> ).....		<b>Nye</b> .....	60

### AUTUMN AND WINTER SORTS

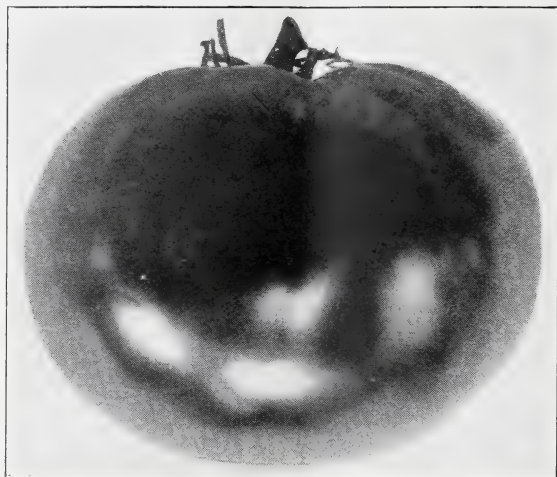
<b>Delicious</b> .....		<b>Oceana</b> .....	70
Boston Marrow.....		<b>Ogle</b> .....	40
<b>Golden Hubbard</b> .....		<b>Okfuskee</b> ...	75
<b>Hubbard</b> . ( <i>See cut</i> ).....		<b>Okmulgee</b> ..	75



HUBBARD

## TOBACCO

	Tel. Cipher	Per Oz.	Per Lb.
Sterling.....	<b>Oneida</b> ..	\$0 15	\$1 50
Sweet Oronoco.....	<b>Orleans</b> ..	15	1 50
<b>White Burley</b> .....	<b>Osborne</b> ..	20	2 00
Bradley Broad Leaf.....	<b>Osceola</b> ..	15	1 50
Persian Rose.....	<b>Otero</b> .....	20	2 00
Big Havana.....	<b>Otsego</b> ...	15	1 50
<b>Sumatra</b> .....	<b>Ouachita</b> ..	35	3 50
Connecticut Seed Leaf.....	<b>Overton</b> ..	15	1 25
<b>Havana</b> .....	<b>Owsley</b> ...	25	2 25



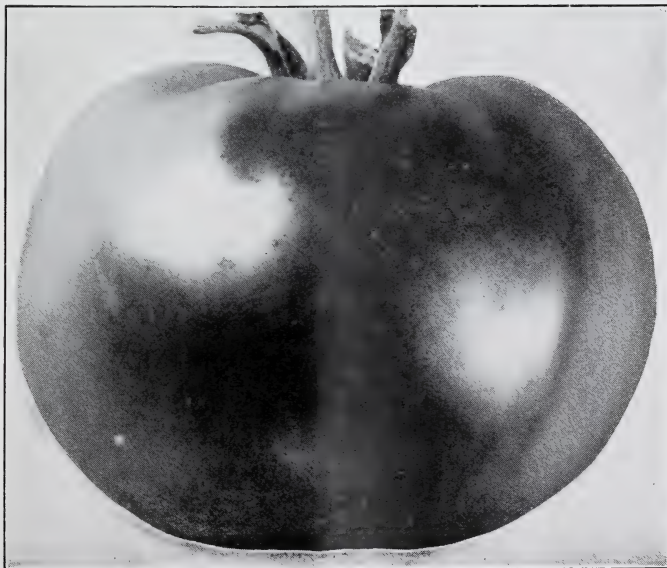
JOHN BAER

## TOMATO

	Tel. Cipher	Per Lb.
<b>Earliana.</b> A particularly profitable first early scarlet tomato for market gardeners .....	<b>Oxford</b> . . .	\$2 50
<b>John Baer.</b> Extra early, scarlet fruited, hardy and productive. Shippers should try it. ( <i>See cut</i> ) .....	<b>Ozark</b> .....	4 00
<b>June Pink.</b> Similar to Earliana but purplish pink .....	<b>Ozaukee</b> . . .	2 25
<b>Bonny Best</b> .....	<b>Panola</b> . . .	2 50
<b>Chalk's Early Jewel.</b> Considered by many to be the best all around tomato for the home garden. Early, of large size, smooth and of excellent quality .....	<b>Page</b> .....	2 50
<b>Early Detroit.</b> The largest and best of the early, purplish pink tomatoes; larger than Acme and earlier maturing than Beauty; an exceptionally valuable addition to this class. A splendid shipper .....	<b>Pacific</b> .....	3 00
<b>Acme.</b> Known also as Essex Early Hybrid .....	<b>Pamlico</b> . . .	2 00
<b>Early Michigan</b> .....	<b>Parker</b> . . .	2 00
<b>Livingston's Globe</b> .....	<b>Patrick</b> . . .	3 00
<b>Beauty.</b> A larger, smoother fruit than the original stock and one of the smoothest and best of the large purplish pink sorts .....	<b>Pawnee</b> . . .	2 00

## TOMATO—Continued

	Tel. Cipher	Per Lb.
<b>Improved Trophy.</b> Our carefully developed stock is notably superior in size, interior color and regularity of fruit .....	<b>Pemiscot...</b>	\$2 25
<b>Perfection</b> .....	<b>Pecos</b> .....	2 00
<b>Stone.</b> One of the largest and most solid, main crop or late, bright red varieties. Our stock is distinctly superior to most of that offered under this name; being more uniform, better colored and larger. ( <i>See cut</i> ).....	<b>Phelps</b> .....	2 00
<b>Ponderosa</b> ( <i>very small crop</i> ) .....	<b>Piatt</b> .....	sold out
<b>Matchless</b> .....	<b>Person</b> .....	2 25
<b>Coreless</b> .....	<b>Phillips</b> .....	2 25
<b>Dwarf Stone</b> .....	<b>Pike</b> .....	2 50
<b>Dwarf Champion</b> .....	<b>Pinal</b> .....	2 50
<b>Peach</b> .....	<b>Piute</b> .....	1 75
<b>Golden Queen</b> .....	<b>Platte</b> .....	1 75
<b>White Apple</b> .....	<b>Plymouth</b> ..	1 75
<b>Red Pear</b> .....	<b>Polk</b> .....	1 75
<b>Yellow Pear</b> .....	<b>Pontotoc</b> ..	1 75
<b>Yellow Plum</b> .....	<b>Portage</b> .....	1 75
<b>Red Cherry</b> .....	<b>Posey</b> .....	1 75
<b>Yellow Cherry</b> .....	<b>Powell</b> .....	1 75
<b>Yellow Husk or Ground Cherry</b> .....	<b>Prairie</b> .....	1 50



STONE



EARLY PURPLE TOP STRAP LEAVED

## TURNIP

### WHITE FLESHED SORTS

	Tel. Cipher	Per Lb.
<b>Extra Early White Milan.</b> .....	<b>Preble</b> .....	\$1 00
<b>Extra Early Purple Top Milan.</b> Roots purple-red on upper portion, white below, smooth, flat; flesh mild, sweet and tender. Well adapted for forcing.....	<b>Presidio</b> ....	1 00
<b>White Egg.</b> An early, oval or egg-shaped variety with smooth, clear white roots of medium size; flesh fine grained and sweet.....	<b>Price</b> .....	35
<b>Early White Flat Dutch, Strap Leaved.</b> A most excellent early garden variety. Roots medium sized, flat; color white. Very early; sweet and tender. It is desirable for table use.....	<b>Pueblo</b> .....	25
<b>Early Purple Top, Strap Leaved.</b> Very extensively used for the table. Roots flat, of medium size, purple or dark red above ground, white below. Flesh white, fine grained and tender. (See cut).....	<b>Putnam</b> ....	25
<b>Purple Top White Globe.</b> The roots are of excellent quality and are suitable for the table as well as for stock feeding. (See cut, page 29). .....	<b>Queens</b> .....	30



## TURNIP—Continued

## WHITE FLESHED SORTS

	Tel. Cipher	Per Lb.
Cow Horn or Long White. Roots long, often twelve to fifteen inches; flesh fine grained and well flavored.....	<b>Rabun</b> .....	\$0 40
Large White Norfolk.....	<b>Rains</b> .....	30
Pomeranean White Globe.....	<b>Ralls</b> .....	30
<b>Sweet German.</b> An excellent, late maturing strap leaved sort, also sold as Sweet German Ruta Baga. The roots are medium large, somewhat globular, solid and sweet.....	<b>Randall</b> ....	35
Seven Top, <i>for turnip greens</i> .....	<b>Ransom</b> ....	30
<b>Southern Prize</b> .....	<b>Ravalli</b> ....	35

## YELLOW FLESHED SORTS

Large Amber Globe. Roots large, globular; skin clear yellow except the top which is tinged with green. Flesh light yellow, fine grained and sweet.....	<b>Ray</b> .....	30
Yellow Globe.....	<b>Redwood</b> ...	35
<b>Yellow Stone.</b> Roots of medium size, globular; skin smooth, attractive pale yellow. Flesh crisp, very tender and of fine quality.....	<b>Refugio</b> ....	35
<b>Orange Jelly</b> or Golden Ball.....	<b>Renville</b> ....	30
Purple Top Yellow Aberdeen.....	<b>Rhea</b> .....	30



PURPLE TOP WHITE GLOBE



PURPLE TOP YELLOW RUTA BAGA

## RUTA BAGA OR SWEDE

	Tel. Cipher	Per Lb.
<b>American Purple Top or Improved Long Island</b> ..	<b>Richmond</b> .....	\$0.40
Bangholm Swede.....	<b>Rolette</b> .....	35
Carter's Imperial Purple Top.....	<b>Ritchie</b> .....	35
<b>D. M. Ferry &amp; Co's Improved Purple Top Yellow</b> ..	<b>Roanoke</b> .....	35
Drummond's.....	<b>Rockdale</b> .....	35
Hall's Westbury.....	<b>Roseau</b> .....	40
Hartley's Bronze Top.....	<b>Rowan</b> .....	40
<b>Laing's Purple Top</b> . Strap leaved.....	<b>Robeson</b> .....	40
<b>Monarch or Tankard</b> .....	<b>Rich</b> .....	40
<b>Perfection White</b> . Absolutely neckless.....	<b>Sabine</b> .....	45
Skirving's King of Swedes.....	<b>Ross</b> .....	35
Sutton's Champion.....	<b>Rush</b> .....	35
<b>Universal or Canadian Gem</b> .....	<b>Riley</b> .....	40
White or Sweet Russian.....	<b>Russell</b> .....	35
Yellow Swede.....	<b>Ringgold</b> .....	35

## AROMATIC, MEDICINAL AND POT HERBS

	Tel. Cipher	Per Lb.
Anise .....	<b>Saginaw</b> ..	\$0 60
Balm .....	<b>Salem</b> ..	1 50
Basil, Sweet .....	<b>Saluda</b> ..	1 00
Borage .....	<b>Sanborn</b> ..	50
Caraway .....	<b>Sandoval</b> ..	60
Caraway, for flavoring .....	<b>Sangamon</b> ..	50
Coriander .....	<b>Saratoga</b> ..	30
Coriander, for flavoring .....	<b>Sarpy</b> ..	25
Dill .....	<b>Saunders</b> ..	1 25
Dill, Mammoth .....	<b>Schley</b> ..	1 50
Fennel, Sweet .....	<b>Scotland</b> ..	50
Horehound .....	<b>Screven</b> ..	1 25
Hyssop .....	<b>Searcy</b> ..	1 50
Lavender .....	<b>Seminole</b> ..	1 50
Marjoram, Sweet .....	<b>Sequoyah</b> ..	1 50
Rosemary .....	<b>Seward</b> ..	sold out
Rue .....	<b>Sharkey</b> ..	sold out
Saffron .....	<b>Shasta</b> ..	75
Sage, Broad Leaf .....	<b>Shawnee</b> ..	1 50
Savory, Summer .....	<b>Sheridan</b> ..	1 25
Thyme .....	<b>Shoshone</b> ..	2 00
Wormwood .....	<b>Sierra</b> ..	1 25

## GRASS SEED

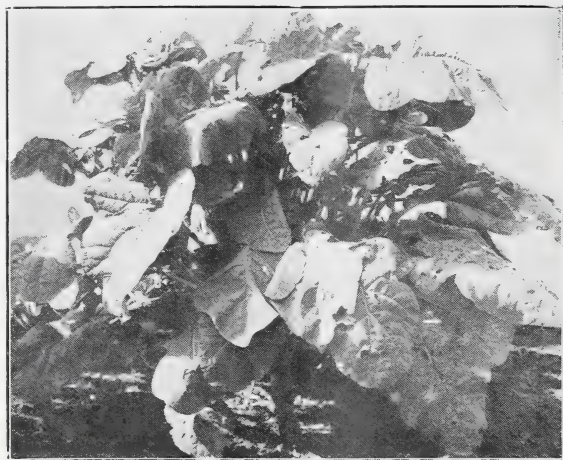
Prices are subject to fluctuations of the market. Not less than ¼ lb. at pound rates nor less than 25 lbs. at 100 lb. rate. Terms net cash ten days.

	Tel. Cipher	Per Lb.	Per 100 Lbs.
Awnless Brome Grass .....	<b>Sonoma</b> ..	Market price	
Canadian Blue Grass .....	<b>Stone</b> ..	" "	
Creeping Bent Grass .....	<b>Skagit</b> ..	" "	
Hard Fescue .....	<b>Spokane</b> ..	" "	
Kentucky Blue Grass, fancy clean; choicest grade .....	<b>Stewart</b> ..	" "	
Orchard Grass, choice .....	<b>Spencer</b> ..	" "	
Perennial Rye Grass .....	<b>Stearns</b> ..	" "	
Red Top, Fancy (cleaned from chaff) .....	<b>Snyder</b> ..	" "	
Red or Creeping Fescue .....	<b>Stafford</b> ..	" "	
Rhode Island Bent Grass .....	<b>Sioux</b> ..	" "	
Sheep's Fescue .....	<b>Stanton</b> ..	" "	
Timothy .....	<b>Stephens</b> ..	" "	
Westerwold Italian Rye Grass .....	<b>Starr</b> ..	" "	
Wood Meadow Grass .....	<b>Steuben</b> ..	" "	

Extra Fine Mixed Lawn Grass (Central Park Mixture).

Our Central Park Mixture is the best possible for permanent lawns .....

.....	<b>Stoddard</b> ..	\$0 35	\$30 00
Fine Mixed Lawn Grass .....	<b>Stokes</b> ..	20	15 00
Shady Lawn Mixture .....	<b>Stonewall</b> ..	60	50 00
Mixtures for Golf Links .....	<b>Story</b> ..	Prices on application	



DWARF ESSEX RAPE

**CLOVER**

	Tel. Cipher	Per Lb.	Per 100 Lbs.
Alfalfa or Lucerne. Choicest American grown...	<b>Stutsman</b>		Market price
Alsike or Swedish.....	<b>Sullivan</b>		" "
Mammoth or Large Red.....	<b>Summers</b>		" "
Medium Red or June.....	<b>Summer</b>		" "
White Dutch, <i>choice</i> .....	<b>Sutter</b>		" "

**MISCELLANEOUS FARM SEEDS**

		Market price
Barley, Common.....	<b>Suwanee</b>	" "
Buckwheat, Japanese.....	<b>Talbot</b>	" "
"    Silver Hull.....	<b>Taney</b>	" "
Flax Seed, <i>for sowing</i> .....	<b>Tarrant</b>	" "
Hungarian.....	<b>Tattnall</b>	" "
Millet, Common.....	<b>Tazewell</b>	" "
"    German or Golden.....	<b>Telfair</b>	" "
Rye, Spring.....	<b>Tensas</b>	" "
"    Fall or Winter.....	<b>Terrell</b>	" "
Rape, Dwarf Essex, <i>for sowing</i> . ( <i>See cut</i> ).....	<b>Terry</b>	\$0 10
Sunflower, Large Russian.....	<b>Tioga</b>	10
Sorghum (Sugar Cane) Albaugh Early.....	<b>Texas</b>	10
"    "    Imperial.....	<b>Tift</b>	10
Vetch or Tare, Spring.....	<b>Tipton</b>	10
"    Hairy or Sand (Winter).....	<b>Todd</b>	20
		15 00

**BIRD SEEDS**

Canary, <i>re-cleaned</i> .....	<b>Tompkins</b>	10	7 00
Hemp.....	<b>Toombs</b>	10	6 50
Lettuce.....	<b>Towner</b>	15	10 00
Maw.....	<b>Traill</b>	60	50 00
Millet.....	<b>Travis</b>	10	3 50
Rape.....	<b>Trigg</b>	10	7 00
Mixed Bird Seed.....	<b>Trinity</b>	10	7 00

All prices on this page are subject to fluctuations of the market. Not less than 25 lbs. at 100 lb. rate. Terms net cash 10 days.

# A SELECTED LIST OF FLOWER SEEDS IN BULK

We will not sell less than 1 oz. of sorts priced at 20c. per oz. or under but we will put up  $\frac{1}{2}$  oz. of seeds priced at 25c. per oz. and over;  $\frac{1}{4}$  oz. of seeds priced at 75c. per oz. and over;  $\frac{1}{8}$  oz. of seeds priced at \$2.00 per oz. and over.



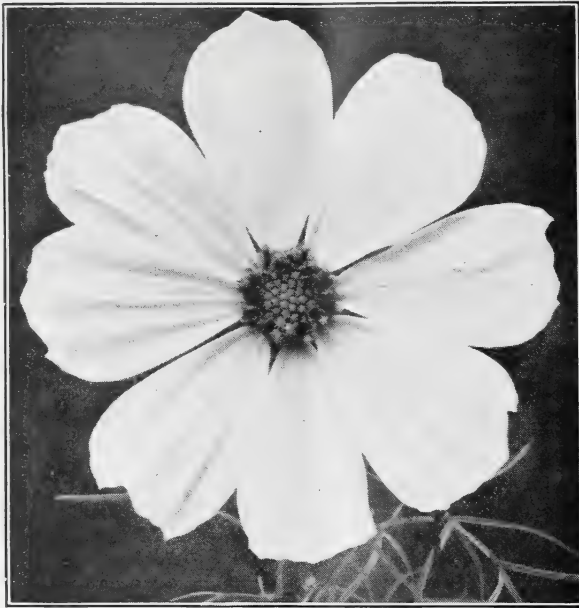
ALYSSUM

	Per Oz.	Per Lb.
Acroclinium, Album.....	\$0 10	\$1 00
“ Roseum.....	10	1 00
“ Mixed.....	10	1 00
Ageratum Mexicanum.....	15	1 50
“ Tom Thumb, dwarf blue.....	30	3 00
“ Imperial, dwarf white.....	30	3 00
Alyssum, Sweet (Maritimum).....	15	1 25
“ Little Gem.....	25	2 50
Amaranthus tricolor (Joseph's Coat).....	20	2 00
Asparagus sprengeri.....	40	
Aster, Queen of the Market, Lavender.....	60	
“ “ “ “ “ Light Blue.....	60	
“ “ “ “ “ Purple.....	60	
“ “ “ “ “ Rose.....	60	
“ “ “ “ “ White.....	60	
“ “ “ “ “ Mixed.....	60	





GIANT CREGO OR COMET (See page 34)



COSMOS

	Per Oz.	Per Lb.
Carnation, Double Picotee fine mixed.....	\$1 50	\$15 00
“ Double dwarf Vienna, mixed, early flowering.....	1 00	10 00
“ Marguerite, finest mixed.....	75	7 50
Castor Bean, Sanguineus.....	10	30
“ “ Zanzibariensis.....	10	60
“ “ Mixed.....	10	50
Celosia cristata (Cockscomb) dwarf mixed.....	75	
Centaurea, Marguerite, white.....	50	
“ Imperialis mixed.....	30	3 00
“ Cyanus (Bachelor's Button) mixed.....	10	85
“ “ Double mixed (Bachelor's Button).....	15	1 50
Cineraria, Maritima candidissima.....	20	
Cobaea Scandens, violet-blue.....	30	3 00
Columbine (Aquilegia) Californica hybrida.....	1 50	
“ “ Double Mixed.....	20	
Convolvulus minor, mixed (Dwarf Morning Glory).....	10	
Cosmos, early flowering, Dawn, white.....	20	1 75
“ “ Mixed.....	20	2 00
“ hybrida, Giant Pink.....	15	1 50
“ “ “ White.....	15	1 50
“ “ “ Mixed.....	15	1 25
Cypress Vine (Ipomoea quamoclit) Scarlet.....	20	
“ “ “ “ White.....	20	2 00
“ “ “ “ Mixed.....	15	1 50





D MORPHOTECA

	Per Oz.	Per Lb.
Dahlia, finest single mixed.....	\$0 30	
Daisy, double White.....	2 00	
“ “ Rose.....	2 00	
“ “ Mixed.....	1 50	
Datura Wrighti.....	25	
“ chlorantha fl. pl., double yellow.....	25	\$2 50
Dimorphoteca Aurantiaca.....	60	6 00
Eschscholtzia, Bush ( <i>Hunnemannia</i> ).....	25	2 50
“ Californica, Deep Yellow (California Poppy).....	10	1 00
“ Double White (Alba).....	40	3 75
“ Mandarin.....	15	1 50
“ Mixed, finest colors.....	15	1 25
Forget-Me-Not, blue ( <i>Myosotis Alpestris</i> ).....	30	3 00
Four O’Clock (Mirabilis, Marvel of Peru) Mixed.....	10	
Foxglove ( <i>Digitalis</i> ) splendid mixed.....	25	
Globe Amaranth ( <i>Gomphrena globosa</i> ) Purple.....	15	
“ “ “ “ White.....	15	
“ “ “ “ Striped.....	15	
“ “ “ “ Mixed.....	15	



GOURDS

	Per Oz.	Per Lb.
Gourds, Apple shaped, early .....	\$0 15	
“ Bottle.....	15	
“ Corsican.....	15	
“ Dish Cloth.....	15	\$1 25
“ Hercules' Club .....	15	
“ Orange (Mock orange).....	15	
“ Pear shaped, Ringed.....	20	
“ “ “ Striped.....	20	
“ Powder Horn.....	20	
“ Siphon or Dipper.....	10	1 00
“ Mixed.....	10	1 00
Gypsophila, Elegans Large Flowering Pure White .....	10	60
“ “ Mixed .....	10	1 00
Helichrysum monstrosum, largest double mixed .....	20	2 00
Heliotrope, Dark Varieties mixed, very choice .....	1 00	10 00
Hibiscus Africanus .....	15	1 50



MARIGOLD, EL DORADO (See page 40)

	Per Oz.	Per Lb.
Hollyhock, Early Flowering Mixed. ....	\$1 00	
“ Double, Blood Red .....	1 00	
“ “ Deep Rose .....	1 00	
“ “ Lemon Yellow.....	1 00	
“ “ Pink .....	1 00	
“ “ Choice Mixed .....	65	\$6 50
“ “ Mixed.....	60	6 00
“ “ Chater’s Finest Mixed.....	1 50	
Hyacinth Bean (Dolichos lablab) Alba, white.....	10	1 00
“ “ “ “ Purpurea, purple .....	10	1 00
“ “ “ “ Mixed .....	10	1 00
Ice Plant (Mesembryanthemum crystallinum).....	10	1 00
Ipomoea, Bona Nox (Evening Glory) .....	10	1 00
“ Coccinea (Star Ipomoea).....	10	75
“ Limbata, mixed .....	10	75
“ Setosa (Brazilian Morning Glory).....	20	2 00
“ Fine Mixed .....	10	1 00
Job’s Tears (Coix lachryma) .....	10	40
Kochia Trichophylla .....	10	75
Lantana, finest French hybrids mixed .....	20	
Larkspur (Delphinium) double dwarf rocket, mixed.....	20	1 75
Linum grandiflorum, rubrum (Scarlet Flax).....	10	75
Lobelia Erinus, Crystal Palcae.....	1 00	10 00
“ “ Emperor William.....	1 00	

	Per Oz.	Per Lb.
Love-in-a-mist ( <i>Nigella Damascena</i> ) Double Blue.....	\$0 10	\$0 50
Lupin Cruikshanki.....	10	50
Marigold, Meteor ( <i>Calendula officinalis</i> , fl. pl.).....	10	75
“ Prince of Orange ( <i>Calendula officinalis</i> , fl. pl.).....	10	80
“ African, double, Mixed.....	20	1 75
“ African El Dorado, double.....	20	2 00
“ French, Legion of Honor (Little Brownie).....	20	
“ <i>Tagetes signata pumila</i> , bright orange yellow.....	25	2 50
Maurandia mixed.....	1 25	
Mignonette, Sweet ( <i>Reseda odorata grandiflora</i> ).....	10	60
“ Mchet.....	30	3 00
“ Pyramidal Bouquet.....	20	2 00
“ Golden Queen.....	25	2 50
“ Ruby, surpasses all other strains of the Mchet class, in large size of flower spike and splendid depth of color... ..	30	3 00
Mimosa pudica (Sensitive Plant).....	25	2 50
Mimulus Moschatus (Musk Plant).....	1 65	
Mimulus Punctatus (Monkey Flower).....	1 25	12 50
Momordica Charantia (Balsam Pear).....	20	
“ <i>Balsamina</i> (Balsam Apple).....	20	
Moon Flower ( <i>Ipomoea Grandiflora Alba</i> ).....	35	3 50
Morning Glory, Aurora.....	10	50
“ “ ( <i>Convolvulus major</i> ) Crimson.....	10	70
“ “ “ Blue.....	10	70
“ “ “ Purple.....	10	70
“ “ “ Striped.....	10	70
“ “ “ White.....	10	70
“ “ “ Mixed.....	10	45
“ “ Giant Japanese, Extra Select mixed.....	15	1 25
Mourning Bride ( <i>Scabiosa</i> ) double, White.....	20	
“ “ “ Dark Maroon.....	15	1 75
“ “ “ Mixed.....	15	1 75

## NASTURTIUMS

### Dwarf Varieties

(*Tropæolum minor*)

	Per Oz.	Per Lb.
Aurora.....	\$0 10	\$0 60
Bronze Colored.....	10	60
Crimson.....	10	60
Chameleon.....	10	1 25
Empress of India.....	10	60
King Theodore.....	10	60
Pearl.....	10	60
Rose.....	10	60
Scarlet.....	10	60
Schilling's Striped.....	10	60
Yellow.....	10	60
Mixed. (Tel. Cipher Itawa).....	sold out	

### Trailing Varieties

(*Tropæolum Lobbianum*)

	Per Oz.	Per Lb.
Bright Yellow.....	\$0 10	\$0 60
Brilliant.....	10	85
Chestnut Brown.....	10	85
Giant of Battles.....	10	60
Hemisphaericum.....	10	50
Jupiter.....	10	50
King of the Blacks.....	10	60
Light Yellow, with maroon stain.....	10	80
Queen Wilhelmina.....	15	1 25
Rose.....	10	50
Spitfire.....	10	1 25
Mixed. (Tel. Cipher Izard).....	10	50

Nasturtiums, Madame Gunter's Hybrids.....	10	40
“ Trailing Chameleon.....	10	1 35
Nicotiana Affinis.....	20	2 00

## PANSIES

The variety of bloom, brilliancy of coloring and long keeping characteristics of pansies render them general favorites. We have been interested in the bringing forward of advanced types of very large varieties and our stocks are the very best obtainable.

	Per Oz.	Per Lb.
Pansy, large flowering, King of the Blacks.....	\$0 90	
“ “ “ Meteor.....	1 25	
“ “ “ Pure Yellow.....	1 25	
“ “ “ Variegated and Striped.....	1 25	
“ “ “ Violet, White Edged.....	1 00	
“ “ “ White.....	1 00	\$10 00
“ “ “ Choice Mixed.....	85	8 50
“ giant “ Emperor William.....	1 00	10 00
“ “ “ Lord Beaconsfield.....	90	9 00
“ Giant Flowering Parisian, mixed.....	1 50	
“ “ Trimardeau, Mixed.....	1 25	12 00
“ giant flowering, Extra Choice Mixed.....	1 25	12 50



GIANT FLOWERED PARISIAN PANSIES

	Per Oz.	Per Lb.
Peas, Everlasting ( <i>Lathyrus latifolius</i> ) Mixed.....	\$0 20	\$1 75
Petunia hybrida, Finest Striped and Blotched.....	50	5 00
“ “ Fine Mixed.....	40	4 00
“ “ Large flowered, Mixed.....	$\frac{1}{8}$ oz. \$0.60..	
“ “ Double, Mixed.....	$\frac{1}{8}$ oz. 2.50	

	Per Oz.	Per Lb.
Phlox Drummondii, large flowering, Alba, pure white.....	\$0 60	
“ “ “ “ Black Warrior, deep maroon.....	60	
“ “ “ “ Isabellina, creamy yellow.....	60	
“ “ “ “ Kermesina alba oculata.....	60	
“ “ “ “ Lilac.....	60	
“ “ “ “ Rosea, rose with distinct eye.....	60	
“ “ “ “ Rosy Chamois.....	60	
“ “ “ “ Scarlet, maroon center.....	60	
“ “ “ “ Splendens, crimson, pure white eye.....	60	
“ “ “ “ Violet.....	60	
“ “ “ “ Extra choice mixed.....	60	\$6 00
Pink, China, double mixed (Dianthus Chinensis).....	20	2 00
“ Heddewig's Double Diadem Mixed.....	40	4 00
“ “ Finest Single Mixed.....	30	3 00
“ Double Japan Mixed (Dianthus laciniatus fl. pl.).....	50	5 00
Poppy, Shirley, extra fine mixed.....	15	1 25
“ Tulip Flowered (Papaver glaucum).....	25	2 50
“ Cardinal, double.....	10	1 00
“ Double White Fringed, extra fine.....	15	1 00
“ Carnation, Double White.....	10	1 00
“ “ Double Mixed.....	10	50
“ Double Choice Mixed.....	10	75
“ Orientale.....	40	
Portulaca, Single, large flowered, Alba, pure white.....	30	
“ “ “ “ Aurea, deep golden.....	30	
“ “ “ “ Fine Mixed.....	25	2 50
“ Double, large flowered, mixed.....	2 25	25 00
Primrose, Evening (Ecnothera) Lamarckiana.....	10	
Primula, Sinensis fimbriata, choicest mixed..... $\frac{1}{8}$ oz. \$2.00..	12 00	
Pyrethrum Parthenifolium aureum (Golden Feather).....	25	
Rhodanthe, Mixed.....	30	3 00
Salpiglossis, fine mixed hybrid varieties.....	40	4 00
Salvia splendens (Flowering Sage).....	1 75	
Smilax (Myrsiphyllum asparagoides).....	20	2 00
Snapdragon (Antirrhinum) large flowering, fine mixed.....	25	2 50
Stock, Early Flowering Brompton Mixed.....	2 50	
“ Double German Ten Weeks, Mixed.....	50	5 00
“ “ “ “ Large flowering, Pure White.....	1 75	
“ “ “ “ “ “ Mixed.....	1 25	12 00
“ Brompton, mixed.....	3 50	
Sunflower, Globosus fistulosus, double.....	10	75
“ Double Chrysanthemum flowered.....	15	1 00
“ Stella.....	15	1 50

Sweet Peas, see pages 44, 45, 46, 47.

	Per Oz.	Per Lb.
Sweet William (Dianthus barbatus) Pure White.....	\$0 15	
“ “ “ “ Velvety Maroon.....	15	
“ “ “ “ Single Mixed, fine.....	10	\$0 90
“ “ “ “ Double Mixed, extra.....	40	4 00
Verbena hybrida, Auricula flowered.....	75	7 50
“ “ Blue.....	60	6 00
“ “ Defiance, scarlet.....	85	8 50
“ “ Italian striped.....	85	8 50
“ “ Pure White, large.....	75	7 50
“ “ Fine Mixed, extra choice strain.....	1 00	10 00
Vinca, Pure White.....	45	
“ Rosea.....	45	
“ Rosea Alba.....	45	
“ Mixed.....	45	
Wallflower, Harbinger, Early Brown.....	15	1 50
“ Mixed Double, extra fine.....	1 75	18 00
Wild Cucumber (Echinocystis lobata).....		65
Zinnia, Elegans Double, Black Purple, Magenta, Orange, Scarlet, or Yellow, in separate colors, each.....	30	
“ “ “ White.....	25	
“ “ “ Striped or Zebra, mixed.....	30	
“ “ “ Choice Mixed.....	25	2 50
“ “ Large Flowered Double Mixed.....	40	
“ Double, Pompon, finest mixed.....	30	



SWEET WILLIAM

## SWEET PEAS

Our stocks are absolutely unsurpassed in selection, purity and vitality.

Sweet Peas 10c. per oz. unless otherwise stated.

Not less than one-fourth pound at pound rate.

### EARLY FLOWERING SPENCER

	Tel. Cipher	Per Oz.	Per Lb.
<b>Yarrawa</b> , bright rose pink. A most desirable variety for winter flowering indoors.....	.....	.....	.....
<b>Wauna</b> .....		\$1 00	

### SPENCER VARIETIES

<b>Apple Blossom Spencer</b> , bright rose with primrose wings tinted rose-carmine; very large.....	.....	15	\$1 50
<b>Yadkin</b> .....			
<b>Asta Ohn</b> , suffused lavender or tinted mauve, sometimes with pinkish tinge, large and wavy.....	.....	20	1 75
<b>Yamhill</b> .....			
<b>Aurora Spencer</b> , orange-rose striped on white.....	.....	15	1 50
<b>Yankton</b> .....			
<b>Blanche Ferry Spencer</b> , rose-pink standard, white wings, tinted light pink; very large and wavy.....	.....	20	2 00
<b>Tulare</b> .....			
<b>Captain of the Blues Spencer</b> , purple with blue wings, lighter than Captain of the Blues.....	.....	20	2 00
<b>Waseca</b> .....			
<b>Countess Spencer</b> , bright pink, Spencer type, very large, long stems. Especially desirable.....	.....	15	1 50
<b>Vance</b> .....			
<b>Dainty Spencer</b> , white suffused and edged with rose-pink, very free blooming.....	.....	20	2 00
<b>Washita</b> .....			
<b>Dobbie's Cream</b> , a very superior cream or primrose.....	.....	20	2 00
<b>Wasatch</b> .....			
<b>Elfrida Pearson</b> , one of the best light blush pinks.....	.....	25	2 25
<b>Waskom</b> .....			
<b>George Herbert</b> , large rose-crimson or rose-carmine Spencer, open form and wavy.....	.....	15	1 50
<b>Washoe</b> .....			
<b>Helen Lewis</b> , large crimson-orange with wings of orange-rose or orange-salmon pink, Spencer type.....	.....	20	1 75
<b>Wallace</b> .....			
<b>Illuminator</b> , bright glowing salmon.....	.....	30	3 00
<b>Ward</b> .....			
<b>King Edward Spencer</b> , brilliant crimson-scarlet, one of the best bright red Spencers.....	.....	20	1 75
<b>Watauga</b> .....			
<b>King Manoel</b> , deep purplish maroon.....	.....	20	2 25
<b>Watab</b> .....			
<b>King White</b> , one of the best yet introduced.....	.....	25	2 50
<b>Weld</b> .....			
<b>Loyalty Spencer</b> , bright blue flaked and striped on white.....	.....	20	2 00
<b>Weir</b> .....			
<b>Margaret Atlee</b> , a very desirable deep cream pink.....	.....	25	2 50
<b>Wekiwa</b> .....			
<b>Margaret Madison (New)</b> , soft light azure blue or pale lavender.....	.....	30	3 25
<b>Welaka</b> .....			
<b>Mrs. Hugh Dickson</b> , light salmon pink.....	.....	20	2 00
<b>Welga</b> .....			
<b>Othello Spencer</b> , very large, beautiful deep maroon.....	.....	20	2 25
<b>Yell</b> .....			
<b>Primrose Spencer</b> , clear, distinct large, wavy; one of the best primrose or cream and ivory varieties.....	.....	20	2 00
<b>Waukesha</b> .....			
<b>Royal Purple</b> , rich royal purple.....	.....	35	3 50
<b>Waukon</b> .....			
<b>Scarlet Emperor</b> , brilliant deep scarlet.....	.....	25	2 50
<b>Wehrum</b> .....			
<b>Stirling Stent</b> , rich metallic salmon.....	.....	20	2 25
<b>Wecota</b> .....			
<b>Thomas Stevenson</b> , brilliant orange-scarlet Spencer.....	.....	20	2 00
<b>Yetter</b> .....			
<b>White Spencer</b> , pure white, an especially attractive Spencer of very large size.....	.....	.....	.....
<b>Yolo</b> .....			

(See page 47 for mixture of Spencer sweet peas)



## SWEET PEAS—Continued

## GRANDIFLORA VARIETIES

## ROSE STANDARD WITH WHITE WINGS (BICOLOR)

	Tel. Cipher	Per Lb.
<b>Extra Early Blanche Ferry</b> , standard bright rose-pink, with nearly white wings. We are headquarters for this, the earliest Sweet Pea for forcing or growing outdoors. . . . .	<b>Troup</b> . . . . .	\$1 00
<b>Blanche Ferry</b> , attractive rose-pink; wings white tinged pink. The typical pink and white sweet pea. . . . .	<b>Tucker</b> . . . . .	60

## WHITE

<b>Dorothy Eckford</b> , pure white, beautifully shell shaped . . . . .	<b>Tuolumne</b> . . . . .	50
<b>Earliest White</b> , the earliest white sweet pea; very desirable for forcing. . . . .	<b>Tuscola</b> . . . . .	1 00
<b>Emily Henderson</b> , clear white, well formed . . . . .	<b>Tyler</b> . . . . .	50
<b>Mont Blanc</b> , good form and clear white color. . . . .	<b>Umatilla</b> . . . . .	1 00

## PRIMROSE OR VERY LIGHT YELLOW

<b>Hon. Mrs. E. Kenyon</b> , a clear shade of primrose. . . . .	<b>Utah</b> . . . . .	50
<b>Mrs. Collier</b> , large, light primrose; lighter than Hon. Mrs. E. Kenyon . . . . .	<b>Upshur</b> . . . . .	50

## LIGHT PINK

<b>Dainty</b> , white, shaded lightly and edged with light pink. . . . .	<b>Valverde</b> . . . . .	65
<b>Katherine Tracy</b> , a soft but brilliant pink. . . . .	<b>Vernon</b> . . . . .	60
<b>Lovely</b> , deep pink, shading lighter at edges. . . . .	<b>Vinton</b> . . . . .	50
<b>Mrs. F. J. Dolansky</b> , pure light pink desirable for early flowering indoors. . . . .	<b>Volusia</b> . . . . .	1 00
<b>Prima Donna</b> , a brilliant yet soft shade of pink. . . . .	<b>Wabash</b> . . . . .	60

## ORANGE-PINK

<b>Bolton's Pink</b> , orange-pink veined rose, semi-hooded. . . . .	<b>Waller</b> . . . . .	60
<b>Miss Willmott</b> , orange-pink; wings rose, tinted orange. . . . .	<b>Walton</b> . . . . .	60
<b>St. George</b> , the brightest orange-pink, wonderfully brilliant. . . . .	<b>Walworth</b> . . . . .	90

## SHADES OF RED

<b>King Edward VII</b> , bright crimson-scarlet. . . . .	<b>Wayne</b> . . . . .	60
<b>Prince of Wales</b> , a pure rose-crimson of large size. . . . .	<b>Wells</b> . . . . .	60
<b>Queen Alexandra</b> , large, bright red, almost scarlet. . . . .	<b>Wetzel</b> . . . . .	60

## PINK AND RED STRIPES

<b>America</b> , carmine striped and splashed on white ground. . . . .	<b>Wapello</b> . . . . .	50
<b>Aurora</b> , large, delicate orange-salmon-pink over white. . . . .	<b>Warren</b> . . . . .	50



SPENCER SWEET PEAS

## SWEET PEAS—Continued

## GRANDIFLORA VARIETIES

## LAVENDER AND LIGHT BLUE

	Tel. Cipher	Per Lb.
<b>Countess of Radnor</b> , a beautiful shade of lavender.....	<b>Whitley</b> .....	\$0 50
<b>Helen Pierce</b> , veined and mottled bright blue on ivory white.....	<b>Wilkes</b> .....	60
<b>Lady Grisel Hamilton</b> , similar to Countess of Radnor, but nearer blue.....	<b>Wilkin</b> .....	60
<b>Lottie Eckford</b> , white shaded lilac, edged magenta-blue.....	<b>Windham</b> ..	50
<b>Mrs. Chas. H. Totty</b> , large early flowering lavender.....	<b>Winn</b> .....	1 00
<b>Mrs. George Higginson, Jr.</b> , clear, delicate lilac blue.....	<b>Winona</b> .....	60

## MAUVE AND PURPLE

<b>Mrs. Walter Wright</b> , a large hooded rosy purple .....	<b>Wise</b> .....	50
--	-------------------	----

## BLUE AND PURPLE

<b>Duke of Westminster</b> , purple shading to violet.....	<b>Woodbury</b> ..	60
<b>Flora Norton</b> , hooded form, clear light blue .....	<b>Woodson</b> ...	60
<b>Lord Nelson</b> , rich blue, deeper than Navy Blue.....	<b>Woodward</b> ..	60

## BLUE AND MAROON STRIPES

<b>Senator</b> , purplish maroon and indigo striped on light ground.....	<b>Wythe</b> .....	65
--	--------------------	----

## VIOLET AND MAROON

<b>Black Knight</b> , glossy deep maroon, one of the darkest.....	<b>Yakima</b> ....	60
<b>Othello</b> , very dark maroon, practically self colored.....	<b>Yoakum</b> ....	50

**CHOICE MIXED.** This mixture has been most carefully grown from our selected stock seed and it will afford a splendid variety of blooms of improved forms and in the widest possible range of desirable colors.

Tel. Cipher **Zapata**. Per Lb. 50c; Per 100 Lbs. \$45.00

**FERRY'S SUPERB MIXED.** We make up this mixture by combining in carefully considered proportions twenty-one separate named varieties, each the very choicest of its class. Nowhere else can one procure a more magnificent mixture of finely formed and beautifully colored, large flowering Sweet Peas.

Tel. Cipher **Yuma**. Per Lb. 65c; Per 100 Lbs. \$60.00

**SPENCERS MIXED.** In this splendid mixture will be found a wide range of colors of this comparatively new class. The flowers are of remarkably large size and wonderfully attractive form.

Tel. Cipher **Young**. Per Oz. 15c; Per Lb. \$1.50

**FERRY'S SUPERB SPENCERS MIXED.** We make up this magnificent mixture by combining eighteen separate named Spencer varieties, each of which our trials have repeatedly shown to be the very best of its class. Unsurpassed as a mixture of this superb class and showing the most desirable range of colors and the finest forms. No better mixture in all the world than this.

Tel. Cipher **Zora**. Per Oz. 25c; Per Lb. \$2.50

# GARDEN TOOLS

Send for Illustrated and Descriptive Catalogues of Garden Tools for 1917

Packed or boxed ready for shipment, and delivered at express office or depot at Detroit, Mich.

	Tel. Cipher	Price
Ames' New Universal Garden Drill, No. 17 .....	<b>Taceo</b> .....	\$ 5 75
“ “ “ Constellation, No. 19.....	<b>lagax</b> .....	7 25
<hr/>		
Planet Jr., No. 3, Hill and Drill Seeder.....	<b>Teho</b> .....	9 50
“ “ 4, Combined Hill and Drill Seeder, Wheel Hoe, Cultivator and Plow.....	<b>Temere</b> .....	10 00
“ “ 4, Hill and Drill Seeder, Plain (as a drill only).....	<b>Tempsa</b> .....	8 00
“ “ 25, Combined Hill and Drill Seeder and Double Wheel Hoe, Cultivator and Plow.....	<b>Teneo</b> .....	12 00
“ “ 31, Combined Drill Seeder and Wheel Hoe.....	<b>Tenor</b> .....	6 50
“ “ 11, Double Wheel Hoe.....	<b>Tergo</b> .....	8 25
“ “ 12, “ “ “ “.....	<b>Ternio</b> .....	6 10
“ “ 13, “ “ “ “.....	<b>Tersus</b> .....	4 50
“ “ 16, Single Wheel Hoe.....	<b>Tetini</b> .....	5 50
“ “ 17, “ “ “ “.....	<b>Texo</b> .....	4 75
“ “ 18, “ “ “ “.....	<b>Theca</b> .....	3 50
“ “ 19, “ “ “ “.....	<b>Thesis</b> .....	3 25
“ “ 38, “ “ “ Disc Hoe, Cultivator and Plow.....	<b>Theto</b> .....	6 50
<hr/>		
The Iron King Seed Drill.....	<b>Tiara</b> .....	6 00
“ “ “ “ with Fertilizer Attachment.....	<b>Timeo</b> .....	7 50
<hr/>		
Excelsior Weeding Hook.....	15 cts. each..	<b>Titubo</b> .. per doz. 1 25
Hazeltine Hand Weeder and Scraper.....	20 “ “	<b>Toga</b> .. “ “ 2 25
Christy Garden Weeder.....	15 “ “	<b>Tollo</b> .. “ “ 1 50
Pressed Steel Garden Trowel.....	15 “ “	<b>Tonum</b> .. “ “ 1 25

## SEED BAGS

We annually manufacture for our own use millions of Seed Bags and are in a position to offer to the trade first quality ready made bags at prices as reasonable as the same grade of goods can be purchased anywhere.

*Samples of all sizes furnished on application.*

### Printing Extra, at Cost

No.	Description	Size	Per 1,000
No. 1	Miniature Pockets, Canary .....	$\frac{3}{8}$ x $2\frac{1}{4}$ inches.....	\$0 60
“ 3	White Coated Paper .....	$2\frac{1}{8}$ x $3\frac{3}{4}$ “ .....	75
“ 7	White Coated Paper .....	$3\frac{1}{8}$ x $4\frac{1}{2}$ “ .....	1 15
“ 12	“ “ “ “ .....	4 x $4\frac{3}{4}$ “ .....	2 00
“ 11	Manilla, Gummed .....	$\frac{1}{2}$ oz. .... $2\frac{1}{4}$ x $3\frac{1}{2}$ “ .....	75
“ 13	“ “ “ “ .....	$2\frac{1}{2}$ x $4\frac{1}{4}$ “ .....	85
“ 16	“ “ “ “ .....	2 oz. .... $3\frac{1}{8}$ x $5\frac{1}{2}$ “ .....	1 00
“ 33	Brown “Kraft” Paper .....	1 pint..... 5 x $7\frac{1}{2}$ “ .....	2 50
“ 36	“ “ “ “ .....	1 pound..... $5\frac{1}{2}$ x 8 “ .....	2 75
“ 39	“ “ “ “ .....	1 quart. .... $6\frac{1}{2}$ x $9\frac{1}{4}$ “ .....	4 25
“ 42	“ “ “ “ .....	3 pints .... $7\frac{1}{2}$ x $10\frac{1}{4}$ “ .....	5 00
“ 45	“ “ “ “ .....	2 quarts .... $8\frac{1}{2}$ x $11\frac{1}{2}$ “ .....	5 50
“ 48	“ “ “ “ .....	3 quarts .... $9\frac{1}{2}$ x $12\frac{1}{2}$ “ .....	6 50
“ 51	“ “ “ “ .....	4 quarts .... $10\frac{1}{2}$ x $14\frac{1}{2}$ “ .....	9 00
“ 54	“ “ “ “ .....	6 quarts .... $11\frac{3}{4}$ x $16\frac{1}{4}$ “ .....	12 00
“ 57	“ “ “ “ .....	8 quarts .... 13 x 18 “ .....	15 00

*Bags Nos. 1 to 16 have flaps; only Nos. 11, 13 and 16 are gummed.*

## TELEGRAPHIC CIPHER

By making use of the following Telegraphic words for weights, together with the Telegraphic Cipher attached to each article in this list, our customers will be able to order by wire at trifling expense. The Telegraphic words for QUANTITIES must always PRECEDE the cipher words for Seeds, but if the same quantity of several articles is needed, the word for that quantity should be placed before the word for the first article only. For example:

“**Freight Adjust Lagrange, Lemhi, Lorain.**” Means “Ship by first freight One Hundred Pounds each of Ferry’s First and Best, Telephone and Champion of England Peas.”

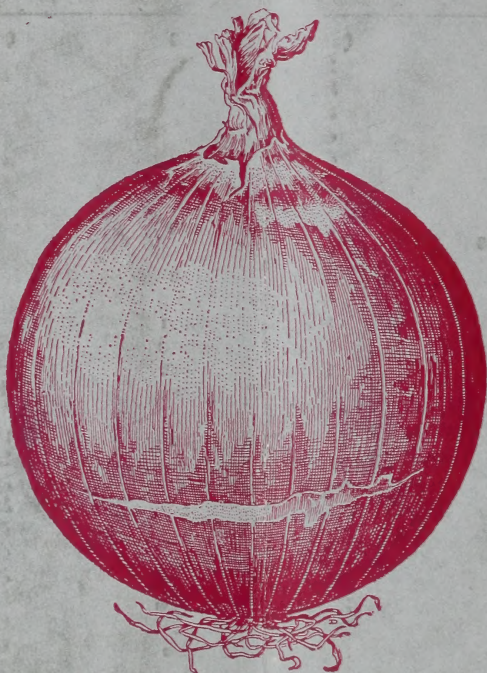
“**Express Above Caddo, Cannon, Catoosa.**” Means “Send by first express Two Pounds each of Early Jersey Wakefield, Early Winnigstadt and D. M. Ferry & Co’s Premium Late Flat Dutch Cabbage.”

### TELEGRAPHIC WORDS FOR WEIGHTS

Quantity	OUNCES	Quantity	POUNDS	Quantity	POUNDS
1/8	Aback	25	Acquit	650	Against
1/4	Abaft	30	Actuate	675	Aggress
1/2	Abase	35	Acute	700	Aghast
3/4	Abash	40	Adage	725	Agnate
1	Abate	45	Adapt	750	Alarm
2	Abbey	50	Addict	775	Albeit
3	Abbot	55	Addle	800	Alcove
		60	Adduce	825	Alert
	POUNDS	65	Adept	850	Alight
1/4	Abhor	70	Adhere	875	Allay
1/2	Abide	75	Adjoin	900	Allege
3/4	Abolish	80	Adjourn	925	Alloy
1	Abound	85	Adjudge	950	Allude
2	Above	90	Adjunct	975	Allure
3	Abrade	95	Adjure	1000	Alpha
4	Abrupt	100	Adjust	1500	Alpine
5	Abscind	125	Admire	2000	Alter
6	Abscond	150	Admit	2500	Alvine
7	Absent	175	Admix	3000	Amass
8	Absolve	200	Adopt	3500	Amaze
9	Absorb	225	Adore	4000	Ambush
10	Abstain	250	Adrift	4500	Amend
11	Abstract	275	Adult	5000	Amenity
12	Absurd	300	Advance	5500	Amiss
13	Abuse	325	Advent	6000	Ample
14	Accede	350	Adverse	6500	Amuse
15	Accent	375	Aerial	7000	Analyze
16	Accept	400	Affect	7500	Anchor
17	Access	425	Affirm	8000	Ancient
18	Accost	450	Affix	8500	Android
19	Account	475	Afford	9000	Angler
20	Accredit	500	Affray	9500	Anile
21	Accuracy	525	Affront	10000	Anthem
22	Accuse	550	Afloat	15000	Antic
23	Acquaint	575	Afoot	20000	Antler
24	Acquire	600	Afore	25000	Antelope
		625	Afraid		

NOTE.—The above Code for TELEGRAMS only—Not for orders by mail.

Wholesale Price List  
OF  
**SEEDS IN BULK**  
1917



**SOUTHPORT RED GLOBE**

Our splendid stock of this onion is the result of many years of careful selection at our Oakview Stock Seed Farm. It is unsurpassed by any.

**D. M. FERRY & CO., Detroit, Mich.**