

Historic, archived document

Do not assume content reflects current scientific knowledge, policies, or practices.



62,93

5

36

SELECTED BULBS and PLANTS

For Fall 1956 Planting

Belgiano's



Special

BORDER COLLECTION OF TULIPS

- GOLDEN AGE.** Golden orange.
- PRINCESS ELIZABETH.** Soft rose-pink.
- REV. H. EWBANK.** Lavender-violet.
- WILLIAM PITT.** Carmine-red.
- ZWANENBURG.** Pure white.

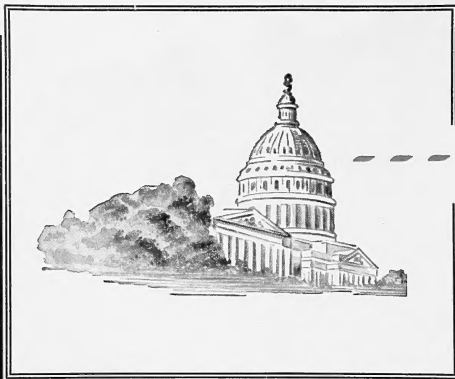
12 each of the above 5 varieties
(60 bulbs) for **\$4.95**

20 each of the above 5 varieties
(100 bulbs) for **\$7.50**

Capitol Park
Lawn Seed



411 New York Ave., N.E., 1220 H St., N.W. • WASHINGTON 2, D. C.



BOLGIANO'S

Capitol Park Lawn Grass Seed

"The Nation's Pride!"

Truly a top-grade lawn mixture, containing a carefully selected, well-balanced blend of highest quality, re-cleaned seed to produce a fine lawn in the Washington, Maryland and Virginia area. Capitol Park Lawn Seed is the result of over 60 years' experience. It has been thoroughly tested and proved and will produce fine-bladed, deep-rooted grasses that are so necessary for a beautiful year-round turf.

CAPITOL PARK LAWN GRASS SEED

Lb.	-	-	\$1.00
5 lbs.	-	-	4.85
25 lbs.	-	-	21.95
50 lbs.	-	-	43.50
100 lbs.	-	-	85.50

BOLGIANO'S WHITE HOUSE SHADY LAWN GRASS SEED

Washington is often called the "city of trees." Because of the shade they cast, these magnificent trees are frequently a cause of concern to home owners. But, thanks to Bolgiano's White House Shady Lawn Grass Seed, you can enjoy a beautiful turf in shady spots that will match the turf of our Capitol Park Lawn Grass in the sun. Through experimentation with grasses best adapted for growing in the shade in the Washington, Maryland and Virginia area, this formula was proved.

Lb. \$1.00; 5 lbs. \$4.85; 25 lbs. \$21.95; 50 lbs. \$43.50

BOLGIANO'S PERMA-GREEN LAWN GRASS SEED

Another of our popular lawn grass seed mixtures is Perma-Green, an all-purpose blend of the finest Kentucky Blue, Red-Top, Highland Bent and Creeping Red Fescue grasses. This blend is capable of producing a dense, velvety lawn resistant to dry summer weather.

Lb. \$1.45; 5 lbs. \$7.15;
25 lbs. \$31.95; 50 lbs. \$63.50

ASK FOR BOLGIANO'S "HANDY GUIDE TO A BEAUTIFUL LAWN"

MERION (B-27) BLUE GRASS. The latest development of the U.S.G.A. Green Section of a sturdy, drought and disease-resistant Blue Grass. It has the characteristics of regular Kentucky Blue Grass plus these advantages. Lb. \$3.50; 10 lbs. \$34.00.

HOW TO ORDER . . .

Address All Mail to F. W. Bolgiano & Co., 411 New York Ave., N. E., Washington 2, D. C.

Our Terms with customers not having an account are always cash with order. We do not send nursery stock C. O. D.

F. W. BOLGIANO & CO., INC., warrants to the extent of the purchase price that, at the time of delivery, seeds or bulbs sold are as described on the container or on the tag attached thereto within recognized tolerances. We give no other or further warranty expressed or implied.

411 New York Ave., N.E., LI. 7-4800 1220 H St., N.W., NA. 8-0091

BOLGIANO'S MERION BLUE GRASS SEED MIXTURE.

Contains the sturdy MERION, latest development in Blue Grass, with Illahee Creeping Red Fescue, Red-Top and Highland Bent. These permanent grasses will give a long-lasting turf. Lb. \$2.85; 3 lbs. \$8.50; 5 lbs. \$14.15; 10 lbs. \$28.00.

Postage and Express Charges. All bulbs will be sent by Mail, charges prepaid, when ordered at single or dozen rates. At 100 rate and over add 5 per cent to the cost of the bulbs to cover carrying charges.

Give Full Directions always, whether shipment is to be made by Freight, Express or Parcel Post.



BOLGIANO'S GOLD TAG TURF FOOD 6-12-4

The beautification of your home, no matter how well you may landscape it, will depend on the attractiveness of your lawn. No lawn can ever develop its full beauty without proper feeding. Bolgiano's Gold Tag Turf Food is carefully formulated to provide complete feeding for lawns. It is non-acid forming. Each bag has full directions for application. 25 lbs. \$1.45; 50 lbs. \$2.25; 80 lbs. \$3.25.

All Prices in this catalog are subject to change without notice

BOLGIANO'S GOLD TAG ORGANIC LAWN AND GARDEN PLANT FOOD 5-4-0

A natural organic plant food containing 5% nitrogen and 4% phosphoric acid for lawns, golf courses, flowers, vegetables, trees and shrubs. Can be used at any time of the year. Especially recommended for summer feeding of lawns. Will not burn if used as directed. Conveniently packaged in 50-lb. bags, with directions. 50 lbs. \$2.50; 100 lbs. \$4.75.





Make a parade of color in the Spring with *Tulips*
 IMPORTED HOLLAND

BOLGIANO'S MAY-FLOWERING TULIPS

TOP-SIZE BULBS, 12 cm. and up in circumference, except Species Tulips

DARWIN ● BREEDER ● COTTAGE ● LILY-FLOWERED

Admiral Tromp. Breeder. Orange-red shaded salmon. Large. \$1.25 per doz.; \$8.75 per 100.
Chappaqua. Breeder. Dark violet-rose. 3 for 40c.; \$1.40 per doz.; \$10.25 per 100.
Charles Needham. Darwin. Very fine scarlet-red with black base. \$1.25 per doz.; \$9.00 per 100.
City of Haarlem. Darwin. Cardinal-red, with distinct blue base; large. \$1.25 per doz.; \$9.50 per 100.
Clara Butt. Darwin. Bright salmon-rose; lovely color and shape. \$1.00 per doz.; \$7.50 per 100.
Demeter. Darwin. Reddish purple flower, large and extremely early. 3 for 35c.; \$1.25 per doz.; \$9.00 per 100.
Farncombe Sanders. Darwin. Brilliant rose-scarlet. \$1.00 per doz.; \$7.75 per 100.
Gisela. Lily-flowered. Pure pink with white center; reflexed petals. 3 for 40c.; \$1.40 per doz.; \$10.25 per 100.
Glacier. Darwin. Pure white with ivory stamens. A tremendous, oval flower of excellent substance. Very long lasting, both in the garden and when cut. \$1.25 per doz.; \$9.50 per 100.
Golden Age. Darwin. A bright golden orange giant. \$1.25 per doz.; \$9.00 per 100.
Governor Stuyvesant. Breeder. Dark bronze-brown. \$1.35 per doz.; \$9.75 per 100.
Inga Hume. Cottage. Inside yellow; outside red with yellow edge. Large black base. \$1.10 per doz.; \$8.00 per 100.
Mamassa. Darwin. A beautiful bright buttercup-yellow. \$1.25 per doz.; \$9.00 per 100.
Mrs. John T. Scheepers. Cottage. Yellow with fawn center. Large, deep cup. \$1.25 per doz.; \$9.00 per 100.
Mrs. Moon. Cottage. Deep yellow; reflexed, pointed petals. \$1.00 per doz.; \$7.50 per 100.

Niphetos. Darwin. Lemon-yellow becoming ivory-yellow. \$1.25 per doz.; \$9.00 per 100.
Papago. Breeder. Brownish red and scarlet inside; yellow on base. \$1.45 per doz.; \$10.50 per 100.
Picotee. Cottage. White margined carmine-rose. \$1.00 per doz.; \$7.50 per 100.
Pride of Haarlem. Darwin. Brilliant carmine-rose; very large. \$1.00 per doz.; \$7.50 per 100.
Pride of Zwaneburg. Darwin. Bright salmon-rose, immense flower on sturdy stem. \$1.25 per doz.; \$9.00 per 100.
Princess Elizabeth. Darwin. Soft rosy pink; very beautiful. A good forcing variety. \$1.00 per doz.; \$7.50 per 100.
Princess Margaret Rose. Cottage. Bright yellow with orange-red edge. \$1.00 per doz.; \$7.50 per 100.
Queen of the Night. Darwin. Large, purplish black. Bluish foliage. \$1.00 per doz.; \$7.50 per 100.
Red Matador. Bright fiery scarlet with yellow base shaded black. One of the most colorful of all garden Tulips; highly recommended. 3 for 45c.; \$1.55 per doz.; \$11.75 per 100.
Rev. H. Ewbank. Darwin. Soft lavender-violet. \$1.00 per doz.; \$7.50 per 100.
Scotch Lassie. Darwin. Pure deep lavender with slightly reflexing petals. \$1.00 per doz.; \$7.50 per 100.
The Bishop. Darwin. Deep violet with small dull blue base and white halo. Large and lasting. \$1.25 per doz.; \$9.00 per 100.

SMILING QUEEN. Cottage. Satiny pink flushed rose-pink on outer petals. A large and very beautiful flower commanding attention in every planting. \$1.25 per doz.; \$9.00 per 100.

**BOLGIANO'S Special Mixture
 of Darwin Tulips**
 11 to 12 cm. in circumference

For a riot of color in your spring garden try this inexpensive special mixture of Darwin Tulips.

50 LARGE-SIZE BULBS PER BAG \$3.15

**BLACK
PARROT**



New May-flowering Double Tulips (Holland Grown)

Also known as Peony-flowered Tulips, because of their full blooms resemble peonies in shape. Very satisfactory. Height 16 to 22 inches.

Eros. Clear rose color; very large and double. \$1.25 per doz.; \$9.00 per 100.

Hoang-Ho. Fine double yellow; well formed. \$1.25 per doz.; \$9.00 per 100.

Mount Tacoma. Semi-double; pure white. \$1.25 per doz.; \$9.00 per 100.

Symphonia. Immense flowers of cerise-red, carried on strong, erect stems. \$1.25 per doz.; \$9.00 per 100.

Uncle Tom. Deep glossy red; large, peony-like. \$1.35 per doz.; \$9.75 per 100.

Single Early Tulips (Holland Grown)

Excellent for early spring color in beds and borders. Long-lasting blooms on 16 to 20-inch stems. Also easily forced indoors.

Bellona. Pure true yellow, long flower, very fragrant. 3 for 45c.; \$1.40 per doz.; \$10.50 per 100.

Couleur Cardinal. Rich, glittering cardinal-red. \$1.50 per doz.; \$11.25 per 100.

De Wet (Fireglow). Golden yellow flushed with orange-scarlet. \$1.25 per doz.; \$9.00 per 100.

Keizerskroon. Bright red with broad golden yellow border. \$1.40 per doz.; \$10.25 per 100.

Pink Beauty. Deep rose with white flush outside. \$1.40 per doz.; \$10.50 per 100.

White Hawk. Pure white. Fine for forcing and bedding. \$1.35 per doz.; \$10.00 per 100.

CLUSIANA (Lady or Candystick Tulip)



TULIPS

MAY-FLOWERING TULIPS, continued

White Triumphator. Lily-flowered. Very large; pure white. The finest Lily-flowered Tulip in existence and absolutely unforgettable. Tall; comes back well for several years. Selected from our trials. 3 for 45c.; \$1.65 per doz.; \$12.75 per 100.

William Pitt. Darwin. One of the largest brilliant carmine sorts. \$1.00 per doz.; \$7.50 per 100.

Yellow Giant. Darwin. Golden yellow. \$1.00 per doz.; \$7.50 per 100.

Zwanenburg. Darwin. Large; pure white. \$1.10 per doz.; \$7.75 per 100.

BOLGIANO'S

Show Garden Mixture of May-flowering Tulips

Our own special blend of top-size Tulips to make your home a show place. **\$1.00 per doz.** **\$7.50 per 100**

Double Early Tulips

(Holland Grown)

Chiefly grown for their showy effects in beds. Height 12 to 14 inches.

Electra. Deep cherry-red. Very showy and distinct. \$1.40 per doz.; \$10.25 per 100.

Mr. Van der Hoef. Pure golden yellow; large flowers. Good forcer. \$1.40 per doz.; \$10.25 per 100.

Peach Blossom. Deep rosy pink; deepening with age to a deep rose. \$1.40 per doz.; \$10.50 per 100.

Schoonoord. Large, pure white sport of Murillo. \$1.40 per doz.; \$10.50 per 100.

Parrot Tulips

(Holland Grown)

The petals are curiously fringed on the edges and they are very peculiarly marked and feathered. The form and coloring of the flower is especially attractive. We list only the choicest varieties.

Black Parrot. A most exotic flower. This purple-black Parrot is unique, strikingly tall and beautiful. \$1.25 per doz.; \$9.00 per 100.

Blue Parrot. Waved petals, clear violet-blue; very attractive. \$1.25 per doz.; \$9.00 per 100.

Discovery. Beautiful lilac-rose, edged pure rose. Exceptionally attractive. \$1.40 per doz.; \$10.25 per 100.

Fantasy. A beautiful warm pink that delights everyone. An outstanding rare variety. \$1.25 per doz.; \$8.75 per 100.

Orange Favorite. Deep orange shaded rose; yellow base. Fragrant. \$1.25 per doz.; \$9.00 per 100.

Sunshine. Pure butter-yellow. 3 for 40c.; \$1.55 per doz.; \$11.50 per 100.

Therese. The best of the red Parrot Tulips. Cherry-scarlet, often attaining a diameter of 8 inches. \$1.40 per doz.; \$10.50 per 100.

Tulip Species or Botanical Tulips

(Holland Grown)

These Tulips are particularly adapted for rock garden or borders. They show their bright colors early in the season and have graceful recurving petals. For the most striking effects, plant in masses or clumps.

Red Emperor. So large and brilliant as to be almost unbelievable. The open blooms are up to 9 inches across! The color is dazzling vermilion-scarlet, with a black base bordered yellow. This is a spectacular Tulip that should be in every garden. 15 to 17 in. Top-size bulbs, \$1.25 per doz.; \$9.00 per 100.

Kaufmanniana. One of the earliest varieties, blooming early in April; color creamy white tinged carmine. Wonderful effects may be had if planted under trees or naturalized in shady places. 5 to 7 in. \$1.10 per doz.; \$8.00 per 100.

Marjolotti. Pretty little flowers of creamy white flaked with pink. 18 in. \$1.00 per doz.; \$7.50 per 100.

Saxatilis. A rare Tulip from Crete. Blooms are lilac color with a yellow base. Plant in a sheltered position, as the leaves appear very early. 7 in. \$1.55 per doz.; \$11.50 per 100.

Sylvestris (Florentina Odorata). A handsome yellow variety, sweet scented; often has two flowers to a stem. 7 in. \$1.00 per doz.; \$7.50 per 100.

Turkestanica. Five to nine flowers on one stem. Creamy white with green and bronzy flush on the outside. Lasts very well. 8 in. \$1.00 per doz.; \$7.50 per 100.

Clusiana (Lady or Candystick Tulip). (French Grown.) Outer petals cherry-red, inner petals creamy white with violet base. Very choice for massing in front of evergreens. 8 in. \$1.40 per doz.; \$10.50 per 100.

NEW HYBRID TULIPS

(Holland Grown)

An outstanding new race of Tulips, the result of many years of crossing the Fosteriana and Kaufmanniana types with the Darwins and Single Early Types. Blooms are enormous and come ten days to two weeks earlier than the standard Darwins. A sensation wherever planted.

Apeldoorn. Orange-scarlet; base black, edged yellow. Enormous flower. 25c. each; \$2.50 per doz.; 25 for \$4.50.

Concerto. Pale cream on darker base. A Kaufmanniana hybrid. 30c. each; \$3.35 per doz.; 25 for \$6.50.

Dover. Fiery poppy-red. A very large flower, twice the size of most Darwins. 30c. each; \$3.25 per doz.; 25 for \$6.25.

Goldbeater. Huge, golden yellow flower. Long egg shape. Sensational. 35c. each; \$3.75 per doz.; 25 for \$7.25.

Lefebvre's Favorite. Orange-scarlet; yellow base. Handsome. 25c. each; \$2.75 per doz.; 25 for \$5.35.

Daffodils FOR BEAUTIFUL SPRING FLOWERS

OREGON GROWN

No garden is complete without a liberal planting of Daffodils or Narcissus. Perfectly hardy, they grow and produce abundantly in almost any position, sun or shade, moist or dry. They are equally suited to pot-culture for winter flowering and are unsurpassed for naturalizing.

Our Daffodil bulbs are grown for us in Oregon, where climate and the skill of America's leading Daffodil specialist, Mr. Jan de Graaff, are combined to produce the very best.

Note. The trumpet, crown, or cup is the center of the flower; the perianth is the surrounding row of petals or wings. (EE) Extra Early; (E) Early; (M) Midseason; (L) Late.

Trumpet Daffodils Yellow Trumpet

Aerolite. A golden Daffodil that is replacing many of the present varieties. The large flower is beautifully proportioned, giving the impression of gracefulness despite its size. Perianth deep primrose, with a pure medium yellow trumpet, which is left in bold relief by the broad-pointed star formed by the flat opening outer petals. One of the longest lasting of all Daffodils either in the garden or after cutting. (E) 3 for 50c.; \$1.75 per doz.; \$13.75 per 100.

King Alfred. The most popular Daffodil in the world, and one that even today holds its own against all comers in every flower market. Because of its large size, golden yellow color and informal, pleasing shape it has become the universal favorite. (M) Double-nose, No. 1 bulbs, 3 for 50c.; \$1.75 per doz.; \$13.75 per 100. Double-nose, No. 2 bulbs and Rounds, 3 for 40c.; \$1.35 per doz.; \$10.00 per 100.

White Trumpet

Beersheba. A magnificent flower with large, perfectly flat perianth; trumpet long and beautifully flanged at mouth. A flower of great size, measuring nearly 5 inches across. A vigorous grower and a grand exhibition variety. (M) 3 for 90c.; \$3.25 per doz.; \$25.00 per 100.

Mount Hood. An overlapping perianth of pure ivory-white, with a large, creamy white trumpet that changes to pure white when fully open. Heavily flanged at the trumpet mouth. (M) 3 for \$1.10; 6 for \$2.00; \$3.75 per doz.; \$29.75 per 100.

Mrs. E. H. Krelage. Uniform ivory-white in trumpet and perianth. Smooth, waxy texture and good form. (M) 20c. each; \$2.25 per doz.; \$16.75 per 100.

Roxane. A large, creamy white trumpet with round, overlapping, pure white perianth. Unusually beautiful; much better than Spring Glory. 3 for 65c.; \$2.25 per doz.; \$16.50 per 100.

Large Cupped Daffodils

Carbineer. A magnificent flower of splendid carriage and great substance. Broad, flat, golden yellow perianth standing at right angles to the large, bright orange-red cup. 3 for 60c.; \$2.15 per doz.; \$15.75 per 100.

Carlton. A fine clear yellow self-color of great size. Flat overlapping perianth and large expanded crown, frilled at brim. A magnificent plant of great vigor. (M) 3 for 55c.; \$2.00 per doz.; \$14.00 per 100.

Dick Wellband. Very strong growing and free flowering. Pure white perianth and flame-orange cup. Long lasting and unfading. (L) 3 for 50c.; \$1.60 per doz.; \$11.75 per 100.

Fortune. Broad, creamy yellow perianth of very solid texture; these have glowing soft orange crowds of great size and elegant form, opening at mouth and fringed. (E) 3 for 50c.; \$1.75 per doz.; \$13.50 per 100.

Large Cupped Daffodils, cont'd.

Francisca Drake. It is impossible to describe adequately in any catalog the beauty and charm of this unusual flower. The pure white perianth petals are of unusual substance, 1½ inches wide, and tinted gold at the base, which shows through on the outside. The cup, wide and deep, is golden yellow at the base, changing gradually to flame-orange at the densely frilled edge. Flowers are held well above the fine foliage and give the effect of a flock of seagulls taking flight. Try them in your yard for beauty next spring. (M) 3 for 50c.; \$1.60 per doz.; \$11.75 per 100.

Gertie Millar. Wonderful flower with pure white perianth and beautifully proportioned, pale primrose cup deeply fluted and frilled and of translucent texture. Unusually long pistils and anthers match these colors perfectly and make them very attractive. (M) 3 for 60c.; \$2.15 per doz.; \$15.75 per 100.

John Evelyn. Deservedly an international favorite and outstanding among the new hybrids. Pure white perianth, 4 to 5 inches across, opening flat, with a flat lemon-yellow cup measuring nearly 2 inches in diameter, densely frilled and fluted or shirred to the base. Good neck; strong grower. (M) 3 for 65c.; \$2.25 per doz.; \$17.50 per 100.

Mrs. R. O. Backhouse. This is the famous "Pink Daffodil." Fine informal perianth of ivory-white, and well-proportioned, long slim trumpet of apricot-pink, changing to shell-pink at the deeply fringed edge. Delicately beautiful but of exceptional substance; long lasting. A must for every garden. (E) 3 for 65c.; \$2.40 per doz.; \$18.75 per 100.

"Green Thumb" Gloves

Made of a special vinyl-treated fabric that keeps dirt from coming through on your hands. Sizes: Small, Medium and Large. 98c. per pair.



AEROLITE. 3 for 50c.; \$1.75 per doz.; \$13.75 per 100

Short Cupped Daffodils

Magic Fire. Striking flower of excellent substance. Pure white, well-overlapping and broad perianth; small cup with fiery red rim. One of finest exhibition varieties. (M) 3 for 45c.; \$1.65 per doz.; \$12.00 per 100.

Mrs. Nette O'Melvery. A "little fairy" flower with pure white perianth and cup of clear lemon-yellow, with orange picotee. Splendid foliage, tall and graceful. In every way a delightful flower and sure to become immensely popular. (E) 3 for 45c.; \$1.65 per doz.; \$12.00 per 100.

Double Narcissus

Cheerfulness. A very pleasing double white Poetaz with good stems. A fine garden and show flower. (L) 3 for 45c.; \$1.65 per doz.; \$12.00 per 100.

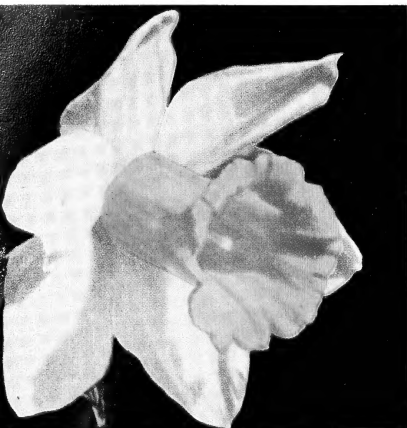
Inglescombe. A pure yellow, fully double Narcissus that has been a favorite for years. (E) 3 for 60c.; \$2.15 per doz.; \$15.75 per 100.

Royal Sovereign. Valuable addition to the Twink group of semi-doubles. Most graceful of all in form, and the most charming, if not the most striking, in coloring. Creamy white interspersed with crinkled and frilled trumpet petals of primrose-yellow, shading to pale primrose as the flower develops. (M) 3 for 45c.; \$1.65 per doz.; \$12.00 per 100.

Twink. A splendid show flower that has created much interest whenever exhibited. It is a double of the semi-full type, the petals alternating soft primrose and clear orange, and so arranged as to give the flower a most attractive appearance. Forces easily. Early, free flowering and hardy. (E) 3 for 45c.; \$1.65 per doz.; \$12.00 per 100.

White or Colored Shell Chips for planting Narcissus Bulbs. Lb. 15c.; 10 lbs. \$1.30 (Not Postpaid).
Stone Pebbles for Planting Narcissus Bulbs. Qt. 10c.; 4 qts. 35c. (Not Postpaid).

FOR COLORFUL SPRING GARDENS—PLANT *Daffodils* THIS FALL

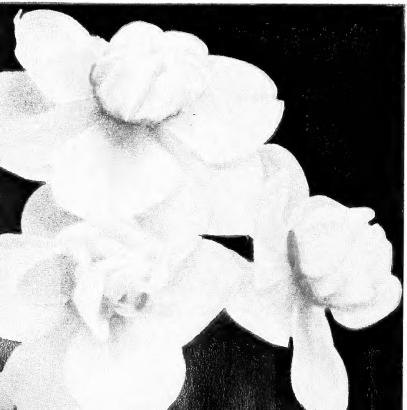


MRS. E. H. KRELAGE



LAURENS KOSTER

CHEERFULNESS



Triandrus Hybrids

Moonshine. A beautiful star-shaped, creamy white flower, often three to a stem, drooping gracefully. Very beautiful and a great favorite, especially for the rock garden or for naturalizing in the shade. (M) 3 for 45c.; \$1.65 per doz.; \$12.00 per 100.

Silver Chimes. One of the prettiest of the small-cupped Triandrus hybrids. Frequently produces heads of three or more flowers with pure white perianth and delicate pale primrose cup. An attractive pot and border plant. (M) 3 for 55c.; \$2.00 per doz.; \$14.00 per 100.

Cyclamineus Hybrids

Beryl. A lovely little Cyclamineus hybrid bearing graceful drooping flowers with primrose-yellow, slightly reflexing perianth and small, globular, bright orange cup shading to gold. Ideal for potting and for the rock garden; height 8 inches. (E) 3 for 40c.; \$1.50 per doz.; \$11.00 per 100.

Jonquilla Hybrids

Campanelle Plenus. A very charming variety, bearing heads of fragrant, double yellow flowers of elegant form on tall, graceful stems. Height 15 inches. (E) 3 for 40c.; \$1.50 per doz.; \$11.00 per 100.

Jonquilla Simplex. The true single sweet Jonquil, of light elegant growth, bearing outdoors in May charming clusters of numerous, small rich yellow flowers of delicious scent. (L) 3 for 35c.; \$1.25 per doz.; \$9.00 per 100.

Tazetta Types (Bunch Flowered)

Geranium. One of the newer Dutch Tazetta hybrids with from five to seven large flowers per stem. The petals are rounded and overlapping; the short flat crown is orange-red. Outstanding in the garden and for exhibitions, and a good variety for late forcing. (L) 3 for 55c.; \$2.00 per doz.; \$14.00 per 100.

Laurens Koster. Creamy white perianth; lemon-yellow cup. A favorite old variety; free flowering. (E) 3 for 40c.; \$1.45 per doz.; \$10.00 per 100.

Hole-in-One Planter

Bulb Planter and Plant Setter. This handy tool makes a hole in one operation. Merely cut the tool into the soil, remove it with a slight twisting motion, and the soil comes with it, leaving a clean hole in which bulbs or plants may be set. \$1.00 ea.



The Jiffy Planting Tool

THE JIFFY PLANTER, which one can use in a standing position, is made of strong durable steel with a tubular steel "T" handle. It easily cuts a cylindrical hole up to 10 inches deep, depending on the pressure put on the angle foot bar. A slight twist and the tool draws out the soil, leaving an ideal hole for setting of bulbs and plants, and automatically pushes the soil from the cylinder with each succeeding insertion. \$2.98.

Miniature Daffodils

Bulbocodium Conspicuous. The Yellow Hoop Petticoat. Flowers rich golden yellow, of hoop-petticoat form. Rush-like foliage. Height 6 inches. Blooms from the middle of February to early March and prefers a sandy peat soil with a fair amount of moisture while in growth, but not in summer; no manure should be given it. (EE) 3 for 35c.; \$1.25 per doz.; \$9.00 per 100.

Poeticus Types

Actaea. The largest Poeticus in existence. Broad, snow-white perianth of great substance and good form; the very large eye is broadly margined with dark red. A most beautiful exhibition flower. (E) 3 for 40c.; \$1.50 per doz.; \$11.00 per 100.

Recurvus (Old Pheasant's Eye). Pure white, reflexing perianth; eye margined deep orange-red. Very fragrant; a favorite old variety. (L) 3 for 40c.; \$1.50 per doz.; \$11.00 per 100.

Bulbs for Indoor Culture

Paper-White Narcissus. Dishes of these, grown in pebbles and water, can be had in bloom continuously from Thanksgiving until Easter. 3 for 45c.; \$1.60 per doz.; \$12.50 per 100.

Grand Soleil d'Or. "Yellow Paper-White" with deep orange cup. Fragrant. Treat the same as the regular Paper-Whites. 3 for 45c.; \$1.75 per doz.; \$3.50 for 25.

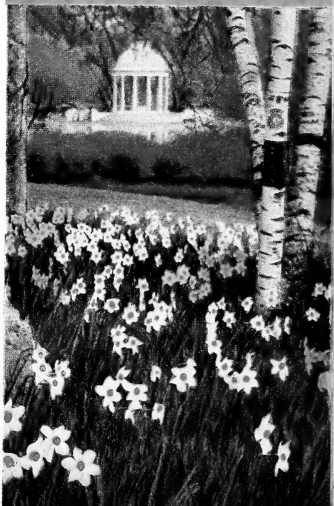
Chinese Sacred Lily

Flowers in clusters very similar to those of the Paper-White Narcissus, but the cups within the petals are yellow. 3 for 45c.; \$1.75 per doz.; \$3.50 for 25.

NARCISSUS FOR NATURALIZING

A mixture containing all types, well assorted, in early and late varieties for naturalizing in masses or for mixed borders or among shrubbery. We recommend it strongly.

\$1.25 per doz.; \$9.50 per 100



Giant-Flowered HYACINTHS (Holland Grown)

Each variety listed is available in two sizes: First-size bulbs produce real exhibition blooms when planted in beds out-of-doors or forced in pots indoors. Bedding-size bulbs will produce fine blooms when planted out-of-doors in beds and along borders.

Large exhibition forcing size, 18 to 19 cm. in circumference, 3 for 70c.; \$2.50 per doz., postpaid. \$19.50 per 100, not postpaid.

Large bedding size, 15 to 16 cm. in circumference, 3 for 50c.; \$1.75 per doz., postpaid. \$12.75 per 100, not postpaid.

Single Pure White

L'Innocence. The very best white. Extra-fine truss with very large bells. A wonderful variety for glass and fiber culture, as well as excellent for bedding and forcing.

Single Red and Pink

La Victoire. Brilliant carmine-red; one of the very finest red varieties for bedding and forcing. It retains its superb color to the end.

Marconi. Bright deep rose. A large, broad spike.

Pink Pearl. Fine clear pink. Large, closely set bells in a broad spike.

Single Dark and Light Blue

Bismarck. Large, broad spike of heavenly blue flowers. An excellent forcer.

Grand Maitre. Light blue with a violet stripe down the center of each floret; deep blue on reverse. Uniform color. Well-shaped spikes.

King of the Blues. Deep glossy blue, well-formed large spike, on short stem. Bells of medium size but of great substance.

Single Yellow

City of Haarlem. Slender, well-rounded spikes of pale yellow.



FOR INDOOR PLANTING

HYACINTH GLASSES →

FOR GROWING HYACINTHS IN WATER

CRYSTAL. 85c. each

YELLOW. 98c. each

BLUE. 98c. each

Use exhibition size bulbs as listed above.

FRENCH ROMAN HYACINTHS. Very early and easily grown. Each bulb produces three or four fragrant flower spikes. Excellent results come from planting three or four bulbs in a 5-inch pan. If potted in September, they will bloom about Christmas. **White, 30c. each; \$3.00 per doz. Blue, 15c. each; \$1.75 per doz. Pink, 25c. each; \$2.50 per doz.**

Miscellaneous Bulbs

AMARYLLIS, Giant American Hybrids.

Amaryllis bulbs planted in October or November should come into bloom in March. Mixed colors only. Jumbo bulbs, suitable for planting in a 6-inch pot, 85c. each (by mail, \$1.00).

Separate Colors. (Holland grown.) Scarlet-red, Dark Red or Orange, \$2.50 each; White or Rose, \$3.00 each, postpaid.

Hardy Amaryllis (*Lycoris squamigera*). (Domestic.) Strap-shaped leaves in spring, followed by clusters of pink lily-like blooms in August. Delightfully fragrant. Will grow in partial shade. 75c. each (by mail, 95c.).

ANEMONE (California Grown)

Blue Poppy. Violet-blue; black center. **His Excellency.** Vivid scarlet with silvery white base and black center.

The Bride. Large, snow-white blooms. **Monarch De Caen, Mixed.** Large, single flowers of blue, white and scarlet. Set bulbs 6 inches deep in cool, moist but well-drained soil. Spring is the best planting time in the North, fall in the South.

St. Brigid. Double-flowered mixture. Any of above: 3 for 35c.; \$1.15 per doz.; \$8.50 per 100

CHIONODOXA (Glory-of-the-Snow). (Holland grown.) Sky-blue flowers bloom soon after the snow is gone. 40c. per doz.; \$2.75 per 100.

CALLA LILIES (California Grown)

Black (*Arum pictum*). Green spathe, deep purple inside. Large bulbs 80c. each; 3 for \$2.25.

Pink (*Zantedeschia Rebmanni*). The blooms are not large but their beautiful pink color makes them very desirable and unusual. Best for indoor culture. 60c. each; 3 for \$1.65.

White (*Z. atbiopica*). Pure white. Pot bulbs in 6 to 8-inch pots when received. Large bulbs, 75c. each; 3 for \$2.15.

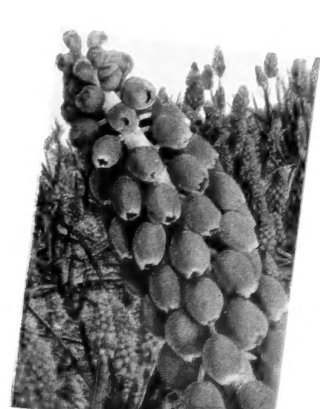
Yellow (*Z. Elloittiana*). Large, rich deep golden flowers often 4 to 5 inches across at the mouth. Leaves spotted with white. Ready in November. 65c. each; 3 for \$1.75.



WINTER ACONITE



SINGLE SNOWDROP



MUSCARI, HEAVENLY BLUE
(Grape Hyacinth)

HOLLAND CROCUS

Spring-Flowering

Top-size bulbs, 9 cm. and up in circumference. One of the earliest of flowers to bloom in the spring. Crocus will grow in the lawn, in flower borders, on the slopes of terraces, in sun or shade.

Purpurea Grandiflora. Rich deep purple. 70c. per doz.; \$5.25 per 100.

Queen of the Blues. Light lilac-blue. 60c. per doz.; \$4.25 per 100.

Remembrance. Dark blue. 60c. per doz.; \$4.25 per 100.

Kathleen Parlow. White. 60c. per doz.; \$4.50 per 100.

Striped Beauty. 60c. per doz.; \$4.50 per 100.

Yellow. 70c. per doz.; \$5.25 per 100.

Special Crocus Mixture

Contains 100 large-size Crocus bulbs (8 to 9 cm. in circumference) in mixed colors, packed in a lithographed bag. **SPECIAL PRICE, \$2.95 per 100**

Autumn-Flowering

Plant Now—Bloom This Fall

They are excellent for planting in the grass and on the borders of shrubbery. Given a sheltered and sunny position in the rock garden, they add color at a time when most rock-garden plants are out of bloom.

Sativus (Saffron Crocus). Beautiful purple flowers feathered with white and adorned with bright orange anthers. 60c. per doz.; \$4.15 per 100.

Speciosus. Lilac-blue flowers with contrasting orange-red anthers arising from a lovely yellow throat. 50c. per doz.; \$3.50 per 100.

Zonatus. Rosy lilac with a yellow center surrounded by a bright orange zone. It may be grown indoors in pots or pans. 50c. per doz.; \$3.50 per 100.

COLCHICUM autumnale major (Meadow Saffron). Autumn flowering. The rosy purple flowers of this unusual plant resemble the Crocus. If planted in August or September the bulbs will flower in a very short time, but the foliage will not appear until spring. They will bloom, without soil or water, in a sunny window. 30c. each; 6 for \$2.50.

ERYTHRONIUM dens-canis purpureus (TROUT LILY; Dogstooth Violet). Flowers like little stars in early April. Very hardy. 3 for 50c.; \$1.75 per doz.

FRESIA. Produces large sprays of very fragrant flowers. Plant the bulbs in a mixture of loam and coarse sand, with a little bonemeal.

White, Yellow, Blue, Pink, or Red. 10c. each; \$1.00 per doz.; \$7.50 per 100.

Rainbow Mixture. Clusters of yellow, blue, violet, mauve, pink and lavender flowers. 85c. per doz.; \$6.25 per 100.

FRITILLARIA meleagris (Snake's Head or Guinea-Hen Flower). Pendent, bell-shaped flowers oddly marked and checkered. 10 to 18 inches high. 50c. per doz.; \$3.75 per 100.

IRIS reticulata. Rich pansy-violet. Blooms in very early spring. About 10 inches tall. 60c. per doz.; \$4.50 per 100.

IXIA (African Corn Lily). Brilliant mixture. 45c. per doz.; \$3.00 per 100.

LEUCOJUM aestivum, Capitola Giant (Snowflake). Strong stems bearing large clusters of pendent white flowers tipped with green. May-flowering. 3 for 35c.; \$1.25 per doz.

LYCORIS radiata. Bright red flowers in autumn. Plant indoors in the North. 15c. each; \$1.75 per doz.

MADONNA LILIES. (French Grown.) White. June-blooming. 55c. each; 3 for \$1.55; \$6.00 per doz.

MUSCARI, Heavenly Blue (Grape Hyacinth). Numerous spikes of light blue flowers during April. Can be planted in masses or in the rock garden, in either shade or sun. 45c. per doz.; \$3.00 per 100.

Botryoides album. Pure white Grape Hyacinth. 60c. per doz.; \$4.00 per 100.

OXALIS. Suitable for pot-culture and winter blooming. Keep close to light to prevent foliage growing too long.

Bermuda Buttercup. Yellow.
Grand Duchess, Lavender, Grand Duchess, White, Hirta. Pink.

Each of above, 50c. per doz.; \$3.75 per 100

RANUNCULUS, Supreme Mixed. Large, turban-like heads of fully double flowers in a good range of color. Bulbs, 3 for 35c.; \$1.25 per doz.

SCILLA campanulata (Wood Hyacinth). Bears bell-like flowers on 15-inch spikes during early May.

White Triumphator. 85c. per doz.; \$6.50 per 100.

Myosotis. Blue. 70c. per doz.; \$5.00 per 100.

Queen of the Pinks. 70c. per doz.; \$5.00 per 100.

SCILLA sibirica, Spring Beauty. Exquisite rich blue flowers in early spring. \$1.25 per doz.; \$9.00 per 100.

SNOWDROPS. May be used effectively in the center or at the edge of a bed.

Single. Large, lovely single white bells. 75c. per doz.; \$5.50 per 100.

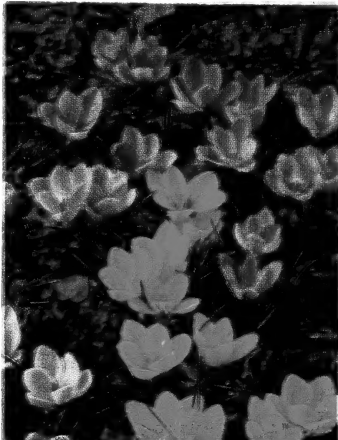
Double. Same as the single, but large, handsome double flowers. \$1.15 per doz.; \$8.75 per 100.

STERNBERGIA lutea. A fall-blooming bulb resembling Autumn Crocus, but has larger blooms on 6 to 8-inch stems. Rich brilliant yellow. Hardy and permanent. 25c. each; \$2.75 per doz.

WINTER ACONITE (*Eranthis hyemalis*). Golden blossoms look charming resting on an emerald-green cushion of leaves. Does well in a moist situation, such as under trees. 60c. per doz.; \$4.25 per 100.



CHIONODOXA



SPRING-FLOWERING CROCUS



SCILLA SIBIRICA, Spring Beauty



SCILLA →
CAMPANULATA

←
RANUNCULUS





BELLINGHAM HYBRIDS

SPECIAL OFFERS

COLLECTION 1	--- 3 Enchantment, 3 Olympic Hybrids	\$2.95
COLLECTION 2	--- 4 Mid-Century Varieties: Enchantment, Tangelo, Valencia, Joan Evans.	
	4 bulbs, 1 of each	2.50
	12 bulbs, 3 of each	7.00
COLLECTION 3	--- Pacific Coast Hybrids, 7 bulbs: 3 Sunset, 3 Bellingham Hybrids, 1 Shuksan	3.25
COLLECTION 4	--- Olympic Collection, 5 bulbs: 3 Olympic Hybrids, 1 Olympic Select, 1 Olympic Pink	6.50
COLLECTION 5	--- Aurelian Collection: Golden Clarion, Sunburst, Heart's Desire.	
	3 bulbs, 1 of each	8.00
	9 bulbs, 3 of each	22.50

Out of the West, land of enchantment, comes a fabulous new group of hardy Lilies—plants bursting with vigor, full of rugged health that will be the highlight of your garden. Graceful or bold, soft-colored or brilliant, in brazen giants with vibrant colors or small, refined and in modest white, they come for every purpose and taste and in all shapes and sizes.

These glorious new Lilies were grown for you in Oregon, on the slopes of lovely Mount Hood. Order them now; select a spot for them in the garden—sunny, well-drained and if possible with a humus-rich, deep, porous soil. The bulbs will be shipped with their full root-system intact, as living plants, direct from our grower to you.

Bellingham Hybrids. Dozens of recurved, long-lasting flowers in July. Colors range from clear yellow through orange to garnet-red, spotted with brown or reddish brown. 6 feet tall. 50c. each; 3 for \$1.40.

Enchantment. Plant Pat. #62. Many large, cupped, upright flowers of orange-rose-tinted-red in late June and early July. 50c. each; 3 for \$1.40.

Fiesta Hybrids. From 6 to 12 reflexed yellow, orange and red flowers, on 4-foot stems. Plant in full sun. 60c. each; 3 for \$1.50.

Golden Chalice Hybrids. Masses of golden cups on tall, straight stems in June. 50c. each; 3 for \$1.40.

Golden Clarion. Golden yellow trumpet Lilies. The fadeproof color is finest when planted in slightly filtered sunlight. \$5.00 each; 3 for \$14.00.

Gold Band Lily. The true *L. auratum* plant *plumbum*. Immense, 7 to 9-inch, fragrant, waxy white, bowl-shaped blooms, golden streaked and often crimson spotted, with as many as 15 on a 6 or 7-foot stem. Blooms in August and September. \$1.50 each; 3 for \$4.00.

Heart's Desire. Many huge, often orange-throated, bowl-shaped flowers. Of great variety in beauty. \$2.50 each; 3 for \$7.00.

Martagon album. Dainty, wax-like flowers, on 4-foot stems in June. Plant not more than 4 inches deep in a well-drained, sunny location. 95c. each; 3 for \$2.90.

Mid-Century Hybrids, Mixed Colors. Selected for beauty, hardiness and vigor. Plant in groups in the border. Bloom in late June. 50c. each; 3 for \$1.40.

Olympic Hybrids. Broad, strong flowers in pyramidal heads. From ivory-white through soft green, with deeper green and russet tints on the outside. About 5 to 7 feet tall, blooming in July. 65c. each; 3 for \$1.75.

Olympic Pink. Robust, giant trumpet Lilies of fuchsia to rose-pink. They need filtered sunlight. \$3.50 each; 3 for \$10.00.

Olympic Select. From specially selected plants. The supply is limited. \$2.50 each; 3 for \$7.00.

Red Champion. Speciosum Lily. White flowers flushed red and heavily spotted with crimson. Blooms in late August and early September. \$1.00 each; 3 for \$2.75.

Shuksan. Similar in type to Bellingham Hybrids, needing the same conditions. Handsome and easily grown. 60c. each; 3 for \$1.50.

Sunburst Strain. Five to 7-foot stems carry as many as 30 huge flowers for weeks in late July. Colors include white, creamy yellow, salmon and orange. Large, star-shaped flowers. \$1.50 each; 3 for \$4.00.

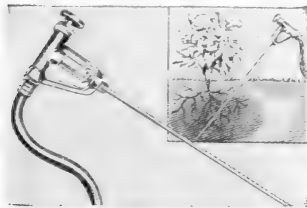
Sunset Lily. Bright red-tipped, recurved flowers, opening in early July. Grows 5 to 7 feet tall and bears as many as 20 flowers. Easily grown. 60c. each; 3 for \$1.50.

Valencia. A June-flowering hybrid of beautiful rich golden hue with bronze midribs and many minute maroon dots. 70c. each; 3 for \$2.00.

THE NEW BOOK OF LILIES. Per copy \$3.50, post-paid.

Write or phone for our beautifully illustrated Lily folder in full color. Free on request.

Ross Root Feeders
The Key to Outdoor Beauty



The Ross Root Feeder puts the fertilizer and water directly to the roots. Produces healthier and more vigorous growth. Especially fine for roses, shrubs and trees. You can fertilize and water at same time or you can just water. \$4.98 complete with 12 cartridges. Additional cartridges, \$1.00 per doz.

Gold Tag Bone Meal. For bulbs, gardens, lawns and flowers. 100 lbs. \$2.95.

Compo. Turns compost into organic manure. 7½ lbs. \$1.25; 25 lbs. \$2.50.

Premier Brand German Peat Moss. Large 7½ cu. ft. bale. \$5.45.

Japidemic. Milky disease spore dust. Controls Japanese beetles in the soil. Lb. \$5.95.

Wizard Brand Sheep Manure; also **Wizard Brand Cow Manure.** Either, 25 lbs. \$1.50; 50 lbs. \$2.70; 100 lbs. \$5.25.

Weedone Weed Killer. Contains the powerful 2,4,5-T and 2,4-D, the two most effective systemic herbicides known. 8 ozs. \$1.00; qt. \$2.75; gal. \$6.75.

NOW! Two Easy Ways to Kill Crab Grass
1. With a sprayer. 2. With a spreader.

Weedon Crab Grass Killer Soder
This great new product is the most effective chemical yet developed to control this hard-to-kill weed pest, without injury to most lawn grasses, including fine fens.

For sprayer application:
4 ozs. \$1.25; 12 ozs. \$2.75; 2 lbs. \$6.75;
6 lbs. \$19.50.

For spreader application:
5-lb. bag \$2.98; 13-lb. bag \$6.65.

MICHIGAN PEAT
An outstanding soil conditioner and mulch for lawns and planting of flowers and nursery stock. Especially good for plants requiring an acid soil. 2½ pk. 59c.; pk. 89c.; 25 lbs. \$1.69; 50 lbs. \$2.49; 100 lbs. \$4.49.

HYPER-HUMUS
A rich soil humus that has been aerated, sweetened and composted, making an ideal top-dressing for lawns and flower beds. 25 lbs. \$1.09; 50 lbs. \$2.69; 100 lbs. \$5.00.

Folium
BALANCED PLANT FOOD



Helps everything that grows grow better! It is the perfect liquid leaf-feeding food with the 20-20-20 formulation of nitrogen, phosphorus and potash recommended for maximum growth! Easy to apply. Just spray or sprinkle on grass or foliage. Won't clog sprays. Will not burn tender leaves. Lb. \$1.25; 5 lbs. \$4.50. *Lareer sizes for larger areas.*



Spike Disc Aerator

Will supply the proper kind of aeration and permit retention of moisture. Also useful before seeding and top dressing. Seed and fertilizer reach into the knif-like cuts in the turf, safe from wind and rain.

No. 8. \$21.50.

Peonies —

We offer some of the world's finest in both double and single varieties. They make a good showing in the garden and are favorite flowers for cutting. In planting, the crown should never have more than 2 inches of soil over it. If planted too deep,

(E) indicates earliest flowering varieties; (E-M) early to midseason; (M) midseason; (M-L) midseason to late; (L) latest blooming varieties.

Peonies will not bloom. The number following the name means the rating tabulated from the votes of the members of the American Peony Society throughout America and Canada. 10 is the highest possible score; none under 8 are offered.

All Perennial plants are subject to the 2% Md. or D. C. Sales Tax. Please include in your remittance.

We pay postage, east of the Mississippi, on perennial and rose orders amounting to \$3.00 or more; west of the Mississippi, please add 10% to the amount of the order. On orders less than \$3.00, add 35c. for postage and packing.

3 POPULAR PEONIES

Festiva Maxima. White.
Richard Carvel. Brilliant crimson.

Walter Faxon. Vivid shell-pink.

COLLECTION F56-1
3 roots,
1 of each, for . . . **\$4.00**



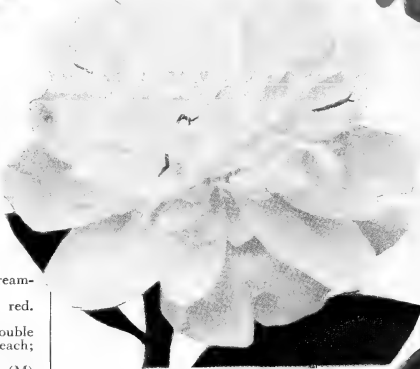
WALTER FAXON
\$2.00 each; 3 for \$5.25



RICHARD CARVEL
\$1.50 each; 3 for \$4.00

Double Peonies

- Alice Harding.** 9.4. (M) Opens bluish, turning to white. \$2.50 each; 3 for \$6.50.
- Baroness Schroeder.** 9.0. (M) Blush turning to purest white; fragrant. \$1.25 each; 3 for \$3.25.
- Cherry Hill.** 8.6. (E) Dark crimson. \$1.50 each; 3 for \$4.00.
- Cornelia Shaylor.** 9.1. (L) Shell-pink. \$1.75 each; 3 for \$4.75.
- Duchesse de Nemours.** 8.1. (E) Cream-white. \$1.25 each; 3 for \$3.25.
- Felix Crousse.** 8.4. (M) Brilliant red. \$1.25 each; 3 for \$3.25.
- Festiva Maxima.** 9.3. (E) Fine double white, with few crimson flecks. \$1.25 each; 3 for \$3.25.
- Glorious** (Kelway Glorious). 9.8. (M) White with creamy suffusion; rose-like fragrance. \$2.50 each; 3 for \$6.50.
- Inspecteur Lavergne.** 8.7. (E) Beautiful deep red. \$1.50 each; 3 for \$4.00.
- Jeannot.** 9.2. (L) Light lavender-pink; sweetly rose-scented. \$1.50 each; 3 for \$4.00.
- Lady Alexandra Duff.** 9.1. (E-M) Light pink, yellow center. \$1.50 each; 3 for \$4.00.
- Le Cygne.** 9.9. (E) Finest pure white. The highest rated Peony. \$2.50 each; 3 for \$6.50.
- Longfellow.** 9.0. (E-M) One of the most popular red Peonies. Striking bright crimson. Large flower; good stem. \$1.75 each; 3 for \$4.50.
- Mons. Jules Elite.** 9.2. (E) Immense flower of fine pink. \$1.25 each; 3 for \$3.25.
- Mons. Martin Cahuzac.** 8.8. (E-M) Dark maroon-red. The darkest Peony. \$2.25 each; 3 for \$6.00.
- Philippe Rivoire.** 9.2. (E) Bright deep crimson. Very well-formed flower; sweet rose-scented. \$2.50 each; 3 for \$6.50.
- Primevere.** 8.6. (M) Light creamy yellow. \$1.75 each; 3 for \$4.75.
- Richard Carvel.** 8.8. (M) Brilliant crimson. \$1.50 each; 3 for \$4.00.
- Sarah Bernhardt.** 9.0. (L) Deep rose-pink, silver tipped; fragrant. \$1.50 each; 3 for \$4.00.
- Solange.** 9.7. (L) Brownish cream. \$2.00 each; 3 for \$5.25.
- Therese.** 9.8. (E-M) Very large; pale, translucent old-rose-pink. \$2.00 each; 3 for \$5.25.



FESTIVA MAXIMA
\$1.25 each; 3 for \$3.25

Fall is the time to think of the flowers like Peonies, Iris and Lilies that you will want in your garden come next spring. For this is the time to plant them. These are valuable, permanent plants that will add a great deal to your home grounds and become more beautiful as they reach large size.

**SINGLE PEONY,
MIKADO**
\$1.25 each;
3 for \$3.25



- Tourangelle.** 9.4. (L) Pale apple-blossom-pink. Beautiful. \$1.25 each; 3 for \$3.25.
- Walter Faxon.** 9.3. (M) Vivid shell-pink. \$2.00 each; 3 for \$5.25.

Single or Anemone-flowered Peonies

- Eva.** Bright lilac-crimson, golden center. Very lively color; late. \$1.25 each; 3 for \$3.25.
- Fuyajo.** Mahogany, tipped light bronze. \$2.00 each; 3 for \$5.25.
- Jeanne Lapandry.** Pure white; flat cream center. \$2.50 each; 3 for \$6.50.
- Kinsui.** Light salmon-pink; pure golden center. \$1.25 each; 3 for \$3.25.
- Mikado.** Deep crimson; stamens dark rose-red with golden edges. \$1.25 each; 3 for \$3.25.
- Suru-gu.** Pure red; thick yellow stamens. Cup-shaped flowers. \$1.25 each; 3 for \$3.25.
- Tamate-Boku.** Lively china-pink; golden center. \$4.50 each; 3 for \$12.00.

IRIS • Queen of Perennials

Unless otherwise noted all varieties of Iris are 60c. each; any 3 for \$1.50; any 6 for \$2.75; any 12 for \$4.85; any 25 for \$8.50.

All Perennial Plants are subject to the 2% D. C. or Md. Sales Tax. Please include in your remittance.

We pay postage, east of the Mississippi, on perennial and rose orders amounting to \$3.00 or more; west of the Mississippi please add 10% to the amount of the order. On orders less than \$3.00, add 35c. for postage and packing.

Aladdin's Wish. 3 ft. Porcelain-blue brushed cream color, which radiates through the flower. Blooms are very large, patterned like some Japanese Iris. 75c. each; 3 for \$2.00.

Amandine. 3 ft. Cool lemon-cream self. One of the finest creams. \$1.00 each; 3 for \$2.90.

Amigo. 3 ft. A striking contrast, with clear light lavender standards effectively foiled by the deep purple velvet, trimly edged falls.

Bandmaster. 3 ft. Immense powder-blue flowers. Stalk tall and well branched. A few shades deeper than Great Lakes; color holds up unusually well. 75c. each; 3 for \$2.00.

Black Wings. A popular Iris of deepest midnight-blue overlaid with a frosty black sheen. Ideal for foreground plantings.

Blue Rhythm. Illustrated in color on back cover, 3 to 4 ft. Very large flowers of cornflower-blue, softened by a silvery overtone. Perfectly branched and just about "cupped" as a blue Iris. 75c. each; 3 for \$2.00.

Brown Thrasher. 3 ft. Like a piece of highly polished brass or bronze. One of the very best brown Iris—smooth in texture, appealing in color and unlike any other. 75c. each; 3 for \$2.00.

Bryce Canyon. Illustrated in color on back cover, 3 ft. Distinct warm shade of brown to terra-copper, self colored. Decidedly one of the most interesting blends; fragrant. 75c. each; 3 for \$2.00.

Casa Morena. 3 ft. Rich, glowing coppery chestnut-brown. A very large flower with a unique richness in the sienna-brown shades and a pleasing iridescence. \$1.00 each; 3 for \$2.90.

Cascade Splendor. 3 ft. Very large, ruffled pink, tan and apricot blend. \$1.00 each; 3 for \$2.90.

Chamois. 3 ft. As its name implies, a pure chamois self with a soft satiny finish. An Iris of distinction and refinement, of good substance for its large size. Excellent form, with leaves slightly waved; fragrant. \$1.00 each; 3 for \$2.90.

Chivalry. 3 ft. Winner of the Dykes Medal and one of the outstanding varieties in the medium blue range. Excellent form and proportion; ruffled. \$1.00 each; 3 for \$2.90.

Copper Pink. 3 ft. Soft pink flushed sparkling copper and dusted gold.

Dauntless. 3 ft. A standard red self. Deep rose-red with velvety falls. Good color and a fine perfume.

Daybreak. 3 ft. A gay golden pink with a coppery undertone—one of the finer pink blends. Slightly ruffled. 75c. each; 3 for \$2.00.

Display. Illustrated in color on back cover, 3 ft. One of the richest reds—Spanish red shading to deep maroon, with little purple influence. No veining at the haft; yellow-tan dorsal brown.

Elsa Sass. 3 ft. Enticing "lemon-ice" toned yellow, an entirely new shade. Cool and frost-like sulphur-yellow with a white blaze near the haft.

Extravaganza. 3 ft. An Amoena with cream-white standards and rich velvety prunella-falls, with a copper medley artfully touching up the haft and edge of the falls. Blue-tinted dorsal brown. \$1.00 each; 3 for \$2.90.

Frieda Mohr. 3 ft. A large lilac-rose factor of classic flaring form and splendid texture.

Garden Magic. 3 ft. Half-almost maroon; glossy velvety falls handsomely contrasted by the rich orange beard.

Miniature Bearded Iris

These dainty little Iris bloom in April and early May.

Fairy. 6 in. Pale blue.

La Fiancee. 12 in. White.

Sambo. 10 in. Deep blue.

Sound Money. 6 in. Compact; yellow.

Iris Sibirica (Siberian Iris)

Being smaller and more graceful, these are greatly admired as cut-flowers.

Cesar's Brother. Rich pansy-purple.

Perry's Blue. Clear blue. Stout stems.

Red Siberian. Mahogany-red. \$2.00 each; 3 for \$5.00.

Snow Queen. A beautiful white.

Dutch Iris Bulbs

One of the most easily grown bulbous plants. Place bulbs 4 to 6 inches deep in good sandy loam. Blooms in early June.

Imperator. Brilliant deep blue with a golden yellow blotch on each standard. 75c. per doz.; \$5.50 per 100.

Golden Harvest. Both the standards and falls are bright golden yellow. 80c. per doz.; \$5.75 per 100.

White Perfection. The finest white Dutch Iris in existence. 75c. per doz.; \$5.50 per 100.

Iris Tingiana

Wedgwood. Graceful large flowers of a beautiful deep blue color. Very early. 85c. per doz.; \$6.00 per 100.

5 Popular Bearded Iris

AS ILLUSTRATED ABOVE

OLA KALA. 3 ft. Deep yellow. 75c. each.

ELMOHR. 3 ft. Reddish mulberry. \$1.00 each.

FLORA ZENOR. 40 in. Pink. \$1.00 each.

GREAT LAKES. 3 ft. Light blue. 75c. each.

JAKE. White. 60c. each.

VERY SPECIAL Save 60c! Only Collection F56-7 \$3.50

Golden Russet. 3 ft. Impassioned Iris—magnificent in color! "A rich golden russet in color." \$1.50 each; 3 for \$4.75.

Gypsy Rose. 3 ft. A warm tapestry-red with a shimmering blue and white variegated beard. \$1.50 each; 3 for \$4.75.

Hi-Time. 2 1/2 ft. Golden apricot with full, deep blue standards. A new Iris! \$1.50 each; 3 for \$4.75.

Lady Mohr. 3 ft. 30 in. Stunning color combination. Large, rich, vibrant blue standards and brilliant yellow and white variegated beard. \$1.50 each; 3 for \$4.75.

Mexico. Bicolor blend of golden buff standards and broad plush-like falls of glowing red-brown. \$1.50 each; 3 for \$4.75.

Minnie Colquitt. 3 ft. A striking, massive Pleinea. The heart of each petal is pure white, with broad shimmering wine-purple on the border repeated in lace on standards and falls. 75c. each; 3 for \$2.00.

Missouri. 3 ft. The giant blooms of faultless form and flawless shimmering texture are a clear rich shade of radiant blue. 75c. each; 3 for \$2.00.

Patrice. 3 ft. A refined Pleinea of beautiful form, distinguished by the subtle brushing of pale gold at the haft and speckling of peach and rosy lavender on the creamy background.

Rainbow Room. 3 ft. Buff and tan forms the background, with accent points of apricot-buff shimmering, the whole complemented by a blaze of blue in the center of each fall just below the beard. \$1.50 each; 3 for \$4.75.

Ranger. 3 ft. A self, deep but brilliant, near crimson-red. Late blooming. \$1.00 each; 3 for \$2.90.

Rocket. Illustrated in color on back cover, 3 ft. An orange self that has risen quickly to fame. Standards pure deep chrome; falls orange-chrome shimmering variegated. A burnished finish on the falls lends extra depth to the color. 75c. each; 3 for \$2.00.

Sable. Illustrated in color on back cover, 3 ft. A wonderful shade of deepest black-violet with a clear tone. 75c. each; 3 for \$2.00.

Snow Flurry. 3 1/2 ft. A beautiful, ruffled blue-white. The unopened buds are lightly tinted blue but open a cool white. Large flowers, strong substance, on long, short-branching stems. 75c. each; 3 for \$2.00.

Snooking. 3 ft. One of the best white Iris. Ideal for use as a blending and harmonizing of ruffled standards.

Sunset Serenade. Unique in color—a lovely golden apricot or apricot-buff with a glorious iridescence like that of its parent Prairie Sunset but lighter in tone. One of the finest of its color. 75c. each; 3 for \$2.00.

Sylvia Murray. 3 1/2 ft. A new blue resulting from a cross of Great Lakes and Shining Waters, lighter in color than either of its parents and with the silvery smoothness of pale blue self. Enormous in size. 75c. each; 3 for \$2.00.

The Red Douglas. 3 ft. Rich rose wine-red, solid to the haft. It is not the reddest Iris but rather a sterling, gorgeously rich, deep dark red. 75c. each; 3 for \$2.00.

Three Oaks. 3 1/2 ft. Beautifully blended tones of rose-pink and copper. Lasts very well. Massive flowers on very tall stems. 75c. each; 3 for \$2.00.

Vanity Fair. Clear medium true pink, very smooth and tailored in appearance. An ideal pink Iris with lots of color, beautiful form and very fine tangery beard. \$5.00 each.

Vatican Prince. 3 ft. Deep but bright blue-purple, silky in finish and heavy in texture, without haft markings. \$1.00 each; 3 for \$2.50.

Violet Symphony. 3 ft. Gleaming lilac-mauve self. A splendid Iris near the top of its class. 75c. each; 3 for \$2.00.

Wabash. 3 ft. Fresh-toned as any orchid is this Amoena with snowy white standards and ultramarine falls with brighter margins.

Hardy Perennials

Unless otherwise noted, all plants are \$1.50 for 3 of one named variety; \$2.75 for 6 of one named variety; \$4.85 per doz. of one named variety. Single plants, 60c. each. On orders less than \$3.00, add 35c. for postage and packing.

All Perennial plants are subject to the 2% Md. or D. C. Sales Tax. Please include in your remittance.

We pay postage, east of the Mississippi, on perennial and rose orders amounting to \$3.00 or more; west of the Mississippi, please add 10% to the amount of the order.

PHLOX divaricata

Lapham. The ideal blue Phlox for early spring bloom. Excellent for planting with hardy candytuft or yellow and white tulips. Excellent in either sun or shade. Grows and spreads rapidly. 8 to 10 in.

PHLOX subulata (Moss or Mountain Pink)

Low spreading plants with attractive foliage cover themselves with a mass of tiny flowers in April and May. A leading rock-garden plant and desirable for wall gardening, or they can be used as edgings.

Pink Red White Blue
COLLECTION F56-4. 4 plants, 1 of each, for \$2.00.
COLLECTION F56-12. 12 plants, 3 of each, for \$5.00.

PLATYCODON (Balloon-Flower)

Four Outstanding New Varieties

Double White. Beautiful double blooms on 18 to 24-inch plants. Fine for cutting and garden decoration.

Double Blue. A good companion for Double White.

Double Pink. Attractive pink.

Shell-Pink. 18 in. Distinctive pale pink flowers. Blooms freely all summer. 65c. each; 3 for \$1.65; 6 for \$3.00; \$5.50 per doz.

PYRETHRUM (Painted Daisy)

Huge, single blooms often 3 to 4 inches across on sturdy, 2 to 2½-foot stems. Wonderful for cutting. Pleasing, brilliant colors.

ORIENTAL POPPIES

Hardy, easy to grow and lasting when well started. Plant them in groups throughout the border for May and June color. The best planting months are September and October.

Barr's White. Finest white to date.

Crimson Pompon. Fully double, blood-red flowers. Beautiful and distinct.

Curtis Giant Flame. Flame-red, extra-large blooms on very tall, heavy stems. One of the largest Poppies.

Curtis Giant Salmon-Pink. Large blooms; medium height.

Curtis Giant Watermelon. Distinct deep watermelon-pink.

Enchantress. Beautiful lilac-rose. The best in this color. \$1.00 each; 3 for \$2.50.

Glowing Embers. Deeply crinkled blooms of medium red.

Helen Elizabeth. Crinkle-petaled; salmon-pink with no base spots.

Henri Cayeux, Improved. Old-rose shaded to burgundy. Very distinct. Often referred to as the Purple Poppy.

Joyce. Charming soft red flowers in great abundance on 48-inch stems. Sturdy growth.

May Sadler. Deep salmon-pink.

Salmon Glow. Salmon-orange. First blooms very double; later ones only slightly double.

Snowflake. Plant Pat. 365. A curious bicolor. The lower half of the flower is pure white and the upper half flame-orange. New and different. \$1.10 each; 3 for \$3.00.

Tangerine. Pure bright orange.

All Poppies, unless otherwise noted: 3 for \$2.00; 6 for \$3.50; \$6.50 per doz. of any one named variety. Single plants, 75c. each



**GLOWING EMBERS BARR'S WHITE
 CURTIS GIANT SALMON-PINK**

FOUR POPULAR POPPIES

**CURTIS GIANT SALMON-PINK
 BARR'S WHITE
 GLOWING EMBERS
 TANGERINE**

COLLECTION F56-2

4 plants, one of each, for \$2.50

Six Lovely Poppies

BIG JIM, CHEERIO, ENCHANTRESS, HELEN ELIZABETH, MAY SADLER, SALMON GLOW

COLLECTION F56-6

6 plants, one of each, for \$4.50

NEWER POPPIES

Big Jim. A giant deep red. \$1.25 each; 3 for \$3.25.

Cheerio. Blush-pink with light red base spots. Medium to large flowers on stems of medium height. Very lovely and outstanding. \$1.00 each; 3 for \$2.50.

G. I. Joe. Watermelon-red. A fine clear brilliant color. \$2.00 each; 3 for \$5.00.

Marcus Perry. A new super-giant Poppy with blooms 8 to 10 inches across. Very strong grower; sturdy stems only 18 inches high. The color is most appealing—brilliant orange-scarlet with black spots. Strong field plants that are sure to bloom next spring. \$1.25 each; 3 for \$3.25.

Raspberry Queen. Unusual color—crushed black raspberry. Plant in a shady location, for the color will fade in bright sunshine. \$1.50 each; 3 for \$4.00.

Loveliest Hardy CARNATIONS

Sweet-scented, double flowers for the garden and for cutting. Very appealing blooms all summer long. Plant in a sunny, well-drained location. Height of all varieties, 10 to 15 inches.

Diana. Deep Persian rose with maroon center; spicy fragrance.

Dubonnet. Brilliant wine-red.

Moon Mist. Large; pure white.

Salmon Unique. Salmon-pink.

Sweet Memory. White spotted crimson in center. Large, hardy, sweet scented. Compact, bushy growth and evergreen foliage the year round.

Wallace Red. Medium-sized blooms of brilliant crimson-red.

Any one named variety: 65c. each; 3 for \$1.65; 6 for \$3.00; \$5.25 per doz.

**COLLECTION F56-8
 6 plants, 1 of each listed above, for \$3.50**

IBERIS (Hardy Candytuft)

Delightful little evergreen plants much used in rock gardens. They make splendid border plants, furnishing closely packed, white bloom in spring.

Sempervivens. A fine plant with dark green foliage. White flowers.

Snowflake. Large, pure white flowers on dwarf plants.

GORGEOUS RUSSELL HYBRID LUPINS

Plant Lupins this fall to brighten your garden from May to July next year. They grow 2½ feet high with flower spikes 2 feet long, representing practically every color in the rainbow. They like a partially shaded location in rich, lime-free soil. Strong plants, sure to bloom. Mixed colors only. 3 for \$1.50; 6 for \$2.75; \$4.85 per doz.

for Fall Planting

Hardy Summer Phlox

Hardy Phloxes are the backbone of your garden during the summer months when color is so much needed! It can be depended on for producing an abundance of bloom over a long period. A sunny location in good rich soil gives best results. Water well in very dry seasons.

- Border Queen.** Watermelon-pink. 18 in.
- Count Zeppelin.** White with red eye. 2 ft.
- Lilian.** Cameo-pink with blue eye. 2 ft.
- Mary Louise.** White. 2 ft.
- Pinkette.** White tinted pink. 2 ft.
- Rosy Blue.** Lavender.
- Ruth May.** Lavender.
- Salmon Beauty.** Salmon with white eye. 2 ft.

San Antonio. Blood-red. 2 ft.
Spitfire. Sunset-red. 2 ft.

- COLLECTION F56-10**
1 each of the 10 for \$3.85
- COLLECTION F56-11**
2 each of the 10 for \$7.25
- COLLECTION F56-13**
3 each of the 10 for \$9.85

Three Beautiful New Phlox

- Brigadier.** Brilliant carmine-red shaded pink. 2 ft.
- Elizabeth Arden.** Soft pink with lighter center. 2 ft.
- Sir John Falstaff.** Very large; deep salmon-pink. 2 ft.

75c. each

- COLLECTION F56-14**
1 each of the 3 for \$2.00

GROUND COVERS

- ENGLISH IVY.** The fastest-growing ground cover. 2 1/2 in. pot plants, \$3.50 per dozen; \$25.00 per doz.
- PACHYSANDRA** (Japanese Spurge). A trailing plant, 6 to 8 inches high, forming a dense cover of foliage, glaucous green. Plants per dozen with leaves by shipping. May and June. \$3.50 per doz.; \$25.00 per 100.
- VINCA minor** (Periwinkle; Trailing Myrtle). An excellent dwarf trailing plant for carpeting the ground where it is too shady for other plants to thrive. \$4.00 per doz.; \$40.00 per 100.

PHLOX.
San Antonio



Aquilegia (Columbine)

One of the most valuable of the early-flowering perennials. They do best in light soil and thrive in semi-shade or full sun. 1 to 2 ft. May, June.
Mrs. Scott Elliott's Strain. Outstanding for its wide range of color.

Delphinium (Perennial Larkspur)

The hybrids provide the long spikes of beautiful bloom so popular for exhibition purposes; cut down after the first bloom, they will repeat in autumn. The *Belladonna* type is desirable to cut for mixed bouquets and blooms all season. Delphiniums require rich soil in full sun.
Belladonna. Light blue. 3 to 4 ft.
Lamartine. Brilliant marine-blue. 3 to 4 ft.
New Giant Pacific Hybrids. Many shades of huge florets beautifully spaced on strong spikes. Mildew-resistant.

Dicentra (Bleeding-Heart)

Shade-loving plants with flowers of unquestioned charm. *Spectabilis* is the Bleeding-Heart of old-time gardens.
Spectabilis. Graceful pink, heart-shaped flowers and long, slender stems in April and May. 75c. each; 3 for \$2.00.

Hemerocallis (Daylilies)

Thriving almost anywhere, and not being bothered by either insects or disease, this is about as near a fool-proof garden plant as can be found. By planting our collection you can see bloom from May on all summer.
Cinnabar. 2 to 3 ft. Orange base, sprinkled cinnamon, recurring sepals and petals. Very free blooming. July. 75c. each; 3 for \$2.00.
Dr. Regel. Rich orange-yellow flowers in May. Very fine for cutting.
Flava Lemon Lily. Sweet-scented, yellow flowers in June.
Hyperion. Large; canary-yellow. 75c. each; 3 for \$2.00.
Imperator. 4 ft. A distinct variety with rich orange-red coloring. July, August. 75c. each; 3 for \$2.00.
Kwanse. Large, double flowers of rich golden-bronze shade.
Leonian Hybrids. Orange-red to maroon. \$1.00 each; 3 for \$2.50.
Mikado. 3 ft. A glamorous combination orange with a mahogany-red spot on each petal. Occasionally blooms in the fall. June, July. 75c. each; 3 for \$2.00.
Ophir. 4 ft. Rich golden yellow coloring. July. 75c. each; 3 for \$2.00.



CHRISTMAS ROSE *Helleborus niger*
\$1.25 each; 3 for \$3.25

Helleborus (Christmas Rose)

They grow best in rich soil and a shady location. Attractive the year round.
Niger. 1 ft. Single white blooms flushed with pink on sturdy stems. December to March. \$1.25 each; 3 for \$3.25.
Orientalis atropurpurea. Crimson-purple flowers on 12 to 15-inch stems. February to April. \$1.25 each; 3 for \$3.25.

5 NEW DAYLILIES

- Carnival.** Large, light red blooms with wide yellow stripe; golden throat. July, August. 3 1/2 ft. \$2.00 each; 3 for \$5.00.
- Enchantress.** Huge; soft yellow to copper-pink. Late July, August. 4 ft. \$2.00 each; 3 for \$5.00.
- Jane.** Bright scarlet-red, with golden throat; very large. Late June, July. 4 ft. \$1.50 each; 3 for \$4.00.
- Lady Esther.** Huge, trumpet-shaped, pale yellow blooms on sturdy, 3 to 3 1/2-foot stems. Mid-June to late July. \$1.50 each; 3 for \$4.00.
- Rose Dubarry.** Strawberry-red, with deep orange throat. Sixty blooms. Late June, July. 3 1/2 ft. \$1.50 each; 3 for \$4.00.

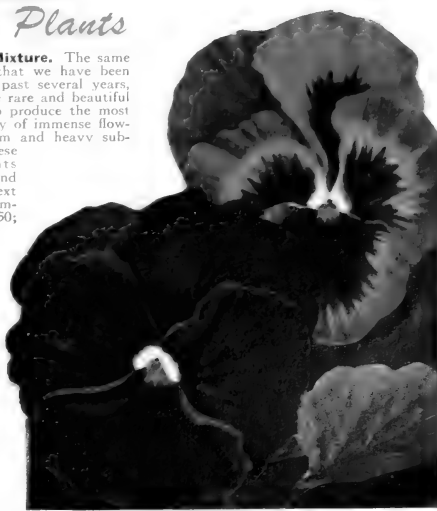
COLLECTION F56-3
1 each of the 5 for \$5.00

(FREE with each offer: 1 August Pioneer for August and September bloom.)

SEEDLING

Pansy Plants

Select Jumbo Mixture. The same famous blend that we have been selling for the past several years, with even more rare and beautiful colors added to produce the most gorgeous display of immense flowers of rare form and heavy substances. Set these seedling plants out this fall and enjoy them next spring and summer. 50 for \$1.50; \$2.75 per 100; \$25.00 per 1000.



Late summer is the time to plant perennial and biennial flower seeds. See our large selection.



PYRAMIDAL ARBORVITAE

Hardy Flowering SHRUBS

- ALMOND, Flowering.** Double pink flowers in early spring. 18 to 24 in., \$2.50 each.
- BEAUTY-BUSH.** Long, arching branches with pink flowers in spring. 2 to 3 ft., \$2.90 each.
- CORALBERRY** (*Symphoricarpos vulgaris*). Compact shrub 4 to 5 feet high, with many clusters of deep red berries through the winter months. 18 to 24 in., \$2.25 each.
- COTONEASTER divaricata** (Spreading Cotoneaster). 4 to 6 ft. Bears scarlet fruit. A fine hedge plant. 18 to 24 in., \$4.50 each.
- FORSYTHIA intermedia spectabilis** (Golden Bell). Strong, erect habit. 2 to 3 ft., \$2.25 each. 3 to 4 ft., \$3.00.
- Lynwood Gold.** (New.) Golden yellow flowers on erect branches. A good bloomer. 2 to 3 ft., \$3.00 each.
- HYDRANGEA, Otaksa.** Blue or pink, depending on soil acidity. 12 to 15 in., \$2.75 each.
- Peegee.** The old-time variety. 18 to 24 in., \$2.25 each.
- HYPERICUM, Hidcote.** (New.) Dwarf shrub with golden yellow flowers from late June until October. 15 to 18 in., \$2.75 each.
- LILAC, Old-fashioned Purple.** 18 to 24 in., \$2.25 each.
- French Hybrids.**
Belle de Nancy. Violet-red.
Charles Joly. Red-purple.
Ellen Willmott. White.
President Grey. Light blue.
 Above 4 varieties
 18 to 24 in. \$2.50 each
- SPIRÆA, Anthony Waterer.** Crimson flowers all summer. Dwarf. 15 to 18 in., \$2.25 each.
- Vanhouttei.** The most showy white variety. May, June, 18 to 24 in., \$2.25 each. 2 to 3 ft., \$2.65.
- VIBURNUM setigerum.** Strong shrub with clusters of bright red berries that remain until early winter. 2 to 3 ft., \$3.00 each.
- WEIGELA rosea.** Pink flowers in May or June. 2 to 3 ft., \$2.85 each.
- Eva Rathke.** Rich reddish purple flowers. 2 to 3 ft., \$2.85 each.

DWARF EVERGREENS

- ARBORVITAE, Globe.** Globes of dense, light green foliage. 12 to 15 in., \$3.50 each. 15 to 18 in., \$4.50.
- Biota** (*Aurea nana*). Grows 4 to 5 feet tall. Pyramidal and compact in form; golden yellow in spring, turning reddish brown in winter. For edging and formal planting. 12 to 15 in., \$4.25 each. 15 to 18 in., \$5.25.
- JUNIPERUS chinensis Pfitzeriana.** Low-spreading, dark green branches. 12 to 15 in., \$4.00 each. 15 to 18 in., \$4.50.
- YEW, Spreading** (*Taxus cuspidata*). Moderately bushy. Short dull green leaves. 12 to 15 in., \$4.75 each. 15 to 18 in., \$6.75.
- Spreading English** (*T. baccata repandens*). Spreading, horizontal branches; dark blue-green foliage. Valuable in low plantings. 12 to 15 in., \$5.25 each.

TALL EVERGREENS

- ARBORVITAE, American.** Tall, rapid grower. 2½ to 3 ft., \$5.25 each. 4 to 5 ft., \$7.50.
- Pyramidal.** Dense, dark green foliage. 2½ to 3 ft., \$5.50 each. 3 to 3½ ft., \$7.50.
- HEMLOCK.** The best evergreen for the shade. 18 to 24 in., \$4.75 each. 2 to 2½ ft., \$6.50.
- SPRUCE, Colorado.** Silvery green foliage. Growing 2 to 3 ft., \$3.50 each.
- Norway.** Dark green, handsome tree reaching 30 to 50 feet. 2 to 2½ ft., \$4.50 each.
- YEW, Upright** (*Taxus media Hicks*). Symmetrical shape. Brilliant scarlet fruits. 15 to 18 in., \$5.25 each. 18 to 24 in., \$7.50.

BROAD-LEAF EVERGREEN SHRUBS

- ABELIA grandiflora** (Bush Arbutus). Leaves dark green and glossy. Flowers white, tinged with pink. 15 to 18 in., \$2.50 each.
- AZALEA, Hinodegiri.** Brilliant scarlet. 8 to 10 in., \$2.25 each. 10 to 12 in., \$3.00. 12 to 15 in., \$3.75.
- Kurume, Coral Bells.** Clear pink. 8 to 10 in., \$2.25 each. 10 to 12 in., \$3.00.
- SNOW.** Pure white. 8 to 10 in., \$2.25 each. 10 to 12 in., \$3.00.
- WOOD, American** (*Buxus sempervirens*). 10 to 12 in., \$2.25 each.
- Old English** (*B. suffruticosa*). 4 to 6 in., 75c. each. 6 to 8 in., \$2.25.
- ILEX crenata** (Japanese Holly). Grows 8 to 10 feet high. Good shrub or hedge plant, with evergreen boxwood-like foliage and black berries. 12 to 15 in., \$4.25 each. 15 to 18 in., \$4.75.
- PIERIS japonica.** Evergreen. Clusters of small drooping white flowers in May. 12 to 15 in., \$4.85 each.
- RHODODENDRON catawbiense.** Large purple flowers. 15 to 18 in., \$5.25 each.
- Maximum.** Large white flowers. 15 to 18 in., \$5.25 each.
- CHERRY, Flowering.** Double pink flowers in spring. 3 to 4 ft., \$6.00 each.
- CRAB, Flowering.** Pink flowers in spring and small fruits in the fall. 3 to 4 ft., \$5.00 each.
- DOGWOOD, Pink-flowering.** Dainty single pink. 2 to 3 ft., \$6.50 each. 3 to 3½ ft., \$7.50.
- White-flowering.** A springtime favorite. Red berries in fall. 2 to 3 ft., \$5.00 each. 3 to 4 ft., \$6.25.
- GOLDEN CHAIN TREE.** Grows 25 or 30 feet. Long clusters of yellow flowers. 3 to 4 ft., \$7.50 each.
- OAK, Pin** (*Quercus palustris*). Grows 75 to 90 feet tall. Shiny foliage, rich scarlet in fall. Pyramidal head. 6 to 8 ft., \$7.50 each.

Fruits

Apple Trees

2-yr.-old \$2.25 each

WINTER VARIETIES

Red Delicious. Red; fine grained.
Jonathan. Hardy; productive.
Stayman (Imp. Winesap). Large.

AUTUMN VARIETIES

Grimes Golden. Good size; yellow.
Smokehouse. Thin yellow skin.

SUMMER VARIETIES

Early Harvest. Medium. Pale yellow.
Lodi. Earliest. White skin.

Pear Trees

2-yr.-old \$2.75 each

Bartlett. The best large eating Pear.
Devoo. Plant Pat. 728. Good keeper. Flesh white.
Kieffer. Large; golden yellow.
Seckel. Small, sweet. Very popular.

Cherry Trees

2-yr.-old \$3.00 each

Bing. Large; delicious, black.
Montmorency. Sour variety.
Napoleon. Large; sweet. Midseason.
Tartarian. Large, sweet, black Cherries.

Peach Trees

2-yr.-old \$2.25 each

Belle of Georgia. Large; white flesh. Freestone.
Elberta. Large; yellow flesh. Freestone.
Golden Jubilee. Extra early; yellow. Freestone.

Plum Trees

2-yr.-old \$2.75 each

Abundance. The popular early cherry-red.
Burbank. A well-known dark red, early.
Damson (Blue Shropshire).

Grape Vines 2-yr.-old, not postpaid

Caco. Large, wine-red berries.
Concord. The standard black.
Golden Muscat. \$1.50 each.
Niagara. White.

All Grape Vines, except where noted,
 75c. each; \$3.90 for 6

HEDGE PLANTS

PRIVET, California. Dark green foliage which remains on the plant until mid-winter. Well-branched heavy stock. 1½ to 2 ft., \$3.50 for 10; \$25.00 per 100.
Lucidum (Evergreen Privet). Compact plant with glossy green leaves and blue berries. 12 to 15 in., \$3.50 each.

All flowering shrubs and evergreens are balled and burlapped. Our plants are good heavy stock. Free delivery in Washington and the suburban area; no shipments made outside this area. Residents of D. C. and Md. are requested to include the 2% sales tax with their remittance.

ORNAMENTAL and SHADE TREES

- MAPLE, Blood-leaf Japanese Dwarf.** True red. 15 to 18 in. \$6.00 each.
- Crimson King.** Plant Pat. 735. The best purple-leaf Maple. Foliage is about the color of a copper beech. Very attractive. 8 to 9 ft., \$12.00 each.
- Norway** (*Acer platanoides*). Dark green leaves turning yellow in fall. 60 to 70 feet. 6 to 8 ft., \$7.50 each.
- Red** (*A. rubrum*). A rapid-growing Maple with vivid fall coloring. This is not the Dwarf Japanese Red-leaf Maple. 6 to 8 ft., \$7.50 each.
- Sugar.** A vigorous grower with bright fall coloring. 6 to 8 ft., \$7.50 each.
- PEACH, Flowering.** Red. 3 to 4 ft., \$3.75 each.

Bolignano's Beautiful ROSES

Residents of D. C. and Md. are requested to include the 2% Sales Tax with remittance.

We pay postage, east of the Mississippi, on Perennial and Rose orders amounting to \$3.00 or more; west of the Mississippi, please add 10% to the amount of the order. On orders less than \$3.00, add 35c. for postage and packing.

THE ALL-AMERICA WINNERS FOR 1957

Golden Showers. Plant Pat. App. for. A hardy everblooming climber bearing a profusion of canary-yellow blooms all season. May be trained as a pillar, climber or bush. \$3.00 each; 3 for \$7.95.

White Bouquet. Plant Pat. 1415. A brand-new Floribunda with double white flowers in clusters on an 18 to 24-inch sturdy plant. Spicy fragrance. \$2.50 each; 3 for \$6.60.

THE NEW GRANDIFLORAS

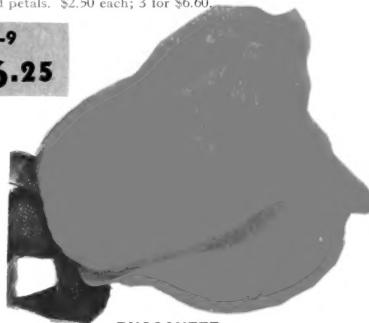
Buccaneer. Plant Pat. 1119. Long, slender buds and cupped flowers of clear yellow. Tall and free branching. A very superior new Rose. \$2.50 each; 3 for \$6.60.

Carrousel. Plant Pat. 1066. Unfading rich dark red. Semi-double flowers, sometimes carried singly and sometimes in big sprays. About 3 feet tall. \$2.00 each; 3 for \$5.25.

Queen Elizabeth. Plant Pat. 1259. Beautiful pink blooms carried upright on a proud, tall plant. Lightly ruffled petals. \$2.50 each; 3 for \$6.60.

COLLECTION F56-9

One each of Carrousel, Buccaneer and Queen Elizabeth for **\$6.25**



BUCCANEER

CLIMBING ROSES

Blaze. Huge clusters of vivid scarlet. \$1.50 each; 3 for \$3.90.

City of York. An attractive creamy white climber, blooming profusely and making a line showing. \$1.50 each; 3 for \$3.90.

Climbing Crimson Glory. Plant Pat. 736. Deep velvety crimson. \$2.50 each; 3 for \$6.60.

Climbing Floradora. Plant Pat. 1054. Scarlet-orange. \$2.00 each; 3 for \$5.25.

Dr. J. H. Nicolas. Plant Pat. 457. Immense, double rosy pink blooms. A strong pillar Rose. \$2.00 each; 3 for \$5.25.

New Dawn. The everblooming form of Dr. W. Van Fleet. Soft pink. \$1.50 each; 3 for \$3.90.

Paul's Scarlet Climber. The most widely planted scarlet climber. Hardy and easy to grow. \$1.50 each; 3 for \$3.90.

CARROUSEL



WHITE BOUQUET

HYBRID TEA ROSES

Ami Quinard. Blackish maroon. \$1.50 each; 3 for \$3.90.

Blanche Mallerin. Plant Pat. 594. Outstanding white. \$2.25 each; 3 for \$6.60.

Capistrano. Plant Pat. 922. Deep glowing rose-pink. \$2.25 each; 3 for \$6.60.

Chrysler Imperial. Plant Pat. 1167. Vivid crimson-red. \$2.50 each; 3 for \$6.60.

Condesa de Sagato. Orange-scarlet and yellow. \$1.50 each; 3 for \$3.90.

Crimson Glory. Deep crimson-red. \$1.50 each; 3 for \$3.90.

Eclipse. Long yellow buds. \$1.50 each; 3 for \$3.90.

Forty-niner. Plant Pat. 792. Rich chrome-yellow and red. \$2.25 each; 3 for \$6.60.

Fred Howard. Plant Pat. 1006. Yellow tips tinted pink. \$2.00 each; 3 for \$5.25.

Helen Traubel. Plant Pat. 1028. Lively pink. \$2.50 each; 3 for \$6.60.

Mirandy. Plant Pat. 632. Maroon-red. \$2.25 each; 3 for \$6.60.

Mission Bells. Plant Pat. 923. Deep salmon-pink. \$2.00 each; 3 for \$5.25.

Mojave. Plant Pat. 1176. Beautiful orange. \$2.75 each; 3 for \$7.20.

New Yorker. Plant Pat. 823. Velvety scarlet. \$2.25 each; 3 for \$6.60.

Nocturne. Plant Pat. 713. Deep red. \$2.25 each; 3 for \$6.60.

Peace. Plant Pat. 591. Everybody's favorite yellow Rose. \$2.50 each; 3 for \$6.60.

HYBRID TEA ROSES, continued

President Eisenhower. Plant Pat. 1217. Rich medium red. \$2.25 each; 3 for \$6.60.

Radiance. Popular pink. \$1.50 each; 3 for \$3.90.

Red Radiance. Rose-red. \$1.50 each; 3 for \$3.90.

Sutter's Gold. Plant Pat. 885. Bright yellow shaded orange. \$2.25 each; 3 for \$6.60.

Tallyho. Plant Pat. 828. Crimson-pink. \$2.25 each; 3 for \$6.60.

Tiffany. Plant Pat. 1304. Phlox-pink. Exquisite for cutting. \$2.50 each; 3 for \$6.60.

FLORIBUNDA ROSES

Baby Blaze. Plant Pat. 1362. Dashing red. \$2.00 each; 3 for \$5.25.

Circus. Plant Pat. 1382. Multicolor—rich yellow and red to orange-buff suffused pink. \$2.50 each; 3 for \$6.60.

Fashion. Plant Pat. 789. Coral-pink suffused with gold. \$2.00 each; 3 for \$5.25.

Floradora. Dazzling bright cinnabar-red. \$1.50 each; 3 for \$3.90.

Goldilocks. Plant Pat. 672. Rich golden yellow. \$1.75 each; 3 for \$4.65.

Jimmy Cricket. Plant Pat. 1346. Tangerine-red opening to coral-orange. \$2.00 each; 3 for \$5.25.

Ma Perkins. Plant Pat. 1143. Salmon-shell-pink. \$2.00 each; 3 for \$5.25.

Permanent Wave. Bright carmine, wavy-edge petals. Dark, glossy foliage. \$1.50 each; 3 for \$3.90.

Pinocchio. Plant Pat. 484. Lovely salmon-pink, flushed gold. \$1.75 each; 3 for \$4.65.

Red Pinocchio. Plant Pat. 812. Rich carmine. \$1.75 each; 3 for \$4.65.

Summer Snow. Plant Pat. 416. Pure white, very double. \$1.50 each; 3 for \$3.90.

Vogue. Plant Pat. 926. Pastel scarlet opening to rose-pink. \$2.00 each; 3 for \$5.25.

COLLECTION F56-15

Washington Favorites

Chrysler Imperial, Forty-niner, Helen Traubel, Mojave, Peace and Sutter's Gold.

1 each of the above six... for **\$13.25**



QUEEN ELIZABETH

Bolgiano's

FIVE
BEAUTIFUL
IRIS



BLUE RHYTHM
75c. each; 3 for \$2.00

**PLANT IRIS
THIS FALL**

For Bloom Next Spring



ROCKET
75c. each; 3 for \$2.00



DISPLAY
60c. each; 3 for \$1.50

COLLECTION F56-5

1 each of the
FIVE
varieties **\$3.35**
illustrated



BRYCE CANYON
75c. each; 3 for \$2.00



SABLE
75c. each;
3 for \$2.00

