

Historic, archived document

Do not assume content reflects current scientific knowledge, policies, or practices.



Dubl

ESTABLISHED 1853.



NO. 5.

HOOPES, BROTHER & THOMAS,

Cherry Hill Nurseries

WEST CHESTER, PA.

SEMI-ANNUAL TRADE LIST.

AUTUMN, 1880.

TWO MEDALS AND DIPLOMAS

AWARDED BY

UNITED STATES CENTENNIAL COMMISSION.

NOTICE TO PURCHASERS.

This list is intended for Nurserymen, Florists and Dealers only, and supersedes all previous editions. The prices are for the quantities named. Five Hundred, Fifty, and Five, will be furnished at the Thousand, Hundred, and Ten rates, respectively. On smaller quantities a discount from our retail prices will be made to the trade. Dealers will be furnished at the lowest rates.

OUR NURSERIES,

covering 300 Acres, with a large amount of glass, are in the immediate vicinity of West Chester, which is situated twenty-seven miles west of Philadelphia, and with which we have nearly hourly communication by two railroads—one a direct road, the other a branch of the Pennsylvania Central, and from which we have a siding to our packing house. By the latter route we are enabled to ship to all parts of the country, without transfer in Philadelphia, and at very low rates to distant points.

THE PACKING SEASON

generally commences from the first to the middle of March in the Spring, and about the first of October in the Autumn.

PACKING.

All orders are carefully packed in bales or boxes, for which a charge is made sufficient to remunerate for the cost of material.

SHIPPING.

Our shipping facilities to the West by fast freight lines, and to New England and the South by various steamship lines, are unexcelled in rapidity of transit and low rates of freight charges.

Purchasers are requested to name the mode of conveyance by which they desire their shipments, *otherwise we will dispatch to the best of our judgment. After delivering to the forwarders, all articles are entirely at the risk of the purchaser; and should any loss or delay occur, the forwarders alone must be held responsible.*

All packages delivered free of cartage at the Dépôts and Express Office in West Chester.

Parties desiring stock shipped per express, C. O. D., *must* accompany their order with cash to half the amount, otherwise no attention will be paid to the same.

CLAIMS.

All claims for errors and deficiencies must be made within TEN DAYS after receipt of the stock. We desire to be notified of mistakes as early as possible, so that we may rectify the same without delay.

TERMS CASH.

The following Catalogues will be mailed on application, viz.:

- No. 1. Descriptive Catalogue of Fruits, two 3 cent stamps; with colored plate, 10 cents.
- No. 2. Illustrative and Descriptive Catalogue of Ornamental Trees, &c., 10 cents.
- No. 3. Illustrative and Descriptive Catalogue of Hardy Perennials and Alpine Plants, pp. 52, 10 cents.
- No. 4. A Hand Book of Greenhouse and Bedding Plants, issued in February, free.
- No. 5. Wholesale Trade List, free.
- No. 6. Autumn Book of Bulbs, free.

Hoopes, Bro. & Thomas

FRUIT DEPARTMENT.

THESE prices are for our selection of varieties, but we will adhere as closely as possible to the wish of the purchaser. In no case will we supply long lists of selected varieties of either Fruit or Ornamental Trees at wholesale rates, but will allow a discount on our retail prices proportionate to the amount of the order.

	Per 10.	Per 100.	Per 1000.
APPLES—STANDARD, 7 to 9 feet, extra size.....	\$1 50	\$12 00	
“ 6 to 8 feet, 4 and 5 years selected.....		10 00	\$80 00
“ 5½ to 7 feet, 3 and 4 yrs., first-class, light		6 00	50 00
CLARK'S ORANGE, PEWAUKEE, TETOFSKY, WEALTHY, and YORK IMPERIAL.....	1 25	10 00	
CRAB, 4 years, 7 to 8 feet.....		10 00	80 00
“ 3 years, 6 to 7 feet.....		6 00	50 00
DWARF, 2 and 3 years.....	1 50	12 00	
We invite especial attention to our very large and fine stock of Apple trees, comprising all the leading varieties.			
PEARS—STANDARD, extra size, 6 to 8 feet.....	3 00	28 00	
“ selected, 5 to 7 feet.....	2 50	22 00	
DWARF, 3 to 5 feet, first-class.....	2 00	16 00	
CHERRIES—STANDARD, 2 years (Hearts & Bigarreaus), 6 to 8 feet....		12 00	
“ “ “ 4½ to 6 feet....		10 00	
“ (Early Richmond), 4 to 6 feet.....		12 00	100 00
“ “ “ 3 to 5 feet.....		10 00	80 00
“ (English Morello), 3½ to 4 feet.....		12 00	
“ “ “ 3 to 4 feet.....		10 00	
“ (Luelling), 4½ to 5½ feet.....	2 00	15 00	
“ “ “ 3½ to 4½ feet.....		12 00	
MONTMORENCY ORDINAIRE. Larger than Early Richmond, and ripening ten days later, very prolific, 2 years, 4 to 5½ feet.....	2 00	15 00	
do. 3 to 4½ feet.....		12 00	
OLIVET. A new Duke Cherry from France, highly recommended, 2 years, 4 to 5 feet.....	2 00	15 00	
do. 3 to 4 feet.....		12 00	
PEACHES—STANDARD, 1 year, 4 to 6 feet, 1st selection.....		7 00	60 00
“ “ 3 to 4 feet, 2d “.....		5 00	40 00
WATERLOO and CONKLING.....	2 50	20 00	
BOWERS' EARLY and MUSSER.....	1 25	10 00	
CUMBERLAND. H. M. Engle, who has fruited most of the new varieties this season, says: “It is the earliest and largest, in fact, the finest early Peach that we have yet fruited.”.....	1 75	15 00	
On Plum stock, 2 years.....	2 50		
ITALIAN DWARF (Dwarf Orleans).....	1 50		
GOLDEN DWARF (Van Buren's).....	1 00	8 00	
PLUMS—On Peach stock, 2 years, 1st selection, 4½ to 6 feet...	1 50		
“ “ “ 2d “ 3½ to 5 feet...	1 25	10 00	
“ “ WILD GOOSE, 6 to 7 feet.....	2 00	15 00	
“ “ “ 5 to 6 feet.....	1 50	12 00	
APRICOTS—1 year.....	1 25	10 00	
NECTARINES—On Peach stock.....	1 25	10 00	
On Plum stock.....	3 00		
QUINCES—APPLE OR ORANGE, 3 feet.....	2 50	20 00	
ORANGES and LEMONS—In 6-inch pots.....	5 00		
BLACKBERRIES—KITTATINNY, LAWTON and WILSON'S EARLY.....		2 00	
CURRANTS—CHERRY, LA VERSAILLAISE and WHITE GRAPE, 2 years.....	75	5 00	
RED DUTCH and VICTORIA, 2 years.....	75	5 00	
GOOSEBERRIES—AMERICAN SEEDLING.....	75	5 00	
DOWNING.....	1 00	8 00	
GRAPES—AGAWAM (Rogers No. 15), 2 years.....	1 50	12 00	
BRIGHTON, 2 years.....	3 00		

	Per 10.	Per 100.	Per 1000.
GRAPES —CATAWBA, 2 years	\$1 50		
CHRISTINE, or TELEGRAPH, 2 years	1 50	\$12 00	
CLINTON, 2 years	80	5 00	
CONCORD, “	80	4 00	
“ 3 years, extra size, canes 5 to 6 feet.....	1 00	6 00	
DELAWARE, 2 years	2 00	18 00	
DIANA, 2 years	1 50	12 00	
EUMELAN, 2 years	2 00		
HARTFORD PROLIFIC, 2 years	1 00	8 00	
IVES' SEEDLING, 2 years	80	5 00	
LADY, 2 years	2 50		
MARTHA, 2 years	1 25	10 00	
MERRIMAC (Rogers, No. 19).....	1 50	12 00	
MOORE'S EARLY, 2 years	6 00		
SALEM, 2 years	1 50	12 00	
WILDER (Rogers No. 4), 2 years.....	1 50	12 00	
NUTS —ALMONDS, Hard Shell.....	1 50		
“ Soft Shell.....	1 50		
CHESTNUTS, American, 3 to 4 feet.....	1 50		
“ “ 4 to 5 feet.....	2 00		
“ “ 5 to 6 feet.....	2 50		
“ Spanish, 1 year.....		4 00	\$30 00
FILBERTS, American, 2 years, 1½ to 2 feet.....	1 00		
“ English, 4 to 5 feet.....	1 25		
MULBERRIES, Downing, 1 year.....	3 00		
“ White, 3 to 4 feet.....	1 25		
PERSIMMON, American, 2 to 3 feet.....	1 50		
SHELLBARK, 2 to 3 feet.....	1 75	15 00	
WALNUTS, Black (J. nigra), 2 to 3 feet.....	1 00		
“ “ 8 to 10 feet.....	1 50		
“ English (J. regia), 1 to 1½ ft., 2 yrs. transpl.	1 00	8 00	
“ “ 2 feet.....	2 00		
“ “ 3 feet.....	2 50		
RASPBERRIES —BRANDYWINE, HERSTINE and TURNER....	50	2 00	
CUTHBERT.....	50	4 00	
McCORMICK (Mammoth Cluster).....	50	2 00	
DOOLITTLE'S IMPROVED BLACK CAP.....	50	2 00	
RHUBARB —MYATT'S LINNÆUS.....		4 00	
STRAWBERRIES —CHARLES DOWNING, CUMBERLAND TRIUMPH, MONARCH OF THE WEST and KENTUCKY.....		1 00	8 00
CRESCENT SEEDLING and ALBANY.....		75	6 00
FOREST ROSE and GREAT AMERICAN....		1 00	8 00
SHARPLESS.....		1 00	8 00

FOREIGN GRAPES.

	Per 10.	Per 100.
The best leading varieties, 1 year, fine.....	\$4 00	\$30 00
“ “ “ “ extra size, in 8 and 10 inch pots.....	10 00	

BUDS.

	Per 100.	Per 1000.
APPLES —Leading varieties.....	50	\$2 00
APRICOT, CHERRY, NECTARINE and PLUM —Leading varieties.....	50	3 00
PEACH —Leading varieties.....	50	2 00

SCIONS.

	Per 100.	Per 1000.
APPLE —Leading varieties.....	\$0 75	\$1 50
CHERRY “	1 00	4 00
PLUM “	1 00	4 00

ORNAMENTAL DEPARTMENT.

DECIDUOUS TREES.

	Per 10.	Per 100.
ALDER —ENGLISH, 10 to 12 feet.....	\$2 50	
“ CUT-LEAVED, 5 to 6 feet.....	5 00	
“ IMPERIALIS, 2 to 3 feet.....	3 00	
APPLE —DOUBLE ROSE FLOWERING.....	2 00	
DOUBLE WHITE FLOWERING.....	2 00	
FLORIBUNDA.....	2 00	
SWEET-SCENTED (P. coronaria).....	2 00	
TENORI.....	2 00	
ASH —ATROVIRENS (Dwarf green crisp-leaved) top worked 5 to 6 feet..	4 00	
ELONZA JAPONICA, 5 to 7 feet.....	3 00	
ENGLISH, 8 feet.....	2 00	\$18 00
“ 10 feet.....	2 25	20 00
“ 12 feet.....	2 50	
“ 14 feet.....	3 00	
GLOBOSA, top worked 6 to 7 feet.....	3 50	
MONOPHYLLA (Single-leaved), 7 to 8 feet.....	3 00	
MYRTIFOLIA (Myrtle-leaved), 6 to 8 feet.....	3 00	
ORNUS (Flowering), 9 to 10 feet.....	2 50	
PANNOSA, 6 to 8 feet.....	2 00	
PLATYCARPA, 6 to 8 feet.....	3 50	
PUNCTATA, 5½ to 7 feet.....	3 00	
“ 12 feet.....	3 50	
SALICIFOLIA (Willow-leaved), 4 to 6 feet.....	3 00	
BEECH —AMERICAN, 5 to 6 feet.....	3 00	25 00
CHESTNUT-LEAVED, 4 to 5 feet.....	8 00	
CURLED-LEAVED (cristata), 3 to 4 feet.....	10 00	
CUT-LEAVED, 3 to 4 feet.....	10 00	
ENGLISH, 3 to 4 feet.....	3 00	20 00
“ 6 to 8 feet.....	5 00	40 00
FERN-LEAVED, 2½ feet.....	10 00	
PURPLE-LEAVED, 3 feet.....	6 00	
“ 4 feet.....	8 00	
“ 5 feet.....	10 00	
} “Rivers.” A variety with exceedingly dark purplish red leaves grafted from our own specimens. }		
BIRCH —WHITE, 5 to 7 feet.....	2 00	15 00
“ 8 to 10 feet.....	2 50	20 00
SWEET, 8 to 10 feet.....	2 50	
CATALPA —BIGNONIODES, 6 to 8 feet.....	1 50	12 00
“ 12 to 16 feet.....	2 00	15 00
CHERRY —BIRD (P. padus), 8 to 10 feet.....	2 50	
“ “ 10 to 12 feet.....	3 00	
CYPRESS —DECIDUOUS, 3 feet.....	2 50	
DOGWOOD —WHITE (Cornus florida), 2 feet.....	1 00	
“ “ “ 3 to 4 feet.....	1 50	
“ “ “ 6 to 7 feet.....	2 50	
ELM —AMERICAN, 6 feet.....	1 50	12 00
“ 8 feet.....	2 00	16 00
“ 10 feet.....	3 00	25 00
“ 12 feet.....	4 00	
SCOTCH, 8 to 10 feet.....	3 00	
HALESIA —TETRAPTERA, 3 to 5 feet.....	2 50	
HORNBEAM —ENGLISH, 2 to 3 feet.....	2 00	
HORSE CHESTNUT —ENGLISH, 8 feet.....	4 50	
FLAVA (Sweet Buckeye), 4 feet.....	2 50	
OHIO BUCKEYE, 4 to 5 feet.....	2 50	
PAVIA, 4 feet.....	2 50	
JUDAS TREE —RED BUD, 4 to 5 feet.....	2 00	
“ 6 to 8 feet.....	2 50	
“ 8 to 10 feet.....	3 00	
“ JAPAN, 2 feet.....	3 50	
KENTUCKY COFFEE —(G. Canadensis), 8 feet.....	2 00	

	Per 10.	Per 100.
KENTUCKY COFFEE—(G. Canadensis), 10 to 12 feet.....	\$3 00	
KCELREUTERIA—PANICULATA, 4 to 5 feet.....	2 00	
“ “ 8 to 10 feet.....	2 50	
LARCH—ENGLISH, 5 to 7 feet.....	2 00	\$15 00
LINDEN—AMERICAN, 8 feet.....	2 50	20 00
“ “ 10 feet.....	3 00	25 00
“ “ 12 feet.....	4 00	30 00
“ “ 14 feet.....	5 00	
“ “ 15 to 18 feet.....	6 00	
ENGLISH, 5 to 7 feet.....	4 00	
“ “ 12 feet.....	5 00	
SILVER-LEAVED, 6 to 8 feet.....	4 00	
“ “ 10 feet.....	5 00	
“ “ 12 feet.....	6 00	
MAGNOLIA—ACUMINATA, 5 feet.....	1 50	12 00
“ “ 6 feet.....	2 00	15 00
“ “ 8 feet.....	2 50	20 00
“ “ 10 feet.....	3 00	25 00
“ “ 12 feet.....	4 00	
“ “ 14 feet.....	5 00	
ALEXANDRINA, 4 to 5 feet.....	6 00	
“ “ 6 to 8 feet.....	7 50	
CONSPICUA, 3 to 4 feet.....	6 00	
“ “ 4 to 6 feet.....	7 50	
“ “ 6 to 8 feet.....	10 00	
“ “ 8 to 10 feet.....	12 50	
FRASERI, 5 to 7 feet.....	7 50	
GLAUCA, 2 feet.....	5 00	
GRACILIS, fine bushy plants.....	2 50	20 00
LENNÉ, 2 to 3 feet.....	6 00	
“ “ 3 to 4 feet.....	7 50	
“ “ 4 to 6 feet.....	10 00	
MACROPHYLLA, 2½ to 3 feet.....	6 00	
NORBERTIANA, 4 to 6 feet.....	7 50	
OBOVATA, fine bushy plants.....	2 50	20 00
SOULANGIANA, 2 to 3 feet.....	5 00	
“ “ 3 to 4 feet.....	6 00	
“ “ 4 to 5 feet.....	7 50	
“ “ 7 to 9 feet.....	10 00	
SPECIOSA, 3 to 4 feet.....	6 00	
“ “ 4 to 6 feet.....	7 50	
TRIPETELA, 6 feet.....	2 50	20 00
“ “ 8 feet.....	4 00	30 00
“ “ 10 feet.....	5 00	
MAPLE—ASH-LEAVED, 6 to 8 feet.....	3 00	
CUT-LEAVED, 7 to 8 feet.....	5 00	
EAGLE'S CLAW, 7 to 8 feet.....	7 50	
ENGLISH, bushy, 4 to 5 feet.....	2 50	
NORWAY, 4 to 5 feet.....	1 25	8 00
“ “ 8 feet.....	3 00	25 00
“ “ 10 to 12 feet.....	4 00	35 00
“ “ 14 feet.....	7 50	
PURPLE, 6 to 8 feet.....	3 00	
“ “ 8 to 10 feet.....	4 00	
RED, 10 feet.....	3 00	
“ “ 12 feet.....	4 00	
“ “ 14 feet.....	5 00	
SILVER-LEAVED, 10 feet, 1 to 1¼ inch caliper.....	1 50	12 00
“ “ 12 feet, 1¾ to 1¾ “ “.....	2 00	16 00
“ “ 14 to 16 feet, 1¾ to 2 inches caliper.....	3 00	
STRIPED-BARK, 8 to 10 feet.....	3 00	
SUGAR, 4 to 6 feet.....	1 25	8 00
“ “ 8 feet.....	3 00	25 00
“ “ 10 feet.....	4 00	35 00
“ “ 12 feet.....	5 00	

	Per 10.	Per 100.
MAPLE—SYCAMORE, 8 feet.....	\$2 50	\$20 00
" 10 feet.....	3 50	
" 12 to 14 feet.....	5 00	
WIERS' CUT-LEAVED, 6 to 8 feet.....	3 00	25 00
" " 8 to 10 feet.....	4 00	30 00
MOUNTAIN ASH—ENGLISH, 7 to 8 feet.....	2 00	
OAK—CHESTNUT (Q. Castanea), 2½ feet.....	1 50	
ENGLISH, 3 to 4 feet.....	1 50	
" 4 to 5 feet.....	2 50	
" 8 to 10 feet.....	3 50	
MOSSY-CUP (Q. macrocarpa), 3 feet.....	2 00	
" " 5 to 7 feet.....	3 00	
OVER-CUP (Q. lyrata), 3 to 4 feet.....	2 00	
PIN (Q. palustris), 10 feet.....	2 50	
RED (Q. rubra), 8 to 10 feet.....	2 50	
SWAMP WHITE (Q. prinus discolor), 4 to 5 feet.....	2 00	18 00
" " 6 feet.....	2 50	20 00
" " 8 to 10 feet.....	3 00	25 00
TURKEY (Q. cerris), 2 feet.....	2 50	
WILLOW (Q. phellos), 6 to 8 feet.....	5 00	
PAULOWNIA—IMPERIALIS, 3 to 4 feet.....	2 00	
PEACHES—BLOOD-LEAVED.....	1 50	
DOUBLE-FLOWERING, 5 very handsome varieties.....	1 50	12 00
PYRAMIDAL, OR POPLAR.....	1 50	
POPLAR—CAROLINA, 12 to 14 feet.....	3 00	25 00
" 15 to 18 feet.....	4 00	30 00
SILVER-LEAVED, 15 to 18 feet, 1¼ to 1½ inch caliper.....	2 50	20 00
" " 18 to 20 feet, 2 to 2½ inches caliper.....	3 00	25 00
SALISBURIA—ADIANTIFFOLIA, 6 to 8 feet.....	5 00	
SOPHORA—JAPONICA, 3 to 4 feet.....	2 00	
" 4 to 6 feet.....	2 50	
SWEET GUM—(Liquidambar styraciflua), 7 to 9 feet.....	4 00	
" " 4 to 5 feet.....	3 00	
TULIP TREE—(L. Tulipifera). 10 feet.....	3 00	25 00
" 12 feet.....	3 50	30 00
" 14 feet.....	4 00	
WHITE FRINGE—2 to 3 feet.....	2 00	
3 to 4 feet.....	2 50	
WILLOW—ROSEMARY LEAVED, 1 year heads.....	2 50	
" " extra, 3 year heads.....	3 00	

WEeping DECIDUOUS TREES.

	Per 10.	Per 100.
ASH—ENGLISH, fine, 2 and 3 year heads.....	\$3 50	
LENTICIFOLIA, 2 year heads.....	3 50	
BEECH—4 feet.....	12 50	
5 to 6 feet.....	15 00	
BIRCH—CUT-LEAVED, 5 to 7 feet.....	3 50	
CHERRY—DWARF, 2 years, fine heads.....	5 00	
GLYPTOSTROBUS—PENDULUS (Weeping Deciduous Cypress) 3 to 4 ft.....	5 00	
LARCH.....	10 00	
LINDEN—WHITE-LEAVED, fine heads, 7 to 8 feet.....	4 00	
" " 14 to 16 feet.....	6 00	
MOUNTAIN ASH—ENGLISH, 1 year.....	3 00	
PEACH.....	2 50	
POPLAR—GRANDIDENTATA.....	2 50	
"PARASOL DE ST. JULIEN,".....	2 50	
SOPHORA—2 to 3 feet.....	7 50	
WILLOW—BABYLONIAN (Common Weeping), 12 feet.....	2 00	
" " 16 feet.....	2 50	
KILMARNOCK, 2 year heads, very fine.....	2 50	\$20 00
" 3 " extra.....	3 00	25 00
NEW AMERICAN, 3 year heads, extra.....	3 00	

EVERGREENS.

These trees have all been transplanted, most of them twice or more in nursery rows, and have been kept properly thinned so as not to spoil their shape.

	Per 10.	Per 100.	Per 1000.
ARBORVITÆ—AMERICAN , 1 to 1½ foot, twice transplanted..	\$0 75	\$5 00	
“ 1½ to 2 feet, “ “	80	6 00	
“ 2½ feet, 3 times transplanted....	1 00	7 00	
“ 3 feet, 3 “ “	1 25	8 00	
“ 4 feet, 3 “ “	1 50	10 00	
BOOTH'S DWARF (<i>T. pumila</i>), 18 to 20 inches, twice transplanted.....	1 50		
“ “ 2 feet, fine, 3 times transpl..	2 00		
BRINCKERHOFF'S , 18 to 24 inches.....	2 00		
“ “ 2 to 2½ feet, twice transpl..	3 00		
“ “ 3 feet, “ “	4 00		
BUIST'S (<i>T. cristata</i>), 3½ feet, “ “	3 00		
CHINESE (<i>B. orientalis</i>), 2 to 3 ft., twice tpl..	1 50		
DENSA , 20 inches, twice transplanted.....	1 50		
“ 2 feet, “ “	2 00		
FALCATA , 2 feet, “ “	4 00		
GLOBOSA , 12 inches, twice transplanted	1 50		
“ 1½ to 2 feet, “ “	2 00		
GOLDEN (<i>B. aurea</i>), 1 year, 4 to 6 inches....	1 00	8 00	
“ “ 2 years, 9 inches.....	1 25	10 00	
“ “ 15 to 18 inches.....	3 00		
“ “ 18 to 24 inches.....	4 00		
HACKERI , 3 feet, twice transplanted.....	2 50		
HOOPES' DWARF (<i>T. nana</i>) 3½ to 4 ft. 3t. tp..	1 50		
“ “ “ 2½ feet, sheared, 3 times transplanted.	2 00		
“ “ “ 3 ft. 3t. tp. sheared	2 50		
HOVEY'S GOLDEN (<i>T. Hoveyi</i>), 1 ft. 3t. tpd..	1 50		
“ “ “ 1½ to 2 feet..	2 00		
PARSONS' DWARF (<i>T. compacta</i>), 2 ft. 2t. tr.	1 50		
“ “ “ 2½ to 3 ft., 3t. tr.	2 00	18 00	
“ “ “ 3½ feet, “ “	2 50	20 00	
PLICATA , 2½ to 3 feet.....	2 50		
PYRAMIDAL , 2 to 2½ feet, 3 times transplanted.	3 00		
REID'S DWARF (<i>T. Reidi</i>), 2½ feet, 3t. tp....	1 50		
“ “ “ 3 feet, “ “	2 00		
ROTUNDATA , 18 to 24 in., new and very distinct	3 00		
SIBERIAN (<i>Wareana</i>), 6 to 12 in., once transp.	1 00	6 00	
“ “ 1 to 1½ ft., 2 times tp.	1 25	12 00	
“ “ 3 feet, 4 times transp.	2 00	16 00	
“ “ 4 “ “ “	2 50	18 00	
VERVÆNE'S VARIEGATED , 18 to 24 inches....	2 00		
“ “ 2 to 2½ feet.....	3 00		
CEDAR—AFRICAN (<i>C. Atlantica</i>), 2 to 2½ feet.....	5 00		
CYPRESS—LAWSON'S , 9 to 15 inches.....	1 50		
NOOKA SOUND (<i>Thuiopsis borealis</i>), 3 feet.....	3 00	25 00	
“ “ “ 3½ to 4 ft..	4 00	30 00	
FIR—APOLLINIS , 2½ to 3 feet	15 00		
BALSAM (<i>A. balsamea</i>), 9 to 12 inches, twice transplanted.	50	4 00	\$30 00
“ “ 15 to 18 “ “ “	1 00	8 00	
“ “ 2 feet, “ “ “	1 25	12 00	
“ “ 3 “ “ “	1 80	15 00	
“ “ 4 “ “ “	2 00	18 00	
“ “ 5 “ “ “	2 50	20 00	
“ “ 6 “ “ “	3 00	25 00	
“ “ 7 to 9 feet “ “	4 00		
CEPHALONIAN (<i>P. Cephalonica</i>), 2½ feet.....	10 00		

	Per 10.	Per 100.	Per 1000.
FIR —CEPHALONIAN (P. Cephalonica), 3 feet.....	\$15 00		
“ “ “ 4 feet.....	20 00		
EUROPEAN SILVER (A. pectinata), 5 to 8 inches, transpl..	50	\$3 00	
“ “ “ 2 feet, twice “ ..	1 50	12 00	
“ “ “ 3 “ “ “ ..	1 75	15 00	
“ “ “ 4 “ “ “ ..	2 00	18 00	
“ “ “ 5 to 7 ft. “ ..	3 00		
“ “ COMPACT (A. pectinata compacta), 9 to 12 inches, bushy.....	10 00		
“ “ WEEPING (A. pectinata pendula), 3 to 4 feet.....	15 00		
HUDSON'S BAY DWARF (A. Hudsonica), 12 in., compact.....	10 00		
NOBLE SILVER (A. nobilis), 18 to 24 inches, bushy.....	12 50		
NORDMANN'S (A. Nordmanniana), 18 to 24 inches.....	7 50		
“ “ “ 2½ to 3 feet.....	15 00		
“ “ “ 3 to 3½ “ ..	20 00		
“ “ “ 5 to 6 “ \$3.00 each.			
NUMIDICA, 18 inches.....	10 00		
JUNIPER —CHINESE, 2 feet.....	2 50		
CRACOVIAN, 4 to 5 feet.....	3 00		
OBLONGA, 3 feet.....	7 50		
OXYCEDRUS, 3 feet.....	5 00		
RIGIDA, 2½ to 3 feet..... \$1.00 each.			
SAVIN (J. Sabina), 2½ feet, twice transplanted.....	3 00	25 00	
SWEDISH, 3 to 3½ feet.....	2 50		
VIRGINIANA GLAUCA, 2½ to 3 feet.....	4 00		
“ “ “ 5 to 6 feet..... 75 cents each.			
WEEPING (J. oblonga pendula) 3 to 4 ft. \$1.00 each.			
PINE —AUSTRIAN, 6 to 9 inches, transplanted.....	75	4 00	
“ “ 1½ to 2 feet, twice transplanted.....	1 25	10 00	
“ “ 2 feet, 3 times transplanted.....	1 75	15 00	
“ “ 3 feet, “ “ ..	2 00	18 00	
“ “ 4 feet, “ “ ..	2 50		
CEMBRA, 1 to 1½ foot.....	2 50		
“ “ 2 to 2½ feet.....	4 00		
“ “ 3 to 4 feet.....	6 00		
DWARF MUGHO, 18 to 24 inches, bushy.....	2 50		
“ “ “ 2 to 3 feet, bushy.....	3 50		
“ “ “ 5 feet, “ ..	4 00		
EDULIS, 18 to 24 inches..... \$1.00 each.			
LAMBERT'S (P. Lambertiana), 3 to 3½ feet.....	5 00		
“ “ “ 4 to 5 feet.....	6 00		
MANDSHURIACA, 3 to 4½ feet.....	10 00		
RIGIDA, 2 to 3 feet.....	1 25		
SCOTCH, 2 to 3 feet, twice transplanted.....	1 50		
“ “ 9 to 12 inches, transplanted.....	50	4 00	
WHITE, 6 to 12 inches, “ ..	50	4 00	
“ “ COMPACT, 3 feet.....	7 50		
“ “ PUMILA, 2 to 3 feet.....	7 50		
PODOCARPUS —JAPONICA, 18 to 24 inches.....	5 00		
RETINISPORIA —FILIFERA, 1 to 1½ foot.....	5 00		
“ “ 2 to 2½ feet.....	7 50		
OBTUSA, 3½ to 4 feet.....	5 00		
PISIFERA, 2½ to 3 feet.....	4 00		
“ “ 4 to 5 feet.....	6 00		
PLUMOSA, 2 years, 6 to 12 inches.....	75	6 00	
“ “ 2 feet, twice transplanted.....	2 00		
“ “ 2½ feet.....	3 00	25 00	
“ “ 4 feet.....	5 00	40 00	
“ “ AUREA, 3 years, 6 to 8 inches.....	1 25	10 00	
“ “ “ 12 to 18 inches.....	3 50	30 00	
“ “ “ 2 to 2½ feet.....	6 00	50 00	
SUARROSA, 1 foot.....	2 00		
“ “ VEITCH'S 3 to 4 feet.....	7 50		

	Per 10.	Per 100.	Per 1000.
SPRUCE—HEMLOCK, 12 to 18 inches, 3 years transplanted....	\$0 50	\$4 00	
“ 15 to 18 inches, bushy, 3 times trans....	80	6 00	\$50 00
“ 2 feet, “ “ “	1 00	7 00	60 00
“ 2½ “ “ “ “	1 10	8 00	70 00
“ 3 “ “ “ “	1 20	9 00	
“ 4 “ “ “ 4 “ “	3 00	25 00	
“ 5 “ “ “ “ “	4 00	30 00	
“ 6 “ “ “ “ “	5 00	40 00	
“ 7 “ “ “ “ “	7 50		
NORWAY, 6 to 9 inches, transplanted.....	50	4 00	
“ 2½ to 3 feet, 2 times transplanted.....	1 00	8 00	70 00
“ 3 “ “ 3 “ “	1 50	10 00	90 00
“ 4 “ “ “ “ “	2 00	15 00	140 00
“ 5 “ “ “ “ “	2 50	20 00	180 00
“ 6 to 7 “ “ “ “	3 00	25 00	
“ DWARF (A. excelsa var. pumila), 6 to 8 in.	4 00		
“ (“ “ pygmæa), 9 in...	4 00		
“ “ GREGORY'S, 3 feet.....	5 00		
“ ELATA, 4 feet.....75 cents each			
OBOVATA, 2½ to 3 feet.....	5 00		
“ 3½ “ “	6 00		
“ 4 to 5 “ “	7 50		
ORIENTALIS, 1½ to 2 feet.....	5 00		
“ 3 “ “	6 00		
“ 4 to 5 “ “	7 50		
WHITE, 6 to 12 inches, transplanted.....	60	5 00	
“ 18 inches, twice “	1 00	8 00	
“ 2 feet, “ “	1 25	10 00	
“ 3 “ “ 3 times “	1 50	14 00	
“ 4 “ “ “ “	2 00	18 00	
“ 5 “ “ “ “	3 00	25 00	
YEW—ADPRESSA (T. adpressa), 18 inches.....	4 00	35 00	
“ STRICTA (T. adpressa stricta), 2½ to 3 feet....	5 00		
AMERICAN (T. Canadensis), bushy, 18 inches.....	5 00		
CUSPIDATA (T. cuspidata), from Japan, only Yew that stood the severe Winter of '71 and '72 uninjured, 1 ft..	7 50		
DOWASTONI, 18 to 24 inches.....	5 00		
DWARF (T. baccata nana), 2 to 2½ feet, bushy.....	5 00		
ERECTA (stricta), 2½ feet.....	4 00		
ERICOIDES (T. baccata ericoides), 2 to 3 feet.....	4 00		
GOLDEN (T. baccata aurea), 15 to 18 inches.....	4 00	35 00	
IRISH GOLDEN (T. bac. fastigiata aurea), 15 to 18 in....	6 00		
WASHINGTON'S GOLDEN (T. bac. Washingtoni) 18 to 24 in.	7 50		
WHITE VARIEGATED (T. baccata alba) 15 to 18 inches...	5 00		

EVERGREEN SHRUBS.

	Per 10.	Per 100.
AUCUBA—HIMALAICA GRANDIS, in 4 inch pots.....	\$3 50	
JAPONICA, in 4 inch pots.....	2 00	
VIRIDIS LATIFOLIA, in 4 inch pots.....	3 50	
BOX—CHINESE, var. longifolia, 3 feet.....	3 50	
“ “ rotundifolia, 15 inches, sheared.....	2 50	
“ “ “ “ 18 to 24 inches.....	3 00	
COMMON Tree, 18 inches, bushy.....	2 00	\$15 00
MYRTLE-LEAVED, 20 inches.....	2 50	
THYME-LEAVED, 18 inches.....	2 50	
“ 2 feet.....	3 00	
VARIEGATED GOLDEN, 18 to 24 inches.....	2 50	
“ SILVER, 18 to 24 inches.....	2 50	
EUONYMUS—JAPONICUS ARGENTUS, 12 to 15 inches.....	1 00	
“ MACROPHYLLUS, 12 to 18 inches.....	1 00	
“ PULCHELLUS, 6 to 9 inches, bushy.....	1 00	

	Per 10.	Per 100.
EUONYMUS—RADICANS	\$1 00	
" TRICOLOR.....	1 00	
" VARIEGATUS.....	1 00	
KALMIA—LATIFOLIA, fine bushy plants, 12 to 18 inches.....	5 00	
MAHONIA—AQUIFOLIUM, 1 foot.....	1 00	
JAPONICA.....	5 00	
RHODODENDRONS—Named kinds, 18 to 24 inches.....	10 00	
" 2 to 3 feet.....	15 00	
SEEDLINGS, 18 to 24 inches	7 50	
YUCCA—FILAMENTOSA.....	1 00	\$8 00
RECURVA.....	5 00	

DECIDUOUS SHRUBS.

	Per 10.	Per 100.	Per 1000.
ALMOND—DOUBLE ROSE AND DOUBLE WHITE, budded on Peach.....	\$1 25	\$10 00	
ALTHÆA—BUIST'S VARIEGATED, 1½ to 2 feet.....	1 50	12 00	
" " 1 year, 9 to 15 inches.....	1 00	8 00	
DOUBLE, EIGHT FINE DISTINCT NAMED VARIETIES 2½ to 3½ feet.....	1 50	12 00	
DOUBLE, TEN FINE DISTINCT NAMED VARIETIES, 2 years, 2 to 2½ feet.....	1 00	8 00	
DWARF SINGLE WHITE, pure white and very handsome	1 50	12 00	
MIXED SEEDLINGS, 3 to 4 feet.....	1 00	8 00	
AZALEA—AMENA, 4 years, 12 inches.....	3 00		
GHENT, fine grafted varieties.....	10 00		
BERBERRY—COMMON AND PURPLE LEAVED.....	1 00		
CALICARPA—PURPUREA.....	1 25		
CALYCANTHUS—FLORIDUS, 2 to 3 feet.....	1 00	8 00	
" 3 to 5 feet.....	1 25	10 00	
CARAGANA—GRANDIFLORA.....	1 25		
CEPHALANTHUS—OCCIDENTALIS.....	1 25		
CLETHRA—ALNIFOLIA.....	1 00	8 00	
COLUTEA—ARBORESCENS.....	1 00		
CORNUS—ALBA, PANICULATA and SANGUINEA.....	1 25		
CURRANT—MISSOURI.....	1 00	8 00	
CYDONIA—JAPONICA (Japan Quince), 9 to 15 inches.....	1 00	4 00	\$30 00
" " " 1½ to 2 feet.....	1 25	6 00	50 00
" " " double flowering, 12 to 18 inches.....	1 00	8 00	
" " " double flowering, 1½ to 2 feet.....	1 25	10 00	
DEUTZIA—CRENATA VARIEGATA and CANDIDISSIMA.....	1 50		
CRENATA, CRENATA FL. PL., FORTUNII and SCABRA.....	1 00	6 00	
GRACILIS, 2 feet, twice transplanted, large clumps.....	1 00	8 00	
" 3 years transplanted, 12 to 18 inches.....	50	4 00	
EUONYMUS—EUROPEUS, 2 to 3 feet.....	1 25		
FORSYTHIA—FORTUNII and VIRIDISSIMA.....	1 00	6 00	
HIPPOPHOE—RHAMNOIDES.....	1 25		
HORSE CHESTNUT—DWARF (<i>Aesculus parviflora</i>), 18 to 30 inches.....	2 50		
HYDRANGEA—PANICULATA GRANDIFLORA, 2½ to 3 feet....	2 00		
ILEX—VERTICILLATA (Black Alder).....	1 25		
KERRIA—JAPONICA.....	1 25		
" VARIEGATA.....	2 00		
LABURNUM—(Golden Chain), 4 to 5 feet.....	1 50		
LILAC—COMMON.....	1 00	8 00	
PERSIAN.....	1 50		
" CUT-LEAVED.....	2 00		
" WHITE.....	2 00		
WHITE.....	1 00	8 00	

	Per 10.	Per 100.	Per 1000.
LONICERA—Upright Honeysuckles (assorted)	\$1 00	\$6 00	
PHILADELPHUS—NIVALIS FL. PL., very fine.....	1 50		
CORDIFOLIUS, CORONARIUS, SANGUINEA and ZEYHERI	1 00	8 00	
PRUNUS—TRILOBA.....	1 00	8 00	
PURPLE MIST—(Rhus cotinus), 3 to 4 feet.....	1 00		
“ “ 4 to 6 feet.....	1 25		
RHUS—OSBECKII (Japan Varnish Tree), 2 to 3 feet.....	2 00		
SPIRÆA—BILLARDI.....	1 00	8 00	
CALLOSA ALBA, OPULIFOLIA VAR. AUREA (Showy foliage), PRUNIFOLIA, REEVESI, SALICIFOLIA... ..	75	6 00	
CHAMÆDRIFOLIA, FONTENAYSI, REEVESI FL. PL., SEMPERFLORENS, THUNBERGI, ULMIFOLIA.....	1 25	10 00	
SNOWBERRY—Red and White Fruited and VARIEGATED.	1 00	6 00	
VIBURNUM—LANTANA, 1½ to 2 feet.....	1 00	6 00	
OPULUS (Tree-cranberry).....	1 25		
“ STERILIS (Snowball).....	1 00	8 00	
“ “ “ 2 years.....	50	4 00	
WEIGELA—ARBOREA GRANDIFLORA, HORTENSIS RUBRA, ROSEA STRIATA, STELTZNERI and VAN HOUTTII	1 25	10 00	
ROSEA NANA VAR., variegated-leaved, very hand- some, 3 feet.....	1 50		

VINES.

	Per 10.	Per 100.
AKEBIA—QUINATA.....	\$1 25	
AMPELOPSIS—BIPINNATA.....	1 25	
QUINQUEFOLIA. (Virginia Creeper).....	1 00	\$8 00
ROYALII.....	2 00	
CELASTRUS—SCANDENS.....	1 00	8 00
CLEMATIS—ALBERT VICTOR, deep lavender, with dark rib down each sepal.....	4 00	
GLOIRE DE ST. JULIEN, flowers very large, white, or pale gray.....	4 00	
HÉLÈNE, large pure white.....	4 00	
JACKMANNI.....	4 00	
LANUGINOSA CANDIDA, the best large white variety.....	4 00	
LOUISE, a Japanese species with purplish flowers.....	4 00	
PERFECTA, tinted white, woolly leaves.....	4 00	
SIEBOLDI, creamy white with purple centre.....	4 00	
VITICELLA (Blue Bells), moderately large drooping flowers, bluish purple or rose-colored.....	1 25	
VITICELLA FRANCOFURTENSIS, similar to Jackmanni, but smaller flower.....	4 00	
HONEYSUCKLES—AUREA RETICULATA (Golden veined), 2 years..	1 00	
BRACHYPODA (New Japan Evergreen).....	1 00	6 00
CANADENSIS, 3 years.....	1 25	
EVERGREEN (L. Japonica), 2 years.....	1 00	6 00
“ extra size, 4 years.....	1 50	
HALLIANA, 3 years.....	1 00	8 00
MONTHLY (Sweet-scented), 2 years.....	1 00	6 00
IVY—We have one of the most complete collections of Ivies in the world, comprising over thirty varieties; for descriptions, see our Catalogue No. 4. In 3 inch pots.....	1 00	8 00
In 4 inch pots.....	1 25	10 00
JESSAMINE—FRUTESCENS.....	1 25	
OFFICINALE.....	1 25	10 00
NUDIFLORUM.....	1 25	
PASSIFLORA—3 varieties.....	1 50	
PERIPLOCA—GRÆCA (Silk Vine).....	1 25	
TECOMA—(Bignonia), COCCINEA.....	2 00	

	Per 10.	Per 100.
TECOMA—(Bignonia), GRANDIFLORA.....	\$2 00	
“ THUNBERGI	2 00	
VINCA—MAJOR, MAJOR VAR., MINOR ALBA, and MINOR VAR.....	1 00	\$8 00
WISTARIA—ALLENI.....	3 00	
FRUTESCENS.....	1 50	
MULTIJUGA (Japan Wistaria).....	4 00	
SINENSIS (Chinese).....	2 50	
“ ALBA, Chinese white flowering.....	4 00	
“ FL. PL., Chinese double flowering	7 50	

HEDGE PLANTS.

	Per 100.	Per 1000.
OSAGE ORANGE—1 year, first-class.....	\$0 50	\$3 00
“ second-class.....	40	2 50
PYRUS—JAPONICA, 1½ to 2 feet.....	6 00	50 00
“ 9 to 15 inches.....	4 00	30 00
EVERGREENS—see pages 8, 9 and 10.		
SHRUBBERY—see pages 11 and 12.		

YOUNG STOCK FOR NURSERYMEN.

CLASS 1.—DECIDUOUS.

	Per 100.	Per 1000.
ASH—ENGLISH, 9 to 15 inches, transplanted.....	\$3 00	
AMPELOPSIS—QUINQUEFOLIA, 2 years.....	2 00	\$15 00
BEECH—AMERICAN, 9 to 18 inches.....	3 00	
ENGLISH, 9 to 18 inches, 2 years transplanted.....	4 00	
CATALPA—SPECIOSA, 1 year, transplanted.....	2 50	
CHEERRY—BIRD (P. padus), 3 years, 18 to 30 inches.....	2 00	15 00
CHESTNUT—SPANISH, 1 year.....	4 00	30 00
CYDONIA—JAPONICA, 2 years, 9 to 15 inches.....	4 00	30 00
DEUTZIA—GRACILIS, 3 years transplanted, 12 to 18 inches.....	4 00	
ELM—AMERICAN, 1 to 2 feet, transplanted.....	3 00	
HORSE CHESTNUT—ENGLISH, 3 years, 1 to 1½ foot.....	2 50	20 00
KENTUCKY COFFEE—(G. Canadensis), 3 years, 3 to 4 feet.....	2 50	
KELREUTERIA—PANICULATA, 2 years, 2 to 3 feet.....	2 00	
“ 3 to 5 feet.....	2 50	
LINDEN—AMERICAN, 6 to 12 inches, transplanted.....	3 00	
MAGNOLIA—GLAUCA, 9 to 15 inches, transplanted.....	10 00	80 00
TRIPETELA, 2 years, 9 to 15 inches.....	4 00	
MAPLE—ENGLISH, 3 to 4 feet, 2 years transplanted.....	5 00	
NORWAY, 2 years, 9 to 18 inches.....	1 00	8 00
“ transplanted, 3 to 4 feet.....	5 00	40 00
“ 5 to 6 feet.....	8 00	
SILVER, 2 years, 2 to 3 feet.....	30	2 00
“ 3 to 4 feet.....	50	3 00
SUGAR, 3 to 4 feet, transplanted.....	5 00	40 00
“ 4 to 6 feet.....	8 00	
SYCAMORE, 3 to 5 feet.....	4 00	
RHUS—COTINUS (Mist Tree), 2 years transplanted, 9 to 18 inches.....	3 00	
SPIRÆA—CALLOSA, 2 years seedlings.....	3 00	20 00
WALNUT—ENGLISH, 2 years transplanted, 12 to 18 inches.....	8 00	
“ 18 to 24 inches.....	12 00	

CLASS 2—EVERGREENS.

For larger sizes, see *Evergreens*, pages 8, 9, 10 and 11.

	Per 100.	Per 1000.
ARBORVITÆ—GOLDEN (<i>B. aurea</i>), 1 year, 4 to 6 inches.....	\$8 00	
“ “ 2 years, 9 inches.....	10 00	
SIBERIAN, 2 years transplanted, 6 to 12 inches.....	6 00	
BOX—ANGUSTIFOLIA, 9 to 15 inches.....	8 00	
COMMON TREE, 9 to 12 inches.....	8 00	
LATIFOLIA, 9 to 15 inches.....	8 00	
LONGIFOLIA, 15 to 18 inches.....	8 00	
ROTUNDIFOLIA, 9 to 12 inches.....	8 00	
THYMIFOLIA, 9 to 15 inches.....	8 00	
VARIEGATA AUREA, 6 to 9 inches.....	8 00	
FIR—BALSAM, 9 to 12 inches, twice transplanted.....	4 00	\$30 00
“ 15 to 18 inches, twice transplanted.....	6 00	
EUROPEAN SILVER, 5 to 8 inches, transplanted.....	3 00	
PINE—AUSTRIAN, 6 to 9 inches.....	4 00	
SCOTCH, 9 to 12 inches, transplanted.....	4 00	
WHITE, 6 to 12 “.....	4 00	
RETINISPORA—PLUMOSA, 2 years, 6 to 12 inches.....	6 00	
“ AUREA, 3 years, 6 to 8 inches.....	10 00	
SPRUCE—HEMLOCK, 12 to 18 inches, 3 years transplanted.....	4 00	
NORWAY, 6 to 9 inches, transplanted.....	4 00	
WHITE, 6 to 12 inches, “.....	5 00	

ROSES.

On their own Roots.

	Per 10.	Per 100.	Per 1000.
BOURBON, TEA, CHINA, &c.—From open ground.....	\$0 75	\$8 00	\$60 00
HYBRID PERPETUAL—From open ground, 2 yrs. strong..	1 75	16 00	
GEN'L JACQUEMINOT, from open ground.....	2 00	18 00	
MOSS—2 years, from open ground.....	2 50	20 00	
CLIMBING—2 years, from open ground.....	1 25	10 00	
MARECHAL NIEL—In 5 inch pots.....	2 00	18 00	
BOURBON, TEA, CHINA, &c.—In 5 inch pots.....	1 50	12 00	

HARDY BORDER PLANTS.

We have been devoting especial attention to this class of plants, and now offer a fine collection to the trade. Assortments, our selection, at \$8.00 per hundred.

	Per 10.	Per 100.
ACHILLEA—MILLEFOLIUM ROSEUM and MILLEFOLIUM RUBRUM....	\$1 00	
PTARMICA FL. PL.....	1 00	
AMPHALODES—VERNA.....	1 00	
ANTHERICUM—LILIASTRUM.....	1 00	
AQUILEGIA—CÆRULEA, CHRYSANTHA and GLANDULOSA.....	1 00	
ASTILBE—JAPONICA.....	1 00	\$8 00
BAPTISIA—CÆRULEA.....	1 00	
CASSIA—MARYLANDICA.....	1 00	

	Per 10.	Per 100.
CHRYSANTHEMUMS—A splendid collection of novelties, and good old kinds in all the classes	\$1 00	
CONVALLARIA—MAJALIS	1 00	\$8 00
CYPRIPEDIUM—SPECTABILE	1 50	
DICENTRA—SPECTABILIS	1 00	
DICTAMNUS—FRAXINELLA	1 00	
DRACOCEPHALUM—VIRGINIANUM	1 00	
ERIANTHUS—RAVENNÆ	1 00	8 00
EUPATORIUM—AGERATOIDES	1 00	
FUNKIA—IVAFOLIA, SIEBOLDI and SUBCORDATA	1 00	
GERANIUM—PRATENSE FL. PL. and SANGUINEUM	1 00	
HELIANTHUS—HIRSUTUS	1 00	
HEMEROCALLIS—FLAVA and GRAMINEA	1 00	
HIBISCUS—PALUSTRIS	1 00	
IRIS—The finest German varieties and the best species, all colors	1 00	8 00
LYCHNIS—CHALCEDONICA	1 00	
LYSIMACHIA—CLETHROIDES	1 00	
LYTHRUM—ROSEUM SUPERBUM and SALICARIA (Purple Loose Strife)	1 00	
GENOTHERA—MISSOURIENSIS	1 00	
OPUNTIA—MISSOURIENSIS and RAFFINESQUI	1 00	
PÆONIES—Named kinds	1 25	10 00
PANICUM—VIRGATUM	1 00	
PHLOX—A beautiful assortment	1 00	
SUBULATA (Mountain Pink)	1 00	
PHYSOSTEGIA—VIRGINIANA	1 00	
POTENTILLA—HOPWOODIANA	1 00	
SARRACENIA—PURPUREA (Pitcher Plant)	1 00	
SAXIFRAGA—CRASSIFOLIA	1 00	
SEDUM—12 species	1 00	
SEMPERVIVUM—TECTORUM (Common House-leek), &c.	1 00	8 00
SILPHIUM—PERFOLIATUM	1 00	
TRADESCANTIA—VIRGINICA, assorted colors	1 00	
TRICYRTIS—GRANDIFLORA	1 00	
TRILLIUM—ERECTUM and GRANDIFLORUM	1 00	8 00
VIOLETS—Four native sorts	1 00	

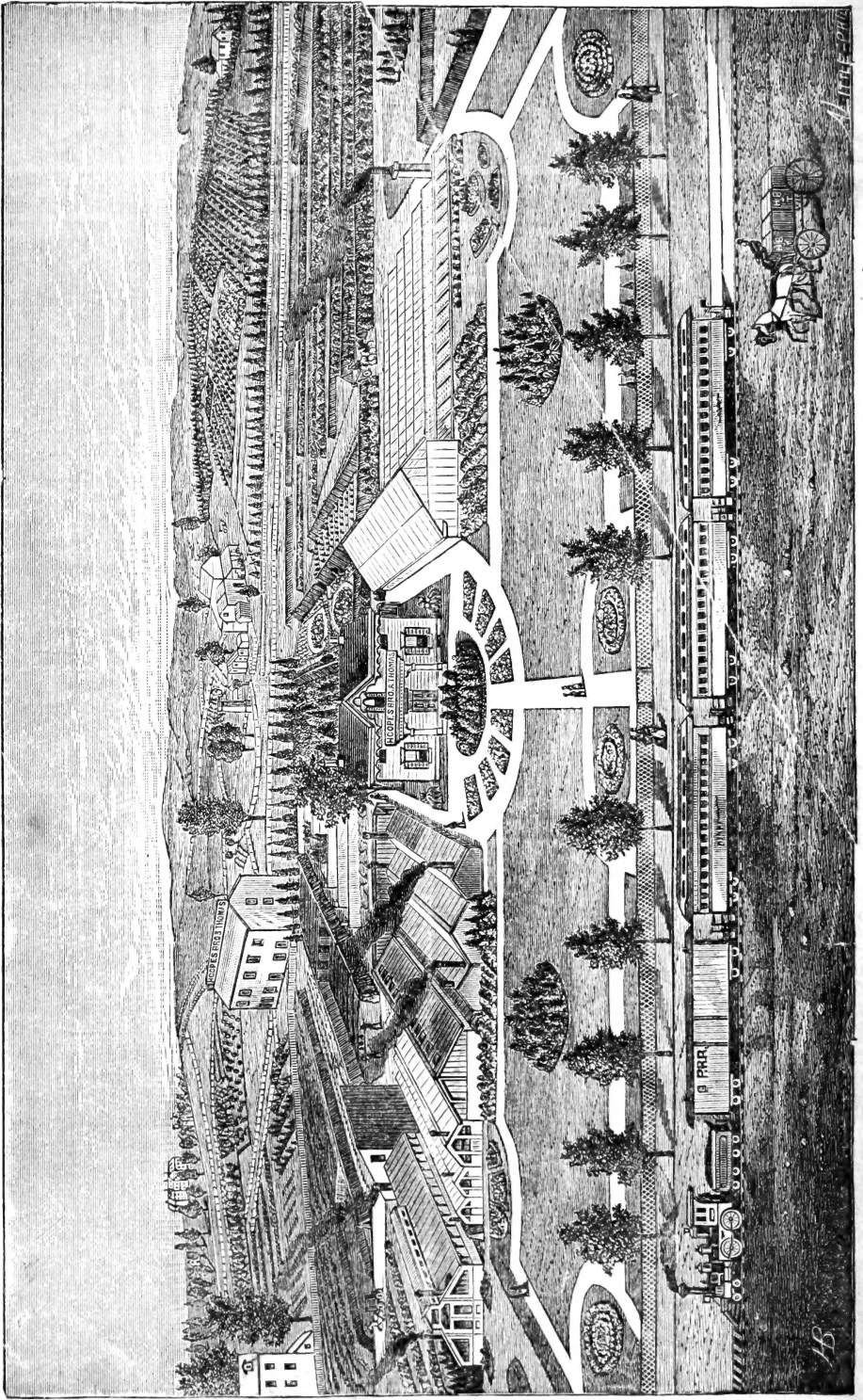
BULBS AND TUBERS.

	Per 10.	Per 100.
BULBOCODIUM—VERNUM	\$1 25	
CANNAS—Elegant named kinds	1 50	
COLCHICUM—AUTUMNALE	1 25	
COLOCASIA—ESCULENTUM	1 00	
CROCUS—In four colors, separate		\$0 60
CROWN IMPERIALS	1 25	
CYCLAMEN—PERSICUM. See Florists' stock.		
DAHLIAS—See Florists' stock.		
DIOSCOREA—BATATUS (Cinnamon Vine)	1 25	
GLADIOLUS—Mixed colors	60	5 00
Named kinds	1 00	
HYACINTHS—Single and double, in colors	1 00	8 00
IRIS—English and Spanish, mixed colors	50	
JONQUILS—Single	25	2 00
MUSCARI—Assorted	75	
NARCISSUS—Assorted	75	
OXALIS—Named kinds, see Florists' stock.		
SCILLA—Assorted	75	
TRITOMA—OVARIA	1 50	
TUBEROSE—DOUBLE ITALIAN, 1st size flowering bulbs	50	2 50
" " 2d " " " " " "		2 00
PEARL 1st " " " " " " "	75	
TULIPS—Single, Double and Parrot		3 00

FLORISTS' STOCK.

	Per 10.	Per 100.
ABUTILON—Assorted, 3 kinds.....	\$1 00	
ADAMIA—VERSICOLOR.....	1 25	
ALLAMANDA—Assorted, 4 kinds.....	1 50	
ALOCASIA—3 rare kinds, in 3 inch pots.....	2 50	
ANTHURIUM—SCHERZERIANUM.....	5 00	
ARDISIA—CRENULATA, in 4 inch pots.....	1 50	
ASCLEPIAS—CURASSAVICA.....	1 00	
ACHYRANTHES—In 5 kinds.....	80	
ACORUS—GRAMINIFOLIUS VARIEGATUS.....	1 00	
ALOYSIA—CITRIODORA.....	1 25	
ALTERNANTHERA—6 varieties, assorted.....	80	
AZALEAS—CHINESE, assorted, in 4 inch pots.....	1 50	
“ “ “ 3 “ “.....	1 00	
BASELLA—RUBRA VARIEGATA.....	1 00	
BEAUCARNEA—2 kinds.....	1 25	
BEGONIAS—Assorted, a large collection.....	1 00	
METALLICA. A splendid novelty from Belgium. The foliage is variously tinted with bronzy-green, and the flowers are of a peculiar pale peach color. It is of easy culture, and appears thoroughly adapted for rooms as well as the conservatory. Grows rapidly and blooms profusely.....	2 00	
BERTOLONIA—GUTTATA. A beautiful little stove plant, with rich velvety foliage, and an abundance of bright pink flowers. Unexcelled for the Wardian case.....	3 00	
BIGNONIA—2 species, in 3 inch pots.....	1 50	
CALADIUMS—A large collection, assorted.....	1 50	
CAMPSIDIUM—FILICIFOLIUM, 3 inch pots.....	1 50	
CANNAS—Mixed.....	1 00	
Named kinds, mostly new.....	1 50	
CENTAUREA—GYMNOCARPA.....	80	
CENTRADENIA—ROSEA, in 3 inch pots.....	1 00	
CISSUS—AMAZONICA and DISCOLOR, in 3 inch pots.....	1 25	
CLERODENDRON—BALFOURI, in 3 inch pots.....	1 25	
COCCOLOBA—PLATYCLADA.....	1 00	
COLEUS—15 beautiful varieties.....	80	\$6 00
COLOCASIA—VIOLACEA.....	1 50	
CROTONS—Elegant kinds, 1 year, fine.....	1 50	
“ “ 2 and 3 years, very fine.....	2 50	
CUPHEA—PLATYCENTRA and HYSSOPIFOLIA.....	80	
CYCLAMENS—A beautiful strain, 3 inch pots.....	1 00	8 00
One year old seedlings.....	50	4 00
CYPERUS—ALTERNIFOLIUS, in 4 inch pots.....	1 00	
“ VARIEGATA, 3 inch pots.....	3 00	
DAHLIAS—A large assortment, open ground roots.....	1 50	12 00
DASYLIRIONS—Assorted kinds.....	1 50	
DIANTHUS—ALBA PLENA.....	1 00	
DIEFFENBACHIA—PICTA.....	1 25	
DRACÆNA—3 kinds, 3 inch pots.....	2 50	
ERANTHEMUM—3 kinds, 3 inch pots.....	80	
EUPHARIUM—AMAZONICA, 4 inch pots.....	3 00	
EUPATORIUM—RIPARIUM.....	1 00	
FERNS—Assorted.....	\$1 00 to	2 00
FICUS—REPENS and MINIMA, in 3 inch pots.....	1 00	
FITTONIA—In variety.....	1 00	
FUCHSIAS—In variety.....	1 00	
GARDENIA—(Cape Jessamine) in 3 inch pots, 3 kinds.....	1 25	
GERANIUMS—Single and Double, assorted.....	1 00	8 00
Ivy leaved, assorted.....	1 00	
Scented-leaved, assorted.....	1 00	

	Per 10.	Per 100.
GOLDFUSIA—ANISOPHYLLA, 3 inch pots		
HELIOTROPES—Best light and dark kinds	\$1 50	
HETEROCENTRUM—ALBUM and ROSAIDS	80	
HIGGINSIA—GHIESBRECHTII, 3 inch pots	1 00	
HYDRANGEA—THOS. HOGG, ACUM POT.	1 00	
JASMINUM—GRANDIFLORUM, in 3 inch pots	1 00	\$8 00
MULTIFLORUM and 3 inch pots	1 50	
JUSTICIA—2 species, 3 inch pot	2 00	
KERRIA—JAPONICA VARIEGATA	1 00	
LAGERSTRÆMIA—INDICA, 4 inch pots	1 00	
LANTANAS—A fine collection	1 00	
LYSIMACHIA—NUMMULARIA	1 00	
MAHERNIA—ODORATA (Moneywort)	1 00	
MARANTA—12 kinds	1 25	
NERIUM—OLEANDER, assorted colors	2 00	
NIEREMBERGIA—G. assorted colors	2 00	
OLEA—FRAGRANS, in RACILIS	1 00	
PALMS—CHAMÆRO, 4 inch pots	1 50	
“ PS EXCELSA MACROCARPA, in 4 inch pots	2 50	
“ HUMILIS, in 4 inch pots, 1 foot	2 00	18 00
LATAN “ MACROCARPA, in 4 inch pots, 1 foot	2 00	18 00
PTYC. IA BORBONICA, 1 year	1 50	
SAB OSPERMA ALEXANDRÆA, 3 inch pots	2 00	
“ AL ADANSONI, in 4 inch pots, 8 inches	2 00	18 00
Sr “ 2 year seedlings, transplanted, strong	60	5 00
SAFORTHIA ELEGANS, in 5 and 6 inch pots, 2 to 2½ feet high	75 cts. to \$1.00 each	
PANIC PANDANUS VEITCHI, 3 and 4 inch pots	5 00	
PASSIFLORA—VARIEGATUM, in 3 inch pots	1 00	
PEPEROMIA—DECAISNEANA	2 00	
PERIPLOMA—In variety	1 00	
PHLOSTROPHE—ANGUSTIFOLIA VAR.	1 00	8 00
PIETERMUM—TENAX, 6 inch pots	7 50	
PLUMBAGO—ARBOREA and REPENS	1 00	
POINSETTIA—PULCHERRIMA, in 5 and 6 inch pots	2 50	
PRIMULA—SINENSIS, single, white and red, 4 inch pots	2 00	
PUNICA—GRANATUM FL. PL., and GRANATUM LUTEM.	1 50	
RHYNOSPERMUM—JASMINOIDES VAR.	1 50	
SALVIA—4 varieties, assorted	1 00	
SELAGINELLA—10 beautiful kinds	1 00	
SENECIO—SCANDENS and MACROGLOSSUS	1 00	
SMILAX—(Myrsiphyllum) 3 inch pots	1 00	8 00
SOLANUMS—Mixed kinds	1 00	
STENOTAPHRUM—GLABRUM VAR. A variegated grass, 3 in. pots	1 00	
SUCCULENTS—AGAVE AMERICANA, 6 inch pots	2 00	
“ CERULESCENS (new and rare) .50 cts each		
“ MEXICANA	2 00	
“ MILLERI PICTA, elegantly striped	2 00	
“ NOV. SP., from Mexico	2 00	
“ XALAPENSIS	2 50	
ALOE ARBOREA	1 50	
“ VERRUCOSA	1 50	
BRYOPHYLLUM CALYGINUM	1 00	
CEREUS SPECIOSUS. Upright Cactus	1 00	
CRASSULAS, assorted	1 00	
ECHVEVERIA SECUNDA GLAUCA	1 00	
EPIPHYLLUM TRUNCATUM, 3 inch pots	1 25	
“ grafted on Pereskia	\$1.00 each	
MAMILLARIA STELLARIS	1 50	
PERESKIA, for stocks, &c.	1 00	
SEMPERVIVUMS, assorted	1 00	8 00
THEA—VIRIDIS, 3 inch pots	1 50	
TORENIA—ASIATICA and PULCHERRIMA, in 3 inch pots	1 00	
VERBENAS—Assorted colors	40	3 00



Office Grounds, and partial view of Greenhouses and Nurseries of Hoopes, Bro. & Thomas, West Chester, Pa.

AB