

# **Historic, Archive Document**

Do not assume content reflects current scientific knowledge, policies, or practices.



62.73

ESTABLISHED 1853.

LIBRARY

RECEIVED

★ JUL 24 1923 ★

U. S. Department of Agriculture.



---

No. 3.

---

Hoopes, Brother & Thomas,

Maple Avenue Nurseries

West Chester, Pa.

---

SEMI-ANNUAL TRADE LIST.

AUTUMN, 1895.

---

While we exercise the greatest care to have all our trees and plants genuine and reliable, and hold ourselves prepared to replace, on proper proof, all that may prove untrue, we do not give any warranty, expressed or implied, and in case of any error on our part, it is mutually agreed between the purchaser and ourselves that we shall not, at any time, be held responsible for a greater amount than the original price of the trees.

---

TWO MEDALS AND DIPLOMAS,

AWARDED BY

UNITED STATES CENTENNIAL COMMISSION.

---

TIMES PRINTING HOUSE.

## NOTICE TO PURCHASERS.

This list is intended for Nurserymen, Florists and Dealers only, and supersedes all previous editions. The prices are for the quantities named. Five Hundred, Fifty, and Five, will be furnished at the Thousand, Hundred, and Ten rates, respectively. On smaller quantities a discount from our retail prices will be made to the trade. Dealers will be furnished at the lowest rates, when their bills for stock purchased at one time exceed two hundred dollars.

### Our Nurseries,

Covering 600 Acres, with a large amount of glass, are in the immediate vicinity of West Chester, which is situated twenty-seven miles west of Philadelphia, and with which we have nearly hourly communication by two railroads—one a direct road, the other a branch of the Pennsylvania Central, and from which we have a siding to our packing-house. By the latter route we are enabled to ship to all parts of the country, without transfer in Philadelphia, and at very low rates to distant points.

### Our Office,

Situated at Maple Avenue Station, is ten minutes' walk from the Main Station in West Chester. Trains leave Broad Street Station, Philadelphia, for Maple Avenue, 6.15, 7.15, 8.50, 9.45, 11.45 A. M.; 12.45, 2.49, 4.25, 4.45, 5.40, 6.45, 8.15 and 11.45 P. M. Return, 5.55, 6.25, 6.41, 7.47, 9.16, 10.21, 11.55 A. M.; 1.58, 4.43, 6.25 and 10.25 P. M. Leave Broad Street Station for West Chester, 6.15, 6.49, 7.15, 7.17, 8.46, 8.50, 9.45, 11.12, 11.45 A. M.; 12.45, 1.28, 2.40, 2.53, 3.47, 4.25, 4.32, 4.45, 4.55, 5.40, 5.44, 6.19, 6.45, 8.15, 8.23, 10.32, 11.43, and 11.45 P. M. Return, 5.10, 5.54, 6.00, 6.24, 6.40, 6.47, 7.35, 7.40, 8.25, 9.10, 9.15, 10.20, 11.25, 11.54 A. M.; 1.05, 1.57, 3.00, 4.42, 4.50, 6.05, 6.24, 7.15, 10.05 and 10.24 P. M.

### The Packing Season

Generally commences from the first to the middle of March in the Spring, and about the first of October in the Autumn. The season is not regulated, however, by any definite date, nor by the state of vegetation at the locality of the planter, but by the condition of the trees when received. Parties south of us may receive our trees some weeks after their season has opened, yet when planted they will give entire satisfaction.

### Packing.

All orders for forwarding by freight or express, except in car-load lots are carefully packed in bales or boxes, for which a charge is made sufficient to remunerate for the cost of material and time.

### Shipping.

Our shipping facilities to the West by fast freight lines, and to New England and the South by various steamship lines, are unexcelled in rapidity of transit and low rates of freight charges.

Purchasers are requested to name the mode of conveyance by which they desire their shipments, OTHERWISE WE WILL DESPATCH TO THE BEST OF OUR JUDGMENT. AFTER DELIVERING TO THE FORWARDERS, ALL ARTICLES ARE ENTIRELY AT THE RISK OF THE PURCHASER; AND SHOULD ANY LOSS OR DELAY OCCUR, THE FORWARDERS ALONE MUST BE HELD RESPONSIBLE.

All packages delivered free of cartage at the Freight and Express Offices in West Chester.

Parties desiring stock shipped per express C. O. D., MUST accompany their order with cash to one-half the amount, otherwise no attention will be paid to the same.

### Claims.

All claims for errors and deficiencies must be made within TEN DAYS after receipt of the stock. We desire to be notified of mistakes as early as possible, so that we may rectify the same without delay.

---

### Terms, Cash.

---

The following Catalogues will be mailed on application, viz.:

- No. 1. Descriptive Catalogue of Fruits, three 2-cent stamps.
- No. 2. Illustrated and Descriptive Catalogue of Ornamental Trees, etc., 10 cents.
- No. 3. Wholesale Trade List, free.

HOOPES, BROTHER & THOMAS.

WEST CHESTER, PA., August, 1895.

# Fruit Department.

These prices are for our selection of varieties, but we will adhere as closely as possible to the wish of the purchaser. In no case will we supply long lists of selected varieties of either Fruit or Ornamental Trees at wholesale rates, but will allow a discount on our retail prices proportionate to the amount of the order.

	Per 10	Per 100	Per 1000
<b>APPLES</b> —STANDARD, extra size, 6 to 8 feet . . . . .	\$1 00	\$8 00	
STANDARD, 5½ to 7 ft., ¾-inch and up, 3 and 4 yrs., 1st selection	80	6 00	\$50 00
“ 5 to 6 feet, ⅝ to ¾-inch, 4 years, 2d selection . . . . .	75	5 00	35 00
<b>CRAB</b> , 3 and 4 years, 6 to 7 feet . . . . .	80	6 00	50 00
<b>PEARS</b> —STANDARD, 1st class, 5 to 7 feet . . . . .	1 70	15 00	130 00
KIEFFER, 2 years, 1st selection, 6 to 7 feet . . . . .	1 50	12 00	100 00
“ 2 years, 2d selection, 5 to 6 feet . . . . .	1 20	10 00	80 00
“ 2 years, 3d selection, 4 to 5 feet . . . . .	1 00	8 00	60 00
<b>DWARF</b> , 1st size, 2 and 3 years, 3½ to 4½ feet . . . . .	1 00	8 00	60 00
“ 2d size, 2 and 3 years, 2½ to 4 feet . . . . .	80	6 00	40 00
<b>CHERRIES</b> —STANDARD, 2 and 3 years (Hearts and Bigarreus), 1st selection, 5 to 7 feet . . . . .	1 20	10 00	80 00
STANDARD, 3 years, 4 to 5 feet, 2d selection . . . . .	1 00	6 00	50 00
“ 2 and 3 years (Dukes and Morellos), 1st selection, 4 to 5 feet . . . . .	1 20	10 00	80 00
STANDARD, 3 years, 3 to 4 feet, 2d selection . . . . .	1 00	8 00	50 00
<b>PEACHES</b> —STANDARD, 1 year, extra size . . . . .	1 00	7 00	60 00
STANDARD, 1 year, 4 to 6 feet, 1st selection ⅞ inch and up . . . . .	80	6 00	50 00
“ 1 year, 3½ to 6 feet, light, 1st selection, ½ to ⅞ inch 3 to 4 feet, 2d selection, ⅝ to ⅞ inch . . . . .	70	5 00	40 00
“ 3 to 4 feet, 2d selection, ⅝ to ⅞ inch . . . . .	50	4 00	30 00
<b>GOLDEN DWARF</b> (Van Buren's), 1 and 2 years . . . . .	1 00	8 00	
<b>ITALIAN DWARF</b> , 2 years . . . . .	1 00		
<b>PLUMS</b> —On Plum stock, 2 and 3 years, 4½ to 6 feet, 1st selection . . . . .	1 80	15 00	
On Plum stock, 2 and 3 years, 4 to 5 feet, 2d selection . . . . .	1 00	8 00	
American varieties on Peach stock, 1st class, 2 years.			
GOLDEN BEAUTY, MARIANA, WILD GOOSE and ROBINSON . . . . .	1 20	10 00	
Japan varieties on Peach, 2 years, 1st selection . . . . .	1 50	12 00	
“ “ “ 2d selection . . . . .	1 25	10 00	
“ “ on Plum, 2 years, 1st selection . . . . .	2 00	18 00	
<b>APRICOTS</b> —1st class, 4 to 6 feet, 2 years . . . . .	1 20	8 00	
2d class, 3 to 4 feet, 2 years . . . . .	1 00	6 00	
<b>NECTARINES</b> —On Peach stock . . . . .	1 25	10 00	
<b>QUINCES</b> —APPLE or ORANGE, 3 to 4 feet . . . . .	1 80	15 00	
CHAMPION, 2 and 3 years, 1st selection, 3 to 4 feet . . . . .	1 80	15 00	
“ 3 years, 2d selection, 3 feet . . . . .	1 25	10 00	
<b>FIGS</b> —5 best varieties, assorted, named and in colors, 18 to 24 inches . . . . .	1 50	12 00	
<b>ORANGES and LEMONS</b> —1 to 2 feet . . . . .	5 00		
<b>BLACKBERRIES</b> —EARLY HARVEST, SNYDER and WILSON'S EARLY ERIE, WILSON, JR., and WACHUSETT THORNLESS . . . . .	30	1 50	12 00
“ 30	2 00	15 00	
<b>CHERRY</b> —DWARF ROCKY MOUNTAIN, 18 to 24 inches . . . . .	2 50		
<b>CURRANTS</b> —CHERRY, LA VERSAILLAISE, and WHITE GRAPE, 2 years . . . . .	50	3 50	
FAY'S PROLIFIC, 2 years . . . . .	80	4 00	35 00
LEE'S PROLIFIC, 2 years . . . . .	40	3 00	
<b>DEWBERRY</b> —LUCRETIA . . . . .	30	2 00	
<b>GOOSEBERRIES</b> —AMERICAN SEEDLING OR HOUGHTON . . . . .	40	3 00	
DOWNING . . . . .	50	4 00	
INDUSTRY, 3 years . . . . .	1 25	10 00	
CROWN BOB and WHITE SMITH . . . . .	1 50	12 00	

	Per 10	Per 100	Per 1000
GRAPES—AGAWAM (Rogers' No. 15), 2 years . . . . .	\$ 60	\$5 00	
BRIGHTON, 2 years . . . . .	70	6 00	
CONCORD, 2 and 3 years . . . . .	40	3 00	\$25 00
CHAMPION, 2 years . . . . .	60	5 00	
DELAWARE, 2 years . . . . .	1 00	7 00	
EATON, 2 years . . . . .	1 00	8 00	
EMPIRE STATE, 2 years . . . . .	80		
GENEVA, 2 years . . . . .	1 00	8 00	
HARTFORD PROLIFIC, 2 years . . . . .	60	5 00	
MERRIMAC (Rogers' No. 19), 2 years . . . . .	60	5 00	
MOORE'S DIAMOND (the best new White Grape), 2 years . . . . .	80	6 00	
“ EARLY, 2 years . . . . .	80	6 00	
MOYER, 2 years . . . . .	1 00	8 00	
NIAGARA, 2 years . . . . .	60	5 00	
POCKLINGTON, 2 years . . . . .	60	5 00	
SALEM, 2 years . . . . .	60	5 00	
VERGENNES, 2 years . . . . .	80	6 00	
WILDER (Rogers' No. 4), 2 years . . . . .	60	5 00	
WORDEN, 2 years . . . . .	60	5 00	
MULBERRIES—NEW AMERICAN, 5 to 7 feet . . . . .	2 00		
DOWNING, 5 to 7 feet . . . . .	2 50	20 00	
HICK'S, 5 to 7 feet . . . . .	2 00		
MULTICAULIS, 8 to 10 feet . . . . .	2 00		
RUSSIAN, 5 to 6 feet . . . . .	1 50		
“ 7 to 9 feet . . . . .	2 00		
WHITE, 5 to 6 feet . . . . .	1 50		
“ 6 to 8 feet . . . . .	1 80		
“ 9 to 10 feet . . . . .	2 00		
YOUNGKEN'S, 4 to 6 feet . . . . .	2 00		
NUTS—ALMONDS, Hard and Soft Shell . . . . .	1 50		
CHESTNUTS, AMERICAN, 3 to 4 feet . . . . .	1 25	10 00	
“ “ 4 to 5 feet . . . . .	1 50	12 00	
“ “ 5 to 6 feet . . . . .	1 80	15 00	
“ JAPAN, 2 to 2½ feet, 2 years' grafts . . . . .	3 50		
“ “ 2½ to 3 feet . . . . .	4 00		
“ “ 3 to 4 feet . . . . .	5 00		
“ NUMBO, 2 to 3 feet . . . . .	3 50		
“ “ 3 to 4 feet . . . . .	4 50		
“ “ 7 to 8 feet . . . . .	7 50		
“ “ 8 to 10 feet . . . . .	10 00		
“ SPANISH, 4 to 5 feet . . . . .	1 80	15 00	
“ “ 5 to 7 feet . . . . .	2 00	18 00	
“ “ 7 to 9 feet . . . . .	2 50		
FILBERT, ENGLISH, 3 to 4 feet . . . . .	1 50		
PECAN, 3 to 4 feet . . . . .	1 50		
“ 4 to 5 feet . . . . .	2 00		
WALNUTS, BLACK, 6 to 7 feet . . . . .	1 80		
“ “ 7 to 9 feet . . . . .	2 00		
“ ENGLISH, 2 to 3 feet . . . . .	1 80		
“ “ 3 to 4 feet . . . . .	2 50		
“ “ 4 to 5 feet . . . . .	3 00		
SHELLBARK, 2 to 3 feet . . . . .	1 50		
PERSIMMON—AMERICAN, 3 to 4 feet . . . . .	1 50		
AMERICAN, 4 to 6 feet . . . . .	2 00		
“ 8 to 9 feet . . . . .	2 50		
RASPBERRIES—GREGG, OHIO, SHAFFERS and SOUHEGAN . . . . .	20	1 20	8 00
CUTBERT and MARLBORO . . . . .	30	1 50	12 00
GOLDEN QUEEN . . . . .	30	1 80	15 00
ASPARAGUS—BARR'S MAMMOTH, 1 year . . . . . \$25.00 per 10,000		50	3 00
BARR'S MAMMOTH, 2 years . . . . . \$30.00 per 10,000		75	3 50
CONOVER'S, 2 years . . . . .		50	3 50
STRAWBERRIES—BUBACH, CHARLES DOWNING, CUMBERLAND TRIUMPH, CRESCENT SEEDLING, ALBANY, MAY KING, SHARPLESS and MANCHESTER . . . . .		50	4 00
GANDY, JESSIE, HAVERLAND . . . . .			
GREENVILLE, SHUCKLESS and TIMBRELL . . . . .		60	5 00
RHUBARB . . . . .	50	4 00	30 00
HORSERADISH—Sets for transplanting . . . . .	25	50	4 00

**BUDS.**

	Per 100	Per 1000
APPLE—Leading varieties	\$0 50	\$1 50
APRICOT, CHERRY, NECTARINE, PEAR AND PLUM—Leading varieties	50	2 00
PEACH—Leading varieties	50	1 50

**SCIONS.**

	Per 100	Per 1000
APPLE—Leading varieties	\$0 75	\$1 50
CHERRY— “ “	1 00	4 00
PEAR— “ “	1 00	4 00
PLUM— “ “	1 00	4 00

**Ornamental Department.**

**DECIDUOUS TREES.**

	Per 10	Per 100
ALDER—ENGLISH, 10 to 12 feet	\$2 50	
ENGLISH, 12 to 14 feet	3 00	
“ CUT-LEAVED, 5 to 6 feet	5 00	
APPLE—DOUBLE FLOWERING, assorted, 4 to 5 feet	1 50	
DOUBLE FLOWERING (Pyrus floribunda), 5 to 6 feet	1 80	
SWEET SCENTED (Pyrus coronarius), 5 to 6 feet	1 50	
ASH—AMERICAN WHITE, 9 to 10 feet	2 50	
AMERICAN WHITE, 10 to 12 feet	3 00	
“ “ 12 to 14 feet	3 50	
“ “ 14 to 16 feet, 2 to 3 inches caliper	6 00	
ENGLISH, 10 to 12 feet	2 00	
“ 12 to 14 feet, 1 3/4 to 2 inches caliper	3 50	
“ 14 to 16 feet, 2 to 3 inches caliper	5 00	
BEECH—AMERICAN, 3 to 4 feet	2 00	
AMERICAN, 4 to 5 feet	2 50	
CHESTNUT-LEAVED, 4 to 5 feet	7 50	
CUT-LEAVED, 4 to 5 feet	8 00	
CURLED-LEAVED, 3 to 4 feet	7 50	
ENGLISH, 3 to 4 feet	1 50	\$12 00
“ 4 to 5 feet	2 00	
“ 5 to 6 feet	2 50	
FERN-LEAVED, 3 to 4 feet	7 50	
PURPLE-LEAVED, 4 to 5 feet { Rivers' Variety }	6 50	
“ 5 to 6 feet	7 50	
BIRCH—WHITE, 7 to 9 feet	2 00	
WHITE, 8 to 10 feet	3 00	
BUTTONWOOD—ORIENTAL, 9 to 10 feet	3 50	30 00
ORIENTAL, 10 to 12 feet	4 00	35 00
“ 12 to 14 feet	5 00	
“ 14 to 16 feet, 2 inches caliper	7 50	
CATALPA—BUNGII, top grafted, 1 year, 4 to 5 feet	3 00	
BUNGII, top grafted, 1 year, 5 to 6 feet	4 00	
“ grafted at ground, 2 to 3 feet	3 00	
KEMPFERI, 9 to 10 feet	2 50	
“ 10 to 12 feet	3 00	
SPECIOSA, 10 to 12 feet	2 00	18 00
“ 12 to 14 feet	2 50	20 00
“ 12 to 14 feet, 2 to 3 inches caliper	3 50	
TEAS'S, 10 to 12 feet	3 00	25 00
“ 12 to 14 feet, 2 to 3 inches caliper	3 50	
CHERRY—BIRD (P. padus), 5 to 7 feet	1 60	
BIRD (P. padus), 7 to 8 feet	1 80	
“ “ 8 to 10 feet	2 00	

	Per 10	Per 100
CYPRESS—DECIDUOUS, 4 to 5 feet . . . . .	\$2 00	
DECIDUOUS, 5 to 6 feet . . . . .	2 50	
" 6 to 7 feet . . . . .	3 00	
" 7 to 9 feet . . . . .	3 50	
DOGWOOD—WHITE, 3 to 4 feet . . . . .	2 00	
WHITE, 4 to 6 feet . . . . .	2 50	\$22 00
" 6 to 8 feet . . . . .	3 00	
RED-FLOWERING, 3 to 4 feet . . . . .	4 00	
" 4 to 5 feet . . . . .	5 00	
" 5 to 6 feet . . . . .	6 00	
ELM—AMERICAN, 7 to 9 feet . . . . .	3 00	25 00
AMERICAN, 9 to 10 feet . . . . .	4 00	35 00
" 10 to 12 feet . . . . .	4 50	
" 14 to 16 feet, 2 to 3 inches caliper . . . . .	7 50	
EUONYMUS—EUROPEUS, 4 to 5 feet . . . . .	1 80	
EUROPEUS, 6 to 7 feet . . . . .	2 50	
HALESIA—TETRAPTERA, 2 to 3 feet . . . . .	2 00	
TETRAPTERA, 3 to 4 feet . . . . .	3 00	
HIPPOPHOE—RHAMNOIDES, 3 to 4 feet . . . . .	1 50	
HORSE CHESTNUT—WHITE FLOWERING, 6 to 7 feet . . . . .	3 50	
RED FLOWERING, 5 to 6 feet . . . . .	3 00	
JUDAS TREE—AMERICAN, 3 to 4 feet . . . . .	1 50	
AMERICAN, 4 to 5 feet . . . . .	2 00	
" 5 to 6 feet . . . . .	2 50	
" 6 to 8 feet . . . . .	3 00	
KOLREUTERIA—PANICULATA, 3 to 4 feet . . . . .	2 00	
PANICULATA, 5 to 7 feet . . . . .	3 00	
" 7 to 9 feet . . . . .	3 50	
LABURNUM—(Cytisus laburnum), 4 to 5 feet . . . . .	1 50	
(Cytisus laburnum), 5 to 6 feet . . . . .	2 00	
LARCH—EUROPEAN, 4 to 6 feet . . . . .	2 00	
EUROPEAN, 6 to 7 feet . . . . .	2 50	
" 8 to 9 feet . . . . .	3 00	
LINDEN—AMERICAN, 7 to 9 feet . . . . .	3 00	25 00
AMERICAN, 9 to 10 feet . . . . .	3 50	30 00
" 10 to 12 feet . . . . .	4 00	35 00
" 12 to 14 feet . . . . .	5 00	
WHITE-LEAVED, 7 to 8 feet, { One of the finest ornamental trees. A } . . . . .	3 50	30 00
" 8 to 10 feet, { good companion to the Norway Maple; } . . . . .	4 00	35 00
" 10 to 12 feet, { holds its leaves late in Fall. } . . . . .	4 50	40 00
MAGNOLIA—ACUMINATA, 4 to 5 feet . . . . .	3 00	
ACUMINATA, 5 to 7 feet . . . . .	3 50	
GLAUCA, 2 to 2½ feet . . . . .	3 50	
" 2½ to 3 feet . . . . .	4 00	
" 3 to 4 feet . . . . .	5 00	
" 4 to 5 feet . . . . .	6 00	
GRACILIS, 2 to 2½ feet . . . . .	2 50	
MACROPHYLLA, 4 to 5 feet . . . . .	4 00	35 00
" 5 to 6 feet . . . . .	4 50	40 00
" 6 to 8 feet . . . . .	5 00	45 00
" 8 to 10 feet . . . . .	6 00	
OBOVATA, 2 to 3 feet . . . . .	2 50	
" 3 to 4 feet . . . . .	3 00	
TRIPETELA, 4 to 5 feet . . . . .	3 00	
" 5 to 7 feet . . . . .	3 50	
" 7 to 9 feet . . . . .	4 00	
" 10 to 12 feet . . . . .	5 00	
MAPLE—COLCHICUM KUBRUM, 3 to 4 feet . . . . .	3 00	
ENGLISH, 5 to 7 feet . . . . .	3 00	
NORWAY, 7 to 9 feet . . . . .	3 00	25 00
" 9 to 10 feet . . . . .	4 00	35 00
" 10 to 12 feet . . . . .	4 50	40 00
" 12 to 14 feet . . . . .	6 00	50 00
" 2 to 3 inches caliper . . . . .	10 00	
Purple broad leaf, has a bright color late in the Summer when SCHWEDLERI is nearly green, 5 to 6 feet . . . . .	4 00	
" 7 to 9 feet . . . . .	5 00	
RED, 7 to 9 feet . . . . .	3 50	30 00



	Per 10	Per 100
<b>MAPLE, RED, 9 to 10 feet</b>	\$4 00	\$35 00
RED, 10 to 12 feet	4 50	40 00
" 12 to 14 feet	5 00	
" 14 to 16 feet, 2 to 3 inches caliper	7 50	
<b>SCHWEDLERI, 5 to 6 feet</b>	4 00	
" 6 to 7 feet	5 00	
" 7 to 9 feet	6 00	
<b>SILVER-LEAVED, 8 to 10 feet</b>	\$100 per 1000	1 50
" 10 to 12 feet	120 per 1000	2 00
" 12 to 14 feet		2 50
" 14 to 16 feet		3 50
" 2 to 3 inches caliper		5 00
" 3 to 4 inches caliper		7 50
<b>STRIPED-BARK, 7 to 9 feet</b>	2 50	
" 9 to 10 feet	3 00	
<b>SUGAR, 8 to 10 feet</b>	4 00	30 00
" 10 to 12 feet	5 00	40 00
" 12 to 14 feet	6 00	50 00
<b>SYCAMORE, 10 to 12 feet</b>	4 00	35 00
" 12 to 14 feet	5 00	45 00
" 2 to 3 inches caliper	7 50	
<b>WIER'S CUT-LEAVED, 6 to 7 feet</b>	2 00	15 00
" 7 to 9 feet	2 50	20 00
" 9 to 10 feet	3 00	25 00
" 10 to 12 feet	3 50	30 00
" 12 to 14 feet	4 00	
" 2 to 2½ inches caliper	7 50	
<b>MOUNTAIN ASH—ENGLISH, 7 to 9 feet</b>	1 80	12 00
ENGLISH, 9 to 10 feet	2 00	14 00
" 10 to 12 feet	2 50	16 00
" 12 to 14 feet	3 00	20 00
<b>OAK-LEAVED, 6 to 7 feet</b>	2 50	
" 8 to 9 feet	3 50	
<b>OAK—ENGLISH, 5 to 6 feet</b>	2 50	
GOLDEN, ( <i>Q. robur concordia</i> ), 5 to 7 feet	7 00	
" 7 to 8 feet	8 00	
<b>PIN, (<i>Q. palustris</i>), 5 to 6 feet</b>	2 50	
" 6 to 8 feet	3 00	
" 7 to 9 feet	3 50	
<b>SCARLET, 6 to 7 feet</b>	3 00	
" 7 to 8 feet	3 50	
<b>WHITE, 4 to 6 feet</b>	2 50	
<b>PAULOWNIA—IMPERIALIS, 7 to 8 feet</b>	2 50	
IMPERIALIS, 9 to 10 feet	3 50	
<b>PEACHES—BLOOD-LEAVED AND DOUBLE-FLOWERING</b>	1 25	10 00
<b>POPLAR—BOLLEANA, 10 to 12 feet</b>	2 50	
CAROLINA, 8 to 10 feet, 1 to 1¼ inch caliper	\$ 80 per 1000	1 20
" 10 to 12 feet, 1¼ to 1½ inch caliper	100 per 1000	1 50
" 12 to 14 feet, 1½ to 1¾ inch caliper	120 per 1000	2 00
" 14 to 16 feet, 1¾ to 2 inches caliper		2 50
<b>LOMBARDY, 9 to 10 feet</b>	1 40	12 00
" 10 to 12 feet	1 60	14 00
" 12 to 14 feet	1 80	16 00
" 14 to 16 feet, 1¾ to 2 inches caliper	2 50	20 00
" 14 to 16 feet, 2 to 3 inches caliper	3 00	25 00
<b>PRUNUS—PISSARDI. Very striking. Rich purple foliage, on plum</b>	1 50	10 00
<b>PURPLE MIST—(<i>Rhus cotinus</i>), 5 to 7 feet</b>	1 80	16 00
<b>SALISBURIA—ADIANTIFOLIA, 7 to 8 feet</b>	3 50	30 00
ADIANTIFOLIA, 8 to 10 feet	4 00	
" 10 to 12 feet	5 00	
" 12 to 14 feet	6 00	
<b>SASSAFRAS—OFFICINALE, 6 to 8 feet</b>	2 50	
<b>SOUR GUM—(<i>Nyssa multiflora</i>), 3 to 4 feet</b>	2 50	
<b>SWEET GUM—(<i>Liquidambar styraciflua</i>), 5 to 6 feet</b>	3 50	30 00
( <i>Liquidambar styraciflua</i> ), 8 to 10 feet	4 00	
<b>THORN—DOUBLE WHITE, DOUBLE RED and PAUL'S, 4 to 5 feet</b>	2 50	
<b>TULIP TREE—(<i>Liriodendron tulipifera</i>), 7 to 8 feet</b>	2 50	20 00
( <i>Liriodendron tulipifera</i> ), 8 to 10 feet	3 00	25 00
" 10 to 12 feet	4 00	35 00

	Per 10	Per 100
<b>WHITE FRINGE</b> —2 to 3 feet, single stems . . . . .	\$1 80	
3 to 4 feet, branched . . . . .	2 50	
4 to 5 feet . . . . .	3 00	
5 to 6 feet . . . . .	3 50	
<b>WILLOW</b> —ORIEL, 6 to 8 feet . . . . .	1 50	
ROSEMARY, 1 and 2 years' heads . . . . .	1 50	\$12 00
“ 4 years' heads . . . . .	2 50	
SHINING-LEAVED, 5 to 6 feet . . . . .	1 50	
“ “ 6 to 8 feet . . . . .	1 80	16 00
“ “ 8 to 10 feet . . . . .	2 50	20 00
“ “ 10 to 12 feet . . . . .	3 00	
<b>YELLOW WOOD</b> —(Cladrastis tinctoria), 4 to 5 feet . . . . .	3 00	
(Cladrastis tinctoria), 5 to 6 feet . . . . .	4 00	

## WEeping DECIDUOUS TREES.

	Per 10	Per 100
<b>APPLE</b> —3 years' heads . . . . .	\$4 00	
<b>BEECH</b> —3 to 4 feet . . . . .	7 50	
16 to 18 feet, 4 to 5 inches caliper . . . . .	50 00	
18 to 20 feet, 5 to 6 inches caliper . . . . .	75 00	
PURPLE, 3½ to 4 feet . . . . .	10 00	
<b>BIRCH</b> —CUT-LEAVED, 7 to 9 feet . . . . .	2 50	
CUT-LEAVED, 9 to 10 feet . . . . .	5 00	
“ 10 to 12 feet . . . . .	7 50	
YOUNG'S, 3 to 4 feet . . . . .	7 50	
“ 5 to 7 feet . . . . .	9 00	
<b>CHERRY</b> —JAPAN, 5 to 7 feet . . . . .	6 00	
<b>CYPRESS</b> —DECIDUOUS, 3 to 4 feet . . . . .	5 00	
<b>DOGWOOD</b> —3 to 4 feet . . . . .	3 50	\$30 00
4 to 5 feet . . . . .	4 00	35 00
5 to 6 feet . . . . .	5 00	40 00
6 to 7 feet . . . . .	7 50	
<b>ELM</b> —AMERICAN, 2 years' heads . . . . .	5 00	
<b>GLYPTOSTROBUS</b> —PENDULUS, 3 to 4 feet . . . . .	4 00	
PENDULUS, 4 to 5 feet . . . . .	5 00	
“ 5 to 7 feet . . . . .	6 00	
“ 8 to 10 feet . . . . .	8 00	
<b>LINDEN</b> —7 to 9 feet . . . . .	4 00	
<b>MOUNTAIN ASH</b> —3 years' heads . . . . .	2 50	20 00
<b>MULBERRY</b> —TEAS'S, 1 year's heads . . . . .	5 00	
<b>POPLAR</b> —2 years' heads . . . . .	3 00	
<b>WILLOW</b> —BABYLONIAN (Common weeping), 7 to 8 feet . . . . .	1 25	10 00
BABYLONIAN (Common weeping), 8 to 10 feet . . . . .	1 50	12 00
“ “ 10 to 12 feet . . . . .	2 00	18 00
<b>KILMARNOCK</b> , 2 years' heads . . . . .	1 50	12 00
<b>NEW AMERICAN</b> , 1 year's heads . . . . .	2 50	
<b>SALOMON'S</b> , 7 to 9 feet . . . . .	1 50	
“ 8 to 10 feet . . . . .	2 00	
“ 10 to 12 feet . . . . .	2 50	
“ 12 to 14 feet . . . . .	3 00	
“ 14 to 16 feet . . . . .	3 50	

EVERGREENS.

THESE trees have all been transplanted, most of them twice or more, in nursery rows and have been kept properly thinned so as not to spoil their shape.

	Per 10	Per 100
ARBOR-VITÆ—AMERICAN, 12 to 18 inches, once transplanted	\$0 60	\$3 50
AMERICAN, 18 to 24 inches, once transplanted	70	4 00
“ 2 to 2½ feet, twice transplanted	1 00	6 00
“ 2½ to 3 feet “	1 20	8 00
“ 3 to 4 feet “	1 40	10 00
“ 4 to 5 feet “	1 50	
“ 5 to 6 feet “	2 00	
BOOTH'S DWARF (T. pumila), 18 to 20 inches, twice transplanted	1 20	
“ 2 to 2½ feet	1 50	
BRINCKERHOFF'S, 1½ to 2 feet, twice transplanted, fine	1 50	
DENSA (T. conica densa), 1½ to 2 feet, twice transplanted	1 50	12 00
“ 2½ to 3 feet, “ extra fine	1 80	
“ 3 to 3½ feet, “	2 00	
DOUGLAS'S PYRAMIDAL, 3 to 3½ feet	2 50	
“ 3½ to 4 feet	3 00	
GEORGE PEABODY, 1 to 1½ foot, twice transplanted	1 50	
“ 1½ to 2 feet, “	2 00	18 00
“ 2 to 2½ feet	2 50	
GLOBOSA, 18 to 24 inches, twice transplanted	1 50	12 00
“ 2 to 2½ feet, fine specimens, twice transplanted	1 80	15 00
GOLDEN, 18 inches, twice transplanted	1 50	
HACKERII, twice transplanted, 3 to 4 feet	2 50	
HEATH-LEAVED (T. ericoides), twice transplanted, 18 to 20 inches	1 50	
PARSONS'S DWARF (T. compacta), twice transplanted, 18 to 24 inches	1 20	
“ 3 to 3½ feet	1 80	
ROLLISSON'S GOLDEN, 2 to 2½ feet, twice transplanted	2 50	
SIBERIAN (Wareana), 1½ to 2 feet, twice transplanted	1 50	12 00
“ 2 to 2½ feet, “	1 80	15 00
TOM THUMB, 18 to 24 inches, twice transplanted	1 50	
“ 3 to 3½ feet	2 50	
VERVÆNE'S VARIEGATED, 1½ to 2 feet, twice transplanted	1 00	
FIR—BALSAM (A. balsamea), 2½ to 3 feet, twice transplanted	1 50	
“ 3 to 3½ feet, “	1 80	
CEPHALONIAN (A. Cephalonica), 1 to 1½ foot, twice transplanted	6 00	
“ 2½ to 3 feet, “	10 00	
EUROPEAN SILVER (A. pectinata), 18 to 24 inches, twice transplanted	1 80	16 00
“ 2 to 2½ feet, “	2 00	18 00
“ 2½ to 3 feet, “	2 50	
HUDSON BAY (A. Hudsonica), 2 to 2½ feet	10 00	
NORDMANN'S (A. Nordmanniana), 2 to 2½ feet, twice transplanted	6 00	
“ 2½ to 3 feet, three times transplanted	8 00	
“ 3 to 3½ feet, 3 and 4 times trans.	12 50	
“ 3½ to 4 feet, 3 and 4 times trans.	15 00	
“ 4 to 5 feet, 3 and 4 times transplanted	25 00	
“ 5 to 6 feet, 4 and 5	35 00	
“ 6 to 7 feet, 4 and 5	50 00	
JUNIPER—IRISH, 2 to 2½ feet, twice transplanted	2 00	16 00
PINE—AUSTRIAN, 1½ to 2 feet, sheared, twice transplanted	1 50	12 00
AUSTRIAN, 2 to 2½ feet, sheared, twice transplanted	1 80	16 00
CEMBRA, 12 to 18 inches	3 00	
DWARF (P. Mugho), 12 to 18 inches in diameter	2 00	
“ 18 to 24 inches	2 50	
“ 2 to 2½ feet	3 00	
SCOTCH, 1½ to 2 feet, twice transplanted, sheared	1 40	
“ 2 to 2½ feet, “	1 60	
“ 3 to 3½ feet, “	1 80	
WHITE, 2 to 2½ feet, “	1 50	12 00
“ 2½ to 3 feet, “	1 80	15 00
“ 3 to 3½ feet, “	2 00	18 00
RETINISPORA—PLUMOSA, 18 to 24 inches, twice transplanted	1 25	
PLUMOSA, 2 to 2½ feet, twice transplanted, sheared	1 60	
“ 2½ to 3 feet, “	2 00	
“ 3½ to 4 feet, “	3 00	
“ 4 to 4½ feet, “	3 50	
“ 4½ to 5 feet, “	5 00	

	Per 10	Per 100
RETINISPORA—PLUMOSA AUREA, 12 to 18 inches	twice transplan'd \$ 2 00	\$ 18 00
PLUMOSA AUREA, 18 to 24 inches	" " 3 00	25 00
" " 2 to 2½ feet	" " 3 50	30 00
" " 2½ to 3 feet	" " 4 00	35 00
" " 3 to 3½ feet	" " 6 00	50 00
" " 3½ to 4 feet	" " 7 50	
SQUARROSA VEITCHI, 18 to 24 inches	twice transplanted 4 00	
SPRUCE—ALCOQUIANA, 12 to 18 inches	5 00	
HEMLOCK, 1½ to 2 feet, twice transplanted	2 00	16 00
" 2 to 2½ feet, " "	2 50	20 00
" 2½ to 3 feet, " "	3 00	
INVERTA, 1½ to 2 feet	4 00	
PUMILA GLAUCA, 12 to 18 inches	4 00	
PYRAMIDALIS, 18 to 24 inches	4 00	
NORWAY, 12 to 15 inches, once transplanted	\$40.00 per 1000 60	5 00
" 2 to 2½ feet, twice transplanted	1 50	12 00
" 2½ to 3 feet, " "	2 00	18 00
PUNGENS, selected blue, 12 to 18 inches	8 00	
" " 18 to 24 inches	10 00	
" 12 to 18 inches, 2 years' grafts	} Grafted from an extra } (selected blue specimen.)	10 00
" 18 to 24 inches, 3 years' grafts		15 00
WHITE, 18 to 24 inches	1 50	14 00
" 2 to 2½ feet, twice transplanted	1 80	16 00
" 2½ to 3 feet, " "	2 00	
" 3 to 3½ feet, " "	2 50	
" 3½ to 4 feet, " "	3 00	

EVERGREEN SHRUBS.

	Per 10	Per 100
AUCUBA—JAPONICA, 12 to 15 inches	\$ 1 25	\$10 00
BOX—CHINESE, var. latifolia, 15 to 18 inches	2 00	
" " " 1½ to 2 feet	3 00	
" " longifolia, 1½ to 2 feet	2 50	
" " " 2 to 2½ feet	3 50	
" " " 2½ to 3 feet	5 00	
" " rotundifolia, 12 to 15 inches	1 50	
" " " 15 to 18 inches	2 00	
" " " 18 to 24 inches	2 50	
" " " 2 to 2½ feet	4 00	
COMMON TREE, 18 to 20 inches in diameter	} Our Boxes have been frequently sheared and are compact and handsome.	3 00
" 2 to 2½ feet in diameter		3 50
MYRTLE-LEAVED, 18 to 20 inches	3 00	
" 2 feet	3 50	
THYME-LEAVED, 12 to 18 inches	2 00	
" " 18 to 24 inches	3 00	
" " 2 to 2½ feet	4 00	
VARIEGATED SILVER, 18 to 24 inches	2 50	
" GOLDEN, 18 to 24 inches	2 50	
" " 2 to 2½ feet	3 00	
" " 2½ to 3 feet	4 00	
EUONYMUS—JAPONICUS, 6 to 12 inches	1 00	8 00
JAPONICUS ARGENTEUS, 12 to 18 inches	1 25	
RADICANS VARIEGATA, 2 years, 6 to 12 inches	1 00	
KALMIA—ANGUSTIFOLIA, (Sheep Laurel) Dwarf habit, with small deep rosy-red flowers, fine clumps in 5-inch pots	3 00	
MAHONIA—BEALII, 18 to 30 inches	3 00	
AQUIFOLIUM, 18 to 24 inches	2 00	
RHODODENDRONS—Named kinds, 2 to 3 feet	10 00	
SEEDLINGS, 2 to 3 feet	8 00	
YUCCA—FILAMENTOSA, strong, well-rooted	\$60 per 1000 1 00	8 00

DECIDUOUS SHRUBS

	Per 10	Per 100	Per 1000
ALMONDS—DWARF DOUBLE FLOWERING, pink, 2 to 3 feet . . . . .	\$1 00	\$8 00	
DWARF DOUBLE FLOWERING, white, 2 to 3 feet . . . . .	1 00	8 00	
ALTHÆA—BUIST'S VARIEGATED, 2 to 3 feet, transplanted . . . . .	1 00	8 00	
The above are exceptionally fine for hedging purposes, as well as for producing marked contrasts in groups of mixed shrubbery.			
DOUBLE, fine distinct, named varieties, 3 to 4 feet . . . . .	1 25	10 00	
“ “ “ “ “ “ 2 to 3 feet . . . . .	1 00	8 00	
SINGLE DWARF WHITE, pure snow-white, fine, 2 to 3 feet . . . . .	1 00	8 00	
These are the finest French varieties, selected out of a large collection of imported plants. They are all grafted, 2 and 3 years old, and are exceedingly thrifty and well branched.			
SEEDLINGS, mixed colors, single and semi-double, fine for screens and hedges, 5 to 6 feet . . . . .		80	6 00
SEEDLINGS, three years, 2 to 3 feet . . . . .		50	4 00
“ from <i>Fleur blanche</i> , coming almost invariably snow-white, 12 to 18 inches . . . . .		60	5 00
AZALEA—ARBORESCENS, a strong-growing mountain species, with very fragrant rose colored flowers, 12 to 18 inches . . . . .	3 00		
CALENDULACEA (Flame-colored Azalea). An elegant, rare native species, 18 to 24 inches . . . . .	3 00		
GHEENT, mixed colors, bushy, 12 to 18 inches . . . . .	6 00		
VISCOSA, A handsome native species, very distinct, with white fragrant flowers . . . . .	2 00	15 00	
All of the above Azaleas, excepting the Ghent varieties, are grown in 5-inch and 6-inch pots, and are especially healthy and fine			
BERBERRY—COMMON, 2 to 3 feet . . . . .	1 00	8 00	
PURPLE, 2 to 3 feet, deep purple, sheared . . . . .	1 25	10 00	
THUNBERGI, 12 to 18 inches . . . . .	1 00	8 00	
CALLICARPA—PURPUREA. A pretty little shrub with small pink flowers, and a great profusion of violet-colored berries in autumn, 12 to 15 inches . . . . .	1 00	8 00	
CALYCANTHUS—GLAUCUS, 3 to 4 feet . . . . .	1 00	8 00	
CARAGANA—SIBERICA, 18 to 30 inches . . . . .	1 00		
CEANOTHUS—AMERICANUS, 2 to 3 feet . . . . .	1 00		
CEPHALANTHUS—OCCIDENTALIS, 2 to 3 feet . . . . .	1 00		
CERCIS—JAPONICA (Japanese Red Bud), 18 to 30 inches . . . . .	3 00		
CITRUS—TRIFOLIUM, (Hardy Orange), stands in the open air in this latitude, without protection, 18 to 30 inches . . . . .	2 00	15 00	
CLETHRA—ALNIFOLIA, 3 to 4 feet . . . . .	1 00	8 00	
COLUTEA—ARBORESCENS, 3 to 4 feet . . . . .	1 00	8 00	
CORCHORUS—(Kerria Japonica), 2 to 3 feet . . . . .	1 00	8 00	
CORNUS—ALBA, STOLONIFERA, SERICEA, SANGUINEA, MASCULA, and PANICULATA, 3 to 4 feet . . . . .	1 00	8 00	
SPATHI, beautiful golden leaves, 12 to 18 inches, 6-inch pots . . . . .	3 00		
VARIEGATA ALBA, pretty white markings, 12 to 18 inches, 6-inch pots . . . . .	3 00		
CORYLUS—PURPUREUS, rich purple foliage in early summer, 2 to 3 feet . . . . .	2 00		
LACINIATA, finely cut, fern-like foliage, 1 to 2 feet . . . . .	1 50		
CYDONIA—JAPONICA (Japan Quince), 12 inches, 2 years . . . . .	50	4 00	30 00
JAPONICA (Japan Quince), 2 to 3 feet . . . . .	80	7 00	60 00
DESMODIUM—JAPONICUM (white), and PENDULIFLORUM (pink), 18 to 24 inches . . . . .	1 50		
DEUTZIA—CANDISSIMA, CRENATA VARIEGATA, CRENATA FL. PL., FORTUNII, and PRIDE OF ROCHESTER, 3 to 4 feet . . . . .	1 00	8 00	60 00
GRACILIS, 18 to 24 inches, transplanted, nice clumps . . . . .	1 00	8 00	60 00
Having grown a large stock of these desirable shrubs, we offer them at low rates, although unsurpassed for health and vigor. None but fine clumps sent out.			
DIMORPHANTHUS—MANSHURICUS. A very ornamental shrub, with long multifid leaves, imparting a decidedly subtropical aspect to a group, 12 to 18 inches . . . . .	1 50		

	Per 10	Per 100	Per 1000
EUONYMUS—LINEARIS, a dwarf form with narrow linear leaves, 18 to 30 inches . . . . .	\$1 50		
EXOCHORDA—GRANDIFLORA, a rare Chinese shrub with pure white flowers, 4 to 5 feet, annually pruned . . . . .	1 00	\$8 00	\$60 00
This exceedingly attractive shrub is very hardy, and should be in every collection. We have succeeded in growing a large stock of healthy plants.			
FORSYTHIA—FORTUNII and VIRIDISSIMA, 3 to 4 feet and over . . . . .	1 00	8 00	60 00
SUSPENSIA, 18 to 24 inches, transplanted . . . . .	1 00	8 00	
HYDRANGEA—PANICULATA GRANDIFLORA, 2 to 3 feet . . . . .	1 00	8 00	60 00
RAMIS PICTUS (Red-branched), in 4-inch pots, 9 to 12 inches . . . . .	1 00	8 00	
" " in open ground, 2 years, 12 to 15 inches . . . . .	1 25	10 00	
HYPERICUM—DENSIFLORUM, 18 to 24 inches . . . . .	1 25	10 00	
ILEX—VERTICILLATA (Black Alder), 18 to 24 inches, valuable for its brilliant scarlet, coral-like berries, in autumn . . . . .	1 50		
ITEA—VIRGINICA, 2 to 3 feet . . . . .	1 00	8 00	
LILAC—COMMON PURPLE, 2 to 3 feet . . . . .	1 00	8 00	
COMMON WHITE, 18 to 30 inches . . . . .	1 00	8 00	
PERSIAN, small flowers, 3 to 4 feet, extra fine . . . . .	1 25	10 00	
EMODI, 3 to 4 feet. Very distinct . . . . .	1 25		
JOSIKEA (Chionanthus-leaved Lilac). A very distinct and beautiful species. We offer strong one year-old budded plants, 12 to 18 inches . . . . .	1 50	12 00	
ROUGE DE MARLY, the variety used by the Parisian florists for forcing, 2 to 3 feet . . . . .	1 00		
WEEPING (Pekinensis pendula), <i>new</i> , grafted on straight single stems, a decidedly pendulous and graceful form. The flowers resemble the ordinary Persian Lilac. 3 to 4 feet stems, one and two-year buds . . . . .	4 00	30 00	
NEW VARIETIES, strong two years' buds (described below). Price, except otherwise noted . . . . .	1 50	12 00	
Having tested a large number of the most popular and highly recommended foreign varieties as they were annually introduced, and selected only those for propagation that possessed a high order of merit, we confidently believe the following list embraces all the finest qualities known to this charming shrub			
AMBROISE VERSCHAFFELT, very pretty pale pink, with large trusses. Good grower and distinct, 3 to 4 feet.			
CERULEA SUPERBA, immense trusses of bluish-lilac flowers. Strong grower, 3 to 4 feet.			
FLORA PLENA, one of the oldest of the double Lilacs, and an excellent kind. Simply a double VULGARIS, 3 to 4 feet.			
GLOIRE DE CRONCELS, bright reddish color, very distinct and fine. One of the best, 3 to 4 feet.			
LANGIUS, peculiar flesh-colored tint, fine truss. Very distinct and pretty, 2 to 3 feet.			
LAVANENSIS, a beautiful double rose lilac. Strong grower and showy, 2 to 3 feet.			
MATHIEU DE DOMBASLE, one of the very best. Large truss of double rich reddish lilac, 2 to 3 feet.			
MADAME MOSER, beautiful pure white, or strong growth and large foliage, 2 to 3 feet.			
NIGRICANS, trusses large and compact, very deep reddish lilac. Foliage dark green, 3 to 4 feet.			
PYRAMIDALIS, an exceedingly fine novelty with large full semi-double flowers. Rose colored, 3 to 4 feet.			
PROFESSEUR STOCKART, dwarf grower, with large trusses of reddish-lilac flowers. Free bloomer, 2 to 3 feet.			
RENONCULE, exceedingly double, short compact truss. Pale reddish lilac, 4 to 5 feet.			
RUBRA INSIGNIS, large clusters of large flowers, reddish lilac. Strong grower, 2 to 3 feet.			
SOUVENIR DE LA SPATH, the most distinct and beautiful variety in the collection, trusses immense, very compact, florets very large, deep purplish red, 2 to 3 feet . . . . .			
SAUGEANA, a member of the Persian group, with reddish-purple flowers. Fine strong grower, 2 to 3 feet.	2 00	15 00	

	Per 10	Per 100	Per 1000
<b>LILAC</b> —VILLE DE TROYES, one of the finest, trusses and florets very large. Rosy or reddish lilac, 3 to 4 feet.			
VIRGINAL, very distinct, large pure white flower and truss. Growth strong, free bloomer, 2 to 3 feet.			
<b>JAPONICA</b> , a new and unique species from Japan, attaining the size of a tree, with large panicles of white flowers. Foliage very large, thick, and deep green color. Strong two-year-old plants, 4 to 5 feet	\$1 50	\$12 00	
<b>VILLOSA</b> , another new Japanese species with foliage resembling the White Fringe ( <i>Chionanthus</i> ), and producing immense panicles of white flowers late in the season, 3 to 4 feet, two years from bud	1 50	12 00	
<b>LONICERA</b> (Upright Honeysuckles)—ALBERTI, a very distinct and attractive little trailing shrub, with narrow leaves and small pink flowers, 18 to 24 inches	1 25		
GRANDIFLORA, large red bloom, 2 to 3 feet	1 25	10 00	
TARTARICA, pink flowers, 2 to 3 feet	1 00	8 00	
“ ALBA, white flowers, 2 to 3 feet	1 00	8 00	
<b>MAAKIA</b> —AMURENSE, 3 to 4 feet	2 50		
<b>MYRICA</b> —CERIFERA (Wax-Myrtle), 12 to 18 inches	1 00	8 00	
<b>PHILADELPHUS</b> —CORONARIUS, 2 to 3 feet	1 00	8 00	
DIANTHÆFLORA PLENA, double-flowering, 2 to 3 feet	1 50		
CORDIFOLIUS, GARDULATA, INODORUS, NIVALIS, SANGUINEA, SPECIOSUS and SATZUMANNI, 3 to 4 feet	1 00	8 00	
<b>PRIVET</b> —CALIFORNIA, 15 to 20 inches, branched, one year	30	2 50	\$20 00
CALIFORNIA, 18 to 24 inches, 2 years	40	3 00	25 00
“ 2 to 3 feet, 2 years	45	3 50	30 00
“ 3 to 4 feet, 3 years, very fine branched plants	50	4 00	35 00
IBOTA, very showy, 18 to 30 inches	1 00	8 00	
VARIEGATED-LEAVED, an elegant new form, standing the sun well and always very distinct, 18 to 24 inches	1 25		
VARIEGATED-LEAVED, 3 to 4 feet, fine specimens	1 50		
<b>PRUNUS</b> —TRILOBA, 3 to 4 feet, fine	1 00	8 00	60 00
<b>RHODODENDRON</b> —VASEYI, a deciduous-leaved Laurel, closely related to the Azaleas, with a profusion of lovely pink flowers in early spring. In 4-inch pots, new and rare	3 00		
<b>RHODOTYPUS</b> —KERRIOIDES, 12 to 18 inches	1 25		
<b>RIBES</b> —AUREUM (Missouri Currant), 3 to 4 feet	1 00	8 00	
<b>ROBINIA</b> —HISPIDA, 12 to 18 inches	1 25	10 00	
<b>SPIRÆA</b> —BILLARDI, REEVESI, REEVESI FL. PL., SALICIFOLIA			
ULMIFOLIA, CALLOSA and OPULIFOLIA, 3 to 4 feet	1 00	8 00	
CALLOSA ALBA, bushy, 2 to 3 feet	1 00	8 00	
CRISPIFOLIA ( <i>S. bullata</i> ), a curious little dwarf plant, attaining only a few inches in height, producing rose-colored flowers, 6 years, 9 to 12 inches, bushy	1 50		
OPULIFOLIA AUREA (Golden Spirea), 3 to 4 feet	1 25		
THUNBERGII, 2 to 3 feet	1 00	8 00	
TOMENTOSA. A pretty native species with dense panicles of rose-colored flowers, 3 to 4 feet	1 00	8 00	
PRUNIFOLIA, 18 to 24 inches	1 25	10 00	
VAN HOUTII, very attractive, 3 to 4 feet	1 25		
“ANTHONY WATERER.” A beautiful novelty introduced this season into our collections. “The “Garden and Forest” thus alludes to it in a recent issue. “This is a seedling of that variety of <i>Spirea Japonica</i> which is known in gardens as <i>S. Bumalda</i> , and which is distinguished by its dwarf compact habit, its persistent flowering, and bright red flowers. <i>Spirea Anthony Waterer</i> originated in the Knaphill Nurseries, at Woking, in England, a few years ago, and differs from its parent in the deeper, brighter, and more intense color of the flowers. As it begins to flower freely when only a few inches high, and continues to produce its large flat corymbs from July until frost appears, this shrub promises to be a capital addition to the rather short list of autumn-flowering hardy shrubs. It has received a first-class certificate from the “Royal Horticultural Society.” We offer nice young plants in 3-inch pots, grown from cuttings this season, and will surely bloom next . . . . . 30 cents each	2 50	20 00	

	Per 10	Per 100	Per 1000
SNOWBERRY—WHITE FRUITED, 2 to 4 feet . . . . .	\$1 00	\$8 00	\$60 00
RED FRUITED, 2 to 3 feet . . . . .	1 00	8 00	60 00
SAMBUCUS—AUREA (Golden-leaved Elder), 3 to 4 feet . . . . .	1 00	8 00	
NIGRA FL. PL. (Double flowering Elder), 2 to 3 feet . . . . .	1 25		
STAPHYLEA—BUMALDA, a rare and very beautiful shrub, 2 to 3 feet . . . . .	1 50		
STYRAX—JAPONICA. This rare gem is one of the most desirable shrubs known. When in bloom, it is literally covered with creamy-white bells, 12 to 18 inches . . . . .	2 00	16 00	
STEPHANANDRA—FLEXUOSA. A very graceful shrub, with deeply cut, fern-like foliage, 12 to 18 inches . . . . .	1 25		
TAMARIX—GALLICA, 2 to 3 or 4 feet . . . . .	1 00	8 00	
VIBURNUM—LANTANA, 3 to 4 feet . . . . .	1 00	8 00	
OPULUS (Cranberry-tree), 3 to 4 feet . . . . .	1 00	8 00	
PLICATUM (Japan Snowball), one of the most popular rare shrubs known, 2 to 3 feet . . . . .	2 00	15 00	
STERILIS, (Snowball), 2 to 3 feet . . . . .	1 25	10 00	
WEIGELA—AMABILIS ALBA, VAN HOUTTII, MME. COUTURNER, ROSEA, CANDIDA and RUBRA, 3 to 4 feet . . . . .	1 00	8 00	
ROSEA NANA VAR. (Variegated-leaved), 2 to 3 feet . . . . .	1 00	8 00	

## VINES.

	Per 10	Per 100	Per 1000
AMPELOPSIS—QUINQUEFOLIA, 2 years . . . . .	\$1 00	\$8 00	
ROYLI, 4-inch pots, strong . . . . .	1 00	8 00	
" 3-inch pots . . . . .	80	6 00	
VARIEGATA (Variegated Grape), strong plants . . . . .	1 25		
VEITCHI, 4-inch pots . . . . .	1 00	8 00	
" 3-inch pots, strong . . . . .	80	6 00	
ARISTOLOCHIA—TOMENTOSA, 2-year seedlings, transplanted . . . . .	1 00	8 00	
AKEBIA—QUINATA, scarce in the trade . . . . .	1 25	10 00	
CELASTRUS—SCANDENS, 3 years . . . . .	1 00	8 00	
CLEMATIS—VITALBA, COCCINEA and CRISPA, 3 years, strong . . . . .	1 25	10 00	
FLAMMULA, fine healthy vines in 3-inch pots . . . . .	1 00	8 00	\$60 00
Large flowering varieties . . . . .	3 00		
HONEYSUCKLES—JAPONICA (Evergreen), HALLIANA, BRACHYPODA, AUREA RETICULATA and MONTHLY, 2 and 3 years, fine . . . . .	1 00	8 00	70 00
HECKROTTI. We are again enabled to offer a fine stock of this valuable Honeysuckle, and are confirmed in the opinion that it is the finest variety grown in the Northern States. . . . .	1 50	12 00	
IVY—VARIEGATED, 4-inch pots . . . . .	1 00		
JESSAMINE—OFFICINALE, the hardy fragrant white species . . . . .	1 25		
NUDIFLORUM, very early, yellow flowers . . . . .	1 00	8 00	
PERIPLLOCA—GRÆCA (Silk Vine) . . . . .	1 00		
TECOMA—RADICANS, strong plants . . . . .	1 00	8 00	
VINCA—WHITE . . . . .	1 00	8 00	
WISTARIA—SINENSIS (Chinese) . . . . .	1 50	12 00	
SINENSIS ALBA, white flowering . . . . .	2 00		
" FL. PL., double flowering . . . . .	2 00		
MULTIJUGA, 3 years . . . . .	2 00		
FRUTESCENS (American Glycine) . . . . .	1 00	8 00	60 00
" strong, 2-years' seedlings . . . . .	80	6 00	50 00

## HEDGE PLANTS.

	Per 100	Per 1000
OSAGE ORANGE—2 years . . . . .	\$0 75	\$4 00
EVERGREENS—See pages 9 and 10.		
SHRUBBERY—See pages 11, 12, 13 and 14.		
PRIVET—See page 13.		



## YOUNG STOCK FOR NURSERYMEN.

### DECIDUOUS.

	Per 10	Per 100	Per 1000
CHESTNUT—AMERICAN, 6 to 12 inches, 1-year seedlings . . . . .	\$0 50	\$1 50	\$10 00
EUONYMUS—EUROPEUS, 9 to 15 inches . . . . .	30	2 00	
LINDEN—AMERICAN, 2 to 3 feet . . . . .	40	3 00	
AMERICAN, 3 to 4 feet . . . . .	50	4 00	
"    4 to 5 feet . . . . .	60	5 00	
MAGNOLIA—ACUMINATA, 3-year seedlings, 12 to 15 inches . . . . .	50	3 00	
TRIPETELA, 6 to 12 inches . . . . .	40	3 00	
"    15 to 18 inches . . . . .	50	4 00	
MAPLE—SUGAR, 3 to 4 feet . . . . .	50	4 00	30 00
SUGAR, 4 to 5 feet . . . . .	70	5 00	40 00
"    5 to 6 feet . . . . .	80	6 00	
"    6 to 7 feet . . . . .	1 00	8 00	
SILVER, 3 to 4 feet, 2 years . . . . .	12	1 00	6 00
"    4 to 5 feet, 2 years . . . . .	18	1 50	8 00
SHRUBBERY—ALTHEA, mixed seedlings, 2 years . . . . .	30	2 00	15 00
ALTHEA, single pure white, 2 years . . . . .	30	2 50	20 00
AMORPHA FRUTICOSA, 2 years . . . . .	20	1 50	10 00
ARISTOLOCHIA TOMENTOSA, a scarce hardy native climber, 1 year, fine roots . . . . .	40	3 00	
CALYCANTHUS GLAUCUS, 1 and 2 years . . . . .	30	2 00	15 00
CERCIS JAPONICA. One of the most valuable and showy large shrubs in cultivation. 2 years . . . . .	30	2 50	20 00
WISTARIA FRUTESCENS, 1 year, fine . . . . .	40	3 00	25 00

### EVERGREENS.

	Per 10	Per 100	Per 1000
ARBOR-VITÆ—AMERICAN, 12 to 18 inches . . . . .	\$0 60	3 50	
AMERICAN, 18 to 24 inches . . . . .	70	4 00	
JUNIPER, IRISH, 9 to 12 inches . . . . .	1 00	8 00	
SPRUCE—NORWAY, 12 to 15 inches . . . . .	60	5 00	40 00

### ROSES.

THESE prices are intended for a regular assortment of varieties, subject to our approval. Should special kinds be desired in quantity, we will quote rates on application.

#### CLASS 1.—GROWN IN THE OPEN GROUND.

	Per 10	Per 100
HYBRID PERPETUAL—Two years strong . . . . .	\$1 50	\$ 12 00
CLIMBING—Two years . . . . .	1 00	8 00
MOSSSES—2 years. A good assortment; own roots and budded . . . . .	1 25	10 00
RUBIGINOSA—SWEET BRIER, 2 years, own roots . . . . .	1 25	10 00
RUGOSA—Strong and well branched, own roots . . . . .	1 25	
WICHURAIANA—One year, open ground . . . . .	1 25	10 00
STANDARD OR TREE ROSES—Mixed colors . . . . .	5 00	

#### CLASS 2.—GROWN IN POTS.

All on their own Roots.

	Per 10	Per 100
EVERBLOOMING—Standard varieties, in 4 and 4½-inch pots . . . . .	\$1 50	\$12 00

## HARDY BORDER PLANTS.

FINE assortments of the following, exclusively our selection, can be furnished at \$6 per 100, \$50 per 1000.

	Per 10	Per 100
ASCLEPIAS TUBEROSA, ASTILBE JAPONICA, AMSONIA SALICIFOLIA, ALSINE MICHAUXII (a pretty little rock-plant), ASTERS in variety, AMPHELODES VERNA, BOLTONIA LATISAUQUA, BETONICA OFFICINALIS, CHRYSANTHEMUMS (a fine collection), COREOPSIS TRIPTERIS and C. LANCEOLATA, CHELONE LYONI, CERASTIUM OBLONGIFOLIUM, CASSIA MARYLANDICA, DELPHINIUM FORMOSUM, DICENTRA SPECTABILIS, and D. EXIMEA, FUNKIA OVATA, HEMEROCALLIS FULVA FL. PL., HELIANTHUS LATIFLORUS and H. GIGANTEUS, HYACINTHUS CANDICANS, HIBISCUS PALUSTRIS, IRIS (the finest German species and varieties), LYSIMACHIA CLETHROIDES, LYTHRUM ROSEUM SUPERBUM, OPUNTIA RAFINESQUII (hardy Cactus), PLUMBAGO LARPENTÆ, PENTSTEMON DIGITALIS, PARDANTHES CHINENSIS, PHLOX SUBULATA (Mountain Pink, fine for rock-eries), and P. PANICULATA, RUBECKIA SPECIOSA and R. NEWMANII, SPIREA ARUNCUS, S. PALMATA, S. LOBATA, S. ULMARIA FL. PL., and S. ULMARIA VARIEGATA, SEDUM in variety, SAPONARIA CAUCASICA FL. PL., SILPHIUM PERFOLIATUM and S. LACINIATUM, SOLIDAGO in variety, TRADESCANTIA in variety, THALICTRUM AQUILEGIFOLIUM, VERONICA in variety, VIOLA CUCULLATA VARIEGATA, V. STRIATA and the new hardy DOUBLE BLUE VIOLET . . . . .	\$1 00	\$8 00
IRIS KÆMPFERI, imported direct from Japan, embracing a diversity of colors. Flowers large, especially rich and attractive . . . . .	1 00	8 00
PHLOX DECUSSATA, an elegant assortment of named varieties; all the most distinct colors in cultivation . . . . .	1 25	10 00

## BULBS AND TUBERS.

	Per 10	Per 100
CANNAS—MADAME CROZY. Best of its type . . . . .	\$0 60	\$5 00
ALBA ROSEA GRANDIFLORA. Valuable light variety . . . . .	1 00	
ALPHONSE BOUVIER. Brilliant crimson, extra fine . . . . .	1 00	
CHAS. HENDERSON. A beautiful new variety of last season, raised by M. Crozy, of dwarf habit, with deep rich crimson flowers. Decidedly an acquisition . . . . .	60	5 00
CROWN JEWEL. A very distinct and new dwarf Canna. Golden-yellow thickly dotted over with scarlet markings. Blooms freely . . . . .	1 50	
COMTE HORACE DE CHOISEUL. Very deep crimson, excellent . . . . .	60	5 00
GOLDEN ROD. A new dwarf variety introduced last season, producing rich yellow flowers. Raised from Mme. Crozy . . . . .	1 50	
GOLDEN STAR. As grown on our grounds the past season, this charming new Canna was decidedly the best of its color. Of dwarf habit, a profuse bloomer, and producing compact heads of rich golden yellow flowers. Very effective for bedding . . . . .	1 50	
KAISER WILHELM II. Rich brilliant scarlet, fine form . . . . .	60	5 00
QUEEN CHARLOTTE. An elegant novelty with rich crimson petals broadly banded with golden-yellow . . . . .	2 50	
SEEDLINGS—Grown from the above only. Purchasers' choice of all red, or yellow, or mixed colors . . . . .	50	3 00
COLOCASIA—ESCULENTUM, 1st class . . . . .	1 00	8 00
CONVALLARIA—(Lily of the Valley.) Strong pips . . . . .	30	2 00
DAHLIAS—Strong roots, a beautiful assortment . . . . .	1 25	10 00
GLADIOLUS—Mixed colors . . . . .	50	3 00
LEMOINE'S BUTTERFLY mixed . . . . .	60	5 00
SNOW-WHITE, pure . . . . .	1 50	12 00
LILIUM—AURATUM . . . . .	1 50	
CANDIDUM . . . . .	1 00	8 00
HARRISII . . . . .	1 00	8 00
SPECIOSUM, ROSEUM . . . . .	1 00	8 00
“ ALBUM . . . . .	2 00	

	Per 10	Per 100
LILIUM—THUNBERGIANUM . . . . .	\$1 00	\$8 00
TIGRINUM . . . . .	75	6 00
“ FLORE PLENO . . . . .	1 00	8 00
TRITOMA—UVARIA . . . . .	1 00	8 00
TUBEROSE—First size, flowering bulbs . . . . .	25	1 50

## ORNAMENTAL GRASSES.

Large orders for the following will be supplied at a discount from these prices, as we now have the largest stock of Ornamental Grasses in the country. Extra-sized clumps can be supplied at an advanced price.

	Per 10	Per 100	Per 1000
ARUNDO—DONAX VARIEGATA . . . . .	\$1 50	\$12 00	
EULALIA—JAPONICA, green foliage . . . . .	75	6 00	\$50 00
JAPONICA VARIEGATA, striped lengthwise . . . . .	75	6 00	50 00
“ ZEBRINA, striped crosswise . . . . .	75	6 00	50 00
GRACILLIMA UNIVITTATA, new and beautiful . . . . .	75	6 00	50 00
PANICUM—VIRGATUM, very graceful . . . . .	1 00		
PHALARIS—ARUNDINACEA PICTA (Variegated Ribbon Grass) . . . . .	1 00	8 00	

## PEACH TREES.

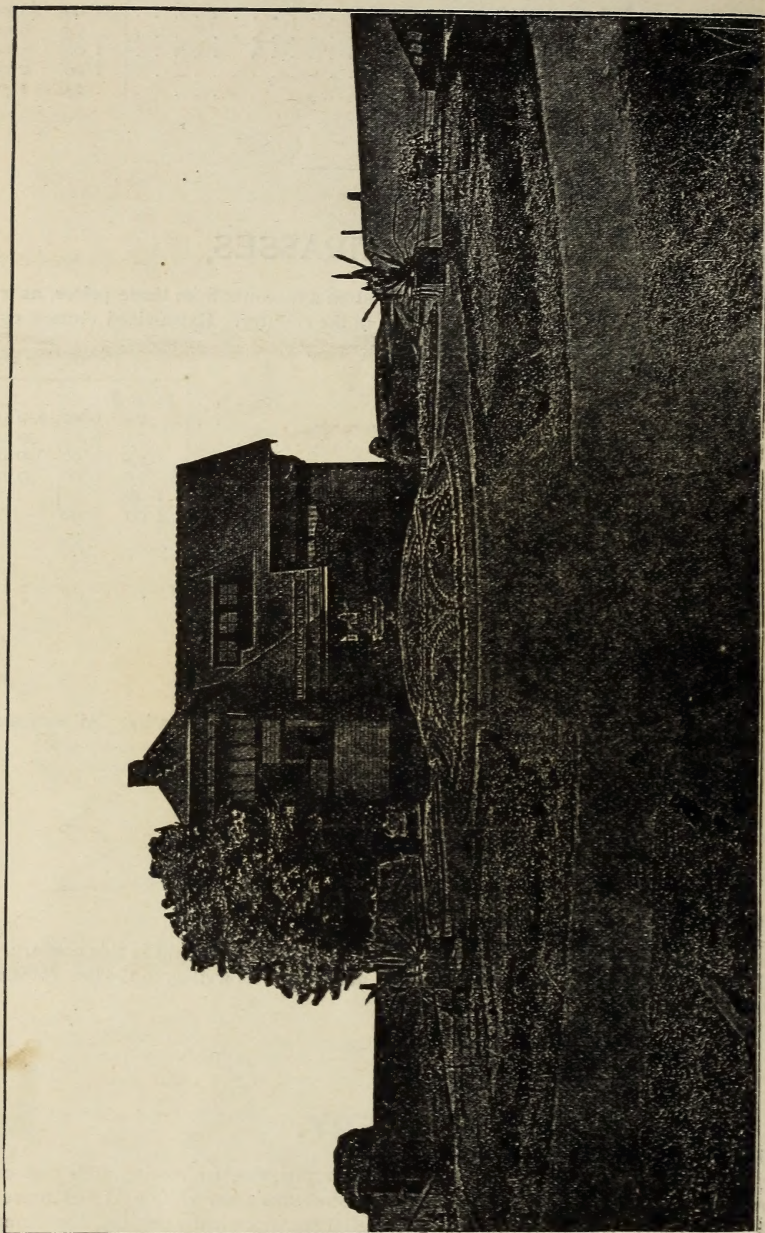
Our stock is unsurpassed in the United States, either in extent or quality. All varieties strictly true to name. Our list embraces everything of value.

## CALIFORNIA PRIVET.

One of the largest and best grown stocks of this valuable hedge-plant in this country. We invite attention to the health and vigor of our plants, as well as to the low rates at which they are offered.

## SHRUBBERY.

ALTHEAS, finest named varieties; DEUTZIA GRACILIS, fine for forcing, nice clumps; YUCCA FILAMENTOSA, hardy and free flowering; SNOWBERRIES, white and red fruited, beautiful bushy plants; ORNAMENTAL GRASSES, the largest stock in the country, fine clumps furnished, etc.



OFFICE AND GROUNDS OF HOOPES, BRO. & THOMAS, WEST CHESTER, PA.