

Archives

qLD

1017

.C98

1925

c.2



LIBRARY  
CLARION UNIVERSITY OF PA  
CLARION, PA





# THE SEQUELLE

1925



Published by the  
**SENIOR CLASS**  
of the  
**Clarion State Normal School**

**CLARION, PENNSYLVANIA**



Clair Byers Wilson, B. S.

## Dedication

We, the class of 1925, as an expression of our esteem and in recognition of his faithful work for Clarion State Normal School respectfully dedicate this book, our Sequelle, to

Clair Byers Wilson

## *Foreword*

---

*"Friendship, peculiar boon of Heaven,  
The noble mind's delight and pride,  
To men and angels only given,  
To all the lower world denied."*

In publishing this edition of *The Sequelle*, the Class of 1925 has engaged in a labor of love. The friendships formed during our normal school days and the affection which we hold for *The Clarion State Normal School* have been the impelling motives in our efforts to publish a senior annual worthy of the traditions of this institution. How well we have succeeded must be left to the verdict of more experienced workmen and wiser minds.

While we are deeply appreciative of the formal instructional features of our student days, we desire to emphasize in this publication the personal or human element. The inspiration and joy which we have received from our association with classmates and instructors are, in the last analysis, the choicest jewels of our educational experience at *Clarion*.





# CONTENTS

Dedication.....	3
Faculty.....	9
Seniors.....	21
Class History.....	51
Class Poem.....	52
Class Prophecy.....	53
Class Will.....	56
Juniors.....	57
Organizations.....	63
Dramatics.....	73
Music.....	77
Athletics.....	83
Training School News.....	88
Literary.....	89
Jokes.....	97
Advertisements.....	100



## *Sequelle Staff*

---

<i>Editor-in-Chief</i> .....	Esther Allio
<i>Assistant Editors</i> .....	Phyllis Arnold, Violet McMahon
<i>Business Manager</i> .....	William Slattery
<i>Assistants</i> .....	Josephine Monfre, Paul Ross
<i>Art Editor</i> .....	Marvis Youkers
<i>Assistants</i> .....	Bernice Stahlman, Mamie Olson
<i>Literary Editor</i> .....	Winifred Joseph
<i>Assistant</i> .....	Mary Baldwin
<i>Y. M. C. A. Editor</i> .....	William Clinger
<i>Y. W. C. A. Editor</i> .....	Ina Gilmore
<i>Literary Societies</i> .....	Leota Sayers
<i>Girl's Athletics</i> .....	Mary McNeil
<i>Boy's Athletics</i> .....	Don Campbell
<i>Music Editor</i> .....	Harriet Tuttle
<i>Joke Editor</i> .....	Wilda Cook
<i>Campus News</i> .....	Harriet Atwell
<i>Training School Editor</i> .....	Geraldine Dovenspike
<i>Dramatic Club</i> .....	Julia Dickinson



### *Senior Class Officers*

Dorothy McCullough .....	<i>President</i>
Paul Ross.....	<i>Vice-President</i>
Violet McMahan .....	<i>Secretary</i>
Bess Ekis.....	<i>Treasurer</i>

#### CLASS COLORS

Blue and Gold

#### CLASS FLOWER

Orphelia Rose

#### CLASS MOTTO

"We have crossed the sea; the ocean lies before us."

#### CLASS YELL

1 -2 -3 -4    3 -2 -1 -4  
 Who for? !    What for? !  
 Who ya going to yell for  
 S -E -N -I -O -R -S  
 Thats the way you spell it.  
 Here's the way you yell it. SENIORS!!!





CLYDE C. GREEN, Principal  
Ph. B., A. M., L. L. D.



JOHN F. WILKINSON, A. M.  
Dean of Instruction  
*Mathematics*



MRS. ANABEL LEE RALSTON  
Dean of Women  
*Expression*



HENRY P. CALDWELL, A. B.  
*Registrar*



WILLIS YARDLEY WELCH, A. M.  
*Science*



CLAIR B. WILSON, B. S.  
*Education*



JAMES R. HUSTON, A. B.  
*Social Studies*



BERTHA VIRGINIA NAIR, A. M.  
*English*



C. A. MIDDLESWATH, A. M.  
*Director of Training School*





IDA SHIVE BENTZ  
*Art*



ALICE LEMON  
*Geography and Penmanship*



NANCY E. CANAN, MUS. B  
*Music*



WILKIE O. MOODY, B. S.  
*Physical Education*



MARY G. WHITEMAN, B. S.  
*Physical Education*



DOROTHY EDGAR, A. B.  
*English and Expression*



CHAS. F. BECKER, PH. B., A. M.  
*Education*



JANET HILEMAN  
*Librarian*



MARGARET DETWILER, PH. B.  
*Nutrition*



EFFIE B. HEPLER  
*Training Teacher—Primary Grades*



ROSA MARIE DELIZ  
*Spanish*



GLADYS HATHAWAY  
*Training Teacher—Primary Grades*



FLORENCE TOMPKINS  
*Training Teacher—Primary Grades*



BERTHA STUTZMAN, B. S.  
*Training Teacher—Intermediate Grades*



MARY HEPLER  
*Training Teacher—Intermediate Grades*



MARTHA S. TROUGHTON  
*Training Teacher—Intermediate Grades*



EVELYN STROHECKER, A. B.  
*Training Teacher—Junior High Grades*



BESSIE M. RUNYAN, A. B.  
*Training Teacher—Junior High Grades*



HARRIET M. FAIRBANKS, A. B.  
*Training Teacher—Junior High Grades*



ELMER O. DELANCY  
*English*



HELEN G. MILLS  
*Secretary to Principal*



ANNIE B. GRAHAM  
*Training Teacher—Junior High Grades*



LODEMA McCULLOUGH  
*Assistant Music Director*



HELEN WALTERS  
*Training Teacher—Primary Grades*



GLADYS BECKETT  
*Training Teacher—Primary Grades*

## *The Purple and the Gold*

---

Have you seen our banners waving  
In the field or in the hall,  
Where the students all assemble  
When they hear the old bell call?  
These bright colors, gayly floating,  
Speak alike to young and old  
Of the joys of Clarion Normal  
And the Purple and the Gold.

Have you heard our students singing  
As they march along their way,  
Whether duty sternly calls them  
Or some pleasure points the way?  
All together proudly singing  
They proclaim in accents bold  
Their great praise of Clarion Normal  
And the Purple and the Gold.

Have you heard our students cheering  
As they meet from day to day;  
Either seated in the chapel  
Or engaged in contest gay?  
All these voices, loudly shouting  
Have to everybody told  
A great love of Clarion Normal  
And the Purple and the Gold.

If you've seen our banners waving,  
If you've heard our singing, too,  
And the voices of our cheering  
Have brought any thought to you;  
Then we know you've thrilled with pleasure,  
And you've felt a pride untold,  
For the glory of our Norma'  
And the Purple and the Gold.





**ESTHER ALLIO**..... **Primary Group**

Tylersburg, Pa.

President Y. W. C. A.  
 Editor-in-Chief Sequelle  
 Varsity Basketball '25  
 Junior Basketball '24  
 Senior Hockey  
 Franklin Literary

Attendant to May Queen  
 Varsity Hockey '24, '25  
 Ass't. Editor Clarion Call  
 Orchestra  
 Dramatic Club  
 Junior Hockey

Esther proves to us that no matter how many A's one receives it does not always mean hard work and no play, for Esther is always in for a good time. Here's to your success, Esther, as much more as you had of it in C. S. N. S.

**BERTHA AMSLER**..... **Primary Group**

St. Petersburg, Pa.

Y. W. C. A.

Franklin Literary

Quiet she is but when you know her you appreciate this very quality. She is kind and thoughtful, making her presence felt rather than heard and we are always glad to know she's there.

**RUTH ANDERSON**..... **Primary Group**

Brookston, Pa.

Bancroft Literary

Sketch Club

Y. W. C. A.

"True to her work, her word, and her friends."

None could wish for a better friend than Ruth. She is a friend to the happy, a friend to the sad, and a friend to all who know her. We have enjoyed your stay with us, Ruth.

**HELENY ANTHONY**..... **Primary Group**

DuBois, Pa.

Senior Class Play  
 Orchestra  
 Glee Club  
 Y. W. C. A.  
 Operetta '25  
 Senior Hockey

Attendant to May Queen  
 Franklin Literary  
 Dramatic Club  
 Basketball '25  
 S. S. S. Vaudeville  
 Sketch Club

Helen possesses that sweet graciousness we all would have. She has found the secret to success.

"She works when she works,  
 She plays when she plays,  
 And this is the way  
 She prolongs her days."

**HARRIET ATWELL** ..... Intermediate Group  
Brockwayville, Pa.

Varsity Hockey '25  
Critic Bancroft Literary

Y. W. C. A.  
Sequelle Staff

"Hattie A" is always wearing a happy smile. Her character and disposition have made it a joy to know her. Her pleasing ways, coupled with her determination to succeed, will make a welcome place for her in the teaching profession as it has in the hearts of those who know her at C. N. S.

**PHYLLIS ARNOLD** ..... Junior High Group  
Clarion, Pa.

President Dramatic Club  
Sketch Club

Bancroft Literary  
Senior Hockey '25

Sequelle Staff

"There was a girl in our town, and she was wondrous wise."

"Phil" is not only wise but a charming young lady. She is one of the few who seldom get angry, and never loses her temper completely. During her three years in C. N. S. she has been a very useful member of the class and has served well in many capacities.

**MARY BALDWIN** ..... Primary Group  
Bradford, Pa

Dramatic Club  
Junior Basketball '24  
Franklin Literary

Varsity Hockey '24 '25  
Varsity Basketball '25  
Y. W. C. A.

Charming and dignified is Mary. If you did not know her, you might think her quiet and reserved. Mary has been prominent in athletics throughout her course here. She played a wonderful game of hockey both years and became a first class basketball center this year. It can be truly said: "The more you know of Mary, the more you want to know."

**RUTH BOTTENHORN** ... Intermediate Group  
Sigel, Pa.

Franklin Literary  
Junior Hockey '24  
Y. W. C. A.  
Glee Club

Varsity Basketball '24  
Y Choir  
Senior Hockey '25  
Operetta '24, '25

S. S. S. Vaudeville

One outstanding feature about Ruth is her insatiable curiosity. Her constant question is "What are you doing?" It seems hard to picture our "Boots" as a school teacher in earnest but we know she will do as well in that as in everything else.





**MARTHA BOWSER** ..... Intermediate Group  
Reynoldsville, Pa.

Bancroft Literary  
Glee Club  
Junior Basketball '24

Y. W. C. A., Treasurer  
Operetta '25

Though quite of a serious nature, Martha is blessed with a happy disposition. When it comes to doing her duty, she is preeminent. We know from her work here what sort of a teacher she will make—an excellent one.

**SUE BROGAN** ..... Intermediate Group  
Summersville, Pa.

Bancroft Literary  
Operetta '25  
Glee Club

Senior Class Play  
S. S. S. Vaudeville  
Sec'y. Student Gov't. '25

Sue is a lover of fun. We like her care-free air and peppy manner. Sue is just everybody's pal everywhere. Wherever she goes, whatever she does, we know that she will succeed and have many friends.

**JAMES BINNEY** ..... Junior High Group

Debating Club  
Varsity Football '25

Varsity Basketball '25  
Class Historian

Who can forget Binney with his dry humor and witty sarcasm? But it is all in such a good-natured manner that no one minds. We may be sure to have some fun when "Spring" is around. Good luck to you, "Spring."

**MARTHA BELL** ..... Primary Group  
Clarion, Pa.

Varsity Hockey '24 '25  
Varsity Basketball '24  
Bancroft Literary

Senior Class Play  
Dramatic Club  
Glee Club '25

Clarion Call Staff

"Mart" is a good pal and a good scout. She is always ready for fun and can enjoy a good time more than anyone we know; even though, as she says, she is frequently "bored to tears." Here is the best success to you, Mart,—no one deserves it more.

**MARGRETTA CAMPBELL** . . . Primary Group  
Clarion, Pa.

Bancroft Literary                      Clarion Call Staff '24

Quiet? Well, perhaps, but she has won her way into the hearts of many through her friendly spirit of helpfulness. She has a quaint humor and a sincerity of purpose which has brought her success here and we know she will be equally successful when she leaves.

**HILDA CARLSON** . . . . . Primary Group  
Kane, Pa.

Pres. of Student Council '25                      Y. W. C. A.  
Glee Club                                              Critic Franklin Literary '25

If you are looking for a girl who has all the good qualities possible—here she is. Hilda is a friend in the truest sense of the word. She is never too busy to do anything that may be asked of her. We have been blessed to have her for this year.

**GENEVIEVE CLARK** . . . . . Primary Group  
Brookville, Pa.

Bancroft Literary                      Y. W. C. A.

"Gen" is one who improves every minute of her time. She is ever cheerful, never grumbling; in fact, a very pleasant person to meet. These are only two of the many qualities which will bring to her success.

**MARY COOK** . . . . . Primary Group  
Lucinda, Pa.

Junior Basketball '25                      Franklin Literary  
Senior Basketball '25                      Senior Hockey '25

Are you hungry? Ask "Cookie" to guide you to the "cats." She has an uncanny sixth sense as to where to find anything eatable but—like sunshine—she finds a welcome wherever she goes.

We all like her  
She's a true friend  
Our best wishes,  
With her we send.





**WILDA COOK.....Primary Group**  
Lucinda, Pa.

Y. W. C. A. Cabinet	"The Lie that Jack Built."
Sequelle Staff	Dramatic Club
Ass't. Cheer Leader '24	Cap't. Junior Basketball
Cheer Leader '25	Cap't. Senior Basketball
Class Prophet	Critic Franklin Literary
Junior Hockey '24	Senior Hockey '25
Attendant to May Queen	S. S. S. Vaudeville

There never was a day so dark that it could dampen the blithe spirits of our "Jerry." Studies have never been known to bother her. We have learned that Wilda has a peculiar liking for drug stores. We wonder why? She is loved by all because of her winning ways but we fear that some "Red" is going to come and claim her soon.

**BRADEN COOK.....Junior High Group**  
Clarington, Pa.

Debating Club President	Y. M. C. A.
Clarion Call Staff	Glee Club
Bus. Mgr. Senior Class Plays	S. S. S. Business Manager

We were lucky when Braden Cook decided to spend the term of '24, '25 with us. During this time he has proved himself a real student, a true friend; and by his pleasing personality and willingness to help others, he has won a great number of friends. We are confident that his success will be unlimited.

**MYRNA CONVER.....Primary Group**  
Emlenton, Pa.

Franklin Literary	Y. W. C. A.	Glee Club '25
-------------------	-------------	---------------

And this is Myrna! She left us mid-semester to teach. She was too good to keep long. But in that short time we learned for sure that little things often contain great value. She proved herself both a good student and a pleasant companion.

**WILLIAM CLINGER.....Junior High Group**  
Soldier, Pa.

Debating Club	Y. M. C. A.
Sequelle Staff	Glee Club
S. S. S. Vaudeville	

"Bill" has been a live wire in the school during his stay with us. He is always the same Bill wherever you find him. His acquired skill in expounding a well baited line generally brings results—take for instance, insurance. At any rate, Bill, we are glad to have been associated with you.

**VERNER CRESSWELL . . . . Junior High Group**  
Clarion, Pa.

Debating Club	Dramatic Club
Glee Club	"The Lie that Jack Built."
Basketball '24, '25	Football '24, '25

"His limbs are cast in manly mold  
For hardy sport or contest bold."

Is it possible for anyone to be more popular than "Cres"? Well, not at Clarion! We look up to our class giant in more than one way. His good nature is exceeded only by his wide choice of girls.

**GERALDINE DOVENSPIKE . . Primary Group**  
Shipperville, Pa.

May Queen	Sec'y, Dramatic Club '24
Clarion Call Staff	Pres. Dramatic Club '25
Bancroft Literary	"The Lie that Jack Built."
Glee Club '24, '25	Oopretta '2, '25
Y. W. C. A. Cabinet	Vice-President Student Gov't
	S. S. S. Vaudeville

We defy you to find a sweeter, more lovable little girl than our "Jerry." Always bright, always happy, never too busy to greet anyone. A lovely disposition such as yours is a wonderful quality, Jerry. May you have it always.

**JULIA DICKINSON . . . . Intermediate Group**  
Wilcox, Pa.

Y. W. C. A.	"Dust of the Road."
Franklin Literary	Sequelle Staff
Dramatic Club	Student Council '25

Julia is one of the most attractive girls in our class. She works and plays with equal enthusiasm. We all remember Julia's success in "Dust of the Road" and hope that she will be equally successful in the drama of Life.

**ELIZABETH DONELLY . Intermediate Group**  
East Brady, Pa.

Franklin Literary	Y. W. C. A.
-------------------	-------------

"Bib" is noted for her good nature, congeniality, and talkativeness. Her winsome ways have won her many friends at Clarion. Every thing Bib attempts is done with zeal and without worry. We all love you, Bib.



**ROSA MARIE DELIZ**

Porto Rico

Teacher of Spanish  
Faculty Advisor of Spanish  
Club  
Orchestra

Glee Club  
Operetta '24, '25  
Bancroft Literary  
Y. W. C. A.

If all Porto Ricans are like Rosa Marie Deliz, send them to Clarion. We know her as student and teacher and love her as both. To her belongs the credit of the fluent Spanish heard on the campus. We surely have enjoyed your stay in Clarion, Rosy-Posy.

**BESSIE ELDER . . . . . Primary Group**

Punxsutawney, Pa.

President Student Gov't. '25  
Y. W. C. A.  
Glee Club  
Operetta '25

Attendant to May Queen  
Varsity Basketball '25  
Cap't Varsity Hockey '25  
Franklin Literary

How can we find enough good things to say of our Bessie? A leader and a pal—no one is more popular. We can never forget her as she was while a member of the class of '25.

**MARTHA ESCHRICH . . . . . Primary Group**

Smethport, Pa.

Y. W. C. A.

Franklin Literary

Martha is a rare combination of the studious and fun-loving. She seems to be always busy, but never so busy that she cannot take time to listen to a good joke, or help in some prank. Keep up the good work you have done here, Martha.

**ICELENE EDEBURN . . . . . Intermediate Group**

Clarion, Pa.

Franklin Literary

Competence, capability, efficiency—these terms may rightly be applied to Icelene. Always up to the mark in her school work without being a book-worm, ready for fun as much as the next one. Keep the combination, Icelene.



**GRACE EXTROM** ..... Intermediate Group  
Big Run, Pa.

Glee Club  
Opera '25  
Senior Class Play

Orchestra  
Y. W. C. A.  
Bancroft Literary  
S. S. S. Vaudeville

We dare you to be with Grace two minutes without laughing, even if you have the dark blues. Grace is never seen studying, yet always knows her lesson well. What would Becht Hall be like without Grace to cheer us up.

**BESSE EKIS** ..... Junior High Group  
Reynoldsville, Pa.

Treasurer Senior Class

Besse was the teacher's stand-by, or, as Miss Nair would say, the court of last resort. We more stupid people can only wonder how Besse ever learned so much, and having learned it, how she keeps it all stored in that mind of hers. All mysteries are not solved, so we can only wonder.

**RUTH FRADENBURGH** Intermediate Group  
Sandy Lake, Pa.

Y. W. C. A.  
Junior Basketball

Bancroft Literary  
Senior Basketball

"Rastus" has lived up to her rep as a minister's daughter, but we would not have her otherwise. A better pal or more true friend you will never find than our Rastus. Just mention "trouble" and Rastus is ready to comfort you in every way. We hope you will always keep your sympathy and tact, Ruth.

**INA GILMORE** ..... Intermediate Group  
Franklin, Pa.

Sequelle Staff  
Bancroft Literary

Senior Basketball  
Y. W. C. A. Cabinet

Why should a person smile when one meets Ina? Simply because one can't help it! Ina's smile and jolly nature are well known on the campus of C. S. N. S. Are you taking Math this semester? Take our advice and be one of Ina's friends. It will pay.





**MAUDE GILMORE** . . . . . Intermediate Group  
Franklin, Pa.

Vice-President Y. W. C. A.      Pres. Bancroft Literary '24  
Student Council                      Spanish Club

Maude is known as "best friend" to many girls in Becht Hall. "Everything in the right place at the right time" is Maude's motto. Her favorite occupation is placing large pictures in small trunks. For a pleasant evening, visit the Gilmore's.

**MARTHA GAYLEY** . . . . . Junior High Group  
Brookville, Pa.

Y. W. C. A.                      Glee Club  
Bancroft Literary              Operetta '25

"Her very frowns are fairer far  
Than smiles of other maidens are."

Here is a girl whose sweet, modest reserve balanced by friendly interest in her classmates' interest make her presence of greatest value to us. "Marsh" is rather a sad, wistful girl at times—at other times the liveliest girl among us.

**HILDA GEORGE** . . . . . Junior High Group  
Elwood City, Pa.

Bancroft Literary, Vice-Pres.      Orchestra  
Y. W. C. A.

Cheerful! Sympathetic! Willing helper!  
Why name them all separately—instead just name Hilda. We love her for her true womanhood, her quiet manners, and her charming ways.

**EMMETT GILLASPIE** . . . . . Junior High Group  
Altoona, Pa.

Varsity Basketball '25              Dramatic Club  
Football '24, '25                      "Dust of the Road."  
Captain Football '24              Debating Club  
Glee Club                              Senior Play  
Y. M. C. A. Cabinet              Orchestra

To all appearances, "Lefty" is a quiet fellow but further acquaintance with him banishes that thought. All men are popular at Becht Hall, but Lefty is extremely popular. Ask the girls. He likes to take his vacation separately. Ask Lefty.

**CHRISTINE DICKINSON**

Y. W. C. A.

President Student Council  
(Summer Term)

Christine's winning smile is always with her and she is a wonderful cure for the blues. She has made a name for herself during the summer terms because of her perseverance, ability and good judgement. We do not know what Christine has planned to do in the future, but we do know that her sunny disposition will make her road easy to travel.

**STELLA GRABOWSKY... Intermediate Group  
Duquesne, Pa.**

Y. W. C. A.

Franklin Literary

Stella divides her day into parts of four—jokes, giggles, laughing, and jokes some more. Stella and her giggle have a widespread reputation. Because her giggle is so very contagious, where you hear her you may be sure of finding a group of laughing girls.

**REUBEN PIFER..... Junior High Group  
Brookville, Pa.**

Y. M. C. A.

Debating Club

We have found Pifer to be a very dependable worker as long as we have known him, and we must add that his industry is rewarded by his high scholastic standing. From his success already attained in the teaching profession, there is no doubt as to his future.

**CORA MAURER..... Intermediate Group  
Pittsburgh, Pa.**

Y. W. C. A.

Cora is one of our most loyal members and hardest workers. Her class work is always done in a serious and sincere manner. Her record as a student is one to be envied.





**MADLINE HASKELL** ..... Primary Group  
Clarion, Pa.

Bancroft Literary                      Varsity Hockey '24

"Pie" is witty and full of fun. When a person is particularly blue, she makes one feel cheerful very soon. We know that she will make a splendid teacher, even though she may not teach more than twenty-five or thirty years. Who knows?

**LUCILLE HAUGH** ..... Primary Group  
Brookville, Pa.

Y. W. C. A.                                  Bancroft Literary

Lucille is one of the pleasant girls who always believes in smiling. She has been with us only a year, but in that time she has made hosts of friends. We hope that her friendships will be lasting ones, for Lucille deserves true friends.

**MILDRED HENRY** ..... Primary Group  
New Bethlehem, Pa.

Franklin Literary                      Orchestra  
Glee Club                                  Y. W. C. A.  
Operetta '25

Mildred is a shy little girl but everyone is glad to welcome her and she has lots of friends at Clarion. Don't be afraid, Mildred! You've had the mumps. The worst is over!

**CATHERINE HOWE** ..... Primary Group  
Oil City, Pa.

Attendant to May Queen              Junior Basketball  
Clarion Call Staff                      Varsity Basketball '25  
V.-Pres. Student Council '24        Y. W. C. A. Cabinet  
Junior Hockey                              Dramatic Club  
Varsity Hockey '25                      Treasurer Class '24  
Bancroft Literary

"Kate" knows how to make an "A" record—an enviable knowledge in our eyes.

"She is always full of laughter,  
Always full of glee,  
Just look at her picture  
And this you will soon see."

**KATHERINE HILE** ..... Primary Group  
Lumber City, Pa.  
Y. W. C. A.

Kathryn declares that she will always be a school-marm but we have our doubts of that. She hasn't been a member of our class very long, but quite long enough for us to feel confident that she will not teach school all her life.

**ESTHER HUTCHISON** ..... Primary Group  
Falls Creek, Pa.  
Y. W. C. A. Bancroft Literary  
Glee Club '25

Esther, at first sight, gives an impression of capability, and in this case, the first impression is correct. Dependable too, and always ready to lend a helping hand.

**ELLEN HENRICKSON** ... Intermediate Group  
Tidioute, Pa.  
Y. W. C. A. Bancroft Literary

Ellen isn't exactly shy—just rather reserved in a crowd. But when you have her alone! There is no limit to her jokes and conversational powers then. Her retiring manner is only a deceiving mask, through which everyone should see.

**BESSIE HINDMAN** ..... Intermediate Group  
Bancroft Literary

Quiet as she is, those who know Bessie realize that she is a friend worth having. She has all the qualities that belong to a good teacher, and her sincerity of purpose will be an unailing guide throughout her career.





**PAULINE HINDMAN . . . . . Intermediate Group**  
Knox, Pa.

Secretary Class '24  
Y. W. C. A. Cabinet  
Dramatic Club  
S. S. S. Vaudeville

Senior Class Play  
Glee Club '24, '25  
Operetta '24, '25  
Clarion Call Staff

"P'line" is one of the most loyal and enthusiastic members of the class of '25. She is always full of pep and ready for fun, but she is also an "A" student. At first glance, P'line seems very sedate but when you know her, oh, my! P'line's prospects are bright indeed if Life always flows so smoothly for her.

**ALICE HEPLER . . . . . Junior High Group**  
Clarion, Pa.

Dramatic Club  
Glee Club '24

Varsity Basketball '25, '25  
Varsity Hockey '24, '25

Who can find a better all-round sport than "A"?!

She is in every athletic activity and we are proud of her in this capacity especially. Al is very decided in her manner, but not at all stubborn. You strike the happy medium, don't you, Al?

**TWILA HUGHES . . . . . Junior High Group**  
DuBois, Pa.

Franklin Literary  
Y. W. C. A.

Glee Club  
Operetta '25  
Sketch Club

Twila can be very quiet at times but oh, at other times how she does enjoy teasing her friends! Twila says she is going to be a school teacher but we think that some dyke may have something to say about that.

**FLORENCE IRWIN . . . . . Intermediate Group**  
Clearfield, Pa.

Franklin Literary  
Assistant Cheer Leader  
Franklin Literary

Y. W. C. A.  
Varsity Hockey '25  
Varsity Basketball '25

"Corny" has no close rival as the liveliest girl in the school. Who ever saw her moody or blue? She couldn't even keep still when she had the scarlet fever. Even the doctor had to admit that Corny was the liveliest scarlet fever patient he ever had. We love you because of your pep, Corny.

**WINIFRED JOSEPH** ..... Primary Group  
Washington, Pa.

Y. W. C. A.	Dramatic Club
Critic Franklin Literary '24	"Gypsy Love Moon"
Junior Basketball	Glee Club '24, '25
Senior Basketball	Operetta '24, '25

This wee maid from Wales has endeared herself to all who know her. We are very proud to have her in our class and she has proved her worth in her literary talent. However her time is not all spent in studying and writing and we find her a very pleasant companion who likes to play tricks on us and keep us in the best of humor. We are very sure that she will succeed in her work and our best wishes go with her wherever it may take her.

**EDITH JAUN** ..... Intermediate Group  
Tionesta, Pa.

Edith has not been a member of the class of '25 very long, but she is already well liked. She is enthusiastic about everything she does and this is a great thing in her favor. Edith is a girl to whom everyone listens at all times. And this is a sign of a forceful personality, we must admit.

**CHARLES JONES** ..... Junior High Group  
Reynoldsville, Pa.

Debating Club	Mgr. Basketball '23
Varsity Basketball '24, '25	

"Chuck" is a friend to all, but no closer than the school laws allow. Some day we may have the pleasure of listening to Chuck as a famous orator. Who knows? We hope so, Chuck.

**ANNABELLE KNARR** ..... Primary Group  
DuBois, Pa.

Y. W. C. A.	Franklin Literary
-------------	-------------------

AnnaBelle is always ready for work and ready for play. She seems to have a special gift for doing everything at the proper time. We know that AnnaBelle will make an efficient teacher.





**EUGENIA KUCENSKI.....Junior High Group**  
 Instanter, Pa.

Orchestra                      Glee Club '24, '25  
 Operetta '24, '25

Here is our fun-loving "Genie." She will always have one of the brightest spots in the memories of her classmates. Dull? Go to Genie's room. You will always find a welcome there and we will guarantee that you won't long be dull.

**MARGARET LAWSON...Intermediate Group**  
 Russell, Pa.

Y. W. C. A.                      Bancroft Literary

"Say, kids, do you have an extra bar of soap?" we know that Margaret is near. Margaret is very industrious and her school work shows the result of this industry.

**IMOGENE LEWIS.....Primary Group**  
 Shippenville, Pa.

Bancroft Literary                      Clarion Call Staff

"Jean" is a quiet little lady, but this is just another case of good things being done up in small packages. Maybe you will teach, Imogene, and maybe you won't, by all accounts. However—

"Success to you  
 Whatever you do."

**GERTRUDE LUCART.....Primary Group**  
 Tylersburg, Pa.

Y. W. C. A.                      Bancroft Literary

"Peg" is one of our industrious students—very quiet but—you know! Peg's wit is really charming when she chooses to display it. The longer we know Peg, the better we all like her.



**MARGARET LYNN** ..... Primary Group  
Shippville, Pa.

Glee Club  
Operetta '25

Y. W. C. A.  
Orchestra

Although "Peg" has been with us just this last year, we have learned to love her. We admire her air of assurance and general dependability. We like to think of Peg as an inspiration to all she meets, in and out of school. Keep your aims as high always, Peg. You will reach your goal.

**HILDA MAYS** ..... Primary Group  
Marienville, Pa.

Y. W. C. A.  
Bancroft Literary

Glee Club  
Operetta '25

"A sunny smile, a welcome glad,  
A pleasant, coaxing way she had."

This is one of our tiny girls. But Oh! What a big heart she has. Quiet, happy and pleasant—that's Hilda. Always a cheery word for every one and a beaming glance from those pretty blue eyes. We wish for you all the happy things in this life, little Hilda.

**CURTIS MARTIN** ..... Junior High Group  
Rimersburg, Pa.

Vice-President Y. M. C. A.  
Debating Club

Glee Club  
Stage Mgr. Dramatic Club  
Plays

Martin has always done his part well in every task set before him. He extends a helping hand to everyone at all times. The Dramatic Club is especially indebted to Martin as stage manager for its plays. Every one has a good word to say for Martin.

**GENEVIEVE MONFRE** ..... Primary Group  
Oil City, Pa.

Y. W. C. A.  
Franklin Literary

Glee Club '24, '25  
Operetta '24, '25

Jolly, good natured, and full of fun—Gen is liked by everyone. Wherever you find Gen, you find an atmosphere of good times. Gen once known could never be forgotten. But to say that she is always jolly is not to say that she can do nothing worth-while for we all know how Gen showed her ability as a student teacher.





**JOSEPHINE MONFRE..... Intermediate Group**  
Oil City, Pa.

Y. W. C. A.  
Franklin Literary  
Glee Club '24, '25  
Operetta '24, '25  
Dramatic Club  
S. S. S. Chairman

Clarion Call Staff  
Sequell Staff Advert. Mgr.  
Class Donor  
Sketch Club  
Senior Basketball  
"Gypsy Love Moon"

To mention all of Jo's good qualities is an almost impossible task, but her exceptional business ability and general efficiency has surely helped the class of '25. When a manager was needed for our affairs, we always called on Jo. And is she popular? Just look above.

**MILDRED MOWREY..... Junior High Group**  
Reynoldsville, Pa.

Y. W. C. A.  
Franklin Literary

Senior Basketball  
Glee Club  
Operetta '25

"A merry heart maketh a cheerful countenance."

Milly always has a pleasant smile for everyone she meets. But she is not too frivolous. Never have we found her shirking her duties. Congenial, sympathetic, and cheerful—she makes the best of companions.

**ELEANOR MURRAY..... Primary Group**  
Reynoldsville, Pa.

Y. W. C. A.  
Spanish Club

Sec'y. Bancroft Literary '25  
Operetta '25  
Glee Club

To some people, Eleanor might seem to be very quiet—but not to those who know her better. She can be very studious, but when she has that merry twinkle in her eye, we know she has forgotten all about work. She has that look especially when the mail brings her daily letter from—Guess who?

**MARY MOORE..... Intermediate Group**  
Lucinda, Pa.

Y. W. C. A.  
Franklin Literary

Glee Club '24, '25  
Operetta '24, '25

Everyone likes Mary. One just can't help it. Mary with her sweet disposition is a comfort to everyone. That she is optimistic is shown by her cheerful grin. Can we ever forget that grin? Mary's and Ina's grins are rivals in the displaying of happiness.

**MILDRED McCausland** . . . . . Primary Group  
DuBois, Pa.

"A sweet little maid is she,  
When she grows up, how nice she'll be."

Milly's sunny smile is always helping some one over a rough spot. We may add that her smile is a true index to her disposition.

**ROSE McCloskey** . . . . . Primary Group  
East Brady, Pa.

Y. W. C. A. Franklin Literary

Shure and 'tis Irish she is! Her calm composure even under trying difficulties, is the envy of all her friends (although she has been known to lie awake all night before going home for vacation). But that isn't quite as bad as packing your traveling bag a month beforehand, is it, Rose?

**GRACE McQueen** . . . . . Primary Group  
Shippenville, Pa.

Y. W. C. A. Franklin Literary

How many people really know Grace? Not many, because to all appearances she is so quiet. But we have enjoyed that keen wit she displays to her friends. That little bit 'o Irish just can't keep itself hidden. The better we know Grace, the more sterling qualities we find in her.

**DOROTHY McCullough** . . . . . Intermediate Group  
New Bethlehem, Pa.

Glee Club '24, '25	Y. W. C. A.
Operetta '24, '25	Bancroft Literary-Sec'y.-
Senior Hockey	Treas. '24
	President Class '25

Do you wonder why "Dot" has so completely won us all? These are a few of the reasons—contagious good humor, pep, and interest in our class. Dot is our class president and we are certainly proud of her. May the teaching profession mete out to Dot all that we know she deserves.





**KATHRYN MCGIFFIN . . . Intermediate Group**  
Brookville, Pa.

Y. W. C. A.	Glee Club
Bancroft Literary	Operetta '25

It is with many regrets that we shall bid Kathryn good-bye after our pleasant year together. She has always taken an active part in all our school affairs. Her highest ambition is to be an excellent teacher, and from what we know of Kathryn we are sure that this ambition will be realized.

**LUCY McLAUGHLIN. . . . Intermediate Group**  
Clarion, Pa.

Lucy is one of our down town girls. We are very sorry that she did not live in the dormitory, for all of us would have liked to have known her better. We do know that she has a propensity for getting things done, and this quality will take her far.

**VIOLET McMAHON. . . . Intermediate Group**  
Franklin, Pa.

Secretary Senior Class	Glee Club
Clarion Call Staff	Operetta '25
Sequelle Staff	Senior Basketball
Sec'y. Franklin Literary '24	Y. W. C. A.

"Vi" is a diligent student and makes every movement count, but she always manages to get her work done in time to join any merriment that is in the air. We are glad of this, for we have enjoyed her entertaining speeches and antics. Vi has a very wide circle of friends at C. S. N. S. May she always have as many!

**MARJORIE McELRAVEY . Junior High Group**  
Sligo, Pa.

Y. W. C. A.	Glee Club '24, '25
Bancroft Literary	Operetta '24, '25
	Y Choir

"Kids, I have so much work to do."

We can't find a more industrious girl in the Senior class than "Margie." She is just as capable and dependable as she is industrious, too. It is rumored that she has a light cut every night, except when she is Proctor. What, Marjorie?

**MARY McNEIL**..... Junior High Group  
Sigel, Pa.

Sequelle Staff                      Junior Hockey  
Varsity Basketball '24, '25      Varsity Hockey '25

Mary is one of those people that can always be depended upon. In basketball, she makes the scores; in classes, she answers the hardest questions; in social affairs, she captures the nicest fellows. Her record at C. S. N. S. is one to be envied.

**MAMIE OLSON**..... Junior High Group  
Kane, Pa.

Y. W. C. A.                      Sketch Club  
Bancroft Literary

Mamie loves to argue next best to working arithmetic problems. Her exceptional mental ability is displayed in both. But not a care has Mamie. She takes life as it comes. We all agree that this is the best thing to do—best for her and for everyone else.

**MARGARET PROSSER**..... Primary Group  
Franklin, Pa.

Franklin Literary                      Dramatic Club  
Y. W. C. A.                      Glee Club  
Sketch Club                      Operetta '25  
Class Donor                      Y Choir

You should hear our Peg tell stories. She can tell them in the funniest way you ever heard stories told. However, this is only one of the many accomplishments that make her dear to us. Peg is indispensable, we all agree, as a carrier of fun and laughter.

**MARIE PAVLICK**..... Intermediate Group  
Duquesne, Pa.

Bancroft Literary                      Glee Club  
Dramatic Club                      Operetta '25  
"Gypsy Love Moon"

We will always remember Marie for her dramatic ability. This she has shown throughout her course at Clarion Normal School. We have missed it this last semester, Marie. But we must remember that our loss is another's gain.





**NINA PETERSON** ..... Intermediate Group  
Grand Valley, Pa.

Franklin Literary                      Y. W. C. A.

This Swedish maiden with her golden curls and attractive smile for all is the wonder of the Senior class. Ever since her arrival at C. S. N. S. she has taken an active part in all school affairs. Nina is ever the same, calm, serene. May you always be so untroubled, Nina.

**CARRIE POTTER** ..... Intermediate Group  
Rockland, Pa.

Y. W. C. A.                              Bancroft Literary

Carrie is one of our twins, the better or worse half we do not even yet know. Oh, Carrie, if you only knew how brain-racking it is when either of you changes the part in your hair, you would have mercy upon us. But what does it matter if we can't tell you apart? We like you both.

**EDNA POTTER** ..... Junior High Group  
Rockland, Pa.

W. Y. C. A.                              Bancroft Literary

An industrious, capable girl is Edna. If she proves as successful in teaching as in talking, she will be a huge success. By the way, in case we have her mixed with her twin sister, refer to Carrie.

**MRS. MARTHA RENN** ..... Primary Group  
Clarion, Pa.

Mrs. Renn is well-loved and respected by us all. She says that she smiles because it takes only four muscles to make a smile and it takes eighteen to frown. This same smile has endeared her to us all. We hope that misfortune is never so heavy that it causes her to lose that bright smile.

**SALLIE READ**..... Intermediate Group  
Detroit, Mich.

Y. W. C. A.                      Sec'y, Student Council  
Franklin Literary

"There is nothing in the world so irresistibly contagious as laughter."

Sallie, that pretty dark-haired maiden, is so brimful of sparkle and merriment, that it fills her jolly laugh and peeps out from her soft, dark eyes. What would we do if it were not for Sallie's lively music? We may add here that she is particularly fond of "Jazz."

**PAUL ROSS**..... Junior High Group  
Corsica, Pa.

Sec'y, Y. M. C. A.                      Basketball  
Debating Club                      Football  
Sequelle Staff                      Orchestra  
Vice-President Senior Class              Glee Club

"Deacon" is a lad with pep who likes to torment the saxophone. He has shown his athletic powers in basketball and his mental abilities in class work. A mixture of the studious, athletic, and fun-loving is Ross—a rare mixture, indeed.

**FLORENCE SCHILL**..... Primary Group  
Shippenville, Pa.

Clarion Call Staff                      Bancroft Literary

A competent, good-natured girl is Florence. She always has her work done and nothing ever excites her. Her aim is to be an ideal primary teacher and that won't be hard for one of her character to realize. We know that she is capable of enduring all the trials of her chosen profession and still wear that same serene look that her classmates shall never forget.

**BLANCHE SHEESLEY**..... Primary Group  
Punxsutawney, Pa.

Y. W. C. A.                      Glee Club  
Vice-Pres. Student Council              Operetta '25  
Franklin Literary

"Never a glimmer of sun so fair, is the light of her wonderful hair."

Behold our Blanche! She looks meek, but oh, how mischievous she really is! When one wants an all-round companion, there is none better than Blanche. We all go to her when we have troubles and she bravely urges us on. Although she has many friends, she still clings to Bessie, her constant companion.





**FLORENCE STORMER** ..... Primary Group  
DuBois, Pa.

Franklin Literary Y. W. C. A.

Quiet, modest Florence! But do you really know her? If so, you have probably changed your mind in regard to this curly haired maiden for Florence is a jolly good sport. As to her nature,—kindness and generosity prevail, while her interests are centered in Art and Cross Word Puzzles. A girl with the ambition she has cannot but succeed.

**ALICE SWARTZ** ..... Primary Group  
Reynoldsville, Pa.

Bancroft Literary Y. W. C. A. Spanish Club

Alice is a girl we all admire because of her lady-like qualities and her ability as a faithful and efficient worker. In fact she has a great many of the characteristics essential to a good teacher. We like you, Alice, and we are glad you became a member of our class.

**EDYTHE SWARTZ** ..... Primary Group  
Anita, Pa.

Y. W. C. A.	Operetta '25
Varsity Hockey '24, '25	Junior Basketball '24
Glee Club	Senior Basketball '25
Pres. Franklin Literary '25	Sketch Club

"Swartzie" is a fun-loving girl who rooms on third floor but spends most of her time on second. When you hear someone giggle, you may be sure that Swartzie has been playing a joke on someone. Her chief aim seems to be to kill time, but occasionally we do find her working.

**LEOTA SAYERS** ..... Intermediate Group  
Cranberry, Pa.

Y. W. C. A. Cabinet	Glee Club
Critic Bancroft Literary '24	Operetta '25
Pres. Bancroft Literary '25	Sequelle Staff

Leota's friendliness has helped many a girl over the stony places in school life. She rides a hobby, but it is hard to decide which appeals to her most—taking pictures or collecting Bills. Whether you want some homemade candy or only a smile, ask Leota.



**ETHEL SCHWAB** ..... Intermediate Group  
Pittsburgh, Pa.

Y. W. C. A.  
Student Council

Bancroft Literary  
Glee Club

Do you need some help? Would you like to tell your troubles to someone? Do you want to have a good time? Call on Ethel Schwab—friend to all. Ethel left us at the end of the first semester and we have searched in vain for someone to take her place.

**EVA STONE** ..... Intermediate Group  
Westville, Pa.

Bancroft Literary

S. S. S. Vaudeville

Here is "Stonie." We never quite knew whether Stonie was in fun or in earnest; joking or serious. But we eventually discovered that she is generally in fun. Just watch her "eyes that talk" and the corners of her mouth to make sure.

**WILLIAM SLATTERY** ..... Junior High Group  
DuBois, Pa.

Clarion Call Staff  
Sequelle Staff Business Mgr.  
Y. M. C. A.  
Football

Debating Club  
Glee Club  
Basketball '25  
Band

Ever since Bill joined our class, he has been a loyal supporter of the Blue and Gold in every way. Any task assigned, Bill was not only promptly begun, but followed to creditable completion. We predict that Bill will make a great success in business.

**CLIFFORD SMITH** ..... Junior High Group  
Reynoldsville, Pa.

Orchestra

S. S. S. Vaudeville  
Debating Club

Jazz, as every one knows him, is an all-round good sport and a true friend. Although hard work and worry are not known to Jazz, he is always ready to lend a helping hand in every class activity. We all wish him success in his career.





**MIRIAM SNOKE**..... Primary Group  
Clearfield, Pa.

Senior Play  
Franklin Literary

Y. W. C. A.  
Sketch Club

"Snookie" and "Corny"—what a combination! A mixture of fun, good-nature, pep, earnestness, and loyalty! Snookie is one of our class artists. Perhaps some day she will help to give us the name of "The Famous Class of '25." Who can tell?

**ELLEN SONGER**..... Primary Group  
Marienville, Pa.

Y. W. C. A.

Bancroft Literary

Classes are no worry to Ellen. She is always prepared and always recites. You may infer from this that she is a favorite with the teachers. We may add that she is also a favorite with her classmates.

**BERNICE STAHLMAN**..... Primary Group  
Limestone, Pa.

Sketch Club  
Spanish Club

Franklin Literary  
Sequelle Staff  
Y. W. C. A.

Bernice is seemingly quiet, but appearances are quite often deceiving. No one could be more entertaining and jolly than Bernice, with her pleasant little smile and droll good humor. Bernice declares that Art is the only thing in which she is interested when it comes to work but we don't believe her. She would do anything for C. S. N. S. and the class of '25.

**JULIA STAUFFER**..... Primary Group  
East Brady, Pa.

Y. W. C. A.

Julia is one of the most well-liked girls of our class. Her popularity is accounted for when we consider her charm, prettiness, and unusual amount of good common sense. We wish her good fortune throughout life.

**GRACE STEUART..... Junior High Group**

Grace is an especially good student and a likeable girl, too. We regret that she lives down town as we should all like a chance to know her better.

**THOMAS E. SUMMERVILLE Junior High Group**

Y. M. C. A. Debating Club

Tom is a shining example of the calm, untroubled student. That unruffled look of his has reassured and encouraged many a prof. He really does deliver the goods, too.

**RUTH THOMPSON.....Primary Group**

Shippville, Pa.

Glee Club '24, '25 Varsity Hockey '25  
 Sec'y. Y. W. C. A. Operetta '24, '25  
 Junior Hockey '24

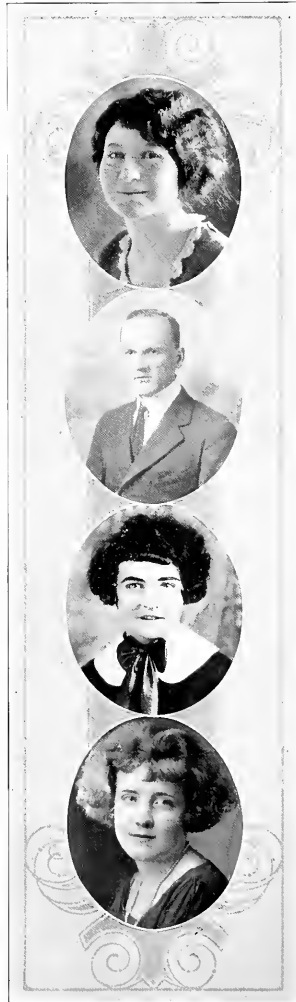
Ruthie is always smiling. Her cheery disposition has won her a host of friends at C. N. S. and she finds some good in all of them. She has a great teaching career ahead of her, we are sure, since it seems to be her one great interest. May your good nature never fail you, Ruth, and may that bright smile bring as much happiness to others as it has to the class of '25.

**LORRAINE TITUS.....Primary Group**

DuBois, Pa.

Glee Club '24, '25 Y. W. C. A. Cabinet  
 Operetta '24, '25 Bus. Mgr. Dramatic Club  
 Pianist Vesper Choir Plays  
 Sketch Club Clarion Call Staff  
 Franklin Literary Sec'y. Dramatic Club

LorRaine is one of the most popular girls in C. N. S. We have found that she has a mind of her own and does what she says she will. Stick to it LorRaine and you will undoubtedly win success. "When she will, she will; you can depend on it. When she won't she won't. There's an end on it."





**HARRIET TUTTLE..... Intermediate Group**  
Smethport, Pa.

Orchestra	Operetta '25
Y. W. C. A.	Student Council '25
Glee Club '25	Sequelle Staff

"Loved by all who know her."

Our Harriet is very industrious. Of her numerous accomplishments her ability as a pianist is most marked. Chapel would not be chapel if Harriet were missing from her position at the piano.

**ELEANOR WALTER..... Primary Group**  
Kittanning, Pa.

Senior Basketball '25	Franklin Literary	Sketch Club
-----------------------	-------------------	-------------

Eleanor is never more happy than when she is playing some prank on someone. Her favorite stunt is playing insanity by using toothpaste for froth. We are glad you recovered from that spell, Eleanor. For while we thought it might be serious—until you took your roll and laughed. We must all give credit to Eleanor for helping the girls at C. N. S. to have a good time.

**LUCILLE WILLMAN..... Primary Group**  
Kane, Pa.

Y. W. C. A.	Student Government
Orchestra	Operetta '25
Glee Club	Franklin Literary

What words can describe Lucille better than "little and spry?" Lucille's specialty seems to be music. A great music supervisor, did you say? We can easily imagine her as that some time in the future.

**MARVIS YOUKERS..... Primary Group**  
Knox, Pa.

Glee Club '24, '25	Franklin Literary
Operetta '24, '25	Varsity Hockey '25
Pianist Y. Choir	Y. W. C. A. Cabinet
Junior Hockey '24	Sketch Club
Treas. Dramatic Club '24	Senior Class Play
Vice-Pres. Dramatic Club '25	Sequelle Staff
S. S. S. Vaudeville	Maid of Honor to May Queen

If you want an all-round good pal, call on Marvie, always ready for anything, always in everything. Marvie swears she hates men, but—With your accomplishments Marvie, there is no danger of your being an old maid. Dancing, music, drawing,—is there anything that Marvie can't do? Marvie has much to be conceited about, but is still natural, modest, lovely in disposition, as well as in appearance. May you always be as unspoiled and attractive Marvie.



**CHARLES McCORMICK ..... Junior Group**

Limestone, Pa.

Debating Club

Music is one of Charles' great interests. Another is teaching, but that has no terrors for him—sincerity and ability are his safeguards. The good wishes of his class go with him.

*Names of Graduating Seniors whose pictures  
do not appear in Annual*

---

Mrs. Mary Roualt .....	Franklin
Lulu McIlvenny .....	East Brady
Mildred Rhodabarger .....	East Brady
Ruth Stanley .....	East Brady
Mrs. H. B. Muntz .....	Warren
Mrs. Gladys James .....	Rimersburg
Belle Thompson .....	Brookville
Rowena Specht .....	Ford City
Nathan Shappee .....	DuBois
Maude Alice Johnston .....	Homestead
Thomas Smathers .....	Limestone
Margaret Corbett .....	Clarion
Loletta Hays .....	Brockwayville
Bertha Hindman .....	Brookville
Margaret Riche .....	Warren

## *Class History*

---

There are many important things in the history of the class of twenty-five which should be recorded. Unfortunately there is not space nor time for anything more than a transient glance at even the most momentous events. In general, however, I believe that I am safe in saying that with this class came a great renaissance. The individuals wearing the colors of twenty-five immediately took up the routine duties necessary about the school and greatly improved every activity of the Normal. The great wisdom of the group was made apparent when Donald Campbell was elected as first year president. This thoughtful decision fortified the class for all time against any charges of amateurishness. Since then the class has carefully maintained its inherent dignity.

Needless to say, "twenty-five" came safely through the junior year. In fact it was rumored that at several of the strictly non-academic functions it was very imperative that the first year students attend. This was especially true of senior week, although the proceedings of that year are reported to have been only mildly strenuous.

It remained for the class of the quarter century to stage a genuine senior week. During this hectic seven day epoch the juniors of Clarion were compelled to undergo the most severe test that has ever been devised, when they were forced to listen to the campus reader recite innumerable stanzas from, "The Cremation of Sam McGee."

At the first meeting of the second year officers were elected. Just to show that the new seniors had lofty plans, Dorothy McCullough was chosen as president.

Shortly after this election the school conferred the first degree in its history when C. Martin was granted permission to add Z-E-R-O to his name. This is a much higher honor than an M. A., and it is the first time it has ever been given to an American.

Classes had not been organized for more than a month when an unexpected survey revealed the surprising fact that there were a few boys in school. This brought up plans for a football team, but the coach had difficulty in making an eleven from seven. Then too, after watching the senior girls wallop the junior co-eds at field hockey, the boys decided that the only way for them to keep up with the fairer sex in sports would be to wait for the next war.

In January of nineteen twenty-five the girls of J. George Becht Hall were relieved of much anxiety when Peg Prosser was finally able to locate her brother John.

The majority of the future school "marms" and master had by this time been given an opportunity to display their wares in the training school. The total number of depredations against the system has not yet been tabulated.

In closing this brief register it is well to state that the seniors of twenty-five were always religiously concerned about the welfare of the under-classmen; in fact, some of the young ladies kept a diligent eye over quite a few of the verdant juniors. They were always forward in advocating new restrictions to be placed on the dormitory girls, and at times were very enthusiastic about changing quiet hour to Saturday evening. However, all in all the class of twenty-five represents one of the most serious-minded groups of students who have ever said "good-bye" to Clarion Normal.

James Binney.

## *Class Poem*

---

"Wisdom," so saith the Wise One,  
"Is more precious than rubies or gold."  
Ah, then! What a buccaneer's treasure  
Lies deep in our ships' guarded hold.

For we have the wisdom of Wilson,  
And we have the methods of "Dad;"  
And we have the warning of "Wilkie,"  
Thus, "Put not your trust in a fad."  
We have talked our heads off for Miss Edgar,  
We have written them blank for Miss Nair,  
But we thank these two for the knowledge  
Our minds have stored in them there.  
We have written new textbooks in history,  
And daily we've handed them in;  
We've sailed 'round the world for Miss Lemon,  
And hidden our fears with a grin.  
For we're wise—so they say,—and we're polished,  
All our lives for the Truth we shall strive;  
But they'll fruitlessly search through the season,  
For another Nineteen Twenty-five.  
So it's been,—good and bad, poor and perfect,—  
(Though the perfect has rarely been seen)  
But we love the dear place, and the buildings;  
And its memory will ever be "Green."

If wisdom be worth more than rubies,  
And knowledge more than fine gold,—  
Ah then! What a buccaneer's treasure  
Lies deep in our ships' guarded hold.

P. Arnold, '25.



## THE CLARION CRYSTAL

JUNE 1940

Winifred Joseph, Mary Baldwin, Editors

### SCIENTIST SAILS FOR AFRICA

New York—Clifford Smith, the famous scientist and his wife (formerly Miss Sallie Read) left today on the Caribbean for South Africa. The purpose of the trip is to study the *Carnosorus olypa lae* and to write on its habits. Mr. Smith expects to return to America within the year in order to publish his book.

### \$5,000 FIRE AT CLINGERVILLE

Clingerville—The Kitten Farm at Clinger ville was destroyed last night when a fire, caused by lightning, was started. Mr. Clinger the owner, escaped uninjured. Misses Josephine Monfre and Violet McMahon, assistants, were burned, though, it was learned today, not seriously. The Mowrey Fire Department arrived too late to be successful and the fire caused great disaster among the kittens.

### STATE PRESIDENT WOMEN'S CLUBS HERE JULY 4

On Saturday, July 4, the Child Welfare and the Women of the Round Table will have as their guest Miss Hilda Carlson, State President of the Federated Women's Clubs. The clubs will give a dinner at the Loomis House, and it is expected that there will be a large attendance. Miss Carlson is an unusually forceful speaker and it is certain that the address will be one of rare entertainment and instruction.

### CELEBRATED HUMORIST TO TALK AT COMMUNITY HOUSE TONIGHT

Tonight, at the Community House at eight o'clock, Miss Grace McQueen, the celebrated humorist will talk to us on "The Elevator, Life."

### McCULLOUGH POOL ROOM RAIDED CRAP GAME BROKEN UP

Last evening the police raided the McCullough Pool Room, lower Main. A crap game then in session was broken up. Several of the participants escaped. Those arrested gave their names as: Mary Moore, Julia Dickenson, Ellen Songer, Katherine Hile, and Gertrude Lucart.

### LEARN TO TALK Through Grace Extrom TEACHER OF EXPRESSION 16 South Mound St.

### STATE REFORMATORY FOR GIRLS INSPECTED

Polk-State Inspectors Gilmore and Fradenburgh visited the reformatory for girls here last week. They reported it to be in a very favorable condition and ably managed by Miss Marjorie McElravey.

### PAIN Eased In Three Minutes By BOWSER'S EASIT Sold At All Drug Stores

### HELEN ANTHONY, NOTED LECTURER HERE TONIGHT

Tonight, in the Town Hall, Miss Helen Anthony, of DuBois, will speak to us on "How To Keep A Man's Love." Miss Anthony is known throughout the country as a speaker of great ability.

### A SURE WAY TO REDUCE QUICKLY Grow Thin To Music Try BLANCHE SHEESLEY'S NEW REDUCING RECORDS

### SHEIKLESS SLIGO PROMISED BY MAYOR

Sligo—"The sheiks must go." This is the edict of Mayor Cora Maurer, presiding officer of the local police court.

No longer will waxed-moustache dandies be permitted to congregate in local waiting rooms and trolley terminals to make loving eyes at the flappers. The sheiks brought before the mayor are being heavily fined.

### SOCIAL NEWS

Miss Bernice Stahlman has returned from Italy where she has been studying Art. She is opening an Art School in the City with Miss Miriam Snoke as her assistant.

Mrs. Knarr announces the engagement of her daughter, Annabelle, to Mr. Francis Costello of Madrid, Spain.

Miss Esther Hutchinson of Falls Creek has accepted a position as primary training teacher at Clarion Normal School.

### POPULAR VICTOR ARTISTS WILL BROADCAST TONIGHT

At 9 A. M. Eastern Standard Time From Stations

Margaret Lynn will sing: "When You and I Were Young Maggie," and "Big Bad Bill." Lucille Willman will sing: "Follow the Swallow," and "Oh, Mabel." International Novelty Orchestra, Eugenia Kucenski directing, will play: "That Wicked Tango," "The Shark's Elbow," Fox Trot, and "The Bees' Knees and the Cat's Meow," Waltz, Harriet Tuttle assisting at the piano.

### SPORT NEWS

Ruth Anderson, heavy-weight champion of the North will meet Florence Stormer, heavy-weight champion of the South, Tuesday night for Championship of U. S.

### PURPLE AND GOLD DEFEATED

Coach Alice Hepler's team of Clarion Normal was defeated Monday for the first time in five years. The score was 2-1. Clarion held her opponent to one basket. During the first quarter Clarion made her only score, a one point basket. The game was well played on both sides.

Chas. Jones has accepted the offer to coach the Boy's Basket ball team of Clarion Normal School.

Emmett Gillaspie, title holder for track will appear at the Athletic Association Meeting Friday night. He has challenged Curtis Martin, English, for championship of the world.

### STAR HOCKEY PLAYER INJURED

Bessie Elder was injured in the International game Saturday. She was hit by the ball, breaking several small bones in the ankle. She was taken from the game during the last few minutes.

### BIRTHS

Word has been received from Ruth Thompson that her new incubator is a success, for twelve baby canaries were hatched in it recently.

London—Devotees of the sock-rolling fashion now are complaining of "chapping of the knees." This is nothing but a form of rash, Dr. Eva Stone says, caused by the sudden blowing of skirts away from the knees, which are thus exposed to the blustery March winds. Stockings which fit very close and high above the knees, Dr. Stone says, are an effective safeguard.

### POLICE BLOTTER

James Binney and Nina Peterson were arrested last evening for necking in the public park. Fine \$50.00.

Elizabeth Donley was arrested on charge of disorderly conduct.

Besse Ekis was arrested Monday evening for driving while intoxicated.

### WANT AND FOR SALE ADS

WANTED—A pair of horn-rimmed spectacles. That bit o' Irish in my eyes makes my husband jealous. Rose McCloskey.

WANTED—A pair of stilts substantial enough to support me when dancing with my husband. Hilda Mays.

FOR SALE—A giggle, cheap, to quick buyer. Must sell or leave town. Eleanor Walter.

FOR SALE—Extra vacations at a suitable price. Have too many for my own use. Julia Stauffer.

WANTED—A fliver-cheap- that can make the Brookville hill on high. Must not have more than 20 rattles and 5 squeaks. Kathryn McGiffen.

WANTED—Clerks for the Hays Variety Store. Apply 15 Main Street. Red haired girls need not apply.

FOR SALE—Peerless hair dye, guaranteed to turn red hair black. Apply Bessie Hindman Bobber Shoppe.

### AEROPLANE DASHES TO EARTH

Due to the presence of mind of Eleanor Murray, pilot, and Ellen Songer, Mechanic, no one was hurt when their plane dashed to earth as a result of engine trouble. The passengers were Miss M. Lawson, teacher and Miss E. Hinrickson, R. N., of Tidouthe en route to Clarion, where they were to attend the annual Alumni Banquet.

### SOCIAL NEWS

Miss Madeline Haskell will entertain at the Country Club this evening in honor of Miss Mary McNeil, bride elect. Covers will be laid for thirty.

Miss Bertha Amsler, president of Woman's Club, announces that there will be a business meeting to be held at Miss Alice Swartz's apartment, Tuesday at 7 o'clock.

Miss Genevieve Monfre of Oil City has accepted the position of private secretary to Mr. John Prosser, principal of Clarion Normal School.

### Y. W. C. A. ORGANIZED

Strattonville—Miss Esther Allio and Miss Pauline Hindman, State Representatives of the Y. W. C. A. will organize a Y. W. C. A. here tonight. A great campaign will start tomorrow for the new building.

### SURE MEANS TO BEAUTY

#### "THE BEAUTY SHOPPE"

Mary Cook and Ruth Bottenhorn  
Managers

Phone 1116 76 State St.

### NEW FACULTY ELECTED AT CLARION NORMAL

Monday evening the board of directors of Clarion Normal School held their annual meeting to elect teachers. The following teachers were elected for the ensuing year:

Dean of Women.....	Lucille Haugh
English.....	Genevieve Clark
Education.....	Harriet Atwell
Physical Education.....	Florence Irwin
Science.....	Ina Gilmore
Librarian.....	Ethel Schwab
Dean of Instruction.....	Leota Sayers
Music.....	Hilda George
Expression.....	Marie Pavlick
Registrar.....	Mildred Henry

It is interesting to note that all of the new faculty are graduates of the institution in which they will now teach.

### FAMOUS POET INJURED IN AUTO- MOBILE ACCIDENT

Phyllis Arnold, rising poet, was seriously injured when the car in which she was riding skidded and turned over on the North Point Bridge. The car was driven by Floyd Faulkner, driver for the Howe Taxi Company. The driver was uninjured, owing to his timely leap from the car.

### FUNERAL DIRECTOR

Thomas Smathers—funeral director and embalmer, floral designs and coffin robes.

3056 Black Avenue

"You Wreck 'Em, We Get 'Em."

### THEATER LAND

GRAND  
YOUKERS AND BELL CO.

Presents  
RUSSIAN POLONNAISE

Youkers and Bell are supported in this by the famous Gold Line Chorus: Wilda Cook, Margarette Campbell, Edna Potter, Carrie Potter, Margaret Prosser, Icelene Edeburn, Florence Schill

Added Features—Roller Skating: LorRaine Titus. Sailor's Hornpipe, Swartz and Hughes

ORPHEUM  
MAX DUNHAM

Presents  
GERALDINE DOVENSPIKE  
in

#### "THE ONE WOMAN"

All Star Cast—Myrna Conver, Bill Slattery, Imogene Lewis, Mildred McCausland, Verner Creswell, Charles McCormick.

Play written by Martha Eschrich.

Directed by Mamie Olson.

Century Comedy—"Come On," featuring Stella Grabowski.

### CORSICA PASTOR SPURNS PAY RAISE

"I am not willing to accept an increase of salary," said the Reverend Paul Ross of the Zion Baptist Church of Corsica today.

"I refuse to take so much of the churches' money," he added. The church is one of the most prosperous in Corsica and recently voted the pastor an increase. The Reverend Mr. Ross is of Scotch descent.

## Class Will

---

WE, the class of 1925 of Clarion Normal, Clarion, State of Pennsylvania, on this ninth day of June, in the year of our Lord, one thousand nine hundred and twenty-five, some of our members being of sound mind and body, and desirous of settling all school affairs before entering upon our life's work which we have been prepared for, to a small degree, by this college, do hereby make our last will and testament.

1. We will and bequeath to the faculty the world's supply of rule books in order that they may be able to devise an additional list of restrictions.

2. To Mr. Wilkinson we will all the protractors available in order that he may get the right angle on current events.

3. We bequeath to Mr. Wilson our respective I. Q's. We hope that he will treat them with the respect due them.

4. To Dad Welsh we will the special privilege of issuing A's to one-half of his students.

5. To Miss Bentz we leave the privilege of sounding a whistle to let us know that she is within seeing distance.

6. We give to Miss Nair the ancient home of Father Jupiter on Mt. Olympus in which she may conduct mythological symposiums.

7. We bequeath to Miss Lemon the new moving picture machine which she may use in all classes of geography. With this in use we know the Juniors will be able to make up their lost sleep.

8. Very gratefully we leave to Mr. Huston our magnificent library, providing he agrees to have more reference reading done next year.

9. To Mr. Delancy we will the right to request modern authors to produce more novels and short stories so that time will not be wasted in composition classes because of the lack of suitable material.

10. We bequeath to Mr. Moody the privilege of writing not more than fifteen volumes on "Gas and Its Proper Use."

11. We will to the critic teachers the pleasant memories of this year's work which we trust may be far more pleasant next year.

12. We will and bequeath to the class of '26 the right to instruct the Juniors in the narrow and straight way. They must, however, show the same kindness and solicitude to the new class, which we always had for them.

13. To this class we give the privilege of reciting poetry at faculty meetings, and practicing on the Saxophone in the library from seven to eight each evening.

14. To the student teachers of '26 we give the right to present lesson plans which will be accepted by the critic teachers.

15. To the students of '26 we will the privilege of spooning in J. George Becht Hall, and also the right to hold hands with the court house clock.

16. To all the students of the C. S. N. S. we give the privilege of playing volley ball in the library. This may be changed to tag, or blind man's bluff upon application to the librarian.

17. To John Bunnell we will Leota Sayer's correspondence course in reducing exercises.

18. To Jake Jones we give the privilege of bossing the kitchen girls, and the right to play the electrical piano at any hour after midnight.

19. We bequeath to Jane Boyd the gift of gab now possessed by Cresswell.

20. We bequeath to Harold Loos the extended vacations of Emmett Gillaspie.

21. We will to Ruth Wilkinson the privilege of bossing a man for the period of three months.

We hereby name, constitute and appoint our principal, Clyde C. Green as executor of this our last will and testament.

In witness whereof, we have hitherto set our hands and seal this ninth day of June, 1925.

Signed, sealed, published, and declared as and for the last will and testament of said testators in the presence of us.

Henry Caldwell, Registrar.

Foster Mohney, Bursar.

Howard Curll.

Witnesses.

B. Paul Ross '25.

# *Juniors*





JUNIOR CLASS

## *Junior Class Officers*

---

*President*.....Harold Loos

*Vice-President*.....Margaret Wilkinson

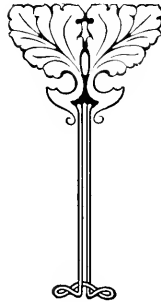
*Secretary*.....Willis Barber

*Treasurer*.....Helen Lynn

## *Class Colors*

---

Red and White







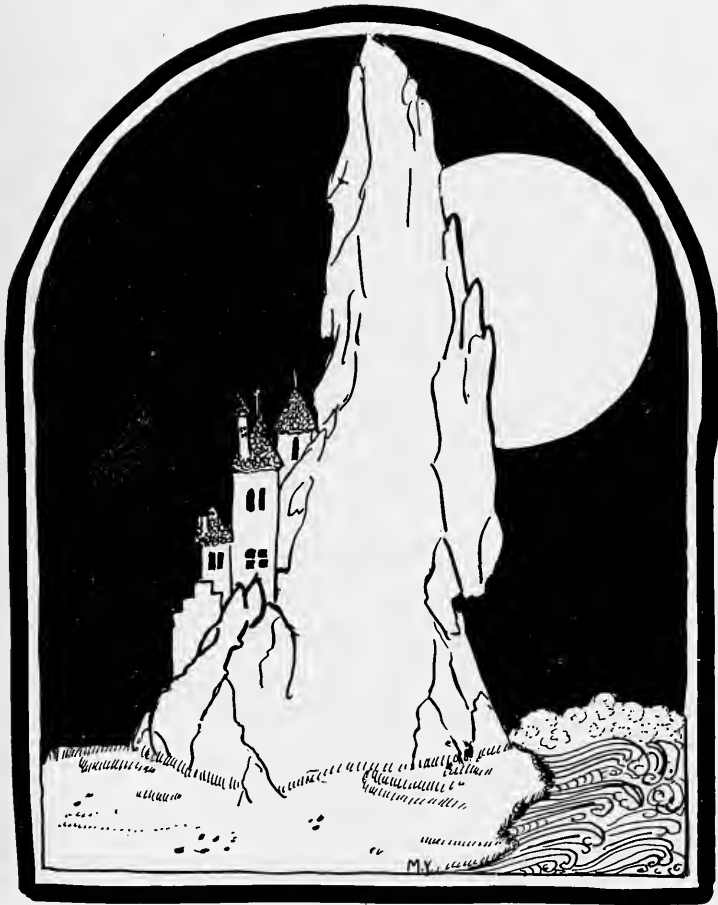
## *Clarion Call Staff*

---

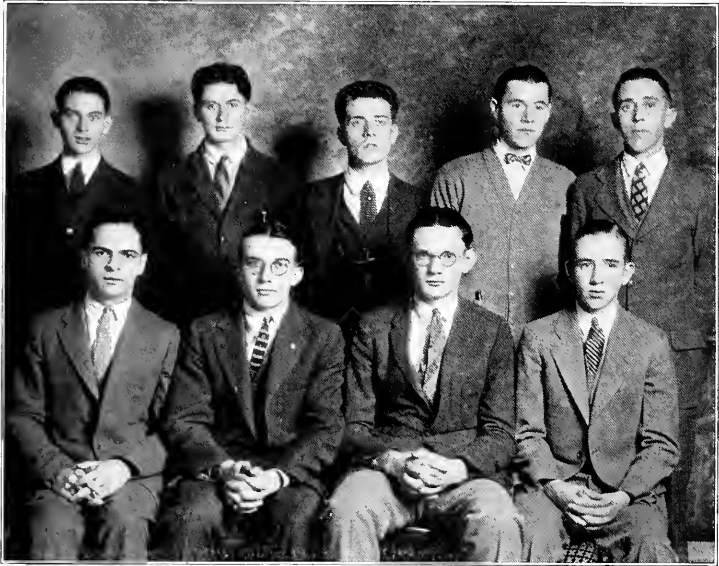
<i>Editor-in-Chief</i> .....	Clair A. Himes
<i>Assistant Editor</i> .....	Elma Harsh
<i>News Editor</i> .....	Mary McNamara
<i>Organization</i> .....	Mary Gosetti
<i>Literary Editor</i> .....	Walter Mooney
<i>Athletics Editor</i> .....	Grace Graham
<i>Jokes Editor</i> .....	Alice Harriger
<i>Exchange Editor</i> .....	Jane Boyd
<i>Alumni Editor</i> .....	Blanche Heasley
<i>Training School Editor</i> .....	Elizabeth Jones
<i>Senior Reporter</i> .....	William Slattery
<i>Junior Reporter</i> .....	Naomi Decker
<i>Circulation Manager</i> .....	Harold Loos
<i>Advertising Manager</i> .....	Braden Cook
Typists {	..... Mildred Gould
	..... Hilda Carlson
	..... Florence Stormer
	..... Bessie Elder



FACULTY CARTOONS



# ORGANIZATIONS



## Y. M. C. A.

One of the most important phases of the students' education is that received in the Y. M. C. A. This organization was fully re-organized this year. A new constitution was drawn up which went into effect in March. This was the beginning of a new era in the religious training of the young men of Clarion State Normal School. Many interesting programs were presented, in which every member participated, and every one acknowledged that this training was an important part of his college life.

The Y. M. C. A. meets Wednesday night of each week at 6:45 P. M. The meetings are of informal nature and every one feels free to express his opinions and to offer suggestions for the betterment of the organization. At the present time we have access to one of the finest equipped Y. M. C. A. rooms in any of the Normal Schools, and we appreciate it very much. At almost any hour of the day you will find some member of the Y in this room studying his next assignment for some lesson in the Normal.

The Y. M. C. A. believes in developing the individual in four phases of life, namely, the religious, the mental, the physical, and the moral. This four-fold aim had been carried out in all of the weekly meetings.

### OFFICERS

Clair Himes .....	<i>President</i>
C. M. Martin .....	<i>Vice-President</i>
B. Paul Ross .....	<i>Secretary</i>
Robert Heffelfinger .....	<i>Treasurer</i>
Prof. C. F. Becker .....	<i>Faculty Advisor</i>

### CABINET OFFICERS

Clair Himes .....	<i>President</i>
C. M. Martin .....	<i>Vice-President</i>
Robert Heffelfinger .....	<i>Treasurer</i>
B. Paul Ross .....	<i>Secretary</i>
Willis Barber .....	<i>Chairman of Publicity Committee</i>
Harold Loos .....	<i>Chairman of Membership Committee</i>
Harry Campbell .....	<i>Chairman of Entertainment Committee</i>

### BOARD OF TRUSTEES

W. R. Clinger, *Chairman*

Vaughn Beary

Jake Jones



## Y. W. C. A.

<i>President</i> .....	Esther Allio
<i>Vice-President</i> .....	Maude Gilmore
<i>Secretary</i> .....	Ruth Thompson
<i>Treasurer</i> .....	Martha Bowser

### CHAIRMEN OF COMMITTEES

<i>Devotional</i> .....	Catherine Howe
<i>U. R.</i> .....	Leota Sayers
<i>Social</i> .....	Geraldine Dovenspike
<i>Social Service</i> .....	Wilda Cook
<i>Music</i> .....	LorRaine Titus
<i>Bible Study</i> .....	Ina Gilmore
<i>Missionary</i> .....	Pauline Hindman
<i>Publicity</i> .....	Marvis Youkers

The Y. W. C. A. has been a great benefit to the students of Clarion Normal. Its purpose has been to promote their growth in real Christian living. Every Wednesday evening the girls meet in the Chapel and talk about some of the vital problems of life.

Morning Watch is conducted each day at 6:55 in the "Y" parlor. Here the girls talk about some phase of Christian living, that may be applied to their everyday life.

The Social Service Committee has been very active in helping the poor and in caring for the sick.

Last year three girls were sent to the Eagles Mere Conference. They brought back with them many useful suggestions, which have helped to make the "Y" a success this year.

We have achieved the remarkable results of this year's work through the enthusiasm and co-operation of each member.



## *Bancroft Literary Society*

<i>President</i> .....	Maude Gilmore
<i>Vice-President</i> .....	Marie Pavlick
<i>Secretary-Treasurer</i> .....	Dorothy McCullough
<i>Critic</i> .....	Leota Sayers
<i>Chairman of Program Committee</i> .....	Ruth Fradenburgh
<i>Faculty Adviser</i> .....	Miss Alice Lemon

With the hearty co-operation of the officers and the untiring efforts of Miss Lemon the Bancroft Literary Society has proved a success. The meetings of the Bancroft Literary Society are held every Friday evening from seven to eight o'clock. Enjoyable musical and literary programs are given.

A very interesting debate was held between the Literary Societies on December 5, 1924. The subject for debate was: "Resolved, that the United States Should Enter The League of Nations." The Bancrofters, upholding the negative side, convinced the judges to decide in their favor.

"Sweet and Twenty," a play given by several members of the Bancroft Literary Society proved such a success that it was given at the Woman's Club at one of their special meetings on February 23, 1925.

The Bancroft Literary Society was victorious in the hockey game which was played with the Franklin Literary Society on November 22, 1924.

A play entitled, "Enter The Hero" by Theresa Helburn was given on April 17, 1925 by members of the Bancroft Literary Society.



## *Franklin Literary Society*

### OFFICERS

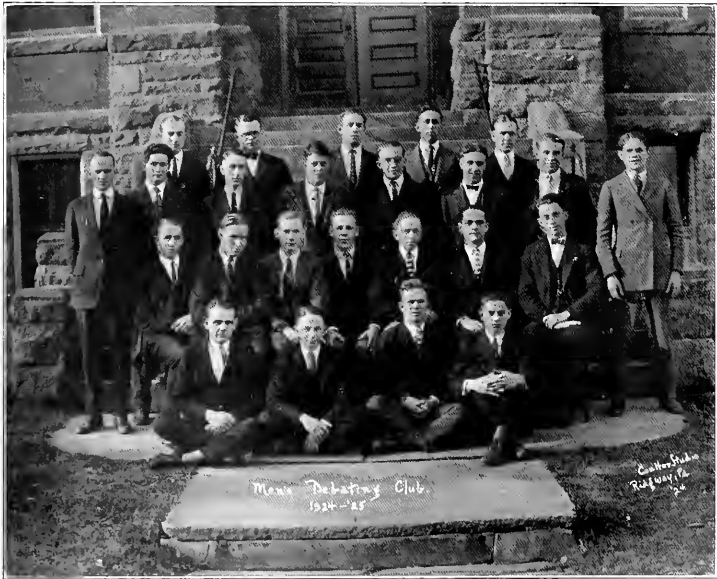
<i>President</i> .....	Edith Swartz
<i>Secretary</i> .....	Violet McMahon
<i>Chairman of Program Committee</i> .....	Loletta Hays
<i>Critics</i> .....	Hilda Carlson, Marjorie McElravy
<i>Faculty Advisor</i> .....	Mr. H. P. Caldwell

Under the direction of Miss Edith Swartz, President, Miss Loletta Hays, Chairman of Program Committee, and Mr. H. P. Caldwell, Faculty Advisor, the members of the Franklin Literary Society held many enjoyable meetings during the year and derived much benefit.

On November 22, 1924, a hockey game between the rivals, the Bancrofters and the Franklinites was witnessed. The score was 5-0 with the Bancrofters in the lead.

On Friday, December 5, 1924 a very interesting debate was staged between the two societies. The subject for debate was: "Resolved, that the United States Should Enter the League of Nations" The Franklin team had the affirmative. The judges' decision was 2-1 in favor of the Bancroft team.

However, the Franklins were not discouraged by the losses of these two contests, but challenged the Bancrofters to a basketball game to be played in the near future.



## *Demosthenian Society*

The Debating Club is not the oldest organization at Clarion but it can be justly said that it is one of the best organizations. The Club was first organized under the careful leadership of our Principal, Dr. Green, during the term of 1920-21. The success of the Club is credited to Dr. Green because of the splendid start he gave it.

The membership is made up of young men who are willing, co-operative workers and who are desirous of promoting every interest that arises.

Meetings are held once each week; the splendid arrangement of programs makes these meetings both interesting and inspiring. Each night instruction is given in parliamentary law, and formal debates are held semi-monthly; the balance of time is given over to talks by prominent men, members of the club, and the entertainment committee which provides a real surprise each meeting night. Dinner parties and after dinner speeches are always popular.

The debating team has challenged a number of noted teams and has been victorious over all those who accepted the challenges.

It is doubtful whether the club would have reached its high degree of success this year had it not been for the untiring efforts of Professor Huston, who sacrificed much valuable time in aiding the club by giving practical assistance to the members as well as the officers.

### OFFICERS

Braden R. Cook .....	<i>President</i>
Clifford Smith .....	<i>Vice-President</i>
James Binney .....	<i>Secretary</i>
Miss Dorothy Edgar, Professor James R. Huston .....	<i>Advisors</i>





## *Spanish Club*

---

The Spanish Club which consists of a group of students enrolled in the Clarion State Normal was organized under the direction of Miss Deliz. The club is called "El Club Hispano-Americano."

The purposes of the club are:

1. To develop fluency in reading and speaking the Spanish language.
2. To stimulate interest in Spanish literature, customs, and people.

The motto of the club is, "Siempre Adelante" (Ever Onward).

### OFFICERS

Mildred Mowrey.....	<i>Presidente</i>
Eleanor Murray.....	<i>Secretaria</i>
Miss Deliz.....	<i>Directora</i>

### ACTIVE MEMBERS

Adeline Baker, Eleanor Murray, Alice Shoup, Helen West, Bernice Stahlman, Alice Swartz, Maude Gilmore, Mildred Mowrey, Mary Gosetti, Irene Gosetti, Don Campbell, Sam Schettino, Kermit Kennemuth, Charles McCormick, and Harold Loos.



## *Sketch Club*

---

One of the most worth-while organizations at Clarion is the Sketch Club. It is composed of those who are especially interested in art.

Some very enjoyable meetings are held out-of-doors, where every member, not only does some very splendid work in sketches, but also enjoys a social time.

Under the helpful directions of Miss Bentz the Sketch Club has produced some very credible work. Long live the Sketch Club. May it always be as helpful and enjoyable an organization as it now is.



## *Student Government*

We have been very proud of the way in which the Student Government of Clarion Normal School has carried on its work this year. Each member of the government has accepted her responsibility to the entire Student body. The Student Council has very successfully met the problems and enforced the regulations of the Student Government.

The officers of the Student Government are:

President .....	Bessie Elder
Vice-President .....	Geraldine Dovenspike
Secretary .....	Loletta Hays

### STUDENT COUNCIL MEMBERS

President .....	Hilda Carlson	Vice-President .....	Blanche Sheesley
Secretary .....	Sallie Read	Senior .....	Maude Gilmore
Senior .....	Harriet Tuttle	Senior .....	Ethel Schwab
Senior .....	Margaret Lynn	Junior .....	Ruth Wilkinson
Junior .....	Elizabeth Jones	Junior .....	Martha Stanley

### FLOOR SUPERVISORS

Second .....	Leota Sayers	Third .....	Alice Shoup
	Fourth .....		Florence Irwin

On account of Loletta Hays and Ethel Schwab teaching this semester, new officers had to be elected to fill the vacancy. Sue Brogan was elected secretary to fill Loletta Hays' place and Julia Dickinson to fill Ethel Schwab's place.



Pals



Guess?



Our Athletes



The S.S.&G.



Part of the S.S.S.



Dont Push



Clarion's Best



Just Trilla



Our Queen of Clubs



Roommates



DRAMATICS



## *Dramatic Club*

---

### OFFICERS

1924  
 Phyllis Arnold  
 Pauline Hindman  
 Geraldine Dovenspike  
 Marvis Youkers  
 Miss Edgar

*President*  
*Vice-President*  
*Secretary*  
*Treasurer*  
*Dramatic Leader*

1925  
 Geraldine Dovenspike  
 Marvis Youkers  
 LorRaine Titus  
 Pauline Hindman  
 Miss Edgar

"The Players" have proved themselves one of the active organizations of the year. Under the direction of Miss Edgar, the members presented a program of three one-act plays during the first semester. These were so successfully given that another program is being prepared for a later date. The Weekly Meetings were a source of enjoyment and became even more of a success in the new club room set aside for use by Principal Green. Good leadership and co-operation working hand in hand have brought the reward of many jolly times to our society.

## *Dramatic Club Plays*

---

### "A GYPSY LOVE MOON"

(Peggy Poe)

Scene—Forest Glen.

Time—Present.

<i>Donna Florietta</i> —A Gypsy Queen.....	Winifred Joseph
<i>Jose</i> —The Favorite of the Queen.....	Marie Pavlick
<i>Miguel</i> —A Gypsy Bandit.....	Josephine Monfre

"A Gypsy Love Moon" is a fantasy based on the true story of an old gypsy king. It is the romantic story of how he fought for, and won, his gypsy love. The Romany love songs and dances lend to the atmosphere of gypsy intrigue and romance.

### "DUST OF THE ROAD"

(Kenneth Sawyer Goodman)

Scene—Farmhouse Living Room.

Time—Christmas after the War.

<i>Peter Steele</i> .....	John Prosser
<i>Prudence Steele</i> —His wife.....	Julia Dickinson
<i>An Old Man</i> —Prudence's Uncle.....	Floyd Faulkner
<i>A Tramp</i> .....	Emmet Gillespie

"Dust of the Road," a one act drama is strong in its lesson of "keeping the joy of living in your heart through true honesty." Peter Steele has been given some money to keep in trust for his friend who goes to war. After his friend's death he is tempted to keep the sum, but Judas in the guise of a tramp, "Dust of the Road" shows him that the way of he who sells his soul for silver is the long road of suffering repentance.

### "THE LIE THAT JACK BUILT"

(George Earle)

Scene—Ellison's Bachelor Apartments and Workshop

Time—Present.

<i>Jack Ellison</i> .....	Verner Cresswell
<i>Frank Montgomery</i> —A Friend.....	Don Campbell
<i>Helen Douglas</i> —Jack's fiancée.....	Geraldine Dovenspike
<i>Doris Taylor</i> —Another Woman.....	Wilda Cook

"The Lie that Jack Built" is a sparkling comedy portraying the embarrassing entanglements of the modern young man who is too deeply interested in more than one of the opposite sex. His first lie is seemingly harmless, but grows to such proportions that eventually he loses the love of his fiancée and is ridiculous in the eyes of his friend. He will "never love another woman, **never**," but when Mabel calls he forgets all his resolutions and begins all over again.

## *Senior Class Play*

---

"Ice Bound" was a very successful part of our "Dramatic Year" at Clarion. Due to the untiring efforts of Miss Edgar and the willingness of the cast the play was unusually well given on November 21, 1924.

### SYNOPSIS

The play took place in the Jordan homestead at Veazie, Maine. Ben Jordan, the "black sheep" of the Jordan family, returned suddenly on the evening of his mother's death and was immediately given over to the police by a member of his family. Jane Crosby, a far off relative of the family and the only real person among the Jordans fell heir to the Jordan estate. Through her kindness and her love for Ben, he was freed from a prison sentence and became a respectable citizen in spite of the opposition of the rest of the Jordan family. In the end Ben and Jane were happily united as Ben's mother had wished.

### ACT I

Veazie, Maine—The parlor of the Jordan homestead, 4 P. M., late October, 1922.

### ACT II

Same room—Two months later. Afternoon.

### ACT III

Same room—Late in the following March.

### CAST

<i>Henry Jordan</i> —Worn by his business cares.....	Reuben Pifer
<i>Emma</i> —His wife.....	Pauline Hindman
<i>Nettie</i> —Her daughter by a former marriage.....	Marvis Youkers
<i>Sadie Fellows</i> —Once Sadie Jordan, a widow.....	Sue Brogan
<i>Orin</i> —Her son.....	Martha Bell
<i>Ella Jordan</i> —The unmarried sister.....	Grace Extrom
<i>Doctor Curtis</i> .....	John Prosser
<i>Jane Crosby</i> —Who works for her board.....	Helen Anthony
<i>Judge Bradford</i> —The leading lawyer.....	Tom Smathers
<i>Ben Jordan</i> —The black sheep of the family.....	Verner Cresswell
<i>Hannah</i> —The hired girl.....	Miriam Snoko
<i>Jim Jay</i> —The constable.....	Emmitt Gillaspie



# MUSIC





### *The Girls' Glee Club*

---

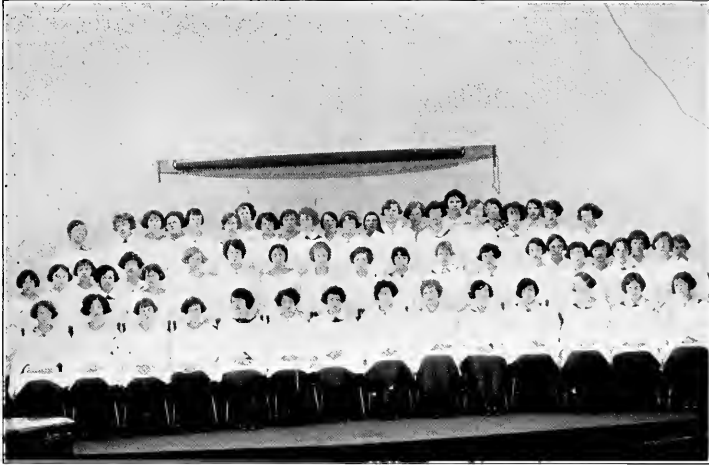
One important part of the music department of Clarion Normal School is the Girls' Glee Club. This organization consisting of sixty-six girls is the largest known in the history of Clarion. The girls were selected and trained under the direction of Miss Canan.

We are pleased to say that the Glee Club had some invitations to sing in the nearby towns, where they gave some very pleasing concerts.

### *Operetta*

---

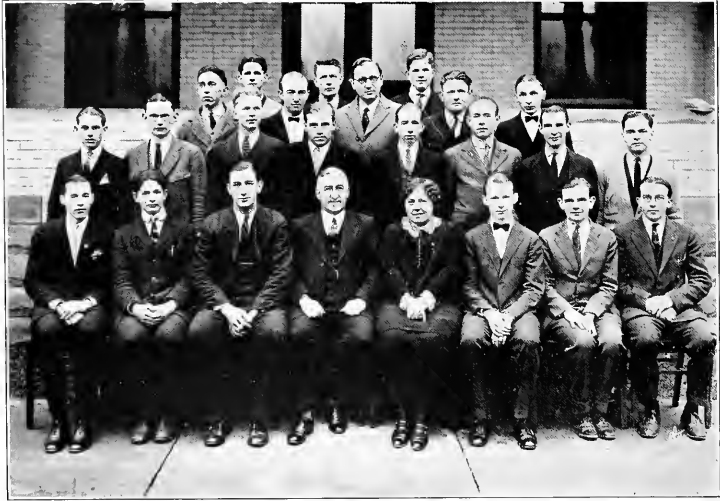
The biggest feature of the Glee Club this year was the Operetta "Mother Goose's Birthday" given on March the fourth. It was very much appreciated by a large audience.



### *Vested Choir*

---

The vested choir is made up of the girls from the Glee Club. This vested choir is one of the new features in our school this year. The choir furnished music for every vesper service. The choir also sang for church services in Brookville, Dubois, Reynoldsville, Shippensville and Clarion. Their singing has given the girls much popularity.



### *Boys' Glee Club*

---

This year the boys organized a Glee Club of twenty-one members. They made their first appearance in the vesper service given on March the fifteenth. We have heard these boys sing many times since.

The Glee Club, together with the Ensemble Group gave an excellent concert on May 19, 1925.



## *Orchestra*

---

The orchestra of Clarion Normal School is one of the activities of the school that is enjoyed by all. The orchestra has been particularly good this year due to the good work of the players and the untiring efforts of the very capable leader, Miss Canan.

The orchestra furnished music for each chapel session and also for various concerts given during the year.

The organization is not only enjoyed by Clarion, but by other nearby towns. The entertainments given by the orchestra in other places have afforded the people a chance of getting acquainted with the talent of C. S. N. S.



## *Band*

---

The band composed of twenty members was organized during the second semester. The lessons were given free to those who were learning to play instruments. The horns were furnished by the school. We are proud of this band which has assisted in many of the concerts given by the orchestra.



# ATHLETICS



## *Boys' Basket Ball*

Clarion Normal opened the 1924-25 season with an excellent showing, and as the season progressed, fine team work developed. At the call for candidates by Coach Moody, about twenty-men responded, including three letter men of the last year's squad. From this number a good combination was finally selected.

The high score field goal man was Captain Cresswell, our big ambling center. Throughout the season Cress played an offensive and defensive game that was a credit to his closing year as a Normalite. He was closely followed by Schettino, the Reynoldsville High flash, whose sensational shots and ability in shooting fouls will long live in the minds of Clarionites. For his running-mate it was a toss-up between Binney and Slattery, both fast men, and also Gillaspie, who was forced to retire after four games. The guard positions were filled by Ross, a splendid, consistent player with an ability to break up passes that cost the opponent many a game, and Prosser, of Rocky Grove, whose sureness at foul shooting was almost uncanny. These men were aided by H. Campbell, a little speed merchant whose place on next year's team is assured, also Jones of Reynoldsville, whose excellent record was stopped by injuries.

The second team was of great assistance in whipping the varsity into condition. With the graduation of Cresswell, Ross, Slattery, Jones, Binney and Gillaspie, the squad will receive a severe blow, but in spite of this a successful season is looked for in 1925-26.

### STANDING OF THE TEAMS

		NAME	FIELD	FOUL	TOTAL
C. S. N. S.	29	Altoona Checker Club	32		
C. S. N. S.	19	Brookville	37		
C. S. N. S.	35	Oil City Bull Dogs	31		
C. S. N. S.	33	Franklin High	25		
C. S. N. S.	21	Kittanning High	24		
C. S. N. S.	25	Ford City High	30		
C. S. N. S.	31	Titusville	41		
C. S. N. S.	29	Kittanning High	38		
C. S. N. S.	35	Knox	36		
C. S. N. S.	31	Ford City	29		
C. S. N. S.	25	Indiana Normal	16		
C. S. N. S.	19	Slippery Rock Normal	24		
C. S. N. S.	25	Knox	24		
		Schettino	34	54	122
		Cresswell	35	13	83
		Ross	25	12	62
		Prosser	10	14	34
		Slattery	8	6	22
		Gillaspie	4	2	10
		Campbell	0	2	2





## *Girls' Basket Ball*

Every so often the fates that be, decree that a school shall lose all its old players. This was true of the girls basket ball team at Clarion Normal this year. Clarion Normal, a potential factor in athletics last year, was left with one regular (who, on account of illness, was unable to play the larger part of the season), and a substitute from last year, the balance all being new players.

In all athletics, it requires time for any new material to develop. But our new team played with just as much courage as a veteran team. Our opponents included teams of much experience and practice. Because of the strong opponents in the first of the season, our scores were not what we might wish. But we proved what we could do when our players became used to each other by winning the last four games of the season. Team play was developed to a marked degree this year, and we will have most of the players next year as the regular team consisted of only two Seniors and four Juniors. This is a very promising outlook.

The team, though small in stature in comparison with some other teams, made up in fighting spirit. Baldwin, Decker, Heilig, the Wilkinsons, (Margaret and Ruth, Hepler) and McNeil were all fighters. This team is a credit to Clarion Normal.

With the material at hand, the writer prophesies a brilliant future in basketball.

Lineup—Mary McNeil, Forward; Ruth Wilkinson, Forward; Alice Hepler, Forward; Bessie Elder, Forward; Mary Baldwin, Center; Catherine Howe, Center; Grace Heilig, Side Center; Olevia Kerr, Side Center; Naomi Decker, Guard; Margaret Wilkinson, Guard; Esther Allio, Guard; Helen Antony, Guard; Florence Erwin, Guard.

### POINTS

	Field Goals	Fouls	Total
McNeil.....	65	16	146
Wilkinson.....	45	22	112
Hepler.....	5		



## *Girls' Hockey Team*

---

Our second hockey season found many new recruits and much interest in this outdoor sport.

The team was coached by Miss Mary G. Whiteman who deserves much credit for the part she played in introducing hockey to Clarion Normal last year.

The first game played was with Franklin High School. The score was 11-3 with Clarion in the lead.

The next home game played was with Slippery Rock. Slippery Rock holds the championship for Western Pennsylvania but had hard work to hold its own. The score was Slippery Rock 4, Clarion 1.

The first game played away from home was at Franklin when the score was tied 3-3.

The second game away from home was at Slippery Rock. Although it was played under many handicaps, Slippery Rock had to work for its score. It was 7-1 in Slippery Rocks favor.

The Squad was—Forwards—L. W. Bessie Elder; L. I. Mary Baldwin; C. Martha Bell; R. I. Mary McNeil; R. W. Laurea McIlhatten; Olevia Kerr, Alice Shoup, Marvis Youkers; C. Naomi Decker. Halfbacks—R. H. Edith Swartz; C. Alice Hepler, Mary Malasky; L. H. Dorothy Blakeslee. Fullbacks—R. F. Florince Irwin; L. H. Gladys Frampton, Catherine Howe. Goal Keeper—Esther Allio, Harriet Atwell.



The Inseparables.



Three Gosses



Clarion's Vamps



Teacher pets



Where's Stanie?



Leisure Hours



Anything Wrong?



Winter

Sports



Perfect Content



Our Three Musketeers

## *Training School News*

---

One of the important features of the Clarion Normal School is the Training School Department.

Because of the increased number of student teachers for the last semester, two new training rooms have been added.

Everything is being done to make the class-rooms and halls attractive. A rest room comfortably furnished has been arranged for the training teachers, which is highly appreciated. Many new pictures and other works of art have been provided for every room. A large statue of the "Winged Victory" now stands at the entrance to the second floor in Science Hall.

For the first time since the organization of the Junior High School, it is under the supervision of a separate principal, Mr. Becker.

A new plan has lately been adopted, in which the student teachers can get new ideas by seeing other large schools in operation. The plan was first put into execution when the members of the Junior High School group went on a trip to the New Castle Junior High School. They returned with glowing accounts and reported a decidedly profitable trip. Similar tours are being planned for the members of the Primary and Intermediate groups.

The training teachers this year are perhaps the most efficient the school has ever had.

Teaching in the training school is a most profitable and delightful experience for the student teachers.

## *“Improvements Lead to Success,” So Says Clarion Normal*

---

In the last year our school has taken some decided steps towards advancement.

Seminary Hall has been entirely remodelled. The main office and the registrar's office have been fully equipped with new furniture.

For the first time in the history of the school we have a vested choir. Miss Canan and Mr. Green have made it possible to have available fifty vestments for the choir.

Two moving picture machines have been installed in the Chapel. This improvement makes it possible for demonstration lessons to be used by the instructors. Our Saturday nights are now anticipated with keen interest, for Mr. Green has arranged to have some of the best known pictures shown in the Chapel. “Quo Vadis” and “Kidnapped” were greatly appreciated.

Navarre? Alas! It is no more. From now on that particular building will answer to the name of J. George Becht Hall.

The halls, reception hall, students' parlor, and dean's office in J. George Becht Hall have been repainted in pleasing tones of grey. New carpets and new furniture have added greatly to the comfort and appearance of the dormitory.

An Ampico reproducing piano has been installed in the social room. This enables us to enjoy music during meal time and for dancing.

Heretofore it has been necessary for the girls living on the third floor of Becht Hall to go to the second floor to find a parlor, but now they have a first class one in front hall on third floor.

Another walk, did someone say? Why certainly, we now have a walk across the campus from Stevens Hall to Eighth Avenue.

No wonder so many students have been missing Chapel in the past years. You ask why? Because the heavy iron doors could not be moved by some of our frail pupils. Future pupils listen! Think up a new excuse. The heavy doors have passed from our world and new wooden ones greet us from the Chapel entrance.

Did you say you liked to read? Get in touch with the Normal Library. One thousand volumes have been added to it this year and twenty-five hundred volumes have been added for the use of the rural schools. There is no excuse for rural school being without a library when Clarion Normal has a good supply of books all ready selected and packed all ready to be used.

## *The Past Unearthed*

Dear students, in pity for the faculty, I shall strive here to make them seem more like human beings instead of grinding machinery. They are real, live people, you know. They are indeed. In considering how to convince you of this, I reasoned in this manner:

"I believe that they are human.

All human beings (except new-born babes) have a past.

Therefore, being human, our teachers must all have pasts.

Consequently, it is my duty as a servant of mankind to unearth these pasts and dig out for use all facts that will prove my point."

This I did, and the following is the result of my search:

Clyde presented a great problem in his youth. Rough, uncultured—he was enough to reduce the rest of the family to tears of hopelessness. At five, he could chew tobacco as fast as their hired man, swear like a poll-parrot, play cards like a professional, and roll dice like a coon. In desperation, his parents decided to send him to a house of correction. Clyde happened to be hovering about the keyhole of the parlor door when these plans were discussed and straightway ran away from home. In his wanderings some months later, he dropped in a church one Sunday night to get out of the rain. His hard heart was melted by the rural choir's anthem and reformation took place. After this Clyde worked hard to make his education a success. He entered "Miss Gray's School For Kindergartners" and was finally installed at our school as principal. Take heart, dear readers! There is yet hope for you.

Mud-pies! Caterpillars! Tight-ropes! Tatters! Dumplings! What more can we say of Janet's youth? A rosy-posy girl brimming over with life and good spirits! Never clean—but who cared! Always ragged—but what mattered that! Everyone loved her, although it was rather a nuisance when Janet decided to bake her mud-pies in the oven of the kitchen stove, or when she wished to preserve her precious butterflies in the family Bible. Janet has never changed her cunning ways and remains just as effervescent as a little child.

Willis was, naturally, a shiftless dreamer. In school he was a perfect picture of laziness and solid comfort. He might be seen at all times gazing vacantly out of the window, sitting on his back-bone, his long legs sprawled out in the aisle ready to trip some one, his dirty pencil in his mouth. He shunned work as he would the mumps and never cared to even know whether the sun revolved about the earth or the earth about the moon. He didn't care about anything simply because he was too lazy to care. (Something in common with us, dear readers). So now we know why Dad makes us do all the talking in class. He's too lazy to do it himself.

Mary Gertrude was an old-fashioned, prim sort of child. She never liked to run and play as normal children do. In fact, she was perfectly content if she could sit in her little high chair with her primer to learn her ABC's. Later on, she liked the Elsie Dinsmore series (as a good girl should). In Mary Gertrude's opinion, it was indeed extremely bad taste for anyone to put a mouse in her pocket—dead or alive. If anyone ever offered her a lollypop, she would sweetly say, "I thank you kindly, but since it is not yet my dinner hour, I really cannot accept it." At the age of 14, she accidentally fell into a tub one day and liked the watery sensation so much that she decided to learn to swim. One incident led to another until Mary Gertrude discarded her Thoreau and took up the vocation of physical training. How thankful we should be for that tub!

James does not surprise us now as we recall his childhood. He was always small for his age—a pale, thin, sickly little boy who was forced to wear glasses at an early age. When he was four years old, he found great joy in reading aloud Milton's works to his playmates, who would sit enraptured at the sound of his voice. He greatly disliked active games. While the older people were talking up the mysteries of the modern age, James would sit on the edge of his little chair in deep meditation, ready to take part in the discussion and give valuable advice. He never emptied the cookie jar behind his mother's back or played hooky! Since no one knew much about social subjects, and James was such a good talker, his parents considered it fitful that he should uplift society in this manner. So here he is—heart and soul.

Now prepare for a surprise—rather, a shock! Iva Shive was a rough little tomboy in days gone by. She never cared whether she had on a bright red shirt and a pair of green overalls, or whether she wore a dress tied about the middle like a sack. Ida's favorite pastime consisted in digging for worms and - - - - - no, not going fishing but dissecting them—cutting them up into little, wriggly, squirmy pieces to see if they are hollow inside. One day, at the age of twelve, she came across a book on designing and on the spot decided to devote her life to the glory of Art. Ida declares that that book alone marked the turning point in her life. Never again those screaming combinations. Ida is now in a most self sacrificing manner giving up all worldly pleasures that Art may be uplifted and heart breaking color schemes seen no more.

Clair was a favorite with everyone when he was a child. He was precocious—even as an infant when he preferred to look at the latest scientific journal to playing with his toes. At the age of five, Clair wrote a book of poems. At ten, he wrote his first book on psychology. Ever since he has been writing on this subject until he now has quite an extensive library at Clearfield. It is said that it is because of his great insight of the human mind that he is still in a single state of being.

A harum-scarum youngster was our Bertha Virginia. Down on the old farm she delighted in playing actress out in the barn. At one time she was an Indian chief, again a circus clown or

a beautiful maiden in distress. At an early age she became quite a flirt—not for the sake of flirting itself, mind you!—the dear child was really imagining herself to be a vamp like Theda Bara. Her constant cry, her mother says, was "I'm gonna be a great actress when I grow up, ain't I, mama?" But she outgrew this tendency and in the course of time became really quite respectable.

We mustn't forget our Henry. Henry was famous as a child for his wondrous beauty. Indeed, he was quite in demand among famous artists. Today we may see his portraits in the best Art studios all over the world. Henry was always generous and gave at least one sixth of his salary (which was large for one so small) to his parents. But alas! Disaster overtook him at the age of eighteen. Artists everywhere turned away from the cherubic type of beauty and instead began to paint the fierce, savage type. Our Henry was sadly grieved for a time, but misfortune cannot tie a good man down. He learned to spell and count and soon afterward joined our faculty circle.

What a prim child was Dorothy! Mothers set her up as a model of good behavior and neatness for their own daughters to follow. Always spotlessly clean, she could be seen walking sedately along to school half an hour before the bell rang, her spectacles pushed down to the tip of her nose, weighted down with books. Dorothy was taught to listen instead of talk (as all good children should be taught). Lo, friends, she was kept quiet too long! That is why she likes to talk so well today and why she chose talking as a career.

There are still some teachers to describe, but oh, dear me! I'm getting frightened—badly frightened. Just now I see the horrors of suspension looming over me with the dangers of expulsion too near for comfort. So I'm going to stop at once. But if the worst should happen, I hope that I shall not have died in vain—that some one will understand these poor, erring teachers just a little better.

Winifred Joseph.

## Fads

Big Ben is never more unreasonable than at six-thirty in the morning. He has a habit of interrupting my rest at this unfortunate time to carry on a conversation with me.

"Ding! Ding!" said he loudly, trying to out-do the town's loudest church bell. Translated from Clockish, this means: "Ho, hum! I wonder what this day will bring forth?"

"Ask me, Benjamin," I answered, "I suppose a new edition of feminine fads."

"It's awful, isn't it?" chimed my friend, who always ticks good English. "What are the women up to now? I suppose things have changed a great deal since they took me out of the shop window."

"I should say so," I exclaimed. "The women vote now and that's opened an avenue for all sorts of fads. Before the next election, ballots are all to be made of silk and tied with pink ribbons. Tea is to be served at all polls, and there will be dancing in the afternoon and evening. The present buildings will be remodeled for the fairer sex, and the men will vote at what was formerly the jail."

"I see," said the sympathetic Benjamin, rubbing his hands over his face, "a new era in politics."

"You're right," I answered gloomily, "it's now fashionable for our lady friends to be in office. Of course, there are a few left who are not candidates for some position, but these are managing to get along pretty well by making two or three speeches each week."

"That's bad," sighed Ben, "What will be the effect of this on our politics?"

"It looks as though the old orders were doomed," I said. "One day the ladies are Democrats and the next, Republicans. It looks as though the party that publishes the best style catalogue will seize the national control."

"By the way," queried Benjamin, "how does the election look to you? Coolidge again?"

"No! It looks to me like a dead beat between Laura Jean Libby, Valentino, and the editor of the "True Story Magazine," I said despondently.

"What games are they playing these days?" inquired the talkative Ben.

"Well, let me see," I said slowly, "there's Mah Jong, and football, and ukeles, and cross word puzzles,—and, oh, yes, a new one called Guess Again."

"That's a new one on me, too," declared Benjamin. "Shoot."

"Well," I began, "it's this way. Years ago when you went calling, the girl took down the family album and you spent a pleasurable evening looking over the pictures of funny old people. Nowadays we don't do that. We forget the ancestors—mainly because it keeps us jumping to locate the members of the present generation. The other day I was talking to one of the wise sex, when a wild-eyed person dashed by on horseback.

"Who is that reckless young man?" I asked her.

"That's my sister," she replied. "She has a boyish bob and is wearing knickers."

"I suppose, according to those signs," I answered sarcastically, "that the attractive young person with the bobbed hair and the rouged lips whom I see yonder skipping rope is your little brother?"

"Come out of the ark, Methuselem," she retorted, "that's Grandma."

"That sounds like a good game," said Benjamin, "if you ever guess right."

"You're losing time, Ben," I answered. "Here, sit up on the window sill and show the world a face that has never needed cosmetics."

James Binney.

## *A Dinner Conversation*

---

At a dinner recently I was seated next to a middle aged gentleman. I rather felt that we had not much in common and wished myself almost any other place. However, I was agreeably surprised when he started to talk about school. He said, "You know, the other day a man said to me, 'The schools are not what they used to be.' I agreed perfectly with his statement, but in case you misunderstand me, I'll add—Thank heaven they are not! When I went to school we had a small one-room building which was presided over by a tyrant on the style of Ichabod Crane. He had no more education than the eight grades, and could not apply what he knew. Every one hated the teacher and the school. I have observed recently that pupils in our schools love their work and have a deep respect for their teachers. How times have changed! People can not tell me the world is growing worse, when we have boys and girls in the school systems who are learning to be good American citizens. They are our leaders of tomorrow. The world can not go wrong in their hands if our present improvements are kept up."

At this point I interrupted his thoughts by asking him to please pass the olives to Miss Spinster who was farther down the table. Not wishing to interrupt his philosophy, I hastened to ask, "What, Mr. - - - do you think of industrial and home economic work in schools?"

"I am heartily in favor of both," he replied. "How can we expect children, especially those of the poorer class, to go out into the world to earn a livelihood, if we have taught them nothing worth while? I tell you, people are just beginning to realize what industrial work can mean to pupils. My town is working for a bond issue to better our system, and I intend to do everything in my power to make it a success."

I was very sorry when the dinner ended, because I knew I should not have another opportunity to talk with Mr. - - - that evening. I felt him to be a powerful factor in a good cause.

Alice Hepler.

---

## *Informal Composition*

---

It is Spring! Not the real, tangible, satisfactory Spring, but rather a delicate hint to warn us of her coming. Already the snow has uncovered patches of brown earth, and the warm sun has opened the little streams again. Rejoicing at their freedom from winter's ice chains, they rush headlong on their way, singing a madcap song of glee and renewed passionate power. The air is quite soft and fresh, deliciously sweet and caressing, after the icy blasts of a week ago. The sky is a soft blue of a deep and tender quality—and the sun is warm—so warm that it is convincing. The hoarse call of the blue-jays seems full of hope and joy. Yes,—though next week it may be deep winter again,—today is it Spring.

Phyllis Arnold.



## *Dressing in a Hurry*

All of us who stay at Navarre know what it is to dress in a hurry now, if we never did before.

A Navarre Hall girl enjoys staying in bed until late while it lasts; but when she hears that ten-minute bell before breakfast, she springs out of bed quickly and begins a mad scramble for her clothes, some of which have a most annoying habit of hiding at inconvenient times. It is then that she wishes she had the will power to get up when the rising bell rang. Where *did* she put her clothes? Why can't she find them? She is sure that she left them on that chair last night, but where are they now? The poor all-enduring and long suffering roommate is now the object of her suspicion.

"Jane, did you move any of my clothes? Dear me! Are you sure? What shall I do?"

About four minutes have flown. She scampers excitedly here and there, throwing this and that out of her way in her mad efforts to find what she has lost. Finally she gets an inspiration and throws the bed-clothes back. There before her are the lost articles! Now she remembers having cast them there the night before when the ten o'clock retiring bell had found her still fully dressed.

The next thing is to get into those clothes as quickly as possible. This she proceeds to do but oh! dear me! in her wild hurry her blouse is on inside out, that will never do! In changing it, she notices that her skirt is hooked crookedly. That must be altered, too, but just then the last breakfast bell rings. There is that poor girl with a blouse in her hands and skirt hooked wrong! She frantically shoves her blouse over her head, hoping that it will cover the hooks on her skirt.

With a final daub of powder and rake of the comb through her tousled hair, this typical dormitory girl runs down the stairs and enters the dining room among the last stragglers. She resolves then and there to get up when the rising bell rings hereafter, but the next day it is the same story over again.

Did you ever have to dress in a hurry to catch a train? I don't know which of the two evils is the lesser—dressing hastily to catch a train or to get to the dining room at Navarre on time. Let us take the case of the busy housewife who is in the middle of spring cleaning when the telephone rings at twelve-thirty. When she answers it, she finds that it is her inconsiderate husband who notifies her that she must be ready and at the station by one-twenty. Then the thoughtless man takes advantage of distance and hangs up the receiver while she is still protesting that she cannot possibly be ready in that short time. There is no other way out of it. She must be ready; she cannot stay there alone. The poor woman casts one despairing glance about the disordered living-room and runs to the garden where she finds Junior making mud pies, as usual. With difficulty, she drags him away and taking him into the house, prepares to get him ready. There is the usual fuss as she washes him and by the time he is dressed she has developed a bad case of nerves. Then she dressed herself. When she opens the wardrobe door, she feels like "Old Mother Hubbard" for rows of unoccupied hooks force themselves before her shocked vision. She has sent all her dresses to the cleaners except for a few old house dresses! She feels like giving up and sinking down on the floor but the hands of the little clock on the dresser point to one o'clock. She hastily tugs the best of these dresses over her head, and in her excitement, doesn't notice that it is torn down the side.

She digs under the bed for a pair of stockings and after a few minutes of frantic pawing, scrambles to her knees, grasping the coveted articles. Off go her shoes and stockings but, as she pulls the other pair of stockings on her ring catches in the silky one and lo! there is a long runner! An impolite exclamation escape her lips as she laces up her shoes, for she has no time to mend that runner. Next she nastily daubs some powder over her face and as a result of not taking time to look in the mirror gets it on in streaks. Now for her hair! She begins to comb it but remembers that Junior was playing on the floor with her hairpins last evening. By the time she has gathered the few that she could find, she has no time to do more than just twist her hair in a tight little knot on the top of her head. On goes her hat and coat! Then the poor woman throws a few things into the suit-case that fortunately, was conveniently near, closed it and goes out, forgetting to lock the door. Let us leave her as she runs down the street with Junior's hand tightly clasped in hers. Let us hope that she caught the train.

Now for the last illustration of dressing in a hurry. The usually conscientiously busy wife has determined to take an afternoon off and do nothing but read and rest. She gets comfortably settled on the sofa in the living-room and is peacefully reading when she hears a loud knocking on the door. She thinks that it is probably only a peddler and ignores it. As the knocking becomes more insistent, she raised reluctantly, tiptoes to the window, and cautiously peeps through the curtains. Her face assumes an expression of dismay as she recognizes not a peddler, but her husband's mother whom she knows of old to be a crank about appearances. She calls softly to Sara to answer while she scampers upstairs to dress. Off she pulls her comfortable slippers and thrusts her unwilling feet into stiff dress shoes. Off comes her cool house dress and into her rustling silk she forces her unwilling arms. A hasty rub of the wash-cloth, a hurried daub of powder, a frantic sweep of the brush, and she descends to greet her unwelcome visitor.

This is what we mean by dressing in a hurry. This is the time when clothes mysteriously disappear and the peacefulness of minds one instant turns into chaos the next. But when you are in a hurry next, remember that:

“When all our clothes seem where they're not  
And stockings on the bum  
Remember with a cheerful grin  
There's better times to come.”

Genevieve Monfre.





Spooners



Any More?



Our Tar Babies



New mode of travel



Hulens family



Love birds



Sheiks



Smiles



Oh, HL !!



Four guesses?

*Autographs*



Cookie (at a game) "Why do you want me to yell when someone is hurt?"  
Mr. Moody—"So the ladies won't hear what he says."

Mr. Loos—"Men had no work and so they hung around on the street.  
Mr. Wilson—"What did they hang on? Telephone poles?"

Jane—"Miss Edgar, how do you pronounce the last word?"  
Miss Edgar—"I pronounce it correctly; How do you?"

Martha—"Where does Sir Oliver Lodge?"  
Besse—"Where Ouiji Boards."

Sargent—"If anyone moves shoot."  
Sentry (colored man)—"Yas, suh, an' if anything shoots, I move."

Geraldine Dovenspike (in Dramatic Club meeting)—"I'll make a date with Mr. Green."  
Voice (in rear of room)—"Naughty, naughty."

Bob—"Did you ever take chloroform?"  
Bunny—"No, who teaches it?"

Miss Bentz—"Henry, were you raised in the south?"  
Mr. Caldwell—"Yes, ma'am, but the rope broke."

Helen—"This looks like a grave case."  
Pauline—"I'm dying to ride in a new hearse."

Hilda—"Don kissed me last night."  
Chorus of girls—"How many times?"  
Hilda—"I came to confess not to brag."

Pa heard him give the Normal yell;  
For joy he could not speak.  
He murmured, "Mother, listen,  
To our son speaking Greek."

Laugh and the world laughs with you,  
Laugh and you laugh alone.  
The first when the joke is the teachers,  
The last when the joke is your own.

#### A MODEL C. S. N. S.

1. Free shows furnished by the faculty in the Chapel at least once a week.
2. Permission for the boys to smoke in the halls.
3. Lessons assigned and prepared by the teachers and read to the students in dramatic style.
4. Morris chairs furnished for each Senior in the class room.
5. Sundaes and sodas furnished by 'Dad' in the Principal's office.
6. Convenient places established for making dates, etc.
7. No rules for attending Chapel.
8. Chewing gum slots placed in the halls.
9. Cuts and tardiness to count as a credit.
10. Eleanor Glynn's books to be read as classics.
11. The library given over to the most popular cases so that they will not be disturbed.
12. Dances held in the social room every Saturday night. Music furnished by some popular Jazz orchestra.
13. Secondary students suppressed, Juniors squelched, and Seniors in full sway.
14. A vacation every two weeks. Vacations lasting from one to two weeks.
15. No studying in any of Miss Nair's or Mr. Wilson's classes.
16. Breakfast served whenever the student feels like getting up.
17. "How to make love" and "How to waste time" to be emphasized in every class.
18. Food furnished for the girls to have midnight feasts.
19. Cars furnished by the state for the students to use in their leisure time.
20. Final tests to be abolished for the seniors.

Weep and they call you a baby,  
Laugh and they call you a fool,  
Yield and they call you a coward,  
Stand and they call you a mule,  
Smile and they call you a silly,  
Frown and they call you a gruff,  
Put on a front like a millionaire  
And someone will call you a bluff—  
So what's the use?

She stood beneath the mistletoe,  
His sweetheart's pretty sister—  
He forward leaned—and stubbed his toe—  
And, holy smoke, he missed her.

#### DO YOU THINK THAT

- If the library should close would Sally Read?  
If the kitchen maids should strike would Mary Cook?  
If people should become color blind would Clyde C. Green?  
If Hilda George should start to cry would Julia Stauffer?

## CAN YOU IMAGINE?

An eight o'clock bell failing to ring?  
 The students getting up at six-thirty?  
 Ham and eggs for breakfast?  
 A dance with a man?  
 Mary without Al?  
 Binney without something to say?  
 Esther Allio going to class unprepared?  
 A week without a balling-out?  
 Corney keeping still?  
 Marvis without a smile?

1  
 We walked along together;  
 The moonlight lit the land,  
 My darling was beside me,  
 I held her little—shawl.

2  
 Yes, I held her little shawl,  
 How fast the evening flies!  
 We spoke in tones of love,  
 I gazed into her—lunch-basket.

3  
 Yes, I gazed into the lunch-basket,  
 And wished I had a taste—  
 There sat my lovely charmer,  
 My arm about her—umbrella.

4  
 Embracing her umbrella,  
 This charming little miss,  
 Her eyes were full of mischief,  
 I slyly stole a—sandwich.

## IF ONE MAN HAD—

The hair of Verner Cresswell.  
 The eyes of Don Campbell.  
 The teeth of Jake Jones.  
 The nose of Mr. Wilson.  
 The mouth of Spring Binney.  
 The complexion of Mr. Delancey.  
 The voice of Al Henry.  
 The pep of Jazz Smith.  
 The moustache of Mr. Caldwell.  
 The brains of Charles Jones.  
 The popularity of Emmett Gillaspie.

## WHAT A WONDERFUL MAN HE WOULD BE.

## BOOKS WE HAVE STUDIED—

"Seats of the Mighty"..... The office  
 "Les Miserables"..... Dad's class  
 "The Great Desire"..... Eats  
 "Age of Innocence"..... Juniors  
 "Changing Winds"..... Library  
 "Way Down East"..... The gym  
 "Circular Staircase"..... Seminary Hall  
 "When Dreams Come True"..... Graduation

Ruth—"Sam is one year younger than you are, isn't he?"

Twila—"Yes, but you see both of my sisters married men younger than themselves.

Winnie (at Y)—"I want to choose a quiet hymn for the last.

Esther—"Perhaps we had better not sing it. That would be more quiet."

Swartzie—"Why does Missouri stand at the head in the production of mules?"

LorRaine—"I don't know."

Swartzie—"It's the only safe place to stand."

Alice Shoup—"In Virginia they wrap the seed potatoes in tissue paper."

Peg—"Why do they do that?"

Alice—"So that they don't get dirt in their eyes."

Blanche Heasley—"Do we have Mother Goose tonight?"

Jo Monfre—"No, but we have Father Time."

Alice Shoup—"He was an acrobat and a lecturer."

Miss Nair—"Oh, no, not an acrobat."

Alice Shoup—"The book said he held people spell-bound by his eloquent speeches."

Sue (watching Miss Canan moving about near the piano)—"Do you suppose she will find it?"

Hilda—"Find what?"

Sue—"The lost chord."

Ellen Songer (in Spanish class)—"The old guard stretched his hands to the stars."

Voice—"Wow! Some stretch."

Pauline—"See that woman—she reminds me of a dynamo."

Esther—"Why?"

Pauline—"Everything she has on is charged."

Hilda—"Why do all the town fellows smile at me when they pass?"

Grace—"They're too polite, probably, to laugh."

John Prosser—"I once wooed a lass."

Mr. Clinger—"I, too, wooed—alas!"



# Clarion State Normal School

Clarion, Pennsylvania.

---

## A TRAINING SCHOOL FOR TEACHERS

Established 1886

More than 2,000 Graduates

30 Professors and Instructors

Training School for 400 Pupils

---

## FOUR CURRICULA

Primary Teachers—2 Years

Junior High School Teachers—  
3 Years.

Intermediate Teachers—2 Years. Rural Teachers—9 Weeks.

Summer Session—9 Weeks.

---

## EXPENSES

Enrollment Fee—\$10.00.

Tuition is Free

Board and Room—\$7.00 per week.

---

*Write for Catalog and Book of Views.*



## THE COULTER STUDIO

*Specialists in School Pictures*

Phone or Write for Appointments

105 Main St.

Ridgway, Pa.

FOR SALE—Bulldog, will eat anything, very fond of children.



*Take Down  
the Receiver*

*And Order  
Your Winter's  
Supply of  
Good*

# COAL

CALL UP AT STRATTONVILLE.

## JONES COAL CO.

*On Lakes-to-Sea Highway*

A little flunking now and then will happen to the best of men.

## THE SAFE-CABINET CO.

Marietta, Ohio.

**Largest manufacturers of Record Protection Devices in the World.  
Competent advice given without charge on record protection problems  
in any business.**

**H. S. BAILEY, Agency Manager,  
New Castle, Pa.**

## **SOMERS, FITLER, TODD CO.**

*Machinery and Supplies*

327 Water St.

Pittsburgh, Pa.

The students all say that the questions do not bother them but the answers do.

**SECTIONAL BOOKCASES**

**OFFICE OUTFITTERS**

**DESKS, CHAIRS, TABLES**

**FILING EQUIPMENT**

**CARPETS, RUGS, LINOLEUMS**

---

**Baker Office Furniture Co.**

813 Liberty Ave.

Pittsburgh, Pa.

When you see a man buying yeast it is not always a sign that his wife bakes.

## **Largest Educational Publishers in the World**

### **THE MACMILLAN COMPANY**

*EDUCATIONAL PUBLISHERS*

**PITTSBURGH, PA.**

# SCHENCK CHINA COMPANY

CHINA, GLASS AND SILVERWARE

FOR HOTELS, RESTAURANTS AND INSTITUTIONS

422 Penn Ave.

Pittsburgh, Pa.

"That's the guy I'm laying for," said the hen as the farmer crossed the yard.

## Brookville, Clarion, Oil City Bus Line

EFFECTIVE MAY 1, 1925.

Lv. Clarion All Hotels 8:00 A. M. 1:00 P. M. 3:15 P. M.	Lv. Oil City Straub & Cun. Hotels 8:30 A. M. 10:50 P. M. 4:00 P. M.	Lv. Salina 7:45 A. M.	Lv. Oil City 5:15 P. M.
---------------------------------------------------------------------	------------------------------------------------------------------------------------	--------------------------	----------------------------

Lv. Clarion 12:45 P. M. 10:00 A. M. 3:30 P. M. 6:30 P. M.	Lv. Brookville 7:15 A. M. 11:30 A. M. 2:15 P. M. 5:00 P. M. 9:45 P. M. Sat. and Sun. Nights Only.
-----------------------------------------------------------------------	------------------------------------------------------------------------------------------------------------------

### Sunday Schedule

Lv. Clarion 10:00 A. M. 4:00 P. M.	Lv. Oil City 9:00 A. M. 4:00 P. M.	Lv. Clarion 7:10 A. M. 7:00 P. M.	Lv. Brookville 9:00 A. M. 9:45 P. M.
------------------------------------------	------------------------------------------	-----------------------------------------	--------------------------------------------

Meet all Trains at Clarion Junction on B. & O. Railroad

Direct Connections B. & O. Trains for Kane and Butler

## CLARION BUS. CO.

# HARTZFELD FURNITURE COMPANY

*High Grade and Medium House Furnishings*

North Brady St. at Scribner's Ave.

DuBois, Pa.

Martha Gayley says she feels like a banjo, so many people are picking on her.

## MILES AND CO.—Inc.

DUBOIS, PA.

*WHOLESALE FRUITS, GROCERIES, PRODUCE*

---

**“EVERY DAY EVAPORATED MILK”**

Mr. Huston—Do you agree with me?

## THE COMMERCIAL

*A MODERN HOTEL*

DUBOIS, PA.

Chas. B. Hamer, *Prop.*

Telephone Orders  
Solicited

We give special attention to all mail orders. Ask us for samples, in fact, use us for all requirements.

Department Stoe

**Broadbent-Martin Co.**  
DuBois, Pa.

Mail Orders  
Solicited

Phone us your requirements and see how promptly they are attended to. We pay postage.

**Authentic Modes for Summer Wear 1925 in Womens,' Misses and Children's Coats, Dresses, Millinery, Neckwear, Hosiery, Gloves and Accessories**

Afternoon Frocks

Printed Silk Frocks

Street Dresses

Graduation Dresses

Fur Bordered Coats

Ensemble Suits

Sport Coats

Knicker Suits

Class Room Dresses

Athletic Underwear

Blouses of Silk

**25 New Shades McCallum Thread Silk Hose (fully guaranteed) Will Give Satisfaction at \$1.95 Pair**

**Betty Wales Dresses in Silks and Cottons**  
**\$18.50 to \$59.50**

Restaurant

Camping and Picnic Grounds

## LAKE-TO-SEA-INN

ROSEVILLE, PA.

Ice Cream, Candy  
Soft Drinks, Tobacco

F. B. HETRICK  
*Proprietor*

Gas, Oil, Tires  
Tubes, Accessories

Margaretta Campbell affirmed that three famous actors are: Harold Lloyd, Verner Cresswell and Barney Google.

### D. L. Armstrong & Sons

*Service Station*

Successor to R. Mayes

Gasoline      Oils      Accessories  
                 Lunches

Top of E. Main St. Hill

Brookville, Pa.

When in town come to

### G. M. Harriger

For Groceries, Flour and Country

Merchandise

Main St.

Clarion, Pa.

"Success in business," said the stamp, "is to find a good thing and then stick to it."

## THE WOMAN'S SHOP

Exclusive Ready-to-Wear Millinery, Suits, Coats, Dresses

If you want a Hat, Coat of Dress suitable for special occasions, Afternoon, Dinner or Evening, you will find it here.

Just Different—Gossard Corsets

Gold Stripe and Van Raalte Hose, Silk Underwear

*We Invite Your Inspection.*

### W. J. TAYLOR

Don Campbell said he was leaving because Mr. Wilkinson gave him orders to find the L. C. M. and he couldn't do it.

### Arthur H. Haskins

*Dealer In*

Grand, Upright and Player Pianos

Victrolas, Records and Radios

517 Main St.

Reynoldsville, Pa.

### Reynoldsville Candy

### Works

Reynoldsville, Pa.

*Wholesale and Retail*

Confectionaries

Ice Cream

Whether it be a Chapeau for the Matron in society or a Felt for the Girl  
in Sports, you will find the proper hat for the  
proper occasion at the

**MERCEDES D. ERDICE**  
*MILLINERY*

Gage Hats and many other well known lines.

One visit to our shop will convince you.

267 Main St.

Brookville, Pa.

"Dad" Welch—"Come on little one, speak up. What is it you wanted to know?"

# Columbia Theater

BROOKVILLE, PA.

One of the finest theaters in Western Pennsylvania.  
Plays all of the big good shows, features, comedies, news,  
press fun.

---

## THE HOME OF THE PIPE ORGAN

---

Special attention paid and the best accommodations for  
children. Watch Brookville newspapers for our weekly  
programs.

Jake Jones tells us that the most popular novel in circulation is "Ten Knights in a Tea Room."

Drugs

Stationery

Get it at

**SANDTS'**

BROOKVILLE, PA.

Candy

Perfumes

*"Do it Electrically"*

**RADIO**

All Sets Installed

**Steel Electric Co.**

286 Main St.

Brookville, Pa.

For a Good Smoke or Something to Read

Call at

**“STERKS”**

**AMERICAN NEWS AND CIGAR STORE**

We have an equipment and a stock that is complete, but good as it is, not too good for Brookville and vicinity.

“Eli Whitney,” says Spring Binney, “was a bootlegger who made the first cotton gin.”

**D. A. HENDERSON**

BROOKVILLE, PA.

---

**DRY GOODS**

LADIES' READY TO WEAR COATS, SUITS, DRESSES

---

*We Specialize in Ladies' Ready to Wear Garments*

---

**“The Store Where Well Dressed Women Buy”**

Ruth Thompson understood President Wilson to say “We must make the world free for Democrats.”

**“SAY IT WITH FLOWERS”**

**C. W. ESPY & SONS**

Y. M. C. A. Building

Brookville, Pa.

Bell 31-R.  
Residence 379-J.

Summerville 79.



**HANDY—**

**When You're in Town or Driving Through.**

**J. Bastine and Co.**

**"THE CLEAN, WHITE SODA FOUNTAIN"**

**Opposite Y. M. C. A.**

**Brookville, Pa.**

Miss Lemon—"You don't always see the most fierce animals in the zoo."

# **Brookville Ice Cream & Dairy Co.**

*Manufacturers of*

## **Brookville Superior Ice Cream**

---

**We use the famous line of Kist Flavors in our  
Ice Cream, Ices and Sherbets.**

Clinger says the only way to be up to date is to get the cross word puzzle.

**—IN BROOKVILLE, A "BIG" BANK**

*—In volume of business handled*

*—In capital invested*

*—In ambition to serve faithfully.*

**Brookville Title & Trust Company**

**Commercial Savings, Trust and Safe Deposit Departments  
Banking and Trust Funds, 4 Millions**

**SECURITY — STRENGTH — SERVICE**

When hungry for home-made Candy and Ice Cream

Call at

## NEW YORK CANDY KITCHEN

NEW BETHLEHEM, PA.

Miss Canan—You must hold “hands” for six beats.

## The C. E. Andrews Lumber Company

NEW BETHLEHEM, PA.

Invites you to inspect

*“A MODEL HOUSE”*

*You can see—A Living Room, A Dining Room, A Model Kitchen, Two Bed Rooms, A Bath Room—All Ready for Occupancy.*

*Also A DISPLAY ROOM*

Containing samples of everything required to build a home from the foundation to the roof, all attractively arranged for your inspection.

It is worth a trip to New Bethlehem to see this exhibit if you ever expect to build anything, anywhere. It is open each day, 8:00 A. M. to 5:30 P. M. and on Saturday evenings.

Mr. Wilson—Who was dragging whom how many times around what?

## NEW BETHLEHEM TRUST CO.

New Bethlehem, Pa.

---

CAPITAL AND SURPLUS..... \$180,000.00

14 Directors

140 Stockholders

4 per cent. Interest Compounded Semi-Annually

# STATE NORMAL SCHOOL

## STUDENTS

### We'll Take the Bank to Your Door

---

A great many people who seldom see this bank use it with ease and profit.

Our primary object in creating a Banking by Mail Service was to enable our friends all over the country to get profit on their idle money.

If you, too, will mail your surplus funds, for deposit in an interest bearing account, you'll have an investment free from any speculative feature, that will pay you a liberal rate of interest.

Whenever you're in town we want you to use this bank, not merely for banking purposes, but as a convenient place to rest and meet your friends.

---

## FIRST NATIONAL BANK

NEW BETHLEHEM, PA.

4 Per Cent. Interest Paid on Savings.

FOR YOUR SWEETS AND LUNCH

## J. A. BENEKOS

201 Center St.

Oil City, Pa.

Miss Bentz—Some of the art work of today is enough to make an angel weep.



*"Exclusive"*

*"Betty Wales"*

*"Irene Castle"*

Fashions

### THAT "WELL - DRESSED" FEELING

Ralph Waldo Emerson, whom no one can accuse of frivolous thinking, has told us of a woman to whom the sense of being well-dressed gave a feeling of inner tranquillity which nothing else in the world could bestow.

The young ladies of Clarion Normal are invited to inspect our stocks of Garments, Millinery and Accessories. Courteous attention.

Yours truly,

EDWARDS BROS., Inc.

Oil City, Pa.

Miss Nair—Many of the realistic tales were hung around Washington.

### IT WILL PAY YOU

to visit Oil City's Greatest Hardware Store for your requirements in Garden Seeds, Garden Tools, Paints, Roofing, Gas Ranges, Refrigerators, Kitchen Cabinets, Electrical Appliances, Tools and Auto Accessories.

**SEEP BROS.**

Oil City, Pa.

*It's not the way the wind blows,  
It's the way our sails are set!"*

Business pilots know this and many of the leading business men of this city know how very helpful this bank can be in determining "the set of the sail" on the great sea of business.

**The Oil City National Bank, Oil City, Pa.**  
*Capital, Surplus and Profits over \$1,000,000.*

John Prosser seems to insinuate that he could be his own grandfather.

**The  
ROYAL  
RESTAURANT**

*"A Good Place to Eat"*  
Oil City, Pa.

**JCPenney Co.**  
A NATIONAL CHAIN OF  
571 DEPARTMENT STORES

The world's largest Chain  
Department Store Organization  
Everything Ready to Wear for Men,  
Women and Children  
We sell for cash only—Same price  
to everybody.

I will not long remember what I have heard here, but I'll never forget what I endured here.

*Compliments of*

**KEYSTONE MOTOR COMPANY**

**STUDEBAKER AUTOMOBILES**

Oil City, Pa.

Phone No. 1722

119 State St.

Miss Hileman—Where do you think you are, in the park?

**MOORE'S ICE CREAM**

**ASK YOUR DEALER**

Special Fancy Creams for any Social Function

Moore Bros. Co.

Oil City, Pa.

## SMART SPRING FOOTWEAR—



*In a variety of styles appropriate for every occasion—moderately priced.*

*Buy your next pair at Brownell's and save the difference.*

## BROWNELL SHOE CO.

211 Center St.

Oil City, Pa.

Mr. Caldwell—Speaking of cars, now the Buick for instance—

## DO YOU KNOW THAT—

While the banks close for the holiday,  
While the stores shut shop for Sunday,  
While the grocer says, "We have some ordered,"  
While the coal dealer tells you to wait,  
While the merchant moves to another town,  
While labor in other industries is on strike,  
While the manufacturer goes out of business,

The UNITED NATURAL GAS COMPANY keeps right on serving you natural gas to rich and poor alike, 365¼ days, 8,766 hours a year?

**THIS IS REAL SERVICE**

**"Use Gas, But Don't Waste It"**

Clair Himes says that 5½ per cent of our population are hogs.

## CRESCENT RESTAURANT

209 Seneca Street

Oil City, Pa.

**Service and Quality**

*Hot Waffles a Specialty*

## Vacation Time Will Soon Be Here

---

Oh, how we all look forward to those jolly days when the summer months afford us the opportunity to spend a few days in the country—or better yet to be employed and be able to lay aside some in a Savings Account.

This bank welcomes new depositors.

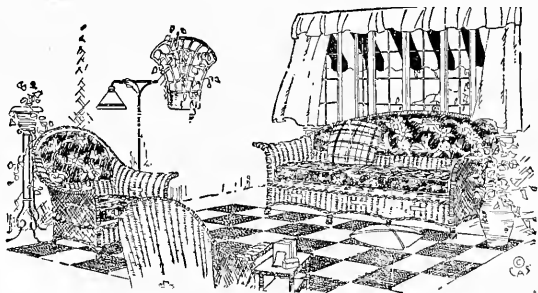
4 PER CENT. PAID ON ALL SAVINGS ACCOUNTS

---

## CITIZENS BANKING COMPANY

OIL CITY, PA.

A literature student was heard to say, "I've been carrying 'The House of Seven Gables' around for three days."



### FURNITURE—THE LIFE TIME POSSESSION

Since good furniture is an expression of good taste and cultivation, and reflects your pride in the appearance of your home, your selection should not be made without thought of the future.

The time given to the choosing of furniture is well repaid because furniture is a Lifetime possession and surrounds you every day, creating a home environment which can prove a constant source of pride and satisfaction.

There is permanent value in sound quality, and permanent beauty in good design. Both are to be found in all of the furniture we sell.

# VEACH'S

*Oil City's Great Furniture Store*

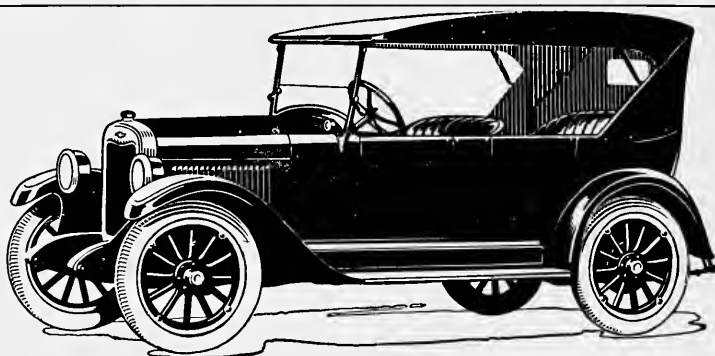
The Graduates from  
**WELCH'S BUSINESS COLLEGE**

*Are Employed* because we know what the business man wants and we know how to train our students so that they can render the best service. We help our graduates in getting and holding positions. It pays to pay tuition at

**WELCH'S BUSINESS COLLEGE**  
Write Us 26 Years in Business Here

Oil City, Pa.

Miss Hileman—Do you know Poe's "Raven?"  
Emery—No, what's he raving about?



**QUALITY AT LOW COST**

Powerful valve-in-head motor, dry plate disc clutch, extra strong real axel with banjo type housing, Duco finish in beautiful colors----all are features that you would expect to find only on high priced cars. Chevrolet represents the highest type of quality car at a low price.

**L. A. LEATHERS**

Brookville

Clarion

You can always tell a Junior, but you can't tell him much.

*Compliments of*

**LEEDOM BROTHERS**

WHOLESALE GROCERS

Oil City, Pa.



Books Stationery Office Supplies Leather Goods

Kodaks Greeting Cards

Special attention given mail orders and prompt delivery guaranteed

## ORMSTON'S BOOK STORE

Edward W. Wallace, Prop.

Arlington Block

Oil City, Pa.

Radio frequency is when you meter every night.

Dry Cleaning, Pressing, Pleating  
and Repair Work

### G. E. Brinkley

Rear No. 7—5th Ave.

Both Phones

Clarion, Pa.

### Dr. Clyde C. Snyder

Surgeon - Dentist

X-Ray

Citizens Trust Bldg. Clarion, Pa.

"A man would be crazy to go to a place like that," said the guide as he pointed to an insane asylum.

Style, Quality,  
Artistic Workmanship

Always something new and  
appealing to the users of  
exclusive styles

Millinery, Dresses  
Hosiery, Needlework,  
Novelties

## Hermione Merryman's Shoppe

619 Main St.

Local Phone 235

Clarion, Pa.

"A man who counts in the world," said Violet, "is a cashier."

## THE COHN CO.

*Oil City's Largest Ready-to-Wear Store*

The place where you can get quality at a moderate price. We specialize in graduation and party dresses.

OIL CITY, PA.

*If You Want the Best---Try*

# **NAIL'S**

## **BASEMENT RESTAURANT**

CLARION, PA.

Delancey says that he has clothes sickness because his tongue is coated and his breath comes in pants.

# **WEIN BROTHERS**

**Clarion's Department Store**

*Where You Will Find Complete Wearing Apparel For*

**MEN, WOMEN, CHILDREN**

*Exclusive Place for  
"Society Brand" Clothes  
Florsheim Shoes*

*Bloomfield Dresses  
Van Raalte Hose  
H. & P. Gloves*

Even in the days of prohibition some people have the nerve to say "The moon is full."

# **HAYS DRY GOODS STORE**

*May we help solve your problems in*

**READY-TO-WEAR DRY GOODS AND NOTIONS**

**Always a Snappy, up-to-the-minute store.**

## David A. Kauffman

*Jeweler*

Normal Seal Jewelry

Clarion, Pa.

*For Good Eats Try*

## Star Restaurant

Open Day and Night

Main St.

Clarion, Pa.

Miss Edgar says that it is easier to smother to death than to freeze because you don't have to shiver. so long

Regardless of the car you buy or the price you pay, there  
is no greater value than a Buick.

## CLARION BUICK CO.

H. W. SPINDLER

333 West Main St.

Clarion, Pa.

LOST—A gentleman's gold watch. \$25 reward and no questions asked—unless my wife answers the door.

## THE CLARION DRY GOODS CO.

CLARION, PA.

A Modern Store  
Quality, Merchandise  
Service

Good Values  
Courtesy  
Satisfaction

Half a dozen good reasons why you should do all your buying at

## CORBETT'S STORE

A rolling stone gathers no moss, but a rolling pin shows who's boss.

*For Service Try*

## Guth's Jewelry Store

Clarion, Pa.

## Clarion Fruit Co.

Cherico Bros., Proprietors  
Both Phones

Main St.

Clarion, Pa.

*Fresh Fruits and Vegetables  
in Season*

# EVERYTHING IN HARDWARE

## DITZ & MOONEY

### HARDWARE COMPANY

Hattie Atwell was injured in the dining room the other day. She tripped over a glass of peaches and was caught in the jam.

#### AT OUR STORE



You will find everything for the home. Furniture that breathes good taste and beauty for the dining room; restful and delightful creations for the bedroom, and real comfort combined with the best artistry for the living room.



*Our Interior Decorating Department* has been designed for your benefit, where plans and color schemes are worked out to best portray the necessary atmosphere for the various rooms in your home. Draperies made up correctly in our own work room at reasonable prices.

**CLARION FURNITURE CO.**

**HASKELLS**

Scientists have not been able to discover why it possible for a girl to go into a room with straight hair and come out in ten minutes with curly locks.

*Compliments of*

**Thompson's  
Confectionary**

Main St.

Clarion, Pa.

Wholesalers

Retailers

**John A. Magee Co.**

*Dealers in*

Hardware, Mine, Mill and Oil Well  
Supplies

Farming Implements

Both Phones

Clarion, Pa.

**FIRST NATIONAL BANK  
OF CLARION**

**FOUNDED 1865**

**OLDEST BANK IN CLARION COUNTY**

---

Capital .....	\$ 100,000.00
Surplus and Profits .....	\$ 160,000.00
Total Resources Over .....	\$2,100,000.00

---

**MEMBER FEDERAL RESERVE BANK**

---

**An Old Bank with Modern Methods**

**Your Account Is Appreciated**

**Four Per Cent Interest Paid on Savings**

---

**OFFICERS**

**S. Win Wilson, President . . . . . A. B. Collner, Cashier**

**M. M. Kaufman, Vice President H. F. Stratton, Assistant Cashier**

**Barr Rimer, Teller.**

## SWEETLAND

230 Main St.

Next to First National Bank

HOME MADE CANDIES

Manufacturers of High Grade Candies

Fancy Boxes for all Occasions.

Many a man who has never seen a baseball has been caught stealing home.

## Call at JOE'S for

Home made Doughnuts and Rolls

Fruits, Confectionary, Ice Cream---Eats of all Kinds

Corner Wood and 8th Ave.

Clarion, Pa.

A man gowned in a black gown may look like a chimney sweep but all the same he is a Ku Klux Klansman from Pittsburgh.

## CLARION MOTOR COMPANY

305-307 Main St.

Clarion, Pa.

*LINCOLN - FORD - FORDSON*

Use genuine Ford parts. Try our guaranteed repair service.

Phone for our Wrecking Truck if you need such service.

Both Phones.

Wanted—A boy to gather eggs at least seventeen years old. Also a wagon by a gentleman with a long steel reinforced tongue.

## KUHN'S BAKERY

WHOLESALE AND RETAIL

M. R. KUHNS, *Proprietor.*

Main Street

Clarion, Pa.

CAPITAL \$135,000.

## CITIZENS TRUST COMPANY

CLARION, PA.

---

T. M. Arnold, President

H. M. Hufnagle, Vice President

C. W. Amsler, Vice President

C. C. Moore, Assistant Treasurer

---

LARGEST BANKING INSTITUTION IN CLARION COUNTY

---

Resources Banking Department, over . . . . . \$2,600,000.00

Resources Trust Department, over . . . . . \$2,100,000.00

Total, over . . . . . \$4,700,000.00

---

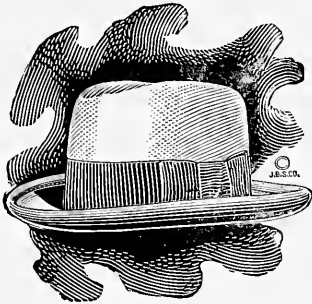
Young Enough to Be Progressive—

Old Enough to Be Conservative

---

## CITIZENS TRUST COMPANY

CLARION, PA.



**MEN and BOY CLOTHING  
STETSON HATS**

**Hart, Schaffner and Marx, Kuppen-  
heimer and Clothcraft Clothing.  
*Snappy Furnishings***

**F. L. Crooks & Co.**

*"Try the Drug Store First"*

# **Campbell's Drug Store**

512 Main St.

Clarion, Pa.

J. C. Campbell, Ph. G.

A. B. Campbell, Ph.G.

Don Campbell thinks that the bull is mightier than the bullet

## **Do You Expect to Succeed?**

***SUCCESS COMES ONLY TO THE STRONG***

**Take care of your health. Our 100% Pure Pasturized Milk and Cream  
is a health food and a mind and body builder.**

**Sanitation Guaranteed.**

**High Quality Ice Cream and Ices.**

***. . . Inspection Invited.***

**CLARION ICE CREAM & DAIRY CO.**



## **A. G. Corbett Drug Co.**

*Drugs, Books, Stationery*

**Reymer and Johnson Candies**

**Cameras and Photo Supplies**

Go to

## **Diffenbacher's**

**Newsroom**

For all the daily papers and magazines, post cards, greeting cards, pennants, novelties.

Opp. Trust Co. **Clarion, Pa.**

Agent for Mary Lincoln Candies.

Stella—Can you keep a secret?  
Bunny—I'll tell the world.

# **E A T S !**

A splendid line of good things that you need for picnics, and all kinds of feeds. Buy them at the

## **CLARION MARKET**

**Both Phones**

**Corner Main and Sixth**

Zero—What are you thinking of?  
Gen.—Nothing.  
Zero—Then you must be thinking of me.

## **Read**

### **The Clarion Republican**

### **Every Week.**

*Have Your Pictures Framed at*

### **Casterline's Studio**

**Clarion, Pa.**

Binney—How many do you suppose are dead in that graveyard?  
Violet—I don't know.  
Binney—Why, they're all dead."

*Walk-Over-Shoes*

"College Senior style at a Hi School

freshman price.

**MAHEY'S SHOE STORE**

*"Shoes that Satisfy"*

## **Dr. E. A. Wilhelm**

**Surgeon - Dentist**

**5th Ave.**

**Clarion, Pa.**

**Established for One-Half Century.**



## “Jahn and Ollier Again”

**T**HE largest personal service school annual engraving house in America. More than twenty years of successful experience in Year Book designing and engraving. Three hundred craftsmen, specially skilled in Annual production. Over 40,000 square feet of operating space in our own fireproof building. A specially organized system of production that insures individual attention to each Annual, efficient manufacture, and on-time delivery. The personal co-operation of a creative and research service department with a reputation.

THIS ANNUAL ENGRAVED BY

**JAHN & OLLIER ENGRAVING CO.**

*Photographers, Artists, and Makers of  
Fine Printing Plates for Black or Colors*

817 Washington Boulevard - Chicago  
(COR. GREEN ST.)



# A STANDARD OF SERVICE

---

**O**UR idea of Service is that  
the purchaser of printing  
is entitled to entire satisfaction  
with each order.

---

We specialize in high grade  
catalog and book work.

---

**The Derrick Publishing Co.**

OIL CITY, PENNSYLVANIA

COMMERCIAL PRINTING DEPARTMENT

**Printing-----Ruling-----Blank Books**

Loose Leaf Sheets and Binders

THE END





CLARION UNIVERSITY OF PENNSYLVANIA



3 9363 00298 9173

NOV 23 1999



