

Spec. Coil

qLD

1017

.C88

1928

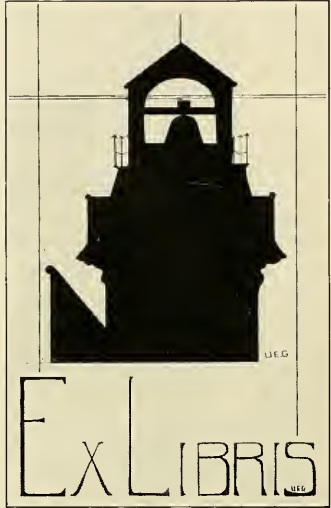


LIBRARY
CLARION STATE COLLEGE
CLARION, PA.



Carlson Library

STATE NORMAL SCHOOL
CLARION, PA.







The Sequelle

Published by the

Senior Class

of the

Clarion State Normal School

1928



Published by
Clarion State Normal School
Photography
Art-Nouveau Studio
Engraving
The Youngstown Arc Engraving Company
Printing
Kurtz Brothers, Clearfield, Pennsylvania.

7
Large
LD
1917
.058
1978



In grateful appreciation of her sincere interest in, and her helpful and untiring cooperation with the students of Clarion State Normal School, we sincerely dedicate this annual to—

Bertha Virginia Nair



To the reader, this volume will portray many of the joys, much of the happiness, and a few of the sorrows, which are experienced in an educational institution of learning.

To the class of 1928, may it ever be a true standard of the ideals and traditions of C. S. N. S., ever reminding them of the true and lasting friendships formed by association with one another while on the campus.

Contents

Book I.

Campus Views
Administration
Faculty

•

Book II.

Senior Class
Junior Class

•

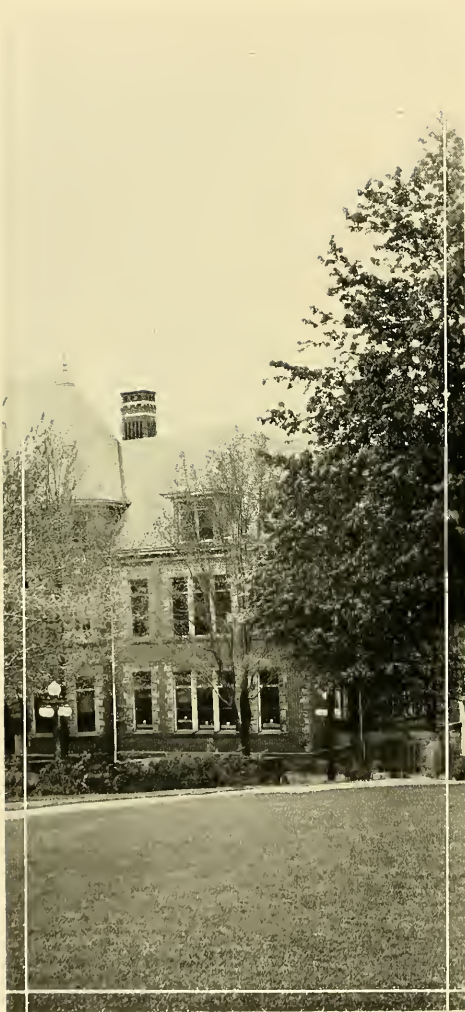
Book III.

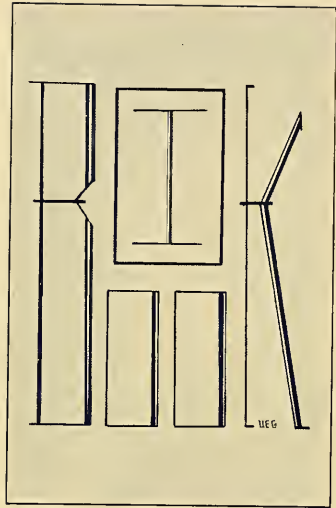
Athletics
Dramatics
Societies

•

Book IV.

This and That
Humor
Advertisements





*Campus Views
Administration*

SEQUOIA



Seminary Hall

A feeling of solemnity and dignity within its walls, that create the desire for knowledge.

SEQUOIA



J. George Becht Hall

Beauty of dignity hath charm, and
with that dignity, there appear
aesthetic beauties untold.

SEQUENCE



Science Hall

Man's being doth require science,
and science alone is learned
through the past achievements of
ages.

SEQUOIA



Chapel

A gathering place for the sincere and frivolous, but worthy of its purpose in life's pathways.

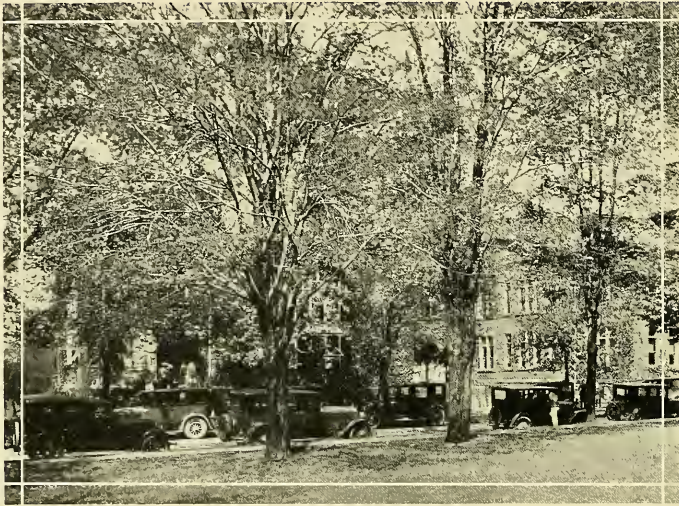
SEQUOIA



Stevens Hall

Great men have slept within these noble walls, and have glorified in their presence of unmolested tranquilities.

SEQUELLE



Campus and Street reviews

Where knowledge walks the blossoms rise,
The earth gives up it's richest prize,
And man set free from chains that bind,
Proclaims the brotherhood of mind.



SEQUELLE



FACULTY



It is they, who have endured us with untiring patience, who have set before us high standards, and have striven to help us reach our desired goal.



SEQUELLE



STATE NORMAL SCHOOL

CLARION, PENNSYLVANIA

March ninth

1928

To the Class of 1928:

This book is a record of your achievements as a class and a history of happy and helpful associations at Clarion. May it serve to perpetuate and enrich your friendships, to increase your loyalty to the school, to deepen your love of state and country, aid to stimulate your desire to serve effectively and constructively.

That you may live richly and abundantly and serve significantly is the school's wish for you.

Sincerely yours,

Robert M. Steele

Principal.



ROBERT McCURDY STEELE, Ph. B., A. M., Ph. D., Principal.



THE FACULTY

DURING our sojourn here, our faculty have become endeared to us, in many ways. Each member of the faculty has played a part in making our college life more complete. We like to think of them as a group of outstanding and efficient leaders; guiding our thoughts along proper channels; inspiring us to further mental, physical, and social activities; and upholding us in all our ideals and standards.

Our attainments as teachers will eventually depend upon our faithfulness to the teaching and inspiration, which the faculty members have given us. Therefore no greater praise can be bestowed upon them than is found in these words of Carlyle:

“They have been wise to instruct us and assist us in the business of daily, virtuous living.”



SEQUOIA



JOHN W. F. WILKINSON,
A.B., A.M.



AMABEL LEE RALSTON



JAMES R. HUSTON,
A.B., B.Ed.



BERTHA VIRGINIA NAIR,
A.B., A.M.



ELIZABETH KEITHAN, B.S.



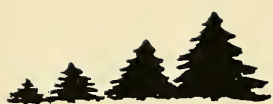
CHARLES F. BECKER,
Ph.B., M.A.



DOROTHY EDGAR, A.B.



MARY B. WILLIAMSON,
Ph.B., M.A.



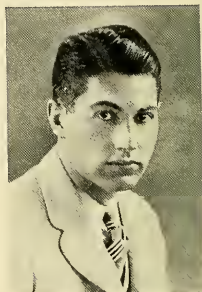
SEQUOIA



HAROLD A. SARIG, A.B.



HAZEL SANDFORD, B.S.



J. O. JONES, B.S.



RUTH PERRY, B.S., M.A.



FRANCES M. SELL, [Drexel]



MORTON F. JONES, A.B.



SARAH SEYLER



HARRY S. MANSON, B.S., A.M.



SEQUOIA



EFFIE BLANCHE HEPLER



HELEN WALTERS



MILDRED E. GAMBLE, A.B.



MARTHA G. RENN



LORETTA G. BROGAN, B.S.



HELEN F. MOHNEY



MARTHA V. TROUGHTON, A.B.



BERTHA J. STUTZMAN,
B.S., M.A.



SEQUOIA



BESSIE M. RUNVAN, A.B.



ANNA B. GRAHAM



PEARL JACK, B.S.



M. BENNET



ELIZABETH NESBITT, A.B.



PEARL NEWTON MILLER



LILLIAN BRIGHT



GENEVIEVE HALE

SEQUOIA



BOARD OF TRUSTEES

HONORABLE F. L. HARVEY, President	Clarion, Pa.
F. P. HAZELTON, Vice-President	Clarion, Pa.
H. M. RIMER, Secretary	Clarion, Pa.
P. C. ANDREWS	New Bethlehem, Pa.
N. C. BALL	Clarion, Pa.
RAYMOND E. BROWN	Brookville, Pa.
MRS. W. B. RANKIN	Clarion, Pa.
MRS. C. C. ROSS	Clarion, Pa.
W. W. WINSLOW	Punxsutawney, Pa.

OFFICERS OF THE BOARD

H. M. RIMER, Secretary	F. P. HAZELTON, Vice-President
	HON. F. L. HARVEY, President

STANDING COMMITTEES

Committee on Instruction

HON. F. L. HARVEY	W. W. WINSLOW	H. M. RIMER
-------------------	---------------	-------------

Committee on Finance

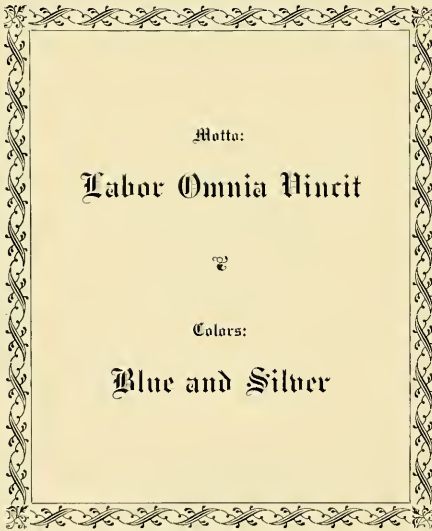
P. C. ANDREWS	MRS. C. C. ROSS
RAYMOND E. BROWN	F. P. HAZELTON

Committee on Household

MRS. W. B. RANKIN	N. C. BALL	H. M. RIMER
-------------------	------------	-------------



SEQUELLE



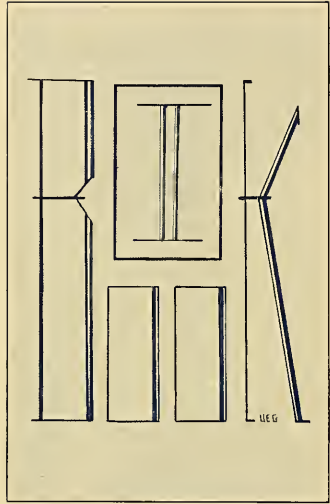
Motto:

Labor Omnia Vincit

•

Colors:

Blue and Silver



Senior Class
Junior Class

SEQUELLE



Officers

Bird Carson..... *President*
Kenneth Wyse..... *Vice-President*
Virginia Graham..... *Secretary*
Grace Stone..... *Treasurer*



SEQUELLE

WE, the seniors, are truly sorry to make our departure from Clarion State Normal School. We came here, thirsting for further knowledge and with a true desire to improve ourselves in every way. Perhaps our chief aim has always been, to be able to compete efficiently with our fellow students, and to be able to play the game of life fairly and squarely. Our environment, while on the campus, has provided us with a background, which, we believe, will enable us to reach our goal. We feel that we are greatly indebted to our school. We shall try in our lives after graduation, to live up to the ideals of the school and of our efficient instructors; and hence, in our small way, repay Clarion State Normal School for her efforts in our behalf.

SEQUENCE



MARIAN AMERICUS

Clarion, Pa.

Travel Club
Franklin Literary Society

Mrs. Americus is one of our most loyal members and hardest workers. Her class work is always done in a serious and sincere manner. She is always smiling. We admire her grit in going to school and rearing a family at the same time.

HERBERT E. ALLSHOUSE

Brookville, Pa.

Demosthenian Club
Owl Club
Track Team
Foot-ball Manager '26
Y. M. C. A. Cabinet
Minstrel '27
Glee Club
Waiter's Club

One seldom hears him speak, but when one does, he hears a melodious voice. This dapper young man is at all times both kind and sensible. Because his name begins with A, he usually has a place in the front row.

HELEN AFFOLTER

Parker's Landing

Franklin Literary Society
Travel Club

Your eyes are your fortune, Helen!

Helen is witty and lively, takes the world as it comes, and never goes out to meet it.

SEQUELLE



MARCELLE BROWN

Tampa, Florida

Franklin Literary Society	Sequelle Staff
Glee Club	Hockey Squad
Vested Choir	Journalism Club
Y. W. C. A.	Minstrel '28

The South is in perfect keeping with Marcelle's personality, for she is sunny, bright and gay. We are glad we have her here, because we need her sunshine and her giggles.

IDA BORING

DuBois, Pa.

Franklin Literary Society

Who is this dark-eyed, dignified member of our class, who is very seldom seen to smile? It is Ida Boring. Ida looks very serious as appearances would indicate. Ida always seems to have herself well under control, as she is never in a hurry, nor excited. She says her ambition is to be a teacher, but we are rather dubious about this statement.

ELIZABETH BARCLAY

Vandergrift, Pa.

Y. W. C. A.
Travel Club
Current Events Club

"Good nature is worth more than knowledge and honor to persons who possess it, and certainly to everybody who dwells with them, so far as mere happiness is concerned."

Elizabeth evidently believes in this statement if we are to judge her by her sunny disposition.

SEQUELLE



ELIZABETH BUCHAN

Titusville, Pa.

Student Council
 Treasurer Franklin Literary Society
 Y. W. C. A. Cabinet
 Travel Club

Why can't she be good? We know she likes to talk and laugh too well. Elizabeth takes no stock in that old saying "children should be seen and not heard." She would rather be both. However, she can be serious sometimes, especially when she is conducting services in Y.

VIOLET BUSSARD

Reynoldsville, Pa.

Travel Club	Y. W. C. A. Cabinet
Glee Club	Basket Ball
Art Club	Hockey

This fair-haired, blue-eyed miss came to us in the last year of our school life. Since Violet stays down town, and does not believe in telling all she knows, we are not very well acquainted with her personal affairs. However, we do know that she thoroughly enjoys disagreeing with the other students in "Health and Hygiene."

MARY CAMPBELL

Vandergrift, Pa.

Bancroft Literary Society
 Y. W. C. A. Cabinet
 Hockey [varsity] '27, '28
 Basket Ball captain '27-'28 varsity
 Sequelle Staff
 Journalism Club
 Student Government
 Waiter's Club '28

Mary is an all-round athletic girl. She is a good leader and a sensible friend to all her classmates.

SEQUELLE



EMMA CAULK

Clarion, Pa.

Glee Club
Cheer leader
Basket-ball
Travel Club
Journalism Club
Operetta '28

Did she ever have a care? If so, no one has heard about it. Emma is pep personified, which fact makes her an able cheerleader. From her witty saying we are prone to think that she reads "College Humour."

BIRD CARSON

Clarion, Pa.

Y. M. C. A.
Football Squad
Demosthenian Society
Basket-ball Manager '27, '28
Minstrel '27
Sequelle Staff
Class President '28

Bird is our able president. He has many talents, chief among which is his ability to express himself in song. As a leader of the Journalism Club he is especially efficient. Recently he has secured employment in the office of register and recorder, where all Seniors and members of the faculty may now secure marriage licenses free of charge.

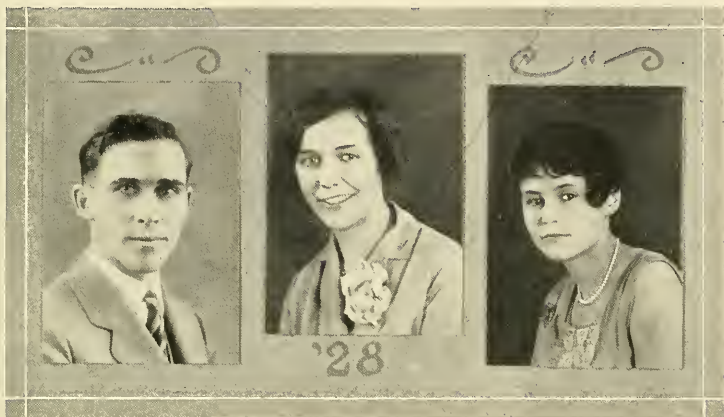
FRANCES CLARK

DuBois, Pa.

Franklin Literary Society

This young maiden, who came to us from DuBois, is rather serious minded and is often asked why she looks so sober. Nevertheless, she is interested in having a good time if it does not conflict with her studies. As a student Frances is very conscientious, and can be found in the library almost anytime.

SEQUELLE



RUTH CROOKS

Clarion, Pa.

Basket-ball [varsity]
 Hockey [varsity]
 Dramatic Club
 Dramatic Club Plays
 Tennis Team [varsity]

Ruth is an athletic type, yet a possessor of much feminine charm. Wouldn't some of us be happy if Ruth would serve us with her "tennis serve"? It has been discovered lately that Ruth possesses unusual ability in singing "popular numbers".

MARION COLLETT

Clarion, Pa.

Demosthenian Society	Sequelle Staff
Y. M. C. A.	Journalism Club
Orchestra	Scout Masters Course
Travel Club	Minstrel Show

One need only look at the list of activities in which Marion participated, to get an idea of the sort of student he is. Marion is never seen idle, as he believes in the old maxim that the more one puts into a thing, the more he will get out of it.

BERTHA CONNOR

DuBois, Pa.

Glee Club
 Girl's Quartette '28

Little, bright, and quick as a flash. Do you know why she is a lyric soprano? Because such a voice suits her so very well. Her pleasant and attractive manner serves to endear her to her companions.



Sequelle



JEAN DIBB

New Bethlehem, Pa.

Basket Ball
Hockey
Volley Ball

Baseball
Student Council
Travel Club

Here is a member of our class who says little, but her accomplishments are many. Jean is a good, all-around girl. She is dependable and takes a lively interest in all the school activities. She has good common sense and she seldom fails to use it.

MARION DALE

Knox, Pa.

Y. W. C. A.
Travel Club
Franklin Literary Club

Dignified and artistic, capable and friendly is Marion. She is one who you just know will reach a successful goal.

SARA JANE [Sally] CURRY

Sharon, Pa.

Y. W. C. A. Cabinet
Dramatic Club
Glee Club
Vested choir
Minstrel
Hockey team '27
Sequelle Staff
Journalism Club
Franklin Literary Society

There are many adjectives which could be used to describe Sally. She is lovable, good-looking, clever, popular and ambitious. You just can't help loving her.

3

Sequelle



SARA EPOLITA

Hazelhurst, Pa.

Y. W. C. A.
Travel Club

Quiet she is, but when you know her, you appreciate this very quality. Sara has a great deal of ability in English. In fact, she is one of the shining lights of Miss Nair's English class. Who knows? Some day she may be taking Miss Nair's place in C. S. N. S.

FLOSSIE DOWNEY

Kellettsville, Pa.

Art Club
Y. W. C. A.

Flossie has an old fashioned name, but she is a very modern girl. We never have seen her down-hearted, but she is many times very thoughtful looking. Of course, we cannot wonder at that when we know that her "better half" is far away, for Flossie is married.

EDNA EVANS

Blawnox, Pa.

Y. W. C. A. Senior Play
Dramatic Club Student Council
Franklin Literary Society Dramatic Club Plays

Has anybody seen our Edna? Everybody in Becht Hall has seen her. Not only do they find in her a true friend and willing worker; but everyone on the campus knows that she is one girl who will do what she promises. She has distinguished herself for her interesting parts in Dramatic Club plays.



SEQUOIA



GRACE GEMBERLING

Selinsgrove, Pa.

Glee Club
Art Club
Y. W. C. A.
Franklin Literary Society
Journalism Club

Many of us might profit, could we borrow some of Grace's conscientious and studious ways. Grace is a sincere worker and one who never shirks duty. In addition to her efficiency she has charm and a twinkling eye.

HELEN FOX

DuBois, Pa.

Franklin Literary Society
Student Government
Y. W. C. A.
Travel Club

You never see her blue. One can see her sweet soul in her everyday living. She is helpful and cheerful, and describes her friends by sketches of poetry.



HELEN EXLEY

Cranberry, Pa.

Bancroft Literary Society
Hockey
Y. W. C. A.
Art Club
Travel Club

This young maiden who hails from Cranberry gives every evidence of a good disposition. To the casual observer she may appear very quiet, but her red hair isn't for nothing.

Helen is very studious, and while many of the other students are talking about good marks, Helen is working for them.

Sequelle



VIRGINIA E. GRAHAM

Monongahela, Pa.

Y. W. C. A. Cabinet '28	Sec'y Senior Class
Glee Club	Sequelle Staff
Vested Choir	Art Club '28
Franklin Literary Society	Hockey Squad '28
Student Council	Journalism Club

Virginia is of ebony and ivory. One can tell to look at her that she is artistic to her very finger tips. Virginia is altogether thorough and practical.

BETTY GOODWIN

Clarion, Pa.

Dramatic Club
 Dramatic Club Plays
 Bancroft Literary Society
 Basket-ball [varsity] '27

Athletic as well as aesthetic. Pretty and witty; humorous and gay; talented and intelligent. Betty may find success through a number of paths. It may be chance or dance—the future only knows.

MILDRED GEORGE

Ellwood City, Pa.

Dramatic Club	Hockey Team '28
Dramatic Club Plays	Sequelle Staff
Vested Choir	Franklin Literary Society
Glee Club	Girl's Quartette '28
Y. W. C. A. Cabinet	Operetta '28
Minstrel '28	Journalism Club '28
Y. W. C. A. Cabinet	Operetta '28

Mildred is very changeable. Sometimes she is happy, and sometimes she is blue; but, she is always interesting. The possession of a personality that never grows monotonous is Mildred's.

SEQUENCE



ELVIRA HEASLEY

Knox, Pa.

Franklin Literary Society
Student Government
Y. W. C. A.

Elvira is another of our quiet girls. She believes in the saying "little girls should be seen and not heard." Although Elvira is quiet, she is full of fun, and is always ready for a good time.

LEONE HART

Ellwood City, Pa.

Y. W. C. A. Cabinet
Dramatic Club
Dramatic Club Plays
Bancroft Literary Society

Leone's one worry is to keep her hair curly. However, we think that this is the only worry she has. Giggling is Leone's chief failing. We find her very lovable.

EVELYN GREENE

Irvona, Pa.

Bancroft Literary Society
Y. W. C. A.
Student Council
Travel Club

Evelyn is kindness and common sense personified. Since her ability to lead is combined with her many other favorable characteristics, we think Evelyn quite an admirable type of girl. Evelyn may be shy, but a young man follows in her train.

SEQUELLE



EMMA HICKINBOTTOM

Verona, Pa.

Glee Club	Hockey
Vested Choir	Basketball
Y. W. C. A.	Franklin Literary Society
	Minstrel Show

If anyone is blue, she has to be around Emma for a very few minutes until she has forgotten all her troubles. Emma's slogan seems to be:

"Happy am I, from care I'm free,
Why can't they all be contented like me?"

NAOMI HEEFNER

Irwin, Pa.

Franklin Literary Society
Y. W. C. A.
Student Council
Dramatic Club
Current Events Club
Travel Club

Small but lively, cheerful, and a splendid leader is Naomi. She has enough pleasing qualities to cause us to say she is a possessor of "it."

MARY HELD

Franklin, Pa.

Bancroft Literary Society	Art Club
Y. W. C. A.	Travel Club
	Hockey

Dainty, demure Mary came to us from Franklin. Friendliness is one of her greatest charms. She seems very mild, but on better acquaintance we decide that appearances are deceiving. They say that "good things come in small packages." This is true of Mary, for one cannot find a better friend, nor a better sport than she.

SEQUELLE



ANNIE HILEMAN

Red Bank, Pa.

She has a most distinctive speech and personality. She is practical and studious, and eager for discussion, always supporting her views with strong arguments.

ARLENE HORNER

Conifer, Pa.

Baseball
Travel Club
Y. W. C. A.

Arlene would have us think her a quiet mouse, but once we know her we decide that still water runs deep. We consider Arlene quite fortunate because her father is a doctor and she can be ill without fear of the cost. Arlene says that she enjoys teaching school because she likes to associate with "bright" people.

VIOLET JOHNS

Brookville, Pa.

Perhaps many of us would profit if we were as efficient as Violet. She is studious, but she always finds time to smile. Were there ever eyes bluer than Violet's?

23



SEQUOIA



HELEN HOCH

Chicora, Pa.

Helen came to C. S. N. S. after graduating from the National Park Seminary. From all appearances, she has a strong affection for her home, as she goes home every week end. We wonder if she gets homesick to see her Mother and Dad, or if perchance there might be a stronger attraction than they.

SARAH LEONARD

Punxsutawney, Pa.

Art Club
Travel Club
Y. W. C. A.

Sarah came to us during the second semester of our Senior year. She seems to be very much interested in Educational Measurements, for Mr. Becker always knows on whom to call when the rest of the class are not able to recite. We have not been able to find anything out about Sarah's personal affairs. We feel sure, however, that she does not have her snappy eyes for nothing.

IOLA HAYES

Oil City, Pa.

Franklin Literary Society
Glee Club
Y. W. C. A.

We hear suppressed giggles behind a closed door. We know that Iola Hayes is around, for she is the champion giggler of Becht Hall. Iola has a weakness for pressing dresses. She thought that she might get an invitation to the Joppa Club Party, so she pressed four dresses. Whether her wish came true or not, I do not know.

SEQUELLE



JENNIE KELLER

Penfield, Pa.

Glee Club
Travel Club
Y. W. C. A.

"This is our Jennie who considers
life worthwhile,
Whose troubles quickly vanish in
the magic of her smile,
She's an oasis in a desert, with her
sunny cheerful ways,
And says she laughs when things go
wrong,
And finds it always pays."

In the short time we have known Jennie
we have found that the above lines give a very
good description of her.

GERALDINE E. KAHLE

Leeper, Pa.

Franklin Literary Society
Y. W. C. A.
Art Club
Travel Club

Serious-minded, kind and studious is Ger-
aldine. Her interesting mannerisms win for her
a large circle of friends.

RACHEL KECK

Clarion, Pa.

Franklin Literary Society
Dramatic Club
Dramatic Club Plays

"Kids, if I can only get the machine", is
Rachel's favorite saying. Because of Rachel's
pleasing disposition, and extraordinary ability
we believe she is going to be a second "Mrs.
Miller."



SEQUELLE



ETHEL KING

Summerville, Pa.

Bancroft Literary Society Art Club
Travel Club Y. W. C. A.

Ethel has won her way into the hearts of many through her friendly spirit of helpfulness. She has a quaint humor and sincerity of purpose, which have brought her a certain degree of success here, and we know she will be equally successful when she leaves C. S. N. S.

MARCELLA KEVERLINE

Crown, Pa.

Travel Club

"Kevy", as she is commonly called, is an innocent little brunette. With her happy and pleasing disposition she is very amiable person. She has a habit of manicuring her finger nails and looking in her compact to see if her head is held at the most becoming angle. Marcella is especially fond of dancing, walking, picnicking, and taxi-driving.



EUGENE KUNSELMAN

Brookville, Pa.

Y. M. C. A. '25, '26, '27
Demosthenian Society
Foot-ball
Basket-ball
Minstrel
Operetta
Glee Club
Student Council

"Gene" just doesn't see trouble. He's ever on the lookout for mischief, but when it comes to the place when things menial are necessary, Gene is right there.



SEQUOIA



AGATHIA MATREAL

Hazelhurst, Pa.

Y. W. C. A.
Franklin Literary Society
Travel Club

If there is any mischief in the air, we know on whom to blame it. She tries to hide her thoughts by assuming a calm and tranquil mein, but when you know her better, "Oh, my!" She is not the quiet mouse one might think. Agatha did not join our class until the second semester of our Junior year, but she has proved herself a good sport and a true friend.

VIRGINIA LUCE

Kane, Pa.

Secretary Y. W. C. A.
Vice Pres. Student Council
Vested Choir
Glee Club
Dramatic Club
Franklin Literary Society
Minstrel Show
Attendant to May Queen

Virginia is another of our quiet girls whom we admire. She has taken a part in all our school affairs. We think that her greatest ambition is to be a teacher. In the future she may become Miss Jack's successor in the training school.

EDNA MAYES

Hazen, Pa.

Art Club
Glee Club
Y. W. C. A.

Although Edna has been in our midst only a short time, she has won a permanent place in our hearts. It only takes a short time to get acquainted with Edna. Anyone who wants a real friend shouldn't miss the opportunity of knowing her.



SEQUOIA



GERTRUDE McCAWLEY

Durant City, Pa.

Y. W. C. A. Cabinet
Vested Choir
Dramatic Club
Student Council
Glee Club
Minstrel Show
Bancroft Literary Society

Those who know "Gert" cannot soon forget her. She never complains or grumbles, but takes life as it comes. She is full of fun and is always ready to have a good time, especially where her friend Virginia is concerned.

FLORENCE McCALL

Parkers Landing, Pa.

Hockey
Travel Club

When gazing upon the countenance of this fair lass, one is wont to say, "How quiet and demure!" but that one errs in his judgment. Real mischief lurks in her eyes and around the corners of her mouth.

62

MARGARET McCUNE

Fairmount City, Pa.

Baseball
Volley Ball
Travel Club

Here's to one who joined our ranks in the fall of '27.

Pat with her wavy golden tresses and dreamy eyes is very well known by the student body; but especially does she aim her darts at the opposite sex. Many men have fallen under the gaze of those soulful eyes.



SEQUOIA



AILEEN DOROTHY McHENRY

Clarion, Pa.

Bancroft Literary Society
Y. W. C. A.
Debating Club

Aileen is studious in every sense of the word, and possesses unusual ability to raise discussions. She is a student worthy of admiration because of her interest in reading history and good literature.

MYRA McFADDEN

Munderf, Pa.

Art Club
Glee Club
Vested Choir
Hockey Team
Baseball Team
Basketball
Travel Club

This dark-haired, brown-eyed maiden came to us from a town known as Munderf. "Frankness and fairness" is her motto, which she carries out daily. Myra is very active in school activities, and she always finishes what she undertakes to do.

IONA McHENRY

Clarion, Pa.

Bancroft Literary Society
Y. W. C. A.

Iona is one of our staunch and sturdy students. She is a willing worker, always faithful to the interests of the class. We see a bright future for her, and our best wishes go with her.

28

SEQUELLE



JANET MILLS

Kane, Pa.

Bancroft Literary Society
Y. W. C. A.
Travel Club

Janet is one of those rare individuals who can make us believe she is very solemn and dignified, while she is really a very jolly person. We do not know very much about Janet's social affairs, as she stays down town, but no doubt she has some romantic attachments.

DOROTHY MILLER

Clarion, Pa.

Dramatic Club
Glee Club
Girl's Trio
Dramatic Club Plays
Sequelle Staff

"Dot" is a girl whom we all admire because of her ladylike qualities, and her ability as a faithful and efficient worker. In fact, she has a great many of the characteristics essential to a good teacher. Dorothy also has the ability to be a leader, and has recently become interested in the Irish question. We feel sure of her success, for she always has a smile and a cheery word for everyone.

FRED MILLER

Punxsutawney, Pa.

Demosthenian Club '26
Owl Club '26-'27
Football '27
Y. M. C. A.
Minstrel '27
Glee Club '26
Waiter's Club '26-'27
Student Council '26

Fred is one of our most courteous members whom the girls greatly admire. He is an intelligent young man whom we can picture as a successful high school principal or county superintendent in future years.



SEQUOIA



KATHERINE MINER

Oakmont, Pa.

Y. W. C. A.
Student Council
Bancroft Literary Society

"K" 's chief hobby is cooking. Many people's troubles find their way to "K", for she never refuses consolation. She is the kind of girl whom all the class admires.

HAROLD MILLER

Clarion, Pa.

Basket-ball
Foot-ball
Y. M. C. A.
Senior Class Play '27
Minstrel '26, '28
Demosthenian Society '26, '27
Glee Club
Travel Club '28
Scout Master's Training Course

Harold is an intelligent student who loves argument. He handles argument skillfully, when he chances to meet it.



DOROTHY MONKS

DuBois, Pa.

Dramatic Club
Dramatic Club Plays
Glee Club
Vested Choir
Pres. Dramatic Club '27
Minstrel
Y. W. C. A. Cabinet
Bancroft Literary Society
Operetta '28
Hockey Squad '28
Quartette '28
Student Council

Dorothy has many talents, charms, and personal attractiveness. These virtues, combined with strong determination, make her an unusual and valuable member of the class of '28.

SEQUELLE



ISABEL PRYOR

Cranberry, Pa.

Franklin Literary Society
Y. W. C. A.
Travel Club
Hockey
Art Club

Yes, this is Isabel. She comes from Cranberry. Isabel is always good-natured. To some she may seem very quiet, but she has shown some of her classmates that she knows how to be noisy. She is very fond of books, works diligently, and is always well prepared to recite.

MILDRED PARSONS

Claridge, Pa.

Bancroft Literary Society
Y. W. C. A.
Treas. Travel Club
Journalism Club
Sec'y Student Council

Carefree and full of pep—in for all kinds of fun. "Mid" is a friend to help one along the way by adding cheer and laughter.

MARY REITZ

New Bethlehem, Pa.

Glee Club
Vested Choir
Travel Club
Y. W. C. A.
Art Club
Hockey

Mary is a new member of our class, but we love her already. She is wholesome and cheerful, and wears a pretty smile.

SEQUOIA



MARGUERITE REYNER

Sheffield, Pa.

Glee Club
Y. W. C. A.
Vested Choir
Travel Club

Marguerite is a rare combination of the studious and frivolous. She seems to be always busy, but never so busy that she cannot take time to listen to a good joke or help in some prank.

AGATHA RENSEL

Travel Club
Y. W. C. A.
Base-ball Team

Don't you just know that Agatha will be the best of teachers? Agatha is rosy-cheeked and happy. Can you imagine her ever refusing to help anyone?



MARY RHEA

Millersburg, Ohio

Y. W. C. A.
Art Club

Mary is a member of our class who hails from the neighboring state of Ohio. She has won the hearts of all who know her. She has many of the characteristics of a good teacher and we feel sure that her future will be a successful one.



SEQUELLE



JOHN STAUFFER

Reynoldsville, Pa.

Demosthenian Club Cabinet	Waiter's Club
Y. M. C. A. Cabinet	Sequelle Staff
Football Squad	Glee Club
Journalism Club	

Few are as thorough and intelligent as John—nor as tall either. The teachers depend upon him to raise the windows and to make himself generally useful. He has proved his heroism by being the only man in Juvenile Literature. It is easy for John to see the humorous side of things. His combination of virtues makes him an admirable classmate.

RUTH SPACKMAN

DuBois, Pa.

Girl's Glee Club	Vested Choir
Bancroft Literary Society	Y. W. C. A.
Hockey Team '28	Minstrel '28
Y. W. C. A., President	
Journalism Club	
Operetta	

Ruth is capable of adapting herself into any circumstance. She is serious when seriousness is required; gay and carefree when the opportunity presents itself. She is loved by every member of the class of '28. She has shown marked leadership in the Y. W. and Journalism Club.

ARLENE STITT

Rimersburg, Pa.

Volley Ball
Baseball
Art Club

Arlene is conscientious, responsible, and very philosophic in her acceptance of things as they come. Her sincere, open-hearted, and thoughtful ways make her admired and liked by all those who know her. At one time we thought Arlene's chief ambition was to be a teacher, but since Christmas vacation we have changed our minds. We wish her the best of luck, whatever her vocation may be.

SEQUELLE



LUELLA RIDDLES

Sykesville, Pa.

Art Club
Franklin Literary Society
Student Council
Y. W. C. A.
Travel Club

Luella is always weaving a happy smile. Her character and disposition have made it a joy to know her. Her pleasing ways, coupled with her determination to succeed, will make a welcome place for her in the teaching profession, as it has in the hearts of those who knew her at C. S. N. S.

JULIA REICH

DuBois, Pa.

Glee Club
Basket-ball
Hiking Club

Curly hair as black as the raven's wing has Julia, and eyes as black or blacker. She is intelligent and humorous, and is a valuable member of our class.

2

LILLIAN ROCKWELL

Oil City, Pa.

Franklin Literary Society
Y. W. C. A.
Art Club

Lillian surely was born on a sunshiny day, for the reflection of the sun still shines from her face. No one near Lillian can be downhearted, except the fond males, for she will have none of them. Her professors like best to hear her make speeches, for she goes at so rapid a pace that for once everybody is awake and alert. Ask Miss Edgar; she knows.

SEQUOIA



ALTHA RUTHERFORD

Clarion, Pa.

Assistant Librarian

Altha says, "I've something to tell you." Then she begins, and she has a good extensive vocabulary with which to tell it, too. One can tell by the movements of her hands that she is the most systematic and accurate person in the world. Puzzle—do students misbehave when she keeps the library?

IZETTA ROLLER

Reynoldsville, Pa.

Y. W. C. A.
Hockey
Franklin Literary Society
Travel Club

This young lady is not as demure as she appears. She will not hesitate to play a good joke on anyone, and will appear perfectly calm while answering, "Why I didn't do it; you didn't expect me to do such a thing, did you?"

SARA SCHWEM

DuBois, Pa.

Sally is quiet, neat and refined, sincere in her work and studious. We can see in her qualities which make for a successful teacher.

SEQUELLE



EDITH SEIGWORTH

Newmansville, Pa.

Glee Club
Vested Choir
Art Club
Dramatic Club
Y. W. C. A.

Pretty, and wearing a smile that is never betraying. Troubles never seem to bother Edith - - - - not even the purchasing of rouge.

BESSIE SEELEY

DuBois, Pa.

Girls Trio

Speaking of busy people, we can't possibly overlook this important member of our class. Even though she isn't as big as some of us, she can hold her own in almost every phase of school work. Bessie is a sure cure for the blues. Although Bessie did not join our class until the fall of '27, we have all learned what a good sport she is.

HESTER SHELLY

Brockway, Pa.

Travel Club

Her snappy black eyes and winning ways have endeared her to the pupils in the training school as well as to the student body. If Hester were not always in such a hurry, perhaps we could learn to know her better.





SEQUELLE



EVELYN SMITH

Pittsburgh, Pa.

Y. W. C. A.
Travel Club

Although Evelyn has been with us but a short time, we have all learned to love her. She is lively and studious, cheerful and witty, and in for all kinds of fun.

NOBLE SKINNER

Kittanning, Pa.

Demosthenian Club
Foot-ball Squad
Glee Club
Treasurer Y. M. C. A. '26, '27
Owl Club
Minstrel '27

Skinner decides whether or not he is right concerning a certain subject; then he goes ahead. Once his mind is made up, it is almost impossible for it to be changed. Skinner is serious-minded enough to be a splendid student, and humorous enough to be entertaining.

ELEANOR SOUTHWORTH

Hydletown, Pa.

Travel Club '28
Y. W. C. A.

"A perfect woman, nobly planned" is Eleanor. Although she has been with us but a short time, we all have learned to know and love her.



SEQUELLE



GOLDA TERWILLIGER

Clarion, Pa.

Y. W. C. A.

Would that many of us were as sincere and thorough about things as Golda. She moves about quietly her duties to perform.

GRACE STONE

Oakmont, Pa.

Y. W. C. A.
Vice Pres. Student Council
Glee Club
Vested Choir
Treas. Senior Class
Franklin Literary Society
Hockey Squad
Minstrel

One wonders how so much pep, enthusiasm, and loveliness could be embodied in so tiny a person. Grace is constantly worrying about her many boy friends, but she leads a cheerful life in general.

HALLIE THOMPSON

Youngsville, Pa.

Art Club
Baseball
House President
Y. W. C. A. Cabinet

Hallie came to us in our Senior year. She is one of the smallest members of the class. Even though Hallie doesn't worry, she finishes all her work. Probably that is the reason that she is always happy. She is especially fond of making graphs for Mr. Becker, when she doesn't have to.

2

SEQUELLE



HELEN WHEELAND

DuBois, Pa.

Dramatic Club
 Dramatic Club Plays
 Glee Club
 Vested Choir
 Bancroft Literary Society
 Sec'y. Dramatic Club
 Quartette '28

Helen has rosy cheeks, a sunny smile, and a cheery disposition. Lessons worry her little; but she always manages to "get there." She is a dependable friend of many.

ADOLPH WETZLER

Elderton, Pa.

Dramatic Club '22
 Waiter's Club '22
 President of Debating Club '22
 Tennis Tournament '22
 Mixed Chorus '22
 Demosthenian Club '26
 Glee Club '26
 Travel Club '27
 Senior Class Play '22

When it comes to telling stories, Adolph is in a class all his own for originality and freedom of expression. He has great ability in meeting crises, such as having a ready answer for any question which may be directed his way.

ETHEL WILSON

DuBois, Pa.

Art Club
 Y. W. C. A.

This charming lass with her wavy brown hair and blue eyes has absorbed a great deal of the artistic ability of our class. Although Ethel has been with us only a few months, we have seen many evidences of her artistic talent. Some day she may be an art teacher, but we have our doubts.



SEQUELLE



THOMAS E. ZAWASKY

Rew City, Pa.

Demosthenian Society '26-'27
Y. M. C. A. '26-'27
Minstrel '26-'27
Class Play '27
Glee Club '26
Foot-ball Squad '27
Track '26-'27
Journalism Club
Sequelle Editor

Popular, capable, and manly is our "Sequelle" editor. Tom does things and enjoys doing them. Watch his expressions and movements sometime, when he is in a humorous mood.

MARY YURICK

Duquesne, Pa.

Glee Club
Vested Choir
Hockey Squad
Franklin Literary Society
Y. W. C. A.
Basket-ball
Minstrel

You never see Mary alone. No, because she is always with Emma. Mary, our pretty blond girl from Duquesne, is perfectly at home on the basket-ball floor, where she always keeps her good disposition.

GERALDINE WYSE

Hawthorne, Pa.

Y. W. C. A. '27, '28, Cabinet
Travel Club
Journalism Club
Franklin Literary Society
Assistant Editor Sequelle Staff

Was there ever hair more curly than Geraldine's? She is cheerful and capable. We like to hear her talk.



SENIOR CLASS HISTORY

TO write a history that would do justice either to the meekest or to the most illustrious of classes, would be quite an impossibility. It would give us unbounded pleasure to be able to trace the personal history of each member of our worthy class; but the lack of adequate space and the number of members in the class of 1928 make such an undertaking impossible.

Perhaps we have not accomplished deeds that will help to solve international difficulties, or to settle the immigration problem, but at least we have tried to radiate a spirit of cheerfulness about us at all times. We sincerely hope that such an attitude may have an influence upon future classes.

The talents and accomplishments of the class of '28 are as diverse and numerous as the members of the class. These talents serve to make our class one of the most individualistic of classes. But let us not forget that it has taken our "Junior selves" as well as our "Senior selves" to prove our abilities. We have found that there is a different place for every talent and ambition. While it may not take much more than studiousness for some one to do his reference work, it takes pure muscle, ingenuity, and bravery to carry out such a program as was witnessed on "Senior Skip Day" in the year of 1927. While it takes actual talent on the part of a selected few to make possible our annual class play, it takes actual executative ability on the part of a few to make possible our beloved "Sequelle". While it takes one type of presence of mind to speak before an audience, it takes another type to guard your man on the basket ball floor.

We have worked hard and enthusiastically for the betterment of the athletics, student government, and all social and religious organizations in connection with our school. We have learned how to surmount obstacles with success.

Our minds have been as fields, that have undergone the various methods of cultivation, and have been sown with valuable seed. The result of this cultivation rests within the future. With the adequate background, which has been developed during our life on the campus, we near our graduation day with a mind set to do our part in carrying out the work set before us as our share in playing the game fairly.



SEQUOIA



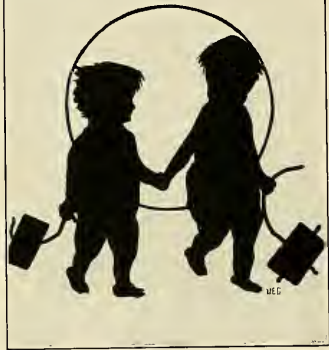
Memorable Happenings



SEQUENCE



JUNIORS



Officers

- William Flanagan.....*President*
Alden Hunt..... *Vice President*
Francis Miller..... *Secretary*
Vera Ritchy..... *Treasurer*



SEQUENCE



JUNIOR CLASS



SEQUOIA



THE JUNIOR CLASS

Class Colors—*Old Rose and Silver*
Class Motto—*A Winner Never Quits*
A Quitter Never Wins

CLASS ROSTER

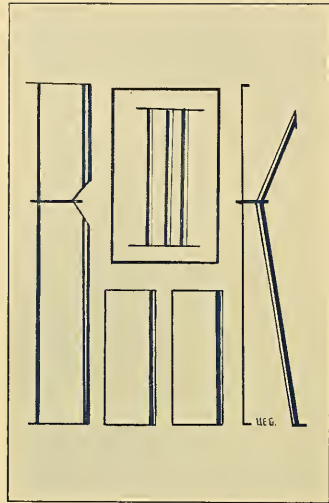
NAME	NICKNAME	HOME	FAVORITE EXPRESSION
Alcorn, Dorothy	"Dot"	Brookville	"Pipe down, big boy."
Armstrong, Agnes	"Agnes"	Edensburg	"For goodness sake."
Barnes, Helen	"Barney"	Cherry Tree	"How be you?"
Barrett, Eleanor	"Specks"	DuBois	"Atta Boy."
Bauer, Kathleen	"Kay"	Sharon	"Is the mail out."
Beckman, Twila	"Twi"	Smethport	"Guess I'll have to diet."
Bell, Charlotte	"Tinkle"	Clarion	"You're darn tootin'."
Burford, Kathleen	"Ford"	Rimersburg	"Wait 'till I find out."
Campbell, Ruth	"Came!"	Clarion	"Once upon a time."
Carson, Belle	"Bell"	Clarion	"What do you think this is?"
Cochran, Jennie	"Jen"	Punxsy	"Wait 'till I find out."
Colloner, Carolyne	"Colloner"	Clarion	"I'm starved."
Conley, Lucille	"Granny"	Clarion	"Don't coax me."
DuMars, Wilbur	"Dewey"	Cochranton	"Where's my marcelle?"
Feraciola, Agnes	"Agnes"	Conifer	"Is that necessary?"
Fiddler, Alta	"Fid"	Clarion	"D'you think so?"
Fitzgerald, William	"Fit"	Ambridge	"So I spoke up and said."
Flanagan, William	"Bill"	Clarion	"I've forgot your name."
Fleming, Grace	"Gracie"	Corsica	"I don't believe that."
Gathers, Edna	"Ed"	Knox	"That's all there is."
George, Marguerite	"Marg"	Clarion	"Who said so?"
Goldsmith, Minnie	"Min"	Tionesta	"I can stay only a second."
Gustavson, Esther	"Gussy"	Bradford	"Good-by darling."
Haines, Mary	"Merry"	Reynoldsville	"She makes me sick."
Hanst, Miram	"Min"	Knox	"What a life."
Hertig, Elizabeth	"Betty"	Emporium	"God love him; I do."
Hetrick, Irene	"Irene"	Fairmount City	"For goodness sake."
Hoffman, Ruth	"Ruthie"	East Brady	"I got my letter."
Jamison, Richard	"Dick"	Butler	"Hell, no."
Johns, Violet	"Vi"	Brookville	"That's the truth."
Kahle, Jane	"Jane"	Oil City	"If this isn't a measley world."
Kirker, Anna Jane	"Slim"	Zelienople	"Mercy, Martha Lou."
Kline, Raymond	"Ray"	Clarion	"What do you know about that?"
Kohlepp, May	"May"	Rochester Mills	"That's just too bad."
Laughner, Helen	"Helen"	Emelenton	"Oh my dear."
Laughenburg, Orpha	"Downey"	Kane	"I'm going home to-day."
Lewis, Ruth	"Lewis"	Sabula	"Who mentioned Oil City?"
Love, Leah	"Lee"	Falls Creek	"I have the next dance with Joe."
Luther, Florence	"Flo"	Corsica	"Now, in my home town."



SEQUOIA



NAME	NICKNAME	HOME	FAVORITE EXPRESSION
Mahey, Jane	"Jane"	Clarion	"What did you tell him?"
Mable, Bernice	"Bunny"	Shippensville	"Let's eat."
Manson, Raymond	"Manson"	Rouseville	"See you later, dear."
Martz, Vivian	"Vi"	Summerville	"Look me over."
Miller, Frances	"Fran"	Clarion	"Let's get together on that."
Miller, Leona	"Leon"	Shippensville	"I heard a good one today."
Miller, Maxine	"Max"	Leeper	"I'll kill him."
Moore, Clyde	"Moore"	Corsica	"Gee whiz, what could I do?"
Moore, Helen	"Helen"	Reynoldsville	"Not now but soon."
Moore, Vera	"Ver"	Kennerdale	"It wont be long now."
Murphy, Juletta	"Jula"	West Monterey	"Good night, no."
McCleary, Laura	"Laura"	Clarion	"What now?"
McCleary, Ralph	"Cleary"	Clarion	"Oh, I don't think."
McCormack, Frances	"Fran"	Clarion	"Well I should say."
McElhatten, Kathleen	"Kay"	Shippensville	"Why mention that subject?"
McFarland, Everett	"Mickey"	Clarion	"Pardon me for snoring."
McHenry, Irene	"Irene"	Sligo	"That's all wrong."
Over, Orpha	"Over"	Sligo	"Where's my room-mate?"
Phillis, Martha	"Pat"	Fombell	"Well folks, I must go."
Powell, Wilda	"Wilda"	Pittsburg	"Sure, I will."
Ramsy, Paul	"Ramsey"	Lawsonham	"I'm sorry I'm late but -"
Reich, Julia	"Julia"	DuBois	"Oh, I suppose."
Richey, Vera	"Vera"	Franklin	"I am collecting for - -"
Ross, Anne	"Ann"	Franklin	"Immediately"
Reaghart, Florence	"Rip"	Strattonville	"I haven't looked at my book."
Rowe, Aldine	"Dean"	Knox	"He just doesn't register."
Rowley, Ellwood	"Rowley"	Ambridge	"Why bring that up?"
Ruffner, Paul	"Ruffner"	Clarion	"Can't do it, mister."
Sayers, Ruth	"Sayersey"	Cranberry	"Well now I couldn't say."
Schwab, Viola	"Vi"	Shippensville	"Oh my dear, I'm so thrilled."
Schwem, Natalie	"Nat"	DuBois	"How do I look?"
Shaffer, Florence	"Shaffer"	Brookville	"Well, well, well."
Sherry, Margaret	"Peg"	Clarion	"Is that nice?"
Simpson, Helen	"Helen"	Corsica	"I might get angry."
Shorts, Grace	"Shorty"	Shippensville	"When I finish this letter."
Sloan, Mary	"Irene"	Soldier	"And how?"
Smith, Bernise	"Berny"	Clarion	"Great grief."
Steward, Lydia	"Lydia"	Rimersburg	"Is that the kind of a girl you are?"
Taylor, Mildred	"Mid"	Clarion	"Oh, I'm sorry."
Thompson, Donald	"Don"	Shippensville	"Hello, soaks."
Thompson, Ruth	"Boo-boo"	Clarion	"I had a peachy time."
Timlin, Marian	"Tim"	DuBois	"Who cares about that?"
Waggett, Florence	"Flo"	DuBois	"Do you know?"
Walters, Charlotte	"Scarlet"	Leeper	"For crying out loud."
Zagst, George	"Georgie"	Fisher	"Sure I'll do it for you."



Activities
Dramatics
Societies



SEQUELLE



ACTIVITIES



Those curricular activities so essential to bring harmony to our future progressive lives.

SEQUOIA



STUDENT COUNCIL

THE Student Government is composed of all the women students of the dormitory. After electing a president and secretary they regularly elect a student council, whose duty it is to act as the governing body for the organization. Thus the Student Council representing the Student Government governs the dormitory. The Council acts as a mediatory between the students and the faculty when difficult student problems have to be solved.

The officers of the Student Government are also members of the Student Council, which is composed of twelve members, nine Seniors and three Juniors.

OFFICERS

STUDENT GOVERNMENT

President.....	Mary Campbell
Secretary.....	Naomi Heefner

STUDENT COUNCIL

President.....	Evelyn Green
Vice President.....	Grace Stone
Secretary.....	Miklred Parsons
Treasurer.....	Gertrude McCawley

SENIOR MEMBERS

Mary Campbell	Naomi Heefner	Virginia Luce
Katherine Miner		Luella Riddles

JUNIOR MEMBERS

Kathleen McElhatten	Vera Richie	Mary Haines
---------------------	-------------	-------------

SEQUENCE



YOUNG WOMEN'S CHRISTIAN ASSOCIATION

THE Young Women's Christian Association is one of the most influential organizations in the school. By means of the "Big Sister" campaign it brings the girls of the school into a closer relationship and makes each feel that others have an interest in her.

The General aim of this organization is to develop Christian leadership by means of high ideals and actual Christian work.

This organization annually sends delegates to the State Y. W. C. A. Conference at Eaglesmere, who bring back many suggestions that add enthusiasm to its work.

Each student is given an opportunity to take part in the exercises and to develop a certain leadership in Christian work.

The association meets every Wednesday evening. The meetings this year have been unusually interesting and instructive, and the attendance deserves special commendation. The programs have been ably directed by the cabinet and the faculty advisor, Mrs. Amabel Lee Ralston.

CABINET

President	Ruth Spackman
Vice-President	Mildred George
Secretary	Virginia Graham
Treasurer	Mary Campbell
Devotional Chairman	Dorothy Monks
Social Chairman	Sally Curry
Morning Watch Chairman	Leone Hart
Undergraduate Chairman	Evelyn Green
Home Missionary Chairman	Geraldine Wyse
Publicity Chairman	Gertrude McCawley
World Fellowship Chairman	Virginia Luce
Music Chairman	Elizabeth Buchan



SEQUOIA



VESTED CHOIR



THE Vested Choir has perhaps functioned in public more than any other school association. The girls who compose it are to be congratulated for their fine spirit of response to the work and the excellent results achieved.

This group appears on the platform each Sunday evening at Vesper services and helps to make each service impressive by their beautiful songs. The group also made several excursions to nearby communities to contribute their songs of inspiration and good cheer.





SEQUOIA



GLEE CLUB

THE Glee Club plays a very important part in our school life. If at any time the members are needed, they are ready to help, and it is from their number that our vested choir is taken.

They also played a larger part in the Christmas Pageant and helped to make it such a success.

Feeling that we owe a great deal to the Glee Club and Mr. Sarig who conducts it, we take this opportunity for thanking them.



SEQUOIA



TRAVEL CLUB



THE Travel Club is one of the new organizations which came into existence this year. The object of this club is to promote interest in travel and to become acquainted with methods of conducting an extra curricular activity of this type in the school room.

The work of this club has consisted of studying the worthwhile scenes and historical places of interest, beginning with local regions and gradually radiating outward until the entire world has been included in the study. This has been one of the most popular organizations of the school this year.

The work has been very ably conducted by the following officers under the leadership of the faculty advisor, Miss Elizabeth Keithan:

President.....	Myra McFadden
Vice President.....	Isabel Pryor
Secretary.....	Alice Killeen
Treasurer.....	Mildred Parsons

SEQUOIA



ART CLUB

The Art Club of Clarion Normal was organized, primarily for those who were interested in the subject itself, and who enjoyed knowing more of Art by actually designing and working out color schemes for various practical purposes.

Through the skillful leadership of Miss Hazel Sandford, the Art instructor, the interest has approximated a maximum, and the membership has increased by more than half the original enrollment.

Interesting problems relating to art are discussed in the weekly meetings. Anyone, whether a member or not, who appreciates and likes this particular type of work, has been permitted to attend the meetings.

The work that has been finished by the members of the Art Club is done for the benefit of the individual student. Each completed article belongs to the designer, and is useful as well as attractive. Exhibitions have displayed the accumulated products to the student body and to the public.

SEQUELLE



YOUNG MEN'S CHRISTIAN ASSOCIATION

SINCE it has universally been accepted that everyone should be affiliated with some religious organization, our Young Mens' Christian Association was organized to meet this need for the men of the school.

The members of this group meet every Wednesday evening in their room in Music Hall. The meetings have been well attended and much interest has been shown. The programs have consisted of addresses and discussions concerning problems of life both in school and out. We feel sure that much good has been accomplished.

The above work has been directed by the following officers under the leadership of Mr. C. F. Becker.

First Semester

President.....	Herbert Allshouse
Vice President.....	John Stauffer
Secretary.....	Paul Snyder
Treasurer.....	Noble Skinner

Second Semester

President.....	George Zagst
Vice President.....	Raymond Manson
Secretary.....	Clyde E. Moore
Treasurer.....	Noble Skinner

SEQUOIA



Back Row:—Moore, Stranges, Flanigan
Front Row:—
Seeley, Schinetto, Huston Faculty advisor, Rowley, McHenry

DEBATING SOCIETY

THE Debating Society has been one of the most unique school organizations. Although the number of members has been rather small, the group has performed some outstanding work.

As the name indicates the purpose of the Society is to sponsor interest in debating and to learn methods of conducting debates. The work has been motivated by the development of competition between our Debating Society and that of the Slippery Rock State Teachers' College. Much interest in the work has been shown by the entire student body.

The work has been ably directed by Professor James R. Huston.

SEQUELLE



Miss Oliver's Dollars.



SEQUELLE



JOURNALISM CLUB



THE Journalism Club was organized for the purpose of interesting the students in the subject of Journalism. This organization has had a very successful year and is one in which much interest has been shown.

In the regular meetings which are held the second and fourth Mondays of each month, Journalism as a profession and as an art has been discussed. Men who have had training and experience in this profession have spoken before the club on topics relating to Journalism. Moving pictures have been presented for the purpose of showing the work of a newspaper office. Interesting reports on journalism have been made at each meeting.

At the first meeting the following officers were elected:

- | | |
|---------------------|------------------|
| President..... | Bird Carson |
| Vice President..... | Grace Gemberling |
| Secretary..... | William Flanagan |
| Treasurer..... | Grace Shorts |

SEQUELLE



DRAMATIC CLUB

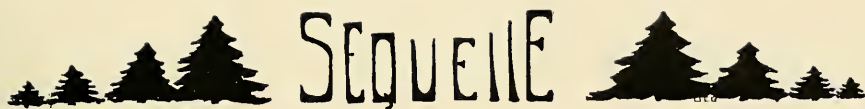
OUR Woman's Dramatic Club under the leadership of Miss Dorothy Edgar has had a very successful year. This is one of the most useful organizations in the school. The members receive training in platform work and play producing. In the weekly meetings plays and readings are presented, discussed, and criticized.

First Semester Officers

President	Dorothy Monks
Vice-President	Rachel Keck
Secretary.....	Helen Wheeland
Treasurer.....	Dorothy Miller

Second Semester Officers

President	Leone Hart
Vice-President	Ruth Crooks
Secretary.....	Edith Seigworth
Treasurer	Ruth Hoffman



DRAMATIC CLUB PLAYS

During the course of the year it has been the custom for this club to present several plays. The following plays were presented to large and appreciative audiences.

FOURTEEN

—Alice Gortonberger

Scene—The Pringle Dining Room

Time—Evening

Mrs. Pringle.....	Edna Evans
Elaine Pringle.....	Viola Schwab
Dunham.....	Leone Hart

THE HEART OF A CLOWN

—C. P. Anderson

Scene—The Outskirts of a Carnival

Time—The End of Summer

The Clown.....	Marian Timlin
Columbine.....	Betty Goodwin
Harlequin.....	Martha Phillis
Gypsy.....	Aldine Rowe

MISS OLIVER'S DOLLARS'

—Emilie H. Callaway

Scene—Sitting Room of Mrs. Beebe's Farmhouse

Time—A Summer Afternoon

Mrs. DeForest.....	Rachel Keck
Ellen DeForest.....	Dorothy Monks
Madge DeForest.....	Sally Curry
Mrs. Beebe.....	Helen Wheeland
Mrs. Kirk.....	Mildred George
Miss Oliver.....	Thelma Curl
Mary Beebe.....	Ruth Crooks
Mrs. Peppins.....	Dorothy Miller

Business Manager—Ruth Hoffman

Stage Manager—Esther Gustavson

Advertising Manager—Charlotte Bell

Under the direction of Miss Dorothy Edgar

Dancing directed by Miss Ruth Perry

Music under the direction of Harold A. Sarig



MOTHER'S DAY

Mother's Days were instituted for the first time at Clarion Normal School, on April 9th and 10th, 1927, by Dr. R. M. Steele. It has now become one of the annual affairs of the school. All the mothers were invited to be the guests of their sons and daughters, as well as guests of the school. On Saturday morning the mothers visited the different classes. In the afternoon they were invited to inspect the buildings and equipment of the school. From 3 to 6 P. M. Mrs. Steele entertained the mothers in her home in Music Hall. In the evening the Senior Class presented their class play, "The Goose Hangs High." On Sunday morning, April 10th, a very impressive service was held in the chapel, where Rev. S. S. Clark of Franklin, Pa. delivered the sermon. On Sunday afternoon the mothers were entertained with a radio concert in Becht Hall. These days were made memorable by the presence of our mothers, and the occasion was probably the most impressive at Clarion Normal School during the whole year.

THE HALLOWE'EN PARTY

The Hallowe'en Party at C. S. N. S. is an annual event that is looked forward to with enthusiasm and expectation. The party that was held October 31, 1927 was to us, the best one ever held at the Normal School. This Hallowe'en Party was the first big party that we attended after coming to school, and many of us felt that we were making our debut into the society of the normal school. The party was preceded by a ghost walk. It made one's blood run cold to see those ghastly forms, threading their way over the dark paths of the campus, and to hear their terrible shrieks and groans. After the walk we went into the social room, which was appropriately decorated with witches, black cats, jack-o-lanterns, and every other gruesome object imaginable. The motly crowd was a sight to behold. The persons present ranged from Little Boy Blue to the Prince of Wales. We, as Juniors, entered the room with fear and trembling, for we had heard all sorts of rumors of what would happen to us. However, the evening passed without any serious trouble. Prizes were given for the best costume, and for the best dancers. We went home feeling that this Hallowe'en party was the best we ever attended.



SEMESTER RECEPTION

At the beginning of each semester, in accordance with an old custom, the Y. W. C. A. gives a semi-annual reception. It is usually held on the first Saturday night of the new semester and is a time when the faculty, old students, and new students greet each other. The program for the evening, which is arranged by the social chairman of the Y. W. C. A., is always very enjoyable. Our principal and various members of the faculty give interesting talks. Often musical numbers and addresses are given by members of the student body. When the program has been completed, the remainder of the evening is usually spent in dancing and playing games.

JUNIOR PROM

Was there ever in the history of C. S. N. S., such an exciting time as February 18, 1927, the night of the Junior Prom? For a month previous to this time, practically all the conversation one heard was, "Whom are you going to invite to the prom? Are you going to get a new dress for the prom? Is your program full?" To us, the Junior Prom stands out as one of the most eventful social affairs of our Normal School life. It was the first party that we had planned without the help of the Seniors, and we were all anxious that it would be a success. The decorations of blue and yellow, made one think of a beautiful garden, although it was snowing and blowing outside. The dance began with a grand march led by our class president. An orchestra from DuBois furnished the beautiful strains of fox trots and waltzes, that carried the guests along, until the wee hours of the morning.

ALUMNI DAY

Alumni day was observed Saturday, June 4, 1927, during Commencement Week. At this time many old friends greeted each other for the first time in many years. In the morning registration took place and also the meetings of the different classes which were scheduled for reunions. In the afternoon, the students of the Clarion Normal School presented a part of their spring festival in the chapel. At three o'clock, memorial exercises were held in honor of the late Dr. J. G. Becht, one of Clarion's most beloved principals. At this time there was unveiled in Becht Hall a picture of him, in who's honor the woman's dormitory had been recently renamed.

The Alumni banquet was held in the Normal School dining room at eight o'clock in the evening. There were approximately four hundred and twelve alumni present, representing classes from 1892 to 1926. Our principal, Dr. Steele, acted as toast master, introducing many excellent and interesting speakers. Among the guests present were Mrs. J. G. Becht and her son Howell M. Becht of Harrisburg, who were prominent in the day's activities.

In spite of the inclement weather, the spirits of the Alumni were not dampened during the whole day. Many of our visitors left Clarion with a renewed love of their Alma Mater, and a determination to return for the Alumni banquet of 1928.



SEQUENCE



The Heart of a Clown.



SEQUELLE



That particular phase of school activity so essential to show our place in the world of physical progress.



SEQUOIA





SEQUOIA



J. O. JONES, Coach

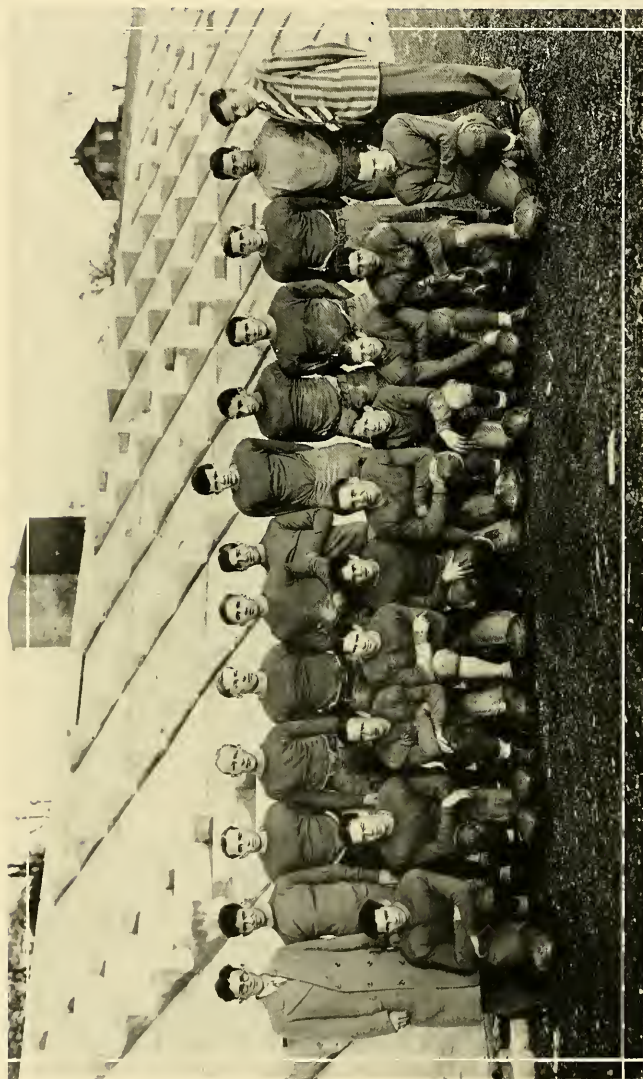


IN spite of many handicaps, our new athletic mentor has shown Clarion that he is a commendable coach. Jones had a small football squad to work with, but he placed a scrappy eleven on the field that proved a menace to any opposition. Acting as a teacher, he taught the game of football from the ground up. Many boys who came to Clarion last September knew little or nothing about the game. Each participant was treated alike, and by Thanksgiving time they were so versed in that particular game, that little was left to be learned of the fundamentals. One season will not make a "star", but to Jones goes the credit of giving these earnest and intent learners, their initial first-class instruction.

Jones, in basket-ball proved his worth, although his particular brand of game was new in this vicinity, making it a difficult task to introduce and make effective in one season.

Coach Jones was well liked throughout both the football and basketball seasons and we hope he continues the excellent work that he has started.

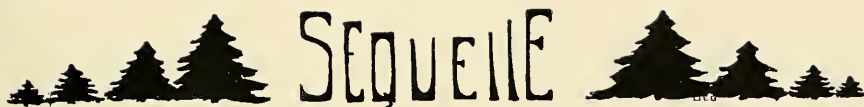
SEQUOIA



FOOTBALL SQUAD

Back Row. Flanagan—Manager, Carson, Miller, Jamison, Zawasky, Rowley, Kline, Stauffer, Moore, Fitzgerald, Skinner, J. O. Jones—Coach, Zagst—student assistant coach.

Front Row—McCleary, McFarland, Wyse, Hunt, Schettino, Graham, Snyder, Kunselman, Stranges, Miller.



CLARION'S GRIDIRON

THE football team at the Clarion State Normal School labored under many difficulties throughout the entire season. When J. O. Jones, our new mentor issued a call for candidates he found that in no way could he form a squad large enough for two teams—thus the first big handicap. Our athletic field had been remodeled and we had no home grounds to practice on—our second handicap.

In spite of these two big handicaps, we had a fairly successful season. The heaviest schedule that the "Purple and Gold" had played for years, had been arranged and it was up to the gallant warriors, few as they were, to do or die. Two games were won and five lost, but no player who entered a game ever admitted defeat or quit fighting until the final whistle had blown.

Mr. Jones built a team that will never be forgotten in sport history at Clarion State Normal School.

Ray Kline, a deserving man who suffered a broken arm in the Edinboro game was unable to appear before the camera for individual honors. Ray played in the first five games at tackle and he was greatly missed when he was forced from the game. He was equally effective on both offense and defense and he was deserving of the "C" he now wears.

Bird Carson, one of last year's lettermen was dealt a costly blow in the Indiana game. He received a dislocated elbow and a broken arm and was forced to sit on the sidelines throughout the rest of the season. Undoubtedly he would have made a good record in the past season, had he been able to continue his work in the back-field.





SEQUELLE



ACCOUNT OF GAMES PLAYED



CLEARFIELD 13

CLARION 0

After three weeks of practice, our squad, twenty strong, boarded the Pierce Arrow 'Bus and started to Clearfield, where a real tough opener was to be played. And it was played. The Clearfield team, under the fine coaching of "Tuffy" McMillan proved to have the edge on our boys in experience, but in nothing else.

The final score was 13—0, against us. The breaks were not with us and we had to taste defeat in our first game. Nevertheless, it was an excellent game, and was worth the defeat since it afforded wonderful experience for our lads. But six of our regulars had ever played before.

CLARION 18

ASHLAND 0

The second game was an easy one for our boys. Ashland High School was met and defeated on foreign soil. The final score was 18—0, but this does not indicate how easily our warriors marched through the big high school team. In this game, Stranges showed the crowd some fine broken-field running, gaining ground every time he carried the ball. The entire team played quite well in this game, particularly the line, which proved a tower of strength against the huskies of Ashland High.

GROVE CITY RESERVES 26

CLARION 0

The third game resulted in an overwhelming defeat at the hands of the Grove City Reserves. Unusually poor sporting tactics were displayed on the part of the College Eleven; the team was coached, captained, and managed by Bill Crebbs, a man who had played four years of varsity football for Grove City and who was ineligible for further competition.

The final score was Grove City 26—Clarion—0.

INDIANA 51

CLARION 0

The fourth game was the only game in which our lads were badly beaten. The Indiana State Teacher's College came out on top of a 51 score featured by the excellent playing of the entire Indiana team. Our boys were too light to hold the Indiana team in check and were completely outclassed. The first half was not a walk away, ending 12—0, but in the second half our defense crumbled and the College boys walked all over us for touchdowns at will.



CALIFORNIA 32

CLARION 0

The "Ambridge Excursion" and the California game will long be remembered. This was our biggest trip and most enjoyable, although a terrible exhibition of football was made in the "sea of mud", supposedly the California football field. Our boys fought hard to ward off defeat, but to no avail, since the California team was superior in weight and experience. The final score was 32—0.

CLARION 26

FRANKLIN 0

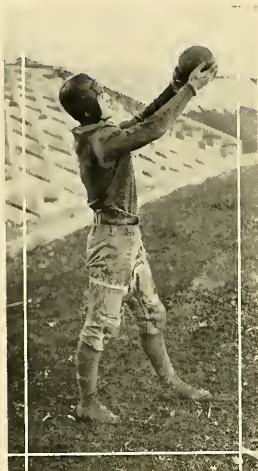
The final game was played against another traditional rival—Franklin. This was the only game in which the Purple and the Gold Machine got completely underway and functioned properly. The two teams were practically even in weight, but our boys romped away with a well earned victory over the Nurseryrites. We were sorry that the football season had to end with this game, since our team was just rounding into proper shape to play such a schedule as was played. Nevertheless we were glad that such a glorious triumph climaxed the season of 1928.

1928 FOOTBALL SCHEDULE

September 29—Ashland at Clarion
October 6—Mansfield Teachers College at Mansfield
October 13—Indiana Teachers College at Clarion
October 20—Franklin High at Clarion
October 27—Slippery Rock Normal at Slippery Rock
November 3—Edinboro Teachers College at Edinboro
November 10—California Normal at Clarion
November 17—Lock Haven Teachers College at Clarion



SEQUELLE



SAM SCHETTINO

Captain Schettino, our popular athletic ace, ended his sporting career at C. S. N. S. with the final football game, and a finer record has been compiled by none. He served us well this season and played superb ball at all times. He was a scrappy leader and was ready to do his "all" for the Alma Mater at all times. We are sorry Sam is through. Luck be with him; the entire squad is with him in all of his efforts. We shall not forget his playing a stellar "END" at Clarion.

THOMAS ZAWASKY

Thomas Zawasky, the blond tackle, was a menace to any opposing linesman. No one in the entire squad could tackle as hard as our "Tom", and we surely do admire him for that distinction. Tom may be back next year, and if he does come, we won't need a new tackle on one side of the line. Tom can play on any normal school team.



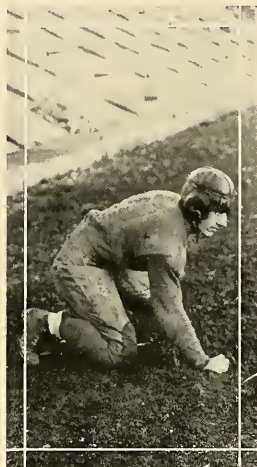


SEQUELLE



KEN WYSE

Ken Wyse was a valuable man on the team in two respects, for he could play good football as well as use diplomacy. If he could not take a man out of a play, he could talk him out of it. Ken was always playing aggressively. We are glad he will be back to battle for the Purple and Gold next season.



CLYDE MOORE

Clyde Moore was the most aggressive man on the squad. His ferocious look almost drove the opposition into submission. He played a tackle and a guard, and made a good showing for himself in both places. Clyde is a first year man and will be back next fall to show us how a good tackle plays. Moore is one man that is helped in football by his quick rising temper, for unless he was partially angry, he could not do his best.



SEQUELLE



MAX GRAHAM

Max Graham, another first year man, played superb football at all times. He was the heaviest man on the line and the hardest to get through. He was a hard tackler and a quick thinker. He will be missed greatly when the season starts next fall.

FRED MILLER

Fred Miller, our big utility guard and tackle, was used in crucial moments in many of the games. He always played for "all that was in him." We are sorry Fred will not be back to help the Purple and Gold in '28, for we are sure he would be holding down a regular berth at guard.





SEQUELLE



ELWOOD ROWLEY

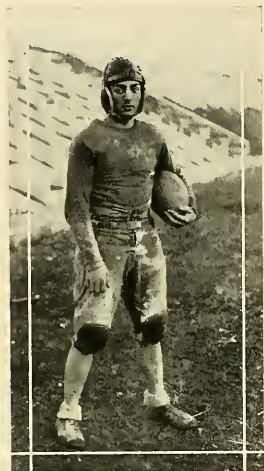
Elwood Rowley, who played the opposite end from the captain, was a new man at Clarion. He deserves much praise for his splendid work in balancing the line at all times. Rowley will be back next year and much is expected from him.



ALDEN HUNT

Alden Hunt, our regular quarter-back, was the brainiest man on the squad when it came to running a team on the field. He very seldom missed a chance to take advantage of a defect in the opposition. Along with his excellent leadership, he was a good safety man, very few men being able to get by him. We are sure "Hut" will make football history for himself when he returns as Captain of next year's team.

SEQUENCE



JOSEPH STRANGES

Joseph Stranges, playing his second year at Clarion, played excellent football at all times. "Joe" was a good ground gainer in almost every game. He has one weakness, WOMEN. We are counting on Joe for next year's team and we feel sure he will come through as he always does.

PAUL SNYDER

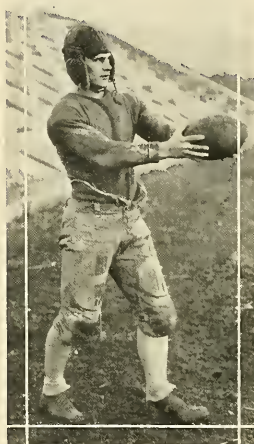
Paul Snyder was the smallest man on our team, but one of the hardest fighters. He was not much of a ball-carrier, but he was the fastest man we had for interference. Paul balanced the backfield to perfection. We expect Snyder to be a "big" gun in the line-up next September.



SEQUENCE

BILL FITZGERALD

Bill Fitzgerald, our husky full-back, was nearly sure of gaining ground on every play. He could see a hole and hit it hard and quickly. Bill has often gone through a line with two or three tacklers trying to bring him down. "Fitz" is a good athlete and we sincerely hope he will be back next season.



DICK JAMISON

Dick Jamison was a good man in any position. No matter where he was placed he always made a good showing. He starred in running interference in almost every game. Because of his value as a utility man, he did not start in every game. Dick was a menace to any tackler in broken field running. His positions were, half-back, full-back and quarter-back, playing at a different position in almost every game.

SEQUELLE



NOBLE SKINNER

Noble Skinner, the varsity center, was always ready to claw the opposition to shreds and open a hole for a few yards gain. This was Skinner's first year as a regular; not big, but effective was our center. He'll be in the center of everything if he puts as much in his life work as he did in football.

EUGENE KUNSELMAN

Eugene Kunselman played his first varsity football this season and, for an initial showing, no one could ask for any better work. He was a brainy linesman and a "plugger." This will probably be his last year at Clarion, but if he is here in '28 we are sure he will make a strong bid for a guard's position.





SEQUELLE

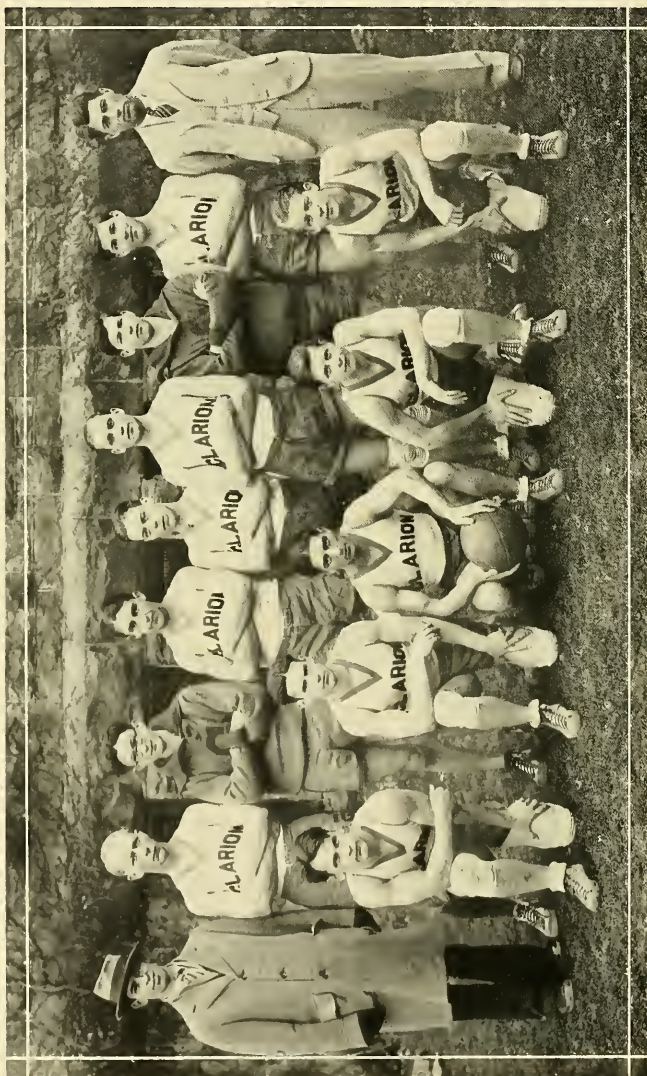


CAPTAIN STRANGES



WHEN Joseph Stranges was elected captain of the Clarion State Normal School basket ball team, no such honor had ever been bestowed upon a more deserving individual. "Joe", as he was known by all, was an efficient leader. At no time in his career, has "Joe" ever upheld any policy, other than to do his best and play fair. On the floor or on the street, he was always working hard and doing his best. He was a quick thinker on the court, and no opportunity to grasp an advantageous position was ever missed by "Joe". This year's team was always glorious in defeat as well as victory, and much credit must go to Captain Stranges for his sportsman-like manner of handling the team. Stranges has not finished his career at Clarion State Normal School, and we are expecting even greater accomplishments from him next year.

SEQUENCE



BASKET BALL SQUAD

Back Row. Carson—Manager, Jamison, Flanagan, Moore, McFarland, DuMars, Ruffner, Kline, J. O. Jones—Coach.
Front Row—Fitzgerald, Hunt, Stranges, Kunselman, Snyder.



BASKET BALL

COACH Jones started the 1927-'28 Basketball season of C. S. N. S. with Captain Stranges as a nucleus of a "green" team. The team immediately showed promise of developing into one of the best teams to represent the Purple and Gold in many seasons.

In the early part of the season, the team made a number of impressive wins, but after the Christmas vacation it went into a temporary slump, due to the small number of players on the squad and the large number of hard games that the schedule called for during the month of January. During the months of February and March, the team made a remarkable come-back and scored quite a number of wins over supposedly superior quintets.

From a critic's standpoint, we can say that the season was a success, even though more games were lost than were won. As he had done in football, Jones taught basket ball as well as coached it. Most of the boys on the squad will be back next year, and from the impressive way in which they finished the season, we can look forward to a very successful season next year.

"Joe" Stranges, our worthy captain, played a forward, and did it to perfection. He could be depended on to make two or three baskets in each game as well as act as the leader of the team.

Clyde Moore, our husky guard, was our best bet on the back court. Along with his excellent guarding ability, Moore had the habit of appearing very unexpectedly at a critical moment, and helped the offense of the team by dropping a few field goals through the hoop.

Gene Kunselman, was our most dependable utility man on the squad. Gene played in almost every game and made a good showing at all times.

"Ray" Kline, our center, played good basketball in all games. Very few shots were made over Kline's head, since he had an uncanny way of breaking up the opponent's shots. Ray came to us with a good record as a basket ball player and he up-held that record throughout the season.

"Dick" Jamison played at forward and center and did commendable work at either post. "Dick" could play an excellent floor game and was an accurate shot. Consistency was Jamison's best quality on the court.

"Cliff" Burns gave basket ball another twirl after a two year lay off and played an efficient guard throughout the season. Burns has size and ability, and much is expected of him in the next three years that he will be with us.

"Ken" Wyse played equally well at forward or guard. When he played guard, few opponents ever invaded his territory to score. At forward "Ken" was always sure of dropping a few two-pointers in to help the Purple and Gold.



SEQUOIA



BASKET BALL SEASON RESULTS

C. S. N. S.	39—New Bethlehem High	16
C. S. N. S.	88—Ashland High	29
C. S. N. S.	23—Kittaning High	26
C. S. N. S.	18—Ford City High	33
C. S. N. S.	31—Faculty	22
C. S. N. S.	27—Edinboro	58
C. S. N. S.	28—Slippery Rock	39
C. S. N. S.	16—Youngstown	34
C. S. N. S.	14—Edinboro	20
C. S. N. S.	29—Indiana	38
C. S. N. S.	29—Indiana	21
C. S. N. S.	28—Ford City High	42
C. S. N. S.	27—California	64
C. S. N. S.	47—Ashland High	30
C. S. N. S.	23—Youngstown	57
C. S. N. S.	15—California	28

LETTER MEN

Stranges—Captain.....	Forward
Jamison.....	Forward
Kline.....	Center
Burns.....	Guard
Moore.....	Guard
Wyse.....	Forward
Kunselman.....	Guard





SEQUOIA



MISS PERRY

Miss Perry came to us last year after receiving her Master's Degree at Columbia University, New York. She did some research work there, also some social service work in New York City.

Since Miss Perry has been with us, the interest in athletics has grown in leaps and bounds. The hockey teams, though not fortunate enough to compete with outside teams, showed much skill and enthusiasm in the intermural games. Our next step in athletics was basket ball. Through interest of the girls and the excellent guidance of Miss Perry, class teams have been organized. We were not permitted to compete with other normal schools, but we have had some very exciting games with the high schools in this vicinity.

Miss Perry has also given us a taste of volley ball, tennis, and some folk dancing. We have not had enough volley ball yet to determine just what the girls can accomplish in it, but we hope that, with the expectations of a new gymnasium, this game will receive more consideration.

On the campus, as well as in the gymnasium, Miss Perry is greatly appreciated by all the girls, especially the girls of the basket ball and hockey teams. Her ability as a director of physical training and health classes is unexcelled. She takes an individual interest in each student, and is always inspiring and helpful.

In the future as we look back over our lives at school, we shall attribute much to the memory of one who is ever ready to give a few kindly words of advice—Miss Ruth Perry.

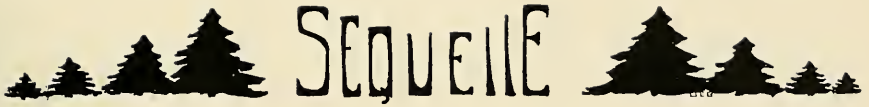


SEQUOIA



GIRLS' BASKETBALL SQUAD.

Back Row—Roller, Bell, Barnes, Perry—instructor, Bauer, Lewis, Luther.
Front Row—Goodwin, Yurick, Campbell, McElhatten, Caulk, Love, Simpson.



INTRAMURAL BASKET BALL

For the first time in the history of Clarion State Normal School has intramural basket ball been carried to the extent of our having a tournament.

The different physical education classes are divided into eight teams which compete for class championship. These teams are carefully coached by Miss Perry, who has at heart the interest and cooperation of every girl. The captains of these teams are: Ruth Crooks, Clarion; Dorothy Alcorn, Brookville; Ruth Lewis, Sabula; Mary Campbell, Vandergrift; Mary Yurick, Duquesne; Leah Love, Falls Creek; and Emma Caulk, Clarion.

We hope that the interest in athletics that is being shown by all the girls will be a means to an end—Better Health—and A New Gymnasium.

INTERSCHOLASTIC

C. S. N. S. vs. McKees Rocks

Lineup

C. S. N. S. 17	McKees Rocks 17
Goodwin.....	L. F.Curry
Love.....	R. F.Dodds
Bell.....	S. C.Wilbur
McElhatten.....	C.Buys
Campbell [capt.].....	L. G.Taylor
Crooks.....	R. G.Canazo

Substitutions: S. Curry for Bell; Caulk for Crooks; McFadden for Caulk; Krause for L. Curry; Stultz for Dodds; Dodds for Wilbur; McCalin for Dodds.

After a few weeks of intensive training our girls opened their basket ball season with McKees Rocks Independents. The game was played in the Normal Gymnasium, and was a thriller from the beginning to the end. The final score was a tie, 17—17. Both teams did some very good playing. Our girls out played their opponents very decidedly in their pass work. They were playing against a very strong team, because the McKees Rocks girls have had practically twice as much experience as ours. The greatest compliment we can pay our girls is that they are good sports through and through.

Our captain Campbell was the out standing player in the game on account of her excellent guarding and passing. We are also very proud of McElhatten, who seemed to be every where at once. When it came to jumping, although "Kate" is not six feet, two, she easily out jumped her opponent who was much taller than she. We feel that with "Kate" back next year, we cannot help having a successful season. All the other girls deserve to be complimented for their speedy playing.



SEQUELLE



C. S. N. S. vs. SIGEL

One of the most exciting girl's basket ball games ever witnessed on the Clarion Normal floor was with Sigel High School sextet, on February 28th.

After winning the two previous games, the Clarion girls thought they would not have a very close game with the small opponents. Both teams went on the floor for the first tip off, one feeling as extremely confident of a victory as the other one felt of defeat. At the end of the first quarter, the Sigel girls were getting control of their nerves and were determined to work harder. By the end of the first half our girls were feeling quite faint for the score was 7—4, with Sigel in the lead. After a few words of encouragement from Miss Perry, our girls went back into the fray, ready to "Win or die." Fortunately they won. At the end of the third quarter Sigel was still in the lead with a score of 11—9. In the final quarter our girls had a spurt of luck in shooting and came out on top, 14—11.

Lineup

C. S. N. S.		Sigel
Whitehill	R. F.	H. Porter
Luther	L. F.	M. Porter
McElhatten	C.	McKenbree
Curry	S. C.	Wilson
Yurick	R. G.	Shamkey
Barnes	L. G.	Blair

Substitutions: Clarion—Lewis for Whitehill; Love for Lewis; Bauer for Luther; Bell for Curry; Campbell for Yurick; McFadden for Barnes; Curry for McFadden.

C. S. N. S. vs. Foxburg

Our second game was played on the Normal Gymnasium floor on February 24th, with the Foxburg High School. Our girls proved themselves very speedy and outclassed the opposition in many departments of the game. The final score was 45—8, in favor of the Normal.

Lineup

C. S. N. S.		Foxburg
Luther	R. F.	Bash
Lewis	L. F.	McCartney
McElhatten	C.	Tippery
Simpson	S. C.	Arnedt
Barnes	R. G.	Irwin
Yurick	L. G.	Ellenberger

Substitutions: Clarion—Whitehill for Luther, Bower for Lewis, Stone for Barnes, Love for Stone, Curry for Stone, McFadden for Barnes, Campbell for McFadden, Crooks for Yurick.

Substitutions: Foxburg—Arnedt for McCartney, McCartney for Arnedt, J. Irwin for Irwin, Melaney for Ellenberger.

Referee—Frances Sell.

The next game was played on the Clarion floor with the Clintonville High School team furnishing the opposition. Again our girls outclassed the opponents, but the visitors showed us that with a few more years of basket ball to their credit, we shall see them near the top for both skill in playing and good sportsmanship. This is Clintonville's first year to have a girl's basket ball team. Although they were defeated by the score of 27 to 3, they proved to us that they are speedy players.

Lineup

C. S. N. S.		Clintonville
Stone	R. F.	Ward
Whitehill	L. F.	Riddle
McElhatten	C.	Aiken
Bell	S. C.	McKean
Barnes	R. G.	Streeter
McFadden	L. G.	Witherup

Substitutions: Clarion—Bauer for Stone, Lewis for Bauer, Love for Lewis, Luther for Whitehill, Goodwin for Luther, Curry for Bell, Simpson for Curry, Crooks for Barnes, Campbell for McFadden.

Substitutions: Clintonville—Streeter for McKean, R. Aiken for Streeter, McKean for Aiken.

Referee—Frances Sell.



SEQUENCE



Class of
1928



SEQUOIA



Girls' Hockey Team



SEQUOIA



HOCKEY



Hockey has always been a favorite sport at Clarion State Normal School. At the beginning of each school year much enthusiasm is shown by the large number of girls reporting for practice. Until this year, there has been a varsity team which has competed with other normal school teams.

Although the athletic field was under construction and playing facilities were very poor, we have had a number of interesting inter-mural games in which the girls showed their good sportsmanship and enthusiasm.

We are anticipating a very successful season in hockey for the coming year of '28-'29. With the ability of the on-coming Seniors, and the use of the new athletic field, we hope to have one of the most successful hockey teams of all times at Clarion State Normal School.

The squad consisted of:

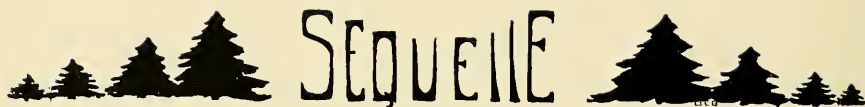
Ruth Crooks—Captain

Helen Barnes
Ruth Spackman
Ruth Campbell
Kathleen Bauer
Myra McFadden
Virginia Graham
Izzetta Roller
Marcelle Browne
Irene Sloan
Dotty Monks
Evelyn Greene
Mary Yurick

Mary Campbell
Alice Killeen
Evelyn Huether
Kathleen McElhatten
Viola Schwab
Betty Goodwin
Mary Held
Charlotte Bell
Sally Curry
Charlotte Walter
Florence McCall
Mildred George
Helen Exley

Isobel Pryor

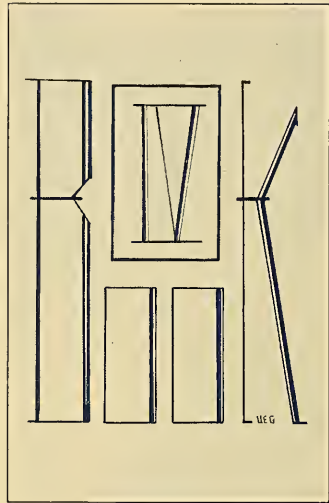




NOTHING is so inspiring and worthy of admiration as real sportsmanship. Though fortune is frequently uncertain and variable, we adhere to the policy—

“If we win, no boasting,”

“If we lose, no alibis.”



Humor
Snaps
Autographs
Calendar
Advertisements



SEQUELLE



HUMOR



That element in
our existence,
which hath power
to make grouchy
folks laugh, provided
they know how it's done;
to make jolly folks
hold their own; to
make some folks extremely
individual; and to
provide others with a
bountiful living

SEQUOIA



IN April 1887, upon a firm basis was started an institution which has grown until it has reached the pinnacle of its existence, "Clarion State Teachers' College." No growth ever known in history has grown so rapidly and consistently as our school and we owe the school's success to Dr. Steele, who through his great insight, saw its possibilities in preparing future teachers for the Commonwealth of the State. But recently made a college, its results are to be measured not by achievements alone, but by the relation its achievements bear to its opportunities.

Autographs



SEQUENCE



Senior Week Costumes



SEQUENCE



CALENDAR


- September 13**—Registration
September 14—First Y. W. C. A. Dog Court.
September 15—Everybody somewhat bewildered.
September 16—Classes begin.
September 17—Miss Williamson returns with shorn tresses and speech still speedier.
Reception.
September 18—First Sunday
September 19—Blue Monday.
September 20—Campus cases begin.
September 21—The library is the Juniors first puzzle.
September 22—Roland Pease.
September 23—Watch the bulletin board for further notice.
September 24—Tennis balls flying.
September 25—Don't forget Vesper service.
September 26—Biology students are conscientiously chasing little jumping creatures.
September 27—Miss Keithan told a good joke even if it was old.
September 28—Every girl wears a bobbie pin or two.
September 29—Foot ball. Ashland vs C. S. N. S.
September 30—The fellows dorm rules; WHERE ARE THEY?

OCTOBER

- October 1**—That book is not on the reserve shelf.
October 2—Long walks.
October 3—What bad taste our Juniors have. Braids, green ribbons, long skirts.
October 4—Dotty Miller seen this morning at 8:05 tearing across the campus accompanied by a piece of toast. LATE.
October 5—Mr. Becker seen this morning in the same state minus the toast.
October 6—Foot ball, Clearfield vs C. S. N. S.
October 7—Rain
October 8—Ruth Crooks and part of the faculty occupied three seats at the Orpheum.
October 9—Sunday. Who coached Marcelle on her afternoon stroll?
October 10—Where was Mildred George over the week-end?
October 11—The assistant librarian's frown is "Registered U. S. Patent Office."
October 12—Good work Columbus.
October 13—More rain.
October 14—Martha and Anna Jane seen apart.
October 15—Where is Tom over the week-end?
October 16—Student wanting "Sin and Society" asks for "Sin and Sincerity."
October 17—Miss Nesbitt enjoyed the week-end at home.
October 18—All the world is asleep.
October 19—Juniors are gradually becoming adjusted.
October 20—Foot ball, Grove City vs C. S. N. S.
October 21—Three new cases reported on the campus.
October 22—Nature is roaming the mountains with her brush and palette.
October 23—Plenty of inspiration for poetry of all kinds.
October 24—Instructors have incurred the wrath of the librarians by assigning chapter heading in place of titles.
October 25—Agatha Matreal catches three mice in her room.
October 26—All the girls go to the beauty shop.
October 27—Foot ball, Indiana vs. C. S. N. S.
October 28—If you can't be more quiet leave the room.
October 29—The leaves are flying and so is time.
October 30—Marion Timlin knows her lesson for once.
October 31—"I forgot the assignment."

NOVEMBER

- November 1**—Halloween Dance.
November 2—The day after the night before.
November 3—Most frequent worry "Training School."
November 4—Ruth Spackman develops appendicitis.



Sequelle

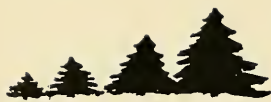
- November 5**—Foot ball, Edinboro vs. C. S. N. S.
November 6—All down-town students slightly late.
November 7—Why worry?
November 8—Cold and colder. Administration buys red flannels.
November 9—Was that Hut and Maxine we saw to-day?
November 10—Foot ball, California vs. C. S. N. S.
November 11—A student leaning against a small oak box of a tan hue says, "Please tell me where the catalog is."
November 12—Warning to belated students.
November 13—He didn't write.
November 14—Urgent appeal for cash to go home.
November 15—Reign of rain.
November 16—All the world is cold.
November 17—Minds turn to European problems. Turkey and Greece.
November 18—Minstrel. Lots of fun behind the scenes.
November 19-28—Thanksgiving vacation. Happy day. . .
November 29—Juniors horrified at Mr. Manson's assignments.
November 30—Nobody stole the dorm during our absence.

DECEMBER

- December 1**—Training school—work - work - work.
December 2—Second Lyceum number—"The Little Theatre Party."
December 3—Library dates increasing in number.
December 4—Late risers buy breakfast in book room.
December 5—"Tell me how to motivate this lesson."
December 6—"Vitalization" and "correct procedure", two other terms added to the vocabulary.
December 7—Frequent saying "I still have another lesson plan to write."
December 8—Sally + braids + cats = tragedy and calamity.
December 9—Dramatic Plays.
December 10—Basket ball. New Bethlehem vs. C. S. N. S.
December 11—Stauffer starts work for a Ph. D.
December 12—Students really working.
December 13—Another "dorm rule" appears.
December 14—Basket ball. Ashland vs. C. S. N. S.
December 15—I wonder what he will give me for Christmas.
December 16—Basket ball. Kittanning vs. C. S. N. S.
December 17—Basket ball. Ford City vs. C. S. N. S.
December 18—Mr. Becker polishes his glasses.
December 19—Christmas dance. Lots of fun.
December 20—Basket ball. Faculty vs. C. S. N. S. varsity.
December 21—Christmas shopping.
December 22—Ditto.
December 23—Jan. 3—Christmas vacation—grab some sleep.

JANUARY

- January 3**—Students return to find date corners in library removed. Really, though, it wasn't done on purpose.
January 4—Resolutions gradually being broken.
January 5—Miss Nair seen walking slowly.
January 6—On bulletin board "All Sequelle work in to-day."
January 7—Basket ball, Edinboro vs. C. S. N. S.
January 8—Miss Keithan took time out to tell a joke in class.
January 9—What are the Juniors observing?
January 10—Third Lyceum number. "Upton Close."
January 11—Sally writes home for a check or two.
January 12—Mail-man was late.
January 13—Basket ball. Slippery Rock vs. C. S. N. S.
January 14—Basket ball. Youngstown College vs. C. S. N. S.
January 15—Dottie Monks thinks she's losing her mind. I wonder?
January 16—Don't you like Flanagan's wooly cap?
January 17—Miss Edgar fails to receive a letter.
January 18—Basket ball. Edinboro vs. C. S. N. S.



SEQUENCE



- January 19—Cases of "nerves" arrive.
January 20—Miss Sell smiles at certain young men in the office.
January 21—Basket ball. Indiana vs. C. S. N. S.
January 22—Who fell and broke that perfectly good ice?
January 23—Sociology.
January 24—Students like to fio to chapel.
January 25—Extensive and defensive study.
January 26—Now, you have an hour and a half. Has every one a blue book?
January 27—Fellows, get your derbies.
January 28—End of semester. Are we happy?
January 29—New students arrive and are looked over.
January 30—Where do we go from here?
January 31—Do you spell psychology with two "i's"?

FEBRUARY

- February 1—Adjustments to new schedule.
February 2—Crooks was late. She forgot to eat her breakfast and went back for it.
February 3—Basket ball. Indiana vs. C. S. N. S.
February 4—Reception.
February 5—Sally, the purple skirt looks well with the gold sweater.
February 6—Junior Class meeting.
February 7—Basket ball. Ford City vs. C. S. N. S.
February 8—Order of onions issues from dining room.
February 9—Strange appearance of Harriet.
February 10—Is your 12th dance taken?
February 11—Basket ball. California vs. C. S. N. S.
February 12—Is your man wearing a dress suit?
February 13—Who's your man?
February 14—Basket ball. Ashland vs. C. S. N. S.
Snyder, Moore and Rainley take a vacation.
February 15—Campus enrobed in gorgeous blanket of pearl.
February 16—Operatic concert. "Promitis" at it's height.
February 17—Prom? Yeh?
February 18—Sleep - Sleep - More sleep.
February 19—How about tests in percentage?
February 20—More arithmetic tests.
February 21—No mail.
February 22—Interesting program, concerning life of Washington, given at chapel.
February 23—Russian Cathedral Quartet.
February 24—Basket ball. New Bethlehem vs. C. S. N. S.
February 25—Basket ball. Youngstown College vs. C. S. N. S.
February 26—Mr. Sarig arrives in Ellwood City. Why?
February 27—Miss Williamson has waxed inventive. Girls, she has suggested that we wear metallic dresses and magnetic shoes.
February 28—Tom and Sarig are off to Clearfield with the "Sequellc? ?"
February 29—Ladies day. Get your man for the leap. The return of the prodigals. My they are looking good.





SEQUELLE



WHO

Jean Dibbs
Herbert Allshouse
Ida Boring
Mary Campbell
Bertha Connor
Marian Dale
Helen Afalter
Emma Caulk
Sally Curry
Marion Collett
Elizabeth Buchan
Marian Americus
Frances Clark
Marcelle Browne
Ruth Crooks
Bird Carson
Violet Bussard
Thelma Curl
Flossie Downey
Sara Epolito
Edna Evans
Tom Zawasky
Leone Hart
Dorothy Monks
Gladys Frampton
Naomi Heefner
Elizabeth Barclay
Helen Wheeland
Hallie Thompson
Marguerite Reyner
Izetta Roller
Bessie Seeley
Arlene Stitt
Emma Hickinbottom
Jennie Kellar
Ethel King
Virginia Luce
Agatha Matreal
Edna Mayes
Janet Mills
Mary Rhea
Betty Goodwin
Sam Schettino
Mildred George
Evelyn Greene
Ruth Spackman
Gene Kunselman
Flossie McCall
Sally Schwem

DIED OF

Roughness
Waiting
Catching a man
Basketball
Loud voice
Bald head
Flirting
Toothache
Dancing
Projectitis
Overwork
Keeping house
Excess weight
Studying
Pardoning
Love
Loneliness
Telling Stories
Directing traffic
Wild nights
Fussing
Sallies
Love
Kisses [Kandy]
Cutting teeth
Hardening of heart
Bashfulness
Boredom
Weight of hair
Hektographitis
Shooting baskets
Growing
Washing boards
Shock
Curly hair
Embarrassment
Disappointment
Sunday walks
Typewriting
Playing hook
Studying
Sophistication
Chewing
Too many calls
Holding hands
Dancing
Colic
Chasing Mickey
Looking in a mirror

LAST WORDS

"I wish I had a birdie voice."
"Miss Seyler, she—"
"I just missed him."
"Shoot two."
"Is my nose shiny?"
"How very boring."
"I've got him."
"Oh, health and hygiene."
"I'll have to ask Tom."
"BEES"
"At last a rest."
"I hate housework."
"I gained a pound."
"Wait a minute."
"Sure enough."
"She loves me—she loves me not."
"It's warm to-day."
"Here's a hot one."
"Here's the right road."
"I had a date Sunday."
"Don't you know it's ten o'clock?"
"Where's my red sweater?"
"Burt"
"Dr's. Weaver and Hughes."
"Oh, heavens."
"I am a minister's wife."
"[unsaid]"
"Where's my art?"
"Shall I curl it?"
"Just ten more days."
"Where is the curling iron?"
"I wish I was six feet."
"It won't be long now."
"I talked out loud."
"Ain't I cute."
"Oh my."
"Oh, for a man."
"I hope it's for me."
"My light is out."
"Heck"
"Isn't Mr. Sarig cute?"
"Oh, deah."
"This will stain my teeth."
"Is that my number?"
"Ooooh, Manson."
"Just one more dance."
"Gimme my bottle."
"Oh, where can he be?"
"She's my sister."



SEQUELLE



WHO

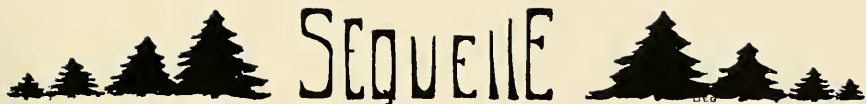
Noble Skinner
Grace Stone
Edith Seigworth
Fred Miller
John Stauffer
Dorothy Miller
Virginia Graham
Helen Exley
Grace Gemberling
Elvira Heasley
Mary Held
Arlene Horner
Rachel Keck
Marcella Keverline
Katherine Miner
Margaret McCune
Isabel Pryor
Julia Reich
Agatha Rensel
Gertrude McCawley
Myra McFadden
Mildred Parsons
Iola Hayes
Mary Reitz
Helen Hoch
Luella Riddles
Sarah Leonard
Lillian Rockwell
Rita Mack
Altha Rutherford
Evelyn Mock
Mary Yurick
Evelyn Smith
Ethel Wilson
Eleanor Southworth
Golda Terwilliger
Aileen McHenry
Iona McHenry
Geraldine Wyse
Helen Fox
Esther Shelley

DIED OF

Artist's fever
Rheumatism
Hanybitis
Painter's colic
Bashfulness
Seeking the lost chord
Wild nights
Walking with Isabel
Studying
Quietness
Long hair
Being head
Teaching
Arriving on time
Dieting
Cold weather
Exhaustion
Beauty parlors
Fussing
Looking for a man
Getting "A's"
Sneering
Boils
Trying to sing
Too many clothes
Weighty matters
Meekness
Brightness
Too many dates
Libraryitis
Joy
Chasing Emma
Being noble
Beauty
Going to church
Cold
Studying
Ditto
Straight hair
Smiling
Mirth

LAST WORDS

"Where's my Graham crackers?"
"I can't move my tongue."
"I got my letter."
"Hand me the rouge."
"Biology"
"I'll get it yet."
"I'm a vamp."
"I have to study."
"Yes, I read it."
"Where's Helen?"
"They are all crazy."
"Turn off that 'vic'."
"Oral communication is."
"I almost beat."
"I'll lose yet."
"Gee it's cold."
"Reducing is hard work."
"Where's the curling iron."
"I'm so warm."
"I never got him."
"Do Ti Do"
"Oh, for some money."
"Such discipline."
"I reached that note."
"I'm going home."
"When do we eat."
"Oh, percentage."
"Where's Evelyn?"
"John called."
"It's out."
"Leave me alone."
"Emma Lou."
"Where's Lillan?"
"I wish I had a school."
"Gee, I'm happy."
"Where's my rubbers?"
"I can't condense my thoughts."
"Ross says - - -"
"I wish I had straight hair."
"I have my work."
"Do you have your work?"



SEQUELLE

Nowadays a real football fan is one who knows the nationality of every man on the All-American team.

* * *

A girl no longer marries a man for better or for worse, but for more or less.

* * *

Joe S.: "How does your new cigarette lighter work?"

Herbie: "Fine, I can light it with one match, now one match, now."

* * *

Wilkinson: "No, shir, never took a 'drink in my life—hic!"

Becker: "But you're obviously—"

Wilkinson: "Never took a drink—hic—I always paid for 'em!"

* * *

"Mamma, are you going to get that new fur coat from daddy?", asked Pat.

Mamma: "No, darling."

Pat: "Have you tried throwing yourself on the floor like I do?"

* * *

Uncle: "Well, Ellwood, I have taken a life insurance policy out in your name. Is there anything more I could do for you?"

Ellwood: "Nothing more on earth, uncle."

* * *

Sam: "Do you know how to make a peach cordial?"

Pete W.: "Sure, send her some candy."

* * *

Maxine: "I had a 'telephone date' tonight."

Rita: "A wiry guy?"

Max: "No, a local operator."

* * *

Zagst: "I don't think it is below zero, today."

Marian T.: "Yes, it is, boy, can't you tell by the costumes the women wear?"

* * *

Raymond: "If you were condemned to die, what kind of a death would you choose?"

Skinner: "Old age."

* * *

Leone: "What is the cure for love at first sight?"

Kate: "Second sight."

* * *

Mr. Manson [in biology class]: "Name some liquid that won't freeze."

John S.: "Hot water."

* * *

Pat: "Can a wife forgive her husband's past?"

Slim: "Usually, if a hubby gives a present first."

Paul: "Name a great time saver."

Gene: "Love at first sight."

* * *

Ruth H.: "Why is a kiss like scandal?"

Aldine: "Because it goes from mouth to mouth."

* * *

Dewey: "You are the only girl I ever loved."

Marce: "You are dismissed. I am not training amateurs."

* * *

Hunt: "What did you do over your week end?"

Ellwood: "I put my hat on it."

* * *

Tom: "I threw a kiss at a girl, yesterday."

Sarig: "What did she say?"

Tom: "She said I was the laziest boy she ever knew."

* * *

Mid G.: "Just look at those football boys in that awful mud. How do you suppose they ever get clean?"

Evelyn G.: "Why, dumbell, what do you suppose the scrub team's for?"

* * *

Agatha: "My dear, there is a reason for everything."

Sara E.: "No. You forgot the men."

* * *

Sally S.: "Clothes often make the men."

Fond Sister: "Clothes often fake them, too."

* * *

Max G.: "Did the cowboys teach you to ride that outlaw horse?"

Clyde M.: "No, I was thrown on my own resources."

* * *

Virginia: "How are you getting on with the typewriter, Noble?"

Noble: "I can make twenty mistakes a minute, now."

* * *

Gene: "You're so dumb, I wouldn't call you a ham."

Mister Winner: "Why not?"

Sam S.: "A ham can be cured."



Sequelle



"THIS AND THAT"

Yellow slips are insidious pieces of paper that inform the student that his ideas do not conform with the accepted opinion of the faculty in general.

* * *

Coach: "I doctor myself with the aid of medical books."

Max: "Yes, and some day you will die of misprint."

* * *

Tom: "That boy has good stuff in him."

Dick: "Where did he get it?"

* * *

Professor [to Kenny Wyse]: "Kenneth, spell banana."

Kenneth: "B-a-a-an-a-n-a-n-a. . . Darn it professor, I know how to spell it, but I don't know when to stop."

* * *

Bill F.: "I'm left handed."

Sarig: "That can't be right."

* * *

Mrs. Huston: "Look at that adorable hat in the window. Let's go buy it."

Steve: "Certainly, dear, right by it."

* * *

Ellwood: "Gee, when I was a little kid I thought nothing of a mile walk."

Dottie Monks: "Well, I don't mind it myself."

* * *

Ruth S. [Seeing two loving ones together]: "One minute from now and he will catch her in his arms."

Charlotte W.: "Yes, one year from now and he will catch her in his pockets."

* * *

Fred Miller: "What's the lipstick doing on your face?"

Dewey: "Oh, that's just my girl's trademark."

* * *

Skinner: "I don't see you running around with Evelyn, lately."

Manson: "No, I'm saving money."

Skinner: "What for?"

Manson: "To marry Clara."

* * *

John S.: "Is it true that bleaching hair causes insanity?"

Clyde: "I know a boy who is simply crazy over a blonde."

* * *

Miss Edgar: "In the sentence, 'I saw the girl climb the fence', how many I's would you use?"

Bill F.: "Both of them."

May K.: "Men are all alike."

Mary R.: "Then why do you want three or four?"

* * *

Alice to grocer: "I want a peck of apples."

Grocer: "Do you want Baldwins?"

Alice: "Surely, do you think I want some hair on them?"

* * *

Gene: "What did you call the twins?"

The Coach [ten years from now]: "The first ones we called Kate and Duplicate. Then we had Pete and Repeat."

Gene: "And the new ones?"

The Coach: "Max and Climax, oy, oy, I hope so."

* * *

Rachel: "Helen, I am losing control of the car."

Helen: "Hit something cheap, because the insurance ran out last week."

* * *

Max M.: "What is an organizer?"

Rita M.: "Aw, he's the guy that makes all the music in church."

* * *

Paul: "Chuck Ellenburger is taking medicine at Juniata College."

Herbie: "How long has he been sick?"

* * *

Weaver: "Do your shoes hurt?"

Moore: "No, but my feet do."

* * *

Bored Sophomore: "I've been around with girls, and girls, and girls, and girls—"

Freshman: "Where? On a merry-go-round?"

* * *

Sally C. [to junior]: "Why are you singing 'Awake my Soul?'"

Viola: "Because my foot is asleep."

* * *

Vivian: "I say, what is good for biting finger nails?"

Agnes: "Why, sharp teeth."



REVELATIONS OF THE VAGABOND

"Well, well, Mary, old dear, we have been here six months and it's time we are moving on. What do you say?"

"Sure Emma, there is a few square miles of this old U. S. A. that remains for us to see. Are you ready?"

And so Mary and Emma started on another lap of their wanderings, only to rove into the oriental splendor of a soothsayer. No, not the fate of a monarch on the Ides of March, is she reading for our adventures, but Madame Grabinsky Wanetka will, for the price of two bits tell your misdeeds, fortune and future.

"Come on, Emma, let us go in and see where we will be this time next year. Maybe it's China."

"Madame Grabinsky Wanetka - - - say, you are Virginia Graham. You can't fool us. But it is good to see you though, gee, I never thought we would meet you here."

"What did we come for? Well, to give you your quarter if you can tell us anything about the rest of the old crowd."

At this girlish outbreak of the two fortune hunters, Madame, the erstwhile Virginia, laughed and promised to do the best she could for her old companions, provided her crystal was in the mood to-day. Emma and Mary followed her into the innermost chambers of the soothsayer's den. The oriental atmosphere overcame them; while looking with awe and enchantment at the magic ball, light flooded the room and instantly they were gazing upon the cozy home of our dear old school teacher—now, Leone Hall.

"Leone is telling Helen A., Ruth, Luella and Mid how happy she was when she was able to send back to dear old Clarion her lovely daughter, Imogene. She says she felt so proud of her. Ruth says she read the note she sent to Mrs. Kalston. Do you see Mrs. Kalston? Why that is her picture that Leone has in her hand. She has snow white hair, wears a hug-me-tight, and a pair of nose glasses, although she is dressed in black taffeta, I shall never forget how nice she looked in green."

"Mary, look here, Miss Parsons just got a letter from Naomi Hefner and her minister husband. They were sent to India as missionaries and who do you suppose is with them? We had a better class than we thought we had—three missionaries, Pete Weaver is with them, Dottie Monks is his ever steady helper."

"Emma, here is Elizabeth Buchan driving her Ford so she will be sure to be on time to meet her class at Columbia. Steve sure had a big influence on that girl. She weighs 175 pounds, and her hair is pulled back in a teacher's knot."

"Ah, guess what? Tom and Sally have become one, and they have a dear little tow-headed Tommy Junior, with his father's good looks, dancing ability and his mother's pep. Sally has as her nurse-maid Gert McCawley—oh, gee—but they seem happy."

"Look, and other expressions of surprise, Helen Hoch, a mannequin. Doesn't she look the part—gorgeous in that frock. Such stately bearing, just like she used to walk in the dining room with Kay. I wonder where Kay is?"

"I found her, in her prime, preparing a meal in the most modern kitchen, but who's kitchen is it? Why, Grace Stone's kitchen, just as I expected. Who are the guests seated in the drawing room? Coach Jones and Frances Sell. What a handsome quartet, Grace, Harry, Frances and John; but our Coach is not married yet."

"Your vision seems to fade, but there it is brighter—brighter—and I see the great waves dashing against the mighty palms. The home of our spinster friend, Marcelle. Can you beat that? Who is that with her—Gene Kunselman, as I live—a retired bachelor. The old attraction seems to linger."

"The light seems to wander farther—still farther. Here on the patio of a well known hotel, Max Graham proprietor, I see John Stauffer carrying several glasses of the best Golden Wedding Whiskey in stock. I wonder who it is for? There is one for Kenny Wyse. Sam is surely helping himself. It seems almost second nature to Paul and Mary; there is Herbie. My word, it was bad influence my dear, bad influence."

"Why, I floated back to the states again, and here in good old New Orleans, I see a big tent. Do you remember the time we were here Emma? But look, Sally Schwem is the fat woman. Clarion food must have had their effect after all. There's the sword swallower, Evelyn Green. She sure changed her occupation since I last saw her, and the strong girl, Mary Campbell. She can pick up her two assistants, with one hand, and her assistants are—be prepared for a shock—Virginia Luce and Mary Held. Two more room-mates that are still together. Who are those over there? Rachel and Thelma, the Slim Twins. But here, one touch of art remains, posed on one toe and delighting millions, stands the fairy of 1928, Betty Goodwin. Her partner, as in those good old days, is the clown, Ruth Crooks."

"Here, Mary, is the one place we have yet to go, Deauville. I wonder who lounges so gracefully under that awning? Why, it's Gerry Wyse, Izetta Roller and Mid Parsons, all who married very wealthy men. Who do you suppose is protecting them? Fred Miller, the hero of the beach, sun-burned, broad-shouldered, handsome Fred. Teaching didn't appeal to him."

"I never saw such a beautiful building before."



SEQUENCE



"I know, it is the opera house. What does that sign read? Upon my word, Dorothy Miller stars in 'Faust' tonight. Isn't that wonderful? Her accompanist is Sara Epolito."

"Why, Emma, I see water, a boat, what a beautiful liner. Ah, there is Bird Carson and his fond wife, Genevieve and a most beautiful daughter. What strange talking. 'She must marry money, I tell you she must'. Not a bit like the Bird we knew. Out of the shadows steps a handsome stranger, the Captain of the liner, Captain Joseph Stranges. Now, I know, Bird wants his daughter to marry the son of Captain Stranges."

"See there is the Statue of Liberty, surely so famous a class must have at least one member in good old New York. The scene is changing. Do you see that law office of the second Darrow? Noble Skinner, certainly has made a name for himself at the bar. Oh, yes, here is the New York Symphony playing at the Metropolitan Opera House. See, who is leading? Harold A. Sarig, successor to Walter Damrosch. In the box, watching with those adoring eyes, sits a beautifully gowned woman, his wife, the former Mildred George. By her side, is the sophisticated debutante daughter, Harriet."

"From the Opera House I see the famed Ziegfeld Follies, now managed by the aged C. F. Becker. Under the spotlights amid a myriad of other beauties I remember this lovely face from long ago, Florence McCall. Florence just couldn't be here unless Eleanor danced with her."

"Yes, girls. The visions have past. It is growing late and already I have spent more than my allotted time with you."

"What, may we see no more? Must we go?"

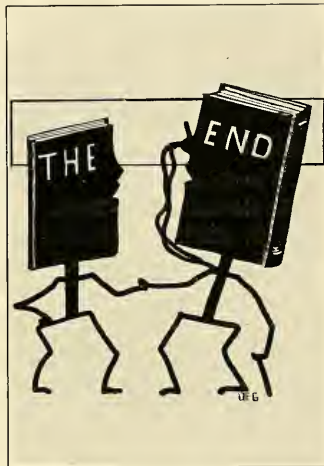
"Come, Mary. What fun it has been to see what all our class mates have done. Good-bye, Virginia. We will see you again, some day, perhaps. Meanwhile, think often of your old school friends and they will think often of you."

S. C. and M. B.





SEQUELLE



TO preserve for you, member of the class of 1928, many of the sincere joys, and the memory of our happy times together on the campus of Clarion State Teachers' College, has been the supreme aim of the Sequelle Staff. That, after you have left this school, you may find pleasure in losing yourself within its pages is our desire for you.

THE SEQUELLE STAFF

Editor in Chief	Thomas E. Zawasky
Associate Editor	William Flanagan
Assistant	Geraldine Wyse
Art Editor	Virginia Graham
Assistant	Mildred George
Business Manager	Kenneth Wyse
Assistant	Alden Hunt
Organizations	John Stauffer
Assistant	Marian Collett
Athletics	Bird Carson
Assistant	Mary Campbell
Literary	Dorothy Miller
Assistant	Grace Gemberling
Jokes	Sally Curry
Assistant	Marcelle Brown
Typists	Emma Hickenbottom
	Sally Curry
	Noble Skinner

Capital \$135,000
CITIZENS' TRUST COMPANY
Clarion, Pa.

T. M. ARNOLD, President
C. W. AMSLER, Vice-President
H. M. HUFNAGEL, Sec'y-Treas.
C. C. MOORE, Assistant Treasurer
B. L. BOWMAN, Assistant Treasurer

Largest Banking Institution in Clarion

Resources, Banking Dept., Over ... \$2,700,000.00
Resources, Trust Dept., Over \$2,400 000.00

Total, Over \$3,100,000.00

Young Enough to be Progressive
Old Enough to be Conservative

CITIZENS' TRUST COMPANY
Clarion, Pa.

ROLL OF HONOR BANK

FIRST NATIONAL BANK

of Clarion

Founded in 1865

Oldest Bank In Clarion County

Capital	-	-	-	-	-	-	-	\$ 100,000.00
Surplus	-	-	-	-	-	-	-	\$ 230,000.00

MEMBER FEDERAL RESERVE BANK

An Old Bank With Modern Methods
Your Account Is Appreciated

FOUR PER CENT. ON SAVINGS

Officers:

S. WIN WILSON, President

M. M. KAUFMAN, Vice-President

A. B. COLLNER, Cashier

H. F. STRATTON, Assistant Cashier

Directors:

S. WIN WILSON

M. M. KAUFMAN

FRANK K. BROWN

THOMAS B. SLICK

HARRY E. RUGH

LEWIS COLLNER

C. F. STRATTON

A BANK THAT IS DIFFERENT

You will find the difference that distinguishes the First National from other banks, not in the things we do for you entirely—for the facilities of financial institutions are pretty much standardized—but in the way we do those things.

For Fifty-Five Years the

FIRST NATIONAL BANK'S HELPFUL, INTERESTED

service has been attracting a growing number of people.

You will find our Officers always ready to talk matters over with you, and our trained, efficient staff of employees makes the handling of your transactions here a pleasure. We will welcome an opportunity to work with and for YOU.

FIRST NATIONAL BANK

New Bethlehem, Pa.

Photographs In This Issue Made By
ART NOUVEAU STUDIO

We Specialize In
All Lines of Photography

Fully equipped to make anything from Kodak finishings to
Portraits in your Homes or Commercial—Construction—and
Progress photos.

Call Us For Your Reunion or Large Gathering Photo.

Prices Right.

ART NOUVEAU STUDIO

A. E. NELSON, Prop.

Phones: 865—1148-G.

Cor. First and State Sts., - - - Oil City, Pa.

We feature a large selection of young mens fine clothing and college student's suits. Our stock for the spring will be most complete showing and the finest line ever offered in this vicinity.



Florsheim Shoes for young men.

A nice line of men's furnishings:

Shirts	Underwear	
Gloves	Socks	Hats
Collars	Caps	Belts
Pajamas	Ties	

Furnishings for the College Miss:

Shoes	Dresses
Hose	Coats
Silk Teddies	Hats
Slips	Middies
Scarfs	Gym. Shoes
Bandeaus	Bloomers

We cater especially to the dresses for the short miss in the half sizes.
We handle the Society Brand clothes for the young men.

WEIN BROTHERS DEPARTMENT STORE
CLARION, PA.

C. E. ANDREWS LUMBER CO.
NEW BETHLEHEM, PA.

Invites you to inspect a Model House
completely finished and furnished.

Living Room	Dining Room
Kitchen	Two Bed Rooms
Bathroom	Breakfast Nook

All ready for Occupancy

Also a display room containing samples of everything that is required in building, from foundation to roof. A permanent display for home builders.

You will marvel at it's completeness. Open for inspection each day from 8:00 A. M. to 6:00 P. M. and on Saturday evenings from 7:00 to 8:30. Other evenings by appointment.

KUHNS' BAKERY

—
Wholesale and Retail

—
R. M. KUHNS, Prop.

—
Main St, Clarion, Pa.

Call at JOE'S

FOR

Home Made Doughnuts and Rolls,
Fruit, Confectionery, Ice Cream.

—
Chocolate Milk, Hot or Cold

—
Corner Wood and 8th Ave.
CLARION, PA.

MEET

And

EAT

At

Nail's Basement Restaurant
CLARION, PA.

Compliments of

Dr's. Stahlman and Long

Osteopathic Physicians

CLARION, PA.

SWEETLAND

Home of Home-made Candies,
fresh from our kitchen to your door.

ICE CREAM, SODAS
and
FANCY SUNDAES

Come in and see

Our Toilet Article display
We have everything you need.

Next door to First National Bank
230 Main St., Clarion, Pa.

For SERVICE Try

GUTH'S JEWELRY STORE

CLARION, PA.

BETTER AUTOMOBILES

CLARION BUICK CO.

H. W. SPLINDLER

33 West Main St., Clarion, Pa.

In Brookville

BROOKVILLE TITLE & TRUST COMPANY

Banking and Trust Funds
5 Million Dollars.

Security

Strength

Service

A. G. CORBETT DRUG CO.

J. L. FITZGERALD, Treas.

Drugs, Books, Stationery

Reymer Candies
Cameras and Photo Supplies

Wholesalers Retailers

JOHN A MAGEE CO.

Dealers in

Hardware, Mine, Mill and
Oil well supplies.

Farming Implements.

Both Phones. CLARION, PA.

WALK-OVER SHOES

College Senior style at a High
School Freshman Price.

MAHEY'S SHOE STORE

"Shoes that satisfy"

RONALD CORBETT DRUG STORES

Trust us to please you for your
Drug Store needs.

Bell Phone 11.

CLARION, PA.

There is no use talking about
Satisfaction and economy in men's
clothing until you've worn a suit of
our make.

V. P. MUSI

623 Main Street.

Cleaning—Pressing—Repairing
For Ladies and Gentlemen.

T. & M. STORE

Thompson—Mahey

Proprietaries

and

"Soda Fountain that's different."



The Klondiker who suddenly
struck it rich and celebrated by
ordering "forty dollars' worth of
ham and eggs" was straining his
pocket-book in vain—like the man
who spends a hundred or more to
get style in a business suit when he
could do virtually as well by
buying

F. L. CROOKS & CO'S.

\$25.00 Special

No Rain Checks Issued For

BILLIARDS

You can enjoy a game night or
day, in any weather, any season of
the year, and never tire of this
great in-door pastime.

Modern Equipment.

FAGLEY & WALTERS

Bowman Bldg.

CLARION, PA.

ELMO CREAMERY CO.

—
"Elmo Creamery Butter"

—
One Product
Made Right

—
Best prices paid for Cream

—
Route 1. Knox, Pa.

YOUNG MEN'S WEAR

—
Snappy Furnishings
Clothing with Style and Color.

—
Reasonable Prices
Quality and Service

—
ALEXANDER & MOORE
Clarion, - - - Pa.

DIETZ & MOONEY
Hardware Company

—
Everything in
Hardware,
Pottery,
China and
Glassware.

—
CLARION, - - PA.

PATRONIZE
OUR
ADVERTISERS



3 9363 00386 9069

Spec. Col.

qLD

1017 Sequelle

.C88

1928

Spec. Col.

qLD

1017

.C88

1928

