

Archives

qLD

1017

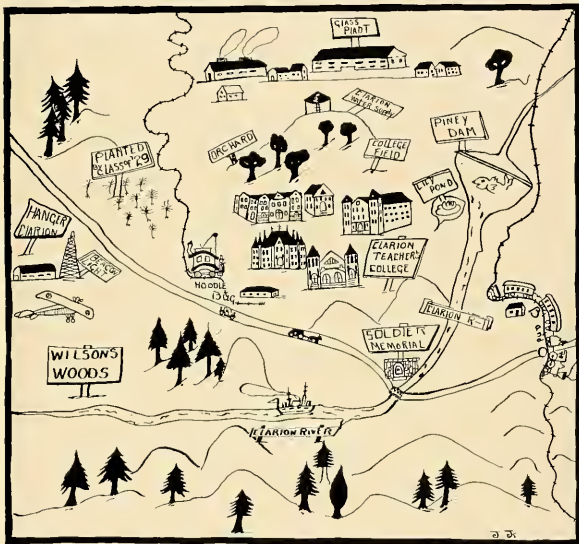
.C88

1929





# EX LIBRIS



William H. Flanagan

*Editor*

Willis Barber

*Business Manager*

THE  
SEQUELLE  
1929

PUBLISHED BY THE

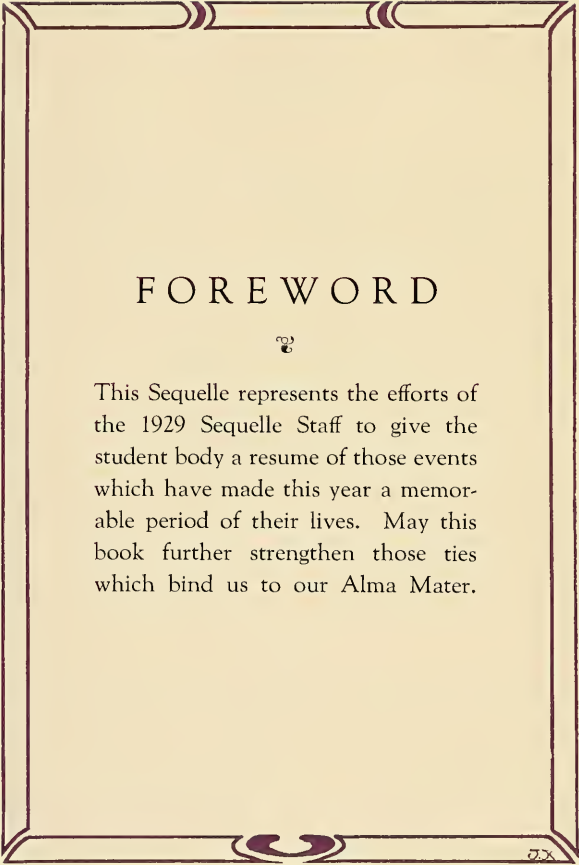
SENIOR CLASS

OF

CLARION STATE TEACHERS' COLLEGE

CLARION - PENNSYLVANIA

Evans  
515  
517  
88  
100



# FOREWORD



This Sequelle represents the efforts of the 1929 Sequelle Staff to give the student body a resume of those events which have made this year a memorable period of their lives. May this book further strengthen those ties which bind us to our Alma Mater.

DLX

# Contents

## Book One

*Campus Views*  
*Administration*

## Book Two

*Senior Class*  
*Mid-Year Class*  
*Junior Class*

## Book Three

*Organizations*  
*Music*  
*Athletics*

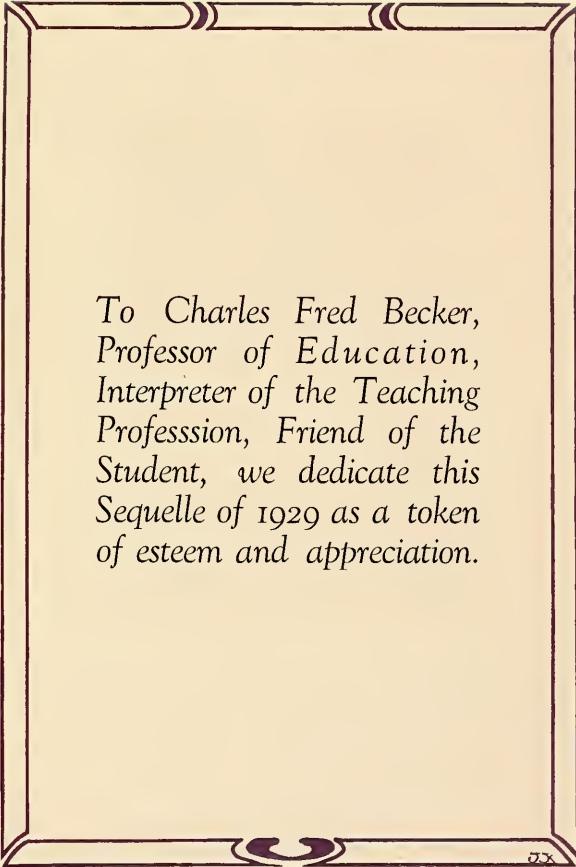
## Book Four

*Humor*  
*Advertisements*



CHARLES F. BECKER, A. M. Ph. B.





*To Charles Fred Becker,  
Professor of Education,  
Interpreter of the Teaching  
Profession, Friend of the  
Student, we dedicate this  
Sequelle of 1929 as a token  
of esteem and appreciation.*

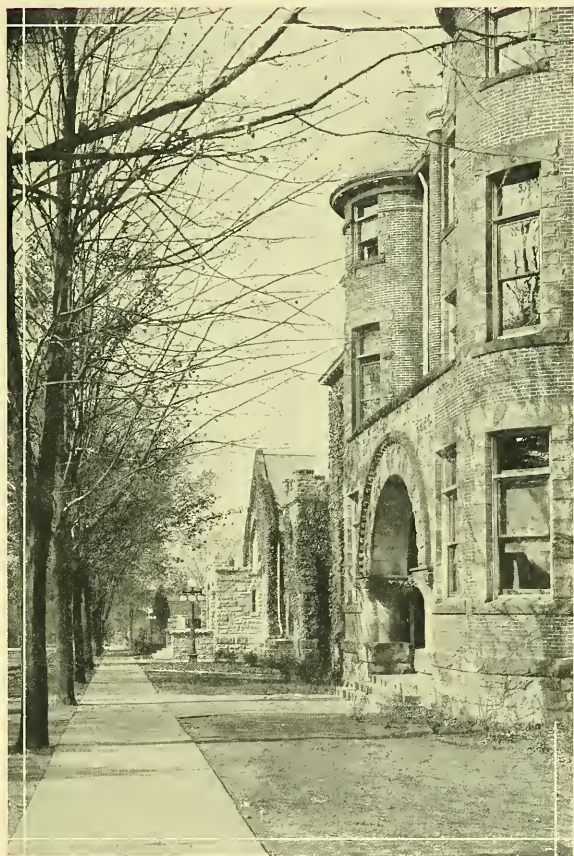
## CLARION TEACHERS' COLLEGE

During a recent act of the State Legislature, the State Council of Education was given the authority to change the State Normal Schools of Pennsylvania into Teachers' Colleges, thus making them eligible to give a four year course and grant the degree of B. S. in Education.

Under this Act, Clarion Normal made application to the State Council and fully met every requirement and condition for the conferring of the collegiate degree. On December 2, 1927, by a resolution of the State Council of Education, Clarion State Normal became Clarion Teachers' College.







CHAPEL AND SCIENCE HALL



J. GEORGE BECHT HALL

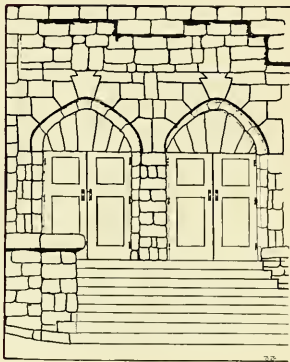
Ten



SEMINARY HALL



Eleven



THE CHAPEL

Twelve

1929





SCIENCE HALL



Thirteen

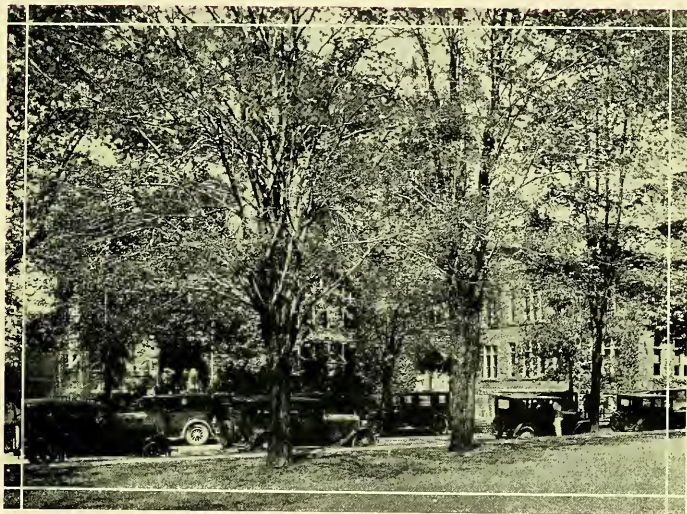


*BECHT HALL AT NIGHT*

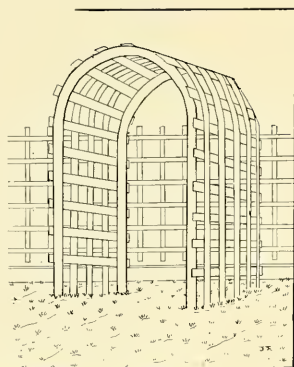
Fourteen

1929

# SEQUETTE

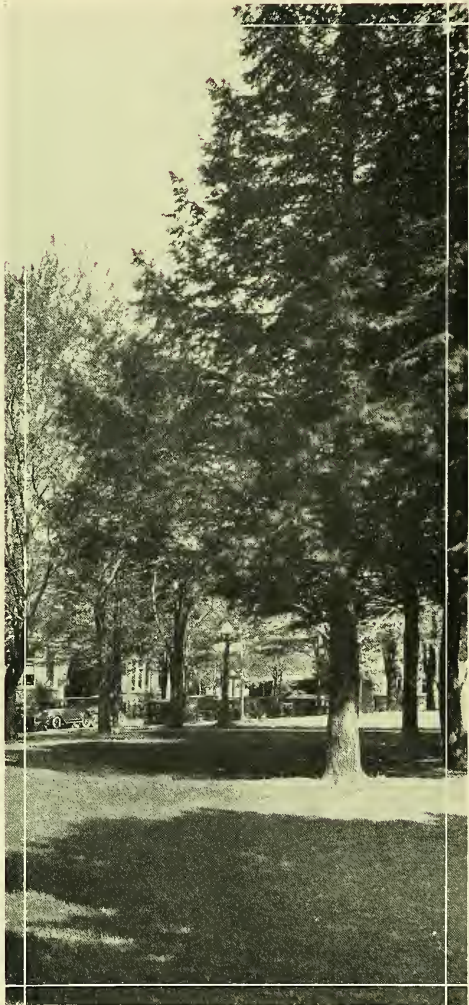


## STREET REVIEW



Fifteen

SEQUOIA



Sixteen

1929

27





G. C. L. RIEMER, Ph. D., LL. D.

Eighteen

1929



#### DR. RIEMER

Dr. Riemer began his term of office at Clarion State Teachers' College on July 18, 1928. We are fortunate in having a principal who has such a broad and thorough education. He attended the Clarion State Normal School from 1889 to 1892. Entering Bucknell University in September 1892, he was graduated in June, 1895. During the next four years he was an instructor at Bucknell. From 1899 to 1901 he studied in the graduate school of Harvard University. He continued his graduate study at Leipzig and Berlin Universities in Germany. From 1905 to 1918 he was a professor of modern languages at Bucknell. During the summer of 1920 he had charge of the German Department at New York University. From 1918 to 1923 he was a member of the Department of Public Instruction. In that capacity he inspected the high schools of eighteen counties in the state. During 1923 to 1927, Dr. Riemer was principal of the Bloomsburg State Teachers' College.

We students of Clarion are certainly proud of our principal. His training and ability have enabled him to make this year one of the most successful periods of Clarion's history.



THE FACULTY

FIRST ROW. Kilston, Renn, Giltner, Nair, Edgar, Green, Gamble, Dr. Riemer.  
 SECOND ROW. Brogan, Nesbitt, Walters, Hepler, Keithan, Sandford, Williamson.  
 THIRD ROW. Jack, Runyan, Bland, Troughron, Perry, Stutzman, Seyler, Graham.  
 FOURTH ROW. Wilkinson, Manson, Bland, Huston, J. Jones, Becker M. Jones.





# FACULTY

1928-29

## ADMINISTRATIVE OFFICERS

G. C. L. RIEMER, Ph. D., LL. D., Principal

JOHN W. F. WILKINSON, A. M., Dean of Instruction

J. O. JONES, B. S.  
*Dean of Men*

AMABEL LEE RALSTON  
*Dean of Women*

FOSTER M. MOHNEY  
*Bursar*

SARA SEYLER  
*Dietitian*

## TEACHING STAFF

CHARLES F. BECKER, A. M.  
*Education*

BURNICE SMITH BLAND  
*Piano, Violin, Brass*

HARRY LEE BLAND, B. Ed. Mus.  
*School Music, Voice*

DOROTHY EDGAR, A. B.  
*English, Oral Expression*

JAMES R. HUSTON, A. B.  
*Social Studies*

JOHN O. JONES, B. S.  
*Physical Education*

MORTON F. JONES, A. B.  
*Director of the Training School*

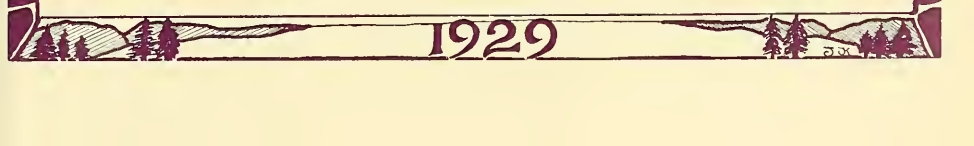
ELIZABETH KEITHAN, B. S.  
*Geography and Penmanship*

HARRY S. MANSON, A. M.  
*Science*

BERTHA VIRGINIA NAIR, A. M.  
*English*

MANLEY E. MACDONALD, A. M.  
*Education and Mathematics*

Twenty One



1929



# SEQUOIA

ELIZABETH NESBITT, A. B.  
*Librarian*

RUTH PERRY, A. M.  
*Physical Education*

HAZEL SANFORD, B. S.  
*Art*

JOHN W. F. WILKINSON, A. M.  
*Mathematics*

MARY B. WILLIAMSON, A. M.  
*Primary Specialist*

## CO-OPERATIVE TRAINING TEACHERS

ELIZABETH A. GILTNER, B. S.  
*Primary Grades*

EFFIE BLANCHE HEPLER  
*Primary Grades*

MARTHA GEMBERLING RENN  
*Primary Grades*

HELEN WALTERS  
*Primary Grades*

LORETTA G. BROGAN, B. S.  
*Intermediate Grades*

MILDRED E. GAMBLE, A. B.  
*Intermediate Grades*

PEARL JACK, A. B.  
*Intermediate Grades*

BERTHA J. STUTZMAN, A. M.  
*Intermediate Grades*

MARTHA V. TROUGHTON, A. B.  
*Intermediate Grades*

ANNA B. GRAHAM  
*Junior High School Grades*

BESSIE M. RUNYAN, A. B.  
*Junior High School Grades*

## RETIRED MEMBERS OF FACULTY

JOHN BALLENTINE, Ph. D.

JAMES PINKS, B. S. Ed.

WILLIS Y. WELCH, A. M., Sc. M.



## BOARD OF TRUSTEES

HONORABLE F. L. HARVEY, President.....	Clarion, Pa.
F. P. HAZELTON, Vice-President.....	Clarion, Pa.
H. M. RIMER, Secretary.....	Clarion, Pa.
P. C. ANDREWS.....	New Bethlehem, Pa.
N. C. BALL.....	Clarion, Pa.
RAYMOND E. BROWN.....	Brookville, Pa.
MRS. W. B. RANKIN.....	Clarion, Pa.
MRS. C. C. ROSS.....	Clarion, Pa.

### OFFICERS OF THE BOARD

HON. F. L. HARVEY, President	
H. M. RIMER, Secretary	F. P. HAZELTON, Vice-President

### STANDING COMMITTEES

#### Committee on Instruction

HON. F. L. HARVEY	W. W. WINSLOW	H. M. RIMER
-------------------	---------------	-------------

#### Committee on Finance

P. C. ANDREWS	MRS. C. C. ROSS
RAYMOND E. BROWN	F. P. HAZELTON

#### Committee on Household

MRS. W. B. RANKIN	N. C. BALL	H. M. RIMER
-------------------	------------	-------------

Twenty Three

# SEQUELLE



Assit Bus. Mgr.



Organizations



Calendar



Organizations



Jokes



Art



Athletes



Editor

# SEQUELLE



Business Mgn



Literary



Photographs



Art



Literary



Assit Editor



Jokes



Athletics



(W) Assit Editor

THE SEQUELLE STAFF

WILLIAM H. FLANAGAN

*Editor-in-Chief*

Assistant Editor

FLORENCE REAGHART

Junior Assistant

STANLEY LORE

*Art*

JANE MAHEY

JANE KAHLE

*Literary*

VERA RICHEY

ALICE KILLEEN

*Organizations*

RUTH HOFFMAN

MORRIS BALDWIN

*Athletics*

KATHLEEN McELHATTEN

PAUL STEWART

*Humor*

BETTY HERTIG

CLYDE MOORE

Calendar

MARIAN TIMLIN

Snapshots

DOROTHY COWAN

*Typists*

WILDA POWELL

MARGUERITE GEORGE

*Business Manager*

WILLIS BARBER

Assistant Business Manager

MILTON WEIN

Faculty Advisor

MISS BERTHA V. NAIR

SEQUOIA



Twenty Six







SEQUOIA

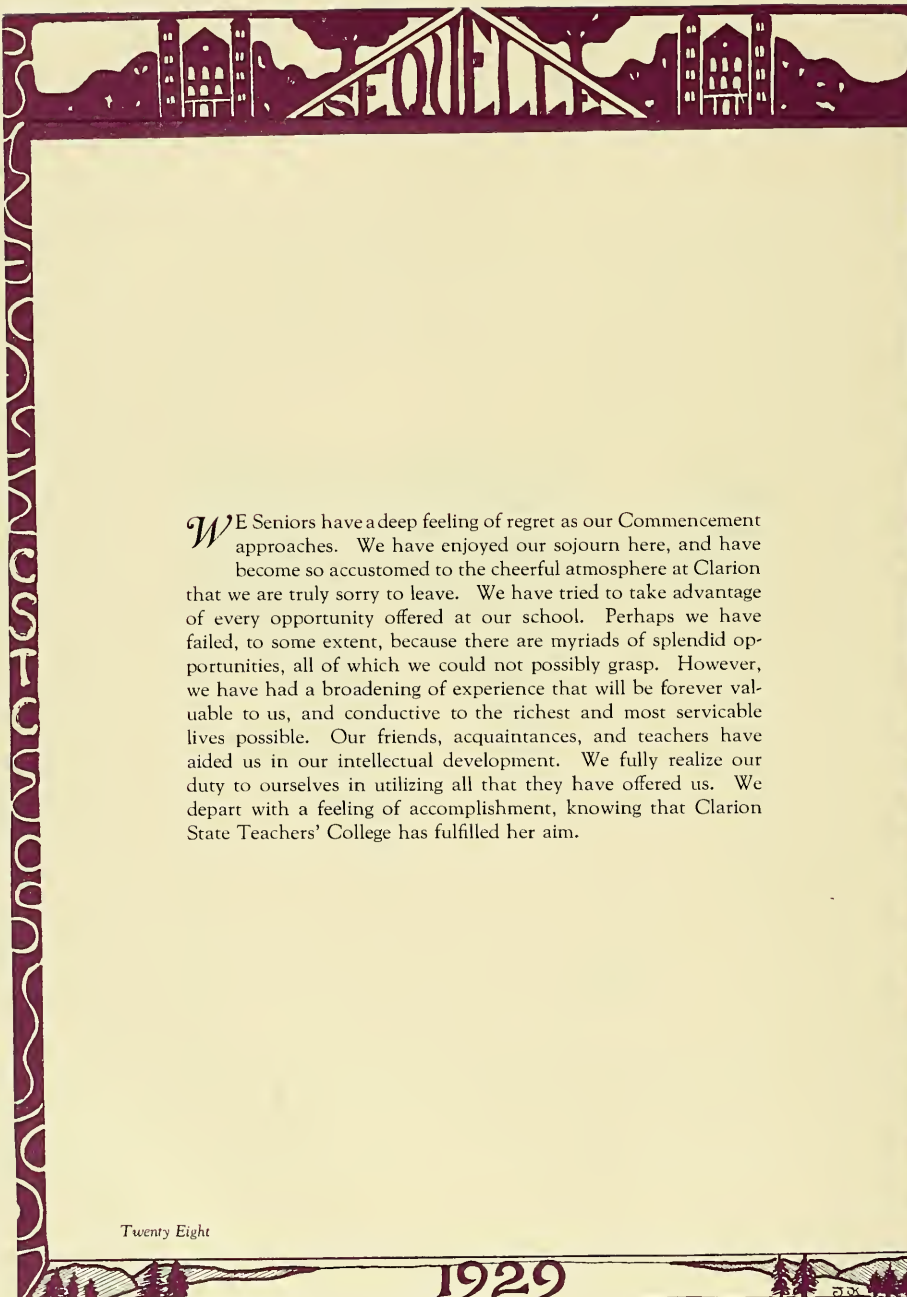
# SENIORS



J. G.

Twenty Seven

1929



*W*E Seniors have a deep feeling of regret as our Commencement approaches. We have enjoyed our sojourn here, and have become so accustomed to the cheerful atmosphere at Clarion that we are truly sorry to leave. We have tried to take advantage of every opportunity offered at our school. Perhaps we have failed, to some extent, because there are myriads of splendid opportunities, all of which we could not possibly grasp. However, we have had a broadening of experience that will be forever valuable to us, and conducive to the richest and most servicable lives possible. Our friends, acquaintances, and teachers have aided us in our intellectual development. We fully realize our duty to ourselves in utilizing all that they have offered us. We depart with a feeling of accomplishment, knowing that Clarion State Teachers' College has fulfilled her aim.



## DEGREE GRADUATES

### GLADYS LONG

*Primary*

*Clarion, Pa.*

How proud Clarion is to grant degrees to such students as these in this group. Mrs. Long has a very sweet personality that has won her many friends. She has many characteristics that the undergraduates may develop. She is refined, dignified, studious, witty, and original.

### PEARL NEWTON MILLER

*Primary*

*Clarion, Pa.*

Could words ever describe Mrs. Miller? Her life must be very full, for she gives so much of herself away. Her personality radiates so that she has won friends from the tiniest tots in the training school to the head of the college.



*Twenty Nine*

1929



**MARTHA AIKENS**

Primary Corsica, Pa.

Travel Club

Alphabetically, Martha has always been first in her class. Martha looks at us with wondering big blue eyes and smiles shyly. With your pleasant disposition, Martha, you will surely be a successful teacher.

**EMMA MOREA AVERY**

Primary Oil City, Pa.

Travel Club

Emma believes in taking Miss Keith-an's advice, for we always find her in the library browsing among the books. Just watch her grey eyes rise slowly from a book, and give significant glances to a certain man seated several tables away. Human Geography is interesting, isn't it, Emma?

Thirty

**ROMAINE ALLSHOUSE**

Primary Summerville, Pa

Y. W. C. A.  
Hostess Club  
Chapel Representative

Everyone enjoys visiting Romaine, for she is such a delightful entertainer. Romaine's favorite occupation is playing "Let me Call You Sweetheart" on her victrola, and looking at the Carnegie Tech pennant hanging on the wall.

**DOROTHY ALCORN**

Primary Brookville, Pa.

Glee Club  
Vested Choir  
Journalism Club  
Sextette

Travel Club  
Prom Committee  
Y. W. C. A.

Dotty is a typically modern girl, whose clothes are Paris' latest creations. Dot is a member of the liveliest crowd in the school. She is full of vim, vigor, and vitality.



**MORRIS J. BALDWIN**

*Junior High* *Clarion, Pa.*

Travel Club  
Current Events Club

The accomplishments and talents of Morris are many and varied. He is a musician and a good student. Morris is an all-around popular fellow. We will remember him for his dependability and originality.

**HELEN BARNES**

*Primary* *Cherrytree, Pa.*

Varsity Basket Ball	Vested Choir
Hockey Squad	Glee Club
Art Club	Travel Club
Hostess Club	Y. W. C. A.
Journalism Club	

Helen comes like a ray of sunlight, always bright, always cheerful. Do you remember how gracefully she danced in the spring festival? Helen loves to dance, and she is in great demand on the dance floor.

**WILLIS BARBER**

*Junior High School* *Franklin, Pa*

Orchestra Varsity "C" Club-Pres.  
Football Y. M. C. A.

Willis is always inviting Miss Keith-an into an argument. We'll have to admit he can uphold physiography explanations for certain topography fairly well. Willis has a fashion for attractive neckties. His evenings recreation consists of dancing and library dates.

**ELEANOR S. BARRETT**

*Intermediate* *DuBois, Pa.*

Art Club	Journalism Club
Vested Choir	Travel Club
Glee Club	Clarion Call Staff
Hostess Club-Treas.	Y. W. C. A. Cabinet
Senior Class Play	Student Council-Sec.

Eleanor is never selfish with her art. She is never too busy to help make posters, or curl hair for her friends. One of her weaknesses is playing tricks on her friends. Just how many rooms did you tear up, Eleanor?

Thirty One



### CHARLOTTE LOUISE BELL

*Primary*

*Clarion, Pa.*

Dramatic Club  
Art Club  
Dramatic Plays  
Varsity Basket Ball

Hockey Squad  
Vested Choir  
Hostess Club  
Senior Class Play

Charlotte is very popular. She has a very interesting way of telling things to the girls in the dormitory. She is always rushing up to Anna Jane's room with, "Oh, girls, we had the best time at the dance last night."

### LOUISE BYRON

*Intermediate*

*Ford City, Pa.*

Opertta  
Student Council

Hostess Club  
Y. W. C. A.

Take your troubles about the training school to Louise, and she will help you with "seat work" or lesson plans. Louise is one of these big hearted girls whom we all love. The children in the training school were all very fond of Miss Byron.

Thirty Two

### TWILA CELIA BECKMAN

*Intermediate*

*Smithport, Pa.*

Student Gov't-Sec.  
Hostess Club-Treas.  
Y. W. C. A. Cabinet  
Glee Club

Vested Choir  
Art Club  
Travel Club  
Waiter's Club

There isn't a girl in the dormitory who doesn't love Twila; she is so sweet and unaffected. Twila has taken quite an active part in student activities, and she is classified as a dependable member in each club.

### RUTH E. CAMPBELL

*Primary*

*Clarion, Pa.*

Glee Club  
Dramatic Club  
Vested Choir

Travel Club  
Hockey  
Dramatic Plays

"I can't get the car; my sister has it." Ruth is always on the go. Anything with action appeals to her. She is very quick on the tennis court and basket ball floor.



**DOROTHY ISABELLE COWAN**

*Primary* *New Bethlehem, Pa.*

- |                          |                |
|--------------------------|----------------|
| Dramatic Club            | Hostess Club   |
| Glee Club                | Tennis Singles |
| Vested Choir             | Sequelle Staff |
| Journalism Club-V. Pres. | Hockey         |
| Travel Club              | Y. W. C. A.    |

A belle of the court is Dot. Dot's social functions are so numerous, we wonder how she ever finds time to study. "Hey, how about a game tonight?" Whether it is bridge or tennis, Dot always scores.

**MARTHA BELLE CARSON**

*Intermediate* *Clarion, Pa.*

- |           |              |
|-----------|--------------|
| Glee Club | Vested Choir |
|-----------|--------------|

Belle's eyes sparkle with merriment when she talks, and dimples appear in her cheeks when she smiles. She is very witty and clever at puns. Her optimism has won her many friends.

**MARY LUCILLE CONLEY**

*Intermediate* *Clarion, Pa.*

- |              |                |
|--------------|----------------|
| Art Club     | Chapel Pianist |
| Glee Club    | Y. W. C. A.    |
| Vested Choir | Hockey         |

"I don't have any work to do, but I simply must go to the library tonight." Lucille likes to bring her dad's car, but that isn't the only reason for her coming to the library. Lucille is always laughing and her eyes twinkle with fun.

**CAROLYN LOUISE COLLNER**

*Primary* *Clarion, Pa.*

- |          |        |
|----------|--------|
| Art Club | Hockey |
|----------|--------|

Carolyn has a very social schedule. Classes never seem to interfere with her social activities. *Gentlemen* prefer blondes; therefore the blue eyed Carolyn is very popular.

Thirty Three



**DOROTHY B. DIBBLE**

*Primary* *Rixford, Pa.*  
Travel Club

Dorothy is very conscientious about her class work. She never leaves anything half done. Dorothy and her room-mate are inseparable. It is always Margaret and Dorothy, or Dorothy and Margaret in class, church, or school. We are given the impression that Dor is bashful, but Margaret doesn't agree with us.

**LYDIA MARY DICKINSON**

*Intermediate* *Ludlow, Pa.*  
Dramatic Club *Hostess Club*  
Travel Club

Lydia reminds one of a mischievous little boy. Her favorite song just now seems to be "We're in the Army Now." She is trying, we hear, to get a boy in the training school to teach her how to make airplanes.

*Thirty Four*

**OLIVE A. EBERLINE**

*Intermediate* *Clarion, Pa.*  
Travel Club

Mrs. Eberline has such a pleasing way of expressing herself in class that we like to listen to her soft low voice. Mrs. Eberline is always busy studying, and preparing herself for her work. Her personality has won her many friends.

**GLADYS NAOMI DAVIS**

*Intermediate* *Munderf, Pa.*  
*Hostess Club*  
*Glee Club*  
*Vested Choir* *Y. W. C. A.*  
*Operetta*

"The voice with a smile." Gladys begins and ends everything with a little trill of giggles. It is no wonder Gladys is always happy—she has hair that curls in the rain, beautiful black eyes, and pretty teeth.





### AGNES FERACOLI

*Intermediate*

*Conifer, Pa.*

Vested Choir	Travel Club
Glee Club	Hostess Club
Art Club	Story Telling Club
Y. W. C. A.	Student Council

You couldn't find a more conscientious student than Agnes. She is very dependable and therefore is given many responsible duties. Agnes worries a great deal if she doesn't get all "A's". In spite of her few worries, she is always pleasant.

### ALTA M. FIDLER

*Intermediate*

*Clarion, Pa.*

Travel Club	Glee Club
Journalism Club	Hostess Club

"Hello! Have you seen Belle?" Alta would be lost without Belle. They walk together, study together, and sing together. Alta is rather quiet except when Belle teases her, and then we hear her pleasant laughter.

### EDNA GATHERS

*Intermediate*

*Knox, Pa.*

Travel Club	Student Council
Hostess Club	Y. W. C. A.
Story Telling Club	Waiter's Club

Edna Gathers—gathers what? Why, everything her professors can give her. Edna is very quiet. She has beautiful Titian curls that are the envy of all the girls of the school.

### ELIZABETH FREEDLINE

*Intermediate*

*Rimersburg, Pa.*

Mrs. Freedline never fails to answer every question Mr. Becker asks her. She enjoys finding the I. Q. of her classmates. Much of her spare time is spent in reading in the library.

Thirty Five



**MINNIE GOLDSMITH**

*Primary* *Tionesta, Pa.*

- Art Club
- Travel Club
- Y. W. C. A.
- Story Telling Club

Minnie has quiet dignity and will always be remembered as a sweet girl. She always comes early to school and has her work done on time. Minnie could win success in any profession because of her thoroughness.

**ESTHER L. GUSTAVSON**

*Primary* *Bradford, Pa.*

- Dramatic Club
- Dramatic Plays
- Hockey
- Glee Club
- Vested Choir
- Art Club
- Hostess Club
- Y. W. C. A.

A jolly good friend is Gussy. She is ready to join in any fun or to help anyone who is in need of assistance. We are sure her unflinching good humor will keep her optimistic and contented.

**MARGUERITE GEORGE**

*Intermediate* *Clarion, Pa.*

- Art Club
- Story Telling Club
- Sequelle Staff

Marguerite is tall, slender, and quick as a flash. Marguerite is very fond of tennis and serves a good ball. We see her in her Ford every evening waiting to take another commuter home.

**MAX T. GRAHAM**

*Junior High* *Northville, Pa.*

- Football
- Travel Club
- Student Council

A brawney fellow is Max—a strong man. We shall always remember him as a football player, for he certainly was a good tackler. His enthusiasm in athletics is not lukewarm, but so spirited that it easily spreads to others.



**MIRIAM HANST**

*Primary*

*Knox, Pa.*

Art Club  
Hostess Club  
Y. W. C. A.

"Is the mail in? Bring my letter over." Miriam is always very sure of that letter. Miriam is far too sensible to be homesick; we feel sure that there is another reason for her going home every week end.

**MARY ANN HAINES**

*Intermediate*

*Reynoldsville, Pa.*

Glee Club  
Vested Choir  
Journalism Club  
"Clarion Call" Staff

Art Club  
Hostess Club  
Basketball  
Student Council

A low voice, a soft laugh, and a sweet smile characterize Mary Ann. Mary Ann is a lovable girl. She is very tall and slender, and blest with beautiful hair and eyes. Mary Ann has many friends.

**BETTY JEAN HERTIG**

*Primary*

*Emporium, Pa.*

Glee Club  
Vested Choir  
Art Club  
Hostess Club

Journalism  
Sequelle Staff  
Y. W. C. A.  
Hockey

Have you ever seen anyone with more beautiful hair than Betty's? Betty is always very modest when you admire her curls. Her favorite color is red, as we can see by scanning her wardrobe. Betty is very popular; she is a good dancer, and she loves to tell jokes.

**IRENE HETRICK**

*Intermediate*

*New Bethlehem, Pa.*

Vested Choir  
Travel Club  
Hostess Club

Y. W. C. A.  
Journalism Club

Irene fairly bubbles over with mischief. She is a good combination of seriousness and mischief. Irene is a diligent worker and very dependable. Each night just before dinner the dormitory girls have the pleasure of listening to Irene play the bells.

Thirty Seven



**RUTH HOFFMAN**

*Primary* East Brady, Pa.  
 Dramatic Plays Hostess Club  
 Dramatic Club Treas. Vested Choir  
 Y. W. C. A. V. Pres. Journalism Club  
 Student Gov't Pres. Sequelle Staff  
 Glee Club Pres. Orchestra  
 May Queen

Ruth is everything a girl should be—a student, a good mixer, a loving and sincere friend, modest and unassuming—a perfect lady. Her election as May Queen proved her popularity with the student body.

**ZELMA JOHNSON**

*Intermediate* Hazen, Pa.  
 Y. W. C. A.  
 Hostess Club  
 Travel Club

Zelma is always ready to join in the fun of the school. Frequently she is the leader when it comes to pranks. We shall never forget how anxiously Zelma searched the dormitory for some one who could tell her where to find the marriage ceremony in the Bible. You found it, Zelma; then what?

**JANE ELIZABETH KAHLE**

*Intermediate* Oil City, Pa.  
 Art Club  
 Y. W. C. A.  
 May Queen Attendant  
 Glee Club  
 Vested Choir  
 Sequelle Staff  
 Journalism Club  
 Hostess Club-Sec.  
 Student Council  
 Treas.

Jane is a great artist. In fact, we suspect that if Miss Sandford had not returned from Europe when she did, she would have lost her position. Jane dances well and all the boys who come to Clarion want to meet her.

**LILLIE M. KELLER**

*Intermediate* Luthersburg, Pa.  
 Y. W. C. A.

Lillie is very quiet, always greeting us with a shy smile. She spends most of her time studying. With a personality like hers, Lillie cannot help but leave oceans of friends behind her.



### ANNA JANE KIRKER

*Primary* Zelionaple, Pa.  
 Glee Club  
 Vested Choir  
 Art Club  
 Y. W. C. A.  
 Hostess Club  
 Dramatic Club  
 Dramatic Plays  
 Student Council  
 May Queen Attendant

An all around girl, Anna Jane is athletic, studious, and sociable. Is it any wonder she is so popular? There isn't anything she can't do. We are proud of you as a classmate, Anna Jane.

### RUTH ROSE LEWIS

*Intermediate* Sabula, Pa.  
 Dramatic Club  
 Dramatic Plays  
 Glee Club  
 Vested Choir  
 Journalism Club  
 Travel Club  
 Hostess Club—Pres.  
 Tennis Doubles  
 Basketball—Varsity  
 Hockey  
 Y. W. C. A.  
 Clarion Call Staff

Vivacious Ruth can certainly put pep into any athletic game. She is an all round sportswoman. Ruth never lets a sprained ankle or a stoved finger keep her out of a game. "I'll play if it kills me" is her motto, and she plays.

### MARY ELLEN KOHLHEPP

*Rural* Rochester Mills, Pa.  
 Hockey  
 Art Club  
 Travel Club  
 Vested Choir  
 Glee Club  
 Hostess Club  
 Y. W. C. A.

If you see a flash of red hair and hear the sound of a vivacious laugh, it is Mary. She is a good student, but she is never too busy to play a joke on someone. If any prank has ever been played on you, it must have been Mary who did it.

### ALICE KILLEEN

*Junior High* Crafton, Pa.  
 Treas. Senior Class  
 Sequelle Staff  
 Student Council  
 Glee Club  
 Vested Choir  
 Orchestra  
 Debating  
 Journalism Club  
 Art Club  
 Hostess Club  
 Y. W. C. A.  
 Hockey Team

Tiny, dainty, dignified Alice. She is kept rather busy with her Junior High work, but even so she has time to participate in social and extra-curricular activities. Alice aspires to be a good teacher, and it is our wish that she may reach her goal.

Thirty Nine



### FLORENCE LUELLE LUTHER

*Intermediate Corsica, Pa.*  
 Basket Ball—Varsity Travel Club  
 Art Club Hockey  
 Vested Choir Hostess Club  
 Glee Club Journalism Club  
 Y. W. C. A. Cabinet

There are two things we often hear Flossy Lou refer to. One is the letter that came or should have come in the morning mail and the other is what she and Helen did in "Fizz Ed" class. Florence is prominent in athletics and Y. W. C. A. work.

### ALICE LOGUE

*Intermediate Clarion, Pa.*  
 Hostess Club  
 Travel Club  
 Hockey

Alice is never able to decide which date to choose. She is always happy. She loves to dance and she is quite popular at dances. Many a man has fallen under the spell of those Alice blue eyes.

### LEAH ESTER LOVE

*Intermediate Falls Creek, Pa.*  
 Y. W. C. A. Varsity Basket Ball—Cap.  
 Hostess Club Hockey  
 Dramatic Club Dramatic Plays  
 Travel Club Art Club  
 Tennis Doubles

What would a basket ball game or a tennis tournament be without Leah? She enters all athletics with a zest that sends her on to victory. Leah roots hard for a certain half-back on the football team.

### FREDERICK McDONALD

*Intermediate Leeper, Pa.*  
 Travel Club, Sec. Track  
 Journalism Club Football  
 Y. M. C. A., Treas. Clarion Call Staff

Fred is very popular in school activities. He is a faithful worker when it comes to raising money for the Varsity "C" Club. Because of his dependability many responsible jobs are given to him, and he handles them successfully and cheerfully.



**FRANCES McCORMACK**

*Primary*

*Clarion, Pa.*

Travel Club  
Art Club  
Y. W. C. A.

We seldom see Frances except in class. She is quite lady-like and intelligent; the type who will be a great success in life. She is the perfect example of the "cool, calm, and collected school maam".

**RALPH McCLEARY**

*Intermediate*

*Clarion, Pa.*

Football  
Travel Club

Ralph is a man of cheerful yesterdays and confident tomorrows. Never once did he or his car fail us when there was a long nature study or biology trip.

**KATHLEEN McELHATTEN**

*Intermediate*

*Shippville, Pa.*

Student Council      Journalism Club  
Glee Club              Sequelle Staff  
Vested Choir          Y. W. C. A. Cabinet  
Basketball              Hockey  
Delegate to Eagles Mere Conference

Nature has endowed her with a kindly disposition, a beautiful voice, and natural ability in athletics. Kate is an outstanding basketball player and is noted for her fair play and good sportsmanship.

**LAURA McCLEARY**

*Rural*

*Clarion, Pa.*

Travel Club  
Journalism Club

Meek, mild, modest. Yes, that is Laura. Her gentle nature and pleasant smile account for her loveliness. We hope fate and fortune will be as kind to Laura as she has been to us.

Forty One



**AIDA MCGREGOR**

*Intermediate North Point, Pa.*

Y. W. C. A.      Travel Club  
Hostess Club      Journalism Club

Upon seeing Aida for the first time one is wont to say, "How quiet and demure!" Upon further acquaintance, one finds that he was mistaken; in fact, one of Aida's chief diversions is giggling and making merrry.

**IRENE McHENRY**

*Intermediate Sligo, Pa.*

Art Club  
Travel Club  
Hostess Club

The faculty will agree on at least one thing: Irene can be depended upon to come to class with the assignment mastered, and ready to contribute to the discussion.

**DOROTHY McFADDEN**

*Primary Richdsville, Pa.*

Art Club      Volley Ball  
Hostess Club      Y. W. C. A.

Dorothy carries on her work with very little unnecessary chatter. Straight and to the point is Dorothy. Even between 10:00 and 10:30 Dot never fails to walk through the hall with her usual dignity and poise.

**RUBY McKINNEY**

*Intermediate Sligo, Pa.*

Hockey  
Travel Club

Ruby is concerned with being optimistic and getting her work in on time. One of the nicest things about Ruby is her encouraging and sympathetic smile.





**BERNICE MAHLE**

<i>Intermediate</i>	<i>Shippenville, Pa.</i>
Art Club	Student Council
Travel Club	Clarion Call
Senior Hostess Club	Vested Choir
Journalism Club	Y. W. C. A.

Who shall be chairman of the decorating committee? Bernice Mahle of course. Bonnie is gifted with remarkable artistic ability. She has scholastic ability too. Success will surely come to Bernice if she continues her hard work and intensive study.

**FRANCES MILLER**

<i>Primary</i>	<i>Girard, Ohio</i>
Art Club	School Trio
Sec. Dramatic Club	Glee Club
Dramatic Plays	Hostess Club
Vested Choir	Journalism Club

Frances can be serious and earnest or gay and carefree, just which ever appeals to her on the spur moment. One of Fran's hobbies is dancing, which she does with much ease and grace.

**VIVIAN MARTZ**

<i>Intermediate</i>	<i>Conifer, Pa.</i>
Glee Club	Hostess Club
Vested Choir	Current Literature Club
Orchestra	Debating Society
Y. W. C. A.	

Shiny brown curls, a friendly smile, a merry laugh ----- Vivian. We shall surely miss our sunny natured friend when she leaves us this June.

**LEONE MILLER**

<i>Intermediate</i>	<i>Shippenville, Pa.</i>
Journalism Club	Pres. Student Council
Vested Choir	Sec. Y. W. C. A.
Glee Club	Travel Club
Hostess Club	Basketball
Clarion Call	Waiters' Club

Leone—amiable, lovable, wholesome, and dependable, always the same. As for her other qualities, those who love her as we do will understand our meaning when we say that she is just "Leone."



**HELEN MOORE**

*Intermediate*                      *Reynoldsville, Pa.*

- |                    |              |
|--------------------|--------------|
| Art Club           | Travel Club  |
| Story Telling Club | Hostess Club |
| Y. W. C. A.        |              |

Helen is one of our hardest workers. Although she enjoys fun, Helen never shirks her duties for the sake of pleasure. We can depend on Helen to accept responsibilities and do her share of whatever is to be done.

**RUTH MORGAN**

*Intermediate*                      *Rimersburg, Pa.*

- |              |
|--------------|
| Travel Club  |
| Hostess Club |

Quiet? Not always. Although Ruth is concerned with her work, she is never too busy to do something for some one or help somebody out of a tight place.

**MAXINE MILLER**

*Primary*                                      *Leeper, Pa.*

- |                |                   |
|----------------|-------------------|
| Art Club       | Vested Choir      |
| Dramatic Club  | Glee Club         |
| Hostess Club   | Goddess of Spring |
| Dramatic Plays | Y. W. C. A.       |

Wavy golden hair, large blue eyes, with curling dark eyelashes, a small oval face, a perfect profile. Don't you see why "gentlemen prefer blondes?"

**VERA MOORE**

*Intermediate*                      *Kennerdell, Pa.*

- |                    |              |
|--------------------|--------------|
| Travel Club        | Y. W. C. A.  |
| Story Telling Club | Vested Choir |
| Hostess Club       | Glee Club    |

Vera is studious, cheerful, humorous, always ready for fun. A diligent worker, a frank and sincere friend, she has endeared herself to all of us.

# SEQUELLE



## ORPHA LOUISE OVER

Primary

Sligo, Pa.

Art Club  
Senior Hostess Club  
Y. W. C. A.

A happy disposition, steadfast, dependable, reliable—one more too. Orpha is one of the best natured girls in the school. Not until one really knows her can he appreciate her true friendship.

## JULETTA MURPHY

Intermediate

West Monterey, Pa.

Travel Club                      Hostess Club  
Story Telling Club              Y. W. C. A.

Juletta's gameness and determination are characteristics which are to be admired. At first Juletta appears quiet and retiring, but upon further acquaintance one finds that she has a pleasing personality and an infinite capacity for sympathy.

## WILDA POWELL

Primary

Pittsburgh, Pa.

Travel Club                      Student Council  
Hostess Club                    Y. W. C. A.  
Story Telling Club              Clarion Call

A smile, a flash of pretty white teeth, plus a deep round dimple in each cheek describes Wilda. Without her the Sequelle and the Clarion Call could never have gone to press.

## MARTHA LOU PHILLIS

Primary

Fombell, Pa.

Glee Club                      Dramatic Club  
Vested Choir                  Dramatic Plays  
Art Club                        Senior Hostess Club  
Girls Sextette                Hockey

Martha Lou goes about her work with a song on her lips ----- never a sigh. A song, you say? Yes, Martha Lou has a beautiful voice.

Forty Five



**ELSIE POSTLETHWAITE**

*Intermediate Brookville, Pa.*

Dramatic Club  
Dramatic Plays

Who has ever seen Elsie when she wasn't as pleasant as could be? She speaks in a delightful, gentle, yet persuasive manner. Elsie is especially attractive because of her winsome smile and long wavy golden hair.

**FLORENCE REAGHART**

*Junior High Strattonville, Pa.*

Journalism Club, Sec.      Travel Club  
Dramatic Club, Treas.      Debating  
Asst. Editor of the Sequelle

Here is a student of whom this school can be proud. For information on any subject come to Florence. Her congenial personality with her accomplishments as a student have made for her a host of friends and well wishers.

**PAUL RAMSEY**

*Intermediate Rimersburg, Pa.*

Travel Club  
Journalism Club  
Football Squad

Paul is a rather quiet youth, whose worst fault is being quite ready to do anything, anytime, for anybody. He is exceedingly kind and good hearted. Paul hopes to be a second Red Grange some day.

**FLORENCE MILDRED REA**

*Primary Reynoldsville, Pa.*

Glee Club      Hostess Club  
Vested Choir      Story Telling Club, Pres.  
Y. W. C. A.

Mildred is ever cheerful, and never too busy to do anything that may be asked of her. Her cheerfulness and helpful ways are only a few of the many qualities that make her well-liked at C. S. T. C.



### VERA RICHEY

*Intermediate* *Franklin, Pa.*

Journalism Club	Travel Club
Hostess Club, Pres.	Treas. Junior Class
Sequelle Staff	Y. W. C. A.
May Queen Attendant	

Quite often we hear Vera say, "That is my ideal and I am going to develop it". This accounts for her many achievements. Vera is a very lovable girl, quiet, neat, and refined. We know she is very studious, for she took three subjects from Professor Huston in one semester.

### RUTH SAYERS

*Primary* *Salina, Pa.*

Y. W. C. A. Cabinet	Glee Club
Art Club	Vested Choir
Travel Club	Hostess Club

It is said that "service bears its own reward" and Ruth has served us long and well. Dignity characterizes Ruth very well, and dignity is a fine thing in women.

### FLORENCE SHAFFER

*Primary* *Brookville, Pa.*

Art Club
Travel Club
Story Telling Club

A ready smile, a cheery word, a friend and companion to all. There is something very attractive in the frank clear gaze of Florence's blue eyes. We find in Florence the very essence of femininity.

### ALDINE ROWE

*Primary* *Knox, Pa.*

Vice-Pres., Dramatic Club	Hostess Club
Dramatic Plays	Art Club
Y. W. C. A.	

Brown, wavy, close-cropped hair, blue eyes, low voiced, intelligent—all these are symbolic of Dean.

Forty Seven



### IRENE SLOAN

*Intermediate* *Reynoldsville, Pa.*

Y. W. C. A. Travel Club  
Hostess Club Story Telling Club  
Art Club

A hard worker is Irene. Irene is the one person out of many who possesses "stick to itive" quality in everything that she attempts to do.

### GRACE SHORTS

*Intermediate* *Shippenville, Pa.*

V. Pres. Senior Class Chapel Captain  
Journalism Club Clarion Call Ed.  
V. Pres. Student Gov. Y. W. C. A. Cab.  
Hostess Club

How shall we describe her? Pretty and witty; charming and intelligent; conscientious and ambitious. Grace has proved herself a helpful and efficient leader in both social and scholastic pursuits. She has capably directed the editing of the Clarion Call.

Forty Eight

### VIOLA SCHWAB

*Intermediate* *Shippenville, Pa.*

Glee Club Journalism Club  
Vested Choir Hostess Club  
Dramatic Club Dramatic Plays  
Hockey Y. W. C. A. Cabinet  
Clarion Call

Vi is a woman of divided interests; namely, society, music, scholastic work, and athletics. She is an all around good sport.

### NATALIE SCHWEM

*Intermediate* *DuBois, Pa.*

Travel Club Art Club  
Journalism Club Hostess Club  
Y. W. C. A.

Artistic, good-looking, a clever dancer is this girl from DuBois. Anyone who wishes to improve his artistic technique will find Nat ready to offer.



**LYDIA STEWART**

*Intermediate Rimersburg, Pa.*

Travel Club  
Hostess Club  
Y. W. C. A.

Lydia is one whose nature never varies. If she can go home occasionally, and succeeds in getting desirable grades, she is contented. We feel sure that some day Lydia will make a good "school-marm."

**ALDA SMITH**

*Intermediate Clarion, Pa.*

Travel Club

To accept life just as it comes and not to worry about it three or four weeks in advance is one of Alda's maxims. She strictly follows this rule. Alda thinks before she speaks; consequently she does not talk quite as long nor say as much as some of the rest of us.

**HELEN SIMPSON**

*Intermediate Corsica, Pa.*

Glee Club      Basket Ball  
Vested Choir    Hockey  
Clarion Call Staff    Travel Club  
Art Club      Y. W. C. A.

The tiny blue-eyed, auburn headed girl with Florence Luther is Helen Simpson. She is a good basket ball player, a splendid tennis player, a member of the hockey team; in fact, Helen's athletic ability is one of her outstanding qualities.

**MARGARET SHERRY**

*Primary Showers, Pa.*

Art Club      Story Telling Club  
Travel Club    Hockey

So cheerful, so gay, so free from vexation is Margaret that she fairly radiates joy. We hope that her wonderful good humor will bring her all the success it is possible for one person to attain.



**IRENE STELTZER**

*Intermediate* *Rimersburg, Pa.*  
 Hostess Club Story Telling Club  
 Travel Club Hockey Team Club  
 Journalism Club Basket Ball  
 Y. W. C. A.

Ted is one of our happy, care-free girls whose heart is too light to bother with serious things. By this statement we do not mean she doesn't spend her share of time in the library or in her room studying sociology.

**MILDRED TAYLOR**

*Intermediate* *Clarion, Pa.*  
 Travel Club  
 Hostess Club  
 Basket Ball

The fair-skinned blue-eyed maiden with Belle is Mildred Taylor. Mid has a keen sense of humor which invariably appears at just the right time and place. However, Mid is not frivolous, but just a happy medium.

*Fifty*

**MARGARET TUTTLE**

*Primary* *Corryville, Pa.*  
 Travel Club  
 Current Events  
 Orchestra

Pretty brown eyes, brown curly hair, a winning smile. Margaret is primarily interested in work and study, but there is always enough time left over for fun and frolic.

**JOSEPH STRANGES**

*Junior High* *Ambridge, Pa.*  
 Football Y. M. C. A.  
 Basketball Demosthenian Society  
 Track

A broad shouldered athlete is Joe. He can handle a football or a basketball with equal proficiency. Where Joe is, there will be fair play and good sportsmanship.





### MARIAN TIMLIN

*Primary DuBois, Pa.*  
 Pres. Dramatic Club  
 Dramatic Plays  
 Senior Hostess Club  
 Y. W. C. A. Cabinet  
 Senior Class Play  
 Glee Club  
 Vested Choir  
 Journalism Club  
 Sequelle Staff  
 Clarion Call

Between activities, studies, dramatics and social affairs Marian is quite busy. Her ability as a capable and efficient leader has been proved in our Y. W. C. A. meetings. Marian possesses a peculiar talent of producing effect in whatever she does or says.

### FLORENCE WAGGETT

*Intermediate DuBois, Pa.*  
 Travel Club  
 Hostess Club  
 Current Literature  
 Senior Play

Florence is industrious, capable, and dependable. She is one of our number who does not make her presence known by the noise she makes. Florence has shown herself to be efficient along many lines. Her favorite pastime, however, is getting A's and B's.

### DONALD THOMPSON

*Intermediate Shippensville, Pa.*  
 Vested Choir

Donald's favorite pastime is walking through the halls, slapping people on the back, and giving them a cheery greeting. If everyone was as cheerful as he, this would be a bright old world.

### RUTH THOMPSON

*Primary Clarion, Pa.*  
 Art Club  
 Travel Club  
 Story Telling Club  
 Y. W. C. A.

The girl who radiates enthusiasm. Ruth is full of pep, intelligent, a good sport and a good student. She has individuality, a dynamic character, and personal magnetism.



**IRENE WILSON**

*Intermediate*                      *Strattonville, Pa.*

Travel Club

There is an astonishing amount of vitality stored away in this small individual. The last detail is not too minute to be considered by Irene in planning her training school work.

**J. KENNETH WISE**

*Junior High*                      *Summerville, Pa.*

Football                      Y. M. C. A.  
Basket Ball                  Debating  
Senior Class, Pres.        Senior Class Play  
Journalism Club

Kenny is an athlete and a student. He has ideas of his own on every subject and does not hesitate to express them. He will make an excellent lawyer because he is always arguing about something.

*Fifty Two*

**CHARLOTTE WALTERS**

*Primary*                              *Leeper, Pa.*

Dramatic Club                  Christmas Pageant  
Dramatic Plays                Chapel Captain  
Travel Club, Pres.              Vested Choir  
Y. W. C. A. Pres.                Glee Club  
Hostess Club

We could say many things about Charlotte, but the quality for which she is most loved is her friendliness which extends not only to her own friends, but to every one in the school.

**VICTOR VASSIA**

*Junior High*                      *Hermine, Pa.*

Vic, the fellow with the cheerful smile and a big "hello" for everybody. He is a happy-go-lucky sort of fellow who never fails to get a big laugh out of everything he comes in contact with. We appreciate his splendid coaching in football and basketball.



**HAZEL HULLER**

*Primary*

*DuBois, Pa.*

Y. W. C. A.  
Hostess Club  
Travel Club

Hazel is one of those quiet girls who find their greatest companionship in books. Her grades betoken a good student. In the sweetness of her smile we can see the reflection of her shy disposition.

**RHEA STALKER**

*Intermediate*

*Mt. Jewett, Pa.*

Mrs. Stalker is one of our staunch and sturdy students. She is a willing worker, being faithful to the interests of the school. Capable and dependable Mrs. Stalker has already insured success for herself.

**GRACE DARLING STEWART**

*Junior High*

*Clarion, Pa.*

Travel Club

Grace Darling has been well named for she has those qualities which made the English heroine so famous—courage, loyalty, and perseverance. She is of the best type of students, and one of which Clarion may be proud.

**WILLIAM HOAK**

*Junior High*

*Uniontown, Pa.*

Basketball

Bill is a good sport, a good student and a good friend. Bill is one of those active persons, always working hard at something or other, especially basketball. Aside from his ability to play the game, Bill helps keep the crowd roaring with his clever wit.

*Fifty Three*

# SECRET



Fifty Four

1929



Fifty Five



## MID-YEAR GROUP



*T*hese students have completed two years of the three year junior high school course. Although they are not organized as a class, they stand distinctively apart from the graduating and first year classes. Among this group of students we have many of the leaders and outstanding members in the activities of the school.

### FRONT ROW

William Flanagan, Everett McFarland, Jane Mahey, Twila Gruver, Elwood Rowley, Thomas Reedy.

### BACK ROW

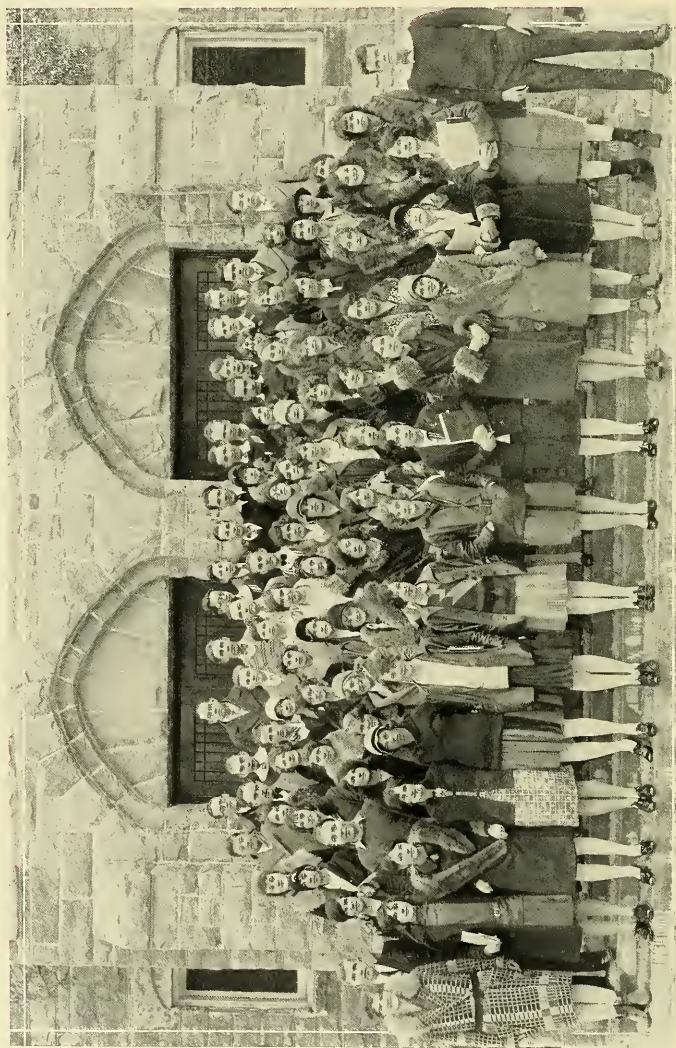
Clyde Moore, John Kaizer, Herbert Steele, Paul Stewart, Raymond Manson, Raymond Kline.

*Fifty Six*



Fifty Seven

1929



THE JUNIOR CLASS

1929



## THE JUNIOR CLASS

### OFFICERS

President .....	ROBERT LINDQUIST
Vice-President .....	JOHN MOCHNICK
Secretary .....	ELINOR BIGLER
Treasurer .....	GRAYCE JOLLEY

Aikens, Annabelle	Brookville	"Keep fit."
Allen, Orval	Rimersburg	"Sleep, my little one, sleep."
Avery, Lester	Helen Furnace	"Eventually."
Bahm, Bernice	Duquesne	"A welcome in any home."
Barger, John	West Monterey	"Not a cough in a carload."
Baughman, Ruth	Summerville	"See Brookville first."
Beals, Gertrude	Emlenton	"99 44-100 pure."
Bigler, Elinor	Clarion	"Height of satisfaction."
Brown, Haezlette	Mosgrove	"None such."
Buchanan, Geraldine	DuBois	"Brain food."
Campbell, Blanche	Callensburg	"Sealed sweet."
Campbell, Dorothy	Clarion	"Delicious and refreshing."
Chitester, Albert	Brookville	"Unlike anything else."
Coggan, Kenneth	Kittanning	"Not a lady fusser."
Coleman, Louise	DuBois	"The short of it."
Cook, Lucile	Clarington	"Five foot two."
Cook, Sara	Reynoldsville	"Don't be quaint."
Crawford, Henry	Sykesville	"I never stop."
Crick, Thelma	Rimersburg	"At your service."
Daum, Russell	Newmansville	"His Father's Son."
Davis, Evelyn	Clarion	"Makes you smile."
Dorr, Mary	Petroleum	"The pick of the vine."
Dovenspike, Ray	New Bethlehem	"Half-pint."
Eichner, Catherine	Harmony	"That indominable will."
Elder, Arthur	Strattonville	"Fresh daily."
Flick, Elizabeth	Rimersburg	"Durability"
Fox, Charles	Clarion	"His Master's Voice."
Fox, Ellen	Barnes	"Home like flavor."
Frak, Lucy	Oil City	"The flavor that lasts."
Fulton, Ralph	Clarion	"Hasn't scratched yet."
Fulton, Wayne	Clarion	"Silence is golden."
George, Clarence	Clarion	"Drive a Ford, save the dif."
Goreck, Irene	Duquesne	"Hard work."
Grabman, Laura	Zelienople	"Learn how."
Greenwood, Victor	Clarion	"Highest in quantity."
Harley, Laura	West Monterey	"Mum's the word."
Havice, Miriam	Oil City	"No more coaxing."
Henderson, Lowell	Summerville	"You can write for the movies."
Herman, Eugenia	Clarion	"So nice."

Hileman, Colvin  
 Hollingshead, Mary  
 Hook, Avanel  
 Irvin, Martha  
 Johnson, Lucy  
 Jolley, Grayce  
 Jury, Kathryn  
 Kata, Joseph  
 Kribbs, Katherine  
 Keller, Mamie  
 Klingler, Martha  
 Kirkpatrick, Bernice  
 Knapp, Mildred  
 Kohn, Louise  
 Korb, Helen  
 Kremel, Clerus  
 Lindquist, Robert  
 Loos, Geraldine  
 Lore, Stanley  
 Lutz, Alberta  
 Mahaffey, Donald  
 Martin, Jessie  
 Mays, Clara  
 Mays, Rebecca  
 Miller, Gladys  
 Mochnick, John  
 Monks, Alta  
 Mooney, Ethel  
 Moyer, Winona  
 McAnaninch, Marie  
 McCabe, Kathryn  
 McClelland, Ida  
 McElroy, Florence  
 McHenry, Erma  
 McKee, Velma  
 McKinley, Faye  
 Neal, Frank  
 Neil, Frances  
 Neil, Hester  
 Nelson, Grace  
 Paine, Lillian  
 Porter, Helen  
 Powers, Robert  
 Reed, Margaret  
 Reid, Edith  
 Reitz, Frank  
 Rhea, Phoebe,  
 Rhea, Stella  
 Rimer, Dorothy  
 Ross, Anne

Red Bank  
 Shippensville  
 Knox  
 Clearfield  
 Hazen  
 DeYoung  
 Clearfield  
 Ambridge  
 Knox  
 Penfield  
 Knox  
 Clarion  
 Baxter  
 Crafton  
 East Brady  
 Ambridge  
 New Bethlehem  
 Reynoldsville  
 DeYoung  
 Clarion  
 Reynoldsville  
 Oil City  
 Clarington  
 Callensburg  
 Pierce  
 Claridge  
 DuBois  
 Clarion  
 Zelenople  
 Sigel  
 Duquesne  
 Swissvale  
 Karns City  
 Pittsburg  
 East Brady  
 Brookville  
 Dayton  
 Punxsutawney  
 Red Bank  
 New Bethlehem  
 Sigel  
 Sigel  
 Mosgrove  
 Miola  
 Clarion  
 Summerville  
 Callensburg  
 Callensburg  
 Rimersburg  
 Franklin

"Terribly embarrasses."  
 "Keep that school-girl complexion."  
 "Join the milk brigade."  
 "Happy all the day."  
 "No oiling."  
 "A gift to the nation."  
 "Remember this."  
 "The Go-getter."  
 "Marian Talley"  
 "Some time."  
 "The Challenger."  
 "The American Penman."  
 "Sturdy and dependable."  
 "Oh! Henry."  
 "The eyes have it."  
 "So easy."  
 "Old Reliable."  
 "Smiles right back at you."  
 "Hear Paderewski"  
 "Save the surface, and you save all."  
 "The American Boy."  
 "Beauty wins. Beauty keeps."  
 "It's touch and go."  
 "Permanent waves."  
 "Pearly smiles."  
 "Who is busier?"  
 "57" Varieties.  
 "A big help."  
 "Swift's Premium."  
 "The Long of It."  
 "Coaches recommended it."  
 "Quality, not quantity."  
 "Blue as the sky."  
 "It pays to insist."  
 "I'm harmless."  
 "Those winning smiles."  
 "Harold Lloyd's only rival."  
 "Mavourneen"  
 "Be nonchalant."  
 "The silent worker."  
 "Simplicity"  
 "Like pearls in the moonlight."  
 "Tough and Ready."  
 "Laugh and Smile."  
 "Nothing over ten cents."  
 "Innocents abroad."  
 "Taking care of your heart."  
 "Sunkist"  
 "Natural in effect."  
 "Where time has a price."

Rowley, Verner  
 Sanders, Annabelle  
 Santner, Estelle  
 Shaw, Elizabeth  
 Shick, Herbert  
 Shipe, Helen  
 Shoemaker, Edith  
 Shreckengost, Edgar  
 Smathers, Mildred  
 Snyder, Helen  
 Soult, Florence  
 Stahlman, Helen  
 Stitt, Helen  
 Stitzinger, Winifred

Stover, Velma  
 Strawcutter, Ruth  
 Streeter, Margaret  
 Summerville, Margaret  
 Taylor, Dorothy  
 Thomas, Joan  
 Tiley, Bertha  
 Traister, Evelyn

Trenkle, Martha  
 Truitt, Dorothy  
 Turney, Maxine  
 Updegraff, John  
 Wank, Dorothy  
 Weber, Arvetta  
 Wein, Gustave  
 Wein, Milton  
 Wenner, Leland  
 Whaley, Marion  
 Williams, Grace  
 Williams, Kenneth  
 Wilson, Helen  
 Wilson, Ruth  
 Wilson, Thomas  
 Wing, Ruby  
 Young, Mary

Ambridge  
 Ellwood City  
 Claridge  
 Sligo  
 Fairmount City  
 Marienville  
 Kittanning  
 Brookville  
 Clarion  
 New Bethlehem  
 Clearfield  
 Sigel  
 East Brady  
 Newmansville

Knox  
 Brookville  
 Clintonville  
 Brookville  
 Hawthorne  
 Oil City  
 Strattonville  
 Brookville

Kane  
 Fairmount City  
 W. Aliquippa  
 Sykesville  
 Coal Glen  
 Troutville  
 Clarion  
 Clarion  
 Clarion  
 Brookville  
 DuBois  
 Duquesne  
 Clarion  
 Marienville  
 Sigel  
 Fisher  
 Oil City

"Sunny Boy."  
 "Quiet but knowing."  
 "Gets them from coast to coast."  
 "Save time."  
 "Danger"  
 "Not too young to love."  
 "Makes life sweeter."  
 "Wherever food is served."  
 "More, Moore."  
 "For the serious minded man."  
 "Beauty is no chance creation."  
 "Mark of quality."  
 "Shake well before using."  
 "Laugh and the world laughs with you."  
 "So neat and petite."  
 "Will not shrink."  
 "Delightful variations."  
 "Necessary ingredient."  
 "Hunt and peek."  
 "Plain facts."  
 "Bon Ami."  
 "Good things come in small packages."  
 "How could it be better!"  
 "Pep guaranteed."  
 "Wrigley's"  
 "Tailor-made?"  
 "Spring freshness."  
 "Seen but not heard."  
 "Violins"  
 "Always belittlin!"  
 "Webster's Dictionary."  
 "The best at any price."  
 "Be bright!"  
 "Well fortified."  
 "For every occasion."  
 "Always welcome, always fitting."  
 "Jerry on the Job."  
 "Stop that chatter."  
 "A fairy in your home."

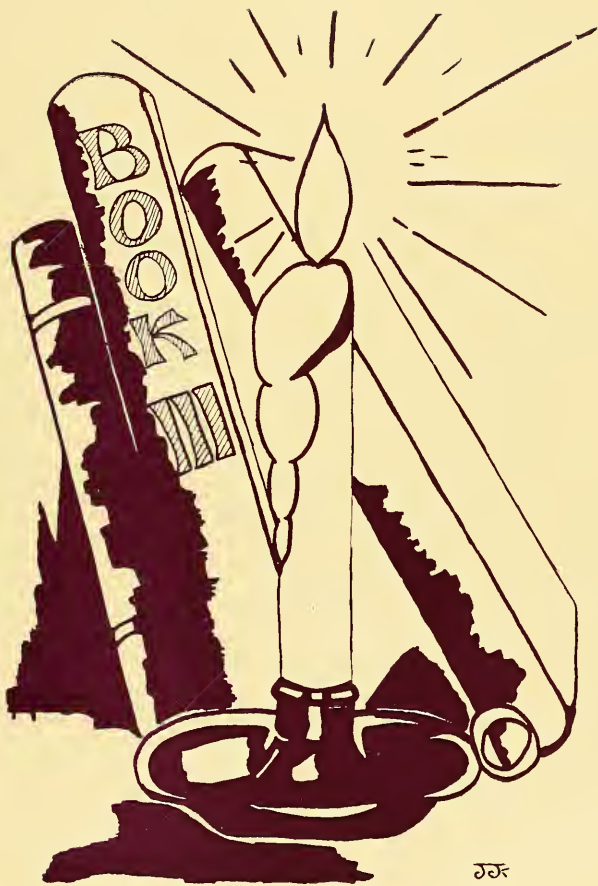


# SEQUETTE



Sixty Two

1929









## THE JUNIOR HOSTESS CLUB

The enthusiasm which has been expressed in the Junior Hostess Club this year indicates that the Senior Hostess Club of next year will be unusually successful. The aims of the organization are to prepare the girls to be hostesses in the future, and to help them form the best friendships among both boys and girls. The Hallowe'en party and the Valentine party were sponsored by the members of this club. These parties were greatly enjoyed by both the Seniors and the members of the faculty. The Junior Hostess Club is a new organization this year, but if that fact were not known, it certainly would be natural to think that it is one of the time honored organizations of the school.

### FIRST SEMESTER OFFICERS

President.....ELEANOR BIGLER  
 Vice President.....LOUISE KOHN  
 Secretary-Treasurer.....ALTA MONKS

### SECOND SEMESTER OFFICERS

President.....JESSIE MARTIN  
 Vice President.....GERTRUDE BEALS  
 Secretary-Treasurer.....HELEN PORTER





## THE SENIOR HOSTESS CLUB



The Senior Hostess Club is one of the new organizations which came into existence this year. The object of this club is to help each member acquire social poise by studying the etiquette of the dining room, the dormitory, and the campus. In fact, it is to give each participant a clear and definite understanding of social life in order that she may have, on all occasions, the unaffected grace and charm of a cultured person.

The work of this club consists of a study of everything worthwhile in social life, and of putting the knowledge gained into action by giving various types of social functions during the year.

### FIRST SEMESTER OFFICERS

President .....	RUTH LEWIS
Vice President .....	RUTH HOFFMAN
Secretary .....	JANE KAHLE
Treasurer .....	TWILA BECKMAN

### SECOND SEMESTER OFFICERS

President .....	VERA RICHEY
Vice President .....	BERNICE MAHLE
Secretary .....	WILDA POWELL
Treasurer .....	ELEANOR BARRETT

Sixty Seven



## THE YOUNG MEN'S CHRISTIAN ASSOCIATION

The Young Men's Christian Association of Clarion College is not based upon denominationalism, but instead it welcomes all who have an interest in the religious side of life.

All the men of the College are eligible for membership in this organization, whose aims are to promote the social side of life and to guide the young men in character building.

Meeting every Wednesday evening in the Music Hall, the men have been privileged to hear addresses and discussions on the current problems which present themselves both in school and out. To have a well-rounded life, a student must belong to the Young Men's Christian Association.

FIRST SEMESTER	OFFICERS	SECOND SEMESTER
Clyde Moore . . . . .	President . . . . .	Robert Lindquist
Clifford Burns . . . . .	Vice-President . . . . .	Kenneth Coggan
Max Graham . . . . .	Secretary . . . . .	Paul Stewart
Frederick McDonald . . . . .	Treasurer . . . . .	Frederick McDonald



## JOURNALISM CLUB

The aims of the Journalism Club are listed under the following headings: the study of journalism as an art; the study of journalism as a profession; and the establishment of a good school paper. The club has endeavored, in the planning of all of its programs, to keep in view these aims and to carry them out as far as possible. The outcome of this earnest endeavor has been the Clarion Call, our school paper, which has been a continued success since the first publication.

### OFFICERS

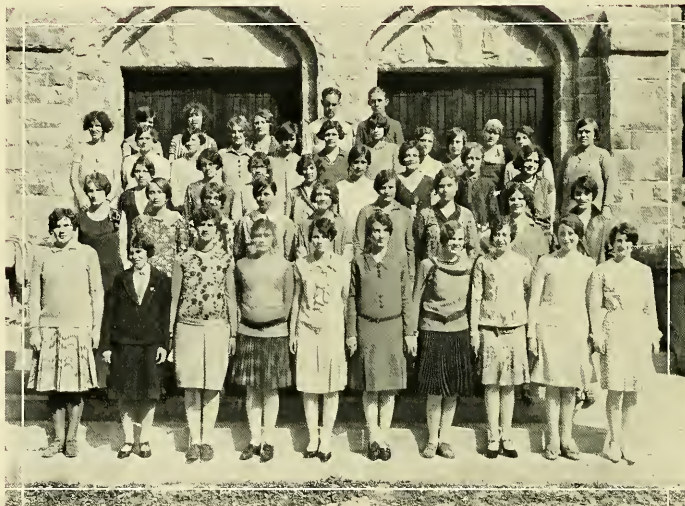
#### FIRST SEMESTER

President.....	William Flanagan
Vice President.....	Kenneth Wyse
Secretary.....	Florence Reaghart
Treasurer.....	Grace Shorts

#### SECOND SEMESTER

President.....	Paul Stewart
Vice-President.....	Dorothy Cowan
Secretary.....	Bernice Mahle
Treasurer.....	Clyde Moore

Sixty Nine



## ART CLUB

The Art Club of Clarion State Teachers' College is not a new organization. Rather it is an organization based on previous successful years, and one whose popularity is shown by the necessity of dividing it into sections.

In spite of this division, the two sections have practically the same aims in view for the Club. To further interest in art work and to promote the appreciation of art are the two major objectives which have marked this year's progress.

During the year the problems have been unusually practical. Craft work, such as tie-dying of handkerchiefs and scarfs, block-printing and making of decorative designs in different mediums have constituted part of the work. Exhibitions of these materials were given from time to time.

### OFFICERS

FIRST SEMESTER		SECOND SEMESTER
John Updegraff	..... President	Dorothy Taylor
Phoebe Rhea	..... Secretary	Dorothy Wank
Margaret Summerville	..... President	Ruth Strawcutter
Ruby Wing	..... Secretary	Jane Mahey



## TRAVEL CLUB

Entering the second year of its history, the Travel Club, with a membership of over one hundred, has endeavored to create, maintain, and promote an interest in travel.

Contributing features to such an extensive program were interesting talks given by the different members of the club, a lecture by a well known traveler, and a Christmas pageant.

An interesting and highly entertaining lecture was given by Mr. Jack Culbertson on the "Tropics of South America and Africa" and following this a major event of the club was a pageant, "Christmas in Many Lands", a part of which was played before the entire student body.

Much of this year's success is due to the efficiency of the following officers under the experienced leadership of Miss Elizabeth Keithan.

### FIRST SEMESTER OFFICERS

President .....	CHARLOTTE WALTER
Vice-President .....	ALICE KILLEN
Secretary .....	FREDERICK McDONALD
Treasurer .....	LEAH LOVE

### SECOND SEMESTER OFFICERS

President .....	JOHN MOCHNICK
Vice-President .....	KENNETH COGGAN
Secretary .....	VERA MOORE
Treasurer .....	JOHN KAIZER

Seventy One



## COLLEGE EDUCATIONAL CLUB



The Educational Club of the College is one of the recently organized groups, and is composed of persons interested in earning the degree of Bachelor of Science, which is granted by this institution. Membership is based on scholarship, recommendation by at least three members of the faculty, and general vote of the active members of the organization.

The club has as its objectives cultural, educational, and social activities. One of its projects during the present year is the publication of an alumni quarterly. This publication, it is hoped, will keep the members of all the alumni interested in the progress and development of our Alma Mater.

### OFFICERS

President.....PEARL NEWTON MILLER '22  
 Secretary.....GLADYS BECKETT LONG '19



## THE CLARION CALL

This year the Clarion Call Staff in keeping with the spirit of progress manifested in the school, increased the size of the paper to a six page monthly publication.

Their purposes have been to represent truly the spirit and standards of Clarion State Teachers' College, to give every phase of school life its due recognition, and to serve both their school and their patrons.

Accordingly, each issue has appeared full of interesting up-to-date stories of general school events, parties, societies, clubs, and athletic games, as well as editorials, jokes and personal news of students and faculty.

### OFFICERS

Editor-in-Chief	GRACE SHORTS
Associate Editor-in-chief	EUGENE BRAENDLE
Literary Editor	BERNICE MAHLE
Assistant Literary Editor	HELEN KORB
News Editor	VIOLA SCHWAB
Assistant News Editor	ALTA MONKS
Boy's Athletic Editor	ELWOOD ROWLEY
Assistant Athletic Editor	KENNETH WILLIAMS
Girl's Athletic Editor	LEONA MILLER
Joke Editor	RUTH LEWIS
Assistant Joke Editor	DOROTHY CAMPBELL
Organization Editor	HELEN SIMPSON
Business Manager	FREDERICK McDONALD
Assistant Business Manager	GUSTAVE WEIN
Alumni Editor	ELEANOR BARRETT
Exchange Editor	MARY HAINES
Typist	WILDA POWELL

Seventy Three



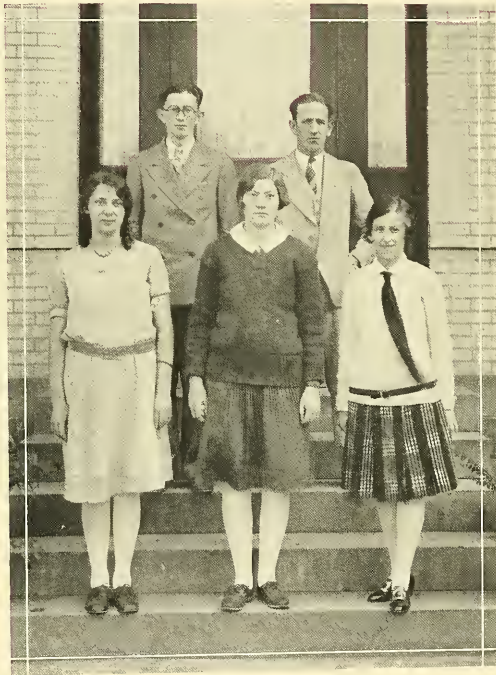
## THE BOYS' STUDENT COUNCIL

The Boys' Student Council is an organization which meets every Monday night for the purpose of dealing with the various problems arising among the young men who live in the dormitory.

This council is supervised by Professor J. O. Jones, Dean of Men, who with the co-operation of Paul Stewart, Max Graham, Joseph Kata, Clyde Moore and Herbert Steele, makes such rules and regulations as are thought necessary for the well being of the boys in the dormitory.

President.....PAUL STEWART  
Secretary.....MAX GRAHAM





## THE OWL AND PEN

The only persons eligible for this club are those members of the Debating Team who have participated in more than half of the regular scheduled debates and thus have gained the privilege of wearing the club emblem.

The purpose of this club is to bring a greater interest to debating and further the progress of intercollegiate debate. The schedule for this year included debates with Slippery Rock, California, and Edinboro State Teachers' Colleges. The subject was, Resolved: "That the American System of Trial by Jury should be abolished."

Seventy Five



## THE STORY TELLING AND MODERN LITERATURE CLUB

*T*his club was organized this year for the purpose of promoting the interest in story telling and developing a knowledge of our modern literature. The ability of Miss Nesbitt as a story teller has been displayed on several occasions and the members of the club are very fortunate in having her as their faculty advisor.

In the study of modern literature the students have made a survey of the best writers of Europe and America. Although the membership for this year was very small, the interest that has been maintained throughout the year gives promise of its rapid growth.



## COLLEGE PLAYERS CLUB



The meetings of the College Player's Club this year have consisted largely of miscellaneous dramatical programs conducted by various members of the club.

The members of the club enjoyed a very delightful trip to Pittsburgh, where they saw the play, "Volpone," by Ben Johnson. Through participation in plays, and in play producing, they have had an unusual opportunity to receive good dramatic training.

### FIRST SEMESTER OFFICERS

President .....	MARIAN TIMLIN
Vice-President .....	ALDINE ROWE
Secretary .....	FRANCIS MILLER
Treasurer .....	MAXINE MILLER

### SECOND SEMESTER OFFICERS

President .....	ALDINE ROWE
Vice-President .....	CHARLOTTE BELL
Secretary .....	GRAYCE JOLLEY
Treasurer .....	FLORENCE REAGHART

# SEQUENT



THE TRYSTING PLACE



THANK YOU, DOCTOR



THE KNIFE OF HEARTS

## PLAYS PRESENTED BY THE COLLEGE PLAYERS CLUB

It is customary for the club to present each year three one act plays.

### THE TRYSTING PLACE

—Booth Tarkington

SCENE: LOBBY OF A SUMMER HOTEL.

Mrs. Curtis.....	ALDINE ROWE
Lancelot Briggs.....	DONALD MAHAFFEY
Mrs. Briggs.....	RUTH HOFFMAN
Jessie Briggs.....	CHARLOTTE BELL
Mr. Ingoldsby.....	CLYDE MOORE
Rupert Smith.....	ELWOOD ROWLEY
Mysterious Voice.....	PAUL STEWART

### THANK YOU, DOCTOR

—Gilbert Emery

SCENE: WAITING ROOM OF DR. GURNEY'S OFFICE.

Mrs. Lester.....	ELEANOR BIGLOR
Nurse Gray.....	FRANCIS MILLER
Doctor Gurney.....	ROBERT LINDQUIST
A Patient.....	KENNETH WILLIAMS
Cort.....	LOWELL HENDERSON

### THE KNAVE OF HEARTS

SCENE: KITCHEN OF THE KING OF HEARTS.

The Manager.....	HERBERT SHICK
Blue Rose.....	MILTON WEIN
Yellow Rose.....	GUSTAVE WEIN
First Herald.....	PHOEBE RHEA
Second Herald.....	STELLA RHEA
Pamdible, the Eighth King of Hearts.....	CHARLES FOX
The Chancellor.....	GEORGE SHEFFER
The Knave of Hearts.....	WILLIAM FLANAGAN
Ursula.....	LYDIA DICKINSON
The Lady Violetta.....	ELSIE POSTLETHWAITE

Ladies of the Court

MAXINE MILLER  
ANNA JANE KIRKER

ESTHER GUSTAVSON  
CHARLOTTE WALTER

Pages

MARY YOUNG  
IDA McCLELLAND

RUTH LEWIS  
MARTHA PHILLIS

LEAH LOVE  
ALTA MONKS

Seventy Nine



## CHAPEL REPRESENTATIVES

The idea of chapel representatives is entirely new to the student body. On November first during the chapel period, the chapel captains were installed by Dr. Riemer. Each student was required to make a pledge. He pledged to abide by all the rules and customs of the school to the best of his ability, and to assist in every possible way in the uplifting of the school. His duty is to take the tri-weekly chapel attendance of his particular section. There is no doubt that this work is very valuable not only to the school, but to each student, who feels a sense of responsibility and leadership.

SEQUEL

# MUSIC



J.D.

Eighty One

1929



## VESTED CHOIR



Every Sunday evening Vesper Service is held in the Chapel. The beautiful anthems sung by the Vested Choir have made the services very impressive. During the Christmas season the Vested Choir enjoyed presenting many beautiful Christmas carols. The choir has made several excursions to nearby communities to sing songs of inspiration and cheer.

### OFFICERS

President . . . . . JANE KAHLE  
 Vice-President . . . . . KENNETH COGGAN  
 Secretary . . . . . LELAND WENNER





## GIRLS' GLEE CLUB

The Girls' Glee Club is composed of twenty-four active girls who are willing to accept any challenge as to their ability to entertain a musically-inclined audience. The members of the club had the unusually interesting experience of broadcasting from W. L. B. W. at Oil City, Pennsylvania. The Glee Club sang on many different occasions throughout the year, and also for several of the clubs in Clarion.

### OFFICERS

President.....RUTH HOFFMAN  
Secretary-Treasurer.....DOROTHY ALCORN

Eighty Three



## ORCHESTRA

The success of the orchestra, as well as the other various musical activities of the school, is due principally to the leadership of Mr. Bland, our efficient supervisor of music.

The orchestra presented unusually interesting programs at several numbers of the lyceum course during the year. It also appeared promptly at the plays and programs given by different school clubs. After hearing classical music played by this group of amateur musicians, the audience could not possibly refrain from being in a receptive mood to enjoy the programs which followed.

Aside from the efficient leadership of Mr. Bland, the genuine success of the orchestra this year is due to the wholehearted interest and co-operation expressed by each member. Everyone was ready and eager at any time to do his best.



## EVENTS

---

### MOTHERS' DAY

---

One of the most enjoyable and happy events of the year was Mothers' Days, April 28 and 29, 1928. The success of the Mothers' Days of previous years has made this affair an annual custom. Credit is due Dr. and Mrs. Robert M. Steele, who planned the first Mothers' Days at Clarion.

A heavy snowstorm detained some of our guests, but most of the mothers arrived before classes were dismissed on Saturday morning. The forenoon's program consisted of visiting the different classrooms, touring the campus, and inspecting the dormitories. On Saturday afternoon from three to six, Mrs. Steele entertained the mothers in her home in Music Hall. On Saturday evening the play, "The Charm School" was presented by the Senior Class. On Sunday morning a special Mothers' Day program was held in the chapel. Beautiful yellow daffodils and large white lilies decorated the altar and entrance. Special music was rendered by the Vested Choir and Male Quartet. An impressive address on "My Mother's Crown" was delivered by Reverend Lawrence B. Ford of New Bethlehem, Pa. On Sunday afternoon the mothers were entertained by their own particular wards.

---

### SKIP DAY

---


Senior Skip Day? Not exactly! We, the Juniors of last year (now Seniors), feel that we did a little skipping too.

For many days the Junior detective agency had been on the look-out for secret senior class meetings, guarded group discussions or other equally suspicious actions. Not a sign of anything unusual!

As is often the case with indiscreet persons, just one little thoughtless detail revealed the entire plot. Bacon, cheese, bread, pickles, bananas, etc., are symbols of picnics. These articles were found in abundance in the kitchen. No one seemed to be informed as to how, when, where, and by whom this food was to be eaten. A crowd of Juniors put two and two together (Mr. Wilkinson taught them how) and the results? ----- Senior Skip Day!

"And then came the dawn." The kitchen was raided, the Senior breakfast quickly but carefully transferred to waiting motors, which speedily drove away to places of safety. A few minutes later, Ruth Campbell with a carload of Junior girls returned from a thrilling ride to the Senior picnic grounds, "The Narrows" near East Brady. After a short debate, it was decided that the Juniors would dine on the Seniors' breakfast at Miola.

Eighty Five



After the Junior members had assembled at Miola, preparations for cooking breakfast were begun. Soon each individual was presented with an awkward, but very good bacon and cheese sandwich. An hour or so later we returned to school and classes.

By no means did this end our fun. A class meeting was held after chapel and the possibilities of a weener roast at Mary Ann were discussed. Dr. Steele approved of the idea so that afternoon we went out to Mary Ann for an outdoor picnic. We reached the dormitory early in the evening in time to welcome our upper classmen.

If outward appearances were an indication of the all day picnic at the Narrows, the Seniors had a fine time. Sunburned hands and faces, grimy, dust streaked, soiled knickers, all told of a happy outdoor picnic.

---

## ALUMNI DAY



The last Saturday of the school term was an eventful one for the graduates of our normal. Words of welcome appeared on bunting hung across the streets to herald the arrival of the Alumni into town. Shall we ever forget that "We are Glad You Are Here" greeting hung across Wood Street at Science Hall? How many years has it fluttered in the breeze for the Alumni?

The greater part of the day was spent in class reunions. In the afternoon, the Alumni gathered in groups on the campus and viewed a second staging of "The Enchanted Garden" by the Physical Education Department.

The Alumni Banquet was very interesting to the juniors who served. Each class was toasted by one of its representatives. A dance ended a big day for those who returned to their Alma Mater.

---


## THE RECEPTION



The annual first semester reception was given by the Y. W. C. A. at the C. S. T. C. September 15, 1928.

The students met in the reception room at eight o'clock. Charlotte Walters, president of the Y. W. C. A. greeted the students, and introductions to the faculty and board of trustees then followed. After the exchange of greetings the crowd assembled in the social room, where Dr. Riemer, Mrs. Ralston and other members of the faculty gave interesting talks. Mr. Bland sang two beautiful selections. The remainder of the evening was spent in games and dancing.

*Eighty Six*



## HALLOWE'EN PARTY

---

The annual Hallowe'en party was sponsored by the Junior Hostess Club. The decorating committee did wonders in transforming the dining room and the reception hall into weird abodes of witches. The entrance to the social room was guarded by a huge spider suspended from his web.

All the faculty and students were invited to take dinner in Becht Hall. Dinner was preceded by a grand march of those in costume. During the meal three ghosts wove a spell about the tables, and witches tossed fortunes from their black bags. After dinner, the crowds moved to the social room, where they solemnly stood about the graves of the faculty and listened to their obituaries and fates. The evening's festivities ended in dancing.

---

## DADS' DAY

---

The first Dads' Day held at the school, November 17, 1928, was an unqualified success. The program for the day was planned by Coach Jones. At 10:30 the inauguration of Dr. Riemer was held in the chapel. Mr. Harry N. Rimer, secretary of the board of trustees, made the address of induction. Dr. Riemer made the address of acceptance. The main speech of the morning program was given by Dr. Joseph H. Apple, president of Hood College, Frederick, Maryland.

Saturday afternoon the Dads had the privilege of seeing our boys win a football victory over Lock Haven.

In the evening, a short program in which the letters were given to the football squad was given in the dining room.

The Dramatic Club, under the direction of Miss Edgar, presented a one act play, "The Trysting Place". This ended the Dads' Day program of the year 1928. So successful was the occasion that Dads' Day will always be observed in the future.

---

## SENIOR CLASS PLAY

---

The play presented by the Senior Class of 1929 was "Mr. Pim Passes By", a clever comedy of English country life by A. A. Milne. This play, presented in the College chapel on the evenings of May third and fourth, was the entertainment feature of our campus on Mothers' Day. The excellent production was

Eighty Seven

made possible by the usual fine directing of Miss Dorothy Edgar, who has established a reputation for giving unique and worthy plays to Clarion audiences.

CAST

of

MR. PIM PASSES BY

Anne.....	ELEANOR BARRETT
Diana.....	CHARLOTTE BELL
Mr. Pim.....	WILLIAM FLANAGAN
Brian Strange.....	HAROLD MILLER
Olivia Marden.....	MARIAN TIMLIN
George Marden.....	CLYDE MOORE
Lady Marden.....	FLORENCE WAGGETT



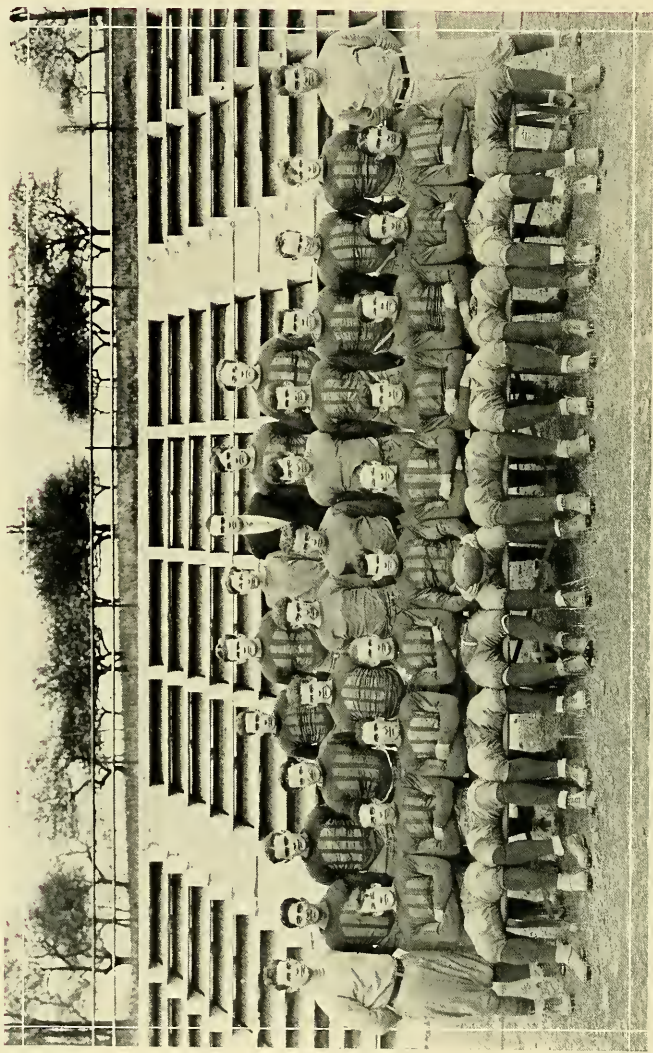
Eighty Eight

1929



Eighty Nine

1929



FOOTBALL SQUAD

FIRST ROW. Steele, Barber, Graham, E. Rowley, Hunt—Captain, V. Rowley, Callen, McDonald, Wise, Moore,  
 SECOND ROW. Vassia—Assistant Coach, Stranges, Kara, Knizer, Kremmel, Powers, Ramsey, Reedy, Braetudle, Lindquist, Allen,  
 Williams, Jones—Coach,  
 THIRD ROW. Dovenspike, H. Stewart, Mahaffey, P. Stewart—Manager, Kline, Barger.





J. O. JONES, Coach

By his dexterity Coach Jones gathered a squad of men together which resulted in one of the best football teams in Clarion history. He instilled a spirit of determination into his men, and that spirit together with a thorough knowledge of the game made the season a success. Jones was most ably assisted by Victor Vassia, a graduate of Thiel.

Immediately after football, basketball came into vogue. The success of athletics has been due to the untiring efforts and capability of Coach Jones. He deserves to be congratulated for the credit he has brought to Clarion athletics.

---

## ON THE GRIDIRON

---

The football season of nineteen hundred twenty eight was in many ways a come-back for football at Clarion. The Purple and Gold representatives won three games and lost five. It was not only the playing of the stalwart young fellows that proved them a worthy team, but the splendid system used by the coaches.

Dr. Lackey proved to be a friend of the players more than once during the season, and to him we wish to express our appreciation.

## ACCOUNT OF GAMES PLAYED

---

CLARION 44

ASHLAND 0

The first football game played on the new Athletic Field was between Ashland High School and Clarion. Clarion played a fast, snappy game and scored in every quarter.

Coach Borell's boys were outweighed, but played a good clean game.

Ninety One

MANSFIELD 20

CLARION 0

Probably the hardest fought game was played at Mansfield. The weather proved ideal and, with a good field to play on, our boys brought the "pigskin" within a few yards of the goal line several times.

INDIANA 20

CLARION 0

October 13, will long be remembered because it was on this day that "College Field" was dedicated. The game was hotly contested, and it was not until the second half that any decided gain was made against Clarion. The game was well played, and good sportsmanship prevailed throughout the game.

CLARION 31

FRANKLIN 7

The fourth game of the season terminated in an overwhelming victory. The line as well as the back-field displayed its strength against the opponents.

SLIPPERY ROCK 2

CLARION 0

Both teams were evenly matched and some well-played football was witnessed. The plays zig-zagged up and down the field, both teams carrying the ball within one or two yards of their goal lines. The game ended with a small score in favor of Slippery Rock.

EDINBORO 41

CLARION 0

This was the only game in which Clarion seemed unable to check the advance of her opponents. Our line proved weak against Edinboro's "huskies". Although Edinboro's fast team could not be excelled, yet several of our men proved themselves to be the gamest type of athletes.

CALIFORNIA 19

CLARION 0

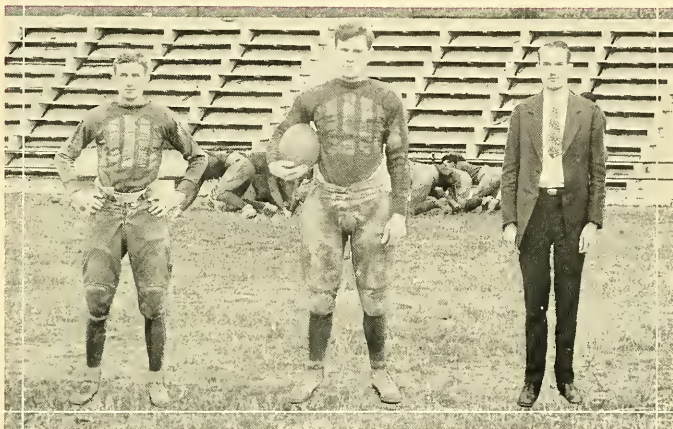
On a field covered with snow, Clarion met California on their home field. Our boys displayed a brilliant attack and held Ewing's squad almost scoreless during the first half. During the last half, our defense weakened and California soon piled up the resulting score.

CLARION 13

LOCK HAVEN 0

Dads' Day! The big day had arrived to be crowned with the victory of the year. Every man on the team seemed to have found himself and team work was apparent throughout the game. Our visitors played excellent football, but were easily outclassed by Clarion. The game was a most renowned climax for the football season of Clarion State Teachers' College.

Ninety Two



BRAENDLE

CAPT. HUNT

P. STEWART, MGR.

**EUGENE BRAENDLE**

*Halfback*

Gene came all the way from Detroit to play football for Clarion. He played good, clean football. His efficiency in catching forward passes gained many yards for Clarion. Gene was the best punter on the squad. We are sorry to say he left school at the end of the first semester.

**ALDEN HUNT**

*Quarterback*

**CAPTAIN**

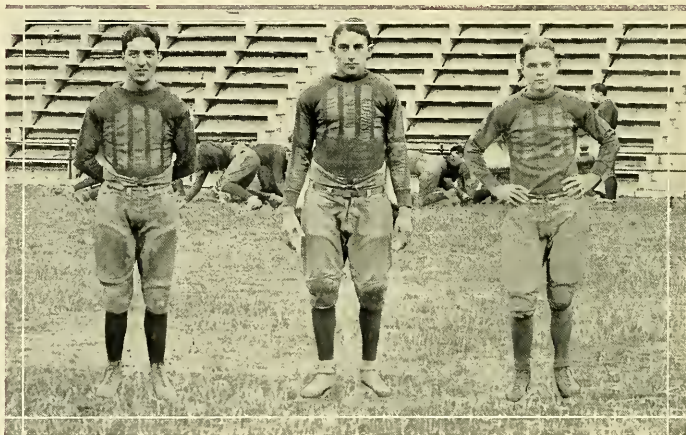
Hunt has the distinction of being one of the best athletes found on the gridiron. He is a speedy little player and was a tower of strength to both the offense and defense. He has an indomitable spirit that never says die. His leadership as captain was unparalleled. Any school can well be proud of the record made by Hunt.

**PAUL STEWART**

*Manager*

Stewart by devoting his best efforts proved a capable manager. His willingness in performing his duties made him efficient. Stewart went to work with a determination in order to give his best to the team. He was ever willing to lend a helping hand and was a true support to the team.

Ninety Three



STRANGES

MOORE

KATA

**JOSEPH STRANGES**

*Halfback*

With the graduation of Stranges the school will lose one of the best all-around athletes. Joe has always earned three letters for himself each year, which shows his athletic accomplishment. Stranges had the dexterity of getting through the tight places on the field, which made him a conspicuous player.

**CLYDE MOORE**

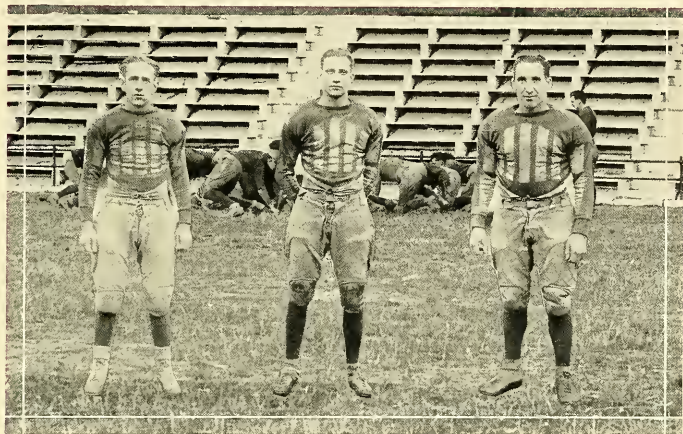
*Tackle*

The record made by Moore surpassed that of last year's. His spirited playing on the field was an incentive to his yellow team-mates. He was a menace to his opponent and made him realize the real meaning of opposition. Moore has been chosen captain of next year's team. We are sure he will prove a very capable leader.

**JOSEPH KATA**

*Tackle*

Kata is another new man in Clarion athletics. His first appearance on the field showed him to be an eminent player. His aptness in holding the line was unexcelled. When a play was called for a run through left tackle, we could count on a good gain. Kata could win for himself a position on any college team.



WYSE

DUMARS

GRAHAM

**KENNETH WYSE**

*Guard*

Ken Wyse was one of the most spirited and pluckiest men on the squad. More than once he showed his ability as a real football player. He is a player of the sure steady type that never falls down in a pinch. Wyse has been a credit in athletics during his three years at Clarion.

**WILBUR DuMARS**

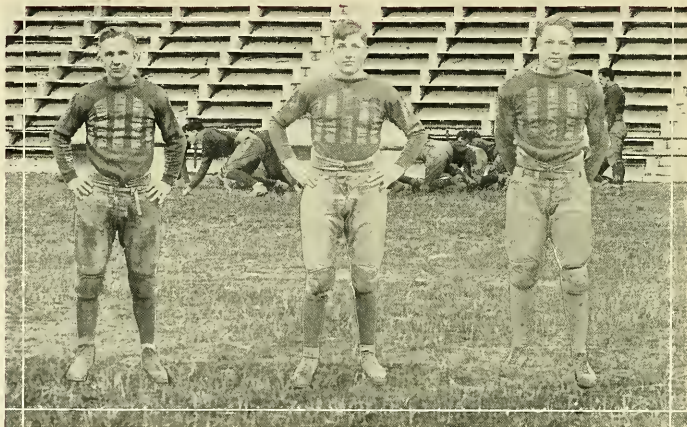
*End*

A small player, but good and a valuable lineman. Dewey could tackle the heaviest of them. He had a determination that was admirable when he entered the game. He was one of the pluckiest men on the team. DuMars always seemed to be in the place to check the advance of his opponents.

**MAX GRAHAM**

*Tackle*

Max played his last year of football for Clarion. He was one of the most powerful men on the squad. Max fought his way through the season with a determination that successfully stopped many of his opponents. Max is one of the men who will graduate this year, and his absence will be keenly felt.



E. ROWLEY

KLINE

V. ROWLEY

**ELWOOD ROWLEY**

*End*

This was Rowley's second year on the squad and he more than measured up to our expectations. He has held the end position both years and has mastered his duties at the terminal. His ability to receive end passes proved a feature in the games. He played superb football during the entire season.

**RAYMOND KLINE**

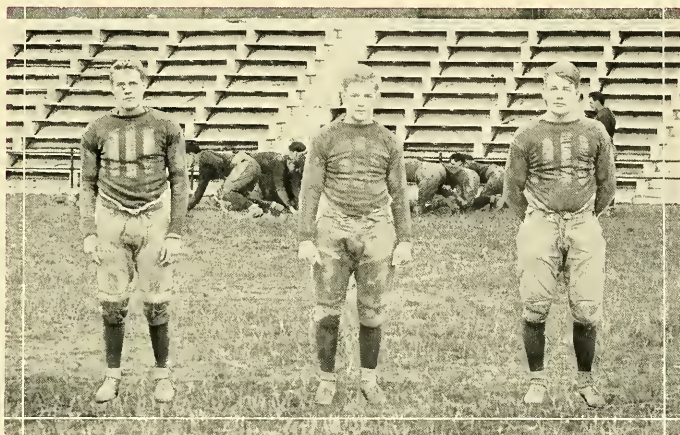
*End*

Last year Kline played the position of tackle. He soon became accustomed to his position at end and played real football throughout the season. He was alert and was always ready to tackle the runner. Kline's athletic ability is not limited to football alone. Next year should add greater distinction to him as an athlete.

**VERNER ROWLEY**

*Tackle*

The position of tackle was filled in a way that is worthy of comment. A man playing on the line does not have much chance to show up, but Rowley did. He was one of the largest men on the squad, a fact which made him an excellent linesman. He was a "plugger" and was game to the last man.



LINDQUIST

KREMMEL

STEELE

**ROBERT LINDQUIST**

*Center*

Lindquist was the snapper-back on the squad. As center Bob was there with the goods. He played consistently during the entire season. His stability on the line proved a menace to the offense. He had the distinction of scoring the first touchdown against a Teachers' College. Bob proved to be a valuable player for Clarion.

**CLETUS KREMMEL**

*Fullback*

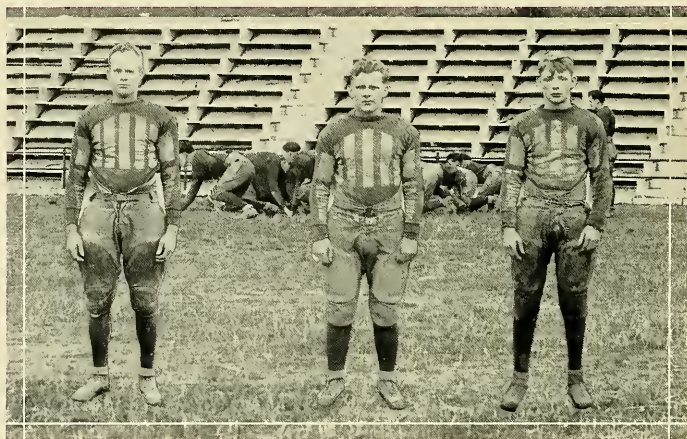
This was Kremmel's first year on the squad, and he proved to be one of the most valuable players. He was an efficient player and could score as well as play the defense. One of his accomplishments was his ability to catch passes which often resulted in a touchdown. Kremmel always played hard on the offense.

**HERBERT STEELE**

*Guard*

His first year of football was a credit to Steele and to the school. He always seemed to be in the right place to stop the attack of his adversaries. When a play was called, through Steele's position a hole was always assured. We hope Steele will be with us to battle for the "Purple and Gold" next year.

*Ninety Seven*



ALLEN

H. STEWART

WILLIAMS

**ORVAL ALLEN**

*End*

Allen is a new man at Clarion, but he soon showed his athletic talents. At end "Sleepy" showed his real worth this season. He was a player "chock full" of vim and grit. On the offense he played hard, consistent football. We feel he will be an asset to the team next year.

**HOWARD STEWART**

*Fullback*

Howdy was the best utility man on the squad. He began football the third week of school. Stewart could hit the line hard and was competent in making a gain.

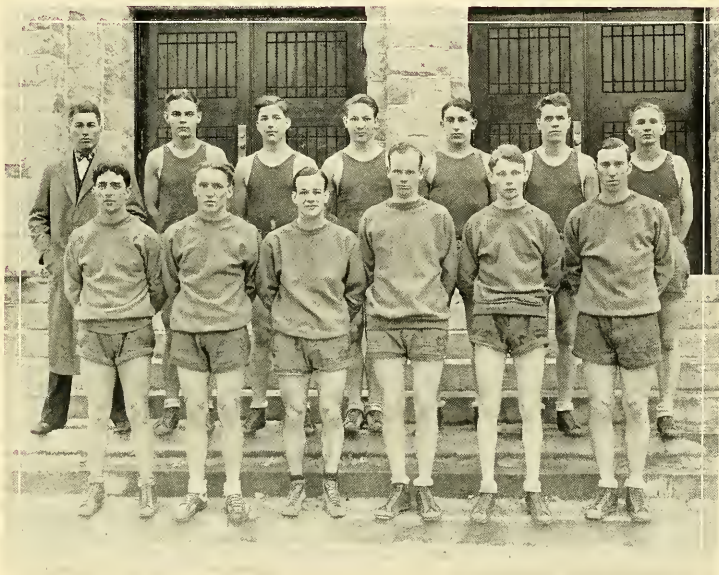
Stewart's weight and build were assets to his ability to play football.

**KENNETH WILLIAMS**

*Quarterback*

"Jock" made his debut in Clarion athletics the third week of the football season. We were soon convinced that he knew the technique of the game. He could play football with the best of them. He was a player of quick and peppy action. Much is expected of Williams in the future athletics of Clarion.





## BASKETBALL

### THE SCHEDULE

C. S. T. C.	32	Brookville "Y"	28
C. S. T. C.	37	Youngstown College at Youngstown	60
C. S. T. C.	16	Edinboro at Clarion	19
C. S. T. C.	15	Slippery Rock at Clarion	19
C. S. T. C.	42	DuBois Independents at Clarion	28
C. S. T. C.	39	California at Clarion	61
C. S. T. C.	37	Youngstown College at Clarion	38
C. S. T. C.	24	Indiana at Clarion	28
C. S. T. C.	46	Ashland Independents at Clarion	8
C. S. T. C.	53	Oil City "Y" at Clarion	39
C. S. T. C.	21	California at California	25
C. S. T. C.	48	State Highway Engineers at Clarion	6
C. S. T. C.	29	Indiana at Indiana	32
C. S. T. C.	31	Slippery Rock at Slippery Rock	32

*Ninety Nine*



## BASKETBALL

Williams, one of the forwards, was the pivot man of the team. He lead the individual scorers and was an outstanding player.

At guard, Kline displayed fine skill and fitted well in the combination which Coach Jones molded together this year.

Rowley played equally well at any position on the team. He played an offensive and defensive game that deserves credit.

Kata playing his first year at Clarion proved a valuable player. He played consistently and was a credit to the team.

Stranges completed his successful basketball career at Clarion. He proved a capable man when given the opportunity.

Our center, Allen, proved efficient in securing the tip-off and added materially to the attack of the team.

Hoak entered Clarion the second semester. He was given opportunity to show his ability and fulfilled all expectations.

Moore playing back guard proved a nemesis to the opposing forwards. He was an excellent floorman and a steady player.

Lindquist played the position of back guard. He was efficient in breaking up passes and contributed to the defense.

Verner Rowley did not experience any trouble in out-jumping the opposing center. He could be relied upon to make a score.

Chitister was another deserving forward. He was speedy and developed confidence as a basketball player.

Heeter began basketball the second semester. Due to injuries received during practice he was unable to play.

Clarion's 1928-1929 basketball season, although not a winning one, can be termed successful. Immediately after football, basketball practice began. Some thirty men reported. Clarion's strength was in her wealth of material. The spirit of fairness and good sportsmanship displayed by the players this year is complimentary to our team. Coach Jones deserves a great deal of credit for the way in which he coached the team.

*One Hundred*



## RESERVES

### PERSONELL

STEELE, Guard  
JOHNSTON, Center  
MAHAFFEY, Forward  
R. FULTON, Forward

W. FULTON, Guard  
KAIZER, Guard  
FOX, Forward  
SCHRECKENGOST, Guard

*T*his is the first year that the Reserves have had an independent schedule, but they proved themselves capable of playing basketball. Most of the material was new, but Coach Jones developed a team that was fast and had good passing and teamwork. The success of the season can be directly attributed to the determination and hard work of the players.

One Hundred One



**GIRLS' HOCKEY SQUAD**

FRONT ROW. Bell, McElhatten, Luther, Simpson, Kohlepp, Logue, Barnes, Hertig, Sloan, Killeen, Campbell.  
 SECOND ROW. Dibble, Lewis, Love, Conley, Phillis, Steltzer, Miss Perry, Gustavson, McKinney, Cowan, Shaw, Kirkpatrick, Sherry, Colliner.

### MISS PERRY

Clarion girls are fortunate in having for their instructor in gymnastics, Miss Ruth Perry, whose tact and skill as director of physical education cannot be excelled.

Not only do the girls know her as an instructor, but as a coach who has shown interest in many sports. Her pleasing personality makes all the girls feel free to tell her their problems and know that they will receive a sympathetic response.



---

## HOCKEY

---

The hockey games for this season were curtailed by bad weather. After several practices the members had begun to show excellent team work. We feel certain that if it had been possible to play intercollegiate games, our girls would have upheld their records of previous years. With the excellent new athletic field and better weather conditions, we are confident that next year the girls will have better success.





GIRLS' BASKETBALL SQUAD

First Row. Luther, Simpson, Haines, Love, Lewis, McElharten, Schwab.  
Second Row. McGregor, Whitehill, Wilson, Cook, Bigler, Wank, Barnes, Taylor.  
Third Row. Moyer, Steltzer, Miss Perry, Miller, Walters.



## BASKETBALL

---

The basketball season this year was filled with enthusiasm throughout. The first game of the season was a Junior-Senior game, in which the Juniors reaped the victory. The Seniors fought hard and were not easily defeated. They challenged the Juniors and were again defeated by a score of 24-23. An intra-mural tournament was carried out very successfully by dividing the Physical Education classes into teams.

In the fastest and most exciting game of the season, the McKees Rocks Teachers won from the Clarion lassies by a score of 20-12. Our girls showed splendid team work and in this way out played their opponents. However, the College girls were not up to par in their goal throwing.

There was no outstanding player, but each did her best to help raise the score. All the girls deserve to be congratulated for the good clean playing shown in this game.

### Lineup

#### C. S. T. C.

COOK.....	L. F.....	CURRY
WILSON.....	R. F.....	E. STULTZ
BELL.....	S. C.....	CAMPBELL
McELHATTEN, (Capt.).....	C.....	BURP
BARNES.....	L. G.....	TAYLOR
KLINGLER.....	R. G.....	REISS

#### McKEES ROCKS

Substitutions. Lewis for Cook; Cook for Wilson; Bigler for Barnes; E. Stultz for Campbell; R. Stultz for Curry; Curry for E. Stultz; Karris for Curry.





## TENNIS

This year a tennis tournament was successfully carried out in the physical education classes. Each girl chose the partner with whom she desired to play. The winners in one game played the winners of another.

In the doubles contest the score was first for one team, then for the other, making it difficult to decide just who would be victorious. The final score, however, gave the championship to Lewis and Love by a score of 6:2—8:6.

Lewis and Love deserve much credit for their sportsmanship shown throughout the games.

A similar tournament was carried out in "singles". Dorothy Cowan took the leading role throughout the contests. Her last opponent was Ruth Lewis. "Dot" was not to be defeated in any of the games, but came out victorious by a score of 6:3—6:3.

One Hundred Six







SEQUENCE



J.C.

One Hundred Seven

1929

4. Mr. Bland tries impersonating before the public.
5. Lucille C. and Willis B. latest campus scandal.
6. Thursday. Library Date Night. Ask Bill Flanagan.
7. Private Harold Peet. Isn't he cute?
8. Everybody's studying. Can't even get up a game of tiddly-winks.
9. Guess what—Tom Reedy put on "the ball and chain", for life.
10. Junior basketball teams defeat Senior teams. My word!
11. Vi Schwab and the coach seen together.
13. Annual "Stag" party at Science Hall.
14. The "Flue" flew in!
15. Another day! Phoebe Rhea looking wistful.
16. The doctor visits Becht Hall quite frequently.
17. If only this school would close!
18. Vacation is coming!
19. Christmas program called off.
20. Christmas party called and given. That orchestra was good.
21. Home, sweet home!
26. Annual mid-year reception—with an orchestra playing the jazz.
27. Vespers in charge of both "Y" organizations.
28. Charlotte W. on a diet.
29. Nothing to do but study!
30. Miss Nair may not be back next year from what we hear.
31. Horrors ---- the library may be closed in the evenings from now on.

### FEBRUARY

1. Fish.
2. Slippery Rock almost got theirs in that game!
3. Morris and Ruth H. seen together in a hiking tour.
4. Ken Williams seems to be enjoying the "no restrictions" rule.
5. Senior girls lost another game to the clever Juniors again.
6. Hester Neal recovering from a scare. Wonder why?
7. Ruth Hoffman had two birthday parties and four cakes today.
8. Youngstown fellows seemed quite alluring tonight.
9. Greer Riemer arrived today. Watch the hair pulling!
10. Where were you last night, Hunt?
11. Valentine Party. "Will you be my Valentine?"
12. Council meeting and some people got campused.
13. Mr. Huston storms about "good sports" in all his classes.
15. Howard Steele shows his pictures of the Artic region in the Chapel.
18. Maxine got a telegram from 'Gene saying he is still alive.
19. Kay McCabe and J. O. Jones hit hard by Cupid's bow.
20. Dr. Riemer and Mrs. Ralston left for conference at Cleveland.
21. "Do you have your dress for the "Prom"?"
22. Joppa Club banquet, but a lot of chicken we had to eat.
23. "Take My Advice" presented in the Chapel.
24. Lucille Cook out on a heap big date.
25. Clyde and Helen seem to have quarreled. Wonder why?
26. Miss Edgar is ill. Who next?
27. "Is he coming?" "May I have a dance?" "---- 11th, Thanks".
28. All the girls looking like mud fences tonight, what with the cream, etc.

### CHRISTMAS VACATION

#### JANUARY (1929)

2. Of all the whoopee chatter!
3. What did you get for Christmas?
4. How about the Training School being closed till Monday? How about it?
5. More good basketball games.
6. Mrs. Ralston suffering from the flu.
7. Joe S. looking lonesome.
8. Helen Shipe and Ken Coggan seen apart at last.
9. Dr. Riemer lectures in chapel.
10. Grace Shorts went downtown to see Bow. Look out, Ed!
11. Girls' Glee Club broadcasted from W.L. B.W. More fame and honor!
12. Sunday --- Work.
14. Everybody settling down to the task of "cramming".
15. Juniors daily getting "observation" in at the Training School.
16. Junior girls took charge of "Y". We do have a few industrious "greenies."
17. Lyceum number. Jubilee Singers rendered "My Old Kentucky Home".
18. Exams, and what have you?
19. " " " " " ?
21. New semester—new everything.
22. Discovered: Mr. Huston and sociology.
23. Mrs. Ralston made a wonderful speech in "Y".
25. Grades out at last. Some good—some bad.

### MARCH

1. What a Prom!



# SEQUENCE

## JOKES

Miss Keithan—"What did you do during vacation?"  
Ruth Campbell—"Nothing, I went to summer school."

Helen Shipe—"I'm telling you for the last time that you can't kiss me."  
Kenneth Coggan—"Fine! I knew you would weaken sooner or later."

## LOVE

"Love is like an onion  
You taste it with delight  
And when it's gone, you wonder  
Whatever made you bite."

Janitor—"Hey, there! Don't spit on the floor."  
Max Graham—"Why, does the floor leak?"

H. Porter—"Gee, Jane, I don't think much of your bob."  
Jane M.—"That's all right, Helen, I don't want you to think much of him."

Braendle—"Why does Peg call you maple syrup?"  
DuMar—"Because I'm such a refined sap."

D. Callen—"Where are you from?"  
Helen Simpson—(Trying to make an impression). "From New Kensington."  
D. Callen—"You didn't live there three years ago."  
Helen Simpson—"No, I moved from there five years ago."

E. Rowley—"Every time I kiss you it makes me feel like a better man."  
H. Wilson—"Well you needn't try to get to Heaven tonight."

Football players may be pretty brave, but the contractors have more sand.

Most all of us: "If you want to see the flattest of the flat, just take a look at my pocketbook."

ONE AND ONE ARE TWO  
A peach came walking down the street  
She was more than passing fair,  
A smile, a nod, a half-closed eye,  
And the peach became a pair.

Mickey McFarland—"Got my golf socks on today."  
Kline—"How's that?"  
Mickey—"Eighteen holes."

Wilbur DuMars—"What would you give for a voice like mine?"  
Harry Moore—"Chloroform."

D. Cowan—"I notice there are a lot of simple things in evening gowns this season."  
Ken Wyse—"Yes, I have been dancing with one all evening."

Charlotte Walter—"Oh, John, Mrs. Ralston would be wild if she were to see you kissing me."

John Barger—"But I ain't kissin' you."

Charlotte Walter—"Oh, I thought you were just going to begin!"

Elenor Bigler—"Is your love for me absolutely unselfish?"

Ken Williams—"Absolutely, dear."

Elenor B.—"Then I wish you'd go somewhere else tonight. Ellwood Rowley promised to call."

Ida McClelland—(thoughtfully). "Why do so many women rest their chins on their hands when they are thinking?"

Lindquist—(brutally). "To keep their mouths shut so they wont disturb themselves."

Updegraff—(To passing motorist). "Hi, mister, I'm going your way."

Motorist—"So I see; but I bet I get there first."

Wyse—"If you keep looking at me like that, I'm going to kiss you."

Mary Dore—"Well, I can't hold this expression much longer."

Crusty—"Time out! I lost a tooth."

Verner—"Next time swallow em, and don't be holding up the game."

Eleanor Barrett—"I want a film for my camera."

Druggist—"What size?"

Eleanor—"120 by 2."

Irene Hetrick's favorite candy is "Oh, Henry."

Wyse—"Say, Hoak, are you a good looker?"

Hoak—"I've been told so."

Wyse—"Then look under my bed for my cuff link."

Alice Killeen—(studying ancient history). "Why do they put B.C. after the dates?"  
Florence Waggett—"Because they didn't know whether the dates were exactly right so they say—bout correct."

Marie McAninch—"What did you and Coggin talk about last night?"

Helen—"Oh, we talked about our kith and kin."

Ruth Wilson—"Yes, Marie, I heard them." Coggin said, "Can I have a kith!"  
And Helen said, "Yes you kin!"



Mrs. Conley—"How is it that I find you kissing my daughter?"

Barber—"I don't know unless it's because you wear rubber heels."

Baldwin (coming from a history exam.) I surely stretched my oats that time."

Allen—"Could you tell me in round numbers what I made in that test?"

Huston—"Yes, zero."

"Red" Chitester—"Well, I answered a question in class today."

Avery—"What answer did you give?"

"Red"—"Present."

Mary Young—"Ouch! I just bumped my crazy bone."

Stella Rea—"Well, comb your hair right and the bump won't show."

Miss Edgar—"Did you say this topic was entirely the results of your own efforts?"

Elder—"Absolutely. I spent two days finding someone who had it written up."

D. Cowan—"Help! Police! Stop him! He tried to flirt with me."

Cop—"Calm yourself, Miss, there's plenty more."

John Barger—"I want a pair of trousers."

Clerk—"What size?"

John B.—"I don't know, but I wear a 15 1-2 collar."

Mrs. Ralston—"Do you play by request?"

Kaizer—(Orchestra leader). "Yes, we do."

Mrs. Ralston—"Would you please play dominoes until I have finished reading this letter?"

Mahaffey—(First time at Vesper service). "Are they all going to get their hair cut?"

J. O. Jones—(Telephoning). "I'll be there in a jiffy!"

Girl friend (disappointedly). "Aw, I thought you had a Chrysler."

Dot. Alcorn—"My face is my fortune."

H. Barnes—"Somebody short-changed you, dear."

Green Junior—(having voice tested). "What kind of a voice have I?"

Mr. Bland—"You have a very mellow voice."

Green Junior—(later, reading from Webster). M-e-l-l-o-w—over ripe, rotten.

Ruth Hoffman—"Do you sing alto?"

Mildred Rea—"No, I have never heard that song."

Charlotte Walter—"When do you think a girl really becomes an old maid?"

Marian Timlin—"When she decides her complexion isn't worth a shot of powder."

Mahaffey—"I got fifty on my intelligence test."

Reitz—"That makes you a half wit then, doesn't it?"

Allan—"What is a dumb waiter."

Monks—"A fellow who asks a girl for a kiss and waits for her to say yes."

Sara Cook—"Does 'Bubbles' Rowley snore in his sleep?"

Donald Thompson—"How should I know; I'm not in any of his classes."

Miss Sandford—"You can't sleep in this class."

Roy Doverspike—"I know, I've been trying for half an hour."

Landlady—(Knocking at the bed-room door). "Eight o'clock! Eight o'clock."

Manson—(Sleepily). "Did you? Better call a doctor."

H. Manson—"You missed my class yesterday, didn't you?"

P. Stewart—"Not in the least, sir, not in the least."

Emma Avery—"I've read that men grow bald because of the intense activity of their brains."

Henderson—"Exactly, and women have no whiskers because of the intense activity of their chins."

Mr. Wilkinson—"Does the moon affect the tide?"

Vic—(Looking at Flanagan). "No, merely the untied."

One Hundred Fourteen



SEQUENCE

THE END



J.V.

One Hundred Fifteen

1929

# CLARION STATE TEACHERS COLLEGE

DIRECT TO YOUR ALMA MATER  
STUDENTS CAPABLE OF CONTINUING  
WHAT YOU HAVE BEGUN HERE.



Capital \$135,000

# CITIZENS' TRUST COMPANY

Clarion, Pa.

---

T. M. ARNOLD, President

C. M. AMSLER, Vice President

H. M. HUFNAGLE, Sec'y-Treas.

C. C. MOORE, Assistant Treasurer

B. L. BOWMAN, Assistant Treasurer

---

Largest Banking Institution in Clarion

---

Resources, Banking Dept., Over - - - - \$2,800,000.00

Resources, Trust Dept. Over - - - - \$2,400,000.00

Total, Over - - - - - \$3,100,000.00

---

*Young Enough to be Progressive*

*Old Enough to be Conservative*

---

# CITIZENS' TRUST COMPANY

Clarion, Pa.

*Roll of Honor Bank*  
**FIRST NATIONAL BANK**  
**OF CLARION**

Founded in 1865

Oldest Bank in Clarion County

Capital	-	-	-	\$ 100,000.00
Surplus	-	-	-	\$ 260,000.00

---

MEMBER FEDERAL RESERVE BANK

---

*An Old Bank with Modern Methods  
Your Account is Appreciated*

---

FOUR PER CENT. ON SAVINGS

---

Officers:

S. WIN WILSON, President  
M. M. KAUFMAN, Vice-President  
A. B. COLLNER, Cashier  
H. F. STRATTON, Assistant Cashier

Directors:

S. WIN WILSON      M. M. KAUFMAN      FRANK K. BROWN  
THOMAS B. SLICK      HARRY E. RUGH  
LEWIS COLLNER      C. F. STRATTON

1872

1929

For 57 years the "First National Bank" has been in alliance with the thrifty people of New Bethlehem and surrounding territory, safeguarding their surplus funds at interest and helping to finance their ventures in home ownership.

The character of its service and the public confidence which it has deserved, have made its growth steady and substantial until today its Resources exceed \$4,000,000.00.

# FIRST NATIONAL BANK

NEW BETHLEHEM, PA.

*"A Bank for All the People"*

OFFICERS:

CHARLES E. ANDREWS JR.	-	-	-	President
CHARLES E. SHEFFER	-	-	-	Vice Pres. and Cashier
CARL W. ANDREWS	-	-	-	Vice President
ADDISON S. JOHNSON	-	-	-	Vice President
FRANK FERGUSON	-	-	-	Assistant Cashier
ALFRED H. SMITH	-	-	-	Assistant Cashier
J. CLYDE MILLER	-	-	-	Comptroller



*Capital, Earned Surplus and Profits of More Than*  
**\$550,000.00**

# C. E. ANDREWS LUMBER CO.

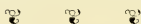
## NEW BETHLEHEM, PA.

*Invites you to inspect a Model House completely finished and furnished.*

Living Room  
Kitchen  
Bathroom

Dining Room  
Two Bed Rooms  
Breakfast Nook

ALL READY FOR OCCUPANCY



Also a display room containing samples of everything that is required in building, from foundation to roof. A permanent display for home builders.

You will marvel at it's completeness. Open for inspection each day from 8:00 A. M. to 6:00 P. M. and on Saturday evenings from 7:00 to 8:30. Other evenings by appointment.



## IRON CITY ELECTRIC CO.

*Westinghouse Agent Jobbers*

WHOLESALE

*All kinds of  
Electrical Supplies*

*Appliances & Radio*

*Corner Sixth & Diamond St.*

PITTSBURGH, PA.

## PENNANTS BANNERS PILLOWS

Add dignity, color and spirit to your school work by the use of FELT PENNANTS, BANNERS and EMBLEMS.

No order too small to receive our attention.

*Catalogue Free*

**Standard Pennant Co.**  
BIG RUN, PA.

## Browns Boot Shops

SHOES and HOSIERY

—at—

POPULAR PRICES

CLARION, PA.

**PARKE'S**  
Gold Camel  
Tea Balls



INDIVIDUAL SERVICE  
"Every Cup a Treat"



**L. H. PARKE COMPANY**  
Philadelphia Pittsburgh

A DEPARTMENT STORE  
—featuring—  
MERCHANDISE  
—of—  
CHARACTER

—  
*The Popular Store*  
for Students

—  
**Wein Bros.**  
WHERE QUALITY PREDOMINATES

**T. & M. STORE**

*For Lower Prices*  
*in Toilet Articles*

The Soda Fountain That's Different  
Try Our Chocolate Drinks

T. & M. STORE

Compliments

— of —

**Guth's Jewelry Store**

CLARION, PA.

**JOHN HENROTIN**

*Expert Shoe Repairing*  
*Service with a Smile*

630 Main St. CLARION, PA.

**VINCENT P. MUSI**

Makers of Better Clothes

Cleaning Pressing Repairing

Phone 288X CLARION, PA.



*Make Light of Darkness*

NILCO LAMP WORKS, INC.  
EMPORIUM, PENNSYLVANIA

SOMERS, FITLER & TODD  
COMPANY



*Machinery and Supplies*



327 Water Street  
PITTSBURGH, Pennsylvania

*Compliments  
— of —*

**PLIMPTON SCOFIELD  
COMPANY**  
*College Furniture*

BOSTON

MASS.

Use

Brookville Superior Ice Cream  
and Dairy Company's

**PRODUCTS**

and be assured of the Best.

*Nyal Service Drug Store*

**A. G. CORBETT DRUG CO.**  
*(Fitzgeralds)*

*Compliments*

*of*

**EDDIES CAFE**



Photographs In this Issue Made By  
**ART NOVEAU STUDIO**

We Specialize In  
**All Lines of Photography**

Fully equipped to make anything from Kodak finishings to Portraits  
in your Home or Commercial—Construction—and Progress Photos.

Call Us for Your Reunion or Large Gathering Photo.

**ART NOVEAU STUDIO**

A. E. NELSON, Prop.  
Phones: 865—1148-G.

Cor. First and State Sts.,

Oil City, Pa.

MEET

and

EAT

at

**Nail's Basement Restaurant**  
Clarion, Pa.

**DITZ & MOONEY**  
Hardware Company

Everything in

Hardware

Pottery

China

—and—

Glassware

Clarion, Pa.

J. C. PENNEY CO.

609 Main St.

CLARION, PA.

## Lincoln Once Said

*"Teach economy. That is one of the first and highest virtues. It begins with saving money."*

The J. C. Penney Company has built up a large business by saving money for its customers. We buy in carload lots, by the thousand dozen, and these economies are the secret of our Low Prices.

Save! Save! Save! It is the watchword of our business.

### Call at **JOE'S**

— For —

Home Made  
DOUGHNUTS  
and ROLLS

FRUIT

CONFECTIONERY  
ICE CREAM

Chocolate Milk, Hot or Cold

Corner Wood & 9th Ave.

CLARION, PA.

## BILLIARDS and POCKET BILLIARDS

Cast off the cares of the day and plunge wholeheartedly into a game of billiards. It will refresh you, rest your brain and steady your nerves.

The value of wholesome recreation is recognized by every intelligent person but we sometimes neglect to apply our knowledge to ourselves.

### **FAGLEY & WALTERS**

Main St. CLARION, PA.

RONALD CORBETT  
...Drug Stores...

Trust Us to Please You for  
Your Drug Store Needs

Bell Phone 11 CLARION, PA.

## SWEETLAND

Home Made Candies  
Toilet Articles

We Serve Light Lunches

CLARION, PA.

An Education in Real Values

CLOTHING and  
FURNISHINGS

for

Man and Boy

ALEXANDER & MOORE  
CLARION, PA.



Kodaks

Victrolas

CAMPBELL'S DRUG STORE  
"The Rexall Store"

Whitman's Chocolates Magazines

STETSON  
HATS  
THE SUNNY FRONT  
F. L. CROOKS & CO.  
Clarion, Pa.

ELMO CREAMERY CO.

"ELMO CREAMERY BUTTER"

*One Product Made Right*

Best Prices Paid for Cream

Route 1 Knox, Pa.

SENSIBLE FOOTWEAR  
at  
SENSIBLE PRICES

ARNER BOOT SHOP  
"Clarion's Shoe Center"

*Photography*

Art Noveau Studio

Oil City, Pa.

*Engravings*

Youngstown Arc

Youngstown, Ohio.

*Printing*

Kurtz Brothers

Clearfield, Pa.



CLARION UNIVERSITY OF PENNSYLVANIA



3 9363 00298 9231

