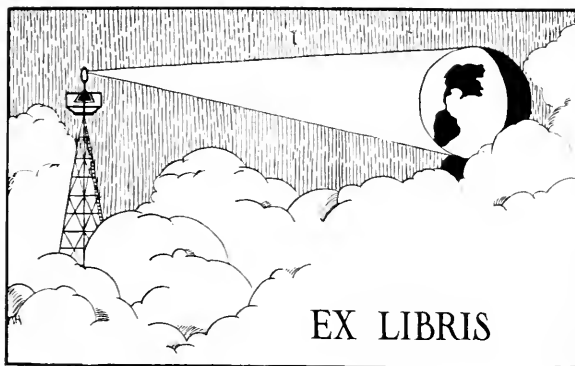


Spec. Col
qLD
1017
.C88
1930
c.2





Carlson Library



EX LIBRIS



FOREWORD

To bring back memories of happy days together; that is my purpose. May I become more precious to each of you as the years go by. May I be the symbol of never-ending friendship. This, and the hope that Clarion will always be dear to you, is all I ask.

The Sequelle



Contents

Opening Section

The School

Scenes

Faculty

Classes

Graduates

Class Organizations

Activities

Organizations

Music

Sports

Humor

Calendar

Jokes

The End

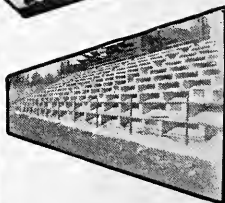


Dedication

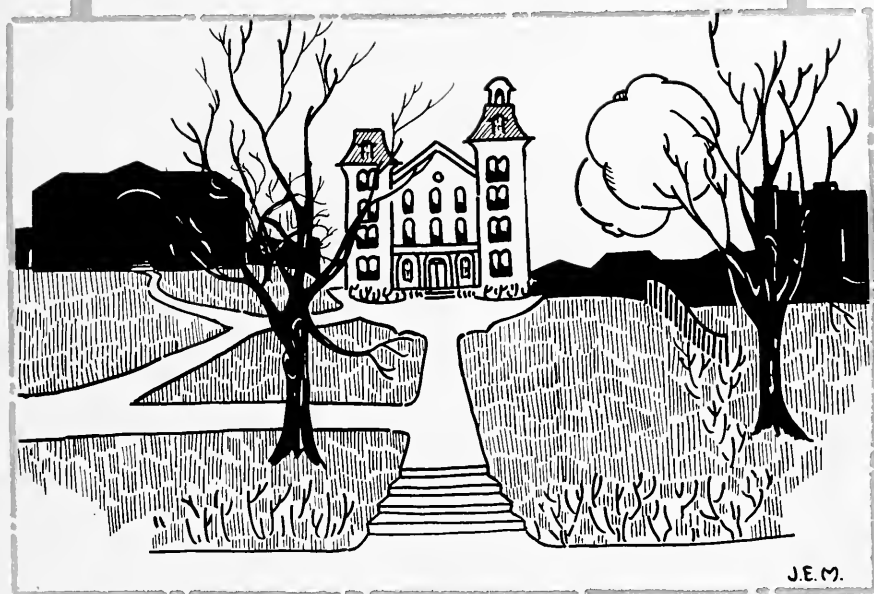
*To Professor Harry S. Manson,
Head of the Science Department
and Sponsor of the Sophomore
Class, we respectfully dedicate
this Sequelle as a token of
appreciation for his friendship
and help at all times.*



HARRY S. MANSON



THE SCHOOL



SCHOOL HYMN

Oh, Clarion, Our best we pledge to you
The days that we have spent here,
We always will hold dear.
Oh, tried and true,
Staunch friends are we to you.
Forever we'll be loyal
To our Clarion;—Clarion.

H. L. Bland

Scenes





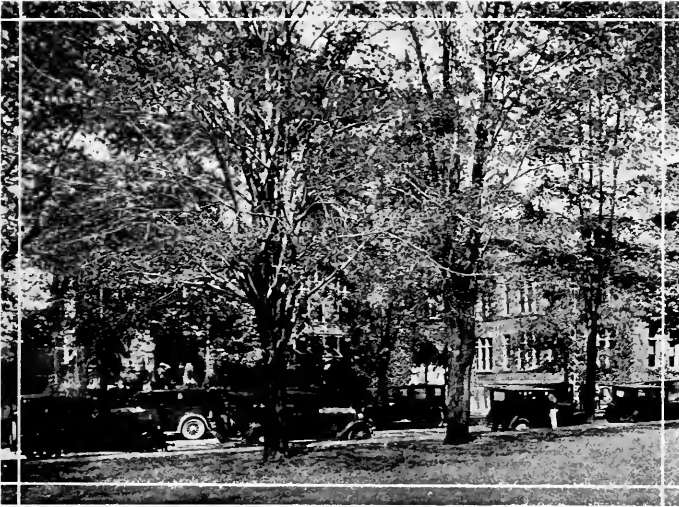
SEMINARY HALL



*T*HE CHAPEL



SCIENCE HALL



STREET REVIEW



MUSIC HALL



J. GEORGE BECHT HALL



*T*HADDEUS STEVENS TRAINING SCHOOL



OLD CHAPEL DOOR

THE PURPLE AND THE GOLD

Have you seen our banners waving
On the field or in the hall,
Where the students all assemble,
As they hear the old bell call?
These bright colors, gaily floating,
Speak alike to young and old
Of the joys of Clarion College
And the Purple and the Gold.

If you've seen our banners waving,
If you've heard our singing, too,
And the voices of our cheering
Have brought any thought to you;
Then we know you've thrilled with pleasure
And you've felt a pride untold,
For the glory of our College
And the Purple and the Gold.

Bertha V. Nair
Nancy E. Cannan

The Faculty





G. C. L. RIEMER, Ph. D., LL. D.

Sequelle 1930



Pearl Newton Miller



Martha V. Troughton



Bessie M. Rungan



Mildred E. Gamble



Loretta G. Brogan



Effie B. Hepler



Martha G. Renn



Helen E. Walters



Pearl Jack



Sarah Seyler



Bertha J. Stutzman



Anna B. Graham

FACULTY

ADMINISTRATIVE OFFICERS

- G. C. L. RIEMER, Ph. D., LL. D., Principal
JOHN W. F. WILKINSON, A. M., Dean of Instruction
G. A. HOYT, B. S., in Ch. E.
Dean of Men
AMABEL LEE RALSTON
Dean of Women
FOSTER MOHNEY
Bursar
SARA SEYLER
Dietitian

TEACHING STAFF

- CHARLES F. BECKER, A. M.
Education
BURNICE SMITH BLAND
Piano, Violin, Brass
HARRY LEE BLAND, B. Ed. Mus.
School Music, Voice
MARIE MARWICK, A. M.
English, Oral Expression
JAMES R. HUSTON, A. B.
Social Studies
JOHN O. JONES, B. S.
Physical Education
G. A. HOYT, B. S., in Ch. E.
Physics, Chemistry
ELIZABETH KEITHAN, B. S.
Geography and Penmanship
HARRY S. MANSON, A. M.
Science
BERTHA VIRGINIA NAIR, A. M.
English
MANLEY E. MACDONALD, A. M.
Education
HELEN D. SIMS, A. M.
Education and Social Studies
MARGARET BOYD, A. M.
Literature

RENA CARLSON
Librarian

HAZEL SANFORD, B. S.
Art

HELEN BARTON
Physical Education

J. W. F. WILKINSON, A. M.
Mathematics

MARY B. WILLIAMSON, A. M.
Primary Specialist

CO-OPERATIVE TRAINING TEACHERS

EFFIE BLANCHE HEPLER
Primaty Grades

MARTHA GEMBERLING RENN
Primaty Grades

HELEN WALTERS
Primaty Grades

LORETTA G. BROGAN, B. S.
Intermediate Grades

MILDRED E. GAMBLE, A. B.
Intermediate Grades

PEARL JACK, A. B.
Intermediate Grades

BERTHA J. STUTZMAN, A. M.
Intermediate Grades

HELEN MOHNEY
Intermediate Grades

MARTHA V. TROUGHTON, A. B.
Junior High School Grades

ANNA B. GRAHAM
Junior High School Grades

BESSIE M. RUNYAN, A. B.
Junior High School Grades

G. A. HOYT, B. S., in Ch. E.
Principal of Junior High School

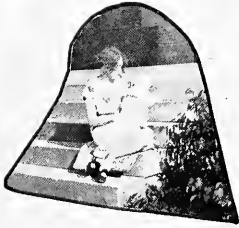
RETIRED MEMBERS OF FACULTY

JOHN BALLENTINE, Ph. D.

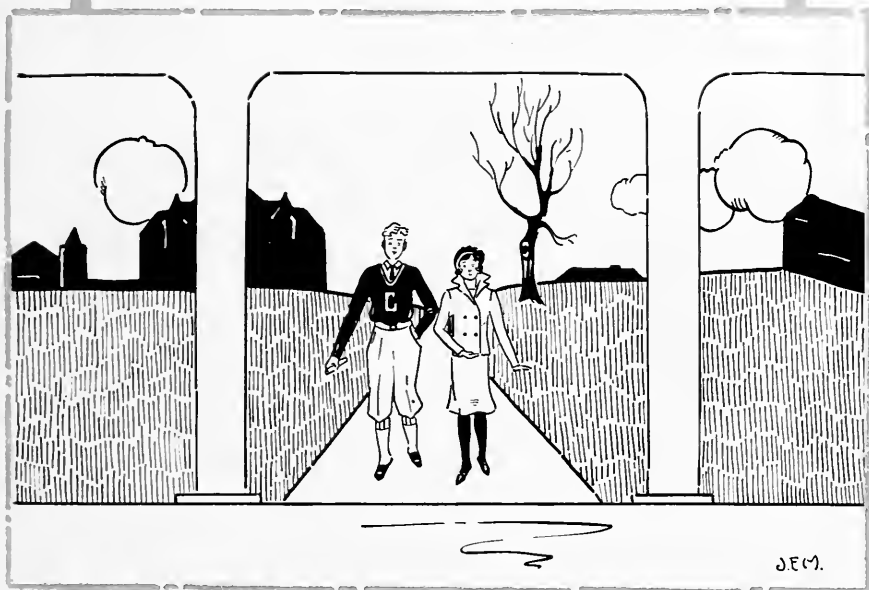
JAMES PINKS, *Bursar*

WILLIS Y. WELCH, A. M., Sc. M.

Sequelle 1930



CLASSES



RALLY SONG

I'm going straight back, and stay back,
In that dear old school.
The place we love best of all,
Oh, can't you hear Clarion call,
It's just a wee place, but in the race
For things good and true,
So I'm going back, for much that I lack,
That's Clarion, True blue.

Mr. H. L. Bland

Graduates



ANNABELLE AIKENS

Primary Brookville, Pa.

Outstanding grace—*A rhythmic walk*

Vested Choir
Hostess Club



AGDA ANDERSON

Intermediate Kane, Pa.

Characteristic pose—*Personifying some Norse goddess.*

Hostess Club
Y. W. C. A.



BERNICE BAHM

Intermediate Duquesne, Pa.

Noteworthy trait—*Singing bass.*

Student Government, V. Pres. Y. W. C. A.
Glee Club, Sec., Treas. Hostess Club
Art Club W. A. A.
Story Telling and Current Literature Club.



RUTH BAUGHMAN

Intermediate Stanton, Pa.

Favorite flower—*"Pillsbury"*

Art Club
Hostess Club
Y. W. C. A.





GERTRUDE BEALS

Intermediate Emlenton, Pa.

Characteristic pose—Being a modern Florence Nightingale

Student Government, Pres.	Vesper Committee
Y. W. C. A. Cabinet	Vested Choir
Travel Club	Dramatic Club
Hostess Club	Basketball



HAZLETTE I. BROWN

Intermediate Mosgrove, Pa. R. D. 1

Chief occupation—Being a very efficient waitress.

Art Club	Travel Club
Hostess Club	Soccer Varsity
Y. W. C. A.	Student Council
Vested Choir	Waiter's Club
Hockey Varsity	



GERALDINE BUCHANAN

Intermediate DuBois, Pa.

Favorite sport—Turning cartwheels.

Glee Club	Orchestra
Y. W. C. A. Cabinet	Operetta
Dramatic Club	Hostess Club



BLANCHE CAMPBELL

Primary Callensburg, Pa.

Favorite Authors—Writers of Etiquette

Y. W. C. A., V. Pres.	Travel Club
Hostess Club, Pres.	Fire Chief
Journalism Club	

EMMA CAULK

B. S. in Secondary Education Clarion, Pa.

Worst habit—Talking in the halls

Glee Club	Senior Class Play
Outdoor Club	Secretary of Senior Class
Clarion Call Staff	Journalism Club
Soccer	



ALBERT CHITESTER

Rural Brookville, Pa.

His Philosophy—Blushing when in the company of the fair young co-eds.

Travel Club	Baseball
Journalism Club	Football (Reserve)
Varsity "C" Club	Track (Squad)
Basketball (Letter)	

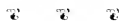


LUCILLE COOK

Primary Clarington, Pa.

Favorite song—"Memories"

Art Club
Hostess Club
Y. W. C. A.



SARA COOK

Intermediate Reynoldsville, Pa.

Favorite hero—Broad shouldered Kremmel.

Dramatic Club	Hockey
Hostess Club	Soccer
Y. W. C. A.	Travel Club
Basketball Varsity	





THELMA CRICK

Intermediate *Rimersburg, Pa.*

Chief occupation—Waiting on busses and tables.

Art Club Y. W. C. A.
 Hostess Club Waiter's Club
 Travel Club



RUSSELL W. DAUM

Rural *Neumannsville, Pa.*

Worst habit—Playing a harmonica

Vested Choir Track
 Men's Glee Club, V. Pres. Y. M. C. A.
 Travel Club Cap & Gown Committee
 Scout Master Tr. Course Red Cross First Aid Course



MRS. AMY DAVIS

B. S. in Secondary Education *Clarion, Pa.*

Favorite Sport—Finding references to back every argument

Travel Club, V. Pres. Senior Class Play



EDWARD DeVILDER

B. S. in Secondary Education *Strattonville, Pa.*

Favorite Authors—Thornlike, Cannon, MacDougall, Barnham.

Senior Class Play

MARY DORR

Intermediate

Petrolia, Pa.

Favorite hero—The man who invented cosmetics.

Hostess Club

Y. W. C. A. Cabinet

Travel Club

Art Club

Waiter's Club

€ € €

ALVERNA DUNMIRE

Rural

Ford City, Pa.

Outstanding virtue—Being prompt.

Hostess Club

Y. W. C. A.

€ € €

CATHERINE EICHNER

Intermediate

Harmony, Pa.

Characteristic pose—Giggling at the dinner table, and humming during class.

Art Club

Hostess Club

Y. W. C. A.

Vested Choir

€ € €

DOROTHA ELDER

Intermediate

Strattonville, Pa.

Characteristic quality—The steadfastness of Gibraltar

Travel Club





MARGARET ELDER

Primary Strattonville, Pa.

Characteristic pose—Riding in an old "Dodge".

Story Telling Club
Y. M. C. A.



ELIZABETH FLICK

Intermediate Rimersburg, Pa.

Favorite expression—"Have you heard—?"

Art Club
Travel Club



ELLEN FOX

Intermediate Barnes, Pa.

Chief occupation—Costume designing.

Vested Choir
Hostess Club



LUCY FRAK

Primary Oil City, Pa.

Chief occupation—Wondering at the student's capacity
for pie.

Hostess Club Manuscript Club
Art Club Travel Club
Y. W. C. A. Sequelle Staff

WAYNE FULTON

Rural

Clarion, Pa.

Characteristic expression—"Holy Cats."

Basketball (Reserves)



MRS. MILDRED GEORGE

Intermediate

Clarion, Pa.

Characteristic pose—Showing people up in the class.

Travel Club



GEORGE GIFFORD

Junior High

DuBois, Pa.

Greatest pleasure—Recounting his romances.

Demosthenian Club
Owl Club



IRENE GORECK

Primary

Duquesne, Pa.

Chief occupation—Curling hair for the "dorm." girls.

Hostess Club
Y. M. C. A.

Basketball
Travel Club





LAURA GRABMAN

Intermediate *Zelienople, Pa.*

Time spent—In being happy.

Hostess Club
Dramatic Club
Y. W. C. A.



ISABEL GROVE

Intermediate *New Bethlehem, Pa.*

Favorite Sport—Reciting in Sociology class

Y. W. C. A.
Travel Club
Hostess Club



LAURA HARLEY

Intermediate *West Monrocy, Pa.*

Favorite Book—Tom Sawyer

Hostess Club Y. W. C. A.
Story Telling Club Travel Club
Current Events



VIOLET HASLETTE

Primary *Muzette, Pa.*

Favorite pastime—Solitaire?

Art Club
Y. W. C. A.

MIRIAM HAVICE

Intermediate Oil City, Pa.

Characteristic pose—Sleeping in Chapel.

Vested Choir Y. W. C. A.
Art Club Hostess Club



MARTHA HEILMAN

Intermediate Ford City, Pa.

Most redeeming virtue—Being herself.

Hostess Club
Y. W. C. A.



ELIZABETH HEETER

B. S. in Secondary Education Clarion, Pa.

Favorite Heroes—The compilers of dictionaries.

Educational Club



EUGENIA HERMAN

Intermediate Clarion, Pa.

Characteristic pose—Being embarrassed in class.

Hostess Club
Art Club





VERNA HIWILER

Intermediate *Emlenton, Pa.*

Chief occupation—Keeping out of people's ways.

- Hostess Club
- Art Club
- Y. W. C. A.

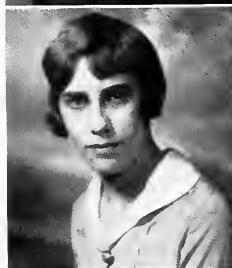


MARY HOLLINGSHEAD

Primary *Shippensville, Pa.*

Chief occupation—Answering the telephone.

- | | |
|---------------------|-----------------|
| Hostess Club, Pres. | Student Council |
| Dramatic Club | Sequelle Staff |
| Art Club | Journalism Club |
| Y. W. C. A. Cabinet | |



AVANEL HOOK

Intermediate *Knox, Pa.*

Favorite Hero—"Rudy Vallec"

- | | |
|-------------|--------------|
| Travel Club | Hostess Club |
| Art Club | Y. W. C. A. |



SHERMAN HORNE

Junior High *Brookville, Pa.*

Favorite Sport—Emulating Daniel Boone

- Baseball
- Franklin Literary Society
- Travel Club, President

IRENE HUNTER

Intermediate Clarion, Pa.
Chief occupation—Taking courses from Miss Keithan.
Vested Choir



FRANCES JAMES

Intermediate Kersey, Pa.
Favorite hero—A town lad who drives a Buick
Y. W. C. A.
Hostess Club, Secretary and Treasurer



LUCY JOHNSON

Intermediate Hazen, Pa.
Characteristic pose—Fixing her hair
Travel Club Hostess Club
Art Club Y. W. C. A.



JOSEPH JOHNSTON

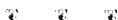
Rural Corsica, Pa.
Chief occupation—Walking home with Sally.
Track (Letter) Varsity C. Club
Basketball (Reserves) Glee Club





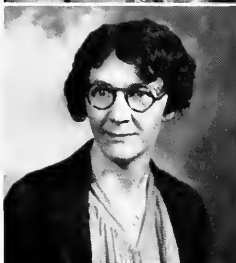
GRAYCE JOLLEY

Primary Warren, Pa.
 Reason for renown—Heading Y. W. C. A. activities
 Y. W. C. A., Pres. May Queen attendant
 Student Council Sequelle Staff
 Dramatic Club, Sec. Travel Club
 Vested Choir, Pres. Journalism Club
 Orchestra



KATHRYN JURY

Intermediate Clearfield, Pa.
 Favorite author—Vina Delmar
 Travel Club Hostess Club
 Dramatic Club Y. W. C. A.



NINA KAHLE

Intermediate Sigel, Pa.
 Reasons for commendation—Getting up before daybreak
 for the privilege of attending C. S. T. C.
 Literary Society



JOHN A. KAISER

Junior High Kramer, Pa.
 Favorite sport—All athletics
 Basketball (Reserves) Orchestra (Dance director)
 Football (Letter) Y. M. C. A.
 Track (Letter) Travel Club, V. Pres.
 Baseball Varsity "C" Club
 Orchestra (School)

MAMIE KELLER

Intermediate Penfield, Pa.

Greatest desire—To please Mr. Bland by giving current events in Music class.

Travel Club Y. W. C. A.
Hostess Club Art Club

• • •

ELIZA KEMP

Primary Stump Creek, Pa.

Description—"Good actions ennoble her."

Y. W. C. A.
Hostess Club
Council Member (Summer)

• • •

BERNICE KIRKPATRICK

Intermediate Clarion, Pa.

Strongest belief—Shakespeare's Maxim that "A low voice is an excellent thing in a woman."

Hostess Club Travel Club
Art Club Orchestra
Vested Choir

• • •

MARTHA KLINGLER

Primary Knox, Pa.

Favorite Sport—Basketball

Y. W. C. A. Cabinet Hostess Club
Travel Club Art Club
Basketball





HELEN KORB

Intermediate

East Brady, Pa.

Characteristic pose—Sitting with Milt, in the library.

Journalism Club
Hostess Club
Y. W. C. A.

Clarion Call Staff
Dramatic Club
Student Council, Pres.



MARGARET KRAUSS

Intermediate

Sligo, Pa.

Chief aim—Pleasing her critic teacher.

Art Club



KATHERINE KRIBBS

Primary

Knox, Pa.

Greatest blessing—A golden voice

Girl's Glee Club
Y. W. C. A.
Story Telling Club

Hostess Club
Vested Choir
Student Council



MARION KUNKLE

Intermediate

Avonmore, Pa.

Favorite heroes—Text book authors

Travel Club

ALICE LEVIS

Intermediate *Franklin, Pa.*

Favorite hero—A black haired boy from Kittanning

Dramatic Club
Hostess Club
Y. W. C. A.



GERALDINE LOOS

Intermediate *Reynoldsville, Pa.*

Outstanding trait—Giggling in the library

Y. W. C. A.	Travel Club
Hostess Club	Art Club
Hockey	Soccer
Basketball (Manager)	



ALBERTA LUTZ

Intermediate *Clarion, Pa.*

Special appeal—Beautiful eyes.

Art Club
Travel Club



MARIE McANINCH

Intermediate *Sigel, Pa.*

Chief occupation—Being a mother to the girls on fourth floor.

Glee Club	Vested Choir
Quartet	Y. W. C. A. Cabinet
Vesper Committee	Hostess Club
Operetta	Pres. of Student Gov't (Summer)





KATHRYN McCABE

Intermediate Duquesne, Pa.

Characteristic pose—Dancing as gracefully as a wood-nymph.

Student Council	May Queen Attendant
Sequelle Staff	Glee Club Business Mgr.
Journalism Club	Dramatic Club
Vested Choir	Dramatic Club Plays
Hostess Club	



IDA McCLELLAND

Primary Swissvale, Pa.

Avocation—Dancing Irish jigs before Woman's Club.

Debating Society	Dramatic Club Plays
Dramatic Club, V. Pres.	May Queen Attendant
Hostess Club	Y. W. C. A.



FLORENCE McELROY

Primary Karns City, Pa.

Worst fault—Winking at the boys

Travel Club	Hostess Club
Y. W. C. A.	Journalism Club



VELMA McKEE

Intermediate East Brady, Pa.

Chief Virtue—Loving a curly haired boy from East Brady.

Hostess Club	Y. W. C. A.
Travel Club	Art Club



FAYE McKINLEY

Intermediate Corsica, Pa.

Most treasured possession—A battered hockey stick

Art Club
Hostess Club



ANNE McLAUGHLIN

Intermediate Richardsville, Pa.

Favorite sport—Gigging

Y. W. C. A.
Hostess Club



JANE MAHEY

Junior High Clarion, Pa.

Greatest dream—Being a second Raphael

Art Club Glee Club
Y. W. C. A. Sequelle Staff



CLARA MAYS

Intermediate Clarington, Pa.

Greatest Recreation—Sitting in Becht Hall.

Art Club
Hostess Club
Y. W. C. A.





REBECCA MAYS

Intermediate Callensburg, Pa.

Most noteworthy trait—A good disposition.

Student Council, V. Pres.	Travel Club
Y. W. C. A.	Fire Lieutenant
Hostess Club	



FRED MILLER

B. S. in Secondary Education Sligo, Pa.

Favorite Sport—Parlor tricks.

Senior Class Pres.	Glee Club
Demosthenian Club	Waiter's Club
Owl Club	Student Council
Football squad	Senior Class Play
Y. M. C. A.	Operetta
Minstrel	



GLADYS MILLER

Intermediate Pierce, Pa.

Chief occupation—Permeating the halls with a delicious fudge odor.

Travel Club	Hostess Club
Art Club	Y. W. C. A.



HELEN MILLER

B. S. in Secondary Education Clarion, Pa.

Favorite Expression—"Mr. Chairman, Honorable Judges"

Journalism Club	Debating Team
Travel Club	Senior Class Play
Clarion Call Staff	

ALTA MONKS

Intermediate

DuBois, Pa.

Favorite Exercise—"Tripping the light fantastic."

Dramatic Club	Vested Choir
Clarion Call Staff	Operetta
Hostess Club, Sec'y.	Hockey Varsity
Dramatic Club Plays	Soccer Varsity
Y. W. C. A.	Basketball
Journalism Club	



ETHEL MOONEY

Intermediate

Sligo, Pa.

Characteristic Trait—Kindness.

Art Club
Hostess Club



WALTER MOONEY

B. S. in Secondary Education

Sligo, Pa.

Cherished Possession—Miss Sequelle, about to make her debut.

Demosthenian Club Critic	Journalism Club
Y. M. C. A.	Clarion Call Staff
Minstrel Show	Editor of 1930 Sequelle
Band	Senior Class Plays
Operetta	Debating Squad
Glee Club	Phi Sigma Pi
Basketball (Reserves)	Outdoor Club
Football (Letter)	Varsity "C" Club.



CLYDE MOORE

Junior High

Corsica, Pa.

Heroine—Helen of Troy

Baseball	Football (3 letters)
Track	Dramatic Club, V. Pres.
Basketball (3 letters)	Journalism Club
Sequelle Staff	Y. M. C. A.





WINONA MOYER

Intermediate Zelenople, Pa.

Characteristic Expression—"Basketball practice, every body out."

Y. W. C. A.	Basketball Varsity
Art Club	Head of Sports
Hostess Club	

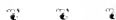


AMELIA MURRAY

Primary Reynoldsville, Pa.

Favorite Poem—"Bob-o-link, bob-o-link, spink, spank, spink."

Y. W. C. A.	Hostess Club
Travel Club	Glee Club (Summer)



HESTER NEIL

Primary Red Bank, Pa.

Favorite Poem—"I l' 'Ike' little Pussy."

Hostess Club	Journalism Club
Y. W. C. A.	Art Club
Glee Club	Vested Choir
Sequelle Staff	Glee Club
Rep. to Bloomsburg Conference	



GRACE NELSON

Primary New Bethlehem, Pa.

Most Cherished possession—Dimples.

Hostess Club	Y. W. C. A.
Travel Club	Vested Choir (Summer)

TWILA OVER

Primary

Clarion, Pa.

Favorite Occupation—Bringing up a Ford in the way it should go.

Y. W. C. A.
Travel Club



EVELYN PHILLIPS

Intermediate

Clarion, Pa.

Favorite pastime—Impersonating Galli-Curci

Glee Club
Vested Choir

Travel Club
Hostess Club



ROBERT POWERS

Rural

Mosgrove, Pa.

Greatest Delight—Tackling low and hard.

Extra-curricular activity committee
Football (Letter)
Y. M. C. A.



GRACE PRYOR

B. S. in Secondary Education

Duke Center, Pa.

Favorite Occupation—Being "Wilkie's" little girl.

Journalism Club, Secretary





FLORENCE REAGHART

B. S. in Secondary Education Strattonville, Pa.

Hero—Any man blessed with the power of argument

- | | |
|--------------------|------------------------|
| Varsity Debate | College Players Club |
| Senior Class Play | Senior Class, V. Pres. |
| Sequelle Staff | Varsity Club |
| Clarion Call Staff | Varsity Soccer |
| Journalism Club | Dramatic Club Plays |



EDITH REID

Intermediate Clarion, Pa.

Favorite Author—H. L. Bland in his latest novel "Bugbears in a College Glee Club."

- | | |
|--------------|--------------|
| Glee Club | Vested Choir |
| Hostess Club | Operetta |
| Art Club | |



MARGARET REED

Intermediate Miola, Pa.

Vocation and Avocation—Giving the Ford its daily dozen.

Travel Club



FRANK REITZ

Rural Brookville, Pa.

Cherished Possession—Book entitled "How to keep from Blushing," By Miss Rosy Cheeks.

- | |
|--------------|
| Vested Choir |
| Travel Club |
| Y. M. C. A. |



PHOEBE RHEA

Intermediate Callensburg, Pa.

Chief Occupation—*Exterminating ardent admirers of the goddess Venus.*

Student Council	Hostess Club
Dramatic Club, Sec'y	Y. W. C. A.
Art Club, Treasurer	Basketball

€ € €

STELLA RHEA

Intermediate Callensburg, Pa.

Characteristic Pose—*Jumping for the tip-off*

Dramatic Club, Sec'y.	Hockey Varsity Sr. Capt.
Art Club	Student Council and
Hostess Club	Student Govern'm't Treas.
Y. W. C. A.	Soccer Varsity
Basketball	

€ € €

DOROTHY RIMER

Primary Rimersburg, Pa.

Favorite color—*Gray—when referring to eyes.*

Hostess Club
Art Club
Manuscript Writing Club

€ € €

ELLWOOD ROWLEY

Junior High Ambridge, Pa.

Favorite Song—*"I've got those Kick-off Blues."*

Football (3 letters)	Baseball
Basketball (2 letters)	Clarion Call Staff
Track (Captain)	Y. M. C. A.
Journalism Club	Minstrel
Varsity "C" Club Sec. Treas.	Dramatic Club





ANNABELLE SANDERS

Intermediate Elwood City, Pa.

Renowned for expression—"There's too much noise in this room, girls."

Student Council Sophomore Class Treas.
Hostess Club, V. Pres. Capt. of Sr. B. B. Team
Art Club Y. W. C. A.



ESTELLE SANTNER

Intermediate Claridge, Pa.

Favorite Song—"Singin' in the Rain."

Hostess Club Glee Club, V. Pres.
Vested Choir Y. W. C. A.



HELEN SEIBERT

Primary Somerset, Pa.

Life Task—Driving away the blues.

Hostess Club
Manuscript Writing Club
Basketball (North Central College, Naperville, Ill.)



ELIZABETH SHAW

Primary Sligo, Pa.

Worst Fault—Blocking traffic with her "Rolls Royce."

Current Literature Club
Journalism Club
Travel Club

HELEN SHIPE

Primary Marienville, Pa.

Famous for—Scientific investigation on: "Making eyes twinkle."

Y. W. C. A.	Vested Choir
Hostess Club	Operetta
Art Club	Glee Club



EDITH SHOEMAKER

Intermediate Kittanning, Pa.

Occupation—Training the youthful idea to school.

Art Club
Hostess Club



EDGAR SCHRECONGOST

Rural Brookville, Pa.

Avocation—Blowing notes (not bank) from his trusty trombone.

Orchestra (School)	Choir, Vested
Dance Orchestra	Basketball (Reserves)
Men's Glee Club	



JUNE SMITH

Primary Punxsutawney, Pa.

Characteristic Trait—Busy as a bee.





MILDRED SMATHERS

Intermediate Limestone, Pa.
Chief Business—Keeping that School Girl Complexion
Hostess Club



ELIZABETH SNOW

Primary Tiona, Pa.
Most Cherished possession—Hiking Boots.
Vested Choir College Players Club
Hostess Club Operetta
Y. W. C. A. Council (Summer)



HELEN SNYDER

Primary New Bethlehem, Pa.
Characteristic Expression—Hurry, hurry girls.
Travel Club
Hostess Club
Y. W. C. A.



HELEN STAHLMAN

Intermediate Sigel, Pa.
Favorite Song—"Brown eyes should never be blue."
Art Club
Y. W. C. A.
Hostess Club

HELEN STITT

Intermediate East Brady, Pa.

Hero— Mr. "Mo", boss of the eleven.

Student Council	Dramatic Club
Hostess Club	Glee Club
Vested Choir	Sequella Staff
Journalism Club	

• • •

WINIFRED STITZINGER

Primary Leeper, Pa.

Favorite Song—"I've got the g-g-g-g-giggles."

• • •

VELMA STOVER

Primary Knox, Pa.

Biggest Job—Keeping sweet when thunder clouds are near

Travel Club	Art Club
Hostess Club	Student Council

• • •

JOSEPH STRANGES

B. S. in Secondary Education Ambridge, Pa.

Characteristic Business—Sometimes a heartbreaker-sometimes a jawbreaker (Football).

Football (4 letters)	Travel Club
Basketball Capt.(4 letters)	Outdoor Club
Track (4 letters)	Demosthenian Society
Y. M. C. A.	Sr. Class Play, Stage Mgr.





RUTH STRAWCUTTER

Primary Brookville, Pa.
 Favorite Pastime—Increasing her stature by standing on a
 sheet of paper.

Art Club
 Manuscript Writing Club
 Hostess Club



MARGARET STREETER

Intermediate Clintonville, Pa.

Life Work—"Tickling the ivories" to the tune of a "Dew,
 dew, dewey day."

Sequelle Staff	Travel Club
Student Government Sec'y.	Art Club
Journalism Club	Y. W. C. A.
Vested Choir	Basketball
Orchestra	Associate Editor of
Hostess Club	Clarion Call
Hockey	



PAUL STEWART

B. S. in Secondary Education DuBois, Pa.

Characteristic expression—"Oo la la, La La poochi."

Pres. Boy's Student Council	Travel Club
Football Mgr. (2 letters)	Dramatic Club Treas.
Journalism Club, Pres.	Dramatic Club Plays
Class Secretary	"C" Club
Sequelle Staff	Chapel Representative
Vesper Committee	Senior Play
Men's Glee Club	Y. M. C. A. Cabinet



MARGARET SUMMERVILLE

Intermediate Corsica, Pa.

Past History—Intimation of secret meetings with the
 "Hoodle Bug".

Hostess Club	Art Club, Pres.
Y. W. C. A.	Vested Choir
Basketball	

DOROTHY TAYLOR

Primary Hawthorne, Pa.

Favorite Poem—"Laugh and the world laughs with you."

Travel Club Art Club Pres.
Hostess Club Y. W. C. A.



JOAN THOMAS

Intermediate Oil City, Pa.

Most Cherished Possession—Sequelle Typewriter

Vested Choir Y. W. C. A.
Glee Club Sequelle Staff
Hostess Club



BERTHA TILEY

Intermediate Strattonville, Pa.

Present Occupation—Convincing the world that she is not related to Boob McNuts "Bertha."

Art Club Travel Club
Y. W. C. A. Manuscript Writing Club
Hostess Club



EVELYN TRAISTER

Intermediate Brookville, Pa.

Life Work—Protecting "Ike" from a hazardous world.
See her cudgel! (a smile).

Hostess Club
Art Club





MARTHA TRENKLE

Primary Kane, Pa.

Life Work—Playing combined role of actress and songster.

Student Council	Vested Choir
Art Club, V. Pres.	Hostess Club
Y. W. C. A. Cabinet	Vesper Committee, Pres.
Glee Club	Basketball



DOROTHY TRUITT

Intermediate Fairmount City, Pa.

Hero—The man in the Business Dep't of the Sequelle.

Art Club	Travel Club
Hostess Club	Basketball
Journalism	Hockey
Y. W. C. A.	



MAXINE TURNEY

Intermediate Aliquippa, Pa.

Occupation—Keeping the opposite sex interested.

Hostess Club	Basketball Jr.
Journalism Club	Soccer Sr.
Art Club	Hockey Sr.
Travel Club	



DOROTHY WANK

Intermediate Luthersville, Pa.

Favorite Occupation—Limping after B. B. Game

Hostess Club	Basketball Sr. Varsity
Art Club	Travel Club
Basketball Jr., Capt.	

ARVETA WEBER

Primary Troutville, Pa.

Hero—Little Black "Sam-bo"

Art Club Manuscript Writing Club
Hostess Club Y. W. C. A. Cabinet
Story Telling Club Student Council
Travel Club



MARION WHALEY

Intermediate Brookville, Pa.

Occupation—Eliminating the whale from Whaley

Y. W. C. A.
Art Club
Hostess Club



CORA WHITE

Primary Summerville, Pa.

Hardest Duty—Singing bass in Mr. Bland's "Queer."

Vested Choir Y. W. C. A.
Hostess Club Art Club



RUTH WILSON

Primary Marienville, Pa.

Most Cherished Possession—A head of naturally straight hair curled in beautiful ringlets.

Y. W. C. A.
Art Club
Hostess Club





RUBY WING

Intermediate

Fisher, Pa.

A lover of myths—Clytie (Clydie)

Art Club
Hostess Club
Y. W. C. A.



MARY YOUNG

Intermediate

Oil City, Pa.

Favorite Poem—"I chatter, chatter as I go."

Dramatic Club
Hostess Club

Art Club
Vested Choir



LORETTA CARLOS

Primary

New Bethlehem, Pa.

Chief Occupation—Making Friends

Y. W. C. A.
Hostess Club
Student Government V. Pres. (Summer)



MERLE CORBETT

B. S. in Secondary Education

Lamartine, Pa.

Latest sociological discovery—A few morals are born with common sense (not cents).

ELLA DICKIE

Intermediate Vandergrift, Pa.

Favorite Hero—Any football man

Travel Club Hostess Club
 Y. W. C. A. Intermediate Club (Indiana S. T. C.)
 Girls' Athletic Club (Indiana S. T. C.)



OLIVE MOWRY

Intermediate Ohl, Pa.

Worst Fault—Keeping still as a mouse.



PAUL RUFNER

Rural Clarion, Pa.

Greatest Joy—"Just a Song at Twilight."

Vested Choir Basketball Reserves
 Glee Club Track Squad



MRS. RUTH BOYD SHOTTS

Intermediate Leeper, Pa.

Most noted possession—"Flaming locks"

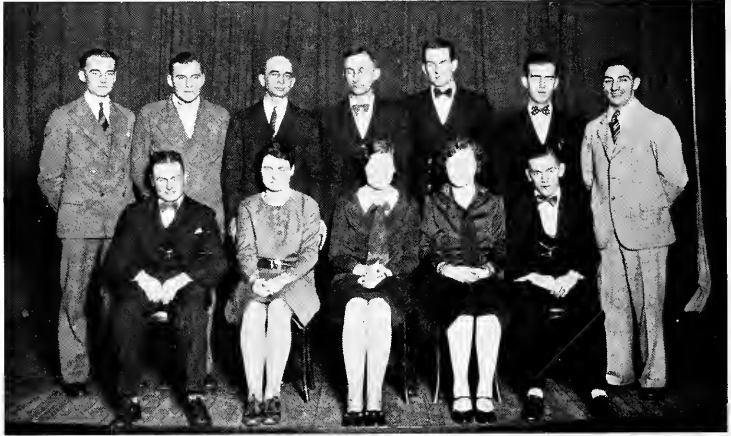
Baseball Pitcher (Summer)
 Hostess Club





In Memoriam

Raymond M. Kline



SENIOR CLASS

FRED MILLER..... *President*
 FLORENCE REAGHART..... *Vice President*
 EMMA CAULK..... *Secretary*
 HELEN MILLER..... *Treasurer*
 M. E. MACDONALD..... *Class Sponsor*

BOWSER, HARRY
 CAULK, EMMA
 CORBETT, MERLE
 DAVIS, AMY
 DEVILDER, EDWARD
 HEETER, ELIZABETH
 LARSON, WESLEY
 MILLER, FRED

MILLER, HELEN
 MOONEY, WALTER
 PRYOR, GRACE
 REAGHART, FLORENCE
 STEWART, PAUL
 STRANGES, JOSEPH
 SWEITZER, RALPH
 WEAVER, TWILA

The Senior Class of 1930 has the distinction of being the first organized four year group in the history of the school. The activities of the class have been many and varied. During the year the senior class had several banquets which were enjoyed by the members. The play "The Intimate Strangers" was presented by the class during the month of March.



JUNIOR CLASS

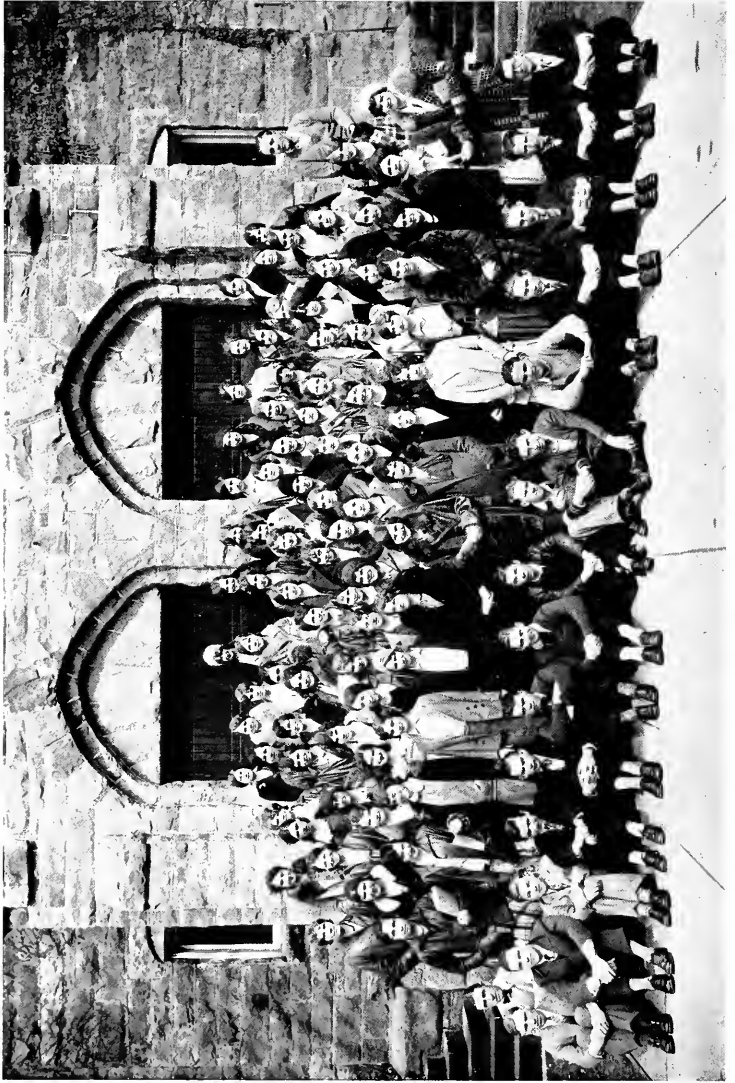
WILLIAM FLANAGAN.....	President
CLYDE MOORE.....	Vice President
JANE MAHEY.....	Secretary
RUTH CAMPBELL.....	Treasurer
H. L. BLAND.....	Class Sponsor

BASHLINE, ZOE
 CAMPBELL, RUTH
 CLARK, LAURA
 DUMARS, WILBUR
 FLANAGAN, WILLIAM
 GEIST, FRED
 GIFFORD, GEORGE

HORNE, SHERMAN
 KAISER, JOHN
 LINDQUIST, ROBERT
 MAHEY, JANE
 MOORE, CLYDE
 ROWLEY, ELWOOD
 SHERRY, MARGARET

THOMAS, RALPH





THE SOPHOMORE CLASS

SOPHOMORE CLASS

HERBERT STEELE,

JOSEPH KATA,

JOHN MOCHNIK,

ANNABEL SANDERS,

H. S. MANSON.

President

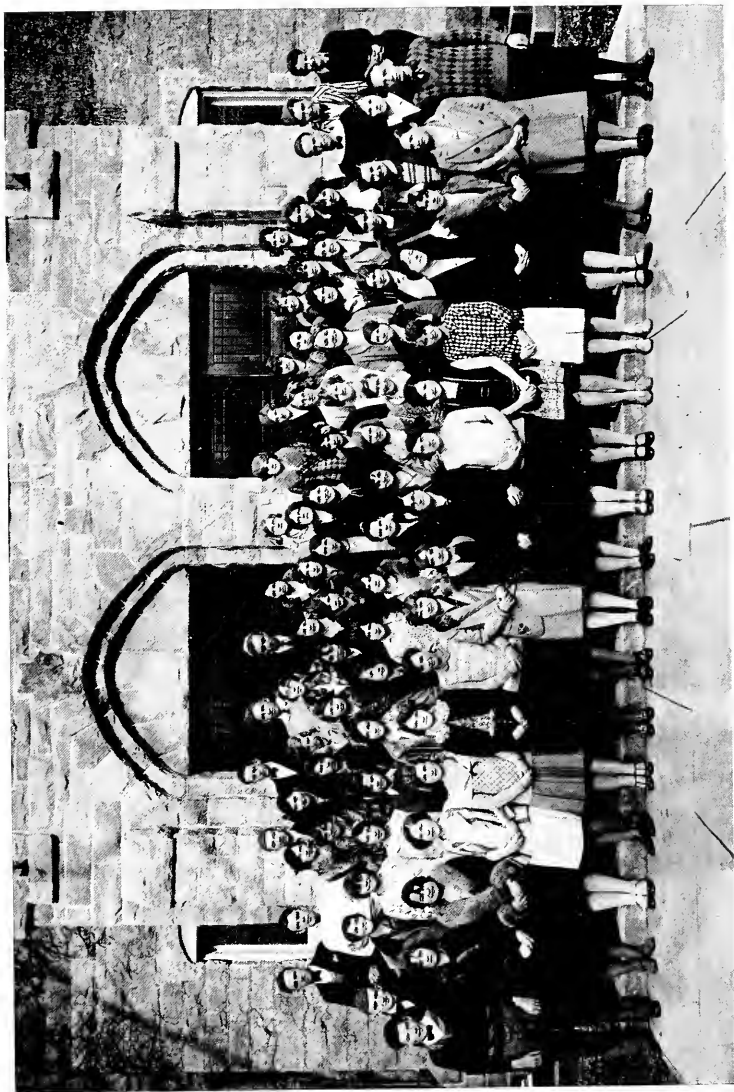
Vice President

Secretary

Treasurer

Class Sponsor

Aikens, Annabelle	Johnston, Joseph	Rhea, Stella
Anderson, Agda	Jolley, Grace	Rimer, Dorothy
Bahn, Bernice	Jury, Kathryn	Ruffner, Paul
Barger, John	Kable, Mrs. Nina	Sanders, Annabelle
Baughman, Ruth	Kata, Joseph	Santner, Estella
Beals, Gertrude	Keller, Mamie	Seibert, Helen
Brown, Hazel	Kemp, Eliza	Shaw, Elizabeth
Buchanan, Geraldine	Kirkpatrick, Bernice	Sheffer, George
Campbell, Blanche	Klingler, Martha	Shipe, Helen
Carlos, Loretta	Korb, Helen	Shoemaker, Edith
Chitester, Albert	Krauss, Margaret	Shrecengost, Edgar
Coggan, Kenneth	Kremmel, Cletus	Shotts, Ruth
Coleman, Daniel	Kribbs, Catherine	Slaughenboup, John
Cook, Lucile	Kunkle, Marion	Smathers, Mildred
Cook, Sara	Levis, Alice	Smith, June
Crick, Thelma	Loos, Geraldine	Snow, Elizabeth
Daum, Russell	Lore, Stanley	Snyder, Helen
Dickie, Ella	Lutz, Alberta	Stahlman, Helen
Dorr, Mary	Mays, Clara	Steele, Herbert
Doverspike, Ray	Mays, Rebecca	Steltzer, Irene
Dunmire, Alverna	Miller, Gladys	Stutt, Helen
Eichner, Catherine	Mochnick, John	Stutzinger, Winifred
Elder, Arthur	Monks, Alta	Stover, Velma
Elder, Dorothea	Mooney, Ethel	Stoot, Virginia
Elder, Margaret	Mowrey, Olive	Strawcutter, Ruth
Flick, Elizabeth	Mover, Winona	Streeter, Margaret
Fox, Charles	Murray, Amelia	Summerville, Margaret
Fox, Ellen	McAninch, Marie	Sweitzer, Russell
Frak, Lucy	McCabe, Cathryn	Taylor, Dorothy
Fulton, Ralph	McClelland, Ida	Thomas, Joan
Fulton, Wayne	McElroy, Florence	Tiley, Bertha
Goreck, Irene	McKee, Velma	Traister, Evelyn
Grabman, Laura	McKinley, Faye	Trenkle, Martha
Grove, Isabel	McLaughlin, Annie	Truitt, Dorothy
Harley, Laura	Neil, Frances	Turney, Maxine
Haslett, Violet	Neil, Hester	Wamsley, Florence
Havice, Miriam	Nelson, Grace	Wank, Dorothy
Heilman, Martha	Over, Twila	Weber, Arveta
Herman, Eugenia	Paine, Lillian	Wein, Gustave
Hileman, Colin	Phillips, Evelyn	Wein, Milton
Hiwiller, Verna	Pifer, Lillian	Whale, Marion
Hollingshead, Mary	Powers, Robert	White, Cora
Hook, Avanel	Reed, Margaret	Wilson, Ruth
Hunter, Irene	Reid, Edith	Wilson, Thomas
James, Frances	Reitz, Frank	Wing, Ruby
Johnson, Lucy	Rhea, Phoebe	Young, Mary



THE FRESHMAN CLASS

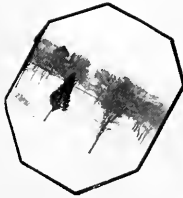
FRESHMAN CLASS

ROBERT WALKER.....	President
LEWIS WELLS.....	Vice President
EVELYN HOFFMAN.....	Secretary
PAULINE HEASLEY.....	Treasurer
MARIE MARWICK.....	Class Sponsor

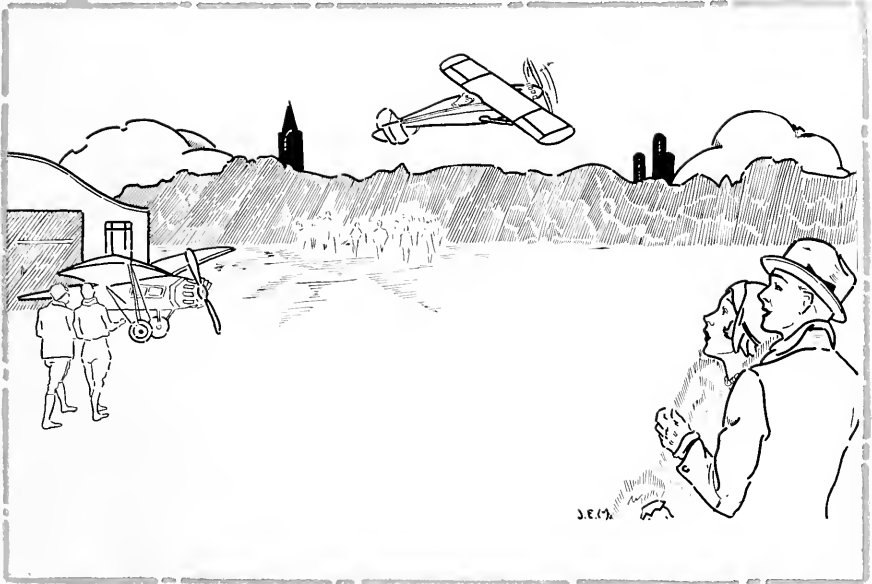
Amsler, Ida
 Anderson, Frances
 Arnold, Robert
 Ashbaugh, Harry
 Beals, Dorothy
 Beels, Hazel
 Biglia, Mary
 Billman, Martha
 Bottenhorn, Helen
 Burns, Margaret
 Campbell, Gweneth
 Cheatham, Mary
 Chikls, Helen
 Clover, James
 Cogley, Irene
 Collner, Madeline
 Conn, Nola
 Corbett, Grace
 Croyle, Mary
 Cuthbert, Elizabeth
 Cyphert, Ruth
 Danielson, Agnes
 Davis, Mary
 Dean, Elizabeth
 Diegle, Edith
 Edwards, Don
 Elder, Blaine
 Elkin, Helen
 Elliot, Claire
 Flockerzi, Alberta
 Frill, Virginia
 Frost, Lucille
 Fulton, Frances
 Garda, Daisy
 George, Mildred
 Gosetti, Tilmac
 Gray, John
 Hanst, Avenell
 Heasley, Pauline
 Heeter, Norva
 Heilbrun, Margaret
 Henderson, Florence

Hoffman, Evelyn
 Horner, Dorothy
 Horton, Rena
 Hummer, Frances
 Hunt, Alden
 Hunter, Elizabeth
 Johnson, Lorraine
 Kassel, James
 Kelso, Ralph
 Kindel, Rosetta
 King, Ruth
 Kirkwood, Virginia
 Kopp, Margaret
 Kopp, Militeen
 Krauss, Flora
 Lawler, Dorothy
 Larence, Emogene
 Lind, Ethel
 Logue, Mildred
 Mahaffey, Donald
 Mahle, Ida
 Mohny, Ruth
 Mooney, Gladys
 Morgan, Retha
 Mott, Arlene
 Murray, Sara
 McAfoose, Robert
 MacDonald, Mary Ellen
 McDowell, Ida
 McGraw, Harriette
 McManigle, Belva
 McNutt, Robert
 Neal, Frank
 Neil, Grace
 Newell, Elizabeth
 Pepper, Dorothy Esther
 Pressler, Violet
 Ramsey, Phillip
 Rea, Twila
 Reed, Sara
 Riddle, Ruth
 Reimer, Isabel

Rossman, Hazel
 Rothrock, George
 Rupert, Helen
 Russell, William
 Sayers, Mary
 Schierberl, Marcella
 Shankle, Edward
 Shawkey, Lucille
 Shorts, Mildred
 Shreffler, Dorothy
 Slike, Olive
 Smith, Carl
 Smith, Grant
 Snyder, Merrill
 Southard, Louise
 Starr, Florence
 Stevens, Rachel
 Stewart, Pearl
 Stewart, William
 Stover, Orris
 Strattan, Florence
 Swanson, Dorothy
 Swartzfager, Elsie
 Taylor, Kenneth
 Updegraff, John
 Vantassel, Clyde
 Walker, Robert
 Wallace, Louise
 Weaver, Elvin
 Wells, Lewis
 Wenner, Leland
 Whaley, Marjorie
 Whitehill, Paul
 Whilhelm, Samuel
 Wilson, Estella
 Wilson, Helen
 Wyant, Florence
 Zilhaber, Margaret
 Miller, Joseph
 Kennedy, Emma
 Hahn, Vivian
 Williams, Kenneth



ACTIVITIES





WOMEN'S STUDENT GOVERNMENT

GERTRUDE BEALS..... *President*
 BERNICE BAHM *Vice President*
 MARGARET STREETER..... *Secretary*

STUDENT COUNCIL

HELEN KORB..... *President*
 REBECCA MAYS..... *Vice President*
 KATHERINE KRIBBS..... *Secretary*
 STELLA RHEA..... *Treasurer*

SENIOR MEMBERS

VELMA STOVER
 PHOEBE RHEA

ARVETA WEBER
 ANNABELLE SANDERS

JUNIOR MEMBERS

MARGARET KOPP

HAZEL BEALS

HAZEL ROSSMAN

The Women's Student Government aims to develop the highest ideals in every student by maintaining a high standard of honor in all matters of personal conduct, and by upholding loyally the finest traditions of the school. The council, which is composed of fifteen members, twelve Seniors and three Juniors, is the administrative body. A meeting of the council is held each week to discuss students for the betterment of the student body.



Y. W. C. A.

GRAYCE JOLLEY
 BLANCHE CAMPBELL
 HELEN STAHLMAN
 GERTRUDE BEALS
 KATHRYN McCABE
 GERALDINE BUCHANAN
 MARIE McANINCH
 MARTHA KLINGLER
 MARTHA TRENKLE
 MARY DORR
 ARVETA WEBER
 MARY HOLLINGSHEAD
 MARGARET STREETER

President
Vice President
Secretary
Devotionals
Music
Treasurer
Publicity
Morning Watch
Social
Foreign Missionary
World Fellowship
Home Missionary
Pianist

No one can ever measure the results of the Y. W. C. A. work. The Y. W. C. A. strives for attitude, ideals and leadership. It endeavors to give each girl an opportunity to develop her personality through active participation in her program. By means of "Y" greeting, receptions and "Big Sister-Campaign", the organization attempts to create a home-like atmosphere and a feeling of friendliness toward our Freshmen girls.

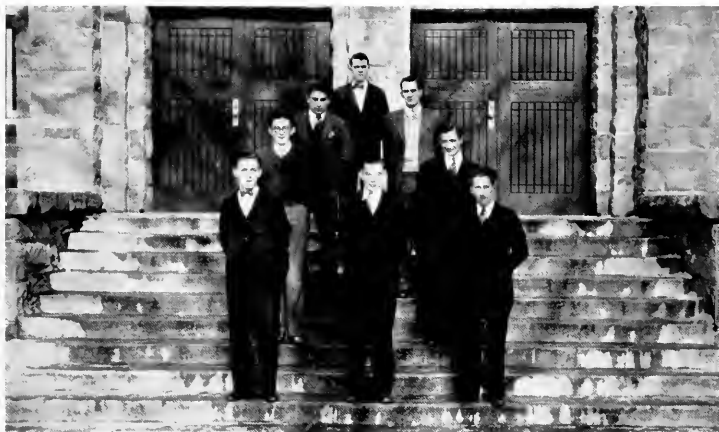
Each year two girls are sent to the Eagles Mere Conference to give them a background for their great work. At Christmas time, food and clothing are sent to needy families. The programs have varied from pantomimes, music and devotions, to camp-fires on our hillside. The Y. W. C. A. is very grateful to Miss Sims and Mrs. Ralston for their invaluable guidance.



MEN'S STUDENT GOVERNMENT

PAUL STEWART..... *President*
ROBERT LINDQUIST..... *Secretary*

*T*he Men's Student Government represents all men residing in the dormitory. Through the administrative body all problems relative to self-government among the men are considered. The government is under the supervision of the Dean of Men, Mr. Hoyt. Very commendable service is rendered by this body in maintaining co-operation among the men in the observance of the rules and regulations common to dormitory life.



Y. M. C. A.

ROBERT LINQUIST.....	President
KENNETH COGGAN.....	Vice President
CHARLES FOX.....	Secretary
STANLEY LORE.....	Treasurer
JOHN MOCHNICK.....	Membership
PAUL STEWART.....	Devotional
WILLIAM FLANAGAN.....	Social
CLYDE MOORE.....	World Fellowship

The Young Men's Christian Association is one of the oldest organizations in the College. This fellowship has advanced with the school, and it is a vital factor in the lives of our men. The aims of the Y. M. C. A. are:

1. To promote a moral and Christian spirit on the campus.
2. To encourage a strong campus friendship among the men.
3. To challenge students toward, "Service for Others".



JOURNALISM CLUB

MILTON WEIN.....	<i>President</i>
PEPPER, WHITEHILL.....	<i>Associate Editors</i>
FRANCES NEIL.....	<i>Secretary</i>
LEWIS WELLS.....	<i>Business Manager</i>
MISS BERTHA V. NAIR.....	<i>Faculty Advisor</i>

Membership to the Club was limited to those interested in journalistic work. Programs during the year were planned in such a manner that a correlation of the theoretical and practical features of journalism were established. The school paper, the "Clarion Call", was the project of the club. This contribution remains as an established favorite on the campus. The paper has endeavored to report school activities of all phases and by so doing has served both the School and the students.



HOSTESS CLUB

FIRST SEMESTER

BLANCHE CAMPBELL . . . *President*
 ANNABELLE SANDERS . . . *Vice President*
 FRANCES JAMES . . . *Secretary-Treasurer*
 HELEN KORB . . . *Program Chairman*
 NOLA CONN . . . *Social Chairman*

SECOND SEMESTER

MARY HOLLINGSHEAD
 LUCILLE FROST
 EVA GOODYEAR
 LORETTA CARLOS
 MRS. SHOTTS

The purpose of this club is to help each member acquire social poise and to be good hostesses at any social affair. The work of this club consisted of a study of the etiquette of the dining room, campus and other social affairs. The club also sponsored the Hallowe'en Party and the Christmas Party to which all the students and faculty were invited. The Club was under the leadership of Miss Sims and Mrs. Ralston.



ART CLUB

FIRST SEMESTER

ELSIE SWARTZFAGER . . . *President* NOLA CONN
AVANELL HANST *Vice President* ESTHER PEFFER
VELMA STOVER *Secretary-Treasurer* JOSEPH MILLER
MISS HAZEL SANFORD *Faculty Advisor*

SECOND SEMESTER

The great interest displayed in art work necessitated the division of the art club into two groups, each group meeting bi-weekly. The object of the art club is to develop the aesthetic side of student life and at the same time the practical side through instruction in practical arts. An unusual feature of the club programs was the social activity which helped to create a diversity of interest.

The popularity of the club can be attributed to the efficient supervision of Miss Sanford.



TRAVEL CLUB

FIRST SEMESTER

SHERMAN HORNE
 AMY DAVIS
 HAZEL BROWN
 ARVETA WEBER

President
Vice President
Secretary
Treasurer

SECOND SEMESTER

THOMAS WILSON
 JOHN KAIZER
 DOROTHY WANK
 MARGARET ZILHAVER

Through the tireless efforts of the advisor, Miss Keithan, the Travel Club enjoyed a successful year. The members received much information and enjoyment from their many programs. An important feature of the club activities was a banquet held in the college social rooms February twenty-fifth which was very well attended and enjoyed.



COLLEGE PLAYERS CLUB

FIRST SEMESTER

ROBERT LINDQUIST.....*President*.....
 CLYDE MOORE.....*Vice President*.....
 PHOEBE RHEA.....*Secretary*.....
 PAUL STEWART.....*Treasurer*.....
 Miss MARIE MARWICK.....*Faculty Advisor*

SECOND SEMESTER

STANLEY LORE
 IDA MCCLELLAND
 STELLA RHEA
 GERTRUDE BEALS

The College Players Club has just closed another successful year. Due to the large number of applicants, it was necessary to limit the club membership to forty-five. Membership is determined by a series of tryouts held each fall. During the year, the club presented its annual program of three one-act plays: "The Florist Shop," "The Valiant", and "Spreading the News". Other plays were presented in the Club and at Chapel.



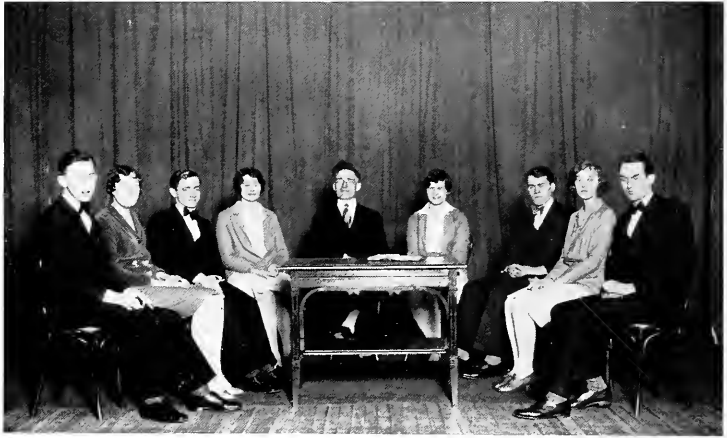
Front Row: HELEN MILLER, ROSETTA KINDEL, FLORENCE REAGHART, IDA McCLELLAND.

Back Row: WALTER MOONEY, MILTON WEIN, WILLIAM FLANAGAN

Absent from picture: MARY CROYLE.

DEBATING CLUB

The Debating Club has been augmented by several new debating enthusiasts who, together with the veterans helped to make the inter-collegiate debating a success. The schedule included debates with Edinboro, California, Slippery Rock, Indiana, Mansfield and Bloomsburg State Teachers Colleges. The question for debate was:—Resolved: That All Nations Should Adopt a Plan of Complete Disarmament, Excepting Such Forces as are Necessary for Police Purposes. The teams were very ably coached by Mr. Merritt Davis.



VESPER COMMITTEE

Representatives from the Y. M. C. A. and the Y. W. C. A. constitute the personnel of the Vesper Committee. The primary objective of the committee is to plan programs of interest that will lend themselves to spiritual and intellectual development. The efforts of the committee have been well rewarded by the renewed interest in the Vesper Services of the past year. Mr. MacDonald was a great help in directing the work of the group.





VARSITY "C" CLUB

FIRST SEMESTER

HERBERT STEELE *President*
ROBERT LINDQUIST *Vice President*
ELWOOD ROWLEY *Secretary*
. *Treasurer*

SECOND SEMESTER

ROBERT LINDQUIST
ELWOOD ROWLEY
PAUL STEWART
CLETUS KREMME

All letter men in the college athletics are eligible for membership in the "C" club. The purpose of the Varsity "C" Club is to promote a co-operative spirit in the college, and to conduct all athletic activities.

During the year the club sponsored the annual football banquet, the spring track meet, a benefit show, and all athletic activities. The club has recently acquired a new furnished club room on the third floor of Seminary Hall.

OTHER ACTIVITIES

During the past year several new extra-curricular clubs have appeared upon the Clarion Campus. Notable among these are the Outdoor Club, which seeks to develop nature lovers; the Faculty Club, noted for teas and its book circle; and the Manuscript Writing Club.

Fraternities are also among the recent developments around the college. The pioneer of these is a local social fraternity known as Alpha Gamma Phi. Other local fraternities are being established and also chapters of two national honor fraternities; Pi Gamma Mu and Phi Sigma Pi.





SEQUELLE STAFF

WALTER MOONEY, *Editor-in-Chief*

Associate Editor, STANLEY LORE

ROBERT LINDQUIST
GRAYCE JOLLEY

Business Managers

RALPH THOMAS

Literary Editors

WILBUR DUMARS

Art Editors

JANE MAHEY

MARY HOLLINGSHEAD

HESTER NEIL

Athletic Editors

JOSEPH KATA

MARTHA KLINGLER

Organization Editors

JOHN MOCHNICK

PAUL STEWART

Joke Editors

CLYDE MOORE

HELEN STITT

MARGARET STREETER, *Snap-Shot Editor*

KATHERINE McCABE, *Calendar*

Typists:

CLETUS KREMMEL

LUCY FRAK

JOAN THOMAS

To this group has been delegated the task of publishing this annual of the graduating class of 1930; and only through the co-operative efforts of the entire body has it been made possible.

A PRAYER

It is my joy in life to find,
At every turning of the road,
The strong arm of a comrade kind
To help me onward with my load.

And since I have no gold to give,
And love alone must make amends,
My only prayer is, while I live,
God make me worthy of my friends.

Frank D. Sherman

MUSIC





MUSIC DIRECTORS

Mr. and Mrs. H. L. Bland, deserve much praise for the directing and management of extra-curricular music activities. Although they are kept extremely busy by music classes, institute engagements and private lessons, they have sponsored and led the Orchestra, Girl's Glee Club, Mens' Glee Club and Vested Choir through a very successful year.

The greatest boast of Mr. and Mrs. Bland is that over forty percent of the students are participating in extra-curricular music.



COLLEGE ORCHESTRA

To the College Orchestra we owe our appreciation for the splendid musical programs which were rendered at chapel meetings, and especially at the Lyceum numbers.

With practically a new organization of the orchestra this year, Mr. Bland, the inspiring and energetic leader, has accomplished a great deal in adding to student interest in music and the new music program inaugurated on the college campus. Mr. Bland has shown to the members the necessity for attention to details of musical technique and expressions. A well balanced organization has resulted from his work.



GIRLS' GLEE CLUB

MARIE MCANINCH..... *President*
 ESTELLE SANTNER..... *Vice President*
 BERNICE BAHM..... *Secretary-Treasurer*

Membership in the Girl's Glee Club is determined by a system of tryouts held at the beginning of the school year. Twenty-four are selected to comprise the squad. Intensive practices are held for numerous concerts given during the school year. These concerts include local engagements, radio broadcasts, and appearances in the vicinity of Clarion.

An intensive concert tour which included in its itinerary programs in the leading cities of North-western Pennsylvania during the Easter Vacation was a feature of the past year's work.



MEN'S GLEE CLUB

JOHN MOCHNICK..... *President*
RUSSELL DAUM..... *Vice President*
ROBERT WALKER..... *Secretary-Treasurer*

The Men's Glee Club is one of the most popular men's organization on the campus. This organization was founded this year and of the numerous candidates twenty-four men were selected. The Club has appeared before the students on several occasions. Several engagements were filled and the club has broadcast over the radio.



VESTED CHOIR

GRAYCE JOLLEY *President*
GERTRUDE BEALS *Vice President*
VIRGINIA FRILL *Treasurer*

One of the most unique organizations at Clarion is the Vested Choir. It is one of the largest musical organizations on the campus, comprising a membership of forty young men and women. Through this group the Vesper Services have been made more interesting. The choir has participated in programs given in the vicinity of the college. Much of the success is due to the directorship of Mr. H. L. Bland.



Left to right: JOHN KAISER, Director, EDGAR SCHRECEGOST, ROBERT WALKER, JAMES MILLER, STANLEY LORE, CHARLES FOX, DONALD MAHAFFEY.

COLLEGE DANCE ORCHESTRA

*T*he College Dance Orchestra, representing the musical talent among the men, has provided syncopation on many occasions to the lovers of the dance. The orchestra has been one of the most appreciated organizations on the campus. The orchestra is under the leadership of John Kaiser.



SPORTS





FOOTBALL SQUAD

Front Row: Doverspike, Captain Moore, Gray.
Second Row: Smith, Seeds, Stranges, Rowley, McAboose, Kaiser.
Third Row: Thomas, Mooney, Kinn (Capt.-elect), Powers, Barger.
Fourth Row: Taylor, Russell, Lindquist, Chitester.
Back Row: Coach Jones, DuMars, Manager Stewart

FOOTBALL SEASON 1929

SCHEDULE

AT HOME

October 19, 1929	C. S. T. C.	0	Mansfield	13
November 2, 1929	C. S. T. C.	0	Edinboro	20
November 23, 1929	C. S. T. C.	7	Slippery Rock . . .	13

AWAY

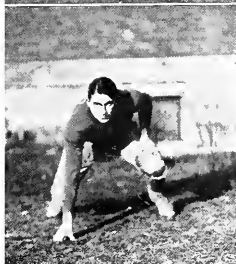
October 5, 1929	C. S. T. C.	0	Millersville	13
October 12, 1929	C. S. T. C.	0	Indiana	33
November 9, 1929	C. S. T. C.	7	California	14
November 16, 1929	C. S. T. C.	12	Lock Haven	38



JOHN O. JONES

Coach

Coach Jones has completed his third year as head mentor of the Purple and Gold. In his three short years with us he has shown that he knows football. The results of the past three years were very gratifying to all. Coach Jones deserves to be congratulated for the growth of athletics in Clarion State Teachers College.



JOSEPH KATA

Tackle

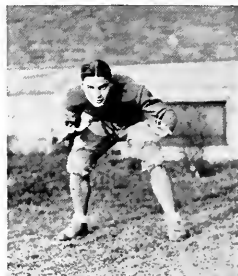
CAPTAIN ELECT

Kata was one of the hardest workers on the squad, always out for practice and fighting hard for C. S. T. C. He played with a consistency and vigor that surpassed his record of last year. Kata did much toward stopping the plays of the opposition. The confidence placed in him by his teammates won the captaincy of next year's team. With Kata leading the squad Clarion should make a record for herself.

ELWOOD ROWLEY

Quarterback

Rowley, better known as "Ben", played some great games for Clarion this year. The manner in which he ran the team at quarter was a credit to him. He is fast and is known for his kicking. "Ben" shows promise of developing into a first class quarterback. He also has a weakness and it is shown toward the girls.



WILLIAM RUSSELL

End

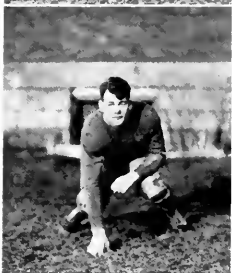
This was Russell's first year on the squad, and he proved to be one of the best players on the team. He grew better with every game and his end was not circled once in the last game. With Bill as a wing next year, we are sure that opposing teams must watch their step.



HERBERT STEELE

Guard

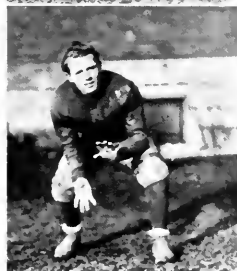
"Herb" played his usual good game at the guard position. He could tear holes in the opposing line at will and also adapt himself to any formation any opponent tried to pull, showing the he had a thorough knowledge of the game. "Herb" promises to be one of the best next year.



JOHN BARGER

Guard

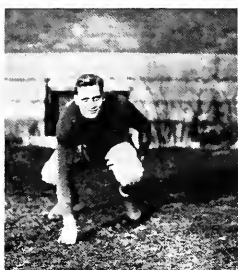
"Fat" playing his first year as a regular was one of the big men in the line and handled his job effectively. "Fat" when determined was a hard man to take out, a fact discovered by more than one opponent. John still has two more years of varsity football and should develop into one of the best guards in this section.



JOHN GRAY

Fullback

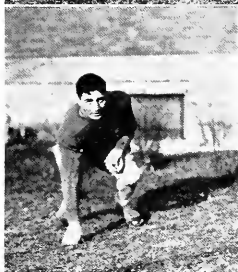
John Gray, better known as "Cocky", playing his first year with the Purple and Gold made a name for himself at fullback. He was one of the fastest men on the squad. It took only one tackle by "Cocky" to convince the opposition he was a regular steam roller on the defense. We hope Gray will be with us next year.



DEWEY DuMARS

End

Dewey has played varsity football for two years. At the kick-off or after a punt one knew that "Frenchy" was going to be among the first to be near the ball when it landed. Although injuries kept Dewey out the greater part of the season, he played in enough games to gain the coveted "C".



JOSEPH STRANGES

Halfback

With the graduation of Joe Stranges, the Purple and Gold will lose a born athlete. Joe has won three letters each year. He is one of the pluckiest halfbacks that the school has turned out. There was just one thing Joe liked better than smothering opponent's plays; that was tackling a player in the open. If you want Joe to smile ask him about the Slippery Rock game.

ROBERT POWERS

Tackle

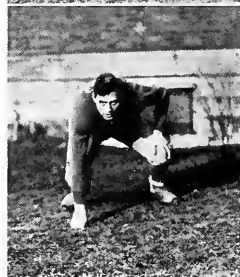
"Bob" was a tackle who was in every play, always hitting his opponents hard. He was a plugger and fighter from the start to the finish. His defensive and offensive strength made him a dependable lineman. This is "Bob's" second year, and we expect great things from him next year.



WALTER MOONEY

Guard

Walter was a general utility man, being used at either a tackle or guard position. His work at the guard was always unflinching, and Clarion loses one of its hardest workers. Next year's squad will sadly miss Mooney in the lineup.



CARL SMITH

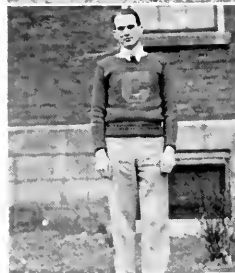
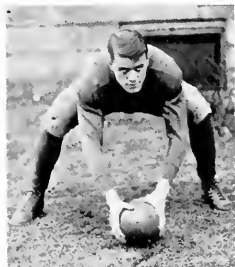
Halfback

One of the hardest workers on a hard working squad, always out for practice and doing his bit with never a grumble was "Bully", who understudied for Kaizer at halfback. This was "Bully's" first year, and he played in enough games to show the Purple and Gold followers that he had ability.

JOHN KAISER

Halfback

A harder worker that "Von" could not be found. "Von" played with consistency and determination. Kaiser often got away for a good run. He will not soon forget the California game. He is a second year man and, if he continues to progress in the future as he has in the past, he will give even a better account of himself next year.



ROBERT LINDQUIST

Center

"Bob" has won a "C" for the past two seasons. Although not a heavy weight, he was the bulwark of the Purple and Gold-line. California and Slippery Rock tried plunging through center, but found "Bob" always in the way. We all hope "Bob" is with us next year.

PAUL STEWART

Manager

This is Paul's second year as football manager. With his graduation we shall miss an energetic man. Paul was well liked by the boys, for he had a good word for all. His work was always efficient and timely. We wish Paul success in his future jobs as manager.



MEN'S BASKETBALL

SCHEDULE OF 1929—1930

AT HOME

C. S. T. C.	23	Franklin Company L.	28
C. S. T. C.	25	Youngstown Y College	20
C. S. T. C.	22	Slippery Rock S. T. C.	25
C. S. T. C.	47	California S. T. C.	21
C. S. T. C.	19	Edinboro S. T. C.	32
C. S. T. C.	23	Indiana S. T. C.	20

AWAY

C. S. T. C.	20	Franklin Company L.	56
C. S. T. C.	24	Indiana S. T. C.	27
C. S. T. C.	22	Youngstown Y. College	41
C. S. T. C.	32	California S. T. C.	50
C. S. T. C.	22	Edinboro S. T. C.	32

TOTAL POINTS

C. S. T. C.	279	Opponents	352
-------------	-----	-----------	-----

BASKET-BALL LETTER MEN

Stranges completed his fourth year of basketball for the Purple and Gold. Joe always played with consistency and determination, and his loss will be felt greatly next year.

Russell, playing his first year for C. S. T. C., took over the center position; which he handled very efficiently. Much is expected of "Bill" in the future.

Williams, running mate of Stranges, was the pivot man of the Clarion team. Although "Jock" came to school the second semester, he gained enough points to make him high scorer. "Jock" should never forget the California game.

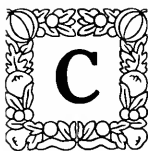
At guard, Moore displayed ability at both offense and defense. Moore was very good at breaking up the opposing team's passes and plays.

Kata, playing the back guard with Moore, proved to be an excellent guardsman. He handled the ball well and was a steady floorman.

DuMars, at guard, was a steady and determined player. Dewey shows great ability, and we expect him with us next year.

Fulton started his basketball participation the second semester. He developed rapidly the confidence and steadiness of a veteran.

Barger, the varsity Basket-ball manager, deserves much credit for the efficient conducting of the past season.



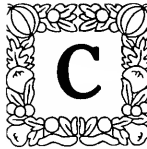
TRACK

Clarion State Teachers College track team of 1929 experienced a successful season on the cinder path. A wealth of material answered the coach's first call early last spring and all were eager to win a place on the varsity. In a triangular meet held at Indiana, Clarion took second place. The winner of this meet was not decided until the final event, the relay, where Indiana just nosed out the Purple and Gold runners.

The fellows that placed in the events were as follows:—100 yard dash, Hoak second; 220 yard dash, Hoak second; Half mile, Linquist second; mile, Rowley first; Javelin, Kline first; Kaiser second; Shot put, Kaiser third, High Jump, DuMars second, Johnston Third; Broad Jump, Stranges second; DuMars third; Relay third.

Captain—1930—Ellwood Rowley

Coach—1930—John O. Jones.





HOCKEY

Hockey was by far the best this season. The Clarion girls were so full of enthusiasm that the weatherman couldn't help but smile favorably upon them and be at hand ready to help them. The season started with vim and ended with three outstanding results.

By division of the physical education classes into various teams, an intra-mural tournament was held from which those under the captaincy of Florence Reaghart emerged as victors.

The Junior and Senior girls competed in three games, playing for points. Although the Juniors started with the lead 2-0, the Seniors were finally victorious 6-2. Scores of each game are respectively, 2-0 Juniors; 2-0 Seniors; 4-0 Seniors. Total 6-2 Seniors.

From the Junior and Senior teams a varsity was chosen.

VARSIITY LINEUP

HAZEL BROWN
ALTA MONKS
ALICE LEVIS
STELLA RHEA
GERALDINE LOOS

MARY CHEATHAM
VIRGINIA FRILL
TILMAE GOSETTI
RUTH RIDDLE
RUTH CYPHERT

FLORENCE REAGHART



GIRLS' BASKETBALL

Basketball was an outstanding feature of the girl's athletics this year. The enthusiasm for hockey was carried over into basketball, but with more fervor.

The Juniors and Seniors contended in a series of five games, the winner of the majority to be acclaimed champions.

The first game of the series, played on January 22, was one of much excitement and anticipation. The Seniors at the end of a somewhat easy struggle left the field of combat as winners with a score of 15-10. The second game fought by two well matched teams closed with the score a tie, 9-9. In the third game the Juniors rallied, carrying this spirit throughout the remaining games, and sweeping all before them with the following scores: 10-7; 10-6; 12-8.

Probably the most sensational game of the season was that played between the Clarion High School and the College Girls Varsity. Although the varsity lacked the splendid team-work of the Clarion lassies, they are to be congratulated upon their good sportsmanship.

HIGH SCHOOL		LINEUP		VARSITY	
LACKEY	F	F	COOK
HOSACK	F	F	HOFFMAN
WILHELM	C	C	COLLNER
WILSON	SC	SC	RHEA
CROOKS	G	G	KLINGLER
KLINE	G	G	ROSSMAN
Substitutions: H. S.—LOGUE, CROOKS; COLLEGE—LIND					
Referees: MISS HELEN BARTON, RUTH CROOKS					

HUMOR



CALENDAR

MARCH—1929

- 2 The Handsome Heroes from California beat us by a score of 25—20.
4. Inaugural speeches from Capitol prove very interesting to few students.
8. Boys journey to Slippery Rock and report a few good looking girls.
12. Varsity "C" Club presents "The Mascot", and "Dolly" Williams' Dancing Dolls."
13. Bernie, Helen, Alta and Kay attempt to sing at Y. Giggles prevail through the song.
- 15 Election of May Queen attendants. Four out of five have "it"!
16. McKees Rocks teachers display their basketball ability at our expense.
20. Helen Stitt seen out riding with her latest weakness, Who? Why, Dovey, of course!
21. College Glee Club gives Brockway a treat.
22. The Social Room becomes an Irish Free State for one night.
23. Everybody happy? ? ? Of course—Easter Vacation.

APRIL—1929

1. Rain and snow dampen spirits at our arrival.
- 10 Y. W. C. A. officers installed.
17. Miss Perry becomes a private detective.
18. Mr. Bland presents his 'Girls' Glee Club' in a very successful concert.
23. Bountiful Banquet for Girls' Basketball team.

MAY—1929

3. Senior Class presents "Mr Pim Passes By".

4. Mother's Day celebrated at the College.
10. Thrills and heart throbs are the results of our most successful "Spring Dance".
12. Rain! Rain! and More Rain?
14. Skip Day and Rain go hand in hand. What Junior could forget the Fair Grounds, Science Hall, Mr. Curll and Dawn! ! !
15. Mr. Fox proves to be very popular on Fourth Floor with Junior girls. We wonder whether we frightened him!
16. Mr and Mrs. Bland entertain Girls! Glee Club with Senior Farewell Banquet
17. Sequelles out. Look at the picture of me. Look at this writeup! and Faculty picture!
18. High School "Children" entertain we College Folks at Music Festival.
19. High School Track Meet at Fairground. Coach's song tonight—"Sleep, Sleep, Sleep!"
22. Teaching of Geography class give Glass Plant officials a treat.
23. Cramming for those finals! ! ! Student Council banquet. Everyone reports a very good time.
24. A scrappy time for all at Peg's party.
25. May Festival with rustic scenes and Martha Lou dancing most gracefully. Seniors step out on Juniors at Alumni Banquet.
26. Time grows near when Seniors will be leaving. Baccalaureate is our first warning.
28. Commencement exercises with many tears and sad faces. Goodbye until next September.

SEPTEMBER :1929;

9. Pioneer Garden seems mighty inviting to sophisticated Seniors.
10. Sun tan, ankle socks and long hair return with some three hundred students.
11. Jessie's and Bill's marriage announced to the Campus Clan.

12. We wonder why Ken Coggan is so blue and lonesome, too!
14. "Y" reception with the Faculty at their old stunts again.
15. Sam Wilhelm treated Hester to a bag of chocolates as an after church treat.
16. Gertrude, how could you frighten those demure little Freshies at Dog Court!

OCTOBER—1929

3. Quiet reigns on Third Floor after one of those gatherings in "Y" parlor.
4. Hostess Club Weiner Roast with Freshies working awfully hard. Boys bow in defeat to Millersville.
6. Minister from Meadville tells Faculty members just why they should not attempt to break up campus cases.
7. G. Rothrock and R. Walker comprise orchestra for dancing tonight.
Just who has Smitty's and Rowley's teeth!
8. Health and Hygiene class plans to edit a new book.
9. Mary Hollingshead "faws down an' goes boom" in Dining Room. Embarrassing.
11. Miss Green presents students with those lovely "Flunk Slips".
12. Indiana played Clarion. A certain young man enjoyed Indiana's fire gong immensely.
14. First Hockey game of season. Yea, Freshies.
18. First pep meeting, with snake dance introducing Wells, Shankle and Van Tassel as cheer-leaders.
19. Lady Luck comes with Mansfield boys. Girls! Beware!
20. Mansfield boys leave town with out breakfast. They don't mean well.
31. And the Goblins 'll get 'cha if you" don't watch out! The weirdest Hal-lowe'en Party!

NOVEMBER—1929

1. Glee Cluh has taffy pull at Mr. and Mrs. Bland's. "Mom" and "Top" certainly are the real thing! !
2. Edinboro plays here. Large crowd—Fifty Edinboro rooters. Fourteen local rooters. Where's our sportmanship?
3. We get a peep at Mr. Hoyt's reason for "Why boys go home."
4. J. O. Jones reports that he almost shot a rabbit on his first hunting trip.
5. Election Day. No Mail. Phoebe and Hep look disheartened. J. R. Reed Company present beautiful concert at Chapel.
6. Freshman—Sophomore hockey game. Of course, the Sophomores won.
7. Ed Shankle declares his right in behalf of Mary Lou.
8. Glee Club attends Kiwanis banquet. Hester just loves Beta Pi(ε), so we are told.
9. Clarion plays at California, Yea! ! ! Kaiser! ! Dewey's car becomes a local bus over the week end.
10. Miss Nesbitt just couldn't forget us. Jerry Loos seems lonesome for a certain young man.
11. Student Council celebrates Armistice Day camping, dorming and social privileging.
13. Grades are out. Dining Room just buzzing with a review of the first five letters of the alphabet! !
16. Boys are defeated at Lock Haven.
24. Miss Marwick presents Dramatic Club Plays in Chapel. Mirth, tears and glee marks the occasion.
25. And so to home for Thanksgiving Vacation.

DECEMBER—1929

2. Turkey and Greece prove mighty rivals during vacation.
3. Look at that picture! Terrible.

4. When does Christmas vacation begin!
15. Seminary Hall boys chant hymns of joy and Christmas at 3 A. M. on Sunday Morning.
18. Miss Marwick entertains College Players Club at a lovely dinner.
20. Presents for one and all with lots of variety at our annual Christmas party.
21. Vacation and home for sixteen days, rest and recreation.

JANUARY—1930

5. Santa was generous to everyone, even with New Year resolutions.
8. Boys make first appearance before appreciation audience.
10. Sequelle Staff begins advertising campaign by snapping picture of Mr. MacDonald's Sociology class.
13. Grayce celebrates her birthday at Y Cabinet meeting with lots of "goodies".
14. Becht Hall Council believes in saving midnight oil. No light cuts.
18. Football Banquet with Dr. Steele the principal speaker. By the way, who took the football?
23. Girl's Glee Club broadcasts from W. L. B. W.
24. Our Training School worries are over.
25. Dig down into the old pocket-book for the last time, Seniors! !
27. Registration brings new forms, new faces and mighty nice students.
28. "Cotter's Saturday Night" with lights on for the benefit of our Balcony friends.
29. College bows in defeat to the Clarion Cagers.

FEBRUARY—1930

2. Bill Russell, the original whispering baritone, makes his debut at church service in town.
5. Freshman—Sophomore girls' basketball game 9-9. Plenty of pep displayed on side-lines.
8. Clarion bows to Slippery Rock by a narrow score.
14. Valentines from far and near attend Junior prom. Oh! what a night!
15. Sleep reigns supreme over C. S. T. C.
16. Inter-City Symphony entertains the educated of Clarion.
17. Coach Jones seen hoboing Hoodlebug tracks. An avocation or habit?
18. Faculty overwhelm Seniors 26-5!!
19. Basketball game between Freshmen and Sophomore girls. Third Floor Sophs stick together in their team work.
21. Louise Hemphill pulls the wool over our eyes by diving into the sea of matrimony.
22. Summer days are here again. "Campus Case" fever is more contagious.
24. Dot Wank sacrifices herself in behalf of Sophomores at exciting basketball game.
27. Mr. Curl is more than working for that new lounge. So thoughtful of the Trustees to think of those Sunday night dates.
28. Greatest day in C. S. T. C. history: Boys defeat California by an overwhelming score of 47-21. Indicative of what a new gym and a good team can do. Both debating teams possess such oratorical powers that Edinboro is defeated both at Clarion and at home.



CLASS ROOM ECHOES

Miss Sims:—"Where is the rest of the class to-day?"

Ruth Campbell:—"They stayed at home to give us a chance to catch up."

☪ ☪ ☪

Prof. Huston:—"John, can you tell me who killed Lincoln?"

J. Barger:—"No sir. You see I've been out of town the past week with the football team."

☪ ☪ ☪

Mr. Manson:—(Everyday Science Class) "And so we find that heat expands things and cold air contracts them. Can anyone give an example of this?"

Geo. Gifford:—"Yes sir. The days are longer in summer."

☪ ☪ ☪

Miss Boyd:—(English Literature Class) "Can you tell me anything about John Milton?"

Tom Wilson:—"Well, he got married and wrote 'Paradise Lost'. Then his wife died and he wrote 'Paradise Regained.'"

☪ ☪ ☪

Miss Barton:—"What is the difference between dancing and jumping?"

Shankle:—"I dunno."

Miss Barton:—"I thought so."

☪ ☪ ☪

Robert Lindquist:—"What's protoplasm?"

Prof. Manson:—"It's the living matter in the cell."

R. Lindquist:—"Oh, I see, a jailbird."

☪ ☪ ☪

J. O. Jones:—"You're not at all muscular. Why don't you exercise with dumb bells?"

Gus. Wein:—"I do, Mr. Jones. You should have seen the one I had last night."

☪ ☪ ☪

Miss Keithan:—"Why does Missouri stand at the head of mule raising in the United States?"

Arthur Elder:—"Because the other end is too dangerous."

☪ ☪ ☪

Miss Nair:—"What is a dogma?"

Frank Reitz:—"A mama dog."

Prof. Wilkinson:—(Astronomy Class) "Charles, name some of the heavenly bodies."

Charles Fox: "Blondes and Brunettes."

• • •

Miss Keithan:—"Name the four seasons."

Ella Dickie:—"Salt, mustard, vinegar and pepper."

• • •

Prof. Huston:—"Mahaffey, how is it that you and Barger have handed in identical answers in my history class?"

Mahaffey:—"Have you never heard sir, that history repeats itself?"

• • •

Mr. Wilkinson:—"How can the experts tell when there's going to be an eclipse?"

Mrs. Weaver:—"Oh, that's easy. Can't they read the papers like the rest of us?"

• • •

Do you think that:

1. If the library should close, would Sally Reed?
2. If the kitchen maids should strike, would Sara or Lucille Cook?
3. If he had the chance would Herbert Steele?
4. If Church were held in the chapel, would Frances and Hester Neil?

• • •

Clarion, Pa.
Nov. 1, 1929.

"Honorable Father:

This most humble son of thine
Sits down this day to pen a line
To let you know he is feeling fine,
That college life is so sublime.
But, daddy, as I write to you,
There's one thing that makes me blue,
And, since you are a daddy true,
I know that you will see me through.
And that, Dear Father, Noble one,
Keeps me from having Joy and Fun.
So since this bliss has just begun,
Please send me dough!

Your humble son."

SEQUELLE'S CLASSIFIED ADS

- For Sale: Five or six hundred words. Do not need them. Inquire Florence Reaghart.
- Wanted: Some one to love. Must be young and handsome. Inquire Mary Dorr.
- For Sale: Some surplus hot air. Will demonstrate how to use it. Inquire George Gifford.
- Wanted: Specific information as to how to keep work up to date. Reward. Inquire Frances Neil.
- For sale: Love letters. All emotions appealed to. Very plainly written and well stated. Inquire Kathryn McCabe.
- Wanted: Information as to how to keep tab on the whereabouts of a room mate. Rachel Stevens.
- Notice: Lessons will be given in all of the latest dance steps. Inquire Alta Monks.
- For Sale: Giggles. Do not need all of them. Will sell cheap. Geraldine Loos.
- Wanted: To buy some of Ellwood Rowley's sarcasm. Need it badly for I feel that I cannot converse without it. Albert Chitester.
- For Sale: Some of my gift of gab. Do not need all of it. Helen Korb.
- For Sale: Pair of shoes. Extra large size, as they have been made to order. Inquire James Kassel.

SONG HITS

- Have you heard the:
- Milkman's Song?
("Oh how I hate to giddup in the morning")
- Detective Song?
("Ah sweet mystery of life")
- Cannibal Song?
("You were meant for meat")
- Forehead Song?
("King forehead day")
- Walk-the floor Song?
("All through the Night")
- Onion Song?
("Why should I cry over you")
- Borrowing Song?
("Then you'll remember me")
- Telephone Song?
("Some where a voice is calling")
- Prohibition Song?
("You ferment for me")
- Carpenter' Song?
("Building a nest for Mary")
- Astronomer's Song?
("My Lucky Star")
- Aviator's Song?
("I've got a feeling, I'm fallin'.")
- Gorilla Song?
("Gorilla My Dreams, I Love You")

KLARION KRACKS

It is easier for a girl to change her mind than to change her name.

☞ ☞ ☞

Many true words are spoken through false teeth.

☞ ☞ ☞

Prizefighter (meeting opponent for first time in the ring): "Glad tuh know you
Excuse the glove."

☞ ☞ ☞

Father is glad that he has finished working his son's way through college.

☞ ☞ ☞

Our idea of nothing is a bladeless knife without a handle.

☞ ☞ ☞

A man with money to burn usually finds a "Flame" to help him.

☞ ☞ ☞

MacDonald says that college is just like a washing machine; you get out of it just
what you put into it—but you would never recognize it.

☞ ☞ ☞

A girl no longer marries a man for better or for worse, but for more or less.

☞ ☞ ☞

A woman doesn't always get the last word—sometimes she is talking to another
woman.

☞ ☞ ☞

"That's the guy I'm laying for", said the hen, as the farmer crossed the yard.

☞ ☞ ☞

A little flunking now and then will happen to the best of men.

☞ ☞ ☞

Betty Snow affirmed that three famous actors are: Harold Lloyd, Harry Bowser,
and Barney Google.

☞ ☞ ☞

"Eli Whitney" says Ed. DeVilder, "was a bootlegger who made the first cotton
gin."

☞ ☞ ☞

Paul Stewart says that he feels like a banjo, so many people picking on him.

RANDOM SHOTS

Hep Neil—"I wish God had made me a man."

Sam—"He did. I'm it."

☪ ☪ ☪

S. Reid—"My dear, Joe was perfectly priceless last night."

R. Mohney—"In what way?"

S. Reed—"Oh, broke again."

☪ ☪ ☪

Jock Williams—"Would you accept a pet monkey?"

Stella Rhea—"Oh, I'll have to ask father. This is so sudden."

☪ ☪ ☪

Kata—"You dance beautifully."

A. Sanders—"I'm sorry I can't say the same of you."

Kata—"You could if you were as big a liar as I am."

☪ ☪ ☪

Truitt—"The only men I kiss are my brothers."

Thomas—"May I join your fraternity?"

☪ ☪ ☪

Senior—"Is there any thing you can do better than anyone else?"

Junior—"Yes, read my own writing."

☪ ☪ ☪

Mr. McDonald—"Say, I believe I have lost the road."

Mrs. McDonald (absent mindedly)—"Are you certain you had it when we left home?"

☪ ☪ ☪

Gray—"I'm not going to school any more."

Whitehill—"Why not?"

Gray—"I can't learn anything. The teachers keep changing the lesson every day."

☪ ☪ ☪

Frank Neil—"Who gave you that black eye?"

E. Rowley—"Nobody gives me anything. I fought for it."

☪ ☪ ☪

Snyder—"Name a great time saver."

Edwards—"Love at first sight."

☪ ☪ ☪

Officer (To DuMars and Streeter)—"Don't you see the sign, "Fine for parking?"

DuMars—"Yes, officer, I can see it, and heartily agree with it."

☪ ☪ ☪

Agnes Danielson—"Can you drive with one hand?"

Fred Miller—"You bet I can."

Agnes Danielson—"Then have an apple."

☪ ☪ ☪

Mr. Hoyt (at Greenawalts Inn)—"Hey, there."

Updegraff—"Yessir, how will you have it?"

Bob McAfoose—"Mr. Levis, I love your daughter more than words can tell."
Mr. Levis—"Well, maybe you can state it in figures."

• • •

Max Turney—"I see where a scientist claims each kiss shortens a girl's life 10 seconds."

Alta Monks—"Heavens above, I've been dead 30 years and didn't know it."

• • •

Flannagan—"You should see the new altar in our Church."

Pressler—"Lead me to it."

• • •

Bowser—"What time did you leave the party last night?"

Larson—"About two minutes after two."

Bowser—"Two o'clock?"

Larson—"No, two blonds."

• • •

Frosh—"How can you tell when Professor Huston asks a serious question?"

Soph—"Watch to see whether last year's flunkers laugh."

• • •

Kay McCabe—"Do I understand that there will be no dessert to night?"

Lucy Frak—"Yes."

Kay McCabe—"Yes what?"

Lucy Frak—"Yes, we have no bannanas."

• • •

Mr. Hoyt—"I never saw such dreamy eyes."

Miss Green—"You never stayed so late."

• • •

Kate Jury—"I say, what is good for biting finger nails?"

Dot Truitt—"Why, sharp teeth."

• • •

Blanche Campbell—"I had my picture taken."

Becky Mays—"Got the proofs?"

Blanche Campbell—"No, you will have to take my word for it."

• • •

Kata—"How much gas do we have, Cletus?"

Kremmel—"Egad, Josef, it points to one-half, but whether the bally thing means half full or half empty, I don't know."

• • •

Jones—"That auto looks pretty well worn out."

Dewey—"It ought to. It's the sole survivor of four love affairs."

Sequelle 1930

THE END



THE STATE TEACHERS COLLEGE

CLARION, *Pennsylvania*



CHARACTER

SCHOLARSHIP

SKILLS

FRIENDSHIP

Capital \$135,000.00

CITIZEN'S TRUST CO.
CLARION, PA.



H. M. HUFNAGEL, President
C. W. AMSLER, Vice President
C. C. MOORE, Assistant Treasurer
B. L. BOWMAN, Assistant Treasurer

Largest Banking Institution in Clarion
RESOURCES OVER \$2,800,000.00

ACTS AS

Executor
Administrator
Guardian
Trustee

Young enough to be progressive
Old enough to be conservative



CITIZEN'S TRUST COMPANY
Clarion, Pa.

ROLL OF HONOR BANK

**FIRST NATIONAL BANK
OF CLARION**

Founded in 1865

OLDEST BANK IN CLARION COUNTY

An Old Bank with Modern Methods
Your Account is Appreciated

MEMBER FEDERAL RESERVE BANK

*WE EXTEND AN INVITATION TO ALL
TO CALL AND SEE OUR NEW BANK BUILDING*

FOUR PER CENT. ON SAVINGS

OFFICERS:

S. Win Wilson, President
M. M. Kaufman, Vice-President
A. B. Collner, Cashier
H. F. Strattan, Assistant Cashier

DIRECTORS:

S. WIN WILSON M. M. KAUFMAN FRANK K. BROWN
EDWARD A. WILHELM HARRY E. RUGH
LEWIS COLLNER C. F. STRATTAN

**Ronald Corbett
Drug Stores**

CLARION, PA.

MARTHA
WASHINGTON
CANDIES

70c per pound

Fresh Every Week

Main Street Bell Phone 11

GET INTO THE GAME

BILLIARDS

A point behind, but still striving
matching trick for trick, skill
against skill.....

then the thrill of putting over
the winning marker.....

That's Billiards:

**FAGLEY
& WALTERS**

Main Street Clarion, Pa.

Compliments of

Eddies Cafe

SWEETLAND

HOME MADE CANDIES
TOILET ARTICLES

We Serve Light Lunches

Clarion, Penna.

Compliments of

**GANOE'S
BARBER SHOP**

MAKE THIS STORE
YOUR STORE

Watch Your Savings Grow!

J. C. Penny Co.

609 Main St. Clarion, Pa.

Compliments of

**CLARION'S
POPULAR
DEPARTMENT
STORE**

Where Students Find Just
The Right Type of
Apparel

Wein Bros.
WHERE QUALITY PREDOMINATES

CLARION, PA.

Compliments of

**Alexander
& Moore**

*ALWAYS
SOMETHING NEW
IN
FURNISHINGS*

THE T. M. STORE

*"Meet your Friends, Where your
Friends Meet you".*

Ladies' Apparel
and
Fashionable Millinery
HALLIE'S SHOPPE

Next door to Theatre

Hallie Brurle M. Hesley
Ladies Apparel Millinery

Service with a Smile

V. P. MUSI

Tailors and Cleaners

We call for and Deliver

Phone 288-M Clarion, Pa.

**DITZ & MOONEY
HARDWARE CO.**

*Everything in
Hardware*

Pottery

China
Clarion, Pa.

**MEET
AND
EAT**

at

**NAIL'S
BASEMENT
RESTAURANT**

CLARION, PA.

CALL AT

JOE'S

—For—

Home Made
DOUGHNUTS
and ROLLS

FRUIT
CONFECTIONERY
ICE CREAM

Chocolate Milk, Hot or Cold

Corner Wood & 9th Ave.

CLARION, PA.

**BURTON'S
STUDIO**

618 Main Street
Clarion, Pa.

"If its photographs we do it."

SCHOOL JEWELRY

David A. Kaufman

Jeweler

Clarion, Penna.

**THE
LOOMIS HOUSE**

On The Lake-to-Sea Highway

Mrs. Nora Foster, *Proprietress*

CLARION, PA.

JOHN HENROTIN

Expert Shoe Repairing

Service with a Smile.

630 Main St. Clarion, Pa.

Wm. W. PHERO

Groceries and Meats

Candy and Tobacco

Ice Cream, Drinks

36 8th Ave. Phone 19-J
CLARION, PA.

**NYAL SERVICE
DRUG STORE**

A. G. Corbett Drug Co.

(Fitzgeralds)

John A. Magee Co.

HARDWARE

CLARION, PA.

G. E. BRINKLEY

CLEANING
AND
TAILORING

31 - 5th Ave. Phone 126M

Members of J. F. Weaver family
in Normal School, from Carrier
Seminary Days of 1883 to 1930.
Eight students from one family.
When you need hardware call at
the

**J. F. WEAVER
HARDWARE CO.**

We understand your problem.

**FELLERS
BEAUTY SHOP**

Wilson Building
Clarion, Penna.

*IN CLARION
IT'S*

HOTEL CLARION

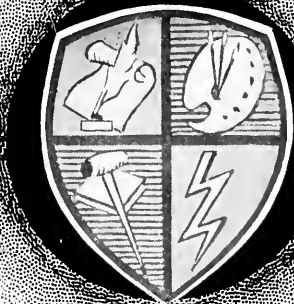
On the Lake-to-Sea Highway

John G. Stubler, *Proprietor*

Compliments of

**GUTH'S
JEWELRY STORE**

CLARION, PA.



WHEN
YOU SEE
THIS SHIELD
YOU KNOW
IT'S ANOTHER
ANNUAL BY
CANTON

THE CANTON ENGRAVING & ELECTROTYPE CO.
CANTON OHIO
ENGRAVERS OF THIS ANNUAL

P
H
O
T
O
G
R
A
P
H
S



L
I
V
E

F
O
R
E
V
E
R

Photography

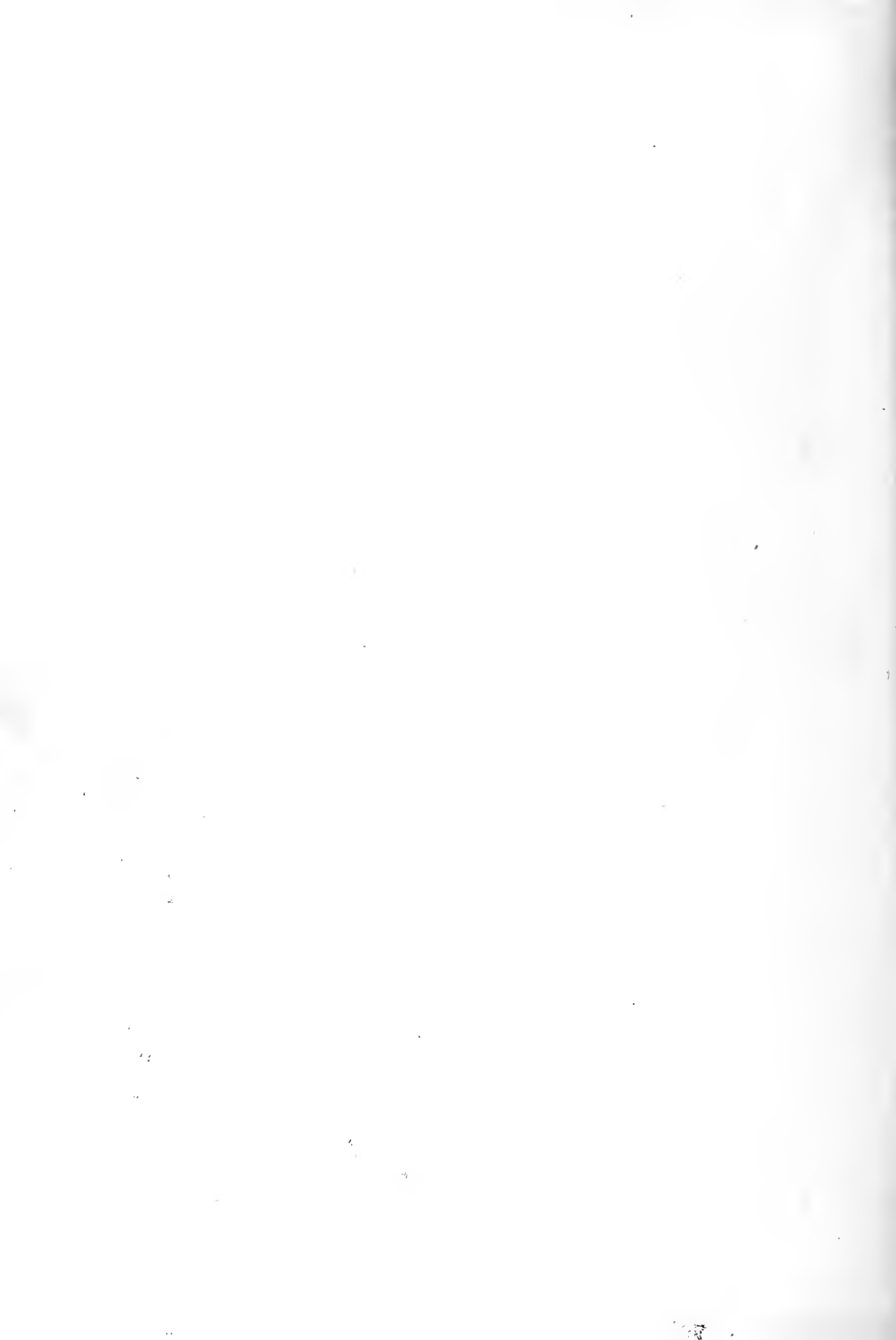
The Language of Vision All May Read and Understand

THE KEPLER STUDIO AND GIFT SHOP

127 E. Market Street

LEWISTOWN, PA.

This Book Serves as a Sample of Our Work



CLARION UNIVERSITY OF PENNSYLVANIA



3 9363 00151 7348

Spec. Col.

qLD
1017
.C88
193C
c.2

