

Spec. Col.

qLD

1017

.C88


1934

THE SEQUELLE

LIBRARY  
CLARION STATE COLLEGE



Carlson Library



Digitized by the Internet Archive  
in 2010 with funding from  
Lyrasis Members and Sloan Foundation

<http://www.archive.org/details/sequelle1934clar>



THE

SEQUELLE

OF

1

9

3

4

COPYRIGHT  
**1934**

EDITOR IN CHIEF  
« « Martha Pence » »

BUSINESS MANAGER  
« « Norbert Master » »

Photography By  
WHITE STUDIO  
New York

Engraving By  
INDIANAPOLIS ENGRAVING CO.  
Indianapolis, Ind.

Printing and Binding By  
THE ZIEGLER PRINTING CO., Inc.  
Butler, Pennsylvania

T  
H  
E

SEQUELLE

O  
F  
1  
9  
3  
4



PUBLISHED BY  
THE SENIOR CLASS

OF  
CLARION STATE  
TEACHERS COLLEGE

CLARION  
PENNSYLVANIA

**T  
H  
E  
S  
E  
Q  
U  
E  
L  
E**

THIS HISTORICAL EDITION  
TO . . .

J. W. F. Wilkinson in his thirty-fourth year of service at the Clarion State Teachers College. The Class of 1934 expresses whole-heartedly its appreciation for Mr. Wilkinson's ever-ready sympathy of the student and his problems.



D  
E  
D  
I  
C  
A  
T  
E  
S





# FOREWORD

This book has been edited with the sincere hope of creating a worthwhile and pleasing souvenir of the years of the Class of 1934 at Clarion. The book is far from perfect. We ask you to overlook these imperfections and see the book only for what it represents—an undying memory of the days in which we lived and loved and laughed at Clarion.



# CONTENTS

DEDICATION  
FOREWORD  
CONTENTS  
STAFF  
VIEWS  
THE COLLEGE  
    ADMINISTRATION  
    CLASSES  
ORGANIZATIONS  
ATHLETICS  
THE SCHOOL YEAR

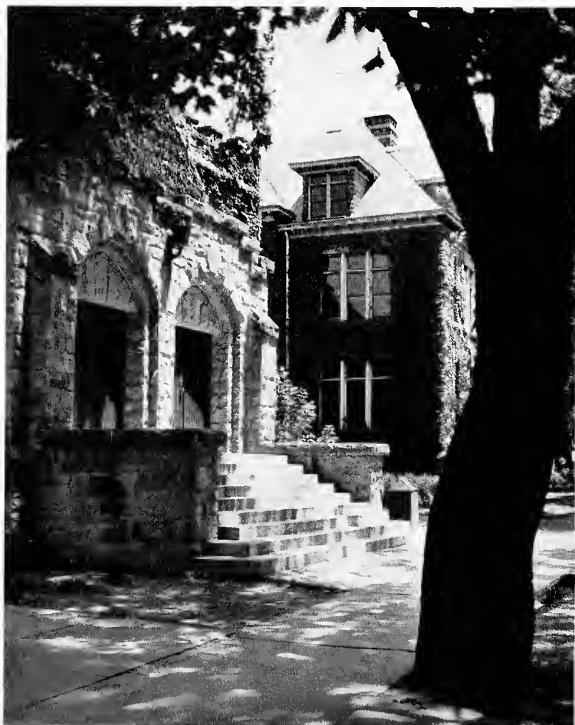


# STAFF

MARTHA PENCE  
NORBERT MASTER  
GWEN COVERT  
JAMES KANENGEISER  
EDNA DAVIES  
PATRICIA PHILLIPS  
ROZELLA MAMOLEN  
WILLARD SIMPSON  
MARCELLA KURTZHALS  
LE VERNE LOGAN  
ALICE HOWARD  
WAYNE KENNEMUTH  
ETHEL FERGUSON  
ESTHER DREW  
BETTY BALDWIN

# VIEWS

The scenic Clarion Campus is justly considered one of the most beautiful in the state. Located on a rolling knoll slightly above the rest of the town, the Campus is composed of twenty-three acres of rolling lawn set off by its attractive buildings and the remarkable variety of trees and shrubbery. To the north the campus overlooks another scene of singular beauty—the forest-covered hills of the Clarion River Valley; to the west, the town of Clarion; and to the east and south, the rolling fields and forests.











# T H E C O L L E G E



THE FIRST FACULTY

In 1886 the State Legislature passed an act establishing the Thirteenth State Normal School District, and steps were taken at once to establish the Clarion State Normal School. Citizens contributed forty thousand dollars and the Legislature appropriated twenty-five thousand dollars. Carrier Seminary was purchased from the Erie Conference of the Methodist Church, additional ground was bought, and work was begun on the buildings. By February two large dormitories were completed, and on April 12, 1887, the school was formally opened and approved by a committee representing the State. The school was managed jointly by the State and the stockholders until February 9, 1916, when the local stock was purchased by the State in the name of the Commonwealth. In 1928, Clarion was granted authority to confer the degree of Bachelor of Science in Education upon students satisfactorily completing the four-year curricula. The name of the institution was changed to State Teachers College on May 28, 1929.

Dedicated to the loyal students

## SCHOOL HYMN

H. L. BLAND

Moderato

Oh, Cla - ri - on, Our best we pledge to you, Tho  
days that we have spent here, We al - ways will hold dear. Oh!  
tried and true, staunch friends are we to you, For -  
ev - er we'll be loy - al to our Clar - ion, Clar - ion.



DR. G. C. L. RIEMER  
Our President

# THE SEQUELLE

## BOARD OF TRUSTEES

H. M. RIMER, Chairman	Clarion
P. C. ANDREWS, Vice-Chairman	New Bethlehem
J. E. HENRETTA	Kane
MRS. W. B. RANKIN	Clarion
MRS. LILLIAN TREZISE	DuBois
E. A. WILHELM, Secretary	Clarion
MRS. RUTH BOVARD	Tionesta
R. LR. SNYDER	Shipperville
R. H. DUNTLY	Corydon

## PAST PRINCIPALS

A. J. DAVIS	1887-1902
SAMUEL WEIR	1902-1904
J. GEORGE BECHT	1904-1912
H. M. SHAFFER	Jan. 1, 1912-July 1, 1913
A. T. SMITH	Jan. 1, 1914-July 1, 1914
A. P. REESE	July 1, 1914-July 1, 1918
C. C. GREEN	1918-1926
R. M. STEELE	1926-1928
G. C. L. RIEMER	1928—President since June 15, 1929

# THE SEQUELLE

## FACULTY

### Top Row

CLARENCE L. DOW, Ph. D.  
Geography  
HARRY S. MANSON, A. M.  
Biological Sciences  
G. A. HOYT, M. S.  
Junior High School  
CHARLES F. BECKER, A. M.  
Director of Teacher Training  
DONALD D. PEIRCE, Ph. D.  
Physical Science  
JAMES R. HUSTON, A. B.  
Social Studies  
JOHN O. JONES, B. S.  
Physical Education

### Second Row

JOHN W. F. WILKINSON, A. M.  
Mathematics  
ANNA B. GRAHAM, B. S.  
Junior High School  
MILDRED E. GAMBLE, A. M.  
Intermediate Grades  
FRANCES J. EASLEY, A. M.  
Primary Grades  
MARIE MARWICK, A. M.  
Speech  
HELEN WALTERS, B. S.  
Primary Grades  
VERA E. SPROUL, A. M.  
Intermediate Grades  
FOSTER M. MOHNEY  
Bursar

### Third Row

BESSIE M. RUNYAN, B. S.  
Junior High School  
HAZEL SANDFORD, A. M.  
Art  
MARILLA EDMISTON, R. N.  
Nurse  
SARA SEYLER  
Dietitian  
HELEN J. ARMSTRONG, B. S.  
Secretary to President  
EDNA J. BARNES, A. M.  
Intermediate Grades  
EFFIE BLANCHE HEPLER, A. B.  
Primary Grades  
GLADYS RICH, A. M.  
Public School Music  
G. C. L. RIEMER, Ph.D., LL. D.  
President  
Bottom Row  
HELEN MOHNEY, B. S.  
Intermediate Grades  
MARGARET A. BOYD, A. M.  
English  
HELEN D. SIMS, A. M.  
Dean of Women, Latin  
BERTHA V. NAIR, A. M.  
English  
BERTHA J. LEIFESTE, A. M.  
Primary Grades  
RENA CARLSON, A. B.  
Librarian  
MARY B. WILLIAMSON, A. M.  
Education  
HELEN M. BARTON, A. M.  
Physical Education



# PIONEERS

We are the pioneers of old,  
Tis we who blaze the trail.  
We hold aloft a glowing torch  
Whose light shall never fail.  
On, on, we go, adventuring,  
Exploring human minds.  
We forge ahead with Wisdom's staff,  
We beat a path which upward winds.  
We chart a Wilderness Unbound,  
Dark Forest Ignorance destroy.  
Dank Superstition Swamp we drain.  
We banish Fear, give birth to Joy.  
We sow the seeds of Thoughts-To-Come,  
We cultivate with toiling hand.  
And lo, the harvest crop abounds  
Within the Soul, man's Promised Land.

—Kathryn Murray



**SENIOR  
CLASS**

# THE SEQUELLE

## SENIOR CLASS ROLL

---

### College Graduates

Ehler, Esther

Moulton, Gladys

Phillips, Elinor

---

### Recipients of Bachelor of Science Degree in Elementary Education

Davies, Edna

Smathers, Phyllis

---

### Recipients of Bachelor of Science Degree in Secondary Education

Barger, John

Master, Norbert

Cassel, James

Moffatt, Maurice

Chitester, Albert

O'Neill, Bess

Drew, Esther

Pence, Martha

Gathers, Opal

Reynolds, Maude

Hartman, Eugene

Simpson, Willard

Hilton, William

Smail, Dean

Kurtzhals, Marcella

Snyder, Kenneth

Logan, LaVerne

Wilhelm, Samuel

Zagst, George

# THE SEQUELLE



## SENIOR CLASS

President - - - - - KENNETH SNYDER  
Vice-President - - - - - EUGENE HARTMAN  
Secretary-Treasurer - - - - - MARTHA PENCE  
Class Advisor - - - - - MR. BECKER

In the fall of 1930 a group of one hundred nineteen individuals from the surrounding area with its diversified interests were attracted to Clarion on the basis of a common interest—an honest endeavor toward personal betterment and community welfare. From the beginning the class displayed leadership in all phases of school activity: the classroom, student organizations, social functions, and athletic contests.

Following the graduation of the two-year members of the class in 1932, the solidarity of this small group was greatly enhanced. The next year the small number was increased by the return of several two-year people for degrees.

Four years have passed quickly, and now this third Senior Class leaves with a greater consciousness of that social service which is the teacher's.

**ALBERT H. CHITESTER**

Α Γ Φ Φ Σ Ω  
Brookville, Pa. R. D. 1  
Brookville High School

**B. S. in Secondary Education**

President Y. M. C. A. '33-'34, Basketball '29, Forensics '32-'34, Men's Glee Club '32-'33, Varsity "C" Club.

**EDNA DAVIES**

Α Χ Δ  
Clarion, Pa.  
Clarion High School

**B. S. in Elementary Education**

College Players Club '31-'34, Women's Glee Club '31-'34, A Cappella Choir '34, Clarion Call Staff, '33-'34, Sequelle Staff '34, Primary Club '33-'34.

**ESTHER E. DREW**

Π Γ Μ  
Bradford, Pa.  
Bradford High School

**B. S. in Secondary Education**

Press Club '33-'34, Y. W. C. A. '21-'23, '33-'34, Y. W. C. A. Cabinet '22-'23, Sequelle Staff '22-'23, '34, Dramatic Club '21-'23, Primary Club '21-'23, Clarion Call Staff '34.

**OPAL AMELIA GATHERS**

Knox, Pa.  
Salem High School

**B. S. in Secondary Education**

Wanderlustigen Club.

**EUGENE H. HARTMAN**

Α Γ Φ Φ Σ Π Π Γ Μ  
Kane, Pa.  
Kane High School

**B. S. in Secondary Education**

Outdoor Club '30-'34, (President '33), Forensics '32-'33, International Relations Club '33, Vice-President Senior Class '34.

**WILLIAM F. HILTON**

(Transfer U. of Pittsburgh '30-'32)  
Kittanning, Pa.  
Kittanning High School

**B. S. in Secondary Education**

Forensics '33, Y. M. C. A. '33-'34, Y. M. C. A. Cabinet '34, Men's Student Council '34, Men's Glee Club '34, Football '33-'34, Basketball Manager '34.



**MARCELLA KURTZHALS**

Ο Α Λ Π Γ Μ

Tylersburg, Pa.

Farmington High School

**B. S. in Secondary Education**

Forensics '31-'32-'33-'34, College  
Players '31-'32-'33-'34, Varsity Bas-  
ketball '32, Varsity Volleyball '32,  
Intramural Sports '33, Sequelle Staff  
'31-'32-'33-'34, Student Senate '33-  
'34, Intercollegiate Debating '32-'34.

**KENNETH LeVERNE LOGAN**

Α Φ Α Φ Σ ΙΙ

Miola, Pa.

Clarion High School

**B. S. in Secondary Education**

College Players '31-'32, Outdoor  
Club '31-'32-'33-'34, Sequelle Staff  
'32-'34, Photography Club '33.

**NORBERT J. MASTER**

Φ Σ ΙΙ

Emlenton, Pa.

Emlenton High School

**B. S. in Secondary Education**

Y. M. C. A. '32-'33-'34, Student  
Senate '33-'34, Outdoor Club '31-  
'32, Sequelle Staff '31-'32-'33-'34,  
Football Manager '33, Basketball '31-  
'34, Football '32, Varsity "C" Club.

**MAURICE P. MOFFATT**

Α Γ Φ Π Γ Μ

Titusville, Pa.

Titusville High School

**B. S. in Secondary Education**

Debating Club '31-'32, Y. M. C. A.  
'32-'33, Foreign Relations Club '33,  
Baseball '31, Men's Student Council  
'32-'33-'34, President Pi Gamma Mu  
'34.

**BESS O'NEILL**

Ι Γ Μ

Strattanville, Pa.

Strattanville High School

**B. S. in Secondary Education**

Wanterlustigen Club, Y. W. C. A.

**MARTHA PENCE**

Σ Δ Φ Π Γ Μ

Cowansville, Pa.

Kittanning High School

**B. S. in Secondary Education**

Press Club '31-'32-'33, Editor Clarion  
Call '31-'33, Clarion Call Staff '34,  
Winner W. C. T. U. Essay Contest  
'31, International Relations Club '33,  
Business Manager Sequelle '32,  
Sequelle Staff '33, Editor-in-Chief of  
Sequelle '34, Secretary Senior Class  
'33-'34, Y. W. C. A. '30-'31.



**MAUDE I. REYNOLDS**

Π Γ Μ  
Clarion, Pa.

Clarion High School

**B. S. in Secondary Education**

Press Club '33, Y. W. C. A., Y. W.  
C. A. Cabinet, '21-'22, Clarion Call  
Staff '34.

**WILLARD SIMPSON**

Corsica, Pa.

Union Vocational School

**B. S. in Secondary Education**

Football '31-'32, Track '31-'32, Bas-  
ketball '31, Glee Club '32-'34, A  
Capella Choir '33-'34, International  
Relations Club '33, Y. M. C. A. '33,  
Travel Club '31, Sequelle Staff '34,  
Men's Double Quartet '33-'34.



**DEAN A. SMAIL**

Α Φ Α Φ Σ Π  
New Bethlehem, Pa.

Clarion High School

**B. S. in Secondary Education**

A Capella Choir '33-'34, Men's Glee  
Club '32-'34, Press Club '32-'33,  
Men's Double Quartet '32-'34, Out-  
door Club '33-'34.



**PHYLLIS SMATHERS**

Α Χ Δ  
Clarion, Pa.

Clarion High School

**B. S. in Elementary Education**

Primary Club '33-'34, Student Senate  
'32-'33, Hostess Club '31-'32, Travel  
Club '31.



**KENNETH SNYDER**

Α Φ Α Φ Σ Π  
Clarion, Pa.

Clarion High School

**B. S. in Secondary Education**

College Players Club '31-'34, Varsity  
'C' Club '31-'34, Outdoor Club  
'33-'34, Basketball Varsity '31-'34,  
Sequelle Staff '32-'33, President  
Community Senate '33-'34, President  
Senior Class.

**LLOYD B. AARON**  
Brookville, Pa.  
Eldred Township High School

**Rural**  
Y. M. C. A. '32-'34, Wanderlustigen  
Club '33-'34.

**EDWIN T. ALCORN**

**A P A**  
Knoxdale, Pa.  
Brookville High School

**Intermediate**  
Men's Glee Club '33-'34, Y. M. C.  
A. '32-'34, Globe Trotters Club  
'32-'33.

**HARRY HOFFMAN ALCORN**  
Summerville, Pa.  
Brookville High School

**Intermediate**  
Globe Trotter's Club '32-'33, Y. M.  
C. A. '32-'34, Men's Glee Club  
'32-'34.

**PERCY BARTOW**

Parker's Landing, Pa.  
Parker City High School

**Rural**  
Y. M. C. A. '32-'34, Art Club '32-  
'33

**DOROTHY BATTERSBY**

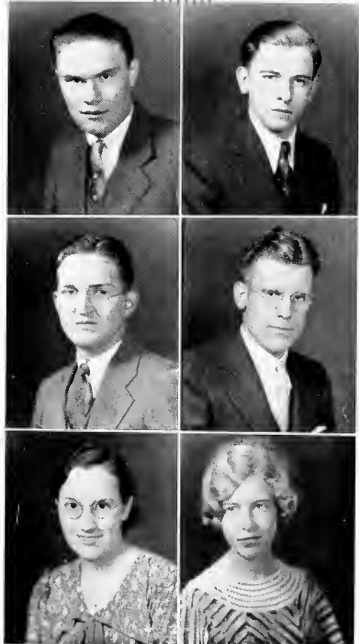
Ellwood City, Pa.  
Lincoln High School

**Intermediate**  
Y. W. C. A. '32-'33, Art Club '33,  
Glee Club '33-'34.

**KATHRYN ELIZABETH BELL**

Knox, Pa.  
Ashland High School

**Primary**  
Girls' Glee Club '33, Y. W. C. A.  
'32-'33, Hostess Club '32, Hiking  
Club '33, Primary Club '33, Y. W.  
C. A. Cabinet '33.



**RUTH E. BENGSTON**

Δ Π Ε  
Kane, Pa.  
Kane High School

**Intermediate**

Community Senate '34, Women's  
Student Council '34, Pan-Hellenic  
Council '33-'34, Hostess Club '33,  
Y. W. C. A. '33.

**RACHEL E. BLOOM**

Θ Α Λ  
Grampian, Pa.  
Brady Township High School

**Intermediate**

College Players Club '32-'34, Y. W.  
C. A. '32, Y. W. C. A. Cabinet '33,  
Women's Athletic Council '33-'34,  
Women's Intra-mural Sports '33, Glee  
Club '33-'34.

**HELEN F. CALDWELL**

Brookville, Pa.  
Clarion High School

**Intermediate**

Press Club '32, Y. W. C. A. '32,  
Hostess Club '32, Women's Intra-  
mural Sports '32-'34, Women's Ath-  
letic Council '33-'34, Art Club '33,  
Primary Club '34.

**HELEN E. CAMPBELL**

Shippenville, Pa.  
Shippenville High School

**Intermediate**

Women's Athletic Council

**MARY LOUISE CARRIER**

Corsica, Pa.  
Union Vocational School

**Intermediate**

Glee Club '32-'34, Primary Club  
'32-'34.

**RUTH CLARK**

Strattanville, Pa.  
Strattanville High School





**PAUL WESLEY CLAYPOOL**

Kittanning, Pa.  
Kittanning High School

**Intermediate**

Glee Club '32-'34, Y. M. C. A.  
'32-'34.

**MARY ELIZABETH COLEMAN**

Λ X Δ  
DuBois, Pa.  
DuBois High School

**Intermediate**

Glee Club '32-'34, Y. W. C. A.  
'32-'34, Hostess Club '32.

**VEDA COTTON**

Δ Π Ε  
Gifford, Pa.  
Bradford High School

**Primary**

Hiking Club '32-'34, Y. W. C. A.  
Cabinet '33-'34, Hostess Club '32-'  
'33, Glee Club, '33-'34, Primary  
Club '33-'34.

**GWEN COVERT**

Λ X Δ  
North East, Pa.  
North East High School

**Intermediate**

Sequelle Staff '34, Clarion Call Staff  
'33-'34, Forensics '33-'34, Women's  
Student Council '33-'34, (President  
'34), Hostess Club '33, Women's In-  
tramural Sports, Women's Athletic  
Council '34.

**MARY MARGRAET CRISWELL**

Σ Δ Φ  
(Transfer from Slippery Rock)  
Emlenton, Pa.  
Emlenton High School

**Intermediate**

College Players Club '34, Women's  
Intra-mural Sports.

**LOIS CYPHERT**

Curlsville, Pa.  
Sligo High School

**Intermediate**

Y. W. C. A. '32-'34, Art Club,  
Women's Glee Club '33-'34, Wo-  
men's Intra-mural sports.



**MARY ELIZABETH DOUGHERTY**

Σ Δ Φ  
Pittsburgh, Pa.  
Mt. Lebanon High School

**Intermediate**

Outdoor Club '32-'33, College  
Players Club '32-'34, Forensics, '33-  
'34, Chairman Decoration Committee  
Freshman Hop '32.

**KENNETH CARLYLE DAUM**

Newmansville, Pa.  
Farmington High School

**Rural**

Glee Club '32-'34.

**MARGUERITE DAVIS**

Brick Church, Pa.  
Vandergrift High School

**Intermediate**

Hostess Club '33, Wanderlustigen  
Club '33-'34, Glee Club '34.

**DONALD A. DIXON**

Sharpsville, Pa.  
Hickory High School

**Intermediate**

Glee Club '33-'34, Orchestra '33-  
'34, Y. M. C. A. '33-'34.

**JUNE DOVERSPIKE**

Timlin, Pa.  
Punxsutawney High School

**Intermediate**

Orchestra '33-'34, Art Club '33,  
Wanderlustigen Club '34, Glee Club  
'34, Hiking Club '34.

**M. ELEANOR DREIBELBIS**

Emlenton, Pa.  
Emlenton High School

**Intermediate**

Y. W. C. A. '32-'34, Hiking Club  
'33-'34, Girls' Glee Club '33-'34,  
Hostess Club '32-'33.



**ESTHER ELIZABETH EHLER**

(Transfer from Slippery Rock)

Shippenville, Pa.

Shippenville High School

**Intermediate**

**JEAN EDWARDS**

Δ X Δ

Bradford, Pa.

Bradford High School

**Intermediate**

Pan-Hellenic Council '33-'34, College Players Club '32-'34, Press Club '33-'34, College Forensics '32-'34, Primary Club '33-'34, Y. W. C. A. '32-'34, Y. W. C. A. Cabinet '33-'34.

**ETHEL FERGUSON**

Δ X Δ

Vandergrift, Pa.

Vandergrift High School

**Intermediate**

Sequelle Staff '33-'34, Hostess Club '33, Y. W. C. A., Women's Intramural Sports, Women's Student Council '33-'34, Glee Club '32-'34, A Cappella Choir '33-'34.

**CHARLES FREDERICK**

Α Γ Φ

Claridge, Pa.

Jeannette High School

**Intermediate**

Y. M. C. A. '32-'33, Men's Glee Club '32-'34, Varsity "C" Club '33-'34, Football Manager '33.

**MILDRED FRILL**

Σ Δ Φ

Leeper, Pa.

Farmington High School

**Intermediate**

Women's Glee Club '32-'34 (President '33), Outdoor Club '32-'34, Women's Intra-mural Sports '32-'34, Y. W. C. A. '32.

**JOHN MELVIN FULTON**

Shippenville, Pa.

Shippenville High School

**Rural**

Geography Club '32-'33 (President '32), Wanderlustigen Club '33-'34, Football '32.



**JAMES R. GOULD**

Α Φ Α  
Putneyville, Pa.  
Kittanning High School

**Intermediate**  
Geography Club '32-'33, Football  
'32, Y. M. C. A. '32-'33, Track '33.

**MARION ELIZABETH GEAHRY**

Θ Α Α  
Vandergrift, Pa.  
Vandergrift High School

**Primary**  
Glee Club '33-'34, Hostess Club  
'32-'33, Y. W. C. A. '33-'34 (Presi-  
dent), Primary Club '33-'34.

**DOROTHY HALEY**

Δ Σ Ε  
Grampian, Pa.  
Curwensville High School

**Primary**  
Outdoor Club '32-'34, Hostess Club  
'33, College Players '32-'34, Wo-  
men's Student Council '32-'34.

**MARY LOUISE HAAG**

Helvetia, Pa.  
Brady Township High School

**Intermediate**  
College Forensics '32-'34, Y. W. C.  
A. '32-'34, Y. W. C. A. Cabinet  
'33-'34, Women's Intra-mural Sports,  
Women's Athletic Council '33-'34,  
Hostess Club '32.

**VIRGINIA HAMMOND**

Riceville, Pa.  
Houston Township High School

**Intermediate**  
Hostess Club '32, Y. W. C. A. '33,  
Women's Glee Club '33-'34.

**NAN HALEY**

Δ Σ Ε  
Grampian, Pa.  
Curwensville High School

**Primary**  
Press Club '33, Outdoor Club '33-  
'34, President Women's Student Gov-  
ernment '33-'34, Women's Student  
Council '32-'34.



**LEONA MAE HARTMAN**

Θ Α Λ  
Kane, Pa.

Kane High School

**Primary**

Outdoor Club '32-'33, Hostess Club '32, Y. W. C. A. '32, Women's Intramural Sports, Press Club '33, Art Club '34, Primary Club '34.

**BETTY LOUISE HARMON**

Callensburg, Pa.  
Sligo High School

**Intermediate**

Women's Glee Club '32-'34, Primary Club '33-'34, Wanderlustigen Club '34, Orchestra '32, Y. W. C. A. '32-'33.

**MARION HILTON**

Θ Α Λ  
Kittanning, Pa.  
Kittanning High School

**Intermediate**

College Players '32-'34, College Forensics '32-'34.

**ELEANORE HEASLEY**

Δ Σ Ε  
Van, Pa.  
Ashland High School

**Primary**

College Players '34, Glee Club '33-'34, Outdoor Club '34, Primary Club '34, Student Council '34, Art Club '32, Y. W. C. A. '32.

**SOPHIA HUDSICK**

Δ Σ Ε  
Tyler, Pa.  
Penfield High School

**Intermediate**

Hostess Club '32-'33, Art Club '33, Women's Intramural Sports '33, Y. W. C. A. '32-'33.

**ALICE M. HOWARD**

Λ Χ Δ  
DuBois, Pa.  
Sandy Township High School

**Intermediate**

Clarion Call '32-'34, Sequelle Staff '34, Y. W. C. A. '33-'34, College Players '32-'34, Glee Club '32-'34, Hostess Club '33, College Forensics '32-'34.



**HOMER KAHLE**

Clarion, Pa.  
Clarion High School

**Rural**

Globe Trotters Club '33, Track Team '33, Art Club '34, Wanderlustigen Club '34, Y. M. C. A. '34, Men's Glee Club '33-'34.

**RUTH HARRIET KARL**

Shippenville, Pa.

**Intermediate**

Art Club '33-'34.



**BONNIBEL KELLER**

Δ Σ Ε  
Penfield, Pa.  
Penfield High School

**Intermediate**

Y. W. C. A. '32, Glee Club '32-'33, College Players Club '32-'34, Women's Intra-mural Sports.



**EILEEN JEAN LUCE**

Δ Σ Ε  
Oil City, Pa.  
Oil City High School

**Intermediate**

Glee Club '32-'34, A Capella Choir '33-'34, Hostess Club '33, Y. W. C. A. '32-'33.



**ELLA MARJORIE MALASKY**

Δ Σ Ε  
DuBois, Pa.  
Sandy Township High School

**Primary**

Y. W. C. A. '33, College Players Club '33, Primary Club '34, Hiking Club '34, Women's Athletic Council '34, Glee Club '34, Intra-mural Sports '33-'34.

**JAMES E. MARTZ**

Ringgold, Pa.  
New Bethlehem High School

**Intermediate**

Wanderlustigen Club '33-'34, Football '32, Track '33.

**BARBARA MacDONALD**

Venus, Pa.  
Ashland High School

**Intermediate**

Hiking Club '33, Hostess Club '32-  
'34, Y. W. C. A. Cabinet '33-'34,  
Glee Club '33-'34.

**ESTHER McELHATTEN**

Shippenville, Pa.  
Shippenville High School

**Intermediate**

Girls' Glee Club '33-'34, Orchestra  
'33, Women's Intra-mural Sports '34.

**CORA ELLEN McKUE**

Δ Π Ε  
Curwensville, Pa.  
Curwensville High School

**Intermediate**

Hostess Club '33, Hiking Club '33-  
'34, Y. W. C. A. '33-'34, Girls' Glee  
Club '34, Women's Student Council  
'34.

**LOIS INEZ McKEE**

Sligo, Pa.  
Sligo High School

**Primary**

Art Club '33-'34, Primary Club '33-  
'34, Y. W. C. A. '32-'34.

**KATHRYN MURRAY**

Λ Χ Δ  
Reynoldsville, Pa.  
Reynoldsville High School

**Intermediate**

Women's Student Council '33-'34,  
Student Senate '33-'34, College  
Players '32-'34, Press Club '32-'33,  
Hostess Club '32-'33, College For-  
ensics '33-'34, Clarion Call Staff  
'32-'34.

**FRANCES MILLER**

Summerville, Pa.  
Summerville High School

**Intermediate**

Art Club '33-'34, Primary Club  
'33-'34.



**FLORENCE IRENE NELSON**

New Bethlehem, Pa.  
New Bethlehem High School

**Primary**

Art Club '32-'33, Primary Club '33-'34, Globe Trotters Club '32-'33.

**DOROTHY MAE PAUP**

Venus, Pa.  
Knox High School

**Rural**

Art Club '33-'34, Globe Trotters Club '32-'33.

**KATHRYN FERNE PETERS**

Kelly Station, Pa.  
Ford City High School

**Rural**

Y. W. C. A. '32, Globe Trotters Club '32-'33, Art Club '33, Women's Intra-mural Sports '32-'33.

**WINNIFRED M. PHANCO**

Δ X Δ  
North East, Pa.  
North East High School

**Intermediate**

Glee Club '34, Hostess Club '33, College Players Club '33-'34, Women's Student Council '34, Y. W. C. A. '32-'34, Primary Club '33-'34, Women's Intra-mural Sports '34.

**PATRICIA RUTH PHILLIPS**

Ο Α Α  
Oil City, Pa.  
Oil City High School

**Primary**

Press Club '32-'33, Primary Club '33, Sequelle Staff '34.

**RUTH PHILLIPS**

Ο Α Α  
Clarion, Pa.  
Clarion High School

**Intermediate**

Art Club '32, Forensics Club '32, Press Club '33-'34, Community Senate '33-'34, Women's Athletic Council '33-'34, Women's Intra-mural Sports '32-'33.





**CARL F. RAMSEY**

Rimersburg, Pa.  
Union High School

**Intermediate**

Y. M. C. A. '32-'33, Football '32,  
Glee Club '33-'34.

**GENEVIEVE PRYOR**

Van, Pa.  
Ashland High School

**Primary**

Hostess Club '32, Y. W. C. A. '32-'  
'33, Hiking Club '32-'33, Primary  
Club '33, Y. W. C. A. Cabinet '33-'  
'34.

**MARGARET REICHART**

Callensburg, Pa.  
Sligo High School

**Intermediate**

Hostess Club '32-'33, Art Club '32-'  
'33, Y. W. C. A. '32-'34, Girls' Glee  
Club '33-'34, Women's Intra-mural  
Sports '33-'34.

**IDA E. RAYBUCK**

Pansy, Pa.  
Brookville High School

**Intermediate**

Travel Club '32-'33, Hostess Club  
'33-'34.

**MARY SAUL**

Δ Π Ε  
Export, Pa.  
Jeannette High School

**Intermediate**

Girls' Glee Club '33-'34, Hostess  
Club '33, A Cappella Choir '33-'34,  
Y. W. C. A. '33-'34, Primary Club  
'34, Y. W. C. A. Cabinet '34.

**MARY REITZ**

Δ Σ Ε  
Brookville, Pa.  
Brookville High School

**Primary**

Glee Club '32-'34, Intra-mural Sports  
'33-'34, Pan-Hellenic '34, Women's  
Student Council '33-'34, A Cappella  
Choir '33-'34, College Players Club  
'33-'34, Primary Club '33-'34, Host-  
ess Club '33.



**SYLVIA F. SCHILL**

Marbel, Pa.  
Shipperville High School

**Intermediate**

Women's Glee Club '32-'34, Or-  
chestra '33, A Cappella Choir '33-'34.

**FRANCES D. SCHRECKENGOST**

Clarion, Pa.  
Clarion High School

**Intermediate**

Travel Club '32, Hiking Club '34.



**ANNA MARGARET SEYLER**

Kittanning, Pa.  
Kittanning High School

**Intermediate**

Hostess Club '32, Hiking Club '33,  
Y. W. C. A. '33-'34, Girls' Glee  
Club '33-'34.

**GERALD T. SILVIS**

Α Φ Α  
Sligo, Pa.  
Sligo High School

**Intermediate**

Men's Glee Club '32-'34, Outdoor  
Club '33-'34, A Cappella Choir '33-  
'34, Men's Double Quartet '33-'34.

**SUSAN STANLEY**

Oil City, Pa.  
Oil City High School

**Primary**

Girls' Glee Club '33, Hostess Club  
'32, Primary Club '33, Hiking Club  
'33, Y. W. C. A. '32-'33.

**HELEN LOUISE STEWART**

Α Χ Δ  
New Bethlehem, Pa.  
New Bethlehem High School

**Primary**

Travel Club '32-'33, Hostess Club  
'32-'34, Press Club '32-'33, Primary  
Club '33-'34, Y. W. C. A. '33-'34.

**PEARLE TERWILLIGER**

Parkers Landing, Pa.  
Parker High School

**Intermediate**

Hostess Club '32, Hiking Club '32-'33, Y. W. C. A. '32-'33, Primary Club '33, Y. W. C. A. Cabinet '33, Intra-mural Sports '32-'33, Art Club '32.

**RUTH STEWART**

Brookville, Pa.  
Brookville High School

**Intermediate**

Women's Glee Club '32-'34, Hostess Club '32, Y. W. C. A. '32-'33, Hiking Club '33, Primary Club '33, A Cappella Choir '33.

**TOBIAS TREMBA**

Rimersburg, Pa.  
Union High School

**Rural**

Y. M. C. A. '33-'34, Forensics Club '33-'34.

**HELEN RUTH THOMPSON**

Brookville, Pa.  
Brookville High School

**Primary**

Travel Club '32, Art Club '33, Primary Club '33-'34.

**CLAYTON L. VOGEL**

Rimersburg, Pa.  
Union High School

**Intermediate**

Football '32, Track '33, Basketball '33-'34, Y. M. C. A. '32.

**PAULINE J. VENSEL**

Δ I E  
St. Petersburg, Pa.  
St. Petersburg-Richland Consolidated High School

**Intermediate**

Glee Club '33-'34, Geography Club '32-'33, Y. W. C. A. '33-'34.



**HELEN J. WAGNER**

Newmansville, Pa.  
Tionesta High School

**Intermediate**

Art Club '32-'33, Hiking Club '33-'34, Y. W. C. A. '32-'33.

**HARRIET ESTHER WHITE**

Echo, Pa.  
Dayton Vocational High School

**Intermediate**

Y. W. C. A. '33-'34, Women's Glee Club '33-'34, Hiking Club '33-'34.

**ANNABEL WILSON**

Δ X Δ  
New Castle, Pa.  
Clarion High School

**Intermediate**

Hiking Club '34, Primary Club '34, Hostess Club '33, Women's Intra-mural Sports '33.

**EULA YATES**

Σ Δ Φ  
Vandergrift, Pa.  
Brookville High School

**Intermediate**

Press Club '32-'33, Hostess Club '32, Y. W. C. A. '32-'33.

**LaMARR YATES**

Δ Φ Δ  
Apollo, Pa.  
Brookville High School

**Intermediate**

Men's Glee Club '33-'34, Y. M. C. A. '33, Globe Trotter's Club '32.

**ANNA ZANOT**

Θ Δ Δ  
Huey, Pa.  
Union High School

**Intermediate**

Women's Intra-mural Sports '32-'34, Women's Athletic Council '33-'34, Y. W. C. A. '32-'33, Y. W. C. A. Cabinet '33-'34, Press Club '33.



# THE SEQUELLE

## GRADUATES NOT PICTURED

**JEROME B. DAVIS**

Clarion, Pa.  
Clarion High School

**Rural**

Glee Club '33-'34, Press Club '34.

**MARY BEATRICE McGRAW**

Tidioute, Pa.  
Tidioute High School

**Primary**

Geography Club '33-'34, Primary  
Club '33-'34.

**JUNE FOX**

Rimersburg, Pa.  
Union High School

**Primary**

Press Club '32-'33, Hostess Club  
'33-'34, Primary Club '33-'34.

**CHARLES WILBERT PENDLETON**

Ramsaytown, Pa.  
Brookville High School

**Rural**

Men's Glee Club, Geography Club  
'32-'33, Y. M. C. A. '32-'33, Hiking  
Club '33-'34.

**GOLDA F. TERWILLIGER**

Clarion, Pa.

**B. S. in Elementary Education**

Art Club '34.

# THE SEQUELLE

Ease with dignity  
—Cicero

THE SEQUELLE

J  
U  
N  
I  
O  
R  
  
C  
L  
A  
S  
S

# THE SEQUELLE

## JUNIOR CLASS ROLL

Ashbaugh, Byron

Baldwin, Betty

Barnes, Martha

Bartley, Turus

Brown, Dorothy

Brown, Leo

Castafero, Ralph

Crooks, Louise

Crooks, Virginia

Gallagher, Fred

Gates, Louise

Hadden, Earl

Hamilton, Harry

Harriger, Guy

Heeter, Madeline

Heverly, Robert

Hincken, Donald

Keefer, Earl

Knight, Harold

Kuhn, Ruth

Kline, Roma

Mallon, Elizabeth

Miller, Homer

Mohney, Elzora

McDonald, Helen

McKee, Jay

McKinney, Morton

McMillan, Elwood

Paine, John

Peterson, Dana

Rhea, Betty

Rhea, Jean

Rosenzweig, Emil

Schreckengost, Edgar

Smith, Joseph

Stahlman, Gerald

Thompson, Bird



# THE SEQUELLE



## JUNIOR CLASS

President - - - - - HOMER MILLER  
Vice-President - - - - - GUY HARRIGER  
Secretary-Treasurer - - - - - BETTY RHEA

Three years ago the present Junior Class enrolled, numbering one hundred sixty students. Many of the students from this group were graduated last year from the two-year course. At present the class numbers less than forty although it has been increased by the return of several alumni members for their degrees.

Many of the Juniors may be found as leaders on the campus in athletics, dramatics, music, and senate representation. In fact, the Junior Class contains seven of this year's football lettermen as well as several basketball lettermen.

# THE SEQUELLE

What a falling-off was there  
—Shakespeare

THE SEQUELLE

S  
O  
P  
H  
O  
M  
O  
R  
E  
  
C  
L  
A  
S  
S

# THE SEQUELLE

## SOPHOMORE CLASS ROLL

Aaron, Lloyd	Geahry, Marian	Phanco, Winifred
Alcorn, Edwin	Geist, Robert	Phillips, Patricia
Alcorn, Harry	Giles, Phyllis	Phillips, Ruth
Austin, Clyde	Gladden, Richard	Porter, Norman
Bartow, Percy	Gould, James	Pryor, Genevieve
Battersby, Dorothy	Haag, Mary Louise	Ramsey, Carl
Bell, Kathryn	Haley, Dorothy	Raybuck, Ida
Bengston, Ruth	Haley, Nancy	Rea, Twila
Bertram, Betty	Hammond, Virginia	Rea, William
Bloom, Rachel	Hanst, Aida	Reichart, Margaret
Brocius, Clarence	Harmon, Betty	Reitz, Mary
Burns, Henry	Hartman, Leona	Ritchie, Harry
Caldwell, Helen	Heasley, Eleanore	Rodgers, Ross
Campbell, Helen	Hess, George	Saul, Mary
Carrier, Mary Louise	Hilton, Marian	Schill, Silvia
Chitester, Ruth	Hiwiler, Donald	Schrecongost, Frances
Clark, Ruth	Hosack, Clara	Seyler, Anna
Claypool, Paul	Howard, Alice	Silves, Gerald
Coleman, Mary	Hudsick, Sophia	Simpson, Ralph
Corbett, Betty	Kahle, Homer	Smail, Ernest
Cotton, Veda	Kanengeiser, James	Smith, Pauline
Covert, Gwen	Karl, Mrs. Ruth	Stahman, Robert
Crawford, Isabel	Keefer, Gerald	Stanley, Susan
Criswell, Margaret	Keller, Bonniel	Stewart, Helen
Crooks, Frances	Kenemuth, Wayne	Stewart, Ruth
Cyphert, Lois	Kenny, Joseph	Terwilliger, Pearl
Daum, Kenneth	Kunselman, Jean	Thompson, Helen
Davis, Jerome	Luce, Eileen	Thompson, Margaret
Davis, Marguerite	Malaskey, Ella	Tremba, Tobias
Dixon, Donald	Mamolen, Rozella	Trunk, Marie
Donhiser, John	Martz, James	Vensel, Pauline
Dougherty, Mary Elizabeth	Miller, Frances	Vogel, Clayton
Doverspike, June	Moore, Robert	Wagner, Helen
Dreibelbis, Margaret	Murray, Kathryn	Walter, Arthur
Edwards, Jean	MacDonald, Barbara	White, Harriet
Ferguson, Ethel	McKue, Cora Ellen	Wilhelm, Catharine
Flynn, Thyra	McElhatten, Esther	Wilson, Annabel
Ford, Willis	McGraw, Mary	Wilson, Dorothy
Fowkes, Sara	McKee, Lois	Wise, Olive
Fox, June	McLaughlin, Kathleen	Yates, Eula
Frederick, Charles	Nelson, Florence	Yates, La Marr
Frill, Mildred	Paup, Dorothy	Young, Frank
Fulton, John	Pendleton, Wilbert	Zanot, Anna
	Peters, Kathryn	

# THE SEQUELLE



## SOPHOMORE CLASS

President - - - - - JAMES KANENGEISER  
Vice-President - - - - - ROSS RODGERS  
Secretary - - - - - PAULINE SMITH  
Treasurer - - - - - RALPH SIMPSON

This class embarked in September, 1932, and with Skipper Kanengeiser at the helm has been successfully guided through calm and angry waters. For two years it has weathered the storms, assisted by First Mate Manson, whose advice and help were invaluable in order to assure a happy landing.

Some of the able seamen are leaving the Good Ship Sophomore Class in May, 1934, to sail in new and stranger waters. The vessel will be decidedly crippled by their loss, but the remaining hands will carry on for two more years without smashing on the rocks.

Bon voyage!

# THE SEQUELLE

Youth should watch joys and shoot them  
as they fly.

—Dryden

THE SEQUELLE

F  
R  
E  
S  
H  
M  
A  
N  
  
C  
L  
A  
S  
S

## THE SEQUELLE

# FRESHMAN CLASS ROLL

Barnett, Lex	Lidstone, Ruth
Bonnet, Earl	Linhart, Marian
Brogan, Chester	Lobaugh, Mary Agnes
Byers, William	Miller, Willard
Carrier, Isobel	Mock, Louise
Carrier, John	Moore, Gladys
Carson, Dorothy	Mott, Alberta
Chamberlain, Helen	Motter, Twila
Cope, Beulah	Mowrey, Franklin
Culbertson, Robert	Phillips, Gertrude
Doverspike, Geraldine	Perry, Lola
Dunne, Betty	Priester, Georgiana
Ehler, Ray	Reighard, Dorothy
Fisher, Donald	Repoff, Joseph
Freedline, Verna	Rimer, Harold
Harriger, Dorothy	Ruland, Irmabelle
Harrison, Dorothy	Schreck, Leone
Hartzell, Lois	Shaffer, Joseph
Hayes, Helen	Sherman, Robert
Henry, Max	Shew, Mary
Hess, Norman	Shreve, Audrey
Hess, Reed	Singer, Lois
Hess, Woodrow	Slike, Edward
Hilliard, Mary	Smith, Louise
Huston, James	Smith, Katherine
Imel, Charles	Swarm, Lillie
Johnston, Russell	Thompson, Katherine
Kaufman, Virginia	Tippery, Katherine
Kifer, Betty	Vockroth, Alberta
Korb, Maurice	Walker, Paul
Kunczewski, Zeigy	Wilbert, Margaret
Lehner, Audrey	Yerina, Henry



# THE SEQUELLE



## FRESHMAN CLASS

President - - - - - EARL BONNET  
Vice-President - - - - - ZIGMUNT KUNCZEWSKI  
Secretary - - - - - MARY AGNES LOBAUGH  
Treasurer - - - - - KATHERINE SMITH

The third week of school saw the freshmen decked out in green hair ribbons and black stocking caps, carefully shunning members of the opposite sex and maintaining with difficulty a most docile aspect in the presence of all upper classmen. Such conditions could not long exist, so the third day of initiation came rebellion in the form of a dummy on top of the chapel. Sharp words were spoken, and blows were struck, with the Junior Class—synonymous with the football team—championing the Freshmen. The affair ended with Kanengeiser mopping his bloody nose. As Temporary President, Carrier retreated into Science with the dummy.

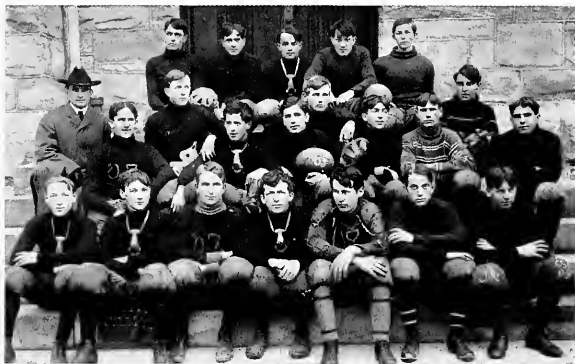
After their period of acclimation the Frosh showed themselves capable and worthy members of the school by sponsoring one of the most successful Freshman Hops the school has ever had.

# THE SEQUELLE

He, full of bashfulness and truth, loved much, hoped little, and  
desired naught.

—Tasso

# T H E ORGANIZATIONS



FOOTBALL TEAM OF 1905

# THE SEQUELLE

Ants never sleep.  
—Emerson

THE SEQUELLE

G  
R  
E  
E  
K  
S

# THE SEQUELLE



National Honorary Educational Society  
Founded at Warrensburg, Missouri, 1916  
Established Lambda Chapter May, 1930

## PHI SIGMA PI

President - - - - - JAY McKEE  
Vice-President - - - - - GUY HARRIGER  
Treasurer - - - - - KENNETH SNYDER  
Corresponding Secretary - HARRY HAMILTON  
Historian - - - - - DEAN SMAIL

### FACULTY MEMBERS

Charles F. Becker, Sponsor      Dr. C. L. Dow  
James R. Huston                  Harry S. Manson  
Dr. D. D. Peirce                  Dr. G. C. L. Riemer  
J. W. F. Wilkinson

### STUDENT MEMBERS

Cassel, James                      Logan, LeVerne  
Chitester, Albert                  Logan, Charles  
Hamilton, Harry                  Master, Norbert  
Hartman, Eugene                  McKee, Jay  
Hess, George                      McKinney, Morton  
Kennemuth, Wayne                Smail, Dean  
Kenny, Joseph                      Snyder, Kenneth  
Steel, Herbert

# THE SEQUELLE



National Honorary Social Science Society  
Founded at Winfield, Kansas, in 1924  
Pennsylvania Iota Chapter  
Established May, 1930

## PI GAMMA MU

President - - - - - MAURICE MOFFATT  
Vice-President - - - - - MARTHA PENCE  
Secretary-Treasurer - - - EUGENE HARTMAN

### FACULTY MEMBERS

Helen Barton  
James Huston  
Helen D. Sims  
Helen Mohney  
Dr. G. C. L. Riemer

### STUDENT MEMBERS

Cassel, James  
Drew, Esther  
Hartman, Eugene  
Reynolds, Maude  
Moffatt, Maurice  
O'Neill, Bess  
Pence, Martha

# THE SEQUELLE



Established March, 1930, at Clarion State Teachers College

## ALPHA GAMMA PHI

### FIRST SEMESTER

President - - - - -	LEO BROWN
Vice-President - - - - -	ROBERT HEVERLY
Secretary - - - - -	EMIL ROSENZWEIG
Scribe - - - - -	ALBERT CHITESTER

### SECOND SEMESTER

President - - - - -	ROBERT HEVERLY
Vice-President - - - - -	TYRUS BARTLEY
Historian - - - - -	EMIL ROSENZWEIG
Secretary - - - - -	MAURICE MOFFATT
Treasurer - - - - -	ALBERT CHITESTER

### FRATRES IN FACULTATE

James R. Huston	Donald D. Peirce
Gilbert A. Hoyt	J. O. Jones
John W. F. Wilkinson	

### FRATRES IN COLLEGIO

Tyrus Bartley	Max Henry
Leo Brown	James Huston, Jr.
Chester Brogan	George Hess
William Byers	Eugene Hartman
James Cassel	Robert Heverly
Ralph Castafero	Zeigy Kunczewski
Albert Chitester	James Sweeny
John Carrier	Samuel Wilhelm
Charles Frederick	Emil Rosenzweig

Ralph Simpson



# THE SEQUELLE



Established April, 1930, at Clarion State Teachers College

## ALPHA PHI ALPHA

President - - - - - LeVERNE LOGAN  
Vice-President - - - - - GUY HARRIGER  
Recording Secretary - - - - - ROSS RODGERS  
Corresponding Secretary - MORTON McKINNEY  
Treasurer - - - - - DEAN SMAIL

### FRATRES IN FACULTATE

Harry S. Manson                      Dr. C. L. Dow  
   Charles F. Becker

### FRATRES IN COLLEGIO

Edwin Alcorn	Willard Miller
Henry Burns	Robert Moore
Willis Ford	Franklin Mowry
Fred Gallagher	Jay McKee
Richard Gladden	Morton McKinney
James Gould	Elwood McMillan
Guy Harriger	Ross Rodgers
Woodrow Hess	Dean Smail
Don Hiwiler	Kenneth Snyder
James Kanengeiser	Gerald Silves
Harold Knight	Bird Thompson
LeVerne Logan	Arthur Walters
Leroy Lovell	LeMarr Yates
Homer Miller	George Zagst

### PLEDGES

Joseph Shaffer                      Harold Rimer

# THE SEQUELLE



National Educational Sorority  
Alpha Zeta Chapter organized on Clarion Campus May 15, 1932, formerly being  
Zeta Kappa Nu Sorority

## DELTA SIGMA EPSILON

President - - - - - NAN HALEY  
Vice-President - - - - - ELEANORE HEASLEY  
Secretary - - - - - EILEEN LUCE  
Treasurer - - - - - MARY REITZ  
Chaplain - - - - - TILMAE GOSETTI  
Sergeant - - - - - DOROTHY HALEY  
Historian - - - - - DOROTHY HALEY  
Sponsor - - - - - MISS HELEN B. BARTON  
Patronesses - - - - - MRS. M. H. DAVIS  
MRS. W. B. RANKIN

### MEMBERS

Nan Haley	Dorothy Haley
Eleanore Heasley	Eileen Luce
Mary Agnes Lobaugh	Mary Reitz
M. Louise Mock	Tilmae Gosetti
	Virginia Kaufman

# THE SEQUELLE



Founded November, 1930, at Clarion State Teachers College

## SIGMA DELTA PHI

### FIRST SEMESTER

President - - - - - FRANCES CROOKS  
 Vice-President - - - - - BETTY BALDWIN  
 Secretary - - - - - MARTHA PENCE  
 Treasurer - - - - - MILDRED FRILL  
 Sergeant - - - - - BETTY MALLON  
 Chaplain - - - - - EULA YATES

### SECOND SEMESTER

President - - - - - MARTHA PENCE  
 Vice-President - - - - - FRANCES CROOKS  
 Secretary - - - - - MARTHA BARNES  
 Sergeant - - - - - BETTY BALDWIN  
 Chaplain - - - - - MARY ELIZABETH DOUGHERTY  
 Sponsor - - - - - MISS BERTHA V. NAIR

### MEMBERS

Betty Baldwin	Ruth Kuhn
Martha Barnes	Helen Lidstone
Leone Carson	Betty Mallon
Margaret Criswell	Gladys Moore
Frances Crooks	Martha Pence
Mary Dougherty	Molly Shew
Mildred Frill	Audrey Shrieve
Louise Johnston	Dorothy Wilson

Eula Yates

### PATRONESSES

Mrs. Harry Wilson	Mrs. Amabel Ralston
Mrs. Lloyd F. Weaver	

# THE SEQUELLE



Founded January, 1931, at Clarion State Teachers College

## LAMBDA CHI DELTA

President - - - - - EDNA DAVIES  
Vice-President - - - - - PHYLLIS SMATHERS  
Secretary - - - - - GWEN COVERT  
Treasurer - - - - - CLARA HOSACK  
Chaplain - - - - - VIRGINIA CROOKS  
Sponsor - - - - - MISS HELEN ARMSTRONG

### MEMBERS

Edna Davies	Phyllis Smathers
Gwen Covert	Winnifred Phanco
Jean Edwards	Helen Stewart
Annabel Wilson	Catherine Wilhelm
Kathryn Murray	Mary Coleman
Virginia Crooks	Clara Hosack
Ethel Ferguson	Alice Howard
	Sara Fowkes

### PATRONESSES

Mrs. William Davies	Mrs. D. D. Peirce
Mrs. Sam Wilson	Mrs. Harry Manson
	Mrs. N. E. Heeter

# THE SEQUELLE



Founded February, 1931, at Clarion State Teachers College

## THETA ALPHA LAMBDA

President - - - - - BETTY RHEA  
Vice-President - - - - - DOROTHY BROWN  
Secretary - - - - - FRANCES MILLER  
Treasurer - - - - - ROZELLA MAMOLEN  
Sponsor - - - - - MISS MARIE MARWICK

### MEMBERS

Rachel Bloom	Dorothy Brown
Marian Geahry	Lois Hartzell
Leona Hartman	Mary Hilliard
Marion Hilton	Jean Kunselman
Marcella Kurtzhals	Betty Rhea
Mary Lou Haag	Jean Rhea
Alberta Volkroth	Lola Perry
Pauline Smith	Kate Smith
Frances Miller	Ruth Phillips
Patricia Phillips	Anna Zanot
Betty Kifer	Rozella Mamolen

### PATRONESSES

Mrs. J. R. Huston	Mrs. Harry Renn
Mrs. Gilbert A. Hoyt	

# THE SEQUELLE



Founded December, 1931, at Clarion State Teachers College

## DELTA PI EPSILON

### FIRST SEMESTER

President - - - - - MARIE TRUNK  
 Vice-President - - - - - OLIVE WISE  
 Secretary - - - - - EDNA KRINER  
 Treasurer - - - - - VEDA COTTON

### SECOND SEMESTER

President - - - - - AIDA HANST  
 Vice-President - - - - - CORA E. MCKUE  
 Secretary - - - - - MADELINE HEETER  
 Treasurer - - - - - MARIE TRUNK  
 Sponsor - - - - - MISS M. B. WILLIAMSON

### MEMBERS

Ruth Bengston	Audrey Lehner
Veda Cotton	Marian Lenhart
Betty Dunne	Mary Saul
Aida Hanst	Marie Trunk
Dorothy Harriger	Pauline Vensel
Dorothy Harrison	Cora E. McKue
Edna Kriner	Olive Wise

### PATRONESSES

Mrs. Long	Mrs. Fitzgerald
Miss Gamble	Mrs. Riley

# THE SEQUELLE



## PAN HELLENIC

### FIRST SEMESTER

President - - - - - RUTH BENGSTON  
Secretary-Treasurer - - - - - MARY REITZ

### SECOND SEMESTER

President - - - - - BETTY MALLON  
Secretary-Treasurer - - - - - JEAN KUNSELMAN

### ACTIVE MEMBERS

Ruth Bengston                      Jean Edwards  
Mary Reitz                          Jean Kunselman  
   Betty Mallon

### SILENT MEMBERS

Madeline Heeter                      Sara Fowkes  
Virginia Kaufman                      Dorothy Wilson  
   Jean Rhea

Pan Hellenic Council is made up of one active and one silent member from each sorority on the campus. The purpose of this council is to discuss and solve any problems which concern all of the sororities.

During the year, Pan Hellenic sponsored a tea for non-sorority girls, the Pan Hellenic Dance, and the Pan Hellenic Banquet.

# THE SEQUELLE

Pure friendship is something which men of an inferior intellect can never taste.

—La Bruyere



THE SEQUELLE

ORGANIZATIONS

# THE SEQUELLE



## Y. W. C. A. CABINET

President	MARIAN GEAHRY
Vice-President	VEDA COTTON
Secretary	ANNA ZANOT
Treasurer	KATHRYN BELL
Devotionals	JEAN EDWARDS
Music	MARY SAUL
Publicity	MARY LOU HAAG
Morning Watch	GENEVIEVE PRYOR
Social	ALICE HOWARD
World Fellowship	RACHEL BLOOM
Home Missionary	BARBARA McDONALD
Foreign Missionary	PEARL TERWILLIGER

The Y. W. C. A. strives to meet the spiritual needs of the girls on our campus. It aims to create a spirit of sisterhood. To carry out these objectives, the organization holds morning watch and weekly meetings. By means of the "Big Sister" movement and the Freshman Reception, the cabinet assists the Freshman girls in adjusting themselves to college life.

The Y. W. C. A. aids the needy in the community at various times during the year.

# THE SEQUELLE



## Y. M. C. A.

President	ALBERT H. CHITESTER
Vice-President	TOBIAS TREMBA
Secretary	BYRON ASHBAUGH
Treasurer	DONALD DIXON
Membership Chairman	NORMAN PORTER
Social Chairman	FRANKLIN MOWRY
Devotional Chairman	WILLIAM HILTON
Program Chairman	JAY McKEE

The Y. M. C. A. on this campus stands for right living. This means the application of Christian principles to the situations which arise in our college environment. The members of this activity strive to develop character with the idea that it is worthwhile in their lives. They build within themselves ideals that will help them in future years when all textbooks are forgotten. The Y. M. C. A. gives a perspective of life which every teacher should acquire and carry into his school work.

# THE SEQUELLE



## HOSTESS CLUB

### FIRST SEMESTER

President - - - - -	LEONE SCHRECK
Secretary-Treasurer - - - - -	HELEN STEWART
Program Chairman - - - - -	LOUISE MOCK

### SECOND SEMESTER

President - - - - -	LEONE SCHRECK
Vice-President - - - - -	LOIS ANN SINGER
Secretary-Treasurer - - - - -	KAY THOMPSON
Program Chairman - - - - -	RUTH REIGHARD

The purpose of the Hostess Club is to instruct the girls in manners, in table setting, in homemaking, in profitable use of leisure time, and in social niceties and proper dress for all occasions. The matter of proper dress was well illustrated early in the year by a style show presented by Smith and Company of Oil City.

Miss Sims has very capably guided the girls in their study of these subjects.

# THE SEQUELLE



## PRIMARY CLUB

President - - - - - RUTH KUHN  
Vice-President - - - - - JEAN EDWARDS  
Secretary-Treasurer - - - - - CATHERINE WILHELM

Since many of the primary subjects have been taken out of the two-year curriculum, the Primary Club undertook to gain a few ideas about primary work by means of a discussion class under the capable leadership of Miss Mary B. Williamson.

Since the aim of the club was to develop socially as well, many good times were enjoyed during the year.

All of the girls of the Club are grateful to Miss Williamson for having enjoyed a most profitable year.

# THE SEQUELLE



## OUTDOOR CLUB

### FIRST SEMESTER

President	- - - - -	GUY HARRIGER
Vice-President	- - - - -	FRED GALLAGHER
Secretary	- - - - -	DON HIWILLER
Faculty Sponsors	- - - - -	MISS WILLIAMSON MR. MANSON

### SECOND SEMESTER

President	- - - - -	LeROY LOVELL
Vice-President	- - - - -	FRED GALLAGHER
Secretary	- - - - -	ALBERTA MOTT

"The Natural Way to a Better Life."

The Outdoor Club, often called the best club on the campus, has had one of its most successful years. Camp Fisher is one of the favorite "hunting grounds," and most of the activities of the past year have centered there.

In seeking for Truth and enjoyment of Life, the members of the Outdoor Club choose the great out-of-doors. For, where else can Truth be found but in Nature?

# THE SEQUELE



## THE WANDERLUSTIGEN

President	ARTHUR WALTERS
Vice-President	NORMAN PORTER
Secretary	LLOYD AARON
Treasurer	HARRY RITCHIE
Advisor	DR. DOW

"The Wanderlustigen" is the recent, self-adopted name of the geography club.

The organization has two main objectives: (1) as the name indicates, to gain increased knowledge concerning various significant geographical features through real or imaginary journeys or through instructive lectures and discussion; (2) to attain social improvement through group activity. With reference to the first objective, the club is especially interested in knowing Pennsylvania better. In this connection trips were taken to many important places in Western Pennsylvania. In pursuance of its second major objective the club has sponsored several picnics and informal parties. The membership is limited to thirty.

# THE SEQUELLE



## ART CLUB

President - - - - - PAULINE SMITH  
Vice-President - - - - - DOROTHA ELDER  
Secretary-Treasurer - - - - - GEORGIANIA PRIESTER

The Art Club, under the supervision of Miss Hazel Sandford, during the past year has had for its objectives: appreciation, creation, and social concomitants. In developing appreciation the members strove to enjoy works of beauty, especially the productions of great masters. In creation, they aimed to make with their own hands useful and beautiful articles, such as linen scarfs, silhouettes, and decorated vases. In furthering social concomitants they aimed to develop a friendly attitude within the group. As an incentive to this end numerous parties and teas were held during the club periods.



# THE SEQUELLE



## HIKING CLUB

### FIRST SEMESTER

President - - - - - AIDA HANST  
Vice-President - - - - - GENEVIEVE PRIOR  
Secretary-Treasurer - - - - - KATHRYN BELL  
Faculty Sponsor- - - - - MISS RENA CARLSON

### SECOND SEMESTER

President - - - - - PHYLLIS GILES  
Vice-President - - - - - DORA BOARIO  
Secretary-Treasurer - - - - - ISABEL CRAWFORD

The purpose of the Hiking Club is to create in its members an interest and an appreciation of Nature. It also aims to acquaint its members with the scenic beauty of Clarion itself. New students at the school find the club especially beneficial in this respect.

# THE SEQUELLE

As turning the logs will make a dull fire burn, so changes of  
studies a dull brain.

—Longfellow

THE SEQUELLE

M  
U  
S  
I  
C

# THE SEQUELE

## THE COLLEGE ORCHESTRA

### MEMBERS

MORTON MCKINNEY, President	- - -	Violin
DONALD DIXON, Librarian	- - - - -	Violin
SARA FOWKES	- - - - -	Violin
MARGARET WILBERT	- - - - -	Violin
MISS HELEN BARTON	- - - - -	Violincello
NORMAN PORTER	- - - - -	Clarinet
FRANK YOUNG	- - - - -	French Horn
GERALD KEEFER	- - - - -	Trumpet
WILLARD MILLER	- - - - -	Trumpet
JUNE DOVERSPIKE	- - - - -	Trombone
CHARLES HETRICK	- - -	Xylophone and Drums
ARTHUR WALTERS	- - - - -	Piano

The College Orchestra, directed this year by Miss Gladys Rich, has been a recreational as well as an educational activity that has afforded this group of aspiring musicians the pleasure of contributing to a harmonious whole. The successful existence of this campus organization has depended upon the sincere interest of its members in orchestral music, upon the desire of each individual to improve his technique in playing his chosen instrument. The Orchestral Literature studied this winter has included:

Unfinished Symphony (First Movement)	- -	Schubert
Largo	- - - - -	Handel
Valse des Fleurs (from the "Nutcracker Suite")	- - - - -	Tschaikowsky
Pilgrims' Chorus (from "Tannhauser")	- -	Wagner
Turkish March (from "The Ruins of Athens")	- - - - -	Beethoven
March aux Flambeaux	- - - - -	Scotson Clark
Minuet (in G)	- - - - -	Beethoven
Lullabye	- - - - -	Brahms
March Militaire	- - - - -	Schubert

The Orchestra has made several public appearances this season, contributing to several chapel programs, to the Christmas and Easter Music Assemblies, and taking part in the Varsity Revue. A string trio consisting of Sara Fowkes—violin, Miss Helen Barton—violincello, and Ruth Kuhn—piano, also contributed several numbers to the Easter program. The Orchestra participated in the Annual Spring Concert during Music Week in May.

# THE SEQUELLE



## WOMEN'S GLEE CLUB

### FIRST SEMESTER

President - - - - - MILDRED FRILL  
Vice-President - - - - - ISABEL CRAWFORD  
Secretary-Treasurer - - - - - DOROTHY BROWN  
Librarian - - - - - MARY SAUL

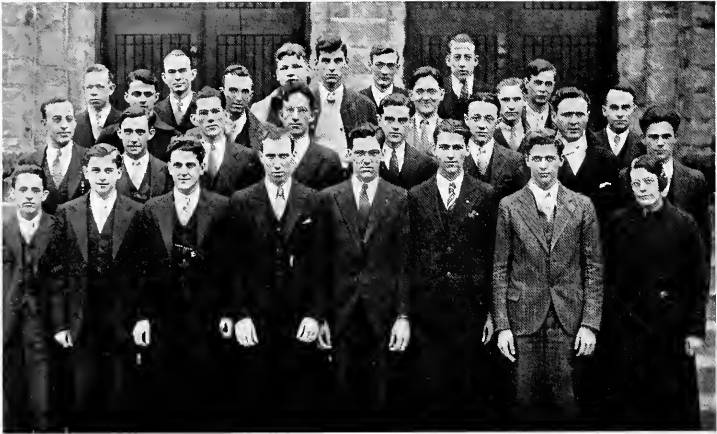
### SECOND SEMESTER

President - - - - - RUTH KUHN  
Vice-President - - - - - ELEANORE HEASLEY  
Secretary-Treasurer - - - - - VEDA COTTON  
Librarian - - - - - JUNE DOVERSPIKE

The Women's Glee Club is one of the finest organizations on the campus. It is composed of thirty-five members under the direction of Miss Gladys E. Rich. The club aims to foster an appreciation of the fine works of the great masters, both past and present. Very decidedly, an avenue for self-expression is presented.

The club has participated in chapel programs and several times has appeared before downtown organizations.

# THE SEQUELLE



## MEN'S GLEE CLUB

President - - - - - MORTON MCKINNEY  
Vice-President - - - - - BIRD THOMPSON  
Treasurer - - - - - ALBERT CHITESTER  
Secretary - - - - - GERALD SILVES

The Men's Glee Club, under the spell of Miss Gladys Rich's capable baton, holds Thursday evening sessions from 8:00 to 9:00. The benefits derived from membership in this campus organization are many. Not the least of these is the salutary and exhilarating psychological release found in striving for cooperative harmony.

With the money acquired by taxation plus that raised by sponsoring shows, the club found it possible to purchase dark blue coat-sweaters for each member fulfilling the constitutional requirements of the organization.

# THE SEQUELLE



## A CAPPELLA CHOIR

Betty Bertram	Donald Dixon
Edna Davies	Gerald Keefer
Ethel Ferguson	Wayne Kennemuth
Eileen Luce	Norman Porter
Mary Reitz	Ross Rodgers
Mary Saul	Gerald Silves
Sylvia Schill	Dean Smail
Ruth Stewart	Arthur Walters

The A Cappella Choir was a decidedly successful innovation in the fall of 1933. The sixteen members were chosen by our competent music director, Miss Rich. Under her inspirational direction the choir has gained in skill and technique. A cappella means to sing entirely without instrumental accompaniment. To sing thus requires much practice if a pleasing effect is to be produced.

During this year the A Cappella Choir has participated in two chapel programs, and has filled engagements with the Women's Club, the Kiwanis Club, the Presbyterian Church, and the Brookville High School. The music used included:

Emitte Spiritum tuum	- - - -	Schuetky
Adoramus te	- - - -	Polestrina
A Joyous Christmas Song	- - -	Gevaert
Were You There?	- - - -	Burleigh
Open Your Eyes	- - - -	MacFarlane

# THE SEQUELLE

*Music is the universal language of mankind.*

—Longfellow



THE SEQUELLE

D  
R  
A  
M  
A  
T  
I  
C  
S  
  
A  
N  
D  
  
D  
E  
B  
A  
T  
E

# THE SEQUELLE



## COLLEGE PLAYERS

### FIRST SEMESTER

President - - - - - JAMES KANENGEISER  
Vice-President - - - - - WINNIFRED PHANCO  
Secretary - - - - - ELLA MALASKY  
Treasurer - - - - - MARCELLA KURTZHALS

### SECOND SEMESTER

President - - - - - EDNA DAVIES  
Vice-President - - - - - CHESTER BROGAN  
Secretary - - - - - CATHERINE WILHELM  
Sponsor - - - - - MISS MARWICK

The College Players Club is motivated by the belief that "the play is the thing." Club periods are devoted to a study of the drama in all its aspects. Many plays and sketches are presented to exemplify proper lighting, costuming, stage make-up, oral interpretation, acting, and all the other elements of play production.

During the first semester a play, "The Wedding," was presented in Chapel. Those taking part were: James Kanengeiser, Mary Elizabeth Dougherty, Marion Hilton, Winnifred Phanco, Arthur Walters, and Ross Rodgers.

The annual presentation of the club for the public was held in May.

# THE SEQUELLE



## COLLEGE FORENSICS

President - - - - - MARCELLA KURTZHALS  
Vice-President - - - - - DONALD HINCKEN  
Recording Secretary - - - - - BETTY MALLON  
Corresponding Secretary - - - - - MARY LOU HAAG

The College Forensics succeeds the Debating Club. Its activities consist of debating, readings, and public speaking.

Inter-collegiate debating comprised the majority of this year's work. Debates were scheduled with Slippery Rock State Teachers College, Shippensburg State Teachers College, California State Teachers College, and Grove City.

The question of debate was: Resolved that the powers of the President should be substantially increased as a settled policy. The Affirmative team was comprised of Albert Chitester, Betty Mallon and Maurice Korb, while the Negative side of the question was upheld by Marcella Kurtzhals, Mary Elizabeth Dougherty, and Marion Hilton.

Under the competent leadership of Mr. William Flanagan, a former member of the College Forensics Club, the members enjoyed a most successful season.

# THE SEQUELLE

Everybody has his own theatre, in which he is manager, actor, prompter, playwright, scene-shifter, box-keeper, door-keeper, all in one, and audience into the bargain.

—Hare

THE SEQUELLE

GOVERNMENT

# THE SEQUELLE



## COMMUNITY SENATE

President - - - - - KENNETH SNYDER  
Vice-President - - - - - GUY HARRIGER  
Secretary-Treasurer - - - - - KATHRYN MURRAY

### MEMBERS

Ruth Bengston	Ruth Phillips
Aida E. Hanst	Leo Brown
Madeline Heeter	Robert Heverly
Marcella Kurtzhals	Jay McKee
Norbert Master	

The aim of the Community Senate is to promote student responsibility, increase student-faculty cooperation, and enrich in every way possible college life.

It is the purpose of this association increasingly to take over the organization and direction of student affairs; to define and regulate the privileges of students; to cooperate with the faculty and proper college authorities in matters of student concern; and constantly to seek to make the College a better agency for preparing teachers.

# THE SEQUELLE



## WOMEN'S STUDENT COUNCIL

President - - - - - GWEN COVERT  
Vice-President - - - - - KATHRYN MURRAY  
Secretary - - - - - MARY REITZ  
Treasurer - - - - - RUTH BENGSTON

### MEMBERS

Eleanore Heasley	Betty Dunne
Phyllis Giles	Marian Lenhart
Winnifred Phanco	Nan Haley
Ethel Ferguson	Mary Hilliard
Dorothy Haley	Isabelle Crawford
Cora Ellen McKue	

The Student Council is the governing body of the Women's Student Government. Its purposes are: to deal with problems concerning the girls' dormitory; to aid in the development of individual responsibility; to develop cooperation between the students and the faculty; to maintain, within the house, high standards of life and culture.

# THE SEQUELLE



## MEN'S STUDENT COUNCIL

President - - - - - MAURICE MOFFATT  
Vice-President - - - - - ROBERT HEVERLY  
Secretary - - - - - TYRUS BARTLEY

### MEMBERS

Dr. D. D. Peirce, (Dean of Men)  
Albert Chitester          Byron Ashbaugh  
William Hilton

The Men's Student Government represents all men residing in the dormitories. The organization aims to develop the highest standards of honor in all matters of personal conduct. The government is under the supervision of the Dean of Men, Dr. D. D. Peirce, and the President of the Council, Maurice Moffatt. Very commendable service is rendered by this body in maintaining cooperation among the men in the observance of the rules and regulations common to dormitory life.



# THE SEQUELLE

## WOMEN DAY STUDENTS

The Women Day Students have a room set aside for their own use. It is large, airy, and beautifully furnished.

Although the girls do not have the valuable contacts of dormitory life, they learn to know other students outside of classes by means of the women day students' room which is both a meeting place and a place of recreation. The democratic spirit of the school prevails there and has a marked effect on everyone who comes in contact with it.

The Women Day Students were represented in the 1933-34 Community Senate by:

Marcella Kurtzhals  
Ruth Phillips  
Aida Hanst

The representatives they have chosen for the coming year are:

Katherine Tippery  
Virginia Kaufman  
Betty Rhea

---

## MEN DAY STUDENTS

The Men Day Student's Association was first organized when the college inaugurated the Student's Cooperative Community Association. The first Senate President, James Kassel, was a representative of the Men Day Students. This year Kenneth Snyder, Jay McKee, and Guy Harriger represented the Association in the Community Senate. Mr. Snyder is President of the present Senate, and Mr. Harriger is Vice-President.

This year the administrative forces of the college provided a room, on the first floor of Science Hall, for the exclusive use of Men Day Students. This room is equipped with tables and chairs and several easy chairs.

Guy Harriger, who was elected President of the Association soon after the beginning of the first semester, met with Dr. Riemer and drew up a set of necessary regulations for conducting the room.

For the ensuing year Homer Miller, LeRoy Lovell, and Guy Harriger have been elected to represent the Men Day Students in the Community Senate.

# THE SEQUELLE

The people's government made for the people, made by the  
people, and answerable to the people.

—Daniel Webster

THE SEQUELLE

P  
U  
B  
L  
I  
C  
A  
T  
I  
O  
N  
S

# THE SEQUELLE



## THE SEQUELLE

Editor-in-Chief - - - - -	MARTHA PENCE
Assistant Editor - - - - -	GWEN COVERT
Business Manager - - - - -	NORBERT MASTER
Assistant Business Manager - - - - -	JAMES KANENGEISER
Literary Editor - - - - -	EDNA DAVIES
Assistant Literary Editor - - - - -	PATRICIA PHILLIPS
Art Editors - - - - -	ROZELLA MAMOLEN WILLARD SIMPSON
Photography - - - - -	MARCELLA KURTZHALS LEVERNE LOGAN
Humor - - - - -	ALICE HOWARD
Athletics - - - - -	WAYNE KENNEMUTH ETHEL FERGUSON
Typist - - - - -	BETTY BALDWIN
Copy-reader - - - - -	ESTHER DREW

# THE SEQUELLE

The 1934 Sequelle was well organized and contracts signed early in 1933. The publication did not progress, however, as smoothly as this might indicate. The well-publicized depression had hit Clarion, too, and for a time it was thought advisable to eliminate the Sequelle or to publish a cheaper type of book than has been customary. After some deliberation the students voted to uphold the tradition by publishing a book of the usual size and quality.

At the beginning of the second semester, Dr. Riemer and the Student Senate made it possible for every student who had been in school for a year to be given a Sequelle as a part of his Student Cooperative Fee. By this the class dues of graduating students were reduced, and the financial burden of the Sequelle greatly lessened.

The book which has been produced is of a strikingly different type. Its simplicity is in accordance with the spirit of the times which is breaking away from the elaborate "artisticness" of a few years ago. The theme which runs through this book is purposely faint but shows subtly the great changes which have taken place in Clarion since its inculcation as a State Normal School in 1887. Consequently, a book of this type is of interest not only to this year's graduates but to the graduates of all time who see in it. It is not just another annual, but a piece from the very heart of their alma mater.

6475

## THE SEQUELLE



## THE CLARION CALL

THE CLARION CALL, financed by the Clarion Student Cooperative Association and published under the auspices of the Community Government Association since 1932, is the most potent campus agency for the expression and preservation of student and faculty attitude and opinion. It offers opportunity of free expression, of learning to appreciate firm, concise, and convincing prose, and of observing the power of the written word over mind and emotion.

The Staff was advised for a part of the first semester by Dr. Donald Peirce, Dean of Men, and for the remainder of the semester by Miss Bertha Nair of the English Department.

Due to the lack of candidates for the popularly elected offices of Managing Editor and Associate Editor, the second semester saw the "Call" pass under the control of the Press Club. It was this organization that gave birth to our college paper and that nurtured it until the year 1932.

# THE SEQUELLE

## Staff Under the Clarion Student Cooperative Association

Managing Editor	MORTON F. MCKINNEY
Associate Editor	RUTH KUHN
Senate Activities	JAMES HUSTON, Jr.
Sport News	WILLIAM HILTON
Social Affairs	KATHRYN MURRAY
"Anon X. Ibid"	JOSEPH SMITH
"Around the Globe"	MARTHA PENCE
"The Campus Calliope"	ALICE HOWARD TYRUS BARTLEY
Free-lancer	JAY McKEE
Historian	JAMES CASSEL
Drama, Music, CWA	EDNA DAVIES
Faculty, Women's Sports	GWEN COVERT

## Staff Under the Press Club

Editor-in-Chief	JEAN KUNSELMAN
Associate Editor	PAULINE SMITH
Make-Up Editor	ROZELLA MAMOLEN
News Editor	RUTH CHITESTER
School Editor	AIDA HANST
Sporting Editors	BETTY RHEA JEROME DAVIS
Club Editors	KATE SMITH JEAN RHEA VIRGINIA CROOKS
Exchange Editor	MAUDE REYNOLDS
Humor and Feature Editors	ESTHER DREW BETTY KIFER RUTH PHILLIPS
Circulation Manager	HELEN McDONALD
Reporters	HELEN CHAMBERLAIN MARGARET WILBERT

# THE SEQUELLE



## PRESS CLUB

### FIRST SEMESTER

President - - - - - JEAN KUNSELMAN  
Vice-President - - - - - ISABEL CARRIER  
Secretary-Treasurer - - - - - PAULINE SMITH

### SECOND SEMESTER

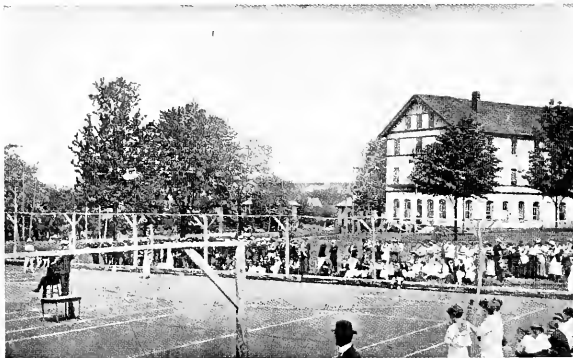
President - - - - - JEAN KUNSELMAN  
Vice-President - - - - - HELEN McDONALD  
Secretary-Treasurer - - - - - RUTH CHITESTER  
Faculty Advisor - - - - - MISS NAIR

The purpose of the Press Club is to promote an interest in the journalism of the day. During the first semester the members discussed modern tendencies in journalism and the various ways to publish a school paper.

During the second semester the Press Club has had complete charge of the college newspaper, "The Clarion Call." The club is thus doing active work in journalism.



# T H E ATHLETICS



TENNIS COURTS, '23



# THE SEQUELLE

A sound mind in a sound body is a short but full description  
of a happy State in this World.

—Locke

THE SEQUELLE

F  
O  
O  
T  
B  
A  
L  
L

# THE SEQUELLE

## 1933 FOOTBALL

The football squad was smaller this year than it has been for six years, but the quality of the material was better than it had been for the last seven years. With only three of last year's regulars missing, there was a nucleus for a good team. The new material more than made up for that lost through graduation. The new material made it advisable to shift the positions of some of those who played last year. Heverly, last year's quarter, played tackle. Bartley, last year's center, was found at quarter. This added to the strength of the team both offensively and defensively.

Although the outcome of the games may not be considered so successful on account of larger and heavier teams, Clarion had a hard-working, fighting team with plenty of spirit and willingness to cooperate.



# THE SEQUELLE



JONES

The athletic activities of Clarion, under the leadership of Coach Jones, were brought to a close this year after the greatest success of all years. Both the football and basketball teams built up this year by Mr. Jones should go undefeated next year.

Mr. Jones' clever offense in basketball never failed to work, and his team was one of the best coached in this year's competition. J. O. has placed athletics on a very high standard and has produced highly capable teams.

Sept. 30

INDIANA

At Indiana

Clarion's opening game initiated her version of the military shift. The opening march took Clarion to the Indiana 12 yard line where three successive 15 yard penalties took away a chance of scoring. The score at the end of the half was Indiana-6—Clarion-0.

Because of the heat (it was 92 on the field) and the number of fresh men that Indiana could throw into the game the second half was all Indiana's. Final score: Indiana-28—Clarion-0.

Oct. 7

ST. VINCENT

At Clarion

St. Vincent had picked Clarion as the soft spot on the schedule but were extended to win 19-0. The scoring was done by forward passing. The Notre Dame running attack was successfully bottled up by the lighter Clarion line.

In her last game St. Vincent defeated Davis and Elkins, the leading scorers of the United States for the season, 26-7.

CLARION

## THE SEQUELE



TYRLUS BARTLEY (Ty)  
Quarter Back  
Parker High School

Ty was shifted from center to quarter back. He did not have much opportunity to show as a ball carrier because of his blocking assignments, but he proved to be the most consistent ground gainer against the heavy Lock Haven line. He was one of the best defensive men on the squad.



EARL BONNET (Bonnet)  
Quarter Back  
Rimersburg High School

Bonnet is the best quarter back prospect among the new men. He has ability and with experience may give somebody a battle for a regular position in another year.



LEO BROWN (Brownie)  
End  
Marienville High School

Brownie held down the left end position. He blocked hard and tackled well. Because of lack of experience, he was sometimes fooled in the early games, but he showed the greatest improvement of any man on the squad.



RALPH CASTAFERO (Casty)  
Half Back  
Brockway High School

Casty was the leading scorer on the squad. His 14 points against Lock Haven gave him the honor of scoring more points on that team than were scored on them in all their other games.

# THE SEQUELLE

FRED GALLAGHER (Skeets)  
Guard  
East Brady High School

Skeets, the other man in our pair of guards, was called the best Teachers College guard for his size. He has the honor of receiving the trophy for having played the most consistent football on the squad.



GEORGE HESS (Duke)  
Guard  
McKeesport High School

Duke, teaming up with Gallagher, gave the school the best pair of guards it has ever had. He was a fast charger, good tackler, and the best blocker on the squad. He had the honor of receiving the Freshman Football Award.



ROBERT HEVERLY (Bob)  
Tackle  
Bellefonte High School

Bob, a last year's backfield man, was shifted to a tackle position. Bob did well in a new position. His offensive work was better than his defensive.



JAMES HUSTON (Jim)  
Full Back  
Kiski

Jimmy, playing his first year of College football, was a great deal of help because of his forward passing. He was on the throwing end of two heaves that scored on Lock Haven in one quarter.



## THE SEQUELLE



JOSEPH KENNY (Joe)

Tackle  
Clarion High School

Joe was a good, steady tackle. Not much ground was gained through his position. His two years' experience should make him an outstanding line-man in another year.

ZEIGY KUNCZEWSKI (Ziggy)

Full Back  
Claridge High School

Ziggy was probably the hardest hitting back on the squad and would have seen much more action but for his lack of experience and injuries. We predict great things for him in another year.

HAROLD RIMER (Fats)

Tackle  
Rimersburg High School

Rimer, a good big boy who made up for lack of experience in his aggressiveness and hard work. Towards the end of the season he proved himself a good line-man.



DANA PETERSON (Pete)

End  
Knox High School

Pete was a fast, aggressive end with good football sense. The team suffered because of his absence due to injury. We are expecting great things from him next year.



# THE SEQUELE

HENRY YERINA (Moon)

Center

Jeannette High School

Moon came here with the reputation of being an all scholastic center. We expected great things of him and were not disappointed.



NORBERT MASTER  
CHARLES FREDERICK

Managers

Without the help of Norbie and Charley in respect to equipment and the water pail, the team wouldn't have enjoyed an otherwise successful season.



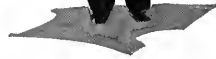
CAPT. EMIL ROSENZWEIG

(Rosey)

End

Bellefonte Academy

Rosey, captain of the 1933 squad and a three year veteran, made a good leader and protected his end of line commendably.



WILLIAM REA (Bill)

Half Back

Clarion High School

Bill played right half this year and showed best on reverse plays. His punting helped us out of some difficult positions.



# THE SEQUELLE

Oct. 21                                  ALUMNI                                  At Clarion

The traditional Alumni game showed the value of being in condition. Behind at the half 6-0, the Varsity came back to score in the 3rd and 4th quarters to win the game 13-0. It was a good battle and we wonder if Fitzgerald's three broken ribs and broken nose have healed yet.

Oct. 28                                  EDINBORO                                  At Clarion

This was the Homecoming game and it turned out to be quite a thriller. Clarion scored in the first quarter when Castafero circled his own right end and then attempted to protect the lead.

Edinboro's passes had us in difficulty for the remainder of the game. One of those long passes gave Edinboro the ball on our 4 yard line. Clarion elected to score a safety for Edinboro rather than risk having a punt blocked. Edinboro had scored a safety in the 3rd quarter when the kicker and center did not function properly and the ball rolled over the goal line. The final score was Clarion-6-Edinboro-4.

Nov. 3                                  CALIFORNIA                                  At California

This was rather a listless game during the entire first half, but became more interesting for California the second half. California intercepted one of Clarion's passes in mid-field and on the next play completed a long pass to put the ball in scoring position. The final score was California 7-Clarion-0.

Nov. 10                                  LOCK HAVEN                                  At Lock Haven

The average weight of the starting Lock Haven team was 189, that of the Clarion team was 156. Add to that a soggy field, partly covered with snow and you might guess who won. The final score was Lock Haven-38-Clarion-14. In eight games Lock Haven had 22 points scored against them, and Clarion scored 14 of that total.

# THE SEQUELLE

Nov. 17

SLIPPERY ROCK

At Clarion

Slippery Rock came here with another good team and a fine record. They had won seven games and had been held to a 6-6 tie by Grove City College. Clarion played a great game and threw a score into the Slippery Rock crew with her forward passing. Castafero took the ball to the Slippery Rock 6-yard line for a first down on a completed lateral pass only to fumble on the next play. Slippery Rock recovered and punted out of danger.

This was the final game for the best Teachers College team in the state for its size.

9/1/15

# THE SEQUELLE

Attack is the reaction, I never think I have hit hard unless it rebounds.

—Johnson

THE SEQUELLE

B  
A  
S  
K  
E  
T  
B  
A  
L  
L

# THE SEQUELLE

LEO BROWN                      Forward      Marienville High School

Brownie completed his second year as the right forward. He has another season of competition. Brownie's ability to go in after center balls was a big help to the team. Although not a high scoring forward, he was valuable as a "feeder" and on defense.

RALPH CASTAFERO              Forward      Brockway High School

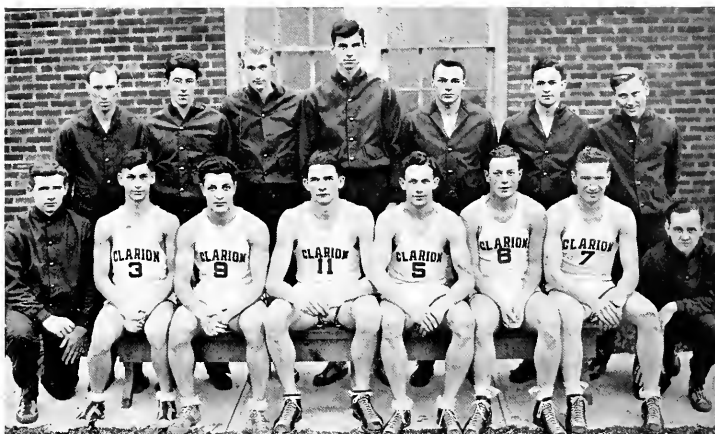
This was Casty's second year on the squad. He started the majority of the games at left forward. Because of his aggressiveness, he fouled himself out of several games but experience will improve the faults.

NORBERT MASTER                Forward      Emlenton High School

Master, a Senior on the squad, though not a regular, was valuable as a substitute and played enough to win his letter. If Norby had been a little larger he would have given somebody a real battle for a regular job.

CSW

## THE SEQUELE



DANA PETERSON                      Guard                      Knox High School

Pete played his third year as a guard and was very valuable as a defensive man because of his aggressiveness. It was Pete's long shot during the last 20 seconds of the Slippery Rock game that won for Clarion.

EMIL ROSENZWEIG                      Center                      Bellefonte Academy

Rosey, playing his third year at center, was high point man for the season. Rosey's height was used to good advantage under the basket. He has one more year of competition and it should be his best season.

SAM WILHELM                      Guard                      Clarion High School

Sam, playing his last year, was second high point man for the Clarion squad. The California game was the high spot in Sam's season when he scored 10 field goals and 2 fouls for a total of 22 points. Sam will be a hard man to replace next year.

# THE SEQUELLE

The iron ring is worn out by constant use.

—Ovid



THE SEQUELLE

T  
R  
A  
C  
K

# THE SEQUELLE

## TRACK

Because of the graduation of the outstanding point winners of the previous year, Clarion had to depend upon a number of new men in track this past season.

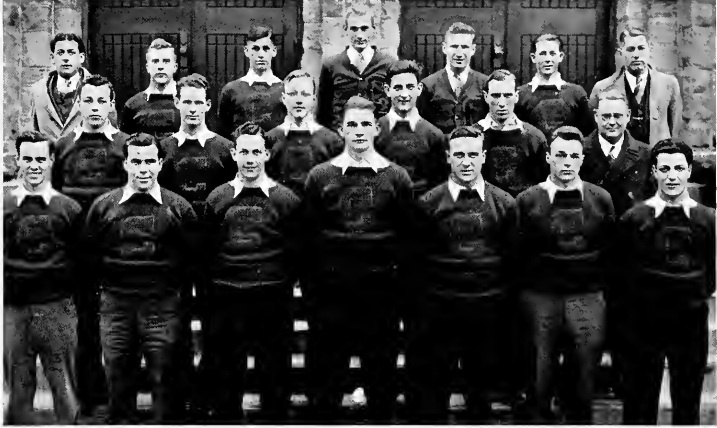
Clarion was defeated in the first dual meet that has been lost in the past four years; the Western Pennsylvania Meet was not held; and, Clarion failed to place in the State Meet. Clarion defeated Indiana, 57-42, and lost to Slippery Rock, 83-40.

Those who made letters in track were: Castafero in the 100, 220, and broad jump, Martz in the 100 and 220, Rea and Hincken in the 440, Brown and Hiwiller in the 880, Rearick in the mile, and Keefer in the mile and 2 mile. Thompson and McKinney earned their letters through competition in the high jump and pole vault. Simpson earned his letter in the board jump and high jump. Kassel and Murphy won letters in the weight events.

Lovell was student manager of the track team.

To make competition keener among our squad medals were awarded to the men who placed first in each event in an intra-mural meet. These medals were won by: Castafero-100, Martz-220, Rea-440, Brown-880, Rearick-mile, Keefer-2 mile, Murphy-shot, McKinney-pole vault, Simpson-broad jump, and Pauley-javelin.

# THE SEQUELLE



## VARSITY "C" CLUB

President - - - - - ROBERT HEVERLY  
Vice-President - - - - - EMIL ROSENZWEIG  
Secretary - - - - - TYRUS BARTLEY  
Treasurer - - - - - MAURICE MOFFATT

This club consists of men who have earned their letters in some major sport at the Clarion State Teachers College. The purpose of the club is to promote sportsmanship, conduct all athletic activities, and encourage all the men of the college to participate in some form of athletics. The club also purchases all athletic awards.

During the past year the club sponsored the annual football banquet. They also sponsored the very successful "Varsity Revue" as well as several shows downtown to raise money for athletic awards.

# THE SEQUELLE



## ATHLETIC COUNCIL FOR MEN

President - - - - - DR. C. L. DOW  
Secretary - - - - - DR. D. D. PEIRCE

The Athletic Council for Men was proposed by Dr. Riemer shortly before the week of December 18, 1933. Dr. Riemer appointed Coach Jones, Dr. Dow, and Dr. Peirce as faculty members of the Council, while the Varsity "C" elected Leo Brown and the Student Senate elected Robert Heverly as student members of the Council. At the first meeting, held on December 18, 1933, Dr. Dow was chosen president and Dr. Peirce, secretary of the new organization.

Since the first meeting, four meetings of the Council have been held. At these meetings a constitution has been drawn up outlining the requirements for membership, number and duties of officers, and duties of the Council; a football and basketball schedule has been acted upon; certain recommendations for athletic awards for men have been made to the Board of Trustees; and plans for a spring athletic program have been presented to the student body for discussion through the medium of a questionnaire.

THE SEQUELLE

W  
O  
M  
E  
N  
S  
  
A  
T  
H  
L  
E  
T  
I  
C  
S

# THE SEQUELLE

## WOMEN'S ATHLETICS

### TENNIS

The first women's sport of the year was tennis. A schedule was worked out for the tournament by the Women's Athletic Council. About twenty girls participated in the tournament. The winner of each match played the winner of another match until all were eliminated except Clara Hosack and Helen Campbell.

The final game, played before a large crowd of spectators, showed some brilliant playing. Clara Hosack won the match by winning the first two of the three sets to be played, with the scores of 6-1 and 6-0.

### HOCKEY

The hockey season opened shortly after school began with enthusiastic representations from both the Sophomore and Freshman classes.

The Sophomores battled their way to new heights annexing all three of the games played with the scores of 6-2, 5-1, and 3-0.

The following girls chosen by the Women's Athletic Council as the best players for their respective positions were chosen as the Varsity Hockey Team for 1933.

R. Reighard  
V. Kaufman  
B. Keller  
L. Mock  
W. Phanco

S. Hudsick  
K. Tippery  
P. Terwilliger  
G. Phillips  
M. Frill

E. McElhatten

### SOCCER

Owing to the weather just one intra-mural soccer game was played this season. Again the Sophomores proved too strong for the Freshmen with the score of 3-1.

The Women's Athletic Council had difficulty in choosing this Varsity because the girls had had so little chance to show their relative merits in one game.

The Varsity Soccer for 1933 which was chosen is as follows:

M. Frill  
S. Hudsick  
V. Kaufman  
R. Reighard  
E. McElhatten

W. Phanco  
P. Terwilliger  
K. Tippery  
G. Phillips  
B. Keller

V. Crooks

# THE SEQUELLE

H  
O  
C  
K  
E  
Y



W.  
A.  
C.



S  
O  
C  
C  
E  
R



# THE SEQUELLE

## BASKETBALL

The Sophomores again defeated the Freshmen, although the games were well played and the competition was keen. The Freshmen as well as the Sophomores are to be commended for the way in which they played and the way they turned out to practices.

Both classes had enough girls out to make several teams. The winning team of each class was chosen to play the winning team of the rival class. This added interest to the class practices and produced a finer team in the end.

The following girls were chosen as the Varsity Basketball Team for 1934:

B. Dunn

M. Linhart

K. Thompson

M. Criswell

R. Reighard

W. Phanco





# T H E SCHOOL YEAR



HARVEY GYMNASIUM

# THE SEQUELLE

## RALLY SONG

H. L. BLAND

Moderato

I'm going straight back, and  
stay back In that dear old school. The place we love best of all. Oh, can't you  
hear Clar-ion call. It's just a swee place, But in the race for things good and  
true, So I'm going back, for much that I lack, That's Clar-ion, true blue.

Copyright 1925 by Horace L. Bland

Printed by John W. Brady Co., Boston

# THE SEQUELE

## COLLEGIO FUGIT

### SEPTEMBER

- Sunday, 10 —A few brave souls return early to hold a Senate meeting.
- Monday, 11 —Registration. My Dear, they won't let me carry more than eighteen hours!  
Miss Sims calls a meeting of new girls and spends several hours laying down a few laws.  
'Y' pajama party. Can that girl from Slippery Rock dance!
- Tuesday, 12 —We attend a few classes. They never miss you the first few days, and you can always say your schedule was mixed up.
- Wednesday, 13—The new boys aren't so hot. And the girls—
- Thursday, 14 —Senate holds another meeting. Becht Hall government meeting. Same old rules!
- Friday, 15 —Freshmen get around to knowing first names of faculty.
- Saturday, 16 —Freshmen reception, but the upper-classmen help to fill in.
- Sunday, 17 —Fergie and Rosy decide it's quits.  
Some old cases are still hanging on.
- Monday, 18 —Baldwin comes back to play the Methodist organ.  
Girls, watch your boy friends.
- Tuesday, 19 —Chapel in the afternoon. Ow!
- Thursday, 21 —Pan-Hellenic tea was a nice affair.
- Friday, 22 —Flower show in Training School. Becht Hall is blossoming like a rose.  
Faculty agree that students don't read enough.  
Well, it takes a thief to catch a thief.
- Saturday, 23 —Ella likes big men.  
Royal mix-up. One night Nancy, then next night someone else. How's the lily pond? Oh, all right, but we're calling them cream-puffs this year.
- Sunday, 24 —Carr here for weekend. Brownie is happy.  
Izzy returns from Washington.
- Monday, 25 —Freshman Week under way. Mobs at bulletin board.
- Tuesday, 26 —Sophs remove Freshman 'dummy. Kanengeiser's nose injured. Juniors support Frosh. Rules changed.

# THE SEQUELLE



O YOU NASTY MAN!

# THE SEQUELLE

Wednesday, 27—Boots Vogel with bludgeon in hand inspects all Freshmen entering Seminary.

Thursday, 28 —“Bed of Roses.”  
Freshmen more docile. Sophomores don't have to get up early for morning song services.

Friday, 29 —Student teachers make out first record books and wonder if teaching is really like this.

Saturday, 30 —Indiana defeats 28-0. Peterson stars.

## OCTOBER

Sunday, 1 —Boy from home drops in. School boy's face red, but he won't razz any more. Little blonde's heart broken.

Monday, 2 —Faculty takes up subject of new grading system.

Tuesday, 3 —First Clarion Calls appear.

Wednesday, 4 —Girls, you shouldn't cut Dr. Dow's class, even if he doesn't see you.

Friday, 6 —First Lit. Test.

Saturday, 7 —St. Vincents beats us.  
Ye editor goes airplane riding.

Sunday, 8 —Carr and Jones return for weekend.

Monday, 9 —Sigma Delta Phi roasts weiners in Wilson's Woods.

Tuesday, 10 —Big time in Library.

Wednesday, 11—“Butchy-Wutchy.”  
Picnic in Cooks Forest.  
Mort McKinney elected editor of Clarion Call.  
80% of students vote.

Friday, 13 —Unlucky day for Sigma Delta Phi to sell toasted cheese sandwiches (?)  
Eastern Star Banquet; no apples thrown.

Saturday, 14 —Pitt beats Navy, 26-0.  
Miss Sims in Pittsburgh.  
Three girls visit N. B. Party later.  
Bunn has weekend.

Sunday, 15 —Moon and Minit go walking.

Monday, 16 —More about new grading system.

Tuesday, 17 —Boy Scouts get awards. How about a few good deeds?  
Outdoor Club has skating party. Why Brownie?

Thursday, 18 —Mr. Huston misses a few cuts.

Friday, 20 —Lovely weather.

Saturday, 21 —We beat alumni.

# THE SEQUELLE



TEAM! TEAM!

# THE SEQUELLE

<p><b>WEIN BROTHERS</b> CLARION'S LEADING DEPARTMENT STORE</p>	<p><b>CAMPBELL'S DRUG STORE</b> THE REXALL STORE Established 1852 CLARION, PENNA.</p>
<p>COMPLIMENTS OF <b>Mr. and Mrs. FRED JENKINS</b></p>	<p>COMPLIMENTS OF <b>KUHN'S BAKERY</b></p>
<p><b>JOHN HENROTIN</b> SHOE REPAIRING Next to Ditz &amp; Mooney</p>	<p><b>FITZGERALD'S</b> A. G. CORBETT DRUG CO. CLARION, PA.</p>
<p>Compliments of <b>COLLEGE GRILL</b> and <b>SWEETLAND</b></p>	<p><b>\$2.95</b> It's the New— "CHAMP HAT" <b>ALEXANDER and MOORE</b> CLARION</p>
<p>The Store that always gives Service with a Smile <b>WM. W. PHERO</b> Candy—Tobacco &amp; Groceries</p>	<p><b>JOE'S</b> Confectionery Fruit Ice Cream Corner Wood and 8th Avenue Clarion, Pa.</p>
<p>Compliments of <b>GREENAWALTS</b></p>	<p>Compliments of <b>EDDIE'S CAFE</b></p>

# THE SEQUELLE



HAPPY DAYS!



## THE SEQUELLE

- Sunday, 22 —Blond "Bubbles" from Ambridge almost busts up Moon's love affair.  
Ken's old girl comes back. Was that nice, Ken?  
Brookville boy friend arrives, and Mary almost couldn't get Ziggy out of the way.
- Monday, 23 —Onion sandwiches.
- Tuesday, 24 —S's and U's begin to appear.  
"The Pilgrimage."
- Wednesday, 25—Fallen angels of third floor float petition. Powers that be squelch.
- Thursday, 26 —Alpha Phi Alpha at skating rink.
- Friday, 27 —Smith's Packard found on curb
- Saturday, 28 —Beat Edinboro, 6-4.  
Homecoming Dance.  
Schreck and Pence in infirmary.
- Sunday, 29 —Pearl parades lounge with hat backwards.
- Monday, 30 —Moon and Minit go walking. Here today and gone tomorrow.  
Kiwanis eat at Becht Hall.
- Tuesday, 31 —Boys attend Fireman's Ball at Recreation Hall.  
O'Donnell of Derrick speaks in chapel.
- NOVEMBER
- Thursday, 2 —First Matinee, "The Silver Chord."
- Friday, 3 —Wreck by Corner Store. Sam Wilhelm almost didn't get out of way.
- Saturday, 4 —Miss Sims goes to Pittsburgh.  
California (Pa.) beat us. Ramsey brothers, Betty and Minit get lost on way and don't get there until 5:00.
- Sunday, 5 —13 at breakfast.  
Moon comes back for more.  
Rain.  
Radio in lounge.  
Hide and seek with two boy friends again.
- Monday, 6 —Mr. Huston falls down stairs and twists knee.  
Education week. Dr. Green gives first speech.
- Tuesday, 7 —Frill steps out with the big Phi Gam from Pitt.  
Minit is seen with local Oil Baron.  
"Song of Songs" with Marlene Dietrich.
- Wednesday, 8 —Mr. Henretta speaks.  
BEET SLIPURIE RAWK!
- Thursday, 9 —Panel discussion in chapel.

# THE SEQUELLE



SOLO!

## THE SEQUELLE

- Friday, 10 —Dr. McKay in chapel. Large attendance after Becht Hall was cleaned out.  
Eight foolish virgins confer with Miss Sims.  
"Hamlet." Local players report that Queen Mother has 'hal.'
- Saturday, 11 —Lockhaven 14, Clarion 3. First game we didn't see.  
Dr. Mudge in chapel.  
"This Day and Age" vies with "Merchant of Venice."  
Duquesne boy, son of local banker, chisels on Summerville boy.
- Sunday, 12 —Grapes again.
- Monday, 13 —Jones makes best speech in chapel.  
Tests begin.  
BEET SLIPURIE RAWK!
- Tuesday, 14 —Second set of grades and first rushing invites appear.  
"Saturday's Millions."
- Wednesday, 15—More invites and a little pre-rushing.
- Thursday, 16 —No school Monday if we beat Slippery Rock.  
Fergie gets "sat on."  
Bostonia and Brookville.
- Friday, 17 —South Seas lecture by Clive.  
Game postponed, and then scheduled as it rains.  
Oil City.
- Saturday, 18 —Bigger and better Bostonia.  
Sequelle proofs back.  
Slippery Rock 14, Clarion 0.
- Sunday, 19 —Get busy girls. It's the last night.  
Ye editor falls down Music Hall steps; typewriter not damaged.  
Silence Week begins at 10:00 p. m.
- Monday, 20 —Minit and Kanengeiser get leads in "A Wedding."
- Tuesday, 21 —"My Weakness."
- Wednesday, 22—Faculty out. Music while we eat. Why Betty!
- Thursday, 23 —We take our punishment gracefully.  
The sad tale of the farmer's daughter and the traveling salesman.
- Friday, 24 —"In Old Vienna" at H. S.  
Betty and Kay in accident during Geography Club trip.

# THE SEQUELLE



SUMMER THESE DAYS!

# THE SEQUELE

- Saturday, 25 —Sophomore Dance. Three seen on sidelines after 10:30.  
Kunselman in town.
- Sunday, 26 —Talk about dance.  
Rains and purs.
- Monday, 27 —Four stay up all night—just for fun.
- Tuesday, 28 —Bonnet heads Frosh.  
We go home.
- DECEMBER
- Sunday, 3 —Some come back early.
- Monday, 4 —Back to the old grind.  
Clarion Calls waiting.
- Tuesday, 5 —Debate on grading system. Mal calls Red a cynic.
- Wednesday, 6 —Miss Nair takes over Clarion Call.
- Thursday, 7 —Theremin and Japanese baritone.  
Primary Club Tea.  
Harriger elected president of Outdoor Club.
- Friday, 8 —Nothing happened.
- Saturday, 9 —Becht Hall Girl out until 12:00. Flat tire gag won't work when you're walking, sister.
- Sunday, 10 —Records broken in getting to breakfast.  
A Cappella Choir sings in church.
- Tuesday, 12 —"Torch Singer."
- Wednesday, 13—Fredrick-Covert affair diverges.
- Thursday, 14 —Liquid Air.
- Friday, 15 —Freshman Hop—three seen on sidelines after 10:30.  
Jimmy Wilson was swell. Ty dances in spite of game leg.
- Saturday, 16 —C. C. Boys defeated, 55-14.
- Sunday, 17 —Attendance at church remarkable.
- Monday, 18 —Christmas parties in Becht Hall. Birthdays.
- Tuesday, 19 —Clarion Calls out. More dirt.
- Wednesday, 20—Varsity "C" boys break out of Founders Hall.  
Strong arm of the law intervenes, and Brownie fears jail  
"Toy Shop" in chapel.
- Thursday, 21 —Sigma Tau organized, and proves very popular.  
Committee appointed to draw up constitution and rules  
Lovell elected president of Outdoor Club. Boo!  
Harriger.
- Friday, 22 —40-minute periods. We leave early.

# THE SEQUELE



CRONIES!

# THE SEQUELLE

## JANUARY

- Tuesday, 2 —We return  
"Did you see me at the New Year's Dance?"  
"Did you see what he got me?"
- Wednesday, 3 —First New Year's resolution broken.
- Thursday, 4 —Ty-Bunn combination starts to break up.
- Friday, 5 —Bull session in Becht Hall. Mal Hilton expounds.
- Saturday, 6 —Defeat Falls Creek independents, 41-20.
- Sunday, 7 —Grove City boy friend cuts out local boy.  
Several girls from Becht Hall and several boys from  
Science lost somewhere between Becht Hall and  
Sweetland.
- Monday, 8 —Ty and Casty contend for Tiddy Winks Cham-  
pionship.
- Tuesday, 9 —First intercollegiate game dropped; Indiana 38,  
Clarion 24.
- Wednesday, 10—Mal holds first auction of year—\$2.50 netted.
- Thursday, 11 —Dan Coleman returns. Dame Rumor has of a trip  
to Alaska and a busted love affair.
- Friday, 12 —Sequelle pictures taken today and tomorrow.
- Saturday, 13 —Clarion defeats highly praised Sterling Oilers of  
Emlenton. Rah! Rah!
- Sunday, 14 —A pal that I loved stole a boy that I loved.
- Monday, 15 —Application bee on.
- Tuesday, 16 —Tests—too busy to see what's going on.
- Wednesday, 17—More tests—busier.
- Thursday, 18 —More of the same plus examinations in the Training  
School. We could learn a lot about the downfall  
of the honor system from those kids.
- Friday, 19 —More.
- Saturday, 20 —No classes. Nothing to study.
- Sunday, 21 —Lonesome weekend.
- Monday, 22 —Clarion Calls out.  
Second semester begins.
- Tuesday, 23 New classes  
"Ann Vickers."
- Wednesday, 24—V. P. I. pin lost.

# THE SEQUELLE



## ★ SCHOOL DAYS

... back in a flash with memories refreshed. The annual filled with pictures dramatizing school life as you lived it has an inestimable value to you as the years pass. Every school financially able should have an annual. Communicate with us for information concerning our specialized service for all kinds of school publications.

★ ★ ★

*School Publication Service*  
**INDIANAPOLIS ENGRAVING COMPANY**  
INDIANAPOLIS, INDIANA



## THE SEQUELLE

- Thursday, 25 —Mr. Huston scares a new class of U. S. History with hints of what's to come.
- Friday, 26 —Joe Smith still on the campus, but not for long.
- Saturday, 27 —California game.
- Sunday, 28 —Red Hepler's discovered.
- Monday, 29 —We begin to attend classes.
- Tuesday, 30 —The college attends court; Election fraud case is on.

### FEBRUARY

- Thursday, 1 —Interclass basketball game for girls well attended.
- Friday, 2 —Did the Ground-Hog? We slept in ourselves.
- Saturday, 3 —"I Am Suzanne."  
Girlhood sweetheart shows up and co-ed gets stung.
- Sunday, 4 —Miss Sims goes to Pittsburgh.
- Monday, 5 —Paul Muni in "The World Changes."  
Senate announces that class dues of graduates will be cut and each student will get a free copy of the Sequelle.
- Tuesday, 6 —Senate passed "The Clarion Call" to Press Club.  
WE BEET SLIPPERY RAWK. 28-26.
- Thursday, 8 —No night classes so we attend game. Lock Haven in the bucket, too, 24-23.
- Friday, 9 —Sorority Ball. Bud Nelson's melody murderers get their suits out of the moth balls and give us a treat.
- Saturday, 10 —Morning after the night before.
- Sunday, 11 —Horton still here. Must like the place.
- Monday, 12 —We just couldn't sing "Happy Birthday, Abe."
- Tuesday, 13 —Alpha Gamma Phis get initiated and locked up; Max looks for dirty doorknobs; Carrier, for a war; Duke, for pennies; and Zeigy is just waiting for housemaid's knee.
- Wednesday, 14 —Mr. Adachi and Dr. Park break down a few arguments and a few of our theories about the proverbial Oriental humor.
- Thursday, 15 —"One Man's Journey."
- Friday, 16 —Becht Hall reeks of candy. Bake sale tomorrow.
- Saturday, 17 —Clarion defeated by Indiana.

## THE SEQUELLE

- Sunday, 18 —More hands held, and more sweet glances passed.
- Monday, 19 —Stampede at mail boxes. Yellow slips of paper the attraction.  
Dr. Rosier inspects the school, and is well pleased.
- Tuesday, 20 —Debate at faculty party: Resolved that the tick of the clock is more important than the hole of the doughnut. Mr. Wilkinson decides it's a tie between Miss Nair and Dr. Peirce.
- Wednesday, 21—Lent begins. Mal, where's your will power?
- Thursday, 22 —Big scandal breaks.  
We didn't sing for George, either.
- Friday, 23 —Practice started for Varsity Revue.
- Saturday, 24 —Clarion takes over California, 42-28.
- Sunday, 25 —"Fox and geese" on campus.  
Brookville lassie rides without per.
- Monday, 26 —Mallon, Barnes, Crooks, Dougherty and Pence go coasting. Crooks in bed for a week.
- Tuesday, 27 —"Girl Without a Room."  
More coasting.

### MARCH

- Thursday, 1 —"Morning Glory" with Katherine Hepburn.
- Friday, 2 —First high school tournament game. Sligo just can't make 'em.
- Saturday, 3 —Joe Smith causes mix-up, and gets called dumb.
- Sunday, 4 —Just like Spring.
- Monday, 5 —Marty Incorporated returns from Cherry Tree, tired but happy.  
Mrs. Lukes speaks to two sororities.  
First robin seen in snowstorm. Also a drunk.
- Tuesday, 6 —Cameron Ralston gives talk on "character."
- Wednesday, 7 —Faculty downs janitors.
- Thursday, 8 —Dot Brown elected president of Becht Hall.
- Friday, 9 —Theta Alpha tea. Swell sandwiches.
- Saturday, 10 —Max shows new interests.  
Edinboro defeats us.  
Betty Baldwin's "other boy friend" turns up.
- Sunday, 11 —You must be more careful of your conduct in the lounge.

# THE SEQUELLE

- Monday, 12 —Dr. Riemer addresses chapel on character and conduct.  
Football pictures taken again.
- Tuesday, 13 —Mr. Lees talks about "leisure."  
Rosy takes advantage of the free Prince Albert.
- Wednesday, 14—No more Wednesday night parties. It's all Brownie's fault.  
Matinees again.
- Thursday, 15 —Shippensburg debate was fun, but not as much fun as entertaining the debaters.
- Friday, 16 —Varsity Revue. Mae West just had to be good.
- Saturday, 17 —Tired after the Revue.  
"Hello, Mae! I've got your number."
- Sunday, 18 —Mothers visit school.
- Monday, 19 —Sorority girls can't go swimming.  
Mrs. Dow and Miss Nair after Dot Wilson's party.  
One of Shippensburg debaters shows his appreciation with two letters.
- Tuesday, 20 —Shakespeare in chapel; George Zagst as Malvolio, and Mabel Bostaph as Lady Macbeth.
- Wednesday, 21—Shreck learns she is to be "Home Missionary" on the "Y" cabinet.
- Thursday, 22 —First day of Spring.  
Minit and Mal pack roller skates and line No. 77 for Shippensburg trip.
- Friday, 23 —Spelling Bee.  
Only three real cases of mumps.  
Debaters leave for Shippensburg Junior Prom.
- Saturday, 24 —"Stuck-up Club" organized just for fun.
- Sunday, 25 —We hear all about the Shippensburg trip.
- Monday, 26 —Back to Visual Education again.  
Dr. Riemer questions Mal about the trip.
- Tuesday, 27 —"Man's Castle."
- Wednesday, 28—Slippery Rock Debate. Open Forum afterward.
- Thursday, 29 —"Ay tank ay go home."
- APRIL
- Tuesday, 3 —Back again.
- Thursday, 12 —Founders Day.

# THE SEQUELLE

- Friday, 13 —Inter-Fraternity Ball.  
Monday, 16 —Second six weeks' ends with a shower of tests.  
Tuesday, 17 —Edgar C. Raine on "Alaska".  
Wednesday, 18—A Cappella Choir concert in Brookville.  
Friday, 20 —Pan Hellenic Banquet.  
Saturday, 28 —Alumni Banquet in Pittsburgh, Faculty away.

## MAY

- Friday, 4 —Delta Sig dancers from Brookville.  
Monday, 7 —Spring Concert for musical organizations.  
Friday, 11 —College Players annual big play, "Clarence."  
Saturday, 12 —Parents Day.  
Sunday, 13 —More parents.  
Monday, 14 —Play Day.  
Friday, 18 —Music Festival.  
Friday, 25 —Class work ends.  
Saturday, 26 —Alumni Day with dance and banquet.  
Sunday, 27 —Baccalaureate Sermon.  
Monday, 28 —Class day.  
Tuesday, 29 —Commencement.  
Adios.



Compliments of  
**NAIL'S BASEMENT RESTAURANT**





CLARION UNIVERSITY OF PENNSYLVANIA



3 9363 00151 7389

Spec. Col.  
qLD  
1017  
.C88  
1934

