

Spec. Col.

qLD

1017


.C88

1937

LIBRARY
CLARION STATE COLLEGE



Carlson Library



Digitized by the Internet Archive
in 2010 with funding from
Lyrasis Members and Sloan Foundation

<http://www.archive.org/details/sequelle1937clar>



THE SEQUELLE . . . 1937

Case
8 LD
J:7
.CSS
193-

THE SEQUE



Compiled by

Margaret Dale

Editor

Willard Miller

Business Manager



Published by

**Clarion
State Teachers
College**

Located at
Clarion, Penna.



Miss Helen M. Barton

Dedication

To you we dedicate the *Sequelle* of 1937. Our associations with you have been among the most pleasant experiences of our school life at Clarion. Through these associations you have shown us the meaning and importance of constant cooperation, friendship, and fair-play in daily living. They are, we know, the keys to your success; we would make them the keys to our own. Our dedication can reveal only a part of the gratitude we feel for this, your contribution to our college life.



Dr. C. C. L. Riemer

We Salute

For the friendship, sympathy, and understanding you so willingly gave; for the example of worthy living you so constantly held before us; for the achievements and benefits accruing from your nine years of service to the College— for these we owe to you an unpayable debt.

The Classes of 1937 express the earnest wish that, as in the past, success will continue to be yours.



The Books

The College

•
The Organizations

•
The Athletes

•
The Activities

The College



- ▼ Faculty
- ▼ Seniors
- ▼ Juniors
- ▼ Underclass



The Books

The C

The C

The t

The t



- ▼ Faculty
- ▼ Seniors
- ▼ Juniors
- ▼ Underclass

*The administration . . . who direct . . . and
formulate . . . the policies basic . . . to . . .
the college.*



Administration

The Presidents Speak



In Appreciation . . .

It has been a pleasure for me to have been associated with you students of the College at Clarion who are the sponsors of this Annual. I feel closest of all to those of you who are about to qualify for the degree. You are best known to me and occupy, in consequence, the warmest place in my affections. The others, I can assure you, I will never forget either. The activities of my life as father and teacher, as you know, have brought me into close contact with many young men and young women. I have learned much from and through them. To none of them, however, do I owe more than I do to you. I want to thank you for what you have done and been. It has been a joy to note your willingness, your loyalty, your co-operation, and your growth. My best wishes for your happiness and success go with you.

DR. RIEMER

Commendation . . .

The *Sequelle* is the record of one year of your college life when you are living life at its fullest. The activities herein recorded are making an impression upon you so that henceforth the word *college* will turn your mind toward Clarion and these years spent here. It is my wish that these years may be most happy ones. The friendships you are forming now will be lifelong. The interests you are developing in the activities pictured in this book will be your future recreations. Some of them may even become vocations. You are to be commended on the splendid student cooperative plan that has made this book possible. It is an experience that will help you in your work with people and organizations in later life.

PAUL G. CHANDLER





Members of The Faculty . . .

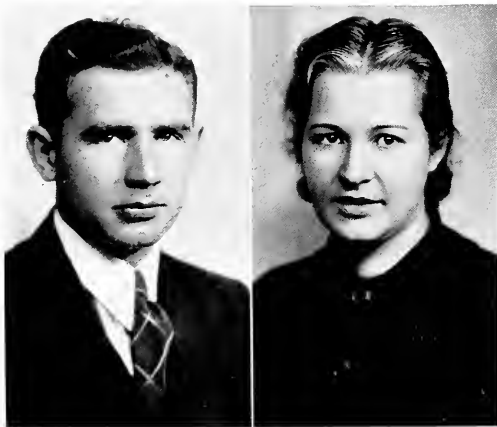
G. C. L. RIEMER, Ph.D., LL.D.
 HELEN J. ARMSTRONG, B.S.
 PAUL R. CHANDLER, Ph.D.
 LOTTIE J. WINGARD
 HELEN M. BARTON, A.M.
 CHARLES F. BECKER, A.M.
 MARGARET A. BOYD, A.M.
 CLAIR E. CAREY, A.M.
 RENA M. CARLSON, M.A., L.S.
 R. O. CORDIER, Ph.D.
 FRANCES EASLEY, A.M.
 MILDRED E. GAMBLE, A.M.
 ANNA B. GRAHAM, B.S.
 EFFIE BLANCHE HELPER, A.B.
 GILBERT A. HOYT, M.S.
 HELEN JASPER, M.A.
 A. K. KEHNER, M.S.
 BERTHA LEIFESTE, A.M.
 HARRY S. MANSON, A.M.
 MARIE MARWICK, A.M.
 HELEN MOHNEY, B.S.
 BERTHA V. NAIR, A.M.
 FANNIE OWENS, R.N.
 DONALD D. PEIRCE, Ph.D.
 GLADYS RICH, A.M.
 HAZEL SANDFORD, A.M.
 SARA SEYLER
 HELEN D. SIMS, A.M.
 WALDO SAMUEL TIPPIN, A.M.
 HELEN WALTERS, B.S.

President, First Semester
Secretary to the President, First Semester
President, Second Semester
Secretary to the President, Second Semester
 Physical Education
 Education
 English
 Mathematics
 Librarian
 Social Studies
 Primary Grades
 Intermediate Grades
 J. H. S. Grades
 Primary Grades
 J. H. S. Grades
 Intermediate Grades
 Geography
 Primary Grades
 Science
 Speech
 Intermediate Grades
 English
 College Nurse
 Science
 Public School Music
 Public School Art
 Dietitian
 Latin
 Physical Education
 Primary Grades

*A bell . . . and we troop . . . to fifty-five
minutes . . . of classroom life . . . with its . . .
lectures . . . discussions . . . reports . . . and tests.*



Classes



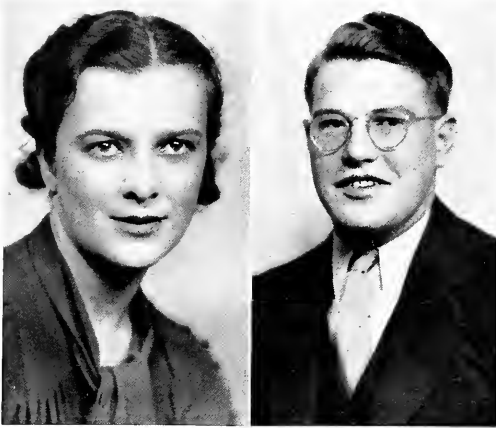
WILLARD MILLER . . . St. Petersburg High School . . . *The Perfect Alibi* . . . *The Show-off* . . . *The Big Pond* . . . Phi Sigma Pi 2-3-4 . . . President 4 . . . Alpha Phi Alpha 1-2-3-4 . . . President 3 . . . Alpha Psi Omega 3-4 . . . President 4 . . . Student Senate 3-4 . . . President 4 . . . College Players 1-2-3-4 . . . President 2 . . . Geography Club 3-4 . . . Student Council 2-3 . . . Sequelle Staff . . . Business Manager 4 . . . Chapel program committee 3-4 . . . basketball 1-3 Orchestra 1-2-3-4.

ELLEN SONGER . . . Extra-Curricular activities . . . Art Club 3 . . . Hostess Club 4 . . . N. A. C. E. 4 . . . Newman Club 4 . . . International Relations Club 4



DORA BOARIO . . . Leechburg High School
. . . Delta Sigma Epsilon 1-2-3-4
Secretary 4 . . . Panhellenic Council 3-4 . . .
Secretary 4 . . . Women's Student Council
1-2 . . . Vice President 2 . . . Glee Club 2-4
. . . President 2 . . . Hiking Club 1-2 . . .
President 2 . . . College Players 2-3-4 . . .
Press Club 4 . . . Sequelle Staff . . . Organiz-
ations . . . Vice President of the Senior
Class.

MARGARET DALE . . . Knox High School
. . . College Players 3 . . . *The Command
Performance* 3 . . . Geography Club 1-2-3
. . . President 2-3 . . . Orchestra 1-2-3 . . .
President 3 . . . Sequelle Staff 2 . . . editor 3
. . . Pi Gamma Mu 2-3.



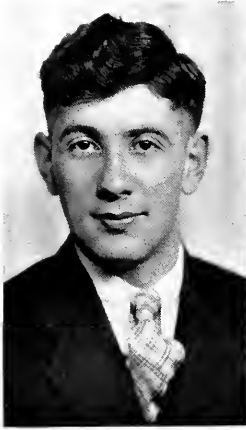
BETTY DUNNE . . . Bradford High School
. . . Sigma Sigma Sigma 1-2-3-4 . . . Treasurer
2-3-4 . . . Press Club 2 . . . Hiking Club 1
. . . N.A.C.E. 3-4 . . . Pan Hellenic Council
2-3-4 . . . Sequelle Staff . . . Women's
athletics . . . Student Senate 2.

NEAL GUTHRIE . . . Alpha Phi Alpha . . .
Football 2-3-4 . . . Varsity "C" Club 3-4
. . . Geographay Club 3-4 . . . Men's Glee
Club 3 . . . Men's Student Council 3-4 . . .
Men's Inter-mural Council 4.



RUTH LIDSTONE . . . Sigma Delta Phi . . .
Art Club 1-2 . . . Secretary 1 . . . Vice
President 2 . . . Hiking Club 2-3 . . .
Hostess Club 3 . . . Pan-Hellenic Council
3-4 . . . Secretary Senior Class.

HELEN MARTIN . . . Clarion High School
. . . Art Club 3 . . . Hiking Club 3 . . .
Hostess Club 4.



RUSSEL JOHNSON . . . Clarion High School
. . . Industries Club 2 . . . Y. M. C. A. 2-3
. . . Men's Glee Club 3 . . . Orchestra 4 . . .
Student Senate 4.

VIRGINIA KAUFMAN . . . Clarion High
School . . . Woman's Athletic Council 2-3-4
. . . varsity hockey 1 . . . varsity soccer 1
. . . intramural sports 1-2-3-4 . . . Delta
Sigma Epsilon 1-2-3-4 . . . Vice President 2
. . . Corresponding Secretary 3 . . . President
4 . . . Alpha Psi Omega 3-4 . . . Stage
manager 4 . . . College Players 1-2-3-4 . . .
President 3 . . . Vice President 2 . . . Press
Club 2-3-4 . . . President 4 . . . Editor
Clarion Call 4 . . . Associate Editor 3 . . .
Athletics 2 . . . Outdoor Club 1 . . . Com-
munity Senate 2-3 . . . Secretary 3 . . . Vice
President class 3 . . . Treasurer class 4 . . .
Alpha Upsilon cast . . . Plays . . . *The Big
Pond* 3 . . . *Why the Chimes Rang* 2 . . .
The Dear Departed 1 . . . *Spreading the
News* 2 . . . *The Showoff* 4.



EDGAR M. SHRECKENGOST . . . Brookville
High School . . . Orchestra '29-'30 . . .
Men's Glee Club '29-'30'34 . . . Vested
Choir '29-'30 . . . Men's Quartet '29-'30 . . .
Property Manager Girl's Glee Club '29-'30
. . . Basketball '30 . . . Y.M.C.A. '29-'30.

HELEN STEWART . . . New Bethlehem High
School . . . Lambda Chi Delta '32-'33-'36-'37
. . . Treasurer '37 . . . Press Club '33 . . .
N.A.C.E. '36-'37 . . . Outdoor Club '36-'37
. . . Secretary N.A.C.E. '36-'37 . . . Glee
Club '36-'37 . . . Hostess Club '32-'33 . . .
Secretary '32 . . . Geography Club '32-'33
. . . *Pinafore* '37

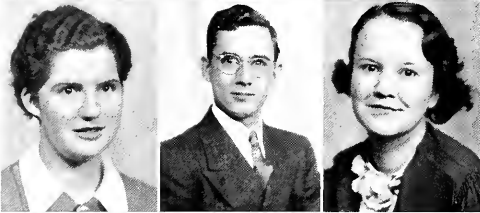
Graduating Sophomores . . .



VIRGIL BEARY
BONNIE BELL
HAZEL BENNETT



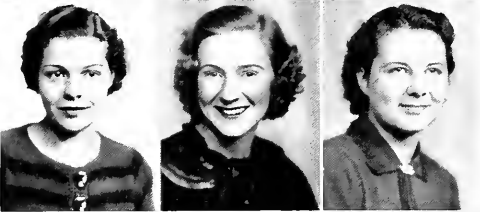
FRANCES BERKHOUSE
ISABEL BONNETT
MARYBELLE CALHOUN



EVELYN CRAIG
ROBERT CRISSMAN
MILDRED DIETZ



MARTHA DUNLAP
DOROTHY FISCHER
HELEN FLYNN



ELEANOR FULTON
LORRAINE GRIFFITH
MARY HAWK



EDYTHA HOMAN
DOROTHY JACKSON
ALICE JOLLEY

Graduating Sophomores . . .

DONALD JONES

ARNOLD KLINE

ALBERT KOELSCH



LOUISE LAUGHLIN

HELEN LONG

MARY OLIVE LONGWELL



AVANELLE MENTEER

ALBERTA PENCE

MARION RENN



LUCILLE ROCKEY

MARY BELLE RODGERS

ISABEL SHIELDS



PRISCILLA SIAR

GERALDINE SLAGLE

MIRIAM STEWART



LOIS STIMER

RALPH SUMMERVILLE

JESSIE SWARM



Graduating Sophomores . . .



JANET TRIMBLE

FRANCES WIMER

MURIEL WOLSTENCROFT

FRANCES WRIGLESWORTH

CHARLES HETRICK



Front row: JONES, STEWART, THORNE, FURLONG, KAUFMAN, DAVIS, GATHERS, CORBETT, STEWART.
 Second row: BEDEYK, MARSHALL, ANDREO, SMOLAK, JACOBS, SCHIERBERL, M. JONES.
 Back row: PLYLER, DENSMORE, HESS, STARTZEL.

Junior Class of 1937 . . .

CLASS OFFICERS

President BRONIE SMOLAK
Vice-President FRED MARSHALL
Secretary-Treasurer GERALDINE THORNE

ANDREO, JOE, Darragh	MARSHALL, FREDERICK, Clarion
FURLONG, LOUISE, Clarion	PLYLER, TOM, DuBois
GATHERS, FLORENCE, Shippenville	SCHIERBERL, EDWARD, Clarion
HESS, REED, Fern	SMITH, ALDA, Clarion
HUBLER, JAMES, Morrisdale	SMOLAK, BRONIE, Port Vue
JACOBS, EDWARD, Port Vue	STARTZELL, CALVIN, Punxsutawney
JONES, MARY, Strattonville	STEWART, MAE, New Bethlehem
JONES, MORGAN, New Castle	THORNE, GEARLADINE, Clarion
KAUFMAN, DOROTHY, Clarion	



Front row: BAILEY, T. McDONALD, WOLFF, MENTEER, SLAGLE, CALHOUN, BELL, ROCKEY, TRIMBLE, JOLLEY, CHITESTER, BONNETT, WIMER, FULTON, PAUP. Second row: BEARY, HILL, STIMER, SWARM, LAUGHLIN, BENNETT, HAWK, KANENGEISER, BROOKS, DUNLAP, FLYNN, STEWART, SHIELDS. Third row: HESS, SUMMERVILLE, REED, PRIESTER, WOZNIAK, BERKHOUSE, JACKSON, LONGWELL, GRIFFITH, SWARM, CRAIG, WOLSTENCROFT, FISCHER, LONG, WRIGLESWORTH, DIETZ, PENCE. Back row: KLINE, CRISSMAN, MARSHALL, MCKINNEY, HASKELL, KOELSCH, STEWART, KIRKLAND, WHITMAN, JONES, RENN, FOX, HOMAN, SIAR, RODGERS.

Sophomore Class . . .

President

Vice-President

Secretary

Treasurer

DEAN MCKINNEY

CHARLES REED

FRANCES WIMER

MARCUS PRIESTER

BAILEY, HAROLD, Youngsville
 BEARY, VIRGIL, Marble
 BEDZYK, MIKE, Ambridge
 BELL, BONNIE, Rockland
 BENNETT, HAZEL, Kane
 BERKHOUSE, FRANCES, Summerville
 BONNETT, ISABEL, Rimburg
 BROOKS, FERN, Reynoldsville
 CALHOUN, MARYBELLE, Brockway
 CALL, JAMES, Clarion
 CARNS, ARTHUR, Clarion
 CHITESTER, MARY, Sheffield
 CRAIG, EVELYN, Seneca
 CRISSMAN, ROBERT, Widnoon
 DAVIS, DOROTHY, East Brady
 DIETZ, MILDRED, Clarion
 DUNLAP, MARTHA, Blairsville
 FISCHER, DOROTHY, Oil City
 FLYNN, HELEN, Ketscy
 FOX, ANNA MARY, Rimburg
 FULTON, ELEANOR, Shippenville
 GRIFFIN, PAUL, Clarion
 GRIFFITH, LORRAINE, Sykesville
 HASKELL, JOHN, Clarion
 HASKELL, WALTER, Clarion
 HAWK, MARY, Rimer
 HETRICK, CHARLES, Fairmount City
 HILL, CLARENCE, Morrisdale
 HOMAN, EDYTHA, Oil City
 JACKSON, DOROTHY, Brockport
 JOLLEY, ALICE, Warren
 JONES, DONALD, Clintontville
 KANENGEISER, BETTY, Clarion
 KIRKLAND, ROLLAND, Natrona Heights
 KLINE, ARNOLD, Sligo
 KOELSCH, ALBERT, Larimer
 KIRKIBS, BENTON, Knox

LAUGHLIN, LOUISE, New Bethlehem
 LONG, HELEN, East Brady
 LONGWELL, MARY, Brockway
 MARSHALL, WILLIAM, Clarion
 MENTEER, AVANELLE, Strattonville
 McDONALD, THEODORE, Warren
 MCKINNEY, DEAN, Clarion
 MACGREGOR, ELSIE, Limestone
 PENCE, VIRGINIA, Mahoning
 PHILLIPS, GERTRUDE, Leeper
 PRIESTER, MARCUS, Rimburg
 REED, CHARLES, Clarion
 REED, JACK, Mila
 RENN, MARIAN, Clarion
 ROCKEY, LUCILLE, Brockway
 RODGERS, MARY BELLE, Oil City
 SAUM, LULA, New Castle
 SCHIERBERL, JOSEPH, Clarion
 SERSHEN, JOHN, Claridge
 SHIELDS, ISABELLE, Baxter
 SIAR, PRISCILLA, Summerville
 SLAGLE, GERALDINE, Putneyville
 STEWART, BERNADINE, Clarion
 STEWART, MIRIAM, New Bethlehem
 STIMER, LOIS, Clarion
 SUMMERVILLE, RALPH, Brookville
 SWARM, BESSIE, Clarion
 SWARM, JESSIE, Clarion
 TRIMBLE, JANET, New Florence
 WHITMAN, ARBELLE, Clarion
 WIMER, FRANCES, Clarion
 WOLFF, JOAN, Clarion
 WOLSTENCROFT, MURIEL, Warren
 WORK, ZELDA, Corsica
 WOZNIAK, HARRY, Timblin
 WRIGLESWORTH, FRANCES, Grampian



Front row: MOORE, SHUMAKER, GARBARINO, CARLSON, SMITH, GARMONG, A. MACDONALD, ALCORN, HAHN, SMERKER, DONOHUE, SNYDER, PFAFF, VOGEL, COOK. Second row: GUTHRIE, SMITH, PORT, SHRIVER, HUMMEL, MONTANA, KNARR, HARTMAN, DUNKLE, LAUGHNER, AKERS, WASSUM, TRUNK, RUSSELL, DINSMORE. Third row: SCHIERBERL, MYERS, TRUNK, TEETS, PHERO, SPIEDEL, DOUGHERTY, GARDA, MEYERS, LAUGHLIN, M. WASSUM, CRAWFORD, GRIMM, KROH. Fourth row: TRUNK, STEWART, TAYLOR, ABERCROMBIE, BESKID, BURNHAM, DOVERSPIKE, SHERMAN, HUMPHREYS, GILES, DICKEY. Back row: MOONEY, LEHMAN, STROUF, THOMPSON, SEIGWORTH, B. JONES, MURDOCK, WEDEKIND, SAYERS.

Freshman Class . . .

President JOE SCHIERBERL
 Vice-President AL MACDONALD
 Secretary-Treasurer LEROY CARLSON

ABERCROMBIE, JAMES, Linesville
 AKERS, MARGARET, Warren
 ALCORN, HELEN, New Bethlehem
 BESKID, CHARLES, Port Vue
 BROWNFIELD, ELSIE, Uniontown
 BURKETT, EILEEN, Coalspring
 BURNHAM, ORLO, Corsica
 BUZARD, JOAN, Strattonville
 CARLSON, LEROY, Oil City
 COOK, LILLIAN, Shippenville
 COWAN, ALTA, Brookville
 CRAWFORD, MARIE, Punnsutawny
 DELLY, HELEN, Mayport
 DICKEY, OPAL, Brookville
 DINSMORE, EDITH, St. Marys
 DONOHUE, MARY MARGARET, Franklin
 DOUGHERTY, CATHERINE, Sigel
 DOVERSPIKE, CHARLOTTE, Worthville
 DUNKLE, HOWARD, Newmansville
 DUNKLE, LOUISE, Tylersburg
 FREDLINE, WOODENE, Reynoldsville
 GARDA, MARION, Falls Creek
 GARBARINO, SENES, Clarion
 GARMONG, PAUL, Emlenton
 GILES, GRACE, Tidont
 GRIMM, BETTY, Clarion
 GUTHRIE, BERNARD, DuBois
 HAHN, GEORGEINE, Sligo
 HARTMAN, ESTHER, New Bethlehem
 HEFFNER, GENEVA, Oil City
 HORNEL, HOMER, Clarion
 HUMPHREYS, BETTY, Clarion
 HUMMEL, ARTHUR, Fisher
 JONES, ELIZABETH, Oil City
 KNARR, ELLSWORTH, Grampian
 KROH, JOAN, Clarion
 LAUGHLIN, JEAN, New Bethlehem
 LAUGHNER, ELEANOR, Emlenton
 LEHMAN, FRED, Clarion

MEYERS, JAMES, Kane
 MINNS, CATHERINE, DuBois
 MONTANA, SAMUEL, Rimersburg
 MOONEY, JOHN, Clarion
 MOORE, ROBERT, Brookville
 MURDOCK, EVA, Brackenridge
 MYERS, JENNIE, Ridgway
 McCUE, MARGARET, Curwensville
 McDONALD, ALFRED, Warren
 PARK, EDITH, Sigel
 PROFF, LOIS, Shippenville
 PHERO, WILLIAM, Clarion
 PLANT, HATTIE, Sykesville
 POPE, HELEN, Oliveberg
 PORT, WINFIELD, Clarion
 RUSSELL, FAY, Clarion
 SAYERS, HELEN, Knox
 SEIGWORTH, HELEN, Strattonville
 SHRIVER, ROBERT, Worthington
 SHERMAN, FAY, East Brady
 SHUMAKER, CLARENCE, Kittanning
 SMITH, ETHELYN, Reynoldsville
 SMITH, LAWRENCE, Mayport
 SMITH, RUSSELL, Newmansville
 SMERKER, THELMA, Fryburg
 SNYDER, EDITH, Westville
 SPIDEL, JANE, Warren
 STEWART, FRANK, Rimersburg
 STROUPE, DONALD, Clarion
 TAYLOR, HARRY, Clarion
 TEETS, MARSHALL, Turtle Creek
 THOMPSON, STANLEY, Strattonville
 TRUNK, EUGENE, Clarion
 TRUNK, MARY LOU, Clarion
 TRUNK, PAUL, Clarion
 VOGEL, ROBERTA, Huey
 WEDEKIND, HAZEL, Shippenville
 WASSUM, HELEN, Rimersburg
 WASSUM, MARTHA, Rimersburg

*To work . . . and play . . . together . . . secure in
the . . . certainty . . . and satisfaction . . . of the com-
mon bonds of . . . friendship . . . interest . . . and co-
operation . . . we find in our . . . organizations . . .*

The Organizations



- ▼ Fraternities
- ▼ Sororities
- ▼ Clubs

*To work . . . and pla
the . . . certainty . . .
mon bonds of . . . frien
operation . . . we find*



▼ Fraternities

▼ Sororities

▼ Clubs

*The Greek societies . . . of Clarion . . . rank high among
their kind . . . in the state. Officers . . . sponsors . . .
and members . . . foster the desire . . . for only the best
. . . in scholarship . . . friendship and . . . social life.*



Greek Life



JONES, MISS BOYD, KANENGEISER, DUNNE, LIDSTONE, BOARIO.

Panhellenic Council



The Panhellenic Council is the governmental body representing the five sororities on the campus. The organization consists of fifteen members, an active, a silent, and an alumna representative from each of these sororities: Delta Sigma Epsilon, Lambda Chi Delta, Sigma Delta Phi, Sigma Sigma Sigma, and Theta Alpha Lambda. Guiding and directing these girls is the very capable Miss Margaret Boyd.

The object of the Panhellenic association is fourfold: to determine the date of bid day, to pass and enforce rush rules, to regulate other matters pertaining to local Panhellenic life, and to encourage all chapters to take an active part in all school activities that are for the common good. This year the local Council started a scholarship fund equal to one semester's tuition. This is to be given to an upper-class girl who will be chosen by a Panhellenic representative, Miss Margaret Boyd, and Dr. Chandler.

The holding of office in the Council is controlled by a rotation system. The officers for the first semester were: president, Ruth Lidstone, Sigma Delta Phi; secretary, Betty Kanangeiser, Theta Alpha Lambda; for the second semester: president, Mary Jones, Lambda Chi Delta; secretary, Dora Boario, Delta Sigma Epsilon; treasurer, Betty Dunne, Sigma Sigma Sigma.

The Panhellenic tea, held in September, was the first event on the Council's social calendar, to which all the women students on the campus were invited. The purpose of this tea was to acquaint the old students with the new. The next event was the annual Panhellenic dinner, which was held on December 4. The last social event of the year was the Panhellenic dance, held on March 12. To the dance, were invited sorority women living in the community who are affiliated with either the National Panhellenic Council or the Association of Education Sororities.



Front row: CALHOUN, DUNKLE, SMITH, AKERS, McCUE, THORNE, LAUGHNER, DEILY, CRAWFORD.
Back row: SPEIDEL, GILES, MINNS, BOARIO, FURLONG, V. KAUFMAN, D. KAUFMAN, DAUGHERTY.

Delta Sigma Epsilon, national educational sorority, was founded September 23, 1914, at Miami University, Oxford, Ohio. Alpha Zeta Chapter was established at Clarion on May 15, 1932.

Six active members began the work this year. They were: Virginia Kaufman, president; Mary Belle Calhoun, vice-president; Dora Boario, recording secretary and sergeant; Geraddine Thorne, corresponding secretary; Dorothy Kaufman, treasurer; Louise Furlong, chaplain and historian; and Miss Helen M. Barton, faculty adviser. On December 6, 1936, another member, Isabel Bonnett, was added to the group, and subsequently elected sergeant. Following her initiation, a party was held at Geraddine Thorne's home to celebrate the occasion. Patronesses of the chapter are Mrs. Merritt Davis, Mrs. W. B. Rankin, and Miss Bertha Leifeste.

In the fall rush week was featured by a dinner and theater party in Oil City. The following week a re-pledging service was held for Isabel Bonnett, Dorothy Fischer, and Muriel Wolsteneroft, and the following rushees were pledged: Margaret Akers, Marie Crawford, Catherine Daugherty, Helen Deily, Louise Dunkle, Grace Giles, Eleanor Laughner, Betty McCue, Kay Minns, Hattie Plant, Ethelyn Smith, and Jane Speidel.

At Christmas time, a program was prepared by the pledges for Miss Leifeste's kindergarten children. The annual Christmas party was attended by both pledges and actives.

Two active members, Virginia Kaufman and Geraddine Thorne, and one alumna, Mary Helen Klepfer, attended the national convention of the sorority held the latter part of last August in St. Louis, Mo. During this conclave, Alpha Zeta Chapter was presented with the Genevieve Schmitt Marshall Memorial Plaque for having the highest scholastic average of all thirty chapters throughout the United States.

Delta Sigma Epsilon





COOK, FLYNN, ROCKEY, COWAN, DIETZ, HOMAN, SIAR, DUNNE.

Sigma Sigma Sigma



Sigma Sigma Sigma is a national sorority. It is the oldest of the education sororities. Since the founding of Alpha chapter at Farmville, Virginia, in April 1898, the purpose of Sigma Sigma Sigma, "to build character, to stimulate high endeavor, to develop leadership, to promote unselfish cooperation, and to create the friendly spirit in all human relationships" has been furthered by the work of thirty three chapters. Alpha Pi Chapter was established in April, 1935.

Priscilla Siar attended the national convention in Washington, D. C. last August. She came home inspired by her contacts with Mabel Lee Walton, national president, the other national officers, and the many "Tri Sig" sisters whom she met there. This enthusiasm stirred anew the feeling which the regional meet at Pittsburgh had aroused last year. With chapter examinations over, the sorority is looking forward to a visit from Mabel Lee Walton for the purpose of chapter inspection.

Last October an informal dinner at Cook Forest Inn and the show "Swing Time" at Brookville constituted the "rush" party. A very delightful Christmas party was held in the sorority room. The second semester the group held a rush party on Washington's Birthday at the home of Marie Trunk, an alumna. Several other parties of various kinds were enjoyed. During the first semester the sorority conducted a "charm school" in conjunction with the entire national group, in which there were many interesting and informative discussions.

The officers serving this year were: president, Priscilla Siar; vice president Lucille Rokey; corresponding secretary, Helen Flynn; recording secretary, Mildred Dietz; treasurer, Betty Dunne.



Back row: KROH, HAHN, SAULA, M. STEWART, HUMPHREYS, FOX, H. STEWART, RENN.
Front row: JONES, GRIFFITH, WHITMAN, SWARM, GRIMM, JACKSON.

In February, Miss Helen Armstrong, sponsor of the Lambda Chi Delta sorority, resigned her position as secretary to the President to take a new position in Washington, D. C. leaving a vacancy in the sorority sponsorship. Mrs. D. D. Pierce, first sponsor of the sorority acted in this position until April the first when Miss Frances Easley accepted the invitation to sponsor the group.

Topping the years activities were the two rushing periods. In the early fall a formal rushing party was held at the Bostonia Country Club. At this time Betty Humphreys, Joan Kroh and Betty Grimm, all of Clarion, were pledged to the sorority and formally initiated at the end of the pledge period. Again in March open rushing brought two more members, namely Zora Saula of Johnstown and Georgina Hahn of Knox.

"Cookie Day" was a regular monthly occurrence for the Lambda Chi's. On that day they sold cookies of all sizes, shapes, and kinds to students on the campus.

Social functions of the year included hikes, slumber parties, theater "dates", camping, picnics, Saturday eve get-togethers, swimming parties and covered dish dinners.

A budget was planned and carried out during the year with a certain amount allotted for camp and for the sorority loan fund. The fund was increased to sixty five dollars.

The officers of the sorority are; president, Bessie Swarm; vice president, Lorraine Griffith; Secretary, Marion Renn; treasurer, Helen Stewart; Pan Hellenic representative, Mary Joye Jones; silent representative, Joan Kroh.

Lambda Chi Delta





Seated: BURKETT, DOVERSPIKE, PFAFF, FULTON.
 Back row: STEWART, WELSCH, SHERMAN, MURDOCK, MISS NAIR, VOGEL, RUSSELL, LIDSTONE.

Sigma Delta Phi



The Sigma Delta Phi Sorority, the oldest sorority on the campus, was founded in November, 1930.

Miss Bertha V. Nair is the sponsor. The officers of the sorority for the first semester were: Bernadine Stewart, president; Florence Gathers, vice-president; Ruth Lidstone, treasurer; and Eleanor Fulton, secretary. For the second semester the officers were: Florence Gathers, president; Eva Murdock, vice-president; Eleanor Fulton, treasurer; and Eileen Burkett, secretary. Pan-Hellenic representatives are: Ruth Lidstone, active; Bernadine Stewart, silent. The patronesses of the sorority are: Mrs. Harry Wilson, Mrs. Lloyd Weaver, and Miss Helen Jasper, all of Clarion, and Mrs. Annabel Ralston of Butler, Pennsylvania.

The Sigma Delta Phi Sorority has been quite active during this year. For the past two years they have published a sorority paper called the *News Letter*. By this paper the alumnae are kept well informed about sorority affairs, alumnae news, and personals concerning the actives and pledges. Each year the Sigma Delta Phis spend a week during the month of August on Lake Erie.

The girls of the sorority are fond of outdoor life. This is proved by the fact that they were often found cooking an early morning breakfast in Knapp's Woods. During the year the girls have enjoyed social affairs including picnics, dinners, parties, and breakfasts.



BENNETT, MENTEER, HAWK, WOLFF, DUNLAP, KANENGEISER, TRIMBLE, ALCORN, SLAGLE, LONGWELL.

The first event of the Thetas in the fall of '36 was a rush party which consisted of a dinner at the Business Woman's Club and a theatre party at Franklin. Soon after Rush Week, the girls initiated Helen Alcorn, Martha Dunlap, Janet Trimble, and Joan Wolff. Another very delightful occasion of the year was the Christmas party given at the home of a patroness, Mrs. C. F. Becker. Mrs. Harry Renn, another patroness, was co-hostess. At the regular meetings of both semesters, Theta Alpha Lambda had a number of interesting and helpful programs.

The second semester rush party was an evening theatre party followed by a lunch at the Coffee Shop. At this party the Thetas also entertained Mrs. Donald Megahan, a new patroness. After the mid-semester rush party, Geneva Hefner became a member of this sorority. In February Hazel Bennett entertained the girls at a "George Washington" party, and to complete this year of social activities, the Thetas entertained their Alumnae members with a "Gypsy" party. The Alumnae and active members came attired in gypsy dress and spent the evening playing games. The sorority has an annual camping trip in August of each year.

This year officers for the group were: president, Hazel Bennett, vice-president, Betty Kanengeiser; secretary, Geraldine Slagle; treasurer, Mary Olive Longwell.

Theta Alpha Lamba





Front row: MARSHALL, SHRIVER, D. JONES, KOELSCH, BAILEY, F. MARSHALL, T. PLYLER, MILLER, CORDIER.
Second row: CARNS, LEHMAN, PHERO, REED, TEETS, BECKER, KUEHNER, MANSON.

Alpha Phi Alpha



The Alpha Phi Alpha's school calendar has been full of social affairs. Officers directing the fraternity this year were: president, Neal Guthrie; vice-president, Willard Miller; secretary, Morgan Jones; corresponding secretary, Dean McKinney; treasurer, Fred Marshall. The main activities of the year were the initiation rite at Camp Coffman, rush parties at Mr. Mansons and at Founders Hall, house parties at Fred Marshall's, William Marshall's and Bill Phero's homes, and a swimming party at the Oil City Y.M.C.A. A special party was held at Christmas at Bill Phero's house and another at Art Carn's house for the winning side of an attendance contest. A joint party was held with the other social fraternity at the Garby Theater, and an inter-fraternity dance was held as usual.

To top the school year off, an initiation was held this spring for Budd Kribbs and Chester Byerly at Fred Marshall's house, and an outing was planned at the end of school.

Every summer the fraternity spends a week on Lake Erie, swimming, going places, and having a good time in general. The members feel that the organization does a great deal towards enriching college life.



*Front row: left to right: RENN, McDONALD, JACOBS, ANDREO, SMOLACK, REED, SCHIERBERL, BYERS, HOYT.
Back row: HETRICK, BEARY, McDONALD, PRIESTER, STROUP, SCHIERBERL, GARMONG, TRUNK.*

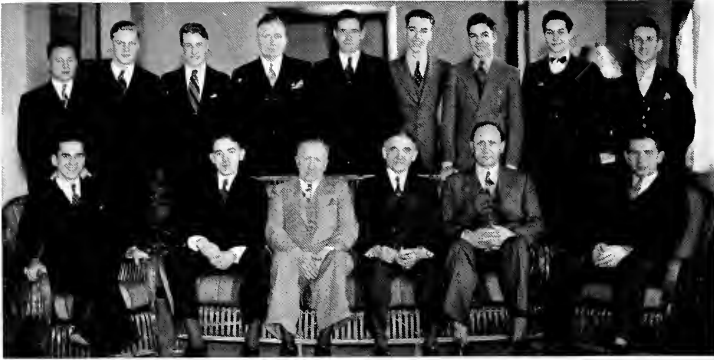
The school year 1936-1937 initiated a year filled with stirring activity in the Alpha Gamma Phi Fraternity. Edward Jacobs was chosen president for the first semester. The other offices were filled by Bronie Smolak, vice president; Theodore McDonald, secretary; Edward Schierberl, treasurer; and Joe Andreo, historian.

The second semester new officers were elected with William Byers as president, Charles Reed, vice president; Paul Griffin, secretary, Marcus Priester, treasurer; and Charles Hetrick, historian.

Social activities and pledging marked the season's central interests. The Alpha Gammas invited the Alpha Phi Alpha Fraternity to a theater party in the fall. A Christmas party was held at the home of Thomas Hossack, and later the members were entertained at the home of Charles Reed. The Interfraternity dance was held April 3 in Becht Hall with Norm Parks furnishing the music. The annual banquet was held late in the spring.

Alpha Gamma Phi





Seated: JONES, PIERCE, MANSON, RIEMER, BECKER, MILLER.
Standing: P. GRIFFIN, JONES, MARSHALL, E. GRIFFIN, CRISSMAN, MCKINNEY, CALL, HASKELL, PLYLER.

Phi Sigma Pi



The Phi Sigma Pi Fraternity is a national, honorary, educational fraternity admittance to which is governed by a high scholastic standing plus desirable social traits. The group at Clarion is called the Lambda Chapter. Its members are active on the campus in almost all phases of the college, social, and professional life.

THE OFFICERS FOR 1936-1937

<i>President</i>	WILLARD MILLER
<i>Vice-president</i>	JAMES CALL
<i>Secretary</i>	MORGAN JONES
<i>Assistant Secretary</i>	DEAN MCKINNEY
<i>Treasurer</i>	THOMAS PLYLER

We have had about twenty-five meetings this year. Outstanding results of these meetings have been several social activities and an educational project called "Publicity in Education," by which we tried to advertise our college to surrounding high schools. The social activities included a party at the time of initiation of eight new members in December, and a semiformal dinner-theater party held at DuBois, March 23. To the latter were invited wives and women friends of the members.

Morgan Jones was fortunate in being able to go to the Grand Chapter meeting held at St. Louis, Missouri, on February 27. He took an active part in the proceedings.



Front row: RENN, MISS BOYD, MILLER, KAUFMAN.
Back row: MARSHALL, CALL, MCKINNEY, HASKELL.

Alpha Upsilon Cast of Alpha Psi Omega, national honorary dramatic fraternity, is headed by the following officers: Willard Miller, director; Virginia Kaufman, stage manager; James Call, business manager. Miss Margaret A. Boyd is faculty adviser. Other active members include Miss Marie Marwick, director of dramatics at the College, Marian Renn, John Haskell, Dean McKinney, and William Marshall. The three last named were initiated during the present school year.

One of the activities of the first semester was the project of directing group activities within the campus dramatic organization, the College Players. Each of five groups—technique of acting, puppetry, make-up, stage management, and theory of play writing—was headed by a member of the honorary group. Members of the Cast also participated in all activities of other organizations on the campus in which any part of the field of dramatics was involved.

During the year, the Cast attended one movie, "Anthony Adverse" and one play, presented by the dramatic group at Allegheny College. In addition, a banquet was held in the spring at which the alumni members, who were initiated May 15, 1936, were entertained.

Alpha Upsilon Cast was established January 17, 1936, after the charter had been granted on January 6. It is one of over a hundred chapters of Alpha Psi Omega. Chapters are to be found in such leading colleges and universities as Washington and Lee, Bethany, Rutgers, Colgate, and Rensselaer. Among Pennsylvania institutions in which chapters are to be found, may be listed Washington and Jefferson, Muhlenburg, Drexel, and the state teachers colleges at Bloomsburg, Edinboro, Shippery Rock, and California.

Alpha Psi Omega



Pi Gamma Mu and International Relations Club . .

On alternate Tuesday evenings a group of students and faculty members gather around a table in seminar fashion to discuss national and international problems. This group is known as the International Relations Club, an organization established on the campus during the second semester of the year 1936-37. The Clarion club is one of a number now found in various colleges and universities.

The International Relations Club was established in Clarion by Pi Gamma Mu, the National Social Science Honor Society. Because its work was similar to that carried on by Pi Gamma Mu previously, it seemed advisable that an International Relations Club be organized so that persons interested in the social sciences, but not eligible for membership in Pi Gamma Mu because of college rank or course of study, might be privileged to participate in such activities. The officers, the same for both organizations are: president, Geraldine Thorne; secretary, treasurer, Louise Furlong. Subjects discussed during the club meetings were: Capital versus Labor, Social Security, Co-operatives, and Problems of the Far East.

Pi Gamma Mu

MISS SIMS	DR. CORDIER	LOUISE FURLONG
MISS BARTON	GERALDINE THORNE	MARGARET DALE
MISS CARLSON		DOROTHY KAUFMAN

International Relations Club

MISS SIMS	LOUISE FURLONG	MAE STEWART
MISS BARTON	MARGARET DALE	DEAN MCKINNEY
MISS CARLSON	DOROTHY KAUFMAN	WILLARD MILLER
DR. CORDIER	ELLEN SONGER	EDITH DINSMORE
GERALDINE THORNE	CATHERINE DAUGHERTY	ROLLAND KIRKLAND
		PAUL GRIFFIN

Autographs . . .

*The friendly group . . . with the common
interest . . . by this . . . do we know . . .
Clarion's clubs . . .*



Clarion Clubs

Hostess Club . . .

The main purpose of the Hostess Club is to raise the social standing of the school by instructing the girls in the proper ways of conducting themselves. This training is very necessary, and the girls consider it as an essential part of their education.

Some girls ask, "What is considered a formal gown?" "Where does this silver belong?" "What dress would be appropriate?" These are some of the questions on which our meetings are based. At our first meeting we discussed "Parliamentary Rules." In our calendar of events we included such topics as "Personal Cleanliness," "Invitations and Answers," "Charm," "Appropriate Dress," and other interesting and helpful subjects.

The officers of the club for the first semester were: Fern Brooks, president; Avanelle Menteer, vice-president; Helen Deily, secretary-treasurer. Joan Wolf, as acting program committee chairman, arranged the topics of discussion for each meeting. With the arrival of the second semester came the following officers: Helen Deily, president; and Ethlyn Smith, secretary-treasurer.

The club is under the direction of Miss Sims, adviser, who guides the hostesses, enabling them to be better fitted socially. This phase of college life is not only practical now, but also will be of great advantage in the future.

*Front row: M. WASSUM, WORK, BUZZARD, SMITH, DEILY, BURKETT, CRAWFORD, H. WASSUM.
Second row: JONES, DOVERSPIKE, SMERKER, LAUGHLIN, ALCORN, GARDA.
Last row: SAYERS, BROOKS, RUSSELL, GRIMM, SAULA.*



N. A. C. E. Club . . .

Because this year is the one hundredth anniversary of the Kindergarten, the Clarion branch of the National Association for Childhood Education selected as its theme for the year "The Kindergarten." The new kindergarten at Clarion, under the direction of Miss Leifeste, is the center of our study. It is logical that the club should use the kindergarten rooms for its meetings.

In the monthly meetings the members have discussed the origination of the movement and how it has progressed through the years. The group took special interest in modern kindergarten, studying their values and types of activities. At the beginning of the year the group divided into smaller units to construct materials for the local kindergarten. Doll clothes, furniture making, and painting occupied these groups in a practical and beneficial way.

Special activities for the year have included sending money to help in the flood stricken areas, having story hours, and selling Zonor-Bloser ever-sharp pencils. The club also expects to sponsor a moving picture.

This branch of N.A.C.E. has thirty five active members. The officers of the club are: president, Murial Wolstencroft; vice-president, Dorothy Fischer; corresponding secretary, Mary Chitester; recording secretary, Evelyn Craig; treasurer, Hazel Bennett. During the year three new members were taken into the association. These new officers were: vice-president, Ellen Songer; recording secretary, Helen Stewart; corresponding secretary, Isabel Shields. Miss Frances Easley is our adviser.

Front row: TRIMBLE, WOLSTENCROFT, STEWART, DUNLAP, SIAR, LONGWELL, DUNNE, SONGER.
Back row: BENNETT, MISS EASLEY, MISS WALTERS, WHITMAN, JOLLEY, WRIGLESWORTH, MISS KUHN, SHIELDS,
MISS HEPLER, MISS LEIFESTE, BONNETT.





Bottom row: GUTHRIE, DALE, JACOBS, WOZNAK.
Middle row: KAUFMAN, MR. KUEHNER, FLYNN, MILLER.
Top row: STEWART, FURLONG, MCKINNEY.

Geography Club . . .

The Geography Club has experienced an active club-year under the leadership of President Dale, Secretary Stewart, and Sponsor Kuhner. The club members were fortunate in being able to make a trip to the United States Weather Bureau offices in the Federal Building at Pittsburgh, Pennsylvania, to learn something of the functions of the staff. Among other places visited that day was the Pittsburgh Press newspaper plant and radio station KDKA.

At each club meeting some phase of geography was reported upon or discussed. One meeting was spent observing an elementary geography class in session at the local public school.

Late in the first semester the club visited the brick plant at Summerville, Pennsylvania, where the many processes in brick manufacturing were observed. A company guide gave valuable explanations to the members.

The clubs program for the second semester consisted of a detailed study of Clarion borough. A large map was made to show all residences and business establishments. By such a comprehensive study the students have gained valuable knowledge of cultural adjustments and experience in map artistry.

Art Club . . .

*If you hold your nose to the grind-stone rough,
And you hold it down there long enough
You will learn to say there is no such thing
As flowers that bloom and birds that sing.*

In the art club, college students find no reason or necessity for holding their noses "to the grind-stone rough" or dulling their sensibilities to the "flowers that bloom and the birds that sing." The art club consists of a group of students who are alert to that which is beautiful and interesting from a creative point of view. This interest expresses itself for the most part in handicrafts. The boys in the club this year have taken pleasure in wood-burning. The girls have made decorative designs for bracelets, finger rings and napkin rings. In February the club invited the Hostess Club to their "Beaux Arts" Ball, where a jolly time was enjoyed by every one present. Art club members work conscientiously, but freely, and believe in a philosophy of life in which happiness for its own sake has a very definite place.

During the first semester the officers of the club were: Lorraine Griffith, president; Robert Crissman, secretary-treasurer; Bessie Swarm, recording angel. The second semester, the offices were held respectively by Joan Wolf, Jessie Swarm, and Lucile Snyder.

SMITH, HUMMEL, LONGWELL, GRIFFITH, RUSSELL, MISS SANDFORD, DINSMORE, HUMPHREYS, CRISSMAN, KOELSCH.
Standing: FREEDLINE, TRIMBLE, SHIELDS, GARDA, ROCKEY, SIAR, CALHOUN, WOZNIACK, FLYNN, M. STEWART, DUNKLE,
DICKEY, PHILLIPS, PFAFF, WEDEKIND, THOMPSON.



Outdoor Club . . .

The Outdoor Club, which was organized in 1930 under the leadership of Mr. Harry S. Manson, has as its aim the stimulation of interest in outdoor life and the creation of an appreciation of nature. It has as its motto: "The Natural Way To A Better Life."

The membership of the club is limited to twenty members, ten men and ten women. New members are admitted into the organization only by being elected by the old members, and membership is retained from year to year.

The officers for the first semester this year were: president, Geraldine Thorne; secretary-treasurer, Fay Sherman. Those for the second semester were: president, Charles Reed; secretary-treasurer, Joan Kroh.

Seated: VOGEL, WELCH, BYERS, STEWART, HOSSACK, A. McDONALD, HILL, ANDREG, SMOLAK.

Standing: SHERMAN, THORNE, KAUFMAN, SCHIERBERL, JACOBS, MR. MANSON, MR. TIPPIN, MURDOCK, JACKSON, STEWART, GRIFFITH.



Newman Club . . .

The Newman Club is a newly organized group consisting of the Catholic students who attend Clarion State Teachers College. It was organized the second week in January by the Reverend A. A. Fisher of Clarion, for the purpose of gathering these students to discuss current topics of religious importance.

The Club meets every two weeks. Reverend Fisher presides as Chaplain, and the students take charge of the meeting. The first discussion of importance was "Our Modern Movies." The following meeting a discussion on child labor aroused active comment among the members.

As the club is a new organization, it has not had much chance as yet to organize fully, but the student interest is increasing and as time goes on, it will grow.

Front row: BEDZYK, ANDREO, McDONALD, FATHER FISHER, JACKSON, DAUGHERTY, SMERKER, ROCKEY
Back row: TRUNK, SCHIERBERL, TRUNK, McDONALD, SCHIERBERL, FLYNN, SONGER.



Y. W. C. A. . . .

The Y.W.C.A. started the new school term by having a pajama party for the new freshman girls. The chief aim was to get these new girls acquainted with one another so they could feel themselves members of one big family.

This association aims to create a feeling of friendship among the girls that they may have a spirit of sisterhood towards one another. Each Wednesday evening from seven to eight o'clock the leaders conduct devotional services on topics selected by the Y.W.C.A. cabinet. These meetings are in charge of the "Y" Cabinet Members, each one taking the duty week about. All the "Y" girls enter into the discussion to make the services interesting.

New books and pamphlets have been purchased for the organization. These books are placed in the library or in the "Y" parlor in Becht Hall.

Through Miss Sims, the adviser, the "Y.W." was able to bring Miss Rebecca Griest to the College. Miss Griest showed pictures and gave an interesting talk on the work of a missionary woman in China. The pictures, shown in the geography room of Science Hall, were open to all college students.

This year the enrollment increased from eighteen members to twenty-two. The girls who are living in town took a great interest in the work this year and it is hoped this interest will continue throughout the coming year.

LONG, DEILY, FLYNN, CRAIG, LAUGHNER, RODGERS.



Y. M. C. A.

The Young Men's Christian Association has tried in its meetings to cultivate a spirit of fellowship among the men and to stimulate wholesome, lofty ideals and attitudes toward Christian living and especially toward campus life.

During the year the "Y" has had especially enthusiastic and beneficial meetings, with an average attendance of about a dozen members. Some of the meetings have been of the group discussion type, but in most of them there have been speakers. During the year very interesting and inspirational talks have been given by Mr. Becker, Mr. Manson, Mr. Carey, Mr. Kuhner, Mr. Hoyt, Dr. Cordier, and Dr. Pierce of the faculty, and by Dr. Harry Stahlman.

The work of the "Y" this year has been administered by the following officers: Morgan Jones, president; Marcus Priester, vice president; Tom Plyler, secretary; and Robert Crissman, treasurer.

A splendid spirit of cooperation and a spiritual uplift have dominated the work of the Y.M.C.A. this year. A great deal of the success of the organization has been due to the faithfulness and energetic activity of a prominent faculty member, Mr. Charles Becker.

Front row: LEHMAN, PRIESTER, WOZNACK, JONES, PLYLER, KNARR.
Back row: CRISSMAN, MOORE, PHERRO, STARTZELL, JONES, MR. BECKER.





Seated: BONNETT, JACKSON, BELL, HOMAN, BROOKS, SLAGLE.
Standing: LONGWELL, GRIFFITH, CALHOUN, DUNNE, CRAIG.

Women's Student Council

The Women's Student Council is the governing body of Becht Hall. It is the Council's duty to keep things running smoothly in the Hall. The group is composed of fourteen members. The officers of the Council for this year were: Mary Belle Calhoun, president; Lorraine Griffith, secretary; and Geraldine Slagle, treasurer. Betty Dunne was the president of the entire hall this past year.

The members were: Margaret Akers, Eleanor Laughner, Geraldine Slagle, Bonnie Bell, Mary Belle Calhoun, Lorraine Griffith, Isabel Bonnett, Fern Brooks, Betty Dunne, Edytha Homan, Mary Olive Longwell, Evelyn Craig and Katherine Minns.

In the capacity of "Big Sisters" the Women's Student Council facilitates the orientation of each year's freshmen. It promotes a home-like atmosphere in considering the personal problems of each individual, in purchasing publications for the lounge, in sending floral tributes, and in extending condolences in times of illness or death. The Woman's Student Council has completed a successful year under the able supervision of our dean of women, Miss Helen D. Sims.



Front row: JOHNSON, FULTON, CALHOUN, ROCKEY, HOMAN, JACOBS.
Back row: MILLER, JONES, THORNE, PAUP, GRIFFEN, SCHIERBERL.

Student Senate . . .

The Student Community Senate is a government body representative of the students of the College. It consists of twelve members. The women resident students, the women day students, and the resident and day men students are the groups represented by the twelve members of the Senate. Respectively, the representatives are: Mary Belle Calhoun, Edytha Homan, and Lucille Rockey; Eleanor Fulton, Elsie Paup and Geraldine Thorne; Willard Miller, Morgan Jones, and Edward Jacobs; Edward Schierberl, Paul Griffen, and Russell Johnson.

After each group elects its representative for the Community Senate, the entire student body elects the officers by popular vote. This year the president of the body was Willard Miller, with Edward Jacobs as vice president, and Geraldine Thorne, secretary.

From the Senate members, various committees are selected whose duty it is to plan and regulate the social affairs of the student body on the campus. The chapel committee, headed by Edward Jacobs and assisted by Willard Miller, Miss Sims, and Mr. Manson, is one of the most important. Lyceum and chapel programs for the year are dependent on this committee. The social calendar is planned and directed by the social committee, headed by Edytha Homan.

Constantly, the Senate has aimed to reflect student spirit and wishes in its work. Student entertainment, welfare, and education are the keynotes of its activities.

*For the unequalled experience . . . of teamwork . . . of
physical endeavor inspired by . . . the spirit of play . . .
and restrained by . . . the silver bonds . . . of rules . . .
for this . . . do we . . . commend . . . and glory in
. . . our athletes.*

The Athletics



- ▼ Football
- ▼ Basketball
- ▼ Tennis
- ▼ Girls' Sports

*For the unequalled ex
physical endeavor inspi
and restrained by . . .
for this . . . do we .
. . . our athletes.*



- ▼ Football
- ▼ Basketball
- ▼ Tennis
- ▼ Girls' Sports

*To learn . . . to play . . . and thus . . . to
learn . . . the joy . . . of good fellowship
and teamwork . . .*



Men's Athletics

Coach Tippin . . .



COACH TIPPIN

Coach Waldo Tippin is completing his second year as Blue and Gold mentor. He is friendly and agreeable to everyone and is well liked for his fine attitude toward Clarion. Though his teams have not been topnotch winners, our coach has done commendable work, with the material he has had. Under his leadership, a splendid intra-mural program has been made possible. Mr. Tippin believes in conducting an athletic program in which everyone can participate. We wish him the best of luck next season.

The Football Squad . . .

CHARLES BESKID
WILLIAM BYERS
PAUL GARMONG
PAUL GRIFFIN
CHARLES REED
EDWARD JACOBS

BRONIE SMOLAK
JOSEPH ANDREO
VIRGIL BEARY
FRANK STEWART
MARSHALL TEETS

HARRY WOZNAK
EDWARD SCHIERBERL
JAMES MEYERS
LEROY CARLSON
MICHAEL BEDZYK

CHARLES HETRICK
THEODORE McDONALD
BENTON KRIBBS
JAMES HUBLER
NEAL GUTHRIE
CHESTER BROGAN

Front row, left to right: Coach TIPPIN, MYERS, SCHIERBERL, GARMONG, ANDREO, BEDZYK, WOZNAK, BESKID, GRIFFIN, HUBLER, MARSHALL.
Back row: CARLSON, A. MACDONALD, KRIBBS, BROGAN, ABERCROMBIE, BEARY, JACOBS, JONES, HILL, REED, SERSHIN, Manager T. MACDONALD.



The Varsity Club . . .

The Varsity C Club is one of the most outstanding men's organizations on the campus. It is a club composed of all letter winners in any major sport. The purchasing of sweaters is made possible through its activities. This year the Varsity C has carried on a very successful financial campaign. A benefit basketball game was held between the Varsity and the Alumni. The next business procedure was a turkey raffle held just before the Christmas Holidays.

Basketball programs were put out by Charles Reed and Paul Griffin for all home games. This project netted a sum of \$55 and enabled the basketball men to purchase sweaters. A series of candy punchboards and a ham raffle followed.

On February 28 the following men were taken into the club: Virgil Beary, Ted McDonald, James Meyers, Paul Garmong, Marshall Teets, Le Roy Carlson, Charles Beskid, Edward Jacobs and Frank Stewart.

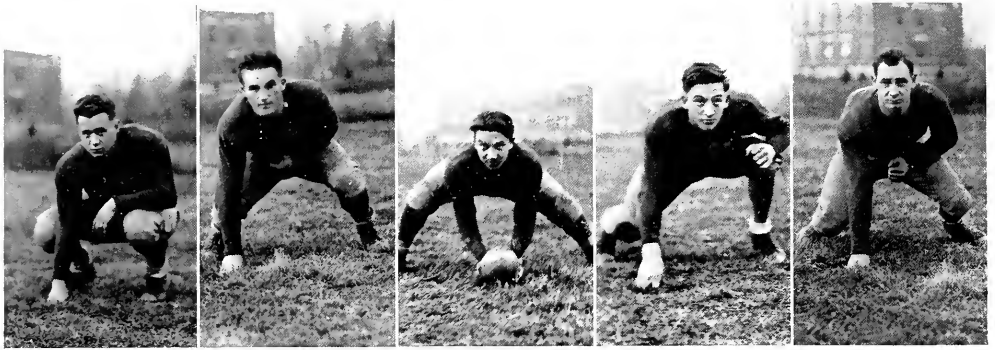
The officers for this term are:

<i>President</i>	PAUL GRIFFIN	<i>Secretary</i>	BRONIE SMOLAK
<i>Vice President</i>	CHARLES REED	<i>Treasurer</i>	JOSEPH ANDREO

The social activities of the club during this year were numerous and varied. Picnics and rifle shooting contests were the main features of the fall. Then followed the tobogganing parties and roller skating frolics. But most important of all was the mid-winter picnic that was held at Cook's Forest during the month of February. The club also held several parties in the gymnasium, where such games as volley-ball, badminton, and ping pong were played.

Back row: N. GUTHRIE, BROGAN, REED, HOSSACK, SCHIERBERL, BEDZYK, GRIFFIN.
Front row: BYERS, HUBLER, SMOLAK, ANDREO, WOZNIAK, HETRICK.





GRIFFEN—*Back*

WOZNAK—*Guard*

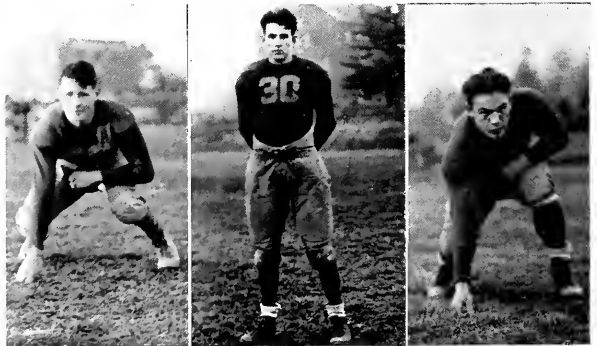
BESKID—*Center*

BEARY—*Tackle*

SCHIERBERL—*Guard*

Football Season . . .

Clarion's 1936-37 grid machine was a success as far as willingness and co-operation were concerned. The squad was composed of inexperienced men for the most part, and Coach Tippin was handicapped at the outset by lack of heavy material. The men representing our school deserve a great deal of credit for the valiant struggle they put up against overwhelming odds.



STEWART—*Guard*

CARLSON—*End*

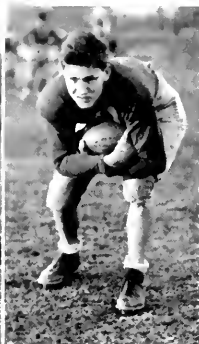
GARMONG—*End*



MYERS—Back



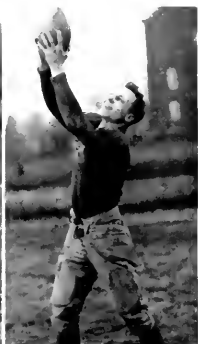
ANDREO—Center



JACOBS—Back



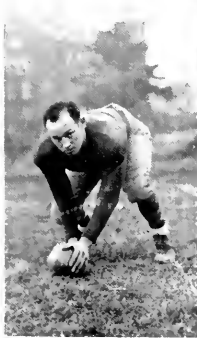
BEDZYK—Back



REED—End

Football Schedule . . .

Grove City	13	Clarion	7
Thiel	20	Clarion	0
Edinboro	40	Clarion	0
Indiana	28	Clarion	0
Lock Haven	32	Clarion	0
California	13	Clarion	0



HILL—Center



MARSHALL—Quarter Back



KRIBBS—Half Back



Front row, left to right: BESKID, BYERS, SMOLAK, MYERS, HETRICK, GARMONG.
 Back row: ASSISTANT MANAGER SERSHIN, MOONEY, TEETS, SCHIERBEHL, COACH TIPPEN, STROUP, ABERCROMBIE, CARLSON, MANAGER MARSHALL.

Basketball Season . . .

The basketball men met with fair success this season. At the beginning of the year things looked better than they had in the past and the first three games ended with victories for us. The injury of our co-captain, Mike Bedzyk, darkened our hopes. This was soon followed by the loss of Hetrick, star forward, for three games. The college is proud of the year's record and hopes that next year's team may finish the season successfully.

BASKETBALL SCHEDULE 1936-37

		Clarion	Opponent
December 17	Alumni at Clarion	32	21
January 9	Alliance at Clarion	38	29
January 16	Edinboro at Clarion	46	41
January 19	Grove City at Grove City	16	43
January 22	Indiana at Indiana	33	43
January 30	California at Clarion	28	54
February 2	Indiana at Clarion	22	45
February 6	Slippery Rock at Clarion	21	41
February 13	Slippery Rock at Slippery Rock	27	57
February 20	California at California	30	50
February 23	Grove City at Clarion	29	38
February 25	Edinboro at Edinboro	34	53
February 25	Alliance at Cambridge Springs	36	45

MIKE BEDZYK . . . injured in Grove City Game . . . co-captain . . . great asset to team . . . inspired necessary leadership qualities to inject spirit into the squad . . . cooperative . . . dependable . . . capable . . . fine ability.



MARSHALL TEETS . . . tall . . . rangy . . . galloping ghost . . . showed great achievement as the season progressed . . . valuable man in pivot position . . . should display an even better brand of basketball next year.



BILL BYERS . . . finished last campaign for C. S. T. C. . . . senior . . . fine shot . . . scoring threat . . . hard man to replace . . . sorry to see him go.

BRONIE SMOLAK . . . good ball handler . . . Smokey . . . consistent . . . calm . . . confident . . . real asset to the team . . . plans to be in the lineup next season.



JIM MEYERS . . . first year man . . . promising ball player . . . aggressive . . . starred particularly on the defense . . . always in there . . . fighting to the end.



WASP HETRICK . . . small . . . fast . . . good shot . . . high scorer in games played . . . concluded third year for Blue and Gold . . . chosen for California's all opponent second team . . . will be heard from again next year.



BUD KRIBBS . . . exceptional player on both defense and offense . . . hard driving guard . . . one of the most valuable men on the squad . . . dependable . . . excellent passer and ball handler . . . though not pictured, was always in the game.

*Good sportsmanship . . . teamwork . . . has
made us cognizant . . . and proud . . . of a
common bond . . . school loyalty.*



Women's Athletics

Helen Barton . . .

If a girl received nothing more from athletics than a deeper friendship with our instructor, she would be more than repaid for her efforts. No campus could ever boast of a more worthy teacher, leader, and friend. She is fair, square, and all that a good sport should be. Clarion's women are greatly indebted to Helen Barton for the joy that her leadership and friendship have brought.



HELEN M. BARTON

Physical Education . . .

The department of physical education for women endeavors to accomplish a three-fold purpose.

First, it seeks to offer the individual opportunities for the improvement of her general physical welfare through the development of a better coordinated neuro-muscular person. No one can hope to attain her most coveted aims in life if she is a physical misfit who lacks poise because of a chronically mal-aligned posture. She can not hope to participate in the economic and social struggle of adulthood if she is organically handicapped by a physical mechanism which is functionally inadequate to meet demands. She can not justly evaluate herself nor will the community so evaluate her if she is physically incapable of rendering service to either.

The second purpose is to provide opportunities for the broadening of social attitudes through recreational experiences with her fellow students. Team games afford a chance for the over-sensitive girl to lose herself in play situations and thus to forget herself in pleasurable experiences of an extrovertive nature. In the intra-mural sports program this is possible as well as it is in the conducted class games, and it is through such continual group participation

that such a person gradually gains the self assurance she needs.

Through individual sports a girl may develop her interests in skill perfection rather than in mass participation. Here is the opportunity for the better coordinated person to meet the challenge of competition against her own imperfections. It is true that in so doing she limits her scope of social contacts, as such games rarely involve more than four people at the most, but by this manifestation of interest in self improvement she is placing herself on a level with a more selected social group.

Since this is primarily an institution for the professional training of teachers it follows therefore that the department has a third purpose which is the preparation of students in its special field. Economic conditions today are no respectors of individual tastes and the student who has been trained in the principles of physical education is in a far better position to accept a place in the present educational system than one without that experience. Too narrow a field of preparation is synonymous with a very limited vocational placement in one's early years of teaching. This third purpose, however, would be quite unattainable were cognizance not taken of the two preceding ones.

Womens Athletic Council



The Clarion State Teachers College women spend many happy hours in sports as a result of the careful planning and coaching of the W.A.C. members. Each year this council works out an intra-mural sports program which consists of various tournaments to be played throughout the year. The various tournaments are played between the freshmen and sophomore girls and are coached by W.A.C. members. The two teams elect their own captains and managers who in turn select class teams from their squads. During the tournament W.A.C. girls observe the players and form their opinions. From the two teams the W.A.C. chooses an honorary varsity. Points are awarded to girls for being present at two thirds of the practices, making the class team, and being chosen for the varsity. In the spring the sums are found and compared. The ten highest girls are awarded letters which automatically makes them members of the Women's Athletic Council. The winners in the tournaments for the year 1936-37 are:

Hockey—Sophomores

Soccer—two games, tied; third—defaulted

Basketball—Sophomores

The W.A.C. also sponsors tournaments between sorority and non-sorority girls. The Sigma Delta Phis were winners of this year's tournament.

It is an annual custom that the W.A.C. hold a Play Day in the spring. At this time girls are invited from various high schools to come to the college for a day of fun.

Officers for the year were:

<i>President</i>	VIRGINIA KAUFMAN
<i>Secretary</i>	MARY CHITESTER

*Front row: FISCHER, CALHOUN, GATHERS, THORNE, CHITESTER.
Back row: WALTERS, KAUFMAN, CRAIG.*

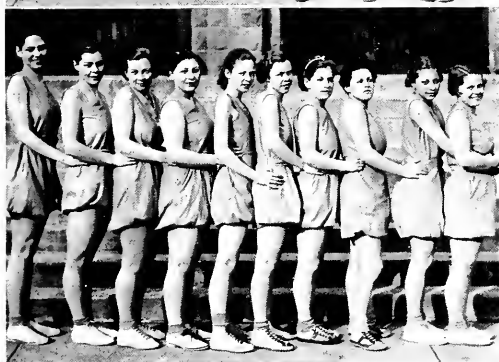




Soccer . . .

Front row: HAHN, BURKETT, ROCKEY, MURDOCK, DEHLY.

Back row: FULTON, RUSSELL, GARDIA.



Hockey . . .

RODGERS, FULTON, DEHLY, JOLLEY, MURDOCK,
WHITMAN, ROCKEY, HAHN, BURKETT,
CRAWFORD.



Basketball . . .

FULTON, RUSSELL, DUNKLE, DEHLY, ROCKEY,
BURKETT.

Soccer . . .

The soccer season opened with a bang, the first game ending in a 0-0 tie and the second in a 2-2 tie. There was no time to play a third game.

The following girls were placed on the soccer varsity:

Sophomores:

Eleanor Fulton, Lucille Rockey, Elsie Paup.

Freshmen:

Katherine Mims, Eileen Burkett, Mary Lou Trunk, Fay Russell, Helen Deily, Marian Garda, Eva Murdock, Georgine Hahn.



Hockey . . .

The freshman and sophomore girls met first in the intra-mural sports schedule in hockey. W. A. C. decided that these girls, through teamwork and good sportsmanship, were worthy of a post on this years varsity:

Sophomores

Alice Jolley, Eleanor Fulton, Ardele Whitman, Marybelle Rodgers, Lucille Rockey.

Freshmen:

Mary Lou Trunk, Eileen Burkett, Helen Deily, Eva Murdock, Georgine Hahn, Marie Crawford.



Basketball . . .

VARSIITY MEMBERS

ELEANOR FULTON

HELEN DEILY

LUCILLE ROCKEY

GEORGINE HAHN

FAY RUSSELL

EILEEN BURKETT

The girls' basketball season was made very vivid by the rivalry between freshmen and sophomore teams. Although the freshmen fought hard and long, the first intra-mural

After waiting several days for nice weather, the girls received permission to play on the tennis courts. Dorothy Fischer coached the freshmen, while Gertrude Phillips coached the sophomore girls. The first game was an 0-0 tie. After a pep talk from Mary Lou Trunk and Lucille Rockey, Georgine Hahn and Eleanor Fulton, captains and managers of the two teams, the second game was played. This game ended in a 2-2 tie. Poor field conditions and the intervention of Thanksgiving vacation kept the girls from playing off the exciting tournament.

The sophomores, with more experience and a knowledge of several clever dribble pass plays, were able to top the freshmen in each of the games. The freshmen seemed very persistent, for, after suffering two defeats, they came out to the third game with more pep than ever. Even though they lost, they seemed to enjoy themselves. The freshmen girls were coached by Virginia Kaufman, with Eleanor Laughner as captain, and Hazel Wedekind as manager. Florence Gathers coached the sophomores, Eleanor Fulton captained, and Alice Jolley managed them. Through capable leadership of these girls and general teamwork, the hockey season ended successfully.

game resulted in a "goose egg" for the freshmen and a score of thirty for the sophomores. However, the freshmen were undaunted, and after two practices brought the score up to 15-10 in favor of the sophomores. In the third game competition was keen, but after a lively battle, the indomitable sophomores won out, thus ending the season with a perfect sophomore record.

*That music hath charms . . . that all the world's a stage
. . . that in art do we find life . . . that writing maketh
an exact man . . . these we hold as the inspiration for
our musical organizations . . . our players, our art depart-
ments . . . and our publications . . .*

The Activities



- ▼ Music
- ▼ Art
- ▼ Dramatics
- ▼ Publications

*That music hath cha
. . . that in art do τ
an exact man . . . t
our musical organizat
ments . . . and our]*



- ▼ Music
- ▼ Art
- ▼ Dramatics
- ▼ Publications

Music and Art at Clarion . . .



GLADYS RICH

This school year has witnessed some of the most successful performances ever given by the music and art departments of the College. These successful activities are due in large part to the abilities of Miss Gladys Rich, music supervisor, and Miss Hazel Sandford, director of art.

The musical organization and the art department, as well as the College Players, provide the means by which frequent contact is made with the public. Entertainment given in carefully planned, beautiful settings has drawn deserving attention to the school and given immeasurable satisfaction to the students.

The high spot of the year for both departments was the presentation of the Gilbert and Sullivan operetta *H. M. S. Pinafore*. Attendance at the performances more than acknowledged the skilful musical direction and the realistic stage setting. During the Christmas season, the old song, *Twelve Days of Christmas*, was dramatized. Again costume and other properties bore the stamp of the art department's careful work.

During the year, the A Cappella Choir, with properties furnished by the art students, has given programs in the surrounding

communities and in New Castle and Pittsburgh. The value of the experiences thus accruing to the members of the Choir is evident.

Apart from its activities with the musical organizations, the art department has won due recognition through its individual efforts. This year, five posters, representative of the work done in the Art I classes, were entered in a state contest which was inaugurated by the Department of Public Instruction and held in Harrisburg. Commendation for the high quality of workmanship was received from the director of art in Harrisburg, Dr. Kirby. A number of art exhibits have been held in Thaddeus Stevens Training School and in the art room during the year.

A large part of the yearly work are the decorations supplied for the school dances. The fitness and originality of the decorations add much to the gaiety of the occasions. From the art department, too, come the posters that herald the College football battles.

It is difficult to picture college life at Clarion without the contributions of these two departments. Their willing cooperation has multiplied a hundredfold their individual benefits to the students.



HAZEL SANDFORD

Women's Glee Club . . .



Front row, left to right: Miss RICH, LAUGHNER, BURKETT, WOLFF, GRIFFITH, HOMAN, BELL, HEFFNER, WHITMAN, McCUE, AKERS, CRAWFORD.
Second row: HARTMAN DOVER-SPIKE, SLAGLE, WOLSTENCROFT, FISHER, SNYDER, HUMPHREYS, M. JONES, FOX, VOGEL, PFAFF.
Third row: SAYRES, B. JONES, SMITH, DEILY, PLANT.
Back row: COOK, WEDEKIND, JACKSON, DINSMORE, WRIGLESWORTH, JOLLEY, RODGERS, MCGREGOR, STEWART, CORBETT.

Is it not significant that in the crowded hours of the college student's life a few of them do find time for regular music making just for fun? Such music lovers are the members of the Glee Clubs, A Cappella Choir, and Orchestra.

The Glee Clubs provide a "fellowship" unit to students interested in music. Out of their friendly comradeship developed three outstanding social and musical events of the year. "The Twelve Days of Christmas" presented in Chapel on December 16, "H.M.S. Pinafore" March 4-5, and the Golden Jubilee Concert on April 12. The Men's Glee Club made its first appearance in Chapel on November 12, when they sang, "Pale in the Amber West" by Park. The Women's Glee Club assisted with a chapel program on February 11, when they sang "The Snow" by Edward Elgar with Esther Hartman at the piano and a violin obligato played by Mr. Donald Graff and Miss Margaret Dale. The music organizations also took charge of the chapel program following the All-School dinner on December 16, when they presented a pageant called "The Twelve Days of Christmas," a dramatization of the old English carol of the same name. The second main attraction was the presentation of the popular Gilbert and Sullivan operetta "H.M.S. Pinafore," a satire on British Navy life. The grand finale of the music organizations was the Annual Spring Concert of April 12, presented to commemorate the 50th anniversary of the founding of our college. The Women sang "Love in Brit-

Men's Glee Club . . .



Front row:
 JONES
 PHERO
 KOELSCH
 KNARR
 KIRKLAND
 BURNHAM
 JONES
 HORNER
Second row:
 CRISMAN
 SUMMERSVILLE
 MCKINNEY
 PLYLER
 B. GUTHRIE
 MOORE
 N. GUTHRIE
Back row:
 HESS
 SCHIERBERL
 CARNS
 MARSHALL
 MISS RICH

A Cappella Choir . . .

Front row: left to right:

MISS RICH
SPEIDEL
FOX
HOMAN
GRIFFITH
WIMER
M. JONES
WOLSTENCROFT
FISCHER

Back row:

CRISSMAN
CALL
CARNS
PLYLER
HASKELL
JONES
KIRKLAND



tany," by Lefebvre and "The Minnet" by Besley. The Men sang two Russian folk songs with James Call singing the baritone solo for the "Volga Boat Song."

Several Glee Club Members have been granted music awards which are based upon a point system and consist of gold medals for four year students and silver medals for two year students. Gold awares were given this year to Morgan Jones and Tom Plyler; silver awards were given Dorothy Fischer, Muriel Wolstencroft, Frances Wrigglesworth and Lorraine Griffith.

The A Cappella Choir was organized by Miss Gladys Rich in 1933 to afford specially talented persons the opportunity of studying more advanced choral music and training in ensemble singing. The Choir has the privilege of representing the college by presenting choral programs throughout the service area. On February 25, the choir gave a program of Russian music in the College Chapel and made a colorful group in their Russian costumes. This same program was given during April in the high schools at Emberton, Ridgway, Clarion, and Punxsutawney.

While the college orchestra is small it is a very necessary and worthwhile organization on the campus. Besides furnishing music between acts for the College Players productions, it also plays an important part in the Baccalaureate and Commencement exercises. In the Golden Jubilee Concert the orchestra played "Pique Dame" by Von Supple and "Invitation to the Dance" by Von Weber.

College Orchestra . . .

MISS RICH
WRIGLESWORTH
HARTMAN
H. WASSUM
COOK
DONAHUE
M. WASSUM
DALE
WEDEKIND





Front row, left to right: McCue, Akers, Giles, Wriglesworth, Whitman, Bell.
 Second row: Laughner, Park, Jolley, Renn, Fox, Jackson.
 Back row: Horner, Schierberl, Jones, Plyler, Marshall, Hosack.



SCENE FROM "THE SHOW OFF"

The College Players . . .

The College Players, campus dramatic organization, has functioned continuously since April, 1920. Club meetings are held bi-monthly. At these meetings, various aspects of dramatics are discussed and illustrated by the members, and one-act plays are given from time to time. During the first semester of this year, a number of small groups were formed within the organization in order to give greater opportunities for active participation in the various phases of dramatic activity. (All of the group leaders chosen were members of Alpha Psi Omega, national honorary dramatic fraternity. The five groups formed and their leaders were: play writing, Virginia Kaufman; stagecraft, Willard Miller; puppetry, Miss Marwick; technique of acting, James Call; make-up, Miss Boyd.)



MISS MARWICK

The major activity of The College Players is the production of plays for both college and community. The Players also give invaluable aid to other organizations on the campus, furnishing actors, electricians, stage managers, and other workers in the field of dramatics. They provide properties, stage equipment, and service to entertainers on the Lyceum Course. The College Players capably assisted the traveling troupe that presented "Dear Brutus" and "A Midsummer Night's Dream." A stage crew and a wardrobe mistress gave valuable assistance to Miss Miriam Marmein, the dance mime, who spoke highly of their ability and competence.

Under the direction of Miss Margaret Boyd, The College Players presented in the college assembly on October 29 the one-act play, "Command Performance." As staged by the Players, this interesting drama of the Orient was given a striking and colorful setting, suggestive of the high caste and opulence of the



SCENE FROM "THE SHOW OFF"



Front row, left to right: POPE, KANENGEISER, VOGEL, BERKHOUSE.

Second row: SAUM, KAUFMAN, STEWART, FURLONG, DOUGHERTY

Back row: MILLER, JONES, REED, MCKINNEY, HASKELL, CALL

The College Players . . .

Maharajah, dominant character of the play, a role ably interpreted by Dean McKinney. Other characters were played by Morgan Jones, Margaret Akers, Joe Schierberl, Chester Brogan, Ardelle Whitman, Walter Haskell, Margaret Dale, Homer Horner, and Bonnie Bell.

"The Show Off," a famous three-act comedy by George Kelly, was produced by The College Players on November 24 under the direction of Miss Marie Marwick, club adviser and director of dramatics. This tremendously human and appealing comedy was accorded a most enthusiastic reception by one of the largest audiences ever assembled in the chapel for a college production, and was given high praise by all who saw it. Virginia Kaufman portrayed the character of Mrs. Fisher with intelligence and artistry. James Call, playing the title role, made of Aubrey Piper the very human, blundering, wholly irresponsible egotist that the playwright intended him to be. All other members of the cast performed capably and worked together to produce a smooth and finished performance. They were: Grace Giles, Marian Renn, Willard Miller, Tom Plyler, John Haskell, Jack Reed, and Chester Brogan.

The last production of the year was the three-act comedy, "Your Uncle Dudley," presented on the evening of Parent's Day. The two outstanding roles were played by Willard Miller and Virginia Kaufman, valuable members of The College Players for four years. Both achieved distinct success in their final appearance in college dramatics at Clarion. Frances Wriglesworth, Fred Marshall, Isabel Bonnett, Marian Renn, and Dean McKinney acquitted themselves creditably. With this bright comedy, The Players rang down the final curtain on their dramatic activities for 1936-1937.



MISS BOYD

Clarion Call . . .

The CLARION CALL, the newspaper of the College, is published periodically throughout the school term by a staff of students interested in journalism. The cost of publication is paid by the Student Cooperative Association from the student activity fee.

This year the members of the Press Club were entertained at two luncheons, one at the home of Virginia Kaufman and the other at the home of its sponsor, Miss Bertha Nair. These luncheons were informal in character. During the luncheon hour a business meeting was held. For its regular meetings, the club met every two weeks in Miss Nair's classroom, where problems relating to journalism and the school paper were discussed.

In October the members of the Press Club journeyed to Pittsburgh where they visited the Cathedral of Learning, the Carnegie Institute of Technology, and the Pittsburgh Sun Telegraph establishment.

Besides publishing the CLARION CALL, the Press Club acts as the official publicity staff of the College. It prepares and sends out articles to the newspapers in this district.

The staff is particularly grateful to Miss Nair, who has given so much of her time and interest to make the paper a success. Sincere appreciation is extended to the editor, Miss Virginia Kaufman, to the associate editor, Mr. Marcus Priester, and to the club's secretary-treasurer, Miss Mary Belle Rodgers.



Front row: HANST, POPE, V. KAUFMAN, THORNE, WHITMAN, RODGERS.
Back row: HESS, BOARIO, D. KAUFMAN, SPEIDEL, PRIESTER.





The Sequelle . . .

The SEQUELLE's purpose is to create by word and picture activities of this school year in such a way that many happy hours spent on the campus will be preserved in memory.

SEQUELLE activities began last spring with the annual election of officers. The second task was the selection of the companies to engrave and publish the SEQUELLE. This work fell upon the shoulders of the editor, Miss Margaret Dale; the business manager, Willard Miller; and the faculty adviser of the SEQUELLE staff, Miss Bertha V. Nair. Many attractive offers were presented by various establishments. After much consideration and deliberation the engraving contract was let to the Pontiac Engraving Company, Chicago, Illinois; the printing contract to the Gray Printing Company of DuBois, Pennsylvania; and the photography to Carl and Don Studio, Clarion, Pennsylvania.

Perhaps the SEQUELLE's most difficult task was to assign and collect write-ups from fellow students. We state this, remembering also the business manager's task of collecting SEQUELLE dues, and the difficulty of attempting to make the sun shine and the wind stop blowing so that SEQUELLE pictures could be taken.

The staff have done their best to achieve two goals. First, they have aimed to make this edition of the SEQUELLE as beautiful and as artistic as limited finances would permit. Second, they have tried to picture every student at least once, either in group or individually. To succeed was an arduous and exacting task overcome only by the excellent leadership and cooperation of the staff.

Sated: DUNNE, BOARIO, SLAGLE, WOLSTENCROFT, HASKELL, BROOKS, DALE, SIAR, HOMAN.
Standing: GRIFFIN, MILLER, PRIESTER, MISS NAIR.



IT PAYS TO SHOP AT

P E N N E Y ' S
J. C. PENNEY COMPANY, Incorporated

609 Main Street

Clarion, Pa.

In appreciation of your
loyal support
. the management
of

The
G A R B Y
Theatre

Clarion, Pa.

The Connecticut
Mutual Life
Insurance Company

Hartford, Conn.

Established 1846
90 Years of
Security and Protection

Edward M. Rimer
Special Representative

Clarion, Pa.

Phone 224

Shoes and Hosiery for the Entire Family

Brown's Boot Shop

Clarion, Pa.

Wein Bros.
WHERE QUALITY PREDOMINATES

JOE'S
THE CORNER STORE

Fruit, Ice Cream
Confections
Corner Wood and 8th Avenue
Clarion, Pa.



GRADUATION GIFTS
David A. Kaufman

JEWELER
Clarion, Pa.

PROTECT YOUR FUTURE
with

Life and Health and
Accident Insurance

Kaufman Insurance Agency

MORTON F. MCKINNEY
Solicitor

Travelers
N U F C E D

The Ress Shop

Women's and Misses'
Ready to Wear

Clarion, Pa.

COMPLIMENTS OF
MR AND MRS. FRED JENKINS

Carl and Don
STUDIO

Clarion, Pa.

Ditz & Mooney Hardware

Phone 218

Clarion, Pa.

STEWART WARNER ELECTRIC REFRIGERATORS
MAYTAG WASHERS AND IRONERS
CHINA AND GLASSWARE
HUNTING AND SPORTING EQUIPMENT

Clarion Furniture Company

"Haskells"

COMPLETE HOME FURNISHINGS

Clarion, Pa.

Rimersburg, Pa.

HAIL THE GRADUATION OF 1937

We join in a hearty commendation of your efforts
and in a sincere wish that your future lives may be happy
and successful.

G. C. Murphy Company

5 and 10 Cent Store

Compliments of
A FRIEND

MEALS

LUNCHES

Modern Diner

ALL NIGHT SERVICE

COMPLIMENTS OF

MAUL'S

DAIRY STORE

BEST WISHES TO THE COLLEGE ON THE HILL

Eighth Avenue Service Station

Clarion, Pa.

DOES YOUR CAR NEED ATTENTION?

Geo. Corbin, Manager

WHEREVER YOU GO

you will always have an interest in the community
and the Alma Mater where you have earned your first
spurs.

The Clarion Republican

will keep you posted on college and Clarion news.

Commercial Printing

Engraving

Compliments of
A FRIEND

JUST OFF THE CAMPUS one
may find the best in groceries
and meats why GO
FARTHER?

WM. W. PHERO

Phone 19



MASTER ENGRAVERS TO AMERICA'S SCHOOLS

Constantly alert for new ideas, better ways of doing things . . . Pontiac has sponsored outstanding improvements in yearbook design and engraving procedure. The name "Pontiac" is and will continue to be your guarantee of unquestionable quality and complete satisfaction.

PONTIAC ENGRAVING & ELECTROTYPE CO.
812-822 WEST VAN BUREN ST. (Chieftain Bldg.) CHICAGO, ILLINOIS



The Printed Word in China . . .

is held in such high regard that special boxes are provided along the walls wherein may be deposited dropped newspapers, lost letters and all stray printed pieces. Any posted notice always has a crowd around it.

In This Country . . .

the printed word is still impressive. But—there is so much of printed material and books that only the attractive can hope to survive.

In the Printing of Your Annual . . .

we have tried to add our personality to that of your editors—so that the book may be worthy of becoming one of your permanent possessions—an attractive reflection in the future of the happy days spent at Clarion.



The Gray Printing Co.

Printers of The Sequelle

Main Office: DuBois, Pa.
Telephone 42

Factory: Falls Creek, Pa.
Telephone 1400

PRESS OF
THE GRAY PRINTING COMPANY
DUBOIS, PA.



CLARION UNIVERSITY OF PENNSYLVANIA

3 9363 00151 7413

Spec. Col.

qLD

1017 Sequelle

.C88

1937

Spec. Col.

qLD

1017

.C88

1937

