

Spec. Col.

qL D

1017

.C88

1940



SEQUENCE

1940


LIBRARY



Carlson Library

1000 1000 1000 1000
1000 1000 1000 1000

LIBRARY
STATE TEACHERS COLLEGE
CLARION, PA.



Digitized by the Internet Archive
in 2010 with funding from
Lyrasis Members and Sloan Foundation

<http://www.archive.org/details/sequelle1940clar>



We, THE CLASS OF 1940

OF THE STATE TEACHERS COLLEGE

LOCATED AT CLARION, PENNSYLVANIA,

GIVE YOU A PICTORIAL PRESENT-

ATION OF A STUDENT'S YEAR

AT THE COLLEGE IN THE PAGES

OF THE NINETEEN HUNDRED FORTY

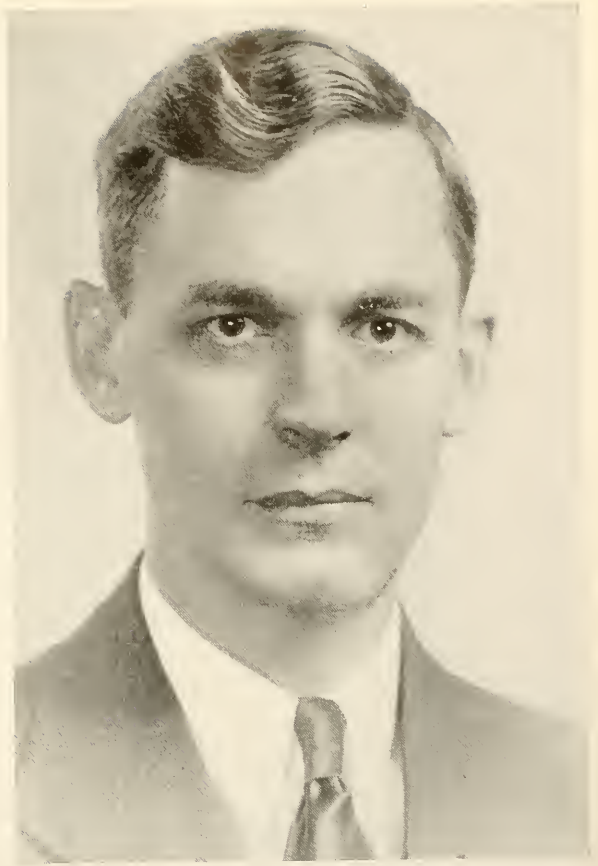
S E Q U E L L E

To

CLARENCE A. KUHNER

FRIEND, SCHOLAR, ADVISOR, WHOSE
INTEREST IN CLARION STATE TEACHERS
COLLEGE AND ITS STUDENTS HAS
ALWAYS BEEN FOREMOST, WE
DEDICATE THESE PAGES IN DEEP
APPRECIATION AND LASTING
GRATITUDE





DEDICATION



FACULTY and CLASSES

OUR PRESIDENT

PAUL G. CHANDLER



Graduates :

This is a time of great adventure for you. Leaving the sheltered halls of college to teach is like going into a new country. These fears and thrills you are now experiencing will in later years be remembered by you as among the greatest of your life.

I foresee for you a teaching career in one of the most stirring periods of history. Radio, talking moving pictures, two world wars, a revolution in transportation, progressive education, mass production, aviation, dictatorships, football stadiums, and motor buses, have all come in the last twenty-five years, and the chances seem good that even greater changes will come in the next twenty-five years. I suggest that all of you pledge yourselves to return twenty-five years hence and talk over the things that have happened in that time.



Helen M. Barton
Nelle H. Ford

Charles F. Becker
Mildred E. Gamble

Margaret A. Boyd
Anna B. Graham

Frank Campbell
Effie B. Hepler

Clair E. Carey
Gilbert A. Hoyt

Rena M. Carlson
Clarence A. Kuhner

Ralph W. Cordier
Bertha V. Leifeste

FACULTY

HELEN M. BARTON, M.A.

Physical Education
Columbia University

CHARLES F. BECKER, M.A.

Education
Columbia University

MARGARET A. BOYD, M.A.

English
University of Pittsburgh

FRANK CAMPBELL, M.A.

High School French
Pennsylvania State University

CLAIR E. CAREY, M.A.

Mathematics
Harvard University

RENA M. CARLSON, M.A.

Librarian
University of Michigan

RALPH W. CORDIER, Ph.D.

Social Studies
Ohio State University

NELLE H. FORD, M.A.

Music
Carnegie Institute of Technology

MILDRED GAMBLE, M.A.

Intermediate Grades
Columbia University

ANNA B. GRAHAM, B.S.

Junior High School Grades
Clarion State Teachers College

EFFIE BLANCHE HEPLER, B.S.

Primary Grades
Geneva College

GILBERT A. HOYT, M.S.

Junior High School Grades
Grove City College

CLARENCE A. KUHNER, M.S.

Geography
University of Wisconsin

BERTHA LEIFESTE, M.A.

Kindergarten-Primary Education
Columbia University

Geography

Social Studies

Music

Science





Harry S. Manson
Hazel M. Sandford

Marie E. Marwick
Sara Seyler

Helen F. Mohney
Georgianne Stary

Bertha V. Nair
Waldo S. Tippin

Fannie C. Owens
Helen Walters

Donald D. Pierce
Lottie Wingard

Greta L. Potter

FACULTY

HARRY S. MANSON, M.A.
Science
Grove City College

HAZEL SANDFORD, M.A.
Art
New York University

MARIE E. MARWICK, M.A.
English
Columbia University

SARA SEYLER
Dietitian
Worcester Domestic Science School

HELEN F. MOHNEY, B.S.
Intermediate Grades
University of Pittsburgh

GEORGIANNE STARY, Ph.D.
Dean of Women
University of Prague

BERTHA V. NAIR, M.A.
English-Latin
University of Pittsburgh

WALDO S. TIPPIN, M.A.
Physical Education
Columbia University

FANNIE C. OWENS, R.N.
Nurse
Oil City Hospital

HELEN WALTERS, B.A.
Primary Grades
Clarion State Teachers College

DONALD D. PEIRCE, Ph.D.
Science
University of Illinois

LOTTIE WINGARD
Registrar
Hoff Business College

GRETA L. POTTER, M.A.
Library-Science
Columbia University

Library Science

Mathematics

Art

Latin-English



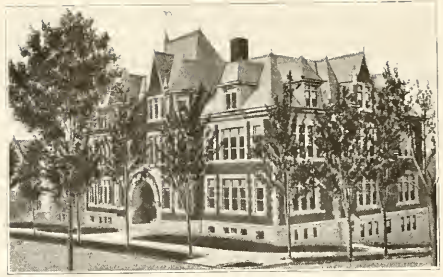
IN THE FALL

WE COME TO COLLEGE . . .

with new enthusiasm . . . eager to renew . . . old acquaintances . . .
to add new ones. Then we pass through . . . the exacting routine of
classes . . . studies . . . tests. Each day . . . we sense . . . the demands
of human contacts . . . the crucial tests of character . . . the accumula-
tion of knowledge . . . until all too soon . . . comes the end of the
year.

Each year's end brings . . . the termination of pleasant acquaint-
ances . . . a host of fond memories. For the seniors comes . . . the





facing of stern responsibility . . . a task . . . as teachers . . . torch-
bearers of the human race.

Every student . . . will cherish . . . these memories of Clarion . . .
with truant fancy . . . through the years to come. This book . . . these
pages . . . will serve . . . to recall . . . faces . . . friendships . . . achieve-
ments . . . to be a fitting sequel . . . to a memorable college year.





THE

CHARLES BESKID

From Port Vue to Clarion State Teachers College came Charlie. Throughout his four years schooling, he has earned four letters in football. He was only one hundred and fifty-five pounds in weight; but he had the sticking quality and fight that was necessary. Charlie also featured in intramurals, participating in most of the activities.

In his four years, "Shorty" has been vice-president of International Relations Club, a member of Pi Gamma Mu, secretary of the Zeta Eta Phi fraternity, and a member of Varsity "C" Club. He also holds the position as day watchman of the campus. Between four and five o'clock of every day you can see him making his final rounds.

CHESTER BYERLY

The genial president of our Class of 1940 is an outstanding personality on the campus with a keen sense of humor, genuine friendliness, and an enviable scholastic record.

"Chet" came to Clarion after one year at Allegheny College. Here he has served as editor of the CALL, member of the Student Senate, Inter-fraternity Council, Press and International Relations Clubs. Chester's Greek background was obtained through membership in Alpha Phi Alpha, Pi Gamma Mu, and Phi Sigma Pi. He will enter the teaching profession with majors in the social studies and English.

The nature of the discussion in which he frequently finds himself is evidence of his interest in politics. Our best wishes to you, Chester, for success in everything you undertake.

LEROY CARLSON

"Swede" hails from Oil City, Pennsylvania. At one time or another the College Players, A Capella Choir, International Relations Club, Press Club, Y. M. C. A. and the Varsity "C" have called him their own. He is a charter member and officer of the Zeta Eta Phi social fraternity. This industrious and fun-loving fellow has made many friends through his ever-ready helping hand. His major studies have been English and mathematics. He is going out to become the "World's Best" school teacher.

HELEN DEILY

Editor of the 1940 SEQUELLE. Helen certainly has made good use of her time spent at college. She has belonged to the Press Club, Hostess Club, Y. W. C. A., A Capella Choir, W. A. C., and Delta Sigma Epsilon sorority. Her majors are Latin and English. Because of her outstanding acting ability, she has had three major roles in "Seven Sisters," "The Night of January Sixteenth" and "Stage Door," and has been awarded membership in the national honorary fraternity, Alpha Psi Omega. Her smile and her personality will take her far.

MARGARET DONAHUE

"Peggy" is a resident of Franklin, Pennsylvania. Besides her interest in co-education and a young man named Paul, she likes sports of all kinds, music, hiking, and elementary work. "Peggy" doesn't belong to all the college organizations, but she has been a member of Women's Athletic Council for three years, president of Sigma Sigma Sigma sorority, member of the Women's Student Council, Outdoor Club, College Orchestra, Association for Childhood Education, Hostess Club, and Panhellenic Council. She has been our time-keeper for the N. Y. A. work and has been faithful in the performance of her duties.

HOWARD DUNKLE

Howard, better known as "Dunkle", has been attracted to Clarion by the various activities which are offered in physical education. Many memories will be left to the day students by Dunkle this year, of which the most important are his speeches given in the day student's room and the fine "fight" he has put up in his student teaching. "Dunkle" hails from Tylersburg, Pennsylvania, a graduate from Farmington High school. Among his best interests are sports, especially "boxing." He has been a member of the Geography Club, Zeta Eta Phi fraternity, Theta Nu Epsilon, and has participated in intramurals. He does not worry about getting a job teaching school. The secret? "Dunkle" is going to marry a superintendent's daughter. An idea, fellows!

1940 SENIORS





THE

DELLA FILLMAN

Mrs. Della Fillman hails from St. Petersburg. Everyone on our campus knows and will remember her for her pleasing and cooperative attitude toward both students and teachers.

She is a graduate in the elementary field and has finished her work in the secondary field with her major in English. She is a straight **A** student.

She likes teaching and claims it ranks first on her list of preferences. Her hobby is reading.

Della is a very active member of the Geography Club, and of the Sequelle Staff.

GRACE GILES

If she's the center of a laughing group, if she's the willing "chaser" for your library book, if she's a tactful student council member reminding you to be quiet, or if she's counting her A's by the dozens, — she's "Gracie."

Making Perry good use of her time, she has been secretary and treasurer of the Delta Sigma Epsilon sorority, dormitory and council presidents, and leader in Press Club. Having unusual dramatic ability, she belongs to Alpha Psi Omega and has played leading roles in "The Show Off" and "Seven Sisters." Her success in the field of mathematics and English can be taken for granted, for she has a wealth of qualities making for success.

HOMER HORNER

Homer is a resident of Clarion and a graduate of Clarion High School. His majors are social studies and English, his main interest is politics, along with music and Ann Sheridan. He is a member of International Relations Club, the Swing Trio, and a charter member of Zeta Eta Phi fraternity. Homer participated in basketball and intramural sports. The football fans were ably entertained by his rapid-fire announcing at the games last year.

CHARLES KROH

Charlie came to C.S.T.C. after two years at Grove City College. He wasted no time in making good here, for his ability soon gained him membership in Alpha Psi Omega and Pi Gamma Mu. His academic interests are social studies, science, and English, plus membership in College Players and the International Relations Club. He has done a commendable job as business manager of this Sequelle, and has distinguished himself by his use of concise, well-turned phrases in practice teaching.

PAUL LEHMAN

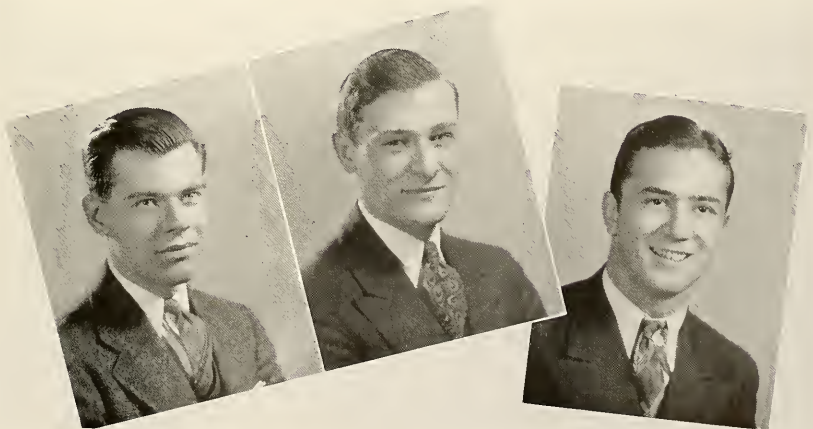
Paul is always seen with his inseparable side-kick, Bob Shriver. Born in Clarion, he received his high school education here. He is a man of varied interests who has earned enough money at service station work and bottle packing to educate himself and support Mrs. Lehman and daughter. Yet he has time to hunt, ski, hike, swim, and to do lathe work in his cellar.

He is active in intramurals, geography, and industrial clubs, Y. M. C. A., and is now president of Alpha Phi Alpha and treasurer of Phi Sigma Pi fraternities.

PERRY LEWIS

Perry, a Clarion lad, is a graduate of Clarion High School. Perry spent one year at Indiana, then transferred to Clarion State Teachers College. His majors are English, social studies, and music. He is a member of College Players, the Swing Trio, International Relations Club, and Zeta Eta Phi fraternity. Besides Gracie Giles, Perrys main interests are ping-pong and the Treymore Club Orchestra. Perry likes music and is probably the most versatile musician on the campus.

1940 SENIORS





THE

BETTY McCUE

Betty has participated in many college activities of various types, during her four years at Clarion. She has been an outstanding member of the International Relations Club, of College Players, of the Young Women's Christian Association, and of Delta Sigma Epsilon, a national educational sorority. She has been awarded membership in Alpha Psi Omega, a national honorary dramatic fraternity, because of her ability in acting.

Betty's dependability and her spirit of cooperation are certainly assets. A great deal is expected of you, Betty.

RAY MANSON

Ray hails from Rouseville where he lives and has taught for several years. He completed his work in the Secondary field the first semester with majors in social studies, geography, and English. Ray was an active member of College Players and International Relations Club. Photography is his hobby and the Sequelle is indebted to him for most of the candid camera shots and some other pictures which appear in this book. It isn't necessary to wish him success; he has it.

JAMES MEYERS

Jim, hailing from Kane, has been a popular boy on the college campus. He has won the distinction of being one of our best athletes. Jim is interested in sports and expects some day to coach a team of his own. He has been a very valuable man on both the football and the basketball squads and was captain of the football and co-captain of the basketball teams this past year. Jim is a member of the Zeta Eta Phi fraternity. His majors are geography and social studies.

SAMUEL MONTANA

Samuel Montana, better known as Sam, hails from Rimmersburg. He hopes some day to be a Doctor of Divinity. He is friendly, likes to tease, and is interested in philosophy and religion. Sam enjoys reading, talking aloud in the library, music and poetry, but he hates wine and profanity. Sam has taken an active part on the campus. He is a member of the Art Club, Geography Club, and Zeta Eta Phi fraternity. Sam was interested in sports until he boxed with a certain student! He took part in religious work both on and off the campus, being president of the Y. M. C. A. on the campus, and president of the young people of Clarion County, District Four. Sam has majors in social studies and science. With his sincerity and progressive nature, he should be a success.

JOHN MOONEY

EVA MURDOCK

The petite pride of Brackenridge is known on the campus as "Ev." She is interested in hiking, volley-ball, basketball, hockey, tobogganing and is a member and past president of the Outdoor Club and Women's Athletic Council. She represented the student body in the Women's Student Council and Student Senate. Sigma Delta Phi claims her as a member. "Ev's" magnetic personality has won her many friends. Any community will find her a good sport and a real leader.

1940 SENIORS





THE

JACK REED

Jack is a well known student on our campus. Before coming to Clarion he was graduated from Clarion High School. Jack is known to most of us around here as the guitar player for the "Swing Trio." While attending school here he has been a member of the A Cappella Choir, International Relations Club, College Players, and the Alpha Phi Alpha social fraternity. Next year we shall probably see Jack teaching mathematics and science in some nearby high school.

CARL RENNELLS

Those who know Carl find him to be a consistent friend, always ready to cooperate in activities. He has the qualities that will make him a success in his chosen profession. Social studies, English, and mathematics are his academic preferences.

Before transferring to Clarion State Teachers College, Carl was an active member of the New York State Students Forum and served on his college year-book staff, the "Chesbronian." Since coming here he has been active as president of both Pi Gamma Mu and International Relations Club, and was elected this year to membership in Phi Sigma Pi.

RACHEL RENNELLS

Rachel came to us this year as a member of the senior class, her previous work having been done at Mansfield State Teachers College. We suspect a secret motive for her selection of Clarion for the place in which to finish her degree. Carl would be the one to ask about that. Besides taking care of her husband, her hobbies are nature study and art. Her activities include Geography Club, International Relations Club, and membership in Pi Gamma Mu. For academic interests she chooses social studies and English with a major in the elementary field.

LUCILLE SEIGWORTH

Lucille is the girl with the friendly smile. She has spent four years as the "Call" typist, not to mention her fine work for the "Sequelle." Lucille is a social studies and English major with French as her minor academic interest. She is a member of the Press Club, International Relations Club, and holds offices in the Pan-Hellenic Council and in the Sigma Sigma Sigma Sorority. Her conscientious attitude and efficiency as a teacher are bound to bring her recognition.

ROBERT SHRIVER

"Bob," whose inseparable pal is Paul Lehman, is a product of Washington, and has a scholastic record that should make his hometown proud of him. He has been active in fraternities, being president of the Phi Sigma Pi and treasurer of the Alpha Phi Alpha; has been a member of the industries and geography clubs, a cabinet member of the Y. M. C. A. and secretary-treasurer of our senior class. His interests are varied, ranging from the stock market to a young lady named "Mary." "Bob's" majors are science and mathematics. We are sure he will go far in educational work.

MARSHALL TEETS

Marshall is a well-known figure on the Clarion campus. This tall, good-natured lad is a graduate of Turtle Creek High School. During his attendance at Clarion, he has been active in athletics, being a letter man in both football and basketball. He is a member of the A Capella Choir, the Outdoor Club, and Alpha Phi Alpha social fraternity. Marshall would like to coach athletics when he graduates from Clarion.

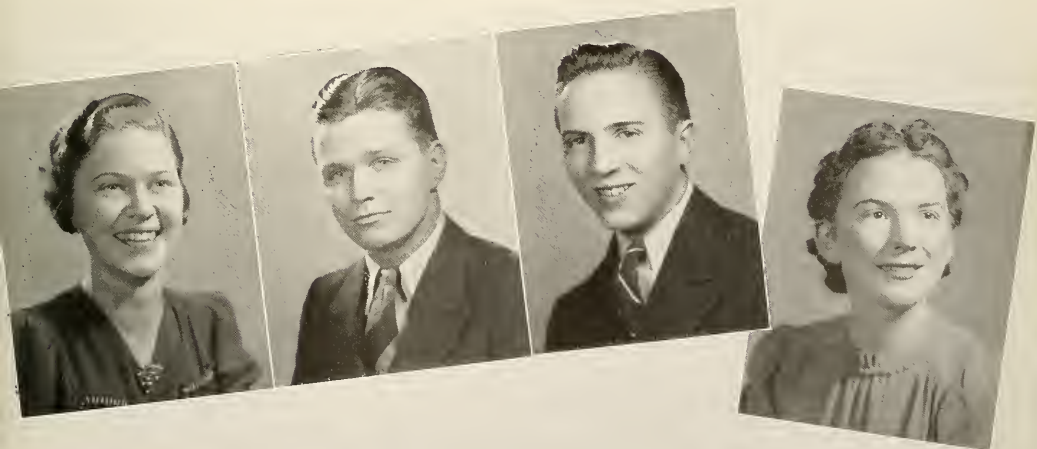
CLARE YOTTER

Although Clare just came last year, she has proved to be a necessary part of our Senior Class. She first became a figure in Clarion's lime-light after her memorable lead as Karen Andre in "The Night of January 16th."

She is a member of College Players, Association for Childhood Education, International Relations Club and Women's Student Council. Her outstanding achievements include being President of Delta Sigma Epsilon and business manager of Alpha Psi Omega.

Clare likes library science, dramatics, long hikes, sorority initiations, and red curtains. Her pet aversions are getting up first in the morning, fire drills, and house meetings.

1940 SENIORS





POST - GRADUATES

ANNA MARY FOX

Anna Mary Fox, one of Clarion's songsters, was graduated from Rimersburg High School in 1935. Anna Mary is a post graduate student, now doing work in the elementary and library science fields, which she will complete during the summer session. Anna Mary received her Bachelor of Science degree in secondary education in science, history, and English in 1939. She is extremely interested in music and is a member of the Girls' Chorus and the Sextette.

MORGAN JONES

Morgan returned as a post-graduate and set the students to cheering and laughing as they haven't done in years. Some of his antics as cheer leader at football games will be long remembered. After graduating from C. S. T. C. in 1938 he went to the University of Nebraska and worked toward his master's degree in geography and administration. He is now taking elementary education and is active in music, dramatics, Alpha Phi Alpha, and Phi Sigma Pi.

MAE STEWART

Mae Stewart, a graduate of Rimersburg High school, came back to Clarion this year after a year of substituting in Porter Township Consolidated School. Mae is noted for her industriousness and dependability. She should be a successful teacher through her thorough mastery of subject matter and business-like way in which she demonstrates her knowledge and practice of educational methods.

Her extra-curricular activities included secretaryship of Pi Gamma Mu and membership in International Relations Club and Association of Childhood Education.

"The educated man is a man with certain subtle spiritual qualities which make him calm in adversity, happy when alone, just in his dealings, rational and sane in all the affairs of life."

Ramsey MacDonald

GRADUATING JUNIORS



Phyllis Blum
Edna Eisenman

Anita Brown
Meade Hinderliter

Gladys Brown
Jean Kapp

Olga Burns
Dorothy Lehner

Louise Courson
Edythe Lucas

BLUM, PHYLLIS

Tionesta, Pennsylvania
Art Club
Geography Club
Association for Childhood Education
Lambda Chi Delta Sorority

BROWN, ANITA

808 Buffalo Street, Franklin, Pennsylvania
College Players
Women's Athletic Council
Association for Childhood Education
Delta Sigma Epsilon Sorority

BROWN, GLADYS

808 Buffalo Street, Franklin, Pennsylvania
Outdoor Club
Press Club
Association for Childhood Education
Sigma Delta Phi Sorority

BURNS, OLGA

Sligo, Pennsylvania
Hostess Club
College Players
Intramurals
Sigma Delta Phi Sorority

COURSON, LOUISE

Tidioute, Pennsylvania
Young Women's Christian Association
Association for Childhood Education
Geography Club
Delta Sigma Epsilon Sorority

EISENMAN, EDNA MAE

Marble, Pennsylvania
Hostess Club
College Players
Press Club
Sigma Delta Phi Sorority

HINDERLITER, MEADE

Mayport, Pennsylvania
Press Club
Intramural Sports
Zeta Eta Phi Fraternity

KAPP, JEAN

Venus, Pennsylvania
Art Club
Hostess Club
Orchestra
Geography Club

LEHNER, DOROTHY

Kaylor, Pennsylvania
Hostess Club
Art Club
Geography Club
Association for Childhood Education

LUCAS, EDYTHE

Fairmount City, Pennsylvania
Art Club
Outdoor Club
Women's Athletic Council
Sigma Delta Phi Sorority

McCLEERY, HAZEL

Franklin, Pennsylvania, Star Route
Hostess Club
Association for Childhood Education

MARINO, MARY

222 North Penn Street, Punxsutawney,
Pennsylvania
Hostess Club
Press Club
Theta Alpha Lambda Sorority

OLSON, ELEANORA

Portland Mills, Pennsylvania
Art Club
Association for Childhood Education
Women's Athletic Council
Delta Sigma Epsilon Sorority

PEARSALL, LUCILLE

Pennsylvania Avenue, Irwin, Pennsylvania
International Relations Club
Geography Club
College Players
Outdoor Club

SAUL, ELEANOR

Broad Street, East Brady, Pennsylvania
A Cappella Choir
Young Women's Christian Association
Outdoor Club
Lambda Chi Delta Sorority

SHAW, JEAN

161 Main Street, Brookville, Pennsylvania
Art Club
Student Council
Intramural Sports

SLATER, RUTH

Clarion, Pennsylvania
Hostess Club
Glee Club
Geography Club
Association for Childhood Education

SNYDER, KATHLEEN

Lucinda, Pennsylvania
A Cappella Choir
Art Club
College Players
Delta Sigma Epsilon Sorority

TRIMBLE, CLARA

13th Street, New Florence, Pennsylvania
College Players
Women's Athletic Council
Geography Club
Young Women's Christian Association

YEANY, CLARENCE

Mayport, Pennsylvania, R. F. D. No. 1
Press Club
Intramurals
Zeta Eta Phi Fraternity

YORKE, MARGARET

205 Central Avenue, Oil City, Pennsylvania
College Players
Press Club
Intramurals
Lambda Chi Delta Sorority

Hazel McCleery
Ruth Slater

Mary Marino
Kathleen Snyder

Eleanor Olson
Clara Trimble

Lucille Pearsall
Clarence Yeany

Eleanor Saul
Margaret Yorke

Jean Shaw



NON-GRADUATING JUNIORS



Ray Abercrombie Paul Claypool Miles Crum Ruth Eisaman Paul Giltinan

Eva Hagerty Betty Henry Louise Hess Bert Hover James Imel

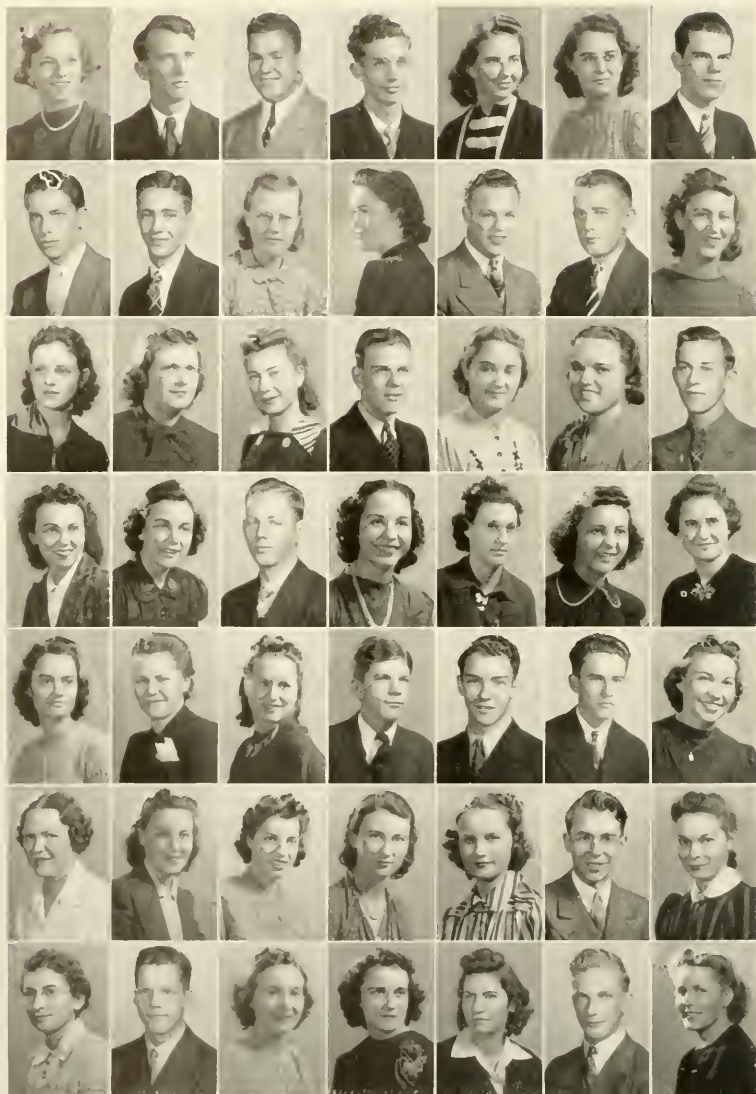
Janet James Robert Jewell Leo McDonald Robert McKenzie Anna Mayer

Orville Myers Edward Neuland Joe O'Brien Clair Reinsel Betty Robbins

Kenneth Rodgers Constance Rousseau William Sheridan Pauline Shumaker Elizabeth Silves

Stephen Snyder Lawrence Thurman Mahlon Traister Kathryn Whitehill Theodore Williams

SOPHOMORES



Edna Ahlgrim Jack Allshouse Julius Angela Ralph Austin Audrey Barnes Ruth Barr Wilson Baughman

Jack Bixby Charles Blake Lillian Bloomster Margaret Boal Claude Bale Francis Bracken Jean Brosius

Vada Mae Brosius Florence Brumberg Anna Mary Byers Forest Carlson Betty Carnathan Rosadell Chitester Quentin Clemenson

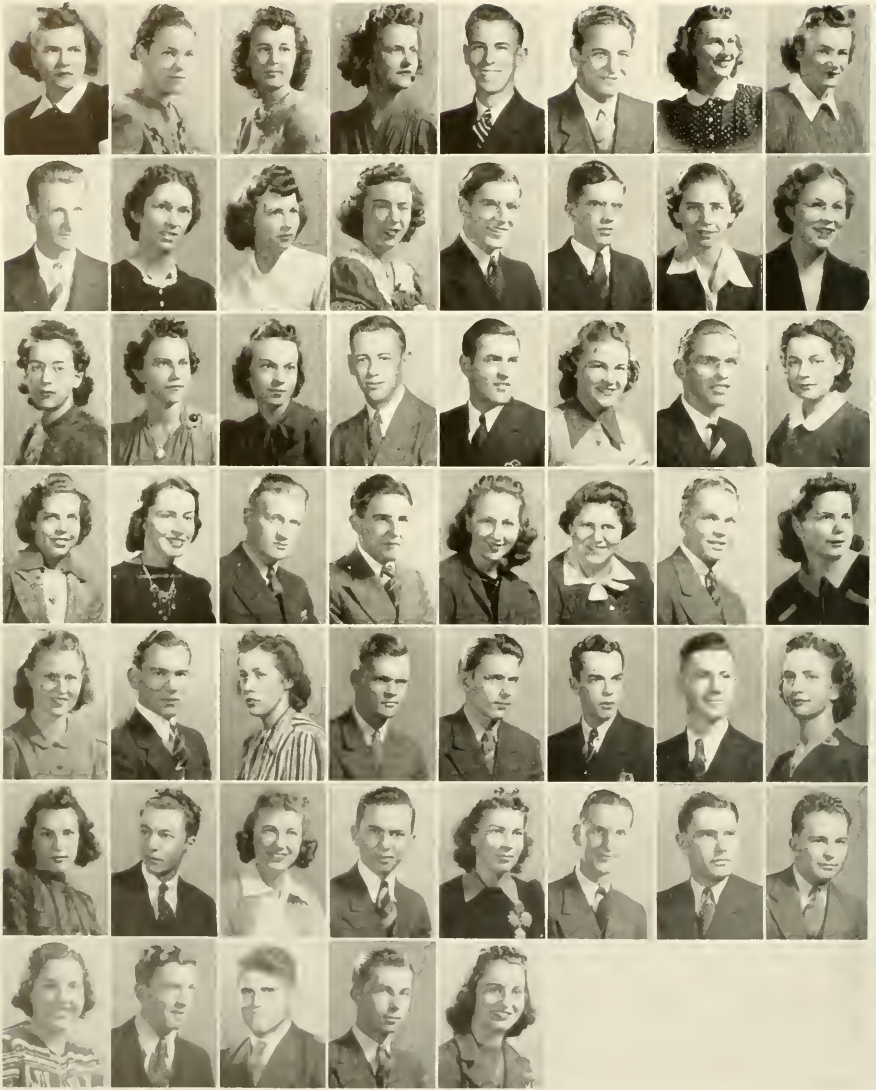
Bernice Clinger Mary Jane Collins James Craig Bonnie Davis Virginia Dengler Geraldine Detrie Eleanor DeWald

Dorothy Dunkle Ruby Ellenberger Ella Evanek Harold Ferguson Harold Fulton Pierce Geist Burdell Giles

Esther Glass Marylou Gourley Pauline Gray Martha Haines Edna Hamilton Richard Hartman Virginia Harvey

Edna Hedrick Donald Hess Ruth Hinderer Mary Catherine Honeck Lillian Hosey Ivan Johns Louise Jones

SOPHOMORES



Romaine Jones
Kathleen Kapp
Martha Kendall
Helen Kissell
Stanley Klepfer
Stephen Kovalyak
Jeane Lindquist
Sue McKee

Merton McKendree
Olive McKinley
Betty McLaughlin
Lorraine Miller
Frank Mohney
John Mohney
Miriam Moses
Eloise Ogden

Elizabeth Paddock
Roberta Paisley
Lorraine Panton
William Paup
Clyde Pence
Belle Piper
Fred Port
Nancy Porter

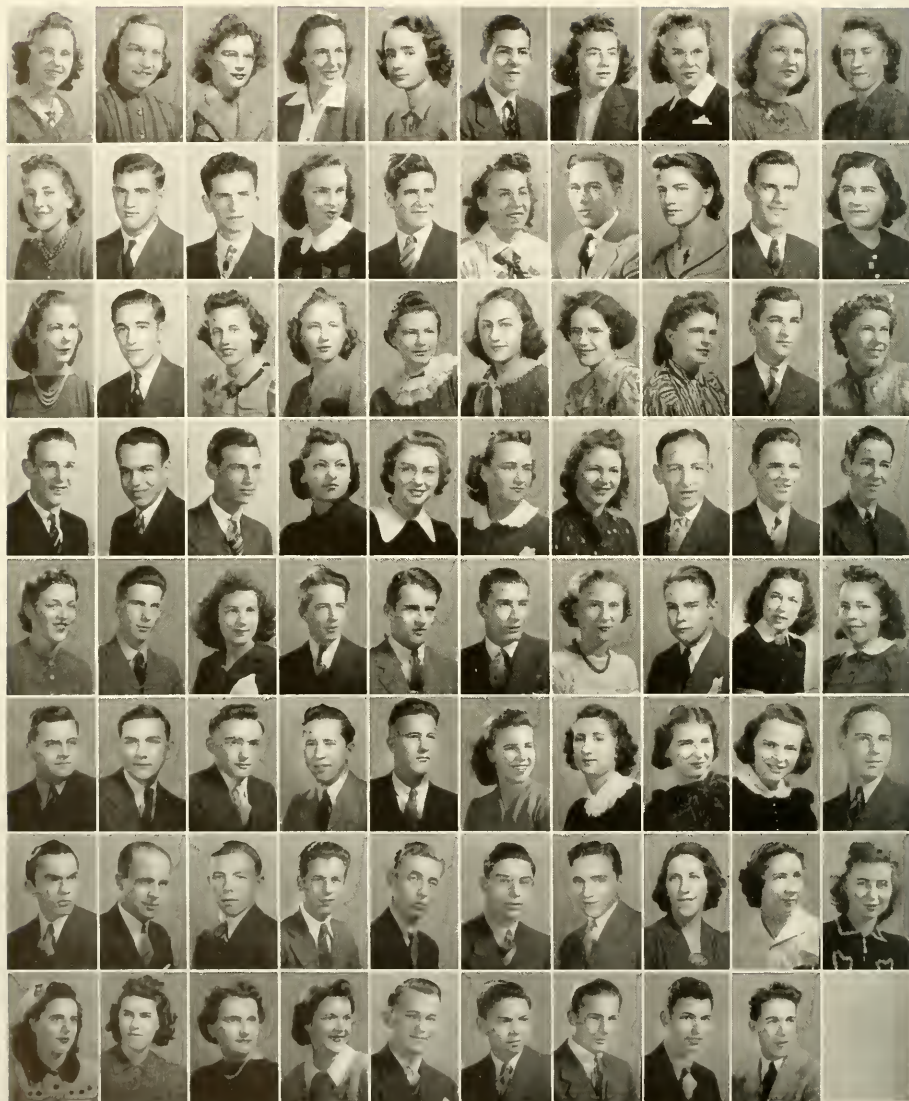
Randayn Radaker
Helen Rea
Mervin Reed
Robert Rhodes
Evelyn Rippy
Hanna Rosenberg
Norman Sampson
Eleanor Schell

Doris Seigworth
Andrew Sevok
Dorothy Shaffer
Robert Shea
DeWayne Slausenhaupt
Clair Smith
Joseph Smith
Mary Alice Smith

Mary Jane Smrekar
Paul Supdic
Unitha Stack
Gene Stewart
Margaret Stewart
Robert Stroupe
Roland Sykes
Paige Varner

Florence Vaughn
Walter Wagner
John Wetzel
Clarence Whitesell
Helen Williams

FRESHMEN



Mildred Baker
Mary Kay Beabes
Adele Behringer
Leah Bessey
Lucy Ann Beyer
George Bawman
Elizabeth Brennan
Vesta Erinker
Dorothy Bracious
Helen Burnham
Beulah Burns
James Buzard
Edward Daugherty
Pauline Davis
Adam DeFlaviano
Margaret DeSantis
Donald Douglass
Jean Dressler
John Edelen
Ella Edwards
Joyce Erickson
Harry Etzel
Eleanor Freas
Mary Hamilton
Helen Handy
Betty Hartle
Iris Hartman
Dorothy Hillgartner
Ned Hoover
Helen Hummell
John Hunter
George Inman
Paul Kapp
Ruth Kapp
Jean Kerr
Rita Kluck
Elaine McCall
Paul McKinley
James Manners
Alan Metzger
Lois Milliran
Robert Mortland
Betty Myers
Charles Myers
William Nadalen
Alfred Natzke
Florence Nightingale
Leland Oakes
Mary Ogorchack
Jean O'Neill
John Pepicelli
Richard Pryor
Dale Rhodes
Kenneth Rossman
Paul Rush
Bonnie Shankle
Bernice Shirey
Betty Siar
Patty Smathers
William Smathers
William Smith
Lawrence Snitzer
Wayne Snyder
William Solonchak
Richard Starr
Robert Sterner
Engene Stinard
Jean Tait
Marion Vail
Jane Vail
Anna Marie Verderose
Jean Watson
Winitred Wilkins
Marian Williams
Clyde Wilson
Merle Wilcott
William Warrell
Nyle Ziegler
Bliss Zener



ORGANIZATIONS



G R E E K S

DAN HELLENIC COUNCIL



The Pan-hellenic Council is the governmental body representing the five sororities, Delta Sigma Epsilon, Sigma Sigma Sigma, Theta Alpha Lambda, Sigma Delta Phi, and Lambda Chi Delta. There is one active and one silent member from each of these sororities. Miss Boyd is the guide and faculty advisor.

The various sororities cooperate in selling candy every Friday evening, and at all home games.

The first social function of the year was a tea, which was held on October 3. All the women students on the campus were invited, and the old and new became acquainted.

The annual Pan-hellenic dinner was held on February 15. Everything was carried out for St. Valentine's Day. The president, Miss Eva Hagerty, presided very graciously. Girls from each sorority participated in the entertainment.

The Pan-hellenic dance was held April 13. To this dance were invited sorority women living in the community who were affiliated with any national sorority, also the sponsors and patronesses.

The officers for the first semester were: President, Eva Hagerty, Theta Alpha Lambda; secretary, Lucille Seigworth, Sigma Sigma Sigma; treasurer, Kathleen Snyder, Delta Sigma Epsilon; for the second semester: President, Marylou Gourley, Lambda Chi Delta; secretary, Gladys Brown, Sigma Delta Phi; and treasurer, Kathleen Snyder, Delta Sigma Epsilon.

Alpha Zeta chapter of Delta Sigma Epsilon has proved to be an active group throughout this school year.

The delegates who attended the twenty-fifth anniversary conclave of Delta Sigma Epsilon held in Cincinnati, returned with many ideas for sorority programs and projects. They also brought back the Genevieve Schmidt Memorial plaque. Alpha Zeta chapter has received it a second time for having the highest scholarship average among the chapters of Delta Sigma Epsilon.

Early in the fall, seven of last year's pledges were initiated. Then came the biggest event of the year, the rush party. The Delta Sigs were successful in pledging seven new girls.

The Delta Sigma Epsilon sorority not only has many social activities but it has also an active interest in social service work. The greatest accomplishment of the year was the assistance given in the Red Cross membership drive. This year Alpha Zeta was a member of the organization. As other social



DELTA SIGMA EPSILON

service activities the girls gave their annual Christmas party for the kindergarten children, and some of the girls also took charge of the entertainment program at a Christmas party for underprivileged children, which was sponsored by the Women's Club.

Included in the social activities was a Christmas party given in honor of the pledges at the home of an alumna. Another event was a skating party given by Betty Paddock at the home of her aunt, Mrs. David Kaufman. In the early spring, the chapter was entertained both by the pledges and by the patronesses. A party was given in honor of Geraldine Thorne, a graduate of '39 who won the Delta Sigma Epsilon scholarship ring for having the highest scholastic standard among the thirty-two chapters of Delta Sigma Epsilon. An important social event of the late spring was the reception given in honor of the new officers.

Officers for the year were: President, Clare Yotter; vice-president, Kathleen Snyder; corresponding secretary, Grace Louise Giles; recording secretary, Louise Courson; and treasurer, Betty McCue.

**LAMBDA
CHI
DELTA**



In 1931, a group of local girls organized the local, social Lambda Chi Delta sorority. This sorority has continued to be one of the most active on the campus.

Early last fall, Miss Ford became the new sponsor. Then began plans for the annual rush dinner which was in the form of an Hawaiian Party. The following girls later were initiated: Leah Bessey, Pauline Davis, Joyce Erickson, Eleanor Freas, Betty June Hartle, Patty Smathers, Jane Vail, Peggy Yorke and Anna Marie Verderose.

The social activities of the sorority included a skating party at the local rink, several outings at Mrs. Samuel Wilhelm's and Mary Joye Jones's camps, a swimming party at Brookville, and a Valentine party given by our patronesses. The summer reunion of all alumnae and actives took place at camp, at Eaglehurst Beach in Erie.

The officers for the year were: President, Pauline Shumaker; vice-president, Kathryn Whitehill; secretary, Eleanor Saul; and treasurer, Unithea Stack.

In spite of the Sigma Delta Phi's numbering the unlucky thirteen when the active members assembled last fall, the girls have had an eventful year. An outstanding rush party was the Winter Carnival held in the Coffee Shop. A birthday anniversary party was held at the home of their faculty advisor, Miss Nair. The spring party given by the patronesses was another leading event on the social calendar. The annual alumnae luncheon, a pajama parade, a skating party, a theater party, and outings at Wilson's Woods were among the other social functions of the sorority. They also have happy recollections of two weeks' camping at Waldameer Beach, Lake Erie, the past summer.



SIGMA DELTA PHI

The officers for the past year have been: First semester: President, Louise Hess; vice-president, Louise Jones; secretary, Lorraine Miller; treasurer, Helen Williams; Second semester: President, Lorraine Miller; vice-president, Ruby Ellenberger; secretary, Lillian Hosey; and treasurer, Dorothy Shaffer.

The sorority is looking forward for next year to be a gala one when they will celebrate their tenth anniversary.

SIGMA
SIGMA
SIGMA



Sigma Sigma Sigma started the school year with a picnic in Wilson's Woods, given by Miss Gamble, the advisor. Mrs. Long and Mrs. Kuhner were present to enjoy this outing.

A most delightful dinner was given by our patronesses—Mrs. Riley, Mrs. Long, Mrs. Kuhner and Mrs. Fitzgerald, at Mrs. Kuhner's home.

The annual rush party was held November 29 at an old-fashioned one room school house. Those present were instructed in the fine art of "dunking." As a result of this party nine new girls were pledged: Jean Kerr, Edna Ahlgrim, Betty Brennan, Eleanor Ruth Eisaman, Roberta Paisley, Mary Hamilton, Doris Seigworth, Helen Burnham and Randalyn Radaker. Miss Gamble gave the actives and alumnae a tea at which our patronesses were present.

At Christmas time, the members packed a complete dinner for a needy family in Clarion to foster Christmas cheer in their home. They have also redecorated the sorority room.

The officers for the past year were: President, Margaret Donahue; vice-president, Lucille Seigworth; recording secretary, Audrey Ruth Barnes; corresponding secretary, Romaine Jones; treasurer, Ruth Barr, and sentinel; Ruth Lehner.

The Theta Alpha Lambda's started an active year with a picnic at Wilson's Woods. Another picnic, with the Sigma Delta Phi's and a Homecoming tea for the alumnae filled the social calendar till rush-week.

The rush party was an informal Thanksgiving dinner at the Coffee Shoppe. Soon after, the following girls were pledged: Betty Henry, Lois Milliron, Mary Ogorchock, Constance Rousseau, Clara Trimble, and Marian Williams.

The enlarged group enjoyed a skating party which was followed by a luncheon at the home of Mr. Becker on January 10. A few weeks later, the new girls met the active alumnae at a tea given by Miss Carlson, the Theta sponsor.



THETA ALPHA LAMBDA

The members are deeply grateful to Mr. Becker for the lovely tea service he presented to them as well as for the kind personal interest he has taken in the sorority. They also appreciate very much the silver spoons given us at Christmas time by Miss Carlson.

The officers for this year were: First semester: President, Jean Lindquist; vice-president, Mary Marino; secretary, Janet James; and treasurer, Nancy Porter; Second semester: President, Jeane Lindquist; vice-president, Janet James; secretary, Jean Brosius; and treasurer, Mary Marino.

Pan-hellenic representatives were Eva Hagerty (active) and Florence Brumberg (silent).

**ALPHA
PSI
OMEGA**



The Alpha Upsilon Cast of Alpha Psi Omega, national honorary dramatic fraternity, is composed of College Players who have won recognition through exceptional work in plays, stage managing, and costuming and make-up efficiency.

This year we had the special honor of being hosts to the twenty casts within our tri-state district: West Virginia, Ohio, and Pennsylvania. This was the second convention in our area and one which set a precedent for enthusiasm and attendance. The program, being one which fulfilled the needs of every case, included speakers who were contacted through well-known dramatic schools, some plays given by our brother casts to represent new phases and ideas in dramatics, and social events which included a banquet and a dance. One of the unusual parts of the program was the exhibition of the different casts' adoptions or inventions which related to costume design, make-up, sound effects, or stage properties illustrating "What Can Be Done With Little Money."

We are grateful to the College Players for helping us to carry out the program and making it fulfill the expectation of each tri-state cast.

The officers of Alpha Psi Omega are: Cast Director, Charles Kroh; business manager, Clare Yotter; and stage manager, Frank Malloy.

The Inter-fraternity Council was organized last year in an attempt to relieve friction among the three social fraternities. The council consists of six members (two from each fraternity) and a faculty adviser. The meetings are irregular. The board convenes only when necessary to settle problems and to decide on future activity.

By adopting and successfully carrying out a system of fraternity pledging by ballot, the council remedied a situation which had caused much dissension in past years. The annual inter-fraternity dance was also supervised by this group and carried out in a very harmonious and business-like manner.

All three fraternities agreed that the council was a very useful and worth-



INTER- FRATERNITY COUNCIL

while agency for inter-fraternity relations. Present indications are that the Inter-fraternity Council has become a permanent and indispensable feature of the fraternity organization on the campus.

The members of the council this year were: Robert McKenzie and Kenneth Rodgers of Alpha Gamma Phi; Perry Lewis and John Mooney of Zeta Eta Phi; Chester Byerly, Merton McKendree, and Marshall Teets of Alpha Phi Alpha. Mr. Kuhner was the faculty adviser.

**ALPHA
PHI
ALPHA**



April 1940 marks the tenth anniversary of Alpha Phi Alpha, one of the oldest Greek organizations on the campus. Plans have progressed to turn the annual DuBois banquet into an anniversary celebration.

The annual rush party was held in Harvey Gymnasium; the informal initiation was held at Camp Coffman, and initiation ceremonies were completed with the formal functions in Founders Hall on the campus.

Last August, according to custom, the fraternity spent a week at North Gerard on Lake Erie.

The following men were accepted as candidates for membership: Harry Etzel, Edward Daugherty, Paul Kapp, Paul Rush, Charles Sheridan, DeWayne Slaugenhaupt, Lawrence Snitzer, Merle Wolcott, John Wetzel and Bill Paup.

Paul Lehman, president; Robert Jewell, vice-president; Robert Shriver, money-tarius; John Mohny, recording scribe; and Stanley Klepfer, corresponding scribe, were the officers during the year. Our faculty members are Dr. Cordier, Mr. Becker, Mr. Kuhner and Mr. Manson.

The 1939-40 school year found the Alpha Gamma's with fifteen of last year's members to begin its tenth year of progress.

The first social function of the year occurred on September 25 at Camp Coffman. The next social event was a rush party held in the Gymnasium on November 13, at which eleven pledges were received. The following were accepted as members: James Buzard, Bill Worrell, Bill Nadolen, Bob Mortland, Al Natzke, James Harvey, Adam DeFlaviano, Bill Solonchak, Dick Mayers, Bob Sproat and Bliss Zener.

The concluding event of the first semester was a Christmas party on December 17, at Dr. Peirce's home, to which all new pledges were invited.



ALPHA GAMMA PHI

Another outstanding social event of the year was the inter-fraternity dance held on March 30. The climax of all social events was the fraternity banquet held near the end of the school year.

The opening of school found Bob McKenzie, president; Bill Bratkovich, vice-president; Kenneth Rodgers, historian; Leo McDonald, secretary; and Al Andreo, treasurer. The chairs for the second semester were held by Bill Bratkovich, president; Al Andreo, vice-president; Clyde Pence, historian; Buck Bole, secretary; and Bob McKenzie, treasurer.

**PHI
SIGMA
PI**



Phi Sigma Pi is a national, honorary, educational fraternity, admittance to which is governed by superior scholarship standing plus a professional interest in education. The fraternity has been established at eighteen other colleges, including chapters at seven of our sister teacher colleges. Lambda Chapter here at Clarion was established in 1930.

At the beginning of the school year, Lambda Chapter had ten active members: Chester Byerly, Robert Shriver, Paul Lehman, Morgan Jones, Lawrence Thurman, Professor Becker, Doctor Peirce, Professor Manson, Doctor Cordier and Doctor Chandler.

On January 31, the following members were initiated into the chapter: John Hughey, Ivan Johns, Robert Jewell, Donald Hess, Richard Hartman and Theodore Williams.

This year's activities included bi-monthly business and professional meetings. The chapter was fortunate in securing several prominent district educators to speak at the professional meetings.

Because this was Lambda Chapter's tenth anniversary, the annual Founder's Day banquet was an auspicious event. It was held during May and served as the social highlight as well as fitting climax of the year's work.

The officers for the year were: President, Robert Shriver; vice-president, Lawrence Thurman; secretary, Morgan Jones; corresponding secretary, Chester Byerly; and treasurer, Paul Lehman.

The 1939-40 school year found the Zeta Eta Phi fraternity celebrating its third year of growing strength and popularity. The fraternity was organized by members who are graduating this spring. They are leaving an organization grateful to them for its founding.

During the football season, the Zeta's put up a lean-to and provided refreshments at all home games. The basketball season found them with the novel idea of selling pencils on which the basketball schedule was printed.

The date of the rush party was the sixteenth of November. The freshmen were entertained at the chapel and old gymnasium by a stage performance



**ZETA
ETA
PHI**

and a carnival. Pledging soon followed and nineteen men were honored with the red and white ribbon. An informal initiation was held at Cook Forest, where the pledges had a warm reception. The formal initiation took place on December 18 in Science Hall.

The officers were: President, Rowland Lewis; vice-president, Leroy Carlson; secretary, Charles Beskid; and treasurer, John Mooney.

PI GAMMA MU and INTER- NATIONAL RELATIONS CLUB



Pi Gamma Mu is an honorary scholastic organization which selects for its members those who have a professional interest in the social studies. The local chapter, under the title, Iota, is but a branch of a national organization with many illustrious men of this particular field as members. Local membership is voted to Juniors who have completed twenty semester hours of social studies work with an average grade of B, and who evince a wholesome professional interest in the field of social studies.

Early in the year Mr. E. C. Ramsey, well known traveler and lecturer spoke to the group; later, Dr. Andrew W. Cordier, of Manchester College, spoke on European affairs. The "Town Hall of the Air" program has been used a number of times, interspersed with a debate on the question of Isolation on one occasion, and a panel discussion on Balkan Politics on another occasion.

Pi Gamma Mu has for its officers this year: Carl Rennells, president; secretary-treasurer, Mae Stewart; sergeant-at-arms, Robert Jewell. This organization is coordinated with, and functions through, the International Relations Club, by means of a president who serves in the same capacity for both organizations. The other officers of the International Relations Club in addition to the president are: vice-president, Charles Beskid; secretary-treasurer, Betty McLaughlin; and sergeant-at-arms, William Cadman. Membership in this club is limited only to those who are interested in lively and worth-while discussions of current world affairs. There have been many interesting programs put on by the members of the group this year with a resulting growing attendance and general interest.

CLUBS

STUDENT SENATE



According to the preamble of the Constitution of the Community Government Association its purpose is to promote student responsibility, increase student-faculty cooperation, and enrich college life. Annually elections are held to choose the twelve members who will represent the college in the Senate for the coming year. These members consist of three from the women resident students, three from the men resident students, three from the women day students, and three from the men day students.

The officers elected for this year were: Pauline Shumaker, president; LeRoy Carlson, vice-president; and Eleanor DeWald, secretary-treasurer.

From the Senate and faculty, committees are appointed to prepare the social calendar for the year, to plan chapel programs, to arrange student welfare, and to perform other necessary duties.

The Senate superintends activities for Parents' Week-end, and draws up rules for freshman initiation. It has purchased a gramophone for the social room in Becht Hall. This year our Senate has sent representatives to conferences of student governing bodies of other colleges and universities held at Lock Haven State Teachers College, Pennsylvania State College, and New York University.

This group is the governing body of all the dormitory girls. It is the duty of the Women's Student Council to enforce all rules and regulations, to make necessary rules to secure the best conduct in student life, and to promote a home-like atmosphere in considering the personal problems of each individual.

The members are elected by the students and are under the supervision of the dean of women, Dr. Stary, who frequently meets with the girls when problems confront the group.

Officers for the first semester were: Grace Giles, house president; Gladys Brown, president, Anita Brown, secretary and treasurer. Grace Giles was



WOMEN'S STUDENT COUNCIL

elected president for the last semester, Jeane Lindquist, vice president, and Jean Dressler, secretary and treasurer.

The ideal of the Council is to see that a high standard of life and culture is maintained in Becht Hall.

GEOGRAPHY CLUB



The Geography Club of 1939-40, which consisted of thirty active members, has enjoyed a very interesting and active year. This club is composed of students interested in geography and is under the direction of Mr. Kuhner.

During the regular club periods a number of educational programs were enjoyed. Several movies from the college Film Library were shown. The club was fortunate in obtaining as guest speakers an ex-mayor of Oil City and Professor Wilkinson, both of whom described and showed pictures of their travels. Some of the club members gave travel talks on unusual places about which the club was desirous of learning.

The outstanding event of the first semester was an all-day trip to Pittsburgh, when the members visited the National Biscuit Company, the Phipps Conservatory, the Heinz Chapel, and the International Rooms in the Cathedral of Learning. The major social activity was a Christmas party held in the Training School.

The main event during the second semester was an all-day trip to several nearby points of interest including the Glass Plant at Ford City, the flood control dam at Crooked Creek, and the navigation dam at Kittanning.

The officers for the year were: president, Norman Sampson; vice-president, Anita Brown; and secretary-treasurer, Louise Courson.

The Outdoor Club is known as a very active club on the campus. This club is sponsored by Mr. Manson. At the beginning of the year four new members were taken into the club which now consists of twenty outdoor-minded individuals.

The club holds its regular meetings every other Tuesday. The members at this time take part in some active activity on or near the campus.

The club members take part in other activities outside of the regular club period. At least once a month the club had an outing. In winter weather tobogganing at Cook's Forest or Campus toboggan slide and ice skating are the chief sports. When weather permits, archery, and tramping are enjoyed.



OUTDOOR CLUB

The club has been shown several motion pictures on outdoor life, scenery, and animals.

The members of the club also enjoy such indoor games as shuffle-board, volleyball, badminton, handball, ping-pong and others. They enjoy target shooting, swimming, and mushball.

This year officers for the Outdoor Club are as follows: John Mooney, president; Sherwood McCormick, vice-president; Edythe Lucas, secretary-treasurer.

COLLEGE PLAYERS



During the year 1939-40 the College Players Club has continued its usual interesting and entertaining program of varied activities. The majority of the club members have participated in some manner in the club meetings which have included discussions on the various phases of play production, a talk on pantomime, presentation of several pantomimes, and reviews of plays appropriate for club presentation. Voice quality and sound effects were discussed and demonstrated by means of student-directed radio plays, one of which was "Which Is The Way To Boston". Participation in these activities has enriched the dramatic background of the club members as well as stimulated a keen interest in dramatic activities.

The main social event during the first semester was the Hallowe'en party held at Cook Forest Inn. The annual College Players Banquet on March 7 was the social highlight of the second semester.

The College Players took charge of the sale of tickets and assisted back stage for the production of the "Merchant of Venice" by the Classic Guild, a group of professional actors.

The Club's outstanding dramatic production was the famous three-act play, "Stage Door" by Edna Ferber and George Kaufman, presented during Parents' Week end. This gave the various members of the club opportunity to reveal their special talents.

The officers of the first semester were: president, Kay Snyder; vice-president, Norman Sampson; secretary, Anna Mary Byers; and treasurer, Betty Paddock; the officers of the second semester were: president, Norman Sampson; vice-president, Mary Alice Smith; secretary, Stanley Klepfer; and treasurer, Pauline Davis.

One of the outstanding projects on our campus is the editing of the *Clarion Call*. This worthy project is accomplished by the members of the Press Club. The *Clarion Call* has been so effectively produced by them that we are proud to say that it ranks high among college papers.

The Press Club closes its active year with many events, most noteworthy of which is the addition of a new literary department. Although its efficient editor, Robert Jewell, resigned during the year, Florence Vaughn, the new editor, capably assumed the duties and has produced an excellent paper.



PRESS CLUB

Officers Second Semester—President, Sherwood McCormic; vice president, William Cadman; secretary and treasurer, Doris Seigworth.

Officers First Semester—President, Dick Hartman; vice president, Eleanor DeWald; secretary-treasurer, Betty Henry.

The main social event of the year was the joint Press Club and Art Club banquet held in March. At this time the distinguished editor of the *Oil City Derrick*, John O'Donnell, addressed our aspiring young writers and artists.

ASSOCIATION CHILDHOOD EDUCATION



The Association for Childhood Education is a student branch of the National Association for Childhood Education. Its membership is composed of students interested in kindergarten, primary, and intermediate education.

During the year the club aims to fulfill these purposes: to gather and disseminate knowledge of the movement for education of young children; to bring into active cooperation all childhood education interests, including parent education; to promote the progressive type of education in nursery school, kindergarten, and primary grades; and to raise the standard of the professional training for teachers.

The club activities included: excursions and discussion of the excursions; showing of moving pictures; a study of the history of Clarion and Clarion County; and work week. An exhibition of educational toys from Holgate Company added interest to the programs.

Officers for the year were: president, Kathryn Whitehill; vice-president, Phyllis Blum; recording secretary, Dorothy Lehner; corresponding secretary, Betty Henry; and treasurer, Elizabeth Silves. Miss Bertha Leifeste was club adviser.

The Art Club has been organized to meet many student needs and is elastic in the scope of its undertakings. All kinds of crafts have been worked upon, such as, wood burning, painting, silk, basketry, and tie-dying.

Each member is privileged to paint a picture for the Parents' Day Exhibition. Prizes are awarded at that time for the best entries. Charcoal, oil, water color and pastel are the mediums used by the students.

Teas, a trip to Pittsburgh, movies, and an annual banquet were some of the social activities enjoyed during the year. The club sponsors a number of famous



ART CLUB

exhibitions annually. This year the outstanding one consisted of several hundred Japanese prints. Miss Sanford acts as adviser of the Art Club.

Officers for the year were: president, John Hughey; vice-president, Gene Stewart; and secretary-treasurer, Helen Burnham.

YOUNG WOMEN'S CHRISTIAN ASSOCIA- TION



The Young Women's Christian Association defines its purpose thus: "We, the members of the Young Women's Christian Association of Clarion State Teachers College, unite in the desire to realize full and creative life through a growing knowledge of God. We determine to have a part in making this life possible for all people. In this task we seek to understand Jesus and follow Him."

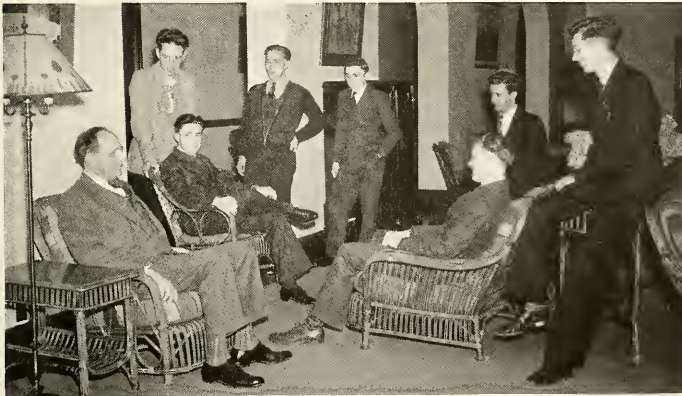
This organization has met every Wednesday evening from seven to eight o'clock. The meetings have been planned by the members of the "Y" cabinet. They have consisted of worship programs, followed by discussions. At several meetings guest speakers have addressed the girls and have given very helpful talks. Other meetings have taken the form of world fellowship programs, at which time movies of other peoples and countries have been shown.

The Social Service work of the Young Women's Christian Association for this school year has included giving Christmas gifts to unfortunate children and singing Christmas carols. Another project sponsored by these girls during this year has been Saturday evening dances held on those nights when no other school function was scheduled.

The officers of the second semester were: president, Miriam Moses; vice-president, Betty Jane McLaughlin; and secretary-treasurer, Mildred Baker. Other cabinet members were: Jean Tait, Ruth Barr, Lorraine Miller, and Eleanor DeWald.

The Young men's Christian Association is keenly interested in the educational, physical, moral, social, and spiritual life of the young men on our campus. It is the aim of the Young Men's Christian Association to increase and strengthen faith in God and to develop a well-integrated personality. In the regular weekly meetings this organization endeavored to further a spirit of understanding and fellowship and to uphold the Christian ideals.

Although not a very large organization, the benefits of the meetings have been invaluable. The Association has been privileged to have several faculty members speak. Informal discussion of problems and questions vital to young people of today has aroused much interest.



YOUNG, MEN'S CHRISTIAN ASSOCIA- TION

This organization has had several joint activities with the Young Women's Christian Association, among which were discussions, morning watch, a Christmas party, and vesper services.

The success of this organization has been due to the constant interest and attendance of the members and the splendid cooperation and advice of the sponsor, Mr. Becker.

President—Norman Sampson.

Vice President—Paul Claypool.

Secretary-Treasurer—Robert Rhodes.

GIRL'S GLEE CLUB



The newest musical organization at Clarion State Teachers College is the Girls' Glee Club. This group was organized in September of 1939 with a membership of approximately thirty-five. Membership is open to all college women with good voices and an elementary degree of sight singing skill. The group studies music selections embracing a variety of vocal styles from early polyphonic works to the works of contemporary choral composers. The members made their debut at the Christmas Concert given at the Brookville Presbyterian Church by the Girls' Glee Club and A Cappella Choir in December 1939. They also sang at the annual Christmas Concert given in the chapel for the students and faculty. They found much pleasure in the concerts which they presented in nearby high schools.

First row, left to right: Dorothy Hillgartner, Eloise Ogden, Lorraine Panton, Audrey Barnes, Miss Ford, Ruth Kapp, Ruth Barr, Vada Brosius, Florence Vaughn.

Second row: Florence Nightingale, Pauline Davis, Joyce Erickson, Adele Behringer, Helen Rea, Betty Myers, Mary Beabes, Betty Brenan, Florence Brumberg.

Third row: Lillian Hosey, Kathleen Snyder, Jean Dressler, Jean Kerr, Betty Hartle, Dorothy Shaffer, Jean Lindquist, Patricia Smathers, Helen Burnham.

This year, the A Cappella Choir enjoyed one of its best seasons. A variety of programs was presented at the college, nearby high schools, and churches.

The choir made its first appearance in their new tailored robes of blue and gold bought for them by the Student Cooperative Association. This appearance was at the Brookville Presbyterian Church where a concert of Christmas music was presented.

The weekend before the holidays, the choir made three other appearances: at the New Rehobeth Presbyterian Church, the annual Christmas service in the college chapel, and the Baptist Church on Main Street for the town broadcast of Christmas music.



A CAPPELLA CHOIR

The choir prepared the Easter Cantata, "Adoramus Te" by L. H. Miller, for a concert in the chapel on Palm Sunday. The choir also sang at several high schools including Otto Township, Kane, and Perry High Schools.

First row, left to right: Eloise Ogden, Vada Mae Brosius, Lorraine Panton, Morgan Jones, Miss Ford, Stanley Klepfer, Bonnie Davis, Mary Jane Collins, Audrey Ruth Barnes.

Second row: Eleanor Saul, Dorothy Shaffer, Marylou Gourley, Kenneth Rossman, William Shoemaker, Helen Rea, Louise Hess, Randalyn Radaker.

Third row: Kathleen Snyder, Marshall Teets, Robert Jewell, Jack Reed, Jeane Lindquist.

SEQUELLE STAFF



During the first month of school the Senior Class met and elected Helen Deily editor and Charles Kroh business manager of the 1940 Sequelle. The other members of the staff were selected from the members of the Senior Class and are as follows: Betty McCue, Chester Byerly, Lucille Seigworth, organizations; Clare Yotter, art; Grace Giles, Perry Lewis, feature; LeRoy Carlson, John Mooney, men's athletics; Eva Murdock, women's athletics; Ray Manson, photography; Della Fillman, literary editor, and Lucille Seigworth, typist.

To Clarence A. Kuhner, business adviser for the Sequelle, Miss Nair, literary adviser, the engraver, and the publisher, we are grateful for the necessary information which was given us. We sincerely hope you will like and appreciate this book.

THE LATIN CLUB

The Latin Club, the most recently organized club on the Clarion campus, was organized at a tea given by Miss Nair, for her Latin students December 5, 1939. The following officers were elected:

President—Helen Deily.

Vice President—Eleanor DeWald.

Secretary-Treasurer—Betty McLaughlin.

Program Committee Chairman—Helen Rea.

The purpose of the club as found in the constitution is to promote an interest in ancient Roman civilization and to create a greater enthusiasm for classical studies. Another objective is to provide the prospective teacher of Latin a valuable means of vitalizing the subject.

Soon after the club was organized the members began working on Latin costumes which were used in the Roman Dress program presented in chapel in April. The characters represented a Roman soldier, a Roman girl, a vestal virgin, a slave, a Roman matron, a Roman bride, and a Roman boy.

The Latin club met the last Tuesday of every month. A committee of three took charge of each program. Some of the programs were Religious Customs, Description and History of Pompeii, and the influence of Latin on English Literature. In April the club enjoyed a banquet and picnic.

Since the Latin Club was so recently begun, its picture does not appear in the Sequelle this year.



ON TO VICTORY

CHEER LEADERS



The sidelines at Clarion State Teachers College resounded this year to a previously unexcelled volume of "rahs" and "yahs." Never was a Clarion football team so roundly cheered on to victory. The pep rallies on the nights before games were well attended and the pep programs themselves were both novel and interesting.

The first pep meeting saw over a hundred students capturing Main Street and yelling themselves hoarse in the rain—an unheard of thing in past years. Before the Edinboro game a giant funeral was held, complete with gallows, Edinboro dummy, and coffin. After hanging the dummy at Fifth and Main, the stunt was made complete with a blazing funeral pyre on the college football field. Before the Indiana game, a modern Boston Tea Party was held to properly scuttle the Indiana team's chances for victory.

Morgan Jones, the head cheer leader, had more than able assistance from the other cheer leaders: Belle Piper, Evelyn Rippey, George Bowman, Mary Jane Collins and Lois Milliron.

May we look forward next year to a continued evidence of vibrant Clarion school spirit.

RALLY SONG

H. L. BLAND

Moderato

I'm go-ing straight back, and
stay back In that dear old school. The place we love best of all. Oh, can't you
hear Clar-ion call, It's just a wee place. But in the race for things good and
true. So I'm go-ing back, for much that I lack, That's Clar-ion, true blue.

Copyright 1926 by Harrie L. Bland

Conrad by John Wiley & Sons

WOMEN'S ATHLETICS

HELEN M. BARTON



Miss Helen M. Barton is the director of women's athletics on our campus and is chiefly responsible for the fine spirit of cooperation and good sportsmanship that is displayed by her girls. Her guidance and administration have at all times been controlling factors in maintaining amicable athletic regulations. Never displaying bias or favoritism, Miss Barton is an admirable example.

Many girls come to college with a limited knowledge in the sports field and their scope and appreciation of physical activity must be broadened. Recreational values and improvement of general physical welfare are stressed in this procedure.

The fact that this is a teacher training institution and that we have responsibility in this regard is not neglected. Although here we do not specialize in physical education, our students have been able to fill positions which demand coaching knowledge of sports and teaching ability in rhythmic work of the elementary grades.

The gymnasium and the playfield are the laboratories in which smoother human relationships and adjustment to social groups are carried forward.

WOMEN'S ATHLETIC COUNCIL



The Women's Athletic Council is made up of girls who have met the standards set up by the Council.

At the end of the second semester the council works out an intra-mural sports program which consists of various tournaments to be played throughout the coming year. These tournaments are played by the Freshmen and upper-class girls and are coached and refereed by selected members of the Women's Athletic Council.

From the two teams an honorary varsity is chosen by the members of the Women's Athletic Council. Each girl who attends practice regularly, cooperates with her group, and is a good sport is eligible to become a member of Women's Athletic Council. At the end of the school term, and after all the tournaments are over, the old members of the council are awarded letters with stars according to the number of years of service, provided that they participated in at least two sports and coach one or coach two sports and participate in one.

The following girls served as officers for Women's Athletic Council this year: president, Edythe Lucas; and secretary treasurer, Clara Trimble. The officers for the coming year of 1940-41 are: president, Eleanor DeWald; vice-president, Lillian Hosey; and secretary-treasurer, Marylou Gourley.

The first sport on this years calendar was Speedball. Captains and managers were selected from the Sophomore and Freshman teams who, with the assistance of the coaches, conducted practice in the afternoons after school.

The first game, played October 24, was won by the Sophomores, 3-2. The next game played November 1, was also won by the upperclassmen with a score of 6-5.

The winning of the second game gave the Sophomores the first series and an inspired start for the sports to follow.

The team consisted of: Ruth Barr, Rosadell Chitester, Unithea Stack, Edna Ahlgrim, Audrey Ruth Barnes, Romaine Jones, Doris Seigworth, Marylou Gour-



SPEEDBALL VARSITY

ley, Mary Jane Collins, Lillian Hosey, Bernice Clinger, Nancy Porter, Burdell Giles, Ruth Lehner, and Miriam Moses.

The Freshmen team consisted of: Marian Williams, Ella Edwards, Beulah Burns, Helen Hummell, Winifred Wilkins, Sue McKee, Joyce Erickson, Mary Catherine Beabes, Vesta Brinker, Jean Watson, Ruth Kapp, Mildred Baker, Jean Kerr, Florence Nightingale, and Anna Marie Verderose.

The varsity made up of outstanding players of each team was: McKee, Stack, Williams, Ahlgrim, Burns, Barr, Moses, Wilkins, Jones, and Seigworth.



HOCKEY VARSITY

The second sport on the women's intramural athletic program was hockey. The weather for hockey was ideal. Although many fingers were stoved and many shins bruised, both freshmen and sophomores played persistently in all the games. The freshmen were coached by Eleanor DeWald with Mary BeaBes as captain and Betty Myers as manager. Audrey Ruth Barnes was the coach of the sophomores; Romane Jones was captain and Miriam Moses was manager.

The hockey varsity, which was chosen by the Women's Athletic Council, consisted of the following girls: Mildred Baker, Ruth Barr, Edna Alhgrim, Unithea Stack, Doris Seigworth, Miriam Moses, Sue McKee, Jean Watson, Beulah Burns, Anna Marie Verderose, and Romane Jones.

The basketball tournament was probably the most exciting contest of the year. The freshman team and the sophomore team were well matched and vivid and fiery was exhibited in all the games. The freshmen, coached by Regina Phelan, made a series of sweeping victories over the sophomores. Marion Williams acted as captain and Helen Burnham as manager of the freshman team. Lillian Hosey coached the sophomores and Bernice Clinger acted as their captain. Competition was keen through all the games.



BASKETBALL VARSITY

Marion Williams, Beulah Burns, Ruth Kapp, Bernice Clinger, Romane Jones, and Unithea Stack are this year's varsity members. The girls pictured here are those selected for last year's basketball varsity.

MEN'S ATHLETICS

WALDO S. TIPPIN



Mr. Tippin is the efficient and competent coach for the men's athletics on our campus.

The first activity in the department of physical education is football. This year's football squad can truly claim the honor of winning the most games in the football history of the college. The ability to convert after the touch-down, excellent blocking, and effective tackling helped the team to win its games.

Basketball season got under way about the middle of December. Again we had a veteran first string, but their success did not match that of the football squad.

Next came inter-collegiate wrestling with Indiana and Edinboro. As this was the trial year for this sport, a great deal depended upon its success. Under the coaching of Scot Widmann, the team had an encouraging season. The mat men were Allan Metzger at 121 pounds, Wayne Snyder at 128 pounds, Harold Ferguson at 136 pounds, Clair Reinsel at 145 pounds, Adam De-Flaviano at 155 pounds, Steve Kovalyak at 165 pounds, William Worrel at 175 pounds, and Robert Shea in the unlimited class. At the end of the wrestling season Coach Widmann picked his three best men and entered them in the State Tournament at Lock Haven State Teachers College.

The final inter-collegiate sport was tennis, coached by Morton McKinney. The team competed with six colleges in this district. Three former players, Mooney, Imel, and McKenzie, were members of the tennis team.

Intramurals culminated the activities of the year. Basketball, volleyball, ping pong, handball, wrestling, badminton, and tennis made up the program. These games were played by students, other than varsity men, who were divided into seven teams.

All in all, this year has been one of the most successful in the sport history of the college.

VARSITY

“C”



The Varsity "C" Club is one of the most outstanding men's organizations on the campus. It is composed of men who have earned a letter in one of the major sports. The requirements for earning a letter are set by the Men's Athletic Council.

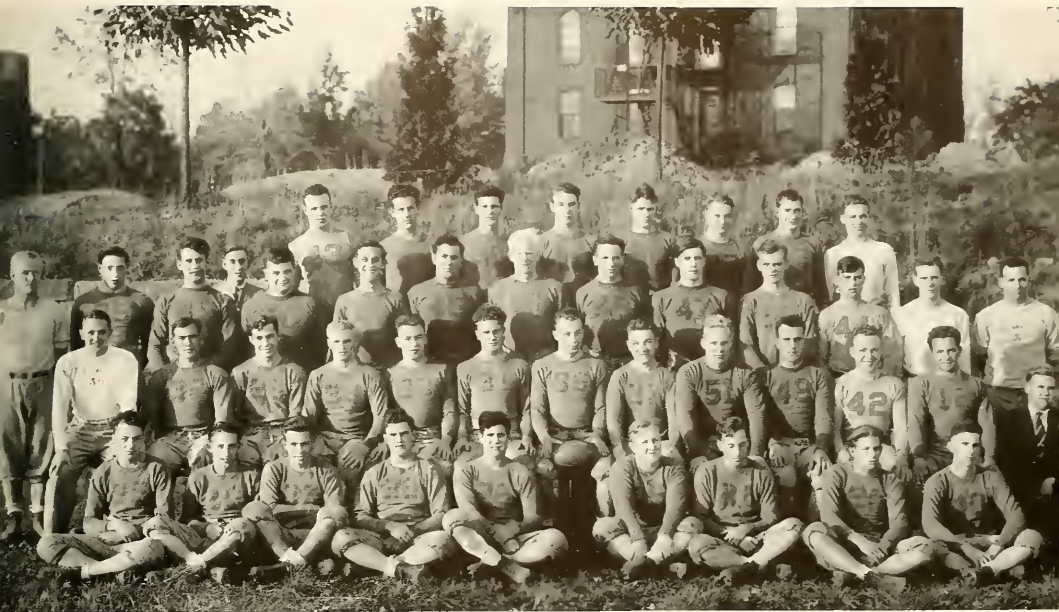
The club's new members for 1939 are: Robert Mortland, George Shoup, Richard Mayers, James Buzard, Charles Sheridan, John Pepicelli and James Sibley. These men were awarded gold sweaters this year.

The club awarded a gold football or basketball to those Juniors and Seniors who had earned two letters in one sport and one in another. John Mooney, Kenneth Rodgers, and James Meyers received basketballs; William Bratkovich, Raymond Abercrombie, William Sheridan, Joseph O'Brien, Marshall Teets, Charles Beskid, and Robert Jewell received footballs.

The club sponsored the Alumni Basketball game this year. They also continued selling jerseys which had an eagle on the front.

The officers for the year 1939-40 are: Raymond Abercrombie, president; William Sheridan, vice-president; and William Bratkovich, secretary-treasurer.

The "C" is something all men on the campus would like to wear, and those who haven't earned one envy those who have. The boys have planned a banquet for all varsity "C" members in the spring.



First row, left to right: Paul Spudic, Robert Sproat, Richard Mayers, James Buzard, Adam DeFlaviano, Ted Williams, Lea McDonald, William Worrell, Robert Mortland.
Second row: Kenneth Rodgers, Andrew Sevok, William Bratkovich, Wesley Freeburg, Charles Sheridan, Harry Wolfe, James Meyers, Charles Beskid, Ray Abercrombie, Joe O'Brien, William Sheridan, Steve Kovalyak, John Freas.
Third row: Mr. Tippin, Bert Remaley, William Nadolen, John Pepicelli, Quentin Clemenson, Clyde Pence, Robert Jewell, Marshall Teets, Frank Mohnney, Robert Shea, Dale Gilbert, John Hunter, Scott Widmann.
Fourth row: John Mooney, Claude Bole, William Solonchak, George Shoup, Harold Fulton, James Sibley, Leland Oakes, Alfred Natzke, James Manners.

GOLDEN EAGLES

Assistant Coach—Scott Widmann

The line's cooperation and good performance is largely due to the coaching of Scott Widmann. It may well be said if it were not for a good line the functioning of the backfield would be hindered to a great degree.

Equipment Manager—Kenny Rodgers

Rodgers assisted the team to the best of his ability. It was his job to keep all the equipment in shape and to help the trainer with his duties during games.

Business Manager—"Zit" Mooney

The money angle was handled by "Zit" Mooney. Having had three years of experience, John did his work well. "Zit" also performed many other duties for the football team, such as the making of programs, the announcing of the games, and the advertising of forthcoming games.

FOOTBALL



The 1939 football season now claims the best record ever made by Clarion State Teachers College. The season ended with the team's winning five games, losing one game, and tying one game.

The first game of the season was played with Grove City on our home field. After pushing each other around for three long quarters, Clarion finally broke through in the fourth to score a touchdown and point.

The next game played was a home game. Alliance bowed to us under the score of 34-0.

Victory followed us to the Thiel game. Here we saw the boys come through with a 13-0 win.

Coming back to our home field to be scored on for the first time, Clarion placed Edinboro's name under the list of losers to the tune of 24-7.

At Monesson for a benefit game with California under the lights, Clarion won the fourth consecutive game, 27-6.

On November 4, Clarion marched into Indiana territory to return with a score of 12-12, after Indiana's tying the score in the final two minutes of the game.

Hiram completed the 1939 schedule, getting revenge for its previous defeat in 1938, by trouncing us 7-26.

Grave City	0
Alliance	0
Thiel	0
Edinboro	7
California	6
Indiana	12
Hiram	26
Total	51

Clarion	7
Clarion	34
Clarion	13
Clarion	24
Clarion	27
Clarion	12
Clarion	7
Total	124

FOOTBALL LETTERMEN—1940

- Raymond Abercrombie**—Ray has been on the squad for three years; he has fought many a battle from his position at right tackle.
- Charles Beskid**—Shorly, a four-year man, has been an outstanding relief center and guard this year.
- Claude Bole**—Buck has played three years in the back fields. He is a hard hitting full back from Rimersburg.
- William Bratkovich**—Bill is a tough guard to get through on the offense. He also played center when called upon.
- James Buzard**—Jim, although it is his first year on the squad, did a very good job as a relief tackle. He also played guard.
- Wesley Freeburg**—The one remaining first string end is "Nurmee." Remember Edinboro? What was the blue number 34 always doing in the Red's back-field?
- Robert Jewell**—"Bob," who is known as the old man of the team, certainly belied the name which was given to him. He alternated with Clyde Pence at right tackle.
- Stephen Kovalyak**—Here is a placement kicker, a runner and a passer; his markmanship was 100 per cent. "Steve" filled the right halfback berth.
- Richard Mayers**—This is Dick's first year of college football. He had a change of pace in running that was to be admired. Many a would-be tackler was eluded by this side-stepping halfback.
- James Meyers**—This year winds up "Captain Jim's" football career at Clarion. It may well be said that this consistent guard will be greatly missed.
- Frank Mohney**—Indiana will not soon forget our blocking back—"Hank." Where did he get that mysterious faculty for the opposing team's plays?
- Robert Mortland**—Coach Tippen will never forget that little fellow who backed up the line in the Indiana game. We are looking forward to seeing "Bob" as our varsity center next year.
- Joseph O'Brien**—The full-back of the team was big. His weight and drive gave us many a first down. His running interference helped to pave the way for many a touchdown.
- Clyde Pence**—Who said the tackle was the meanest person on the team? We all regret that he received an ankle injury in the Thiel game, for stability at this position was an asset to the team.
- John Pepicelli**—His nickname "Pep" did not belie his character. This tackle's jovial character on the football trips made a long trip short.
- Andrew Sevok**—"Andy is one of those fast shifting halfbacks. We shall never forget "Big Seven's" work in the Alliance game.
- William Sheridan**—The one Clarion halfback to make the All-State Teachers College team was "Baldy." His open-field running and his line-plunges constituted for us numerous touchdowns.
- Charles Sheridan**—"Baldy's" little brother "Ink" was a deserving quarterback. Many an end will remember his inescapable blocking.
- George Shoup**—George was the team's ambidextrous passer. His punting and passing will not readily be overlooked.
- James Sibley**—This is Jim's first year on the varsity, and he proved to be a capable end. He doesn't say much, but watch him next football season.
- Marshall Teets**—We also regret to see this elastic end leave us this May. How "Marsh" ever snared some of those passes is beyond us.
- John Wetzel**—Here is our only All-State Teachers College tackle. We shall remember him for his persistent invading of the enemy's backfield.
- Harry Wolfe**—Good old Harry the Bear is another guard. He showed his mettle in the Edinboro game.



BASKETBALL

The 1939-40 basketball season was one long season of upsets. Although a veteran team, its ability was not up to par with that of last year. For some unknown reason the team did not seem to click, even with the steady substitution of other players. At the end of the season all we could say was that we won two games.

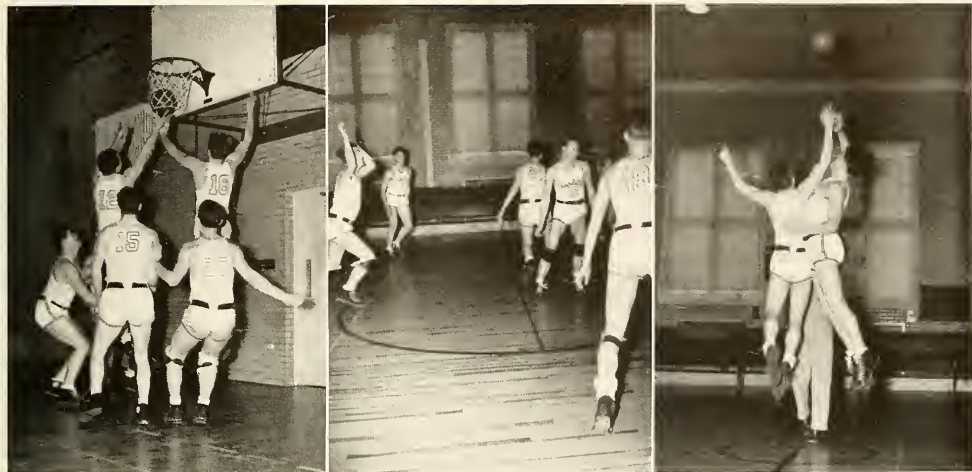
The squad consisted of Abercrombie, Teets, Meyers, McKenzie, Rodgers, Solonchak, Freeburg, Wetzel, Sibley, Manners, McKendree, Bixby, McCormick, and Wyncoop.

"Zit" Mooney served as basketball manager of the team. This being his second year as manager he was well instructed in his duties. He also kept the spirit of the team on a high level.

Alan Metzger, who was the faithful assistant manager, will in all probabilities be manager next year.

SEASON SUMMARY:

Grove City	27	Clarion	18
Slippery Rock	60	Clarion	25
Alumni	36	Clarion	32
Indiana	45	Clarion	21
Alliance	32	Clarion	34
Edinboro	54	Clarion	33
Slippery Rock	41	Clarion	31
Edinboro	32	Clarion	30
Thiel	53	Clarion	50
California	44	Clarion	38
California	51	Clarion	40
Thiel	44	Clarion	33
Penn	39	Clarion	35
Indiana	50	Clarion	39
Grove City	51	Clarion	45
Alliance	38	Clarion	44



BASKETBALL LETTERMEN—1940

Raymond Abercrombie—This was "Ray's" second year on the squad, and he proved invaluable to the squad. Ray was injured at mid-season and was unable to play in the remaining games.

Wesley Freeburg—This man, our pivot man and forward, out-smarted his opponent many times. "Wes" was very good on defense and was always there when it came to making points.

Robert McKenzie—"Bob," playing his second year on the squad, made a splendid contribution to his team. He filled a guard position and was a dead shot from the corner of the floor.

James Meyers—Here is one of the Seniors who has played four years on the squad. "Jim" filled a forward position this year and was elected a co-captain by his team mates.

Kenneth Rodgers—"Kenny" filled a guard position. Although he is the small man of the team, many an opponent has found out he is hard to get around. He has been one of our high scorers this year.

William Solonchak—"Bill" is the only freshman to earn a letter. He is another small man who fills a guard berth. "Bill" is a good shot, and we expect big things from him in the future.

Marshall Teets—Another Senior who played in the forward position. He was the fellow who liked to dribble through the other team. "Marsh" played in the pivot position and was heard from many times in the scoring column. He was the other co-captain of the team.

John Wetzel—"Muggs" is that big fellow who always got in the opponents' road when they wanted to score. He played at center and was always ready when needed.



SEQUELLE EXTRAS



1940'S MOST AND BEST

MOST:	Boy	Girl
Likely to succeed	Charles Kroh	Pauline Shumaker
Typical student	Robert Jewell	Pauline Shumaker
Wide awake in class	William Shoemaker	Pauline Shumaker
Wide awake out of class	Perry Lewis	Evelyn Rippy

BEST:	Boy	Girl
Date	Bliss Zener	Joyce Erickson
Dressed	Leland Oakes	Pauline Markel
Sport	Steve Kovalyak	Eleanor Dewald
Athlete	Jim Meyers	Marylou Gourley
Prospective Teacher	Chester Byerly	Grace Giles
Wit	Perry Lewis	Grace Giles
Matched Couple	Marshall Teets	Jeanne Lindquist
Loafer	Julius Angelo	Louise Hess
Apple Shiner	Gene Stewart	
	John Hughey	
Worker	William Shumaker	Mrs. Fillman
Filibusterer	Homer Horner	Ruth Eleanor Eisaman

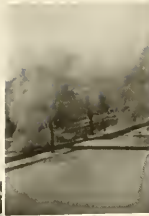
Song	"Careless"
Movie	"Mr. Smith Goes to Washington"
Chapel Program	Amateur Program
Walk	Wilson's Woods
Place to loaf:	
On Campus	Day Student's Room
Off Campus	Sweetland

HORIZONTAL

1. Another name for Thurman, the poet.
7. What Homer is always talking about, if you add an s.
13. Students come to Clarion and go _____.
15. Greek letter.
16. Favorite food in the Dining-Hall. (Toast always goes with it).
17. When you tell the second lie.
18. Disgrace, ignominy.
20. Pig latin for the word god.
21. Most of us are excluded from classes when this person comes.
23. To make a mistake.
25. Afternoon.
26. Latin pronoun or something.
27. You did this, if you took your date down town.
29. Note in anyone's scale.
30. This is what the fellows in a frat are. (Abbr.)
32. A wayside hotel.
33. Frequent food, both in the Army and in the Dining Hall.
34. Water.
36. The home of the Wizard.
38. You can hear it for a penny.
39. Initials of the Vice President of Student Senate this year.
40. Word coined on the campus last year.
41. Common nickname on the Campus.
43. Brisk, active.
45. Sorority.
46. First name is Harvey.
47. Preposition.
50. Morgan, as cheer leader, is full of this.
51. What the school needs, but doesn't have.
53. Personal pronoun.
54. You are supposed to take this in class, but you write them instead.
57. What anyone is if he tries to work this cross-word puzzle.
59. Another preposition.
60. There aren't any of these people in school.
62. A kind of boat, or a kind of war.
63. Abbreviation for Vermont.
65. Favorite beverage.
66. What we do in class.
67. Before.
69. Model of car.
72. Gum without you.
73. Apple _____.
76. What the teachers do here.
77. Squirrel food.
79. What the Dorm students do with food.
80. The way Miss Nair will not permit you to spell "through."
81. Mournful, dismal, doleful.

VERTICAL

1. The students enrolled here are _____.
2. Form of the verb be.
3. We have lots of local _____.
4. A pickaninny has this.
5. We don't know what this spells.
6. Belongs to Mona.
7. You'll use this to work the crossword puzzle.
8. Teacher's answer to pupils', "I didn't study my lesson."
9. If your roommate can't find his clothes, he does this among yours.
10. The word would be tirade if it were spelled that way.
11. Characterizes the fellows in the dorms.
12. What we all wait for.
14. An island not near here.
19. Dewey's philosophy in a shortened form.
22. You find this in chemistry class.
24. A lion will do this sometimes.
28. Fox hunters say goodbye this way.
30. The way Hunter procures his cigarettes.
31. What stores do with packages.
32. Large.
35. Song title.
36. Musical plays.
37. A fraternity.
38. An Indian name.
40. Head of the Actor's Guild of Seminary Hall.
42. An island misspelled.
44. Abbreviation for "I'm going."
48. Also.
49. Golf advice.
51. Large.
52. Only this number of days in each week.
55. They hang these people for treason.
56. French possessive pronoun.
58. What you are if you come here.
61. Negative.
64. Letters of the alphabet.
66. Self-satisfied, complacent.
68. God of love.
69. To loop and knot thread by means of a shuttle.
70. Indian language.
71. Note in the scale.
72. Animal.
74. That is what Ben was.
75. Man's name.
78. Another French pronoun.



COLLEGE HUMOR

Professor (taking up quiz papers): "Why the quotation marks on this paper?"

Student: "Courtesy to the man on my left."

"In a recent psychological experiment, one of a set of identical twins was trained to be an athlete; the other, to read and write.

Freshman Girl (after blind date): "I've had a wonderful evening, but this wasn't it."

The coach of Conference Champions has a cute way of disciplining his football players: every time anyone of them makes a mistake he fines him and takes it out of his pay.

"A college education is the transference of the notes of the professor to the notebook of the student without going to the minds of either."

"I 'aven't 'ad a bite for days," said a tramp to the landlady of an English Inn, The George and Dragon. "D'you think yer could spare me one?"

"Certainly not," replied the landlady.

"Thank yer," said the tramp, and slouched off. A few minutes later he was back.

"What do yer want now?" asked the landlady.

"Could I 'ave a few words with George?" said the tramp.

Mr. Manson: "Can anyone tell me what causes the trees to become petrified?"

Gene Stewart: "The wind makes them rock."



An Appreciation

TO THESE ADVERTISERS who, it must be remembered, have represented their various trades among these pages because of sincere interest in Clarion State Teachers College, we the 1940 SEQUELLE staff, on behalf of ourselves and the Student Body, express our appreciation.

Compliments of

Weaver Motor Co.

Sales—Oldsmobile—Service

Safety Tested Used Cars

SIXTH and WOOD ST. Phone 318

CLARION, PA.

J. W. M. GRUBER & SON

SHIPPENVILLE, PA.



Exclusive Producers and Distributors of this high quality milk in the Clarion Area. We have been furnishing this brand of milk to the Clarion State Teachers College for SEVEN consecutive years.

Order this same High Quality Milk for your home. It is delivered direct from the farm. Insures you Better Flavor, Higher Quality, More Vitamins, and More Minerals. *The Milk That Stays Fresh Longer.*

Phone Shippenville 33-J-2

Visitors Always Welcome at the Farm

NINE MILES WEST OF CLARION ON ROUTE 322

Fine Cuts of Meat

Free Delivery

SMITHY'S MARKET

"Quality Always"

Courteous Service

Fresh Fruits and Vegetables

Towing and Storage Service

J. F. LEATHERS COMPANY

333 Main Street Phone 60

CLARION

"Ford For '40"

Ford Mercury Lincoln-Zephyr

JOE'S

THE CORNER STORE

Fruit Confections Ice Cream

Corner Wood and Eighth Avenue

Clarion, Pa.

COMPLIMENTS

of

PHILLIPS'
GREENHOUSES

COMPLIMENTS

of

MAUL'S
DAIRY STORE

MOTHPROOF—CLEANING All woolen garments insured 6 months
against moth damage when cleaned by us

PARIS VERY SAFE CLEANERS

Every Modern Facility for Delicate Gowns,
Dresses, Hats, Gloves, to Heavy Furs and Rugs

Expert alterations on high class furs
Furniture cleaning and moth proofing
Kittanning -123½ N. McKean Street

Brockway, Telephone 102-R

DuBois, Telephone 261

St. Marys, Dial 7444

Clothes Insurance Against Fire, Theft and Delivery Hazard

P E N N E Y ' S
C. PENNEY COMPANY, Incorporated

609 Main Street

Clarion, Pa.

Best Wishes
To The College
SHEEHY, INC.

1910
Dodge Luxury Liner
With New Full-Floating Ride
LAUGHLIN-FREAS
MOTORS
DODGE PLYMOUTH
CLARION, PA.

Meals *Lunches*
MODERN DINER
24 Hour Service
Next To Garby Theatre

Compliments of
J. M. CROOKS
Clarion's Best in Men's
Clothing

Buy At Browns And Save
BROWN'S BOOT SHOP

Our New Location—The Alexander Building
CLARION, PA.

HAIL THE GRADUATION OF 1940

We join in a hearty commendation of your efforts and in a sincere wish that your future lives may be happy and successful.

G. C. MURPHY COMPANY

5 and 10 CENT STORE

CLARION COUNTY THRIFT PLAN
INCORPORATED

*The Thrift Plan System
of Finance*

515 Main Street Clarion, Pa.

Phone 7

RINGS

PENS

DAVID A. KAUFMAN

*The
Official College Jeweler*

EXPERT REPAIRING

WATCHES

BARACH'S

*Ladies' Ready-To-Wear
and Accessories*



612 Main Street Clarion, Pa.

QUICK LUNCH

(Sweetland)

Sundaes Sodas Sandwiches

All Kinds of Good Food

CLARION, PA.

Sales

PONTIAC

Service

TRI MOTOR COMPANY

R. H. CRIBBS

J. P. TROUT

SPECIAL 6

DELUXE 8

DELUXE 6

TORPEDO 8

OUR BEST WISHES to every graduate and student of Clarion State Teachers College. Please keep us in mind — write us when you secure a position or a better one; when you are married; or receive some distinctive recognition. We are glad to print good news about Clarion students.

The Clarion Republican

Just Off The Campus one may find the best in groceries and meats.

... Why Go Farther?

WM. W. PHERO

Phone 19

Best Wishes To

The College

SPINDLER & STARR

Dealers in

BUICK

CHEVROLET

*The Largest Store in
Clarion County*

WEIN BROTHERS

*"Where Quality
Predominates"*

Compliments of

MEANS & LAUF

Drug Store

Compliments of

MR. AND MRS. FRED JENKINS

Best Wishes to the College on the Hill

Eighth Avenue Service Station

CLARION, PA.

Does Your Car Need Attention?

GEO. CORBIN, *Manager*

HASKELL FURNITURE COMPANY

◇ ◇

*"Quality Home Furnishings
at Reasonable Prices"*

◇ ◇

Rimersburg, Pa.

Clarion, Pa

◇ ◇

*The Best of Luck and Success
From Your House of Hits*

Garby Theatre

◇ ◇

V. P. MUSI

Cleaners and Tailors

We own and operate our own plant

One Day Service

Phone 390

623 Main Street

Clarion, Pa.

Fruits

Phone 38

CLARION FRUIT COMPANY

Sam Cherico, Prop.

Modern Store

Self Serve

Groceries

Meats

606 MAIN STREET

CLARION, PA.

Not Only Good Food—But All You Want

Best Wishes For This Year

THE COFFEE SHOP

Moderate Prices

HAZEL MILLER

Cor. 8th and Main Street

Clarion 72

A Bank of Strength and Character

Banking transactions are strictly supervised by the banking authorities.

OUR DIRECTORS

Merritt H. Davis
B. M. Davis

Herbert R. Lander

Perry Wile
W. M. Moore

Member Federal Deposit Insurance Corporation

First National Bank in Clarion

CLARION

PENNSYLVANIA

INSURE

Against Death.

Against Accident,
Against Illness.

With

**KAUFMAN INSURANCE
AGENCY**

Morton F. McKinney, *Solicitor*

NYAL SERVICE DRUG STORE

FITZGERALD'S

A. G. Corbett Drug Co.

FIRST RATE

Clarion, Pa.

THE RESS SHOP

Women's and Misses'

Ready to Wear



CLARION, PA.

Expert Hair Styling . . .

We Handle **DERMETICS**
exclusively

**KATHRYN'S
BEAUTY SHOP**

Banner Building

Phone 310

DITZ & MOONEY HARDWARE

Phone 218

Clarion, Pa.

Stewart-Warner Electric Refrigerators

Lucas Paints

China and Glassware

Hunting and Sporting Equipment

"JAHN AND OLLIER AGAIN"



Repeated acceptance by discriminating Year Book Boards has inspired and sustained the Jahn & Ollier slogan that gathers increasing significance with each succeeding year.

JAHN & OLLIER ENGRAVING CO.

817 West Washington Blvd., Chicago, Ill. - Telephone MONroe 7080

Commercial Artists, Photographers and Makers of Fine Printing Plates for Black and Colors

PITTSBURGH PRINTING

Company . . .

*General Commercial Printers
and Publishers*



CORRESPONDENCE SOLICITED
CONCERNING YOUR PRINTING
REQUIREMENTS

530-534 FERNANDO STREET - PITTSBURGH, PENNA.

CLARION UNIVERSITY OF PENNSYLVANIA



3 9363 00151 7447

Spec. Col.
qLD
1017 Sequelle
.C88
1940

Spec. Col.
qLD
1017
.C88
1940

