

Spec. Col.
qL D
1017
.C88
1941



SESSQUICENTENNIAL

1941

LIBRARY
CLARION STATE COLLEGE



Carlson Library

FOREWORD

In preparing this volume we have endeavored, with the highest of aims and ideals, to include those things which will recall the cherished memories of student days at Clarion. Yet the result of our striving is, after all, only another Sequelle. We hope that it will please you.

THE EDITOR



We give you . . .

Pictorial Highlights of





the year at the . . .

**STATE TEACHERS COLLEGE
AT CLARION. PENNSYLVANIA
IN THE PAGES OF THE . . .**



1941

Sequelle



*Class
of 1920
1920
1920*

To ..

RALPH W. CORDIER

OUR GENIAL FRIEND, COUNSELOR, ADVISER
STERLING CHARACTER AND GRACIOUS
THE HEIGHTS TO WHICH THE TEACHING
HAVE GIVEN US A NOTABLE EXAMPLE
CATE THIS SEQUELLE

AND EDUCATOR, WHOSE
MANNER HAVE REVEALED
PROFESSION RISES AND
TO EMULATE, WE DEDI-



A bell rings—

Chairs scrape—

Young men and women—

eagerly seeking—to

find—the knowledge—

from books—to

form firm friendships—

These—the youth—

sit in classes—

brought together—

by common interests—

their football team—

their dances—their tests—

so they come to—

realize this—

"The world is clay—with courage and faith and perseverance—

You can mold it to your desire—

Each of you has one enemy—yourself—"

None need to fail—

A bell rings—

Chairs scrape—





PRESIDENT PAUL G. CHANDLER

Message To The Senior Class

It is always interesting to see the changes that come to college students from the time they enter as freshmen until they leave as graduates. These changes are due in part to academic development, in part to opportunities for leadership in college organizations, and partly to maturity that naturally comes between the ages of eighteen and twenty-two.

The changes that will come to you in the next four years will be even more and greater than in the last four. The responsibilities that will rest upon you from being a teacher in a community, from being a citizen and taxpayer, from being an example to youth will give you further development and maturity.

Clarion will always be your alma mater. Your professional success will to some extent depend on the reputation of your college. You should keep up an interest in making it the best it can be made.

PAUL G. CHANDLER





Clarion—being small—gives its students the advantage of coming to know faculty members as individuals like "ourselves," not just symbols.

As individuals we shall best remember them—but—will we ever forget how—

Dr. Cordier piled references on our burdened shoulders—then asked so gently "Is that too much?"—

Mr. Manson journeyed with us through the snow to feed the squirrels—

Miss Marwick recited "A Dillar-a-Dollar" to late comers in Kid Lit class—

Miss Nair pleaded for Press Club reporters to get assignments in on time—

Dr. Peirce told jokes so soberly—

Mr. Carey explained simple addition in terms of algebraic equations—

Mr. Tippin told anecdotes—

Miss Sanford delighted in giving Monday morning tests—

Mr. Kuhner insisted that we make maps and graphs according to scale—

Miss Carlson reminded us—"Shhh—Too much visiting in the library."—

Mrs. Potter enjoyed taking us on Library Science trips—

Miss Wingard helped straighten out irregular schedules—

Mr. Becker forgot to come to class—

Mr. Campbell insisted on going one better—

Miss Boyd had a smile for you and me—





Helen M. Barton
Mildred Gamble
Bertha Leifeste
Ellen I. Peterson

Charles F. Becker
Anna B. Graham
Harry S. Manson
Hazel Sandford

Margaret A. Boyd
Anna A. Greenawalt
Marie E. Marwick
Waldo S. Tippin

Frank Campbell
Walter L. Hart
Helen F. Mohney
Helen Walters

Clair E. Carey
Effie B. Helper
Bertha V. Nair
LoHie Wingard

Rena M. Carlson
Gilbert A. Hoyt
Fannie C. Owens

Ralph W. Cordier
Clarence A. Kuhner
Donald D. Peirce

OUR FRIENDS THE FACULTY

- BARTON, HELEN M.—M.A. Physical Education—Columbia University
 - BECKER, CHARLES F.—M.A. Education—Columbia University
 - BOYD, MARGARET A.—M.A. English—University of Pittsburgh
 - CAMPBELL, FRANK—M.A. High School—French—Pennsylvania State University
 - CAREY, CLAIR E.—M.A. Mathematics—Harvard University
 - CARLSON, RENA M.—M.A. Librarian—University of Michigan
 - CORDIER, RALPH W.—Ph.D. Social Studies—Ohio State University
- GAMBLE, MILDRED—M.A. Intermediate Grades—Columbia University
 - GRAHAM, ANNA B.—B.S. Junior High School Grades—Clarion State Teachers College
 - GREENAWALT, ANNA A.—B.S. Dietitian—Pennsylvania State College
 - HART, WALTER L.—M.A. Art—Carnegie Institute of Technology
 - HEPLER, EFFIE B.—B.S. Primary Grades—Geneva College
 - HOYT, GILBERT A.—M.S. Junior High School Grades—Grove City College
 - KUHNER, CLARENCE A.—M.S. Geography—University of Wisconsin
- LEIFESTE, BERTHA—M.A. Kindergarten-Primary Education—Columbia University
 - MANSON, HARRY S.—M.A. Science—Grove City College
 - MARWICK, MARIE E.—M.A. English—Columbia University
 - MOHNEY, HELEN F.—M.A. Intermediate Grades—Columbia University
 - NAIR, BERTHA V.—M.A. English-Latin—University of Pittsburgh
 - OWENS, FANNIE C.—R.N. Nurse—Oil City Hospital
 - PEIRCE, DONALD D.—Ph.D. Science—University of Illinois
- PETERSON, ELLEN I.—Ph.D. Dean of Women—Syracuse University
 - SANDFORD, HAZEL—M.A. Art—New York University
 - TIPPIN, WALDO S.—M.A. Physical Education—Columbia University
 - WALTERS, HELEN—M.A. Primary Grades—Columbia University.
 - WINGARD, LOTTIE—Registrar—Hoff Business College



Seniors



Ray Abercrombie
Paul Claypool

Albert Andreo
Miles Crum

William Bratkovich
Eva Hagerty

Ray—"There is only one way by which we may reach our desired goal—that is to get up and go."

Anonymous

Al—"The same frankness runs through his conversation."

Richard Steele

Bill—"The best kind of sympathy is that which lends a hand."

Anonymous

Paul—"Who is a rich man? He who is content."

Epictetus

Miles—"Let me people at least with my fanciers, the plains and the rocks."

Robert Browning

Eva—"We are all working together to one end."

Marcus Aurelius

"You to the left and I to the right,

- **ABERCROMBIE, RAY**—R.D. = 3, Linesville, Pa.
Zeta Eta Phi; Outdoor Club 3-4; Varsity "C" 2-3-4;
Wrestling 3; Football 1-2-3-4; Basketball 1-2-3-4;
Intramurals 1-2-3-4; Inter-Fraternity Council 4;
Student Senate 3-4.
- **ANDREO, ALBERT**—Darragh, Pa.
Alpha Gamma Phi; Pi Gamma Mu; Phi Sigma Pi;
Intramurals 1-2-3; Inter-Fraternity Council 4;
Newman Club 4.
- **BRATKOVICH, WILLIAM**—Claridge, Pa.
Alpha Gamma Phi; Pi Gamma Mu; Phi Sigma Pi;
Football 1-2-3-4; Intramurals 1-2-3; Varsity "C" 1-2-3-4;
Inter-Fraternity Council 3-4; Newman Club 4;
Sequelle Staff.
- **CLAYPOOL, PAUL**—R.D. = 4, Kittanning, Pa.
A Cappella Choir 3-4; International Relations 3;
Intramurals 3-4; Y.M.C.A. 3-4.
- **CRUM, MILES**—Marble, Pa.
International Relations 3-4; Intramurals 1-2-3-4;
Press Club 1-2; Boy Scouts 1; Geography Club 1-3-4;
Y.M.C.A. 2-3-4.
- **HAGERTY, EVA**—R.D. = 4, Franklin, Pa.
Theta Alpha Lambda; Hostess Club 1; Intramurals 1;
A.C.E. 2-3-4; Pan-Hellenic Council 3.



Seniors



Betty Henry
Robert Jewell

Louise Hess
Reva Love

Bert Hover
Leo McDonald

Betty—"I know not why but my heart has always whispered—seek your goal."

Henry Van Dyke

Louise—"—with perfect self command which characterizes the well poised woman—."

Myrtle Agnes

Bert—"Keeping originality always in view."

Edgar Allen Poe

Bob—"Few things are impossible to diligence and skill."

Anonymous

Reva—"Knowldege comes but wisdom lingers."

Alfred Tennyson

Leo.—Our work counts for more than our talk."

Anonymous

For the ways of men must sever,

- HENRY, BETTY—R.D. #2, New Bethlehem, Pa.
Theta Alpha Lambda; Press Club 2-3-4; Art Club 3-4; College Players 3-4; Student Senate 3; Sequelle Staff.
- HESS, LOUISE—115 South 3rd Avenue, Clarion, Pa.
Sigma Delta Phi; A Cappella Choir 1-2-3; Chorus 3; Outdoor Club 1-2-3-4.
- HOVER, BERT—Sheffield, Pa.
Zeta Eta Phi; Phi Sigma Pi; College Players 3; International Relations 3; Intramurals 3-4; Press Club 4.
- JEWELL, ROBERT—37 Cole Avenue, Bradford, Pa.
Alpha Phi Alpha; A Cappella Choir 1-2-3-4; Orchestra 1; Varsity "C" 2-3-4; Football 1-2-3-4; Intramurals 1-2-3-4; College Players, 1-2; Outdoor Club 3-4; Press Club 3; Y.M.C.A. International Relations 3; Student Senate 3-4; Business Manager of Sequelle.
- LOVE, REVA—1009 Mercer Avenue, New Castle, Pa.
Pi Gamma Mu; Camera Club 3-4; International Relations 2-3-4; Literary Club 2-3; Sequelle Staff.
- McDONALD, LEO—104 Cayuga Avenue, Warren, Pa.
Alpha Gamma Phi; Varsity "C" 4; Football 1-2-3-4; International Relations 2; Newman Club 4; Intramurals 1-2-3-4.



Seniors



Robert McKenzie
Anna Moyer

Opal Meley
Orville Myers

John Mooney
Edward Newland

Bob—"A man is worth only as much as he is worth to his fellowmen."

Anonymous

Opal—"I put heart to school—in a world where men grow wise."

Henry Van Dyke

John—"I'm going to be a man and conquer all I can."

Stetson

Ann—"My pleasure lies in seeking that I myself grow better day by day."

Epicteus

Orville—"A man's true merit 'tis not hard to find."

Alexander Pope

Eddie—"I do my duty—other things trouble me not."

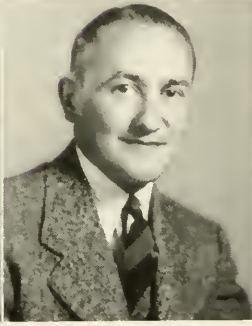
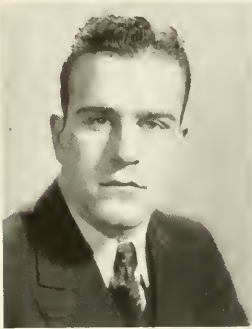
Marcus Aurelius

And it well may be for a day and a night,

- MCKENZIE, ROBERT—Rixford, Pa.
Alpha Gamma Phi; Varsity "C" 2-3-4; Tennis 3-4; Basketball 3-4; Intramurals 1-2-3-4; Outdoor Club 3-4; Student Senate 3.
- MELEY, OPAL—Shipperville, Pa.
Geography Club 3-4; Glee Club 1-2; Y.W.C.A. 1-2; Sequelle Staff; Franklin Literary Society 1-2.
- MOONEY, JOHN—703 Wood Street, Clarion, Pa.
Zeta Eta Phi; Varsity "C" 2-3-4; Tennis 2-3-4; Football Manager 3-4; Basketball Manager 2-3-4; Football Trainer 4; Intramurals 1-2-3-4; Outdoor Club 3-4; Geography Club 2-4; A Cappella Choir 2-3; Inter-Fraternity Council 3-4; Student Senate 3-4; Sequelle Staff.
- MOYER, ANNA—Hersey, Pa.
Delta Sigma Epsilon; College Players 1-2-3-4; Glee Club 1; A.C.E. 2-3-4; Y.W.C.A. 1-2-3-4; Hostess Club 1; Geography Club 2; Intramurals 1; Sequelle Staff.
- MYERS, ORVILLE—Rimersburg, Pa.
A Cappella Choir 1-2-3; Orchestra 1; Intramurals 1-2-3-4; Geography Club 3-4.
- NEWLAND, EDWARD—Summerville, Pa.
Alpha Phi Alpha; College Players 1-2; Press Club 1-2-3; Camera Club 3-4; International Relations 3; Intramurals 1-2-3-4; Newman Club 3-4; College Publicity Director 4; Sequelle Staff.



Seniors



Joseph O'Brien
Betty Robbins

Regina Phelan
Kenneth Rodgers

Clair Reinsel
Jeanne Shaw

Joe—"What concerneth every man is not whether he fail or succeed but that he do what he can."

Anonymous

Regina—"Let's sing the praise of books."

Walter Turner

Clair—"His principles—Never to turn his back upon a friend."

Duer

Betty—"She has a voice of gladness, a smile, and an eloquence of beauty."

William Cullen Bryant

Kenny—"A comrade faithful to the end, wise understanding, and steady."

Walter Turner

Jeanne—"Then come my friend and leave your fears behind."

Henry Van Dyke

And, it well may be forever!

- O'BRIEN, JOSEPH—629 Main Street, Clarion, Pa.
Alpha Gamma Phi; Varsity "C" 2-3-4; Football 2-3-4; Intramurals 3-4; Newman Club 2-3-4.
- PHELAN, REGINA—Eldred, Pa.
Hostess Club 1-4; Intramurals 1-2-3-4; W.A.C. 2-3-4; Outdoor Club 2; Geography Club 1-2-3; Newman Club 3-4; Latin Club 4; French Club 2.
- REINSEL, CLAIR—R.D. #1, Mayport, Pa.
Zeta Eta Phi; Wrestling 3-4; Intramurals 1-2-3-4; Press Club 1-2.
- ROBBINS, BETTY—212 Chestnut Street, Port Allegany, Pa.
Lambda Chi Delta; College Players 2-3-4; Y.W.C.A. 2-3-4; Geography Club 2-3-4; Outdoor Club 2; French Club 2; Women's House Council 4; Press Club 4; Student Senate 4.
- RODGERS, KENNETH—Cochranon, Pa.
Alpha Gamma Phi; Varsity "C" 2-3-4; Basketball 2-3-4; Football Manager 1-2-3; Intramurals 1-2-3-4; Outdoor Club 1-2; President of Senior Class; Sequelle Staff.
- SHAW, JEANNE—Brookville, Pa.
Theta Alpha Lambda; Art Club 1; Intramurals 1-2; Student Senate 1; Sequelle Staff.



Seniors



William Sheridan
William Shoemaker

George Shoup
Elizabeth Silves

Pauline Shumaker
Roland Sykes

Bill Sheridan—"Grandeur, strength, and grace are here to speak of thee."
William Cullen Bryant

Bill Shoemaker—"There is delight in singing."
Campbell

George—"His days had not been spent in singleness."
Wordsworth

Pauline—"She seldom fussed and she often smiled."
Nash

Elizabeth—"Patience is a necessary ingredient of success."
Anonymous

Roland—"I can look with no indifference upon things or persons."
Charles Lamb

But whether we live or whether we die,

- **SHERIDAN, WILLIAM**—New Bethlehem, Pa.
Alpha Phi Alpha; Pi Gamma Mu; Varsity "C" 1-2-3-4; Football 1-2-3-4; Basketball 1-2; Intramurals 1-2-3-4; Press Club 1-2; College Players 2; International Relations 3; President of Student Senate. 4.
- **SHOEMAKER, WILLIAM**—120 White Street, Brookville, Pa.
Phi Sigma Pi; A Cappella Choir 3-4; Art Club 3-4; Camera Club 3-4; Sequelle Staff.
- **SHOUP, GEORGE**—Clarion, Pa.
Alpha Phi Alpha; Varsity "C" 3-4; Football 3-4; Intramurals 2-3-4.
- **SHUMAKER, PAULINE**—New Bethlehem, Pa.
Lambda Chi Delta; Pi Gamma Mu; Hostess Club 1; Geography Club 1-2-3; Pan-Hellenic Council 2-3; Student Senate 3-4; International Relations 3-4; President of Student Senate 3; Editor of Sequelle.
- **SILVES, ELIZABETH**—Sligo, Pa.
Delta Sigma Epsilon; Hostess Club 1; Press Club 1-2-3-4; Intramurals 1; A.C.E. 2-3-4; Student Senate 4; Sequelle Staff.
- **SYKES, ROLAND**—323 Jackson Street, Reynoldsville, Pa.
Pi Gamma Mu; International Relations 3; Camera Club 4; Intramurals 3-4; Sequelle Staff.



Seniors



Lawrence Thurman
Kathryn Whitehill

Mahlon Traister
Merle Wiser

Lawrence—"Why do unskilled and ignorant souls disturb him who has skill and knowledge?"

Marcus Aurelius

Mahlon—"A good friend is rare indeed."

Robert Louis Stevenson

Kay—"They who will give themselves the trouble of considering."

Edmund Burke

Merle—"Try to enjoy the great festival of life with other men."

Epicteus

In Memoriam
Eleanora Olson
October 20, 1940

Be a fair or an ill wind blowing!

- THURMAN, LAWRENCE—Woodville, Pa.
Pi Gamma Mu; Phi Sigma Pi; Alpha Psi Omega; College Players 2-3-4; Geography Club 2;
Press Club 2-3-4; International Relations 3-4; Intramurals 3.
- TRAISTER, MAHLON—Rimersburg, Pa.
Zeta Eta Phi; Intramurals 1-2-3-4; Y.M.C.A.
- WHITEHILL, KATHRYN—Shipperville Pa.
Lambda Chi Delta; College Players 1-2-3-4; A.C.E. 2-3-4; Intramurals 1; Student Senate
3-4; Sequelle Staff.
- WISER, MERLE—Sligo, Pa.
College Players 1; Press Club 1-2; Intramurals 1-2-3-4.



POST GRADUATES



Mary Kay Banner
Bernice Miller

Dorothy Kaufman
Bernadine Stewart

Here's Luck!
In the teeth of all ill winds blowing!"

—RICHARD HOVEY

SENIORS PARK HERE

GRADUATING JUNIORS

BARR, RUTH

321 Hone Avenue, Oil City, Pennsylvania

Sigma Sigma Sigma
International Relations
W. A. C.
Choir
Chorus
Y. W. C. A.
Outdoor Club
Intramurals



BROSIUS, JEAN

Summerville, Pennsylvania

Theta Alpha Lambda
Outdoor Club
Art Club
A. C. E.
Geography Club



BROWN, GLADYS

808 Buffalo Street, Franklin, Pennsylvania

Sigma Delta Phi
Art Club
Geography Club
Outdoor Club
Press Club
A. C. E.
A Cappella Choir
Pan-Hellenic Council



BYERS, ANNA MARY

142 Sixth Avenue, Clarion, Pennsylvania

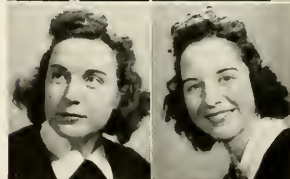
Lambda Chi Delta
College Players
Press Club
A. C. E.
Student Senate



COLLINS, MARY JANE

511 First Street, DuBois, Pennsylvania

Lambda Chi Delta
A Cappella Choir
Outdoor Club
Intramurals
A. C. E.
W. A. C.



DENGLER, VIRGINIA

Oak Street, Reno, Pennsylvania

Sigma Sigma Sigma
Geography Club
Y. W. C. A.



BAUGHMAN, WILSON

New Bethlehem, Pennsylvania

Zeta Eta Phi
Intramurals
Y. M. C. A.

BROSIUS, VADA MAE

Summerville, Pennsylvania

Sigma Sigma Sigma
A Cappella Choir
Outdoor Club
A. C. E.

BRUMBERG, FLORENCE

Brockport, Pennsylvania

Theta Alpha Lambda
Outdoor Club
Press Club
Y. W. C. A.
International Relations
Geography Club
Chorus
Pan-Hellenic Council

CLINGER, BERNICE

Corsica, Pennsylvania

Sigma Sigma Sigma
Intramurals
Outdoor Club
Press Club
Art Club
A. C. E.
International Relations
Newman Club

DAVIS, BONNIE

208 Liberty Street, Clarion, Pa.

Lambda Chi Delta
A Cappella Choir
College Players
Intramurals
W. A. C.
Sextette
Pan-Hellenic Council

DUNKLE, DOROTHY

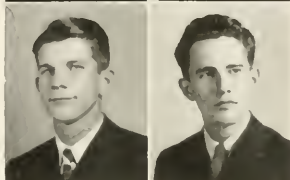
Tionesta, Pennsylvania

Art Club
Geography Club

ELLENBERGER, RUBY
 Foxburg, Pennsylvania
 Sigma Delta Phi
 Pan-Hellenic Council
 Geography Club
 Y. W. C. A.
 Intramurals



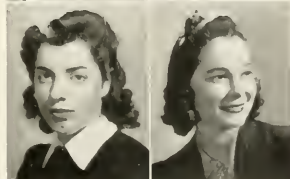
FERGUSON, HAROLD
 Pansy, Pennsylvania
 Zeta Eta Phi
 Boy Scouts
 Outdoor Club
 Geography Club
 Intramurals
 Wrestling



GLASS, ESTHER
 Venus, Pennsylvania
 Art Club
 Geography Club
 Intramurals



GRAY, PAULINE
 Huey, Pennsylvania
 Art Club
 Geography Club



HOSEY, LILLIAN
 Rimersburg, Pennsylvania
 Sigma Delta Phi
 College Players
 Outdoor Club
 W. A. C.
 Chorus
 Intramurals



JONES, ROMAINE
 Clarion, Pennsylvania
 Sigma Sigma Sigma
 Press Club
 A. C. E.
 Art Club
 W. A. C.
 Intramurals



EVANEK, ELLA
 Huey, Pennsylvania
 Intramurals

GEIST, PIERCE, JR.
 Baxter, Pennsylvania
 Alpha Phi Alpha
 Outdoor Club
 Boy Scouts
 Intramurals
 Geography Club

GOURLEY, MARYLOU
 107 E. Garden Road, Pittsburgh, Pennsylvania
 Lambda Chi Delta
 College Players
 Intramurals
 W. A. C.
 Pan-Hellenic Council

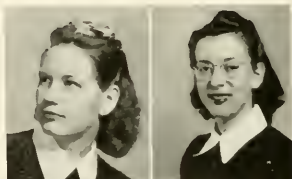
HARVEY, VIRGINIA
 201 Dinsmore Avenue, Punxsutawney, Pennsylvania
 Lambda Chi Delta
 Outdoor Club
 Geography Club
 Intramurals

HUGHEY, JOHN
 309 Knarr Street, DuBois, Pennsylvania
 Phi Sigma Pi
 College Players
 Art Club
 Geography Club
 Intramurals

KENDALL, MARTHA
 27 Taylor Street, Brookville, Pennsylvania
 Sigma Delta Phi
 Outdoor Club
 Y. W. C. A.
 Geography Club
 Intramurals

LEHNER, RUTH

Rimersburg, Pennsylvania
Sigma Sigma Sigma
Hostess Club
Geography Club
International Relations
Intramurals



PADDOCK, ELIZABETH

174 Seventh Avenue, Clarion, Pennsylvania
Delta Sigma Epsilon
College Players
A. C. E.

PANTON, LORRAINE

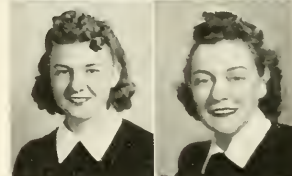
Foxburg, Pennsylvania
Delta Sigma Epsilon
A Cappella Choir
Y. W. C. A.
A. C. E.
Girls' Chorus
Women's Student Council



PAUP, WILLIAM
Venus, Pennsylvania
Alpha Phi Alpha
Boy Scouts
Outdoor Club
Geography Club
Intramurals

PIPER, BELLE

1202 Washington Boulevard, McKeesport, Pennsylvania
Sigma Delta Phi
College Players
Outdoor Club
Pan-Hellenic Council



PORTER, NANCY
Summerville, Pennsylvania
Theta Alpha Lambda
Outdoor Club
Art Club
Press Club
Camera Club
International Relations
A. C. E.
Intramurals

RADAKER, RANDALYN

Brookville, Pennsylvania
Sigma Sigma Sigma
A Cappella Choir
Girls' Chorus
Y. W. C. A.



RIPPY, EVELYN
436 Second Avenue, Johnsonburg, Pa.
Sigma Delta Phi
Intramurals
Geography Club
Outdoor Club

SHEA, ROBERT

Rimersburg, Pennsylvania
Phi Sigma Pi
Alpha Phi Alpha
Outdoor Club
Football
Wrestling
Camera Club
Intramurals



SMREKAR, MARY JANE
Venus, Pennsylvania
Sigma Delta Phi
Art Club
Geography Club
Intramurals

STEWART, GENE

Brookville, Pennsylvania
College Players
Press Club
Art Club
Camera Club
Y. M. C. A.
Intramurals



WHITESELL, CLARENCE
Grange, Pennsylvania
Zeta Eta Phi
College Players
Intramurals

Juniors Look To The Future

THE fall of 1938 saw us descend upon the campus as one hundred thirty eager, bewildered freshmen. We were greeted by a barrage of tests, glowing tales of the omniscience of Miss Sims, Dr. Chandler's little lectures, and freshmen initiation. In November we officially organized as the class of 1940 with Forest Carlson as president and Dr. Peirce as adviser. In December with the Christmas Dance we made our contribution to the social life of the college. The rest of the year passed quickly and uneventfully as we individually made places for ourselves in athletics, and in the music and the dramatic organizations of the college.

As sophomores we are more or less undistinguished. Once again we organized behind Carlson and Dr. Peirce, took our places in student ac-

tivities, sponsored a dance, occasionally studied, and again won all women's intramural tournaments.

The beginning of our junior year found us ready and willing to accept the responsibility of Mrs. Potter's library science courses, student teaching, and leadership in college activities. Now hardened to comments and conferences, we were still unable to face eight o'clock without flinching. In December we joined forces with the '41 class to sponsor the first annual Junior-Senior Prom. May will bring the departure of some of our most loyal members. To them we say much luck and success. As for the rest of us, we look forward to our last year with high hopes and ambitions.



Vice-President J. Mohney-
Secretary B. McLaughlin
President F. Carlson



Edna Ahlgrim	Jack Allshouse	Julius Angelo	Audrey Barnes	Jack Bixby	Lillian Bloomster	Claude Bole	Margaret Bouquin
Francis Bracken	Forest Carlson	Rosadell Chitester	Geraldine Detrie	Eleanor DeWald	Wesley Freeburg	Harold Fulton	Burdell Giles
Richard Hartman	Edna Hedrick	Donald Hess	Ruth Hinderer	Mary C. Honeck	James Imel	Janet James	Louise Jones
Helen Kissell	Stanley Klepfer	Stephen Kovalyck	Frank Malloy	Merton McKendree	Betty J. McLaughlin	Lorraine Miller	Frank Mohney



John
Mohny

Hanna
Rosenberg

Joe
Smith

Paige
Varner

Miriam
Moses

Norman
Sampson

Mary Alice
Smith

Walter
Wagner

Eloise
Ogden

Doris
Seiqworth

Stephen
Snyder

John
Wetzel

Roberta
Paisley

Andrew
Sevok

Unithea
Stack

Helen
Williams

Clyde
Pence

Dorothy
Shaffer

Margaret
Stewart

Harry
Wolfe

Helen
Rea

Eleanor
Schell

Jane
Stockdale

Robert
Rhodes

DeWayne
Slaugenhaupt

Robert
Stroupe

Sophomores Begin To Plan



V. Pres., W. Nadolen—Pres., B. Burns—Treas., J. Manners

WE as Freshmen were the usual type. A know-it-all look was marked on all faces, just to make sure that none of the upper classmen could detect the bewildered, quaky feeling that each of us had in the pit of our stomachs. But the camouflage didn't last long. How could it—with everyone generously friendly? After we went bravely through Freshmen Week, we were fit to take anything, and we did.

The week-ends at home became fewer and fewer. We cheered the football on to victories; we danced our way into the social affairs, bursting with pride over the success of the Freshmen Dance. In other words, we learned all the tricks of the trade our first year. We were all anxious to return the next fall to teach these tricks to the new freshmen.

Our sophomore year was just a little less boistrous. We added a little dignity which befits a sophomore; we understood better the values of an education. Although we have become a little more serious minded, we still maintained the spirit of our freshmen days. Who will ever forget our freshmen-sophomore days as personified by the intellect of a Mildred Baker or Lawrence Snitzer, the dancing feet of a Bliss Zener, and the good sportsmanship of a Jim Sibley? Weave these all together, and you have the half-way mark in the colorful panorama of the class of '43.

Mildred Baker
 Harriet Beals
 Adele Behringer
 Lucy Ann Beyer
 Betty Brenan
 Dorothy Brocius
 Helen Burnham



Beulah Burns
 James Buzard
 Edward Daugherty
 Margaret DeSantis
 Elsie Dinger
 Donald Douglass
 Jean Dressler



Ella Edwards
 Joyce Erickson
 Harry Etzel
 Mary Hamilton
 Helen Handy
 Betty Hartle
 Fay Henry



Dorothy Hilgartner
 Helen Hummel
 John Hunter
 Ruth Kapp
 Jean Kerr
 Rita Jane Kluck
 James Manners



Maxine McAnulty
 Paul McKinley
 Alan Metzger
 Magdalen Moeck
 Charles Myers
 Elizabeth Myers
 William Nadolen



Alfred Natzke
 Florence Nightingale
 Mary Ogorchock
 Jean O'Neill
 June Price
 Dale Rhodes
 Ruth Rimer



Kenneth Rossman
 Bonnie Shankle
 Betty Siar
 William Smathers
 Lawrence Snitzer
 Wayne Snyder
 William Solonchak



Eugene Stinard
 Jean Tait
 Jane Vail
 Anna Marie Verderose
 Jean Watson
 Marian Williams
 Clyde Wilson



Merle Wolcott
 William Worrell
 Elaine McCall



Freshmen Discover Themselves



Secretary M. Scott—Vice-President J. McLain
—President I. Fall

IMAGINE we were not different from other Freshmen classes, because we also had high ideals. Right away we had tests which destroyed our illusions and showed us we didn't know everything. All fear of college vanished when we met the Dean of Women at the Freshmen Tea. Yes, not a bad place; we might even enjoy it.

So that we might give the right impression we studied enthusiastically, but the work was cut short by Freshmen Week. Doing queer things which were assigned without rhyme or reason added zest to life. A series of unwarranted hair cuttings followed. What a bombshell! It swept Senate members, culprits, and victimized freshmen. Senate said, "Naughty, naughty, and don't do it again."

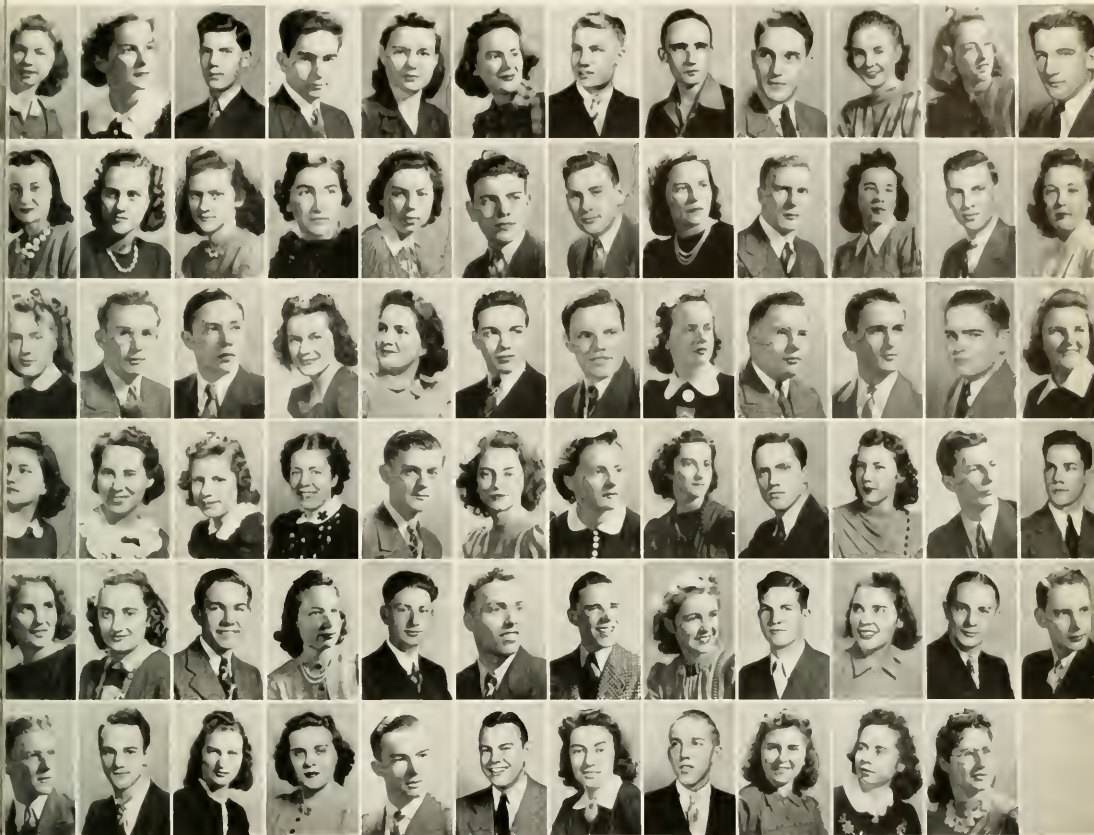
Fraternities and sororities looked us over and tried enticing some of us to their order. We were pledged and soon found out if fate smiled or frowned. Well, we are still alive in spite of strenuous initiations. Now we have to study-semester exams soon. The questions then in order were: "Shall we be here for another semester? When May comes shall we greet her from campus?"

With exams over we got a brief breathing spell. Then we set sail once more. The first storm encountered by our good ship was first semester grades. There were those who rejoiced, and those who—well!

We've come quite a way now. Shall we be wiser next year for this year's experiences? Maybe we'll even write about it next year.



W. Aaron	E. Allison	J. Arner	E. Barlett	W. Bates	D. Baumbach	D. Beightol	H. Berlin	M. Black	R. Bogart
N. Brindley	Y. Burns	A. Campbell	E. Carroll	K. Cervone	B. Cristy	M. Claypool	A. R. Cloud	M. A. Conklin	J. Conley



A. Connelly	N. Corbett	P. Curtis	D. Detrie	M. Dias	M. Dwyer	D. Elder	G. Fair	I. Fall	J. Faulk	P. Fiddler	M. Ford
R. Fowkes	F. George	L. George	A. Gerber	P. Goodwill	J. Harnish	W. Hultman	A. Hoovler	J. Jewart	M. Kapp	P. Kapp	V. Kendali
T. Kennedy	L. Kerr	C. Laughlin	L. Laughlin	G. Logan	R. McCandless	L. McCanna	K. McCaughan	W. McEntarfer	J. McLain	J. Martin	P. Miles
M. Moore	A. Neal	N. Neverla	E. Reaghart	G. Reed	J. Rhea	E. Rhcoes	I. Ross	M. Scott	M. Shick	L. Shorts	J. Sjar
D. Singer	I. Slater	J. Slike	M. Slike	B. Smith	J. Smith	C. Snyder	E. Spillane	J. Stewart	M. Stewart	M. Strickler	E. Stroupe
J. Thompson	J. Tile	P. Timlin	R. Trescher	J. Trunk	R. Wiberg	J. Williams	T. Willis	A. Wilson	J. Witherow	P. Wolf	

It is

by these—

clubs, activities—

we meet—come—

into closer contact—

with—our—

fellow students—

acquaintances bloom—

to friendships—

friendships to last

through college—

through—all life.

Here we learn—

to cultivate—those

gifts—which are our

heritage—here harbors

memories—of—the

girl—the boy—

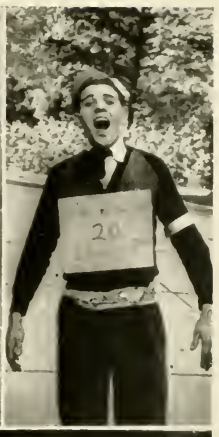
the time—to

take through

the

years.





CLARION

- C** that's for campus we'll never forget,
Each nook and cranny impresses every step.
- L** is for library where we study much,
References, magazines, dates and such.
- A** is for advisers whom we can't do without,
And about whom our praises we do loudly shout.
- R** is for romances—tried and true,
Of which our school has far from few.
- I** is for ingenuity—the Juniors claim,
They as Seniors hope to retain.
- O** is for One and Only—Our Own College,
The place where we have gained our knowledge.
- N** is for now, the time to leave,
Keep plugging along! don't stop to grieve.

PAN-HELLENIC COUNCIL



First row: Barnes, Moses.
Second row: Piper, DeWald, Miss Boyd.
Third row: Erickson, Davis, Brenan, Ellenberger, Brumberg, Price.

The Pan-Hellenic Council is the governmental body representing the five sororities found on the campus—Delta Sigma Epsilon, Lambda Chi Delta, Sigma Sigma Sigma, Sigma Delta Phi, and Theta Alpha Lambda. The council consists of one active and one silent member from each sorority.

The main purpose of the council is the regulation of "rushing" and the making and enforcing of rules necessary for the well being and smooth running of the sororities.

The Pan-Hellenic dinner held December 11, was especially successful because a number of the Alumnae were back to help celebrate the tenth anniversary of the council, which was organized in 1930.

Other social events include the annual Pan-Hellenic tea, which was held September 26, 1940, and the Pan-Hellenic dance, which was held March 15, 1940.

Officers for first semester:

President.....ELEANOR DEWALD
Secretary..... BONNIE DAVIS
Treasurer..... BELLE PIPER

Officers for second semester:

President.....AUDREY RUTH BARNES
Secretary.....FLORENCE BRUMBERG
Treasurer..... BELLE PIPER
Adviser..... MISS MARGARET BOYD

DELTA SIGMA EPSILON



First row: Peddock, Ogden.
 Second row: Burns, Watson, Honeck,
 Bouquin, Baker, Rea, Silves, Moses,
 DeWald, Hamilton, McLaughlin,
 Panton.
 Third row: Nightingale, Kaufman,
 Moyer, Dressler.

Officers:

President	ELEANOR DeWALD
Vice-President	MIRIAM MOSES
Rec. Secretary	BETTY JANE McLAUGHLIN
Corresponding Secretary	EDNA HAMILTON
Treasurer	ELIZABETH SILVES
Adviser	MISS HELEN BARTON

Founder's day, panhellenic tea, camping, rushing, bridal showers, panhellenic dance, parties, province meeting, Red Cross membership drive. These words and others hold pleasant memories of 1940-41 for Alpha Zeta of Delta Sigma Epsilon.

The calendar began with camp at Canadotha Lake in August, where fleeting days were filled with swimming, riding, eating, skating, boating, and dancing.

A weekend at Cook's Forest proved entirely different. A light snow added the thrill of hiking among the giant pines. About twelve alumnae accompanied the actives.

Rushing was climaxed by the party at the American hotel in Brookville. After Silence Week Delta Sigma learned they had gained six new pledges!—Ann Gerber, Helen Marie Handy, Arline Hoovler, Betty Rhodes, Dell Singer, and Margorie Stewart.

On March 8 and 9 two official delegates and eight other Alpha Zetas attended the province meeting in Philadelphia with Drexel and Temple as hostesses.

In October the Delta Sigs were saddened by the death of Eleanora Olson, an active member for the past three years, and Dorothy Haley Bonsall, who was graduated in 1936.

LAMBDA CHI DELTA



First row: Vail, Collins, Robbins, Verdere, Harvey.
Second row: Whitehill, Shumaker, Smith, Stewart, Gourley, Giles, Miss Greenawalt, Davis.
Third row: Stack, Byers, Kissell, Erickson, Hartle, Kapp, Stockdale.

One of the most active sororities on the campus, "The Lambda Chi Delta," is celebrating its tenth anniversary of progress with twenty-five active members.

The annual rush dinner was held in the form of a nautical party. The rushing efforts were well rewarded by the pledging and later initiating of the following girls: Jane Conley, Jeanne Rhea, Kay McCaughan, Ruth Fowkes, Lorraine Laughlin, and Emma Lou Spillane.

Social functions of the year included a week-end camping at Cook Forest in the fall and again in February, two roller skating parties, and parties at the homes of Mrs. Samuel Wilhelm, Mrs. Wayne Magee, and Mrs. Wid Shreffler. A major event in the fall was the Halloween party at which the Lambda Chi's entertained all the other sororities. In the spring a party was given for the patronesses.

Two projects of which the Lambda Chi's are proud are the sorority paper, which is published monthly under the editorship of Marylou Gourley, and the Lambda Chi Delta loan fund. The annual reunion of alumnae and actives will be held in August at Eaglehurst Beach in Erie.

Officers:

- President PAULINE SHUMAKER
- Vice-President MARYLOU GOURLEY
- Secretary BETTY ROBBINS
- Treasurer UNITHEA STACK
- Adviser MISS ANN GREENAWALT

SIGMA DELTA PHI



First row: Beals, Miss Nair, Siar, Henry, Shaffer, McCall, Hoosey Ellenberger, Miller.
Second row: McKee, Williams, Brown, Rippy, Hess, Piper, Jones.

The Officers:

President	LORRAINE MILLER
Vice-President	RUBY ELLENBERGER
Secretary	ELAINE McCALL
Treasurer	DOROTHY SHAFFER
Adviser	MISS BERTHA NAIR

The tenth anniversary of the Sigma Delta Phi's was celebrated this year in connection with the patriotic rush party which was held in the Anderson Hotel. Seven girls were initiated into the sorority: Margaret Boal, Velma Burns, Elsie Dinger, Martha Kendall, Virginia Kendall, Mary Jane Smrekar, and Juanita Witherow. At the rush party Sue McKee announced her prospective marriage to Earl Bonnett of Rimersburg which occurred during the Thanksgiving Holidays.

During the year the girls redecorated their room. Their social activities included several theater parties, a party at Louise Hess's, and several parties at the home of their adviser, Miss Nair. They also spent a week-end at Cook Forest. The girls are looking forward to spending some time camping this summer.

The social service work included preparing a dinner for a needy family and collecting magazines for those who couldn't afford to buy them.

SIGMA SIGMA SIGMA



First row: Seigworth, Burnham, Bren-
en, Eisaman, Barnes, Barr, Radaker,
Jones.
Second row: Clinger, Lehner, Brosius,
Paisley, Ahlgrim, Schell, Kerr.

Sigma Sigma Sigma is a national education sorority. It was the first national education sorority founded in the United States. Alpha Pi chapter was installed on the Clarion campus on April 27, 1935.

On November 1, seven girls were initiated: Edna Ahlgrim, Helen Burnham, Bernice Clinger, Ruth Eleanor Eisaman, Jean Kerr, Randalyn Radaker, and Doris Seigworth. Afterwards a party was held at the home of the adviser, Miss Gamble.

The week-end of November the ninth brought to the campus two national officers, Mrs. L. T. Whitman from Algonac, Michigan, and Miss Emma Sloan from Buffalo, New York, for the triennial national inspection.

The annual rush party was held November 21 at the Eastern Star Rooms as a "Backwards" party. As the result of this party Mary Kay Banner, Mary Elizabeth Dias, and Audene Neal were pledged.

At Christmas time the Tri-Sigmas packed a basket with food stuffs for a needy family in Clarion. With the close of the school year, the Tri-Sigmas are planning their annual summer camp.

Officers:

President AUDREY RUTH BARNES
Vice-President RUTH BARR
Recording Secretary RUTH LEHNER
Corresponding Secretary BETTY BRENNAN
Treasurer ROMAINE JONES
Sentinel ELEANOR SCHELL
Adviser MISS MILDRED GAMBLE

THETA ALPHA LAMBDA



First row: Brumberg, Miss Owens, Price, Shaw, Williams, Henry.
 Second row: Hagerty, Trimble, Ogorchock, Brosius, Porter.

Officers for the First Semester:

President	MARIAN WILLIAMS
Vice-President	CLARA TRIMBLE
Secretary	MARY OGORCHOCK
Treasurer	BETTY HENRY

Officers for the Second Semester:

President	FLORENCE BRUMBERG
Vice-President	BETTY HENRY
Recording Secretary.....	JUNE PRICE
Corresponding Secretary ..	MARIAN WILLIAMS
Treasurer	MARY OGORCHOCK
Adviser	MISS FANNIE OWENS

This sorority was organized in 1933, and since that time has been one of the most active sororities on the Clarion Campus. With all of the girls co-operating and working so well together much good work has been accomplished. This year was started off by an early morning hike and breakfast down by the river.

The Thetas feel very proud of their new room. The woodwork and walls have been painted, the furniture re-upholstered, and all finishing touches have been applied.

For many years the members have enjoyed the sponsorship of Miss Rena Carlson. Because of her resignation, Miss Owens, the College nurse, was chosen as the new adviser. The girls were much pleased to give their first party in their newly remodeled room, in honor of Miss Owens.

The annual rush party was held at the Coffe Shoppe on November 20, 1940, in the form of a "Conscription Party", followed by a theatre party at the Garby. The group afterwards pledged and later initiated the following girls: Lucy Ann Beyer, Dorothy Brocious, Nancy Corbett, Jeanne Faulk, Peggy DeSantis.

INTER-FRATERNITY COUNCIL



Bratkovich, Abercrombie, Mr. Kuhner, Mooney, Andreo, Klepfer, McKendree.

The Inter-Fraternity Council began its third year of operation at the beginning of the 1940-41 school year.

This council serves the purpose of promoting cooperation and a feeling of good fellowship among the three fraternities of the campus. It controls the pledging of new fraternity members and has charge of the annual inter-fraternity dance.

The council consist of six delegates, (two from each fraternity), and a faculty adviser. By close cooperation on the part of the members of the council, much friction heretofore experienced among the three fraternities has been relieved. Through its commendable work the Inter-Fraternity Council has become one of the outstanding permanent organizations of the campus.

Officers:

- President JOHN MOONEY
- Secretary RAY ABERCROMBIE
- Adviser MR. CLARENCE KUHNER

ALPHA PHI ALPHA



First row: Mohney, Klepfer, Hartman, Newland, Mohney, Geist, Hess, Wolcott.
Second row: Meyers, Shea, Snyder, Paup, Mr. Manson, McKendree, Slaugenhaupt, Snitzer, Etzel, Wetzel, Jewell, Mr. Kuhner.

Officers:

President	EDWARD NEWLAND
Vice-President	JOHN MOHNEY
Recording Secretary.....	RICHARD HARTMAN
Corresponding Secretary.....	STANLEY KLEPFER
Treasurer	FRANK MOHNEY
Advisers.....	MR. KUHNER, MR. MANSON, MR. BECKER, DR. CORDIER

Alpha Phi Alpha launched into its second decade of continuous activity with a series of informal parties. Early in the year work was begun on a new Phi room in Founders Hall. This room completed early in December was the first fraternity room on the campus. Besides decorating the new room, the fraternity purchased jackets which the majority of the members are now wearing daily.

The annual rush party was held in Harvey Gymnasium in November, and for one night, as it does each year, the gymnasium became "Cafe Alpha Phi Alpha."

Informal initiation of pledges took place during a week end trip to Camp Coffman. Plans are now in progress for the DuBois banquet, which is held each May, and for a trip the last week in May. As usual, plans are being made for the annual summer camp on Lake Erie.

ALPHA GAMMA PHI



First row: Sevok, McKenzie, Dr. Peirce, Nadolen, Bole, Andreo, Kovalyak, Natzke, McDonald, Rodgers, Mr. Hart.

Second row: Trunk, Buzard, Solonchak, Zener, Worrell, Bratkovich, Stroupe, Pence.

The oldest fraternity on the campus, "The Alpha Gamma Phi", is celebrating its eleventh year of progress with thirty-four active members.

Mr. Hart, the head of the College musical department, was formally taken into the fraternity September 20, 1940. His entrance is a great asset to the fraternity. To foster greater interest in the fraternity, Mr. Hart composed a schedule of social and athletic games which continued throughout the school year.

The social functions of the year included a weiner roast to which dates were taken, an ice cream social, a rush party, a Christmas party at Mr. Hoyt's residence, an Easter party, an interfraternity dance, and a banquet, which brought a grand climax to the year's activities.

Officers for the First Semester:

- President ALBERT ANDREO
- Vice President..... CLAUDE BOLE
- Secretary STEPHEN KOVALYAK
- Treasurer KENNETH RODGERS
- Historian ROBERT MCKENZIE

Officers for the Second Semester:

- President CLAUDE BOLE
- Vice-President ANDREW SEVOK
- Custodian WILLIAM BRATKOVICH
- Treasurer KENNETH RODGERS
- Secretary CLYDE PENCE
- Advisers . DR. D. D. PEIRCE, MR. GILBERT HOYT,
MR. WALTER HART

PHI SIGMA PI



Jewell, Hess, Mr. Manson, Hughey,
Dr. Cordier, Thurman, Dr. Peirce,
Hartman.

Officers:

President ROBERT JEWELL
Vice-President JOHN HUGHEY
Secretary DONALD HESS
Treasurer RICHARD HARTMAN
Cor. Secretary LAWRENCE S. THURMAN

Phi Sigma Pi is a national, honorary, educational fraternity, admittance to which is governed by superior scholarship standing plus a professional interest in education. The fraternity has been established at eighteen other colleges. Lambda Chapter here at Clarion was established in 1930.

January 13, 1941, fourteen new members, William Bratkovich, Bert Hover, Albert Andreo, William Shumaker, Norman Sampson, Dale Rhodes, Robert Rhodes, Roland Sykes, James Manners, Robert Shea, Harold Fulton, Merle Wolcott, De Wayne Slaughaupt, and Wayne Snyder were initiated into the Lambda Chapter.

This year's activities included monthly business and professional meetings. The chapter was fortunate in receiving several prominent speakers, including the fraternity's national president, C. B. Wilson of State Teachers College, California, Pennsylvania, to speak at the meetings.

The pre-Christmas Banquet was held December 18 in Becht Hall. The Founder's Day Banquet was held in May with several other chapters in this vicinity.

ZETA ETA PHI



First row: Imel, Hunter, Whitesell, Allshouse, Abercrombie, Hover, McKinley, Mooney, Angelo, Reinsel, Fulton.

Second row: Rossman, Stinard, Smathers, Baughman, Myers, Traister, Wolfe, Varner, Metzgar, Ferguson.

The fall of 1940 saw the Zeta Eta Phi fraternity celebrating the beginning of its fourth year. At the Home-Coming game the fraternity welcomed the Alumni by the means of a large banner in front of Seminary Hall.

The annual rush party was held at Metzgar's Camp at Cook Forest. Pledging followed, and the following men were honored by the red and white pledge pin: Harold Berlin; James Siar; Merle Call; William Aaron; Lawrence Kerr; Charles Laughlin; Joseph Jewart and Donald Wyncoop. The formal initiation was held on December 16, 1940, in Science Hall.

During the course of the past year the fraternity procured a room in Science Hall in which their meetings and minor social events were held. The social calendar of the Zeta's was dotted with numerous parties, picnics, and of course the big social event of the year, the Fraternity Dance. The fraternity is looking forward to an enjoyable camping trip to Lake Chautauqua this summer.

Officers:

President	RAY ABERCROMBIE
Vice-President	JOHN MOONEY
Treasurer	JULIUS ANGELO
Secretary	CLARENCE WHITESSELL
Sergeant of Arms	JOHN HUNTER
Adviser	MR. FRANK CAMPBELL

Autographs

PI GAMMA MU



First row: Dr. Cordier, Shumaker, Sykes, McLaughlin, Thurman, Mr. Kuhner, Miss Carlson, Kaufman.
Second row: Sheridan, DeWald, Jewell, Moses, Stack, Love.

To send out from our colleges and universities young men and women imbued with social idealism, trained in scientific thought, and encouraged to help others to be scientific in thought on all social questions—this is the purpose of Pi Gamma Mu, national Social Honor Society.

Pennsylvania Iota chapter of Pi Gamma Mu was organized at Clarion State Teachers College May 18, 1930, with twenty-two charter members. Since then the local chapter has grown to include approximately one hundred members. To be eligible one must have at least twenty hours in the field of social studies and an average of B. In the fall five new members were initiated: Albert Andreo, William Bratkovich, Mary Kay Banner, Ruth Eisaman, and Merle Wisser.

In the past Pi Gamma Mu has been active through International Relations Club. This year, International Relations Club being organized independently, Pi Gamma Mu decided to hold its own regular meetings. The topics of discussion were based on the teaching of social studies.

Officers:

PresidentLAWRENCE THURMAN
Vice-PresidentROLAND SYKES
Secretary-Treasurer..... BETTY McLAUGHLIN
AdviserDR. R. W. CORDIER

INTERNATIONAL RELATIONS CLUB



First row: Dr. Cordier, DeWald, Ahlgrim, Mr. Kuhner, Love, Barnes, Moses, Klepfer, Shumaker, Thurman, Barr.

Second row: Kaufman, Rea, Hess, Eisaman, McLaughlin, Shaffer, Brennan, Banner, Tile, Siar.

Officers:

President AUDREY RUTH BARNES
Vice-President ELEANOR DeWALD
Sec.-Treas. BETTY JANE McLAUGHLIN
Sergeant-at-arms STANLEY KLEPFER
Program Chairman PAULINE SHUMAKER
Adviser DR. R. W. CORDIER

The International Relations Club was organized February 16, 1937, by Pi Gamma Mu Social Science Fraternity, to make it possible for those actively interested in the field of the social sciences to belong to an organization which meets to study and discuss social trends and international affairs. This year International Relations Club was reorganized and became a separate organization independent of Pi Gamma Mu.

Regular bi-monthly meetings consisting of interesting panel discussions, informative lectures, and heated debates were held. A number of social events were enjoyed this year which included a weiner roast and Christmas party. In March the club sponsored a chapel program at which Modern History Films were shown.

For Them, A Taste of Good Government

STUDENT SENATE

The Student Senate is the governing body which represents the students of the College. It is composed of twelve members who are elected annually by the students and includes three representatives from the dormitory girls, three from the dormitory men, three from the women day students, and three from the men day students. From these the entire student body elects the officers.

The purpose of the Student Senate is to promote student responsibility, increase student-faculty cooperation, and enrich college life. The Senate sent representatives to conferences of student governing bodies of other colleges and universities held at Indiana State Teachers College and at Pennsylvania State College.

Among the various duties performed by the Senate are the budgeting of the Student Co-operative Fund, the drawing up and enforcing of Freshman Week rules, and the planning and superintending of the Parents Week-end program. Senate members are also appointed to work on committees with the faculty to plan the year's social calendar, the chapel programs, and to aid in the efficient management of the life of the students at Clarion. In the fall a committee of Senate members working with Miss Boyd compiled and edited the Student Handbook.

WOMEN'S STUDENT COUNCIL

The Women's Student Council is the governing body of Becht Hall. It is their duty to make the rules and regulations necessary to secure the best conduct in student life to enforce these rules and regulations; to foster among the girls living in Becht Hall greater individual responsibility, and to see that a high standard of life and culture is maintained.

The group is composed of nine members, two members elected from each of the four classes, and the president. The members of this year's Council are: Seniors, Clara Trimble, Betty Robbins; Juniors, Betty Jane McLaughlin, Eleanor DeWald, Lorraine Panton; Sophomores, Jean Watson, Jean Dressler; Freshmen, Phyllis Timlin, Dell Singer.

In October the Council sponsored a Halloween party for the dormitory girls, and in December held a formal tea in Becht Hall lounge for the commuting girls, the faculty members, and their wives.

The Women's Student Council was represented at the Tri-State Women's Intercollegiate Conference held at Grove City College on October 25 and 26, 1940.

STUDENT SENATE

First row: Stewart, Mooney, Sheridan,
Shumaker, Metzgar, Robbins.

Second row: Silves, Sykes, Abercrom-
bie, McLaughlin, Jewell.



WOMEN'S STUDENT COUNCIL

DeWald, Robbins, McLaughlin, Pan-
ton, Dressler, Trimble, Singer, Wat-
son, Dr. Peterson, Timlin.



OFFICERS

President WILLIAM SHERIDAN
Vice-President JOHN MOONEY
Secretary-Treasurer BETTY ROBBINS

OFFICERS

President ELEANOR DeWALD
Vice-President LORRAINE PANTON
Secretary-Treasurer BETTY ROBBINS
Senate Representatives
..... BETTY JANE McLAUGHLIN, BETTY ROBBINS
Adviser DR. ELLEN PETERSON

To Better Understand the World About Them

THE GEOGRAPHY CLUB

The Geography Club is composed of fifty members. The club is made up of those students who are interested in geography and wish to further their knowledge in that field in a practical way.

Several club periods of the first semester were given over to trips to various local plants and industries. Some of the places visited were a coal field just outside Clarion, where strip-mining was in progress; the local ice-cream plant; and the Clarion Republican newspaper office. These trips were planned by Harold Fulton, the chairman of the program committee.

Members of the club added a personal note to the program by describing trips which they had taken during the summer. Several interesting films from the College Film Library were shown at the meetings.

THE OUTDOOR CLUB

There is always a long waiting list of people who would like to belong to the Outdoor Club; the membership is limited to twenty. Activities consist of picnicking, tobogganing, skiing, skating, archery, target-shooting, mushball, and hiking. Rifles and fully equipped toboggans have been recently added to the club's outdoor equipment.

This year all the members have conscientiously entered into all phases of the club's programs, including the meetings held every other Tuesday morning, and the painting of the new club room. The members painted and are furnishing a club room situated on the third floor of Founders Hall. Despite the cold weather, many picnics were held outdoors, and several were held at the family camps of members.

The organization has had much success in past years, and it will continue to be popular as long as people love outdoor life.

GEOGRAPHY CLUB

First row: McCall, Witherow, Kendall, Smrekar, Hamilton, Schell, Vail.

Second row: Gray, Brosius, McCaughan, Burns, Kendall, Hillgartner, Chitester, Siar, Campbell, Hamilton, Rhodes, Kapp, Hinderer.

Third row: Brumberg, Haines, Dias, Glass, Barlett, Rosenberg, Dunkle, Hedrick, Dinger, Kapp, Rhodes.

Fourth row: Mr. Kuhner, Hartman, Slike, Slaughenaupt, Smith, Fulton, Stewart, Smith, Wagner, Hughey, Paup, Laughlin.



OUTDOOR CLUB

Metzgar, McKee, Stroupe, Nadolen, Abercrombie, Hess, Trimble, Piper, Mr. Manson, Brown, Hosey, Port, Jewell, Mooney.



OFFICERS

President MARY JANE SMERKAR
 Vice President DeWAYNE SLAUGHENHAUPT
 Secretary-Treasurer ROSADELL CHITESTER
 Adviser MR. CLARENCE KUHNER

OFFICERS

President JOHN MOONEY
 Secretary-Treasurer BELLE PIPER
 Adviser MR. HARRY H. MANSON

They Who Entertain and They Who Inform

COLLEGE PLAYERS

The College Players is one of the oldest organizations on the Clarion campus, having been founded in April, 1920. The Club this year consisted of fifty-two members who were interested in the various aspects of dramatics.

During the bi-monthly club meetings many interesting programs were presented by various members on costuming, stage designing, make-up, sound effects, and other phases of play production. At one meeting the College Players received new inspiration from the letters received from alumni members. All activities have been conducted in a manner that stimulated keen interest in dramatics and insured cooperation.

A one-act play, "Red Carnations," was presented and directed by club members during a club period. Eugene O'Neill's one-act play, "In the Zone," was presented by the College Players as a chapel program on November 21, 1940. A three-act play was presented for Parents Week-end in May. The annual College Players banquet was held on December 17, 1940, in the form of a Christmas party.

In January three College Players members, Lorraine Miller, Norman Sampson, and Lawrence Thurman, were initiated into Alpha Psi Omega, national honorary dramatic fraternity.

PRESS CLUB

The Press Club has as its chief function the editing of the "Clarion Call." The club also trains prospective teachers to direct school publications. *The editor and staff are chosen each year from the membership of the club. The "Call" ranks high among the college papers on its exchange list. It is also responsible for sending Clarion news to the papers in our college area.

The Press Club enjoys many social events. Outstanding events this year were the weiner roast at Wilson's woods in October, a party at the Coffee Shop in January, and a banquet in March.

COLLEGE PLAYERS

- First row: Black, Byers, Kapp, Logan, Cervone, Verderose, Wilson, Singer, Miles, Stewart.
- Second row: Smith, Banner, Hinderer, Miller, Baker, Robbins, Sampson, Markel, Trimble.
- Third row: Trescher, Port, McEntarfer, Hedrick, Paddock, Whitesell, Hummell, Erickson, Piper, Stack, Moyer, Goodwill, Whitehill, Gerber, Hoover, Rhea.
- Fourth row: Klepfer, Ford, Beightol, Manners, Curtis, Hartle, Bates, McKinley.



PRESS CLUB

- First row: Detrie, Ford, Wolcott, Allison, Douglass.
- Second row: Byers, Reaghart, Boal, Jones, Shaffer, DeWald, McLaughlin, Rea, Stack, Miss Nair, O'Neil, Trescher.
- Third row: Williams, Kennedy, Detrie, Behringer, Silves, Verderose, Giles, Robbins, Christy, Kaufman, Paisley, Honeck, Bouquin.
- Fourth row: McKinley, Metzger, Cadman, Thurman, Varner, Stewart.



Officers for the First Semester

- PresidentLORRAINE MILLER
- Vice-PresidentLAWRENCE THURMAN
- SecretaryBETTY ROBBINS
- TreasurerMILDRED BAKER
- AdviserMISS MARIE MARWICK

Officers for the Second Semester

- PresidentBETTY ROBBINS
- Vice-PresidentRUTH KNAPP
- SecretaryJOYCE ERICKSON
- TreasurerPAULINE MILES

Officers for the First Semester:

- PresidentELEANOR DeWALD
- Vice-PresidentEUGENE STEWART
- TreasurerDONALD DOUGLASS
- SecretaryANNA-MARIE VERDEROSE
- AdviserMISS BERTHA NAIR

Officers for the Second Semester:

- PresidentDONALD DOUGLASS
- Vice-PresidentEUGENE STEWART
- TreasurerTERESA KENNEDY
- SecretaryARLINE HOOVLER

*Editor of the "Clarion Call"...UNITHEA STACK

They Caught the Beauty of College Life

CAMERA CLUB

The Camera Club is the newest club on the campus. It has furnished much work and pleasure for its members. The club provides an opportunity for some to continue their hobby and to instruct members new to this field in the fundamentals of photography. The one great aim is to learn to take and make better pictures.

At the beginning of the year the Camera Club equipped a dark room on the third floor of Science Hall. Through the generosity of the Student Cooperative a fine enlarger was purchased. On January 9 a chapel program explaining color pictures was sponsored by the Camera Club. An exhibit of pictures made by the club was shown near the end of the year.

ART CLUB

Like all other artists, the members of the Art Club enjoy gaiety and a good meal, so one of the first events of their season was a dinner at Cook's Forest. Here in the midst of great natural beauty the Club started its yearly program.

During the first term much interest was shown in the crafts, which resulted in wood-burning, working in brass, and weaving Christmas cards which were sold at the Holiday Season and were so popular that the Club plans to have more ready for next year. Four exhibitions in Becht Hall contributed to the cultural life of the college and town.

At the beginning of the second term a jolly Get-Together was held by the Press and Art Clubs at the Coffee Shop. And after that came pictures, in the studio and out-of-doors, pictures in oil, water-colors, charcoal, and pastel. On Parent's Day the prizes were awarded and shortly thereafter the most popular picture was announced. The chapel program, when all the pictures were shown, was a happy event, and the annual banquet in Becht Hall was one of the pleasantest memories of the year.

Best of all, however, was the pleasure of working in the Art Club's beautiful new studio in Davis Hall. To be the first club to occupy this room was a privilege indeed.

CAMERA CLUB

First row: Baker, Hoovler, Handy, Love, Christy, Rimer, Myers.

Second row: Slaugenhaupt, Rosenberg, Rhodes, Stewart, Shoemaker, Snyder.

Third row: Hartman, Klepfer, Neuland, Mohney, Beightol, Hess, Curtis, Dr. Peirce, McEntarfer, Wolcott.



ART CLUB

First row: Snyder, George, Shick, Hinderer, Bouquin, George, Miller, Stewart.

Second row: Thompson, Tait, Miss Sandford, Spillane, Shoemaker, Allhouse, McCaughan, Mrs. Potter, Haines, Bracken.



Officers:

PresidentHANNA ROSENBERG
 Secretary HELEN MARIE HANDY
 TreasurerWAYNE SNYDER
 AdviserDR. D. D. PEIRCE

Officers:

President KATHERINE McCAUGHAN
 Vice-PresidentJEAN TAIT
 Secretary-TreasurerFRANCIS BRACKEN
 ReporterMAGDALEN MOCEK
 AdviserMISS HAZEL SANDFORD

To Be Good Mothers and Gracious Hostesses

ASSOCIATION CHILDHOOD EDUCATION

The Association for Childhood Education is a student branch of the National Association for Childhood Education. Its membership is composed of teachers and students interested in kindergarten, primary, or intermediate work.

During the year the club aims to gather and disseminate knowledge of the movement for the education of young children; to bring into active cooperation all childhood education interests, including parent education; to promote the progressive type of education in nursery school, kindergarten, and primary grades; and to raise the standard of professional training for the teachers.

These purposes were carried out through the regular meetings by interesting topics in the group. The club activities included the showing of moving pictures, interesting discussions, and a review of children's magazines. The programs also included a debate, a discussion of education laws, a demonstration of school projects, an address from an outside speaker, and films.

THE HOSTESS CLUB

The purpose of the Hostess Club is to teach young women how to invite and receive guests, how to preside at the table, and how to enjoy the amenities of social life. In fact, what it means to be a gracious hostess is the major thought of the club.

During the semester the Club, composed of thirty-seven members, sponsored a chapel program, had charge of the campus decorations at the Homecoming Dance, and also took charge of the check room at this dance. The club has had several parties. Among the subjects discussed at the various meetings were the following: Problems of Etiquette, Entertainment For All Types of Parties, Informal Everyday Situations, Conversational Topics, Demonstrations of Introductions, What To Do At a Tea, and How To Be a Good Hostess.

ASSOCIATION CHILDHOOD
EDUCATION

First row: Moyer, Panton, Hamilton,
Paddock, Baker, Silves, Seigworth,
Clinger, Haines, Byers, Whitehill,
Dunkle, Brosius.

Second row: Boal, Jones, Watson,
Stewart, Smith, Henry, Tait, Kluck.



HOSTESS CLUB

First row: Jones, Myers, George,
Black, George, Baumbach, Moore,
Brocius, Wolff, Conklin.

Second row: DeSantis, Goodwill,
Tait, Nightingale, Wilson, Logan,
Stewart, Gerber, Rimer, Dr. Peter-
son.

Third row: Singer, Stockdale, Kluck,
Watson, McAnulty, Corbett, Neal,
Faulk, Timlin, Miles, Slike, Rhea,
Phelan.



Officers:

President ELIZABETH SILVES
Vice-President DORIS SEIGWORTH
Recording Secretary LORRAINE PANTON
Correspondent Secretary GERALDINE DETRIE
Treasurer ROMAINE JONES
Club Adviser MISS BERTHA LEIFESTE

Officers:

President JEAN TAIT
Vice-President FLORENCE NIGHTINGALE
Secretary GLADYS LOGAN
Treasurer MARJORIE STEWART
Adviser DR. ELLEN PETERSON

Life At Clarion and Among the Romans

SEQUELLE STAFF

The story of this year's "Sequelle" began last spring, when the graduates of 1941 elected Pauline Shumaker editor and Robert Jewell business manager.

During the summer and early fall salesmen from engraving and printing companies continually visited us—eager to sell their services. The engraving contract was finally let to the Jahn-Ollier Engraving Company, Chicago, Illinois; the printing to the Pittsburgh Printing Company, Pittsburgh, Pennsylvania; and the photography to the Zamsky Studios, Philadelphia, Pennsylvania.

One of the first activities of the year was the appointment of the other members of the staff. Those chosen were the following members of the Senior Class: Ida Heller, Anna Moyer, Kathryn Whitehill, organizations; Eva Hagerty, Clara Trimble, women's athletics; John Mooney, Kenneth Rodgers, men's athletics; Opal Meley, Jean Shaw, art; Betty Henry, Roland Sykes, features; Reva Love, Edward Neuland, photography; Elizabeth Silves, William Shoemaker, literary editors; and William Bratkovitch, typist.

To Miss Nair, literary adviser, Professor Clarence Kuhner, business adviser, and the Camera Club we are sincerely grateful for their friendly interest and cooperation in the editing of this annual publication.

We earnestly desire that it meets with your approval, and that these pages will hold memories throughout the years.

THE CLASSICAL CLUB

The Classical Club, one of the newer clubs on the Campus, was organized last year by the Latin students. The principal objective of this club is to work out projects supplementing various activities of the Latin classes. Another purpose of the club is to vitalize the study of Latin and provide a rich background for the study of Roman life and civilization.

Last year the club worked out a program based upon Roman dress which was presented in the college chapel and also before several high schools in the Clarion service area. This year an enlarged program on Roman life was presented before a number of groups.

SEQUELE STAFF

First row: Shoemaker, Henry Rodgers,
Shumaker, Jewell, Mooney, Moyer.
Second row: Whitehill, Shaw, Sykes,
Neuland.



CLASSICAL CLUB

First row: Phelan, Kissel, Stockdale,
Miss Nair.
Second row: McKinley, Rea, DeWald,
Klepfer, McLaughlin.



Editor PAULINE SHUMAKER
Business Manager..... ROBERT JEWELL
Literary Adviser..... MISS BERTHA NAIR
Business Adviser..... MR. CLARENCE KUHNER

Officers:
President HELEN KISSELL
Vice-President ELEANOR DeWALD
Secretary-Treasurer JANE STOCKDALE
Adviser MISS BERTHA NAIR

Religion on the Campus, Church and the School

YOUNG WOMEN'S CHRISTIAN ASSOCIATION

It is the purpose of the Young Women's Christian Association to "unite in the desire to realize full and creative life through a growing knowledge of God . . . to have a part in making this life possible for all people and in this task to seek to understand Jesus and follow Him."

During the year the organization met each Wednesday evening to discuss problems which are vital to the youth of today. The meetings, which were planned and conducted by members of the "Y", included discussion meetings, song services, and candlelight services.

The organization united with the Young Men's Christian Association for a freshman reception and Christmas caroling. The association is trying to secure a piano in order that it may hold meetings in the "Y" parlor in Becht Hall. The group assisted the Clarion Civic Club in making "bundles for Britain."

YOUNG MEN'S CHRISTIAN ASSOCIATION

The Young Men's Christian Association is one of the religious organizations for young men on the campus. It is also vitally interested in the educational, physical, moral, and social development of the individual. Through discussions and fellowship of this group its members have striven to strengthen their faith in God and to uphold the ideals of Christian character.

At the beginning of the year, the organization met with the Young Women's Christian Association in a joint reception for the new students that they might become acquainted with the old members. Other activities enjoyed by the members were informal discussions of vital problems, the morning watch, vesper services, candlelight services, and talks by guest speakers.

Y. W. C. A.

First row: Miller, Panton, Baker, Miller, Barr, Moses, McLaughlin, Dr. Peterson, Hummell.

Second row: Kerr, DeWald, Singer, Robbins, Hoover, Kluck, Nightingale, Tait, Watson, Gerber, Timlin.



Y. M. C. A.

Mr. Becker, Myers, Claypool, Rhodes, Rhodes, Douglas, Sampson, Hess, McEntarfer, Klepfer.



Officers:

President MIRIAM MOSES
 Vice President and Worship Chairman
 BETTY JANE McLAUGHLIN
 Secretary-Treasurer MILDRED BAKER
 Corresponding Secretary JEAN TAIT
 World Fellowship Chairman LORRAINE MILLER
 Recreation Chairman RUTH BARR
 Adviser DR. ELLEN PETERSON

Officers:

President DONALD HESS
 Vice-President NORMAN SAMPSON
 Secretary-Treasurer ROBERT RHODES
 Adviser MR. FRED BECKER

Singing Sweet Songs, Both Old and New

GIRLS' CHORUS

The following are members of the girls' chorus:

First Sopranos

Mary K. Beabes
Betty Myers
Kathryn Cervone
Jean Dressler
Dorothy Shaffer
Isabelle Slater

Second Sopranos

Alice Lou Wilson
Betty Christy
Dorothy Baumbach
Bernice Miller
Vada Mae Brosius
Doris Seigworth
Fay Henry
Ruth Barr
Lorraine Panton
Edna Ahlgrim

Altos

Pauline Miles
Helen Burnham
Elsie Dinger
Helen Hummel
Helen Rea
Mary Kay Banner
Jean Kerr
Randalyn Radaker
Mary Jane Collins

A CAPPELLA

The A Cappella Choir, including the new members, is made up of forty-two choral singers. It is under the direction of Professor Walter L. Hart, the new musical supervisor on the Clarion campus.

The first program of the year was presented in the college chapel early in October. Several other programs have been given throughout the year in chapel and before various organizations in Clarion and its vicinity.

The annual Christmas program was presented in the college chapel, in the First Methodist Church, and in the Clarion High School. It was the Christmas cantata, "Christ Is Born" by Joseph M. Clokey.

A number of appearances were made in other nearby high schools. Included among these were St. Marys, Ridgway, Clarion-Limestone, Shippensville, Emlenton, St. Petersburg, and several others.

In addition to being a musical organization, the A Cappella Choir acts as a social organization to which any student having musical ability may belong. The social functions of the year have included a Christmas party at the home of Mr. Hart and a picnic at Cook Forest late in the spring.

GIRLS' CHORUS

- First row: Behringer, Brosius, Barr, Beabes, Mr. Hart, Banner, Kapp, Barnes, Rea.
- Second row: Hummell, O'Neil, Shaffer, Slater, Kissell, Christy, Erickson, Collins, Miles.
- Third row: Dinger, Ahlgrim, Radaker, Seigworth, Hartle, Gourley, Burnham, Kerr, Dressler.
- Fourth row: Ogden, Myers, Baumbach, Wilson, Davis, Pantan, Miller, Cervone, Price.



A CAPPELLA CHOIR

- First row: Price, Ogden, Beabes, Barr, Brosius, Behringer, Rea, Mr. Hart, Barnes, Kapp, Collins, Pantan, Davis.
- Second row: Gourley, Shaffer, Radaker, Banner, Kissell, Erickson, Hartle, Burnham, Kerr.
- Third row: Arner, Stroupe, Ahlgrim, Seigworth, Dressler, Klepfer, Meyers.
- Fourth row: Claypool, Curtis, Shoemaker, Rossman, Thompson, Naden.
- Fifth row: Bates, Manners, Brindley, Jewell, Fall, Willis, Tile.



Officers:

President MARY KAY BANNER
 Vice-President JEAN DRESSLER
 Librarian RANDALYN RADAKER
 Sec.-Treas. DORIS SEIGWORTH

Officers:

President BOB JEWELL
 Secretary-Treasurer BONNIE DAVIS
 Adviser WALTER HART

GIRLS' OCTET



OCTET

First row: Ogden, Kapp, Davis.
Second row: Erickson, Behringer, Kissell, Hartle, Barnes.

BOYS' QUARTET AND GIRLS' OCTET

The boys' quartet organized at the beginning of the school year consisted of three freshmen and one junior. The girls' octet has four sophomores.

During the year the two groups sang for civic groups, high school audiences, church organizations, college assemblies, and fraternity and sorority meetings. Because of frequent appearances each group became a valuable unit in the college life. The quartet and the octet are permanent organizations and are always prepared for any request.

BOYS' QUARTET

QUARTET

First row: Willis, Arner, Klepfer,
Bates.



NEWMAN CLUB

NEWMAN CLUB

First row: Phelan, Bouquin, Banner, Bratkovich, Zener, Slike, DeSantis, Verderose.

Second row: Smith, Honeck, McDonald, Clinger, Kennedy.

Third row: Daugherty, O'Neill, Ogorchock, Smith, Kerr.

Fourth row: Smith, Reinsel, Fater Fischer.

Fifth row: Slike, Neuland, Andreo, Angelo.

Sixth row: Carroll, Aeron.



The Newman Club is distinguished as a Catholic club of fellowship and culture. Its principles were laid down in October, 1893, by the Club's five founders, who are men well known and still living, Timothy L. Harrington, M.D.; James J. Walsh, M.D., K. C. St. G., Sc.D., LL.D., Litt.D.; Joseph Walsh, M.D; John J. Gilbride, M.D.; John J. Robrecht, M.D.; Reverend A. A. Fischer, pastor of the Immaculate Conception Church, is chaplain of the local organization.

The meetings are conducted by the students. The students themselves provide questions concerning which they are in doubt, and, if possible, answer the questions for one another. If they are not able to give definite information on a question, the answer is given by the Chaplain.

The major social event for the first semester was a Christmas party held in the parochial school gymnasium on December 13.

Officers:

- President REGINA PHELAN
- Vice-President EDWARD NEULAND
- Secretary MARY ALICE SMITH
- Treasurer ALBERT ANDREO
- Adviser REVEREND A. A. FISCHER

Sunny September days—

School sports begin—

The falling shadows—

of a crisp autumn eve—

The shrill blast of a whistle—

The sound of booted toe on leather—

Game day—Color of fall clothes and leaves—

Cheers—First down eight to go—Stirring band

music—The final whistle—Into the gym, the weather

is cold—The acrid odor of human bodies—

The thump of balls on hard wood floors—The

swish of nets—Noise from the crowd—The mat

is out—The crowd tenses—Two bodies sweat

and strain—A cheer rings out—



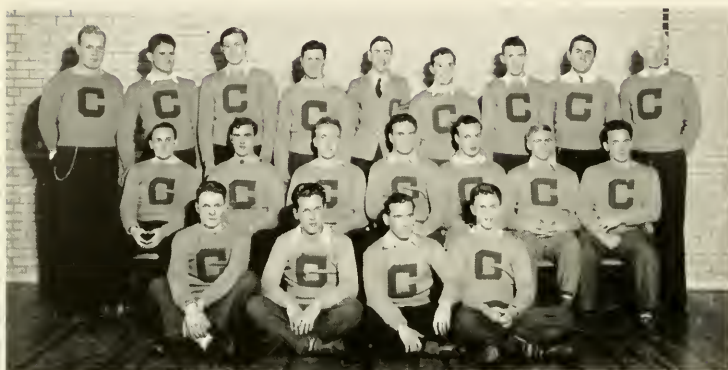


Win, Lose or Draw, Fight On!

Success Calls For Speed and Endurance



VARSITY "C" CLUB



VARSITY C

First row: Sibley, Solonchak, Sevok, McKenzie.

Second row: Rodgers, Buzard, Sheridan, Wolfe, Bole, Freeburg, Kovalyak.

Third row: Abercrombie, Wetzel, Mohney, Shoup, Mooney, Bratkovich, Imel, Pence, Jewell.

The Varsity "C" club is composed of lettermen from all varsity sports here at Clarion. It is not only one of the oldest men's organization on the campus, but is probably the most respected and envied of them all.

The club awarded a gold football or basketball to those juniors and seniors who have earned two letters in one sport and one in another. John Wetzel, Stephen Kovalak, Andrew Sevok, Harry Wolfe, Wesley Freeburg, Claude Bole, Clyde Pence, and Frank Mohney all received footballs.

The club's new members for 1940 are: Leo McDonald, Bliss Zenner, Bob Wiberg, Irwin Fall, Russell Bogart, Mervin Strickler, George Boschini, Bill Nadolen, and Manus Scott.

The club sponsored the Alumni Basketball game this year. They also sponsored a dance for the club's benefit.

Officers:

PresidentRAY ABERCROMBIE
Vice-PresidentBILL SHERIDAN
Secretary-TreasurerBILL BRATKOVICH
AdviserMR. WALDO TIPPIN



WALDO S. TIPPIN

As the name of Clarion has risen in the athletic world, from obscurity to district, state, and national recognition, the name of "Tippinmen" has risen with it. To Mr. Tippin goes the credit of building the athletic team which, during the past four years, have assumed their rightful place.

Under Mr. Tippin's direction this past year has been one of the most successful. Beginning with football, a rugged power machine swept to four victories in seven contests, losing the Pennsylvania State Teachers College Championship by two points.

Basketball took over in January and gave Clarionites one of the year's biggest and best surprises. An inexperienced five led by a handfull of freshmen rolled to win after win, and gave the old school a bright view toward the future.

February brought the end of basketball and new impetus to intercollegiate wrestling when Mr. Tippin announced that mat sport has been made a varsity sport. During the past two years wrestling has assumed a definite place as one of our most popular sports.

Spring with tennis completed the Clarion varsity sports picture. Six matches marked the tennis program.

Throughout the year Mr. Tippin directed a program of intra-mural sports featuring, volley-

It Pays To Be Alert

ball, basketball, ping-pong, handball, wrestling, badminton, horseshoe, and softball, in which practically every college student participated.

For the fine spirit of cooperation and good sportsmanship that is displayed by the girls, much credit should be given to Miss Helen M. Barton, who is director of women's athletics on our campus.

A threefold purpose is found in the physical education program for women. It helps the girls to become better acquainted with sports; it broadens their scope and affords them greater opportunity for appreciation of physical activity. It promotes opportunities for the broadening of social attitudes through recreational experiences with fellow students. It also helps the students to fill positions which demand coaching knowledge of sports and teaching ability in rhythmic work of the elementary grades.

Miss Barton's guidance and administration have at all times been controlling factors in maintaining amicable athletic regulations.

HELEN M. BARTON





First row: Fall, Wetzel, Strickler, Kovalyak, A. Jercrombie, Sevok, Sheridan, O'Brien, Wolfe, Bogart, Scott, Sibley, Boschini.
 Second row: Shoup, Mohney, Pence, Wiberg, Nadolen, Jewett, Zener, Shea, Jewell, Bole, Bratkovich, Buzard.
 Third row: Mr. Tippin, Martin, Worrell, McDonald, Stewart, Angelo, McCanna, Ford, Solonchak, Ferguson, Meyers.

GOLDEN EAGLES

Season summary

Grove City	6	C.S.T.C.	13
Alliance	0	C.S.T.C.	45
Thiel	12	C.S.T.C.	0
Edinboro	0	C.S.T.C.	35
California	6	C.S.T.C.	25
Indiana	14	C.S.T.C.	12
Ithaca	39	C.S.T.C.	13
Total		77	
	77		143

FOOTBALL SEASON

The 1940 football season ranks as one of the best football seasons in the history of Clarion State Teachers College. The season summary shows the team winning four and losing three games.

The team traveled to Grove City to open the season. Clyde Pence blocked a punt in the second period and recovered for the first touchdown of the season. In the third period Bill Sheridan ran off tackle for another touchdown, and then kicked the extra point. Clarion won 13 to 6.

On October 5 the boys traveled to Cambridge Springs to defeat Alliance College 45 to 0. Fullback Joe O'Brien paced the Clarion attack, scoring three of the Eagles' seven touchdowns. Bole added two, and Leo McDoland and Andy Sevok had one apiece. Steve Kovalyak scored all three of the Eagles' extra points from placement.

Opening at home on October 12 with Thiel College the team had its first set back, with the men from Greenville winning 12 to 0.

On October 19 the Eagles came back strong to defeat Edinboro State Teachers College at Edinboro 35 to 0. George Boschini opened the scoring when he ran 45 yards for the Eagles' first tally; and in the second period Bogart turned in the longest run of the game, when he reeled off 80 yards for a touchdown. Boschini and Bogart both scored again later in the game, and O'Brien added the odd tally. The extra points were perfect with Boschini scoring two, Kovalyak, Jewell, and Sibley one apiece.

On October 26 the Eagles played California State Teachers College at home before a large Homecoming crowd and won 25 to 6. Touchdowns were scored by Russ Bogart, who ran 19 yards for the Eagles' first score; two by O'Brien and the last tally by Andy Sevok in the closing minutes of the game. Kovalyak kicked the only extra point of the game.

Indiana State Teachers College invaded Clarion's grid-iron on November 2 to give Clarion its second set back 12 to 14. The Eagles scored first, recovering an Indiana fumble on the invaders' 13 yard line; from here Sheridan chucked a pass to Irwin Fall on the goal line for the score. In the second frame Strickler intercepted an Indiana pass. Boschini found a hole in the center of the Indiana line and ran 40 yards to score. Indiana came back and scored in the third period and then in the last seconds of the game to win.

The last game saw the Eagles going out of state to be beaten by Ithaca College at Ithaca, New York by the score of 13 to 39. Manus Scott, doing a wonderful job of passing, entered into the scoring when he passed 29 yards to O'Brien for the first score. Then in the last quarter Scott passed to Nadolen for a gain of 45 yards and a touchdown. Kovalyak kicked the extra point.

FOOTBALL LETTERMEN — 1941

RAYMOND ABERCROMBIE—Senior tackle—Ray has completed his fourth years as varsity tackle. When next fall rolls around, there will be a big hole to fill at left tackle.

RUSSELL BOGART—Rus returned to Clarion after a year's absence. He will be long remembered for his long runs in the Edinboro game.

CLAUDE BOLE—Buck did not see much action this year because of a broken finger. We are expecting great things from him next year.

GEORGE BOSCHINI—George came to us heralded as a great high school halfback. He more than lived up to his advance build-up.

WILLIAM BRATKOVICH—Senior center—Bill will be sorely missed next fall. He had the honor of making All State Teachers College Center.

IRWIN FALL—A freshmen end who hails from Erie and turned out to be a starting end. He enjoys hitting the opponent hard and was an outstanding defensive end.

WESLEY FREEBERG—Wes, the blond Swede from Erie, will be remembered by many an opponent for his hard blocks and vicious tackles.

ROBERT JEWELL—Bob is another senior who is finishing his fourth year on the squad. He was always ready when needed.

STEVE KOVALYAK—Steve was converted from a halfback to a guard and was a great success. He should go places next year.

FRANK MOHNEY—Hank was changed from the blocking job to tackle, and came through with flying colors. Hank has another year to play.

LEO McDONALD—After working four years Rabbit made his letter. Who will not forget that touch-down at Alliance?

WILLIAM NADOLEN—A sophomore who played right end. Bill should have a good record next year as in the past.

JOE O BRIEN—Joe is finishing his career at C.S.T.C. One of the best fullbacks in the districts, Joe will be hard to replace next fall.

CLYDE PENCE—Another of those big tackles who helped to win many a game with his stellar work. Clyde will be back to give his all again next fall.

MANUS SCOTT—A freshmen halfback who got the nickname of Clipper from the squad. Manus will help the Eagles in the future.

ANDREW SEVOK—Andy is that little halfback from Youngsville. He brought the crowd to its feet many a time with his long runs.

WILLIAM SHERIDAN—Captain Bill will long be remembered at C.S.T.C. Although hampered by injuries this season, he came back in time to help his team through many a tough spot.

GEORGE SHOUP—Another halfback who was converted into a guard. He was always ready to give all he had. George is a senior.

JAMES SIBLEY—Jim is an end who came through in grand style. As he is only a sophomore, he will be around again next year.

MERVIN STRICKLER—A freshmen center who came to us from Harrisburg by way of Summerville. He should be very helpful to the boys next year.

JOHN WETZEL—Big Muggs the regular right tackle will be remembered by many an opponent. He was usually the fifth man in the opponents' field.

ROBERT WIBERG—Bob came to us from Altoona. He played right guard. We expect great things from him next year.

HARRY WOLFE—Hat is one of those fellows that play any position equally well. Harry will be back again next year for another year of service.

BLISS ZENER—Bliss played both end and halfback on the reserves. He was well liked by the fellows.



First row: McKenzie, Siar, Willis, Mr. Tippin, Freeberg, Call, Ford, Solonchak.
Second row: Sibley, Imel, Brindley, Wiberg, McCanna, Wetzel, Manners.

BASKETBALL LETTERMEN—1941

FREEBURG, WESLEY—This was "Wes's" third year on the squad. He was one of the high scorers of the year. As forward he often outsmarted his opponent.

IMEL, JAMES—Jim is a senior and has been on the squad for four years. Playing at guard this year he turned in a good year on the defense.

MANNERS, JAMES—Jim is a sophomore. Playing in guard position he has knocked down many would be baskets.

McKENZIE, ROBERT—Bob turned in his third year on the squad. Bob filled a guard position and is a dead shot when he is set. Bob was elected 1941 Captain.

RODGERS, KENNETH—Kenny, although the shortest man on the squad, filled a forward position. He also turned in a good year on the defense.

SIAR, JAMES—Jim is one of the freshmen on the squad. He filled a guard position and often thrilled the crowd when he let a long shot go that went through the basket.

SIBLEY, JAMES—This was Sibley's second year on the squad. Jim has played every position on the team, but he has best filled the forward position.

WIBERG, ROBERT—Bob was the big center who tipped in the baskets which the other fellows threw wild. He is a freshmen, and we expect great things from him next year.

WILLIS, THEODORE—Ted was Freeburg's mate at forward. He is a freshmen and has turned in the most individual points of the squad.

WETZEL, JOHN—Muggs filled a center position and also played some at guard. Although he didn't make many points, he was always in the fighting.

METZGER, ALAN—Al was the squad manager who held the spirit of the Eagles on a high level through out the year.

BASKETBALL

Season summary

C.S.T.C.	34	Thiel	40
C.S.T.C.	59	Alliance	36
C.S.T.C.	41	Grove City	45
C.S.T.C.	52	Penn	40
C.S.T.C.	25	Slippery Rock	45
C.S.T.C.	48	California	28
C.S.T.C.	32	Indiana	40
C.S.T.C.	36	California	55
C.S.T.C.	33	Edinboro	43
C.S.T.C.	42	Slippery Rock	46
C.S.T.C.	39	Thiel	46
C.T.S.C.	33	Indiana	31
C.S.T.C.	13	Grove City	46
C.S.T.C.	36	Edinboro	51
C.S.T.C.	57	Alliance	53
<hr/>		<hr/>	
Total	580		645

Individual Scoring

Name	F.G.	F.P.	T.P.
Willis	54	29	137
Freeburg	39	37	115
Siar	30	11	71
Imel	20	10	50
McKenzie	12	14	38
Wiberg	14	10	38
Sibley	16	4	36
Wetzel	12	8	32
Rodgers	11	3	25
McKendree	11	1	23
Manners	4	2	10
Ford	0	2	2
McCanna	1	0	2
Call	0	1	1

Autographs

Varsity Football Isn't Everything

WRESTLING

The newest varsity sport at Clarion, wrestling has turned out to be most successful. Fans who watched the matches enjoyed them to the utmost and have visions of many more successful seasons. Although comparatively new as a varsity sport, wrestling has captured the whole-hearted interest of all who have witnessed any of the matches.

Last year Clarion entered four wrestlers in the State meet at Lock Haven, two of them being nosed out by a narrow margin in the finals. This year the entire squad entered the tournament. In the meet the boys made their presence greatly felt in that they walked off with a fourth place in the state as a team and captured one first place, one second and two thirds individually. Willie Worrell and Wayne Snyder garnered a third place apiece. Steve Kovalyak lost a very tough bout to a veteran from Kutztown, but emerged with a second place medal. In the final event, Bobby Shea played Jack the Giant Killer by defeating the touted former state champ, the gigantic Frank Geno. Shea the underdog of the bout took his man much as a tug-boat would take a huge ocean liner into port and emerged with a state championship.

The team was ably coached by Steve Kovalyak and fans have high hopes that in the future Clarion "grapplers" will uphold the honor of the school as they have in the past two years.

The members of the 1940-41 squad were Wayne Snyder 121 lb. class, John Paul Tile 128

lb. class, Harold Ferguson 136 lb. class, Clair Reinsel 145 lb. class, Steve Kovalyak and Dick McCandless 155 lb. class, Delbert Elder 165 lb. class, Willie Worrell 175 lb. class, and Bobby Shea in the unlimited class.

TENNIS

The 1940 tennis team had a rather poor season, as the Golden Eagle's netmen emerged the victor in but one match out of seven; but after considering its strenuous activities one may term the season "a success."

THE TENNIS SQUAD

*Freeburg, Wesley—"Stubie's" stamina and will to win have been very valuable to us this season.

Imel, James—"Slippery", the team's number 1 man, is an asset that will be relied upon heavily next fall.

*McKenzie, Robert—One of our most steady players, "Bob" will also be back next year.

Mooney, John—"Rope" has been playing tennis for Clarion for many years, and he is determined that some day, somehow, he will win a match.

*Natzke, Alfred—A freshmen letterman, "Al" has three more years of tennis to which he can look forward.

Joseph O'Brien—"Big Joe" was drafted to the team this year and turned out to be a very handy man with a racquet.

*Lettermen

WRESTLING

Abercrombie, Shea, Worrell, Kovalyak,
Reinsel, Ferguson, Snyder, Metzger.



TENNIS

Mooney, Nadolen, Imel, Natzke.



WOMEN'S ATHLETIC COUNCIL



First row: Hosey, DeWald, Baker, Chitester, Burns, Phelan.

Second row: Collins, Williams, Stack, Moses, Ahlgrim, Barnes, Watson, Seigworth, Jones, Trimble.

The Women's Athletic Council consists of girls who have taken part in the intramural sports and have met the requirements of the Council.

A program of intramural sports is set up each year by the council. It is an interclass schedule, and some of the sports are speedball, hockey, basketball, volleyball, mushball, ping-pong, and tennis. The teams are coached, and the games are refereed by members of the Women's Athletic Council.

An honorary varsity is chosen at the end of each tournament. A girl who attends practice regularly, shows playing ability, a cooperative spirit, and good sportsmanship is eligible for a position on the varsity. Letters are awarded at the close of the year to members of the council who have met the standards and new members are taken in by the point system.

The council had a hike and weiner roast the first semester and a picnic in the spring.

Officers:

President ELEANOR DeWALD

Secretary MARYLOU GOURLEY

Adviser MISS HELEN BARTON

H O C K E Y



The Sophomore Hockey team was composed of the following:

Helen Burnham
Mary Ogorchock
Marian Williams
Lucy Ann Beyer
Jean Dressler
Jean Watson
Mildred Baker
Rita Jane Kluck
Peggy DeSantis

Peggy DeSantis was elected captain and Mary Ogorchock manager.

In spite of the fact that the weather kept them from having as many practises as they were allowed; they played a commendable game against the juniors. This game was played in the snow. Many times no one knew where the ball was, but that fact didn't spoil the fun. It only served to make them play a little harder. Helen Burnham succeeded in getting the ball across the goal twice, and Mary Ogorchock was the other scorer, making at the end of the game—Sophomores 3, Juniors 0. In their game with the freshmen, however, they were given a surprise. This game was played in the mud, which did not keep the freshmen from making points, for they won the game.

S P E E D B A L L



Sophomore Speed Ball was coached by Mary Jane Collins. The following girls reported to practices and were chosen for the class team:

Mildred Baker	Helen Hummel
Beulah Burns	Rita Jane Kluck
Helen Burnham	Mary Ogorchock
Lucy Ann Beyer	June Price
Peggy DeSantis	Jane Vail
Jean Dressler	Anna Marie Verderose

Jean Watson

Jane Vail was chosen Manager and Jean Dressler, Captain.

The team was not so successful in winning the game, but they showed fine sportsmanship and gave plenty of competition for their opponents. Helen Burnham and Jean Dressler were chosen for the Varsity Team.

BASKETBALL

GIRLS' BASKETBALL

First row: Goodwill, Black, Singer,
O'Neill,

Second row: Conley, Collins, Neverla,
Wilson, Miles, Rhodes.

Third row: Cloud, Hummel, Kennedy,
Barlett, Stack, Burnham, Williams,
Kluck, Ogorchock, Bayer.



The varsity team chosen from the class teams consists of the following girls:

Bernice Clinger

Jane Conley

Nathalie Neverla

Pauline Miles

Merle Black

Helen Burnham

The Freshmen were the victors in the girls' intramural basketball games. They succeeded in winning all the games they played with 137 points. The Juniors came in second with 74 points.

Freshman Captain

Manager

Coach

Pauline Miles

Pauline Goodwill

Regina Phelan

Sophomore Captain

Manager

Coach

Jean Dressler

Helen Burnham

Beulah Burns

Junior Captain

Manager

Coach

Mary Jane Collins

Doris Seigworth

Audrey Ruth Barnes



C
A
M
P
U
S

R
E
M
I
N
D
E
R
S

Audrey Ruth's Bob is a Jewell—Just pals—Along the river—For refreshment—Miller likes Port—

On the fence—Choir on tour—Meet the mother of the brood—

Through for the day—Quaint—Clarion boys at scene of action—

Delta Sigs take to open roads—Won't you paint our portrait?—Pretty as a picture—Crockadile tears—

Duck Jean, a campus couple goes here—Hey!—Sleepy time gals—Watch James, he'll Snitzer—

REMINISCENCE

- Sept. 10—Parents leave sons and daughters at C.S.T.C. for the first time.
Sept. 11—Upper classmen return. Hail! Hail! the gang's all here!
Sept. 12—In the groove.
Sept. 15—Freshmen reception. Say, s(he's all right!
Sept. 19—Easy to tell the freshmen.
Sept. 28—Grove City—Yipee, we won.
Oct. 2—Picnic—Two by two.
Oct. 14—Institute—It will soon be us.
Oct. 18—When's vacation start?
Oct. 26—Alma Mater greets old grads.
Nov. 2—Indiana and—
Nov. 7—Mrs. Carveth Wells tells of hubby's adventures. Did you see Carveth?
Nov. 27—Don't eat too much turkey.
Dec. 2—19 more shopping days 'til Christmas.
Dec. 10—Greeks feast.
Dec. 14—What can I get her?
Dec. 17—Oh! these tests.
Dec. 20—Upper classmen promenade.
Dec. 21—Home for Christmas.
Dec. 24—Best wishes for a Merry Christmas and a Happy New Year.
Jan. 2—Back for a rest.
Jan. 12—Exams!
Jan. 14—More of 'em.
Jan. 18—And still—!!
Jan. 21.—Off for a fresh start.
Jan. 31—See ya at the game.
Feb. 2—Groundhog sees his shadow. Six more weeks of this.
Feb. 8—Lambda Chis—Cabin party—Was it fun!
Feb. 10—Tomorrow's Saturday. Oh boy! Won't have to walk to High School.
Feb. 13—Dr. Priestly—"Help England Win the War."
Feb. 15—"Be my Valentine tonight?"
March 1—Deadline Sequelle write ups.
March 15—"Going to the Sorority Dance?"
March 16—It was divine.
March 18—Art-Press Club dine.
April 1—"Fooled, Hah!"
April 3—Senate—Meet the president.
April 5—Easter vacation.
April 15—Back to last lap.
April 20—Spring fever—so has faculty.
April 26—Tonight's the time—Frat Dance!
May 3—Mind your manners. Mom's here.
May 4—Bye folks—See you in a couple weeks.
May 15—Midnite oil—Wonder who'll flunk.
May 24—Alumni back to look us over.
May 25—Baccalaureate—Why so serious?
May 26—All over now—World is ours.

SONG IMPERSONATIONS

Let's All Sing Together	Choir
A Nightingale Sang in Berkeley Square	Florence
A Lazy Lack A Daisy Melody	Rossmann
It's Eight O'clock	Monday Morning
Busy As a Bee (I'm Buzz Buzz Buzzing)	Regina Phelan
Crosstown	High School Student Teachers
Down by the Ohio	Cordier
Can't Get Indiana Off My Mind	Football Team
If I Had My Way	Wetzel
Little Girl	June Price
My Son, My Son	John Paul
Movin' Along	The Juniors
So Far, So Good	Sophomores
Run, Rabbit, Run	McDonald
Same Old Story	Grades
Wearing of the Green	Frosh
Let That Be a Lesson to You	Comments
The Beginning of the End	Graduation
Where Lovers Meet	Sweetland
At Last It's Love	Shoup
PAGE NO. 94	Page 94 SEQUELLE

IF WE COULD BUT—

Be as conscientious as	Kay Whitehill
Draw like	Martha Haines
Sing like	Steve Kovalyak
Wrestle like	Bob Shea
Take it like	Julius Angelo
Work as hard as	Helen Deily
Have originality of	Ed Neuland
Prepare lessons like	Anna Moyer
Have ability of	Bonnie Davis
Play football like	Bill Sheridan
Cheer like	Teresa Kennedy

Then none of us need fear the future

A freshman is a transition personified, from an introvert into a dominant ego. He is filled at first with an inward trepidation, but his cowed outlook keeps its bovine character to emerge quite bulb like. The goose-egg of ego which characterizes the yearling is solidified into a mass of self satisfaction.

The human brain is truly a wonderful thing. It starts working the minute you wake up and never stops until you get to class.

Exams

Pass all papers to end of the row.

Have a carbon sheet under each one, so I can correct all mistakes at once.

C
A
M
P
U
S

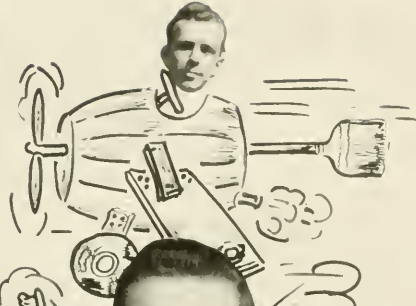
R
E
M
I
N
D
E
R
S



Why, Zit—for shame . . . Shake pal . . . Hmmm . . . Theta's before a conflag . .
 What's so serious? . . . Doesn't it look familiar? . . . Wait!
 Lambda Chi—How're we doin'? . . . School's oldest romance . . . After last snow-
 fall . . . Faculty confer . . .
 Now Mary! . . . A group of real sports . . . Masculinity . . . King Winter . .



OUR WEE
BAKER



JAKE



HUNTING AN
APPLE



OUR BEST WISHES to every graduate and student of Clarion State Teachers College. Please keep us in mind—write us when you secure a position or a better one; when you are married; or receive distinctive recognition. We are glad to print good news about Clarion students.

THE CLARION REPUBLICAN

Printers of the "Clarion Call"

J. F. LEATHERS CO.

Fords and Mercury

K. & G. USED CARS

Phone 60

Clarion, Pa.

CLARION FARMS

R. D. 1. CLARION, PA.

"The Oldest Dairy Farm in Clarion County"

For the past year we have been supplying Clarion State Teachers College with pure milk from a 100% Registered Guernsey Herd

FRED S. PORT, SR.

WIN PORT

A Bank of Strength and Character

Banking transactions are strictly supervised by the banking authorities.

OUR DIRECTORS

Merritt H. Davis

B. M. Davis

Herbert R. Lander

W. M. Moore

Perry Wile

Member Federal Deposit Insurance Corporation

First National Bank in Clarion

CLARION

PENNSYLVANIA

Just Off the Campus one may
find the best in groceries and
meats.

. . . Why Go Farther?

WM. W. PHERO

"The College Grocer"

Phone 19

NYAL SERVICE DRUG STORE

FITZGERALD'S

A. G. Corbett Drug Co.

FIRST RATE

Clarion, Pa.

THE RESS SHOP

Women's and Misses'

Ready to Wear

CLARION, PA.

Expert Hair Styling . . .

We Handle **DERMETICS**
exclusively

KATHRYN'S
BEAUTY SHOP

Banner Building

Phone 310

DITZ & MOONEY HARDWARE

Phone 218

Clarion, Pa.

Stewart-Warner Electric Refrigerators

Lucas Paints

China and Glassware

Hunting and Sporting Equipment

Best Wishes to the College on the Hill

Eighth Avenue Service Station

CLARION, PA.

Does Your Car Need Attention?

GEO. CORBIN, *Manager*

*The Finest Store in
Clarion County*

WEIN BROTHERS

*"Where Quality
Predominates"*

*The Best of Luck and Success
From Your House of Hits*

Garby Theatre

**HASKELL FURNITURE
COMPANY**

*"Quality Home Furnishings
at Reasonable Prices"*

Rimersburg, Pa. Clarion, Pa.

Fruit-

Phone 38

CLARION FRUIT COMPANY

Sam Cherico, Prop.

Modern Store

Self Serve

Groceries

Meats

606 MAIN STREET

CLARION, PA.

Not Only Good Food — But All You Want

BEST WISHES FOR THIS YEAR

THE COFFEE SHOP

Moderate Prices

HAZEL MILLER

Cor. 8th and Main Streets

Clarion 72

Compliments of

MEANS & LAUFS DRUG COMPANY

QUICK LUNCH

(Sweetland)

Sundaes Sods Sandwiches

All Kinds of Good Food

CLARION, PA.

JOE'S

THE CORNER STORE

Fruit

Ice Cream

Confections

Corner Wood and Eighth Avenue

Clarion, Pa.

Meals

Lunches

Modern Diner

24 Hour Service

Next to Garby Theatre

Compliments of

J. M. CROOKS

Clarion's Best in Men's

Clothing

Buy at Brown's and Save

BROWN'S BOOT SHOP

Our New Location—The Alexander Building

CLARION, PA.

PENNEY'S

J. C. PENNEY CO., INC.

609 Main Street

Clarion, Pa.

Compliments

of

MAUL'S

DAIRY STORE

DON'S MEN'S SHOP

For Men Who Want the
Best in Wearing Apparel

MAIN STREET CLARION, PA.

Compliments

of

PHILLIPS'

GREENHOUSE

Establish Your Credit

The THRIFT PLAN Way

. . . Loans to \$300

CLARION COUNTY THRIFT
PLAN, INC.

515 MAIN STREET CLARION, PA.

RUSSELL C. HEPLER, *Mgr.*
Phone 7

MOTHPROOF—CLEANING All woolen garments insured 6 months
against moth damage when cleaned by us

PARIS VERY SAFE CLEANERS

*Every Modern Facility for Delicate Coats, Dresses, Hats, Gloves,
to Heavy Furs and Rugs*

Expert alterations on high class furs . . . Furniture cleaning and moth proofing

KITTANNING—123½ N. McKEAN STREET

Brockway, Telephone 102-R

Dubois, Telephone 261

St. Marys, Dial 7444

Clothes Insurance Against Fire, Theft, and Delivery Hazard

HAIL THE GRADUATION OF 1941

We join in a hearty commendation of your efforts and in a sincere wish that your future lives may be happy and successful.

G. C. MURPHY COMPANY

5 and 10 CENT STORE

WHITE'S APPLIANCE STORE

RCA Victor Radios

General Electric Appliances

Main Street

Clarion, Pa.

HALES' NUT SHOP

Peanuts

Candy

Popcorn

Buy your "sweetie" some sweets
at the little shop on the corner
of Sixth and Main

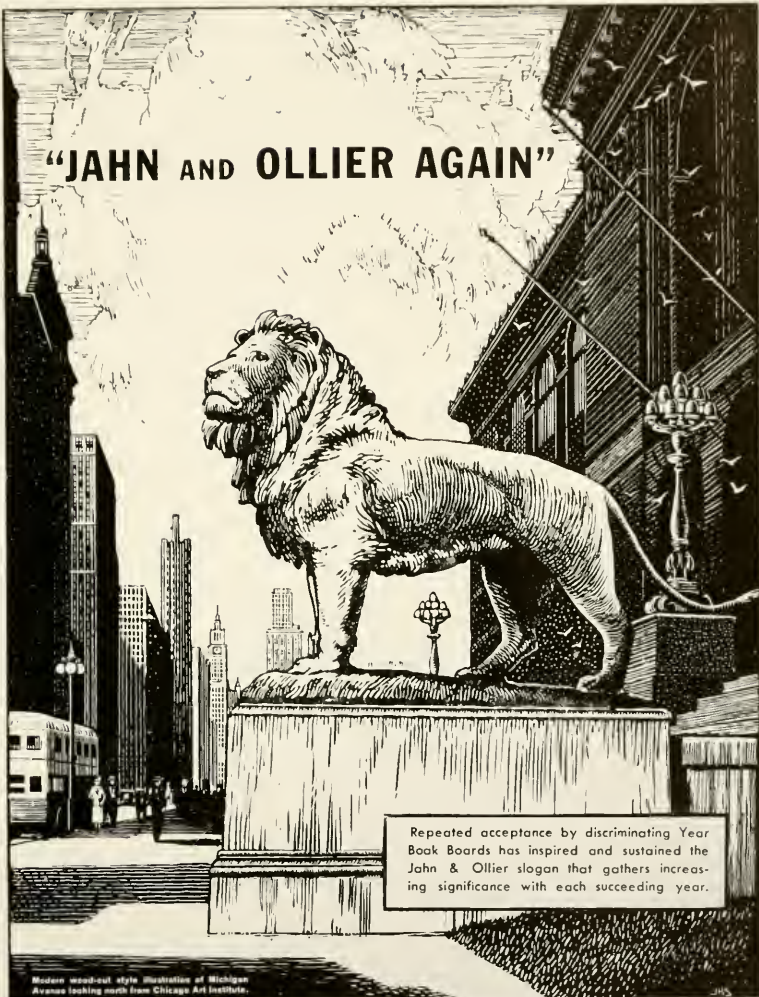
Compliments of

MR. AND MRS. FRED JENKINS

An Appreciation

TO THESE ADVERTISERS who, it must be remembered, have represented their various trades among these pages because of sincere interest in Clarion State Teachers College, we the 1941 SEQUELLE staff, on behalf of ourselves and the Student Body, express our appreciation.

"JAHN AND OLLIER AGAIN"



Repeated acceptance by discriminating Year Book Boards has inspired and sustained the Jahn & Ollier slogan that gathers increasing significance with each succeeding year.

Modern woodcut style illustration of Michigan Avenue looking north from Chicago Art Institute.

JAHN & OLLIER ENGRAVING CO.
817 West Washington Blvd., Chicago, Ill. - Telephone **MONroe 7080**
Commercial Artists, Photographers and Makers of Fine Printing Plates for Black and Colors

PITTSBURGH PRINTING Co.

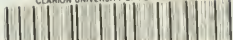
530-34 FERNANDO ST.

PITTSBURGH, PA.

COLLEGE ANNUALS
HIGH SCHOOL YEAR BOOKS
and MONTHLY PUBLICATIONS

*Our representative will be
pleased to advise you when
compiling your next year's
Annual. Telephone Grant 1950-51*

CLARION UNIVERSITY OF PENNSYLVANIA



3 9363 00150 7216

Spec. Col.

qLD

1017 Sequelle

.C88

1941

Spec. Col.

qLD

1017

.C88

1941

