

Spec. Col.

QLD

1017

.C88

1944



SEQUELLE

1


9

4

4



Carlson Library



Digitized by the Internet Archive  
in 2010 with funding from  
Lyrasis Members and Sloan Foundation

<http://www.archive.org/details/sequelle1944clar>



# FOREWORD

Your 1944 Sequelle isn't all we wanted it to be; but we hope you will overlook its shortcomings and accept it for what it is—a symbol—a memory.

This is our memory of  
the school we loved



*And classes we met*





*Of people we knew*





*And fun we had*





*Yes--this is*





*Our*

# SEQUELLE

*of 1944*

---

JEAN WILLIAMS . . . . . *Editor*  
PHYLLIS TIMLIN . *Business Manager*

---





#### YOU'VE SEEN

the gym and the football field on a windy autumn day . . . the towers of Seminary, ever the same . . . the windows of Science Hall reflecting evening glows . . . the lower campus, early in the morning, when the sun cuts through the fog . . . the garden pond on Sunday afternoons in September . . . winter pictures of the chapel . . .

Our world . . . for a while . . . always to be remembered.



# DEDICATION . . .

To the Men of Clarion State Teachers  
College Whose Service of Yesterday, Today,  
and Tomorrow in This War Upholds for Us  
the Principles of Freedom.

Class of '44

# OUR PRESIDENT



PAUL G. CHANDLER



# The President's Message . . .

The senior class is to be congratulated on publishing a SEQUELLE this year. Photographers do not have enough films to take care of their trade and none of them returned their bid blanks. We were fortunate to have a member of the faculty who could do photographic work. There is a shortage of paper and there is a shortage of skilled labor. It will be interesting to see how many college annuals are published this year. The resourcefulness you have shown in publishing your yearbook will contribute to the success of each one of you. I shall follow each of you in your positions with interest, and I expect to find each one showing the same resourcefulness in your teaching that you have shown in publishing your year book.

# FACULTY . . .

---

---



HELEN M. BARTON, Ed.D.  
*Physical Training, Geography*

CHARLES F. BECKER, M.A.  
*Education*



MARGARET A. BOYD, M.A.  
*English*

CLAIR E. CAREY, M.A.  
*Mathematics*

RENA M. CARLSON, M.A.  
*Librarian*



RALPH W. CORDIER, Ph.D.  
*Social Studies*

CHARLES R. FLACK, M.A.  
*Library Science*

MILDRED E. GAMBLE, M.A.  
*Intermediate Grades*



RUTH K. GRAFF, M.A.  
*Primary Grades*

ANNA B. GRAHAM, B.S.  
*Junior High School*

MIRIAM G. GREENLEE, M.A.  
*High School English*



WALTER L. HART, M.A.  
*Music*

EFFIE B. HEPLER, B.S.  
*Primary Grades*

GILBERT A. HOYT, M.A.  
*Mathematics*

CLARENCE A. KUHNER, M.A.  
*Geography*

BERTHA V. LEIFESTE, Ph.D.  
*Kindergarten-Primary Education*



HARRY S. MANSON, M.A.  
*Biological Science*

MARIE MARWICK, M.A.  
*English, Speech*

BERTHA V. NAIR, M.A.  
*English, Latin*



FANNIE C. OWENS, R.N.  
*Nurse*

DONALD D. PEIRCE, Ph.D.  
*Dean of Men, Science*

HAZEL SANFORD, M.A.  
*Art*



SEWELL E. SLICK, Ph.D.  
*High School, Social Studies*

ETHEL M. SPALLER, M.A.  
*Physical Education*

GRACE M. STOKE, M.A.  
*Dean of Women, Education*



WALDO S. TIPPIN, M.A.  
*Physical Education*

MARTHA WEISMANTEL  
*Dietitian*

LOTTIE J. WINGARD  
*Registrar*





### OUR NEUCLEUS

One small group . . . whose varied personalities have formed opinions . . . stimulated thinking . . . given knowledge . . . asked for it again . . . our Faculty . . . upon whose character the spirit of our College rests.



A-h-h . . . at ease . . . Mr. and Mrs. . . . ridin' high . . . three  
 senior lassies . . . Say, now! . . . Hazel . . . "Alice, where art thou . . . ?"  
 . . . now for a little H<sub>2</sub>O . . . but, oh, tomorrow . . . come on in,  
 Paulie . . . H-m-m . . . hold it! . . . down to earth . . . A-I, so long  
 Blaine . . . wait a minute . . . sophistication . . . got a class . . . beauty  
 and the beast . . . "sweet Eloise" . . . good company!

# SENIORS



### SENIOR CLASS OFFICERS

President.....TERESA KENNEDY  
Vice President.....ARLINE KELLETT  
Secretary-Treasurer.....MARILYN SIMONS



ELOISE ARLENE BARLETT, Clarion  
*Elementary*

Geography Club, A.C.E., Intramurals, Women's Athletic Council, Y.W.C.A., Sequelle Staff, Sigma Sigma Sigma.



KATHRYN E. BLACK, Clearfield  
*Kindergarten-Primary*

Art Club, Hostess Club, A.C.E., International Relations Club, Camera Club, Intramurals, Y.W.C.A., Sigma Sigma Sigma.



KATHRYN CERVONE BOLE, Pittsburgh  
*Library Science, English, Social Studies*

Intramurals, A Capella Choir, College Players, Press Club, International Relations Club, Women's Athletic Council, Women's House Council, Pi Gamma Mu, Lambda Chi Delta.



VELMA BURNS, Sligo  
*Elementary*

Geography Club, Intramurals, Pan-Hellenic Council, Student Senate, Sigma Delta Phi.

---





ELOISE BARLETT . . . . . "Work and play while you may."

KATHRYN BLACK . . . . . "Are you kidding?"

KATHRYN BOLE . . . . . "Hurray, hurray! This is where I  
found my husband!"

VELMA BURNS . . . . . "It's all over . . ."



ADELINE CAMPBELL, Brookville

*Elementary*

Geography Club, Art Club, Camera Club, Sigma Delta Phi.



MABEL CLAYPOOL, Kittanning

*Elementary*

Art Club, Y.W.C.A., Intramurals, Geography Club, A.C.E.,  
Hostess Club, Camera Club, Sequelle Staff.



MARY ALICE CONKLIN, Warren

*Geography, English, Social Studies*

Hostess Club, Geography Club, International Relations Club.



ADA CONNELLY, Aliquippa

*Elementary*

Intramurals, Y.W.C.A., A.C.E.



ADELINE CAMPBELL . . . . . "So long for now."

MABEL CLAYPOOL . . . . . "We're all working together to  
one end."

MARY ALICE CONKLIN . . . . . "I'll get by--"

ADA CONNELLY . . . . . "The world is so full of a number  
of things . . ."



MARY ELIZABETH DIAS, Clarion

*Elementary*

Geography Club, A.C.E., Intramurals, Y.W.C.A., Pan-Hellenic, Sigma Sigma Sigma.



PHYLLIS FIDDLER, Brockway

*Elementary*

College Players, Theta Alpha Lambda.



MARIE ROSE FILLIPIH, Pittsburgh

*Mathematics, Social Studies*

Art Club, Intramurals, Geography Club, Y.W.C.A., Camera Club, International Relations Club, Sequelle Staff.



RUTH CAROLINE FOWKES, Clarion

*Elementary*

Intramurals, Outdoor Girls, Lambda Chi Delta.



- MARY ELIZABETH DIAS . . . . . "I can truthfully say my four  
years of college have been won-  
derful."
- PHYLLIS FIDDLER . . . . . "I'll try anything once."
- MARIE FILLIPIH . . . . . "Never say die."
- RUTH CAROLINE FOWKES . . . . . "Not at the top but climbing."



MARJORIE STEWART FREEBURG, Oakdale

*Library Science, English, Social Studies*

College Players, Hostess Club, Y.W.C.A., Intramurals,  
Women's Student Council, W.A.C., Outdoor Girls, Pan-Hel-  
lenic, Sequelle Staff, Delta Sigma Epsilon.



LOIS GEORGE, Mahoning

*Elementary*

Art Club, Hostess Club, Y.W.C.A., Intramurals, A.C.E.,  
International Relations Club, Pi Gamma Mu.



ANNA JANE GERBER, Foxburg

*Elementary*

College Players, Y.W.C.A., Hostess Club, Intramurals,  
A.C.E., Delta Sigma Epsilon.



ALICE GUSEMAN, Grindstone

*Library Science*

Who's Who, A Capella Choir, Intramurals, Y.W.C.A.,  
International Relations Club, Sequelle Staff, Delta Sigma  
Epsilon, Student Senate.



MARJORIE FREEBURG . . . . . "Eat, Drink, and be Married."

LOIS GEORGE . . . . . "A merry heart maketh a cheerful countenance."

ANN GERBER . . . . . "To an only child dorm life has certainly been wonderful."

ALICE GUSEMAN . . . . . "I'll really miss the year I've cut off my college life by graduating in three years."



HELEN JUNE HETRICK, Corsica  
*Elementary*

Hostess Club, Geography Club, Art Club, Intramurals,  
Camera Club.



ARLINE HOOVLER KELLETT, Clarion  
*English and Geography*

College Players, Camera Club, Press Club, Y.W.C.A., Art  
Club, Women's Student Council, Geography Club, Sequelle  
Staff, Delta Sigma Epsilon.



TERESA KENNEDY, Driftwood  
*Library Science, Social Studies, English*

Who's Who, Press Club, Intramurals, Newman Club, Stu-  
dent Senate, W.A.C., College Players, International Relations  
Club, Sequelle Staff, Pi Gamma Mu, Delta Sigma Epsilon.



GLADYS LOGAN, Miola  
*Elementary*

College Players, Hostess Club, Intramurals, Geography Club,  
Camera Club, Sequelle Staff, Delta Sigma Epsilon.





- HELEN HETRICK . . . . . "These times so soon have ended,  
but, oh what's beginning?"
- ARLINE KELLETT . . . . . "A husband and a degree are val-  
uable possessions!"
- TERESA KENNEDY . . . . . "No one can say I didn't try."
- GLADYS LOGAN . . . . . "All good things have come to  
an end."



LAIRD McCANNA, Kittanning  
*Social Studies, English, Geography*

Football, Basketball, Intramurals, Outdoor Club, Varsity C,  
International Relations Club, Pi Gamma Mu, Alpha Gamma  
Phi.



PAULINE MILES, Strattonville  
*Kindergarten-Primary*

Girls Chorus, A Capella Choir, Hostess Club, College  
Players, Y.W.C.A., Intramurals, A.C.E., Outdoor Club,  
W.A.C., Trio, Girls Ensemble.



BEATRICE MILLER, Apollo  
*Elementary*

Hostess Club, Y.W.C.A., Intramurals, Art Club, Geography  
Club, A.C.E., Art Club.



MARGARET MOORE, Brookville  
*Elementary*

Who's Who, Hostess Club, Geography Club, Intramurals,  
Girls Chorus, A Capella Choir, A.C.E., Sequelle Staff, Delta  
Sigma Epsilon.



- LAIRD McCANNA . . . . . "The Cadets created competition  
but not ambition."
- PAULINE MILES . . . . . "I'll miss you!"
- BEATRICE MILLER . . . . . "Gosh!"
- MARGARET MOORE . . . . . "WH-E-E-E!"



EVELYN REAGHART, Strattanville  
*Library Science, English, Latin*

Who's Who, Press Club, Geography Club, Art Club, Classical Club, International Relations Club, Hostess Club, Sequelle Staff, Theta Alpha Lambda.



MARY REYNOLDS, Clarion  
*Elementary*

Art Club, Camera Club, Geography Club, Intramurals, International Relations Club.



JEANNE RHEA, Sligo  
*Social Studies and English*

College Players, Outdoor Club, Intramurals, International Relations Club, Lambda Chi Delta.



BETTY RHODES, Hallton  
*Elementary*

Intramurals, Geography Club, A.C.E., Art Club, Y.W.C.A., International Relations Club, Delta Sigma Epsilon.



- EVELYN REAGHART . . . . . "Knowledge — nerves, and never again."
- MARY REYNOLDS . . . . . "God has chosen the foolish things of the world to confound the wise."
- JEANNE RHEA . . . . . "Prematurely but not permanently a pedagogue."
- BETTY RHODES . . . . . "What! No more eight o'clock classes!"



ILENE ROSS, Brockway

*Elementary*

Y.W.C.A., Hostess Club, Intramurals, A.C.E., W.A.C.,  
Women's House Council, Sigma Sigma Sigma.



MARION SHICK, New Bethlehem

*English, Social Studies, Latin*

Art Club, Hostess Club, College Players, Intramurals, Clas-  
sical Club, International Relations Club, Sequelle Staff, Pi  
Gamma Mu, Delta Sigma Epsilon.



MARILYN SIMONS, Wilcox

*Library Science, Social Studies, English*

Y.W.C.A., Intramurals, Delta Sigma Epsilon.



ISABELLE SLATER, Clarion

*Elementary*

Girls' Chorus, Intramurals, A.C.E., A Capella Choir, Art  
Club, Theta Alpha Lambda.



ILENE ROSS . . . . . "How time flies!"

MARION SHICK . . . . . "Content with yesterday's memories."

MARILYN SIMMONS . . . . . "I have enjoyed the fellowship of my classmates more than I can say."

ISABELLE SLATER . . . . . "Smile and the world smiles with you."



MARY LOUISE SLIKE, Sigel

*History and English*

Hostess Club, Intramurals, Newman Club, Sequelle Staff,  
W.A.C., Pi Gamma Mu.



ANNE SMITH, Brookville

*Geography, Social Studies, English*

A Capella Choir, Press Club, College Players, Delta Sigma  
Epsilon, Ensemble.



PHYLLIS D. TIMLIN, Wesleyville

*Library Science, English, Social Studies*

Hostess Club, Y.W.C.A., Intramurals, A Capella Choir,  
Women's House Council, Sequelle Staff, Delta Sigma Epsilon.



RUTH TRESCHER, Pittsburgh

*Library Science, Social Studies, English*

Intramurals, College Players, Press Club, Women's Student  
Council, Outdoor Girls, International Relations Club, Lambda  
Chi Delta.





- |                |   |   |   |   |   |  |
|----------------|---|---|---|---|---|--|
| MARY SLIKE     | . | . | . | . | . | "No fidget and no reformer, just a calm observer of must and ought." |
| ANNE SMITH     | . | . | . | . | . | "Pray for what you want, but when you get off your knees, HUSTLE."   |
| PHYLLIS TIMLIN | . | . | . | . | . | "The friendliness of the Clarion students will long be remembered."  |
| RUTH TRESCHER  | . | . | . | . | . | "Skip it."   |



FLORENCE GEORGE TRAISTER, Clarion

*Elementary*

Who's Who, Art Club, Hostess Club, Y.W.C.A., A.C.E.,  
Geography Club, International Relations Club, Pi Gamma Mu.



JEAN WILLIAMS, Strattanville

*Social Studies, Geography, English*

Who's Who, Press Club, Intramurals, Geography Club, Art  
Club, Pi Gamma Mu, Pan-Hellenic, International Relations  
Club, Sequelle Staff, Theta Alpha Lambda.



ALICE LOU WILSON, Strattanville

*English and Social Studies*

Girls' Chorus, Hostess Club, College Players, Intramurals,  
Y.W.C.A., W.A.C., A Capella Choir, Student Senate, Se-  
quelle Staff.

IN MEMORIAM

•

Kathryn McCaughan



- FLORENCE TRAISTER . . . . . "The heart of the wise teacheth  
his mouth, and addeth learning  
to his lips."
- JEAN WILLIAMS . . . . . "Tomorrow is a new day."
- ALICE LOU WILSON . . . . . "It's been so nice just knowing  
you."

## THE JUNIOR CLASS . . .

The juniors, like every class, believe that their members are "getting to be somebody!" The freshmen, are the people at whom everyone looks—the belles of the campus; by the time they become sophomores they just sit on the sidelines, attracting very little attention, the juniors, however, are beginning to command respect; and of course the seniors are far superior to all other classes. Seriously, though, the juniors really have already established themselves securely. The junior basketball team has proven itself champion. The *Clarion Call* has been most successful under its junior editor. *Who's Who* has two representatives from the junior class; Pi Gamma Mu has several. You will find hard-working, fun-loving juniors leading in every college activity. Scattered all over the world are former members of the class, who took "the khaki and the gun instead of cap and gown." Some of our members have speeded ahead and are now seniors. We'll miss them next year, but we'll be proud to see them at graduation among the ranks of those who will commence the new life in the great profession for which they have spent the past four years preparing.



### JUNIOR CLASS OFFICERS

*President*.....DORIS BLOOMSTER  
*Vice President*.....VERNE CUTHBERT  
*Secretary*.....KATHLEEN STEWART  
*Treasurer*.....MARY JANE SHOEMAKER



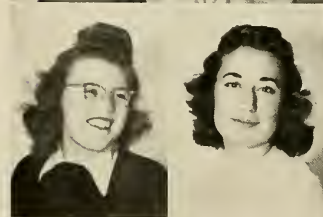
Doris Bloomster

Elizabeth Bovaird



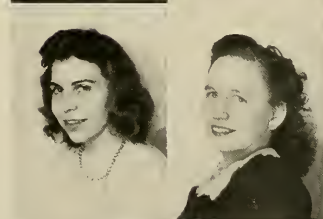
Catherine Brooks

Doris Caskey



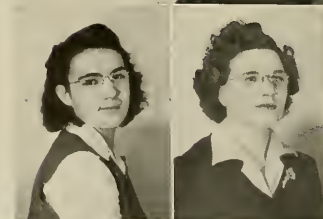
Kathryn Copeland

Verne Cuthbert



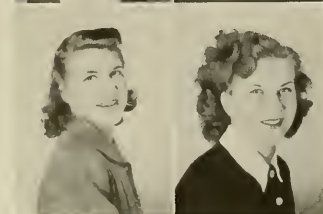
Mary Alma Hahn

Betty Heasley



Sara Mae Heckathorn

Mary Alice Hess



Bernadette Hugus

Marigrace Hutchison

---

---

# JUNIORS

Connie Kanski

Marjorie McClain

Ann Moeck



Maxine Mong

Barbara Paddock

Evelyn Rupert



Marion Shockey

Mary Jane Shoemaker

Pauline Showers



Gevienne Smith

Kathleen Stewart

Lois Stroupe



# THE SOPHOMORE CLASS . . .

The good old sophomore class hasn't been active as a group, but we certainly have gone places individually. We are organized having a president, vice-president, secretary, and treasurer; but the time hasn't arrived when we need to function. We have, as you can easily guess, the Boy Scout Motto behind us "Be Prepared."

When we came to Clarion as freshmen, no one could say we weren't any greener than green—for the outlandish things we innocently did brought many a laugh to upper-classmen. We learned the hard way, of course—but with loads of fun and adventures sprinkled in memories. We made our friends and gradually throughout the year found our places in C. S. T. C.

Thus the sophomore class speaks—but don't forget you'll be hearing about us in the headlines.





### SOPHOMORE CLASS OFFICERS

*President*.....JEAN DONALDSON  
*Vice President*.....MAXINE MONG  
*Secretary*.....GEVIENNE SMITH  
*Treasurer*.....JOAN DAVIS

# SOPHOMORES

---

Mary Burns

Mary Carr

Joan Davis

Blaine Stover

Jean Donaldson

Betty Finerty

Elizabeth Griffith

Vera Gray

Dorethia Harmon

Betty Hilliard

Ruth Brasuell Kane

Betty Kifer





Patricia Larson

Geraldine Ledebur

Gertrude Lobaugh

Kathryn Reid

Margaret Rimer

Mary Seifert

Clarence Wert

Ivan Young

Margaret Zuendel

# THE FRESHMAN CLASS . . .

September 13 found many bewildered freshmen walking around the campus wondering what would happen to them. That problem soon solved itself when Mr. Becker herded us into Seminary Hall to start the famed freshmen tests. Tests over, classes began; and we knew that our college career had started.

Our life was quite uneventful until Freshmen Week rolled around. Huge signs, blackened noses, and pigtailed broadcast to everyone that we were the new freshmen. This week proved to be very amusing to everyone except to us. After the harrowing experiences of initiation, we settled down to business and had our first class meeting. With Miss Stoke as class advisor we elected our officers and became acquainted with each other.

Next came Rush Week, bringing to the girls invitations to rush parties of the various sororities.

Thanksgiving vacation at last, and home, for many of us the first time since our arrival at college. The three weeks between Thanksgiving and Christmas vacations seemed endless, but was climaxed with the formal Christmas dance in the gym.

Our spirits were high after vacation, but they were soon dampened by the thoughts of the oncoming semester exams. With the new semester came new freshmen to be added to our ranks.

Intramural basketball, tobogganing, and hiking took up many of our evenings during the second semester.

With final exams and Commencement we had at last reached our first goal in college life—the completion of our first year.



### FRESHMAN CLASS OFFICERS

*President*.....DORIS NULPH  
*Vice President*.....ANNE SHIPLEY  
*Treasurer*.....MARTHA MOHNEY  
*Secretary*.....NORMA BLOOM



Thelma  
Allison

Norma  
Bloom



La Gene  
Carrier

Lora  
Casagni



Marjorie  
Clover

June  
Estes Hollman



Helen  
Ferry

Dorothy  
Dryden



Edith  
Gunderman

Arthur  
Henry



Marjorie  
Kennedy

Billie  
Larson



Martha  
Lewis

Marilyn  
Lobaugh



Janet  
McDevitt

Veronica  
Matter

---

---

# FRESHMEN

Martha Mohney

Kathryn Moore

Margaret Neely



Benton Nulph

Doris Nulph

Walter Prusick



Carolyn Roman

Hazeldine Servey

Ann Shipley



Nancy Smathers

Mable Smith

Mary Stewart



Amanda Strattan

Maxine Summerville

Helen Weeter



Pearle Weigand

Jean Wick

Dorothy Zacherl



AND FUN WE HAD . . .





B Heasley, M. Freeburg, B Paddock, G. Ledebur, V. Cuthbert, M. Dias, N. Corbett, M. Ochs, M. Mong, A. Moeck.



## PAN-HELLENIC

Sorority affairs come under the jurisdiction of the Pan-Hellenic council. Each of the five sororities are represented by two members, all of whom composed Pan-Hellenic council. These members plan Pan-Hellenic activities, and decide upon sorority matters.

The annual Pan-Hellenic tea for non-sorority girls was held in the Coffee Shop early in the fall. The sorority girls celebrated Valentine Day with a party at the gym.

### OFFICERS

First Semester  
 MARY DIAS  
 VERNE CUTHBERT  
 NANCY CORBETT

*President*  
*Secretary*  
*Treasurer*  
*Adviser*

Second Semester  
 BETTY HEASLEY  
 VERNE CUTHBERT  
 ANN MOECK  
 MISS MARGARET BOYD



J. Donaldson, M. Simons, P. Timlin, A. Guseman, B. Paddock, A. Kellett.

M. Shick, J. Davis, M. Freeburg, Miss Barton, B. Rhodes, A. Gerber, E. Griffith.

M. Seifert, G. Smith, G. Logan, M. Zuendel, M. Moore, L. Stroupe, T. Kennedy.

## DELTA SIGMA EPSILON

For the beginning of the Delta Sig activities it is necessary to go back to the rush party, which was in a military theme starting with invitations written as draft notices enclosed in "bomb" of painted walnut shells, and ending with a skit satirizing life on the campus with the cadets so much in evidence. As a result Martha Mohny, Jean Wick, Pearl Weigand, Veronica Motter, Maxine Summerville, Betty Finerty, Catherine Brooks, and Kathryn Moore were pledged to the sorority in December.

One of the most enjoyable events of the year was the "dessert" that the sponsor, Dr. Leifeste, Mrs. Sloan, and Mrs. Davis gave at the Coffee Shop as a Christmas present to the girls. It was followed by the annual Christmas party before the fire place at Mrs. Sloan's home. Those who went tobogganing and bowling with the group will never forget the fun.

But it wasn't all play! Who can forget the salvage drive and the counting, sorting, and sending of materials to the therapy hospital sponsored by Delta Sigma Epsilon Sorority. Then too, the girls were for two weeks at the local theaters, taking charge of the selling of bonds for the fourth war loan drive.

### OFFICERS

<i>President</i> .....	PHYLLIS TIMLIN
<i>Vice President</i> .....	ELIZABETH GRIFFITH
<i>Recording Secretary</i> .....	GEVIENNE SMITH
<i>Corresponding Secretary</i> .....	ALICE GUSEMAN
<i>Treasurer</i> .....	BARBARA PADDOCK
<i>Chaplain</i> .....	JOAN DAVIS
<i>Sergeant</i> .....	ARLINE KELLETT
<i>Sponsor</i> .....	DR. HELEN BARTON

M. Shockey. Mrs. Flack, M Reid.

V. Cuthbert. G Ledebur. M Clover. R. Kane. D. Caskey. A. Shipley. K Reid. R Trescher.

N. Smathers. R. Fowkes. H. Ferry. L. Laughlin. M. Lobaugh.



## LAMBDA CHI DELTA

The Lambda Chi's went fishing on their rush party. Seashells, mermaids, and fish of all descriptions furnished the decorations for a dinner held at Nail's Restaurant. Ann Shipley, Marjorie Clover, Helen Ferry, Nancy Smathers, and Marilyn Lobaugh were pledged and later initiated.

Following several bowling parties the girls gathered at Flack's for special "feeds." The new members became better acquainted with their patronesses at a St. Valentine tea held in the Coffee Shop. Throughout the year the Lambda Chi's did miscellaneous typing for the Red Cross and helped to raise money to provide "Service Kits" for the boys overseas.

### OFFICERS

<i>President</i> .....	MARION SHOCKEY
<i>Vice President</i> .....	RUTH TRESCHER
<i>Secretary</i> .....	DORIS CASKEY
<i>Treasurer</i> .....	KAY CERVONE BOLE
<i>Sponsor</i> .....	MRS. CHARLES FLACK



V. Burns, B. Hilliard.

A. Campbell, Miss Nair, B. Heasley.

## SIGMA DELTA PHI

War has seriously affected the numbers of this sorority. Some of the sisters are working in war factories; others are teaching on emergency certificates. This world crisis has had a great effect upon our activities, too; we have volunteered our services to the Red Cross. We have done our bit in social service work by making scrap books to send to orphanages and children's homes. Our efforts to keep the alumnae in close association with the college have led to faithful correspondence with them. With all this, we have had recreation for ourselves and have broadened our social life through learning new and entertaining games.

At the meetings during the second semester the programs included interesting subjects and worthwhile discussions of special value to the life of the college girls.

### OFFICERS

First Semester		Second Semester
ADELINE CAMPBELL	<i>President</i>	BETTY HEASLEY
BETTY HEASLEY	<i>Vice President</i>	BETTY HILLIARD
BETTY HILLIARD	<i>Secretary</i>	VELMA BURNS
VELMA BURNS	<i>Treasurer</i>	MAXINE MONG
	<i>Sponsor</i>	MISS BERTHA NAIR



K. Black. E Barlett.

Miss Gamble. M. E. Dias, M.  
Burns. E. Boviard. I. Ross.  
M. Ochs.

M. Kennedy, V. Gray.

## SIGMA SIGMA SIGMA

The biggest event of the Tri Sigma year was the visit of Mrs. Carson, National Social Service Chairman. She was entertained with the members at a dinner given by Miss Gamble.

The rush party, held in the Training School, consisted of square dancing and games. Afterwards the group went to the Coffee Shop for lunch and singing. The following were pledged: Mary Jane Shoemaker, Edith Gunderman, Dorothy Dryden, Doris Nulph, Norma Bloom, and Gertrude Lobaugh.

Sigma Sigma Sigma sororities, located all over the United States, worked out a project to create friendly relations between the young people of Pan America and those of the United States. The local chapter sent articles to represent this section of Pennsylvania. As another part of its work the sorority last fall conducted a most successful rummage sale.

### OFFICERS

<i>President</i> .....	ILENE ROSS
<i>Vice President</i> .....	MARY E. DIAS
<i>Recording Secretary</i> .....	KATHRYN BLACK
<i>Corresponding Secretary</i> .....	MARJORIE KENNEDY
<i>Treasurer</i> .....	ELIZABETH BOVIARD
<i>Adviser</i> .....	MISS MILDRED GAMBLE



J. Hollman, N. Corbett, Miss Weismantel, M. Hess, M. Hahn, A. Mocek, I. Slater.

## THETA ALPHA LAMBDA

During the first semester the Theta Alpha Lambda made two scrap books: one for the soldiers at Deshon, the other for the Children's Hospital in Pittsburgh. For their own use they made shelves for their dishes. The second semester saw them repairing toys and knitting for the Red Cross.

Social functions were numerous and varied—parties, dinners, shows, and informal get-togethers. These were sponsored by Miss Weismantel, Mrs. Cordier, Mrs. Elliot, and Mrs. Hoyt.

The rush season was celebrated by a theater party followed by refreshments at the Coffee Shop. Evelyn Reaghart, Jean Williams, and Helen Webster were pledged and initiated.

### OFFICERS

First Semester		Second Semester
ANN MOCEK	<i>President</i>	MARY ALICE HESS
NANCY CORBETT	<i>Vice President</i>	PHYLLIS FIDDLER
ISABELLE SLATER	<i>Secretary</i>	MARY ALMA HAHN
JUNE HOLLMAN	<i>Treasurer</i>	JUNE HOLLMAN
MARY ALICE HESS	<i>Cor. Secretary</i>	ANN MOCEK
MARY ALMA HAHN	<i>Chaplain</i>	HELEN WEETER
MARY ALMA HAHN	<i>Sgt.-at-Arm</i>	EVELYN REAGHART
	<i>Adviser</i>	MISS MARTHA WEISMANTEL



Change classes . . . hot dogs . . . Ritz . . . "Kids'll eat ivy, too . . . smilin'  
 through . . . no letter today . . . sad case . . . goin' my way . . . another day  
 two little sisters . . . glamor in the making.



J. Williams, E. Reaghart, E.  
Rupert.

A. Guseman, F. Traister, T.  
Kennedy, M. Moore, K.  
Copeland.

## WHO'S WHO

Eight students of Clarion State Teachers' College were listed in the 1943-44 issue of "Who's Who Among Students in American Universities and Colleges." This number consists of six senior representatives: Jean Williams, Teresa Kennedy, Alice Guseman, Florence Traister, Evelyn Reaghart, and Margaret Moore; two junior representatives: Evelyn Rupert, and Kathryn Copeland.

This book is published through the cooperation of over six thousand American Universities and Colleges as a means of national recognition for graduates. Several students from accredited colleges are selected each year, by an unprejudiced committee, for their biographies to appear in "Who's Who."

The purpose of "Who's Who" is to serve as an incentive for students, as a means of compensation for what they have already done, as a recommendation to the business world, and as a standard of measurement for students.



I Young, W. Prusick, L. McCanna,  
 C. Wert, B. Stover,  
 M. Long, E. Rupert, V. Burns,  
 M. McClain, A. Guseman, T. Kennedy.



## STUDENT SENATE

The purpose of the Student Senate, the student governing organization on campus, is to promote student responsibility, increase student-faculty cooperation, and enrich college life. Twelve members elected annually consist of three women resident students, three men resident students, and three men day students.

A few of the committees made up of Senate and faculty members are: the social committee (which arranges the social calendar), the chapel committee (which recommends and selects lectures and entertainments), and the financial committee (which budgets the Student Cooperative Fund).

The Senate of this year has had the singular task of serving the student body in one of the most difficult periods of its history—a period in which the effects of war have been felt in many of the activities and programs which this governing body has helped to carry out.

### OFFICERS

*President*.....LAIRD McCANNA  
*Vice President*.....EVELYN RUPERT  
*Secretary-Treasurer*.....MAXINE MONG  
*Adviser*.....DR. PAUL G. CHANDLER



J. Davis, M. Mohney, J. Donaldson, I. Ross.  
M. McClain, M. Freeburg, K. Copeland, M. Clover, D. Caskey.

## WOMEN'S STUDENT COUNCIL

The Women's Student Council is the representative body of Egbert Hall. It consists of two members from each class and the dean of women, who together try to solve the inevitable problems which arise in the girls' dormitory. Such factors as a small dormitory filled to capacity, the presence of the army personnel on the campus, and other effects of a world crisis, have added greatly to the responsibilities of this organization.

The first social function of the house was a get-acquainted party for the freshmen. The annual Christmas tea was held, but, as a patriotic note, the accustomed formal attire was omitted.

### OFFICERS

<i>President</i> .....	KATHRYN COPELAND
<i>Vice President</i> .....	JOAN DAVIS
<i>Secretary</i> .....	DORIS CASKEY
<i>Treasurer</i> .....	JEAN DONALDSON

T. Kennedy, P. Timlin, K. Stewart, R. Trescher, D. Caskey, A. Guseman, E. Bartlett, A. Hoovler, E. Reaghart, G. Logan, M. Shick, M. Stewart, J. Williams.



## SEQUELLE STAFF

Are you enjoying the Sequelle? It doesn't seem probable that you would have found the first, the second, or perhaps even the third draft of this book very interesting, but now that it has been presented to you, you'll find hours of work contained between its covers: making assignments, correcting copy, taking and retaking pictures, and all that goes with such a publication, and it is the sincere hope of the Sequelle Staff that it reaches your expectations. Like "the man behind the man behind the gun" there are numerous helpers unnamed, but the following make up the staff heads:

<i>Editor</i> .....	JEAN WILLIAMS
<i>Associate Editor</i> .....	TERESA KENNEDY
<i>Business Manager</i> .....	PHYLLIS TIMLIN
<i>Literary</i> .....	ARLINE KELLETT
<i>Photography</i> .....	EVELYN REAGHART
<i>Typist</i> .....	MABEL CLAYPOOL
<i>Treasurer</i> .....	ALICE GUSEMAN
<i>Literary Adviser</i> .....	MISS BERTHA NAIR
<i>Business Adviser</i> .....	MR. CLARENCE KUHNER



T. Kennedy, K. Copeland, C. Kanski, M. McClain, J. Williams.

M. Shockey, M. Shick, L. McCanna, L. Stroupe, A. Mocek.

## PI GAMMA MU

Pi Gamma Mu is a national honorary social studies fraternity. To be admitted one must have a B average and at least twenty hours in the social studies field.

During January Pi Gamma Mu held initiation in the lounge of Egbert hall, at which time the following students were admitted to the society: Teresa Kennedy, Lois George, Florence Traister, Kathryn Bole, Mary Slike, Laird McCanna, Kathryn Copeland, Constance Kanski, Marian Shockey, Lois Stroupe, Marjorie McClain, and Ann Mocek.

Regular meetings are held on the second Tuesday of each month. This year the fraternity has discussed plans for the organization of junior historical societies. Several social gatherings were enjoyed by the members, the outstanding event of which was an enjoyable evening spent at the home of Dr. Cordier.

### OFFICERS

<i>President</i> .....	MARIAN SHICK
<i>Vice-President</i> .....	TERESA KENNEDY
<i>Secretary</i> .....	JEAN WILLIAMS
<i>Adviser</i> .....	DR. RALPH CORDIER

K Copeland, C. Kanski, M. Carr, E. Rupert, K. Stewart, M. Filliph, T. Kennedy.

M. Shockey, E. Reaghart, M. Shick, L. McCanna, B. Pad-dock, M Conklin.

J Williams, M. Reynolds, B. Rhodes, M. McClain, L. Stroupe, A. Hahn.



# INTERNATIONAL RELATIONS CLUB

"My argument is this . . ." and so one of the twenty-seven members of the International Relations Club begins his presentation of views, interpretations and opinions concerning world affairs to fellow students. This argument, whether defeated, or enlarged upon, represents the privilege of each member to partake in the discussion every second Tuesday evening.

Interest this year was centered upon the war effort of the allied nations and its effect upon both the enemy and the home front. Consideration of the subject "World Peace" proved most interesting. The necessity, principles, problems, and possibilities of a lasting world peace were carefully weighed. All students are welcomed to I. R. C., particularly those interested in social studies.

## OFFICERS

*President* . . . . . LAIRD McCANNA  
*Vice-President* . . . . . JEAN WILLIAMS  
*Secretary-Treasurer* . . . . . KATHRYN COPELAND  
*Adviser* . . . . . DR. RALPH CORDIER



V. Motter, M. Zuendel, J. Davis,  
J. Helenbrook, J. Hollman,  
M. A. Hahn, B. Hilliard, K.  
Stewart, M. Smith.

V. Cuthbert, K. Reid, M. Lo-  
baugh, R. Kane, N. Smathers,  
D. Caskey.

G. Ledebur, M. Clover, B. Kifer,  
G. Smith.

## PRESS CLUB

The major aim of this organization is to publish an issue of the "Call" every month. It also endeavors to give the members some practical training in journalism which will aid them later in directing the publication of school papers. This is accomplished by the study of other school publications. Practice in writing is also given, and other newspaper articles are studied.

This year each member of the club will be presented a Press Club pin as a badge of membership.

The main social event of the year was the Press Club party which was given jointly with the members of the Art Club, and which this year took place in the Coffee Shop on St. Patrick's Day.

### OFFICERS

First Semester		Second Semester
RUTH CAROLYN KANE	<i>President</i>	NANCY SMATHERS
KATHLEEN STEWART	<i>Vice-President</i>	VERONICA MOTTER
DORIS CASKEY	<i>Secretary</i>	BETTY HILLIARD
VERNE CUTHBERT	<i>Treasurer</i>	MARJORIE CLOVER
	<i>Adviser</i>	MISS BERTHA NAIR

G. Lobaugh. D. Bloomster. L. Casagni. S. Hecathorn. H. Brownlee. M. Filippih. Mr. Kuhner. C. Roman. A. Kellett. G. Logan. E. Rupert. M. Carr. H. Hetrick. A. Mocek. M. Ochs.



## GEOGRAPHY CLUB

Traveling on a magic carpet woven of imagination, the members of the Geography Club traveled to India, to Washington and Oregon, and to the seacoast to watch the tides come in.

The trip to India was made under the direction of Mrs. Becker, guest speaker at one of the meetings. Maps, costumes, jewelry, letters, pictures, and other articles of interest aided in bringing reality into the club room.

The geographers were led to Washington and Oregon by Evelyn Rupert, who discussed pictures as they were shown on the screen. The trip to the seacoast was a movie on tides. Mr. Kuhner entertained at a meeting by presenting a talk on weather, proving to all members that little is really known about this common topic of conversation.

Other activities of the year included a visit to the local Coca-Cola plant, and the observing and recording of weather conditions at the campus weather station.

### OFFICERS

First Semester  
 EVELYN RUPERT  
 ARLINE KELLETT  
 MARY CARR

*President*  
*Vice-President*  
*Sec.-Treas.*

*Admiser*

Second Semester  
 DORIS BLOOMSTER  
 BILL LAFRANCHI  
 ANN MOCEK  
 MR. CLARENCE  
 KUHNER



K. Reid, R. Kane, K. Bole, J. Davis, B. Heasley, B. Finerty, M. Mohny, M. Clover, D. Caskey, J. Rhea, V. Cuthbert, C. Kanski, K. Copeland, H. Ferry, M. McClain, G. Ledebur, Mr. Manson.

## OUTDOOR GIRLS

The outdoor club was this year an all girl organization, and therefore renamed the "Outdoor Girls." The club's main functions included sending the "Call" to our men and women in service, keeping a scrapbook of their pictures and most interesting letters, and sending to them birthday cards and letters telling of the whereabouts and welfare of former college friends.

Several evenings were spent in tobogganing and bowling, after which the club usually went to Mr. Manson's to enjoy eating in front of the fireplace. Though missing the male members, the club had a most enjoyable and successful year.

First Semester	OFFICERS	Second Semester
DORIS CASKEY	<i>President</i>	VERNE CUTHBERT
VERNE CUTHBERT	<i>Vice-President</i>	DORIS CASKEY
CONNIE KANSKI	<i>Sec. Treas.</i>	MARJORIE FREEBURG
	<i>Adviser</i>	MR. HARRY MANSON



T. Kennedy, P. Miles, J. Davis,  
 B. Griffith, N. Smathers, J.  
 Rhea, B. Stover, W. Prusick,  
 K. Reid, M. Mohny, A. Ger-  
 ber, B. Finerty, M. Reid, M.  
 Clover.

J. Donaldson, J. McDvitt, J.  
 Hollman, A. Shipley, M.  
 Shockey, L. C a r r i e r, H.  
 Weeter, H. Ferry, B. Hilliard,  
 G. Logan, M. Shick, A.  
 Smith.

B. Griffith, M. Zuendel, M.  
 Lewis, J. Wick, G. Ledebur,  
 M. Hess, M. Lobaugh.



## COLLEGE PLAYERS

Every College Player believes that "All the world's a stage, and all the men and women merely players." Each person performs his assigned role to the best of his ability as he works for the good of the club.

The curtain has fallen on the activities of the college players for 1943-44. Some of the outstanding events were the presentation of the play "Time for Romance", reading and discussing facts which are valuable to every actor, a radio quiz, and an illustrated talk on make up and costuming. The members enjoyed many inspirational talks given by Miss Marwick, the club's adviser. One of the most beneficial was "Sound Effects in Play Production."

### OFFICERS

First Semester		Second Semester
MARIAN SHOCKEY	<i>President</i>	JEAN DONALDSON
JEAN DONALDSON	<i>Vice-President</i>	MARIAN SHOCKEY
BETTY KIFER	<i>Secretary</i>	BETTY FINERTY
GERALDINE LEDEBUR	<i>Treasurer</i>	BETTY HILLIARD
	<i>Adviser</i>	MISS MARIE
		MARWICK



E. Rupert, M. Ochs, I. Ross E. Bovaird, F. Traister, M. Shoemaker, Mrs. Graff, M. Moore, Miss Hepler, P. Showers, P. Miles, M. Claypool, E. Staab, E. Barlett, B. Hugus, B. Heasley, K. Black, M. Dias, A. Gerber, K. Stewart.

# ASSOCIATION FOR CHILDHOOD EDUCATION

The Association for Childhood Education is a student branch of the National Association for Childhood Education. Its membership is composed of teachers and students interested in kindergarten, primary, or intermediate work.

During the year the club aims to gather and disseminate knowledge of the movement for the education for young children; to bring into active cooperation all childhood education interests, including parent education; to promote the progressive type of education in nursery school, kindergarten, and primary grades; and to raise the standard of professional training for teachers.

The club's activities included a picnic at Wilson Woods with freshman girls as guests, a panel discussion, a book display, a Christmas party at Dr. Leifeste's apartment, and several outside speakers.

## OFFICERS

<i>President</i> .....	FLORENCE TRAISTER
<i>Vice-President</i> .....	MARGARET MOORE
<i>Secretary</i> .....	MARY E. DIAS
<i>Corresponding Secretary</i> .....	ANN GERBER
<i>Treasurer</i> .....	BETTY HEASLEY
<i>Adviser</i> .....	DR. BERTHA LEIFESTE

E. Gunderman, D. Dryden, M Rimer, M. Kennedy, L. Carrier, N. Bloom, P. Weigand, M. Clapool, M. Mohney, D. Nulph, M. Neely, A. Shipley, H. Ferry, M. McClain, H. Weeter, M. Stewart, H. Servey.



## HOSTESS CLUB

The work of the Hostess Club dealt largely with discussing and learning the fundamental principles of etiquette.

During the programs of the year problems of immediate interest to college girls were discussed, and many rules of social conduct were practiced. The members also learned the all important art of being gracious.

Among the many activities of the club, the most notable were: a window display during Book Week, parties, a tea for both the senior class and the faculty, and the decorating of the Egbert Hall lounge for the Christmas season.

### OFFICERS

*President*.....MARGARET LOUISE NEELY  
*Secretary*.....NORMA BLOOM  
*Treasurer*.....ANNE SHIPLEY  
*Adviser*.....MISS GRACE STOKES



M. Simons, E. Barlett, E. Rupert, A. Gerber, P. Miles, P. Timlin.  
 B. Heasley, G. Smith, N. Bloom, A. Mocek, P. Weigand, M. Seifert.  
 A. Connelly, J. Donaldson, I. Ross, K. Black, K. Stewart.  
 A. Wilson, K. Reid, M. Kennedy, M. Carr, M. Clover.

# YOUNG WOMEN'S CHRISTIAN ASSOCIATION

The purpose of the Young Women's Christian Association is to "unite in the desire to realize full and creative life through a growing knowledge of God . . . to have a part in making this life possible for all people, and in this task to seek to understand Jesus and follow Him."

During the year the organization met every other Wednesday evening to discuss problems which are vital to youth today. The meetings were planned and conducted by various members of the "Y" and included discussion meetings, song services, and two excellent lectures by prominent national workers in the Y. W. C. A.

The following officers were elected during the second semester for the coming year:

- |  |                  |
|--|------------------|
| <i>President</i> . . . . .                 | EVELYN RUPERT    |
| <i>Vice-President</i> . . . . .            | GEVIENNE SMITH   |
| <i>Recording Secretary</i> . . . . .       | MARY SEIFERT     |
| <i>Corresponding Secretary</i> . . . . .   | PEARL WEIGAND    |
| <i>Treasurer</i> . . . . .                 | MARY CARR        |
| <i>World Fellowship Chairman</i> . . . . . | KATHLEEN STEWART |
| <i>Recreation Chairman</i> . . . . .       | JEAN DONALDSON   |
| <i>Adviser</i> . . . . .                   | MISS GRACE STOKE |



E. Gunderman. M J. Shoemaker. D. Zacharl.

D. Harmon. D. Dryden. D. Nulph. Miss Sandford. M Rimer. A. Kellet.

## ART CLUB

The Art Club began its activities this year by designing and making brightly colored baby slippers which were donated to the Greek War Relief Society. During the Christmas season, the club with additional members from the Art Department made 1350 cards of 5 different types. For the most part these cards were sent or given to men in the service. In the spring 300 Easter greeting cards were designed and painted for our Alumni in the armed forces, and special birthday cards were made for the same purpose by both the Art Club and the Out Door Club. In December an informal "get-to-gether" was held at the Coffee Shop, and on St. Patrick's Day the Art and Press Clubs had their joint party, which as usual was a very jolly and happy affair. The acquisition of bronze Art Club pins brought joy and pride to all members who received them, and was one of the real satisfactions enjoyed during the year.

### OFFICERS

*President* . . . . . MARY JANE SHOEMAKER  
*Vice-President* . . . . . DOROTHY ZACHERL  
*Secretary-Treasurer* . . . . . DOROTHY DRYDEN  
*Adviser* . . . . . MISS HAZEL SANDFORD



E. Staab, M. Reynolds, H. Hetrick, K. Stewart, M. Fillipih, D. Bloomster, A. Mocek.

## CAMERA CLUB

Camera Club members, whether they are experienced photographers or not, always look forward to their meeting. If they lack experience, they are sure to learn something new. Those who know all about developing films and making contact prints and enlargements are always eager to see how well that last film turned out, or see what good enlargements they can make.

### OFFICERS

First Semester		Second Semester
DORIS BLOOMSTER	<i>President</i>	ANNE MOCEK
FAN OWENS	<i>Vice-President</i>	MARY REYNOLDS
KATHLEEN STEWART	<i>Secretary</i>	VERONICA MOTTER
ANN MOCEK	<i>Treasurer</i>	KATHLEEN STEWART
	<i>Adviser</i>	DR. DONALD PIERCE



E. Reaghart. B. Hilliard. A.  
Hahn. H. Weeter.  
M. Shick. J. Wick. Miss Nair.  
G. Smith. M. Hess.

## CLASSICAL CLUB

The Classical Club was organized to show the members the practical value of the Latin language in modern living. The activities of the club developed appreciation and understanding of the Roman government, literature, and art, in addition to revealing a picture of the private life of the Romans. This organization is made up of students majoring, or especially interested, in Latin. A tea at the home of Miss Nair was the main social event of the year.

### OFFICERS

<i>President</i> .....	MARIAN SHICK
<i>Vice-President</i> .....	MARY ALMA HAHN
<i>Secretary</i> .....	GÉVIENNE SMITH
<i>Treasurer</i> .....	HELEN WEETER
<i>Adviser</i> .....	MISS BERTHA NAIR



D. Bloomster, P. Miles, G. Le-  
debur, M. Seifert, A. Wilson,  
B. Hugus, E. Barlett.

C. Kanski, T. Kennedy, D. Cas-  
key, I. Ross, K. Copeland.

## WOMEN'S ATHLETIC COUNCIL

The Women's Athletic Council was one of the most outstanding organizations on campus this year, because the war has eliminated men's athletics here at C.S.T.C.. It drew up the rules of the tournaments and elected the members of the various varsities. The W.A.C. enjoyed a well rounded social life, too. On February 18 Miss Spaller entertained at an informal party in the gym. On the weekend of March 4 all members had an exciting time at Cooks Forest, where they enjoyed a week of camping and the beauties of the surrounding vicinity.

### OFFICERS

<i>President</i> .....	KATHRYN W. COPELAND
<i>Vice-President</i> .....	MARY SEIFERT
<i>Secretary-Treasurer</i> .....	DORIS L. CASKEY
<i>Advisers</i> .....	DR. HELEN BARTON MISS ETHEL SPALLER



V. Cuthbert, M. Carr, K. Stewart,  
M. Burns, M. Mohney,  
V. Burns, E. Bovard, H.  
Ferry, R. Kane, G. Lobaugh,  
V. D. Nulph.



## SPEEDBALL VARSITY

Weather conditions this year prolonged the speedball season and necessitated the elimination of the hockey games which usually follow speedball. Consequently all the enthusiasm of both these intramural sports was packed into an exciting speedball tournament.

The Juniors emerged victorious from a hard fought campaign, and were declared the school champions. At the conclusion of the season the following varsity was selected from the best players of each of the four teams:

Velma Burns, Kathleen Stewart, Verne Cuthbert, Gertrude Lobaugh, Elizabeth Bovard, Ruth Kane, Mary Carr, Mary Burns, Martha Mohney, Helen Ferry, and Doris Nulph.



P. Showers, K. Bole, V. Matter, B. Hugus, D. Dryden, D. Nulph, M. Seifert, T. Allison, B. Heasley, M. Hess.

M. Hutchison, A. Guseman, D. Caskey, I. Slater, B. Griffith, J. Donaldson, P. Weigand, M. Clover, M. Lewis, M. Reid, G. Smith, B. Finerty, J. Wick.

M. Shockey, A. Stratton, V. Cuthbert, P. Miles, L. Carrier, P. Timlin, M. Rimer.

## GIRLS' CHORUS

During previous years Clarion State Teachers College has had an A Capella Choir as well as a Girls' Chorus, but this year, due to the shortage of men at Clarion as everywhere else, the girls have had to carry on alone.

As a result of the gasoline problem, the concert tours were curtailed, but several programs were given at Clarion. The first appearance of the year was at the Clarion Methodist Church. Several weeks later the Chorus presented a chapel program, which was broadcast over the DuBois station.

J. Wick, D. Caskey, K. Bole,  
M. Shockey, P. Miles, M.  
Hutchinson.



## ENSEMBLE

The ensemble, under the direction of Mr. Walter Hart, has been outstanding among the C.S.T.C. activities this year. It has given several stage performances in local and surrounding churches and schools and has appeared for performances in Salem, Tionesta, and Rocky Grove.

A part of this organization, the Girls' Trio, composed of Kathryn Bole, Marion Shockey, Pauline Miles, and accompanied by Doris Caskey added to the success of a bond drive at Punxsutawney, February 1, where they broadcasted several selections over radio station W.C.E.D.

At the Du Bois bond drive held February 15, Jean Wick, piano soloist, and Marigrace Hutchinson, vocal soloist, joined the trio in broadcasting. This broadcast consisted of many patriotic renditions.



# HONOR ROLL

Everyone of these boys has been missed on the campus, but our loss was Uncle Sam's gain. The Class of '44 proudly presents its Honor Roll.

WILLIAM AARON  
WILLIAM ALLISON  
JAMES ARNER  
WILLIAM BATES  
DAVID BEIGHTOL  
HAROLD BERLIN  
RUSSELL BOGART  
NEIL BRINDLEY  
EUGENE CARROLL  
PAUL CURTIS  
DONALD DETRIE  
DELBERT ELDER  
GORDON FAIR  
IRWIN FALL  
MICKEY FORD  
WILLIAM HULTMAN  
JOSEPH JEWART

LAWRENCE KERR  
CHARLES LAUGHLIN  
PEPPER MARTIN  
RICHARD McCANDLESS  
WESLEY McENTARFER  
JACK McLAIN  
NEWTON REED  
JAMES SIAR  
JOSEPH SLIKE  
BEN SMITH  
CLYDE SNYDER  
JOHN STEWART  
MERVIN STRICKLER  
JACK THOMPSON  
JOHN TILE  
JOSEPH TRUNK  
ROBERT WIBERG

Missing in Action  
JAMES HARNISH



## Memories . . . .

Jolly Sunday afternoon walks and talks with boys in khaki . . . "Beowulf" read to the tune of "Queenie" . . . discussion on the French and Indian War, above the drone of a plane . . . retreat on Saturday afternoons in the fall . . . the Christmas formal . . . U.S.O. and Quintile dances . . .

young men of the Air Corps, drilling, marching, singing, studying . . . preparing to fight in the war for the Skies.

## Acknowledgments

The Staff is deeply indebted to a great many people who have helped to make this SEQUELLE possible:

To Howard Trombley . . . who gave us pictures in spite of handicaps.

To Miss Nair and Mr. Kuhner, our advisers . . . who compensated for our ineptitude.

To the Stevenson and Foster Co. . . . the printers.

To Jahn and Ollier . . . the engravers.

To all those who contributed time, effort, and encouragement to the SEQUELLE.

---

---

## An Appreciation :

The Staff of the 1944 SEQUELLE, on behalf of the Student Body, takes this opportunity to express their appreciation and thanks to the advertisers, who through their kind assistance and co-operation, have aided the cause of the SEQUELLE.

---

---

*Compliments*  
of  
MAUL'S  
Dairy Store

First Rate Store  
First Class Drugs

*Nyal Service Store*  
FITZGERALD'S  
A. G. CORBETT DRUG CO.  
CLARION, PA.

### HAIL THE GRADUATION OF 1944

We join in a hearty commendation of your efforts and in a sincere wish that your future lives may be happy and successful.

**G. C. MURPHY & COMPANY**

5 and 10 CENT STORE



COMPLIMENTS OF

# Leather's Lanes

CLARION'S LEADING RECREATIONAL CENTER

*Not Only Good Food—But All You Want*

Best Wishes for This Year

## THE COFFEE SHOP

MODERATE PRICES

Hazel Miller

Corner Eighth and Main Streets

Clarion 72

### MODERN STORE

*Groceries                  Fruits*

*Fresh Meats*

---

SAM CHERICO, Proprietor

PHONE 38

CLARION, PA

*Compliments of*  
**A FRIEND**

OUR BEST WISHES to every graduate and student of Clarion State Teachers College. Please keep us in mind—write us when you secure a position or a better one; when you are married; or receive distinctive recognition.

We are glad to print good news about Clarion students.

## **The Clarion Republican**

*"The Paper with the Service News"*

Compliments

# Brookville Dairy Products Company

Manufacturers of

QUALITY DAIRY PRODUCTS



BROOKVILLE

PENNSYLVANIA

MERWIN'S

Stationery · Magazines · Newspapers

Greeting Cards



MAIN STREET      CLARION, PA.

Compliments of

HUGH M. OWENS

Jeweler

Compliments of

*Mr. and Mrs. Fred Jenkins*

Compliments of

## MEANS & LAUF DRUG COMPANY

Compliments

CLASS OF 1944

KNOX FRUIT COMPANY

A. and J. AGNELLO

PHONE 29

KNOX, PA.

Compliments of

WEIN BROTHERS

*A Bank of Strength and Character*

Banking transactions are strictly supervised by the banking authorities.

OUR DIRECTORS

Merritt H. Davis      Herbert R. Lander      Perry Wile  
B. M. Davis              W. M. Moore

*Member Federal Deposit Insurance Corporation*

**FIRST NATIONAL BANK in CLARION**

CLARION

PENNSYLVANIA

Just Off the Campus one may find  
the best in groceries and meats.  
... Why go farther?

WM. W. PHERO

"The College Grocer"

Phone 19

RHEA LUMBER  
COMPANY

*Lumber and Builders' Supplies*

KNOX, PA.

CLARION, PA.

# DITZ & MOONEY HARDWARE

*"Everything in Hardware"*

*Lucas Paints  
China and Glassware  
Hunting and Sporting Equipment*

PHONE 218

CLARION, PA.

## THE RESS SHOP

↙  
*Women's and Misses'  
Ready to Wear*

↘  
CLARION, PA.

*Compliments*

## MODERN DINOR

Meals                      Lunches

—————  
NEXT TO GARBY THEATRE

*Compliments of*

## Meadow Gold Dairies, Inc.

KITTANNING, PA.

## ORPHEUM THEATRE

*owned and operated by*

HEPINGER AMUSEMENT COMPANY



Clarion's Leading Theatre Since 1912

## PARIS VERI-SAFE CLEANERS

Established 1917

Insured · Mothproof · Cleaning and Waterproofing  
Dyeing, Repairing and Storage of  
Clothes, Furs, Hats, Rugs and Furniture

MAIN PLANT, 631-37 MAIN STREET

BROCKWAY, PA.

### The *Rexall* Store

Soda Fountain and Luncheonette  
Service

*Lowest Cut Prices*

KING DRUG STORE

### HERMAN BROTHERS

THE CORNER STORE

*Fruits      Ice Cream  
Confections*

Corner Wood and Eighth Avenue  
CLARION, PA.

# **PENNEY'S**

J. C. PENNEY CO., INC.

*Suppliers for the Home Front!*

609 MAIN STREET

CLARION, PA.

*Compliments of*

THE COLLEGE GRILL

J. F. Weaver Est.

HARDWARE COMPANY

Highest Quality Merchandise  
at Lowest Possible Prices

PHONE 194

CLARION, PA.

J A F F E ' S

Women's and Misses' Wearing  
Apparel of the Better Kind

608 MAIN STREET, CLARION PA.

Phone 89

EXPERT HAIR STYLING . . .

We Handle DERMETICS  
Exclusively

K A T H R Y N ' S  
BEAUTY SHOP

BANNER BUILDING  
Phone 310

*Compliments of*

**RIECK'S SEALTEST**

MILK AND ICE CREAM COMPANY

*Buyt at Brown's and Save*

**BROWN'S BOOT SHOP**

SHOES AND HOSIERY

CLARION

PENNSYLVANIA

FOR VICTORY  
BUY MORE WAR BONDS  
AND STAMPS

—  
DAVID A. KAUFMAN  
*Jeweler*

*The Best of Luck and Success  
From Your House of Hits*

—  
GARBY THEATRE  
CLARION, PA.

# The Stevenson & Foster Co.

PRINTERS - LITHOGRAPHERS - STATIONERS

421 Seventh Avenue - Pittsburgh, Penna.



COLLEGE ANNUALS  
HIGH SCHOOL YEAR BOOKS  
MONTHLY PUBLICATIONS



Our representative will be  
pleased to assist you when  
compiling your next Publication.

... Telephone GRant 1551 ...

PRINTERS SINCE 1812

# JAHN & OLLIER AGAIN



## LOYAL

always, to the  
cause of better  
Yearbooks

JAHN & OLLIER  
ENGRAVING CO.

Makers of Fine Printing  
Plates for Black and Color  
Artists - Photographers

817 W. WASHINGTON BLVD.  
CHICAGO







CLARION UNIVERSITY OF PENNSYLVANIA



3 9363 00386 9333

Spec. Col.

qLD

1017 Sequelle

.C88

1944

Spec. Col.

qLD

1017

.C88

1944

