

Spec. Col.
qLD
1017
.C88
1945

1945

Sequelle





Carlson Library

Digitized by the Internet Archive
in 2010 with funding from
Lyrasis Members and Sloan Foundation

<http://www.archive.org/details/sequelle1945clar>



Foreword

The product of good comradeship in work and in play the SEQUELLE for 1945 is our attempt to leave with you a tangible symbol of our life together here. We shall not apologize for the inadequacies of a war time year book or for our own inexperience, for we have done our best. Some day you will take up this book, musty with the years, and find in it a picture or a phrase that will bring a flood of memories of your college years, and you will be glad and proud that you were one time a student at Clarion State Teacher's College.



A Book

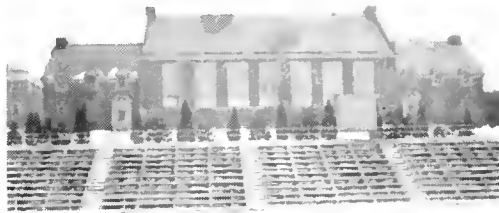
of Notes

to keep fresh the
myriad memories
of a school - - -

WHERE WE



LIVED AND LOVED . . .



...and this as in



other years we call it the

SEQUELLE

for 1945





A message



from the President

The Sequelle Staff has worked quietly but efficiently this year and has produced a good yearbook. The demands of war have produced shortages of materials used in this kind of publication, especially paper and films. You are to be congratulated on working so smoothly and effectively despite handicaps.

You of the class of '45 should feel a strong bond existing between you. You are few because the war took your numbers away. You have lived and studied together through the world's greatest military struggle. You are observing together the world problems that world wars create. You will go out together to work in a society that is in some ways different from what it was when you entered college four years ago.

Your memories of your Alma Mater will always be associated with aviation student formation, boys going away to war, battle headlines, rationing, etc. You will enjoy coming back to reunions in future years when we have peace, and talking over these stirring times.

TEACHERS



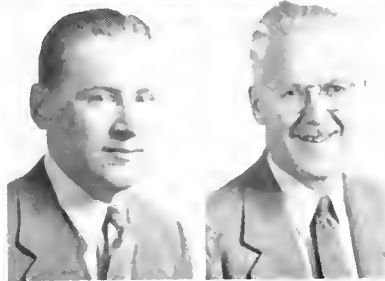
CHARLES F. BECKER, M.A.
Education

MARGARET A. BOYD, M.A.
English



CLAIR E. CAREY, M.A.
Mathematics

RENA M. CARLSON, M.A.
Librarian



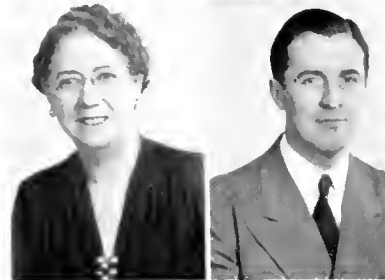
RALPH W. CORDIER, Ph.D.
Social Studies

CHARLES R. FLACK, M.A.
Library Science



MILDRED GAMBLE, M.A.
Intermediate Grades

RUTH K. GRAFF, M.A.
Primary Grades



ANNA B. GRAHAM, B.S.
Junior High School

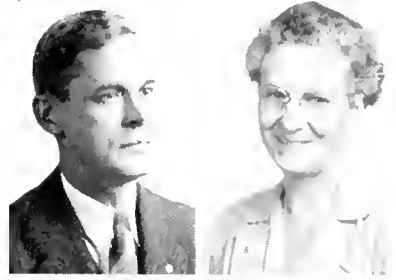
WALTER L. HART, M.A.
Music



EFFIE B. HEPLER, B.S.
Primary Grades

CLARENCE A. KUHNER, M.A.
Geography

BERTHA V. LEIFESTE, Ph.D.
Kindergarten Primary Education



HARRY S. MANSON, M.A.
Biological Science

BERTHA V. NAIR, M.A.
English, Latin



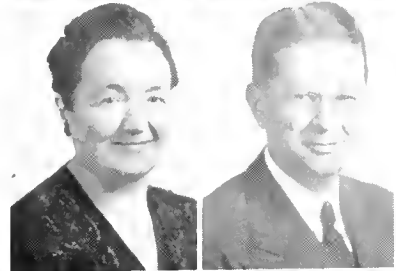
FANNIE C. OWENS, R.N.
Nurse

DONALD D. PIERCE, Ph.D.
Dean of Men, Science



HAZEL SANFORD, M.A.
Art

SEWELL E. SLICK, Ph.D.
High School, Social Studies



GRACE M. STOKE, M.A.
Dean of Women, Education

WALDO S. TIPPIN, M.A.
Physical Education



LOTTIE J. WINGARD
Registrar



we will remember

As they

really are ...



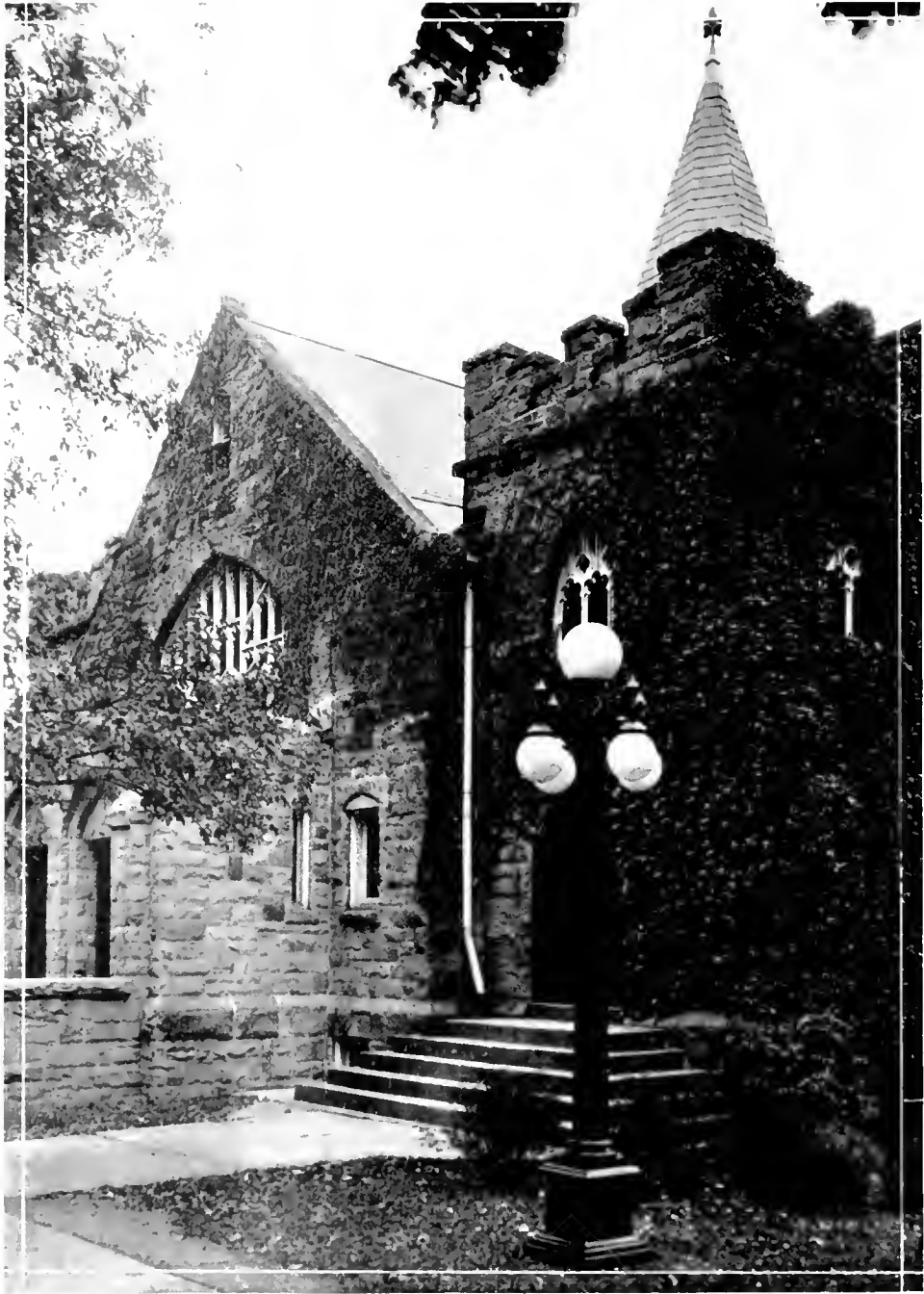


Top row: A true friend . . . Mother Carey's Chicken . . . Mr. and Mrs.

Second row: Pals . . . What do we have for dinner? . . . Taste good, Mr. Kuhner?

Third row: Where he is, fun is . . . That's where our money goes . . . Whoops, there . . . Woodzin'

Fourth row: Family man . . . Busybody . . . Versatile.



The Classes



The SENIORS



History

We, the class of '45 have witnessed, not a gradual change in college customs and social functions, but an abrupt one. As Frosh, we joined together in college dances, teas, parties, and other events. We were a mixed group of girls and boys. In December of that year, we were suddenly a country at war. We watched our classmates march off to a fight bigger than any we'd ever seen on a football field. Every boy from our class is proudly doing his part to retain our freedom. We've seen the Civilian Pilot Training men and the Army Air Corps come to our campus, and leave. They've made us realize the real work the boys are doing; they've made our thoughts and prayers go with our college boys whom we knew in civilian life.

Nevertheless, we girls have made our college days something to remember. We have gained much from years at Clarion, both intellectually and socially. We have made lasting friendships. C.S.T.S. will not be forgotten; after graduation we shall always be looking forward to a visit back to our Alma Mater.

OFFICERS

President
Vice-President
Secretary
Treasurer

MARY JANE TURNBULL
VERNE GUTHBERT
GEVIENNE SMITH
MAXINE MONG

ADA CONNOLLY

pleasant, a good conversationalist

"Well, I don't believe that."



LOIS STROUPE

calm, complacent, poised

"Well, Ray said - - !"



EVON TERWILLIGER

short, dark, energetic

"Never say die."



Three musketeers . . . roommates . . . True to her name . . . Good things always come in pairs . . . teachers . . . Beauty and Brains—which is which?



MARJORIE TAYLOR - "Marge"

loquacious, sense of humor

"Gotta clean my room."



MARY JANE TURNBULL - - -
"Tutti frutti"

dark, dancing eyes, always herself

"Is the mail in?"



MARGARET ZUENDEL

sincere, energetic, studious

"The perfect pedagogue."



DORIS BLOOMSTER, Kennard, Pa.

Geography Club 1,2,5,4; Intramurals 2,5,4; Camera Club 2,5,4; Women's Athletic Council 5,4; Sequelle Staff; Who's Who.



DOROTHY BLOOMSTER, Kennard, Pa.

Geography Club 1,2,4; Camera Club 2,4; Intramurals 2,4; International Relations Club 4; Association for Childhood Education 4; Women's Athletic Council 5,4; Sequelle Staff.



ELIZABETH BOVIARD, Brockway, Pa.

Y.W.C.A. 1,2; Hostess Club 2; Sigma Sigma Sigma 1,2,5,4; Association for Childhood Education 5,4; Art Club 4; Intramurals 2,5,4; Women's Athletic Council 4; Sequelle Staff.



MARY CARR, Youngsville, Pa.

Geography Club 1,2; Y.W.C.A. 1,2,4; International Relations Club 1,2,4; Intramurals 1, 2,4; Camera Club 2,4; Association for Childhood Education 4; Women's Athletic Council 4; Sequelle Staff.

DORIS BLOOMSTER

photographic-minded, pensive, energetic

"Umm-m!"

"Silence is golden".

DOROTHY BLOOMSTER - - - "Dot"

quiet, reliable, a poet

"Better late than never"

"Smile and the world smiles with you".

ELIZABETH BOVAIRD - - - "Libby"

tall, willowy, blonde, optimistic

"How true!"

MARY CARR

quiet, studious, efficient, always smiling.

"Never say 'can't' "



SARA BEVERIDGE

always willing, cooperative, pleasing

"I'll always remember C.S.T.C."



DORIS CASKEY - - - "Doree"

"Sleepy gal" the pianist, attractive, dreamy eyed

".H———.H"

"Where to, now?"



VERNE CUTHBERT

A friend to everyone, a smile for all, lover of boogie woogie and swing

"It's all my fault!"

"How wonderful!"



KATHRYN COPELAND - - - "Copic"

sincere, with qualities for leadership

"Where's your proof?"

"This only the beginning - Dr. Copeland

- How's it sound?"



SARA MAE BEVERIDGE, Emerickville, Pa.

Geography Club 1,2,3,4; Classical Club 1,2; Intramurals 2.



DORIS CASKEY, Port Allegany, Pa.

A Capella Choir 1,2,3,4; Intramurals 1,2,3,4; Press Club 2,5; Outdoor Club 2,5,4; Ensemble 3,4; Women's Athletic Council 3,4; International Relations Club 2,5; Women's House Council 3,4; Pres.; Lambda Chi Delta 1,2,3,4.



VERNE CUTHBERT, Ridgway, Pa.

A Capella 1,2,3,4; Art Club 1; Intramurals 1,2,3,4; Press Club 2,5; Outdoor 3,4; Women's Athletic Council 3,4; Student Senate 4, Pres.; Women's House Council 4; Pan Hellenic 2,5; Lambda Chi Delta 1,2,5; 4, Pres.; Sequelle Staff.



KATHRYN COPELAND, Tidioute, Pa.

College Players 1; Press Club 1,2, Pres. 5; "Call" Editor, 4; Intramurals 1,2,3,4; Women's Athletic Council 2,5,4; Student Senate 2; Women's House Council 1,2,3,4; Outdoor Club 3,4; Pi Gamma Mu; Who's Who; International Relations Club 1,2,5; Sequelle Staff.





MARY ALMA HAHN, Crown, Pa.

Hostess Club 1; Classical Club 1,2,3,4; Newman Club 1;
Y.W.C.A. 2; Press Club 3; International Relations Club 3;
Theta Alpha Lambda 3,4.



RANDOLYN HARNISH, Clarion, Pa.

A Capelle Choir 1,2,3,4; Y.W.C.A. 1; Sigma Sigma Sigma
1,2,3,4.



ELSIE HARTMAN, Sligo, Pa.

Geography Club 1; Intramurals 2; Girls Chorus 1; Asso-
ciation for Childhood Education 2; Sigma Delta Phi 1,2,3,4.



JOY HELENBROOK, Bradford, Pa.

College Players 1,2; International Relations Club 2;
Intramurals 2; Press Club 3,4; Association for Childhood
Education 4; Sequelle Staff.

MARY ALMA HAHN

reserved, consistent, quiet

"College has been swell!"

RANDOLYN HARNISH - - - "RONNIE"

dependable, has traveled a lot, enthusiastic

"Wait until this war's over!"

ELSIE HARTMAN

trusting, conscientious, optimistic

"There's always more to learn!"

JOY HELENBROOK - - - "Eager beaver"

happy-go-lucky, sentimental
always on a merry-go-round

"What time is it now?"





BETTY HEASLEY - - - "Bunny"

domestic, capable, musically inclined

"Teaching is something different every day!"



MARY ALICE HESS - - - "M.A."

sympathetic, encouraging, dignified

"Everything happens to me!"



CONNIE LEAHY

blonde, self-assured, frank, likes nature

"Why?"

"I don't care!"



ANN MOECK

cooperative, reliable, sociable

"I Hope!"

"Ooooooh!"

MARY ALICE HESS, New Bethlehem, Pa.

A Capella Choir 1,2,5; College Players 1,2,5; Classical Club 1,2,5.



BERNADETTE HUGUS, Knox, Pa.

A Capella Choir 1,2,5; Outdoor Club 1; College Players 1; Intramurals 1,2,5; Women's Athletic Council 2,5; International Relations Club 5; Association of Childhood Education 2,4; Delta Sigma Epsilon 3,4.



CONNIE LEAHY, Johnsonburg, Pa.

A Capella Choir 2; Art Club 1; Newman Club 1; Intramurals 1,2,5,4; Press Club 2,5,4; Outdoor Club 2,5,4; Women's Athletic Council 2,5,4; Pi Gamma Mu; International Relations Club 2,5,4; Sequelle Staff, Ass't Editor of "Call".



ANN MOCEK, McDonald, Pa.

Hostess Club 1; Intramurals 1,2,5,4; Geography Club 5; Pi Gamma Mu 4; Camera Club 5; Who's Who; Pan Hellenic 5,4; International Relations Club 1,2,5,4; Sequelle Staff; Theta Alpha Lambda 1,2,5,4.





MAXINE MONG, Shippenville, Pa.

Hostess Club 1; International Relations Club 2,5; Intramurals 1; Press Club 2; Student Senate 2; Pan Hellenic 2,5; Sigma Delta Phi 1,2,5.



MARY OCHS, Lucinda, Pa.

Sigma Sigma Sigma 1,2,5,4; Pan Hellenic 5,4; Hostess Club 1; Art Club 2,4; Intramurals 2,5; Association for Childhood Education 5,4; Geography Club 5; Sequelle Staff.



BARBARA PADDOCK, Clarion, Pa.

Delta Sigma Epsilon 1,2,5,4; College Players 1,2; Hostess Club 1; Intramurals 2; International Relations Club 5,4; Sequelle Staff.



KATHERINE REID, Oil City, Pa.

Lambda Chi Delta 1,2,5,4; Hostess Club 1; Y.W.C.A. 1,2; Intramurals 1,2,4; Press Club 2,4; Association for Childhood Education 5,4; College Players 2; Outdoor Girls 2,4; Who's Who.

MAXINE MONG

ingenuous, small, sweet

"Sure will miss Clarion!"

MARY OCHS

shy, sylph-like

"Wish we had more vacations!"

"So soon?"

BARBARA PADDOCK

attractive, dignified, dreamy eyed

"What a sense of humor!"

KATHERINE REID - - - "Kay"

dramatic, the three year genius

*"The early bird gets the worm,
but what about the poor worm."*



EVELYN RUPERT - - - "Evvie"

studious, ingenious, a girl of hobbies, critic
reader of modern books for children. She
reads them all!



GEVIENNE SMITH

consistent, persistent, persevering

"I wish I knew what I was doing!"



MARIAN SHOCKEY - - - "Mimi"

optimistic, jolly, carefree

"I get such a kick out of life!"

"Hey kids, guess what!"



BERNADETTE HUGUS - - - "Bernie"

aggressive, neat, poised, imaginative

*"You have to use more than
psychology".*



KATHLEEN STEWART

reliable, poetically-inclined, a lover of
Shelley and Keats

*"A good laugh is a builder-
upper!"*

EVELYN RUPERT, Oil City, Pa.

Y.W.C.A. 1,2,5,4; Intramurals 1,2; Geography Club; International Relations Club 2,3,4; Student Senate 3,4; Association for Childhood Education 3,4; Camera Club 3; Who's Who; Sequelle Staff.



MARIAN SHOCKEY, Apollo, Pa.

A Capella Choir 1,2,3; College Players 1,2,3; Lambda Chi Delta 1,2,3,4; Intramurals 1,2; Women's Student Council 2; International Relations Club 2,3; College Trio 2,3; Pi Gamma Mu 3,4.



GEVIENNE SMITH, Strattonville, Pa.

A Capella Choir 2,3; Hostess Club 1; Latin Club 2,2,5; Y.W.C.A. 2,3; Press Club 2; International Relations Club 2,3; Delta Sigma Epsilon 1,2,3.



KATHLEEN STEWART, Emlenton, Pa.

Press Club 1,2,3,4; Y.W.C.A. 1,2,3,4; Art Club 2; International Relations Club 1,2,3,4; Intramurals 1,2,3,4; Association for Childhood Education 3,4; Camera Club 3,4; Women's Athletic Council 4; Sequelle Staff.





LOIS STROUPE, Hampton Station, Pa.

Hostess Club 1; Outdoor Club 2; International Relations Club 3,4; Delta Sigma Epsilon 1,2,3,4.



MARJORIE TAYLOR, Brookville, Pa.

Geography Club 1; International Relations Club 1,2,3,4; Intramurals 2; Outdoor Club 3,4; Hostess Club 5; Y.W.C.A. 2; Women's House Council 5; Student Senate 5; Pi Gamma Mu 3,4.



EVON TERWILLIGER, Parkers Landing, Pa.

Hostess Club 1; Sigma Delta Phi 4.



MARY JANE SHOEMAKER TURNBULL, Falls Creek, Pa.

Association for Childhood Education 3,4; Art Club 3,4; Sigma Sigma Sigma 3,4; Who's Who.

KATHERINE VANCE. Clarion, Pa.

Camera Club 3; Delta Sigma Epsilon.



MARGARET ZUENDEL. Starr, Pa.

Press Club 1,2,3; Who's Who; College Players 1,2; Sequelle Staff 1; Intramurals 2; Delta Sigma Epsilon 1,2,3,4.



BETTY HEASLEY, Rew, Pa.

A Capella Choir 1,2,3; Art Club 1; Y.W.C.A.; Association for Childhood Education 1,2,3,4; Intramurals 2; Outdoor Club 3,4; Sigma Delta Phi 1,2,3,4.



The JUNIORS



Junior Class History

The Junior Class is not so large this year—some of our number have joined the ranks of marching men and others have speeded up and will graduate this spring. We're proud of all of them.

At last we feel as though we're getting somewhere. To us, as freshmen and sophomores, college days seemed to stretch ahead endlessly, but now we know they're numbered, and we value them all the more.

This year has gone quickly for the Junior Class, which, although small, makes itself known. You'll find alert, fun-loving juniors in every college activity. And you'll be seeing more of us, as we take our places as the dignified seniors of next year.

OFFICERS

President

JEAN DONALDSON

Vice-President

RUTH HAMILTON

Secretary

BETTY FINERTY

Treasurer

MARGARET RIMER



Friendly . . . Mary and friend . . . Happy, Marge? . . . Look
at the pretty—house . . . Scotty and Michael . . . Where ya goin'?





THELMA ALLISON
New Bethlehem

MARY BURNS
Clarion



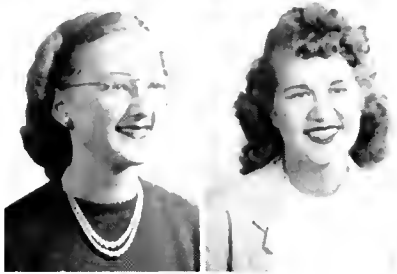
LAURA CASAGNI
Apollo

JOAN DAVIS
De Young



JEAN DONALDSON
Pittsburgh

BETTY FINERTY
Sheffield

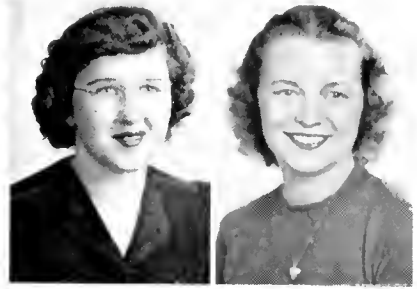


RUTH HAMILTON
Uniontown

BETTY HILLIARD
Brookville

MARJORIE KENNEDY
Punxsutawney

GERALDINE LEDEBUR
Sheffield



GERTRUDE LOBAUGH
Callensburg

MARGARET NEELY
Tarentum



MARGARET RIMER
Rimersburg

NAOMI SAYERS
Petroia



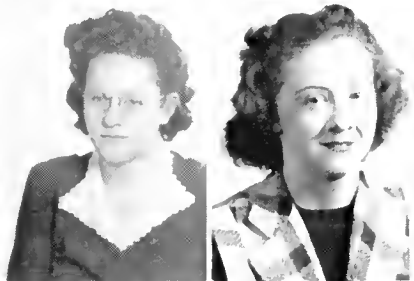
MARY SEIFERT
Kittanning

ANNA SHIPLEY
Uniontown



MARY STEWART
Punxsutawney

AMANDA STRATTON
Limestone



IVAN YOUNG
Clarion

DOROTHY ZACHERAL
Shipperville



The SOPHOMORES





Studious Shipley . . . Pals . . . Li'l' Helen . . . Cat and Max . . . One of the Mohneys . . . Lotsa fun . . . Yodelin' Lou . . . Picturesque . . . Spanish bugs



Sophomore Class

The sophomores entered school this year with a great feeling . . . everything was familiar—that is, except the freshmen. How grand it was to be able to find our way around, to greet the faculty members as friends, and to see again the ones who had helped us through our first year at college! We sympathized with the freshmen, because we knew just how they felt, wandering around, not knowing where to go or what to do.

We lost our president to the Women's Marine Corps and Ruth Swarhout resumed her duties. We wish Ronnie much luck in her new life.

OFFICERS

President

RUTH SWARTHOUT

Vice-President

NORMA BLOOM

Secretary . . .

...JEAN WICK

Treasurer

DORIS NULPH



NORMA BLOOM
Pittsburgh

LA GENE CARRIER
Summerville



MARJORIE CLOVER
Knox

DOROTHY DRYDEN
Mammoth



HELEN FERRY
Brookville

EDITH GUNDERMAN
Oil City



WILLIAM LAFRANCHI
Clarion

VERONICA MATTER
Shippenville



EVE MOCEK
McDonald

MARTHA MOHNEY
Brookville



CATHERINE MOORE
Brookville

BENTON NULPH
Leeper

DORIS NULPH
Climax

CHARLES RUMMEL
Knoxdale



HAZELDINE SERVEY
Clarion

NANCY SMATHERS
Clarion



MABLE SMITH
Tylersburg

LOU SOLLEY
Grampian



MAXINE SUMMERVILLE
Clarion

RUTH SWARTHOUT
Oil City



HELEN WEETER
Emlenton

PEARLE WEIGAND
Apollo

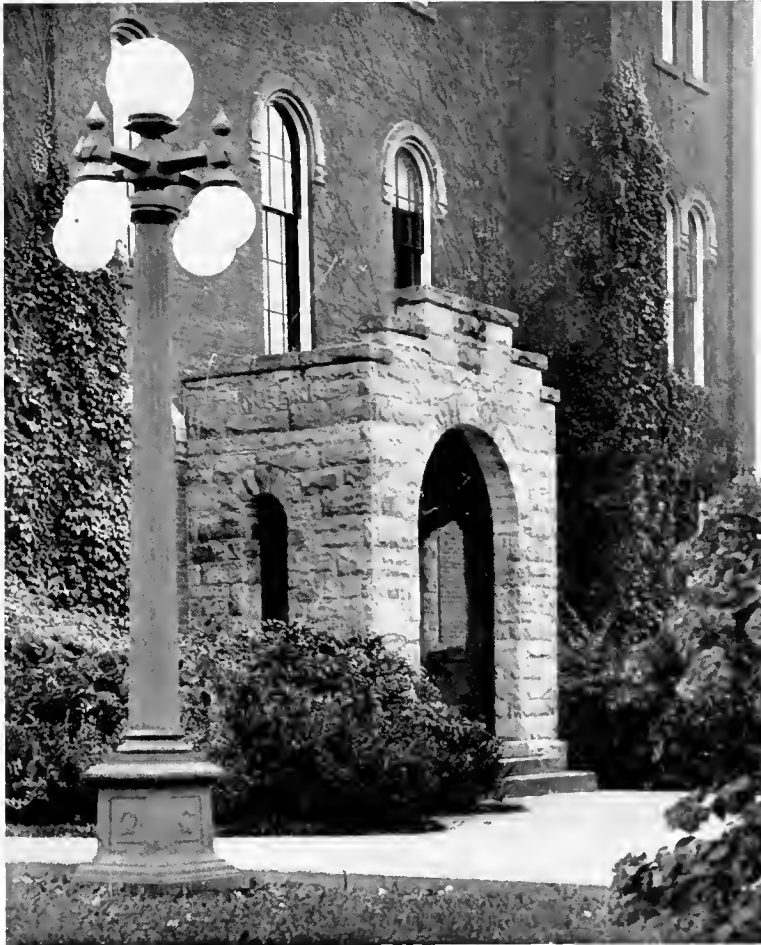


JEAN WICK
Tionesta



The BIG SNOW





The FRESHMEN



History of the Freshman Class

The class of 1948 started the year by taking an active part in the social life of the college. The Halloween party held for the entire school proved to be successful, and the Christmas party provided an enjoyable time for all concerned.

The experiences of the Freshman Class as a whole have been many and varied. Many of the students were facing new friends, new teachers, and a new environment for the first time. Organization took place early in the semester, and the following students were elected as officers: president—William Farrell; vice-president—Robert Kerr; secretary—Nellie McKinley; treasurer—Martha Helmintoller; program chairman—Dominic Federici.

Upon losing our president and program chairman to the Army Air Corps, our vice-president, Robert Kerr, became our president, and Betty McKinley was elected to serve as program chairman.

At semesters we received a large addition to our class, which now totals at sixty-seven freshmen. Our class is a large one, but our hope is that we will have not only quantity, but also quality in our accomplishments.



Freshman Week . . . old friends . . . new friends



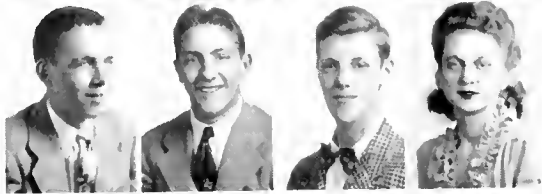
Lorna Bloom, Grampian, Pa.
Helen Bonsall, Grampian, Pa.
Jane Bonsall, Grampian, Pa.
Patricia Burns, Clarion, Pa.



Ernest Aharrab, Hallton, Pa.
Jane Arner, Clarion, Pa.
Donald Beers, Paint Mills, Pa.
Jean Blake, New Bethlehem, Pa.



Jula Bozard, Strattonville, Pa.
Doris Ann Crooks, Clarion, Pa.
Marian Davis, Pittsburgh, Pa.
Helen Duncan, New Galilee



William Farrell, Port Allegany, Pa.
Dominic Federic, Sykesville, Pa.
Kenneth Gibbons, Franklin, Pa.
Gloria Hagerstrand, Monessen, Pa.



Phyllis Hale, Turkey City, Pa.
Vernice Hardes, Port Allegany, Pa.
Sarah Harnish, Clarion, Pa.
Martha Helmintoller, Clarion, Pa.

Ruth Hill, Franklin, Pa.
 Kathleen Hobbs, Georgetown, Pa.
 Sarah Kelly, Boyers, Pa.
 Robert Kerr, Clarion Limestone, Pa.
 Vivian Maxwell, New Kensington



Josephine McCall,
 Richard McClain, East Brady, Pa.
 Betty McKinley, Erie, Pa.
 Nellie McKinley, Clarion, Pa.
 Jean Miller, Grampian, Pa.



Irma Messler, North East, Pa.
 Jane Minich, Mayport, Pa.
 Martha Mitchell, Kittanning, Pa.
 Arthur Moyer, Clarion, Pa.
 Donald Nulph, Clarion, Pa.



Marian Nuffer, Oil City, Pa.
 Shirley Robb, West Middlesex, Pa.
 Leatrice Smith, Corydon, Pa.
 June Sutherland, Clarion, Pa.
 Arlene Texter, Monroe, Pa.



Samuel Thompson, Clarion, Pa.
 Elaine Truitt, Mayport, Pa.
 Betty Underwood, Rimersburg, Pa.
 Betty Watson, Tionesta, Pa.
 Muriel Wright, Bradford, Pa.



Mary Kay Schierberl, Clarion, Pa.
 Joyce Simpson, Leeper, Pa.
 Jane Smathers, Clarion, Pa.





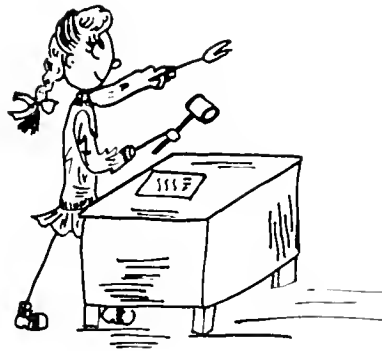
Looks as if it's raining
 . . . typical senior room
 . . . Bill . . . a snowy
 group . . .



Jeannie's dream
 man . . . friends
 Gone but not
 forgotten . . .
 smiles . . . one of
 the Kerr boys . . .
 Theta gals . . . Tri Sigs
 . . . Papa Becker



— Our Clubs —



Days of Fun Were Ours



Laurel and Hardy . . . Exercisin' . . . How about a ride?
. . . Silly Billies . . . Snow baby . . . Cook's Forest bound . . .
Dorce and her Al . . . Relaxing . . . Posing.



Front row: Martha Mohney, Verne Cuthbert.

Second row: Veronica Matter, Jean Donaldson, Ernest Aharra, Nancy Smathers, Maxine Summerville.



Student Senate

The Student Senate is the governing body which represents the students of the college. It is composed of seven members elected annually by the students and includes three representatives from dormitory women, three from women day students, and a man from either the day or resident men students.

The purpose of this association is "to take over the organization and direction of student affairs; to cooperate with the faculty and proper college authorities in matters of student concern; and constantly to seek to make the college a better agency for preparing teachers."

The three main committees made up of faculty and senate members are the social committee, the chapel committee, and the financial committee.

Officers of the Senate, elected by popular vote of the entire student body are:

President.

VERNE CUTHBERT

Vice-President

MARTHA MOHNEY

Secretary-Treasurer

ERNEST AHARRAH



First row: Marion Davis, Irma Messler.

Second row: Doris Caskey, Geraldine Ledebur, Verne Cuthbert, Doris Nulph, Marjorie Clover
Jean Donaldson, Kathryn Copeland.



Women's Student Council

Women's Student Council of Becht Hall is made up of two girls from each class, the dean of women, and the house president. Its chief purpose is to make dormitory life democratic and enjoyable.

This year, after a week of parties for the freshmen, House Council rewrote its constitution. Between semesters the girls gave a farewell party for Bernadette Hugus and Marion Shockey, who completed their courses in January.

OFFICERS

President

Vice-President

Secretary-Treasurer

DORIS CASKEY

JEAN DONALDSON

MARJORIE CLOVER

WHO'S WHO?

In order that high ranking students may be recognized nationally, "Who's Who Among American Universities and Colleges" is published each year. It includes the biographies of chosen graduates from six thousand or more American universities or colleges, and it is used as a standard of measurement and a recommendation to the business world.

Early in this school year a committee of the faculty chose eight students to represent Clarion State Teachers' College in this year's issue. Those receiving this recognition include: Margaret Zuendel, Ann Mocek, Mary Jane Turnbull, Catherine Vance, Katherine Reid, Doris Bloomster, seniors; and Betty Hilliard and Ivan Young, juniors.

Front Row: Mary Jane Turnbull, Katherine Reid, Ann Mocek.

Standing: Catherine Vance, Ivan Young, Evelyn Rupert, Margaret Zuendel, Doris Bloomster.





Lois Stroupe,
Ann Moeck,
Connie Leahy,
Kathryn Copeland.

Pi Gamma Mu

The purpose of Pi Gamma Mu is the inculcation of the ideals of scholarship, and social service in the study of social problems. Its particular purpose is to send out from our colleges and universities young men and women imbued with social idealism, trained in scientific thought, and encouraged to help others to be scientific in their thinking on social questions. Pi Gamma Mu aims to occupy a position in the field of social sciences comparable to that of Phi Beta Kappa in the field of literary studies.

The motto of the society is the epigram of the Master Teacher: "Ye shall know the truth, and the truth shall make you free".

Under the terms of its charter, Pi Gamma Mu has undertaken the task of encouraging the study of the social sciences by stimulating such interests among graduate and undergraduate students and faculty members in colleges and universities. The privilege of membership in the society is granted to those who have shown unusual interest and aptitude in the study of such sciences. Students from our campus who have met the qualifications for membership are: Mrs. Jack Taylor, Mrs. Wayne Leahy, Miss Ann Moeck, Miss Kathryn Copeland, and Miss Lois Stroupe.

International Relations Club

Every other Tuesday members of International Relations Club meet to become enlightened on some phase of the war and the coming peace, on which we have an ample supply of topics because of present unsettled conditions of the world. These meetings prove very interesting, especially when we start predicting such things as who will get to Berlin first and whether the war will end in Europe or South Pacific end first?

Among the topics presented at these meetings were: "The Election", "Scope of the War in the Far East", "China", "War in Europe", and "A Study of United Nations". Use was made of the Study Kit on which Dr. Cordier worked under the United States Office of Education.

This year the club became a member of Junior Town Meeting, which is a national organization patterned after "Town Meeting of the Air".

OFFICERS

<i>President</i>	EVELYN RUPERT
<i>Vice-President</i>	RUTH HAMILTON
<i>Secretary-Treasurer</i>	LOIS STROUPE



First row: C. Vance, M. Zuendel, K. Stewart, D. Bloomster.
Second row: G. Smith, M. Clover, L. Stroupe, E. Rupert, R. Hamilton, D. Bloomster.
Third row: W. LaFranchi, M. Nupher, D. Crooks, B. Paddock, M. Seifert, B. Nulph.
Fourth row: M. Carr, B. McKinley, A. Mocek, H. Ferry, B. Hilliard, G. Ledebur.



Press Club

The main object of this organization is to publish the college newspaper, the "Clarion Call". Each member automatically becomes a member of the Call staff and assumes his responsibility in helping to publish it. Another purpose is to train the prospective teacher to direct the publication of school papers.

Numerous college publications are exchanged during the year that each member may have a better understanding of the different types of articles and publications popular to-day in college newspapers.

The highlights of the meetings included news of the week, book reviews, and reports on various newspaper articles. The main social event was a party held jointly with the Art Club.

OFFICERS

First Semester
CONNIE LEAHY
BETTY HILLIARD
MARTHA MOHNEY
MARGARET NEELY
NANCY SMATHERS
MISS BERTHA NAIR

President
Vice-President
Secretary
Treasurer
Editor of the Call
Advisor

Second Semester
ROBERT KERR
BETTY UNDERWOOD
SHIRLEY ROBB
JEAN BLAKE



First row: Simpson, Leahy, Kennedy, Neely, Nupher, Underwood, M. Davis, Clover.
Second row: J. Davis, Matter, Hilliard, Aharra, Miss Nair, Federici, Moyer, Schriebel, Copeland, Mohney, Farrell.
Third row: Kerr, Duncan, N. Smathers, Hobbs, Blake, Robe, E. Moeck, K. Stewart, N. McKinley, Helenbrook.



First Row: K. Copeland,
E. Bovaïrd, J. Helen-
brook, A. Mocek, C.
Leahy, M. J. Turnbull.

Second Row: V. Cuthbert,
M. Seifert, B. Paddock,
E. Rupert, K. Stewart.



Sequelle Staff

We, the Sequelle Staff, have worked together in a group to publish this yearbook, the 1945 SEQUELLE. We want it to reflect our happy times at Clarion State Teachers College. We want it to be for the future, a telescope into the past, our college days. We want it to show the different personalities, their talents, ambitions, and hobbies, which make a versatile student body eager for accomplishment.

We want to thank the Seniors who are not on the staff, but who helped us gather material. We want to thank Miss Nair and Mr. Kuhner for their help and suggestions.

THE STAFF

Editor

KATHLEEN STEWART

Literary Editor ...

JOY HELENBROOK

Literary Assistants

KATHRYN COPELAND
MARY JANE TURNBULL
ELIZABETH BOVAIRD

Junior assistant Editor

MARY SEIFERT

Business Manager ...

MARY CARR, EVELYN RUPERT

Advertising

BARBARA PADDOCK

Typists... ..

MARY OCHS
VERNE CUTHBERT
ANN MOCEK

Photography

CONNIE LEAHY
DORIS BLOOMSTER
DOROTHY BLOOMSTER



Seated: La Gene Carrier, Sarah Kelly.

Standing: Laura Casagni, Naomi Sayers, Mary Burns, Veronica Matter, Maxine Summerville, Mary Stewart, Gertrude Lobaugh, Dorothy Bloomster, Kathleen Stewart, Doris Bloomster, Mary Carr.



Camera Club

The Camera Club centers around: Lights! Camera! Action! and, we'll admit, is more amateur than it will ever be professional. This year has been one in which the amateurs learned something new every meeting, all the way from making prints to taking silhouettes. Of course the work includes developing films and enlarging them.

The dark room is the nervous tension room. Will they or will they not turn out? Eyes are strained until on go the lights and before the eyes of the photographer are the actual results. As usual, the results are fairly good. The members should go right on taking, developing, and printing. In the end they have experience, plus knowledge, plus many unforgettable days.

OFFICERS

First Semester

DOROTHY BLOOMSTER
KATHLEEN STEWART
MARY CARR
MARY BURNS
DR. DONALD PEIRCE

President
Vice-President
Secretary
Treasurer
Advisor

Second Semester

DORIS BLOOMSTER
HAZELDINE SERVEY
MARY CARR
LA GENE CARRIER

Geography Club

The Geography Club for 1944-45 has had a very informative and active year. The club was unfortunate in losing its president, John Longnaker, during the first semester, when he joined the Merchant Marines. The vacancy created by John's leaving has been ably filled by Benton Nulph.

One period was devoted to the discussion of "Alaska Our Neighbor". Topics discussed were "Matanuska Village", "Oil Supply and Transportation", "Alaskan Highway", and "The Valley of Ten Thousand Smokes". The club was restricted in visiting plants because of the war time inconveniences, but the group was able to visit the Cocoa Cola plant in Clarion.

A number of movies were shown, some of which were entitled "Navajo Indians", "The Gray Squirrel", "The People of the Congo", and "Arizona and Its Scenic Wonders". The main social event of the year was the Christmas party held at the home of Mr. Kuhner, the club's sponsor.

OFFICERS

First Semester		Second Semester
JOHN LONGNAKER	<i>President</i>	HELEN BROWNLEE
BENTON NULPH	<i>Vice-President</i>	BENTON NULPH
DOROTHY ZACHERL	<i>Secretary-Treasurer</i>	LAURA CASAGNI
MR. C. A. KUHNER	<i>Advisor</i>	



Seated: D. Bloomster, M. Carr, S. Beveridge, M. Stewart, D. Bloomster, L. Casagni, D. Zacherl.

Standing: Mr. Kuhner, W. LaFranchi, B. Nulph.





First row: Joyce Simpson, Elaine Truitt, Jane Minich, Norma Bloom, Irma Messler.

Second row: Donald Nulph, Mary Jane Turnbull, Edith Gunderman, Arlene Texter, Mary Ochs, Jean Blake, Betty Underwood.

Third row: Dorothy Zacherl, Dorothy Dryden, Libby Bovaird, Doris Nulph, Margaret Rimer, Miss Sandford.



Art Club

Activities of the Art Club have been many and varied. They included making individual designs for block-printed Christmas cards, painting place cards for the Christmas dinner, and selling campus-design Christmas cards that the club had previously made. Some stenciling was done on cloth, and a number of letters were written to college alumni now in the service.

Social activities started off with a picnic the second week of school; and Hallowe'en, Christmas, and St. Patrick's Day parties followed in the appropriate seasons.

OFFICERS

President

DOROTHY DRYDEN

Vice-President

DORIS NULPH

Secretary-Treasurer

MARGARET RIMER

College Players

The College Players, under a new sponsor, Miss Margaret Boyd, had a very successful year. The high lights of '44 and '45 were educational programs, sound effects presented in the form of a radio play, and a delightful Christmas play in the College Chapel.

The Players have a membership of over forty students who united to form a club whose influence has been felt throughout college dramatic activities.

We, the members, give our thanks to Miss Boyd for her capable leadership, guidance, and advice. We are also looking forward to next year when we can return with renewed vigor to plays, special readings, discussions, and other dramatic activities.

OFFICERS

First Semester		Second Semester
ANNE SHIPLEY.....	<i>President</i> ..	MARTHA MOHNEY
MARTHA MOHNEY.....	<i>Vice-President</i> HELEN FERRY
JEAN WICK.....	<i>Secretary</i> BETTY MCKINLEY
IVAN YOUNG.....	<i>Treasurer</i> ERNEST AHARRAH



First row: J. Davis, M. Clover, J. Smathers, Betty Watson, J. Bonsall, Patty Burns.

Second row: H. Weeter, J. Wick, M. Mohny, Miss Boyd, A. Shipley, G. Ledebur.

Third row: E. Moeck, L. Solley, G. Hagerstrand, R. Hamilton, S. Harnish.

Fourth row: J. Donaldson, V. Maxwell, B. Kerr, B. McKinley, D. Federici, M. Shockey, K. Reid, M. A. Hess, S. Thompson, B. Hilliard, T. Allison, I. Young, J. Buzard, E. Aharrah, N. Smathers.



Classical Club

The Classical Club, though reduced in membership after the loss of the seniors last year, has carried on most of its work this year during the regular Latin class period. In addition to the translation of the "Agricola" and "Germania" by Tacitus and the plays of Terence, much time has been devoted to the study of the style composition of Latin works, historical backgrounds, and a special study of the Republican and Empire Periods. The relation of Latin to everyday life has been constantly emphasized and many visual aids have been used to enrich the class room work. Visits to the local high school Latin classes were made. A party ended the activities of the year.

OFFICERS

President

HELEN WEETER

Secretary

GEVIENNE SMITH

Treasurer

MARY ALMA HAHN



First row: Miss Nair, Betty Hilliard, Helen Weeter

Second row: Alma Hahn, Gevienne Smith.



Front Row: Lorna Bloom,
J. Minick, B. Watson,
S. Kelly, V. Hardes.

Back Row: H. Bonsall,
E. Truitt, P. Hale,
J. Miller, V. Maxwell,
M. Wright,
B. McKinley,
M. Mitchell,
E. Terwilliger.



Hostess Club

The Hostess Club is a group composed mainly of freshmen girls who meet to discuss the fundamental principles of etiquette.

During the year several meetings were devoted to parties, which gave us the opportunity to practice rules in social conduct formerly discussed.

The club sponsors annually a tea for the faculty and one for the Senior Class. Outside speakers are guests at intervals.

OFFICERS

First Semester
MARTHA MITCHELL
BETTY MCKINLEY
MURIEL WRIGHT

President
Vice-President
Secretary-Treasurer
Treasurer

Second Semester
MARTHA MITCHELL
BETTY MCKINLEY
MURIEL WRIGHT
LEATRICE SMITH



First Row:

- D. Caskey,
- C. Leahy,
- M. Wright,
- M. Neely,
- H. Ferry,
- M. Clover.

Second Row:

- V. Cuthbert,
- B. Finerty,
- K. Copeland,
- Mr. Manson,
- J. Wick,
- L. Smith,
- M. Mohney,
- M. Davis,
- M. Helmtoller,
- N. Smathers.

Outdoor Girls

The Outdoor Club has always been one of the most active and colorful organizations on campus, with its vitality and zest for good wholesome fun! Although the Club has been renamed the *Outdoor Girls*, the traditions of the club are carried on in a fine manner.

This year found the establishment of a new club room in Science Hall although we'll still gladly accept the hospitality of our sponsor, Mr. Manson, to share his fireplace, after an evening of tobogganning on a cold winter night. Some of the high lights of our activities this year were our trip to Dr. Wilhelm's camp, tobogganning, and a breakfast hike.

Although we missed the presence of our "Outdoor Lads," we have still had many good times and a successful year.

OFFICERS

First Semester

MARTHA MOHNEY

DORIS CASKEY

MARJORIE CLOVER.

President

Vice President

Secretary-Treasurer

Second Semester

MARTHA MOHNEY

MURIEL WRIGHT

LEATRICE SMITH

Young Women's Christian Association

The purpose of the Young Women's Christian Association is to unite in the desire to realize full and creative life through a growing knowledge of God . . . to have a part in making this life possible for all people, and in this task to seek to understand Jesus and follow Him. During the year the Y girls acted as big sisters in welcoming the freshman girls at a special meeting. Each Y girl contributed a Christmas gift to the baskets sent out by Clarion Women's Clubs to families in this district. At Christmas time the Y sponsored a college carolling party. Debates on such subjects as "Compulsory Military Training" and "Race Prejudice" gave opportunity for individual expression and sent the girls away with some new thoughts. Several social events varied the year's program.

OFFICERS

First Semester		Second Semester
EVELYN RUPERT	<i>President</i>	MARJORIE CLOVER
GEVIENNE SMITH	<i>Vice-President</i>	JEAN WICK
MARJORIE CLOVER	<i>Secretary</i>	HELEN BROWNLIE
MARY CARR . . .	<i>Treasurer</i>	JANE MINICH



First Row: Marjorie Clover, Muriel Wright, Mabel Smith, Leatrice Smith, Jean Wick.

Second Row: Margaret Zuendel, Vernice Hardes, Martha Moheny, Vivian Maxwell, Phyllis Hale, Evelyn Rupert, Betty Watson, Martha Mitchell, Gloria Hagerstrand, Lorna Bloom.

Third Row: Dorothy Bloomster, Kathleen Stewart, Helen Duncan, Mary Stewart, Ruth Hill, Jane Bonsal, Helen Bonsal, Jean Miller





First Row:
 Stratton, Caskey,
 Dryden, Reid,
 Nulzh, Hades,
 Rimer, Cuthbert,
 Finerty, Crooks.

Second Row:
 Messler, N. McKinley,
 Helmtoller, Sayers,
 Shockey, Carrier,
 H. Bonsall, Miller,
 R. Harnish, Swarthout.

Third Row:
 B. McKinley, E. Moeck,
 Arner, Hamilton,
 Allison, Smith,
 Hess, Maxwell,
 P. Burns, Wick.

Fourth Row:
 Hale, S. Harnish,
 Donaldson, Duncan,
 Seifert, Matter,
 J. Bonsall, Nuffer,
 Hagerstrand.

Girls Chorus

The Girls' Chorus hasn't been sleeping on its feet this year; they've been busy singing, not only on campus but in the community as well. Appearances have been made on High School Day, at the Baptist, Methodist, and Presbyterian Churches, on chapel and radio programs, and Baccalaureate. A constant effort is made to vary the selections of each program; thus the girls are continually learning new music and increasing their repertoire.

It hasn't been all work for the Girls' Chorus. Among their social activities they had a dinner, with all the trimmings, at Nail's Restaurant and afterwards played games in Davis Hall.

OFFICERS

President

VERNE CUTHBERT

Vice-President

BETTY FINERTY

Secretary

JEAN DONALDSON

Treasurer

MARY SEIFERT

Ensemble

The Girls Ensemble consists of the college trio, soloists, and an accompanist. These girls not only provide entertainment, but publicity for the college as well. They have sung in Salem, Punxsutawney, Tionesta, DuBois, Brookville, Sheffield, Otto Township, Port Allegany, Ridgway, Custer City and many other places outside Clarion. In Clarion they have appeared at the Civic Club, Rotary Club banquets, Kiwanis, High School Day programs, radio broadcasts, bond rallies, and various churches.

Their programs are always varied, the selections being patriotic, religious, and humorous. The soloists of the group are June Sutherland, Martha Helmintoller, and Jean Wick. The trio consists of June Sutherland, Martha Helmintoller and Betty Finerty. The accompanists are Doris Caskey and Jean Wick.

J. Wick, D. Caskey,
J. Sutherland,
M. Helmintoller,
B. Finerty,
R. Hamilton



Association for Childhood Education

The Association for Childhood Education has had several interesting programs this year. Early in the fall we had a lecture by Mrs. William Hearst on newspaper writing, and in the spring a birthday banquet.

One of the most interesting meetings was the film party sponsored by the A.C.E. for the children in the Training School. Besides showing the films to the children the girls told stories and entertained the children with music.

We closed our year with the local convention.

OFFICERS

<i>President</i>	MARY JANE TURNBULL
<i>Vice-President</i>	BERNADETTE HUGUS
<i>Corresponding Secretary</i>	EVELYN RUPERT
<i>Recording Secretary</i>	KATHLEEN STEWART
<i>Treasurer</i>	ELIZABETH BOVAIRD
<i>Program Chairman</i>	MARY OCHS
<i>Adviser</i>	DR. BERTHA LEIFESTE



First row: M. Carr, M. Stewart, M. Ochs, K. Reid.

Second row: M. Smith, D. Bloomster, D. Bloomster, E. Rupert, K. Stewart, M. J. Turnbull, E. Gunderman, D. Nulph, D. Dryden, M. Rimer.

Third row: E. Bovaird, J. Davis, M. Burns, J. Helenbrook, B. Finerty.





First row: Doris Bloomster, Helen Ferry, Mary Carr, Connie Leahy.

Second row: Dorothy Bloomster, Martha Mohney, Jean Wick, Kathryn Copeland, Verne Cuthbert, Mary Seifert, Marjorie Clover, Kathleen Stewart, Libby Bovard, Doris Caskey.



Women's Athletic Council

The Women's Athletic Council is composed of women students who have won letters by participating in at least two intramural sports and have met the qualifications of the point system of the Council.

The activities of the council consist of electing the varsity for each sport from the intramural participants. Students are named to the varsity for outstanding ability in a sport, for good sportsmanship, and for devoting time to the games. The council also coaches teams, referees games, and selects the lettermen in the spring.

This fall the organization sponsored speedball intramurals, and this winter it sponsored basketball. Our advisor this year has been Mr. Tippin, who is acting as instructor for women's athletics. In this capacity, he has enthusiastically directed the program of the council.

OFFICERS

President

MARY SEIFERT

Vice-President

HELEN FERRY

Secretary-Treasurer

MARY CARR



Men's Basketball

During the first semester of the 1944-45 term, there was no basketball team on campus except for a group of dormitory students playing independent ball.

With the arrival of fourteen new men at the beginning of the second semester, Dr. Chandler fulfilled the fellows' request for a basketball team. The Student Senate met and added an amendment to their budget to finance the team. Thirteen fellows answered Coach Tippin's call for players. After medical examinations twelve men worked hard for two weeks before their first game.

Because it was so late in the season, it was possible to schedule only six games. The "Golden Eagles" met Thiel, Polish Alliance, and Grove City College twice each, once on our floor and once on our opponent's floor. The team played excellent ball, but was handicapped by the lack of experience. The teams which they played all had the experience of the first semester's playing.

Mr. Tippin did an excellent job of coaching the squad. Mr. Campbell, proctor of men's dormitory, aided the team by driving the station wagon on trips and by keeping official time. Sam Tippin helped out by acting as assistant manager to the squad.

SCORES

		CLARION	VISITORS
THIEL ..	here	29	49
ALLIANCE	there	52	62
THIEL ..	there	24	56
ALLIANCE.....	here	58	41
GROVE CITY	here.....	59	22
GROVE CITY	there. . .	55	56

Top row:

F. Campbell.
S. Tippin.
R. Ditty,
R. Kerr,
W. Moore,
D. George,
E. Aharrah,
Coach Tippin.

Second row:

A. Moyer,
C. Sardi,
B. Space,
D. Stroupe,
R. McClain,
T. Cyphert.





First Row:
 Geraldine Ledebur,
 Helen Weeter.

Second Row:
 Betty Finerty,
 Margaret Rimer
 Ann Moeck.

Missing:
 Mary Ochs,
 Maxine Mong,
 Betty Hilliard,
 Nancy Smathers,
 Barbara Paddock.

Pan Hellenic Council

The Pan Hellenic Council is the governing body of the five sororities on campus. Two representatives from each sorority compose this group. It is the aim of Pan Hellenic to bring the two national and three local sororities together and encourage them to take an active interest in all college activities.

The annual tea for non-sorority girls was held in Becht Hall in October.



ester
 MOECK
 MONG
 PADOCK

Sigma Delta Phi Sorority

The Sigma Delta Phi Sorority started the year out right with a tea at the home of Miss Nair, their adviser, with the patronesses as guests. Shortly after this they started planning for their Rush Party, which was held on November 16. Upon entering the Eastern Star rooms the rushees were instantly transferred to a Hawaiian Dinner Club, complete with native girls, grass skirts, and Island music. Throughout the year they enjoyed other informal social gatherings at the Coffee Shop and Miss Nair's home.

The members have not only been interested in parties, but in social work as well. At Christmas time the Sigma Delt's selected a needy family for whom they prepared a gift basket. At this season they also sent twenty-two dollars to Deshon Hospital. In January they held a rummage sale, the proceeds of which were turned over to the local Red Cross to be used to buy recreational material for the soldiers stationed at the prisoner of war camps at Marienville, Pa. Night class students and faculty appreciated the sale of sandwiches and coffee between classes.

At their meeting they discussed such timely topics as: etiquette, health, book and movie reviews and poetry.

The girls all wish to thank Miss Nair for the help and guidance which she has given throughout the year to make their work successful.

OFFICERS

First Semester
MAXINE MONG
BETTY HILLIARD
MABLE SMITH
BETTY HEASLEY

President
Vice President
Secretary
Treasurer

Second Semester
LAURA CASAGNI
BETTY HEASLEY
LOU SOLLEY
MABLE SMITH



Betty Heasley, Lou Solley, Mable Smith, Miss Nair, Laura Casagni, Maxine Mong, Betty Hilliard.



Sigma Sigma Sigma Sorority

Tri Sigma was visited by two alumnae representatives, Aida Hanst and Roxanne Irwin. They were entertained with the members at a tea given by Miss Gamble.

The rush party, held in the Training School, had as its theme "Test Your Senses". Games and music were featured, followed by refreshments. The following were pledged: Jean Blake, Betty Underwood, LaGene Carrier, Patty Burns, Joyce Simpson, Elaine Truitt, and Jane Minich.

Among Sigma Sigma Sigma's various activities are: a very successful rummage sale, sending of Christmas stockings to convalescent nurses in Fitzsimmons General Hospital near Denver, Colorado, collecting of books for the Merchant Marine Library, and a week-end trip to Cook Forest.

OFFICERS

President

ELIZABETH BOVAIRD

Vice-President

MARY JANE TURNBULL

Recording Secretary

DORIS NULPH

Corresponding Secretary

MARY OCHS

Treasurer

DOROTHY DRYDEN

Adviser

MISS MILDRED GAMBLE



First row: Elaine Truitt, Jane Minich, Betty Underwood, Joyce Simpson.

Second row: Patty Burns, Mary Burns, Edith Gunderman, Dorothy Dryden, Elizabeth Bovaird, Mary K. Banner.

Third row: Ronnie Harnish, Marjorie Kennedy, Margaret Rimer, Miss Gamble, Jean Blake, Norma Bloom, Mary Ochs.



Front Row:

R. Hamilton,
G. Ledebur,
M. Shockey,
H. Ferry,
A. Shipley,
K. Reid,
M. Clover.

Second Row:

N. Smathers,
V. Cuthbert,
Mrs. Flack,
D. Caskey.



Lambda Chi Delta

This year has been a busy one for the Lambda Chi's. A camping trip to Cook Forest started the year out right in September and then many other social events followed, including a Hallowe'en party given for the other sororities, several parties at Mrs. Charles Flack's, a party at Mrs. Willard Shreffler's and our annual Christmas party held at the Flacks! The rush party was in the form of a county fair and was held at Nail's restaurant. As a result of this party, the following nine girls were pledged: Mary Kay Schieberl, Martha Helmintoller, Doris Ann Crooks, Vernice Harges, Jane Smathers, Nellie McKinley, Mickey Neely, Marian Nuffer and Julu Buzard.

A rummage sale was held at the beginning of the second semester, and the girls enjoyed being saleswomen for a day. Our semester rush party was held at Nancy Smather's and soon afterwards our two rushees, Ava Anne Doorley and Dolores Currier, were pledged. Plans for the rest of the semester include a patroness party and several camping trips to Cook Forest.

OFFICERS

President
Vice-President
Secretary
Corresponding Secretary
Treasurer

VERNE CUTHBERT
KAY REID
HELEN FERRY
RUTH HAMILTON
ANNE SHIPLEY



Second Row:
 C. Vance,
 B. Paddock,
 Miss McLaughlin,
 M. Summerville,
 C. Moore,
 G. Smith,
 Pearl Weigand.

First Row:
 J. Donaldson,
 M. Seifert,
 J. Wick,
 L. Stroupe,
 B. Hugus,
 B. Finerty,
 J. Davis,
 M. Mohney.

Delta Sigma Epsilon

The Delta Sigs started out this year with a new sponsor, Betty J. McLaughlin, a former member who is serving temporarily in Dr. Barton's absence, and with twelve active members. Four pledges were initiated, two at Inspection for Miss Daniel, and the other two at First Province Meeting in Pittsburgh.

Our first Rush Party this year was the "Delta Drug Dive," and was carried out in the drug store theme. As a result we pledged the following girls: Helen L. Bonsall, Marian Davis, Jean Miller, Helen Duncan, Martha Mitchell, Phyllis Hale, Shirley Robb, Kathleen Hobbs, Leatrice Smith, and Muriel Wright.

Again this year we collected salvage for the therapy wing of O'Reilly Hospital. We had tobogganing parties, and were entertained at a Christmas party by our patronesses, Mrs. M. Davis, Mrs. John Sloan, Dr. Bertha Leifeste, and our sponsor.

OFFICERS

- | | |
|--------------------------------|---------------------|
| <i>President</i> | BARBARA PADDOCK |
| <i>Vice-President</i> | MARTHA MOHNEY |
| <i>Recording Secretary</i> | JOAN DAVIS |
| <i>Corresponding Secretary</i> | JEANNE WICK |
| <i>Treasurer</i> | LOIS STROUP |
| <i>Chaplain</i> | JEANNE DONALDSON |
| <i>Sergeant</i> | GEVIENNE SMITH |
| <i>Historian</i> | MARGARET ZUENDEL |
| <i>Advisor</i> | BETTY J. McLAUGHLIN |

Theta Alpha Lambda

The Theta Alpha Lambda's first social function was to initiate Mrs. Slick, their new advisor. The Rush Party was held in the social room of Davis Hall with games and dancing furnishing the entertainment. Afterwards the group went to Mrs. Slick's apartment for refreshments. Those pledged and initiated were Hazeldine Servey and Ruth Swarthout.

Scrapbooks were made during the first semester at Christmas time for the Aspinwall Veteran's Hospital, and the Municipal Hospital in Pittsburgh. The second semester was devoted to making hooked rugs for the sorority room and doing knitting for the Red Cross.

The social functions were numerous and assorted such as toboggan parties, theater parties, and informal get togethers. These were sponsored by Mrs. S. E. Slick, Mrs. R. Cordier, Mrs. James Elliott, and Mrs. G. Hoyt.

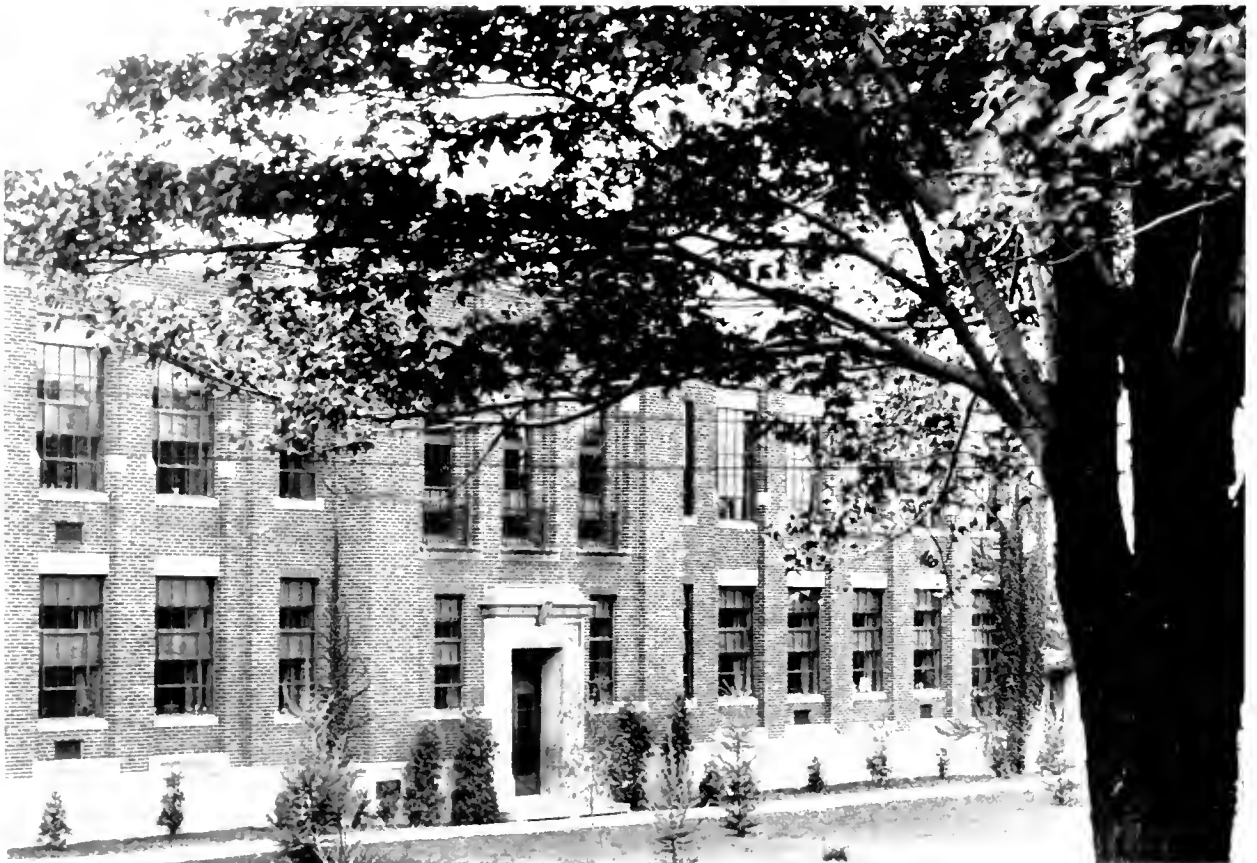
OFFICERS

First Semester		Second Semester
HELEN WEETER	<i>President</i>	EVE MOCEK
MARY ALMA HESS	<i>Vice-President</i>	HELEN WEETER
MARY ALICE HESS	<i>Secretary</i>	ANN MOCEK
ANN MOCEK	<i>Treasurer</i>	MARY ALICE HESS
EVE MOCEK	<i>Corresponding Secretary</i>	MARY ALMA HAHN
	<i>Chaplain</i>	RUTH SWARTHOUT
	<i>Sergeant-at-Arms</i>	HAZELDINE SERVEY
	<i>Advisor</i>	MRS. S. E. SLICK

Back Row: Mrs. Slick,
A. Mocek, M. A. Hess,
Helen Weeter, M. A.
Hahn, E. Mocek.

Front Row: H. Servey,
Ruth Swarthout.





Acknowledgments

We give our hearty thanks to Ruthie Kane for her impressions of her own memories of Clarion State Teachers College, as expressed in the delightful drawings which appear throughout the SEQUELLE. Those of you who did not know Ruthie have doubtless met her through her cartoons which have appeared in the CALL and the drawings hanging on the walls of Vern and Doree's room.

We express our appreciation also to Doris Caskey and Betty Heasley, who, while not official members of the staff, gave tirelessly of their time and effort on behalf of the SEQUELLE.

We take this opportunity to extend our gratitude to those patrons who have helped in a financial way in the publication of the SEQUELLE. Without their cooperation this publication would have been impossible.

THE STAFF.



MEMORIES



REMEMINISCING



Our artist, Ruthie . . . campus couples . . .
Miss Spaller . . . Cadets . . . Dr. Barton . . .
"Speak the speech . . ." . . . our fellows
. . . old classmates.



?? REMEMBER ??

Freshman Year:

The tortures of Freshman week! 'Specially when the college picnic at Cooks Forest came right in the middle of it.

Homecoming weekend. Football game and our first big formal dance!!! The Traymore Club Orchestra played.

Football games, pepmeeting, always something to look forward to.

Sweetland on our night out . . . it was always jammed.

"I don't want to set the world on fire," "Blues in the Night," and "Chattanooga Choo Choo."

Dancing in the social room on Friday afternoons.

December 7, 1941 The darkest spot in our most wonderful year.

Basketball Season . . . A thrilling overtime game with Grove City.

Choir trips.

Fraternity Dance . . . nicest formal of the year. Favors were compacts, locketts, and necklaces.

Graduation . . . Goodbye to the Seniors. The campus was new to us in its beautiful spring clothes.



Sophomore Year:

Nice to be an upperclassman!

Good football season . . . how we loved football!

"Can't get out of this mood," "As time goes by," and "Don't get Around Much Anymore."

The Christmas formal and the much looked forward to Christmas dinner.

CADETS made their appearance at C.S.T.C.

First U.S.O. dance. 500 MEN!!

The Army reserve was called . . . Gee, we hated to see our own fellows go.

Quintile dances, one a month.

Letter writing became a major pastime.

The Campus was like a different world, cadets marching 'n singing on every walk.

Week-ends were bright spots, dances at the library every Saturday night.

Graduation seemed much more serious than ever before.

Junior Year:

Only a few college fellows left on campus . . . how we missed those who had gone!

Tougher schedules, more responsibility . . . H-mmm, don't know whether we like this too well.

Met some wonderful cadets, had some wonderful times and hated to say goodbye when the time was up.

Weddings got to be everyday occurrences.

The Outdoor Club was taken over by the girls and a collection of C.S.T.C. servicemen's pictures for a scrapbook was started.

The Hallowe'en dance in the gym was one of the highspots of the year.

Lots of our college boys in the service visited C.S.T.C. on their furloughs . . . It's always so good to see them.

"Mr. Five by Five," "Paper Dolls," and "Shoo Shoo, Baby."

CPD was discontinued. Cadets were all gone by graduation.

Thanks for the memories!



Senior Year:

STUDENT TEACHING!!!!!!!!!!!!

It doesn't seem possible that we're really in our last year.

Lesson plans.

Seems good to see such a big Freshman class.

"I'll walk alone", "Swinging on a Star", and "Don't Fence Me In".

More lesson plans . . . Seems as though we don't have time for anything else.

Basketball comes back to C.S.T.C. Three home games! The best one was the one with Grove City . . . We won, of course.

Senior Orientation . . . learning how to write a letter of application: "D'ya 'spose anyone will ever hire us?"

Mimi, Bernie and Evie left us at semesters to go on their own.

Still more lesson plans . . . This is MURDER!!!!

Oh, goodness, almost forgot to mention Frank Sinatra!

Getting the Sequelle ready . . . Poor Mr. Kubner!

Graduation at last. Proud parents and friends . . . everyone shaking hands . . . at last, *the diploma* . . . kinda hard to keep the tears back . . . Last minute packing . . . With goodbyes and promises to always keep in touch, we leave.

The Twenty-fifth Anniversary of the Class of 45

The master of ceremonies is that famous character known as the second Carmen Miranda, zany comedian and singer, Libby Bovaird. Straight from Hollywood with Libby is Lois Stroupe, famous glamour girl and protege of Betty Grable.

While these two celebrities mingle among the crowd, let us look about for others who may be prominent in the public eye. Ah! there at the far end of the room I spy Bernadette Hugus, Republican presidential candidate, seated pompously with her campaign manager, Marge Taylor. Arguing vociferously with Marge, we see Elsie Hartman campaign manager for Democratic presidential candidate, Mary Carr.

Looking closer I see that there are those who have not deserted the profession for which they were trained.

That very distinguished looking speaker at the head of the table is Evelyn Rupert, Ph. D. She is now engaged in an educational discussion with Kathryn Copeland, professor of English at Vassar, and Margaret Zuendel, who has written a series of social studies text books.

Ada Connelly, who is devoting her talents to the betterment of education, is wrapped up in an enlightening conversation with Mary Ochs, who has made housework a delight by use of pushbutton electricity.

Ann Mocek, who has solved the mystery of perpetual motion, is seated in the corner pondering further scientific wonders.

Mary Alice Hess, head librarian in the Library of Congress, has just informed me that Betty Heasley and her husband are engrossed in extensive studies in the education of the feeble-minded. She also tells me that Evon Terwilliger has revolutionized rural teaching and that something new has been added by Catherine Vance's "Up-to-date Uses of English Grammar."

The aristocracy and upper four hundred are also represented in Spanish Countess Mimi Valencia and Barbara Paddock, owner of the famous "House of Fine Jewels" on 42nd Street, New York City.

The elementary field in education is being reviewed by Kay Reid, critic teacher in first grade of Clarion Training School, Maxine Mong, professor of intermediate education at Teacher's College, Columbia University, and Doris Bloomster, owner of her private kindergarten in China. Incidentally, Doris's dozen children have gone through her kindergarten.

Dorothy Bloomster, owner of the St. Louis Cardinals, is poring over Kathleen Stewart's latest volume of poems "Moods and Melancholies of an Alaskan Professor". Sara Beveridge, national president of the W. C. T. U., is policing the kitchen to see that a certain item isn't included in the menu.

The instruction of Latin has been brought back to life by Gevieme Smith in her "New School of Latin" in Pasadena, California, and by Mary Alma Hahn. Mary Alma is at present translating a "History of Rome" by Suetonius, recently unerathed by Connie Leahy in her famous globe trotting escapades.

Ronnie Harnish, lecturer among high society circles, has just released her new book "Why Discipline Your Children?"

I hear the entertainment tonite is to be excellent. Glancing over the programme I see that Joy Helenbrook - second Houdini - is to perform her great mystifications; Mary Jane Turnbull, Powers model, is to show a few of the very latest fashions in evening wear for the ladies; and high-lighting the show with a preview of the latest Broadway hit, "Lassies from Clarion", are those well known stars, famous Broadway team, Doree and Verne.



He keeps us happy
He keeps us in.
He keep us clean.



Studies in black.

Honor Roll



Our classmates and friends have been more than a little missed. Memories of the days we had them among us have colored our life here at Clarion. We are very proud to present our honor roll.

MARION BISH

PETE KUPSEK

JIM BOWMAN

BILL LAUGHILIN

ROBERT BURGESS

JACK MCGINNIS

ANGELO BUTERA

JIM MCKINLEY

RICHARD BROSSMAN

WALTER MULLIGAN

LOUIS CALDERONE

ROBERT "TINY" MUTH

JOE CAPASSO

JIM NEWELL

WILLIAM CRISSMAN

CHARLES SHANER

THEODORE FREDERICI

GORDON SILLS

RUSSELL FICHTER

PHILLIP WALLACE

ARTHUR GILLOTTI

JIM WIEDT

DICK HELMINTOLLER

PAUL ZIMMERMAN

ERNEST "TURK" JOHNSON

KELLY FLEMING



MERWIN'S

Stationery - Magazines - Newspapers

Greeting Cards

Ice Cream - Candy

MAIN STREET CLARION, PA.

DITZ & MOONEY HARDWARE

"Everything in Hardware"

Lucas Paints

China and Glassware

Hunting and Sporting Equipment

PHONE 218

CLARION, PA.

Compliments of

HUGH M. OWENS

Jeweler

Compliments of

BROWN'S BOOT SHOP

CLARION, PA.

HAIL THE GRADUATION OF 1945

We join in a hearty commendation of your efforts and in a sincere wish that
your future lives may be happy and successful.

G. C. MURPHY & COMPANY

5 and 10 CENT STORE

Compliments of

Mr. and Mrs. Fred Jenkins

PARIS VERI-SAFE CLEANERS

Established 1917

Insured - Mothproof - Cleaning and Waterproofing
Dyeing, Repairing and Storage of
Clothes, Furs, Hats, Rugs and Furniture

MAIN PLANT, 651-57 MAIN STREET

BROCKWAY, PA.

Compliments

Brookville Creamery Products Company

Manufacturers of

COUNTRY CLUB DAIRY PRODUCTS



BROOKVILLE

PENNSYLVANIA

Greetings
TO THE STUDENTS OF C. S. T. C.
DAVID A. KAUFMAN
Jeweler

PHONE 55-M

CLARION, PA.

Compliments of
WEIN BROTHERS
CLARION'S FINEST STORE

Nyal Service Store
FITZGERALD'S
A. G. CORBETT DRUG CO.
CLARION, PA.

HERMAN BROTHERS
THE CORNER STORE
Fruits Ice Cream
Confections
Corner Wood and Eighth Avenue
CLARION, PA.

The Clarion Republican
"The paper with the Service News"
Clarion County's Best Newspaper
The home of the Clarion Call.

Compliments

MODERN DINER

Meals Lunches

NEXT TO GARBY THEATRE

The *Rexall* Store

Soda Fountain and Luncheonette
Service

Lowest Cut Prices

KING DRUG STORE

Penney's

J. C. PENNEY CO., INC.

Suppliers for the Home Front!

609 MAIN STREET

CLARION, PA.

A Bank of Strength and Character

Banking transactions are strictly supervised by the banking authorities.

OUR DIRECTORS

Merritt H. Davis Herbert R. Lander Perry Wile
B. M. Davis W. M. Moore

Member Federal Deposit Insurance Corporation

FIRST NATIONAL BANK in CLARION

CLARION

PENNSYLVANIA

Compliments

of

MAUL'S
DAIRY STORE

ORPHEUM THEATRE

CLARION

Established 1912

FOR THE BEST SHOWS



The
COFFEE SHOP

HAZEL S. MILLER, Proprietress

Not Only

GOOD FOOD

But All You Want At Moderate Prices

o

CORNER MAIN ST. & 8TH AVE.

CLARION 72

THE RESS SHOP

Women's and Misses'
Ready to Wear

—o—

CLARION, PA.

MODERN STORE

Groceries Fruits
Fresh Meats

— — — — —
SAM CHERICO, Proprietor

PHONE 58

CLARION, PA.

Compliments of

MEANS & LAUF DRUG COMPANY

J. F. Weaver Est.
HARDWARE COMPANY

Highest Quality Merchandise
at Lowest Possible Prices

PHONE 194

CLARION, PA.

Just Off the Campus one may find
the best in groceries and meats.
. . . Why go farther?

WM. W. PHERO

"The College Grocer"

Phone 19

COMPLIMENTS OF

Leather's Lanes

CLARION'S LEADING RECREATIONAL CENTER

*The Best of Luck and Success
From Your House of Hills*

GARBY THEATRE

CLARION, PA.

EXPERT HAIR STYLING . . .

We Handle DERMETICS
Exclusively

KATHRYN'S
BEAUTY SHOP

Phone 310 BANNER BUILDING

Compliments of

THE COLLEGE GRILL

FIRST CHOICE ALWAYS

RIECK'S

Sealtest
ICE CREAM

Compliments of

Carl and Don

Studio

CLARION, PENNA.

PHOTOGRAPHERS FOR 1945 SEQUELLE

The Stevenson & Foster Co.

PRINTERS - LITHOGRAPHERS - STATIONERS

421 Seventh Avenue - Pittsburgh, Penna.



COLLEGE ANNUALS
HIGH SCHOOL YEAR BOOKS
MONTHLY PUBLICATIONS



Our representative will be
pleased to assist you when
compiling your next Publication.

... Telephone GRant 1551 ...

PRINTERS SINCE 1812

Compliments of

**CONEMAUGH
ENGRAVING
COMPANY**





CLARION UNIVERSITY OF PENNSYLVANIA



3 9363 00386 9341

Spec. Col.
qLD
1017
.C88
1945

