

Spec. Col.  
1017  
.C88  
1946

STODOLLE 1946

LIBRARY  
CLARION STATE COLLEGE



Carlson Library

LIBRARY  
STATE ARIZONA COLLEGE  
TULSA, OKLA.

---

1

---

LIBRARY

STATE TEACHERS COLLEGE

GEORGETOWN, N.C.

*"For those who like this kind of book,  
this is the kind of book they will like."*

*---Abraham Lincoln*



*"Lives of great men all remind us  
We can make our lives sublime  
And, departing; leave behind us  
Foot steps on the sands of time."*

—LONGFELLOW

State Teachers' College,  
Clarion, Pa.

To you whom we leave behind, this  
*Sequelle* is a pictorial review of our life and  
loves on campus.

Class of 1946

Editor, Ruth E. Hamilton  
Business Manager, Betty Williard

100  
125  
100  
100  
470



*"There is no friendship, no love, like that of a parent for the child."*

—BEECHER



# *Dedication*

---

To the mothers and fathers of the class of 1946 whose love and sacrifices have made all this possible, this issue of the *Sequelle* is affectionately dedicated with the full knowledge that the training we have received at Clarion State Teacher's College will make us more worthy citizens of that better world for which our men have so gallantly fought and given their lives.



## *A letter from Dr. Chandler*

---

You have worked enthusiastically on your yearbook and the results show originality and creativeness.

The pleasure which the annual copy of the *Sequelle* gives to every student contributed to making Clarion a friendly college. It builds morale and makes us all take pride in C. S. T. C.

You of the class of 1946 have been a part of the college as it was before the war and during the war; now you are fortunate again in spending your last college year under peace conditions. May you always meet emergencies with that same fortitude and adaptability you have shown during World War II.

# Faculty

CHARLES F. BECKER, M. A.  
Education

MARGARET A. BOYD, M. A.  
English

FRANK M. CAMPBELL, M. A.  
Languages

CLAIR E. CARLY, M. A.  
Mathematics

RUSA M. CARLSON, M. A.  
Librarian

RALPH W. CORDIER, PH. D.  
Social Studies

CHARLES R. FLACK, M. A.  
Library Science

MILDRED GAMBLE, M. A.  
Intermediate Grades

RUTH K. GRAFF, M. A.  
Primary Grades

ANNA B. GRAHAM, B. S.  
Junior High School

WALTER L. HART, M. F. A.  
Music

EFFIE B. HEPPLER, B. S.  
Primary Grades





CLARENCE A. KUHNER, M. A.  
Geography

BERTHA V. LEIFESTE, PH. D.

Kindergarten, Primary Education

HARRY S. MANSON, M. A.

Biological Science

MARIE M. MARWICK, M. A.

Speech

BERTHA V. NAIR, M. A.

English, Latin

FANNIE C. OWENS, R. N.

Nurse

DONALD D. PEIRCE, PH. D.  
Science

HAZEL SANDFORD, M. A.

Art

SEWELL E. SLICK, PH. D.

High School, Social Studies

GRACE M. STORKE, M. A.

Dean of Women, Education

WALDO S. TIPPIN, M. A.

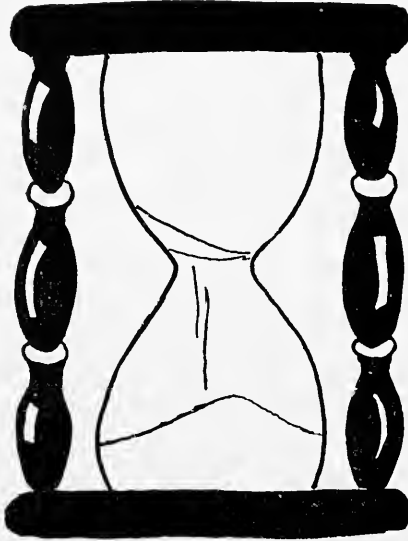
Physical Education

LOTTIE J. WINGARD

Registrar

# Faculty

## *The Seniors*



*"The echoes rebound to a joyful sound  
And shrink from voicing care"*

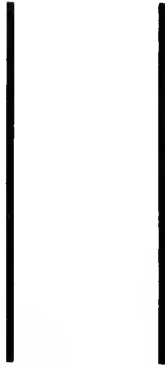
*--- Ella Wilcox*

*Our President*



*Paul G. Chander*

# Faculty And Classes



*"Ships that pass in the night, and  
Speak to each other in passing;  
Only a signal shown and a distant  
voice in the darkness:  
So on the ocean of life, we pass  
and speak one another,  
Only a look and a voice and then  
darkness again and silence."*

—SHAKESPEARE



## *Class of 1946*

We, the class of 1946, are not so large this year—some of our number are not with us and others have graduated on a speeded up program. We have watched our classmates march off to fight for a free nation, and we were proud of them.

We've seen Civilian Pilot Training men and the Army Air Corps come to our campus and leave. Our lives seemed like bedlam at times trying to keep things straight within ourselves as the world whizzed past us.

Our memories of C. S. T. C. have been filled with both happiness and sadness—both have made us bigger people because of it. Our years at Clarion have served to make us mature people ready to face life and fulfill our obligations to ourselves and others.

We have made our college days something to remember. We have gained much from years at Clarion, both intellectually and socially. We have made lasting friendships. C. S. T. C. will not be forgotten; after graduation we shall always be looking forward to a visit back to our Alma Mater.

### OFFICERS

|                |           |               |
|----------------|-----------|---------------|
| President      | - - - - - | John Tile     |
| Vice-President | - - - - - | Joan Davis    |
| Secretary      | - - - - - | Gerry Ledebur |
| Treasurer      | - - - - - | Betty Finerty |



## *The Seniors*

THELMA MERNA ALLISON

Thelma hails from New Bethlehem but graduated from Brookville High School. She is taking the accelerated three-year course, which has meant a constant effort on her part to keep up with her courses and add extra-curricular activities, which are the fun of college life.

Being a conscientious worker has helped her do a fine job of majoring in secondary education. Her major fields are English, social studies, and math.

While at Clarion she has been a member of the Art Club, the Hostess Club, the Choir, and the College Players Club. We like to remember Thelma for her dramatic ability, for she has handled various roles with genuine talent.

HELEN EMMA BROWNLEE

Helen is a quiet person and always has a smile for everyone. She came to Clarion from Brookville. Being quite religious in nature, Helen has been an active member of the Young Women's Christian Association for two years and secretary for one. She's also been a member of the Hostess Club and participated in intramural sports. During her senior year she was president of the Geography Club after three years of loyal membership in that organization.

Helen is majoring in elementary education, and being a hard worker and cheerful, she leaves no doubts as to her success in that field.

LAURA MAE CASAGNI

If she's always busy, hurrying here and there but has time to say a few friendly words—that's Laura! And it's no wonder she's so busy! Laura is a three-year student and has managed somehow to combine studying with a little play. She has been a member of the Camera Club, Association for Childhood Education, and participated in intramural sports. She has been secretary-treasurer of the Geography Club; secretary of the Future Teachers of America; representative to the Student Senate; and held offices in Sigma Delta Phi.

Laura is majoring in elementary education and her knack for sewing should help considerably. As prophets of the future we can truly say "Laura will be a fine teacher".



## Class of 1949

NANCY MARGARET CORBETT

Nancy has been active in the Art Club for two years and in the Hostess Club for one. She has also participated in intramural sports for two years.

She comes from Corsica, Pennsylvania, and graduated from Clarion-Limestone Consolidated School. Nancy majored in elementary education. Her sense of humor should help her over some of the rough spots that always come up in teaching.

During the second semester of her senior year Nancy taught second grade in the Main Street School of Clarion, Pennsylvania; therefore she won't graduate in May of 1946. Nancy was also a member of the Theta Alpha Lambda Sorority. Her friendliness has made her dear to many of the Clarion students.

JOAN EYVONNE DAVIS

"Jodie" or "Jo", as Joan is popularly called at Clarion, comes from De Young. She is a student of the elementary curriculum and specialized in the primary grades.

Because of her sociability and agreeable nature Jo has had many and varied extra class activities. She has been class secretary and vice-president, vice-president of Woman's House Council, member of Delta Sigma Epsilon, Hostess Club, Young Women's Christian Association, College Players, Outdoor Club, Association for Childhood Education, Press Club, and *Sequelle* Staff. In her four years at Clarion Jodie at all times has been tactful and pleasing in any social gathering.

JEAN FOSTER DONALDSON

"Scotty" is a Pittsburgh girl who is a graduate of West View High School. She will always be a great part of all our memories of Clarion State Teachers College.

Secondary education with the fields of Library Science, Social Studies, and English were her specialties at Clarion.

Because of her frankness, sincerity, and fairness in all things she became Freshman, Sophomore, and Junior class president; student senate member; president, vice-president, and treasurer of Women's House Council; Young Women's Christian Association member; vice-president of Choir; president and vice-president of College Players; an able member of the *Sequelle* Staff and a member of Delta Sigma Epsilon. Her friendliness and sense of humor have made her near and dear to all those who knew her at college.



## The Seniors

### BETTY MAE FINERTY

Upon meeting "Betts" one would at once be taken by her neat appearance, good looks, and likable personality. Her home is in Sheffield and her major field has been the elementary curriculum.

Betty came to us after a semester at Grove City College, where she was enrolled as a music student. Her musical ability was continued at Clarion in the Choir, Ensemble, and Trio. Her activities have been Young Women's Christian Association, Intramurals, Outdoor Club, College Players, Association for Childhood Education, class secretary, president of Pan-Hellenic, *Sequelle* staff, and Delta Sigma Epsilon.

When we think of Betts in years to come, we cannot help remembering her sweetness, her music ability, and most of all her all-round personality.

### RUTH ELIZABETH HAMILTON

Neat, elite and attractive "Hammie" came to us after completing one year at Hood College for Women. Musically inclined, she has sung in the Choir, Ensemble, and Trio, besides being a talented pianist.

Ruth's honors include Pi Gamma Mu and Who's Who. She was vice-president of her junior class, a member of College Players, and president and vice-president of International Relations Club. In her senior year "Hammie" was *Sequelle* Editor and Women's House Council representative.

Her majors include social studies and English, in which she is certain to excel. Blonde "Hammie" is a typical college girl of which we can be proud.

### BETTY LOUISE HILLIARD

Betty, who comes from Brookville, has made a fine record at Clarion, both scholastically and in her extra-curricular activities. She has been a member of the Classical, Art, and International Relations Clubs. She is also a member of the Young Women's Christian Association and has participated in intramural sports. She has served actively as president of Hostess Club, treasurer of College Players, business manager of *Sequelle*, and Editor of the *Clarion Call*.

Betty is quite an attractive girl, very capable and industrious. She was elected to membership in Pi Gamma Mu, Who's Who, and Alpha Psi Omega.

Betty is always remembered for her dramatic ability, for she has been in many plays and given varied dialogues at college parties.



## *Class of 1946*

ELIZA KEMP

Eliza is one of those pleasant persons whom you are always glad to see on campus at any time. She comes from DuBois, Pennsylvania. She completed her first two years in summer sessions and one winter and her third year in night school. Eliza served for twenty-six months in the WAVES, doing technical work in a Naval Reserve Laboratory. Her duties involved flying; therefore she had permanent flight orders.

Eliza is majoring in elementary education. She has been an active member of the Geography and International Relations Clubs. Eliza seems to possess the ability to think straight, and consequently there are no doubts as to her success.

MARJORIE JANE KENNEDY

Peppy "Marge" is a "Punxsy gal". Being a conscientious worker, she has completed her curriculum in a three-year accelerated course.

Marge has been a member of the Hostess Club for two years and has participated in intramural sports during her freshman and junior years, which is evidence that she believes in mixing a little fun with studies. And, above all, Marge is the girl who can do it. Our "Punxsy gal" has also been active in the Young Women's Christian Association and Sigma Sigma Sigma, national educational sorority.

Marge's majors are in social studies, English, and biological science, in which fields we are proud to say she will be a success. With her generosity and lively conversational talent, we don't have to worry about Marge and her success.

GERALDINE MAE LEDEBUR

This petite, attractive, intelligent, blond who hails from Sheffield is our "Gerrie". We all know her for her many outstanding offices. For instance, she was the president of Pan-Hellenic Council, president of Woman's House Council, treasurer of College Players, and secretary of the senior class.

Her cooperative spirit is shown by her active participation in the Young Women's Christian Association, Press Club, College Players, Intramurals, Outdoor Club, Woman's Athletic Council and *Sequelle* Staff.

During her four years here she has acquired a major in Library Science, Social Studies, and English. Our good wishes for the future go with "Gerrie" wherever she may be; but she hardly needs any good wishes, for we know she'll do a fine job of anything she tries.



## The Seniors

### GERTRUDE ELIZABETH LOBAUGU

"Gert", as she is called on Clarion's campus, comes from Callensburg and graduated from Sligo High School. She majored in library science, social studies, English, and geography. Gert has a dry wit which has made her dear to her friends.

She is an athletic person, having participated in intramural sports and having gained membership in the Women's Athletic Council. She has also been a member of the Hostess, Geography, and Camera Clubs.

Gert is a slow, easy-going girl with a generous nature, and as a future librarian we know she'll do her best.

### JANE MARGARET MACMILLAN

Friendly, sincere, intelligent, able—these are just a few of the adjectives which best describe Jane. "Will anyone forget how she could always pop up with the correct answers to the most difficult questions?"

She was a member of Pi Gamma Mu, to which she made valuable contributions. Jane was active in extra-curricular activities; she was a member of College Players, International Relations Club, Press, Outdoor, Choir, Lambda Chi Delta, and participated in intramural sports.

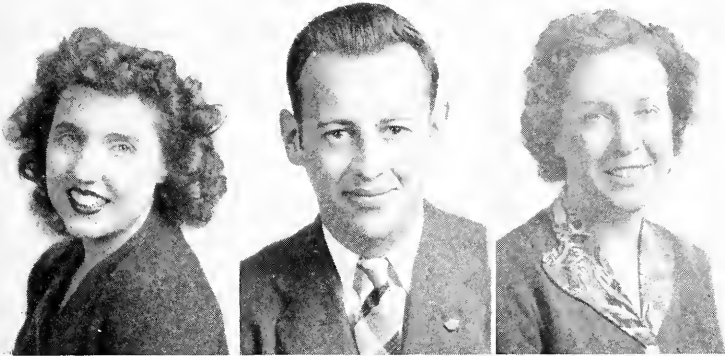
Because she has transferred to Washington and Jefferson College, she won't graduate with Clarion's class of 1946.

### EVE MOCER

Eve, a resident of McDonald, Pennsylvania, and a graduate of Hickory Vocational High School, came to Clarion in January of 1944 and will graduate this summer.

During her short stay at Clarion she was a member of the Geography Club for one year, International Relations Club for two years, Press Club for one year, Choir for two years, College Players for two years, Intramurals for two years, *Sequelle* Staff, and Theta Alpha Lambda Sorority.

Eve is a blond, cheerful, studious girl who has proved her scholarship by her election to Pi Gamma Mu and Who's Who in American Colleges and Universities. Her majors are social studies, Spanish and French. We are certain that a person who shows such initiative will succeed in the future.



## Class of 1946

MARGARET LOUISE NEELY

"Mick" or "Mickey" as we all know her, is one of our classmates we won't easily forget. Her home is in Tarentum, Pennsylvania.

She makes everyone feel at ease in her presence—and fun follows Mick wherever she goes. Among the things noteworthy about Mick are her generosity, cheerfulness, attractiveness — and her Neely wit.

Her majors are social studies and English. Having an accelerated program with heavy schedules, she still found time to participate in Clarion's many extra-curricular activities. She served as president of the Hostess Club, was a member of the College Players for one year, and during her two years membership in Press Club she served as treasurer and secretary. She was also active for two years in intramural sports. She is a member of Lambda Chi Delta Sorority and Literary Editor of the *Sequelle*.

WILLIAM ARNOLD PAUP

William Paup, who is known to us as Bill, comes from Venus, Pennsylvania. He attended Clarion for two years before he entered the army and is now back to finish his work.

While he attended college Bill participated in various activities. He was a member of the Outdoor Club, Geography Club, and Intramurals. He is also a member of the Alpha Phi Alpha fraternity.

To many on campus, Bill seems quiet and reserved, but after one gets to know him you find out he is full of fun and always willing to work. Of course, we can't forget that bundle from heaven Bill likes to talk about. We do want to say we are glad Bill is back to finish his work and we know he will do a fine piece of work.

MARIE REEP

Marie comes from Mt. Jewett, Pennsylvania. She graduated from Mt. Jewett High School and then attended Lockhaven State Teachers College for two years. She taught grades four, six, seven, and eight in the Mt. Jewett Public School. Marie completed her third year in summer sessions and came to Clarion to finish her fourth year of college.

Marie is obtaining her degree by majoring in elementary education. Her talent for art and membership in the Geography Club should prove helpful in this field.

She is extremely conscientious in all she does, willing to help everyone and the type of person one grows to like more and more with knowing.



## The Seniors

NORMAN H. SAMPSON

"Norm" comes from Warren and lived on campus his senior year with his wife and small son. He was active in such organizations as College Players, Geography, International Relations and Alpha Phi Alpha. He has worked hard as president and vice-president of the Young Men's Christian Association, and president of the Camera Club.

Norm is very neat and nice looking. His intelligence has gained him membership in Alpha Psi Omega and Phi Sigma Pi, honorary educational fraternities.

He majored in secondary education with science and math as his special fields. Norm completed his fourth year of college after about four years in the service of the United States Army. He was a popular fellow with all students and always had a good word for everyone.

GRACE NAOMI SAYERS

Naomi is one of the many who despise her first name, and gives a coy look when it is applied to her.

Naomi has lived in many towns; at present in Petrolia, Pennsylvania — graduating from Karns City High School. She transferred to Clarion in 1944 from Mansfield State Teachers College, where she majored in home economics.

While at Clarion she was a member of the Choir and the Camera Club for two years.

Naomi is a reserved, tactful person who possesses a mind of her own and in the future will do justice to her three majors: library science, social studies, and English. She will be graduated this summer.

MARY LOUISE SEIFERT

Mary could easily be called the "humor" of the class of 1946. She is also noted for her friendliness and athletic ability.

Mary comes from Brookville, although she graduated from Kittanning High School. She is interested in secondary education and has majored in geography, social studies, and English.

While at Clarion Mary's activities have been varied—Young Women's Christian Association, Choir, Ensemble, International Relation's Club, and *Sequelle* staff. Her participation in intra-mural sports and membership in the Woman's Athletic Council is ample proof of her athletic ability. She has been the secretary of Young Woman's Christian Association, treasurer of Choir, vice-president and president of Woman's Athletic Council, assistant editor of the *Sequelle* and a member of Delta Sigma Epsilon.





## Class of 1946

### ANNA LOUISE SHIPLEY

Anna Louise, who hails from Uniontown, is popularly known as "Ship" or "Spike". "Ship" was graduated from St. John's High School in Uniontown with the class of 1945.

A description of her?—an attractive, neat girl with dramatic ability and an enviable scholastic record. Anna Louise was a student in the secondary curriculum with majors in social studies and English. Ship's outstanding scholastic ability won her membership in Pi Gamma Mu and Who's Who and enabled her to complete her college education in three years.

Her varied activities on the Clarion campus included membership in Hostess Club, College Players, International Relations, Women's Athletic Council, and Lambda Chi Delta.

### RUTH SWARTHOUT

One of our outstanding seniors in the elementary field was Ruth, who specialized in primary work. Ruth was graduated from Oil City High School in 1941. She attended Clarion State Teachers College one year, worked two years as an accountant in an office, and then returned to Clarion.

On campus Ruth was known as a friendly lass with a sense of humor and a high scholastic standing.

She has been active in the following organizations: Theta Alpha Lambda, Association for Childhood Education, Camera Club, Choir, and Mixed Choir.

Having outstanding ability, Ruth has been honored by her election to the presidency of Future Teachers of America and the sophomore class and by being chosen for Who's Who in American Colleges and Universities in 1945. With her well-rounded personality Ruth will have great success in teaching.

### JOHN PAUL TILE

Final impressions are lasting and "Johnny" surely made some good ones. He was the president of his class, of student senate, and of International Relations Club in his fourth active year at Clarion.

John hails from Ridgway, where he attended Centennial High School. On arriving at Clarion he soon was well known for his friendly ways, cooperation, and leadership. He was seldom idle, cheerfully giving his help wherever it was needed.

He was a member of International Relations Club for four years, Young Men's Christian Association and Choir for three years, student senate and varsity for two years, and *Sequelle* staff for one year. He was also an active member of Alpha Gamma Phi and Pi Gamma Mu.

Since John served for approximately two years with Uncle Sam's armed forces, he won't graduate this year.



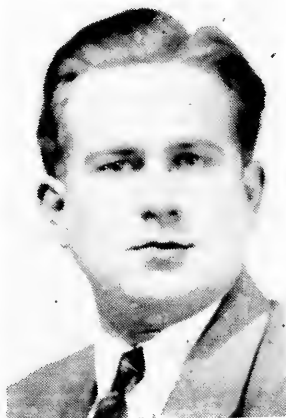
## *The Seniors*

DOROTHY ZACHERL

We predict success in teaching for "Dot", for she certainly has a way with young children. She is specializing in primary education.

Dot came from Shipperville as a three-year accelerated student. She is a very conscientious worker and thorough in all that she does. When it comes to activities Dot hasn't been in the background, for she has participated actively in the Camera Club and Association for Childhood Education. She was vice-president of the Art Club, secretary-treasurer of Geography Club and corresponding secretary of Future Teachers of America. Dot is neat in appearance and has a pleasing personality.

IN MEMORIAM



JOHN M. CHULDENKO

September 2, 1945

The only service man from our class to be killed.

*"The nearer I approach the end, the plainer I hear around me the immortal symphonies of the worlds which invite me. It is marvelous, yet simple."*

—VICTOR HUGO

## *Class of 1946*

BROOKS, ELLA EVANEK

From Huey, Pennsylvania, and graduated from Sligo High School. Majoring in elementary education.

GOULD, JAMES

From Putneyville, Pennsylvania, and graduated from Kittanning High School. Majoring in social studies and geography.

GOURLEY, MARY LOU

From Pittsburgh, Pennsylvania, and graduated from Brentwood High School. Majoring in elementary education.

HINDERLITER, MEADE

From Mayport, Pennsylvania, and graduated from Hawthorn High School. Majoring in social studies, English, and geography.

LEWIS, CULL

From Adrian, Pennsylvania, and graduated from Apollo High School. Majoring in social studies, English, and geography.

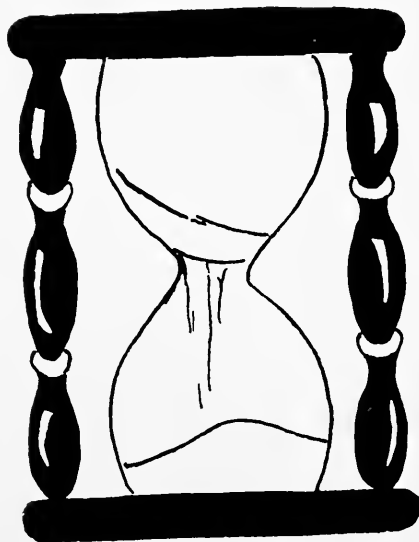
SLAUGENHOPT, WALTER

From Sligo, Pennsylvania, and graduated from Sligo High School. Majoring in social studies and English.

VANCE, KATHERINE BROOKS

From Clarion, Pennsylvania, and graduated from Clarion High School. Majoring in social studies and English.

## *The Junior Class*



*"The Bird of Time has but a little way  
To flutter—and the Bird is on the Wing."*

—OMAR KHAYYAMI

# Class of 1947

The sun shines east, the sun shines west; but the class of 1947 shines the best !!!

Well—this may be a debatable statement, but the Juniors think 1947 shines the best.

Events in 1945-46 for the Junior class as a whole have been rather limited. The year has seemed to pass “atom-like”, and it is almost unbelievable that next year we shall betreading this campus as Seniors.

Each year has been an extremely different one for the Junior class, but this fun-seeking gang has taken all in its stride and is anxious to make that top rung year the best that Clarion State Teacher’s College has ever seen.

## OFFICERS

|                |           |                |
|----------------|-----------|----------------|
| President      | - - - - - | Ernest Johnson |
| Vice-President | - - - - - | Helen Weeter   |
| Secretary      | - - - - - | LaGene Carrier |
| Treasurer      | - - - - - | Doris Nulph    |

NORMA BLOOM  
Pittsburgh

LA GENE CARRIER  
Summerville

MARGY LU COOK  
Beaver Falls

DOROTHY DRYDEN  
Mammoth

HELEN FLRY  
Brookville

EDITH GUNDERMAN  
Oil City

ERNEST JOHNSON  
Johnsonburg

MARTHA MOHNEY  
Brookville

MARY CATHERINE MOORE  
Brookville

DORIS NULPH  
Climax

## *The Juniors*





*Class of 1947*

HAZELDINE SERVEY  
Clarion

ERNEST SMAIL  
New Bethlehem

MABEL SMITH  
Tylersburg

LOU SOLLEY  
Grampian

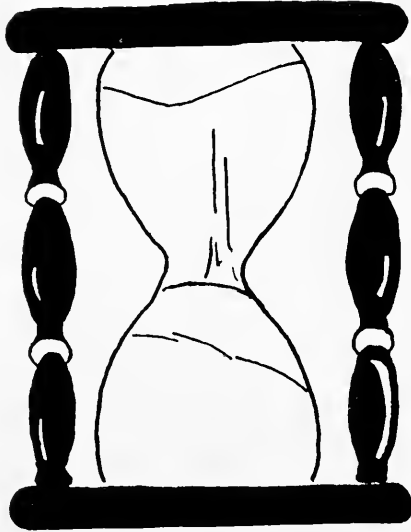
MAXINE SUMMERVILLE  
Clarion

HELEN WEETER  
Emlenton

PEARLE WEIGAND  
Apollo

JEAN WICK  
Tionesta

## *The Sophomore Class*



*I want to live my life aright from day to day  
I'm sure I shall not pass again this way.*

—ANONYMOUS



# Class of 1948

The sophomores began this year of peace with a feeling of great joy and happiness. No longer do we wander around, seeing strange faces, and stumbling in on the wrong classes as we did last year. It was a wonderful feeling to help the upper classmen with Freshman Week without having to undergo the torture that it entailed. It was fun to welcome the new freshmen, and help give them the feeling of pride in C.S.T.C. which we have come to know.

Several members of our class, who had to leave for the armed service, have returned to maintain the quantity of our class as well as the quality. We have also gained some new members whom we are very glad to have with us.

We hope that the next two years will be as pleasant as our freshman and sophomore years.

## OFFICERS

|                |       |               |
|----------------|-------|---------------|
| President      | - - - | Dick McClain  |
| Vice-President | - - - | Marian Davis  |
| Secretary      | - - - | Muriel Wright |
| Treasurer      | - - - | Kenny Gibbons |



## The Sophomores

JANE ARNER  
Clarion

JEAN BLAKE  
New Bethlehem

LORNA BLOOM  
Grampian

JANE BONSALE  
Troutville

JULIA BUZARD  
Strattonville

HELEN LOUISE BONSALE  
Grampian

DORIS ANN CROOKS  
Clarion

COLEEN BRIGHT  
Clarion

MARIAN DAVIS  
Pittsburgh

HELEN DUNCAN  
New Galilee

PHYLLIS HALE  
Turkey City

KENNETH GIBBONS  
Franklin

VERNICE HARDES  
Port Allegany

GLORIA HAGERSTRAND  
Monessen

SARAH HARNISH  
Clarion

MARTHA HELMINTOLLER  
Clarion

RUTH HILL  
Franklin

KATHLEEN HOBBS  
Georgetown



*Class of 1948*

ROBERT KERR  
Summerville

SHIRLEY MARTS  
Erie

VIVIAN MAXWELL  
New Kensington

RICHARD McCLAIN  
East Brady

JEAN MILLER  
Grampian

BETTY MCKINLEY  
Brookville

JANE MINICH  
Mayport

NELLIE MCKINLEY  
Clarion

IRMA MESSLER  
North East

MARTHA MITCHELL  
Kittanning

ARTHUR MOYER  
Shippenville

JANE SMATHERS  
Clarion

DONALD NULPH  
Clarion

MARY KAY SCHIERBERL  
Clarion

SHIRLEY ROBB  
Sharon

CHARLES RUMMEL  
Knoxdale

JOYCE SIMPSON  
Leeper

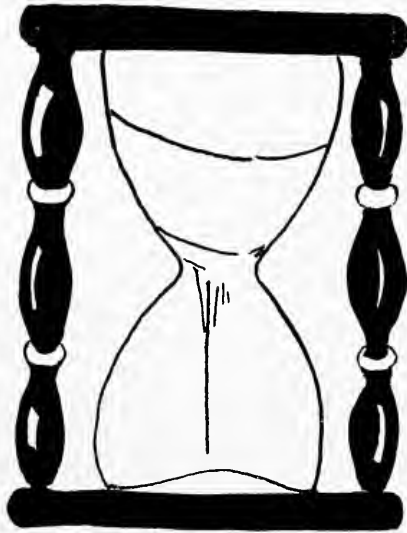
ARLENE TEXTER  
Modioe

ELAINE TRUITT  
Mayport

BETTY UNDERWOOD  
Rimersburg

BETTY WATSON  
Tionesta

## *The Freshman Class*



*"In books, or work, or healthful play,  
Let my first years be passed,  
That I may give for every day  
Some good account at last."*

—ISAAC WATTS

# Class of 1949

---

Although we of the Freshman class have traveled around in a fog for the past year, we still have had fun. We'll never forget Freshman Week, at which time we appeared on campus with blackened noses and immense green ribbons in our hair. We didn't mind the laughter we caused among the upper classmen, for we, too, will have the fun of watching the antics of next year's freshmen.

Our class started out as a large one, but at mid-term we welcomed many new classmates, most of whom were returned veterans.

We hope that the next three years of college life will be as enjoyable as the one we have just completed.

## OFFICERS

President - - Dominic Gasbarre  
Vice-President - - William Moore  
Secretary - - Alberta Deemer  
Treasurer - - Mary Alice Miller

ROW ONE

ROW TWO

ROW THREE

ROW FOUR

ELLEN ANDREWS  
Oil City

JO ANN CARNAHAN  
Clarion

DOMINIC GASBARRE  
Ridgway

BARBARA LOBAUGH  
Clarion

TWILA BARTELO  
Gibsonia

DELORES CURRIER  
Uniontown

PHYLLIS GOBLE  
Clarion

VERENA LOLL  
Lucinda

JEAN BLATTY  
Brookville

ALBERTA DEEMER  
Rives City

LEILA GRUBE  
Brookville

RUTH McNUITY  
Shippenville

PEGGY ANN BEBRINGER  
Pleasantville

GIRALD DUNKLE  
Calleensburg

RALPH HARTLE  
Marble

VIRGINIA MAXWELL  
Clarion

GLORIA BELLES  
Kittanning

RICHARD ELLIOTT  
Clarion

MARY LOU JOHNSTON  
Parkers Landing

EVALYN MEMON  
Pleasantville

JOANNE BISH  
New Bethlehem

JOYCE FERGUSON  
Apollo

RUTH KEARNEY  
Vandergrift

MARY ALICE MILLER  
Industry

MILTON BOYD  
Leeper

CEORA GARDNER  
Ridgway

CARL LARSON  
Elbon

CHESTER MINICH  
Fairmont City

MIRLE BOYLLS  
Strattonville

HELEN RAE GARDNER  
DuBois

BERNADETTE LANDER  
Lucinda

SHIRLEY MINNS  
DuBois

*The Freshmen*





## *Class of 1949*

| ROW ONE                      | ROW TWO                        | ROW THREE                    | ROW FOUR                             |
|------------------------------|--------------------------------|------------------------------|--------------------------------------|
| WILLIAM MOORE<br>Brookville  | MARJORIE OTTE<br>Pittsburgh    | CARL SARDI<br>Clarion        | BERTHA THOMPSON<br>Kersey            |
| BETTY MORGAN<br>Kittanning   | MARY PALCHUCK<br>Meadville     | ELSIE SELLERS<br>Ford City   | VIOLET VUKOSLAVICH<br>Cheswick       |
| VIVIAN MORGAN<br>Oil City    | LOIS PONTIUS<br>Chicora        | ARDELLA SERVEY<br>Clarion    | AUDREY WALLS<br>Sharpsville          |
| HELEN MAE NEVEL<br>Brockway  | NOREEN PRENDERGAST<br>Brockway | ELEANOR SHAFFER<br>Mayport   | DELLA JANE WILLIAMS<br>Reynoldsville |
| COURTNEY NELSON<br>Kushequa  | NORMA REA<br>Clarion           | BETTY SNYDER<br>Rimersburg   | RICHARD WOLF<br>Erie                 |
| MILDRED OCHS<br>Lucinda      | PAUL ROSSMAN<br>East Brady     | DENISE STEIN<br>Emporium     | DELINA YERACE<br>Freeport            |
| MARY K. O'NEILL<br>Leechburg | MARY SALSGIVER<br>Beccaria     | MARY STRICKLER<br>York Haven | ALICE ZACHERL<br>Shippenville        |



*At semesters, we came to college*

RICHARD RHODES  
Hallton

CARDINER WOLFE  
Brookville

LOUISE TAYLOR  
Shawville

BONNIE CARSON  
Kane

ARVILLA WEAVER  
Oil City





## *Back in "Civies"*

### BACK ROW:

DONALD McCLUNE  
Clarion

JAMES BOWMAN  
Clarion

JOHN PASCARELLA  
West Hickory

JAMES KERR  
Clarion

PETE WHISNER  
Clarion

EUGENE CARROLL  
Lucinda

JOSEPH LAUGHLIN  
Clarion

DE WAYNE SLAUGENHAUPT  
Shippenville

HARRY KISSELL  
Clarion

RICHARD DARLING  
Titusville

JOHN BROOKS  
Clarion

RAY McMASTER  
Clarion

### FRONT ROW:

ROBERT JUDY  
Lucinda

WILLIAM LAUGHLIN  
Clarion

EDWARD ELLIOTT  
Clarion

JOHN LONGNAKER  
Lamartine

EDWARD MARTIN  
Clarion

LOUIS TROESE  
Rimersburg

BLAINE STOVER  
Knox

SHURMAN HALL  
Clarion

JAMES ROUSE  
Corry

HOWARD DAVIS  
Lamartine



## *Veterans*

### BACK ROW:

RICHARD HORCHLER  
New Castle

JAMES BURNSLD  
Shaw, Miss.

CHARLES HAWK  
Franklin

JAMES CAMPBELL  
New Castle

JOSEPH MAGIE  
Uniontown

ROBERT SIAR  
Brookville

JAMES GOULD  
Putneyville

GORDON SILLS  
Johnsonburg

DUANE RAY  
Ferd

ROBERT GILLILAND  
Franklin

JOSEPH SEKELSKY  
Johnsonburg

MERVIN STRICKLER  
York Haven

### FRONT ROW:

WILLIAM SMITH  
New Castle

FRANK RUPAR  
Southview

PETER TATUSKO  
Farrell

ROBERT MUTH  
New Cumberland

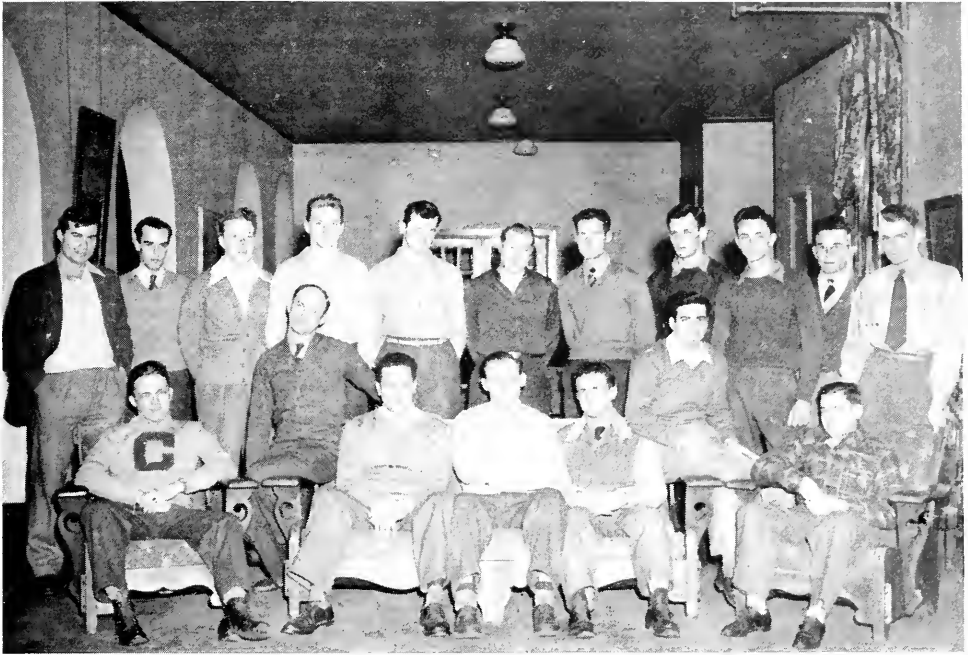
MARY LOU GOURLEY  
Pittsburgh

HAROLD BERLIN  
Oil City

ALBERT McCANN  
New Cumberland

DONALD IRWIN  
Franklin

RAYMOND HOFFMAN  
New Cumberland



## *Civilians Again*

### FIRST ROW:

DALE GILBERT  
Brookville

CLAIR SMITH  
Summerville

DOUGLAS KROH  
Brookville

MEADE HINDERLITER  
Hawthorne

PHILIP WALLACE  
Brookville

MAX DIEBLER  
Brookville

RUSSELL HARRIGER  
Ramseytown

RAYMOND ROWAN  
Brookville

ROBERT MORRISON  
Brookville

LAWRENCE KERR  
Corsica

DIXON CLOVER  
Brookville

### SECOND ROW:

JAMES MANNERS  
Brookville

LAWRENCE SMITH  
Mayport

HARRY BURNS  
Brookville

HENRY BREHM  
Brookville

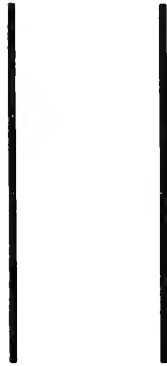
ARTHUR SHRECEGOST  
Brookville

GUIDO VOLPE  
Brockway

GALEN BLOOM  
Grampian

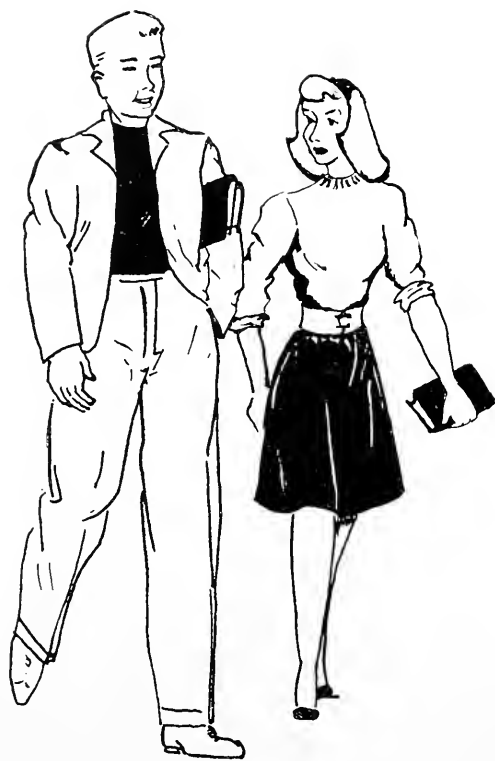


# *Organizations*

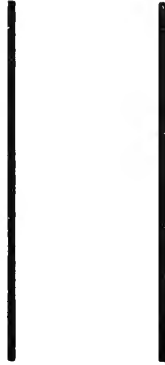


*"The Wine of Life keeps oozing drop by drop,  
The Leaves of Life keep falling one by one."*

—OMAR KHAYYAM



# *Greek Life*



*"The sailor has no harder job  
Who sails the stormy oceans  
Than I who steel my little soul  
Through strange and deep emotions."*

—McCANN

The purpose of Pi Gamma Mu is the inculcation of the ideals of scholarship and social service in the study of social problems. To send out from our colleges and universities young men and women imbued with social idealism, trained in scientific thought, and encouraged to keep others to be scientific in thought on all social questions is its particular purpose.

Pennsylvania Iota Chapter of Pi Gamma Mu was organized at Clarion, May 18, 1950, with twenty-two charter members. Since then the local chapter has grown to include approximately one hundred members. The motto of Pi Gamma Mu, national Social Honor Society, is that of the Master Teacher: "Ye shall know the truth, and the truth shall make you free."

In September the members drew up a program for the rest of the year and selected these students who were eligible for membership: Anna Louise Shipley, Helen Ferry, and Eve Mocek.

#### OFFICERS

President - - Charles Rummel  
Vice-President - - Betty Hilliard  
Secretary-Treasurer - Ruth Hamilton

## *Pi Gamma Mu*



THIRD Row:  
I. Tile  
Dr. Cordier  
C. Rummel

SECOND Row:  
J. Macmillan  
E. Mocek  
R. Hamilton  
B. Hilliard

FIRST Row:  
A. Shipley  
H. Ferry



STANDING:  
 H. Servey  
 L. Casagni  
 M. Schiebert

SEATED:  
 J. Blake  
 D. Dryden  
 H. Weeter  
 M. Smith  
 B. Finerty



## *Pan-Hellenic Council*

Representing the five sororities on campus is the Pan-Hellenic Council. This body is made up of ten members, two from each sorority. It encourages cooperation among the sororities and plans social events.

The annual Pan-Hellenic tea for non-sorority women was held in Becht Hall lounge in October. The annual Pan-Hellenic dinner, resumed for the first time since the war, was held in March.

### OFFICERS

| FIRST SEMESTER |                      | SECOND SEMESTER |                        |
|----------------|----------------------|-----------------|------------------------|
| President      | - - - Betty Finerty  | President       | - - - Nancy Smathers   |
| Secretary      | - - - Helen Weeter   | Secretary       | - - - Helen Weeter     |
| Treasurer      | - - - Laura Casagni  | Treasurer       | - - - Laura Casagni    |
| Adviser        | - - Miss Grace Stoke | Adviser         | - - Miss Margaret Boyd |

The first function of the Delta Sigs was to initiate Dr. Bertha V. Leifeste as our new sponsor.

A Cardinal was the theme of our Rush Party. Some of the main attractions were the Delta donkey, Sigma seer, and the Epsilon entertainers. The following girls were pledged: Joan Bish, Alberta Deemer, Vivian Maxwell, Florence Morrison, Marjorie Otte, and Audrey Walls.

Among the many social functions was a party given by Dr. Leifeste. In August, Conclave, a national convention, is to be held in Philadelphia. During the year the Delta Sigs were busy working on many projects to earn money to send delegates to Conclave.

As has been done for several years, we collected salvage for the therapy wing of O'Reilly General Hospital. We also collected books to be sent to the Merchant Marines.

#### OFFICERS

|                     |     |                 |           |       |                 |
|---------------------|-----|-----------------|-----------|-------|-----------------|
| President           | - - | Martha Mohney   | Treasurer | - - - | Jean Wick       |
| Vice-President      | -   | Martha Mitchell | Chaplain  | - -   | Jean Donaldson  |
| Recording Secretary | -   | Helen Duncan    | Sergeant  | - -   | Catherine Moore |
| Corresponding Sec.  | -   | Pearl Weigand   | Historian | - - - | Betty Finerty   |
|                     |     | Adviser         | - - -     |       | Bertha Leifeste |

## *Della Sigma Epsilon*



THIRD ROW:  
 S. Robb  
 K. Hobbs  
 M. Wright  
 J. Wick  
 H. Duncan  
 M. Summerville  
 J. Davis

SECOND ROW:  
 J. Donaldson  
 I. Bonsall  
 B. Watson  
 L. Smith  
 M. Mohney  
 M. Seibert  
 C. Moore

FIRST ROW:  
 B. Finerty  
 L. Miller  
 H. Bonsall  
 P. Hale  
 M. Mitchell  
 P. Weigand  
 M. Davis

THIRD Row:

M. Nupher  
D. Currier  
V. Harries  
M. Neely  
M. Schieberl

SECOND Row:

M. Clover  
J. Smathers  
D. Crooks  
M. Helms  
N. McKinley

FIRST Row:

H. Ferry  
J. Buzzard  
G. Ledebur  
R. Hamilton  
H. Flack



## *Lambda Chi Delta*

This year has been a busy one for the Lambda Chi's. The girls all bought gray sweaters with the Lambda Chi Delta emblem in coral and green. The rush party was in the form of a night club and was held at the Legion Hall. As a result of this party the following five girls were pledged and later initiated: Norma Ray, Barbara Lobaugh, Ruth McNulty, Shirley Marts, and Mary Kay O'Neil.

A movie was sponsored at the beginning of second semester. Plans for the rest of the semester include a party for the patronesses and several camping trips to Cook Forest.

### OFFICERS

President - - - Gerrie Ledebur  
Vice-President - - Doris Ann Crooks  
Secretary - - - Mickey Neely  
Treasurer - - - Nellie McKinley  
Adviser - - - - Ruth Kissell

The Sigma Delta's started the year out by initiating their new officers. At our regular meetings we discussed problems on etiquette and college life. Among the activities were sponsoring movies, helping with the American Red Cross, and sending Christmas gifts and dinners to needy families.

The Rush Party was held on November 16. Upon entering Davis Hall the rushees were toured around the world. Leaving their embarkation center they were immediately ordered to Nail's Restaurant for refreshments. Here they discovered tables tied in red, white, and blue, which made them believe it was America. After refreshments and games they were taken back to Davis Hall to learn more of other countries of the world. Here they saw tables decorated to represent Sweden, Scotland, Ireland, Russia, and China. Each rushee read jokes to represent her country. Following the Chinese method of drinking tea, the guests spent the remainder of the evening playing games and dancing.

After this party the following were pledged and initiated: Toni Yerace, Betty Morgan, Vivian Morgan, Mary Esther Salsgiver, and Noreen Prendergast.

#### OFFICERS

| FIRST SEMESTER |                     | SECOND SEMESTER |                    |
|----------------|---------------------|-----------------|--------------------|
| President      | - - - Lou Solley    | President       | - - - Mable Smith  |
| Vice-President | - Laura Casagni     | Vice-President  | - - Lou Solley     |
| Secretary      | - - - Mable Smith   | Secretary       | - - - Toni Yerace  |
| Treasurer      | - - - Arlene Texter | Treasurer       | - - - Betty Morgan |

## *Sigma Delta Phi*



A. Texter  
M. Smith  
Miss Nair  
N. Matter  
L. Solley  
L. Casagni

THIRD Row:  
 M. Kennedy  
 N. Bloom  
 L. Carrier  
 J. Blake  
 B. Thompson

SECOND Row:  
 S. Harnish  
 Miss Gamble  
 D. Dryden  
 D. Nulph  
 E. Gunderman  
 J. Simpson

FIRST Row:  
 B. Underwood  
 E. Truitt  
 J. Minich



## *Sigma Sigma Sigma*

This year has been an industrious one for the Tri Sigmas. They started out by having a very successful rummage sale in November. Also during this month, Aida Hanst, an alumna representative, visited the sorority for a week-end. Following this the rush party, "Tri Sigma Circus", was held. As a result, twelve girls were pledged: Ellen Andrews, Twila Bartello, Jeanne Beatty, Peggy Behringer, Ceora Gardner, Mary Lou Johnston, Evalyn Meabon, Mary Alice Miller, Helen Mae Nevel, Eleanor Shaffer, Mary K. Strickler, and Violet Vukoslavich.

Some of the important social activities of the year were a Christmas party, tea for the patronesses, visit from Mrs. Hazel McRee, a national alumna representative, and the annual week-end camping trip to Cook's Forest.

Featured also during the term were the sponsoring of movies, packing of Christmas boxes for needy French school children, and the contributing of funds to the convalescent nurses in Fitzsimmons General Hospital near Denver, Colorado.

### OFFICERS

|                         |           |                 |
|-------------------------|-----------|-----------------|
| President               | - - - - - | Doris Nulph     |
| Vice-President          | - - -     | Edith Gunderman |
| Recording Secretary     | - -       | Dorothy Dryden  |
| Treasurer               | - - - - - | Norma Bloom     |
| Corresponding Secretary | -         | Bertha Thompson |
| Adviser                 | - - - - - | Miss Gamble     |

A camping trip to Cook Forest started the year for the Thetas. During the year the girls worked packing Red Cross boxes for the boys overseas and sponsoring movies. Readings and discussions of etiquette, books, and poetry were carried on while the members knitted a multicolored afghan for a veteran's hospital.

The first semester rushees were entertained in Davis Hall and were served a lunch at the home of Mrs. Ralph Cordier. The second semester rushees were given a theater party with lunch at the Coffee Shop.

Various other informal parties provided fun for the girls with Mrs. S. E. Slick, Mrs. R. Cordier, Mrs. J. Elliott, and Mrs. G. Hoyt participating.

#### OFFICERS

| FIRST SEMESTER     |                      | SECOND SEMESTER    |                      |
|--------------------|----------------------|--------------------|----------------------|
| President          | - - Hazeldine Servey | President          | - - Ruth Swarthout   |
| Vice-President     | - - Ruth Swarthout   | Vice-President     | - - Hazeldine Servey |
| Secretary          | - - Eve Mocek        | Secretary          | - - Lois Pontius     |
| Treasurer          | - - Helen Weeter     | Treasurer          | - - Diane Leshok     |
| Corresponding Sec. | - Lois Pontius       | Corresponding Sec. | - Helen Weeter       |
| Chaplain           | - - June Sutherland  | Chaplain           | - - Eve Mocek        |
| Adviser            | - - Mrs. S. E. Slick | Adviser            | - - Mrs. S. E. Slick |

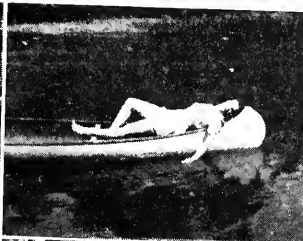
## *Theta Alpha Lambda*



STANDING:  
H. Servey  
H. Weeter

SEATED:  
M. Leshok  
R. Swarthout  
L. Pontius  
Mrs. Slick  
E. Mocek

Campus Folks



Threesome  
Glamour  
Seniors We'll Miss  
Autumn Nocturne

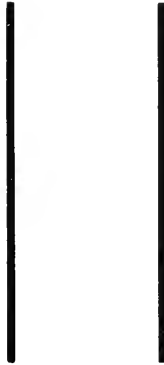
Nice Canoe !!!  
Pals  
Roommates Men !!!  
"Let It Snow"

Our Boys  
Cook's Forest Trip  
Rather Cold  
Our Bertie





# Activities



*“Variety’s the very spice of life,  
That gives it all its flavour.”*

—COWPER

The aims of the Student Senate are three-fold: to represent the student body in affairs on campus, to increase cooperation between the faculty and the student body, and to promote and maintain a full and enjoyable college life.

To carry out these aims there are three committees: the social committee, the chapel committee, and the financial committee.

The Student Senate is composed of representatives from the dormitory women, the women day students, and a man either from the day or resident men students. Officers are elected by popular vote of the entire student body.

#### OFFICERS

President - - - - - John Tile  
Vice-President - - - - - Martha Mohney  
Secretary-Treasurer - - - - - Martha Mitchell  
Adviser - - - - - Dr. Paul G. Chandler

## *Student Senate*



STANDING:  
L. Casagni  
K. Moore  
P. Weigand  
N. Bloom

SEATED:  
M. Mohney  
J. Tile  
M. Mitchell

SECOND ROW:  
 R. Hamilton  
 M. Mahney  
 L. Messler  
 D. Williams  
 M. Otte

FIRST ROW:  
 N. Bloom  
 G. Ledebur  
 J. Donaldson  
 B. McKinley



## *Women's House Council*

The functions of the Women's House Council are to represent the girls in the dormitory and to consider all the various problems which are entailed in governing and aiding the girls to have the best possible dormitory life.

This fall, during his visit here, Ensign Wm. Seloncheck donated ten dollars to the House Council to buy records for dancing in the Social Room. This gift was greatly appreciated by everyone as dancing has become one of the chief recreations of the college students.

A party was held early in the year to welcome the new students and help them get acquainted with the faculty and upper classmen. It was fun and was enjoyed by all who came.

The Council consists of two members from each class and the dean of women who acts as adviser.

### OFFICERS

|                |           |                  |
|----------------|-----------|------------------|
| President      | - - - - - | Scotty Donaldson |
| Vice-President | - - - - - | Gerry Ledebur    |
| Secretary      | - - - - - | Betty McKinley   |
| Treasurer      | - - - - - | Irma Messler     |

Seems like old times since we have a mixed chorus on campus again. For the past two years the choir has been entirely feminine in personnel. This year six men have made the beginning of what we hope will result in a mixed A Cappella Choir equal to that of the pre-war choir.

Appearances were made at the Methodist, Baptist, and Presbyterian churches, Baccalaureate, and on chapel programs.

## *Choir*

FOURTH ROW: M. Helmsoller, D. Nulph, D. Dryden, D. Currier, I. Bonsall, W. Moore, R. McClain, R. Woll, R. McNulty, M. Seibert, M. Otte.

THIRD ROW: P. Hale, P. Weigand, E. Moeck, N. Sovers, J. Tile, R. Kerr, P. Rossman, T. Allison, M. Strickler, H. Duncan, B. Lobaugh.

SECOND ROW: G. Hagerstrand, R. Kearney, N. McKinley, I. Ferguson, M. Mitchell, I. Arner, V. Hades, B. Vinerty, R. Swarthout, L. Carrier.

FIRST ROW: R. Hill, L. Bloom, B. McKinley, I. Messler, D. Crooks, H. Bonsall, J. Miller, J. Wick, V. Maxwell.





THIRD Row: C. Gardiner, C. Nelson, D. Steen, J. Bish, D. Williams.

SECOND Row: L. Solley, L. Grube, V. Morgan, J. Beatty, M. Strickler, H. Gardiner, B. Lobaugh.

FIRST Row: E. Meabon, M. Wright, L. Smith, M. Otte, P. Behringer, N. Rhea, E. Andrews, M. O'Neill, E. Shaffer.

## *Girl's Choir*

This year the girls' choir has experienced a more substantial continuation of the girls' chorus which has been doing full choir work for the last three years. They have given concerts for the Methodist, Baptist, and Presbyterian churches in Clarion and have contributed to our own chapel programs.

Since we no longer face a gasoline shortage, the choir has again been making concert tours which were discontinued during the war years.

### OFFICERS

|                     |           |                 |
|---------------------|-----------|-----------------|
| President           | - - - - - | Ceora Gardner   |
| Vice-President      | - - - - - | Norma Rea       |
| Secretary-Treasurer | - - - - - | Joann Bish      |
| Librarian           | - - - - - | Jean Beatty     |
| Adviser             | - - - - - | Mr. Walter Hart |

The Girl's Ensemble, under the direction of Mr. Walter Hart, has been outstanding among the C.S.T.C. activities this year. It has given many stage performances in local and surrounding schools from Erie to Fayette Counties. Highlights of the season were an offer to sing with a local band, and two overnights trips to Uniontown and to Erie.

The Girl's Ensemble consists of the college trio, soloists, and accompanists. These girls not only provide entertainment, but publicity for our college as well. The programs are varied and the selections consist of semi-classical and popular songs.

The soloists of the group are Ruth Kearney and Martha Helmtoller. The trio consists of Ruth Hamilton, Martha Helmtoller, and Betty Finerty. The accompanists are Jean Wick and Ruth McNulty.

## *College Ensemble*



R. Kearney  
M. Helmtoller  
R. Hamilton  
R. McNulty  
B. Finerty  
J. Wick



BACK Row: P. Bellis, M. Salsgiver, D. Nulph, A. Zachert, M. Paulchek, D. Zachert, I. Messler.  
 FRONT Row: C. Bright, T. Yerace, H. Neville, M. Leshock, B. Pendergast, V. Lall, Miss Sandford,  
 E. Anderson, J. Minich.

## *Art Club*

Activities of the Art Club have been numerous and varied. They included individual projects of painting, sketching, stenciling and the making of Christmas cards which were sold to the students and faculty.

Social activities began with a party early in the first semester, followed by other social affairs, such as the Hallowe'en, the Christmas, and the annual Art-Press Club party.

### OFFICERS

|                     |           |                 |
|---------------------|-----------|-----------------|
| President           | - - - - - | Irma Messler    |
| Vice-President      | - - - - - | Jane Minich     |
| Secretary-Treasurer | - - - - - | Bertha Thompson |
| Adviser             | - - - - - | Hazel Sanford   |

The Association for Childhood Education has an instructive program planned for every monthly meeting. In November the topic for discussion was "What is A.C.E.?", a topic which was of value to everyone.

December was a busy month for members of the organization. Some of the members helped with the annual presentation of the Christmas program of the Training School. Later a Christmas party was sponsored for the first and second grades.

The meetings this year proved to be of particular interest and value to the members, especially to those of the elementary field.

#### OFFICERS

|                         |                        |
|-------------------------|------------------------|
| President               | Dorothy Dryden         |
| Vice-President          | Marian Davis           |
| Corresponding Secretary | Ruth Hill              |
| Recording Secretary     | Vernice Hards          |
| Treasurer               | Phyllis Hale           |
| Program Chairman        | Laura Casagni          |
| Adviser                 | Dr. Bertha L. Leifeste |

## *Association for Childhood Education*

STANDING: M. Smith, B. Finerty, R. Swarthout, J. Davis, L. Casagni, C. Moore, M. Summerville, J. Bonsall, B. Watson.

SEATED: M. Davis, E. Gundenman, B. Underwood, D. Dryden, L. Carrier, D. Nulph, M. Wright, V. Hards, P. Hale, S. Hamish, L. Smith, R. Hill.





THIRD Row:  
 C. Moore  
 N. Bloom  
 H. Weyer  
 H. Servey

SECOND Row:  
 G. Lobaugh  
 T. Bartello  
 M. Smith  
 J. Simpson

FIRST Row:  
 R. Swarhout  
 M. Summerville  
 M. Johnson  
 E. Truitt  
 N. Sampson



## Camera Club

The Camera Club members found their meetings for the past year instructive and enjoyable. Although work in the dark room was a new experience for some of the members, they were soon successfully developing, printing, and enlarging pictures, and they soon discovered in doing it an entertaining hobby that they will be able to enjoy the year 'round. Other club activities were making silhouettes and taking pictures for the *Sequelle*.

### OFFICERS

#### FIRST SEMESTER

President - - Hazeldine Servey  
 Vice-President - Catherine Moore  
 Secretary - - - Norma Bloom  
 Treasurer - - Betty McKinley  
 Adviser - - - - -

#### SECOND SEMESTER

President - - Norman Sampson  
 Vice-President - Clifford McClune  
 Secretary - - - Elaine Truitt  
 Treasurer - - - Joyce Simpson  
 Adviser - - - - - Dr. Donald Pierce

The College Players, the campus dramatic organization, is one of the oldest clubs at Clarion. Established in April, 1920, it has been continuously active ever since its organization, and has held an honored place on the Clarion campus. Since 1929 the College Players Club has been under the able leadership of Miss Marwick and Miss Margaret Boyd.

Membership in the College Players is gained by try-outs held at the beginning of each semester and open to all students of the college. The membership is limited to forty-five. Club meetings are devoted to a variety of activities: one-act plays, make-up demonstrations, and discussions of lighting, costuming, sound effects, techniques in acting, and other phases of play production.

The play, "The Travelers", was successfully presented as a chapel program on December 6; another one-act play was given on High School Day as a part of the entertainment arranged for the high school guests of the college.

The social affairs of the club during 1945-1946 included a Halloween program enjoyed jointly with the Art Club, and a unique and very entertaining Christmas party.

#### OFFICERS

| FIRST SEMESTER |                        | SECOND SEMESTER |                        |
|----------------|------------------------|-----------------|------------------------|
| President      | - - Dick McClain       | President       | - - Richard Wolf       |
| Vice-President | - - Jean Donaldson     | Vice-President  | - - Betty Underwood    |
| Secretary      | - - Kathleen Hobbs     | Secretary       | - - Elsie Sellers      |
| Treasurer      | - - Robert Kerr        | Treasurer       | - - Bill Moore         |
| Adviser        | - - Miss Marie Marwick | Adviser         | - - Miss Margaret Boyd |

## College Players

FOURTH ROW: R. Elliott, M. Boyles, J. Cyphert, R. Walle, W. Moore, C. Sardi, M. Marwick, R. Kerr, R. McClain, E. Johnson, J. Hale.

THIRD ROW: H. Terry, I. Macmillan, M. Clover, I. Smathers, I. Allison, S. Harnish, B. Labangh, N. Rhea, M. Otte, I. Bunsall, M. Cook, I. Donaldson, K. Hildis, B. Underwood.

SECOND ROW: J. Davis, I. Mock, B. Finerty, I. Wark, M. Moloney, V. Maxwell, M. Miller.

FIRST ROW: B. Hilliard, C. Gardner, L. Sulley, I. Miller, I. Bunsall, I. Beatty, E. Sellers, A. Deemer, V. Vukoslavich, L. Grube.





THIRD Row: M. Salsgiver, N. Prendergast, E. Shaffer, M. Johnston, D. Steen, H. Gardiner, J. Beatty, T. Bartello, E. Meabon, M. Miller, M. Summerville, C. Moore.  
 SECOND Row: A. Deemer, M. O'Neill, C. Gardner, P. Behringer, E. Sellers, J. Bish, C. Nelson, D. Williams, L. Grube.  
 FIRST Row: M. Strickler, G. Belles, M. Palchuck, M. Otte, V. Yukoslavich.

## *Hostess Club*

The purpose of the Hostess Club is to further prepare prospective teachers for social life.

The Hostess Club opened the 1945-46 term with a visit to the local Woman's Club. At that time the girls heard an interesting lecture on glassware.

During the first semester the members learned the "do's" and "don'ts" of setting an attractive table for both formal and informal occasions. Before the Christmas holidays the girls learned the method of preparing a simple but attractive table decoration. At this time the girls displayed their artistic ability by decorating the Becht Hall lounge for the Christmas festivities.

The highlights of the second semester were several interesting talks by outside speakers and two teas, one for the faculty in February and one for the seniors in May.

### OFFICERS

|                |                             |
|----------------|-----------------------------|
| President      | - - - - - Alberta Deemer    |
| Vice-President | - - - - - Mary Lou Johnston |
| Secretary      | - - - - - Mary K. Strickler |
| Treasurer      | - - - - - Elsie Sellers     |
| Adviser        | - - - - - Miss Grace Stoke  |

The International Relations Club seeks to stimulate and intensify the interest of all students in the scientific and unbiased study of society and social subjects. All social problems are discussed openly and freely at the meetings. Here the members present their views, interpretations, and opinions concerning world affairs.

Interest this year was centered upon "Labor versus Management, Compulsory Military Training, and World Reconstruction". The members conducted a poll on campus, the issue being Compulsory Military Training in Peacetime.

Students specializing in social studies are particularly welcome to our club.

#### OFFICERS

|                     |                   |
|---------------------|-------------------|
| President           | John Tile         |
| Vice-President      | James Burnsed     |
| Secretary-Treasurer | Eve Moeck         |
| Adviser             | Dr. Ralph Cordier |

## *International Relations Club*

THIRD ROW: M. Smith, P. Gibbs, E. Smal, D. Gashar, E. Johnson.

SECOND ROW: M. Clover, J. Messler, H. Ferry, S. Robb, K. Hahls, M. Mitchell, L. Grube, J. Smathers, A. Shipley, M. Nupher, C. Bright, R. Hamilton.

FIRST ROW: Dr. Cordier, J. Macmillan, J. Tile, E. Kemp, E. Moeck, B. Hilliard





STANDING TO LEFT: M. Wright, R. Kerr, M. Mohney, B. Finerty, J. Wick, M. Davis, M. Neely, G. Ledebur, L. Smith.

STANDING TO RIGHT: R. McClaine, W. Moore, E. Johnson, Mr. Manson, J. Davis, H. Ferry, R. Wolf.

## *Outdoor Club*

"Help! Where am I?" "Do you think Mr. Manson knows where he is?" "Where are you, Mr. Manson?" "Gosh!—it's dark." "Wait for me! I can't find the trail." . . . These and other desperate cries were heard from the Outdoor Club members on a jaunt over the Longfellow trail in the dark, which occurred after a delightful picnic prepared and enjoyed by Mr. Manson and the club. Although this was only one of many of their activities, the clubbers will remember its uniqueness and thrills for a long while. Some of the other activities of this organization were the trip to Dr. Wilhelm's camp and the Christmas party held at Mr. Manson's home.

This active year for the club owes its success to the officers:

|                     |                   |
|---------------------|-------------------|
| President           | Nancy Smathers    |
| Vice-President      | Leatrice Smith    |
| Secretary-Treasurer | Martha Helmtoller |

and Mr. Manson who heartily supported each activity. Without the help of Mr. Manson none of the undertakings could have been successful and the Outdoor Club appreciates him.

The Pre-Flight Club of the Clarion College is a new club on campus, but has gained momentum quickly because of the many activities in which it participates. Mr. Carey, sponsor of the club, has throughout the year conducted many interesting and informative meetings.

The purpose of the club is as follows:

1. To further an interest in aviation.
2. To teach members some knowledge of the technical side of aviation.
5. To encourage members to realize the potentialities of air travel.

#### OFFICERS

|            |           |                |
|------------|-----------|----------------|
| Pilot      | - - - - - | Toni Yerace    |
| Co-pilot   | - - - - - | Joann Bish     |
| Navigator  | - - - - - | Betty McKinley |
| Bombardier | - - - - - | Bing Larson    |

## *Pre-Flight Club*

BACK ROW: Mr. Carey, S. Mats, A. Zuchel, P. Berringer, I. Bish, M. Paulchek, T. Yerace, K. Gibbons.

FRONT ROW: M. O'Neil, A. Texer, H. Servey, C. Gardner, M. Leshok, C. Larson.





THIRD Row: J. Arner, M. Boyles, D. Crooks, R. Elliott, M. Clover, A. Moyer, J. Smathers, M. Mohney.

SECOND Row: P. Goebels, L. Pontius, N. McKinley, T. Cyphert, Miss Nair, H. Ferry, M. Neely, M. Schierbert, S. Robb.

FIRST Row: J. MacMillan, J. Carnahan, B. Underwood, T. Yerace, B. Watson, S. Marts, B. Hilliard.

## *Press Club*

The main object of this organization is to publish the college newspaper, the *Clarion Call*. A member of the club automatically becomes a member of the *Call* staff and helps the editor in the collecting of news, writing of articles, and the publication of the *Call*.

Highlights of this year's meetings included news of the week, reports on various newspaper articles, weiner roast, and the party held jointly with the Art Club.

This year members of the Press Club were given the use of a room on third floor of Seminary Hall to be used as a *Call* room. They energetically went to work, cleaning the room and equipping it in true newspaper style.

### OFFICERS

| FIRST SEMESTER |           |                | SECOND SEMESTER |       |                  |
|----------------|-----------|----------------|-----------------|-------|------------------|
| President      | - - -     | Helen Ferry    | President       | - - - | Dick Elliott     |
| Vice-President | - - -     | Ted Cyphert    | Vice-President  | - - - | Martha Mohney    |
| Secretary      | - - -     | Mickey Neely   | Secretary       | - - - | Toni Yerace      |
| Treasurer      | - - -     | Nelly McKinley | Treasurer       | - - - | Lois Pontius     |
| Adviser        | - - - - - | - - - - -      | - - -           | - - - | Miss Bertha Nair |

Making this *Sequelle* for you has meant the expenditure of energy, worry, and, yes—fun. Not one person would have missed the experience of doing his bit to help make it a success. It has been said that one picture is "better than a thousand words". We have tried to use more pictures this year to depict to you the story of the activities and life at Clarion State Teachers College. We hope that this *Sequelle* will be a reminder of Clarion which you will always want to keep.

To Miss Nair and Professor Clarence Kuhner, we are sincerely grateful for their friendly interest and cooperation in editing this annual publication.

|                                   |   |
|-----------------------------------|---|
| Editor                            | Ruth Hamilton   |
| Junior Assistant Editor           | Marjorie Clover   |
| Business Manager                  | Betty Hilliard  |
| Junior Assistant Business Manager | Helen Weeter  |
| Literary Editor                   | Margaret Neely  |
| Literary Assistants               | Jean Donaldson, Betty Finerty, Marjorie Kennedy,<br>Joan Davis, Mary Seifert, John File, Ernest Johnson |
| Advertising                       | Mary Seifert  |
| Typing                            | Gerrie Ledebur, Jean Donaldson, Marjorie Kennedy  |
| Photography                       | Gerrie Ledebur, Betty Hilliard, Eve Moeck   |
| Cartiatures                       | Irma Messler  |

## *"Sequelle" Staff*

STANDING: Mr. Kuhner, G. Ledebur, R. Hamilton, J. File, Miss Nair

SEATED ON LEFT: B. Hilliard, E. Moeck, I. Davis, M. Neely, E. Messler, M. Seifert.

SEATED ON RIGHT: A. Shipley, J. Donaldson, B. Finerty, H. Weeter, M. Clover, E. Johnson.





BACK Row:  
H. Weeter  
N. Bloom  
J. Wick  
H. Ferry  
FRONT Row:  
A. Shipley  
E. Mocek  
R. Swarhout  
R. Hamilton



## *Who's Who in C. S. T. C.*

Each year a group of students are selected by a committee of the faculty to represent Clarion State Teachers College in the year's edition of "Who's Who in American Universities and Colleges". This 1946 edition will include the biographies of chosen graduates from six thousand or more American universities and colleges, and it is used as a standard of measurement and a recommendation to the business world. The students are chosen who possess a very high scholastic rating and show active participation and leadership in extra-curricular activities. This is the highest honor a student can obtain on this campus.

The following have been chosen for 1945-46: Helen Weeter, Helen Ferry, Ruth Swarhout, Norma Bloom, Ruth Hamilton, Betty Hilliard, Jean Wick, Anna Louise Shipley, and Eve Mocek.

It is the purpose of the Young Women's Christian Association to "unite in the desire to realize a full and creative life through a growing knowledge of God . . . to have a part in making this life possible for all people and in this task to seek to understand Jesus and follow Him." It aims to create a spirit of sisterhood and to promote friendship among the girls. It is most influential in fostering the development of a personal philosophy of conduct and morality in the individual member.

During the year the organization met to discuss problems which are vital to the youth today. The meetings, which were planned and conducted by members of the "Y", included discussion meetings, song services, and candlelight services.

This year the "YW" activities included a Hallowe'en Party, the sponsoring of a chapel program, and the annual all college caroling.

The officers of the "Y" Cabinet are:

- President - - - - - Mary K. Strickler
- Vice-President - - - - - Jane Minich
- Secretary-Treasurer - - - - - Mary Lou Johnston

## *Young Women's Christian Association*

STANDING: E. Shaffer, M. Strickler, J. Beatty, T. Bartello, V. Hards, I. Bonsall, F. Truitt, L. Bloom, B. Watson, B. Hilliard, R. Hill.

SEATED: T. Yerace, M. Johnston, M. Moloney, J. Wirk, M. Clover, J. Minich, N. Prendergast, H. Ferry, H. Neville.



*Campus Couples*



Muriel and Bob

Lorna and her man!

Chet and Ruthie

In the middle of September, 1944  
Are you cold?

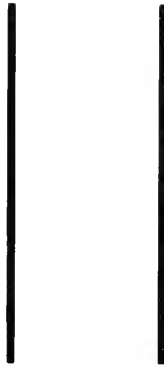
Remember when?

Cute Foursome

Nice !!!



# *Athletics*



*“Time, you old gypsy man  
Will you not stay,  
Put up your caravan  
Just for one day?”*

—HODGSON

The Women's Athletic Council is composed of girls who have won letters by participating in the intramural sports. After the girls have won their letter it is their duty to help choose the varsity teams in speedball and basketball. Students are elected on these varsity teams for their good sportsmanship, outstanding ability, and their willingness to cooperate and take part in these sports.

This year there were both speedball and basketball intramurals. Our adviser, Mr. Tippin, has enthusiastically directed the program of the council.

#### OFFICERS

President . . . . . Martha Mohney  
Secretary-Treasurer . . . . . May Kay Schierberl  
Adviser . . . . . Waldo S. Tippin

### *Women's Athletic Council*

SECOND ROW: Mr. Tippin, H. Bonsall, K. Hobbs, M. Mohney, M. Seibert, D. Crooks, M. Helmstoller  
FIRST ROW: A. Shipley, H. Servey, G. Lobaugh, M. Schierberl, G. Ledebur, H. Ferry, I. Wick



Back Row:  
Mr. Tippin  
D. Currier  
E. Gunderman  
N. McKinley  
D. Dryden  
S. Robb

Front Row:  
D. Steen  
T. Yerace  
G. Belles  
B. Underwood



## *Speedball Varsity*

"Make that goal!" Yes, they made the goal. These girls led the school to a happy and victorious speedball season.

The best players were chosen from each class to form one Hercules of a team. Each time the ball was set loose these girls craftily took possession of it and carried it up the field through opposition to the goal, and they always "made that goal".

The members of this All-American team were Gloria Belles, Denise Steen, and Toni Yerace from the freshman class; Delores Currier, Shirley Robb, Betty Underwood, and Nellie McKinley of the sophomore class; and Dorothy Dryden and Edith Gunderman from the junior class, thus forming an invincible team.

The Golden Eagles opened their basketball season December 8 against Alliance College. The Eagles were defeated by a strong Alliance five 59-42. In the following week Coach Tippin ironed out many difficulties and the Eagles showed fine form in trouncing California Teachers 46-45. The next game was another thriller with Indiana Teachers, the Eagles being victorious this time 44-55. January 12 the Eagles journeyed to California where the Californians avenged a previous defeat by the score 54-40.

The Tippinmen were bolstered by many veterans who had returned from the war. After a week's practice the Eagles traveled to Indiana and lost a hard-fought game 59-54. Seven days later Grove City College handed Clarion its third straight defeat with a score of 51-28. The teachers jumped back into the win column by downing a game Edinboro quintet 55-52.

Throughout the season all members of the squad showed plenty of interest, determination, and fighting spirit. With the exception of Guard Jim Manners, the Eagles are a young team and have plenty of eligibility left for future years of their college careers. The intentions of the squad are to finish remaining games with a clean slate.

## *Our Team*

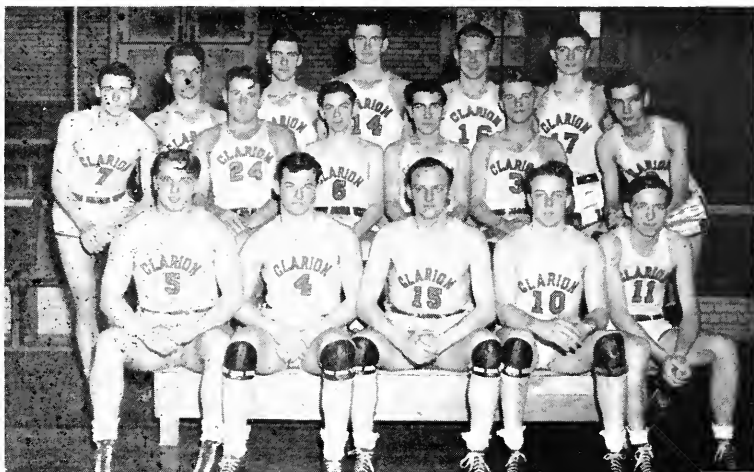


THIRD ROW:  
A. Moyer  
C. Sardi

SECOND ROW:  
Mr. Tippin  
D. McClain  
W. Moore  
E. Johnson  
D. Gasbarre

FIRST ROW:  
D. Wolfe  
M. Boyles  
T. Cyphert  
R. Kerr





THIRD Row: Manners, McClune, Bernsed, Kerr, Moore.

SECOND Row: Laughlin, Hoffman, Moyer, Sier, Wolfe, McClain.

FIRST Row: Whisner, Wallace, Brehm, Kroh, Farrell.

## *Golden Eagles*

### C.S.T.C. BASKETBALL SEASON

|                 |    |   |   |   |   |   |   |   |   |            |    |
|-----------------|----|---|---|---|---|---|---|---|---|------------|----|
| Dec. 8—Clarion  | 42 | - | - | - | - | - | - | - | - | Alliance   | 59 |
| Dec. 14—Clarion | 46 | - | - | - | - | - | - | - | - | California | 45 |
| Jan. 9—Clarion  | 41 | - | - | - | - | - | - | - | - | Indiana    | 50 |
| Jan. 11—Clarion | 40 | - | - | - | - | - | - | - | - | California | 54 |
| Jan. 26—Clarion | 54 | - | - | - | - | - | - | - | - | Indiana    | 59 |
| Feb. 2—Clarion  | 28 | - | - | - | - | - | - | - | - | Grove City | 51 |
| Feb. 9—Clarion  | 55 | - | - | - | - | - | - | - | - | Edinboro   | 52 |
| Feb. 15—Clarion | 44 | - | - | - | - | - | - | - | - | Thiel      | 50 |
| Feb. 16—Clarion | 40 | - | - | - | - | - | - | - | - | Alliance   | 57 |
| Feb. 20—Clarion | 42 | - | - | - | - | - | - | - | - | Edinboro   | 55 |
| Feb. 27—Clarion | 51 | - | - | - | - | - | - | - | - | Grove City | 52 |
| Mar. 1—Clarion  | 25 | - | - | - | - | - | - | - | - | Thiel      | 26 |

Clarion 466

Won 6

Opponents 448

Lost 6

The Varsity C Club is an organization of men who have received a letter in one of the three major sports at Clarion. Its purpose is three fold: to promote sportsmanship, to create an interest in athletics among the men of the college, and to supervise all athletic activities.

A person is eligible for membership in the Varsity C Club when he has participated in the required number of games of football or basketball or has earned the specified number of points in wrestling.

A person who has become a member of this organization pays entrance dues after which he is a life member of the club and is entitled to free admission to all athletic events.

The Varsity C Club is one of the oldest clubs on the campus and is recognized as one of the most active.

Last November the following students were admitted: Dick McClain, Robert Kerr, Carl Sardi, Art Moyer, and Ted Cyphert. The following Varsity C men have returned to college from the service: Turk Johnson, John Tile, Phil Wallace, Tiny Muth, Mervin Strickler, James Manners, and Gordon Sills.

#### OFFICERS

President - - - - - Turk Johnson  
Secretary-Treasurer - - - - - John Tile  
Adviser - - - - - Waldo S. Tippin

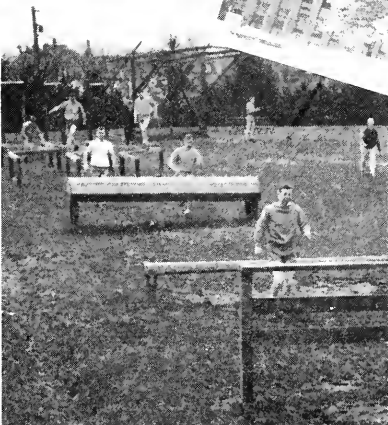
## *Varsity "C"*



Back Row:  
T. Cyphert  
E. Johnson  
R. Kerr  
I. Tile

Front Row:  
A. Moyer  
C. Sardi  
D. McClain

Campus Reminders



1945 snow—brr !!!  
 The way to education  
 Burma Road  
 More C.T.D. men !!!

C.T.D.—over the top  
 Harvey Gym  
 Our favorite tree  
 Chapel over yet?



# Features



*"I love a field of clean white snow  
Untouched by human feet.  
And when I have to walk through one  
I try to make my footprints neat."*

—McCANN

## *Retrospection by Song Titles*

Music usually has the power to recall happy memories. Our four years at C.S.T.C. will be remembered whenever we hear the songs which we have associated with our college years.

"Can't Get Out of This Mood", "Don't Get Around Much Any More", "That Old Black Magic", "As Time Goes By", "Constantly", and "It Seems To Me I've Heard That Song Before" strike the keynote of our freshman year. We remember football games, our first Homecoming Dance, the formal Christmas dinner and dance, sorority rushing in January, war really hitting the campus with our first contingent of C.S.T.C. men leaving in February, Cadets appearing in April, their marching, singing, working, and playing becoming part of campus life, the U.S.O. formal in April, and suddenly goodbye to the Seniors.

Our Sophomore year is recalled by the familiar strains of "I'll Get By", "Wait For Me Mary", "All or Nothing at All", "There Are Such Things", "The Desert Song", and "Paper Doll". In quick succession, quintile dances, dates with the Cadets, the Christmas dinner, Cook Forest week ends, High School Day, and the closing of the 557th C.T.D. flash through our minds, bringing back the memories of '45 and '44.

"I'll Be Seeing You", "White Christmas", "I Love You", "Saturday Night", "Always", and "Please Don't Say No" awaken the memories of letter writing as a pastime, furloughs spent in Clarion, renewal of basketball games, shock of President Roosevelt's death, apprehension, yet joy, of V-E day which are memories of our junior year.

While Sinatra, Crosby, and other vocalists sang such songs as "I Can't Begin to Tell You", "That's For Me", "Symphony", and "Paper Moon", we faced our final year at C.S.T.C. Lesson Plans, student teaching, application letters, Pan-Hellenic Tea, return of veterans to campus, Onize Club dances, Canteen dances, Baccalaureate, and finally our diplomas.

Our musical review of four years at Clarion comes to a close with "Auld Lang Sync".

## Clarion

- C** that's for the campus we'll never forget,  
Each nook and cranny impresses every step.
- L** is for library where we study much,  
References, magazines, dates and such.
- A** is for advisers whom we can't do without,  
And about whom our praises we do loudly shout.
- R** is for romances—tried and true,  
Of which our school has far from few.
- I** is for ingenuity—the Juniors claim,  
They as Seniors hope to retain.
- O** is for One and Only—Our Own College,  
The place where we have gained our knowledge.
- N** is for now, the time to leave,  
Keep plugging along; don't stop to grieve.

Pauline Shumaker,  
Editor of 1941 *Sequelle*

# Remember ?

HERE WE LEARN—

TO CULTIVATE—THOSE  
GIFTS—WHICH ARE OUR  
HERITAGE—HERE HARBORS  
MEMORIES—OF—THE  
GIRL—THE BOY—  
THE TIME—TO  
TAKE THROUGH  
THE  
YEARS.

IT IS

BY THESE—  
CLUBS, ACTIVITIES—  
WE MEET—COME—  
INTO CLOSER CONTACT—  
WITH—OUR—  
FELLOW STUDENTS—  
ACQUAINTANCES BLOOM—  
TO FRIENDSHIPS—  
FRIENDSHIPS TO LAST  
THROUGH COLLEGE—  
THROUGH—ALL LIFE.



*Remember ?*



*Gateway to Learning*

*Remember ?*



*Training School on a sunny day!*

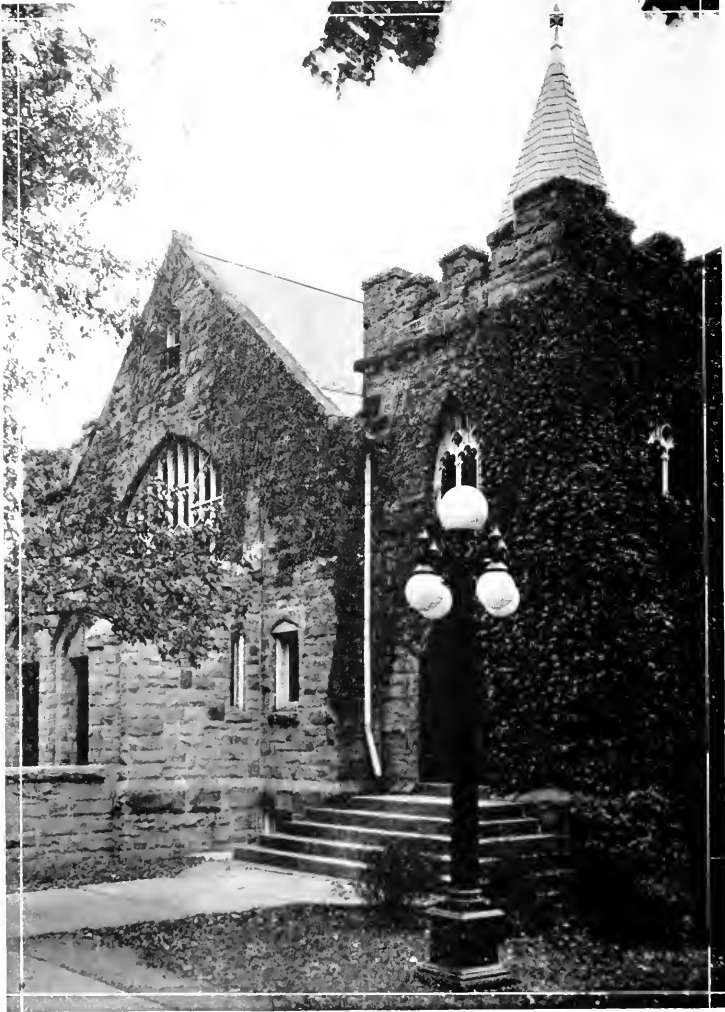
*Remember ?*



*Choir Practice . . .*

*Music Appreciation*

*Remember ?*



*Chapel . . . good and bad speakers,  
. . . Graduation !!!*

*Remember ?*



*Science . . . Manson and Pierce, our "profs"*

*The skeleton and evil odors.*

*Remember ?*



*Egbert Hall . . . boys' Dormitory  
Our days there when the C.T.D.  
took over . . . beautiful rooms.*

*Remember ?*

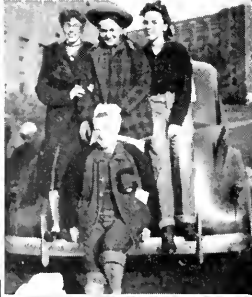


*Seminary . . . Becht . . . Music . . . Egbert . . . Our Tree*



*Davis Hall . . . Becker, Flack, and Campbell*

*Freshmen Week*



What a day !!!  
Black noses

Blushing bride

Watch it gals!  
Checks no less  
Look at the legs

Impersonation day



# Adieu

So falls the curtain on another school year. Yet the rejoicing of the Seniors is tinged with a deeper feeling of regret when we think we will not be among those who return to C.S.T.C. next year.

Perhaps there have been days when everything seemed to go wrong; lessons would not come right; work seemed to pile upon us; and in our estimation the teachers were not very amiable. We've all had those blue days when we thought we were the most abused people on earth, and yet now that it is all over, how trivial all these things seem, and how much more trivial they will seem to us ten years hence.

We have struggled upward through four years at C.S.T.C. through days that were dreary and hard, through days that were filled with laughter and happiness to a final goal. Our day has finally come. Graduation! At this stage, Seniors lay aside their work and are ready to reap the rich harvest which they have sown during their four years. They are ready to face the world, armed with knowledge and hope.

So let us remember the good and forget the bad. Let us treasure up memories of the bright and pleasant times so that we may look upon our college days as our happiest days.

To the underclassmen and the faculty we bid fond farewell.

*“The play is done, the curtains drop,  
Slow falling to the prompters bell  
A moment yet the actor stops,  
And looks around to say farewell.”*

—THACKERY

## Attention Students and Alumni

The advertisers on the following pages have evidenced their interest in the progress of our College. Let us show our appreciation of their interest by patronizing them whenever the opportunity arises. With mutual co-operation, the town and college will advance together.

## DITZ & MOONEY HARDWARE

"Everything in Hardware"

LUCAS PAINTS --- CHINA AND GLASSWARE  
HUNTING AND SPORTING EQUIPMENT

PHONE 218

CLARION, PA.

COMPLIMENTS  
OF

**BROWN'S  
BOOT SHOP**

CLARION, PA.

COMPLIMENTS  
OF

**HUGH M. OWENS  
JEWELER**

HAIL THE GRADUATION CLASS OF 1946

We join in a hearty commendation of your efforts and in a sincere wish that your future lives may be happy and successful.

**G. C. MURPHY & COMPANY**

**5 and 10 Cent Store**

THE REXALL STORE  
SODA FOUNTAIN  
and  
LUNCHEONETTE SERVICE  
LOWEST CUT PRICES  
KING DRUG STORE

COMPLIMENTS  
OF  
MAUL'S  
DAIRY STORE

**PENNEY'S**  
J. C. PENNEY CO., INC.

J. C. PENNY CO., INC.

609 MAIN STREET

CLARION, PA.

A BANK OF STRENGTH AND CHARACTER  
Banking transactions are strictly supervised by the banking authorities  
OUR DIRECTORS

Merritt H. Davis

Herbert R. Lander

Perry Wile

B. M. Davis

W. M. Moore

MEMBER FEDERAL DEPOSIT INSURANCE CORPORATION

**FIRST NATIONAL BANK in CLARION**

CLARION

PENNSYLVANIA

COMPLIMENTS  
OF  
CLARION  
FIRESTONE DEALER  
STORE

COMPLIMENTS  
OF  
ANDERSON  
HOTEL

COMPLIMENTS  
OF  
**Mr. and Mrs. Fred Jenkins**

EAT AT  
**BALDY'S MODERN DINER**  
MEALS --- LUNCHES  
NEXT TO GARBY THEATRE

COMPLIMENTS  
**BROOKVILLE CREAMERY PRODUCTS**  
**COMPANY**

MANUFACTURERS OF  
**Country Club Dairy Products**



**BROOKVILLE, PENNSYLVANIA**

# ORPHEUM THEATRE

CLARION

ESTABLISHED 1912

FOR THE BEST SHOWS

## MODERN STORE

GROCERIES --- FRUITS  
FRESH MEATS

SAM CHERICO, Proprietor

PHONE 38

CLARION, PA.

## THE DRESS SHOP

WOMEN'S AND MISSES'  
READY TO WEAR



Clarion, Pa.

COMPLIMENTS

OF

MEANS & LAUF DRUG COMPANY

Just off the campus one may  
find the best in groceries and  
meats . . . Why go farther?

**WM. W. PHERO**

"THE COLLEGE GROCER"

PHONE 19

**J. F. Weaver Est.**

**HARDWARE  
COMPANY**

Highest Quality Merchandise  
at Lowest Possible Prices

PHONE 194

CLARION, PA.

# MORGAN SHIPLEY CO.

BOX 406

UNIONTOWN, PA.

QUAKER SUGAR

# ATLANTIC FREIGHT LINES INC.

Common Carrier, General Commodities

SECOND NATIONAL BANK BUILDING

UNIONTOWN, PA.

CONTINUED SUCCESS  
TO THE STUDENTS OF C. S. T. C.

**DAVID A. KAUFMAN**

**Jeweler**

PHONE 33-M

CLARION, PA.

COMPLIMENTS  
OF

**WEIN BROTHERS**

**Clarion's Finest Store**

**HERMAN  
BROTHERS**

THE CORNER STORE  
FRUITS --- ICE CREAM  
CONFECTIONS  
CORNER WOOD AND EIGHTH AVENUE  
CLARION, PA.

NYAL SERVICE STORE

**FITZGERALD'S**

A. G. CORBETT DRUG CO.

Clarion, Pa.

**THE CLARION REPUBLICAN**

"THE PAPER WITH THE WANT ADS"

**Clarion County's Best Newspaper**

THE HOME OF THE CLARION CALL

COMPLIMENTS  
OF  
**GARBY THEATRE**

WHERE HITS ARE A DAILY HABIT

**THE  
COFFEE SHOP**

Not Only

**GOOD FOOD**

But All You Want

**AT MODERATE PRICES**

CORNER MAIN ST. AND EIGHTH AVE.  
CLARION 72

EXPERT HAIR STYLING . . .

WE HANDLE DERMETICS

Exclusively

**KATHRYN'S  
BEAUTY SHOP**

PHONE 310

BANNER BUILDING

COMPLIMENTS  
OF

**THE  
COLLEGE  
GRILL**

FIRST CHOICE ALWAYS

**RIECK'S**

*Sealtest*  
**ICE CREAM**

**JAFFE'S  
of Clarion**

WOMEN'S AND MISSES  
WEARING APPAREL

608 MAIN STREET

CLARION, PA.

**CLARION  
HEATING  
and  
APPLIANCES  
FURNACES**

Complete Line of Appliances  
PHONE 640 CLARION, PA.



# MERWIN'S

STATIONERY --- MAGAZINES --- NEWSPAPERS

GREETING CARDS

ICE CREAM --- CANDY

MAIN STREET

CLARION, PA.

Forever in their thoughts . . .

## PORTRAITS

of you or yours . . .

A Portrait of you or yours lives in the thoughts of loved ones. This is more especially true if that portrait is caught by the magic of our cameras and the expert craftsmanship of our photographers and finishers.

### DEVELOPING AND FINISHING SERVICE

YOU WILL APPRECIATE OUR EXCELLENT SERVICE . . . BRING YOUR FILMS TO US  
DO NOT DELAY HAVING THAT PORTRAIT MADE NOW . . . YES, TODAY

## CARL & DON STUDIOS

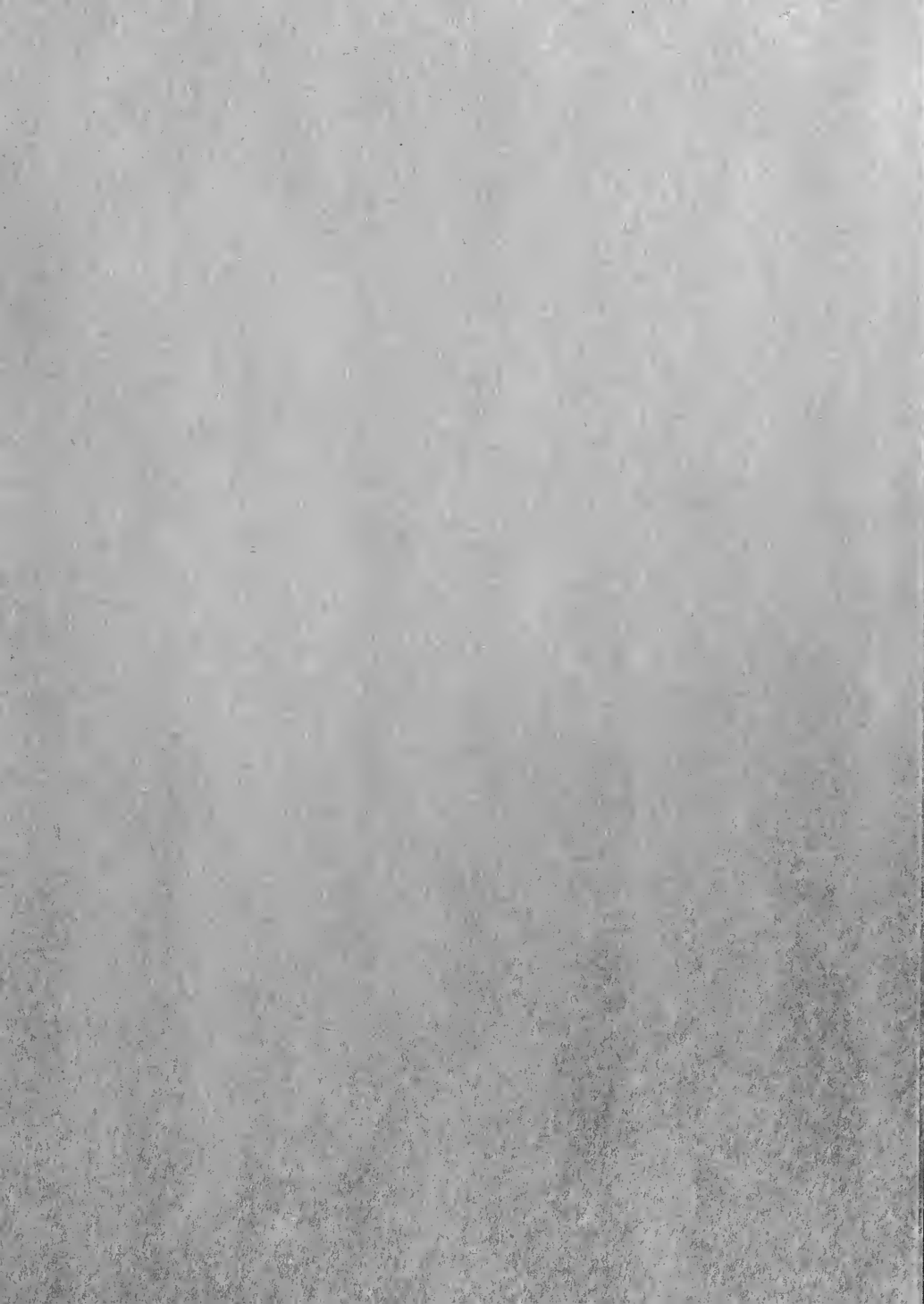
PHONE 66-M

CLARION, PA.











CLARION UNIVERSITY OF PENNSYLVANIA



3 9363 00150 7273

Spec. Col.  
qLD  
1017  
.C88  
1946

