

Spec. Col.

qLD

1017

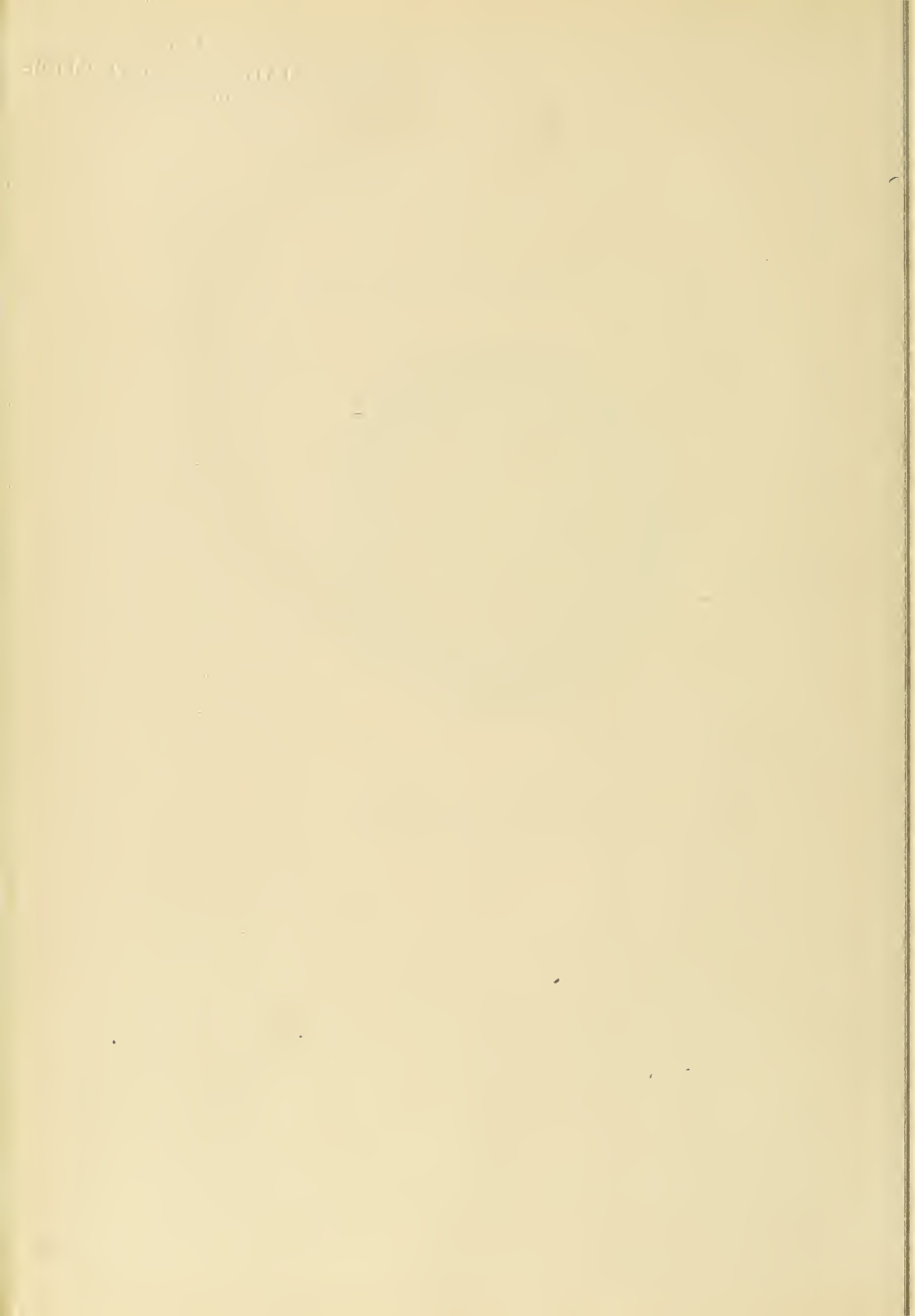
.C88


1947



1947

Sequella





Digitized by the Internet Archive
in 2010 with funding from
Lyrasis Members and Sloan Foundation

<http://www.archive.org/details/sequelle1947clar>



THE SEQUELLE

Published by the

SENIOR CLASS

CLARION STATE TEACHERS COLLEGE

Clarion, Pa.

1947



MARJORIE CLOVER
Editor-in-Chief

HELEN WEETER
Business Manager

22
§ 1017
.C88
1947



To MISS LOTTIE WINGARD

Whose helpful, understanding and hospitable personality has won a place in the hearts of both students and faculty alike, we gratefully dedicate this Sequelle.

The
Clarion
Scene



Panorama of education, personalities, and activities-building philosophies of living for each participating student.



Administration—The President, the faculty—theirs the task of discipline, guidance and inspiration.

Classes—Seniors, Juniors, Sophomores, Freshmen—theirs the task of decision, diligence, diversion, orientation.

Organizations — honorary societies, departmental clubs, social groups — theirs the task of stimulating talent, cementing friendships.

Athletics—the gridirons, the hardwood—theirs the task to create fair play for life, the sound body, strong and vibrant.

Features—theirs the task to recall vivid memories of student days.



ADMINISTRATION



The class of 1947 was predominately a girls' class through most of its four years at Clarion. Originally thirty-eight entered as freshmen in 1943. Eight of these were boys, most of whom were not yet old enough for military service, but who later left for the Army. Eight members of the class took the accelerated program and graduated early. Eleven dropped out. The class gained seventeen men this year when they returned from military duty. Eleven members of the class are of the original thirty-eight.

The class of 1947 might well be called our Victory Class. Students who entered when the war days were darkest, you have added to your numbers our men who served their country till the world conflict was successfully finished and who returned to graduate with you. You are going out under circumstances much happier for all of you than existed four years ago. May all of your future years be as bright as your present prospects.

MESSAGE FROM THE PRESIDENT



CHARLES F. BECKER, M. A.
Education

MARGARET A. BOYD, M.A.
English

FRANK M. CAMPBELL, M.A.
French, Spanish



CLAIR E. CAREY, M. A.
Mathematics

RENA M. CARLSON, M.A.
Librarian

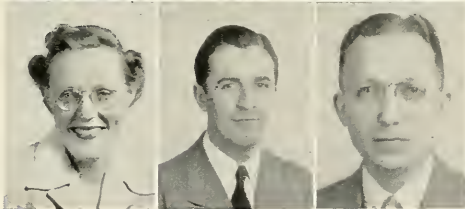
THOMAS A. CARNAHAN, M.A.
Mathematics



RICHARD C. SKINNER, M.A.
English-Jr. H. S. Grades

CHARLES R. FLACK, M.A.
Library Science

MILDRED E. GAMBLE, M.A.
Intermediate Grades

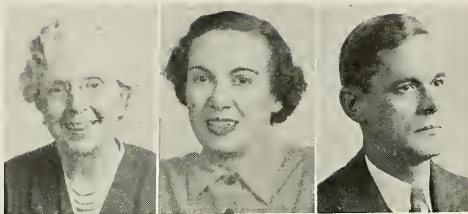


RUTH GRAFF, M.A.
Primary Grades

WALTER HART, M.F.A.
Music

HARRISON A. HARTMAN, M.A.
English, Social Studies

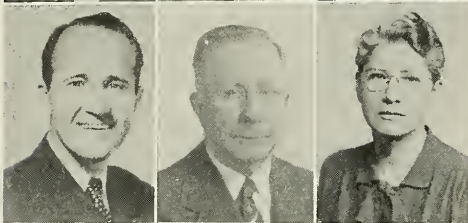
THE FACULTY



EFFIE B. HEPLER, B.S.
Primary Grades

HELEN J. HOLT, Ph.D.
English

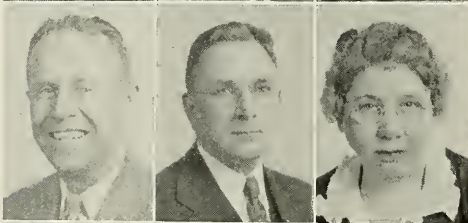
C. A. KUHNER, M.A.
Geography



ARVY F. LIGON, M.A.
Librarian

HARRY S. MANSON, M.A.
Biological Science

MARIE MARWICK, M.A.
English, Speech



GERALD A. MOORE, M.A.
Physical Education

JAMES D. MOORE, M.A.
Acting Dean of Instruction

BERTHA V. NAIR, M.A.
English, Latin



GALEN OBER, M.A.
Physical Science

GEORGE OBER, M.A.
Physical Science

FANNIE C. OWENS, R.N.
Nurse

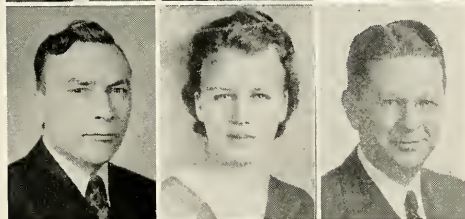
THE FACULTY



DONALD D. PEIRCE, Ph.D.
Physical Science

DONALD D. PREDMORE, Ph.D.
Biological Science

HAZEL SANDFORD, M.A.
Art



MELVIN C. SCHMALLENBERG, M.A.
Physics

BETTY SIMPSON, B.S.
Physical Education

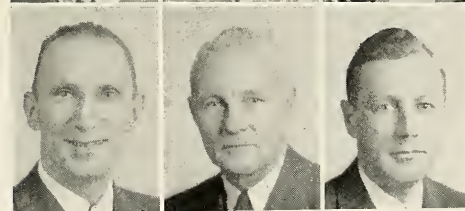
SEWELL E. SLICK, Ph.D.
Social Studies



WILLARD M. STEVENS, Ph.D.
Social Studies-Jr. H. S. Grades

GRACE STOKE, M.A.
Dean of Women-Education

EVELYN STROHECKER, M.A.
Kindergarten-Primary Education



JAMES G. TALLANT, Ph.D.
Social Studies, English

WALDO S. TIPPIN, M.A.
Physical Education

SAMUEL WILHELM, M.S.,
Social Studies-Sr. H. S. Grades

THE FACULTY



CLASSES

SENIORS

FRESHMAN YEAR—

Freshman Week—black noses, pigtails, costume day, trip through tunnel with Mr. Becker
Egbert Hall—beautiful rooms, black-out drills
Cadets—retreat, open posts, quintile dances, "Paddy Murphy", "Ragged but Right"
Christmas dinner and dance
"Pistol-Packing Mama" . . . "Paper Doll" . . . Mairzy Doats'

SOPHOMORE YEAR—

Change of residence to Becht Hall
Men—conspicuous by their absence
Snow, snow, and more snow . . . tobogganing . . . Christmas caroling
V-E Day! !
President Roosevelt's death
Walks through Wilson's Woods, to Toby Bridge and the Lily Pond

JUNIOR YEAR—

Athletics again—basketball and baseball games
Dancing after dinner in the social room and at the Canteen on Friday nights
Breakfasts at "Baldy's" . . . loafing at the Coffee Shop
"Let it Snow" . . . "Symphony" . . . "Oh, What It Seemed to be" . . . The Gypsy"
Spring Formal and Onized Club dances
Sorority week-ends at Cook's Forest

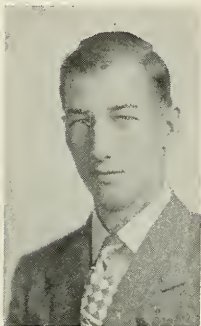
SENIOR YEAR—

Men on campus again!—record-breaking enrollment
Speedball field replaced by homes for vets
Lesson plans! !—'Snuff said
Our first college football games and wrestling matches
Evenings at the Snack Bar
"To Each His Own" . . . "The Old Lamplighter" . . . "Heartaches"
Homecoming Week-end—Pan-Hellenic and Frat Dances once again
Graduation—for four years our aim, but its attainment tinged with regret

OFFICERS

<i>President</i>	DALE GILBERT
<i>Vice President</i>	LAWRENCE SMITH
<i>Secretary-treasurer</i>	NORMA BLOOM

SENIORS

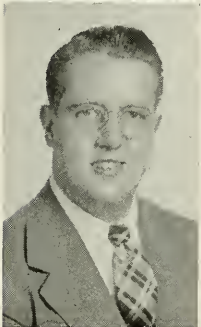


WILLIAM ALLISON

Limestone, Pa.

Science, Mathematics

Alpha Phi Alpha-3, 4, President-4; Zeta Phi-2; Phi Sigma Pi-2, 3, 4, Secretary-3, President-4; Press Club-1, 2, 3, 4, Vice President-2; International Relations Club-3, 4; Sequelle Staff.



JAMES H. ARNER

Clarion, Pa.

Science, Mathematics

Alpha Gamma Phi-1, 2, 3, 4, Treasurer-2, 3, President-4; Phi Sigma Pi-2, 3, 4, Vice President-4; Choir-1, 2, 3; Boys' Quartet-1, 2, 3; Intramurals-1, 2, 3; Tennis Team-2; Student Senate-3; Outdoor Club-1, 2, 3, Vice President-2.

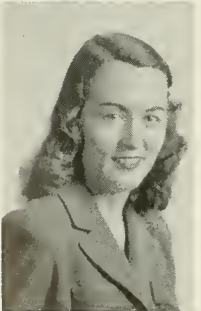


NORMA BLOOM

Pittsburgh, Pa.

Spanish, French, Biological Science

Sigma Sigma Sigma-2, 3, 4, Treasurer-3; Who's Who Among Students in American Colleges and Universities-3; Class Secretary-1; Class Vice President-2; Class Secretary-4; Student Senate Representative-3; Women's House Council-3, 4, Vice President-3; Hostess Club-1, Secretary-1; Y.W.C.A.-1; Art Club-2; Camera Club-3, 4, Vice President-4; Sequelle Staff-4.



LA GENE CARRIER

Summerville, Pa.

Elementary

Sigma Sigma Sigma-2, 3, 4; College Secretary-3; Choir and Mixed Ensemble-1, 2, 3; Hostess Club-1, College Players-1; Camera Club-2, Secretary-2; College Social Committee Chairman; A.C.E.-2, 3, 4; Sequelle Staff-4.

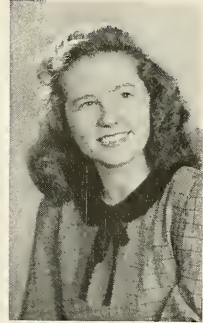
SENIORS

MARJORIE CLOVER

Knox, Pa.

English, Social Studies, Library Science

Lambda Chi Delta-1, 2, 3, 4, Recording Secretary-4; Pi Gamma Mu-3, 4; Outdoor Club-1, 2, 3, 4, Secretary-Treasurer-2; Press Club-1, 2, Secretary-2; College Players-1, 2; A Capella Choir-1; Y.W.C.A.-1, 2, 3, Secretary-1, President-2, 3; Women's House Council-1, 2, Secretary-Treasurer-2; Sequelle Staff-3, 4, Editor-4; Women's Athletic Council-1, 2, 3, 4; Intramurals-1, 2, 3, 4; Chapel Program Committee-3; International Relations Club-2, 3.

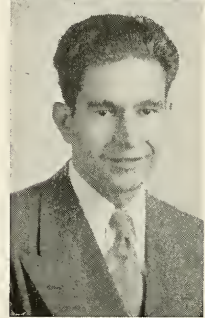


DONALD DETRIE

Franklin, Pa.

Science, Mathematics

Alpha Phi Alpha-2, 3, 4; International Relations Club-1, 2, 3; Press Club-2, 3; Intramurals-3; Y.M.C.A.-2, 3, 4, President-3, Secretary-Treasurer-4.

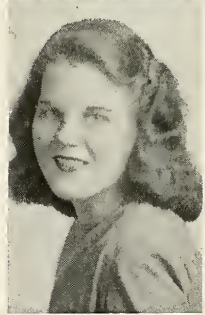


DOROTHY DRYDEN

Mammoth, Pa.

Elementary

Sigma Sigma Sigma-1, 2, 3, 4, Secretary-2, Treasurer-3, President-4; Who's Who Among Students in American Colleges and Universities-4; Art Club-1, 2, Secretary-1, President-2; Hostess Club-1; Girls' Choir-1, 2; A Capella Choir-3, 4; A.C.E.-2, 3, 4, President-3, Treasurer-4; Women's Athletic Council-4; Pan Hellenic-3; Student Council-4; Social Committee-4; Speedball Varsity-3; Sequelle Staff-4; Intramurals 1, 2, 3, 4.

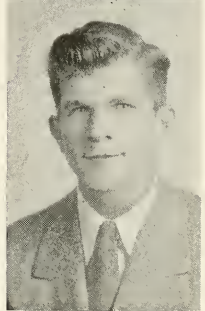


HAROLD W. FERGUSON

Pansy, Pa.

Science, Social Studies

Zeta Eta Phi-1, 2, 3; Wrestling-1, 2, 3, 4; Football Manager-3; Geography Club-1, 2; Varsity C-2, 3, 4; Elementary, Taught-1½ years.



SENIORS

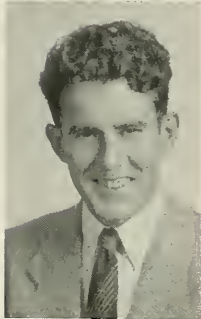


MARY ALICE FLICK

Grant, Ken.

Elementary

College Players-1, 2, 3; Press Club 1, 2; Intramurals-1; A.C.E.-2, 3;
Newman Club-2, 3.

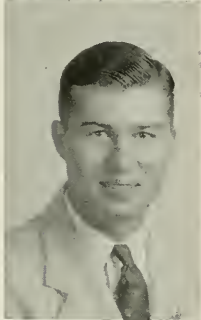


PIERCE GEIST, JR.

Baxter, Pa.

Social Studies, English

Alpha Phi Alpha-1, 2, 3, 4; Vice President-4; International Relations
Club-4; Vice President-4; Outdoor Club.



WILLIAM D. GILBERT

Brookville, Pa.

Science, Social Studies, Geography

Zeta Eta Phi-2, 3, 4; Treasurer-2; President-4; Inter-Fraternity Council;
Camera Club; President-4; Class President-4; Varsity C; Intramurals.



EDITH GUNDERMAN

Oil City, Pa.

Elementary

Sigma Sigma Sigma-1, 2, 3, 4; Vice President-3; Art Club-1, 2; Hostess
Club-1; A.C.E.-2, 3, 4; Women's Athletic Council-4; Speedball Varsity-3;
Sequelle Staff-4; Intramurals-1, 2, 3, 4.

SENIORS

THURMAN R. HALL

Clarion, Pa.

Social Studies, English

Transferred from: Vanderbilt University-2 years; Anderson College-1 year; Tennis-1; Intramural basketball-1, 2.

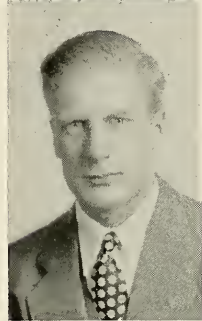


JOSEPH G. JEWART

New Bethlehem, Pa.

Social Studies, English, Geography

Alpha Phi Alpha-3; Zeta Eta Phi-1, 2; Pi Gamma Mu-3, 4; Varsity C-1, 2, 3, 4; Football-1, 2, 3; Intramurals-1, 2, 3.

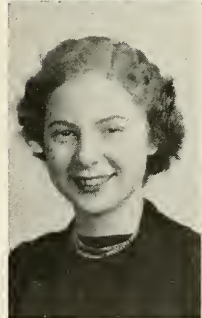


MARGY LU JOHNSON

Beaver Falls, Pa.

Library Science, English

Delta Sigma Epsilon-3, 4; College Players-1, 4; Squelle Staff; Geneva College-2 years.



ERNEST JOHNSON

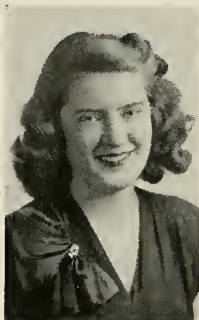
Johnsonburg, Pa.

Social Studies, Mathematics

Alpha Phi Alpha-1, 2, 3, 4, Secretary-4; Inter-Fraternity Council-4; International Relations Club-2, 3; College Players-1, 2, 3, 4; Varsity C-1, 2, 3, 4, President-3; Football-1, 2, 3; Baseball-1, 2, 3, Coach-2; Intramurals-1, 2, 3.



SENIORS



MARTHA MOHNEY

Brookville, Pa.

Library Science, English, Spanish

Delta Sigma Epsilon-1, 2, 3, 4, Vice President-2, President-3, Chaplain-4;
College Players-1, 2, 3, 4, President-2; Outdoor Club-1, 2, 3, 4, President-2;
Women's Athletic Council-1, 2, 3, 4, President-3, Secretary-4; Intramurals-
1, 2, 3, 4; Y.W.C.A.-2, 3; Women's House Council-2, 3, 4; Press Club-2, 3,
President-2; Hostess Club-1; Student Senate-2, 3, 4, Vice President-2, 3, 4;
Sequelle Staff.

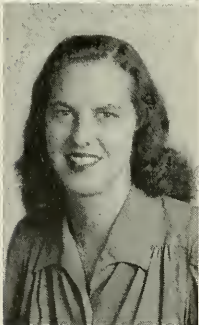


CATHERINE MOORE

Brookville, Pa.

Kindergarten-Primary

Delta Sigma Epsilon-2, 3, 4; Geography Club-1; Camera Club-2, 3, 4,
Vice President-3; Hostess Club-3; A.C.E.-2, 3, 4; Press Club-3; Student
Senate-2, 3, 4; Sequelle Staff; Outdoor Club-4.

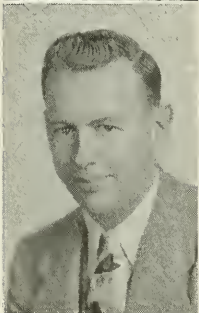


DORIS NULPH

Climax, Pa.

Elementary

Sigma Sigma Sigma-1, 2, 3, 4, Secretary-2, President-3; Art Club-1, 2,
Vice President-2; Girls' Choir-1, 2; A Capella Choir-23, 4; Hostess Club-1;
Class President-1, Treasurer-2; A.C.E.-2, 3, 4; Women's Athletic Council-4;
Intramurals-1, 2, 3, 4; Speckball Varsity-1, 3; House Council-3.



WILLIAM PAUP

Venus, Pa.

Social Studies, Mathematics, English

Alpha Phi Alpha-1, 2, 3, 4; Intramurals-1, 2, 3; Outdoor Club-1;
Geography Club-2, 3.

SENIORS

LOU RAYMOND

Grampian, Pa.
Elementary

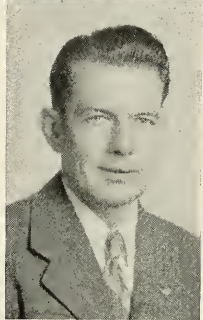
Sigma Delta Phi-1, 2, 3, 4; Secretary-2; Vice President-3; President-4; Hostess Club-1; Y.W.C.A.-1, 2, 3, 4; Choir-3; College Players-2, 3; International Relations Club-3; Association of Childhood Education-2.



DEWAYNE SLAUGENHAUPT

Clarion, Pa.
Science, Mathematics, English

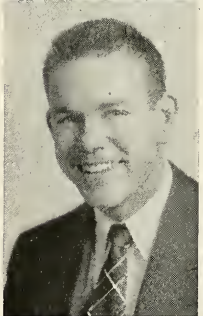
Alpha Phi Alpha-2, 3; Phi Sigma Pi-3, 4; Treasurer-4; W.W.I.A.C. & V.-4; Geography Club-1, 2; Vice President-2; Camera Club-2, 3; Baseball-3.



JOSEPH SLIKE

Sigel, Pa.
Science, Mathematics

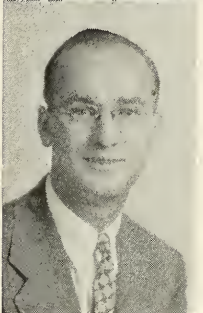
Alpha Phi Alpha-1, 2, 3, 4; Geography Club-1, 2, 3; International Relations Club-4; Newman Club-1, 2, 3; Intramurals-1, 2, 3, 4.



ERNEST G. SMAIL

Limestone, Pa.
Science, Social Studies

Sigma Tau Gamma-4; International Relations Club-3; Geography Club-4; Graduated in 1943 with a two-year elementary certificate; taught six years in Clarion County.



SENIORS

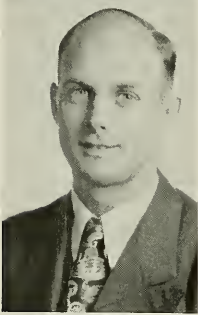


CLAIR C. SMITH

Brookville, Pa.

Geography, Social Studies

Alpha Phi Alpha-1, 2, 3, 4; Outdoor Club-1, 2, 3; Geography Club-1, 2, 3; Intramurals-1, 2, 3, 4.



LAWRENCE A. SMITH

Mayport, Pa.

Social Studies, Science, Geography

Sigma Tau Gamma-4, Secretary-4; Pi Gamma Mu-3, 4; Who's Who Among Students of American Colleges and Universities-4; Phi Sigma Pi-4; International Relations Club-1, 2, 3; Varsity C-2; Outdoor Club-4; Interfraternity Council-4, President-4.

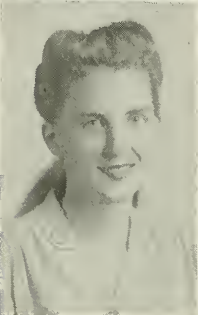


HELEN F. SHIELDS

Brookville, Pa.

Social Studies, Library Science, Geography

Lambda Chi Delta-1, 2, 3, 4, Secretary-2, President-4; Pi Gamma Mu-3, 4; Alpha Psi Omega-3, 4; Who's Who Among Students in American Colleges and Universities-3; College Players-1, 2, 3, Vice President-2; Press Club-3, President-3; Outdoor Club-1, 2, 3, 4, Vice President-3; Women's Athletic Council-1, 2, 3, 4; Hostess Club-1.



DELL SINGER STRICKLER

Penfield, Pa.

Science, Geography, English

Intramurals-1, 2; College Players-1, 2; Treasurer-2; Hostess Club-1; Y.W.C.A.-1, 2; Women's Athletic Council-2, Secretary-2; House Council-1, 2; Who's Who in American Colleges and Universities; International Relations Club-3.

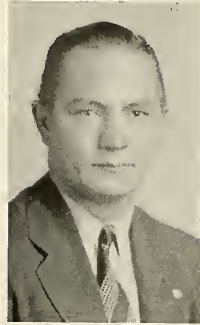
SENIORS

MERVIN STRICKLER

Yorkhaven, Pa.

Social Studies, Geography

College Players-1, 2, President-2; Football-1, 2; Varsity "C"-1; Intramural-2, Student Senate-2, Outdoor Club-2, Camera Club-2; International Relations Club-3; Tennis-3; Pi Gamma Mu-3; Alpha Si Omega-3.

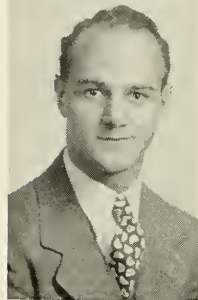


JOHN TILE

Ridgway, Pa.

Mathematics, Social Studies, English

Alpha Gamma Phi-1, 2, 3, 4, Vice President-4, Secretary-2, Treasurer-3; Pi Gamma Mu-2, 3, 4; Student Senate-2, 4, President-4; International Relations Club-1, 2, 3, 4, President-4; Varsity C-2, 3, 4, Treasurer-3, 4; Y.M.C.A.-1, 2, President-2; College Players-1, 2, 3; A Capella Choir-1, 2, 3.



HELEN WEETER

Emlenton, Pa.

Biological Science, Latin, English

Theta Alpha Lambda-1, 2, 3, 4, President-2, Treasurer-1, Secretary-3; Who's Who Among Students in American Universities and College-3; Sequelle Staff-3, 4, Assistant Business Manager-4; Pan-Hellenic Council-2, 3, Secretary-3; Camera Club-3, 4, Secretary-4; College Players-1, 2; Hostess Club-1; Intramurals-2; Classical Club-1, 2, 3, Treasurer-2, Vice President-3; Class Vice President-3.



PEARL WEIGAND

Apollo, Pa.

Elementary

Delta Sigma Epsilon-1, 2, 3, 4; Hostess Club-1; Y.W.C.A.-1, Secretary-1; Student Senate-3; Choir-1, 2, 3.



SENIORS



CLARENCE F. WHITESELL

Punxsutawney, Pa.
Social Studies, English

Zeta Eta Phi-1, 2, 3, Secretary-2; Sigma Tau Gamma-4; College Players-2, 3; Intramurals-1, 2, 3; Y.M.C.A.



JEAN WICK

Tionesta, Pa.
Library Science, English, Geography

Delta Sigma Epsilon-1, 2, 3, 4, Secretary-2, Treasurer-3; Who's Who in American Colleges and Universities-3; College Players-1, 2, 3, Secretary-2; Outdoor Club-2, 3, 4; Y.W.C.A.-2, Vice President-2; Women's Athletic Council-1, 2, 3, 4; Intramurals-1, 2, 3, 4; A Capella Choir-1, 2, 3, 4, President-3; Girls' Ensemble-1, 2, 3, 4; Sequelle Staff-4; Band-4.



IVAN YOUNG

Clarion, Pa.
Science, Mathematics

Phi Sigma Pi-2, 3, 4; A Capella Choir-1; Intramurals-1; Y.M.C.A.-1, Secretary-1; Student Senate-1; College Players-3.

NANCY SMATHERS KERR

Clarion, Pa.
Social Studies, Spanish, English

Lambda Chi Delta-1, 2, 3, 4; Pan Hellenic Council-3; Student Senate-2; Press Club-1, 2, 3, Editor of the Call-2; President-1; College Players-1, 2, 3; Outdoor Club-1, 2, 3, President-3; Intramurals-1, 2, 3.

THEODORE WILLIAMS

Science, Social Studies, English

Phi Sigma Pi-2, 3, 4; Football; Press Club-1, 2; Intramurals-1, 2, 3.

JUNIORS

'Twas in the fall of '44 when we came to Clarion. Since then our class has increased greatly with the return of the pre-war students to the campus.

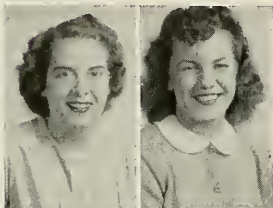
As sophomores there seemed to be an endless number of school days ahead. However, these valuable days sped quickly by as we joined clubs and took part in major student activities.

And now we are juniors—our tastes, scholastically, are on our major and minors. Campus sites this year require some sophistication, for only seniors could sniff at our antics, while adoring freshmen and sophomores watched.

When dignity finally descends on us in the cloak of seniority, may we carry through our duties buoyantly, responsively, and intelligently.

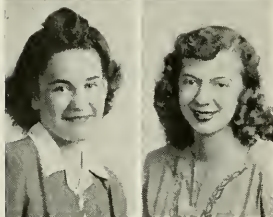
<i>President</i>	CHARLES GREEN
<i>Vice President</i>	IRMA MESSLER
<i>Secretary</i>	LEATRICE SMITH
<i>Treasurer</i>	SHIRLEY ROBB

JUNIORS



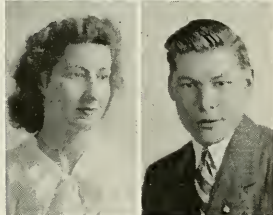
JANE ARNER

JEAN BLAKE



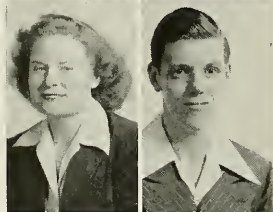
LORNA BLOOM

HELEN LOUISE BONSALE



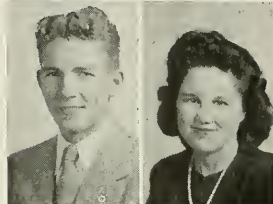
JANE BONSALE

WARREN CRISSMAN



MARIAN DAVIS

KENNETH GIBBONS



CHARLES GREEN

PHYLLIS HALE

JUNIORS

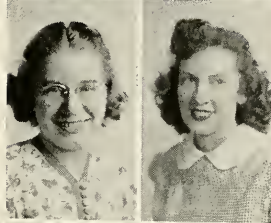
VERNICE HARDES

SARA HARNISH



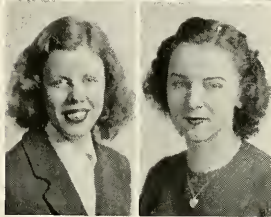
RUTH HILL

KATHLEEN HOBBS



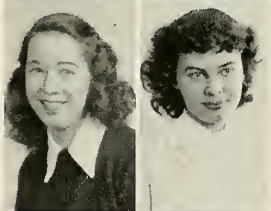
BETTY MCKINLEY

VERONICA MATTER SMATHERS



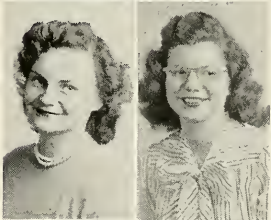
VIVIAN MAXWELL

IRMA MESSLER



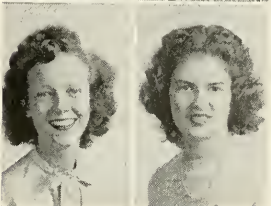
JEAN MILLER

MARTHA MITCHELL

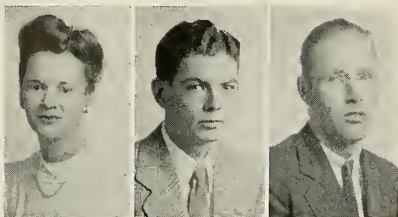


MARIAN WEIGEL

MURIEL WRIGHT



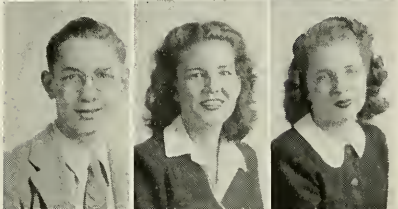
JUNIORS



MARY KAYE MIZE

ARTHUR MOYER

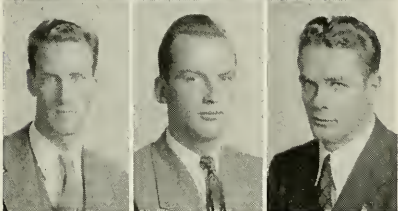
BENTON NULPH



DONALD NULPH

LOIS PONTIUS

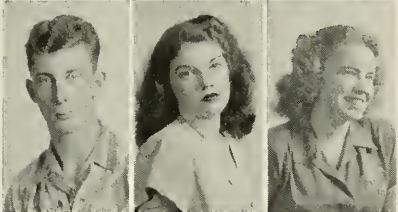
SHIRLEY ROBB



CHARLES RUMMELL

JAMES RUSSEL

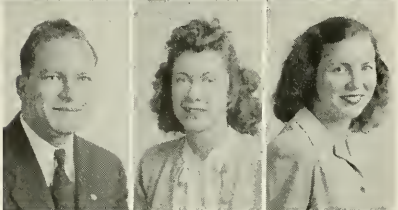
JAMES SIBLEY



GORDON SILLS

JOYCE SIMPSON

LEATRICE SMITH



BLAINE STOVER

ARLINE TEXTER

BERTHA THOMPSON



ELAINE TRUITT

BETTY UNDERWOOD

BETTY WATSON

SOPHOMORES

At last we Sophomores have passed the ordeal as Freshmen here at C.S.T.C., and have finally adapted ourselves to our academic life.

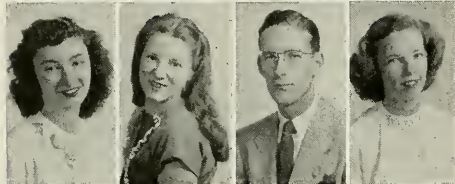
We were greatly disappointed this year by not being able to initiate this year's "Freshie's" to the tortures of C.S.T.C.'s campus life, but our hats are off to this year's Freshmen because of their ability to adapt themselves so readily to college life.

In two years the class of '49 has seen two senior classes pass through our chapel doors, leaving their college days behind, and taking with them their four years of college training. We, the class of '49, hope that when it is our turn to pass through the threshold of this college we shall have absorbed to our own individual capacities the desire for a better, more educated world.

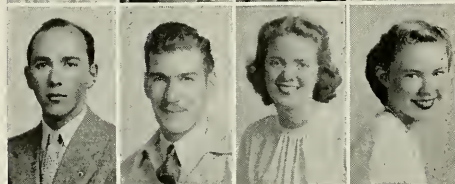
SOPHOMORES



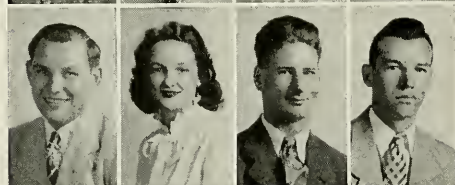
ERNEST AHARRAH
ELLEN ANDREWS
TWILA BARTELLO
JEAN BEATTY



PEGGY ANN BEHRINGER
PATRICIA BELLES
JAMES BOWMAN
EARLA BROCK



RICHARD BROSSMAN
JOSEPH CAPASSO
BONNIE CARSON
MARILYN CURRY



JAMES DAVIDSON
ALBERTA DEEMER
LLOYD DIBB
GOMER EDWARDS



DOMINIC FEDERICI
JOYCE FERGUSON
KELLY FLEMING
CEORA GARDNER



PHYLLIS GOBLE
LEILA GRUBE
GAIL HORTON
MARY LOU JOHNSTON



RUTH KEARNEY
JOHN KERR
VERENA LOLL
BRENADETTE LANDER

SOPHOMORES

JOHN LONGNAKER

CLIFFORD McCLUNE

VIRGINIA MAXWELL

EVELYN MEABON

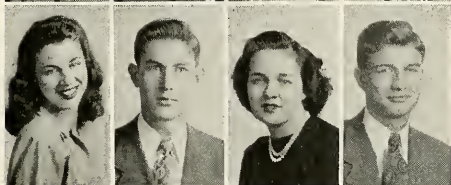


MARY ALICE MILLER

CHESTER MINNICH

SHIRLEY MINNS

WILLIAM MOORE

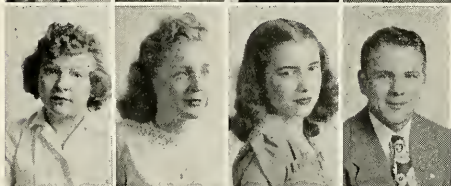


VIVIAN MORGAN

COURTNEY NELSON

HELEN MAE NEVEL

JAMES NEWELL



MARY KAYE O'NEIL

NORMA REA

MARY SALSGIVER

ELEANOR SHAFFER



GEORGE SHOUBE

DENISE STEEN

MARY STRICKLER

VIOLET VUKOSLAVICH

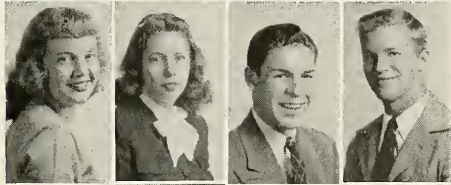


AUDREY WALLS

DELLA WILLIAMS

HALLEY WILLISON

RICHARD WOLFE



WILLIAM WORRELL

TONI YERACE

WILLIAM ZIMMERMAN

ALICE ZACHERL



FRESHMEN

Despite our size and masculine supremacy, we, the Class of 1950, entered college enveloped in the usual fog of where to go, what to take, and why! Our bewilderment was short lived as we soon united as a class under the advisorship of Dr. D. R. Predmore and elected class officers.

While we have completed our first year as the largest freshman class in Clarion's history, we regret that our number will not remain the same through graduation as we comprise 120 Pennsylvania State College transfers plus those who intend pursuing professions not offered at Clarion.

True, we shall be small in size come 1950, but after observing the style in which we took the first year hurdle, we feel confident that quality rather than quantity is our goal.

<i>President</i>	WILLIAM MARTIN
<i>Vice President</i>	RALPH M. GATES
<i>Secretary</i>	PHYLLIS ORCUTT
<i>Treasurer</i>	JAMES WIBERG

FRESHMEN



First Row—H. Fromeyer, P. Calvert, M. Bastress, G. Burkett, B. Heckman, C. Battles, G. Harchick, E. Zigarella, B. Ardary, H. Bell, and K. Hawk.

Second Row—G. Calvert, F. Dormire, V. Baker, A. Fish, B. Ferguson, J. Faye, T. Brinkley, N. Coon, F. Coy, J. Banjak, and M. Surra.

Third Row—M. Shiring, J. Stubler, R. Stephens, W. Curry, R. Pascuzzi, J. Swoger, G. Adamson, W. Rockwell, S. Baranski, C. Cuneo, and M. Sills.

Fourth Row—W. Johnson, G. Shirley, D. Knapp, J. Brennan, R. Jack, D. Snyder, E. Skacan, J. Nelson, and L. Rhodes.

Fifth Row—E. Rhoades, D. Reid, W. Mohny, C. Biddle, J. Dale, J. Walton, E. Golla, R. Stewart, and B. Carns.

FRESHMEN



First Row—N. Boyer, E. Brugh, W. Fulcomer, M. Clark, N. Charles, D. Eury, R. Seibel, J. Ruffner, R. Phillips, R. Lukehart, R. Veidheffer, P. Weibel, J. Shaul, and F. Mencer.

Second Row—J. Tallarico, R. Navarra, R. Lindholm, L. Olson, D. Treharne, P. Neff, W. Posel, W. Lynch, C. Lee, M. Kohan, J. Mogle, A. Bojarski, and C. Ramsden.

Third Row—F. Walter, L. Woodrow, A. Yakim, W. Mumford, E. Prusick, F. Loose, N. Singer, E. McFadden, M. Rice, M. Dahler, and H. Winner.

Fourth Row—J. Kuhns, A. Miller, F. Osborn, B. MacBeth, J. Raybuck, M. Zavacky, E. Carrier, L. Marinaccio, P. Lowstuter, F. Lichtenberger, H. Clark, and A. Slaughenhaupt.

Fifth Row—L. Lyons, R. Knauss, H. White, P. Sharbaugh, J. Patz, H. Stockdil, R. Stephens, H. Larimer, F. Vassalotti, K. Woodall, and W. Miller.

Sixth Row—P. Tolusic, R. Larimer, A. Larson, W. Nelson, R. Meeley, J. Rogers, W. Zeitler, W. Smith, A. Eshelman, S. Webster, G. Singleback, and R. Nicolas.

FRESHMEN



First Row—G. Gorske, H. Fesenmyer, P. Slaughaupt, A. Kelleher, H. Pugar, T. Jackson, R. Gates, J. Kinter, W. Monson, O. Fry, and D. Johnson.

Second Row—T. Sovesky, C. Stewart, D. Slimak, J. Nichols, R. Stefanick, W. Kintz, W. Jones, P. Kiel, W. Jackson, R. Kiser, and R. Gilson.

Third Row—C. Fagely, M. Nypaver, M. Glover, L. George, S. Gibson, J. Seifer, P. Mowell, F. Jones, and A. Douglas.

Fourth Row—R. Bergdahl, J. Schwab, A. Hickok, D. Hoovler, M. Kohn, H. Furlong, R. Kinkead, C. Kinkead, R. Heeter, and P. Himes.

Fifth Row—K. Saff., W. Elliott, G. Francisco, C. Kapp, H. Greenman, I. Henry, D. King, B. Letto, and D. Henry.

FRESHMEN



First Row—M. Osipov, W. Martin, R. McCrae, R. Rhodes, H. Davis, I. Clyde, A. Lees, J. Lee, R. Gilliland, J. Skelsky, and P. Tatusko.

Second Row—J. Freas, P. Flanagan, J. Bychak, E. Wolcott, L. McCanna, R. Harriger, A. McCann, R. Morrison, and F. Sharrow.

Third Row—J. Cochran, G. Bloom, R. Whitford, F. Rugar, A. Coburn, W. Clause, G. Kane, B. Whitebill, and J. Middler.

Fourth Row—C. Coleman, W. Knight, J. Simmers, B. Coleman, W. Clouse, R. McMasters, and C. Hawk.

Fifth Row—H. Kissell, H. Buzzard, W. Clinger, R. Diehl, J. Cochran, C. Cook, S. Smathers, E. Elliott, G. Volpe, and W. Kark.

FRESHMEN



First Row—L. Confer, I. Kunselman, E. Schosler, N. Zimmerman, M. Spleen, E. Ziegler, B. McIntyre, P. Orcutt, M. Longiotti, J. Vescoe, B. Grossman, and B. Sherwood.

Second Row—V. Reigel, D. Miller, J. Hannold, N. Doverspike, L. Rishell, P. Lawson, G. Whisner, S. Watson, W. Guest, and A. Dale.

Third Row—R. Crowe, C. Croyle, H. Toth, M. Spencer, F. Rosenson, L. Rinker, D. Kahle, H. Danielson, and J. Martin.

Fourth Row—H. Meisinger, J. Dreibelbis, H. Davis, M. Garvin, J. Boyer, C. Rudosky, J. DeLong, S. Dellaquila, F. Curry, and J. Cunningham.

Fifth Row—L. Bramhall, J. Corey, D. Budd, L. Aaron, G. Derk, H. Couch, G. Anderson, W. Creed, V. Caruso, and P. Caruso.

PENN STATE FRESHMEN



First Row—W. Barnes, M. Bower, J. Dinger, P. Lipser, M. Baumgardner, N. Kester, S. Scaright, P. Wilson, and D. Shearer.

Second Row—G. Hanks, F. Kiser, W. Hill, C. Wright, C. Host, P. Jones, A. Batz, and E. Golla.

Third Row—L. Clayton, G. Breene, L. Goldberg, R. Crowe, G. Himes, R. Hahn, W. Lynch, R. McElhatten, J. Benson.

Fourth Row—D. Faust, J. Trembach, H. Singleton, M. Slick, V. Long, M. Gurgevich, W. King, R. Bottenhorn, and L. Watson.

Fifth Row—R. Stumpf, B. Campbell, W. Gotshall, W. Valla, S. Delpero, W. Cosgrove, E. Wilson, and W. Casper.

PENN STATE FRESHMEN



First Row—W. Barcus, M. Brill, F. Armstrong, W. Grotefend, W. Howard, H. Wylie, R. Platt, G. Master, and H. Weaver.

Second Row—H. Storey, D. Knobel, L. Kinnaird, J. Allen, G. Miller, K. Sieber, G. Cope, R. Brady, and B. Smathers.

Third Row—G. Shaw, J. Sutherland, L. Trump, A. Thomas, C. Wood, L. Gilbert, J. Dodge, and B. Carns.

Fourth Row—W. Showers, C. Walker, T. Brooks, A. Stewart, W. Rose, J. Hanby, R. Ifft, H. Graffius, D. Day, and J. Foster.

Fifth Row—H. Colvin, J. Blume, C. Fish, W. Adams, W. Horton, J. Keltz, J. Yedlicka, J. Schalch, R. McKown, and A. Rapoport.



ORGANIZATIONS

STUDENT SENATE



First Row—M. Mohney, D. Dryden, C. Moore, M. O'Neil, B. Lobaugh

Second Row—L. Smith, R. Harriger, I. Young, E. Smail



COLLEGE PLAYERS



First Row—Frank Rugar, Harold Meisinger, Jack Simmers, Lavern Woodrow, Arvid Larson, Bob Gilliland, Gomer Edwards, Blaine Stover, Bill Moore, John DeLong.

Second Row—Jack Ricalton, John Banjak, Dominic Federici, David Reid, Charles Ramsden, Shirley Marts, Phyllis Slaughaupt, Priscilla Wilson, Leila Grube, Patricia Allison, Betty Underwood, Mary Alice Miller, Ceora Gardner, Lou Raymond, Frances Rosenson, Richard Elliott.

Third Row—Jean Beatty, Genevieve Harchick, Betty Watson, Jane Bonsall, Vivian Maxwell, Alberta Deemer, Kathleen Hobbs, Ernest Johnson, Sally Searight.

Fourth Row—Frederick Coy, Patricia Lawson, Hurley Graffius, Jane Dinger, Helen Mae Nevel, Della Williams, Helen Louise Bonsall, Violet Vukoslavick, Margy Lou Johnson.

Fifth Row—William Zeitler, Courtney Ann Nelson, Lois George, Marian Clark, Marian Weigel, Joe Sekelsky, James McKinley, Jean Miller.

First Semester

President..... BOB GILLILAND
Vice President.....MARY ALICE MILLER
Secretary.....VIOLET VUKOSLAVICH
Treasurer.....LEILA GRUBE
Sponsor.....MISS MARWICK

Second Semester

DOMENIC FEDERICI
 JACK RICALTON
 BETTY WATSON
 PHYLLIS SLAUGENHAUPT
 MISS MARWICK

INTERNATIONAL RELATIONS CLUB



First Row—M. Zevachy, B. Thompson, J. Nichols, D. Steen, S. Searight, L. Taylor, A. Zacherl, T. Jackson, and N. Kester.

Second Row—C. Kinkead, Dr. Slick, P. Geist, H. Bonsall, C. Green, J. Miller, G. Edwards, E. Truitt, J. Slike, B. Watson, and R. Kinkead.

Third Row—R. Brady, J. Dodge, R. Gilliland, F. Coy, K. Hobbs, N. Coon, S. Robb, W. Crissman, T. Yerace, W. Martin, and R. Harriger.

Fourth Row—R. McElhattan, B. Smathers, P. Goble, H. Couch, M. Kohn, R. Platt, W. Fulcomer, W. Allison, M. Spleen, F. Vassalotti, and S. Baranski.

<i>President</i>	CHARLES GREEN
<i>Vice President</i>	PIERCE GEIST
<i>Secretary-treasurer</i>	JEAN MILLER
<i>Sponsor</i>	DR. SLICK

OUTDOOR CLUB



First Row—M. Mohney, J. Wick, H. Shields, M. Mize, N. Neverla, A. Moyer.

Second Row—C. Green, R. McKown, M. Wright, L. Smith, M. Helmintoller, R. Wolfe, W. Moore, J. Newell, M. Clover, Mr. Manson.

	<i>First Semester</i>	<i>Second Semester</i>
<i>President</i>	JAMES NEWELL	RICHARD WOLFE
<i>Vice President</i>	MARTHA HELMINTOLLER	M. HELMINTOLLER
<i>Secretary-treasurer</i>	CHARLES GREEN	ROBERT MCCOWAN
<i>Sponsor</i>	MR. MANSON	MR. MANSON

PRESS CLUB



First Row—C. McClune, L. Kinard, Miss Nair, J. Blake, B. Underwood, T. Yerace, R. Elliott, C. Green.
Second Row—D. Slimak, I. Messler, M. Salsgiver, L. Pontius, F. Rosenson.
Third Row—M. Mitchell, P. Lipser, T. Jackson, D. Hoover, A. Eidell.
Fourth Row—G. Dunkle, J. Banjak, T. Brinkley, R. Carey, W. Allison, E. Grine.
Fifth Row—C. Fegley, A. Larson, W. Adams, R. Heeter, M. Kohan, J. Cochran, F. Rugar.
Sixth Row—J. DeLong, W. Wassum, H. Meisinger, S. Nicholls, K. Woodall.

	<i>First Semester</i>	<i>Second Semester</i>
<i>President</i>	CLIFFORD MCCLUNE	JOSEPH COCHRAN
<i>Vice President</i>	TONI YERACE	DANA KAHLE
<i>Secretary</i>	BETTY UNDERWOOD	BETTY UNDERWOOD
<i>Treasurer</i>	JEAN BLAKE	ROBERT CAREY
<i>Sponsor</i>	MISS NAIR	MISS NAIR



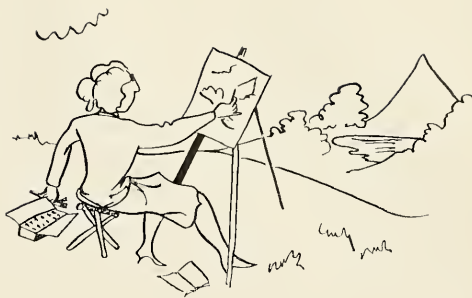
GEOGRAPHY CLUB



First Row—T. Bartello, M. Miller, S. Harnish, M. Johnston, J. Beatty, J. Simpson, H. Nevel.
 Second Row—L. Dibb, W. Karl, A. Zacherl, Mr. Kuhner, A. Texter, B. Nulph, P. Goble, E. Smail.

President..... ERNEST SMAIL
 Vice President..... JOYCE SIMPSON
 Secretary-treasurer..... JEANNE BEATTY
 Sponsor..... MR. KUHNER

ART CLUB



First Row—E. Shaffer, B. Lander, E. Ziegler, G. Belles, V. Baker.
Second Row—B. McIntyre, J. Faye, H. Toth, A. Zacherl, G. Burkett.
Third Row—V. Loll, J. Mogle, H. White, M. Spencer, D. Bugt, M. Gurgevich, Miss Sandford.

<i>President</i>	DOROTHY ZACHERL
<i>Vice President</i>	MRS. WILLIAM PERRY
<i>Secretary-treasurer</i>	GLORIA BELLES
<i>Sponsor</i>	MISS SANDFORD

YOUNG WOMEN'S CHRISTIAN ASSOCIATION



First Row—A. Lees, J. Beatty, M. Strickler, M. Johnston, B. Carson.

Second Row—P. Wilson, E. Skinner, J. Nichols, V. Baker, E. Shaffer, T. Bartello, E. Ziegler.

President.....MARY STRICKLER
Vice President.....JEANNE BEATTY
Secretary-treasurer.....MARY LOU JOHNSTON
Sponsor.....MISS STOKE

YOUNG MEN'S CHRISTIAN ASSOCIATION



First Row—N. Coon, M. McCrae, R. Veihdeffer, L. Woodro, C. Green, C. Biddle, I. Young, D. Detrie.

Second Row—Mr. Carey, F. Coy, P. Neff, W. Zimmerman, W. Adams, A. Larson, W. Horton, W. Crissman, Mr. Becker, D. Nulph.

PresidentCHARLES GREEN
SecretaryIVAN YOUNG
SponsorMR. BECKER

HOSTESS CLUB



First Row—M. Longiotti, H. Pugar, M. Korn, P. Slaugenhaupt, E. Zigarella, C. Battles, H. Bell.

Second Row—S. Scaright, R. Stefanich, J. Faye, B. Sherwood, M. Glover, B. Ardary, P. Orcutt, J. Nichols, P. Wilson, S. Nypaver.

President PHYLLIS SLAUGENHAUPT
Secretary-treasurer ROSE MARIE STEFANIC
Sponsor MISS STOKE

AERONAUTICS CLUB



First Row—R. Rowan, T. Yerace, K. Sieber, A. Walls, T. Jackson, B. Grossman, C. Hawk, P. Lipser, D. Eury.

Second Row—L. Confer, D. Knobel, D. Jones, K. Stewart, D. Slimak, P. Mowell, E. Brugh, S. Watson, A. Fish.

Third Row—M. Brill, Walker, E. Holtzworth, R. Harriger, B. Rose, T. Brooks, G. Calvert, Mr. Carey.

Fourth Row—J. Shofestall, H. Greeneman, G. Songer, J. Shaul, F. Mencer, B. Grotefend, J. Sutherland, E. Aharrah.

Fifth Row—D. Stahlman, F. Walters, D. Brady, C. Furlong, F. Jones, B. Curry, C. Fish, J. Yedlicka.

<i>President</i>	RAYMOND ROWAN
<i>Vice President</i>	TONI YERACE
<i>Secretary</i>	ERNEST AHARRAH
<i>Treasurer</i>	BILL GROTEFEND
<i>Sponsor</i>	MR. CAREY



CAMERA CLUB I



First Row—E. Truitt, J. Simpson, L. Pontius, E. Zigaralla, C. Battles, A. Kelber, N. Zimmerman, M. Bower, S. Harnish, V. Maxwell, C. McCluné.

Second Row—J. Cochran, C. Cook, S. Baranski, N. Kester, E. Wolcott, G. Baumgartner, R. Diehl, P. Cropp, J. Swoger, S. Denny, D. Peirce.

Third Row—J. Bychak, E. Rhodes, W. Creed, W. Clouse, M. Slick, I. Young, R. Campbell, R. McMaster, P. Tatuso, R. Morrison, R. Wolff, G. Volpe, C. Minich.

Fourth Row—J. Rogers, D. Thompson, H. Davis, R. Long, J. Freas, G. Weaver, J. Longnaker.

First Semester

President..... CLIFFORD MCCLUNE
Vice President..... ELAINE TRUITT
Secretary..... JOYCE SIMPSON
Treasurer..... HOWARD DAVIS
Sponsor..... DR. PEIRCE

Second Semester

GEORGE SHOEMAKER
 JOYCE SIMPSON
 LOIS PONTIUS
 DR. PEIRCE
 DICK RHODEY

CAMERA CLUB II



First Row—Dr. Peirce, I. Clyde, S. Watson, P. Bebringer, E. Meabon, H. Fromyer, B. Kunselman, B. Grossman, H. Weeter, N. Bloom, D. Gilbert.

Second Row—E. Andrews, B. Heckman, J. Hannold, H. Slaughaupt, M. Spleen, F. Dormire, N. Charles, G. Harchick.

Third Row—R. A. Crow, L. Aaron, D. Watson, F. Coy, R. Weiner, R. Stephan, R. Rhodes, G. Shaw.

Fourth Row—G. Miller, I. Henry, J. Lee, J. Dreibelbiss, J. Benson, A. Moyer, G. Miller, L. Clayton.

Fifth Row—C. Lee, W. Elliott, G. Shoemaker, G. Snyder, W. King, G. Greenman.

<i>President</i>	DALE GILBERT
<i>Vice President</i>	NORMA BLOOM
<i>Secretary</i>	HELEN WEETER
<i>Treasurer</i>	ARTHUR MOYER
<i>Sponsor</i>	DR. PEIRCE

MUSIC DEPARTMENT



A CAPELLA CHOIR

First Row—R. Kearney, N. Rea, M. O'Neill, J. Ferguson, D. Dryden, S. Gibson, Mr. Hart, M. Otte, D. Nulph, J. Arner, E. Skinner, G. Baumgardner, J. Vescoe.

Second Row—G. Whisner, L. Grube, M. Helmtollter, L. Bloom, N. Zimmerman, B. Lobaugh, M. Strickler, P. Calvert, J. Wick.

Third Row—W. Moore, J. Robinson, J. Hanby, L. Bramhall, G. Bloom, R. McCrea, H. Horton, C. Lee, E. Wilson, L. Rinker.

Fourth Row—W. Jones, G. Hoffman, R. Brossman, T. Clinger, B. MacBeth M. Sills, J. Bowman, R. Kirsch, D. Kroh, E. Carrier, R. Stumpf, J. Kerr.



- President*..... GEORGE HOFFMAN
- Vice President*.....MARJORIE OTTE
- Secretary-treasurer*.....DEFOREST BOWMAN, JR.
- Sponsor*..... MR. HART



GIRLS' CHORUS

First Row—A. Kelleher, E. Meabon, M. Glover, D. Rickell, P. Behringer, C. Nelson, J. Dinger, E. Shaffer, C. Battles.

Second Row—H. Furlong, N. Doverspike, L. George, J. Beatty, P. Lawson, F. Rosenson, F. Dormire, S. Searight.

Third Row—E. Andrews, M. Johnston, N. Boyer, R. Hill, L. Solley, J. Henderson, E. Zeigler, V. Baker, P. Slaugenhaupt, V. Vukoslavich.



BOYS' CHORUS

First Row—W. Moore, M. Sills, H. Horton, B. MacBeth, E. Wilson, J. Bowman, E. Carrier, R. Stumpf, J. Kerr, L. Rinker.

Second Row—W. Jones, J. Hoffman, T. Clinger, B. Kirsch, D. Brossman, R. Wolfe, L. Bramhall, G. Bloom, R. McCrae.

ENSEMBLE



ENSEMBLE

J. Wick, N. Rea, J. Vescoe, M. Helmintoller, J. Ferguson, R. Kearney



TRIO

J. Wick, R. Kearney, M. Helmintoller, J. Vescoe



BAND

*Inside Row—Left to right—*C. Host, M. Weigel, W. Johnson, L. Bloom, W. Rockwell.
*Middle Row—*A. Kelleher, C. Battles, G. Whisner, J. Wick, J. Schaloch, I. Young, E. Brugh,
 P. Neff, D. Yedlicka, L. Olson, E. Golla.
*Outside Row—*B. Sherwood, H. Bonsall, P. Goble, D. Bowman, C. Henry, R. McCrae, C. Fish,
 J. Hanby, G. Cope, Mr. Hart, F. Sharrow, G. Bloom.



QUARTET

L. Bramhall, E. Wilson, J. Bowman, W. Jones

FUTURE TEACHERS OF AMERICA



Miss Strohecker, P. Weigand, R. Hill, M. Davis

<i>President.</i>	PEARLE WEIGAND
<i>Vice President.</i>	PIERCE GEIST
<i>Secretary-treasurer.</i>	ALICE ZACHERAL
<i>Sponsor.</i>	MISS STROHECKER

ASSOCIATION OF CHILDHOOD EDUCATION



First Row—E. Gunderman, D. Dryden, D. Nulph, M. Davis, L. Carrier, E. Shaffer, M. Smith, R. Hill.

Second Row—J. Bonsall, P. Behringer, E. Meabon, D. Williams, P. Hale, Miss Strohecker, V. Harde, B. Watson, V. Vukoslavich.

<i>President</i>	MARIAN DAVIS
<i>Vice President</i>	PHYLLIS HALE
<i>Secretary</i>	PEGGY ANN BEHRINGER
<i>Treasurer</i>	DOROTHY DRYDEN
<i>Sponsor</i>	MISS STROHECKER



HONORARY SOCIETIES

SORORITIES

AND

FRATERNITIES

WHO'S WHO



First Row—S. Robb, J. Miller, M. Smith, L. Bloom.

Second Row—D. Slaughaupt, D. Dryden, R. Elliott, D. Strickler, L. Smith.

Each year the biographies of selected students appear in "Who's Who Among Students in American Colleges and Universities." This volume is published in order to give recognition to outstanding students. It serves as a recommendation for deserving students to the business world and offers a placement service for them when they graduate. The students chosen here at Clarion are selected by a committee of faculty members. Those having the highest scholastic standing and who have demonstrated ability in leadership by actively participating in extra curricular activities are chosen.

There were twelve students selected from Clarion this year. They are Shirley Robb, Charles Rummel, Ruth Hill, Dell Strickler, Lawrence Smith, James Kassel, Lorna Bloom, Dorothy Dryden, Mary Alice Smith, Richard Elliott, DeWayne Slaughaupt, and Jean Miller.

PI GAMMA MU



Front—M. Clover, H. Shields. Rear—J. Tile, J. Jewart, L. Smith

Pi Gamma Mu is an honorary scholastic organization which selects for its members those who have a professional interest in the social studies. The local chapter, under the title, Iota, is but a branch of a national organization with many illustrious men of this particular field as members. Local membership is voted to juniors who have completed twenty semester hours of social studies work with an average grade of B, and who evince a wholesale professional interest in the field of social studies.

PHI SIGMA PI



First Row—I. Young, T. Williams, B. Allison, R. Elliott, L. Smith.

Second Row—J. Arner, D. Slaughenhaupt, Mr. Becker, Mr. Manson, Dr. Peirce.

On October 3 the Lambda Chapter of Phi Sigma Pi held its first meeting of the year and reorganized after three years of inactivity. This meeting was followed by business and professional meetings during the year.

The formal initiation, at which three candidates, Lawrence Smith, Richard Elliott, and Charles Rummell, were admitted to membership, was held on October 28. In November, Lambda Chapter was represented at the Grand Chapter of Phi Sigma Pi held in Washington, D. C., by the president. The year's activities were climaxed by the annual Founder's Day Banquet held in May.

Phi Sigma is a national honorary education fraternity for men with superior scholarship and qualities which promote the interests of education. Eighteen chapters are active in the United States.

<i>President</i>	WILLIAM ALLISON
<i>Vice President</i>	JAMES ARNER
<i>Secretary</i>	IVAN YOUNG
<i>Treasurer</i>	DEWAYNE SLAUGENHAUPT
<i>Sponsor</i>	PROFESSOR C. F. BECKER

SORORITIES



PAN HELLENIC COUNCIL



First Row—S. Marts, B. Underwood, M. Salsgiver.

Second Row—M. Schierberl, S. Robb, J. Blake, A. Deemer.

President..... JEAN BLAKE
Secretary..... SHIRLEY ROBB
Sponsor..... MISS BOYD

LAMBDA CHI DELTA



First Row—R. Lobaugh, J. Smathers, N. Rea.

Second Row—S. Marts, M. O'Neill, H. Shields, Mrs. Kissell, M. Clover, M. Schierberl.

Third Row—N. Kerr, N. McKinley, M. Helmintoller, V. Harde, M. Smith.

Looking over the new crop of men, recruits for pledging, new schedules, new friends and new faculty, "Pan Hellenic" tea, football season highlighted by "Homecoming" game and dance, and rushing finally gained the following students as new members: Ruth Kearney, Mert Bower, Naomi Boyer, Marie Kohn, Janet Vescoe, Becky Kunselman, Helen Pugar, and Henriette Fromeyer.

Sorority Week-end at the "forest", Christmas formal that wound up at "Toot's", Helen Ferry's change of name to Mrs. D. Shields, Nancy Smathers' marriage to James Kerr, exams and frustration (only to start it over again January twenty-second) were the high lights of the year.

<i>President</i>	HELEN FERRY SHIELDS
<i>Vice President</i>	NANCY SMATHERS KERR
<i>Secretary</i>	MARJORIE CLOVER
<i>Treasurer</i>	MARTHA HELMINTOLLER
<i>Corresponding Secretary</i>	MARY KAY O'NEILL

SIGMA SIGMA SIGMA



First Row—D. Nulph, B. Thompson, J. Simpson, V. Vukoslavich.

Second Row—J. Beatty, N. Bloom, M. Miller, B. Underwood, H. Nevel, Miss Gamble.

Third Row—D. Dryden, M. Strickler, E. Shaffer, M. Johnston, J. Blake, E. Meabon, P. Behringer, E. Gunderman, T. Bartello.

The Tri-Sigma's started the fall term with a Regional Convention, which was held in Toledo, Ohio. Dorothy Dryden, Joyce Simpson, and Twila Bartello represented the Clarion Chapter at this inspiring meeting.

The rush party theme this year was the "Star Fair." As a result the following girls were pledged: Helen Bell, Mary Spleen, Edith Zigarella, Phyllis Orcutt, Charlotte Battles, Courtney Nelsos, Anna Lees, Nancy Zimmerman, and Catherine Stewart.

The social activities for the year included a party at Mary K. Banner's cabin, a pledge party, and the Regional Convention.

The sorority sponsored a movie, sold Christmas Seals and Christmas Cards, and are sponsoring a refugee orphan in Europe.

<i>President</i> DOROTHY DRYDEN
<i>Vice President</i> JEAN BLAKE
<i>Treasurer</i> JOYCE SIMPSON
<i>Recording Secretary</i> MARY STRICKLER
<i>Corresponding Secretary</i> MARY LOU JOHNSTON
<i>Advisor</i> MILDRED GAMBLE

DELTA SIGMA EPSILON



First Row—P. Weigand, J. Wick, M. Mitchell, M. Otte, H. Bonsall, J. Miller.
Second Row—V. Maxwell, B. Watson, L. Smith, Dr. Holt, A. Walls, M. Johnson.
Third Row—A. Deemer, K. Hobbs, S. Robb, B. Carson, M. Wright, J. Bonsall, F. Morrison,
 P. Hale, J. Bish, C. Moore, M. Davis.

With the fall of 1946 we were back at the old grind again, but with many new faces and the fun of getting acquainted. We missed our alumnae, but worked to the best of our ability.

Initiation of our new sponsor, Dr. Helen Holt—breakfast at the Coffee Shop, Homecoming Day, rush party with a drugstore theme—all have kept us busy.

The following girls were pledged: Betty Lou Ardary, Violet May Baker, Marilyn Bastress, Erla Brock, Nancy Doverspike, Helen Furlong, Lois George, Dana Hoovler, Irma Messler, Dorothy Jean Richell, Francis Rosenson, Shirley Watson.

<i>President</i>	MARTHA MITCHELL
<i>Vice President</i>	JANE BONSALL
<i>Corresponding Secretary</i>	PEARL WEIGAND
<i>Treasurer</i>	PHYLLIS HALE
<i>Assistant Treasurer</i>	VIVIAN MAXWELL
<i>Chaplain</i>	MARTHA MOHNEY
<i>Sergeant</i>	BETTY WATSON
<i>Historian</i>	SHIRLEY ROBB
<i>Advisor</i>	DR. HELEN HOLT

SIGMA DELTA PHI



First Row—N. Matter, Miss Nair, M. Salsgiver.
Second Row—L. Raymond, B. Morgan, V. Morgan.

The following girls were welcomed as pledges to Sigma Delta Phi this year: Elaine Brugh, Iris Clyde, Donna Eury, Betty Grossman, Genevieve Harchick, Catherine Hawk, Patricia Lawson, Pauline Lipser, Pat Mowell, Jeanne Nichols, Jane Seifer, and Dorothy Slimak.

A special social event was the Sunday evening supper given by the patronesses at the home of Mrs. Milo Smathers. Plans for the semester included a project in knitting and crocheting, the annual party at the home of the faculty advisor, Miss Nair, and special programs on college interests.

The following officers were elected for the year 1947:

<i>President</i>	MARY SALSGIVER
<i>Vice President</i>	BETTY MORGAN
<i>Secretary</i>	TONI YERACE
<i>Treasurer</i>	VIVIAN MORGAN
<i>Chaplain</i>	ARLENE TEXTER
<i>Guard</i>	NELL MOTTER

FRATERNITIES



INTERFRATERNITY COUNCIL



First Row—D. Gilbert, L. Smith, E. Johnson, J. McGinnis.

Second Row—G. Sills, R. Muth, Mr. Kubner.

ALPHA GAMMA PHI



First Row—R. Zelechowski, J. Davidson, J. Newell, J. Tile, W. Zacherl, W. Worrell.
Second Row—J. Arner, C. Green, Dr. Peirce, J. McKinley, Mr. Carnahan, G. Sills, J. Kerr.

The year 1946 saw the re-opening of the organization with twelve old members who held a rush party in Harvey Gym. The frat has now grown to an active membership of 75.

Many activities were planned for the year. The most important social event of the season was the Valentine Dance held at Ross Memorial.

The Frat also honored its deceased brothers, who gave their lives in the fight for freedom for this country, by erecting a plaque which hangs in Seminary Hall.

	<i>First Semester</i>	<i>Second Semester</i>
<i>President</i>	WILLIAM WORRELL	JAMES NEWELL
<i>Vice President</i>	JOHN TILE	WILFRED ZACHERL
<i>Secretary</i>	CHARLES GREEN	PHIL MAROTTI
<i>Treasurer</i>	WILFRED ZACHERL	JOHN TILE
<i>Historian</i>	JAMES NEWELL	JAMES DAVIDSON

SIGMA TAU GAMMA



First Row—H. Fesenmyer, R. Rhodes, J. Selkelski, K. Gibbons, J. Sibley, H. Davis, R. Hahn.
Second Row—Mr. Campbell, L. Smith, H. Davis, J. Longnecker, D. Gilbert, A. Moyer, C. Minich, J. Banjak.
Third Row—R. Nicholas, G. Iodonato, T. Helmohekkel, S. Cook, G. Rhodes, C. Webster, B. Coleman, D. Wyncoop, W. Mumford, G. Calvert, H. Berlin, E. Aharah, R. Rowan, C. McClune, R. Morrison, J. Freas, B. Grotefeld, C. Fegeley.

Sigma Tau Gamma, national social, educational, and professional fraternity is new at Clarion, the Alpha Zeta Chapter having been formed in May, 1946. The first members to be initiated were largely former members of Zeta Eta Phi a local social fraternity which had been inactive during the war.

At the opening of the school the fraternity had 19 active members. Twenty-four new members were initiated January 27.

The president and several members attended the national convention in St. Louis on December 27-30. At this convention the advisor, F. M. Campbell, was elected Grand Archon of the eastern division of Sigma Tau Gamma.

<i>President</i>	DALE GILBERT
<i>Vice President</i>	JOHN LONGNAKER
<i>Secretary</i>	LAWRENCE SMITH
<i>Treasurer</i>	ARTHUR MOYER
<i>Advisor</i>	FRANK CAMPBELL

ALPHA PHI ALPHA



First Row—D. Brossman, C. Smith, B. Allison, R. Muth, P. Geist, J. Capasso, D. Detrie.
 Second Row—E. Johnson, Mr. Becker, G. Edwards, J. Bowman, Mr. Kuhner, J. Slike, B. Stover.

By November the Freshmen were well acquainted with the Biology Lab, and Alpha Phi as the social side of it.

The old members had a warm spot for the first meeting in the "Lab." after seeing the world via the service. The Alpha Phi's were back on Campus.

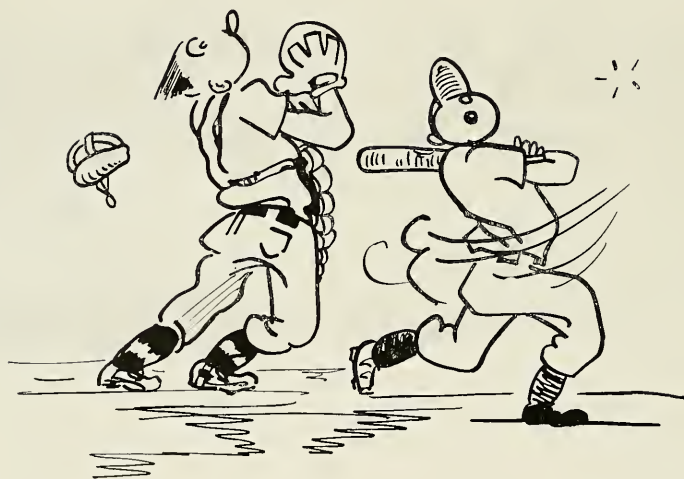
The following men were pledged and later formally initiated: Charles Biddle, Richard Brady, George Breene, John Corey, Fred Coy, John DeLong, Richard Elliot, Marvin Garvan, Edward Holzwarth, Donald Johnson, Harold Larimer, Arvid Larson, William Lynch, Robert McCrea, William Mohney, David Reid, John Rogers, Jack Simmers, Peter Tatusko, Edward Wolcott, Kenneth Wodall, and Lavern Woodrow.

The informal initiation was held with much excitement at Cook Forest on January 4. Several old members were present, giving a reunion flare to the ceremonies.

Plans were drawn for numerous activities, the more important being the inter-fraternity dance and fraternity banquet during the spring semester, the latter including many old members of Alpha Phi.

- President..... WILLIAM ALLISON
- Secretary..... DEFOREST BOWMAN, JR.
- Treasurer..... ERNEST JOHNSON
- Advisors..... PROFESSORS MANSON, KUHNER, AND BECKER

ATHLETICS



BASEBALL • BASKETBALL
FOOTBALL • WRESTLING

WOMEN'S ATHLETIC COUNCIL



First Row—B. Underwood, K. Hobbs, J. Blake, S. Robb, P. Bellis, H. Bonsall.

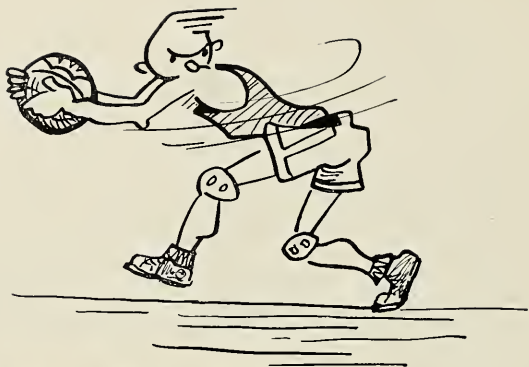
Second Row—M. Mohney, E. Gunderman, J. Wick, H. Shields, T. Yerace, S. Harnish.

Third Row—M. Clover, M. Wright, N. McKinley, M. Schierberl, M. Helmintoller, R. Nulph,
N. Neverla, Miss Bryant, D. Dryden.

President.....MARTHA HELMINTOLLER
Secretary-Treasurer.....MARTHA MOHNEY
Sponsor.....MRS. SIMPSON



VARSITY "C"



First Row—A. Moyer, J. Tile, W. Davidson, J. Newell, F. Kovalyak, W. Zacherl.

Second Row—G. Malacarne, H. Ferguson, J. Jewart, W. Worrell, E. Johnson, L. Smith, D. Gilbert.

Third Row—J. McKinley, H. Brehm, G. Hoffman, J. Sibley, R. Zelechowski, W. Moore, H. Whisner, R. Wolfe, W. Smith, P. Wallace.

COACHING STAFF



W. Tippin, T. Carnahan, J. Moore, G. Moore.

With the advent of a variety of talent this year, Coach Waldo S. Tippin garnered a number of new coaches for the College. Mr. Tippin secured a number of able men to assist him in his coaching duties.

Gerald A. Moore, a former coach at Clarion Senior School and graduate of Defiance College, Ohio, came to assist Tippin in the backfield coaching of the Golden Eagles. Mr. Moore is head of the Intra-Mural department at the college and will coach the baseball team when the Eagles of the diamond open their season.

Another new addition was Thomas A. Carnahan, former Supervising Principal at Falls Creek. Mr. Carnahan helped mold our strong line during football season and supported Tippin on the court during basketball. Mr. Carnahan has two other works which keep him busy: teaching engineering drawing and mathematics.

James Moore, the acting dean of instruction, is also a member of the coaching staff. Last fall he gave his sound advise to the linesmen and was a help in his scouting activities during the season. Jim has fourteen years of coaching experience and has proved to be another valuable asset to Mr. Tippin's staff.

Steve Kovalyak, former student of Clarion, was back this year and proved to be valuable on the line in football and ably led the wrestling team through a successful season. We expect to see Steve do even better next year since he had a number of green men to work with this year. Steve will assist Gerry Moore with the big nine this spring.



BASEBALL



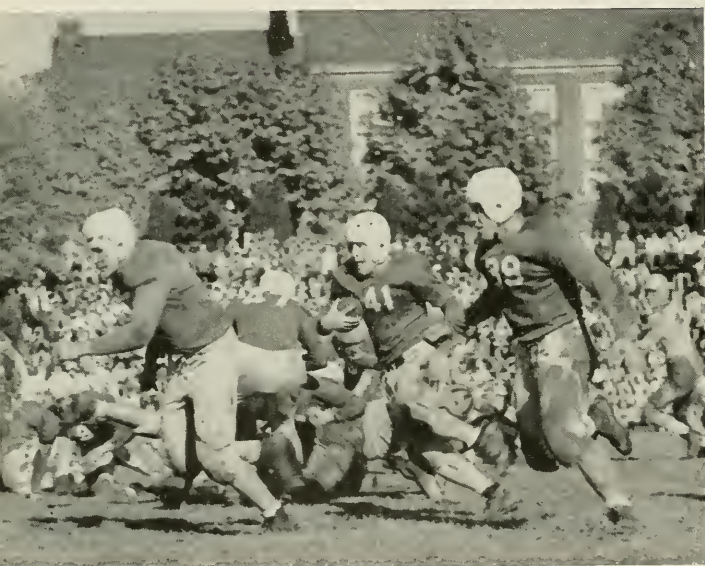
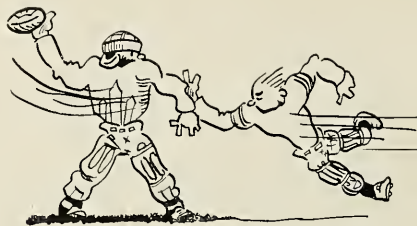
Front Row—E. Johnson. *First Row*—Farrell, Schierbel, Moyer, Kavolyak, Smith, Malcarne, S. Hoffman.

Second Row—Kroh, Pascorella, Wallace, G. Hoffman, Sills, Gilbert, Whisner, McClune.

The Golden Eagles of Clarion enjoyed one of the most successful seasons of any team in the State this year on the baseball diamond. They not only completed an undefeated inter-collegiate season, but in doing so, defeated several of the finer teams in Western Pennsylvania. Among those who fell before the expert playing of the men from C.S.T.C. were the Pitt Panthers, who went down to defeat before a very large crowd at Home Coming last spring.

The team was coached by Ernest "Turk" Johnson, who also served very capably on the receiving end of Gordie "Tex" Sills' expert pitching. Sills was undoubtedly one of the outstanding pitchers in college ball last year and turned in a fine job on the mound. His hitting was also of great value in several close games.

Freddie Kovalyak's fine base running, Malcarne's long hitting, "Chippie" Smith and Art Moyer's double play combination, "Pete" Whisner's sun glasses, Sam Hoffman's chatter, "Daisy" Gilbert's chew of tobacco and Bob Wyberg's support from the side lines all contributed to a perfect combination. The substitutions weren't many—but performed creditably when called on.



Season's Record

Oct. 5	Clarion	50	Edinboro	0
Oct. 11	Clarion	6	Bloomsburg	0
Oct. 19	Clarion	13	Thiel	14
Oct. 26	Clarion	7	California	19
Nov. 2	Clarion	14	Indiana	25
Nov. 9	Clarion	7	Bethany	19
Nov. 16	Clarion	26	Alliance	7
Totals	Clarion	123	Opponents	84
	Won	3	Lost	4





Left to Right, First Row—Zelochoski, Ferenchak, Jones, Brehm, Marotti, Turney, Carr, Pecora Blockowicz, Rusciolelli, Malacarne, Atwood, Vogt.

Second Row—Pontzer, Muth, Hoffman, Kerr, Casper, Askey, Hindman, Servey, Gruenzel, Zacherl, Whisner, Navarra, Dale.

Third Row—Krauss, George, Pontzer, Weber, Creed, Faust, Shearer, Kroh, Mumford, Yakin Gates, Jack, Rimer, Brennan.

Fourth Row—Thompson, Campbell, Rapaport, Usnick, Flath, Hoffman, Sills, Willison, Luvison, Robinson, Scarantine, Hippchew, Curry, Johnson.

Fifth Row—Delpero, Komisak, Cosgrove, Caruso, V., Caruso, Wolfe, Sibley, Nicolas, Reigel, Singer, Mason, Harlacker, Worrell, Newell.

FOOTBALL

As the first postwar football team started practice at College Field this year, Coach Tippin had ninety-two men reporting for practice. This was the largest group of stellar athletes ever to invade the Clarion oval. After four weeks of strenuous training, Tippin rounded out a squad of forty-three men to hold and compete for berths on the eleven.





CHEERLEADERS

J. Simmers, N. Doverspike, L. George, M. Otte, T. Yerace, L. Rinker

SCORES OF GAMES

California	52
Grove City	49
Indiana	69
Alliance	57
Fenn	34
Indiana	33
Edinboro	45
California	57
Thiel	51
Fenn	48



Edinboro	43
Clarion	32
Clarion	53
Clarion	39
Clarion	46
Clarion	30
Clarion	35
Clarion	46
Clarion	61
Clarion	32
Clarion	54
Clarion	41

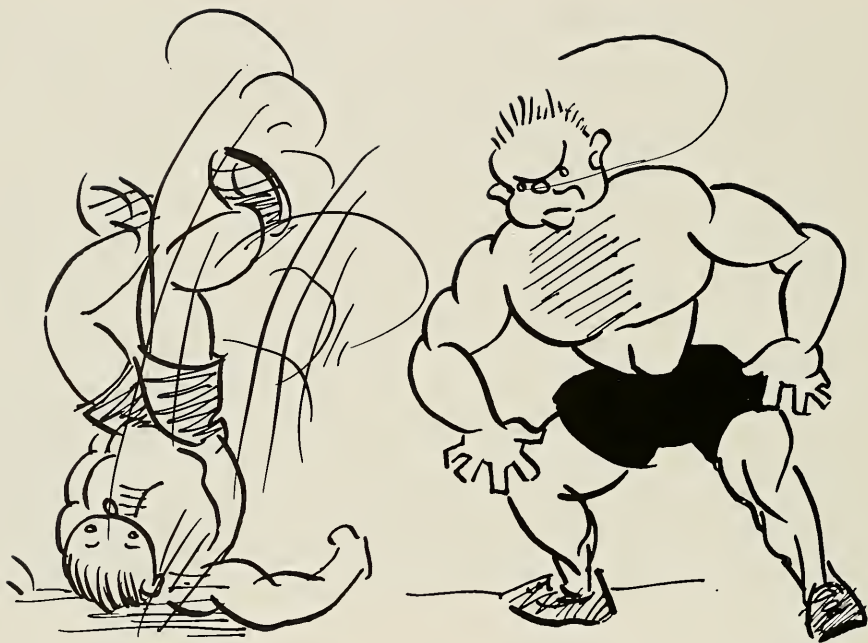


First Row—W. Casper, A. Rappaport, R. McKown, S. Webster, W. Clouse, R. Wolfe.

Second Row—Gilbert, manager; R. Skacan, R. Hindman, W. Gettys, D. Shearer, G. Derk, Weible, Kelly, Mr. Carnahan, coach.

BASKETBALL

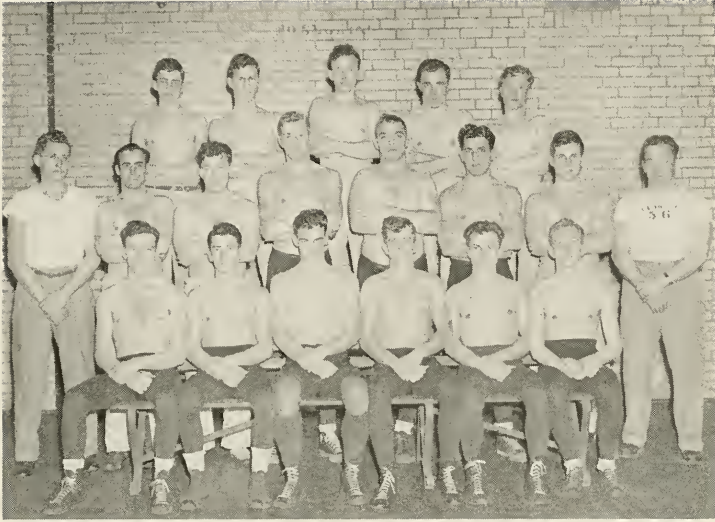
The Clarion Varsity is a team composed mostly of veterans. The ace forward and high scorer, "Doc" Willison, comes to us from Sewickley. The defense, William Casper from Homestead, George Derk from Pittsburgh and Stan Webster from Brookville. The rest of the squad includes such standouts as McKown, Rappaport, Wolfe, Clouse, Whisner, and Hindman.



WRESTLING

Wrestle! With this resounding cry the Clarion matmen entered another season of intercollegiate wrestling. Under the able coaching of Steve Kovalyak the green Clarion squad won three matches, beating Edinboro twice and Dubois Undergraduate Center once. Clarion lost to powerful Clearfield Y.M.C.A. twice, were beaten and tied by Indiana, and lost once to Dubois Undergraduate Center.

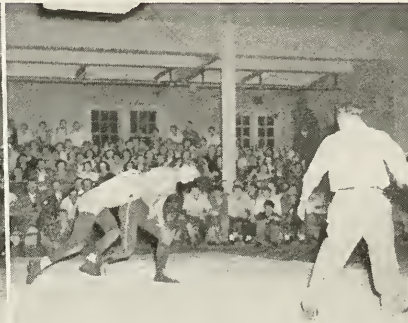
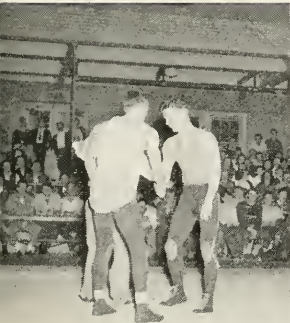
At the State Teachers College meet, held at Indiana in March, Clarion finished a strong third behind experienced Indiana and Lock Haven teams. Robert Flath took first place in the unlimited class; Dale Thompson finished second in the 165-pound class, Frank Lignelli took third place in the 175-pound class, and Stanley Baranski was a third place winner in the 136-pound class.



First Row—N. Coon, R. Larimer, D. Thompson, H. Ferguson, S. Baranski, J. Ruffner.

Second Row—E. Blockowicz, manager; R. Seibel, P. Sharbaugh, K. Sieber, R. Flath, F. Liganelli, W. Jones, S. Kovalyak, coach.

WRESTLING



CAMPUS GUYS AND GALS



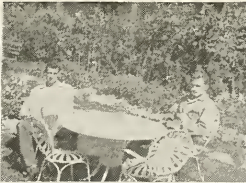
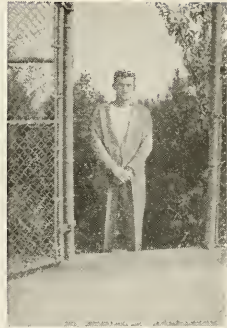
JUST FRIENDS



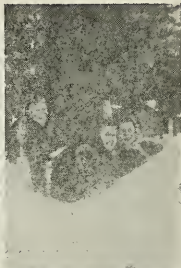
HOW THESE MEN DO STUDY!



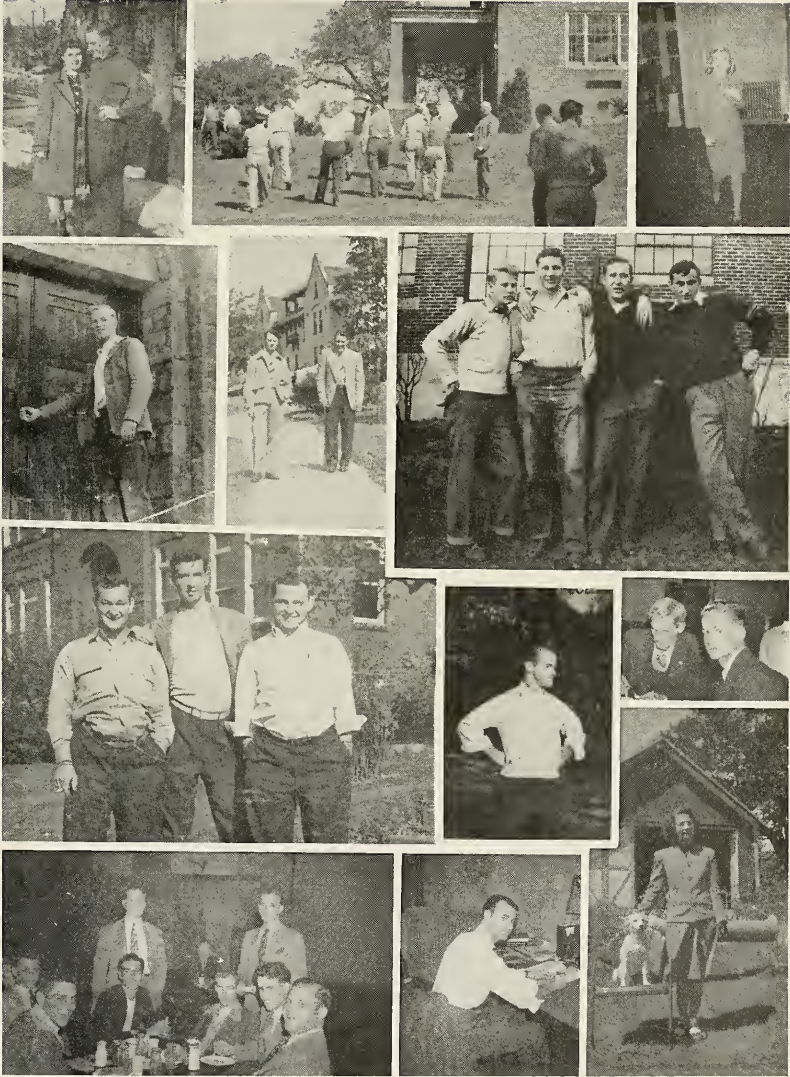
AND HOW THEY DO LOAF!



CROSS CAMPUS GLIMPSES



OF COLLEGE JOES AND GALS



CLARION MEN IN ACTION



SCENES WE'LL CHERISH



An Appreciation

The staff of the 1947 Sequelle, on behalf of the Student Body, takes this opportunity to express their appreciation to the merchants of Clarion and vicinity for their kind assistance and co-operation in making this year's Sequelle possible.

J. M. CROOKS & SONS

CLOTHING. FURNISHINGS. ACCESSORIES and SHOES
FOR COLLEGE MEN

A Complete Line of Shoes for Coeds

Compliments of

BROOKVILLE CREAMERY PRODUCTS

Manufacturers of

COUNTRY CLUB DAIRY PRODUCTS

BROOKVILLE, PENNSYLVANIA

Compliments of

MACBETH'S CABINS

COOK FOREST, PA.

EAT AT
BALDY'S MODERN DINER

MEALS . . . LUNCHES

Next to Garby Theater

J. F. WEAVER Est.
HARDWARE COMPANY

Highest Quality Merchandise
at Lowest Possible Prices

PHONE 194

CLARION, PA.

Compliments

of

L. and R.
DECORATING CO., INC.

Compliments of

GARBY THEATER

WHERE HITS ARE A DAILY HABIT

NYAL SERVICE STORE

FITZGERALD'S

A. G. CORBETT DRUG CO.

CLARION, PA.

Compliments

of

**WHITE'S
APPLIANCES**

Make Our Record Department
Your Music Headquarters

JOHN DITZ HARDWARE

"Everything in Hardware"

"Frigidaire" Refrigerators and Ranges
"Conlon" Washers and Ironers

"Magic Chef" Gas Ranges
China, Glassware, Pictures, Gifts

PHONE 218

CLARION, PA.

MODERN STORE
GROCERIES - FRUITS
FRESH MEATS

SAM CHERICO, *Proprietor*



PHONE 38

CLARION, PA.

CLARION HEATING
and
APPLIANCES

Gas and Coal Furnaces
Complete Line of Appliances

PHONE 640

CLARION, PA.

Compliments

of

CHARLES DIMINO



SHOE REPAIR

SHOE SHINE

HERMAN BROTHERS

The Corner Store



FRUITS - ICE CREAM
CONFECTIONS

Corner Wood and Eighth Avenue

CLARION, PA.

Compliments of

WEIN BROTHERS

CLARION'S FINEST STORE

"SAY IT WITH FLOWERS"



PHILLIPS FLOWERS

PHONE 209

CLARION, PA.

Compliments

of

COLLEGE GRILL

Compliments

of

CLARION
FIRESTONE
DEALER

MEANS - LAUF DRUG STORE

522 MAIN STREET

CLARION, PA.

COSMETICS

Lucien Lelong
Lentheric
Revlon
Chen Yu

FOUNTAIN SERVICE

MEN'S TOILETRIES

Old Spice
Sea Forth
Yardley
Courtley

PENNEY'S

J. C. PENNEY CO., INC.

"IT PAYS TO SHOP AT PENNEY'S"

609 MAIN STREET

CLARION, PA.

*Congratulations and Good Wishes
to the Class of 1947*



OWENS - ILLINOIS

GLASS COMPANY

CLARION, PENNSYLVANIA

Compliments of

WAYNE R. WEAVER

OLDSMOBILE

G.M.C. TRUCKS



S A L E S

S E R V I C E

CLARION, PA.

Compliments
of
HUGH M. OWENS
JEWELER

THE RESS SHOP
WOMEN'S and MISSES
READY TO WEAR

☞
CLARION, PA.

RAGLEY
MAYTAG STORE
COMPLETE LINE OF
APPLIANCES

Phone 93
750 MAIN STREET CLARION, PA.

Compliments
of
MAUL'S
DAIRY STORE

MERWIN'S

STATIONARY . . . MAGAZINES . . . NEWSPAPERS
GREETING CARDS . . . CANDY

●
FOUNTAIN SERVICE

MAIN STREET

CLARION, PA.

HAIL THE GRADUATION CLASS OF 1947

We join in a hearty commendation of your efforts and in a sincere
wish that your future lives may be happy and successful.

☞
G. C. MURPHY & COMPANY
5 AND 10 CENT STORE

Compliments
of
MR. and MRS. FRED JENKINS

THE CLARION REPUBLICAN
THE PAPER WITH THE BEST WANT ADS
CLARION COUNTY'S BEST NEWSPAPER
The Home of the Clarion Call

FAYE'S COFFEE SHOP

Not Only
GOOD FOOD
But All You Want
At Moderate Prices

Corner Main Street and Eighth Avenue
Phone Clarion 72

Compliments
of
**D. and M.
CLEANERS**
CLARION, PA.

CITIZEN'S TRUST COMPANY

CLARION, PA.



RESOURCES OVER \$6,600,000.00

MEMBER FEDERAL DEPOSIT INSURANCE CORPORATION

Compliments

of the

ANDERSON
HOTEL

Compliments

of

SPINDLER & STARR

~

BUICK - CADILLAC
CHEVROLET

CLARION, PA.

Just off the campus one may
find the best in groceries
and meats . . . Why go farther?

~

PHERO'S GROCERY

"THE COLLEGE GROCER"

Phone 19

A T

KATHRYN'S
BEAUTY SHOP

Have Your Hair Styled to Suit
Your Personality

The Best in Permanent Waves

PHONE 310

CLARION, PA.

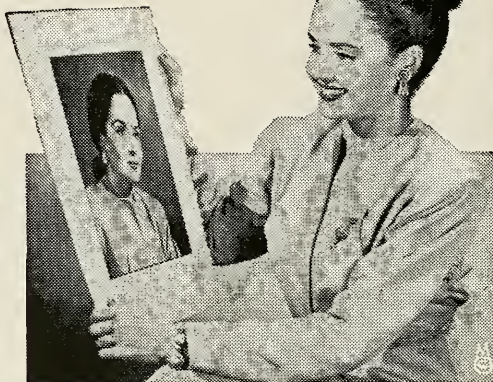
Charm . . .

that is

You . . .

in our

Portraits



CARL and DON
STUDIO

CLARION . . .

Our expert photographers will pose you at your loveliest. Yes, we repeat, they will catch the CHARM that is really you.

for appointments . . . Telephone 66-M

CLARION UNIVERSITY OF PENNSYLVANIA



3 9363 00150 7281

Spec. Col
qLD
1017
.C88
1947



500
(Chicago)
CHICAGO