

Spec. Col.  
qLD  
1017  
.C88  
1947



1947

*Spec. Col.*



Digitized by the Internet Archive  
in 2010 with funding from  
Lyrasis Members and Sloan Foundation

<http://www.archive.org/details/sequelle1947clar>





# THE SEQUELLE

*Published by the*

SENIOR CLASS

CLARION STATE TEACHERS COLLEGE

Clarion, Pa.

1947



MARJORIE CLOVER

*Editor-in-Chief*

HELEN WEETER

*Business Manager*

Case  
LD  
1917  
.082  
1047



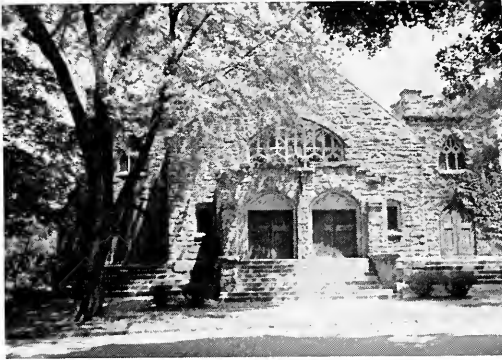
To MISS LOTTIE WINGARD

Whose helpful, understanding and hospitable personality has won a place in the hearts of both students and faculty alike, we gratefully dedicate this Sequelle.

The  
Clarion  
Scene



Panorama of education, personalities, and activities-building philosophies of living for each participating student.



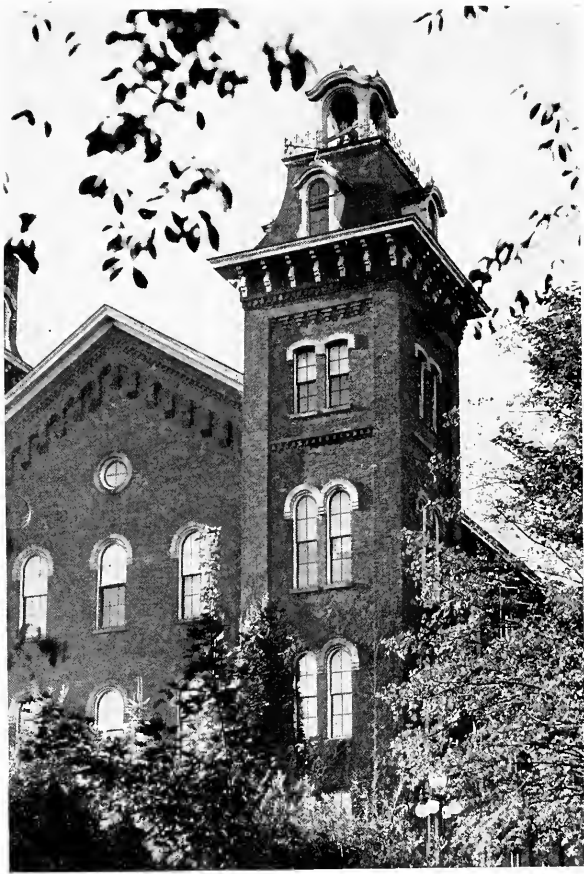
Administration—The President, the faculty—theirs the task of discipline, guidance and inspiration.

Classes—Seniors, Juniors, Sophomores, Freshmen—theirs the task of decision, diligence, diversion, orientation.

Organizations — honorary societies, departmental clubs, social groups — theirs the task of stimulating talent, cementing friendships.

Athletics—the gridirons, the hardwood—theirs the task to create fair play for life, the sound body, strong and vibrant.

Features—theirs the task to recall vivid memories of student days.



# ADMINISTRATION



The class of 1947 was predominately a girls' class through most of its four years at Clarion. Originally thirty-eight entered as freshmen in 1943. Eight of these were boys, most of whom were not yet old enough for military service, but who later left for the Army. Eight members of the class took the accelerated program and graduated early. Eleven dropped out. The class gained seventeen men this year when they returned from military duty. Eleven members of the class are of the original thirty-eight.

The class of 1947 might well be called our Victory Class. Students who entered when the war days were darkest, you have added to your numbers our men who served their country till the world conflict was successfully finished and who returned to graduate with you. You are going out under circumstances much happier for all of you than existed four years ago. May all of your future years be as bright as your present prospects.

## MESSAGE FROM THE PRESIDENT



CHARLES F. BECKER, M. A.  
*Education*

MARGARET A. BOYD, M.A.  
*English*

FRANK M. CAMPBELL, M.A.  
*French, Spanish*



CLAIR E. CAREY, M. A.  
*Mathematics*

RENA M. CARLSON, M.A.  
*Librarian*

THOMAS A. CARNAHAN, M.A.  
*Mathematics*



RICHARD C. SKINNER, M.A.  
*English-Jr. H. S. Grades*

CHARLES R. FLACK, M.A.  
*Library Science*

MILDRED E. GAMBLE, M.A.  
*Intermediate Grades*

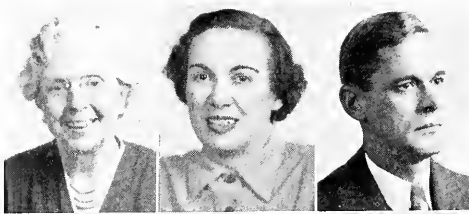


RUTH GRAFF, M.A.  
*Primary Grades*

WALTER HART, M.F.A.  
*Music*

HARRISON A. HARTMAN, M.A.  
*English, Social Studies*

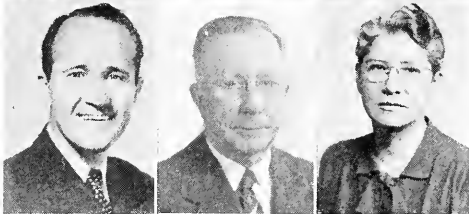
## THE FACULTY



EFFIE B. HEPLER, B.S.  
*Primary Grades*

HELEN J. HOLT, Ph.D.  
*English*

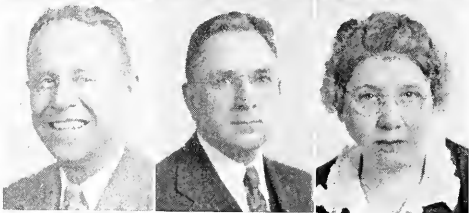
C. A. KUHNER, M.A.  
*Geography*



ARVY F. LIGON, M.A.  
*Librarian*

HARRY S. MANSON, M.A.  
*Biological Science*

MARIE MARWICK, M.A.  
*English, Speech*



GERALD A. MOORE, M.A.  
*Physical Education*

JAMES D. MOORE, M.A.  
*Acting Dean of Instruction*

BERTHA V. NAIR, M.A.  
*English, Latin*



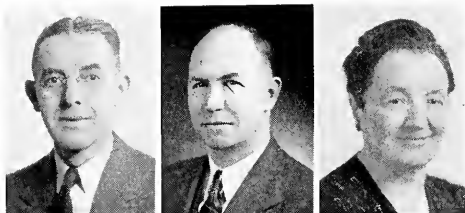
GALEN OBER, M.A.  
*Physical Science*

GEORGE OBER, M.A.  
*Physical Science*

FANNIE C. OWENS, R.N.  
*Nurse*

## THE FACULTY





DONALD D. PEIRCE, Ph.D.  
*Physical Science*

DONALD D. PREDMORE, Ph.D.  
*Biological Science*

HAZEL SANDFORD, M.A.  
*Art*



MELVIN C. SCHMALLENBERG, M.A.  
*Physics*

BETTY SIMPSON, B.S.  
*Physical Education*

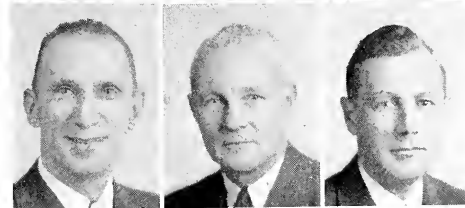
SEWELL E. SLICK, Ph.D.  
*Social Studies*



WILLARD M. STEVENS, Ph.D.  
*Social Studies-Jr. H. S. Grades*

GRACE STOKE, M.A.  
*Dean of Women-Education*

EVELYN STROHECKER, M.A.  
*Kindergarten-Primary Education*

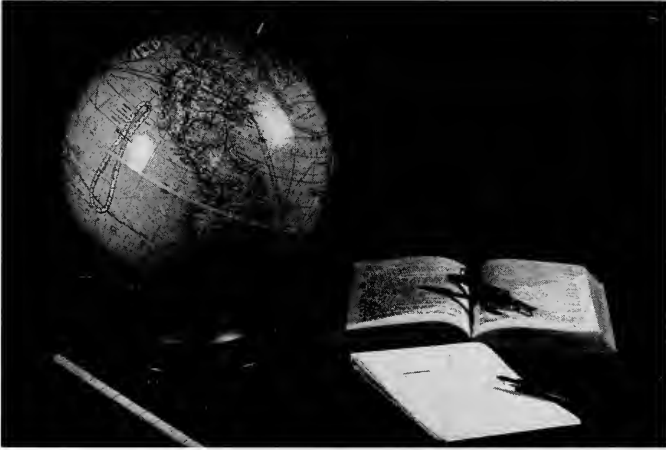


JAMES G. TALLANT, Ph.D.  
*Social Studies, English*

WALDO S. TIPPIN, M.A.  
*Physical Education*

SAMUEL WILHELM, M.S.,  
*Social Studies-Sr. H. S. Grades*

## THE FACULTY



# CLASSES

# SENIORS

## FRESHMAN YEAR—

Freshman Week—black noses, pigtails, costume day, trip through tunnel with Mr. Becker  
Egbert Hall—beautiful rooms, black-out drills  
Cadets—retreat, open posts, quintile dances, "Paddy Murphy", "Ragged but Right"  
Christmas dinner and dance  
"Pistol-Packing Mama" . . . "Paper Doll" . . . Mairzy Doats"

## SOPHOMORE YEAR—

Change of residence to Becht Hall  
Men—conspicuous by their absence  
Snow, snow, and more snow . . . tobogganing . . . Christmas caroling  
V-E Day! !  
President Roosevelt's death  
Walks through Wilson's Woods, to Toby Bridge and the Lily Pond

## JUNIOR YEAR—

Athletics again—basketball and baseball games  
Dancing after dinner in the social room and at the Canteen on Friday nights  
Breakfasts at "Baldy's" . . . loafing at the Coffee Shop  
"Let it Snow" . . . "Symphony" . . . "Oh, What It Seemed to be" . . . The Gypsy"  
Spring Formal and Onized Club dances  
Sorority week-ends at Cook's Forest

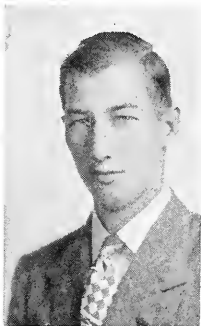
## SENIOR YEAR—

Men on campus again!—record-breaking enrollment  
Speedball field replaced by homes for vets  
Lesson plans! !—Snuff said  
Our first college football games and wrestling matches  
Evenings at the Snack Bar  
"To Each His Own" . . . "The Old Lamplighter" . . . "Heartaches"  
Homecoming Week-end—Pan-Hellenic and Frat Dances once again  
Graduation—for four years our aim, but its attainment tinged with regret

## OFFICERS

*President* . . . . . DALE GILBERT  
*Vice President* . . . . . LAWRENCE SMITH  
*Secretary-treasurer* . . . . . NORMA BLOOM

# SENIORS

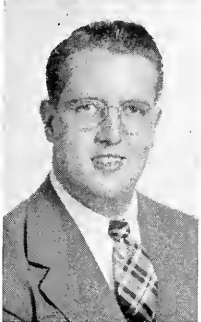


**WILLIAM ALLISON**

Limestone, Pa.

*Science, Mathematics*

Alpha Phi Alpha-3, 4, President-4; Zeta Phi-2; Phi Sigma Pi-2, 3, 4, Secretary-3, President-4; Press Club-1, 2, 3, 4, Vice President-2; International Relations Club-3, 4; Sequelle Staff.



**JAMES H. ARNER**

Clarion, Pa.

*Science, Mathematics*

Alpha Gamma Phi-1, 2, 3, 4, Treasurer-2, 3, President-4; Phi Sigma Pi-2, 3, 4, Vice President-4; Choir-1, 2, 3; Boys' Quartet-1, 2, 3; Intramurals-1, 2, 3; Tennis Team-2; Student Senate-3; Outdoor Club-1, 2, 3, Vice President-2.

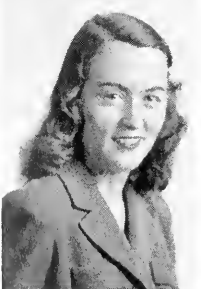


**NORMA BLOOM**

Pittsburgh, Pa.

*Spanish, French, Biological Science*

Sigma Sigma Sigma-2, 3, 4, Treasurer-3; Who's Who Among Students in American Colleges and Universities-3; Class Secretary-1; Class Vice President-2; Class Secretary-4; Student Senate Representative-3; Women's House Council-3, 4, Vice President-3; Hostess Club-1, Secretary-1; Y.W.C.A.-1; Art Club-2; Camera Club-3, 4, Vice President-4; Sequelle Staff-4.



**LA GENE CARRIER**

Summerville, Pa.

*Elementary*

Sigma Sigma Sigma-2, 3, 4; College Secretary-3; Choir and Mixed Ensemble-1, 2, 3; Hostess Club-1, College Players-1; Camera Club-2, Secretary-2; College Social Committee Chairman; A.C.E.-2, 3, 4; Sequelle Staff-4.

# SENIORS

## MARJORIE CLOVER

Knox, Pa.

*English, Social Studies, Library Science*

Lambda Chi Delta-1, 2, 3, 4, Recording Secretary-4; Pi Gamma Mu-3, 4; Outdoor Club-1, 2, 3, 4, Secretary-Treasurer-2; Press Club-1, 2, Secretary-2; College Players-1, 2; A Capella Choir-1; Y.W.C.A.-1, 2, 3, Secretary-1, President-2, 3; Women's House Council-1, 2, Secretary-Treasurer-2; Sequelle Staff-3, 4, Editor-4; Women's Athletic Council-1, 2, 3, 4; Intramurals-1, 2, 3, 4; Chapel Program Committee-3; International Relations Club-2, 3.

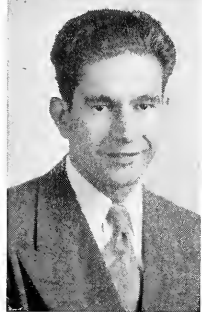


## DONALD DETRIE

Franklin, Pa.

*Science, Mathematics*

Alpha Phi Alpha-2, 3, 4; International Relations Club-1, 2, 3; Press Club-2, 3; Intramurals-3; Y.M.C.A.-2, 3, 4, President-3, Secretary-Treasurer-4

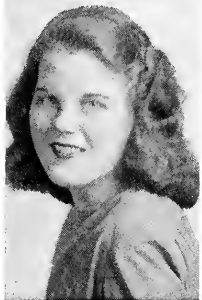


## DOROTHY DRYDEN

Mammoth, Pa.

*Elementary*

Sigma Sigma Sigma-1, 2, 3, 4, Secretary-2, Treasurer-3, President-4; Who's Who Among Students in American Colleges and Universities-4; Art Club-1, 2, Secretary-1, President-2; Hostess Club-1; Girls' Choir-1,2; A Capella Choir-3, 4; A.C.E.-2, 3, 4, President-3, Treasurer-4; Women's Athletic Council-4; Pan Hellenic-3; Student Council-4; Social Committee-4; Speedball Varsity-3; Sequelle Staff-4; Intramaurals, 1, 2, 3, 4.

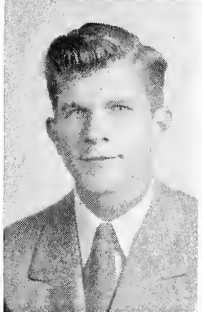


## HAROLD W. FERGUSON

Pansy, Pa.

*Science, Social Studies*

Zeta Eta Phi-1, 2, 3; Wrestling-1, 2, 3, 4; Football Manager-3; Geography Club-1, 2; Varsity C-2, 3, 4; Elementary, Taught-1½ years.



# SENIORS



MARY ALICE FLICK

Grant, Ken.

*Elementary*

College Players-1, 2, 3; Press Club 1, 2; Intramurals-1; A.C.E.-2, 3;  
Newman Club-2, 3



PIERCE GEIST, JR.

Baxter, Pa.

*Social Studies, English*

Alpha Phi Alpha-1, 2, 3, 4; Vice President-4; International Relations  
Club-4; Vice President-4; Outdoor Club.



WILLIAM D. GILBERT

Brookville, Pa.

*Science, Social Studies, Geography*

Zeta Eta Phi-2, 3, 4; Treasurer-2; President-4; Inter-Fraternity Council;  
Camera Club; President-4; Class President-4; Varsity C; Intramurals.



EDITH GUNDERMAN

Oil City, Pa.

*Elementary*

Sigma Sigma Sigma-1, 2, 3, 4; Vice President-3; Art Club-1, 2; Hostess  
Club-1; A.C.E.-2, 3, 4; Women's Athletic Council-4; Speedball Varsity-3;  
Sequelle Staff-4; Intramurals-1, 2, 3, 4.

# SENIORS

## THURMAN R. HALL

Clarion, Pa.

*Social Studies, English*

Transferred from: Vanderbilt University-2 years; Anderson College-1 year; Tennis-1; Intramural basketball-1, 2.



## JOSEPH G. JEWART

New Bethlehem, Pa.

*Social Studies, English, Geography*

Alpha Phi Alpha-3; Zeta Eta Phi-1, 2; Pi Gamma Mu-3, 4; Varsity C-1, 2, 3, 4; Football-1, 2, 3; Intramurals-1, 2, 3.



## MARGY LU JOHNSON

Beaver Falls, Pa.

*Library Science, English*

Delta Sigma Epsilon-3, 4; College Players-1, 4; Squelle Staff; Geneva College-2 years.

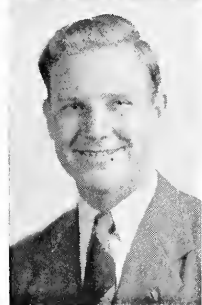


## ERNEST JOHNSON

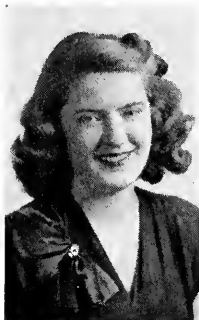
Johnsonburg, Pa.

*Social Studies, Mathematics*

Alpha Phi Alpha-1, 2, 3, 4, Secretary-4; Inter-Fraternity Council-4; International Relations Club-2, 3; College Players-1, 2, 3, 4; Varsity C-1, 2, 3, 4, President-3; Football-1, 2, 3; Baseball-1, 2, 3, Coach-2; Intramurals-1, 2, 3.



# SENIORS



## MARTHA MOHNEY

Brookville, Pa.

*Library Science, English, Spanish*

Delta Sigma Epsilon-1, 2, 3, 4, Vice President-2, President-3, Chaplain-4;  
College Players-1, 2, 3, 4, President-2; Outdoor Club-1, 2, 3, 4, President-2;  
Women's Athletic Council-1, 2, 3, 4, President-3, Secretary-4; Intramurals-  
1, 2, 3, 4; Y.W.C.A.-2, 3; Women's House Council-2, 3, 4; Press Club-2, 3,  
President-2; Hostess Club-1; Student Senate-2, 3, 4, Vice President-2, 3, 4;  
Sequelle Staff.



## CATHERINE MOORE

Brookville, Pa.

*Kindergarten-Primary*

Delta Sigma Epsilon-2, 3, 4; Geography Club-1; Camera Club-2, 3, 4,  
Vice President-3; Hostess Club-3; A.C.E.-2, 3, 4; Press Club-3; Student  
Senate-2, 3, 4; Sequelle Staff; Outdoor Club-4.



## DORIS NULPH

Climax, Pa.

*Elementary*

Sigma Sigma Sigma-1, 2, 3, 4, Secretary-2, President-3; Art Club-1, 2,  
Vice President-2; Girls' Choir-1, 2; A Capella Choir-23, 4; Hostess Club-1;  
Class President-1, Treasurer-2; A.C.E.-2, 3, 4; Women's Athletic Council-4;  
Intramurals-1, 2, 3, 4; Spectball Varsity-1, 3; House Council-3.



## WILLIAM PAUP

Venus, Pa.

*Social Studies, Mathematics, English*

Alpha Phi Alpha-1, 2, 3, 4; Intramurals-1, 2, 3; Outdoor Club-1;  
Geography Club-2, 3.



# SENIORS

## LOU RAYMOND

Grampian, Pa.  
*Elementary*

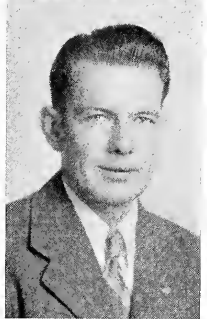
Sigma Delta Phi-1, 2, 3, 4; Secretary-2; Vice President-3; President-4; Hostess Club-1; Y.W.C.A.-1, 2, 3, 4; Choir-3; College Players-2, 3; International Relations Club-3; Association of Childhood Education-2.



## DEWAYNE SLAUGENHAUPT

Clarion, Pa.  
*Science, Mathematics, English*

Alpha Phi Alpha-2, 3; Phi Sigma Pi-3, 4; Treasurer-4; W.W.I.A.C. & V.-4; Geography Club-1, 2; Vice President-2; Camera Club-2, 3; Baseball-3.



## JOSEPH SLIKE

Sigel, Pa.  
*Science, Mathematics*

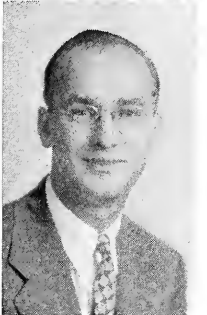
Alpha Phi Alpha-1, 2, 3, 4; Geography Club-1, 2, 3; International Relations Club-4; Newman Club-1, 2, 3; Intramurals-1, 2, 3, 4.



## ERNEST G. SMAIL

Limestone, Pa.  
*Science, Social Studies*

Sigma Tau Gamma-4; International Relations Club-3; Geography Club-4; Graduated in 1943 with a two-year elementary certificate; taught six years in Clarion County.



# SENIORS



**CLAIR C. SMITH**

Brookville, Pa.

*Geography, Social Studies*

Alpha Phi Alpha-1, 2, 3, 4; Outdoor Club-1, 2, 3; Geography Club-1, 2, 3; Intramurals-1, 2, 3, 4.



**LAWRENCE A. SMITH**

Mayport, Pa.

*Social Studies, Science, Geography*

Sigma Tau Gamma-4, Secretary-4; Pi Gamma Mu-3, 4; Who's Who Among Students of American Colleges and Universities-4; Phi Sigma Pi-4; International Relations Club-1, 2, 3; Varsity C-2; Outdoor Club-4; Interfraternity Council-4, President-4.



**HELEN F. SHIELDS**

Brookville, Pa.

*Social Studies, Library Science, Geography*

Lambda Chi Delta-1, 2, 3, 4, Secretary-2, President-4; Pi Gamma Mu-3, 4; Alpha Psi Omega-3, 4; Who's Who Among Students in American Colleges and Universities-3; College Players-1, 2, 3, Vice President-2; Press Club-3, President-3; Outdoor Club-1, 2, 3, 4, Vice President-3; Women's Athletic Council-1, 2, 3, 4; Hostess Club-1.



**DELL SINGER STRICKLER**

Penfield, Pa.

*Science, Geography, English*

Intramurals-1, 2; College Players-1, 2; Treasurer-2; Hostess Club-1; Y.W.C.A.-1, 2; Women's Athletic Council-2, Secretary-2; House Council-1, 2; Who's Who in American Colleges and Universities; International Relations Club-3.

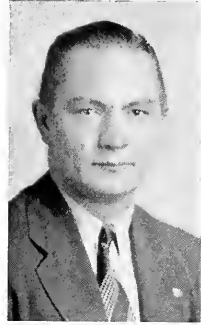
# SENIORS

## MERVIN STRICKLER

Yorkhaven, Pa.

*Social Studies, Geography*

College Players-1, 2, President-2; Football-1, 2; Varsity "C"-1; Intramural-2, Student Senate-2, Outdoor Club-2, Camera Club-2; International Relations Club-3; Tennis-3; Pi Gamma Mu-3; Alpha Si Omega-3.

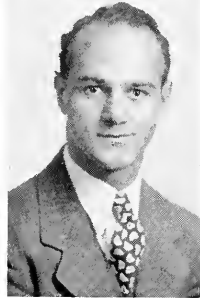


## JOHN TILE

Ridgway, Pa.

*Mathematics, Social Studies, English*

Alpha Gamma Phi-1, 2, 3, 4, Vice President-4, Secretary-2, Treasurer-3; Pi Gamma Mu-2, 3, 4; Student Senate-2, 4, President-4; International Relations Club-1, 2, 3, 4, President-4; Varsity C-2, 3, 4, Treasurer-3, 4; Y.M.C.A.-1, 2, President-2; College Players-1, 2, 3; A Capella Choir-1, 2, 3.



## HELEN WEETER

Emlenton, Pa.

*Biological Science, Latin, English*

Theta Alpha Lambda-1, 2, 3, 4, President-2, Treasurer-1, Secretary-3; Who's Who Among Students in American Universities and College-3; Sequelle Staff-3, 4, Assistant Business Manager-4; Pan-Hellenic Council-2, 3, Secretary-3; Camera Club-3, 4, Secretary-4; College Players-1, 2; Hostess Club-1; Intramurals-2; Classical Club-1, 2, 3, Treasurer-2, Vice President-3; Class Vice President-3.



## PEARL WEIGAND

Apollo, Pa.

*Elementary*

Delta Sigma Epsilon-1, 2, 3, 4; Hostess Club-1; Y.W.C.A.-1, Secretary-1; Student Senate-3; Choir-1, 2, 3.



# SENIORS



## CLARENCE F. WHITESELL

Punxsutawney, Pa.  
*Social Studies, English*

Zeta Eta Phi-1, 2, 3, Secretary-2; Sigma Tau Gamma-4; College Players-2, 3; Intramurals-1, 2, 3; Y.M.C.A.



## JEAN WICK

Tionesta, Pa.  
*Librery Science, English, Geography*

Delta Sigma Epsilon-1, 2, 3, 4, Secretary-2, Treasurer-3; Who's Who in American Colleges and Universities-3; College Players-1, 2, 3, Secretary-2; Outdoor Club-2, 3, 4; Y.W.C.A.-2, Vice President-2; Women's Athletic Council-1, 2, 3, 4; Intramurals-1, 2, 3, 4; A Capella Choir-1, 2, 3, 4, President-3; Girls' Ensemble-1, 2, 3, 4; Sequelle Staff-4; Band-4.



## IVAN YOUNG

Clarion, Pa.  
*Science, Mathematics*

Phi Sigma Pi-2, 3, 4; A Capella Choir-1; Intramurals-1; Y.M.C.A.-1, Secretary-1; Student Senate-1; College Players-3.

## NANCY SMATHERS KERR

Clarion, Pa.  
*Social Studies, Spanish, English*

Lambda Chi Delta-1, 2, 3, 4; Pan Hellenic Council-3; Student Senate-2; Press Club-1, 2, 3, Editor of the Call-2; President-1; College Players-1, 2, 3; Outdoor Club-1, 2, 3, President-3; Intramurals-1, 2, 3.

## THEODORE WILLIAMS

*Science, Social Studies, English*

Phi Sigma Pi-2, 3, 4; Football; Press Club-1, 2; Intramurals-1, 2, 3.

# JUNIORS

'Twas in the fall of '44 when we came to Clarion. Since then our class has increased greatly with the return of the pre-war students to the campus.

As sophomores there seemed to be an endless number of school days ahead. However, these valuable days sped quickly by as we joined clubs and took part in major student activities.

And now we are juniors—our tastes, scholastically, are on our major and minors. Campus sites this year require some sophistication, for only seniors could sniff at our antics, while adoring freshmen and sophomores watched.

When dignity finally descends on us in the cloak of seniority, may we carry through our duties buoyantly, responsively, and intelligently.

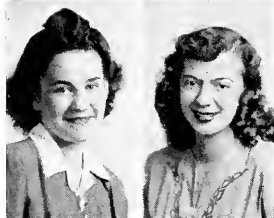
<i>President</i> .....	CHARLES GREEN
<i>Vice President</i> .....	IRMA MESSLER
<i>Secretary</i> .....	LEATRICE SMITH
<i>Treasurer</i> .....	SHIRLEY ROBB

# JUNIORS



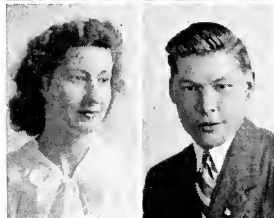
JANE ARNER

JEAN BLAKE



LORNA BLOOM

HELEN LOUISE BONSALE



JANE BONSALE

WARREN CRISSMAN



MARIAN DAVIS

KENNETH GIBBONS



CHARLES GREEN

PHYLLIS HALE

# JUNIORS

VERNICE HARDES

SARA HARNISH



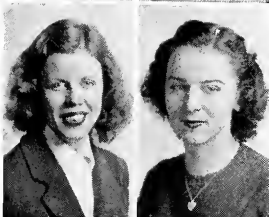
RUTH HILL

KATHLEEN HOBBS



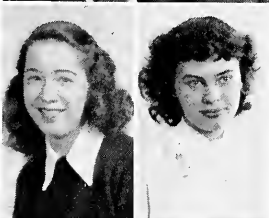
BETTY MCKINLEY

VERONICA MATTER SMATHERS



VIVIAN MAXWELL

IRMA MESSLER



JEAN MILLER

MARTHA MITCHELL



MARIAN WEIGEL

MURIEL WRIGHT



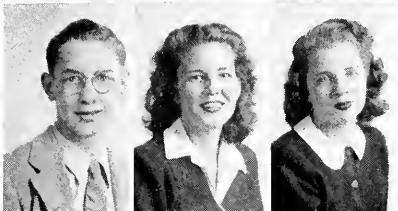
# JUNIORS



MARY KAYE MIZE

ARTHUR MOYER

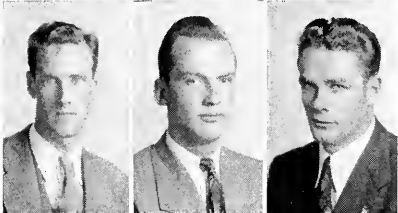
BENTON NULPH



DONALD NULPH

LOIS PONTIUS

SHIRLEY ROBB



CHARLES RUMMELL

JAMES RUSSEL

JAMES SIBLEY



GORDON SILLS

JOYCE SIMPSON

LEATRICE SMITH



BLAINE STOVER

ARLINE TEXTER

BERTHA THOMPSON



ELAINE TRUITT

BETTY UNDERWOOD

BETTY WATSON



# SOPHOMORES

At last we Sophomores have passed the ordeal as Freshmen here at C.S.T.C., and have finally adapted ourselves to our academic life.

We were greatly disappointed this year by not being able to initiate this year's "Freshie's" to the tortures of C.S.T.C.'s campus life, but our hats are off to this year's Freshmen because of their ability to adapt themselves so readily to college life.

In two years the class of '49 has seen two senior classes pass through our chapel doors, leaving their college days behind, and taking with them their four years of college training. We, the class of '49, hope that when it is our turn to pass through the threshold of this college we shall have absorbed to our own individual capacities the desire for a better, more educated world.

# SOPHOMORES



ERNEST AHARRAH  
 ELLEN ANDREWS  
 TWILA BARTELLO  
 JEAN BEATTY



PEGGY ANN BEHRINGER  
 PATRICIA BELLES  
 JAMES BOWMAN  
 EARLA BROCK



RICHARD BROSSMAN  
 JOSEPH CAPASSO  
 BONNIE CARSON  
 MARILYN CURRY



JAMES DAVIDSON  
 ALBERTA DEEMER  
 LLOYD DIBB  
 GOMER EDWARDS



DOMINIC FEDERICI  
 JOYCE FERGUSON  
 KELLY FLEMING  
 CEORA GARDNER



PHYLLIS GOBLE  
 LEILA GRUBE  
 GAIL HORTON  
 MARY LOU JOHNSTON



RUTH KEARNEY  
 JOHN KERR  
 VERENA LOLL  
 BRENADETTE LANDER

# SOPHOMORES

JOHN LONGNAKER

CLIFFORD McCLUNE

VIRGINIA MAXWELL

EVELYN MEABON



MARY ALICE MILLER

CHESTER MINNICH

SHIRLEY MINNS

WILLIAM MOORE



VIVIAN MORGAN

COURTNEY NELSON

HELEN MAE NEVEL

JAMES NEWELL



MARY KAYE O'NEIL

NORMA REA

MARY SALSGIVER

ELEANOR SHAFFER



GEORGE SHOUBE

DENISE STEEN

MARY STRICKLER

VIOLET VUKOSLAVICH



AUDREY WALLS

DELLA WILLIAMS

HALLEY WILLISON

RICHARD WOLFE



WILLIAM WORRELL

TONI YERACE

WILLIAM ZIMMERMAN

ALICE ZACHERL



# FRESHMEN

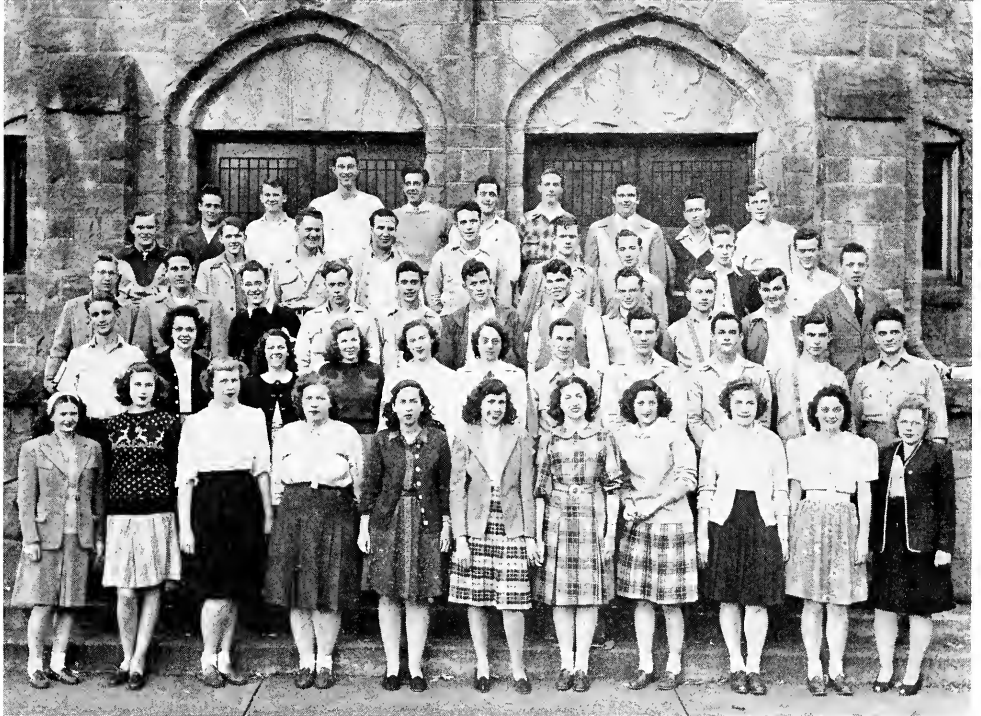
Despite our size and masculine supremacy, we, the Class of 1950, entered college enveloped in the usual fog of where to go, what to take, and why! Our bewilderment was short lived as we soon united as a class under the advisorship of Dr. D. R. Predmore and elected class officers.

While we have completed our first year as the largest freshman class in Clarion's history, we regret that our number will not remain the same through graduation as we comprise 120 Pennsylvania State College transfers plus those who intend pursuing professions not offered at Clarion.

True, we shall be small in size come 1950, but after observing the style in which we took the first year hurdle, we feel confident that quality rather than quantity is our goal.

<i>President</i> .....	WILLIAM MARTIN
<i>Vice President</i> .....	RALPH M. GATES
<i>Secretary</i> .....	PHYLLIS ORCUTT
<i>Treasurer</i> .....	JAMES WIBERG

# FRESHMEN



*First Row*—H. Fromeyer, P. Calvert, M. Bastress, G. Burkett, B. Heckman, C. Battles, G. Harchick, E. Zigarella, B. Ardary, H. Bell, and K. Hawk.

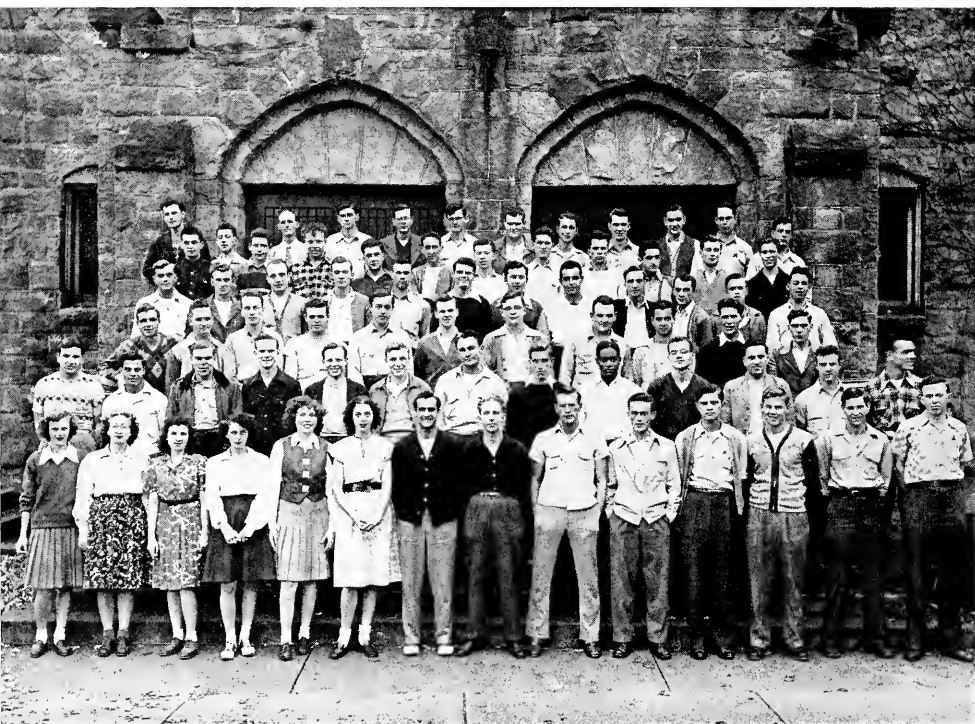
*Second Row*—G. Calvert, F. Dormire, V. Baker, A. Fish, B. Ferguson, J. Faye, T. Brinkley, N. Coon, F. Coy, J. Banjak, and M. Surra.

*Third Row*—M. Shiring, J. Stubler, R. Stephens, W. Curry, R. Pascuzzi, J. Swoger, G. Adamson, W. Rockwell, S. Baranski, C. Cuneo, and M. Sills.

*Fourth Row*—W. Johnson, G. Shirley, D. Knapp, J. Brennan, R. Jack, D. Snyder, E. Skacan, J. Nelson, and L. Rhodes.

*Fifth Row*—E. Rhoades, D. Reid, W. Mohney, C. Biddle, J. Dale, J. Walton, E. Golla, R. Stewart, and B. Carns.

# FRESHMEN



*First Row*—N. Boyer, E. Brugh, W. Fulcomer, M. Clark, N. Charles, D. Eury, R. Seibel, J. Ruffner, R. Phillips, R. Lukehart, R. Veidheffer, P. Weibel, J. Shaul, and F. Mencer.

*Second Row*—J. Tallarico, R. Navarra, R. Lindholm, L. Olson, D. Treharne, P. Neff, W. Posel, W. Lynch, C. Lee, M. Kohan, J. Mogle, A. Bojarski, and C. Ramsden.

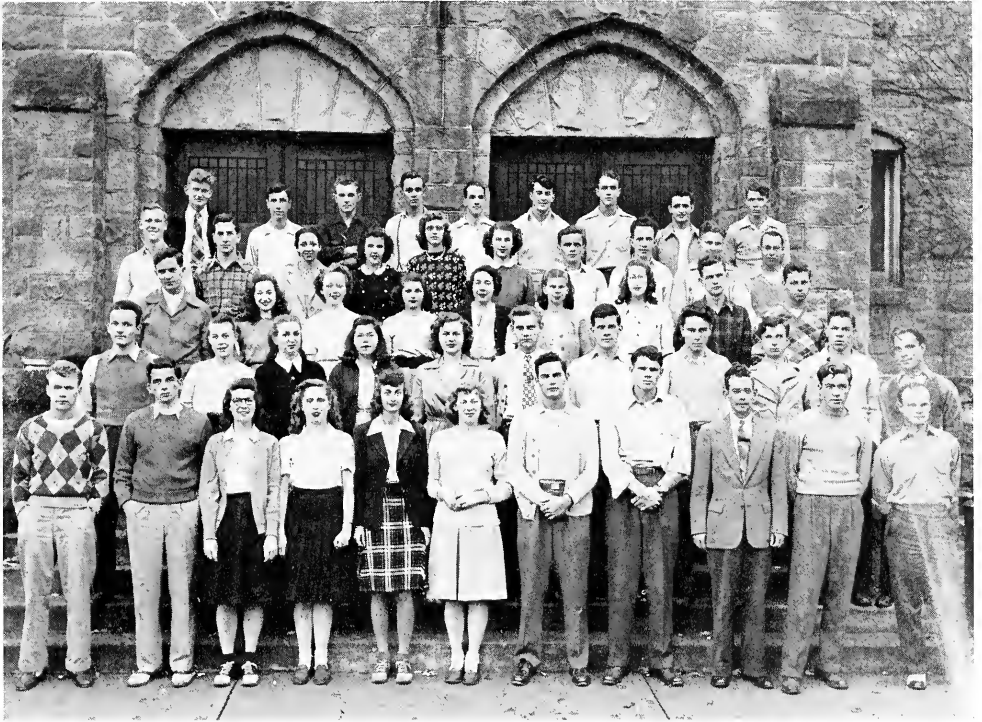
*Third Row*—F. Walter, L. Woodrow, A. Yakim, W. Mumford, E. Prusick, F. Loose, N. Singer, E. McFadden, M. Rice, M. Dahler, and H. Winner.

*Fourth Row*—J. Kuhns, A. Miller, F. Osborn, B. MacBeth, J. Raybuck, M. Zavacky, E. Carrier, L. Marinaccio, P. Lowstuter, F. Lichtenberger, H. Clark, and A. Slaughenhaupt.

*Fifth Row*—L. Lyons, R. Knauss, H. White, P. Sharbaugh, J. Patz, H. Stockdil, R. Stephens, H. Larimer, F. Vassalotti, K. Woodall, and W. Miller.

*Sixth Row*—P. Tolusic, R. Larimer, A. Larson, W. Nelson, R. Meeley, J. Rogers, W. Zeitler, W. Smith, A. Eshelman, S. Webster, G. Singleback, and R. Nicolas.

# FRESHMEN



*First Row*—G. Gorske, H. Fesenmyer, P. Slaughaupt, A. Kelleher, H. Pugar, T. Jackson, R. Gates, J. Kinter, W. Monson, O. Fry, and D. Johnson.

*Second Row*—T. Sovesky, C. Stewart, D. Slimak, J. Nichols, R. Stefanick, W. Kintz, W. Jones, P. Kiel, W. Jackson, R. Kiser, and R. Gilson.

*Third Row*—C. Fagely, M. Nypaver, M. Glover, L. George, S. Gibson, J. Seifer, P. Mowell, F. Jones, and A. Douglas.

*Fourth Row*—R. Bergdahl, J. Schwab, A. Hickok, D. Hoovler, M. Kohn, H. Furlong, R. Kinkead, C. Kinkead, R. Heeter, and P. Himes.

*Fifth Row*—K. Saff., W. Elliott, G. Francisco, C. Kapp, H. Greenman, I. Henry, D. King, B. Letto, and D. Henry.

# FRESHMEN



*First Row*—M. Osipov, W. Martin, R. McCrae, R. Rhodes, H. Davis, I. Clyde, A. Lees, J. Lee, R. Gilliland, J. Sekelsky, and P. Tatusko.

*Second Row*—J. Freas, P. Flanagan, J. Bychak, E. Wolcott, L. McCanna, R. Harriger, A. McCann, R. Morrison, and F. Sbarrow.

*Third Row*—J. Cochran, G. Bloom, R. Whitford, F. Rugar, A. Coburn, W. Clause, G. Kane, B. Whitebill, and J. Middler.

*Fourth Row*—C. Coleman, W. Knight, J. Simmers, B. Coleman, W. Clouse, R. McMasters, and C. Hawk.

*Fifth Row*—H. Kissell, H. Buzzard, W. Clinger, R. Diebl, J. Cochran, C. Cook, S. Smathers, E. Elliott, G. Volpe, and W. Kark.



# FRESHMEN



*First Row*—L. Confer, I. Kunselman, E. Schosler, N. Zimmerman, M. Spleen, E. Ziegler, B. McIntyre, P. Orcutt, M. Longiotti, J. Vescoe, B. Grossman, and B. Sherwood.

*Second Row*—V. Reigel, D. Miller, J. Hannold, N. Doverspike, L. Risshell, P. Lawson, G. Whisner, S. Watson, W. Guest, and A. Dale.

*Third Row*—R. Crowe, C. Croyle, H. Toth, M. Spencer, F. Rosenson, L. Rinker, D. Kahle, H. Danielson, and J. Martin.

*Fourth Row*—H. Meisinger, J. Dreibelbis, H. Davis, M. Garvin, J. Boyer, C. Rudosky, J. DeLong, S. Dellaquila, F. Curry, and J. Cunningham.

*Fifth Row*—L. Bramhall, J. Corey, D. Budd, L. Aaron, G. Derk, H. Couch, G. Anderson, W. Creed, V. Caruso, and P. Caruso.

# PENN STATE FRESHMEN



*First Row*—W. Barnes, M. Bower, J. Dinger, P. Lipser, M. Baumgardner, N. Kester, S. Searight, P. Wilson, and D. Shearer.

*Second Row*—G. Hanks, F. Kiser, W. Hill, C. Wright, C. Host, P. Jones, A. Batz, and E. Golla.

*Third Row*—L. Clayton, G. Breene, L. Goldberg, R. Crowe, G. Himes, R. Hahn, W. Lynch, R. McElhatten, J. Benson.

*Fourth Row*—D. Faust, J. Trembach, H. Singleton, M. Slick, V. Long, M. Gurgevich, W. King, R. Bottenhorn, and L. Watson.

*Fifth Row*—R. Stumpf, B. Campbell, W. Gotshall, W. Valla, S. Delpero, W. Cosgrove, E. Wilson, and W. Casper.

# PENN STATE FRESHMEN



*First Row*—W. Barcus, M. Brill, F. Armstrong, W. Grotefend, W. Howard, H. Wylie, R. Platt, G. Master, and H. Weaver.

*Second Row*—H. Storey, D. Knobel, L. Kinnaird, J. Allen, G. Miller, K. Sieber, G. Cope, R. Brady, and B. Smathers.

*Third Row*—G. Shaw, J. Sutherland, L. Trump, A. Thomas, C. Wood, L. Gilbert, J. Dodge, and B. Carns.

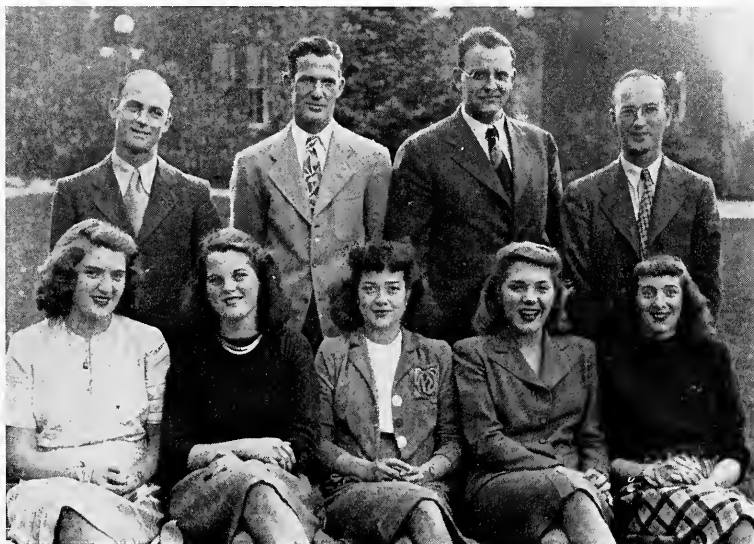
*Fourth Row*—W. Showers, C. Walker, T. Brooks, A. Stewart, W. Rose, J. Hanby, R. Ifft, H. Graffius, D. Day, and J. Foster.

*Fifth Row*—H. Colvin, J. Blume, C. Fish, W. Adams, W. Horton, J. Keltz, J. Yedlicka, J. Schalch, R. McKown, and A. Rapoport.



# ORGANIZATIONS

# STUDENT SENATE



*First Row—M. Mohney, D. Dryden, C. Moore, M. O'Neil, B. Lobaugh  
Second Row—L. Smith, R. Harriger, I. Young, E. Smail*



# COLLEGE PLAYERS



*First Row*—Frank Rugar, Harold Meisinger, Jack Simmers, Lavern Woodrow, Arvid Larson, Bob Gilliland, Gomer Edwards, Blaine Stover, Bill Moore, John DeLong.

*Second Row*—Jack Ricalton, John Banjak, Dominic Federici, David Reid, Charles Ramsden, Shirley Marts, Phyllis Slaughaupt, Priscilla Wilson, Leila Grube, Patricia Allison, Betty Underwood, Mary Alice Miller, Ceora Gardner, Lou Raymond, Frances Rosenson, Richard Elliott.

*Third Row*—Jean Beatty, Genevieve Harchick, Betty Watson, Jane Bonsall, Vivian Maxwell, Alberta Deemer, Kathleen Hobbs, Ernest Johnson, Sally Searight.

*Fourth Row*—Frederick Coy, Patricia Lawson, Hurley Graffius, Jane Dinger, Helen Mae Nevel, Della Williams, Helen Louise Bonsall, Violet Vukoslavick, Margy Lou Johnson.

*Fifth Row*—William Zeitler, Courtney Ann Nelson, Lois George, Marian Clark, Marian Weigel, Joe Sekelsky, James McKinley, Jean Miller.

## *First Semester*

*President*..... BOB GILLILAND  
*Vice President*..... MARY ALICE MILLER  
*Secretary*..... VIOLET VUKOSLAVICH  
*Treasurer*..... LEILA GRUBE  
*Sponsor*..... MISS MARWICK

## *Second Semester*

DOMENIC FEDERICI  
 JACK RICALTON  
 BETTY WATSON  
 PHYLLIS SLAUGENHAUPT  
 MISS MARWICK

# INTERNATIONAL RELATIONS CLUB



*First Row*—M. Zevachy, B. Thompson, J. Nichols, D. Steen, S. Searight, L. Taylor, A. Zacherl, T. Jackson, and N. Kester.

*Second Row*—C. Kinkead, Dr. Slick, P. Geist, H. Bonsall, C. Green, J. Miller, G. Edwards, E. Truitt, J. Slike, B. Watson, and R. Kinkead.

*Third Row*—R. Brady, J. Dodge, R. Gilliland, F. Coy, K. Hobbs, N. Coon, S. Robb, W. Crissman, T. Yerace, W. Martin, and R. Harriger.

*Fourth Row*—R. McElhattan, B. Smathers, P. Goble, H. Couch, M. Kohn, R. Platt, W. Fulcomer, W. Allison, M. Spleen, F. Vassalotti, and S. Baranski.

*President*.....CHARLES GREEN  
*Vice President*.....PIERCE GEIST  
*Secretary-treasurer*.....JEAN MILLER  
*Sponsor*.....DR. SLICK

# OUTDOOR CLUB



*First Row*—M. Mohney, J. Wick, H. Shields, M. Mize, N. Neverla, A. Moyer.

*Second Row*—C. Green, R. McKown, M. Wright, L. Smith, M. Helmintoller, R. Wolfe, W. Moore, J. Newell, M. Clover, Mr. Manson.

	<i>First Semester</i>	<i>Second Semester</i>
<i>President</i> .....	JAMES NEWELL	RICHARD WOLFE
<i>Vice President</i> .....	MARTHA HELMINTOLLER	M. HELMINTOLLER
<i>Secretary-treasurer</i> .....	CHARLES GREEN	ROBERT MCCOWAN
<i>Sponsor</i> .....	MR. MANSON	MR. MANSON



# PRESS CLUB



*First Row*—C. McClune, L. Kinard, Miss Nair, J. Blake, B. Underwood, T. Yerace, R. Elliott, C. Green.  
*Second Row*—D. Slimak, I. Messler, M. Salsgiver, L. Pontius, F. Rosenson.  
*Third Row*—M. Mitchell, P. Lipser, T. Jackson, D. Hoover, A. Eidell.  
*Fourth Row*—G. Dunkle, J. Banjak, T. Brinkley, R. Carey, W. Allison, E. Grine.  
*Fifth Row*—C. Fegley, A. Larson, W. Adams, R. Heeter, M. Kohan, J. Cochran, F. Rugar.  
*Sixth Row*—J. DeLong, W. Wassum, H. Meisinger, S. Nicholls, K. Woodall.

	<i>First Semester</i>	<i>Second Semester</i>
<i>President</i> .....	CLIFFORD MCCLUNE	JOSEPH COCHRAN
<i>Vice President</i> .....	TONI YERACE	DANA KAHLE
<i>Secretary</i> .....	BETTY UNDERWOOD	BETTY UNDERWOOD
<i>Treasurer</i> .....	JEAN BLAKE	ROBERT CAREY
<i>Sponsor</i> .....	MISS NAIR	MISS NAIR



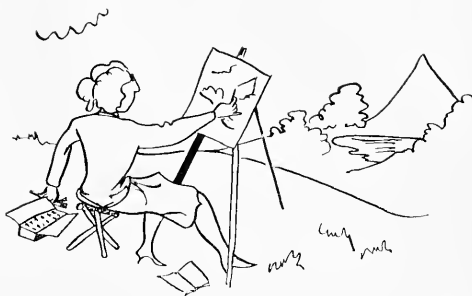
# GEOGRAPHY CLUB



First Row—T. Bartello, M. Miller, S. Harnish, M. Johnston, J. Beatty, J. Simpson, H. Nevel.  
 Second Row—L. Dibb, W. Karl, A. Zacherl, Mr. Kuhner, A. Texter, B. Nulph, P. Goble, E. Smail.

President..... ERNEST SMAIL  
 Vice President..... JOYCE SIMPSON  
 Secretary-treasurer..... JEANNE BEATTY  
 Sponsor..... MR. KUHNER

# ART CLUB



*First Row*—E. Shaffer, B. Lander, E. Ziegler, G. Belles, V. Baker.  
*Second Row*—B. McIntyre, J. Faye, H. Toth, A. Zacherl, G. Burkett.  
*Third Row*—V. Loll, J. Mogle, H. White, M. Spencer, D. Bugt, M. Gurgevich, Miss Sandford.

<i>President</i> .....	DOROTHY ZACHERL
<i>Vice President</i> .....	MRS. WILLIAM PERRY
<i>Secretary-treasurer</i> .....	GLORIA BELLES
<i>Sponsor</i> .....	MISS SANDFORD

# YOUNG WOMEN'S CHRISTIAN ASSOCIATION



*First Row*—A. Lees, J. Beatty, M. Strickler, M. Johnston, B. Carson.

*Second Row*—P. Wilson, E. Skinner, J. Nichols, V. Baker, E. Shaffer, T. Bartello, E. Ziegler.

*President*.....MARY STRICKLER  
*Vice President*.....JEANNE BEATTY  
*Secretary-treasurer*.....MARY LOU JOHNSTON  
*Sponsor*.....MISS STOKE

# YOUNG MEN'S CHRISTIAN ASSOCIATION



*First Row*—N. Coon, M. McCrae, R. Veihdeffer, L. Woodro, C. Green, C. Biddle, I. Young, D. Detrie.

*Second Row*—Mr. Carey, F. Coy, P. Neff, W. Zimmerman, W. Adams, A. Larson, W. Horton, W. Crissman, Mr. Becker, D. Nulph.

*President* ..... CHARLES GREEN  
*Secretary* ..... IVAN YOUNG  
*Sponsor* ..... MR. BECKER

# HOSTESS CLUB



*First Row*—M. Longicetti, H. Pugar, M. Korn, P. Slaugenhaupt, E. Zigarella, C. Battles, H. Bell.

*Second Row*—S. Scaright, R. Stefanich, J. Faye, B. Sherwood, M. Glover, B. Ardary, P. Orcutt, J. Nichols, P. Wilson, S. Nypaver.

*President* ..... PHYLLIS SLAUGENHAUPT  
*Secretary-treasurer*..... ROSE MARIE STEFANIC  
*Sponsor*..... MISS STOKE

# AERONAUTICS CLUB



*First Row*—R. Rowan, T. Yerace, K. Sieber, A. Walls, T. Jackson, B. Grossman, C. Hawk, P. Lipser, D. Eury.

*Second Row*—L. Confer, D. Knobel, D. Jones, K. Stewart, D. Slimak, P. Mowell, E. Brugh, S. Watson, A. Fish.

*Third Row*—M. Brill, Walker, E. Holtzworth, R. Harriger, B. Rose, T. Brooks, G. Calvert, Mr. Carey.

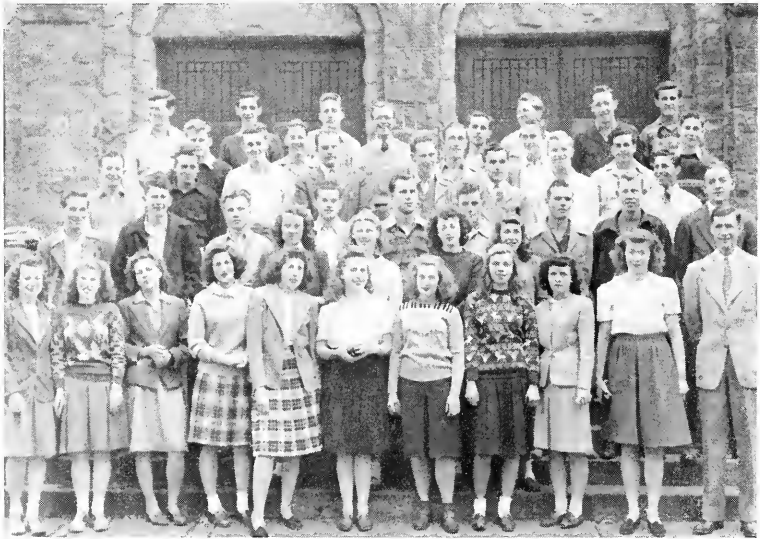
*Fourth Row*—J. Shofestall, H. Greeneman, G. Songer, J. Shaul, F. Mencer, B. Grotefend, J. Sutherland, E. Aharrah.

*Fifth Row*—D. Stahlman, F. Walters, D. Brady, C. Furlong, F. Jones, B. Curry, C. Fish, J. Yedlicka.

*President*.....RAYMOND ROWAN  
*Vice President*.....TONI YERACE  
*Secretary*.....ERNEST AHARRAH  
*Treasurer*.....BILL GROTEFEND  
*Sponsor*.....MR. CAREY



# CAMERA CLUB I



*First Row*—E. Truitt, J. Simpson, L. Pontius, E. Zigaralla, C. Battles, A. Kelber, N. Zimmerman, M. Bower, S. Harnish, V. Maxwell, C. McCluné.

*Second Row*—J. Cochran, C. Cook, S. Baranski, N. Kester, E. Wolcott, G. Baumgartner, R. Diehl, P. Cropp, J. Swoger, S. Denny, D. Peirce.

*Third Row*—J. Bychak, E. Rhodes, W. Creed, W. Clouse, M. Slick, I. Young, R. Campbell, R. McMaster, P. Tatuso, R. Morrison, R. Wolff, G. Volpe, C. Minich.

*Fourth Row*—J. Rogers, D. Thompson, H. Davis, R. Long, J. Freas, G. Weaver, J. Longaker.

## *First Semester*

*President*..... CLIFFORD MCCLUNE  
*Vice President*..... ELAINE TRUITT  
*Secretary*..... JOYCE SIMPSON  
*Treasurer*..... HOWARD DAVIS  
*Sponsor*..... DR. PEIRCE

## *Second Semester*

GEORGE SHOEMAKER  
 JOYCE SIMPSON  
 LOIS PONTIUS  
 DR. PEIRCE  
 DICK RHODEY



# CAMERA CLUB II



*First Row*—Dr. Peirce, I. Clyde, S. Watson, P. Behringer, E. Meabon, H. Fromyer, B. Kunselman, B. Grossman, H. Weeter, N. Bloom, D. Gilbert.

*Second Row*—E. Andrews, B. Heckman, J. Hannold, H. Slaughaupt, M. Spleen, F. Dormire, N. Charles, G. Harchick.

*Third Row*—R. A. Crow, L. Aaron, D. Watson, F. Coy, R. Weiner, R. Stephan, R. Rhodes, G. Shaw.

*Fourth Row*—G. Miller, I. Henry, J. Lee, J. Dreibelbiss, J. Benson, A. Moyer, G. Miller, L. Clayton.

*Fifth Row*—C. Lee, W. Elliott, G. Shoemaker, G. Snyder, W. King, G. Greenman.

<i>President</i> .....	DALE GILBERT
<i>Vice President</i> .....	NORMA BLOOM
<i>Secretary</i> .....	HELEN WEETER
<i>Treasurer</i> .....	ARTHUR MOYER
<i>Sponsor</i> .....	DR. PEIRCE

# MUSIC DEPARTMENT



## A CAPELLA CHOIR

*First Row*—R. Kearney, N. Rea, M. O'Neill, J. Ferguson, D. Dryden, S. Gibson, Mr. Hart, M. Otte, D. Nulph, J. Arner, E. Skinner, G. Baumgardner, J. Vescoe.

*Second Row*—G. Whisner, L. Grube, M. Helmintoller, L. Bloom, N. Zimmerman, B. Lobaugh, M. Strickler, P. Calvert, J. Wick.

*Third Row*—W. Moore, J. Robinson, J. Hanby, L. Bramhall, G. Bloom, R. McCrea, H. Horton, C. Lee, E. Wilson, L. Rinker.

*Fourth Row*—W. Jones, G. Hoffman, R. Brossman, T. Clinger, B. MacBeth, M. Sills, J. Bowman, R. Kirsch, D. Kroh, E. Carrier, R. Stumpf, J. Kerr.



<i>President</i>	.....	GEORGE HOFFMAN
<i>Vice President</i>	.....	MARJORIE OTTE
<i>Secretary-treasurer</i>	.....	DEFOREST BOWMAN, JR.
<i>Sponsor</i>	.....	MR. HART



### GIRLS' CHORUS

*First Row*—A. Kelleher, E. Meabon, M. Glover, D. Rickell, P. Behringer, C. Nelson, J. Dinger, E. Shaffer, C. Battles.

*Second Row*—H. Furlong, N. Doverspike, L. George, J. Beatty, P. Lawson, F. Rosenson, F. Dormire, S. Searight.

*Third Row*—E. Andrews, M. Johnston, N. Boyer, R. Hill, L. Solley, J. Henderson, E. Zeigler, V. Baker, P. Slaugenhaupt, V. Vukoslavich.



### BOYS' CHORUS

*First Row*—W. Moore, M. Sills, H. Horton, B. MacBeth, E. Wilson, J. Bowman, E. Carrier, R. Stumpf, J. Kerr, L. Rinker.

*Second Row*—W. Jones, J. Hoffman, T. Clinger, B. Kirsch, D. Brossman, R. Welfe, L. Bramhall, G. Bloom, R. McCrae.

# ENSEMBLE



## ENSEMBLE

J. Wick, N. Rea, J. Vescoe, M. Helmtoller, J. Ferguson, R. Kearney



## TRIO

J. Wick, R. Kearney, M. Helmtoller, J. Vescoe



## BAND

*Inside Row—Left to right—*C. Host, M. Weigel, W. Johnson, I. Bloom, W. Rockwell.  
*Middle Row—*A. Kelleher, C. Battles, G. Whisner, J. Wick, J. Schatoh, I. Young, E. Brugh,  
 P. Neff, D. Yedlicka, L. Olson, E. Golla.  
*Outside Row—*B. Sherwood, H. Bonsall, P. Goble, D. Bowman, C. Henry, R. McCrac, C. Fish,  
 J. Hanby, G. Cope, Mr. Hart, F. Sharrow, G. Bloom.



## QUARTET

E. Bramhall, E. Wilson, J. Bowman, W. Jones

# FUTURE TEACHERS OF AMERICA



Miss Strohecker, P. Weigand, R. Hill, M. Davis

<i>President</i> .....	PEARLE WEIGAND
<i>Vice President</i> .....	PIERCE GEIST
<i>Secretary-treasurer</i> .....	ALICE ZACHERAL
<i>Sponsor</i> .....	MISS STROHECKER

# ASSOCIATION OF CHILDHOOD EDUCATION



*First Row*—E. Gunderman, D. Dryden, D. Nulph, M. Davis, L. Carrier, E. Shaffer, M. Smith, R. Hill.

*Second Row*—J. Bonsall, P. Behringer, E. Meabon, D. Williams, P. Hale, Miss Strohecker, V. Harde, B. Watson, V. Vukoslavich.

*President* ..... MARIAN DAVIS  
*Vice President* ..... PHYLLIS HALE  
*Secretary* ..... PEGGY ANN BEHRINGER  
*Treasurer* ..... DOROTHY DRYDEN  
*Sponsor* ..... MISS STROHECKER





**HONORARY SOCIETIES**

**SORORITIES**

**AND**

**FRATERNITIES**

# WHO'S WHO



*First Row*—S. Robb, J. Miller, M. Smith, L. Bloom.

*Second Row*—D. Slaughaupt, D. Dryden, R. Elliott, D. Strickler, L. Smith.

Each year the biographies of selected students appear in "Who's Who Among Students in American Colleges and Universities." This volume is published in order to give recognition to outstanding students. It serves as a recommendation for deserving students to the business world and offers a placement service for them when they graduate. The students chosen here at Clarion are selected by a committee of faculty members. Those having the highest scholastic standing and who have demonstrated ability in leadership by actively participating in extra curricular activities are chosen.

There were twelve students selected from Clarion this year. They are Shirley Robb, Charles Rummel, Ruth Hill, Dell Strickler, Lawrence Smith, James Kassel, Lorna Bloom, Dorothy Dryden, Mary Alice Smith, Richard Elliott, DeWayne Slaughaupt, and Jean Miller.

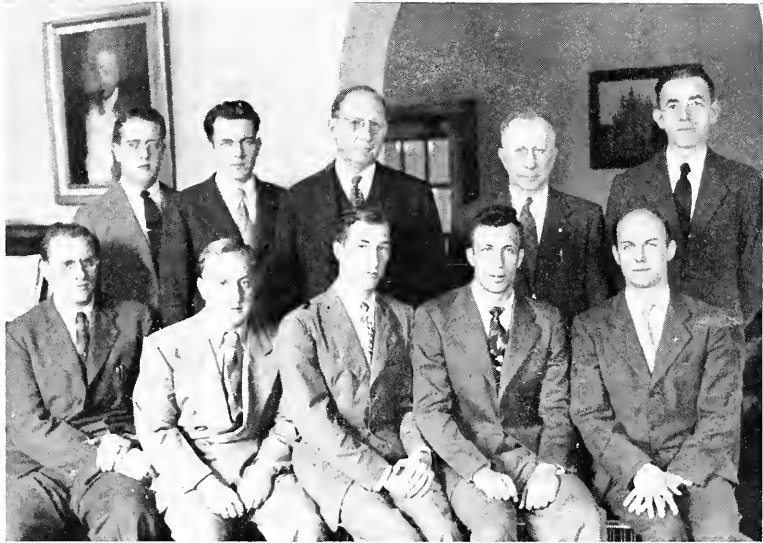
# PI GAMMA MU



*Front—M. Clover, H. Shields. Rear—J. Tile, J. Jewart, L. Smith*

Pi Gamma Mu is an honorary scholastic organization which selects for its members those who have a professional interest in the social studies. The local chapter, under the title, Iota, is but a branch of a national organization with many illustrious men of this particular field as members. Local membership is voted to juniors who have completed twenty semester hours of social studies work with an average grade of B, and who evince a wholesale professional interest in the field of social studies.

# PHI SIGMA PI



*First Row*—I. Young, T. Williams, B. Allison, R. Elliott, L. Smith.  
*Second Row*—J. Arner, D. Slaughenhaupt, Mr. Becker, Mr. Manson, Dr. Peirce.

On October 3 the Lambda Chapter of Phi Sigma Pi held its first meeting of the year and reorganized after three years of inactivity. This meeting was followed by business and professional meetings during the year.

The formal initiation, at which three candidates, Lawrence Smith, Richard Elliott, and Charles Rummell, were admitted to membership, was held on October 28. In November, Lambda Chapter was represented at the Grand Chapter of Phi Sigma Pi held in Washington, D. C., by the president. The year's activities were climaxed by the annual Founder's Day Banquet held in May.

Phi Sigma is a national honorary education fraternity for men with superior scholarship and qualities which promote the interests of education. Eighteen chapters are active in the United States.

<i>President</i> .....	WILLIAM ALLISON
<i>Vice President</i> .....	JAMES ARNER
<i>Secretary</i> .....	IVAN YOUNG
<i>Treasurer</i> .....	DEWAYNE SLAUGENHAUPT
<i>Sponsor</i> .....	PROFESSOR C. F. BECKER

# SORORITIES



# PAN HELLENIC COUNCIL



*First Row*—S. Marts, B. Underwood, M. Salsgiver.

*Second Row*—M. Schierberl, S. Robb, J. Blake, A. Deemer.

*President*..... JEAN BLAKE  
*Secretary*..... SHIRLEY ROBB  
*Sponsor*..... MISS BOYD

# LAMBDA CHI DELTA



*First Row*—R. Lobaugh, J. Smathers, N. Rea.

*Second Row*—S. Marts, M. O'Neill, H. Shields, Mrs. Kissell, M. Clover, M. Schierberl.

*Third Row*—N. Kerr, N. McKinley, M. Helmintoller, V. Hades, M. Smith.

Looking over the new crop of men, recruits for pledging, new schedules, new friends and new faculty, "Pan Hellenic" tea, football season highlighted by "Homecoming" game and dance, and rushing finally gained the following students as new members: Ruth Kearney, Mert Bower, Naomi Boyer, Marie Kohn, Janet Vescoe, Becky Kunselman, Helen Pugar, and Henriette Fromeycr.

Sorority Week-end at the "forest", Christmas formal that wound up at "Toot's", Helen Ferry's change of name to Mrs. D. Shields, Nancy Smathers' marriage to James Kerr, exams and frustration (only to start it over again January twenty-second) were the high lights of the year.

<i>President</i> .....	HELEN FERRY SHIELDS
<i>Vice President</i> .....	NANCY SMATHERS KERR
<i>Secretary</i> .....	MARJORIE CLOVER
<i>Treasurer</i> .....	MARTHA HELMINTOLLER
<i>Corresponding Secretary</i> .....	MARY KAY O'NEILL

# SIGMA SIGMA SIGMA



*First Row*—D. Nulph, B. Thompson, J. Simpson, V. Vukoslavich.

*Second Row*—J. Beatty, N. Bloom, M. Miller, B. Underwood, H. Nevel, Miss Gamble.

*Third Row*—D. Dryden, M. Strickler, E. Shaffer, M. Johnston, J. Blake, E. Meabon, P. Behringer, E. Gunderman, T. Bartello.

The Tri-Sigma's started the fall term with a Regional Convention, which was held in Toledo, Ohio. Dorothy Dryden, Joyce Simpson, and Twila Bartello represented the Clarion Chapter at this inspiring meeting.

The rush party theme this year was the "Star Fair." As a result the following girls were pledged: Helen Bell, Mary Spleen, Edith Zigarella, Phyllis Orcutt, Charlotte Battles, Courtney Nelsos, Anna Lees, Nancy Zimmerman, and Catherine Stewart.

The social activities for the year included a party at Mary K. Banner's cabin, a pledge party, and the Regional Convention.

The sorority sponsored a movie, sold Christmas Seals and Christmas Cards, and are sponsoring a refugee orphan in Europe.

<i>President</i> .....	DOROTHY DRYDEN
<i>Vice President</i> .....	JEAN BLAKE
<i>Treasurer</i> .....	JOYCE SIMPSON
<i>Recording Secretary</i> .....	MARY STRICKLER
<i>Corresponding Secretary</i> .....	MARY LOU JOHNSTON
<i>Advisor</i> .....	MILDRED GAMBLE



# DELTA SIGMA EPSILON



*First Row*—P. Weigand, J. Wick, M. Mitchell, M. Orte, H. Eonsall, J. Miller.  
*Second Row*—V. Maxwell, B. Watson, L. Smith, Dr. Holt, A. Walls, M. Johnson.  
*Third Row*—A. Deemer, K. Hobbs, S. Robb, B. Carson, M. Wright, J. Bonsall, F. Morrison,  
 P. Hale, J. Bish, C. Moore, M. Davis.

With the fall of 1946 we were back at the old grind again, but with many new faces and the fun of getting acquainted. We missed our alumnae, but worked to the best of our ability.

Initiation of our new sponsor, Dr. Helen Holt—breakfast at the Coffee Shop, Homecoming Day, rush party with a drugstore theme—all have kept us busy.

The following girls were pledged: Betty Lou Ardary, Violet May Baker, Marilyn Bastress, Erla Brock, Nancy Doverspike, Helen Furlong, Lois George, Dana Hoovler, Irma Messler, Dorothy Jean Richell, Francis Rosenson, Shirley Watson.

<i>President</i> .....	MARTHA MITCHELL
<i>Vice President</i> .....	JANE BONSALL
<i>Corresponding Secretary</i> .....	PEARL WEIGAND
<i>Treasurer</i> .....	PHYLLIS HALE
<i>Assistant Treasurer</i> .....	VIVIAN MAXWELL
<i>Chaplain</i> .....	MARTHA MOHNEY
<i>Sergeant</i> .....	BETTY WATSON
<i>Historian</i> .....	SHIRLEY ROBB
<i>Advisor</i> .....	DR. HELEN HOLT

# SIGMA DELTA PHI



*First Row*—N. Matter, Miss Nair, M. Salsgiver.  
*Second Row*—L. Raymond, B. Morgan, V. Morgan.

The following girls were welcomed as pledges to Sigma Delta Phi this year: Elaine Brugh, Iris Clyde, Donna Eury, Betty Grossman, Genevieve Harchick, Catherine Hawk, Patricia Lawson, Pauline Lipser, Pat Mowell, Jeanne Nichols, Jane Seifer, and Dorothy Slimak.

A special social event was the Sunday evening supper given by the patronesses at the home of Mrs. Milo Smathers. Plans for the semester included a project in knitting and crocheting, the annual party at the home of the faculty advisor, Miss Nair, and special programs on college interests.

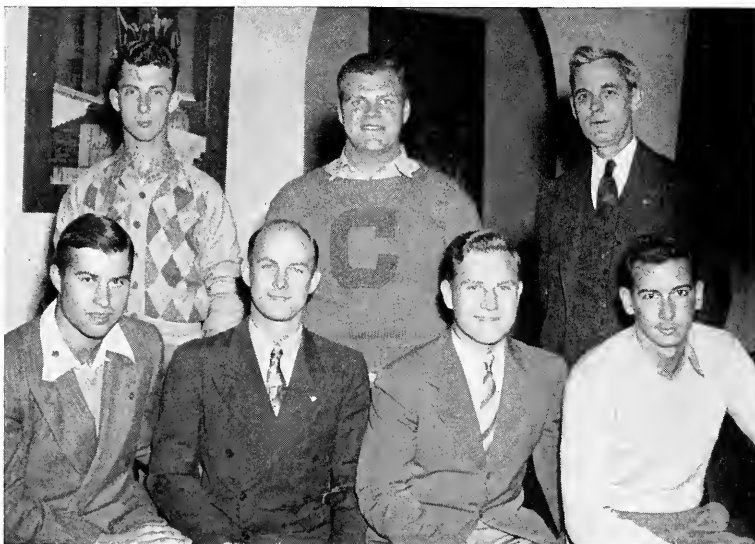
The following officers were elected for the year 1947:

<i>President</i> .....	MARY SALSGIVER
<i>Vice President</i> .....	BETTY MORGAN
<i>Secretary</i> .....	TONI YERACE
<i>Treasurer</i> .....	VIVIAN MORGAN
<i>Chaplain</i> .....	ARLENE TEXTER
<i>Guard</i> .....	NELL MOTTER

# FRATERNITIES



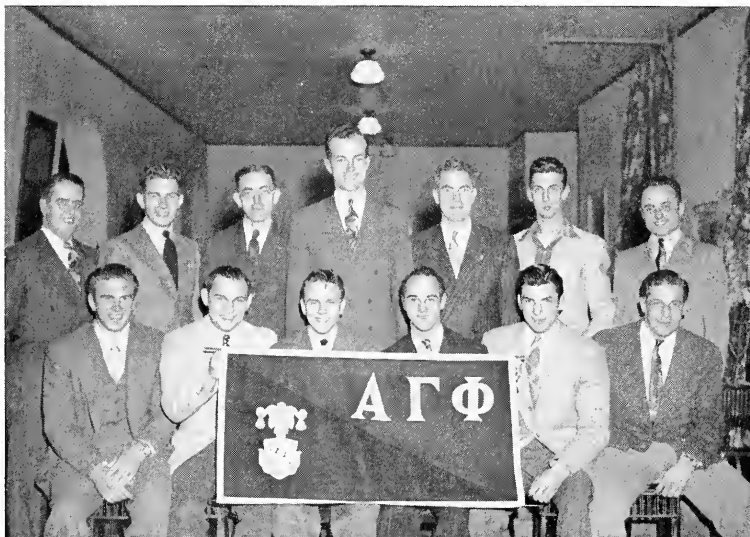
# INTERFRATERNITY COUNCIL



*First Row—D. Gilbert, L. Smith, E. Johnson, J. McGinnis.*

*Second Row—G. Sills, R. Muth, Mr. Kubner.*

# ALPHA GAMMA PHI



*First Row*—R. Zelechowski, J. Davidson, J. Newell, J. Tile, W. Zacherl, W. Worrell.

*Second Row*—J. Arner, C. Green, Dr. Peirce, J. McKinley, Mr. Carnahan, G. Sills, J. Kerr.

The year 1946 saw the re-opening of the organization with twelve old members who held a rush party in Harvey Gym. The frat has now grown to an active membership of 75.

Many activities were planned for the year. The most important social event of the season was the Valentine Dance held at Ross Memorial.

The Frat also honored its deceased brothers, who gave their lives in the fight for freedom for this country, by erecting a plaque which hangs in Seminary Hall.

	<i>First Semester</i>	<i>Second Semester</i>
<i>President</i> .....	WILLIAM WORRELL	JAMES NEWELL
<i>Vice President</i> .....	JOHN TILE	WILFRED ZACHERL
<i>Secretary</i> .....	CHARLES GREEN	PHIL. MAROTTI
<i>Treasurer</i> .....	WILFRED ZACHERL	JOHN TILE
<i>Historian</i> .....	JAMES NEWELL	JAMES DAVIDSON

# SIGMA TAU GAMMA



*First Row*—H. Fesenmyer, R. Rhodes, J. Selkelski, K. Gibbons, J. Sibley, H. Davis, R. Hahn.  
*Second Row*—Mr. Campbell, L. Smith, H. Davis, J. Longnecker, D. Gilbert, A. Moyer, C. Minich, J. Banjak.  
*Third Row*—R. Nicholas, G. Iodonato, T. Helmohekel, S. Cook, G. Rhodes, C. Webster, B. Coleman, D. Wyncoop, W. Mumford, G. Calvert, H. Berlin, E. Aharah, R. Rowan, C. McClune, R. Morrison, J. Freas, B. Grotfend, C. Fegeley.

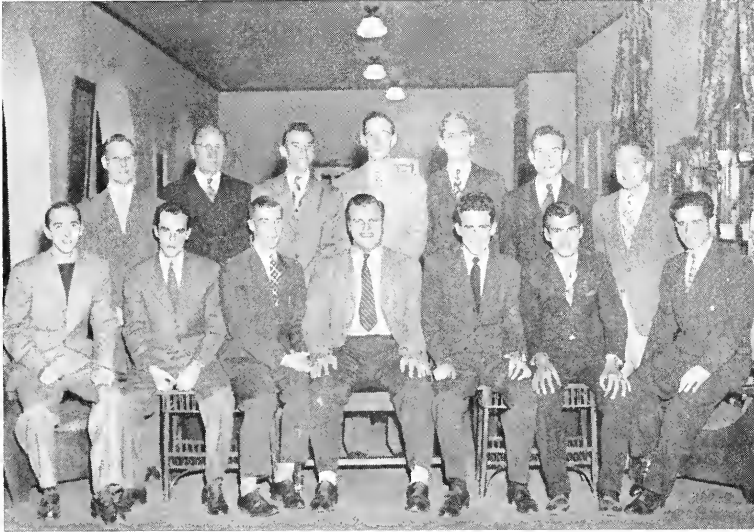
Sigma Tau Gamma, national social, educational, and professional fraternity is new at Clarion, the Alpha Zeta Chapter having been formed in May, 1946. The first members to be initiated were largely former members of Zeta Eta Phi a local social fraternity which had been inactive during the war.

At the opening of the school the fraternity had 19 active members. Twenty-four new members were initiated January 27.

The president and several members attended the national convention in St. Louis on December 27-30. At this convention the advisor, F. M. Campbell, was elected Grand Archon of the eastern division of Sigma Tau Gamma.

<i>President</i> .....	DALE GILBERT
<i>Vice President</i> .....	JOHN LONGNAKER
<i>Secretary</i> .....	LAWRENCE SMITH
<i>Treasurer</i> .....	ARTHUR MOYER
<i>Advisor</i> .....	FRANK CAMPBELL

# ALPHA PHI ALPHA



First Row—D. Brossman, C. Smith, B. Allison, R. Muth, P. Geist, J. Capasso, D. Detrie.  
 Second Row—E. Johnson, Mr. Becker, G. Edwards, J. Bowman, Mr. Kuhner, J. Slike, B. Stover.

By November the Freshmen were well acquainted with the Biology Lab, and Alpha Phi as the social side of it.

The old members had a warm spot for the first meeting in the "Lab." after seeing the world via the service. The Alpha Phi's were back on Campus.

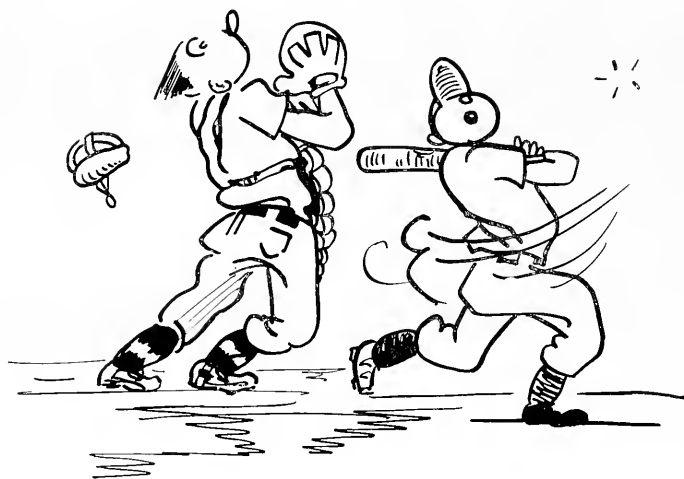
The following men were pledged and later formally initiated: Charles Biddle, Richard Brady, George Breene, John Corey, Fred Coy, John DeLong, Richard Elliot, Marvin Garvan, Edward Holzwarth, Donald Johnson, Harold Larimer, Arvid Larson, William Lynch, Robert McCrea, William Mohney, David Reid, John Rogers, Jack Simmers, Peter Tatusko, Edward Wolcott, Kenneth Wodall, and Lavern Woodrow.

The informal initiation was held with much excitement at Cook Forest on January 4. Several old members were present, giving a reunion flare to the ceremonies.

Plans were drawn for numerous activities, the more important being the inter-fraternity dance and fraternity banquet during the spring semester, the latter including many old members of Alpha Phi.

- President..... WILLIAM ALLISON
- Secretary..... DEFOREST BOWMAN, JR.
- Treasurer..... ERNEST JOHNSON
- Advisors..... PROFESSORS MANSON, KUHNER, AND BECKER

# ATHLETICS



BASEBALL • BASKETBALL  
FOOTBALL • WRESTLING



# WOMEN'S ATHLETIC COUNCIL



*First Row*—B. Underwood, K. Hobbs, J. Blake, S. Robb, P. Bellis, H. Bonsall.

*Second Row*—M. Mohney, E. Gunderman, J. Wick, H. Shields, T. Yerace, S. Harnish.

*Third Row*—M. Clover, M. Wright, N. McKinley, M. Schierberl, M. Helmintoller, R. Nulph, N. Neverla, Miss Bryant, D. Dryden.

*President*.....MARTHA HELMINTOLLER  
*Secretary-Treasurer*..MARTHA MOHNEY  
*Sponsor*.....MRS. SIMPSON



# VARSITY "C"

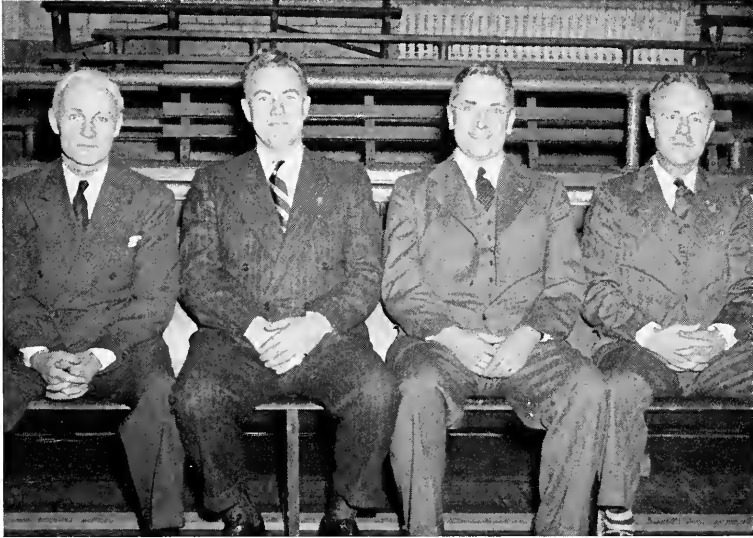


*First Row*—A. Moyer, J. Tile, W. Davidson, J. Newell, F. Kovalyak, W. Zacherl.

*Second Row*—G. Malacarne, H. Ferguson, J. Jewart, W. Worrell, E. Johnson, L. Smith, D. Gilbert.

*Third Row*—J. McKinley, H. Brehm, G. Hoffman, J. Sibley, R. Zelechowski, W. Moore, H. Whisner, R. Wolfe, W. Smith, P. Wallace.

# COACHING STAFF



W. Tippin, T. Carnahan, J. Moore, G. Moore.

With the advent of a variety of talent this year, Coach Waldo S. Tippin garnered a number of new coaches for the College. Mr. Tippin secured a number of able men to assist him in his coaching duties.

Gerald A. Moore, a former coach at Clarion Senior School and graduate of Defiance College, Ohio, came to assist Tippin in the backfield coaching of the Golden Eagles. Mr. Moore is head of the Intra-Mural department at the college and will coach the baseball team when the Eagles of the diamond open their season.

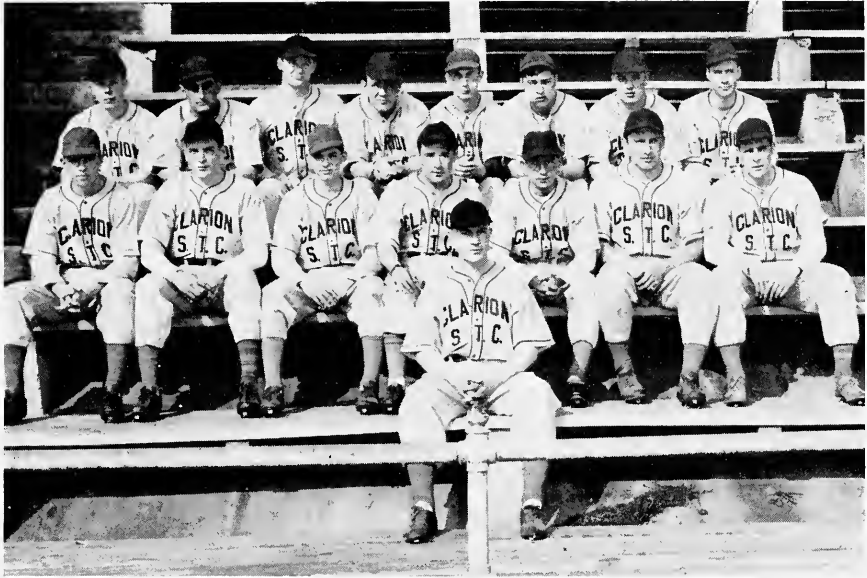
Another new addition was Thomas A. Carnahan, former Supervising Principal at Falls Creek. Mr. Carnahan helped mold our strong line during football season and supported Tippin on the court during basketball. Mr. Carnahan has two other works which keep him busy: teaching engineering drawing and mathematics.

James Moore, the acting dean of instruction, is also a member of the coaching staff. Last fall he gave his sound advise to the linesmen and was a help in his scouting activities during the season. Jim has fourteen years of coaching experience and has proved to be another valuable asset to Mr. Tippin's staff.

Steve Kovalyak, former student of Clarion, was back this year and proved to be valuable on the line in football and ably led the wrestling team through a successful season. We expect to see Steve do even better next year since he had a number of green men to work with this year. Steve will assist Gerry Moore with the big nine this spring.



# BASEBALL



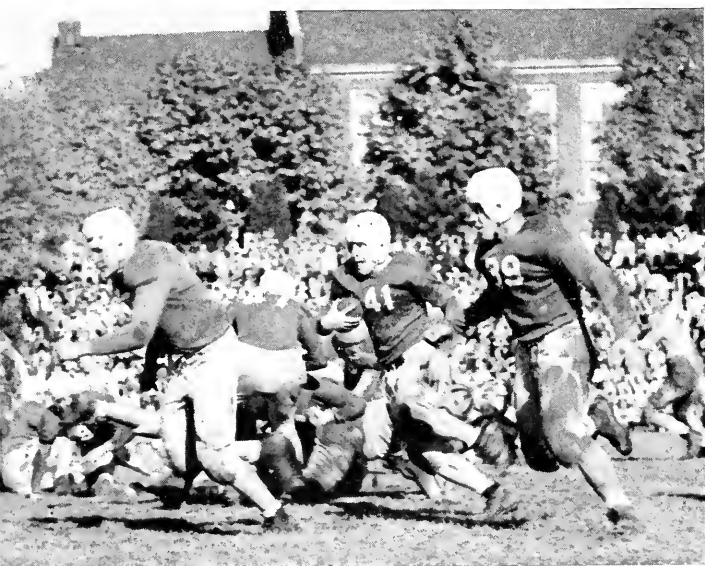
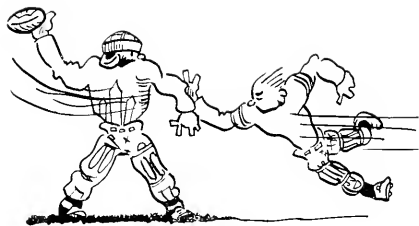
*Front Row*—E. Johnson. *First Row*—Farrell, Schierbel, Moyer, Kavolyak, Smith, Malcarne, S. Hoffman.

*Second Row*—Kroh, Pascorella, Wallace, G. Hoffman, Sills, Gilbert, Whisner, McClune.

The Golden Eagles of Clarion enjoyed one of the most successful seasons of any team in the State this year on the baseball diamond. They not only completed an undefeated inter-collegiate season, but in doing so, defeated several of the finer teams in Western Pennsylvania. Among those who fell before the expert playing of the men from C.S.T.C. were the Pitt Panthers, who went down to defeat before a very large crowd at Home Coming last spring.

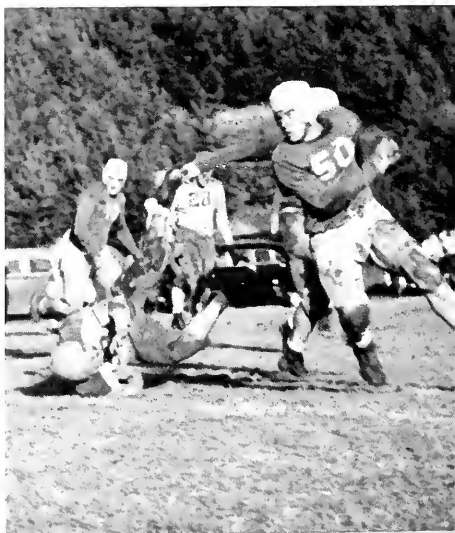
The team was coached by Ernest "Turk" Johnson, who also served very capably on the receiving end of Gordie "Tex" Sills' expert pitching. Sills was undoubtedly one of the outstanding pitchers in college ball last year and turned in a fine job on the mound. His hitting was also of great value in several close games.

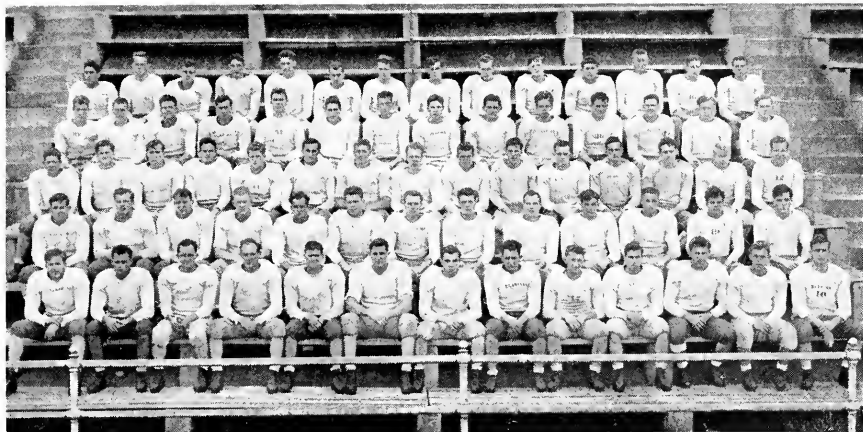
Freddie Kovalyak's fine base running, Malacarne's long hitting, "Chippie" Smith and Art Moyer's double play combination, "Pete" Whisner's sun glasses, Sam Hoffman's chatter, "Daisy" Gilbert's chew of tobacco and Bob Wyberg's support from the side lines all contributed to a perfect combination. The substitutions were'nt many—but performed creditably when called on.



*Season's Record*

Oct. 5	..... Clarion	50—Edinboro	..... 0
Oct. 11	..... Clarion	6—Bloomsburg	..... 0
Oct. 19	..... Clarion	13—Thiel	..... 14
Oct. 26	..... Clarion	7—California	..... 19
Nov. 2	..... Clarion	14—Indiana	..... 25
Nov. 9	..... Clarion	7—Bethany	..... 19
Nov. 16	..... Clarion	26—Alliance	..... 7
Totals	..... Clarion	123—Opponents	..... 84
	..... Won	3 Lost	..... 4





*Left to Right, First Row*—Zelochoski, Ferenchak, Jones, Brehm, Marotti, Turney, Carr, Pecora Blockowicz, Rusciolelli, Malacarne, Atwood, Vogt.

*Second Row*—Pontzer, Muth, Hoffman, Kerr, Casper, Askey, Hindman, Servey, Gruenzel, Zacherl, Whisner, Navarra, Dale.

*Third Row*—Krauss, George, Pontzer, Weber, Creed, Faust, Shearer, Kroh, Mumford, Yakin Gates, Jack, Rimer, Brennan.

*Fourth Row*—Thompson, Campbell, Rapaport, Usnick, Flath, Hoffman, Sills, Willison, Luvison, Robinson, Scarantine, Hippchew, Curry, Johnson.

*Fifth Row*—Delpero, Komisak, Cosgrove, Caruso, V., Caruso, Wolfe, Sibley, Nicolas, Reigel, Singer, Mason, Harlacker, Worrell, Newell.

## FOOTBALL

As the first postwar football team started practice at College Field this year, Coach Tippin had ninety-two men reporting for practice. This was the largest group of stellar athletes ever to invade the Clarion oval. After four weeks of strenuous training, Tippin rounded out a squad of forty-three men to hold and compete for berths on the eleven.





# CHEERLEADERS

J. Simmers, N. Doverspike, L. George, M. Otte, T. Yerace, L. Rinker

## SCORES OF GAMES

California .....	52
Grove City .....	49
Indiana .....	69
Alliance .....	57
Fenn .....	34
Indiana .....	33
Edinboro .....	45
California .....	57
Thiel .....	51
Fenn .....	48



Edinboro .....	43
Clarion .....	32
Clarion .....	53
Clarion .....	39
Clarion .....	46
Clarion .....	30
Clarion .....	35
Clarion .....	46
Clarion .....	61
Clarion .....	32
Clarion .....	54
Clarion .....	41



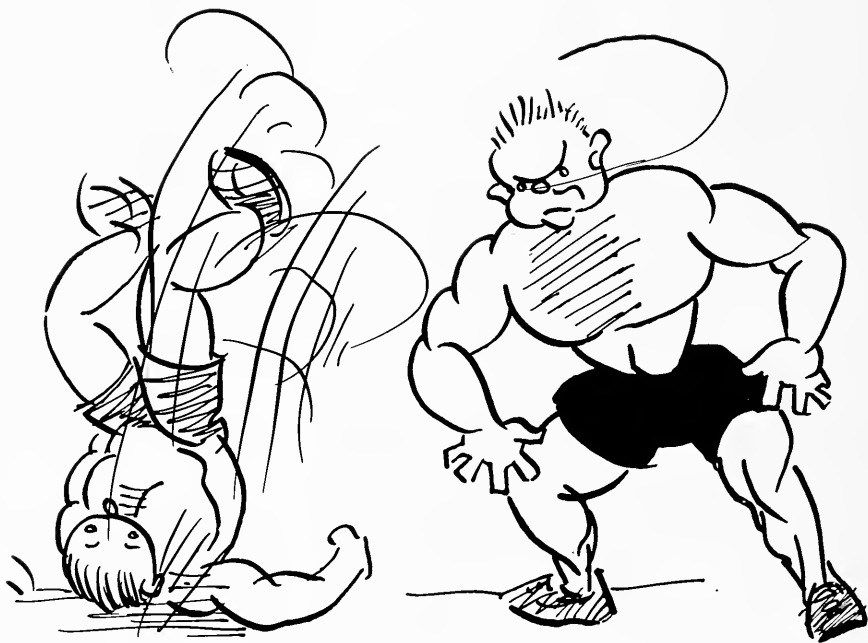


*First Row*—W. Casper, A. Rappaport, R. McKown, S. Webster, W. Clouse, R. Wolfe.

*Second Row*—Gilbert, manager; R. Skacan, R. Hindman, W. Gettys, D. Shearer, G. Derk, Weible, Kelly, Mr. Carnahan, coach.

## BASKETBALL

The Clarion Varsity is a team composed mostly of veterans. The ace forward and high scorer, "Doc" Willison, comes to us from Sewickley. The defense, William Casper from Homestead, George Derk from Pittsburgh and Stan Webster from Brookville. The rest of the squad includes such standouts as McKown, Rappaport, Wolfe, Clouse, Whisner, and Hindman.



## WRESTLING

Wrestle! With this resounding cry the Clarion matmen entered another season of intercollegiate wrestling. Under the able coaching of Steve Kovalyak the green Clarion squad won three matches, beating Edinboro twice and Dubois Undergraduate Center once. Clarion lost to powerful Clearfield Y.M.C.A. twice, were beaten and tied by Indiana, and lost once to Dubois Undergraduate Center.

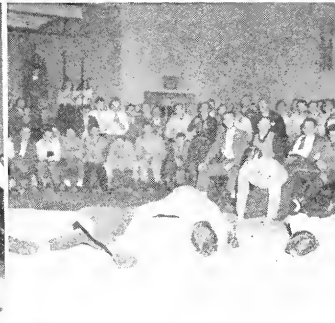
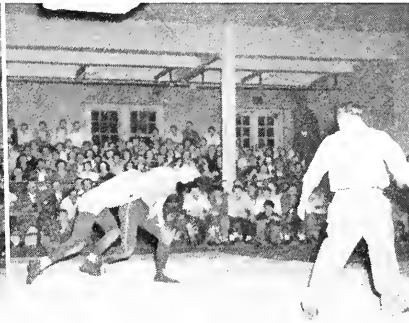
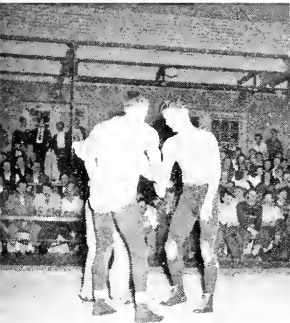
At the State Teachers College meet, held at Indiana in March, Clarion finished a strong third behind experienced Indiana and Lock Haven teams. Robert Flath took first place in the unlimited class; Dale Thompson finished second in the 165-pound class, Frank Lignelli took third place in the 175-pound class, and Stanley Baranski was a third place winner in the 136-pound class.



*First Row*—N. Coon, R. Larimer, D. Thompson, H. Ferguson, S. Baranski, J. Ruffner.

*Second Row*—E. Blockowicz, manager; R. Seibel, P. Sharbaugh, K. Sieber, R. Flath, F. Liganelli, W. Jones, S. Kovalyak, coach.

## WRESTLING



# CAMPUS GUYS AND GALS



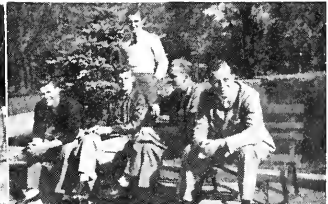
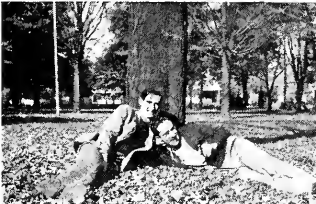
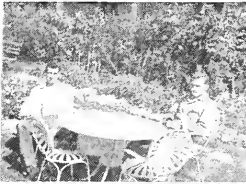
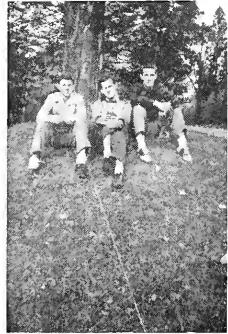
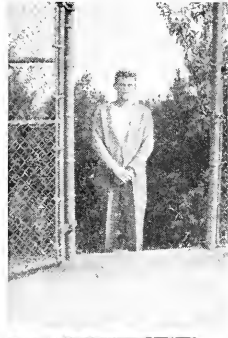
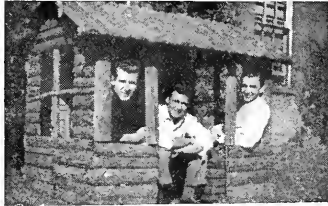
# JUST FRIENDS



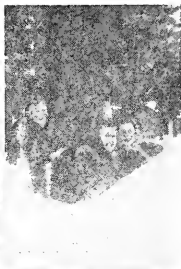
# HOW THESE MEN DO STUDY!



# AND HOW THEY DO LOAF!

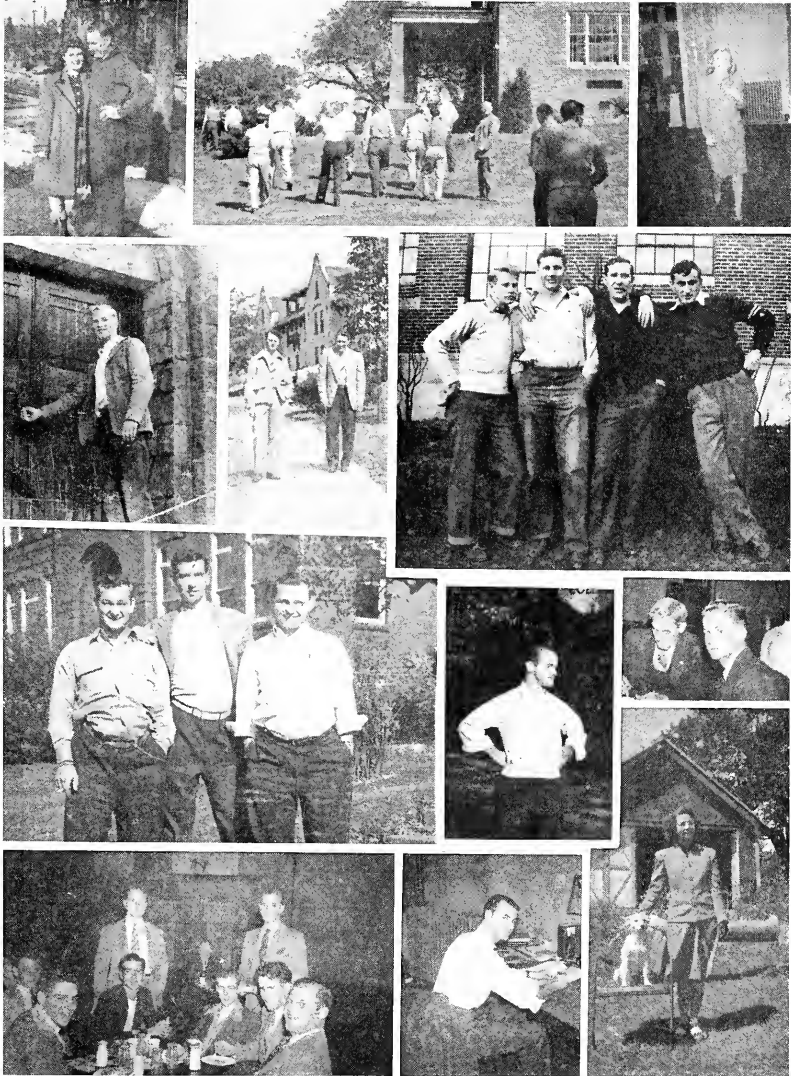


# CROSS CAMPUS GLIMPSES





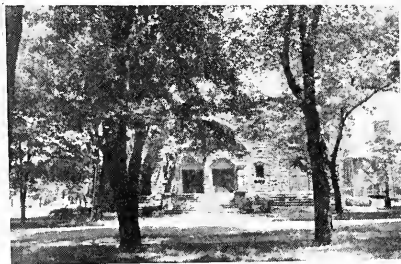
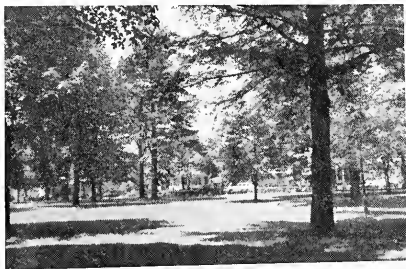
# OF COLLEGE JOES AND GALS



# CLARION MEN IN ACTION



# SCENES WE'LL CHERISH



---

---

*An Appreciation*

*The staff of the 1947 Sequelle, on behalf of the Student Body, takes this opportunity to express their appreciation to the merchants of Clarion and vicinity for their kind assistance and co-operation in making this year's Sequelle possible.*

---

---

**J. M. CROOKS & SONS**

CLOTHING, FURNISHINGS, ACCESSORIES and SHOES  
FOR COLLEGE MEN

*A Complete Line of Shoes for Coeds*

*Compliments of*

**BROOKVILLE CREAMERY PRODUCTS**

*Manufacturers of*

COUNTRY CLUB DAIRY PRODUCTS

BROOKVILLE, PENNSYLVANIA

*Compliments of*

**MACBETH'S CABINS**

COOK FOREST, PA.

EAT AT  
**BALDY'S MODERN DINER**

MEALS . . . LUNCHES

*Next to Garby Theater*

J. F. WEAVER Est.  
**HARDWARE COMPANY**

Highest Quality Merchandise  
at Lowest Possible Prices

PHONE 194

CLARION, PA.

*Compliments*

*of*

L. and R.  
**DECORATING CO., INC.**

*Compliments of*

**GARBY THEATER**

*WHERE HITS ARE A DAILY HABIT*

**NYAL SERVICE STORE**

**FITZGERALD'S**

**A. G. CORBETT DRUG CO.**

CLARION, PA.

*Compliments*

*of*

**WHITE'S  
APPLIANCES**

Make Our Record Department  
Your Music Headquarters

# JOHN DITZ HARDWARE

*"Everything in Hardware"*

"Frigidaire" Refrigerators and Ranges  
"Conlon" Washers and Ironers

"Magic Chef" Gas Ranges  
China, Glassware, Pictures, Gifts

PHONE 218

CLARION, PA.

MODERN STORE  
GROCERIES - FRUITS  
FRESH MEATS

SAM CHERICO, *Proprietor*



PHONE 38

CLARION, PA.

CLARION HEATING  
*and*  
APPLIANCES

Gas and Coal Furnaces  
Complete Line of Appliances

PHONE 640

CLARION, PA.

*Compliments*

*of*

CHARLES DIMINO



SHOE REPAIR

SHOE SHINE

HERMAN BROTHERS

*The Corner Store*



FRUITS - ICE CREAM  
CONFECTIONS

Corner Wood and Eighth Avenue

CLARION, PA.

*Compliments of*

WEIN BROTHERS

CLARION'S FINEST STORE

"SAY IT WITH FLOWERS"



## PHILLIPS FLOWERS

PHONE 209

CLARION, PA.

*Compliments*

*of*

COLLEGE GRILL

*Compliments*

*of*

CLARION  
FIRESTONE  
DEALER

## MEANS - LAUF DRUG STORE

522 MAIN STREET

CLARION, PA.

### COSMETICS

Lucien Lelong  
Lentheric  
Revlon  
Chen Yu

### FOUNTAIN SERVICE

### MEN'S TOILETRIES

Old Spice  
Sea Forth  
Yardley  
Courtley

# PENNEY'S

J. C. PENNEY CO., INC.

*"IT PAYS TO SHOP AT PENNEY'S"*

609 MAIN STREET

CLARION, PA.

*Congratulations and Good Wishes  
to the Class of 1947*



**OWENS - ILLINOIS**

GLASS COMPANY

CLARION, PENNSYLVANIA

*Compliments of*

**WAYNE R. WEAVER**

OLDSMOBILE

G.M.C. TRUCKS



*S A L E S*


*S E R V I C E*

CLARION, PA.





*Compliments*  
*of*  
HUGH M. OWENS  
JEWELER

THE RESS SHOP  
WOMEN'S and MISSES  
READY TO WEAR  
  
CLARION. PA.

RAGLEY  
MAYTAG STORE  
COMPLETE LINE OF  
APPLIANCES

Phone 93  
750 MAIN STREET      CLARION, PA.

*Compliments*  
*of*  
MAUL'S  
DAIRY STORE

MERWIN'S  
STATIONARY . . . MAGAZINES . . . NEWSPAPERS  
GREETING CARDS . . . CANDY

●  
FOUNTAIN SERVICE

MAIN STREET

CLARION, PA.

HAIL THE GRADUATION CLASS OF 1947

We join in a hearty commendation of your efforts and in a sincere  
wish that your future lives may be happy and successful.

  
G. C. MURPHY & COMPANY  
5 AND 10 CENT STORE

*Compliments*

*of*

**MR. and MRS. FRED JENKINS**

**THE CLARION REPUBLICAN**

*THE PAPER WITH THE BEST WANT ADS*

**CLARION COUNTY'S BEST NEWSPAPER**

*The Home of the Clarion Call*

**FAYE'S COFFEE SHOP**

*Not Only*

**GOOD FOOD**

*But All You Want*

**At Moderate Prices**

Corner Main Street and Eighth Avenue  
Phone Clarion 72

*Compliments*

*of*

**D. and M.  
CLEANERS**

**CLARION, PA.**

**CITIZEN'S TRUST COMPANY**

**CLARION, PA.**

•••

**RESOURCES OVER \$6,600,000.00**

**MEMBER FEDERAL DEPOSIT INSURANCE CORPORATION**

*Compliments*

*of the*

ANDERSON  
HOTEL

*Compliments*

*of*

SPINDLER & STARR

~

BUICK - CADILLAC  
CHEVROLET

CLARION, PA.

Just off the campus one may  
find the best in groceries  
and meats . . . Why go farther?

~

PHERO'S GROCERY

"THE COLLEGE GROCER"

Phone 19

A T

KATHRYN'S  
BEAUTY SHOP

Have Your Hair Styled to Suit  
Your Personality

*The Best in Permanent Waves*

PHONE 310

CLARION, PA.

**Charm . . .**

that is

**You . . .**

in our

**Portraits**



**CARL and DON**  
**STUDIO**

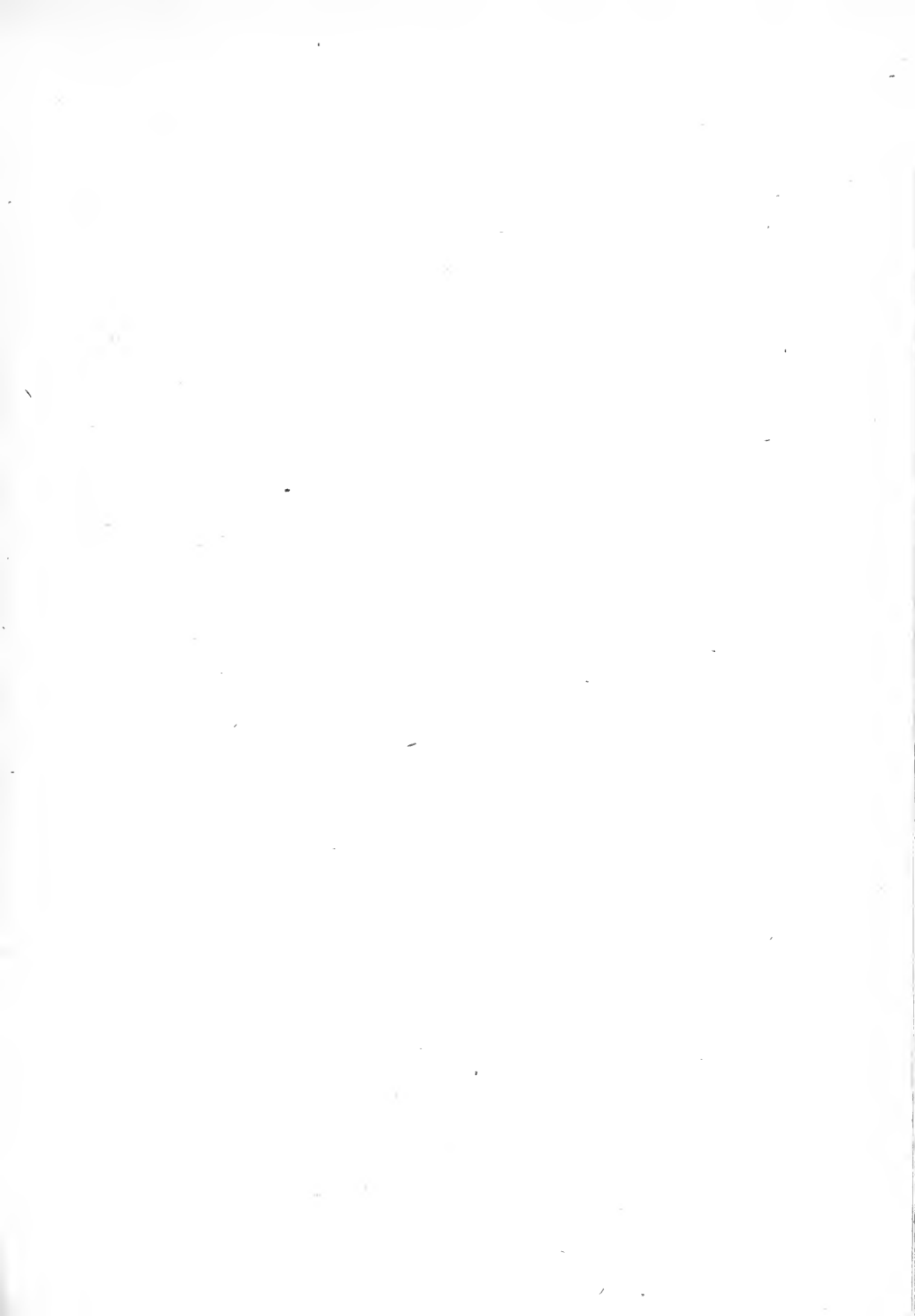
CLARION . . .

Our expert photographers will pose you at your loveliest. Yes, we repeat, they will catch the CHARM that is really you.

*for appointments . . . Telephone 66-M*











CLARION UNIVERSITY OF PENNSYLVANIA



3 9363 00150 7281

Spec. Col  
qLD  
1017  
.C88  
1947

