

Spec. Col.  
qL.D  
1017  
.C88  
1949




1949

*Sequels*



Carlson Library





Digitized by the Internet Archive  
in 2010 with funding from  
Lyrasis Members and Sloan Foundation

<http://www.archive.org/details/sequelle1949clar>

# Sequelle

Clarion State Teachers College

M. Shiring

—

Editor in Chief

L. Woodrow

—

Assistant Editor

A. Larson

—

Business Manager

1949



LD  
8 1917  
.3  
17















# DEDICATION

TO STANLEY W. LORE, OUTSTANDING MEMBER OF OUR FACULTY, AND ALUMNUS OF CLARION, NOT ONLY FOR HIS SINCERE INTEREST IN THE STUDENTS AS INDIVIDUALS IN HIS CLASSROOM, IN HIS GUIDANCE CLINIC, AND IN HIS FRIENDLY SOCIAL RELATIONSHIPS, BUT ALSO FOR HIS UNTIRING EFFORTS TO FURTHER THE DESIRED AIMS OF THE COLLEGE AS A WHOLE, WE, THE STAFF, DEDICATE THIS 1949 ISSUE OF THE SEQUELLE.



STANLEY W. LORE



PAUL G. CHANDLER

### *Message to the Seniors:*

*I want to congratulate the class of 1949 as the largest four year graduating class in the history of the college. You compare favorably in numbers with the large two year class of 160 which graduated in 1913.*

*The 1949 class is more mature and contains more married students than previous classes. Many of you have taken the accelerated program and have finished four years work in three years which is a tribute to your seriousness of purpose and your desire to get on with the affairs of the world as quickly as you can.*

*Let me at this point repeat a recommendation I have often made to our graduates. Go on to a university and take graduate work. I especially recommend this to the veterans who have further entitlement under the Veterans Administration. Graduate work pays bigger dividends in life than any other school work.*

*I have enjoyed the interest you have taken in school affairs and I know that you will keep up this interest in Clavion through life.*

PAUL G. CHANDLER

# FACULTY

836



MARGARET A. BOYD, M.A.  
*English*



FRANK M. CAMPBELL, M.A.  
*French, Spanish*



RENA M. CARLSON, M.A.  
*Librarian*



THOMAS A. CARNAHAN, M.A.  
*Mathematics*



BRUCE H. DINSMORE, M.A.  
*Science-Mathematics*

WALTER J. DOVERSPIKE, M.Ed.  
*Senior High Grades*



CHARLES R. FLACK, B.L.S., M.A.  
*Library Science*



WAYNE L. FULTON, B.S.  
*Senior High Grades*



MILDRED E. GAMBLE, M.A.  
*Intermediate Grades*

CLARK GILL, Ph.D.  
*Social Studies  
Education*



RUTH GRAFF, M.A.  
*Primary Grades*

WALTER L. HART, M. of F.A.  
*Music*

DOROTHY C. HARTMAN, A.B.  
*Senior High Grades*

HARRISON A. HARTMAN, M.A.  
*English, Social Studies  
Geography*

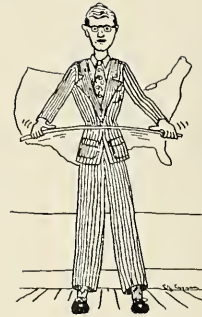


EFFIE B. HEPLER, B.S.  
*Primary Grades*

JAMES W. KASSEL, M.Litt.  
*Junior High Grades*

C. A. KUHNER, M.S.  
*Geography*

MILDRED LENK, M.A.  
*Senior High Grades*



GEORGE R. LEWIS, M.Litt.  
*Mathematics*

STANLEY W. LORE, M.Ed.  
*Psychology, Education*

MARY McNEILL, A.B.  
*Dietician*

HARRY S. MANSON, M.A.  
*Science*



LAWRENCE W. MARKS, A.B.  
*Senior High Grades*

MARIE MARWICK, M.A.  
*Speech-English*

JAMES D. MOORE, M.Ed.  
*Dean of Instruction*

ROBERT MOORE, M.A.  
*Physical Education*

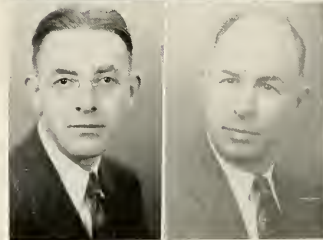
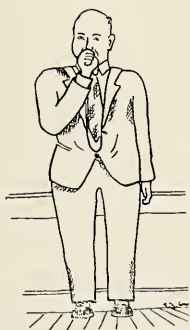


BERTHA V. NAIR, M.A.  
*English-Latin*

GALEN I. OBER, M.Ed.  
*Science*

GEORGE F. OBER, M.Ed.  
*Science*

FANNIE C. OWENS, R.N.  
*Nurse*



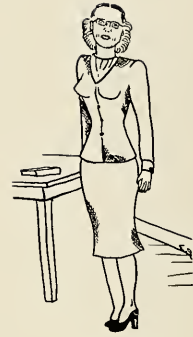
DONALD D. PEIRCE, Ph.D.  
*Science*

DONALD R. PREDMORE, Ph.D.  
*Science*

HAZEL SANDFORD, M.A.  
*Art*



DEBBIE L. SHAW, M.A.  
*English*



PAUL L. SHANK, M.Ed.  
*Science*

HARRIET SKAGGS, M.A.  
*English*

RICHARD C. SKINNER, M.A.  
*Education-Director  
of Teacher Training*

SEWELL E. SLICK, Ph.D.  
*Social Studies  
Dean of Men*



ETHEL M. SPALLER, M.A.  
*Health  
Physical Education*

WILLARD M. STEVENS, Ed.D.  
*Senior High Grades*

MARTHA STEWART, Ed.M.  
*Librarian*



DANA STILL, M.A.  
*Junior High Grades*



GRACE M. STOKES, M.A.  
*Dean of Women  
Education*



EVELYN J. STROHECKER, M.A.  
*Kindergarten-Primary  
Education*



J. GLENN TALLANT, Ph.D.  
*Social Studies*

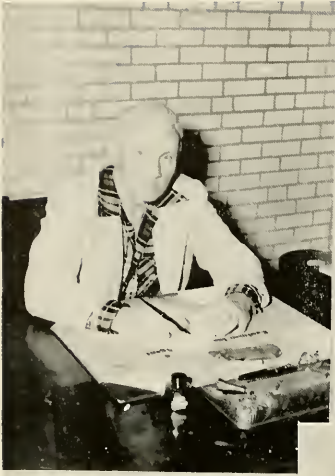
WALDO S. TIPPIN, M.A.  
*Physical Education*



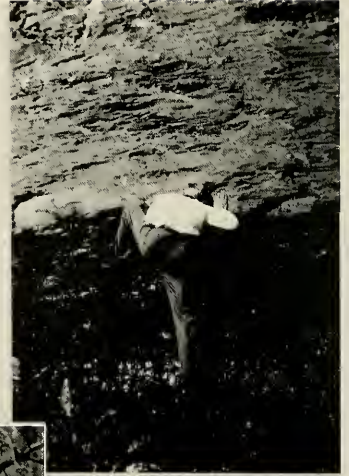
SAMUEL A. WILHELM, Litt.M.  
*Senior High Grades*



LOTTIE WINGARD  
*Registrar*



Great White Father



Klondike



Aggie



"Trent"



Hunty Dumpty M.I.Q

# Students





Temperance



Ted



Wheels



Nile



Resting



F.T. A.



Call "Joe"



Ipana



Smiles



Thinker



49'ers



Men of distinction



# CLASS OF "FORTY-NINE"

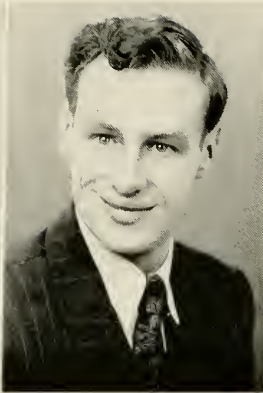
## SENIOR CLASS OFFICERS

B. CARSON  
E. CAMPBELL  
J. DELONG  
I. HENRY

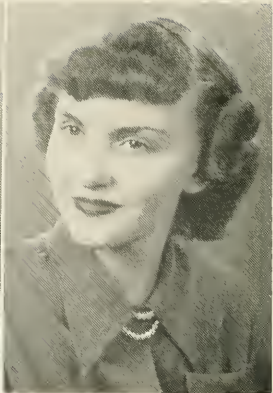




GEORGE ADAMSON  
Hyde, Pa.  
*Social Studies,  
Geography*



ERNEST AHARRAK  
Halton, Pa.  
*Science,  
Mathematics*



PATRICIA ALLISON  
Limestone, Pa.  
*Elementary*



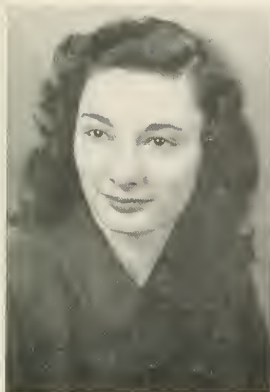
JOHN BANJAK  
Sharon, Pa.  
*Science,  
Mathematics*



TWILA BARTELLO  
Gibsonia, Pa.  
*Library Science,  
English,  
Social Studies*



JEANNE BEATTY  
Brookville, Pa.  
*Library Science,  
Geography*



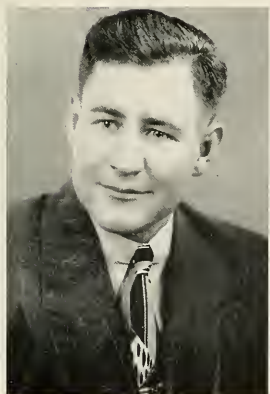
MARGARET ANN BEHRINGER  
Pleasantville, Pa.  
*Elementary*



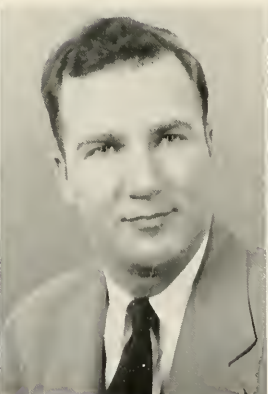
CHARLES BIDDLE  
North Elizabeth, Pa.  
*English,  
Social Studies*



HAROLD BLEWITT  
New Castle, Pa.  
*Social Studies,  
Geography*



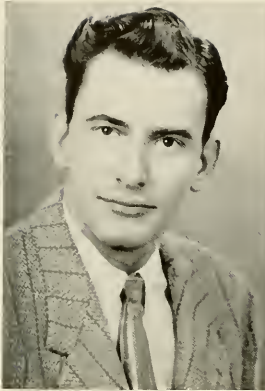
GALEN BLOOM  
Grampian, Pa.  
*Elementary*



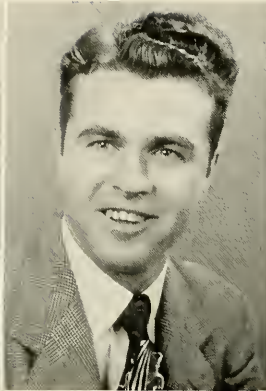
JOHN BRENNAN  
Punxsutawney, Pa.  
*Social Studies,  
Geography*



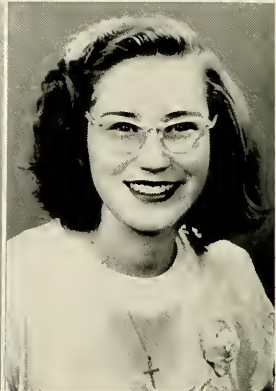
EARLA BROCK  
Kane, Pa.  
*Library Science,  
English,  
Social Studies*



JAMES BURNSSED  
Pascagoula, Miss.  
*Social Studies,  
English*



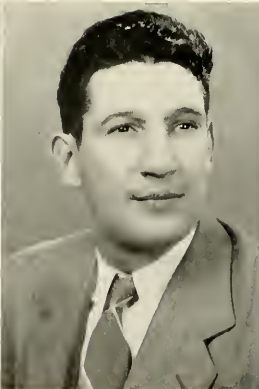
HOMER BUZARD  
Rimersburg, Pa.  
*Social Studies,  
Geography,  
English*



PHYLLIS CALVERT  
Chicora, Pa.  
*Social Studies,  
Geography,  
English*



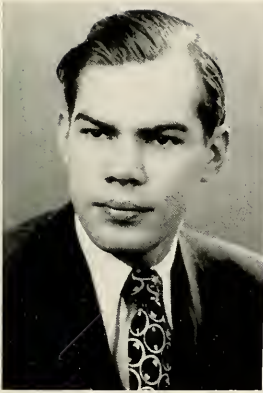
BONNIE CARSON  
Kane, Pa.  
*Library Science,  
English*



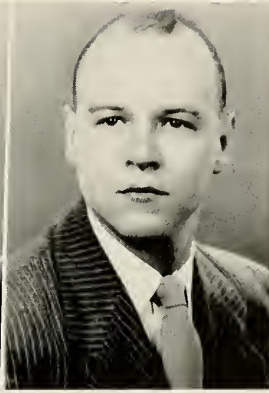
PAUL CARUSO  
Ford City, Pa.  
*Social Studies,  
Mathematics*



ELEANOR CLOVER  
Knox, Pa.  
*Library Science,  
English*



LUTHER COBB  
Cranberry, Pa.  
*Social Studies,  
English*



BOYD COLEMAN  
Franklin, Pa.  
*Social Studies,  
Geography*



NILE COON  
Clearfield, Pa.  
*Social Studies,  
Biology,  
English*



JOHN COREY  
Whitney, Pa.  
*Science,  
Social Studies*



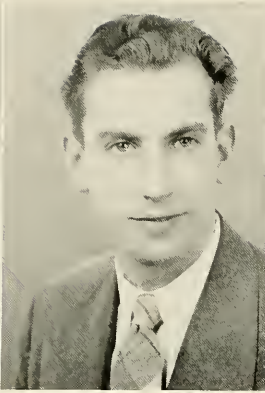
PAUL CROOKS  
New Kensington, Pa.  
*Science,  
Mathematics*



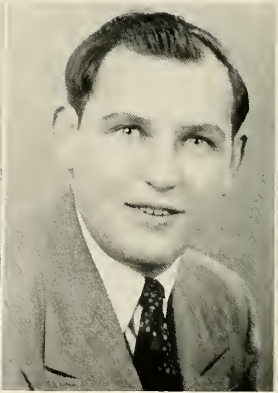
MARILYN CURRY  
Punxsutawney, Pa.  
*English,  
Geography*



WILLIAM CURRY  
Punxsutawney, Pa.  
*Social Studies,  
Geography*



TED CYPHERT  
Clarton, Pa.  
*Social Studies,  
Geography*



JAMES DAVIDSON  
Erie, Pa.  
*Social Studies,  
Geography*



HOWARD DAVIS  
Emlenton, Pa.  
*Science  
Spanish*



STEPHEN DELLAQUILLA  
Johnsonburg, Pa.  
*Mathematics  
Science*



JOHN DELONG  
North East, Pa.  
*Social Studies,  
Geography*



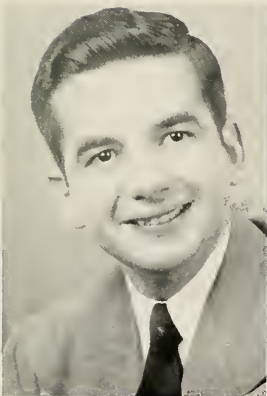
JAMES FAULKNER  
Tionesta, Pa.  
*Social Studies,  
English*



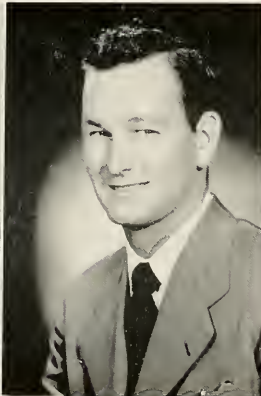
KATHERINE FERGUSON  
Apollo, Pa.  
*Library Science,  
English*



JESSIE FAY  
Corry, Pa.  
*Library Science,  
English*



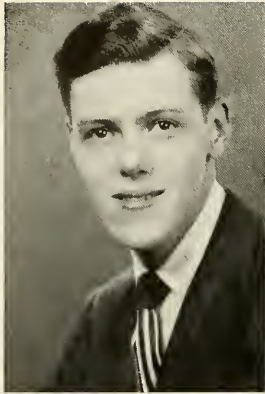
HOWARD FESENYER  
Oil City, Pa.  
*Social Studies,  
Spanish*



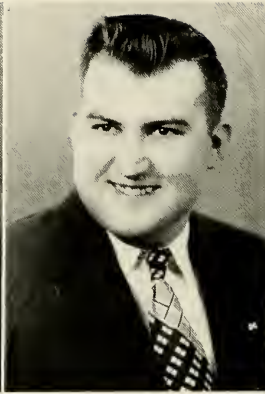
KELLY FLEMING  
Ridgway, Pa.  
*Social Studies,  
English*



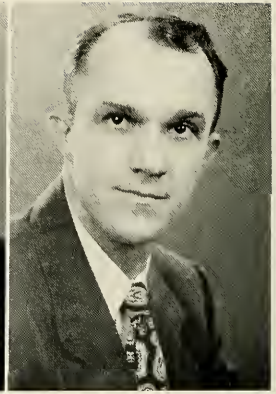
CEORA GARDNER  
Ridgway, Pa.  
*Geography,  
Social Studies  
English*



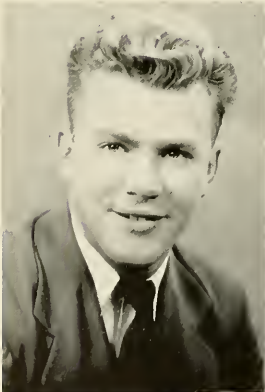
KENNETH GIBBONS  
Franklin, Pa.  
*French,  
Spanish,  
English*



PAUL GILBERT  
Brookville, Pa.  
*Social Science  
Geography*



WILLIAM GOLDSMITH  
Eldred, Pa.  
*Elementary*



GEORGE GORSKE  
Johnsonburg, Pa.  
*Science,  
Mathematics*

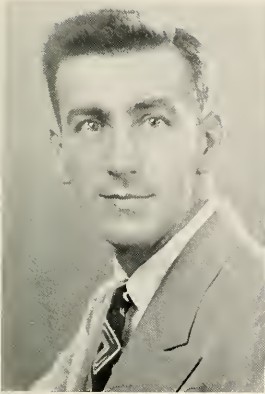


LEILA GRUBE  
Brookville, Pa.  
*Library Science,  
English*



AURELIA HANNOLD  
Clarion, Pa.  
*Elementary*





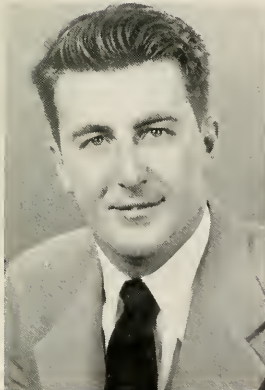
HARRY HARLACHER  
New Cumberland, Pa.  
*Social Studies,  
Geography,  
English*



MARY HASLET  
Tionesta, Pa.  
*English,  
Social Studies*



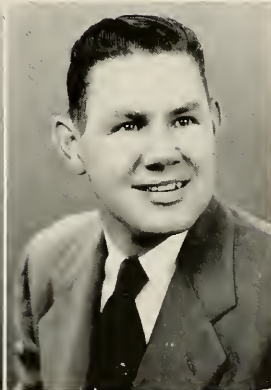
FRANCES HEETER  
Clarion, Pa.  
*Social Studies,  
English*



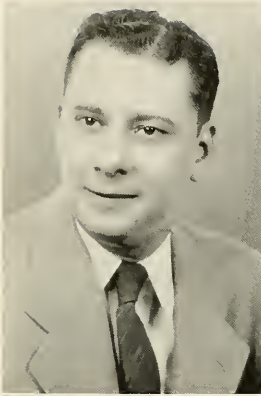
IRVIN HENRY  
Johnsonburg, Pa.  
*Social Studies,  
Science*



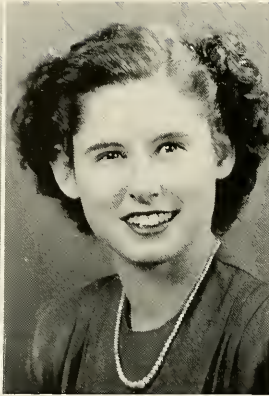
CRAIG HIMES  
Evans City, Pa.  
*Geography,  
Biology*



FRED HIPPCHEN  
Punxsutawney, Pa.  
*Social Studies,  
Geography,  
English*



EDWIN HOLZWARTH  
Bradford, Pa.  
*Elementary*



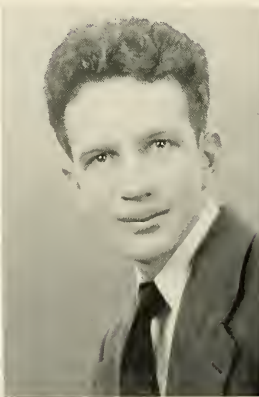
MARY LOU JOHNSTON  
Parkers Landing, Pa.  
*Library Science,  
English*



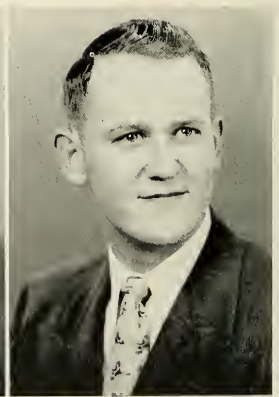
RUTH KEARNEY  
Vandergrilt, Pa.  
*Library Science,  
English*



PAUL KIEL  
Hawthorne, Pa.  
*Social Studies,  
Geography,  
English*



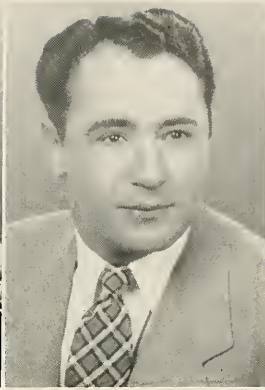
CHARLES KINKEAD  
Greensburg, Pa.  
*Biology,  
English*



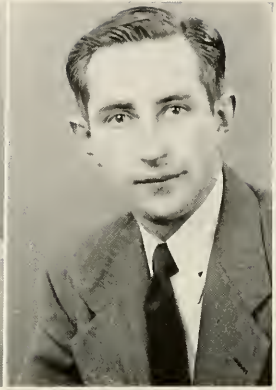
DONALD KNAPP  
Clarion, Pa.  
*Geography,  
Social Studies*



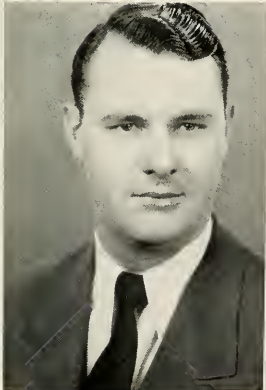
KADE KOS  
West Brownsville, Pa.  
*Library Science,  
English,  
Social Studies*



FRED KOVALYAK  
Reynoldsville, Pa.  
*Social Studies,  
Geography*



RICHARD KREPP  
Franklin, Pa.  
*Mathematics,  
Science*



GEORGE KUHN  
Tarentum, Pa.  
*Geography,  
Social Studies*



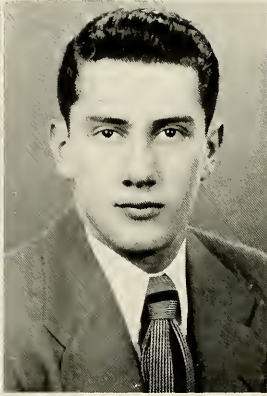
JOSEPH KUHN  
Hawthorne, Pa.  
*Social Studies,  
Geography*



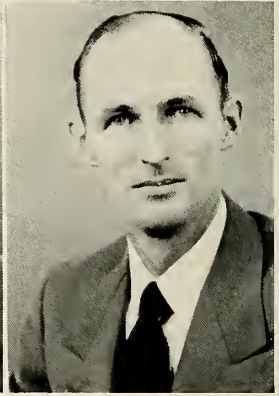
WILLIAM LAFRANCHI  
Clarion, Pa.  
*Library Science,  
Social Studies,  
English*



HAROLD LARIMER  
Brookville, Pa.  
*Social Studies,  
Geography,  
English*



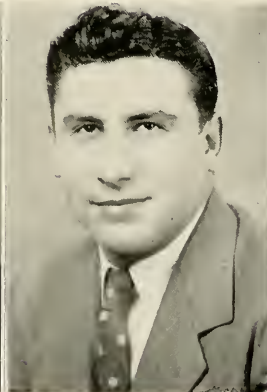
RALPH LARIMER  
Brookville, Pa.  
*Social Studies,  
Geography*



ARVID LARSON  
Cairnbrook, Pa.  
*Social Studies,  
Science*



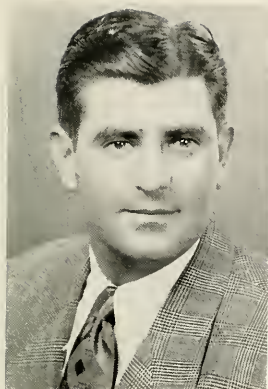
BARBARA LOBAUGH  
Clarion, Pa.  
*English,  
Social Studies*



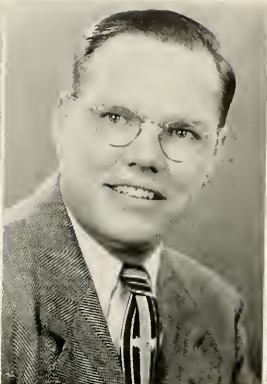
GUIDO MALACARNE  
Brookville, Pa.  
*Social Studies,  
Geography*



WILLIAM MARTIN  
McKeesport, Pa.  
*Geography,  
Mathematics*



PHILIP MAROTTI  
New Castle, Pa.  
*Social Studies,  
Geography,  
English*



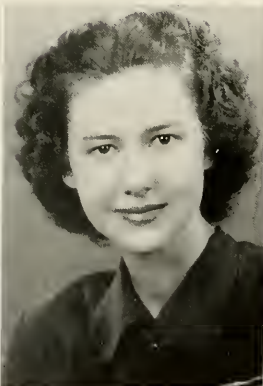
LYLE MCCANNA  
Clarion, Pa.  
*Geography,  
Biology*



ROBERT MCCRAE  
Pittsburgh, Pa.  
*Social Studies,  
Geography,  
English*



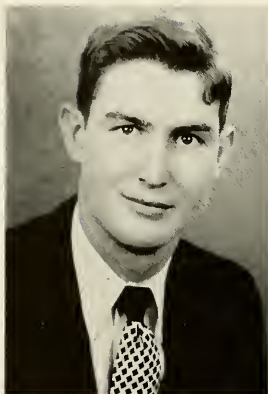
SARA MCGAUGHEY  
Brookville, Pa.  
*Elementary*



EVALYN MEABON  
Pleasantville, Pa.  
*Elementary*



JOHN MIDDLER  
Johnstown, Pa.  
*Social Studies,  
English*



CHESTER MINICH  
Fairmount City, Pa.  
*Science,  
Mathematics*



BETTY MORGAN  
Kittanning, Pa.  
*Social Studies,  
English*



VIVIAN MORGAN  
Oil City, Pa.  
*Elementary*



ROBERT MORRISON  
Brookville, Pa.  
*Mathematics,  
Science*



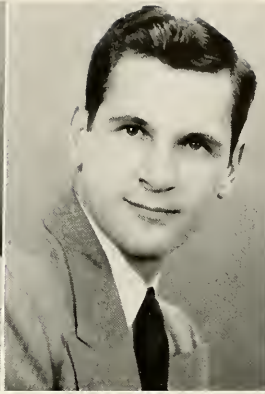
HELEN MAE NEVEL  
Brockway, Pa.  
*Elementary*



LEROY OLSON  
Kane, Pa.  
*Social Studies,  
Geography,  
English*



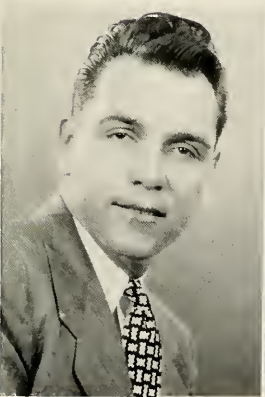
MARY K. O'NEILL  
Avonmore, Pa.  
*Library Science,  
English*



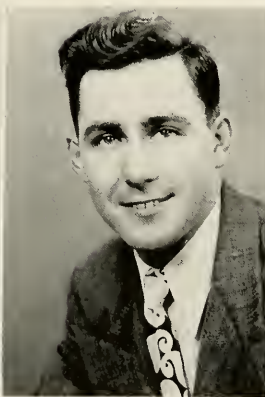
MICHAEL OSIPOV  
Portage, Pa.  
*Social Studies,  
Science,  
Geography,  
English*



WALTER PRUSICK  
Ambridge, Pa.  
*Science,  
Mathematics*



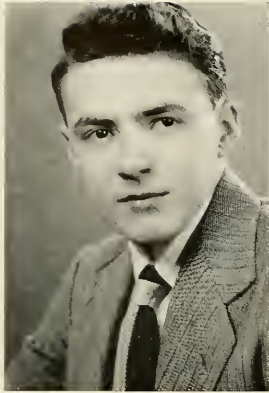
CHARLES RAMSDEN  
McKeesport, Pa.  
*Social Studies,  
English*



LONZIE RINKER  
Aliquippa, Pa.  
*Social Studies,  
Biology*



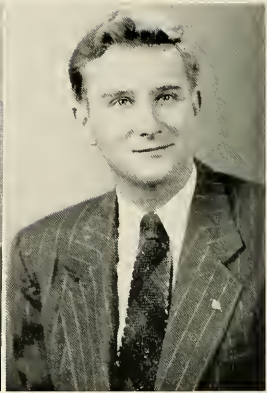
LYNN RHODES  
Brookville, Pa.  
*Science,  
Mathematics*



RICHARD RHODES  
New Kensington, Pa.  
*Social Studies,  
English*



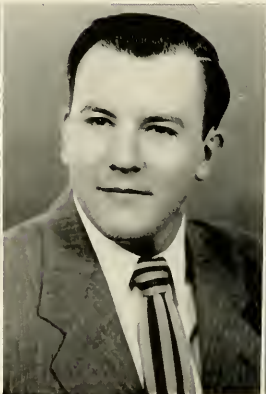
LOMA ROADMAN  
Merrittstown, Pa.  
*Library Science,  
English,  
Social Studies*



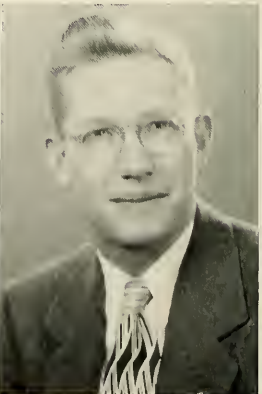
JOSEPH SEKELSKY  
Johnsonburg, Pa.  
*Social Studies,  
English*



ELEANOR SHAFFER  
Mayport, Pa.  
*Elementary*

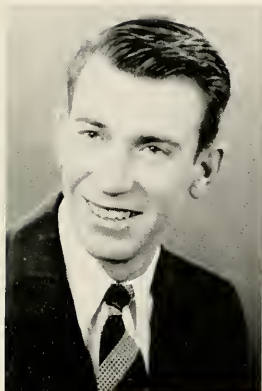


HENRY SHEPARD  
Templeton, Pa.  
*English,  
Geography,  
Social Studies*



MARK SHIRING  
New Kensington, Pa.  
*Social Studies,  
Geography  
English*





JAMES SHOFESTALL  
Corsica, Pa.  
*Science,  
Chemistry*



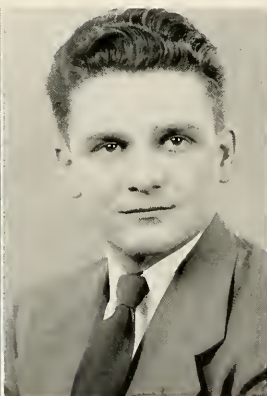
DONALD SHOUP  
Clarion, Pa.  
*Science,  
Mathematics*



EMMA LOU SKINNER  
New Bethlehem, Pa.  
*Library Science,  
English*



DOROTHY SLIMAK  
Brookville, Pa.  
*Social Studies,  
Geography,  
English*



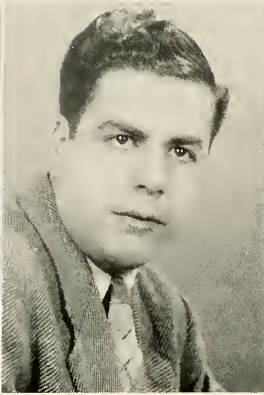
MARIO SURRA  
Brandy Camp, Pa.  
*Mathematics,  
Science*



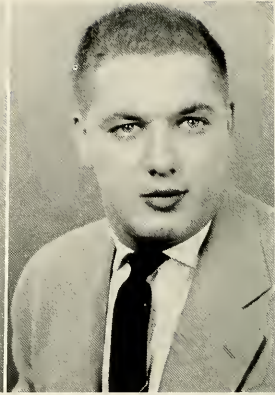
JOSEPH TALIARICO  
Sharon, Pa.  
*Social Studies,  
Geography*



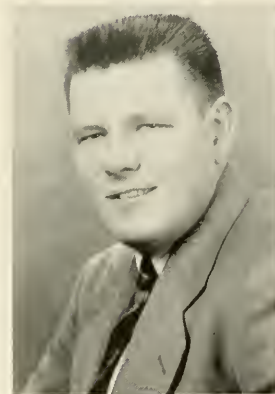
DAVID TREHARNE  
New Castle, Pa.  
*English,  
Spanish*



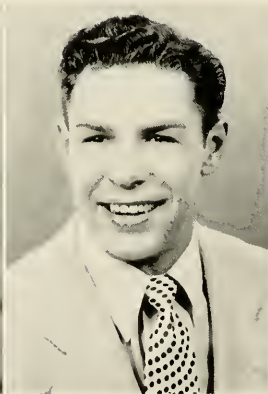
GUIDO VOLPE  
Brockway, Pa.  
*Social Studies,  
Geography*



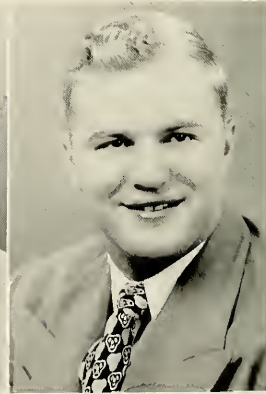
HAROLD WHISNER  
Clarion, Pa.  
*Social Studies,  
Geography*



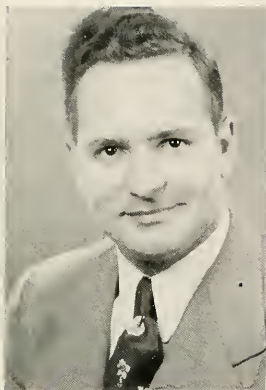
JAMES WIBERG  
Altoona, Pa.  
*Social Studies,  
Geography*



HALLEY WILLISON  
Sewickley, Pa.  
*Mathematics,  
Geography*

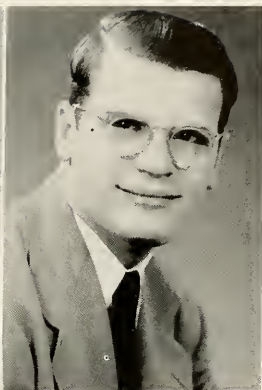


RICHARD WOLF  
Erie, Pa.  
*Science,  
Social Studies*



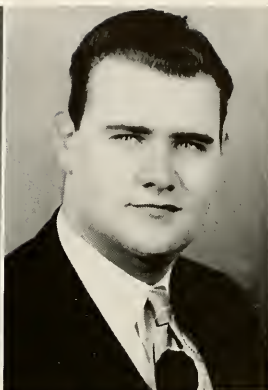
LAVERN WOODROW  
Tarentum, Pa.

*Biology,  
Social Studies,  
English*



MICHAEL ZAVACKY  
McKees Rocks, Pa.

*Social Studies,  
Biology,  
English*



WILLIAM ZEITTLER  
East Brady, Pa.

*Biology,  
General Science*

## *The End*

*It seems to me that all the poems  
Covering college life are writ—  
The effort I'm inclined to make  
Improves them not one whit.  
I know you all are praying hard  
That this will be a "shortie;"  
I pledge my faith to all of you  
The lines will not pass forty.  
I could review our life and times  
Spent happily roving idly—  
It seems to me we've heard before—  
'Tis a subject wrote on widely.  
So let's just bid a fond adieu  
To all that's made life merry—  
Let's raise our steins and wave farewell  
To what's left of Tom and Jerry.  
No tears or frowns, I beg of you  
Let's make this day remembered  
You must admit that it's been real—  
So leave the fires embered.  
The last makes half of what I said  
Would be the end; so now  
I'll close with just one parting thought—  
So long, Chumps, and "Here's How!"*

—FRANKIE ROSENSON



Uuh !!



Bish



Buddies



At ease



Roommates



Isaac



Interest



The Travelers



Evalyn



Our Baby



Watch the Birdie

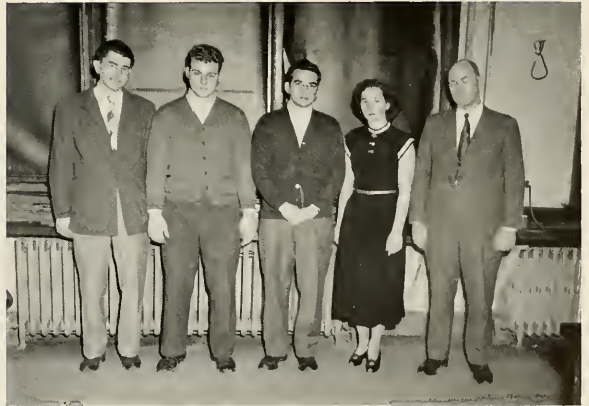


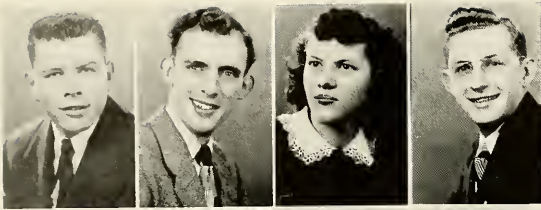
Our Viv-

# CLASS OF " FIFTY "

## JUNIOR CLASS OFFICERS

C. COOK  
L. MATCHULET  
H. FESEMYER  
M. NYPAVER  
D. PREDMORE

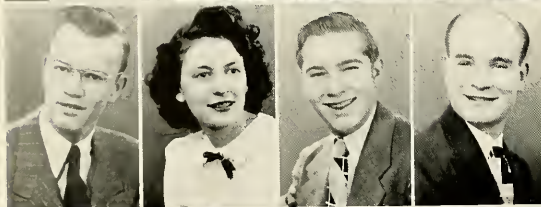




A. ASKEY  
 F. BADGER  
 V. BAKER  
 E. BLOCKOWICZ



N. BOYER  
 E. BRUGH  
 E. BRINKLEY  
 T. BRINKLEY



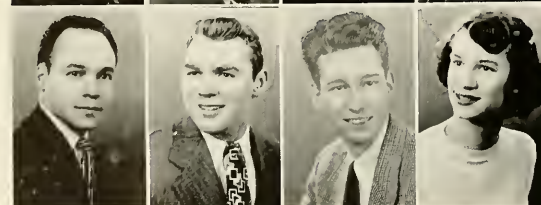
H. CLARK  
 M. CLARK  
 J. COCHRAN  
 L. CONFER



C. COOK  
 G. COPE  
 W. CRAIG  
 E. CRAVEN



C. EMERY  
 S. DELPARO  
 G. DERK  
 D. EURY



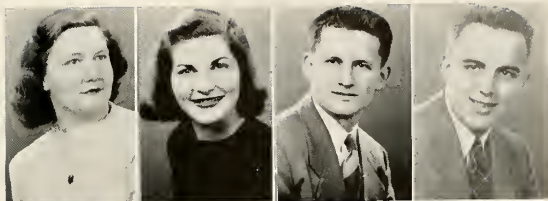
A. FEDRICK  
 R. FLATH  
 T. FOSNIGHT  
 H. FURLONG

L. GARVIN

L. GEORGE

Z. GEORGE

W. GEITYS



S. GIBSON

M. GLÖVER

M. GREEN

E. GROSSMAN



F. GRUBBS

G. HARCHICK

J. HARDY

R. HEETER



S. HEFFNER

D. HOOVLER

G. IADONATO

T. JACKSON

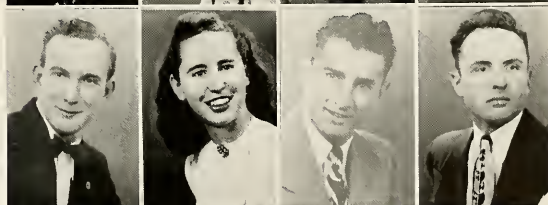


S. JOHNS

A. KELLAHER

E. KELLEY

J. KERR

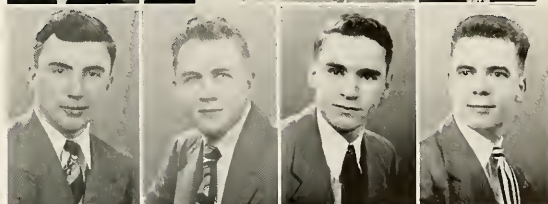


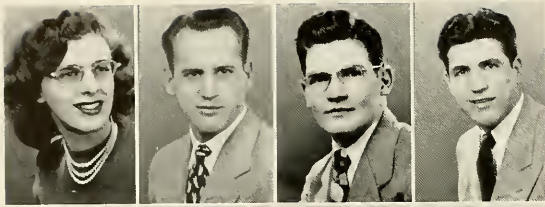
R. KERR

D. KING

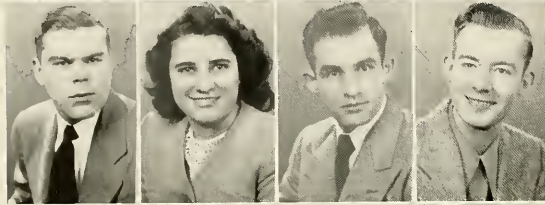
T. KNEPP

W. KNIGHT

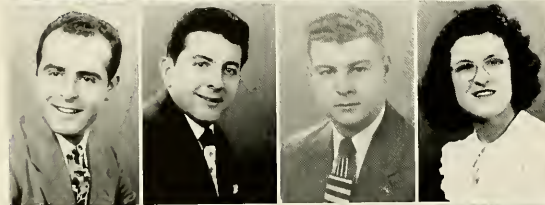




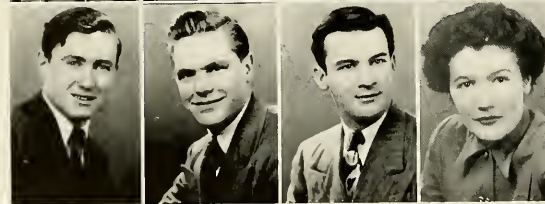
M. KOHN  
 T. KOMISAK  
 J. LEE  
 F. LIGNELLI



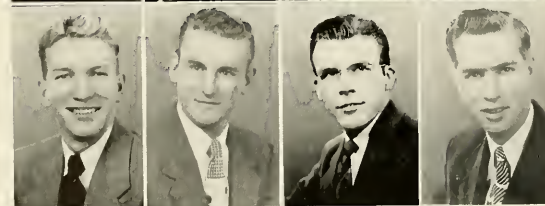
R. LINDHOLM  
 M. LONGIOTTI  
 N. LUVISON  
 B. MACBETH



L. MARINACCIO  
 T. MASON  
 L. MATCHULET  
 C. MATEER



R. McCLUNE  
 J. MCCREADY  
 F. McELROY  
 B. McMICHAEL



K. McMILLEN  
 A. MILLER  
 D. MILLER  
 R. MOORE



R. MOORE  
 W. MURRAY  
 R. MUSI  
 C. NELSON



T. NELSON

J. NICHOLS

R. NICOLAS

S. NYPAVER



F. PECORA

R. PLATT

J. PROKOP

E. PRUSICK



H. PUGAR

M. REED

J. REIGEL

J. ROGERS

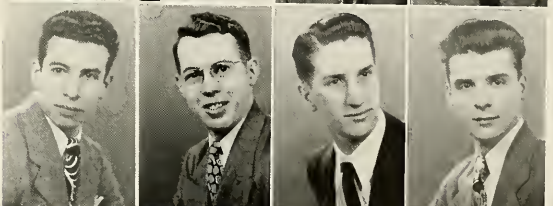


E. RUSCIOLELLI

E. SCHEAFNOCKER

J. SCHWAB

C. SCHWARZWALDER



F. SARROW

B. SHERWOOD

J. SIEFER

N. SINGER



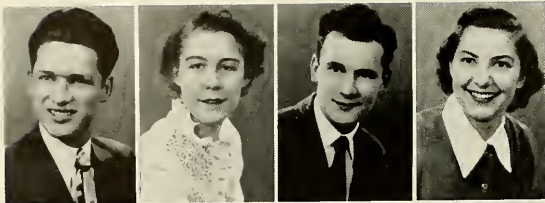
E. SKACAN

P. SLAUGENHAUPT

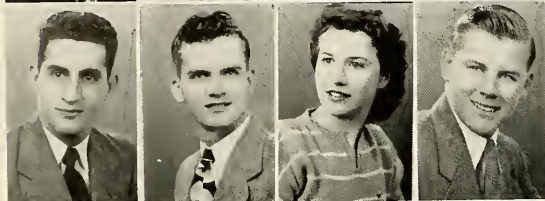
D. SNYDER

M. SPLEEN





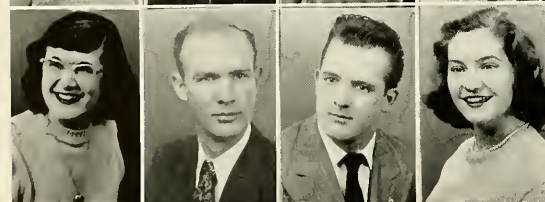
R. STEPHENS  
 C. STEWART  
 P. TOLUSIC  
 H. TOTH



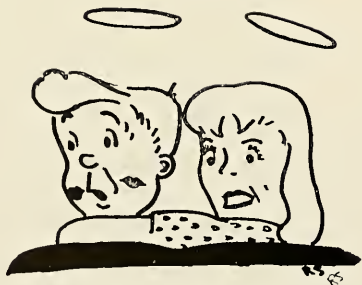
F. VASSALOTTI  
 F. WALTER  
 S. WATSON  
 P. WEIBEL



G. WHISNER  
 R. WHITFORD  
 C. WILCOX  
 R. WILSON



B. WOOD  
 G. WOOD  
 R. YAKIM  
 N. ZIMMERMAN



# CLASS OF "FIFTY-ONE"

## SOPHOMORE CLASS OFFICERS

H. HARTMAN  
P. CARR  
L. BROWN  
P. TAYLOR  
J. JANNUZI





*First Row*—G. Marshall, E. Rock, P. McKee, E. Walley, J. McCue, J. Kapp.  
*Second Row*—R. Mays, R. Green, B. Thompson, H. Kincaid, S. McKenzie, J. Fink.  
*Third Row*—M. Hecci, R. Hoover, M. George, M. Ochs, S. Murphy, A. Salemme, J. Dolby.  
*Fourth Row*—C. Harris, H. Lehman, J. Jannuzi, M. Shetter, C. Papalle, R. Varrotto.  
*Fifth Row*—P. Taylor, J. Bove.

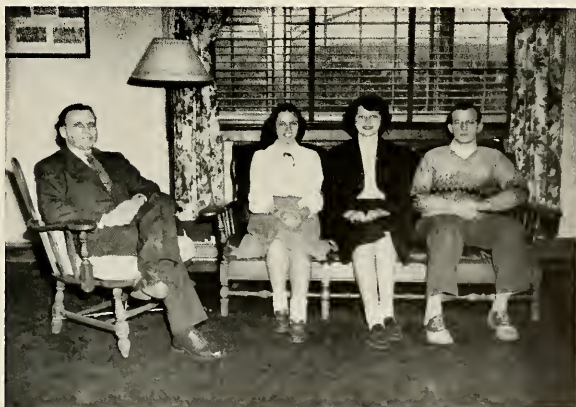


*First Row*—J. Stalder, K. Kennedy, F. Ames, S. Johnson, J. Willson, H. Bell, M. Caimi, F. Ohl, C. Dimino.  
*Second Row*—P. Lane, M. Bailey, J. Weigel, P. Stewart, B. Faust, B. Hay, N. Korb, F. Creighton, P. Carr.  
*Third Row*—D. Korb, H. Cochran, G. Trembach, M. Lopinto, G. Wolfe, J. Shaw, E. Turchick.  
*Fourth Row*—J. Palaggio, F. Vescio, E. Chalfant, T. Barratt, W. Mader, D. Vagelbacker, A. Plopa.  
*Fifth Row*—M. Petruska, E. Dolecki, R. Miller, J. Eakin, W. Garber, S. Baker, M. Kohan, H. Jenkins.

# CLASS OF "FIFTY-TWO"

## FRESHMAN CLASS OFFICERS

C. GILL  
D. NELSON  
A. BRADY  
H. TRUMAN





*First Row*—R. Judd, M. McCleary, R. Dalzell, P. Kulbaba, T. Higgons, J. Olds.  
*Second Row*—B. Gault, S. Stanley, J. Chervenak, R. Nelson, J. Carter, D. Thorburn, J. Williams.  
*Third Row*—T. Clayton, P. Felton, R. Long, H. Calhoun, J. Kudarski, R. Sleeman, J. Clayton.  
*Fourth Row*—J. Felton, E. Rhodes, R. Spragg, M. VanWinkle, D. Green, J. Bray, J. King.  
*Fifth Row*—R. Mohncey, R. Perry, J. Russ, R. McKinney, D. Goldthwaite, W. Stotler, R. Kline, N. Kovalchick, R. Burns.



*First Row*—J. Lawrence, R. Zelezmock, R. Lansberry, D. Schwartz, G. Leish, S. Tippin, D. McClune, R. Solkovy.  
*Second Row*—D. Hay, D. Leathers, J. Mock, M. Umstead, G. Hiteshue, J. Patton, J. Cowan.  
*Third Row*—F. Pala, A. Weimer, H. Mchallick, W. Schierberl, E. Vail, V. Luther, J. Pearsall.  
*Fourth Row*—G. Stennett, L. Ianni, P. Jacobs, J. Engler, P. Wuenstel, B. Donaldson, D. Harp, R. Buckeye, R. May.  
*Fifth Row*—P. Scierka, J. Lamoree, D. Florin, E. Boschini, W. Gjebre, D. Trembach.



*First Row*—J. Leopardo, L. Weigald, P. Schultz, G. Johnson, C. Adams, J. Hale, W. Watson, S. Knight.  
*Second Row*—G. McMaster, D. McClune, G. Merryman, R. Wright, E. Himes, M. Ritts, D. Mortland, E. Kiler.  
*Third Row*—D. Hibbard, H. Fox, L. Rapp, L. Kindelberger, M. Dietz, D. Rice, P. Jacobson, E. Anderson, C. Haupt, J. Clingin.  
*Fourth Row*—P. Mock, M. Kiser, J. Duich, D. Burns, R. Smith, J. Johnston, D. Smith, R. Vaughan, J. Seidler, W. Mahle.  
*Fifth Row*—J. Campbell, F. Curry, G. Kennemuth, E. Beers, C. Servey, M. Bennett, C. Best, M. Moore, B. Taylor.



*First Row*—P. Shirey, A. Brady, D. Daugherty, A. Marts, P. Denning, P. Skinner, V. Schultz, E. Dickey.  
*Second Row*—M. Knowlton, M. Alves, M. Markle, M. Eberle, J. Hanna, E. Beers, M. Williams, G. Wagner, D. Routhie.  
*Third Row*—G. Oakes, K. Webb, H. Fisher, G. Middleton, J. Campbell, G. Younker, R. Catt, C. DeLong, J. Martone.  
*Fourth Row*—D. Freudenberger, J. Russell, J. Huet, L. Ande, C. Baker, J. Sterrett, K. Polasko, G. Simitaske.  
*Fifth Row*—N. McElhattan, M. Dible, E. Ewaski, E. McNulty, B. Johnston, B. Warncke, H. Meabon.



*First Row*—D. Curfman, K. Mullen, D. Mills, H. Haas, J. Cotton, J. Duespohl, R. Ifft.  
*Second Row*—R. Osterholm, R. Brandon, A. McLaughlin, W. Englert, R. Koerber, J. Lavosky, D. Powers, D. Best.  
*Third Row*—H. McKenzie, P. Clyde, D. Cline, M. Schierberl, B. Hess, B. Harvey, R. Brittain, B. Goode.  
*Fourth Row*—D. Carbaugh, W. Neff, D. Heinen, L. Tenerove, D. Whisner, D. Dornburg, R. Herb.  
*Fifth Row*—R. Cooke, E. Martindale, W. Downs, A. Latz, G. Hogue, R. Russell, M. Doverspik, M. Chapin.



*First Row*—W. Kirk, A. Millin, A. Zihmer, J. Kanaan, D. Baker, D. Jones, G. Johnson.  
*Second Row*—A. Picr, A. Keniston, C. Slater, M. Henry, D. Stowe, R. Cooke, E. Weaver, G. Oakley.  
*Third Row*—D. Ballas, S. Russo, E. Raucke, J. Ondrejko, B. Rybiski, E. Huggler, M. Shafer.  
*Fourth Row*—M. Caruso, J. Busch, R. Predebon, H. Smith, D. Deithorn, J. Ritter, J. Kudroski.  
*Fifth Row*—R. Allison, C. Gaut, M. Geronimo, J. Matthews, E. Ewaski, J. Gifford, D. Cribbs, T. Kerr.





Tunin'



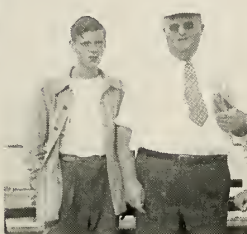
Pat



Resignation



Studious



Hemi ~ sphere



Buddies



On the fence



Stacked



All for one



Lovely Day



Between Classes



"Chandi"



Just Kids



Nice!



Working?



Good Subjects



Ton? Dick? Harry?



Muscles



Paul



Steppin'



Push



# ACTIVITIES

# FUTURE TEACHERS OF AMERICA



*First Row—H. Nevel, R. Koerber, W. Johnson, D. Curfman, M. Johnston.  
Second Row—S. McGaughey, J. Fay, C. Mateer, J. Hammold, T. Bartello, E. Strohecker.  
Third Row—W. Lafranchi, J. Duespohl, G. Hogue, R. Stephens, J. Kerr.*

Just a step away from the National Education Association and the Pennsylvania State Education Association, the Future Teachers of America, has as its purpose the enlightenment of students who intend to enter the field of teaching.

At monthly meetings, problems pertaining to the Future Teachers are discussed.

## OFFICERS

*President . . . . . WILLIAM LAFRANCHI*  
*Secretary-Treasurer . . . . . TWILA BARTELLO*  
*Librarian . . . . . PATRICIA ALLISON*  
*Sponsor . . . . . EVALYN STROHECKER*



# ASSOCIATION OF CHILDHOOD EDUCATION



Row one seated—E. Walley, H. Nevel, W. Johnson, V. Baker, E. Shaffer.  
 Row two seated—B. Sherwood, J. McCue, S. McGaughey, J. Hannold, G. Whisner, M. Clark.  
 Standing—V. Morgan, M. Glover, E. Meabon, P. Behringer, P. Lane, F. Wilson, D. Williams, E. Strohecker.

The membership of the Association of Childhood Education is limited to students who are interested in elementary education. New members are accepted each October at which time they are entertained at an informal party.

At our monthly meetings we discuss problems pertaining to childhood education, and conduct workshops in music, art, literature and recreational games.

Each year in December the group entertains the kindergarten and first grade children with a Christmas party.



## OFFICERS

<i>President</i> . . . . .	VIOLET BAKER
<i>Vice-President</i> . . . . .	ELEANOR SHAFER
<i>Secretary</i> . . . . .	DONNA EURY
<i>Treasurer</i> . . . . .	MARTHA LOU GLOVER
<i>Sponsor</i> . . . . .	EVALYN STROHECKER

# ART CLUB



*First Row*—D. Delozier, M. Johnson, J. Lemp, B. Mercer, R. Musi, C. Dimino.  
*Second Row*—F. Ohl, R. Deitz, F. Palaggo, J. Bove, H. Bell, P. Felton, D. Trembach, H. Sandford.  
*Third Row*—W. Shaffer, T. Nelson, A. Klingensmith, J. Hackett, R. Hoover, W. Gjebre, R. Green.

The purpose of the organization is to further the interest for art of all types with consideration to education.

In conjunction with the purpose mentioned above, the following activities were carried out: a trip to the Carnegie Art Show at Pittsburgh, and of interest to the whole school body was the club's engagement of Ernest Thurn, from the Thurn School of Modern Art, to give a demonstration in chapel.

## OFFICERS

### *President*

JOHN BOVE

### *Vice-President*

FRANK PALLAGO

### *Secretary*

BETTY MERCER

### *Treasurer*

ALBERT KLINGENSMITH

### *Sponsor*

MISS SANDFORD



# CAMERA CLUB



D. Mortland, M. Riis, L. Rapp, M. Campbell, K. Webb, W. Lafranchi, D. Mills, W. Johnson, E. Vail, H. Krouse, M. Hecci, M. Eberle, C. Mateer, H. Fox, M. Clark, D. Pierce.

On the campus we find a very scientific group, who have photography as their main concern.

Activities are centered around the theme of photography. A few of them are: use of the dark room, photo contests, and talks of different types of cameras. On the lighter side the club gathered together and had a good time and finished it up just right with refreshments.



## OFFICERS

*President*  
W. JOHNSON

*Vice-President*  
B. VAIL

*Secretary*  
M. CLARK

*Treasurer*  
D. MORTLAND

*Sponsor*  
D. PIERCE

# COLLEGE PLAYERS



*Row one seated*—S. McKenzie, F. Creighton, C. Haupt, B. Oldt, J. McCue.

*Row two seated*—L. Woodrow, M. Knowlton, C. Morgan, P. King, P. Stewart, J. Chambers, M. Van Winkle, A. Marshall, D. Daugherty, L. Maxwell, M. Smith, N. Fegley.

*Standing*—D. Pfuntner, R. Mays, A. Weimer, S. Tippin, A. Martinez, J. Mellon, J. Messler, J. Banjak, D. Hay, G. Marshall, A. Brady, M. McConnell, C. Ramsden, P. Slaughaupt, J. Jannizi.

The College Players is one of the largest and most active clubs on our campus.

Each semester this club sponsors the production of one full length play and several one-act plays. The first semester presentation of *Stage Door*, under the direction of Miss Marwick, gave thirty-two of our young thespians an opportunity to appear behind the footlights.

Christmas banquets, formal and informal parties, and presentation of one-act plays are features of our regular monthly meetings.

## OFFICERS

*President*

FLO CREIGHTON

*Vice-President*

JOHN BANJAK

*Secretary*

L. MAXWELL

*Treasurer*

BOB MAYS

*Sponsor*

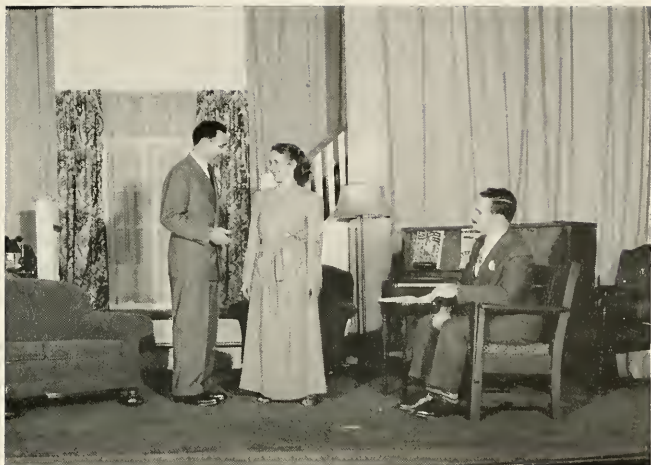
MARIE HARWICK



*Seated*—M. Johnston, B. Hess, P. Skinner, P. Schultz, M. Knowlton.  
*Standing*—M. Marwick, J. Watters, R. Wright, W. Mahoney, J. Beatty, M. Boyd.



COLLEGE  
PLAYERS  
PRESENT



# "STAGE DOOR"



BY  
EDNA FERBER  
AND  
GEORGE KAUFMAN

# GEOGRAPHY CLUB



*First Row*—M. Eberle, D. Burns, E. Walley, K. Kennedy, J. Weigel, J. Stalder.  
*Second Row*—A. Kelleher, D. Cribbs, H. Fisher, J. Gifford, E. Dickey, M. Long-  
iotti, N. Korb.  
*Third Row*—D. Ballas, E. Brinkley, A. Salemme, J. Matthews, E. Chalfant, K.  
Emerick, J. Taylor, R. Rhodes.

The Geography Club is a campus organization of students interested in further recognizing and studying natural geographic formations and the products resulting in man's use of these natural resources. By developing a deeper appreciation of our basic activities, we are more able to utilize materials for the betterment of our future society.

Highlights of this year's work include the group's trip to Pittsburgh, the showing of slides by one of the members, taken on his summer tour of the West, and perhaps the greatest, the quadrupled increase in the club's membership over that of previous years.

## OFFICERS

### *President*

THOMAS NELSON

### *Vice-President*

JEANNE BEATTY

### *Secretary-Treasurer*

AMY ROSE KELLEHER

### *Sponsor*

MR. KUHNER



*First Row*—D. Korb, J. Starrett, E. Kiler, J. Kanaan, P. Denning, C. Baker.  
*Second Row*—B. McMichael, S. Murphy, R. Varratto, T. Nelson, M. Ny-  
paver, M. Robertson, E. Rock.  
*Third Row*—C. Papale, H. Ande, M. Henry, W. Lafranchi, R. Stephen, C.  
Kuhner.

# HOSTESS CLUB



*First Row*—P. Skinner, G. Oakes, S. Knight, R. Vaughan, D. Jones, G. Middleton, J. Price.  
*Second Row*—E. Anderson, D. Stowe, L. Kindelberger, P. Mock, D. Baker, J. Russell, J. Hanna, D. Nelson.

The Hostess Club is capably sponsored by Miss Stoke. Each year the club provides the decoration in the lounge of Becht Hall for the Christmas celebration.

The purpose of the club is to give the girls the fundamental principles for entertaining and opportunities to plan menus and serve them.



## OFFICERS

<i>President</i> . . . . .	DORIS NELSON
<i>Secretary</i> . . . . .	PATRICIA MOCK
<i>Treasurer</i> . . . . .	PATRICIA SKINNER
<i>Sponsor</i> . . . . .	GRACE STOKES

# INTERNATIONAL RELATIONS CLUB



*Seated*—J. Corey, S. Slick, P. McKee, L. Maxwell, B. Wood, N. Coon.  
*Standing*—T. Barrett, F. Sharrow, J. Fink, W. Schiebrel, L. Tenerove, E. McCall, J. Chervenak, T. Kerr, J. DeLong, M. Shiring.

It is the policy of the International Relations Club, one of the largest clubs of the campus, to deal with current international problems. It has conducted some very enlightening discussions in the past semester, including presidential candidates in the election of 1948, the Marshall Plan, the Taft-Hartley Law, and Aid to China.

Dr. Gill, one of the new members of our faculty, joins Dr. Slick and Dr. Tallant in the advisory capacity.

As a result of the successful United Nations trip in the spring of 1948, the club unanimously voted to make a second trip in the spring of this year.

## OFFICERS

### *President*

JOHN DELONG

### *Vice-President*

T. CYPHERT

### *Secretary-Treasurer*

P. CALVERT

### *Sponsor*

S. SLICK



*Seated*—C. Gill, M. Zavacky, W. Martin, M. VanWinkle, J. Mellon, P. Calvert, M. Kiser.  
*Standing*—L. Woodrow, I. Henry, A. Larson, T. Cyphert, J. Schwab, B. McMichael, M. Reed, D. Rice, B. Ferguson, R. McCrae.

# NEWMAN CLUB



*First Row*—B. Rybinski, M. Caimi, G. Harchick, M. Deitz, R. Musi, H. Toth, J. Lawrence.  
*Second Row*—E. Tenaglia, J. Bray, C. Slater, M. Geronimo, K. Webb, M. Lopin o, P. Kanbaba, J. Kerr.  
*Third Row*—L. Tencroce, E. Prusick, M. Petruska, E. Turchick, J. Chervenak, T. Kerr, E. Boschini.

The Newman Club is a national organization composed of Catholics attending non-Catholic institutions of higher learning. The purpose of the club is to deepen the spiritual and enrich the temporal lives of its religious, intellectual, and social activities.

Highlights of the semesters were a "get acquainted" dance on October 20 and a Christmas banquet on December 16. Members are looking forward to a formal dance early in the spring.

## OFFICERS

<i>President</i> . . . . .	NORGE LUVISON	<i>Secretary</i> . . . . .	BETTY FERGUSON
<i>Vice-President</i> . . . . .	STEVE DELPARO	<i>Treasurer</i> . . . . .	PAUL CAREY



*First Row*—P. Denning, H. Bell, D. Smith, M. Nypaver, S. Murphy, J. Price, A. Wilkie.  
*Second Row*—J. Ondrejko, S. Delperio, R. Kerr, J. Seidler, J. Stalker, C. Papale, A. Salemm, P. Jacobson.  
*Third Row*—P. Carey, M. Caruso, T. Palaggo, J. Busch, J. Palaggo, E. Rusciottelli, N. Luvison, J. Gronick.



*First Row*—G. Whisner, C. Adams, S. Johnson, J. Kapp, F. Creighton, M. McConnell, S. Gibson, J. Campbell, P. Lane, M. Holden, L. Garvin, P. Carr, D. Daugherty, E. Port.  
*Second Row*—S. Arner, R. McElhattan, D. Hibbard, D. Dornburg, F. Ames, M. Knowlton, P. Slaugenhaupt, A. Marshall, J. Wilson, N. Zimmerman, P. Shirey, A. Wilkie, P. Schultz.  
*Third Row*—R. Kerr, D. Diethorn, J. Irwin, M. Petruska, E. Helmintoller, W. Douds, G. Bloom, C. Krepps, M. Petruska, J. Kerr.  
*Fourth Row*—C. Himes, J. Lee, E. McNully, W. Stockwell, D. Knapp, M. Sheffer, C. DeLong, B. Macbeth.

## CHOIR === ENSEMBLE



*Seated*—R. McElhattan, B. Faust.  
*Standing*—P. Carr, K. Adams, S. Gibson, A. Marshall, M. McConnell, F. Creighton, R. Kearney.

# THE BAND



*Seated*—M. Eberle, B. Sherwood, J. Lindquist, P. Jacobson, M. Green, P. Schultz, D. Freudenberger, D. Goldthwaite, G. Yonker, D. Carbaugh, M. Sheffer, R. Hovis, D. McManigle, E. Brugh, P. Carr, J. Leopardo.

*Standing*—M. Alves, J. Barclay, J. Capelli, P. Lasitis, M. Dible, W. Hart, T. Kuhns, E. Helmintoller, C. Himes, D. Daugherty, H. Lehman, G. Cope, G. Bloom, J. Waters.



# OUTDOOR CLUB



*First Row*—C. Minich, K. Miller, J. Messler, L. Sebring, R. Larimer, J. Schwab, B. Macbeth.

*Second Row*—D. Predmore, M. Klepfer, F. Master, L. Rhodes, N. Zimmerman, J. Cochran, L. Matchulet.

*Third Row*—R. Moore, M. Sheffer, J. Lee, R. Kerr.

As in past years, the Outdoor Club has carried out its principles of good sportsmanship and love for the outdoors.

This year along with having their usual good times, they found time to sponsor a "Nature Trail" at Cooks Forest, an educational and very picturesque project.

A party for new members given earlier in the fall, was a huge success. At that time the members inspected the trail.

## OFFICERS

<i>President</i> . . . . .	CHESTER MINICH
<i>Vice-President</i> . . . . .	BRUCE MACBETH
<i>Secretary-Treasurer</i> . . . . .	RUTH KEARNEY
<i>Sponsor</i> . . . . .	DONALD PREDMORE



# PRESS CLUB



First Row—A. Keniston, N. Miller, B. Shields, M. Caimi, L. Roadman, G. Wagner, B. Nair.  
Second Row—C. Larson, L. Cobb, J. Tomikel, C. Weir, J. Sparhawk, C. Nelson, D. Routhce.

The purpose of the Press Club is to publish the *Clarion Call* and the *College Bulletin*, a weekly publication introduced for the first time this year. It aims also to give prospective teachers training they will need later in directing school publications.

Highlights of the year include moving pictures about journalism, discussions of various types of newspaper articles, and lectures about prominent editors.

## OFFICERS

*Editor*

TED CYPHERT

*Associate Editor*

LUTHER COBB

*President*

THOMAS BRINKLEY

*Vice-President*

CHARLES NELSON

*Secretary*

MARJORIE REED

*Treasurer*

BING LARSON

*Advisor*

MISS NAIR



Seated—T. Cyphert, M. Reed, M. Say, B. Wood.  
Standing—J. Siefer, P. King, T. Brinkley.

# SPORTSMEN'S CLUB



*First Row*—D. Trembach, H. Cochran, G. Trembach, E. Lloyd, W. Gjebre.  
*Second Row*—D. Curlman, J. Irwin, D. Ballas, J. Eaken, R. Biscaglia, F. McElroy,  
 G. Ober.

This year brought to the campus a new organization that has as its name the Sportsman Club. Under the able supervision of Mr. Galen Ober, the club had a very successful year.

The purpose of this organization is to create and maintain good sportsman-like conduct among the students of this college, to participate in all-round outdoor sports, and to build a good character foundation for the members of this club.

## OFFICERS

- President*  
 CHIEF LEWANDOWSKI
- Vice-President*  
 GEORGE TREMBACH
- Secretary*  
 HAROLD COCHRAN
- Treasurer*  
 ED LLOYD
- Sponsor*  
 GALEN OBER



*First Row*—C. Slater, D. Helbling, T. Helbling, J. Anderson, G. Lewandowski,  
 J. Price.  
*Second Row*—F. Grubbs, F. Augustine, H. Meriz, H. Bell, J. Rettig, B. Schill.  
*Third Row*—J. Matthews, E. Montebell, V. Caruso, M. Geronimo, R. Zeleznock.

# STUDENT SENATE



*Seated*—L. Grube, M. Zavacky, P. Chandler, F. Lignelli, E. Brock.  
*Standing*—J. Kapp, P. Slaugenhaupt, L. Cobb, T. Cyphert, B. Coleman, L. George, M. Curry.

The Student Senate (Clarion Students Association) is composed of twelve students duly elected to represent and act for the student body. This body strives to work out differences that arise within the student body and between this body and other campus forces that may tend to appear.

Another prime duty of this student government group is to prepare a budget for the appropriation of the student activity fund. The fund is so appropriated as to pay the cost of varied activities which seem to contribute most to the campus life of all students.

Elections to the Clarion Students Association are planned so that all factions of the student body are represented—dormitory students, town students and commuting students, with male and female students on an equal representation basis.



## OFFICERS

- President* . . . . . M. ZAVACKY  
*Vice-President* . . . . . F. LIGNELLI  
*Secretary* . . . . . E. BROCK

# YOUNG WOMEN'S CHRISTIAN ASSOCIATION



*First Row*—R. Vaughan, J. Seifer, J. Sterrett, E. Keefer, G. Oakes, D. Stowe, P. Skinner, A. Wilkie, H. Nevel.  
*Second Row*—K. Stewart, V. Baker, C. Baker, J. Hanna, J. Russell, L. Ande, R. Smith, J. Johnston.  
*Third Row*—M. Diebel, E. Anderson, S. Knight, M. Say, G. Whisner, J. McCue, E. Rock, M. Glover, F. Wilson, J. Gifford.  
*Fourth Row*—E. Dickey, H. Fisher, G. Middleton, J. Kanaan, T. Bartello, J. Beatty, M. Johnston, E. Shaffer, K. Kennedy.  
*Fifth Row*—P. Mock, S. McGaughy, M. Henry, L. Kindelberger, M. Green, P. Lane, J. Nichols, G. Marshall.

The Y.W.C.A. holds inspiring devotional and business meetings twice a month. Each Christmas Tide, the Y.W.C.A. joins with the Y.M.C.A. and invites the student body to enter into the spirit of the season by Christmas caroling in the town under the leadership of Mr. and Mrs. Stanley Lore.

## OFFICERS

<i>President</i>	PAT LANE
<i>Vice-President</i>	ELEANOR SHAFFER
<i>Secretary</i>	TWILA BARTELLO
<i>Treasurer</i>	JEAN MCCUE
<i>Sponsor</i>	GRACE STOKE

# YOUNG MEN'S CHRISTIAN ASSOCIATION



*First Row*—R. Stephens, G. Johnson, W. Johnson, D. Curfman, J. Lee.  
*Second Row*—I. Henry, W. Lafranchi, A. Larson, J. Irwin, N. Coon, L. Laughlin.  
*Third Row*—S. Lore, M. Sheffer, P. Shank, L. Woodrow.

The Young Men's Christian Association is an organization whose purpose is to provide Christian fellowship and foster Christian ideals among the men on our campus. It seeks to sponsor activities of a physical, social, mental and religious nature.

The programs have consisted of hymn sings, illustrated lectures, and inspirational talks, in addition to recreational activities of a varied nature. Some meetings have been held jointly with the Y.W.C.A., one of which culminated in the annual Christmas caroling tour of faculty homes.

The Y.M.C.A. plans to expand its activities, and has already met with gratifying success in increasing its membership.

## OFFICERS

<i>President</i> . . . . .	MERLE SHEFFER
<i>Vice-President</i> . . . . .	WILLIAM LAFRANCHI
<i>Secretary</i> . . . . .	WILBUR JOHNSON
<i>Treasurer</i> . . . . .	ROLAND STEPHENS
<i>Sponsor</i> . . . . .	STANLEY LORE

## SEQUELLE STAFF

J. BANJAK

L. WOODROW

M. SHIRING

F. BADGER



J. BEATTY

E. CRAVEN

E. SKINNER

R. SLEEMAN

E. SILAFFER



R. KEARNEY

B. CARSON

M. L. JOHNSTON

E. BROCK



A. LARSON

T. BARTELLO

L. OLSON

C. MINICH



# WAITER'S CLUB



*First Row*—W. Goode, R. Lafferty, R. Evans, J. Schweppe, R. May, J. Spence.  
*Second Row*—D. Ballas, E. Meabon, E. Shaffer, P. Behringer, M. Longiotti, J. Nichols, E. Brugh, C. Bates.  
*Third Row*—D. Eury, M. Nypaver, R. Varratto, A. Plopa, J. Banjak, E. Turchick, P. Carey, H. Clark, J. Weigel.  
*Fourth Row*—J. Tomikel, M. Petruska, J. Stonis, M. Sheffer, E. Boschini, E. Ewaski, E. Prusick, T. Kerr.

The idea for a Waiters Club was formulated in the fall of 1947 with the purpose of knitting together a group of students who constantly work together to get the meals served correctly and efficiently.

The year's activities were highlighted with a Christmas dance. Music was furnished by the "Moonlight Serenaders", the campus dance band.

## OFFICERS

*President* . . . JOHN TOMIKLE  
*Vice-President* . . . AL PLOPA  
*Secretary* . . . NANCY ZIMMERMAN  
*Treasurer* . . . MARY LONGOTTI  
*Sponsor* . . . . STANLEY LORE



# WHO'S WHO



*Floor*—S. Dellaquila, J. Corey, M. Shiring.

*Seated*—A. Larson, L. Olson, J. Beatty, M. Zavacky, I. Henry, M. Nypaver, M. Osipov, V. Baker T. Cyphert.

Mary Lou Johnston, a member of Who's Who, was not present for the picture.

With the highest standards ever recorded at Clarion State Teachers College, the faculty committee had a job on their hands to select the proposed percentage of students for "Who's Who Among Students in American Colleges and Universities".

Basic for membership is scholarship and activity of the individual. The honor is great and we have a fine group to uphold it this year.





# "Frats"

ΑΥΩ	ΔΣΕ   ΣΔΦ 7.00 Room 311	ΑΦΑ Room A 7.00
ΑΓΦ 7.00 PM	3 <sup>rd</sup> Floor Sem 7.00 PM Mon	ΦΣΠ
⊖ ΑΛ 11.00 Sem	ΠΓΜ 314 Sem	9.00 - Fri Sem. Hall 314
ΜΧΔ 11.00 - 12.00 PM	ΣΤΓ-ΓΡΠ 726 Davis	ΣΣΣ 9.00 - Sem Phages-Tri Sch.



## PAN-HELLENIC COUNCIL



*Seated*—M. Kohn, M. Spleen, J. Nichols, J. Willson, R. Musi.  
*Standing*—M. Clark, P. Slaughaupt, P. Stewart.

# DELTA SIGMA EPSILON



*First Row*—F. Ames, M. Smith, F. Spak, J. Weigel, K. Kennedy, P. Carr.  
*Second Row*—L. Maxwell, L. Brown, S. Watson, M. George, L. George, S. Allen, E. Brock.  
*Third Row*—F. Creighton, B. Faust, F. Masters, E. Spaller, P. Stewart, H. Furlong, P. Bish, M. Johnson.

Delta Sigma Epsilon held its 16th national conclave, the Dixie Jamboree, in Biloxi, Mississippi in August of 1948. Those attending from Alpha Zeta Chapter were Earla Brock, Shirley Watson, Martha Smith, and Pat Carr. It proved a never to be forgotten experience for all concerned, and many ideas on national sorority work were brought back.

One of our most important events this year was the "Gay Nineties" rush party on November 3rd. As a result, we now have 16 very nice pledges in addition to our 23 actives. Other activities for the year include selling food in the dorm on Tuesday, parties for new initiates and pledges, decorating for the Homecoming Dance, sponsoring a record dance in the gym, and our week-end at Cooks Forest.

## OFFICERS

- President* . . . . . EARLA BROCK  
*Vice-President* . . . . . LOIS GEORGE  
*Recording Secretary* . . . . . HELEN FURLONG  
*Corresponding Secretary* . . . . . PAT CARR  
*Treasurer* . . . . . SHIRLEY WATSON



# LAMBDA CHI DELTA SORORITY



*Floor*—M. Palo, L. Grant, N. Boyer.  
*Seated*—J. Willson, E. Clover, R. Graff, M. O'Neill, M. Kohn.  
*Standing*—R. Kearney, N. Harriger, H. Pugar, B. Lobaugh.

The Lambda Chi's, under the able leadership of Mrs. Graff, has had, as usual, a profitable year—a year filled with civic projects, pleasant associations, and fun. Following our "rush party", which this year featured a "Hoe Down" farm party, we initiated nine excellent new members. Major events of the year which we recall with pleasure are: Cooks forest week-end, the successful rummage sale, and our delightful Christmas party.

## OFFICERS

<i>President</i> . . . . .	MARY K. O'NEILL
<i>Vice-President</i> . . . . .	RUTH KEARNEY
<i>Secretary</i> . . . . .	ELEANOR CLOVER
<i>Treasurer</i> . . . . .	LEE GRANT
<i>Sponsor</i> . . . . .	MRS. DONALD GRAFF
<i>Pan Hellenic Representative</i> . . .	MARIE KOHN



# SIGMA DELTA PHI



*Floor*—B. Morgan, M. Longiotti, E. Brugh.  
*Seated*—M. Reed, B. Wood, B. Nair, T. Jackson, G. Harchick.  
*Standing*—J. Nichols, J. Sieter, D. Slimak, B. Sherwood, B. Grossman.

The Sigma Delta Phi sorority plunged into its nineteenth consecutive year with a memorable weekend at Cooks Forest. Our social season was highlighted by the "Hell-z-poppin" rush party. The excursion into the home of departed spirits admitted into our sorority several new members.

During the Christmas season we supplemented our treasury by selling the conventional Yuletide greeting cards. Our social service work, namely supplying a basket of food for the Christmas dinner of a needy family, emphasized our motto "Be kind, be brave, be true not only to thyself, but to others". We also enjoyed several informal get-togethers. Plans carried out included a trip through the coke plant, the Pan-Hellenic Dance, and a rummage sale.

## OFFICERS

<i>President</i> . . . . .	THELMA JACKSON
<i>Vice-President</i> . . . . .	DOROTHY SLIMAK
<i>Secretary</i> . . . . .	BARBARA WOOD
<i>Treasurer</i> . . . . .	ELAINE BRUGH
<i>Sponsor</i> . . . . .	BERTHA NAIR



# SIGMA SIGMA SIGMA



Row One—H. Bell, T. Bartello, S. Gibson, M. Gamble, P. Behringer, J. Stalder, M. Green.  
 Row Two—C. Dimino, E. Walley, H. Toth, E. Meabon, M. Banner, M. Glover, F. Wilson,  
 J. Beatty.  
 Row Three—M. Johnston, E. Shaffer, K. Stewart, C. Gardner, M. Spleen, S. Johnson, J.  
 Zimmerman.

Alpha Pi chapter of Sigma Sigma Sigma has had a very eventful year. Among the highlights was a most successful rush party, the theme of which was a "Haunted House". Following this party twenty girls were pledged to Tri Sigma. One of our visitors this year was Mrs. Robert McKenrick, our chapter inspector. Alpha Pi passed with flying colors. For our Christmas social service project, we aided Miss Gamble in making house slippers for the children at the county home.



## OFFICERS

- President . . . . . MARY LOU JOHNSTON  
 Vice-President . . . . . PHYLLIS SLAUGHENHAUPT  
 Recording Secretary . . . . . MARTHA LOU GLOVER  
 Corresponding Secretary . . . . . HELEN TOTH  
 Treasurer . . . . . MARY SPLEEN  
 Rush Chairman . . . . . TWILA BARTELLO

# THETA ALPHA LAMBDA



*Seated*—G. Whisner, M. Caimi, M. Robertson, J. Rettig, R. Musi, H. Mertz, M. Clark, D. Delozier.  
*Standing*—B. Ferguson, H. Skaggs, J. Clark.

The purpose of this sorority is to promote and foster the principles of fellowship and goodwill among the members of our sorority.

Our motto is "To thine ourself be true".

The theme of our rush party, held on November 5, centered about a gypsy carnival with fortune tellers, peanuts, popcorn, candied apples, and all that is necessary to make a gypsy carnival successful.

Our patronesses, entertained us one evening by taking us to a camp, near Fisher. There they served to us a delicious home cooked dinner. All who attended enjoyed it greatly.

## OFFICERS

<i>President</i> . . . . .	JOAN RETTIG
<i>Vice-President</i> . . . . .	ROSE JEAN MUSI
<i>Secretary</i> . . . . .	MARY LOUIS CAIMI
<i>Treasurer</i> . . . . .	JANE CLARK
<i>Sponsor</i> . . . . .	HARRIET SKAGGS



## INTER-FRATERNITY COUNCIL



P. Whisner, H. Fesenmyer, J. Rogers, L. Marinaccio, J. Kuhns, M. Shiring.



# ALPHA GAMMA PHI



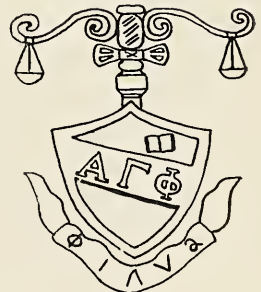
*Row One*—G. Fallon, B. Casper, P. Taylor, J. Jannuzi, J. Bove, E. Skacan, B. MacBeth.  
*Row Two*—G. Kuhns, J. Kerr, B. Brochetti, J. Palaggio, B. Yakin, D. Treharne, D. Shoup,  
 L. Rhodes, M. Petruska, T. Komisak.  
*Row Three*—E. Rusciollelli, P. Whisner, R. Robinson, J. Davidson, W. Mader, S. Delpero,  
 A. Askey, F. Sharrow, K. Miller.  
*Row Four*—R. Blewitt, C. Ramsden, D. Wolfe, E. Pecora, B. Moore, J. Brennan, G. Derk,  
 E. Prusick, N. Luvison, E. Blockowitz, D. Virgalitto.  
*Row Five*—D. Lounsbury, T. Knapp, H. Willison, F. Lignelli, W. Walls.

Alpha Gamma Phi does it again! Starting the year off right, the pledges literally mopped the sidewalks of C. S. T. C. clean with a rip-roaring informal initiation that really had the campus upon its toes rocking with anticipation.

Along with the lighter side of the year's activities, the members found time to make money for their annual activities which were their banquet and a formal dance.

## OFFICERS

<i>President</i> . . . . .	T. MASON
<i>Vice-President</i> . . . . .	F. PECORIA
<i>Secretary</i> . . . . .	P. TAYLOR
<i>Treasurer</i> . . . . .	P. WHISNER
<i>Historian</i> . . . . .	J. DAVIDSON



# ALPHA PHI ALPHA



*Row One*—M. Shiring, R. Larimer, J. Corey, F. Christy, W. Martin, J. DeLong.  
*Row Two*—J. Prokop, C. Kinkead, F. Vasslotti, G. Cope, E. Holzworth, R. McCrae, R. Tagg.  
*Row Three*—L. Woodrow, L. Rinker, I. Henry, D. Nogar, M. Zavacky, L. Olson, N. Coon, H. Larimer, A. Larson.  
*Row Four*—Dr. Predmore, E. Craven, C. Biddle, C. Kuhner, J. Rogers, G. Wood, F. Badger, T. Fosnight, H. Manson, S. Lore.

With fond memories of a successful social season in 1947-48, the Alpha Phi's started 1948-49, with a great deal of enthusiasm. The fraternity reorganized under a new constitution with an executive committee to handle future plans for the fraternity.

The first social affair was a successful rush party held in Room A where 30 pledges were entertained. This party was followed by the traditional initiation at Camp Coffman.



## OFFICERS

<i>President</i> . . . . .	J. DELONG			
<i>Vice-President</i> . . . . .	A. LARSON			
<i>Secretary</i> . . . . .	L. WOODROW			
<i>Treasurer</i> . . . . .	J. COREY			
<i>Wizard</i> . . . . .	C. BIDDLE			
<i>Sponsors</i> . . . . .	<table style="border-left: 1px solid black; border-right: 1px solid black; border-collapse: collapse;"> <tbody> <tr> <td style="padding: 0 5px;">D. PREDMORE</td> </tr> <tr> <td style="padding: 0 5px;">H. MANSON</td> </tr> <tr> <td style="padding: 0 5px;">C. KUHNER</td> </tr> </tbody> </table>	D. PREDMORE	H. MANSON	C. KUHNER
D. PREDMORE				
H. MANSON				
C. KUHNER				

# SIGMA TAU GAMMA



*First Row*—J. Wiberg, W. Murray, D. Knapp, R. Nicolas, B. Colman, R. Morrison, C. Himes.  
*Second Row*—W. Gettys, R. Perry, R. McCready, P. Crooks, J. Cochran, J. Anderson, R. Platt, T. Cyphert, C. Minich.  
*Third Row*—C. Cook, P. Weibel, K. McMillen, L. Marinaccio, R. Hoover, R. Lafferty, J. Schewepe, M. McCombs, L. Match  
 ullet, H. Fesenmyer, J. Kuhns.  
*Fourth Row*—K. Gibbons, E. Montebell, R. Garbart, J. Johnson, J. Schwab, R. Rhodes, G. Garske, M. Surra, M. Petruska, R.  
 Kerr.  
*Fifth Row*—F. Campbell, J. Lee, C. Best, P. Scierka, T. Stolzenback, N. Mihailoff, R. Wright, W. Mahoney, R. Krepp, J. Seid-  
 ler, D. Shoup.  
*Sixth Row*—W. Zeitler, W. Garber, J. Spence, A. Linn, R. McElhattan, H. Shepard, G. Volpe, J. Banjak.

One of the high-lights of the year of Sigma Tau Gamma, the national social fraternity, was the formal initiation held at the Underwood Hotel at Knox. Here pledges were taken into the fraternity, making the active membership sixty-two, at present.

Taking place at Cooks Forest, the informal initiation proved very warming to twenty-four pledges. Refreshments were served and an enjoyable time was had by all until the commencement of the initiation.

Two important steps were taken forward by the fraternity this year. The first of these was the organization of the alumni of the fraternity; the second was the starting of a fund for a fraternity house.

The province conclave was held at Indiana S.T.C. There were brothers from Indiana State Teachers College, Kent University, Ohio, Fairmount State Teachers College, West Virginia, and Clarion State Teachers College.

## OFFICERS

<i>President</i>	BOYD COLEMAN
<i>Vice-President</i>	RAY NICHOLS
<i>Secretary</i>	DONALD KNAPP
<i>Treasurer</i>	CHESTER MINICH
<i>Sponsor</i>	FRANK CAMPBELL



# ALPHA PSI OMEGA



M. Marwick, J. Messler, L. Maxwell, L. Grube, P. Slaughaupt, L. Woodrow, F. Creighton, J. DeLong, M. Boyd.

John Banjak, a member of Alpha Psi, was not present for the picture.

Membership in Alpha Psi Omega, national honorary dramatic fraternity, is given as an award for active participation in college dramatics. Certain national requirements must include experience in both acting and stage work.

The group was entertained at two social evenings in the home of Miss Boyd and Miss Marwick, faculty members of Alpha Psi Omega.



# PI GAMMA MU



*Seated*—F. Campbell, S. Lore, K. Kos, H. Skaggs, R. Carlson, S. Slick, J. Tallent.  
*Standing*—M. Shiring, J. Corey, J. Wiberg, A. Larson, W. Lafranchi, I. Henry, J. LeLong,  
 M. Osipov, T. Cyphert, M. Zavacky, L. Olson, C. Gill.

Since the motto of Pi Gamma Mu, an honorary social fraternity, is "Ye shall know the truth and the truth shall make you free", the Iota chapter aims to instill in the minds of individuals a scientific attitude toward all social questions and a greater cooperation among students of the various branches of the social sciences.

Members who have distinguished themselves in the study of the social sciences are elected upon the completion of at least twenty semester hours of social studies with an average grade of not less than B.

## OFFICERS

- President* . . . . . JOHN COREY  
*Vice-President* . . . . . ARVID LARSON  
*Secretary-Treasurer* . . . . . WILLIAM LAFRANCHI  
*Sponsor* . . . . . SEWELL SLICK



# PHI SIGMA PI



T. Brinkley, L. Woodrow, H. Manson, T. Nelson, M. Zavacky, A. Larson, M. Osipov, P. Chandler, J. Henry, T. Cyphert, L. Olson, S. Lore, J. Banjak, S. Dellaquila, C. Kinkead, M. Shiring.

Phi Sigma Pi is a national honorary scholastic fraternity whose membership is made up of men who are recognized for scholastic ability and give promise to leadership in the field of education.

The chapter on this campus is the Lambda chapter.



## OFFICERS

<i>President</i>	MARK SHIRING
<i>Vice-President</i>	IRVING HENRY
<i>Secretary</i>	THOMAS NELSON
<i>Assistant Secretary</i>	LEROY OLSON
<i>Treasurer</i>	LAVERN WOODROW
<i>Historian</i>	MICHAEL OSIPO
<i>Sponsor</i>	MR. LORE



Alpha Phi's



Alpha Gamma's



Lambda's



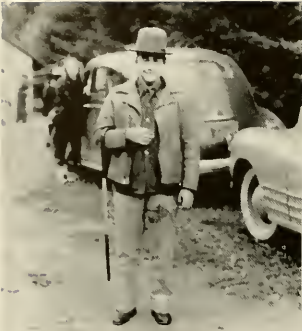
Sigma Delta's



Tri Sig's



Delta Sig's



What is it?



Don't throw



Howdy



Pedgie



Brothers



Characters



Frosh



After chapel



# Sports



# THE 1948 PIGSKIN PARADE



Upon returning to the campus last September the students of C.S.T.C. found the "Golden Eagles" busy sharpening their claws for an invading Cheyney squad. Thanks to the cooperation of the student senate, the squad was able to get under way a few days early this season so as to be in shape for the early game with Cheyney State Teachers, September 25, 1948.

Cheyney found the "Mooremen" in top physical condition with their claws sharpened to perfection. Lettermen were trying in desperation to hold onto their "old berths" while many promising prospects were out to give them a run. Unfortunately Cheyney got caught in the "cross fire" and were carried away by the powerful Eagles to the tune of 33 to 6.



*Coaches—Carnahan*

*Moore*

*Sheridan*



*First Row*—S. Delpero, H. Whisner, R. Robinson, H. Harlacher, E. Blockowitz, N. Luvison, T. Komisak, W. Mader, F. Giggler, H. Askey, G. Malacarne.  
*Second Row*—K. Bailey, H. Thompson, G. Stennett, R. Predebon, L. Sukala, F. Lignelli, F. Vescio, A. Engro, T. Mason, M. Caruso, E. Rusciollelli.  
*Third Row*—P. Hubauer, R. Flath, R. Zakula, M. Cvjeticanin, F. Curry, R. Lees, C. Barr, W. Murray, E. Dolecki, J. Uzmack, P. Byers, F. Palaggio.  
*Fourth Row*—R. Russell, J. Clingan, S. Russo, E. Boschini, F. Pecora, L. Ianni, R. Coury, J. Parshook, J. Busch, J. Smathers, N. Margetan, W. Casper.

The following Saturday found the Edinboro "Red Raiders" invading the Clarion turf, and until the "Eagles" found themselves in the third quarter it seemed as if the "Raiders" would be taking home our scalps. Our strong defense held throughout the entire game and when Clarion's offense began clicking rolled up 19 points to remain undefeated, untied and unscorred upon only once in the two games of a potentially good season.

The players on this year's squad will never forget the games played at Rio Grande College of Ohio on Oct. 9. It was home coming for Rio Grande, they were christening a new athletic field, and both teams formed a large circle in which the "Homecoming Queen" was crowned. The Rio Grande team was "keyed-up" and ready to crown the "Moormen" from Pennsylvania. The victory 27 to 0, was not an easy one, but sixty minutes of genuine "bashing" which produced a field goal, two safeties, and three touchdowns for the rugged "Eagles".

Traveling to Greenville with an unblemished record, the "Golden Eagles" were hampered by a combination of over-confidence and mud, plus a lucky pass in the final four minutes of play, and the Thiel "Tom-Cats" were able to upset the "up-until-now" invincible "Eagles" who were partially blinded by the three previous glaring victories.



The fans who gathered under the lights at Clarion Park on the evening of Oct. 22nd to witness a predicted three touchdown victory by the California "Vulcans" over Clarion, were fortunate in seeing one of the seasons most exciting games in which the "Eagles" after a "heart to heart" talk by coach Moore, came back in the second half to score 20 points only to drop a close decision 21 to 20. A moral victory was ours, and we knew we had a football team with the students backing it 100 percent.

Saturday, Oct. 30th. "Our boys did shine that night!" An estimated crowd of 4000 saw the Golden Eagles chalk up their first football victory in history over Indiana. Every player of Clarion's team, whether on the field or on the bench helped push each inch of each foot down the field and across the Indians' goal line that night. Solid blocking and tackling helped register four touchdowns, a field goal, and two safeties; final score 33 to 0.

Cloudy skies, fans dressed as if expecting deluge, and a rain soaked field provided the setting for Clarions' final home game. Once again the Eagles offense seemed to bog down in the mud and it was difficult to shake loose our "scat backs" or complete aeriels for distance with a wet ball. The Polish boys from Alliance College in Cambridge Springs came out on top, aide dby some excellent punting on the part of the Alliance kicker.

The "Golden Eagles" journeyed to Slippery Rock for the final fray of the campaign. Early scoring opportunities were nullified by fumbles, and again the underfooting was tricky, the "Eagles" were also hampered by injuries occurring during the opening minutes of the game. As the final whistle sounded, Clarion was on the short end of a 21 to 7 score.

The 1948 season showed a total of four wins and four defeats, a very successful season under the leadership of the newly installed coach, Bob Moore. Clarion scored a total of 140 points compared with 63 points for their opponents. The 1948 squad will always be remembered for the "glorious victory" they scored over Indiana State Teachers.

Credit must be given to Coach Moore, who, assisted by Tom Carnahan and "Baldy" Sheridan began working with a squad new to him. He installed a new type offense and defense and fielded a team which Clarion and its students were proud of, enjoyed watching, and will never forget.



# BASKET BALL



*Kneeling*—E. Kelley, M. O'Toole, P. Weibel, S. Gjurick, R. Colley, S. Russo, H. Mehallick, J. Buck.

*Standing*—E. Skacan, Mgr., R. Whitford, W. Casper, J. McCready, C. Willoughby, A. Latz, G. Fallon, G. Derk, H. Willison, R. Zakula, W. Englert, R. Garbart, Mgr.

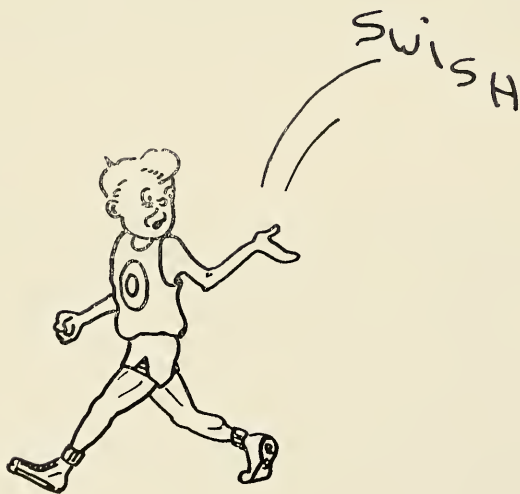
Regardless of Clarion's unimpressive record this season, Carnahan's boys played the type of basketball that glued spectators to their seats for the entire game, and in several instances for exciting over time periods. A summary of the "cagers'" accomplishments would not be complete without paying due respect to that outstanding player's player "Doc" Halley Willison. As usual "Doc" was the "hub" of the team and around him rotated such veterans as George Dirk, Bill Casper, Cece Willoughby, "Lex" Burnsed, Whitford and Weibel.

Outstanding rookies include—Englert, Latz, Zakula, O'Toole, McCready, Russo and Mehallick.

Next year's squad will be minus Willison and Burnsed but should be able to muster a strong combination from the remaining Lettermen.

## BASKETBALL SCORES

C. S. T. C.—62	California	47	C. S. T. C.—62	Gannon	72		
"	-46	Slippery Rock	56	"	-48	Edinboro	56
"	-51	Indiana	55	"	-59	Thiel	61
"	-41	Grove City	60	"	-55	Indiana	56
"	-60	Alliance	53	"	-56	Slippery Rock	58
"	-42	Gannon	47	"	-60	Edinboro	46
"	-45	California	61	"	-69	Grove City	60
"	-47	Fenn	43	"	-74	Alliance	37
				"	-58	Thiel	55





*Kneeling*—W. Watson, T. Helbling, A. Marts, W. Goode, N. Coon, D. Lounsbury, R. Yakim, J. Lysinger.  
*Standing*—J. Mathews, J. Huet, E. Rusciollelli, F. Pecora, F. Lignelli, R. Flath, B. Taylor, W. Mahle, J. Klinger, W. Peacock.

## WRESTLING

Coach Bob Moore came up with a much improved wrestling team this year. Hampered continually by injuries to "key men" the team, after defeating Indiana in their opening match, dropped the remaining matches on their card. The return engagement with Indiana was "in-the-bag" when Bob Flath, who incidentally captured the heavyweight State Teachers wrestling tournament the year before, was forced to cede to a weaker opponent because of a painful shoulder injury.

The matmen displayed a very clean and exciting type of wrestling, and opponents after grappling with such experienced "grapplers" as Flath, Lignelli, Helbling, Coon, were aware of the fact that they had encountered the better type wrestler.

"Ruff" and promising new-comers who displayed outstanding pep and ability were Rusceolli, Klingan, Taylor, Huet, Herb, Goode, and Lysinger.



# BASEBALL



*Kneeling*—E. Kelley, T. Kovolyak, J. Zelek, G. Malcarne, W. Curry.  
*Standing*—J. Wiberg, S. Hoffman, D. Bayla, C. Tabarella.

Hampered by spring rains, the Golden Eagle's baseball team got off to a slow and muddy start. Player-coach, Gordon Sills, held battery practice in the gymnasium a few weeks prior to the regular season. Dan Balya, Bob Zelechowski, and Gordie Sills turned in fine roles as starting pitchers, while the relief pitching was handled very nicely by Wayne Mader, Andy Yakin, and Tabarella. Paul Caruso, Joe Zelek, and Tony Mason alternated at the back-stop spot. The "go-getters" in the outfields included the veterans Bill Curry, Jim Wiberg, Guido Malcarne and Freddy Kovalyak. Infield play was characterized by such stars as George Hoffman, Jim Kelly and Frank Lignelli.

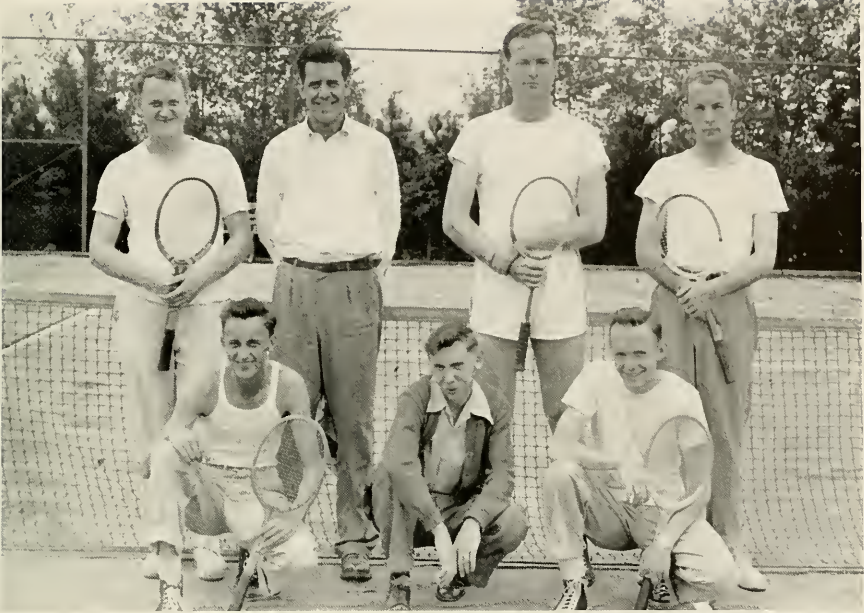
## *SQUAD*

Balya, Bossart, Bramhall, Caruso, Curry, Hoffman, Kelley, Kovalyak, Lignelli, Malcarne, Mader, Mason, Shoup, Sills, Tabarella, Taylor, Wiberg, Woodall, Yakin, Zelek, Zelechowski, Lee.





# TENNIS



*Kneeling*—R. Morrison, B. Zakor, C. Himes.  
*Standing*—D. Knapp, C. Biddle, J. McKinley, J. DeLong.

The tennis record for 1948 shows three wins against four defeats. Tennis on the inter-collegiate level is on the upgrade at Clarion. With all of the '48 team back for service in '49, hopes are high. The members of the team feel they will be able to paint the win side of the card more often.

## RESULTS

Clarion	6	Slippery Rock	3
"	4	California	5
"	7	Thiel	2
"	3	Grove City	6
"	1	Grove City	8
"	8	Thiel	1
"	2	Indiana	7



# VARSITY "C" CLUB



*First Row*—F. Kovalyak, J. Zelek, N. Coon, J. Lee, H. Harlacker, R. Robinson, C. Himes, E. Kelley, W. Martin.

*Second Row*—S. Delpero, R. Morrison, T. Cyphert, C. Biddle, H. Willison, G. Malacarne, D. Balya, F. Lignelli, P. Caruso.

*Third Row*—E. Rusciollelli, N. Luvison, G. Derk, C. Willoughby, H. Askey, H. Thompson, J. DeLong, R. Wolfe, E. Blockowicz.

A group of hard working men, honored for their sportsmanship, make up the Varsity "C" Club. To gain membership in this organization a person must earn a letter in one of the inter-collegiate sports.

It was the members of this group who supplied you with programs, pop, and sandwiches at the sports events this year. The profit from their concessions were used to buy special jackets for three year letter men.

# WOMEN'S ATHLETIC ASSOCIATION



*First Row*—H. Bell, P. Carr, M. Clark, L. Maxwell, M. Longiotti, S. McKenzie, L. Garvin, H. Toth.  
*Second Row*—M. Smith, F. Spak, P. Stewart, J. Fink, J. Nichols, V. Baker, B. Wood, M. Reed.  
*Third Row*—E. Spaller, M. Bish, M. Kohn, F. Wilson, B. Hay, F. Master, M. Spleen, T. Jackson.

W.A.A., sponsored by Miss Spaller, consists of college women interested in sports and recreational activities. The various intramural sports include volleyball, basketball, and baseball. Individual sports: tennis, badminton, ping-pong, archery, golf, quoits, and shuffleboard. W.A.A. also sponsors the occasional square dances held in the gymnasium.

The purposes of this organization are to stimulate the interest of the entire student body in athletics and recreational activities; and to foster the spirit of friendliness, good will, and good sportsmanship.

All college women with a "C" average in academic work are eligible to join W.A.A. By participating the regularly offered sports, girls are able to accumulate the number of points necessary for membership.

## OFFICERS

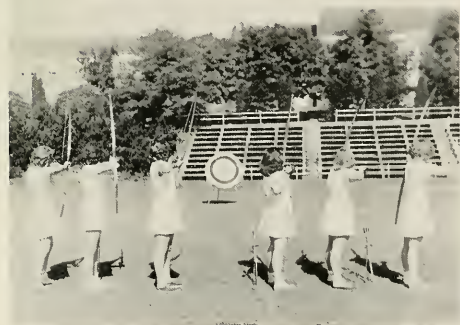
<i>President</i> . . . . .	PHYLLIS STEWART
<i>Vice-President</i> . . . . .	THELMA JACKSON
<i>Secretary-Treasurer</i> . . . . .	HONORE BELL
<i>Sports Manager</i> . . . . .	MARTHA SMITH
<i>Sponsor</i> . . . . .	MISS SPALLER

# CHEERLEADERS



C. Haupt, F. Masters, L. Brown, J. Willson, L. George, L. Staley, B. Harvey, S. Allen







# MEMORIES





Home



Coming







By Day



By Night



"Gildy" & "Fess"



Sarah & Crosley



"Bea" & Bob



"Froggie" & "Cook"



Chuck & M.E.



"Swede" and Friend



Geora & "Dody"



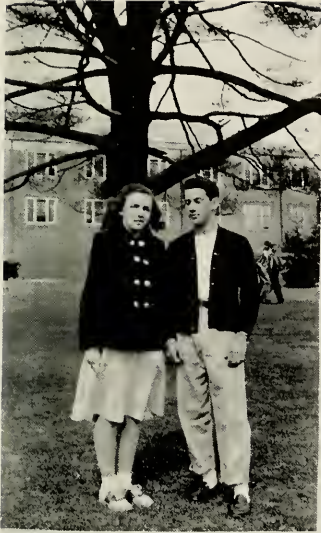
"Skip" & "Mike"



Bill & Fso — "Norm" & John



Lee & "Burch"



"Phyl" + Ralph



Frank + "Jimmy"



"Dee" + Paul



Bill + Joyce



"Royalty"



John + "Feg"



Joan + Wayne



"Morph" + George



Carol-Fritz-Doris + Ed ~~~ Bob + "Spike"



Betty + Mark



Mope-Marlyn-Tony-Lois



Marge + Ray



Mary + Lou



Pep + Vi



Mabel + Ken



Flo + John



Shirley + Will



Jack + Joan



Peg + Ernie



Jeannet + Norge



Dana + Harold



Bill + Twi

*Appreciation . . .*

*We gratefully acknowledge the kind co-operation that the businessmen of Clarion and vicinity have shown in making this year's Sequelle possible. We are sure that the students on the "Hilf" will continue to express their appreciation by patronizing our business friends.*

**DAVID A. KAUFMAN**

**JEWELER**

Phone 681

Clarion, Pa.

**HERMAN BROTHERS**

*The Corner Store*

**FRUITS • ICE CREAM  
CONFECTIONS**

Corner Wood and Eighth Avenue

CLARION, PA.

*Compliments of*

**WAYNE R. WEAVER**

**OLDSMOBILE**

**Sales, Service**

**Clarion, Pa.**

*Compliments of*

# GARBY THEATRE

WHERE HITS ARE A DAILY HABIT

## Builders and Contractors Supply Company

*"Everything for the Builder"*

Phone 750 East Main St.

CLARION, PA.

*Compliments of*

## DICK SLATER

RIVER HILL MOTORS

- Willys Cars, Jeeps, Trucks
- Kaiser-Frazer Sales
- Auto Glass Installed

Phone 787-M

Clarion

*Compliments of*

## Elliott's Esso Service

*Compliments of*

## SPINDLER & STARR

BUICK — CADILLAC

CHEVROLET

—Clarion, Pa.

*"Modern Appliances for Better Living"*

## WHITE'S APPLIANCES

*"The Best In Music On Records"*

518 Main Street Clarion, Pa.

*Compliments of*

## McKinley-White Motors

Your Friendly Ford Dealer

Phone 740

Clarion, Pa.

E A T A T

# BALDY'S MODERN DINER

MEALS . . . . LUNCHES

*Next to Garby Theatre*

## CLARION MOTOR CO.

*WHOLESALE*

**AUTO SUPPLIES AND  
EQUIPMENT**

513 MAIN STREET                      CLARION, PA.

**PHONE 75 AND 658**

## Nail's Restaurant

**HOME COOKING**

Open Sunday

Clarion

*Compliments of*

**Clarion Firestone  
Dealer**

*Compliments of*

## ANDERSON HOTEL

Bus Depot

Phone 175

Clarion

GEO. CORBIN, *Manager*

*Aircraft Sales and Service*

**Approved G. I. Flight Training**

*Courses Include Private—Commercial Instructors*

**Also Private Instruction and Charter Flights and Rentals**

MERCURY OUTBOARD MOTORS — BOATS

**CULBERTSON AVIATION --- PARKER CRAMER AIRMORT**

**AIRPORT ROAD**

**PHONE 32**

**CLARION, PA.**



Jazz



Beauty



Portrait



Future U.N.



"Mammy"



Wayward Bus



"Gergaphy"



Art?



NYAL SERVICE STORE

## FITZGERALD'S

A. G. CORBETT DRUG COMPANY

CLARION, PA.

*Compliments of*

## BIGLEY'S

GULF SERVICE STATION

153 West Main Street

Clarion, Pa.

EYES EXAMINED

GLASSES FITTED

## DR. G. E. STRAUSS

OPTOMETRIST

Sixth Street

Clarion, Pa.

*AUTOMOBILES BOUGHT AND SOLD*

## T. W. Chapman Auto Exchange

Sales — HUDSON — Service

*AUTO WRECKING*

Phone 32

Strattanville, Pa.

*Compliments of*

# VOWINCKEL BROS.

## CORNER RESTAURANT

Clarion-Shippenville Road

— and —

Sales --- PONTIAC --- Service

One of the most up-to-date Auto-Body shops in this part of the state

Frame straightening and wheel aligning

333 MAIN STREET

CLARION, PA.

STATIONARY — MAGAZINES

CANDY

NEWSPAPERS — GREETING CARDS

# MERWIN'S

FOUNTAIN SERVICE

MAIN STREET

CLARION, PA.

## J. F. WEAVER EST. HARDWARE CO.

Highest Quality Merchandise at  
Lowest Possible Prices

Phone 194

Clarion, Pa.

*Compliments of*

## Freas-Snyder Motor Co.

CHRYSLER — PLYMOUTH  
Quality Trailercoaches

Phone 64

Clarion, Pa.

W. Harold Laughlin

Dodge "Job Rated" Trucks

## LAUGHLIN MOTOR COMPANY

DODGE AND PLYMOUTH CARS

PHONE 141

CLARION, PA.

## Clarion Heating & Appliance Co.

"We Sell the Best and Repair  
the Rest"

Phone 640

Clarion, Pa.

*Compliments of*

## V. P. MUSI



CLEANERS

TAILORS

*THE REXALL STORE—*

**SODA FOUNTAIN AND  
LUNCHEONETTE SERVICE**

*LOWEST CUT PRICES*

**KING DRUG STORE**

**W. J. Fletcher**

**Clarion Office Equipment**

**ROYAL TYPEWRITERS**

*Standard or Portable*

**Sales and Service**

**Phone 272**

*Compliments of*

**FIRST NATIONAL BANK IN CLARION**

*Member of Federal Deposit Insurance Corporation*

**CLARION, PENNSYLVANIA**

*BEST OF LUCK TO THE STUDENTS OF C. S. T. C.—*

**J. M. CROOKS & SONS**

**CLARION, PA.**

**CLOTHING**

**SHOES**

*Compliments of*

**PARK DINOR**

**A GOOD PLACE**

**TO EAT**

**CLARION ROLLER MILLS**

**A Complete Line of**

**"FUL-O-PEP" FEEDS**

**A. O. Johnson, Prop.**

**Phone 592**



~One of the twins~



Tardy Belles!



Dolly



Blue Monday



Old Timers



Hikers



The Wedding



Our Gang ~ '45



Food & Fun



Mess \_\_\_\_\_

MEET YOU AT THE

# COFFEE SHOP

CLARION, PA.

## MEANS-LAUF DRUG STORE

522 MAIN STREET

CLARION, PA.

*COSMETICS*

Lucien Lelong  
Lentheric  
Reylon  
Chen Yu

FOUNTAIN  
SERVICE

*MEN'S TOILETRIES*

Old Spice  
Sea Forth  
Yardley  
Courley

*Compliments of*

# Brookville Creamery Products Co.

*Manufacturers of*

## COUNTRY CLUB DAIRY PRODUCTS

BROOKVILLE . . . . . PENNSYLVANIA

*Just off the campus one may find the best in  
Groceries and meats . . . Why go farther?*

## **Phero's Food Market**

**"The College Grocer"**

Phone 19

*Compliments of*

## **MAUL'S DAIRY STORE**

*Compliments of*

# MR. AND MRS. FRED JENKINS

*Compliments of*

## **MacBeths' Cabins**

**COOK FOREST PARK**

Cooksburg, Pa.

PHONE 310

CLARION, PA.

— AT —

## **Kathryn's Beauty Shop**

**Have Your Hair Styled to Suit  
Your Personality**

*The Best In Permanent Waves*

PHONE 216

KNOX, PA.

# **PENNEY'S**

J. C. PENNEY CO., Inc.

**"IT PAYS TO SHOP AT PENNEY'S"**

**609 MAIN STREET**

**CLARION**

*Compliments of*

## Brown's Boot Shop

CLARION, PA.

Best Wishes, C. S. T. C.  
Graduates

— from —

## CLARION NEWSPAPERS, Inc.

THE DEMOCRAT            EVERY TUESDAY  
THE REPUBLICAN        EVERY THURSDAY

"Frigidaire" Refrigerators and Ranges

## JOHN DITZ HARDWARE

"Everything In Hardware"

"Magic Chef" Gas Ranges

China, Glassware, Pictures, Gifts, Etc.

Phone 218

Clarion, Pa.

*Compliments of*

## CLOVER FARM STORES

*Compliments of*

# *Wilson Bakeries*

"SAY IT WITH FLOWERS"

# PHILLIPS FLOWERS

PHONE 209

CLARION, PA.

Compliments of

# LOOMIS HOTEL

Excellent Food and Rooms

DRESS SHOPPE —

*Ladies' Apparel*

SPORT CENTER —

*Everything in Sports*

Compliments of

## L. & R. Decorating Co., Inc.

Parts

Accessories

SALES

## McCullough Nash Motors, Inc.

SERVICE

Phone 633

Clarion, Pa.

## CLARION BLOX CO.

“EVERYTHING FOR THE  
BUILDER'S USE”

Phone 786-W

Clarion, Pa.

## Coca-Cola Bottling Co.

OF CLARION, PA., INC.

Clarion, Pa.

# Clarion Dry Cleaning Co.

PHONE 657

LIBERTY AND SIXTH AVENUE



*Compliments of*

**ELSLAGER RADIO  
AND APPLIANCE**

Top of River Hill

**MOHNEY & BEATTY**

Plumbing, Heating Electric  
Appliances

Phone 548      247 Liberty Street

CLARION, PA.

HAIL THE GRADUATION CLASS OF 1949—

*We join in a hearty commendation of your efforts and in a sincere wish  
that your future lives may be happy and successful*

**G. C. MURPHY & COMPANY**

5 AND 10 CENT STORE

*Compliments of*

**WEIN BROTHERS**

CLARION'S FINEST STORE

**CITIZENS TRUST COMPANY**

CLARION, PA.

RESOURCES OVER \$6,700,000.00

*Member of Federal Deposit Insurance Corporation*

SALES AND SERVICE

## RAGLEY MAYTAG STORE

S. A. RAGLEY, *Manager*

750 Main Street

Clarion, Pa.

*Compliments of*

## Duff's Sterling Service

*Distributors of*

U. S. ROYAL TIRES

Phone 9408

Clarion, Pa.

*Lobaugh's Country Maid Ice Cream---*

*Manufactured by*

Clarion Ice Cream and Dairy Company

PHONE 152

CLARION, PA.



# LIBERTY STUDIOS

CLARION, PA.

*Photographers to 1949 Sequelle*

R. W. MERRYMAN, *Photographer*

**Quality** and **Economy!**

*A Happy Combination*

*But....*

Quality without economy  
falls short of value....

Economy without quality  
is unsatisfying, indeed!

Zimmerman fine-screen Engravings  
bring you both these Essentials of  
Value-- **STERLING QUALITY** and  
**MONEY SAVING ECONOMY.**

**ZIMMERMAN**

**ENGRAVING CO.**

SYKESVILLE,

PENNSYLVANIA

*Printers of "The Sequelle"*

Compliments of

# **The Carrolltown News**



Phone 2131

Carrolltown, Pa.

FELT AND CHENILLE AWARDS

SWEATERS AND JACKETS

# STANDARD PENNANT CO.

BIG RUN, PENNSYLVANIA

JEFFERSON COUNTY

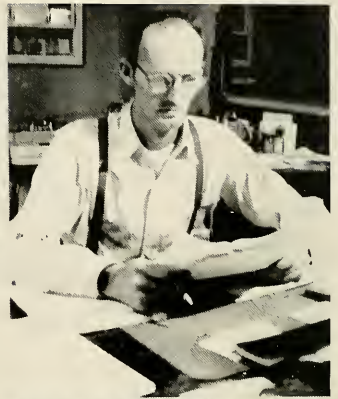
## EDITORIAL COMMENTS

This is your *Sequelle*. We sincerely hope it meets with your every desire. To us it represents many hours of hard work sprinkled with joy and laughter. However, we feel it has been a great honor to accept the responsibility of publishing this issue of the *Sequelle*.

As the editor I want to take this opportunity to thank a great staff publicly. In my humble opinion no better group of people could be brought together in a common effort.

## SEQUELLE STAFF

<i>Editor</i>	M. SHIRING	<i>Identification</i>	M. JOHNSTON J. BEATTY
<i>Assistant Editor</i>	L. WOODROW	<i>Layout</i>	E. BROCK R. KEARNEY B. CARSON
<i>Literary Editor</i>	J. BANJAK	<i>Business Manager</i>	A. LARSON T. BARTELLO L. OLSON C. MINICH
<i>Art</i>	E. CRAVEN F. BADGER R. SLEEMAN	<i>Photography</i>	C. GARDNER
<i>Typing</i>	E. SHAFER E. SKINNER	<i>Sports</i>	H. HARLACHER



# AUTOGRAPHS

# AUTOGRAPHS







CLARION UNIVERSITY OF PENNSYLVANIA



3 9363 00150 7265

Spec. Col.  
qLD  
1017  
.C88  
1949

