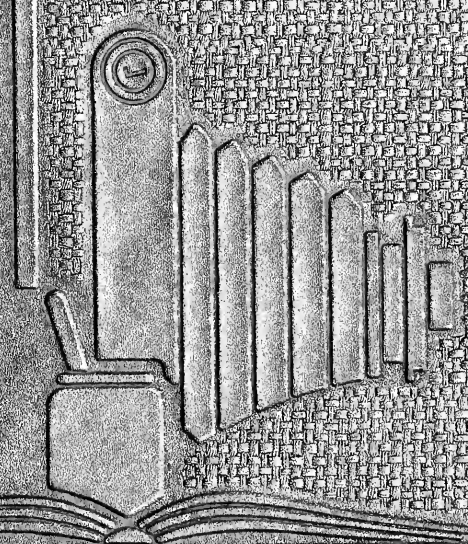


Spec. Col.
q. D
1017
.C88
1949

PORTRAIT

OF ALMA MATER




1949

Sequels



Carlson Library



Digitized by the Internet Archive
in 2010 with funding from
Lyrasis Members and Sloan Foundation

<http://www.archive.org/details/sequelle1949clar>

Sequelle

Clarion State Teachers College

M. Shiring

—

Editor in Chief

L. Woodrow

—

Assistant Editor

A. Larson

—

Business Manager

1949

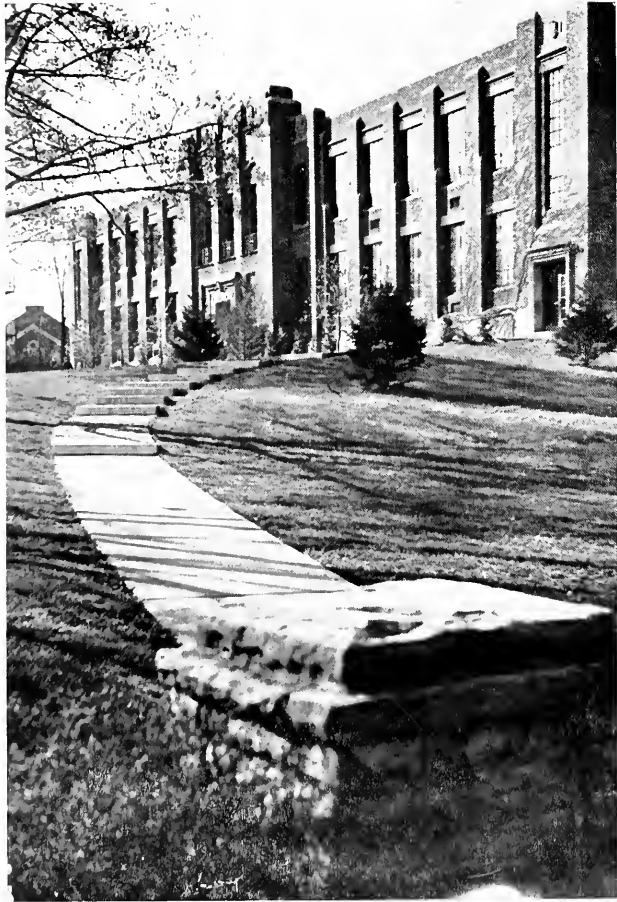
LD
8 121













DEDICATION

TO STANLEY W. LORE, OUTSTANDING MEMBER OF OUR FACULTY, AND ALUMNUS OF CLARION, NOT ONLY FOR HIS SINCERE INTEREST IN THE STUDENTS AS INDIVIDUALS IN HIS CLASSROOM, IN HIS GUIDANCE CLINIC, AND IN HIS FRIENDLY SOCIAL RELATIONSHIPS, BUT ALSO FOR HIS UNTIRING EFFORTS TO FURTHER THE DESIRED AIMS OF THE COLLEGE AS A WHOLE, WE, THE STAFF, DEDICATE THIS 1949 ISSUE OF THE SEQUELLE.



STANLEY W. LORE



PAUL G. CHANDLER

Message to the Seniors:

I want to congratulate the class of 1949 as the largest four year graduating class in the history of the college. You compare favorably in numbers with the large two year class of 160 which graduated in 1913.

The 1949 class is more mature and contains more married students than previous classes. Many of you have taken the accelerated program and have finished four years work in three years which is a tribute to your seriousness of purpose and your desire to get on with the affairs of the world as quickly as you can.

Let me at this point repeat a recommendation I have often made to our graduates. Go on to a university and take graduate work. I especially recommend this to the veterans who have further entitlement under the Veterans Administration. Graduate work pays bigger dividends in life than any other school work.

I have enjoyed the interest you have taken in school affairs and I know that you will keep up this interest in Clarion through life.

PAUL G. CHANDLER

ACADEMY

836



MARGARET A. BOYD, M.A.
English



FRANK M. CAMPBELL, M.A.
French, Spanish



RENA M. CARLSON, M.A.
Librarian



THOMAS A. CARNAHAN, M.A.
Mathematics



BRUCE H. DINSMORE, M.A.
Science-Mathematics

WALTER J. DOVERSPIKE, M.Ed.
Senior High Grades



CHARLES R. FLACK, B.L.S., M.A.
Library Science



WAYNE L. FULTON, B.S.
Senior High Grades

MILDRED E. GAMBLE, M.A.
Intermediate Grades

CLARK GILL, Ph.D.
*Social Studies
Education*



RUTH GRAFF, M.A.
Primary Grades

WALTER L. HART, M. of F.A.
Music

DOROTHY C. HARTMAN, A.B.
Senior High Grades

HARRISON A. HARTMAN, M.A.
*English, Social Studies
Geography*



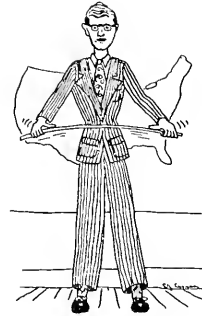
EFFIE B. HEPLER, B.S.
Primary Grades

JAMES W. KASSEL, M.Litt.
Junior High Grades

C. A. KUHNER, M.S.
Geography



MILDRED LENK, M.A.
Senior High Grades



GEORGE R. LEWIS, M.Litt.
Mathematics

STANLEY W. LORE, M.Ed.
Psychology, Education

MARY MCNEILL, A.B.
Dietician

HARRY S. MANSON, M.A.
Science



LAWRENCE W. MARKS, A.B.
Senior High Grades

MARIE MARWICK, M.A.
Speech-English

JAMES D. MOORE, M.Ed.
Dean of Instruction

ROBERT MOORE, M.A.
Physical Education

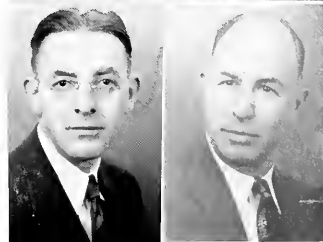
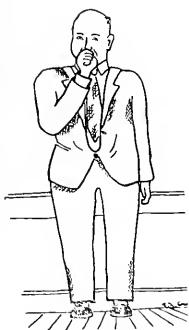


BERTHA V. NAIR, M.A.
English-Latin

GALEN L. OBER, M.Ed.
Science

GEORGE F. OBER, M.Ed.
Science

FANNIE C. OWENS, R.N.
Nurse



DONALD D. PEIRCE, Ph.D.
Science

DONALD R. PREDMORE, Ph.D.
Science

HAZEL SANDFORD, M.A.
Art



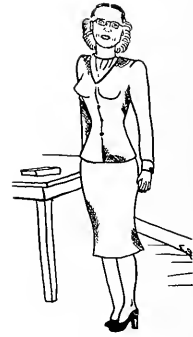
DEBBIE L. SHAW, M.A.
English



PAUL L. SHANK, M.Ed.
Science



HARRIET SKAGGS, M.A.
English



RICHARD C. SKINNER, M.A.
*Education-Director
of Teacher Training*

SEWELL E. SLICK, Ph.D.
*Social Studies
Dean of Men*



ETHEL M. SPALLER, M.A.
*Health
Physical Education*



WILLARD M. STEVENS, Ed.D.
Senior High Grades

MARTHA STEWART, Ed.M.
Librarian



DANA STILL, M.A.
Junior High Grades



GRACE M. STOKES, M.A.
*Dean of Women
Education*

EVELYN J. STROHECKER, M.A.
*Kindergarten-Primary
Education*

J. GLENN TALLANT, Ph.D.
Social Studies

WALDO S. TIPPIN, M.A.
Physical Education



SAMUEL A. WILHELM, Litt.M.
Senior High Grades

LOTTIE WINGARD
Registrar



Great White Father



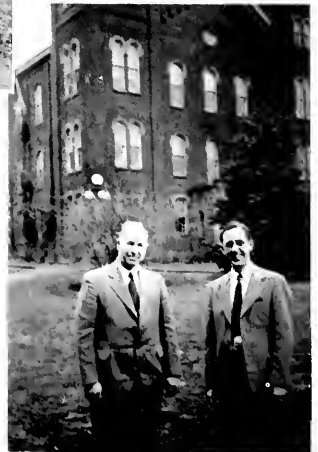
Klondike



Aggie



"Trent"



Hunty Dumpty M.I.Q

Students





Temperance



Ted



Wheels



Nile



Resting



F.T. A.



Call "Joe"



Ipana



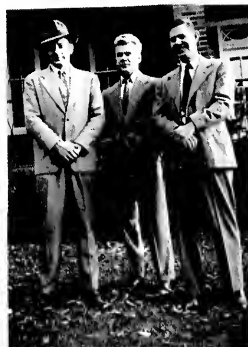
Smiles



Thinker



49'ers



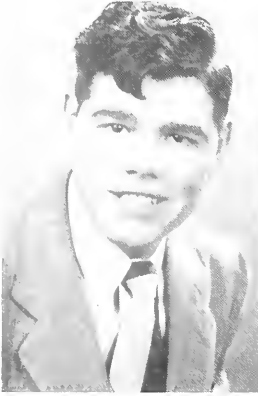
Men of distinction

CLASS OF "FORTY-NINE"

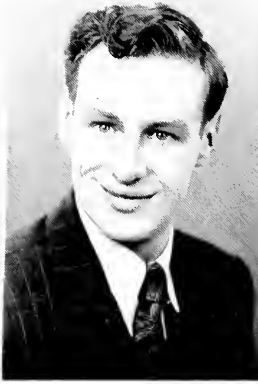
SENIOR CLASS OFFICERS

B. CARSON
E. CAMPBELL
J. DELONG
I. HENRY





GEORGE ADAMSON
Hyde, Pa.
*Social Studies,
Geography*



ERNEST AHARRAK
Halton, Pa.
*Science,
Mathematics*



PATRICIA ALLISON
Limestone, Pa.
Elementary



JOHN BANJAK
Sharon, Pa.
*Science,
Mathematics*



TWILA BARTELLO
Gibsonia, Pa.
*Library Science,
English,
Social Studies*



JEANNE BEATTY
Brookville, Pa.
*Library Science,
Geography*



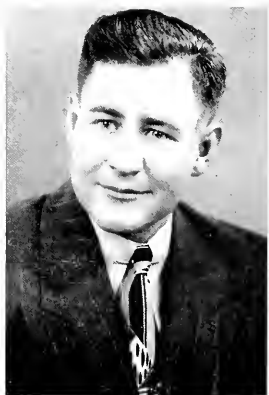
MARGARET ANN BEHRINGER
Pleasantville, Pa.
Elementary



CHARLES BIDDLE
North Elizabeth, Pa.
*English,
Social Studies*



HAROLD BLEWITT
New Castle, Pa.
*Social Studies,
Geography*



GALE BLOOM
Grampian, Pa.
Elementary



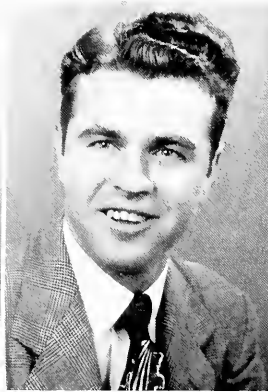
JOHN BRENNAN
Punxsutawney, Pa.
*Social Studies,
Geography*



EARLA BROCK
Kane, Pa.
*Library Science,
English,
Social Studies*



JAMES BURNSED
Pascagoula, Miss.
*Social Studies,
English*



HOMER BUZARD
Rimersburg, Pa.
*Social Studies,
Geography,
English*



PHYLLIS CALVERT
Chicora, Pa.
*Social Studies,
Geography,
English*



BONNIE CARSON
Kane, Pa.
*Library Science,
English*



PAUL CARUSO
Ford City, Pa.
*Social Studies,
Mathematics*



ELEANOR CLOVER
Knox, Pa.
*Library Science,
English*



LUTHER COBB
Cranberry, Pa.
*Social Studies,
English*



BOYD COLEMAN
Franklin, Pa.
*Social Studies,
Geography*



NILE COON
Clearfield, Pa.
*Social Studies,
Biology,
English*



JOHN COREY
Whitney, Pa.
*Science,
Social Studies*



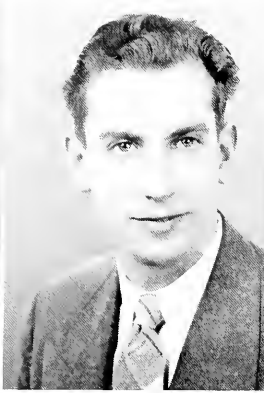
PAUL CROOKS
New Kensington, Pa.
*Science,
Mathematics*



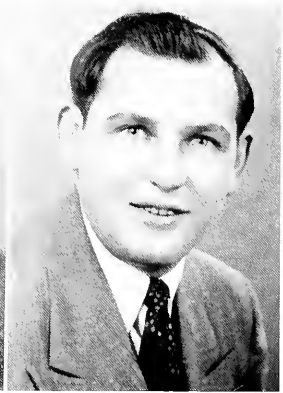
MARILYN CURRY
Punxsutawney, Pa.
*English,
Geography*



WILLIAM CURRY
Pittsburawhey, Pa.
*Social Studies,
Geography*



TED CYPHERT
Clarion, Pa.
*Social Studies,
Geography*



JAMES DAVIDSON
Erie, Pa.
*Social Studies,
Geography*



HOWARD DAVIS
Emlenton, Pa.
*Science
Spanish*



STEPHEN DELLAQUILLA
Johnsonburg, Pa.
*Mathematics
Science*



JOHN DELONG
North East, Pa.
*Social Studies,
Geography*



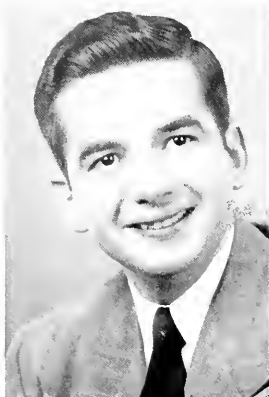
JAMES FAULKNER
Tionesta, Pa.
*Social Studies,
English*



KATHERINE FERGUSON
Apollo, Pa.
*Library Science,
English*



JESSIE FAY
Coity, Pa.
*Library Science,
English*



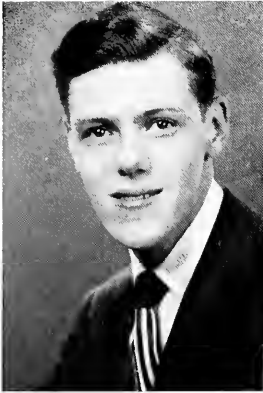
HOWARD FESENYMYER
Oil City, Pa.
*Social Studies,
Spanish*



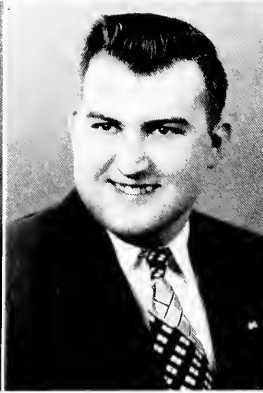
KELLY FLEMING
Ridgway, Pa.
*Social Studies,
English*



CEORA GARDNER
Ridgway, Pa.
*Geography,
Social Studies
English*



KENNETH GIBBONS
Franklin, Pa.
*French,
Spanish,
English*



PAUL GILBERT
Brookville, Pa.
*Social Science
Geography*



WILLIAM GOLDSMITH
Eldred, Pa.
Elementary



GEORGE GORSKE
Johnsonburg, Pa.
*Science,
Mathematics*



LEILA GRUBE
Brookville, Pa.
*Library Science,
English*



AURELIA HANNOLD
Clarion, Pa.
Elementary



HARRY HARLACHER
New Cumberland, Pa.

*Social Studies,
Geography,
English*



MARY HASLET
Tionesta, Pa.

*English,
Social Studies*



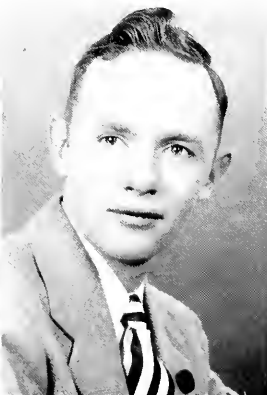
FRANCES HEETER
Clarion, Pa.

*Social Studies,
English*



IRVIN HENRY
Johnsonburg, Pa.

*Social Studies,
Science*



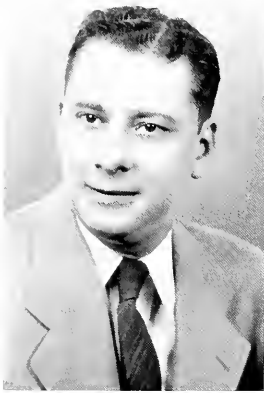
CRAIG HIMES
Evans City, Pa.

*Geography,
Biology*



FRED HIPPCHEN
Punxsutawney, Pa.

*Social Studies,
Geography,
English*



EDWIN HOLZWARTH
Bradford, Pa.
Elementary



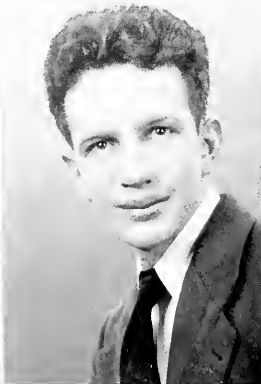
MARY LOU JOHNSTON
Parkers Landing, Pa.
*Library Science,
English*



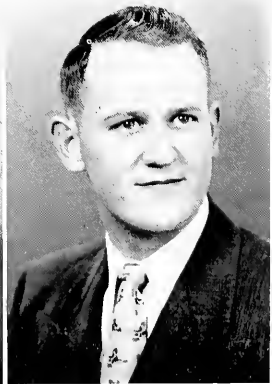
RUTH KEARNEY
Vandergrilt, Pa.
*Library Science,
English*



PAUL KIEL
Hawthorne, Pa.
*Social Studies,
Geography,
English*



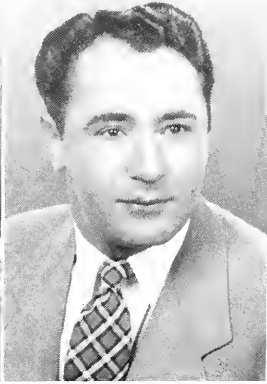
CHARLES KINKEAD
Greensburg, Pa.
*Biology,
English*



DONALD KNAPP
Clarion, Pa.
*Geography,
Social Studies*



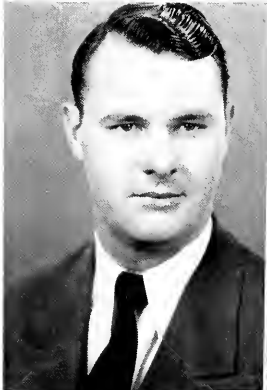
KADE KOS
West Brownsville, Pa.
*Library Science,
English,
Social Studies*



FRED KOVALYAK
Reynoldsville, Pa.
*Social Studies,
Geography*



RICHARD KREPP
Franklin, Pa.
*Mathematics,
Science*



GEORGE KUHN
Tarentum, Pa.
*Geography,
Social Studies*



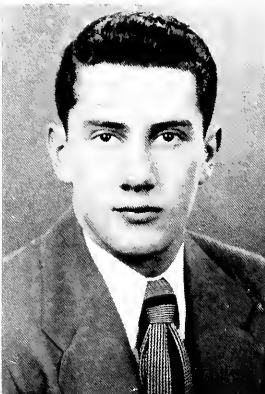
JOSEPH KUINS
Hawthorne, Pa.
*Social Studies,
Geography*



WILLIAM LAFRANCHI
Clarion, Pa.
*Library Science,
Social Studies,
English*



HAROLD LARIMER
Brookville, Pa.
*Social Studies,
Geography,
English*



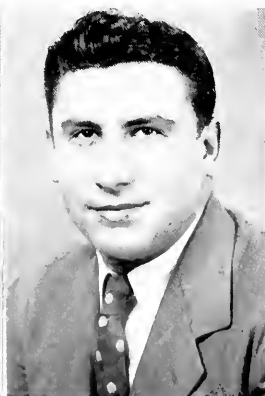
RALPH LARIMER
Brookville, Pa.
*Social Studies,
Geography*



ARVID LARSON
Cairnbrook, Pa.
*Social Studies,
Science*



BARBARA LOBAUGH
Clarion, Pa.
*English,
Social Studies*



GUIDO MALACARNE
Brookville, Pa.
*Social Studies,
Geography*



WILLIAM MARTIN
McKeesport, Pa.
*Geography,
Mathematics*



PHILIP MAROTTI
New Castle, Pa.
*Social Studies,
Geography,
English*



LYLE MCCANNA
Clarion, Pa.
*Geography,
Biology*



ROBERT MCCRAE
Pittsburgh, Pa.
*Social Studies,
Geography,
English*



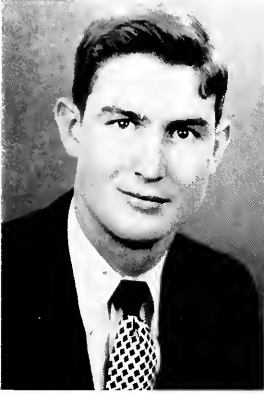
SARA MCGAUGHEY
Brookville, Pa.
Elementary



EVALYN MEABON
Pleasantville, Pa.
Elementary



JOHN MIDDLER
Johnstown, Pa.
*Social Studies,
English*



CHESTER MINICH
Fairmount City, Pa.
*Science,
Mathematics*



BETTY MORGAN
Kittanning, Pa.
*Social Studies,
English*



VIVIAN MORGAN
Oil City, Pa.
Elementary



ROBERT MORRISON
Brookville, Pa.
*Mathematics,
Science*



HELEN MAE NEVEL
Brockway, Pa.
Elementary



LEROY OLSON
Kane, Pa.
*Social Studies,
Geography,
English*



MARY K. O'NEILL
Avonmore, Pa.
*Library Science,
English*



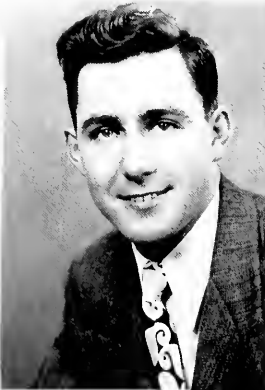
MICHAEL OSIPOV
Portage, Pa.
*Social Studies,
Science,
Geography,
English*



WALTER PRUSICK
Ambridge, Pa.
*Science,
Mathematics*



CHARLES RAMSDEN
McKeesport, Pa.
*Social Studies,
English*



LONZIE RINKER
Aliquippa, Pa.
*Social Studies,
Biology*



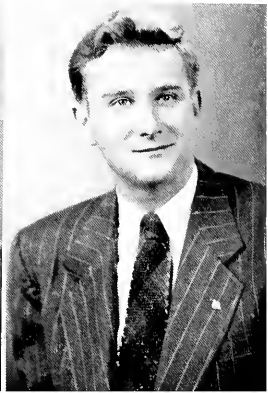
LYNN RHODES
Brookville, Pa.
*Science,
Mathematics*



RICHARD RHODES
New Kensington, Pa.
*Social Studies,
English*



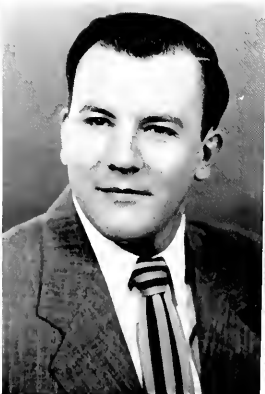
LOMA ROADMAN
Merrittstown, Pa.
*Library Science,
English,
Social Studies*



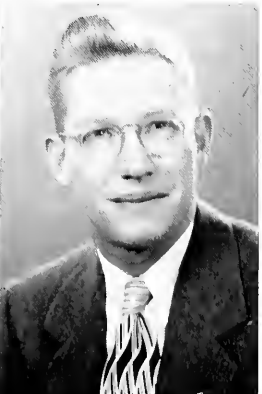
JOSEPH SEKELSKY
Johnsonburg, Pa.
*Social Studies,
English*



ELEANOR SHAFFER
Mayport, Pa.
Elementary



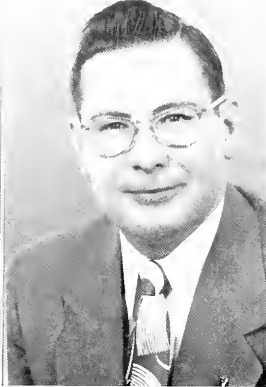
HENRY SHEPARD
Templeton, Pa.
*English,
Geography,
Social Studies*



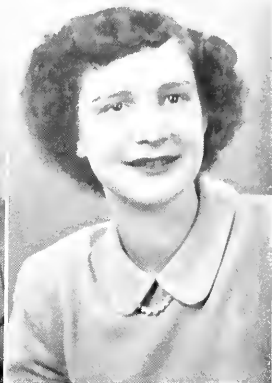
MARK SHIRING
New Kensington, Pa.
*Social Studies,
Geography
English*



JAMES SHOFESTALL
Corsica, Pa.
*Science,
Chemistry*



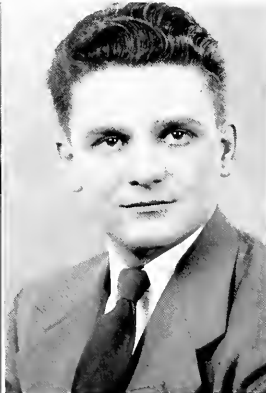
DONALD SHOUP
Clarion, Pa.
*Science,
Mathematics*



EMMA LOU SKINNER
New Bethlehem, Pa.
*Library Science,
English*



DOROTHY SLIMAK
Brookville, Pa.
*Social Studies,
Geography,
English*



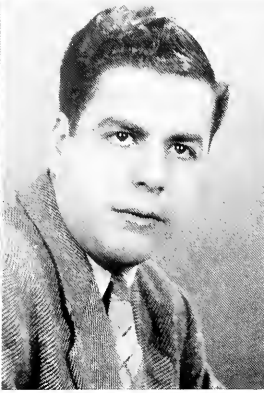
MARIO SURRA
Brandy Camp, Pa.
*Mathematics,
Science*



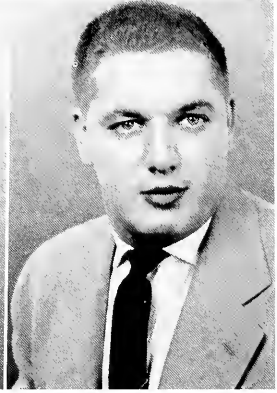
JOSEPH TALIARICO
Sharon, Pa.
*Social Studies,
Geography*



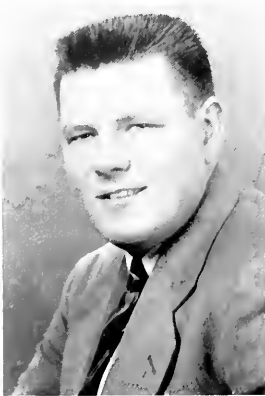
DAVID TREHARNE
New Castle, Pa.
*English,
Spanish*



GUIDO VOLPE
Brockway, Pa.
*Social Studies,
Geography*



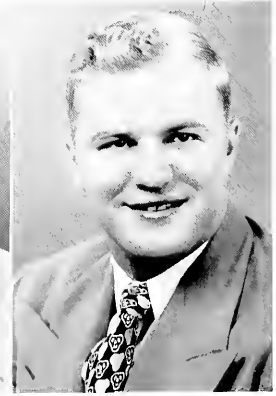
HAROLD WHISNER
Clarion, Pa.
*Social Studies,
Geography*



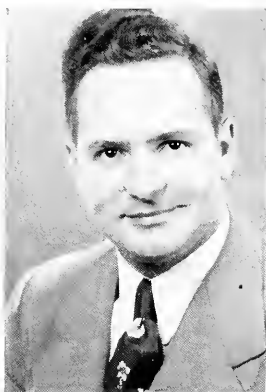
JAMES WIBERG
Altoona, Pa.
*Social Studies,
Geography*



HALLEY WILLISON
Sewickley, Pa.
*Mathematics,
Geography*



RICHARD WOLF
Eric, Pa.
*Science,
Social Studies*



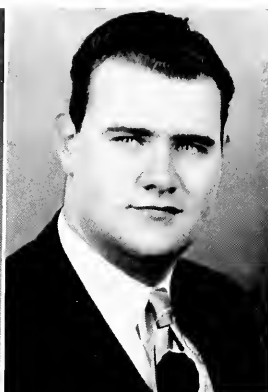
LAVERN WOODROW
Tarentum, Pa.

*Biology,
Social Studies,
English*



MICHAEL ZAVACKY
McKees Rocks, Pa.

*Social Studies,
Biology,
English*



WILLIAM ZETTLER
East Brady, Pa.

*Biology,
General Science*

The End

*It seems to me that all the poems
Covering college life are writ—
The effort I'm inclined to make
Improves them not one whit.
I know you all are praying hard
That this will be a "shortie";
I pledge my faith to all of you
The lines will not pass forty.
I could review our life and times
Spent happily roving idly—
It seems to me we've heard before—
'Tis a subject wrote on widely.
So let's just bid a fond adieu
To all that's made life merry—
Let's raise our steins and wave farewell
To what's left of Tom and Jerry.
No tears or frowns, I beg of you
Let's make this day remembered
You must admit that it's been real—
So leave the fires embered.
The last makes half of what I said
Would be the end; so now
I'll close with just one parting thought—
So long, Chumps, and "Here's How!"*

—FRANKIE ROBINSON



Uuh !!



Bish



Buddies



At ease



Roommates



Isaac



Interest



The Travelers



Evalyn



Our Viv-



Our Baby

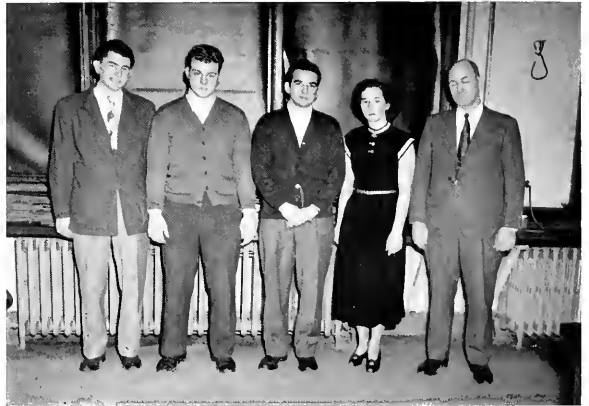


Watch the Birdie

CLASS OF " FIFTY "

JUNIOR CLASS OFFICERS

C. COOK
L. MATCHULET
H. FESENMYER
M. NYPAVER
D. PREDMORE





A. ASKEY
 F. BADGER
 V. BAKER
 E. BLOCKOWICZ



N. BOYER
 E. BRUGH
 E. BRINKLEY
 T. BRINKLEY



H. CLARK
 M. CLARK
 J. COCHRAN
 L. CONFER



C. COOK
 G. COPE
 W. CRAIG
 E. CRAVEN



C. EMERY
 S. DELPARO
 G. DERK
 D. EURY



A. FEDRICK
 R. FLATH
 T. FOSNIGHT
 H. FURLONG

L. GARVIN

L. GEORGE

Z. GEORGE

W. GETTYS



S. GIBSON

M. GLOVER

M. GREEN

E. GROSSMAN



F. GRUBBS

G. HARCHICK

J. HARDY

R. HEETER



S. HEFFNER

D. HOOVLER

G. IADONATO

T. JACKSON



S. JOHNS

A. KELLAHER

E. KELLEY

J. KERR

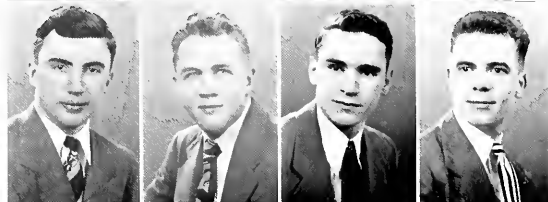


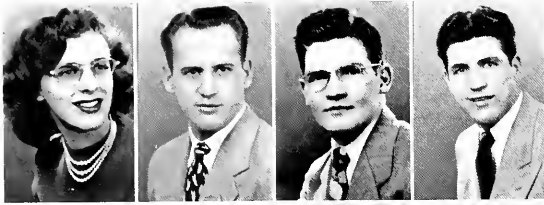
R. KERR

D. KING

T. KNEPP

W. KNIGHT





M. KOHN
 T. KOMISAK
 J. LEE
 F. LIGNELLI



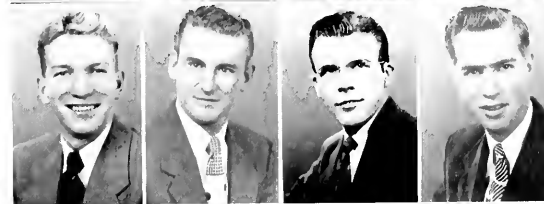
R. LINDHOLM
 M. LONGIOTTI
 N. LUVISON
 B. MACBETH



L. MARINACCIO
 T. MASON
 L. MATCHULET
 C. MATEER



R. McCLUNE
 J. MCCREADY
 F. McELROY
 B. McMICHAEL



K. McMILLEN
 A. MILLER
 D. MILLER
 R. MOORE



R. MOORE
 W. MURRAY
 R. MUSI
 C. NELSON

T. NELSON

J. NICHOLS

R. NICOLAS

S. NYPAVER



F. PECORA

R. PLATT

J. PROKOP

E. PRUSICK



H. PUGAR

M. REED

J. REIGEL

J. ROGERS



E. RUSCIOLELLI

E. SCHEAFNOCKER

J. SCHWAB

C. SCHWARZWALDER



F. SARROW

B. SHERWOOD

J. SIEFER

N. SINGER



E. SKACAN

P. SLAUGENHAUPT

D. SNYDER

M. SPLEEN





R. STEPHENS
 C. STEWART
 P. TOLUSIC
 H. TOTH



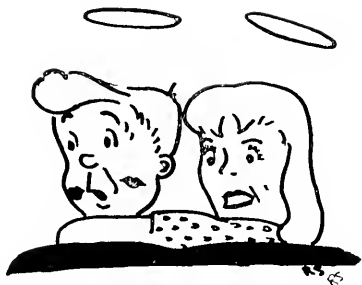
F. VASSALOTTI
 F. WALTER
 S. WATSON
 P. WEIBEL



G. WHISNER
 R. WHITFORD
 C. WILCOX
 R. WILSON



B. WOOD
 G. WOOD
 R. YAKIM
 N. ZIMMERMAN



CLASS OF "FIFTY-ONE"

SOPHOMORE CLASS OFFICERS

H. HARTMAN
P. CARR
L. BROWN
P. TAYLOR
J. JANNUZI





First Row—G. Marshall, E. Rock, P. McKee, E. Walley, J. McCue, J. Kapp.
Second Row—R. Mays, R. Green, B. Thompson, H. Kincaid, S. McKenzie, J. Fink.
Third Row—M. Hecci, R. Hoover, M. George, M. Ochs, S. Murphy, A. Salemmie, J. Dolby.
Fourth Row—C. Harris, H. Lehman, J. Jannuzi, M. Shelter, C. Papalle, R. Varrotto.
Fifth Row—P. Taylor, J. Bove.



First Row—J. Stalder, K. Kennedy, F. Ames, S. Johnson, J. Willson, H. Bell, M. Cairni,
 F. Ohl, C. Dimino.
Second Row—P. Lane, M. Bailey, J. Weigel, P. Stewart, B. Faust, B. Hay, N. Korb, F.
 Creighton, P. Carr.
Third Row—D. Korb, H. Cochran, G. Trembach, M. Lopinto, G. Wolle, J. Shaw, E. Tur-
 chick.
Fourth Row—J. Palaggio, F. Vescio, E. Chalfant, T. Barratt, W. Mader, D. Vogelbacker,
 A. Plopa.
Fifth Row—M. Petruska, E. Dolecki, R. Miller, J. Eakin, W. Garber, S. Baker, M. Kohan,
 H. Jenkins.

CLASS OF "FIFTY-TWO"

FRESHMAN CLASS OFFICERS

C. GILL
D. NELSON
A. BRADY
H. TRUMAN





First Row—R. Judd, M. McCleary, R. Dalzell, P. Kulbaba, T. Higgons, J. Olds.
Second Row—B. Gault, S. Stanley, J. Chervenak, R. Nelson, J. Carter, D. Thorburn, J. Williams.
Third Row—T. Clayton, P. Felton, R. Long, H. Calhoun, J. Kudarski, R. Steeman, J. Clayton.
Fourth Row—J. Felton, E. Rhodes, R. Spragg, M. VanWinkle, D. Green, J. Bray, J. King.
Fifth Row—R. Mohnicy, R. Perry, J. Russ, R. McKinney, D. Goldthwaite, W. Stotler, R. Kline, N. Kovalchick, R. Burns.



First Row—J. Lawrence, R. Zeleznick, R. Lansberry, D. Schwartz, G. Leish, S. Tippin, D. McClune, R. Solkovy.
Second Row—D. Hay, D. Leathers, J. Mock, M. Umstead, G. Hiteshue, J. Patton, J. Gowatt.
Third Row—F. Pala, A. Weimer, H. McHallick, W. Schierbel, E. Vail, V. Luther, J. Pearsall.
Fourth Row—G. Stennett, L. Fanni, P. Jacobs, J. Engler, P. Wuenstel, B. Donaldson, D. Harp, R. Buckeye, R. May.
Fifth Row—P. Scierka, J. Lamoree, D. Florin, E. Boschini, W. Gjebre, D. Trembach.



First Row—J. Leopardo, L. Weigald, P. Schultz, G. Johnson, C. Adams, J. Hale, W. Watson, S. Knight.
Second Row—G. McMaster, D. McClune, G. Merryman, R. Wright, E. Himes, M. Ritts, D. Mortland, E. Kiler.
Third Row—D. Hibbard, H. Fox, L. Rapp, L. Kindelberger, M. Dietz, D. Rice, P. Jacobson, E. Anderson, C. Haupt, J. Clingin.
Fourth Row—P. Mock, M. Kiser, J. Duich, D. Burns, R. Smith, J. Johnston, D. Smith, R. Vaughan, J. Seidler, W. Mahle.
Fifth Row—J. Campbell, F. Curry, G. Kennemuth, E. Beers, C. Servey, M. Bennett, C. Best, M. Moore, B. Taylor.



First Row—P. Shirey, A. Brady, D. Daugherty, A. Marts, P. Denning, P. Skinner, V. Schultz, E. Dickey.
Second Row—M. Knowlton, M. Alves, M. Markle, M. Eberle, J. Hanna, E. Beers, M. Williams, G. Wagner, D. Routche.
Third Row—G. Oakes, K. Webb, H. Fisher, G. Middleton, J. Campbell, G. Younker, R. Catt, C. DeLong, J. Martone.
Fourth Row—D. Freudenberger, J. Russell, J. Huet, L. Ande, C. Baker, J. Sterrett, K. Polasko, G. Simitaske.
Fifth Row—N. McElhattan, M. Dible, E. Ewaski, E. McNulty, B. Johnston, B. Wancke, H. Meabon.



First Row—D. Curfman, K. Mullen, D. Mills, H. Haas, J. Cotton, J. Duespohl, R. Ifft.
Second Row—R. Osterholm, R. Brandon, A. McLaughlin, W. Englert, R. Koerber, J. Lavosky, D. Powers, D. Best.
Third Row—H. McKenzie, P. Clyde, D. Cline, M. Schierberl, B. Hess, B. Harvey, R. Brittain, B. Goode.
Fourth Row—D. Carbaugh, W. Neff, D. Heinen, L. Tenerove, D. Whisner, D. Dornburg, R. Herb.
Fifth Row—R. Cooke, E. Martindale, W. Downs, A. Latz, G. Hogue, R. Russell, M. Doverspike, M. Chapin.



First Row—W. Kirk, A. Millin, A. Zihmer, J. Kanaan, D. Baker, D. Jones, G. Johnson.
Second Row—A. Pier, A. Keniston, C. Slater, M. Henry, D. Stowe, R. Cooke, E. Weaver, G. Oakley.
Third Row—D. Ballas, S. Russo, E. Raucke, J. Ondrejko, B. Rybiski, E. Huggler, M. Shaf-ler.
Fourth Row—M. Caruso, J. Busch, R. Predebou, H. Smith, D. Deithorn, J. Ritter, J. Kud-aroeki.
Fifth Row—R. Allison, C. Gaut, M. Geronimo, J. Matthews, E. Ewaski, J. Gillford, D. Caibbs, T. Kerr.



Tunin'



Pat



Resignation



Studious



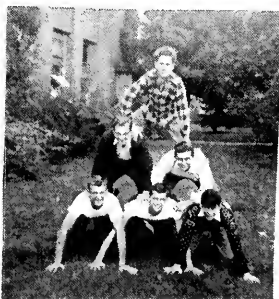
Hemi ~ sphere



Buddies



On the fence



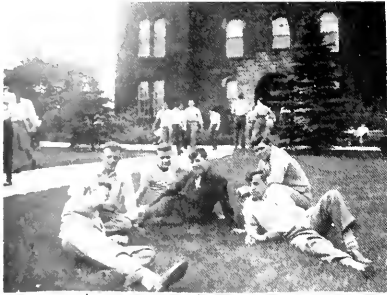
Stacked



All for one



Lovely Day



Between Classes



"Chandi"



Just Kids



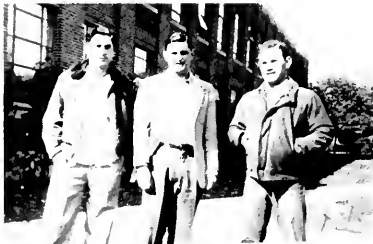
Nice!



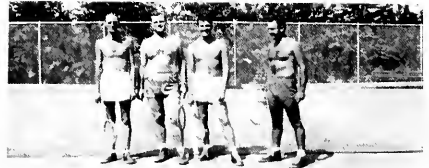
Working?



Good Subjects



Ton? Dick? Harry?



Muscles



Paul



Steppin'



Push



ACTIVITIES

FUTURE TEACHERS OF AMERICA



First Row—H. Nevel, R. Koerber, W. Johnson, D. Curfman, M. Johnston.
Second Row—S. McGaughey, J. Fay, C. Mateer, J. Hamold, T. Bartello, E. Strohecker.
Third Row—W. Lafranchi, J. Duespohl, G. Hogue, R. Stephens, J. Kerr.

Just a step away from the National Education Association and the Pennsylvania State Education Association, the Future Teachers of America, has as its purpose the enlightenment of students who intend to enter the field of teaching.

At monthly meetings, problems pertaining to the Future Teachers are discussed.

OFFICERS

- President* WILLIAM LAFRANCHI
Secretary-Treasurer TWILA BARTELLO
Librarian PATRICIA ALLISON
Sponsor EVALYN STROHECKER



ASSOCIATION OF CHILDHOOD EDUCATION



Row one seated—E. Walley, H. Nevel, W. Johnson, V. Baker, E. Shaffer.
 Row two seated—B. Sherwood, J. McCue, S. McGaughey, J. Hammold, G. Whisner, M. Clark.
 Standing—V. Morgan, M. Glover, E. Meabon, P. Behringer, P. Lane, F. Wilson, D. Williams, E. Strohecker.

The membership of the Association of Childhood Education is limited to students who are interested in elementary education. New members are accepted each October at which time they are entertained at an informal party.

At our monthly meetings we discuss problems pertaining to childhood education, and conduct workshops in music, art, literature and recreational games.

Each year in December the group entertains the kindergarten and first grade children with a Christmas party.



OFFICERS

- President VIOLET BAKER
- Vice-President ELEANOR SHAFER
- Secretary DONNA EURY
- Treasurer MARTHA LOU GLOVER
- Sponsor EVALYN STROHECKER

ART CLUB



First Row—D. Delozier, M. Johnson, J. Lemp, B. Mercer, R. Musi, C. Dimino.
Second Row—F. Ohl, R. Deitz, F. Palaggo, J. Bove, H. Bell, P. Felton, D. Trembach, H. Sandford.
Third Row—W. Shaffer, T. Nelson, A. Klingensmith, J. Hackett, R. Hoover, W. Gjebre, R. Green.

The purpose of the organization is to further the interest for art of all types with consideration to education.

In conjunction with the purpose mentioned above, the following activities were carried out: a trip to the Carnegie Art Show at Pittsburgh, and of interest to the whole school body was the club's engagement of Ernest Thurn, from the Thurn School of Modern Art, to give a demonstration in chapel.

OFFICERS

President

JOHN BOVE

Vice-President

FRANK PALLAGO

Secretary

BILLY MERCER

Treasurer

ALBERT KLINGENSMITH

Sponsor

MISS SANDFORD



CAMERA CLUB



D. Mortland, M. Riits, L. Rapp, M. Campbell, K. Webb, W. Lalranchi, D. Mills, W. Johnson, E. Vail, H. Krouse, M. Hecci, M. Eberle, C. Mateer, H. Fox, M. Clark, D. Pierce.

On the campus we find a very scientific group, who have photography as their main concern.

Activities are centered around the theme of photography. A few of them are: use of the dark room, photo contests, and talks of different types of cameras. On the lighter side the club gathered together and had a good time and finished it up just right with refreshments.



OFFICERS

President
W. JOHNSON

Vice-President
B. VAIL

Secretary
M. CLARK

Treasurer
D. MORTLAND

Sponsor
D. PIERCE

COLLEGE PLAYERS



Row one seated—S. McKenzie, F. Creighton, C. Haupt, B. Oilt, J. McCue.

Row two seated—L. Woodrow, M. Knowlton, C. Morgan, P. King, P. Stewart, J. Chambers, M. Van Winkle, A. Marshall, D. Daugherty, L. Maxwell, M. Smith, N. Feglev.

Standing—D. Pfuntner, R. Mays, A. Weimer, S. Tippin, A. Martinez, J. Mellon, J. Messler, J. Banjak, D. Hay, G. Marshall, A. Brady, M. McConnell, C. Ramsden, P. Slaugenhaupt, J. Jannuzi.

The College Players is one of the largest and most active clubs on our campus.

Each semester this club sponsors the production of one full length play and several one-act plays. The first semester presentation of *Stage Door*, under the direction of Miss Marwick, gave thirty-two of our young thespians an opportunity to appear behind the footlights.

Christmas banquets, formal and informal parties, and presentation of one-act plays are features of our regular monthly meetings.

OFFICERS

President

FLO CREIGHTON

Vice-President

JOHN BANJAK

Secretary

L. MAXWELL

Treasurer

BOB MAYS

Sponsor

MARIE HARWICK



Seated—M. Johnston, B. Hess, P. Skinner, P. Schultz, M. Knowlton.

Standing—M. Marwick, J. Watters, R. Wright, W. Mahoney, J. Beatty, M. Boyd.

COLLEGE
PLAYERS
PRESENT



"STAGE DOOR"



BY
EDNA FERBER
AND
GEORGE KAUFMAN

GEOGRAPHY CLUB



First Row—M. Eberle, D. Burns, E. Walley, K. Kennedy, J. Weigel, J. Stalder.
Second Row—A. Kelleher, D. Cribbs, H. Fisher, J. Gifford, E. Dickey, M. Longjotti, N. Korb.
Third Row—D. Ballas, E. Brinkley, A. Salemme, J. Matthews, E. Chalfant, K. Emerick, J. Taylor, R. Rhodes.

The Geography Club is a campus organization of students interested in further recognizing and studying natural geographic formations and the products resulting in man's use of these natural resources. By developing a deeper appreciation of our basic activities, we are more able to utilize materials for the betterment of our future society.

Highlights of this year's work include the group's trip to Pittsburgh, the showing of slides by one of the members, taken on his summer tour of the West, and perhaps the greatest, the quadrupled increase in the club's membership over that of previous years.

OFFICERS

President

THOMAS NELSON

Vice-President

JEANNE BEATTY

Secretary-Treasurer

AMY ROSE KELLEHER

Sponsor

MR. KUHNER



First Row—D. Korb, J. Starrett, E. Kifer, J. Kanaan, P. Denning, C. Baker.
Second Row—B. McMichael, S. Murphy, R. Varratto, T. Nelson, M. Ny-paver, M. Robertson, E. Rock.
Third Row—C. Papale, H. Ande, M. Henry, W. Lafranchi, R. Stephen, C. Kulmer.

HOSTESS CLUB



First Row—P. Skinner, G. Oakes, S. Knight, R. Vaughan, D. Jones, G. Middleton, J. Price.
Second Row—E. Anderson, D. Stowe, I. Kindelberger, P. Mock, D. Baker, J. Russell, J. Hanna, D. Nelson.

The Hostess Club is capably sponsored by Miss Stoke. Each year the club provides the decoration in the lounge of Becht Hall for the Christmas celebration.

The purpose of the club is to give the girls the fundamental principles for entertaining and opportunities to plan menus and serve them.



OFFICERS

- | | |
|----------------------------|------------------|
| <i>President</i> | DORIS NELSON |
| <i>Secretary</i> | PATRICIA MOCK |
| <i>Treasurer</i> | PATRICIA SKINNER |
| <i>Sponsor</i> | GRACE STOKES |

INTERNATIONAL RELATIONS CLUB



Seated—J. Corey, S. Slick, P. McKee, L. Maxwell, B. Wood, N. Coon.
Standing—T. Barrett, F. Sharrow, J. Fink, W. Schiebrel, L. Tenerove, E. McCall, J. Chervenak, T. Kerr, J. DeLong, M. Shiring.

It is the policy of the International Relations Club, one of the largest clubs of the campus, to deal with current international problems. It has conducted some very enlightening discussions in the past semester, including presidential candidates in the election of 1948, the Marshall Plan, the Taft-Hartley Law, and Aid to China.

Dr. Gill, one of the new members of our faculty, joins Dr. Slick and Dr. Tallant in the advisory capacity.

As a result of the successful United Nations trip in the spring of 1948, the club unanimously voted to make a second trip in the spring of this year.

OFFICERS

President

JOHN DELONG

Vice-President

T. CYPHERT

Secretary-Treasurer

P. CALVERT

Sponsor

S. SLICK



Seated—C. Gill, M. Zavacky, W. Martin, M. VanWinkle, J. Mellon, P. Calvert, M. Kiser.
Standing—L. Woodrow, I. Henry, A. Larson, T. Cyphert, J. Schwab, B. McMichael, M. Reed, D. Rice, B. Ferguson, R. McCrae.

NEWMAN CLUB



First Row—B. Rybinski, M. Caimi, G. Harchick, M. Deitz, R. Musi, H. Toth, J. Lawrence.
Second Row—E. Tenaglia, J. Bray, C. Slater, M. Geronimo, K. Webb, M. Lopina, P. Kaulbaba, J. Kerr.
Third Row—L. Tencrovc, E. Prusick, M. Petraska, E. Turchick, J. Chervenak, T. Kerr, E. Boschini.

The Newman Club is a national organization composed of Catholics attending non-Catholic institutions of higher learning. The purpose of the club is to deepen the spiritual and enrich the temporal lives of its religious, intellectual, and social activities.

Highlights of the semesters were a "get acquainted" dance on October 20 and a Christmas banquet on December 16. Members are looking forward to a formal dance early in the spring.

OFFICERS

<i>President</i>	NORGE LUVISON	<i>Secretary</i>	BETTY FERGUSON
<i>Vice-President</i>	STEVE DELPARO	<i>Treasurer</i>	PAUL CAREY



First Row—P. Denning, H. Bell, D. Smith, M. Nypaver, S. Murphy, J. Price, A. Wilkie.
Second Row—J. Ondrejko, S. Delperio, R. Kerr, J. Seidler, J. Stalker, C. Papale, A. Salemine, P. Jacobson.
Third Row—P. Carey, M. Caruso, T. Palaggio, J. Busch, J. Palaggio, E. Ruscicelli, N. Luvison, J. Gronick.



First Row—G. Whisner, C. Adams, S. Johnson, J. Kapp, F. Creighton, M. McConnell, S. Gibson, J. Campbell, P. Lane, M. Holden, L. Garvin, P. Carr, D. Daugherty, E. Port.
Second Row—S. Arner, R. McElhattan, D. Hibbard, D. Dornburg, F. Ames, M. Knowlton, P. Slaughaupt, A. Marshall, J. Wilson, N. Zimmerman, P. Shirey, A. Wilkie, P. Schultz.
Third Row—R. Kerr, D. Diethorn, J. Irwin, M. Petruska, E. Helmlintoller, W. Douds, G. Bloom, C. Krepps, M. Petruska, J. Kerr.
Fourth Row—C. Hines, J. Lee, E. McNully, W. Stockwell, D. Knapp, M. Sheffer, C. DeLong, B. Macbeth.

CHOIR === ENSEMBLE



Seated—R. McElhattan, B. Faust.
Standing—P. Carr, K. Adams, S. Gibson, A. Marshall, M. McConnell, F. Creighton, R. Kearney.

THE BAND



Seated—M. Eberle, B. Sherwood, J. Lindquist, P. Jacobson, M. Green, P. Schultz, D. Freudenberg, D. Goldthwaite, G. Yonker, D. Carbaugh, M. Sheffer, R. Hovis, D. McManigle, E. Brugh, P. Carr, J. Leopardo.

Standing—M. Alves, J. Barclay, J. Capelli, P. Lasitis, M. Dible, W. Hart, T. Kuhns, E. Helmtoller, C. Himes, D. Daugherty, H. Lehman, G. Cope, G. Bloom, J. Waters.



OUTDOOR CLUB



First Row—C. Minich, K. Miller, J. Messler, L. Sebring, R. Larimer, J. Schwab, B. Macbeth.

Second Row—D. Predmore, M. Klepfer, F. Master, L. Rhodes, N. Zimmerman, J. Cochran, L. Matchulet.

Third Row—R. Moore, M. Sheller, J. Lee, R. Kerr.

As in past years, the Outdoor Club has carried out its principles of good sportsmanship and love for the outdoors.

This year along with having their usual good times, they found time to sponsor a "Nature Trail" at Cooks Forest, an educational and very picturesque project.

A party for new members given earlier in the fall, was a huge success. At that time the members inspected the trail.

OFFICERS

<i>President</i>	CHESTER MINICH
<i>Vice-President</i>	BRUCE MACBETH
<i>Secretary-Treasurer</i>	RUTH KEARNEY
<i>Sponsor</i>	DONALD PREDMORE

PRESS CLUB



First Row—A. Keniston, N. Miller, B. Shields, M. Caimi, L. Roadman, G. Wagner, B. Nair.
Second Row—C. Larson, L. Cobb, J. Tomikel, C. Weir, J. Sparhawk, C. Nelson, D. Routhche.

The purpose of the Press Club is to publish the *Clarion Call* and the *College Bulletin*, a weekly publication introduced for the first time this year. It aims also to give prospective teachers training they will need later in directing school publications.

Highlights of the year include moving pictures about journalism, discussions of various types of newspaper articles, and lectures about prominent editors.

OFFICERS

Editor

TED CYPHERT

Associate Editor

LUTHER COBB

President

THOMAS BRINKLEY

Vice-President

CHARLES NELSON

Secretary

MARJORIE REED

Treasurer

BING LARSON

Advisor

MISS NAIR



Seated—T. Cyphert, M. Reed, M. Say, B. Wood.
Standing—J. Sieler, P. King, T. Brinkley.

SPORTSMEN'S CLUB



First Row—D. Trembach, H. Cochran, G. Trembach, E. Lloyd, W. Gjebre.
Second Row—D. Curfman, J. Irwin, D. Ballas, J. Eaken, R. Bisceglia, F. McElroy, G. Ober.

This year brought to the campus a new organization that has as its name the Sportsman Club. Under the able supervision of Mr. Galen Ober, the club had a very successful year.

The purpose of this organization is to create and maintain good sportsman-like conduct among the students of this college, to participate in all-round outdoor sports, and to build a good character foundation for the members of this club.

OFFICERS

- President*
CHIEF LEWANDOWSKI
- Vice-President*
GEORGE TREMBACH
- Secretary*
HAROLD COCHRAN
- Treasurer*
ED LLOYD
- Spisor*
GALEN OBER



First Row—C. Slater, D. Helbling, T. Helbling, J. Anderson, G. Lewandowski, J. Price.
Second Row—F. Grubbs, F. Augustine, H. Mertz, H. Bell, J. Rettig, B. Schill.
Third Row—J. Matthews, E. Montebell, V. Caruso, M. Geronimo, R. Zeleznock.

STUDENT SENATE



Seated—L. Grube, M. Zavacky, P. Chandler, F. Lignelli, E. Brock.
Standing—J. Kapp, P. Slaugenhaupt, L. Cobb, T. Cyphert, B. Coleman, L. George, M. Curry.

The Student Senate (Clarion Students Association) is composed of twelve students duly elected to represent and act for the student body. This body strives to work out differences that arise within the student body and between this body and other campus forces that may tend to appear.

Another prime duty of this student government group is to prepare a budget for the appropriation of the student activity fund. The fund is so appropriated as to pay the cost of varied activities which seem to contribute most to the campus life of all students.

Elections to the Clarion Students Association are planned so that all factions of the student body are represented—dormitory students, town students and commuting students, with male and female students on an equal representation basis.



OFFICERS

President M. ZAVACKY
Vice-President F. LIGNELLI
Secretary E. BROCK

YOUNG WOMEN'S CHRISTIAN ASSOCIATION



First Row—R. Vaughan, J. Seifer, J. Sterrett, E. Keeler, G. Oakes, D. Stowe, P. Skinner, A. Wilkie, H. Nevel.
Second Row—K. Stewart, V. Baker, C. Baker, J. Hanna, J. Russell, L. Ande, R. Smith, J. Johnston.
Third Row—M. Diebel, E. Anderson, S. Knight, M. Say, G. Whisner, J. McCue, E. Rock, M. Glover, F. Wilson, J. Gifford.
Fourth Row—E. Dickey, H. Fisher, G. Middleton, J. Kanaan, T. Bartello, J. Beatty, M. Johnston, E. Shaffer, K. Kennedy.
Fifth Row—P. Mock, S. McGaughy, M. Henry, L. Kindelberger, M. Green, P. Lane, J. Nichols, G. Marshall.

The Y.W.C.A. holds inspiring devotional and business meetings twice a month. Each Christmas Tide, the Y.W.C.A. joins with the Y.M.C.A. and invites the student body to enter into the spirit of the season by Christmas caroling in the town under the leadership of Mr. and Mrs. Stanley Lore.

OFFICERS

<i>President</i>	PAT LANE
<i>Vice-President</i>	ELEANOR SHAFFER
<i>Secretary</i>	TWILA BARTELLO
<i>Treasurer</i>	JEAN MCCUE
<i>Sponsor</i>	GRACE STOKE

YOUNG MEN'S CHRISTIAN ASSOCIATION



First Row—R. Stephens, G. Johnson, W. Johnson, D. Curlman, J. Lee.
Second Row—I. Henry, W. Lafranchi, A. Larson, J. Irwin, N. Coon, L. Laughlin.
Third Row—S. Lore, M. Sheffer, P. Shank, L. Woodrow.

The Young Men's Christian Association is an organization whose purpose is to provide Christian fellowship and foster Christian ideals among the men on our campus. It seeks to sponsor activities of a physical, social, mental and religious nature.

The programs have consisted of hymn sings, illustrated lectures, and inspirational talks, in addition to recreational activities of a varied nature. Some meetings have been held jointly with the Y.W.C.A., one of which culminated in the annual Christmas caroling tour of faculty homes.

The Y.M.C.A. plans to expand its activities, and has already met with gratifying success in increasing its membership.

OFFICERS

<i>President</i>	MERLE SHEFFER
<i>Vice-President</i>	WILLIAM LAFRANCHI
<i>Secretary</i>	WILBUR JOHNSON
<i>Treasurer</i>	ROLAND STEPHENS
<i>Sponsor</i>	STANLEY LORE



SEQUELLE STAFF

J. BANJAK

L. WOODROW

M. SHIRING

F. BADGER

J. BEATTY

E. CRAVEN

E. SKINNER

R. SLEEMAN

E. SHAFFER

R. KEARNEY

B. CARSON

M. L. JOHNSTON

E. BROCK

A. LARSON

T. BARTELLO

L. OLSON

G. MINICH

WAITER'S CLUB



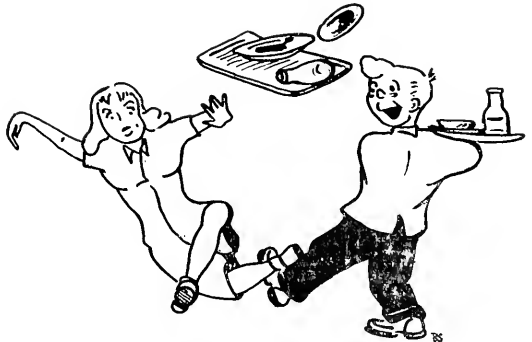
First Row—W. Goode, R. Lafferty, R. Evans, J. Schweppe, R. May, J. Spence.
Second Row—D. Ballas, E. Meabon, E. Shaffer, P. Behringer, M. Longiotti, J. Nichols, E. Brugh, C. Bates.
Third Row—D. Eury, M. Nypaver, R. Varratto, A. Plopa, J. Banjak, E. Turchick, P. Carey, H. Clark, J. Weigel.
Fourth Row—J. Tomikel, M. Petruska, J. Stonis, M. Sheffer, E. Boschini, E. Ewaski, E. Prusick, T. Kerr.

The idea for a Waiters Club was formulated in the fall of 1947 with the purpose of knitting together a group of students who constantly work together to get the meals served correctly and efficiently.

The year's activities were highlighted with a Christmas dance. Music was furnished by the "Moonlight Serenaders", the campus dance band.

OFFICERS

- President* . . . JOHN TOMIKLE
Vice-President . . . AL PLOPA
Secretary . . . NANCY ZIMMERMAN
Treasurer . . . MARY LONGOTTI
Sponsor . . . STANLEY LORE



WHO'S WHO



Floor—S. Dellaquila, J. Corey, M. Shiring.

Seated—A. Larson, L. Olson, J. Beatty, M. Zavacky, I. Henry, M. Nypaver, M. Osipov, V. Baker, T. Cyphert.

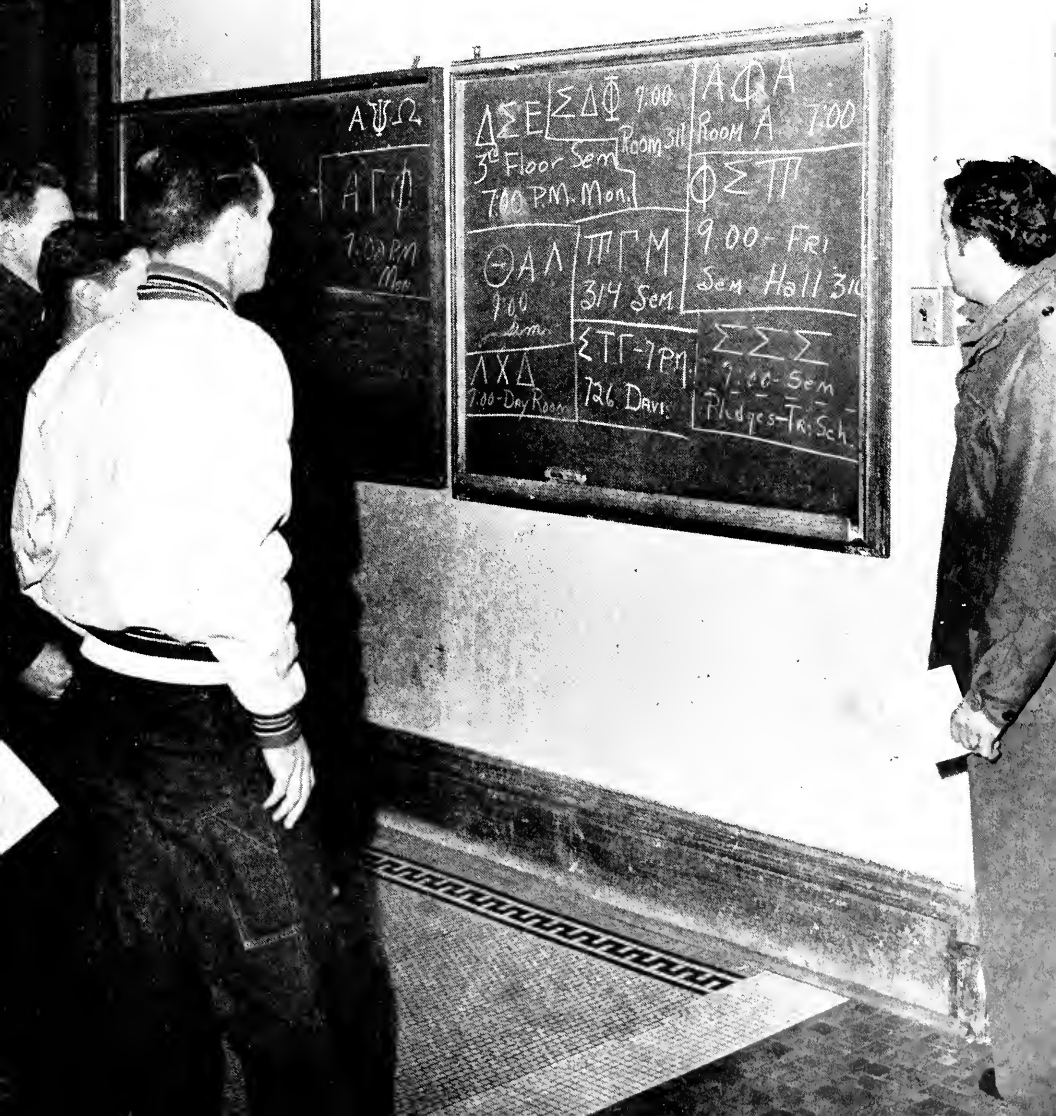
Mary Lou Johnston, a member of Who's Who, was not present for the picture.

With the highest standards ever recorded at Clarion State Teachers College, the faculty committee had a job on their hands to select the proposed percentage of students for "Who's Who Among Students in American Colleges and Universities".

Basic for membership is scholarship and activity of the individual. The honor is great and we have a fine group to uphold it this year.



"Frats"



$\alpha\psi\Omega$

$\alpha\Gamma\Phi$
7:00 PM Mon

$\Delta\Sigma E$ / $\Sigma\Delta\Phi$ 7:00
3rd Floor Sem Room 311
7:00 PM Mon

$\Theta\alpha\lambda$
1:00 Sem

$\Pi\Gamma M$
3:14 Sem

$\lambda\chi\Delta$
7:00 Day Room

$\Sigma\Gamma\Gamma$ - 7 PM
126 Days

$\alpha\phi\alpha$
Room A 7:00

$\phi\Sigma\pi$
9:00 - FRI
Sem Hall 314

$\Sigma\Sigma\Sigma$
9:00 Sem
Pledges - Tri-Sch.

PAN-HELLENIC COUNCIL



Seated—M. Kohn, M. Spleen, J. Nichols, J. Willson, R. Musi.
Standing—M. Clark, P. Slangenhaupt, P. Stewart.

DELTA SIGMA Δ EPSILON



First Row—F. Ames, M. Smith, F. Spak, J. Weigel, K. Kennedy, P. Carr.
Second Row—L. Maxwell, L. Brown, S. Watson, M. George, L. George, S. Allen, E. Brock.
Third Row—F. Creighton, B. Faust, F. Masters, E. Spaller, P. Stewart, H. Furlong, P. Bish, M. Johnson.

Delta Sigma Epsilon held its 16th national conclave, the Dixie Jamboree, in Biloxi, Mississippi in August of 1948. Those attending from Alpha Zeta Chapter were Earla Brock, Shirley Watson, Martha Smith, and Pat Carr. It proved a never to be forgotten experience for all concerned, and many ideas on national sorority work were brought back.

One of our most important events this year was the "Gay Nineties" rush party on November 3rd. As a result, we now have 16 very nice pledges in addition to our 23 actives. Other activities for the year include selling food in the dorm on Tuesday, parties for new initiates and pledges, decorating for the Homecoming Dance, sponsoring a record dance in the gym, and our week-end at Cooks Forest.

OFFICERS

- President* EARLA BROCK
Vice-President LOIS GEORGE
Recording Secretary HELEN FURLONG
Corresponding Secretary PAT CARR
Treasurer SHIRLEY WATSON



LAMBDA CHI DELTA SORORITY

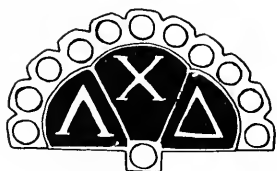


Floor—M. Palo, L. Grant, N. Boyer.
Seated—J. Willson, E. Clover, R. Graff, M. O'Neill, M. Kohn.
Standing—R. Kearney, N. Harriger, H. Pugar, B. Lobaugh.

The Lambda Chi's, under the able leadership of Mrs. Graff, has had, as usual, a profitable year—a year filled with civic projects, pleasant associations, and fun. Following our "rush party", which this year featured a "Hoe Down" farm party, we initiated nine excellent new members. Major events of the year which we recall with pleasure are: Cooks forest week-end, the successful rummage sale, and our delightful Christmas party.

OFFICERS

<i>President</i>	MARY K. O'NEILL
<i>Vice-President</i>	RUTH KEARNEY
<i>Secretary</i>	ELEANOR CLOVER
<i>Treasurer</i>	LEE GRANT
<i>Sponsor</i>	MRS. DONALD GRAFF
<i>Pan Hellenic Representative</i>	..	MARIE KOHN



SIGMA DELTA PHI



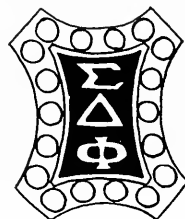
Floor—B. Morgan, M. Longiotti, E. Brugh.
Seated—M. Reed, B. Wood, B. Nair, T. Jackson, G. Harchick.
Standing—J. Nichols, J. Sicfer, D. Slimak, B. Sherwood, B. Grossman.

The Sigma Delta Phi sorority plunged into its nineteenth consecutive year with a memorable weekend at Cooks Forest. Our social season was highlighted by the "Hell-z-poppin" rush party. The excursion into the home of departed spirits admitted into our sorority several new members.

During the Christmas season we supplemented our treasury by selling the conventional Yuletide greeting cards. Our social service work, namely supplying a basket of food for the Christmas dinner of a needy family, emphasized our motto "Be kind, be brave, be true not only to thyself, but to others". We also enjoyed several informal get-togethers. Plans carried out included a trip through the coke plant, the Pan-Hellenic Dance, and a rummage sale.

OFFICERS

<i>President</i>	THELMA JACKSON
<i>Vice-President</i>	DOROTHY SLIMAK
<i>Secretary</i>	BARBARA WOOD
<i>Treasurer</i>	ELAINE BRUGH
<i>Sponsor</i>	BERTHA NAIR

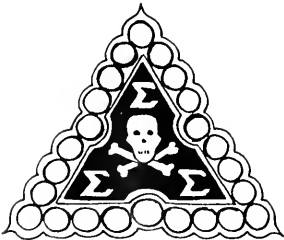


SIGMA SIGMA SIGMA



Row One—H. Bell, T. Bartello, S. Gibson, M. Gamble, P. Behringer, J. Stalder, M. Green.
 Row Two—C. Dimino, E. Walley, H. Toth, E. Meabon, M. Banner, M. Glover, F. Wilson,
 J. Beatty.
 Row Three—M. Johnston, E. Shaffer, K. Stewart, C. Gardner, M. Spleen, S. Johnson, J.
 Zimmerman.

Alpha Pi chapter of Sigma Sigma Sigma has had a very eventful year. Among the highlights was a most successful rush party, the theme of which was a "Haunted House". Following this party twenty girls were pledged to Tri Sigma. One of our visitors this year was Mrs. Robert McKenrick, our chapter inspector. Alpha Pi passed with flying colors. For our Christmas social service project, we aided Miss Gamble in making house slippers for the children at the county home.



OFFICERS

- President* MARY LOU JOHNSTON
Vice-President PHIVELLS SLAUGHENHAUPT
Recording Secretary MARTHA LOU GLOVER
Corresponding Secretary HELEN TOTH
Treasurer MARY SPLEEN
Rush Chairman TWILA BARTELLO

THETA ALPHA LAMBDA



Seated—G. Whisner, M. Caimi, M. Robertson, J. Rettig, R. Musi, H. Mertz, M. Clark, D. Delozier.
Standing—B. Ferguson, H. Skaggs, J. Clark.

The purpose of this sorority is to promote and foster the principles of fellowship and goodwill among the members of our sorority.

Our motto is "To thine ourself be true".

The theme of our rush party, held on November 5, centered about a gypsy carnival with fortune tellers, peanuts, popcorn, candied apples, and all that is necessary to make a gypsy carnical successful.

Our patronesses, entertained us one evening by taking us to a camp, near Fisher. There they served to us a delicious home cooked dinner. All who attended enjoyed it greatly.

OFFICERS

- President* JOAN RETTIG
Vice-President ROSE JEAN MUSI
Secretary MARY LOUIS CAIMI
Treasurer JANE CLARK
Sponsor HARRIET SKAGGS

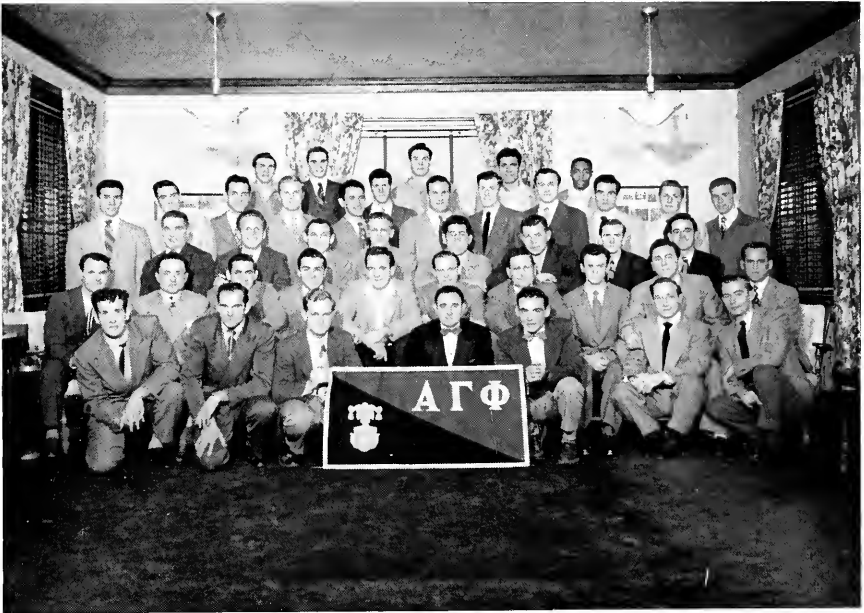


INTER-FRATERNITY COUNCIL



P. Whisner, H. Fesemyer, J. Rogers, L. Marinaccio, J. Kuhns, M. Shiring.

ALPHA GAMMA PHI



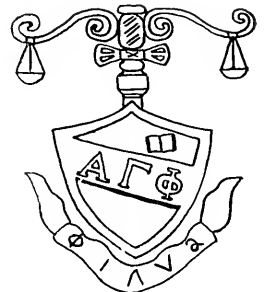
Row One—G. Fallon, B. Casper, P. Taylor, J. Jannuzi, J. Bove, E. Skacan, B. MacBeth.
Row Two—G. Kuhns, J. Kerr, B. Brochetti, J. Palaggio, B. Yakin, D. Trehame, D. Shoup,
 L. Rhodes, M. Petruska, T. Komisak.
Row Three—E. Rusciolelli, P. Whisner, R. Robinson, J. Davidson, W. Mader, S. Delpero,
 A. Askey, F. Sharrow, K. Miller.
Row Four—R. Blewitt, C. Ramsden, D. Wolfe, E. Pecora, B. Moore, J. Brennan, G. Derk,
 E. Prusick, N. Luvison, E. Blockowitz, D. Virgalitto.
Row Five—D. Lounsbury, T. Knapp, H. Willison, F. Lignelli, W. Walls.

Alpha Gamma Phi does it again! Starting the year off right, the pledges literally mopped the sidewalks of C. S. T. C. clean with a rip-roaring informal initiation that really had the campus upon its toes rocking with anticipation.

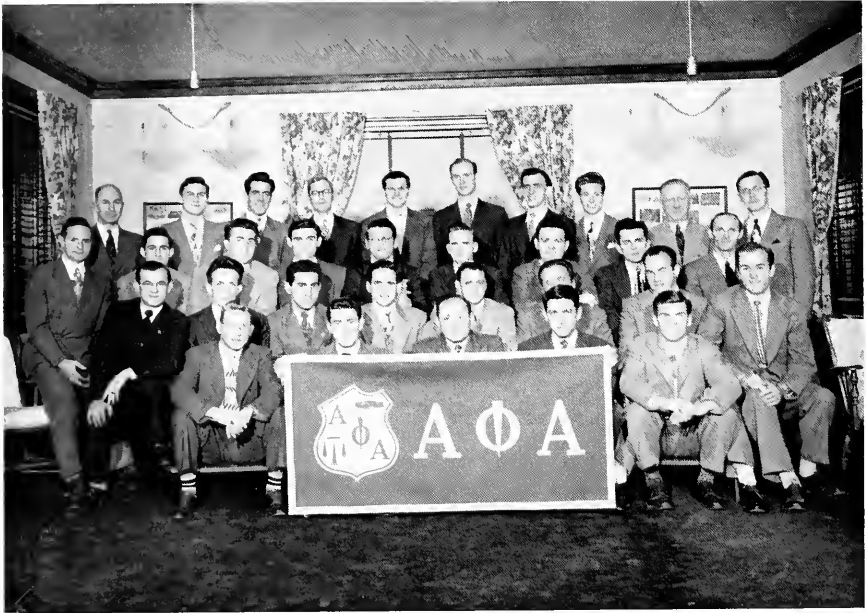
Along with the lighter side of the year's activities, the members found time to make money for their annual activities which were their banquet and a formal dance.

OFFICERS

<i>President</i>	T. MASON
<i>Vice-President</i>	F. PECORIA
<i>Secretary</i>	P. TAYLOR
<i>Treasurer</i>	P. WHISNER
<i>Historian</i>	J. DAVIDSON



ALPHA PHI ALPHA



Row One—M. Shiring, R. Larimer, J. Corey, F. Christy, W. Martin, J. DeLong.
Row Two—J. Prokop, C. Kinkead, F. Vasslotti, G. Cope, E. Holzworth, R. McCrae, R. Tagg.
Row Three—L. Woodrow, L. Rinker, I. Henry, D. Nogar, M. Zavacky, L. Olson, N. Coon, H. Larimer, A. Larson.
Row Four—Dr. Predmore, E. Craven, C. Biddle, C. Kuhner, J. Rogers, G. Wood, F. Badger, T. Fosnight, H. Manson, S. Lore.

With fond memories of a successful social season in 1947-48, the Alpha Phi's started 1948-49, with a great deal of enthusiasm. The fraternity reorganized under a new constitution with an executive committee to handle future plans for the fraternity.

The first social affair was a successful rush party held in Room A where 30 pledges were entertained. This party was followed by the traditional initiation at Camp Coffman.



OFFICERS

<i>President</i>	J. DELONG			
<i>Vice-President</i>	A. LARSON			
<i>Secretary</i>	L. WOODROW			
<i>Treasurer</i>	J. COREY			
<i>Wizard</i>	C. BIDDLE			
<i>Sponsors</i>	<table style="border-left: 1px solid black; border-right: 1px solid black; border-collapse: collapse;"> <tbody> <tr> <td style="padding: 0 5px;">D. PREDMORE</td> </tr> <tr> <td style="padding: 0 5px;">H. MANSON</td> </tr> <tr> <td style="padding: 0 5px;">C. KUHNER</td> </tr> </tbody> </table>	D. PREDMORE	H. MANSON	C. KUHNER
D. PREDMORE				
H. MANSON				
C. KUHNER				

SIGMA TAU GAMMA



First Row—J. Wiberg, W. Murray, D. Knapp, R. Nicolas, B. Colman, R. Morrison, C. Himes.
Second Row—W. Getvis, R. Peery, R. McCready, P. Crooks, J. Cochran, J. Anderson, R. Platt, T. Cyphert, C. Minich.
Third Row—C. Cook, P. Weibel, K. McMullen, L. Marinaccio, R. Hoover, R. Lafferty, J. Schweppe, M. McCombs, L. Match
 uliet, H. Fesemmyer, J. Kuhus.
Fourth Row—K. Gibbons, E. Montebell, R. Garbart, J. Johns.o.a, J. Schwab, R. Rhodes, G. Garske, M. Surra, M. Petruska, R.
 Kerr.
Fifth Row—F. Campbell, J. Lee, C. Best, P. Scierka, T. Stolzenback, N. Mihailoff, R. Wwright, W. Mahoney, R. Krepp, J. Scid-
 ler, D. Sloup.
Sixth Row—W. Zeitler, W Garber, J. Spence, A. Linn, R. McElhattan, H. Shepard, G. Volpe, J. Banjak.

One of the high-lights of the year of Sigma Tau Gamma, the national social fraternity, was the formal initiation held at the Underwood Hotel at Knox. Here pledges were taken into the fraternity, making the active membership sixty-two, at present.

Taking place at Cooks Forest, the informal initiation proved very warming to twenty-four pledges. Refreshments were served and an enjoyable time was had by al until the commencement of the initiation.

Two important steps were taken forward by the fraternity this year. The first of these was the organization of the alumni of the fraternity; the second was the starting of a fund for a fraternity house.

The province conclave was held at Indiana S.T.C. There were brothers from Indiana State Teachers College, Kent University, Ohio, Fairmount State Teachers College, West Virginia, and Clarion State Teachers College.

OFFICERS

- President* BOYD COLEMAN
- Vice-President* RAY NICHOLS
- Secretary* DONALD KNAPP
- Treasurer* CHESTER MINICH
- Sponsor* FRANK CAMPBELL



ALPHA PSI OMEGA



M. Marwick, J. Messler, L. Maxwell, L. Grube, P. Slaugenaupt, L. Woodrow, F. Creighton, J. DeLong, M. Boyd.

John Banjak, a member of Alpha Psi, was not present for the picture.

Membership in Alpha Psi Omega, national honorary dramatic fraternity, is given as an award for active participation in college dramatics. Certain national requirements must include experience in both acting and stage work.

The group was entertained at two social evenings in the home of Miss Boyd and Miss Marwick, faculty members of Alpha Psi Omega.



PI GAMMA MU



Seated—F. Campbell, S. Lore, K. Kos, H. Skaggs, R. Carlson, S. Slick, J. Tallent.
Standing—M. Shiring, J. Corey, J. Wiberg, A. Larson, W. Lafranchi, I. Henry, J. LeLong,
 M. Osipov, T. Cyphert, M. Zavacky, L. Olson, C. Gill.

Since the motto of Pi Gamma Mu, an honorary social fraternity, is "Ye shall know the truth and the truth shall make you free", the Iota chapter aims to instill in the minds of individuals a scientific attitude toward all social questions and a greater cooperation among students of the various branches of the social sciences.

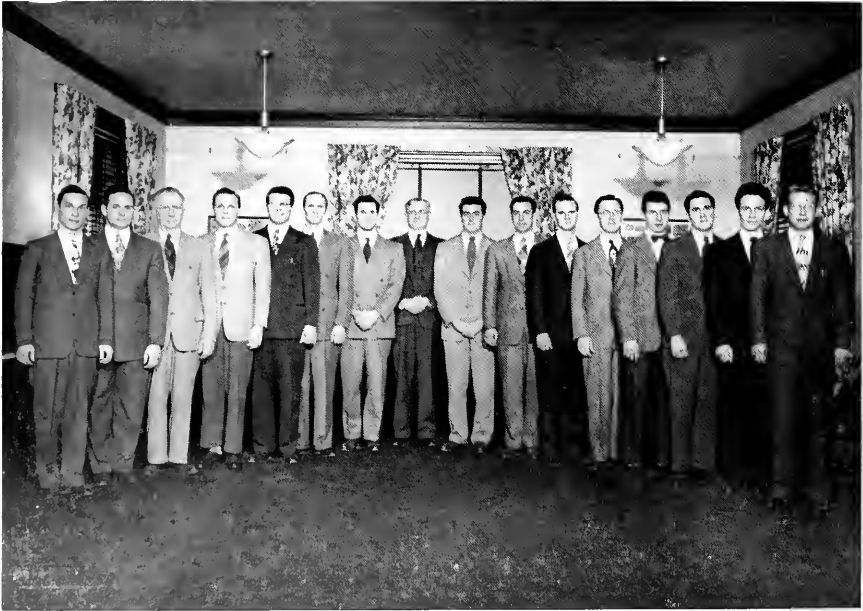
Members who have distinguished themselves in the study of the social sciences are elected upon the completion of at least twenty semester hours of social studies with an average grade of not less than B.

OFFICERS

President JOHN COREY
Vice-President ARVID LARSON
Secretary-Treasurer WILLIAM LAFRANCHI
Sponsor SEWELL SLICK



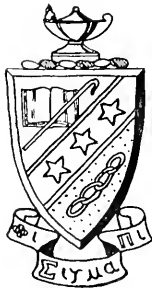
PHI SIGMA PI



T. Brinkley, L. Woodrow, H. Manson, T. Nelson, M. Zavacky, A. Larson, M. Osipov, P. Chandler, I. Henry, T. Cyphert, L. Olson, S. Lore, J. Banjak, S. Dellaquila, C. Kinkead, M. Shiring.

Phi Sigma Pi is a national honorary scholastic fraternity whose membership is made up of men who are recognized for scholastic ability and give promise to leadership in the field of education.

The chapter on this campus is the Lambda chapter.



OFFICERS

<i>President</i>	MARK SHIRING
<i>Vice-President</i>	IRVING HENRY
<i>Secretary</i>	THOMAS NELSON
<i>Assistant Secretary</i>	LEROY OLSON
<i>Treasurer</i>	LAVERN WOODROW
<i>Historian</i>	MICHAEL OSIPOV
<i>Sponsor</i>	MR. LORE



Alpha Phi's



Alpha Gamma's



Lambda's



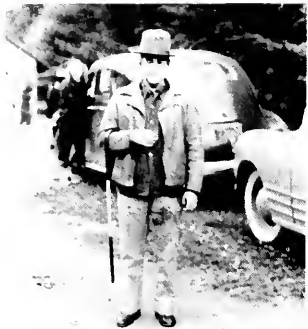
Sigma Delta's



Tri Sig's



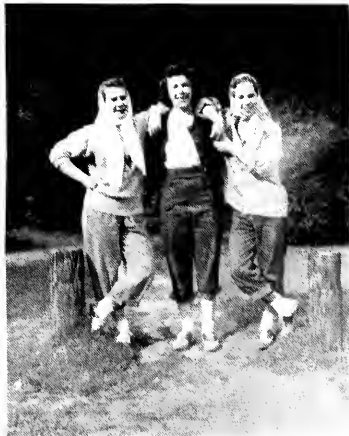
Delta Sig's



What is it?



Don't throw



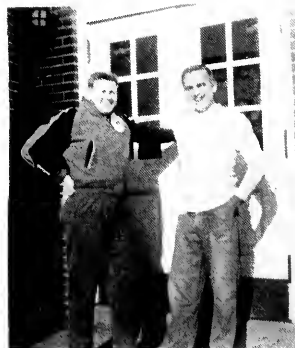
Howdy



Pedgie



Brothers



Characters



Frosh

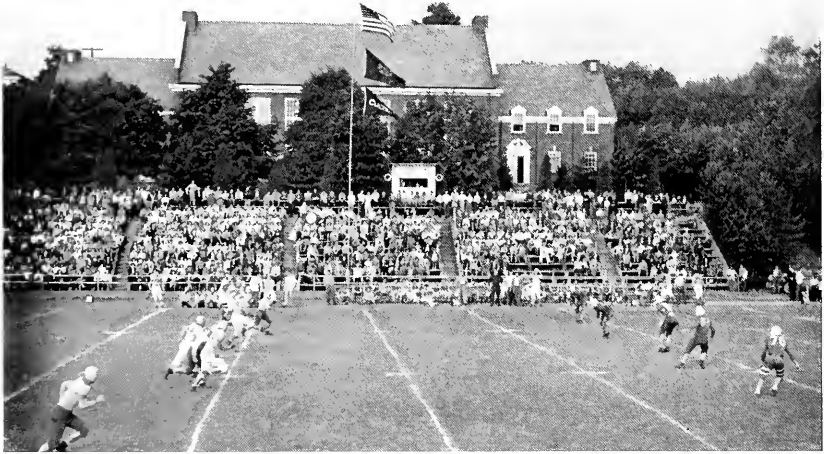


After chapel

SPORTS



THE 1948 PIGSKIN PARADE



Upon returning to the campus last September the students of C.S.T.C. found the "Golden Eagles" busy sharpening their claws for an invading Cheyney squad. Thanks to the cooperation of the student senate, the squad was able to get under way a few days early this season so as to be in shape for the early game with Cheyney State Teachers, September 25, 1948.

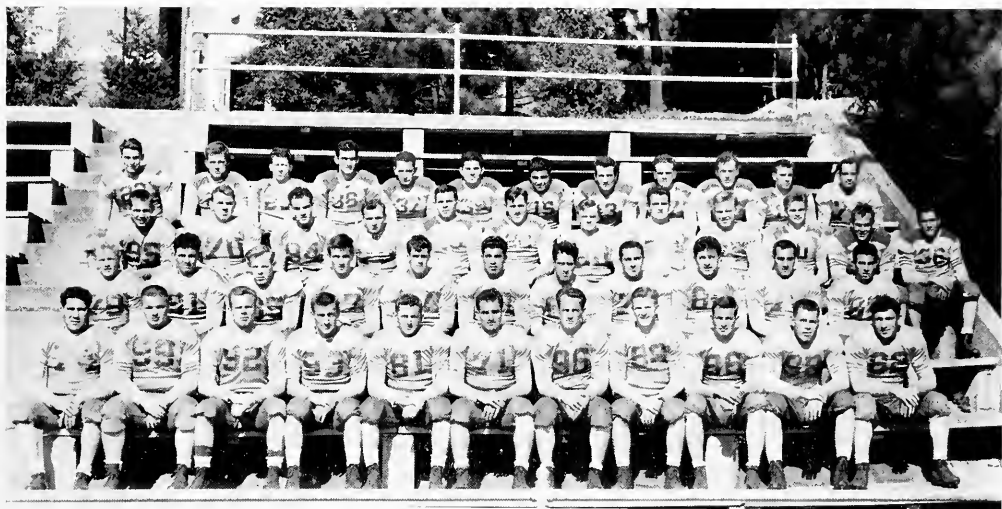
Cheyney found the "Mooremen" in top physical condition with their claws sharpened to perfection. Lettermen were trying in desperation to hold onto their "old berths" while many promising prospects were out to give them a run. Unfortunately Cheyney got caught in the "cross fire" and were carried away by the powerful Eagles to the tune of 33 to 6.



Coaches—Cannahan

Moore

Sheridan



First Row—S. Delpero, H. Whisner, R. Robinson, H. Harlacher, E. Blockowitz, N. Luvison, T. Komisak, W. Mader, F. Giggler, H. Askey, G. Malacarne.
Second Row—K. Bailey, H. Thompson, G. Stennett, R. Predobon, L. Sukala, F. Lignelli, F. Vescio, A. Engro, T. Mason, M. Caruso, E. Rusciollelli.
Third Row—P. Hubauer, R. Flath, R. Zakula, M. Cvjeticanin, F. Curry, R. Lees, C. Barr, W. Murray, E. Dolecki, J. Uzmack, P. Byers, F. Palaggio.
Fourth Row—R. Russell, J. Clingan, S. Russo, E. Boschini, F. Pecora, L. Ianni, R. Coury, J. Parshook, J. Busch, J. Smathers, N. Margetan, W. Casper.

The following Saturday found the Edinboro "Red Raiders" invading the Clarion turf, and until the "Eagles" found themselves in the third quarter it seemed as if the "Raiders" would be taking home our scalps. Our strong defense held throughout the entire game and when Clarion's offense began clicking rolled up 19 points to remain undefeated, untied and unscorred upon only once in the two games of a potentially good season.

The players on this year's squad will never forget the games played at Rio Grande College of Ohio on Oct. 9. It was home coming for Rio Grande, they were christening a new athletic field, and both teams formed a large circle in which the "Homecoming Queen" was crowned. The Rio Grande team was "keyed-up" and ready to crown the "Moormen" from Pennsylvania. The victory 27 to 0, was not an easy one, but sixty minutes of genuine "bashing" which produced a field goal, two safeties, and three touchdowns for the rugged "Eagles".

Traveling to Greenville with an unblemished record, the "Golden Eagles" were hampered by a combination of over-confidence and mud, plus a lucky pass in the final four minutes of play, and the Thiel "Tom-Cats" were able to upset the "up-until-now" invincible "Eagles" who were partially blinded by the three previous glaring victories.



The fans who gathered under the lights at Clarion Park on the evening of Oct. 22nd to witness a predicted three touchdown victory by the California "Vulcans" over Clarion, were fortunate in seeing one of the seasons most exciting games in which the "Eagles" after a "heart to heart" talk by coach Moore, came back in the second half to score 20 points only to drop a close decision 21 to 20. A moral victory was ours, and we knew we had a football team with the students backing it 100 percent.

Saturday, Oct. 30th. "Our boys did shine that night!" An estimated crowd of 4000 saw the Golden Eagles chalk up their first football victory in history over Indiana. Every player of Clarion's team, whether on the field or on the bench helped push each inch of each foot down the field and across the Indians' goal line that night. Solid blocking and tackling helped register four touchdowns, a field goal, and two safeties; final score 33 to 0.

Cloudy skies, fans dressed as if expecting deluge, and a rain soaked field provided the setting for Clarions' final home game. Once again the Eagles offense seemed to bog down in the mud and it was difficult to shake loose our "scat backs" or complete aials for distance with a wet ball. The Polish boys from Alliance College in Cambridge Springs came out on top, aide dby some excellent punting on the part of the Alliance kicker.

The "Golden Eagles" journeyed to Slippery Rock for the final fray of the campaign. Early scoring opportunities were nullified by fumbles, and again the underfooting was tricky, the "Eagles" were also hampered by injuries occurring during the opening minutes of the game. As the final whistle sounded, Clarion was on the short end of a 21 to 7 score.

The 1948 season showed a total of four wins and four defeats, a very successful season under the leadership of the newly installed coach, Bob Moore. Clarion scored a total of 140 points compared with 63 points for their opponents. The 1948 squad will always be remembered for the "glorious victory" they scored over Indiana State Teachers.

Credit must be given to Coach Moore, who, assisted by Tom Carnahan and "Baldy" Sheridan began working with a squad new to him. He installed a new type offense and defense and fielded a team which Clarion and its students were proud of, enjoyed watching, and will never forget.



BASKET BALL



Kneeling—E. Kelley, M. O'Toole, P. Weibel, S. Gjurick, R. Colley, S. Russo, H. Mehallick, J. Buck.

Standing—E. Skacan, Mgr., R. Whitford, W. Casper, J. McCready, G. Willoughby, A. Latz, G. Fallon, G. Derk, H. Willison, R. Zakula, W. Englert, R. Garbart, Mgr.

Regardless of Clarion's unimpressive record this season, Carnahan's boys played the type of basketball that glued spectators to their seats for the entire game, and in several instances for exciting over time periods. A summary of the "cagers" accomplishments would not be complete without paying due respect to that outstanding player's player "Doc" Halley Willison. As usual "Doc" was the "hub" of the team and around him rotated such veterans as George Dirk, Bill Casper, Cece Willoughby, "Lex" Burnsed, Whitford and Weibel.

Outstanding rookies include—Englert, Latz, Zakula, O'Toole, McCready, Russo and Mehallick.

Next year's squad will be minus Willison and Burnsed but should be able to muster a strong combination from the remaining Lettermen.

BASKETBALL SCORES

C. S. T. C.—62	California	47	C. S. T. C.—62	Gannon	72
" —46	Slippery Rock	56	" —48	Edinboro	56
" —51	Indiana	55	" —59	Thiel	61
" —41	Grove City	60	" —55	Indiana	56
" —60	Alliance	53	" —56	Slippery Rock	58
" —42	Gannon	47	" —60	Edinboro	46
" —45	California	61	" —69	Grove City	60
" —47	Fenn	43	" —74	Alliance	37
			" —58	Thiel	55





Kneeling—W. Watson, T. Helbling, A. Marts, W. Goode, N. Coon, D. Lounsbury, R. Yakim, J. Lysinger.
Standing—J. Matthews, J. Huet, E. Rusciollelli, F. Pecora, F. Lignelli, R. Flath, B. Taylor, W. Mahle, J. Klinger, W. Peacock.

WRESTLING

Coach Bob Moore came up with a much improved wrestling team this year. Hampered continually by injuries to "key men" the team, after defeating Indiana in their opening match, dropped the remaining matches on their card. The return engagement with Indiana was "in-the-bag" when Bob Flath, who incidentally captured the heavyweight State Teachers wrestling tournament the year before, was forced to cede to a weaker opponent because of a painful shoulder injury.

The matmen displayed a very clean and exciting type of wrestling, and opponents after grappling with such experienced "grapplers" as Flath, Lignelli, Helbling, Coon, were aware of the fact that they had encountered the better type wrestler.

"Ruff" and promising new-comers who displayed outstanding pep and ability were Rusceolli, Klingan, Taylor, Huet, Herb, Goode, and Lysinger.



BASEBALL



Kneeling—E. Kelley, T. Kovolyak, J. Zelek, G. Malcarne, W. Curry.
Standing—J. Wiberg, S. Hoffman, D. Bayla, C. Tabarella.

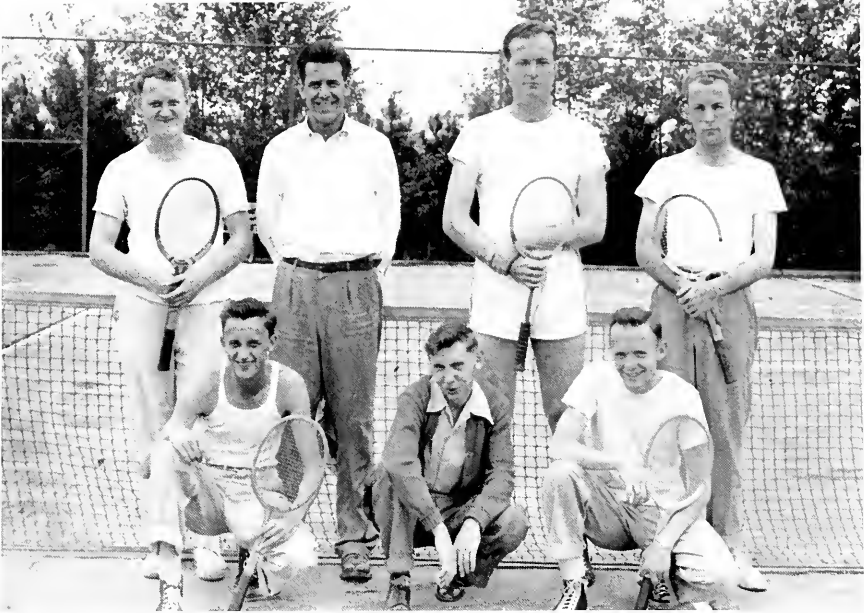
Hampered by spring rains, the Golden Eagle's baseball team got off to a slow and muddy start. Player-coach, Gordon Sills, held battery practice in the gymnasium a few weeks prior to the regular season. Dan Balya, Bob Zelechowski, and Gordie Sills turned in fine roles as starting pitchers, while the relief pitching was handled very nicely by Wayne Mader, Andy Yakin, and Tabarella. Paul Caruso, Joe Zelek, and Tony Mason alternated at the back-stop spot. The "go-getters" in the outfields included the veterans Bill Curry, Jim Wiberg, Guido Malcarne and Freddy Kovalyak. Infield play was characterized by such stars as George Hoffman, Jim Kelly and Frank Lignelli.

SQUAD

Balya, Bossart, Bramhall, Caruso, Curry, Hoffman, Kelley, Kovalyak, Lignelli, Malcarne, Mader, Mason, Shoup, Sills, Tabarella, Taylor, Wiberg, Woodall, Yakin, Zelek, Zelechowski, Lee.



TENNIS



Kneeling—R. Morrison, B. Zakor, C. Himes,
Standing—D. Knapp, C. Biddle, J. McKinley, J. DeLong.

The tennis record for 1948 shows three wins against four defeats. Tennis on the inter-collegiate level is on the upgrade at Clarion. With all of the '48 team back for service in '49, hopes are high. The members of the team feel they will be able to paint the win side of the card more often.

RESULTS

Clarion	6	Slippery Rock	3
"	4	California	5
"	7	Thiel	2
"	3	Grove City	6
"	1	Grove City	8
"	8	Thiel	1
"	2	Indiana	7



VARSITY "C" CLUB



First Row—F. Kovalyak, J. Zelek, N. Coon, J. Lee, H. Harlacker, R. Robinson, C. Himes, E. Kelley, W. Martin.

Second Row—S. Delpero, R. Morrison, T. Cyphert, C. Biddle, H. Willison, G. Malacame, D. Balya, F. Lignelli, P. Caruso.

Third Row—E. Rusciollelli, N. Luvison, G. Derk, C. Willoughby, H. Askey, H. Thompson, J. DeLong, R. Wolfe, E. Blockowicz.

A group of hard working men, honored for their sportsmanship, make up the Varsity "C" Club. To gain membership in this organization a person must earn a letter in one of the inter-collegiate sports.

It was the members of this group who supplied you with programs, pop, and sandwiches at the sports events this year. The profit from their concessions were used to buy special jackets for three year letter men.

WOMEN'S ATHLETIC ASSOCIATION



First Row—H. Bell, P. Carr, M. Clark, L. Maxwell, M. Longiotti, S. McKenzie, L. Garvin, H. Toth.
Second Row—M. Smith, F. Spak, P. Stewart, J. Fink, J. Nichols, V. Baker, B. Wood, M. Reed.
Third Row—E. Spaller, M. Bish, M. Kohu, F. Wilson, B. Hay, F. Master, M. Spleen, T. Jackson.

W.A.A., sponsored by Miss Spaller, consists of college women interested in sports and recreational activities. The various intramural sports include volleyball, basketball, and baseball. Individual sports: tennis, badminton, ping-pong, archery, golf, quoits, and shuffleboard. W.A.A. also sponsors the occasional square dances held in the gymnasium.

The purposes of this organization are to stimulate the interest of the entire student body in athletics and recreational activities; and to foster the spirit of friendliness, good will, and good sportsmanship.

All college women with a "C" average in academic work are eligible to join W.A.A. By participating the regularly offered sports, girls are able to accumulate the number of points necessary for membership.

OFFICERS

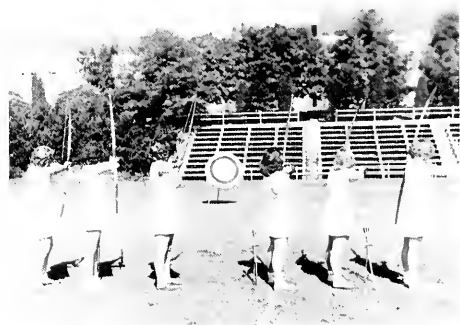
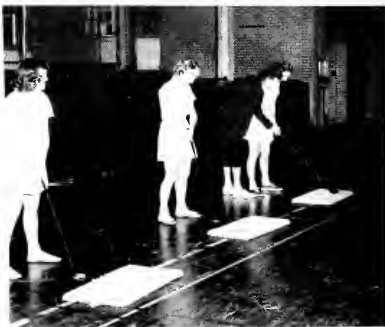
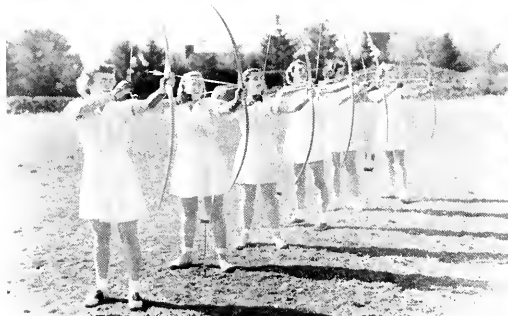
<i>President</i>	PHYLLIS STEWART
<i>Vice-President</i>	THELMA JACKSON
<i>Secretary-Treasurer</i>	HONORE BELL
<i>Sports Manager</i>	MARTHA SMITH
<i>Sponsor</i>	MISS SPALLER

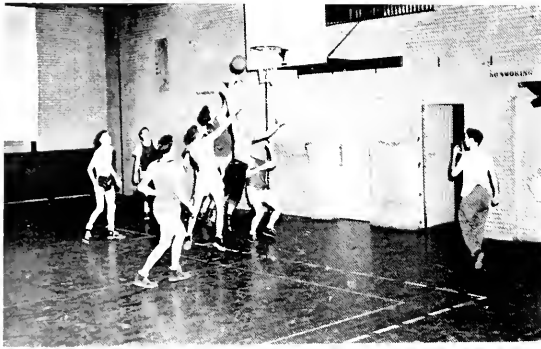
CHEERLEADERS



C. Haupt, F. Masters, L. Brown, J. Willson, L. George, L. Staley, B. Harvey, S. Allen







MEMORIES -



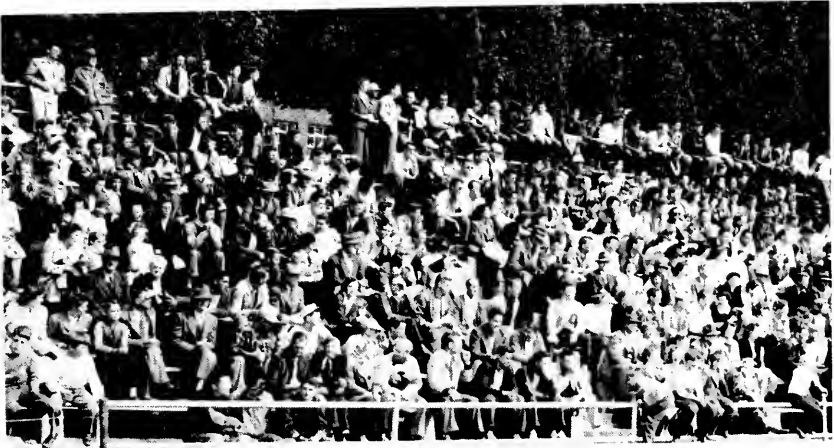


Home



Coming





By Day



By Night



"Gildy" & "Fess"



Sarah & Crosley



"Bea" & Bob



"Froggie" & "Book"



Chuck & M.E.



"Swede" and Friend



Geora & "Dody"



"Skip" & "Mike"



Bill & Fio — "Norm" & John



Lee & "Burch"



"Phyl" + Ralph



Frank + "Jimmy"



"Dee" + Paul



Bill + Joyce



"Royalty"



John + "Feg"



Joan + Wayne



"Murph" + George



Carol-Fritz - Doris + Ed ~ ~ ~ Bob + "Spike"



Betty + Mark



Mope~Marlyn~Tony~Lois



Marge + Ray



Mary + Lou



Pep + Vi



Mabel + Ken



Flo + John



Shirley + Will



Jack + Joan



Peg + Ernie



Jeannet + Norge



Dana + Harold



Bill + Twi

Appreciation . . .

We gratefully acknowledge the kind co-operation that the businessmen of Clarion and vicinity have shown in making this year's Sequelle possible. We are sure that the students on the "Hill" will continue to express their appreciation by patronizing our business friends.

DAVID A. KAUFMAN

JEWELER

Phone 681

Clarion, Pa.

HERMAN BROTHERS

The Corner Store

**FRUITS • ICE CREAM
CONFECTIONS**

Corner Wood and Eighth Avenue

CLARION, PA.

Compliments of

WAYNE R. WEAVER

OLDSMOBILE

Sales, Service

Clarion, Pa.

Compliments of

GARBY THEATRE

WHERE HITS ARE A DAILY HABIT

Builders and Contractors Supply Company

"Everything for the Builder"

Phone 750 East Main St.
CLARION, PA.

Compliments of

DICK SLATER

RIVER HILL MOTORS

- Willys Cars, Jeeps, Trucks
- Kaiser-Frazer Sales
- Auto Glass Installed

Phone 787-M Clarion

Compliments of

Elliott's Esso Service

Compliments of

SPINDLER & STARR

BUICK — CADILLAC
CHEVROLET

—Clarion, Pa.

"Modern Appliances for Better Living"

WHITE'S APPLIANCES

"The Best In Music On Records"

518 Main Street Clarion, Pa.

Compliments of

McKinley-White Motors

Your Friendly Ford Dealer

Phone 740 Clarion, Pa.

E A T A T

BALDY'S MODERN DINER

MEALS LUNCHES

Next to Garby Theatre

CLARION MOTOR CO.

W'HOLESALE

**AUTO SUPPLIES AND
EQUIPMENT**

513 MAIN STREET CLARION, PA.

PHONE 75 AND 658

Nail's Restaurant

HOME COOKING

Open Sunday

Clarion

Compliments of

**Clarion Firestone
Dealer**

Compliments of

ANDERSON HOTEL

Bus Depot

Phone 175

Clarion

GEO. CORBIN, *Manager*

Aircraft Sales and Service

Approved G. I. Flight Training

Courses Include Private—Commercial Instructors

Also Private Instruction and Charter Flights and Rentals

MERCURY OUTBOARD MOTORS — BOATS

CULBERTSON AVIATION --- PARKER CRAMER AIRMORT

AIRPORT ROAD

PHONE 32

CLARION, PA.



Jazz



Beauty



Portrait



Future U.N.



"Mammy"



Wayward Bus



"Gergaphy"



Art?

NYAL SERVICE STORE

FITZGERALD'S

A. G. CORBETT DRUG COMPANY
CLARION, PA.

Compliments of

BIGLEY'S GULF SERVICE STATION

153 West Main Street
Clarion, Pa.

EYES EXAMINED GLASSES FITTED

DR. G. E. STRAUSS

OPTOMETRIST

Sixth Street Clarion, Pa.

AUTOMOBILES BOUGHT AND SOLD

T. W. Chapman Auto Exchange

Sales — HUDSON — Service

AUTO WRECKING

Phone 32 Strattanville, Pa.

Compliments of

VOWINCKEL BROS.

CORNER RESTAURANT

Clarion-Shippenville Road

— and —

Sales --- PONTIAC --- Service

One of the most up-to-date Auto-Body shops in this part of the state

Frame straightening and wheel aligning

333 MAIN STREET

CLARION, PA.

STATIONARY -- MAGAZINES

CANDY

NEWSPAPERS -- GREETING CARDS

MERWIN'S

FOUNTAIN SERVICE

MAIN STREET

CLARION, PA.

J. F. WEAVER EST. HARDWARE CO.

Highest Quality Merchandise at
Lowest Possible Prices

Phone 194

Clarion, Pa.

Compliments of

Freas-Snyder Motor Co.

CHRYSLER — PLYMOUTH
Quality Trailercoaches

Phone 64

Clarion, Pa.

W. Harold Laughlin

Dodge "Job Rated" Trucks

LAUGHLIN MOTOR COMPANY

DODGE AND PLYMOUTH CARS

PHONE 141

CLARION, PA.

Clarion Heating & Appliance Co.

"We Sell the Best and Repair
the Rest"

Phone 640

Clarion, Pa.

Compliments of

V. P. MUSI

CLEANERS

TAILORS

THE REXALL STORE—

**SODA FOUNTAIN AND
LUNCHEONETTE SERVICE**

LOWEST CUT PRICES

KING DRUG STORE

W. J. Fletcher

Clarion Office Equipment

ROYAL TYPEWRITERS

Standard or Portable

Sales and Service

Phone 272

Compliments of

FIRST NATIONAL BANK IN CLARION

Member of Federal Deposit Insurance Corporation

CLARION, PENNSYLVANIA

BEST OF LUCK TO THE STUDENTS OF C. S. T. C.—

J. M. CROOKS & SONS

CLARION, PA.

CLOTHING

SHOES

Compliments of

PARK DINOR

A GOOD PLACE

TO EAT

CLARION ROLLER MILLS

A Complete Line of

“FUL-O-PEP” FEEDS

A. O. Johnson, Prop.

Phone 592



~ One of the twins ~



Tardy Belles!



Dolly



Blue Monday



Old Timers



Hikers



The Wedding



Our Gang ~ '45



Food & Fun



Mess _____

MEET YOU AT THE

COFFEE SHOP

CLARION, PA.

MEANS-LAUF DRUG STORE

522 MAIN STREET

CLARION, PA.

COSMETICS

Lucien Lelong
Lentheric
Revlon
Chen Yu

FOUNTAIN
SERVICE

MEN'S TOILETRIES

Old Spice
Sea Forth
Yardley
Courley

Compliments of

Brookville Creamery Products Co.

Manufacturers of

COUNTRY CLUB DAIRY PRODUCTS

BROOKVILLE PENNSYLVANIA

*Just off the campus one may find the best in
Groceries and meats . . . Why go farther?*

Phero's Food Market

"The College Grocer"

Phone 19

Compliments of

MAUL'S DAIRY STORE

Compliments of

MR. AND MRS. FRED JENKINS

Compliments of

MacBeths' Cabins

COOK FOREST PARK

Cooksburg, Pa.

PHONE 310

CLARION, PA.

— AT —

Kathryn's Beauty Shop

**Have Your Hair Styled to Suit
Your Personality**

The Best In Permanent Waves

PHONE 216

KNOX, PA.

PENNEY'S

J. C. PENNEY CO., Inc.

"IT PAYS TO SHOP AT PENNEY'S"

609 MAIN STREET

CLARION

Compliments of

Brown's Boot Shop

CLARION, PA.

Best Wishes, C. S. T. C.
Graduates

— from —

CLARION NEWSPAPERS, Inc.

THE DEMOCRAT EVERY TUESDAY
THE REPUBLICAN EVERY THURSDAY

"Frigidaire" Refrigerators and Ranges

JOHN DITZ HARDWARE

"Everything In Hardware"

"Magic Chef" Gas Ranges

China, Glassware, Pictures, Gifts, Etc.

Phone 218

Clarion, Pa.

Compliments of

CLOVER FARM STORES

Compliments of

Wilson Bakeries

"SAY IT WITH FLOWERS"

PHILLIPS FLOWERS

PHONE 209

CLARION, PA.

Compliments of

LOOMIS HOTEL

Excellent Food and Rooms

DRESS SHOPPE —

Ladies' Apparel

SPORT CENTER —

Everything in Sports

Compliments of

L. & R. Decorating Co., Inc.

Parts

Accessories

SALES

McCullough Nash Motors, Inc.

SERVICE

Phone 633

Clarion, Pa.

CLARION BLOX CO.

**'EVERYTHING FOR THE
BUILDER'S USE'**

Phone 786-W

Clarion, Pa.

Coca-Cola Bottling Co.

OF CLARION, PA., INC.

Clarion, Pa.

Clarion Dry Cleaning Co.

PHONE 657

LIBERTY AND SIXTH AVENUE

Compliments of

**ELSLAGER RADIO
AND APPLIANCE**

Top of River Hill

MOHNEY & BEATTY

Plumbing, Heating Electric
Appliances

Phone 548 247 Liberty Street

CLARION, PA.

HAIL THE GRADUATION CLASS OF 1949—

*We join in a hearty commendation of your efforts and in a sincere wish
that your future lives may be happy and successful*

G. C. MURPHY & COMPANY

5 AND 10 CENT STORE

Compliments of

WEIN BROTHERS

CLARION'S FINEST STORE

CITIZENS TRUST COMPANY

CLARION, PA.

RESOURCES OVER \$6,700,000.00

Member of Federal Deposit Insurance Corporation

SALES AND SERVICE

RAGLEY MAYTAG STORE

S. A. RAGLEY, *Manager*

750 Main Street

Clarion, Pa.

Compliments of

Duff's Sterling Service

Distributors of

U. S. ROYAL TIRES

Phone 9408

Clarion, Pa.

Lobaugh's Country Maid Ice Cream---

Manufactured by

Clarion Ice Cream and Dairy Company

PHONE 152

CLARION, PA.



LIBERTY STUDIOS

CLARION, PA.

Photographers to 1949 Sequelle

R. W. MERRYMAN, *Photographer*

Quality and **Economy!**

A Happy Combination

But....

Quality without economy
falls short of value....

Economy without quality
is unsatisfying, indeed!

Zimmerman fine-screen Engravings
bring you both these Essentials of
Value-- **STERLING QUALITY** and
MONEY SAVING ECONOMY.

ZIMMERMAN

ENGRAVING CO.

SYKESVILLE,

PENNSYLVANIA

Printers of "The Sequelle"

Compliments of

The Carrolltown News



Phone 2131

Carrolltown, Pa.

FELT AND CHENILLE AWARDS

SWEATERS AND JACKETS

STANDARD PENNANT CO.

BIG RUN, PENNSYLVANIA

JEFFERSON COUNTY

EDITORIAL COMMENTS

This is your *Sequelle*. We sincerely hope it meets with your every desire. To us it represents many hours of hard work sprinkled with joy and laughter. However, we feel it has been a great honor to accept the responsibility of publishing this issue of the *Sequelle*.

As the editor I want to take this opportunity to thank a great staff publicly. In my humble opinion no better group of people could be brought together in a common effort.

SEQUELLE STAFF

<i>Editor</i>	M. SHIRING	<i>Identification</i>	M. JOHNSTON J. BEATTY
<i>Assistant Editor</i>	L. WOODROW	<i>Layout</i>	E. BROCK R. KEARNEY B. CARSON
<i>Literary Editor</i>	J. BANJAK	<i>Business Manager</i>	A. LARSON T. BARTELLO L. OLSON C. MUNICH
<i>Art</i>	E. CRAVEN F. BADGER R. SLEEMAN	<i>Photography</i>	C. GARDNER
<i>Typing</i>	E. SHAFFER E. SKINNER	<i>Sports</i>	H. HARLACHER



AUTOGRAPHS

AUTOGRAPHS

CLARION UNIVERSITY OF PENNSYLVANIA



3 9363 00150 7265

Spec. Col.
qLD
1017
.C88
1949

