

Spec. Col.
QLD
1017
.C88
1951
c.2



Sequelle

NINETEEN HUNDRED FIFTY ONE




Carlson Library

VE ALL



LIBRARY
CLARION STATE COLLEGE
CLARION, PA.



Digitized by the Internet Archive
in 2010 with funding from
Lyrasis Members and Sloan Foundation

<http://www.archive.org/details/sequelle1951clar>

*The
Sequelle*

Clarion

State

Teachers

College

1951







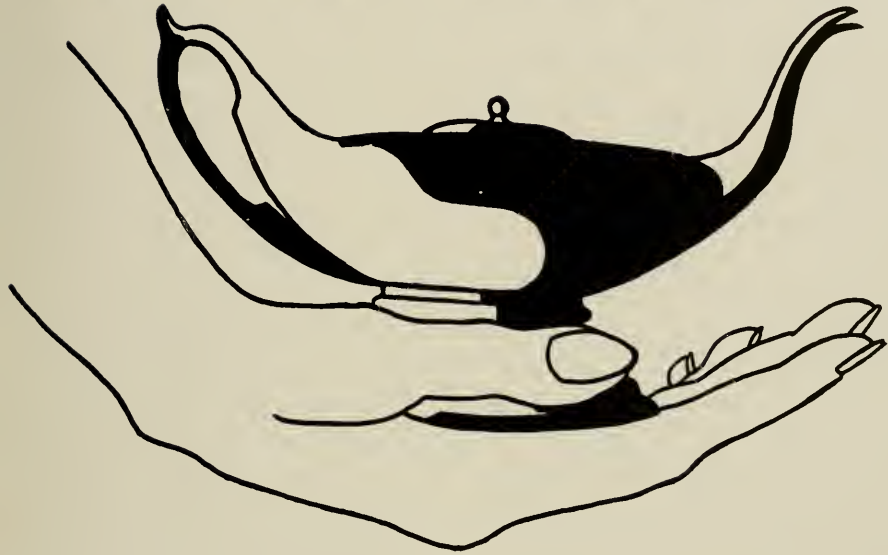


Dedication

We, the Class of 1951, respectfully and sincerely dedicate this *Sequelle* to those individuals who have given freely of their time, talents, and energy in order that our social life and functions here at Clarion could be more complete and satisfying.



FACULTY



Page
L9
1817
.858
1951
C. 2



Faculty



Row 1 **MARY KAY BANNER**, M. Ed. University of Pittsburgh; Co-operative teacher, Intermediate Grades

MARGARET BOYD, M. A. University of Pittsburgh; English

SGT. FRANK BROWN, Infantry R.O.T.C. Instructor



Row 2 **FRANK CAMPBELL**, M. A. Pennsylvania State College; Foreign Language

RENA CARLSON, M. A. University of Michigan; Head Librarian

THOMAS CARNAHAN, M. Ed. Pennsylvania State College; Mathematics, Engineering, Drawing



Row 3 **BRUCE DINSMORE**, M. A. Columbia University; Science, Mathematics

WALTER DOVERSPIKE, M. Ed. University of Pittsburgh; Co-operative Teacher, Sr. H. S.

CHARLES FLACK, M. A. University of Illinois; Head of Library Science



Row 4 **WAYNE FULTON**, B. S. Clarian State Teachers College; Co-operative Teacher, Sr. H. S.

MILDRED GAMBLE, M. A. Columbia University; Demonstration Teacher, Intermediate Grades

CLARK GILL, Ph. D. University of Minnesota; Social Studies, Education

Faculty

Row 1 **RUTH GRAFF**, M. A. Columbia University; Demonstration Teacher, Primary Grades

WALTER HART, M. of F. A. Carnegie Institute of Technology; Head of Music

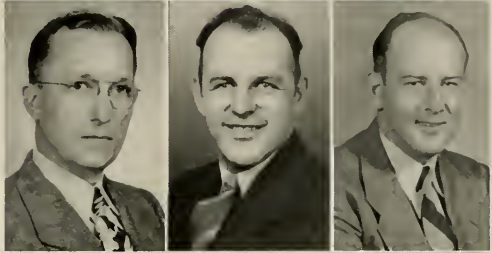
DOROTHY HARTMAN, A. B. Wittenberg College; Co-operative Teacher, Sr. H. S.



Row 2 **HARRISON HARTMAN**, M. A. Columbia University; English, Social Studies, Geography

JAMES KASSEL, M. Litt. University of Pittsburgh; Co-operative Teacher, Jr. H. S.

BENTON KRIBBS, M. A. Pennsylvania State College; Physical Education



Row 3 **CLARENCE KUHNER**, M. S. University of Wisconsin; Head of Geography

MILDRED LENK, M. A. University of Cincinnati; Demonstration Teacher, Sr. H. S.

GEORGE LEWIS, M. Litt. University of Pittsburgh, Head of Mathematics



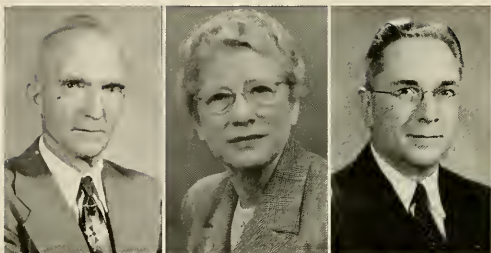
Row 4 **STANLEY LORE**, Ph. D. Pennsylvania State College; Director of Student Personnel, Psychology

MARY McNEIL, Dietitian

HARRY MANSON, M. A. Grove City College; Head of Biological Science



Faculty



Row 1 **LAWRENCE MARKS**, A. B. Pennsylvania State College; Co-operative Teacher, Sr. H. S.

MARIE MARWICK, M. A. Columbia University; Speech, English

JAMES MOORE, M. E. University of Pittsburgh; Dean of Instruction



Row 2 **SGT. JACK MULLEN**, Air R.O.T.C. Instructor

BERTHA NAIR, M. A. University of Pittsburgh; Head of English

GALEN OBER, M. Ed. University of Pittsburgh; Science



Row 3 **GEORGE OBER**, M. Ed. University of Pittsburgh; Science

FANNIE OWENS, R. N., Nurse

DONALD PIERCE, Ph. D. University of Illinois; Head of Physical Science



Row 4 **DONALD PREDMORE**, Ph. D. University of Pittsburgh; Science

HAZEL SANDFORD, M. A. New York University; Head of Art

NELDLA SCHNATTERLY, M. Ed. University of Pittsburgh; Co-operative Teacher, Primary Grades



Row 5 **PAUL SHANK**, M. E. University of Pittsburgh; Science

HARRIET SKAGGS, M. A. Peabody College; English

RICHARD SKINNER, M. A. Northwestern University; Director of Teacher Training

Faculty

Row 1 SEWELL SLICK, Ph. D. University of Pittsburgh;
Head of Social Studies; Dean of Men

ETHEL SPALLER, M. A. Columbia University; Health
and Physical Education

WILLARD STEVENS, Ed.D. University of Pitts-
burgh; Demonstration Teacher, Jr. H. S.



Row 2 MARTHA STEWART, Ed. M. University of Pitts-
burgh; Librarian

DANA STILL, M. A. Ohio State University; Demon-
stration Teacher, Jr. H. S.

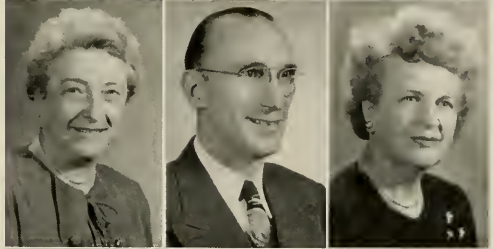
GRACE STOKE, M. A. Columbia University;
Dean of Women



Row 3 EVELYN STROHECKER, M. A. Columbia Univer-
sity; Kindergarten-Primary

JAMES TALLANT, Ph. D. George Peabody College;
Social Studies

RUTH THOMPSON, M. Ed. University of Pitts-
burgh; Co-operative Teacher, Intermediate
Grades



Row 4 WALDO TIPPIN, M. A. Columbia University;
Head of Physical Education

HAZEL USHER, M. A. University of Pittsburgh; Co-
operative Teacher, Jr. H. S.

SAMUEL WILHELM, Litt. M. University of Pitts-
burgh; Demonstration Teacher, Sr. H. S.



Row 5 LOTTIE WINGARD, Registrar

Not Pictured HELEN BECKER, M. A. Columbio Uni-
versity; Elementary Education

AMY DAVIS, M. A. University of Pittsburgh;
English, Geography





Message To The Class of 1951

I wish to congratulate you on your graduation from college. It is a distinction to which few people attain. No one who graduates from college ever forgets his graduation. It opens doors to you throughout life that would otherwise be closed. The college imposes upon you responsibilities to society. If you are not able to attain these immediately by obtaining a teaching position you should continue your studies till an opening does occur. You should feel the responsibility all during your life to contribute more to society than those who have not had your opportunities. People look back upon their four years of college during later life as among their happiest. College friends are the ones that they count on most during life, in pleasure and adversity.

May each and every one of you go out from Clarion with a feeling that you are well prepared to do the work that falls to your lot. I hope you will always look on Clarion as a college that gave you good preparation. Now that you have finished four years of work here I would be glad to have any suggestions any of you may have for the improvement of the institution.

Paul G. Chandler

SENIORS



Seniors



LOUIS AARON Clarion
Social Studies, Geography



FAYE AMES Oil City
Elementary



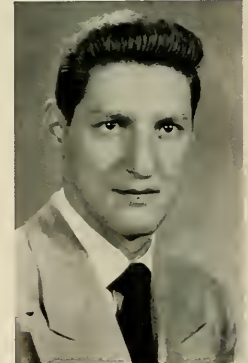
JOSEPH K. BAILEY Wilkinsburg
General Science, Social Studies, English



JAMES BAIR Franklin
General Science, Mathematics



DANIEL BALYA Central City
Biological Science, Social Studies, English



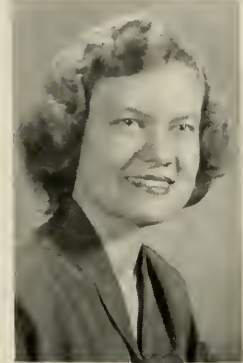
AMOS BARTOLI Turtle Creek
General Science, Social Studies,
English

1951

LILA BROWN **McKeesport**
Biological Science, English

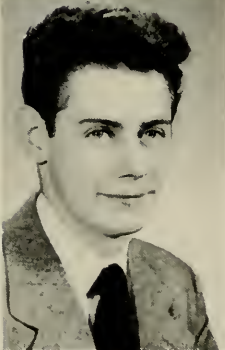


HONORA BELL **Pittsburgh**
Spanish, English



VIRGINIA BULLARD **Glenshaw**
Elementary

CHARLES BEST **Kittanning**
General Science, Safety Education



MARY CAIMI **Force**
Library Science, English, Social Studies

MARGARET BISH **New Bethlehem**
English, Social Studies



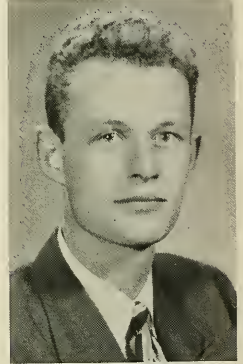
Seniors



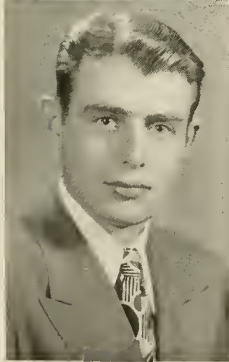
PAUL CAREY **New Castle**
Biological Science, Social Studies,
Safety Education



JOHN R. COWAN **Anita**
Geography, Social Studies



PATRICIA CARR **Brookville**
Library Science, Spanish, English



MARY ROSE DIETZ **Fryburg**
Elementary



ROBERT COOLEY **Franklin**
General Science, Social Studies



DORIS DELOZIER **Hollidaysburg**
Elementary

1951

MARY LOU DOVERSPIKE RUSSELL
Mathematics, English

Clarion



CONCETTA DIMINO
French, Spanish

Franklin



JOHN DUESPHOL
Elementary

Petrolia



JOAN DOLBY
Elementary

Helen Furnace



JACK EAKIN
General Science, Social Studies

Clintonville



EDWARD DOLECKI
Mathematics, Physical Science, English

Oil City



Seniors



BETTY ESHBAUGH West Monterey
Geography, Social Studies, English



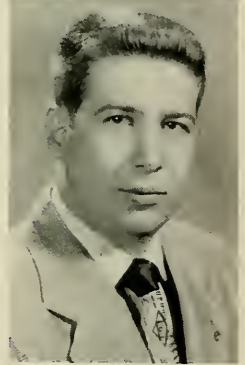
JEAN FINK Clarion
Library Science, Social Studies, English



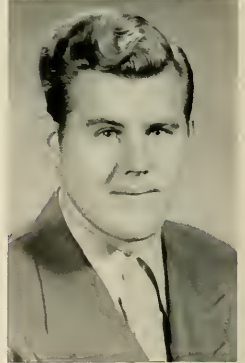
ROBERT EVANS Oil City
Chemistry, Biology



CHESTER FLEMING Brackenridge
Science, English

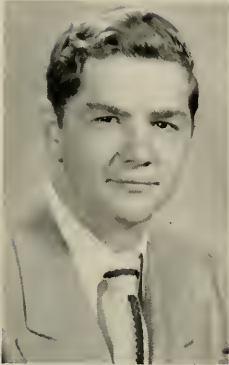


BARBARA FAUST Dayton
Elementary



JOSEPH GALAYDA Pricedale (Soph)
Social Studies, English

1951



MRS. PEARL GEORGE
Elementary

Mahoning



ROBERT GARBART
Social Studies, English, Safety Education

Pittsburgh



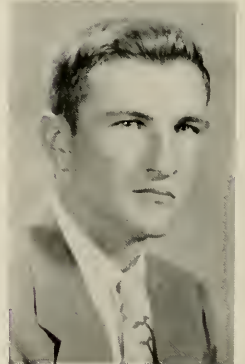
VIRGINIA LEE GRANT
Elementary

Emlenton



HELEN GARDINER
Elementary

DuBois



DONALD GRAY
Social Studies, Mathematics, English

Brookville



MARION GEORGE
English, Social Studies

Clarion

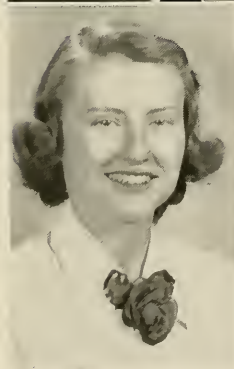
Seniors



JAMES HARDY Pittsburgh
English, Social Studies



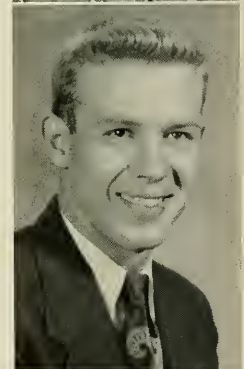
MARGARET HECEI Sheffield
Library Science, Spanish, English



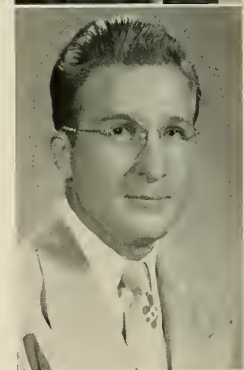
BETTY HARRIS Clarion
Library Science, English, Social Studies



SAMUEL HEFFNER Hawthorn
Science, Mathematics



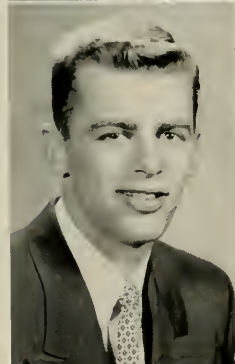
BETTY HAY Cheswick
Elementary



DAVID HEBLING New Brighton
Geography, English, Social Studies,
Safety Education



THOMAS HEBLING **New Brighton**
Geography, English, Social Studies,
Safety Education



CHARLES HERRON **Wilkinsburg**
Chemistry, Mathematics



RAWLIN HILTY **Apollo**
Science, English



DORIS BURNS HUNGER **Mayport**
Elementary

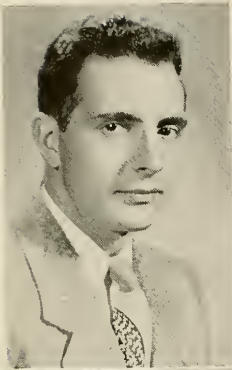


DOLORES HUTTER **Pittsburgh**
Biological Science, English



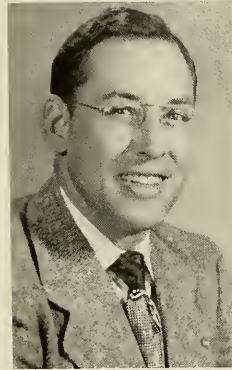
MABLE JOHNSON **Johnsonburg**
Elementary

Seniors



ROBERT JOHNSON
Elementary

Brookville



WILBERT JOHNSON
Social Studies, Safety Education

Punxsutawney



GLORIA KANAAN
Elementary

New Kensington

MRS. ADA KIMPEL
Elementary

Clarion



JOYCE KAPP
Elementary

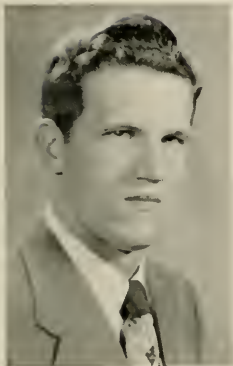
Kassuth



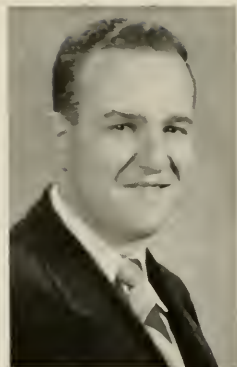
KATHERINE KENNEDY
Library Science, Geography, English

Butler





HERMAN KROUSE **New Bethlehem**
Science, Mathematics



HARRY KINCAID **Tionesta**
Spanish, Social Studies, English



DORA KORB **Rigler**
Elementary



ROBERT LAFFERTY **Seneca**
Biological Science, Mathematics, English

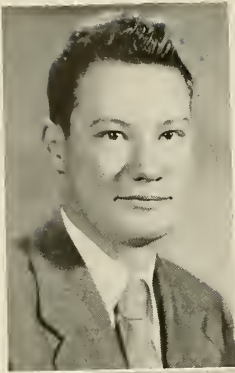


NELLIE KORB **Rigler**
Elementary



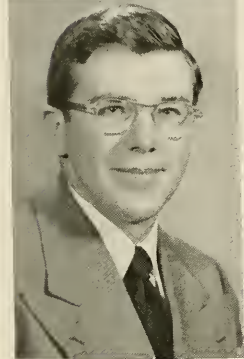
PATRICIA LANE **Titusville**
Elementary

Seniors



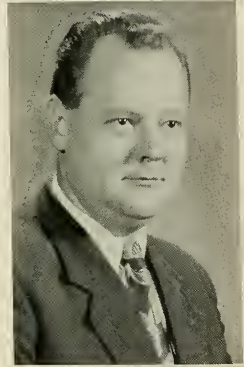
HOWARD LEHMAN
Elementary

Clarion



KENNETH McCURDY
Science, Social Studies, Safety Education

Oil City



DANIEL LOUNSBURY
Social Studies, Geography, Safety Education

Salamanca



DELORES MCGREGOR
Elementary

Greenville



ELEONAR JEAN McCUE
Elementary

Curwensville



MARGARET MCKEE
Library Science, English, Social Studies

Washington

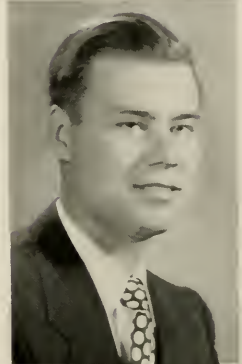
1951



LOLA MAXWELL **New Kensington**
Library Science, Speech, English



WAYNE MADER **Ridgway**
Biological Science, Social Studies



ROBERT MAYS **Knox**
Biological Science, Social Studies



GLADYS MARSHALL **New Kensington**
English, Social Studies



BETTY MERCER **Ridgway**
Social Studies, Biological Science, English



FERN MASTER **Knox**
Library Science, English, Social Studies

Seniors



JENNIFER MEESLER North East
Library Science, Speech, English



VINCE MONTORO Madera
Elementary



FRANK MIDDLEL Johnstown
Social Studies, Geography, English,
Safety Education



SHIRLEY MURPHY Charleoi
Elementary



KENNETH MILLER Mayport
General Science, Chemistry



DORIS NELSON Oil City
Library Science, English, Social Studies



JOSEPH PAINE
Elementary

Clarion



DONALD NOGAR
General Science, Social Studies

Hazelhurst



MARGARET PALO
Elementary

Clarion



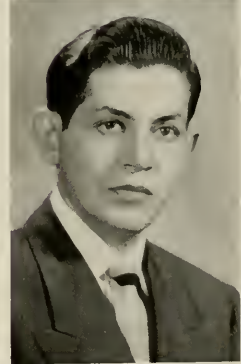
MILDRED OCKS
Elementary

Lucinda



CHARLES PAPALE
English, Social Studies

Pittsburgh



BARBARA OLDT
Library Science, English, Social Studies

Mifflinburg

Seniors



JOHN PEARSALL Brookville
Geography, English, Social Studies



SHIRLEY PECORA West Bridgewater
Elementary



MICHAEL PETRUSKA Pittsburgh
Elementary



MYRON PETRUSKA Pittsburgh
Geography, English



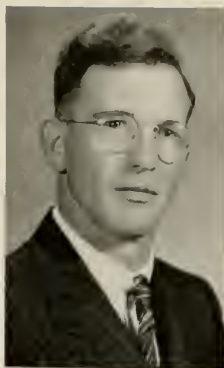
ANTHONY PITOCO Pittsburgh
Biological Science, English



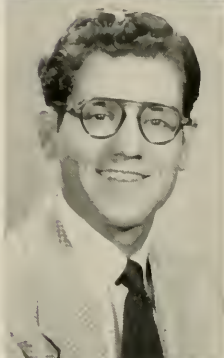
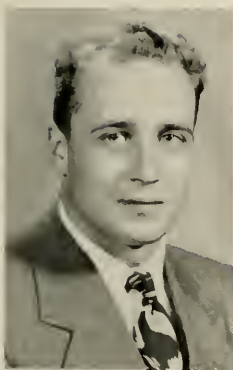
ALFRED PLOPA Cuddy
Science, Mathematics, English

1951

PAUL RUFFNER Brookville
English, Social Studies, Elementary



EUGENE RHOADES Lamartene
General Science, Mathematics



ARTHUR SALEMME Pittsburgh
Elementary

MABEL ROBERTSON Punxsutawney
Elementary



JAMES SCHWEPPE Verona
Social Studies, Geography

ELEANOR ROCK Latrobe
Library Science, English



Seniors



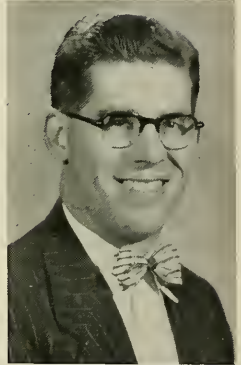
LEORA SEBRING Ohio View
Library Science, Geography, Social Studies



MERLE SHEFFER Elementary Van



JACOB SHAFFER Sigel
English, Social Studies



MARTHA SMITH New Kensington
Elementary



JOSEPH SHAW Liberty
Mathematics, Science

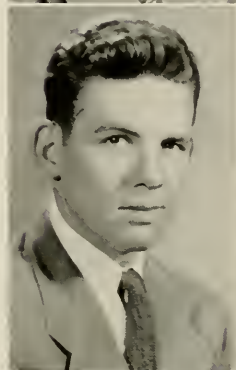


FLORENCE SPAK New Kensington
Elementary

RAY SWITZER Knox
Science, Social Studies, English



JOSEPH SPENCE Titusville
Elementary



HADLEY THOMPSON Wilkinsburg
Social Studies, English

JEANNE STALDER New Kensington
Library Science, English, Social Studies

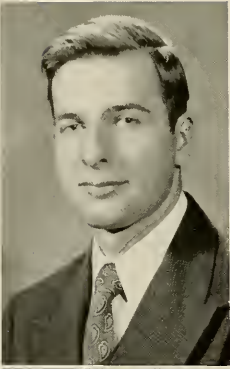


JOHN THOMPSON Emlenton
Elementary

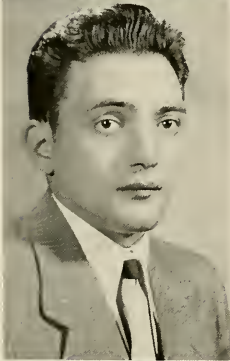
JOHN STONIS Leechburg
Library Science, Social Studies, English



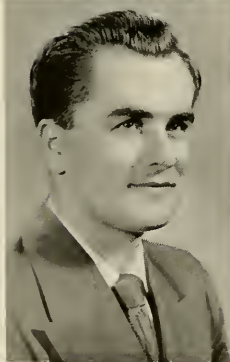
Seniors



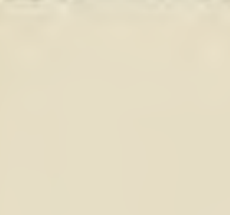
JOHN TOMIKEL Cuddy
English, Geography, General Science,
Social Studies



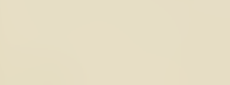
GEORGE TREMBACH Pricedale
Geography, Social Studies



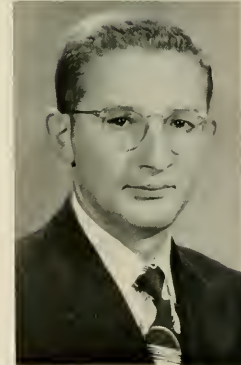
LOUIS TOSI Pittsburgh
Geography, Social Studies



JOHN TREMBACH Pricedale
Elementary



DAVID TREMBACH Pricedale
Elementary



EDWARD TURCHICK Coalport
Science, Social Studies, English

1951

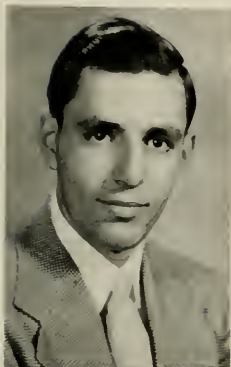
ELEANOR WALLEY
Elementary

Karns City



RALPH VARRATO
Elementary

Vandergrift



JOHN WATERS
Elementary

Lansdale



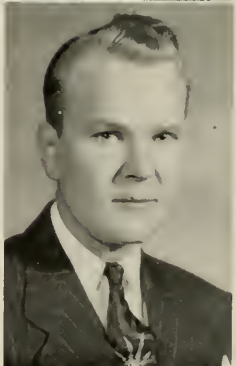
DOMINIC VIRGALLITO
Elementary

Sharon



RICHARD WEBSTER
Science, Mathematics

Clarion



FRANK VESCIO
Social Studies, Geagrophy, English

Sewickley



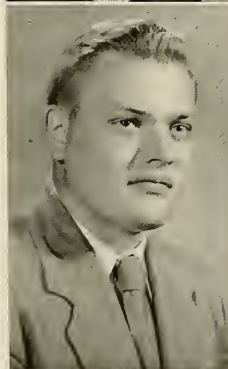
Seniors



DORIS BENSON WILLIAMS New Castle
Library Science, English



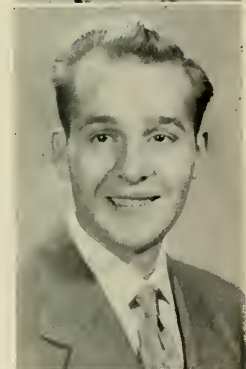
CECIL WILLOUGHBY Beaver
Social Studies, Geography



FRED WISE Brookville
Science, Social Studies



JANICE WEIGEL Fairview
Library Science, Social Studies, English



RICHARD WOLFE Brookville
Social Studies, Spanish, English



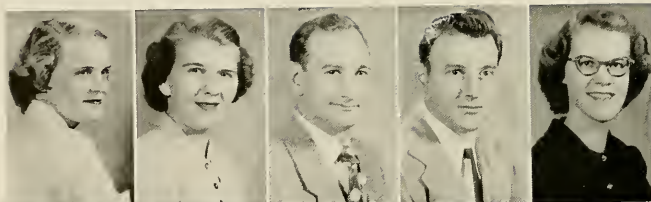
ROBERT WOLFE Punxsutawney
Elementary



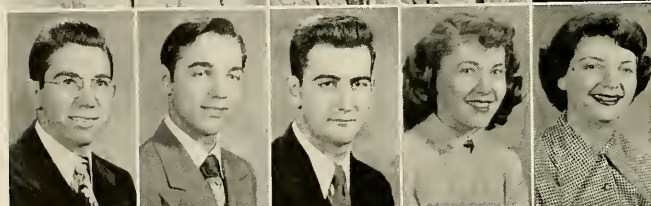
JUNIORS



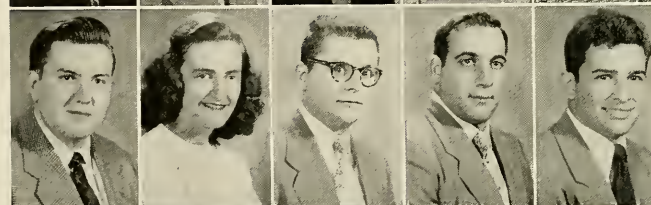
Juniors



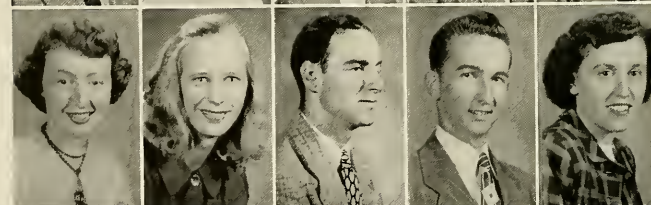
Row 1 Katherine Adams, Eleanor Anderson, Richard Astor, Frank Augustine, Dorothy Boker



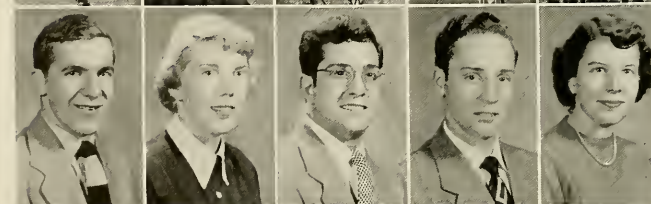
Row 2 Donald Ballas, Dick Barr, Gene Boschini, Elaine Boyer, Ann Moree Brody



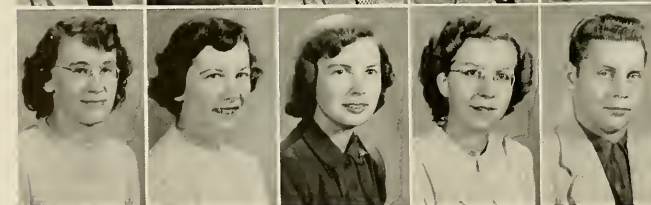
Row 3 Robert Braun, June Campbell, Joseph Coppelli, Mike Coruso, Robert Coury



Row 4 Donna Cribbs, Sue Ann Cunningham, Donald Curfman, Chester Daugherty, Donno Daugherty



Row 5 Charles Davidson, Ruth Davis, Hugo De Felice, Charles De Long, Marjorie Dible



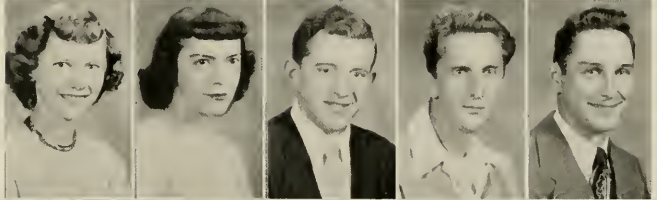
Row 6 Esther Dickey, Dorothy Dorner, Glorio Durbin, Marjorie Eberle, Herbert Elias

Juniors

Row 1 Edward Ewaskey, Dere-
thea Exley, John Felton,
Helen Fox, Doris Freuden-
berger



Row 2 Nancy George, Joan Gif-
ford, Daniel Goldwithe,
John Gray, James Hale



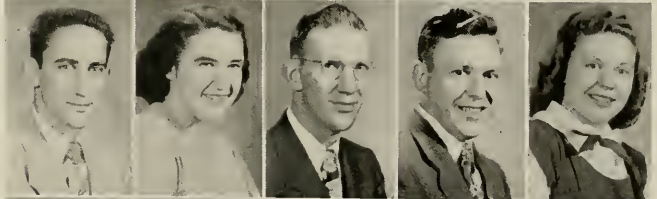
Row 3 Gary Hamil, Judy Honno,
Robert Hanson, Joanne
Hill, Robert Hillis



Row 4 Everett Hines, John Juban,
Joan Johnson, Gail Kenne-
muth, Edith Kifer



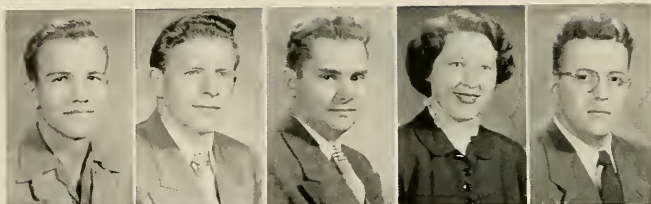
Row 5 Robert Kifer, Lois Kindl-
berger, John King, Ells-
worth Knarr, Sally Knight



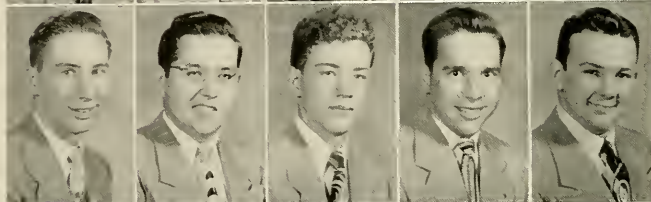
Row 6 Roy Koerber, Phyllis Kra-
mer, Charles Krepps, Ger-
don Laird, Charles Leish



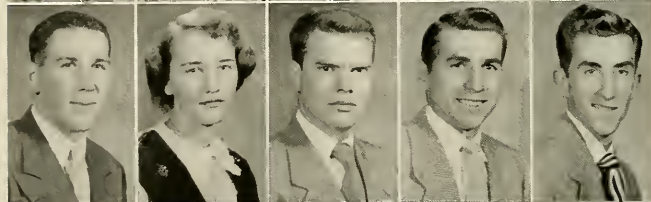
Juniors



Row 1 John Love, Walter Mahle,
Milo Markel, Alice Mar-
shall, Joseph Matthews



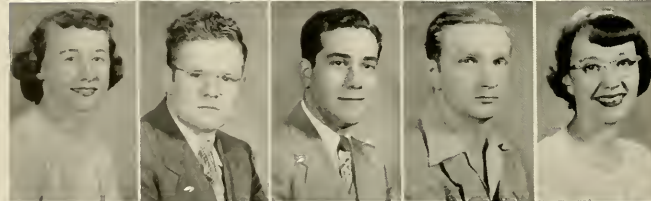
Row 2 Rockne May, John Mays,
Melvin McCleary, Harry
Mehallick, James Miller



Row 3 Robert Miller, Ruth Miller
Duane Mills, Patrick Minahan,
Paul Mochnick



Row 4 Patricia Mock, Robert Moh-
ney, Harry Morris, Donna
Mortland, Wilma Murphy



Row 5 Mary Ookes, Gail Oakley,
Frank Palagga, Bill Pan-
ciero, Shirley Perry



Row 6 Stanley Plovney, Raymond
Predebon, Lenare Rapp,
Peggy Rearick, Ray Reitz

Juniors

Row 1 Helen Rickard, Paul Rasmann, June Russell, Sal Russa, Beatrice Rybiski



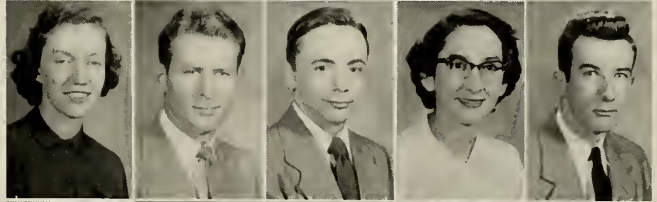
Row 2 Ray Sacalic, Chalmer Saxon, Glaria Schmidt, Pete Scierka, Carl Servey



Row 3 Berlie Shingledecker, Patsy Skinner, Daris Smith, Harry Smith, Lena Staley



Row 4 Jane Sterrett, Cannell Stewart, Harald Stewart, Dorothy Stawe, Matthew Sullivan



Row 5 Rass Summerville, Eugene Tenaglia, James Tarr, Bruce Taylor, Irene Vabrak

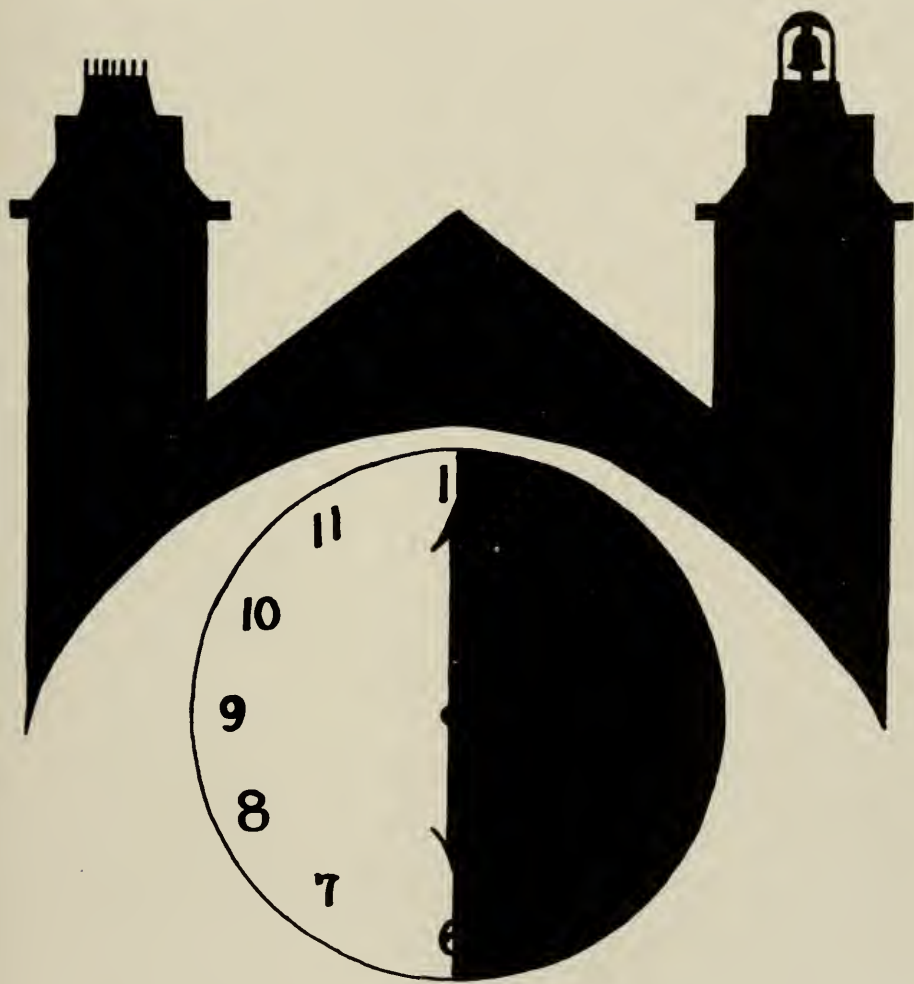


Row 6 Mary Ellen Weeks, Charles Weir, Betty Wile, Jae Winkleman, Henry Luther





SOPHOMORES



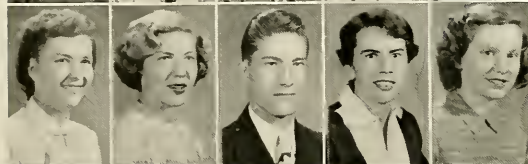
Sophomores



Row 1 Ted Aiken, Nancy Allison, Andrew Bach,
Gladys Barnes, Vivian Barthelemy



Row 2 Marlys Barto, Ann Bostress, Kenneth
Bouer, William Beezer, Virginia Bennett



Row 3 Dorothy Benson, Ellen Blissell, Rena Ban-
toni, Eloine Bavo, Vivian Bawser



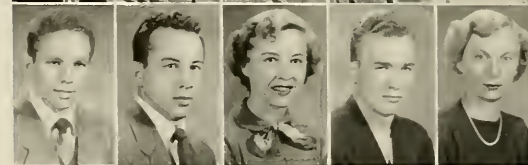
Row 4 Tam Brady, Blanchard Brock, Dorothy
Campbell, June Carbaugh, Betty Cober



Row 5 Mary Copley, Jane Cowan, Morilyn
Craig, Thelmo Crandall, Gary Croyle



Row 6 Terry Crayle, George Czup, Koy Daugh-
erty, Ralph Davis, Jayce Docherty



Row 7 Mike Dalmayer, Fred Donelli, Patricia
Donovan, Francis Dastal, Coralyn Dovers-
spike



Row 8 William Edgar, George Ellis, Mary Ann
Engman, Berlie Etzel, Paul Fenchak

Sophomores

Row 1 Lavis Galli, Evelyn Gordakowski, Joe
Genavese, Ray Giering, Helen Ganga-
ware



Row 2 Carl Graham, Jean Grey, Esther Groll-
mus, Herbert Gumpf, Dolares Hager



Row 3 Mayer Harris, Barbara Heasley, Mary
Jane Hilliard, Mirian Hummell, Eloine
Johnson



Row 4 Gus Johnson, Raberta Kominski, Edna
Keagh, Marie Knapp, Adolf Latz



Row 5 Gwendolyn Law, Jackie Lewis, Bob Lo-
gan, Mildred McClune, Bob McDanough



Row 6 Rebert McElhatten, Paul McNaughtan,
Albert Marinich, Elaine Meegon, Joanne
Milliard



Row 7 William Morris, Mary Ellen Marrison,
Jahn Neese, Gordon Nichols, Maureen
O'Connor



Row 8 Groce Ohl, Rod Olinger, Albert Orris,
Clarice Phillips, Joanno Pugh



Sophomores



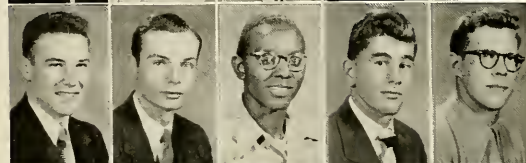
Row 1 Harry Pugh, Lois Radus, Clyde Ransel,
Perry Ray, Margie Riggs



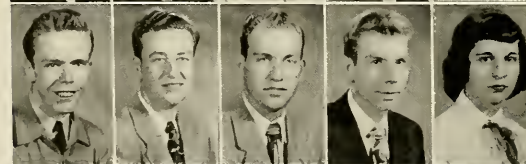
Row 2 Martha Rackmore, Glenna Rose, Jerry
Rumsey, Ned Salerno, Thalia Schahn



Row 3 Larry Schulte, Margaret Seybert, Harry
Shindlecker, Iris Shaffstall, Sally
Simka



Row 4 James Smathers, Scott Smathers, Em-
mett Smith, Thomas Stanka, Ronald Ter-
williger



Row 5 Walter Texter, Sergio Ulivagnalia, Archie
Umstead, Bill Vail, Sylvia Verrata



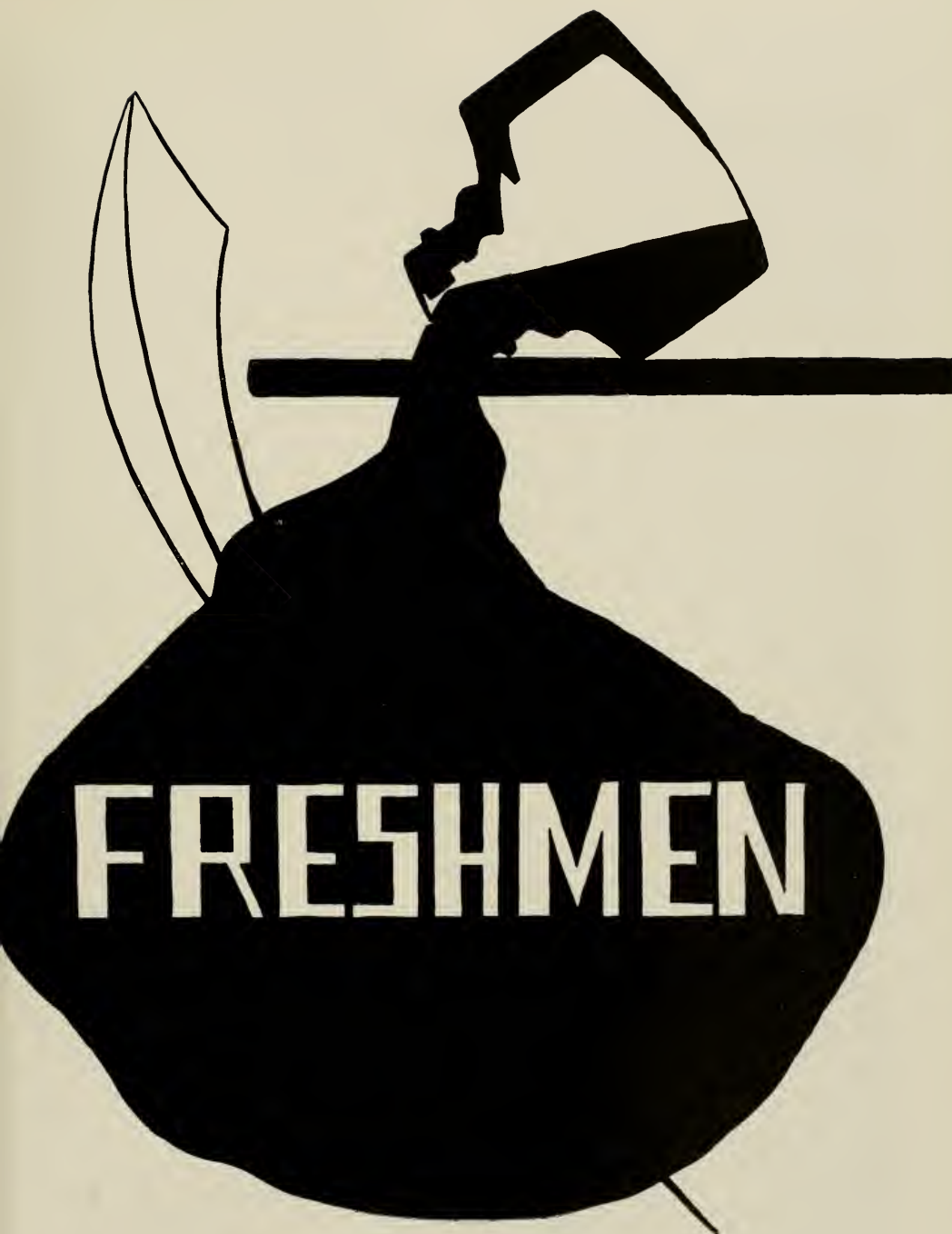
Row 6 Charles Ward, Twila Wassum, Alvin
Weaver, Evelyn Webster, Dalores Weid-
ner



Row 7 Dan Weitz, Elmer Wensel, Daris Wilson,
James Wilson, Fred Wise



Row 8 Robert Wanderling, Jean Wanderly,
Katherine Zerbe, Albert Woodman, John
Yarnovic



FRESHMEN

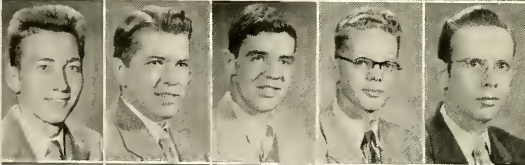
Freshmen



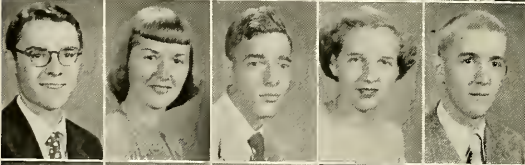
Row 1 Margaret Abplanalp, Diane Adelman,
Loretta Allegretta, Gordon Allen, Betty
Allison



Row 2 Dale Ambrase, Shirley Bach, Elsie Balagi,
Dominick Barilar, Merle Barnett



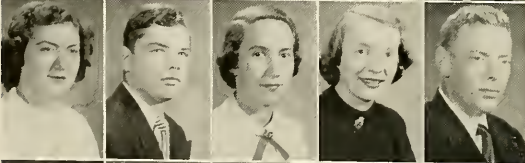
Row 3 Robert Barrage, Bill Baun, William Beall,
Duane Beals, Charles Best



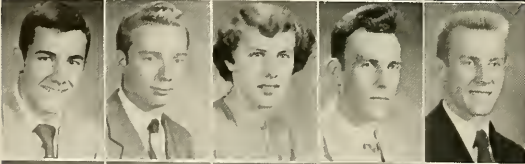
Row 4 Jack Black, Betty Ann Blough, Paul
Balan, Danna Bawan, Jack Brown



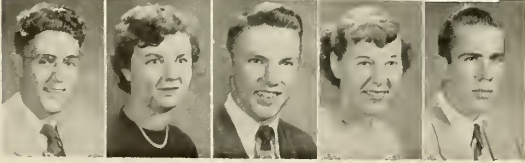
Row 5 Robert Brawn, Roseann Bruno, Darathy
Butts, Dick Cadugan, David Caldwell



Row 6 Carol Campbell, Matthew Carson, Rita
Casarica, Frances Chaffee, Patrick Clark



Row 7 Alfansa Calpe, Merle Canrad, Mariam
Canstable, Glenn Caan, Donald Cawen



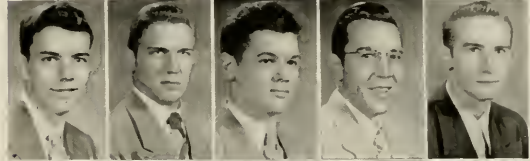
Row 8 Ronald Crowe, Shirley Crawley, Joseph
Culp, Margaret Curtis, James Demski

Freshmen

Row 1 Pat Dibuona, Dave Dickinson, Angela Dimino, Bonnie Dinger, James Dittman



Row 2 Paul Doerr, Edwin Dunmire, Charles Earley, Carl Eberle, Dorl Eck



Row 3 Shirley Ewing, Sam Farmerie, Joe FASTER, Betty Gallagher, Angeline Galteria



Row 4 Gloria Galteria, Richard Gehrett, Lucille George, Shirley Gilbert, Anne Govaletz



Row 5 Leeland Gregg, Clifford Grine, Elizabeth Gruebele, Barry Hall, Clayton Horriger



Row 6 Frederick Harriger, John Harris, Charlotte Hartge, Cecilia Hartman, Gerald Hartnett



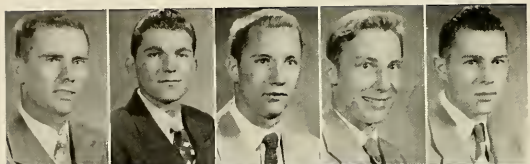
Row 7 Joseph Hazlett, Joan Heeney, Bill Helmintoller, Shirley Hildebrand, Barbara Hill



Row 8 Robert Hilliard, Howard Hopkins, Janet Howell, Elsie Hrivnok, Thomas Inter



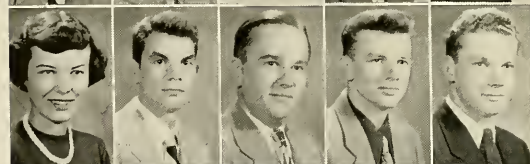
Freshmen



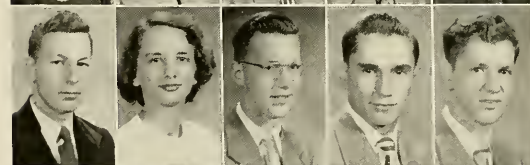
Row 1 Kenneth Johnson, Leon Johnson, Dick Janes, Bernard Kammeriener, George Kapp



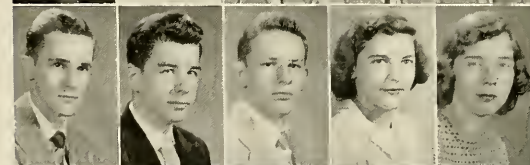
Row 2 Charles Kessler, James Kindel, Donna Kline, George Kaelsch, Shirley Kuhns



Row 3 Janice Laird, Andrew Laurita, Richard Lawson, John Leathers, James Leffler



Row 4 Joseph Leiber, Alice Leslie, Tom Lewis, Richard Langa, James Lupinacci



Row 5 Dick McCard, Charles McDonald, Ted McDonald, Marilyn McEntire, Sandra McFarland



Row 6 Billy McGinnis, Kathleen McKissick, Ralph McNutt, Nancy McQuiston, Patricia Manny



Row 7 John Miller, Jeanne Mills, Joan Mitchell, Chris Mitsas, Robert Moore



Row 8 Virginia Moore, William Marts, Barbara Martland, Marsue Martland, Betty Lau Naquin

Freshmen

Row 1 Ruth Neiger, Robert Nelson, Charles Obertance, Jayce O'Dannell, Cleve Oliver



Row 2 Margaret Orcutt, Beverly Otto, Richard Otto, Angela Pantozes, Enrico Papurella



Row 3 Carolyn Pos, Virginia Patton, Richard Pisarcih, Barbara Papsen, John Pracko



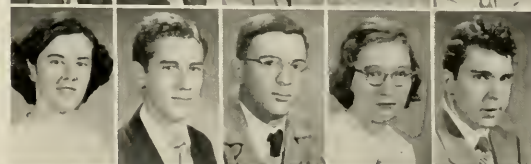
Row 4 Eugenia Price, Howard Reasinger, William Rice, Gloria Rodriguez, Ja Anne Rudge



Row 5 Alexander Sandusky, Samuel Schafer, Bruce Schroeder, Joanee Schwartz, John Seman



Row 6 Nancy Shank, David Sharove, Kenneth Shick, Alice Smith, Harry Smith



Row 7 Jerry Smith, Patty Smith, Mary Jane Spencer, Robert Starr, Sue States



Row 8 Patsy Steltzer, Florence Terry, Joseph Tessitare, Norma Thompson, Richard Tarp



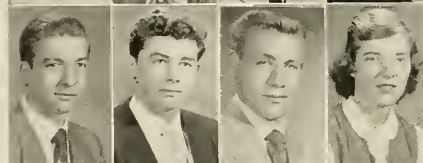
Freshmen



Row 1 John Toth, Sara Trautman, John Vallina,
Jeannine Vandeuren



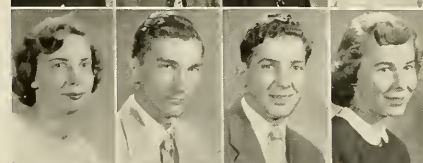
Row 2 Betty Vasbinder, Marilyn Voorhies, Carl
Wagner, Mary Lou Walloce



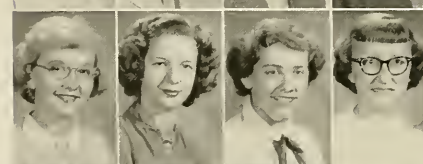
Row 3 Ed Walsh, William Walsh, William Watt,
Anna Weaver



Row 4 Danna Weaver, Lawrence Weaver, Ann
Webarg, Ann White



Row 5 Joanne White, Donald Witney, Albert
Wiedl, Emma Lou Williams



Row 6 Joyce Wilson, Audrey Wolfe, Suzanne
Wolfe, Pauline Young



Row 7 Frances Zita, Dan Zupelo, Harry Zurasky

Row 1 M. E. Weeks, M. McKee,
P. Carr, F. Terry, B.
Gallagher

Row 2 D. Cribbs, L. Brown, J.
Sterrett, J. Hill



Row 1 C. Hartman, P. Steltzer,
H. Gangaware, P. Donovan,
B. Allison

Row 2 M. Rockmore, D. Wilson,
P. Manny, Miss Spaller,
S. Crowley, F. Chaffee,
G. Barnes



House Council

The Women's House Council is the governing body of the women's dormitories: Science Hall and Becht Hall. The membership is made up of girls elected each spring. Those elected serve the following year. The freshman members are elected in the fall.

Meetings are held as often as it seems necessary to carry on the business of the separate dormitories. Among the duties of the council are: the selection of fire wardens, hall proctoring at all times, proposals of any suggestions for the

improvement of living conditions in the dormitory, and student relationships.

This year the Women's House Council planned a welcoming program for the incoming freshmen girls. This was an informal way of getting the freshmen acquainted and it turned out to be very successful. Among the activities that were planned were a tour of the campus, a picnic, a song fest, and several record dances. After seeing how successful this program was, we are hoping that it will continue in coming years.

OFFICERS

PRESIDENT

PAT CARR

VICE PRESIDENT

PEG McKEE

SECRETARY

MARY ELLEN WEEKS

SPONSOR

MISS GRACE STOKE



A. Salemme, A. Plopa, W. Mader, Mr. Hartman,
M. Johnson



Row 1 Dr. Chondler, P. Skinner, A. Umstead,
L. Staley, R. Mays

Row 2 J. Tamikal, M. Johnson, M. Coruso, W.
Reiser, J. Sterrett, V. Bennett



M. Craig, Mr. Lewis, E. Persegheffi, P. Donovan,
P. Mervash

Mr. Flack, D. Ballas, D. Smith, R. Osterhalm



Student Government

Student government at Clarion exhibits itself in two forms: the Student Senate and the Class Officers.

The Student Senate is the governing body of all student activity composed of members elected directly by the students.

The Class Officers handle the financial and social life of their particular class; they are elected by the students who are members of that class.

By participating in the elections and activities of the governing bodies, all students receive a close-up view of democracy in action.

J. Hartnett, D. Kline, T. Inter, J. Lupinacci





M. Eberle, E. Dolecki, C. Krepps, Miss Spaller, Dr. Lore, J. Foster, M. Croig, D. Mortland

Social Committee

OFFICERS

PRESIDENT	TED AIKEN
VICE PRESIDENT	CHUCK KREPPS
SECRETARY	DONNA MORTLAND
TREASURER	JOE FOSTER
SPONSORS	MR. SHANK, MISS STOKE, MISS SPALLER, DR. LORE

The social committee is the organization that is given the task of providing a well rounded social program for the students at Clarion. This year the committee worked under the additional handicap of a shifting membership. The hardest blow was the loss of Dr. Gill, one of the more active sponsors, in the middle of the first semester. Three of the student representatives, Ted Aiken, Joe Foster, and Chuck Morgan were also lost as the year progressed.

The members elected this year were as follows: Edward Dolecki, senior class; Chuck Krepps, junior class; Ted Aiken, sophomore class; Joe

Foster, freshman class; Jerry Rumsey, interfraternity council; Marjorie Eberle, intersorority council; Chuck Morgan, boys dayroom; and Donna Mortland, girls dayroom.

Featured this year on the social calendar were twilight dances, weekend record dances, square dances and the four major dances. Each of the four major dances were sponsored by one of the classes.

Under the inspiring leadership of Dr. Gill, the committee drew up its social calendar for the year; and under the capable direction of Mr. Shank the schedule was carried out.

EDUCATION







Elementary Education

Every year many students graduate from Clarion State Teachers College with a major in elementary education.

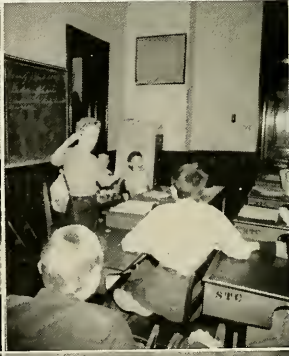
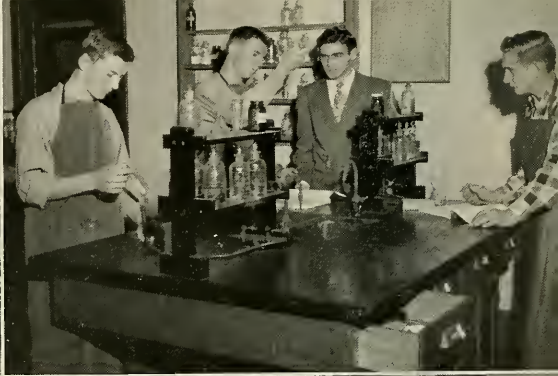
To complete this major, elementary students are required to take twelve hours of student teaching at the elementary level. Three of the twelve hours are taken during the junior year as an observation period. At this time the student becomes acquainted with the various levels between kindergarten and sixth grade and is better able to choose the level at which he wishes to specialize. The remaining nine hours of student teaching are completed as a senior at the level chosen by the student for specialization.

Elementary majors are also required to take education courses pertinent to their field. These courses include: methods and techniques of teach-

ing reading, arithmetic, English, spelling, handwriting, music, art, and others.

Another opportunity provided for elementary majors is membership in the Clarion chapter of the Association for Childhood Education. Any student at Clarion may belong although the club meets the interests of elementary students mainly. The Association for Childhood Education meets once a month to discuss topics of interest to the elementary teacher. Part of the monthly meeting is spent as a workshop period.

Thus through the various opportunities provided in the curriculum and in extra-curricular activities the student may be graduated from Clarion State Teachers College well prepared to teach in the elementary school.





Secondary Education

Secondary education is always of great importance to the American schools and Clarion offers a wide selection of subjects for preparation in this field.

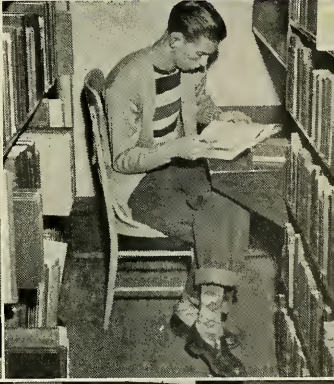
Students desiring to teach in the secondary grades may specialize in English, foreign languages, social science, geography, science or speech. The speech field, previously unavailable at Clarion, was added when our schools began placing their current emphasis on speech activities.

Majors in any of these fields are obtained after twenty-four semester hours in a specific

field have been completed. Minors are obtained after eighteen hours.

Perhaps the most valuable part of the secondary preparation is the twelve hours period of student teaching. The training takes place in one of the district schools: Clarion's Junior or Senior High Schools, the Clarion-Limestone Consolidated School, Brookville High School or New Bethlehem High School.

Probably more than any other experience in college, this period of adult responsibility and actual classroom activity produces the capable, efficient junior and senior high school teachers for which Clarion is noted.



Library Science

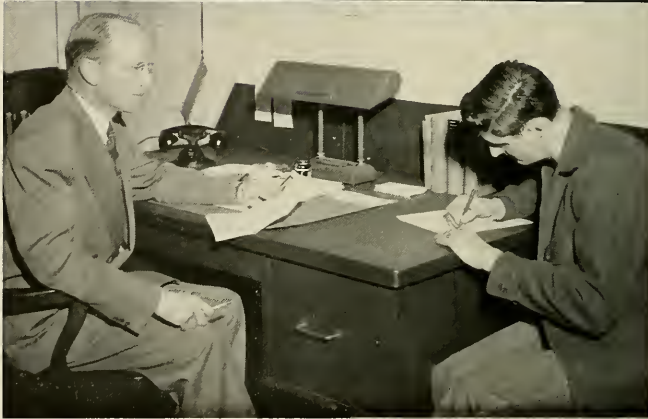
Special instruction is offered at Clarion in the field of library science. One of the few schools in Pennsylvania teaching this subject, Clarion prepares prospective librarians mainly in the field of high school library work. Graduates in the field of library science may not only administer library service but may also hold teaching positions in the secondary field.

During their junior and senior years, library science students are required to complete thirty semester hours of specialized library courses before they are graduated. All of these courses are taught by Mr. Charles R. Flack while the required library practice work is under the guidance of Miss Rena Carlson and Miss Martha Stewart. Library science students also acquire

majors and minors in such secondary fields as English, social studies, and geography.

There are certain things that Clarion library science students never forget, even after graduation: Mr. Flack's "quizzes"; the junior class library observation trips in the spring; the two weeks practice work for the seniors; the informal and pleasant teas given by Mr. and Mrs. Flack; and, finally, the spirit of friendliness and comradeship that seems to belong specifically to the library science classes.

Library science has much to offer to those who are interested in that particular field of education. The rewards are many, and it is well worth the time and effort expended.



Guidance and Placement

Probably two of the most important educational departments here at Clarion are those dealing with student guidance and the placement service of the college.

Dr. Stanley Lore is in charge of the student guidance program and has done much to aid Clarion students throughout their college careers. The National Teacher Examinations for seniors are also part of the guidance program under the care of Dr. Lore.

The placement department at Clarion is very capably directed by Mr. Richard Skinner. Placement service is given Clarion graduates free of charge, and many graduating seniors acquire excellent teaching positions through this service.

Placement and guidance services are becoming increasingly more important and effective here at Clarion with each succeeding year.



R. O. T. C.

The mission of the ROTC is twofold: to train junior officers for wartime emergency and to teach leadership, citizenship and the development of character through self-discipline.

"If war comes to us again the fact seems inescapable that we will not have time to train units before we are faced with the final issue of defeat or victory. We must be prepared on M-Day, the day the enemy strikes. Our weapons must be better than theirs on that day, our resources must be promptly available, and, above all, our manpower must have already been trained. This training must be given in time of

peace. Without a standing army of prohibitive size, this can only be accomplished by training our civilian reserve, our citizen army.

It is my personal opinion that the greatest single motivation force for world peace today is the organized military potentiality of the United States. Its potentiality for the maintenance of world peace will continue so long as the world is convinced of our willingness and ability to vitalize it in time to meet any threat of aggression from any other power. This is our greatest assurance of keeping the peace for which we fought.

(Excerpts from General Eisenhower's speech
before Congress on November 15, 1945)



OUR BID TO



CLUBS



Row 1 R. Beals, N. Allison, M. Barta, C. Graham, L. Shank, G. Durbin, D. Goldwithe, J. Irwin, U. Vaganoli, J. Campbell, J. Leiber, D. Freudenberger, M. Eberle
 Row 2 P. Carr, J. Crow, E. Walter, D. Kline, J. Black, B. Martland, M. Sheffer, L. Galli, D. Exley, T. Wassum, D. Sharove
 Row 3 J. Mays, D. Daugherty, H. Layman, B. Wile, R. Lawson, M. Dihle, J. Miller, J. Waters
 Row 4 J. Cappelli, J. Morris, B. Waddell, E. Smith, M. Helmtollar, J. Culp, J. Gray, C. Pas, Mr. Hart

College Band

The band has been operating as a college organization for several years. This is the first year, however, that its members have had the added inspiration of playing in uniform. During football season the band was very active and pleased the spectators at half-time with its maneuvers and formations. It also participated in several parades including the Indiana Homecoming Game Parade, which composed some 10 bands, and also the local Clarion Halloween Parade.

Many local schools have thrilled to its visiting concerts and to its finale "My Hero" from The Chocolate Soldier.

Last year several members of the band were privileged to attend and participate in the third annual Intercollegiate All-State Band which was held at Carnegie University in Pittsburgh. Several members also plan to attend this year's festival. This will make the fourth year that we have sent participants.



Row 1 F. Chaffee, M. Seybert, C. Adams, G. Rose, D. Daugherty, J. Rudge, A. Leslie, L. Radus, P. Carr
Row 2 J. Lewis, B. Blaugh, E. Hrivnak, C. Campbell, M. Canstable, D. Hutter, B. Ballagher, S. Perry
Row 3 D. Freudenberger, P. Manny, M. Smith, S. Arner, A. Marshall, A. Weiberg, J. Grey, E. Keagh
Row 4 E. Webster, B. Wile, J. Campbell, R. Davis, C. Hartge, M. Ochs, B. Martland
Row 5 P. Rossman, D. Sharave, G. Thampson, A. Dimina, N. Salerno
Row 6 G. Kennemuth, C. Grine, R. Lewis, D. Mills, J. Beary, C. Krepps
Row 7 E. Matt, J. Lupinacci, E. Smith, R. Terwilliger, M. Petruska, C. Johnson
Row 8 D. Jayce, K. Bauer, H. Shingledecker, M. Sheffer, W. Waddell, C. DeLang, C. Lias

Choir

The A'Capella choir has been one of Clarion's most active organizations. It has for several years given concerts in many of the regional schools. The Choir's repertoire comprises mostly sacred selections but also includes several secular numbers.

This year's choir has been blessed with a large supply of returning "veteran" singers who

give added strength to each section.

Three members of the choir last year attended the first Intercollegiate All-State Choir which was held at Lebanon Valley College. It was under the leadership of Fred Woring's assistant director, Lara Hoggard, and proved to be a very memorable experience for those present.



M. Sheffer, M. Petruska, C.
Krepps, P. Rossman, J. Cappelli

Male Quartet

The present college male quartet is a carry-over from last year when it was originally started. This year it has participated in a great many programs in various places throughout the state. The quartet has been accepted with much enthusiasm wherever it has performed, having presented programs at many local parties and banquets and having also participated in contests and on radio programs.

Its numbers include a variety of spiritual, barbershop, and novelty tunes such as the following:

Coney Island Babe

On a Chinese Honeymoon
You Had a Dream
Aura Lee
Kentucky Babe
The Band
Tumbling Tumble Weed
Climbin' Up The Mountain
Po' Mourner
The Winter Song
A Log On the Fire
Tavern in the Town
The Tack
and many others.

A. Marshall, B. Faust, C. Adams,
P. Carr, G. Durbin



College Ensemble

Consisting of the girls trio, the mixed quartet, and several soloists both vocal and instrumental, the college ensemble has been actively engaged in entertainment work for several years. It is the only musical organization in which Mr. Hart is both the director and a participant, sing-

ing tenor in the mixed quartet. The Ensemble is capable of giving a pleasing program very well rounded with variety and talent. For long programs, the quartet and accordionist are added to the group thus supplying infinite variety to the entertainment.



Row 1 H. Gardner, J. Johnson,
M. Smith, A. Salemme,
J. Thompson, M. Stro-
ecker, M. John, H.
Shindeldecker, E. Wol-
ley, J. McCue

Row 2 D. Daugherty, G. Rose,
D. Delozier, J. Hanna,
D. Hungar, E. Kifer, A.
M. Brady, J. Duesphol,
T. Crondall, S. Pecora,
D. Stowe, J. Russell

Association of Childhood Education

The Association of Childhood Education is a national organization whose purpose is to gather and disseminate knowledge about the movement for the education of young children, to promote the progressive type of education in kindergarten and primary grades, and to raise the standard of the professional training for teachers in this field.

Eligibility for membership is open to all ad-

ministrators and students majoring in the elemen-
tary field of education.

At the monthly meetings, panel discussions are presented by the members of the group. These discussions are taken from "The Journal of Childhood Education" and concern problems of childhood development toward citizenship. Workshops on Halloween, Thanksgiving, Christmas, and Easter are conducted by the group.

OFFICERS

PRESIDENT	JOHN THOMPSON
VICE PRESIDENT	ARTHUR SALEMME
SECRETARY	MABEL JOHNSON
TREASURER	MARTHA SMITH
SPONSOR	MISS EVELYN STROHECKER

Row 1 R. M. Ditz, I. Vobrok, F. Wise, Miss Sanford, B. Otto, J. Johnston, J. Mayes, M. A. Engman, P. Lane

Row 2 M. McClune, J. Schwartz, R. Miller, J. Orris, F. Horriger, J. Shaffer, B. Barnes, M. Coty, R. Neiger, L. Rapp



Art Club

OFFICERS

PRESIDENT	JOAN JOHNSTON
VICE PRESIDENT	JOHN MAYES
SECRETARY	BEVERLY OTTO
TREASURER	FRED WISE
SPONSOR	MISS HAZEL SANFORD

Apparently, today the main emphasis in education is being placed on the social aspects of life. The Art Club encourages its members to broaden their outlook on life, to develop their appreciation of the fine and minor arts, and to learn to live and work together graciously.

Enjoyable parties given throughout the year were the one at Kassel's Rumpus Room, the Christmas Party, the St. Patrick's Day party, and

one in the Art Room to conclude the year's work.

By way of contributing to campus life, the club continued its practice of distributing Co-Op pictures.

The main project of the year was the making of the ever-popular aluminum trays. A minor project of the year was the making of red-yarn lopel Santa Clauses.



Row 1 J. King, D. Gold-
waithe, K. Miller, B.
Brock, P. McNutt

Row 2 D. Martland, F. Terry,
B. Hill, J. Gray,
K. Daugherty, M.
Knapp, D. Butts, G.
Johnsan

Row 3 J. Dittman, F. Wise,
Dr. Peirce, W. Siar,
B. Schroeder, R.
Lawson, R. Switzer

Camera Club

OFFICERS

PRESIDENT	KENNETH MILLER
VICE PRESIDENT	BLANCHARD BROCK
SECRETARY	DONNA MORTLAND
TREASURER	KAY DAUGHERTY
SPONSOR	DR. DONALD PEIRCE

For our photographers and those who have just recently become interested in photography as a hobby, there is the Camera Club.

Active now on campus for ten years, the Camera Club under the very capable supervision of Dr. Peirce offers the amateur the opportunity to continue his study of photography.

More interest has been shown in the Camera Club since the introduction of the photography class this year.

Club meetings during the year are devoted to programs which are planned to further the member's interest and knowledge of photography. Programs such as lectures by profes-

sional photographers and professional training films and slides are intermingled with demonstrations by the more experienced members of the club and Dr. Peirce to teach the beginner the developing and printing processes.

At the disposal of the club are a well-equipped dark room and a Speed Graphic camera for those members who are interested in becoming proficient in the use of the more professional type camera.

Included in the social program are the annual outings, usually held at Cook's Forest, where everyone is expected to eat to his capacity and have a wonderful time.

- Row 1 S. Kuhns, J. Howell, A. Galteria, V. Patton
- Row 2 G. Galteria, N. McQuis-
tan, M. Voarhees, S. States,
Miss Skaggs, Miss Nair, G.
Rodriquez, S. Simko, P.
Rearick, S. Bach
- Row 3 D. Curfman, D. Hutter, L.
Ianni, M. Langham, C.
Obertance, E. Ewaskey, D.
Geherett, D. Ballas, T.
Schohn, M. Hecci



Press Club

EDITOR

EDWARD EWASKEY

ASSOCIATE EDITORS

ANDREW FENTON

LAWRENCE IANNI

MAX LANGHAM

PRESIDENT

EDWARD EWASKEY

VICE PRESIDENT

BLAINE HOOVER

SECRETARY

PEGGY REARICK

TREASURER

DONALD CURFMAN

SPONSORS

MISS NAIR

MISS SKAGGS

The primary purpose of the Press Club is to publish the Clarion Call, the college newspaper. The experience gained will aid the prospective teachers in directing high school publications. In the regular club meetings discussions are held on newspaper work, and speakers from the local

newspapers give talks on the various phases of newspaper work.

The other side of the club is social. It has become an annual event for the Art and Press Clubs to hold a joint banquet. Parties are held for the club alone. Picnics at Cook's Forest round out the major events of the club's social calendar.



UPPER PICTURE

- Row 1 J. Messler, E. Blissel, M. O'Can-
nar, M. Smith, P. Skinner, P.
Mochnick, L. Maxwell, H. Gan-
gaware, D. Benson, B. Heasley
- Row 2 W. Waddell, D. Trembach, E.
Mott, C. Lias, C. Groham, G.
Thompson, R. Lewis



LOWER PICTURE

- Row 1 B. Allison, J. Leslie, M. McIn-
tyre, R. Casarica, M. Constable
- Row 2 E. Balogi, J. Heeney, A. Gava-
letz, G. Rodriguez, H. Hilde-
brande, B. Mortland, M. Mort-
land, P. Steltzer, E. Hrivnak,
S. Bach
- Row 3 E. Price, B. Popson, E. Greu-
bel, R. Longo, C. Oliver, M.
Conrad, P. Clark, A. Pantazes,
D. Sharove, R. Moore, R. Cher-
rett, R. Whitney

College Players

The College Players is the dramatics club of the Campus. The activities of the club are various, but they all center about the art of the drama. At regular club meetings the members learn the necessities of play production and technique by reports, reviews and reading of plays. The Club presented a "meller drayma"

the first semester entitled "A Shop Girl's Honor," or "Her Fatal Charm." The second play of the year was "The Show-off."

Miss Marwick is the faculty adviser of the club and Miss Boyd is the faculty sponsor of the Honorary Dramatic Fraternity of Alpha Psi Omega.



OFFICERS

- | | |
|----------------|---------------|
| PRESIDENT | PAUL MOCHNICK |
| VICE PRESIDENT | PATSY SKINNER |
| SECRETARY | MARTHA SMITH |
| TREASURER | LOLA MAXWELL |
| SPONSOR | MISS MARWICK |

Row 1 S. Plavny, J. Duespohl, N. Thompson, C. Phillips, G. Law, E. Walley, E. Wensel, W. Panciero, D. Curfman

Row 2 R. Reitz, P. Smith, L. George, V. Bowser, L. Ande, D. Smith, K. M c K i s i c k, D. Weaver, D. Korb, J. Felton, P. George



Row 3 G. Genemuth, J. Wilson, N. Korb, V. Potton, T. Wossum, A. Umstead, C. Rhodes, E. Smith, Dr. Skinner, J. McCoy, Miss Strohecker, R. Koerber, S. Pajerske

Future Teachers of America

OFFICERS

PRESIDENT	JACK FELTON
VICE PRESIDENT	STANLEY PLAVNY
SECRETARY-TREASURER	DORIS KORB
LIBRARIAN	DONARD CURFMAN
SPONSORS	MISS EVELYN STROHECKER MR. RICHARD SKINNER

The Future Teachers of America, Clarion Chapter, was organized to interest both young men and women in education as a lifelong career. The club, a junior branch of the National Education Association and the Pennsylvania State Education Association, follows closely the purposes and principles of the senior organization. Membership is open to all students.

Our first meetings were dedicated to orientating new members. Social activities are planned throughout the year. Guest speakers

are invited to meetings to familiarize the members with modern educational proceedings. Correspondence is carried on with various high schools and colleges in Pennsylvania.

A merit system has been developed by which members may earn points as a result of participating in qualified activities. Having earned a required number of points a Certificate of Merit is issued upon graduation with the recommendation of our sponsors.



Row 1 E. Wensel, V. Montour,
L. Dittman

Row 2 K. Dougherty, M.
Knopp, S. Knight, P.
Young, H. Fox, J. Mills,
J. Schwartz, Mr. Kuhner

Row 3 N. George, B. Dinger,
L. Kindleberger, S.
Wolfe, A. M. Brady, S.
Gilbert, B. Otto

Row 4 G. Boschini, J. Pojersky,
P. Mock, E. Dickey, E.
Anderson, H. McCoy,
P. McNaughton, J. Mor-
timer

Geography Club

The Geography Club has been organized for the students interested in investigating the natural geographic formations and the products resulting in man's use of these natural resources. By studying all phases of geography, the club instills in its members a deeper appreciation and understanding of all the basic activities which lead to the improvement of our civilization.

The annual all-day trip to Pittsburgh was changed to one through Clearfield and vicinity.

The Geography Club visited the glass plant in Clarion, saw several movies of foreign countries, and listened to a talk by one of the members who had visited Arizona during the summer. A party was planned by the club members at Christmas time.

In this club an opportunity is given to all the members to participate in every possible way. All the activities are planned by the members themselves.

OFFICERS

PRESIDENT	ANN MAREE BRADY
VICE PRESIDENT	ELEANOR ANDERSON
SECRETARY-TREASURER	SALLY KNIGHT
SPONSOR	C. A. KUHNER

Row 1 M. J. Spencer, J. Laird, D. Kline, E. Williams, F. Terry, B. Popsen, M. Orcot
 Row 2 A. Smith, F. Zito, J. O'Donnell, B. Naquin, S. Stotes



Hostess Club

The Hostess Club is an organization of Freshman girls who are interested in the social customs of every day living. The meetings are held in the Becht Social room.

Discussions are held centering around etiquette, conduct for teas, personal appearance,

manners, and many other subjects helping the girls to adapt themselves to different situations.

Many social affairs were planned and enacted during the year. Among these were holiday parties, conasta lessons, and a movie party and tea.

OFFICERS

PRESIDENT

EMMA LOU WILLIAMS

SECRETARY-TREASURER

DONNA BOWAN

SPONSOR

MISS GRACE STOKE



Row 1 R. Williams, J. Eakin, B. Blough, A. Plapa, E. Turchick, B. Schroder, J. Laird, D. Nagar, R. Giering
 Row 2 Dr. Tallant, G. Jahnsan, J. Heeney, S. Murphy, P. Bish, D. Delazier, M. Constable, Dr. Slick, L. Maxwell, C. Servey, D. Ballas
 Row 3 D. J. Williams, J. Weigel, K. Kennedy, B. Mercer, J. Lemp, M. Palo, G. Kennemuth, M. Markle, C. Hartman, M. Aplanalp, S. Ewing, O. Durbin, M. Orcatt, F. Chaffee, J. Vanduren
 Row 4 B. Etzel, A. Laschiave, M. Merriman, W. Farley, R. May, E. Ewaskey, M. Langharn, H. Kincaid, J. Stanis, C. Graham, D. Butts, A. Umstead

International Relations Club

The International Relations Club deals with the current international problems that exist in the world today. Panel discussions present the pros and cons of the topic, which is then open for discussion. This semester the club discussed the Chinese Communists in the Korean situation and de Seversky's, "The Key to Military Survival". It has also been the custom in the past few years for the members of the club to visit the United

Nations Assembly during the spring semester. If possible, such a trip shall be undertaken again this year.

The club not only has a serious side to its personality, but it also enjoys such activities as weiner roasts and parties. A "get-acquainted" weiner roast held early this year was a most enjoyable affair.

OFFICERS

- | | |
|---------------------|-------------------|
| PRESIDENT | EDWARD TURCHIK |
| VICE PRESIDENT | ALFRED PLOPA |
| SECRETARY-TREASURER | MARGARET BISH |
| SPONSORS | DR. SEWELL SLICK |
| | DR. J. G. TALLANT |

- Row 1 S. Simka, R. Kim'nski, M. O'Connar, E. Meegan, D. Smith
- Row 2 J. Heeney, R. Casarico, A. Galterio, E. Boyer, A. Brady, M. Ochs, D. Benson, K. Zerbe, B. Hill
- Row 3 A. Gavaletz, R. Bruno, E. Blissell, J. Stalder, G. Galterio, G. Schmidt, I. Vobrak, J. Mitchell, S. Murphy, F. Zito, B. Naquin



- Row 1 R. Wolfe, R. May, M. Petrusko, A. Salemme, J. Hartnett
- Row 2 P. Domano, J. Lupinacci, J. Haaper, E. Ewaskey, A. Plopa, Sgt. Mullens



Newman Club

Open to all students of the Catholic faith, the Newman Club is organized for the promotion of spiritual, social, and cultural life. Here on campus, the Newman Club fulfills these purposes throughout the year by conducting various activities. At the regular meeting held on alternate Wednesday evenings, the program includes vari-

ous speakers, discussions, and movies. This group, as a body, attends Holy Communion every first Sunday of the month.

Some of the high-lights of the year included a "get-acquainted" dance, Christmas dance, a lecturer on African Missionary work of the White Fathers, and movies.

OFFICERS

PRESIDENT
VICE PRESIDENT
SECRETARY
TREASURER
CHAPLAIN
MODERATOR
CO-SPONSORS

MYRON PETRUSKA
GENE BOSCHINI
ELAINE BOVA
ARTHUR SALEMME
ROCKNE MAY
FATHER A. A. FISHER
MISS MARY KAY BANNER
SGT. J. MULLEN



Row 1 E. Grollmus, P. Donovan, I. Shoffstall, L. Shank, L. Radus, E. Gardikowski, E. Keogh
 Row 2 S. Crawley, M. Riggs, P. Colosimo, D. Dornberg, Dr. Predmore, C. Krepps, J. Lewis, D. Cadugan, G. Durbin, D. Bowan
 Row 3 G. Gallagher, S. Cunningham, H. Gongaware, B. Heasley, J. O'Donnell, E. Webster, A. Weaver, J. Cowan, M. Craig, M. Dolmeyer, G. Nichols, J. Hartnett, F. Donelli, D. Butts, J. Mitchell, V. Bennett, M. Hummell

Outdoor Club

This year the Outdoor Club has a larger membership than ever before in its history. It was decided to increase the membership of the club because of the great response to the request for new members. The club's fifty-one members met at Cook's Forest on October twenty-second and hiked over the Nature Trail which is sponsored by the club. Besides hiking, the members enjoyed a game of softball, a picnic supper in one of the larger cabins owned by the MacBeth's, and a few hours of dancing.

Plans are being made to repair the toboggan slide which is located near the practice foot-

ball field. Another future project for the club is the repairing of the signs which are to be found along the Nature Trail.

The activities of the club include hiking, tobogganning, target practice, and picnicking, all of which serve to fulfill the aim of the club: to provide recreation and healthful activities for its members.

Dr. Donald Predmore, the sponsor of the club, is appreciated for his assistance in organizing and planning activities and for his valuable advice.

OFFICERS

PRESIDENT	ROBERT MAYS
VICE PRESIDENT	CHARLES KREPPS
SECRETARY	JACKIE LEWIS
TREASURER	MICHAEL DOLMAYER
SPONSOR	DR. DONALD PREDMORE

Row 1 J. Weigel, P. Ray, G. Laird, N. Solerna, J. Schweppa, M. George, R. Lafferty, M. E. Weeks

Row 2 B. Naquin, K. Bouer, P. Kramer, E. Bava, M. Craig, J. Black, E. Ewaskey, R. Coury, R. Sacalic, M. Petruska, L. Ianni



Row 3 E. Balogi, M. Canrad, M. Carson, A. Marshall, E. Dunmire, J. Spence, G. Allen, R. Stewart, E. Boschini, A. Plopa, E. Turchick, R. Predebon, H. DeFelicce

Royal Order of Waiters

Organized in regards to efficiency and social development, the Royal Order of Waiters celebrates its third year of success. Under the capable sponsorship of Dr. Stanley Lore, it has become a regular part of many of our student help's college activities.

Membership is completely voluntary, and is open to not only those who wait tables, but also any students who are employed in the kitchen and dishroom.

The club meets bi-monthly with two purposes in mind. Constructive criticisms and

changes in waiters' rules of courtesy, efficiency, and etiquette are introduced and carried out. Social functions are also planned.

All meetings are concluded by entertainment provided either by the talented members of the group or by other capable persons on campus.

The two outstanding recreational activities of the year are the holiday party and dance and the picnic which is held every spring at Cook's Forest.

OFFICERS

PRESIDENT	ROCKNE MAY
VICE PRESIDENT	JACK BLACK
SECRETARY	MARILYN CRAIG
TREASURER	JERRY HARTNETT
ASSISTANT TREASURER	ELAINE BOVA
SPONSOR	DR. STANLEY LORE



Row 1 S. McKenzie, L. Maxwell,
P. Bish, J. Stonis, D. J. Wil-
liams, K. Kennedy, Mr.
Kuhner
Row 2 J. Tamikel, D. Hutter, S.
Murphy, A. Plopa, D. Dorn-
berg, M. Craig, J. Weigel,
E. Turchick

Sequelle

THE STAFF

EDITORS	JOHN STONIS AMOS BARTOLI
PHOTOGRAPHY	MARGARET BISH SHIRLEY MURPHY
LAYOUT	MARILYN CRAIG DORIS BENSON
TYPISTS	LOLA MAXWELL ED EWASKEY FLORENCE SPAAK
BUSINESS MANAGER	MARY LOU DOVERSPIKE SHIRLEY MCKENZIE
IDENTIFICATION	JANICE WEIGAL KATHERINE KENNEDY
MISCELLANEOUS	ED TURCHIK AL PLOPPA
SPORTS	PAUL CAREY
ART	DOLORES HUTTER

To record the many phases of our college life was much more complicated than we had at first anticipated. The work called for planning and thought and more time than seemed available. If we have made omissions or errors, we ask you to bear with us, for we believe we have also made some fine contributions.

First we would like to thank the staff for its tireless work in putting the Sequelle together.

Next, we would like to thank the students, the publishers, the engraver, and the photographer for their co-operation. We especially would like to express our greatest appreciation to Mr. Kuhner and Miss Skaggs for all their assistance in making this book possible. This is your Sequelle, we hope you like it.

John Stonis
Amos Bartoli

- Row 1 R. Hilliard, R. Crowe, B. Kammandler, K. Bauer, D. Cassoday, J. Leathers, L. Lewandawski, T. Hebling, A. Marnich
- Row 2 G. Ober, D. Shick, R. Webster, T. Summerville, P. Scierka, M. Caruso, L. Tosi, D. Hebling
- Row 3 C. Obertance, L. Gregg, L. Johnson, C. Lias, G. Trembach
- Row 4 W. Roberts, J. Olrey, D. Trembach, A. Johnson
- Row 5 A. Sanduski, J. Smathers, W. Rice, R. Reitz, L. Himes
- Row 6 G. Kaelsch, C. Daugherty, D. Ambrose, R. Barroge, J. Smith



Sportsman's Club

OFFICERS

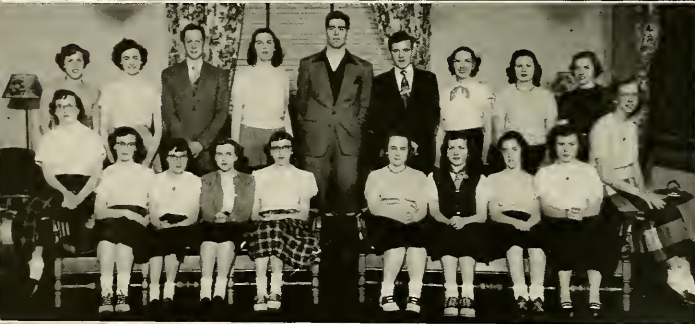
- | | |
|----------------|-----------------|
| PRESIDENT | FRANK AUGUSTINE |
| VICE PRESIDENT | LOUIS TOSI |
| SECRETARY | PETER SCIERKA |
| TREASURER | TOM HELBLING |
| RANGE OFFICER | MIKE CARUSO |
| SPONSOR | MR. GALEN OBER |

After a long and difficult struggle during the previous years, the Sportsman's Club has successfully achieved the goals they have strived for. One of these goals included the new rifle range in Davis Hall. In cooperation with the R. O. T. C. the Sportsmans finally have gone into full swing in the use of this range. At the present time firing is done on Wednesday from 6:30 P. M. until 10:00 P. M. (Thanks to Mr. Galen Ober for

sacrificing his hours to better the club.) Besides the activities in the range, the sportsmans also sponsored a bowling team composed of its own members. Each member of the Sportsman's Club should participate in all sports activities on the campus and conduct himself in a sportsman-like manner. Sgt. Brown has been taken in as a honorary member by unanimous vote.



Row 1 N. Allison, L. Radus, J. Pugh, G. Durbin, D. Wilson, M. Rockmore, J. Harris, B. Oldt
 Row 2 J. Duesphal, G. Nichols, C. Culp, G. Johnson, J. Leathers, P. Ray, M. Engman, E. Wise, H. Gordner, D. Hunger
 Row 3 M. Barto, G. Ohl, M. Rearick, J. Miller, L. Himes, K. Bauer, R. Miller, J. Grey, P. Lane, T. Schahn



Row 1 M. Orcott, J. Howell, A. Smith, D. Bowen, P. Young, J. Hunter, M. E. Morrison, L. Shank, K. McKisick, E. Webster
 Row 2 M. Constable, J. Campbell, J. Irwin, C. Hartge, M. Sheffer, D. Goldwithe, P. Mack, S. Knight, M. Voorhes



Row 1 M. Craig, S. Perry, B. Allison, J. White, R. Neiger, D. Butts, F. Ames
 Row 2 C. Graham, Mr. Lare, Mrs. Lore, J. Waters, J. Hill, D. Curfman, J. McCue, E. Grollmus, Mr. Shank, J. Mills
 Row 3 E. Johnson, B. Gallagher, E. Pierce, N. McQuiston, E. Kifer, J. Sterrett, L. Kindleberger, S. Wolfe, B. Neiger, J. Jahnson, D. Stowe, D. Baker, M. Eberle

Student Christian Association

The Clarion Student Christian Association is a religious organization which replaces the former Y. W. C. A. and Y. M. C. A. Its purpose is to promote an interest in religious activities among both the men and women students of the college as well as to provide for social and recre-

ational activities. The Student Christian Association is non-denominational and all who are interested in practicing Christian living and in fulfilling spiritual needs are encouraged to attend its meetings and social functions.

OFFICERS

PRESIDENT
 VICE PRESIDENT
 SECRETARY
 TREASURER
 SPONSORS

JACK WATERS
 JEAN McCUE
 ESTER GROLLMUS
 DONALD CURFMAN
 DR. STANLEY LORE
 MR. PAUL SHANK

Row 1 F. Donelli, W. Mader,
F. Vescio, C. Willoughby,
G. Czop

Row 2 D. Stemmerick, J. Matthews,
E. Dolecki, J. Zelek,
G. Fallon, R. Caury,
M. Caruso, L. Ianni



Row 3 H. Mehallick, J. Buck, J. Busch, K. Bailey, R. Gorbort, J. Juban, M. Petruska, H. Smith,
R. Predeban

Varsity "C"

The Varsity "C" Club is made up of student athletes. The requirement for admission is the earning of a varsity letter. This is done by noticeable participation in one of Clarion's major sports: football, basketball, baseball, or tennis. Payment of an entrance fee and regular attendance are required of members.

The most important function of the club is in providing suitable awards for the members in recognition of their athletic accomplishments.

These awards are purchased through the sale of refreshments at athletic contests. This year it was augmented by an allowance from the student senate.

The Varsity "C" gives three standard awards: sweaters, jackets, and senior awards. The club is looking forward to many years of continued success and promotion of good will for intercollegiate athletics.

OFFICERS

PRESIDENT	JOSEPH ZELEK
VICE PRESIDENT	FRANK VESCIO
SECRETARY	GEORGE FALLON
TREASURER	EDWARD DOLECKI
SPONSOR	MR. TIPPEN



Row 1 D. Freudenberger, S. Knight, G. Schmidt, Miss Spaller, M. Eberle
 Row 2 S. Pecora, D. Daugherty, J. Hanna, B. Hay, J. Hill, R. Miller, A. M. Brady, E. Kifer, J. Russell, J. Johnson, L. Staley, D. Cribbs, L. Maxwell, M. Smith

Women's Athletic Association

A group of very active and sports-minded women on campus form the Women's Athletic Association, sponsored by Miss Spaller. The WAA is not a very large organization at present, but quite a few girls will have made their necessary points to join this year. They also must have a "C" average in their academic work.

The purposes of this organization are to stimulate the interest of the entire student body in athletics and recreational activities and to foster the spirit of friendliness, good will, and good sportsmanship.

As in former years, the WAA's intramural

program consists of the following sports: volleyball, basketball, softball, tennis, badminton, and ping-pong. This year a few new sports have been added to the program: bowling, hiking, and archery.

The WAA accepted several invitations from other colleges to attend playdays there. At all of these, the girls came back with reports of having had a wonderful time.

When the girls have fulfilled their qualifications for joining the organization, they are awarded a letter, and at the end of two years they receive a bracelet.

OFFICERS

- | | |
|-----------------------|---------------------|
| PRESIDENT | GLORIA SCHMIDT |
| VICE PRESIDENT | MARJORIE EBERLE |
| SECRETARY | SALLY KNIGHT |
| TREASURER | JEAN FINK |
| SOCIAL CHAIRMAN | MARY LOU DOVERSPIKE |
| SPONSOR | MISS ETHEL SPALLER |

FRATERNITIES



SORORITIES



C. Adams, L. Staley, J. Hill, F. Spak, B. Oldt, T. Schohn, G. Oakes, M. Eberle

Panhellenic Council - - - Interfraternity Council

The Panhellenic Council and the Interfraternity Council are the governing bodies of the sororities and fraternities on the campus. Each sorority and fraternity elect their own representatives to the Councils. The Councils conform to National Panhellenic and Interfraternity Council rules. Miss Boyd is the advisor of the Panhellenic Council and Mr. Kuhner is the advisor of the Interfraternity Council.



C. Krepps, K. Bailey, Mr. Kuhner, H. Brown, J. Rumsey, R. Loferty, L. Ianni

UPPER PICTURE

- Row 1 G. Zissus, L. Tasi, F. Vescio, G. Wiloughby, R. Wolfe, K. Bailey, R. Coaley, D. Lounsbury, G. Fallon
- Row 2 J. Zelek, P. Cary, D. Balya, M. Petrusko, A. Plopa, D. Virgilito, A. Pitacco



LOWER PICTURE

- Row 1 F. Dastal, D. Bevevinn, F. Palagga, W. Bober, R. Predebon, R. Coury, F. Donelli
- Row 2 L. Ianni, L. Galli, E. Caffrey, H. Elias, D. Weitz, R. Sacolic, T. Brady, H. Mehallick, J. Matthews, J. Genovese, F. Musi, E. Boschini
- Row 3 M. Caruso, D. Dunn, R. Shaw, J. Gray, E. Ewakdey, P. Mervach, J. Busch, T. Aiken, G. Czop



Alpha Gamma Phi

OFFICERS

PRESIDENT

JOHN JANUZZI
(In Service)

VICE PRESIDENT

KEN BAILEY

SECRETARY

WAYNE MADER

TREASURER

DON VIRGALLITO

HISTORIAN

FRANK PALAGGO

SPONSOR

DR DONALD PEIRCE

Alpha Gamma Phi fraternity has as its purpose the promotion of good fellowship and excellent sportsmanship among member brothers. Membership in this fraternity is based upon these qualities: scholastic ability, personality, and character.

Early in February, the Alpha Gammos held their annual rush party in Harvey Gymnasium.

As usual this initiation of new members was one of the highlights of the activities on campus with everyone enjoying the frolicing of the new members as they went through their poces.

As usual, the fraternity organized their annual basketball team, which is the proud possessor of the inter-fraternity Basketball Trophy.



Row 1 C. Weir, G. Homil, A. Weaver, R. Evns, E. Tanagella, M. McCleary
 Row 2 B. Taylor, Dr. Predmore, C. Krepps, M. Sheffer, C. Fleming, R. Kifer, Mr. Kuhner, J. Thompson
 Row 3 Dr. Lare, G. Nichols, D. Goldthwaithe, M. Bennett, K. Bauer, J. Hardy, J. Torr, J. Rumsey, J. Irwin, R. Koerber, H. Morris

Alpha Phi Alpha

OFFICERS

PRESIDENT	MERLE SHEFFER
VICE PRESIDENT	CHESTER FLEMING
SECRETARY	CHARLES KREPPS
CORRESPONDING SECRETARY	ROBERT EVANS
TREASURER	ROBERT KIFER
WIZARD	KENNETH BAUER
CHAPLAIN	GORDON NICHOLS
SPONSORS	DR. STANLEY LORE MR. HARRY MANSON DR. DONALD PREDMORE MR. CLARENCE KUHNER

The Alpha Phi Alpha fraternity was organized in 1930 by a group of young men who believed that through such an organization they could better learn to serve themselves and others. The three basic principles of the fraternity, Knowledge, Loyalty, and Sportsmanship, have since the time of their organization been exemplified by their high scholastic achievement, their loyalty to their fraternity and each other, and sportsmanship in whatever activity they may be engaged.

Alpha Phi Alpha, fundamentally a social fraternity, is outstanding on the campus both in the activities of the fraternity and in the participation of the members in other campus activities. Dances, parties, and movies are only a few of the many and varied activities of the fraternity. One of the most exciting and at the same time one of the most serious activities of the fraternity each year is the pledging and initiation of new members.

Row 1 M. L. Doverspike, P. Reorick, M. McKee, B. Hay, L. Maxwell, F. Ames, E. Exley, B. Faust

Row 2 D. Dougherty, K. Kennedy, F. Spak, M. Bish, B. Heasley, S. Perry, M. Craig, H. Gongaware, D. Campbell, M. Dible, A. M. Brady, G. Rase, R. Davis, P. Carr



Row 3 G. Doverspike, A. Marshall, E. Spaller, D. Darnburg, M. Smith, J. Lewis, M. Jansen, A. Bostress, J. Carbaugh, L. Sebring, L. Brawn, M. Riggs, M. George, F. Master, S. Pecara, J. Weigel

Delta Sigma Epsilon

OFFICERS

PRESIDENT	MARGIE DIBLE
VICE PRESIDENT	RUTH DAVIS
SECRETARY	MARILYN CRAIG
TREASURER	ANN MAREE BRADY
CHAPLAIN	KATHY KENNEDY
SPONSOR	MISS ETHEL SPALLER

Scholarship, leadership, and character serve as the foundation of Delta Sigma Epsilon Sorority. Our sorority is the largest national sorority on our campus.

Delta Sigs not only place much emphasis on the scholastic phase of college, but they are also very enthusiastic concerning their social life. The Pan-Hellenic Dance and our trips to Cook's Forest are the highlights each year. They also find time for sponsorship of dances, rummage sales, and many gay parties. This year after our Pirate Rush Party, twenty-six girls were pledged to DSE. With these wonderful girls,

we're planning a bright future for Delta Sigma Epsilon.

This year the Delta Sigs became interested in the project of sending old toys to our Social Service Representatives and in maintaining the cost of a bed in an institution for war orphans. They find that the personal satisfaction received from these projects compensated for any work connected with them.

The Delts are proud of their patronesses: Mrs. Lore, Mrs. Davis, and Mrs. Sloan, and of their sponsor, Miss Ethel Spaller, who is always ready to help in any way possible. Miss Spaller is the source of much of their success.



Row 1 V. Barthelemy, B. Mercer, M. Capley, P. Kramer, V. Bullard

Row 2 M. Pala, L. Staley, Mrs. Graff, V. Bennett, D. J. Benson, L. Grant, W. Murphy

Lambda Chi Delta

OFFICERS

PRESIDENT	PHYLLIS KRAMER
VICE PRESIDENT	VIVIAN BARTHELEMY
SECRETARY	BETTY MERCER
TREASURER	VIRGINIA BENNETT
SPONSOR	MRS. RUTH GRAFF

Lambda Chi Delta, a local group, founded in January, 1931, is celebrating its Twentieth Anniversary. The purpose of this sorority centers mainly in providing a lasting friendship among its sisters as well as social activities and intellectual stimulation. The qualifications for membership needed are a high level of academic achievement as well as desirable personal traits of character. Jackets and hats in the sorority colors of coral and green may be purchased by the members who desire them. Emblematic pins may also be bought.

Activities of the year began with the Rush Party and Dinner held at the Lutheran Church

with the theme of "Little Bo-Peep and Her Lambs." Active members, assisted by the visiting alumnae, furnished amusing entertainment and costumes. Other social events included the Pledge Party, a weekend trip to Cook's Forest and the annual Alumnae and Patronesses Party.

The Alpha Alumnae Chapter has been newly organized this year. The president, Mrs. Bessie Swarn, will serve until next year's Homecoming meeting. They have offered us valuable assistance this year which we gratefully accepted.

Mrs. Graff, our adviser, has given us her able assistance and advice in both sorority and personal matters.

Row 1 Miss Stewart, P. Mock, E. Anderson, Miss Nair
 Row 2 K. Zerbe, E. Keogh, K. Adams, J. Campbell, S. McKenzie, L. Kindleberger, E. Bovo, E. Webster, E. Kifer, M. Eberle, D. Stowe, I. Vobrak



Sigma Delta Phi

OFFICERS

PRESIDENT	PAT MOCK
VICE PRESIDENT	ELEANOR ANDERSON
SECRETARY	IRENE VOBRAK
TREASURER	JUNE CAMPBELL
SPONSORS	MISS BERTHA NAIR
	MISS MARTHA STEWART

The Sigma Delta Phi Sorority is the oldest on the campus. It was founded in 1930 and has continued down through the years with a membership at present of fifteen.

The theme of the rush party this year was western. The party was held in the American Legion Hall where cowboy hats and a "two-gunned" sheriff ruled for the evening. The sorority received thirteen pledges as a result.

Each year the girls spent a weekend at Cook's Forest. Another annual event is the

Christmas Party. At this time the sorority prepares a basket of food and toys for a needy family.

During November, the group sponsored a record dance in the gymnasium with entertainment during intermission.

The Sigma Delta are especially proud of their new sorority song and make every effort possible to live up to it. It is entitled "Sisterhood Forever".



Row 1 L. Radus, E. Walley, E. Gardakowski, H. Bell, D. Smith, M. E. Weeks, P. Skinner

Row 2 J. Stalder, M. Gamble, C. Baer, H. Ande, J. Hanna, G. Durbin, E. Boyer, S. Knight, G. Oakes, D. Baker, J. Johnston, D. Martland

Row 3 J. Docherty, J. Hill, J. Fink, G. Ohl, G. Schmidt, J. Sterrett, J. Kanaan, J. Gray, J. Russell, D. Weidner, J. Gifford, D. Cribbs, E. Grollmus

Sigma Sigma Sigma

OFFICERS

PRESIDENT	DORIS ANNE SMITH
VICE PRESIDENT	GLORIA SCHMIDT
RECORDING SECRETARY	JANE STERRETT
CORRESPONDING SECRETARY	JOYCE KANAAN
TREASURER	DOROTHY BAKER
KEEPER OF THE GRADES	JEAN FINK
CO-SPONSORS	MISS MARY KAY BANNER MISS MILDRED GAMBLE

The twenty-second national convention of Sigma Sigma Sigma was held at the Edgewater Beach Hotel in Chicago in June, 1950. Those representing Alpha Pi were Gloria Schmidt and Doris Anne Smith. It was the best ever, and the delegates brought back many new ideas and inspirations.

Homecoming began activities for Alpha Pi. We made "A Tri Sigma Shoe" to welcome the Alumni. We were very happy when Elaine Boyer was chosen "Rose of Sigma Tau".

Our November Rush Party with a Mother Goose theme was a gala affair with all the members of Mother Goose Land present, even Humpty Dumpty.

Dances, parties, food sales, rummage sales, a week-end at Cook's Forest, our Founders' Day celebration, all topped by Senior-Send-Off will fill this year with many "Sigma Memories".

We are indebted to our sponsors, Miss Banner and Miss Gamble, who have been so very enthusiastic and understanding in the guidance of our chapter throughout the years.



Row 1 P. Rossman, R. Varrato, C. Papale, J. Buck, C. Davidson, C. Stewart, B. Brock, J. Hale

Row 2 R. May, F. Campbell, J. Schweppe, A. Solemme, A. Bartoli, R. Osterholm, R. Wolfe, R. Lafferty, J. Spence, R. Garbart, E. Knerr, T. Stonko, G. Laird

Row 3 W. Garber, J. Miller, J. Johnston, R. Mays, H. Brown, H. Smith, J. Eakin, H. Stewart, M. Petrusko, D. Still, F. Saxon

Row 4 R. Stewart, R. Mahney, R. Logon, R. McDonough, D. Stemmerick, C. Delong, C. Leish

Sigma Tau Gamma

OFFICERS

PRESIDENT	ROBERT GARBART
VICE PRESIDENT	JOSEPH SPENCE
RECORDING SECRETARY	ARTHUR SALEMME
TREASURER	GORDON LAIRD
CORRESPONDING SECRETARY	MICHAEL PETRUSKA
CHAPLAIN	JOHN WIBERG
SPONSORS	FRANK CAMPBELL
	DANA STILL

The Alpha Zeta Chapter of the Sigma Tau Gamma, national fraternity, is the only national fraternity on the campus. The Sig Taus started the year with forty-eight members and added thirty-five new pledges during rush week. The rush party was held in the Harvey Gymnasium on February 12, 1951. The party was in the form of a carnival. After considerable initiation and doing the tasks assigned them, the thirty-five rushees were taken in as full fledged members.

The Sig Taus were well represented in variety athletics as Don Stemmerich, Bob Kelly, Amos Bartoli, John Wiberg and John Buck were members of this year's championship basketball squad. Don Stemmerich had the further honor

of being named Player of the Week for the Tri-State area.

The annual district conclave was held on May 6-7, 1950 in Buffalo, New York. Charles Best was the fraternities representative at the district conclave. The national conclave met in Warrensburg, Missouri over the Christmas vacation. The fraternity was represented at this conclave by William Garber. Both of the delegates brought back many fine suggestions for bettering the fraternity.

The fraternity is proud to say that several Sig Taus have answered the call of the Armed Forces of the nation. These brothers are Ken Mullen, Bob McDonough, Bob Hoover and Al Brown.



Row 1 C. Varrato, M. Caimi, H. Skaggs, B. Oldt, D. Delazier

Row 2 B. Rybiski, M. Ochs, T. Schohn

Theta Alpha Lambda

OFFICERS

PRESIDENT	MARY LOUISE CAIMI
VICE PRESIDENT	MILLIE OCHS
SECRETARY	THALIA SCHOHN
TREASURER	BEATRICE RYBINSKI
SPONSOR	MISS HARRIET SKAGGS

The Theta Alpha Lambdas under the able leadership of Miss Skaggs has had a very successful. One of our most important events of the year was the "Gay Fiesta" rush party. As a result, we received four new members: Vivian Bowser, Clarice Philips, Angeline Galterio, Gloria Galterio.

The purpose of this sorority is to promote and foster the principles of fellowship and goodwill among the members of our group. This year we have had a number of activities which have helped to live up to those principles.

Our motto is, "To thine own self be true."

L. Maxwell, P. Mochnick, J. Messler



Alpha Psi Omega

The national honorary fraternity, Alpha Psi Omega, was introduced on Clarion campus in 1936, chiefly through the efforts of Miss Marie Marwick, sponsor of the campus dramatic organization.

One of the largest honorary fraternities of its type, Alpha Psi Omega offers membership only to those students who have obtained recognition for outstanding and meritorious participation in the various phases of play production. Clarion's cast, Alpha Upsilon, under the sponsor-

ship of Miss Margaret A. Boyd, is only one of the several hundred casts associated with Alpha Psi Omega which carries on the function of stimulating a genuine interest in an appreciation for the drama.

Because of the rigid requirements for entrance and the accompanying honor bestowed upon its members, Alpha Psi Omega presents a worthy challenge to all serious-minded students affiliated with the college dramatic organizations throughout the country.



Row 1 Mr. Campbell, J. Stonis,
Miss Skoggs, Dr. Slick,
Dr. Tollant

Row 2 Dr. Lore, R. Johnson,
W. LeFranchi

Pi Gamma Mu

One of the leading national honor societies at Clarion is Pi Gamma Mu. Majors in the field of social science who have completed twenty semester hours in that field with a "B" average are elected to the society. Due to these requirements only upper classmen, usually seniors, are elected as new members. This year there were only three students chosen: John Cowan, Robert Johnston and John Stonis. The major active part of the society is made up of faculty members who possess the necessary requirements.

The official journal of Pi Gamma Mu is **Social Science** which is published quarterly and distributed to the various chapters.

The office of secretary-treasurer is a permanent position and at the present time is held by Dr. J. Glenn Tallant. Dr. Sewell Slick is the sponsor of the Clarion chapter.

"Ye shall know the truth and the truth shall make you free."

Row 1 R. Heffner, J. Waters, Dr. Lore, J. Irwin, R. Wolfe, P. Mochnick, D. Nagar
 Row 2 Dr. Gill, Mr. Shank, A. Fenton, A. Bortoli, M. Sheffer, Mr. Ober, R. Mays



Phi Sigma Pi

OFFICERS

PRESIDENT	ANDREW FENTON
VICE PRESIDENT	ROBERT HEFFNER
SECRETARY	RICHARD WOLFE
TREASURER	ROBERT MAYS
SPONSOR	DR. STANLEY LORE

Phi Sigma Pi is a teachers professional honorary fraternity. Requirements for membership are scholarship and future promise of leadership in the field of education.

Clarion's Lambda chapter was chartered in 1932. Dr. Stanley Lore, our sponsor, was one of its charter members.

An initiation for new members was held on February 20, 1951. The following men were accepted into membership; Sergio Ulovagnoli, Harold McCoy, Dan Goldthwaite, Blair Antill, Don Ballas, Den Bauer, Dick Black, Herman Brown, Raymond Giering, James King, Stanley Plavny, William Reiser, Keith Stahlman, and James Wilson.



Row 1 M. Doverspike, A. Fenton, J. Campbell, R. Dietz, M. Bish, S. MacKenzie, A. Bartoli, G. Marshall

Row 2 L. Maxwell, R. Wolfe, J. Messler, J. Stonis, J. Irwin, D. Nogar, E. Rock

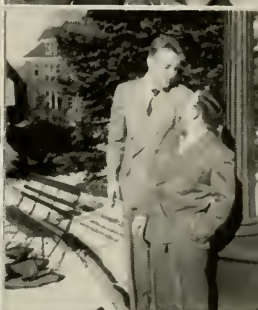
Who's Who

Since the year 1934, students considered by a faculty committee as superior in scholarship, leadership, and participation in campus activities have been selected as members of "Who's Who in American Universities and Colleges." Over six hundred educational institutions elect members to this honorary organization, founded to serve as a standard of measurement for students. The members receive recognition in the annual publication of the organization and free

placement service if they desire it.

This year fourteen new members from our campus took their places beside the five remaining members of last year's selection. Selections are made from seniors having an A or B average with juniors having the highest averages completing the quota.

Membership in this organization is the highest honor awarded on our campus and we have a fine group this year as in the past.





SPORTS





- Row 1 D. Bevevino, G. Czap, G. Stennett, H. Thompson, J. Bailey, F. Vescio, W. Mader, E. Dolecki, M. Caruso, F. Curry, J. McCullough, J. Shindle
- Row 2 P. Mervosh, R. Coury, R. Predebon, B. Taylor, E. Dunmire, H. Mehallick, S. Russo, W. Reisinger, J. Finn, J. Vallino, L. Ianni
- Row 3 A. Sandusky, E. Persigheti, T. Aiken, D. Casady, C. Wier, R. Shaw, D. Dunn, H. Elias, R. Yesky, R. Olinger, J. Busch
- Row 4 W. Carnell, R. Leffler, C. Willoughby, H. Zarasky, F. Donelli, R. Pert, B. McDonough, J. Croyle, A. Colpa
- Row 5 E. Caffrey, R. Balan, L. Gregg, W. Peacock, S. Anta, W. Sacriponte, E. Lendenski, W. McClafferty

SCORES

Clarion	Opponents
7	Edinboro 13
0	Mt. Union 53
0	Thiel 12
22	Brockport 6
13	Indiana 7
6	California 12
13	Slippery Rock 20



Football

After consideration of all factors involved, Clarion's 1950 football edition can neither be condemned nor praised. Although the roster showed sixteen returning lettermen, the loss of such men as Lignelli, Svitchan, Walls, and fifteen other stalwarts could not but be felt. Coupled with the fact that the freshman lacked experience, it is not difficult to understand the want of success.

The margin of victory in most of the losses was, however, indicative of what may be expected in the future. In the Edinboro and Slippery Rock games, the victors were outplayed but managed to win. The Eagles had little trouble

in outplaying California only to lose the game, 12 to 6. Mt. Union was the only team to really beat Clarion; the rest could have swayed either way.

There was one compensating feature. The Eagles defeated Indiana for the third consecutive year. Our traditional rivals went into the game undefeated only to have the Eagles rudely upset them. This one game will be uppermost in the minds of the graduating seniors who are: Co-captains, Ken Bailly and Hadley Thompson, a pair of very capable performers who will be sorely missed; Frank Vescio and Ed Dolecki, the Eagles very spirited guards; and Wayne Mader always a capable performer and splendid fellow.

Basketball

The flashy Clarion quintet wrote the best record in the school's history into the record books this past season. Their 15-2 record netted them the Western Pennsylvania Class B Championship and they added the toga of Teachers College Champs by winning 8 out of the team's 10 games in Teachers College competition.

The fiery Librarians burned up the hardwood with one of the highest scoring teams in the nation. Twice they topped the 90 mark and another time they set a new school record by amassing 102 points against Thiel. They ended the year with a 78.2 points per game average. Their fast-breaking offense did not lend itself to defense as the opposition was permitted to cash in on 64.3 points per game.

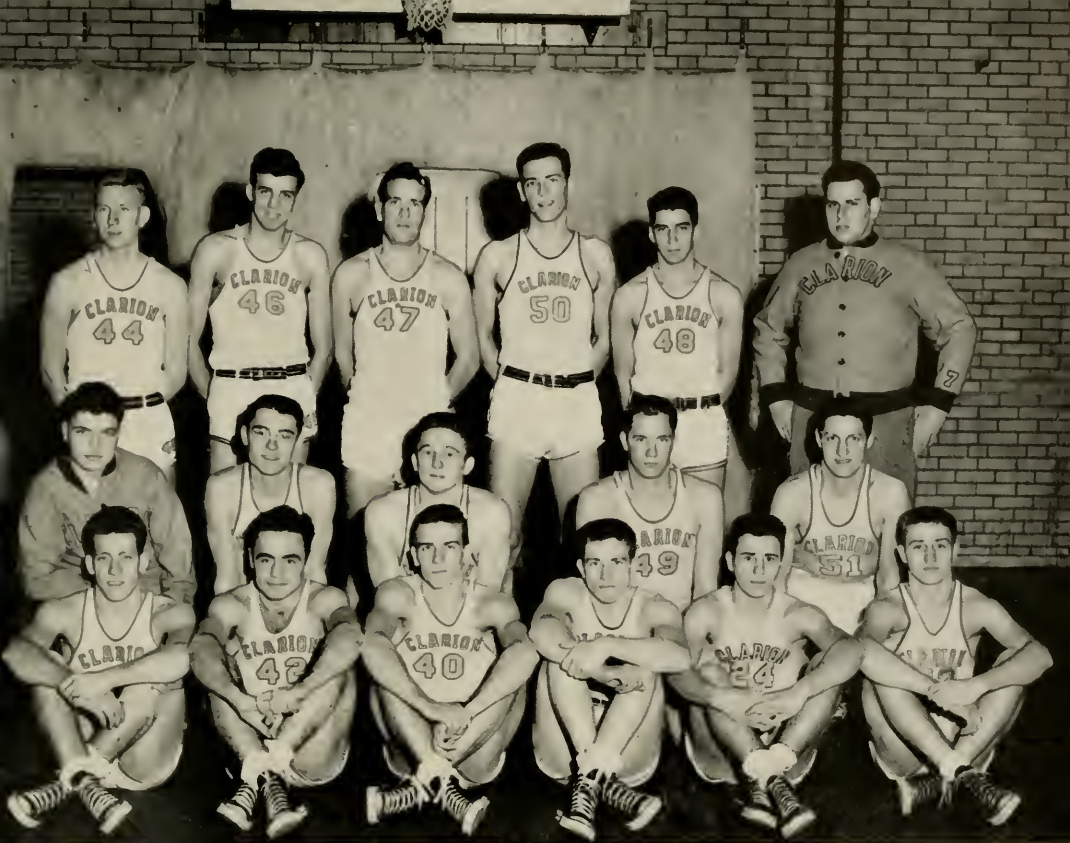
Coach Ben Kribbs, youthful mentor of this year's cage squad, did a remarkable job in his first year at his Alma Mater as he kept the boys keyed up for every game.

Clarion started the campaign by squeezing by California, 68-66. After dropping the next game to Slippery Rock, the Librarians found themselves and won the next nine games before running afoul on the Indiana hardwood. The Indians upset the dope by dumping Clarion 87-79. Clarion righted themselves and went on to win the remaining five games. The season was filled with thrills aplenty. The Edinboro game

was one of the wildest free scoring games the college has seen for many a moon. The next home game found Clarion coming from behind to nip Lock Haven. The Librarians scored the winning basket with a scant 20 seconds left to play.

Scoring for the team was very evenly divided with six players averaging over ten points per game. Robert Kelly led the scoring parade with an average of 13.5 points per game and a total of 229 points. Kelly also had the individual high for one game as he ripped the cords for 32 points in the Thiel game. Don Stemmerich was only 15 points behind Kelly as he piled up 214 points for a 12.6 average. John Wiberg, Cecil Willoughby, Ronald Buck and Amos Bartoli followed in very close order all averaging over 10 points per game.

The services of Co-Captains Cecil Willoughby and Amos Bartoli will be greatly missed by the Librarians next year. Willoughby has established many scoring records while at Clarion and holds the distinction of being a four year letterman in basketball. That is a distinction that is not held by very many athletes. Amos "Moose" Bartoli, undoubtedly the most underrated player on the squad, not only came through when the chips were down, but was unsurpassed as a team player.



Row 1 S. Russo, B. Kelly, J. Winheman, R. Buck, C. Mitsos, J. McCullough
 Row 2 M. Carson, J. Block, R. Balan, R. Jones, A. Bortoli
 Row 3 C. Willaughby, D. Stemmerick, G. Fallon, C. Obertonce, J. Buck, F. Finn

BASKETBALL SEASON RECORD

Clarion	68	California	66	Clarion	72	California	50
Clarion	59	Slippery Rock	63	Clarion	102	Thiel	53
Clarion	78	Grove City	62	Clarion	59	Lock Haven	56
Clarion	71	Indiana	51	Clarion	79	Indiana	87
Clarion	86	Alliance	66	Clarion	91	Edinboro	82
Clarion	73	Slippery Rock	58	Clarion	81	Alliance	54
Clarion	84	Fenn	67	Clarion	73	Lock Haven	71
Clarion	84	Edinboro	82	Clarion	72	Grove City	58
		Clarion	98			Thiel	66



Row 1 H. Smith, T. Aiken, C. Weir, R. Nelson, J. Busch
 Row 2 J. Winkleman, B. Taylor, D. Stemmick, T. Mason, D. Erickson
 Row 3 Coach Moore, T. Komasac, A. Miller, J. Henry, D. Bolya
 Row 4 J. Zelac, F. Lignelli, J. Jubin, E. Scakin

Baseball

1950

SCORES

Clarion		Opponents
6	Pitt	5
3	Indiana	5
3	Alliance	4
0	Thiel	7
1	Allegheny	10
1	Geneva	5
5	Slippery Rock	7
7	Thiel	12

Practice was held up by spring rains early in the season. Coach Moore and Assistant Coach Daniel Balya were forced to give the squad light work-outs in the gym.

The Clarion Golden Eagles beat the University of Pittsburgh in the first game of the season, 6-5. The lack of experience but not fighting spirit was shown by the record of one victory and seven defeats.

Harry Smith led the batting with an average

of .374, and Jahny Busch was close behind with a .348 average.

The hurling was taken care of by Busch, Smith, Bickel, Erickson, Mader and Yakim.

A respectable job in the outfield was performed by Winkelman, Knowlson, Taylor, and Miller.

Stemmerick, Lignelli, Bevevino, Weir, Mason, and Zelek filled in the infield positions.

Aiken and Juban handled the catching chores.



Row 1 K. McMillen, M. Doverspike, M. Petruska

Row 2 T. Carnahan, T. Sylveski, J. Pezzoni, B. Brachetti, J. Foley, W. Stackwell

Tennis

1950

SCORES

Clarion		Opponents
8	Indiana	1
1	Slippery Rock	8
1	Grove City	8
0	California	9
0	Slippery Rock	6
3	Thiel	6

Feeling the effects of a damp season and the loss of six seniors who last season carried away the championship, the tennis team refused to submit to complete defeat. Coach Carnahan started out with a team which was entirely new to the varsity roster excepting McMillen who was a member of last year's championship team and competently inspired the team through a hard fought season.

Noteworthy in this new line-up was Mary Lou Doverspike who displayed fine playing ability against rough opposition. As the first female participant on the varsity tennis squad, Mary Lou proved to be a valuable constituent in every respect.

The team is aspiring toward a more successful season in 1951 with the return of at least three of last year's netters.

Row 1 L. Staley, E. Blissel,
A. Bastress, H. Gongaware,
J. O'Donnell



Row 2 B. Gallagher, P.
Manny, L. Brawn

Cheerleaders

The cheerleaders at C. S. T. C. are Lila Brown, Lena Staley, Helen Gongaware, Ellen Blissel, Ann Bastress, Betty Gallagher, Joyce O'Donnell, and Patricia Manny.

Lila Brown, a senior from McKeesport, has served as a cheerleader for four years. Lena Staley, a junior from Clarion, has three years experience. The sophomores are Helen Gongaware from Jeanette, Ellen Blissel from Butler, and

Ann Bastress from Clarion. Betty Gallagher from Knox, Joyce O'Donnell from Beaver, and Patricia Manny from Butler are freshmen.

One of the new features sponsored by the cheerleaders is a Pep Club. The purpose of this club is to organize a more complete student cheering section.

Miss Spaller, women's athletic director, is the capable sponsor of the cheerleaders.



Intramurals

(Women)

Girls' intramurals are one phase of school life which gives every girl a chance to improve at her favorite sport. Willingness to participate and to co-operate are the only requirements for eligibility. Not only is athletic ability developed, but through this activity such qualities as leadership, good sportsmanship and sociability are established. Good clean competition is one of the healthiest methods to provide an outlet for excess energy and through the supervision of our girls' athletic instructor, Miss Spaller, our inter-

class sports have become a necessary and interesting part of our college life.

Do not think lightly of the feminine aspect of athletics, for skill is not the only outcome expected of participants. A well-rounded personality is a consistent prerequisite for success, and one cannot be a capable member of a team unless she can get along with others. Girls' sports are here to stay and deserve a laudable place on the list of extracurricular activities.

Intramurals

MEN



Picture 1 Intramural Captains 1950-51
Intramural Director Gene Baschini



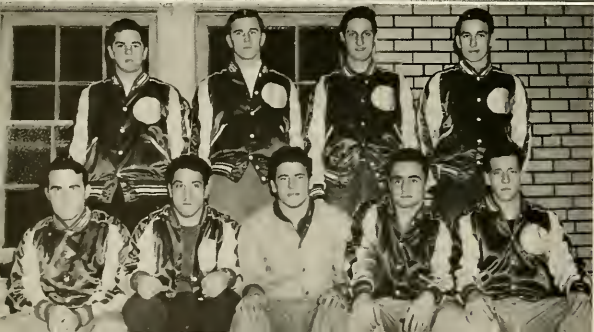
Picture 2 Intramural Champs 1949-50
Tulane
Captain George Trembach



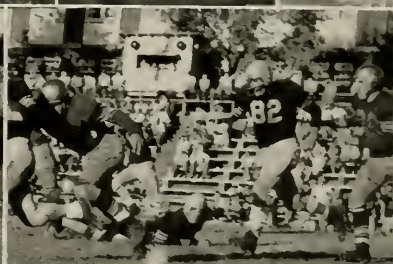
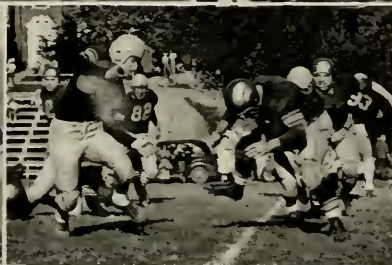
Picture 3 Valleyball Champs 1949-50
Cornell
Captain Gardan Laird



Picture 4 Touch Football Champs 1950-51
Cornell
Captain Gardan Laird



Picture 5 Basketball Champs 1949-50
Harvard
Captain Paul Carey





MEMORIES





E. Boyer, M. Dible, J. Grey, M. Craig, M. Alpanap, M. Voorhes, L. Grant, M. Johnson, K. Kennedy



E. Boyer, M. Johnson, L. Grant, K. Boiley, K. Kennedy



E. Boyer, M. Johnson, L. Grant, H. Thompson, K. Kennedy

Homecoming Autographs

Roseann
and
Joe



Johnnie
and
Mary



Lausive
and
Dick



Jim
and
Pat



Frank
and
Hazel



Dan
and
Helen



Joyce
and
Ace



Jan
and
Black



Amas
and
Daris



Ann Maree
and
Pete



Sebe
and
Don



Mable
and
Johnnie



Jeannie
and
Mac



Helen
and
Match



Christmas Dance

I, R. C. Picnic

Mary Ellen and Poe



Mable and Tony

Pat and Gene

June and Merle

Pat and Jack



Mike and Marilyn

Jean and Bob

Vince and Helen

Jayce and Howard



Don and Edna

George and Ann

Satch and Butch

Chuck and Lena

Cassie and Dick

Compliments of
E. H. KLINGENSMITH
Owner of
KLINGY'S BAR-B-Q

FREE DINING ROOM
DANCE FLOOR FOR PARTIES
SEATS 300

East Main Street

BEER, WINE & LIQUOR

Clarion, Pa.

"Modern Appliances for
Better Living"

WHITE'S APPLIANCES

"The Best In Music On Records"

518 Main Street

Clarion, Pa.

Compliments of

DUFF'S STERLING SERVICE

Washing — Lubrication
Spray Glazing

Phone 9408

Clarion, Pa.

Yearbook Engravings

Featuring



"Specializing Year After Year Makes the Difference"

ZIMMERMAN ENGRAVING COMPANY

SYKESVILLE,

PENNSYLVANIA.

The REXALL Store
KING DRUG STORE

Soda Fountain
and
Luncheonette Service
Lowest Cut Prices

Compliments of

O'BRIEN'S SERVICE STATION

Clarion, Pa.

COMPLIMENTS

M
O
BEST FRIENDLY
FOOD SERVICE
IN
TOWN E
R
D I N E R

Compliments of

WEIN BROTHERS

CLARION'S FINEST STORE

FREAS MOTOR CO.

Formerly Freas-Snyder

CHRYSLER — PLYMOUTH

Quality Trailercoaches

Phone 64

Clarion, Pa.

Compliments of
HOTEL LOOMIS

Completely Remodeled

Excellent Food & Rooms

DORIAN SHOPPE

Ladies Apparel

SPORT CENTER

Everything in Sports
and Television

Compliments of
GARBY THEATRE

"Where Hits Are A Daily Habit"

Compliments of the

BOWL ARENA

Bowling is Fun for Everyone

Reservations

Phone 705

Clarion, Pa.

HERMAN BROTHERS

The Corner Store

FRUITS - ICE CREAM
CONFECTIONS

Corner Wood & Eighth

Clarion, Pa.

Compliments of

SPINDLER & STARR

BUICK - CADILLAC
CHEVROLET

Clarion

Pa.

Compliments of

HOTEL UNDERWOOD

Knox, Pa.

SALES and SERVICE

RAGLEY MAYTAG STORE

S. A. RAGLEY, Manager

750 Main Street

Clarion, Pa.

Compliments of

BROWN'S BOOT SHOP

Clarion

Pa.

Compliments of

FIRST NATIONAL BANK OF CLARION

Member of Federal Deposit Insurance Corporation

CLARION

PENNSYLVANIA

Automobiles Bought & Sold

**T. W. CHAPMAN
AUTO EXCHANGE**

Sales - HUDSON - Service
Auto Wrecking

Phone 32

Strattanville, Pa.

J. L. BYERLY'S IMPLEMENT STORE

John Deere Tractors

and

Quality Farm Equipment

Compliments of



"Helping to Provide For the
Better Things of Life, Through
Credit."

PHONE 7

CLARION, PA.

Compliments of
MARIE'S SHOPPE

"Exclusive but not Expensive"

Dresses — Millinery
Costume Jewelry
Sportswear — Accessories

Compliments
of

BURGESS JAMES J. ARNER

Compliments of

M. J. FILETTI

Manager A & P Super Market

CLARION

PENNA.

Compliments of

WAYNE R. WEAVER

OLD S M O B I L E
Sales and Service

CLARION

PENNSYLVANIA

NATION WIDE STORE

L. H. GARBARINO

Groceries - Vegetables
Quality Meats

Clarion

Pa.

Compliments
of

MAUL'S DAIRY STORE

Stationery

Magazines

Candy

Newspapers

M-E-R-W-I-N-'S

FOUNTAIN SERVICE

Hallmark Greeting Cards

MAIN STREET

CLARION, PA.

**J. F. WEAVER EST.
HARDWARE CO.**

Highest Quality Merchandise
at Lowest Possible Prices

Phone 194

Clarion, Pa.

Parts

Accessories

SALES

**McCOLLOUGH NASH
MOTORS, INC.**

SERVICE

Phone 633

Clarion, Pa.

CITIZEN'S TRUST COMPANY

CLARION

PENNSYLVANIA

RESOURCES OVER \$7,000,000.00

Member of Federal Deposit Insurance Corporation

Farmall Tractor

RICE IMPLEMENT STORE

"Where You Get
the Service You Want"

McCORMICK FARM EQUIPMENT
INTERNATIONAL HARVESTER
REFRIGERATION

Clarion

Penna.

Just off the campus one may find
the best in Groceries and Meats
. . . Why go farther?

PHERO'S FOOD MARKET

"The College Grocer"

GARBARINO'S

FIRESTONE DEALER STORE

Clarion

COCA-COLA BOTTLING CO.

OF CLARION, PA., INC.

Clarion

Pa.

Compliments of

LOBAUGH'S COUNTRY MAID ICE CREAM

PHONE 152

CLARION, PA.

HAIL THE GRADUATING CLASS OF 1951

We join in a Hearty Commendation of your efforts
and in a Sincere Wish that your future lives may be
Happy and Successful.

G. C. MURPHY & COMPANY

5c AND 10c STORE

Typewriters Adding Machines Steel Files
Desks Chairs Safes Supplies

CLARION OFFICE EQUIPMENT

Clarion, Pennsylvania

W. J. FLETCHER, owner

Phone 272

Sales and Service

Out of Way - - - - Less to Pay

**CURT
CLOTHING**

Men's and Boys' Wear

Clarion

Penna.

Compliments of
THE GIERING RESTAURANTS
PARK DINOR – VILLAGE INN

Courthouse Square

Eighth Avenue

GOOD FOOD ALWAYS

Compliments
HUGH M. OWENS

Jeweler

Clarion, Pa.

Garby Theatre Bldg.

Phone 8

Compliments of

ANDERSON HOTEL

Bus Depot

Phone 175

Clarion, Pa.

STANDARD PENANT COMPANY

BIG RUN, PA.

JEFFERSON COUNTY

Manufacturers of
SCHOOL AWARD LETTERS
EMBLEMS
BANNERS IN FELT AND CHENILLE
AND WE FEATURE A FINE LINE OF SWEATERS AND JACKETS

GILMORE CLOVER FARM

East Main St.

Clarion

Pa.

Compliments of

BIGLEY'S
GULF SERVICE STATION

153 West Main Street

Clarion

Pa.

UNITED MILLS

Stores and Mills:

Clarion and Emlenton

Phone 193

422 Wood Street

Clarion, Pa.

Compliments of

L. & R. DECORATING CO. INC.

Compliments of

MR. AND MRS. FRED JENKINS

LAUGHLIN MOTOR COMPANY

DODGE AND PLYMOUTH CARS

DODGE "JOB RATED" TRUCKS

● Phone 141

Clarion, Pa.

Compliments of

ELLIOTT'S ESSO SERVICE

RAY PRINTING COMPANY

"Quality Printing Since 1890"

Clarion

Penna.

BEST WISHES TO THE GRADUATING CLASS

OF 1951

LEWIS STUDIO

"A Name in Portraits"

KNOX 224

PENNA.

PATRONIZE THE ADVERTISERS

Compliments

of

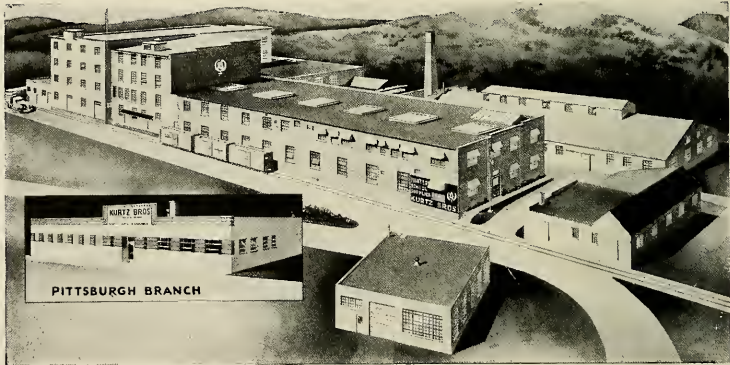
SEQUELLE STAFF

"GET EDUCATED"

WHEN YOU NEED INSURANCE

SEE

BILL FLANAGAN



Built to Serve You . . .

Pictured above, Kurtz Bros. factory and warehouses along with the Pittsburgh Branch contain more than 112,000 square feet of floor space. Here, under one roof, your school annuals are printed, bound and covered. A plant built to serve your printing needs.

KURTZ BROS. » » CLEARFIELD, PA.



TOMORROW
TOMORROW

CLARION UNIVERSITY OF PENNSYLVANIA



3 9363 00150 7323

TOMORROW



Spec. Col.
qLD
1017
.C88
1951
c.2

